



How Asian aerosols impact regional surface temperatures across the globe

Joonas Merikanto¹, Kalle Nordling¹, Petri Räisänen¹, Jouni Räisänen², Declan O'Donnell¹, Antti-Ilari Partanen¹, Hannele Korhonen¹

5 ¹Finnish Meteorological Institute, Helsinki, Finland

²INAR/Physics, University of Helsinki, Helsinki, Finland

Correspondence to: Joonas Merikanto (joonas.merikanto@fmi.fi)

Abstract. South and East Asian anthropogenic aerosols mostly reside in an air mass extending from the Indian Ocean to the North Pacific. Yet the surface temperature effects of Asian aerosols spread across the whole globe. Here, we remove Asian anthropogenic aerosols from two independent climate models (ECHAM6.1 and NorESM1) using the same representation of aerosols via MACv2-SP (a simple plume implementation of the 2nd version of the Max Planck Institute Aerosol Climatology). We then robustly decompose the global distribution of surface temperature responses into contributions from atmospheric energy flux changes. We find that the horizontal atmospheric energy transport strongly moderates the surface temperature response over the regions where Asian aerosols reside. Atmospheric energy transport and changes in clear-sky longwave radiation redistribute the temperature effects efficiently across the Northern hemisphere, and to a lesser extent also over the Southern hemisphere. The model-mean global surface temperature response to Asian anthropogenic aerosol removal is 0.26 ± 0.04 °C (0.22 ± 0.03 for ECHAM6.1 and 0.30 ± 0.03 °C for NorESM1) of warming. Model-to-model differences in global surface temperature response mainly arise from differences in longwave cloud (0.01 ± 0.01 for ECHAM6.1 and 0.05 ± 0.01 °C for NorESM1) and shortwave cloud (0.03 ± 0.03 for ECHAM6.1 and 0.07 ± 0.02 °C for NorESM1) responses. The differences in cloud responses between the models also dominate the differences in regional temperature responses. In both models, the Northern hemispheric surface warming amplifies towards the Arctic, where the total temperature response is highly seasonal and weakest during the Arctic summer. We estimate that under a strong Asian aerosol mitigation policy tied with strong climate mitigation (Shared Socioeconomic Pathway 1-1.9) the Asian aerosol reductions can add around 8 years' worth of current day global warming during the next few decades.

1 Introduction

Understanding how regional climates respond to different climate forcings is crucial for assessing how climate change impacts societies. Samset et al. (2018) showed that anthropogenic aerosols cool the global mean surface temperature in four latest generation climate models by between 0.5K – 1.1K. However, the regional impacts of anthropogenic aerosols on surface temperatures remain particularly complicated to unravel (Persad and Caldeira, 2018; Nordling et al., 2019).



Due to the short lifetime of aerosols, their distribution in the atmosphere is highly heterogeneous and dependent on the location of their emissions and on various dynamical and microphysical processes influencing also their properties and climate effects. Aerosols give rise to both local and remote temperature responses, so that the geographic distributions of aerosol radiative forcing and temperature effects are largely dislocated (Shindell et al., 2010; Nordling et al., 2019). Furthermore, same aerosol emissions originating from different regions vary in their climate forcing efficacies, with their global surface temperature response per unit global radiative forcing differing by factors between 2 to 14, depending on aerosols species and the models used (Kasoar et al., 2018; Westerveld, et al., 2020; Persad and Caldeira 2018).

During the past decades air pollution levels in Europe and North America have decreased considerably while grown in South and East Asia. These opposing changes in air pollution have kept the overall global anthropogenic aerosol radiative forcing close to constant since the mid-1970s (Murphy 2013; Fiedler et al., 2018). South and East Asia have become the dominant sources of anthropogenic aerosol emissions (Lamarque, 2010). Consequently, air pollution has become a major health problem in Asia. Ambient aerosol pollution reduces the life-expectancy by 1.24 years in East Asia and by 1.56 years in South Asia (Apte et al., 2018), and is attributable to 0.67 million deaths per year in India alone (Balakhrisnan et al., 2019). Shared Socioeconomic Pathways (SSPs) predict that strong air pollution mitigation policies (SSP1-1.9) could reduce the Asian aerosol emissions from their 2015 levels by 55% already by 2030 and by 90% by 2100 (Lund et al., 2019, Fig S2).

Large past changes and potentially at least equally significant future changes in Asian aerosols have prompted recent studies on their global and regional surface temperature effects. Kasoar et al. (2016) used three climate models (HadGEM3-GA4, CESM1, and GISS-E2) to study regional surface temperature responses to the removal of SO₂ emissions from China. Two of the three models showed Northern hemispheric warming due to aerosol removal but of significantly different magnitude, while the third model showed no significant surface temperature responses. The authors pinpointed the mixed results from the models to their different treatments of aerosol microphysical processes and aerosol-cloud interactions. Westerveld et al. (2020) also used three climate models (GFDL, CESM1, and GISS-E2) to investigate the surface temperature responses to the removals (or significant reductions) of aerosol sources from several different regions, including China and India. Overall, the models varied in aerosol radiative forcings and regional temperature response patterns associated with Asian aerosol reductions, but suggested that the reductions mostly result in significant surface temperature increase across the Northern hemisphere, and particularly over the Arctic. Persad and Caldeira (2018) used the CAM5 model to place an equivalent to China's total annual year 2000 anthropogenic aerosol emissions at different locations around the globe. They found that emissions placed in China cooled the whole Northern hemisphere, while the same emissions placed in India resulted in a mixed regional response of warming and cooling.



65 Here, we explore the global and regional surface temperature responses to a complete removal of South and East Asian aerosols
using two different climate models, ECHAM6.1 and NorESM1. As in Nordling et al. (2019), we use an identical description
of anthropogenic aerosols in both models. The use of identical aerosols across the models allows us to study the similarities
and differences in model dynamical responses to aerosols, and exclude the model response perturbations that result from
differences in modeled aerosols. Further, we aim to understand the robustness of changes in the climate system that lead to the
local and remote changes in surface temperatures.

70

It is complicated to resolve the pathway from a climate forcing to a regional surface temperature response in climate models
even for globally homogeneous greenhouse gases, let alone for aerosols. A significant climate perturbation results in a complex
set of responses in general circulation patterns, cloud properties, surface albedo, atmospheric water vapor concentrations et
cetera. Surface temperature responses result from a combination of all these different climate feedbacks. Therefore, even a
75 seemingly robust regional surface temperature signal in different climate models may result from a different combination of
feedbacks that sums up to a similar temperature response.

Räisänen (2017) presented a new method built around the concept of effective planetary emissivity for a robust decomposition
of the energetic components that sum up to the geographic distribution of surface temperature responses. Here, we extend the
80 method to better resolve the longwave cloud feedback using radiative kernels, and apply it for the analysis of the model results.
The method allows separating the contributions from atmospheric heat transport, changes in shortwave and longwave radiation
related to clear sky and clouds, surface energy fluxes, and surface albedo to a local surface temperature response.

2 Method

2.1 Model experiments and analysis

85 We use ECHAM6.1 (Stevens et al., 2013) and NorESM1 (Bentsen et al., 2013, Iversen et al. 2013; Kirkevåg et al. 2013)
general circulation models to carry out 100-year slab ocean equilibrium runs for the present day (year 2005) atmosphere
without South and East Asian anthropogenic aerosols, but leaving all other aerosol sources intact. The last 60 years of
equilibrated climate data from each simulation are used for the analysis. These runs are compared to otherwise identical
baseline climate runs of same length but having all aerosol sources on. For the baseline, we use the same ECHAM6.1 and
90 NorESM1 model runs as presented in Nordling et al., (2019).

The background aerosols for ECHAM6.1 are prescribed using the climatology of Kinne et al. (2013), while for NorESM1,
they are simulated by the model's bottom-up aerosol microphysics scheme (Kirkevåg et al. 2013). In both cases, the impact of
modern-day (year 2005) anthropogenic aerosols is represented via the MACv2-SP climatology (Stevens et al. 2017). MACv2-
SP uses in-situ observations of aerosol optical depth (AOD) for the top-to-bottom representation of aerosol-radiation effects,
95 and calculates the aerosol direct and first indirect effects through changes in fixed three dimensional AOD fields with monthly



time resolution. The anthropogenic impact on AOD is represented through nine different aerosol plumes, which together represent the sources and transport of anthropogenic aerosols, including biomass burning. In the runs without Asian anthropogenic aerosols we have turned off plume numbers 3 and 4. The direct and indirect instantaneous aerosol radiative are calculated online in the models using double radiation calls. The global instantaneous forcing can be modelled near-identically with MACv2-SP in ECHAM6.1 and NorESM1, albeit there are some model-to-model differences related to model-specific representations of clouds, surface albedo, and background aerosol (Nordling et al., 2019). The effective radiative forcing (analyzed by Fiedler et al. (2019) for multi-decadal fixed-SST runs for ECHAM6.3 and NoreSM1 models using the same background aerosol representations as here) shows somewhat larger model-to-model variations, but the geographic patterns of the effective radiative forcings with MACv2-SP are close to those of instantaneous radiative forcings. The differences in global anthropogenic aerosol radiative forcings between the ECHAM6.1 and NorESM1 models with MACv2-SP aerosols are small enough to be insignificant for the obtained temperature responses, as discussed in Nordling et al. (2019). However, different representations of natural background aerosol in the models can lead to differences in obtained indirect aerosol forcing (Carslaw et al., 2013; Fiedler et al., 2019), and this is the case also for anthropogenic Asian aerosols when using the model-intrinsic background aerosol representations in NorESM1 and ECHAM6.1, as we will discuss later. Here, both models were coupled to their intrinsic mixed-layer (slab) ocean model representations (for ECHAM6.1 see Roekner et al., 2003; for NorESM1 see Bitz et al., 2012), and hence changes in ocean currents are not accounted for in our analysis.

The analysis of results is based on monthly-mean values of data, calculated separately for each month in the 60-year timeseries. The response uncertainties in global-mean values are calculated as standard error of means using a 95% confidence interval for individual models, and as a pooled standard error of mean with a 95% confidence interval for responses averaged over the two models. The statistical significance of regional responses is evaluated using a Student's t-test with an autocorrelation correction according to Zwiers and von Storch (1995).

2.2 Temperature response decomposition

We decompose the distribution of local surface temperature responses to local changes in atmospheric energetic components using a method presented in Räisänen (2017). The method only requires standardly archived climate model output for the decomposition.

The rate of change of total energy in an atmospheric column is

$$\frac{\delta E}{\delta t} = SW_{TOA}^{\downarrow} - LW_{TOA}^{\uparrow} - F_{SURF}^{\downarrow} + C^{\rightarrow}, \quad (1)$$



where SW_{TOA}^{\downarrow} is the net incoming shortwave radiation and LW_{TOA}^{\uparrow} is the outgoing longwave radiation at the top of the atmosphere, C^{\rightarrow} is the net horizontal heat transport into the column (energy flux convergence), and the net downward heat flux into the surface is given by

130

$$F_{SURF}^{\downarrow} = SW_{SURF}^{\downarrow} + LW_{SURF}^{\downarrow} + SH + LH, \quad (2)$$

where SW_{SURF}^{\downarrow} and LW_{SURF}^{\downarrow} are the net shortwave and longwave radiation fluxes into the surface, and SH and LH are the sensible and latent heat fluxes, respectively. To relate Eq. (1) with the surface air temperature T one defines (Räisänen and Ylhäisi, 2015; Räisänen, 2017)

135

$$LW_{TOA}^{\uparrow} = \varepsilon_{eff} \sigma T^4, \quad (3)$$

where the effective planetary emissivity ε_{eff} is essentially a measure of the local atmospheric greenhouse effect. Substituting Eq. (3) into Eq. (1) gives

140

$$\varepsilon_{eff} \sigma T^4 = SW_{TOA}^{\downarrow} - F_{SURF}^{\downarrow} + C^{\rightarrow} - \frac{\delta E}{\delta t} \quad (4)$$

Then, letting $[\]$ to mark the mean state between baseline and perturbed climates, the change in Eq. (4) between the two climate states can be written as

145

$$\sigma [\varepsilon_{eff}] \Delta(T^4) = -\sigma \Delta \varepsilon_{eff} [T^4] + \Delta SW_{TOA}^{\downarrow} - \Delta F_{SURF}^{\downarrow} + \Delta \left(C^{\rightarrow} - \frac{\delta E}{\delta t} \right) \quad (5)$$

Linearizing the left hand side of Eq. (5) as

150

$$\sigma [\varepsilon_{eff}] \Delta(T^4) \approx 4\sigma [\varepsilon_{eff}] [T^3] \Delta T = D \Delta T \quad (6)$$

allows the decomposition of surface temperature response into changes in energy flux components in the atmospheric column,

$$\Delta T = \Delta T_{LW} + \Delta T_{SW} + \Delta T_{SURF} + \Delta T_{CONV}, \quad (7)$$

155

where



$$\Delta T_{LW} = -\frac{\sigma \Delta \varepsilon_{eff}[T^4]}{D}, \quad (8a)$$

160

$$\Delta T_{SW} = \frac{\Delta SW_{TOA}^\downarrow}{D}, \quad (8b)$$

$$\Delta T_{SURF} = -\frac{\Delta F_{SURF}^\downarrow}{D}, \quad (8c)$$

$$165 \quad \Delta T_{CONV} = \frac{\Delta \left(c \rightarrow \frac{\delta E}{\delta \varepsilon} \right)}{D}. \quad (8d)$$

We mark the surface temperature change due to horizontal heat transport and the change in the energy storage (Eq. 8d) collectively as CONV. Annually, the change in the energy storage of an atmospheric column averages to zero in an equilibrium climate (Porter et al., 2010; Räisänen, 2017), and Eq. (8d) corresponds to the difference in horizontal heat transport between two equilibrium climates. However, on monthly and seasonal timescales the changes in atmospheric energy storage can be significant.

The terms on the right hand side of Eqs. (8a-b) can be further expanded to separate the surface temperature responses due to clear-sky and cloud radiative effects. The standard climate model output contains radiative fluxes both for all-sky and clear-sky (CS) conditions, so that the temperature response to longwave cloud radiative effect can be obtained as

$$\Delta T_{LW_{CRE}} = \Delta T_{LW} - \Delta T_{LW_{CS}} = -\frac{\sigma \Delta \varepsilon_{eff}[T^4]}{D} + \frac{\sigma \Delta \varepsilon_{eff,cs}[T^4]}{D} \quad (9)$$

Räisänen (2017) calculated the surface temperature response due to changes in longwave cloud emissivity as $\Delta T_{LW_{CRE}}$, but noted that it is a negatively biased approximation of the actual cloud long-wave feedback, as also discussed by Soden et al., (2004). Here, we extend the calculation to allow for a more precise separation of thermal radiation to its clear-sky and cloud contributions with the help of radiative kernels. Radiative kernels are climate model –derived radiative responses to small changes in climate state, such as to changes in atmospheric and surface temperature water vapor under clear-sky and all-sky conditions. We use the radiative kernels of Block and Mauritsen (2013) and their Eq. (4) to calculate a corrected longwave cloud feedback $\Delta LW_{cld} \approx \Delta LW_{CRE} - \Delta LW_{cor}$, namely

$$\Delta LW_{cor} = (K_T - K_T^{clr})\Delta T + \sum_i (K_{T_i} - K_{T_i}^{clr})\Delta T_i + \sum_i (K_{w_i} - K_{w_i}^{clr})\Delta(\ln q)_i, \quad (10)$$



Where K_T and K_w are different model level mass-weighted radiative kernels, q is the specific humidity, and the summations
190 are carried over the model levels i . Block and Mauritsen (2013) generated their radiative kernels with the ECHAM6 climate
model, and here we apply the kernels both to the ECHAM6.1 and NorESM1 models. This should bring no major bias for the
NorESM1 calculations, as Myhre et al. (2018) showed that radiative kernels do not significantly depend on the specific model
used for their construction. The calculated correction is used to redistribute the effect of $\Delta\varepsilon_{eff}$ between the cloud and clear-
sky terms as

195

$$\Delta T_{LW_{cld}} = \Delta T_{LW_{CRE}} - \frac{\Delta LW_{cor}}{D} \quad (11a)$$

$$\Delta T_{LW_{clr}} = \Delta T_{LW_{CS}} + \frac{\Delta LW_{cor}}{D} \quad (11b)$$

200 where $\Delta T_{LW_{cld}}$ and $\Delta T_{LW_{clr}}$ are the corrected longwave cloud and clear-sky temperature responses.

As discussed in Räisänen (2017), the surface and top-of-atmosphere shortwave radiative responses for clear-sky and all-sky
conditions can also be further separated to physically more meaningful terms using the Approximative Partial Radiative
Perturbation (APRP) method of Taylor et al. (2007).

205

$$\Delta T_{SW} = \Delta T_{SW_{IN}} + \Delta T_{SW_{clr}} + \Delta T_{SW_{cld}} + \Delta T_{SW_{Albedo}} + \Delta T_{SW_{NL}}, \quad (12)$$

where $\Delta T_{SW_{IN}}$ corresponds to changes in incoming solar radiation (zero in our model experiments), $\Delta T_{SW_{clr}}$ is the corrected
clear-sky shortwave temperature response, $\Delta T_{SW_{cld}}$ is the shortwave cloud response, $\Delta T_{SW_{Albedo}}$ the temperature response due
210 to changes in surface albedo, and $\Delta T_{SW_{NL}}$ is a non-linear correction term, small enough to be insignificant for the analysis.

Hereafter, we use the subscripts in ΔT terms as shorthand notations when discussing the various temperature responses (so that
 $\Delta T_{SW_{clr}}$ is discussed as SW_{clr} etc.).

3 Results

215 3.1 Radiative forcing

Figure 1 shows the net change in instantaneous top-of-atmosphere aerosol radiative forcing, ΔIRF , due to removal of South
and East Asian anthropogenic aerosols, calculated as an average over the full 60-year equilibrated climate data sets over both
models as



220 $\Delta IRF(\text{removed S\&E Asian aerosols}) = IRF(\text{no S\&E Asian aerosols}) - IRF(\text{all aerosols}).$ (13)

Note that since we here remove the Asian aerosols from the models, ΔIRF is positive in sign, i.e. that of warming. ΔIRF further breaks into $\Delta IRF = \Delta IRF_d + \Delta IRF_{id}$, where ΔIRF_d describes the change in aerosol direct radiative forcing due to the net change in direct radiation attenuation of aerosols through their scattering and absorption of solar radiation. ΔIRF_{id} is the change in indirect radiative forcing (the Twomey effect) between the runs without and with South and East Asian aerosols. The geographical pattern of ΔIRF is nearly identical for ECHAM6.1 and NorESM1, with the model-to-model correlation coefficient of 0.99. However, the modeled globally averaged ΔIRF differs slightly between the models, being $0.38 \pm 0.00 \text{ Wm}^{-2}$ for ECHAM6.1 and $0.41 \pm 0.00 \text{ Wm}^{-2}$ for NorESM1, with a model mean of $0.40 \pm 0.00 \text{ Wm}^{-2}$. Results for individual models are shown in the Appendix Fig. A1.

230

In the models, ΔIRF due to removal of Asian aerosols is concentrated on a distinctive patch over the region surrounding the aerosol sources. The change in local radiative forcing reaches up to 8.3 Wm^{-2} over SE China. The change in direct radiative forcing ΔIRF_d in the models is responsible for slightly over a half ($0.22 \pm 0.00 \text{ Wm}^{-2}$; $0.23 \pm 0.00 \text{ Wm}^{-2}$ for ECHAM6.1 and $0.20 \pm 0.00 \text{ Wm}^{-2}$ for NorESM1 with a model-to-model correlation coefficient 0.96) of the total globally averaged ΔIRF , and more focused on the polluted regions than the change in indirect forcing ΔIRF_{id} ($0.18 \pm 0.00 \text{ Wm}^{-2}$; $0.15 \pm 0.00 \text{ Wm}^{-2}$ for ECHAM6.1 and $0.21 \pm 0.00 \text{ Wm}^{-2}$ for NorESM1 with a model-to-model correlation coefficient 0.94), which spreads more evenly over a larger area. The higher model-to-model correlation coefficient for ΔIRF than for ΔIRF_d and ΔIRF_{id} separately indicates a cancellation of regional model-to-model differences when changes in direct and indirect radiative forcings are summed up. This cancellation of differences in ΔIRF suggests that differences in modelled cloud fields mainly distribute ΔIRF differently to its ΔIRF_d and ΔIRF_{id} components in the models, while differences in modelled background aerosols likely also play a role in model-to-model difference in ΔIRF_{id} .

240

3.2 Annually averaged temperature response decomposition

We first describe the commonalities in modeled surface temperature responses to the omission of S&E Asian aerosols in the two models, before discussing their differences. The average global equilibrium temperature response ΔT to the removal of aerosols across the two models is shown in Fig. 2A (individual models shown in Figs. A2A and A3A, and global-level results are collected on Table A1). The regional distribution of surface temperature response is strikingly different from the distribution of S&E Asian aerosol forcing, with surface warming spreading over the entire Northern Hemisphere, and to a lesser extent also to the Southern hemisphere. Indeed, significant warming extends to regions where no change in aerosols is modeled, such as over to the North American continent (0.5 K) and to Arctic regions with warming exceeding 1 K. The warming over the region with the strongest change in local aerosol forcing (SE China) is 1.5 K with a local climate sensitivity

250



of $0.18 \text{ K}/(\text{Wm}^{-2})$ (i.e., $1.5 \text{ K} / 8.3 \text{ Wm}^{-2}$), while the globally averaged warming is $0.26 \pm 0.04 \text{ K}$ with a climate sensitivity of $0.65 \pm 0.11 \text{ K}/(\text{Wm}^{-2})$.

As described in Methods, the total local temperature response can be represented as a sum of responses in clear and cloudy-sky shortwave (SW_{clr} and SW_{cld}) and longwave (LW_{clr} and LW_{cld}) radiation, surface albedo (ALBEDO), surface energy fluxes (SURF), and an energy convergence term (CONV) representing the horizontal transport of heat for annually averaged results. The annually averaged temperature responses for each of the energetic terms, averaged over the 60 year sets of equilibrated climate runs with both models, are shown in Fig. 2B-H. The sum of surface temperature responses to individual energetic terms (sum over panels B-H) reproduces the total surface temperature response in panel A with a spatial correlation coefficient $\text{cc}=0.998$ and an identical global mean.

First it can be noted that the geographical distribution of temperature responses due to changes in clear-sky shortwave radiation, SW_{clr} (Fig. 2B) resembles closely the distribution of shortwave direct radiative forcing, ΔIRF_d (Fig. 1B), with a correlation coefficient $\text{cc}=0.96$. SW_{clr} is also one of the major energetic terms of the total globally averaged temperature response, responsible for $0.08 \pm 0.01 \text{ K}$ of the total globally averaged temperature response of $0.26 \pm 0.04 \text{ K}$.

Over the whole region of positive radiative forcing (ΔIRF in Fig. 1A) the warming is moderated by the cooling caused by the transport of energy away from the region, CONV (Fig. 2C). CONV also efficiently redistributes the temperature effects across the globe. Since CONV only acts by horizontally redistributing atmospheric energy, its effect on the global surface temperature response is effectively zero ($-0.01 \pm 0.02 \text{ K}$).

Unlike for the connection between SW_{clr} and ΔIRF_d , the geographical distribution of temperature responses due to changes in cloudy-sky shortwave radiation, SW_{cld} (Fig. 2D) corresponds only weakly to the geographical distribution of the change in shortwave cloud radiative forcing $\Delta\text{IRF}_{\text{id}}$ (Fig. 1C) ($\text{cc}=0.23$). Indeed, while there is pronounced positive $\Delta\text{IRF}_{\text{id}}$ in South Asia and western subtropical North Pacific in Fig. 1C, much of the warming response in this region appears actually in the LW_{cld} term (Fig. 2E). This is because of feedbacks that lead to changes in cloud cover and other cloud properties. Clouds both reflect SW radiation and reduce outgoing longwave radiation (e.g., Loeb et al. 2018), and changes in cloud amount tend to have opposing effects on SW_{cld} and LW_{cld} . The average total cloud cover change in the models is shown in Fig. 3A. The global distribution of cloud cover changes correlates strongly with LW_{cld} ($\text{cc}=0.77$) and anti-correlates with SW_{cld} ($\text{cc}=-0.74$). Only by summing SW_{cld} and LW_{cld} (Fig 2I) one can again recognize the warming response to $\Delta\text{IRF}_{\text{id}}$ (Fig 1C) ($\text{cc}=0.70$). There is a marked and statistically significant increase in cloud cover over India, the Indochinese peninsula, and western subtropical North Pacific, accompanied with a strong decrease in SW_{cld} and increase in LW_{cld} . The strong increase in cloud cover over India and the Indochinese peninsula leads to a weaker overall surface temperature response (Fig. 2A) in these regions. In contrast, the decrease of cloud cover over East Asia amplifies the temperature response over the region. Further, the changes



285 in clouds also contribute to remote temperature responses, such as to a weakening of the cloud cover over Mediterranean and
central Asia with compensating surface temperature effects from the SW_{cld} and LW_{cld} pathways. Overall, the combined effect
of clouds ($SW_{\text{cld}} + LW_{\text{cld}}$) on the globally averaged temperature response is 0.08 ± 0.04 K.

Together with the horizontal energy transport CONV, also the clear-sky longwave response LW_{clr} acts as a strong redistributor
290 of the surface temperature changes across the globe. Similarly to CO_2 forcing (Räisänen, 2017), LW_{clr} (0.08 ± 0.03 K) is one of
the major terms in the overall global temperature response also for aerosols. This is somewhat counterintuitive, as the modeled
aerosols only impact the shortwave radiation in clear and cloudy skies. The geographical distribution of LW_{clr} mainly results
from a combination of atmospheric water vapor and lapse rate feedbacks (Pithan and Mauritsen, 2014; Räisänen, 2017), but
the separation of these feedbacks is not pursued in this study.

295 Fig. 2F shows the annual average change across both models in ALBEDO, that is the surface temperature response to the
change in surface albedo. The change in surface albedo is related to changes in snow and sea-ice cover, but interestingly the
surface albedo (ratio between reflected and incoming surface shortwave radiation) also changes over India in both models,
likely due to changes in the ratio of direct vs. diffuse solar radiation. The surface albedo change further pushes the geographical
300 distribution of warming towards Northern latitudes. The globally averaged temperature effect of the surface albedo change is
nevertheless small (0.02 ± 0.01 K)

The annually averaged temperature response due to changes in surface energy flux, SURF (Fig. 2G), is zero over the continents
as there is no net annual exchange of heat between continental surface and the atmosphere regardless of climate state, and
305 nonzero mainly over ocean regions where there are changes in sea ice cover. In climate runs with fully coupled ocean models,
instead of slab-ocean models used here, the annually averaged oceanic surface terms could be larger due to changes in oceanic
circulation and heat transport. Since we have run the modeled climates to an equilibrium, the yearly averaged global SURF is
zero (0.00 ± 0.04 K); yet, it introduces a significant noise term in the results. However, oceanic SURF term plays an important
role in the seasonal cycle of regional temperature responses, as we will discuss further when describing the seasonality of
310 modelled temperature responses.

3.3 Model-to-model differences in regional temperature responses

The parenthesis in Figs. 1, 2 and 3 show the model-to-model correlation coefficients for the geographical distributions of
changes in radiative forcings, temperature response terms and cloud cover due to the removal of South and East Asian
anthropogenic aerosols. The coefficients describe the geographical uniformity of responses for the ECHAM6.1 and NorESM1
315 climate models using the same representation of anthropogenic aerosols via the MACv2-SP aerosol scheme.



320 The strong correlation between modelled change in aerosol direct radiative forcing ΔIRF_d ($cc=0.96$) translates into a strong correlation between the modelled surface temperature response due to SW_{clr} ($cc=0.91$). However, the strong correlation for the change in aerosol indirect radiative forcing ΔIRF_{id} ($cc=0.96$) does not result in a strong correlation between the modelled SW_{cld} ($cc=0.28$). This is due to different changes in modelled cloud fields, and the high sensitivity of SW_{cld} to such changes. As discussed in the previous section, the changes in cloud fields also lead to changes in LW_{cld} . In both models the change in LW_{cld} ($cc=0.46$) is particularly pronounced over the Asian monsoon region, where the cloud cover increases due to the omission of S&E Asian anthropogenic aerosols. The total surface temperature response due to clouds, $SW_{cld} + LW_{cld}$ ($cc=0.37$) has a similar correlation as the change in total cloud cover ($cc=0.37$) between the models. The distribution of annual average surface temperature responses due to changes in atmospheric energy transport, $CONV$ ($cc=0.64$), is modeled relatively robustly across the models, given that $CONV$ extends over both hemispheres. The correlation between annual LW_{clr} terms ($cc=0.52$) is modest, and differences in LW_{clr} contribute to model differences in the total temperature response particularly over North Asia. The surface temperature responses to albedo changes in the models, $ALBEDO$ ($cc=0.23$), have a rather weak correlation, but much of the deviation in $ALBEDO$ responses results from sporadic differences in modelled Southern Ocean sea ice.

330

The total surface temperature response ΔT ($cc=0.65$) due to removal of S&E Asian anthropogenic aerosols using the MACv2-SP aerosol scheme has a weaker correlation than the temperature response due to removal of all anthropogenic MACv2-SP aerosols in the same models ($cc=0.78$) (Nordling et al., 2019). The total globally and annually averaged surface temperature responses in the models due to the removal of S&E Asian anthropogenic aerosols (0.22 ± 0.03 KK for ECHAM6.1 and 0.30 ± 0.03 K for NorESM1) also differ more than the corresponding values for the complete removal of anthropogenic aerosols (0.48 ± 0.04 K for ECHAM6.1 and 0.50 ± 0.06 K for NorESM1, with error given here using a 95% confidence interval). For the removal of S&E Asian anthropogenic aerosols modelled here, the largest contributors to the differences in modeled globally and annually averaged surface temperature responses between the two models are the cloud terms SW_{cld} (0.03 ± 0.03 K for ECHAM6.1 and 0.07 ± 0.02 K for NorESM1) and LW_{cld} (0.01 ± 0.01 K for ECHAM6.1 and 0.05 ± 0.01 K for NorESM1).

340 3.4 Seasonal cycle of temperature responses across NH latitudes

The seasonal cycle of latitudinal temperature responses is shown in Fig. 4A for ECHAM6.1 and in Fig. 4B for NorESM1. The figures also highlight the latitudinal dislocation of the change in aerosol radiative forcing and the resulting temperature response. In both models the change in radiative forcing peaks between 20–30 °N, but the temperature responses are strongest over the High North.

345

The seasonality of the latitudinal surface temperature responses (star symbols in Fig. 4) is modest in both models from low to mid-latitudes, with opposing changes in energetic terms contributing to balancing cooling and warming seasonal responses. Throughout the Northern hemisphere both shortwave and longwave clear-sky terms (SW_{clr} and LW_{clr} shown with color bars) remain positive during all seasons. Surface temperature changes due to cloud shortwave responses (SW_{cld}) are strongest during



350 the summer, being positive in the mid-latitudes but mostly negative elsewhere. The cloud longwave term (LW_{cld}) typically
opposes the SW_{cld} responses, and particularly strongly over the 10-20 °N band due to opposing responses to changes in
cloudiness in the region. The change in the net oceanic surface energy flux, (SURF), amplifies the summer warming in 0-20
°N during the Asian monsoon, and overall the changes in oceanic surface fluxes tend to regulate the modest seasonality of
temperature responses from low to mid-latitudes, and amplify the seasonality of the response in the Arctic. Atmospheric
355 energy transport and storage (CONV) also regulates the modest seasonality of responses from low to mid-latitudes together
with SURF, although these terms tend to oppose each other. The seasonal CONV terms grow from mostly negative at low
northern latitudes towards mostly positive at high northern latitudes, reflecting the increase in atmospheric energy transport
towards High North.

360 The differences in modelled latitudinal temperature responses become larger from 50 °N northwards, where the direct influence
from the change in aerosol radiative forcing diminishes. Between 50-70 °N warming from the longwave clear-sky term is
stronger in NorESM1 than in ECHAM6.1, and the negative shortwave cloud term also contributes to lesser warming in
ECHAM6.1.

365 In the Arctic, the surface temperature warming is large in both models in the Northern hemispheric autumn and winter and
characterized by a near lack of negative energetic terms and strong LW_{clr} terms in both models. The models produce mixed
results for the Arctic spring, but both models show a steep summer minimum in the overall surface temperature response. The
Arctic summer response is characterized by the positive surface albedo (ALBEDO) and energy transport effects (CONV)
opposed by a strongly negative surface energy term (SURF) corresponding to oceanic heat uptake. In Arctic summer, the
370 shortwave cloud effects SW_{cld} are more negative in ECHAM6.1 than in NorESM1, with very modest effects for the rest of the
year. During other seasons, the surface energy (SURF) term becomes positive as the ocean releases the energy stored. Thus,
in the Arctic, SURF amplifies the seasonality of the temperature response.

3 Conclusions and discussion

In this work, we have represented the modern day anthropogenic aerosols identically in two climate models with independent
375 development histories, and studied the equilibrium climate responses to the removal of East and South Asian anthropogenic
aerosols. This forcing gives rise to a positive surface temperature response, the global mean of which is somewhat larger in
NorESM1 (0.30 ± 0.03 K) than in ECHAM6.1 (0.22 ± 0.03 K). Both models robustly show that the warming response spreads
across both hemispheres and is particularly strong in the Arctic.

380 The temperature decomposition method by Räisänen (2017) provides a valuable tool for analyzing how the surface temperature
response to a regional forcing spreads to remote regions. Over the polluted regions in South and East Asia, the removal of



anthropogenic aerosols leads to a strong surface warming contribution from additional solar radiation reaching the surface under clear-sky conditions. The local temperature effects due to changes in clouds are however more complex. While the removal of modeled aerosols in the applied MACv2-SP aerosol scheme (Stevens et al., 2017) only affects the cloud shortwave properties via the first indirect aerosol effect, the cloud responses manifest themselves both in shortwave and longwave channels, with changes in cloud amount having opposite shortwave and longwave effects on surface temperatures.

The driver of the wide geographical spreading of the temperature response appears to be the strong tendency of atmospheric heat transport to regulate surface warming over the region of diminished aerosol forcing while simultaneously enhancing the warming in remote locations. Further, changes in the clear-sky longwave responses spread the surface temperature warming over both hemispheres. In both models the seasonality of the latitudinal surface temperature responses is modest in northern low and mid-latitudes, but strong over the Arctic.

The mechanisms driving the strongly seasonal Arctic response resembles those for the CMIP5 ensemble for CO₂ doubling (Räisänen, 2017) and historical transient simulations (Pithan and Mauritsen, 2014). They involve the ice-albedo feedback, where additional sea ice melt during spring and summer leads to increased absorption of solar radiation by the larger open water area in the Arctic Ocean during summer and autumn. During the summer the Arctic Ocean is thermalized close to the freezing temperature and the trapped solar radiation is stored as heat within the ocean (e.g. Holland and Bitz, 2003; Screen and Simmonds, 2010). This heat is then released during autumn and winter, elevating the atmospheric sub-zero temperatures. However, the longwave clear-sky response contributes to the seasonality and the overall Arctic warming, supporting the strong role of temperature feedbacks in the Arctic warming (Pithan and Mauritsen, 2014) also in case of South and East Asian aerosol removal. Further, it is notable that in this study a strong Arctic surface temperature response takes place despite the lack of modeled changes in oceanic heat transport, which have been previously shown to dominate the increase in heat transport towards the Arctic due to reductions in European anthropogenic aerosol emissions (Acosta-Navarro et al., 2016).

The temperature decomposition method also allows an analysis of the similarities and differences between the response in ECHAM6.1 and NorESM1. It was found that the larger global annual mean warming in NorESM1 than in ECHAM6.1 (0.30 ± 0.03 K vs. 0.22 ± 0.03 K) is primarily associated with the shortwave cloud response (0.07 ± 0.02 K for NorESM1 and 0.03 ± 0.03 K for ECHAM6.1) and the longwave cloud response (0.05 ± 0.01 K for NorESM1 and 0.01 ± 0.01 K for ECHAM6.1). Furthermore, there are significant differences in the geographic patterns of cloud cover responses, which lead to equally significant local/regional differences in the combined shortwave and longwave cloud surface temperature responses. Overall, these differences notwithstanding, it is however encouraging that the geographical distribution of remote surface temperature response is robust in the two independent climate models, when run with identical aerosol descriptions. Not just the distribution of total surface temperature response is similar in the models, but also the distributions of different energy flux drivers which together constitute the obtained temperature responses, are mostly similar.



The effective radiative forcing (ERF) due to *adding* MACv2-SP aerosols was shown to be -0.50 Wm^{-2} for ECHAM6.3 and -0.65 Wm^{-2} for NorESM1 by Fiedler et al. (2019). As such, the total ERF for all anthropogenic aerosols computed using the MACv2-SP scheme is in the low-end range of typical ERFs (between -0.29 and -1.44 Wm^{-2}) obtained for CMIP5 models with model-intrinsic aerosol schemes (Shindell et al., 2015), and closely matches the recent estimate of -0.55 Wm^{-2} for the 1750-2015 change in global aerosol ERF by Lund et al. (2019). The global annual temperature response for adding MACv2-SP aerosols was shown to be -0.48K for ECHAM6.1 and -0.50K for NorESM1, being in the low end of equilibrium temperature responses (-0.5 to -1.1K) for adding model-intrinsic anthropogenic aerosols in four contemporary climate models (Samset et al., 2018). Therefore, the annual average temperature response of $0.26 \pm 0.04 \text{ K}$ obtained here can be considered to be a conservative estimate for the removal of South and East Asian anthropogenic aerosols.

To contextualize the effects of strong Asian aerosol pollution mitigation scenarios on the changes in global surface temperatures, we note that global temperatures have increased by an average of $0.18 \text{ }^\circ\text{C}$ per decade during 1980-2019 (NOAA global climate report 2019). Lund et al. (2019) showed that under the Socioeconomic Shared Pathway 1-1.9, the strong air pollution mitigation scenarios tied with CO_2 mitigation policies lead to a 55% drop in combined aerosol emissions from South and East Asian regions already by 2030. Our models predict an annually averaged global warming of $0.26 \pm 0.04 \text{ }^\circ\text{C}$ if the South and East Asian anthropogenic aerosols are removed totally. Assuming a linear relationship between aerosol emission reductions and temperature effects and a relatively fast transient climate response for the aerosols, the Asian emissions reductions can add another 7.9 (6.7-9.2) years' worth of current day global warming on top of greenhouse gas -related warming during the next few decades, thus significantly pushing back the near-decadal effects of strong CO_2 mitigation policies under Socioeconomic Shared Pathway 1-1.9.

Data availability

Data and scripts are available at <https://fmi.b2share.csc.fi/records/aa3085799bff4be798342e4c0d66caa3>.

Author contributions

The manuscript was written by JM with contributions from all authors. KN performed ECHAM6.1 simulations with help from JM, PR and DO'D. PR performed all NorESM1 simulations. The data analysis was carried out by JM and KN and guided by JR. HK came up with the initial research idea and AIP assisted with project coordination.



Competing interests

The authors declare no competing interests.

445 Acknowledgements

This project has been funded by the European Research Council (ERC) under the European Union's Horizon 2020 research and innovation program under grant agreement no. 646857, and by the Academy of Finland (projects 287440 and 308365). The authors would also like to thank Stephanie Fiedler for providing the MACv2-SP code for ECHAM6.1.

Financial support

450 This research has been supported by the Academy of Finland (grant no. 287440) and the European Research Council (grant no. 646857).

References

- Acosta Navarro, J. C., Varma, V., Riipinen, I., Seland, Ø., Kirkevåg, A., Struthers, H., Iversen, T., Hansson, H. C., and Ekman, A. M. L.: Amplification of Arctic warming by past air pollution reductions in Europe, *Nature Geoscience*, 9, <http://dx.doi.org/10.1038/ngeo2673>, 2016.
- 455 <http://dx.doi.org/10.1038/ngeo2673>, 2016.
- Apte, J. S., Brauer, M., Cohen, A. J., Ezzati, M., and Pope, C. A.: Ambient PM_{2.5} reduces global and regional life expectancy, *Environ. Sci. Technol. Lett.*, 5, 546–551, <https://doi.org/10.1021/acs.estlett.8b00360>, 2018.
- 460 Balakrishnan, K., Dey, S., Gupta, T., Dhaliwal, R. S., Brauer, M., Cohen, A. J., Stanaway, J. D., Beig, G., Joshi, T. K., Aggarwal, A. N., Sabde, Y., Sadhu, H., Frostad, J., Causey, K., Godwin, W., Shukla, D. K., Kumar, G. A., Varghese, C. M., Muralidharan, P., Agrawal, A., Anjana, R. M., Bhansali, A., Bhardwaj, D., Burkart, K., Cercy, K., Chakma, J. K., Chowdhury, S., Christopher, D. J., Dutta, E., Furtado, M., Ghosh, S., Ghoshal, A. G., Glenn, S. D., Guleria, R., Gupta, R., Jeemon, P., Kant, R., Kant, S., Kaur, T., Koul, P. A., Krish, V., Krishna, B., Larson, S. L., Madhipatla, K., Mahesh, P. A., Mohan, V., Mukhopadhyay, S., Mutreja, P., Naik, N., Nair, S., Nguyen, G., Odell, C. M., Pandian, J. D., Prabhakaran, D., Prabhakaran, P., Roy, A., Salvi, S., Sambandam, S., Saraf, D., Sharma, M., Shrivastava, A., Singh, V., Tandon, N., Thomas, N. J., Torre, A., Xavier, D., Yadav, G., Singh, S., Shekhar, C., Vos, T., Dandona, R., Reddy, K. S., Lim, S. S., Murray, C. J. L., Venkatesh, S., and Dandona, L.: The impact of air pollution on deaths, disease burden, and life expectancy across the states of India: the Global Burden of Disease Study 2017, *Lancet Planetary Health*, 3, e26–e39, [https://doi.org/10.1016/S2542-5196\(18\)30261-4](https://doi.org/10.1016/S2542-5196(18)30261-4), 2019.

470



- Bitz, C., Shell, K., Gent, P., Bailey, D., Danabasoglu, G., Armour, K., Holland, M., and Kiehl, J.: Climate Sensitivity of the Community Climate System Model, Version 4, *J. Climate*, 25, 3053–3070, doi:10.1175/JCLI-D-11-00290.1, 2012.
- Block, K. and Mauritsen, T.: Forcing and feedback in the MPI-ESM-LR coupled model under abruptly quadrupled CO₂, *J. Adv. Model. Earth Syst.*, 5, 676–691, 2013.
- Carslaw, K., Lee, L., Reddington, C., Pringle, K., Rap, A., Forster, P., Mann, G., Spracklen, D., Woodhouse, M., Regayre, L., and Pierce, J. R.: Large contribution of natural aerosols to uncertainty in indirect forcing, *Nature*, 503, 67–71, 2013.
- 480 Fiedler, S., Kinne, S., Huang, W. T. K., Räisänen, P., O'Donnell, D., Bellouin, N., Stier, P., Merikanto, J., van Noije, T., Makkonen, R., and Lohmann, U.: Anthropogenic aerosol forcing – insights from multiple estimates from aerosol-climate models with reduced complexity, *Atmos. Chem. Phys.*, 19, 6821–6841, <https://doi.org/10.5194/acp-19-6821-2019>, 2019.
- Holland, M. and Bitz, C.: Polar amplification of climate change in coupled models, *Clim. Dynam.*, 21, 221–232, 485 doi:10.1007/s00382-003-0332-6, 2003.
- Iversen, T., Bentsen, M., Bethke, I., Debernard, J. B., Kirkevåg, A., Seland, Ø., Drange, H., Kristjansson, J. E., Medhaug, I., Sand, M., and Seierstad, I. A.: The Norwegian Earth System Model, NorESM1-M – Part 2: Climate response and scenario projections, *Geosci. Model Dev.*, 6, 389–415, <https://doi.org/10.5194/gmd-6-389-2013>, 2013.
- 490 Kassoar, M., Voulgarakis, A., Lamarque, J.-F., Shindell, D. T., Bellouin, N., Collins, W. J., Faluvegi, G., and Tsigaridis, K.: Regional and global temperature response to anthropogenic SO₂ emissions from China in three climate models, *Atmos. Chem. Phys.*, 16, 9785–9804, <https://doi.org/10.5194/acp-16-9785-2016>, 2016.
- 495 Kassoar, M., Shawki, D., and Voulgarakis, A.: Similar spatial patterns of global climate response to aerosols from different regions, *Clim. Atmos. Sci.*, 1, 12, <https://doi.org/10.1038/s41612-018-0022-z>, 2018.
- Kinne, S., O'Donnell, D., Stier, P., Kloster, S., Zhang, K., Schmidt, H., Rast, S., Giorgetta, M., Eck, T. F., and Stevens, B.: MAC-v1: A new global aerosol climatology for climate studies, *J. Adv. Model. Earth Syst.*, 5, 704–500 740, <https://doi.org/10.1002/jame.20035>, 2013.
- Kirkevåg, A., Iversen, T., Seland, Ø., Hoose, C., Kristjansson, J. E., Struthers, H., Ekman, A. M. L., Ghan, S., Griesfeller, J., Nilsson, E. D., and Schulz, M.: Aerosol–climate interactions in the Norwegian Earth System Model – NorESM1-M, *Geosci. Model Dev.*, 6, 207–244, <https://doi.org/10.5194/gmd-6-207-2013>, 2013.



505

Lamarque, J.-F., Bond, T. C., Eyring, V., Granier, C., Heil, A., Klimont, Z., Lee, D., Liousse, C., Mieville, A., Owen, B., Schultz, M. G., Shindell, D., Smith, S. J., Stehfest, E., Van Aardenne, J., Cooper, O. R., Kainuma, M., Mahowald, N., McConnell, J. R., Naik, V., Riahi, K., and van Vuuren, D. P.: Historical (1850–2000) gridded anthropogenic and biomass burning emissions of reactive gases and aerosols: methodology and application, *Atmos. Chem. Phys.*, 10, 7017–7039, <https://doi.org/10.5194/acp-10-7017-2010>, 2010.

510

Loeb, N. G., Doelling, D. R., Wang, H. L., Su, W. Y., Nguyen, C., Corbett, J. G., Liang, L. S., Mitrescu, C., Rose, F. G., and Kato, S.: Clouds and the Earth's Radiant Energy System (CERES) Energy Balanced and Filled (EBAF) Top-of-Atmosphere (TOA) Edition-4.0 Data Product, *J. Climate*, 31, 895–918, 2018.

515

Lund, M. T., Myhre, G., and Samset, B. H.: Anthropogenic aerosol forcing under the Shared Socioeconomic Pathways, *Atmos. Chem. Phys.*, 19, 13827–13839, <https://doi.org/10.5194/acp-19-13827-2019>, 2019.

520

Murphy, D. M.: Little net clear-sky radiative forcing from recent regional redistribution of aerosols, *Nat. Geosci.*, 6, 258–262, 2013.

525

Myhre, G., Kramer, R. J., Smith, C. J., Hodnebrog, Ø., Forster, P., Soden, B.J., Samset, B.H., Stjern, C.W., Andrews, T., Boucher, O., Faluvegi, G., Fläschner, D., Kasoar, M., Kirkevåg, A., Lamarque, J.F., Olivié, D., Richardson, T., Shindell, D., Stier, P., Takemura, T., Voulgarakis, A., Watson-Parris, D.: Quantifying the Importance of Rapid Adjustments for Global Precipitation Changes, *Geophys Res Lett.*, 28;45(20):11399-11405. doi: 10.1029/2018GL079474, 2018.

NOAA National Centers for Environmental Information, State of the Climate: Global Climate Report for Annual 2019, published online January 2020, retrieved on June 24, 2020 from <https://www.ncdc.noaa.gov/sotc/global/201913>

530

Nordling, K., Korhonen, H., Räisänen, P., Alper, M. E., Uotila, P., O'Donnell, D., and Merikanto, J.: Role of climate model dynamics in estimated climate responses to anthropogenic aerosols, *Atmos. Chem. Phys.*, 19, 9969–9987, <https://doi.org/10.5194/acp-19-9969-2019>, 2019.

535

Persad, G. G. and Caldeira, K.: Divergent global-scale temperature effects from identical aerosols emitted in different regions, *Nat. Commun.*, 9(1), 3289, doi:10.1038/s41467-018-05838-6, 2018.

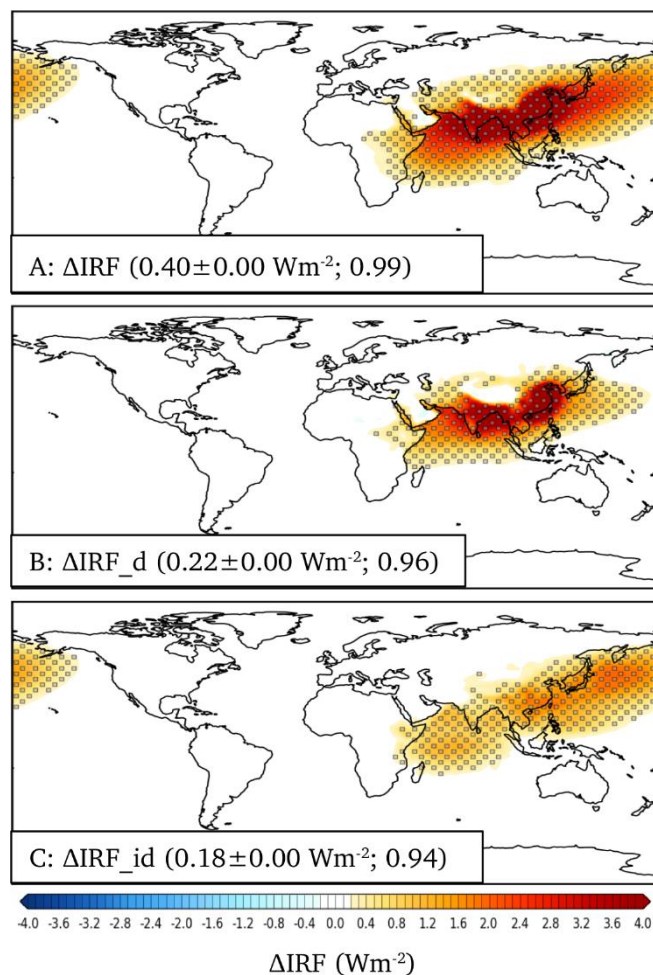
Pithan, F. and Mautitsen, T.: Arctic amplification dominated by temperature feedbacks in contemporary climate models, *Nature Geosci.*, 7, 181–184, doi:10.1038/ngeo2071, 2014.



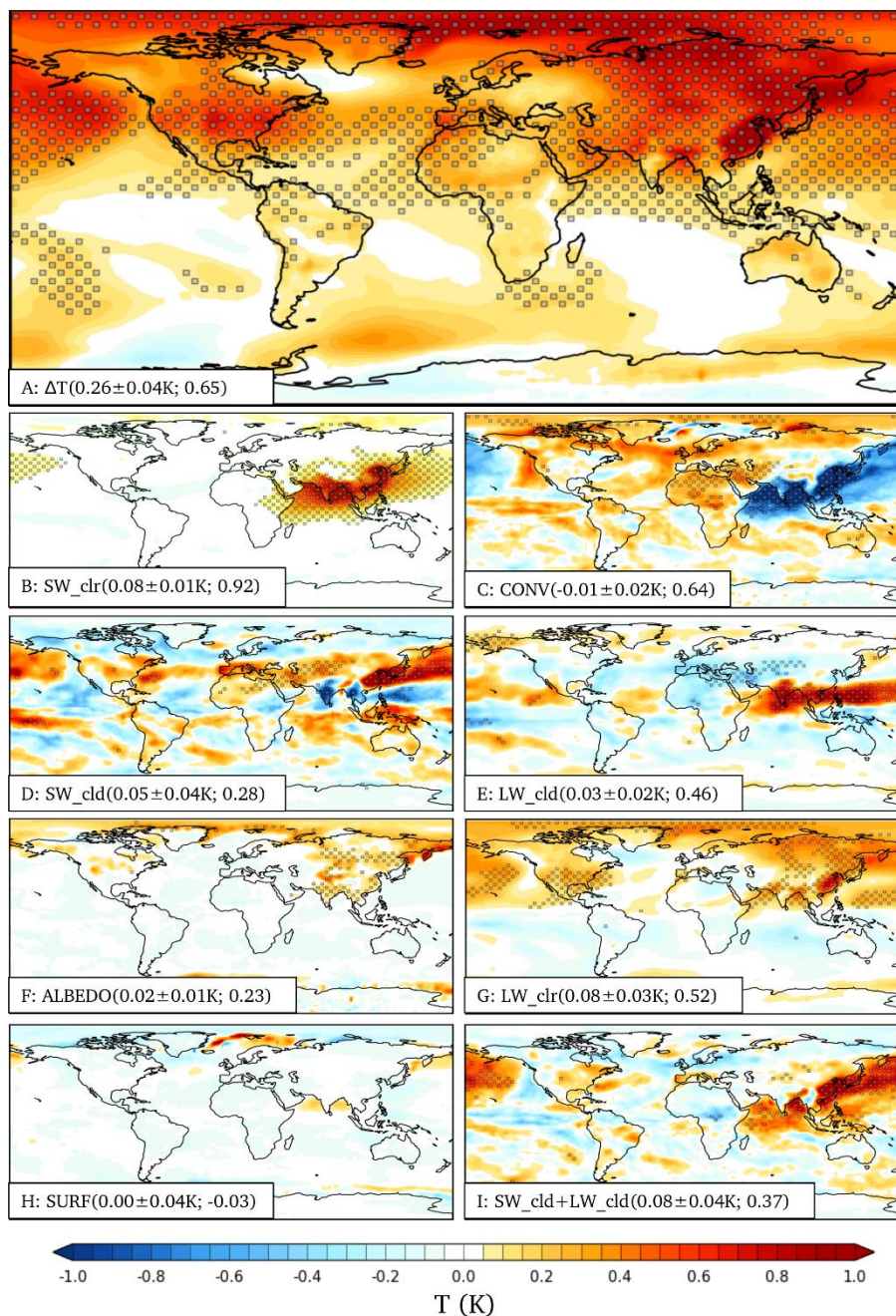
- 540 Porter, D. F., Cassano, J. J., Serreze, M. C., and Kindig, D. N.: New estimates of the large-scale Arctic atmospheric energy budget, *J. Geophys. Res.*, 115, D08108, doi:10.1029/2009JD012653, 2010.
- Roeckner, E., Bäuml, G., Bonaventura, L., Brokopf, R., Esch, M., Giorgetta, M., Hagemann, S., Kirchner, I., Kornbluh, L., Manzini, E., Rhodin, A., Schlese, U., Schulzweida, U., and Tompkins, A.: The atmospheric general circulation model
- 545 ECHAM5. PART I: Model description, Tech. Rep. 349, Max-Planck-Inst. für Meteorol., Hamburg, Germany, 2003.
- Räisänen J., and Ylhäisi, J.S.: CO₂ -induced climate change in northern Europe: CMIP2 versus CMIP3 versus CMIP5. *Clim Dyn* 45:1877–1897, 2015
- 550 Räisänen, J.: An energy balance perspective on regional CO₂-induced temperature changes in CMIP5 models. *Climate Dynamics*, 48(9-10), 3441-3454, 2017.
- Samset, B. H., Sand, M., Smith, C. J., Bauer, S. E., Forster, P. M., Fuglestad, J. S., Osprey, S., and Schleussner, C.-F.: Climate Impacts From a Removal of Anthropogenic Aerosol Emissions, *Geophys. Res. Lett.*, 45, 1020–1029,
- 555 <https://doi.org/10.1002/2017GL076079>, 2018.
- Stevens, B., Giorgetta, M., Esch, M., Mauritsen, T., Crueger, T., Rast, S., Salzmann, M., Schmidt, H., Bader, J., Block, K., Brokopf, R., Fast, I., Kinne, S., Kornbluh, L., Lohmann, U., Pin-cus, R., Reichler, T., and Roeckner, E.: Atmospheric component of the MPI-M Earth System Model: ECHAM6, *J. Adv. Model. Earth Sy.*, 5, 146–172, 2013.
- 560
- Screen, J. A. and Simmonds, I.: The central role of diminishing sea ice in recent Arctic temperature amplification, *Nature*, 464, 1334–1337, 2010.
- Soden, B. J., Broccoli, A. J., and Hemler, R. S.: On the use of cloud forcing to estimate cloud feedback, *J. Climate*, 17, 3661–
- 565 3665, 2004.
- Stevens, B., Giorgetta, M., Esch, M., Mauritsen, T., Crueger, T., Rast, S., Salzmann, M., Schmidt, H., Bader, J., Block, K., Brokopf, R., Fast, I., Kinne, S., Kornbluh, L., Lohmann, U., Pin-cus, R., Reichler, T., and Roeckner, E.: Atmospheric component of the MPI-M Earth System Model: ECHAM6, *J. Adv. Model. Earth Sy.*, 5, 146–172, 2013.
- 570



- Stevens, B., Fiedler, S., Kinne, S., Peters, K., Rast, S., Müsse, J., Smith, S. J., and Mauritsen, T.: MACv2-SP: a parameterization of anthropogenic aerosol optical properties and an associated Twomey effect for use in CMIP6, *Geosci. Model Dev.*, 10, 433–452, <https://doi.org/10.5194/gmd-10-433-2017>, 2017.
- 575 Shindell, D. T., Schulz, M., Ming, Y., Takemura, T., Faluvegi, G., and Ramaswamy, V.: Spatial scales of climate response to in-homogeneous radiative forcing, *J. Geophys. Res.*, 115, D19110, doi:10.1029/2010JD014108, 2010.
- Taylor, K. E., Crucifix, M., Braconnot, P., Hewitt, C. D., Doutriaux, C., Broccoli, A. J., Mitchell, J. F. B., and Webb, M. J.: Estimating Shortwave Radiative Forcing and Response in Climate Models, *J. Climate*, 20, 2530–2543, 580 <https://doi.org/10.1175/JCLI4143.1>, 2007.
- Westervelt, D. M., Mascioli, N. R., Fiore, A. M., Conley, A. J., Lamarque, J.-F., Shindell, D. T., Faluvegi, G., Previdi, M., Correa, G., and Horowitz, L. W.: Local and remote mean and extreme temperature response to regional aerosol emissions reductions, *Atmos. Chem. Phys.*, 20, 3009–3027, <https://doi.org/10.5194/acp-20-3009-2020>, 2020.
- 585 Zwiers and von Storch: Taking Serial Correlation into Account in Tests of the Mean, *J. Clim.*, 8, 336–351, 1995.



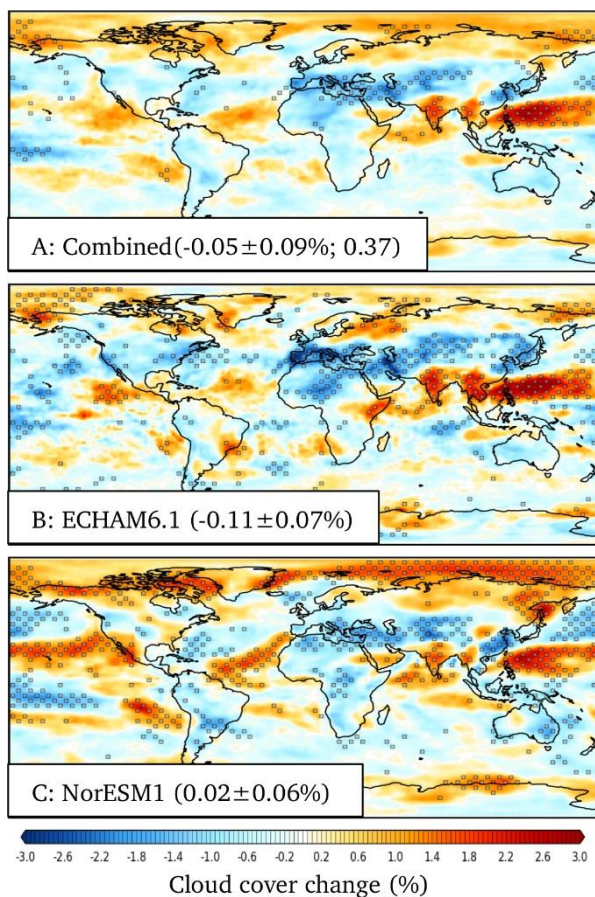
590 **Figure 1:** The change in the mean instantaneous radiative forcing between runs without and with SE Asian aerosols using the MACv2-SP aerosol scheme, averaged over the two climate models (individual models shown in Fig. S1). Parenthesis show the average global mean value and the model-to-model correlation coefficient, respectively. A: Change in the total aerosol radiative forcing, B: change in the direct aerosol radiative forcing, and C: change in the indirect aerosol radiative forcing. Stippling shows regions where the results are statistically significant at the $p < 0.05$ level for both models, and models also agree on the sign.



595

600

Figure 2: The geographical distributions of annually averaged surface air (2m) temperature responses due to the removal of South and East Asian aerosols (mean over ECHAM6.1 and NorESM1 climate models). Brackets show global average responses in Kelvins and the model-to-model correlation coefficient, respectively. Panel A: the total surface temperature response. Panels B-H: Contributions to the total surface temperature response from shortwave clear-sky response (B), horizontal atmospheric heat transport (C), shortwave cloud response (D), longwave cloud response (E), surface albedo change (F), longwave clear-sky response (G), and surface energy flux change (H). Panels B-H sum up to the response seen in Panel A. Panel I shows the combined shortwave and longwave cloud response. Stippling shows regions where the results are statistically significant at the $p < 0.05$ level for both models, and models also agree on the sign.



605 **Figure 3:** The geographical distributions of annually averaged changes in total cloud cover due to the removal of South and East
Asian aerosols. **A:** Cloud cover change averaged over both ECHAM6.1 and NorESM1 climate models. Brackets show global average
responses in percentages and the model-to-model correlation coefficient, respectively. Stippling shows regions where the results are
statistically significant at the $p < 0.05$ level for both models, and models also agree on the sign. Panel B and C: Cloud cover change in
610 ECHAM6.1 and NorESM1, respectively. Brackets give global average responses in percentages. Stippling shows regions where the
results are statistically significant at the $p < 0.05$ level.

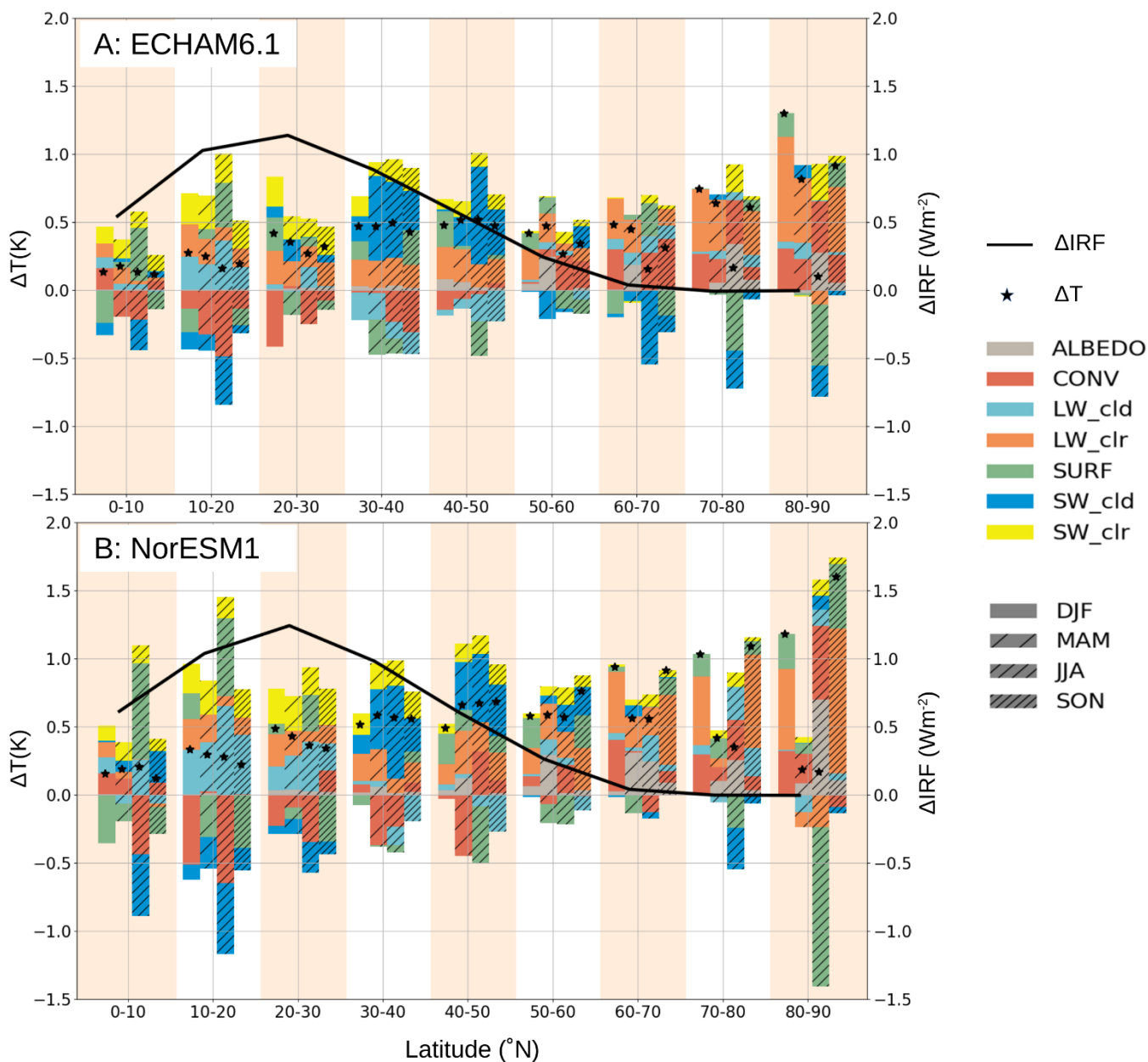


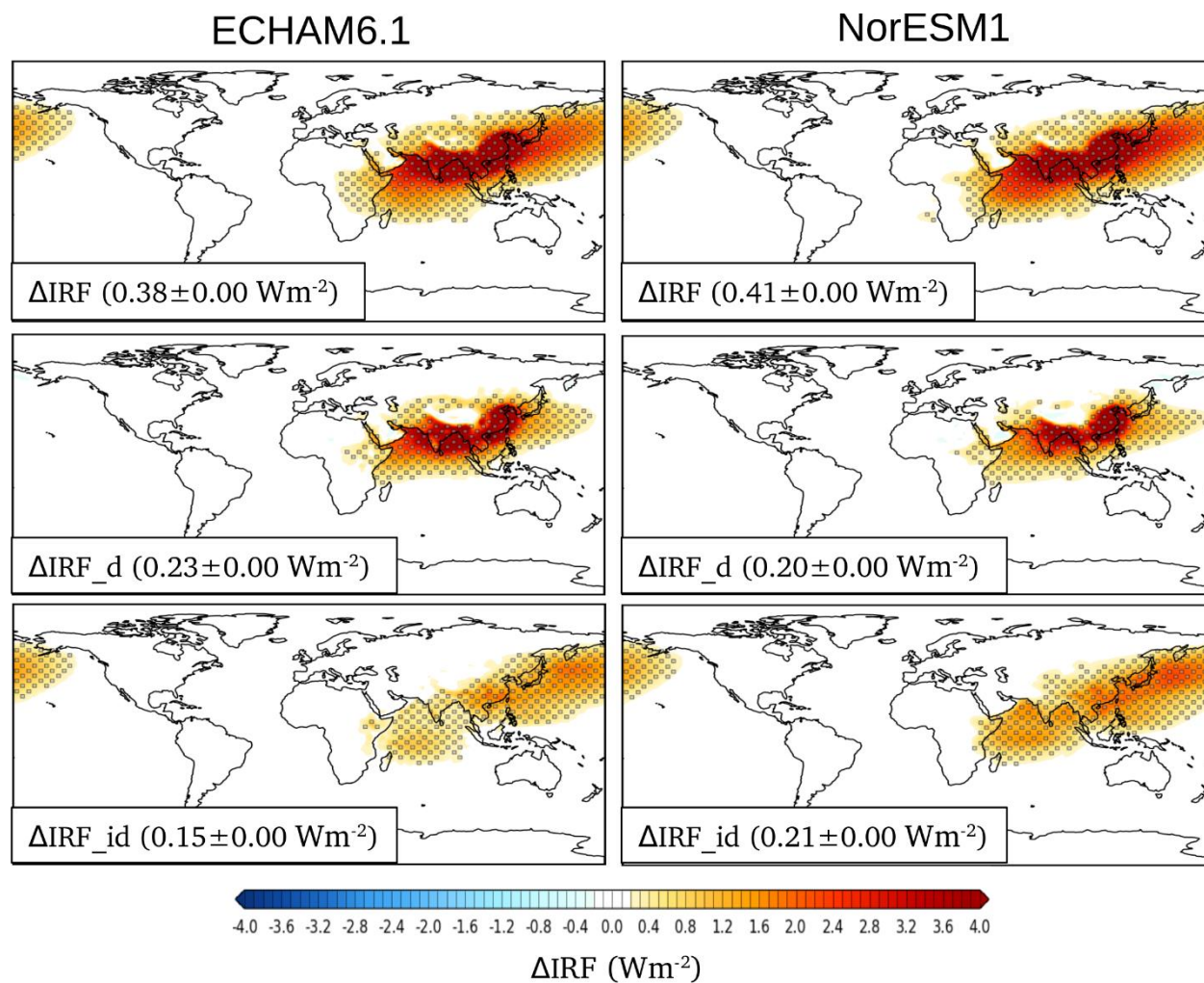
Figure 4: Seasonal cycles of surface temperature responses averaged over the Northern hemispheric latitude bands for the ECHAM6.1 (A) and NorESM1 (B) models. Color bars show the different contributions to seasonal mean temperature responses shown with the star symbols. Different seasons are indicated with different hatchings over the color bars. The solid lines indicate the annual average Asian aerosol radiative forcing RF for each model. The modest seasonality in radiative forcing is not shown due to sake of clarity.

615

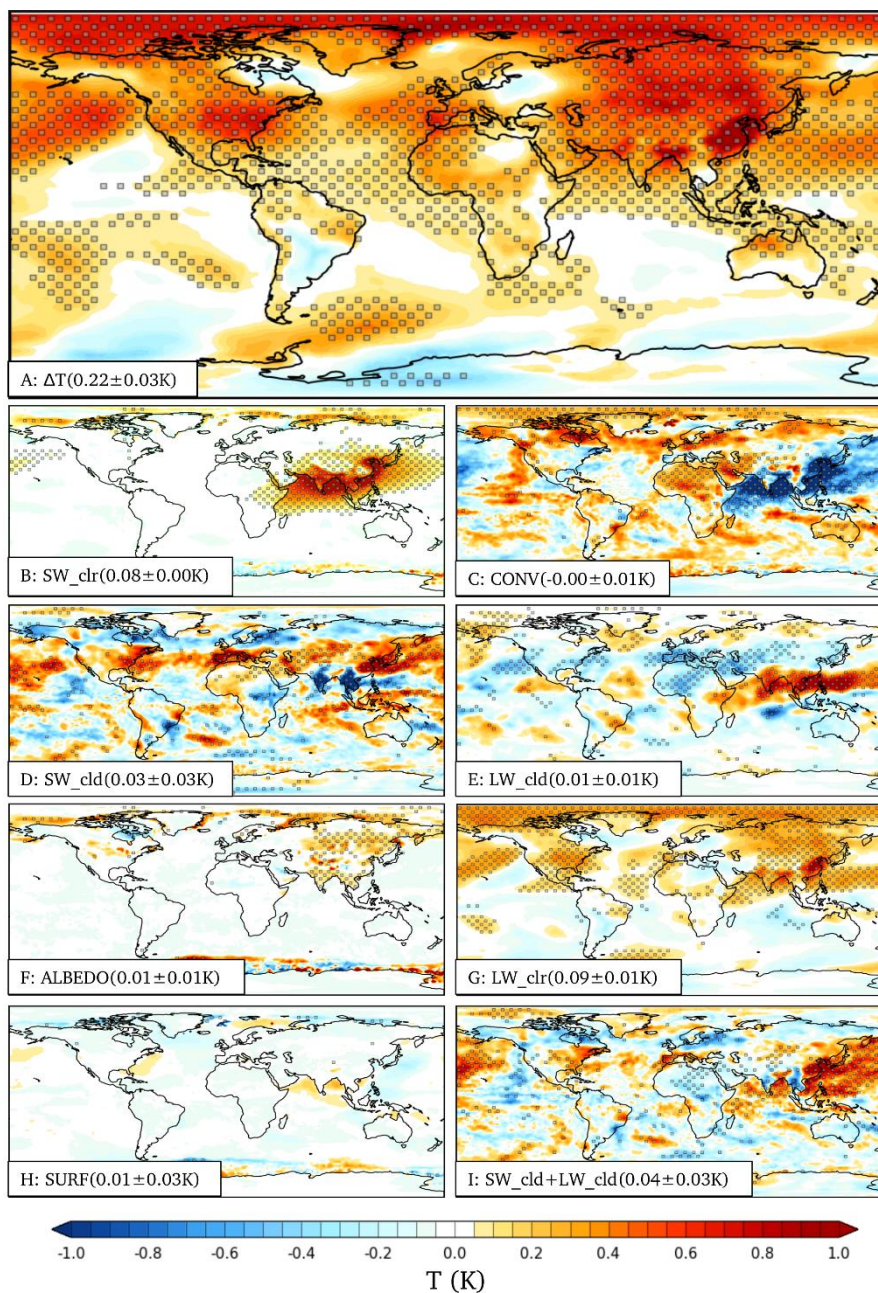


620

Appendix

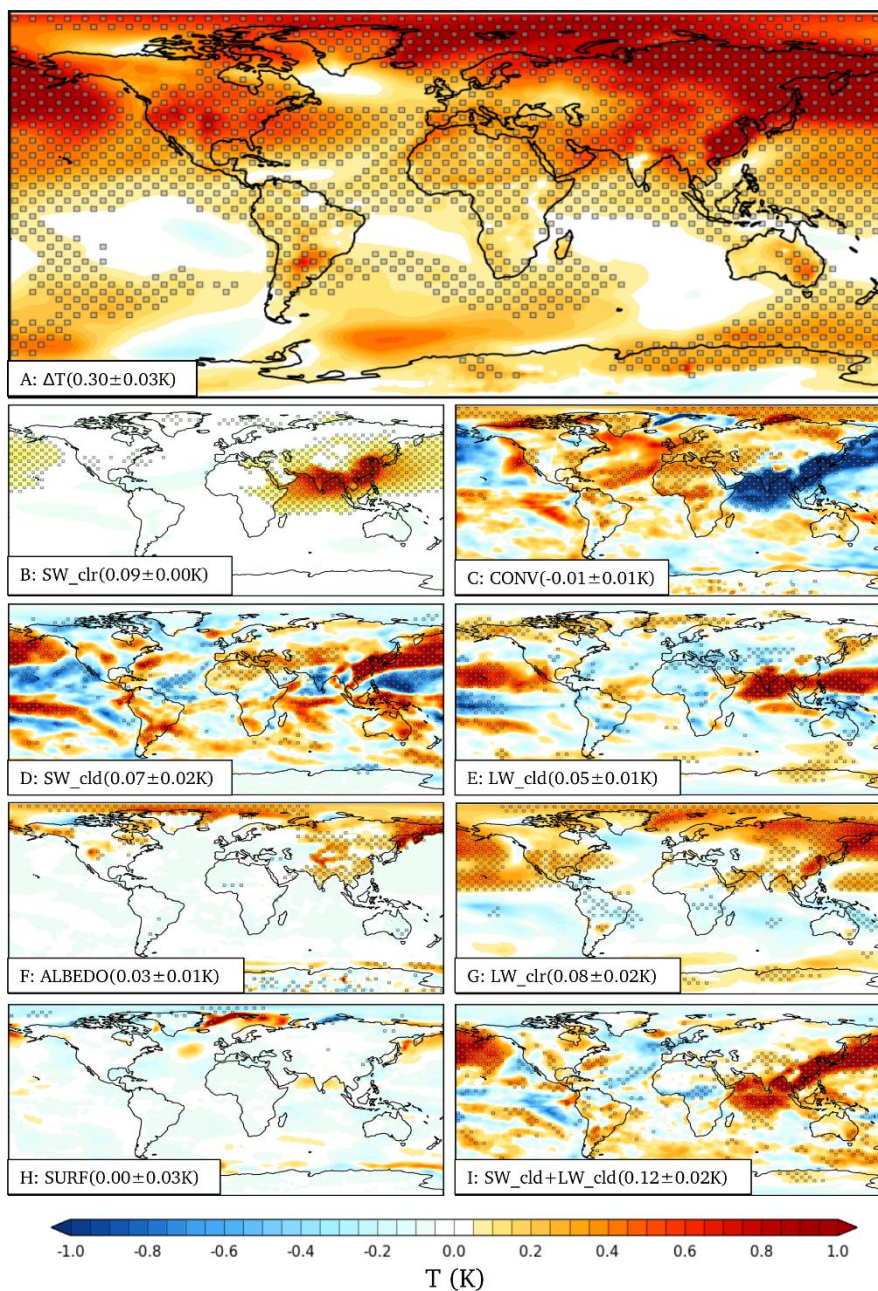


625 **Figure A1:** The change in the mean instantaneous radiative forcings for runs without and with SE Asian aerosols shown for the individual models (left panels, ECHAM6; right panels, NorESM).



630

Figure A2: The geographical distributions of annually averaged surface air (2m) temperature responses due to the removal of South and East Asian aerosols for ECHAM6. Brackets show global averages. Panel A: the total surface responses. Panels B-H: Contributions to the total surface temperature response from shortwave clear-sky response (B), horizontal atmospheric heat transport (C), shortwave cloud response (D), longwave cloud response (E), surface albedo change (F), longwave clear-sky response (G), and surface energy flux change (H). Panels B-H sum up to the response seen in Panel A. Panel I shows the combined shortwave and longwave cloud response.



635

Figure A3: As Fig A2, but for the NorESM model

640



	ΔT	LW_{ctr}	SW_{ctr}	LW_{cld}	SW_{cld}	$ALBEDO$	$CONV$	$SURF$	$LW_{cld} + SW_{cld}$
<i>ECHAM6.1</i>	0.22±0.03 (0.12876)	0.09±0.01 (0.05751)	0.08±0.00 (0.01674)	0.01±0.01 (0.03961)	0.03±0.03 (0.12634)	0.01±0.01 (0.03652)	-0.00±0.01 (0.03005)	0.01±0.03 (0.09962)	0.04±0.03 (0.01169)
<i>NorESM1</i>	0.30±0.03 (0.11558)	0.08±0.02 (0.08762)	0.09±0.00 (0.01489)	0.05±0.01 (0.04337)	0.07±0.02 (0.09526)	0.03±0.01 (0.02346)	-0.01±0.01 (0.05439)	0.00±0.03 (0.09717)	0.12±0.02 (0.07647)
<i>Model mean</i>	0.26±0.04 (0.12235)	0.08±0.03 (0.07411)	0.08±0.01 (0.01584)	0.03±0.02 (0.04153)	0.05±0.04 (0.11188)	0.02±0.01 (0.03069)	-0.01±0.02 (0.04394)	0.00±0.04 (0.09840)	0.08±0.04 (0.09879)
<i>Correlation</i>	0.651	0.519	0.918	0.461	0.279	0.226	0.642	-0.031	0.372

645 **Table A1:** Upper rows for each model and model mean: yearly global mean values in Kelvins, with errors on the means given with a 95% confidence interval. Error on the model mean is given as a pooled sample standard error on the mean. Values in brackets show the standard deviations in yearly mean values (pooled standard deviations for model mean). The bottom row: spatial correlation between NorESM1 and ECHAM6.1.