

Measurement report: Fourteen months of real-time characterisation of the submicronic aerosol and its atmospheric dynamic at the Marseille-Longchamp supersite

5 Benjamin Chazeau^{1,2}, Brice Temime-Roussel¹, Grégory Gille², Boualem Mesbah², Barbara D'Anna¹, Henri Wortham¹, Nicolas Marchand¹

¹Aix Marseille Univ, CNRS, LCE, Marseille, France

²AtmoSud, Regional Network for Air Quality Monitoring of Provence-Alpes-Côte-d'Azur, Marseille, France

10 *Correspondence to:* Benjamin Chazeau (benjamin.chazeau@univ-amu.fr) and Nicolas Marchand (nicolas.marchand@univ-amu.fr)

Abstract. This study reports results of PM₁ chemical composition determined using a Time-of-Flight Aerosol Chemical Speciation Monitor (ToF-ACSM) over a 14-month period (1 February 2017 - 13 April 2018) at the Marseille-Longchamp supersite (MRS-LCP) in France. Parallel measurements were performed with an Aethalometer, an ultrafine particle monitor
15 and a suite of instruments to monitor regulated pollutants (PM_{2.5}, PM₁₀, NO_x, O₃ and SO₂). The average PM₁ chemical composition over the period was dominated by organic aerosol (OA; 49.7%) and black carbon (BC; 17.1%) while sulfate accounted for 14.6%, nitrate for 10.2%, ammonium for 7.9% and chloride for 0.5% only. Wintertime was found to be the season contributing the most to the annual PM₁ mass concentration (30%), followed by autumn (26%), summer (24%) and spring (20%). During this season, OA and BC concentrations were found to contribute to 32% and 31% of their annual
20 concentrations, respectively, as a combined result of heavy urban traffic, high emissions from residential heating and low planetary boundary layer (PBL) height. Most (75%) of the fifteen days exceeding the target daily PM_{2.5} concentration value recommended by the World Health Organization (WHO) occurred during this season. These episodes contribute to an increase of 6.5% of the annual PM₁ concentration. Local and long-range pollution episodes with contrasting chemical composition could be distinguished, accounting for 40 and 60% of the exceedance days, respectively. Enhanced OA and BC
25 concentrations, mostly originating from domestic wood burning under nocturnal land breeze conditions were observed during local pollution episodes, while high level of oxygenated OA and inorganic nitrate were associated to medium/long-range transported particles.

In summertime, substantially higher concentrations of sulfate were found with an average and a maximum contribution to the PM₁ mass of 24% and 66% respectively. Results from k-means clustering analysis of daily profiles of sulfate
30 concentrations clearly reveal the significant influence of local harbour/industrial activities on air quality, in addition to the more regional contribution of shipping traffic that originates from the Mediterranean basin.

1 Introduction

A major societal concern in European Union (EU) countries is related to air quality as it is nowadays recognized as the first sanitary risk from environmental origin. The exposure to fine particles causes premature mortality in European cities according to the report from Environmental European Agency (EEA, 2019). Recent models predict that premature deaths would reach 380000 per year and could even increase up to 500000 by 2050 (Lelieveld et al., 2015). In France, according to a recent study, 48000 premature deaths per year are linked to fine particles, representing the third cause of mortality behind alcohol and tobacco (Pascal et al., 2016). Regarding annual safety threshold recommendations for both PM_{10} ($20 \mu\text{g m}^{-3}$) and $PM_{2.5}$ ($10 \mu\text{g m}^{-3}$) addressed by the World Health Organization (WHO, 2006), most of European countries still exceed the limit values (48 and 68% of air quality monitoring stations, respectively). In Southern France, 85% of the population live in areas exceeding the WHO recommendations for particle matter (Rouaud and Channac, 2019). Even though it is well recognized that smaller particles may cause more damage to human health than PM_{10} (Kreyling et al., 2006), Air Quality Standard for PM_1 has still not been set up in France. Therefore, it appears important to focus on this specific size fraction and extensive studies on high polluted episodes are needed. They are directly linked to several features as chemical composition, physical properties of fine particles, proximity of anthropogenic activities and meteorological conditions. Moreover Pandolfi et al. (2020) described that long-range sources could affect local urban pollution as more than 60% of PM in five European urban sites were from regional and continental origins.

In the last 15 years aerosol mass spectrometer (AMS) technology dedicated to the real-time analysis of the submicron aerosol chemical composition (Canagaratna et al., 2007; Jayne et al., 2000) has been widely used to investigate the emissions and transformation processes of aerosol chemical species. Unfortunately, most of the studies are limited to short-term campaign measurements, hindering our understanding of aerosol chemical composition over long temporal scales. The recently developed Aerodyne aerosol chemical speciation monitor (ACSM) is more robust and easily deployed for long-term monitoring of submicron aerosol chemical composition (Fröhlich et al., 2013; Ng et al., 2011), even if the ability of measuring particle size distribution is no longer available and the poor resolution of ACSM mass spectra does not allow high-resolution peak fitting (Timonen et al., 2016).

Studies of several month duration using AMS were previously conducted in Europe: Melpitz (3 months; Poulain et al., 2011), Puy-de-Dôme (5 months; Freney et al., 2011) and London (1 year; Young et al., 2015). In recent years ACSM studies were performed for yearly trend in remote/regional sites such as Jungfraujoch (14 months; Fröhlich et al., 2015), Montseny (1 year; Minguillón et al., 2015), Ispra (1 year; Bressi et al., 2016) or Aukstaitija in Lithuania (9 months; Pauraite et al., 2019). Similarly yearly and seasonal investigations were also carried out in large European cities at urban background scale in Paris (2 years; Petit et al., 2015), Zurich (1 year; Canonaco et al., 2015), Helsinki (4 months; Aurela et al., 2015), London (10 months; Reyes-Villegas et al., 2016) and Athens (1 year ; Stavroulas et al., 2019).

The Mediterranean city of Marseille, as a highly urbanised area, exposed to a variety of anthropic (traffic, residential heating, shipping, industries) and biogenic (terrestrial vegetation, marine aerosols) sources is a challenging area for fine particle

65 studies. The ESCOMPTE experiment (2001) demonstrated that the topography and the air mass circulation, characterized by local and mesoscale winds, drives the pollution levels in the city (Cachier et al., 2005; Drobinski et al., 2007; Mestayer et al., 2005; Puygrenier et al., 2005). High level of atmospheric pollutants such as fine particles have often been observed in Marseille, where mortality rate and cardiovascular hospital admissions are significantly elevated, even higher than in Paris whose population is 6 times higher (Pascal et al., 2013).

70 Fine particles have been previously characterized in Marseille during an intensive field campaign (3 weeks in summer 2008), (El Haddad et al., 2011a, 2011b, 2013). The seasonal variations and sources of aerosol have been well documented through the offline analysis of daily filter samples collected over 1 year (Bozzetti et al., 2017; Salameh et al., 2015, 2018) but this methodology only gives poor temporal resolution compared to online instruments and therefore cannot capture the fast changes in concentration and chemical composition.

75 In this context a new atmospheric urban background supersite dedicated to the long-term and real time chemical and physical characterization of submicron aerosol was recently implemented in Marseille. This supersite gathers state of art instruments for the measurement of aerosols (chemical composition and size distribution) and a suite of instruments for the monitoring of regulated pollutants ($PM_{2.5}$, PM_{10} , NO_x , O_3 and SO_2). The goal of the present paper is to characterize the fourteen-month phenomenology of submicron aerosol in a coastal city. The seasonal variations, diurnal profiles, and geographical origins of

80 PM_1 are presented with a focus on local and long-range pollution episodes when PM exceedance days occur. Also, the chemical characteristics of shipping/industrial emissions in summer are explored through backtrajectories analysis.

2 Instrumentation and Methodology

2.1 Marseille Supersite

Marseille-Longchamp supersite (MRS-LCP) is in the downtown park “Longchamp” ($43^{\circ}18'18.84''N$; $5^{\circ}23'40.89''E$; 71 m a.s.l.) of Marseille. This site, run by a joint effort between the Laboratory of Environmental Chemistry (LCE) and the French regional air quality network (AtmoSud, <https://www.atmosud.org>), gathers a complete set of instruments for the measurement of both regulated and non-regulated pollutants (see section 2.2). This infrastructure is intended to become a high-level research platform for monitoring air pollution and contributing to collaborative research programs. It is classified as urban background site based on the criteria used by the European Environment Agency (Larssen et al., 1999). Marseille is

85 the second most populated city in France with more than 1.8 million of inhabitants. The city also encounters the second most traffic congestion in France (TOMTOM, 2020). The number of vehicle kilometres travelled was 2.4 billion within a 5 km radius around the supersite in 2017 (AtmoSud traffic database). Considering the relative road network size it was 2.3 times higher than the largest city in EU, London (Department for Transport, 2020). The city hosts the second largest harbour of the Mediterranean Sea and the largest French harbour, with almost 4000 ship berthing in the several basins of Marseille for the

90 year 2017 (based on port calls statistics registered at “Grand Port Maritime de Marseille”). At 40 km North-West of the city is located the large industrial complex of Fos-sur-mer with petroleum refining, shipbuilding, steel facilities, and coke

production plants (El Haddad et al., 2011b; Salameh et al., 2018). The region is well-known for active photochemistry inducing high ozone concentrations (Flaounas et al., 2009) during summer periods, and frequent secondary organic aerosol formation events (El Haddad et al., 2013). Air mass circulation is complex in Marseille area (Drobninski et al., 2007; El Haddad et al., 2013; Flaounas et al., 2009) and is driven by the surrounding topography. The city is bordered by Mediterranean Sea from the southwest and enclosed from the north, east and south by mountain ranges up to 700 m a.s.l. The synoptic air masses come from the Rhone valley, the Atlantic and Mediterranean Sea (Drobninski et al., 2007). Moreover, Marseille air quality is often affected by two regional winds (Mistral and South-Easterly Mediterranean wind) and local sea/land breeze cycles. The Mistral is a strong wind blowing from the North-West (300°-360°) along the lower Rhône River valley toward the Mediterranean Sea. South-Easterly Mediterranean wind (105°-135°) blows at similar intensity from the sea toward the lands. The South-Westerly sea breeze (210°-270°) and North-Easterly land breeze (5°-90°) are local winds prevailing during weak Mistral wind (Figure S1). Land breeze circulation is often associated with high pollution levels over Marseille due to the low pollutants dispersion (El Haddad et al., 2013). In the early morning of summer days, Marseille is directly downwind of the industrial area and the harbour basins. As the temperature of the land surface rises, sea breeze sets in and the polluted air masses from the industrial area are transported over the Mediterranean Sea before reaching the city.

2.2 Instrumentation and data analysis

2.2.1 ACSM sampling and data corrections

Ambient submicron particles (NR-PM₁) were measured continuously from 1 February 2017 to 13 April 2018 using a time-of-flight aerosol chemical speciation monitor (ToF-ACSM, Aerodyne Research Inc., USA). The instrument provides quantitative assessment of non-refractory species as organics, nitrate, sulfate, ammonium and chloride in the size range 40-1000 nm. The aerosol is sampled at the main inlet at a flow rate of 3 L min⁻¹ and dried using a Nafion dryer system (Perma Pure, New Jersey, USA) to keep the relative humidity (RH) below 40%. A subsample flow of 0.085 L min⁻¹ passes through a critical orifice and enters an aerodynamic lens that focuses the particles into a narrow beam, these are then flash-vaporized upon impaction on a heated tungsten plate at 600°C. The resulting vapours are ionized using 70 eV electron impact (EI) ionization. The time-of-flight mass spectrometer (ETOF, TOFWERK, Thun, Switzerland) provides mass spectra at a mass-to-charge resolution of $M/\Delta M=600$. The data were acquired at a time resolution of 15 min using Igor-DAQ v.2.1.4 software and by Tofware v.2.5.13 written in Igor Pro (Wavemetrics inc., Lake Oswego, Oregon, USA). Further description and detail of the instrument are presented by Fröhlich et al. (2013, 2015) and Timonen et al. (2016). Calibrations of ionization efficiency (IE) of nitrate and relative ionization efficiency (RIE) of ammonium and sulfate were repeated 3 times over the 14-month measurement period. The calculated values are summarized in Table S1. Table S2 lists the detection limits, calculated as three times the noise level, for the 5 quantified species. The collection efficiencies values (CE) were corrected using algorithms described by Middlebrook et al. (2012), the composition-dependant CE is shown in Figure S2. On average

over the entire period, a composition dependant CE of 0.47 ± 0.05 is obtained, which is comparable to values typically found
130 for ambient aerosol (≈ 0.5 , Middlebrook et al., 2012). An overall uncertainty of $\pm 30\%$ is associated to the total mass
concentrations. It includes the uncertainties on the IE, RIE and CE values (Bahreini et al., 2009).

The organic aerosol (OA) mass was corrected to account for measurement interferences. According to Pieber et al. (2016)
ammonium nitrate induces an overestimation of OA at m/z 44. A correction is introduced in the fragmentation table by
measuring the relationship between measured CO_2^+ and the NH_4NO_3 mass measured during ToF-ACSM calibrations (see
135 equation S1). Our dataset showed very little contribution of NH_4NO_3 on the organic m/z 44 with value ranging from 0.1-
0.5% (Table S3).

The ion fragments at m/z 30 and m/z 46 assigned to nitrate (NO^+ and NO_2^+) may contain interferences from organic species
like CH_2O^+ at m/z 30 and CH_2O_2^+ at m/z 46. These interferences lead to an overestimation of UMR nitrate and can falsely
suggest the presence of organic nitrate in high OA/NO_3^- environments. Here the m/z 30 and m/z 46 signals have been
140 corrected for these interferences by using correlated organic signals respectively at m/z 29 from CHO^+ and m/z 45 from
 CHO_2^+ (equation S2), as recommended by Fry et al. (2018). These peaks were the closest organic signals to the nitrate peaks
with organic interferences.

2.2.2 Collocated instruments

ACSM measurements were combined with several on-line collocated instruments. A dual spot 7-wavelength AE33
145 Aethalometer (Magee Scientific) (Drinovec et al., 2015) equipped with a $\text{PM}_{2.5}$ cut-off inlet and a Nafion dryer operating at 5
 L min^{-1} was used to measure equivalent black carbon (BC) concentrations at a 1 min time resolution. Equivalent black
carbon concentrations were calculated from the absorption coefficient at 880 nm with the default mass absorption cross
section (MAC) implemented in the AE33 ($7.77 \text{ m}^2 \text{ g}^{-1}$). The submicron aerosol number size distribution was investigated
with the model 3031 ultrafine particle monitor (TSI Inc., Minnesota, USA) equipped with a PM_{10} cut-off inlet and a Nafion
150 dryer and running at 16.7 L min^{-1} for the whole study period. This instrument provides measurements from 20 to 1000 nm,
with six channels of size resolution. The aerosol number size distribution in the range 10.25-1084 nm was further explored
over 45 channels using a Scanning Mobility Particle Sizer system (SMPS, L-DMA, CPC5403, GRIMM) for two periods:
from 23 June to 12 August 2017 (summer period) and from 6 November 2017 to 11 January 2018 (winter period). The
SMPS was connected to the ACSM sampling line under the dryer system with a bypass flow rate of 0.3 L min^{-1} .

155 Off-line measurements were carried out to collect particles (24h PM_{10}) onto pre-fired (during 24h at 500°C) 150 mm-
diameter quartz filters (Pall Gellman, TISSUQUARTZ) (08h00 to 08h00 UTC) using a high volume sampler (Digitel DA-
80) operating at a flowrate of $30 \text{ m}^3 \cdot \text{h}^{-1}$. 45 filters were discontinuously sampled from 1 March to 1 May 2017 (22 filters) and
from 1 July to 23 September 2017 (23 filters). Major anions and cations (SO_4^{2-} , NO_3^- , and NH_4^+) were analysed using ion
chromatography (Sciare et al., 2008) after extraction of filter punches in ultra-pure water and following recommendations
160 from the EN 16913 European standard. Elemental/organic content was analysed using Sunset OC/EC analyser (EUSAAR2
thermal protocol) according to Cavalli et al. (2010).

Continuous measurements of SO₂, NO_x and O₃, and PM_x were carried out by the air quality monitoring station. A M100E UV fluorescence analyser, a M200E chemiluminescence analyser (Teledyne API, California, USA) and a Serinus 10 ozone analyser (Ecotech, Australia) were deployed for the SO₂, NO_x and O₃ measurements, respectively. A Continuous Beta-attenuation continuous particulate monitor (BAM 1020, Met One Instruments Inc., Oregon, USA) was used to measure the mass concentrations of PM_{2.5} and PM₁₀ and an optical particle counter (FIDAS 200, PALAS, Germany) was used for the measurement of PM₁, PM_{2.5} and PM₁₀ since February 2018. Each sampler operated with a dedicated sampling line at a flow rate of 16.7 L min⁻¹ for the BAM 1020 and 5 L min⁻¹ for the FIDAS. Both instruments were equipped with a drying set-up (smart heater system for the BAM 1020, Intelligent Aerosol Drying System for the FIDAS).

The sampling inlets of all the instruments of the station were located at approximately 3 meters above the ground. All the time resolutions of this instrumental panel were synchronized to 15 min and time was UTC based.

2.3 Meteorological data and backtrajectories analysis

The site is equipped with a three-dimensional sonic anemometer to provide temperature and wind measurements (directions and speeds). Precipitations and relative humidity parameters were taken from the Vaudrans meteorological station located 6 km away for the MRS-LC site (43°18'26"N; 5°28'28"E). Non-parametric wind regression (NWR; Henry et al., 2009) and sustained wind incidence method-2 (SWIM-2; Olson et al., 2012) algorithms were used to examine the geographical origin of pollutants. NWR and SWIM-2 analyses were performed using the ZeFir toolkit (Petit et al., 2017a). SWIM-2 analysis can be preferred over standard NWR analysis in specific cases when rapid changes of wind direction occur, as it includes a down-weighting function related to the standard deviation of the wind direction (Petit et al., 2017a). To investigate air mass origin during specific pollution episodes, 72h-backtrajectories were calculated every hour from the PC-based version of HYSPLIT (Draxler et al., 1999) with weekly 1° Global Data Assimilation System (GDAS) meteorological field data. Backtrajectories were set to end at MRS-LCP coordinates (43°18'18.84"N; 5°23'40.89"E ; 64 m a.g.l.). Planetary Boundary Layer (PBL) height data were directly extracted from the GDAS files with HYSPLIT. Finally, Concentration Weighted Trajectory (CWT) was performed with ZeFir to investigate the locations most frequently associated with elevated concentrations. CWT approach relates pollutant concentrations measured at a receptor site (MRS-LCP) with backtrajectories, and displays the localisation of air masses associated with high concentrations at the site (Ashbaugh et al., 1985; Petit et al., 2017b). For this study, the CWT domain was set in the range of (40-46° N; -5-10° E) with the grid cell size of 0.05°×0.05°.

3 Results and discussion

3.1 Air quality overview

Figure 1 shows the annual average concentrations of regulated pollutants (NO₂, O₃, SO₂, PM₁₀, PM_{2.5}) measured over 11 years (2008-2018) at MRS-LCP station and the corresponding number of days exceeding the daily WHO guidelines during

the period of the present study (2017-2018). Based on the Theil-Sen approach, the annual concentrations of NO₂, PM₁₀ and PM_{2.5} have decreased at a yearly rate of -0.58, -0.40, and -0.57 μg m⁻³, since 2010, in a comparable way as observed in urban sites within Europe (EEA, 2020). These trends can be related to the parallel reduction in air pollutant emissions resulting from the EU policies that have been continuously implemented.

Despite these significant progresses towards better air quality, the city is still experiencing days with exceedance concentrations for PM₁₀ and PM_{2.5}, mainly in winter periods (Figure 1). In the period 2017 to 2018, about 28 and 12 exceedance days were recorded for PM_{2.5} and PM₁₀ respectively.

Moreover, as a coastal city in the Mediterranean basin, Marseille exhibits high ozone concentrations, especially during summertime. The annual mean concentration of ozone measured at MRS-LCP station has reached 60 μg m⁻³ in 2018, and 144 days above the 8h-average threshold of 100 μg m⁻³ (WHO) were recorded in 2017 and 2018, mostly during summertime when temperature are the highest. The annual mean increases at a yearly rate of + 0.84 μg m⁻³ year⁻¹, which is consistent with the general trend observed in cities in Europe. Part of this increase is believed to reflect the reduction of the NO emitted locally and its resulting lower NO titration effect in urban environment (Escudero et al., 2014).

Another feature of the city shown in Figure 1 is that the decreasing trend observed from most primary pollutants does not apply to SO₂, as the annual average concentrations have increased again since 2014. It is believed that the trend toward lower concentration expected from the use of low fuel sulphur content has been hindered by the increasing influence of in-port ship emissions and the spreading of cruise tourism in the city (+31% of cruise passengers in the period 2014-2018 ; MedCruise, 2018). As a result, SO₂ constitutes a potential source of secondary particulate matter produced locally.

3.2 Cross-validation of PM₁ chemical species concentrations

The PM₁ mass concentrations measured by the ToF-ACSM were compared with 24h-PM₁ filter measurements and displayed in the Figure S3. The concentrations of chemical species were daily averaged and compared with respective offline measurements from 1 March to 23 September 2017 (n= 45). Orthogonal distance regressions were performed for the analysis and the term “a” and “b” referred to the intercept and the slope, respectively. A good agreement is found for ammonium and sulfate (R²=0.71 and slope of 1.0, and R²=0.76 and slope of 1.03, respectively). For nitrate the results are less consistent (R²=0.69 and slope of 1.59). This higher slope can be attributed to the volatilization of nitrate from the filters during hot periods (Ripoll et al., 2015; Schaap et al., 2004a). The NH₄ measured/NH₄ predicted ratio was also investigated from 1 February 2017 to 13 April 2018 (Figure S4) as an indirect proxy for particle acidity (Zhang et al., 2007) and/or presence of high organic nitrate concentrations (Petit et al., 2017b). The NH₄ predicted represents the theoretical ammonium concentration needed to neutralize the inorganic species concentrations (NO₃⁻, SO₄²⁻, Cl⁻). For most of the cities inorganic species tend to be fully neutralized and a limited amount of acidic particles can only be observed when the site is located close to an emission source (e.g. industries, harbour, fire event...). Here the slope value close to 1 (0.95) reflects a full neutralization for

225 all anions and suggests that there is enough ammonia in the gas phase to neutralize these species despite the nearby harbour and industrial complex. In addition to agricultural activity, ammonia can be emitted by sources closed to urban areas, such as vehicular exhausts, sewage, industrial emissions or residential biomass burning (Meng et al., 2017; Sun et al., 2017; Sutton et al., 2013).

The organics to OC comparison (ACSM concentrations vs filters) showed a good correlation with $R^2=0.79$ whereas the
230 intercept value was low (-1.23) and the slope was high (2.37) (Figure S3). The slope, interpreted as the OM to OC ratio, is higher than the recommended values for urban areas (1.6 ± 0.2 , Petit et al., 2015; Stavroulas et al., 2019; Turpin and Lim, 2001). It is possible that the chosen sampling periods for the comparison (spring and summer 2017) bias high the OM-to-OC value as the photochemical activity and thus atmospheric aging are expected to increase. Ratio up to 2.2 have been observed when a significant fraction of particulate matter is made of aged aerosol (Aiken et al., 2008; Minguillón et al., 2011).
235 Minguillón et al. (2015) and (Via et al., 2020) also suggest a possible overestimation of OA due to the underestimation of the RIE applied to organics with the ACSM. RIE for organic varies within a wide range which strongly depends on the carbon oxidation state (Xu et al., 2018) and thus would need further investigations. A theoretical OM to OC ratio can be calculated based on fractional contribution of m/z 44 (f_{44}) mainly due to CO_2^+ (Canagaratna et al., 2015). The determined ratio was 1.94 over the offline measurements period, which is lower than the ratio obtained from OC filters comparison method but
240 remains elevated for an urban site. From this method, a value of 1.91 was found for the entire study period.

BC measurements from AE33 are compared with EC offline filters and an excellent agreement is found with $R^2=0.87$. The slope of 1.68 relates the difference in measurements properties between EC (thermic) and BC (absorption). The difference between the measured BC and EC could be attributed to the variability of the mass absorption coefficient (MAC) value used to convert the absorbance to BC mass concentrations in the AE33 instrument. This value could be influenced by light-
245 absorbing OC like brown carbon from biomass burning. Here the slope is in agreement with values from other studies: 1.14 to 2.13 through one year at Fresno supersite (Park et al., 2006; 1.62 and 1.92 using EUSAAR2 and NIOSH870 protocols, respectively) and between January 2015 and July 2016 at the Environment-Climatology Observatory of Lecce (Merico et al., 2019).

Finally the sum of ACSM species and BC mass concentrations were compared to the estimated mass using SMPS volume
250 during the two deployment periods of this instrument (from 23 June to 12 August 2017 and from 6 November 2017 to 11 January 2018). For the SMPS mass conversion, a density (d_{calc}) was estimated taking into account the chemical composition of PM_{10} with respective densities of 1.75 g cm^{-3} for nitrate, sulfate and ammonium and 1.52 g cm^{-3} for chloride (Cross et al., 2007). The organic aerosol density can increase whether there are high contributions of carboxylic/dicarboxylic acids ($1.46\pm 0.23\text{ g cm}^{-3}$) and/or polycyclic aromatic hydrocarbons ($1.28\pm 0.12\text{ g cm}^{-3}$). In contrast this density would decrease with
255 high contributions of n-alkanes ($0.79\pm 0.01\text{ g cm}^{-3}$) and/or n-alkanoic acids ($0.89\pm 0.07\text{ g cm}^{-3}$) (Turpin and Lim, 2001). Finally, a density of 1.2 g cm^{-3} was chosen for organic aerosol (Cross et al., 2007). A default density of 1.77 g cm^{-3} is applied for BC as recommended by Poulain et al. (2014). The calculated density is based on the following equation (Salcedo et al., 2006):

$$d_{calc} = \frac{[Total_{ACSM} + BC]}{\frac{[NO_3^-]}{1.75} + \frac{[SO_4^{2-}] + [NH_4^+]}{1.52} + \frac{[Cl^-]}{1.2} + \frac{[OM]}{1.77} + \frac{[BC]}{1.77}}, \quad (1)$$

where the time-dependant mass fractions are based on ACSM and AE33 measurements. The density was found to range between 1.24 and 1.77, with an average value of 1.43. The scatter plot of ACSM+BC concentrations vs. PM₁ concentrations from SMPS in Figure 2a shows strong correlation (R²=0.81) and slope close to unity (slope=1.02 and intercept=0.46). Reconstituted mass (ACSM+AE33) was also compared to PM₁ mass measurements from FIDAS for the last 3 months of the database (19 February to 13 April 2018) in Figure S3. Again satisfactory results are displayed with R²=0.89, slope=0.9 and intercept=1.67 and show the consistency of the different measurements. The linear regression analysis of reconstituted PM₁ vs PM_{2.5} yielded a slope of 0.89 for a confidence interval of 99% and R²=0.77 (Figure 2b) so we can assume that PM_{2.5} concentrations are mainly composed of submicron particles.

3.3 Submicron aerosol temporal variability

3.3.1 PM average composition

Figure 3 shows the time series of the concentrations of ACSM components, Black Carbon, daily-PM_{2.5} and ultrafine particles (UFPs; diameter <100nm) number along with the seasonal PM₁ chemical composition. The average concentration over the period was 9.9 μg m⁻³ and 12.0 μg m⁻³ for PM₁ (ACSM+BC) and PM_{2.5} (BAM), respectively. While these results comply with the EU PM_{2.5} annual mean standard of 25 μg m⁻³, the value does not meet the WHO guideline of 10 μg m⁻³, like most of the cities in Europe (EEA, 2019). The site experienced several episodes of elevated PM₁ (> 30 μg m⁻³), most frequently during the coldest months in late autumn, winter and early spring, resulting occasionally in an exceedance of daily PM_{2.5} limit WHO values.

The PM₁ chemical composition is dominated by organics (49.7%) and BC (17.1%), while sulfate accounts for 14.6%, nitrate for 10.2%, ammonium for 7.9% and chloride for 0.5% only. The PM₁ chemical composition is consistent with results from PM_{2.5} filters in MRS-LCP reported over the August 2011 to July 2012 period (Bozzetti et al., 2017; Salameh et al., 2015). The results are also comparable to those found in other Mediterranean coastal cities, where a noticeable proportion of sulfate is generally observed (Mallet et al., 2019; Minguillón et al., 2015; Stavroulas et al., 2019), whereas most urban sites in northern/central Europe show higher nitrate contribution (Lianou et al., 2011; Petit et al., 2015; Young et al., 2015).

The UFP average concentration as determined by the UFP monitor was less than 8000 cm⁻³ in the range of 20-100 nm. These values are similar to those observed in Barcelona but are higher than those found in Madrid and Rome for the same size range (Brines et al., 2015). In Marseille, UFPs represented at 85% of total submicron particle number, in agreement with previous observations in urban environment (Rodríguez and Cuevas, 2007; Wehner and Wiedensohler, 2003).

3.3.2 Seasonal variability

290 A summary of the seasonal statistics (average and standard deviation) relative to PM_{10} mass, chemical composition and number concentrations is reported in Table 1. PM_{10} concentrations estimated from the sum of all species measured by the ACSM + Black carbon vary between $8.1 \mu\text{g m}^{-3}$ (spring) and $11.9 \mu\text{g m}^{-3}$ in winter.

The concentrations of organic and black carbon follow this trend as the highest values are observed during winter and autumn with OA / BC concentrations of $6.2 / 2.1 \mu\text{g m}^{-3}$ and $5.1 / 1.9 \mu\text{g m}^{-3}$ respectively. The higher carbonaceous
295 concentrations during the cold months are expected considering i) a reduction of the planetary boundary layer (PBL) height resulting in the accumulation of pollutants at ground level compared to other seasons and ii) increasing emissions from residential heating and open combustion of green wastes (Bozzetti et al., 2017).

The relative contribution of the biomass burning throughout the seasons can be estimated using the aethalometer model (Sandradewi et al., 2008) that allows to apportion black carbon into fossil fuel and wood burning (respectively BC_{FF} and
300 BC_{WB}). The methodology applied is further described in the Supplement. Seasonal estimations of BC_{WB} and BC_{FF} contributions in MRS-LCP are shown in Figure 4. BC_{WB} shows a clear seasonal variability with a mean value of $0.59 \mu\text{g m}^{-3}$ corresponding to the highest contribution to the total BC in winter (28%). By comparison, summer average value of $0.11 \mu\text{g m}^{-3}$ BC_{WB} represents the lowest contribution (7%). Overall, the magnitude of the seasonal variations are similar to those reported recently in Athens and Milan (Diapouli et al., 2017; Liakakou et al., 2020; Mousavi et al., 2019). Biomass burning
305 also contributes to the seasonal variability of organic aerosol concentration as shown by the magnitude between winter and summer of f60 (the relative signal intensity of m/z 60, commonly attributed to $C_2H_4O_2^+$, a characteristic fragment ion of biomass-burning tracer anhydrosugars ; Alfarra et al., 2007) (Table 1). Despite the mild climate in South of France, wood heating is an important source of pollution. Almost 15% of housing use wood for heating in Aix-Marseille Metropolis (use of chimneys, wood stove or wood boiler) (ADEME, 2009) and around 50% of the identified equipment are still considered
310 as non-efficient in France (ADEME, 2020). Additionally, several wood-fired heating plants located in Aubagne, Gardanne and Aix-en-Provence (15, 18 and 25 km from Marseille, respectively) might contribute to biomass burning emissions. Besides wood heating, the open burning is expected to contribute to the increasing concentration of carbonaceous aerosol, particularly in autumn. This includes the agricultural burning, since one third of the department surface area is dedicated to agricultural activities, but also the green waste burning. While this latter practice is prohibited, it is suspected to still be used
315 nowadays. The close link between the temperature and the magnitude of the wood burning contribution suggests that the residential heating is the main source of biomass burning carbonaceous aerosol (Figure S7a).

The BC_{FF} is nevertheless the main contributor to ambient black carbon (72-93% of total BC) but has a much lower seasonal fluctuation than biomass burning, with values ranging from $1.1 \mu\text{g m}^{-3}$ (spring) to $1.7 \mu\text{g m}^{-3}$ (autumn). The elevated BC_{FF} contribution and lower seasonal variations are consistent with the high traffic emissions that remain constant in the city
320 throughout the year. A similar low seasonal amplitude is observed on f57, the fraction of the $C_4H_9^+$ organic fragment, commonly considered as a proxy for primary organic aerosol and emitted mostly by traffic emissions (Zhang et al., 2005).

Vehicular emissions highly contribute to carbonaceous aerosols in Marseille as demonstrated by El Haddad et al. (2011b) and can be a significant source for OA.

325 The secondary organic aerosol is known to substantially contribute to the OA in Marseille (Bozzetti et al., 2017; El Haddad et al., 2013). The contribution of this fraction to the total OA seems to remain relatively constant during the year, as suggested by the variation of f_{44} (the relative signal intensity of m/z 44, commonly attributed to CO_2^+ , a characteristic fragment ion of oxygenated organic aerosol) across the seasons (Table 1). It is worth noting the clear correlation between f_{44} and the temperature in summer, as shown in (Figure S7b). This observation supports the conclusion that biogenic precursors strongly contribute to the secondary organic aerosol formation at this season.

330 Sulfate concentrations exhibit opposite seasonal pattern to that observed for the total carbonaceous fraction, as the highest concentration is observed in summer ($2.26 \mu\text{g m}^{-3}$). During this season, the average contribution of sulfate to the total mass of PM_{10} accounts for ≈ 23 % of the PM_{10} . Sulfate exhibits its lowest concentrations in spring and winter (1.06 and $1.12 \mu\text{g m}^{-3}$ respectively). The origin of sulfate aerosol is further examined in section 3.4.2.

Nitrate shows a distinct seasonal pattern as maximum concentrations occur in winter and early spring, with average values of 335 1.58 and $1.13 \mu\text{g m}^{-3}$ respectively, making up ≈ 14.0 % of the particle mass, and minimum concentration in summer ($0.24 \mu\text{g m}^{-3}$). This feature has been already observed in other European cities (Minguillón et al., 2015; Petit et al., 2015; Reyes-Villegas et al., 2016; Young et al., 2015) and is generally attributed to the lower temperature and higher relative humidity that shift the partitioning of semi-volatile ammonium nitrate toward the particulate phase (Huffman et al., 2009; Stelson and Seinfeld, 1982). This is supported by Figure S8 where lowest temperature and highest relative humidity values are found in 340 winter and early spring. The episodes with high nitrate concentration reported in late winter/early spring (see section 3.3.1) are also expected to bias high the average for these seasons though. Nitrate was further categorised into inorganic and organic fraction using the method described by Farmer et al., (2010). The detailed methodology is presented in the Supplement. Inorganic nitrate makes up a large fraction (62-80%) of the total nitrate as shown in Figure 4 and explains most of its variability throughout the seasons. $\text{NO}_{3,\text{Org}}$ average concentration ranges from $0.09 \mu\text{g m}^{-3}$ in summer to $0.26 \mu\text{g m}^{-3}$ in 345 winter. The resulting average $\text{NO}_{3,\text{Org}}$ fraction for the whole dataset is $20 \pm 7\%$. The error here is determined from error propagation calculations described by Farmer et al. (2010) and is detailed in SI. This fraction is in the range of reported values for European urban sites (28%, Mohr et al., 2012; 24%, Saarikoski et al., 2012). Assuming a molecular weight between 200 and 300 g mol^{-1} for particle organic nitrates, contribution of organic nitrates to total OA can be estimated (Xu et al., 2015). Results presented in Table S4 give a contribution to total OA of about 6–10% in summer, 11-17% in autumn, 14- 350 20% in winter and 18–28% in spring. These results suggest that despite the low contribution of $\text{NO}_{3,\text{Org}}$ to total nitrate, organic nitrates can be an significant fraction of OA in Marseille.

As ammonium is closely connected to sulfate and inorganic nitrate and, the combination of both components with opposite trends induces a rather flat seasonal pattern.

Chloride maximum and minimum concentrations occur in winter and summer, respectively. This is consistent with the 355 expected dominant form of chloride usually detected in PM_{10} with ACSM, that is semi-volatile NH_4Cl .

The seasonal variation of UFPs followed the general patterns observed for BC and OA concentrations over the year (Figure S8). UFPs average concentration were slightly higher in winter and autumn with average values of 8600 cm^{-3} and 8100 cm^{-3} , respectively, while an average value of 7500 cm^{-3} was found in spring and summer.

360 To get insights into the sources and processes contributing to ultrafine particles in urban ambient air, number concentrations were investigated using the methodology developed by Rodríguez and Cuevas (2007). This methodology has been extensively applied in urban environment to apportion the number concentration of primary and secondary sources (del Águila et al., 2018; González et al., 2011; Hama et al., 2017a, 2017b; Reche et al., 2011; Rodríguez and Cuevas, 2007; Tobías et al., 2018). The total measured UFPs number concentration (N) can be split in two components:

365

$$N_1 = S_1 \cdot BC, \quad (2)$$

$$N_2 = N - N_1, \quad (3)$$

where N_1 accounts for fresh primary emissions of vehicle exhaust, directly emitted in the particle phase or nucleating immediately after emission (Arnold et al., 2006; Burtscher, 2005; Kittelson, 1998) and N_2 accounts mostly for secondary particles formed in the atmosphere during the dilution and cooling of the exhaust emissions (see Figure S11 for details). To refine the method, BC_{FF} was used instead of total BC to better apportion primary traffic emissions.

The N_1 and N_2 fractions were derived from the TSI 3031 measurements and average number concentrations during each season are reported in Table 1 and Figure 4. It should be emphasized that results obtained from this analysis are sensitive to the sampling strategy (cut size of the particle counter, distance from the sources) and to the physicochemical properties of the primary particles (presence and size of the BC core) (Kerminen et al., 2018; Kulmala et al., 2016). In the present work, an underestimation of N_2 is expected, as particles smaller than 20 nm are not accounted for when the TSI 3031 is used.

The N_2 fraction was predominant with number concentrations 1.02 to 1.7 times higher than N_1 . The N_2 average particle numbers were higher in spring and summer as the concentrations reached their highest value ($\approx 4300 \text{ cm}^{-3}$ and 4800 cm^{-3}). In contrast, the N_1 emissions appear to be dominant in winter and autumn, with average concentrations of ≈ 4200 and 3800 cm^{-3} . An explanation for these results could be either the higher traffic rate or the low temperature influencing the soot particle formation during combustion in these seasons. The N_1 seasonal trend slightly varied through the measurement period with a contribution between 37 and 50%.

385 While it appears that the highest UFPs mean number concentrations are observed in autumn and winter, a different picture is found when the frequency of occurrence of short term high concentration episodes is investigated as a function of the season. Figure 5 shows the box plots of 15-minute average UFPs number concentrations, binned into intervals of SO_2 concentrations classes, a proxy industrial and shipping activity. It clearly shows that the most intense episodes occur preferentially in summer and are associated with high SO_2 concentrations. This season gathers more than 55% of the highest SO_2

390 concentrations ($>20\mu\text{g m}^{-3}$) episodes. The higher occurrence of sharp and intense UFP peaks in summer is confirmed by the SMPS data as 10 events exceeding $50\,000\text{ cm}^{-3}$ were observed in summer against only 1 in winter (Figure 3).

3.3.3 Diurnal profiles

Figure 6 shows the average diurnal profiles of ACSM components (OA , NH_4^+ , NO_3^- , SO_4^{2-}) and specific organic markers (f_{44} , f_{57} , f_{60}), BC_{FF} , BC_{WB} and particle number concentrations (N_1 and N_2) across the different seasons.

395 Distinctive diurnal patterns are found for carbonaceous aerosols. First, a clear traffic-related diurnal profile was observed for BC_{FF} with a morning peak and an evening peak starting at the typical rush hours (04:00 UTC and 16:00 UTC respectively). This pattern confirms that traffic emission prevails over the other potential sources of fossil fuel such as oil-fired boilers, industrial and shipping activities. The amplitude of the traffic-related diurnal cycle seemed to be affected by the boundary layer height since it varied within the year, with maximum min to max amplitude of 0.9 during winter and minimum min to
400 max amplitude of 0.5 during summer.

The BC_{WB} had a distinct diurnal cycle with a typical increase starting at 17:00 UTC and a maximum level of $1.1\mu\text{g m}^{-3}$ at nighttime. The mean to max amplitude increased steadily from spring, autumn to winter (0.1, 0.2 and 0.4, respectively), following the increased heating demand. Under specific meteorological conditions (no rain, low wind speed, low boundary layer height) this source is responsible for episodes of high PM_1 concentrations in Marseille. This is discussed in detail in
405 Sect. 3.4.1. In winter and autumn, OA diurnal cycle mainly resulted from the superposition of both traffic-related and wood burning-related cycles with maxima of $4.9\mu\text{g m}^{-3}$ and $7.9\mu\text{g m}^{-3}$ for the morning and evening peak, respectively. This feature is highlighted by the seasonal diurnal profiles of the organic ion fractions f_{60} and f_{57} . While f_{60} followed exactly the BC_{WB} diurnal cycles, f_{57} displayed the same bimodal pattern than BC_{FF} . In spring and summer an additional local maximum appeared for OA during mid-day ($3.8\mu\text{g m}^{-3}$). This can be attributed to the enhanced photochemical activity and formation
410 of secondary organic aerosol as suggested by the f_{44} diurnal cycles. OA mid-day peaks may also be partly related to a distinct cooking source (Bozzetti et al., 2017). This is confirmed upon inspection of the f_{55} vs f_{57} plot (Figure S12), commonly used to diagnose the presence of this source (Mohr et al., 2012) as it shows a typical V-shape on daytime (05h-17h UTC), with data between 11h and 13h UTC (green points) and data from the morning (red and yellow points between 05h and 08h UTC) near the respective f_{55}/f_{57} fits previously reported for pure cooking organic aerosol and traffic emissions. During nighttime
415 there is no clear separation of cooking and traffic-related organic aerosol as these sources are expected to be co-emitted at the same hours.

The $\text{NO}_{3,\text{Inorg}}$ diurnal cycles exhibit a morning peak that occurs in general 1-2 hours after the morning traffic-related peak, suggesting that formation of ammonium nitrate occurs locally in presence of the NO_x and NH_3 possibly co-emitted emissions. Suarez-Bertoa et al. (2015) mentioned that urban traffic emissions of ammonia have increased in Europe (+378%)
420 over the last decades leading to possible enhanced ammonium concentrations. In the late afternoon, concentrations increase and remain high because of the boundary layer height decrease, together with the lower temperature and higher relative humidity that favour condensation to the particle phase. The diurnal variations of $\text{NO}_{3,\text{Org}}$ are represented for each season in

Figure 6. Concentrations increased after sunset and were higher at night, likely due to the oxidation of VOCs by the nitrate radical (Kiendler-Scharr et al., 2016). The minimum to maximum amplitude was more pronounced in summertime, possibly
425 due to enhanced biogenic VOCs emissions. Still, these results might be partly influenced by the low level of total nitrate concentration encountered during this period. Slight daily enhancements of $\text{NO}_{3,\text{Org}}$ were found in the morning (around 08:00 UTC) and are attributed to photooxidation of VOCs in the presence of high nitrogen monoxide NO concentrations (the diurnal profiles are also reported in Figure 6 and show maxima at 07:00 UTC) as mentioned by Xu et al. (2015).

Sulfate and ammonium exhibit very similar profiles, except for winter and early spring when ammonium is mainly
430 associated to nitrate. The quite flat diurnal profiles of ammonium sulfate during autumn, winter, and spring might be due to the regional character of this component (regional transport) (Seinfeld and Pandis, 2016).

In summer however, ammonium sulfate diurnal profile shows a clear increase during the daylight period with maxima reached at noon, possibly due to local photochemical production of sulfate from its precursor SO_2 emitted by nearby shipping and industrial activities and advected to the city as the sea breeze sets in. Some studies suggest fast SO_2 to sulfate
435 conversion in the exhaust plumes (Healy et al., 2009; Lack et al., 2009). This local sulfate fraction will be discussed in detail in Section 3.4.2.

Average daily profiles for N_1 and N_2 are represented in Figure 6 and show distinct daily pattern. Particle number concentration N_1 exhibits maxima during morning and evening traffic rush hours similarly to NO concentration, when UFPs are mainly associated to vehicle exhaust emissions. In winter N_2 follows the traffic bimodal profile with 1-2 hours shift
440 (morning peak at starting at 06:00 UTC and evening at 17:00 UTC) which can highlight the fast homogeneous dilution/cooling (favoured by the low temperature and high relative humidity conditions) and mixing of the vehicle exhaust in the ambient air (Casati et al., 2007; Charron and Harrison, 2003). In summer, N_2 exhibits a daily evolution with a broad maximum during daylight. This trend closely follows the daily evolution of temperature, ozone, f_{44} and SO_4^{2-} concentration suggesting a photo-oxidative process of gaseous precursors (Woo et al., 2001), as SO_2 , combined with more dilution of
445 pollutants when the boundary layer increases (Reche et al., 2011). For the transitional seasons (autumn and spring) the patterns reveal some mixing between the cars exhaust cooling and photochemistry states and N_2 can be attributed to the two processes. Analysis of the secondary fraction N_2 between 10 and 20 nm determined from SMPS summer data reveals that this fraction followed the SO_2 diurnal evolution (Figure 6). Both SO_2 and $\text{N}_{2(10-20\text{ nm})}$ concentrations increased from the morning suggesting the nucleation of sulfuric acid particles (Burtcher, 2005; González et al., 2011). In this size range, the
450 secondary ($\text{N}_{2(10-20\text{ nm})}$) and fresh primary emissions ($\text{N}_{1(10-20\text{ nm})}$) fractions corresponded to 90% and 10% of the total number concentration ($\text{N}_{(10-20\text{ nm})}$), respectively. Overall the UFPs investigation demonstrates that secondary particle formation is an important contributor to particle number in Marseille and besides road traffic, there is some high influence of industrial/shipping mixed sources.

3.4 Case Study of PM₁ polluted periods

455 3.4.1 PM episodes with exceedance days: local vs long-range transport

Table 2 summarizes the number of PM_{2.5} exceedance days throughout the last decade in MRS-LCP, using as reference value 25 µg m⁻³ 24-hours mean from the WHO guideline for particulate matter. Overall, the number of exceedance days has strongly declined over the years (it is 3-4 times lower in 2017 than in the 2009-2011 period). In the present study, 15 exceedance days were observed over the 14 month-period (from 1 February 2017 to 13 April 2018). These exceedance
460 periods occurred in spring, late autumn, and winter, in good agreement with seasonal frequency distribution in the last decade, and they could last from 1 to 4 consecutive days as shown in Figure 3. Among the 15 exceedance days, two pollution episodes have been selected as case studies, as they represent two contrasting pollution regimes: a local event in Christmas period (23-24 December 2017) and a regional persistent pollution episode (22-25 February 2018).

The average PM_{2.5} concentrations were 31.2 µg m⁻³ and 36.7 µg m⁻³ respectively for the local and regional pollution
465 episodes, with average PM₁ concentrations of 28.7 µg m⁻³ and 31.1 µg m⁻³, respectively. This indicates that PM_{2.5} pollution episodes were driven by PM₁ concentrations in both cases. Figure 7 shows the time series of the meteorological parameters (i.e. temperature, relative humidity, wind speed and direction, PBL height and precipitations), with the PM₁ components as well as the BC/ SO₄²⁻ ratio during these 2 events. The sulfate fraction (SO₄²⁻) is considered a good tracer for long-range transport, whereas BC refers to local influence from the city and the surrounding area (Petit et al., 2015). The use of this
470 local/long-range proxy requires the assumption of minor local source of SO₂ and no direct SO₄²⁻ formation in plumes at a local scale during the 2 episodes. Therefore the industrial and shipping contributions to global pollution have to be low for these periods. This is true except for a short period on the 23 December around 12:00 UTC when a temporary increase of SO₄²⁻ decreases the BC/SO₄²⁻ ratio. This short event possibly originated from industrial and/or shipping emissions as SO₂ and UFPs concentrations also increased. Additionally, aged air masses might contain BC particles (Laborde et al., 2013) and this
475 interference must be considered during the BC/SO₄²⁻ ratio analysis.

The Christmas local episode lasted two consecutive days: the 23 and 24 December 2017 (Figure 7a). PM₁ (ACSM+BC) concentration was dominated by OA (63%) and BC (21%). Carbonaceous concentrations increased mostly in the evening by a factor of 4 to 5 in the space of a few minutes with the onset of the land breeze and remained high overnight. The temporal
480 evolution of BC contributions (Figure 7a) clearly indicates a predominance of biomass burning with a maximum contribution of BC_{WB} to BC between 80-100% at night. At night PM size distribution ranged between 40 and 200 nm (Figure S13), typical of wood burning emissions (Coudray et al., 2009). High BC/SO₄²⁻ ratio (average of 6.12 with values up to 20) and low wind speed conditions suggests a strong local influence. This is supported by the NWR analysis plots for OA and the biomass markers (BC_{WB}, f₆₀) shown in Figure 8, indicating that high concentrations are associated to North-East land
485 breeze.

This configuration is very frequent in Marseille, as land breeze regime prevailed 25% of the time, as shown by the wind roses, Figure S14. Under such meteorological conditions, the average annual PM_1 concentration was $14.3 \mu g m^{-3}$ instead of $8.49 \mu g m^{-3}$ for the remaining period. These winds transport to the city anthropogenic emissions from the surrounding suburban residential areas of Marseille, in the north-easterly direction. In winter, these areas are a few degrees colder than the city of Marseille, resulting in an increased use of firewood as an auxiliary heating source. After the 25 December, the PM_1 levels dropped down as the wind direction shifted from North-East to East/South-East. The PM_1 decrease was also favoured by the vertical dilution that occurred with increased PBL height combined with precipitations.

The February long-range event took place during a period of four consecutive $PM_{2.5}$ exceedance days from 22 to 25 February 2017 (Figure 7b) and was ended as a higher PBL height led to the dilution of atmospheric pollutants. The aerosol chemical composition was relatively stable with OA contribution of 41%, followed by NO_3^- (25%), BC (12%), NH_4^+ (11%), and SO_4^{2-} (10%). While this measurement period was not complemented by a SMPS, the comparison between the PM_1 mass concentrations found in both periods ($31.1 \mu g.m^{-3}$ for the February event and $28.7 \mu g.m^{-3}$ for the Christmas event) with their respective total number concentration as determined with the TSI 3031 (12800 and $22800 cm^{-3}$) indicates that the mass-weighted particle size distributions was shifted to larger size during this episode (Figure 7c). This event is characterised by a low BC/ SO_4^{2-} ratio (average of 1.13), suggesting advection of aged and processed air masses. The BC/ SO_4^{2-} ratio can reach values of 4-5 though, when regional background concentrations are enriched by local BC emissions, contributing to enhanced particle level. The secondary origin of the aerosol is confirmed by the high content of ammonium nitrate. Figure 8 shows SWIM-2 analysis plot for $NO_{3,Inorg}$ indicating that the main dominant wind sector for this species is North to South-West, with the highest concentration from North/North-West at high wind speed ($\approx 1.8 m s^{-1}$) and South/South-West at low wind speed ($\approx 1.1 m s^{-1}$). This result likely shows a combined local pollution with medium/long-range transport of secondary species during this time. In order to avoid local influences, wind regression analysis were conducted on $NO_{3,Inorg}$ normalized by BC. The resulting plot shown in figure 8 reveals the North/North-West sector origin, corresponding to Mistral wind (wind speed between 1.8 and $2.2 m s^{-1}$) conditions. A similar result is obtained with f_{44} which suggests that a high fraction of secondary organic aerosol is also associated to this event.

Analysis of the 72h-backtrajectories ($n=32$; displayed every 3 hours) displayed in Figure S15 shows that the air masses came essentially from Eastern and central Europe, passed over Switzerland and the northern Italy and were then channelled along the Rhone Valley corridor toward the Mediterranean Sea under Mistral regime. The CWT analysis for the nitrate supports this hypothesis since it shows a potential source region in the North-East part of the Pô Valley (Figure S15). The Pô Valley is well known for its high levels of inorganic (Diémoz et al., 2019; Schaap et al., 2004b; Squizzato et al., 2013) and secondary organic aerosol (Saarikoski et al., 2012). The plain is enclosed by the Alpine chain and the Apennines limiting the dispersion of pollutants and thus leading to frequent pollution events. During the winter/spring period low temperature and high humidity may favour ammonium nitrate particles formation (Schaap et al., 2004b). The hot spot along the Rhône valley can be connected to the intense nitrogen fertilization in this period causing high level of NH_3 emissions in the area

520 (Ramanantenasoa et al., 2018), and leading to enhanced ammonium nitrate formation. Additionally, industrial emissions from areas along the valley, such as the “Vallée de la Chimie” in the south of Lyon, can contribute to this episode. As similarities can be found within the 15 exceedance days, it was possible to gather them in one of the two categories previously described (local event and regional/long-range event) according to some key criteria listed in Table S5. The local events were characterised by high BC/SO₄²⁻ ratio and an enrichment of PM_{2.5} concentration under land breeze.

525 Local pollution is expected to be advected by land breeze, therefore $\Delta PM_{2.5}$ (Land breeze/Other winds) should significantly increase during these days. Local events were also heavily impacted by biomass burning particles as revealed by the high BC_{WB} contribution to PM_{2.5} (fBC_{FF PM2.5} in Table S5). Investigation of the ratio of f₄₄ to f₆₀ indicates that these are mostly fresh biomass emissions as evidenced by the high f₆₀ (>0.01) and low f₄₄ (<0.01) when particles concentrations are at their highest (30 µg.m⁻³) (Figure 9). For regional/long range episodes, the variability of f₄₄ and f₆₀ is larger as the aging degree of particles

530 is expected to vary from one air mass to another and as the air masses may be affected by local biomass burning emissions. It is noteworthy that some observed values within the f₆₀ background ($\approx 0.3 \% \pm 0.06$; Cubison et al., 2011) denote no evidence of biomass burning emissions during these episodes.

The regional/long-range events were associated with an enhanced mass fraction of nitrate (fNO₃⁻ PM₁ in Table S5) and higher wind speeds occurring during these days. The probability density distributions of these criteria are presented in Figure 10.

535 As expected the graphs show larger BC concentrations and f₆₀ contributions during the local events, with a wind frequency dominated by land breeze (5°-90°) driving the pollution and to a lesser extent sea breeze and Mistral winds (210°-360°). Regional/long-range events were affected by higher NO₃⁻ concentrations and higher wind speeds. Even if f₄₄ was slightly larger during these events, the distribution is in the same range than the one for local events. As mentioned previously the local pollution is combined to the long-range transport during these events, reducing the f₄₄ values with the increasing

540 hydrocarbon fragments contribution. This is supported by the wind frequency which, despite the Mistral dominance, is still affected by a low land breeze influence. In term of frequency of occurrence, 40% of exceedance days account for local origin (6 days) and 60% for long-range transport influence (9 days).

Globally, the combined observations of phenomenology, chemical composition and meteorology allow to accurately analyse events with exceedance mass concentrations for fine particles at MRS-LCP supersite, highlighting variable situations in an

545 urban area affected by different air mass origins.

3.4.2 Sulfate origin and Shipping/industrial plumes in summer

The summertime aerosol contributes little to the exceedance of PM_{2.5} air quality thresholds (Figure 1). This season accounts for only 10% of the exceedance days since 2008 and none of these occurred in 2017-2018. Still, the high solar radiation and temperature combined to the dry condition are expected to enhance the formation of secondary pollutants and their

550 accumulation. High ozone levels often exceeding the WHO threshold are indeed recorded in Marseille (section 3.1). These conditions also affect the aerosol composition as it results in an enhanced secondary sulfate fraction (see section 3.3.2). NWR plots of sulfate and its precursor SO₂, shown in Figure 8, indicate that their occurrence is preferentially associated the

South-West sector, and covers a broad range of wind speeds. This wind sector is representative of the sea breeze conditions that prevail in summer and that blow inland coastal emission sources. Known local potential emissions sources include the large petrochemical and industrial area of Fos-Berre, located 40 km northwest, the shipping traffic in the gulf of Fos related to these activities and the Marseille harbour, located 3 km away from the site. During summertime, the ships traffic described as the sum of ship movements (arrivals and departures) increases by 25% (4319 movements against 3262 movements for the 2017-2018 period) partly because of the enhanced numbers of passenger ferries and travel cruises during the holiday season.

Figure 11 shows the diurnal trend of cumulative number of ship movements for the summer 2017. This number was differentiated according to the type of movement and the basin location (the exact geographic positions are reported in the Supplement in Figure S1). As can be seen by the diurnal profile of the ship movements in the harbour, two maxima were observed: the first at 05:00 UTC due to ship arrivals and the second at 17:00 UTC due to ship departures. Once the sea breeze sets in (06h00 UTC), the highest SO₂ peak might be related to the ship arrivals increase; however, El Haddad et al. (2011a, 2013) assigned similar morning SO₂ plumes to industrial activity from Fos-sur-mer in summer. Thus, the first SO₂ increase could arise from a combination of contribution from ships arrival and industrial air masses, whereas the second peak could be mostly linked to the late afternoon boats departure. It should be noted that SO₂ concentrations slightly increase earlier during the night (00h00-04h00 UTC) and can be linked to scarce wind advections from the sea, also related to the ship traffic and not caught by the average wind diurnal cycle in Figure 11. SO₄²⁻ concentrations increased during the day and could be also partly affiliated to the direct influence of shipping/industrial activity to the monitoring site. In addition to these local sources, long range transport from the Mediterranean basin of sulfate and its precursor can also contribute to the levels of sulfate observed.

The variability of the summer daily patterns of sulfate was investigated using a k-means clustering algorithm run on the hourly concentrations. The method is further described in the Supplement. From this analysis, 3 distinct clusters were assessed, accounting for 20, 16 and 27 days for cluster 1, cluster 2 and cluster 3, respectively. The resulting average diurnal patterns of sulfate, SO₂ and N_{2(10-20nm)} (whose diurnal profiles were found to be closely linked to SO₂, see section 3.3.3) and wind profiles are shown in Figure 12 for each cluster. The three clusters are confirmed to be mainly driven by the diurnal sea breeze cycle, that blows towards the city from 06h00-08h00 UTC to 20h00-21h00 UTC. Cluster 1 seems to be related to the regional background of sulfate as it is associated with the lowest concentration ($\approx 2\mu\text{g}\cdot\text{m}^{-3}$) and a flat diurnal profile. Meanwhile, SO₂ and N_(10-20 nm) increase simultaneously as the breeze sets in to peak at $4\mu\text{g}\cdot\text{m}^{-3}$ and 8000cm^{-3} respectively at 10h00-12h00. The comparison of the daily profiles indicates that sulfate is fully decoupled from its precursors in this cluster and that no significant conversion of SO₂ to sulfate occurs by the time the air mass reaches the site.

On the contrary, cluster 2 gathers days when the sulfate concentrations are well correlated with the N_{2(10-20 nm)} and SO₂ daily profiles, that show maximum concentrations of $6\mu\text{g}\cdot\text{m}^{-3}$ and 6000cm^{-3} at 12h00. Sulfate concentration peaks at the same time ($\approx 3.5\mu\text{g}\cdot\text{m}^{-3}$). The cycle may reflect the transport of rather fresh to moderately processed plumes that regularly reach

the site. The molar ratio of sulfate to total sulfur, indicative of SO₂-to-sulfate conversion grows when photochemical activity is expected to be at its highest, from 0.3 (10h00) to 0.5 (16h00) (Figure S18). Based on this observation, it is hypothesized that this cluster is also representative of days when SO₂ to sulfate conversion occurs.

590 In cluster 3, the sulfate concentration is found to progressively increase during the day and reaches a concentration of 3 µg.m⁻³ at 20h00. SO₂ and N_(10-20 nm) exhibit similar variations with 2 peaks at 08h00 (4 µg m⁻³ ; 3800 cm⁻³) and 17h00 (3 µg m⁻³ ; 3800 cm⁻³). It is presumed that cluster 3 is related to the most processed air masses as it exhibit the highest SO₄²⁻ to SO₂ mean ratio (mean 06h00-19h00 value ; 0.58 against 0.45 and 0.39 for cluster 2 and 1, respectively).

595 NWR analyses were carried out to locate potential sources of sulfates nearby the site. In addition, CWT analyses were used to identify potential distant sources. Results from NWR and CWT for the three clusters are shown in Figure 13.

Cluster 1 is preferentially associated to the North-West sector (corresponding to the Mistral wind) and the area of the sea breeze having the highest speed as, indicated by the joint probability polar plot. The wind average wind speed was 0.9 m s⁻¹ against ≈ 0.7 m s⁻¹ for cluster 2 and 3, respectively. The NWR plots confirm the hypothesis on the potential origin of sulfate and SO₂ in the 3 clusters: in the case of cluster 1, sulfate and SO₂ are disconnected to each other, while they have the same south-westerly origin in cluster 2, as indicated by the similar hotspots in the plots (also displayed in Figure S19b). Cluster 3 exhibits moderate sulfate concentrations in a broader range of wind speed and in a larger South-West direction, consistent with a significant regional feature. The increasing sulfate concentrations from the South-West direction reach its maximum during early evening, as shown in Figure S19c. A South-East winds circulation can be more pronounced for some days of cluster 3, also contributing to the SO₄²⁻ enhancement (Figure S20). It should be emphasized that some rare land breeze from the North-East bring further background sulfate concentrations back to the city for the three clusters (Figure 13a).

On a larger scale, the CWT analysis of cluster 1 corresponds to a background level without a distinct origin. A clear hotspot in the South-West (also shown in Figure S19a) is connected to the night of 23 July corresponding to the end of a sulfate advection from cluster 3. The combination of the k-means clustering and the CWT analysis can suffer from this bias, as the times series that arise from the k-mean clustering are essentially segmented 24-hours periods. The CWT of sulfate for cluster 2 clearly shows a hotspot along the southern coast of France (“Golfe du Lion”) that encompasses the industrial area of Fos-sur-mer, while sulfate of cluster 3 is associated to air masses that expands over a larger area in the Mediterranean basin. The highest sulfate concentration are located on the main shipping routes in the Mediterranean, from the north of Spain, along the French coast and the west coast of Italy (Nunes et al., 2020) This is not unexpected as the maritime shipping emissions have been estimated to account for more than 50% of the sulfate in the western Mediterranean (Aksoyoglu et al., 2016). These hotspots are also observed on the SO₂ and SO₄²⁻ surface mass concentrations in summer 2017 from the MERRA2 model (Figure S21a and b), which is based on the Goddard Earth Observing System (GEOS) atmospheric data assimilation system (ADAS) (Gelaro et al., 2017).

The chemical composition and size distribution tend to support the distinct features identified between the 3 clusters: cluster 1 has the lowest concentration level, with 7.7 µg m⁻³ against 10.3 µg m⁻³ and 9.9 µg m⁻³ for cluster 2 and 3, respectively. The

greater influence of the local emission on cluster 2 than on cluster 3 is reflected by the higher black carbon content and the lowest sulfate content (Table S6 and Figure S22). It is also reflected by the higher total number concentration and a more pronounced Aitken mode observed on cluster 2 (Figure S23). Both Clusters 2 and 3 have an additional accumulation mode that has been already observed for aged aerosol passing over the Mediterranean Sea (Mallet et al., 2019).

625 **4 Summary and conclusions**

The chemical composition of submicron aerosols was monitored in real time between 1 February 2017 and 13 April 2018 at an urban background site of the Mediterranean city of Marseille. Measurements were carried out with a ToF-ACSM associated with a suite of collocated instruments including an aethalometer, an ultrafine particle monitor, a SMPS and monitors for regulated pollutants (PM, NO_x, O₃, SO₂).

630 The reconstituted PM₁ mass (ACSM measurements + BC) was cross validated through several comparisons with external parameters. ACSM+BC concentrations were found to be in good agreement with estimated mass concentrations from SMPS ($R^2=0.81$ and slope=1.02) and PM₁ concentrations from FIDAS ($R^2=0.89$ and slope=0.9).

OA was the most abundant specie of submicron aerosol, with an annual average of 49.7% and the carbonaceous fraction was dominant for every season (66.8%) and especially during cold months. BC contributes largely to this fraction (17.1% of total submicron aerosol) and is mainly dominated by fossil fuel emissions as determined with the AE-33 aethalometer model. BC from wood burning emissions showed higher contribution during winter and very low contribution in summer, as expected.

635 The organic nitrate contribution was evaluated using the NO₂⁺/NO⁺ ratio method and gave reasonable results in separating NO_{3,Org} and NO_{3,Inorg} concentrations. Some uncertainties still remain as R_{ON} was set to a fixed value and could slightly vary according to the VOC precursors which lead to particle organic nitrate formation. Also, low nitrate signal provide instable R_{obs} and could enhance the uncertainty of the estimation. The NO_{3,Org} fraction was 20±7% for the total nitrate (representing 10.2% on average for the PM₁ concentrations) during the entire period and did not significantly contribute to enhanced polluted events with high PM₁ concentrations. However organic nitrate contribution to total OA could be estimated to significant values with maximum during springtime (18-28%).

645 Particle number concentration was successfully segregated into two components (N₁ and N₂) by using the minimum slope found in the N vs BC_{FF} plot, with BC_{FF} accounting for primary particles. N₁ was attributed to fresh primary traffic emissions and N₂ to secondary particles. The secondary N₂ fraction was predominant with number concentrations 1.02 to 1.7 times higher than N₁. While N₁ showed clear maxima during morning and evening traffic rush hours, N₂ was either attributed to dilution/cooling and mixing of vehicular exhausts in the atmosphere during cold seasons or to photooxidation products of gaseous precursors during hot seasons. These results revealed the importance of secondary particle formation and contrasted seasonal sources of UFPs number.

650 PM₁ pollution events were determined according to the daily concentrations exceeded WHO recommendations. To illustrate their differences in chemical composition, meteorological dynamic and geographical origins two events (23-24 December

2017 and 22-25 February 2018) were carefully examined. BC/SO₄²⁻ ratio, non-parametric wind regressions and backtrajectories provided important information to discriminate local and long-range transport contributions. The local contribution during exceedance days is attributed to an increase of biomass burning emissions with domestic heating and green wastes burning, cumulated with intense traffic. In those situations, the OA and BC concentrations strongly increase at night in the space of few minutes when the nocturnal land breeze set up and the boundary layer height decreases. The long-range pollution case, led to high increase of secondary aerosol, more precisely ammonium nitrate and oxygenated OA, transported from the central Europe and notably Pô Valley to the city. The investigation of the total PM_{2.5} exceedance days (based on f44/f60 ratio, BC contribution to PM_{2.5}, nitrate contribution to PM₁, wind speed and $\Delta PM_{2.5}$ (Land breeze/Other winds)) highlighted that local influences are mainly responsible of continuous background pollution and its mix with long-range transport events can trigger to situation with high exceedance levels of fine particles. This elevated pollution occurred mostly in winter and early spring with favourable wind conditions. Even if no exceedance day was found during the summer season, the chemical composition is slightly different, with higher sulfate contributions and intense UFPs plumes (mostly between 10 and 20 nm) associated with SO₂ are advected on site. A k-means clustering analysis has been performed to inspect sulfate variability from summer days which can be driven by several origins. Over the 63 days including in the analysis, 20 days were attributed to background sulfate concentrations, and 16 days to enhanced concentrations under the direct influence of the harbour and industrial areas. The remaining days (27) were attributed to mixed sulfate sources with a regional influence. In addition to local industrial and shipping activity, regional Mediterranean air masses can bring higher sulfate concentrations from aged shipping plumes, probably mixed with other sources such as marine biogenic or crustal. In conclusion, the supersite MRS-LCP successfully recorded up to 1 year observations and seasonality of fine particles. The long-term real-time monitoring in MRS-LCP showed a great potential and will supply direct information to public authorities and citizens. It may provide better understanding of pollution episodes and more effective control of local mitigation within the context of French Atmosphere Protection Plan.

675

Data availability. Data are available upon request to the contact author Benjamin Chazeau (benjamin.chazeau@univ-amu.fr).

Author contributions. NM designed the research. BC, GG and BM contributed to the measurements. BC performed the analysis and wrote the paper. NM, BD, BT and HW reviewed and all authors commented on the paper.

Competing interests. The authors declare they have no conflict of interest.

Acknowledgements. This work is supported by AtmoSud, ANRT, the PACA Region and the French ministry of Environment. BC also acknowledges V Crenn and ADDAIR for the ToF-ACSM support, D Piga and J Poulidor for the

685

supply of shipping and road traffic data and J-E Petit for developing Zefir tool. Some visualization used in this paper were produced with the Giovanni online data system, developed and maintained by the NASA GES DISC.

References

- ADEME: La maîtrise de l'énergie dans les logements en Paca., 2009.
- 690 ADEME: Le bois énergie et la qualité de l'air, ademe.fr <https://www.ademe.fr/expertises/energies-renouvelables-en-production-reseaux-stockage/passer-a-l'action/produire-chaaleur/dossier/bois-biomasse/bois-energie-qualite-lair>, last access: 31 March 2020, 2020.
- del Águila, A., Sorribas, M., Lyamani, H., Titos, G., Olmo, F. J., Arruda-Moreira, G., Yela, M. and Alados-Arboledas, L.: Sources and physicochemical characteristics of submicron aerosols during three intensive campaigns in Granada (Spain),
- 695 *Atmospheric Research*, 213, 398–410, <https://doi.org/10.1016/j.atmosres.2018.06.004>, 2018.
- Aiken, A. C., DeCarlo, P. F., Kroll, J. H., Worsnop, D. R., Huffman, J. A., Docherty, K. S., Ulbrich, I. M., Mohr, C., Kimmel, J. R., Sueper, D., Sun, Y., Zhang, Q., Trimborn, A., Northway, M., Ziemann, P. J., Canagaratna, M. R., Onasch, T. B., Alfarra, M. R., Prevot, A. S. H., Dommen, J., Duplissy, J., Metzger, A., Baltensperger, U. and Jimenez, J. L.: O/C and OM/OC Ratios of Primary, Secondary, and Ambient Organic Aerosols with High-Resolution Time-of-Flight Aerosol Mass
- 700 Spectrometry, *Environmental Science & Technology*, 42(12), 4478–4485, <https://doi.org/10.1021/es703009q>, 2008.
- Aksoyoglu, S., Baltensperger, U. and Prévôt, A. S. H.: Contribution of ship emissions to the concentration and deposition of air pollutants in Europe, *Atmos. Chem. Phys.*, 16(4), 1895–1906, <https://doi.org/10.5194/acp-16-1895-2016>, 2016.
- Alfarra, M. R., Prevot, A. S. H., Szidat, S., Sandradewi, J., Weimer, S., Lanz, V. A., Schreiber, D., Mohr, M. and Baltensperger, U.: Identification of the Mass Spectral Signature of Organic Aerosols from Wood Burning Emissions,
- 705 *Environmental Science & Technology*, 41(16), 5770–5777, <https://doi.org/10.1021/es062289b>, 2007.
- Arnold, F., Pirjola, L., Aufmhoff, H., Schuck, T., Lahde, T. and Hameri, K.: First gaseous sulfuric acid measurements in automobile exhaust: Implications for volatile nanoparticle formation, *Atmospheric Environment*, 40(37), 7097–7105, <https://doi.org/10.1016/j.atmosenv.2006.06.038>, 2006.
- Ashbaugh, L. L., Malm, W. C. and Sadeh, W. Z.: A residence time probability analysis of sulfur concentrations at grand
- 710 Canyon National Park, *Atmospheric Environment* (1967), 19(8), 1263–1270, [https://doi.org/10.1016/0004-6981\(85\)90256-2](https://doi.org/10.1016/0004-6981(85)90256-2), 1985.
- Aurela, M., Saarikoski, S., Niemi, J. V., Canonaco, F., Prevot, A. S. H., Frey, A., Carbone, S., Kousa, A. and Hillamo, R.: Chemical and Source Characterization of Submicron Particles at Residential and Traffic Sites in the Helsinki Metropolitan Area, Finland, *Aerosol and Air Quality Research*, 15(4), 1213–1226, <https://doi.org/10.4209/aaqr.2014.11.0279>, 2015.
- 715 Bahreini, R., Ervens, B., Middlebrook, A. M., Warneke, C., de Gouw, J. A., DeCarlo, P. F., Jimenez, J. L., Brock, C. A., Neuman, J. A., Ryerson, T. B., Stark, H., Atlas, E., Brioude, J., Fried, A., Holloway, J. S., Peischl, J., Richter, D., Walega, J.,

- Weibring, P., Wollny, A. G. and Fehsenfeld, F. C.: Organic aerosol formation in urban and industrial plumes near Houston and Dallas, Texas, *Journal of Geophysical Research*, 114, <https://doi.org/10.1029/2008JD011493>, 2009.
- 720 Bozzetti, C., El Haddad, I., Salameh, D., Daellenbach, K. R., Fermo, P., Gonzalez, R., Minguillón, M. C., Iinuma, Y., Poulain, L., Elser, M., Müller, E., Slowik, J. G., Jaffrezo, J.-L., Baltensperger, U., Marchand, N. and Prévôt, A. S. H.: Organic aerosol source apportionment by offline-AMS over a full year in Marseille, *Atmospheric Chemistry and Physics*, 17(13), 8247–8268, <https://doi.org/10.5194/acp-17-8247-2017>, 2017.
- 725 Bressi, M., Cavalli, F., Belis, C. A., Putaud, J.-P., Fröhlich, R., Martins dos Santos, S., Petralia, E., Prévôt, A. S. H., Berico, M., Malaguti, A. and Canonaco, F.: Variations in the chemical composition of the submicron aerosol and in the sources of the organic fraction at a regional background site of the Po Valley (Italy), *Atmospheric Chemistry and Physics*, 16(20), 12875–12896, <https://doi.org/10.5194/acp-16-12875-2016>, 2016.
- 730 Brines, M., Dall'Osto, M., Beddows, D. C. S., Harrison, R. M., Gómez-Moreno, F., Núñez, L., Artíñano, B., Costabile, F., Gobbi, G. P., Salimi, F., Morawska, L., Sioutas, C. and Querol, X.: Traffic and nucleation events as main sources of ultrafine particles in high-insolation developed world cities, *Atmospheric Chemistry and Physics*, 15(10), 5929–5945, <https://doi.org/10.5194/acp-15-5929-2015>, 2015.
- Burtscher, H.: Physical characterization of particulate emissions from diesel engines: a review, *Journal of Aerosol Science*, 36(7), 896–932, <https://doi.org/10.1016/j.jaerosci.2004.12.001>, 2005.
- 735 Cachier, H., Aulagnier, F., Sarda, R., Gautier, F., Masclat, P., Besombes, J.-L., Marchand, N., Despiiau, S., Croci, D., Mallet, M., Laj, P., Marinoni, A., Deveau, P.-A., Roger, J.-C., Putaud, J.-P., Van Dingenen, R., Dell’Acqua, A., Viidanoja, J., Martins-Dos Santos, S., Liousse, C., Cousin, F., Rosset, R., Gardrat, E. and Galy-Lacaux, C.: Aerosol studies during the ESCOMPTE experiment: an overview, *Atmospheric Research*, 74(1–4), 547–563, <https://doi.org/10.1016/j.atmosres.2004.06.013>, 2005.
- 740 Canagaratna, M. R., Jayne, J. T., Jimenez, J. L., Allan, J. D., Alfarra, M. R., Zhang, Q., Onasch, T. B., Drewnick, F., Coe, H., Middlebrook, A., Delia, A., Williams, L. R., Trimborn, A. M., Northway, M. J., DeCarlo, P. F., Kolb, C. E., Davidovits, P. and Worsnop, D. R.: Chemical and microphysical characterization of ambient aerosols with the aerodyne aerosol mass spectrometer, *Mass Spectrometry Reviews*, 26(2), 185–222, <https://doi.org/10.1002/mas.20115>, 2007.
- 745 Canagaratna, M. R., Jimenez, J. L., Kroll, J. H., Chen, Q., Kessler, S. H., Massoli, P., Hildebrandt Ruiz, L., Fortner, E., Williams, L. R., Wilson, K. R., Surratt, J. D., Donahue, N. M., Jayne, J. T. and Worsnop, D. R.: Elemental ratio measurements of organic compounds using aerosol mass spectrometry: characterization, improved calibration, and implications, *Atmospheric Chemistry and Physics*, 15(1), 253–272, <https://doi.org/10.5194/acp-15-253-2015>, 2015.
- Canonaco, F., Slowik, J. G., Baltensperger, U. and Prévôt, A. S. H.: Seasonal differences in oxygenated organic aerosol composition: implications for emissions sources and factor analysis, *Atmospheric Chemistry and Physics*, 15(12), 6993–7002, <https://doi.org/10.5194/acp-15-6993-2015>, 2015.

- Casati, R., Scheer, V., Vogt, R. and Benter, T.: Measurement of nucleation and soot mode particle emission from a diesel passenger car in real world and laboratory in situ dilution, *Atmospheric Environment*, 41(10), 2125–2135, <https://doi.org/10.1016/j.atmosenv.2006.10.078>, 2007.
- Cavalli, F., Viana, M., Yttri, K. E. and Genberg, J.: Toward a standardised thermal-optical protocol for measuring atmospheric organic and elemental carbon: the EUSAAR protocol, *Atmos. Meas. Tech.*, 11, 2010.
- Charron, A. and Harrison, R. M.: Primary particle formation from vehicle emissions during exhaust dilution in the roadside atmosphere, *Atmospheric Environment*, 37(29), 4109–4119, [https://doi.org/10.1016/S1352-2310\(03\)00510-7](https://doi.org/10.1016/S1352-2310(03)00510-7), 2003.
- Coudray, N., Dieterlen, A., Roth, E. and Trouvé, G.: Density measurement of fine aerosol fractions from wood combustion sources using ELPI distributions and image processing techniques, *Fuel*, 88(5), 947–954, <https://doi.org/10.1016/j.fuel.2008.12.013>, 2009.
- Cross, E. S., Slowik, J. G., Davidovits, P., Allan, J. D., Worsnop, D. R., Jayne, J. T., Lewis, D. K., Canagaratna, M. and Onasch, T. B.: Laboratory and Ambient Particle Density Determinations using Light Scattering in Conjunction with Aerosol Mass Spectrometry, *Aerosol Science and Technology*, 41(4), 343–359, <https://doi.org/10.1080/02786820701199736>, 2007.
- Cubison, M. J., Ortega, A. M., Hayes, P. L., Farmer, D. K., Day, D., Lechner, M. J., Brune, W. H., Apel, E., Diskin, G. S., Fisher, J. A., Fuelberg, H. E., Hecobian, A., Knapp, D. J., Mikoviny, T., Riemer, D., Sachse, G. W., Sessions, W., Weber, R. J., Weinheimer, A. J., Wisthaler, A. and Jimenez, J. L.: Effects of aging on organic aerosol from open biomass burning smoke in aircraft and laboratory studies, *Atmospheric Chemistry and Physics*, 11(23), 12049–12064, <https://doi.org/10.5194/acp-11-12049-2011>, 2011.
- Department for Transport: Road traffic statistics, <https://roadtraffic.dft.gov.uk/regions/6>, 2020.
- Diapouli, E., Kalogridis, A.-C., Markantonaki, C., Vratolis, S., Fetfatzis, P., Colombi, C. and Eleftheriadis, K.: Annual Variability of Black Carbon Concentrations Originating from Biomass and Fossil Fuel Combustion for the Suburban Aerosol in Athens, Greece, *Atmosphere*, 8(12), 234, <https://doi.org/10.3390/atmos8120234>, 2017.
- Diémoz, H., Barnaba, F., Magri, T., Pession, G., Dionisi, D., Pittavino, S., Tombolato, I. K. F., Campanelli, M., Della Ceca, L. S., Hervo, M., Di Liberto, L., Ferrero, L. and Gobbi, G. P.: Transport of Po Valley aerosol pollution to the northwestern Alps – Part 1: Phenomenology, *Atmospheric Chemistry and Physics*, 19(5), 3065–3095, <https://doi.org/10.5194/acp-19-3065-2019>, 2019.
- Draxler, R., Stunder, B., Rolph, G., Stein, A. and Taylor, A.: HYSPLIT4 User’s Guide, , 254, n.d.
- Drinovec, L., Močnik, G., Zotter, P., Prévôt, A. S. H., Ruckstuhl, C., Coz, E., Rupakheti, M., Sciare, J., Müller, T., Wiedensohler, A. and Hansen, A. D. A.: The “dual-spot” Aethalometer: an improved measurement of aerosol black carbon with real-time loading compensation, *Atmospheric Measurement Techniques*, 8(5), 1965–1979, <https://doi.org/10.5194/amt-8-1965-2015>, 2015.
- Drobinski, P., Saïd, F., Ancellet, G., Arteta, J., Augustin, P., Bastin, S., Brut, A., Caccia, J. L., Campistron, B., Cautenet, S., Colette, A., Coll, I., Corsmeier, U., Cros, B., Dabas, A., Delbarre, H., Dufour, A., Durand, P., Guénard, V., Hasel, M., Kalthoff, N., Kottmeier, C., Lasry, F., Lemonsu, A., Lohou, F., Masson, V., Menut, L., Moppert, C., Peuch, V. H.,

- Puygrenier, V., Reitebuch, O. and Vautard, R.: Regional transport and dilution during high-pollution episodes in southern France: Summary of findings from the Field Experiment to Constraint Models of Atmospheric Pollution and Emissions Transport (ESCOMPTE): POLLUTION TRANSPORT AND DILUTION IN SOUTHERN FRANCE, *Journal of Geophysical Research: Atmospheres*, 112(D13), n/a-n/a, <https://doi.org/10.1029/2006JD007494>, 2007.
- 785 El Haddad, I., Marchand, N., Temime-Roussel, B., Wortham, H., Piot, C., Besombes, J.-L., Baduel, C., Voisin, D., Armengaud, A. and Jaffrezo, J.-L.: Insights into the secondary fraction of the organic aerosol in a Mediterranean urban area: Marseille, *Atmospheric Chemistry and Physics*, 11(5), 2059–2079, <https://doi.org/10.5194/acp-11-2059-2011>, 2011a.
- 790 El Haddad, I., Marchand, N., Wortham, H., Piot, C., Besombes, J.-L., Cozic, J., Chauvel, C., Armengaud, A., Robin, D. and Jaffrezo, J.-L.: Primary sources of PM_{2.5} organic aerosol in an industrial Mediterranean city, Marseille, *Atmospheric Chemistry and Physics*, 11(5), 2039–2058, <https://doi.org/10.5194/acp-11-2039-2011>, 2011b.
- El Haddad, I., D’Anna, B., Temime-Roussel, B., Nicolas, M., Boreave, A., Favez, O., Voisin, D., Sciare, J., George, C., Jaffrezo, J.-L., Wortham, H. and Marchand, N.: Towards a better understanding of the origins, chemical composition and aging of oxygenated organic aerosols: case study of a Mediterranean industrialized environment, Marseille, *Atmospheric Chemistry and Physics*, 13(15), 7875–7894, <https://doi.org/10.5194/acp-13-7875-2013>, 2013.
- 795 Escudero, M., Lozano, A., Hierro, J., Valle, J. del and Mantilla, E.: Urban influence on increasing ozone concentrations in a characteristic Mediterranean agglomeration, *Atmospheric Environment*, 99, 322–332, <https://doi.org/10.1016/j.atmosenv.2014.09.061>, 2014.
- 800 European Environment Agency: Air quality in Europe: 2019 report. https://op.europa.eu/publication/manifestation_identifier/PUB_THAL19012ENN, last access: 27 May 2020, 2019.
- European Environment Agency.: Air quality in Europe: 2020 report., Publications Office, LU. <https://data.europa.eu/doi/10.2800/786656>, last access: 16 February 2021, 2020.
- Farmer, D. K., Matsunaga, A., Docherty, K. S., Surratt, J. D., Seinfeld, J. H., Ziemann, P. J. and Jimenez, J. L.: Response of an aerosol mass spectrometer to organonitrates and organosulfates and implications for atmospheric chemistry, *Proceedings of the National Academy of Sciences*, 107(15), 6670–6675, <https://doi.org/10.1073/pnas.0912340107>, 2010.
- 805 Flaounas, E., Coll, I., Armengaud, A. and Schmechtig, C.: The representation of dust transport and missing urban sources as major issues for the simulation of PM episodes in a Mediterranean area, *Atmos. Chem. Phys.*, 11, 2009.
- Frenay, E. J., Sellegri, K., Canonaco, F., Boulon, J., Hervo, M., Weigel, R., Pichon, J. M., Colomb, A., Prévôt, A. S. H. and Laj, P.: Seasonal variations in aerosol particle composition at the puy-de-Dôme research station in France, *Atmospheric Chemistry and Physics*, 11(24), 13047–13059, <https://doi.org/10.5194/acp-11-13047-2011>, 2011.
- 810 Fröhlich, R., Cubison, M. J., Slowik, J. G., Bukowiecki, N., Prévôt, A. S. H., Baltensperger, U., Schneider, J., Kimmel, J. R., Gonin, M., Rohner, U., Worsnop, D. R. and Jayne, J. T.: The ToF-ACSM: a portable aerosol chemical speciation monitor with TOFMS detection, *Atmospheric Measurement Techniques*, 6(11), 3225–3241, [https://doi.org/10.5194/amt-6-3225-](https://doi.org/10.5194/amt-6-3225-2013)
- 815 2013, 2013.

- Fröhlich, R., Cubison, M. J., Slowik, J. G., Bukowiecki, N., Canonaco, F., Croteau, P. L., Gysel, M., Henne, S., Herrmann, E., Jayne, J. T., Steinbacher, M., Worsnop, D. R., Baltensperger, U. and Prévôt, A. S. H.: Fourteen months of on-line measurements of the non-refractory submicron aerosol at the Jungfraujoch (3580 m a.s.l.) – chemical composition, origins and organic aerosol sources, *Atmospheric Chemistry and Physics*, 15(19), 11373–11398, <https://doi.org/10.5194/acp-15-11373-2015>, 2015.
- 820
- Fry, J. L., Brown, S. S., Middlebrook, A. M., Edwards, P. M., Campuzano-Jost, P., Day, D. A., Jimenez, J. L., Allen, H. M., Ryerson, T. B., Pollack, I., Graus, M., Warneke, C., de Gouw, J. A., Brock, C. A., Gilman, J., Lerner, B. M., Dubé, W. P., Liao, J. and Welti, A.: Secondary organic aerosol (SOA) yields from NO₃ radical + isoprene based on nighttime aircraft power plant plume transects, *Atmospheric Chemistry and Physics*, 18(16), 11663–11682, <https://doi.org/10.5194/acp-18-11663-2018>, 2018.
- 825
- Gelaro, R., McCarty, W., Suárez, M. J., Todling, R., Molod, A., Takacs, L., Randles, C. A., Darmenov, A., Bosilovich, M. G., Reichle, R., Wargan, K., Coy, L., Cullather, R., Draper, C., Akella, S., Buchard, V., Conaty, A., da Silva, A. M., Gu, W., Kim, G.-K., Koster, R., Lucchesi, R., Merkova, D., Nielsen, J. E., Partyka, G., Pawson, S., Putman, W., Rienecker, M., Schubert, S. D., Sienkiewicz, M. and Zhao, B.: The Modern-Era Retrospective Analysis for Research and Applications, Version 2 (MERRA-2), *J. Climate*, 30(14), 5419–5454, <https://doi.org/10.1175/JCLI-D-16-0758.1>, 2017.
- 830
- González, Y., Rodríguez, S., Guerra García, J. C., Trujillo, J. L. and García, R.: Ultrafine particles pollution in urban coastal air due to ship emissions, *Atmospheric Environment*, 45(28), 4907–4914, <https://doi.org/10.1016/j.atmosenv.2011.06.002>, 2011.
- Hama, S. M. L., Cordell, R. L. and Monks, P. S.: Quantifying primary and secondary source contributions to ultrafine particles in the UK urban background, *Atmospheric Environment*, 166, 62–78, <https://doi.org/10.1016/j.atmosenv.2017.07.013>, 2017a.
- 835
- Hama, S. M. L., Cordell, R. L., Kos, G. P. A., Weijers, E. P. and Monks, P. S.: Sub-micron particle number size distribution characteristics at two urban locations in Leicester, *Atmospheric Research*, 194, 1–16, <https://doi.org/10.1016/j.atmosres.2017.04.021>, 2017b.
- 840
- Healy, R. M., O'Connor, I. P., Hellebust, S., Allan, A., Sodeau, J. R. and Wenger, J. C.: Characterisation of single particles from in-port ship emissions, *Atmospheric Environment*, 43(40), 6408–6414, <https://doi.org/10.1016/j.atmosenv.2009.07.039>, 2009.
- Henry, R., Norris, G. A., Vedantham, R. and Turner, J. R.: Source Region Identification Using Kernel Smoothing, *Environmental Science & Technology*, 43(11), 4090–4097, <https://doi.org/10.1021/es8011723>, 2009.
- 845
- Huffman, J. A., Docherty, K. S., Aiken, A. C., Cubison, M. J., Ulbrich, I. M., DeCarlo, P. F., Sueper, D., Jayne, J. T., Worsnop, D. R., Ziemann, P. J. and Jimenez, J. L.: Chemically-resolved aerosol volatility measurements from two megacity field studies, *Atmos. Chem. Phys.*, 22, 2009.

- Jayne, J. T., Leard, D. C., Zhang, X., Davidovits, P., Smith, K. A., Kolb, C. E. and Worsnop, D. R.: Development of an Aerosol Mass Spectrometer for Size and Composition Analysis of Submicron Particles, *Aerosol Science and Technology*, 33(1–2), 49–70, <https://doi.org/10.1080/027868200410840>, 2000.
- 850 Kerminen, V.-M., Chen, X., Vakkari, V., Petäjä, T., Kulmala, M. and Bianchi, F.: Atmospheric new particle formation and growth: review of field observations, *Environmental Research Letters*, 13(10), 103003, <https://doi.org/10.1088/1748-9326/aadf3c>, 2018.
- Kiendler-Scharr, A., Mensah, A. A., Friese, E., Topping, D., Nemitz, E., Prevot, A. S. H., Äijälä, M., Allan, J., Canonaco, F., 855 Canagaratna, M., Carbone, S., Crippa, M., Dall'Osto, M., Day, D. A., De Carlo, P., Di Marco, C. F., Elbern, H., Eriksson, A., Freney, E., Hao, L., Herrmann, H., Hildebrandt, L., Hillamo, R., Jimenez, J. L., Laaksonen, A., McFiggans, G., Mohr, C., O'Dowd, C., Otjes, R., Ovadnevaite, J., Pandis, S. N., Poulain, L., Schlag, P., Sellegri, K., Swietlicki, E., Tiitta, P., Vermeulen, A., Wahner, A., Worsnop, D. and Wu, H.-C.: Ubiquity of organic nitrates from nighttime chemistry in the European submicron aerosol: Organic Nitrates in European PM₁, *Geophysical Research Letters*, 43(14), 7735–7744, 860 <https://doi.org/10.1002/2016GL069239>, 2016.
- Kittelson, D. B.: ENGINES AND NANOPARTICLES: A REVIEW, , 14, 1998.
- Kreyling, W. G., Semmler-Behnke, M. and Möller, W.: Ultrafine Particle–Lung Interactions: Does Size Matter?, *Journal of Aerosol Medicine*, 19(1), 74–83, <https://doi.org/10.1089/jam.2006.19.74>, 2006.
- Kulmala, M., Luoma, K., Virkkula, A., Petäjä, T., Paasonen, P., Kerminen, V.-M., Nie, W., Qi, X., Shen, Y., Chi, X. and 865 Ding, A.: On the mode-segregated aerosol particle number concentration load: contributions of primary and secondary particles in Hyytiälä and Nanjing, , 21, 13, 2016.
- Laborde, M., Crippa, M., Tritscher, T., Jurányi, Z., Decarlo, P. F., Temime-Roussel, B., Marchand, N., Eckhardt, S., Stohl, A., Baltensperger, U., Prévôt, A. S. H., Weingartner, E. and Gysel, M.: Black carbon physical properties and mixing state in the European megacity Paris, *Atmospheric Chemistry and Physics*, 13(11), 5831–5856, [https://doi.org/10.5194/acp-13-5831-](https://doi.org/10.5194/acp-13-5831-2013) 870 2013, 2013.
- Lack, D. A., Corbett, J. J., Onasch, T., Lerner, B., Massoli, P., Quinn, P. K., Bates, T. S., Covert, D. S., Coffman, D., Sierau, B., Herndon, S., Allan, J., Baynard, T., Lovejoy, E., Ravishankara, A. R. and Williams, E.: Particulate emissions from commercial shipping: Chemical, physical, and optical properties, *Journal of Geophysical Research*, 114, <https://doi.org/10.1029/2008JD011300>, 2009.
- 875 Larssen, S., Sluyter, R. and Helmis, C.: Criteria for EUROAIRNET - The EEA Air Quality Monitoring and Information Network, , 56, 1999.
- Lelieveld, J., Evans, J. S., Fnais, M., Giannadaki, D. and Pozzer, A.: The contribution of outdoor air pollution sources to premature mortality on a global scale, *Nature*, 525(7569), 367–371, <https://doi.org/10.1038/nature15371>, 2015.
- Liakakou, E., Stavroulas, I., Kaskaoutis, D. G., Grivas, G., Paraskevopoulou, D., Dumka, U. C., Tsagkaraki, M., Bougiatioti, 880 A., Oikonomou, K., Sciare, J., Gerasopoulos, E. and Mihalopoulos, N.: Long-term variability, source apportionment and

- spectral properties of black carbon at an urban background site in Athens, Greece, *Atmospheric Environment*, 222, 117137, <https://doi.org/10.1016/j.atmosenv.2019.117137>, 2020.
- Lianou, M., Chalbot, M.-C., Kavouras, I. G., Kotronarou, A., Karakatsani, A., Analytis, A., Katsouyanni, K., Puustinen, A., Hameri, K., Vallius, M., Pekkanen, J., Meddings, C., Harrison, R. M., Ayres, J. G., ten Brink, H., Kos, G., Meliefste, K., de
885 Hartog, J. and Hoek, G.: Temporal variations of atmospheric aerosol in four European urban areas, *Environmental Science and Pollution Research*, 18(7), 1202–1212, <https://doi.org/10.1007/s11356-011-0471-y>, 2011.
- Mallet, M. D., D'Anna, B., Mème, A., Bove, M. C., Cassola, F., Pace, G., Desboeufs, K., Di Biagio, C., Doussin, J.-F., Maille, M., Massabò, D., Sciare, J., Zapf, P., di Sarra, A. G. and Formenti, P.: Summertime surface PM1 aerosol
890 composition and size by source region at the Lampedusa island in the central Mediterranean Sea, *Atmospheric Chemistry and Physics*, 19(17), 11123–11142, <https://doi.org/10.5194/acp-19-11123-2019>, 2019.
- MedCruise: Statistics Cruise Activities in MedCruise Ports, statistics report, MedCruise Association, Puerto de Santa Cruz de Tenerife., 2018.
- Meng, W., Zhong, Q., Yun, X., Zhu, X., Huang, T., Shen, H., Chen, Y., Chen, H., Zhou, F., Liu, J., Wang, X., Zeng, E. Y. and Tao, S.: Improvement of a Global High-Resolution Ammonia Emission Inventory for Combustion and Industrial
895 Sources with New Data from the Residential and Transportation Sectors, *Environ. Sci. Technol.*, 51(5), 2821–2829, <https://doi.org/10.1021/acs.est.6b03694>, 2017.
- Merico, E., Cesari, D., Dinoi, A., Gambaro, A., Barbaro, E., Guascito, M. R., Giannossa, L. C., Mangone, A. and Contini, D.: Inter-comparison of carbon content in PM10 and PM2.5 measured with two thermo-optical protocols on samples
900 collected in a Mediterranean site, *Environmental Science and Pollution Research*, 26(28), 29334–29350, <https://doi.org/10.1007/s11356-019-06117-7>, 2019.
- Mestayer, P. G., Durand, P., Augustin, P., Bastin, S., Bonnefond, J.-M., Bénech, B., Campistron, B., Coppalle, A., Delbarre, H., Dousset, B., Drobinski, P., Druilhet, A., Fréjafon, E., Grimmond, C. S. B., Groleau, D., Irvine, M., Kergomard, C., Kermadi, S., Lagouarde, J.-P., Lemonsu, A., Lohou, F., Long, N., Masson, V., Moppert, C., Noilhan, J., Offerle, B., Oke, T. R., Pigeon, G., Puygrenier, V., Roberts, S., Rosant, J.-M., Saïd, F., Salmond, J., Talbaut, M. and Voogt, J.: The urban
905 boundary-layer field campaign in marseille (ubl/clu-escompte): set-up and first results, *Boundary-Layer Meteorology*, 114(2), 315–365, <https://doi.org/10.1007/s10546-004-9241-4>, 2005.
- Middlebrook, A. M., Bahreini, R., Jimenez, J. L. and Canagaratna, M. R.: Evaluation of Composition-Dependent Collection Efficiencies for the Aerodyne Aerosol Mass Spectrometer using Field Data, *Aerosol Science and Technology*, 46(3), 258–271, <https://doi.org/10.1080/02786826.2011.620041>, 2012.
- 910 Minguillón, M. C., Perron, N., Querol, X., Szidat, S., Fahrni, S. M., Alastuey, A., Jimenez, J. L., Mohr, C., Ortega, A. M., Day, D. A., Lanz, V. A., Wacker, L., Reche, C., Cusack, M., Amato, F., Kiss, G., Hoffer, A., Decesari, S., Moretti, F., Hillamo, R., Teinilä, K., Seco, R., Peñuelas, J., Metzger, A., Schallhart, S., Müller, M., Hansel, A., Burkhardt, J. F., Baltensperger, U. and Prévôt, A. S. H.: Fossil versus contemporary sources of fine elemental and organic carbonaceous

- particulate matter during the DAURE campaign in Northeast Spain, *Atmospheric Chemistry and Physics*, 11(23), 12067–12084, <https://doi.org/10.5194/acp-11-12067-2011>, 2011.
- Minguillón, M. C., Ripoll, A., Pérez, N., Prévôt, A. S. H., Canonaco, F., Querol, X. and Alastuey, A.: Chemical characterization of submicron regional background aerosols in the western Mediterranean using an Aerosol Chemical Speciation Monitor, *Atmospheric Chemistry and Physics*, 15(11), 6379–6391, <https://doi.org/10.5194/acp-15-6379-2015>, 2015.
- 920 Mohr, C., DeCarlo, P. F., Heringa, M. F., Chirico, R., Slowik, J. G., Richter, R., Reche, C., Alastuey, A., Querol, X., Seco, R., Peñuelas, J., Jiménez, J. L., Crippa, M., Zimmermann, R., Baltensperger, U. and Prévôt, A. S. H.: Identification and quantification of organic aerosol from cooking and other sources in Barcelona using aerosol mass spectrometer data, *Atmospheric Chemistry and Physics*, 12(4), 1649–1665, <https://doi.org/10.5194/acp-12-1649-2012>, 2012.
- Mousavi, A., Sowlat, M. H., Lovett, C., Rauber, M., Szidat, S., Boffi, R., Borgini, A., De Marco, C., Ruprecht, A. A. and 925 Sioutas, C.: Source apportionment of black carbon (BC) from fossil fuel and biomass burning in metropolitan Milan, Italy, *Atmospheric Environment*, 203, 252–261, <https://doi.org/10.1016/j.atmosenv.2019.02.009>, 2019.
- Ng, N. L., Herndon, S. C., Trimborn, A., Canagaratna, M. R., Croteau, P. L., Onasch, T. B., Sueper, D., Worsnop, D. R., Zhang, Q., Sun, Y. L. and Jayne, J. T.: An Aerosol Chemical Speciation Monitor (ACSM) for Routine Monitoring of the Composition and Mass Concentrations of Ambient Aerosol, *Aerosol Science and Technology*, 45(7), 780–794, 930 <https://doi.org/10.1080/02786826.2011.560211>, 2011.
- Nunes, R. A. O., Alvim-Ferraz, M. C. M., Martins, F. G., Calderay-Cayetano, F., Durán-Grados, V., Moreno-Gutiérrez, J., Jalkanen, J.-P., Hannuniemi, H. and Sousa, S. I. V.: Shipping emissions in the Iberian Peninsula and the impacts on air quality, *Atmos. Chem. Phys.*, 20(15), 9473–9489, <https://doi.org/10.5194/acp-20-9473-2020>, 2020.
- Olson, D. A., Vedantham, R., Norris, G. A., Brown, S. G. and Roberts, P.: Determining source impacts near roadways using 935 wind regression and organic source markers, *Atmospheric Environment*, 47, 261–268, <https://doi.org/10.1016/j.atmosenv.2011.11.003>, 2012.
- Pandolfi, M., Mooibroek, D., Hopke, P., van Pinxteren, D., Querol, X., Herrmann, H., Alastuey, A., Favez, O., Hüglin, C., Perdrix, E., Riffault, V., Sauvage, S., van der Swaluw, E., Tarasova, O. and Colette, A.: Long-range and local air pollution: what can we learn from chemical speciation of particulate matter at paired sites?, *Atmospheric Chemistry and Physics*, 20(1), 940 409–429, <https://doi.org/10.5194/acp-20-409-2020>, 2020.
- Park, K., Chow, J. C., Watson, J. G., Trimble, D. L., Doraiswamy, P., Park, K., Arnott, W. P., Stroud, K. R., Bowers, K., Bode, R., Petzold, A. and Hansen, A. D. A.: Comparison of Continuous and Filter-Based Carbon Measurements at the Fresno Supersite, *Journal of the Air & Waste Management Association*, 56(4), 474–491, <https://doi.org/10.1080/10473289.2006.10464521>, 2006.
- 945 Pascal, M., Corso, M., Chanel, O., Declercq, C., Badaloni, C., Cesaroni, G., Henschel, S., Meister, K., Haluza, D., Martín-Olmedo, P. and Medina, S.: Assessing the public health impacts of urban air pollution in 25 European cities: Results of the Aphekom project, *Science of The Total Environment*, 449, 390–400, <https://doi.org/10.1016/j.scitotenv.2013.01.077>, 2013.

- Pascal, M., Chanel, P. de C., Corso, M., Medina, S., Wagner, V., Gorla, S., Beaudeau, P., Bentayeb, M., Tertre, A. L., Ung, A., Chatignoux, E. and Quénel, P.: Impacts de l'exposition chronique aux particules fines sur la mortalité en France continentale et analyse des gains en santé de plusieurs scénarios de réduction de la pollution atmosphérique, , 162, 2016.
- 950 Pauraitė, J., Pivoras, A., Plauškaitė, K., Byčėnienė, S., Mordas, G., Augustaitis, A., Marozas, V., Mozgeris, G., Baumgarten, M., Matyssek, R. and Ulevičius, V.: Characterization of aerosol mass spectra responses to temperature over a forest site in Lithuania, *Journal of Aerosol Science*, 133, 56–65, <https://doi.org/10.1016/j.jaerosci.2019.03.010>, 2019.
- Petit, J.-E., Favez, O., Sciare, J., Crenn, V., Sarda-Estève, R., Bonnaire, N., Močnik, G., Dupont, J.-C., Haeffelin, M. and 955 Leoz-Garziandia, E.: Two years of near real-time chemical composition of submicron aerosols in the region of Paris using an Aerosol Chemical Speciation Monitor (ACSM) and a multi-wavelength Aethalometer, *Atmospheric Chemistry and Physics*, 15(6), 2985–3005, <https://doi.org/10.5194/acp-15-2985-2015>, 2015.
- Petit, J.-E., Favez, O., Albinet, A. and Canonaco, F.: A user-friendly tool for comprehensive evaluation of the geographical origins of atmospheric pollution: Wind and trajectory analyses, *Environmental Modelling & Software*, 88, 183–187, 960 <https://doi.org/10.1016/j.envsoft.2016.11.022>, 2017a.
- Petit, J.-E., Amodeo, T., Meleux, F., Bessagnet, B., Menut, L., Grenier, D., Pellan, Y., Ockler, A., Rocq, B., Gros, V., Sciare, J. and Favez, O.: Characterising an intense PM pollution episode in March 2015 in France from multi-site approach and near real time data: Climatology, variabilities, geographical origins and model evaluation, *Atmospheric Environment*, 155, 68–84, <https://doi.org/10.1016/j.atmosenv.2017.02.012>, 2017b.
- 965 Pieber, S. M., El Haddad, I., Slowik, J. G., Canagaratna, M. R., Jayne, J. T., Platt, S. M., Bozzetti, C., Daellenbach, K. R., Fröhlich, R., Vlachou, A., Klein, F., Dommen, J., Miljevic, B., Jiménez, J. L., Worsnop, D. R., Baltensperger, U. and Prévôt, A. S. H.: Inorganic Salt Interference on CO₂+ in Aerodyne AMS and ACSM Organic Aerosol Composition Studies, *Environmental Science & Technology*, 50(19), 10494–10503, <https://doi.org/10.1021/acs.est.6b01035>, 2016.
- Poulain, L., Spindler, G., Birmili, W., Plass-Dülmer, C., Wiedensohler, A. and Herrmann, H.: Seasonal and diurnal 970 variations of particulate nitrate and organic matter at the IfT research station Melpitz, *Atmospheric Chemistry and Physics*, 11(24), 12579–12599, <https://doi.org/10.5194/acp-11-12579-2011>, 2011.
- Poulain, L., Birmili, W., Canonaco, F., Crippa, M., Wu, Z. J., Nordmann, S., Spindler, G., Prévôt, A. S. H., Wiedensohler, A. and Herrmann, H.: Chemical mass balance of 300 °C non-volatile particles at the tropospheric research site Melpitz, Germany, *Atmospheric Chemistry and Physics*, 14(18), 10145–10162, <https://doi.org/10.5194/acp-14-10145-2014>, 2014.
- 975 Puygrenier, V., Lohou, F., Campistron, B., Saïd, F., Pigeon, G., Bénech, B. and Serça, D.: Investigation on the fine structure of sea-breeze during ESCOMPTE experiment, *Atmospheric Research*, 74(1–4), 329–353, <https://doi.org/10.1016/j.atmosres.2004.06.011>, 2005.
- Ramanantenasoa, M. M. J., Gilliot, J.-M., Mignolet, C., Bedos, C., Mathias, E., Eglin, T., Makowski, D. and Générumont, S.: A new framework to estimate spatio-temporal ammonia emissions due to nitrogen fertilization in France, *Science of The 980 Total Environment*, 645, 205–219, <https://doi.org/10.1016/j.scitotenv.2018.06.202>, 2018.

- Reche, C., Querol, X., Alastuey, A., Viana, M., Pey, J., Moreno, T., Rodríguez, S., González, Y., Fernández-Camacho, R., de la Rosa, J., Dall'Osto, M., Prévôt, A. S. H., Hueglin, C., Harrison, R. M. and Quincey, P.: New considerations for PM, Black Carbon and particle number concentration for air quality monitoring across different European cities, *Atmospheric Chemistry and Physics*, 11(13), 6207–6227, <https://doi.org/10.5194/acp-11-6207-2011>, 2011.
- 985 Reyes-Villegas, E., Green, D. C., Priestman, M., Canonaco, F., Coe, H., Prévôt, A. S. H. and Allan, J. D.: Organic aerosol source apportionment in London 2013 with ME-2: exploring the solution space with annual and seasonal analysis, *Atmospheric Chemistry and Physics*, 16(24), 15545–15559, <https://doi.org/10.5194/acp-16-15545-2016>, 2016.
- Ripoll, A., Minguillón, M. C., Pey, J., Jimenez, J. L., Day, D. A., Sosedova, Y., Canonaco, F., Prévôt, A. S. H., Querol, X. and Alastuey, A.: Long-term real-time chemical characterization of submicron aerosols at Montsec (southern Pyrenees, 1570
990 m a.s.l.), *Atmospheric Chemistry and Physics*, 15(6), 2935–2951, <https://doi.org/10.5194/acp-15-2935-2015>, 2015.
- Rodríguez, S. and Cuevas, E.: The contributions of “minimum primary emissions” and “new particle formation enhancements” to the particle number concentration in urban air, *Journal of Aerosol Science*, 38(12), 1207–1219, <https://doi.org/10.1016/j.jaerosci.2007.09.001>, 2007.
- Rouaud, P. and Channac, Y.: Pollution de l’air par les PM10 En 2017, le seuil de l’OMS dépassé pour la moitié des résidents
995 de la région, INSEE Analyses, INSEE, Marseille. <https://www.insee.fr/fr/statistiques/4250618?sommaire=4251028>, 2019.
- Saarikoski, S., Carbone, S., Decesari, S., Giulianelli, L., Angelini, F., Canagaratna, M., Ng, N. L., Trimborn, A., Facchini, M. C., Fuzzi, S., Hillamo, R. and Worsnop, D.: Chemical characterization of springtime submicrometer aerosol in Po Valley, Italy, *Atmospheric Chemistry and Physics*, 12(18), 8401–8421, <https://doi.org/10.5194/acp-12-8401-2012>, 2012.
- Salameh, D., Detournay, A., Pey, J., Pérez, N., Liguori, F., Saraga, D., Bove, M. C., Brotto, P., Cassola, F., Massabò, D.,
1000 Latella, A., Pillon, S., Formenton, G., Patti, S., Armengaud, A., Piga, D., Jaffrezo, J. L., Bartzis, J., Tolis, E., Prati, P., Querol, X., Wortham, H. and Marchand, N.: PM2.5 chemical composition in five European Mediterranean cities: A 1-year study, *Atmospheric Research*, 155, 102–117, <https://doi.org/10.1016/j.atmosres.2014.12.001>, 2015.
- Salameh, D., Pey, J., Bozzetti, C., El Haddad, I., Detournay, A., Sylvestre, A., Canonaco, F., Armengaud, A., Piga, D., Robin, D., Prevot, A. S. H., Jaffrezo, J.-L., Wortham, H. and Marchand, N.: Sources of PM2.5 at an urban-industrial
1005 Mediterranean city, Marseille (France): Application of the ME-2 solver to inorganic and organic markers, *Atmospheric Research*, 214, 263–274, <https://doi.org/10.1016/j.atmosres.2018.08.005>, 2018.
- Salcedo, D., Onasch, T. B., Dzepina, K., Canagaratna, M. R., Zhang, Q., Huffman, J. A., DeCarlo, P. F., Jayne, J. T., Mortimer, P., Worsnop, D. R., Kolb, C. E., Johnson, K. S., Zuberi, B., Marr, L. C., Volkamer, R., Molina, L. T., Molina, M. J., Cardenas, B., Bernabé, R. M., Márquez, C., Gaffney, J. S., Marley, N. A., Laskin, A., Shutthanandan, V., Xie, Y., Brune,
1010 W., Leshner, R., Shirley, T. and Jimenez, J. L.: Characterization of ambient aerosols in Mexico City during the MCMA-2003 campaign with Aerosol Mass Spectrometry: results from the CENICA Supersite, *Atmospheric Chemistry and Physics*, 6(4), 925–946, <https://doi.org/10.5194/acp-6-925-2006>, 2006.
- Sandradewi, J., Prévôt, A. S. H., Szidat, S., Perron, N., Alfarra, M. R., Lanz, V. A., Weingartner, E. and Baltensperger, U.: Using Aerosol Light Absorption Measurements for the Quantitative Determination of Wood Burning and Traffic Emission

- 1015 Contributions to Particulate Matter, *Environmental Science & Technology*, 42(9), 3316–3323,
<https://doi.org/10.1021/es702253m>, 2008.
- Schaap, M., Spindler, G., Schulz, M., Acker, K., Maenhaut, W., Berner, A., Wieprecht, W., Streit, N., Müller, K.,
Brüggemann, E., Chi, X., Putaud, J.-P., Hitenberger, R., Puxbaum, H., Baltensperger, U. and ten Brink, H.: Artefacts in the
sampling of nitrate studied in the “INTERCOMP” campaigns of EUROTRAC-AEROSOL, *Atmospheric Environment*,
1020 38(38), 6487–6496, <https://doi.org/10.1016/j.atmosenv.2004.08.026>, 2004a.
- Schaap, M., van Loon, M., ten Brink, H. M., Dentener, F. J. and Bultjes, P. J. H.: Secondary inorganic aerosol simulations
for Europe with special attention to nitrate, *Atmospheric Chemistry and Physics*, 4(3), 857–874, <https://doi.org/10.5194/acp-4-857-2004>, 2004b.
- Sciare, J., Sarda-Estève, R., Favez, O., Cachier, H., Aymoz, G. and Laj, P.: Nighttime residential wood burning evidenced
1025 from an indirect method for estimating real-time concentration of particulate organic matter (POM), *Atmospheric
Environment*, 42(9), 2158–2172, <https://doi.org/10.1016/j.atmosenv.2007.11.053>, 2008.
- Seinfeld and Pandis, J. H., Spyros N.: *Atmospheric Chemistry and Physics*, 2016.
- Squizzato, S., Masiol, M., Brunelli, A., Pistollato, S., Tarabotti, E., Rampazzo, G. and Pavoni, B.: Factors determining the
formation of secondary inorganic aerosol: a case study in the Po Valley (Italy), *Atmospheric Chemistry and Physics*, 13(4),
1030 1927–1939, <https://doi.org/10.5194/acp-13-1927-2013>, 2013.
- Stavroulas, I., Bougiatioti, A., Grivas, G., Paraskevopoulou, D., Tsagkaraki, M., Zampas, P., Liakakou, E., Gerasopoulos, E.
and Mihalopoulos, N.: Sources and processes that control the submicron organic aerosol composition in an urban
Mediterranean environment (Athens): a high temporal-resolution chemical composition measurement study, *Atmospheric
Chemistry and Physics*, 19(2), 901–919, <https://doi.org/10.5194/acp-19-901-2019>, 2019.
- 1035 Stelson, A. W. and Seinfeld, J. H.: Relative humidity and temperature dependence of the ammonium nitrate dissociation
constant, , 16(Issue 5), 983–992, 1982.
- Suarez-Bertoa, R., Zardini, A. A., Lilova, V., Meyer, D., Nakatani, S., Hibel, F., Ewers, J., Clairotte, M., Hill, L. and
Astorga, C.: Intercomparison of real-time tailpipe ammonia measurements from vehicles tested over the new world-
harmonized light-duty vehicle test cycle (WLTC), *Environmental Science and Pollution Research*, 22(10), 7450–7460,
1040 <https://doi.org/10.1007/s11356-015-4267-3>, 2015.
- Sun, K., Tao, L., Miller, D. J., Pan, D., Golston, L. M., Zondlo, M. A., Griffin, R. J., Wallace, H. W., Leong, Y. J., Yang, M.
M., Zhang, Y., Mauzerall, D. L. and Zhu, T.: Vehicle Emissions as an Important Urban Ammonia Source in the United
States and China, *Environ. Sci. Technol.*, 51(4), 2472–2481, <https://doi.org/10.1021/acs.est.6b02805>, 2017.
- Sutton, M. A., Reis, S., Riddick, S. N., Dragosits, U., Nemitz, E., Theobald, M. R., Tang, Y. S., Braban, C. F., Vieno, M.,
1045 Dore, A. J., Mitchell, R. F., Wanless, S., Daunt, F., Fowler, D., Blackall, T. D., Milford, C., Flechard, C. R., Loubet, B.,
Massad, R., Cellier, P., Personne, E., Coheur, P. F., Clarisse, L., Van Damme, M., Ngadi, Y., Clerbaux, C., Skjøth, C. A.,
Geels, C., Hertel, O., Wichink Kruit, R. J., Pinder, R. W., Bash, J. O., Walker, J. T., Simpson, D., Horváth, L., Misselbrook,

- T. H., Bleeker, A., Dentener, F. and de Vries, W.: Towards a climate-dependent paradigm of ammonia emission and deposition, *Phil. Trans. R. Soc. B*, 368(1621), 20130166, <https://doi.org/10.1098/rstb.2013.0166>, 2013.
- 1050 Timonen, H., Cubison, M., Aurela, M., Brus, D., Lihavainen, H., Hillamo, R., Canagaratna, M., Nekat, B., Weller, R., Worsnop, D. and Saarikoski, S.: Applications and limitations of constrained high-resolution peak fitting on low resolving power mass spectra from the ToF-ACSM, *Atmospheric Measurement Techniques*, 9(7), 3263–3281, <https://doi.org/10.5194/amt-9-3263-2016>, 2016.
- Tobías, A., Rivas, I., Reche, C., Alastuey, A., Rodríguez, S., Fernández-Camacho, R., Sánchez de la Campa, A. M., de la
1055 Rosa, J., Sunyer, J. and Querol, X.: Short-term effects of ultrafine particles on daily mortality by primary vehicle exhaust versus secondary origin in three Spanish cities, *Environment International*, 111, 144–151, <https://doi.org/10.1016/j.envint.2017.11.015>, 2018.
- TOMTOM: Traffic Index for urban congestion worldwide, https://www.tomtom.com/en_gb/traffic-index/ranking/, 2020.
- Turpin, B. J. and Lim, H.-J.: Species Contributions to PM_{2.5} Mass Concentrations: Revisiting Common Assumptions for
1060 Estimating Organic Mass, *Aerosol Science and Technology*, 35(1), 602–610, <https://doi.org/10.1080/02786820119445>, 2001.
- Via, M., Minguillón, M. C., Reche, C., Querol, X. and Alastuey, A.: Increase of secondary organic aerosol over four years in an urban environment, preprint, *Aerosols/Field Measurements/Troposphere/Chemistry (chemical composition and reactions)*, 2020.
- 1065 Waked, A., Favez, O., Alleman, L. Y., Piot, C., Petit, J.-E., Delaunay, T., Verlinden, E., Golly, B., Besombes, J.-L., Jaffrezo, J.-L. and Leoz-Garziandia, E.: Source apportionment of PM₁₀ in a north-western Europe regional urban background site (Lens, France) using positive matrix factorization and including primary biogenic emissions, *Atmospheric Chemistry and Physics*, 14(7), 3325–3346, <https://doi.org/10.5194/acp-14-3325-2014>, 2014.
- Wehner, B. and Wiedensohler, A.: Long term measurements of submicrometer urban aerosols: statistical analysis for
1070 correlations with meteorological conditions and trace gases, *Atmos. Chem. Phys.*, 14, 2003.
- WHO: WHO Air quality guidelines for particulate matter, ozone, nitrogen dioxide and sulfur dioxide, Summary of risk assessment., 2006.
- Woo, K. S., Chen, D. R., Pui, D. Y. H. and McMurry, P. H.: Measurement of Atlanta Aerosol Size Distributions: Observations of Ultrafine Particle Events, *Aerosol Science and Technology*, 34(1), 75–87,
1075 <https://doi.org/10.1080/02786820120056>, 2001.
- Xu, L., Suresh, S., Guo, H., Weber, R. J. and Ng, N. L.: Aerosol characterization over the southeastern United States using high-resolution aerosol mass spectrometry: spatial and seasonal variation of aerosol composition and sources with a focus on organic nitrates, *Atmospheric Chemistry and Physics*, 15(13), 7307–7336, <https://doi.org/10.5194/acp-15-7307-2015>, 2015.
- Xu, W., Lambe, A., Silva, P., Hu, W., Onasch, T., Williams, L., Croteau, P., Zhang, X., Renbaum-Wolff, L., Fortner, E.,
1080 Jimenez, J. L., Jayne, J., Worsnop, D. and Canagaratna, M.: Laboratory evaluation of species-dependent relative ionization

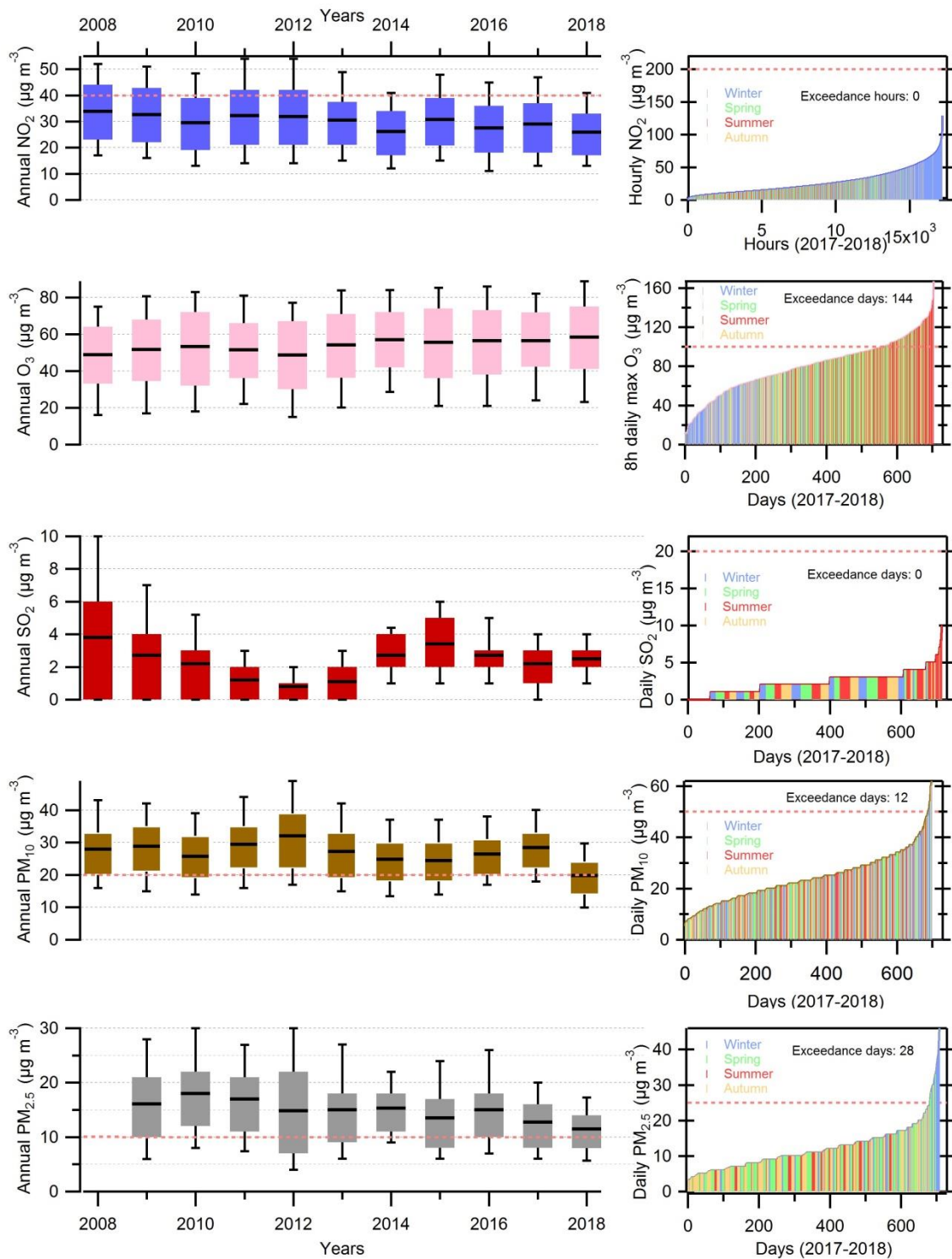
efficiencies in the Aerodyne Aerosol Mass Spectrometer, *Aerosol Science and Technology*, 52(6), 626–641, <https://doi.org/10.1080/02786826.2018.1439570>, 2018.

1085 Young, D. E., Allan, J. D., Williams, P. I., Green, D. C., Flynn, M. J., Harrison, R. M., Yin, J., Gallagher, M. W. and Coe, H.: Investigating the annual behaviour of submicron secondary inorganic and organic aerosols in London, *Atmospheric Chemistry and Physics*, 15(11), 6351–6366, <https://doi.org/10.5194/acp-15-6351-2015>, 2015.

Zhang, Q., Alfarra, M. R., Worsnop, D. R., Allan, J. D., Coe, H., Canagaratna, M. R. and Jimenez, J. L.: Deconvolution and Quantification of Hydrocarbon-like and Oxygenated Organic Aerosols Based on Aerosol Mass Spectrometry, *Environmental Science & Technology*, 39(13), 4938–4952, <https://doi.org/10.1021/es048568l>, 2005.

1090 Zhang, Q., Jimenez, J. L., Worsnop, D. R. and Canagaratna, M.: A Case Study of Urban Particle Acidity and Its Influence on Secondary Organic Aerosol, *Environmental Science & Technology*, 41(9), 3213–3219, <https://doi.org/10.1021/es061812j>, 2007.

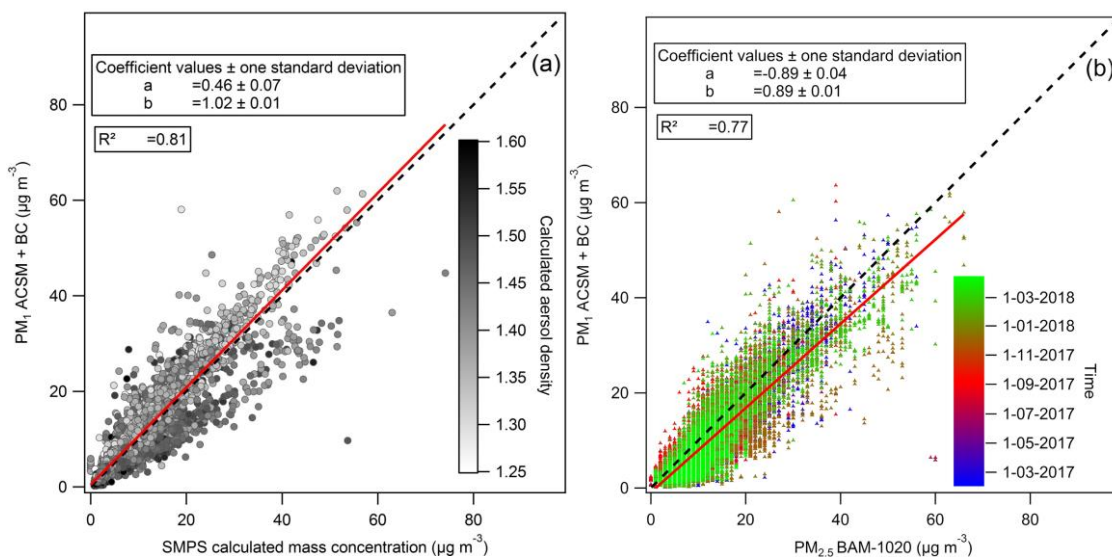
1095



1100 **Figure 1: Graphs at left show annual average concentrations of the following pollutants during the last 11 years in Marseille-Longchamp: Nitrogen dioxide (Blue), Ozone (pink), sulphur dioxide (red), PM₁₀ (brown) and PM_{2.5} (grey). The slopes of NO_x, O₃, PM₁₀ and PM_{2.5} trends were estimated by the Sen-Theil method and their significance was evaluated through the non-parametric Mann-Kendall test. The red dotted thresholds correspond to the annual concentrations recommended by WHO (World Health Organisation) for Nitrogen dioxide, PM₁₀ and PM_{2.5}. Graphs at right show data sorted by increasing daily values together with the number of days in excess according to the WHO recommendations (again the red dotted lines) for the years 2017 and 2018. For ozone, it corresponds to the daily maximum 8h average. Sticks for daily values are color-coded depending on the seasons (winter = blue; spring = green; summer = red; autumn = orange).**

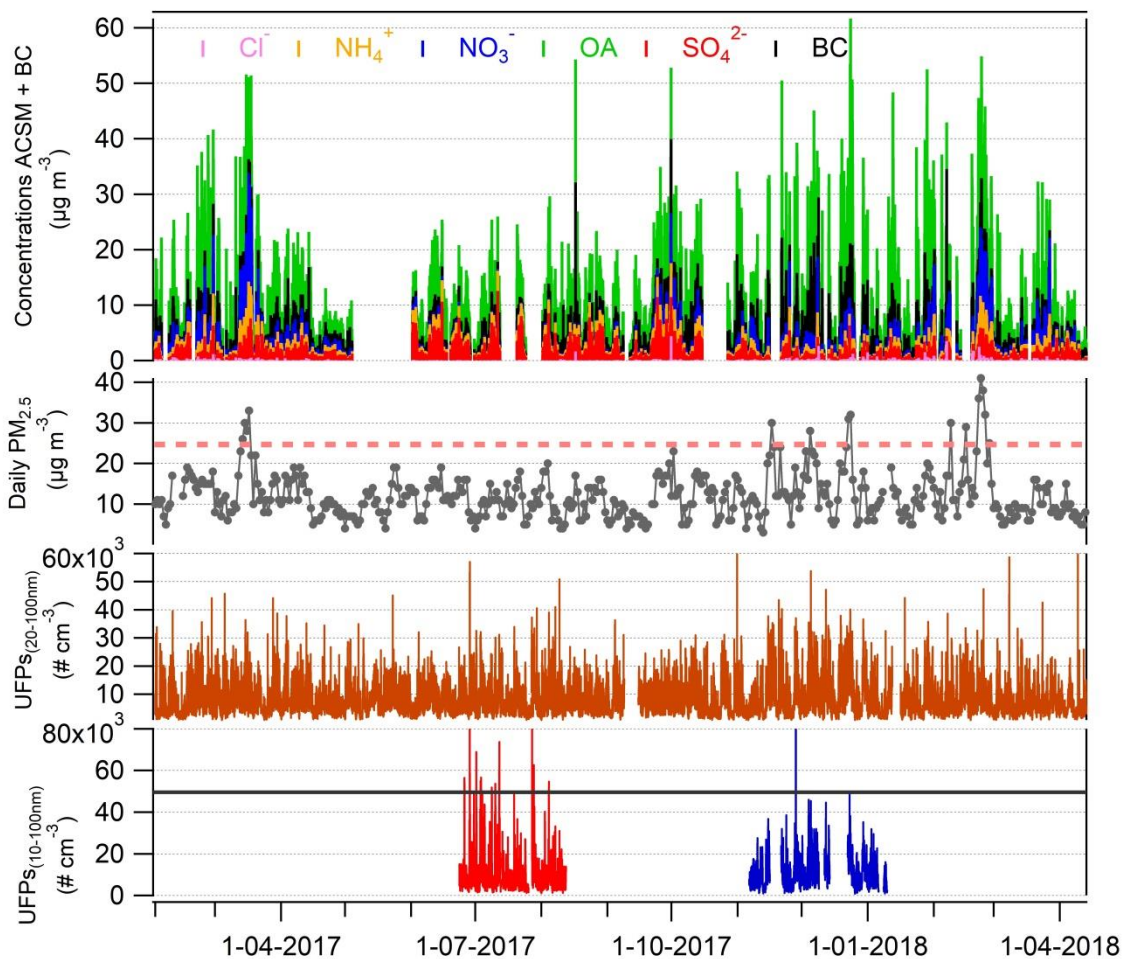
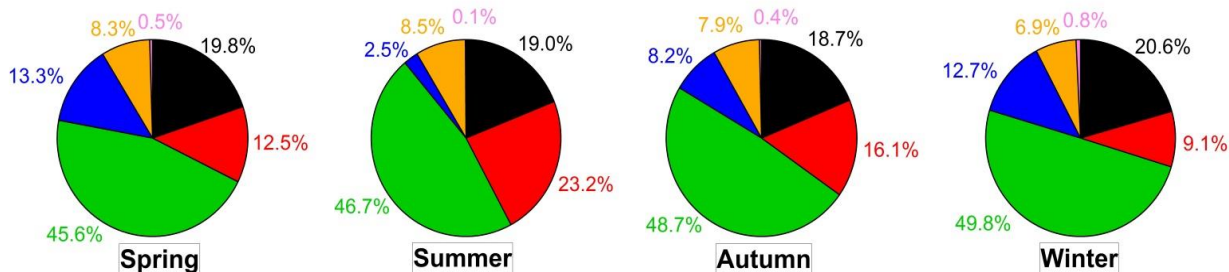
1105

1110



1115

Figure 2: Reconstructed PM₁ (ACSM + BC) vs PM₁ calculated from SMPS measurements, with the color-coded density evaluated from the PM₁ chemical composition (a) and reconstructed PM₁ vs PM_{2.5} measurements by BAM-1020, coloured according to the sampling time (d-mm-yyyy) (b). Red lines correspond to orthogonal distance fits and black dashed lines to 1:1 lines. R² are determined with least square fits.



1120

Figure 3: Time series of 1h-PM₁ chemical species (Cl⁻, OA, NH₄⁺, NO₃⁻, SO₄²⁻ and BC), daily-PM_{2.5}, total UFPs (20-100nm) measured with 3031 and total UFPs (10-100nm) measured with SMPS GRIMM (summer period in red and winter period in blue) from 1 February 2017 to 13 April 2018. The average particle number concentrations were higher in winter however sharp events exceeding 50 000 cm⁻³ (black line) were more abundant in summer period. This feature is traceable for the 10-100 nm size range measured with the SMPS GRIMM. The pink dotted thresholds correspond to the daily PM_{2.5} concentrations recommended by WHO. Pie charts of average PM₁ components contribution for each season are showed on the upper panel.

	Unit	SPRING (March-April-May)		SUMMER (June-July-August)		AUTUMN (September-October-November)		WINTER (December-January-February)	
		Average	SD	Average	SD	Average	SD	Average	SD
OA	$\mu\text{g m}^{-3}$	3.86	3.37	4.55	2.66	5.07	3.78	6.17	5.69
BC	$\mu\text{g m}^{-3}$	1.30	1.17	1.49	1.16	1.90	1.74	2.12	2.27
SO ₄ ²⁻	$\mu\text{g m}^{-3}$	1.06	0.84	2.26	1.66	1.57	1.50	1.12	0.99
NO ₃ ⁻	$\mu\text{g m}^{-3}$	1.13	2.08	0.24	0.23	0.83	1.09	1.58	2.13
NH ₄ ⁺	$\mu\text{g m}^{-3}$	0.70	0.85	0.83	0.59	0.77	0.77	0.86	0.93
Cl ⁻	$\mu\text{g m}^{-3}$	0.04	0.08	0.01	0.04	0.04	0.11	0.09	0.18
PM ₁	$\mu\text{g m}^{-3}$	8.09	6.99	9.39	4.77	10.2	7.26	11.9	9.79
f60	%	0.5	0.8	0.3	0.2	0.4	0.6	0.8	1.4
f44	%	10.1	11.9	13.0	10.5	14.2	14.2	10.5	13.0
f57	%	2.3	3.5	1.8	1.9	2.0	2.5	2.4	3.4
BC _{WB}	$\mu\text{g m}^{-3}$	0.19	0.25	0.11	0.14	0.24	0.46	0.59	0.89
BC _{FF}	$\mu\text{g m}^{-3}$	1.10	1.04	1.38	1.10	1.66	1.53	1.52	1.78
NO _{3,Org}	$\mu\text{g m}^{-3}$	0.22	0.32	0.09	0.08	0.18	0.17	0.26	0.26
NO _{3,Inorg}	$\mu\text{g m}^{-3}$	0.91	1.80	0.15	0.18	0.64	0.94	1.31	1.95
N _{1 (20-100nm)}	N cm ⁻³	3200	2531	2756	1736	3804	3212	4268	3916
N _{2 (20-100nm)}	N cm ⁻³	4339	3755	4777	4552	4301	3958	4332	3641

1130 **Table 1: Seasonal average concentrations and associated standard deviation (SD) of main chemical species of submicron aerosol and specific organic fragments for the study period. Average concentrations and SD of BC, nitrate, and particles number (20-100 nm) components are also represented.**

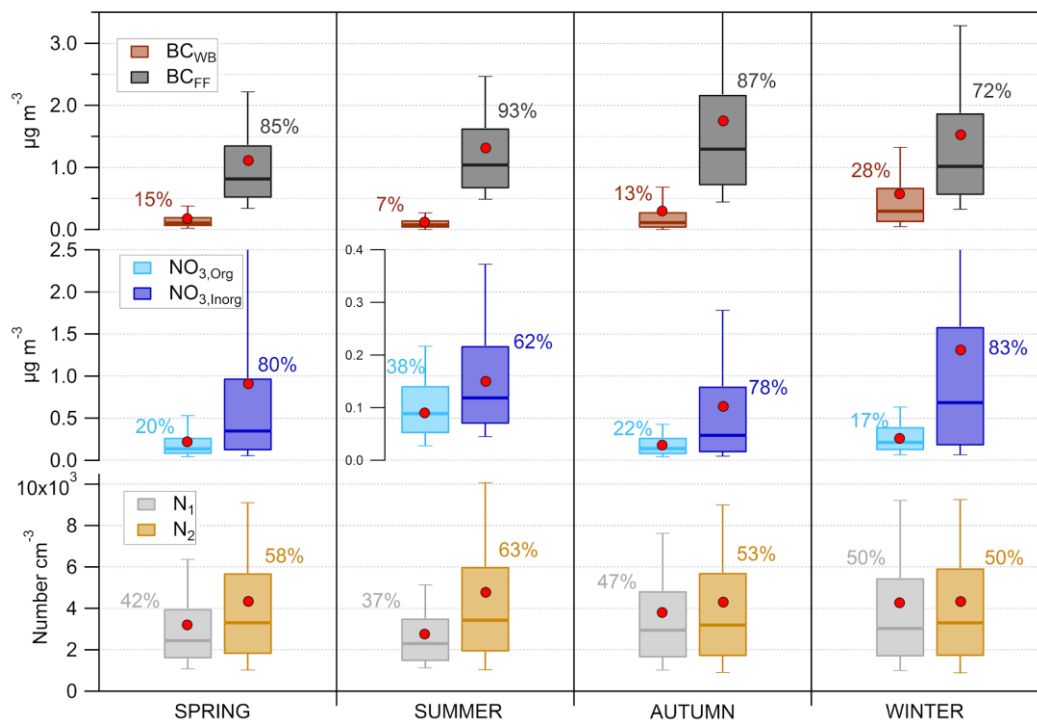
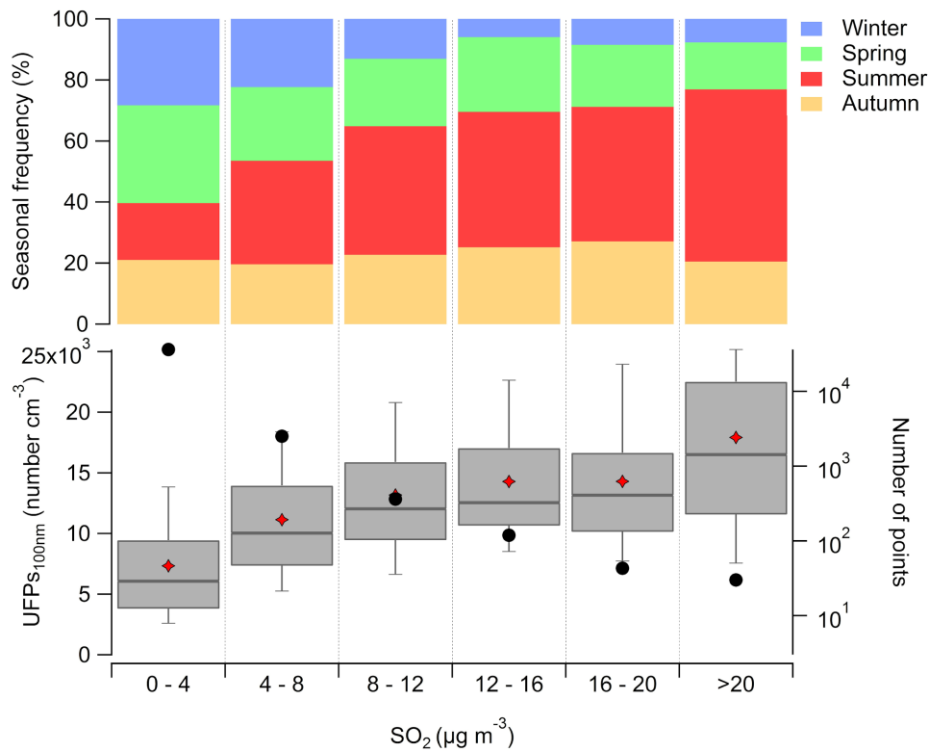
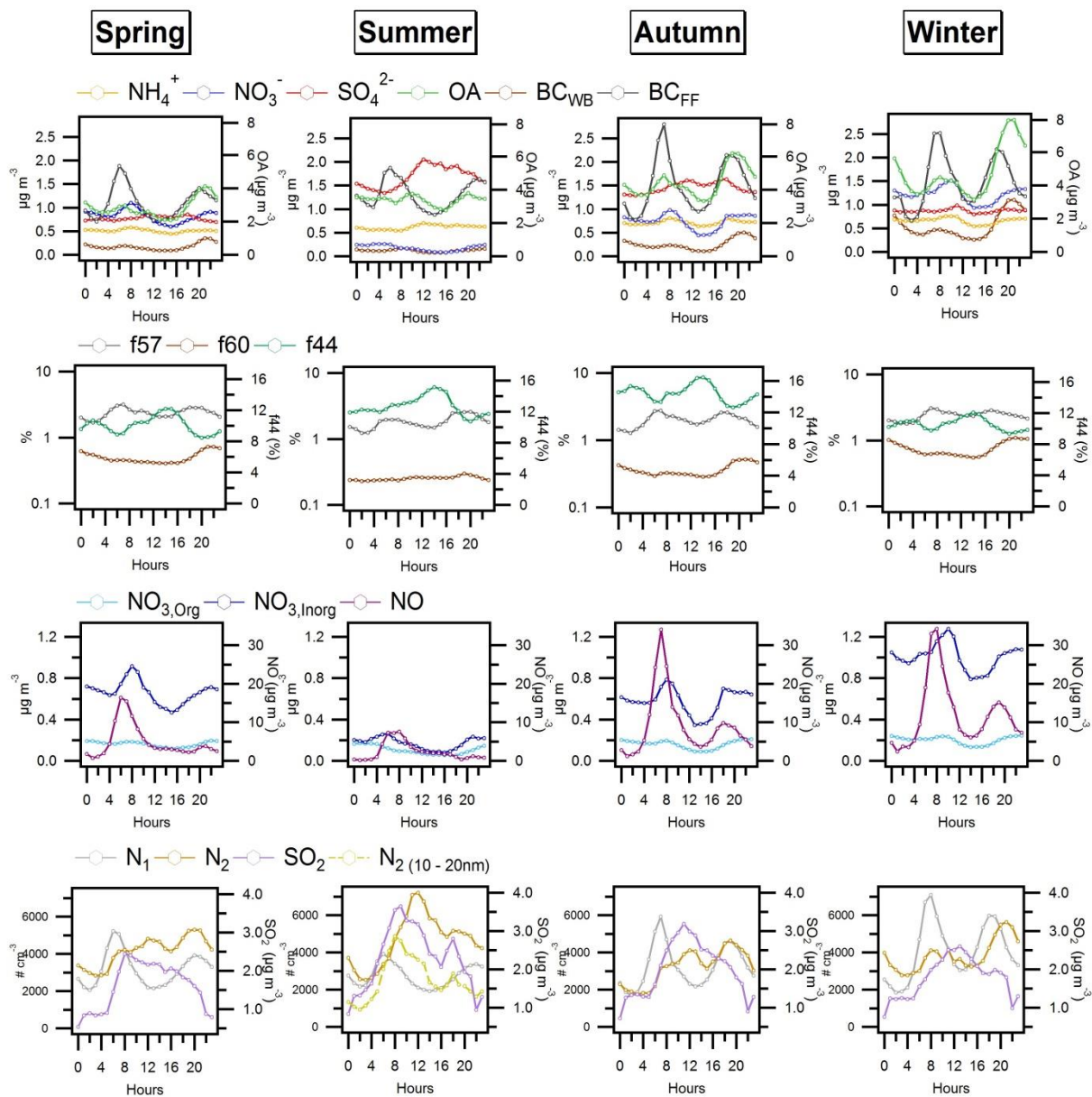


Figure 4: Seasonal concentrations for the different fractions of BC (BC_{WB} and BC_{FF}), NO_3^- ($NO_{3,Org}$, $NO_{3,Inorg}$), and UFPs number between 20 and 100nm (N_1 , N_2) represented as box plots. The band inside the box is the median (50th percentile), the bottom and top of the box represent the lower and upper quartiles respectively (the 25th and the 75th percentile). The ends of the whiskers denote here the 10th and 90th percentile. The red dots refer to the mean of each component.

1140



1145 **Figure 5:** Box plots of $\text{UFPs}_{<100\text{nm}}$ number for different SO_2 concentrations bins (bottom) and seasonal occurrence frequency for each bin (top). The red diamonds are the mean, the bands inside the box are the median, the bottom and top of the box represent the lower and upper quartiles respectively and the ends of the whiskers show the 10th and 90th percentile. The black circles denote the number of data points (15-min resolution) encountered in each bin.



1150

Figure 6: Seasonal diurnal profiles of PM₁ species, specific fractions of organic fragments (f60, f44 and f57), nitrate components (NO_{3,Org}, NO_{3,Inorg}) and NO, and UFPs components (N₁, N₂) and SO₂. Note that left axis for f60 and f57 values is on logarithm scale for clarity reasons. For summer, secondary number of particles N₂ was also calculated for N between 10 and 20 nm from SMPS GRIMM measurements during the 23 June-12 August 2017 period (yellow dashed-line).

1155

	2008	2009	2010	2011	2012	2013	2014	2015	2016	2017	2018
Winter	-	12	19	29	31	35	4	17	18	11	12
Spring	-	10	16	11	16	5	11	8	3	4	0
Summer	0	13	19	3	1	4	1	0	2	0	0
Autumn	-	15	7	14	3	3	4	6	5	1	0
Year	-	50	61	57	51	47	20	31	28	16	12

1160 **Table 2: Number of days exceeding 25 $\mu\text{g m}^{-3}$ for $\text{PM}_{2.5}$ concentrations (WHO recommendation) since they are measured in MRS-LCP. Results are presented by season and for the total years.**

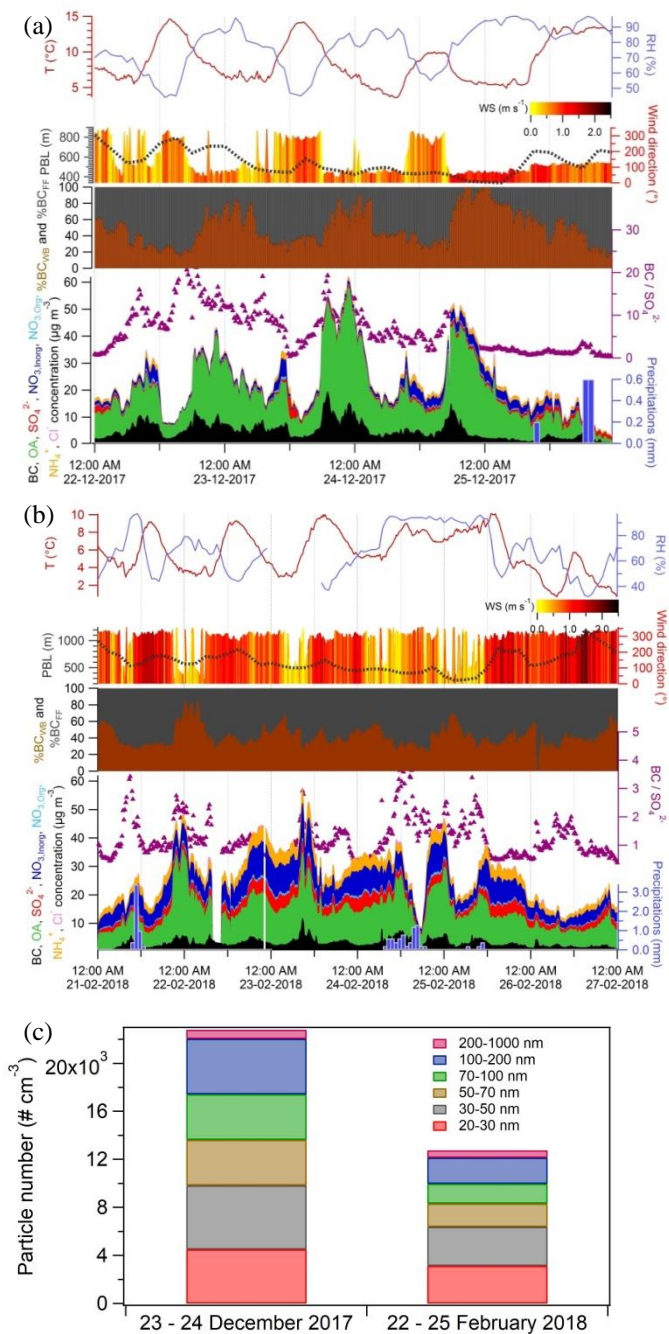
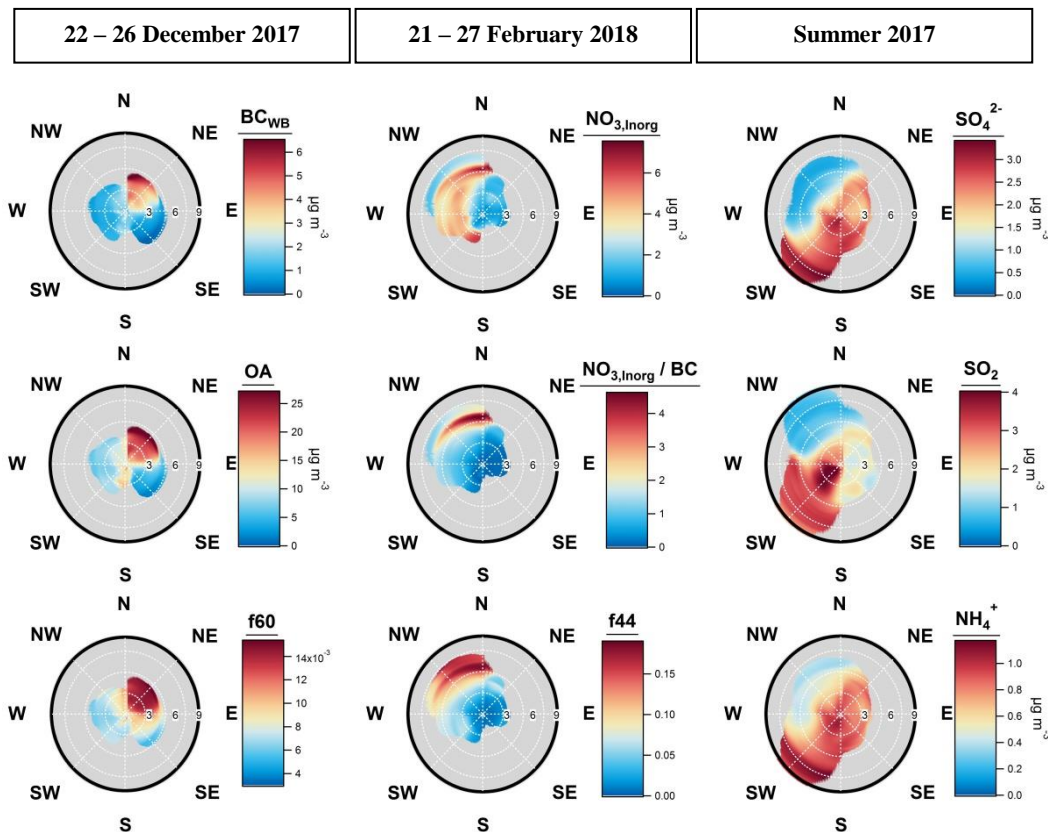


Figure 7: Time series of meteorological conditions and chemical composition during the two polluted episodes: the local Christmas event (23-24 December 2017) (a) and the long-range event (22-25 February 2018) (b). The chemical composition of submicron particles (Cl⁻, NH₄⁺, NO₃, SO₄²⁻, OA and BC); the relative contribution of BC_{FF} and BC_{WB}; the BC/SO₄²⁻ ratio; and the meteorological data (temperature, relative humidity, wind direction and speed, planetary boundary layer and precipitations) are

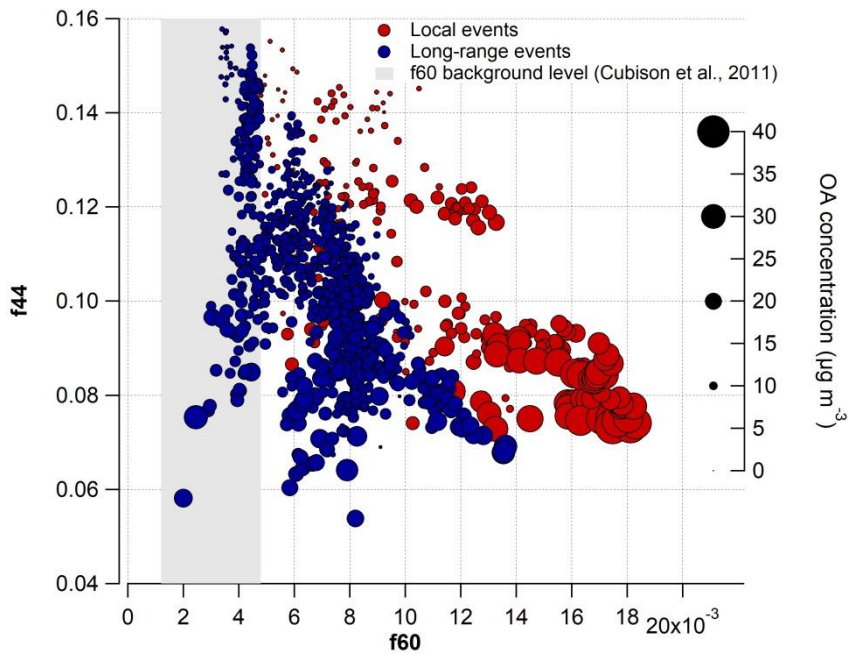
represented. The size contributions of total particle number during the two events (measured with the TSI 3031) are also shown (c).



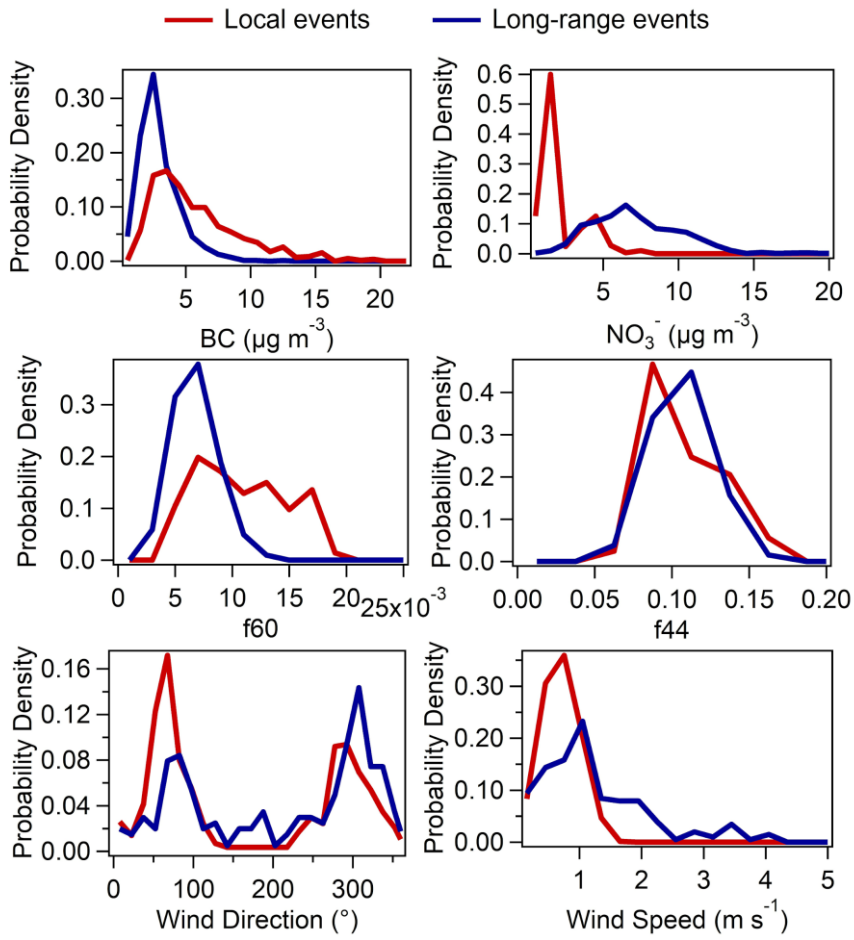
1170

1175

Figure 8: NWR plots for the local Christmas event, SWIM-2 plots for the long-range episode and NWR plots for the summer period. BC_{WB} concentrations, OA concentrations and fraction of the m/z 60 ACSM organic signal are represented for the local Christmas event from 22 to 26 December 2017. $NO_{3,Inorg}$ concentrations, $NO_{3,Inorg}$ normalized by BC and fraction of the m/z 44 ACSM organic signal are displayed for the long-range influence from 21 to 27 February 2018. The SWIM-2 analysis was performed using a rolling standard deviation over 2 hours of wind measurements. The time periods for the events is extended to better catch the variability. SO_4^{2-} , SO_2 and NH_4^+ concentrations are represented for the summer 2017. Radial and tangential axes show respectively the wind speed ($km \cdot h^{-1}$) and the wind direction ($^\circ$).

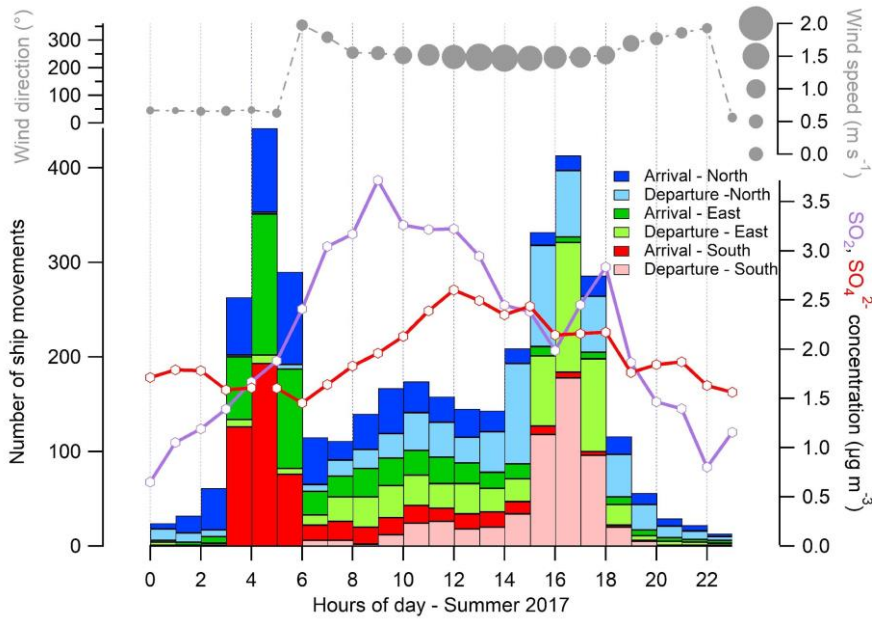


1180 **Figure 9: f44 vs f60 ratios during the local events (dark red circles) and the long-range events (dark blue circles). The size of markers is proportional to the OA concentration. The grey area represents the f60 background level defined by Cubison et al. (2011) (0.003 ± 3 times the standard deviation).**



1185

Figure 10: Probability density distributions of BC, NO_3^- , f60, f44, wind direction and speed during $\text{PM}_{2.5}$ exceedance days belonging to local (dark red) and long-range (dark blue) categories.



1190

Figure 11: Diurnal profile of cumulative number of ship movements for the summer 2017 period, coloured according to the basin location (blue for north, green for east, red for south) and the type of movement (dark-coloured for arrival, light-coloured for departure). Diurnal profiles of SO_2 in purple, SO_4^{2-} in red and wind direction in grey (the size of dots is proportional to the wind speed intensity) are also represented. The data points linked to low speed conditions ($<0.5 \text{ m s}^{-1}$) were filtered out from the analysis.

1195

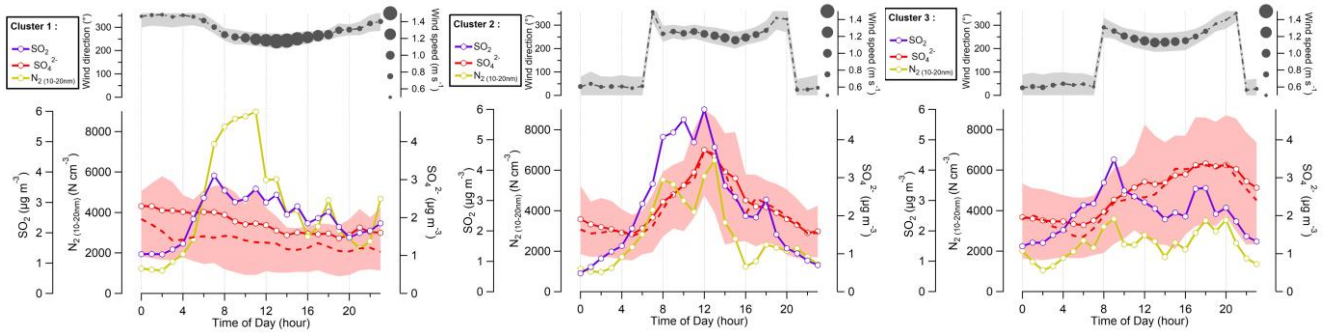


Figure 12: Diurnal cycles of SO_4^{2-} , SO_2 , N_2 (10-20nm) for the three clusters in summer 2017. Solid lines denote mean profiles, red dashed line is the median and red shaded area is the 25th-75th percentiles range for SO_4^{2-} . The average diurnal cycles for wind direction are also shown in the upper panels with the size of dots depending on wind speed and the grey shaded area representing \pm the standard deviation of wind.

1200

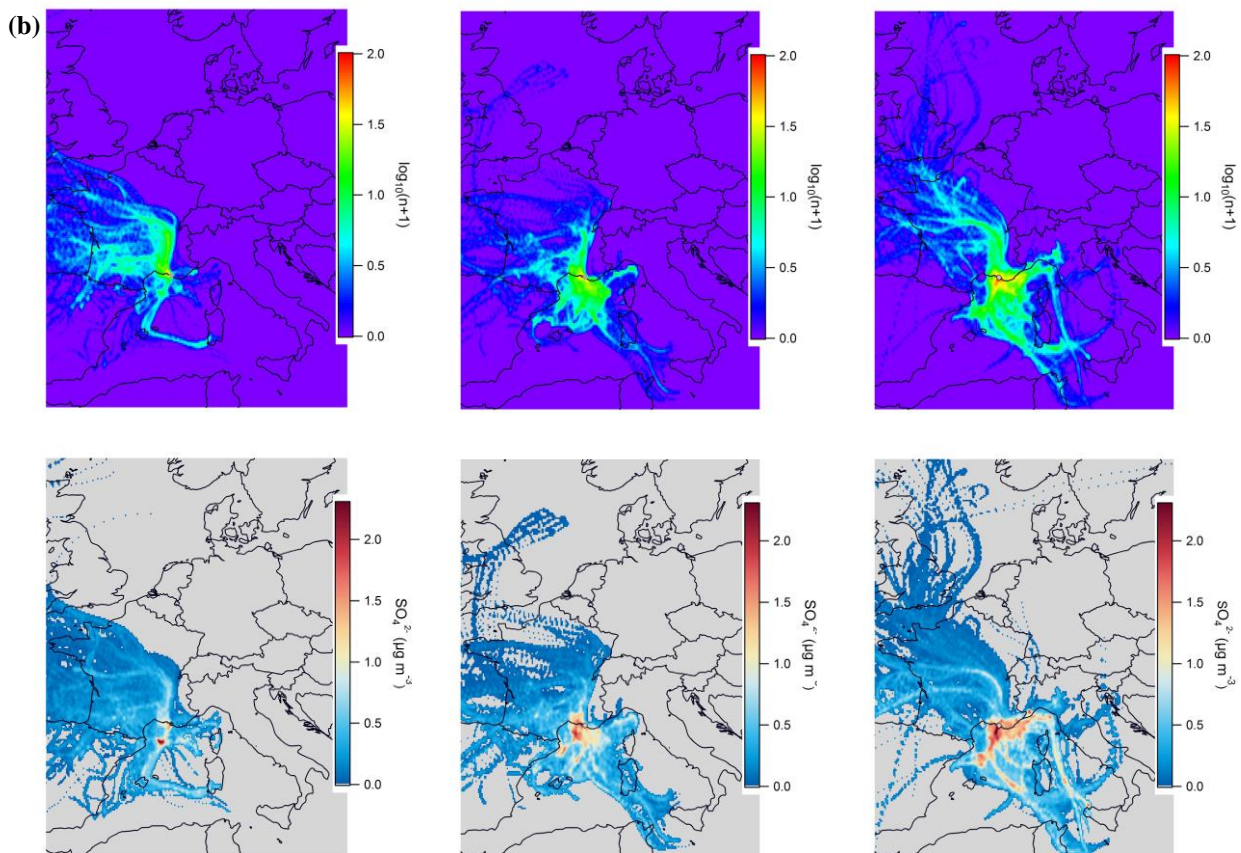
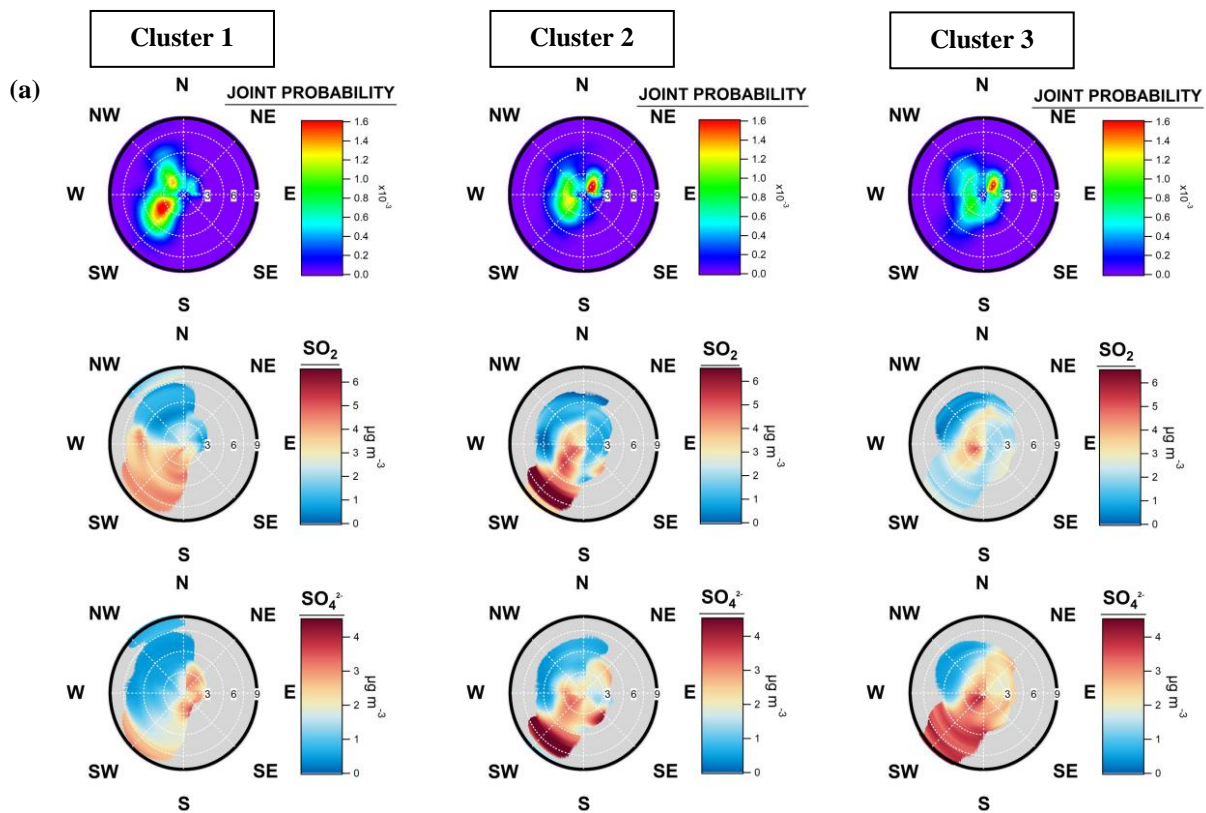


Figure 13: Joint probability distributions of winds (upper panel) and NWR plots (lower panel) of SO_2 and SO_4^{2-} for the three clusters (a). ZeFir trajectory density for 72h-backtrajectories (generated every hour at MRS-LCP station) and CWT maps for SO_4^{2-} (in $\mu\text{g m}^{-3}$) are also displayed for the three clusters (b). The $\log_{10}(n+1)$ colour scale corresponds to the occurrence of backtrajectory endpoints which drop into a particular cell. A discrete function based on $\log_{10}(n+1)$ was applied to down-weight data with high concentrations but low number of trajectories passing through a particular cell, as recommended by (Waked et al., 2014). The aim was to avoid local sulfate influence from the transport model.

1210