

*Supplement of*

**Persistent primary organic tar particles during the regional wintertime hazes in North China: insights into their aging and optical changes**

Lei Liu<sup>1</sup>, Jian Zhang<sup>1</sup>, Yinxiao Zhang<sup>1</sup>, Yuanyuan Wang<sup>1</sup>, Liang Xu<sup>1</sup>, Qi Yuan<sup>1</sup>, Dantong Liu<sup>1</sup>, Yele Sun<sup>2</sup>, Pingqing Fu<sup>3</sup>, Zongbo Shi<sup>4</sup>, and Weijun Li<sup>1,\*</sup>

<sup>1</sup>Department of Atmospheric Sciences, School of Earth Sciences, Zhejiang University, Hangzhou 310027, China

<sup>2</sup>State Key Laboratory of Atmospheric Boundary Layer Physics and Atmospheric Chemistry, Institute of Atmospheric Physics, Chinese Academy of Sciences, Beijing 100029, China

<sup>3</sup>Institute of Surface-Earth System Science, Tianjin University, Tianjin 300072, China

<sup>4</sup>School of Geography, Earth and Environmental Sciences, University of Birmingham, Birmingham B15 2TT, UK

*\*Correspondence to:* Weijun Li (liweijun@zju.edu.cn)

Table S1. Detailed information on individual particle samples collected at the Gucheng rural and Beijing urban sites.

Location	Date	Local time	Sampling duration (s)	Temperature (°C)	RH (%)	Pressure (hPa)	WS (m s <sup>-1</sup> )	Pollution level
Gucheng	21 Nov. 2016	12:00	180	-0.6	100	1018	4	Clean
	22 Nov. 2016	8:06	180	-4.7	97	1012	0.9	Clean
	22 Nov. 2016	19:22	120	-3.8	47	1036	0.6	Heavy (Early stage)
	23 Nov. 2016	10:50	15	0.9	51	1034	0.6	Heavy (Early stage)
	24 Nov. 2016	8:06	15	-6.4	94	1028	0	Heavy (Middle stage)
	25 Nov. 2016	3:00	15	-2.0	79	1022	1.6	Heavy (Middle stage)
	25 Nov. 2016	8:07	10	-4.7	93	1023	0	Heavy (Middle stage)
	25 Nov. 2016	15:19	10	1.4	77	1022	1.6	Heavy (Late stage)
	25 Nov. 2016	20:44	10	1.1	84	1022	1.7	Heavy (Late stage)
	26 Nov. 2016	3:00	8	-1.4	95	1018	0	Heavy (Late stage)
	26 Nov. 2016	8:15	8	-1.9	98	1018	0	Heavy (Late stage)
	26 Nov. 2016	12:27	10	5.5	70	1017	0.8	Heavy (Late stage)
Beijing	22 Nov. 2016	19:00	60	-1.8	33	1039	0.5	Clean
	24 Nov. 2016	19:00	15	2.9	41	1026	0.9	Moderate
	25 Nov. 2016	12:00	20	3.8	42	1026	1.5	Moderate
	25 Nov. 2016	22:00	10	3.1	72	1024	0	Heavy
	26 Nov. 2016	9:00	10	2.4	75	1022	0	Heavy
	26 Nov. 2016	16:00	10	7	45	1019	0	Heavy
	26 Nov. 2016	22:00	10	3.8	71	1020	0	Heavy

Table S2. Summary of the average meteorological parameters and mass concentrations of PM<sub>2.5</sub>, aerosol chemical species, organic aerosol (OA) factors, and gaseous pollutants in different periods at the Gucheng rural and Beijing urban sites.

	Gucheng rural site				Beijing urban site		
	Clean	Heavily polluted			Clean	Moderately polluted	Heavily polluted
		Early stage	Middle stage	Late stage			
<i>Meteorological parameters</i>							
<i>T</i> (°C)	-1.5	-2.9	-1.6	0.53	-2.0	2.1	3.9
RH (%)	97	63	65	78	58	48	64
WS (m s <sup>-1</sup> )	2.8	0.51	0.53	0.50	1.4	0.38	0.28
<i>P</i> (hPa)	1013.5	1032.6	1026.9	1019.6	1029.1	1026.5	1021.5
<i>PM<sub>2.5</sub> and chemical components (μg m<sup>-3</sup>)<sup>a</sup></i>							
PM <sub>2.5</sub>	39.8	288.3	312.3	396.8	10.8	111.0	281.0
OM	19.8	185.1	175.4	217.2	5.7	44.4	82.8
SO <sub>4</sub> <sup>2-</sup>	2.0	13.6	17.3	41.2	2.0	13.9	51.3
NO <sub>3</sub> <sup>-</sup>	2.4	11.3	14.7	30.8	1.9	19.7	41.0
NH <sub>4</sub> <sup>+</sup>	1.4	11.5	13.9	28.2	1.1	9.8	24.2
Cl <sup>-</sup>	1.2	11.1	9.8	15.9	0.46	7.2	14.7
EC	1.4	8.9	8.7	10.9	/	/	/
K <sup>+</sup>	0.36	1.6	1.5	2.7	/	/	/
Na <sup>+</sup>	0.63	0.41	0.42	0.92	/	/	/
Mg <sup>2+</sup>	0.08	0.18	0.15	0.28	/	/	/
Ca <sup>2+</sup>	0.75	1.1	0.84	1.8	/	/	/
<i>OA factors (μg m<sup>-3</sup>)<sup>b</sup></i>							
FFOA	/	/	/	/	1.0	9.2	15.6
COA	/	/	/	/	1.1	6.5	9.0
BBOA	/	/	/	/	0.20	5.4	15.0
OOA	/	/	/	/	0.74	12.7	24.1
OPOA	/	/	/	/	1.9	7.7	12.2
aqOOA	/	/	/	/	0.24	3.0	10.7
<i>Gaseous pollutants</i>							
CO (mg m <sup>-3</sup> )	0.44	2.4	2.9	4.3	0.54	2.8	4.1
SO <sub>2</sub> (μg m <sup>-3</sup> )	10.3	48.2	55.5	55.9	6.0	23.2	21.8
NO <sub>2</sub> (μg m <sup>-3</sup> )	25.3	62.7	80.0	94.5	29.0	94.1	130.8
O <sub>3</sub> (μg m <sup>-3</sup> )	36.1	10.7	10.2	10.5	42.6	11.0	7.6

<sup>a</sup>The aerosol chemical components at the Gucheng rural site were obtained by offline analysis of PM<sub>2.5</sub> filter samples and those at the Beijing urban site were obtained by online analysis of NR-PM<sub>1</sub> using a high-resolution aerosol mass spectrometer (HR-AMS).

<sup>b</sup>OA factors were derived by PMF analysis of HR-AMS data at the Beijing urban site.

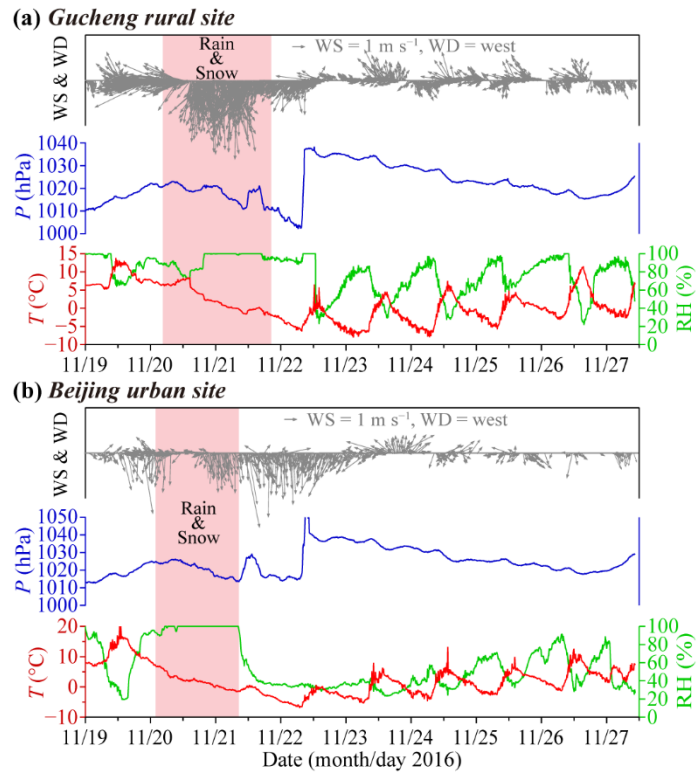


Figure S1. Time series of meteorological parameters including temperature ( $T$ ), pressure ( $P$ ), relative humidity (RH), wind speed (WS), and wind direction (WD) at the (a) Gucheng rural site and (b) Beijing urban site.

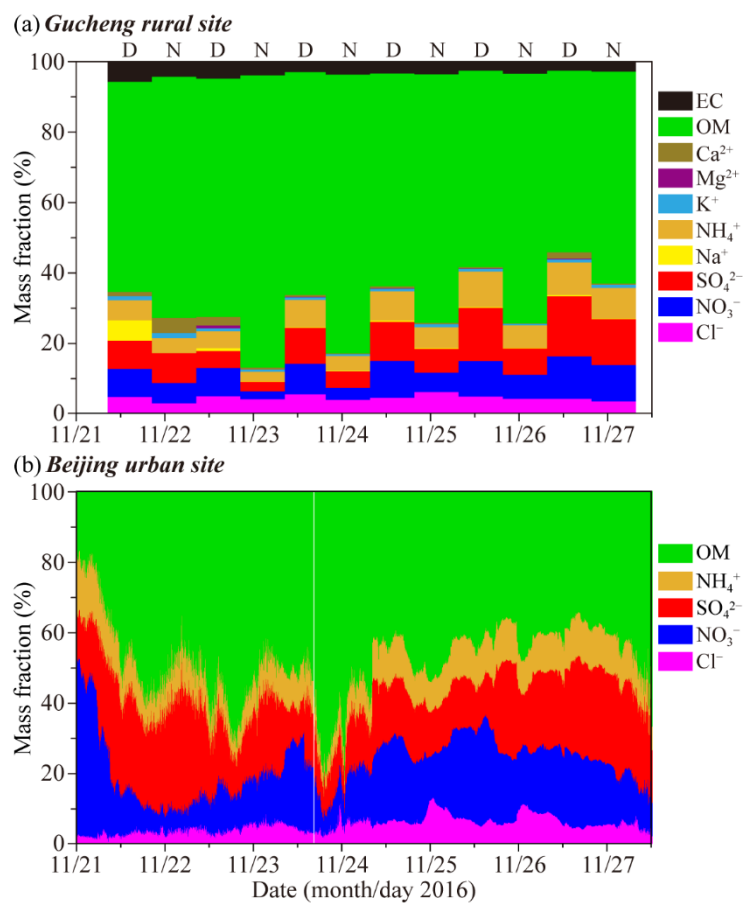


Figure S2. Relative mass fractions of major chemical species in PM<sub>2.5</sub> at the Gucheng rural site (a) and in NR-PM<sub>1</sub> at the Beijing urban site (b).

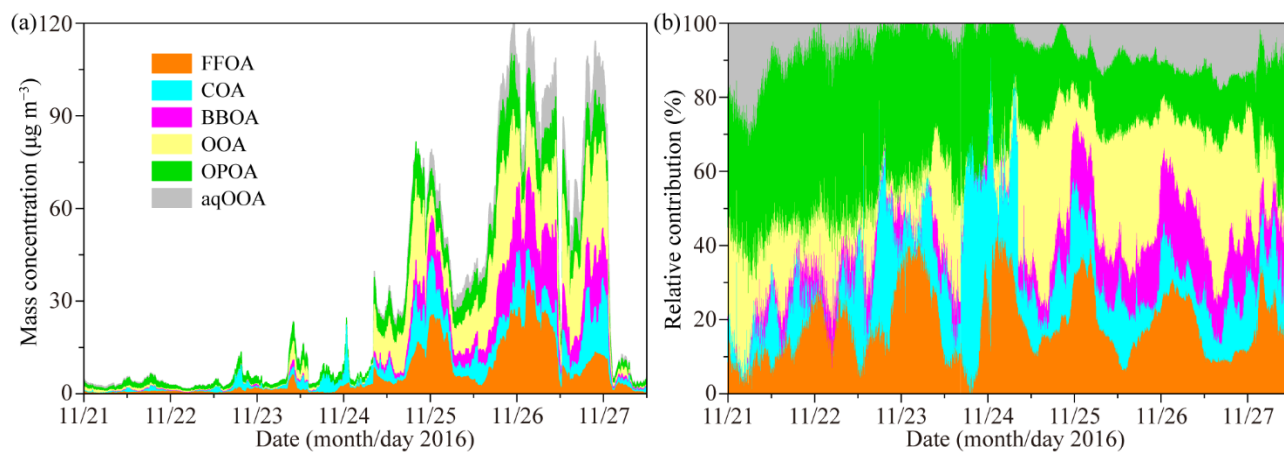


Figure S3. Absolute (a) and relative (b) contributions to organic aerosol (OA) in NR-PM<sub>1</sub> from different factors (i.e., FFOA–fossil fuel-related OA, COA–cooking OA, BBOA–biomass burning OA, OOA–oxygenated OA, OPOA–oxidized POA, and aqOOA–aqueous-phase OOA) at the Beijing urban site.