

1 *Supplement of*

2 **Changes in black carbon emissions over Europe due to**
3 **COVID-19 lockdowns**

4

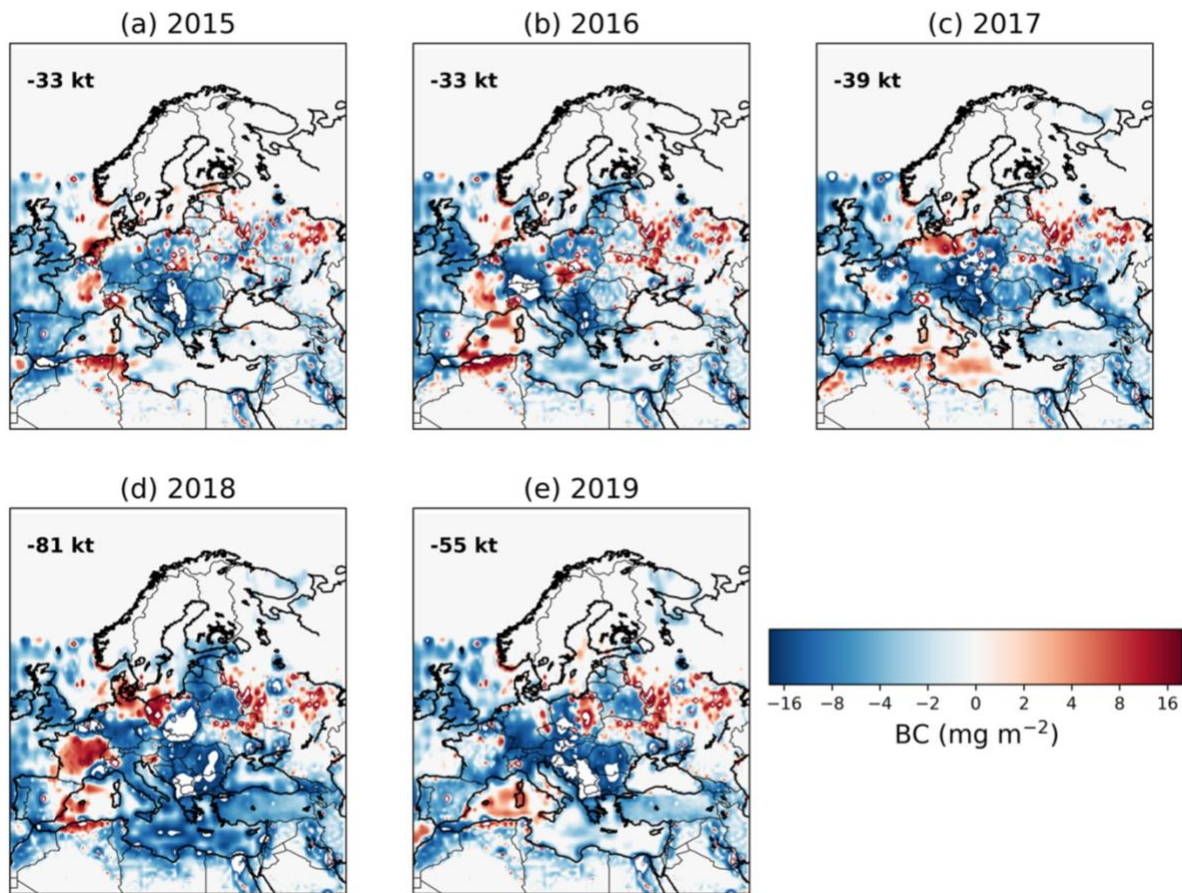
5 *Nikolaos Evangeliou et al.*

6

7 * Correspondence to: N. Evangeliou (nikolaos.evangeliou@nilu.no)

8

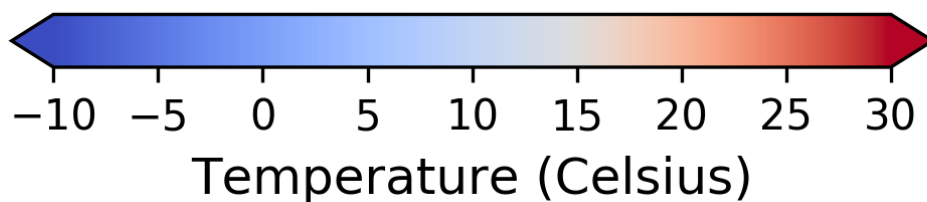
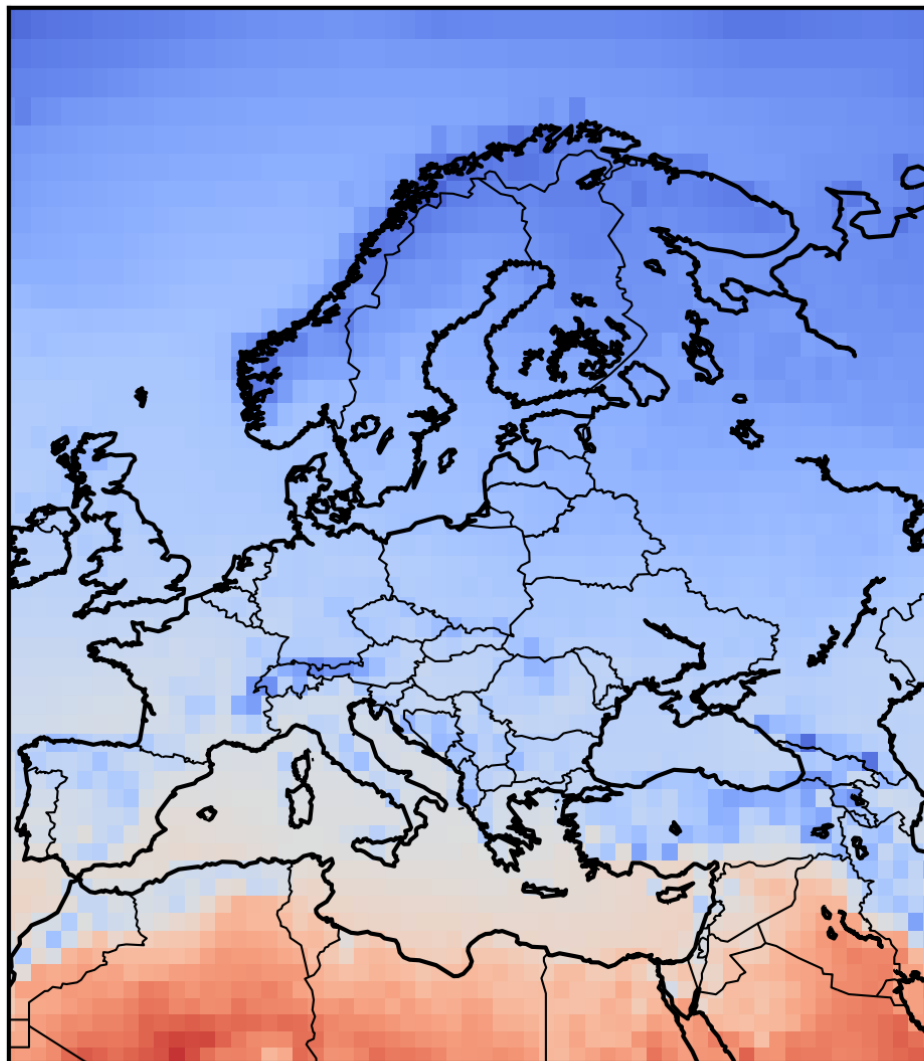
9 Supplementary figures



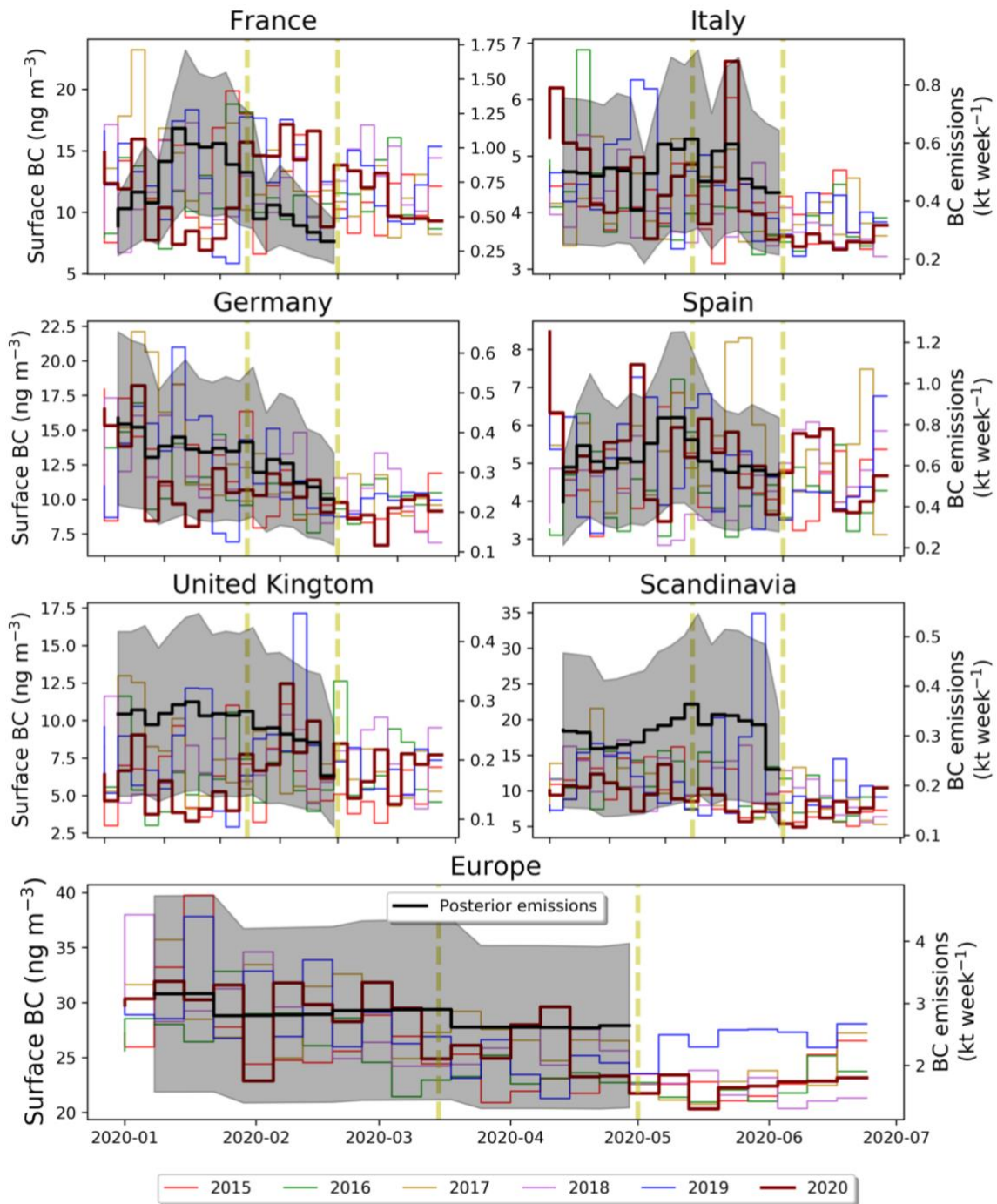
10

11 **Supplementary Figure 1.** Comparison with BC emissions in previous years. Difference of
12 optimised (posterior) BC emissions over Europe during the 2020 lockdown (14 March to 30
13 April) from respective BC emissions in previous years (same period) constrained with the same
14 inversion algorithm and the same settings.

Mean temperature at 2 m (ECMWF) during lockdown (14 March - 30 April)



15
16 **Supplementary Figure 2.** Surface temperature during the 2020 lockdown. Average surface
17 temperature at 2 m over Europe during the COVID-19 lockdown (14 March to 30 April) from
18 ERA-5 (ECMWF) (Copernicus Climate Change Service (C3S), n.d.). Note that prevailing
19 average temperatures over Europe during the lockdown were below 15°C. This temperature has
20 been used as the basis temperature, below which residential combustion has been found to
21 increase (Quayle and Diaz, 1980; Stohl et al., 2013).



22

23 **Supplementary Figure 3.** Weekly posterior BC emissions against MERRA-2 concentrations.

24 Average surface BC concentrations from MERRA-2 (left axis) since 2015 in the most highly

25 affected European countries (France, Italy, Germany, Spain and UK), Scandinavia and Europe

26 from the pandemic, in contrast to the calculated optimized BC emissions (right axis). The grey

27 shaded area corresponds to the BC emission uncertainty calculated as described in the Results

28 section. The vertical yellow dashed lines correspond to the beginning and end of the COVID-

29 19 lockdown (14 March to 30 April 2020).

30

31

32 **References**

33 Copernicus Climate Change Service (C3S): C3S ERA5-Land reanalysis . Copernicus Climate
34 Change Service, [online] Available from: <https://cds.climate.copernicus.eu/cdsapp#!/home>
35 (Accessed 31 August 2020), n.d.

36 Quayle, R. G. and Diaz, H. F.: Heating degree day data applied to residential heating energy
37 consumption, *J. Appl. Meteorol.*, 19, 241–246, 1980.

38 Stohl, A., Klimont, Z., Eckhardt, S., Kupiainen, K., Shevchenko, V. P., Kopeikin, V. M. and
39 Novigatsky, A. N.: Black carbon in the Arctic: The underestimated role of gas flaring and
40 residential combustion emissions, *Atmos. Chem. Phys.*, 13(17), 8833–8855, doi:10.5194/acp-
41 13-8833-2013, 2013.

42