

# Changes in black carbon emissions over Europe due to COVID-19 lockdowns

Nikolaos Evangeliou<sup>1,\*</sup>, Stephen M. Platt<sup>1</sup>, Sabine Eckhardt<sup>1</sup>, Cathrine Lund Myhre<sup>1</sup>, Paolo Laj<sup>2,3,4</sup>, Lucas Alados-Arboledas<sup>5,6</sup>, John Backman<sup>7</sup>, Benjamin T. Brem<sup>8</sup>, Markus Fiebig<sup>1</sup>, Harald Flentje<sup>9</sup>, Angela Marinoni<sup>10</sup>, Marco Pandolfi<sup>11</sup>, Jesus Yus-Díez<sup>11</sup>, Natalia Prats<sup>12</sup>, Jean P. Putaud<sup>13</sup>, Karine Sellegri<sup>14</sup>, Mar Sorribas<sup>15</sup>, Konstantinos Eleftheriadis<sup>16</sup>, Stergios Vratolis<sup>16</sup>, Alfred Wiedensohler<sup>17</sup>, Andreas Stohl<sup>18</sup>

<sup>1</sup>Norwegian Institute for Air Research (NILU), Department of Atmospheric and Climate Research (ATMOS), Kjeller, Norway.

<sup>2</sup>University of Grenoble Alpes, CNRS, IRD, Grenoble-INP, IGE, 38000 Grenoble, France.

<sup>3</sup>CNR-ISAC, National Research Council of Italy – Institute of Atmospheric Sciences and Climate, Bologna, Italy.

<sup>4</sup>University of Helsinki, Atmospheric Science division, Helsinki, Finland.

<sup>5</sup>Andalusian Institute for Earth System Research (IISTA-CEAMA), Granada, Spain.

<sup>6</sup>Department of Applied Physics, University of Granada, Granada, Spain.

<sup>7</sup>Atmospheric Composition Research, Finnish Meteorological Institute, Helsinki, Finland.

<sup>8</sup>Laboratory of Atmospheric Chemistry, Paul Scherrer Institute, Villigen PSI, Switzerland.

<sup>9</sup>Deutscher Wetterdienst, Meteorologisches Observatorium Hohenpeissenberg, Albin-Schwaiger-Weg 10, 82383 Hohenpeissenberg, Germany.

<sup>10</sup>Institute of Atmospheric Sciences and Climate, National Research Council of Italy (ISAC-CNR), 40121, Bologna, Italy.

<sup>11</sup>Institute of Environmental Assessment and Water Research IDAEA-CSIC, C/Jordi Girona 18-26, Barcelona 08034, Spain.

<sup>12</sup>Izaña Atmospheric Research Center, State Meteorological Agency (AEMET), C/La Marina 20, 38001, Tenerife, Spain.

<sup>13</sup>European Commission, Joint Research Centre (JRC), Via Enrico Fermi 2749, Ispra (VA) 21027, Italy.

<sup>14</sup>Laboratoire de Météorologie Physique, UMR6016, CNRS/UBP, 63178 Aubière, France.

<sup>15</sup>El Arenosillo Atmospheric Sounding Station, Atmospheric Research and Instrumentation Branch, National Institute for Aerospace Technology, 21130 Huelva, Spain.

<sup>16</sup>Environmental Radioactivity Lab, Institute of Nuclear & Radiological Sciences & Technology, Energy & Safety, NCSR “Demokritos”, Ag. Paraskevi, Athens, Greece.

<sup>17</sup>Department Experimental Aerosol and Cloud Microphysics, Leibniz Institute for Tropospheric Research, Leipzig, Germany.

<sup>18</sup>Department of Meteorology and Geophysics, University of Vienna, UZA II, Althanstraße 14, 1090 Vienna, Austria.

\* Corresponding author: N. Evangeliou ([Nikolaos.Evangeliou@nilu.no](mailto:Nikolaos.Evangeliou@nilu.no))

## Abstract

Following the emergence of the severe acute respiratory syndrome coronavirus 2 (SARS-CoV-2) responsible for COVID-19 in December 2019 in Wuhan (China) and its spread to the rest of the world, the World Health Organization declared a global pandemic in March 2020. Without effective treatment in the initial pandemic phase, social distancing and mandatory quarantines were introduced as the only available preventative measure. In contrast to the detrimental societal impacts, air quality improved in all countries that strict lockdowns were applied, due to lower pollutant emissions. Here we investigate the effects of the COVID-19 lockdowns in Europe on ambient black carbon (BC), which affects climate and damages health, using in-situ observations from 17 European stations in a Bayesian inversion framework. BC emissions declined by 23 kt in Europe (20% in Italy, 40% in Germany, 34% in Spain, 22% in France) during lockdowns compared to the same period in the previous five years, which is partially attributed to COVID-19 measures. BC temporal variation in the countries enduring the most drastic restrictions showed the most distinct lockdown impacts. Increased particle light absorption in the beginning of the lockdown, confirmed by assimilated satellite and remote sensing data, suggests residential combustion was the dominant BC source. Accordingly, in Central and Eastern Europe, which experienced lower than average temperatures, BC was elevated compared to the previous five years. Nevertheless, an average decrease of 11% was seen for the whole of Europe compared to the start of the lockdown period, with the highest peaks in France (42%), Germany (21%), UK (13%), Spain (11%) and Italy (8%). Such a decrease was not seen in the previous years, which also confirms an impact of COVID-19 on the European emissions of BC.

# 1 Introduction

The identification of the severe acute respiratory syndrome coronavirus 2 (SARS-CoV-2 or COVID-19) in December 2019 (WHO, 2020) in Wuhan (China) and its subsequent transmission to South Korea, Japan, and Europe (initially mainly Italy, France and Spain) and the rest of the world led the World Health Organization to declare a global pandemic by March 2020 (Sohrabi et al., 2020). Although the symptoms are normally mild or not even detected for most of the population, people with underlying diseases or elderly are very vulnerable showing complications that can lead to death (Huang et al., 2020). Considering the lack of available treatment and vaccination to combat further spread of the virus, the only prevention measures included strict social, travel and working restrictions in a so-called lockdown period that lasted for several weeks (mid-March to end of April 2020 for most of Europe). The most drastic measures were taken in China, where the outbreak started, in Italy that faced large human losses and later in the United States. Despite all these restriction, still six months after the first lockdown, several countries are reporting severe human losses due to the virus (John Hopkins University of Medicine, 2020).

Despite the dramatic health and socioeconomic consequences of COVID-19 lockdowns, their environmental impact might be beneficial. Bans on mass gatherings, mandatory school closures, and home confinement (He et al., 2020; Le Quéré et al., 2020) during lockdowns have all resulted in lower traffic-related pollutant emissions and improved air quality in Asia, Europe and America (Adams, 2020; Bauwens et al., 2020; Berman and Ebisu, 2020; Conticini et al., 2020; Dantas et al., 2020; Dutheil et al., 2020; He et al., 2020; Kerimray et al., 2020; Le et al., 2020; Lian et al., 2020; Otmani et al., 2020; Sicard et al., 2020; Zheng et al., 2020). The restrictions also present an opportunity to evaluate the cascading responses from the interaction of humans, ecosystems, and climate with the global economy (Diffenbaugh et al., 2020).

Strongly light absorbing black carbon (BC, or ‘soot’), is produced from incomplete combustion of carbonaceous fuels e.g. fossil fuels, wood burning, biofuels (Bond et al., 2013). By absorbing solar radiation, it warms the air, reduces tropical cloudiness (Ackerman, 2000) and atmospheric visibility (Jinhuan and Liqun, 2000). BC causes pulmonary diseases (Wang et al., 2014a), may act as cloud condensation nuclei affecting cloud formation and precipitation (Wang et al., 2016) and contributes to global warming (Bond et al., 2013; Myhre et al., 2013; Wang et al., 2014a). When deposited on snow, it reduces snow albedo (Clarke and Noone, 1985; Hegg et al., 2009) accelerating melting. Since BC is both climate relevant and strongly

linked to anthropogenic activity, it is important to determine the effects of the COVID-19 lockdowns thereon.

Here, we present a rigorous assessment of temporal and spatial changes BC emissions over Europe (including Middle East and parts of North Africa), combining in situ observations from the Aerosol, Clouds and Trace Gases Research Infrastructure (ACTRIS) network and state-of-the-art emission inventories within a Bayesian inversion. We validate our results with independent satellite data and compare them to inventories and baseline and optimized emissions calculated for previous years.

## 2 Methods

This section gives a detailed description of all datasets and methods used for the calculation of COVID-19 impact. Section 2.1 describes the instrumentation of the particle light absorption measurements from Aerosol, Clouds and Trace Gases Research Infrastructure (ACTRIS), and the networks European Monitoring and Evaluation Program (EMEP) and Global Atmosphere Watch (GAW). These measurements were used in the inverse modelling algorithm (dependent measurements) and to validate the optimised (posterior) emissions of BC (independent measurements). For each of the observations and stations, the source – receptor matrices (SRMs), also known as “footprint emission sensitivities” or “footprints”, were calculated as described in section 2.2. The latter together with the observations were fed in the inversion algorithm described in section 2.3. To overcome classic inverse problems (Tarantola, 2005), prior (a priori) emissions of BC were used in the inverse modelling algorithm calculated using bottom-up approaches (section 2.4). The optimised (a posteriori) emissions of BC were compared with reanalysis data from MERRA-2 (Modern-Era Retrospective Analysis for Research and Applications Version 2), which are described in section 2.5, while MERRA-2 Ångström exponent data together with absorption Ångström exponent from the aerosol robotic network (AERONET) (section 2.6) were used to examine the presence of biomass burning aerosols in Europe. A description of the statistical tests and the country definitions used in the paper is given in sections 2.7 and 2.8, respectively.

### 2.1 Particle light absorption measurements

The measurement sites contributing data to this paper are regional background sites (except for one site in Germany) and all contribute to the research infrastructure ACTRIS, and the networks EMEP and GAW. The measurement data used for the period 2015 - May 2020 consist of hourly-averaged, quality-checked, particle light absorption measurements. The

quality assurance and quality control correspond to the Level 2 requirements for ACTRIS, EMEP and GAW data, as described in detail in Laj et al. (2020).

All absorption measurements within ACTRIS and EMEP are taken using a variety of filter-based photometers: Multi-Angle Absorption Photometers (MAAP), Particle Soot Absorption Photometers (PSAP) Continuous Light Absorption Photometers (CLAP), and the Aethalometer (AE31). Information on instrument type at the various sites are included in [Table 1](#) and procedures for harmonization of measurement protocols to produce comparable data sets are described in Laj et al. (2020) in detail. Zanatta et al. (2016) suggested that a mass absorption cross-section (MAC) value of  $10 \text{ m}^2 \text{ g}^{-1}$  (geometric standard deviation of 1.33) at a wavelength of 637 nm can be considered to be representative of the mixed boundary layer at European ACTRIS background sites, where BC is expected to be internally mixed to a large extent. Assuming an absorption Ångström exponent (AAE) is equal to unity, i.e. assuming no change in MAC for different sources (Zotter et al., 2017), we extrapolated the MACs at 637 nm ( $MAC_{@637}$ ) to the measurement wavelengths of our study ( $MAC_{@λ_2}$ ) using the following equation:

$$MAC_{@λ_2} = MAC_{@637} \left(\frac{λ_1}{λ_2}\right)^{AAE} \xrightarrow{\text{yields}} MAC_{@λ_2} = 10 \left(\frac{637}{λ_2}\right)^1 \quad (1)$$

following Lack and Langridge (2013). The resulting MAC values for each measurement station are shown in [Table 1](#).

## 2.2 Source – receptor matrix (SRM) calculations

SRMs for each of the 17 receptor sites ([Table 1](#)) were calculated using the Lagrangian particle dispersion model FLEXPART version 10.4 (Pisso et al., 2019). The model releases computational particles that are tracked backward in time based on 3-hourly operational meteorological analyses from the European Centre for Medium-Range Weather Forecasts (ECMWF) with 137 vertical layers and a horizontal resolution of  $1^\circ \times 1^\circ$ . The tracking of BC particles includes gravitational settling for spherical particles with an aerosol mean diameter of  $0.25 \mu\text{m}$  and a logarithmic standard deviation of 0.3 and a particle density of  $1500 \text{ kg m}^{-3}$  (Long et al., 2013). FLEXPART also simulates dry and wet deposition (Grythe et al., 2017), turbulence (Cassiani et al., 2014), unresolved mesoscale motions (Stohl et al., 2005) and includes a deep convection scheme (Forster et al., 2007). SRMs were calculated for 30 days backward in time, at temporal intervals that matched measurements at each receptor site. This backward tracking is sufficiently long to include almost all BC sources that contribute to surface

concentrations at the receptors given a typical atmospheric lifetime of 3–11 days (Bond et al., 2013).

### 2.3 Bayesian inverse modelling

The Bayesian inversion framework FLEXINVERT+ described in detail in Thompson and Stohl (2014) was used to optimize emissions of BC before (January to mid-March 2020) and during the COVID-19 lockdown period in Europe (mid-March to end of April 2020). To show potential differences on the signal from the 2020 restrictions, emissions were optimised with the same set up during the same period (January to April) in the previous five years (2015–2019). Note that the number of stations in the inversions of 2015–2019 was slightly higher (20 stations against 15 that were used in 2020), due to different data availability. The algorithm finds the optimal emissions, which lead to FLEXPART modelled concentrations that better match the observations considering the uncertainties for observations, prior emissions and SRMs. Specifically, the state vector of BC concentrations,  $y_{(M \times 1)}^{mod}$ , at  $M$  points in space and time can be modelled given an estimate of the emissions,  $x_{(N \times 1)}$ , of the  $N$  state variables discretised in space and time, while atmospheric transport and deposition are linear operations described by the Jacobian matrix of SRMs,  $H_{(M \times N)}$ :

$$y^{mod} = Hx + \epsilon \quad (2)$$

where  $\epsilon$  is an error associated with model representation, such as the modelled transport and deposition or the measurements. Since  $H$  is not invertible or may not have unique inverse, according to Bayesian statistics, the inverse problem can be described as the maximization of the probability density function of the emissions given the prior information and observations. This is equivalent to the minimum of the cost function:

$$J(x) = \frac{1}{2}(x - x_b)^T B^{-1}(x - x_b) + \frac{1}{2}(y - Hx)^T R^{-1}(y - Hx) \quad (3)$$

where  $y$  is the vector of observed BC concentrations,  $x$  and  $x_b$  the vectors of optimized and prior emissions, respectively, while  $B$  and  $R$  are the error covariance matrices that weight the posterior–prior flux and observation–model mismatches, respectively. Based on the Bayes' theorem, the most probable posterior emissions,  $x$  are given by the following equation (Tarantola, 2005):

$$x = x_b + BH^T(HBH^T + R)^{-1}(y - Hx_b) \quad (4)$$

Here, posterior emissions were calculated weekly between 1 January and 30 April 2020. The aggregated inversion grid (25°N–75°N and 10°W–50°E) and the average SRM for inversions are shown in [Figure 1](#), while the measurement stations are listed in [Table 1](#). The

variable grid uses high resolution at regions, where there are many stations and hence strong contribution from emissions, while it lowers resolution at regions that lack measurement stations following a method proposed by Stohl et al. (2010).

Prior emission errors  $\mathbf{B}$  are correlated in space and time, but very little is known about the true temporal and spatial error correlation patterns. The spatial error correlation for the emissions is defined as an exponential decay over distance (we assume that emissions on land and ocean are not correlated). The temporal error correlation matrix is described similarly using the time difference between grid cells in different time steps. The full temporal and spatial correlation matrix is given by the Kronecker product (see Thompson and Stohl, 2014). The error covariance matrix for the emissions is the matrix product of correlation pattern and the error covariance of the prior fluxes. We calculate the error on the emissions in each grid-cell (on the fine grid) as a fraction of the maximum value out of that grid cell and the eight surrounding ones.

The observation error covariance matrix  $\mathbf{R}$  combines measurement, transport model and representation errors. For the measurement errors, we use values given by the data providers. Transport model errors are difficult to quantify and depend not only on the model but also on the meteorological inputs. Therefore, we do not quantify the full transport error, but only the part of it that can be estimated from FLEXPART, i.e. the stochastic uncertainty (see Stohl et al., 2005). As regards to representation errors, we consider observation representation error and model aggregation error. The observation representation error is calculated from the standard deviation of all measurements available in a user-specified measurement averaging time interval, based on the idea that if the measurements are fluctuating strongly within that interval then their mean value is associated with higher uncertainty than if the measurements are steady (Bergamaschi et al., 2010). The aggregation error is attributed to reduction of the spatial resolution of the model and is calculated by projecting the loss of information in the state space into the observation space (Kaminski et al., 2001). Hence, the observation error covariance matrix is defined as the diagonal matrix with elements equal to the quadratic sum of the measurement, transport model and measurement representation errors (Thompson and Stohl, 2014).

Theoretically, the algorithm can calculate negative posterior emissions, which are physically unlikely. To tackle this problem, an inequality constraint was applied on the emissions following the method of Thacker (2007) that applies the constraint as “error-free” observations:

$$\hat{\mathbf{x}} = \mathbf{x} + \mathbf{A}\mathbf{P}^T(\mathbf{P}\mathbf{A}\mathbf{P}^T)^{-1}(\mathbf{c} - \mathbf{P}\mathbf{x}) \quad (5)$$



where  $\mathbf{A}$  is the posterior error covariance matrix,  $\mathbf{P}$  is a matrix operator to select the variables that violate the inequality constraint, and  $\mathbf{c}$  is a vector of the inequality constraint, which in this case is zero.

We evaluated the assumptions made on the error covariance matrices for the prior emissions and the observations using the reduced  $\chi^2$  statistics ( $\mathbf{B}$  and  $\mathbf{R}$ ). When  $\chi^2$  is equal to unity, the posterior solution is within the limits of the prescribed uncertainties. The latter is the value of the cost function at the optimum (Thompson et al., 2015). In the inversions performed here, the calculated  $\chi^2$  values were between 0.8 and 1.5 indicating that the chosen uncertainty parameters are close to the ideal ones. The number of measurements used in each inversion was equal to 12538 from 17 stations. To select the inversion that provides the most statistically significant result, an evaluation of the improvement in the posterior modelled concentrations, with respect to the prior ones, against the observations was performed (Figure 2). The resulting values of each of the statistical measures that were performed are given in detail in Table 2. Note that this is not a validation of the posterior emissions, because the comparison is only done for the observations that were included in the inversion (dependent observations), and the inversion algorithm has been designed to reduce the model–observation mismatches. This means that the reduction of the posterior concentration mismatches to the observations is determined by the weighting that is given to the observations with respect to the prior emissions. A proper validation of the posterior emissions is performed against observations that were not included in the inversion (independent observations) in section 3.3.

## 2.4 Prior emissions

As a priori emissions in the inversions, the ECLIPSE version 5 and 6 (Evaluating the CLimate and Air Quality ImPacts of ShortlivEd Pollutants) (Klimont et al., 2017), EDGAR (Emissions Database for Global Atmospheric Research) version HTAP\_v2.2 (Janssens-Maenhout et al., 2015), ACCMIP (Emissions for Atmospheric Chemistry and Climate Model Intercomparison Project) version 5 (Lamarque et al., 2013) and PKU (Peking University) (Wang et al., 2014b) were used (Figure 3). All inventories include the basic emission sectors (e.g., waste burning, industrial combustion and processing, all means of transportation (aerial, surface, ocean), energy conversion, residential and commercial combustion (see references therein). Biomass burning emissions were adopted from the Global Fire Emissions Database, Version 4.1s (GFEDv4.1s)(Giglio et al., 2013). Note that the a priori emissions used in the inversions of 2015–2019 period corresponded to year 2015 of ECLIPSEv6 and they were not interpolated for the years between 2015 and 2020, where the ECLIPSEv6 emissions were

calculated for. We calculate that the anthropogenic emissions of BC in Europe between January-April 2015 and January-April 2020 in ECLIPSEv6 differ by 3.4% only, and therefore we expect that this would not add significant bias in our calculations.

## 2.5 MERRA-2 (Modern-Era Retrospective Analysis for Research and Applications Version 2)

The MERRA-2 reanalysis dataset for BC (Randles et al., 2017) assimilates bias-corrected AOD from Moderate Resolution Imaging Spectroradiometer (MODIS), Advanced Very High Resolution Radiometer (AVHRR) instruments, Multiangle Imaging SpectroRadiometer (MISR) and Aerosol Robotic Network (AERONET) with the Goddard Earth Observing System Model Version 5 (GEOS-5). BC and other aerosols in MERRA-2 are simulated with the Goddard Chemistry, Aerosol, Radiation and Transport (GOCART) model and delivered in hourly to monthly temporal resolution and  $0.5^\circ \times 0.625^\circ$  spatial. The product has been validated for AOD, PM and BC extensively (Buchard et al., 2017; Qin et al., 2019; Randles et al., 2017; Sun et al., 2019). Ångström exponent (AE), a measure of how the AOD changes relative to the various wavelength of light, is derived here from AOD<sub>469</sub>, AOD<sub>550</sub>, AOD<sub>670</sub>, and AOD<sub>865</sub>, by fitting the data to the linear transform of Ångström's empirical expression:

$$\tau_\lambda = \tau_{\lambda_0} \left( \frac{\lambda}{\lambda_0} \right)^{-a} \quad (6)$$

where  $\tau_\lambda$  is the known AOD at wavelength  $\lambda$  (in nm),  $\tau_{\lambda_0}$  is the AOD at 1000 nm, and  $a$  stands for AE (Gueymard and Yang, 2020).

## 2.6 Absorption Ångström exponent from Aerosol Robotic Network (AERONET) data

Aerosol composition over Europe during the COVID-19 lockdown was confirmed using the AERONET data (Holben et al., 1998). AERONET provides globally distributed observations of spectral aerosol optical depth (AOD), inversion products, and precipitable water in diverse aerosol regimes. The AE for a spectral dependence of 440-870 nm is related to the aerosol particle size. Values less than 1 suggest an optical dominance of coarse particles corresponding to dust, ash and sea spray aerosols, while values greater than one imply dominance of fine particles such as smoke and industrial pollution (Eck et al., 1999). We chose data from five stations covering Western, Central and Eastern Europe, for which cloud-free measurements exist for the lockdown period, namely Ben Salem (9.91°E, 35.55°N), Minsk (27.60°E, 53.92°N), Montsec (0.73°E, 42.05°N), MetObs Lindenberg (14.12°E, 52.21°N) and

396 Munich University (11.57°E, 48.15°N). We used Level 1.5 absorption AE (AAE)  
 397 measurements for the COVID-19 lockdown period (14 March to 30 April 2020).

## 398 **2.7 Statistical measures**

399 For the performance evaluation of the inversion results against dependent (observations  
 400 that were included in the inversion) and independent observations (observations that were not  
 401 included in the inversion), four different statistical quantities were used:

402 (1) Pearson's correlation coefficient:

$$403 \quad R_{mo} = \frac{n \sum_{i=1}^n m_i o_i - \sum_{i=1}^n m_i \sum_{i=1}^n o_i}{\sqrt{n \sum_{i=1}^n m_i^2 - (\sum_{i=1}^n m_i)^2} \sqrt{n \sum_{i=1}^n o_i^2 - (\sum_{i=1}^n o_i)^2}} \quad (7)$$

404 where  $n$  is sample size,  $m$  and  $o$  the individual sample points for model concentrations and  
 405 observations indexed with  $i$ .

406 (2) The normalized root mean square error (nRMSE):

$$407 \quad nRMSE = \frac{\sqrt{\sum_{i=1}^n \frac{1}{n} (m_i - o_i)^2}}{o_i^{max} - o_i^{min}} \quad (8)$$

408 (3) The mean fractional bias  $MFB$  was selected as a symmetric performance indicator that gives  
 409 equal weights to under- or over-estimated concentrations (minimum to maximum values range  
 410 from -200% to 200%) and is defined as:

$$411 \quad MFB = \frac{\frac{1}{n} \sum_{i=1}^n (m_i - o_i)}{\sum_{i=1}^n \left( \frac{m_i + o_i}{2} \right)} \quad (9)$$

412 (4) The mean absolute error was computed normalized ( $nMAE$ ) over the average of all the  
 413 actual values (observations here), which is a widely used simple measure of error:

$$414 \quad nMAE = \frac{\sum_{i=1}^n |m_i - o_i|}{\sum_{i=1}^n o_i} \quad (10)$$

## 415 **2.8 Region definitions**

416 All country and regional masks are publicly available. Regions used for statistical  
 417 processing purposes were adopted from the United Nations Statistics Division  
 418 (<https://unstats.un.org/home/>). Accordingly, Northern Europe includes UK, Norway, Denmark,  
 419 Sweden, Finland, Iceland, Estonia, Latvia and Lithuania. Southern Europe includes Spain, Italy,  
 420 Greece, Slovenia, Croatia, Bosnia, Serbia, Albania and North Macedonia. Western Europe is  
 421 defined by France, Belgium, Holland, Germany, Austria and Switzerland. Eastern Europe  
 422 includes Poland, Czechia, Slovakia, Hungary, Romania, Bulgaria, Moldova, Ukraine, Belarus  
 423 and Russia.

## 3 Results

### 3.1 Optimized (posterior) emissions from Bayesian inversion

We performed five inversions for BC over Europe for 1st January- 30th April 2020, each with different prior emissions from ECLIPSE version 5 and 6, EDGAR version HTAP\_v2.2, ACCMIP version 5 and PKU (Figure 3). Total prior emissions of BC in Europe from the five emission inventories for the period of the inversion ranged between 192-377 kt. We evaluated the assumptions made on the error covariance matrices for the prior emissions and the observations using the reduced  $\chi^2$  statistic (**B** and **R**, see section 2.3). When  $\chi^2$  is equal to unity, the posterior solution is within the limits of the prescribed uncertainties. The performance of the inversions with the five different prior inventories was evaluated using four statistical parameters (see section 2.7). The best performance of the inversions was achieved using ECLIPSEv6 (Table 2, and Figure 2) with the smallest *nRMSE* (0.073) value, the largest Pearson's  $R^2$  (0.60), the closest to zero *MFB* value (0.03) and the smallest *nMAE* (714). Therefore, all the results presented below correspond to this inversion.

Posterior emissions of BC were calculated to be 191 kt in the inversion domain (10°W–50°E, 25°N–75°N) or approximately 20% smaller than those in ECLIPSEv6 (239 kt) (Figure 4). Note that these numbers refer to the whole inversion domain (not only Europe) and the whole study period (January – April 2020). The largest posterior differences were found in the eastern part of the domain (20°E–50°E, 45°N–55°N), where emissions dropped from 35 to 29 kt. Emissions of BC in the western part of the inversion domain (10°W–20°E, 45°N–55°N) declined by almost 11% (from 45 to 40 kt), as those in the north part (5°W–35°E, 55°N–70°N) that covers Scandinavian countries (from 8.7 to 6.4 kt). Finally, in the southern part (10°W–50°E, 35°N–45°N) of the domain (Spain, Italy, Greece) the posterior emissions also decreased by 21% relative to the priors (from 61 to 48 kt). The largest country decreases were seen in France (from 14 to 8.2 kt), Italy (from 8.0 to 5.9 kt), UK (from 4.4 to 3.1 kt) and Germany (from 4.5 to 4.1 kt). Surprisingly, BC emissions were slightly enhanced in Poland (from 21 to 23 kt), and in Spain (from 6.3 to 7.5 kt). In general, inversion algorithms reduce the mismatches between modelled concentrations and observation by correcting emissions (section 2.3). If decreased posterior emissions are calculated during the whole inversion period (before and during the lockdowns), impact from the COVID-19 restrictions cannot be concluded and, most likely, the reduced emissions are due to errors in the prior emissions. In the next section (3.2), we demonstrate that this decrease was due to the COVID-19 lockdowns, by comparing

posterior emissions with emissions from previous years, as well as with the respective emissions before and during the lockdown measures.

### 3.2 Comparison with previous years

We also performed inversions for 2015–2019 for the same period as the 2020 lockdowns (January–April) using almost the same measurement stations and keeping the same settings. The difference in BC emissions during the lockdown in 2020 (14 March to 30 April) from the respective emissions during the same period in 2015–2019 (14 March to 30 April) are shown in [Figure 5](#), (a, emission anomaly) together with the gross domestic product (GDP) (Kummu et al., 2020) (b), and (c) temperature anomaly from ERA-5 (Copernicus Climate Change Service (C3S), 2020) for the same period as the emission anomaly. The difference in the 2020 emissions of BC during the lockdown from the respective emissions in the same period in each of the previous years (2015–2019) is illustrated in [Supplementary Figure 1](#). As an independent source of information, active fires from MODIS satellite product MCD14DL (Giglio et al., 2003) are also shown in [Figure 5a](#) and [Supplementary Figure 1](#).

Overall, BC emissions decreased by ~46 kt during the COVID-19 lockdown in the inversion domain (10°W–50°E, 25°N–70°N) as compared with the same period in the previous five years. We record a significant decrease in BC emissions in Central Europe (Northern Italy, Austria, Germany, Spain and some Balkan countries) ([Figure 5](#)). On average, emissions were 23 kt lower (63 to 40 kt) over Europe during the lockdown in 2020 than in the same period of 2015–2019 ([Figure 5](#)). The decrease has the same characteristics when compared to each of previous years since 2015 ([Supplementary Figure 1](#)) based on measurements of BC at similar regions as those used for the 2020 inversion. The countries that showed drastic reductions in BC emissions during the lockdowns were those that suffered from the pandemic dramatically, with many human losses, strict social distancing rules and consequently less transport. Specifically, comparing with the previous five years, the 2020 emissions of BC during the lockdowns dropped by 20% in Italy (3.4 to 2.7 kt), 40% in Germany (3.3 to 2.0 kt), 34% in Spain (4.7 to 3.1 kt), 22% in France (3.5 to 2.7 kt) and remained the same or were slightly enhanced in Poland (~9.2 kt), and Scandinavia (~1.2 kt). Overall, BC emissions during the 2020 lockdowns in Western Europe declined by 32% (8.8 to 6.0 kt), in Southern Europe by 42% (17 to 9.9 kt) and in Northern Europe by 29% (5.4 to 3.8 kt) as compared with the 2015–2019 period. BC emissions in Eastern Europe were slightly increased during the 2020 lockdown as compared to the same period in the last five years (28 to 31 kt). The hot-spot emissions in Eastern Europe coincide with the presence of active fires as revealed from MODIS ([Figure 5a](#)).

Note that these numbers correspond to BC emissions during the COVID-19 lockdown period only (mid-March – April 2020).

Some localised areas of increased BC emissions exist in Southern France, Belgium, Northern Germany and Eastern Europe (Figure 5), which are observed relative to almost every year since 2015 (Supplementary Figure 1). While some hotspots in France cannot be easily explained, increased emissions in Eastern European countries are likely due to increased residential combustion, as people had to stay home during the lockdown. The combination of the financial consequences of the COVID-19 lockdown with the relatively low GDP per capita in these countries and the fact that from mid-March to end of April 2020 surface temperatures in these countries were significantly lower than in previous years is suggestive of increased emissions due to residential combustion. This source is most important in Eastern Europe (Klimont et al., 2017). Although residential combustion can be performed for heating or cooking needs in poorer countries, it is also believed to provide a more natural type of warmth and a comfortable and relaxing environment. Hence, it should not be assumed as an emission source in countries with lower GDPs only, especially as people spent more time at home. Moreover, the prevailing average temperatures over Europe during the lockdown were below 15°C (Supplementary Figure 2), a temperature used as a basis temperature below which residential combustion increases (Quayle and Diaz, 1980; Stohl et al., 2013).

### 3.3 Uncertainty and validation of the posterior emissions

One of the basic problems when dealing with inverse modelling is that changing model, observational, or prior uncertainties can have drastic impacts on posterior emissions. We addressed this issue by finding the optimal parameters, in order to have a reduced  $\chi^2$  statistic around unity (see section 2.3). However, there are two other sources of uncertainty that, although not linked with the inversion algorithm, could affect posterior emissions drastically. The first is the use of different prior emissions; to estimate this type of uncertainty, we performed five inversions for January to April 2020 using each of the prior emission datasets (ECLIPSEv6 and v5, EDGAR-HTAPv2.2, ACCMIPv5 and PKU). The uncertainty was calculated as the gridded standard deviation of the posterior emissions resulting from the five inversions. The second type of uncertainty concerns measurement of BC, which is defined as a function of five properties (Petzold et al., 2013). However, as of today, no single instrument exists that could measure all of these properties at the same time. Hence, BC is not a single particle constituent, rather an operational definition depending on the measurement technique (Petzold et al., 2013). Here we use light absorption coefficients (Petzold et al., 2013) converted

to equivalent BC (eBC) using the mass absorption cross section (MAC). The MAC is instrument specific and wavelength dependent. The site-specific MAC values used to convert the filter-based light absorption to eBC can be seen in [Table 1](#). It has been reported that MAC values vary from 2 – 3 m<sup>2</sup> g<sup>-1</sup> up to 20 m<sup>2</sup> g<sup>-1</sup> (Bond and Bergstrom, 2006). To estimate the uncertainty of the posterior fluxes associated with the variable MAC, we performed a sensitivity study for January to April 2020 using MAC values of 5, 10 and 20 m<sup>2</sup> g<sup>-1</sup> in all stations, as well as variable MAC values for each station ([Table 1](#)). Since these values are lognormally distributed, the uncertainty is calculated as the geometric standard deviation. The impact of other sources of uncertainty, such as those referring to scavenging coefficients, particle size and density that are used in the model have been studied before and [are](#) significantly smaller than the sources of uncertainty that are considered here (Evangelidou et al., 2018; Grythe et al., 2017).

The posterior emissions are less sensitive to the use of different MACs than the use of different prior inventories ([Figure 6](#)). The relative uncertainty due to different use of MAC values was up to 20–30% in most of Europe and increases dramatically (~100%) far from the observations. The emission uncertainty of BC from the use of different priors was estimated to be up to 40% in Europe and shows very similar characteristics (same hot-spot regions and larger values where measurements lack). Overall, the combined uncertainty of BC emissions was ~60% in Europe.

Validation of top-down emissions obtained by inversion algorithms can be proper only if measurements that were not included in the inversion are to be used (independent observations). For this reason, we left out of the inversion observations from two stations (DE0054K and DE0066R, [Table 1](#)). Due to the higher measurement station density in Central Europe, we randomly selected two German stations, rather than from a country that is adjacent to regions that lack observations.

The prior, optimized and measured concentrations are shown in [Figure 7](#), together with MERRA-2 surface BC concentrations at the same stations. The average footprint emission sensitivities are also given for the period of the lockdown. At station DE0054K, prior emissions represent observations very well until the beginning of the lockdown and then fail ([Figure 7](#)). On the other hand, the posterior emissions represent the variant concentrations during the lockdown effectively and also manage to capture some concentration peaks, which is reflected by lower *nRMSE*. Backward modelling showed that the enhanced concentrations originate from Northern Germany and the Netherlands, where posterior emissions were increased compared with the prior ones ([Figure 4](#)). A similar pattern was seen at station DE0066K,



although this station showed concentrations up to  $4 \text{ mg m}^{-3}$  (Figure 7). Again, the optimized emissions managed to represent the peaks at the end of January 2020 and at the beginning of the lockdown, which is again reflected by a half  $nRMSE$  values and  $MFB$  close to zero as compared to the priors. The larger concentrations during the lockdown result from increased emissions over Eastern Germany, Poland and the Netherlands, as well as in oil industries in the North Sea (Figure 4b). In all these regions the footprint emissions sensitivities corresponding to the two independent stations were the highest.

## 4 Discussion

The improved air quality that Europe during the lockdown was also evident from the assimilated MERRA-2 satellite-based BC data. The latter are plotted in Supplementary Figure 3 (left axis) for 2015–2020, together with the posterior emissions calculated in the present study (right axis). For instance, weekly average concentrations of BC over Europe in MERRA-2 (Supplementary Figure 3, bottom). Many of the ACTRIS stations reported increased light absorption in the beginning of the lockdown (e.g., Figure 7); MERRA-2 data show the same patterns in France, Italy, UK and in Spain, and in all of Europe, in general. This can be explained by residential combustion considering that the surface temperature during the lockdown was lower than in previous years (Figure 5). The latter was confirmed by MERRA-2 reanalysis Ångström Exponent (AE) parameter at 470–870 nm, which shows higher values over Central and Eastern Europe during the lockdown in 2020 than in the same period of the previous years (Figure 8a,b). Larger AE values confirm the presence of wood burning aerosols (Eck et al., 1999). The fact that during the COVID-19 lockdown, residential combustion was a significant aerosol source in Europe, as compared to the previous years, was also confirmed by real-time observations of absorption AE from the AERONET data in five selected stations over Europe (Figure 8c). Measured absorption AE was higher during mid-March to April 2020 than in the same period of the last five years.

Emissions of BC calculated with Bayesian inversion for the lockdown period dropped substantially in most of the countries that suffered from further spread of the virus and, accordingly, from strict lockdown measures, as compared to the respective emissions before the lockdowns (Supplementary Figure 3). Specifically, the decrease in France was as high as 42%, 8% in Italy, 21% in Germany, 11% in Spain and 13% in the UK. Emissions also declined in Scandinavia by 5%, although Sweden did not enforce a lockdown. Overall, a reduction in BC emissions of about 11% can be concluded for Europe as a whole due to the lockdown.



Stronger decreases in Eastern Europe were likely partly compensated by increased residential combustion in resulting from the prevailing low temperatures.

We report a 23 kt decrease in BC emissions in Europe during the lockdown that partially resulted from the COVID-19 outbreak, as compared to the same period in all previous years since 2015, based on particle light absorption measurements. We highlight these changes in BC emissions partially as a result of COVID-19 restrictions by plotting the temporal variability of the BC emissions in the 5 previous years (2015 – 2019) for France, Italy, Germany, Spain, Scandinavia and Europe (Figure 9). We record decreases in BC emissions in France, Italy, Germany and Scandinavia in mid-March to April 2020, opposite to what was estimated for all years between 2015 and 2019, which is obviously due to COVID-19. The UK and Spain showed a similar decrease in mid-March to April 2020 emissions as in all previous years (2015–2019). However, the estimated posterior BC emissions during the 2020 lockdowns were significantly lower than those of the same period in any of the previous years. Overall, emissions declined by 20% in Italy, 40% in Germany, 34% in Spain, 22% in France and remained the same and slightly enhanced in Scandinavia or Poland as compared to those of the last five years.

## 5 Conclusions

The impact of the COVID-19 lockdowns over Europe on the BC emissions, in response to the pandemic was assessed in the present manuscript. Particle light absorption measurements from 17 ACTRIS stations all around Europe were rapidly gathered and cleaned to produce a high-quality product. The latter was used in a well-established Bayesian inversion framework and BC emissions were optimised over Europe to better capture the observations. However, one should be careful not to overinterpret the emission changes at regional scales, due to the poor station data density used and the high resolution timesteps of the inversions (weekly posterior emissions). We calculate that the optimised (posterior) BC emissions declined from 63 to 40 kt (23%) during the lockdowns over Europe, as compared to the same period in the previous five years (2015–2019). The largest reductions were calculated for countries that suffered from the pandemic dramatically, such as Italy (3.4 to 2.7 kt), Germany (3.3 to 2.0 kt), Spain (4.7 to 3.1 kt), France (3.5 to 2.7 kt). BC emissions in Western Europe during the 2020 lockdowns were decreased from 8.8 to 6.0 kt (32%), in Southern Europe from 17 to 9.9 kt (42%) and in Northern Europe from 5.4 to 3.8 kt (29%) as compared to the same period in the last five years. BC emissions were slightly enhanced in Eastern Europe (from 28 to 31 kt) and remained unchanged in Scandinavia during the lockdown, due to increased residential

Deleted:

combustion, as people had to stay home and temperatures at that time were the lowest of the last five years. The presence of wood burning aerosols during the lockdowns was confirmed by large MERRA-2 AE, as well as from absorption AE measurements from AERONET that were higher in the lockdowns than in the same period of the last five years. The impact of the European lockdowns on BC emissions was also confirmed by a 11% decrease of the posterior emissions over Europe during the lockdowns, as compared to the period before, opposite to what was calculated in the previous years, which is obviously due to COVID-19. This decrease was more pronounced in France (42%), Italy (8%), Germany (21%), Spain (11%), UK (13%) and in Scandinavian countries (5%). The full impact of the disastrous pandemic will likely take years to assess. Nevertheless, with COVID-19 cases once again increasing in many countries, the information presented here are essential to understand the full health and climate impacts of lockdown measures.

*Data availability.* All measurement data and model outputs used for the present publication are open and can be downloaded from <https://doi.org/10.21336/gen.b5vj-sn33> or upon request to the corresponding author. All prior emission datasets are also available for download. ECLIPSE emissions can be obtained from [http://www.iiasa.ac.at/web/home/research/researchPrograms/air/Global\\_emissions.html](http://www.iiasa.ac.at/web/home/research/researchPrograms/air/Global_emissions.html), EDGAR version HTAP\_V2.2 from <http://edgar.jrc.ec.europa.eu/methodology.php#>, ACCMIP version 5 from [http://accent.aero.jussieu.fr/ACCMIP\\_metadata.php](http://accent.aero.jussieu.fr/ACCMIP_metadata.php)) and PKU from <http://inventory.pku.edu.cn>. FLEXPART is open in public and can be downloaded from <https://www.flexpart.eu>, so as FLEXINVERT+ from <https://flexinvert.nilu.no>. MERRA-2 re-analysis data can be obtained from <https://disc.gsfc.nasa.gov>, so as AERONET measurements from <https://aeronet.gsfc.nasa.gov>.

*Author contributions.* N.E. led the work and wrote the paper. S.E. and A.S. commented on the inversion framework. C.L.M., P.L., L.A.A., J.B., B.T.B., M.F., H.F., M.P., J.Y.D., N.P., J.P.P., K.S., M.S., K.E., S.V. and A.W. provided the ACTRIS measurements. S.M.P. gave recommendations on the MAC values used and wrote parts of the paper. All authors gave input in the writing process.

*Competing interests.* The authors declare no competing interests.

*Acknowledgements.* This study was supported by the Research Council of Norway (project ID: 275407, COMBAT – Quantification of Global Ammonia Sources constrained by a Bayesian Inversion Technique). N.E. and S.E. received funding from Arctic Monitoring & Assessment

Programme (AMAP). J.B. was supported by the Academy of Finland project Novel Assessment of Black Carbon in the Eurasian Arctic: From Historical Concentrations and Sources to Future Climate Impacts (NABCEA, project number 296302), and the Academy of Finland Centre of Excellence program (project number 307331) and COST Action CA16109 Chemical On-Line cOmpoSition and Source Apportionment of fine aerosoL, COLOSSAL. We thank B. Mougenot, O. Hagolle, A. Chaikovsky, P. Goloub, J. Lorente, R. Becker and M. Wiegner for their effort in establishing and maintaining the AERONET sites Ben Salem (Tunisia), Minsk (Belarus), Montsec (Spain), MetObs Lindenberg (Germany) and Munich University (Germany). The research leading to the ACTRIS measurements has received funding from the European Union's Horizon 2020 research and innovation programme under grant agreement No 654109 and the Cloudnet project (European Union contract EVK2-2000-00611).

## References

- Ackerman, a. S.: Reduction of Tropical Cloudiness by Soot, *Science* (80-. ), 288(5468), 1042–1047, doi:10.1126/science.288.5468.1042, 2000.
- Adams, M. D.: Air pollution in Ontario, Canada during the COVID-19 State of Emergency, *Sci. Total Environ.*, 742, 140516, doi:10.1016/j.scitotenv.2020.140516, 2020.
- Bauwens, M., Compernelle, S., Stavrou, T., Müller, J. F., van Gent, J., Eskes, H., Levelt, P. F., van der A, R., Veefkind, J. P., Vlietinck, J., Yu, H. and Zehner, C.: Impact of Coronavirus Outbreak on NO<sub>2</sub> Pollution Assessed Using TROPOMI and OMI Observations, *Geophys. Res. Lett.*, 47(11), 1–9, doi:10.1029/2020GL087978, 2020.
- Bergamaschi, P., Krol, M., Meirink, J. F., Dentener, F., Segers, A., Van Aardenne, J., Monni, S., Vermeulen, A. T., Schmidt, M., Ramonet, M., Yver, C., Meinhardt, F., Nisbet, E. G., Fisher, R. E., O'Doherty, S. and Dlugokencky, E. J.: Inverse modeling of European CH<sub>4</sub> emissions 2001–2006, *J. Geophys. Res. Atmos.*, 115(22), 1–18, doi:10.1029/2010JD014180, 2010.
- Berman, J. D. and Ebisu, K.: Changes in U.S. air pollution during the COVID-19 pandemic, *Sci. Total Environ.*, 739, 139864, doi:10.1016/j.scitotenv.2020.139864, 2020.
- Bond, T. C. and Bergstrom, R. W.: Light Absorption by Carbonaceous Particles: An Investigative Review, *Aerosol Sci. Technol.*, 40(1), 27–67, doi:10.1080/02786820500421521, 2006.
- Bond, T. C., Doherty, S. J., Fahey, D. W., Forster, P. M., Berntsen, T., Deangelo, B. J., Flanner, M. G., Ghan, S., Kärcher, B., Koch, D., Kinne, S., Kondo, Y., Quinn, P. K., Sarofim, M. C., Schultz, M. G., Schulz, M., Venkataraman, C., Zhang, H., Zhang, S., Bellouin, N., Guttikunda, S. K., Hopke, P. K., Jacobson, M. Z., Kaiser, J. W., Klimont, Z., Lohmann, U., Schwarz, J. P., Shindell, D., Storelvmo, T., Warren, S. G. and Zender, C. S.: Bounding the role of black carbon in the climate system: A scientific assessment, *J. Geophys. Res. Atmos.*, 118(11), 5380–5552, doi:10.1002/jgrd.50171, 2013.
- Buchard, V., Randles, C. A., da Silva, A. M., Darmenov, A., Colarco, P. R., Govindaraju, R., Ferrare, R., Hair, J., Beyersdorf, A. J., Ziemba, L. D. and Yu, H.: The MERRA-2 aerosol reanalysis, 1980 onward. Part II: Evaluation and case studies, *J. Clim.*, 30(17), 6851–6872, doi:10.1175/JCLI-D-16-0613.1, 2017.

920 Cassiani, M., Stohl, A. and Brioude, J.: Lagrangian Stochastic Modelling of Dispersion in the  
 921 Convective Boundary Layer with Skewed Turbulence Conditions and a Vertical Density  
 922 Gradient: Formulation and Implementation in the FLEXPART Model, *Boundary-Layer*  
 923 *Meteorol.*, 154(3), 367–390, doi:10.1007/s10546-014-9976-5, 2014.

924 Clarke, A. D. and Noone, K. J.: Soot in the arctic snowpack: a cause for perturbations in  
 925 radiative transfer, *Atmos. Environ.*, 41(SUPPL.), 64–72, doi:10.1016/0004-6981(85)90113-1,  
 926 1985.

927 Conticini, E., Frediani, B. and Caro, D.: Can atmospheric pollution be considered a co-factor  
 928 in extremely high level of SARS-CoV-2 lethality in Northern Italy?, *Environ. Pollut.*, 261,  
 929 114465, doi:10.1016/j.envpol.2020.114465, 2020.

930 Copernicus Climate Change Service (C3S): C3S ERA5-Land reanalysis . Copernicus Climate  
 931 Change Service, [online] Available from: <https://cds.climate.copernicus.eu/cdsapp#!/home>  
 932 (Accessed 31 August 2020), 2020.

933 Dantas, G., Siciliano, B., França, B. B., da Silva, C. M. and Arbilla, G.: The impact of  
 934 COVID-19 partial lockdown on the air quality of the city of Rio de Janeiro, Brazil, *Sci. Total*  
 935 *Environ.*, 729, doi:10.1016/j.scitotenv.2020.139085, 2020.

936 Diffenbaugh, N. S., Field, C. B., Appel, E. A., Azevedo, I. L., Baldocchi, D. D., Burke, M.,  
 937 Burney, J. A., Ciais, P., Davis, S. J., Fiore, A. M., Fletcher, S. M., Hertel, T. W., Horton, D.  
 938 E., Hsiang, S. M., Jackson, R. B., Jin, X., Levi, M., Lobell, D. B., McKinley, G. A., Moore, F.  
 939 C., Montgomery, A., Nadeau, K. C., Pataki, D. E., Randerson, J. T., Reichstein, M., Schnell,  
 940 J. L., Seneviratne, S. I., Singh, D., Steiner, A. L. and Wong-Parodi, G.: The COVID-19  
 941 lockdowns: a window into the Earth System, *Nat. Rev. Earth Environ.*, 1–12,  
 942 doi:10.1038/s43017-020-0079-1, 2020.

943 Dutheil, F., Baker, J. S. and Navel, V.: COVID-19 as a factor influencing air pollution?,  
 944 *Environ. Pollut.*, 263, 2019–2021, doi:10.1016/j.envpol.2020.114466, 2020.

945 Eck, T. F., Holben, B. N., Reid, J. S., Smirnov, A., Neill, N. T. O., Slutsker, I. and Kinne, S.:  
 946 Wavelength dependence of the optical depth of biomass burning, urban, and desert dust  
 947 aerosols, *J. Geophys. Res.*, 104(D24), 31333–31349, 1999.

948 Evangeliou, N., Thompson, R. L., Eckhardt, S. and Stohl, A.: Top-down estimates of black  
 949 carbon emissions at high latitudes using an atmospheric transport model and a Bayesian  
 950 inversion framework, *Atmos. Chem. Phys.*, 18(20), doi:10.5194/acp-18-15307-2018, 2018.

951 Forster, C., Stohl, A. and Seibert, P.: Parameterization of convective transport in a Lagrangian  
 952 particle dispersion model and its evaluation, *J. Appl. Meteorol. Climatol.*, 46(4), 403–422,  
 953 doi:10.1175/JAM2470.1, 2007.

954 Giglio, L., Descloitres, J., Justice, C. O. and Kaufman, Y. J.: An enhanced contextual fire  
 955 detection algorithm for MODIS, *Remote Sens. Environ.*, 87(2–3), 273–282,  
 956 doi:10.1016/S0034-4257(03)00184-6, 2003.

957 Giglio, L., Randerson, J. T. and van der Werf, G. R.: Analysis of daily, monthly, and annual  
 958 burned area using the fourth-generation global fire emissions database (GFED4), *J. Geophys.*  
 959 *Res. Biogeosciences*, 118, 317–328, doi:10.1002/jgrg.20042, 2013, 2013.

960 Grythe, H., Kristiansen, N. I., Groot Zwaaftink, C. D., Eckhardt, S., Ström, J., Tunved, P.,  
 961 Krejci, R. and Stohl, A.: A new aerosol wet removal scheme for the Lagrangian particle  
 962 model FLEXPARTv10, *Geosci. Model Dev.*, 10, 1447–1466, doi:10.5194/gmd-10-1447-  
 963 2017, 2017.

964 Gueymard, C. A. and Yang, D.: Worldwide validation of CAMS and MERRA-2 reanalysis  
 965 aerosol optical depth products using 15 years of AERONET observations, *Atmos. Environ.*,  
 966 225(November 2019), 117216, doi:10.1016/j.atmosenv.2019.117216, 2020.

967 He, G., Pan, Y. and Tanaka, T.: The short-term impacts of COVID-19 lockdown on urban air  
 968 pollution in China, *Nat. Sustain.*, doi:10.1038/s41893-020-0581-y, 2020.

969 Hegg, D. A., Warren, S. G., Grenfell, T. C., Doherty, S. J., Larson, T. V. and Clarke, A. D.:

Source attribution of black carbon in arctic snow, *Environ. Sci. Technol.*, 43(11), 4016–4021, doi:10.1021/es803623f, 2009.

Holben, B. N., Eck, T. F., Slutsker, I., Tanré, D., Buis, J. P., Setzer, A., Vermote, E., Reagan, J. A., Kaufman, Y. J., Nakajima, T., Lavenu, F., Jankowiak, I. and Smirnov, A.: AERONET—A Federated Instrument Network and Data Archive for Aerosol Characterization, *Remote Sens. Environ.*, 66(1), 1–16, doi:10.1016/S0034-4257(98)00031-5, 1998.

Huang, C., Wang, Y., Li, X., Ren, L., Zhao, J., Hu, Y., Zhang, L., Fan, G., Xu, J., Gu, X., Cheng, Z., Yu, T., Xia, J., Wei, Y., Wu, W., Xie, X., Yin, W., Li, H., Liu, M., Xiao, Y., Gao, H., Guo, L., Xie, J., Wang, G., Jiang, R., Gao, Z., Jin, Q., Wang, J. and Cao, B.: Clinical features of patients infected with 2019 novel coronavirus in Wuhan, China, *Lancet*, 395(10223), 497–506, doi:10.1016/S0140-6736(20)30183-5, 2020.

Janssens-Maenhout, G., Crippa, M., Guizzardi, D., Dentener, F., Muntean, M., Pouliot, G., Keating, T., Zhang, Q., Kurokawa, J., Wankmüller, R., Denier Van Der Gon, H., Kuenen, J. J. P., Klimont, Z., Frost, G., Darras, S., Koffi, B. and Li, M.: HTAP-v2.2: A mosaic of regional and global emission grid maps for 2008 and 2010 to study hemispheric transport of air pollution, *Atmos. Chem. Phys.*, 15(19), 11411–11432, doi:10.5194/acp-15-11411-2015, 2015.

Jinhuan, Q. and Liquan, Y.: Variation characteristics of atmospheric aerosol optical depths and visibility in North China during 1980 } 1994, *Atmos. Environ.*, 34, 603–609, 2000.

John Hopkins University of Medicine: Coronavirus resource center, [online] Available from: <https://coronavirus.jhu.edu/map.html> (Accessed 10 August 2020), 2020.

Kaminski, T., Rayner, P. J., Heimann, M. and Enting, I. G.: On aggregation errors in atmospheric transport inversions, *J. Geophys. Res. Atmos.*, 106(D5), 4703–4715, doi:10.1029/2000JD900581, 2001.

Kerimray, A., Baimatova, N., Ibragimova, O. P., Bukenov, B., Kenessov, B., Plotitsyn, P. and Karaca, F.: Assessing air quality changes in large cities during COVID-19 lockdowns: The impacts of traffic-free urban conditions in Almaty, Kazakhstan, *Sci. Total Environ.*, 730, 139179, doi:10.1016/j.scitotenv.2020.139179, 2020.

Klimont, Z., Kupiainen, K., Heyes, C., Purohit, P., Cofala, J., Rafaj, P., Borken-Kleefeld, J. and Schöpp, W.: Global anthropogenic emissions of particulate matter including black carbon, *Atmos. Chem. Phys.*, 17, 8681–8723, doi:10.5194/acp-17-8681-2017, 2017.

Kummu, M., Taka, M. and Guillaume, J. H. A.: Data from: Gridded global datasets for Gross Domestic Product and Human Development Index over 1990–2015, v2, Dryad, Dataset, doi:<https://doi.org/10.5061/dryad.dk1j0>, 2020.

Lack, D. A. and Langridge, J. M.: On the attribution of black and brown carbon light absorption using the Ångström exponent, *Atmos. Chem. Phys.*, 13(20), 10535–10543, doi:10.5194/acp-13-10535-2013, 2013.

Laj, P., Bigi, A., Rose, C., Andrews, E., Lund Myhre, C., Collaud Coen, M., Wiedensohler, A., Schultz, M., Ogren, J., Fiebig, M., Gliß, J., Mortier, A., Pandolfi, M., Petäjä, T., Kim, S.-W., Aas, W., Putaud, J.-P., Mayol-Bracero, O., Keywood, M., Labrador, L., Aalto, P., Ahlberg, E., Alados Arboledas, L., Alastuey, A., Andrade, M., Artíñano, B., Ausmeel, S., Arsov, T., Asmi, E., Backman, J., Baltensperger, U., Bastian, S., Bath, O., Beukes, J. P., Brem, B., Bukowiecki, N., Conil, S., Couret, C., Day, D., Dayantolis, W., Degorska, A., Dos Santos, S. M., Eleftheriadis, K., Fetfatzis, P., Favez, O., Flentje, H., Gini, M., Gregorič, A., Gysel-Beer, M., Hallar, G., Hand, J., Hoffer, A., Hueglin, C., Hooda, R., Hyvärinen, A., Kalapov, I., Kalivitis, N., Kasper-Giebl, A., Kim, J. E., Kouvarakis, G., Kranjc, I., Krejci, R., Kulmala, M., Labuschagne, C., Lee, H.-J., Lihavainen, H., Lin, N.-H., Löschau, G., Luoma, K., Marinoni, A., Meinhardt, F., Merkel, M., Metzger, J.-M., Mihalopoulos, N., Nguyen, N. A., Ondracek, J., Pérez, N., Perrone, M. R., Petit, J.-E., Picard, D., Pichon, J.-M., Pont, V., Prats, N., Prenni, A., Reisen, F., Romano, S., Sellegri, K., Sharma, S., Schauer, G., Sheridan,

1020 P., Sherman, J. P., Schütze, M., Schwerin, A., Sohmer, R., Sorribas, M., Steinbacher, M.,  
 1021 Sun, J., Titos, G., Tokzko, B., et al.: A global analysis of climate-relevant aerosol properties  
 1022 retrieved from the network of GAW near-surface observatories, *Atmos. Meas. Tech. Discuss.*,  
 1023 1–70, doi:10.5194/amt-2019-499, 2020.  
 1024 Lamarque, J. F., Shindell, D. T., Josse, B., Young, P. J., Cionni, I., Eyring, V., Bergmann, D.,  
 1025 Cameron-Smith, P., Collins, W. J., Doherty, R., Dalsoren, S., Faluvegi, G., Folberth, G.,  
 1026 Ghan, S. J., Horowitz, L. W., Lee, Y. H., MacKenzie, I. A., Nagashima, T., Naik, V.,  
 1027 Plummer, D., Righi, M., Rumbold, S. T., Schulz, M., Skeie, R. B., Stevenson, D. S., Strode,  
 1028 S., Sudo, K., Szopa, S., Voulgarakis, A. and Zeng, G.: The atmospheric chemistry and climate  
 1029 model intercomparison Project (ACCMIP): Overview and description of models, simulations  
 1030 and climate diagnostics, *Geosci. Model Dev.*, 6(1), 179–206, doi:10.5194/gmd-6-179-2013,  
 1031 2013.  
 1032 Le, T., Wang, Y., Liu, L., Yang, J., Yung, Y. L., Li, G. and Seinfeld, J. H.: Unexpected air  
 1033 pollution with marked emission reductions during the COVID-19 outbreak in China, *Science*  
 1034 (80-. ), (2), eabb7431, doi:10.1126/science.abb7431, 2020.  
 1035 Lian, X., Huang, J., Huang, R., Liu, C., Wang, L. and Zhang, T.: Impact of city lockdown on  
 1036 the air quality of COVID-19-hit of Wuhan city, *Sci. Total Environ.*, 742, 140556,  
 1037 doi:10.1016/j.scitotenv.2020.140556, 2020.  
 1038 Long, C. M., Nascarella, M. A. and Valberg, P. A.: Carbon black vs. black carbon and other  
 1039 airborne materials containing elemental carbon: Physical and chemical distinctions, *Environ.*  
 1040 *Pollut.*, 181, 271–286, doi:10.1016/j.envpol.2013.06.009, 2013.  
 1041 Myhre, G., Samset, B. H., Schulz, M., Balkanski, Y., Bauer, S., Berntsen, T. K., Bian, H.,  
 1042 Bellouin, N., Chin, M., Diehl, T., Easter, R. C., Feichter, J., Ghan, S. J., Hauglustaine, D.,  
 1043 Iversen, T., Kinne, S., Kirkevåg, A., Lamarque, J. F., Lin, G., Liu, X., Lund, M. T., Luo, G.,  
 1044 Ma, X., Van Noije, T., Penner, J. E., Rasch, P. J., Ruiz, A., Seland, Skeie, R. B., Stier, P.,  
 1045 Takemura, T., Tsigaridis, K., Wang, P., Wang, Z., Xu, L., Yu, H., Yu, F., Yoon, J. H., Zhang,  
 1046 K., Zhang, H. and Zhou, C.: Radiative forcing of the direct aerosol effect from AeroCom  
 1047 Phase II simulations, *Atmos. Chem. Phys.*, 13(4), 1853–1877, doi:10.5194/acp-13-1853-2013,  
 1048 2013.  
 1049 Otmani, A., Benchrif, A., Tahri, M., Bounakhla, M., Chakir, E. M., El Bouch, M. and  
 1050 Krombi, M.: Impact of Covid-19 lockdown on PM10, SO2 and NO2 concentrations in Salé  
 1051 City (Morocco), *Sci. Total Environ.*, 735(2), 139541, doi:10.1016/j.scitotenv.2020.139541,  
 1052 2020.  
 1053 Petzold, A., Ogren, J. A., Fiebig, M., Laj, P., Li, S. M., Baltensperger, U., Holzer-Popp, T.,  
 1054 Kinne, S., Pappalardo, G., Sugimoto, N., Wehrli, C., Wiedensohler, A. and Zhang, X. Y.:  
 1055 Recommendations for reporting black carbon measurements, *Atmos. Chem. Phys.*, 13(16),  
 1056 8365–8379, doi:10.5194/acp-13-8365-2013, 2013.  
 1057 Pisso, I., Sollum, E., Grythe, H., Kristiansen, N., Cassiani, M., Eckhardt, S., Arnold, D.,  
 1058 Morton, D., Thompson, R. L., Groot Zwaaftink, C. D., Evangeliou, N., Sodemann, H.,  
 1059 Haimberger, L., Henne, S., Brunner, D., Burkhardt, J. F., Fouilloux, A., Brioude, J., Philipp,  
 1060 A., Seibert, P. and Stohl, A.: The Lagrangian particle dispersion model FLEXPART version  
 1061 10.4, *Geosci. Model Dev.*, 12, 4955–4997, doi:10.5194/gmd-12-4955-2019, 2019.  
 1062 Qin, W., Zhang, Y., Chen, J., Yu, Q., Cheng, S., Li, W., Liu, X. and Tian, H.: Variation,  
 1063 sources and historical trend of black carbon in Beijing, China based on ground observation  
 1064 and MERRA-2 reanalysis data, *Environ. Pollut.*, 245(2), 853–863,  
 1065 doi:10.1016/j.envpol.2018.11.063, 2019.  
 1066 Quayle, R. G. and Diaz, H. F.: Heating degree day data applied to residential heating energy  
 1067 consumption, *J. Appl. Meteorol.*, 19, 241–246, 1980.  
 1068 Le Quéré, C., Jackson, R. B., Jones, M. W., Smith, A. J. P., Abernethy, S., Andrew, R. M.,  
 1069 De-Gol, A. J., Willis, D. R., Shan, Y., Canadell, J. G., Friedlingstein, P., Creutzig, F. and

Peters, G. P.: Temporary reduction in daily global CO<sub>2</sub> emissions during the COVID-19 forced confinement, *Nat. Clim. Chang.*, 10(7), 647–653, doi:10.1038/s41558-020-0797-x, 2020.

Randles, C. A., da Silva, A. M., Buchard, V., Colarco, P. R., Darmenov, A., Govindaraju, R., Smirnov, A., Holben, B., Ferrare, R., Hair, J., Shinzuka, Y. and Flynn, C. J.: The MERRA-2 aerosol reanalysis, 1980 onward. Part I: System description and data assimilation evaluation, *J. Clim.*, 30(17), 6823–6850, doi:10.1175/JCLI-D-16-0609.1, 2017.

Sicard, P., De Marco, A., Agathokleous, E., Feng, Z., Xu, X., Paoletti, E., Rodriguez, J. J. D. and Calatayud, V.: Amplified ozone pollution in cities during the COVID-19 lockdown, *Sci. Total Environ.*, 735, doi:10.1016/j.scitotenv.2020.139542, 2020.

Sohrabi, C., Alsafi, Z., O'Neill, N., Khan, M., Kerwan, A., Al-Jabir, A., Iosifidis, C. and Agha, R.: World Health Organization declares global emergency: A review of the 2019 novel coronavirus (COVID-19), *Int. J. Surg.*, 76(February), 71–76, doi:10.1016/j.ijsu.2020.02.034, 2020.

Stohl, A., Forster, C., Frank, A., Seibert, P. and Wotawa, G.: Technical note: The Lagrangian particle dispersion model FLEXPART version 6.2, *Atmos. Chem. Phys.*, 5(9), 2461–2474, doi:10.5194/acp-5-2461-2005, 2005.

Stohl, A., Kim, J., Li, S., O'Doherty, S., Salameh, P. K., Saito, T., Vollmer, M. K., Wan, D., Yao, B., Yokouchi, Y. and Zhou, L. X.: Hydrochlorofluorocarbon and hydrofluorocarbon emissions in East Asia determined by inverse modeling, *Atmos. Chem. Phys. Discuss.*, 10(2), 2089–2129, doi:10.5194/acpd-10-2089-2010, 2010.

Stohl, A., Klimont, Z., Eckhardt, S., Kupiainen, K., Shevchenko, V. P., Kopeikin, V. M. and Novigatsky, A. N.: Black carbon in the Arctic: The underestimated role of gas flaring and residential combustion emissions, *Atmos. Chem. Phys.*, 13(17), 8833–8855, doi:10.5194/acp-13-8833-2013, 2013.

Sun, E., Xu, X., Che, H., Tang, Z., Gui, K., An, L., Lu, C. and Shi, G.: Variation in MERRA-2 aerosol optical depth and absorption aerosol optical depth over China from 1980 to 2017, *J. Atmos. Solar-Terrestrial Phys.*, 186(January), 8–19, doi:10.1016/j.jastp.2019.01.019, 2019.

Tarantola, A.: *Inverse Problem Theory and Methods for Model Parameter Estimation*, Society for Industrial and Applied Mathematics, Philadelphia, Pa., 2005.

Thacker, W. C.: Data assimilation with inequality constraints, *Ocean Model.*, 16(3–4), 264–276, doi:10.1016/j.ocemod.2006.11.001, 2007.

Thompson, R. L. and Stohl, A.: FLEXINVERT: An atmospheric Bayesian inversion framework for determining surface fluxes of trace species using an optimized grid, *Geosci. Model Dev.*, 7(5), 2223–2242, doi:10.5194/gmd-7-2223-2014, 2014.

Thompson, R. L., Stohl, A., Zhou, L. X., Dlugokencky, E., Fukuyama, Y., Tohjima, Y., Kim, S. Y., Lee, H., Nisbet, E. G., Fisher, R. E., Lowry, D., Weiss, R. F., Prinn, R. G., O'Doherty, S., Young, D. and White, J. W. C.: Methane emissions in East Asia for 2000–2011 estimated using an atmospheric Bayesian inversion, *J. Geophys. Res. Atmos.*, 120(9), 4352–4369, doi:10.1002/2014JD022394, 2015.

Wang, P., Wang, H., Wang, Y. Q., Zhang, X. Y., Gong, S. L., Xue, M., Zhou, C. H., Liu, H. L., An, X. Q., Niu, T. and Cheng, Y. L.: Inverse modeling of black carbon emissions over China using ensemble data assimilation, *Atmos. Chem. Phys.*, 16(2), 989–1002, doi:10.5194/acp-16-989-2016, 2016.

Wang, R., Tao, S., Balkanski, Y., Ciais, P., Boucher, O., Liu, J., Piao, S., Shen, H., Vuolo, M. R., Valari, M., Chen, H., Chen, Y., Cozic, A., Huang, Y., Li, B., Li, W., Shen, G., Wang, B. and Zhang, Y.: Exposure to ambient black carbon derived from a unique inventory and high-resolution model, *Proc. Natl. Acad. Sci. U. S. A.*, 111(7), 2459–63, doi:10.1073/pnas.1318763111, 2014a.

Wang, R., Tao, S., Shen, H., Huang, Y., Chen, H., Balkanski, Y., Boucher, O., Ciais, P.,

Shen, G., Li, W., Zhang, Y., Chen, Y., Lin, N., Su, S., Li, B., Liu, J. and Liu, W.: Trend in global black carbon emissions from 1960 to 2007, *Environ. Sci. Technol.*, 48(12), 6780–6787, doi:10.1021/es5021422, 2014b.

WHO: Report of the WHO-China Joint Mission on Coronavirus Disease 2019 (COVID-19), WHO-China Jt. Mission Coronavirus Dis. 2019, 2019(February), 16–24 [online] Available from: <https://www.who.int/docs/default-source/coronaviruse/who-china-joint-mission-on-covid-19-final-report.pdf>, 2020.

Zanatta, M., Gysel, M., Bukowiecki, N., Müller, T., Weingartner, E., Areskoug, H., Fiebig, M., Yttri, K. E., Mihalopoulos, N., Kouvarakis, G., Beddows, D., Harrison, R. M., Cavalli, F., Putaud, J. P., Spindler, G., Wiedensohler, A., Alastuey, A., Pandolfi, M., Sellegri, K., Swietlicki, E., Jaffrezo, J. L., Baltensperger, U. and Laj, P.: A European aerosol phenomenology-5: Climatology of black carbon optical properties at 9 regional background sites across Europe, *Atmos. Environ.*, 145, 346–364, doi:10.1016/j.atmosenv.2016.09.035, 2016.

Zheng, H., Kong, S., Chen, N., Yan, Y., Liu, D., Zhu, B., Xu, K., Cao, W., Ding, Q., Lan, B., Zhang, Z., Zheng, M., Fan, Z., Cheng, Y., Zheng, S., Yao, L., Bai, Y., Zhao, T. and Qi, S.: Significant changes in the chemical compositions and sources of PM<sub>2.5</sub> in Wuhan since the city lockdown as COVID-19, *Sci. Total Environ.*, 739, doi:10.1016/j.scitotenv.2020.140000, 2020.

Zotter, P., Herich, H., Gysel, M., El-Haddad, I., Zhang, Y., Mocnik, G., Hüglin, C., Baltensperger, U., Szidat, S. and Prévôt, A. S. H.: Evaluation of the absorption Ångström exponents for traffic and wood burning in the Aethalometer-based source apportionment using radiocarbon measurements of ambient aerosol, *Atmos. Chem. Phys.*, 17(6), 4229–4249, doi:10.5194/acp-17-4229-2017, 2017.



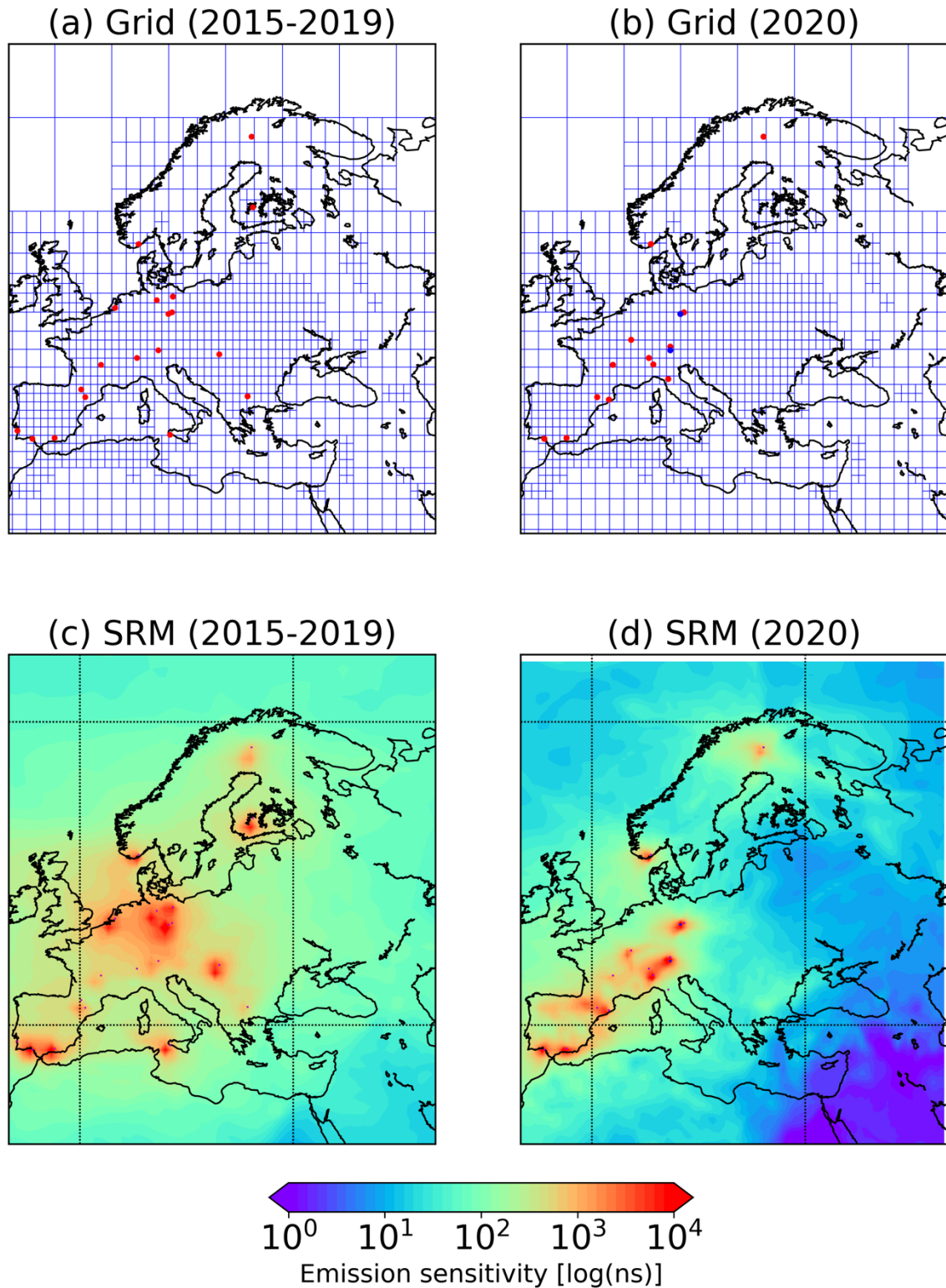
## TABLES & FIGURES

**Table 1.** Observation sites from the ACTRIS platform used to perform the inversions (dependent observations) and to validate the posterior emissions (independent observations) (the altitude indicates the sampling height in meters above sea level). Multi-Angle Absorption Photometers (MAAP) were used at all sites, except El Arenosillo (ES0100R) where a Continuous Light Absorption Photometer (CLAP) was used, Birkenes (NO0002R), where a Particle Soot Absorption Photometer (PSAP) and Observatoire Perenne de l' Environnement (FR0022R) and Zeppelin (NO0042G) where Aethalometers (AW31) were used.

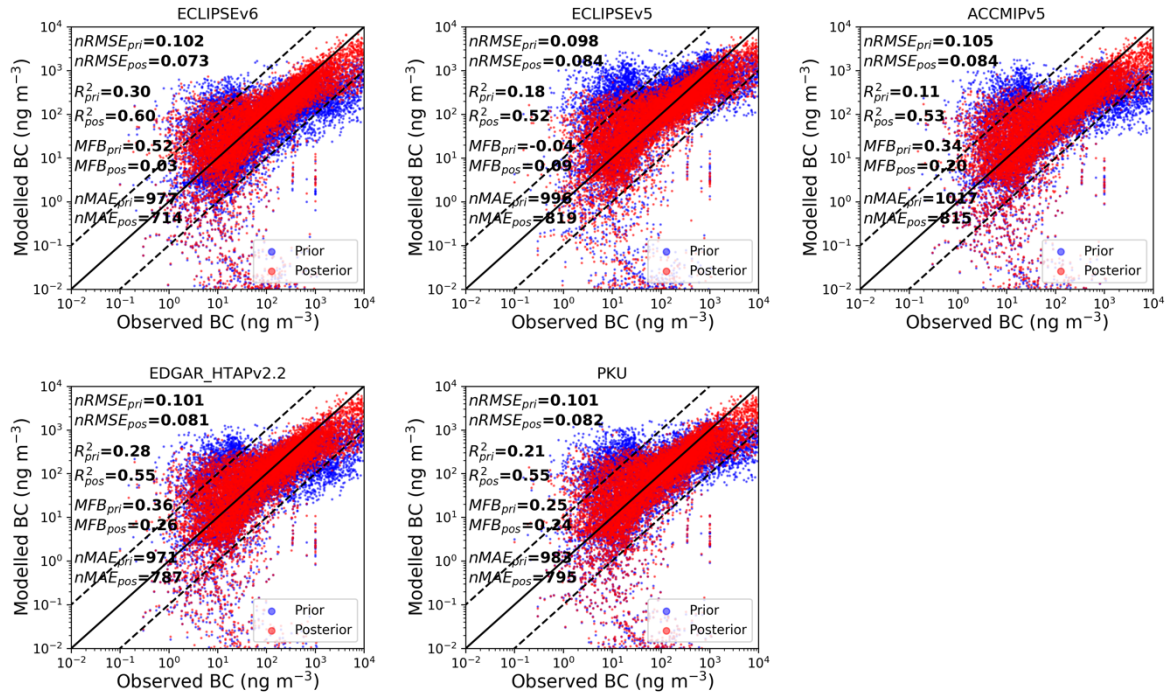
Name	Latitude	Longitude	Altitude	Type	Wavelength (nm)	MAC <sub>@637</sub> (m <sup>2</sup> g <sup>-1</sup> )
Jungfraujoch (CH0001G)	46.55	7.99	3578	Dependent	637	10
Hohenpeissenberg (DE0043G)	47.80	11.01	985	Dependent	660	9.65
Melpitz (DE0044K)	51.53	12.93	86	Dependent	670	8.78
Zugspitze-Schneefernerhaus (DE0054R)	47.42	10.98	2671	Independent	670	9.51
Leipzig-Eisenbahnstrasse (DE0066K)	51.35	12.41	120	Independent	670	9.51
Izaña (ES0018G)	28.41	-16.50	2373	Dependent	670	9.51
Granada (ES0020U)	37.16	-3.61	680	Dependent	670	9.51
Montsec (ES0022R)	42.05	0.73	1571	Dependent	670	9.51
El Arenosillo (ES0100R)	37.10	-6.73	41	Dependent	652	13.64
Montseny (ES1778R)	41.77	2.35	700	Dependent	670	8.48
Pallas (FI0096G)	67.97	24.12	565	Dependent	637	10.00
Observatoire Perenne de l' Environnement (FR0022R)	48.56	5.51	392	Dependent	880	7.24
Puy de Dôme (FR0030R)	45.77	2.96	1465	Dependent	670	9.51
Ispra (IT0004R)	45.80	8.63	209	Dependent	880	6.96
Mt Cimone (IT0009R)	44.18	10.70	2165	Dependent	670	9.51
Birkenes II (NO0002R)	58.39	8.25	219	Dependent	660	7.59
Zeppelin mountain (NO0042G)	78.91	11.89	474	Dependent	880	7.24

**Table 2.** Statistical measures (*RMSE*, Pearson's  $R^2$ , *MFB* and *nMAE*) for each of the prior and posterior concentrations against dependent observations (observations that were used in the inversion algorithm) for BC (eBC). Note that the inversion using ECLIPSEv6 prior emission dataset gave the best agreement with the observations and therefore the results of this inversion are presented here.

	<b><i>nRMSE</i></b>	<b>Pearson's <math>R^2</math></b>	<b>MFB</b>	<b>nMAE</b>
Prior ECLIPSEv6	0.102	0.30	0.52	997
Prior ECLIPSEv5	0.098	0.18	-0.04	996
Prior EDGAR_HTAPv2.2	0.105	0.11	0.34	1017
Prior ACCMIPv5	0.101	0.28	0.36	971
Prior PKU	0.101	0.21	0.25	983
<b>Posterior ECLIPSEv6</b>	<b>0.073</b>	<b>0.60</b>	<b>0.03</b>	<b>714</b>
Posterior ECLIPSEv5	0.084	0.52	0.09	819
Posterior EDGAR_HTAPv2.2	0.084	0.53	0.20	815
Posterior ACCMIPv5	0.091	0.55	0.26	787
Posterior PKU	0.082	0.55	0.24	795

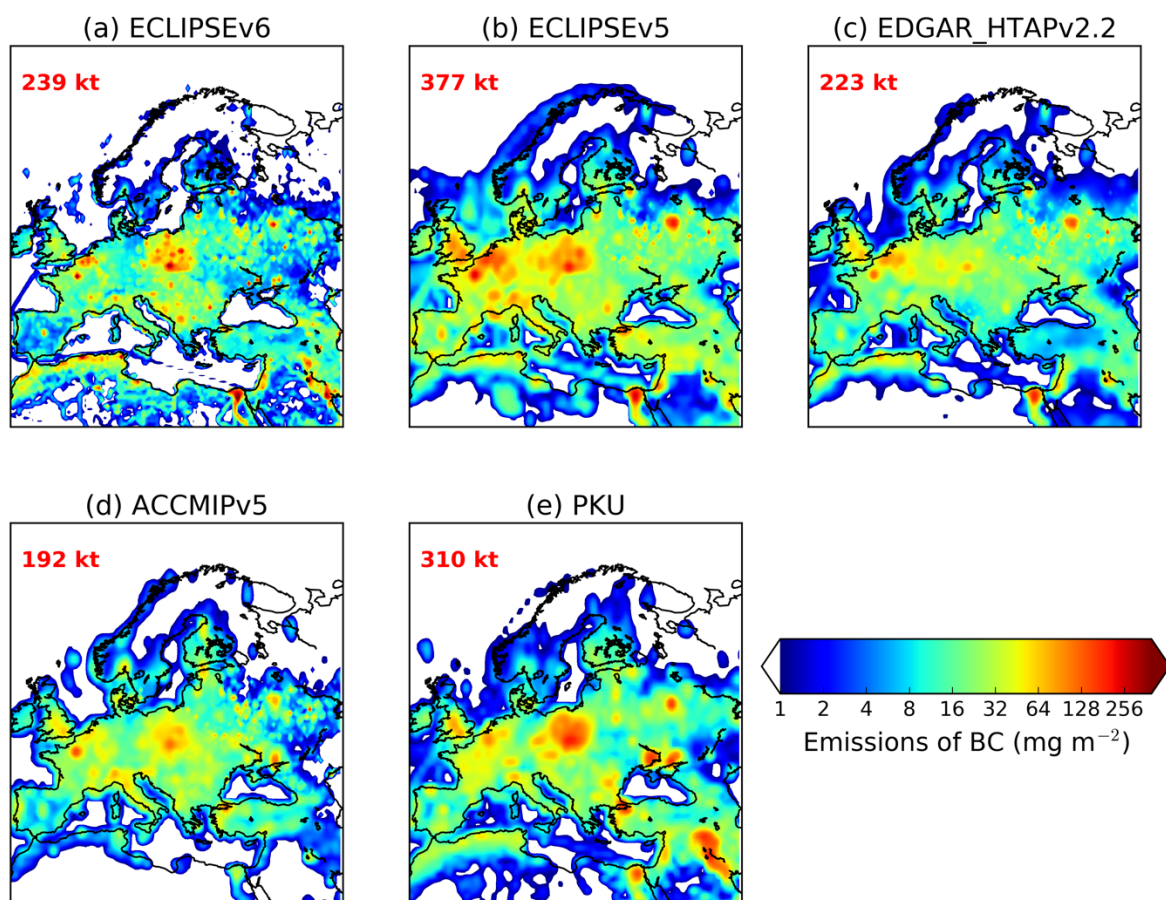


**Figure 1.** Aggregated inversion grid used for the (a) 2015–2019 and (b) 2020 inversions, respectively. The dependent measurements that were used in the inversion were taken from stations highlighted in red. The two independent stations that were used for the validation are shown in blue. (c, d) Footprint emission sensitivity (i.e. SRM) averaged over all observations and time steps for each of the inversions. Red points denote the location of each measurement site.

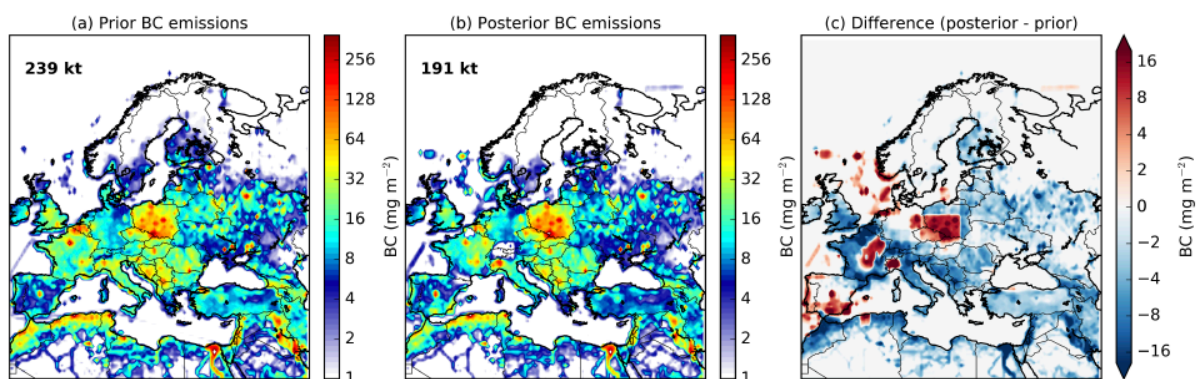


**Figure 2.** Scatter plots of prior and posterior concentrations against dependent observations (observations that were included in the inversion framework) from ACTRIS from January to April 2020. Four statistical measures ( $nRMSE$ , Pearson's  $R^2$ ,  $MFB$  and  $nMAE$ ) were used to assess the performance of each inversion using five different prior emission inventories for BC (ECLIPSEv5, v6, ACCMIPv5, EDGAR\_HTAPv2.2 and PKU).

### PRIOR EMISSIONS (JAN-APR 2020)



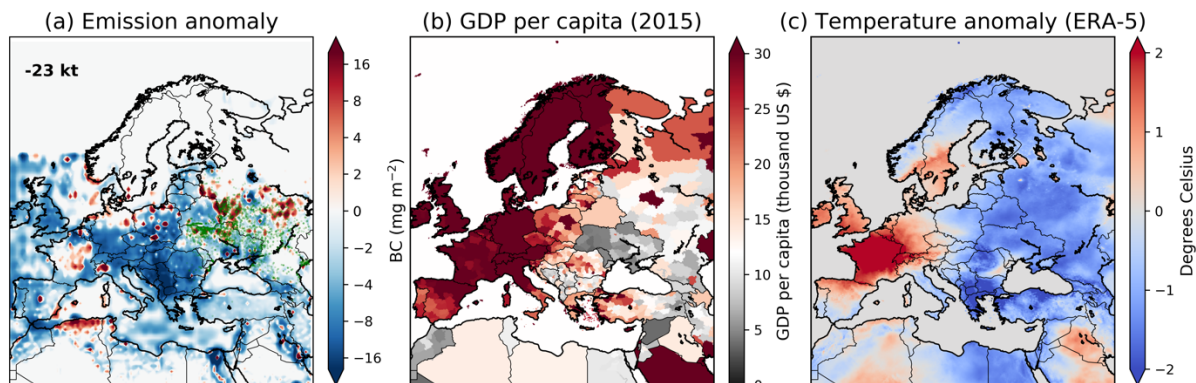
**Figure 3.** Prior emissions of black carbon (BC) used in the inversions. BC emissions from anthropogenic sources were adopted from ECLIPSE version 5 and 6 (Evaluating the CLimate and Air Quality ImPacts of ShortlivEd Pollutants) (Klimont et al., 2017), EDGAR (Emissions Database for Global Atmospheric Research) version HTAP\_v2.2 (Janssens-Maenhout et al., 2015), ACCMIP (Emissions for Atmospheric Chemistry and Climate Model Intercomparison Project) version 5 (Lamarque et al., 2013) and PKU (Peking University) (Wang et al., 2014b). Biomass burning emissions of BC from Global Fire Emissions Database (GFED) version 4.1 (Giglio et al., 2013) were added in each of the aforementioned inventories.



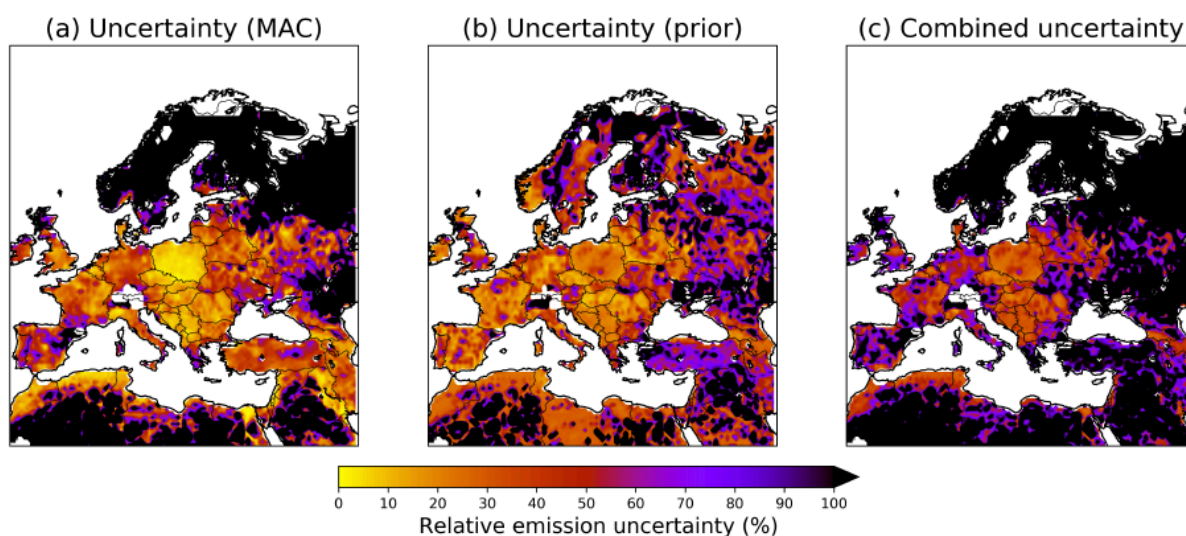
**Figure 4.** (a) Prior emissions of BC from ECLIPSEv6, (b) optimized (posterior) BC emissions after processing the ACTRIS data into the inversion algorithm, and (c) difference between posterior and prior emissions. All the results correspond to the inversion yielding the best results ([Table 2](#) and [Figure 2](#)).



# EMISSION ANOMALY, GDP, TEMPERATURE ANOMALY DURING THE LOCKDOWN PERIOD

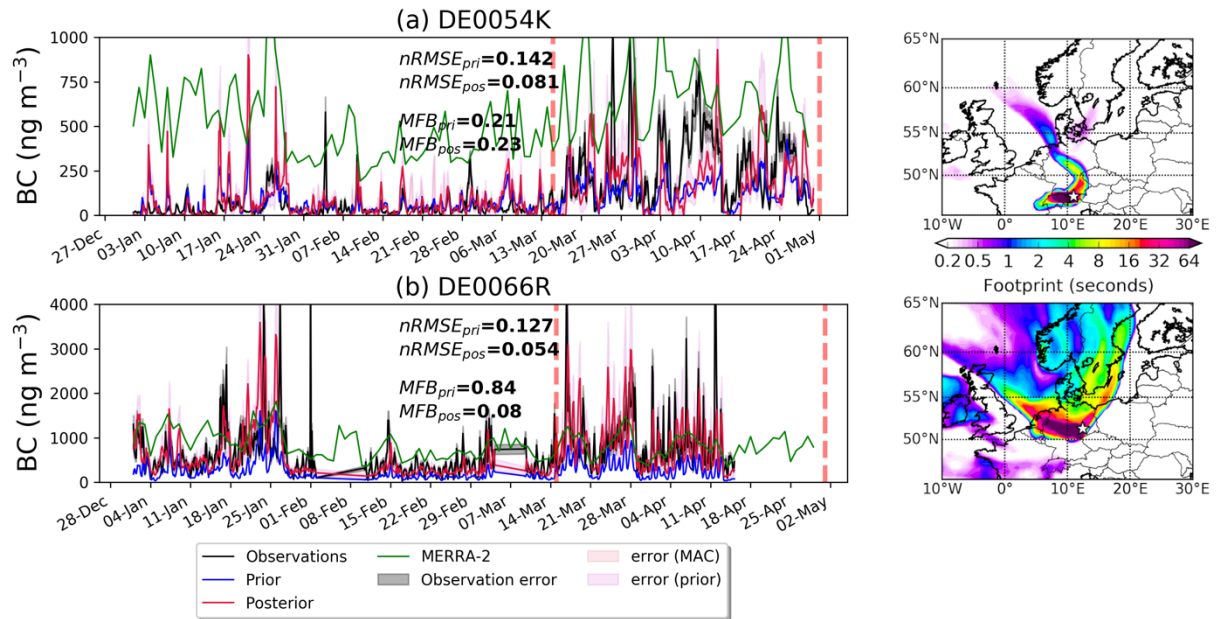


**Figure 5.** (a) Difference in posterior BC emissions during the lockdown (14 March to 30 April 2020) in Europe from the respective emissions during the same period in 2015 – 2019, (b) GDP from Kummu et al. (2020), and (c) temperature anomaly from ERA-5 (Copernicus Climate Change Service (C3S), 2020) for the same period as the emission anomaly. The base GDP value below which a low income can be assumed was set to 12 thousand US dollars. Active fires from MODIS are plotted together with emission anomaly (green dots).

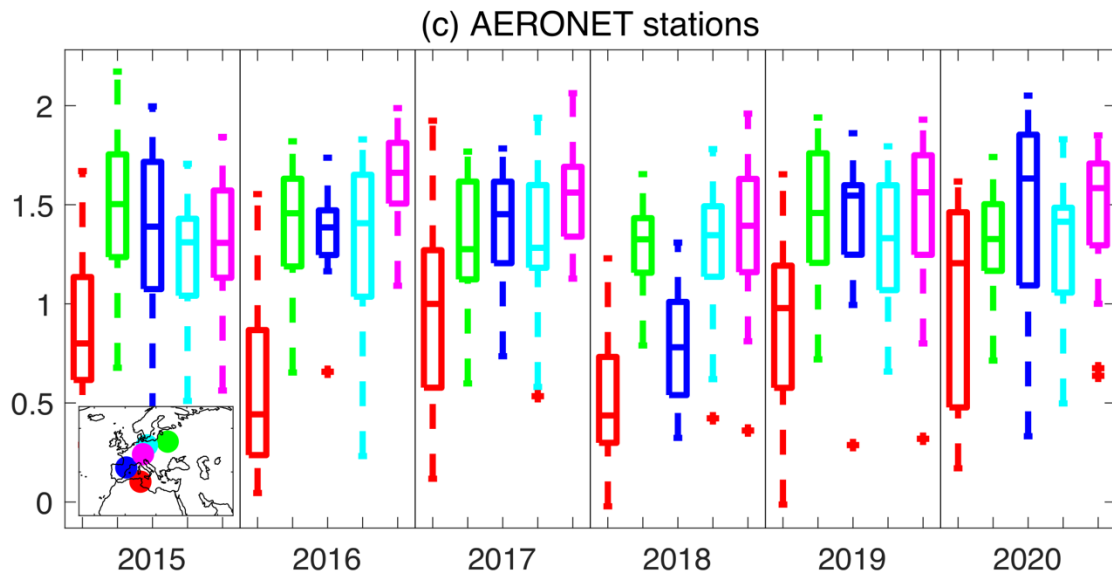
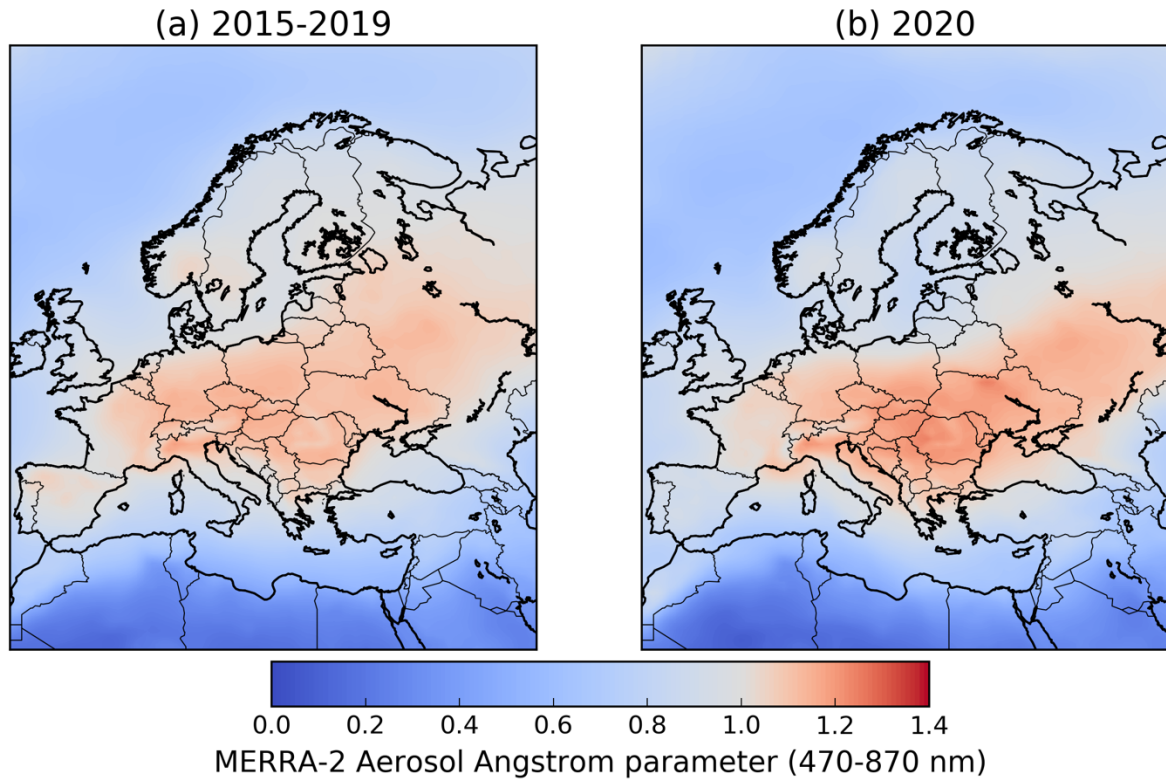


**Figure 6.** (a) Uncertainty of BC emissions due to the use of variable MAC values to convert from aerosol absorption to eBC concentrations that are used by the inversion algorithm. (b) Uncertainty due to the use of five different prior emissions inventories for BC. (c) Combined uncertainty.

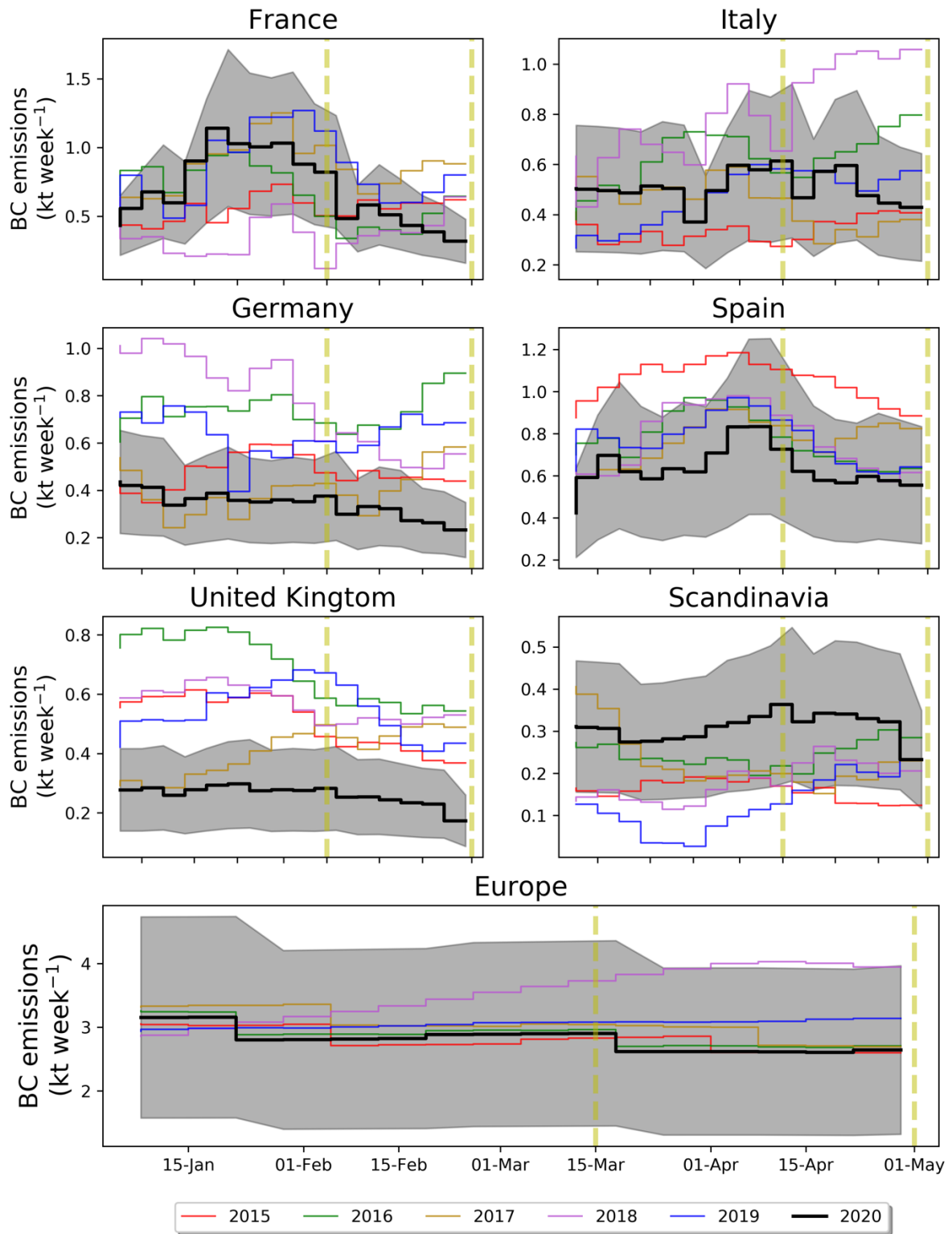




**Figure 7.** Prior and posterior BC concentrations at DE0054K and DE0066R stations that were not included in the inversion are compared with observations. The validation is done by calculating the  $nRMSEs$  and  $MFBs$  for the prior and posterior concentrations. The uncertainty of the observations is also given together with the posterior uncertainties in the concentrations calculated from the use of different MAC and prior emissions. For comparison, we plot the concentrations from MERRA-2 at the same two stations. The vertical dashed lines denote the period of the lockdown in most of Europe. On the right, the average footprint emission sensitivities are given at each independent station for the period of the lockdown.



**Figure 8.** (a) Average total aerosol Ångström parameter (470-870 nm) over Europe (mid-March to April) in the five previous years (2015–2019) and (b) in 2020 (lockdown). (c) AERONET Absorption AE in Ben Salem (9.91°E, 35.55°N, in red), Minsk (27.60°E, 53.92°N, green), Montsec (0.73°E, 42.05°N, blue), MetObs Lindenberg (14.12°E, 52.21°N, magenta) and Munich University (11.57°E, 48.15°N) during mid-March to April in all years since 2015.



**Figure 9.** Posterior BC emissions in the most highly affected European countries (France, Italy, Germany, Spain and UK), Scandinavia and Europe from the COVID-19 pandemic (2020). Posterior BC emissions for every year since 2015 are also plotted in the same temporal resolution to show changes in BC emissions characteristics during the 2020 COVID-19 pandemic. The grey shaded area corresponds to the BC emission uncertainty, while the vertical yellow dashed lines correspond to the beginning and end of the 2020 lockdown.

## **SUPPLEMENTARY FIGURE LEGENDS**

### **Supplementary Figure 1. Comparison with BC emissions in previous years.**

Difference of optimised (posterior) BC emissions over Europe during the 2020 lockdown (14 March to 30 April) from respective BC emissions in previous years (same period) constrained with the same inversion algorithm and the same settings. Active fires from MODIS are plotted together with emission anomaly (green dots).

### **Supplementary Figure 2. Surface temperature during the 2020 lockdown.**

Average surface temperature at 2 m over Europe during the COVID-19 lockdown (14 March to 30 April) from ERA-5 (ECMWF)(Copernicus Climate Change Service (C3S), 2020). Note that prevailing average temperatures over Europe during the lockdown were below 15°C. This temperature has been used as the basis temperature, below which residential combustion has been found to increase(Quayle and Diaz, 1980; Stohl et al., 2013).

### **Supplementary Figure 3. Weekly posterior BC emissions against MERRA-2 concentrations.**

Average surface BC concentrations from MERRA-2 (left axis) since 2015 in the most highly affected European countries (France, Italy, Germany, Spain and UK), Scandinavia and Europe from the pandemic, in contrast to the calculated optimized BC emissions (right axis). The grey shaded area corresponds to the BC emission uncertainty calculated as described in section 3.3. The vertical yellow dashed lines correspond to the beginning and end of the COVID-19 lockdown (14 March to 30 April 2020).