

# Pan-Arctic surface ozone: modelling vs measurements

Xin Yang<sup>1</sup>, Anne-M. Blechschmidt<sup>2</sup>, Kristof Bogner<sup>3</sup>, Audra McClure–Begley<sup>4,5</sup>, Sara Morris<sup>4,5</sup>, Irina Petropavlovskikh<sup>4,5</sup>, Andreas Richter<sup>2</sup>, Henrik Skov<sup>6</sup>, Kimberly Strong<sup>3</sup>, David Tarasick<sup>7</sup>, Taneil Uttal<sup>5</sup>, Mika Vestenius<sup>8</sup>, Xiaoyi Zhao<sup>7</sup>

5 <sup>1</sup>British Antarctic Survey, UK Research Innovation, Cambridge, UK

<sup>2</sup>Institute of Environmental Physics, University of Bremen, Bremen, Germany

<sup>3</sup>Department of Physics, University of Toronto, Toronto, ON, Canada

<sup>4</sup>Cooperative Institute for Research in Environmental Sciences, University of Colorado, Boulder, CO, USA

<sup>5</sup>NOAA Earth System Research Laboratory, Boulder, CO, USA

10 <sup>6</sup>Climate, Department of Environmental Science, Aarhus University, Denmark

<sup>7</sup>Air Quality Research Division, Environment and Climate Change Canada, Toronto, ON, Canada

<sup>8</sup>Atmospheric Composition Research, Finnish Meteorological Institute, Helsinki, Finland

*Correspondence to:* Xin Yang (xinyang55@bas.ac.uk)

15 **Abstract.** Within the framework of the International Arctic Systems for Observing the Atmosphere (IASOA), we report a modelling-based study on surface ozone across the Arctic. We use surface ozone from six sites: Summit (Greenland), Pallas (Finland), Barrow (USA), Alert (Canada), Tiksi (Russia), and Villum Research Station (VRS) at Station Nord (North Greenland, Danish Realm), and ozonesonde data from three Canadian sites: Resolute, Eureka, and Alert. Two global chemistry models: a global chemistry transport model (p-TOMCAT) and a global chemistry climate model (UKCA), are used for model-  
20 data comparisons. Remotely sensed data of BrO from the GOME-2 satellite instrument and ground-based Multi-axis Differential Optical Absorption Spectroscopy (MAX-DOAS) at Eureka, Canada are used for model validation.

The observed climatology data show that spring surface ozone at coastal sites is heavily depleted, making ozone seasonality at Arctic coastal sites distinctly different from that at inland sites. Model simulations show that surface ozone can be greatly reduced by bromine chemistry. In April, bromine chemistry can cause a net ozone loss (monthly mean) of 10-20 ppbv, with  
25 almost half attributable to open-ocean-sourced bromine and the rest to sea-ice-sourced bromine. However, the open-ocean-sourced bromine, via sea spray bromide depletion, cannot by itself produce ozone depletion events (ODEs) (defined as ozone volume mixing ratios VMRs < 10 ppbv). In contrast, sea-ice-sourced bromine, via sea salt aerosol (SSA) production from blowing snow, can produce ODEs even without bromine from sea spray, highlighting the importance of sea ice surface in polar boundary layer chemistry.

30 Modelled total inorganic bromine ( $\text{Br}_Y$ ) over the Arctic sea ice is sensitive to model configuration, e.g., under the same bromine loading,  $\text{Br}_Y$  in the Arctic spring boundary layer in the p-TOMCAT control run (i.e., with all bromine emissions) can be 2 times that in the UKCA control run. Despite the model differences, both model control runs can successfully reproduce large bromine explosion events (BEEs) and ODEs in polar spring. Model-integrated tropospheric column BrO generally matches GOME-2 tropospheric columns within ~50% in UKCA and a factor of 2 in p-TOMCAT. The success of the models  
35 in reproducing both ODEs and BEEs in the Arctic indicates that the relevant parameterizations implemented in the models work reasonably well, which supports the proposed mechanism of SSA production and bromide release on sea ice. Given that sea ice is a large source of SSA and halogens, changes in sea ice type and extent in a warming climate will influence Arctic boundary layer chemistry, including the oxidation of atmospheric elemental mercury. Note that this work does not necessarily rule out other possibilities that may act as a source of reactive bromine from sea ice zone.

40

## 1 Introduction

Climatological data show that mean surface ozone across the Arctic is ~5 ppbv higher than that in the Antarctic (Helmig et al., 2007), reflecting the impact of anthropogenic emissions of ozone precursors such as NO<sub>x</sub> (=NO+NO<sub>2</sub>) and volatile organic compounds (VOC) in the northern hemisphere (NH) (e.g., Law and Stohl, 2007; Quinn et al., 2008; Walker et al., 2012; Ancellet et al., 2016). For a specific location, the surface ozone depends on multiple factors, including the elevation above sea level (asl), proximity to the coast, human influence, and processes such as photochemical production/loss rates and dry deposition. Over the past several decades, Arctic sea ice extent has been declining (e.g., Cavalier et al., 2012; Laxon et al., 2013, Olonscheck et al., 2019) and thinning (Lindsay and Zhang 2005; Kwok and Rothrock, 2009). The rapid disappearance of summer multiyear sea ice means there will be more young sea ice in the following winter and spring, which will potentially affect the exchange of chemical compounds (both gaseous and particulate phase) between the ocean, sea ice, and the atmosphere. A modelling study shows that the alteration of surface albedo alone, in a scenario of a sea-ice-free Arctic summer, can significantly alter the atmospheric oxidizing capacity at high latitudes, including the concentrations of ozone and the hydroxyl radical (OH) (Voulgarakis et al., 2009a). Therefore, the rapid change of Arctic environment in a warming climate may greatly affect Arctic near surface ozone concentration, seasonality and long-term trend (Tarasick and Bottenheim 2002). Observations of anomalously low boundary layer ozone at coastal sites in the Arctic spring have been reported (Bottenheim et al., 1986; Barrie et al., 1988). An ozone depletion event (ODE) often refers to surface ozone volume mixing ratios (VMRs) drops < 10 ppbv or even near zero levels. ODEs are mostly found in association with strongly enhanced bromine, so-called bromine explosion events (BEEs). The enhanced bromine monoxide (BrO) can extend from near the surface to a height of a few km, as has been frequently observed by in situ measurements (e.g., Liao et al., 2011, 2012; Buys et al., 2012; Schultz et al., 2017 and references therein), ground-based remote sensing (e.g., MAX-DOAS, Frieß et al., 2011; Zhao et al., 2016) and satellite-based remote sensors (e.g., Wagner and Platt, 1998; Theys et al., 2011). Analyses of Arctic transport (Bottenheim and Chan 2006; Liu et al., 2013), as well as in situ measurements (Bottenheim et al., 2009; Jacobi et al., 2010; Seabrook et al., 2013) suggest that the near-surface ozone minimum in spring is not limited to coastal sites, but covers much of the Arctic basin, indicating that the sources of bromine are mainly sea-ice-related (e.g., Simpson et al. 2007a, Abbatt et al., 2012). However, the dominant sources of bromine during ODEs or BEEs are still under debate. Proposed candidates for reactive bromine release include e.g., frost flowers (Kaleschke et al. 2004), first-year sea ice (Skov et al., 2004; Simpson et al., 2007b), sea salt aerosol (SSA) produced from blowing snow (Yang et al., 2008), snowpack (Pratt et al., 2013; Custard et al., 2017), SSA from open leads (e.g., Kirpes et al., 2019). [For example, Pratt et al. \(2013\) showed that the snowpack is a source of reactive halogens. Custard et al. \(2017\) provided further evidence that snowpack activation occurs.](#) In addition, stratospheric BrO intrusions in association with downward transport of air masses from lower stratosphere also affect polar free tropospheric BrO (Salawitch et al., 2010). Global chemical models have been used to test chemical schemes for interpreting or reproducing observed spring ODEs and BEEs. For instance, Toyota et al. (2011) and Falk and Sinnhuber (2018) focused on snowpack-released bromine while Yang et al. (2010) and Choi et al. (2012; 2018) considered blowing-snow-sourced bromine. Box (or 0-D) models are used for process studies such as heterogeneous reactions on various saline particles including SSA, frost flowers, and snowpack (Fan and Jacob 1992; Tang and McConnell, 1996; Michalowski et al. 2000; Evans et al., 2003). 1-D models have also been developed with a focus on the exchange of gaseous-phase halogens between the air in the boundary layer and the snowpack, and boundary layer ODEs and BEEs (Saiz-Lopez et al., 2008; Thomas et al., 2011, 2012; Cao et al. 2013; 2016). Recent winter cruise data from the Weddell Sea, Antarctica, confirm that the sea ice surface is a large source of sea salt aerosol (Frey et al., 2019; Yang et al., 2019). Like the open-ocean-sourced sea spray, the sea-ice-sourced SSA is also a large reservoir of various chemical compounds, including inorganic halogens. Through heterogeneous reactions, bromide (Br<sup>-</sup>) and chloride (Cl<sup>-</sup>) can be activated and released to the air to form a large source of inorganic halogens (Fan and Jacob, 1992, Vogt et al.,

1996), and the consequences may induce polar boundary layer bromine explosion events and ozone depletion events (Simpson et al., 2007a; Abbatt et al., 2012).

SSA bromide data collected in the NH mid-to-low latitudes show that bromide is largely depleted with respect to sodium without a clear seasonal cycle of the depletion strength (Sander et al., 2003). This is attributed to the air pollution and acidification of SSA in the NH. However, in the Southern Ocean of Antarctica, where the air is less polluted, a seasonally varying bromide depletion strength is observed (Ayers et al., 1999, Legrand et al., 2016) with maximum depletion factors in later spring to early summer and a minimum in winter. Global chemistry models with a detailed tropospheric bromine scheme show that open-ocean-sourced bromine can cause tropospheric ozone loss of ~5% at mid- to-low latitudes and up to 15-30% at high latitudes (Yang et al., 2005; Parrella et al., 2012). Model runs with sea-ice-sourced bromine implemented show that an additional 10-25% ozone loss can be simulated in polar spring (Yang et al., 2010). Global models with a relatively coarse horizontal resolution of a few degrees by a few degrees can explain large-scale (e.g., > ~500 km) ODEs and BEEs in both polar regions (Theys et al., 2011; Zhao et al., 2016; Legrand et al. 2016; Choi et al., 2018). However, no systematic validation against measured ozone and BrO in the Arctic and the Antarctic has been presented. This is important to examine and refine the bromine scheme implemented in models, especially in the polar regions.

Most current global-scale chemistry models do not have sea-ice-sourced halogens included. A recent assessment of tropospheric ozone performance in current global models is mainly focused on mid-latitudes (Young et al., 2018), as are most global ozone seasonality studies (e.g., Derwent et al., 2016; Parrish et al., 2016). Previous multi-model assessments of Arctic surface ozone in global chemistry transport models (CTMs) gave quite different implications on the role of halogens. For instance, Monks et al. (2015) and early modelling work by Shindell et al. (2008) showed over-prediction of surface ozone at Barrow in spring, implying a result of missing halogen chemistry. However, Emmons et al. (2015) showed a general model under-prediction in April compared with ozone sondes, suggesting that the halogen-induced bias may not be pervasive in the Arctic troposphere. In a very recent modelling work focusing on polar tropospheric halogens (Fernandez et al., 2019), photochemical release of molecular bromine, chlorine, and interhalogens from the sea-ice surface, and iodine biologically produced underneath and within porous sea-ice are considered. However, relatively little is known about model skill in reproducing polar spring boundary layer ozone, especially on short-time scales of hourly, daily, leaving a large gap in our understanding of the global ozone budget in the polar regions.

Although observations of surface ozone and tropospheric vertical ozone profiles are limited in the Arctic, existing data clearly show that there is a spring ozone maximum at inland sites such as Pallas, Finland (e.g., Hatakka et al., 2003) and Summit, Greenland (3208 m asl) (e.g., Helmig et al., 2007). It has been proposed that this spring ozone maximum, also seen at other high-latitude locations (e.g., Monks et al., 2000), is attributable to reduced ozone photo-dissociation and dry deposition in winter, balanced by increased stratospheric ozone intrusions in spring following the breakup of the polar vortex in the lower stratosphere (e.g., Laurila 1999; Helmig et al., 2007). However, at coastal sites, ozone is observed to be heavily depleted during spring. Moreover, the near-surface ozone minimum observed in spring is not limited to coastal sites, but covers much of the Arctic boundary layer (Liu et al., 2013; Hardacre et al., 2014). Can global models with state-of-the-art bromine chemistry reproduce this pan-Arctic spring ozone depletion? What is the dominant factor that causes spring ODEs and BEEs? These are the two key questions addressed in this study.

We employ multi-year integrations in two global chemistry models (the p-TOMCAT chemistry transport model and the UKCA chemistry-climate model) and perform comparisons to observations of surface ozone, vertical ozone profiles, and GOME-2 tropospheric column BrO, in order to validate the effect of these modelled processes on ozone depletion and BrO enhancement. This work is undertaken in the framework of International Arctic Systems for Observing the Atmosphere (IASOA), whose mission is to advance coordinated and collaborative research objectives using data from independent Arctic atmospheric observatories (Uttal et al. 2016). This is a modelling-based study of the pan-Arctic surface zone; more information about ozone climatology can be found in a companion paper by McClure–Begley et al. (in preparation). The surface ozone climatology

data used in this study are from Summit, Greenland (72.6°N, 38.5°W), Pallas, Finland (68.0°N, 24.1°E), Barrow, USA (71.3°N, 156.6°W), Alert, Canada (82.5°N, 62.3°W), Tiksi, Russia (71.6°N, 128.9°E) and Villum Research Station (VRS), at Station Nord, Greenland (81.4°N, 16.4°W). Ozonesonde data are from three Canadian sites: Resolute (74.7°N, 95.0°W), Eureka (80.1°N, 86.4°W), and Alert. Retrievals of tropospheric column BrO from the GOME-2 instrument, including maps and  
5 subsetted data for each site, and ground-based MAX-DOAS BrO at Eureka are also used. Figure 1 shows the locations of these sites. Measurements are described briefly in Section 2. Model experiments are described in Section 3. The results of the model-data comparison is presented in Sections 4. Discussions and summary are in section 5 and 6, respectively.

## 2 Measurements

### 2.1 Surface ozone and ozonesondes

10 Surface ozone data are retrieved from the World Data Centre for Reactive Gases (WDCRG) and archived at the NOAA Global Monitoring Laboratory (<https://www.esrl.noaa.gov/gmd/ozwv/surfoz/data.html>). The measurements of surface ozone are made by several brands of dual cell UV absorption monitors, which relate UV absorption to ozone concentration following the Beer-Lambert law. Details can be found in these articles: e.g., VRS Research Station in Skov et al. (2004, 2019), Alert in Bottenheim et al. (2002), or in review articles by e.g., Gaudel et al. (2018), Oltmans et al. (2010) and Cooper et al. (submitted).  
15 In general, the technique has a detection limit of about 1 ppbv and an uncertainty (95% confidence interval) of about 1 ppbv for VMRs below 10 ppbv and about 2 ppbv for more typical surface VMRs of 30-40 ppbv (Galbally et al., 2013; Tarasick et al., 2019a).

Ozonesonde data from the three Canadian stations used here can be found at the World Ozone and Ultraviolet Radiation Data Centre (WOUDC). During the period of interest here, all ozonesondes used were electrochemical concentration cells (ECC)  
20 (Komhyr, 1969), manufactured by Environmental Science (EN-SCI) Corp. All sondes used the conventional neutral-buffered 1% potassium iodide sensing solution. The data records of the Canadian sites have recently been re-evaluated (Tarasick et al., 2016). Based on the typical ozone sensor response time of 25-40 s (Smit and Kley, 1998), and assuming a typical balloon ascent rate of 4-5 m s<sup>-1</sup>, the ozonesondes have a vertical resolution of about 100-200 metres. Measurement precision is ±3-5% and the overall uncertainty in ozone VMRs is less than 10% in the troposphere (Kerr et al., 1994; Smit et al., 2007; Tarasick  
25 et al., 2016; 2019a, c).

Ozonesonde releases are normally once per week, although additional releases are often scheduled during observational campaigns in the Arctic spring. Despite their low frequency of observation compared to surface monitoring, ozonesondes have been used successfully to study boundary-layer processes like ODEs (e.g., Bottenheim et al., 2002; Tarasick and Bottenheim, 2002) and long-range transport (e.g., Oltmans et al., 2010; He et al., 2011; Tarasick et al., 2019b).

### 30 2.2 Complementary data sets

In addition to the ozone measurements, several other data sets are employed in this study: tropospheric columns of BrO from the Global Ozone Monitoring Experiment-2 (GOME-2; Callies et al., 2000) instrument onboard the Meteorological Operational Satellite-A (MetOp-A), and lower tropospheric profiles of BrO from ground-based Multi-axis Differential Optical Absorption Spectroscopy (MAX-DOAS) at Eureka, Canada.

35 The GOME-2 tropospheric BrO columns used in this study are described in further detail by Blechschmidt et al. (2016). In summary, tropospheric BrO vertical columns ( $VCD_{\text{trop}}$ ) were obtained based on the approach of Begoin et al. (2010) for deriving BrO total slant column densities by the DOAS (Platt et al., 1994) method using a 336-347 nm fitting window (Afe et al., 2004) and on Theys et al. (2011) for stratospheric correction. The latter involves the use of a climatology of stratospheric vertical column densities (VCDs) of BrO estimated by the BASCOE chemical transport model (Errera et al., 2008; Viscardy  
40 et al., 2010). The stratospheric VCDs were converted to slant columns by application of a stratospheric air mass factor and

then subtracted from total slant columns. A tropospheric air mass factor was applied for conversion to  $VCD_{\text{trop}}$  assuming that all BrO is located and well mixed within the lowermost 400 m of the troposphere over ice or snow with a surface reflectance of 0.9. A sensitivity study for a BEE case showed that the GOME-2 tropospheric BrO column has a moderate sensitivity to the stratospheric BrO column, e.g., a variation in the  $VCD_{\text{strat}}$  of 15–30% leads to a change in  $VCD_{\text{trop}}$  of about 0.5 to  $1 \times 10^{13}$  molecules  $\text{cm}^2$ , respectively (Zhao et al., 2016). The influence of clouds on GOME-2 BrO retrievals and the implications for studying bromine explosion events using GOME-2 data are discussed in Blechschmidt et al. (2016). GOME-2 tropospheric BrO column maps (0.5x0.5 degree grid) and time series based on subsetted data of  $VCD_{\text{trop}}$  (all measurements having their centre within a distance of <40 km from the ground-station) at Resolute, Eureka and Alert sites are used here.

MAX-DOAS measurements were performed at the Polar Environment Atmospheric Research Laboratory (PEARL) Ridge Laboratory (610 m) in Eureka. Spectra were recorded in the UV using a grating spectrometer (1200 groves/mm grating) with a cooled (200 K) charge-coupled device (CCD) detector at 0.4-0.5 nm resolution. Elevation angles of 30°, 15°, 10°, 8°, and 5° (6° in 2011) were used in the elevation scans, and measurements were only taken with solar elevation above 4°. Differential slant column densities (dSCDs) of BrO and the oxygen dimer ( $\text{O}_4$ ) were retrieved using the settings described in Zhao et al. (2016). Reference spectra for the DOAS analysis were interpolated from zenith measurements taken before and after each elevation scan. dSCDs were converted to profiles using a two-step optimal estimation method (Frieß et al., 2011). First, aerosol extinction profiles were retrieved from  $\text{O}_4$  dSCDs, and then the extinction profiles were used as a forward model parameter in the BrO retrieval. The retrievals were performed on a 0-4 km altitude grid with 0.2 km resolution. Due to the altitude of the instrument (610 m) and the lack of low or negative elevation angles, the retrieved profiles are only sensitive to well-mixed BrO in a deep boundary layer, and to lofted BrO events.

### 20 **3 Models**

A global chemistry transport model, p-TOMCAT, and a global chemistry climate model, UKCA, are used in this study. The offline p-TOMCAT used 6-hour ERA-Interim dataset to drive its winds, temperature and moisture. The ERA-Interim data were taken from the European Centre for Medium-Range Weather Forecasts (ECMWF) (Dee et al., 2011). In this study, a nudged UKCA version is used to ensure a model meteorological field close to the real situation for data-model comparison. We follow the work of Telford et al. (2008) with a standard nudging relaxation parameter  $G=1/6 \text{ h}^{-1}$ , which value lies within the range of relaxation parameters used by other models (Jeuken et al., 1996; Hauglustaine et al., 2004; Schmidt et al., 2006). We used the 6hrly ERA-Interim winds and temperature to constrain UKCA model's dynamical field. However, nudging is not applied to all levels; no nudging being applied above level 50 (~48 km), or below level 12 (~2.9 km (the actual height varies depending on the orography)). To avoid instability of the model, moisture is not nudged to reanalysis data, therefore it is free running.

Both models applied a non-local boundary layer mixing scheme, but p-TOMCAT based on the parameterisation of Holtslag and Boville (1993), while UKCA based on the scheme of Lock et al. (2000). In terms of convective mass flux, p-TOMCAT applied the scheme of Tiedtke (1989) – which has been updated to increase convective transport to the mid and upper troposphere (Barret et al., 2010; Feng et al., 2011), and UKCA applied the bulk convection model of Gregory and Rowntree (1990). As shown in a multi-model inter-comparison in tropics, these two models showed different behaviour in terms of deep convective transport of tropical boundary layer tracers (Hoyle et al., 2011). The clouds and precipitation schemes are also different between the two models (Russo et al., 2011), resulting in different wash-out rates for aerosols and soluble chemical compounds. The precipitation bias in the op-TOMCAT model (Giannakopoulos et al., 2004) is remedied by applying a correction to force the simulated precipitation values towards Global Precipitation Climatology Project (GPCP) observations (Adler et al., 2003), following the work in Legrand et al. (2016). This corrected precipitation scheme has been used in recent

sea salt aerosol modelling works (Rhodes et al., 2017; Yang et al., 2019). However, precipitation in UKCA is free running, therefore the two models may have different wet removal rates for soluble gaseous-phase species. Details of other model configurations, mainly in chemistry scheme used are described in sections 3.1 for p-TOMCAT and 3.2 for UKCA.

In addition to the two global chemistry models, we used back-trajectories from the NOAA Hybrid Single-Particle Lagrangian Integrated Trajectory (HYSPPLIT) model (Stein et al., 2015; Rolph et al. 2017) for air-mass history study of the selected ODE case in section 4.2.

### 3.1 p-TOMCAT model

The Cambridge parallelised-Tropospheric Offline Model of Chemistry and Transport (p-TOMCAT) has a horizontal resolution of  $2.825^\circ \times 2.825^\circ$  (longitude  $\times$  latitude) and 31 vertical layers from the surface to about 10 hPa (~31 km) at the top layer. Sea-ice coverage and sea surface temperatures are monthly and taken from the Hadley Centre Sea Ice and Sea Surface Temperature dataset (Rayner et al., 2003). The p-TOMCAT non-local vertical diffusion scheme is taken from the National Centre for Atmospheric Research Community Climate Model, Version 2. This scheme determines the planetary boundary layer (PBL) height explicitly and takes account of large-scale eddy transport that can occur throughout the boundary layer even when part of it is statically stable. Implementation and validation of the PBL scheme was carried out by Wang et al. (1999). The model behaviour in terms of vertical mixing of atmospheric tracer and air mass transport has been reported in Russo et al. (2011) and Hoyle et al., (2011).

The ozone photochemistry scheme applied to the model has been detailed in previous studies (Law et al., 1998, 2000) and Savage et al. (2004), with updates including an isoprene chemistry scheme, same as the one implemented to the UKCA model by Young et al. (2009) according to the method of Poschl et al. (2000), a hydrolysis reaction of  $\text{N}_2\text{O}_5$  on aerosols and cloud droplets (Yang et al., 2005), a tropospheric bromine scheme involving both gaseous-phase reactions (Yang et al., 2005) and heterogeneous reactions (Yang et al., 2010), and a Fast-J photolysis scheme developed by Voulgarakis et al. (2009b), which is not used in this study. They found that  $\text{N}_2\text{O}_5$  hydrolysis can cause net  $\text{NO}_x$  loss at high latitudes by up to 60% in the northern hemisphere and ~80% in the southern hemisphere (Yang et al., 2005). They found that including halogen-related heterogeneous reactions on aerosols and cloud droplet can significantly increase polar BrO partitioning by a factor of ~3 (Yang et al., 2010). This heterogeneous reaction scheme for halogen reactivation was also implemented to the UKCA model (Yang et al., 2014; Dennison et al., 2019; Ming et al., 2020).

Ozone is dry-deposited in the bottom model layer with dry deposition velocity inferred from the study of Ganzeveld and Lelieveld (1995) by Giannakopoulos (1998). The original dry deposition velocity over ocean and snow ( $=0.05 \text{ cm s}^{-1}$ ) is reduced to  $0.01 \text{ cm s}^{-1}$  in this study following recent modelling work by Hardacre et al. (2015) and Luhar et al. (2018) as well as Helmig et al. (2007). Since p-TOMCAT only covers part of the stratosphere with a top layer height of ~31 km, a simplified stratospheric chemical scheme has to be used, including a pre-prescribed top boundary condition for ozone. Therefore, p-TOMCAT model is quite different from the UKCA model in upper troposphere and lower stratosphere. However, it is unlikely that the downwards transport of air mass in the polar region may significant influence near surface bromine. Recent change to p-TOMCAT the tropospheric halogen chemistry scheme includes updates to dry and wet deposition schemes as reported in Legrand et al. (2016). Tropospheric bromine comes from three emission sources: (i) very short-lived substances (VSLS) bromocarbons following the work of Warwick et al. (2006) with reduced flux for  $\text{CH}_2\text{Br}_2$  (Yang et al., 2014), (ii) Open ocean sea spray (Yang et al. 2005, Breider et al., 2009; Parrella et al., 2012), and (iii) sea-ice-sourced SSA in polar regions following the work of Yang et al. (2008; 2010; 2019). Here we define total inorganic bromine  $\text{Br}_Y = \text{HOBr} + \text{HBr} + \text{BrO} + \text{Br} + \text{BrONO}_2 + \text{BrNO}_2 + 2 * \text{Br}_2 + \text{BrCl}$ .

A process-based SSA transport, dry and wet deposition scheme has been implemented in the model by Levine et al. (2014) based on the work of Reader and McFarlane (2003). The open ocean sea spray emission scheme follows Jaeglé et al., (2011),

and the sea-ice-sourced SSA scheme follows the latest work of Yang et al. (2019). Both open-ocean-sourced and sea-ice-sourced SSA (denoted as OO and SI, respectively) are tagged in 21 size bins covering dry NaCl diameter of 0.02-20  $\mu\text{m}$  in order to track their history for online calculation of their surface density for heterogeneous reaction rates.

All parameters applied in this study for the Arctic SSA simulation are directly taken from our recent SSA modelling work by Yang et al. (2019), including a 3.5 times Antarctic snow salinity for the Arctic. The Antarctic Weddell Sea cruise data (Frey et al., 2019) is a probability of surface snow salinity, which is different to the constant salinity value (=0.3 psu, practical salinity unit) used in Legrand et al. (2016), Zhao et al. (2017) and Rhode et al. (2017). The trebled snow salinity assumption is taken from Yang et al. (2008) to reflect the likelihood that Arctic snow is more saline than in the Antarctic due to reduced precipitation. This assumption is partly justified by surface snow  $[\text{Cl}^-]$  concentrations observed in the two poles. For instance, an averaged surface snow (top 1-2 cm)  $[\text{Cl}^-]$  concentration of 368  $\mu\text{M}$  is derived from the Weddell Sea, Antarctic (<https://ramadda.data.bas.ac.uk/repository/entry/show?entryid=853dd176-bc7a-48d4-a6be-33bcc0f17eeb>, Frey et al. (2019)). In the Arctic, Pratt et al. (2013) reported a mean surface  $[\text{Cl}^-]$  concentration of 1,121  $\mu\text{M}$  (top 1 cm) over coastal sea ice near Barrow, Alaska, and Krnavek et al. (2012) reported a much higher surface  $[\text{Cl}^-]$  concentration of 21,058  $\mu\text{M}$  over first-year sea ice and 63,217  $\mu\text{M}$  over multi-year sea ice over a slightly deeper depth of 2~3 cm below the surface. They are about 3, 57 and 172 times of the Weddell Sea surface salinity. The relative higher salinity in the Arctic is partly related to less precipitation as already mentioned. For instance, the depth of snowpack on sea ice near Barrow, Alaska is in a range of 10-40 cm (Krnavek et al. (2012), while in the Weddell Sea, the mean snow depth over FYI is 20.9 cm and 50.0 cm over MYI (Frey et al., 2019). Other parameters used in this study include a mean snow age of 3 days for the Arctic following the recent work of Huang and Jaeglé (2017). We assume that the evaporation rate of blowing snow particles is controlled by the moisture gradient between the surface of the particle and the ambient air, an evaporation function of  $\frac{dm_i}{dt}=d_i$ , with  $m_i$  being water mass and  $d_i$  being diameter of snow particle) i.e., the classic mechanism in Yang et al. (2019). For blowing snow size distribution, we used a shape parameter  $\alpha=3$  and a scale parameter  $\beta=37.5 \mu\text{m}$ , with a SSA production ratio  $N=20$  (i.e., 20 SSA particles formed from one saline wind-blown snow particle during sublimation). This set of parameter corresponds to the SI\_Classic\_B $\times$ 20 run in Yang et al. (2019) and is one of the best parameter sets that matched the Weddell Sea SSA in size range of 0.4 – 10  $\mu\text{m}$ . Also, this set gave the highest SSA mass loading in polar regions (Yang et al., 2019).

To parameterize bromide release from SSA in the Arctic, two different patterns of bromine depletion factor (DF) are used. Table 1 contains a seasonal DF scheme with a maximum value of 0.53 in May and a minimum of 0.07 in December. This seasonal scheme is derived from the bulk SSA bromide depletion strength from Dumont d'Urville (Legrand et al., 2016), Cape Grim and Macquarie Island (Ayers et al., 1999) in the Southern Hemisphere with a six-month shift of the phase in order to apply to the NH. Since similar year-round in situ dataset from the Arctic is not available, we could not justify this seasonal DF pattern, which demands further systematic measurements in the Arctic. As used in previous modelling studies, a size-dependent (non-seasonal) DF scheme for the NH is used for comparison (Supplementary Table 1), which is derived from previous work of Yang et al. (2008, 2010) and Breider et al. (2009). Note that we simply apply these DF schemes to all SSA emitted and do not distinguish between the open-ocean-sourced and the sea-ice-sourced SSA in terms of bromide release. However, this approach may introduce bias as freshly emitted sea spray is alkaline with  $\text{pH}>8$  and needs acidification first by absorbing sulphate or nitrate before bromide can be liberated to the atmosphere through heterogeneous reactions (e.g., Breider et al., 2009). In contrast, snowpack in the Arctic is largely acidified with  $\text{pH}$  of 4-6 due to local acidity contamination (e.g., de Caritat et al., 2005). The difference in initial conditions between sea spray and sea-ice-sourced SSA may affect bromide release in both timing and strength, which has not been considered by our models. Thus, we may overestimate the open-ocean-sourced SSA effect in polar regions, as the alkaline buffering effect is not considered.

## 3.2 UKCA

UKCA, a version of the UK Earth System Model with Chemistry and Aerosols, has a dynamical core from the Met Office Unified Model (UM) (Morgenstern et al., 2009). A nudged model version-7.3 is used in this study with a horizontal resolution of  $3.75^\circ \times 2.5^\circ$  and 60 vertical layers from the surface to ~84 km. The tropospheric chemistry scheme was built on the scheme in p-TOMCAT model, but contains a comprehensive stratospheric chemistry scheme for climate studies (Braesicke et al., 2013; Banerjee et al., 2014; Ming et al., 2020). In terms of SSA production, the same schemes for open ocean sea spray and for sea-ice-sourced SSA as in the p-TOMCAT are used, apart from the fact that the SSA in UKCA runs is no longer being tagged and tracked for online calculation of heterogeneous reaction rates. Therefore, the emitted SSAs are just used for bromide emission. For heterogeneous reactions, the aerosol surface area density is calculated using the archived monthly climatology aerosol dataset taken from the CLASSIC scheme (Johnson et al., 2010). In p-TOMCAT model, heterogeneous reactions occur also on cloud droplets, but UKCA does not include such reactions on cloud droplets. Therefore, in free troposphere, the BrO partitioning in UKCA may be lower than that in p-TOMCAT, which may result in more soluble inorganic bromine species being washed-out by precipitation in UKCA, as discussed in section 4.

Note that UM-UKCA is a complex chemistry-climate coupling model, covering the whole atmosphere including both troposphere and stratosphere. In many aspects of dynamics and chemistry, it behaves quite differently from the p-TOMCAT CTM. A detailed comparison of model characteristics in vertical mixing and transport of tropical boundary layer tracers was performed by Russo et al. (2011) and Hoyle et al. (2011). The bottom model layer of UKCA, in which chemical compounds such as ozone undergo dry deposition, is ~20 m thick, while in p-TOMCAT it is ~60 m thick. All released SSA and bromine (in the form of Br<sub>2</sub>) are put in the bottom model layer before they are further vertically mixed and horizontally transported. These differences in model vertical resolution may affect model output even if other factors are the same. Although the two models are quite different, e.g., in absolute values of chemical compounds, the relative changes in response to changes of bromine loading, for example, are still informative and will be our major interest and focus of the discussion.

## 3.3 Model experiments

Table 2 lists major model experiments performed in this study. The two model base runs, pTOMCAT\_control and UKCA\_control, contain reactive bromine emissions from both sea-ice-sourced and open-ocean-sourced SSA and VSLS bromocarbons. The pTOMCAT\_No\_Br run does not include any bromine emission, therefore, it is a model run without bromine chemistry. The pTOMCAT\_VSLS and UKCA\_VSLS runs only contain bromocarbons as a source of reactive bromine (without bromine from open ocean and sea ice). The pTOMCAT\_SI\_VSLS and UKCA\_SI\_VSLS runs only contain sea-ice-sourced SSA and bromocarbons as sources of reactive bromine. Similarly, the pTOMCAT\_OO\_VSLS and UKCA\_OO\_VSLS runs only contain sea-spray-sourced SSA and bromocarbons as sources of reactive bromine. By checking the differences between experiments from the same model, we expect to separate individual bromine source contributions to Arctic boundary layer bromine mixing ratio and ozone mixing ratio. Similarly, by checking the differences between the two model responses, we will see model-induced uncertainty, e.g., in both the bromine mixing ratio and ozone mixing ratio. This is because both models employ very similar bromine emissions. Therefore, the differences are mainly due to different model configuration either in their physical aspect, including precipitation, boundary layer dynamics, land use, etc, or in their chemistry aspect involving key atmospheric species such as ozone or OH, and heterogeneous reactions.

Apart from the pTOMCAT\_Fixed\_DF run, in which a fixed (non-seasonal) DF scheme is used (Table S1), all model experiments apply the same bromine DF scheme shown in Table 1. A multiple-year integration (2006-2008) is performed, with averaged outputs used as a climatology for comparison. Several spring runs in 2010, 2011 and 2013 are made with more frequent outputs for ODE and BEE comparisons: 1-hourly output frequency in pTOMCAT\_control and 3-hourly output frequency in UKCA\_control are used for further analysis and model-data comparisons. These years are selected because either significant ODEs or BEEs are observed at one or more sites.



To investigate model sensitivity to key parameters, such as snow salinity, DF, cut-off size and SSA spectrum, we performed additional model experiments (Table 3) with a range of uncertainty for each parameter. For example, pTOMCAT\_high\_salinity applies a 10 times Weddell Sea snow salinity, and pTOMCAT\_low\_salinity applies a 1 times salinity; pTOMCAT\_2×DF applies a doubled DF and pTOMCAT\_0.5×DF applies a halved DF; pTOMCAT\_SSA20 $\mu$ m applies a large cut-off threshold with dry NaCl radius of 20  $\mu$ m and pTOMCAT\_SSA5 $\mu$ m applies a small cut-off threshold of 5  $\mu$ m; pTOMCAT\_spectrum\_1 applies same parameters as in the control run but a small N=10 and pTOMCAT\_spectrum\_2 applies a different parameter set with N=1 and different  $\alpha$ ,  $\beta$  and  $\frac{dm_i}{dt}$  function (see Table 3), which corresponds to the SI\_Base run in Yang et al., (2019). This sensitive experiment is only integrated for one year (2007) with results are compared to the pTOMCAT\_control run result, as discussed in section 5.

## 10 4 Results

### 4.1 Surface ozone seasonality

Figure 2 shows observed monthly mean surface ozone VMRs at the six Arctic locations, two inland (Summit and Pallas) and four coastal (Alert, Barrow, Tiksi and VRS) sites. Spring ozone maxima of >50 ppbv at Summit and ~45 ppbv at Pallas were observed. However, at coastal sites, spring-time ozone is depleted, with low VMRs of 15~20 ppbv, which are comparable to or even lower than their summer ozone minimum in July-August. The summer minimum is thought attributable to enhanced ozone photo-dissociation, where NO<sub>x</sub> levels are low, and increased dry deposition to plants (e.g., Hatakka et al., 2003; Engvall Stjernberg et al., 2011). At higher latitude sites such as Alert and VRS, that are within the polar dome and surrounded by Arctic tundra with sparse vegetation, there is normally still snow coverage even in mid-summer, so the local effect of dry deposition to plants may not be as significant as at Pallas or other sites located further south. However, the long-range transport from lower latitudes of ozone affected by summer plants may result in vegetation having an effect on these sites. For example, the suppressed high latitude summer ozone in Siberia is related to deposition loss to vegetation during long-range transport into the Arctic (Engvall Stjernberg et al., 2011). Figure 2 also shows that model runs without bromine chemistry (pTOMCAT\_No\_Br) and with bromocarbons only (pTOMCAT\_VSLS) can generate spring ozone maxima at all six sites. When open-ocean-sourced reactive bromine is included (orange line in Fig. 2), the spring ozone peak is reduced significantly. The OO-sourced bromine can cause ozone reductions in all seasons (Fig. 3), with a maximum reduction of > 10 ppbv in April and a minimum reduction (1~2 ppbv) in summer. However, the OO-sourced reactive bromine does not alter the ozone seasonality pattern, as the spring ozone peak remains (Fig. 2). On the other hand, sea-ice-sourced reactive bromine (red line in Fig. 2) can significantly perturb the ozone seasonal cycle, by removing the spring ozone peak completely. On average, SI-sourced bromine can cause a maximum ozone loss of > 10 ppbv in April at coastal sites (Fig. 3), similar to the OO-sourced reactive bromine effect. In autumn, SI-sourced bromine only weakly influences the bromine budget and ozone loss. Model runs which contain bromine sources from both OO and SI (black line in Fig. 3) can cause a peak of annual ozone loss of > 25 ppbv (in monthly mean) in April at coastal sites, giving the best match to the observations (Fig. 2). However, inclusion of halogen chemistry leads to severe underestimation of spring ozone at Summit and Pallas.

A similar effect of the SI- and OO-sourced reactive bromine on surface ozone can be seen in UKCA runs but with net ozone loss only half of that seen in p-TOMCAT runs (Fig. S1). As discussed below, this difference is consistent with the difference in total inorganic bromine Br<sub>Y</sub> between the two models: a spring surface layer Br<sub>Y</sub> maximum of 10-30 pptv is simulated in pTOMCAT\_control (Fig. 3), which is about twice that (5-10 pptv) in UKCA\_control (Fig. S1). This is consistent with zonal mean (April) Br<sub>Y</sub> differences between the two models as shown in Fig. S2. Since both models employ a very similar bromine emission flux (e.g., SSA production driven by ECMWF data and with the same bromine depletion factor), the difference in Br<sub>Y</sub> between the two models is likely due to the difference in removal process of inorganic bromine species, such as HBr, HOBr, Br<sub>2</sub> and BrONO<sub>2</sub>, which are either dry and/or wet deposited. Previous model simulations have shown that, on the global

scale, precipitation wash-out is responsible for ~90% of the removal of tropospheric Br<sub>Y</sub> (Yang et al., 2005). In polar regions, where the precipitation rate is relatively low, dry deposition to the surface is another efficient pathway for inorganic bromine removal in surface layer. The different approaches in chemical scheme applied by the models may also affect inorganic bromine deposition rate through influencing partitioning of inorganic bromine species. This is because some species (e.g., HBr, HOBr) are very soluble while others are not (e.g., BrO). A higher BrO partitioning is expected at a higher ozone concentration, and vice versa. Therefore, an overestimated ozone is expected to have a negative feedback to bromine removal and net ozone loss via bromine chemistry. In addition, p-TOMCAT considers heterogeneous reactions on cloud droplets while UKCA does not, this difference may explain why BrO partitioning in p-TOMCAT is higher than that in UKCA, especially in free troposphere, where BrO partitioning can be as large as 50% (Fig. S2). In addition, the higher BrO partitioning in p-TOMCAT also attribute less Br<sub>Y</sub> removal by dry and wet depositions.

Comparing the surface layer BrO/Br<sub>Y</sub> ratio between the two models (Fig. S3), we can see that both UKCA\_control and pTOMCAT\_control give a very similar spring peak with a ratio around 20-30% at coastal sites, with an exception at VRS, where a ratio of up to >60% is simulated in the UKCA\_control run. The largest discrepancy appears in summer at some coastal sites such as Alert, Tiksi and VRS, where a second summer peak ratio is simulated in the UKCA\_control, which is likely attributed to the obviously overestimated summer ozone concentrations by this model (Fig. S4).

From Fig. 2 and Fig. S1 we can see that, on average, surface BrO VMRs at inland sites are smaller than that at coastal sites in both model outputs. For example, in April, mean BrO is ~1 pptv at Summit and ~0.5 pptv at Pallas, at coastal sites, VMRs are between 2 and 7 pptv in pTOMCAT\_control run. In terms of Br<sub>Y</sub>, as shown in Fig. 3, in April, both OO- and SI-sourced bromine contributes roughly the same amount (6~8 pptv) at the two inland sites of Summit and Pallas. At coastal sites (Alert, Barrow, Tiksi and VRS), the OO-sourced bromine contributes one-sixth to half of the SI-sourced Br<sub>Y</sub>, i.e., 4~5 pptv vs 8~30 pptv. The large (and small) gradient in Br<sub>Y</sub> of the SI-sourced (and the OO-sourced) bromine between inland and coastal sites indicates that SI-sourced bromine is locally sourced, while OO-sourced bromine is remotely transported and thus has a smaller horizontal gradient in VMR. In addition, VSLS bromocarbons only have a relatively small contribution of ~0.5 pptv Br<sub>Y</sub> in spring-summer (Fig. 3), corresponding to an ozone loss of ~1 ppbv. As shown in Fig.S7, VSLS contribution to tropospheric Br<sub>Y</sub> over the Arctic increases from near surface layer ~0.5 pptv (in April and July) to ~2 pptv at ~200 hpa. In spring (April), it only accounts for 2~4% of the total Br<sub>Y</sub> in the surface layer and ~40% at 200 hpa; in July, it accounts for 15~20% in the surface layer and >60% at 300~400 hpa.

#### 4.2 Surface ozone frequency distribution

Figure 4 shows NH summer (July) surface ozone frequency distribution at four coastal sites from both observation and p-TOMCAT runs. Climatology clearly indicates a single ozone peak distribution with peak VMRs around ~20 ppbv. The p-TOMCAT model successfully reproduces this summer single peak distribution frequency, though it overestimates it by a few ppbv, e.g., at Alert and VRS. Similar to what is reflected in Fig. 3, the bromine effect on ozone loss is small, only 1-2 ppbv. In April, the observed ozone distribution frequency is quite different from the summer pattern, as a flat distribution across ozone bins is observed with a large ozone depletion fraction at ozone VMRs <10 ppbv (Fig. 5 and 6). Although both p-TOMCAT (Fig. 5) and UKCA (Fig. 6) fail to reproduce this flat distribution pattern, the two model runs with SI-sourced bromine implemented can largely reproduce ozone depletion fraction (at ozone < 10 ppbv). It is interesting to note that though OO-sourced bromine alone can cause April monthly mean ozone to drop by 5~10 ppbv at coastal sites (dashed blue line vs solid blue line in Fig.5 and 6), but itself alone cannot generate any ozone depletion at VMRs < 20 ppbv, indicating that this remotely sourced bromine to the Arctic is not responsible for coastal ODEs; rather, it only affects background ozone. On the other hand, SI-sourced bromine can cause ozone depletion with a significant fraction of ozone VMRs < 10 ppbv (dashed orange line in Fig. 5 and Fig. 6), supporting the suggestion that locally sourced bromine (from sea ice) is responsible for spring ODEs.

As discussed in Section 4.3, the failure of models in reproducing the flat ozone distribution in spring is likely attributable to the coarse resolution of the models used. For instance, the  $\sim 2.8^\circ \times 2.8^\circ$  in p-TOMCAT and  $3.75^\circ \times 2.5^\circ$  in UKCA horizontal resolution means that any sub-grid scale events will not be captured and represented by the model, and a finer resolution model may be needed to have better representation of the observations.

5

### 4.3 Spring ozone depletion events

#### 4.3.1 Time series

Figure 7 and 8 show month-long time series of surface ozone at Tiksi (May 2011), Barrow (March 2010), Summit (April 2010), VRS (April 2010) and Alert (April 2010) in observations (black lines), along with pTOMCAT\_control output (fig. 7) and UKCA\_control output (Fig. 8) of surface ozone shown (in red) and BrO (in blue) from the nearest gridbox. Also shown in Fig. 7 and 8 are maximum and minimum ozone taken from five adjacent gridboxes in the bottom model layer of each model with the aim of investigating the effect of model resolution on output. From Fig. 7, we see that both the p-TOMCAT and UKCA models can largely reproduce large ODEs, e.g., the 1-week-long ODE during 7-11 May 2011 at Tiksi and 10-15 March 2010 at Barrow, and the 3-day long ODE during 22-24 April 2010 at VRS. However, the model has a very limited ability to represent small-scale events that last from a few hours to  $\sim 1$  day. Large discrepancies are found in both timing and magnitude of the ozone depletion. For instance, the one-day long ODE on  $\sim 22$  April 2010 at Alert is not well captured by the central gridbox closest to the site in both models. For example, the p-TOMCAT simulated minimum ozone occurs later by about one day. However, this observed ozone minimum is reproduced if adjacent gridbox results are taken into account. In general, the pTOMCAT\_control run central gridbox surface ozone is significantly correlated with observed ozone with medium to high correlation coefficients  $R$  of 0.68 at Tiksi, 0.49 at Barrow, 0.60 at Summit and 0.75 at VRS and a small  $R=0.22$  at Alert ( $p<0.001$  at all sites). (Fig. 7 and Table 4 column 2). UKCA\_control run shows a similar result with different correlation coefficients  $R$  of 0.68 ( $p<0.001$ ) at Tiksi, 0.18 ( $p<0.01$ ) at Barrow, 0.47 ( $p<0.001$ ) at Summit, 0.62 ( $p<0.001$ ) at VRS and 0.41 ( $p<0.001$ ) at Alert (Fig. 8).

Figure 7 and 8 show that large ODEs are mostly accompanied by enhanced BrO. Statistical analysis shows (for the p-TOMCAT result only) that surface BrO simulated is negatively correlated with observed ozone at Tiksi, Summit and VRS with  $R$  of -0.49 ( $p<0.001$ ), -0.19 ( $p<0.001$ ) and -0.51 ( $p<0.001$ ) respectively (Table 4 column 3), while at Barrow and Alert, the correlation is not significant (with  $R$  of  $\sim -0.05$ ). However, the correlation between observed surface ozone and simulated tropospheric BrO column becomes significant with  $R$  of  $\sim -0.2$  ( $p<0.001$ ) (Table 4 column 4) at these two sites; a similar phenomenon is seen between observed ozone and GOME-2  $\text{BrO}_{\text{trop}}$  at Tiksi, Barrow and VRS (Table 4 column 5), though this correlation does not exist at Summit and Alert. In general, boundary layer ozone is influenced by column BrO in the low troposphere rather than by surface BrO, though these two factors are largely correlated in modelling output (Table 4 column 8). For example, observed ozone at Barrow and Alert significantly correlated with simulated tropospheric column BrO but surface BrO. This is because ozone has much longer lifetime than BrO, thus through vertical mixing and/or air ventilation at top of the boundary layer, ozone and BrO in the free troposphere may influence surface ozone within the boundary layer. For a specific location, surface ozone may not always represent ozone levels in higher layers, so is surface BrO. Therefore, ozonesonde vertical profile data may supply more information than surface data. Note that at extremely low ozone conditions (e.g., after a complete ozone consumption by halogen chemistry in a stable boundary layer), the negative correlation between BrO and ozone concentrations may not exist (Zhao et al., 2016). This is because under that condition, the photochemical equilibrium is shifted from BrO towards atomic Br.

Figure 9 and 10 show time series of tropospheric column BrO from GOME-2, along with outputs from pTOMCAT\_control (Fig. 9) and UKCA\_control (Fig. 10). The GOME-2  $\text{BrO}_{\text{trop}}$  data are tropospheric vertical column BrO for each site at the overpass time. In general, p-TOMCAT  $\text{BrO}_{\text{trop}}$  matches GOME-2  $\text{BrO}_{\text{trop}}$  well with a correlation coefficient  $R=0.59$  ( $p<0.001$ )

at Tiksi, 0.37 ( $p < 0.001$ ) at Barrow, 0.33 ( $p < 0.001$ ) at VRS and 0.30 ( $p < 0.001$ ) at Alert. The lowest correlation is seen as Summit with  $R = 0.16$  ( $p < 0.1$ ), where the satellite column does not show significant day-to-day perturbation (Table 4 column 7 or Fig. 9). In UKCA, a similar correlation is found with  $R = 0.32$  ( $p < 0.01$ ) at Tiksi, 0.31 ( $p < 0.01$ ) at Barrow, 0.39 ( $p < 0.001$ ) at VRS. However, at Summit and Alert the correlation coefficients are very small (0.05 at Summit and 0.1 at Alert). p-TOMCAT model tends to overestimate satellite column BrO data by factors of  $\sim 2$  during BEEs, e.g., during 7-11 May 2011 and during 9-15 March 2010, when there are large ODEs observed. But during non-ODEs (or non-BEEs) periods, modelled column BrO in p-TOMCAT is in good agreement with the GOME-2 data. In contrast, UKCA BrO<sub>trop</sub> significantly underestimates during non-BEEs periods, e.g., by a factor of  $\sim 10$  over Summit, though works well during BEEs. On average, UKCA BrO<sub>trop</sub> is lower than the observation by  $\sim 50\%$ .

#### 10 4.3.2 Vertical profiles

A large ODE observed at Eureka on 3-7 April 2011 has been reported by Zhao et al. (2016), who pointed out that this ODE was a transported event associated with a strong cyclone originating in the Chukchi Sea on 31 March 2011. GOME-2 BrO<sub>trop</sub> images (Fig. S5) clearly indicated a large spiral BrO plume over the Chukchi Sea on 1 April 2011 (Blechschmidt et al., 2016), which was transported across the Canadian high Arctic in the following days. This event might have influenced both Resolute and Alert, which are located within  $\sim 500$  km of Eureka. HYSPLIT 6-day back trajectories ending at 12:00 UTC on 5 April 2011 (Fig. 11) show that the air-mass history of the three sites has a very similar transport pattern, further indicating that these three sites were influenced by the same synoptic system. For this reason, we extend this case study by looking at ozonesonde data from all three sites as shown in Fig. 12a-c and 13a-c. Ozonesonde data clearly indicate a severe ozone depletion layer at altitude  $< 2$  km during 3-7 April 2011 at both Resolute and Eureka, with minimum ozone less than 1 ppbv in the near-surface layer. At Alert, the ozone depletion strength was a bit weaker than at the other two sites, but the depleted ozone layer still reaches an altitude of 1-1.5 km. Moreover, the most severe ozone depletion at Alert on 4 April is not near the surface, but rather at an elevated height of 500-800 m. The simulated ozone profiles in UKCA\_control run (Fig. 12d-f) generally match the ozonesonde profiles in the 0-4 km range. For this ODE, both the timing of occurrence and height range of the ODE are roughly captured by the UKCA model. The modelled BrO profile is shown in Fig. 12g-i, with enhanced BrO being simulated in association with ozone depletion. At Eureka, the simulated maximum surface BrO is similar to the MAX-DOAS measurement with a maximum VMR of  $\sim 20$  pptv for this event (Zhao et al., 2016; 2017). In pTOMCAT\_control run, ozone-poor air is not limited to near surface layer (or  $< 1.5$  km), rather depleted ozone spread is well spread over the lower troposphere to a height of  $\sim 4$  km (Fig. 13d-f). Similarly, simulated BrO in p-TOMCAT is also uniformly spread in lower troposphere (Fig. 13g-i). A zoom-in comparison between the GOME-2 tropospheric column BrO and model-integrated BrO for the period of 1-10 April 2011 is shown in Fig. 14 (for UKCA) and Fig. 15 (for p-TOMCAT). Satellite BrO columns reached a peak firstly on 3 April 2011 at Resolute. One day later, the peak appeared at Eureka and Alert. The UKCA\_control run shows a similar transport pattern of enhanced BrO, which reached Resolute first, and then Eureka and Alert (Fig. 14). However, the pTOMCAT\_control run shows enhanced BrO reaches Eureka and Resolute first and then Alert later (Fig. 15). The differences are likely related to the different model resolutions and gridbox coordinate. The above finding is consistent with our previous conclusion made in Zhao et al. (2016) that this ODE is transported associated with a large cyclone.

A strong correlation between the modelled BrO<sub>trop</sub> and the GOME-2 BrO<sub>trop</sub> data can be seen at Resolute with a high  $R$  of 0.71 ( $p < 0.001$ ) in UKCA (Fig. 14d) and 0.59 ( $p < 0.001$ ) in p-TOMCAT (Fig. 15d). At the other two sites, the correlation is positive in UKCA but with small  $R$  of  $\sim 0.2$ , in p-TOMCAT, the  $R$  is small to medium: 0.45 at Eureka ( $p < 0.01$ ) and 0.33 ( $p < 0.05$ ) at Alert. The UKCA BrO<sub>trop</sub> is on average lower than the satellite data by  $\sim 50\%$  (refers to the regression equations shown in Fig. 14), which is opposite to the overestimated BrO<sub>trop</sub> by 50-90% in p-TOMCAT model (in Fig. 15). This difference is in line with the above discussed differences in total Br<sub>Y</sub> between the two models (in Section 4.1), although the same total bromine emissions are applied.

## 5 Discussions

Regarding tropospheric total Br<sub>Y</sub> in the Arctic, as mentioned previously, the model-to-model difference can be as large as 100% at near surface layer (under the same bromine loading). As a consequence, the ozone loss due to bromine chemistry can be different by a factor of two. The relatively high Br<sub>Y</sub> in pTOMCAT\_control run is partly due to the higher BrO partitioning in p-TOMCAT (attributed to the inclusion of heterogeneous reactions on cloud droplets) and thus less wet removal of soluble bromine species, and partly due to stronger vertical mixing of air masses in lower troposphere and thus less dry deposition removal of reactive bromine species from the surface layer.

On a global scale, the uncertainty of the sea spray (from open ocean) source can be a factor of four (Lewis and Schwartz, 2004). On sea ice, the blowing snow related SSA production is sensitive to both snow salinity and bulk sublimation flux calculated (as a complex function of near surface wind speed, temperature and relative humidity, etc) (Yang et al., 2019). Although we lack snow data on Arctic sea ice to strictly constrain the 3.5 times Antarctic Weddell Sea snow salinity used for the Arctic (Section 3.1), the likelihood of higher snow salinity in the Arctic implies that there is more SSA generated from same amount of blowing snow sublimation flux (also with slightly larger SSA in size). As a consequence, there is more reactive bromine released from blowing snow in the Arctic than in the Antarctic. Given that the snow salinity effect on SSA mass production is almost linear, the uncertainty caused by this factor can be linearly estimated when more snow data in the Arctic are available. However, in terms of relative bromine release from SSA, the actual emission flux varies and depends on the salinity, this is due to the cut-off threshold size applied (i.e., a dry NaCl radius of 10 μm in the control run). Therefore, the reactive bromine release from SSA is a function of snow salinity and SSA spectrum.

Another factor that may directly affect reactive bromine emission is the depletion factor. Fig. S6 shows simulated ozone from the pTOMCAT\_Fixed\_DF run, in which a fixed bromine DF scheme (Table S1) is used. For comparison, the pTOMCAT\_control run result is shown, in which the seasonal DF scheme (Table 1) is applied. As can be seen, the timing of the spring ozone minimum shifts slightly from April in pTOMCAT\_control towards March in pTOMCAT\_Fixed\_DF, which makes the model agreement poorer, as the observed ozone minimum is in May at the four coastal sites. To achieve better agreement with the observations, the model needs either an even larger seasonal amplitude of bromine DF than that in Table 1 or a further shift of the DF phase by at least one month, e.g., to allow the annual maximum DF (=0.53) to shift from May to June. However, due to lack of year-round SSA bromide data in the Arctic, we could not validate the DF patterns used in this study as this requires systematic measurements of the SSA bromide depletion strength in the Arctic. This is critical as local SSA is a large source of bromine and the seasonal DF not only affects the timing but also affects the total bromine flux to the atmosphere. Model bias also comes from applying the same depletion factor scheme (i.e., Table 1) to both open-ocean-sourced sea spray and sea-ice-sourced SSA. As we know that freshly released sea spray is alkaline with pH>8, and therefore, the anions in sea spray may buffer the absorbed nitrate and sulphate before getting acidified to allow bromide to be released through heterogeneous reaction, e.g.,  $\text{HOBr} + \text{Br}^- \rightarrow \text{Br}_2$  (e.g., Sander et al., 2003; Breider et al., 2009). On sea ice, the situation could be different as surface snow may have been pre-acidified before grains are lifted in to the air to form SSA. Unfortunately, this difference in the process of bromide liberation from SSA particles is beyond the scope of this study, but we note that it could result in bias, e.g., in bromide releasing from air-borne SSA in both strength, timing and locations.

To investigate model sensitivity to the above key parameters used in describing sea-ice sourced SSA and reactive bromine release from SSA, we performed additional model experiments (in Table 3) by altering one or a few parameters in each experiment and comparing the output with the pTOMCAT\_control output (for year 2007). For most key parameters, we designed a pair run with one applying a higher value and the other a lower value than in the control run. Model results are shown in figure 16 with derived sea-ice sourced Br<sub>Y</sub> (April) and ozone (as well as change with respect to the control run) shown in Table 3.

Since the control run applied a 3.5 times Weddell Sea salinity, the 10 times salinity run in pTOMCAT\_high\_salinity and 1 times salinity in pTOMCAT\_low\_salinity is roughly ~3 times and ~1/3 of the control run salinity, respectively. Comparing to

the pTOMCAT\_control run, the sea-ice sourced Br<sub>Y</sub> (April) in pTOMCAT\_high\_salinity increases by +94.8%, corresponding to additional ozone loss by -37.5%. Sea-ice sourced Br<sub>Y</sub> (April) in pTOMCAT\_low\_salinity decreases by -60%, corresponding to ozone increase by +61%. It is interesting to note that ozone and Br<sub>Y</sub> percentage change in pTOMCAT\_low\_salinity is at a ratio of 1:1, but in pTOMCAT\_high\_salinity run the ozone percentage change is only < 1/2 of the Br<sub>Y</sub> percentage change. Sea-ice sourced Br<sub>Y</sub> in pTOMCAT\_SSA20μm (with a large cut-off radius size of 20 μm) increases by +42.3%, corresponding to additional ozone loss by -21.1%, which is almost half of the Br<sub>Y</sub> percentage change. On the contrary, sea-ice sourced Br<sub>Y</sub> in pTOMCAT\_SSA5μm (with a small cut-off radius size of 5 μm) decreases by -55.1%, corresponding to ozone increase by +45.4%. Sea-ice sourced Br<sub>Y</sub> in pTOMCAT\_2×DF (a doubled DF) increases by 84.5%, corresponding to additional ozone loss by -35.7% (less than 1/2 of the Br<sub>Y</sub> change). Sea-ice sourced Br<sub>Y</sub> in pTOMCAT\_0.5×DF (a halved DF) decreases by -47.3%, corresponding to additional increase by +45.8% (almost same amount of the Br<sub>Y</sub> change). Sea-ice sourced Br<sub>Y</sub> in pTOMCAT\_spectrum\_1 (with a small N=10) reduces by -20.1%, corresponding to ozone increase by +16.5%. Sea-ice sourced Br<sub>Y</sub> in pTOMCAT\_spectrum\_2 reduces by -42.2%, corresponding to ozone gain by +38.6%. In all model experiments with reduced Br<sub>Y</sub> from sea ice, the percentage change in ozone is almost in the same amount of Br<sub>Y</sub> change. However, in the Br<sub>Y</sub> increasing cases, the ozone percentage (loss) change is only half or less than that of the Br<sub>Y</sub> percentage change indicating that ozone consumption efficiency is getting lower at higher reactive bromine loading, therefore, introducing extra reactive bromine to the environment will not necessary result in equivalent amount of ozone loss as at low reactive bromine loading.

The above model experiments clearly show the possible range of modelled ozone and Br<sub>Y</sub> in the Arctic caused by uncertainty of each key parameter involved in the parameterisations. From these runs we can derive the likely maximum effect from the sea-ice sourced SSA from blowing snow. For example, the mean DF values in spring (March, April and May, see Table 1) are ~0.5, a doubling DF indicates all bromide in SSA is released to the air, thus the pTOMCAT\_2×DF run represents an extreme scenario with the maximum effect from blowing snow (with other conditions unchanged), so is the pTOMCAT\_SSA20μm run, as under this cut-off threshold, almost all SSA formed from blowing snow releases bromide as a source of reactive bromine. pTOMCAT\_high\_salinity represents another extreme case that shows the large effect from blowing snow. Their combination effect can be multiplied and result in even larger effect. Equivalently, under extremely low snow salinity (such as in pTOMCAT\_low\_salinity) or small DF (such as in pTOMCAT\_0.5×DF), the blowing snow sourced SSA effect on Arctic surface ozone and reactive bromine will be less important than the control run. Therefore, we demand further field measurement to collect data to constrain these key model parameters.

6 Summary For the first time, using two global chemistry models, we have examined the three tropospheric bromine sources (bromocarbons, open ocean sea spray and sea-ice-sourced SSA) and their impacts on Arctic boundary layer bromine and ozone loss. Our modelling experiments show that inclusion of bromine chemistry can greatly improve Arctic surface ozone seasonality reproduction, in particular the spring ozone depletion observed at most Arctic coastal sites, such as Tiksi, Barrow, VRS and Alert. However, inclusion halogen-chemistry leads to severe underestimation of spring ozone at inland sites such as Summit and Pallas. Our model results shows that very short-lived bromocarbons contribution to Arctic tropospheric Br<sub>Y</sub> is less than half pptv in the near surface layer, corresponding to small ozone loss of < 1 ppbv. Multi-year simulations show that inclusion of bromine chemistry can cause Arctic surface ozone loss by 10~20 ppbv in spring, with almost half of the ozone loss attributed to open-ocean sourced SSA and the other half from sea-ice sourced SSA. However, without SI-sourced bromine, models cannot reproduce Arctic ozone depletion events, and OO-sourced bromine only affects background atmospheric ozone and cannot by itself produce any polar surface ODEs.

Although a very similar tropospheric halogen scheme applied in the two models, the model-to-model differences are relatively large. For example, boundary layer Br<sub>Y</sub> in p-TOMCAT control run is higher than in UKCA control run, which is likely related to the different wet and dry depositions of reactive bromine species. Comparing the GOME-2 satellite data, p-TOMCAT BrO<sub>Trop</sub> overestimates the observations by a factor of ~2 during BEEs, but agrees well with the observations during non-BEEs.

On the contrary, UKCA BrO<sub>trop</sub> generally underestimates the observations by ~50% during BEEs, but severely underestimates the observation during non-BEEs (e.g., more than an order of magnitude at Summit). Despite the model differences, both model's outputs of time series of surface ozone and tropospheric column BrO (in spring) show significant correlation to the observations at most selected periods, which strongly supports the physical and chemical mechanisms implemented.

5 Due to the relatively coarse model resolution (e.g., 2~3 degree in horizontal direction), our models cannot resolve small scale ODEs, e.g., with a spatial scale < ~500 km (or with a temporal scale of < ~1 day). Thus, to allow a better reproduction of small-scale ozone events, a fine resolution model is needed. Ozone sonde data from three adjacent high Arctic Canadian sites (Resolute, Eureka and Alert), satellite BrO<sub>trop</sub> and back-trajectory model output clearly indicate a large ODE (and BEE) in association with a stormy system, which event is successfully captured by the two models, further confirming that ODEs and  
10 BEEs can be long-distance transported. Although our global models cannot be able to reproduce small-scale ODEs, the success of the models in capturing large scale ODEs (and BEEs) gives additional evidence from a chemistry side to the proposed mechanism of SSA production and reactive bromine release from blowing snow on sea ice (Yang et al., 2008; 2019; Frey et al., 2019). Note that the success of the blowing snow mechanism does not necessarily rule out other possibilities, including the proposed candidates of reactive bromine from snowpack, open leads, frost flowers, sea ice surface, etc. Change in sea ice  
15 extent and type in a warming climate will influence Arctic boundary layer chemistry and Arctic climate, including the deposition of atmospheric mercury to the surface (Wang et al., 2019).

### Author Contributions

XY designed the study, performed model experiments, and interpreted model output. AM provided surface ozone data, and DT provided ozonesonde data of the three Canadian sites. KB, KS and XZ provided MAX-DOAS BrO data at Eureka, AMB  
20 and AR provided GOME-2 tropospheric BrO columns, and XZ contributed to GOME-2 and ozonesonde data analysis. XY prepared the manuscript draft with contributions from all co-authors in both data interpretation and discussions.

### Acknowledgements

We thank the IASOA ([www.iasoa.org](http://www.iasoa.org)) Trace Gases Working group for stimulating and encouraging this investigation. We  
25 thank the many observers who obtained these data over many years of careful work. Ozone sounding data and surface data for Alert were provided by Environment and Climate Change Canada (ECCC). DANCEA is acknowledged for the financial support to carry out ozone measurements at Villum Research Station. The Eureka MAX-DOAS BrO measurements were made at the Polar Environment Atmospheric Research Laboratory (PEARL) by the Canadian Network for the Detection of Atmospheric Change (CANDAC), primarily supported by NSERC, CSA, and ECCC. Ozone measurements from the Tiksi  
30 Observatory are supported by the Russian Federal Service for Hydrological and Meteorological Monitoring (Roshydromet) and the Russian Arctic and Antarctic Research Institute (AARI). The NOAA Arctic Research Program has contributed to establishing surface ozone measurement programs in Tiksi and Eureka. The Summit and Barrow surface ozone observations are collected by the NOAA Global Monitoring Laboratory. The Pallas surface ozone observations are collected by the Finnish Meteorological Institute. AB and AR gratefully acknowledge the funding by the Deutsche Forschungsgemeinschaft (DFG, German Research Foundation)-Projektnummer 268020496-TRR 172, within the Transregional Collaborative Research Center  
35 "Arctic Amplification: Climate Relevant Atmospheric and Surface Processes, and Feedback Mechanisms (AC)" in subproject C03. The authors gratefully acknowledge the NOAA Air Resources Laboratory (ARL) for the provision of the HYSPLIT transport and dispersion model and/or READY website (<http://www.ready.noaa.gov>) used in this publication.

## References

- Abbatt, J. P. D., Thomas, J. L., Abrahamsson, K., Boxe, C., Granfors, A., Jones, A. E., King, M. D., Saiz-Lopez, A., Shepson, P. B., Sodeau, J., Toohey, D. W., Toubin, C., von Glasow, R., Wren, S. N., and Yang, X.: Halogen activation via interactions with environmental ice and snow in the polar lower troposphere and other regions, *Atmos. Chem. Phys.*, 12, 6237–6271, <https://doi.org/10.5194/acp-12-6237-2012>, 2012.
- Adler, R. F., Huffman, G. J., Chang, A., Ferraro, R., Xie, P.-P., Janowiak, J., Rudolf, B., Schneider, U., Curtis, S., Bolvin, D., Gruber, A., Susskind, J., Arkin, P., and Nelkin, E.: The Version-2 Global Precipitation Climatology Project (GPCP) Monthly Precipitation Analysis (1979–Present), *J. Hydrometeorol.*, 4, 1147–1167, [https://doi.org/10.1175/1525-7541\(2003\)004<1147:TVGPCP>2.0.CO;2](https://doi.org/10.1175/1525-7541(2003)004<1147:TVGPCP>2.0.CO;2), 2003.
- Afe, O. T., Richter, A., Sierk, B., Wittrock, F., and Burrows, J. P.: BrO emission from volcanoes: A survey using GOME and SCIAMACHY measurements, *Geophys. Res. Lett.*, 31, L24113, doi:10.1029/2004GL020994, 2004.
- Ancellet, G., N. Daskalakis, J.C. Raut, D. Tarasick, J. Hair, B. Quennehen, F. Ravetta, H. Schlager, A.J. Weinheimer, A.M. Thompson, B. Johnson, J.L. Thomas, and K.S. Law, Analysis of the latitudinal variability of tropospheric ozone in the Arctic using the large number of aircraft and ozonesonde observations in early summer 2008, *Atmos. Chem. Phys.*, 16, 13341–13358, <https://doi:10.5194/acp-16-13341-2016>, 2016.
- Ayers, G. P., Gillett, R. W., Cainey, J. M., and Dick, A. L.: Chloride and bromide loss from sea-salt particles in Southern Ocean air, *J. Atmos. Chem.*, 33, 299–319, 1999.
- Barret, B., Ricaud, P., Mari, C., Attié, J.-L., Boussez, N., Josse, B., Le Flochmoe'n, E., Livesey, N. J., Massart, S., Peuch, V.-H., Piacentini, A., Sauvage, B., Thouret, V., and Cammas, J.-P.: Transport pathways of CO in the African upper troposphere during the monsoon season: a study based upon the assimilation of spaceborne observations, *Atmos. Chem. Phys.*, 8, 3231–3246, doi:10.5194/acp-8-3231-2008, 2008.
- Barrie, L. A., J. W. Bottenheim, R. C. Schnell, P. J. Crutzen, and R. A. Rasmussen, Ozone destruction and photochemical reactions at polar in the lower Arctic atmosphere, *Nature*, 334, 138–141, 1988.
- Barrie, L. A., Bottenheim, J. W., Schnell, R. C., Crutzen, P. J., and Rasmussen, R. A.: Ozone destruction and photochemical reactions at polar sunrise in the lower Arctic atmosphere, *Nature*, 334, 138–141, <https://doi.org/10.1038/334138a0>, 1988.
- Begoin, M., Richter, A., Weber, M., Kaleschke, L., Tian-Kunze, X., Stohl, A., Theys, N., and Burrows, J. P.: Satellite observations of long range transport of a large BrO plume in the Arctic, *Atmos. Chem. Phys.*, 10, 6515–6526, doi:10.5194/acp-10-6515-2010, 2010.
- Blechschmidt, A.-M., Richter, A., Burrows, J. P., Kaleschke, L., Strong, K., Theys, N., Weber, M., Zhao, X., and Zien, A.: An exemplary case of a bromine explosion event linked to cyclone development in the Arctic, *Atmos. Chem. Phys.*, 16, 1773–1788, doi:10.5194/acp-16-1773-2016, 2016.
- Bottenheim, J. W., Gallant, A. G. & Brice, K. A.: Measurements of NO<sub>y</sub> species and O<sub>3</sub> at 82°N latitude, *Geophys. Res. Lett.* 13, 113–116, 1986.
- Bottenheim, J.W., J.D. Fuentes, D.W. Tarasick and K.G. Anlauf, Ozone in the Arctic lower troposphere during winter and spring 2000 (ALERT2000), *Atmospheric Environment*, 36, 2535–2544, 2002.
- Bottenheim, J. W., and E. Chan, A trajectory study into the origin of spring time Arctic boundary layer ozone depletion, *J. Geophys. Res.*, 111, D19301, doi:[10.1029/2006JD007055](https://doi.org/10.1029/2006JD007055), 2006.
- Bottenheim, J. W., Netcheva, S., Morin, S., and Nghiem, S. V.: Ozone in the boundary layer air over the Arctic Ocean: measurements during the TARA transpolar drift 2006–2008, *Atmos. Chem. Phys.*, 9, 4545–4557, <https://doi.org/10.5194/acp-9-4545-2009>, 2009.
- Braesicke, P., Keeble, J., Yang, X., Stiller, G., Kellmann, S., Abraham, N. L., Archibald, A., Telford, P., and Pyle, J. A.: Circulation anomalies in the Southern Hemisphere and ozone changes, *Atmos. Chem. Phys.*, 13, 10677–10688, <https://doi:10.5194/acp-13-10677-2013>, 2013.



- Banerjee, A., Archibald, A. T., Maycock, A., Telford, P., Abraham, N. L., Yang, X., Braesicke, P., and Pyle, J.: Lightning NO<sub>x</sub>, a key chemistry–climate interaction: impacts of future climate change and consequences for tropospheric oxidising capacity, *Atmos. Chem. Phys.*, 14, 9871–9881, <https://doi.org/10.5194/acp-14-9871-2014>, 2014.
- Breider, T., Chipperfield, M. P., Richards, N. A. D., Carslaw, K. S., Mann, G. W., and Spracklen, D. V.: The impact of BrO on dimethylsulfide in the remote marine boundary layer, *Geophys. Res. Lett.*, 37, L02807, doi:10.1029/2009GL040868, 2009.
- 5 Buys, Z., Brough, N., Huey, G., Tanner, D., von Glasow, R., and Jones, A. E.: Br<sub>2</sub>, BrCl, BrO and surface ozone in coastal Antarctica: a meteorological and chemical analysis, *Atmos. Chem. Phys. Discuss.*, 12, 11035–11077, doi:10.5194/acpd-12-11035-2012, 2012.
- Callies, J., Corpaccioli, E., Eisinger, M., Hahne, A., and Lefebvre, A.: GOME-2 – Metop’s Second-Generation Sensor for Operational Ozone Monitoring, *ESA Bull.-Eur. Space*, 102, 28–36, 2000.
- 10 Cavalieri, D. J., and C. L. Parkinson, Arctic sea ice variability and trends, 1979–2010, *Cryosphere*, 6(4), 881– 889, doi:[10.5194/tc-6-881-2012](https://doi.org/10.5194/tc-6-881-2012), 2012.
- Cao, L. and Gutheil, E.: Numerical simulation of tropospheric ozone depletion in the polar spring, *Air Qual. Atmos. Health*, 6, 673–686, doi:10.1007/s11869-013-0208-9, 2013
- 15 Cao, L., Platt, U., and Gutheil, E.: Role of the boundary layer in the occurrence and termination of the tropospheric ozone depletion events in polar spring, *Atmos. Environ.*, 132, 98–110, doi:<http://dx.doi.org/10.1016/j.atmosenv.2016.02.034>, 2016.
- Choi, S., N. Theys, R. J. Salawitch, P. A. Wales, J. Joiner, T. P. Canty, et al.: Link between arctic tropospheric BrO explosion observed from space and sea-salt aerosols from blowing snow investigated using ozone monitoring instrument BrO data and GEOS-5 data assimilation system, *J. Geophys. Res. Atmos.*, 123 (13), pp. 6954–6983, DOI: [10.1029/2017JD026889](https://doi.org/10.1029/2017JD026889), 2018.
- 20 Production flux of sea spray aerosol, *Rev. Geophys.*, 49, RG2001, <https://doi.org/10.1029/2010RG000349>, 2018.
- Choi, S., Wang, Y., Salawitch, R. J., Canty, T., Joiner, J., Zeng, T., Kurosu, T. P., Chance, K., Richter, A., Huey, L. G., Liao, J., Neuman, J. A., Nowak, J. B., Dibb, J. E., Weinheimer, A. J., Diskin, G., Ryerson, T. B., da Silva, A., Curry, J., Kinnison, D., Tilmes, S., and Levelt, P. F.: Analysis of satellite-derived Arctic tropospheric BrO columns in conjunction with aircraft measurements during ARCTAS and ARCPAC, *Atmos. Chem. Phys.*, 12, 1255–1285, [https://doi.org/10.5194/acp-12-1255-](https://doi.org/10.5194/acp-12-1255-2012)
- 25 [2012](https://doi.org/10.5194/acp-12-1255-2012), 2012.
- Custard K. D., A. R. W. Raso, P. B. Shepson, R. M., Staebler, and K. A. Pratt, Production and release of molecular bromine and chlorine from the Arctic coastal snowpack, *ACS Earth and Space Chemistry*, 1(3), 142–152, <https://doi.org/10.1021/acsearthspacechem.7b00014>, 2017.
- de Caritat, P., Hall, G., G`islason, S., Belsey, W., Braun, M., Goloubeva, N. I., Olsen, H. K., Scheie, J. O., and Vaive, J. E.: Chemical composition of arctic snow: concentration levels and regional distribution of major elements, *Sci. Total Environ.*, 336, 183–199, doi:10.1016/j.scitotenv.2004.05.031, 2005.
- 30 Dee, D. P., Uppala, S. M., Simmons, A. J., Berrisford, P., Poli, P., Kobayashi, S., Andrae, U., Balmaseda, M. A., Balsamo, G., Bauer, P., Bechtold, P., Beljaars, A. C. M., van de Berg, L., Bidlot, J., Bormann, N., Delsol, C., Dragani, R., Fuentes, M., Geer, A. J., Haimberger, L., Healy, S. B., Hersbach, H., Hólm, E. V., Isaksen, L., Kállberg, P., Köhler, M., Matricardi, M., McNally, A. P., Monge-Sanz, B. M., Morcrette, J. J., Park, B. K., Peubey, C., de Rosnay, P., Tavolato, C., Thépaut, J. N., and Vitart, F.: The ERA-Interim reanalysis: configuration and performance of the data assimilation system, *Q. J. Roy. Meteor. Soc.*, 137, 553–597, doi:10.1002/qj.828, 2011.
- Dennison, F., Keeble, J., Morgenstern, O., Zeng, G., Abraham, N. L., and Yang, X.: Improvements to stratospheric chemistry scheme in the UM-UKCA (v10.7) model: solar cycle and heterogeneous reactions, *Geosci. Model Dev.*, 12, 1227–1239, <https://doi.org/10.5194/gmd-12-1227-2019>, 2019.
- 40 Derwent, R. G., Parrish, D. D., Galbally, I. E., Stevenson, D. S., Doherty, R. M., et al.: Interhemispheric differences in seasonal cycles of tropospheric ozone in the marine boundary layer: Observation – model comparisons. *J Geophys Res.* DOI: <https://doi.org/10.1002/2016JD024836>, 2016.

- Emmons, L. K., Arnold, S. R., Monks, S. A., Huijnen, V., Tilmes, S., Law, K. S., Thomas, J. L., Raut, J.-C., Bouarar, I., Turquety, S., Long, Y., Duncan, B., Steenrod, S., Strode, S., Flemming, J., Mao, J., Langner, J., Thompson, A. M., Tarasick, D., Apel, E. C., Blake, D. R., Cohen, R. C., Dibb, J., Diskin, G. S., Fried, A., Hall, S. R., Huey, L. G., Weinheimer, A. J., Wisthaler, A., Mikoviny, T., Nowak, J., Peischl, J., Roberts, J. M., Ryerson, T., Warneke, C., and Helmig, D.: The POLARCAT
- 5 Model Intercomparison Project (POLMIP): overview and evaluation with observations, *Atmos. Chem. Phys.*, 15, 6721–6744, <https://doi.org/10.5194/acp-15-6721-2015>, 2015.
- Engvall Stjernberg, A.-C., A. Skorokhod, J.-D. Paris, N. Elansky, P. Nédélec, and A. Stohl, Low concentrations of near-surface ozone in Siberia. *Tellus*, 63B, 011607, doi:10.3402/tellusb.v64i0.11607, 2011.
- Errera, Q., Daerden, F., Chabrilat, S., Lambert, J. C., Lahoz, W. A., Viscardy, S., Bonjean, S., and Fonteyn, D.: 4D-Var
- 10 assimilation of MIPAS chemical observations: ozone and nitrogen dioxide analyses, *Atmos. Chem. Phys.*, 8, 6169–6187, doi:10.5194/acp-8-6169-2008, 2008.
- Evans, M. J., Jacob, D. J., Atlas, E., Cantrell, C. A., Eisele, F., Flocke, F., Fried, A., Mauldin, R. L., Ridley, B. A., Wert, B., Talbot, R., Blake, D., Heikes, B., Snow, J., Walega, J., Weinheimer, A. J., and Dibb, J.: Coupled evolution of BrO<sub>x</sub>-ClO<sub>x</sub>-HO<sub>x</sub>-NO<sub>x</sub> chemistry during bromine-catalyzed ozone depletion events in the arctic boundary layer, *J. Geophys. Res. Atmos.*,
- 15 108, doi:10.1029/2002JD002732, 2003.
- Falk, S., Sinnhuber, B.-M., Polar boundary layer bromine explosion and ozone depletion events in the chemistry-climate model EMAC v2.52: Implementation and evaluation of AirSnow algorithm. *Geoscientific Model Development*, 1115–1131. 2018.
- Fan, S. M., and D. J. Jacob D. J.: Surface ozone depletion in Arctic spring sustained by bromine reactions on aerosols, *Nature*, 359, 522–524, 1992.
- 20 Feng, W., Chipperfield, M. P., Dhomse, S., Monge-Sanz, B. M., Yang, X., Zhang, K., and Ramonet, M.: Evaluation of cloud convection and tracer transport in a three-dimensional chemical transport model, *Atmos. Chem. Phys.*, 11, 5783–5803, doi:10.5194/acp-11-5783-2011, 2011.
- Fernandez, R. P., Carmona-Balea, A., Cuevas, C. A., Barrera, J. A., Kinnison, D. E., Lamarque, J.-F., Blaszcak-Boxe, C., Kim, K., Choi, W., Hay, T., Blechschmidt, A. M., Schönhardt, A., Burrows, J. P., & Saiz-Lopez, Modeling the sources
- 25 and chemistry of polar tropospheric halogens (Cl, Br, and I) using the CAM-Chem global chemistry-climate model. *Journal of Advances in Modeling Earth Systems*, 11(7), 2259–2289. <https://doi.org/10.1029/2019MS001655>, 2019.
- Frey, M. M., Norris, S. J., Brooks, I. M., Anderson, P. S., Nishimura, K., Yang, X., Jones, A., Nerentorp Mastromonaco, M. G., Jones, D. H., and Wolff, E. W.: First direct observation of sea salt aerosol production from blowing snow above sea ice, *Atmos. Chem. Phys. Disc.*, acp-2019-259, 2019.
- 30 Frieß, U., Sihler, H., Sander, R., Pöhler, D., Yilmaz, S., and Platt, U.: The vertical distribution of BrO and aerosols in the Arctic: Measurements by active and passive differential optical absorption spectroscopy, *J. Geophys. Res.*, 116, D00R04, doi:10.1029/2011JD015938, 2011.
- Gregory, D. and Rowntree, P. R.: A mass flux convection scheme with representation of cloud ensemble characteristics and stability-dependent closure, *Mon. Weather Rev.*, 118, 1483–1506, 1990.
- 35 Galbally, I.E., Schultz, M.G., Buchmann, B., Gilge, S., Guenther, F., Koide, H., Oltmans, S., Patrick, L., Scheel, H.-E., Smit, H., Steinbacher, M., Steinbrecht, W., Tarasova, O., Viallon, J., Volz-Thomas, A., Weber, M., Wielgosz R. and Zellweger C., Guidelines for Continuous Measurement of Ozone in the Troposphere, GAW Report No 209, Publication WMO-No. 1110, ISBN 978-92-63-11110-4, World Meteorological Organisation, Geneva Switzerland, 76 pp. <http://www.wmo.int/pages/prog/arep/gaw/gaw-reports.html>, 2013.
- 40 Ganzeveld, L. and Lelieveld, J.: Dry deposition parametrisation in a chemistry general circulation model and its influence on the distribution of reactive trace gases, *J. Geophys. Res.*, 100, 20999–21012, doi:10.1029/95JD02266, 1995.
- Giannakopoulos, C.: Modelling the impact of physical and removal processes on tropospheric chemistry, Ph.D. thesis, University of Cambridge, 1998.

- Gaudel, A. and Cooper, O. R.: Tropospheric Ozone Assessment Re-port: Present-day distribution and trends of tropospheric ozone relevant to climate and global atmospheric chemistry model evaluation, *Elem. Sci. Anth.*, in press, 2018.
- Giannakopoulos, C., Good, P., Law, K. S., Wang, K.-Y., Akylas, E., and Koussis, A.: Rainfall parameterization in an off-line chemical transport model, *Atmos. Sci. Lett.*, 5, 82–88, <https://doi.org/10.1002/asl.68>, 2004.
- 5 Hatakka, J., Aalto, T., Aaltonen, V., Aurela, M., Hakola, H., Komp-pula, M., Laurela, T., Lihavainen, H., Paatero, J., Salminen, K., and Viisanen, Y.: Overview of the atmospheric research activities and results at Pallas GAW station, *Boreal Environ. Res.*, 8, 365–383, 2003.
- Hardacre, C., Wild, O., and Emberson, L.: An evaluation of ozonodry deposition in global scale chemistry climate models, *Atmos. Chem. Phys.*, 15, 6419–6436, <https://doi.org/10.5194/acp-15-6419-2015>, 2015.
- 10 Hauglustaine, D., Hourdin, F., Jourdain, L., Filliberti, M., Walters, S., Lamarque, J., and Holland, E.: Interactive chemistry in the Laboratoire de Mé té orologie Dynamique general circulation model: Description and background tropospheric chemistry evaluation, *J. Geophys. Res.*, 109, 4314, doi:10.1029/2003JD003957, 2004.
- Helmig, D., Oltmans, S. J., Carlson, D., Lamarque, J.-F., Jones, A., Labuschagne, C., Anlauf, K., and Hayden, K.: A Review of surface ozone in the polar regions, *Atmos. Environ.*, 41(24), 5138–5161, 2007.
- 15 He, H., D.W. Tarasick, W.K. Hocking, T.K. Carey-Smith, Y. Rochon, J. Zhang, P.A. Makar, M. Osman, J. Brook, M. Moran, D. Jones, C. Mihele, J.C. Wei, G. Osterman, P.S. Argall, J. McConnell and M.S. Bourqui (2011), Transport Analysis of Ozone Enhancement in Southern Ontario during BAQS-Met, *Atmos. Chem. Phys.*, 11, 2569-2583, doi:10.5194/ acp-11-2569-2011.
- Helmig, D., Oltmans, S. J., Morse, T. O., and Dibb, J. E.: What is causing high ozone at Summit, Greenland?, *Atmos. Environ.*, 41(24), 5031–5043, <https://doi.org/10.1016/j.atmosenv.2006.05.084>, 2007.
- 20 Holtzlag, A. A. M., and Boville, B. A.: Local versus non-local boundary layer diffusion in a global climate model, *J. Clim.*, 6, 1825-1842, [https://doi.org/10.1175/1520-0442\(1993\)006<1825:LVNBLD>2.0.CO;2](https://doi.org/10.1175/1520-0442(1993)006<1825:LVNBLD>2.0.CO;2), 1993.
- Honrath, R. E., M. C. Peterson, S. Guo, J. E. Dibb, P. B. Shepson, and B. Campbell, Evidence of NO<sub>x</sub> production within or upon ice particles in the Greenland snowpack, *Geophys. Res. Lett.*, 26, 695–698, doi:10.1029/1999GL900077, 1999.
- Hoyle, C. R., Marécal, V., Russo, M. R., Allen, G., Arteta, J., Chemel, C., Chipperfield, M. P., D'Amato, F., Dessens, O.,
- 25 Feng, W., Hamilton, J. F., Harris, N. R. P., Hosking, J. S., Lewis, A. C., Morgenstern, O., Peter, T., Pyle, J. A., Reddmann, T., Richards, N. A. D., Telford, P. J., Tian, W., Viciani, S., Volz-Thomas, A., Wild, O., Yang, X., and Zeng, G.: Representation of tropical deep convection in atmospheric models – Part 2: Tracer transport, *Atmos. Chem. Phys.*, 11, 8103-8131, <https://doi.org/10.5194/acp-11-8103-2011>, 2011.
- Huang, J., & Jaeglé, L., Wintertime enhancements of sea salt aerosol in polar regions consistent with a sea ice source from
- 30 blowing snow. *Atmospheric Chem. Phys.*, 17(5), 3699–3712. <https://doi.org/10.5194/acp-17-3699-2017>, 2017.
- Jacobi, H.-W., Morin, S., and Bottenheim, J. W.: Observation of widespread depletion of ozone in the springtime boundary layer of the central Arctic linked to mesoscale synoptic conditions, *J. Geophys. Res.*, 115, D17302, doi:10.1029/2010JD013940, 2010.
- Jaeglé, L., Quinn, P. K., Bates, T. S., Alexander, B., and Lin, J.-T.: Global distribution of sea salt aerosols: new constraints
- 35 from in situ and remote sensing observations, *Atmos. Chem. Phys.*, 11, 3137-3157, doi:10.5194/acp-11-3137-2011, 2011.
- Jeuken, A., Siegmund, P., Heijboer, L., Feichter, J., and Bengtsson, L.: On the Potential of assimilating meteorological analyses in a global climate model for the purposes of model validation, *J. Geophys. Res.*, 101, 16 939–16 950, 1996.
- Johnson, C., Mann, G., Bellouin, N., and D Jacobi, H.-W., Morin, S., and Bottenheim, J. W.: Observation of widespread depletion of ozone in the springtime boundary layer of the central Arctic linked to mesoscale synoptic conditions, *J. Geophys.*
- 40 *Res.*, 115, D17302, doi:10.1029/2010JD013940, 2010.
- Kaleschke, L., Richter, A., Burrows, J., Afe, O., Heygster, G., Notholt, J., Rankin, A. M., Roscoe, H. K., Hollwedel, J., Wagner, T., and Jacobi, H.-W.: Frost flowers on sea ice as a source of sea salt and their influence on tropospheric halogen chemistry, *Geophys. Res. Lett.*, 31, L16114, doi:10.1029/2004GL020655, 2004.

- Kerr, J.B., H. Fast, C.T. McElroy, S.J. Oltmans, J.A. Lathrop, E. Kyro, A. Paukkunen, H. Claude, U. Köhler, C.R. Sreedharan, T. Takao and Y. Tsukagoshi, The 1991 WMO international ozonesonde intercomparison at Vanscoy, Canada, *Atmosphere-Ocean*, 32, 685-716, 1994.
- Kirpes, R. M., Bonanno, D., May, N. W., Fraund, M., Barget, A. J., Moffet, R. C., & Pratt, K. A., Wintertime Arctic sea spray aerosol composition controlled by sea ice lead microbiology. *ACS Central Science*, 5(11), 1760–1767. <https://doi.org/10.1021/acscentsci.9b00541>, 2019.
- Komhyr, W.D., Electrochemical concentration cells for gas analysis, *Ann. Geoph.*, 25, 203-210, 1969.
- Krnavek, L., Simpson, W. R., Carlson, D., Domine, F., Douglas, T. A., and Sturm, M.: The chemical composition of surface snow in the Arctic: examining marine, terrestrial, and atmospheric influence, *Atmos. Environ.*, 50, 349–359, doi:10.1016/j.atmosenv.2011.11.033, 2012.
- Kwok, R., and D.A. Rothrock, Decline in Arctic sea ice thickness from submarine and ICESat records: 1958-2008. *Geophysical Research Letters* 36: L15501, 2009.
- Laurila, T., Observational study of transport and photochemical formation of ozone over northern Europe, *J. Geophys. Res.*, 104, 26,235–26,243, 1999.
- 15 Law, K. S., P.-H. Plantevin, D. E. Shallcross, H. Rogers, C. Grouhel, V. Thouret, A. Marengo, and J. A. Pyle, Evaluation of modelled O<sub>3</sub> using MOZAIC data, *J. Geophys. Res.*, 103, 25,721–25,740, 1998.
- Law, K. S., Plantevin, P. -H., Thouret, V., Marengo, A., Asman, W. A. H., Lawrence, M., 25Crutzen P. J., Müller, J. -F., Hauglustaine, D. A., and Kanakidou, M.: Comparison between global chemistry transport model results and Measurement of Ozone by Airbus In-Service Aircraft (MOZAIC) data, *J. Geophys. Res.*, 105, 1503–1525, 2000.
- 20 Law, K. S., and Stohl A.: Arctic air pollution: Origins and impacts, *Science*, 315, 1537–1540, 2007.
- Laxon, S. W., et al., CryoSat estimates of Arctic sea ice volume, *Geophys. Res. Lett.*, 40, doi:[10.1002/grl.50193](https://doi.org/10.1002/grl.50193), 2013.
- Legrand, M., Yang, X., Preunkert, S., and Theys, N.: Year-round records of sea salt, gaseous, and particulate inorganic bromine in the atmospheric boundary layer at coastal (Dumont d'Urville) and central (Concordia) East Antarctic sites, *J. Geophys. Res.-Atmos.*, 121,997–1023, doi:10.1002/2015JD024066, 2016.
- 25 Levine, J. G., Yang, X., Jones, A. E., and Wolff, E. W.: Sea salt as an ice core proxy for past sea ice extent: A process-based model study, *J. Geophys. Res. Atmos.*, 119, 5737–5756, doi:10.1002/2013JD020925, 2014.
- Liao, J., Sihler, H., Huey, L. G., Neuman, J. A., Tanner, D. J., Frieß, U., Platt, U., Flocke, F. M., Orlando, J. J., Shepson, P. B., Beine, H. J., Weinheimer, A. J., Sjostedt, S. J., Nowak, J. B., Knapp, D. J., Staebler, R. M., Zheng, W., Sander, R., Hall, S. R., and Ullmann, K.: A comparison of Arctic BrO measurements by chemical ionization mass spectrometry and long path-
- 30 differential optical absorption spectroscopy, *J. Geophys. Res.*, 116, D00R02, doi:10.1029/2010JD014788, 2011.
- Liao, J., Huey, L. G., Tanner, D. J., Flocke, F. M., Orlando, J. J., Neuman, J. A., Nowak, J. B., Weinheimer, A. J., Hall, S. R., Smith, J. N., Fried, A., Staebler, R. M., Wang, Y., Koo, J.-H., Cantrell, C. A., Weibring, P., Walega, J., Knapp, D. J., Shepson, P. B., and Stephens, C. R.: Observations of inorganic bromine (HOBr, BrO, and Br<sub>2</sub>) speciation at Barrow, Alaska, in spring 2009, *J. Geophys. Res.*, 117, D00R16, doi:10.1029/2011JD016641, 2012.
- 35 Lindsay, R.W., and J. Zhang, The thinning of Arctic sea ice, 1988-2003: Have we passed a tipping point? *Journal of Climate* 18: 4879-4894, 2005.
- Liu, G., J.J. Liu, D.W. Tarasick, V.E. Fioletov, J.J. Jin, O. Moeni, X. Liu, C.E. Sioris, M. Osman: A global tropospheric ozone climatology from trajectory-mapped ozone soundings, *Atmos. Chem. Phys.*, 13, 10659-10675, [10.5194/acp-13-10659-2013](https://doi.org/10.5194/acp-13-10659-2013), 2013.
- 40 Luhar, A. K., Woodhouse, M. T., and Galbally, I. E.: A revised global ozone dry deposition estimate based on a new two-layer parameterisation for air-sea exchange and the multi-year MACC composition reanalysis, *Atmos. Chem. Phys.*, 18, 4329-4348, <https://doi.org/10.5194/acp-18-4329-2018>, 2018.

- Michalowski, B. A., J. S. Francisco, S. M. Li, L. A. Barrie, J. W. Bottenheim, and P. B. Shepson, A computer model study of multiphase chemistry in the Arctic boundary layer during polar sunrise, *J. Geophys. Res.*, 105, 15,131–15,145, 2000.
- Ming, A., Winton, V. H. L., Keeble, J., Abraham, N. L., Dalvi, M. C., Griffiths, P., et al., Stratospheric ozone changes from explosive tropical volcanoes: Modeling and ice core constraints. *Journal of Geophysical Research: Atmospheres*, 125, e2019JD032290. <https://doi.org/10.1029/2019JD032290>, 2020.
- Monks, P. S.: A review of the observations and origins of the spring ozone maximum, *Atmospheric Environment*, 34, 3545-3561, [https://doi.org/10.1016/S1352-2310\(00\)00129-1](https://doi.org/10.1016/S1352-2310(00)00129-1), 2000.
- Monks, S. A., Arnold, S. R., Emmons, L. K., Law, K. S., Turquety, S., Duncan, B. N., Flemming, J., Huijnen, V., Tilmes, S., Langner, J., Mao, J., Long, Y., Thomas, J. L., Steenrod, S. D., Raut, J. C., Wilson, C., Chipperfield, M. P., Diskin, G. S., Weinheimer, A., Schlager, H., and Ancellet, G.: Multi-model study of chemical and physical controls on transport of anthropogenic and biomass burning pollution to the Arctic, *Atmos. Chem. Phys.*, 15, 3575–3603, <https://doi.org/10.5194/acp-15-3575-2015>, 2015.
- Morgenstern, O., Braesicke, P., O'Connor, F. M., Bushell, A. C., Johnson, C. E., Osprey, S. M., and Pyle, J. A.: Evaluation of the new UKCA climate-composition model – Part 1: The stratosphere, *Geosci. Model Dev.*, 2, 43–57, doi:10.5194/gmd-2-43-2009, 2009.
- Olonscheck, D., T. Mauritsen, and Notz D.: Arctic sea-ice variability is primarily driven by atmospheric temperature fluctuations. *Nature Geoscience*. doi:10.1038/s41561-019-0363-1, 2019.
- Oltmans, S.J., A.S. Lefohn, J.M. Harris, D.W. Tarasick, A.M. Thompson, H. Wernli, B.J. Johnson, P.C. Novelli, S.A. Montzka, J.D. Ray, L.C. Patrick, C. Sweeney, A. Jefferson, T. Dann, J. Davies, M. Shapiro and B.N. Holben, Enhanced ozone over western North America from biomass burning in Eurasia during April 2008 as seen in surface and profile observations, *Atmospheric Environment*, 44, (35) 4497-4509, ISSN 1352-2310, doi: 10.1016/j.atmosenv.2010.07.004, 2010.
- O'Dowd, C. D., Smith, M. H., Consterdine, I. E., and Lowe, J. A.: Marine aerosol, sea salt, and the marine sulphur cycle: A short review, *Atmos. Environ.*, 31, 73–80, 1997.
- O'Dowd, C. D., Lowe, J., Smith, M. H., and Kaye, A. D.: The relative importance of sea-salt and nss-sulphate aerosol to the marine CCN population: An improved multi-component aerosol-droplet parameterisation, *Q. J. R. Meteorol. Soc.*, 125 (556 Part B), 1295–1313, 1999.
- Parrella, J. P., Jacob, D. J., Liang, Q., Zhang, Y., Mickley, L. J., Miller, B., Evans, M. J., Yang, X., Pyle, J. A., Theys, N., and Van Roozendael, M.: Tropospheric bromine chemistry: implications for present and pre-industrial ozone and mercury, *Atmos. Chem. Phys.*, 12, 6723-6740, <https://doi.org/10.5194/acp-12-6723-2012>, 2012.
- Parrish, DD, Galbally, IE, Lamarque, JF, Naik, V, Horowitz, L, et al., Seasonal cycles of O<sub>3</sub> in the marine boundary layer: Observation and model simulation comparisons. *J Geophys Res* 121(1): 538–557. DOI: <https://doi.org/10.1002/2015JD024101>, 2016.
- Pratt, K. A., Custard, K. D., Shepson, P. B., Douglas, T. A., Pöhler, D., General, S., Zielcke, J., Simpson, W. R., Platt, U., Tanner, D. J., Huey, L. G., Carlsen, M., and Stirm, B. H.: Photochemical production of molecular bromine in Arctic surface snowpacks, *Nat. Geosci.*, 6, 351–356, <https://doi.org/10.1038/NGEO1779>, 2013.
- Quinn, P. K., Bates, T. S., Baum, E., Doubleday, N., Fiore, A. M., Flanner, M., Fridlind, A., Garrett, T. J., Koch, D., Menon, S., Shindell, D., Stohl, A., and Warren, S. G.: Short-lived pollutants in the Arctic: their climate impact and possible mitigation strategies, *Atmos. Chem. Phys.*, 8, 1723-1735, <https://doi.org/10.5194/acp-8-1723-2008>, 2008.
- Reader, M. C., and McFarlane, N.: Sea-salt aerosol distribution during the Last Glacial Maximum and its implications for mineral dust, *J. Geophys. Res.*, 108(D8), 4253, doi:10.1029/2002JD002063, 2003.
- Rayner, N. A., et al., Global analyses of sea surface temperature, sea ice, and night marine air temperature since the late nineteenth century, *J. Geophys. Res.*, 108(D14), 4407, doi:10.1029/2002JD002670, 2003.

- Rhodes, R. H., Yang, X., Wolff, E. W., McConnell, J. R., and Frey, M. M.: Sea ice as a source of sea salt aerosol to Greenland ice cores: a model-based study, *Atmos. Chem. Phys.*, 17, 9417-9433, <https://doi.org/10.5194/acp-17-9417-2017>, 2017.
- Rolph, G., Stein, A., and Stunder, B., Real-time Environmental Applications and Display sYstem: READY. *Environmental Modelling & Software*, 95, 210-228, <https://doi.org/10.1016/j.envsoft.2017.06.025>, 2017.
- 5 Russo, M. R., V. Marecal, C. R. Hoyle, J. Arteta, C. Chemel, O. Dessens, W. Feng, J. S. Hosking, P. Telford, O. Wild, X. Theys, N., M. Van Roozendaal, F. Hendrick, X. Yang, I. De Smedt, A. Richter, M. Begoin, Q. Errera, P. V. Johnston, K. Kreher, and M. De Mazière, Global observations of tropospheric BrO columns using GOME-2 satellite data, *Atmos. Chem. Phys.*, 11, 1791-1811, doi:10.5194/acp-11-1791-2011, 2011.
- Saiz-Lopez, A., Plane, J. M. C., Mahajan, A. S., Anderson, P. S., Bauguitte, S. J.-B., Jones, A. E., Roscoe, H. K., Salmon, R. A., Bloss, W. J., Lee, J. D., and Heard, D. E.: On the vertical distribution of boundary layer halogens over coastal Antarctica: implications for O<sub>3</sub>, HO<sub>x</sub>, NO<sub>x</sub> and the Hg lifetime, *Atmos. Chem. Phys.*, 8, 887-900, doi:10.5194/acp-8-887-2008, 2008.
- 10 Salawitch, R., Canty, T., Kurosu, T., Chance, K., Liang, Q., daSilva, A., Pawson, S., Nielsen, J. E., Rodriguez, J. M., Bhartia, P. K., Liu, X., Huey, L. G., Liao, J., Stickel, R. E., Tanner, D. J., Dibb, J. E., Simpson, W. R., Donohoue, D., Weinheimer, A., Flocke, F., Knapp, D., Montzka, D., Neuman, J. A., Nowak, J. B., Ryerson, T. B., Oltmans, S., Blake, D. R., Atlas, E. L., Kinnison, D. E., Tilmes, S., Pan, L. L., Hendrick, F., Van Roozendaal, M., Kreher, K., Johnston, P. V., Gao, R. S., Johnson, B., Bui, T. P., Chen, G., Pierce, R. B., Crawford, J. H., and Jacob, D. J.: A new interpretation of total column BrO during Arctic spring, *Geophys. Res. Lett.*, 37, L21805, doi:10.1029/2010GL043798, 2010.
- Sander, R., Keene, W. C., Pszenny, A. A. P., Arimoto, R., Ayers, G. P., Baboukas, E., Cainey, J. M., Crutzen, P. J., Duce, R. A., Hönninger, G., Huebert, B. J., Maenhaut, W., Mihalopoulos, N., Turekian, V. C., and Van Dingenen, R.: Inorganic bromine in the marine boundary layer: a critical review, *Atmos. Chem. Phys.*, 3, 1301-1336, <https://doi.org/10.5194/acp-3-1301-2003>, 2003.
- 20 Schmidt, G., Ruedy, R., Hansen, J., Aleinov, I., Bell, N., Bauer, M., Bauer, S., Cairns, B., Canuto, V., Cheng, Y., Del Genio, A., Faluvegi, G., Friend, A., Hall, T., Hu, Y., Kelley, M., Kiang, N., Koch, D., Lacis, A., Lerner, J., Lo, K., Miller, R., Nazarenko, L., Oinas, V., Perlwitz, J., Perlwitz, J., Rind, D., Romanou, A., Russell, G., Sato, M., Shindell, D., Stone, P., Sun, S., Tausnev, N., Thresher, D., and Yao, M.-S.: Present day atmospheric simulations using GISS ModelE: Comparison to in-situ, satellite and reanalysis data, *J. Climate*, 19, 153-192, 2006.
- Schultz, M. G., Schröder, S., Lyapina, O., Cooper, O., Galbally, I., Petropavlovskikh, I., von Schneidmesser, E., Tanimoto, H., Elshorbany, Y., Naja, M., Seguel, R., Dauert, U., Eckhardt, P., Feigenspahn, S., Fiebig, M., Hjellbrekke, A.-G., Hong, Y.-D., Christian Kjeld, P., Koide, H., Lear, G., Tarasick, D., Ueno, M., Wallasch, M., Baumgardner, D., Chuang, M.-T., Gillett, R., Lee, M., Molloy, S., Moolla, R., Wang, T., Sharps, K., Adame, J. A., Ancellet, G., Apadula, F., Artaxo, P., Barlasina, M., Bogucka, M., Bonasoni, P., Chang, L., Colomb, A., Cuevas, E., Cupeiro, M., Degorska, A., Ding, A., Fröhlich, M., Frolova, M., Gadhavi, H., Gheusi, F., Gilge, S., Gonzalez, M. Y., Gros, V., Hamad, S. H., Helmig, D., Henriques, D., Hermansen, O., Holla, R., Huber, J., Im, U., Jaffe, D. A., Komala, N., Kubistin, D., Lam, K.-S., Laurila, T., Lee, H., Levy, I., Mazzoleni, C., Mazzoleni, L., McClure-Begley, A., Mohamad, M., Murovic, M., Navarro-Comas, M., Nicodim, F., Parrish, D., Read, K. A., Reid, N., Ries, L., Saxena, P., Schwab, J. J., Scorgie, Y., Senik, I., Simmonds, P., Sinha, V., Skorokhod, A., Spain, G., Spangl, W., Spoor, R., Springston, S. R., Steer, K., Steinbacher, M., Suharguniyawan, E., Torre, P., Trickl, T., Weili, L., Weller, R., Xu, X., Xue, L. and Zhiqiang, M., Tropospheric Ozone Assessment Report: Database and Metrics Data of Global Surface Ozone Observations. *Elem Sci Anth*, 5, p.58. DOI: <http://doi.org/10.1525/elementa.244>, 2017
- 35 Savage, N. H., K. S. Law, J. A. Pyle, A. Richter, H. Nüß, and J. P. Burrows, Using GOME NO<sub>2</sub> satellite data to examine regional differences in TOMCAT model performance, *Atmos. Chem. Phys.*, 4, 1895-1912, 2004. Seabrook, J. A., Whiteway, J. A., Gray, L. H., Staebler, R., and Herber, A.: Airborne lidar measurements of surface ozone depletion over Arctic sea ice, *Atmos. Chem. Phys.*, 13, 6023-6029, <https://doi.org/10.5194/acp-13-6023-2013>, 2013.
- 40

- Shindell, D. T., Chin, M., Dentener, F., Doherty, R. M., Faluvegi, G., Fiore, A. M., Hess, P., Koch, D. M., MacKenzie, I. A., Sanderson, M. G., Schultz, M. G., Schulz, M., Stevenson, D. S., Teich, H., Textor, C., Wild, O., Bergmann, D. J., Bey, I., Bian, H., Cuvelier, C., Duncan, B. N., Folberth, G., Horowitz, L. W., Jonson, J., Kaminski, J. W., Marmer, E., Park, R., Pringle, K. J., Schroeder, S., Szopa, S., Takemura, T., Zeng, G., Keating, T. J., and Zuber, A.: A multi-model assessment of pollution transport to the Arctic, *Atmos. Chem. Phys.*, 8, 5353–5372, <https://doi.org/10.5194/acp-8-5353-2008>, 2008.
- 5 Simpson, W. R., von Glasow, R., Riedel, K., Anderson, P., Ariya, P., Bottenheim, J., Burrows, J., Carpenter, L. J., Frieß, U., Goodsite, M. E., Heard, D., Hutterli, M., Jacobi, H.-W., Kaleschke, L., Neff, B., Plane, J., Platt, U., Richter, A., Roscoe, H., Sander, R., Shepson, P., Sodeau, J., Steffen, A., Wagner, T., and Wolff, E.: Halogens and their role in polar boundary-layer ozone depletion, *Atmos. Chem. Phys.*, 7, 4375-4418, <https://doi.org/10.5194/acp-7-4375-2007>, 2007a.
- 10 Simpson, WR, Carlson, D, Hönninger, G, Douglas, TA, Sturm, M, Perovich, D and Platt, U.: First-year sea-ice contact predicts bromine monoxide (BrO) levels at Barrow, Alaska better than potential frost flower contact. *Atmospheric Chemistry and Physics* 7(3): 621–627. ISSN 1680-7324. <http://www.atmos-chem-phys.net/7/621/2007/>. DOI: [10.5194/acp-7-621-2007](https://doi.org/10.5194/acp-7-621-2007), 2007b.
- Skov, H. Christensen, J. Goodsite, M.E. Heidam, N.Z. Jensen, B. Wählin, P. and Geernaert, G.: The fate of elemental mercury in Arctic during atmospheric mercury depletion episodes and the load of atmospheric mercury to Arctic. *ES & T*, 38, 2373-2382, 2004.
- Skov, H., Nordstrøm, C. Jensen, B., Christoffersen, C., Poulsen, M.B., Liisberg, J.B., Beddows, D., and Dall'Osto M., Christensen, J.: The variability in gaseous elemental mercury at Villum Research Station, Station Nord in North Greenland from 1999 to 2017, [doi.org/10.5194/acp-20190912](https://doi.org/10.5194/acp-20190912), under review ACP, 2020.
- 20 Smit H.G.J and D. Kley, JOSIE: The 1996 WMO International intercomparison of ozonesondes under quasi flight conditions in the environmental simulation chamber at Jülich, WMO Global Atmosphere Watch Report No. 130, WMO TD No. 926, World Meteorological Organization, Geneva, 1998.
- Smit, H.G.J., W. Straeter, B. Johnson, S. Oltmans, J. Davies, D.W. Tarasick, B. Hoegger, R. Stubi, F. Schmidlin, T. Northam, A. Thompson, J. Witte, I. Boyd and F. Posny: Assessment of the performance of ECC-ozonesondes under quasi-flight conditions in the environmental simulation chamber: Insights from the Juelich Ozone Sonde Intercomparison Experiment (JOSIE), *J. Geophys Res.*, 112, D19306, doi:10.1029/2006JD007308, 2007.
- 25 Stein, A.F., Draxler, R.R., Rolph, G.D., Stunder, B.J.B., Cohen, M.D., and Ngan, F., NOAA's HYSPLIT atmospheric transport and dispersion modeling system, *Bull. Amer. Meteor. Soc.*, 96, 2059-2077, <http://dx.doi.org/10.1175/BAMS-D-14-00110.1>, 2015.
- 30 Tang, T., and J. C. McConnell, Autocatalytic release of bromine from Arctic snow pack during polar sunrise, *Geophys. Res. Lett.*, 23, 2633- 2636, 1996.
- Tarasick, D.W., and J.W Bottenheim, Surface ozone depletion episodes in the Arctic and Antarctic from historical ozonesonde records, *Atmos. Chem. Phys.*, 2, 197-205, 2002.
- Tarasick, D.W., J. Davies, H.G.J. Smit and S.J. Oltmans, A re-evaluated Canadian ozonesonde record: measurements of the vertical distribution of ozone over Canada from 1966 to 2013, *Atmos. Meas. Tech.* 9, 195-214, doi:10.5194/amt-9-195-2016, 2016.
- 35 Tarasick, D., Galbally, I.E., Cooper, O.R., Schultz, M.G., Ancellet, G., Leblanc, T., Wallington, T.J., Ziemke, J., Liu, X., Steinbacher, M., Staehelin, J., Vigouroux, C., Hannigan, J.W., García, O., Foret, G., Zanis, P., Weatherhead, E., Petropavlovskikh, I., Worden, H., Osman, M., Liu, J., Chang, K.-L., Gaudel, A., Lin, M., Granados-Muñoz, M., Thompson, A.M., Oltmans, S.J., Cuesta, J., Dufour, G., Thouret, V., Hassler, B., Trickl, T. and Neu, J.L.: Tropospheric Ozone Assessment Report: Tropospheric ozone from 1877 to 2016, observed levels, trends and uncertainties. *Elem Sci Anth*, 7(1), p.39. DOI: <http://doi.org/10.1525/elementa.376>, 2019a.

- Tarasick, D.W., T.K. Carey-Smith, W.K. Hocking, O. Moeini, H. He, J. Liu, M. Osman, A.M. Thompson, B. Johnson, S.J. Oltmans and J.T. Merrill, Quantifying stratosphere-troposphere transport of ozone using balloon-borne ozonesondes, radar windprofilers and trajectory models, *Atmos. Environ.*, 198, 496–509, <https://doi.org/10.1016/j.atmosenv.2018.10.040>, 2019b.
- 5 Tarasick, D.W., H.G.J. Smit, A.M. Thompson, G.A. Morris, J.C. Witte, J. Davies, T. Nakano, R. van Malderen, R.M. Stauffer, T. Deshler, B.J. Johnson, R. Stübi, C. Sterling and S.J. Oltmans, Improving ECC Ozonesonde Data Quality: Assessment of Current Methods & Outstanding Issues, *Earth and Space Science*, under review, 2019c. Telford, P. J., Braesicke, P., Morgenstern, O., and Pyle, J. A.: Technical Note: Description and assessment of a nudged version of the new dynamics Unified Model, *Atmos. Chem. Phys.*, 8, 1701–1712, <https://doi.org/10.5194/acp-8-1701-2008>, 2008.
- 10 Thomas, J. L., Stutz, J., Lefter, B., Huey, L. G., Toyota, K., Dibb, J. E., and von Glasow, R.: Modeling chemistry in and above snow at Summit, Greenland – Part 1: Model description and results, *Atmos. Chem. Phys.*, 11, 4899–4914, <https://doi.org/10.5194/acp-11-4899-2011>, 2011.
- Theys, N., Van Roozendaal, M., Hendrick, F., Yang, X., De Smedt, I., Richter, A., Begoin, M., Errera, Q., Johnston, P. V., Kreher, K., and De Mazière, M.: Global observations of tropospheric BrO columns using GOME-2 satellite data, *Atmos. Chem. Phys.*, 11, 1791–1811, <https://doi.org/10.5194/acp-11-1791-2011>, 2011.
- 15 Tiedtke, M.: A comprehensive mass flux scheme for cumulus parameterization in large scale models, *Mon. Weather Rev.*, 117, 1779–1800, [https://doi.org/10.1175/1520-0493\(1989\)117<1779:ACMFSF>2.0.CO;2](https://doi.org/10.1175/1520-0493(1989)117<1779:ACMFSF>2.0.CO;2), 1989.
- Toyota, K., McConnell, J. C., Lupu, A., Neary, L., McLinden, C. A., Richter, A., Kwok, R., Semeniuk, K., Kaminski, J. W., Gong, S. L., Jarosz, J., Chipperfield, M. P., & Sioris, C. E.: Analysis of reactive bromine production and ozone depletion in the Arctic boundary layer using 3-D simulations with GEM-AQ: Inference from synoptic-scale patterns. *Atmospheric Chemistry and Physics*, 11(8), 3949–3979. <https://doi.org/10.5194/acp-11-3949-2011>, 2011.
- 20 Uttal, T.; Starkweather, S.; Drummond, J. R.; Vihma, T.; Makshtas, A. P.; Darby, L. S.; Burkhart, J. F.; Cox, C. J.; Schmeisser, L. N.; Haiden, T.; Maturilli, M.; Shupe, M. D.; De Boer, G.; Saha, A.; Grachev, A. A.; Crepinsek, S. M.; Bruhwiler, L.; Goodison, B.; McArthur, B.; Walden, V. P.; Dlugokencky, E. J.; Persson, P. O. G.; Lesins, G.; Laurila, T.; Ogren, J. A.; Stone, R.; Long, C. N.; Sharma, S.; Massling, A.; Turner, D. D.; Stanitski, D. M.; Asmi, E.; Aurela, M.; Skov, H.; Eleftheriadis, K.; Virkkula, A.; Platt, A.; Forland, E. J.; Iijima, Y.; Nielsen, I. E.; Bergin, M. H.; Candlish, L.; Zimov, N. S.; Zimov, S. A.; O'Neill, N. T.; Fogal, P. F.; Kivi, R.; Konopleva-Akish, E. A.; Verlinde, J.; Kustov, V. Y.; Vassel, B.; Ivakhov, V. M.; Viisanen, Y.; Intrieri, J. M., International Arctic Systems for Observing the Atmosphere: An International Polar Year Legacy Consortium. *Bull. Amer. Meteorol. Soc.*, 97 (6), 1033–1056, 2016.
- 30 Viscardy, S., Errera, Q., Christophe, Y., Chabrilat, S., and Lambert, J.-C.: Evaluation of Ozone Analyses From UARS MLS Assimilation by BASCOE Between 1992 and 1997, *IEEE J-STARS*, 3, 190–202, doi:10.1109/JSTARS.2010.2040463, 2010.
- Vogt, R., Crutzen, P. J., and Sander, R.: A mechanism for halogen release from sea-salt aerosol in the remote marine boundary layer, *Nature*, 383, 327–330, doi:10.1038/383327a0, 1996.
- 35 Voulgarakis, A., Yang, X., and Pyle, J. A.: How different would tropospheric oxidation be over an ice-free Arctic?, *Geophys. Res. Lett.*, 36, L23807, doi:10.1029/2009GL040541, 2009a.
- Voulgarakis, A., Wild, O., Savage, N. H., Carver, G. D., and Pyle, J.A.: Clouds, photolysis and regional tropospheric ozone budgets, *Atmos. Chem. Phys.*, 9, 8235–8246, doi:10.5194/acp-9-8235-2009, 2009b. Wagner, T., and U. Platt: Satellite mapping of enhanced BrO concentrations in the troposphere, *Nature*, 395, pp. 486–490, 1998.
- 40 Walker T.W., D.B.A. Jones, M. Parrington, D.K. Henze, L.T. Murray, J.W. Bottenheim, K. Anlauf, J.R. Worden, K.W. Bowman, C. Shim, K. Singh, M. Kopacz, D.W. Tarasick, J. Davies, P. von der Gathen, A.M. Thompson and C.C. Carouge, Impacts of midlatitude precursor emissions and local photochemistry on ozone abundances in the Arctic, *J. Geophys. Res.*, 117, D01305, doi:10.1029/2011JD016370, 2012.



- Wang, K. Y., Pyle, J. A., Sandersen, M. G., and Bridgeman, c.: Implimentation of a convective atmospheric boundary layer scheme in a tropospheric chemistry transport model, *J. Geophys. Res.*, 104, 23,729– 23,745, 1999.
- Wang, S., S.M. McNamara, C.W. Moore, D. Obrist, A. Steffen, P.B. Shepson, R.M. Staebler, A.R.W. Raso, K.A. Pratt, Direct detection of atmospheric atomic bromine leading to mercury and ozone depletion, *Proceedings of the National Academy of Sciences* Jul 2019, 116 (29) 14479-14484; DOI: 10.1073/pnas.1900613116, 2019.
- Warwick, N. J., J. A. Pyle, G. D. Carver, X. Yang, N. H. Savage, F. M. O'Connor, and R. A. Cox, Global modeling of biogenic bromocarbons, *J. Geophys. Res.*, 111, D24305, doi:10.1029/2006JD007264, 2006.
- Yang, X., Cox, R. A., Warwick, N. J., Pyle, J. A., Carver, G. D., O'Connor, F. M., and Savage, N.H.: Tropospheric bromine chemistry and its impacts on ozone: A model study. *J. Geophys. Res.*, 110, D23311, doi:10.1029/2005JD006244, 2005.
- Yang, X., Pyle, J. A., and Cox, R. A.: Sea salt aerosol production and bromine release: Role of snow on sea ice, *Geophys. Res. Lett.*, 35 (L16815), doi:10.1029/2008gl034536, 2008.
- Yang, X., Pyle, J. A., Cox, R. A., Theys, N., and Van Roozendael, M.: Snow-sourced bromine and its implications for polar tropospheric ozone, *Atm. Chem. Phys.*, 10, 7763-7773, doi:10.5194/acp-10-7763-2010, 2010.
- Yang, X., N. L. Abraham, A. T. Archibald, P. Braesicke, J. Keeble, P. J. Telford, N. J. Warwick, and J. A. Pyle, How sensitive is the recovery of stratospheric ozone to changes in concentrations of very short lived bromocarbons? *Atmos. Chem. Phys.*, 14, 10431-10438, doi:10.5194/acp-14-10431-2014, 2014.
- Yang, X., Neděla, V., Runštuk, J., Ondrušková, G., Krausko, J., Vetráková, L., and Heger, D.: Evaporating brine from frost flowers with electron microscopy and implications for atmospheric chemistry and sea-salt aerosol formation, *Atmos. Chem. Phys.*, 17, 6291-6303, <https://doi.org/10.5194/acp-17-6291-2017>, 2017.
- Yang, X., Frey, M. M., Rhodes, R. H., Norris, S. J., Brooks, I. M., Anderson, P. S., Nishimura, K., Jones, A. E., and Wolff, E. W.: Sea salt aerosol production via sublimating wind-blown saline snow particles over sea ice: parameterizations and relevant microphysical mechanisms, *Atmos. Chem. Phys.*, 19, 8407–8424, <https://doi.org/10.5194/acp-19-8407-2019>, 2019.
- Young, P. J., Arneth, A., Schurgers, G., Zeng, G., and Pyle, J. A.: The CO<sub>2</sub> inhibition of terrestrial isoprene emission significantly affects future ozone projections, *Atmos. Chem. Phys.*, 9, 2793–2803, <https://doi.org/10.5194/acp-9-2793-2009>, 2009.
- Young, PJ, Naik, V, Fiore, AM, Gaudel, A, Guo, J, Lin, MY, Neu, J, Parrish, D, Reider, HE, Schnell, JL, Tilmes, S, Wild, O, Zhang, L, Brandt, J, Delcloo, A, Doherty, RM, Geels, C, Hegglin, M, Hu, L, Im, U, Kumar, R, Luhar, A, Murray, L, Plummer, D, Rodriguez, J, Saiz-Lopez, A, Schultz, MG, Woodhouse, M, Zeng, G & Ziemke, J, 'Tropospheric Ozone Assessment Report: Assessment of global-scale model performance for global and regional ozone distributions, variability, and trends' *Elementa: Science of the Anthropocene*, vol. 6, no. 1. <https://doi.org/10.1525/elementa.265>, 2018.
- Zhao, X., Strong, K., Adams, C., Schofield, R., Yang, X., Richter, A., Friess, U., Blechschmidt, A.-M., and Koo, J.-H.: A case study of a transported bromine explosion event in the Canadian high arctic, *J. Geophys. Res. Atmos.*, 121, 457–477, doi:10.1002/2015JD023711, 2016.
- Zhao, X., Weaver, D., Bognar, K., Manney, G., Millán, L., Yang, X., Eloranta, E., Schneider, M., and Strong, K.: Cyclone-induced surface ozone and HDO depletion in the Arctic, *Atmos. Chem. Phys.*, 17, 14955-14974, <https://doi.org/10.5194/acp-17-14955-2017>, 2017.

Table 1. Monthly mean SSA bromine depletion factor (DF) scheme applied in the NH (>45°N), which is derived from the data in the Southern Hemisphere at Cape Grim (41°S), Macquarie Island (55°S) and Dumont d'Urville (66°S) (Ayers, 1999, Legrand et al. 2016). Note that a 6-month shift of the phase is applied to match the NH seasons. A cut-off dry NaCl diameter of 10 μm is applied (i.e., DF=0 at diameter > 10 μm).

Month	DF
January	0.175
February	0.260
March	0.445
April	0.500
May	0.530
June	0.383
July	0.225
August	0.168
September	0.192
October	0.170
November	0.145
December	0.07

Table 2. Model experiments with various bromine sources from sea ice (SI), open ocean (OO) and very short-lived substances (VSLs) of bromocarbons. Two bromine depletion factor (DF) schemes are used: with seasonal cycle (Table 1) and without seasonal cycle (i.e., using a fixed DF in Table S1).

5

Models and Experiments	Bromine from SI	Bromine from OO	Bromine from VSLs	DF for SSA
pTOMCAT_control	Yes	Yes	Yes	Seasonal
pTOMCAT_No_Br	No	No	No	Seasonal
pTOMCAT_VSLs	No	No	Yes	Seasonal
pTOMCAT_SI_VSLs	Yes	No	Yes	Seasonal
pTOMCAT_OO_VSLs	No	Yes	Yes	Seasonal
pTOMCAT_Fixed_DF	Yes	Yes	Yes	Fixed
UKCA_control	Yes	Yes	Yes	Seasonal
UKCA_VSLs	No	No	Yes	Seasonal
UKCA_SI_VSLs	Yes	No	Yes	Seasonal
UKCA_OO_VSLs	No	Yes	Yes	Seasonal

Table 3: Model sensitive experiments. The parameters involved in the experiments are listed in the 2<sup>nd</sup> column. The derived sea-ice-sourced Br<sub>Y</sub> and ozone change (relative to pTOMCAT\_OO\_VSLS run) is in the 3<sup>rd</sup> and 5<sup>th</sup> column, respectively. The corresponding percentage (and change) of Br<sub>Y</sub> and ozone are in the 4<sup>th</sup> and 6<sup>th</sup> column, respectively. The ozone difference (also relative to pTOMCAT\_OO\_VSLS run) is in the 5<sup>th</sup> column, with percentage of the control run result (and change) in the 6<sup>th</sup> column. The values are for April, 2007 and representing average of all the six sites.

Experiments	Key parameters	ΔBr <sub>Y</sub> (pptv) in April (relative to pTOMCAT_OO_VSLS)	% of pTOMCAT_control ΔBr <sub>Y</sub> (and difference)	ΔO <sub>3</sub> (ppbv) in April (relative to pTOMCAT_OO_VSLS)	% of pTOMCAT_control ΔO <sub>3</sub> (and difference)
pTOMCAT_control	N=20 shape parameter α=3 scale parameter β=37.5 μm dm <sub>i</sub> /dt=d <sub>i</sub> (°) snow salinity =3.5×Weddell Sea value cut-off radius (dry NaCl)=10 μm	47.2	100 (0)	-20.4	100 (0)
pTOMCAT_spectrum_1	same as pTOMCAT_control but N=10	37.8	79.9 (-20.1)	-17.0	83.5 (+16.5)
pTOMCAT_spectrum_2	same as pTOMCAT_control but N=1, α=2, β=70 μm and dm <sub>i</sub> /dt=constant	27.3	57.8 (-42.2)	-12.5	61.1 (+38.6)
pTOMCAT_low_salinity	same as pTOMCAT_control but snow salinity =1× Weddell Sea value	18.9	40.0 (-60.0)	-8.0	39.0 (+61.0)
pTOMCAT_high_salinity	same as pTOMCAT_control but snow salinity =10× Weddell Sea value	92.0	194.8 (+94.8)	-28.1	137.5 (-37.5)
pTOMCAT_2×DF	same as pTOMCAT_control but 2×DF (°)	87.1	184.4 (+84.4)	-27.7	135.7 (-35.7)
pTOMCAT_0.5×DF	same as pTOMCAT_control but 0.5×DF	24.9	52.7 (-47.3)	-11.1	54.2 (+45.8)
pTOMCAT_SSA20μm	same as pTOMCAT_control run but cut-off radius=20 μm	67.3	142.3 (+42.3)	-24.7	121.1 (-21.1)
pTOMCAT_SSA5μm	same as pTOMCAT_control but cut-off radius=5 μm	21.2	44.9 (-55.1)	-9.1	44.6 (+45.4)

\*:  $m_i$  is water mass of the particle, and  $d_i$  is diameter.

\*\* : if the 2×DF value is > 1.0, then a maximum value of 1.0 is used.

10

Table 4. Correlation coefficients ( $R$ ) at each site between various variables used in Fig. 6 and 7. Note that \* indicates probability value < 0.1, \*\* < 0.01 and \*\*\* < 0.001.

$R$	Obs O <sub>3</sub> vs model surface O <sub>3</sub>	Obs O <sub>3</sub> vs BrO <sub>surface</sub>	Obs O <sub>3</sub> vs BrO <sub>trop</sub>	Obs O <sub>3</sub> vs GOME-2 BrO <sub>trop</sub>	Model surface O <sub>3</sub> vs model BrO <sub>surface</sub>	Model BrO <sub>trop</sub> vs GOME-2 BrO <sub>trop</sub>	Model BrO <sub>trop</sub> vs model BrO <sub>surface</sub>
Ticksi	0.68***	-0.49***	-0.53***	-0.62***	-0.78***	0.59***	0.96***
Barrow	0.49***	-0.04	-0.23***	-0.32**	-0.42***	0.37***	0.87***
Summit	0.63***	-0.19***	0.03	0.09	0.00	0.16*	0.42***
Villum	0.76***	-0.51***	-0.34***	-0.42***	-0.50***	0.33**	0.57***
Alert	0.24***	-0.05*	-0.22***	0.03	-0.36***	0.30**	0.59***

15

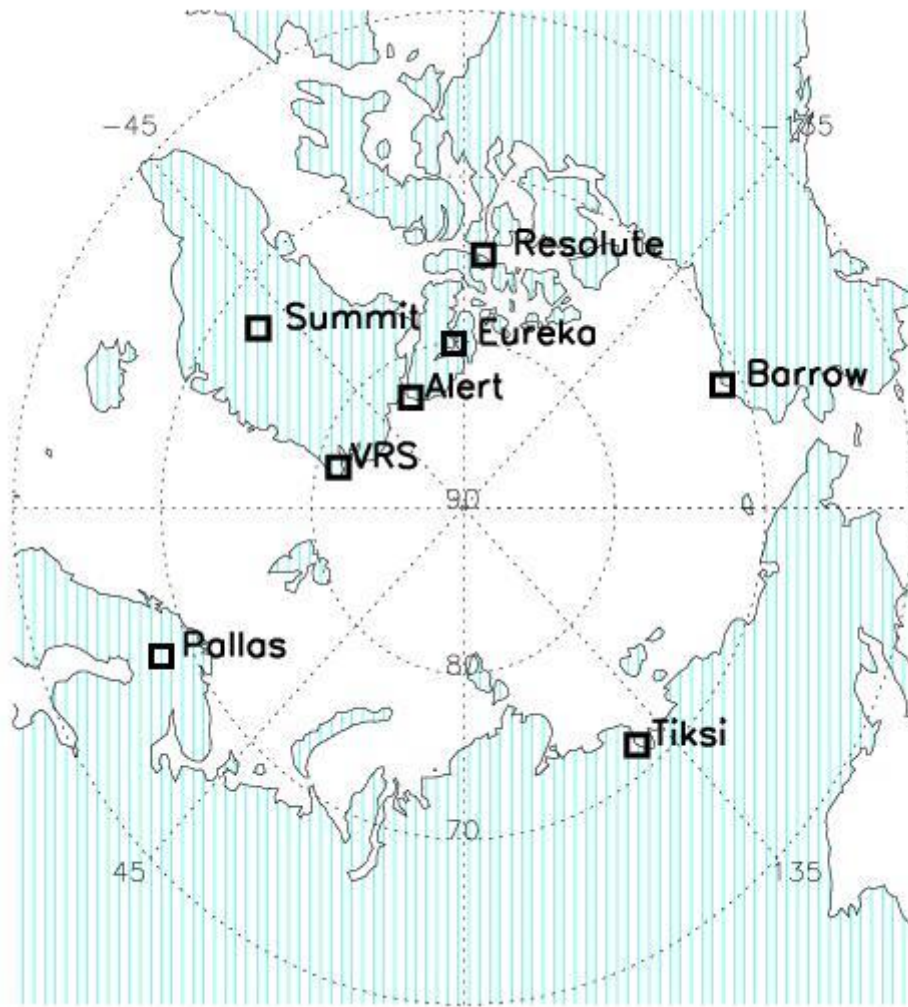


Figure1: Map of the Arctic showing the locations of the eight Arctic sites where either surface ozone and/or ozonesonde data are used in this study.

5

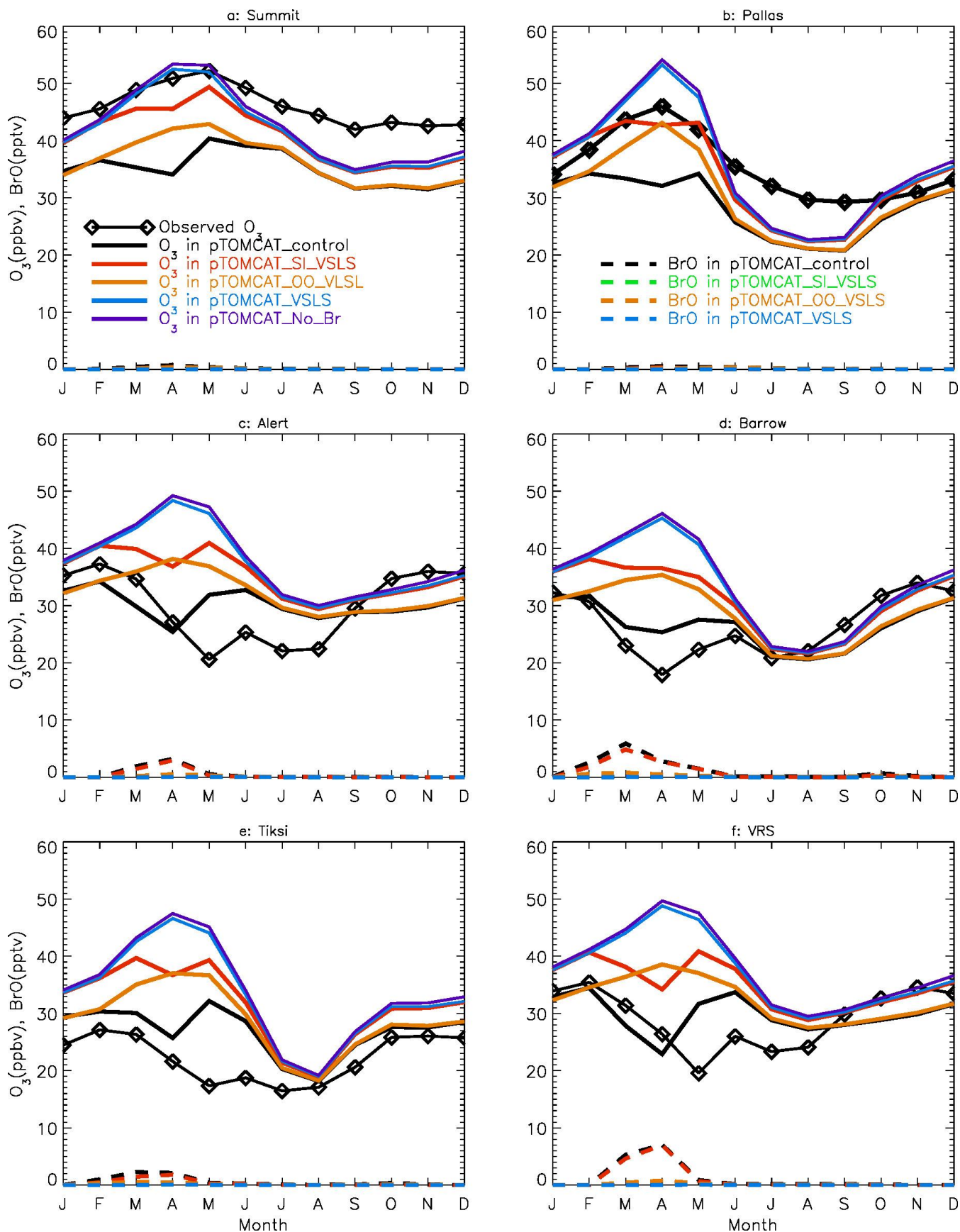


Figure 2: Climatology of monthly mean surface ozone (solid black line with diamond symbols) at six Arctic sites. The observed data are the average of 2000-2016 at Summit, 1995-2012 at Pallas, 1992-2012 at Alert, 1974-2016 at Barrow, 2011-2016 at Tiksi and 1980-2014 at VRS Research Station. Model surface ozone concentrations (VMRs) from various experiments are shown in colourful solid lines with BrO in dashed lines based on an integration of 2006-2008.

5

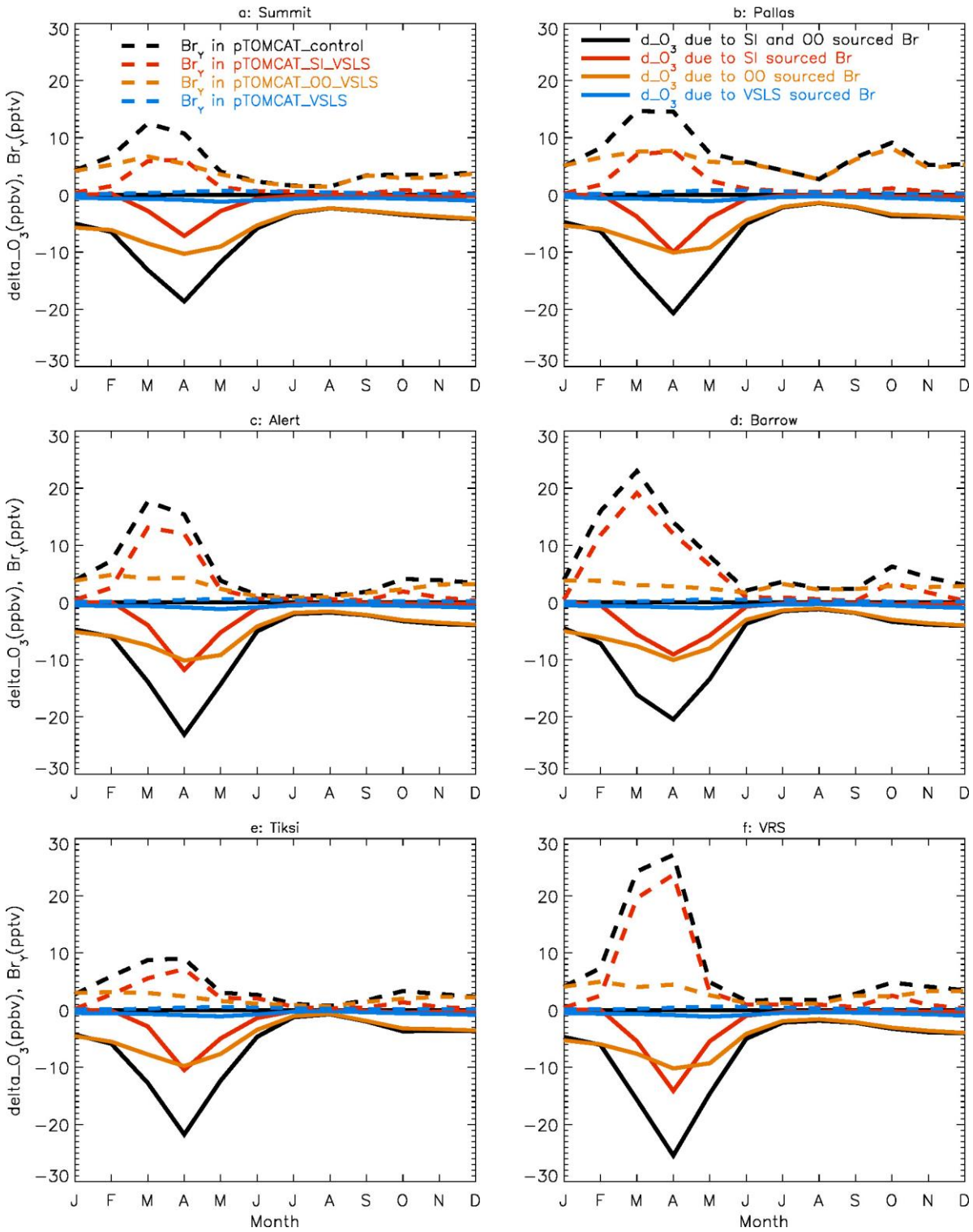


Figure 3: Ozone changes in response to alteration of various bromine sources. E.g., solid black line = pTOMCAT\_control - pTOMCAT\_VLSL representing both SI and OO contributions, solid red line = pTOMCAT\_control - pTOMCAT\_OO\_VLSL representing SI contribution only, solid orange line = pTOMCAT\_control - pTOMCAT\_SI\_VLSL representing OO contribution only, and solid blue line = pTOMCAT\_VLSL - pTOMCAT\_No\_Br representing VLSL contribution only. Dashed lines represent total inorganic bromine ( $\text{Br}_\gamma$ ) in various model runs: the dashed black line is the pTOMCAT\_control run representing all bromine source contributions, the dashed red line is the pTOMCAT\_SI\_VLSL run representing SI and VLSL contributions, the dashed orange line is the pTOMCAT\_OO\_VLSL run representing OO and VLSL contributions, and the dashed blue line is the pTOMCAT\_VLSL run representing VLSL contribution only.

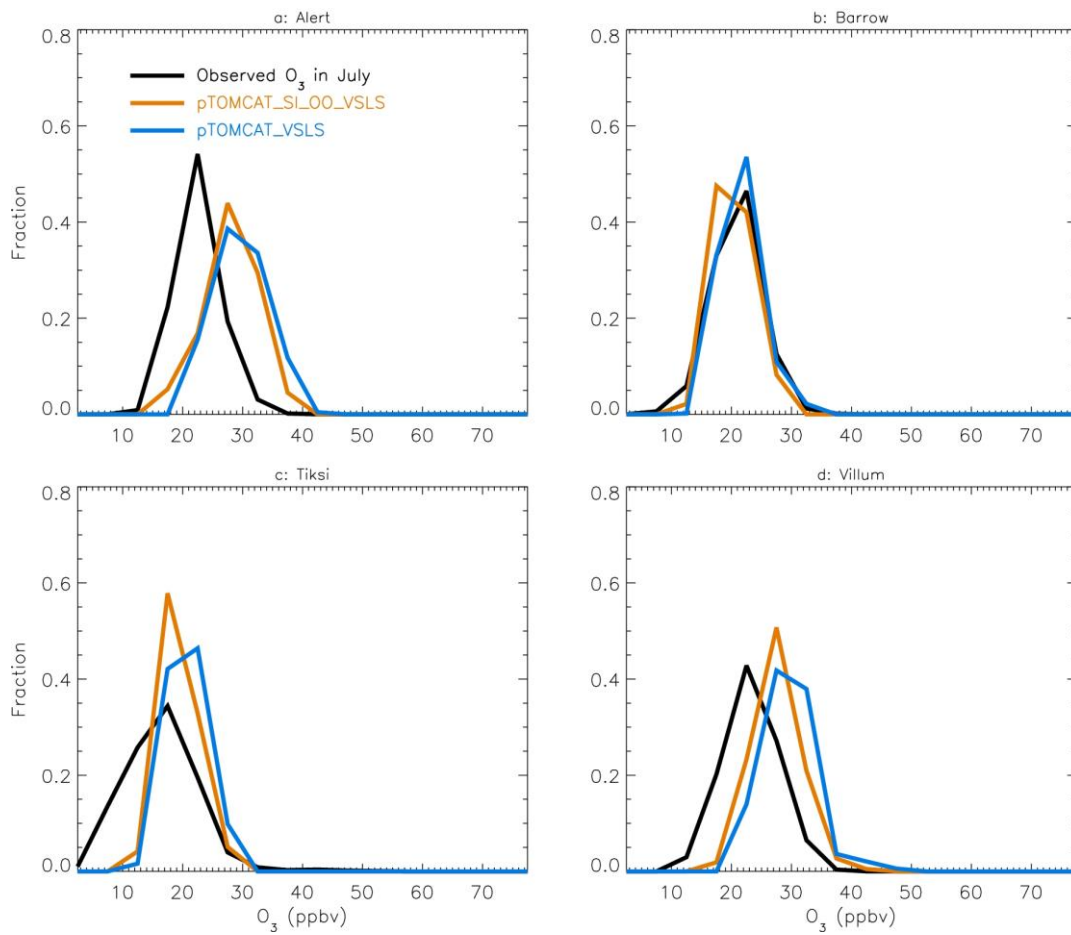


Figure 4: July surface ozone fractional distribution (with a bin interval of 5 ppbv). The observed fractional distribution is shown in black line, with pTOMCAT\_control result shown in solid orange and pTOMCAT\_VSLS shown in solid blue.



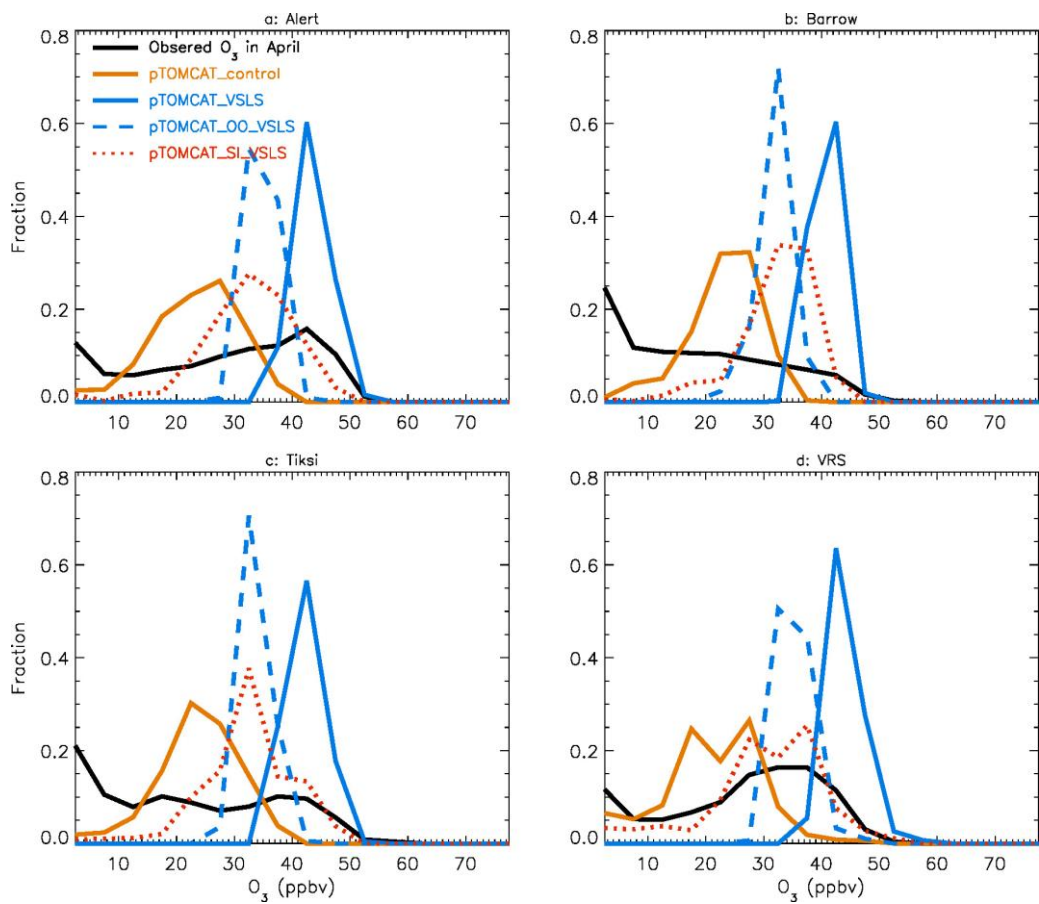


Figure 5: Same as Fig. 4 but for April. Also shown are the pTOMCAT\_OO\_VLSL results using dashed blue line and the pTOMCAT\_SI\_VLSL result in dashed orange.

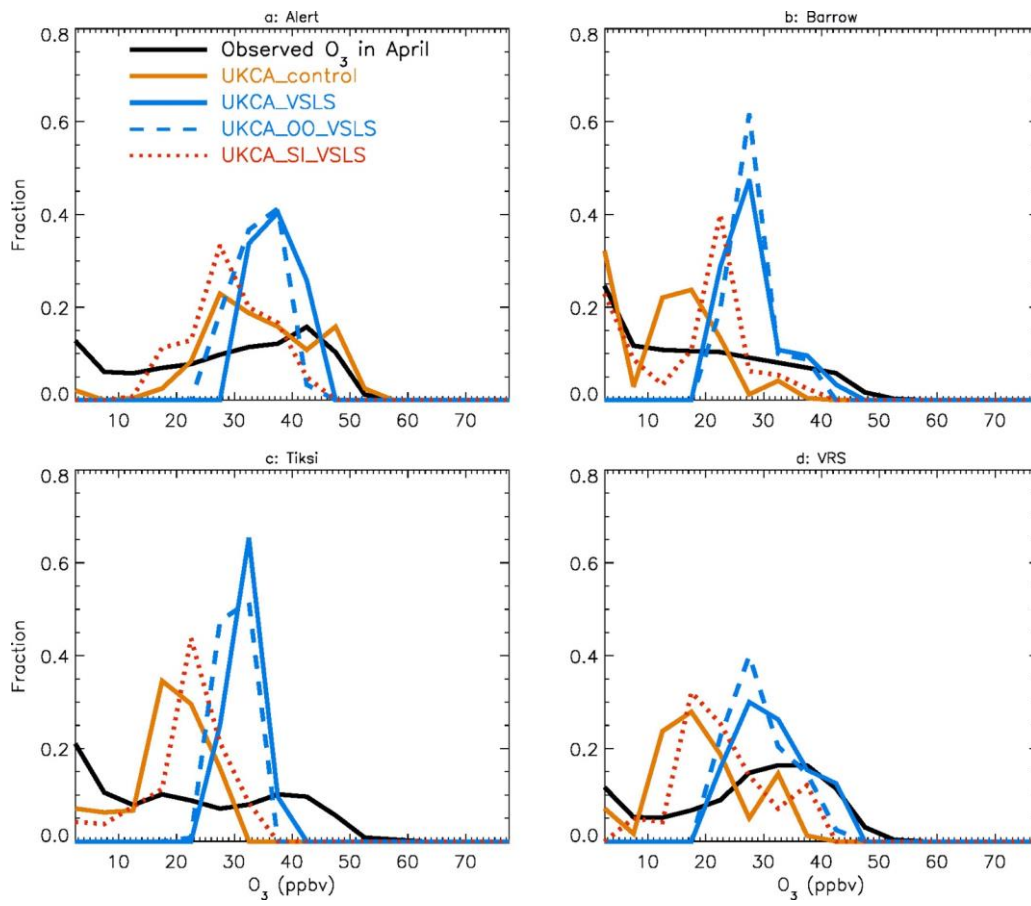


Figure 6: Same as Fig. 5 but for UKCA model results.

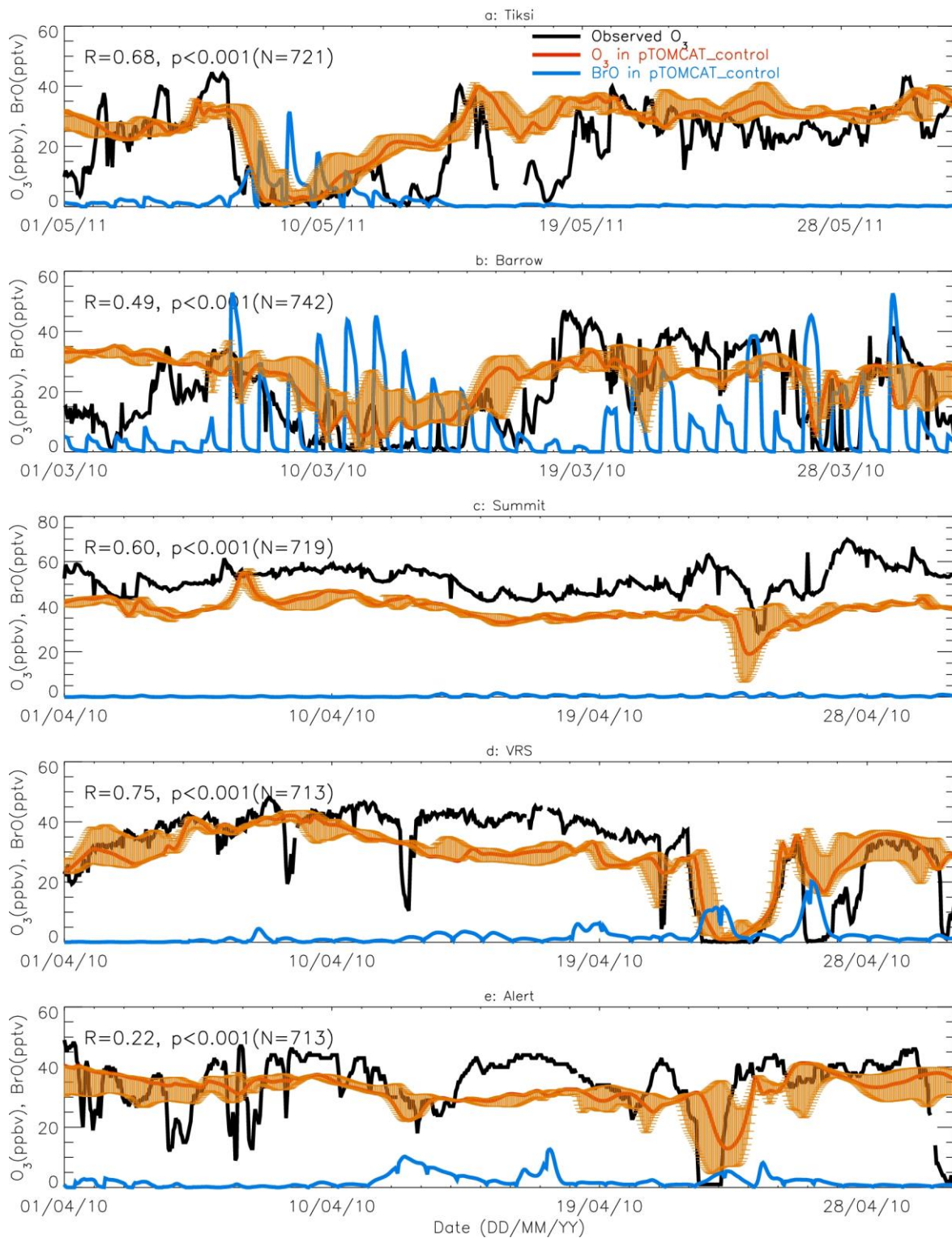


Figure 7: 1-month long time-series of surface ozone and BrO at (a) Tiksi (May 2011), (b) Barrow (March 2010), (c) Summit (April 2010), (d) Villum (April 2010) and (e) Alert (April 2010). Observed ozone is shown in black, with pTOMCAT\_control ozone shown in bold red representing value of the nearest central gridbox to the observation site. The bold blue line is central gridbox BrO. Note that maximum and minimum ozone, which are shown in orange bars, are taken from the five adjacent gridboxes next to the central gridbox to highlight the possible range of the tracer concentrations.

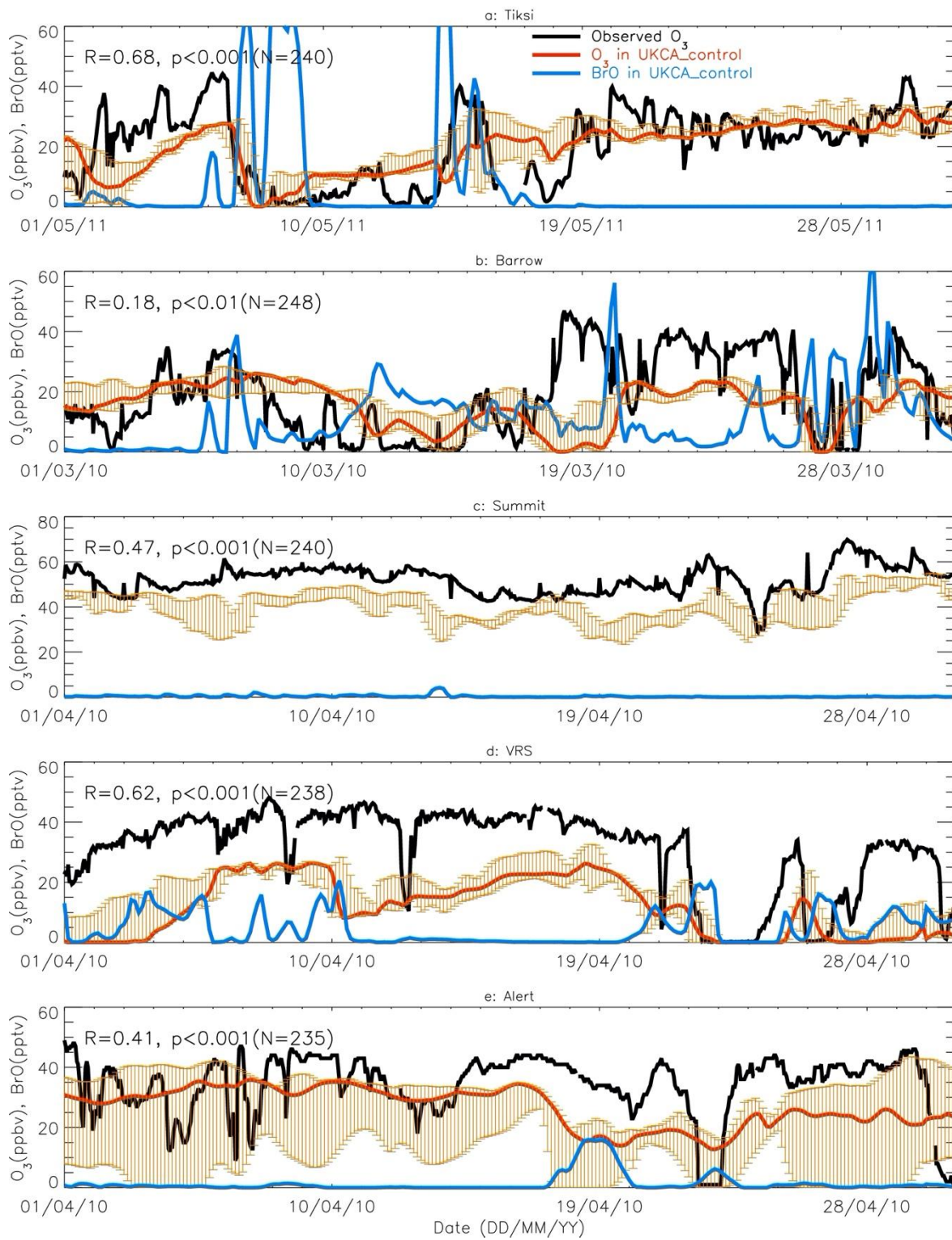


Figure 8: Same as Fig. 7 but for UKCA\_control run results.

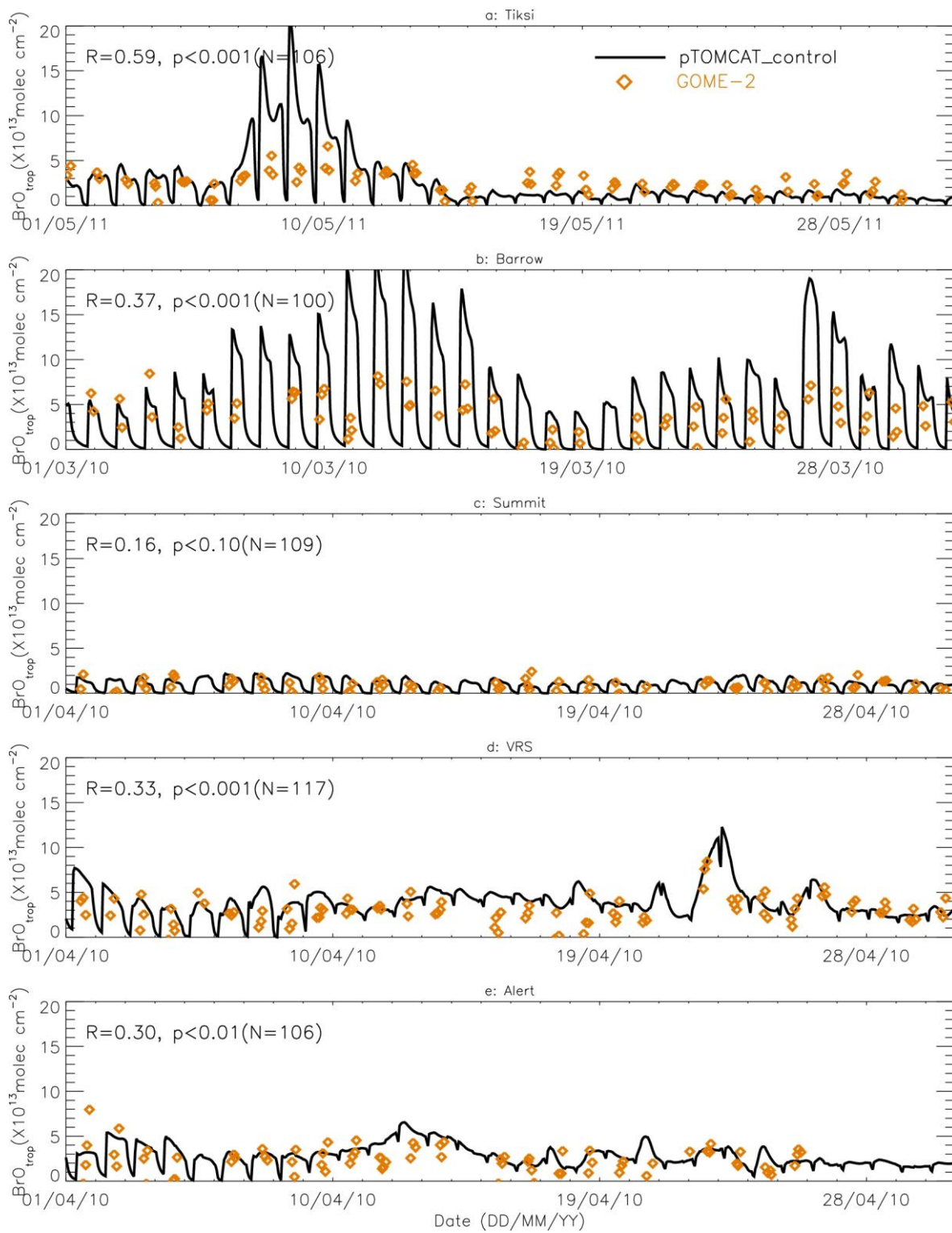


Figure 9: Time-series of tropospheric BrO column from GOME-2 (orange diamond symbols) and pTOMCAT\_control run BrO (black line). The correlation coefficient  $R$  and statistics significance level  $p$  at each site is given.

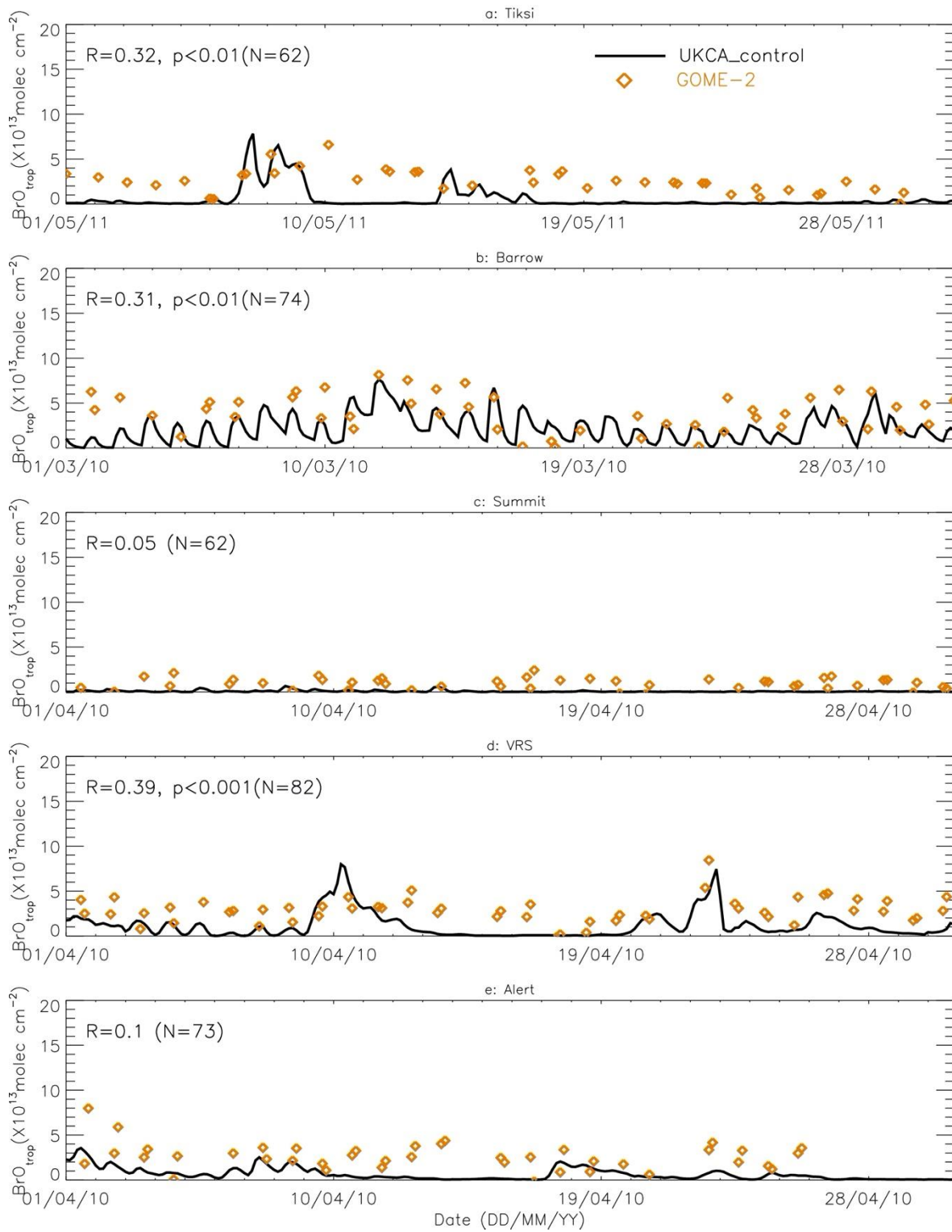


Fig. 10: Same as Fig. 9 but for UKCA\_control run results.

NOAA HYSPLIT MODEL  
Backward trajectories ending at 1200 UTC 05 Apr 11  
GHDA Meteorological Data

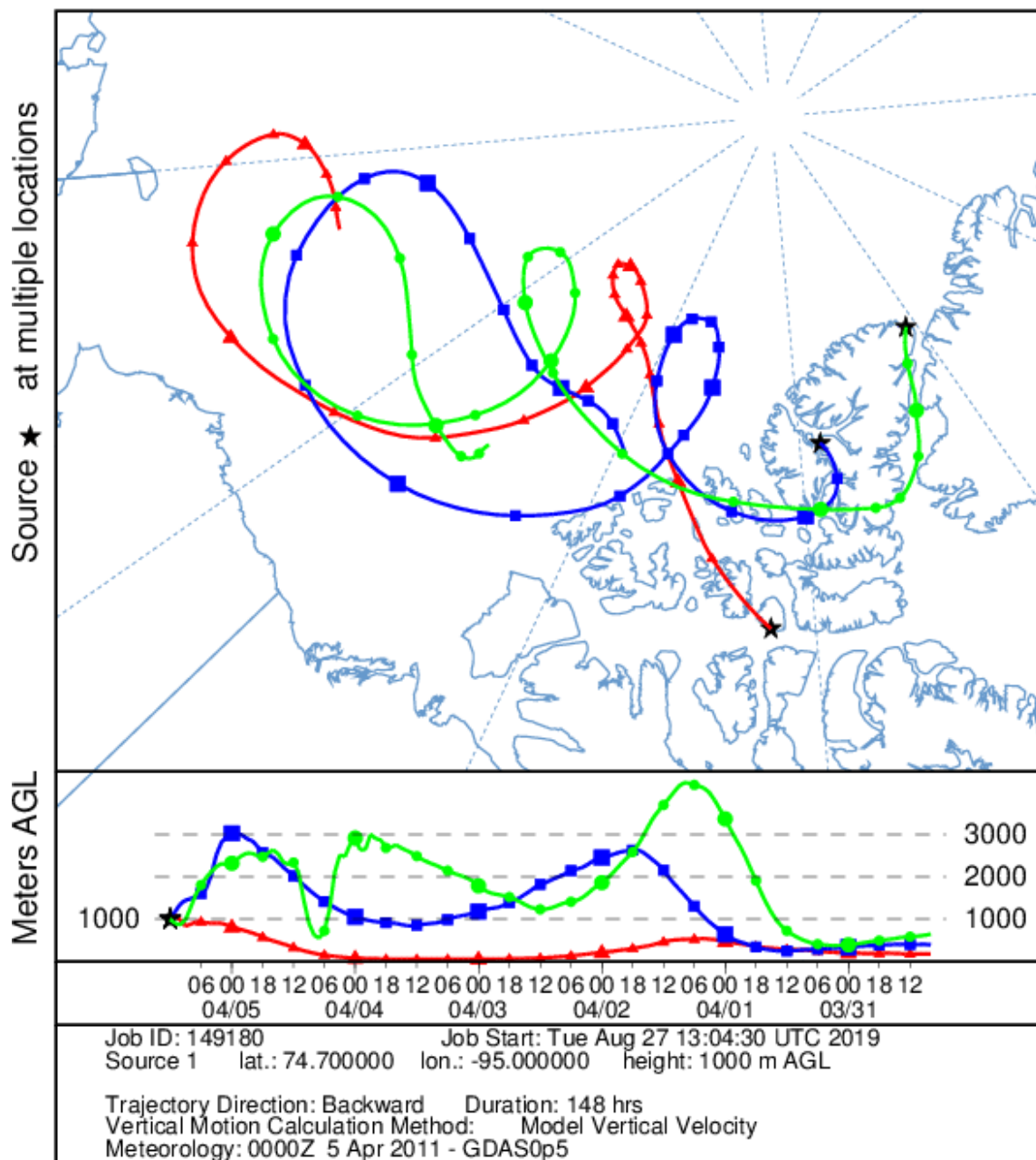


Figure 11: HYSPLIT 6-day back trajectories for Resolute, Eureka and Alert ending at 12:00 UTC on 5 April 2011.

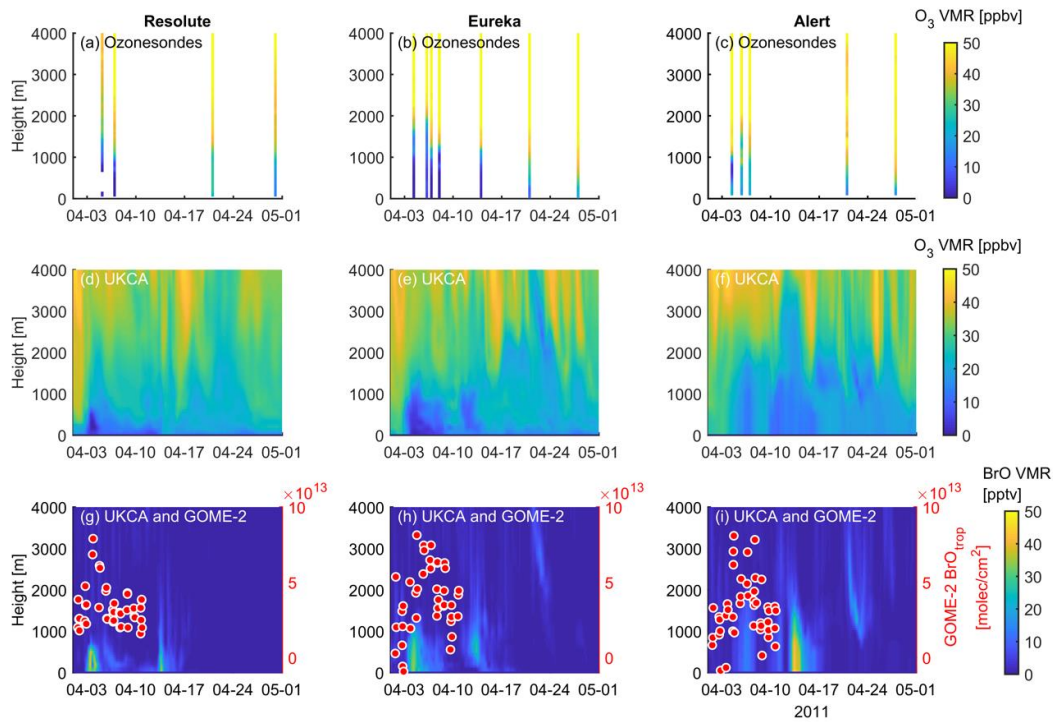


Figure 12: Profile of ozonesonde (0-4km) at Resolute (a), Eureka (b), and Alert (c) during April 2011. UKCA\_control ozone profiles (d-f) and BrO profiles (g-i) are also plotted. GOME-2 overpass data (tropospheric column BrO) of the period 1-10 April 2011 is also plotted in g-i, which is detailed in Fig. 10.

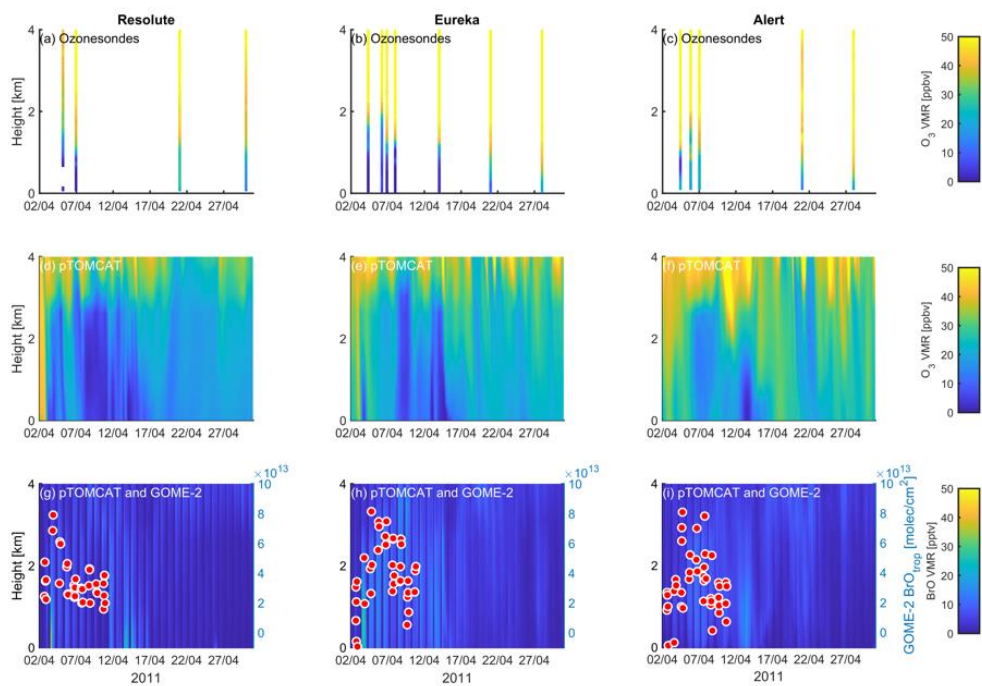


Figure 13: Same as Fig.12 but for pTOMCAT\_control run results.



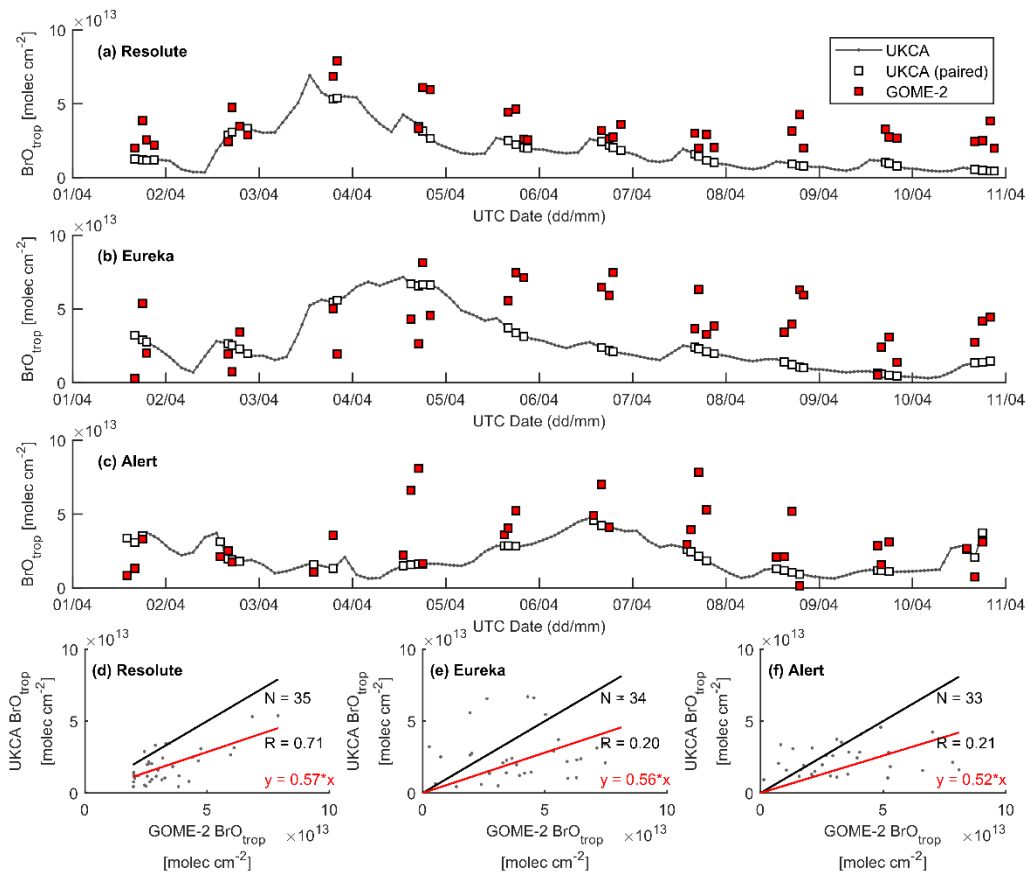


Figure 14: Time series of GOME-2 and UKCA\_control tropospheric BrO column at (a) Resolute, (b) Eureka, and (c) Alert for the period 1-10 April 2011. Correlation plots between the model and GOME-2 are shown in d-f, with black line representing 1:1 plot and red line representing regression fit.

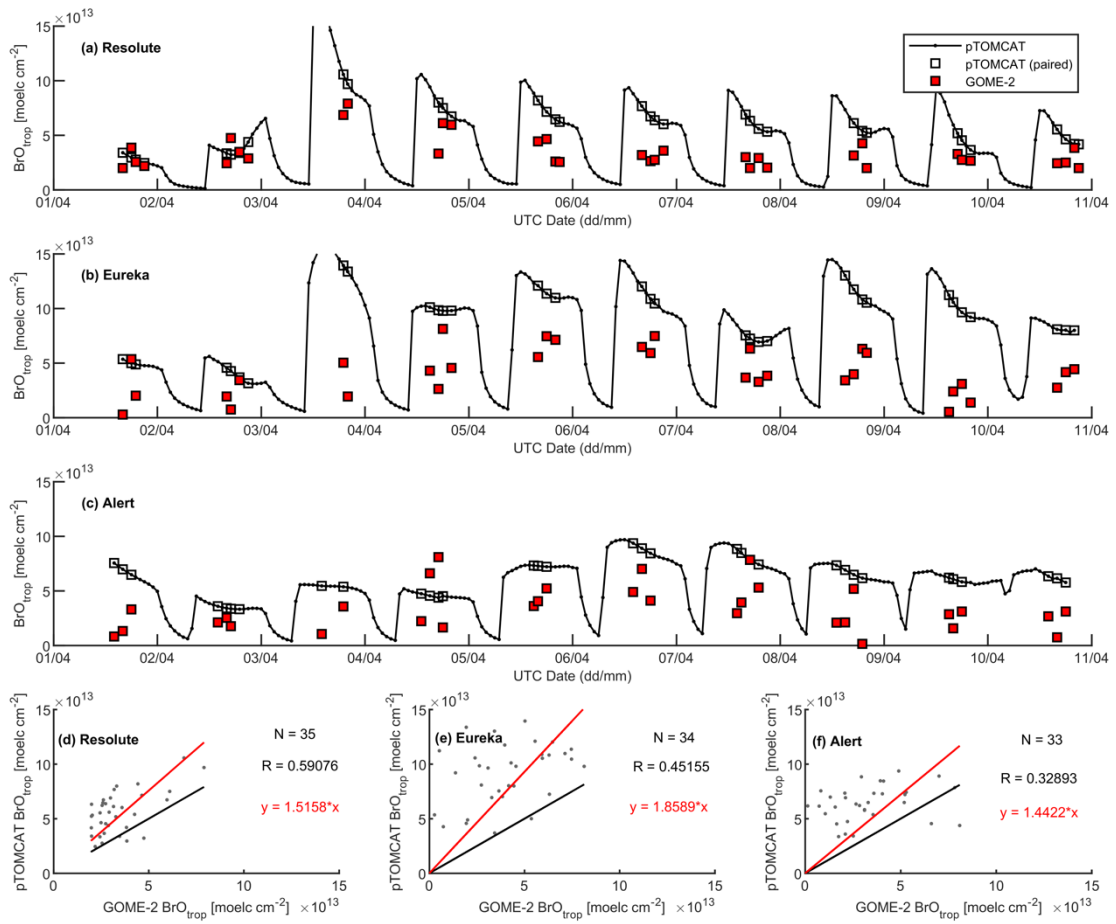


Figure 15: Same as Fig. 14 but for pTOMCAT\_control run results.

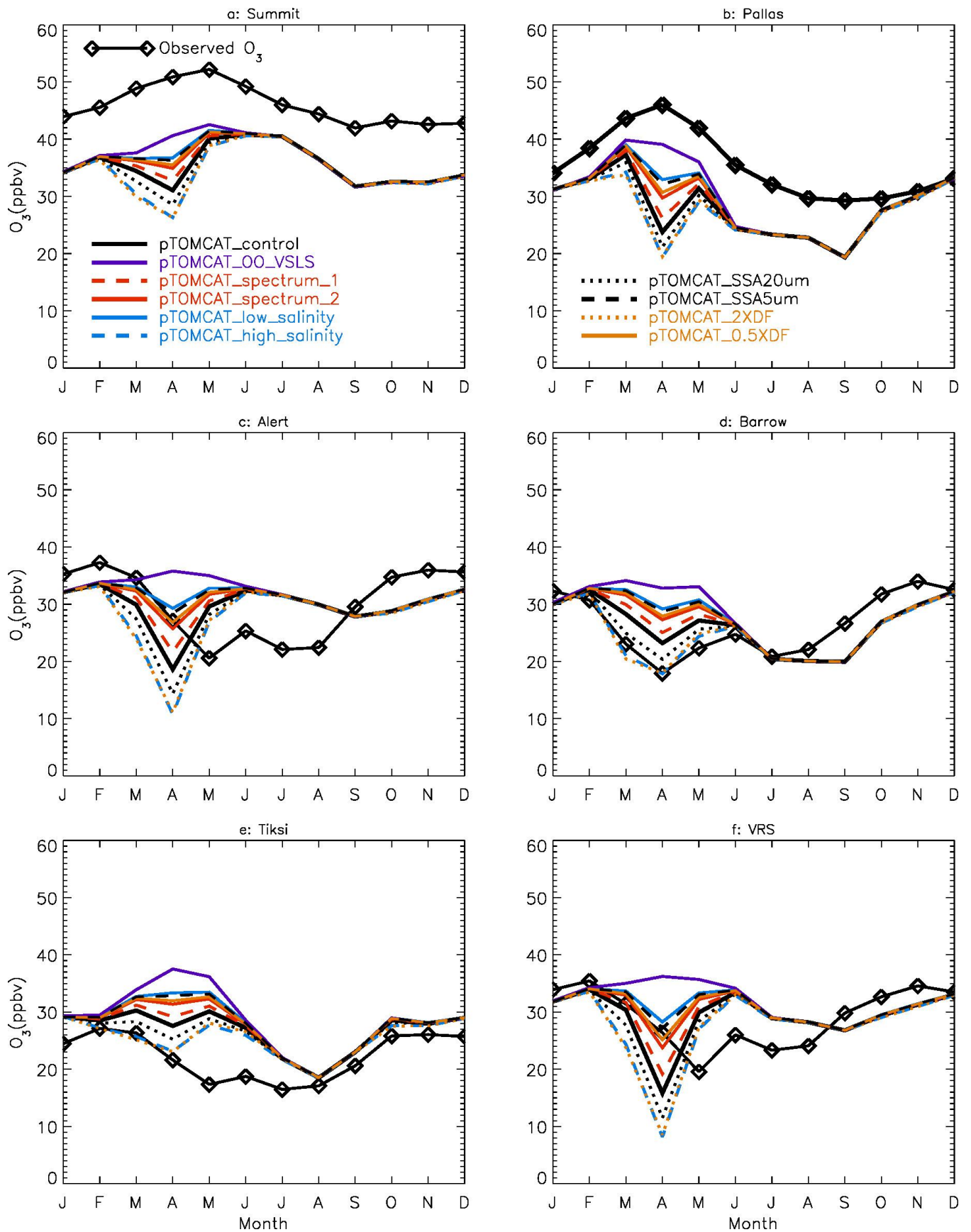


Fig. 16: Monthly mean ozone at the six sites in the Arctic. Ozone observations are climatology and simulated ozone outputs are only for year 2007.