

# Response to Referee #1

## *General Comments:*

*This manuscript explores how biomass burning impacts surface albedo and regional meteorology using radiosonde, satellite retrievals, reanalysis data and the WRF-Chem model. It is well organized and written. The results demonstrate improvements in modeling meteorology during biomass burning seasons. It is worth to be published in ACP after addressing the following issues.*

**Response:** We would like to thank the referee for providing the insightful suggestions, which have indeed helped us further improve the manuscript.

## *Specific Comments:*

*1. My major concern is on the treatments of changes in surface albedo in the model. Observed changes in albedo for shortwave and near infrared are  $-0.02 \sim -0.06$ , and  $-0.06 \sim -0.1$ . The largest decrease of  $-0.1$  was used in the ABD run, while changes of about  $-0.05$  occurred more frequently. Will this treatment overestimate the impacts of biomass burning in the model? Could you discuss how this will affect your conclusion.*

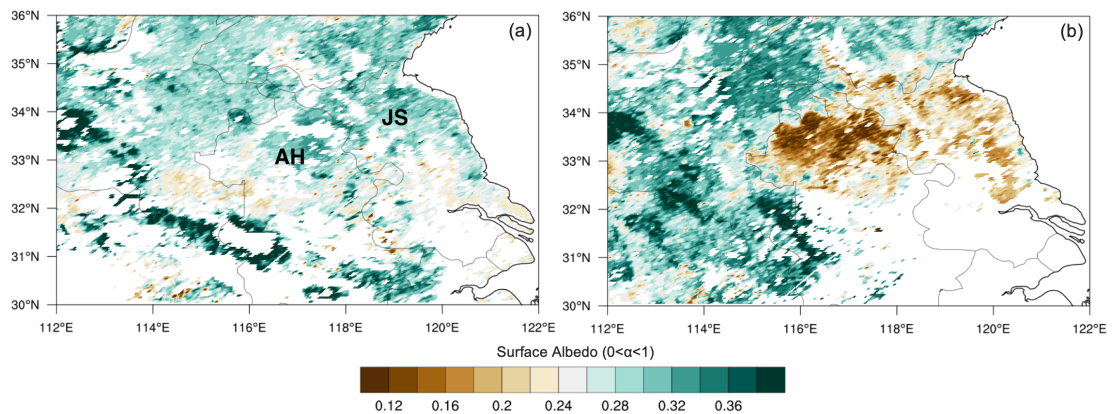
**Response:** Thanks for the suggestions. Sensitivity tests for different surface albedo decline have been supplemented in the following part. Related discussion have been modified in the revised manuscript.

In this study, we aim to figure out the possible radiative effects of straw burning induced surface albedo decline and its impact on regional meteorology. Many existing studies have indicated that the effect of fire on surface albedo is complex and depends on combustion completeness, fire intensity, pre-fire land cover structure, underlying soil reflectance (Roy and Landmann, 2005). Based on satellite retrievals, the surface albedo declines in June 2012 show obvious spatial heterogeneity (Fig. R1), and have a larger decline margin in Province Anhui (AH) than Jiangsu (JS). It is relatively consistent with the two apexes on the frequency distribution of albedo decline (Fig. 3). And the burning in AH was indeed more severe, which is consistent with the distribution of fire detection by satellite. In the numerical experiments, the fire prone areas were extracted out by setting a threshold number of fire counts in a grid unit.

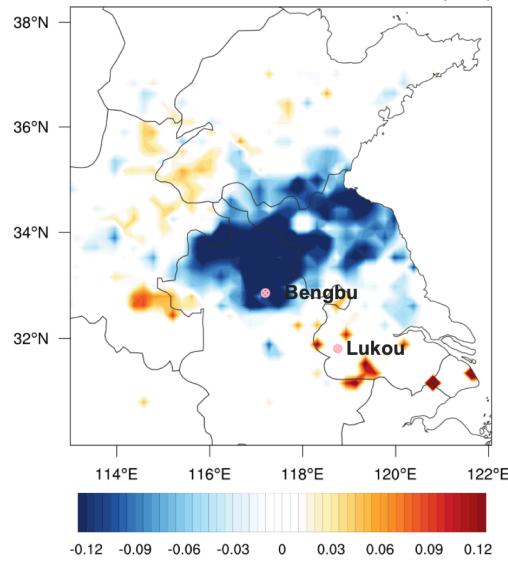
To further understand the impact of the albedo decline values on the conclusions, three experiments are supplemented: On the one hand, to compare with the ALB-0.1 run (namely the ABD run in manuscript), the decline margin in run 'ALB-0.05' and 'ALB-0.08' are set to  $-0.05$  and  $-0.08$ , respectively. On the other hand, decline values in run 'ALB-  $\Delta$  modisalb'

were set by the difference of MODIS-detect surface albedo (MOD09A1) on 24 May and 17 June directly. The distribution of albedo change is shown in Fig. R2. It is clearly demonstrated that the declines of most areas in northern AH, featuring the highest fire density, are even far more than 0.12. In addition, albedo changes in adjacent areas are less than 0.06, or have not been extracted as fire prone area for higher threshold of fire counts density here.

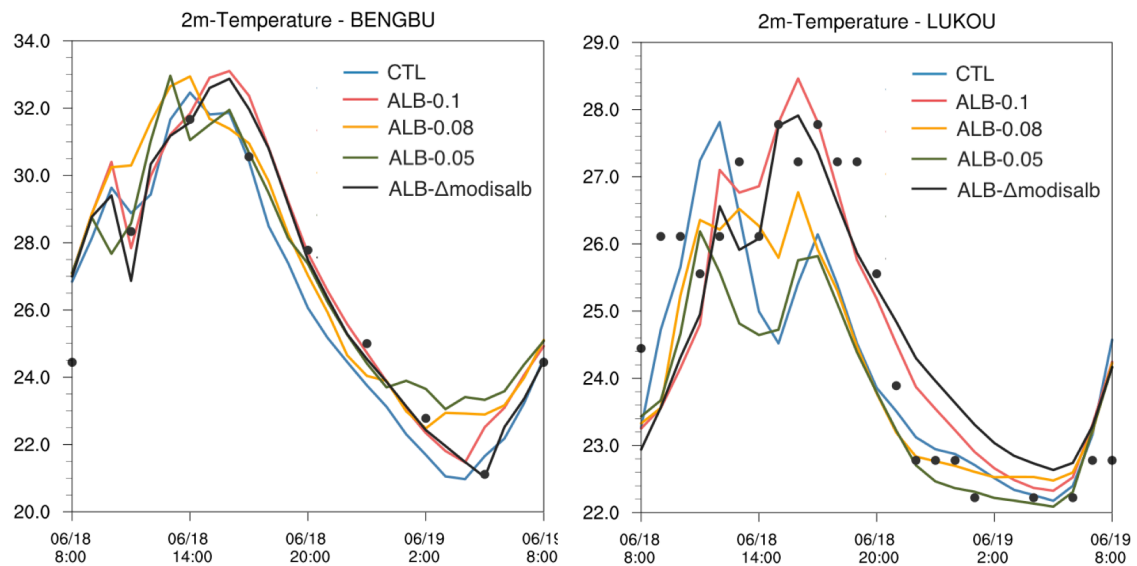
Results of these runs and site observations were compared. In Fig. R3a, both ‘ALB-0.1’ and ‘ALB-  $\Delta$  modisalb’ perform well at Bengbu, especially in the evening. In contrast, by comparing ‘ALB-0.1’, ‘ALB-0.08’ and ‘ALB-0.05’, we can find reverse increment in the evening, which can be explained by the longwave radiation balance in the evening. As for the surrounding areas with slight burning (Fig. R3b), warmings at noon have a positive increase among ‘ALB-0.05’, ‘ALB-0.08’ and ‘ALB-0.1’. And the ‘ALB-  $\Delta$  modisalb’ with the direct albedo difference of pre-fire and post-fire even performs better, owing to the better characterization of surface albedo decline, in aspects of both spatial distribution and scope in severely burned area. Your valuable and thoughtful comment led me to explore more deeply about the heterogeneity of surface albedo change and the albedo change set in sensitivity tests. Related discussion have been modified in the revised manuscript, and more descriptions on the scope and distribution characteristics of surface albedo decline have been added. Please see line 127-131, 183-192, 199-205, 258-283 and 293-295 in the revised manuscript. Accordingly, Figs. 7-10 have been alternated with new results in ABD experiment.



**Fig. R1** Distribution of surface albedo by MODIS band2 on (a) 24 May, (b) 17 June in 2012. Two provinces Jiangsu (JS) and Anhui (AH) are marked respectively.



**Fig. R2** Distribution of surface albedo change set in experiment 'ALB-  $\Delta$  modisalb'.



**Fig. R3** Simulated and observed 2-m temperature at meteorological stations: **(a)** Bengbu and **(b)** Lukou.

2. Page 6, line 190-191: why abnormal signal of surface warming happens in the downwind direction? Is fire induced surface warming treated in your model?

**Response:** Thanks for your suggestions. Observational evidences show that signals of surface warming exists over fire-prone area, and even extend to downwind areas. The decreased surface albedo over fire prone areas can make the surface absorb more solar radiation and then enhance air temperature through vertical mixing (Fig. R4a). Then, the downwind areas are

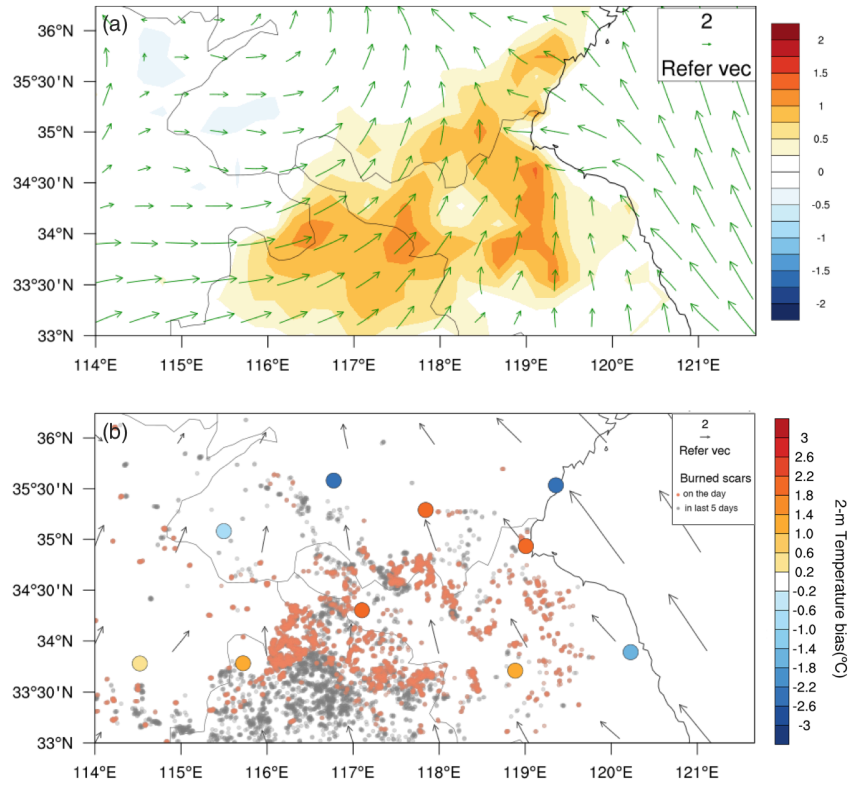
influenced by warm advection transportation. It is consistent with the abnormal warming signals in Fig. R4b.

The heat released by fire was not treated in the model based on some researches related to the burning characteristics and fire radiative power. For this biomass burning case, during which the burned biomass is winter wheat straw (Li et al., 2016; Huang et al., 2012b). In East China, especially in the northern Jiangsu and Anhui province, most fires of wheat straw are characterized by short-lived smoldering (Fig. R5) (Huang et al., 2012a; 2016). When crops are harvested by hand, the residue is often burned in piles that may smolder, together with short-lived burnings of wheat roots over the surface. The combustion process of smolder is not as full as flaming. Correspondingly, the fire radiative power (FRP) between this straw burning is much weaker than the grassland fire in North America (Fig. R6) based on MODIS Thermal Anomalies Product (MOD14A1 and MYD14A1). The relationship between fire radiative power and fire size varies at a global scale (Laurent et al., 2019). As shown in Fig. R6, the average maximum FRP for the most severe area in this burning case is almost less than  $0.02 \text{ kW/m}^2$ . As for radiative effects, the maximum of solar shortwave radiation reaching the surface in summer can be over  $1 \text{ kW/m}^2$ , and the sunshine duration is about 11~12 hours (Wallace and Hobbs, 2006). Moreover, surface albedo decline in this place can be over -0.12, as aforementioned (Fig. R2). The energy disturbance aroused by surface albedo decline can be much larger than this kind of straw burning. Therefore, the fire induced warming was not treated in the model.

In addition, the observational signals not only exists on the burning days, but also on the following days (Fig. R7). According to the time series of fire counts (Fig. 1a), the burning had already gone to the end during 16th to 18th June, but surface warming signals still exists over both local and downwind area. The decreased surface albedo can maintain for a period of time before char materials are removed by weathering and new-generated vegetation. But the heat from smoldering cannot last as long. The abnormal warming can be explained by direct radiative effect of decreased surface albedo and the influence of warm advection.

Related description has been added. Please see line 131-137, 219-221 and 280-283 in the revised manuscript.

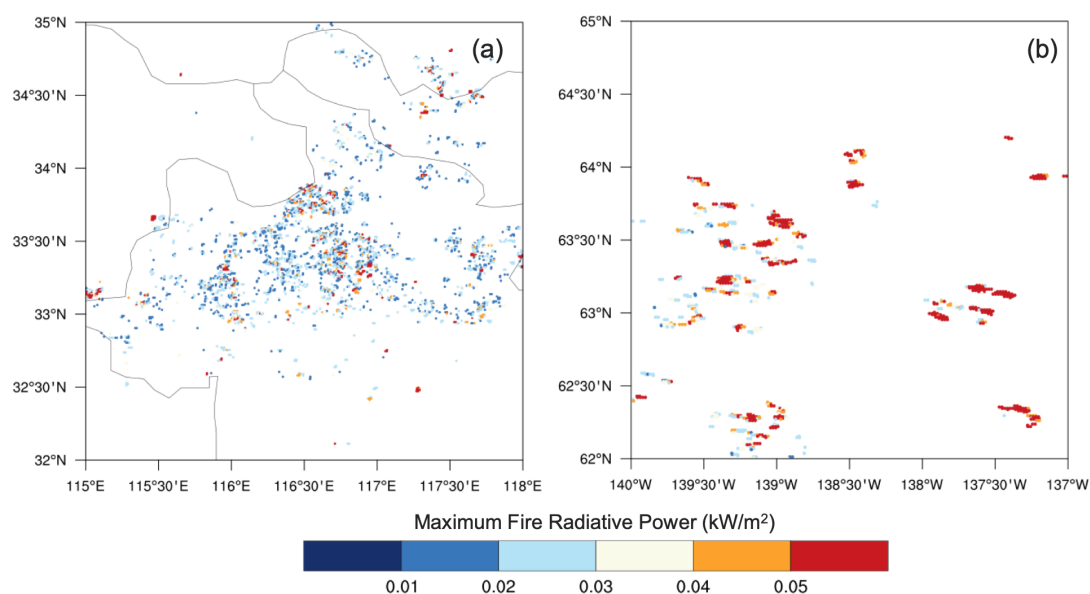




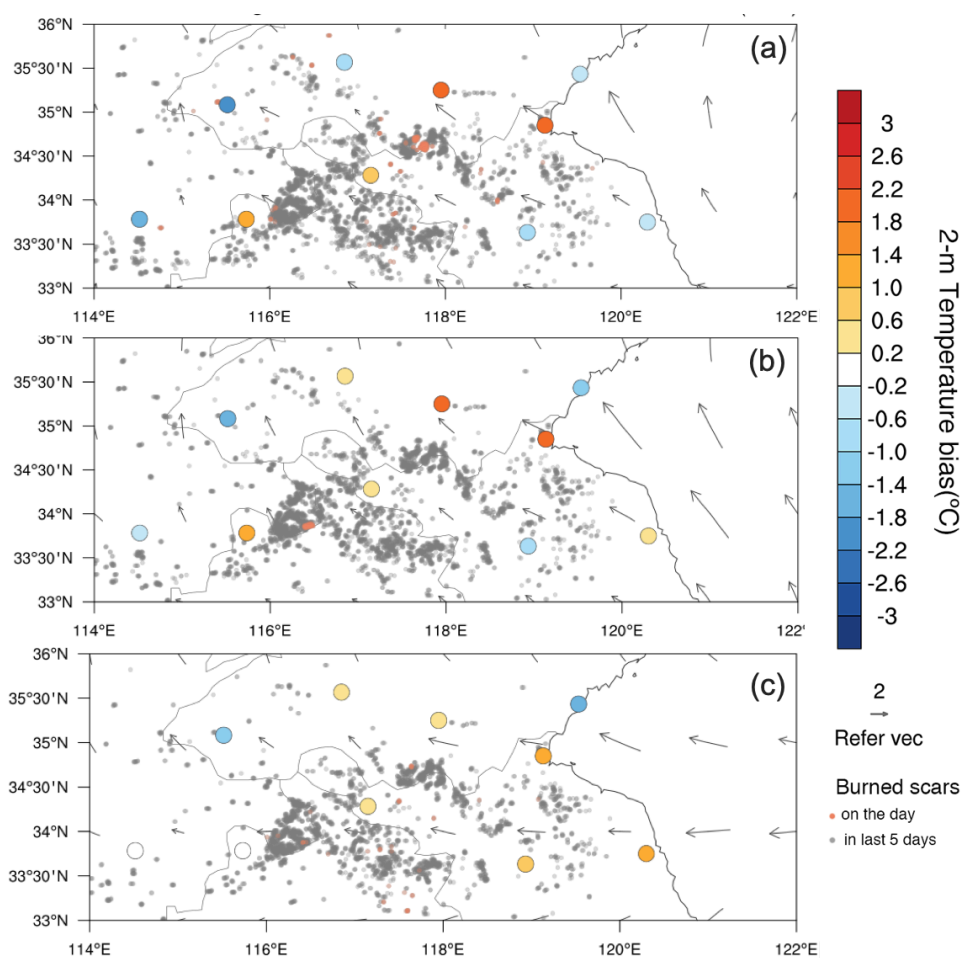
**Fig. R4 (a)** Temperature bias at 2 m height between FNL data and station observations (OBS), and the ‘burned scars’ on 13 June 2012 at local time 20:00. Bias is defined as value of OBS minus FNL. Grey arrows mark the 10-m wind field in FNL. Grey dots mark the ‘burned scar’ (defined as accumulated fire counts in the past 5 days) while orange dots mark fire counts on the day. **(b)** Temperature bias at 2 m height between CTL run and ABD (ALB-  $\Delta$  modisalb) run, and the 10-m wind field in ABD run, on 13 June at 12:00.



**Fig. R5** A photo showing the field burning of wheat straw in Suixi county (33°54′37″N, 116°45′46″E), northern Anhui province on June 14, 2013.



**Fig. R6** MODIS-detect maximum fire radiative power (FRP) during crop straw fire in northern Anhui on 9 June 2012 and grassland fire in North America on 3 July 2004.



**Fig. R7** Temperature bias at 2 m height (fill-coloured circles) between FNL analysis

data and station observations (OBS) in zone YHR **(a)** on 16 June 2012, **(b)** on 17 June 2012 and **(c)** on 18 June 2012, at local time 20:00. Bias is defined as value of OBS minus FNL. Grey arrows mark the 10-m wind field in FNL. Grey dots mark the ‘burned scar’ (defined as accumulated fire counts in the past 5 days) while orange dots mark fire counts on the day.

*Minor Suggestions:*

*Page 1, line 8: impacts air quality*

*Page 1, line 13: show that surface*

*Page 1, line 15: show a positive deviation*

**Response:** Accepted. Great thanks for your carefulness. Please see Line 8, 13 and 15 in the revise manuscript.

*Page 4, line 102: meteorological observations from*

**Response:** Accepted. In addition to make it more readable, the sentence has been rephrased. Please see Line 111-112 in the revise manuscript.

*Page 7, line 221: “and the behind physical images has” to “and the underlying physical images have not”*

**Response:** Accepted. Please see Line 251 in the revise manuscript.

*Page 7, line 222-224: please rephrase this sentence to make it easier to read*

**Response:** Done. To make the whole manuscript more readable, this sentence have been deleted during the modification, and related description has been put in the introduction part. Please see Line 66-68 in the revise manuscript.

*Page 9, line 262: change the sentence to “A typical and severe burning episode in 2012 was chosen as the study case.”*

**Response:** Accepted. Please see Line 292 in the revise manuscript.

*Page 9, line 279: naturally induced*

**Response:** Accepted. Please see Line 312 in the revise manuscript.

## References

- Huang, X., Li, M. M., Li, J. F., and Song, Y.: A high-resolution emission inventory of crop burning in fields in China based on MODIS Thermal Anomalies/Fire products, *ATMOS ENVIRON*, 50, 9-15, 10.1016/j.atmosenv.2012.01.017, 2012a.
- Huang, X., Song, Y., Li, M. M., Li, J. F., and Zhu, T.: Harvest season, high polluted season in East China, *ENVIRON RES LETT*, 7, 044033, 10.1088/1748-9326/7/4/044033, 2012b.
- Huang, X., Ding, A. J., Liu, L. X., Liu, Q., Ding, K., Niu, X. R., Nie, W., Xu, Z., Chi, X. G., Wang, M. H., Sun, J. N., Guo, W. D., and Fu, C. B.: Effects of aerosol–radiation interaction on precipitation during biomass-burning season in East China, *ATMOS CHEM PHYS*, 16, 10063-10082, 10.5194/acp-16-10063-2016, 2016.
- Laurent, P., Mouillot, F., Moreno, M. V., Yue, C., and Ciais, P.: Varying relationships between fire radiative power and fire size at a global scale, *BIOGEOSCIENCES*, 16, 275-288, 10.5194/bg-16-275-2019, 2019.
- Li, J., Bo, Y., and Xie, S. D.: Estimating emissions from crop residue open burning in China based on statistics and MODIS fire products, *J ENVIRON SCI*, 44, 158-170, 10.1016/j.jes.2015.08.024, 2016.
- Roy, D. P., and Landmann, T.: Characterizing the surface heterogeneity of fire effects using multi - temporal reflective wavelength data, *INT J REMOTE SENS*, 26, 4197-4218, 10.1080/01431160500112783, 2005.
- Wallace, J. M., and Hobbs, P. V.: *Atmospheric Science (Second Edition)*, Academic Press, 2006.

## Response to Referee #2

### *General Comments:*

*The manuscript explored the biomass burning induced surface darkening effects and the climate feedback on regional meteorology in eastern China combined with satellite retrievals and WRF-Chem simulations. The paper fits the scope and deserves to be published in this journal with minor revisions.*

**Response:** We appreciate for the professional review on our article. According to the suggestions, we have made extensive corrections to improve the manuscript, the detailed corrections are listed below.

### *Specific Comments:*

*1. Line 12-13: "Satellite retrievals show that surface . . . .in the near-infrared broadband)." This sentence is unclear. Do you mean the decreased surface albedo (-0.16) appears in the harvest season than other seasons? Please rewrite this sentence.*

**Response:** Thanks for pointing it out. Based on satellite retrievals, sharp surface albedo declines are found over fire prone areas. And the scope of declines in the near-infrared broadband is the most significant, which can be up to -0.16. It is consistent with the outstanding capacity of near-infrared band to separate the signals between vegetation and charcoal, as demonstrated by previous studies (Jin and Roy, 2005; Trigg and Flasse, 2000). To make it easier to read, the sentence has been rephrased. Please see line 12-14 in the revised manuscript.

*2. Line 17: The same as above. What do you mean of later afternoon, should be rewritten more accurately.*

**Response:** Thanks for the suggestions. The 'later afternoon' here referred to the time after 14:00 until the sunset. It has been rewritten more accurately for clarity. Please see line 17, 247-248 and 303-305 in the revised manuscript.

*3. Line 29-33: The sentence is too long and hard to follow. Please revise to short sentences.*

**Response:** Accepted. The sentence has been rephrased during the reorganization of the introduction. Please see line 24-25 and 49-51 in the revised manuscript.

*4. Line 37-41: As above, please shorten the sentence.*

**Response:** Accepted. The sentence has been shortened. Please see line 33-39 in the revised manuscript.

5. *The multi citations in this manuscript should be separated by blank space.*

**Response:** Accepted. All citations in the manuscript has been separated by blank space in the revised version.

6. *Line 42: Grammar mistake for “a decrease”. The form “a” is rarely used in front of “decrease”. The sentence can be rewritten as “such decreased surface albedo depends...” or “such surface albedo decline depends...”*

**Response:** Accepted. Thank you very much for pointing it out. The sentence has been modified. Please see line 39-40 in the revised manuscript.

7. *Line 48-49: Suggested to delete “in estimation”*

**Response:** Accepted. Please see line 55-56 in the revised manuscript.

8. *Line 50-51: Delete “Owing to.....maize,”*

**Response:** Accepted. Please see line 59-60 in the revised manuscript.

9. *Line 53-54: The sentence can be revised as “farmers, who are eager to deal with tons of wheat straw, always resort to burning on spot rather than taking them as fuel.*

**Response:** Accepted. This revision has been made for clarity. Please see line 59-61 in the revised manuscript.

10. *Line 56: Please be careful to follow the format of this journal. (Ding et al., 2013a; 2015a, 2015b).*

**Response:** Accepted. We were really sorry for our careless mistakes. Article citation format has been carefully checked in the revised version. Please see line 94-95, 100-101, 105 and 163 in the revised manuscript.

11. Line 69-70: Shorten the sentence.

**Response:** Accepted. The sentence has been rephrased in the revised version. Please see line 76-78 in the revised manuscript.

12. Line 71: Should be revised as “decreased surface albedo or surface albedo decline”. Similar changes throughout the manuscript.

**Response:** Accepted. All the similar expressions in the text have been modified accordingly. Please see line 10, 13, 39-40, 82-83, 178, 180, 188, 194, 196, 203, 209, 255, 266, 268, 280 and 294 in the revised manuscript.

13. I suggested that the introduction section should be reorganized or revised by native editors.

**Response:** Accepted. The introduction section has been reorganized. In addition, more detailed statements of situations in China and relevant previous studies has been added to make the background clearer. Please see line 21-90 in the revised manuscript.

14. Line 84: (MOD09A1), the other similar changes should also be revised.

**Response:** Accepted. Similar changes for all datasets and some abbreviations have been modified in the revised version. Please see line 96, 104, 123, 134, 176 and 225 in the revised manuscript.

15. Figure 1 b-c. The color bar of Figure 1b and 1c should be labeled (units)

**Response:** Accepted. The physical quantity of the color bar is a ratio, ‘surface albedo’. The unit has been added in the revised version. Please see Fig. 1 in the revised manuscript.

16. In Figure 3, the wavelengths for shortwave and near\_IR should be given.

**Response:** Accepted. The wavelengths for the bands has been added in both manuscript and Figure captions. Please see line 98-99, 195, 297-298 and Fig. 3 in the revised manuscript.



## References

Jin, Y., and Roy, D. P.: Fire-induced albedo change and its radiative forcing at the surface in northern Australia, *GEOPHYS RES LETT*, 32, 10.1029/2005gl022822, 2005.

Trigg, S., and Flasse, S.: Characterizing the spectral-temporal response of burned savannah using in situ spectroradiometry and infrared thermometry, *INT J REMOTE SENS*, 21, 3161-3168, 10.1080/01431160050145045, 2000.

# Biomass burning induced surface darkening and its impact on regional meteorology in eastern China

Rong Tang<sup>1,2</sup>, Xin Huang<sup>1,2,\*</sup>, Derong Zhou<sup>1,2</sup>, and Aijun Ding<sup>1,2</sup>

<sup>1</sup>School of Atmospheric Sciences, Nanjing University, Nanjing, 210023, China

<sup>2</sup>Collaborative Innovation Center of Climate Change, Jiangsu Province, Nanjing, 210023, China

*Correspondence to:* Xin Huang (xinhuang@nju.edu.cn)

**Abstract.** Biomass burning has attracted great concerns for the emission of particular matters and trace gases, which substantially [impacts](#) air quality, human health and climate change. Meanwhile, large areas of dark char, carbon residue produced in incomplete combustion, can stick to the surface over fire prone areas after open burning, leading to a sharp drop in surface albedo, so-called ‘surface darkening’. However, exploration into such [surface albedo declines](#) and the radiative and meteorological effects is still fairly limited. As one of the most high-yield agricultural areas, eastern China features [intensive](#) straw burning every early summer, the harvest season for winter wheat, which was particularly strong in 2012. [Satellite retrievals show that the surface albedo decline over fire prone areas was significant, especially in the near-infrared band, which can reach -0.16.](#) Observational evidences of abnormal surface warming were found by comparing radiosonde and reanalysis data. Most sites around intensive burned scars [show](#) a positive deviation, extending especially in the downwind area. Comparisons between ‘pre-fire’ and ‘post-fire’ from 2007 to 2015 indicated a larger temperature bias of the forecast during ‘post-fire’ stage. [The signal becomes more apparent between 14:00 and 20:00 LT.](#) WRF-Chem simulations suggest that including ‘surface darkening’ can decrease model bias and well captured temperature variation after burning at sites in fire areas and its adjacent area. This work highlights the importance of biomass burning induced albedo change in weather forecast and regional climate.

## 1 Introduction

Biomass burning (BB) refers to open or quasi-open combustion of plants or organic fuels, [including forest fires, savannah fires, peat burning and crop residue burning in field](#) (Andreae, 1991; Andreae and Merlet, 2001; Fearnside, 2000; Thompson, 1996). [Intensive BB events occur across the world every year, and pose great threats to life and property of human being \(Bowman and Panton, 1994; Duncan et al., 2003; Kaiser et al., 2012; Streets et al., 2003; Uhl and Kauffman, 1990\) . Apart from this, BB has received widespread attentions due to air pollution, health threats and climate change caused by the large amount of particulate matter, trace gases, and greenhouse gases it releases \(Chan and Yao, 2008; Chang and Song, 2010; Chen et al., 2017; Crutzen and Andreae, 1990; Crutzen et al., 1979; Hansen, 2005; Haywood and Ramaswamy, 1998; Hobbs et al., 1997; Langmann, 2009; Podgorny et al., 2003\).](#) However, the impact of BB is much more than that. BB can directly destruct

30 vegetation covers and affect soil properties over fire prone areas (Certini, 2005), and is considered as one of the most important  
31 factors influencing the global terrestrial ecosystem (Fearnside, 2000).

32 Since open BB tends to occur directly on land surface, vegetation covers will be destructed, and the underlying surface  
33 properties would be affected straightway (Certini, 2005; Myhre et al., 2005). Among them, surface albedo is highly sensitive  
34 to BB (Govaerts, 2004; Jin and Roy, 2005). Due to the cover of black charcoal that produced in incomplete combustion, sharp  
35 surface albedo decline can be observed over fire prone areas, [which has been proven on several kinds of vegetation covers](#)  
36 [including savannah and forest \(Govaerts et al., 2002; Jin and Roy, 2005; Myhre et al., 2005; Roy and Landmann, 2005\). Such](#)  
37 [kind of ‘surface darkening’ could maintain for about one week or even longer if it is dryer and calmer](#), before char materials  
38 are removed by weathering and vegetation starts to regenerate (Amiro et al., 2006; Beringer et al., 2003; Bremer, 1999; Trigg  
39 and Flasse, 2000; Tsuyuzaki et al., 2008; Veraverbeke et al., 2012). The magnitude of such [surface albedo decline](#) depends on  
40 fire intensity and can be up to half of pre-fire values (Veraverbeke et al., 2012). [Decreased surface albedo](#) enhances the capacity  
41 of fire-affected surface to absorb solar radiation under clear sky condition, perturbing the surface energy budget and the process  
42 of land-atmosphere interaction, and then modifying local or even regional circulations (Gatebe et al., 2014; Govaerts et al.,  
43 2003). These changes in meteorological parameters will be important for weather and air quality forecast (Ding et al., 2013a;  
44 Yang et al., 2019; Zhang et al., 2016).

45 Though restriction has been strengthened, [severe and large-scale BB events still occurred frequently all over the world in](#)  
46 [recent years \(Abatzoglou and Williams, 2016; Nolan et al., 2020\)](#). Moreover, threats from global fire activities are still  
47 increasing dramatically with climatic and anthropogenic drivers (Marlon et al., 2009; Pechony and Shindell, 2010; Van Der  
48 Werf et al., 2006). [These facts raise the alarm of further investigation into the impact of BB, to improve human ability to](#)  
49 [predict future weather and climate \(Hansen, 2005\)](#). Globally, BB events occur with significant seasonal variations and distinct  
50 regional characteristics (Duncan et al., 2003; Hao and Liu, 1994; Kaiser et al., 2012; Streets et al., 2003; Uhl and Kauffman,  
51 1990). [It is noteworthy that agricultural burning is still very common in many developing countries, mainly during post-harvest](#)  
52 [periods, for the purpose of clearing farmland and providing ash fertilization for the crop rotation \(Gao, 2002; Ravindra et al.,](#)  
53 [2019; Tipayarom and Kim Oanh, 2020\)](#). However, exploration into such fire induced decreased surface albedo and its radiative  
54 and meteorological effects is still fairly limited.

55 As for China, [with the world’s top-ranked crop production across the world](#), about 122 Tg of crop residue is burned on spot  
56 annually (Yan et al., 2006). Eastern China, especially the middle and lower reaches of Yellow River and Yangtze River,  
57 features large plain area and dense population with high agricultural production (Li et al., 2016). Eastern China has been  
58 characterized by intensive straw burning every June, the harvest season for winter wheat (He et al., 2007; Huang et al., 2012a,  
59 2018; Li et al., 2016; Yang et al., 2013; Yin et al., 2019). After revolution in rural fuel structure, [farmers](#), who are eager to  
60 deal with tons of wheat straw, always resort to burning on spot rather than taking them as fuel (Lu et al., 2011; Yan et al., 2006;  
61 Zhu et al., 2019). Hence, the wheat straw burning is exceedingly dense in both time and space (Huang et al., 2012b; Yang et  
62 al., 2008). [This phenomenon would not only pose alarming threats to air quality and human health \(Ding et al., 2016; Nie et](#)

63 al., 2015), but also bring great challenges to weather and climate forecast (Ding et al., 2013b; Huang et al., 2016; Wang et al.,  
64 2018; Xu et al., 2018; Zhou et al., 2018).

65 Based on years of satellite fire counts in eastern China, the most severe straw burning happened in June 2012 (Huang et al.,  
66 2012b). The most concentrated area of burning in eastern China is the Yellow-Huai River area (YHR), which connects the  
67 middle and lower reaches of Yellow River and Yangtze River. YHR is the major wheat producing area in China (Lei and Yuan,  
68 2013). An extremely typical pollution episode was triggered by BB emissions from YHR in June 2012, during which a yellow  
69 haze blanketed the Yangtze River Delta (YRD) (Ding et al., 2013a; Huang et al., 2012b; Xie et al., 2015). The intensive BB  
70 events and the caused heavy pollution put weather forecast in trouble, during which a series of meteorological anomalies were  
71 observed, such as air temperature changes and precipitation redistribution (Ding et al., 2013a; Gao et al., 2018; Huang et al.,  
72 2016). On one hand, these anomalies have been partly attributed to aerosols, particularly absorbing aerosols like black carbon  
73 (BC), considering the interaction between air quality and meteorology (Huang et al., 2016). On the other hand, the fire induced  
74 decreased surface albedo and its radiative and meteorological effects in regional scale should not be ignored (Myhre et al.,  
75 2005). The striking spectral contrast between dark charcoal deposit over burned surface and bright ripe wheat could arouse  
76 distinct physical signals, so called ‘surface darkening’ (Govaerts et al., 2003; Pereira et al., 1999). The influence of such surface  
77 albedo decline on local and regional energy budget can be significant (Jin and Roy, 2005), especially in summer when solar  
78 radiation is extremely strong. It could be another key issue that needs to be well understood so as to figure out the  
79 meteorological anomalies during the burning season. Since many developing areas are still carrying out large-scale agricultural  
80 burning, better understanding of such fire-induced albedo change and its meteorological effects is of great significance for  
81 weather and climate forecast (Ravindra et al., 2019).

82 In this study, signals of surface albedo decline induced by crop residue burning in eastern China were found based on satellite  
83 retrievals, defined as ‘surface darkening’. Magnitude and spatial distribution of the declines were investigated combining fire  
84 counts by MODIS based on straw burning in June 2012. Temperature anomalies after BB were also explored using long-term  
85 site observations from 2007 to 2015 in eastern China, and comparisons were made between the two status, ‘pre-fire’ and ‘post-  
86 fire’. Moreover, with the aid of the Weather Research and Forecasting model coupled with Chemistry (WRF-Chem model),  
87 decreased surface albedo over fire prone areas were taken into consideration in the simulation targeting at temperature  
88 anomalies in June 2012. The further impact of ‘surface darkening’ in radiation budget, energy reallocation in Earth-atmosphere  
89 system and meteorology were discussed on a local and regional scale, which is of assignable climatological significance and  
90 should not be neglected.

## 91    **2 Data and Method**

### 92    **2.1 Fire counts and surface albedo**

93    The intensity of fire counts and the magnitude of surface albedo decline induced by crop residue burning were analysed based  
94    on standard Moderate Resolution Imaging Spectroradiometer (MODIS) products provided by NASA (Giglio and Justice,  
95    2015a, 2015b, 2017; Vermote, 2015).

96    [MODIS Surface Reflectance product \(MOD09A1\)](#) provides an estimate of the surface spectral reflectance of MODIS Band 1  
97    through 7 at a horizontal resolution of 500 m and use Bidirectional Reflectance Distribution Function (BRDF) database to  
98    better constrain the different threshold used (Schaaf et al., 2002). [Wavelengths of the seven MODIS spectral narrow-bands](#)  
99    [ranges relatively from 0.62-0.67μm, 0.84-0.87μm, 0.46-0.48μm, 0.54-0.56μm, 1.23-1.25μm, 1.63-1.65μm, and 2.11-2.15μm.](#)  
00    The narrowband albedo can be converted to broadband like shortwave and near-infrared through valid algorithms (Liang, 2001,  
01    2003). It has been corrected for atmospheric conditions such as gases, aerosols and Rayleigh scattering. The dataset is updated  
02    every 8 d, for selecting one value from all acquisitions in an 8-day composite period for each pixel unit. The criteria for grid  
03    cell value selection includes cloud conditions and solar zenith angle.

04    [MODIS Thermal Anomalies/Fire Daily L3 Global product \(MOD/MYD14A1\)](#) are daily surface thermal anomaly data obtained  
05    by Terra and Aqua satellites with spatial resolution of 1 km (Giglio et al., 2009, 2013, 2016; Hawbaker et al., 2008), and fire  
06    counts with low confidence were got rid of for quality control. The “fire count” described in the following part indicates the  
07    central location of MODIS pixels with surface thermal anomalies. The actual geographic size of the pixel varies depending on  
08    the angle at which satellite scans. When counting the number of pixels in target region, the pixels are abstracted into points on  
09    a two-dimensional plane.

### 10    **2.2 Temperature observation and forecast**

11    [To obtain the surface meteorological conditions, meteorological observations of air temperature at 2 m height](#) were acquired  
12    from the Global Hourly Surface Database by [the US National Centers for Environmental Information \(NCEI\)](#). The temperature  
13    observations were used to compare with the US National Centers for Environmental Prediction (NCEP) global final analysis  
14    data (FNL) with a  $1^{\circ} \times 1^{\circ}$  spatial resolution which is updated every 6 [hour](#), and were also applied for verification and analysis  
15    of numerical simulations.

16    [The radiosonde data at Xuzhou \(117.15°E, 34.28°N, WMO station number 58027\) observatories were collected from the](#)  
17    [University of Wyoming \(http://weather.uwyo.edu/upperair/sounding.html\), which is the only sounding site in YHR area. The](#)  
18    [radiosondes were launched twice a day \(08:00 and 20:00 LT\) and made measurements both on the mandatory pressure levels](#)  
19    [\(e.g., surface, 1000, 900, 850 hPa\) and additional key levels. It measures vertical profiles of atmospheric parameters like air](#)  
20    [temperature, water mixing ratio, etc.](#)

21

## 2.3 Experiment design and model configuration

The version 3.6.1 of Weather Research and Forecast Model with Chemistry (WRF-Chem), an online-coupled chemical transport model, was employed in this study, in which multiple physical and chemical processes are depicted including emission, transport, mixing, and chemical transformation of trace gases and aerosols simultaneously with meteorology (Grell et al., 2005). In order to take fire-induced albedo change into consideration and figure out impact of ‘surface darkening’ on radiation budget and meteorology in eastern China, a pair of parallel experiments in WRF-Chem with surface albedo as variable was designed: In CTL run, default value of monthly surface albedo in model was adopted, while in ABD run, we applied satellite-detected albedo decline over fire-prone areas. In particular, the fire-affected grids were extracted out by certain threshold of fire counts density in June 2012, and the surface albedo decline in each grid is defined as the difference of MODIS-detect surface albedo between ‘post-fire’ and ‘pre-fire’ based on satellite data analysis in Section 3.1. In YHR, most fire of wheat straw are characterized by short-lived and incomplete smoldering (Huang et al., 2016). The relationship between the fire radiative power (FRP) and fire sizes varies at a global scale, and FRP of such straw burning is much weaker than grassland fires in North American (Laurent et al., 2019). Based on MODIS Thermal Anomalies Product (MOD/MYD14A1), the average maximum FRP for the most severe burning area in June 2012 is almost less than  $0.02 \text{ kW} \cdot \text{m}^{-2}$ , the energy disturbance of which is much smaller than the continuous radiative disturbance of surface albedo decline in summer. Consequently, the heat released by fire was not treated in the model.

The domain is centered at  $115.0^{\circ}\text{E}$ ,  $33.0^{\circ}\text{N}$  with a grid resolution of 20km covered the eastern China and its surrounding areas. The initial and lateral boundary conditions of meteorological variables are obtained from NCEP FNL that update every 6 hour. MIX, a mosaic Asian anthropogenic emission inventory developed by Tsinghua University (Li et al., 2017) and the Fire Inventory from NCAR (FINN) providing high resolution global emission estimates from open burning (Wiedinmyer et al., 2011) were applied in WRF-Chem as anthropogenic and BB emissions, respectively. The simulations were conducted for the time period of 2-18<sup>th</sup> June 2012, and was split into eight independent 72-hour runs for the meteorological fields, while the chemical outputs from the preceding run were used as the initial conditions for the following run. Only the last 48-hour results of each run were kept for analysis, and the first 7-day were regarded as the model spin-up period for atmospheric chemistry, so as to allow the model to reach a state of statistical equilibrium under the applied forcing (Berge et al., 2001; Lo et al., 2008).

The main configurations for WRF-Chem physical and chemical processes in both CTL and ABD experiment are listed in Table 1. A new version of the rapid radiative transfer model (RRTMG) was employed to depict the radiative transfer process for both shortwave and longwave radiation (Iacono et al., 2008; Mlawer et al., 1997). The Noah Land surface scheme (Ek et al., 2003) was used to describe the land-atmosphere interactions, implemented with the MYJ Boundary Layer scheme (Janjic, 1994) to describe the diurnal evolution of the planet boundary layer (PBL). As for cloud and precipitation processes, the new Grell-Freitas cumulus ensemble parameterization (Grell and Freitas, 2014) along with Lin microphysics (Lin et al., 1983) accounting for six forms of hydrometers were employed. Moreover, since the experiments were designed on the basis of

54 MODIS products, the MODIS surface classification options of the International Geosphere-Biosphere Programme (IGBP) was  
55 adopted to keep consistency.

## 56 **3 Results and discussion**

### 57 **3.1 Fire-induced surface albedo change**

58 In 2012, About 160 Tg crop residue was burned, and 36% of the total fires were recorded on farmland, the most of which  
59 occurred in June, the harvest season for wheat (Li et al., 2016). YHR, the major wheat producing area in China, locates in the  
60 vast flat plain in eastern China. Figure 1a shows the daily number of satellite fire counts in YHR, where cropland especially  
61 wheat dominates the vegetation cover (Gong et al., 2019; Lei and Yuan, 2013; Van Der Werf et al., 2010). The limited duration  
62 of agricultural fire combined with the low temporal resolution of MODIS may increase the difficulty of signal capture and  
63 lead to underestimation of fire counts (Chang and Song, 2009, 2010; Giglio et al., 2009; Randerson et al., 2012; Yin et al.,  
64 2019). As illustrated in Fig. 1a, severe and intensive BB events happened in mid-early June, especially 7-13 June, a tense and  
65 busy period in the crop cycle for harvest of wheat and sowing of maize. Among them, burning on 13 June is the most serious.  
66 Black charcoal deposit produced in high-intensive open straw burning would adhere to exposed soil and bound surface albedo  
67 over a period of time before removal of char by natural process or regeneration of vegetation (Veraverbeke et al., 2012). The  
68 strong spectral contrast between dark burned surface and original bright dry ripe wheat cover can arouse distinct physical  
69 signals (Govaerts et al., 2003; Pereira et al., 1999).

70 Understanding the saliency and persistence of signals is important for estimation of albedo change amplitude and further  
71 analysis of its radiative and meteorological effects. The signals of ‘surface darkening’ was a relatively short duration for about  
72 one week and much more sensitive in shortwave near-infrared bands (Trigg and Flasse, 2000). Considering higher resolution  
73 and better depiction of narrow-band satellite observations, and the outstanding capacity of near-infrared to separate the signals  
74 between vegetation and charcoal (Jin and Roy, 2005; Trigg and Flasse, 2000), the shortwave near-infrared band (0.84-0.87  
75  $\mu\text{m}$ ) was chosen. Figure 1b and 1c show the surface albedo distribution before and after the severe burning separately, based  
76 on MODIS Surface Reflectance product (MOD09A1) which updates every 8 day and has ruled out the interference of clouds.  
77 Data on 1 June has not been adopted because of too few valid data. For shortwave near-infrared band, decrease induced by fire  
78 is about 0.30 to 0.14, almost half of original values. The immediate surface albedo decline after fire can be attributed to the  
79 large-scale replacement of ripe wheat with black charcoal over fire prone areas, so-called ‘burned scar’. Char materials strongly  
80 absorb the incoming solar radiation, causing a significant decline of the reflection-to-incoming solar radiation ratio  
81 (Veraverbeke et al., 2012), and this could disturb surface radiation balance at a level that cannot be ignored (Jin and Roy,  
82 2005), which needs further exploration.

83 The total satellite-detected fire counts with high-confidence from 24 May to 17 June, the highly intensive straw-burning period,  
84 is shown in Fig. 2a. Combined, satellite derived surface albedo changes of the same time period in shortwave near-infrared  
85 broadband at fire locations are shown in Fig. 2b. As illustrated, the fire counts are fairly concentrated, especially in the northern

part of Anhui (AH) province, an agricultural area mainly dominated by winter wheat (Yan et al., 2006). Correspondingly, extensive negative values in Fig. 2b demonstrate substantial signals of surface albedo decline over fire prone area in June 2012. For near-infrared broadband, the declines range from -0.16 to -0.02. In addition, the surface albedo declines show obvious spatial heterogeneity, and have a larger decline margin in northern AH than Jiangsu (JS). The effect of fire surface albedo is complex, determined by combustion completeness, fire intensity, pre-fire land cover structure and underlying soil reflectance (Roy and Landmann, 2005). Here, the burning in AH was indeed more severe, which is consistent with the satellite fire detections. Though the surface albedo product applied here has ruled out cloud interference, partial inevitable noises like cloud shadow still exist, reflecting on the scattering positive values in the north-western region in Fig. 2b. To better understand the signals agricultural fire induced surface albedo decline and provide a basis for the following numerical experiments, frequency distributions of surface albedo decline in near-infrared (0.7-2.5 $\mu\text{m}$ ) and short-wave (0.25-2.5 $\mu\text{m}$ ) band are shown in Fig. 3, to clarify the magnitude of surface albedo decline. The sample size of fire counts is 9,477 pixels, consistent with the sample of those marked in Fig. 2a. Surface albedo change in most fire-affected pixels changes distribute in negative region, while the noises in positive region correspond to those positive values in the north-western area in Fig. 2b owing to cloud shadows. The frequency distribution of both near-infrared and shortwave band shows two apexes, which is in accordance with the spatial heterogeneity of fire in AH and JS. Peak values for shortwave distribute between -0.02 and -0.06, for near-infrared distribute between -0.06 and -0.10. Since nearly half of the solar energy that reaches the surface is at wavelengths longer than 0.7  $\mu\text{m}$ , albedo change in near-infrared is rather significant for the energy budget of the surface (Hartmann, 1994). Consequently, to better characterize the surface albedo decline in aspects of both spatial distribution and scope in severely burned area, the difference of satellite derived surface albedo in shortwave near-infrared band was adopted as the albedo decline between the parallels experiments over fire prone areas.

### 3.2 Observational evidences on surface warming in ‘post-fire’ period

Surface albedo is defined as the fraction of the downward solar flux density that is reflected by the surface, directly determining the absorptivity of the surface (Hartmann, 1994). In other words, when the flux of downward solar radiation reaching at the surface is the same, more solar radiation will be absorbed by surface with decreased albedo. Without green plants to do photosynthesis over fire prone areas, the immediate fire-induced increase in radiation absorption are used to heat the ground mostly and then warm the near surface atmosphere (Andrews, 2010; Wallace and Hobbs, 2006), leading to the signal of surface warming. What’s more, straw burning in YHR bursts in summer, when solar radiation is the strongest and the response of surface albedo can be the fiercest. Hence, the air temperature observations over fire prone areas after BB were investigated. Near-surface air temperature observations at meteorological sites were compared with FNL data in 2012. Refer to Fig. 1a, burning in YHR is the most severe on 13 June, while 18 June is the end date of the wheat straw burning ‘season’ in 2012. Temperature bias at 2 m height in observational network at 20:00 LT on 13 and 18 June was shown in Fig. 4, filled according to the value of observation minus FNL. In addition, fire counts on the day and accumulated during the past five days, so called ‘burned scar’, were marked. The scattered positive values of temperature bias in Fig. 4 represent that observational temperature



19 at those sites are higher than predictions from forecast model with only a small fraction of assimilated observations. Most sites  
20 around intensive burned scars shows a positive deviation, which is an abnormal signal of surface warming, extending especially  
21 in the downwind direction.

22 In fact, intensive straw burning occurred in YHR every June, during post-harvest period of wheat over the past twenty years  
23 before the launched strict regulations in recent years (Li et al., 2016; Yin et al., 2019), which could announce significance in  
24 climatology to understand the signals of surface warming after BB.

25 Xuzhou (XZ) station (marked in Fig. 4), the only radiosonde observatory located in the most intensive fire prone area in YHR.  
26 The radiosonde observations at XZ from 2007 to 2015 was compared with FNL data in the PBL. Sample of days was selected  
27 out according to burning condition in each year, and has been classified into specific status, ‘pre-fire’ and ‘post-fire’. ‘Post-  
28 fire’ days must be in 5 days after a severe burning, while ‘pre-fire’ must be among the 5 days before fire but not in 5 days after  
29 previous fire. Only days under clear sky condition were selected. The statistical distribution of temperature bias on different  
30 isobaric levels at 20:00 LT in the two status was shown in Fig. 5a and 5b. Temperature bias was defined as the value of  
31 radiosonde observation minus FNL data. As illustrated, temperature biases are mostly positive on the lower levels in both two  
32 status, and absolute values of ‘post-fire’ are larger than ‘pre-fire’. Combined with Fig. 5c, it means observations at ‘post-fire’  
33 have bigger positive deviation from forecast results, a signal of abnormal warming at ‘post-fire’. In addition, with regards to  
34 the vertical profile of bias at ‘post-fire’ (Fig. 5b), deviations on lower levels tend to be bigger and more positive than those on  
35 higher levels. Larger absolute value of deviation means lower predictability of temperature at ‘post-fire’. Radiosonde data  
36 updates 2 times a day, 08:00 LT and 20:00 LT, and only patterns at 20:00 LT was shown here since no significant difference  
37 exists between the two status at 08:00 LT. After accumulation of absorbed radiation during the daytime, the change of thermal  
38 states near the ground level can be notable by 20:00 LT. The abnormal warming signal tends to be more obvious near the  
39 surface, which can be explained by the enhancement of surface heat absorptivity caused by decreased surface albedo.

40 For the same sample of days in 2007-2015, the diurnal variation of 2-m temperature bias between site observations and FNL,  
41 in the two status was shown in Fig. 6. Negative values of deviation at 08:00 LT and 14:00 LT show that FNL tends to  
42 overestimate temperature during daytime and underestimate at night. It is noteworthy that the absolute values of deviations at  
43 ‘post-fire’ are always larger than those at ‘pre-fire’ no matter during the day or night. With regard to the median values,  
44 deviations at ‘post-fire’ gradually surpass over those at ‘pre-fire’ between 14:00 and 20:00, consistent with the warming signal  
45 revealed by radiosonde analysis at 20:00 LT. The continuous uptrend during the daytime demonstrates a needed response time  
46 of heat accumulation, which may be attributed to the radiative effect of ‘surface darkening’ (Andrews, 2010; Myhre et al.,  
47 2005). Thus, the signal of abnormal warming becomes more apparent between 14:00 and 20:00 LT, with the gradual  
48 accumulation process.

### 49 3.3 Improved temperature simulation by considering surface albedo change

50 As aforementioned, fire-induced surface albedo change and observational evidences of abnormal surface warming were  
51 substantial in eastern China. However, the radiative effects on meteorology and the underlying physical images of surface

warming have not been figured out yet, which should resort to model simulation. In existing studies, radiative effects of albedo changes over burned scars were investigated on land covers, like boreal forests (Lyons et al., 2008) and savannas (Jin and Roy, 2005; Myhre et al., 2005), but few of them was conducted on open agricultural fire in farmlands. Exploration into the disturbance of surface albedo decline induced by agricultural BB using model simulation can be meaningful for improving weather and climate forecast of regions with the large scale BB events. Hence, WRF-Chem experiments targeting at surface albedo change induced by agricultural BB in eastern China were conducted. The most severe episode happened in June 2012 was selected as the case. Surface albedo set in the two parallel experiments, CTL and ABD, were shown in Fig. 7a and 7b. Figure 7c shows the surface albedo difference between the two experiments, which is defined as the difference of MODIS-detect surface albedo between ‘post-fire’ (17 June) and ‘pre-fire’ (24 May) in each grid. Model results were compared with site observational air temperature, respectively in concentrated fire prone areas (Fig. 8a) and its southern adjacent area, YRD (Fig. 8b). In Fig. 8, ABD experiment shows increase in temperature and enjoy a better fit with observations at both sites in the afternoon and evening compared to CTL experiment. Temperature anomalies can be simulated to some extent, after considering the decreased surface albedo caused by BB.

The local surface energy budget at Bengbu was shown in Fig. 9. Bengbu locates in fire affected area where adopted the decreased albedo. As shown in Fig. 9a, upward shortwave radiation at the surface reduces a lot, while only a little change exists in downward shortwave radiation reaching the surface. The smaller ratio of solar radiation reflected to the atmosphere by surface can be attributed to surface albedo decline. Accordingly, with more solar radiation absorbed by the surface, the ground will be heated and the surface temperature will be higher in ABD experiment (Fig. 9b). Higher surface temperature would give rise to larger upward heat flux, thereby heating the atmosphere near the surface by vertical mixing (Stull, 1988). So, local radiation budget change induced by surface albedo change would directly influence the near-surface air temperature and arouse an abnormal warming signal over fire prone areas in the afternoon and evening with a certain lag.

Meanwhile, the temperature influence of fire-induced albedo change is also obvious in adjacent areas like LK (Lukou) (Fig. 8b), located in YRD. Some other stations in YRD also show similar patterns. Local temperature can be affected by various factors such as local radiation budget change and advection transport caused by thermal disturbance. As illustrated in Fig. 10a, surface warming shows in the upwind area of LK station, which means influence of warm advection. According to Fig. 10b and 10c, sharp decrease in low cloud water contents was found in the upwind area in ABD experiment. Low clouds, effective reflectors of solar radiation (Hartmann, 1994), would arouse large perturbations to surface radiation budget. In Fig. 10d, downward shortwave reaching the surface in ABD experiment reduces quit a lot due to reflection and occlusion of low clouds. The additional heat by decreased albedo over fire prone areas would increase the surface temperature, change both sensible heat flux and latent heat flux, and then change the vertical velocity in boundary layer and even disturb the process of cloud formation (Stull, 1988). Thus, surface albedo declines near fire locations also have great impacts on areas where surface albedo was barely changed, by disturbance to cloud formation and advection transmission.

84 These ‘burned scars’ can remain over the surface for about one week under rainy condition, or even longer if dryer and calmer  
85 (Trigg and Flasse, 2000). The length of period allows the process of local radiative accumulation and disturbance in regional  
86 circulation, and influence on temperature over both fire prone areas and adjacent areas.

## 87 4 Conclusions

88 To figure out surface albedo change induced by biomass burning and its impact on regional meteorology in eastern China, an  
89 investigation into the relationship between surface albedo change and temperature anomalies was conducted based on  
90 meteorological observations and satellite retrievals, combining with WRF-Chem simulations. This study focuses on the  
91 intensive wheat straw burning occurred every early summer in the YHR area, the major wheat producing area in eastern China.

92 A typical and severe burning episode in 2012 was chosen to be the study case.

93 Fire-induced ‘surface darkening’ over fire prone areas was verified based on satellite retrievals. Large area of surface albedo  
94 decline shows over fire prone areas in YHR. It also shows obvious spatial heterogeneity, and has a larger decline margin in  
95 AH, where fire counts are more concentrated and the burning is much more severe. For the near-infrared broadband, the  
96 absolute surface albedo decline ranges in  $-0.16 \sim -0.02$ , which can be an obvious signal in the regional scale and arouse large  
97 radiative disturbance. Peak values of reduction for shortwave band ( $0.7\text{-}2.5\mu\text{m}$ ) distributed between  $-0.06$  and  $-0.02$ , for near-  
98 infrared band ( $0.25\text{-}2.5\mu\text{m}$ ) distribute between  $-0.10$  and  $-0.06$ .

99 Evidences of abnormal surface warming were found in eastern China. Most sites around intensive burned scars shows a positive  
00 deviation in June 2012, an abnormal signal of surface warming which extends especially in the downwind direction.  
01 Comparisons were made between status of ‘pre-fire’ and ‘post-fire’ under clear sky condition, based on multi-years  
02 temperature observations from 2007 to 2015. Observations at ‘post-fire’ have bigger positive deviation from forecast results  
03 at 20:00LT, especially on lower levels. This kind of abnormal surface warming signal at ‘post-fire’ will lead to lower  
04 predictability of temperature. In terms of diurnal variation, the signal becomes more apparent between 14:00 and 20:00 LT,  
05 with the accumulation of absorbed radiation.

06 To examine the direct radiative effects and its potential regional meteorological impacts of surface albedo change, WRF-Chem  
07 experiments targeting at the surface albedo change induced by agricultural BB in eastern China were carried out. ABD  
08 experiment shows increase in temperature and enjoys a better fit with observations in concentrated fire prone areas and its  
09 southern adjacent area compared to CTL, especially in the afternoon and evening. Surface albedo change over fire prone areas  
10 influence the surface temperature through both direct local radiation budget change and indirect disturbance in cloud formation  
11 and advection transmission.

12 This study shows that either human or naturally induced biomass burning will not only influence the weather and regional  
13 climate by emission of aerosols and trace gases. The change in surface albedo could also cause significant impacts at regional  
14 scale during the post-fire periods, particular in regions with strong solar radiation. Such kind of short-term disturbance should  
15 be considered in future weather, climate and air quality forecast models.

16 *Data availability.* Meteorological datasets used in this work can be acquired from <https://rda.ucar.edu/datasets/ds083.2/>,  
17 <http://weather.uwyo.edu/upperair/sounding.html>, and <https://www7.ncdc.noaa.gov/CDO/cdoselect.cmd>. MODIS dataset can  
18 be obtained from the Level-1 and Atmosphere Archive & Distribution System (LAADS) Distributed Active Archive Center  
19 (DAAC), located in the Goddard Space Flight Center in Greenbelt, Maryland (<https://ladsweb.nascom.nasa.gov>).

20 *Author contributions.* RT and XH led the manuscript writing. RT and DZ conducted the data analysis and model simulations.  
21 AD contributed to the research design.

22 *Competing interests.* The authors declare that they have no conflict of interest.

23 *Acknowledgements.* This work was supported by the National Natural Science Foundation of China (91544231, 41725020,  
24 91744311, and 41422504). The numerical modeling was conducted on computing facilities at the High Performance  
25 Computing Centering (HPCC) at Nanjing University.

## 26 **References**

- 27 Abatzoglou, J. T., and Williams, A. P.: Impact of anthropogenic climate change on wildfire across western US forests, PNAS,  
28 113, 11770-11775, 10.1073/pnas.1607171113, 2016.
- 29 Amiro, B. D., Orchansky, A. L., Barr, A. G., Black, T. A., Chambers, S. D., Chapin Iii, F. S., Goulden, M. L., Litvak, M., Liu,  
30 H. P., McCaughey, J. H., McMillan, A., and Randerson, J. T.: The effect of post-fire stand age on the boreal forest energy  
31 balance, AGR FOREST METEOROL, 140, 41-50, 10.1016/j.agrformet.2006.02.014, 2006.
- 32 Andreae, M. O.: Biomass burning - its history, use, and distribution and its impact on environmental-quality and global climate,  
33 Global Biomass Burning: Atmospheric, Climatic, and Biospheric Implications, edited by: Levine, J. S., MIT Press, Cambridge,  
34 3-21 pp., 1991.
- 35 Andreae, M. O., and Merlet, P.: Emission of trace gases and aerosols from biomass burning, GLOBAL BIOGEOCHEM CY,  
36 15, 955-966, 10.1029/2000gb001382, 2001.
- 37 Andrews, D. G.: An Introduction to Atmospheric Physics, Cambridge University Press, 2010.
- 38 Berge, E., Huang, H. C., Chang, J., and Liu, T. H.: A study of the importance of initial conditions for photochemical oxidant  
39 modeling, J GEOPHYS RES-ATMOS, 106, 1347-1363, 10.1029/2000jd900227, 2001.
- 40 Beringer, J., Hutley, L. B., Tapper, N. J., Coutts, A., Kerley, A., and O'Grady, A. P.: Fire impacts on surface heat, moisture  
41 and carbon fluxes from a tropical savanna in northern Australia, INT J WILDLAND FIRE, 12, 333-340, 10.1071/wf03023,  
42 2003.

43 Bowman, D., and Panton, W. J.: Fire and cyclone damage to woody vegetation on the north coast of the northern-territory,  
 44 australia, AUST. GEOGR., 25, 32-35, 10.1080/00049189408703096, 1994.

45 Bremer, D. J. H., J. M.: Effect of spring burning on the surface energy balance in a tallgrass prairie, AGR FOREST  
 46 METEOROL, 97, 43-54, 10.1016/s0168-1923(99)00034-9, 1999.

47 Certini, G.: Effects of fire on properties of forest soils: a review, OECOLOGIA, 143, 1-10, 10.1007/s00442-004-1788-8, 2005.

48 Chan, C. K., and Yao, X.: Air pollution in mega cities in China, ATMOS ENVIRON, 42, 1-42,  
 49 10.1016/j.atmosenv.2007.09.003, 2008.

50 Chang, D., and Song, Y.: Comparison of L3JRC and MODIS global burned area products from 2000 to 2007, 114,  
 51 10.1029/2008jd011361, 2009.

52 Chang, D., and Song, Y.: Estimates of biomass burning emissions in tropical Asia based on satellite-derived data, 10, 2335-  
 53 2351, 10.5194/acp-10-2335-2010, 2010.

54 Chen, J. M., Li, C. L., Ristovski, Z., Milic, A., Gu, Y. T., Islam, M. S., Wang, S. X., Hao, J. M., Zhang, H. F., He, C. R., Guo,  
 55 H., Fu, H. B., Miljevic, B., Morawska, L., Thai, P., Fat, L., Pereira, G., Ding, A. J., Huang, X., and Dumka, U. C.: A review  
 56 of biomass burning: Emissions and impacts on air quality, health and climate in China, SCI TOTAL ENVIRON, 579, 1000-  
 57 1034, 10.1016/j.scitotenv.2016.11.025, 2017.

58 Crutzen, P. J., Heidt, L. E., Krasnec, J. P., Pollock, W. H., and Seiler, W.: Biomass burning as a source of atmospheric gases  
 59 CO, H<sub>2</sub>, N<sub>2</sub>O, NO, CH<sub>3</sub>Cl and COS, Nature, 282, 253-256, 10.1038/282253a0, 1979.

60 Crutzen, P. J., and Andreae, M. O.: Biomass burning in the tropics - impact on atmospheric chemistry and biogeochemical  
 61 cycles, Science, 250, 1669-1678, 10.1126/science.250.4988.1669, 1990.

62 Ding, A. J., Fu, C. B., Yang, X. Q., Sun, J. N., Petäjä, T., Kerminen, V. M., Wang, T., Xie, Y., Herrmann, E., Zheng, L. F.,  
 63 Nie, W., Liu, Q., Wei, X. L., and Kulmala, M.: Intense atmospheric pollution modifies weather: a case of mixed biomass  
 64 burning with fossil fuel combustion pollution in eastern China, 13, 10545-10554, 10.5194/acp-13-10545-2013, 2013a.

65 Ding, A. J., Fu, C. B., Yang, X. Q., Sun, J. N., Zheng, L. F., Xie, Y. N., Herrmann, E., Nie, W., Petäjä, T., Kerminen, V. M.,  
 66 and Kulmala, M.: Ozone and fine particle in the western Yangtze River Delta: an overview of 1 yr data at the SORPES station,  
 67 ATMOS CHEM PHYS, 13, 5813-5830, 10.5194/acp-13-5813-2013, 2013b.

68 Ding, A. J., Huang, X., Nie, W., Sun, J. N., Kerminen, V. M., Petäjä, T., Su, H., Cheng, Y. F., Yang, X. Q., Wang, M. H., Chi,  
 69 X. G., Wang, J. P., Virkkula, A., Guo, W. D., Yuan, J., Wang, S. Y., Zhang, R. J., Wu, Y. F., Song, Y., Zhu, T., Zilitinkevich,  
 70 S., Kulmala, M., and Fu, C. B.: Enhanced haze pollution by black carbon in megacities in China, GEOPHYS RES LETT, 43,  
 71 2873-2879, 10.1002/2016gl067745, 2016.

72 Duncan, B. N., Martin, R. V., Staudt, A. C., Yevich, R., and Logan, J. A.: Interannual and seasonal variability of biomass  
 73 burning emissions constrained by satellite observations, J GEOPHYS RES, 108, 10.1029/2002jd002378, 2003.

74 Ek, M. B., Mitchell, K. E., Lin, Y., Rogers, E., Grunmann, P., Koren, V., Gayno, G., and Tarpley, J. D.: Implementation of  
 75 Noah land surface model advances in the National Centers for Environmental Prediction operational mesoscale Eta model, J  
 76 GEOPHYS RES-ATMOS, 108, 10.1029/2002jd003296, 2003.

77 Fearnside, P. M.: Greenhouse gas emissions from land-use change in Brazil's Amazon region, *Global Climate Change and*  
78 *Tropical Ecosystems*, edited by: Lal, R., Kimble, J. M., and Stewart, B. A., Crc Press-Taylor & Francis Group, Boca Raton,  
79 231-249 pp., 2000.

80 Gao, M., Ji, D. S., Liang, F. C., and Liu, Y.: Attribution of aerosol direct radiative forcing in China and India to emitting  
81 sectors, *ATMOS ENVIRON*, 190, 35-42, 10.1016/j.atmosenv.2018.07.011, 2018.

82 Gao, X.: Analysis on the Current Status of Utilization of Crop Straw in China, *Journal of Huazhong Agricultural*, 354, 4031-  
83 4036, 2002.

84 Gatebe, C. K., Ichoku, C. M., Poudyal, R., Román, M. O., and Wilcox, E.: Surface albedo darkening from wildfires in northern  
85 sub-Saharan Africa, *ENVIRON RES LETT*, 9, 065003, 10.1088/1748-9326/9/6/065003, 2014.

86 Giglio, L., Loboda, T., Roy, D. P., Quayle, B., and Justice, C. O.: An active-fire based burned area mapping algorithm for the  
87 MODIS sensor, 113, 408-420, 10.1016/j.rse.2008.10.006, 2009.

88 Giglio, L., Randerson, J. T., and van der Werf, G. R.: Analysis of daily, monthly, and annual burned area using the fourth-  
89 generation global fire emissions database (GFED4), *J GEOPHYS RES-BIOGEO*, 118, 317-328, 10.1002/jgrg.20042, 2013.

90 Giglio, L., Schroeder, W., and Justice, C. O.: The collection 6 MODIS active fire detection algorithm and fire products,  
91 *REMOTE SENS ENVIRON*, 178, 31-41, 10.1016/j.rse.2016.02.054, 2016.

92 Gong, P. L., H.; Zhang, M. N.; Li, C. C.; Wang, J.; Huang, H. B.; Clinton, Nicholas; Ji, L.Y.; Li, W.Y.; , Bai, Y., Chen, B.,  
93 Xu, B., Zhu, Z., Yuan, C., Ping Suen, H., Guo, J., Xu, N., Li, W., Zhao, Y., Yang, J., Yu, C., Wang, X., Fu, H., Yu, L., Dronova,  
94 I., Hui, F., Cheng, X., Shi, X., Xiao, F., Liu, Q., and Song, L.: Stable classification with limited sample: transferring a 30-m  
95 resolution sample set collected in 2015 to mapping 10-m resolution global land cover in 2017, *SCI BULL*, 64, 370-373,  
96 10.1016/j.scib.2019.03.002, 2019.

97 Govaerts, Y. M., M., P. J., B., P., and B., M.: Impact of fires on surface albedo dynamics over the African continent, *J*  
98 *GEOPHYS RES*, 107, 10.1029/2002jd002388, 2002.

99 Govaerts, Y. M., Pinty, B., and Lattanzio, A.: Impact of vegetation fires on surface albedo dynamics and absorbed solar  
00 radiation over the African Continent, 3, 1576-1578, 10.1109/igarss.2003.1294180, 2003.

01 Govaerts, Y. M.: Multi-years analysis of vegetation fires impact on surface albedo dynamics over the African continent, 2004.

02 Grell, G. A., Peckham, S. E., Schmitz, R., McKeen, S. A., Frost, G., Skamarock, W. C., and Eder, B.: Fully coupled "online"  
03 chemistry within the WRF model, *ATMOS ENVIRON*, 39, 6957-6975, 10.1016/j.atmosenv.2005.04.027, 2005.

04 Grell, G. A., and Freitas, S. R.: A scale and aerosol aware stochastic convective parameterization for weather and air quality  
05 modeling, 14, 5233-5250, 10.5194/acp-14-5233-2014, 2014.

06 Hansen, J.: Efficacy of climate forcings, 110, 10.1029/2005jd005776, 2005.

07 Hao, W. M., and Liu, M.-H.: Spatial and temporal distribution of tropical biomass burning, *GLOBAL BIOGEOCHEM CY*,  
08 8, 495-503, 10.1029/94gb02086, 1994.

09 Hartmann, D. L.: *Global Physical Climatology*, Academic Press, 1994.

10 Hawbaker, T. J., Radeloff, V. C., Syphard, A. D., Zhu, Z. L., and Stewart, S. I.: Detection rates of the MODIS active fire  
 11 product in the United States, REMOTE SENS ENVIRON, 112, 2656-2664, 10.1016/j.rse.2007.12.008, 2008.

12 Haywood, J. M., and Ramaswamy, V.: Global sensitivity studies of the direct radiative forcing due to anthropogenic sulfate  
 13 and black carbon aerosols, J GEOPHYS RES-ATMOS, 103, 6043-6058, 10.1029/97jd03426, 1998.

14 He, L. M., Wang, W. J., Q., W., B., W., Q., L., Z., W. C., and M., L. X.: Evaluation of the Agricultural Residues Burning  
 15 Reduction in China Using MODIS Fire Product, Environmental Monitoring in China, 23, 42-50, 2007.

16 Hobbs, P. V., Reid, J. S., Kotchenruther, R. A., Ferek, R. J., and Weiss, R.: Direct radiative forcing by smoke from biomass  
 17 burning, Science, 275, 1776-1778, 1997.

18 Huang, X., Li, M. M., Li, J. F., and Song, Y.: A high-resolution emission inventory of crop burning in fields in China based  
 19 on MODIS Thermal Anomalies/Fire products, ATMOS ENVIRON, 50, 9-15, 10.1016/j.atmosenv.2012.01.017, 2012a.

20 Huang, X., Song, Y., Li, M. M., Li, J. F., and Zhu, T.: Harvest season, high polluted season in East China, ENVIRON RES  
 21 LETT, 7, 044033, 10.1088/1748-9326/7/4/044033, 2012b.

22 Huang, X., Ding, A. J., Liu, L. X., Liu, Q., Ding, K., Niu, X. R., Nie, W., Xu, Z., Chi, X. G., Wang, M. H., Sun, J. N., Guo,  
 23 W. D., and Fu, C. B.: Effects of aerosol–radiation interaction on precipitation during biomass-burning season in East China,  
 24 ATMOS CHEM PHYS, 16, 10063-10082, 10.5194/acp-16-10063-2016, 2016.

25 Huang, X., Wang, Z. L., and Ding, A. J.: Impact of Aerosol-PBL Interaction on Haze Pollution: Multiyear Observational  
 26 Evidences in North China, GEOPHYS RES LETT, 45, 8596-8603, 10.1029/2018gl079239, 2018.

27 Iacono, M. J., Delamere, J. S., Mlawer, E. J., Shephard, M. W., Clough, S. A., and Collins, W. D.: Radiative forcing by long-  
 28 lived greenhouse gases: Calculations with the AER radiative transfer models, J GEOPHYS RES, 113, 10.1029/2008jd009944,  
 29 2008.

30 Janjic, Z. I.: THE STEP-MOUNTAIN ETA COORDINATE MODEL - FURTHER DEVELOPMENTS OF THE  
 31 CONVECTION, VISCOUS SUBLAYER, AND TURBULENCE CLOSURE SCHEMES, Monthly Weather Review, 122,  
 32 927-945, 10.1175/1520-0493(1994)122<0927:Tsmecm>2.0.Co;2, 1994.

33 Jin, Y., and Roy, D. P.: Fire-induced albedo change and its radiative forcing at the surface in northern Australia, GEOPHYS  
 34 RES LETT, 32, 10.1029/2005gl022822, 2005.

35 Kaiser, J. W., Heil, A., Andreae, M. O., Benedetti, A., Chubarova, N., Jones, L., Morcrette, J. J., Razinger, M., Schultz, M. G.,  
 36 Suttie, M., and Van Der Werf, G. R.: Biomass burning emissions estimated with a global fire assimilation system based on  
 37 observed fire radiative power, BIOGEOSCIENCES, 9, 527-554, 10.5194/bg-9-527-2012, 2012.

38 Langmann, B. D., B. ; Textor, C.; Trentmann, J.; Van Der Werf, G. R.: Vegetation fire emissions and their impact on air  
 39 pollution and climate, ATMOS ENVIRON, 43, 107-116, 10.1016/j.atmosenv.2008.09.047, 2009.

40 Laurent, P., Mouillot, F., Moreno, M. V., Yue, C., and Ciais, P.: Varying relationships between fire radiative power and fire  
 41 size at a global scale, BIOGEOSCIENCES, 16, 275-288, 10.5194/bg-16-275-2019, 2019.

42 Li, J., Bo, Y., and Xie, S. D.: Estimating emissions from crop residue open burning in China based on statistics and MODIS  
 43 fire products, J ENVIRON SCI, 44, 158-170, 10.1016/j.jes.2015.08.024, 2016.

44 Li, M., Zhang, Q., Kurokawa, J., Woo, J. H., He, K. B., Lu, Z. F., Ohara, T., Song, Y., Streets, D. G., Carmichael, G. R.,  
 45 Cheng, Y. F., Hong, C. P., Huo, H., Jiang, X. J., Kang, S. C., Liu, F., Su, H., and Zheng, B.: MIX: a mosaic Asian anthropogenic  
 46 emission inventory under the international collaboration framework of the MICS-Asia and HTAP, *ATMOS CHEM PHYS*, 17,  
 47 935-963, 10.5194/acp-17-935-2017, 2017.  
 48 Liang, S. L.: Narrowband to broadband conversions of land surface albedo I, *REMOTE SENS ENVIRON*, 76, 213-238,  
 49 10.1016/s0034-4257(00)00205-4, 2001.  
 50 Liang, S. L., Shuey, C. J., Russ, A. L., Fang, H. L., Chen, M. Z., Walthall, C. L., Daughtry, C. S. T., and Hunt, R.: Narrowband  
 51 to broadband conversions of land surface albedo: II. Validation, 84, 25-41, 10.1016/s0034-4257(02)00068-8, 2003.  
 52 Lin, Y. L., Farley, R. D., and Orville, H. D.: BULK PARAMETERIZATION OF THE SNOW FIELD IN A CLOUD MODEL,  
 53 *Journal of Climate and Applied Meteorology*, 22, 1065-1092, 10.1175/1520-0450(1983)022<1065:Bpotsf>2.0.Co;2, 1983.  
 54 Lo, J. C. F., Yang, Z. L., and Pielke, R. A.: Assessment of three dynamical climate downscaling methods using the Weather  
 55 Research and Forecasting (WRF) model, *J GEOPHYS RES-ATMOS*, 113, 16, 10.1029/2007jd009216, 2008.  
 56 Lu, B., Kong, S. F., Han, B., Wang, X. Y., and Bai, Z. P.: Inventory of atmospheric pollutants discharged from biomass burning  
 57 in China continent in 2007, *China Environmental Science*, 31, 186-194, 2011.  
 58 Lyons, E. A., Jin, Y. F., and Randerson, J. T.: Changes in surface albedo after fire in boreal forest ecosystems of interior Alaska  
 59 assessed using MODIS satellite observations, *J GEOPHYS RES-BIOGEO*, 113, n/a-n/a, 10.1029/2007jg000606, 2008.  
 60 Marlon, J. R., Bartlein, P. J., Carcaillet, C., Gavin, D. G., Harrison, S. P., Higuera, P. E., Joos, F., Power, M. J., and Prentice,  
 61 I. C.: Erratum: Climate and human influences on global biomass burning over the past two millennia, *NAT GEOSCI*, 2, 307-  
 62 307, 10.1038/ngeo468, 2009.  
 63 Mlawer, E. J., Taubman, S. J., Brown, P. D., Iacono, M. J., and Clough, S. A.: Radiative transfer for inhomogeneous  
 64 atmospheres: RRTM, a validated correlated-k model for the longwave, *J GEOPHYS RES-ATMOS*, 102, 16663-16682,  
 65 10.1029/97jd00237, 1997.  
 66 Myhre, G., Govaerts, Y., Haywood, J. M., and K., B. T.: Radiative effect of surface albedo change from biomass burning,  
 67 *GEOPHYS RES LETT*, 32, 10.1029/2005gl022897, 2005.  
 68 Nie, W., Ding, A. J., Xie, Y. N., Xu, Z., Mao, H., Kerminen, V. M., Zheng, L. F., Qi, X. M., Huang, X., Yang, X. Q., Sun, J.  
 69 N., Herrmann, E., Petäjä, T., Kulmala, M., and Fu, C. B.: Influence of biomass burning plumes on HONO chemistry in eastern  
 70 China, *ATMOS CHEM PHYS*, 15, 1147-1159, 10.5194/acp-15-1147-2015, 2015.  
 71 Nolan, R. H., Boer, M. M., Collins, L., Resco De Dios, V., Clarke, H., Jenkins, M., Kenny, B., and Bradstock, R. A.: Causes  
 72 and consequences of eastern Australia's 2019–20 season of mega-fires, *GLOB CHANGE BIOL*, 26, 1039-1041,  
 73 10.1111/gcb.14987, 2020.  
 74 Pechony, O., and Shindell, D. T.: Driving forces of global wildfires over the past millennium and the forthcoming century,  
 75 *PNAS*, 107, 19167-19170, 10.1073/pnas.1003669107, 2010.  
 76 Pereira, J. M. C., Sá, A. C. L., Sousa, A. M. O., Silva, J. M. N., Santos, T. N., and Carreiras, J. M. B.: Spectral characterisation  
 77 and discrimination of burnt areas, 1999.



Podgorny, I. A., Li, F., and Ramanathan, V.: Large Aerosol Radiative Forcing due to the 1997 Indonesian Forest Fire, 30, 10.1029/2002gl015979, 2003.

Randerson, J. T., Chen, Y., van der Werf, G. R., Rogers, B. M., and Morton, D. C.: Global burned area and biomass burning emissions from small fires, J GEOPHYS RES-BIOGEO, 117, n/a-n/a, 10.1029/2012jg002128, 2012.

Ravindra, K., Singh, T., Mor, S., Singh, V., Mandal, T. K., Bhatti, M. S., Gahlawat, S. K., Dhankhar, R., Mor, S., and Beig, G.: Real-time monitoring of air pollutants in seven cities of North India during crop residue burning and their relationship with meteorology and transboundary movement of air, SCI TOTAL ENVIRON, 690, 717-729, 10.1016/j.scitotenv.2019.06.216, 2019.

Roy, D. P., and Landmann, T.: Characterizing the surface heterogeneity of fire effects using multi-temporal reflective wavelength data, INT J REMOTE SENS, 26, 4197-4218, 10.1080/01431160500112783, 2005.

Schaaf, C. B., Gao, F., Strahler, A. H., Lucht, W., Li, X. W., Tsang, T., Strugnell, N. C., Zhang, X. Y., Jin, Y. F., Muller, J., Lewis, P., Barnsley, M., Hobson, P., Disney, M., Roberts, G., Dunderdale, M., Doll, C., D'Entremont, R. P., Hu, B., Liang, S., Privette, J. L., and Roy, D.: First operational BRDF, albedo nadir reflectance products from MODIS, REMOTE SENS ENVIRON, 83, 135-148, 10.1016/s0034-4257(02)00091-3, 2002.

Streets, D. G., Yarber, K. F., Woo, J. H., and Carmichael, G. R.: Biomass burning in Asia: Annual and seasonal estimates and atmospheric emissions, GLOBAL BIOGEOCHEM CY, 17, n/a-n/a, 10.1029/2003gb002040, 2003.

Stull, R. B.: An introduction to boundary layer meteorology, Atmospheric Sciences Library, 8, Kluwer Academic Publisher, 89 pp., 1988.

Thompson, A. M.: Biomass burning and the atmosphere—accomplishments and research opportunities, ATMOS ENVIRON, 30, i-ii, 10.1016/s1352-2310(96)90021-7, 1996.

Tipayarom, A., and Kim Oanh, N. T.: Influence of rice straw open burning on levels and profiles of semi-volatile organic compounds in ambient air, Chemosphere, 243, 125379, 10.1016/j.chemosphere.2019.125379, 2020.

Trigg, S., and Flasse, S.: Characterizing the spectral-temporal response of burned savannah using in situ spectroradiometry and infrared thermometry, INT J REMOTE SENS, 21, 3161-3168, 10.1080/01431160050145045, 2000.

Tsuyuzaki, S., Kushida, K., and Kodama, Y.: Recovery of surface albedo and plant cover after wildfire in a Picea mariana forest in interior Alaska, CLIMATIC CHANGE, 93, 517-525, 10.1007/s10584-008-9505-y, 2008.

Uhl, C., and Kauffman, J. B.: Deforestation, fire susceptibility, and potential tree responses to fire in the eastern amazon, Ecology, 71, 437-449, 10.2307/1940299, 1990.

Van Der Werf, G. R., Randerson, J. T., Giglio, L., Collatz, G. J., Kasibhatla, P. S., and Arellano, A. F.: Interannual variability in global biomass burning emissions from 1997 to 2004, ATMOS CHEM PHYS, 6, 3423-3441, 10.5194/acp-6-3423-2006, 2006.

Van Der Werf, G. R., Randerson, J. T., Giglio, L., Collatz, G. J., Mu, M., Kasibhatla, P. S., Morton, D. C., Defries, R. S., Jin, Y., and Van Leeuwen, T. T.: Global fire emissions and the contribution of deforestation, savanna, forest, agricultural, and peat fires (1997–2009), ATMOS CHEM PHYS, 10, 11707-11735, 10.5194/acp-10-11707-2010, 2010.

12 Veraverbeke, S., Verstraeten, W. W., Lhermitte, S., Van De Kerchove, R., and Goossens, R.: Assessment of post-fire changes  
 13 in land surface temperature and surface albedo, and their relation with fire - burn severity using multitemporal MODIS imagery,  
 14 INT J WILDLAND FIRE, 21, 243, 10.1071/wf10075, 2012.

15 Wallace, J. M., and Hobbs, P. V.: Atmospheric Science (Second Edition), Academic Press, 2006.

16 Wang, Z. L., Huang, X., and Ding, A. J.: Dome effect of black carbon and its key influencing factors: a one-dimensional  
 17 modelling study, 10.5194/acp-18-2821-2018, 2018.

18 Wiedinmyer, C., Akagi, S. K., Yokelson, R. J., Emmons, L. K., Al-Saadi, J. A., Orlando, J. J., and Soja, A. J.: The Fire  
 19 INventory from NCAR (FINN): a high resolution global model to estimate the emissions from open burning, 4, 625-641,  
 20 10.5194/gmd-4-625-2011, 2011.

21 Xie, Y. N., Ding, A. J., Nie, W., Mao, H. T., Qi, X. M., Huang, X., Xu, Z., Kerminen, V. M., Petäjä, T., Chi, X. G., Virkkula,  
 22 A., Boy, M., Xue, L. K., Guo, J., Sun, J. N., Yang, X. Q., Kulmala, M., and Fu, C. B.: Enhanced sulfate formation by nitrogen  
 23 dioxide: Implications from in situ observations at the SORPES station, J GEOPHYS RES-ATMOS, 120, 12679-12694,  
 24 10.1002/2015jd023607, 2015.

25 Xu, Z. N., Huang, X., Nie, W., Shen, Y. C., Zheng, L. F., Xie, Y. N., Wang, T. Y., Ding, K., Liu, L. X., Zhou, D. R., Qi, X.  
 26 M., and Ding, A. J.: Impact of Biomass Burning and Vertical Mixing of Residual-Layer Aged Plumes on Ozone in the Yangtze  
 27 River Delta, China: A Tethered-Balloon Measurement and Modeling Study of a Multiday Ozone Episode, J GEOPHYS RES-  
 28 ATMOS, 123, 11,786-711,803, 10.1029/2018jd028994, 2018.

29 Yan, X., Ohara, T., and Akimoto, H.: Bottom-up estimate of biomass burning in mainland China, 40, 5262-5273,  
 30 10.1016/j.atmosenv.2006.04.040, 2006.

31 Yang, S., He, H., Lu, S., Chen, D., and Zhu, J.: Quantification of crop residue burning in the field and its influence on ambient  
 32 air quality in Suqian, China, 42, 1961-1969, 10.1016/j.atmosenv.2007.12.007, 2008.

33 Yang, Y. J., Fu, Y. F., Wu, B. W., Shi, C. E., Deng, X. L., Zhang, H., and Zhang, Y.: Impacts of Agricultural Fire on Aerosol  
 34 Distribution over East China During Summer Harvest Time, Journal of Atmospheric and environmental optics,  
 35 10.3969/j.issn.1673 — 6141.2013.04.001, 2013.

36 Yang, Y. J., Yim, S. H. L., Haywood, J., Osborne, M., Chan, J. C. S., Zeng, Z. L., and Cheng, J. C. H.: Characteristics of  
 37 Heavy Particulate Matter Pollution Events Over Hong Kong and Their Relationships With Vertical Wind Profiles Using High-  
 38 Time-Resolution Doppler Lidar Measurements, J GEOPHYS RES-ATMOS, DOI: 10.1029/2019JD031140, 2019.

39 Yin, L. F., Du, P., Zhang, M., Liu, M. X., Xu, T. T., and Song, Y.: Estimation of emissions from biomass burning in China  
 40 (2003–2017) based on MODIS fire radiative energy data, BIOGEOSCIENCES, 16, 1629-1640, 10.5194/bg-16-1629-2019,  
 41 2019.

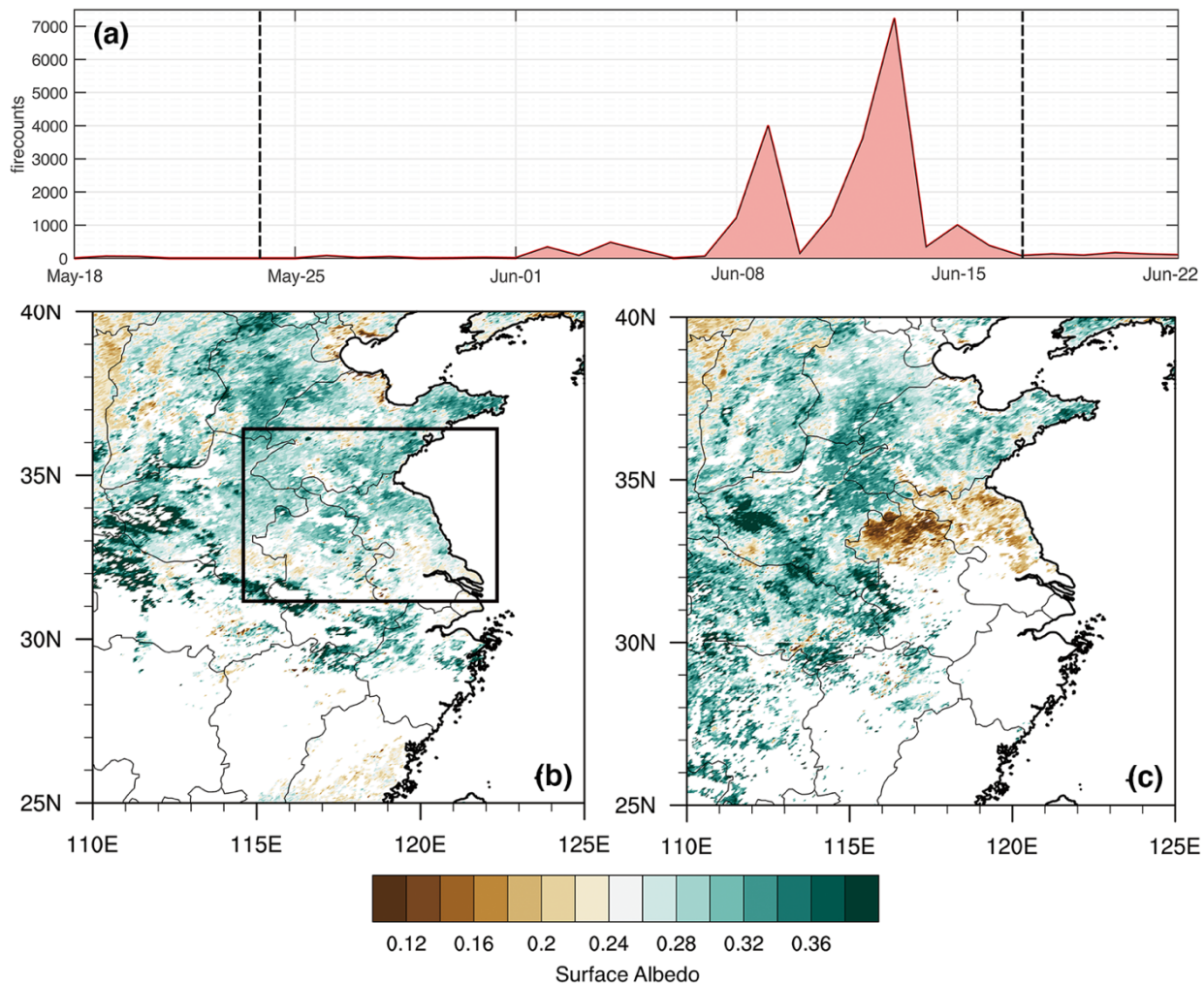
42 Zhang, Y., Ding, A. J., Mao, H. T., Nie, W., Zhou, D. R., Liu, L. X., Huang, X., and Fu, C. B.: Impact of synoptic weather  
 43 patterns and inter-decadal climate variability on air quality in the North China Plain during 1980–2013, ATMOS ENVIRON,  
 44 124, 119-128, 10.1016/j.atmosenv.2015.05.063, 2016.

45 Zhou, D. R., Ding, K., Huang, X., Liu, L. X., Liu, Q., Xu, Z. N., Jiang, F., Fu, C. B., and Ding, A. J.: Transport, mixing and  
 46 feedback of dust, biomass burning and anthropogenic pollutants in eastern Asia: a case study, *ATMOS CHEM PHYS*, 18,  
 47 16345-16361, 10.5194/acp-18-16345-2018, 2018.  
 48 Zhu, X., Yun, X., Meng, W., Xu, H., Du, W., Shen, G., Cheng, H., Ma, J., and Tao, S.: Stacked Use and Transition Trends of  
 49 Rural Household Energy in Mainland China, *ENVIRON SCI TECHNOL*, 53, 521-529, 10.1021/acs.est.8b04280, 2019.  
 50  
 51  
 52  
 53

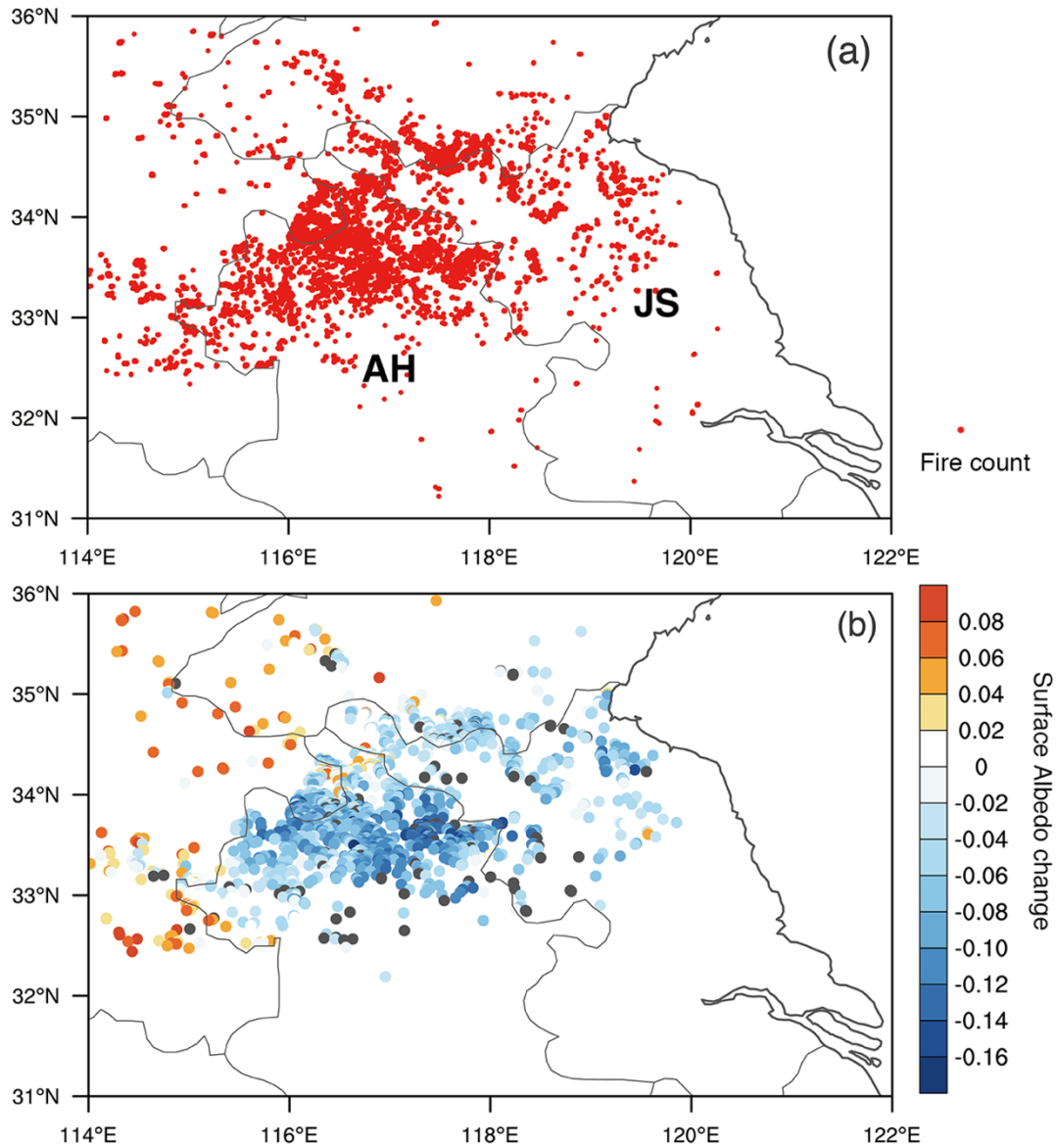
**Table 1. WRF-Chem domain setting and configuration selections.**

Domain setting	
Horizontal grids	130 × 130
Grid spacing	20km × 20km
Vertical layers	30
Map projection	Lambert Conformal
Configuration selections	
Land surface	Noah
Boundary layer	MYJ
Microphysics	Lin et al.
Cumulus	Grell-Freitas
Radiation	RRTMG
Chemistry	CBMZ
Aerosol	MOSAIC

54



**Figure 1.** (a) Daily number of satellite fire counts in the black-boxed zone marked in Fig. 1b. Distribution of satellite-retrieved surface albedo in the northern part of Anhui and Jiangsu Province (b) on 24 May, (c) on 17 June in 2012. Note that the two dates are marked by black dashed lines in Fig. 1a.



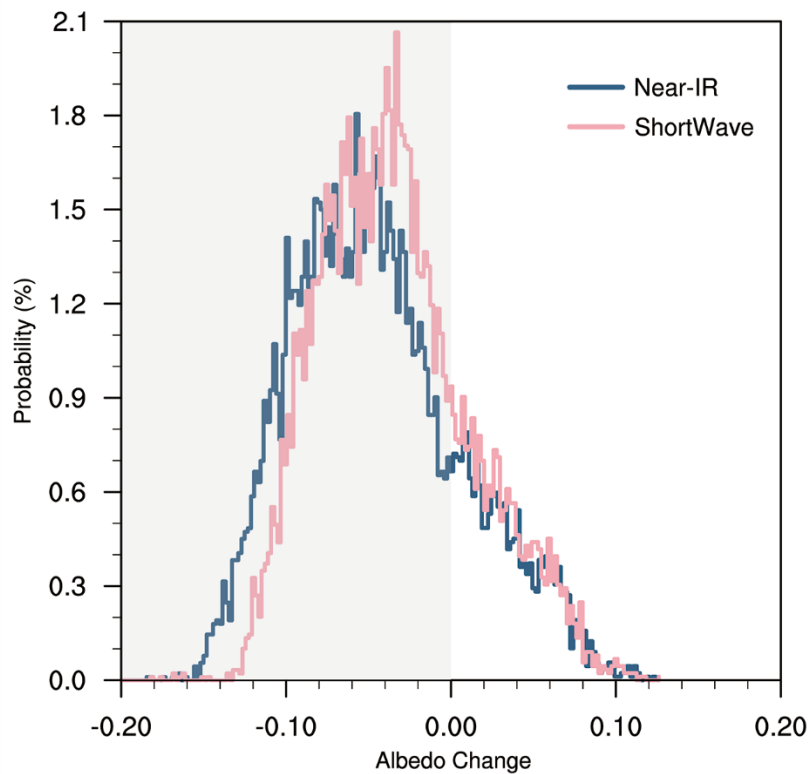
59

60

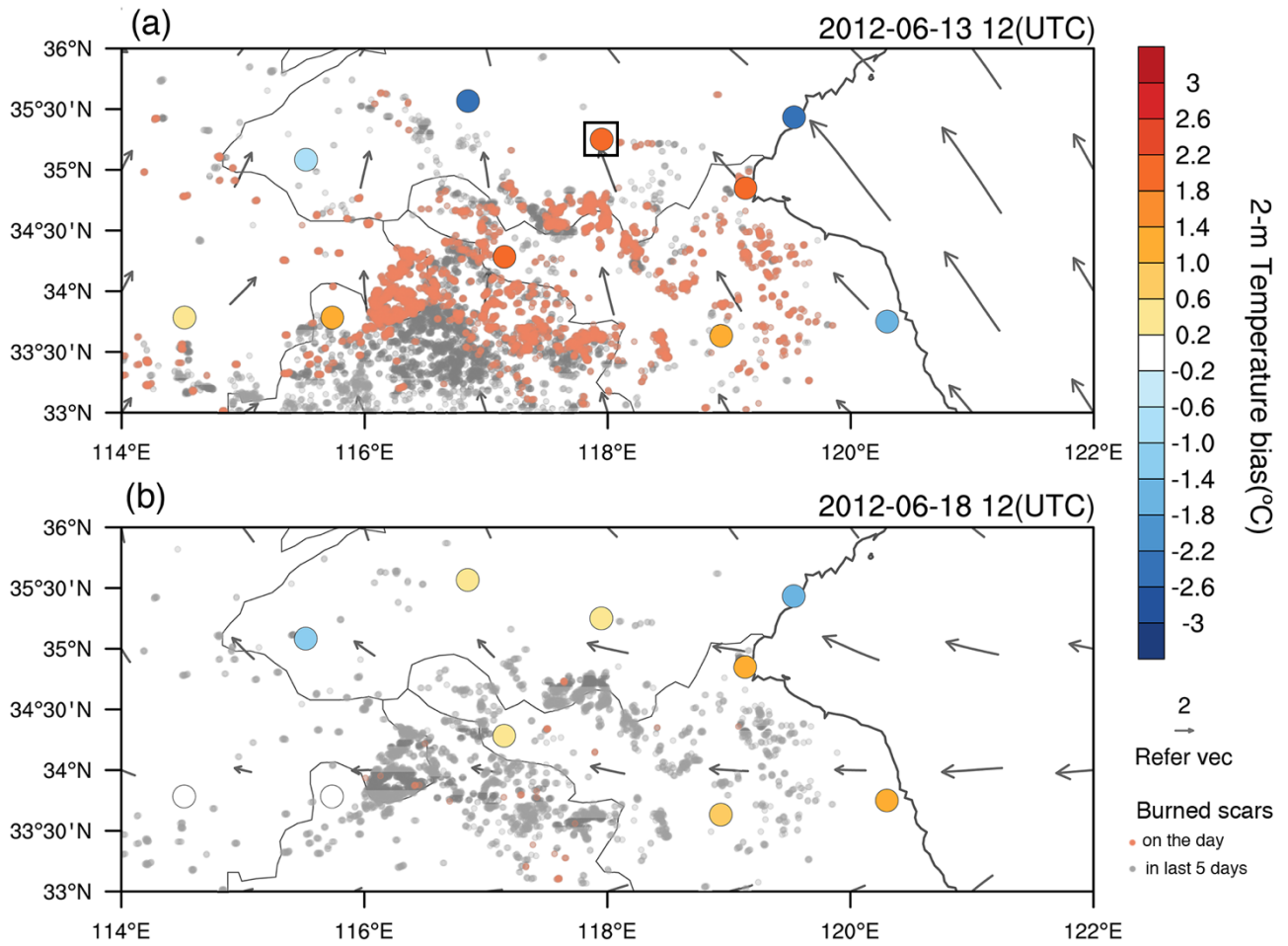
61

62

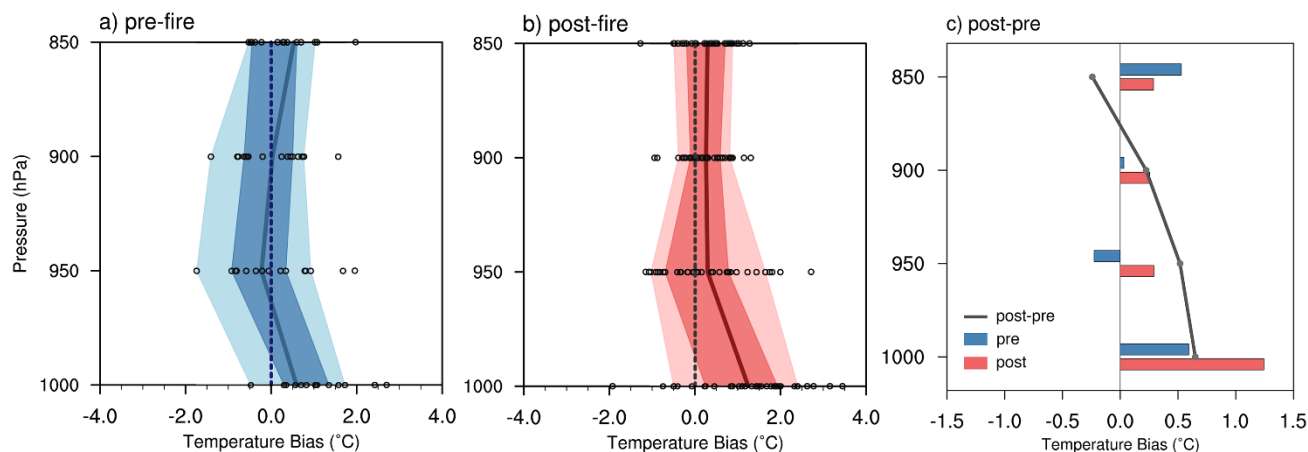
**Figure 2. (a)** Accumulated satellite fire counts with high-confidence from 24 May to 17 June in 2012. **(b)** Surface albedo changes for the period by MOD09A1 over corresponding burned area in Fig. 2a. Declines equal values on 17 June minus those on 24 May. Note that a certain uniform data interval was adopted considering the dots' density.



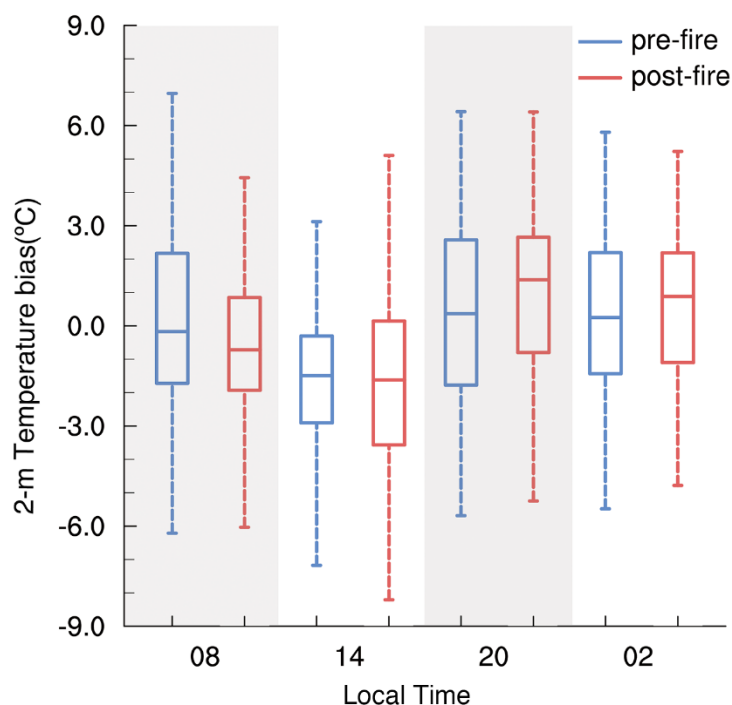
**Figure 3.** Frequency distributions of satellite-retrieved surface albedo changes in all pixels with high-confident satellite fire counts. Changes equal values on 17 June minus those on 24 May. The wavelength ranges of ‘Near-IR’ and ‘Shortwave’ are ‘0.7-2.5 $\mu\text{m}$ ’ and ‘0.25-2.5  $\mu\text{m}$ ’, respectively.



**Figure 4.** Temperature bias at 2 m height (fill-coloured circles) between FNL analysis data and station observations (OBS) in zone YHR (a) on 13 June 2012 and (b) on 18 June 2012, at local time 20:00. Bias is defined as value of OBS minus FNL. Grey arrows mark the 10-m wind field in FNL. Grey dots mark the ‘burned scars’, which are defined as accumulated fire counts in the past 5 days. Orange dots mark fire counts on the day. Note that the small black box in Fig. 4a marks the location of XZ (Xuzhou).

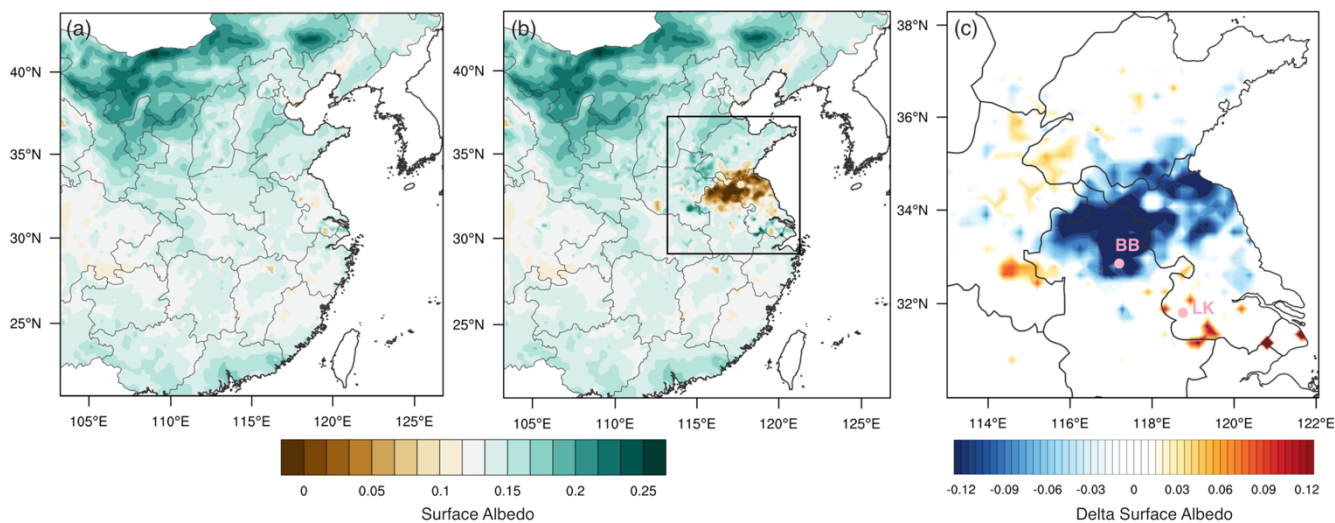


**Figure 5.** Temperature Bias on isobaric levels between FNL analysis data and radiosonde observations (OBS) at local time 20:00 at XZ (Xuzhou) on clear-sky days before and after BB in June 2007-2015: **(a)** pre-fire **(b)** post-fire. Black circles mark original value of temperature bias (OBS-FNL), dash line marks zero, and the five curves of filled parts are respectively 10, 25, 75, 90 percentile and average line in proper order. Bars in **(c)** are the mean value at separate levels and the curve is the corresponding bias between ‘post-fire’ and ‘pre-fire’. Note that the small black box in Fig. 4a marks the location of XZ (Xuzhou).

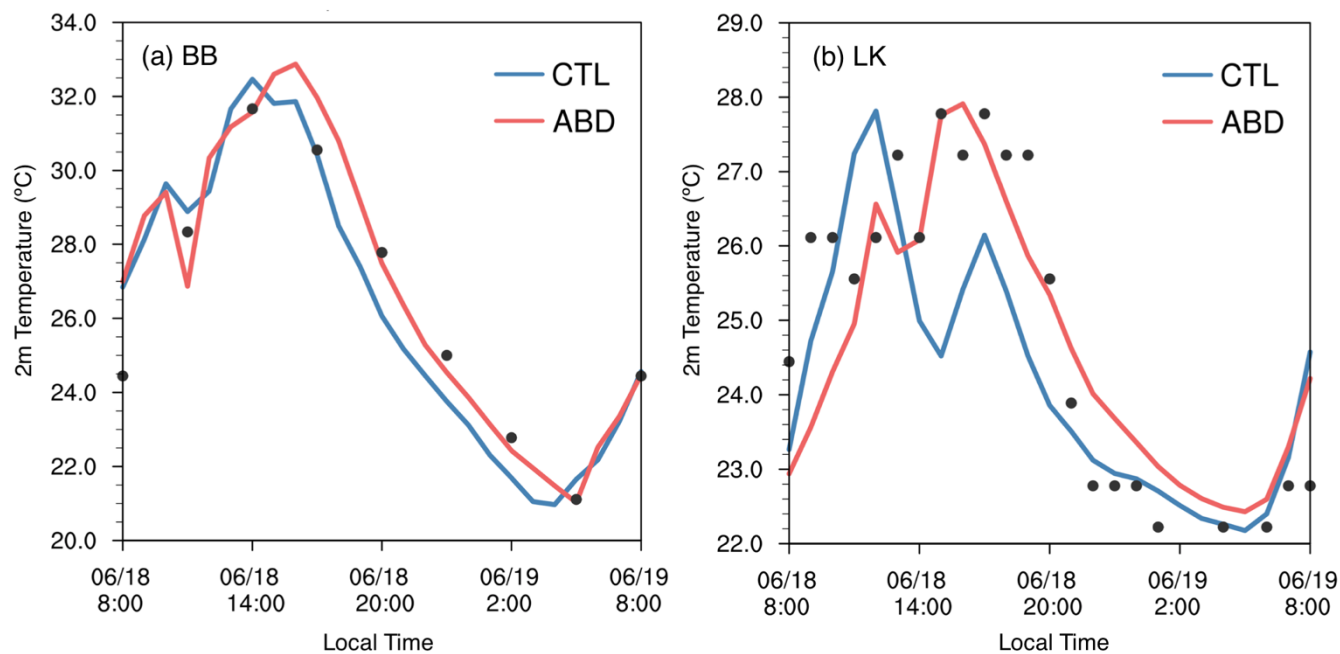


**Figure 6.** Temperature bias at 2 m height, defined as the value of OBS minus FNL, at stations over fire prone area at local time 08:00, 14:00, 20:00, 02:00 under clear-sky condition pre/post fire in 2007-2015.

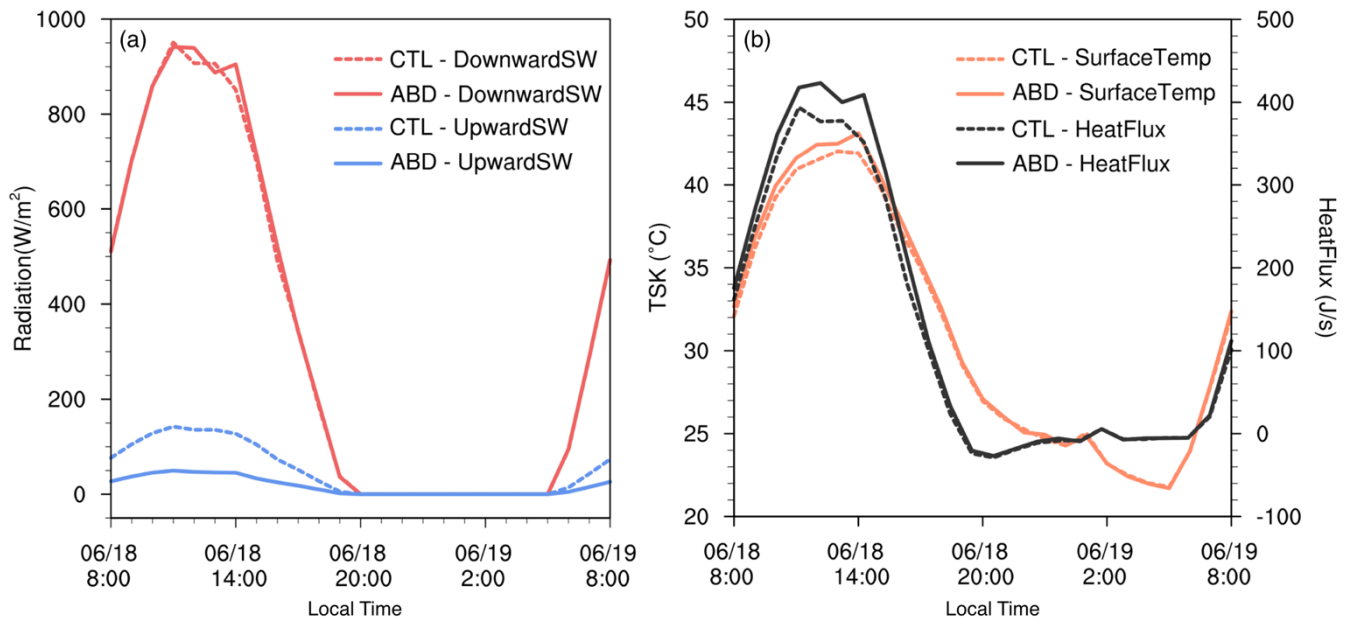




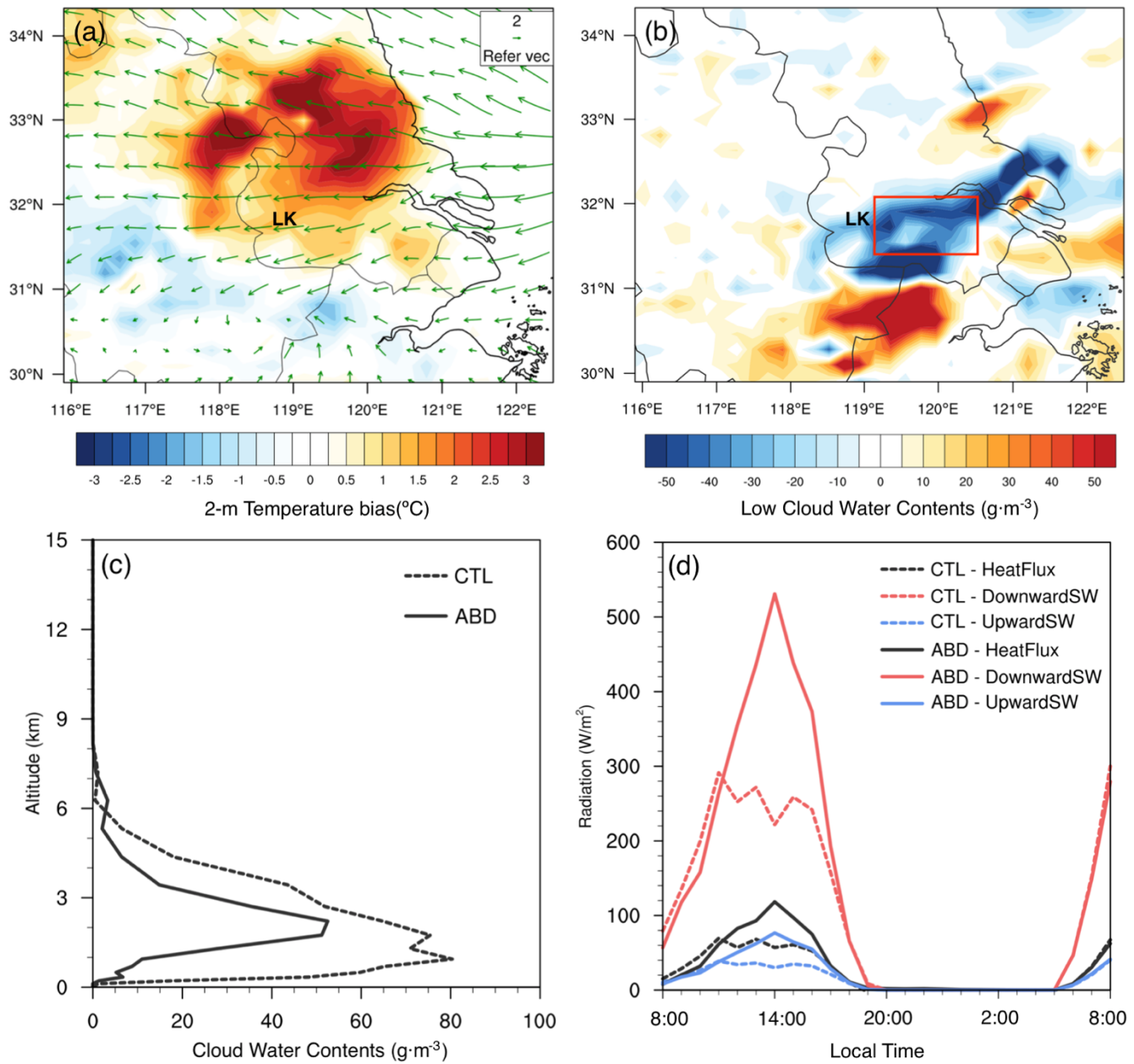
**Figure 7.** Surface albedo distribution in experiments: (a) CTL and (b) ABD, and (c) difference between the parallel ones (ABD-CTL). Note that region in Fig. 7c corresponds to the black box in Fig. 7b.



**Figure 8.** Simulated and observed 2-m temperature at meteorological stations: (a) BB (Bengbu), (b) LK (Lukou), on 18 June 2012. Note that locations of BB (Bengbu) and LK (Lukou) are marked in Fig. 7c.



**Figure 9.** Thermal physical quantities at surface level on 18 June 2012 in experiments CTL and ABD. **(a)** Down-ward and upward shortwave radiation, **(b)** Surface temperature and upward heat flux.



**Figure 10.** (a) Average 10m-wind field in ABD and difference of 2m-temperature between ABD and CTL (ABD-CTL) during the afternoon (12-17LT) on 18 June. (b) Average difference in low cloud water contents between ABD and CTL (ABD-CTL). (c) Vertical profile of cloud water content during afternoon (12-17LT) and (d) shortwave radiation and upward heat flux averaged in region marked by red rectangle in Fig. 10b on 18 June.