

We really thank the editor for their comments. We have addressed the comments below, with the responses italicized and the modified texts in red.

1. L132, 193, 197, and others: you may want to keep the accuracy and unit of filter area values to be consistent.

Thank you for the suggestion. To be consistent, the filter area values have been rounded to one decimal place and in units of cm^2 .

2. Line 404: you mentioned 3 different assay metrics, but you frequently discussed as 2 in the title and main text. Please double check and make sure the definition and categorization are consistent.

To clarify, the sentence has been modified.

Line 404, “This study suggests that all three OP metrics, **OP^{AA}** and **OP^{GSH}** in the RTLF assay as well as **OP^{DTT}** in the DTT assay, are associated with transition metal ions.”

3. It is better to explain what does the ‘TEOM’ mean in the caption of Figure 1.

We have revised the caption of Fig. 1 according to the suggestion to include the explanation of TEOM.

In Fig. 1 caption, “The pie charts show the average aerosol composition based on $\text{PM}_{2.5}$ mass measured by the **tapered element oscillating microbalance** (TEOM) during the whole sampling year...”

4. Figure 3 caption: change the ‘species’ to ‘components’?

The caption has been modified accordingly.

Characterization and comparison of PM_{2.5} oxidative potential assessed by two acellular assays

Dong Gao^{1±}, Krystal J. Godri Pollitt², James A. Mulholland¹, Armistead G. Russell¹, Rodney J. Weber³

5 ¹School of Civil and Environmental Engineering, Georgia Institute of Technology, Atlanta, GA 30332, USA

²Department of Environmental Health Sciences, School of Public Health, Yale University, New Haven, CT 06510, USA

³School of Earth and Atmospheric Sciences, Georgia Institute of Technology, Atlanta, GA 30332, USA

10 ± Current address: Department of Environmental Health Sciences, School of Public Health, Yale University, New Haven, CT 06510, USA

Correspondence to: Rodney J. Weber (rweber@eas.gatech.edu)

Abstract. The capability of ambient particles to generate *in vivo* reactive oxygen species (ROS), called oxidative potential (OP), is a potential metric for evaluating the health effects of particulate matter (PM) and is supported by several recent epidemiological investigations. Studies using various types of OP assays differ in their sensitivities to varying PM chemical components. In this study, we systematically compared two health-relevant acellular OP assays that track the depletion of antioxidants or reductant surrogates: the synthetic respiratory tract lining fluid (RTLFL) assay that tracks the depletion of ascorbic acid (AA) and glutathione (GSH), and the dithiothreitol (DTT) assay that tracks the depletion of DTT. Year-long daily samples were collected at an urban site in Atlanta, GA (Jefferson Street) during 2017 and both DTT and RTLFL assays were performed to measure the OP of water-soluble PM_{2.5} components. PM_{2.5} mass and major chemical components, including metals, ions, and organic and elemental carbon were also analyzed. Correlation analysis found that OP as measured by the DTT and AA depletion (OP^{DTT} and OP^{AA}, respectively) were correlated with both organics and some water-soluble metal species, whereas that from the GSH depletion (OP^{GSH}) was exclusively sensitive to water-soluble Cu. These OP assays were moderately correlated with each other due to the common contribution from metal ions. OP^{DTT} and OP^{AA} were moderately correlated with PM_{2.5} mass, with Pearson's $r = 0.55$ and 0.56 , respectively, whereas OP^{GSH} exhibited a lower correlation ($r = 0.24$). There was little seasonal variation in the OP levels for all assays due to the weak seasonality of OP-associated species. Multivariate linear regression models were developed to predict OP measures from the particle composition data. Variability in OP^{DTT} and OP^{AA} were attributed to not only the concentrations of metal ions (mainly Fe and Cu) and organic compounds, but also antagonistic metal–organic and metal–metal interactions. OP^{GSH} was sensitive to the change in water-soluble Cu and brown carbon (BrC), a proxy for ambient humic-like substances.

1 Introduction

35 Epidemiological studies have consistently reported associations between particulate matter (PM) and increased morbidity and mortality (Brunekreef and Holgate, 2002; Cohen et al., 2017; Lippmann, 2014; Norris et al., 1999;

Pope et al., 2004; Samet et al., 2000; Sun et al., 2010; Thurston et al., 2017). The capacity of inhaled PM to elicit oxidative stress has emerged as a hypothesis to explain PM-induced adverse health effects. Inhaled PM can directly introduce PM-bound reactive oxygen species (ROS) to the surface of the lung where they react with and deplete lung lining fluid antioxidants, or introduce redox-active PM species which can react with biological reductants and generate ROS *in vivo* (Lakey et al., 2016). The latter can occur in organs beyond the lungs by particles or chemical species being translocated from the lungs throughout the body. Oxidative stress arises when the presence and production of ROS overwhelms the antioxidant defenses, and can lead to cell and tissue damage and induction of chronic and degenerative diseases (Das, 2016; Halliwell, 1994; Pizzino et al., 2017). The ability of PM to generate ROS *in vivo*, referred to as the oxidative potential (OP) of particles, has gained increasing attention as possibly a more integrative health-relevant measure of ambient PM toxicity than PM mass concentration which may contain a mix of highly toxic (e.g. polycyclic aromatic hydrocarbons (PAHs), quinones, environmentally persistent free radicals, highly oxygenated organic molecules, and transition metals) to relatively benign (e.g. sulfate and ammonium nitrate) PM components (Frampton et al., 1999; Khachatryan et al., 2011; Lippmann, 2014; Tong et al., 2018; Tong et al., 2019).

A variety of acellular assays have been developed to assess PM OP (Ayres et al., 2008; Bates et al., 2019). In general, these assays involve the incubation of PM extracts or suspension with chemical reagents/probes, and the response is recorded over time or after incubation. The responses recorded include the depletion of reductant surrogate, such as the dithiothreitol (DTT) assay (Cho et al., 2005), and depletion of specific antioxidants in a composite solution, such as a synthetic respiratory tract lining fluid (RTLFL) model (Godri et al., 2011; Mudway et al., 2004; Zielinski et al., 1999). In contrast, other assays measure ROS generation (e.g., the dichlorofluorescein assay (Huang et al., 2016; Venkatachari et al., 2005)), or hydroxyl radical formation in the presence of H₂O₂ (e.g., electron paramagnetic/spin resonance (EPR/ESR) (Shi et al., 2003a; Shi et al., 2003b)). The assays based on exposing PM species to antioxidants are currently more commonly used. The DTT assay (Cho et al., 2005) is a chemical system that mimics the *in vivo* PM-catalyzed electron transfer process. In this assay, DTT acts as a surrogate of the cellular reductant (NADH or NADPH), donating electrons to oxygen and producing ROS with the catalytic assistance of PM redox-active species. PM OP (i.e., OP^{DTT} in this case) is determined by measuring the depletion of DTT over time, which is assumed to be proportional to the concentration of redox-active compounds in PM. For the RTLFL assay, RTLFL is constructed to simulate the aqueous environment that particles first encounter when inhaled into the lungs and deposited. The antioxidants in RTLFL, specifically the major low-molecular-weight antioxidants, ascorbic acid (AA), uric acid (UA), and reduced glutathione (GSH), provide protective defenses against PM-induced oxidative damage. The extent to which they are depleted by PM over time reflects a direct measure of PM oxidative activity by this assay, expressed as OP^{AA}, OP^{UA}, and OP^{GSH} (Kelly et al., 1996; Mudway et al., 2004; Zielinski et al., 1999). Some studies (DiStefano et al., 2009; Fang et al., 2016; Janssen et al., 2015; Mudway et al., 2005) have used a simplified alternative approach to AA analysis in RTLFL, where only the single antioxidant AA is contained in the solution. If not explicitly stated, OP^{AA} in this paper represents OP^{AA} obtained from the RTLFL model.

75 Recently, a growing number of epidemiological studies have used these OP assays to examine the link between
particle OP and adverse health outcomes. OP^{DTT} of ambient fine particles has been found to be more strongly
associated with multiple cardiorespiratory outcomes, such as airway inflammation (Delfino et al., 2013; Janssen et
al., 2015; Yang et al., 2016), asthma (Abrams et al., 2017; Bates et al., 2015; Fang et al., 2016; Yang et al., 2016)
and congestive heart failure (Bates et al., 2015; Fang et al., 2016), than PM mass. Multiple population-scale studies
employed the RTLF assay to assess OP of PM_{2.5}, and found that OP^{GSH} was associated with lung cancer,
80 cardiometabolic mortality (Weichenthal et al., 2016a), emergency room visits for respiratory illness (Weichenthal et
al., 2016c), myocardial infarction (Weichenthal et al., 2016b), and adverse birth outcomes (Lavigne et al., 2018).
The association between airway inflammation in asthmatic children and OP^{GSH} of PM_{2.5} personal exposure was also
reported (Maikawa et al., 2016). In the study of Strak et al. (2012), no association was found between OP^{GSH} and
acute airway inflammation in healthy volunteers after 5 h of exposure. A population-scale study in London, UK
found no association between OP^{GSH} and mortality and hospital admission (Atkinson et al., 2016). For the AA
85 depletion, either in the composite RTLF model or in a simplified AA-only model, no association with adverse health
end points has been found, including asthma, cause-specific mortality, and cardiorespiratory emergency department
visits (Fang et al., 2016; Maikawa et al., 2016; Weichenthal et al., 2016a; Weichenthal et al., 2016b; Weichenthal et
al., 2016c). Bates et al. (2019) provide a review of the relationships of various OP assays with adverse health effects.

The differences in observed health effects may be due to the different sensitivity of OP assays to various PM
90 species. Past studies have shown that specific assays are correlated with different PM components. OP^{DTT} has been
found to be sensitive to transition metals (Charrier and Anastasio, 2012; Fang et al., 2016; Verma et al., 2015a) and
organic species, especially more oxygenated aromatic organics, such as quinones and hydroxyquinones (Cho et al.,
2005; Kumagai et al., 2002; McWhinney et al., 2011; Verma et al., 2015b). OP^{AA} obtained from the simplified AA-
only model are mostly responsive to the metal content of PM (Fang et al., 2016; Maikawa et al., 2016; Yang et al.,
95 2014). Antioxidants (AA and GSH) within the synthetic RTLF are responsive to a slightly different group of metals.
For example, OP^{AA} responds to iron and OP^{GSH} is related to aluminum (Godri et al., 2010). But both OP^{AA} and
OP^{GSH} are sensitive to copper (Ayres et al., 2008). Studies performed on real PM samples or standard solutions
indicate that quinones also drive the oxidative losses of both antioxidants (Ayres et al., 2008; Calas et al., 2018;
Kelly et al., 2011; Pietrogrande et al., 2019).

100 Since different assays capture different chemical fractions of the oxidative activity of PM, it is challenging to
synthesize the findings from OP-health studies. There remains a need to compare different assays on identical
particle samples to advance our understanding of the effects of PM species on OP measures, and in turn assess the
results of the health studies that use OP. In this study, we used two acellular OP assays, DTT and RTLF, to measure
the water-soluble OP of ambient PM_{2.5} collected from urban Atlanta, GA over one-year period. These two assays
105 were chosen since they are currently most commonly used and have shown significant associations with adverse
health outcomes in some studies. A suite of chemical components was also measured on these samples and
univariate and multivariate linear regression analyses were performed to identify and evaluate the contribution of
major chemical components to each of these OP metrics.

2 Methods

110 2.1 Sampling

Year-long sampling was conducted in 2017 from 1 January to 30 December at the Jefferson Street SEARCH (Southeastern Aerosol Research and Characterization) site (Edgerton et al., 2006, 2005). Jefferson Street is situated roughly 4.2 km northwest of downtown Atlanta and 2.3 km from a major interstate highway and is representative of urban Atlanta region. The site has been extensively used in past studies characterizing urban-Atlanta air quality (Hansen et al., 2006) and the data used in OP and epidemiological studies (Abrams et al., 2017; Bates et al., 2015; Fang et al., 2016; Sarnat, 2008; Verma et al., 2014).

115 Ambient PM_{2.5} were collected daily (from midnight to midnight, 24 h integrated samples) onto pre-baked 8×10 in. quartz filters (Pallflex Tissuquartz, Pall Life Sciences) using high-volume samplers (HiVol, Thermo Anderson, nominal flow rate 1.13 m³ min⁻¹, PM_{2.5} impactor). A total of 349 filter samples were collected for analysis; missing days were due to instrumentation issues. The HiVol quartz filters were wrapped in pre-baked aluminum foil after collection and stored at -18 °C until analysis. PM_{2.5} mass concentration was monitored continuously by a tapered element oscillating microbalance (TEOM, Thermo Scientific TEOM 1400a), the sample stream dried at 30 °C using a Sample Equilibration System (Meyer et al., 2000). A Sunset semi-continuous OCEC analyzer (Sunset Laboratory) was used to provide in situ measurements of organic and elemental carbon (OC/EC) content of fine PM. The data were obtained hourly by using 1 h cycles in which the instrument sampled ambient air through an activated carbon denuder for 45 min and analyzed the particles collected on the quartz filter for 15 min using NIOSH 5040 analysis protocol (Birch and Cary, 1996).

120 2.2 Oxidative potential measurements

Two acellular assays, DTT and RTLF assays, were performed to measure the oxidative potential of water-soluble PM_{2.5}. The DTT analysis was completed at Georgia Institute of Technology, and all filters were analyzed within one month after collection. The RTLF assay was conducted at Yale University during Oct. 2018. Prior to the OP analyses, a fraction of each HiVol filter (5.107 cm² for DTT and 4.5 cm² for RTLF) was punched out, placed in a sterile polypropylene centrifuge vial (VWR International LLC, Suwanee, GA, USA) and then extracted in 5 mL of deionized water (DI, >18 MΩ cm⁻¹) via 30 min sonication. The water extract was filtered through a 0.45 μm PTFE syringe filter (Fisherbrand, Fisher Scientific) and then used for OP analysis.

135 2.2.1 DTT assay

The DTT assay was performed with a semi-automated system developed by Fang et al. (2015b), following the protocol described by Cho et al. (2005). In brief, the PM extract (3.5 mL; 40±15 μg mL⁻¹ of PM) was incubated with DTT solution (0.5 mL; 1 mM) and potassium phosphate buffer (1 mL; pH~7.4, Chelex-resin treated) at 37 °C. A small aliquot (100 μL) of the mixture was withdrawn at designated times (0, 4, 13, 23, 31 and 41 min) and mixed with trichloroacetic acid (TCA, 1 % w/v) to quench the DTT reactions. After addition of Tris buffer (pH ~8.9), the remaining DTT was reacted with 5,5'-dithiobis-(2-nitrobenzoic acid) (DTNB) to form a colored product which absorbs light at 412 nm. The final mixture was pushed through a 10 cm path length liquid waveguide capillary cell (LWCC; World Precision Instruments, Inc., FL, USA), and the light absorption was recorded by an online

145 spectrometer, which included a UV-Vis light source (DT-mini-2, Ocean Optics, Inc., Dunedin, FL, USA) and a
multi-wavelength light detector (USB4000 Miniature Fiber Optic Spectrometer). The DTT consumption rate, used
as a measure of OP, was determined from the slope of the linear regression of DTT residual vs. time. Good linearity
was found for all samples with correlation coefficients (R^2) larger than 0.98. In parallel with all sample batches, at
least one field blank and one positive control (9,10-phenanthraquinone) was analyzed, and their OP values remained
150 constant throughout the analysis. The limit of detection (LOD), defined as three times of the standard deviation of
 OP^{DTT} for blanks, was $0.31 \text{ nmol min}^{-1}$. The PM OP measured by this assay (i.e., OP^{DTT}) was blank-corrected and
normalized by the air volume that passed through the extracted filter fraction, expressed as $\text{nmol DTT min}^{-1} \text{ per m}^3$.
This approach did not involve the use of PM samples with constant mass, which is sometimes employed to limit
nonlinear DTT response to certain metal ions (Charrier et al., 2016).

155 2.2.2 RTLF assay

The RTLF assay is based on the protocol adopted by Maikawa et al. (2016). PM water extracts ($35 \pm 13 \mu\text{g}$ of PM per
mL) were transferred into a 96-well microplate with $180 \mu\text{L}$ of sample liquid in each well. $20 \mu\text{L}$ of synthetic RTLF
(pH ~ 7.0) containing equimolar concentrations (2 mM) of AA, UA and GSH was added into each well, resulting in
a final starting concentration of $200 \mu\text{M}$ of antioxidants. The PM-RTLF mixture was incubated in a plate reader
160 (SpectraMax190, Molecular Devices, LLC, San Jose, CA, USA) for 4 hours at 37°C with gentle mixing. Following
incubation, the concentrations of AA and GSH were analyzed immediately. UA concentration was not measured
since studies have consistently suggested that no depletion of UA was observed in the presence of PM (Kunzli et al.,
2006; Mudway et al., 2004; Zielinski et al., 1999).

AA concentration was determined with the plate reader by measuring the light absorbance at 260 nm. The GSH
165 concentration was indirectly quantified by measuring total glutathione (GSx) and oxidized glutathione (GSSG)
concentrations, both compounds determined using the enzymatic recycling method (Baker et al., 1990). The
incubated PM-RTLF mixture was diluted 49-fold with 100 mM sodium phosphate buffer (pH ~ 7.5) containing
ethylenediaminetetraacetic acid (EDTA). To measure the GSx concentration, $50 \mu\text{L}$ of each diluted sample was
dispensed onto a microplate. $100 \mu\text{L}$ of reaction mixture (0.15 mM DTNB, 0.2 mM NADPH and 1 U glutathione
170 reductase (GR)) was added to each well. In the mixture, GSH reacted with DTNB, forming a yellow colored product
5-thio-2-nitrobenzoic acid (TNB) and the mixed disulfide GS-TNB. In the presence of NADPH and GR, GSSG and
GS-TNB were reduced back to GSH, leading to more TNB production. The plate was analyzed on the plate reader
for two minutes under constant mixing to continuously monitor the formation of TNB. The TNB formation rate,
which is proportional to the GSH concentration, was measured at an absorbance of 405 nm. For GSSG
175 measurement, $5 \mu\text{L}$ of 2-vinylpyridine was added to $130 \mu\text{L}$ of the diluted sample to conjugate GSH. The solution
was incubated at room temperature for 1 hour, followed by similar procedures performed for the GSx measurement.
The GSH concentration was calculated by subtracting two times the GSSG concentration from the measured GSx
concentration.

Field blanks and known controls (e.g. positive controls: H_2O_2 and Cu; negative control: Zn) were run in parallel with
180 all sample batches. All samples and controls were measured in triplicate. The percentage of AA and GSH depletion

after 4 h incubation for each PM sample was calculated relative to the field blank. The LOD for AA and GSH depletion after 4 h incubation was 4.0 % and 4.5 %, respectively. PM OP obtained from this assay, i.e., OP^{AA} and OP^{GSH}, was determined by normalizing the percentage loss with the sampled air volume, in unit of % depletion per m³.

185 2.3 Chemical analysis on PM filters

2.3.1 Elemental analysis

Both total and water-soluble trace metals were determined by inductively coupled plasma-mass spectrometry (ICP-MS) (Agilent 7500a series, Agilent Technologies, Inc., CA, USA), including magnesium (Mg), aluminum (Al), potassium (K), calcium (Ca), chromium (Cr), manganese (Mn), iron (Fe), copper (Cu) and zinc (Zn). For the
190 determination of concentrations of total metals, a 1.5 cm² filter punch from the HiVol quartz filter was acid-digested for 20 min using aqua regia (HNO₃+3HCl). The acid-digested sample was then diluted in DI water to 10 mL, filtered with a 0.45 μm PTFE syringe filter. For the analysis of water-soluble metals, no digestion was performed. In this
| case, one circular punch (5.1 cm² in diameter) was extracted in 5 mL of DI via 30 min sonication. The extract was filtered using a 0.45 μm PTFE syringe filter, and then acid-preserved by adding concentrated nitric acid (70 %) to a
195 final concentration of 2 % (v/v).

Formatted: Superscript

2.3.2 Water-soluble organic carbon (WSOC) and brown carbon (BrC)

Two 1.5 cm² filter punches from the HiVol filter were extracted in 15 mL DI in a pre-baked glass centrifuge vial (DWK Life Sciences, Rockwood, TN, USA) by 30 min sonication. The extracts filtered with 0.45 μm PTFE syringe filters were used to measure water-soluble organic carbon (WSOC) and its light absorption properties (BrC, used as
200 a source tracer). A fraction (~6 mL) of filter extract was injected by a syringe pump (Kloehn, Inc., NV, USA) into a 2.5 m path length LWCC (World Precision Instruments, Inc., FL, USA), with an internal volume of 500 μL. The absorbance at 365 nm wavelength (BrC) was measured by an online spectrophotometer. The remaining liquid extract was drawn into Sievers total organic carbon (TOC) analyzer (Model 900, GE Analytical Instruments, Boulder, CO, USA) for determination of WSOC concentration. The TOC was calibrated with a series of prepared
205 sucrose standards.

2.3.3 Water-soluble ionic species

One 1.5 cm² filter punch from the HiVol filter was extracted in 10 mL DI via sonication. The inorganic ions (SO₄²⁻, NO₃⁻, and NH₄⁺) in the filtered water extracts were measured by ion-exchange chromatography (IC) with conductivity detection (Anion: Metrosep A Supp 5–150/4.0 anion separation column; eluent: 3.2 mM Na₂CO₃, 1.0
210 mM NaHCO₃, eluent flow rate 0.78 mL/min. Cation: Metrosep C 4–150/4.0 cation separation column; eluent: 1.7 mM HNO₃, 0.7 mM dipicolinic acid, eluent flow rate 0.9 mL/min) with an automated sampler (Dionex AS40, Thermo Fisher Scientific, Waltham, MA).

2.4 Multivariate regression models

Multivariate linear regression models were developed to predict OPs based on PM speciation data and investigate
215 the relative importance of species on different OPs. Prior to the regression analysis, boxplots were used to identify

the outliers and test the normality of data. Extreme values (a total of ~3 % of the OP measurements) were removed from the data set. Linear regression was performed between PM components and the various OPs. To simplify the analysis, PM components correlated with OP ($r > 0.4$, $p < 0.05$) were selected as the independent variables of the models. A stepwise regression was applied to the data set using Matlab R2016a to form the multivariate regression models. To evaluate the performance of the final models, 5-fold cross validation was employed and repeated 50 times. For each OP measure, the average mean-squared error over 50 iterations was within 25 % of the mean OP value (23.4 %, 17.9 % and 12.2 % for OP^{DTT}, OP^{AA} and OP^{GSH}, respectively).

3 Results and discussion

3.1 Ambient PM composition

Figure 1 shows the time series of PM_{2.5} mass concentration and the averaged chemical composition of ambient particles collected at the site. A factor of 1.6 was applied to convert organic carbon to organic matter (Turpin and Lim, 2001; Weber, 2003). Reconstituted mass from measured chemical species agreed well with PM_{2.5} mass measured by the TEOM with Pearson's $r = 0.84$, and accounted for more than 80 % of the PM_{2.5} mass. The missing mass may result from other species not measured, semi-volatile material lost from the filter, and the uncertainty in converting measured carbon mass to organic matter (factor of 1.6 used).

Fractions of various chemical components in PM_{2.5} are consistent with previous observations (Edgerton et al., 2005; Verma et al., 2014). In general, PM mass was dominated by organic compounds (WSOM+WIOM~50 %), followed by inorganic ions (10 % SO₄²⁻, 4–7 % NH₄⁺, and 1–8 % NO₃⁻). Metals constituted 6–13 % of the PM mass, among which water-soluble metals were at trace amounts (1–2 %). EC accounted for a small fraction of the PM mass (5–6 %). NH₄⁺ and NO₃⁻, which are semi-volatile, accounted for a larger fraction of fine particle mass during the cold season. The metal fraction also increased in winter, whereas the fractions of other PM components did not vary significantly during the sampling period.

Although insoluble PM components also play an important role in OP (Gao et al., 2017; Verma et al., 2012), this study solely focuses on water-soluble OP measurements, and thus the water-soluble PM components are the primary focus in this study. The OP (DTT assay only) contribution from water-insoluble components were discussed in detail in another paper from this study (Gao et al., accepted).

3.2 Association of OP with PM components

Pearson's correlation coefficients for the linear regression between OP and select chemical components are shown in Table 1. The detailed correlation matrices for different seasonal periods are given in Table S1–S3. We defined the strength of the absolute correlation coefficient value as strong for values ≥ 0.65 , moderate from 0.40 to 0.65, and weak for values < 0.4 . The OP assays were moderately inter-correlated over the sampling year. In all cases (whole year and summer or winter), OP^{AA} and OP^{GSH} had the highest correlations, which may in part be due to these measurements being conducted on the same sample extracts. As for OP^{DTT}, the correlations with OP^{AA} and OP^{GSH} varied, but were largely similar. The correlations between the OP measures and various PM components varied, highlighting the different sensitivities of OP assays to various PM components. Note these correlations do not imply

that the compounds are responsible for the OP as some of them are not redox active compounds. However, the correlations may indicate the emission sources (e.g., as source tracers – vehicular emissions for EC, secondary processing for WSOC and SO_4^{2-} , and biomass burning for BrC and K), which also probably emit the water-soluble species contributing to the measured OP.

255 As shown in Table 1, OP^{DTT} was correlated with OC and WSOC, indicating a contribution from PM organic compounds. The correlations between OP^{DTT} and certain water-soluble metals, such as Fe, Cu and Mn, were also observed. A moderate correlation of EC with OP^{DTT} ($r=0.51$) and somewhat with metals and OC ($r=0.55$, 0.43 and 0.83 for Fe, Mn and OC, respectively; Table S1) suggests that incomplete combustion could be one of their common sources. The associations found in this study between OP^{DTT} and PM composition are consistent with a number of
260 previous studies (Fang et al., 2016; Fang et al., 2015b; Verma et al., 2014; Yang et al., 2014), though the correlations in our work were weaker ($r > 0.5$ compared with $r > 0.65$ in other studies).

Similar to OP^{DTT} , OP^{AA} was moderately correlated with OC, WSOC and water-soluble metals, mainly Fe and Cu ($r=0.47$ – 0.55). The results are compared with a previous study conducted in the same Atlanta region by Fang et al. (2016) wherein a simplified AA assay was applied to assess water-soluble OP of $\text{PM}_{2.5}$. The AA depletion in the
265 AA-only model was found to be strongly correlated with water-soluble Cu with Pearson's $r > 0.65$, and associations with WSOC (or BrC) and metals were also observed. The weaker sensitivity of AA to water-soluble Cu observed in our study is possibly due to the reactivity hierarchy existing within the antioxidant model with $\text{GSH} > \text{AA}$ (Zielinski et al., 1999). This is further supported by other studies. In the study of Charrier et al. (2011), ligand speciation modeling indicated that GSH was a stronger ligand compared to AA and caused a dramatic shift in Cu speciation by
270 forming Cu–GSH complexes. The experimental results in the study of Pietrogrande et al. (2019) showed that the response of the acellular AA assay was strongly dependent on the composition of synthetic RTLF used and the presence of GSH and UA would lower the sensitivity of AA response to Cu. The correlations of organics and EC which comprised a large fraction of PM mass (Fig. 1), with OP^{DTT} and OP^{AA} , likely account for the OP^{DTT} and OP^{AA} correlations with PM mass.

275 In contrast to OP^{DTT} and OP^{AA} , OP^{GSH} was found to be exclusively correlated with water-soluble Cu with Pearson's $r > 0.7$. The consistently lower correlation of OP^{AA} with water-soluble Cu than OP^{GSH} with Cu, is consistent with GSH outcompeting AA in the RTLF in forming Cu complexes. The results are also consistent with other studies (Aliaga et al., 2010; Ayres et al., 2008; Godri et al., 2011).

The correlations differed by seasons. In winter, OP^{AA} and OP^{DTT} were more correlated with organic species, with
280 stronger associations with WSOC, BrC and K, indicating biomass burning as a common source of OP^{AA} and OP^{DTT} . In summer, all OP assays tended to be metal-driven. OP^{AA} and OP^{DTT} were more correlated with Cu, along with SO_4^{2-} , suggesting possible influence of secondary processing on metal mobilization (Fang et al., 2017; Ghio et al., 1999) and resulting in a strong inter-correlation between different OP metrics.

3.3 Temporal variation

285 The time series of the monthly and seasonal averages of different OP measures are shown in Fig. 2. Significant seasonal variability in these OP measures was not evident; only a subtle seasonal variation observed for OP^{DTT} and no variations for OP^{AA} and OP^{GSH}. OP^{DTT} was slightly higher during the cold period (Jan–Feb and Nov–Dec) with an average level of $0.24 \pm 0.08 \text{ nmol min}^{-1} \text{ m}^{-3}$ compared to $0.20 \pm 0.04 \text{ nmol min}^{-1} \text{ m}^{-3}$ in the warm period (May–Aug) and a median OP^{DTT} ratio between two periods of 1.20. However, OP^{AA} and OP^{GSH} had more similar levels across
290 seasons, with median ratios between cold and warm periods of 1.10 and 0.97, respectively.

The seasonality in OP measures should result from the temporal variations in PM species driving the various OP. From the temporal variation of the OP-associated species shown in Fig. 3 (the seasonal averaged concentrations were given in Fig. S1), BrC had an obvious seasonality, higher in winter and lower in summer, which is due to the stronger influence of biomass burning in winter. The variation in BrC may lead to the small variation in OP^{DTT},
295 considering the good correlation between OP^{DTT} and BrC in winter. Water-soluble Cu is slightly higher in mid-summer (Aug) and water-soluble Fe is slightly higher in fall (Sep), but these trends are not seen in the various measures of OP.

3.4 Multivariate model

Given that one or more PM components contributed to these measures of OP, multivariate linear regression analysis
300 was conducted to identify the main PM components that drive the variability in OP and provide a contrast between the assays. Water-soluble organic species (WSOC or BrC) and metals, mainly Fe, Cu, Mn, were selected as the independent variables to form multivariate linear regression models for OP^{DTT} and OP^{AA}, based on their high correlations, as noted above. EC, though also correlated with OP^{DTT} and OP^{AA}, was not chosen as one of the predictors due to its correlations with selected water-soluble species (e.g., WSOC, water-soluble Mn and Fe). For
305 OP^{GSH}, WSOC and BrC were used as input in addition to water-soluble Cu to include the possible influence of organic species on OP^{GSH}. The resulting linear relationships between different OP measures and PM components are shown in Table 2. The time series of measured and predicted OPs and the contributions of model variables to each OP measure are given in Fig. S2. Overall, the multivariate models explained variability in OP measures reasonably well with the coefficients of determination between modeled and measured OPs (R^2) greater than 0.4, with the
310 models better capturing the OP^{AA} and OP^{GSH} variability. In the regression results for OP^{DTT} and OP^{AA}, components including water-soluble Fe, Cu and BrC (or WSOC) and interaction terms between metal–organic and metal–metal were included, suggesting that the variability of OP^{DTT} or OP^{AA} is dependent upon not only bulk concentrations of PM components but also interactions between species. The regression model for OP^{GSH} captured the contributions from Cu and BrC but had no interaction terms. The intercept in each regression model, though large and accounting
315 for over 50 % of the mean of OP measures (Fig. S2), is practically meaningless, because the regression models are applicable only when the PM components are at ambient concentrations.

All models captured the contributions from organic species, however, the organic contributions in different models were represented by different measures of organics. In the OP^{DTT} and OP^{GSH} models, the organic contribution was denoted by BrC, whereas WSOC was used in the OP^{AA} model. Although WSOC and BrC were correlated with each

320 other (Table S1–S3), there is a difference between these two parameters. The OP contribution from BrC, an
optically defined measure, may not be straightforward, however, the optical properties of BrC are related to
chemical properties. There is evidence showing that BrC components may directly contribute to OP (Chen et al.,
2019). It has been found that BrC predominantly represents the hydrophobic organic fraction (i.e., the humic-like
substances (HULIS) fraction) in PM (Verma et al., 2012) and is largely from incomplete combustion (mainly
325 biomass burning) (Hecobian et al., 2010). For example, quinones, as a subset of the HULIS fraction (Verma et al.,
2015b), can be estimated better with BrC than with WSOC. WSOC also includes organic compounds present in the
hydrophilic fraction, e.g., levoglucosan, (Lin and Yu, 2011) and low molecular weight organic acids (Sullivan and
Weber, 2006) and thus is a more integrative measure of organic compounds compared to BrC. The difference
between BrC and WSOC is also supported by the different seasonal variation observed in BrC and WSOC (Fig. 3).

330 For OP^{DTT} results, the presence of Cu and BrC in the equation is as expected, since Cu and organic species have
been found active in DTT oxidation (Charrier and Anastasio, 2012; Cho et al., 2005). However, Fe, which has a low
intrinsic DTT activity (Charrier and Anastasio, 2012), was found to be predictive of OP^{DTT} , likely suggesting that Fe
represents surrogate measures of constituents with intrinsic redox active properties which were not quantified. This
is also supported by the evidence that Fe had correlations with other PM constituents such as OC and EC (Table S1–
335 S3) which may suggest that Fe in the PM water extracts is solubilized by forming complexes with combustion-
derived organic species. The interaction terms, along with their negative coefficients, suggest antagonistic
interactions between Cu and organic compounds and between Cu and Fe. The interaction between metal and
organics, though not taken into account when applying multivariate regression analysis in previous studies (Calas et
al., 2018; Verma et al., 2015a), is consistent with experimental results (Yu et al., 2018) wherein antagonistic
340 interactions between Cu and ambient HULIS were observed in the DTT consumption. However, the interaction
between metals contrasts with experiments which showed additive effects for metal mixtures (Yu et al., 2018). But it
should be noted that the interactions among metals were usually tested with mixtures of individual species, which
can poorly represent the complex chemistry of ambient PM.

For RTLF assay, the variability of OP^{AA} was attributed to the concentrations of Fe, Cu and WSOC, antagonistic
345 metal–organic interaction between Fe and organic compounds and metal–metal competition between Fe and Cu.
Even though the RTLF assay in previous studies was generally used to measure the OP of methanol-extracted PM
suspension, the contributions from metals and organics observed in our water-soluble OP agree with previous results
(Ayres et al., 2008; Kelly et al., 2011; Pietrogrande et al., 2019). The presence of interaction terms is novel and is
supported by little empirical evidence. The antagonistic interaction between Fe and WSOC is reasonable. Fe in the
350 water extracts has been found largely complexed with organic compounds (Wei et al., 2019). Since AA is not a
strong ligand for Fe (Charrier and Anastasio, 2011), the complexation between Fe and organic compounds can
prevent Fe from reacting with AA. For OP^{GSH} , despite weak correlation of OP^{GSH} with BrC, BrC still accounted for
the variability in OP^{GSH} , consistent with previous findings that OP^{GSH} is responsive to quinones (Ayres et al., 2008;
Calas et al., 2018).

355 It is noteworthy that the multivariate regression models do not account for the possible nonlinear behavior of species
with OP responses. For example, nonlinear concentration–response curves have been found for DTT oxidation by
dissolved Cu and Mn (Charrier and Anastasio, 2012), which may not be characterized in the multivariate regression
model, potentially affecting the accuracy of the OP^{DTT} model. We note that the variables in the models not only
represent the contribution from individual species, but also show a possible influence from co-emitted unquantified
360 components. There are also interactions existing among PM species, affecting the relationships between PM
compounds and OP metrics.

To further investigate the sensitivity of different OP assays to PM species, standardized regression was applied to
rescale the variables measured in different units and make the coefficients in the regression equations comparable. It
is also an effective way to reduce collinearity induced by the inter-correlated nature of PM species and the existence
365 of interaction terms. The standardized coefficient of a specific component indicates the estimated change in an OP
measure for every one-unit increase in component. The higher the absolute value of the standardized coefficient, the
stronger the effect of the PM species on the OP measure.

Figure 4 shows the relative importance of each PM component to OP metrics based on the calculation of
standardized coefficients. As shown in Fig. 4, water soluble Fe was the most important variable in the model of
370 OP^{DTT} , followed by BrC, Cu and antagonistic interactions. Even though OP^{DTT} is not responsive to water-soluble Fe,
Fe may be a surrogate measure of compounds co-emitted with Fe from brake/tire wear and secondary formation
which have been identified as two major sources of Fe in the southeastern US (Fang et al., 2015a). For OP^{AA} , the
strength of the effects of Fe, Cu and WSOC on OP^{AA} was similar. OP^{GSH} was approximately four times more
sensitive to Cu than to BrC, with standardized coefficients of 0.70 and 0.18 for Cu and BrC, respectively. These
375 results show clear contrasts between the assays, where OP^{DTT} and OP^{AA} are more similar and both have significant
contrasts to OP^{GSH} .

In all these cases, it must also be kept in mind that the measurements were performed on the PM water extracts,
which are not the conditions that are found in the ambient aerosol. Thus, inferring associations between species in
the extracts and applying to ambient conditions is not straightforward, however, this analysis is useful for
380 interpreting and contrasting the possible causes for associations between these types of assays and any health effects.

Water-soluble Fe, as the most important determinant of OP^{DTT} , has been estimated to have the strongest effect on
cardiovascular outcomes in the Atlanta metropolitan region (Ye et al., 2018), which may account for associations
between OP^{DTT} and health outcomes observed in this region. OP^{GSH} is strongly dependent on a limited number of
PM components, and thus associations between OP^{GSH} and health outcomes may vary more significantly by regions
385 than other assays do and associations could be expected if the PM toxicity in a region is mainly driven by specific
species, such as water-soluble Cu. OP^{AA} is affected by the composition of synthetic lung fluid, and thus the AA
responses obtained from RTLF and AA-only model are not comparable and should be distinguished from each
other. In the RTLF model, the response of OP^{AA} metric by PM is diminished due to the presence of GSH, possibly
leading to weaker associations between OP^{AA} and health endpoints.

390 **4 Conclusions**

In this study, a comparison was made between two of the most common techniques used for the assessment of PM oxidative potential based on antioxidant depletion from a complex synthetic RTLF (OP^{AA} and OP^{GSH}) and DTT oxidation (OP^{DTT}). These two assays were used to quantify the water-soluble OP of ambient PM_{2.5} collected in urban Atlanta over a one-year period based on daily filter samples. We observed moderate correlations among the OP assays, suggesting different sensitivities of OP measures to PM species. Univariate and multivariate regression analyses indicated that OP^{DTT} and OP^{AA} were correlated to organic species and water-soluble metals (Fe and Cu) and were negatively affected by the interactions among species. At a more detailed level, for organic components, OP^{DTT} was associated specifically with HULIS and incomplete combustion products identified by BrC, whereas OP^{AA} was associated to a more general measure of organic components, WSOC. OP^{GSH}, though also affected by organic species, was predominantly sensitive to water-soluble Cu. Subtle temporal variation in OP^{DTT} and no seasonal variations in OP^{AA} and OP^{GSH} were observed, which appears to be due to little seasonality in the combined PM constituents affecting each assay. A small OP^{DTT} variation was associated with variation in BrC that was higher in the cold seasons.

405 This study suggests that all three OP metrics, [OP^{AA} and OP^{GSH} in the RTLF assay as well as OP^{DTT} in the DTT assay](#), are associated with transition metal ions. However, OP^{DTT} and OP^{AA} are more chemically integrative OP measures compared to OP^{GSH}, and thus may be more informative and helpful in linking OP with health end points. The multivariate regression models for different OP measures indicate the degree to which OP variability in the PM water extracts is predicted by PM constituents.

410 We should note that the filter samples used in this study were averaged over 24 hours, which may dampen variability in the emission sources that contribute to OP and obscure the impact of specific species (e.g., traffic-related metals) on redox activity of PM. Furthermore, all these results were obtained from a specific location in Atlanta, GA and should be interpreted and generalized with caution as the chemical composition or sources of PM varies by region. There are marked differences in RTLF composition in different levels of respiratory tract. The synthetic RTLF reflects select antioxidants in the lung and other key constituents are not represented in this simplified chemical model. The DTT assay is also subject to similar limitations that DTT cannot fully represent the biological complexity. However, these assays can be used as PM screening tools and provide rapid health-relevant assessment of PM.

420 *Data availability.* All data are available at <http://doi.pangaea.de/10.1594/PANGAEA.908043>.

Author contributions. DG collected and analyzed the data and drafted the manuscript. KJGP assisted with RTLF measurements. JAM and AGR helped with model development. The data were interpreted by DG and RJW. RJW conceived, designed and oversaw the study. All authors discussed the results and contributed to the final manuscript.

Formatted: Superscript

Formatted: Superscript

Formatted: Superscript

425 *Competing interests.* The authors declare that they have no conflict of interest.

Acknowledgements. This publication was made possible by Georgia Tech EAS Jefferson St Funds which was a generous gift from Georgia Power/Southern Company. We would like to thank Linghan Zeng, Gigi Pavur, Joseph Caggiano and Allison Weber for assisting with the sampling campaigns and the lab work.

430

References

- Abrams, J. Y., Weber, R. J., Klein, M., Sarnat, S. E., Chang, H. H., Strickland, M. J., Verma, V., Fang, T., Bates, J. T., Mulholland, J. A., Russell, A. G., and Tolbert, P. E.: Associations between Ambient Fine Particulate Oxidative Potential and Cardiorespiratory Emergency Department Visits (vol 125, 2017), *Environ Health Persp*, 125, 2017.
- 435 Aliaga, M. E., Carrasco-Pozo, C., Lopez-Alarcon, C., and Speisky, H.: The Cu(I)-glutathione complex: factors affecting its formation and capacity to generate reactive oxygen species, *Transit Metal Chem*, 35, 321-329, 2010.
- Atkinson, R. W., Samoli, E., Analitis, A., Fuller, G. W., Green, D. C., Anderson, H. R., Purdie, E., Durister, C., Aitlhadj, L., Kelly, F. J., and Mudway, I. S.: Short-term associations between particle oxidative potential and daily mortality and hospital admissions in London, *Int J Hyg Envir Heal*, 219, 566-572, 2016.
- 440 Ayres, J. G., Borm, P., Cassee, F. R., Castranova, V., Donaldson, K., Ghio, A., Harrison, R. M., Hider, R., Kelly, F., Kooter, I. M., Marano, F., Maynard, R. L., Mudway, I., Nel, A., Sioutas, C., Smith, S., Baeza-Squiban, A., Cho, A., Duggan, S., and Froines, J.: Evaluating the toxicity of airborne particulate matter and nanoparticles by measuring oxidative stress potential - A workshop report and consensus statement, *Inhal Toxicol*, 20, 75-99, 2008.
- 445 Baker, M. A., Cerniglia, G. J., and Zaman, A.: Microtiter Plate Assay for the Measurement of Glutathione and Glutathione Disulfide in Large Numbers of Biological Samples, *Anal Biochem*, 190, 360-365, 1990.
- Bates, J. T., Fang, T., Verma, V., Zeng, L. H., Weber, R. J., Tolbert, P. E., Abrams, J. Y., Sarnat, S. E., Klein, M., Mulholland, J. A., and Russell, A. G.: Review of Acellular Assays of Ambient Particulate Matter Oxidative Potential: Methods and Relationships with Composition, Sources, and Health Effects, *Environ Sci Technol*, 53, 4003-4019, 2019.
- 450 Bates, J. T., Weber, R. J., Abrams, J., Verma, V., Fang, T., Klein, M., Strickland, M. J., Sarnat, S. E., Chang, H. H., Mulholland, J. A., Tolbert, P. E., and Russell, A. G.: Reactive Oxygen Species Generation Linked to Sources of Atmospheric Particulate Matter and Cardiorespiratory Effects, *Environ Sci Technol*, 49, 13605-13612, 2015.
- 455 Birch, M. E. and Cary, R. A.: Elemental carbon-based method for monitoring occupational exposures to particulate diesel exhaust, *Aerosol Sci Tech*, 25, 221-241, 1996.

- Brunekreef, B. and Holgate, S. T.: Air pollution and health, *Lancet*, 360, 1233-1242, 2002.
- 460 Calas, A., Uzu, G., Kelly, F. J., Houdier, S., Martins, J. M. F., Thomas, F., Molton, F., Charron, A., Dunster, C.,
Oliete, A., Jacob, V., Besombes, J. L., Chevrier, F., and Jaffrezo, J. L.: Comparison between five acellular
oxidative potential measurement assays performed with detailed chemistry on PM10 samples from the city of
Chamonix (France), *Atmos Chem Phys*, 18, 7863-7875, 2018.
- Charrier, J. G. and Anastasio, C.: Impacts of antioxidants on hydroxyl radical production from individual and mixed
465 transition metals in a surrogate lung fluid, *Atmos Environ*, 45, 7555-7562, 2011.
- Charrier, J. G. and Anastasio, C.: On dithiothreitol (DTT) as a measure of oxidative potential for ambient particles:
evidence for the importance of soluble transition metals, *Atmos Chem Phys*, 12, 9321-9333, 2012.
- Charrier, J. G., McFall, A. S., Vu, K. K. T., Baroi, J., Olea, C., Hasson, A., and Anastasio, C.: A bias in the "mass-
470 normalized" DTT response - An effect of non-linear concentration-response curves for copper and
manganese, *Atmos Environ*, 144, 325-334, 2016.
- Chen, Q., Wang, M., Wang, Y., Zhang, L., Li, Y. and Han, Y.: Oxidative Potential of Water-Soluble Matter
Associated with Chromophoric Substances in PM_{2.5} over Xi'an, China, *Environ Sci Technol*, 53, 8574-
8584, 2019.
- Cho, A. K., Sioutas, C., Miguel, A. H., Kumagai, Y., Schmitz, D. A., Singh, M., Eiguren-Fernandez, A., and
475 Froines, J. R.: Redox activity of airborne particulate matter at different sites in the Los Angeles Basin,
Environ Res, 99, 40-47, 2005.
- Cohen, A. J., Brauer, M., Burnett, R., Anderson, H. R., Frostad, J., Estep, K., Balakrishnan, K., Brunekreef, B.,
Dandona, L., Dandona, R., Feigin, V., Freedman, G., Hubbell, B., Jobling, A., Kan, H., Knibbs, L., Liu, Y.,
Martin, R., Morawska, L., Pope, C. A., Shin, H., Straif, K., Shaddick, G., Thomas, M., van Dingenen, R., van
480 Donkelaar, A., Vos, T., Murray, C. J. L., and Forouzanfar, M. H.: Estimates and 25-year trends of the global
burden of disease attributable to ambient air pollution: an analysis of data from the Global Burden of Diseases
Study 2015, *Lancet*, 389, 1907-1918, 2017.
- Das, S. K.: SPECIAL ISSUE ON "FREE RADICALS AND ANTIOXIDANTS IN HEALTH & DISEASES"
Preface, *Indian J Exp Biol*, 54, 681-683, 2016.
- 485 Delfino, R. J., Staimer, N., Tjoa, T., Gillen, D. L., Schauer, J. J., and Shafer, M. M.: Airway inflammation and
oxidative potential of air pollutant particles in a pediatric asthma panel, *J Expo Sci Env Epid*, 23, 466-473,
2013.
- DiStefano, E., Eiguren-Fernandez, A., Delfino, R. J., Sioutas, C., Froines, J. R., and Cho, A. K.: Determination of
metal-based hydroxyl radical generating capacity of ambient and diesel exhaust particles, *Inhal Toxicol*, 21,
490 731-738, 2009.
- Edgerton, E. S., Hartsell, B. E., Saylor, R. D., Jansen, J. J., Hansen, D. A., and Hidy, G. M.: The Southeastern
Aerosol Research and Characterization Study, part 3: Continuous measurements of fine particulate matter
mass and composition, *J Air Waste Manage*, 56, 1325-1341, 2006.

495 Edgerton, E. S., Hartsell, B. E., Saylor, R. D., Jansen, J. J., Hansen, D. A., and Hidy, G. M.: The southeastern aerosol research and characterization study: Part II. Filter-based measurements of fine and coarse particulate matter mass and composition, *J Air Waste Manage*, 55, 1527-1542, 2005.

Fang, T., Guo, H., Verma, V., Peltier, R. E., and Weber, R. J.: PM_{2.5} water-soluble elements in the southeastern United States: automated analytical method development, spatiotemporal distributions, source apportionment, and implications for health studies, *Atmos Chem Phys*, 15, 11667-11682, 2015a.

500 Fang, T., Guo, H. Y., Zeng, L. H., Verma, V., Nenes, A., and Weber, R. J.: Highly Acidic Ambient Particles, Soluble Metals, and Oxidative Potential: A Link between Sulfate and Aerosol Toxicity, *Environ Sci Technol*, 51, 2611-2620, 2017.

Fang, T., Verma, V., Bates, J. T., Abrams, J., Klein, M., Strickland, M. J., Sarnat, S. E., Chang, H. H., Mulholland, J. A., Tolbert, P. E., Russell, A. G., and Weber, R. J.: Oxidative potential of ambient water-soluble PM_{2.5} in the southeastern United States: contrasts in sources and health associations between ascorbic acid (AA) and dithiothreitol (DTT) assays, *Atmos Chem Phys*, 16, 3865-3879, 2016.

Fang, T., Verma, V., Guo, H., King, L. E., Edgerton, E. S., and Weber, R. J.: A semi-automated system for quantifying the oxidative potential of ambient particles in aqueous extracts using the dithiothreitol (DTT) assay: results from the Southeastern Center for Air Pollution and Epidemiology (SCAPE), *Atmos Meas Tech*, 8, 471-482, 2015b.

510 Frampton, M. W., Ghio, A. J., Samet, J. M., Carson, J. L., Carter, J. D., and Devlin, R. B.: Effects of aqueous extracts of PM(10) filters from the Utah Valley on human airway epithelial cells, *Am J Physiol-Lung C*, 277, L960-L967, 1999.

Gao, D., Fang, T., Verma, V., Zeng, L. G., and Weber, R. J.: A method for measuring total aerosol oxidative potential (OP) with the dithiothreitol (DTT) assay and comparisons between an urban and roadside site of water-soluble and total OP, *Atmos Meas Tech*, 10, 2821-2835, 2017.

Gao, D., Mulholland, J. A., Russell, A. G., and Weber, R. J.: Characterization of water-insoluble oxidative potential of PM_{2.5} using the dithiothreitol assay, *Atmos Environ* (accepted).

Ghio, A. J., Stoneheurner, J., McGee, J. K., and Kinsey, J. S.: Sulfate content correlates with iron concentrations in ambient air pollution particles, *Inhal Toxicol*, 11, 293-307, 1999.

520 Godri, K. J., Duggan, S. T., Fuller, G. W., Baker, T., Green, D., Kelly, F. J., and Mudway, I. S.: Particulate Matter Oxidative Potential from Waste Transfer Station Activity, *Environ Health Persp*, 118, 493-498, 2010.

Godri, K. J., Harrison, R. M., Evans, T., Baker, T., Dunster, C., Mudway, I. S., and Kelly, F. J.: Increased Oxidative Burden Associated with Traffic Component of Ambient Particulate Matter at Roadside and Urban Background Schools Sites in London, *Plos One*, 6, 2011.

525 Halliwell, B.: Free-Radicals, Antioxidants, and Human-Disease - Curiosity, Cause, or Consequence, *Lancet*, 344, 721-724, 1994.

Hansen, D. A., Edgerton, E., Hartsell, B., Jansen, J., Burge, H., Koutrakis, P., Rogers, C., Suh, H., Chow, J., Zielinska, B., McMurry, P., Mulholland, J., Russell, A., and Rasmussen, R.: Air quality measurements for the aerosol research and inhalation epidemiology study, *J Air Waste Manage*, 56, 1445-1458, 2006.

530

- Hecobian, A., Zhang, X., Zheng, M., Frank, N., Edgerton, E. S., and Weber, R. J.: Water-Soluble Organic Aerosol material and the light-absorption characteristics of aqueous extracts measured over the Southeastern United States, *Atmos Chem Phys*, 10, 5965-5977, 2010.
- 535 Huang, W., Zhang, Y. X., Zhang, Y., Fang, D. Q., and Schauer, J. J.: Optimization of the Measurement of Particle-Bound Reactive Oxygen Species with 2',7'-dichlorofluorescein (DCFH), *Water Air Soil Poll*, 227, 2016.
- Janssen, N. A. H., Strak, M., Yang, A., Hellack, B., Kelly, F. J., Kuhlbusch, T. A. J., Harrison, R. M., Brunekreef, B., Cassee, F. R., Steenhof, M., and Hoek, G.: Associations between three specific a-cellular measures of the oxidative potential of particulate matter and markers of acute airway and nasal inflammation in healthy volunteers, *Occup Environ Med*, 72, 49-56, 2015.
- 540 Kelly, F., Anderson, H. R., Armstrong, B., Atkinson, R., Barratt, B., Beevers, S., Derwent, D., Green, D., Mudway, I., Wilkinson, P., and Committee, H. E. I. H. R.: The impact of the congestion charging scheme on air quality in London. Part 2. Analysis of the oxidative potential of particulate matter, *Res Rep Health Eff Inst*, 2011. 73-144, 2011.
- Kelly, F. J., Cotgrove, M., and Mudway, I. S.: Respiratory tract lining fluid antioxidants: the first line of defence against gaseous pollutants, *Cent Eur J Public Health*, 4 Suppl, 11-14, 1996.
- 545 Khachatryan, L., Vejerano, E., Lomnicki, S. and Dellinger, B.: Environmentally persistent free radicals (EPFRs). 1. Generation of reactive oxygen species in aqueous solutions, *Environ Sci Technol*, 45, 8559-8566, 2011.
- Kumagai, Y., Koide, S., Taguchi, K., Endo, A., Nakai, Y., Yoshikawa, T., and Shimojo, N.: Oxidation of proximal protein sulfhydryls by phenanthraquinone, a component of diesel exhaust particles, *Chem Res Toxicol*, 15, 483-489, 2002.
- 550 Kunzli, N., Mudway, I. S., Gotschi, T., Shi, T. M., Kelly, F. J., Cook, S., Burney, P., Forsberg, B., Gauderman, J. W., Hazenkamp, M. E., Heinrich, J., Jarvis, D., Norback, D., Payo-Losa, F., Poli, A., Sunyer, J., and Borm, P. J. A.: Comparison of oxidative properties, light absorbance, and total and elemental mass concentration of ambient PM_{2.5} collected at 20 European sites, *Environ Health Persp*, 114, 684-690, 2006.
- 555 Lakey, P. S. J., Berkemeier, T., Tong, H. J., Arangio, A. M., Lucas, K., Poschl, U., and Shiraiwa, M.: Chemical exposure-response relationship between air pollutants and reactive oxygen species in the human respiratory tract, *Sci Rep-Uk*, 6, 2016.
- Lavigne, É., Burnett, R.T., Stieb, D.M., Evans, G.J., Godri Pollitt, K.J., Chen, H., van Rijswijk, D. and Weichenthal, S.: Fine particulate air pollution and adverse birth outcomes: effect modification by regional nonvolatile oxidative potential, *Environmental health perspectives*, 126, 077012, 2018.
- 560 Lin, P. and Yu, J. Z.: Generation of Reactive Oxygen Species Mediated by Humic-like Substances in Atmospheric Aerosols, *Environ Sci Technol*, 45, 10362-10368, 2011.
- Lippmann, M.: Toxicological and epidemiological studies of cardiovascular effects of ambient air fine particulate matter (PM_{2.5}) and its chemical components: Coherence and public health implications, *Crit Rev Toxicol*, 44, 299-347, 2014.
- 565

- Maikawa, C. L., Weichenthal, S., Wheeler, A. J., Dobbin, N. A., Smargiassi, A., Evans, G., Liu, L., Goldberg, M. S., and Pollitt, K. J. G.: Particulate Oxidative Burden as a Predictor of Exhaled Nitric Oxide in Children with Asthma, *Environ Health Persp*, 124, 1616-1622, 2016.
- 570 McWhinney, R. D., Gao, S. S., Zhou, S. M., and Abbatt, J. P. D.: Evaluation of the Effects of Ozone Oxidation on Redox-Cycling Activity of Two-Stroke Engine Exhaust Particles, *Environ Sci Technol*, 45, 2131-2136, 2011.
- Meyer, M. B., Patashnick, H., Ambs, J. L., and Rupprecht, E.: Development of a sample equilibration system for the TEOM continuous PM monitor, *J Air Waste Manage*, 50, 1345-1349, 2000.
- 575 Mudway, I.S., Duggan, S.T., Venkataraman, C., Habib, G., Kelly, F.J. and Grigg, J.: Combustion of dried animal dung as biofuel results in the generation of highly redox active fine particulates, *Particle and fibre toxicology*, 2, 6, 2005.
- Mudway, I. S., Stenfors, N., Duggan, S. T., Roxborough, H., Zielinski, H., Marklund, S. L., Blomberg, A., Frew, A. J., Sandstrom, T., and Kelly, F. J.: An in vitro and in vivo investigation of the effects of diesel exhaust on human airway lining fluid antioxidants, *Arch Biochem Biophys*, 423, 200-212, 2004.
- 580 Norris, G., YoungPong, S. N., Koenig, J. Q., Larson, T. V., Sheppard, L., and Stout, J. W.: An association between fine particles and asthma emergency department visits for children in Seattle, *Environ Health Persp*, 107, 489-493, 1999.
- Pietrogrande, M. C., Bertoli, I., Manarini, F., and Russo, M.: Ascorbate assay as a measure of oxidative potential for ambient particles: Evidence for the importance of cell-free surrogate lung fluid composition, *Atmos Environ*, 211, 103-112, 2019.
- 585 Pizzino, G., Irrera, N., Cucinotta, M., Pallio, G., Mannino, F., Arcoraci, V., Squadrito, F., Altavilla, D., and Bitto, A.: Oxidative Stress: Harms and Benefits for Human Health, *Oxid Med Cell Longev*, doi: Artn 8416763 10.1155/2017/8416763, 2017. 2017.
- Pope, C. A., Burnett, R. T., Thurston, G. D., Thun, M. J., Calle, E. E., Krewski, D., and Godleski, J. J.: Cardiovascular mortality and long-term exposure to particulate air pollution - Epidemiological evidence of general pathophysiological pathways of disease, *Circulation*, 109, 71-77, 2004.
- 590 Samet, J. M., Dominici, F., Curriero, F. C., Coursac, I., and Zeger, S. L.: Fine particulate air pollution and mortality in 20 US Cities, 1987-1994., *New Engl J Med*, 343, 1742-1749, 2000.
- Sarnat, J. A.: Fine Particle Sources and Cardiorespiratory Morbidity: An Application of Chemical Mass Balance and Factor Analytical Source Apportionment Methods, *Epidemiology*, 19, S44-S44, 2008.
- 595 Shi, T., Knaapen, A. M., Begerow, J., Birmili, W., Borm, P. J. A., and Schins, R. P. F.: Temporal variation of hydroxyl radical generation and 8-hydroxy-2'-deoxyguanosine formation by coarse and fine particulate matter, *Occup Environ Med*, 60, 315-321, 2003a.
- Shi, T. M., Schins, R. P. F., Knaapen, A. M., Kuhlbusch, T., Pitz, M., Heinrich, J., and Borm, P. J. A.: Hydroxyl radical generation by electron paramagnetic resonance as a new method to monitor ambient particulate matter composition, *J Environ Monitor*, 5, 550-556, 2003b.
- 600 Strak, M., Janssen, N. A. H., Godri, K. J., Gosens, I., Mudway, I. S., Cassee, F. R., Lebret, E., Kelly, F. J., Harrison, R. M., Brunekreef, B., Steenhof, M., and Hoek, G.: Respiratory Health Effects of Airborne Particulate Matter:

- The Role of Particle Size, Composition, and Oxidative Potential-The RAPTES Project, *Environ Health Persp*, 120, 1183-1189, 2012.
- 605 Sullivan, A. P. and Weber, R. J.: Chemical characterization of the ambient organic aerosol soluble in water: 1. Isolation of hydrophobic and hydrophilic fractions with a XAD-8 resin, *J Geophys Res-Atmos*, 111, 2006.
- Sun, Q. H., Hong, X. R., and Wold, L. E.: Cardiovascular Effects of Ambient Particulate Air Pollution Exposure, *Circulation*, 121, 2755-2765, 2010.
- 610 Thurston, G. D., Kipen, H., Annesi-Maesano, I., Balmes, J., Brook, R. D., Cromar, K., De Matteis, S., Forastiere, F., Forsberg, B., Frampton, M. W., Grigg, J., Heederik, D., Kelly, F. J., Kuenzli, N., Laumbach, R., Peters, A., Rajagopalan, S. T., Rich, D., Ritz, B., Samet, J. M., Sandstrom, T., Sigsgaard, T., Sunyer, J., and Brunekreef, B.: A joint ERS/ATS policy statement: what constitutes an adverse health effect of air pollution? An analytical framework, *Eur Respir J*, 49, 2017.
- Tong, H., Lakey, P.S., Arangio, A.M., Socorro, J., Shen, F., Lucas, K., Brune, W.H., Pöschl, U. and Shiraiwa, M.: Reactive oxygen species formed by secondary organic aerosols in water and surrogate lung fluid, *Environ Sci Technol*, 52, 11642-11651, 2018.
- 615 Tong, H., Zhang, Y., Filippi, A., Wang, T., Li, C., Liu, F., Leppla, D., Kourtchev, I., Wang, K., Keskinen, H.M. and Levula, J.T.: Radical formation by fine particulate matter associated with highly oxygenated molecules, *Environ Sci Technol*, 53, 12506-12518, 2019.
- 620 Turpin, B. J. and Lim, H. J.: Species contributions to PM_{2.5} mass concentrations: Revisiting common assumptions for estimating organic mass, *Aerosol Sci Tech*, 35, 602-610, 2001.
- Venkatachari, P., Hopke, P. K., Grover, B. D., and Eatough, D. J.: Measurement of particle-bound reactive oxygen species in turbid aerosols (vol 50, pg 49, 2005), *J Atmos Chem*, 52, 325-326, 2005.
- 625 Verma, V., Fang, T., Guo, H., King, L., Bates, J. T., Peltier, R. E., Edgerton, E., Russell, A. G., and Weber, R. J.: Reactive oxygen species associated with water-soluble PM_{2.5} in the southeastern United States: spatiotemporal trends and source apportionment, *Atmos Chem Phys*, 14, 12915-12930, 2014.
- Verma, V., Fang, T., Xu, L., Peltier, R. E., Russell, A. G., Ng, N. L., and Weber, R. J.: Organic Aerosols Associated with the Generation of Reactive Oxygen Species (ROS) by Water-Soluble PM_{2.5}, *Environ Sci Technol*, 49, 4646-4656, 2015a.
- 630 Verma, V., Rico-Martinez, R., Kotra, N., King, L., Liu, J. M., Snell, T. W., and Weber, R. J.: Contribution of Water-Soluble and Insoluble Components and Their Hydrophobic/Hydrophilic Subfractions to the Reactive Oxygen Species-Generating Potential of Fine Ambient Aerosols, *Environ Sci Technol*, 46, 11384-11392, 2012.
- 635 Verma, V., Wang, Y., El-Affifi, R., Fang, T., Rowland, J., Russell, A. G., and Weber, R. J.: Fractionating ambient humic-like substances (HULIS) for their reactive oxygen species activity - Assessing the importance of quinones and atmospheric aging, *Atmos Environ*, 120, 351-359, 2015b.
- Weber, R.: Short-term temporal variation in PM_{2.5} mass and chemical composition during the Atlanta supersite experiment, 1999, *J Air Waste Manage*, 53, 84-91, 2003.

- Wei, J. L., Yu, H. R., Wang, Y. X., and Verma, V.: Complexation of Iron and Copper in Ambient Particulate Matter and Its Effect on the Oxidative Potential Measured in a Surrogate Lung Fluid, *Environ Sci Technol*, 53, 1661-1671, 2019.
- 640 Weichenthal, S., Crouse, D. L., Pinault, L., Godri-Pollitt, K., Lavigne, E., Evans, G., van Donkelaar, A., Martin, R. V., and Burnett, R. T.: Oxidative burden of fine particulate air pollution and risk of cause-specific mortality in the Canadian Census Health and Environment Cohort (CanCHEC), *Environ Res*, 146, 92-99, 2016a.
- Weichenthal, S., Lavigne, E., Evans, G., Pollitt, K., and Burnett, R. T.: Ambient PM_{2.5} and risk of emergency room visits for myocardial infarction: impact of regional PM_{2.5} oxidative potential: a case-crossover study, *Environ Health-Glob*, 15, 2016b.
- 645 Weichenthal, S. A., Lavigne, E., Evans, G. J., Pollitt, K. J. G., and Burnett, R. T.: Fine Particulate Matter and Emergency Room Visits for Respiratory Illness Effect Modification by Oxidative Potential, *Am J Resp Crit Care*, 194, 577-586, 2016c.
- 650 Yang, A., Janssen, N. A. H., Brunekreef, B., Cassee, F. R., Hoek, G., and Gehring, U.: Children's respiratory health and oxidative potential of PM_{2.5}: the PIAMA birth cohort study, *Occup Environ Med*, 73, 154-160, 2016.
- Yang, A., Jedynska, A., Hellack, B., Kooter, I., Hoek, G., Brunekreef, B., Kuhlbusch, T. A. J., Cassee, F. R., and Janssen, N. A. H.: Measurement of the oxidative potential of PM_{2.5} and its constituents: The effect of extraction solvent and filter type, *Atmospheric Environment*, 83, 35-42, 2014.
- 655 Ye, D. N., Klein, M., Mulholland, J. A., Russell, A. G., Weber, R., Edgerton, E. S., Chang, H. H., Sarnat, J. A., Tolbert, P. E., and Sarnat, S. E.: Estimating Acute Cardiovascular Effects of Ambient PM_{2.5} Metals, *Environ Health Persp*, 126, 2018.
- Yu, H. R., Wei, J. L., Cheng, Y. L., Subedi, K., and Verma, V.: Synergistic and Antagonistic Interactions among the Particulate Matter Components in Generating Reactive Oxygen Species Based on the Dithiothreitol Assay, *Environ Sci Technol*, 52, 2261-2270, 2018.
- 660 Zielinski, H., Mudway, I. S., Berube, K. A., Murphy, S., Richards, R., and Kelly, F. J.: Modeling the interactions of particulates with epithelial lining fluid antioxidants, *Am J Physiol-Lung C*, 277, L719-L726, 1999.

665

670

Table 1. Pearson's r between OP and PM composition

	Overall			Summer			Winter		
	OP ^{AA}	OP ^{GSH}	OP ^{DTT}	OP ^{AA}	OP ^{GSH}	OP ^{DTT}	OP ^{AA}	OP ^{GSH}	OP ^{DTT}
OP ^{GSH}	0.67**			0.78**			0.62**		
OP ^{DTT}	0.61**	0.45**		0.66**	0.70**		0.53**	0.50**	
PM _{2.5} mass	0.56**	0.24**	0.55**	0.23*	0.19	0.49**	0.70**	0.36**	0.54**
OC	0.50**	0.10	0.55**	0.16	0.03	0.40**	0.61**	0.26**	0.50**
EC	0.49**	0.13*	0.51**	0.11	0.01	0.39**	0.60**	0.28**	0.44**
WSOC	0.55**	0.19**	0.52**	0.24*	0.20	0.41**	0.66**	0.38**	0.54**
BrC	0.36**	0.04	0.41**	0.33**	0.14	0.51**	0.51**	0.33**	0.69**
SO ₄ ²⁻	0.41**	0.37**	0.34**	0.42**	0.35**	0.48**	0.33**	0.27**	0.18*
WS-K	0.49**	0.30**	0.50**	0.32**	0.08	0.46**	0.52**	0.33**	0.56**
WS-Fe	0.47**	0.17**	0.50**	0.43**	0.21	0.59**	0.52**	0.24**	0.48**
WS-Cu	0.50**	0.74**	0.36**	0.51**	0.79**	0.65**	0.60**	0.78**	0.31**
WS-Mn	0.38**	0.19**	0.37**	0.34**	0.13	0.61**	0.49**	0.28**	0.37**
WS-Zn	0.31**	0.31**	0.34**	0.32**	0.11	0.46**	0.41**	0.14	0.31**

Note: **p-value<0.01; *p-value<0.05. Correlations not statistically significant (p>0.05) are in grey, r>0.65 are bold. All metals listed are water-soluble metals.

680 Table 2. Multivariate linear regression models for OP metrics.

	Fe	Cu	WSOC	BrC	metal-organic	metal-metal	intercept	R ²
OP ^{DTT}	2.28E-3	2.69E-3		5.75E-2	-1.36E-3	Cu*BrC	-4.09E-5	0.13
OP ^{AA}	1.17E-1	1.07E-1	9.32E-1		-1.30E-2	Fe*WSOC	-2.05E-3	4.38
OP ^{GSH}		7.41E-2		2.77E-1				3.65

Note: All metals are water-soluble metals. The values represent the coefficients for variables. Cell is left blank where the corresponding variable is not included in the equation. As an example, the linear equation of OP^{DTT} is as follows: OP^{DTT} = 2.28E-3*Fe + 2.69E-3*C_u + 5.75E-2*BrC - 1.36E-3*(Cu*BrC) - 4.09E-5*(Fe*Cu) + 0.13. The concentrations of water-soluble metals are in units of ng m⁻³, whereas the units for WSOC and BrC are µg m⁻³ and Mm⁻¹, respectively.

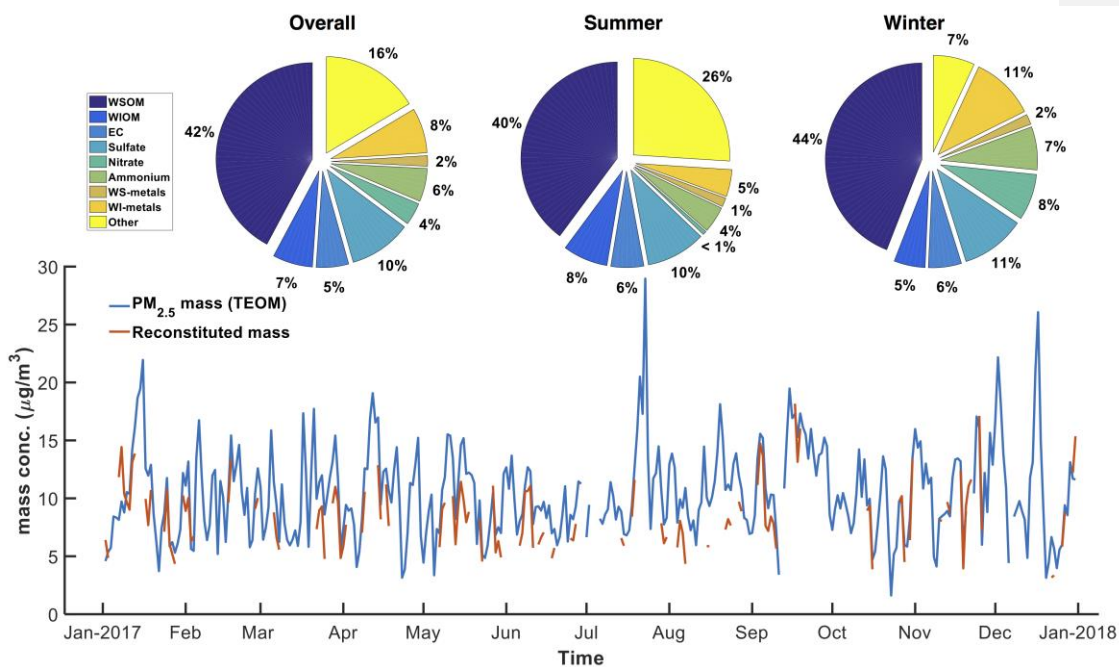
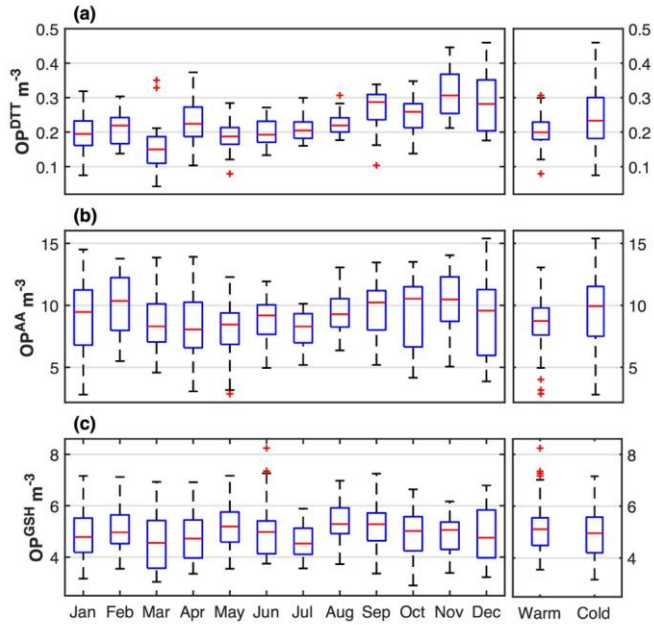


Figure 1: Time series of PM_{2.5} mass concentration. The pie charts show the average aerosol composition based on PM_{2.5} mass measured by the tapered element oscillating microbalance (TEOM) during the whole sampling year, summer and winter. WSOM: water-soluble organic matter (=WSOC*1.6); WIOM: water-insoluble organic matter (=OM-WSOM); WS-metals: sum of water-soluble metals, including Al, Mg, Ca, K, Fe, Cu, Mn, Zn; WI-metals: water-insoluble metals (=total_metals-WS_metals). Summer: Jun–Aug; winter: Jan–Feb and Nov–Dec.



695 **Figure 2: Temporal variation for (a) $OP^{DTT} m^{-3}$ ($nmol\ min^{-1}\ m^{-3}$), (b) $OP^{AA} m^{-3}$ (% depletion of AA m^{-3}), and (c) $OP^{GSH} m^{-3}$ (% depletion of GSH m^{-3}). Warm period: May–Aug; cold period: Jan–Feb and Nov–Dec.**

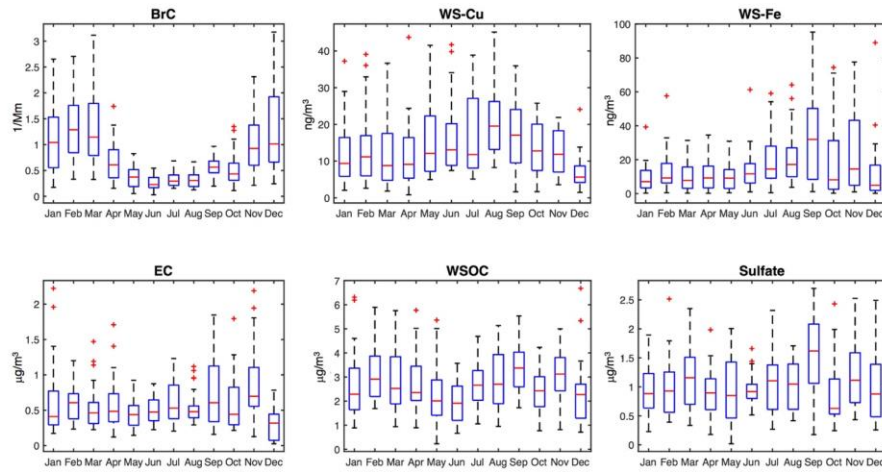


Figure 3: Temporal variation for select PM [components/species](#).

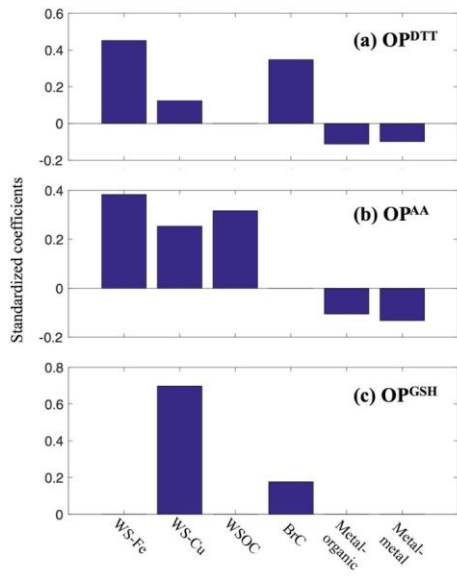


Figure 4: Standardized regression coefficients for different OP measures with selected PM components.