

Observational evidence of moistening the lowermost stratosphere via isentropic mixing across the subtropical jet

Jeffery Langille¹, Adam Bourassa¹, Laura L. Pan², Daniel Letros¹, Brian Solheim¹, Doug Degenstein¹,
5 Daniel Zawada¹

¹Institute of Space and Atmospheric Studies, University of Saskatchewan, Saskatoon, S7N 5E2, Canada

²National Center for Atmospheric Research, Boulder Colorado, 3090 Center Green Drive, CO 80301, USA

Correspondence to: Jeffery Langille (jeff.langille@usask.ca)

10 **Abstract.** Isentropic mixing across and above the subtropical jet is a significant mechanism for
stratosphere-troposphere exchange. In this work, we show new observational evidence on the role of
this process in moistening the lowermost stratosphere. The new measurement, obtained from the
Spatial Heterodyne Observations of Water (SHOW) instrument during a demonstration flight on the
NASA's ER-2 high-altitude research aircraft, captured an event of poleward water vapour transport,
15 including a fine scale (vertically $\sim < 1$ km) moist filament above the local tropopause in a high spatial
resolution two-dimensional cross-section of the water vapour distribution. Analysis of these
measurements combined with ERA5 reanalysis data reveals that this poleward mixing of air with
enhanced water vapour occurred in the region of a double tropopause following a large Rossby wave
breaking event. These new observations highlight the importance of high resolution measurements in
20 resolving processes that are important to the lowermost stratosphere water vapour budget.

1. Introduction

The distribution of water vapour in the upper troposphere and lower stratosphere (UTLS) region plays a
critical role in the physical processes that couple the region to Earth's climate. This is especially true
near the tropopause and in the lower stratosphere where the radiative sensitivity and climate impact of
25 water vapour is most significant (de Forster and shine, 1999; de Forster and Shine, 2002; Solomon et
al., 2010). Several studies have shown that trends in stratospheric water vapour affect long term and
recent climate trends (e.g., Solomon et al., 2010; Dessler et al., 2013; Banerjee et al., 2019). Due to the
strong gradient in the water vapour distribution across the tropopause and the fact that controlling
mechanisms often involve small scale processes, quantifying stratospheric water vapour and its trends
30 remains challenging for both observations and modelling (Kley et al., 2000; Gettelman et al., 2010;
Riese et al., 2012; Högberg, et al., 2019; Nedoluha et al., 2017).

In this work, we present a case study of high-spatial-resolution observations of UTLS water vapour that
has been enabled by new measurement technology. The measurements, using the Spatial Heterodyne
35 Observations of Water (SHOW) instrument on board the NASA ER-2 research aircraft during a
demonstration flight, captured an event of water vapour transport into the lowermost stratosphere across

the subtropical jet. Using ECMWF ERA-5 reanalysis product, we demonstrate the transport is driven by a large scale Rossby-wave breaking event and in association with the occurrence of a double tropopause. Together, the result demonstrates the importance of isentropic transport processes for the stratospheric water vapour budget, and the importance of high-resolution water vapour measurements in the UTLS.

In the middle-world, the layer of atmosphere between 310 K and 380-400 K, the isentropic surfaces intersect the tropopause in the subtropics (Holton, 1995 and reference therein). A ubiquitous feature here is a sudden drop in the thermal tropopause near the subtropical jet, known as the “tropopause break”. The layer poleward of the break is defined as the lowermost stratosphere and is strongly influenced by transport via isentropic mixing associated with Rossby wave breaking (e.g., Chen, 1995; Scott and Cammas, 2002). The role of isentropic mixing in the budget of lowermost stratosphere water vapour has been highlighted by both in-situ airborne and balloon observations (e.g., Dessler et al., 1995; Hintsa et al., 1998; Ray et al., 1999) and satellite measurements (e.g., Pan et al., 1997). A number of more recent studies have shown that the occurrence of a double tropopause is associated with Rossby-wave breaking and large-scale poleward transport. Chemical signatures of this type of transport has been observed in ozone and a number of other species (Pan et al., 2009; Homeyer et al. 2011; Ungermann et al., 2013). The observation reported in this work, however, represents the first such measurement of the 2-dimensional structure of the water vapour distribution.

The Spatial Heterodyne Observations of Water (SHOW) instrument is a new limb sounding satellite prototype originally designed and built at York university that is being further developed in collaboration between the University of Saskatchewan and the Canadian Space Agency to provide high vertical resolution (< 250 m) measurements of water vapour with high precision ($< \pm 1$ ppm) in the UTLS region. The instrument implements a limb imaging spatial heterodyne spectrometer (SHS) to obtain vertically resolved images of the water vapour spectrum using limb-scattered sunlight in a 2 nm spectral window centered on 1364.5 nm (Langille et al., 2017). Each SHOW measurement is inverted using the optimal estimation approach to obtain the vertical water vapour profile for each along-track sample (Langille et al., 2018).

The SHOW prototype flew several demonstration flights on NASA’s ER-2 airplane in July, 2017 in order to validate the measurement approach and to demonstrate the along-track sampling capabilities of the instrument. The SHOW measurement technique, retrieval approach and instrument performance was validated during an Engineering flight that was performed on July 17, 2018 (Langille et al., 2019). Comparison with co-located radiosonde measurements were found to be in excellent agreement, with differences of < 1 ppm above 15 km (near the thermal tropopause) and $< 2-5$ ppm below 15 km, due to both natural variability between the observations and measurement precision.

The analysis of this work focuses on another flight performed on July 21, 2017. The flight path (Figure 1), across several degrees of latitude off the west coast of North America from roughly 34° North to 48° North along the 124.5° West longitude line, was chosen in an attempt to observe potential mixing near the tropopause break in a region known to have a relatively frequent occurrence of double

80 tropopauses in summer season [Anel et al., 2008]. This mixing process often produce fine scale
filaments that are difficult for the satellite measurements and the large-scale models to resolve. The
result of the measurement indeed shows fine scale water vapour structures which reveals poleward
mixing of moist filaments in the region of a double tropopause, demonstrating the capability of the new
measurement technology in capturing the climate relevant water vapour transport process.

85 Meteorological fields determined from the ECMWF ERA-5 reanalysis are used to examine the
dynamical setting of the measurements. To support the process understanding, the Rossby-wave
breaking event that proceeds the observation is examined using isentropic maps of potential vorticity
(PV). Also examined to support the process identification is the nearly coincident retrievals of ozone
and water vapour from the AURA-MLS instrument.

90

2. The Spatial Heterodyne Observations of Water (SHOW) instrument

The SHOW instrument is spatial heterodyne spectrometer that has been optimized for limb viewing
observations of limb-scattered sunlight within a vibrational band of water. The limb is imaged
conjugate to the SHS interference fringes such that each interferogram row and subsequently each
95 spectral row in the image is mapped one-to-one to line of sight at the limb. Each sample provides a
vertically resolved spectral image with ~0.03 nm spectral resolution in a 2 nm window centered on
1364.5 nm. These vertically resolved spectral images are inverted using a non-linear optimal estimation
approach to obtain the vertical distribution of water vapour. The SHOW measurement technique and
retrieval algorithm is discussed in previous publications [Langille et al., 2018; Langille et al., 2019].

100

Instrument parameter	Specification
ER-2 airplane altitude	~21.34 km (70000 ft max)
Airplane speed	~760 km/h (maximum at altitude)
Field Of View	4° vertical by 5.1° horizontal
Temporal cadence	1Hz or 0.5 Hz
Spatial sampling at the surface	~1 km @ 1 Hz
Instantaneous angular vertical resolution	0.0176 degrees
Retrieval altitudes	13 km to 18 km
Retrieval grid	250 m
Mass	222.68 lbs [101 kg]
Power	465 W (peak), 200 W (average)
Dimensions	(0.465 m × 1.32 m × 0.38 m)
Spectral Resolution (unapodized)	~0.03 nm
Spectral range	1363 nm – 1366 nm

Table 1 SHOW ER-2 instrument parameters

105 The prototype SHOW instrument is optimized for observations from NASA's ER-2 airplane and is
mounted in a forward looking wing pod to observe a 4 degree vertical by 5.1 degree horizontal field of
view. Flying at an altitude of 21 km, the viewing geometry and optical configuration provides a vertical

sampling at the limb tangent point of 51 m to 171 m, increasing towards the ground tangent. The instrument utilizes anamorphic optics to average over the scene in the horizontal dimension; therefore, no horizontal (longitudinal) scene information is obtained. Using this configuration, retrievals are performed on a 250 m retrieval grid with no smoothing to provide an approximate vertical resolution of 250 m from 13 km up to 18 km with precisions better than 1 ppm. The instrument can be operated using sampling rates from 0.1 Hz up to 2 Hz mode; however, the measurements discussed in this paper are obtained using a sampling rate of 1Hz. This provides an approximate raw along track sampling of ~0.5 km at the surface (or ~0.005 degrees latitude). The primary instrument specifications are listed in Table 1 and the full instrument configuration is presented in Langille et al., 2019.

3. ER-2 flight track and the metrological background

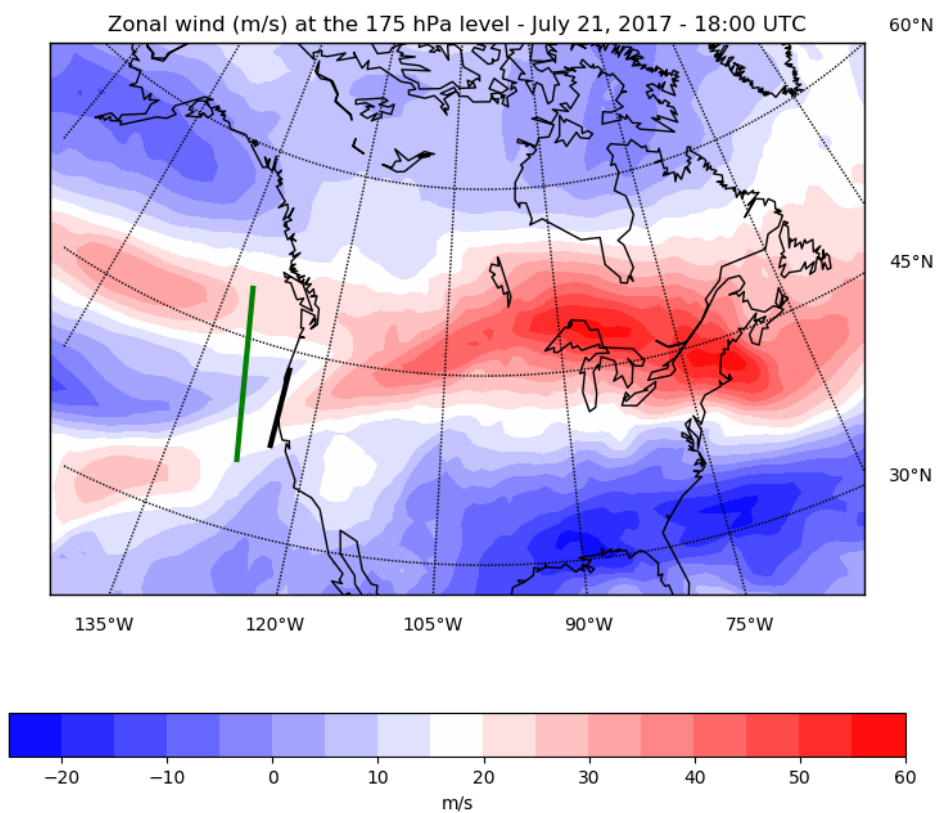
The measurements discussed in this paper were obtained during a flight on board the ER-2 performed on July 21, 2017 between 18:00 UTC and 19:00 UTC off the Western coast of North America. For analysis of the meteorological fields within this measurement window we utilize the ECMWF (ERA-5) reanalysis products, which are provided in 1-hour time steps on a 0.25 degree x 0.25 degree grid (latitude x longitude) at 37 pressure levels from 1 mbar up to 1000 mbar.

To provide the dynamical background of the flight track, the zonal wind at the 175-hPa level (approximately 13 km altitude) for the 18:00:00 UTC time step on July 21, 2017 is shown in Figure 1. The zonal wind field shows a double jet structure with the subtropical jet located near 35° North and the polar jet near 45° North. Both features have jet cores (with winds > 40 m/s) that are located over the Pacific Ocean. As the subtropical jet is shifting north, downstream in an anticyclonic flow, the two jets merge over North America. This configuration is formed with a large-scale Rossby wave-breaking event that developed over several days prior to the SHOW measurements, and is demonstrated in Figure 2 using the 380 K isentropic potential vorticity in 48-hour intervals over a six days period. To further connect with the ER-2 track, the potential vorticity on the 380 K and 400 K surfaces is shown in Figure 3 for the 21/07/2017 time step. Here, the separation between stratospheric and tropospheric air occurs near 6 PVU and 8 PVU, respectively (Kunz et al., 2011), which is noted by the white transition region between red (low PV air and tropospheric) and blue (high PV air and stratospheric) colors in the figures. A well-defined low PV structure consistent with tropospheric air is observed on the 380 K surface that extends from the Western Pacific up to the extratropical region over North America as a result of the wave breaking.

To characterize the dynamical structure vertically, the height of the thermal tropopause and the occurrence of the double tropopause is shown in Figure 4. Here the tropopause is derived using the ERA-5 temperature field using the lapse rate definition (WMO, 1957; 1992) with a modification. The modified version locates the first tropopause as the lowest level where the lapse rate drops below 2 K/km and remains below that value on average for 1 km (instead of 2 km). A second tropopause is identified if the lapse rate increases above 2K/ km (instead of 3 K/km) and then decreases again below 2 K/km. This is done to remedy the coarse vertical resolution of the of the temperature data. This type of

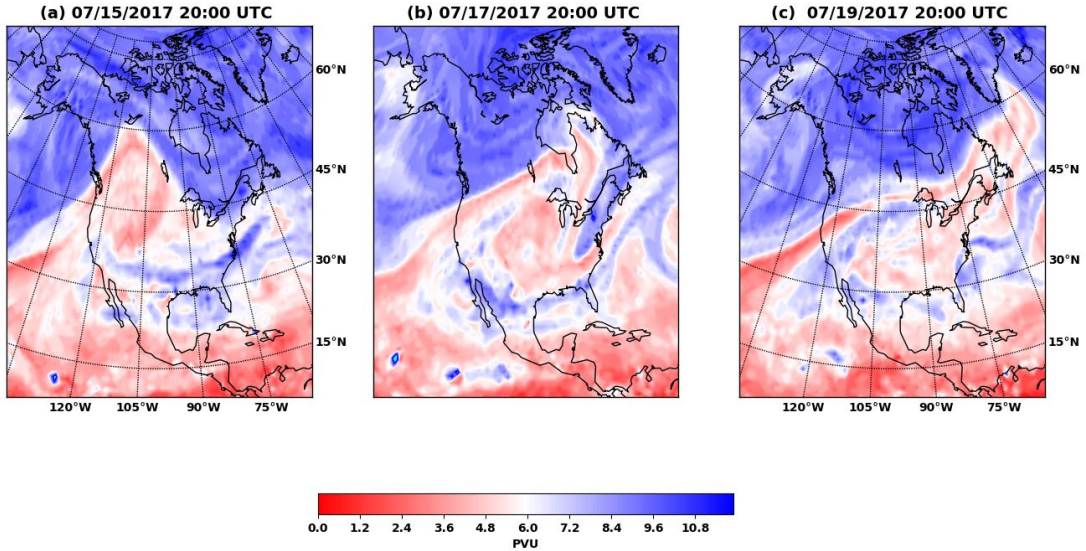
modification has been recognized to allow identification of the double tropopause derived from coarse resolution temperature data that is more consistent with high resolution observational data (Randel et al., 2007). In particular, our goal here is to highlight the spatial extent of the layered static stability structure as discussed in Sections 4-5. The height distribution of the primary tropopause is shown in Figure 4 (a). The distribution of the secondary tropopause, shown in Figure 4 (b), is consistent with the formation mechanism of a poleward wave breaking along the subtropical jet (Pan et al., 2009).
150 Although not shown here, the double tropopause features have varying strength from time-step to time-step on the days leading up to and after the flight. Occurrences of double tropopauses are common in this region with the highest occurrence rate in the winter [Swartz et al., 2014]; although, they are also
155 observed in the summer season [Anel et al., 2008].

The ER-2 flight track with the SHOW instrument for the 18:00 UTC to 19:00 UTC time period, as indicated in Figures 1, 3 and 4, includes the edge of a large double tropopause region that extends off the Western coast of the United States. For process verification using an independent measurement, we
160 identified a near co-located MLS satellite observation track, also marked on Figures 1, 3, and 4. Analysis of the SHOW and MLS measurements are discussed in Section 4 and Section 5 respectively.



165

Figure 1 Zonal wind on the 175 hPa surface for the 18:00 UTC, July 21, 2019 time step. The ER-2 flight track with SHOW measurement is shown as the black line and the closest measurement track of the AURA-MLS instrument is as the dark green.



170 Figure 2 Potential vorticity on the 380 K isentropic surface on 07/15/2017, 07/17/2017 and 07/19/2017 showing a Rossby wave breaking event several days prior to the SHOW measurements.

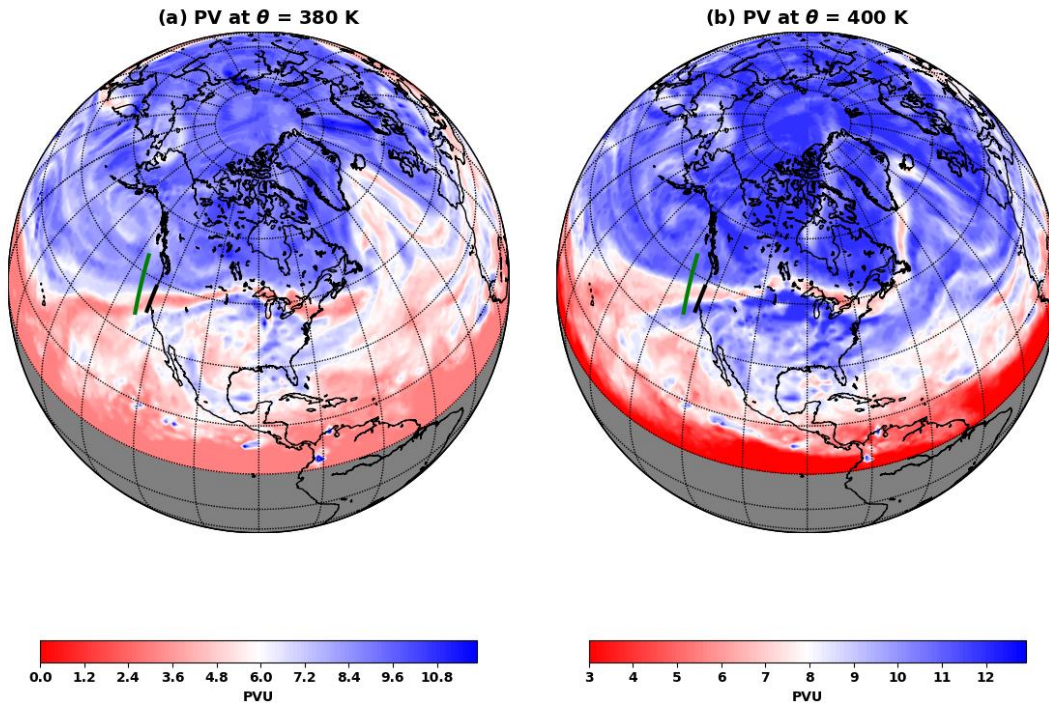
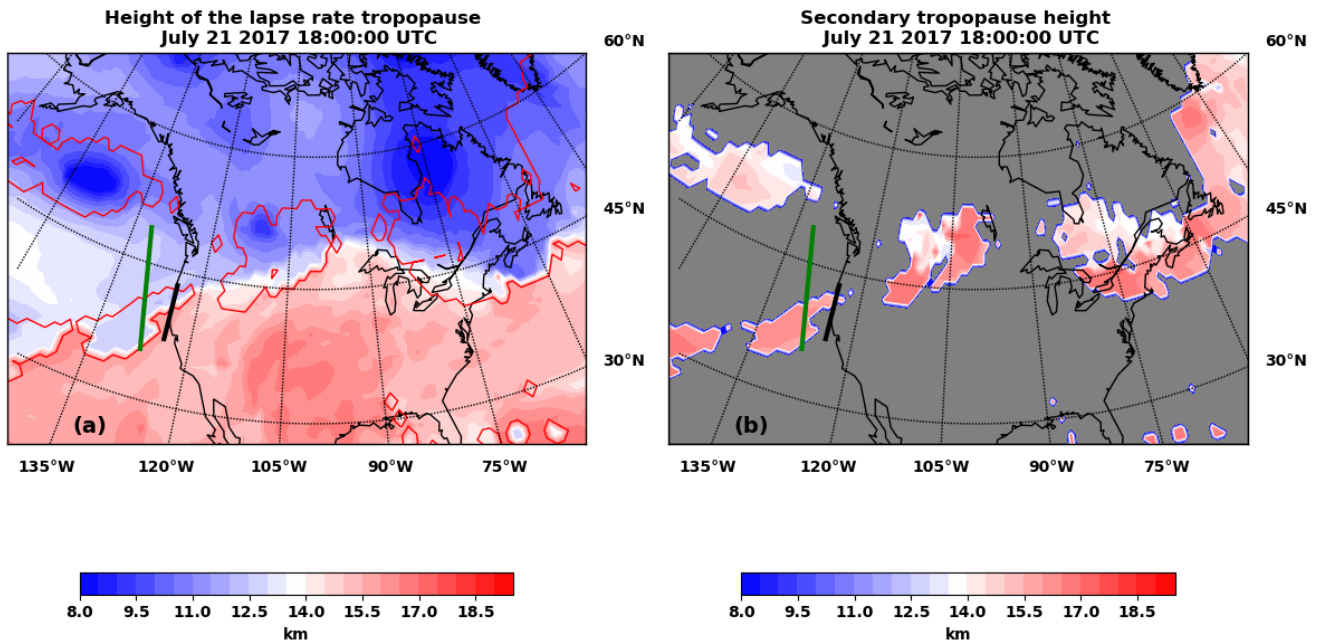


Figure 3 Potential vorticity on the 380 K (a) and 400 K (b) isentropic surfaces for the 18:00 UTC, July 21, 2019 time step. The measurement track of SHOW and MLS are shown in black and green respectively.



175

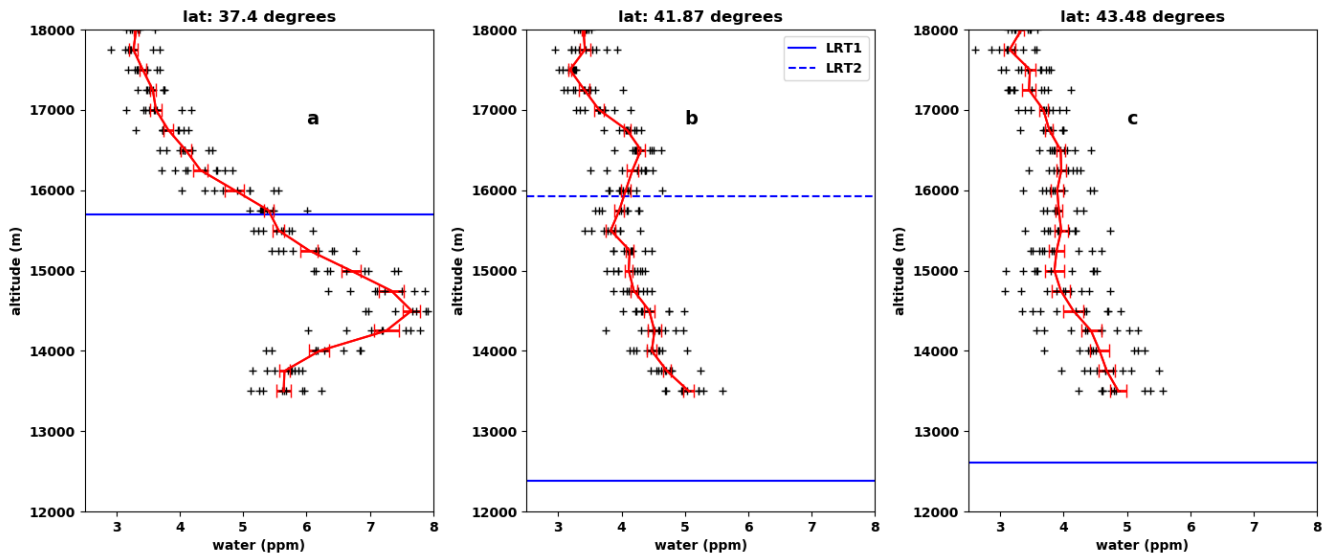
Figure 4 Height of the thermal tropopause (a) and the height of the secondary tropopause (b) for the 18:00 UTC time step. The red outline in (a) denotes the edge of the double tropopause regions shown in (b). The measurement track of SHOW and MLS are shown in black and green respectively.

4. SHOW Observations

180

We begin the analysis of SHOW water vapour measurements with three example profiles, shown in Figure 5 (a-c), which correspond to the latitude bins centered at 37.4 degrees North profiles, 41.87 degrees North and 43.48 degrees North respectively. Each example shows the set of 10 samples obtained within in each latitude bin (black) and the mean of the sample set (red). The observed variance in the water vapour distribution closely matches the 1-2 ppm measurement error predicted by propagating the noise through the retrieval. The red error bars show the precision for the averaged measurements which is less than < 0.3 ppm for most measurement altitudes. The upper and lower boundaries of the retrievals presented in this paper are 18 km and 13.5 km respectively. The altitude of the first and second lapse rate tropopause are shown as blue solid and dashed lines respectively.

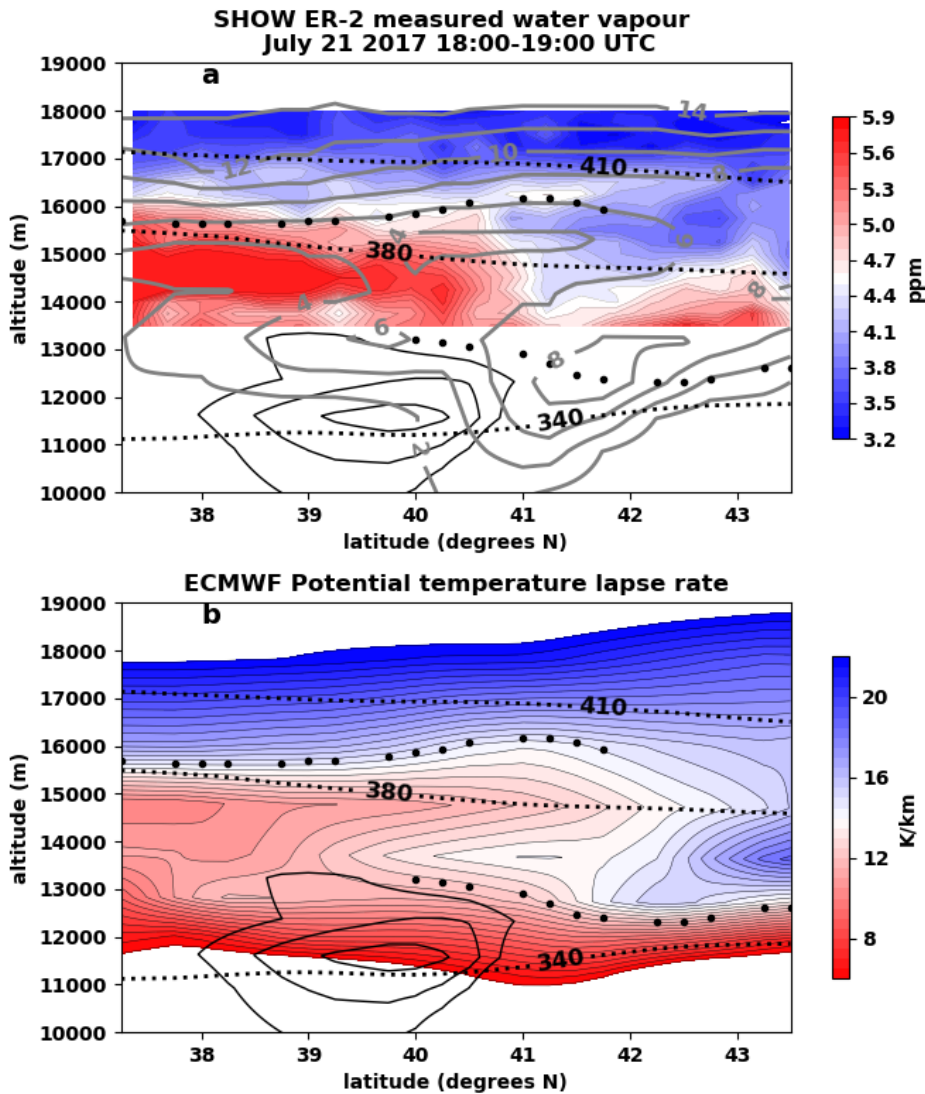
190



195 Figure 5 Example show profiles at 37.4° N (a), 41.87° N (b), and 43.48° N (c). All profiles lie closely along the 124.5° W in longitude. The black data points correspond to each of the individual profiles and the red line is the average of all latitude measurements in each altitude bin. The error bars show the precision of the averaged measurements. The first and second tropopause are identified in the Figure with the solid blue and dotted blue lines respectively.

200 For the 37.4° N measurement, the water vapour mixing ratio increases to a maximum near 14.5 km and then decreases rapidly with increasing altitude. The water vapour mixing ratio is also found to decrease slightly below 14.6 km. In the current analysis, the lower boundary of the retrieval is at 13.5 km and therefore doesn't capture the expected increase of water vapour at altitudes below 13.5 km. At 41.87° N a secondary peak in the water vapour profile is observed near 16.5 km. The amount of water vapour decreases slightly below this peak and then continues to steadily increase with decreasing altitude. Further along the flight track, at 43.48° N, the peak at 16.5 km has diminished and the amount of water vapour increases slowly with decreasing altitude.

205



210 Figure 6 SHOW measured water vapour profile (from 18:00 UTC to 19:00 UTC) (a) and the potential temperature lapse rate
 determined from the ECMWF reanalysis for the 19:00 UTC time step along the SHOW measurement track (b). The dark dotted
 line shows the location of the thermal tropopause. The grey contours show the potential vorticity, several zonal wind contours
 are shown in light grey, and the light black dotted line shows the 340 K, 380 K and 410 K isentropes respectively. The longitude is along
 the 124.5° W line and is nearly constant for the measurements.

215 All of the measured water vapour profiles obtained along the flight track are stacked and plotted as a
 single data curtain in Figure 6 (a). Along this track, SHOW obtained high vertical resolution (< 250 m)
 measurements of UTLS water vapour around the tropopause (13 km – 18 km). These measurements
 were then averaged by latitude to increase the signal to noise ratio, resulting in an along track sampling
 of approximately 0.32 degrees latitude (approximately 36 km at the ground). The result provides a high
 220 vertical resolution time (latitude) – height cross-section of the water vapour distribution along the flight

track. The dynamical fields, including zonal wind, potential temperature, potential vorticity and the derived tropopause locations from the ECMWF reanalysis (18:00 UTC time step) are overlaid on top of the water vapour measurements. The dynamical structure in the cross-section co-located with the flight track is further examined in Figure 6 (b), where the structure of the static stability is highlighted using the potential temperature lapse rate determined from the reanalysis data ($PTLR = \Delta\theta/\Delta z$). In both figures, the 340 K, 380 K and 410 K isentropes are shown as the thin dotted lines and the thick black dots identify the location of the thermal tropopause.

The 410 K isentrope lies entirely in the stratosphere (in the overworld) at all latitudes. Above the 410 K isentrope, the water vapour mixing ratio is observed to have values between 3.0 ppm – 4.0 ppm which defines the background water vapour mixing ratio in the lowermost stratosphere. Near the tropopause (in the middleworld), sharp spatial structures are resolved that have gradients on the order of 0.5 ppm per 250 m sampling bin. SHOW does not record the water vapour distribution below the 340 K isentrope since the retrieval cuts off at an altitude of 13.5 km. Discussion of this lower boundary is presented in Section 6.

The dynamical structure of the cross-section identifies the flight track extended over a well-defined tropopause break over the jet core, which is indicated by tight zonal wind contours (black) near 39.9° latitude. South of 39.9° latitude, the thermal tropopause sits at an altitude of close to 15.5 km. The region of 39.9° to 42° has a double tropopause structure. More importantly, the region of the tropopause break has layered structure of static stability, showing a layer of low stability, tropospheric like air mass extending poleward over the primary tropopause. Consistent with the stability structure, the PV field (grey) in the region shows weakened gradient. Overall, the dynamical background has a large similarity with the observed tropospheric intrusion from the HIRDLES satellite ozone case study (Fig. 1 in Pan et al., 2009).

Water vapour measurements from SHOW (Figure 6 a) recorded a layer with water vapour mixing ratio greater than 5 ppmv which is much higher than the stratospheric background, centered at roughly 14.6 km, and extends poleward to about 40.5° above the local primary tropopause. Note that the layer in between the two tropopauses where the PV distribution shows a weakened gradient between the 4 and 8 pvu contours, indicating a weakened tropopause (Pan et al., 2009; Kunz et al., 2011a; 2011b). Further poleward, the SHOW measurements captured a part of layer with enhanced water vapour above the primary tropopause between 41.5°N and 43.5° N. The moist layer is also co-located with the weakened PV gradient.

While the static stability structure of the cross section (Fig 6b) indicates a case of intrusion of low static stability air from the subtropical troposphere into the mid-latitude lowermost stratosphere, the quasi-isentropic transport indicated by the SHOW water vapour cross-section is not entirely matching the stability structure. Considering that the observation is made in the advent of the Rossby wave breaking event, it is physically reasonable that the dynamical field and chemical structure are no longer intact, which is a sign of an irreversible transport. It is also likely due to the ERA5 products available to the

analysis are given in much coarser vertical resolution compared to the SHOW measurements. The important point is that there is a clear process identification supported by both the water vapour measurement and the dynamical field analysis. We will see a similar shift in the analysis of the MLS water vapour and ozone data in the following section.

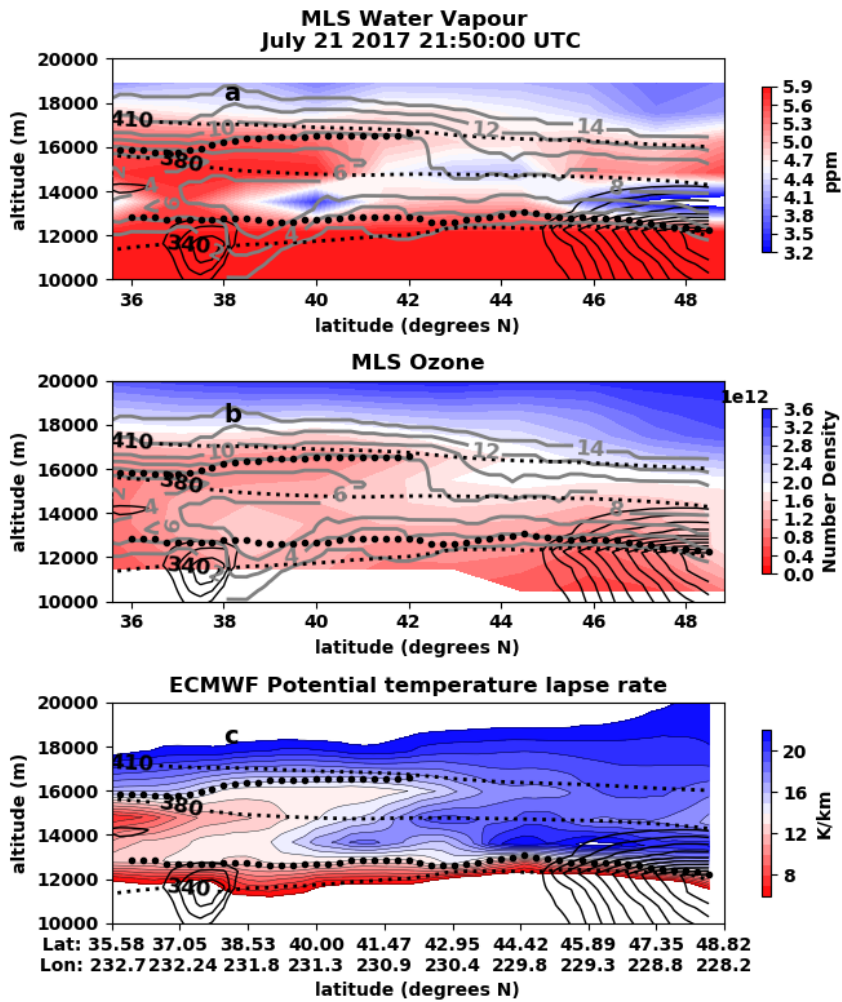
5. AURA MLS ozone and water vapour

For process verification, we examine measurements of water vapour and ozone that were obtained along a nearly coincident measurement track as shown in Figure 1 (solid green line). The AURA-MLS satellite instrument obtained measurements along this track at approximately 21:51 UTC - roughly 2 hours after the SHOW measurements were performed. Along this track, the MLS instrument sampled the same geophysical feature along a slightly different path with an along track sampling of 168 - 230 km and a vertical resolution of 1.3-3.2 km in the UTLS (316 hPa - 46 hPa). The MLS measurements have a coarser spatial resolution and the sampling is not exactly coincident with SHOW. Therefore, some differences are expected between the measurements. However, both sensors sample nearly the same region in the vicinity of the subtropical jet. Therefore, the MLS measurements are used to check for consistency with the meteorological picture in comparison with the SHOW measurements.

The AURA-MLS measurements of water vapour and ozone are shown in Figure 7 (a) and Figure 7 (b) respectively. The corresponding PTLR plot is shown in Figure 7 (c). For this comparison we use the 22:00 UTC time step of the ECMWF ERA5 reanalysis since it is the closest available time step to the MLS measurements which occurred at close to 21:50 UTC.

The distributions of the two trace species have a spatial structure that matches the general shape of the structure observed in the PTLR plot and PV contours. As expected, the vertical distributions of the trace species are basically inverted, with water vapour decreasing with increasing altitude and vice versa for ozone. Most importantly, a filamentary structure is observed that extends from 36 N to 42 N near 16 km and coincides with the presence of a double tropopause. Again, the feature matches a similar structure that is observed in the corresponding PTLR plot and PV contours at a lower altitude (~ 15 km).

Taking the sharpest gradient in the PTLR to define the boundary between tropospheric and stratospheric air we see that tropospheric air is primarily characterized with a PTLR < 12 K/km and stratospheric air is characterized with a PTLR > 12 K/km. Therefore, as was the case with the SHOW measurements, the observed filamentary structure with PTLR < 12 K/km is consistent with the intrusion of a low static stability air from the subtropical troposphere into the mid-latitude lower stratosphere. Mixing on the poleward side of the subtropical jet results in moistening and diminished ozone in the lowermost stratosphere.



300 Figure 7 MLS measured water vapour profile (a), ozone (b) and the potential temperature lapse rate determined from the ECMWF reanalysis for the 22:00 UTC time step along the MLS measurement track (c).

305 The spatial structures recorded by SHOW (Figure 5) and MLS (Figure 6) during this event are strikingly similar and are consistent with spatial structures in the meteorological fields. A direct comparison shows that both instruments recorded similar amounts of water vapour in the vicinity of the subtropical jet. They both capture the moist filament near 16 km, as well as, the dry regions near 13.5 km in the lower latitude portion of the measurement tracks. However, the coarser vertical resolution of MLS smears the vertical extent of the moist filament across a large vertical range of ~2 km.

310 Interestingly, the spatial structures observed in the MLS ozone and water vapour profiles are both shifted to a higher altitude relative to the PTLR and PV structures. Regardless, it is clear that the spatial variability observed in the MLS ozone and water vapour measurements, in light of the higher resolution

SHOW observations, is consistent with isentropic mixing on the poleward side of the subtropical jet in the presence of a double tropopause.

315

6. Discussions and Conclusions

The SHOW measurements presented in this paper reveal fine spatial structures with vertical scales < 1 km in the two-dimensional water vapour profile near the subtropical jet. The meteorological picture that was presented in Section 2 indicates that these structures are associated with isentropic transport and mixing due to the “stirring” of a Rossby wave breaking event in the days leading up to the flight. The high vertical resolution measurements of the two-dimensional water vapour distribution provide a detailed window into the mixing processes that is not completely resolved in the reanalysis dynamical fields or the AURA MLS measurements.

320

325

The vertical resolution of the measurements determined from the full-width half maximum of the retrieval averaging kernel is 250 m and the precision on the measurements is < 0.3 ppm. The accuracy of the SHOW measurements and retrieval approach was examined in Langille et al., 2018 and was found to be < 0.5 ppm for a wide range of water vapour variability and background aerosol. The approximate line-of-sight accuracy of the SHOW observations determined from the flight data is < 150 m in the 13 km -18 km region. Comparison with collocated radiosonde measurements obtained during an Engineering flight on July 17, 2019 also showed excellent agreement [Langille et al., 2019]. This provides reasonable level of confidence that the variability observed in Figure 6 is reflective of the true state of the atmosphere at the time of measurement.

330

335

However, we must also note that the SHOW retrieval is sensitive to the upper and lower cut-off of the retrieval. In this paper, the upper boundary was chosen to be roughly 2 km below the aircraft altitude. Above this level, the sensitivity to water vapour is significantly reduced as the path between the aircraft and tangent point decreases. On the other hand, the lower boundary was chosen to be several km below the lapse rate tropopause at the beginning of the measurements. Below this level, the optical depth becomes too large to accurately retrieve water vapour information [see Langille et al., 2018]. Ideally, this lower cutoff would actively chosen to track changes in the altitude of the lapse rate tropopause and allow retrievals several km below this altitude; however, the retrieval run was performed without a-priori knowledge of the meteorological picture. An active determination is also under development that utilizes the sensitivity of the Jacobian to changes in the water vapour profile to determine the appropriate cut-off [Langille et al., 2018]. In this paper, the lower boundary cut-off was fixed at 13.5 km using knowledge obtained from simulated retrievals in order to ensure the retrieval was not influenced by this effect.

340

345

350

The objective of the comparisons with the reanalysis data, as well as AURA MLS observations, is to identify the dynamical process that produced the measured water vapour structure. A number of factors can contribute to the differences and the offset displayed in the comparison. The reanalysis data has a

vertical resolution of 1-3 km in the UTLs region. Therefore, the reanalysis data set has been used to confirm that the observed variability is consistent with general meteorological picture and isentropic mixing associated with Rossby wave breaking near the subtropical jet. On the other hand, the MLS measurements provide a means to confirm consistency with the large scale spatial variability; although, the measurements are not expected to have exact agreement since the MLS measurements are made along a flight track that samples a slightly different region of the atmosphere. Also, the limb viewing geometry from a satellite is different from the aircraft and the AURA MLS measurements have a lower vertical resolution (1.3-3.2 km) compared to the SHOW measurements (250 m). The overall consistency supports the process identification despite the specific difference.

In conclusion, the high-spatial resolution measurements of a two-dimensional structure of the water vapour transport above and poleward of the subtropical jet provide unprecedented details of isentropic mixing across the tropopause break driven by Rossby wave breaking. The observed significant enhancement of water vapour in the lowermost stratosphere indicates that this type of transport is a significant process for stratospheric water vapour budget. The fine structure of the water vapour in the mixing process supports the importance of the high-resolution water vapour measurement capability. These measurements also serve to demonstrate the capabilities of the SHOW instrument and further advance the technical readiness of the instrument for future satellite deployment.

7. References

- 1 Añel, J. A., Antuña, J. C., De La Torre, L., Castanheira, J. M. and Gimeno, L.: Climatological features of global multiple tropopause events, *J. Geophys. Res. Atmos.*, doi:10.1029/2007JD009697, 2008.
- 2 Banerjee, A., Chiodo, G., Previdi, M., Ponater, M., Conley, A. J. and Polvani, L. M.: Stratospheric water vapour: an important climate feedback, *Clim. Dyn.*, doi:10.1007/s00382-019-04721-4, 2019.
- 3 Chen, P.: Isentropic cross-tropopause mass exchange in the extratropics, *J. Geophys. Res.*, doi:10.1029/95jd01264, 1995.
- 4 Dessler, A. E., Hints, E. J., Weinstock, E. M., Anderson, J. G. and Chan, K. R.: Mechanisms controlling water vapour in the lower stratosphere: “A tale of two stratospheres,” *J. Geophys. Res. Atmos.*, 100(D11), 23167–23172, doi:10.1029/95JD02455, 1995.
- 5 Dessler, A. E., Schoeberl, M. R., Wang, T., Davis, S. M. and Rosenlof, K. H.: Stratospheric water vapour feedback, *Proc. Natl. Acad. Sci. U. S. A.*, doi:10.1073/pnas.1310344110, 2013.
- 6 Forster, P. M. de F. and Shine, K. P.: Assessing the climate impact of trends in stratospheric water vapour, *Geophys. Res. Lett.*, doi:10.1029/2001gl013909, 2002.
- 7 Forster, P. M. D. F. and Shine, K. P.: Stratospheric water vapour changes as a possible contributor to observed stratospheric cooling, *Geophys. Res. Lett.*, doi:10.1029/1999GL010487, 1999.

- 390 8 Gettelman, A., Hegglin, M. I., Son, S. W., Kim, J., Fujiwara, M., Birner, T., Kremser, S., Rex, M., Añel, J. A.,
Akiyoshi, H., Austin, J., Bekki, S., Braesike, P., Brhl, C., Butchart, N., Chipperfield, M., Dameris, M., Dhomse, S.,
Garny, H., Hardiman, S. C., Jöckel, P., Kinnison, D. E., Lamarque, J. F., Mancini, E., Marchand, M., Michou, M.,
Morgenstern, O., Pawson, S., Pitari, G., Plummer, D., Pyle, J. A., Rozanov, E., Scinocca, J., Shepherd, T. G., Shibata,
K., Smale, D., Teyssdre, H. and Tian, W.: Multimodel assessment of the upper troposphere and lower stratosphere:
Tropics and global trends, *J. Geophys. Res. Atmos.*, doi:10.1029/2009JD013638, 2010.
- 395 9 Hintsä, E. J., Boering, K. A., Weinstock, E. M., Anderson, J. G., Gary, B. L., Pfister, L., Daube, B. C., Wofsy, S. C.,
Loewenstein, M., Podolske, J. R., Margitan, J. J. and Bui, T. P.: Troposphere-to-stratosphere transport in the
lowermost stratosphere from measurements of H₂O, CO₂, N₂O and O₃, *Geophys. Res. Lett.*,
doi:10.1029/98GL01797, 1998.
- 400 10 Högberg, C., Lossow, S., Khosrawi, F., Bauer, R., Walker, K. A., Eriksson, P., Murtagh, D. P., Stiller, G. P.,
Steinwagner, J. and Zhang, Q.: The SPARC water vapour assessment II: Profile-to-profile and climatological
comparisons of stratospheric $\delta d(H_2O)$ observations from satellite, *Atmos. Chem. Phys.*, doi:10.5194/acp-19-2497-
2019, 2019.
- 405 11 Holton, J. R., Haynes, P. H., McIntyre, M. E., Douglass, A. R., Rood, R. B. and Pfister, L.: Stratosphere-troposphere
exchange, *Rev. Geophys.*, doi:10.1029/95RG02097, 1995.
- 12 Homeyer, C. R., Bowman, K. P., Pan, L. L., Atlas, E. L., Gao, R. S. and Campos, T. L.: Dynamical and chemical
characteristics of tropospheric intrusions observed during START08, *J. Geophys. Res. Atmos.*,
doi:10.1029/2010JD015098, 2011.
- 13 Kley, D., et al. (2000), SPARC assessment of upper tropospheric and stratospheric water vapour, WCRP 113, World
Meteorol. Organ., Geneva, Switz.
- 14 Kunz, A., Konopka, P., Müller, R. and Pan, L. L.: Dynamical tropopause based on isentropic potential vorticity
gradients, *J. Geophys. Res.*, 116(D1), D01110, doi:10.1029/2010JD014343, 2011.
- 410 15 Kunz, A., Pan, L. L., Konopka, P., Kinnison, D. E. and Tilmes, S.: Chemical and dynamical discontinuity at the
extratropical tropopause based on START08 and WACCM analyses, *J. Geophys. Res. Atmos.*, 116(D24), n/a-n/a,
doi:10.1029/2011JD016686, 2011.
- 415 16 Langille, J. A., Letros, D., Zawada, D., Bourassa, A., Degenstein, D. and Solheim, B.: Spatial Heterodyne
Observations of Water (SHOW) vapour in the upper troposphere and lower stratosphere from a high altitude aircraft:
Modelling and sensitivity analysis, *J. Quant. Spectrosc. Radiat. Transf.*, 209, 137–149,
doi:10.1016/j.jqsrt.2018.01.026, 2018.
- 17 Langille, J. A., Solheim, B., Bourassa, A., Degenstein, D., Brown, S. and Shepherd, G. G.: Measurement of water
vapour using an imaging field-widened spatial heterodyne spectrometer, *Appl. Opt.*, 56(15),
doi:10.1364/AO.56.004297, 2017.

- 420 18 Langille, J., Letros, D., Bourassa, A., Solheim, B., Degenstein, D., Dupont, F., Zawada, D. and Lloyd, N. D.: Spatial heterodyne observations of water (SHOW) from a high-altitude airplane: characterization, performance, and first results, *Atmos. Meas. Tech.*, 12(1), 431–455, doi:10.5194/amt-12-431-2019, 2019.
- 19 Livesey, N. J., Read, W. G., Wagner, P. A., Froidevaux, L., Lambert, A., Manney, G. L., Valle, L. F. M., Pumphrey, H. C., Santee, M. L., Schwartz, M. J., Wang, S., Fuller, R. A., Jarnot, R. F., Knosp, B. W., Martinez, E. and Lay, R. R.: Earth Observing System (EOS) Aura Microwave Limb Sounder (MLS) version 4.2x level 2 data quality and description document., 2018.
- 425 20 Nedoluha, G. E., Kiefer, M., Lossow, S., Michael Gomez, R., Kämpfer, N., Lainer, M., Forkman, P., Martin Christensen, O., Jin Oh, J., Hartogh, P., Anderson, J., Bramstedt, K., Dinelli, B. M., Garcia-Comas, M., Hervig, M., Murtagh, D., Raspollini, P., Read, W. G., Rosenlof, K., Stiller, G. P. and Walker, K. A.: The SPARC water vapour assessment II: Intercomparison of satellite and ground-based microwave measurements, *Atmos. Chem. Phys.*, doi:10.5194/acp-17-14543-2017, 2017.
- 430 21 Pan, L., Solomon, S., Randel, W., Lamarque, J. F., Hess, P., Gille, J., Chiou, E. W. and McCormick, M. P.: Hemispheric asymmetries and seasonal variations of the lowermost stratospheric water vapour and ozone derived from SAGE II data, *J. Geophys. Res. Atmos.*, doi:10.1029/97jd02778, 1997.
- 435 22 Pan, L. L., Randel, W. J., Gille, J. C., Hall, W. D., Nardi, B., Massie, S., Yudin, V., Khosravi, R., Konopka, P. and Tarasick, D.: Tropospheric intrusions associated with the secondary tropopause, *J. Geophys. Res.*, 114(D10), D10302, doi:10.1029/2008JD011374, 2009.
- 23 Randel, W. J., Seidel, D. J. and Pan, L. L.: Observational characteristics of double tropopauses, *J. Geophys. Res. Atmos.*, doi:10.1029/2006JD007904, 2007.
- 440 24 Ray, E. A., Moore, F. L., Elkins, J. W., Dutton, G. S., Fahey, D. W., Vömel, H., Oltmans, S. J. and Rosenlof, K. H.: Transport into the Northern Hemisphere lowermost stratosphere revealed by in situ tracer measurements, *J. Geophys. Res. Atmos.*, doi:10.1029/1999JD900323, 1999.
- 25 Riese, M., Ploeger, F., Rap, A., Vogel, B., Konopka, P., Dameris, M. and Forster, P.: Impact of uncertainties in atmospheric mixing on simulated UTLS composition and related radiative effects, *J. Geophys. Res. Atmos.*, 117(D16), n/a-n/a, doi:10.1029/2012JD017751, 2012.
- 445 26 Scott, R. K. and Cammas, J. P.: Wave breaking and mixing at the subtropical tropopause, *J. Atmos. Sci.*, doi:10.1175/1520-0469(2002)059<2347:WBAMAT>2.0.CO;2, 2002.
- 27 Solomon, S., Rosenlof, K. H., Portmann, R. W., Daniel, J. S., Davis, S. M., Sanford, T. J. and Plattner, G. K.: Contributions of stratospheric water vapour to decadal changes in the rate of global warming, *Science* (80-.), doi:10.1126/science.1182488, 2010.
- 450 28 Ungermann, J., Pan, L. L., Kalicinsky, C., Olschewski, F., Knieling, P., Blank, J., Weigel, K., Guggenmoser, T., Stroh, F., Hoffmann, L. and Riese, M.: Filamentary structure in chemical tracer distributions near the subtropical jet following a wave breaking event, *Atmos. Chem. Phys.*, 13(20), 10517–10534, doi:10.5194/acp-13-10517-2013, 2013.

29 World Meteorological Organization (1957), *Meteorology: A three dimensional science*, WMO Bull., 6, 134– 138.

455