

# SUPPORTING INFORMATION

## On the annual variability of Antarctic aerosol size distributions at Halley research station

Thomas Lachlan-Cope<sup>1</sup>, David Beddows<sup>2</sup>, Neil Brough<sup>1</sup>, Anna E. Jones<sup>1</sup>, Roy M. Harrison<sup>2,+</sup>, Angelo Lupi<sup>3</sup>, Young Jun Yoon<sup>4</sup>, Aki Virkkula<sup>5,6</sup> and Manuel Dall'Osto<sup>7\*</sup>

<sup>1</sup>*British Antarctic Survey, NERC, High Cross, Madingley Rd, Cambridge, CB3 0ET, United Kingdom*

<sup>2</sup>*National Center for Atmospheric Sciences, University of Birmingham, Edgbaston, Birmingham, B15 2TT, United Kingdom*

<sup>3</sup>*Institute of Atmospheric Sciences and Climate (ISAC), National Research Council (CNR), via P. Gobetti 101, 40129, Bologna Italy*

<sup>4</sup>*Korea Polar Research Institute, 26, SongdoMirae-ro, Yeonsu-Gu, Incheon, KOREA 406-840*

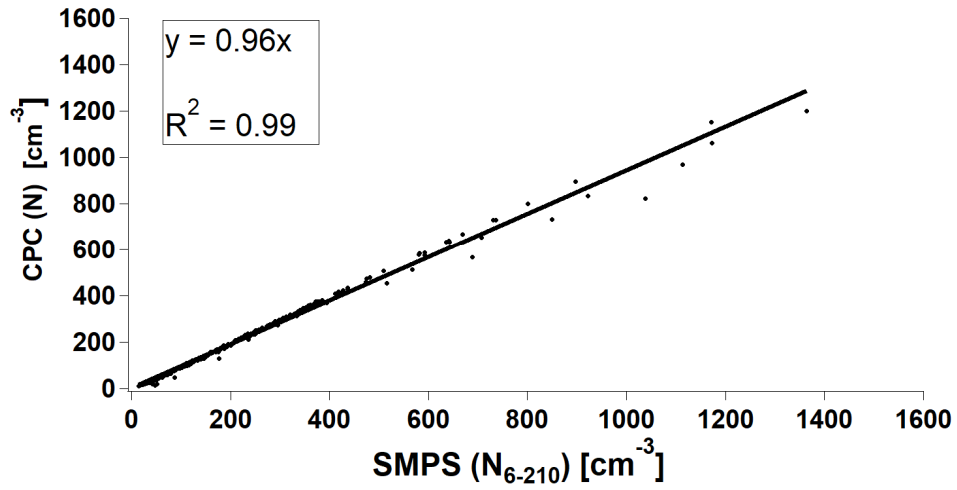
<sup>5</sup>*Institute for Atmospheric and Earth System Research, University of Helsinki Helsinki, FI-00014, Finland*

<sup>6</sup>*Finnish Meteorological Institute, FI-00101 Helsinki, Finland*

<sup>7</sup>*Institute of Marine Sciences, Passeig Marítim de la Barceloneta, 37-49. E-08003, Barcelona, Spain; corresponding author, email: dallosto@icm.csic.es*

<sup>+</sup>Also at: Department of Environmental Sciences/Centre of Excellence in Environmental Studies, King Abdulaziz University, PO Box 80203, Jeddah, 21589, Saudi Arabia.

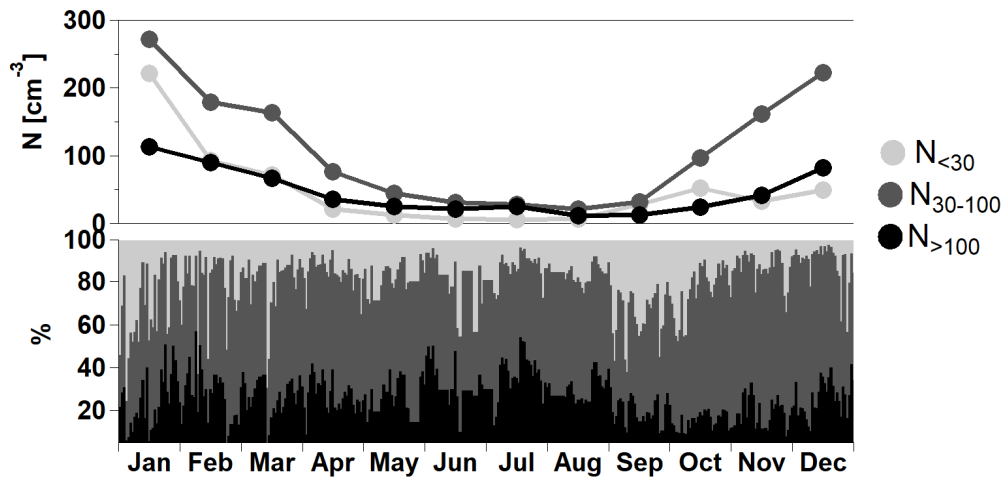
1  
2  
3  
4  
5  
6  
7



8  
9  
10  
11  
12  
13  
14  
15  
16  
17  
18  
19  
20  
21  
22  
23  
24

**Figure SI 1** Intercomparison between CPC (TSI 3010) and SMPS (TSI 3082)

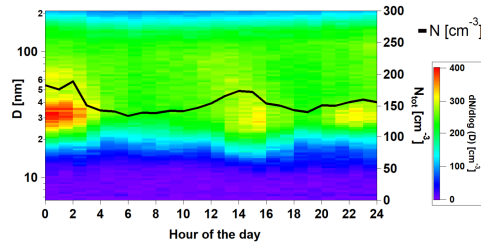
1  
2  
3  
4  
5  
6



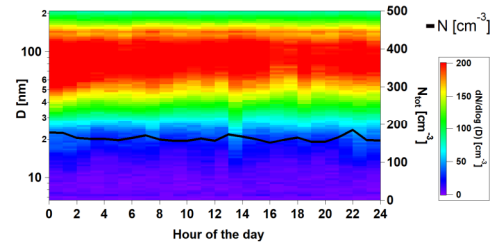
7  
8  
9  
10  
11  
12  
13  
14  
15  
16  
17  
18  
19  
20  
21  
22  
23  
24

**Figure SI 2** Temporal variation of different aerosol modes at Halley during the year 2015 for N<sub><30</sub>, N<sub>30-100</sub> and N<sub>>100</sub> particle number concentrations (cm<sup>-3</sup>).

1  
2  
3  
4  
5

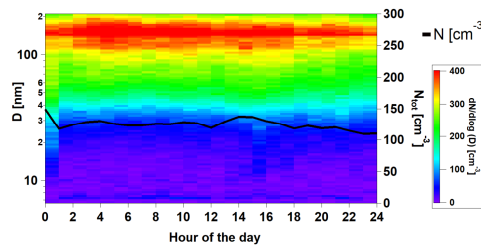


(a) Pristine\_30

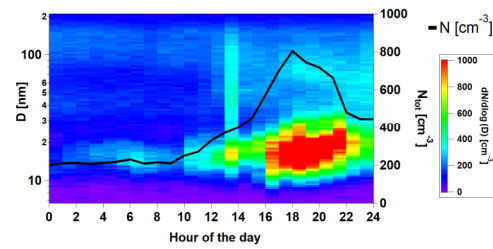


(b) Pristine\_75

6  
7

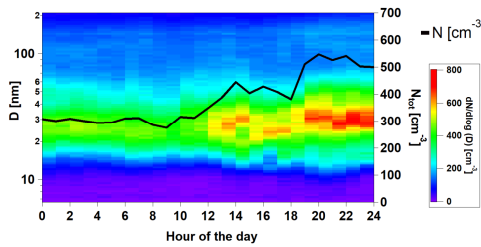


(c) Pristine\_160

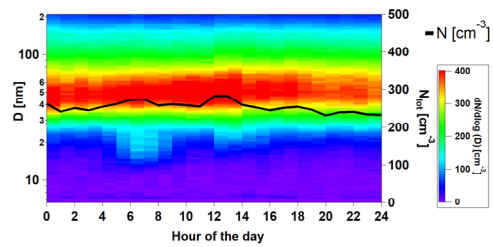


(d) Nucleation

8  
9

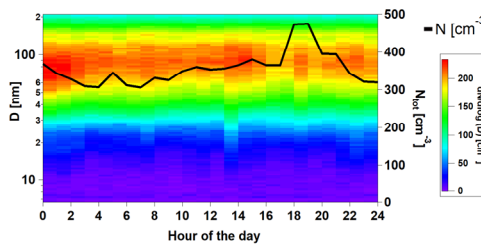


(e) Bursting

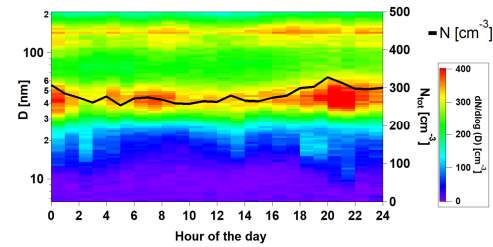


(f) Nascent

10  
11



(g) Aiken



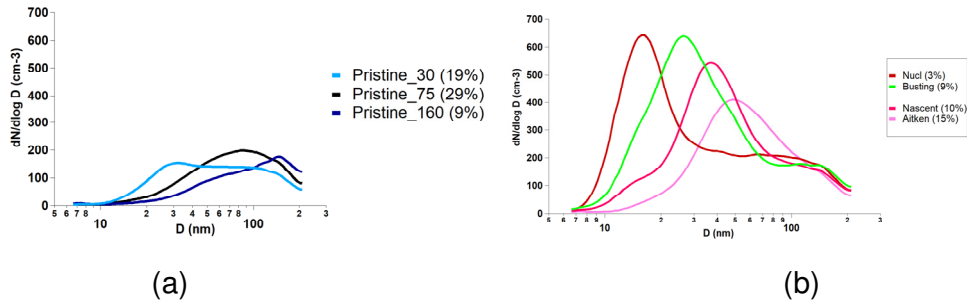
(h) Bimodal

12  
13  
14

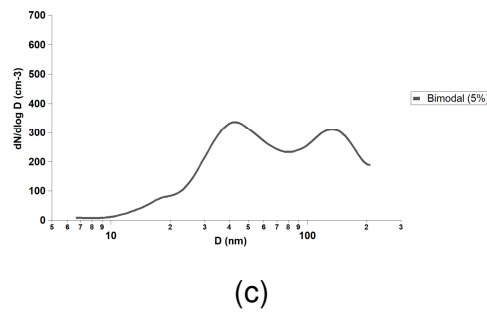
**Figure SI 3** Diurnal profiles of aerosol size categories for the 8 K-means categories.

17

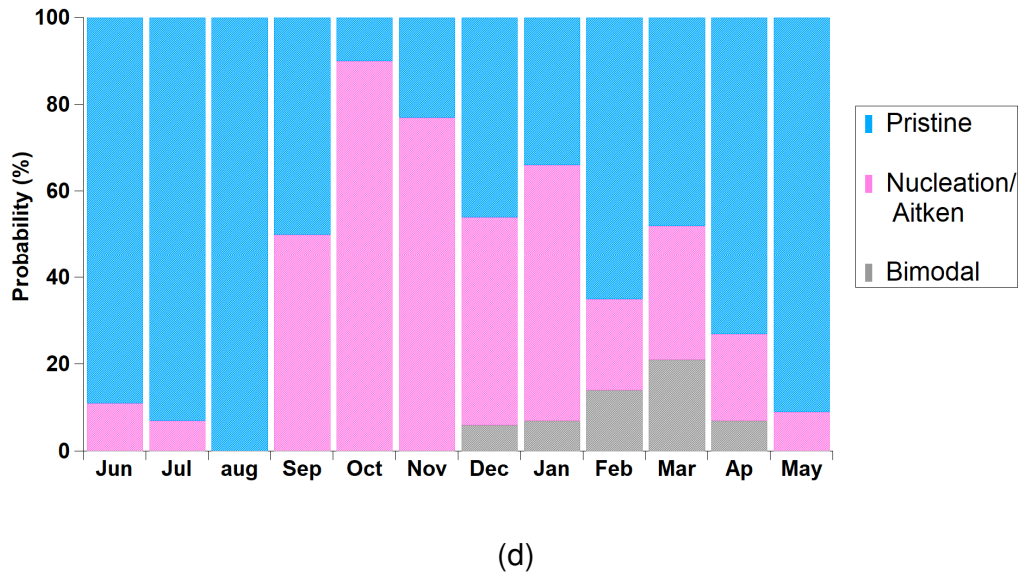
1  
2  
3  
4



5  
6



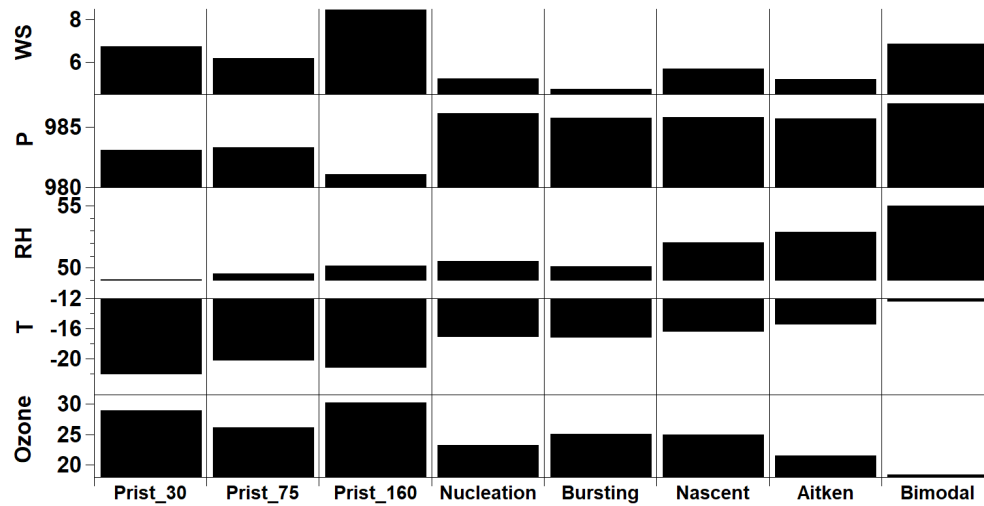
7  
8



9  
10  
11  
12  
13  
14  
15  
16

**Figure SI 4** Average daily aerosol distributions grouped for different broad categories: (a) pristine, (b) nucleation-Aitken, (c) bimodal and (d) annual temporal trend expressed as monthly means.

1  
2  
3



4

5

6 **Figure SI 5** Average values of selected parameters (ozone, Temperature T,  
7 Relative Humidity RH, Pressure P, Wind Speed WS) for the 8 K-means  
8 categories.

9

10

11

12

13

14

15

16

17

18

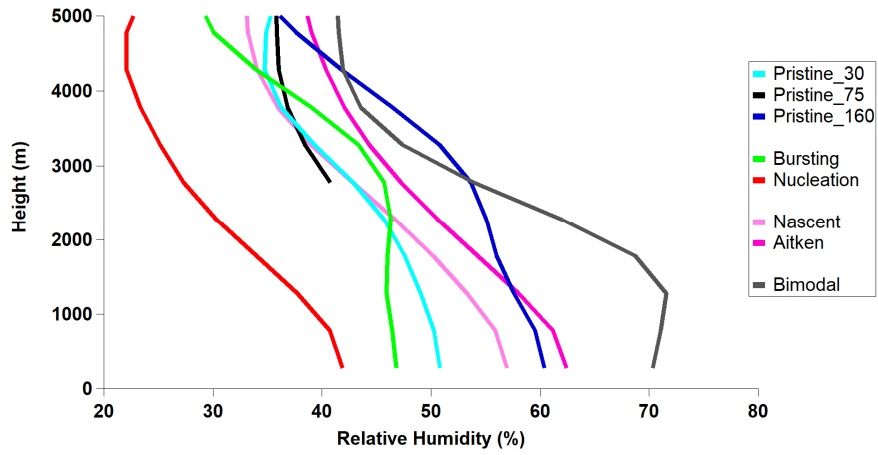
19

20

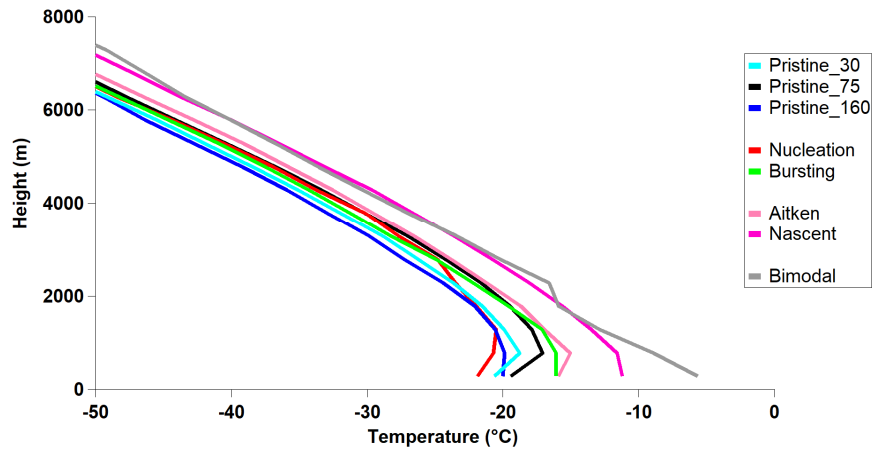
21

22

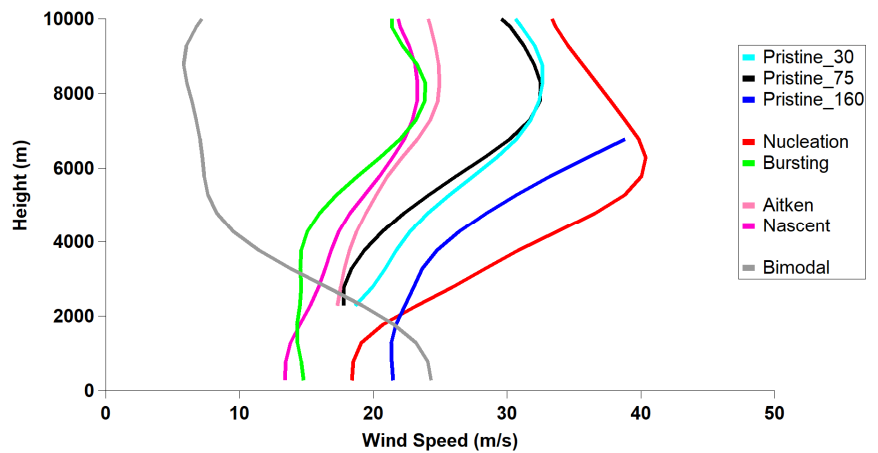
23



(a)



(b)



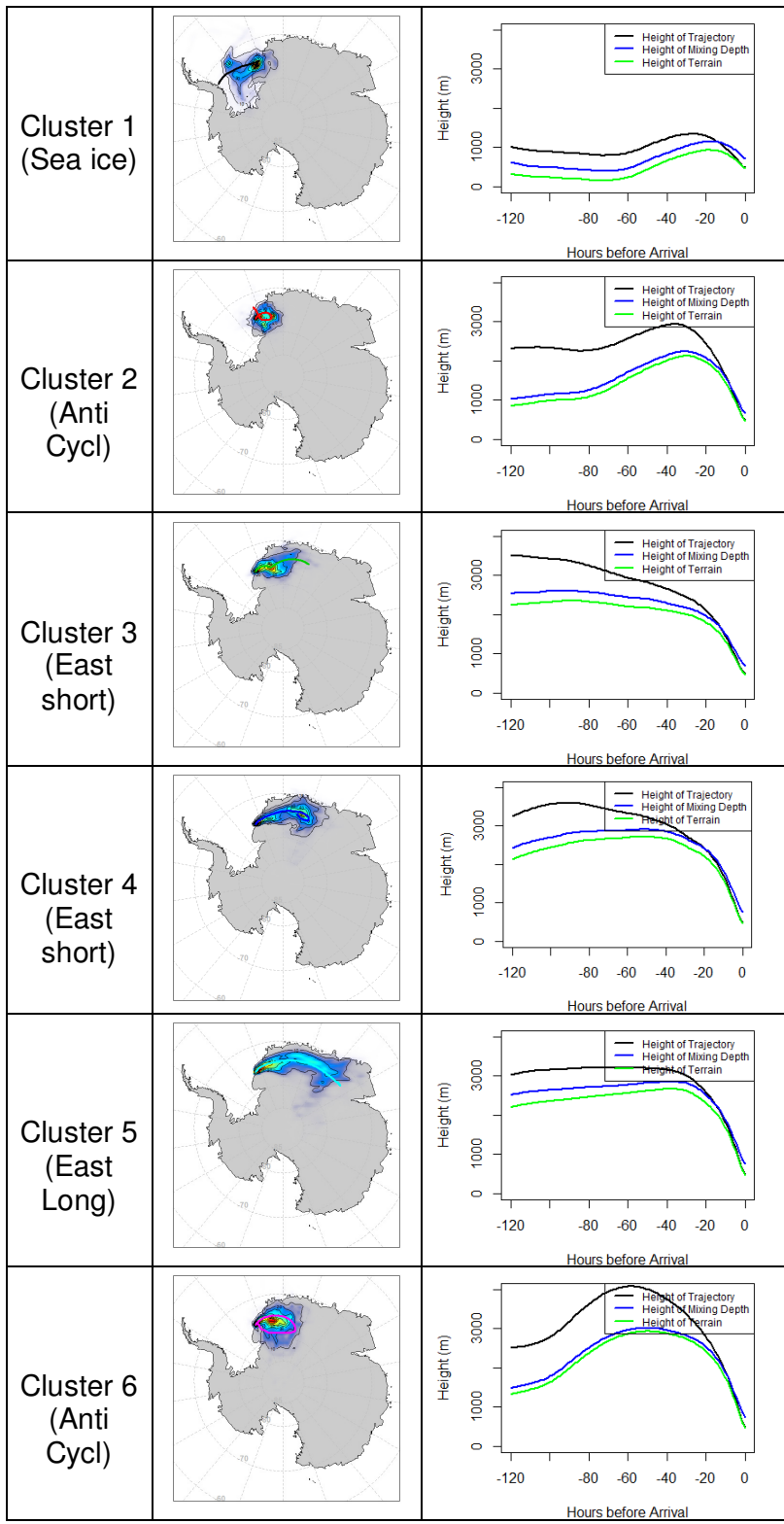
(c)

1  
2

3  
4

5  
6  
7

8 **Figure SI 6** Average vertical profiles of (a) Relative Humidity, (b)  
9 Temperature and (c) Wind speed for the 8 K-means aerosol categories



1

2 **Figure SI 7** Heights of the air mass back trajectory clusters arriving at Halley  
 3 station through 2015. Also shown are heights of the mixed layer depth and  
 4 terrain height, all in meters above sea level.