

Review of Second Revision of “Ice injected into the tropopause by deep convection – Part 2: Over the Maritime Continent” by Dion et al., 5 November 2020.

We would like to thank again Dr. Michelle Santee for the consequent work done during all the proofreading processes of this study. Our corrections and answers are detailed below. Reviewer comments are copied in blue. Our answers are in black. Main changes in the text are presented below in bold.

Abstract:

(1) L1-3: Results presented in a companion paper (Part I) have used ... and shown --> A companion paper (Part 1) used ... and showed

(2) L9: “binned” would be better than “averaged” here.

(1)-(2) : We changed the text according to your suggestions.

(3) L17: First, I find the term “absolute relative differences” confusing. Second, stating absolute values for the relative differences is inconsistent with what was done in the rest of the paper and is somewhat misleading. Third, see comment #2 in Section 7 about how these ranges are specified. Please enact changes consistently throughout the manuscript.

(3) : We change the text in the abstract L.17 of the previous version by the following text (L.15-17 of the new version) :

« The observational ΔIWC range between ΔIWC^{Prec} and ΔIWC^{Flash} , interpreted as the uncertainty of our model in estimating the amount of ice injected, is smaller over land (**where the two relative differences between ΔIWC^{Prec} and ΔIWC^{Flash} agree to within +7 to -22%**) than over ocean (**where relative differences are between +6 and -71%**) in the UT and TL. »

(4) L19: It would be good to add “, depending on the study zone” after “139%”.

(4) : We changed the text according to your suggestions.

Section 1:

(1) L36: With the edits made to the beginning of this paragraph, “CPT” is no longer defined. (2) L75: an other --> another

(1) : We changed the text according to your suggestions.

Section 2:

(1) L96: of tropopause which --> of the tropopause, which

(2) L97: Lower Stratosphere ... do --> lower stratosphere ... does

(3) L115-117: The awkward grammar and the redundancy in these sentences make them hard to read and confusing. I suggest instead: “The TRMM-3B42 product (version V7) is a multi- satellite precipitation analysis that extends the precipitation product through 2019 by merging microwave and infrared spaceborne observations, including TRMM measurements from 1997 to 2015.”

(4) L118: are provided --> is provided

(5) L124-126: In addition to some typos/grammar issues, this sentence gives the impression that the TRMM-3B42 data record is only 13 years long, which is not the case. I suggest re- writing as: “This was possible because of the combination of the precessing orbit of the TRMM satellite and the availability of precipitation estimates from the other satellites included in the TRMM-3B42 analysis during our 13-year study period.”

(1)-(5) : We changed the text according to your suggestions.

(6): L130-134: Although it is much clearer in this draft, I remain confused by aspects of the LIS description (e.g., how the 550×550 km region mentioned relates to the stated 3–6 km resolution of the LIS measurements), so I went to download the Christian et al. [2000] reference (LIS ATBD). The URL given in the reference section (L619-620) does not seem to point to an active site. However, I was able to obtain the LIS ATBD from

<https://eosps.nasa.gov/sites/default/files/atbd/atbd-lis-01.pdf>.

(7) I looked through the LIS ATBD only briefly and did not thoroughly read it, but I note that many of the values given in these lines (e.g., resolution at nadir and limb, detection efficiencies at noon and at night, latitude range) do not appear in that document. Clearly the authors have relied on another source of LIS information besides the referenced ATBD. If there is a published paper that contains relevant information, it should be cited here.

(6)-(7): We updated the link provided in the reference list by the following one: <https://eosps.gsfc.nasa.gov/sites/default/files/atbd/atbd-lis-01.pdf>, and remove the previous link (<http://thunder.msfc.nasa.gov/bookshelf/pubs/atbd/>. 2000). Furthermore, we added the following link in the text as reference of the information provided:

https://ghrc.nsstc.nasa.gov/lightning/overview_lis_instrument.html.

Thus, we verified and corrected the paragraph presenting TRMM-LIS as follow (L127 of the new manuscript version):

« The Lightning Imaging Sensor (LIS) aboard of the TRMM satellite measures several parameters related to lightning, including the number of flashes within a given time period. **Details are given in Christian et al. (2000), and, more recently, in the NASA website (https://ghrc.nsstc.nasa.gov/lightning/overview_lis_instrument.html), including how the raw measurements are processed to estimate the number of flashes (Flash), subject to a detection efficiency of the instrument of 69% at noon to 88% at night (lower during the day because of background illumination). The instrument detects lightning with storm-scale resolution of **5-10 km (5 km at nadir), and the observation range of the sensor is between 38° N and 38° S. The LIS on TRMM views a total area exceeding 580 km × 580 km at the cloud top.**** The LIS instruments obtained measurements between 1 January 1998 and 8 April 2015. To be consistent with the other parts of our study, we used the measurements only for DJF from 2004-2015. As LIS is on the TRMM platform, the measurements can be binned in 1-hour intervals of LT to obtain a full 24-hr diurnal cycle. The measurements could be further binned at either $0.25^\circ \times 0.25^\circ$ or at $2^\circ \times 2^\circ$ horizontal resolution to allow comparison with Prec from TRMM-3B42. »

(8) L148: I'm not sure exactly what is meant by the ERA5 “process” – data assimilation system?

(8): Indeed, « ERA5 “process” » would mean “data assimilation system”. To be clearer, we changed “process” in the text L.148 of the new version manuscript by “data assimilation system”.

(9) L154: radiances data --> radiance data (or, radiances data --> radiances)

(10) L157: Delete “by”.

(11) L163: Delete “and in the present study”; also, add “profiles” or “data” or something similar between “IWC_{ERA5}” and “have been degraded”.

(12) L164: the MLS vertical resolution of IWC_{MLS} --> the vertical resolution of IWC_{MLS}

(9)-(12): We changed the text according to your suggestions.

Section 4:

(1) L207: between Prec low values ($4-8 \text{ mm day}^{-1}$) and IWC_{MLS} large concentrations ($4-7 \text{ mg m}^{-3}$) --> between low values of Prec ($4-8 \text{ mm day}^{-1}$) and large values of IWC_{MLS} ($4-7 \text{ mg m}^{-3}$)

(2) L210: Delete the comma after “analysis”.

(3) L211-213: These two sentences (“From ...pixel.”) are fully redundant with the newly added sentence in L209-211 and should be deleted.

- (4) L216: with Prec value is --> with Prec values
- (5) L217: on the contrary --> in contrast
- (6) L236: section 2.4 --> section 3
- (7) L251: Figure --> figure
- (8) L256-257: It seems to me that the sentence about the low value of ΔIWC over the sea is out of place here. I think it would go better at the end of the previous paragraph, since what is currently the last sentence of that paragraph also discusses pixels with low values of ΔIWC .
- (9) L258: This sentence is missing essential information. I think the authors mean “when ΔIWC is large” and “when ΔIWC is small” (“small” is a more appropriate word than “weak”).
- (10) L259: Since this sentence begins “More precisely”, the implication is that it will elaborate further on the immediately preceding discussion. But this is not the case – the previous sentence talks about the duration of the increasing phase of the Prec diurnal cycle, whereas this sentence is about its amplitude. I would delete “More precisely”.
- (11) L262: IWC_{MLS} ... are --> IWC_{MLS} ... is
- (1)-(11) : We changed the text according to your suggestions.

Section 5:

- (1) L277: Flash takes --> Flash has (or, Flash takes --> Flash is characterized by)
- (1): We changed the text according to your suggestions.

(2) L300: The times when Flash and Prec reach their maxima are not the same as those given in the previous section (L284-285). I realize that the earlier estimates are based on Figs. 6b and 2d, whereas the numbers here are from the broader averages of Fig. 7, but it is still a bit confusing for the reader, so some words of clarification would help.

(2) : The sentence L. 284-285 of the previous manuscript version has been changed to be consistent with the range of values observed later in Fig. 7. Thus the range of value observed in Fig. 6b and Fig. 2d, include the range of value observed later Fig.7.

L. 280 of the new manuscript version:

«Over land, the **maxima of Flash are mainly observed in the range 15:00-18:00 LT, while maxima of Prec (Fig. 2d) are mainly observed over a longer range of maxima from 18:00 to 24:00 LT.** Coastal regions show similar hours of maximum of Prec and Flash, i.e between 00:00 LT and 04:00 LT although, over the West Sumatra Coast, diurnal maxima of both Prec and Flash happen 1–4 hours earlier (from 23:00-24:00 LT) than those of other coasts. »

We change L296 as follow :

« Over land, during the growing phase of the convection, Prec and Flash start to increase at the same time (10:00 LT – 12:00 LT) but Flash **reaches a maximum earlier (from 15:00 LT) than Prec (from 18:00 LT), consistently with the range of maximum hours observed Fig. 2d and Fig. 6b.**

(3) L352-353: In addition to a couple of other minor wording issues in this sentence, I don't think it is correct to characterize the decreasing phase of the diurnal cycle as “decreasing more rapidly” for Flash than for Prec. To address all of the issues, I suggest something along these lines: “However, because Flash is observed only in deep convective clouds, the decreasing phase of the Flash diurnal cycle is shorter than the decreasing phase of Prec.”

(3) : We changed the text according to your suggestions.

(4) L358-372: The discussion in this paragraph is confusing. The sentence starting in L360 notes that the Java Sea shows the largest diurnal maxima in Prec and Flash. The sentence starting in L364 marks the contrast with NAusSea, Bismarck Sea, and WSumSea, which display diurnal cycles with small amplitudes. It is then stated (L366-367) that “Java Sea and WSumSea present a similar

diurnal cycle of Prec and Flash, with Flash growing phase starting about 4 h earlier than that of Prec.” This seems to contradict the earlier statement contrasting the diurnal cycles of Java Sea and WSumSea. Perhaps WSumSea should be omitted from the list of regions with weak diurnal cycles. Moreover, while it is true that the difference in the timing of the onset of the growing phases of Flash and Prec is about 4 h for WSumSea, this sentence implies a similar timing difference for the Java Sea, but that is not what Fig. 9a seems to indicate (although the lengthy “plateau” in the diurnal cycle of Flash between about 10 and 18 LT makes it difficult to judge exactly when its growing phase should be considered to start).

We decided to suppress the following sentence comparing Java Sea and WsumSea L366 of the previous manuscript version: « Java Sea and WSumSea present a similar diurnal cycle of Prec and Flash, with Flash growing phase starting about 4 h earlier than that of Prec. »

Then, in L367-368 it is stated “China Sea also shows a diurnal maximum of Flash shifted by about 4 hours before the diurnal maximum of Prec”. The use of “also” and the 4-hour figure leads the reader to expect an apples-to-apples comparison, but of course the timing of the maximum in the diurnal cycle is not the same thing as the timing of the onset of the growing phase, and indeed the second half of the sentence – “but the time of the diurnal minimum of Prec and Flash is similar” – clearly shows that the behavior over the China Sea is much different, since the onset of the increasing phases for Flash and Prec coincide.

We suppressed the « also » in the sentence L 367-368 of the previous manuscript version.

Finally, the delay between the diurnal minimum in Flash and that in Prec over the NAusSea is estimated to be “more than 7 h” (L371), but it looks more like about 9 hours to me.

We changed « 7 » by « 9 » in the sentence L 371 of the previous manuscript version.

(5) L373: Flash and Prec increasing phase of convection start at the same time and increase --> the increasing phases of convection for Flash and Prec start at the same time and increase

(5) : We changed the text according to your suggestions.

(6) L376-377: The same comments as above for the differences in the onset of the growing phases of Flash and Prec of 4 h over the Java Sea and 7 h over NAusSea apply here too. In addition, the statement that the increasing phases of Flash and Prec start at the same time over the Bismarck Sea does not reflect the more complicated reality for the minimum in the Flash diurnal cycle discussed in L370-371.

(6) : We correct the sentence as follow L.372 of the new manuscript version:

« **The diurnal cycles of Flash and Prec have shown some time lag as** over North Australia Sea where the diurnal cycle of Flash is more than **9 hours ahead of the diurnal cycle of Prec.**»

The following sentence has been suppressed :

« . China Sea and Bismarck Sea present the same time of the onset of the Flash and Prec increasing phase »

Section 7:

(1) L422: Over Java, ΔIWC_{Prec} is given as 8.7 mg m⁻³ and ΔIWC_{Flash} as 8.1 mg m⁻³, hence their difference is 0.6, not 0.7 mg m⁻³.

(1) : We changed 0.7 by **0.6**, L.417 of the new manuscript version.

(2) L434: The range of $r_{Prec-Flash}$ summarized here for islands (–6 to –22%) does not include the value for Java (+6%), whereas the range summarized for seas (+6 to –71%) does include the value for Java Sea. I am puzzled by this inconsistency. I think that for both regions either the full range should be represented or the typical range excluding the outliers should be used, but in the latter

case the fact that Java / Java Sea are omitted needs to be made clear.

(2) : We changed the values L.434 of the previous manuscript version by the values including Java island as follow L.27-429 of the new version :

« ΔIWC^{Prec} and ΔIWC^{Flash} are more consistent to each other, both in the UT and in the TL, over islands (relative difference $r^{Prec-Flash} = +7$ to -22 %) than over seas ($r^{Prec-Flash} = +6$ to -71 %). »

(3) L444: in named --> is named

(3) : We changed the text according to your suggestions.

(4) L477-478: I have a couple of issues with the sentence “Amounts of ice injected deduced from observations and reanalysis show close absolute values over land in the UT and over land and sea in the TL but largely different over sea in the UT.” First, it’s not clear to me why the focus here is on “absolute values” when much of the discussion throughout Section 7 emphasizes relative differences (or perhaps they mean absolute values of relative differences). Second, I am not convinced that “show close absolute values” is a supportable statement based on the results in Fig. 11. While the observational and reanalysis ranges do overlap in most (but by no means all) locations except over the seas in the UT, as was noted in preceding sections, fairly large differences between the observational ΔIWC and ΔIWC_{CERAS} are not uncommon, and in some cases even ΔIWC^{Prec} and ΔIWC^{Flash} do not agree particularly well. I think a more appropriate statement here would be: “Amounts of injected ice deduced from observations and reanalysis are fairly consistent over land in the UT and over land and sea in the TL but are inconsistent over sea in the UT.”

(4): We changed the text according to your suggestions.

(5) L479: While it is true that over land “ r^{Total} is larger in the TL than in the UT”, over sea the upper end of the r^{Total} range in the TL (160%) is not greatly different from that in the UT (156%), according to the values quoted in L473-476 (I tried to check a few of these values by eyeballing Fig. 11 but didn’t get the exact values given in these lines, so the authors might want to double-check them again).

(5): We double-checked all the calculations of r^{Total} and the values presented previously are correct. We change the sentence L.479 of the previous manuscript version by the following one, L.474 of the new manuscript version :

« However, the impact of the vertical resolution on the estimation of ΔIWC is much larger in the TL than in the UT (r^{Total} is larger in the TL than in the UT) over land, but similar over sea. »

(6) L480: “At any considered level” should be “At both considered levels”, but to avoid repeating the same phrase at the beginning of two sentences in a row, I suggest that it simply be deleted here.

(6): We deleted the beginning of the sentence starting by “At any considered level” L.480 of the previous manuscript version, as suggested.

(7) L481: form --> from

(6)-(7): We changed the text according to your suggestions.

Section 9:

(1) L530: (TRMM), the number --> (TRMM), and the number

(2) L554: I think it would be good to emphasize here that the largest ΔIWC occurs over land. I suggest changing “are related to” to “are found over land and are shown to be related to”.

(1)-(2): We changed the text according to your suggestions.

(3) L555-556: See comment #2 in Section 7 about the ranges quoted for islands and seas.

(3): We change the sentence L.555 of the previous manuscript version by the following sentence

L.550-552 of the new manuscript version:

« ΔIWC^{Prec} is typically smaller than ΔIWC^{Flash} , with the two estimates differing up to -22% over land and up to -71% over sea, **excepted for Java and Java Sea, where the two estimates differ by $+7$ and $+6\%$, respectively.** »

(4) L557-558: The possibility that very low values of Flash over sea may contribute to the larger discrepancies between ΔIWC^{Prec} and ΔIWC^{Flash} there was not mentioned when these differences were first discussed in Section 7.1 (e.g., L434-435), so it should be added in those lines too. Also, it might be good to insert “per pixel” after “flashes day⁻¹”.

(4). We added “per pixel” after “flashes day⁻¹” L.554 of the new manuscript version.

We added the information about the very low values of Flash in the text L. 434 of the previous manuscript version, as follow, L.429-431 of the new manuscript version:

« The larger difference over seas is probably due to the larger contribution from stratiform precipitation to Prec over sea and to the very low values of Flash over seas ($<10^{-2}$ flashes day⁻¹ per pixel). »

(5) L559: difference between ΔIWC estimated from observations and from reanalysis --> differences between ΔIWC estimated from observations and that estimated from reanalysis

(6) L560-561: This sentence (“Among ... retained as inconsistent.”) doesn’t really make sense. I think it would be better to say something like: “In light of these relative differences, ΔIWC estimates from observations and reanalysis are found to be fairly consistent over land in the UT and over land and sea in the TL but inconsistent over sea in the UT.”

(7) L568: maximum value of ... range --> maximum values of ... ranges

(8) L569: and than 0.3 mg m⁻³ --> and more than 0.3 mg m⁻³

(9) L571: evaluated --> fully evaluated; strongest --> largest

(5)-(9) : We changed the text according to your suggestions.

We did other small changes :

L. 30, we changed “up to” by “through”.

L. 42, we changed “is focusing” by “focuses”.

L.57, we changed “those authors” by “Yang and Slingo (2001)” to be clearer.

L.85 we changed the sentence “This section presents the instruments and the reanalyses used for this study.” by “ This section presents the **observational and reanalysis datasets** used for this study”.

L. 89 we changed the sentence “the elevation” by “the elevation from Solar Radiation Data (SoDa, [http ...](#)”.

L.255 we changed “null”, by “zero”.

L. 289, we delated the url link already given previously, and changed by “SoDa elevation filter”.

Ice injected into the tropopause by deep convection – Part 2: Over the Maritime Continent

Dion Iris-Amata¹, Dallet Cyrille¹, Ricaud Philippe¹, Carminati Fabien², Dauhut Thibaut³, and Haynes Peter⁴

¹CRNM, Meteo-France - CNRS, Toulouse, 31057, France

²Met Office, Exeter, Devon, EX1 3PB, UK

³Max Planck Institute for Meteorology, Hamburg, Germany

⁴DAMTP, University of Cambridge, Cambridge, CB3 0WA, UK

Correspondence: iris.dion@umr-cnrm.fr

Abstract. The amount of ice injected into the tropical tropopause layer has a strong radiative impact on climate. **Results presented in a** companion paper (Part **I** ~~have~~ used) the amplitude of the diurnal cycle of ice water content (IWC) as an estimate of ice injection by deep convection and ~~shown~~ showed that the Maritime Continent (MariCont) region provides the largest injection to the upper troposphere (UT, 146 hPa) and to the tropopause level (TL, 100 hPa). This study focuses on the MariCont region and extends that approach to assess the processes, the areas and the diurnal amount and duration of ice injected over islands and over seas during the austral convective season. The model presented in the companion paper is again used to estimate the amount of ice injected (ΔIWC) by combining ice water content (IWC) measured twice a day by the Microwave Limb Sounder (MLS; Version 4.2) from 2004 to 2017, and precipitation (Prec) measurements from the Tropical Rainfall Measurement Mission (TRMM; Version 007) ~~averaged~~ binned at high temporal resolution (1 hour). The horizontal distribution of ΔIWC estimated from Prec (ΔIWC^{Prec}) is presented at $2^\circ \times 2^\circ$ horizontal resolution over the MariCont. ΔIWC is also evaluated by using the number of lightning events (Flash) from the TRMM-LIS instrument (Lightning Imaging Sensor, from 2004 to 2015 at 1-h and $0.25^\circ \times 0.25^\circ$ resolution). ΔIWC^{Prec} and ΔIWC estimated from Flash (ΔIWC^{Flash}) are compared to ΔIWC estimated from the ERA5 reanalyses (ΔIWC^{ERA5}) with the vertical resolution degraded to that of MLS observations ($\langle \Delta IWC^{ERA5} \rangle$). Our study shows that the diurnal cycles of Prec and Flash are consistent with each other in phase over land but different over offshore and coastal areas of the MariCont. The observational ΔIWC range between ΔIWC^{Prec} and ΔIWC^{Flash} , interpreted as the uncertainty of our model in estimating the amount of ice injected, is smaller over land (where the two ~~estimates~~ relative differences between ΔIWC^{Prec} and ΔIWC^{Flash} agree to within ~~6 to 22~~ +7 to -22%) than over ocean (where ~~absolute~~ relative differences are between ~~+6 and 71~~ +6 and -71%) in the UT and TL. The impact of the MLS vertical resolution on the estimation of ΔIWC is greater in the TL (difference between ΔIWC^{ERA5} and $\langle \Delta IWC^{ERA5} \rangle$) of 32 to 139 %, depending on the study zone) than in the UT (difference of 9 to 33%). Considering all the methods, in the UT, estimates of ΔIWC span 4.2 to 10.0 mg m⁻³ over land and 0.4 to 4.4 mg m⁻³ over sea, and in the TL estimates of ΔIWC span 0.5 to 3.9 mg m⁻³ over land and 0.1 to 0.7 mg m⁻³ over sea. Finally, based on IWC from MLS and ERA5, Prec and Flash, this study highlights that 1) at both levels, ΔIWC estimated over land ~~is~~ can be more than twice that estimated over sea, and 2) small islands with high topography present the largest ΔIWC (e.g., Java Island).

1 Introduction

The tropical tropopause layer (TTL) is widely recognised as a region of great importance for the climate system. The water vapour (WV) and ice cirrus clouds in this region have a strong radiative effect (e.g. Stephens et al., 1991). Furthermore the partitioning between WV and ice in the TTL is a consequence of dehydration processes taking place there and controlling the global distribution of stratospheric WV, with implications for climate (e.g. Forster and Shine 1997) and for stratospheric ozone chemistry (Stenke and Grewe, 2005). WV and ice crystals are transported ~~up to~~ through the tropopause layer by two main processes: a three-dimensional large-scale slow process (300-m month^{-1}), and a small-scale fast convective process (diurnal timescale) (e.g. Fueglistaler et al., 2009; Randel and Jensen, 2013). Many studies have already shown the impact of convective processes on the hydration of the atmospheric layers from the upper troposphere (UT) to the lower stratosphere (LS) (e.g. Liu and Zipser, 2005; Jensen et al., 2007; Dauhut et al., 2018; Dion et al., 2019). However, although within the tropical UT and LS the vertical distribution of water vapour is constrained by temperature, the transport of total water (WV and ice) by convection is still poorly quantified. The vertical distribution of water vapour in those layers is constrained by thermal conditions of the CPT (cold point tropopause) (Randel et al., 2006). Dion et al. (2019) have shown that air masses transported up to 146 hPa in the UT and up to 100 hPa in the tropopause layer (TL) have ice to total water ratios of more than 50% and 70%, respectively, and that ice in the UT is strongly spatially correlated with the diurnal increases of deep convection, while WV is not. Dion et al. (2019) hence focused on the ice phase of total water to estimate the diurnal amount of ice injected into the UT and the TL over convective tropical areas, showing that it is larger over land than over ocean, with maxima over land of the Maritime Continent (MariCont), the region including Indonesian islands. The present study ~~is focusing~~ focuses on the MariCont region in order to gain further understanding of small-scale processes impacting the diurnal injection of ice up to the TL.

The method used by Dion et al. (2019) to estimate convective injection of ice to the UT and TL was via estimation of the amplitude of the diurnal cycle of ice using twice daily (at 01:30 and 13:30 local time) ice water content (IWC) observations from the Microwave Limb Sounder (MLS) instrument and the full diurnal cycle of precipitation (Prec) measured by the Tropical Rainfall Measurement Mission (TRMM) instrument (at one hour resolution). The method first focuses on the increasing phase of the diurnal cycle of Prec (peak to peak from the diurnal Prec minimum to the diurnal Prec maximum) and shows that the increasing phase of Prec is consistent in time and in amplitude with the increasing phase of the diurnal cycle of deep convection, over tropical convective zones and during convective season. The amount of ice (ΔIWC) injected into the UT and the TL is estimated by relating IWC measured by MLS during the growing phase of the deep convection to the increasing phase of the diurnal cycle of Prec. Dion et al. (2019) conclude that deep convection over the MariCont region is the main process impacting the increasing phase of the diurnal cycle of ice in those layers.

The MariCont region is one of the main convective centers in the tropics, with the wettest troposphere and the coldest and driest tropopause (Ramage, 1968; Sherwood, 2000; Hatsushika and Yamazaki, 2001). Yang and Slingo (2001) have shown that, over the Indonesian area, the phase of the convective activity diurnal cycle drifts from land to coastlines and to offshore areas.

Even though ~~those authors~~ Yang and Slingo (2001) have done a comprehensive study of the diurnal cycle of precipitation and convection over the MariCont, the diurnal cycle of ice injected by deep convection up to the TL over this region is still not well understood. Millán et al. (2013) have tentatively evaluated the upper tropospheric diurnal cycle of ice from Superconducting Submillimeter-Wave Limb-Emission Sounder (SMILES) measurements over the period 2009-2010 but without differentiating land and sea over the MariCont, which caused their analysis to show little diurnal variation over that region. Dion et al. (2019) have 1) highlighted that the MariCont must be considered as two separate areas: the MariCont land (MariCont_L) and the MariCont ocean (MariCont_O), with two distinct diurnal cycles of the Prec and 2) estimated the amount of ice injected in the UT and the TL. Over these two domains, it has also been shown that convective processes are stronger over MariCont_L than over MariCont_O. Consequently, the amount of ice injected in the UT and the TL is greater over MariCont_L than over MariCont_O.

Building upon the results of Dion et al. (2019), the present study aims to improve their methodology by i) studying smaller study zones and by distinguishing between islands and sea within the MariCont, ii) comparing the sensitivity of our model to different proxies of deep convection and iii) comparing the amount of ice injected in the UT and the TL inferred by our model to that of ERA5 reanalyses. Based on space-borne observations and meteorological reanalyses, ΔIWC is assessed at a horizontal resolution of $2^\circ \times 2^\circ$ over 5 islands (Sumatra, Borneo, Java, Sulawesi and New Guinea) and 5 seas (West Sumatra Sea, Java Sea, China Sea, North Australia Sea, and Bismarck Sea) of the MariCont during the convective season (December, January and February, hereafter DJF) from 2004 to 2017. Consistently with Dion et al., (2019), ΔIWC will be first estimated from Prec derived from TRMM-3B42. An alternative estimate of ΔIWC based on the number of flashes (Flash) detected by the TRMM Lightning Imaging Sensor (TRMM-LIS), ~~an other~~ another proxy for deep convection as shown by Liu and Zipser (2008), is also provided. Finally, we will use IWC calculated by the ERA5 reanalyses from 2005 to 2016 to estimate ΔIWC in the UT and the TL over each study zone and compare it to ΔIWC estimated from Prec and Flash.

The observational datasets used in our study are presented in Sect. 2. Methodology is reviewed in Sect. 3. The amount of ice (ΔIWC) injected up to the TL estimated from Prec is evaluated in Sect. 4. Diurnal cycles of Prec and Flash are compared to each other over different areas of the MariCont in Sect. 5. Results of the estimated ΔIWC injected up to the UT and the TL over five islands and five seas of the MariCont are presented and compared with the ERA5 reanalyses in Sect. 6. Results are discussed in Sect. 7, and conclusions are drawn in Sect. 8. This paper contains many abbreviations and acronyms. To facilitate reading, ~~they are compiled~~ a complete specification is given in the Acronyms list.

2 Datasets

This section presents the ~~instruments and the reanalyses~~ observational and reanalyses datasets used for this study.

2.1 MLS Ice Water Content

The Microwave Limb Sounder (MLS) was launched on NASA's Earth Observing System Aura platform in 2004 (Waters et al., 2006). MLS follows a sun-synchronous near-polar orbit, obtaining daily near global coverage. Ascending (northbound)

portions of the orbit cross the equator at 13:30 local time (LT); descending portions of the orbit cross the equator at 01:30 LT. Among other products, MLS provides measurements of ice water content (IWC^{MLS} , mg m^{-3}). Although optimal estimation is used to retrieve almost all other MLS products, a cloud-induced radiance technique is used to derive IWC^{MLS} (Wu et al., 2008, 2009). Here we use version 4.2 IWC data, filtered following the recommendations of the MLS team described by Livesey et al. (2018). We select IWC^{MLS} during all austral convective seasons DJF between 2004 and 2017. MLS data processing provides IWC^{MLS} at 6 levels in the UTLS (82, 100, 121, 146, 177 and 215 hPa). We have chosen to study only two of the available levels: 146 hPa as representative of the lower part of the TTL (named UT for upper troposphere) and 100 hPa as representative of tropopause, which lies in the middle of the TTL (named TL for tropopause level). Note that the level at 82 hPa, representing the ~~Lower Stratosphere~~lower stratosphere, would have been also very interesting to study but ~~do~~does not provide enough significant measurements of IWC to achieve acceptable signal-to noise ratio. The resolution of IWC^{MLS} (horizontal along the path, horizontal perpendicular to the path, vertical) measured at 146 and 100 hPa is $300 \times 7 \times 4$ km and $200 \times 7 \times 5$ km, respectively. In our study, we consider 13 years of MLS data, which allows the IWC^{MLS} measurements to be averaged in bins of 2° (~ 220 km) zonal and meridional extent, over all study zones. The valid IWC range is $0.02\text{--}50.0$ mg m^{-3} at 100 hPa and $0.1\text{--}50.0$ mg m^{-3} at 146 hPa (Livesey et al., 2018). Typical single-profile precisions (i.e. random noise) are 0.10 mg m^{-3} at 100 hPa and $0.20\text{--}0.35$ mg m^{-3} at 146 hPa, and the accuracy (i.e. systematic error) is 100 % for values less than 10 mg m^{-3} at both levels. The fact that our study is based on 13-year averages of all observations within each $2^\circ \times 2^\circ$ bin implies that the uncertainty on the averages due to measurement precision is drastically reduced. On the other hand, the systematic error on the averages will be unchanged. Our analysis, based on the methodology developed in Dion et al. (2019), uses the difference between the maximum and the minimum of IWC obtained within 24 hours as an estimate of the amplitude of the diurnal cycle of IWC, and hence of the amount of ice injected in the TL and/or the UT. By considering the difference between the maximum and the minimum of IWC obtained within 24 hours, the associated systematic error decreases. This supposes that the systematic errors are ~~the same~~similar within each temporal bin within 24 hours.

2.2 TRMM-3B42 Precipitation

The Tropical Rainfall Measurement Mission (TRMM) was launched in 1997 and provided measurements of precipitation until 2015. The TRMM satellite carried five instruments, three of which (PR, TMI, VIRS) formed a complementary sensor suite for rainfall. TRMM had an almost circular orbit at 350 km altitude performing a complete revolution in one and a half hour. The ~~3B42 algorithm product (TRMM-3B42)~~TRMM-3B42 product (version V7) is a ~~multi-satellite precipitation analysis, created to estimate the precipitation and multi-~~satellite precipitation analysis that extends the precipitation product through ~~2019. The analysis merges 2019 by merging~~microwave and infrared spaceborne observations and included, including TRMM measurements from 1997 to 2015 (Huffman et al., 2007, 2010; Huffman and Bolvin, 2018). Precipitation from TRMM-3B42 (Prec) ~~are~~is provided at a 0.25° (~ 29.2 km) horizontal resolution, extending from 50° S to 50° N (<https://pmm.nasa.gov/data-access/downloads/trmm>, last access: April 2019). Details of the binning methodology of TRMM-3B42 are provided by Huffman and Bolvin (2018). The precipitation estimates do not distinguish between stratiform and convective precipitation and the implications of this will be discussed later. Work is currently underway ~~with NASA funding~~ to develop more appropriate

estimators for random error, and to introduce estimates of bias error (Huffman and Bolvin, 2018). In our study, Prec from
125 TRMM-3B42 was selected over the austral convective seasons (DJF) from 2004 to 2017 and at each location was binned into
1-hour intervals according to local time (LT). This was possible because of the ~~combinaison~~combination between the pre-
processing orbit of the TRMM satellite and the precipitation analysis from the other satellites included into TRMM-3B42 long
duration (13 years). Finally for each 1-hour interval of LT the data was averaged to a horizontal grid of $2^\circ \times 2^\circ$ to be compared
to IWC^{MLS} .

130 2.3 TRMM-LIS number of lightning flashes

The Lightning Imaging Sensor (LIS) aboard of the TRMM satellite measures several parameters related to lightning, including
the number of flashes within a given time period. Details are given in Christian et al. (2000), and, more recently, in the
NASA website (https://ghrc.nsstc.nasa.gov/lightning/overview_lis_instrument.html), including how the raw measurements are
processed to estimate the number of flashes (Flash), subject to a detection efficiency of the instrument of 69% at noon to
135 88% at night (lower during the day because of background illumination). The instrument detects lightning with storm-scale
resolution of 5-10 km (5 km at nadir), and the observation range of the sensor is between 38° N and 38° S. The ~~instrument~~
~~detects lightning with storm-scale resolution of 3-6 km (3 km at nadir, 6 km at limb) over a large region (550×550 km) of the~~
~~Earth's surface~~LIS on TRMM views a total area exceeding 580 km × 580 km at the cloud top. The LIS instruments obtained
measurements between 1 January 1998 and 8 April 2015. To be consistent with the other parts of our study, we used the
140 measurements only for DJF from 2004-2015. As LIS is on the TRMM platform, the measurements can be binned in 1-hour
intervals of LT to obtain a full 24-hr diurnal cycle. The measurements could be further binned at either $0.25^\circ \times 0.25^\circ$ or at 2°
 $\times 2^\circ$ horizontal resolution to allow comparison with Prec from TRMM-3B42.

2.4 ERA5 Ice Water Content

The European Centre for Medium-range Weather Forecasts (ECMWF) Reanalysis 5, known as ERA5, replaces the ERA-
145 Interim reanalyses as the fifth generation of the ECMWF reanalysis providing global climate and weather for the past decades
(from 1979) (Hersbach et al., 2018). ERA5 provides hourly estimates for a large number of atmospheric, ocean and land
surface quantities and covers the Earth on a 30 km grid with 137 levels from the surface up to a height of 80 km. Reanalyses
such as ERA5 combine a large number of observations (space-borne, air-borne, and ground-based) with short-range forecasts.
Our study uses the specific cloud ice water content (mass of condensate / mass of moist air) (IWC^{ERA5}) as representative of
150 non-precipitating ice. Precipitating ice, classified as snow water, is also provided by ERA5 but not used in this study because it
is of little relevance to convectively injected ice in the TTL. No direct observations of atmospheric ice content are provided to
the ERA5 ~~proecess~~data assimilation system, and IWC^{ERA5} is primarily determined within the forecast model by changes in the
analysed temperature (and at low levels, humidity) which is mostly driven by the assimilation of temperature-sensitive radiances
from satellite instruments. These determine IWC^{ERA5} through the model microphysics which allows ice supersaturation with
155 respect to ice (100-150% in relative humidity) but not with respect to liquid water. Although microwave radiances at 183 GHz
which are sensitive to atmospheric scattering induced by ice particles are assimilated, clouds and precipitation are not used as

control variables in the 4D-Var assimilation system and cannot be adjusted independently in the analysis (Geer et al., 2017). Furthermore whilst the modeled microwave radiances ~~data~~ are mainly sensitive to the larger ice particles such as those in the cores of deep convection (Geer et al., 2017), the sensitivity to cirrus clouds in ERA5 is strongly dependent on microphysical assumptions on the shape and size of the cirrus particles. Observations that affect the tropospheric stability or humidity, or the synoptic situation, can affect the upper level ice cloud indirectly, e.g. ~~by~~ changing the intensity of the convection will change the amount of outflow cirrus generated (Geer et al., 2017). A recent study of cloud ice observed by satellites and generated by re-analysis datasets (Duncan and Eriksson, 2018) has found that ERA5 is able to capture both seasonal and diurnal variability in cloud ice water but exhibits noisier and higher amplitude diurnal variability than borne out by multi-satellite estimates.

The present study uses the IWC^{ERA5} at 100 and 150 hPa averaged over DJF from 2005 to 2016 with one-hour temporal resolution. IWC^{ERA5} is compared to the amount of ice injected in the UT and the TL as estimated by the model developed in Dion et al. (2019) ~~and in the present study~~. IWC^{ERA5} ~~data~~ have been degraded along the vertical at 100 and 150 hPa ($\langle \Delta IWC^{ERA5} \rangle$) consistently with the ~~MLS~~ vertical resolution of IWC^{MLS} (5 and 4 km at 100 and 146 hPa, respectively) using a box function (see section 7.2). IWC^{ERA5} and $\langle \Delta IWC^{ERA5} \rangle$ will be both considered in this study. IWC^{ERA5} , initially provided in kg kg^{-1} , has been converted into mg m^{-3} using the temperature provided by ERA5 in order to be compared with IWC^{MLS} .

3 Methodology

This section summarizes the method developed by Dion et al. (2019) to estimate ΔIWC , the amount of ice injected into the UT and the TL. Dion et al. (2019) have presented a model relating Prec (as proxy of deep convection) from TRMM to IWC^{MLS} over tropical convective areas during austral convective season DJF. The IWC^{MLS} value measured by MLS during the growing phase of the convection (at $x = 01:30$ LT or $13:30$ LT) is compared to the Prec value at the same time x in order to define the correlation coefficient (C) between Prec and IWC^{MLS} , as follows:

$$C = \frac{IWC_x^{MLS}}{Prec_x} \quad (1)$$

The diurnal cycle of estimated IWC ($IWC^{est}(t)$) can be calculated by using C applied to the diurnal cycle of Prec ($Prec(t)$), where t is the time, as follows:

$$IWC^{est}(t) = Prec(t) \times C \quad (2)$$

The amount of IWC injected ~~up to~~ into the UT or the TL (ΔIWC^{Prec}) is defined by the difference between the maximum of IWC^{est} (IWC_{max}^{est}) and its minimum (IWC_{min}^{est}).

$$\Delta IWC^{Prec} = C \times (Prec_{max} - Prec_{min}) = IWC_{max}^{est} - IWC_{min}^{est} \quad (3)$$

185 where $Prec_{max}$ and $Prec_{min}$ are the diurnal maximum and minimum of Prec, respectively. Figure 1 illustrates the relationship
between the diurnal cycle of Prec and the two MLS measurements at 01:30 and 13:30 LT. The growing phase of the convection
is defined as the period of increase in precipitation from $Prec_{min}$ to $Prec_{max}$. The amplitude of the diurnal cycle is defined by
the difference between $Prec_{max}$ and $Prec_{min}$. In Fig. 1, because the growing phase of the illustrated convection is happening
during the afternoon, only the MLS measurement at 13:30 LT is used in the calculation of ΔIWC . IWC at 01:30 LT is not used
190 in that case.

4 Horizontal distribution of ΔIWC estimated from Prec over the MariCont

4.1 Prec from TRMM-3B42 related to IWC from MLS

In order to identify the main regions of injection of ice in the TL over the MariCont, Figure 2 presents different parameters asso-
ciated with this region: a) the name of the main islands and seas over the MariCont, b) the elevation (<http://www.soda-pro.com/web-services/>
195 [from the Solar Radiation Data \(SoDa\)](http://www.soda-pro.com/web-services/altitude/srtm-in-a-tile), <http://www.soda-pro.com/web-services/altitude/srtm-in-a-tile>, last access: June 2019),
c) the daily mean of Prec at $0.25^\circ \times 0.25^\circ$ horizontal resolution, d) the hour of the diurnal maxima of Prec at $0.25^\circ \times 0.25^\circ$
horizontal resolution, and e) the daily mean ($\bar{IWC} = (IWC_{01:30} + IWC_{13:30}) \times 0.5$) of IWC^{MLS} at 146 hPa at $2^\circ \times 2^\circ$
horizontal resolution. Several points need to be highlighted. Daily means of Prec over land and coastal regions are higher than
over oceans (Fig. 2c). Regions where the daily mean of Prec is maximum are usually surrounding the highest elevation over
200 land (e.g. over New Guinea) and near coastal regions (North West of Borneo in the China Sea and southern Sumatra in the
Java Sea) (Fig. 2b and c). Prec maxima are observed during the evening (18:00-00:00 LT) over land, during the night-morning
(00:00-06:00 LT) over the coasts, and during the morning-noon and to a lesser extent during the evening (09:00-12:00 LT
and 15:00-00:00 LT) over sea/ocean. These differences may be related to the diurnal variation of the land/sea breeze over the
course of 24 hours. The sea breeze during the day favours land convection at the end of the day when land surface temperature
205 is higher than oceanic surface temperature. During the night, the land surface temperature drops below the coastline sea sur-
face temperature, and the land breeze systematically favours the development of convection over coasts. These observations are
consistent with results presented by Qian (2008), who explained that high precipitation is mainly concentrated over land in the
MariCont because of the strong sea-breeze convergence, but also because of the combination with the mountain–valley winds
and cumulus merging processes. Amplitudes of the diurnal cycles of Prec over the MariCont will be detailed as a function of
210 island and sea in section 5. The location of the largest concentration of IWC^{MLS} ($3.5 - 5.0 \text{ mg m}^{-3}$, Fig. 2e) is consistent
with that of Prec ($\sim 12 - 16 \text{ mm day}^{-1}$) over the West Sumatra Sea, and over the South of Sumatra island. However, over
North Australia seas (including the Timor Sea and the Arafura Sea), we observed large differences between ~~Prec-low-values~~
[low values of Prec](#) ($4 - 8 \text{ mm day}^{-1}$) and [large values of](#) IWC^{MLS} ~~large-concentrations~~ ($4 - 7 \text{ mg m}^{-3}$).

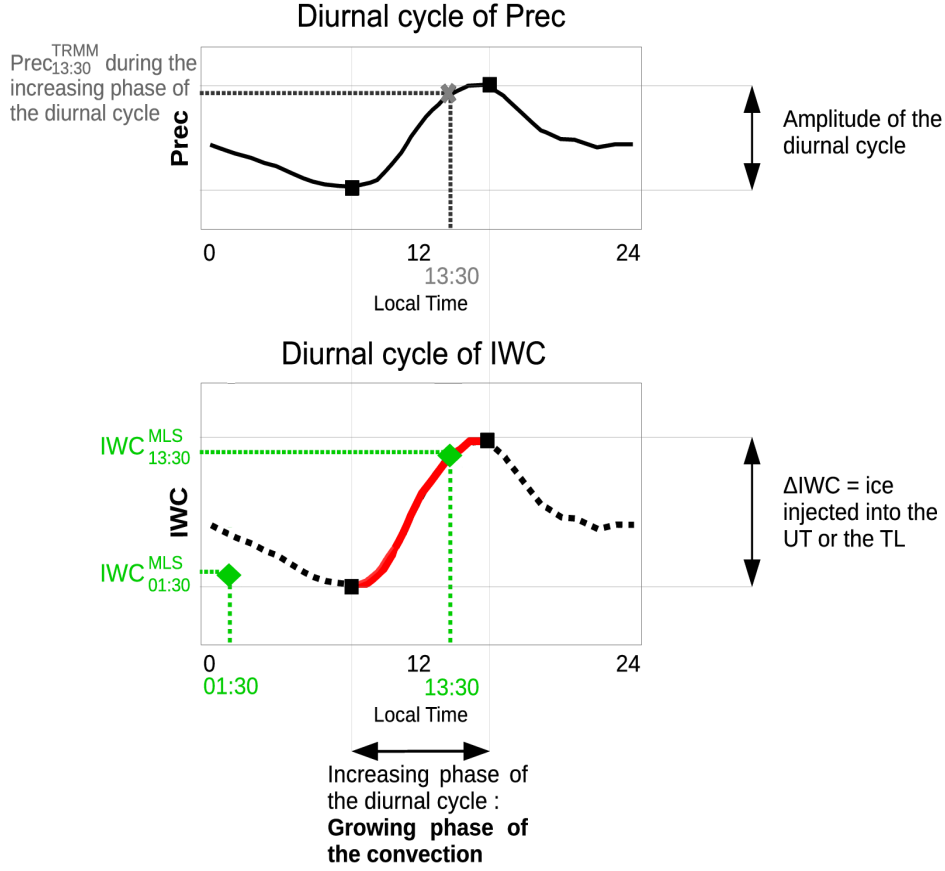


Figure 1. Illustration of the model developed in Dion et al. (2019) to estimate the amount of ice (ΔIWC) injected into the UT or the TL. Diurnal cycle of a proxy of deep convection (Prec) (a), diurnal cycle of ice water content (IWC) estimated from diurnal cycle of the proxy of deep convection (b). In red line, the increasing phase of the diurnal cycle. In black dashed line, the decreasing phase of the diurnal cycle. The green diamonds are the two IWC^{MLS} measurements from MLS. Grey thick cross represents the measurement of Prec during the growing phase of the convection ($Prec_x$), used in the model. Maximum and minimum of the diurnal cycles are represented by black squares. Amplitude of the diurnal cycle is defined by the differences between the maximum and the minimum of the cycle.

4.2 Convective processes compared to IWC measurements

215 Although TRMM horizontal resolution is $0.25^\circ \times 0.25^\circ$, we require information at the same resolution as IWC^{MLS} . The diurnal cycle of Prec obtained from TRMM analysis can be used for each $2^\circ \times 2^\circ$ pixel to deduce the duration of the increasing phase of Prec and hence the duration of the growing phase of the convection. ~~From the diurnal cycle of Prec in~~

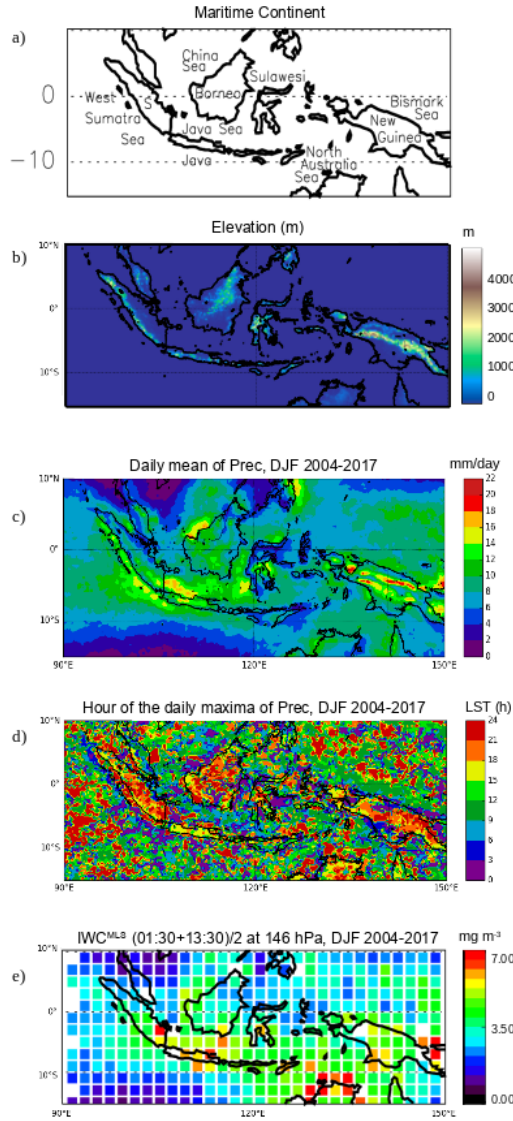


Figure 2. Main islands and seas of the MariCont (S is for Sumatra) (a), elevation from Solar Radiation Data (SoDa) (b); daily mean of Prec obtained from TRMM analysis over the Maritime Continent, averaged over the period of DJF 2004-2017 (c), hour (local solar time (LST)) of the diurnal maxima of Prec over the MariCont (d); daily mean $(01:30 \text{ LT} + 13:30 \text{ LT})/2$ of IWC^{MLS} at 146 hPa from MLS over the MariCont averaged over the period of DJF 2004-2017 (e). Observations are presented with a horizontal resolution of $0.25^\circ \times 0.25^\circ$ (b, c and d) and $2^\circ \times 2^\circ$ (e).

TRMM analysis, the duration of the increasing phase of Prec can be known for each $2^\circ \times 2^\circ$ pixel. The duration of the growing phase of the convection can then be defined from Prec over each pixel. Figures 3a and b present the anomaly (deviation from the mean) of Prec in TRMM-3B42 over the MariCont for the pixels where convection is in the growing phase at 01:30 LT and

13:30 LT, respectively. Anomalies are calculated relative to the average computed over the entire MariCont region. ~~Thus, red colors show regions that are~~ Both blue and red shadings highlight regions experiencing the growing phase of convection ~~and whose Prec value is~~, but while reds are associated with Prec values greater than the overall MariCont mean ~~at the respective time (01:30 LT or 13:30 LT), whereas blue colors show those regions where there is little precipitation compared to the overall~~
225 ~~MariCont mean during the growing phase of convection. Pixels can be~~, blues, in contrast, are associated with precipitation less than the regional mean. Pixels are represented in the panels for both local times when: 1) the onset of the convection is before 01:30 LT and the end is after 13:30 LT, or 2) the onset of the convection is before 13:30 LT and the end is after 01:30 LT. The gray color denotes pixels for which convection is not ongoing at 01:30 LT nor at 13:30 LT. Similar anomalies of IWC^{MLS} over the MariCont are shown in Figs. 3c and d, over pixels when the convection is in the growing phase at 01:30 LT and 13:30 LT,
230 respectively. Note that, within each $2^\circ \times 2^\circ$ pixel, at least 60 measurements of Prec or IWC^{MLS} at 13:30 LT or 01:30 LT over the period 2004-2017 have been selected for the average.

The Prec anomaly at 01:30 LT and 13:30 LT varies between -0.15 and $+0.15$ mm h^{-1} . The IWC^{MLS} anomaly at 13:30 LT and 01:30 LT varies between -3 and $+3$ mg m^{-3} . At 13:30 LT, the growing phase of the convection is found mainly over land. At 13:30 LT, over land, the strongest Prec and IWC^{MLS} anomalies ($+0.15$ mm h^{-1} and $+2.50$ mg m^{-3} , respectively) are
235 found over ~~the Java island~~ Java, and northern Australia for IWC^{MLS} . At 01:30 LT, the growing phase of the convection is found mainly over sea (while the pixels of the land are mostly gray), with maxima of Prec and IWC^{MLS} anomalies over coastlines and seas close to coasts such as the Java Sea and the Bismarck Sea. Three types of regions can be distinguished from Fig. 3: i) regions where Prec and IWC^{MLS} anomalies have the same sign (~~positive or negative either at 01:30 LT or 13:30 LT~~) (e.g. over Java, Borneo, Sumatra, the Java Sea and the coast of Borneo or the China Sea); ii) regions where Prec anomaly is positive and
240 IWC^{MLS} anomaly is negative (e.g. over the West Sumatra Sea); and iii) regions where Prec anomaly is negative and IWC^{MLS} anomaly is positive (e.g. over the North Australia Sea at 01:30 LT). Convective processes associated to these three types of regions over islands and seas of the MariCont are discussed in Sect. 6.

4.3 Horizontal distribution of ice injected into the UT and TL estimated from Prec

From the model developed in Dion et al. (2019) based on Prec from TRMM-3B42 and IWC from MLS and synthesized in
245 section 2.4.3, we can calculate the amount of IWC injected (ΔIWC) at 146 hPa (UT, Figure 4a) and at 100 hPa (TL, Figure 4b) by deep convection over the MariCont. In the UT, the amount of IWC injected over land ~~is on average larger~~ ($> 10 - 20$ mg m^{-3}) is on average larger than over seas (< 15 mg m^{-3}). Southern Sumatra, Sulawesi, northern New Guinea and northern Australia present the largest amounts of ΔIWC over land ($15 - 20$ mg m^{-3}). Java Sea, China Sea and Bismarck Sea present the largest amounts of ΔIWC over seas ($7 - 15$ mg m^{-3}). West Sumatra Sea and North Australia Sea present low values of
250 ΔIWC (< 2 mg m^{-3}). We ~~can~~ note that the anomalies of Prec and IWC during the growing phase over North Australia Sea at 13:30 LT are positive ($> \underline{0.2-0.15}$ mm h^{-1} , Fig. 3b and > 2.5 mg m^{-3} , Fig. 3d, respectively). In the TL, the maxima (up to 3.0 mg m^{-3}) and minima (down to $0.2 - 0.3$ mg m^{-3}) of ΔIWC are located within the same pixels as in the UT, although 3 to 6 times lower than in the UT. The decrease of ΔIWC with altitude is larger over land (by a factor 6) than over sea (by a factor 3). We ~~can~~ note that the similar pattern between the two layers comes from the diurnal cycle of Prec in the calculation of ΔIWC at

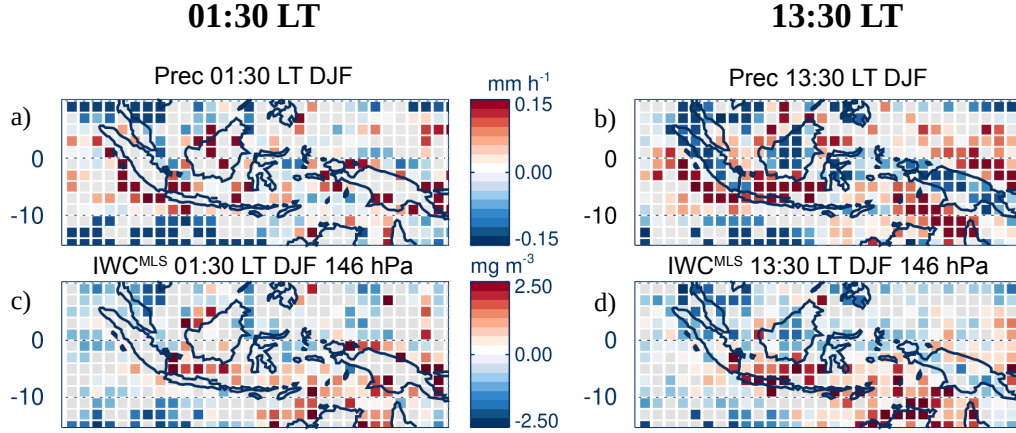


Figure 3. Anomaly (deviation from the mean) of Prec (a-b) and Ice Water Content (IWC^{MLS}) at 146 hPa (c-d), at 01:30 LT (left) and at 13:30 LT (right) over pixels where 01:30 LT and 13:30 LT are during the growing phase of the convection, respectively, averaged over the period of DJF 2004-2017. The gray color denotes pixels for which convection is not ongoing.

255 146 and 100 hPa. The differences in the magnitudes of the ΔIWC values at 100 and 146 hPa arise from the different amounts of IWC measured by MLS at those two levels. That is, similar ΔIWC patterns are expected between the two levels because, according to the model developed in Dion et al. (2019), deep convection is the main process transporting ice into the UT and the TL during the growing phase of the convection. Convective processes associated ~~to~~ with land and sea are further discussed in Sect. 6.

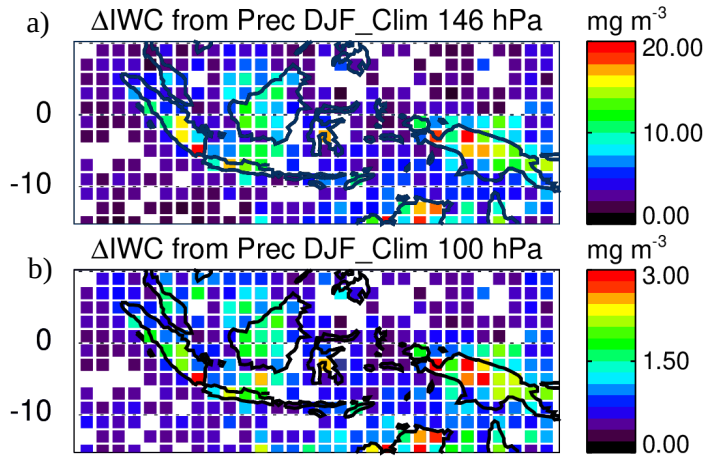


Figure 4. Daily amount of ice injected (ΔIWC) up to the UT (a) and up to the TL (b) estimated from Prec, averaged during DJF 2004-2017.

260 In order to understand better the role of deep convection in determining the largest values of ΔIWC per pixel, isolated pixels selected in Fig. 4a are presented separately in Figure 5a and f. This [Figure figure](#) shows the diurnal cycles of Prec in four pixels selected for their large ΔIWC in the UT ($\geq 15 \text{ mg m}^{-3}$, Fig. 5b, c, d, e), and the diurnal cycle of Prec in four pixels selected for their low ΔIWC in the UT (but large enough to observe the diurnal cycles of IWC between 2.0 and 5.0 mg m^{-3} , Fig. 5g, h, i, j). Pixels with low values of ΔIWC over land (Fig. 5g, h and i) present small amplitude of diurnal cycles of Prec ($\sim +0.5$ mm h^{-1}), with maxima between 15:00 LT and 20:00 LT and minima around 11:00 LT.

~~a) and f) Location of $2^\circ \times 2^\circ$ pixels where ΔIWC have been found higher than 15 mg m^{-3} (in Fig. 4) and where ΔIWC have been found between 2 and 5 mg m^{-3} (in Fig. 4), respectively. Diurnal cycle of Prec (solid line): (b, c, d, e) over 4 pixels where ΔIWC have been found higher than 15 mg m^{-3} (in Fig. 4); (g, h, i, j) over 4 pixels where ΔIWC have been found between 2 and 5 mg m^{-3} (in Fig. 4), during DJF 2004-2017. The diamond represents IWC^{MLS} during the increasing phase of the convection. The dashed line is the diurnal cycle of IWC estimated from the diurnal cycle of Prec and from IWC^{MLS} .~~

270 The pixel with low value of ΔIWC over sea (Fig. 5j) shows an almost ~~null-zero~~ amplitude of the diurnal cycle of Prec, with low values of Prec all day long ($\sim 0.25 \text{ mm h}^{-1}$). ~~Pixels with large values of ΔIWC over land (Fig. 5b, c, d, e) show longer duration of-~~

Over land, the increasing phase of ~~the diurnal cycle~~ Prec diurnal cycle is longer (from $\sim 09:00$ LT to $20:00 - 00:00$ LT) ~~than the increasing phase of Prec diurnal cycle over pixels with low values of when ΔIWC is large (Fig. 5b, c, d, e) than when ΔIWC is small (from 10:00 LT to 15:00 - 19:00 LT). More precisely, pixels, Fig. 5g, h, i). Pixels~~ labeled 1 and 2 over New Guinea (Fig. 5d and e) and the pixel over southern Sumatra (Fig. 5c) show amplitude of diurnal cycle of Prec reaching 1.0 mm h^{-1} , while the pixel over North Australia (Fig. 5b) shows lower amplitude of diurnal cycle of Prec (0.5 mm h^{-1}).

IWC^{MLS} during the growing phase of deep convection ~~and the diurnal cycle of IWC estimated from Prec are is~~ also shown on Fig. 5. For pixels with large values of ΔIWC , IWC^{MLS} is between 4.5 and 5.7 mg m^{-3} over North Australia, South Sumatra and New Guinea 1. For pixels with low values of ΔIWC , IWC^{MLS} is found between 1.9 and 4.7 mg m^{-3} . To summarize, large values of ΔIWC are observed over land in combination with i) longer growing phase of deep convection (> 9 hours) and/or ii) large diurnal amplitude of Prec ($> 0.5 \text{ mm h}^{-1}$). However, as IWC^{MLS} ranges overlap for the high and low ΔIWC , no definitive conclusion about the relationship between IWC^{MLS} and ΔIWC can be drawn.

285 In the next section, we estimate ΔIWC using another proxy of deep convection, namely Flash measurements from LIS.

5 Relationship between diurnal cycle of Prec and Flash over MariCont land and sea

Lightning is created in cumulonimbus clouds when the electric potential energy difference is large between the base and the top of the cloud. Lightning can appear at the advanced stage of the growing phase of the convection and during the mature phase of the convection. For these reasons, in this section, we use Flash measured from LIS during DJF 2004-2015 as another proxy of deep convection in order to estimate ΔIWC (ΔIWC^{Flash}) and check the consistency with ΔIWC obtained with Prec (ΔIWC^{Prec}).

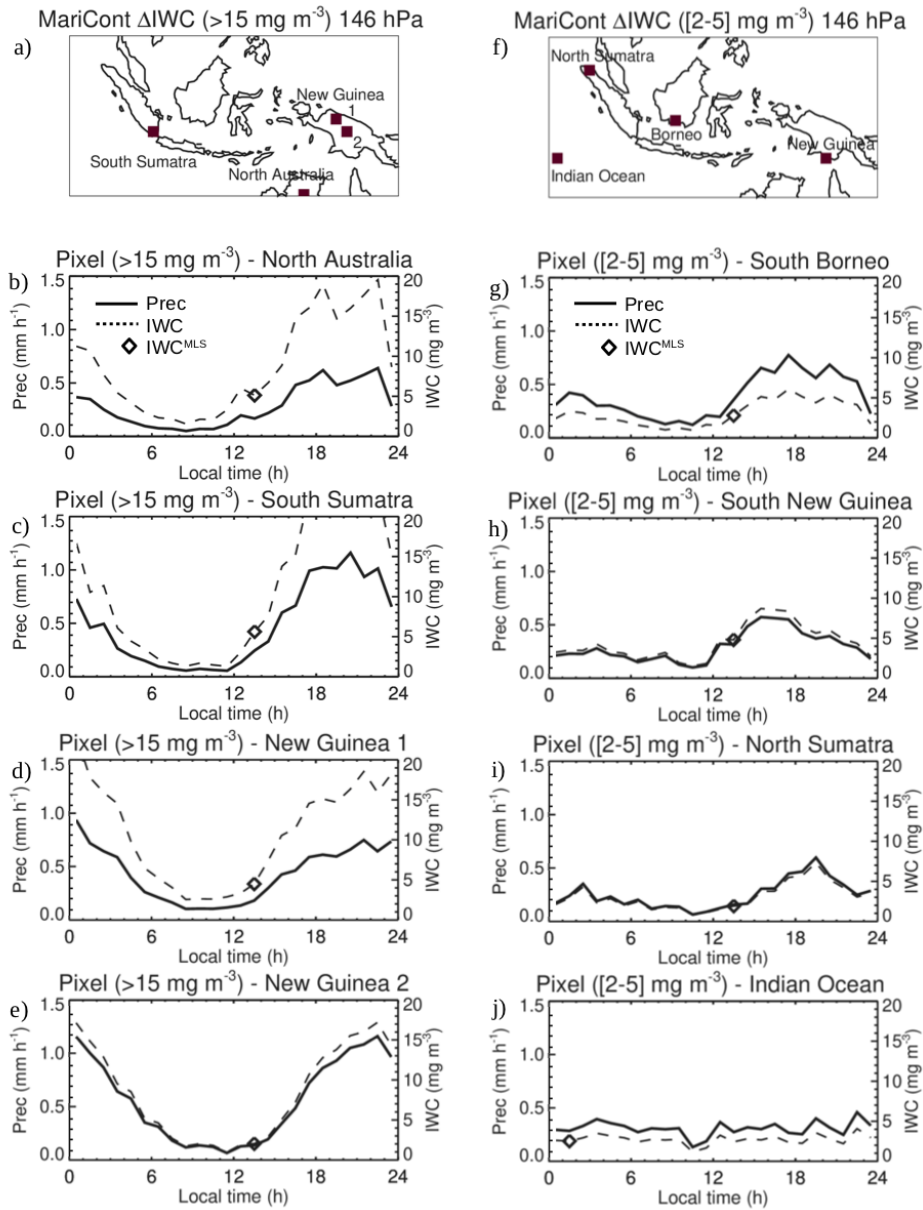


Figure 5. a) and f) Location of $2^\circ \times 2^\circ$ pixels where ΔIWC have been found higher than 15 mg m^{-3} (in Fig. 4) and where ΔIWC have been found between 2 and 5 mg m^{-3} (in Fig. 4), respectively. Diurnal cycle of Prec (solid line): (b, c, d, e) over 4 pixels where ΔIWC have been found higher than 15 mg m^{-3} (in Fig. 4), (g, h, i, j) over 4 pixels where ΔIWC have been found between 2 and 5 mg m^{-3} (in Fig. 4), during DJF 2004-2017. The diamond represents IWC^{MLS} during the increasing phase of the convection. The dashed line is the diurnal cycle of IWC estimated from the diurnal cycle of Prec and from IWC^{MLS} .

5.1 Flash distribution over the MariCont

Figure 6a shows the daily mean of Flash in DJF 2004-2015 at $0.25^\circ \times 0.25^\circ$ horizontal resolution. Over land, Flash can reach a maximum of 10^{-1} flashes day $^{-1}$ per pixel while, over seas, Flash ~~takes-is characterized by~~ smaller values ($\sim 10^{-3}$ flashes day $^{-1}$ per pixel). When compared to the distribution of Prec (Fig. 2c), maxima of Flash are found over similar regions as maxima of Prec (Java, ~~East-of-east of the~~ Sulawesi coast, Sumatra and northern Australia). Over Borneo and New Guinea, coastlines show larger values of Flash ($\sim 10^{-2}$ flashes day $^{-1}$) than inland ($\sim 10^{-3}$ flashes day $^{-1}$). Differences between Flash and Prec distributions are found over ~~the~~ North Australia Sea, with relatively large number of Flash ($>10^{-2}$ flashes day $^{-1}$) compared to low Prec (4 – 10 mm day $^{-1}$) (Fig. 2c), and over several inland regions of New Guinea where the number of Flash is relatively low ($\sim 10^{-2}$ – 10^{-3} flashes day $^{-1}$) while Prec is high (~ 14 – 20 mm day $^{-1}$). Figure 6b shows the hour of the Flash maxima. Over land, ~~the maximum of Flash is between~~ maxima of Flash are mainly observed in the range 15:00 LT and ~~1900-18:00 LT, slightly earlier than the maximum while~~ maxima of Prec (Fig. 2d) ~~observed between 16~~ are mainly observed over a longer range of maxima from 18:00 LT and to 24:00 LT. Coastal regions show similar hours of maximum of Prec and Flash, i.e between 00:00 LT and 04:00 LT although, over the West Sumatra Coast, diurnal maxima of both Prec and Flash happen 1–4 hours earlier (from 23:00-24:00 LT) than those of other coasts.

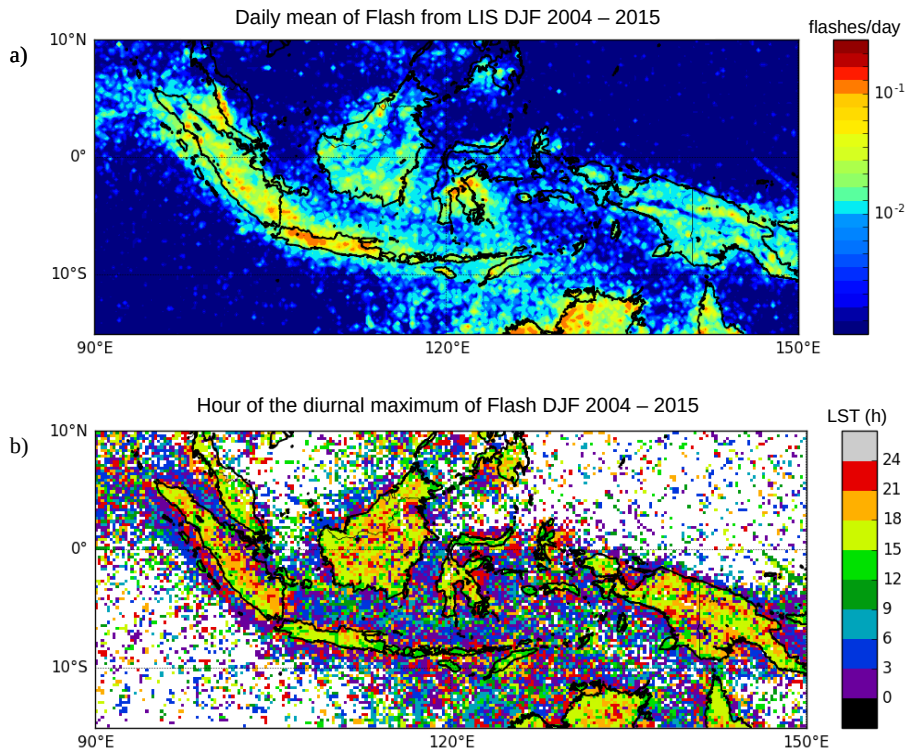


Figure 6. Daily mean of Flash measured by LIS averaged over the period DJF 2004-2015 (a); Hour (local solar time (LST)) of the diurnal maximum of Flash (b).

5.2 Prec and Flash diurnal cycles over the MariCont

This section compares the diurnal cycle of Flash with the diurnal cycle of Prec in order to assess the potential for Flash to be used as a proxy of deep convection over land and sea of the MariCont. Diurnal cycles of Prec and Flash over the MariCont land, coastline and offshore (MariCont_L, MariCont_C, MariCont_O, respectively) are shown in Figs. 7a–c, respectively.

310 Within each $0.25^\circ \times 0.25^\circ$ pixel, ocean/land/coast filters were applied from the ~~Solar Radiation Data (SoDa,)~~[SoDa elevation filter](#). Each pixel is designated as either land or sea. Then MariCont_C is the region defined by sea pixels that are within 5 pixels of a land pixel. This choice of 5 pixels was made after consideration of some sensitivity tests in order to have the best compromise between a high signal-to-noise ratio and a good representation of the coastal region. The MariCont_O is the average of all offshore pixels defined as sea pixels excluding 10 pixels (~ 2000 km) over the sea from the land, thus coastline
315 pixels are excluded as well as all the coastal influences. MariCont_L is the average over all land pixels.

Over land, during the growing phase of the convection, Prec and Flash start to increase at the same time (10:00 LT – 12:00 LT) but Flash reaches a maximum earlier ([from 15:00 LT – 16:00 LT](#)) than Prec (~~17:00 LT – from 18:00 LT~~), [consistently with the range of maximum hours observed Fig. 2d and Fig. 6b](#). This is consistent with the finding of Liu and Zipser (2008) over the whole tropics. The different timing of the maxima could come from the fact that in the dissipating stage of the convection
320 the number of flashes decreases whilst the precipitation remains relatively high. Combining our results with the ones presented in Dion et al. (2019), Flash and Prec can be considered as good proxies of deep convection during the growing phase of the convection over the MariCont_L.

Over coastlines (Fig. 7b), the Prec diurnal cycle is delayed by about +2 to 7 h with respect to the Flash diurnal cycle. Prec minimum is around 18:00 LT while Flash minimum is around 11:30 LT. Maxima of Prec and Flash are found around
325 04:00 LT and 02:00 LT, respectively. This means that the increasing phase of Flash is 2–3 h longer than that of Prec. These results are consistent with the work of Mori et al. (2004) showing a diurnal maximum of precipitation in the early morning between 02:00 LT and 03:00 LT and a diurnal minimum of precipitation between 11:00 LT and 21:00 LT, over coastal zones of Sumatra. According to Petersen and Rutledge (2001) and Mori et al. (2004), coastal zones are areas where precipitation results more from convective activity than from stratiform activity and the amplitude of diurnal maximum of Prec decreases
330 with the distance from the coastline.

Over offshore areas (Fig. 7c), minima of diurnal cycle of Prec and diurnal cycle of Flash are reached in the late afternoon, between 16:00 LT and 17:00 LT (Flash) and 17:00 LT and 18:00 LT (Prec), whilst maxima of diurnal cycle of Prec and Flash are reached in the early morning, between 06:00 LT and 07:00 LT (Flash) and around 08:00 LT – 09:00 LT (Prec). Results over offshore areas are consistent with diurnal cycle of Flash and Prec calculated by Liu and Zipser (2008) over the whole tropical
335 ocean, showing the increasing phase of the diurnal cycle of Flash starting 1–2 hours before the increasing phase of the diurnal cycle of Prec.

The time interval between the maximum and minimum of Prec is always longer than that for Flash. The period after the maximum of Prec is likely more representative of stratiform rainfall than deep convective rainfall. Consistent with that picture, model results from Love et al. (2011) have shown the suppression of deep convection over the offshore area west of Sumatra

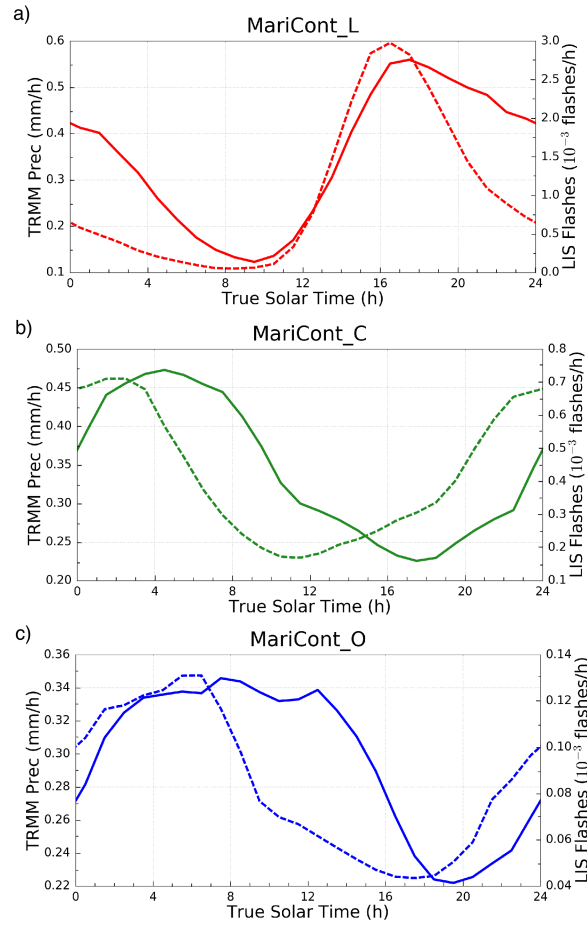


Figure 7. Diurnal cycle of Prec (solid line) and diurnal cycle of Flash (dashed line) over MariCont_L (a), MariCont_C (b) and MariCont_O (c).

from the early afternoon due to a downwelling wavefront characterized by deep warm anomalies around noon. According to the authors, later in the afternoon, gravity waves are forced by the stratiform heating profile and propagate slowly offshore. They also highlighted that the diurnal cycle of the offshore convection responds strongly to the gravity wave forcing at the horizontal scale of 4 km. To summarize, diurnal cycles of Prec and Flash show that:

- i) over land, Flash increases proportionally with Prec during the growing phase of the convection,
- ii) over coastlines, Flash increasing phase is more than 6–7 hours ahead of Prec increasing phase,
- iii) over offshore areas, Flash increasing phase is about 1–2 hours ahead of Prec increasing phase.

In section 7, we investigate whether this time difference impacts the estimation of ΔIWC over land, coasts, and offshore areas.

5.3 Prec and Flash diurnal cycles and small-scale processes

In this subsection, we study the diurnal cycle of Prec and Flash at $0.25^\circ \times 0.25^\circ$ resolution over areas of deep convective activity over the MariCont. In line with the distribution of large values of Prec (Fig. 2), IWC^{MLS} (Fig. 3) and ΔIWC (Fig. 4), we have selected five islands and five seas over the MariCont. Diurnal cycles of Prec and Flash are presented over land for a) Java, b) Borneo, c) New Guinea, d) Sulawesi and e) Sumatra as shown in Figure 8 and over sea for the a) Java Sea, b) North Australia Sea (NAusSea), c) Bismarck Sea, d) West Sumatra Sea (WSumSea) and e) China Sea as shown in Figure 9. Diurnal cycles of IWC from ERA5 (IWC^{ERA5}) are also presented in Figs. 8 and 9 and will be discussed in Section 6.

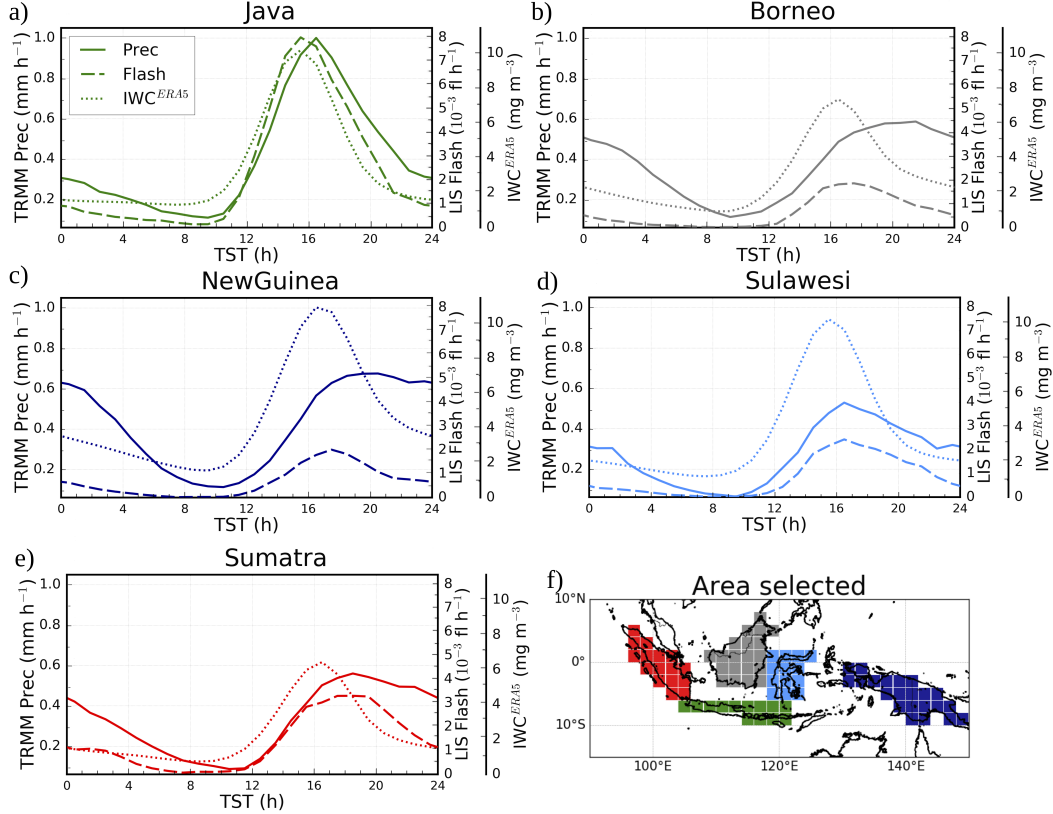


Figure 8. Diurnal cycles of Prec (solid line), Flash (dashed line) and IWC^{ERA5} from ERA5 at 150 hPa (dotted line) over MariCont islands: Java (a), Borneo (b), New Guinea (c), Sulawesi (d) and Sumatra (e) and map of the study zones over land (f).

Over land, the amplitude of the diurnal cycle of Prec is the largest over Java (Fig. 8a), consistent with Qian (2008), with a maximum reaching 1 mm h^{-1} , while, over the other areas, maxima are between 0.4 and 0.6 mm h^{-1} . Furthermore, over Java, the duration of the increasing phase in the diurnal cycle of Prec is 6 h, consistent with that of Flash, whereas elsewhere the duration of the increasing phase is longer in Prec than in Flash by 1–2 h. The particularity of Java is related to the increasing phase of the diurnal cycle of Prec (6 h), which is faster than over all the other land areas considered in our study (7 – 8 h).

The strong and rapid convective growing phase measured over Java might be explained by the fact that the island is narrow with high mountains (up to ~ 2000 m altitude, as shown in Fig. 2b) reaching the coast. The topography promotes the growth of intense and rapid convective activity. The convection starts around 09:00 LT, rapidly elevating warm air up to the top of the mountains. Around 15:00 LT, air masses cooled at higher altitudes are transported to the sea, favoring the dissipating stage of the convection. Like Java, Sulawesi is a small island with high topography. However, the amplitude of the diurnal cycle of Prec and Flash is not as strong as over Java. Other islands, such as Borneo, New Guinea and Sumatra, have high mountains but also large lowland areas. Mountains promote deep convection at the beginning of the afternoon while lowlands help maintain the convective activity through shallow convection and stratiform rainfall (Nesbitt and Zipser, 2003; Qian, 2008). Deep and shallow convection are then mixed during the slow dissipating phase of the convection (from $\sim 16:00$ LT to 08:00 LT). However, because Flash ~~are-is~~ observed only in deep convective clouds, the decreasing phase of ~~Flash-diurnal-cycles decreases more rapidly~~ the Flash diurnal cycle is shorter than the decreasing phase of Prec. The diurnal maxima of Prec found separately over the 5 islands of the MariCont (at $0.25^\circ \times 0.25^\circ$ resolution) are much higher than the diurnal maxima of Prec found over broad tropical land regions (South America, South Africa and MariCont_L, at $2^\circ \times 2^\circ$ resolution) from Dion et al. (2019): $\sim 0.6 - 1.0 \text{ mm h}^{-1}$ and $\sim 0.4 \text{ mm h}^{-1}$, respectively. However, the duration of the increasing phase of the diurnal cycle of Prec is consistent with the one calculated over tropical land by Dion et al. (2019).

Over sea, the five selected areas (Fig. 9a-e) show a diurnal cycle of Prec and Flash similar to that of either coastline or offshore areas depending on the region considered. The diurnal cycle of Prec and Flash over Java Sea is similar to the one over coastlines (Fig. 7b). Java Sea (Fig. 9a), an area mainly surrounded by coasts, shows the largest diurnal maximum of Prec ($\sim 0.7 \text{ mm h}^{-1}$) and Flash ($\sim 1.1 \cdot 10^{-3} \text{ flashes h}^{-1}$) with the longest growing phase. In this area, land and sea breezes observed in coastal areas impact the diurnal cycle of the convection (Qian, 2008). Over Java Sea, Prec is strongly impacted by land breezes from Borneo and Java islands (Qian, 2008), explaining why Prec and Flash reach largest values during the early morning. By contrast, NAusSea, and Bismarck Sea and WSumSea (Figs. 9b, c and d, respectively), which are large regions on which coastal influences are likely to be weak, show small amplitude of the diurnal cycle. In our analysis, these three study zones are the areas including the most offshore pixels. ~~Java Sea and WSumSea present a similar diurnal cycle of Prec and Flash, with Flash growing phase starting about 4 h earlier than that of Prec. China Sea also~~ China Sea shows a diurnal maximum of Flash shifted by about 4 hours before the diurnal maximum of Prec, but the time of the diurnal minimum of Prec and Flash is similar. Over China Sea and Bismarck Sea, the diurnal cycle of Flash shows a weak amplitude with maxima reaching only $0.1 - 0.2 \cdot 10^{-3} \text{ flashes h}^{-1}$. Furthermore, over Bismarck Sea, while the diurnal minimum in Prec is around 18:00 LT, there are several local minima in Flash (08:00, 14:00 and 18:00 LT). Over NAusSea, the diurnal minimum of Prec is delayed by more than ~~7-9~~ 7-9 hours compared to the diurnal minimum of Flash.

To summarize, over islands, the increasing phases of convection for Flash and Prec ~~convective-increasing-phases~~ start at the same time and increase similarly but the diurnal maximum of Flash is reached 1–2 hours before the diurnal maximum of Prec. Over seas, the duration of the ~~convective-increasing-phase~~ increasing phase of convection and the amplitude of the diurnal cycles are not always similar depending on the area considered. The diurnal ~~cycle of Flash over Java Sea and West Sumatra~~ Sea is 4 hours ahead of the diurnal cycle of Prec, and cycles of Flash and Prec show some time lag as over North Australia

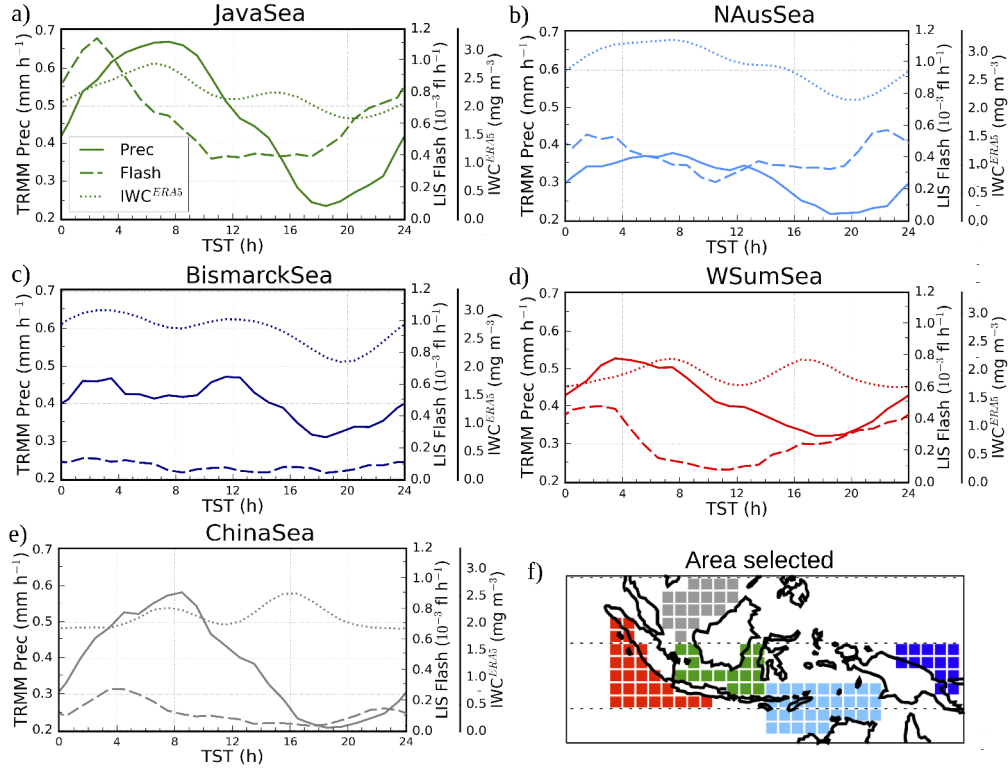


Figure 9. Diurnal cycles of Prec (solid line), Flash (dashed line) and IWC^{ERA5} from ERA5 at 150 hPa (dotted line) over MariCont seas: Java Sea (a), North Australia Sea (NAusSea) (b), Bismarck Sea (c), West Sumatra Sea (WSumSea) (d), China Sea (e) and map of the study zones over sea (f).

Sea, it where the diurnal cycle of Flash is more than 7 hours ahead. China Sea and Bismarck Sea present the same time of the onset of the Flash and Prec increasing phase 9 hours ahead of the diurnal cycle of Prec. In Section 7, we estimate ΔIWC over the 5 selected island and sea areas from Prec and Flash as a proxy of deep convection.

6 Horizontal distribution of IWC from ERA5 reanalyses

400 The ERA5 reanalysis provides hourly IWC at 150 and 100 hPa (IWC^{ERA5}). The diurnal cycle of IWC^{ERA5} over the MariCont will be used to calculate ΔIWC^{ERA5} in order to support the horizontal distributions and the amount of ice injected in the UT and the TL deduced from our model combining IWC^{MLS} and TRMM-3B42 Prec or IWC^{MLS} and LIS flash. In assessing the consistency or lack thereof in the comparisons between ΔIWC^{ERA5} and both ΔIWC^{Prec} and ΔIWC^{Flash} , it should be kept

in mind that IWC^{ERA5} data quality has not yet been fully evaluated. Figures 10a, b, c and d present the daily mean and the hour
 405 of the diurnal maxima of IWC^{ERA5} at 150 and 100 hPa. In the UT, the daily mean of IWC^{ERA5} shows a horizontal distribution
 over the MariCont consistent with that of IWC^{MLS} (Fig. 2e), except over New Guinea, where IWC^{ERA5} (exceeding 6.4 mg m^{-3}) is much ~~stronger~~larger than IWC^{MLS} ($\sim 4.0 \text{ mg m}^{-3}$). The highest amount of IWC^{ERA5} is located over the New
 Guinea mountain chain and over the West coast of North Australia (exceeding 6.4 mg m^{-3} in the UT and 1.0 mg m^{-3} in the
 TL). Over islands in the UT and the TL, the time of the IWC^{ERA5} diurnal maximum is found between 12:00 LT and 15:00 LT
 410 over Sulawesi and New Guinea and between 15:00 LT and 21:00 LT over Sumatra, Borneo and Java, which is close to the ~~hour~~
time of the diurnal maximum of Flash over islands (Fig. 6). Over sea, in the UT and the TL, the time of the IWC^{ERA5} diurnal
 maximum is found between 06:00 LT and 09:00 LT over West Sumatra Sea, Java Sea, North Australia Sea, between 06:00 LT
 and 12:00 LT over China Sea and between 00:00 LT and 03:00 LT over Bismarck Sea. There are no significant differences
 between the ~~hour~~time of the maximum of IWC^{ERA5} in the UT and in the TL.

415 The diurnal cycles of IWC^{ERA5} at 150 hPa are presented in Figs. 8 and 9 over the selection of islands and seas of the
 MariCont together with the diurnal cycles of Prec and Flash. Over islands (Fig. 8), the maximum of the diurnal cycle of
 IWC^{ERA5} is found between 16:00 LT and 17:00 LT, consistent with the diurnal cycle of Prec and Flash. The durations of the
 increasing phase of the diurnal cycles of Prec, Flash and IWC^{ERA5} are all consistent to each other (6 – 8 h). Over sea (Fig.
 9), the maximum of the diurnal cycle of IWC^{ERA5} is mainly found between 07:00 LT and 10:00 LT over Java Sea and North
 420 Australia Sea, consistent with the diurnal cycle of Prec, and a second peak is found around 16:00 LT. Thus, the duration of the
 increasing phase of the diurnal cycles of IWC^{ERA5} is consistent with ~~the one that~~ of Prec over these two sea study zones (~ 10
 hours), but not with ~~the one that~~ of Flash. Over the Bismarck Sea, the diurnal maxima of IWC^{ERA5} are found at 04:00 LT
 with a second peak later at noon. Over the West Sumatra Sea, two diurnal maxima are found at 08:00 LT and 17:00 LT. Over
the China Sea, the diurnal maximum of IWC^{ERA5} is found at 16:00 LT with a second peak at 08:00 LT. These differences
 425 in the timing of the maximum of the diurnal cycle of Prec, Flash and IWC^{ERA5} observed at small-scale over ~~sea~~seas of the
 MariCont are not well understood. However, these differences do not affect the calculation of the ΔIWC^{Prec} , ΔIWC^{Flash} or
 ΔIWC^{ERA5} , because only the magnitude of the diurnal cycle (max-min) matters for the calculation of ΔIWC .

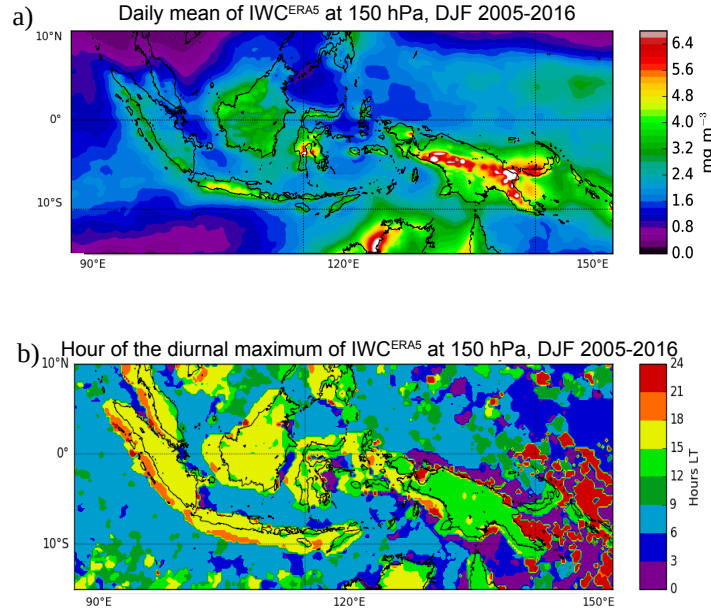
7 Ice injected over a selection of island and sea areas

Figure 11 synthesizes ΔIWC deduced from observations and reanalysis in the UT and the TL over the 5 islands and 5 seas of
 430 the MariCont studied in the previous section.

7.1 ΔIWC deduced from observations

Eqs. (1-3) are used to calculate ΔIWC from Prec (ΔIWC^{Prec}) and from Flash (ΔIWC^{Flash}). As presented in the previous
 section, Prec and Flash can be used as two proxies of deep convection, although differences in their diurnal cycles may
 depend on the region considered. The observational ΔIWC range calculated between ΔIWC^{Prec} and ΔIWC^{Flash} provides a

UT



TL

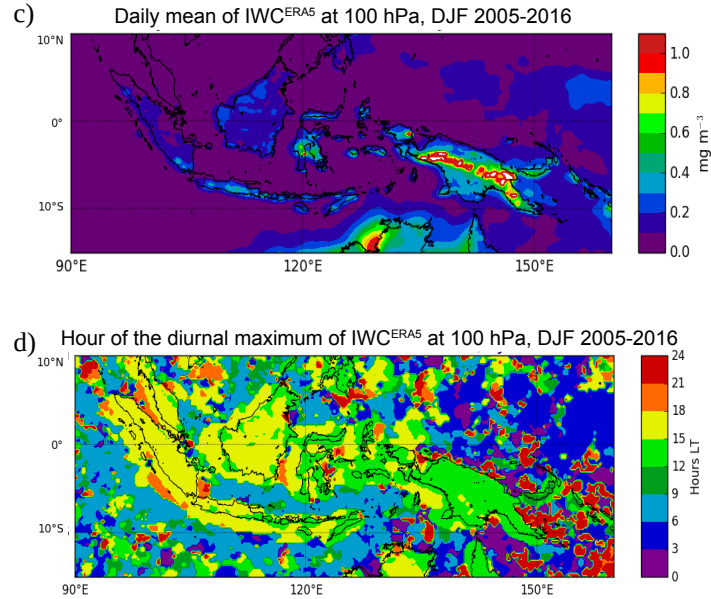


Figure 10. Daily mean of IWC^{ERA5} averaged over the period DJF 2005-2016 at 150 hPa (a) and at 100 hPa (c); Time (hour, local time (LT)) of the diurnal maximum of IWC^{ERA5} at 150 hPa (b) and at 100 hPa (d).

435 quantitative characterisation of the uncertainty in our model. In the following we will consider the relative difference, expressed as a percentage, between ΔIWC^{Prec} and ΔIWC^{Flash} as:

$$r^{Prec-Flash} = 100 \times \frac{\Delta IWC^{Prec} - \Delta IWC^{Flash}}{(\Delta IWC^{Prec} + \Delta IWC^{Flash}) \times 0.5} \quad (4)$$

In the UT (Fig. 11a), over islands, ΔIWC calculated over Sumatra, Borneo, Sulawesi and New Guinea varies from 4.9 to 7.1 mg m^{-3} whereas, over Java, ΔIWC reaches 8.1–8.7 mg m^{-3} . ΔIWC^{Flash} is generally greater than ΔIWC^{Prec} by less than 1.4 mg m^{-3} (with $r^{Prec-Flash}$ ranging from -6 to -22% over the study zones) for all the islands, except for Java where ΔIWC^{Prec} is larger than ΔIWC^{Flash} by 0.7–0.6 mg m^{-3} ($r^{Prec-Flash} = 7\%$). Over sea, ΔIWC varies from 1.1 to 4.4 mg m^{-3} . ΔIWC^{Flash} is greater than ΔIWC^{Prec} by 0.6 to 2.3 mg m^{-3} ($r^{Prec-Flash} = -35$ to -71%), except for Java Sea, where ΔIWC^{Prec} is greater than ΔIWC^{Flash} by 0.2 mg m^{-3} ($r^{Prec-Flash} = 6\%$). Over North Australia Sea and West Sumatra Sea, ΔIWC^{Flash} is more than twice as large as ΔIWC^{Prec} ($r^{Prec-Flash} = -63\%$ and -71% , respectively).

445 In the TL (Fig. 11b), the observational ΔIWC range is found between 0.7 and 1.3 mg m^{-3} over islands and between 0.2 and 0.7 mg m^{-3} over seas. The same conclusions apply to the observational ΔIWC range calculated between ΔIWC^{Prec} and ΔIWC^{Flash} in the TL as in the UT, with differences less than 0.4 mg m^{-3} .

To summarize, independently of the proxies used for the calculation of ΔIWC , and for both UT and TL, ~~Java island~~the island of Java shows the largest injection of ice over the MariCont. The minimum value of the observational ΔIWC range over Java ~~island~~ is larger than the maximum value of the observational ΔIWC range of other land study zones by more than 1.0 mg m^{-3} in the UT and more than 0.3 mg m^{-3} in the TL. Furthermore, it has been shown that both proxies can be used in our model, with more confidence over land: ΔIWC^{Prec} and ΔIWC^{Flash} are more consistent to each other, both in the UT and in the TL, over islands (relative difference $r^{Prec-Flash} = -6+7$ to -22%) than over seas ($r^{Prec-Flash} = +6$ to -71%). The larger difference over seas is probably due to the larger contribution from stratiform precipitation to Prec over sea and to the very low values of Flash over seas ($<10^{-2}$ flashes day^{-1} per pixel).

7.2 ΔIWC deduced from reanalysis

ΔIWC from ERA5 ($\Delta IWC_{z_0}^{ERA5}$) is calculated in the UT and the TL ($z_0 = 150$ and 100 hPa, respectively) as the max–min difference in the amplitude of the diurnal cycle. We can use the IWC^{ERA5} to assess the impact of the vertical resolution of the MLS measurements on the observationally-derived ΔIWC estimates. According to Wu et al. (2008), estimates of IWC derived from MLS represent spatially-averaged quantities within a volume that can be approximated by a box of $\sim 300 \times 7 \times 4$ km^3 near the pointing tangent height. In order to compare IWC^{MLS} and IWC^{ERA5} , two steps were taken: 1) the horizontal resolution of ERA5 was degraded from $0.25^\circ \times 0.25^\circ$ to $2^\circ \times 2^\circ$ ($\sim 200 \text{ km} \times 200 \text{ km}$), and 2) the vertical resolution of ERA5 was degraded by convolving the vertical profiles of IWC^{ERA5} with a box function whose width is 5 and 4 km at 100 and 146 hPa, respectively. IWC^{ERA5} with degraded vertical resolution ~~is~~is named $\langle IWC^{ERA5} \rangle$. The ERA5 amount of ice injected

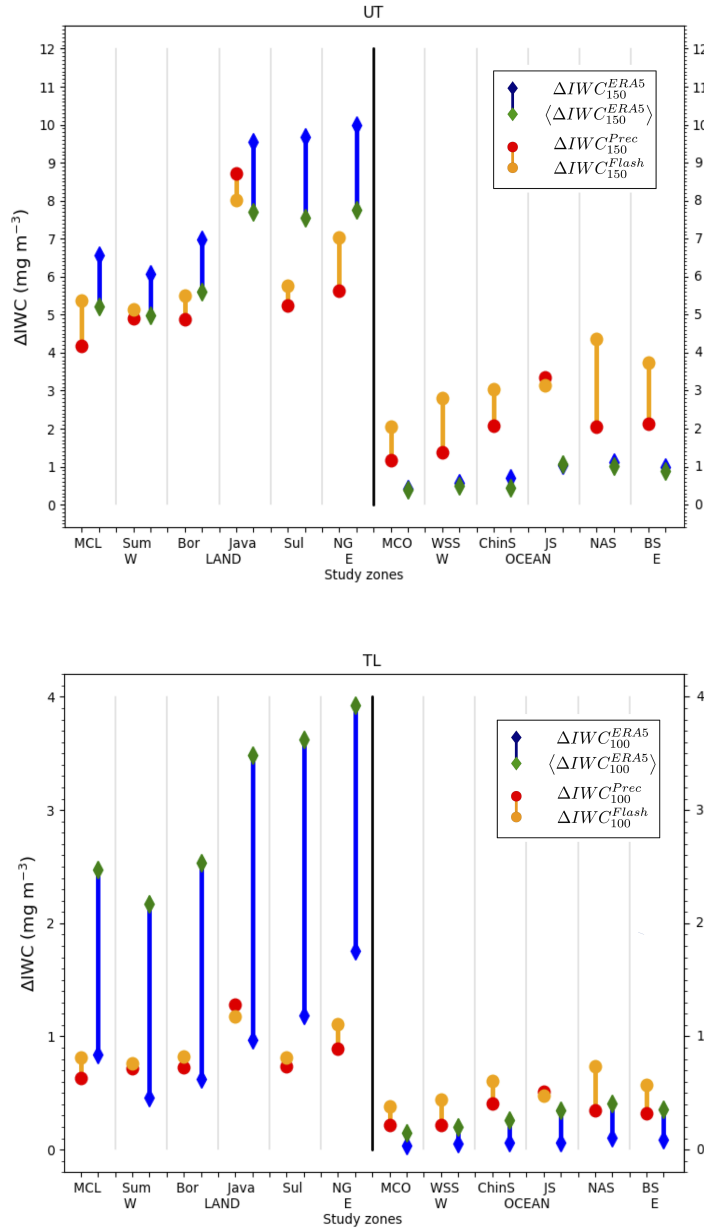


Figure 11. Top: ΔIWC (mg m⁻³) estimated from Prec (red) and Flash (orange) at 146 hPa and ΔIWC estimated from ERA5 at the level 150 hPa and at the level 150 hPa degraded in the vertical, over islands and seas of the MariCont: MariCont_L (MCL) and MariCont_O (MCO); from West (W) to East (E) over land, Sumatra (Sum), Borneo (Bor), Java, Sulawesi (Sul) and New Guinea (NG); and over seas, West Sumatra Sea (WSS), China Sea (ChinS), Java Sea (JS), North Australia Sea (NAS) and Sea (BS). Bottom: Same as in top but for 100 hPa.

465 at $z_0 = 150$ and 100 hPa with degraded vertical resolution ($\langle \Delta IWC_{z_0}^{ERA5} \rangle$) is thus calculated from $\langle IWC_{z_0}^{ERA5} \rangle$. In the following we consider the difference $r^{ERA5-\langle ERA5 \rangle}$ between ΔIWC^{ERA5} and $\langle \Delta IWC^{ERA5} \rangle$ as:

$$r^{ERA5-\langle ERA5 \rangle} = 100 \times \frac{\Delta IWC^{ERA5} - \langle \Delta IWC^{ERA5} \rangle}{(\Delta IWC^{ERA5} + \langle \Delta IWC^{ERA5} \rangle) \times 0.5} \quad (5)$$

Figure 11 shows $\Delta IWC_{z_0}^{ERA5}$ and $\langle \Delta IWC_{z_0}^{ERA5} \rangle$ at $z_0 = 150$ and 100 hPa, over the island and the sea study zones. In the UT (Fig. 11a), over islands, ΔIWC_{150}^{ERA5} and $\langle \Delta IWC_{150}^{ERA5} \rangle$ calculated over Sumatra and Borneo vary from 4.9 to 7.0 mg
 470 m^{-3} ($r^{ERA5-\langle ERA5 \rangle}$ ranges from 20 to 22 %) whilst ΔIWC_{150}^{ERA5} and $\langle \Delta IWC_{150}^{ERA5} \rangle$ over Java, Sulawesi and New Guinea reach 7.5–10.0 $mg\ m^{-3}$ ($r^{ERA5-\langle ERA5 \rangle} = 21$ to 24 %). Over sea, ΔIWC_{150}^{ERA5} and $\langle \Delta IWC_{150}^{ERA5} \rangle$ vary from 0.35 to 1.1 $mg\ m^{-3}$ ($r^{ERA5-\langle ERA5 \rangle} = 9$ to 33 %). Over island and sea, ΔIWC_{150}^{ERA5} is greater than $\langle \Delta IWC_{150}^{ERA5} \rangle$. The small differences between ΔIWC_{150}^{ERA5} and $\langle \Delta IWC_{150}^{ERA5} \rangle$ over island and sea in the UT support the fact that the vertical resolution at 150 hPa has a low impact on the estimated ΔIWC .

475 In the TL, over land, ΔIWC_{100}^{ERA5} and $\langle \Delta IWC_{100}^{ERA5} \rangle$ vary from 0.5 to 3.9 $mg\ m^{-3}$ ($r^{ERA5-\langle ERA5 \rangle} = -32$ to -138%) with $\langle \Delta IWC_{100}^{ERA5} \rangle$ being larger than ΔIWC_{100}^{ERA5} by as much as 2.5 $mg\ m^{-3}$ over some islands. Over sea, ΔIWC_{100}^{ERA5} and $\langle \Delta IWC_{100}^{ERA5} \rangle$ vary from 0.05 to 0.4 $mg\ m^{-3}$ ($r^{ERA5-\langle ERA5 \rangle} = -85$ to -139%) with ΔIWC_{100}^{ERA5} lower than $\langle \Delta IWC_{100}^{ERA5} \rangle$ by as much as 0.3 $mg\ m^{-3}$. The large differences between ΔIWC_{100}^{ERA5} and $\langle \Delta IWC_{100}^{ERA5} \rangle$ over island and sea in the TL support the fact that the vertical resolution at 100 hPa has a high impact on the estimation of ΔIWC .

480 7.3 Synthesis

The comparison between the observational ΔIWC range and the reanalysis ΔIWC range is presented in Fig. 11. In the UT, over land, observation and reanalysis ΔIWC ranges agree to within 0.1 to 1.0 $mg\ m^{-3}$, which highlights the robustness of our model over land, except over Sulawesi and New Guinea, where the observational and the reanalysis ΔIWC ranges differ by at least 1.7 and 0.7 $mg\ m^{-3}$, respectively. Over sea, the observational ΔIWC range is systematically greater than that of
 485 the reanalysis by ~ 1.0 – $2.2\ mg\ m^{-3}$, with systematically larger estimates derived from observations than from the reanalysis. The consistency between observational and reanalysis ΔIWC ranges is calculated as the minimum value of the higher range minus the maximum value of the lower range divided by the mean of these two values. In the UT, observational and reanalysis ΔIWC estimates are found to be consistent over land, where the relative differences between their ranges are less than 25%, but inconsistent over sea, where differences are 62–96%. In the TL, the relative differences between the observational and
 490 reanalysis ΔIWC ranges are 0–49% over land and 0–28% over sea.

In the following, we define the total range covering the observational and reanalysis ΔIWC estimates, r^{Total} , as the maximum value of the higher range minus the minimum value of the lower range divided by the mean of these two values. In the UT, the observational and reanalysis ΔIWC estimates span 4.2 to 10.0 $mg\ m^{-3}$ (with r^{Total} values from 20 to 57%) over land and 0.4 to 4.4 $mg\ m^{-3}$ (with r^{Total} values from 107 to 156%) over sea. In the TL, the observational and reanalysis ΔIWC
 495 estimates span 0.5 to 3.9 $mg\ m^{-3}$ (with r^{Total} values from 88 to 134%) over land and 0.1 to 0.7 $mg\ m^{-3}$ (with r^{Total} values of 142 to 160%) over sea.

Amounts of ~~ice-injected~~ injected ice deduced from observations and reanalysis are ~~consistent (i.e., the relative differences between their respective ranges are less than 49%)~~ fairly consistent over land in the UT and over land and sea in the TL but are inconsistent over sea in the UT (~~where differences are as large as 96%~~). However, the impact of the vertical resolution on the estimation of ΔIWC is much larger in the TL than in the UT (r^{Total} is larger in the TL than in the UT). At both levels, observational and reanalyses ΔIWC estimated over land is more than twice as large as ΔIWC estimated over sea. ~~At any considered level, although~~ Although Java has shown the largest values of ΔIWC ~~form from~~ observations compared to other study zones, the reanalysis ΔIWC range shows that Sulawesi and New Guinea may also reach high values of ΔIWC , similar to those seen over Java. However, as the ERA5 IWC data have yet to be extensively validated, it is also possible that the reanalysis overestimates IWC in these regions.

8 Discussion on small-scale convective processes impacting ΔIWC over a selection of areas

Our results have shown that, in all the datasets used, Java island and Java Sea are the two areas with the largest amount of ice injected up to the UT and the TL over the MariCont land and sea, respectively. In this section, processes impacting ΔIWC in the different study zones are discussed.

8.1 Java island, Sulawesi and New Guinea

Sulawesi, New Guinea and particularly Java island have been shown as the areas of the largest ΔIWC in the UT and TL. Qian (2008) have used high resolution observations and regional climate model simulations to show the three main processes impacting the diurnal cycle of rainfall over the Java island. The main process explaining the rapid and strong peak of Prec during the afternoon over Java (Fig. 8a) is the sea-breeze convergence around midnight. This convergence caused by sea-breeze phenomenon increases the deep convective activity and impacts the diurnal cycle of Prec and the IWC injected up to the TL by amplifying their quantities. The second process is the mountain-valley wind converging toward the mountain peaks, reinforcing the convergence and the precipitation. The land breeze becomes minor compared to the mountain-valley breeze and this process is amplified with the mountain altitude. As shown in Fig. 2b, New Guinea has the highest mountain chain of the MariCont. The third process shown by Qian (2008) is precipitation that is amplified by the cumulus merging processes, which are more important over small islands such as Java (or Sulawesi) than over large islands such as Borneo or Sumatra. Another process is the interaction between sea-breeze and precipitation-driven cold pools that generates lines of strong horizontal moisture convergence (Dauhut et al., 2016). Thus, IWC increases proportionally with Prec, consistent with the results from Dion et al. (2019), and rapid convergence combined with deep convection transports elevated amounts of IWC at 13:30 LT (Fig. 3), producing high ΔIWC during the growing phase of the convection (Fig. 4 and Fig. 11) over Java Island.

8.2 West Sumatra Sea

In section 4.2, it has been shown that the West Sumatra Sea is an area with positive anomaly of Prec during the growing phase of the convection but negative anomaly of IWC, which differs from other places. These results suggest that Prec is

representative not only of convective precipitation but also of stratiform precipitation. The diurnal cycle of stratiform and convective precipitation over West Sumatra Sea has been studied by Mori et al. (2004) using 3 years of TRMM precipitation radar (PR) datasets, following the 2A23 Algorithm (Awaka, 1998). Mori et al. (2004) have shown that rainfall over Sumatra is characterized by convective activity with a diurnal maximum between 15:00 LT and 22:00 LT while, over the West Sumatra Sea, the rainfall type is convective and stratiform, with a diurnal maximum during the early morning (as observed in Fig. 9). Furthermore, their analyses have shown a strong diurnal cycle of 200-hPa wind, humidity and stability, consistent with the PR over West Sumatra Sea and Sumatra Island. Stratiform and convective clouds are both at the origin of heavy rainfall in the tropics (Houze and Betts, 1981; Nesbitt and Zipser, 2003) and in the West Sumatra Sea, but stratiform clouds are mid-altitude clouds in the troposphere and do not transport ice up to the tropopause. Thus, over the West Sumatra Sea, ΔIWC calculated from Prec is possibly overestimated because Prec includes a non-negligible amount of stratiform precipitation over this area.

8.3 North Australia Sea and seas with nearby islands

The comparisons between Figs. 2c and 6a have shown strong daily mean of Flash ($10^{-2} - 10^{-1}$ flashes day^{-1}) but low daily mean of Prec ($2.0 - 8.0$ mm day^{-1}) over the North Australia Sea. Additionally, Fig. 11 shows that the strongest differences between ΔIWC^{Prec} and ΔIWC^{Flash} are found over the North Australia Sea, with ΔIWC^{Flash} greater than ΔIWC^{Prec} by 2.3 mg m^{-3} in the UT ($r^{Prec-Flash} = \sim 71\%$) and by 0.4 mg m^{-3} in the TL ($r^{Prec-Flash} = -75\%$). These results imply that the variability range in our model is too large, highlighting the difficulty of estimating ΔIWC over this study zone. Furthermore, as for Java Sea or Bismarck Sea, North Australia Sea is surrounded by several islands. According to the study from Pope et al. (2008), the cloud size is the largest during the afternoon over the North Australia land, during the night over North Australia coastline and during the early morning over the North Australia sea. These results suggest that deep convective activity moves from the land to the sea during the night. Over the North Australia Sea, it seems that the deep convective clouds are mainly composed of storms with lightning but precipitation is weak or does not reach the surface before evaporating.

9 Conclusions

The present study has combined observations of ice water content (IWC) measured by the Microwave Limb Sounder (MLS), precipitation (Prec) from the algorithm 3B42 of the Tropical Rainfall Measurement Mission (TRMM), and the number of flashes (Flash) from the Lightning Imaging Sensor (LIS) on board of TRMM with IWC provided by the ERA5 reanalyses in order to estimate the amount of ice injected (ΔIWC) in the upper troposphere (UT) and the tropopause level (TL) over the MariCont, from the method proposed in a companion paper (Dion et al., 2019). The study is focused on the austral convective season of DJF from 2004 to 2017. In the model used (Dion et al., 2019), Prec is considered as a proxy of deep convection injecting ice (ΔIWC^{Prec}) in the UT and the TL. ΔIWC^{Prec} is firstly calculated by the correlation between the growing phase of the diurnal cycle of Prec from TRMM-3B42 (binned at 1-hour resolution over the diurnal cycle) and the value of IWC measured by MLS (IWC^{MLS} , provided at the temporal resolution of 2 observations in local time per day) during the growing phase of the diurnal cycle of Prec. While Dion et al. (2019) have calculated ΔIWC^{Prec} over large convective study zones in the

560 tropics, we show the spatial distribution of ΔIWC^{Prec} in the UT and the TL at $2^\circ \times 2^\circ$ horizontal resolution over the MariCont, highlighting local areas of strong injection of ice up to 20 mg m^{-3} in the UT and up to 3 mg m^{-3} in the TL. ΔIWC injected in the UT and the TL has also been evaluated by using another proxy of deep convection: Flash measured by TRMM-LIS. Diurnal cycle of Flash has been compared to diurnal cycle of Prec, showing consistencies in 1) the spatial distribution of Flash and Prec over the MariCont (maxima of Prec and Flash located over land and coastline), and 2) their diurnal cycles over land (similar onset and duration of the diurnal cycle increasing phase). Differences have been mainly observed over sea and coastline areas, with the onset of the diurnal cycle increasing phase of Prec delayed by several hours depending on the considered area (from 2 to 7 h) compared to Flash. ΔIWC calculated by using Flash as a proxy of deep convection (ΔIWC^{Flash}) is compared to ΔIWC^{Prec} over five islands and five seas of the MariCont. Over each study zone, the range of values between ΔIWC^{Prec} and ΔIWC^{Flash} , the observational ΔIWC range, allows us to characterize the uncertainty of our model. ΔIWC is also estimated from IWC provided by the ERA5 reanalyses (ΔIWC^{ERA5} and IWC^{ERA5} , respectively) at 150 and 100 hPa over the study zones. We have also degraded the vertical resolution of IWC^{ERA5} to be consistent with that of IWC^{MLS} observations: 4 km at 146 hPa and 5 km at 100 hPa. The ΔIWC ranges calculated from observations and reanalyses were evaluated over the selected study zones (island and sea).

With the study of ΔIWC^{Prec} , results show that the largest amounts of ice injected in the UT and TL per $2^\circ \times 2^\circ$ pixels are found over land and are shown to be related to i) an amplitude of Prec diurnal cycle larger than 0.5 mm h^{-1} and ii) a duration of the growing phase of the convection longer than 9 hours. ΔIWC^{Prec} is typically smaller than ΔIWC^{Flash} , with the two estimates ~~disagreeing by -6~~ differing by up to -22 % over land and +6 up to -71 % over sea, excepted for Java and Java Sea, where the two estimates differ by +7 and +6 % respectively. The larger differences between ΔIWC^{Prec} and ΔIWC^{Flash} over sea might be due to the combination of the presence of stratiform precipitation included in Prec and the very low values of Flash over seas ($<10^{-2}$ flashes day^{-1} per pixel). The diurnal cycle of IWC^{ERA5} at 150 hPa is more consistent with that of Prec and Flash over land than over ocean. Finally, the relative difference between ΔIWC estimated from observations ~~has been shown to be consistent with~~ ΔIWC and that estimated from reanalysis ~~to within are, over land, 25% over land%~~ in the UT ~~to within and~~ 49% over land in the TL and ~~to within over sea, 96% in the UT and 28% over in the TL.~~ In light of these relative differences, ΔIWC estimates from observations and reanalysis are found to be fairly consistent over land in the UT and over land and sea in the TL, but inconsistent over sea in the UT, where relative differences are as large as 96%. Thus, considering the combination of the observational and reanalysis ΔIWC ranges, the total ΔIWC range has been found in the UT to be between 4.2 and 10.0 mg m^{-3} over land and between 0.4 and 4.4 mg m^{-3} over sea and, in the TL, between 0.5 and 3.9 mg m^{-3} over land and between 0.1 and 0.7 mg m^{-3} over sea. The impact of the vertical resolution on the estimation of ΔIWC has been found to be greater in the TL than in the UT.

590 The study at small scale over islands and seas of the MariCont has shown that ΔIWC from ERA5, Prec and Flash in the UT agree to within $0.1 - 1.0 \text{ mg m}^{-3}$ over MariCont_L, Sumatra, Borneo and Java, with the largest values obtained over Java Island. Based on observations, Java ~~Island~~ presents the largest amount of ice in the UT and the TL (with the minimum ~~value values~~ of the observational ΔIWC ~~range over Java island~~ ranges over Java being larger than the maximum ~~value values~~ of the observational ΔIWC ~~range ranges~~ of other land study zones by more than 1.0 mg m^{-3} in the UT and more than 0.3

595 mg m^{-3} in the TL). Based on the reanalysis, New Guinea and Sulawesi reach similar ranges of ice injection in the UT and even larger ranges of values in the TL than Java~~Island~~, although it must be kept in mind that ERA5 IWC data have not yet been fully evaluated. Processes related to the ~~strongest~~largest amount of ΔIWC injected into the UT and the TL have been identified as the combination of sea-breeze, mountain-valley breeze and merged cumulus, accentuated over small islands with high topography such as Java or Sulawesi.

600 *Author contributions.* IAD analysed the data, formulated the model and the method combining MLS, TRMM and LIS data and took primary responsibility for writing the paper. CD has treated the LIS data, provided the Figures with Flash datasets, gave advices on data processing and contributed to the Prec and Flash comparative analysis. PR strongly contributed to the design of the study, the interpretation of the results and the writing of the paper. PR, FC, PH and TD provided comments on the paper and contributed to its writing.

Acknowledgements. We thank the National Center for Scientific Research (CNRS) and the Excellence Initiative (Idex) of Toulouse, France to 605 fund this study and the project called Turbulence Effects on Active Species in Atmosphere (TEASAO – <http://www.legos.obs-mip.fr/projets/axes-transverses-processus/teasao>, last access: May 2020, Peter Haynes ~~Chair of Attractiv~~Chaire d’attractivité). We would like to thank the teams that have provided the MLS data (https://disc.gsfc.nasa.gov/datasets?page=1&keywords=ML2IWC_004, last access: May 2020), the TRMM data (<https://pmm.nasa.gov/data-access/downloads/trmm>), the LIS data (https://ghrc.nsstc.nasa.gov/lightning/data/data_lis_trmm.html, last access: May 2020) and the ERA5 Reanalysis data (<https://cds.climate.copernicus.eu/cdsapp#!/dataset/reanalysis-era5-pressure-levels-monthly-means>, last access: May 2020). We would like to thank both reviewers for their helpful comments and especially Michelle Santee for the many very detailed comments she provided that were invaluable in improving the study.

Main acronyms list

ΔIWC : Amount of ice injected by deep convection up to the study pressure level

$\Delta\text{IWC}^{\text{Prec}}$: ΔIWC estimated from Prec and from IWC^{MLS}

615 $\Delta\text{IWC}^{\text{Flash}}$: ΔIWC estimated from Flash and from IWC^{MLS}

$\Delta\text{IWC}^{\text{ERA5}}$: ΔIWC estimated from ERA5 reanalysis

$\langle\Delta\text{IWC}^{\text{ERA5}}\rangle$: $\Delta\text{IWC}^{\text{ERA5}}$ degraded along the vertical at the study pressure level consistently with the MLS vertical resolution of IWC^{MLS}

DJF: December, January, February

620 Flash: number of Flashes

IWC: Ice water content

IWC^{ERA5} : IWC from ERA5 reanalysis

IWC^{MLS} : IWC measured by MLS

LS: Lower stratosphere

625 MariCont: Maritime Continent
MariCont_C: Coastlines of the Maritime Continent
MariCont_O: Maritime Continent ocean
MariCont_L: Maritime Continent land
MLS: Microwave Limb Sounder

630 NAuSea: North Australia Sea
Prec: Precipitation
TTL: Tropical tropopause Layer
UT: Upper troposphere
UTLS: Upper troposphere and lower stratosphere

635 WSumSea: West Sumatra Sea
WV: Water vapour

References

- Awaka, J.: Algorithm 2A23 - Rain type classification. Proc. Symp. on the Precipitation Observation from Non-Sun Synchronous Orbit, 215–220, 1998.
- Carbone, R. E., Wilson, J. W., Keenan, T. D. and Hacker, J. M.: Tropical island convection in the absence of significant topography, part I: life cycle of diurnally forced convection. *Monthly weather review*, 128(10):3459–3480, 2000.
- Chappel, L.: Assessing severe thunderstorm potential days and storm types in the tropics. Presentation at the International Workshop on the Dynamics and Forecasting of Tropical Weather Systems, Darwin, 2001.
- Christian, H. J.: Algorithm theoretical basis document (ATBD) for the Lightning Imaging Sensor (LIS). <https://thunder.msfcospso.gsfc.nasa.gov/bookshelf/sites/pubs/default/files/atbd/-2000-atbd-lis-01.pdf>, 2000.
- Dauhut, T., Chaboureaud, J.-P., Escobar, J. and Mascart, P.: Giga-LES of Hector the Convective and its two tallest updrafts up to the stratosphere. *Journal of the Atmospheric Sciences*, 73(12):5041–5060, 2016.
- Dauhut, T., Chaboureaud, J.-P., Mascart, P. and Lane, T.: The overshoots that hydrate the stratosphere in the tropics. EGU General Assembly Conference Abstracts, volume 20, 9149, 2018.
- Dion, I.-A., Ricaud, P., Haynes, P., Carminati, F. and Dauhut, T.: Ice injected into the tropopause by deep convection – part 1: in the austral convective tropics. *Atmospheric Chemistry and Physics*, 19(9):6459–6479, 2019.
- Duncan, D., Eriksson, P.: An update on global atmospheric ice estimates from observations and reanalyses. In EGU General Assembly Conference Abstracts (Vol. 20, p. 13448), 2018.
- Forster, F., Shine, P.: Radiative forcing and temperature trends from stratospheric ozone changes. *Journal of Geophysical Research: Atmospheres* (Vol. 102, p. 10841–10855, 1997.
- Fueglistaler, S., Dessler, A. E., Dunkerton, T. J., Folkins, I., Fu, Q. and Mote, P. W.: Tropical tropopause layer. *Reviews of Geophysics*, 47(1), doi: 10.1029/2008RG000267, 2009a.
- Geer, A. J., Baordo, F., Bormann, N., Chambon, P., English, S. J., Kazumori, M. et al.: The growing impact of satellite observations sensitive to humidity, cloud and precipitation. *Quarterly Journal of the Royal Meteorological Society*, 143(709), 3189–3206, 2017.
- Goler, R., Reeder, M. J., Smith, R. K., Richter, H., Arnup, S., Keenan, T., May, P. and Hacker, J.: Low-level convergence lines over North Eastern Australia. part I: the North Australian cloud line. *Monthly weather review*, 134(11):3092–3108, 2006.
- Hatsushika, H. and Yamazaki, K.: Inter-annual variations of temperature and vertical motion at the tropical tropopause associated with ENSO. *Geophysical research letters*, 28(15):2891–2894, 2001.
- Hersbach, H.: Operational global reanalysis: progress, future directions and synergies with NWP. European Centre for Medium Range Weather Forecasts, 2018.
- Houze, R. A. and Betts, A. K.: Convection in [gateGATE](#). *Reviews of Geophysics*, 19(4):541–576, 1981.
- Huffman, G. J., Bolvin, D. T., Nelkin, E. J., Wolff, D. B., Adler, R. F., Gu, G., Hong, Y., Bowman, K. P. and Stocker, E. F.: The TRMM multi-satellite precipitation analysis (TMPA): quasi-global, multiyear, combined-sensor precipitation estimates at fine scales. *Journal of hydrometeorology*, 8(1):38–55, 2007.
- Huffman, G. J., Adler, R. F., Bolvin, D. T., Nelkin, E. J.: The TRMM Multi-satellite Precipitation Analysis (TMPA) in Satellite rainfall applications for surface hydrology. Springer, Dordrecht, 3–22, 2010.
- Huffman, G. J., Bolvin, D. T.: Real-time TRMM Multi-satellite Precipitation Analysis data set documentation. Available online: URL https://gpm.nasa.gov/sites/default/files/document_files/3B4XRT_doc_V7_180426.pdf (last access: April 2020).

- 675 Jensen, E. J., Ackerman, A. S., Smith, J. A.: Can overshooting convection dehydrate the tropical tropopause layer?. *Journal of Geophysical Research: Atmospheres*, 112(D11), 2007.
- Liu, C. and Zipser, E. J.: Global distribution of convection penetrating the tropical tropopause. *Journal of Geophysical Research: Atmospheres*, 110(D23), 2005.
- Liu, C. and Zipser, E. J.: Diurnal cycles of precipitation, clouds, and lightning in the tropics from 9 years of TRMM observations. *Geophys. Res. Lett.*, 35, L04819, doi:10.1029/2007GL032437, 2008.
- 680 Livesey, N. J., Read, W. G., Wagner, P. A., Froidevaux, L., Lambert, A., Manney, G.L., Millan, L.F., Pumphrey, H. C., Santee, M. L., Schwartz, M. J., Wang, S., Fuller, R. A., Jarnot, R. F., Knosp, B. W., Martinez, E. and Lay, R. R.: Version 4.2x Level 2 data quality and description document, Tech. Rep. JPL D-33509 Rev. D, Jet Propulsion Laboratory, available at: <http://mls.jpl.nasa.gov> (last access: 01 09 2019), 2018.
- 685 Lopez, P.: Direct 4D-Var assimilation of NCEP stage IV radar and gauge precipitation data at ECMWF. *Monthly Weather Review*, 139(7), 2098-2116, 2011.
- Love, B. S., Matthews, A. J. and Lister, G. M. S.: The diurnal cycle of precipitation over the Maritime Continent in a high-resolution atmospheric model. *Quarterly Journal of the Royal Meteorological Society*, 137(657):934–947, 2011.
- Millán, L., Read, W., Kasai, Y., Lambert, A., Livesey, N., Mendrok, J., Sagawa, H., Sano, T., Shiotani, M. and Wu, D. L.: SMILES ice cloud products. *Journal of Geophysical Research: Atmospheres*, 118(12):6468–6477, 2013.
- 690 Mori, S., Jun-Ichi, H., Tauhid, Y. I., Yamanaka, M. D., Okamoto, N., Murata, F., Sakurai, N., Hashiguchi, H. and Sribimawati, T.: Diurnal land–sea rainfall peak migration over Sumatra island, Indonesian Maritime Continent, observed by TRMM satellite and intensive radio sonde soundings. *Monthly Weather Review*, 132(8):2021–2039, 2004.
- Nesbitt S. W. and Zipser, E. J.: The diurnal cycle of rainfall and convective intensity according to three years of TRMM measurements. *Journal of Climate*, 16(10):1456–1475, 2003.
- 695 Petersen, W. A. and Rutledge, S. A.: Regional variability in tropical convection: observations from TRMM. *Journal of Climate*, 14(17), 3566-3586, 2001.
- Pope, M, Jakob, C. and Reeder, M. J.: Convective systems of the North Australian monsoon. *Journal of Climate*, 21(19):5091–5112, 2008.
- Qian, J.-H.: Why precipitation is mostly concentrated over islands in the Maritime Continent. *Journal of the Atmospheric Sciences*, 65(4):1428–1441, 2008.
- 700 Ramage, C. S.: Role of a tropical “Maritime Continent” in the atmospheric circulation. *Mon. Wea. Rev.*, 96(6):365–370, 1968.
- Randel, W. J., Wu, F., Voemel, H., Nedoluha, G. E. and Forster, P.: Decreases in stratospheric water vapor after 2001: links to changes in the tropical tropopause and the Brewer-Dobson circulation. *Journal of Geophysical Research: Atmospheres*, 111(D12), 2006a.
- Randel, W. J. and Jensen, E.J.: Physical processes in the tropical tropopause layer and their roles in a changing climate. *Nature Geoscience*, 6:169, 2013. doi: 10.1038/ngeo1733. URL <https://doi.org/10.1038/ngeo1733>, 2013.
- 705 Sherwood, S. C.: A stratospheric “drain” over the Maritime Continent. *Geophysical research letters*, 27(5):677–680, 2000.
- Stenke A. and Grewe, V.: Simulation of stratospheric water vapor trends: impact on stratospheric ozone chemistry. *Atmospheric Chemistry and Physics*, 5(5): 1257–1272, 2005.
- Stephens G. L. and Greenwald, T. J.: The earth’s radiation budget and its relation to atmospheric hydrology: 2. observations of cloud effects. *Journal of Geophysical Research: Atmospheres*, 96(D8):15325–15340, 1991.
- 710

- Waters, J. W., Froidevaux, L., Harwood, R. S., Jarnot, R. F., Pickett, H. M., Read, W. G. ... and Holden, J. R.: The Earth Observing System Microwave Limb Sounder (EOS MLS) on the Aura satellite. *IEEE Transactions on Geoscience and Remote Sensing*, 44(5), 1075-1092, 2006.
- 715 Wu, D. L., Jiang, J. H., Read, W. G., Austin, R. T., Davis, C. P., Lambert, A., Stephens, G. L. and Vane, D. G., Waters, J. W.: Validation of the Aura MLS cloud ice water content measurements. *Journal of Geophysical Research: Atmospheres*, 113, D15, 2008.
- Wu, D. L., Austin, R. T., Deng, M. et al. Comparisons of global cloud ice from MLS, CloudSat, and correlative data sets. *Journal of Geophysical Research: Atmospheres*, 2009, vol. 114, no D8, 2009.
- Yang G.-Y. and Slingo, J.: The diurnal cycle in the tropics. *Monthly Weather Review*, 129(4):784–801, doi: 10.1175/1520-0493(2001), 2001.