

## Reviewer comments, 2<sup>nd</sup> review.

### Sea spray aerosol organic enrichment, water uptake and surface tension effects

Luke T. Cravigan<sup>1</sup>, Marc D. Mallet<sup>1,a</sup>, Petri Vaattovaara<sup>2</sup>, Mike J. Harvey<sup>3</sup>, Cliff S. Law<sup>3,4</sup>, Robin L. Modini<sup>5,b</sup>, Lynn M. Russell<sup>5</sup>, Ed Stelcer<sup>6,c</sup>, David D. Cohen<sup>6</sup>, Greg Olsen<sup>7</sup>, Karl Safi<sup>7</sup>, Timothy J. Burrell<sup>3</sup>, and Zoran Ristovski<sup>1</sup>

### (Authors Response in italics, excerpts from text in bold)

The authors have made notable revisions to their manuscript, and I find it most certainly improved. I do, however, have remaining questions that derive from the revisions that I think should be addressed prior to publication.

*The authors thank the reviewer for their detailed review and consideration of the revised manuscript and very helpful comments.*

The caption for Fig. 9 seems incorrect. I think that the blue and green are switched, as a ZSR mixing model would lead to a lower calculated GF at a given OVF when the organics are assumed to have a GF = 1 compared to a GF = 1.6.

*The authors agree with this statement and the caption has been changed.*

#### **HGF modelled using ZSR assumption shown assuming an organic HGF of 1 (green) and an organic HGF of 1.6 (blue) shown**

When the authors now state “An increase in the compressed film model HGF relative to the ZSR modelled HGF is therefore due to a reduction in surface tension, not to changes in the water activity,” I’m not sure this is correct. The activity is changing because material is partitioning to the surface and therefore no longer contributing to solubility. So, the reduction in surface tension here offsets the change in water activity, I think.

*The authors agree with the reviewer, however this sentence has been removed upon review of the compressed film model results (see comments responses below).*

P1/L9: For clarity, would be good to say “The composition of the submicron organic fraction” rather than just “the organic fraction” as the previous sentence breaks things into size ranges.

*The authors agree with this statement and the text has been changed.*

#### **P1/L9**

**“The composition of the submicron organic fraction was consistent throughout the voyage and was largely composed of a....”**

P3/L2: I suggest adding “dependent on the method used and size range investigated.”

*The authors agree with the suggestion and the text has been changed.*

#### **P2/L32**

**“Chamber observations of nascent SSA universally indicate the presence of an internally mixed organic component, with the organic contribution varying between studies from approximately 4% - 80% by volume, dependent on the method used and size range investigated..”**

P3/L5: I suggest changing to “based on water uptake methods, where volume mixing rules are assumed,

*The authors agree with the suggestion and the text has been changed.*

**P3/L3**

**“Estimates of the sub-100 nm SSA organic fraction based on water uptake methods, where volume mixing rules are assumed, are of the order of 5 - 37%..”**

P3/L12: I suggest it be clarified that the volatilizable component is not the only type of organic present.

*The authors agree with the suggestion and the text has been changed.*

**P3/L11**

**“The organic fraction of sub-200 nm diameter SSA appears to be comprised of a volatilisable component which evaporates at approximately 150 - 200°C and comprises of the...”**

P4/L20: The authors updated this sentence, but it is now unclear to me how this is consistent with ZSR. Consistent in what manner? Above, the authors noted that the organic fraction in small SSA can be much greater than 4-17%. Also, in the list of references given few have explicitly shown that ZSR works by making independent measurements of composition and hygroscopicity, and then comparing. I suggest this be clarified.

*The authors agree and the text has been changed.*

**“Studies using nascent SSA generation chambers have largely indicated that the presence of primary organics suppresses sub-200 nm diameter SSA hygroscopic growth factors (HGFs) by 4-17% relative to sea salt (Bates et al., 2012; Fuentes et al., 2011; Modini et al., 2010a). Simultaneous measurement of SSA composition and supersaturated water uptake have indicated that the observed hygroscopicity is consistent with the Zdanovskii, Stokes, and Robinson (ZSR) assumption (Stokes and Robinson, 1966; Schwieter et al., 2017).”**

Regarding the organic volume fraction derived by volatility, the authors note in their response that if material charred it would be assigned to the low volatility organic fraction. However, this assumes that the charred material would evaporate at all. This is not guaranteed. In OC/EC analysis, charred organics typically do not evaporate until very high temperatures. These organics would be mis-attributed to salt. This aspect could be clarified further.

*The authors don't think that charred material would be classified as salt. Salt is classified by the volatility at 200 - 400 deg C, the more volatility over this temperature range the more hydrates and therefore the more sea salt (as a fraction of volume). The assumption is that charred material would reduce the volatility at 200-400 degC and therefore be classified as low volatility organics.*

*Mention of the possible misattribution of charred organics has been added to the methods section.*

**P9/L17 " It is also possible that the charring of semi volatile organics could also lead to mis-attribution as low volatility organics. "**

P11/L5: It would be good if the authors clarified here that this is now for PM<sub>1</sub>, as the discussion to this point about volatility is for small particles.

*The authors agree with the statement and the text has been changed.*

**P11/L5 "The PM<sub>1</sub> organic mass fraction from SSA samples collected on filters was..."**

P14/L4: Certainly the size distributions obtained are a result of the glass filters used. It is established that use of different generation methods leads to different size distributions. Perhaps the authors' point here is that the particulars of these distributions are not a result of using four filters, but of using filters in general. Also, this seems to conflict with the authors statement on P15/L9 that the use of four filters is key to getting a broader distribution compared to studies that use different filter configurations. I suggest that this could be clarified.

*The size distributions from the glass filter is generally similar in shape - and represented by 4 lognormal modes. Using 4 sintered glass filters broadens the distribution by spreading the contribution more evenly among the lognormal modes. The text has been changed to clarify these points.*

**P13/L32**

**"This is consistent with the number of lognormal modes fitted by Fuentes et al. (2010) and is not a direct result of the use of four glass filters in this study, but a result of using sintered glass filters in general."**

**P15/L2**

**"SSA produced from sintered glass filters does not perfectly represent real world bubble bursting from wave breaking (Collins et al., 2014; Prather et al., 2013) but the use of four glass filters with different pore sizes resulted in a broader distribution than other measurements of nascent SSA using glass filters (Collins et al., 2014; Fuentes et al., 2010; Keene et al., 2007; Mallet et al., 2016). For example, the normalised number contributions from mode 1 and mode 4 was three times greater than that observed by Fuentes et al. (2010)."**

P15/L20: I'll encourage the authors to modify this to say "(generally greater than 0.4 and as high as 0.85)"

*The authors agree and the text has been changed*

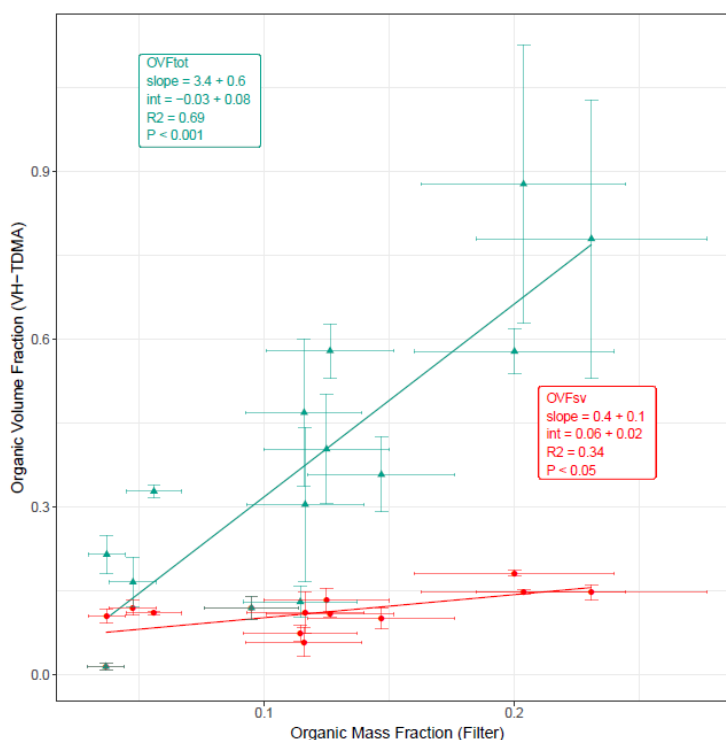
**P16/L5**

**"The 50 nm OVF was highest during bloom 1 (generally greater than 0.4 and as high as 0.85), which..."**

Fig. 6: There are a few errors in the revised Fig. 6. The slope of the blue lines is definitely not 1.3. It is much larger. I think this was mislabeled. Also, I highly doubt the R<sup>2</sup> for the blue points is 0.68. I think it is closer to 0.35. I think this higher R<sup>2</sup> reported is only obtained when

the volatility-derived OVF values near zero when the filter measurements are  $> 0$  are excluded. Similarly, I do not think the  $R^2$  value for the red points is 0.27 based on the measurements shown; it is likely lower. I'll note that these near-zero points were not included in the previous version of Fig. 6. It appears that these near-zero points had non-zero values in the previous version. Have these been revised? Or is this a typo? It would be useful if it were clarified where these additional measurements came from. Related, all  $R^2$  values discussed on P17 and P18 should be revised accordingly if these near-zero points are correct.

*An outdated version of the organic mass fraction (filter vs TDMA) was inadvertently added. The figure has been corrected, and the in text  $R^2$  values have been double checked.*



**Figure 6.** Comparison of 50 nm organic volume fraction calculated from volatility measurements (using VH-TDMA) and the  $PM_1$  OMF measured using FTIR/IBA on filter samples. Volatile fractions shown in red, total organic fractions shown in green.

P17/L8: I would argue that if the volatilities differ by hundreds of degrees (as is true for the semi-volatile and low-volatility components) their composition is necessarily quite different. Perhaps the authors could clarify here that they seem to mean the fractional contributions of the different organic components were similar, which is not the same as saying that the composition is similar.

*Agree- text has been changed*

#### **P17/L2**

**"The correlations suggest that the fractional contributions to the volatile and low volatility OVFs from the different seawater organic components measured in this study were similar, but the semi-volatile OVF displayed a higher contribution from aliphatic, lipid like species"**

P19/L11: It would still be good to indicate this is for  $PM_1$ .

*The authors agree and the text has been changed*

**P17/L8**

**"Alcohol functional groups contributed  $77 \pm 8$  % of the PM1 SSA organic mass (OM), alkanes...."**

P19/L31: The authors now note explicitly that the estimated OVF from the UFO-TDMA measurements do not correlate with either the semi-volatile or low-volatility OVF values, which is an interesting addition. Yet, they note that the UFO-derived OVF is likely associated with the semi-volatile components, and further that it must be a subset of the semi volatile components. If this is the case, then I would think that the UFO-derived OVF values should be universally lower than the semi-volatile OVF values. However, the UFO derived OVF values are larger (35%) than the semi-volatile OVF values (max ~15%). Can this be explained.

*Further detail has been added regarding the limitation of the application of UFO-TDMA GFs to SSA and some explanation for the potential over-prediction of OVF from the UFO-TDMA.*

**"Ethanol growth factors measured using the UFO-TDMA for preselected 50 nm diameter SSA were  $1.22 \pm 0.02$  (mean  $\pm$  sd) and were largely invariable for all of the water samples examined. The ZSR assumption was used with an organic growth factor of 1.5 and a sea salt growth factor of 1, based on UFO-TDMA measurements of oxidised organics (tartaric, benzoic and citric acid) and sodium chloride, respectively (Vaattovaara et al., 2005; Joutsensaari et al., 2001). The measured ethanol growth factors correspond to moderately oxidised organic volume fractions averaging  $35 \pm 5\%$ , when the two component ZSR model above is applied. The ethanol growth factor for species commonly observed in SSA, such as polysaccharides, proteins and lipids are not known, and therefore the representativeness of the ZSR model for primary marine aerosol is highly uncertain. For example some of the fatty acids and alkanes with the highest concentrations in the seawater are soluble (Myristic and Palmitic acid, Eicosane and Docosane) or very soluble (Lauric acid) in ethanol and could potentially display high ethanol growth factors (Haynes, 2018). Chlorophyll-a is also very soluble in ethanol (Haynes, 2018). If the ethanol growth factor of the SSA organic component is larger than 1.5, as assumed in the ZSR assumption, then the computed OVF will be overestimated. The variability due to SSA diameter in the ethanol growth factors measured at 15 to 50 nm were all within experimental error once a correction for the Kelvin effect was applied. There were no significant correlations with the 50 nm ethanol growth factor and the organic volume fraction calculated from volatility and PM1 organic mass fractions. The species responsible for the observed ethanol growth can't be determined without further reference measurements for sea spray. The ethanol growth factor of volatilised SSA (for sample U7520) was  $1.03 \pm 0.03$  at 200 deg C, and averaged  $1.01 \pm 0.03$  between 250 and 400 deg C, suggesting that the component contributing to ethanol growth was largely semi-volatile. The component that contributed to ethanol growth was more constant than the OVFSV measured using the VH-TDMA, suggesting that it could have been a subset of the total volatile organic component. The high UFO-TDMA OVF relative to the VH-TDMA OVF could suggest that the computed OVF from the UFO-TDMA is overestimated."**

Fig. 9: The x-axis values seem to have changed from the previous version. It is unclear (i) why they have changed and (ii) why the x-axes now differ between panels (a) and (b). This needs to be reconciled.

The changes in relation to the OVF (x-axis in Figure 9) were due to the removal of the NaSO<sub>4</sub> hydrate component from the computation of  $f_{io}$ , which had a subsequent impact on the OVF computed from volatility measurements. This component was removed because it has been shown that the contribution to volatility from NaSO<sub>4</sub> hydrates is very small (Rasmussen et al. 2017).

The heated HGF (right hand side) figure previously displayed the total volatility on the x-axis, it now shows the low volatility OVF – because this is what contributes to the heated HGF. The x-axis has been relabelled.

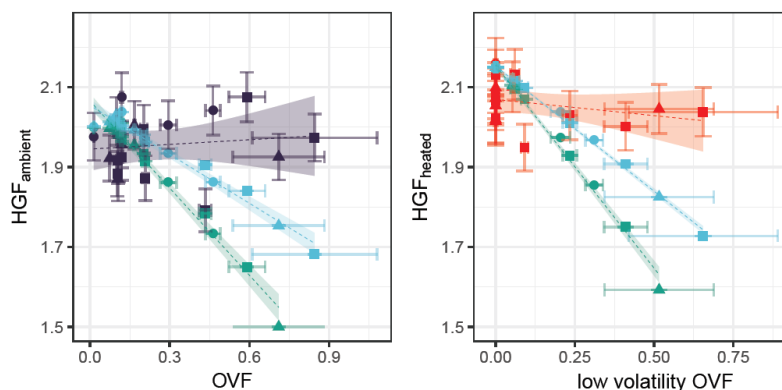


Figure 9

P21/L23: It is still not clear that this enhancement in droplet diameter is important at much higher RH than considered here. I suggest the authors make this aspect clear.

*The authors agree with the reviewer's statement and the paragraph has been changed to make this more clear.*

**P21/L23**

**"A buffered response of SSA hygroscopicity under supersaturated conditions to OVF has been previously reported (Ovadnevaite et al., 2011a; Collins et al., 2016; Forestieri et al., 2018b) and is thought to be linked to surface active organics (e.g. fatty acids). It should be noted that these observations were made in supersaturated conditions and therefore the applicability to observations in this study is not clear."**

P22/L9: It is unclear whether this organic fractions are for PM<sub>1</sub> or for the 50 nm particles.

*The authors agree with the reviewer's statement and the paragraph has been changed to make this more clear.*

**P22/L6**

**"The 50 nm deliquescence relative humidity was measured for the Workboat 9 seawater sample at 69% RH (Fig. 10), notably lower than that observed for NaCl/sea salt, ~73.5 % (Zieger et al., 2017). SSA generated from Workboat 9 seawater displayed an ambient 50 nm HGF of 1.84 ± 0.06, a heated 50 nm HGF of 1.94 ± 0.06, an organic volume fraction of approximately 21% at 50 nm and a PM<sub>1</sub> organic mass fraction of approximately 3%. The PM<sub>1</sub> alkane to hydroxyl ratio..."**

P23/L10: While I generally try to avoid bringing up new things during re-review, have the authors considered the sensitivity of their OCEANFILMS results to the assumed bubble thickness? They note in the methods that the assumed bubble thickness affects the resulting organic fraction. Can better agreement be obtained using a different, yet still reasonable, value for the bubble thickness? That said, the model/observation agreement is better at high OMF and worse at lower values, so changing the bubble thickness is likely to affect the intercept more than the slope, unless the authors were to allow the bubble thickness to vary with the water composition in some manner.

*The bubble thickness will shift the values up or down, and as the reviewer said this could be used to improve the intercept, but not so the  $R^2$ . To optimise the intercept the thickness would need to be set to 0.8 - 1  $\mu\text{m}$ , which is at the upper limit of the bubble thickness in the literature (Modini et al. 2013 indicates a thickness of 0.01 to 1  $\mu\text{m}$ ).*

*It is likely that the thickness varies with organic fraction as the reviewer pointed out. For example measurements have shown that the presence of surfactants can enhance the bubble lifetime at the surface - allowing it to drain more and become thinner. However applying a parameterisation for the thickness is beyond the measurements taken in this study.*

*This raises an interesting point and some discussion has been added on this.*

#### **P23/L10**

**"It is worth noting that both OCEANFILMS models over predict when the organic fraction is low,  $\text{OMF} < 0.05$ . The bias at low OMF could be due to the choice of bubble thickness. The use of a single thickness value is a simplification as it is likely to depend on the seawater surface composition and surface tension (Modini et al. 2013)."**

Compressed film model: I appreciate the updates that the authors have made. However, I still have concerns and questions over this discussion and implementation.

(i) For the ZSR comparison, the authors used the OVF values derived from the volatility measurements, specifically it seems that they used the total OVF. (Although it is not clear whether these are actually OMF or OVF...see question above regarding Fig. 9 discrepancy.) However, in the CF discussion, the authors use the OMF from the PM1 measurements, which they note on P26/L10. But why? This does not lead to a fair comparison, and makes it difficult to compare with Fig. S8, which shows the surface tension vs. the volatility derived OVF. Also, the OVF is, presumably, used as the input to the model, and thus seems to be a better parameter to compare with.

*The authors agree with the reviewer's comments, the OVF is the more relevant parameter and is used as the input to the compressed film model. Figure 13/Figure S5 and the surrounding discussion now use OVF.*

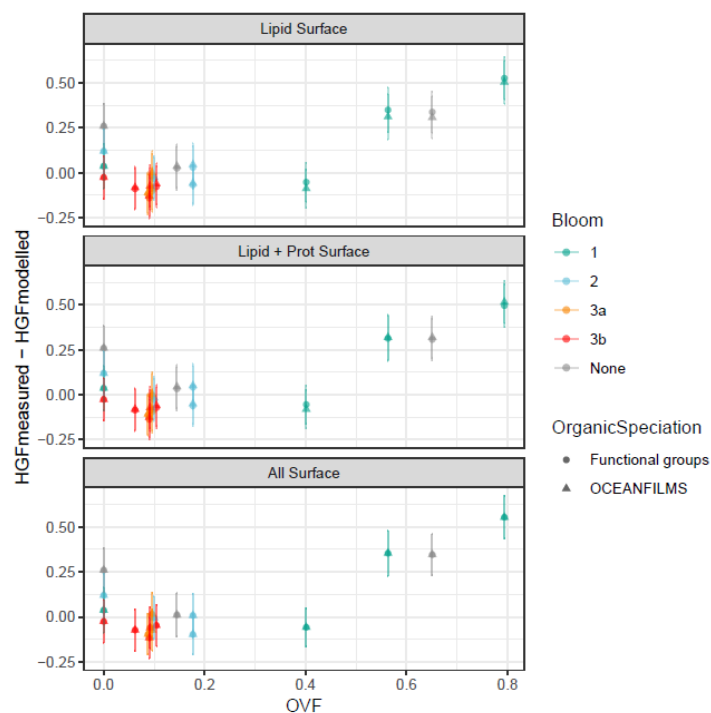


Figure 13

(ii) Are the surface tensions reported in Fig. S8 the value at 90% RH? It is not clear.

*Yes the surface tensions are for 90%RH, this has been added to the caption.*

**"Surface tension computed using the compressed film model as a function of SSA organic volume fraction for 50 nm diameter SSA particles at 90% RH..."**

(iii) The authors state that "The reduction in surface tensions at low OVFs for the lipids plus polysaccharides and all organics partitioning cases results in over prediction of the HGF" and "the error in the modelled HGF is reduced at low OVFs when only the lipids are partitioned to the surface." It is not clear from Fig. 13 how this is the case. First, the use of absolute values of the measurement-model difference makes it not possible to tell what is an over vs. underestimate. Second, it is unclear what is being compared to what when it is stated that error is reduced. Looking at Fig. 13, the only difference between the panels is for the "functional groups" calculations for the lipid-only partitioning. The "OCEANFILMS" calculations for lipid-only are the same as for the total organic partitioning. Thus, how is error reduced comprehensively?

*This section has been reworded following adjustments of the molar volume in the compressed film model, and the associated changes to Figure 13.*

**P26/L8**

**"The most notable feature is that for both ambient (Fig 130 and heated measurements (Fig. S5) the error at high organic volume fractions is large. At high organic volume fractions the compressed film model performed best, at the assumed molecular volume and molecular area, when the lipids and proteins were allowed to partition to the surface. At low OVFs the predicted HGF is very similar regardless of which components were allowed to partition to the surface. At low OVFs the volume organics isn't sufficient for the**



formation of a monolayer and therefore the surface tension remains equal to the surface tension of water, as shown in Fig. S8. The difference between the use of the functional group measurements or the OCEANFILMS-2 model for the functional group concentrations is distinguishable for the case in which only the lipids are allowed to partition to the SSA surface. In this case the higher lipid fraction predicted by OCEANFILMS-2 results in the formation of a monolayer at OVFs greater than 0.4, resulting in slightly lower error in the modelled HGFs. The monolayer is never formed for the lipid only case when the functional group measurements are applied, as indicated in Figure S8."

(iv) The authors have selected to use a more reasonable organic molecular volume now. However, they assume this is appropriate for lipids. Given a typical lipid density of 1 g/cm<sup>3</sup>, a molecular volume of  $4 \times 10^{-5}$  implies a molecular weight of 40 g/mol. This is inconsistent with the properties of lipids. Also, is there a reason why they have chosen to only consider the upper-limit organic HGF case? The data presented do not seem to support a large proportion of organosulfate species, which are the compounds that were observed to have such large HGF values. The lipopolysaccharides, which dominate the mass here (according to the FTIR measurements) have HGF values closer to 1.25 at 90%, per the cited Estill et al. (2017) paper.

*The authors agree with the reviewers comments. A molecular volume of  $2.2 \times 10^{-4}$  m<sup>3</sup>/mol. has now been applied, and this is now compared with an organic HGF of 1.15. This is consistent with the HGF from Raoult's law for an organic with a molecular volume of  $2.2 \times 10^{-4}$  m<sup>3</sup>/mol. The methods section has been amended to describe the selection of molecular volume.*

#### **P12/L20**

**"The molecular volume was chosen to broadly represent the molecular volume of marine organics, most notably lipids and polysaccharides (Petters et al., 2009). The molecular area..."**

(v) Differences are seen between the functional group and OCEANFILMS model partitioning for lipid-only partitioning at low OVF. This is not discussed explicitly; instead, the authors focus on one of these results (from the functional group analysis) as this is the one result that differs from the others. A more complete discussion should be provided.

*The authors agree that this discussion was lacking. Discussion regarding the difference between the compressed film modeled HGFs using FTIR functional groups and OCEANFILMS-2 input has been included.*

#### **P26/L13**

**"The difference between the use of the functional group measurements or the OCEANFILMS-2 model for the functional group concentrations is distinguishable for the case in which only the lipids are allowed to partition to the SSA surface. In this case the higher lipid fraction predicted by OCEANFILMS-2 results in the formation of a monolayer at OVFs greater than 0.4 (greater than 0.5 for heated samples, Fig. S5), resulting in slightly lower error in the modelled HGFs. The monolayer is never formed for the lipid only case when the functional group measurements are applied, as indicated in Figure S8."**

(vi) It is not clarified in Fig. 13 that the results shown are likely for the functional group analysis, and not OCEANFILMS.

*Figure 13 includes data from both the functional groups and OCEANFILMS-2 compressed film model inputs. The authors suspect Figure 14 was being referred to. The figure caption in Figure 14 has been updated to explicitly state that the functional group data is being used in the compressed film modelled HGFs.*

**Figure 14. Ambient HGF modelled using compressed film model (green) as a function of OVF, modelled using the ZSR assumption (light blue) and observed (dark blue). Compressed film model output is for case where lipid and protein fraction (computed from functional group measurements) can partition to the particle surface. ZSR model used an organic HGF of 1.15.**

(vii) In Fig. 12 the authors show the absolute value of the measured minus modeled. At minimum, the y-axis label should be updated to indicate the absolute value has been used. However, by showing this as an absolute value, this masks the fact that at low OVF the modeled overpredicts the HGF and at higher OVF the model underpredicts. I suggest that this figure would be more meaningful if the true difference were shown, rather than the absolute value.

*The authors agree with the reviewers comments. Figure 13 and Figure S5 have been changed to show the difference between measured and modelled HGF.*

(viii) I am not certain that Fig. 14, as presented, “highlights the contribution of surface tension to the observed SSA HGF.” The authors show results from the functional group analysis when only lipids partition. But, this is the case where surface tension has the smallest impact, per Fig. S8, since many points are unaffected. Only the points at the largest OVF are impacted by surface tension reduction. This is the reason that the ZSR and CF model results are so similar at low OVF. In particular, since the lipids are only ~10% of the total organics, this leaves 90% to contribute to the hygroscopicity with an apparent HGF of 1.6 (per the authors’ constraints) and little influence on the surface tension. When the OVF is  $< 0.2$ , the fractional amount of organics that does not contribute to hygroscopicity is  $0.2 \times 0.1 = 0.02$ . At larger OVF, the majority of the organics still contribute to the hygroscopicity (since lipids are ~10%) but now the surface tension is reduced and there is slightly greater growth. The authors do note in the text that at high organic fraction the HGF is increased by 0.05 owing to the decrease in surface tension. I’ll suggest that, if the authors’ aim is to “highlight” the influence of surface tension, they add a panel that shows the difference between the ZSR and CF model results as a function of surface tension.

*The authors agree with the reviewer. Following the implementation of compressed film model parameters more consistent with marine organics, the discussion has now been amended*

#### **P26/L18**

**“A comparison of the HGFs modelled using the compressed film model and those modelled using the ZSR assumption is shown in Fig. 14. The compressed film model is shown for the case when the lipids and proteins are allowed to partition to the surface. The compressed film modelled HGFs at high organic volume fractions are up to 0.03 greater, however this does not account for the reduction in HGF predicted by the ZSR assumption, i.e. by Raoult’s Law. The modest impact of decreased surface tension on HGF is consistent with previous studies on sub-saturated water uptake (Ruehl et al., 2016; Moore et al., 2008). Despite the inclusion of the surface tension effect (via the compressed film model) there was still a significant discrepancy between the observed and modelled HGFs, even when the relatively large uncertainty in the OVF is considered.”**

(ix) I find the sentence on P26/L19 starting “The role of surface tension...” is a run-on. I think a period is missing after the first clause.

*The authors agree and the first clause has been removed.*

**P26/L28**

**“OVFs inferred in studies using water uptake techniques, using the ZSR assumption (Fuentes et al., 2011; Modini et al., 2010a), have often been lower..”**

(x) Now that the authors CF calculations are clearer, I will suggest that the remainder of the paragraph starting on P26/L21 with “For example...” be substantially altered. The key point it seems the authors are trying to make here is that OVF values inferred from HGF measurements might lead to underestimates in the actual OVF. I think that the authors could better make this point by simply stating this, rather than trying to make a potentially apples-to-oranges comparison between different studies that took place at different times (which they seem to acknowledge in the last sentence). As currently written, the main point, I find, gets a little lost. I'll further encourage the authors to be semi quantitative here. They should be able to say, at least approximately, by how much the OVF might be underestimated. The magnitude of the differences in the HGF values shown in Fig. 14 b/t the ZSR and CF calculations suggest the potential mis-application of the ZSR could lead to a differences in the OVF of nominally 5% when the OVF is large (e.g. 0.75 instead of 0.8). I do not think that the authors' arguments or calculations would support differences of up to 40% in the OVF, as implied by the cited studies and numbers.

*The authors agree with the reviewer's comments. An example of the average OVF computed using the ZSR assumption on the observed HGFs has been added to the text and compared to that computed using the volatility methods.*

**Page 26/L25**

**“Applying the ZSR assumption to the observed HGFs, assuming an organic HGF of 1.15, yields organic volume fractions for Bloom 1 of 0.12 pm 0.2 (mean \_ sd), the OVFs computed using volatility measurements for Bloom 1 were 0.5 pm 0.3. It is also worth noting that the ZSR OVF for Bloom 1 includes an outlier (Workboat 4), for which the ZSR approximation is consistent with the OVF from volatility measurements. OVFs inferred in studies using water uptake techniques, using the ZSR assumption (Fuentes et al., 2011; Modini et al., 2010a), have often been lower than those measured using more direct analyses of SSA chemical composition (Keene et al., 2007; Facchini et al., 2008; Prather et al., 2013). SSA with hygroscopic growth factors inconsistent with the ZSR mixing rule, as presented here, could contribute to this apparent discrepancy.”**

(xi) The authors note that the “discussion of the potential for surface tension to impact CCN concentrations has been removed. This section has been updated to discuss the potential difference between the CCN computed using ZSR modelled and measured HGFs.”

However, I still have concerns regarding this discussion. The authors implicitly assume that whatever phenomenon that is leading to the measured HGF here being relatively independent of the OVF persists to the point of activation. This is not guaranteed, and the authors seem to imply from the discussion previous to the CCN discussion that surface tension is responsible for at least some of the influence. I strongly encourage the authors to restrict their discussion to what they have measured (HGF values) or clearly state the assumption regarding translation of the HGF values measured at 90% to the critical supersaturation.

*The authors agree with the reviewers suggestions and have removed the discussion/calculations relating to the impact on CCN, instead the focus is on the sub saturated hygroscopicity.*

(xii) I suggest the authors report the lower-limit surface tension and the C0 value used in the main text. The lower-limit surface tension is important to the results.

*The authors agree and these details have been added to the data analysis section.*

**P12/L19**

**"A C0 value of  $10^9$  mol.mol<sup>-1</sup> and a surface tension minimum of 0.03 J/m<sup>2</sup> was applied."**

Minor:

P1L4: Should be "and therefore"

*The authors agree and the text has been changed "and therefore the region is..."*

P7/L18: Typically, Figures are numbered in the order they are presented. Thus, this should probably be Fig. 3.

*The reference to figure 4 has been removed from this section. It was unnecessary to refer to this figure (results) in the methods section.*

P5/L6: The Aitken mode composition was also estimated from the UFO-TDMA. This might be noted.

*The authors agree and the text has been changed*

**"Aitken mode SSA composition was inferred from volatility data and estimated from UFO-TDMA measurements. \$PM\_1\$ composition.."**

P12/L35: There is extraneous text where I believe a reference should be.

*The authors have fixed the broken in text reference.*

P19/L25: This is an incomplete sentence.

*The authors agree and the text has been changed*

**"The ZSR assumption was used with an organic growth...."**

9/05/2020 9:33:05 AM

# Compare Results

Old File:

**Cravigan\_SOAP\_NascentSSA\_ReviewerComments.pdf**

**36 pages (3.14 MB)**  
21/02/2020 4:54:08 PM

versus

New File:

**Cravigan\_SOAP\_NascentSSA\_2ndRoundReviewerComments.pdf**

**36 pages (3.17 MB)**  
9/05/2020 9:18:53 AM

## Total Changes

478

## Content

74 Replacements  
178 Insertions  
152 Deletions

## Styling and Annotations

8 Styling  
66 Annotations

[Go to First Change \(page 1\)](#)

# Sea spray aerosol organic enrichment, water uptake and surface tension effects

Luke T. Cravigan<sup>1</sup>, Marc D. Mallet<sup>1,a</sup>, Petri Vaattovaara<sup>2</sup>, Mike J. Harvey<sup>3</sup>, Cliff S. Law<sup>3,4</sup>, Robin L. Modini<sup>5,b</sup>, Lynn M. Russell<sup>5</sup>, Ed Stelcer<sup>6,c</sup>, David D. Cohen<sup>6</sup>, Greg Olsen<sup>7</sup>, Karl Safi<sup>7</sup>, Timothy J. Burrell<sup>3</sup>, and Zoran Ristovski<sup>1</sup>

<sup>1</sup>School of Earth and Atmospheric Sciences, Queensland University of Technology, Brisbane, Australia

<sup>a</sup>Now at Institute for Marine and Antarctic Studies, University of Tasmania, Hobart, Australia

<sup>2</sup>University of Eastern Finland, Kuopio, Finland

<sup>3</sup>National Institute of Water and Atmospheric Research, Wellington, New Zealand

<sup>4</sup>Department of Marine Sciences, University of Otago, Dunedin, NZ

<sup>5</sup>Scripps Institute of Oceanography, University of California, San Diego, La Jolla, California

<sup>b</sup>Now at Laboratory of Atmospheric Chemistry, Paul Scherrer Institute, 5232 Villigen PSI, Switzerland

<sup>6</sup>Centre for Accelerator Science, NSTLI, Australian Nuclear Science and Technology Organisation, Menai, NSW, Australia

<sup>c</sup>Deceased

<sup>7</sup>National Institute of Water and Atmospheric Research, Hamilton, New Zealand

**Correspondence:** Zoran Ristovski (z.ristovski@qut.edu.au)

**Abstract.** The aerosol driven radiative effects on marine low-level cloud represent a large uncertainty in climate simulations, in particular over the Southern Ocean, which is also an important region for sea spray aerosol production. Observations of sea spray aerosol organic enrichment and the resulting impact on water uptake over the remote southern hemisphere are scarce, and therefore the region is under-represented in existing parameterisations. The Surface Ocean Aerosol Production (SOAP)

5 voyage was a 23 day voyage which sampled three phytoplankton blooms in the highly productive water of the Chatham Rise, east of New Zealand. In this study we examined the enrichment of organics to nascent sea spray aerosol and the modifications to sea spray aerosol water uptake using in-situ chamber measurements of seawater samples taken during the SOAP voyage.

Primary marine organics contributed up to 23% of the sea spray mass for particles with diameter less than approximately 1  $\mu\text{m}$ , and up to 79% of the particle volume for 50 nm diameter sea spray. The composition of the submicron organic fraction  
10 was consistent throughout the voyage and was largely composed of a polysaccharide-like component, characterised by very low alkane to hydroxyl concentration ratios of approximately 0.1 - 0.2. The enrichment of organics was compared to the output from the chlorophyll-a based sea spray aerosol parameterisation suggested by Gantt et al. (2011) and the OCEANFILMS models. OCEANFILMS improved on the representation of the organic fraction predicted using chlorophyll-a, in particular when the co-adsorption of polysaccharides was included, however the model still under predicted the proportion of polysaccharides by  
15 an average of 33%.

Nascent 50 nm diameter sea spray aerosol hygroscopic growth factors measured at 90% relative humidity averaged  $1.93 \pm 0.08$ , and did not decrease with increasing sea spray aerosol organic fractions. The observed hygroscopicity was greater than expected from the assumption of full solubility, particularly during the most productive phytoplankton bloom (B1), during which organic fractions were greater than approximately 0.4. The water uptake behaviour observed in this study is consistent

with that observed for other measurements of phytoplankton blooms, and can be partially attributed to the presence of sea salt hydrates, which lowers the SSA hygroscopicity when the organic enrichment is low. The inclusion of surface tension effects only marginally improved the modelled hygroscopicity, and a significant discrepancy between the observed and modelled hygroscopicity at high organic volume fractions remained. The findings from the SOAP voyage highlight the influence of biologically-sourced organics on sea spray aerosol composition, these data improve the capacity to parameterise sea spray aerosol organic enrichment and water uptake.

## 1 Introduction

Aerosol-cloud interactions represent a large uncertainty in modelled radiative forcing (Myhre et al., 2013), and in particular a strong radiative bias has been associated with under representation of low level cloud over the Southern Ocean (Bodas-Salcedo et al., 2012; Protat et al., 2017). Sea spray aerosol (SSA) are an important contributor to cloud condensation nuclei (CCN), in particular over the Southern Ocean (Quinn et al., 2017; Cravigan et al., 2015; Fossum et al., 2018; Gras and Keywood, 2016). The phytoplankton derived organic fraction of nascent SSA has been shown to influence water uptake and CCN activity, however in some cases this relationship is not entirely predictable. For example the drivers of an observed positive correlation between modelled SSA organic mass fraction and cloud droplet number concentrations over the high latitude Southern Ocean are unclear (McCoy et al., 2015). Models of SSA organic enrichment are largely based on chamber measurements which relate SSA and seawater composition. SSA generation chambers are often used because ambient SSA measurements are hindered by low concentrations and atmospheric processing (Cravigan et al., 2015; Frossard et al., 2014; Laskin et al., 2012; Shank et al., 2012). SSA measurements are scarce in the Southern Hemisphere (Cravigan et al., 2015), therefore parameterisations of SSA organic enrichment have largely been developed based on Northern Hemisphere measurements. Further constraint of these relationships to observations for the Southern Hemisphere is required.

The inorganic composition of SSA has largely been assumed to mirror the inorganic composition of seawater (Lewis and Schwartz, 2004), however a few important exceptions have been identified. The enrichment of  $\text{Ca}^{2+}$  in SSA, relative to seawater, has been identified in a number of ambient marine (Leck and Svensson, 2015; Sievering et al., 2004) and nascent SSA chamber studies (Keene et al., 2007; Salter et al., 2016; Schwier et al., 2017). Cation enrichment has also been observed in the form of  $\text{Mg}^{2+}$  and  $\text{K}^{+}$  (Ault et al., 2013b; Schwier et al., 2017), and is also associated with deficits in  $\text{Cl}^{-}$  (Ault et al., 2013a; Prather et al., 2013; Schwier et al., 2017).  $\text{PM}_{10}$   $\text{Ca}^{2+}$  has been observed to be enriched by up to 500% (Schwier et al., 2017), relative to seawater, with a number of studies showing stronger enrichment for sub-100 nm diameter SSA (Leck and Svensson, 2015; Salter et al., 2016). It is uncertain whether the ocean surface  $\text{Ca}^{2+}$  is complexed with organic matter, or is the product of precipitation of  $\text{CaCO}_3$  by certain phytoplankton groups, which can be a product of photosynthetic reactions. Observations of organic carbon particles that contain inorganic cations (such as  $\text{Ca}^{2+}$ ,  $\text{Mg}^{2+}$  and  $\text{K}^{+}$ ) but no  $\text{Cl}^{-}$ , has also been reported, suggesting that in some cases these species complex with organic material (Ault et al., 2013a).

Chamber observations of nascent SSA universally indicate the presence of an internally mixed organic component, with the organic contribution varying between studies from approximately 4% - 80% by volume, dependent on the method used and

size range investigated (Fuentes et al., 2011; Schwier et al., 2015, 2017; Facchini et al., 2008; Bates et al., 2012; Modini et al., 2010a). The majority of observations show that the organic fraction increases with decreasing particle diameter (Facchini et al., 2008; Keene et al., 2007; Prather et al., 2013; Quinn et al., 2014). Estimates of the sub-100 nm SSA organic fraction based on water uptake methods, where volume mixing rules are assumed, are of the order of 5 - 37% (Fuentes et al., 2011; Modini et al., 2010a), and sit at the lower end of the all nascent SSA organic fraction measurements (Facchini et al., 2008; Keene et al., 2007; Prather et al., 2013). Exceptions include Quinn et al. (2014), who derived an organic volume fraction (OVF) of up to 0.8 (for 40 nm SSA) using CCN measurements. Externally mixed organics have also been observed to comprise the majority of the number concentration of sub-180 nm SSA in some studies (Collins et al., 2014, 2013; Prather et al., 2013). It should be noted that the externally mixed organic fraction still contained inorganic ions, but was characterised by an absence of Cl (Ault et al., 2013a).

The organic fraction of sub-200 nm diameter SSA appears to be comprised of a volatilisable component which evaporates at approximately 150 - 200°C and comprises of the order of 10% of the SSA volume (Modini et al., 2010a; Quinn et al., 2014). An SSA low volatility organic component has also been observed in the North Pacific and Atlantic Oceans (Quinn et al., 2014), but was not seen in the South-West Pacific (Modini et al., 2010a). The organic volume fraction of sub-100 nm diameter SSA has been previously estimated by comparing the volatility of nascent SSA generated using natural seawater samples with SSA generated from sea salt samples (Cravigan, 2015; Mallet et al., 2016; Modini et al., 2010a). This method assumes that the volatile organic component is the only cause for the difference in volatility. It has been subsequently noted that components of sea salt aerosol retain hydrates even when dried to very low relative humidity (RH <5%), such as MgCl<sub>2</sub> and CaCl<sub>2</sub> (Rasmussen et al., 2017). Sea salt hydrates need to be taken into account when estimating the SSA OVF using volatility.

The SSA organic fraction has been associated with the phytoplankton decline due to bacterial grazing and viral infection, which releases fatty acids and polysaccharides predisposed to SSA enrichment (O'Dowd et al., 2015). The composition of *PM*<sub>1</sub> SSA organics is characterised by a large fraction (>50%) of hydroxyl functional groups, with smaller contributions from alkanes and smaller again from amines and carboxylic acid groups (Russell et al., 2010). The hydroxyl functional group is generally consistent with water soluble polysaccharides (Russell et al., 2010), however water insoluble lipopolysaccharides (LPS) have been observed in SSA (Ceburnis et al., 2008; Facchini et al., 2008; Claeys et al., 2010; Miyazaki et al., 2010; Sciare et al., 2009) and may depress water solubility and enhance surface tension effects. Functional group measurements can be equated to molecular classes, for example higher alkane to hydroxyl ratios indicates less oxygenated and more lipid like organics. Chamber generated nascent *PM*<sub>1</sub> SSA alkane to hydroxyl ratios averaging  $0.34 \pm 0.21$  for non-productive waters and  $0.93 \pm 0.41$  for productive waters have been reported (Frossard et al., 2014). The proportion of fatty acids, and therefore alkanes, is linked to phytoplankton production because the lifetime of fatty acids is relatively short, compared to polysaccharides.

Empirical relationships between the nascent *PM*<sub>1</sub> SSA organic fraction and chlorophyll-a (Chl *a*) concentrations are most commonly used to estimate SSA organic enrichment (Gantt et al., 2011; Schwier et al., 2015; Fuentes et al., 2011). A lagged correlation between the peak in Chl *a* of a phytoplankton bloom and organic enrichment of SSA has been observed (O'Dowd



et al., 2015; Rinaldi et al., 2013). Although Chl *a* may not represent the molecular processes that drive enrichment it indicates the spatial and temporal magnitude of phytoplankton whilst providing a proxy for organic compounds released. Chl *a* is readily available due to satellite retrievals (Rinaldi et al., 2013) and it has been shown that over monthly timescales correlates well with SSA organic fraction (O'Dowd et al., 2015). Alternative models have been suggested which aim to better explain the molecular drivers of  $PM_1$  SSA organic enrichment. OCEANFILMS (Organic Compounds from Ecosystems to Aerosols: Natural Films and Interfaces via Langmuir Molecular Surfactants) is a model of SSA organic enrichment based on the seawater molecular composition (Burrows et al., 2014, 2016). Marine organics are broken up into classes and adsorption to a surface film (e.g. a bubble) is driven by the Langmuir adsorption coefficient. The molecular classes are a labile lipid-like class, a semi-labile polysaccharide-like class, a protein class with intermediate ocean lifetimes, a long lived processed class and a humic-like mixture from deep up-welled water. The processed class composition and surface activity is poorly characterised, but this class represents the recalcitrant dissolved organic carbon resulting from biogeochemical ageing of other groups. The Langmuir adsorption coefficient is based on observations of reference molecules for each molecular class (Burrows et al., 2014). The surface coverage representation is further extended by considering the interaction between polysaccharides and more surface active molecular classes, which results in co-adsorption of more soluble polysaccharides (Burrows et al., 2016). Only a small number of long term datasets are available to constrain SSA enrichment, in particular in the Southern Hemisphere (Quinn et al., 2015).

Studies using nascent SSA generation chambers have largely indicated that the presence of primary organics suppresses sub-200 nm diameter SSA hygroscopic growth factors (HGFs) by 4-17% relative to sea salt (Bates et al., 2012; Fuentes et al., 2011; Modini et al., 2010a). Simultaneous measurement of SSA composition and supersaturated water uptake have indicated that the observed hygroscopicity is consistent with the Zdanovskii, Stokes, and Robinson (ZSR) assumption (Stokes and Robinson, 1966; Schwier et al., 2017). Importantly, exceptions have been identified based on CCN measurements which indicate a role of surface tension on SSA water uptake (Ovadnevaite et al., 2011a; Collins et al., 2016; Forestieri et al., 2018b). The suppression of surface tension has been identified as having a potential impact on the hygroscopicity parameter ( $\kappa$ ) computed from CCN measurements during nascent SSA microcosm experiments. The hygroscopicity parameter was persistently high ( $\kappa > 0.7$ ) even with high marine biological activity and high SSA organic fractions (Collins et al., 2016). Alternatives to the assumption of full solubility for the organic component of internal carboxylic acid-salt mixtures have been suggested based on laboratory (Ruehl and Wilson, 2014; Ruehl et al., 2016) and field measurements of secondary particles (Ovadnevaite et al., 2017), and applied to SSA analogues (Forestieri et al., 2018b). It is worth noting that the impact of surface tension on water uptake in the sub-saturated regime is generally small (Ruehl et al., 2016; Moore et al., 2008). The compressed film model creates an organically enriched surface layer, which acts to suppress surface tension, and a bulk solution which is a mixture of organic species, inorganic species and water. With a sufficient concentration of a surface active species the water tension suppression can compensate for the reduction in water uptake due to the Raoult effect. As the droplet grows the organic monolayer becomes increasingly dilute, until the droplet surface tensions approaches the surface tension of water. The application of the compressed film model for SSA analogues indicated that the organic component can be considered dissolved into the bulk (Forestieri et al.,

2018b; Fuentes et al., 2011; Petters and Petters, 2016; Prisle et al., 2010). The surface tension suppression of SSA is far from consistent suggesting that regional differences and the richness in organic matter and/or microbial composition are important.

Measurements of nascent SSA composition and water uptake taken during the Surface Ocean Aerosol Production (SOAP) research voyage (Law et al., 2017) over the Chatham Rise in the South-West Pacific Ocean, on-board the RV Tangaroa (NIWA, Wellington), are reported here. The measured SSA composition and hygroscopicity are presented with respect to an extensive suite of seawater composition. Aitken mode SSA composition was inferred from volatility data and **estimated from UFO-TDMA measurements**.  $PM_1$  composition was measured from analysis of filter samples. These data provide a valuable comparison between Southern Hemisphere observations and existing models for SSA organic enrichment and SSA water uptake.

## 2 Methods

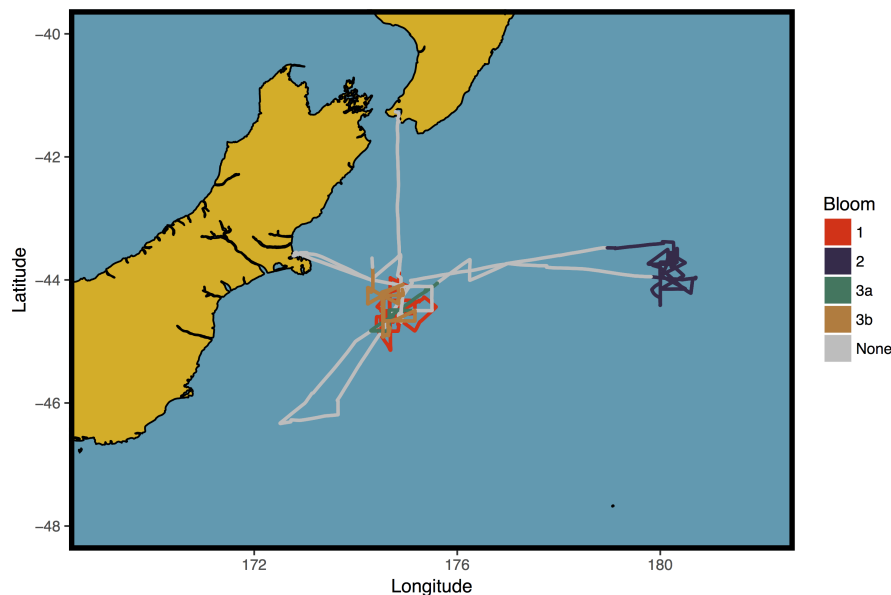
### 2.1 SOAP voyage

The SOAP voyage examined air-sea interactions over the biologically-productive frontal waters of the Chatham Rise, east of New Zealand in February and March 2012. The Chatham Rise couples pristine marine air masses with high biological activity due to the mixing of warm subtropical water and cool Southern Ocean waters. Subtropical waters have relatively low macronutrient levels, while Southern Ocean waters are depleted in iron, but not in macronutrients (Law et al., 2017). Phytoplankton blooms were identified via satellite ocean colour images and further mapped using continuous measurement of seawater parameters (Chl *a*, dimethyl sulfide, and carbon dioxide concentrations). Three broad bloom periods were defined as shown in Fig. 1. The first bloom (B1) occurred 12 hours into the voyage and was characterised by dinoflagellates and displayed elevated Chl *a* and seawater dimethyl sulfide (DMS), 7 days into the voyage a weakening bloom (B2) was driven by coccolithophores, and a final bloom (B3) displayed a mixture of phytoplankton groups. Bloom 3 was subdivided into B3a and B3b due to changes in the surface water characteristics following the passage of a storm.

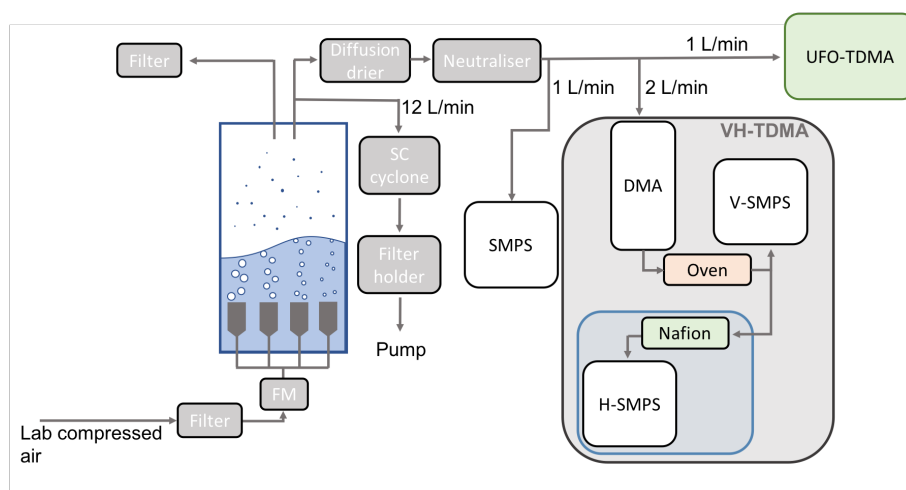
### 2.2 Measurements/instrumentation

Seawater samples were collected throughout the voyage for the purpose of generating nascent SSA. Seawater was primarily collected from the ocean surface (approximately 10 cm depth) during workboat operations at a distance from the RV Tangaroa or from the mixed layer (3 - 12 m depth, always less than the measured mixed layer depth) from a conductivity, temperature and depth rosette (CTD), and a number of deep water samples were collected for comparison. Due to the sampling method used these seawater samples are not representative of the sea surface microlayer (SML). Samples also spanned the variability in ocean biological conditions observed throughout the SOAP voyage. Table S1 provides a description of the seawater samples that were taken.

Nascent SSA was generated in-situ in a 0.45 m<sup>3</sup> cylindrical polytetrafluoroethylene chamber housing four sintered glass filters with porosities between 16 and 250  $\mu\text{m}$  (Cravigan, 2015; Mallet et al., 2016). Dried and filtered compressed air was passed through the glass filters at a flow rate of  $15.5 \pm 3 \text{ L min}^{-1}$  and resulting SSA was sampled from the headspace of



**Figure 1.** Voyage map for SOAP study, coloured by bloom periods.



**Figure 2.** Experimental schematic of nascent SSA chamber experiments during SOAP voyage. The VH-TDMA (grey) contains an RH controlled region (blue) used for water uptake measurements.

the chamber. A diffusion drier was used to dry the sample flow to  $20 \pm 5$  % RH prior to characterisation. Figure 2 shows the sampling set up used to generate, condition and measure nascent SSA. SSA produced from sintered glass filters does not perfectly represent real world bubble bursting from wave breaking (Collins et al., 2014; Prather et al., 2013) and the limitations to the methods are discussed in further detail in Section 3.2.

Size distributions and number concentrations of 10 to 300 nm diameter SSA were measured using a TSI 3080 scanning mobility particle sizer (SMPS), coupled with a 3071 differential mobility analyser and a 3010 condensation particle counter (CPC) (TSI, Shoreview, MN), with an aerosol sample flow rate of 1 L min<sup>-1</sup> and a sheath flow rate of 10 L min<sup>-1</sup>. The volatility and hygroscopicity of nascent SSA was determined with a volatility and hygroscopicity tandem differential mobility analyser (VH-TDMA) (Alroe et al., 2018; Johnson et al., 2008, 2004). The VH-TDMA selects particles based on mobility diameter, conditions them, and measures the resulting particle size distributions using parallel SMPSs (V-SMPS and H-SMPS in Fig. 2), each with a TSI 3010 CPC. The aerosol sample flow rate for each SMPS was 1 L min<sup>-1</sup>, resulting in a total inlet flow of 2 L min<sup>-1</sup>, the sheath flow for the pre-DMA, V-DMA and H-DMA were 11, 6 and 6 L min<sup>-1</sup>, respectively. The VH-TDMA can be operated in a number of sampling modes, although in general the instrument is designed to observe the water uptake at ambient temperature and subsequently observe the water uptake of a low volatility component (at some elevated temperature), which is used to infer the water uptake of the volatile component. Nascent SSA with a mobility diameter of 50 nm were preselected for each water sample and a number of water samples were also analysed with a preselected diameter of 30, 100 or 130 nm for comparison. Table S1 details the VH-TDMA analysis pre-selected particle size. The SSA volatile fraction was determined by measuring the diameter of preselected SSA upon heating by a thermodenuder up to 500 °C, in temperature increments of 5 °C - 50 °C. After heating the SSA hygroscopic growth factor at 90% RH was measured. The dependence of HGF on RH at ambient temperature was measured for one water sample (workboat 9) to provide the deliquescence relative humidity (DRH).

Size distribution, volatility and HGFs have also been measured for laboratory sea salt samples, which were generated using the same glass filters, chamber and sample conditioning. A comparison of the sea salt and sea spray volatility (Fig. S3) was used to calculate the 50 nm SSA organic volume fraction. In addition laboratory sea salt Transmission Electron Microscopy (TEM) samples were collected using a TSI 3089 Nanometer Aerosol Sampler and analysed using X-ray dispersive spectrometry (TEM-EDX). TEM data were collected on a JEOL2100 transmission electron microscope operating at 200 kV coupled with a Gatan high angle annular dark field (HAADF) detector. TEM images were used to compare the morphology of heated (250 °C) and unheated SSA samples and TEM-EDX data were used to compute enrichment factors for laboratory sea salt.

The ultrafine organic tandem differential mobility analyzer (UFO-TDMA, Vaattovaara et al., 2005; Joutsensaari et al., 2001) was used to calculate moderately oxidized organic volume fractions of SSA particles by measuring how much the particle grows in sub-saturated (82% ± 2%) ethanol vapour. The growth factor of the SSA samples in ethanol vapour was measured at pre-selected mobility diameters of 15, 30 and 50 nm using the UFO-TDMA. Growth of sodium chloride and ammonium sulfate in ethanol vapour have been shown to be negligible for preselected diameters up to 100 nm (Vaattovaara et al., 2005; Joutsensaari et al., 2001), while oxidised organics (tartaric, benzoic and citric acid) have growth factors of 1.3 to 1.6 in subsaturated (86%) ethanol vapour. UFO-TDMA and H-TDMA measurements of sample U7520 were pre-treated using a thermodenuder (heated in 10°C steps up to 500°C). This allowed examination of the contribution of volatile components to particle growth in ethanol vapour, but excluded the estimation of organic fractions from VH-TDMA measurements.

SSA generated from 23 ocean water samples was collected on filters for further compositional analysis using transmission Fourier Transform Infra Red (FTIR) and Ion Beam analysis (IBA). SSA was sampled through a 1 µm sharp cut cyclone (SCC

2.229PM1, BGI Inc., Waltham, Massachusetts) and collected on Teflon filters, with the sample confined to deposit on a 10 mm circular area. Back filter blanks were used to characterise the contamination during handling, and before analysis samples were dehydrated to remove all water, including SSA hydrates, as described in Frossard and Russell (2012). Filter blanks were under the detection limit for the FTIR and Si was the only compound with blank measurements above the IBA detection limit.

FTIR measurements were carried out according to previous marine sampling techniques (Maria et al., 2003; Russell et al., 2011, 2010) and characterised the functional groups associated with major carbon bond types, including saturated aliphatic (alkane) groups, alcohol (used here to include phenol and polyol) groups, carboxylic acid groups, non-acidic carbonyl groups, and primary amine groups. FTIR measurements are non-destructive, therefore subsequent to FTIR analysis filter samples underwent simultaneous particle induced X-ray emission (PIXE) and gamma ray emission (PIGE) analysis (Cohen et al., 2004). The elements discussed herein, of interest for SSA, are Na (from PIGE) and Mg, Si, S, Cl, K, Ca, Zn, Br and Sr (from PIXE). It should be noted that Rutherford backscattering and particle elastic scattering analysis did not yield useful results for the analysis of C, N, O, and H. The SSA organic concentrations were instead obtained solely from FTIR analysis.

A large number of ocean water measurements were taken, characterising the physical properties, nutrient concentration, the phytoplankton population, bloom productivity and the concentration of molecular classes important for SSA e.g. fatty acids, proteins and carbohydrates. A detailed list of ocean water measurements undertaken during the SOAP voyage is contained in Law et al. (2017). The parameters of interest here are the concentrations of Chl *a*, dissolved organic carbon (DOC), high molecular weight proteins and sugars, alkanes and the fatty acid concentration. It should be noted that the protein and carbohydrate measurements include both dissolved and particle components. Fatty acid measurements are made up of measurements from 34 individual fatty acid species, which can be broken up into saturated (14 species), monounsaturated (9 species) and polyunsaturated (11 species). Alkanes were also speciated, with carbon numbers ranging from 13 to 36. Details of the sampling and analysis methodology for the parameters used in this paper are available in the supplementary material.

## 2.3 Data analysis

Nascent SSA size distributions for each water sample were averaged and normalised to their maximum value. Non-linear least square fits of up to four lognormal modes were fitted to each distribution with a random selection of initial values for the geometric mean and standard deviation, constrained to 10 - 320 nm and less than 2, respectively. The most appropriate fit was determined using the bayesian information criterion, which is a measure of the error in reconstructing the measured size distribution that applies a penalty based on the number of parameters used and therefore avoids over fitting (Sakamoto et al., 1987).

All VH-TDMA data were inverted using the TDMAinv algorithm (Gysel et al., 2009), and external modes were allocated based on local maxima of the resulting piecewise linear GF distribution. Volatility measurements and hygroscopicity measurements were inverted separately and a single VGF mode was used to correct HGF for volatility. The volatile fraction (VF) was

computed using Equation 1, where  $d$  is the particle diameter,  $T$  denotes the temperature of the thermodenuder and  $o$  denotes ambient temperature.

$$VF = 1 - VFR = 1 - \left( \frac{dT}{d_0} \right)^3 \quad (1)$$

In this study SSA organic volume fractions were calculated using volatility measurements, by accounting for the presence of sea salt hydrates. The volatility due to hydrates was used as a proxy for the proportion of inorganic sea salt in the natural seawater samples, which in turn provided the proportion of organics. The volume of hydrates is assumed to be a stable proportion of the sea salt volume, and there is assumed to be no contribution to the hydrates from SSA organics. As the organic fraction of internally mixed SSA increases, the sea salt fraction decreases and the hydrate fraction decreases in proportion to the sea salt as illustrated in Fig. S2. The sea salt fraction was computed by comparing natural sea spray volatility profiles and laboratory sea salt volatility profiles. In this study it was assumed that volatility was due to the evaporation of hydrates over the temperature range 200 - 400 °C, i.e. that semi-volatile organics evaporate at temperatures less than 200 °C and non-volatile (or more precisely low volatility) organics evaporate at temperatures above 400 °C. This assumption is supported by previously reported volatility profiles of nascent SSA generated from natural seawater and from laboratory sea salts, which are consistently parallel at 200 - 400 °C, indicating that the volatility is due to the evaporation of similar components i.e. hydrates (Modini et al., 2010b; Rasmussen et al., 2017). If the SSA samples contained some organics that evaporated between 200-400 °C, these would be incorrectly assigned as inorganic sea salt hydrates, in this respect the computed organic volume fractions could be considered lower limits. **It is also possible that the charring of semi volatile organics could also lead to mis-attribution as low volatility organics.**

The organic volume fraction was inferred from volatility measurements using the linear model outlined in Eq. 2, and shown in Fig. S3, where  $VF_T$  is the measured volatile fraction of the sea spray sample at thermodenuder temperature  $T$  and  $VF_{T,SS}$  is the measured volatile fraction of laboratory sea salt at temperature  $T$ . The slope of Eq. 2,  $f$ , is the proportion of volatility due to sea salt hydrates, and was assumed to represent the proportion of hydrated sea salt in the natural seawater samples. The total organic volume fraction is then given by  $1 - f$ . For example an internally mixed SSA particle with an organic volume fraction of 50% and a sea salt (including hydrate) volume fraction of 50% has half the volume of hydrates compared the laboratory sea salt particles of the same diameter. The volatility due to hydrates will be reduced by half and therefore  $f$  will also be reduced by half relative to laboratory sea salt, assuming that hydrates dominate the volatility at 200 - 400 °C. Further detail on the linear fits for individual samples is shown in the supplementary material.

$$VF_{T=200-400^\circ C} = f \times VF_{T=200-400^\circ C, SS} + OV_{F_{sv}} \quad (2)$$

Laboratory sea salt volatility profiles were measured using three different sea salt samples, a commercially available sea salt (Pro Reef Sea Salt, Tropic Marin, Wartenberg, Germany), and two mixtures of laboratory grade salts, one mimicking Sigma-Aldrich Sea Salts composition and one mimicking the Niedermeier et al. (2008) Atlantic Ocean sea salt composition. Sea salt

solutions were all made to a concentration similar to sea water, 35 g L<sup>-1</sup> and volatility profiles were within experimental error of one another. The error in the laboratory sea salt volatile fractions were assumed to be the maximum of the standard error in the mean across the three sea salt samples and the instrumental error ( $\pm 3\%$ ).

The method used to compute the organic volume fraction implicitly assumes that the proportion of hydrates in the sea salt component of SSA is constant, however observations have shown variability in inorganic composition of SSA can vary (Salter et al., 2016; Schwier et al., 2017; Ault et al., 2013a), particularly species such as Ca, Cl and Mg, which are potentially important for the formation of hydrates. As a result a further correction was applied to  $f$  for the case where the composition of inorganic sea salt, and therefore hydrates, is different between the natural SSA sample and the laboratory sea salt sample. The correction is represented by  $f_{io}$  in Eq. 3. Ca and Mg enrichment and associated Cl depletion can result in an overall reduction in hydrate forming sea salt species, such as CaCl<sub>2</sub> and MgCl<sub>2</sub> (Salter et al., 2016; Schwier et al., 2017). The ionic composition of nascent SSA generated from natural seawater was measured using ion beam analysis and used to compute the inorganic molecular composition, which in turn was used to compute the volume fraction of hydrates for each sample as described in the supplementary material. The same analysis was performed based on the ionic composition of laboratory sea salts and  $f_{io}$  was computed as the ratio of natural seawater SSA hydrate volume fraction to laboratory sea salt hydrate volume fraction. These calculations of the sea salt hydrate fraction used the  $PM_1$  measurements, but were applied to 50 nm diameter SSA. This is a potential source of uncertainty to the computed OVF, which is sensitive to changes in  $f_{io}$ . There would have to be an appreciable difference in the enrichment of a hydrate forming component between the 50 nm SSA and both the  $PM_1$  SSA and 50 nm sea salt for this to impact the OVF. Previous observations have shown size dependent enrichment in the submicron SSA Ca and Mg components for example (Salter et al., 2016; Keene et al., 2007), but this has also been observed for sea salt (Salter et al., 2016). In the context of this study an increase in the volatility due to an increase in hydrates at 50 nm (relative to  $PM_1$ ) is assumed to be reflected in the sea salt volatility and have little impact on the computed OVF.

$$OVF_{tot} = 1 - \frac{f}{f_{io}} \quad (3)$$

The volume fraction of semi-volatile organics in the nascent SSA generated from natural seawater, which evaporate at temperatures less than 200 °C, were computed from the intercept in Eq. 2. Uncertainties for  $OVF_{sv}$  and  $OVF_{tot}$  were taken to be whichever is the maximum out of the measurement error for VF and the standard error for the intercept and slope, respectively. The measurement error in VF is  $\pm 3\%$ , which is due to a 1% DMA sizing uncertainty (Johnson et al., 2004; Modini et al., 2010a). This approach quantifies the proportion of volatility due to the presence of hydrates and due to the presence of organics, and is therefore an improvement on previously published estimates of the SSA OVF (Mallet et al., 2016; Modini et al., 2010a; Quinn et al., 2014).

The HGF was computed using Eq. 4, where  $d_{RH,T}$  is the measured diameter at the RH of the H-SMPS (90% for all except the DRH measurement) and thermodenuder temperature T, and  $d_{dry,T}$  is the measured dry diameter at thermodenuder temperature T. HGFs for sea salt were shape corrected using the dynamic shape factor from (Zieger et al., 2017). The presence of an organic fraction has been observed to increase the sphericity of nascent SSA (Laskin et al., 2012), therefore an organic



fraction dependent shape correction was applied (Zelenyuk et al., 2007). A single shape factor was used across all temperatures because TEM images of laboratory sea salt showed an insignificant difference between the apparent shape of SSA at ambient temperature and those heated to 250 °C (Figure S4).

$$HGF = \frac{d_{RH,T}}{d_{dry,T}} \quad (4)$$

- 5 The  $PM_1$  organic mass fraction from SSA samples collected on filters was computed from the total organic mass from FTIR analysis and the inorganic mass from ion beam analysis, as in Eq. 5. The filter exposed area (0.785 cm<sup>2</sup> was used to convert inorganic areal concentrations into total mass. The inorganic mass (IM) was computed as the sum of Na, Mg, SO<sub>4</sub>, Cl, K, Ca, Zn, Br and Sr. The measured S mass was used to calculate the SO<sub>4</sub> mass, all S was assumed to be in the form of SO<sub>4</sub>. The uncertainty in the organic mass measured using FTIR is up to 20% (Russell, 2003; Russell et al., 2010), this is taken as the  
10 uncertainty in the  $PM_1$  OMF.

$$OMF_{PM_1} = \frac{OM_{FTIR}}{OM_{FTIR} + IM_{IBA}} \quad (5)$$

Enrichment factors for inorganic elements were calculated with respect to the laboratory prepared seawater and presented with respect to Na<sup>+</sup> (Salter et al., 2016), as shown in Eq. 6, where X is the element of interest. Enrichment factors were calculated from Ion Beam Analysis of filter samples and from TEM-EDX analysis of laboratory sea salt samples.

$$15 \quad EF(X) = \frac{([X]/[Na^+])_{SSA}}{([X]/[Na^+])_{water}} \quad (6)$$

- The OCEANFILMS model was implemented for the surface and mixed layer nascent SSA experiments with measured water parameters used to represent bulk seawater molecular classes. Lipids were assumed to be equal to the total concentration of fatty acids, the total high molecular weight proteins were used to represent the protein molecular class, and high molecular weight reducing sugars were used to represent polysaccharides. Note that these measurements were not micro layer measurements, the  
20 seawater samples were collected via CTDs or on workboats. Missing water composition data were filled using the relationships outlined in Burrows et al. (2014), based on the lifetime of each molecular class, for example the bulk concentration of proteins was assumed to be equal to one third of the polysaccharide concentration, when no other data were available. The humic like molecular class was assumed not to be present at the surface and in the mixed layer, and therefore not included (Burrows et al., 2014). The processed molecular class concentration was assumed to make up the remainder of the dissolved organic  
25 carbon (DOC) after polysaccharides, proteins and lipids have been subtracted, a minimum was applied to the concentration of processed compounds to prevent unrealistically low or negative concentrations. The Langmuir adsorption coefficients for each molecular class was taken directly from Burrows et al. (2014). OCEANFILMS was run including the co-adsorption of polysaccharides with all other molecular classes (Burrows et al., 2016), and an assumed bubble thickness of 0.3 μm. The effect of the bubble thickness is to change the ratio of organics to salt in the bubble film and therefore the SSA organic fraction,



however the distribution of organic molecular classes don't vary. The assumed bubble thickness was not based on any measured bubble parameters.

The ZSR approximation was used to compute the ambient temperature nascent SSA HGF, defined as the average of all measurements less than 45°C, and the heated nascent SSA HGF, defined as the average HGF for all measurements between 255 - 405 °C. The terms used in the ZSR mixture were sea salt, low volatility organics, semi-volatile organics and hydrates. The volume fraction of each of these components was based on the volatility measurements (Eq. 2 and Eq. 3), the hydrate fraction was computed from the difference between the VF at 255 - 405 °C and the  $OVF_{sv}$ . The HGFs for the hydrate component, semi-volatile organic and low volatility organic component were assumed to be 1 (Modini et al., 2010a) and the HGF for the sea salt component was assumed to be 2.15 at 50 nm, based on measurements of heated laboratory sea salt  $2.15 \pm 0.06$  averaged across 300 - 350 °C. The sea salt HGF is also consistent with the HGF of pure NaCl (Zieger et al., 2017), which represents the HGF of sea salt without hydrates. HGFs have not been kelvin corrected here because all measurements were performed at the same pre-selected particle size. The hydrate fraction of the salt has been explicitly included here to account for any variation in the proportion of hydrates between samples. Calculations using the ZSR approach were repeated using an organic (semi-volatile and low volatility) HGF of 1.6 as a sensitivity test for the relationship between OVF and HGF. The HGF of 1.6 was chosen as an upper limit for organics that could possibly be present in SSA (Estillore et al., 2016, 2017).

As a counterpoint to the ZSR assumption, which assumes the organic component is dissolved into the bulk, the compressed film model (Ruehl et al., 2016) was applied to explore the influence of partitioning organics to the surface on the nascent SSA water uptake. The composition of the SSA organics are unknown, therefore the compressed film model was computed for organics with a molecular volume of  $V_{org}$  of  $2.2 \times 10^{-4} \text{ m}^3 \text{ mol}^{-1}$  and a molecular area ( $A_0$ ) of 150 square angstroms. A  $C_0$  value of  $10^{-9} \text{ mol.mol}^{-1}$  and a surface tension minimum of  $0.03 \text{ J.m}^{-2}$  was applied. The molecular volume was chosen to broadly represent the molecular volume of marine organics, most notably lipids and polysaccharides (Petters et al., 2009). The molecular area was chosen to correspond with calculations on sea spray mimics in Forestieri et al. (2018b), who pointed out that to have an impact on surface tension,  $A_0$  needs to be in excess of 100 square angstroms. The speciation of organics into molecular classes was calculated from the functional group concentrations as shown in Burrows et al. (2014) and applied in the compressed film model. HGFs were computed using the compressed film model for three cases, assuming that just the lipids are able to partition to the surface, that the lipids and the polysaccharides are able to partition to the surface and assuming that all of the organics are able partition to the surface. The hygroscopicity of the bulk aerosol i.e. the component not partitioned to the surface, was computed using the ZSR assumption as outlined in the previous paragraph, with an organic HGF of 1.6, which matches the hygroscopicity of the surface component. Further detail on the implementation of the compressed film model is included in the supplementary material.

## 3 Results

### 3.1 Seawater composition

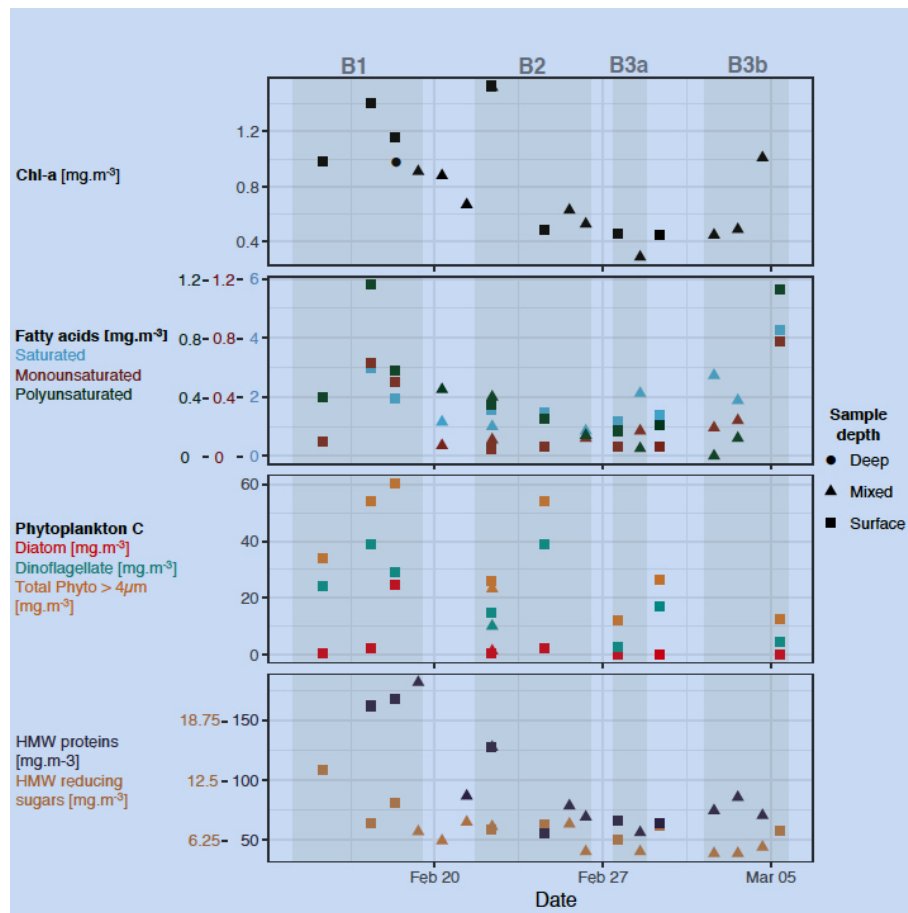
Chl *a* concentrations from water samples used to generate SSA ranged from 0.29 to 1.53  $\mu\text{g L}^{-1}$  as shown in Fig. 3, which are indicative of productive open ocean regions (O'Dowd et al., 2015), in particular for the Southern Hemisphere. Measured Chl *a* concentrations are up to an order of magnitude lower than previous SSA measurements taken in coastal waters (Frossard et al., 2014; Quinn et al., 2014). Significant correlations were observed between Chl *a* and total high molecular weight proteins and polyunsaturated fatty acids ( $R^2 = 0.51$ ,  $p\text{-value} < 0.01$ ). The saturated fatty acid component was the largest contributor to the total fatty acid concentration, and was made up of stearic, palmitic, myristic and lauric acid ( $C_{18}$  to  $C_{12}$ , all even). Monounsaturated fatty acids were dominated by oleic acid ( $C_{18}$ ) and polyunsaturated fatty acids were made up of docosahexaenoic and eicosapentenoic acid ( $C_{22}$  and  $C_{20}$ ). Fatty acid concentrations showed significant correlation with the concentration of alkanes ( $R^2 = 0.75$ ,  $p\text{-value} < 0.001$ ), particularly monounsaturated fatty acids. Alkanes displayed even carbon numbers from 16 to 28, with peak concentrations for octadecane ( $C_{18}$ ) and eicosane ( $C_{20}$ ). It is worth noting that fatty acid and alkane measurements were only done for the surface and mixed layer samples and were not done for the deep water samples.

Bloom 1 was dominated by dinoflagellates and displayed the highest average Chl *a* concentrations of  $0.84 \pm 0.2 \text{ g L}^{-1}$  and total phytoplankton carbon concentrations. Relatively short lived aliphatic species, such as fatty acids and alkanes were elevated during bloom 1, as were proteins, which are of intermediate lifetime. High molecular weight reducing sugars were elevated during bloom 1, although less so than the proteins. Elevated surface concentrations were also noticeable during bloom 1, particularly for the aliphatic species, in particular alkanes with 3.1 times higher average concentration from surface measurements ( $\sim 0.1\text{m}$ ) than from shallow mixed layer measurements ( $\sim 2\text{m}$ ), and fatty acids with 1.7 (saturated) to 4.2 (monounsaturated) times higher surface concentrations. Elevated surface concentrations were also observed for Chl *a* (1.7 times higher) and carbohydrates (1.5 times higher). The apparent gradient in organics in the surface seawater is distinct for bloom 1, and points to a potentially enhanced contribution from surface active species over this bloom.

Bloom 2 was characterised as a coccolithophore bloom (Law et al., 2017) and displayed decreasing Chl *a*, fatty acid and high molecular weight protein concentrations throughout the bloom. The overall organic concentrations in bloom 2 were lower than bloom 1, with average Chl *a* concentrations of  $0.67 \pm 0.3 \text{ g L}^{-1}$ , however DOC concentrations were slightly elevated ( $807 \pm 65 \text{ g L}^{-1}$ ) compared to bloom 1 ( $714 \pm 135 \text{ g L}^{-1}$ ) and bloom 3 ( $718 \pm 84 \text{ g L}^{-1}$ ). The number of measurements during bloom 3 were limited, however initially the bloom displayed similar concentrations to bloom 2, Chl *a* of  $0.44 \pm 0.17 \text{ g L}^{-1}$  and the final measurements of bloom 3b displayed elevated Chl *a* and fatty acid concentrations. Bloom 3 displayed the lowest total phytoplankton carbon concentrations.

### 3.2 SSA size distributions

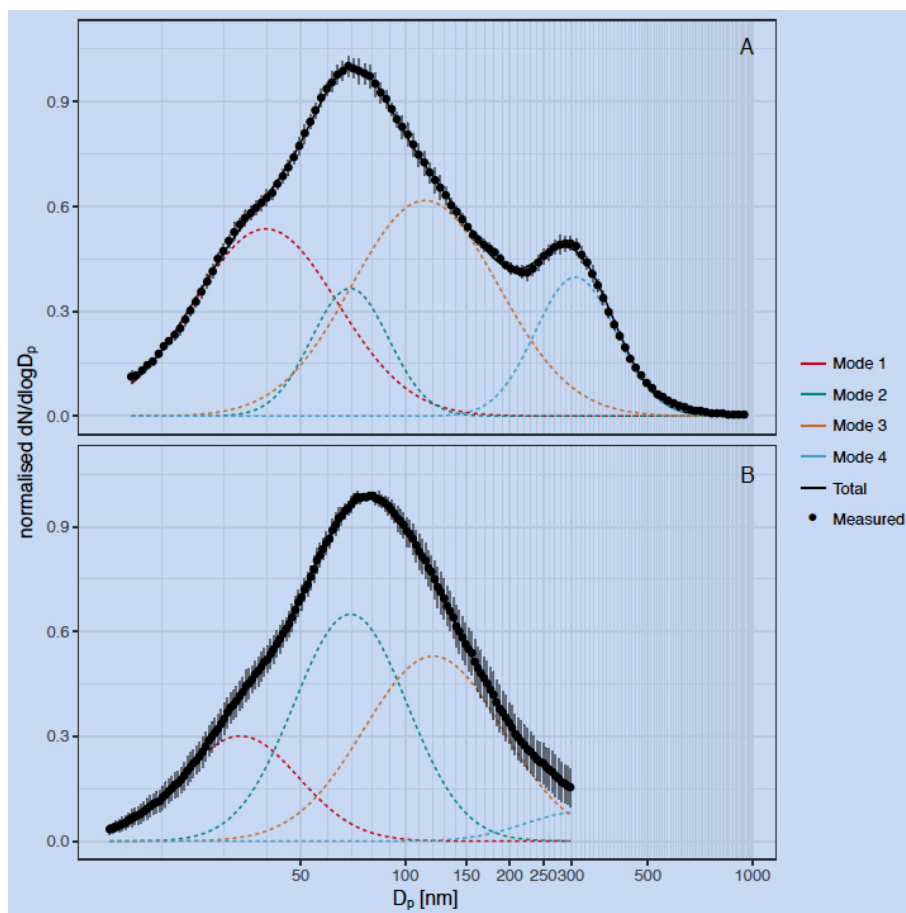
The measured size distributions were broken up into four log-normal modes characterised by geometric mean diameters ranging from 33 to 320 nm, as seen in Fig. 4. This is consistent with the number of lognormal modes fitted by Fuentes et al. (2010) and is not a direct result of the use of four glass filters in this study, but a result of using sintered glass filters in general.



**Figure 3.** Characterisation of biological activity for water samples used to generate SSA. Note that this is a selected subset of all water parameters. Panels show the concentration of Chl *a* (top), fatty acids (2nd from top), phytoplankton carbon (2nd from bottom) and total high molecular weight (HMW) reducing sugars and proteins (bottom). Note that total HMW proteins and reducing sugars include particle and dissolved fractions. Shapes represent the water sample depth class (surface 0.1 m, mixed 3 - 12 m and deep > 12 m).

Size distributions generated from natural seawater were slightly shifted towards larger diameters compared to laboratory sea salt measurements, and showed a significant enhancement in mode 2 and lower contributions from modes 1 and 4 (Fig. 4 and Table 1). The size distribution of SSA generated from natural seawater samples is more narrow than laboratory sea salt particle size distributions, which is consistent with the addition of a surfactant material (Fuentes et al., 2010; Modini et al., 2013) which allows the saline components of the bubble film to drain more before bursting, producing an organically enriched particle with a more uniform distribution. Differences between the shape of inorganic sea salt and organically enriched sea spray size distributions has not been observed in all studies (Forestieri et al., 2018a; Zabori et al., 2012).

The shape of the nascent SSA size distribution was broadly similar to nascent SSA size distributions observed in previous studies which also used sintered glass filters, but shifted to slightly larger mean diameters. For example Fuentes et al. (2010)



**Figure 4.** Nascent SSA size distributions from laboratory sea salt measurements (A) and natural seawater measurements (B). Seawater size distributions are an average of all water samples. Lines represent the fitted modes (dotted) and total fitted distribution (solid), black dots represent measured values and grey bars indicate the standard deviation in  $dN/d\log D_p$ .

fitted lognormal modes with mean mobility diameters of 20, 41, 87 and 250 nm to laboratory sea salt generated using glass sintered filters, and modes with mean mobility diameters of 14, 48, 124 and 334 nm for plunging water generated sea salt. SSA produced from sintered glass filters does not perfectly represent real world bubble bursting from wave breaking (Collins et al., 2014; Prather et al., 2013) but the use of four glass filters with different pore sizes resulted in a broader distribution than other measurements of nascent SSA using glass filters (Collins et al., 2014; Fuentes et al., 2010; Keene et al., 2007; Mallet et al., 2016). For example, the normalised number contributions from mode 1 and mode 4 was three times greater than that observed by Fuentes et al. (2010). Observations have shown organic enrichment (King et al., 2013) and also externally mixed organics (Collins et al., 2014) for Aitken and accumulation mode SSA using sintered glass techniques, with slightly higher organic enrichment than that observed using plunging water or wave breaking methods. Despite the limitations, the use of sintered glass filters allowed an examination of the components of seawater that contribute to SSA organic enrichment.

**Table 1.** Nascent SSA lognormal parameters

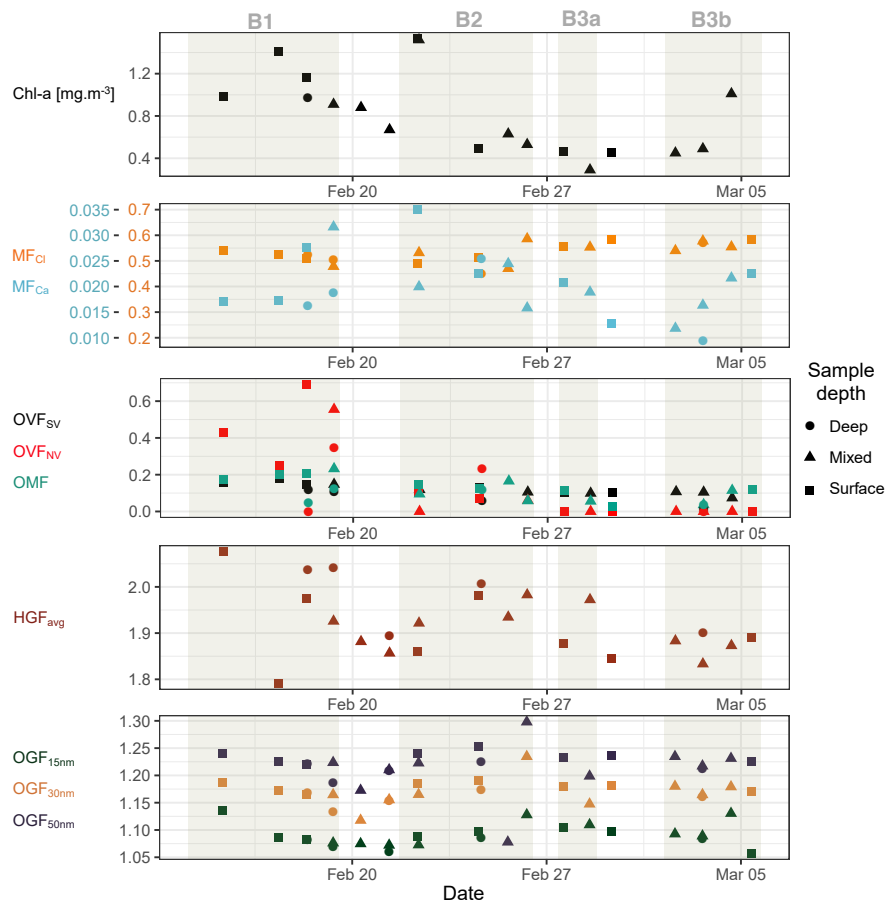
Water sample	Parameter	Mode 1	Mode 2	Mode 3	Mode 4
Laboratory sea salt	Normalised number conc.	0.34	0.12	0.40	0.14
	Mean diameter	40	69	114	309
	Geometric standard deviation	1.61	1.29	1.63	1.31
Natural seawater (average)	Normalised number conc.	0.184	0.384	0.384	0.048
	Mean diameter	34	70	120	320
	Geometric standard deviation	1.47	1.45	1.58	1.44

**3.3 SSA composition**

Volatility measurements using the VH-TDMA indicated that the SSA volatile organic fraction made up a relatively consistent proportion of the 50 nm SSA, with a  $OVF_{SV}$  of  $0.10 \pm 0.04$  (mean  $\pm$  sd), as shown in Fig. 5. SSA compositional results are also tabulated in the supplementary material. The low volatility organic fraction, however, made up a much more variable proportion, with an average  $OVF_{LV}$  of  $0.13 \pm 0.20$ . The 50 nm OVF was highest during bloom 1 (generally greater than 0.4 and as high as 0.85), which is coincident with seawater samples enriched in organics, during which time low volatility organics dominated. A dominant low volatility organic SSA fraction has been observed for nascent SSA measurements in the North Pacific and North Atlantic oceans (less than 15% volatilised at below 230 °C), and in the Great Barrier Reef (Bates et al., 2012; Mallet et al., 2016; Quinn et al., 2014), our observations are broadly consistent with these results. It should be noted that a low volatility SSA fraction is not universally observed (Modini et al., 2010a; O'Dowd et al., 2004; Ovadnevaite et al., 2011b). Organic mass fractions measured using FTIR and ion beam analysis of filter samples averaged  $0.12 \pm 0.6$ , and were elevated during bloom 1 with surface water samples displaying  $PM_1$  OMF of approximately 0.2. The values observed here fit within the broad range of observed  $PM_1$  OMFs for nascent SSA, for example at Mace Head summertime SSA organic mass fractions of up to 0.8 have been observed (Facchini et al., 2008; O'Dowd et al., 2004), while summertime OMFs of 3 - 7% have been observed for the North Atlantic and North Pacific Oceans (Bates et al., 2012; Quinn et al., 2014).

Figure 6 shows that the organic volume fraction inferred using volatility techniques and the mass fraction measured using FTIR/IBA of the filter samples correlate reasonably well. No information on the organic fraction of the lognormal modes shown in Fig. 4 are available, therefore a direct comparison of  $PM_1$  OMF is not shown here. It is worth noting that the presence of inorganic species, such as  $Ca^{2+}$ , complexed with the organics are included in organic estimates from volatility, but not from filter analyses.

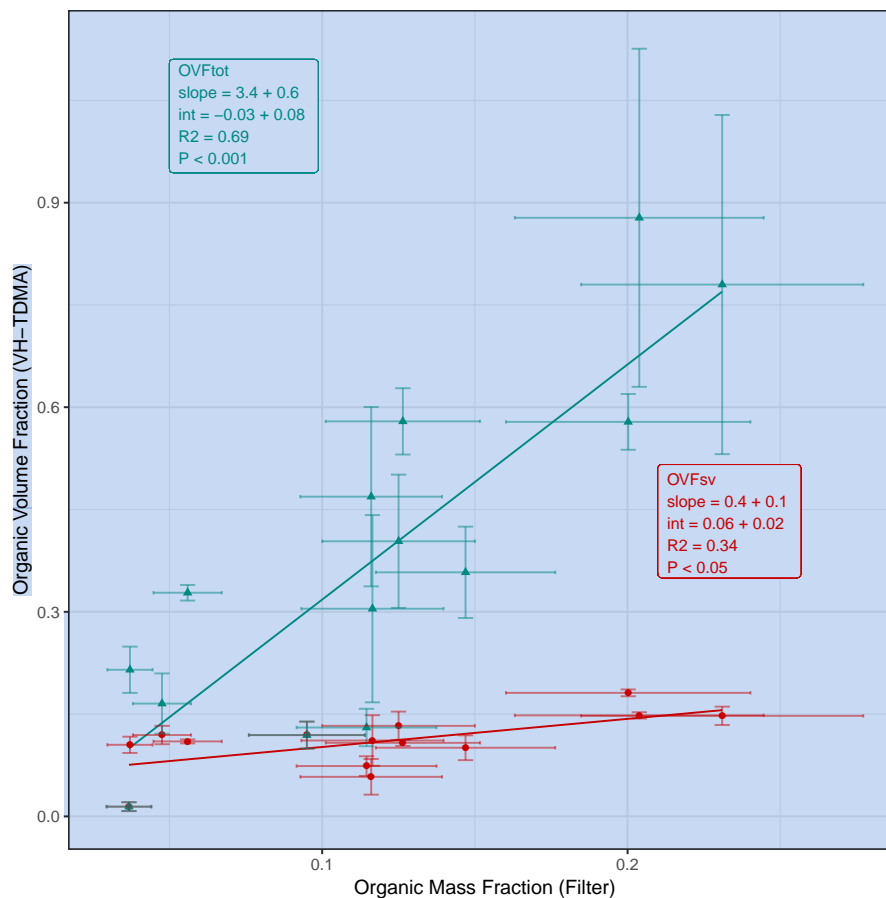
Correlations of both the semi volatile organic volume fraction ( $OVF_{SV}$ ) and the low volatility organic volume fraction ( $OVF_{LV}$ ) with seawater high molecular weight proteins were observed ( $R^2$  of 0.46 and 0.63, p-value  $< 0.01$ , and slope of  $4 \pm 1 \times 10^{-4}$  and  $4 \pm 1 \times 10^{-3} permg.m^{-3}$ , respectively). Similarly for high molecular weight carbohydrates ( $OVF_{SV}$   $R^2$  of 0.44, p-value  $< 0.01$ , and slope of  $9 \pm 2 \times 10^{-3} permg.m^{-3}$ ,  $OVF_{LV}$   $R^2$  of 0.88, p-value  $< 0.01$ , and slope of  $6 \pm 2 \times 10^{-2} permg.m^{-3}$ ).



**Figure 5.** Summary of nascent SSA properties. Chl *a* time series included for context on phytoplankton bloom conditions (top panel). Mass fractions (MF) of  $\text{Cl}^-$  and  $\text{Ca}^{2+}$  (multiplied by 20) relative to total inorganic mass concentrations measured using IBA on filter samples (2nd panel from top). VH-TDMA  $\text{OVF}_{\text{SV}}$ ,  $\text{OVF}_{\text{LV}}$  and FTIR/IBA derived  $\text{PM}_1$  OMF from filter samples (3rd panel from top). HGF measured using VH-TDMA (2nd panel from bottom), organic growth factor measured using UFO-TDMA (bottom panel).

In addition the semi volatile OVF correlated with total alkanes ( $R^2$  of 0.45, p-value  $< 0.01$ , and slope of  $8 \pm 2 \times 10^{-3}$ ) and polyunsaturated fatty acids ( $R^2$  of 0.33, p-value  $< 0.05$ , and slope of  $4 \pm 2 \times 10^{-2} \text{ permg.m}^{-3}$ ). The correlation suggest that the fractional contributions to the volatile and low volatility OVFs from the different seawater organic components measured in this study were similar, but the semi-volatile OVF displayed a higher contribution from aliphatic, lipid like species. The

- 5 correlation between semi-volatile OVF and seawater alkanes was significant for all carbon numbers between  $\text{C}_{16}$  and  $\text{C}_{26}$ . The strongest correlations were observed for lower carbon numbers, for  $\text{C}_{16}$  the  $R^2$  was 0.55, the p-value was  $< 0.001$ , and the slope was  $0.07 \pm 0.02$ , and for  $\text{C}_{26}$  the  $R^2$  was 0.28, the p-value was  $< 0.05$ , and the slope was  $0.17 \pm 0.07$ . Concentrations were largely below the detection limit for carbon number greater than  $\text{C}_{26}$ .



**Figure 6.** Comparison of 50 nm organic volume fraction calculated from volatility measurements (using VH-TDMA) and the  $PM_{10}$  OMF measured using FTIR/IBA on filter samples. Volatile fractions shown in red, total organic fractions shown in green.

The mass fraction of inorganic species in SSA during SOAP was observed to vary from that of salts in seawater, in particular an enrichment factor of  $1.7 \pm 0.6$  relative to the composition of laboratory sea water was observed for  $Ca^{2+}$  and  $0.4 \pm 0.2$  for  $Mg^{2+}$  (Fig. 7). Enrichment factors (EF) observed from TEM-EDS analysis of laboratory sea salt samples were  $0.8 \pm 0.3$  for  $Ca^{2+}$  and  $1.0 \pm 0.1$  for  $Mg^{2+}$  (*mean ± sd*), suggesting sea salt fractions similar to seawater. It should be noted that TEM-EDS EF were based on a modest number of measurements (25 particles).  $Ca^{2+}$  inorganic mass fraction and EF were observed to increase with  $PM_{10}$  OMF, while the  $Cl^{-}$  inorganic mass fraction and EF decreased with increasing  $PM_{10}$  OMF. The mass ratio of  $Cl^{-}$  to  $Na^{+}$  was  $1.6 \pm 0.2$ , which is slightly lower than the seawater ratio of 1.8 (Seinfeld and Pandis, 2006). It is also worth noting that the mass ratio of  $Cl^{-}$  to  $Na^{+}$  from sea salt TEM-EDS measurements was much lower than that for seawater,  $1.3 \pm 1$ , however the uncertainty was very large.  $Cl^{-}$  depletion is commonly observed for ambient SSA, and is largely attributed to atmospheric aging processes.  $Cl^{-}$  depleted nascent SSA, as observed here, has also previously been reported to indicate that chloride is fractionated in seawater depending on the seawater composition or that  $Cl$  is evaporated during SSA production

(Schwier et al., 2017). Wave chamber experiments identified an externally mixed C and O containing particle type, which contained inorganic elements such as S, Na, Mg, Ca and K, but not Cl (Ault et al., 2013a) and the presence of this particle type could decrease the overall Cl contribution. Enrichment of  $\text{Ca}^{2+}$  is consistent with other nascent SSA chamber experiments, a proposed explanation for this is the complexing of  $\text{Ca}^{2+}$  with carbonate ions. The presence of carbonate would potentially be detected in the  $\text{OVF}_{\text{LV}}$  from TDMA measurements and could therefore provide an explanation for the over prediction observed in Fig. 6. Alternatively  $\text{Ca}^{2+}$  could be in a complex with organics, Salter et al. (2016) concluded that if this were the case it would be with a minor amount of organic material.

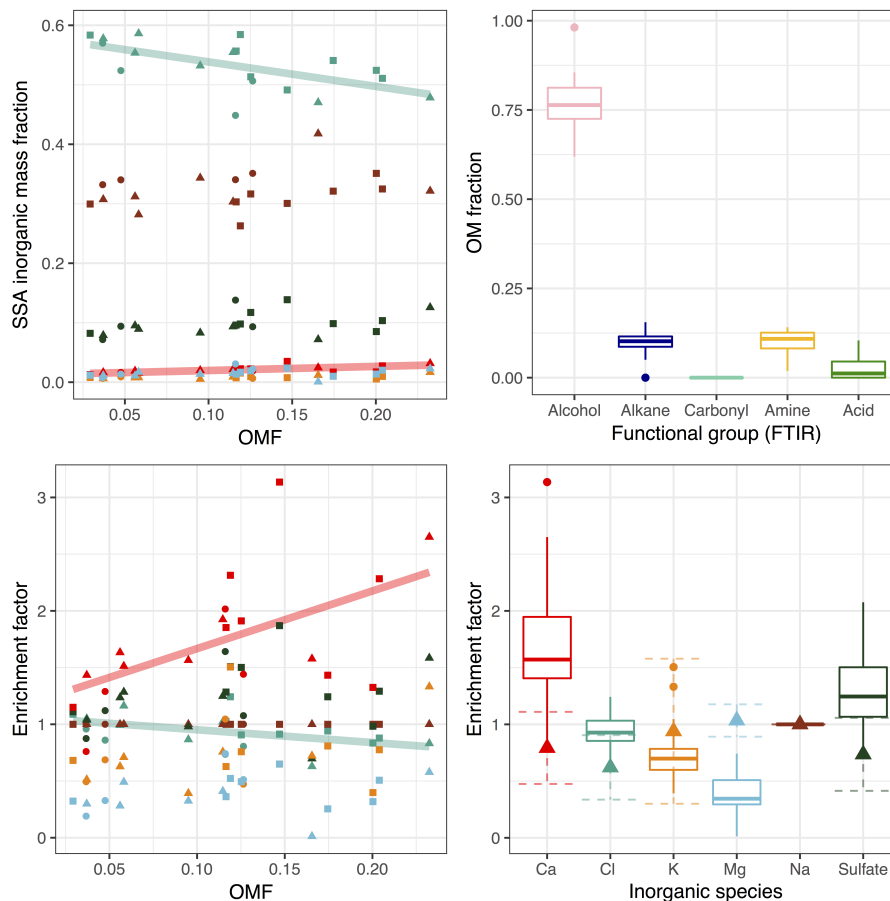
Alcohol functional groups contributed  $77 \pm 8\%$  of the  $\text{PM}_1$  SSA organic mass (OM), alkanes  $10 \pm 4\%$ , amines  $10 \pm 3\%$  and carboxylic acid groups  $3 \pm 3\%$  (*mean*  $\pm$  *sd*). The make up of organics across the samples was relatively constant, as depicted by the ranges shown in Fig. 7. The ratio of alkane to hydroxyl (alcohol) functional groups indicates whether the organic fraction is aliphatic/lipid like (high ratio) or more oxidised/carbohydrate like (low ratio). The nascent SSA generated during SOAP had alkane to hydroxyl ratios ranging from 0.06 to 0.25, with a mean of 0.14, which are very low values for non-oligotrophic waters, suggesting that the SSA was enriched in carbohydrates. For some context Frossard et al. (2014) reported average ratios of  $0.34 \pm 0.21$  for non-productive waters and  $0.93 \pm 0.41$  for productive waters. Chlorophyll-a concentrations for productive waters reported in Frossard et al. (2014), extend to  $10 \mu\text{g L}$ , far above those observed in this study. It is also worth noting that the alkane to hydroxyl ratios were lowest during blooms 1 and 3,  $0.12 \pm 0.04$  and  $0.11 \pm 0.04$ , respectively and highest outside of phytoplankton blooms  $0.2 \pm 0.05$ . These results suggest that the SSA from phytoplankton blooms is enriched in carbohydrate-like organics, more so than the less biologically active regions.

Ethanol growth factors measured using the UFO-TDMA for preselected 50 nm diameter SSA were  $1.22 \pm 0.02$  (*mean*  $\pm$  *sd*) and were largely invariable for all of the water samples examined. The ZSR assumption was used with an organic growth factor of 1.5 and a sea salt growth factor of 1, based on UFO-TDMA measurements of oxidised organics (tartaric, benzoic and citric acid) and sodium chloride, respectively (Vaattovaara et al., 2005; Joutsensaari et al., 2001). The measured ethanol growth factors correspond to moderately oxidised organic volume fractions averaging  $35 \pm 5\%$ , when the two component ZSR model above is applied. The ethanol growth factor for species commonly observed in SSA, such as polysaccharides, proteins and lipids are not known, and therefore the representativeness of the ZSR model for primary marine aerosol is highly uncertain.

For example some of the fatty acids and alkanes with the highest concentrations in the seawater are soluble (Myristic and Palmitic acid, Eicosane and Docosane) or very soluble (Lauric acid) in ethanol and could potentially display high ethanol growth factors (Haynes, 2018). Chlorophyll-a is also very soluble in ethanol (Haynes, 2018). If the ethanol growth factor of the SSA organic component is larger than 1.5, as assumed in the ZSR assumption, then the computed OVF will be overestimated.

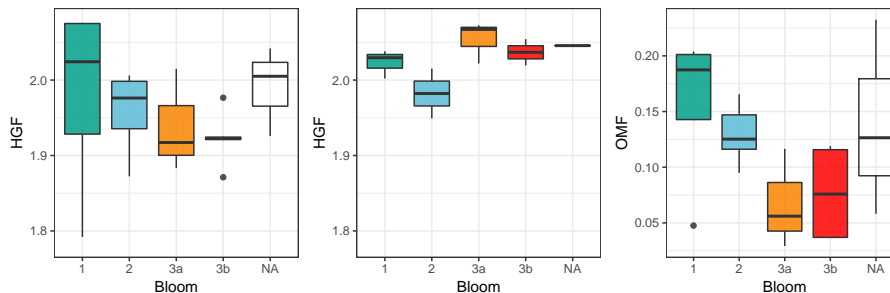
The variability due to SSA diameter in the ethanol growth factors measured at 15 to 50 nm were all within experimental error once a correction for the Kelvin effect was applied. There were no significant correlations with the 50 nm ethanol growth factor and the organic volume fraction calculated from volatility and  $\text{PM}_1$  organic mass fractions. The species responsible for the observed ethanol growth can't be determined without further reference measurements for sea spray. The ethanol growth factor of volatilised SSA (for sample U7520) was  $1.03 \pm 0.03$  at  $200^\circ\text{C}$ , and averaged  $1.01 \pm 0.03$  between 250 and  $400^\circ\text{C}$ , suggesting that the component contributing to ethanol growth was largely semi-volatile. The component that contributed to





**Figure 7.** Inorganic mass fraction (top left) and enrichment factor (bottom) versus organic mass fraction (bottom left) measured from IBA and FTIR analysis of filter samples. Enrichment factors of inorganic species are with respect to laboratory prepared sea water and presented with respect to  $\text{Na}^+$ . Left hand plots show linear trends for species with statistically significant correlations (Cl fraction displayed  $R^2$  of 0.34, p-value  $< 0.01$ , and slope of  $-0.9 \pm 0.3$ , and Ca fraction displayed  $R^2$  of 0.42, p-value  $< 0.01$ , and slope of  $7 \pm 2$ ). Shapes indicate water sample depth. Colours in the left panels correspond to inorganic species indicated in the bottom right panel. Triangles in bottom right plot represent the mean EF from TEM-EDS measurements of SSA generated from laboratory seawater, dotted error bars show standard deviation in the mean. Contribution to organic mass from functional groups measured by FTIR shown top right. Boxes extend from the 25th to the 75th percentile, with the line showing the median, crosses show measurements outside of the 95% confidence interval in the median.

ethanol growth was more constant than the  $\text{OVF}_{\text{SV}}$  measured using the VH-TDMA, suggesting that it could have been a subset of the total volatile organic component. The high UFO-TDMA OVF relative to the VH-TDMA OVF could suggest that the computed OVF from the UFO-TDMA is overestimated.



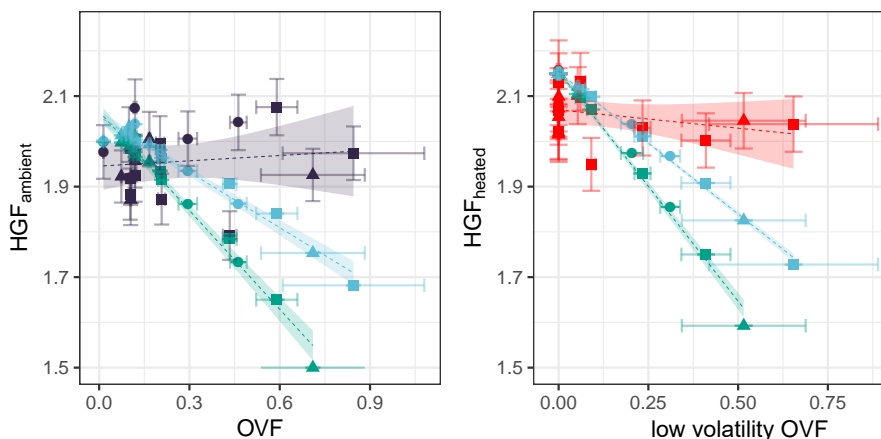
**Figure 8.** Ambient HGF (left), heated HGF (middle) and  $PM_1$  OMF (right) by bloom. HGFs measured using VH-TDMA, OMF measured from FTIR and IBA analysis of filter samples. Note that NA refers to measurements taken outside of an identified bloom.

### 3.4 SSA water uptake

The HGFs observed for SSA generated from both laboratory sea salt and natural seawater samples showed up to 3 externally mixed HGF modes (Fig. S6). The first natural seawater SSA HGF mode averaged  $1.89 \pm 0.07$  and contributed a number fraction of  $0.8 \pm 0.12$  for 50 nm diameter SSA. The second mode displayed an average HGF of  $2.04 \pm 0.09$  and contributed a number fraction of  $0.2 \pm 0.1$ . The third HGF mode was sporadically observed during SOAP measurements at 50 and 100 nm diameters (observed during 4 samples), but when present contributed a number fraction of 0.01 to 0.06 and displayed an average HGF of  $2.25 \pm 0.02$ . The fraction of the second HGF mode at 50 nm correlated with the proportion of lognormal mode 3 ( $R^2$  of 0.39, p-value  $< 0.01$ , and slope of  $0.87 \pm 0.3$ ). This suggests that the lognormal modes may have different composition and/or morphology, which has previously been observed for nascent SSA (Collins et al., 2013), however in the absence of size resolved compositional measurements further conclusions are not possible.

The shape corrected 50 nm ambient nascent SSA HGF averaged  $1.94 \pm 0.08$  (mean  $\pm$  sd) across all samples, with individual samples ranging from  $1.79 \pm 0.05$  to  $2.08 \pm 0.06$  as shown in Fig. 5. Heated 50 nm HGFs averaged  $2.02 \pm 0.05$  across all samples, with individual samples ranging from  $1.91 \pm 0.06$  to  $2.09 \pm 0.06$ . Particularly interesting is the distribution of HGFs throughout the voyage as shown in Fig. 8, both nascent SSA HGFs and  $PM_1$  OMFs were highest for bloom 1 on average, and decreased for subsequent blooms. The SSA HGF after heating is approximately 0.1 higher than that from the ambient HGF, which is a similar change in HGF as observed for laboratory sea salt samples, and is likely to be largely due to the evaporation of hydrates. The relationship between HGF and OVF or OMF observed here is not consistent with that expected from the ZSR assumption i.e. full solubility of organic components. Conventional ZSR mixing would suggest the organic fraction and water uptake would be inversely proportional to each other, because of the presence of a less hygroscopic organic component. Even when a HGF of 1.6 is assumed for the organic component, the trend in HGF is not consistent between measured and ZSR modelled HGFs (Fig. 9). Deviations between the ZSR model and the measured data begin to become pronounced at OVFs greater than 0.4. It should also be noted that the measured HGFs show a large sample to sample variability.

A buffered response of SSA hygroscopicity under supersaturated conditions to OVF has been previously reported (Ovadnevait et al., 2011a; Collins et al., 2016; Forestieri et al., 2018b) and is thought to be linked to surface active organics (e.g.



**Figure 9.** The measured HGF of 50 nm diameter SSA at ambient temperature (left) and heated to 255 - 400 °C (right) as a function of the total OVF and low volatility OVF, respectively. HGF modelled using ZSR assumption shown assuming an organic HGF of 1 (green) and an organic HGF of 1.6 (blue) shown alongside measured HGFs (ambient in dark blue, heated in red). Linear fit to the measured and modelled data indicated by dashed line, shading represents the 95% confident interval in the linear fit.

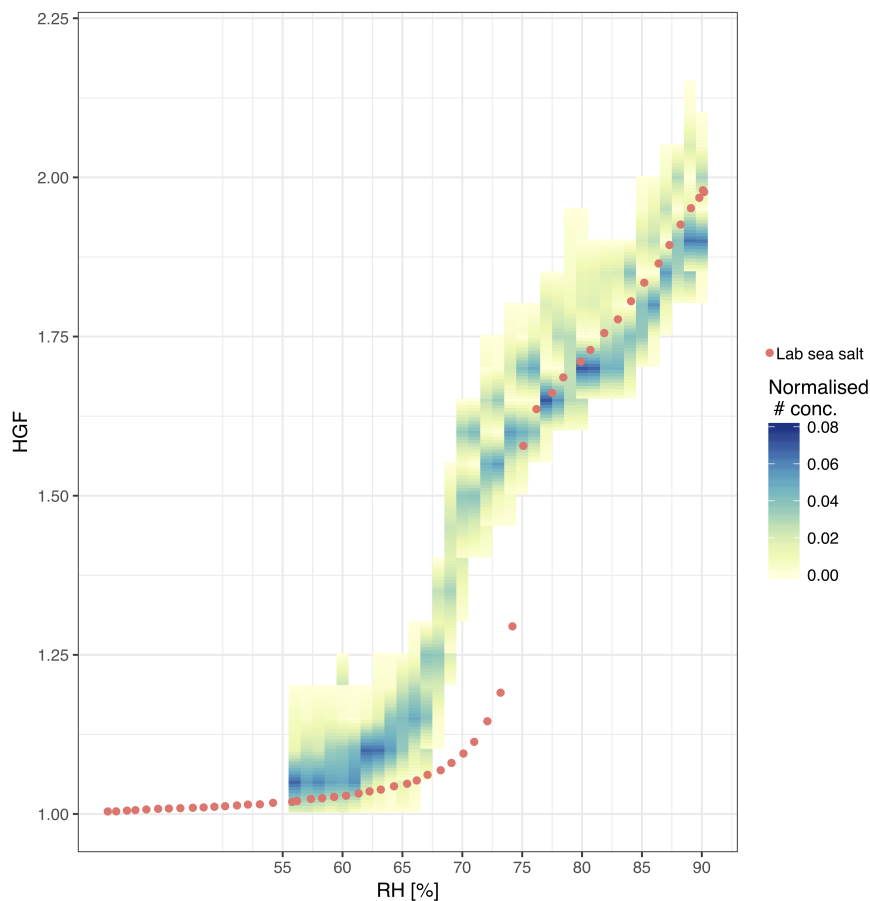
fatty acids). It should be noted that these observations were made in supersaturated conditions and therefore the applicability to observations in this ~~is not clear~~. Given the observed combination of a low alkane to hydroxyl ratio and an apparent non-soluble organic component, lipopolysaccharides (LPS) could present a reasonable candidate for the composition of the organic component. LPS have previously been identified as an important component in primary marine aerosol (Cochran et al., 2017; Estillore et al., 2017; Facchini et al., 2008; Bikkina et al., 2019).

The 50 nm deliquescence relative humidity was measured for the Workboat 9 seawater sample at 69% RH (Fig. 10), notably lower than that observed for NaCl/sea salt, ~73.5 % (Zieger et al., 2017). SSA generated from Workboat 9 seawater displayed an ambient 50 nm HGF of  $1.84 \pm 0.06$ , a heated 50 nm HGF of  $1.94 \pm 0.06$ , an organic volume fraction of approximately 21% at 50 nm and a  $PM_1$  organic mass fraction of approximately 3%. The  $PM_1$  alkane to hydroxyl ratio was 0.14. The DRH observed here is consistent with observed organic sea salt mixtures in the literature, for example a 2:1 mass ratio mixture of NaCl to glucose resulted in a 100 nm DRH of  $69.2 \pm 1.5$  % and the mixture had a hygroscopicity ( $\kappa$ ) of 0.8 (Estillore et al., 2017).

## 4 Discussion

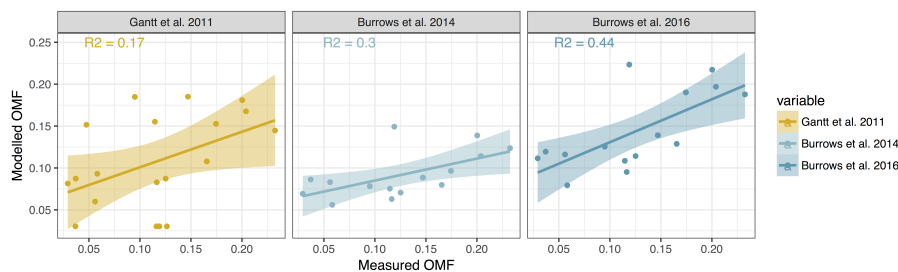
### 4.1 SSA organic enrichment

- 15 The organic enrichment of SSA was examined using the Chl *a* based emissions scheme suggested by Gantt et al. (2011), the OCEANFILMS-1 emissions scheme (Burrows et al., 2014) and the OCEANFILMS-2 emissions scheme which allows for the co-adsorption of polysaccharides (Burrows et al., 2016). The relationship between SSA  $PM_1$  OMF estimated using Chl *a*



**Figure 10.** Deliquescence of 50 nm SSA generated from SOAP sea water sample (Workboat 9) shown in yellow to blue colour scale. Laboratory sea salt deliquescence curve shown with circles.

(Gantt et al., 2011) and the measured SSA  $PM_1$  OMF is quite scattered ( $R^2$  of 0.17), as shown in Fig. 11. The nature of the sampling method used in this study, 23 spot samples taken over an 18 day period, was not favourable for the use of Chl  $a$  as a marker for SSA organics. The enrichment of SSA is not just a product of phytoplankton biomass, which is largely what is measured by Chl  $a$ , but more likely due to the demise of phytoplankton communities and the resulting release of a range of organic material, some of which is available for transfer into the aerosol phase. Chl  $a$  is best used as marker over much longer time scales, of the order of weeks to months, for example to describe the seasonality in SSA organic enrichment. The OCEANFILMS-1 model improves on the scatter of modelled organic fraction compared to the Chl  $a$  model ( $R^2$  of 0.3), however the magnitude of the modelled  $PM_1$  OMF is low, which is likely due to the under-representation of more soluble DOC, such as polysaccharides. OCEANFILMS-2 includes the co-adsorption of polysaccharides and reproduces the SSA  $PM_1$  OMF reasonably well ( $R^2$  of 0.44). It is worth noting that both OCEANFILMS models over predict when the organic fraction

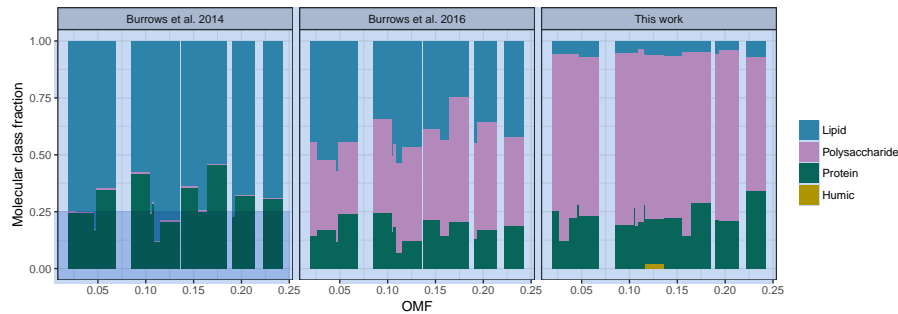


**Figure 11.**  $PM_1$  OMF modelled using parameterisation from Gantt et al. (2011) (left), OCEANFILMS-1 (middle) and OCEANFILMS-2 (right) compared to that measured in this study. Lines show the linear fit between modelled and measured OMF, shading shows the 95% confidence interval in the linear model. Fit parameters for Gantt et al. 2011:  $R^2$  of 0.17, p-value < 0.05, and slope of  $0.4 \pm 0.2$ . Fit parameters for OCEANFILMS-1:  $R^2$  of 0.3, p-value < 0.05, and slope of  $0.3 \pm 0.1$ . Fit parameters for OCEANFILMS-2:  $R^2$  of 0.44, p-value < 0.01, and slope of  $0.5 \pm 0.1$ .

is low,  $OMF < 0.05$ . The bias at low OMF could be due to the choice of bubble thickness. The use of a single thickness value is a simplification as it is likely to depend on the seawater surface composition and surface tension (Modini et al., 2013).

The organic macromolecular classes associated with the SSA were determined from the functional group composition using the conversions outlined in Burrows et al. (2014), which relates the concentration of each molecular class to a weighted sum of the functional group concentrations. The high proportion of alcohol functional groups from observations resulted in a similarly high contribution from the polysaccharide-like molecular class, with an average contribution of  $0.72 \pm 0.06$  to the total  $PM_1$  OMF. The conversion between functional groups and macromolecular classes is based on the properties of characteristic molecules, for example cholesterol and simple sugars, and is therefore not a perfect representation of the marine environment. There was no apparent change in the distribution of molecular classes/functional groups with the organic mass fraction, as shown in Fig. 12, despite an increase in seawater polysaccharides and proteins for samples with higher  $PM_1$  OMF (see Fig. S2). These results might suggest that the SSA organics were bound in a similar molecule or complex, which was uniform regardless of the organic mass fraction. As expected OCEANFILMS-1 underestimated the proportion of polysaccharides and over estimated the proportion of lipids, as shown in Fig. 12. OCEANFILMS-2 displayed an improved representation of polysaccharides, however the proportion was still underestimated with an average contribution of  $0.39 \pm 0.06$  to the total  $PM_1$  OMF. It is worth noting that the processed molecular class was not computed from FTIR measurements because the functional group composition is so similar to the polysaccharide-like class. The contribution of the processed class to the SSA organic fraction from both OCEANFILMS models was very low (Fig. 12).

Over prediction of alkane to hydroxyl ratios for particularly clean marine measurements is a known issue for OCEANFILMS-2, and broadening the model to different saccharides with varying molecular weights has been identified for future research (Burrows et al., 2016). Particularly of interest here is research into the interaction of surfactants with divalent cations, which have been observed to impact the orientation of surfactant head groups, and thus the surface pressure, for modelled surfactant salt systems (Adams et al., 2016; Casillas-Ituarte et al., 2010; Casper et al., 2016). In particular  $Ca^{2+}$  has been observed to form



**Figure 12.** Measured organic composition inferred from functional groups (right) and modelled organic composition from OCEANFILMS (OCEANFILMS-1 left panel, OCEANFILMS-2 middle panel).

particularly stable complexes, bridging neighbouring surfactant molecules, and having a condensation effect on the monolayer (Casper et al., 2016). The enhanced enrichment of  $\text{Ca}^{2+}$  with higher OMF observed herein may therefore be associated with the complexation with surfactants, in which case the enrichment of  $\text{Ca}^{2+}$  could influence the organic enrichment and the SSA water uptake.

- 5 OCEANFILMS does improve the prediction of organic enrichment from seawater parameters, relative to Chl *a* based models. Limitations remain in the implementation of OCEANFILMS, which requires the availability of surface water concentrations for the five macromolecular classes, which are generally generated using biogeochemical modelling. In addition there are remaining uncertainties as to the global applicability of the model organics applied in OCEANFILMS, in regions with different phytoplankton populations for example. Further broadening and/or refining the organics of interest in OCEANFILMS is likely to hinder its application. Similar issues of global applicability are also present for Chl *a* based estimates of OMF. Chl *a* is, however, globally observed at a daily timescale via satellite and is extremely important for large scale simulations of SSA organic enrichment. Measurements over the sparsely observed Southern and South Pacific Oceans, such as those reported herein, are important to constrain emission schemes developed in other parts of the world, particularly given the importance of SSA in this region.

## 15 4.2 SSA water uptake

- The sea spray hydrate volume fraction ranged from 0.05 - 0.16 and is associated with the inorganic sea salt component of SSA. The hydrates make up a larger proportion of the SSA at low OVFs. The inclusion of the hydrates in the ZSR model lowered the HGF by approximately 0.15 at low OVFs and by approximately 0.05 at high OVFs, and therefore lowers the dependence of SSA HGF on OVF. Reasonable agreement between the modelled and measured HGFs at low OVFs is reached with the ZSR model including hydrates, however there are still large discrepancies at high OVFs as shown in Fig. 9.

- The compressed film model was run to examine the potential impact of organic surface partitioning on SSA water uptake. The proportion of SSA organics at the particle surface was tested assuming that partitioning occurs on the basis of the organic

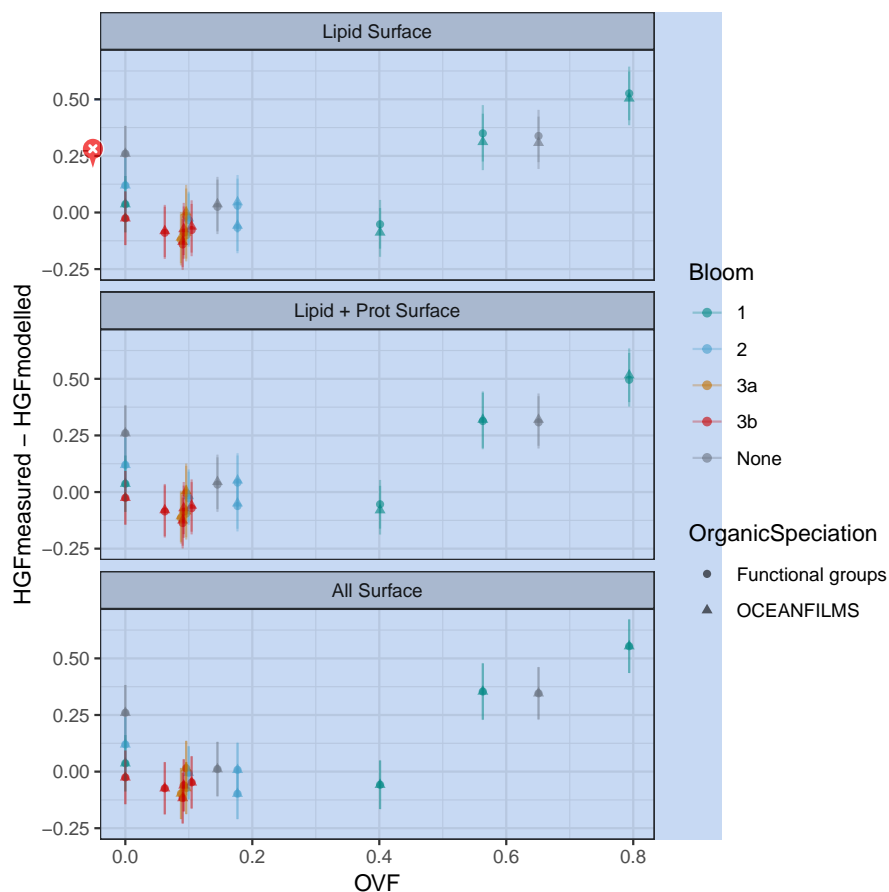
molecular classes as computed from the distribution of functional groups or from the OCEANFILMS-2 model. Four cases were tested assuming the following molecular classes partitioned to the surface:

- lipids,
- lipids and proteins,
- 5 • lipids and polysaccharides,
- all organics.

The resulting error in the HGF given by the compressed film model is shown in Fig. 13 and Fig. S5. The most notable feature is that for both ambient (Fig. 13) and heated measurements (Fig. S5) the error at high organic volume fractions is large. At high organic volume fractions the compressed film model performed best (at the assumed molecular volume and molecular area) when the lipids and proteins were allowed to partition to the surface. At low OVFs the predicted HGF is very similar regardless of which components were allowed to partition to the surface. At low OVFs the volume organics isn't sufficient for the formation of a monolayer and therefore the surface tension remains equal to the surface tension of water, as shown in Fig. S8. The difference between the use of the functional group measurements or the OCEANFILMS-2 model for the functional group concentrations is distinguishable for the case in which only the lipids are allowed to partition to the SSA surface. In this case the higher lipid fraction predicted by OCEANFILMS-2 results in the formation of a monolayer at OVFs greater than 0.4 (greater than 0.5 for heated samples, Fig. S5), resulting in slightly lower error in the modelled HGFs. The monolayer is never formed for the lipid only case when the functional group measurements are applied, as indicated in Figure S8.

A comparison of the HGFs modelled using the compressed film model and those modelled using the ZSR assumption is shown in Fig. 14. The compressed film model is shown for the case when the lipids and proteins are allowed to partition to the surface. The compressed film modelled HGFs at high organic volume fractions are up to 0.03 greater, however this does not account for the reduction in HGF predicted by the ZSR assumption, i.e. by Raoult's Law. The modest impact of decreased surface tension on HGF is consistent with previous studies on sub-saturated water uptake (Ruehl et al., 2016; Moore et al., 2008). Despite the inclusion of the surface tension effect (via the compressed film model) there was still a significant discrepancy between the observed and modelled HGFs, even when the relatively large uncertainty in the OVF is considered. Applying the ZSR assumption to the observed HGFs, assuming an organic HGF of 1.15, yields organic volume fractions for Bloom 1 of  $0.12 \pm 0.2$  (mean  $\pm$  sd), the OVFs computed using volatility measurements for Bloom 1 were  $0.5 \pm 0.3$ . It is also worth noting that the ZSR OVF for Bloom 1 includes an outlier (Workboat 4), for which the ZSR approximation is consistent with the OVF from volatility measurements. OVFs inferred in studies using water uptake techniques, using the ZSR assumption (Fuentes et al., 2011; Modini et al., 2010a), have often been lower than those measured using more direct analyses of SSA chemical composition (Fuentes et al., 2007; Facchini et al., 2008; Prather et al., 2013). SSA with hygroscopic growth factors inconsistent with the ZSR mixing rule, as presented here, could contribute to this apparent discrepancy.

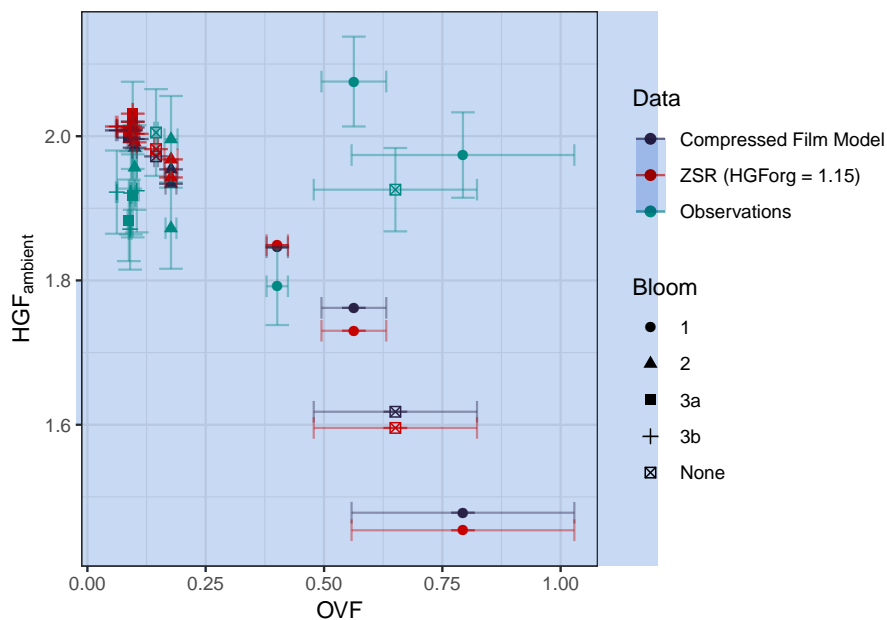
The discrepancy between observed and modelled HGFs was particularly apparent for samples with OVFs collected during Bloom 1, the most productive phytoplankton bloom. The drivers of the HGF discrepancy are unknown, but could potentially



**Figure 13.** Ambient HGF measured minus compressed film modelled HGF for lipids partitioned to the surface (top), lipids and proteins partitioned to the surface (middle panel) and all organics partitioned to the surface (bottom). Organic speciation derived from FTIR measurements (circles) and from OCEANFILMS model (triangles).

relate to short lived seawater components associated with strong phytoplankton blooms and the interaction between these components. For example mixtures of surface active membranes and monolayers (DPPC in particular) with inorganic (Casper et al., 2016) and organic (Edholm and Nagle, 2005) components have shown condensing effects, with associated impacts on the molecular area and volume. Modifications to the molecular volume have potential impacts on the hygroscopicity through the Raoult's Law (Petters et al., 2009) and through changes in surface tension. The weak influence of seawater biology on aerosol hygroscopicity in the supersaturated regime during intense phytoplankton blooms has previously been reported (Collins et al., 2016), and hypothesised to be associated with a decrease in surface tension at high organic volume fractions. Decreased surface tension does not explain the observed HGFs at high organic volume fractions in this study, the processes controlling the HGFs we observed may be relevant to these supersaturated observations. It should be pointed out that it is unknown whether these processes persist as the droplet grows and the solutes become more dilute, therefore the impact on CCN concentration is





**Figure 14.** Ambient HGF modelled using compressed film model (green) as a function of OVf, modelled using the ZSR assumption (light blue) and observed (dark blue). Compressed film model output is for case where lipid and protein fraction (computed from functional group measurements) can partition to the particle surface. ZSR model used an organic HGF of 1.15.

unknown. Further observation of sub saturated and supersaturated water uptake and composition of SSA from intense phytoplankton blooms are required to understand the importance of water uptake deviations from the ZSR assumptions. Our results support previous studies which indicate a preference for examining the water uptake properties of SSA using realistic seawater, with complex composition (Prather et al., 2013), rather than models with a small number of components.

## 5 5 Conclusions

Chamber measurements of primary marine aerosol generated from 23 seawater samples collected across three phytoplankton blooms tracked during the 23 day SOAP voyage over the Chatham Rise (east of New Zealand) are examined in this study. The SSA was an internal mixture of sea salt and organics. Volatility measurements at a preselected particle mobility diameter of 50 nm indicated that the SSA had an organic volume fraction of up to 0.79, with an average of  $0.24 \pm 0.22$ . Filter measurements of PM for diameters less than approximately  $1 \mu m$  were analysed for the concentration of organic functional groups using FTIR, and the concentration of inorganic species was determined using IBA. The organic mass fractions ranged from 0.03 to 0.23, and had a large proportion of hydroxyl functional groups which, along with very low alkane to hydroxyl ratios, suggests a polysaccharide rich, less aliphatic organic species.  $Ca^{2+}$  was observed to be 1.7 times higher in the aerosol phase than in

- seawater, which is consistent with other primary marine aerosol studies. A possible explanation for this is that  $\text{Ca}^{2+}$  complexes with organics in the SML, which is supported by the correlation of the  $\text{Ca}^{2+}$  enrichment factor with SSA  $PM_1$  OMF.
- The SSA organic fraction displayed a scattered correlation with chlorophyll-a, consistent with previous studies which show that chlorophyll-a is best used to correlate SSA organic enrichment over larger spatial scales and at temporal scales of the order of months. The OCEANFILMS model provided an improved representation of the SSA organic fraction observed in this study, in particular when the co-adsorption of polysaccharides was included i.e. OCEANFILMS-2 was applied. High hydroxyl to  $PM_1$  OMF fractions were observed from FTIR measurements, which translated to large estimated contributions from the polysaccharide like molecular class of  $0.72 \pm 0.06$ . OCEANFILMS-2 underestimated the contribution from the polysaccharide-like molecular class ( $0.39 \pm 0.06$ ). Further work on representing the adsorption of polysaccharide species is required.
- Water uptake measurements revealed that the SSA hygroscopicity was largely invariable with the organic mass fraction, with HGFs averaging  $1.93 \pm 0.08$ . The observed HGFs deviated from the regularly used water uptake mixing rule, the ZSR assumption, particularly during B1 when organic volume fractions were above 0.4. At low OVFs the inclusion of the sea salt hydrate component in the ZSR model improved the agreement with measurements. The representation of hygroscopicity was only marginally improved at high OVFs when the compressed film model was applied. Despite the inclusion of the surface tension effect there was still a significant discrepancy between the observed and modelled HGFs at high OVFs. The processes driving the high HGFs observed at high OVFs are uncertain, further observations of SSA composition, sub saturated and supersaturated water uptake during intense phytoplankton blooms are required.
- The SSA organics showed consistently low alkane to hydroxyl ratios, even in relatively productive waters with high SSA organic fractions, and surface tension effects. These results could indicate that the source and structure of the SSA organics was largely consistent throughout the voyage, for example made up of lipopolysaccharides, which have previously been identified as an important component in primary marine aerosols. These measurements provide valuable comparison with observations for models of SSA organic enrichment and water uptake. Constraints on emissions and process models for this region are of particular importance because existing measurements are sparse and it is a region for which SSA has been observed to make up a large contribution to CCN.
- Data availability.** The data are available through the World Data Center PANGAEA (<https://www.pangaea.de/>) in the near future. The nascent SSA composition, water uptake and volatility data is available in the supplementary material. Further data and information are available by request to the corresponding author or the voyage leader Cliff Law ([cliff.law@niwa.co.nz](mailto:cliff.law@niwa.co.nz)).
- Author contributions.** The SOAP campaign was led and coordinated by CSL and MJH. CSL led the ocean biogeochemistry work programme and MJH led the atmospheric work programme. LTC, MDM, PV, MJH and CSL made measurements during the SOAP voyage. GO developed fatty acids and Alkane techniques and analysed samples. KS collected workboat samples, conducted Chl-a sampling and optical microscopy on phytoplankton species. TB sampled and analysed High Molecular Weight Sugars and Proteins. RLM and LMR performed FTIR analysis

on SSA filter samples. ES and LTC performed IBA analysis on filter samples. LTC led analysis and interpretation of data, with input from all authors (ZR in particular) and the manuscript production, with input from all authors.

*Competing interests.* The authors declare that they have no conflict of interest.

*Acknowledgements.* We acknowledge the invaluable assistance of the captain, officers and crew of the R/V Tangaroa. We thank Gus Olivares and Nick Talbot collection and analysis of samples. In addition we would like to thank researchers, in particular Robin Modini, for providing time and expertise in running FTIR analysis on these samples. FTIR analyses were also supported by National Science Foundation grant NSF AGS-1013423. The SOAP study was supported by funding from NIWA's Climate and Atmosphere Research Programme 3 – Role of the oceans (2015/16 SCI), and VOC and CCN measurements were supported by CSIRO's Capability Development Fund. Petri Vaattovaara's participation was supported by EU COST action 735, the Academy of Finland, through the Centre of Excellence and via a Finnish Academy visiting grant, no. 136841. We would like to thank AINSE Limited for providing financial assistance (Award - ALNGRA13048) to enable the Ion Beam Analysis of elemental composition of marine aerosol filters collected during the SOAP voyage. Data analysis was supported by ARC Discovery grant DP150101649. Some of the data reported in this paper were obtained at the Central Analytical Research Facility (CARF) operated by the Institute for Future Environments (QUT). Access to CARF is supported by generous funding from the Science and Engineering Faculty (QUT).

## References

- Adams, E. M., Casper, C. B., and Allen, H. C.: Effect of cation enrichment on dipalmitoylphosphatidylcholine (DPPC) monolayers at the air-water interface, *Journal of Colloid and Interface Science*, 478 IS -, 353–364, 2016.
- Alroe, J., Cravigan, L. T., Mallet, M. D., Ristovski, Z. D., Miljevic, B., Osuagwu, C. G., and Johnson, G. R.: Determining the link  
5 between hygroscopicity and composition for semi-volatile aerosol species, *Atmospheric Measurement Techniques*, 11, 4361–4372, <https://doi.org/10.5194/amt-11-4361-2018>, 2018.
- Ault, A. P., Moffet, R. C., Baltrusaitis, J., Collins, D. B., Ruppel, M. J., Cuadra-Rodriguez, L. A., Zhao, D., Guasco, T. L., Ebben, C. J., Geiger, F. M., and et al.: Size-dependent changes in sea spray aerosol composition and properties with different seawater conditions, *Environ. Sci. Technol.*, 47, 5603–5612, <https://doi.org/doi:10.1021/es400416g>, 2013a.
- 10 Ault, A. P., Zhao, D., Ebben, C. J., Tauber, M. J., Geiger, F. M., Prather, K. A., and Grassian, V. H.: Raman microspectroscopy and vibrational sum frequency generation spectroscopy as probes of the bulk and surface compositions of size-resolved sea spray aerosol particles, *Physical Chemistry Chemical Physics*, 15, 6206, <https://doi.org/10.1039/c3cp43899f>, 2013b.
- Bates, T. S., Quinn, P. K., Frossard, A. A., Russell, L. M., Hakala, J., Petäjä, T., Kulmala, M., Covert, D. S., Cappa, C. D., Li, S. M., and et al.: Measurements of ocean derived aerosol off the coast of California, *J. Geophys. Res.*, 117, n/a, <https://doi.org/10.1029/2012JD017588>,  
15 2012.
- Bikkina, P., Kawamura, K., Bikkina, S., Kunwar, B., Tanaka, K., and Suzuki, K.: Hydroxy Fatty Acids in Remote Marine Aerosols over the Pacific Ocean: Impact of Biological Activity and Wind Speed, *ACS Earth Space Chem.*, 3, 366–379, 2019.
- Bodas-Salcedo, A., Williams, K. D., Field, P. R., and Lock, A. P.: The surface downwelling solar radiation surplus over the southern ocean in the met office model: The role of midlatitude cyclone clouds, *Journal of Climate*, 25, 7467–7486, 2012.
- 20 Burrows, S. M., Ogunro, O., Frossard, A. A., Russell, L. M., Rasch, P. J., and Elliott, S. M.: A physically based framework for modeling the organic fractionation of sea spray aerosol from bubble film Langmuir equilibria, *Atmospheric Chemistry and Physics*, 14, 13 601–13 629, <https://doi.org/10.5194/acp-14-13601-2014>, 2014.
- Burrows, S. M., Gobrogge, E., Fu, L., Link, K., Elliott, S. M., Wang, H., and Walker, R.: OCEANFILMS-2: Representing coadsorption of saccharides in marine films and potential impacts on modeled marine aerosol chemistry, *Geophysical Research Letters*, 43, 8306–8313,  
25 <https://doi.org/10.1002/2016GL069070>, 2016.
- Casillas-Ituarte, N. N., Callahan, K. M., Tang, C. Y., Chen, X., Roeselová, M., Tobias, D. J., and Allen, H. C.: Surface organization of aqueous  $\text{MgCl}_2$ ; and application to atmospheric marine aerosol chemistry, *Proc Natl Acad Sci USA*, 107, 6616, 2010.
- Casper, C. B., Verreault, D., Adams, E. M., Hua, W., and Allen, H. C.: Surface Potential of DPPC Monolayers on Concentrated Aqueous Salt Solutions, *J. Phys. Chem. B*, 120, 2043–2052, <https://doi.org/10.1021/acs.jpcb.5b10483>, 2016.
- 30 Ceburnis, D., O'Dowd, C. D., Jennings, G. S., Facchini, M. C., Emblico, L., Decesari, S., Fuzzi, S., and Sakalys, J.: Marine aerosol chemistry gradients: Elucidating primary and secondary processes and fluxes, *Geophysical Research Letters*, 35, n/a, <https://doi.org/10.1029/2008GL033462>, 2008.
- Claeys, M., Wang, W., Vermeylen, R., Kourtchev, I., Chi, X., Farhat, Y., Surratt, J. D., Gómez-González, Y., Sciare, J., and Maenhaut, W.: Chemical characterisation of marine aerosol at Amsterdam Island during the austral summer of 2006–2007, *Journal of Aerosol Science*,  
35 41, 13–22, 2010.

- Cochran, R. E., Laskina, O., Trueblood, J. V., Estillore, A. D., Morris, H. S., Jayarathne, T., Sultana, C. M., Lee, C., Lin, P., Laskin, J., and et al.: Molecular Diversity of Sea Spray Aerosol Particles: Impact of Ocean Biology on Particle Composition and Hygroscopicity, *Chem*, 2, 655–667, <https://doi.org/10.1016/j.chempr.2017.03.007>, 2017.
- Cohen, D. D., Stelcer, E., Hawas, O., and Garton, D.: IBA methods for characterisation of fine particulate atmospheric pollution: a local, regional and global research problem, *The 13th International Conference on Particle Induced X-ray Emission (PIXE 2013)*, 219–220 IS –, 145–152, 2004.
- Collins, D. B., Ault, A. P., Moffet, R. C., Ruppel, M. J., Cuadra-Rodriguez, L. A., Guasco, T. L., Corrigan, C. E., Pedler, B. E., Azam, F., Aluwihare, L. I., and et al.: Impact of marine biogeochemistry on the chemical mixing state and cloud forming ability of nascent sea spray aerosol, *Journal of Geophysical Research: Atmospheres*, p. n/a, <https://doi.org/10.1002/jgrd.50598>, 2013.
- 10 Collins, D. B., Zhao, D. F., Ruppel, M. J., Laskina, O., Grandquist, J. R., Modini, R. L., Stokes, M. D., Russell, L. M., Bertram, T. H., Grassian, V. H., and et al.: Direct aerosol chemical composition measurements to evaluate the physicochemical differences between controlled sea spray aerosol generation schemes, *Atmospheric Measurement Techniques*, 7, 3667–3683, <https://doi.org/10.5194/amtd-7-6457-2014>, 2014.
- Collins, D. B., Bertram, T. H., Sultana, C. M., Lee, C., Axson, J. L., and Prather, K. A.: Phytoplankton blooms weakly influence the cloud forming ability of sea spray aerosol, *Geophysical Research Letters*, 43, 9975–9983, <https://doi.org/10.1002/2016GL069922>, 2016.
- Cravigan, L. T.: Sources and composition of sub-200 nm sea spray aerosol inferred from volatility and hygroscopicity., 2015.
- Cravigan, L. T., Ristovski, Z., Modini, R. L., Keywood, M. D., and Gras, J. L.: Observation of sea-salt fraction in sub-100 nm diameter particles at Cape Grim, *Journal of Geophysical Research: Atmospheres*, p. 2014JD022601, <https://doi.org/10.1002/2014JD022601>, 2015.
- Edholm, O. and Nagle, J. F.: Areas of Molecules in Membranes Consisting of Mixtures, *Biophysical Journal*, 89, 1827–1832, <https://doi.org/10.1529/biophysj.105.064329>, 2005.
- 20 Estillore, A. D., Hettiyadura, A. P. S., Qin, Z., Leckrone, E., Wombacher, B., Humphry, T., Stone, E. A., and Grassian, V. H.: Water Uptake and Hygroscopic Growth of Organosulfate Aerosol, *Environ. Sci. Technol.*, 50, 4259–4268, <https://doi.org/10.1021/acs.est.5b05014>, 2016.
- Estillore, A. D., Morris, H. S., Or, V. W., Lee, H. D., Alves, M. R., Marciano, M. A., Laskina, O., Qin, Z., Tivanski, A. V., and Grassian, V. H.: Linking hygroscopicity and the surface microstructure of model inorganic salts, simple and complex carbohydrates, and authentic sea spray aerosol particles, *Physical Chemistry Chemical Physics*, 19, 21 101–21 111, <https://doi.org/10.1039/C7CP04051B>, 2017.
- 25 Facchini, M. C., Rinaldi, M., Decesari, S., Carbone, C., Finessi, E., Mircea, M., Fuzzi, S., Ceburnis, D., Flanagan, R., NILSSON, E. D., and et al.: Primary submicron marine aerosol dominated by insoluble organic colloids and aggregates, *Geophysical Research Letters*, 35, n/a, <http://dx.doi.org/10.1029/2008GL034210>, 2008.
- Forestieri, S. D., Moore, K. A., Borrero, R. M., Wang, A., Stokes, M. D., and Cappa, C. D.: Temperature and Composition Dependence of Sea Spray Aerosol Production, *Geophysical Research Letters*, 45, 7218–7225, <https://doi.org/10.1029/2018gl078193>, 2018a.
- 30 Forestieri, S. D., Staudt, S. M., Kuborn, T. M., Faber, K., Ruehl, C. R., Bertram, T. H., and Cappa, C. D.: Establishing the impact of model surfactants on cloud condensation nuclei activity of sea spray aerosol mimics, *Atmospheric Chemistry and Physics*, 18, 10 985–11 005, <https://doi.org/10.5194/acp-18-10985-2018>, 2018b.
- Fossum, K. N., Ovadnevaite, J., Ceburnis, D., Dall’Osto, M., Marullo, S., Bellacicco, M., Simó, R., Liu, D., Flynn, M., Zuend, A., and et al.: Summertime Primary and Secondary Contributions to Southern Ocean Cloud Condensation Nuclei, *Scientific Reports*, 8, 13 844, <https://doi.org/10.1038/s41598-018-32047-4>, 2018.
- 35 Frossard, A. A. and Russell, L. M.: Removal of Sea Salt Hydrate Water from Seawater-Derived Samples by Dehydration, *Environmental science amp; technology*, 46, 13 326–13 333, <https://doi.org/10.1021/es3032083>, 2012.

- Frossard, A. A., Russell, L. M., Burrows, S. M., Elliott, S. M., Bates, T. S., and Quinn, P. K.: Sources and composition of submicron organic mass in marine aerosol particles, *Journal of Geophysical Research: Atmospheres*, 119, 2014JD021913, <https://doi.org/10.1002/2014JD021913>, 2014.
- Fuentes, E., Coe, H., Green, D., de Leeuw, G., and McFiggans, G.: Laboratory-generated primary marine aerosol via bubble-bursting and atomization, *Atmospheric Measurement Techniques*, 3, 141–162, <https://doi.org/10.5194/amt-3-141-2010>, 2010.
- Fuentes, E., Coe, H., Green, D., and McFiggans, G.: On the impacts of phytoplankton-derived organic matter on the properties of the primary marine aerosol – Part 2: Composition, hygroscopicity and cloud condensation activity, *Atmospheric Chemistry and Physics*, 11, 2585–2602, <https://doi.org/10.5194/acp-11-2585-2011>, 2011.
- Gantt, B., Meskhidze, N., Facchini, M. C., Rinaldi, M., Ceburnis, D., and O'Dowd, C. D.: Wind speed dependent size-resolved parameterization for the organic mass fraction of sea spray aerosol, *Atmospheric Chemistry and Physics*, 11, 8777–8790, 2011.
- Gras, J. L. and Keywood, M.: Cloud condensation Nuclei over the Southern Ocean: wind dependence and seasonal cycles, *Atmospheric Chemistry and Physics Discussions*, 2016, 1–26, <https://doi.org/10.5194/acp-2016-998>, 2016.
- Gysel, M., McFiggans, G. B., and Coe, H.: Inversion of tandem differential mobility analyser (TDMA) measurements, *Journal of Aerosol Science*, 40, 134–151, <https://doi.org/10.1016/j.jaerosci.2008.07.013>, 2009.
- 15 Haynes, W. M.: *CRC Handbook of Chemistry and Physics*, CRC Press/ Taylor & Francis, CRC Press/ Taylor & Francis, 99th (internet version 2018) edn., 2018.
- Johnson, G. R., Ristovski, Z., and Morawska, L.: Method for measuring the hygroscopic behaviour of lower volatility fractions in an internally mixed aerosol, *Journal of Aerosol Science*, 35, 443–455, <https://doi.org/10.1016/j.jaerosci.2003.10.008>, 2004.
- Johnson, G. R., Fletcher, C., Meyer, N., Modini, R., and Ristovski, Z. D.: A robust, portable H-TDMA for field use, *Journal of Aerosol Science*, 39, 850–861, <https://doi.org/10.1016/j.jaerosci.2008.05.005>, 2008.
- Joutsensaari, J., Vaattovaara, P., Vesterinen, M., Hameri, K., and Laaksonen, A.: A novel tandem differential mobility analyzer with organic vapor treatment of aerosol particles, *Atmospheric Chemistry and Physics*, 1, 51–60, <https://doi.org/10.5194/acp-1-51-2001>, 2001.
- Keene, W. C., Maring, H., Maben, J. R., Kieber, D. J., Pszenny, A. A. P., Dahl, E. E., Izaguirre, M. A., Davis, A. J., Long, M. S., Zhou, X., and et al.: Chemical and physical characteristics of nascent aerosols produced by bursting bubbles at a model air-sea interface, *J. Geophys. Res.*, 112, D21 202, <https://doi.org/10.1029/2007JD008464>, 2007.
- 25 King, S. M., Butcher, A. C., Rosenoern, T., Coz, E., Lieke, K. I., de Leeuw, G., NILSSON, E. D., and Bilde, M.: Investigating Primary Marine Aerosol Properties: CCN Activity of Sea Salt and Mixed Inorganic–Organic Particles, *Environ. Sci. Technol.*, 46, 10 405–10 412, <https://doi.org/doi:10.1021/es300574u>, 2013.
- Laskin, A., Moffet, R. C., Gilles, M. K., Fast, J. D., Zaveri, R. A., Wang, B., Nigge, P., and Shutthanandan, J.: Tropospheric chemistry of internally mixed sea salt and organic particles: Surprising reactivity of NaCl with weak organic acids, *J. Geophys. Res.*, 117, D15 302, <https://doi.org/10.1029/2012JD017743>, 2012.
- 30 Law, C. S., Smith, M. J., Harvey, M. J., Bell, T. G., Cravigan, L. T., Elliott, F. C., Lawson, S. J., Lizotte, M., Marriner, A., McGregor, J., and et al.: Overview and preliminary results of the Surface Ocean Aerosol Production (SOAP) campaign, *Atmospheric Chemistry and Physics*, 17, 13 645–13 667, <https://doi.org/10.5194/acp-17-13645-2017>, 2017.
- 35 Leck, C. and Svensson, E.: Importance of aerosol composition and mixing state for cloud droplet activation over the Arctic pack ice in summer, *Atmospheric Chemistry and Physics*, 15, 2545–2568, <https://doi.org/10.5194/acp-15-2545-2015>, 2015.
- Lewis, E. R. and Schwartz, S. E.: Sea salt aerosol production mechanisms, methods, measurements and models, a critical review, 152, 2004.

- Mallet, M., Cravigan, L., Miljevic, B., Vaattovaara, P., Deschaseaux, E., Swan, H., Jones, G., and Ristovski, Z.: Sea spray aerosol in the Great Barrier Reef and the presence of nonvolatile organics, *Journal of Geophysical Research: Atmospheres*, p. 2016JD024966, <https://doi.org/10.1002/2016JD024966>, 2016.
- Maria, S. F., Russell, L. M., Turpin, B. J., Porcja, R. J., Campos, T. L., Weber, R. J., and Huebert, B. J.: Source signatures of carbon monoxide and organic functional groups in Asian Pacific Regional Aerosol Characterization Experiment (ACE-Asia) submicron aerosol types, *J. Geophys. Res.*, 108, n/a, <https://doi.org/10.1029/2003JD003703>, 2003.
- McCoy, D. T., Burrows, S. M., Wood, R., Grosvenor, D. P., Elliott, S. M., Ma, P. L., Rasch, P. J., and Hartmann, D. L.: Natural aerosols explain seasonal and spatial patterns of Southern Ocean cloud albedo, *Science Advances*, 1, e1500157, <https://doi.org/10.1126/sciadv.1500157>, 2015.
- 10 Miyazaki, Y., Kawamura, K., and Sawano, M.: Size distributions and chemical characterization of water-soluble organic aerosols over the western North Pacific in summer, *J. Geophys. Res.*, 115, n/a, <http://dx.doi.org/10.1029/2010JD014439>, 2010.
- Modini, R. L., Harris, B., and Ristovski, Z.: The organic fraction of bubble-generated, accumulation mode Sea Spray Aerosol (SSA), *Atmospheric Chemistry and Physics*, 10, 2867–2877, 2010a.
- Modini, R. L., Johnson, G. R., He, C., and Ristovski, Z. D.: Observation of the suppression of water uptake by marine particles, *Atmospheric Research*, 98, 219–228, 2010b.
- 15 Modini, R. L., Russell, L. M., Deane, G. B., and Stokes, M. D.: Effect of soluble surfactant on bubble persistence and bubble-produced aerosol particles, *Journal of Geophysical Research: Atmospheres*, 118, 1388–1400, <https://doi.org/10.1002/jgrd.50186>, 2013.
- Moore, R. H., Ingall, E. D., Sorooshian, A., and Nenes, A.: Molar mass, surface tension, and droplet growth kinetics of marine organics from measurements of CCN activity, *Geophysical Research Letters*, 35, n/a–n/a, <https://doi.org/10.1029/2008gl033350>, 2008.
- 20 Myhre, G., Shindell, D., Bréon, F. M., and Collins, W.: Anthropogenic and natural radiative forcing, <https://doi.org/10.1002/2013GL059099/full>, 2013.
- Niedermeier, D., Wex, H., Voigtlander, J., Stratmann, F., Uggemann, E. B., Kiselev, A., Henk, H., and Heintzenberg, J.: **LACIS-measurements** and parameterization of sea-salt particle hygroscopic growth and activation, *Atmospheric Chemistry and Physics*, 8, 579–590, <https://doi.org/10.5194/acp-8-579-2008>, 2008.
- 25 O'Dowd, C., Ceburnis, D., Ovadnevaite, J., Bialek, J., Stengel, D. B., Zacharias, M., Nitschke, U., Connan, S., Rinaldi, M., Fuzzi, S., and et al.: Connecting marine productivity to sea-spray via nanoscale biological processes: Phytoplankton Dance or Death Disco?, *Scientific Reports*, 5, 14883, <https://doi.org/10.1038/srep14883>, 2015.
- O'Dowd, C. D., Facchini, M. C., Cavalli, F., Ceburnis, D., Mircea, M., Decesari, S., Fuzzi, S., Yoon, Y. J., and Putaud, J.-P.: Biogenically driven organic contribution to marine aerosol, *Nature*, 431, 676–680, <https://doi.org/10.1038/nature02959>, 2004.
- 30 Ovadnevaite, J., Ceburnis, D., Martucci, G., Bialek, J., Monahan, C., Rinaldi, M., Facchini, M. C., Berresheim, H., Worsnop, D. R., and O'Dowd, C.: Primary marine organic aerosol: A dichotomy of low hygroscopicity and high CCN activity, *Geophysical Research Letters*, 38, L21806, <https://doi.org/10.1029/2011GL048869>, 2011a.
- Ovadnevaite, J., O'Dowd, C., Dall'Osto, M., Ceburnis, D., Worsnop, D. R., and Berresheim, H.: Detecting high contributions of primary organic matter to marine aerosol: A case study, *Geophysical Research Letters*, 38, n/a, <http://dx.doi.org/10.1029/2010GL046083>, 2011b.
- 35 Ovadnevaite, J., Zuend, A., Laaksonen, A., Sanchez, K. J., Roberts, G., Ceburnis, D., Decesari, S., Rinaldi, M., Hodas, N., Facchini, M. C., and et al.: Surface tension prevails over solute effect in organic-influenced cloud droplet activation, *Nature*, 546, 637–641, <https://doi.org/10.1038/nature22806>, 2017.

- Petters, M. D., Kreidenweis, S. M., Prenni, A. J., Sullivan, R. C., Carrico, C. M., Koehler, K. A., and Ziemann, P. J.: Role of molecular size in cloud droplet activation, *Geophysical Research Letters*, 36, <https://doi.org/10.1029/2009gl040131>, 2009.
- Petters, S. S. and Petters, M. D.: Surfactant effect on cloud condensation nuclei for two-component internally mixed aerosols, *Journal of Geophysical Research: Atmospheres*, 121, 1878–1895, <https://doi.org/10.1002/2015JD024090>, 2016.
- 5 Prather, K. A., Bertram, T. H., Grassian, V. H., Deane, G. B., Stokes, M. D., DeMott, P. J., Aluwihare, L. I., Palenik, B. P., Azam, F., Seinfeld, J. H., and et al.: Bringing the ocean into the laboratory to probe the chemical complexity of sea spray aerosol, *Proceedings of the National Academy of Sciences*, 110, 7550–7555, 2013.
- Prisle, N. L., Raatikainen, T., Laaksonen, A., and Bilde, M.: Surfactants in cloud droplet activation: mixed organic-inorganic particles, *Atmospheric Chemistry and Physics*, 10, 5663–5683, <https://doi.org/10.5194/acp-10-5663-2010>, 2010.
- 10 Protat, A., Schulz, E., Rikus, L., Sun, Z., Xiao, Y., and Keywood, M.: Shipborne observations of the radiative effect of Southern Ocean clouds, *Journal of Geophysical Research: Atmospheres*, 122, 318–328, <https://doi.org/10.1002/2016JD026061>, 2017.
- Quinn, P. K., Bates, T. S., Schulz, K. S., Coffman, D. J., Frossard, A. A., Russell, L. M., Keene, W. C., and Kieber, D. J.: Contribution of sea surface carbon pool to organic matter enrichment in sea spray aerosol, *Nature Geoscience*, 7, 228–232, <https://doi.org/10.1038/ngeo2092>, 2014.
- 15 Quinn, P. K., Collins, D. B., Grassian, V. H., Prather, K. A., and Bates, T. S.: Chemistry and Related Properties of Freshly Emitted Sea Spray Aerosol, *Chemical Reviews*, p. 150406123611007, <https://doi.org/10.1021/cr500713g>, 2015.
- Quinn, P. K., Coffman, D. J., Johnson, J. E., Upchurch, L. M., and Bates, T. S.: Small fraction of marine cloud condensation nuclei made up of sea spray aerosol, *Nature Geoscience*, 30, 869, <https://doi.org/10.1038/ngeo3003>, 2017.
- Rasmussen, B. B., Nguyen, Q. T., Kristensen, K., Nielsen, L. S., and Bilde, M.: What controls volatility of sea spray aerosol? Results from laboratory studies using artificial and real seawater samples, *Journal of Aerosol Science*, 107, 134–141, <https://doi.org/10.1016/j.jaerosci.2017.02.002>, 2017.
- Rinaldi, M., Fuzzi, S., Decesari, S., Marullo, S., Santolieri, R., Provenzale, A., Hardenberg, J. v., Ceburnis, D., Vaishya, A., O'Dowd, C. D., and et al.: Is chlorophyll-a the best surrogate for organic matter enrichment in submicron primary marine aerosol?, *Journal of Geophysical Research: Atmospheres*, 118, 4964–4973, <https://doi.org/10.1002/jgrd.50417>, 2013.
- 25 Ruehl, C. R. and Wilson, K. R.: Surface Organic Monolayers Control the Hygroscopic Growth of Submicrometer Particles at High Relative Humidity, *The Journal of Physical Chemistry A*, 118, 3952–3966, <https://doi.org/10.1021/jp502844g>, 2014.
- Ruehl, C. R., Davies, J. F., and Wilson, K. R.: An interfacial mechanism for cloud droplet formation on organic aerosols, *Science*, 351, 1447–1450, <https://doi.org/10.1126/science.aad4889>, 2016.
- Russell, L. M.: Aerosol Organic-Mass-to-Organic-Carbon Ratio Measurements, *Environmental science amp; technology*, 37, 2982–2987, <https://doi.org/10.1021/es026123w>, 2003.
- 30 Russell, L. M., Hawkins, L. N., Frossard, A. A., Quinn, P. K., and Bates, T. S.: Carbohydrate-like composition of submicron atmospheric particles and their production from ocean bubble bursting, *Proceedings of the National Academy of Sciences*, 107, 6652–6657, 2010.
- Russell, L. M., Bahadur, R., and Ziemann, P. J.: Identifying organic aerosol sources by comparing functional group composition in chamber and atmospheric particles, *Proceedings of the National Academy of Sciences*, 2011.
- 35 Sakamoto, Y., Ishiguro, M., and Kitagawa, G.: Akaike information criterion statistics., *Mathematics and Computers in Simulation*, 29, 452, 1987.
- Salter, M. E., Hamacher-Barth, E., Leck, C., Werner, J., Johnson, C. M., Riipinen, I., Nilsson, E. D., and Zieger, P.: Calcium enrichment in sea spray aerosol particles, *Geophysical Research Letters*, 43, 8277–8285, <https://doi.org/10.1002/2016GL070275>, 2016.



- Schwier, A. N., Rose, C., Asmi, E., Ebling, A. M., Landing, W. M., Marro, S., Pedrotti, M. L., Sallon, A., Iuculano, F., Agusti, S., and et al.: Primary marine aerosol emissions from the Mediterranean Sea during pre-bloom and oligotrophic conditions: correlations to seawater chlorophyll a from a mesocosm study, *Atmospheric Chemistry and Physics*, 15, 7961–7976, <https://doi.org/10.5194/acp-15-7961-2015>, 2015.
- 5 Schwier, A. N., Sellegri, K., Mas, S., Charriere, B., Pey, J., Rose, C., Temime-Roussel, B., Jaffrezo, J. L., Parin, D., Picard, D., and et al.: Primary marine aerosol physical flux and chemical composition during a nutrient enrichment experiment in mesocosms in the Mediterranean Sea, *Atmospheric Chemistry and Physics*, 17, 14 645–14 660, <https://doi.org/10.5194/acp-17-14645-2017>, 2017.
- Sciare, J., Favez, O., Sarda-Estève, R., Oikonomou, K., Cachier, H., and Kazan, V.: Long-term observations of carbonaceous aerosols in the Austral Ocean atmosphere: Evidence of a biogenic marine organic source, *J. Geophys. Res.*, 114, n/a, <http://dx.doi.org/10.1029/2009JD011998>, 2009.
- 10 Seinfeld, J. H. and Pandis, S. N.: *Atmospheric Chemistry and Physics: From Air Pollution to Climate Change*, 2006.
- Shank, L. M., Howell, S., Clarke, A. D., Freitag, S., Brekhovskikh, V., Kapustin, V., McNaughton, C., Campos, T., and Wood, R.: Organic matter and non-refractory aerosol over the remote Southeast Pacific: oceanic and combustion sources, *Atmospheric Chemistry and Physics*, 12, 557–576, <https://doi.org/10.5194/acp-12-557-2012>, 2012.
- 15 Sievering, H., Cainey, J., Harvey, M., McGregor, J., Nichol, S., and Quinn, P.: Aerosol non-sea-salt sulfate in the remote marine boundary layer under clear-sky and normal cloudiness conditions: Ocean-derived biogenic alkalinity enhances sea-salt sulfate production by ozone oxidation, *J. Geophys. Res.*, 109, D19 317, <https://doi.org/10.1029/2003JD004315>, 2004.
- Stokes, R. H. and Robinson, R. A.: Interactions in Aqueous Nonelectrolyte Solutions. I. Solute-Solvent Equilibria, *The Journal of Physical Chemistry*, 70, 2126–2131, <https://doi.org/10.1021/j100879a010>, 1966.
- 20 Vaattovaara, P., Räsänen, M., Kuhn, T., Joutsensaari, J., and Laaksonen, A.: A method for detecting the presence of organic fraction in nucleation mode sized particles, *Atmospheric Chemistry and Physics*, 5, 3277–3287, 2005.
- Zabori, J., Matisāns, M., Krejci, R., Nilsson, E. D., and Strom, J.: Artificial primary marine aerosol production: a laboratory study with varying water temperature, salinity, and succinic acid concentration, *Atmospheric Chemistry and Physics*, 12, 10 709–10 724, <https://doi.org/10.5194/acp-12-10709-2012>, 2012.
- 25 Zelenyuk, A., Imre, D., Cuadra-Rodríguez, L. A., and Ellison, B.: Measurements and interpretation of the effect of a soluble organic surfactant on the density, shape and water uptake of hygroscopic particles, *Journal of Aerosol Science*, 38, 903–923, <https://doi.org/10.1016/j.jaerosci.2007.06.006>, 2007.
- Zieger, P., Väisänen, O., Corbin, J. C., Partridge, D. G., Bastelberger, S., Mousavi-Fard, M., Rosati, B., Gysel, M., Krieger, U. K., Leck, C., and et al.: Revising the hygroscopicity of inorganic sea salt particles, *Nature Communications*, 8, ncomms15883, <https://doi.org/10.1038/ncomms15883>, 2017.
- 30