

REFeree#1

This paper describes a case study assessment of the introduction of an interactive wave simulation to describe sea state as a lower boundary to an atmosphere model simulation of a heavy rainfall event over the Mediterranean. The Introduction and Model Description sections are in general very clear and efficiently set out. Results are compared with a comprehensive set of surface and satellite-based observations of atmosphere and wave variables. As set out below, aspects of the experimental design and dependence on a single case limit the extent to which the paper can add value to the existing literature, and the authors are encouraged to consider this further. Overall, the paper is generally written to a good standard, is relevant and has scientific merit.

I am content that the paper should be published following some minor, but significant(!), suggested corrections and considerations as set out below. Each in themselves are perhaps worthy of ‘major’ corrections and further work, as acknowledged by the authors in the concluding paragraph, but perhaps it is sufficient that the choices made are more directly addressed and justified within the current paper rather than recommending a more significant re-write and further simulation and analysis work.

Specific comments

1. Wave model coupling approach

→ Section 2.3.2 – wave model coupling. The authors describe the use of the WASP parameterisation of the surface roughness and coupling via the wave model simulated peak period. This seems like a rather indirect approach, given that more typically the WAVEWATCHIII calculated Charnock parameter could be used directly into Eq. 7 (e.g. Varlas et al., 2018; Section 2). In fact, Wahle et al. 2017 pass the WAM wave model calculated roughness length directly (see their Section 2.3). The direct use of WAVEWATCHIII computed Charnock parameter was also described for example in coupling studies of the North West European shelf by Lewis et al (2018, 2019).

Another study cited, Renault et al., 2012, apply a similar wave-age dependent coupling (their Section 3.5), and here reference to Drennen et al., 2005 might be appropriate.

→ Further, more detail of p5,130 (“coefficients A and B being polynomial functions of the surface wind speed”) would be useful.

→ The authors should set out their rationale for the WASP parameterisation in preference to the wave model computed Charnock or roughness. Indeed, a comparison between the WASP and Wavewatch computed roughness would have been a very enlightening addition to this discussion and of wider use for assessing potential modelling uncertainties for the community. In short, what is the sensitivity of results (roughness lengths) to this configuration choice?

Both reviewers suggest that a more direct wind-wave coupling approach would be to make use of the Charnock parameter which is computed in the wave models. This is indeed the classical approach for atmosphere-wave coupling.

The computation of the Charnock parameter within wave models is in fact known to be very sensitive, through the wind input (S_{in}), to the high-frequency tail of the spectrum (see Eq. 5.22 and 5.24 in Janssen, 2004), which is always parameterized in wave models, because high frequencies cannot be represented explicitly (in f^5 in WW3 and WAM). Some sensitivity tests on WW3 and WAM also showed that there is a small variability in the Charnock parameter due to the wave field variability at a given wind speed. Thus, the benefit of coupling with a wave model is reduced. This point is notably discussed in Voltaire et al. (2017).

The WASP approach used here has two advantages, compared to the Charnock parameter approach: i) it allows to compare more directly the wave parameter coupled fields with observations, and so to check their validity; ii) the Charnock parameter is defined differently depending on the wind speed range considered, enabling to represent in a more physical way its behaviour and possible dependency on the waves. Especially, it reproduces the observed decrease of the drag coefficient by very strong wind, which would not be possible using a wave-age only Charnock parameter as in Drennan et al. (2005). The WASP parametrization, unlike those based on wave-age Charnock parameters, is then usable for wind speeds up to 50 m s⁻¹.

In more detail, the Charnock parameter is calculated in WASP as follows :

- For wind speed at first level (U_a) below 7 m/s, it is a power function of U_a : $\alpha_{ch} = aU_a^b$, with $a=0.7$ and $b=-2.52$;
- For U_a above 7 m/s, the dependency to wave-age (χ) is introduced and defined as: $\alpha_{ch} = A\chi^B$, where A and B are polynomial functions of U_a :

$$A=A_0+A_1U_a+A_2U_a^2+A_3U_a^3$$

$$B=B_0+B_1U_a+B_2U_a^2+B_3U_a^3$$
detailed in Table A.

	A0 B0	A1 B1	A2 B2	A3 B3
$7 \leq U_a < 23$	-9.202 -4.124E-1	2.265 -2.225E-1	-1.340E-1 1.178E-2	2.350E-3 1.616E-4
$23 \leq U_a < 25$	2.270 -2.410	6.670E-2 4.300E-2	0.0 0.0	0.0 0.0
$U_a \geq 25$	9.810E-2 0.0	-4.130E-3 0.0	4.340E-5 0.0	1.160E-8 0.0

Table A: Coefficients of the polynomial functions A and B, depending on the wind speed range.

Figure A shows the comparison between the Charnock parameter calculated with WASP and with WW3 the 14 October at 00UTC. It highlights that, by using WASP, we obtain much higher variability in the Charnock parameter.

Section 2.3.2 has been enlarged to better describe these advantages of using the WASP parameterization and an appendix has been added to the paper with the details of the calculation of the Charnock parameter (as shown above).

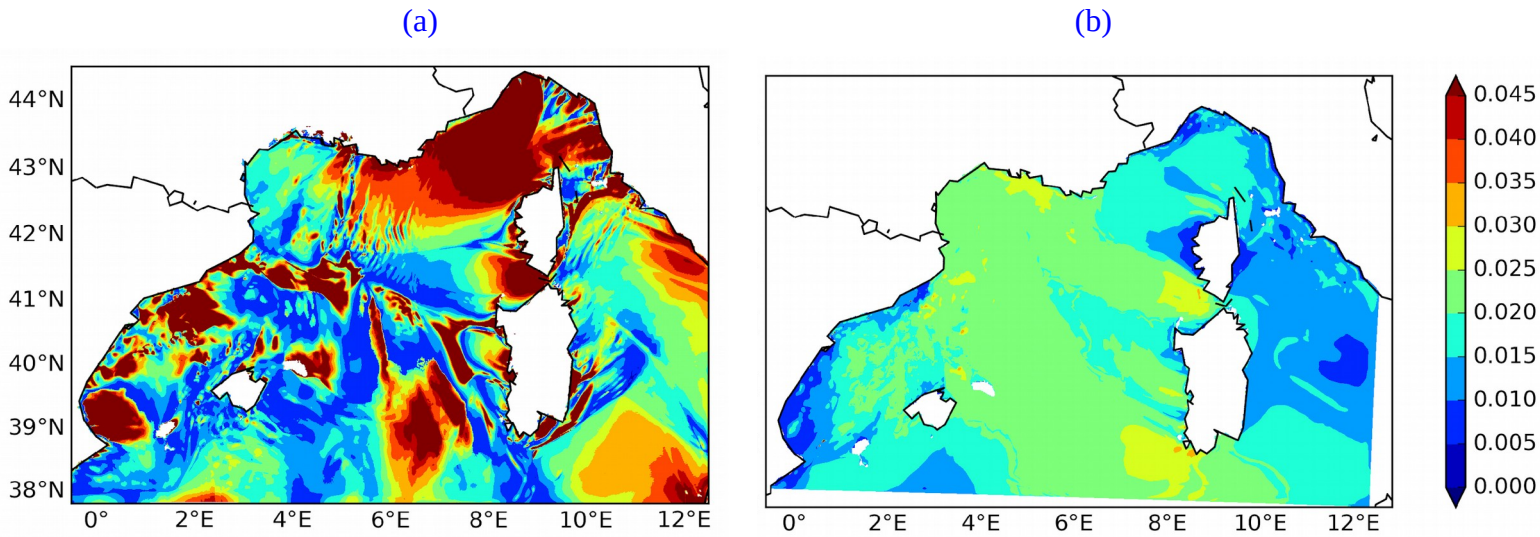


Figure A: Charnock parameter from (a) WASP and (b) WW3 the 14 October at 00UTC.

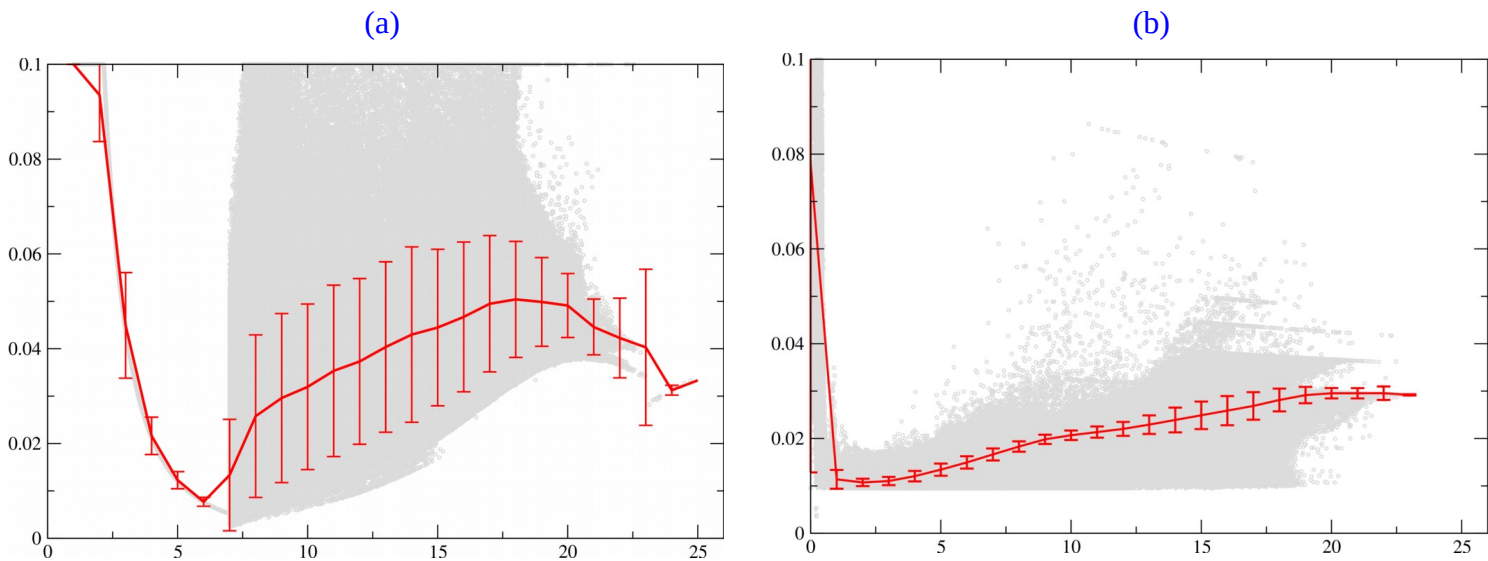


Figure B: Charnock coefficient from (a) WASP as a function of 10 m-wind (m/s) and from (b) WW3 for 13 October 2016 (grey dots and mean value (+/- one standard deviation) in red).

2. A-W coupling experiments

Section 2.4 – set of experiments. The authors set out the 4 (WY, AY, AWF and AWC) experiments. On the one hand, this is a justifiable and clean experimental design.

→ However, given the increasing use of more fully coupled atmosphere-ocean-wave regional configurations for similar case study assessments (e.g. Renault et al, Ricci et al, etc), the authors should more directly justify the lack of ocean interactions within the current study. This is highlighted in the final paragraph of the paper, but should also be addressed directly in the choice of experiments described in Section 2.

This is a good remark from the reviewer. Indeed, there is no ocean coupling in the experiments presented in the paper.

The objective of this study is to better assess the role of the waves on the dynamics (i.e. the impact

on the momentum flux and surface wind) but also the impact on the sea surface turbulent heat fluxes during this kind of Mediterranean heavy precipitation event. The ocean interactive coupling by modifying the SST during the model integration has a significant impact on the heat and moisture fluxes (e.g. for Mediterranean HPE Lebeaupin Brossier et al. 2009 and Rainaud et al. 2017) that could mask the effect of the waves on these fluxes. So, a fixed SST is used here. Also, this way, the AY experiment is also very close to the AROME operational forecast which uses a fixed SST field.

A comment has been added at the beginning of section 2.4.

We would like to mention here that a tri-coupled experiment AROME-NEMO-WW3 of the same case is currently under investigation in order to analyse the different coupled impacts.

→ Finally, please comment on expected sensitivity of results to the choice of coupling frequency (1h). Were any sensitivity tests conducted to assess this? Some studies (e.g. Renault et al., though many others exist), involve interactions at much higher coupling frequency, to capture interactions with fast moving systems for example.

The coupling frequency was set to 1h to be consistent with our forced experiment (AWF) as the AROME forcing is routinely available hourly and thus to compare fairly AWC and AWF. We didn't test any higher or lower coupling frequency.

Also, the variability of wave parameter and wind appears quite well captured with a frequency of 1h, as shown for example in Figure 2 of the paper.

Higher coupling frequency would possibly have introduced more variability in the results and we agree this should be carefully tested in the future, along with the use of instantaneous or averaged wind/wave coupled fields.

3. Simulation lead time considerations

→ The authors chose to validate only the first 24h of each AROME simulation in Section 3, though simulations covered T+0 to T+42. Why are data beyond the first day not considered? Similarly, the focus in Section 5 is on T+14 and T+24 snapshots only.

Indeed, for each day, for the period from 00UT to 18UT we have two forecasts available, except for the wave-only simulation WY which is a continuous simulation. So to fairly validate the wave parameters in WY/AWF and AWC, we only considered the first 24 hours of each forecast, and to be consistent in the atmospheric component validation, we examined the same forecast range (T+0 to T+24h) for wind in AY, AWF, AWC.

In section 4, we examine the forecast starting on 13 october 2016 00UT, in order to have the continuity necessary to well describe the event, in particular the initiation mechanisms and the mature/strongly precipitating phase.

In section 5, we only show the range T+14 to T+24 as this section aims to focus on the Phases I (initiation) and II (mature phase) of the event, when the atmospheric conditions and sea state appear more favorable to strong air-wave interactions, and so when coupling may more strongly impact the convective system triggering and sustaining. But, in fact the whole forecast starting on 13 october 2016 00UT is used and the Phases III and IV were also examined, but they are more representative of the system moving eastward and intensity decreasing over France.

→ Converse to this, would you expect the impact of wave interactions to perhaps grow with time (some spin up effect) if all regional simulations were initialised from the same operational analysis? Please also comment on the time taken for 1.3 km scale high-resolution details to spin up within the model domain. This spin up effect may help explain the rather similar results shown in Fig. 2.

From the atmospheric point of view, all the experiments start from the AROME analysis at 00UTC which is also at a 1.3 km resolution. The spin-up is so quite short (<1h).

Only the wave conditions at the surface vary between the experiments.

But, AWF and AWC started from the same sea state the 12 october at 00UTC. This state is extracted from WY after 7 days of simulation (between 5 and 12 october) that was enough to spin up the high-resolution wave model.

In conclusion, the impact of wave interactions may grow with time during the forecast and also progressively from one forecast to another as WaveWatchIII restarts each time at 00UTC from the previous forecast at T+24h. But the experimental design used here, with the same atmospheric initiation in AWC and AWF, can not fully clarify this.

To properly consider this issue, it would be necessary to run longer experiments (more than 3 successive forecasts) and also to include the production of new atmospheric analysis using the previous forecast (of AWF or AWC) as background.

This point is now included in the conclusion.

→ Wave results for AWF seem slightly degraded relative to WY in Fig 2., but not commented on. Is there some explanation for the different behaviour?

Actually, waves in AWF and WY are exactly the same.

Concerning the differences between AWC and WY, there is indeed a small degradation of the results with decreases of H_s and T_p with coupling. The studies of Renault et al. 2012 and of Whale et al. 2017 showed also, negative feedbacks on H_s and T_p , associated with reduced wind when coupled.

The caption of Figure 2 has been changed to avoid confusion between simulations.

→ In Section 5, what is the sensitivity to model lead time? Presumably there are periods of overlapping data from different model start times for these periods of interest? Does the influence of wave interaction grow with lead time, or are results dominated by increasing errors? Authors state that “differences between three simulations were well established”, but are you confident differences were spun up?

As previously said, the impact of wave interactions may grow with time during the forecast and also progressively from one forecast to another as WaveWatchIII restarts each time from the previous forecast. Figures C and D show the evolution of the differences of T_p and surface wind between the coupled experiment AWC and the forced one AWF/WY. As already explained, the AROME analysis is used as initial conditions for both AWF and AWC. In fact for the overlapping periods there is no clear evidence of error due to the lead time considered. The differences in terms of wind are maximum and large when convective systems affect the considered area, but do not clearly grow with time. In terms of T_p , the differences between AWC and AWF/WY are maximum but limited to -1.4s the 13 october, then tend to zero at the end of 14 october.

In Section 5, we analyse the 42 hours of forecast starting from the 13 October at 00UTC, in order to examine in a continuous way the mechanisms at the air-sea interface and the effects of waves on the HPE. Also, the mature phase of convective systems was identified from 19UTC, 13 october to 03UTC, 14 october, thus without overlapping most of the time.

The introduction of section 5 has been rewritten to clarify this.

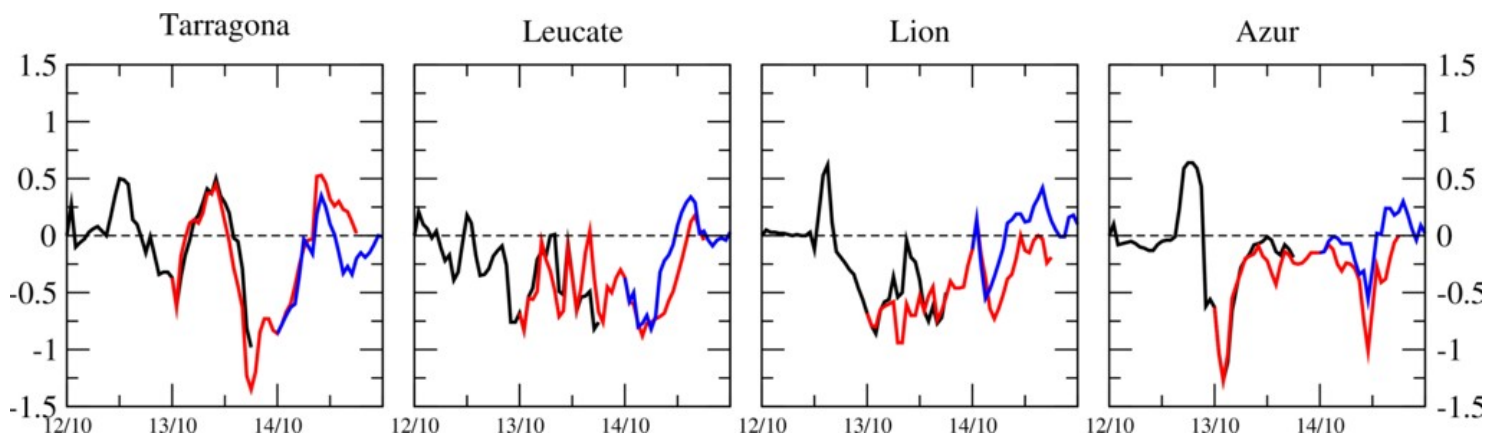


Figure C: T_p (s) differences evolution between AWC and AWF(WY) from 12 to 15 October 2016 00UTC at the Tarragona, Leucate, Lion and Azur buoys: The forecast starting on 12 October 2016 00UTC is in black, the one starting on 13 in red and the one starting on 14 in blue.

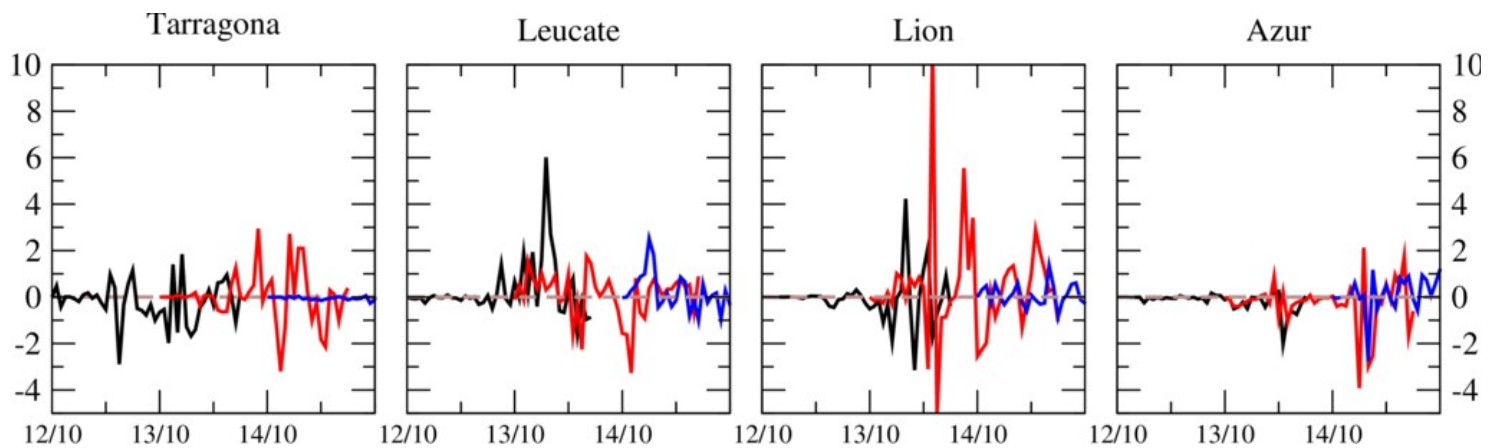


Figure D: Same as Figure C but for the 10m-wind speed (m/s) between AWC and AWF.

→ In general, all simulation results seem to be essentially similar, and it is difficult to assess how much this is a true reflection that the systems are not very sensitive to wave interactions (a null result, which should be more explicitly captured in the Abstract), or a symptom of the experimental design. Authors should be clearer in their discussion on this.

In fact the system is very sensitive to waves especially on the dynamics, this might need to be made clearer in the paper. The slow-down of the 10m-wind along the French Riviera where the wind sea is created is over a very large area and is directly linked to the wind-wave interactions. This phenomenon was found in previous studies (i.e. Renault et al. 2012, Whale et al. 2017, Bouin et al. 2017) and so was expected here as for the displacement of the precipitation which could be also expected (Bouin et al. 2017). However, the effect of the waves on heat fluxes were not clearly assessed in previous studies. We found that indeed the heat fluxes during those mediterranean events are not very sensitive to sea state even if the studied case appeared initially suitable to expect some effect due to waves (i.e. a wide zone of young waves, large wind speed and strong sea surface fluxes below the easterly flow). With this we are now able to conclude that the dynamics of the system is really sensitive to sea state conditions but very likely that the sea surface heat fluxes are not.

Possibly, the impression that the simulation are very similar comes from our analysis of the coupling impact that indeed does not modify the atmospheric forecast so largely when compared to the forecast with wave forcing, as coupling progressively balances the wind sea, the stress and the

near-surface wind. We try to clarify this in the conclusion/discussion and the abstract.

4. Discussion of precipitation differences

The overall conclusion from Section 5.2 appears to be that simulations were “about the same”. It is again difficult to judge the extent to which differences just reflected expected variability in the simulation (e.g. as might be reflected in an ensemble of simulations of the case), and how much any differences could be attributed more physically to changes in low-level flows and heat fluxes previously described. P13, l33 should therefore be expanded to provide a more qualified discussion of how “this displacement was directly linked to. . .”. I am otherwise left with an impression that the precipitation differences are somehow ‘random’ and could equally be produced with some other change in (e.g.) model parameters, initial condition etc. There is some attempt at this in the summary from l5, p14, but this could be more explicitly set out. For example, phrases like “due to differences in terms of heat fluxes. . .” is too vague here to help the reader follow the physical arguments being discussed. It might be instructive to discuss the relative sensitivity of the system, e.g. with reference to any operational ensemble information available at the time of this particular study, to set some context.

The operational AROME ensemble available in October 2016 was designed with AROME at 2.5 km horizontal resolution, with different initial time (03, 09, 15 and 21UTC), with the unperturbed AROME SST analysis and the operational ECUME sea surface fluxes parametrization. Thus comparing our simulations to the ensemble forecasts appears to be very complex.

In fact, we made several sensitivity experiments with AROME changing the atmospheric initial conditions (ARPEGE analysis), the sea surface fluxes parametrizations (the operational one, ECUME, its new version ECUME6 and COARE 3.0) and the initial SST fields (ARPEGE analysis, AROME analysis) partly presented in the communication from Sauvage et al. 2018 (available here: https://ams.confex.com/ams/23BLT21ASI/mediafile/Manuscript/Paper345111/Extended_Abstract_AMS.pdf).

All these simulations result in the formation of two convective systems: one over the Hérault area and one over sea. For this latter, the large modifications of the heat fluxes induced by SST or parametrization changes are of primary importance, as they affect both the intensity and the location of the system.

In the sensitivity experiments presented in the paper, the heat fluxes are in fact not significantly modified. This result was not really expected, but it finally permits to be confident in the impact of waves which appears to be limited to a dynamical effect that displaces the convergence and not related indirectly to large modification of the convective system intensity.

The conclusion has been revised to better explain the results.

5. Dependence on a single case study

It is difficult to assess the significance of this paper to a general readership and to the community, given that it addresses only a single case study. However, it is equally not clear how many such cases would need to be considered before some robust statistics are achieved, and the key physical mechanisms are lost in the number of cases addressed – it would be a quite different paper in fact.

The authors should however be clearer, perhaps in both the methods and discussion sections, on the relevance of the single case to wider improvement of understanding and simulation quality for the region. What can operational centres learn (if anything) from the study for development of forecast model configurations for example? Suggesting that further cases are considered in a similar manner would fundamentally change the submitted manuscript, so is not recommended by this reviewer, but the limitations of the single study (particularly assessed in a deterministic framework) should be

more openly acknowledged and discussed. Further, discussion of how the current paper adds value beyond some earlier work in the region (e.g. Renault et al, 2012 and later references) would be welcome.

This is a good remark from the reviewer and we now discuss more the fact that the results are valid for our studied case in a deterministic framework and that other HPEs (and even other kinds of meteorological situations) are needed to further conclude on the sea state impact on high-resolution weather forecast.

Nevertheless, this study marks a new step in our understanding of the sea state impact on Mediterranean HPE and in the evaluation of the importance of the wind-wave interactions for convection-permitting NWP models, after the studies of Thevenot et al. 2016 and Bouin et al. 2017 that highlighted:

- a slowdown of the low-level wind, due to higher surface roughness increasing the momentum flux (even in a moderate-wind context);
- differences in the low-level dynamics influences the positioning of the convergence directly or indirectly as it modifies the propagation of cold pools over sea, and consequently the location of the heaviest precipitation.

The main results of these two previous studies are thus confirmed in using another HPE, the case of october 2016, that was particularly interesting due to the very strong wind regime at low-level generating a wind sea, favorable to large air-wave exchanges. Also, here we analyse more deeply the impact on the heat and moisture fluxes, and use an interactive atmosphere-wave coupling at a kilometer scale.

This point is now included in the conclusion/discussion section.

Technical corrections

=====

→ P6, l23 – do you mean 1/2 deg. or perhaps 1/12 deg. global WW3 resolution model? Could not work out if the boundary conditions were rather coarse scale (and if so, please comment on any boundary spin up issues into much higher resolution system), or if a typo.

Yes, the WW3 boundaries come from a 1/2° resolution WW3 global model.

In fact the wave boundary conditions are applied as classically for regional WW3 model, *i.e.*:

- boundary data are composed of 8 spectral points (each defined following 24 directions and 31 frequencies) chosen the closest as possible to our borders among the outputs points available from the 1/2° resolution WW3 global model. The coordinates of these points are the following : 0.5°E-37.5°N ; 2.5°E-37.5°N ; 5.5°E-39.5°N ; 11°E-38°N ; 11°E-40°N ; 11°E-40.5°N ; 12.5°E-39.5°N ; 13.5°E-39.5°N
- The 8 spectral points are then linearly interpolated on the regional grid (at 1/72°-resolution) in WW3 pre-process routine, and further used in the forecast run.

→ P6, l27 – please comment if SST is updated daily (as implied) during the simulation, or a fixed SST is used throughout the 42h simulation? One might again expect precipitation fields to be rather sensitive to details (e.g. resolution, updating frequency) of the SST field in this case (e.g. Lebaupin Brossier et al, 2006; 2008) – authors should comment. Useful to also confirm if any surface currents information is used, or if assumed to have a stationary sea surface?

As explained before, we used a fixed SST during each 42h-forecast. No surface current and no sea level information is taken into account.

The SST fields come from the global daily analysis of Mercator Océan International (1/12°-resolution PSY4 system), i.e. the analysis of 12 October 2016 for the forecast starting on 12 October 2016 at 00UTC, of 13 for the one starting on 13, 00UTC, etc. These SST fields present quite fine structures (Fig. E), signatures of the complex circulation in the north-western Mediterranean Sea, and are updated in the PSY4 system considering atmospheric forcing and thanks to data assimilation.

Of course, the SST controls largely the heat and moisture fluxes and thus has a strong influence on the precipitating system, as highlighted by numerous studies in the literature (e.g. Pastor et al., 2001; Lebeaupin et al., 2006; Miglietta et al., 2011; Romero et al., 2015; Stocchi and Davolio, 2016; Rainaud et al. 2017; Meroni et al. 2018a,b ; Strajnar et al. 2019; Senatore et al. 2019). And this is why in order to isolate the wave impact in this study, the SST is the same in the sensitivity experiments and no ocean coupling is applied.

We try to make this point clearer in the section 2.4.

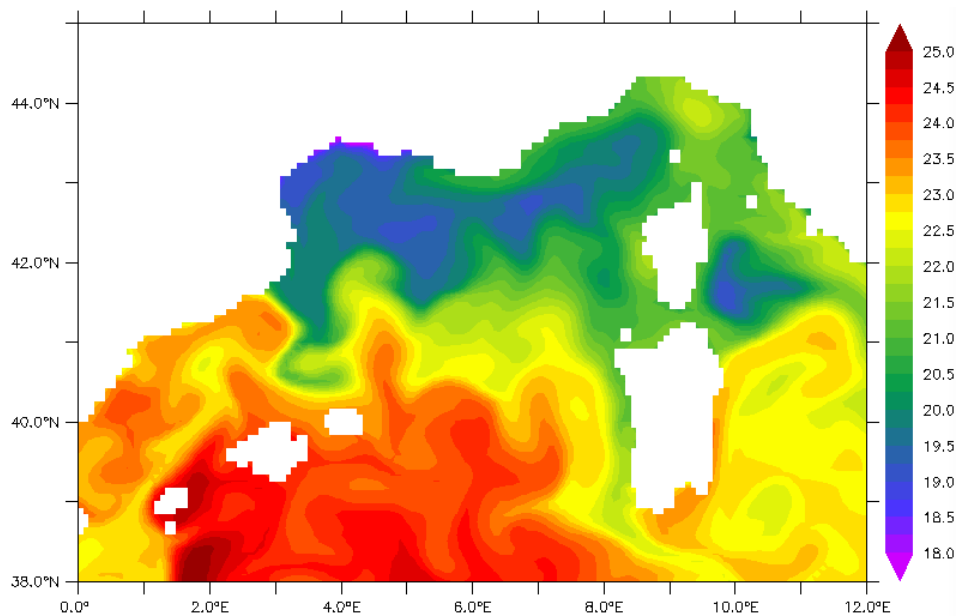


Figure E: SST field (°C) from the PSY4 analysis for 13 October 2016.

→ Fig. 9, 10, 11, 12 – would be clearer to plot impact of interactive coupling differences as (AWC – AWF) in panels b) and d), given panels a) and c) establish differences of AWF to AY. The additional impact of coupling here is the inverse of what is currently shown, so is a bit confusing to follow. For example, in Fig. 12, are the AWC differences just the inverse of AWF to AY (such that AWC is more similar to AY than AWF?), or is the main rain area further displaced again?

Figures 9 to 12 have been changed to show the differences AWC-AWF.

Actually, in Fig. 12 the rain patch in AWC is displaced (4 km) slightly to the west compared to AWF, making it closer to the one simulated in AY (see Figure F below).

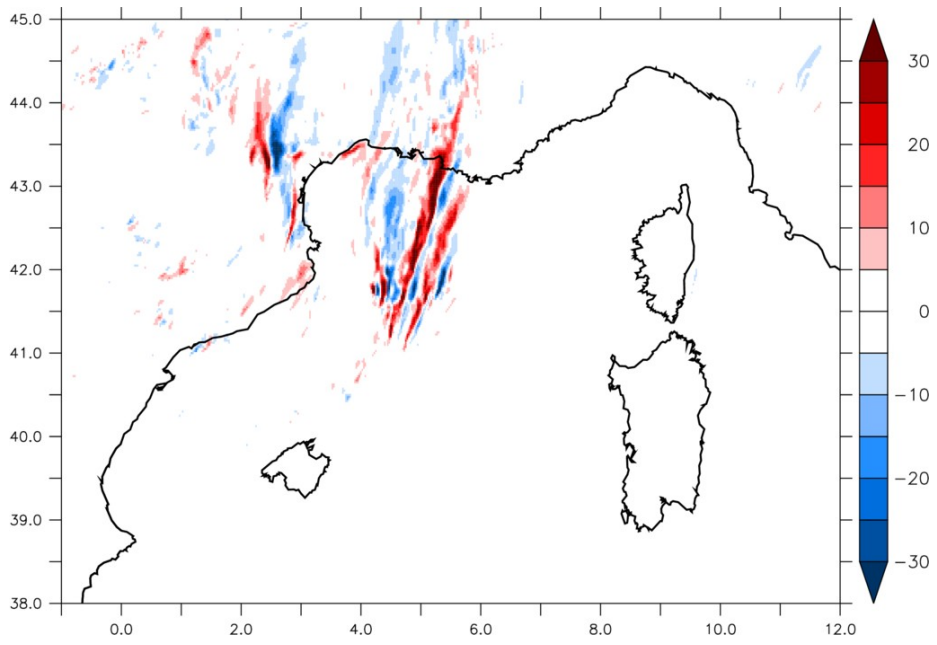


Figure F: 6h-rainfall amount (mm) differences the 14 October 2016 at 00UTC between AWC-AY.

REFEREE#2

This paper describes how to directly add the impact of ocean waves in the parameterisation of the aerodynamical roughness length scale used by an atmospheric model to prescribe the momentum exchange between the atmosphere and the sea surface. A single case study is then used to illustrate the impact on short range prediction of a heavy precipitation event. This type of work is not entirely new as I would encourage the author to refer to Peter Janssen book (Janssen 2004), which clearly supports the concept of two-way active coupling between an operational atmospheric model and a wave model. What is novel and worthy of publication is the WASP parameterisation. For this reason, the actual expression of A and B would be a very good addition to the paper. However, the authors need to explain a bit more their choice of the WASP parameterisation, rather than using the Charnock values that WW3 can produce. A comparison of the WW3 Charnock and the WASP counterpart will be required and any major differences would need to be justified.

Those are good remarks and have also been pointed out by the Referee#1 (see pages 1 and 2). Indeed, we did not use the classical approach that consists in directly taking the WW3 Charnock parameter, as there is a small variability in the Charnock parameter due to the wave field variability at a given wind speed and thus reducing the benefit of coupling with a wave model (see Fig. A). As already mentioned, the WASP approach used here has two advantages: i) it allows to compare more directly the wave parameter coupled fields with observations, and so to check their validity; ii) the Charnock parameter is defined differently depending on the wind speed range considered, enabling to represent in a more physical way its behaviour and possible dependency on the waves. Especially, it reproduces the observed decrease of the drag coefficient by very strong wind, which would not be possible using a wave-age only Charnock parameter as in Drennan et al. (2005). The WASP parameterisation, unlike those based on wave-age Charnock parameters, is then usable for very strong wind speeds. Section 2.3.2 has been enlarged to describe the advantages of using the WASP parameterization and an appendix has been added to the paper with the details of the calculation of the Charnock parameter (as shown above).

Anemometers mounted on buoys are rarely at 10m height. Nothing is mentioned regarding the adjustment of the buoy winds to 10m. The discussion regarding the bias reduction of 10m winds is only relevant if the buoy winds have been adjusted to 10m. Revise the manuscript accordingly. Indeed, the observed wind speed and direction at Lion and Azur buoys and presented in our results are obtained after an adjustment to 10 meters using a standard log profile function.

The peak wave period is not a very stable quantity in situation of multi peak wave spectra. In the Mediterranean Sea, it is not too often the case, but over open ocean conditions, this is more often the norm. How would the WASP parameterisation deal with such situation? Is T_p computed from the full 2D-spectrum? Should one instead only determine T_p from the windsea part of the spectrum?

This is a very good remark, and the following details are now included in the sections 2.3.3 and 2.4 of the paper.

Indeed, the wind-wave coupling concerns the wind sea part of the wave field, and the peak period used to compute the Charnock parameter in WASP is actually the peak period of the wind sea only, as permitted by WW3 which has been modified (08-2017, Version 5.16) specifically to issue this variable as a coupling parameter.

Obviously, this paper is only a one case study. It has focussed on short range forecasts. This needs to be clearly highlighted and discussed.

In Janssen (2004), the impact of the coupling to waves is shown to be even more important at longer lead time. In the final section, it is discussed that ocean waves have an impact on the

momentum flux across the air-sea interface. However, according to Janssen and Bidlot (2018), waves might also impact on the latent and sensible heat fluxes
<https://doi.org/10.1016/j.piutam.2018.03.003>
<https://www.sciencedirect.com/science/article/pii/S2210983818300038>

This is a good remark from both reviewers.

In the conclusion, we now discuss more the fact that the results are valid for our studied case, for short-range forecast in a deterministic framework and that other HPEs (and even other kinds of meteorological situations) are needed to further conclude on the sea state impact on high-resolution weather forecast.

Nevertheless, this study marks a new step in our understanding of the sea state impact on HPE, after Thevenot et al. 2016 and Bouin et al. 2017. Compared to these two previous studies, the case of october 2016 was particularly interesting due to the very strong wind regime at low-level generating a wind sea and very large heat and moisture fluxes below the easterly wind.

In fact, with this case study, we confirm that the dynamics of the system is really sensitive to sea state conditions but that very likely that the sea surface heat fluxes feeding HPEs are not.

Also, here we use an interactive atmosphere-wave coupling.

Minor corrections:

- At a few places: biais -> bias
 - P2, line 26: waves, known as sea spray, occurs -> waves occurs, generating sea spray
 - P3, line 2: add Janssen 2004
 - P4, line 9: the adjustments of Bidlot et al. are only relevant if you use ST3, otherwise with ST4, there is an all new prescription of the whitecap dissipation that does not use Bidlot et al.
 - P5, line 28: the Charnock parameter is -> the surface roughness is
 - P8, line 7: well represents -> represents well
 - P8, line 8: It also can be noticed a delay -> Also, there is a delay
 - P14, line 18: In this purpose -> For this purpose
 - P14, line 21: coupled way -> coupled mode
 - P14, line 30: affected all the event – affected during all the event
- All the corrections listed above have been included in the manuscript.

→ P5, in (7), the first term is the Charnock relation, the second term is the viscous contribution to z_0 . See Beljaars, A. C. M. (1994). The parametrization of surface fluxes in large-scale models under free convection. Q. J. R. Meteorol. Soc., 121, 255-270.

The sentence in the paper has been changed accordingly.

→ P6, line 15: to an untrained person, the relation between T_p and U_a would appear to be not correct. Truly speaking, one can find a relation between $T_p \sim c * U_a/g$, with c non dimensional and from empirical fetch relation find that for a typical non dimensional fetch $c \sim 5$, hence why one can simply write $T_p \sim 0.5 U_a$

The direct relationship between T_p and U_a used by default in WASP (when no wave information is brought) has been more detailed.

additionnal refs:

Drennan et al. 2005, doi.org/10.1175/JPO2704.1

Rainaud et al. 2017, doi.org/10.1002/qj.3098

Characterization of the air-sea exchanges mechanisms during a Mediterranean heavy precipitation event using realistic sea state modelling

César Sauvage ¹, Cindy Lebeau-pin Brossier ¹, Marie-Noëlle Bouin ^{1,2}, and Véronique Ducrocq ¹

¹CNRM, Université de Toulouse, Météo-France, CNRS, Toulouse, France

²CNRS, Ifremer, IRD, UBO / Laboratoire d'Océanographie Physique et Spatiale (LOPS), UMR 6523, IUEM, Plouzané, France

Correspondence: César Sauvage (cesar.sauvage@meteo.fr)

Abstract. This study investigates the mechanisms acting at the air-sea interface during the heavy precipitation event that occurred between the 12-14 October 2016 over the north-western Mediterranean area, and that led to large amounts of rainfall (up to 300 mm in 24h) over the Hérault region (South of France). The study case was characterized by a very strong easterly to southeasterly wind at low level ($>20 \text{ m.s}^{-1}$) generating a very rough sea (significant wave height up to 6 m) along the French Riviera and the Gulf of Lion. In order to investigate the role of the waves on those air-sea exchanges during such extreme events a set of numerical experiments was designed using the Météo-France kilometer-scale AROME-France Numerical Weather Prediction model - including the WASP sea surface turbulent fluxes parametrization - and the wave model WaveWatchIII. Results from those sensitivity experiments in the forced or coupled modes showed that taking the waves generated by the model into account increases the surface roughness. **Thus, the increase in the momentum flux induces a slow-down of the easterly low-level atmospheric flow and a displacement of the convergence line at sea. Despite strong winds and young sea below the easterly flow, the turbulent heat fluxes upstream of the precipitating system are not significantly modified. The forecast of the heaviest precipitation is finally modified when sea state is taken into account, notably in term of location, slightly more largely in the forced mode than in the coupled mode as the coupling balances interactively the wind sea, the stress and wind.**

1 Introduction

The western Mediterranean region is regularly affected by Heavy Precipitation Events (HPE) characterized by a large amount of rainfall over a small area in a very short time which can lead to flash flood events causing severe damages and in some cases, casualties (e.g. Delrieu et al., 2005; Llasat et al., 2013). Usually such events are generated by quasi-stationary Mesoscale Convective Systems (MCSs) developed eastwards of an upper-level trough and enhanced by an unstable low-level jet advecting moist and warm air towards the Mediterranean coasts (Nuissier et al., 2011; Duffourg et al., 2016). Several mechanisms leading to the initiation of the deep convection have been identified (Ducrocq et al., 2008, 2016), in particular the forcing by mountainous coastal regions surrounding the Mediterranean Sea which force the unstable low-level flow to lift and thus trigger

the deep convection. Besides the orographic lifting, deep convection can also be triggered by low-level wind convergence and cold pool due to precipitation evaporation.

The Mediterranean Sea still warm in autumn acts as a reservoir of moisture and heat that feeds the low-level flow by up to 40 to 60% according to the study of Duffourg and Ducrocq (2011) of ten HPEs over southwestern France. Therefore, air-sea exchanges during those events are key processes of these events. These exchanges, namely the sea surface turbulent heat, moisture and momentum fluxes can be modulated by the sea surface conditions such as the temperature (SST), sea state and wind. Indeed, previous studies have shown that fluctuations of SST can induce variations in the atmospheric low-level dynamics and stability and also in precipitation (e.g. Lebeaupin Brossier et al., 2006; Cassola et al., 2016; Stocchi and Davolio, 2017; Meroni et al., 2018; Strajnar et al., 2019). How the sea surface turbulent fluxes are formulated in the models has also a significant impact on the rainfall amounts simulated during HPE (Lebeaupin Brossier et al., 2008).

The momentum transfer from air to ocean strongly depends on the sea state. In case of wind-generated waves, the wave-induced stress represents a large fraction of the total stress that induces an enhancement of the drag airflow and so, modifies the wind profile and the near-surface dynamics (Janssen, 1989, 1991, 1992; Donelan, 1990). Analyses of *in-situ* data highlighted the strong relationship between the sea surface roughness length (z_0) and the wave age (Smith et al., 1992; Donelan et al., 1993; Drennan et al., 2003).

Nowadays, several bulk parametrizations of the sea surface turbulent fluxes includes this relationship between z_0 and the wave age. For example, the common used Coupled Ocean–Atmosphere Response Experiment (COARE) 3.0 sea surface turbulent parametrization (Fairall et al., 2003) enables to take into account the sea state in the momentum flux parametrization either with the formulation of Oost et al. (2002) or the one from Taylor and Yelland (2001) through the relationship between z_0 and the Charnock coefficient. Using the former formulation of Oost et al. (2002) in high-resolution numerical experiments of HPE, Thévenot et al. (2016) and Bouin et al. (2017) showed an impact on the location of precipitation when the sea state forcing is taken into account in the sea surface turbulent fluxes parametrization. Nevertheless, these formulas are known to produce too strong fluxes when strong winds ($>20 \text{ m.s}^{-1}$) are encountered (Pineau-Guillou et al., 2018).

Besides directly controlling the momentum flux, surface roughness also impacts the turbulent heat fluxes and the turbulent structure and thickness of the atmospheric boundary layer (Doyle, 1995, 2002). For example, an impact on the thermodynamics structure and on the moisture transfer affecting the evolution of a convective system has been recently shown by Varlas et al. (2018) using an air-wave coupled system over the Mediterranean region.

In addition, under strong wind conditions, intense breaking of ocean waves occurs, generating sea spray. The sea spray effect has a significant impact on the moisture and heat transfer at the air-sea interface that has been highlighted in several papers (e.g. Andreas, 1992; Andreas et al., 1995; Kepert et al., 1999; Bao et al., 2000, 2011; Bianco et al., 2011).

Based on this, recent studies implemented different formulations in order to better take into account the sea-state and sea spray effect on the sea surface roughness and heat and momentum fluxes during extreme events such as the Hurricane Arthur (Garg et al., 2018) or a Mediterranean tropical-like cyclone also named medicane (Rizza et al., 2018). They showed that including the surface waves effects significantly improved the simulated track, as well as the intensity and the maximum wind speed of the storm.

The sea state evolution can be retrieved from numerical wave model outputs, then used as a surface forcing of atmospheric models. However, coupled atmosphere-wave systems allow to take into account the feedback of the modified wind profile to the wind-wave generation. Previous studies have demonstrated the importance of wind-wave coupling showing significant effects on the representation on the atmospheric low-level dynamics (e.g. Janssen, 2004; Renault et al., 2012; Ricchi et al., 2016; Katsafados et al., 2016; Wahle et al., 2017; Varlas et al., 2018). They have shown impacts on the drag coefficient over rough sea and on the momentum flux resulting in a reduced simulated surface wind speed. Also, all these studies reassessed clearly the need of a better representation of the sea state in the understanding of air-sea exchanges. The present study investigates the impact of waves on a Mediterranean HPE using a kilometric-scale coupled atmosphere-wave system. The coupling involves the wave model WaveWatchIII and the AROME Numerical Weather Prediction model with a new fluxes parametrization (WASP) that takes explicit wave parameters to compute the wave age, then z_0 and the momentum and heat fluxes. The Heavy Precipitation Event studied here occurred during 12 to 14 October 2016 with two main convective areas, one over sea and one hitting the south of France (Hérault). Strong wind conditions and a very roughness sea were observed during this event, making it a well suited case to study the influence of waves on the atmospheric low levels and heavy precipitation systems.

A detailed description of the experimental protocol and of the fluxes parametrization is given in section 2. The validation of the reference experiments against available atmospheric and wave observations is done in section 3. Then, in section 4, a description of the event divided into separate phases is given. Section 5 presents the results of the sensitivity analysis done by comparing our different numerical simulations. Conclusions and discussions are finally given in section 6.

2 Numerical Set-Up

2.1 The atmospheric model

The non-hydrostatic AROME Numerical Weather Prediction (NWP) model (Seity et al., 2011) is used in this study. The AROME configuration used here is the one operationally used at Météo-France with a 1.3 km horizontal resolution and a domain centered over France which covers notably our area of interest, the North-Western Mediterranean Sea (Fig. 1a). The vertical grid has 90 hybrid η -levels with a first level thickness of almost 5m. The time step is 50 s. In AROME, the advection scheme is semi-Lagrangian and the temporal scheme is semi-implicit. The 1.5 order TKE turbulent scheme from Cuxart et al. (2000) is used. Thanks to its high resolution, the deep convection is explicitly solved in AROME while the shallow convection is solved with the Eddy Diffusion Kain Fritsch (EDKF, Kain and Fritsch, 1990) parametrization. The ICE3 one-moment microphysical scheme (Pinty and Jabouille, 1998) is used to compute the evolution of five hydrometeor species (rain, snow, graupel, cloud ice and cloud liquid water). The surface exchanges are computed by the SURFace EXternalisé (SURFEX) surface model (Masson et al., 2013) that considers four different surface types: land, towns, sea and inland waters (lakes and rivers). Exchanges over land are computed through the ISBA (Interaction between Soil, Biosphere and Atmosphere) parametrization (Noilhan and Planton, 1989). The formulation from Charnock (1955) is used for inland waters whereas the Town Energy Balance (TEB) scheme is activated over urban surfaces (Masson, 2000). The treatment of the sea surface exchanges in AROME-SURFEX is detailed below (sections 2.3.1 and 2.3.2). Output fluxes are weight-averaged inside each grid box according to the fraction of

each respective tile, before being provided to the atmospheric model at every time step.

2.2 The wave model

The wave model is WaveWatchIII (hereafter WW3, version 5.16, The WAVEWATCH III Development Group 2016; Tolman
5 1992). The model domain covers the North-Western Mediterranean Sea at $1/72^\circ$ horizontal resolution (Fig. 1b). The bathymetry is coming from the NEMO-NWMED72 ocean model configuration described in Sauvage et al. (2018b), itself originally built from the interpolation of a $1/120^\circ$ horizontal resolution topography with a dedicated treatment for islands, coastlines and river mouths delineation. **The time step is 60s.**

The set of parametrizations from Ardhuin et al. (2010) is used like for most of the wave forecasting centers (Ardhuin et al.,
10 2019). Thus, the swell dissipation is computed with the Ardhuin et al. (2009) scheme and the wind input parametrization is adapted from Janssen (1991). Nonlinear wave-wave interactions are computed using the discrete interaction approximation (DIA, Hasselmann et al., 1985). The parametrization of the reflection by shorelines is described in Ardhuin and Roland (2012). Moreover, the computation of the depth-induced breaking is based on Battjes and Janssen (1978)'s algorithm and the bottom friction formulation follows Ardhuin et al. (2003).

15 2.3 Atmosphere-wave coupling

2.3.1 Bulk iterative equations

The sea surface turbulent fluxes are calculated through the bulk formulae described as follows:

$$\tau = \rho C_D \Delta U^2, \quad (1)$$

$$LE = \rho L_v C_E \Delta U \Delta q, \quad (2)$$

$$20 \quad H = \rho c_{pa} C_H \Delta U \Delta \theta, \quad (3)$$

with ρ the air density, c_{pa} the air heat capacity and L_v the vaporization heat constant. ΔU , Δq and $\Delta \theta$ represent the air-sea gradients of velocity, specific humidity and potential temperature near the surface, respectively. C_D , C_E and C_H represent the transfer coefficients. Each transfer coefficient can be defined such as:

$$C_X = c_x^{1/2} c_d^{1/2}, \quad (4)$$

25 where x being d for wind speed, θ for potential temperature and q for water vapor humidity. Therefore:

$$c_x^{1/2}(\zeta) = \frac{c_{xn}^{1/2}}{1 - \frac{c_{xn}^{1/2}}{\kappa} \psi_x(\zeta)} \quad (5)$$

and:

$$c_{xn}^{1/2} = \frac{\kappa}{\ln(z/z_{0x})} \quad (6)$$

with the subscript n referring to neutral ($\zeta = 0$) stability, z to the reference height and ψ_x is an empirical function describing the stability dependence of the mean profile, κ is von Karman's constant.

The sea surface roughness length z_0 is defined by two terms, the Charnock's relation (Charnock, 1955) and a viscous contribution (Beljaars, 1994):

$$5 \quad z_0 = \frac{\alpha_{ch} \cdot u_*^2}{g} + \frac{0.11 \cdot \nu}{u_*}, \quad (7)$$

with ν the kinematic viscosity of dry air, the friction velocity u_* and the Charnock coefficient α_{ch} .

2.3.2 Wave impact on the Charnock coefficient

One common method to couple developing waves and stress is to make the Charnock coefficient α_{ch} explicitly dependent on the sea state by computing it either in the wave model from the wave spectra (e.g. Janssen et al., 2001) or in the atmospheric model as a function of the wave age (Mahrt et al., 2001; Oost et al., 2002; Moon et al., 2004). Studies based on observations (e.g. Oost et al., 2002) express it as a power function:

$$\alpha_{ch} = A \cdot \chi^{-B}, \quad (8)$$

with coefficients A and B either constant or depending on the surface wind speed, and the wave age χ defined as $\chi = \frac{c_p}{U_a}$ with c_p the peak phase speed and U_a the near surface wind. Sea state can mainly be defined using the wave age. Wind sea corresponds to waves, generated by local wind, which are still growing (wave age < 0.8) or in equilibrium with the wind (wave age between 0.8 and 1.2), and are aligned with the local wind. These waves (and only these ones) benefit from momentum transfer from the atmosphere to grow and, as such, are coupled with the wind. Conversely, swell (that does not depend on the momentum from the atmosphere) corresponds to waves generated by a remote or past wind field, and are characterized by wave-age above 1.2 or are not aligned with the local wind.

20 Assuming that the water depth is infinite (in practice, as soon as the depth is much larger than the dominant waves), the phase speed of the waves can be expressed as:

$$c_p = \frac{gT_p}{2\pi}, \quad (9)$$

with T_p the peak period of the waves and g the acceleration of gravity.

Keeping the coefficients A and B constant with wind speed results in drag coefficient and wind stress too strong in strong wind conditions (wind speed above 20 m.s⁻¹) as shown by Pineau-Guillou et al. (2018). In order to tackle this, and to reproduce the saturation or the decrease of the drag coefficient observed in strong to cyclonic winds (e.g. Powell et al., 2003), we take advantage of a new parameterization called WASP (Wage-Age Stress dependant Parametrization). This approach considers that the wind-speed range where the wind stress transferred to the sea surface mainly sustains the wave development (through interaction with non breaking waves) is 5 to 20 m.s⁻¹. Above 20 m.s⁻¹, the contribution of breaking waves to the wave stress is dominant and the wave age is not an appropriate parameter to represent the sea state effect on the surface roughness. Below

5 5 m.s^{-1} , by very weak wind, the surface roughness is mainly controlled by the viscous term (second term in the right-hand side, Eq. 7). In order to reproduce these different mechanisms and the decrease of the drag coefficient by very strong wind, the Charnock parameter of the WASP parameterization is piecewise continuously defined following Eq. 8, coefficients A and B being polynomial functions of the surface wind speed (see Appendix A). In weak to strong wind regimes where wind stress observations are numerous and consistent with each other (*i.e.* until 23 m.s^{-1}), it has been fitted to datasets used to build the COARE 3.5 parameterization (Edson et al., 2013). The temperature and humidity roughness lengths z_{0T} and z_{0q} (see Eq. 6) that define the corresponding neutral transfer coefficients have been adjusted for the resulting sensible and latent heat fluxes to match the COARE 3.0 (Fairall et al., 2003) parametrization for surface wind speeds up to 45 m.s^{-1} . The stability functions ψ_x (Eq. 5) are a blend of the Kansas-type functions (Businger et al., 1971) with a profile matching the asymptotic convective limit (Fairall et al., 1996).

So, WASP enables to represent in a more physical way the Charnock parameter's behaviour and its dependency on waves. Also, it reproduces the observed decrease of the drag coefficient by very strong wind, which would not be possible using a wave-age only Charnock parameter as in Drennan et al. (2005). With this, WASP is more relevant for atmosphere-wave coupling and for strong to cyclonic wind speed.

15 2.3.3 Coupling

The coupling is performed using the SURFEX-OASIS coupling interface (Voltaire et al., 2017) that manages the exchanges between the AROME and WW3 models. AROME-SURFEX provides the two components of the near surface wind speed to WW3 whereas WW3 provides T_p , the peak period of the wind sea, to AROME-SURFEX. The OASIS coupler (Craig et al., 2017) allows to choose the coupling frequencies and the interpolation methods for the exchanged fields.

20 Also, as the AROME domain is larger than the WW3 domain, in particular covering also a part of the Atlantic Ocean, there is no air-wave coupling for the marine zones not covered by WW3 (*i.e.* for the grey zones in Fig. 1a) and, there, χ is directly estimated in WASP as a function of wind with $T_p = 0.5 \times U_a$ and thus $c_p = \frac{gU_a}{4\pi}$. This can be found using the relation $T_p = \frac{c_p}{g} \times U_a$ where for a typical non dimensional fetch $c_p \sim 5$ and the gravity constant $g \sim 10$.

2.4 Set of simulations

25 In this study, three kinds of simulations were examined: wave-only, atmosphere-only and wave-atmosphere coupled simulations. As the objective of this study is to better assess the role of the waves on the dynamics (*i.e.* the impact on the momentum flux and surface wind) but also the impact on the sea surface turbulent heat fluxes, a common and fixed Sea Surface Temperature (SST) is used in all the experiments and no ocean coupling is introduced in order to not mask the waves effects on these fluxes.

30 First a wave-only simulation (named WY) was run. For this, WW3 runs from the 5 to the 15 October 2016 with initial condition (H_s, T_p) set to 0 and using a near-surface wind forcing coming from AROME forecasts at a hourly frequency (+1h to +24h each day, see Sauvage et al. (2018a)). The period from 5 to 12 October served here as a spin-up period and will not be

considered in the following. Boundary conditions for the wave model consists in 8 points spectra distributed along the domain and provided by a WW3 global simulation running at $1/2^\circ$ resolution run at IFREMER (Rascle and Ardhuin, 2013). Those points (each defined following 24 directions and 31 frequencies) are chosen as close to our domain border as possible among the outputs points available from the WW3 global simulation. They are then linearly interpolated on our grid ($1/72^\circ$) in WW3 pre-process routine.

Atmosphere-only simulations were done with AROME. Each AROME simulation was composed of forecast runs that start every day (12, 13 and 14 October 2016) at 00UTC from AROME operational analyses and that last 42h. Hourly boundary conditions came from the ARPEGE (Action de Recherche Petite Echelle Grande Echelle, Courtier et al. (1991)) operational forecasts, except the SST that came from the global daily analysis of Mercator Océan International ($1/12^\circ$ -resolution PSY4 system, Lellouche et al., 2013). The first atmosphere-only (AY) simulation was done without any wave information, meaning that χ was set as a function of the near surface wind with $T_p = 0.5 \times U_a$. The second atmosphere-only run (AWF) was forced by the hourly wind-sea T_p from the WY simulation.

Finally, a two-way coupled AROME-WW3 simulation (AWC) was done following the description given in section 2.3.3. The SST field, the atmospheric initial and boundary conditions of AWC were the same as in the atmosphere-only simulations. Also, the wave boundary conditions in AWC were the same as for WY. Wave initial conditions come from restart files, first from WY for the forecast starting on 12 October 00UTC, then for the following days, from the previous AWC forecast run (after 24h). The coupling frequency was set to 1h in both ways. Each exchanged field was interpolated with a bilinear method.

3 Validation of the experiments

3.1 Available observations

In order to validate the simulations, we collected several observations of the surface and near surface in the north-western Mediterranean area (see Fig. 1b that displays the observations over the WW3 domain).

Data from 14 moored buoys (listed in Tab. 1 and plotted in Fig. 1b) available either from Copernicus Marine Environment Monitoring Service (CMEMS, <http://marine.copernicus.eu/>) database or from the HyMeX program database (<http://mistrals.sedoo.fr/HyMeX/>) were first used for validation. These platforms measure a wide variety of near-surface variables that may include sea temperature, salinity, wave parameters like the significant wave height (H_s) and peak period (T_p), but also some atmospheric parameters such as the 2m-air temperature, relative humidity, the 10m-wind speed, direction and gusts. Added to those buoys, 6 coastal surface weather stations from the Météo-France network were used mainly around the Gulf of Lion and in Corsica in order to complete the coverage over the area of interest concerning atmospheric *in-situ* data.

Altimetric data from two satellites crossing the area during the event were used for the significant wave height validation. The first satellite is Jason-2 (OSTM/Jason-2 Products Handbook, 2008) from the joint CNES/NASA oceanography mission Jason. Altimetric measurements used are the Geophysical Data Record (GDR) from the MLE4 (Maximum Likelihood Estimator) altimeters retracking algorithm corrected following a buoy comparison method: $H_{s_cor} = 1.0149 \times H_s + 0.0277$. The second dataset was obtained from GDR data of the SARAL/AltiKa satellite (SARAL/AltiKa Products handbook, 2013) that also uses

the MLE4 altimeters retracking algorithm but simply removing erroneous H_s using a threshold relationship. Both satellites combined gather 292 measures of H_s during the period between 12 and 14 October 2016.

To validate the rainfall accumulation the ANTILOPE product from Météo-France were used (Laurantin, 2008). This product merges rain gauges and radar data. This analysis was complemented by the use of the Météo-France radar composite images
5 over western Europe.

3.2 Validation of AWF and WY

For the validation of our wave and atmospheric reference simulations, WY and AWF respectively, the time-series from 12 to 14 October were built using the first 24h of simulation starting each day (Fig. 2). Observations and simulations were compared using the nearest grid point in space and time from the model (WW3 or AROME) to the observation ones. The bias, the root
10 mean square error (RMSE) and the correlation were computed and summarized in Table 2.

During the entire event, the sea state appeared to be well represented by WY with correlation of 0.90 for H_s and T_p . Looking at Figure 2, H_s and T_p seemed to be underestimated during the event. This was confirmed by negatives bias of -23 cm for H_s and -0.79 s for T_p , as by the comparison of the simulated H_s against satellite data with an average bias of about -0.17 cm (Table 2). Yet, a good correlation of 0.78 was obtained with satellite data.

15 In AWF, the wind speed and direction were quite well represented with a correlation of 0.64 and 0.86, respectively (Table 2). They were very slightly overestimated during the event with an averaged bias of 0.04 m.s⁻¹ and 2°. Looking the wind speed correlation over different regions, *i.e.* Gulf of Lion and Balearic Sea, some differences can be highlighted. In the Gulf of Lion and along the French Riviera a correlation coefficient of 0.82 was found. Looking at the buoys located in the Balearic Sea, *i.e.* where the wind was weaker, the simulation represents well the wind speed value but a low correlation (0.45) is found.

20 By looking more in detail at the French western coastal buoys, such as Leucate (Fig. 2) located on the most western part of the Gulf of Lion, a large underestimation of the wind speed was found. The observed wind speed reached several times values between 18 and 20 m.s⁻¹ whereas the simulation reached only 15 m.s⁻¹. Added to this, at Sète, the wind intensity was in good agreement but decreased faster than observed (not shown). Also, there is a delay at the end of the event between the simulation and observations, looking at the Lion buoy (Fig. 2) when a transition to a northerly wind occurred.

25 The validation against *in-situ* data for the 2m-air temperature (T2M) and relative humidity (RH)(Tab. 2) showed that AWF represented quite well these two atmospheric parameters with correlation coefficients of 0.68 and 0.78, respectively, despite small overestimations (averaged biases 0.26°C and 2.23%, respectively). These scores, together with the validation against low-level wind and wave parameters, permitted to be confident in the use of AWF to investigate the evolution of the turbulent fluxes at the air-sea interface during the HPE.

30 4 Event description

The studied HPE occurred the 13 and 14 October 2016 over the north-western Mediterranean Sea. This event could be defined as a typical “Cyclonic Southerly” (CS) case, following the four synoptic type classification of Nuissier et al. (2011). Indeed, the

synoptic meteorological situation (Fig. 3) was characterized by a trough in altitude extending from the British Islands to Spain and associated with a lowering of the tropopause (Fig. 3a) inducing a south-westerly flow over south-eastern France. A cyclonic circulation took place at low levels (Fig. 3b) with a high moisture content over the Gulf of Lion and a strong south-easterly flow that originated from south-eastern Tunisia. During the night and the following day, the trough moved eastwards from the Bay of Biscay to the Gulf of Lion along with cold and warm fronts (Fig. 3c) and the low level flow shifted also eastwards.

It was characterized by four periods that can be distinguished using observations over land and the reference simulation (AWF) for the marine low-level conditions: (I) initiation stage, (II) mature systems, (III) north-eastward propagation and (IV) Tramontane wind onset. In the following, a detailed description of the chronology of the event and the mechanisms involved is done. In that purpose, the 42h forecast starting on the 13 October 2016 00UTC of AWF was used along with observations.

4.1 Chronology of the convective systems

The Phase I, from 03UTC to 18UTC on 13 October 2016 (+3h to +18h in the simulation), was marked by the triggering of deep convection and the stationarity of the two main systems. The first deep convective system was triggered at the Cévennes foothills, south of the Massif Central, (Figs. 1, 4a and 5a), where the unstable rapid south-easterly marine flow encountered orography (Fig. 5c). The second one was a MCS associated with large precipitation over sea (Figs. 4a and 5a). It formed at the convergence between the warm south-easterly flow, associated with high CAPE values, with the colder and drier easterly flow from the Alps and Ligurian Sea (Figs. 5c,d). These two convective systems were well represented in the reference simulation (Figs. 4a and 5a) in terms of location and rainfall amounts compared to observations. The simulated radar reflectivities corresponded also quite well to observations (not shown) except in the northeastern Spain where too active convective systems were simulated.

During Phase II, from 19UTC on 13 October to 03UTC on 14 October (+19h to +27h in the simulation), the precipitating system over the Hérault region stayed stationary. Its intensity increased in the observation (Fig. 4b) whereas precipitation totals for the second system over sea decreased. In AWF the simulated precipitating system over sea started to shift towards east while precipitation over the Hérault region decreased (Fig. 6a). The simulated cold front progresses eastwards earlier than in the observations and thus, the southern flow started also to shift (Fig. 6d) as for the convergence line over sea (Fig. 6c).

The Phase III, from 04UTC to 10UTC on 14 October (+28h to +34h in the simulation), was marked by the north-eastward propagation of the system. As the western front was moving eastwards, the system over the Hérault region shifted toward the French Riviera (Fig. 7c) leading locally to a decrease in precipitation total (< 60 mm over the Hérault region, Fig. 4c). In the simulation, the system over sea also moved eastwards, extended from West of Corsica to the French Riviera along with a decrease in the rainfall amounts (Fig. 7a). It appeared that the simulated eastward propagation was earlier than observed. Consistently, the southerly flow was also shifted and was located between Corsica-Sardinia and the continental Italy (Fig. 7d) with main convergence area over the Ligurian Sea. At the same time the intensity of the inland system (over the Hérault region) was overestimated compared to observations (Figs. 4c and 7a).

The last Phase (IV), from 11UTC on 14 October (+35h to the end of simulation, not shown), was characterized by the end of precipitation over France (Fig. 4d) and the beginning of a new wind regime in the Gulf of Lion, with a dry and cold

north-westerly flow corresponding to the regional Tramontane wind regime. The warm southern flow was thus limited to the South-East of the simulation domain and fed the precipitating system located from North of Sardinia to continental Italy region (Fig. 4d). For this period, the simulation was in good agreement with observations in term of rainfall location and amounts.

4.2 Evolution of the sea state

- 5 Three different areas can be distinguished in our domain, mainly represented by the three moored buoys (Fig. 1, Tab. 1).
- The Tarragona buoy, where the wind was weak, was situated in a long fetch area. There was swell all along the event, first aligned with the southeasterly wind in Phase I and then crossed, as wind and waves were opposite.
 - The Lion buoy was located where the easterly wind was stronger during Phase I generating a young wind-sea with strong H_s . It evolved to a well-developed wind-sea during Phase II and then to a swell as the fetch became longer in this area.
 - 10 – The Azur buoy was located in the strong easterly wind all along the event. Characterized by a short fetch, a wind-sea was continuously produced in this area.

During Phase I, a strong easterly wind (between 15 and 20 m.s^{-1} , Figs. 5b and 2) affected the Ligurian Sea, the French Riviera till the Gulf of Lion. This created a "wind sea", with young waves (see Azur buoy on Figs. 8 and 5e) aligned with the wind and associated with moderate H_s (< 3 m, Fig. 5f). In fact, all along the event the waves in this area were directly generated
15 by the local wind (Fig. 8) with low values of wave age (< 1) and similar direction between wind and waves. In the Gulf of Lion a rough to very rough sea was observed ($H_s \sim 4\text{-}5$ m) associated with T_p about 8 s (Fig. 2). Still, weak wave age (Figs. 5e and 8) were found here due to strong winds. Thus, in this area the waves were mainly generated by the wind above. In the Balearic Sea high wave age were simulated (> 1.2 , Fig. 8) under a weak south-westerly flow (Fig. 2) inducing weaker H_s , corresponding to moderate sea. The sea state in this area corresponded to a swell coming from the south.

20 During Phase II, T_p was maximum (~ 10 s observed) in the Gulf of Lion as for H_s , which reached about 6 m corresponding to a very rough sea which is rather exceptional in the Mediterranean Sea. This well-developed wind-sea (wave age between 0.8 and 1.2) was due to the continuously easterly wind blowing since the first phase (Fig. 6b and 2). The intensity of the easterly flow decreased in the Gulf of Lion but increased in the Ligurian Sea ($\pm 2\text{-}3$ m.s^{-1} , Figs. 6b and 2). In the Balearic Sea, the wave age were still high but with wave direction changing progressively from easterly to north-easterly. This corresponded to
25 the swell coming from the Ligurian Sea as a weak south to north-westerly wind (< 10 m.s^{-1}) was blowing locally (Figs. 6b,e, 8 and 2).

During Phase III, H_s started to decrease over the domain (Figs. 7f and 2) and the observed T_p was maximum in the Balearic Sea and in the western part of the Gulf of Lion, associated with swell (Figs. 7e, 2 and 8). As the front was moving eastwards, a significant decrease in the easterly wind was observed (up to -7 m.s^{-1} , Figs. 7b and 2), whereas the wind speed was the
30 strongest in the Gulf of Genoa. Indeed, the wind in the Gulf of Lion started to change direction with a transition to a northerly wind (see Leucate, Sète and Lion in Figure 2). As in the Balearic Sea (Fig. 7e and 8) the wind was changing direction from north-westerly to westerly.

Finally, during Phase IV, H_s kept decreasing over the domain (<3 m, Fig. 2). T_p significantly decreased in the Gulf of Lion whereas the highest values were still located in the Balearic Sea (Fig. 2). In both locations, the swell generated along the French Riviera was present (Fig. 8) while the easterly wind significantly decreased (now <14 m.s $^{-1}$, Fig. 2). A north-westerly wind (Tramontane) onset in the Gulf of Lion was observed (Fig. 2), while a westerly wind was blowing over the Balearic Sea.

5 4.3 Air-sea interface

The latent heat flux (LE) was quite low over the domain, as displayed by the Figure 5g. During Phase I, the cold and dry air from the Alps became rapidly warmer and more humid as it flowed westwards over sea. The evaporation started in this area and marked also the location of the largest values of LE (over 300 W.m $^{-2}$, Fig. 5g). Added to this, this region was characterized by the strongest humidity transport, due to the easterly flow, towards the Gulf of Lion as the air humidity increased (over 94%).
10 Under the strong easterly wind, along the French Riviera, the difference between SST and T2M was up to 4°C (5°C locally) and thus with high values of sensible heat flux (H) (over 150 W.m $^{-2}$, Fig. 5g). The warm ($>23^\circ\text{C}$) and humid (over 85 %) southern flow did not produce large heat fluxes (Fig. 5g). It can be noticed that in the Balearic Sea there was warm and dry air masses but the weak southwesterly wind blowing in this area limited evaporation and heat fluxes. The momentum flux was the largest under the strong easterly wind in the Gulf of Lion up to 1.5 N.m $^{-2}$ and locally up to 1.2 N.m $^{-2}$ under the southeasterly
15 flow (Fig. 5h). It remained lower than 0.3 N.m $^{-2}$ in the rest of the domain.

As the system moved eastwards during Phase II, the rapid low-level flow moved from the Gulf of Lion to the Ligurian Sea. The evaporation kept increasing in this area and the dry air in the Gulf of Genoa became nearly saturated in the Gulf of Lion. The largest values of momentum flux were at this time located along the French Riviera (Fig. 6h). LE decreased in the Gulf of Lion by more than 50 W.m $^{-2}$ and increased along the French Riviera and the Gulf of Genoa to reach more than 360
20 W.m $^{-2}$ (Fig. 6g). As the cold front was shifting, the low-level air mass in the Balearic becomes drier and it pushed the humid southerly flow to the east. Maximum values of H are also shifted in the Gulf of Genoa to reach 200 W.m $^{-2}$ (Fig. 6g) whereas H significantly decreased in the Gulf of Lion.

During Phase III, drier air (RH $<70\%$) was now located from the Balearic Sea to the coast of Sardinia. In the Gulf of Lion, low-level air kept getting drier whereas moist air was now mainly located along the French Riviera and in the Gulf of Genoa
25 where precipitation occurred. Under precipitation, H increased to 250 W.m $^{-2}$ (Fig. 7g). LE significantly decreased by 100 W.m $^{-2}$ along the French Riviera but was still maximum in the Gulf of Genoa (Fig. 7g). A large decrease was also noticed in the momentum flux (by 1 N.m $^{-2}$) along the French Riviera and maximum values were found in the Gulf of Genoa (Fig. 7h).

During the last Phase (IV), with the large decrease in the wind intensity and the precipitation now located over Italy, RH decreased along the French Riviera and the Gulf of Genoa associated with a large decrease in the heat fluxes (by 150 W.m $^{-2}$).
30 The momentum flux was now lower than 0.3 N.m $^{-2}$ in the Gulf of Genoa.

A rapid analysis of the relationship between the heat fluxes (H and LE) and atmospheric parameters (U_a , temperature gradient, humidity gradient) using scatterplots was done (not shown). It highlighted that the sensible heat flux was more correlated to the temperature gradient at the air-sea interface (0.56), related to cold air present in the easterly flow or below precipitation. Conversely, the latent heat flux was more correlated to the wind (0.49) than to the gradient of humidity (0.31).

In summary, the maximum turbulent fluxes were associated with the easterly low-level jet due to strong winds and large air-sea temperature (moisture) gradients for heat fluxes. In the southerly flow, heatfluxes appeared more limited despite moderate wind. This highlighted the role of the Ligurian easterly flow in extracting heat and moisture from sea and in providing them to the MCSs.

5 Finally, looking at the different phases of the event, some areas emerged as potential regions where the waves should have an impact on the low-level flow. Indeed, during Phases I and II, an effect on the momentum flux was expected on areas of strong easterly wind and of wind-sea, especially over the French Riviera and the Gulf of Lion in Phase I. Those regions were also the places with the highest heat fluxes during the event and thus, were more likely to be affected by the sea state. So, the sensitivity to the impact of the representation of sea state will be particularly investigated these areas in the following.

10 5 Sensitivity analysis

In this section, the goal is to better understand the impact of the waves on the sea surface turbulent fluxes and to evaluate the impact on the HPE forecast. We focused on Phases I and II, on 13 October at 14UTC and on 14 October 2016 at 00UTC (corresponding to +14h and +24h of forecast, respectively, starting on 13 October 00UTC). **In order to examine in a continuous way during these two Phases the mechanisms at the air-sea interface and the effects of waves on the HPE, the sensitivity analysis is done considering the 42 hours of forecast starting on 13 October, 00UTC.**

5.1 Low-level flow

5.1.1 Impact of the waves: AWF versus AY

In the following, AWF, which takes into account the sea state, is compared to AY the atmosphere-only simulation (see section 2.4). Figures 9a,c present the difference of the sea surface roughness length (z_0) between AWF and AY. During the Phase I, compared to AY, an increase of z_0 in AWF was found over the wind sea under the strong easterly wind in the Gulf of Lion and along the French Riviera (from $2 \cdot 10^{-3}$ to $4 \cdot 10^{-3}$ m). In the rest of the domain much lesser z_0 differences were noticed (less than $2 \cdot 10^{-4}$ m). These changes induced an increase of the drag coefficient C_d up to $0.8 \cdot 10^{-3}$ and led to an increase of more than 0.1 N.m^2 of the momentum flux. Finally, it resulted in a decrease of the 10m wind speed intensity of the strong easterly flow by more than 1 m.s^{-1} over a large area between the Gulf of Lion and the French Riviera (Fig. 10a). During the Phase II, along the French Riviera and the Gulf of Genoa characterized by the strong easterly wind and a young wind sea (Figs. 6b,e), z_0 increased by more than $2 \cdot 10^{-3}$ m and up to $1 \cdot 10^{-2}$ m in AWF compared to AY (Fig. 9c). Knowing that in AY z_0 barely goes over $3 \cdot 10^{-3}$ m these differences correspond to an increase of more than 100% of the values in AY. Under the convective system some difference dipoles were found. In the Gulf of Lion a slight increase of z_0 was seen. Whereas the differences in z_0 in Liguria were seen from the beginning of the simulation, differences under the MCS and in the Gulf of Lion appeared to be more likely resulting from differences in the movement of the convective system over sea induced by the decrease of the wind intensity during Phase I. By the same mechanisms as in Phase I, the increase of z_0 upstream of the MCS (*i.e.* along the

French Riviera) directly impacted the C_d which increases in AWF by $0.2 \cdot 10^{-3}$ to locally more than $1 \cdot 10^{-3}$. This led to an increase of the wind stress in this area between 0.1 and 0.3 N.m^2 and resulted in a slow down of the 10-m wind speed along the French Riviera between 1 to 2 m.s^{-1} (Fig. 10c). Larger differences were found under the convective system, but appeared inhomogeneous in space and time. Thus, the results confirmed the primary effect of the representation of sea state as notably highlighted by Thévenot et al. (2016) and Bouin et al. (2017), *i.e.* an increased surface roughness and wind stress when sea state is taken into account that slow down the upstream low-level flow. In the two sub-areas delineated in Figure 10c, it was found that on average the slow down of the 10-m wind speed was obtained in both areas during the four Phases. More especially in the Gulf of Lion during the Phase I, an averaged slow down of 0.9 m.s^{-1} was noticed. This represented a decrease of about 6% of the average wind intensity in AWF. The same result was found during Phase II along the French Riviera with an averaged decrease of 0.9 m.s^{-1} (-7%). Scores did not appear to be significantly changed between AWF and AY (Table 2). However, a lower bias in the wind intensity was found (0.04 m.s^{-1} in AWF against 0.22 m.s^{-1} in AY) and was actually mostly due to a large improvement at the Azur buoy where the bias was reduced from 0.42 m.s^{-1} in AY to 0.08 m.s^{-1} in AWF.

Figures 11a,c present the heat fluxes (latent and sensible fluxes, resp.) differences between AWF and AY. Along the French Riviera, where the latent heat flux was the strongest, a decrease was obtained in AWF during Phases I and II. However, this corresponded to a small decrease (5 W.m^{-2} on average) equivalent to 2% of the total averaged latent flux. Relatively larger differences, positive and negative, were found under the convective system. But on average these differences were small, representing +/- 2% (3 W.m^{-2}). They were very likely related to differences in term of intensity of the convection within the MCS and its location and not to a direct effect of the waves. Differences in the sensible heat flux (Fig. 11c) were mainly located under the precipitation with very weak differences along the French Riviera.

5.1.2 Impact of the coupled system: AWF versus AWC

Figures 9b,d present the differences in z_0 between AWF and the atmosphere-wave coupled system AWC. During Phase I, z_0 in AWC was increased up to $2 \cdot 10^{-3}$ m over the French Riviera and the eastern part of the Gulf of Lion (Fig. 9b). As a result a slight decrease of the 10m wind speed intensity was found, about 0.6 m.s^{-1} (Fig. 10b). During Phase II, smaller differences were obtained along the French Riviera. It corresponded to a small increase of z_0 in AWC of about $1 \cdot 10^{-3}$ m, under the strong easterly wind (Fig. 9d). The 10m-wind speed was decreased in AWC by no more than 0.3 m.s^{-1} (Fig. 10d). The smaller impact on the low level dynamics in AWC can be explained by the feedback of the wind on the waves. Indeed, it was found that on average during the event H_s was decreased in AWC by 12% and T_p by 7%. Since, in WY we had already an underestimation of the wave parameters, this decrease in AWC induced larger biases (Table 2). Larger differences in the wind intensity were still found under the convective system and downstream of it in the Gulf of Lion (Fig. 10d). However, those were not really consistent time-to-time and were mainly due to the movement of the system and the slow down of the wind during Phase I.

Figures 11b,d illustrate the differences in the heat fluxes. Either for LE or H very small variations were noticed, less than 10 W.m^{-2} along the French Riviera. As before, the larger differences in the Gulf of Lion were more likely to be induced by the movement and the convective cells evolution of the MCS.

Thus, in average, coupling showed here only minor effects on the dynamics and on the heat and moisture exchanges below the upstream low level flow. One main explanation for this small effect might be that the waves used in AWF and in AWC were really close to each other in term of spatial and temporal resolution, both simulated using WW3. Locally, effects on the dynamics can be significant especially in strong wind and wind-sea areas where we found a decrease of the wind speed and of H_s and T_p .

5.2 Precipitation

The maximum peak rainfall amounts in 24h simulated over the Hérault region were 273 mm in AY, 278 mm in AWF and 271 mm in AWC and agree with the ANTILOPE maximum value of 287 mm. Larger differences were found for the convective system over sea, with maximum peak rainfall amount in 24h of 348 mm in ANTILOPE, but only 214 mm in AY, 187 mm in AWF and 188 mm in AWC. Note, however, that the ANTILOPE rainfall amount estimations over sea were not corrected with rain gauges and might contain some inaccuracies due to the distance from the ground-based radars.

Figure 12 presents the differences in the 6h-rainfall amount between 13 October 18UT and 14 October 00UTC. On average, the total amount of rainfall in the sub-areas in Figure 12a, corresponding to the MCSs locations, was about the same in all simulations. A displacement of approximately 40 km eastwards of the precipitation over sea was found however in AWF compared to AY (Fig. 12a). This displacement was directly related to the decrease of the wind speed along the French Riviera (Fig. 10c) and thus to the convergence line that was located more east. For the convective system over the Hérault area only a slight shift (few km) of the maximum peak was seen. Also, in this area the simulated precipitation amounts in AY and AWF were both too far inland (Fig. 4b). In AWC (Fig. 12b) a slight shift of few kilometers westwards was obtained when compared to AWF.

Thus, these differences in the precipitation forecasts highlighted here the indirect effects of taking sea state into account: first, a modification of the position of the convergence line at sea related to the speed of the low-level easterly flow and then a small modulation of the intensity of the associated convection likely due to differences in term of heat fluxes upstream over the Ligurian Sea. These differences, which concern the MCS at sea, then induced low-level flow disturbances downstream in the Gulf of Lion, but with relatively little impacts on the dynamics of the precipitating system that affected the Hérault area. This demonstrated that the mechanism involved in the formation of this inland system, *i.e.* the orographic uplift, then the reinforcement by the convergence between the southerly flow and the large-scale front, were dominant features and appear, for that precipitating system, less sensitive to the sea surface conditions.

6 Conclusions

The Mediterranean HPEs are known to be violent events and are quite often associated with strong wind conditions and thus very rough sea state. This study investigated the role of the representation of the sea state during the HPE that occurred between the 12 and 14 October 2016 south of France. Thanks to sensitivities experiments, the strong air-sea interactions during the event were analysed and allowed us to evaluate the impact of the representation of the sea state in the forecasting system.

For this purpose, a set of high resolution (1.3 km) numerical simulations was realized using the atmospheric model AROME and the wave model WW3, both in stand-alone mode or in the two-way coupled atmosphere-wave mode. To describe the turbulent fluxes that control the sea surface exchanges the innovative parametrization WASP was used as it is particularly designed to be used in coupled mode with a wave model and allows to introduce the dependency on waves by directly taking
5 into account the peak period T_p in the calculation of the Charnock parameter, then of the surface roughness length z_0 .

Using observations and the reference simulation (AWF), we highlighted that the studied event was characterized by a convergence between a warm and moist southerly flow with a dry and cold easterly flow, that triggered convection over sea. A second convective system, south of France, was initiated by an orographic uplift and was fed by the easterly flow. Both systems produced a large amount of precipitation. Three characteristic regions emerged from the analysis. First, the Balearic region
10 was affected by weak wind and swell all along the event. Then, the Gulf of Lion was located at first where the easterly flow was maximum producing a young sea with high H_s and strong air-sea fluxes. As the system was moving eastwards with the maximum wind intensity, the sea state evolved from a well-developed sea to a swell in this region. Finally, the French Riviera, was affected during all the event by the strong easterly wind generating a wind sea. There the heat fluxes were the most intense.

The simulation results were compared to various observations such as moored buoys for atmospheric and waves parameters
15 (completed with Météo-France surface weather stations along the coasts for atmospheric parameters), ANTILOPE to validate the rainfall accumulations and also altimetric data from satellites to complete the validation of waves parameters. On average the simulations showed a good agreement with either atmospheric and waves observations. However, it can be noticed that both H_s and T_p tend to be underestimated by the model whereas the atmospheric parameters tend to be overestimated. Furthermore, the simulated convective system over sea appeared to move eastwards faster than the observed one.

Then, a sensitivity analysis was done to study the effects of waves and the impact of the atmosphere-waves coupling. It
20 showed large differences when the impact of the sea state was taken into account in the surface turbulent fluxes. Indeed, in AWF compared to AY, under the strong easterly wind upstream of the convective system, the generated wind-sea significantly increased the sea surface roughness length (locally up to $1 \cdot 10^{-2}$ m) and the momentum flux which resulted in a slow down of the 10m wind intensity of more than $1 \text{ m}\cdot\text{s}^{-1}$ over a large area. This decrease was more important than in the previous studies
25 of Thévenot et al. (2016) and Bouin et al. (2017) due to very rough sea conditions and a strong wind regime in our studied case. Added to that, a decrease of the latent heat flux was noticed along the French Riviera but did not represent a significant decrease of the total flux (by 2% on average). Larger differences were found under the convective system but were more likely associated to differences in its location over sea at small scale. The scores did not show significant change except for the wind intensity especially at the Azur buoy where the wind decreased in AWF and the bias was reduced.

Looking at the impact of air-wave coupling by comparing AWC to AWF, small effects were found. As a feedback of the
30 wind on waves, we found a decrease of H_s and T_p compared to WY **resulting from the interactive coupling that balances interactively the wind sea, the stress and wind**. Thus, the coupling effect appeared to be of same order than the forcing effect when compared to AY and the comparison between WY (forcing AWF) and AWC showed very close results in terms of wave modelling. However, this result on coupling must be moderated by the fact that it was a single case study, one configuration
35 and only one short-term forecast was considered. To conclude more robustly on the effect of the wave coupling, additional tests

with the AROME-WW3 coupled system must be conducted regarding notably the parametrizations of the WW3 configuration, the initialization or the coupling frequency, also considering longer forecast (or longer period) of successive forecast.

In all simulations the rainfall amount forecast was in good agreement in the South of France over the Hérault area. It was found that in AWF the convective system over sea was shifted eastwards, during phase II, of about 40 km compared to AY.

5 This was due to the changes in the low level dynamics in AWF in response to the sea state, that modified the position of the convergence line.

Either on AWF or AWC the waves didn't have a significant impact on heat fluxes whereas favourable conditions were met for this with strong sea state with young sea collocated with strong turbulent heat fluxes. Thus, it seemed that the sea state cannot directly affect in a significant way the heat exchanges at the air-sea interface during Mediterranean HPEs. Nevertheless, the fact

10 that the heat fluxes are not significantly modified in the sensitivity experiments permits to be confident in the understanding of the waves impact which appears to be limited to a dynamical effect that displaces the convergence and not related indirectly to large modification of the convective system intensity (see for example Rainaud et al. (2017) for IOP16a and Sauvage et al. (2018a) for sensitivity tests to SST or sea surface fluxes parametrization). The dynamical impact appears relevant to take into account in high-resolution weather forecast as it affected the marine low level flow whose velocity is a key ingredient for HPE
15 (Bresson et al., 2012).

In conclusion, the results obtained in this study, even if they concern only one case, mark a new step in our understanding of the sea state impact on Mediterranean HPE, after the studies of Thévenot et al. (2016) and Bouin et al. (2017), and confirm that:

- a slowdown of the low-level wind, due to higher surface roughness increasing the momentum flux (even in a moderate-
20 wind context as in the studied case of Thévenot et al. (2016));
- differences in the low-level dynamics influencing the positioning of the convergence (directly as here or indirectly as it modifies the propagation of cold pools over sea in the studied case of Bouin et al. (2017)), and consequently the location of the heaviest precipitation.

The analysis of the latent and sensible heat fluxes sensitivity shows that there is no significant impact on the heat and moisture
25 exchanges at the sea surface, in spite of a situation favourable to large air-wave interactions with very strong wind regime at low-level generating a wind sea.

However, further investigations still need to be done to improve our understanding of the air-sea interactions. In particular, the wave impact in terms of sea spray was not included here. The impact of wave interactions may also grow with time during the forecast and also progressively from one forecast to another as WW3 restarts each time from the previous forecast at
30 T+24h. But the experimental design used here, in a deterministic framework and with the same atmospheric initiation in AWC and AWF, can not fully clarify this issue. To properly consider the growth of the wave impacts, it would be necessary to run longer experiments (more than 3 successive forecasts) and also to include the production of new atmospheric analysis using the previous forecast (of AWF or AWC) as background. Ensembles and other meteorological situations must also be considered to enlarge the evaluation of the importance of the wind-wave interactions for convection-permitting NWP models.

Future work will also consist in adding the interactive evolution of the ocean and thus of the sea surface temperature (constant here during the forecast time) which is known to have an effect on the lower levels of the atmosphere. This will be done using kilometric-scale tri-coupled ocean-atmosphere-wave simulations. One objective is to quantify the impact of the ocean on the forecast compared to the impact of waves. Finally, regarding the parametrization of the sea surface turbulent fluxes WASP, it needs to be tested and validated on more study cases, especially during strong wind conditions, in order to further assess its added value.

Appendix A: Charnock parameter in WASP

In the Wave-Age Stress Parametrization (WASP), the Charnock parameter (α_{ch}) is defined differently depending on the wind speed range, as follows:

- 10 – For wind speed at first level (U_a) below 7 m.s^{-1} , it is a power of U_a : $\alpha_{ch} = aU_a^b$, with $a = 0.7$ and $b = -2.52$;
- For U_a above 7 m.s^{-1} , the dependency to wave-age (χ) is introduced and defined as: $\alpha_{ch} = A\chi^B$, where A and B are polynomial functions of U_a :

$$\begin{cases} A = A_0 + A_1U_a + A_2U_a^2 + A_3U_a^3 \\ B = B_0 + B_1U_a + B_2U_a^2 + B_3U_a^3 \end{cases}$$
 detailed in Table A1

- 15 Thus, the dependency of the Charnock parameter and the decrease in the drag coefficient by very strong wind are represented, and, the WASP parametrization, unlike those based on wave-age Charnock parameters, is suitable for huge wind speeds.

Author contributions. All authors (CS, CLB, MNB and VD) contribute to the conceptualization, methodology, writing draft preparation, review and editing of the article. MNB developed the WASP parametrization and manages its integration in the SURFEX code. Coupling development and simulations was done by CS and CLB. CS, CLB and MNB proceeded to the validation and analysis of the results.

- 20 *Competing interests.* The author declare that they have no conflict of interest.

Acknowledgements. This work is a contribution to the HyMeX program (Hydrological cycle in the Mediterranean EXperiment - <http://www.hymex.org>) through INSU-MISTRALS support. The authors acknowledge the Occitanie French region for its contribution to Césaire Sauvage's PhD at CNRM. The authors acknowledge the MISTRALS/HyMeX database teams (ESPRI/IPSL and SEDOO/OMP) for their help in accessing to the surface weather station data. Oceanographic buoys data and the PSY4V3R1 daily analyses were made available by the Copernicus Marine Environment Monitoring Service (marine.copernicus.eu). Altimeter data were freely available from the CERSAT service at IFREMER. The authors gratefully acknowledge Mickaël Accensi and Fabrice Ardhuin (LOPS) for their invaluable help and advices concerning the

development and application of the north-western Mediterranean configuration of the WaveWatchIII model. The authors finally thank Olivier Nuissier (CNRM) for discussions about the characteristics of the studied Mediterranean heavy precipitation event.

References

- Andreas, E. L.: Sea Spray and the Turbulent Air-Sea Heat Fluxes, *Journal of Geophysical Research*, 97, 11 429–11 441, <https://doi.org/10.1029/92jc00876>, 1992.
- Andreas, E. L., Edson, J. B., Monahan, E. C., Rouault, M. P., and Smith, S. D.: The spray contribution to net evaporation from the sea: A
5 review of recent progress, *Boundary-Layer Meteorology*, 72, 3–52, <https://doi.org/10.1007/bf00712389>, 1995.
- Ardhuin, F. and Roland, A.: Coastal wave reflection, directional spread, and seismoacoustic noise sources, *Journal Of Geophysical Research-Oceans*, 117, 16 pp., <https://archimer.ifremer.fr/doc/00088/19938/>, 2012.
- Ardhuin, F., O'Reilly, W. C., Herbers, T. H. C., and Jessen, P. F.: Swell Transformation across the Continental Shelf. Part
I: Attenuation and Directional Broadening, *Journal of Physical Oceanography*, 33, 1921–1939, [https://doi.org/10.1175/1520-0485\(2003\)033<1921:STATCS>2.0.CO;2](https://doi.org/10.1175/1520-0485(2003)033<1921:STATCS>2.0.CO;2), 2003.
10
- Ardhuin, F., Chapron, B., and Collard, F.: Observation of swell dissipation across oceans, *Geophysical Research Letters*, 36, <https://doi.org/10.1029/2008gl037030>, 2009.
- Ardhuin, F., Rogers, E., Babanin, A. V., Filipot, J.-F., Magne, R., Roland, A., van der Westhuysen, A., Queffelec, P., Lefevre, J.-M., Aouf, L., and Collard, F.: Semiempirical Dissipation Source Functions for Ocean Waves. Part I: Definition, Calibration, and Validation, *Journal
of Physical Oceanography*, 40, 1917–1941, <https://doi.org/10.1175/2010JPO4324.1>, 2010.
15
- Ardhuin, F., Stopa, J. E., Chapron, B., Collard, F., Husson, R., Jensen, R. E., Johannessen, J., Mouche, A., Passaro, M., Quartly, G. D., Swail, V., and Young, I.: Observing Sea States, *Frontiers in Marine Science*, 6, <https://doi.org/10.3389/fmars.2019.00124>, 2019.
- Bao, J.-W., Wilczak, J. M., Choi, J.-K., and Kantha, L. H.: Numerical Simulations of Air-Sea Interaction under High Wind Conditions Using a Coupled Model: A Study of Hurricane Development, *Monthly Weather Review*, 128, 2190–2210, [https://doi.org/10.1175/1520-0493\(2000\)128<2190:nsoasi>2.0.co;2](https://doi.org/10.1175/1520-0493(2000)128<2190:nsoasi>2.0.co;2), 2000.
20
- Bao, J.-W., Fairall, C. W., Michelson, S. A., and Bianco, L.: Parameterizations of Sea-Spray Impact on the Air-Sea Momentum and Heat Fluxes, *Monthly Weather Review*, 139, 3781–3797, <https://doi.org/10.1175/mwr-d-11-00007.1>, 2011.
- Battjes, J. and Janssen, J.: Energy loss and set-up due to breaking of random waves, *Coastal Engineering Proceedings*, 1, <https://journals.tdl.org/icce/index.php/icce/article/view/3294>, 1978.
- 25 Beljaars, A. C. M.: The parametrization of surface fluxes in large-scale models under free convection, *Quarterly Journal of the Royal Meteorological Society*, 121, 255–270, <https://doi.org/10.1002/qj.49712152203>, 1994.
- Bianco, L., Bao, J.-W., Fairall, C. W., and Michelson, S. A.: Impact of Sea-Spray on the Atmospheric Surface Layer, *Boundary-Layer Meteorology*, 140, 361–381, <https://doi.org/10.1007/s10546-011-9617-1>, 2011.
- Bouin, M.-N., Redelsperger, J.-L., and Lebeaupin Brossier, C.: Processes leading to deep convection and sensitivity to sea-state representation during HyMeX IOP8 heavy precipitation event, *Quarterly Journal of the Royal Meteorological Society*, 143, 2600–2615, <https://doi.org/10.1002/qj.3111>, <http://dx.doi.org/10.1002/qj.3111>, 2017.
30
- Bresson, E., Ducrocq, V., Nuissier, O., Ricard, D., and de Saint-Aubin C.: Idealized numerical simulations of quasi-stationary convective systems over the Northwestern Mediterranean complex terrain, *Q.J.R. Meteorol. Soc.*, 138, 1751–1763, 2012.
- Businger, J. A., Wyngaard, J. C., Izumi, Y., and Bradley, E. F.: Flux-Profile Relationships in the Atmospheric Surface Layer, *Journal of the
Atmospheric Sciences*, 28, 181–189, [https://doi.org/10.1175/1520-0469\(1971\)028<0181:fprita>2.0.co;2](https://doi.org/10.1175/1520-0469(1971)028<0181:fprita>2.0.co;2), 1971.
35
- Cassola, F., Ferrari, F., Mazzino, A., and Miglietta, M. M.: The role of the sea on the flash floods events over Liguria (northwestern Italy), *Geophysical Research Letters*, 43, 3534–3542, <https://doi.org/10.1002/2016gl068265>, 2016.

- Charnock, H.: Wind stress on a water surface, *Quarterly Journal of the Royal Meteorological Society*, 81, 639–640, <https://doi.org/10.1002/qj.49708135027>, <https://rmets.onlinelibrary.wiley.com/doi/abs/10.1002/qj.49708135027>, 1955.
- Courtier, P., Freydier, C., Geleyn, J.-F., Rabier, F., and Rochas, M.: The Arpege project at Meteo France, in: *Seminar on Numerical Methods in Atmospheric Models*, 9-13 September 1991, vol. II, pp. 193–232, ECMWF, ECMWF, Shinfield Park, Reading, <https://www.ecmwf.int/node/8798>, 1991.
- Craig, A., Valcke, S., and Coquart, L.: Development and performance of a new version of the OASIS coupler, OASIS3-MCT_3.0, *Geoscientific Model Development*, 10, 3297–3308, <https://doi.org/10.5194/gmd-10-3297-2017>, 2017.
- Cuxart, J., Bougeault, P., and Redelsperger, J.-L.: A turbulence scheme allowing for mesoscale and large-eddy simulations, *Quarterly Journal of the Royal Meteorological Society*, 126, 1–30, <https://doi.org/10.1002/qj.49712656202>, <https://rmets.onlinelibrary.wiley.com/doi/abs/10.1002/qj.49712656202>, 2000.
- Delrieu, G., Nicol, J., Yates, E., Kirstetter, P.-E., Creutin, J.-D., Anquetin, S., Obled, C., Saulnier, G.-M., Ducrocq, V., Gaume, E., Payrastré, O., Andrieu, H., Ayrat, P.-A., Bouvier, C., Neppel, L., Livet, M., Lang, M., du Châtelet, J. P., Walpersdorf, A., and Wobrock, W.: The Catastrophic Flash-Flood Event of 8–9 September 2002 in the Gard Region, France: A First Case Study for the Cévennes–Vivarais Mediterranean Hydrometeorological Observatory, *Journal of Hydrometeorology*, 6, 34–52, <https://doi.org/10.1175/JHM-400.1>, 2005.
- Donelan, M. A.: Air-sea interaction, *The Sea*, 9, 239–292, <https://ci.nii.ac.jp/naid/10022553099/en/>, 1990.
- Donelan, M. A., Dobson, F. W., Smith, S. D., and Anderson, R. J.: On the Dependence of Sea Surface Roughness on Wave Development, *Journal of Physical Oceanography*, 23, [https://doi.org/10.1175/1520-0485\(1993\)023<2143:OTDOSS>2.0.CO;2](https://doi.org/10.1175/1520-0485(1993)023<2143:OTDOSS>2.0.CO;2), 1993.
- Doyle, J. D.: Coupled ocean wave/atmosphere mesoscale model simulations of cyclogenesis, *Tellus A: Dynamic Meteorology and Oceanography*, 47, 766–778, <https://doi.org/10.3402/tellusa.v47i5.11574>, 1995.
- Doyle, J. D.: Coupled Atmosphere-Ocean Wave Simulations under High Wind Conditions, *Monthly Weather Review*, 130, 3087–3099, [https://doi.org/10.1175/1520-0493\(2002\)130<3087:caowsu>2.0.co;2](https://doi.org/10.1175/1520-0493(2002)130<3087:caowsu>2.0.co;2), 2002.
- Drennan, W. M., Graber, H. C., Hauser, D., and Quentin, C.: On the wave age dependence of wind stress over pure wind seas, *Journal of Geophysical Research: Oceans*, 108, n/a–n/a, <https://doi.org/10.1029/2000JC000715>, <http://dx.doi.org/10.1029/2000JC000715>, 8062, 2003.
- Drennan, W. M., Taylor, P. K., and Yelland, M. J.: Parameterizing the Sea Surface Roughness, *Journal of Physical Oceanography*, 35, 835–848, <https://doi.org/10.1175/jpo2704.1>, 2005.
- Ducrocq, V., Nuissier, O., Ricard, D., Lebeaupin, C., and Thouvenin, T.: A numerical study of three catastrophic precipitating events over southern France. II: Mesoscale triggering and stationarity factors, *Quarterly Journal of the Royal Meteorological Society*, 134, 131–145, <https://doi.org/10.1002/qj.199>, <http://dx.doi.org/10.1002/qj.199>, 2008.
- Ducrocq, V., Davolio, S., Ferretti, R., Flamant, C., Santaner, V. H., Kalthoff, N., Richard, E., and Wernli, H.: Introduction to the HyMeX Special Issue on ‘Advances in understanding and forecasting of heavy precipitation in the Mediterranean through the HyMeX SOP1 field campaign’, *Quarterly Journal of the Royal Meteorological Society*, 142, 1–6, <https://doi.org/10.1002/qj.2856>, <http://dx.doi.org/10.1002/qj.2856>, 2016.
- Duffourg, F. and Ducrocq, V.: Origin of the moisture feeding the Heavy Precipitating Systems over Southeastern France, *Natural Hazards and Earth System Sciences*, 11, 1163–1178, <https://doi.org/10.5194/nhess-11-1163-2011>, <http://www.nat-hazards-earth-syst-sci.net/11/1163/2011/>, 2011.
- Duffourg, F., Nuissier, O., Ducrocq, V., Flamant, C., Chazette, P., Delanoë, J., Doerenbecher, A., Fourié, N., Di Girolamo, P., Lac, C., Legain, D., Martinet, M., Said, F., and Bock, O.: Offshore deep convection initiation and maintenance during the HyMeX IOP 16a

- heavy precipitation event, *Quarterly Journal of the Royal Meteorological Society*, 142, 259–274, <https://doi.org/10.1002/qj.2725>, <https://hal-insu.archives-ouvertes.fr/insu-01246578>, 2016.
- Edson, J. B., Jampana, V., Weller, R. A., Bigorre, S. P., Plueddemann, A. J., Fairall, C. W., Miller, S. D., Mahrt, L., Vickers, D., and Hersbach, H.: On the Exchange of Momentum over the Open Ocean, *Journal of Physical Oceanography*, 43, 1589–1610, <https://doi.org/10.1175/jpo-d-12-0173.1>, 2013.
- 5 Fairall, C. W., Bradley, E. F., Rogers, D. P., Edson, J. B., and Young, G. S.: Bulk parameterization of air-sea fluxes for Tropical Ocean-Global Atmosphere Coupled-Ocean Atmosphere Response Experiment (TOGA-COARE), *Journal of Geophysical Research: Oceans*, 101, 3747–3764, <https://doi.org/10.1029/95jc03205>, 1996.
- Fairall, C. W., Bradley, E. F., Hare, J. E., Grachev, A. A., and Edson, J. B.: Bulk Parameterization of Air–Sea Fluxes: Updates and Verification for the COARE Algorithm, *Journal of Climate*, 16, 571–591, [https://doi.org/10.1175/1520-0442\(2003\)016<0571:BPOASF>2.0.CO;2](https://doi.org/10.1175/1520-0442(2003)016<0571:BPOASF>2.0.CO;2), [http://dx.doi.org/10.1175/1520-0442\(2003\)016<0571:BPOASF>2.0.CO;2](http://dx.doi.org/10.1175/1520-0442(2003)016<0571:BPOASF>2.0.CO;2), 2003.
- 10 Garg, N., Ng, E. Y. K., and Narasimalu, S.: The effects of sea spray and atmosphere–wave coupling on air–sea exchange during a tropical cyclone, *Atmospheric Chemistry and Physics*, 18, 6001–6021, <https://doi.org/10.5194/acp-18-6001-2018>, 2018.
- Hasselmann, S., Hasselmann, K., Allender, J. H., and Barnett, T. P.: Computations and Parameterizations of the Nonlinear Energy Transfer in a Gravity-Wave Spectrum. Part II: Parameterizations of the Nonlinear Energy Transfer for Application in Wave Models, *Journal of Physical Oceanography*, 15, 1378–1391, [https://doi.org/10.1175/1520-0485\(1985\)015<1378:CAPOTN>2.0.CO;2](https://doi.org/10.1175/1520-0485(1985)015<1378:CAPOTN>2.0.CO;2), [https://doi.org/10.1175/1520-0485\(1985\)015<1378:CAPOTN>2.0.CO;2](https://doi.org/10.1175/1520-0485(1985)015<1378:CAPOTN>2.0.CO;2), 1985.
- 15 Janssen, P.: *The Interaction of Ocean Waves and Wind*, Cambridge University Press, <https://doi.org/10.1017/cbo9780511525018>, 2004.
- Janssen, P., Doyle, J., Bidlot, J.-R., Hansen, B., Isaksen, L., and Viterbo, P.: Impact and feedback of ocean waves on the atmosphere, ECMWF Technical Memoranda Series, <https://doi.org/10.21957/c1ey8zifx>, 2001.
- 20 Janssen, P. A. E. M.: Wave-Induced Stress and the Drag of Air Flow over Sea Waves, *Journal of Physical Oceanography*, 19, 745–754, [https://doi.org/10.1175/1520-0485\(1989\)019<0745:wisatd>2.0.co;2](https://doi.org/10.1175/1520-0485(1989)019<0745:wisatd>2.0.co;2), 1989.
- Janssen, P. A. E. M.: Quasi-linear Theory of Wind-Wave Generation Applied to Wave Forecasting, *Journal of Physical Oceanography*, 21, 1631–1642, [https://doi.org/10.1175/1520-0485\(1991\)021<1631:qltoww>2.0.co;2](https://doi.org/10.1175/1520-0485(1991)021<1631:qltoww>2.0.co;2), 1991.
- 25 Janssen, P. A. E. M.: Experimental Evidence of the Effect of Surface Waves on the Airflow, *Journal of Physical Oceanography*, 22, 1600–1604, [https://doi.org/10.1175/1520-0485\(1992\)022<1600:eeoteo>2.0.co;2](https://doi.org/10.1175/1520-0485(1992)022<1600:eeoteo>2.0.co;2), 1992.
- Kain, J. S. and Fritsch, J. M.: A One-Dimensional Entraining/Detraining Plume Model and Its Application in Convective Parameterization, *Journal of the Atmospheric Sciences*, 47, 2784–2802, [https://doi.org/10.1175/1520-0469\(1990\)047<2784:AODEPM>2.0.CO;2](https://doi.org/10.1175/1520-0469(1990)047<2784:AODEPM>2.0.CO;2), 1990.
- Katsafados, P., Papadopoulos, A., Korres, G., and Varlas, G.: A fully coupled atmosphere–ocean wave modeling system for the Mediterranean Sea: interactions and sensitivity to the resolved scales and mechanisms, *Geoscientific Model Development*, 9, 161–173, <https://doi.org/10.5194/gmd-9-161-2016>, <https://www.geosci-model-dev.net/9/161/2016/>, 2016.
- 30 Kepert, J., Fairall, C., and Bao, J.-W.: Modelling the Interaction Between the Atmospheric Boundary Layer and Evaporating Sea Spray Droplets, in: *Atmospheric and Oceanographic Sciences Library*, pp. 363–409, Springer Netherlands, https://doi.org/10.1007/978-94-015-9291-8_14, 1999.
- 35 Laurantin, O.: ANTILOPE: Hourly rainfall analysis merging radar and rain gauge data., *Proceedings of Weather Radar and Hydrology Conference 2008*, 2008.

- Lebeauvin Brossier, C., Ducrocq, V., and Giordani, H.: Sensitivity of torrential rain events to the sea surface temperature based on high-resolution numerical forecasts, *Journal of Geophysical Research: Atmospheres*, 111, n/a–n/a, <https://doi.org/10.1029/2005JD006541>, d12110, 2006.
- Lebeauvin Brossier, C., Ducrocq, V., and Giordani, H.: Sensitivity of three Mediterranean heavy rain events to two different sea surface fluxes parameterizations in high-resolution numerical modeling, *Journal of Geophysical Research: Atmospheres*, 113, n/a–n/a, <https://doi.org/10.1029/2007JD009613>, d21109, 2008.
- Lellouche, J.-M., Le Galloudec, O., Drévillon, M., Régnier, C., Greiner, E., Garric, G., Ferry, N., Desportes, C., Testut, C.-E., Bricaud, C., Bourdallé-Badie, R., Tranchant, B., Benkiran, M., Drillet, Y., Daudin, A., and De Nicola, C.: Evaluation of global monitoring and forecasting systems at Mercator Océan, *Ocean Science*, 9, 57–81, <https://doi.org/10.5194/os-9-57-2013>, 2013.
- 10 Llasat, M. C., Llasat-Botija, M., Petrucci, O., Pasqua, A. A., Rosselló, J., Vinet, F., and Boissier, L.: Towards a database on societal impact of Mediterranean floods within the framework of the HYMEX project, *Natural Hazards and Earth System Sciences*, 13, 1337–1350, 2013.
- Mahrt, L., Vickers, D., Sun, J., Jensen, N. O., Jørgensen, H., Pardyjak, E., and Fernando, H.: Determination Of The Surface Drag Coefficient, *Boundary-Layer Meteorology*, 99, 249–276, <https://doi.org/10.1023/a:1018915228170>, 2001.
- Masson, V.: A Physically-Based Scheme For The Urban Energy Budget In Atmospheric Models, *Boundary-Layer Meteorology*, 94, 357–397, <https://doi.org/10.1023/A:1002463829265>, 2000.
- 15 Masson, V., Le Moigne, P., Martin, E., Faroux, S., Alias, A., Alkama, R., Belamari, S., Barbu, A., Boone, A., Bouysse, F., Brousseau, P., Brun, E., Calvet, J.-C., Carrer, D., Decharme, B., Delire, C., Donier, S., Essaouini, K., Gibelin, A.-L., Giordani, H., Habets, F., Jidane, M., Kerdraon, G., Kourzeneva, E., Lafaysse, M., Lafont, S., Lebeauvin Brossier, C., Lemonsu, A., Mahfouf, J.-F., Marguinaud, P., Mokhtari, M., Morin, S., Pigeon, G., Salgado, R., Seity, Y., Taillefer, F., Tanguy, G., Tulet, P., Vincendon, B., Vionnet, V., and Voltaire, A.: The SURFEXv7.2 land and ocean surface platform for coupled or offline simulation of earth surface variables and fluxes, *Geoscientific Model Development*, 6, 929–960, <https://doi.org/10.5194/gmd-6-929-2013>, 2013.
- 20 Meroni, A. N., Parodi, A., and Pasquero, C.: Role of SST Patterns on Surface Wind Modulation of a Heavy Midlatitude Precipitation Event, *Journal of Geophysical Research: Atmospheres*, 123, 9081–9096, <https://doi.org/10.1029/2018jd028276>, 2018.
- Moon, I.-J., Ginis, I., and Hara, T.: Effect of Surface Waves on Air–Sea Momentum Exchange. Part II: Behavior of Drag Coefficient under Tropical Cyclones, *Journal of the Atmospheric Sciences*, 61, 2334–2348, [https://doi.org/10.1175/1520-0469\(2004\)061<2334:EOSWOA>2.0.CO;2](https://doi.org/10.1175/1520-0469(2004)061<2334:EOSWOA>2.0.CO;2), 2004.
- 25 Noilhan, J. and Planton, S.: A Simple Parameterization of Land Surface Processes for Meteorological Models, *Monthly Weather Review*, 117, 536–549, 1989.
- Nuissier, O., Joly, B., Joly, A., Ducrocq, V., and Arbogast, P.: A statistical downscaling to identify the large-scale circulation patterns associated with heavy precipitation events over southern France, *Quarterly Journal of the Royal Meteorological Society*, 137, 1812–1827, <https://doi.org/10.1002/qj.866>, 2011.
- 30 Oost, W., Komen, G., Jacobs, C., and Oort, C. V.: New evidence for a relation between wind stress and wave age from measurements during ASGAMAGE, *Boundary-Layer Meteorology*, 103, 409–438, <https://doi.org/10.1023/a:1014913624535>, 2002.
- OSTM/Jason-2 Products Handbook : OSTM/Jason-2 Products Handbook , CNES : SALP-MU-M-OP-15815-CN, Ed 1.2, 2008.
- 35 Pineau-Guillou, L., Arduin, F., Bouin, M.-N., Redelsperger, J.-L., Chapron, B., Bidlot, J.-R., and Quilfen, Y.: Strong winds in a coupled wave–atmosphere model during a North Atlantic storm event: evaluation against observations, *Quarterly Journal of the Royal Meteorological Society*, 144, 317–332, <https://doi.org/10.1002/qj.3205>, 2018.

- Pinty, J.-P. and Jabouille, P.: A mixed-phase cloud parameterization for use in mesoscale non-hydrostatic model: simulations of a squall line and of orographic precipitations., *Conf. on Cloud Physics, Amer. Meteor. Soc.*, 217–220, 1998.
- Powell, M. D., Vickery, P. J., and Reinhold, T. A.: Reduced drag coefficient for high wind speeds in tropical cyclones, *Nature*, 422, 279–283, <https://doi.org/10.1038/nature01481>, 2003.
- 5 Rainaud, R., Lebeaupin Brossier, C., Ducrocq, V., and Giordani, H.: High-resolution air–sea coupling impact on two heavy precipitation events in the Western Mediterranean, *Quarterly Journal of the Royal Meteorological Society*, 143, 2448–2462, <https://doi.org/10.1002/qj.3098>, 2017.
- Rasche, N. and Arduin, F.: A global wave parameter database for geophysical applications. Part 2: Model validation with improved source term parameterization, *Ocean Modelling*, 70, 174–188, <https://doi.org/10.1016/j.ocemod.2012.12.001>, 2013.
- 10 Renault, L., Chiggiato, J., Warner, J. C., Gomez, M., Vizoso, G., and Tintoré, J.: Coupled atmosphere-ocean-wave simulations of a storm event over the Gulf of Lion and Balearic Sea, *Journal of Geophysical Research: Oceans*, 117, n/a–n/a, <https://doi.org/10.1029/2012JC007924>, c09019, 2012.
- Ricchi, A., Miglietta, M. M., Falco, P. P., Benetazzo, A., Bonaldo, D., Bergamasco, A., Sclavo, M., and Carniel, S.: On the use of a coupled ocean–atmosphere–wave model during an extreme cold air outbreak over the Adriatic Sea, *Atmospheric Research*, 172–173, <http://www.sciencedirect.com/science/article/pii/S0169809516000090>, 2016.
- 15 Rizza, U., Canepa, E., Ricchi, A., Bonaldo, D., Carniel, S., Morichetti, M., Passerini, G., Santiloni, L., Puhales, F. S., and Miglietta, M.: Influence of Wave State and Sea Spray on the Roughness Length: Feedback on Medicanes, *Atmosphere*, 9, 301, <https://doi.org/10.3390/atmos9080301>, 2018.
- SARAL/AltiKa Products handbook: SARAL/AltiKa Products handbook, CNES : SALP-MU-M-OP-15984-CN, Issue 2, rev 3, 2013.
- 20 Sauvage, C., Brossier, C. L., Bouin, M.-N., and Ducrocq, V.: Role of the sea state on the air-sea exchanges during a Mediterranean heavy precipitation event in a kilometer-scale forecast system., *Preprints*, 21 st AMS Conf. on Air-Sea Interaction, Oklahoma city, OK, p. 6, https://ams.confex.com/ams/23BLT21ASI/mediafile/Manuscript/Paper345111/Extended_Abstract_AMS.pdf, 2018a.
- Sauvage, C., Brossier, C. L., Ducrocq, V., Bouin, M.-N., Vincendon, B., Verdecchia, M., Taupier-Letage, I., and Orain, F.: Impact of the representation of the freshwater river input in the Western Mediterranean Sea, *Ocean Modelling*, 131, 115 – 131, <https://doi.org/https://doi.org/10.1016/j.ocemod.2018.09.005>, 2018b.
- 25 Seity, Y., Brousseau, P., Malardel, S., Hello, G., Bénard, P., Bouttier, F., Lac, C., and Masson, V.: The AROME-France convective scale operational model, *Mon. Wea. Rev.*, 2011.
- Smith, S. D., Anderson, R. J., Oost, W. A., Kraan, C., Maat, N., Cosmo, J. D., Katsaros, K. B., Davidson, K. L., Bumke, K., Hasse, L., and Chadwick, H. M.: Sea surface wind stress and drag coefficients: The HEXOS results, *Boundary-Layer Meteorology*, 60, 109–142, <https://doi.org/10.1007/bf00122064>, 1992.
- 30 Stocchi, P. and Davolio, S.: Intense air-sea exchange and heavy rainfall: impact of the northern Adriatic SST, *Advances in Science and Research*, 13, 7–12, <https://doi.org/10.5194/asr-13-7-2016>, 2017.
- Strajnar, B., Cedilnik, J., Fettich, A., Ličer, M., Pristov, N., Smerkol, P., and Jerman, J.: Impact of two-way coupling and sea-surface temperature on precipitation forecasts in regional atmosphere and ocean models, *Quarterly Journal of the Royal Meteorological Society*, 145, 228–242, <https://doi.org/10.1002/qj.3425>, 2019.
- 35 Taylor, P. K. and Yelland, M. J.: The Dependence of Sea Surface Roughness on the Height and Steepness of the Waves, *Journal of Physical Oceanography*, 31, 572–590, [https://doi.org/10.1175/1520-0485\(2001\)031<0572:tdossr>2.0.co;2](https://doi.org/10.1175/1520-0485(2001)031<0572:tdossr>2.0.co;2), 2001.

- The WAVEWATCH III Development Group: User manual and system documentation of WAVEWATCH III version 5.16, Tech. Note 329, 2016.
- Thévenot, O., Bouin, M.-N., Ducrocq, V., Lebeaupin Brossier, C., Nuissier, O., Pianezze, J., and Duffourg, F.: Influence of the sea state on Mediterranean heavy precipitation: a case-study from HyMeX SOP1, *Quarterly Journal of the Royal Meteorological Society*, 142, 377–389, <https://doi.org/10.1002/qj.2660>, 2016.
- 5
- Tolman, H. L.: Effects of Numerics on the Physics in a Third-Generation Wind-Wave Model, *Journal of Physical Oceanography*, 22, 1095–1111, [https://doi.org/10.1175/1520-0485\(1992\)022<1095:EONOTP>2.0.CO;2](https://doi.org/10.1175/1520-0485(1992)022<1095:EONOTP>2.0.CO;2), 1992.
- Varlas, G., Katsafados, P., Papadopoulos, A., and Korres, G.: Implementation of a two-way coupled atmosphere-ocean wave modeling system for assessing air-sea interaction over the Mediterranean Sea, *Atmospheric Research*, 208, 201–217, <https://doi.org/10.1016/j.atmosres.2017.08.019>, 2018.
- 10
- Voldoire, A., Decharme, B., Pianezze, J., Lebeaupin Brossier, C., Sevault, F., Seyfried, L., Garnier, V., Bielli, S., Valcke, S., Alias, A., Accensi, M., Arduin, F., Bouin, M.-N., Ducrocq, V., Faroux, S., Giordani, H., Léger, F., Marsaleix, P., Rainaud, R., Redelsperger, J.-L., Richard, E., and Riette, S.: SURFEX v8.0 interface with OASIS3-MCT to couple atmosphere with hydrology, ocean, waves and sea-ice models, from coastal to global scales, *Geoscientific Model Development*, 10, 4207–4227, <https://doi.org/10.5194/gmd-10-4207-2017>, 2017.
- 15
- Wahle, K., Staneva, J., Koch, W., Fenoglio-Marc, L., Ho-Hagemann, H. T. M., and Stanev, E. V.: An atmosphere–wave regional coupled model: improving predictions of wave heights and surface winds in the southern North Sea, *Ocean Science*, 13, 289–301, <https://doi.org/10.5194/os-13-289-2017>, 2017.

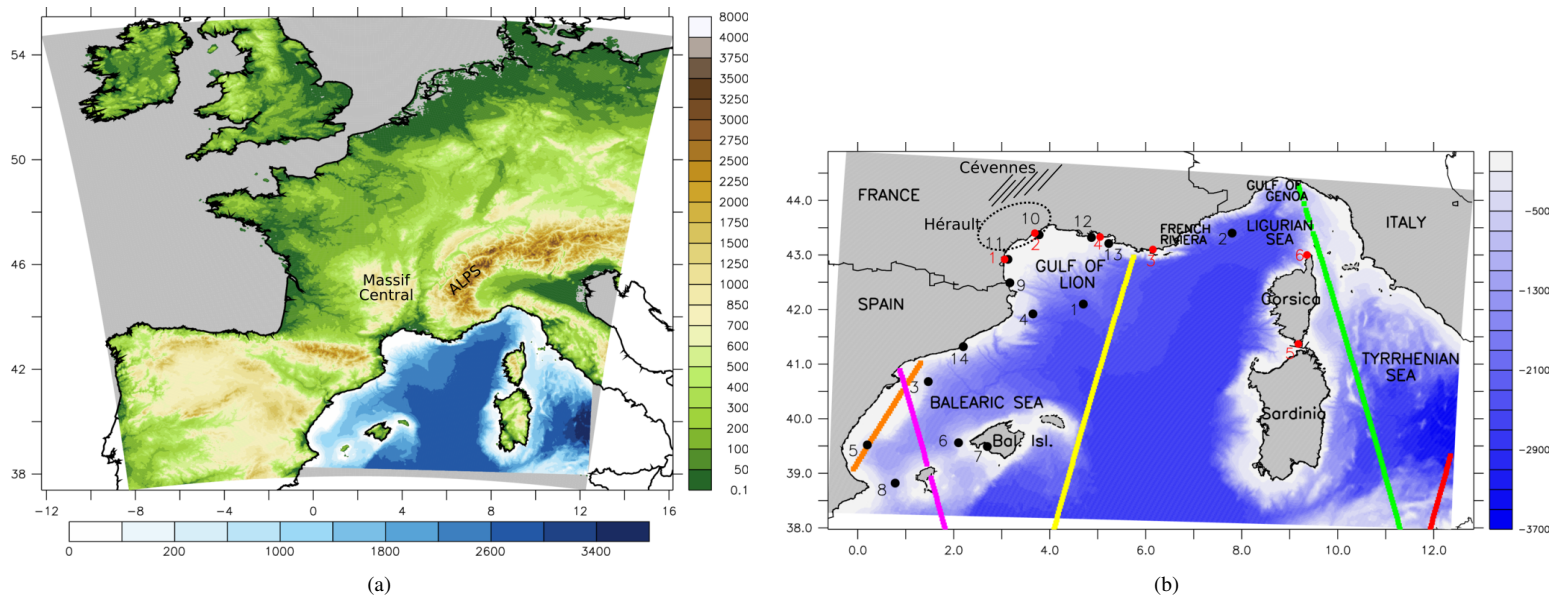


Figure 1. Simulation domain: (a) AROME-France (topography, m) and (b) WW3 domain illustrated with bathymetry (blue scale, m). Black circles indicate the location of the moored buoys and red circles the location of the surface stations (see Tab 1); in green the satellite track on 12/10 around 05UTC; in yellow on 13/10 around 18UTC; in magenta on 14/10 around 05UTC and in red and orange on 14/10 around 18UTC. Orange track is for JASON-2 and the others are for SARAL.

Name	Longitude	Latitude	Source	Name	Longitude	Latitude	Source
1-Lion	4.7°E	42.1°N	Météo-France	11-Leucate	3.13°E	42.92°N	CMEMS
2-Azur	7.8°E	43.4°N	Météo-France	12-MesuRho	4.87°E	43.32°N	CMEMS
3-Tarragona	1.47°E	40.68°N	CMEMS	13-Le Planier	5.23°E	43.21°N	CMEMS
4-Begur	3.65°E	41.92°N	CMEMS	14-Barcelone	2.2°E	41.32°N	CMEMS
5-Valence	0.20°E	39.52°N	CMEMS	<i>1-Leucate</i>	3.06°E	42.92°N	Météo-France
6-Dragonera	2.1°E	39.56°N	CMEMS	<i>2-Sète</i>	3.69°E	43.4°N	Météo-France
7-Bahia de Palma	2.7°E	39.49°N	CMEMS	<i>3-Hyères</i>	6.15°E	43.1°N	Météo-France
8-Canal de Ibiza	0.78°E	38.82°N	CMEMS	<i>4-Martigues</i>	5.05°E	43.33°N	Météo-France
9-Banyuls-sur-mer	3.17°E	42.49°N	CMEMS	<i>5-Bonifacio</i>	9.18°W	41.37°N	Météo-France
10-Sète	3.78°E	43.37°N	CMEMS	<i>6-Ersa</i>	9.36°W	43°N	Météo-France

Table 1. Names and locations of the moored buoys and surface stations (in italic) used for validation.

Moored buoys and surface stations												
Parameter	WY			AY			AWF			AWC		
	Bias	RMSE	Correlation	Bias	RMSE	Correlation	Bias	RMSE	Correlation	Bias	RMSE	Correlation
H_s	-0.23	0.53	0.90	-	-	-	-	-	-	-0.28	0.58	0.90
T_p	-0.79	1.16	0.90	-	-	-	-	-	-	-1.27	1.64	0.88
WSP	-	-	-	0.22	2.70	0.66	0.04	2.75	0.64	0.09	2.67	0.65
WDIR	-	-	-	1.43	42.05	0.85	2.0	42.46	0.86	1.85	42.95	0.85
T2M	-	-	-	0.39	1.25	0.70	0.45	1.32	0.66	0.44	1.32	0.66
RH2M	-	-	-	2.19	8.84	0.79	2.89	9.66	0.76	3.0	9.97	0.76
Satellites												
H_s	-0.17	0.4	0.78	-	-	-	-	-	-	-0.28	0.5	0.71

Table 2. Skill scores computed against surface stations and satellite data for the wave-only simulation (WY) and the coupled simulation (AWC) for wave parameters (H_s , T_p) and for the atmosphere-only simulations (AY, AWF) and coupled simulations (AWC) for atmosphere parameters. WSP stands for 10m-wind speed (m.s^{-1}), WDIR for 10m-wind direction ($^\circ$), T2m for 2m-air temperature ($^\circ\text{C}$) and RH2M for 2m-relative humidity (%).

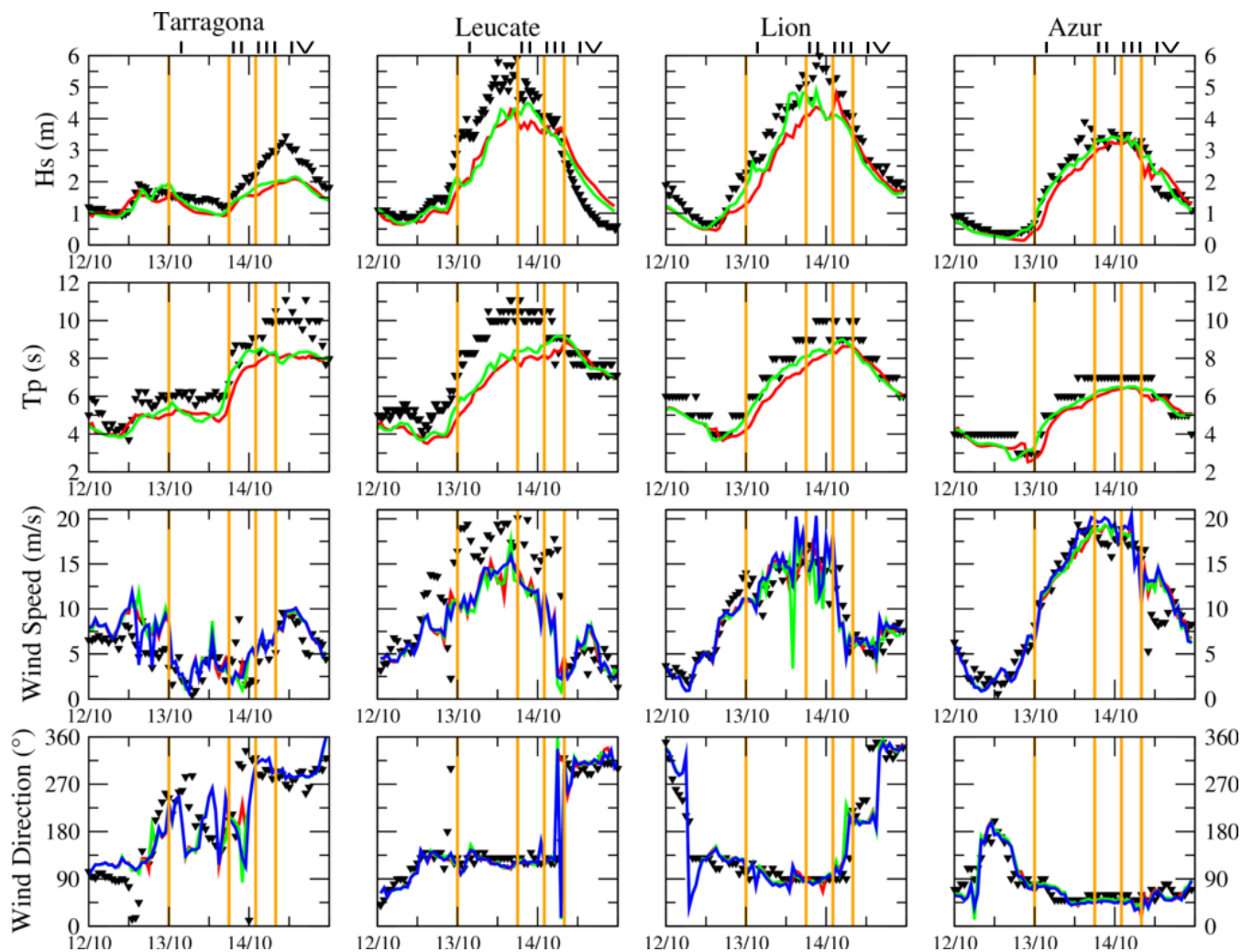


Figure 2. Evolution of H_s (m), T_p (s), wind speed ($\text{m}\cdot\text{s}^{-1}$) and wind direction ($^\circ$) simulated with AWF/WY (green), AWC (red), AY (blue) against buoy observations (black triangles).

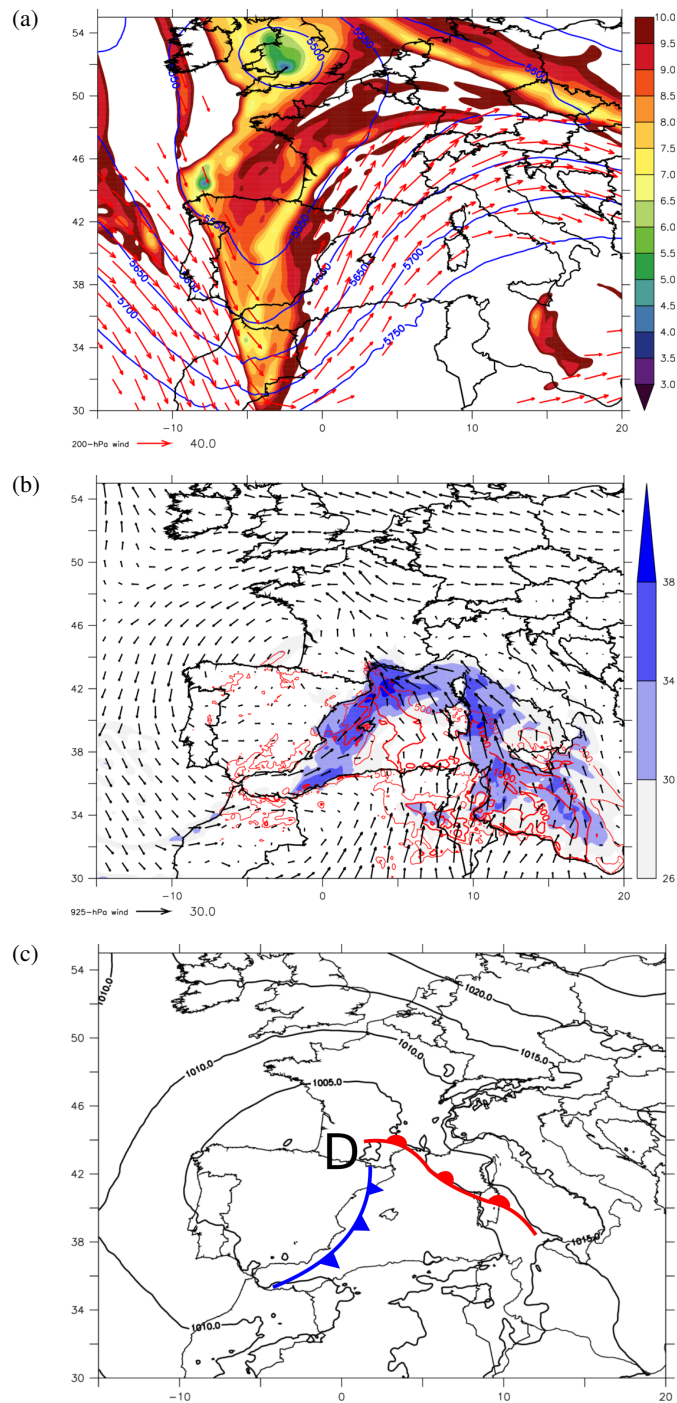
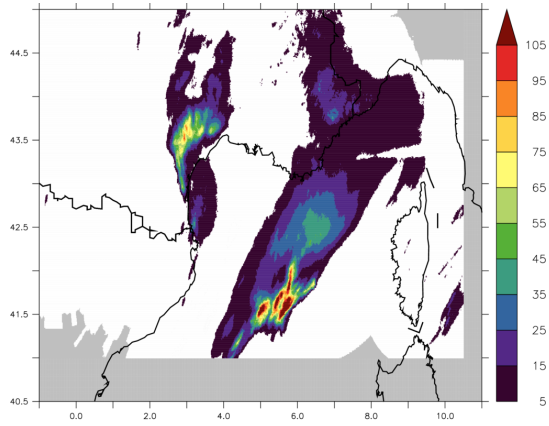
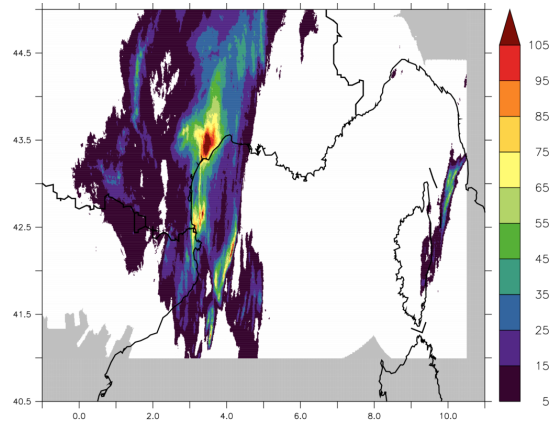


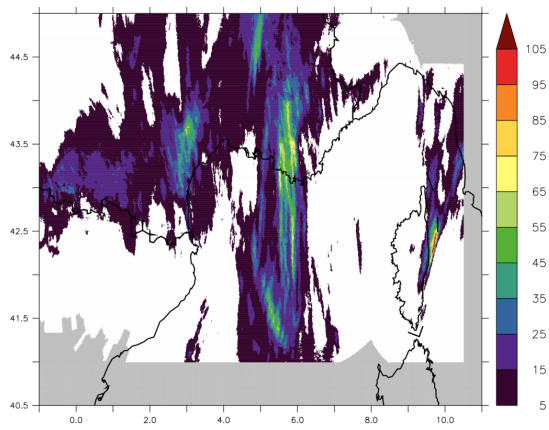
Figure 3. Synoptic situation at 12UTC, 13 October 2016 from the ARPEGE analysis (a) at high level: colour shading is the height of the 2 PVU iso-surface (km), blue contour is the geopotential height (m) at 500 hPa and black arrows the wind above 20 m/s at 200 hPa; (b) at low level: colour shading is the Integrating Water Vapor (kg.m^{-2}), red contour is the Convective Available Potential Energy (J.kg^{-1}) and black arrows the wind at 925 hPa; (c) mean sea level pressure (black contour) and position of the cold (blue) and warm (red) fronts.



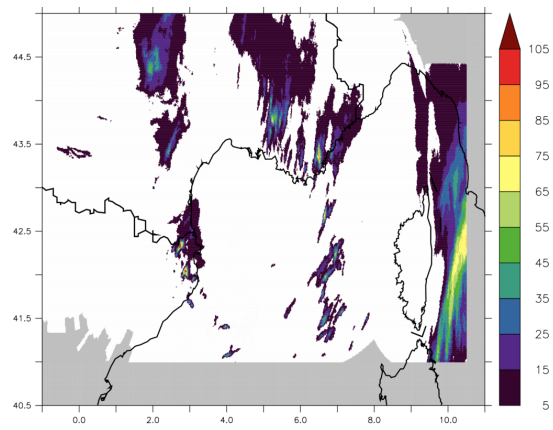
(a) 13 Oct. at 12UTC.



(b) 14 Oct. at 00UTC.



(c) 14 Oct. at 06UTC.



(d) 14 Oct. at 18UTC.

Figure 4. 6h-rainfall amounts (mm) from ANTILOPE observations.

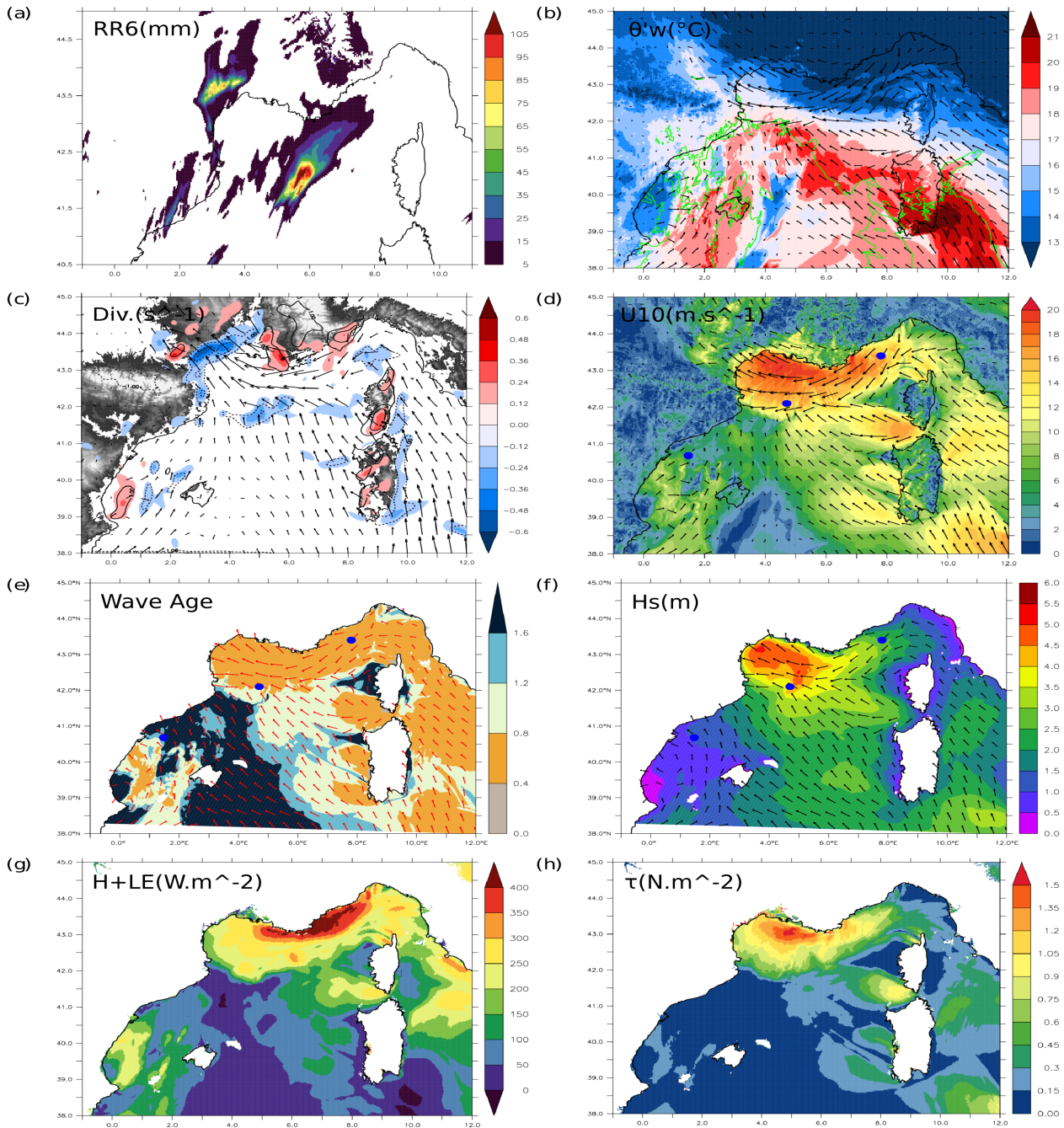


Figure 5. (a) 6h-rainfall amount (mm); (b) Pseudo-adiabatic potential temperature θ_w' (colour shading, $^{\circ}\text{C}$) and wind (m.s^{-1} , arrow) at 925 hPa with the CAPE over 750 J.kg^{-1} in green contour; (c) wind divergence (colour shading, 10^{-3} s^{-1} , values between -0.12 and 0.12 are masked, s^{-1}) at 950 hPa, black contour is the vertical velocity (Pa.s^{-1}) at 950 hPa and black arrows the horizontal winds (m.s^{-1}); (d) 10m-wind intensity and direction (m.s^{-1}); (e) wave age and wave direction; (f) wave significant height (m) and wave direction; (g) total turbulent heat fluxes (H, LE) (W.m^{-2}) and (h) wind stress (N.m^{-2}) simulated by AWF the 13 October at 12UTC. Blue dots in (d, e, f) stand for Tarragona, Lion and Azur buoys (west to east).

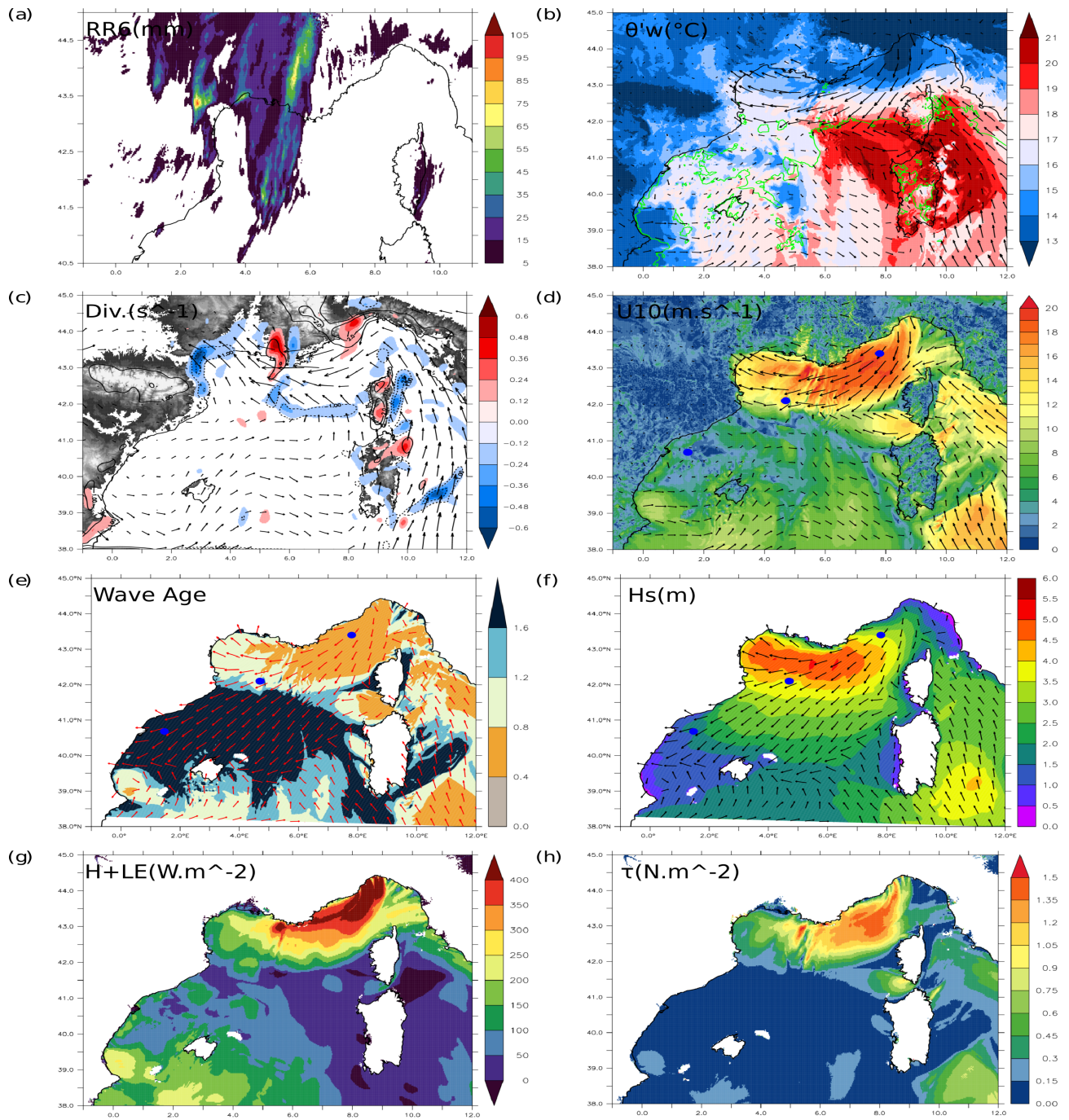


Figure 6. Same as Figure 5 but the 14 October 00UTC.

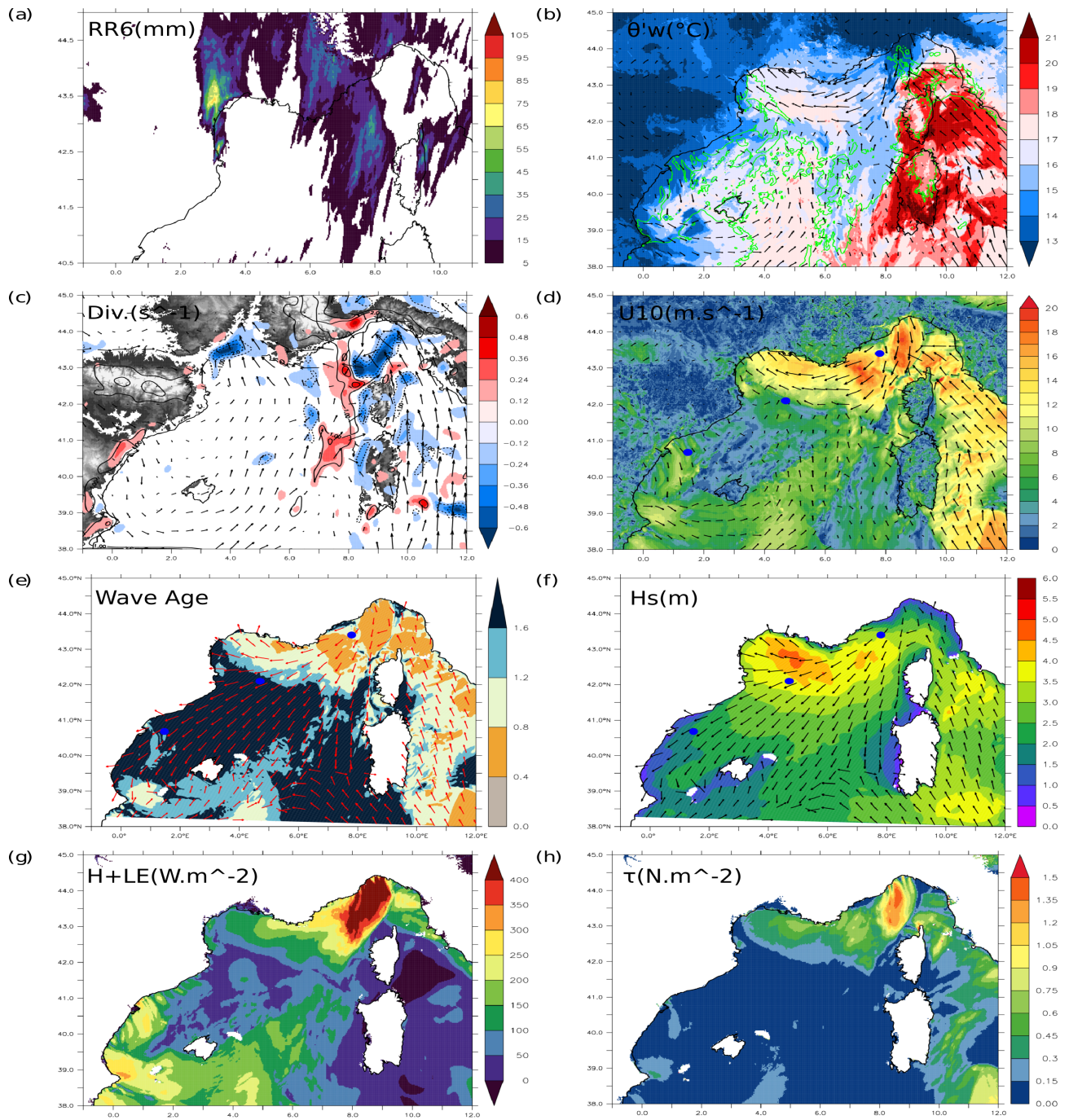


Figure 7. Same as Figure 5 but the 14 October 06UTC.

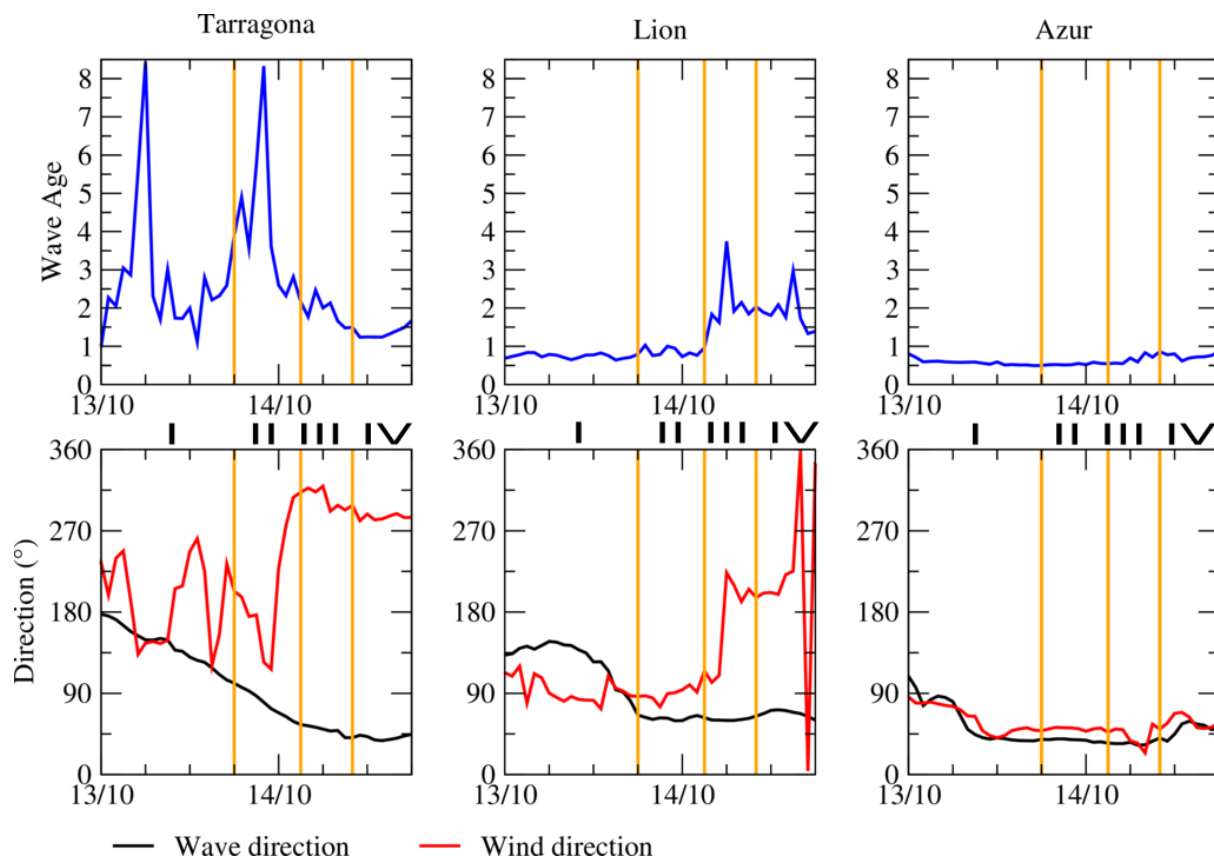


Figure 8. Evolution of the wave age (blue) and direction (°) of local wind (red) and waves (black) simulated with AWF (WY) during the 13 October run at three different moored buoys. Orange lines limit the four different phases (I, II, III, IV).

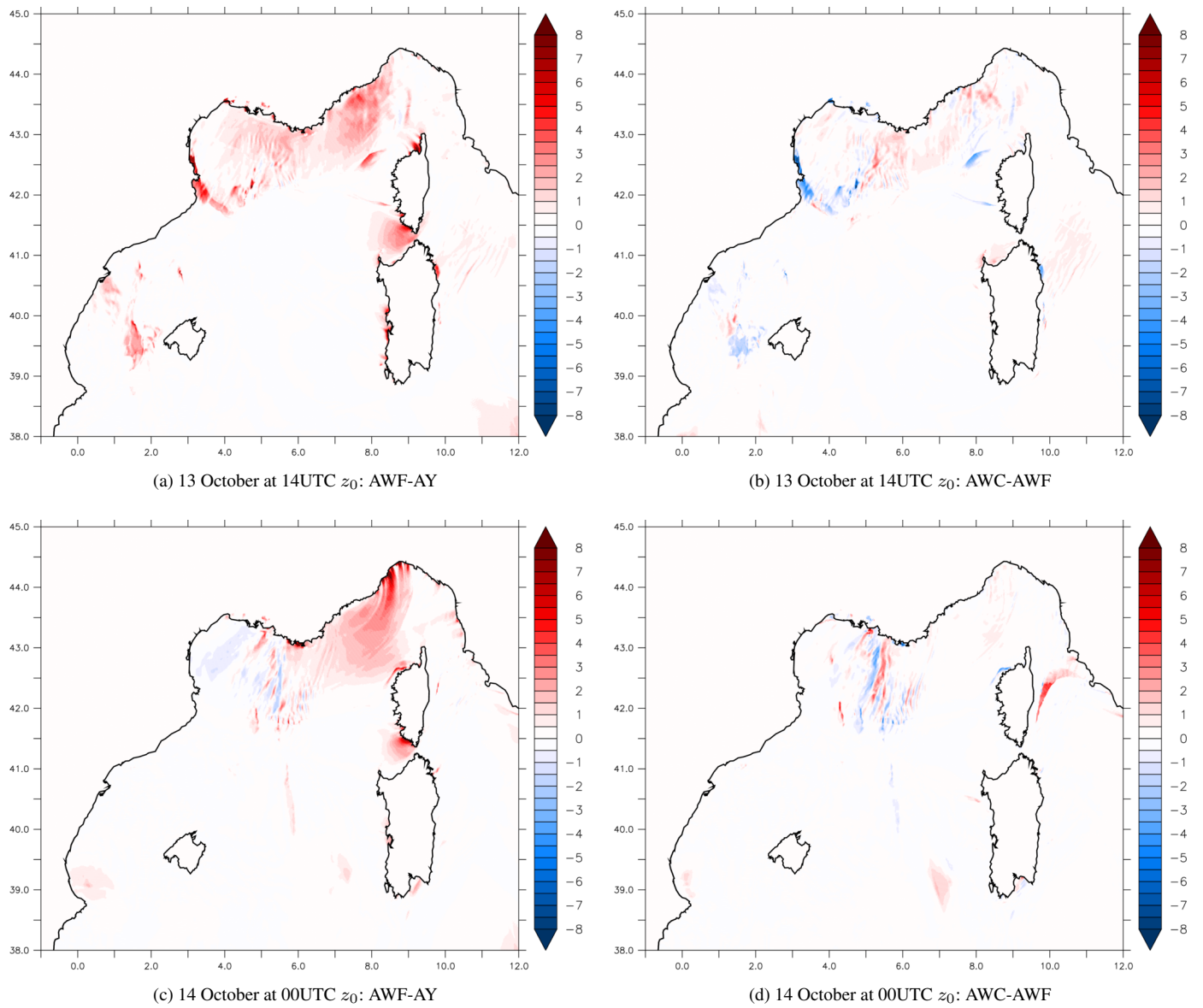


Figure 9. z_0 (10^{-3} m) differences for the 13 October at 14UTC (a,b) and the 14 October at 00UTC (c,d) between AWF-AY (a,c) and AWC-AWF (b,d).

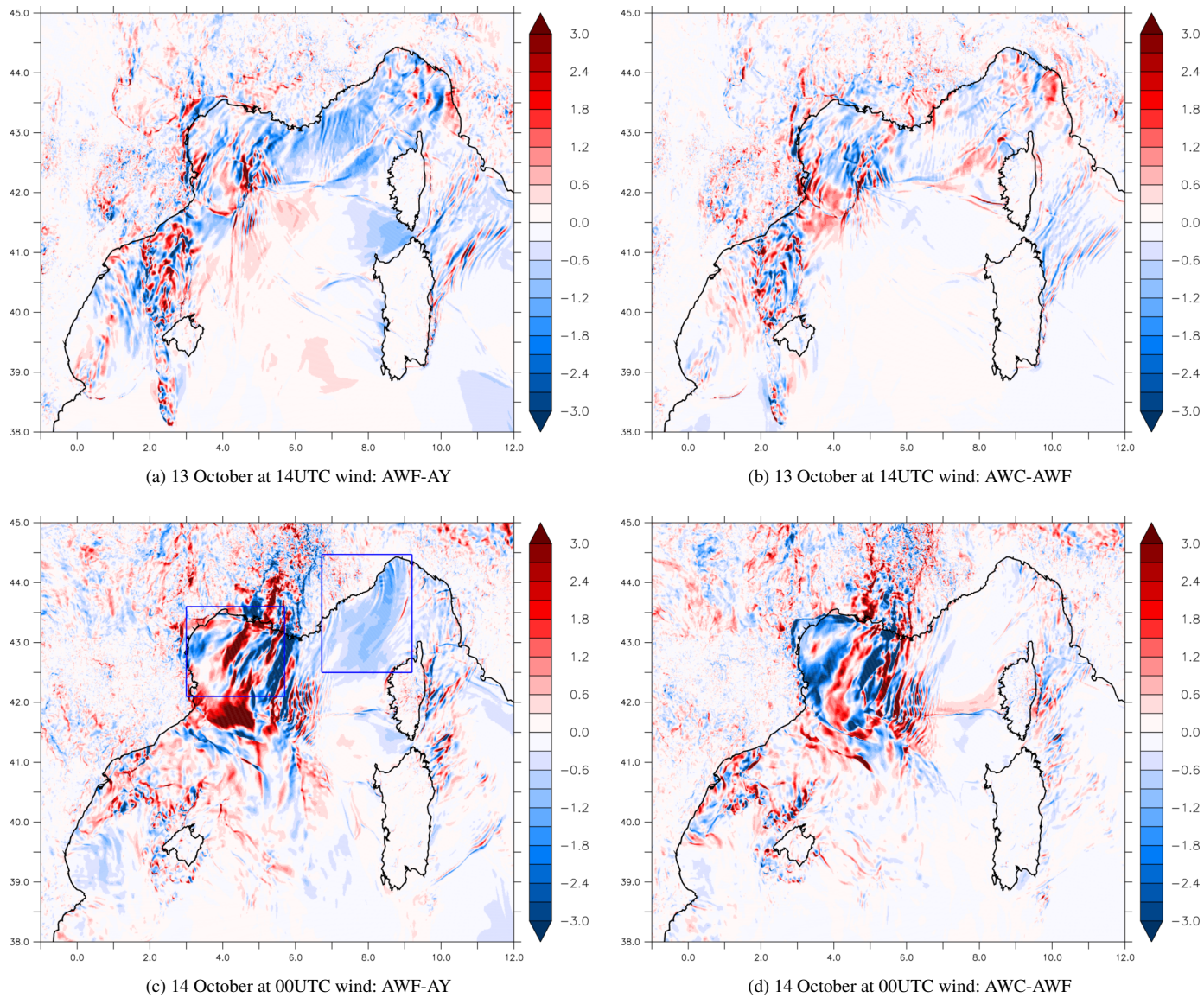
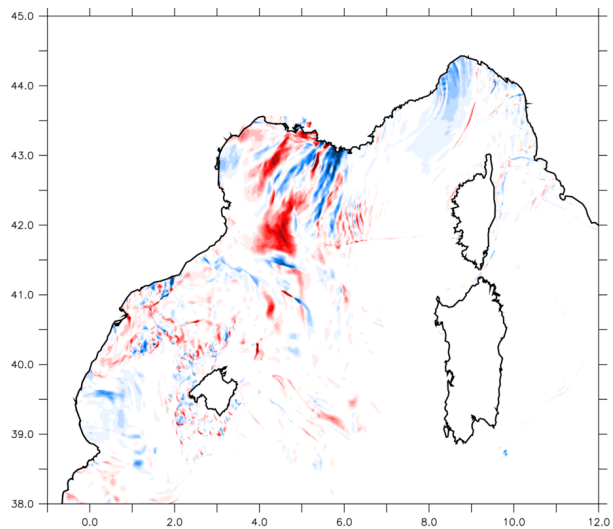
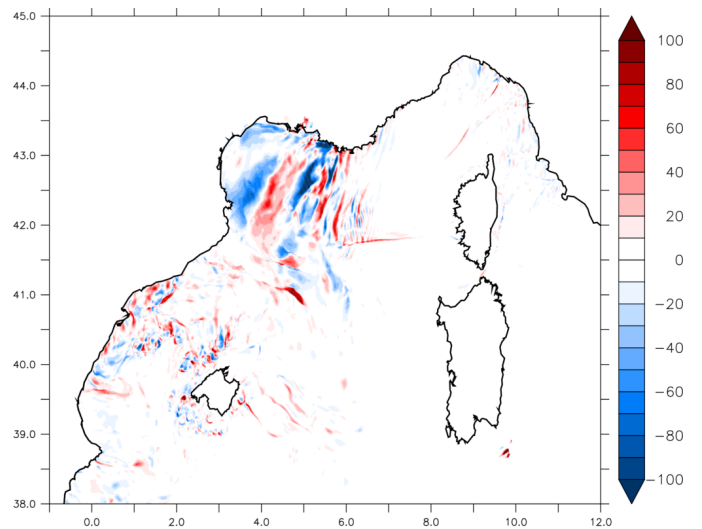


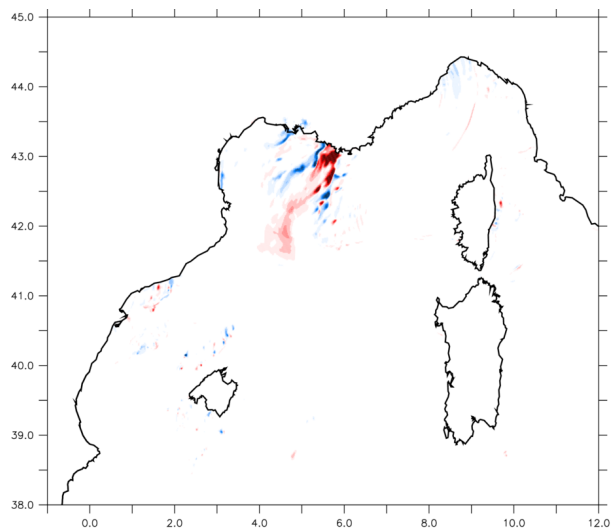
Figure 10. Wind (m.s^{-1}) differences for the 13 October at 14UTC (a,b) and the 14 October at 00UTC (c,d) between AWF-AY (a,c) and AWC-AWF (b,d).



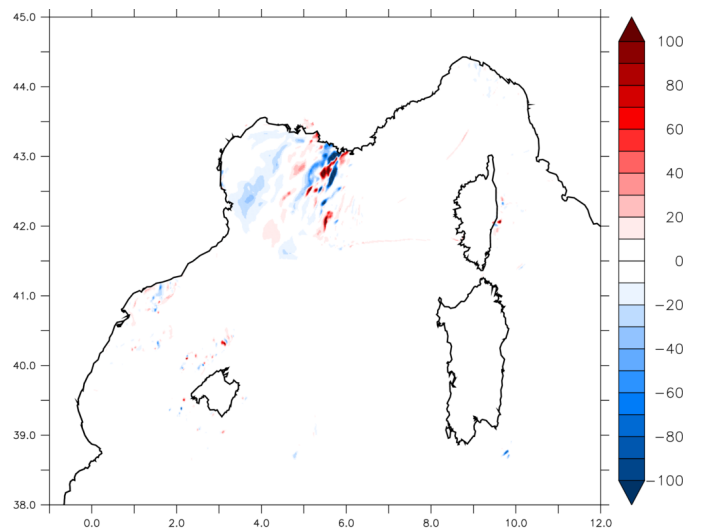
(a) 14 October at 00UTC LE: AWF-AY



(b) 14 October at 00UTC LE: AWC-AWF

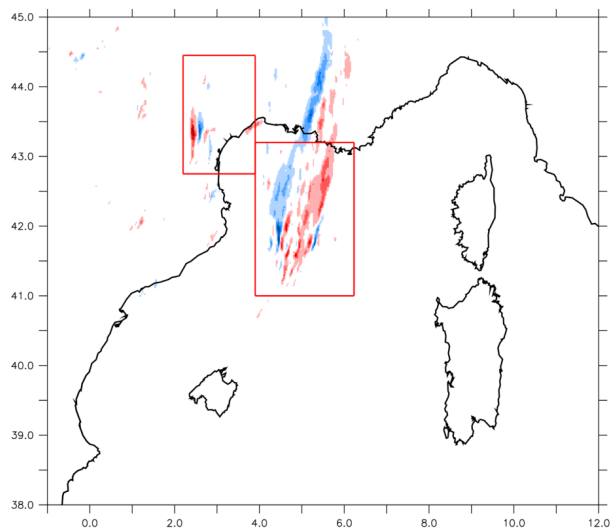


(c) 14 October at 00UTC H: AWF-AY

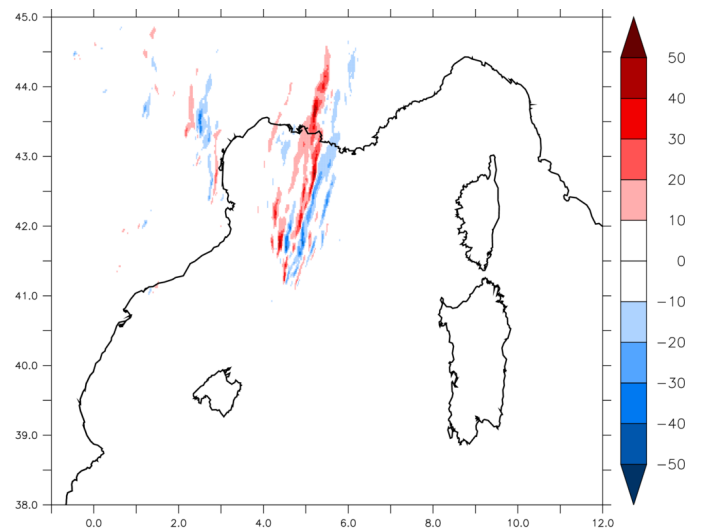


(d) 14 October at 00UTC H: AWC-AWF

Figure 11. (a,b) LE (W.m^{-2}) and (c,d) H (W.m^{-2}) differences for the 14 October at 00UTC between AWF-AY (a,c) and AWC-AWF (b,d).



(a) 14 October at 00UTC RR6: AWF-AY



(b) 14 October at 00UTC RR6: AWC-AWF

Figure 12. 6h-rainfall amount (mm) differences for the 14 October at 00UTC between AWF-AY (a) and AWC-AWF (b).

	A_0	A_1	A_2	A_3
	B_0	B_1	B_2	B_3
$7 \leq U_a < 23$	-9.202 -4.124E-1	2.265 -2.225E-1	-1.34E-1 1.178E-2	2.35E-3 1.616E-4
$23 \leq U_a < 25$	2.27 -2.41	6.67E-2 4.30E-2	0.0 0.0	0.0 0.0
$U_a \geq 25$	9.81E-2 0	-4.13E-3 0	4.34E-5 0	1.16E-8 0

Table A1. Coefficients of the polynomial functions A and B, depending on the wind speed range.