

Modelling the potential impacts of the recent, unexpected increase in CFC-11 emissions on total column ozone recovery

James Keeble^{1,2}, N. Luke Abraham^{1,2}, Alexander T. Archibald^{1,2}, Martyn P. Chipperfield^{3,4}, Sandip Dhomse^{3,4}, Paul T. Griffiths^{1,2}, and John A. Pyle^{1,2}

¹Department of Chemistry, University of Cambridge, Cambridge, UK

²National Centre for Atmospheric Science (NCAS), University of Cambridge, Cambridge, UK

³School of Earth and Environment, University of Leeds, Leeds, U.K.

⁴National Centre for Earth Observation (NCEO), University of Leeds, Leeds, U.K.

10 *Correspondence to:* James Keeble (james.keeble@atm.ch.cam.ac.uk)

Abstract. The temporal evolution of the abundance of long-lived, anthropogenic chlorofluorocarbons in the atmosphere is a major factor in determining the timing of total column ozone (TCO) recovery. Recent observations have shown that the atmospheric mixing ratio of CFC-11 is not declining as rapidly as expected under full compliance with the Montreal Protocol, and indicate a new source of CFC-11 emissions. In this study, the impact of a number of potential future CFC-11 emissions scenarios on the timing of TCO return to the 1960-1980 mean (an important milestone on the road to recovery) is investigated using the UM-UKCA model. Key uncertainties related to this new CFC-11 source and their impact on the timing of the TCO return date are explored, including: the duration of new CFC-11 production and emissions; the impact of any newly created CFC-11 bank; and the effects of co-production of CFC-12. Scenario-independent relationships are identified between cumulative CFC emissions and the timing of the TCO return date, which can be used to establish the impact of future CFC emissions pathways on ozone recovery in the real world. It is found that, for every 200 Gg Cl (~258 Gg CFC-11) emitted, the timing of global TCO return to 1960-1980 averaged values is delayed by ~0.56 years. However, a marked hemispheric asymmetry in the latitudinal impacts of cumulative Cl emissions on the timing of the TCO return date is identified, with longer delays in the southern hemisphere than the northern hemisphere for the same emission. Together, these results indicate that, if rapid action is taken to curb recently identified CFC-11 production then no significant delay in the timing of TCO return to the 1960-1980 mean is expected, highlighting the importance of ongoing, long-term measurement efforts to inform the accountability phase of the Montreal Protocol. However, if the emissions are allowed to continue into the future, and are associated with the creation of large banks, then significant delays in the timing of the TCO return date may occur.

1 Introduction

The discovery of the ozone hole by Farman et al. (1985) led quickly to the confirmation of the idea put forward by Molina and Rowland (1974) that chlorine radical species, the breakdown products of the chlorofluorocarbons (CFCs), could deplete stratospheric ozone. In the face of the scientific evidence, the Montreal Protocol on substances that deplete the ozone layer was agreed in 1987 and ratified in 1989. The original controls proposed were modest, covering only CFC₁₁ (CFC-11), CFC₁₂ (CFC-12), three further CFCs and three brominated compounds (Halons). However, in line with the developing scientific understanding, the controls were subsequently strengthened in a series of adjustments and amendments to the Protocol. These included stronger regulation on the phase down schedules, the addition of many more CFCs, CCl₄ and transitional hydrochlorofluorocarbon (HCFC) compounds under the London Amendment in 1990 and the inclusion of many more brominated compounds, including methyl bromide under the Copenhagen Amendment of 1992. The initial replacements for the CFCs, the HCFCs, have shorter lifetimes than the CFCs (Chipperfield et al., 2014) and accordingly their impact on stratospheric ozone is less. They, in turn, are being replaced by hydrofluorocarbons (HFCs), compounds which do not directly lead to ozone depletion but some of which are strong greenhouse gases. Regulations to limit the growth of many HFCs were agreed in the Kigali Amendment in 2016.

In consequence, the atmospheric abundances of ozone-depleting chlorine and bromine species are now declining in the atmosphere, following their peaks in the late 1990s (WMO, 2018), leading to the start of ozone recovery. The 2018 Scientific Assessment for the Montreal Protocol (WMO, 2018) reported that the Antarctic ozone hole, while continuing to occur each year, is showing early signs of recovery (e.g. Solomon et al., 2016) and that upper stratospheric ozone has increased by up to 3% since 2000 (e.g. LOTUS, 2019). However, there is as yet no significant recovery trend in global column ozone (e.g. Ball et al., 2018; Weber et al., 2018). Furthermore, because many ODSs are also greenhouse gases, their control has brought significant climate benefits (Velders et al., 2007; Velders et al., 2012; WMO, 2018). The annual reduction in these greenhouse gas emissions is estimated to be about five times larger than the annual emission reduction target for the first commitment period of the Kyoto Protocol (WMO, 2014).

The Montreal Protocol has undoubtedly been successful. Without the Protocol the abundance of ODSs would likely have risen such that, for example, very large ozone depletion could have occurred in the Arctic (Chipperfield et al, 2015). Uncontrolled growth of ODSs would also have severely exacerbated the impact on global warming of the increase in other greenhouse gases, making current climate targets even more challenging to meet. However, there have recently been questions about the completeness of the implementation of the Protocol. The concentrations of some short-lived anthropogenic halocarbons, which are not covered by the Protocol, have increased in the atmosphere (Hossaini et al., 2017; Oram et al., 2017; Fang et al. 2018), with suggestions that they might be by-products in the production of other halocarbons. Furthermore, the concentrations of some of the controlled ODSs have not followed projections based on their phase-out under the Montreal Protocol. For instance, concentrations of carbon tetrachloride, CCl₄, have not fallen as rapidly as expected based on its atmospheric lifetime. A detailed reanalysis of CCl₄ indicates that inadvertent by-product emissions from the production of chloromethanes and

perchloroethylene, and fugitive emissions from the chlor-alkali process, have contributed to this discrepancy (SPARC, 2016; Sherry et al., 2018; WMO, 2018) and recently Lunt et al. (2018) have shown that emissions of CCl₄ from east China have increased in the last decade. East China as a source of other short-lived halocarbons was also suggested by Ashfold et al. (2015) and Fang et al. (2018).

5 Against this background, Montzka et al. (2018) showed that the atmospheric abundance of one of the major chlorine-carrying CFCs, CFC-11, is not declining as expected under full compliance with the Montreal Protocol. Using the NOAA network of ground-based observations, they demonstrated clearly that the rate of decline of CFC-11 in the atmosphere between 2015-2017 was about 50% slower than that observed during 2002–2012 and was also much slower than had been projected by WMO (2014). They inferred that emissions of CFC-11 had been approximately constant at ~55 Gg yr⁻¹ between 2002 and 2012 and
10 had then risen after 2012 by 13 Gg yr⁻¹ to ~68 Gg yr⁻¹. Montzka et al. (2018) argued that this increase could not be explained by increased release from pre-existing banks. Instead, they suggested that production of CFC-11 in east Asia, which is inconsistent with full compliance of the Montreal Protocol, was the likely cause. Using inverse modelling, Rigby et al. (2019) have since shown that the increase in CFC-11 emissions from eastern China between 2008-2012 and 2014-2017 is ~7 Gg yr⁻¹, corresponding to approximately 40-60% of the global emission increase identified by Montzka et al. (2018) during that
15 period. The increase in CFC-11 emissions after 2012, in conjunction with the expected decline in global CFC-11 emissions which would have resulted from full compliance with the Montreal Protocol, has resulted in global CFC-11 emissions being ~35 Gg yr⁻¹ greater than anticipated by the WMO (2014) A1 scenario in 2019.

The exact source of the emissions remains unknown, nor is it known if there is co-production of CFC-12. It is usual that the gases are produced together in an industrial plant (e.g. Siegemund et al., 2000), with the fraction of CFC-11 to CFC-12
20 production varying between 0.3 to 0.7 (UNEP, 2018). There is currently no evidence that CFC-12 concentrations in the atmosphere are also declining at a slower rate than expected but some co-production of CFC-12 along with CFC-11 is always expected.

Compliance with the Montreal Protocol is essential for its continued success in reducing stratospheric Cl_y and ultimately healing the ozone layer. Any non-compliance will inevitably prolong the period when the Antarctic ozone hole will continue
25 to occur and delay the date at which global total column ozone (TCO) returns to its 1980s values, an important milestone on the road to recovery. Recent studies by Dameris et al. (2019) and Dhomse et al. (2019) have explored a range of different future ODS loadings, enhanced above those expected under full compliance with the Montreal Protocol, and find substantial delays in recovery depending on the scenario. It is essential therefore to understand the likely impact of the current non-compliance. Here the UM-UKCA chemistry-climate model is used to assess the possible implications of the change in decline
30 of CFC-11. A number of possible scenarios are explored in a range of sensitivity calculations. These include emissions which cease immediately, or which persist for different periods into the future. These scenarios also consider that some of the non-compliant production may be stored in new CFC-11 banks, for later release, and, that production of CFC-11 may be associated with co-production of CFC-12.

Until the source of the recent CFC-11 emissions is understood and thoroughly quantified, model calculations can only investigate a range of possible future emissions scenarios. However, models can be used to search for a relationship between the amount of chlorine emitted into the atmosphere and the timing of TCO return dates. Here results from both the UM-UKCA model and the TOMCAT CTM (recently used to study the impact of increased CFC-11 emissions on the behaviour of the Antarctic ozone hole (Dhomse et al., 2019)) are used to investigate the relationship between increased emissions and enhanced ozone depletion. Identification of a robust relationship would allow us to develop a scenario-independent understanding of the impact of uncontrolled CFC emissions on the TCO return date.

In Section 2 the UM-UKCA model and CFC scenarios used in this study are discussed in detail. Section 3 assesses the impact of these CFC emissions scenarios on stratospheric chlorine loading, before the impacts on the TCO return date are examined in Section 4. Section 5 investigates the relationship between cumulative CFC emissions and ozone depletion, using both the CCM and CTM. Finally, further discussion of the results and a summary of our conclusions are provided in Section 6.

2 Model configuration and simulations

To explore the impacts of potential future CFC-11 emission scenarios on the TCO return date, a total of 10 transient simulations were performed using version 7.3 of the HadGEM3-A configuration of the Met Office's Unified Model (Hewitt et al., 2011) coupled with the United Kingdom Chemistry and Aerosol scheme (hereafter referred to as UM-UKCA). This configuration of the model has a horizontal resolution of 2.5° latitude \times 3.75° longitude, and 60 vertical levels following a hybrid sigma-geometric height coordinate, extending from the surface to a model top at 84 km. The chemical scheme is an expansion of the scheme presented in Morgenstern et al. (2009) in which halogen source gases are considered explicitly and the effects of the solar cycle are considered, as described in Bednarz et al. (2016), and includes 45 chemical species, 118 bimolecular reactions, 17 termolecular reactions, 41 photolysis and 5 heterogeneous reactions occurring on the surfaces of polar stratospheric clouds and sulphate aerosols. This chemistry scheme provides a detailed treatment of stratospheric chemistry including the O_x , ClO_x , BrO_x , HO_x and NO_x catalytic cycles, and a simplified tropospheric scheme including the oxidation of a limited number of organic species (CH_4 , CO , CH_3O_2 , CH_3OOH , $HCHO$) alongside detailed HO_x and NO_x chemistry. The chemical tracers O_3 , CH_4 , N_2O , CFC-11, CFC-12, CFC-113, and HCFC-22 are all interactive with the radiation scheme. The halogenated source gases CFC-11, CFC-12, CFC-113, HCFC-22, halon-1211, halon-1301, CH_3Br , CH_3Cl , CCl_4 , CH_2Br_2 , and $CHBr_3$ are considered explicitly, the concentration of each prescribed at the surface as a time evolving lower boundary conditions (LBC). The version of UM-UKCA used in this study is an atmosphere-only configuration, with each simulation using the same prescribed sea surface temperatures (SSTs) and sea ice fields taken from a parent coupled atmosphere-ocean HadGEM2-ES integration. The configuration of the model used for this study includes the effects of the 11-year solar cycle in both the radiation and photolysis schemes. The top of atmosphere solar flux follows historical observations from 1960 to 2009, after which a repeating solar cycle is imposed which is an amplitude equivalent to the observed cycle 23 (as detailed in Bednarz et

al., 2016). Further information on the model configuration used for this study is provided in Keeble et al. (2018). Except for CFC-11 and CFC-12 LBCs, all other chemical forcings in the simulations follow the experimental design of the WCRP/SPARC CCM1 REF-C2 experiment (Eyring et al., 2013), which adopts the RCP6.0 scenario for future GHG and ODS emissions. A baseline experiment performed using CFC-11 and CFC-12 LBCs provided by the WMO (2014) A1 scenario was run from 1960 to 2099. A further 9 simulations were performed, running from 2012 to 2099, using a range of CFC-11 and CFC-12 LBCs, which were designed to cover a large but plausible range of potential future CFC emissions scenarios given the associated uncertainties.

2.1 CFC-11 scenarios

There are a number of important details associated with the recently reported CFC-11 emissions from East Asia which are poorly understood. A key factor is whether the identified CFC-11 emissions arise from emissive or non-emissive uses. If they arise from a totally emissive use, then the observed CFC-11 changes represent the total new CFC-11 production, with this new source of CFC-11 being released into the atmosphere during either production or use. Conversely, if they arise from a non-emissive use (e.g. foam insulation), then the observed changes to CFC-11 represent only a fraction of the total production, with a large component entering a new bank. In order to address this, two scenario types were created, which reflect the new CFC-11 production which is in addition to that implied in the WMO (2014) A1 scenario. In SCEN1, which represents the emissive use scenario, constant emissions of 35 Gg CFC-11 yr⁻¹ (~27 Gg Cl yr⁻¹) were assumed while in SCEN2 total production was assumed to be 90 Gg CFC-11 yr⁻¹ (~70 Gg Cl yr⁻¹), with 15 Gg CFC-11 yr⁻¹ of this total directly emitted into the atmosphere, while the remaining 75 Gg CFC-11 yr⁻¹ entered a bank with an assumed release fraction of 3.5 % yr⁻¹. The SCEN2 scenario is designed to give an additional emission increment of ~35 Gg CFC-11 yr⁻¹ in 2019, similar to the emissions value used in SCEN1 and consistent with the CFC-11 emissions increment, in addition to that expected assuming only release from known banks, identified by Montzka et al. (2018.) We emphasize that the 35 Gg CFC-11 yr⁻¹ and 90 Gg CFC-11 yr⁻¹ values represent the extra emissions/production increment assumed in addition to those of the WMO (2014) A1 scenario.

A second key factor is the duration of the illegal production. In order to address this question, three sets of simulation were performed for both SCEN1 and SCEN2, in which uncontrolled production either stops this year (2019), or continues into the future until 2027 or 2042, giving total emissions periods of 7, 15 or 30 years, respectively. All simulations assume that uncontrolled production and emission began in 2012. Simulations are named such that the scenario name is followed by the emission period, separated by an underscore (i.e. SCEN1_15 uses SCEN1 emissions from 2012 for 15 years).

A third consideration is the potential co-production of CFC-12. While there is no evidence currently that CFC-12 concentrations in the atmosphere are declining at a slower rate than expected (Montzka et al., 2018), CFC-12 is commonly co-produced alongside CFC-11 in ratio of 30:70 either way (TEAP, 2019). Accordingly, an additional scenario (SCEN3) was developed in which 90 Gg yr⁻¹ of both CFC-11 and CFC-12 is produced, i.e. a ratio of 50:50, towards the middle of the expected range. The same assumptions are made about the relative fraction entering the bank and the subsequent bank release rate as

for SCEN2. SCEN3 was performed for the three different emissions periods used by SCEN1 and SCEN2, and simulations follow the same naming convention. As we consider both CFC-11 and CFC-12, all future emission/production values will be given in Gg Cl, with 1 Gg CFC-11 equal to ~ 0.77 Gg Cl, and 1 Gg CFC-12 equal to ~ 0.59 Gg Cl.

The emissions for these various scenarios are shown (in Gg Cl) in Figure 1a, while Figure 1b shows the cumulative emissions and Figure 1c shows the size of the newly created bank. The SCEN3 scenarios include both CFC-11 and CFC-12, both scaled to Gg Cl and summed.

Figure 1a highlights that the SCEN1 scenario emissions stop at the end of the assumed production, while for the SCEN2 and SCEN3 scenarios emissions continue throughout the 21st century long after the cessation of production due to the newly created bank. For SCEN2 and SCEN3 the shapes of the emissions curves are controlled by the combination of direct emission and newly created bank. While production continues, the yearly direct emissions remain constant, but the bank grows, leading to larger total emissions per year. At the moment production stops the direct emissions also stop, resulting in a marked step down in the emissions. After that point, all emissions emanate from the newly created bank. The maximum size of emission is dictated by the duration of production. For comparison, Daniel et al. (2007) estimate that peak CFC-11 production, before the adoption of the Montreal Protocol, reached ~ 300 Gg Cl yr^{-1} in 1986-87. For SCEN1 scenarios, cumulative emissions increase only during the period of assumed production; there is no newly created bank. For the SCEN2 and SCEN3 scenarios cumulative emissions grow most rapidly during the period when direct emissions occur but they continue to increase throughout the 21st century due to emissions from the bank. The size of the newly created bank is dependent on the duration of production and the release rate from the bank (Figure 1c), which was assumed to be $3.5\% \text{ yr}^{-1}$.

As discussed above, the UM-UKCA model uses prescribed lower boundary condition (LBC) mixing ratios of CFCs. As a result, each of the emissions scenarios described above was converted into LBC mixing ratios using a simplified box model which uses only the emissions flux and a CFC-11 lifetime of 55 years. This model reproduces to within good agreement the observed 1994-2017 CFC-11 surface mixing ratio when initialized with the 1994 values and using the emission estimates of Montzka et al. (2018). The time variation of CFC-11 at the surface is shown in Figure 2 for the different scenarios.

3 Stratospheric Chlorine

Increases in stratospheric chlorine will lead to ozone depletion, and so uncontrolled production of CFCs could obviously pose a serious threat to the continued success of the Montreal Protocol. Modelled 40 km stratospheric inorganic chlorine (Cl_y) mixing ratios, averaged from 10°S - 10°N , are shown in Figure 3, and stratospheric the Cl_y return date (the date at which Cl_y mixing ratios, averaged from 10°S - 10°N at 40 km, return to the BASE 1980 value) are given in table 1. We chose the 10°S - 10°N latitude range for calculating Cl_y return dates as this is within the tropical pipe in which air is predominantly moved vertically with limited horizontal mixing (e.g. Waugh, 1996; Neu and Plumb, 1999), a necessary consideration as Cl_y varies latitudinally with age of air. In the BASE simulation, stratospheric Cl_y mixing ratio is projected to return to its 1980 value by

2058. Only small differences in the stratospheric Cl_y return date are modelled for the SCEN1 simulations, with a maximum delay of 3 years occurring in the SCEN1_30 simulation, which assumes the longest duration of additional CFC-11 emissions. However, large delays in the stratospheric chlorine return date are modelled in the SCEN2 simulations, which assume a large bank is also being produced alongside the direct atmospheric emissions (see figure 1). In the SCEN2_7 scenario, which
5 assumes CFC-11 production stops in 2019, the stratospheric Cl_y return date is delayed by 2 years, and for SCEN2_30, which assumes CFC-11 production continues until 2042, the stratospheric Cl_y return date is delayed by 8 years. The delays highlight the potential importance for ozone depletion of any bank produced and its subsequent emission into the atmosphere. The delay in the stratospheric Cl_y return date is larger still if co-production of CFC-12 is considered, with the stratospheric Cl_y return date being delayed by 14 years in the SCEN3_30 scenario considered here.

10 **4 Modelled total column ozone response**

Figure 4 shows the annual mean total column ozone (TCO) data from the BASE simulation (grey line) from 1960-2100, averaged over 60°S - 60°N . Consistent with previous studies, TCO values decrease sharply from 1980 to the late 1990s as a result of increasing stratospheric chlorine loadings, before gradually increasing throughout the 21st century. Superimposed on these long-term trends is an 11-year oscillation resulting from the solar cycle. Observed annual mean TCO values from version
15 2.8 of the Bodeker Scientific total column ozone dataset (Bodeker et al., 2005) are shown in purple. There is generally good agreement between modelled TCO values and the Bodeker dataset; decadal total column ozone changes, the response of column ozone to the solar cycle and the magnitude of interannual variability are all well captured by the model throughout the time period during which the observations and model data overlap.

As discussed by Keeble et al. (2018; following WMO, 2007; Chipperfield et al., 2017), three stages of ozone recovery can be
20 identified: (i) a slowed rate of decline and the date of minimum column ozone, (ii) the identification of significant positive trends and (iii) a return to historic values. Here, we focus on the impact of uncontrolled CFC-11 emissions on the last of these metrics: return to historic values, with the historic baseline value defined as the total column ozone average from 1960-1980. This definition of the baseline period was chosen to avoid any sensitivity of the TCO return date to the choice of any individual year (which may be anomalously high or low). In actuality, global (60°S - 60°N) TCO averaged from 1960-1980 in the BASE
25 simulation is 298.1 DU, and the values for 1960 and 1980 are 297.5 DU and 298.0 DU respectively, and so there is little difference between the timing of global TCO return to these three values. However, differences do occur in regions with high interannual variability (e.g. the Arctic).

As discussed in previous studies (e.g. Salby et al., 2011; Ball et al., 2018), the identification of total column ozone recovery is complicated by the effects of interannual variability. To mitigate these impacts, the effects of natural processes (such as
30 volcanic eruptions, the QBO, ENSO and solar cycle) can be removed from the data using statistical techniques (such as Multiple Linear Regression, e.g. Staehelin et al., 2001; WMO, 2007 or the Time series Additive Model, Scinocca et al., 2010),

or the data can be smoothed by averaging across multiple years (e.g. Dhomse et al., 2018). Following Dhomse et al. (2018), annual mean UM-UKCA data is smoothed using an 11-point boxcar smoothing to reduce both the effects of short-term variability and the signature of the 11-year solar cycle. The smoothed data are shown on figure 4 as the black line. For the analysis in subsequent sections, all data from the BASE and SCEN simulations are smoothed using this method.

5 Ideally, to provide uncertainty estimates for our various integrations, a multi-member ensemble would be run for the BASE and each SCEN calculation. However, in order to explore the largest possible range of future CFC-11 emissions scenarios, only one integration was performed for each scenario. Instead, data from a separate 5-member ensemble of 1980-2080 transient simulations (see Bednarz et al, 2016) is used to provide a rough estimate of the uncertainty range of return dates. These simulations used the same model configuration as used for our BASE and SCEN calculations but were forced with the older
10 WMO (2011) CFC-11 and CFC-12 LBCs. Uncertainty estimates were estimated simply by identifying the ensemble member with the largest difference in return date from the ensemble mean, and defining this difference as the uncertainty range (e.g. for 5 ensemble members where the return dates might be 2061, 2062, 2060, 2061 and 2066, the mean return date would be 2062 and the largest deviation is 2066, so the uncertainty estimate would be ± 4 years). This provides an approximate indication of uncertainty for all latitude ranges considered here, except for the latitude range 90°S-60°S, where TCO return to the 1960-
15 1980 mean occurred after 2080, and so lies outside the range of the ensemble.

For the BASE integration under the WMO (2014) scenario, a global (60°S-60°N) TCO return date of 2054 \pm 2 years was calculated, with the return dates for other latitudes shown in Table 1. In the next section, the impact of CFC-11 and CFC-12 emissions from the different SCEN scenarios on these return dates is assessed.

4.1 Global total column ozone

20 Figure 5 shows smoothed TCO values for the BASE and SCEN simulations, averaged from 60°S-60°N. All simulations show return to the baseline period of the 1960-1980 average between 2054 and 2064 (return dates provided in Table 1). The BASE simulation, which adopts the WMO (2014) LBC for ODSs and as such assumes the lowest anthropogenic Cl_y emissions, returns to the 1960-1980 mean the earliest, in 2054, as discussed above. The impact of the additional CFC-11 and CFC-12 production scenarios investigated here is to delay the return date. For SCEN1_7 and SCEN1_15, the delay is small and within the range
25 of return dates calculated from the 5-member ensemble. Only SCEN1_30 of the SCEN1 scenarios shows a significant delay in return date of 3 years. In contrast, for the SCEN2 simulations, which assume the creation of a new bank and subsequent emissions of CFC-11 from that bank, substantial delay in the return date of global TCO is modelled in both the SCEN2_15 and SCEN2_30 simulations (4 and 7 years, respectively). Only in the case that the assumed production of 90 Gg/yr stops this year (2019) is no significant delay in the return of TCO values to the baseline period modelled. The SCEN3 scenarios, which
30 assume the co-production of CFC-12 alongside CFC-11, all show larger delays in the return date, being 10 years for SCEN3_30.

4.2 Regional total column ozone

Regional TCO projections for the BASE and SCEN simulations are also shown in figure 5, from the Antarctic to the Arctic, and TCO return dates for each region is given in Table 1. Annual mean TCO values over Antarctica (90°S-60°S) return to the 1960-1980 average by 2084 in the BASE simulation, 30 years after the global (60°S-60°N) TCO average is expected to return.

5 Substantial further delays in the date at which Antarctic TCO returns to the 1960-1980 mean are modelled for a number of the SCEN simulations. Again, the impact of the SCEN1 scenarios, which assumes no newly created bank, is modest with no delay modelled, except for SCEN1_30, which returns to the 1960-1980 average in 2088. In contrast, large delays are modelled for both the SCEN2_15 and SCEN2_30 simulations, which have projected return dates of 2093 and 2095 respectively. If co-production of CFC-12 is considered, SCEN3_15 and SCEN3_30 suggest that 11-year averaged TCO values will not return to
10 the 1960-1980 baseline period by the end of the 21st century.

In the SH midlatitudes (60°S-30°S), delays in the return date are modelled for a number of SCEN simulations. If production stops in 2019 there is essentially no delay, while scenarios with higher emissions or longer duration lead to delays between 6 (SCEN2) and 9 years (SCEN3_30, which includes co-production of CFC-12).

While most SCEN simulations project a delay in the return of Antarctic and SH midlatitude annual mean TCO to the 1960-
15 1980 mean, SCEN1_7, SCEN1_15 and SCEN3_7 all have earlier return dates than the BASE simulation. In the case of SCEN1_7 these changes in the SH midlatitudes are outside the model range calculated from the Bednarz et al (2016) 5-member ensemble, occurring 4 years earlier than in the BASE simulation. This may be because the uncertainty estimates calculated here from the 5-member ensemble do not fully capture the true system uncertainty, or that atmospheric chemistry-climate feedbacks may result in increased TCO values in some locations despite increased stratospheric ODS values. For example,
20 Keeble et al. (2014) show modelled wintertime TCO increases in the northern midlatitudes resulting from increased polar ozone depletion and associated changes in the lower branch of the BDC.

The observed ozone loss in the tropics has been small and, furthermore, future changes in the tropics are driven both by reductions in the stratospheric abundance of halogens, which tend to increase ozone, and the strengthening of the Brewer-Dobson circulation, which tends to decrease column ozone (e.g. Oman et al., 2010; Eyring et al., 2013; Meul et al., 2014;
25 Keeble et al., 2017; Chiodo et al., 2018). Here, tropical (30°S-30°N) TCO values are projected to return to the 1960-1980 mean by 2057 in the BASE simulation, and all SCEN simulations show significant delays to this return date except for SCEN1_7 and SCEN2_7 (i.e. those simulations which assume that uncontrolled production of CFC-11 stops in 2019, and there is no co-production of CFC-12). While TCO values are projected to return to the 1960-1980 average for the broad definition of the tropics used here, if a narrower definition is used (e.g. 5°S-5°N), TCO values do not return to the 1960-1980 average at any
30 point in the 21st century. This is consistent with the impacts on lower stratospheric ozone of the increased speed of the BDC resulting from anthropogenic GHG changes (e.g. Oman et al., 2010; Eyring et al., 2013; Meul et al., 2016; Keeble et al., 2017). In the NH midlatitudes (30°N-60°N), TCO under the BASE projection is modelled to return in 2047, considerably earlier than the SH midlatitudes. As at other latitudes, significant delay in the return date is modelled in the majority of SCEN simulations.

In the Arctic (60°N-90°N), annual mean TCO values are projected to return to the 1960-1980 mean in the BASE simulation in 2048, again substantially earlier than the Antarctic return date. While significant delays for Arctic ozone are modelled in the majority of SCEN simulations, unlike at other latitude ranges, the latest return dates are not associated with the SCEN3 simulations, which assume co-production of CFC-12. Instead, the latest return date of 2057 occurs in the SCEN2_30 simulations. We ascribe this to the very high dynamical variability of the Arctic polar vortex, its subsequent impact on total column ozone, and the large uncertainties in defining a return date in this region. Bednarz et al. (2016), also using the UM-UKCA model, showed that, although springtime Arctic ozone was projected to return to 1980 values by the late 2030s, episodes of dynamically-driven very low ozone could be found well into the second half of this century, consistent with our annual mean results presented here.

10 **5 Identifying scenario-independent relationships between CFC emissions and TCO return to the 1960-1980 mean**

While the SCEN simulations used in this study were designed to cover a broad range of potential future CFC-11 production scenarios, it is unlikely that future CFC-11 emissions will follow any of the scenarios described here. Therefore, we aim here to identify scenario-independent relationships between future CFC emissions pathways and the impact on TCO. For example, Dhomse et al. (2018) found relationships between the chlorine return date and a number of indicators of ozone recovery for a range of models (see, e.g., their Figure 8). In this study this relationship is further explored by linking TCO differences to emissions. Three emerging relationships are explored in the following sections: i) the timing of the global TCO return date as a function of Cl_y return date; ii) the magnitude of annual mean TCO depletion in a year as a function of the cumulative CFC emissions up to that year; and iii) the TCO return date as a function of the cumulative additional CFC emissions by the end of the simulation.

20 **5.1 Cl_y return date vs TCO return date**

The future evolution of stratospheric ozone mixing ratios follows closely the evolution of stratospheric Cl_y (e.g. WMO, 2018). Dhomse et al. (2018) found correlations between modelled return dates of stratospheric chlorine and ozone recovery dates for Antarctic and Arctic spring across a range of CCMI models. A similar relationship between the timing of Cl_y return to 1980 values and the timing of global TCO return to the 1960-1980 mean is identified in the SCEN simulations performed as part of this study, shown in Figure 6. As discussed above, the Cl_y return date is defined as the date at which Cl_y mixing ratios at 40 km return, averaged from 10°S-10°N, return to their 1980s value. The relationship between the global TCO return date and the Cl_y return date is robust, with an r² of 0.92, and indicates that for every year Cl_y return is delayed, the TCO return date is delayed by 0.64 years (given by the gradient of the linear fit through the points). The Cl_y return date itself is strongly linked to the assumed emissions. A robust linear relationship, with an r² value of 0.96, was identified between the total cumulative additional Cl emissions and the delay in Cl_y return date. This relationship indicates that, for every additional 200 Gg of Cl (258 Gg CFC-11 equivalent) emitted by 2099 above those implied in the WMO (2014) scenario, the Cl_y return date is delayed

10

by 0.86 years. It should be noted that the Cl_y return date occurs ~5 years later on average than the global TCO return date in the BASE and SCEN simulations (see Table 1), indicating that even after the time TCO values have returned to the 1960-1980 average, stratospheric chlorine mixing ratios remain elevated above the 1980 value.

5.2 TCO depletion vs cumulative emissions

5 In order to explore the magnitude of annual mean TCO depletion in any year as a function of the cumulative Cl emissions up to that year, results from the UM-UKCA SCEN simulations are supplemented by simulations performed with the TOMCAT chemistry transport model (CTM; Chipperfield et al., 2017). Both models have full stratospheric chemistry schemes but are independent of one another. The control CTM simulation (CTM_C) was performed until 2080 with repeating year 2000 meteorology and time-dependent future source gas surface mixing ratios. Two further simulations (described in detail in
10 Dhomse et al. (2019)) were performed with additional future CFC-11 emissions (i) at constant 67 Gg yr^{-1} (CTM_Fix) and (ii) including simulation of a bank and production decreasing to zero over 10 years (CTM_Bank). Note that simulation CTM_Bank gives larger emissions than CFM_Fix until about the year 2040.

Figure 7 shows, for both the UM-UKCA and TOMCAT models, the cumulative additional Cl emissions plotted against the additional TCO depletion driven by the increased emissions compared with a base integration, averaged over 60°S - 60°N . UM-
15 UKCA values are calculated as the difference between each SCEN simulation with respect to the BASE simulation, while TOMCAT values are calculated as CTM_Fix - CTM_C and CTM_Bank - CTM_C. For both models, all available years from each scenario are plotted, with each point representing a single year and showing the TCO difference between the scenario and base simulation for that year plotted against the cumulative Cl emissions reached by that year.

The estimated TCO depletion from both UM-UKCA and CTM simulations follows a reasonably compact, linear relationship
20 with cumulative emissions. The CTM simulations use identical meteorology, without any chemistry-climate feedbacks, and so a comparison of two simulations gives a direct measure of the chemical ozone impact of the additional emissions. In contrast, UM-UKCA generates consistent time-varying meteorology for each of the SCEN simulations and so includes both a forced response and internally generated natural variability. Despite this difference, the modelled relationship between cumulative emissions and global ozone depletion is remarkably similar for the two models: a total emission of 3500 Gg (Cl) gives a near-
25 global mean ozone decrease of between 2.5-3 DU. The agreement between the two models provides confidence in the diagnosed chemical impact of the CFC-11 emissions and shows a means by which results from different model simulations, with different CFC-11 emissions scenarios, can be compared. Further, it allows an estimate to be made of the impact of any given CFC-11 emission scenario on TCO depletion, which can in turn be applied to the real-world future emissions of CFC-
11, which remain uncertain.

30 In CTM run CFC_Bank the maximum CFC-11 emissions by 2080 are around 2700 Gg CFC-11 . By this stage a significant part of the large initial pulse of emissions (see Dhomse et al 2019) would have been removed from the atmosphere (consistent with its ~55 year lifetime) so that the CTM line deviates from the simple linear fit (black line Figure 7). This is also true for

the SCEN simulations performed with UM-UKCA, although the effects are small compared to the dynamically driven variability. The SCEN1 simulations are not shown in Figure 7 as their cumulative emissions stop increasing when the direct emissions stop (see Figure 1) and so for a large period of the simulations the differences are dominated by variability.

5.3 TCO return date vs total cumulative emissions

- 5 Figure 8 shows the relationship between the total cumulative additional Cl emissions, in Gg, and projected global TCO return date in the BASE and SCEN simulations. These values represent the additional Cl emissions assumed for each scenario in addition to the WMO (2014) A1 scenario. A robust ($r^2=0.93$) linear relationship is found, indicating that for every extra 200 Gg of Cl emitted, global TCO return to the 1960-1980 mean is delayed by 0.56 years. Repeating this analysis for 10-degree latitude bins gives the latitudinal dependence of the impacts of cumulative Cl emissions on TCO return date (Figure 9).
- 10 Uncertainty estimates are calculated for the regression using the standard error of the estimate, given as $\sigma_{est} = \sqrt{\frac{\sum(y-y')^2}{N}}$ where y is the TCO return date, y' is the predicted TCO return date from the regression mode, and N is number of simulations. For every 200 Gg of Cl emitted, the date of TCO return to the 1960-1980 mean is delayed by between 0.18-1.60 years, with a marked hemispheric asymmetry evident in the response. Large delays (~ 1.6 years per 200 Gg Cl) are modelled in the Antarctic, where heterogeneous processing of chlorine reservoirs on polar stratospheric cloud (PSC) surfaces allows for large ozone
- 15 depletion even for relatively small chlorine concentrations. On annual mean timescales these low values mix into the southern hemisphere midlatitudes, resulting in larger delays to the return date there (0.5-0.8 years per 200 Gg Cl) than in the northern hemisphere midlatitudes and Arctic (0.1-0.5 years per 200 Gg Cl), where the effects of PSC processing are less pronounced due to the higher temperatures and high dynamical variability of the Arctic polar vortex. No values are given south of 80°S , as TCO values do not return to the baseline period by the end of the simulations.
- 20 The delay in tropical TCO return date is also long (0.5-1.3 years per 200 Gg Cl) and associated with large uncertainties. As discussed above, the observed depletion of ozone in the tropics has been very small (WMO, 2018) and quantifying TCO recovery is complex, depending on not just the ODS loading of the stratosphere but on other factors including the future levels of greenhouse gases, changes to tropospheric ozone and the projected acceleration of the Brewer-Dobson circulation (e.g. Butchart, 2014; Meul et al., 2016).

25 6 Discussion and conclusions

The Montreal Protocol has been successful in reducing emissions of ODSs into the atmosphere, which in turn has led to the onset of ozone recovery. However, recent observational evidence indicates that atmospheric mixing ratios of CFC-11 are declining at a slower rate than that expected under full compliance with the Montreal Protocol. It seems likely that emissions resulting from new production, in contravention of the Montreal Protocol, are the likely cause of the change in decline rate,

with an important source in east Asia (Montzka et al., 2018; Rigby et al., 2019). However, there remain large uncertainties associated with these emissions: their source remains unidentified, changes to the release rate from the historical bank are unknown, the size of any newly created bank is uncertain and undetected co-production of other chlorinated ODSs is possible. Given these uncertainties, the impact of a range of plausible future CFC-11 emissions scenarios on the timing of TCO return to the 1960-1980 mean, a key milestone on the road to ozone recovery, was explored using the UM-UKCA model. Making a range of assumptions the scenarios are intended to cover a breadth of future emission pathways. We consider the size of emissions and their duration; we compare emissive versus non-emissive use (where in the latter the bank is enhanced) and we consider possible co-production of CFC-12. While none of the scenarios developed here is expected to accurately predict the future CFC-11 emissions pathway of the real-world, they provide a sensitivity range to guide possible future trajectories of the ozone layer.

If the recently identified CFC-11 emissions result from an emissive use (i.e. there is no new bank being created and estimated emissions are equal to the total production) then, provided the source of new CFC-11 production stops within the next decade, results from the SCEN1 scenarios indicate that there will be no significant delay in the return of global total column ozone to the 1960-1980 baseline. Only in the case of prolonged emissions would significant delay in the return date of global column ozone be expected.

However, if the recently identified CFC-11 changes result from non-emissive use, results from the SCEN2 scenarios indicate that, unless stopped immediately, the production has the potential to delay global total column ozone return to the 1960-1980 mean by up to 7 years, depending on the duration of the production and the size of the annual increment to the bank. Further, results from the SCEN3 scenarios suggest that if CFC-12 has been co-produced with CFC-11, then global total column ozone return could have already been delayed by 4 years, and that if, under the assumptions made here, production continues for up to 30 years from 2012, the total column ozone return date may be delayed by a decade.

Our results are, of course, dependent on the assumptions made in each of the SCEN scenarios. Therefore, it is important to identify scenario-independent metrics which can be used to establish the impact of future CFC emissions pathways on TCO return date. Three such relationships were identified: i) global TCO return date as a function of Cl_y return date; ii) the magnitude of annual mean TCO depletion in a year as a function of the cumulative CFC emissions up to that year; and iii) global TCO return date as a function of the total cumulative additional CFC emissions by the end of the simulation. The second of these relationships was further verified by comparing with results from the TOMCAT CTM, and despite differences between the assumed emissions scenarios used by both models, and the fundamental differences in the treatment of meteorology, good agreement was found between the two models, with 2.5-3 DU TCO depletion occurring for an additional 3500 Gg Cl. The robust linear relationship found between the total cumulative additional Cl emissions and the global TCO return date indicates that for every 200 Gg of Cl (~258 Gg CFC-11) emitted, global TCO return to the 1960-1980 mean is delayed by 0.56 years. However, a marked hemispheric asymmetry in the impacts of cumulative Cl emissions on the TCO return date at particular latitudes was identified, with longer delays in the southern hemisphere than the northern hemisphere for the same emission.

While these scenario-independent relationships are useful, they come with some caveats. All the scenarios developed in this study assume that new CFC-11 production began in 2012, and that despite new CFC-11 production, atmospheric CFC-11 mixing ratios continue to decline, consistent with the observations presented by Montzka et al. (2018). It is not expected that an emission of CFC-11 emitted in 2020 would have the same impact on the ozone return date as the same emission of CFC-11 emitted in, for example, 2080. This is due in part to the different background stratospheric temperatures, circulation, and sinks of active chlorine (e.g. the conversion of ClO_x to HCl through reaction with CH_4) at different times throughout the 21st century. Furthermore, any additional chlorine emissions which occur after TCO has returned to its 1960-1980 mean value might not deplete ozone below this value, and so would not affect the return date. Additionally, while the simulations analyzed in this study highlight the role of CFC-11 emissions on stratospheric ozone recovery, coupling between the ClO_x , BrO_x , NO_x , HO_x and O_x catalytic cycles means that not all the changes to the timing of the ozone return date modelled here are solely due to stratospheric chlorine changes. Dameris et al. (2019) highlight that increases in surface CFC-11 concentrations lead to increased ozone depletion through reactions of ClO_x and BrO_x , but relatively decreased depletion through O_x , NO_x and HO_x reactions. Due to these factors, in addition to the cumulative total, the temporal evolution of CFC-11 emissions is likely an important control on the relationships identified in this study. In this study we assume steady changes in emissions, consistent with a continuous anthropogenic source of additional CFC-11, rather than changes which might be large but sporadic. As such, while the relationships identified here likely give a good indication of the TCO response to the recently identified source of CFC-11, they may not prove robust for any unexpected CFC-11 emissions later in the century.

The detection of the change in the rate at which CFC-11 concentrations are declining in the atmosphere, and the inferred change in emissions, are important contributions to the Montreal Protocol during its accountability phase, during which the impact of the Protocol on the atmosphere is being assessed. It is clear that long-term monitoring of ODSs, as well as ozone, is an absolutely critical component of the atmospheric science response to the Protocol and its input to policy negotiations. Continued modelling of the impact of these emissions on the projected timing of the TCO return date is also required.

Results presented here highlight the need for rapid action in tackling any uncontrolled production of CFC-11. Unless emissions are stopped rapidly, we anticipate potentially significant delays in recovery. The date at which global TCO returns to its 1960-1980 mean could be delayed by about a decade, on the basis of our assumed emissions, and Antarctic ozone might not recover at all this century. New knowledge concerning the nature of the ODS emissions is required, which, in concert with increased atmospheric measurements of the ODSs, can inform the on-going discussions of the Montreal Protocol and ensure its future success.

Data availability

Data from all simulations are available on the UK Research Data Facility (<http://www.archer.ac.uk/documentation/rdf-guide>). v2.8 of the Bodeker dataset can be found at <http://www.bodekerscientific.com/data/total-column-ozone>, while v3 of the

GOME/SCIAMACHY/GOME2 Merged Total Ozone dataset can be found at https://www.iup.uni-bremen.de/gome/wfdoas/merged/wfdoas_merged.html.

Competing interests

The authors declare that they have no conflict of interest.

5 Acknowledgements

The research leading to these results has received funding from the European Community's Seventh Framework Programme (FP7/2007-2013) under grant agreement no. 603557 (StratoClim). We thank NERC through NCAS for financial support and NCAS-CMS for modelling support. Model simulations have been performed using the ARCHER UK National Supercomputing Service. This work used the UK Research Data Facility (<http://www.archer.ac.uk/documentation/rdf-guide>).

10 We would like to thank Greg Bodeker of Bodeker Scientific, funded by the New Zealand Deep South National Science Challenge, for providing the combined total column ozone database. We would like to thank both reviewers for their time and comments, which have helped improve the manuscript.

References

- Ashfold, M. J., Pyle, J. A., Robinson, A. D., Meneguz, E., Nadzir, M. S. M., Phang, S. M., Samah, A. A., Ong, S., Ung, H. E.,
15 Peng, L. K., Yong, S. E., and Harris, N. R. P.: Rapid transport of East Asian pollution to the deep tropics, *Atmos. Chem. Phys.*, 15, 3565-3573, <https://doi.org/10.5194/acp-15-3565-2015>, 2015.
- Ball, W. T., Alsing, J., Mortlock, D. J., Staehelin, J., Haigh, J. D., Peter, T., Tummon, F., Stübi, R., Stenke, A., Anderson, J.,
Bourassa, A., Davis, S. M., Degenstein, D., Frith, S., Froidevaux, L., Roth, C., Sofieva, V., Wang, R., Wild, J., Yu,
P., Ziemke, J. R., and Rozanov, E. V.: Evidence for a continuous decline in lower stratospheric ozone offsetting ozone
20 layer recovery, *Atmos. Chem. Phys.*, 18, 1379–1394, <https://doi.org/10.5194/acp-18-1379-2018>, 2018.
- Bednarz, E. M., Maycock, A. C., Abraham, N. L., Braesicke, P., Dessens, O., and Pyle, J. A.: Future Arctic ozone recovery:
the importance of chemistry and dynamics, *Atmos. Chem. Phys.*, 16, 12159-12176, <https://doi.org/10.5194/acp-16-12159-2016>, 2016.
- Bodeker, G. E., Shiona, H., and Eskes, H.: Indicators of Antarctic ozone depletion, *Atmos. Chem. Phys.*, 5, 2603–2615,
25 [doi:10.5194/acp-5-2603-2005](https://doi.org/10.5194/acp-5-2603-2005), 2005.
- Butchart, N.: The Brewer-Dobson circulation, *Reviews of Geophysics*, 52, 157–184, [doi:10.1002/2013RG000448](https://doi.org/10.1002/2013RG000448), 2014.

- Chiodo, G., Polvani, L., Marsh, D., Stenke, A., Ball, W., Rozanov, E., Muthers, S., and Tsigaridis, K.: The response of the ozone layer to quadrupled CO₂ concentrations. *J. Climate*, 31, 3893–3907, <https://doi.org/10.1175/JCLI-D-17-0492.1>, 2018.
- 5 Chipperfield, M. P., Liang, Q., Strahan, S. E., Morgenstern, O., Dhomse, S. S., Abraham, N. L., Archibald, A. T., Bekki, S., Braesicke, P., Di Genova, G., Fleming, E. L., Hardiman, S. C., Iachetti, D., Jackman, C. H., Kinnison, D. E., Marchand, M., Pitari, G. A., Rozanov, P. J., Stenke, E. A., and Tummon, F.: Multimodel estimates of atmospheric lifetimes of long-lived ozone-depleting substances: Present and future, *J. Geophys. Res.-Atmos.*, 119, 2555–2573, <https://doi.org/10.1002/2013JD021097>, 2014.
- 10 Chipperfield, M. P., Dhomse, S. S., Feng, W., McKenzie, R. L., Velders, G., and Pyle, J. A.: Quantifying the ozone and ultra-violet benefits already achieved by the Montreal Protocol, *Nat. Commun.*, 6, 7233, <https://doi.org/10.1038/ncomms8233>, 2015.
- Chipperfield, M.P., S. Bekki, S. Dhomse, N.R.P. Harris, B. Hassler, R. Hossaini, W. Steinbrecht, R. Thieblemont and M. Weber, Detecting recovery of the stratospheric ozone layer, *Nature*, 549, 211–218, doi:10.1038/nature23681, 2017.
- 15 Dameris, M., Jöckel, P., and Nützel, M.: Possible implications of enhanced chlorofluorocarbon-11 concentrations on ozone, *Atmos. Chem. Phys.*, 19, 13759–13771, <https://doi.org/10.5194/acp-19-13759-2019>, 2019.
- Daniel, J. S., Velders, G. J. M., Solomon, S., McFarland, M., and Montzka, S. A.: Present and future sources and emissions of halocarbons: Towards new constraints, *J. Geophys. Res.*, 112, D02301, doi:10.1029/2006JD007275, 2007.
- 20 Dhomse, S., Kinnison, D., Chipperfield, M. P., Cionni, I., Hegglin, M., Abraham, N. L., Akiyoshi, H., Archibald, A. T., Bednarz, E. M., Bekki, S., Braesicke, P., Butchart, N., Dameris, M., Deushi, M., Frith, S., Hardiman, S. C., Hassler, B., Horowitz, L. W., Hu, R.-M., Jöckel, P., Josse, B., Kirner, O., Kremser, S., Langematz, U., Lewis, J., Marchand, M., Lin, V., Mancini, E., Marécal, V., Michou, M., Morgenstern, O., O'Connor, F. M., Oman, L., Pitari, G., Plummer, D. A., Pyle, J. A., Revell, L. E., Rozanov, E., Schofield, R., Stenke, A., Stone, K., Sudo, K., Tilmes, S., Visioni, D., Yamashita, Y., Zeng, G.: Estimates of ozone return dates from Chemistry-Climate Model Initiative simulations, *Atmos. Chem. Phys.*, 18, 8409–8438, <https://doi.org/10.5194/acp-18-8409-2018>, 2018.
- 25 Dhomse, S., Feng, W., Montzka, S. A., Hossaini, R., Keeble, J., Pyle, J. A., Daniel, J. S., Chipperfield, M. P.: Delay in recovery of the Antarctic ozone hole from unexpected CFC-11 emissions, *Nat Commun* 10, 5781. <https://doi.org/10.1038/s41467-019-13717-x>, 2019.
- 30 Eyring, V., Arblaster, J. M., Cionni, I., Sedláček, J., Perlwitz, J., Young, P. J., Bekki, S., Bergmann, D., Cameron-Smith, P., Collins, W. J., Faluvegi, G., Gottschaldt, K.-D., Horowitz, L. W., Kinnison, D. E., Lamarque, J.-F., Marsh, D. R., Saint-Martin, D., Shindell, D. T., Sudo, K., Szopa, S., and Watanabe, S.: Long-term ozone changes and associated climate impacts in CMIP5 simulations, *J. Geophys. Res.-Atmos.*, 118, 5029–5060, doi:10.1002/jgrd.50316, 2013.
- Fang, X., Park, S., Saito, T., Tunnicliffe, R., Ganesan, A., Rigby, M., Li, S., Yokouchi, Y., Fraser, P., Harth, C., Krummel, P., Mühle, J., O'Doherty, S., Salameh, P., Simmonds, P., Weiss, R., Young, D., Lunt, M., Manning, A., Gressent, A.,

- and Prinn, R.: A potential new threat to ozone layer recovery from a rapid increase in chloroform emissions from China, *Nat. Geosci.*, 2018.
- Farman, J. C., Gardiner, B. G., and Shanklin, J. D.: Large losses of total ozone in Antarctica reveal seasonal ClO_x/NO_x interaction, *Nature*, 315, 207–210, 1985.
- 5 Hewitt, H. T., Copsey, D., Culverwell, I. D., Harris, C. M., Hill, R. S. R., Keen, A. B., McLaren, A. J., and Hunke, E. C.: Design and implementation of the infrastructure of HadGEM3: the next-generation Met Office climate modelling system, *Geosci. Model Dev.*, 4, 223–253, doi:10.5194/gmd-4-223-2011, 2011.
- Hossani, R., Chipperfield, M. P., Montzka, S. A., Leeson, A. A., Dhomse, S. S., and Pyle, J. A.: The increasing threat to stratospheric ozone from dichloromethane, *Nature Communications*, 8:15962, 1–9, doi:10.1038/ncomms15962, 10 2017.
- Keeble, J., Brown, H., Abraham, N. L., Harris, N. R. P., and Pyle, J. A.: On ozone trend detection: using coupled chemistry–climate simulations to investigate early signs of total column ozone recovery, *Atmos. Chem. Phys.*, 18, 7625–7637, <https://doi.org/10.5194/acp-18-7625-2018>, 2018.
- Keeble, J., Bednarz, E. M., Banerjee, A., Abraham, N. L., Harris, N. R. P., Maycock, A. C., and Pyle, J. A.: Diagnosing the radiative and chemical contributions to future changes in tropical column ozone with the UM-UKCA chemistry–climate model, *Atmos. Chem. Phys.*, 17, 13801–13818, <https://doi.org/10.5194/acp-17-13801-2017>, 2017.
- 15 LOTUS: SPARC/IO3C/GAW report on Long-term Ozone Trends and Uncertainties in the Stratosphere, edited by: Petropavlovskikh, I., Godin-Beekmann, S., Hubert, D., Damadeo, R., Hassler, B., Sofieva, V., SPARC Report No. 9, WCRP-17/2018, GAW Report No. 241, doi:10.17874/f899e57a20b, 2019.
- 20 Lunt, M., Park, S., Li, S., Henne, S., Manning, A., Ganesan, A., Simpson, I., Blake, D., Liang, Q., and O’Doherty, S.: Continued Emissions of the Ozone-Depleting Substance Carbon Tetrachloride from Eastern Asia, *Geophys. Res. Lett.*, 45, 11423–11430, 2018.
- Meul, S., Langematz, U., Oberländer, S., Garny, H., and Jöckel, P.: Chemical contribution to future tropical ozone change in the lower stratosphere, *Atmos. Chem. Phys.*, 14, 2959–2971, <https://doi.org/10.5194/acp-14-2959-2014>, 2014.
- 25 Meul, S., Dameris, M., Langematz, U., Abalichin, J., Kerschbaumer, A., Kubin, A., and Oberländer-Hayn, S.: Impact of rising greenhouse gas concentrations on future tropical ozone and UV exposure, *Geophys. Res. Lett.*, 43, 2919–2927, <https://doi.org/10.1002/2016GL067997>, 2016.
- Molina, M. J. and Rowland, F. S.: Stratospheric sink for chlorofluoromethanes: Chlorine atom catalyzed destruction of ozone, *Nature*, 249, 810–812, doi:10.1038/249810a0, 1974.
- 30 Montzka, S. A., Dutton, R., Yu, P., Ray, E., Portmann, R. W., Daniel, J. S., Kuijpers, L., Hall, B. D., Mondeel, D., Siso, C., Nance, D. J., Rigby, M., Manning, A. J., Hu, L., Moore, F., Miller, B. R., Elkins, J. W.: A persistent and unexpected increase in global emissions of ozone-depleting CFC-11, *Nature*, 557, 413–417, <https://doi.org/10.1038/s41586-018-0106-2>, 2018.

- Morgenstern, O., Braesicke, P., O'Connor, F. M., Bushell, A. C., Johnson, C. E., Osprey, S. M., and Pyle, J. A.: Evaluation of the new UKCA climate-composition model – Part 1: The stratosphere, *Geosci. Model Dev.*, 2, 43–57, doi:10.5194/gmd-2-43-2009, 2009.
- 5 Neu, J. L. and Plumb, R. A.: Age of air in a leaky pipe model of stratospheric transport, *J. Geophys. Res.*, 104, 19243–19255, 1999.
- Oman, L. D., Plummer, D., Waugh, D. W., Austin, J., Scinocca, J., Douglass, A. R., Salawitch, R. J., Akiyoshi, H., Bekki, S., Braesicke, P., Butchart, N., Chipperfield, M., Dhomse, S., Eyring, V., Frith, S., Garcia, R. R., Gettelman, A., Hardiman, S. C., Kinnison, D., Lamarque, J. F., Mancini, E., Marchand, M., Michou, M., Morgenstern, O., Pawson, S., Pitari, G., Peter, T., Pyle, J., Rozanov, E., Shepherd, T. G., Shibata, K., Stolarski, R., Teysse, H., and Tian, W.: Multi-model assessment of the factors driving the ozone evolution over the 21st century, *J. Geophys. Res.*, accepted, 10 2010.
- Oram, D., Ashfold, M., Laube, J., Gooch, L., Humphrey, S., Sturges, W., Leedham-Elvidge, E., Forster, G., Harris, N., and Mead, M.: A growing threat to the ozone layer from short-lived anthropogenic chlorocarbons, *Atmos. Chem. Phys.*, 17, 11929–11941, 2017.
- 15 Rigby, M., Park, S., Saito, T., Western, L. M., Redington, A. L., Fang, X., Henne, S., Manning, A. J., Prinn, R. G., Dutton, G. S., Fraser, P. J., Ganesan, A. L., Hall, B. D., Harth, C. M., Kim, J., Kim, K.-R., Krummel, P. B., Lee, T., Li, S., Liang, Q., Lunt, M. F., Montzka, S. A., Mühle, J., O'Doherty, S., Park, M.-K., Reimann, S., Salameh, P. K., Simmonds, P., Tunnicliffe, R. L., Weiss, R. F., Yokouchi, Y. and Young, D.: Increase in CFC-11 emissions from eastern China based on atmospheric observations, *Nature*, 569 (7757), 546–550, doi:10.1038/s41586-019-1193-4, 2019.
- 20 Salby, M. L., Titova, E. A., and Deschamps, L.: Rebound of Antarctic ozone, *Geophys. Res. Lett.*, 38, L09702, doi:10.1029/2011GL047266, 2011.
- Scinocca, J. F., Stephenson, D. B., Bailey, T. C., and Austin, J.: Estimates of past and future ozone trends from multimodel simulations using a flexible smoothing spline methodology, *J. Geophys. Res.*, 115, D00M12, <https://doi.org/10.1029/2009JD013622>, 2010.
- 25 Sherry, D., McCulloch, A., Liang, Q., Reimann, S., and Newman, P. A.: Current sources of carbon tetrachloride in our atmosphere, *Environ. Res. Lett.*, 13, 024004, <https://doi.org/10.1088/1748-9326/aa9c87>, 2018
- Siegemund, G., Schwertfeger, W., Feiring, A., Smart, B., Behr, F., Vogel, H., McKusick, B.: Fluorine compounds, organic in Ullmann's Encyclopedia of Industrial Chemistry, edited by: Elvers, B., 10.1002/14356007.a11_349.pub2, 2000.
- Solomon, S., Ivy, D. J., Kinnison, D., Mills, M. J., Neely, R. R., and Schmidt, A.: Emergence of healing in the Antarctic ozone 30 layer, *Science*, 353, 269–274, <https://doi.org/10.1126/science.aae0061>, 2016.
- SPARC: SPARC Report on the Mystery of Carbon Tetrachloride, edited by: Liang, Q., Newman, P. A., and Reimann, S., SPARC Report No. 7, WCRP-13/2016, 2016.
- Stahelin, J., Harris, N. R. P., Appenzeller, C., and Eberhard, J.: Ozone trends: A review, *Rev. Geophys.*, 39, 231–290, 2001.

- TEAP: Technology and Economic Assessment Panel. 2018 Assessment Report. Nairobi: Technology and Economic Assessment Panel, United Nations Environment Programme (UNEP) 100 pp. <https://ozone.unep.org/science/assessment/teap>, 2019.
- 5 UNEP: Report of the Thirtieth Meeting of the Parties to the Montreal Protocol on Substances that Deplete the Ozone Layer, Quito, Ecuador, 5-9 November 2018, UNEP/OzL.Pro.30/11, 2018. Available at: <http://conf.montreal-protocol.org/meeting/mop/mop30/report/SitePages/Home.aspx>.
- Velders, G. J. M., Andersen, S. O., Daniel, J. S., Fahey, D. W., and McFarland, M.: The importance of the Montreal Protocol in protecting climate, *P. Natl. Acad. Sci. USA*, 104(12), 4814–4819, 2007.
- 10 Velders, G. J. M., Ravishankara, A. R., Miller, M. K., Molina, M. J., Alcamo, J., Daniel, J. S., Fahey, D. W., Montzka, S. A., and Reimann, S.: Preserving Montreal Protocol climate benefits by limiting HFCs, *Science*, 335, 922–923, doi:10.1126/science.1216414, 2012.
- Waugh, D. W.: Seasonal variation of isentropic transport out of the tropical stratosphere, *J. Geophys. Res.*, 101, 4007–4023, <https://doi.org/10.1029/95JD03160>, 1996
- 15 Weber, M., Dikty, S., Burrows, J. P., Garny, H., Dameris, M., Kubin, A., Abalichin, J., and Langematz, U.: The Brewer-Dobson circulation and total ozone from seasonal to decadal time scales, *Atmos. Chem. Phys.*, 11, 11221–11235, <https://doi.org/10.5194/acp-11-11221-2011>, 2011.
- Weber, M., Coldewey-Egbers, M., Fioletov, V. E., Frith, S. M., Wild, J. D., Burrows, J. P., Long, C. S., and Loyola, D.: Total ozone trends from 1979 to 2016 derived from five merged observational datasets – the emergence into ozone recovery, *Atmos. Chem. Phys.*, 18, 2097–2117, <https://doi.org/10.5194/acp18-2097-2018>, 2018.
- 20 World Meteorological Organization (WMO): Scientific Assessment of Ozone Depletion: 2006, Global Ozone Research and Monitoring Project, Report No. 50, Geneva, Switzerland, 2007.
- World Meteorological Organization (WMO): Scientific Assessment of Ozone Depletion: 2014, Global Ozone Research and Monitoring Project, Report No. 55, Geneva, Switzerland, 2014.
- 25 World Meteorological Organization (WMO): Scientific Assessment of Ozone Depletion: 2018, Global Ozone Research and Monitoring, Project-Report No. 58, 588 pp., Geneva, Switzerland, 2018.

	Cl _y return date	Date of total column ozone (TCO) return to 1960-1980 mean					
		10°S-10°	60°S-60°	90°S-60°S	60°S-30°S	30°S-30°N	30°N-60°N
Base	2058	2054±2	2084±?	2065±1	2057±3	2047±2	2048±3
SCEN1_7	2059	2055	2078	2061	2060	2050	2050
SCEN1_15	2057	2055	2082	2064	2062	2050	2052
SCEN1_30	2061	2057	2088	2068	2063	2049	2048
SCEN2_7	2060	2055	2084	2065	2060	2047	2049
SCEN2_15	2062	2058	2093	2071	2065	2051	2052
SCEN2_30	2066	2061	2095	2071	2069	2052	2057
SCEN3_7	2061	2058	2081	2064	2063	2052	2054
SCEN3_15	2064	2058	No return	2068	2066	2053	2053
SCEN3_30	2073	2064	No return	2074	2081	2052	2052

Table 1 Cl_y return date (defined as the date at which Cl_y mixing ratios, averaged from 10°S-10°N at 40 km, return to the BASE simulation 1980 value) and the date TCO returns to the 1960-1980 mean in the BASE and SCEN simulations. Uncertainty estimates for the TCO return date in the BASE simulation are provided by a separate 5-member ensemble, as described in the text. TCO return to the 1960-1980 mean occurs after 2080 for the latitude range 90°S-60°S, and so no uncertainty estimate can be provided for this latitude band, denoted by the ‘±?’ in the table.

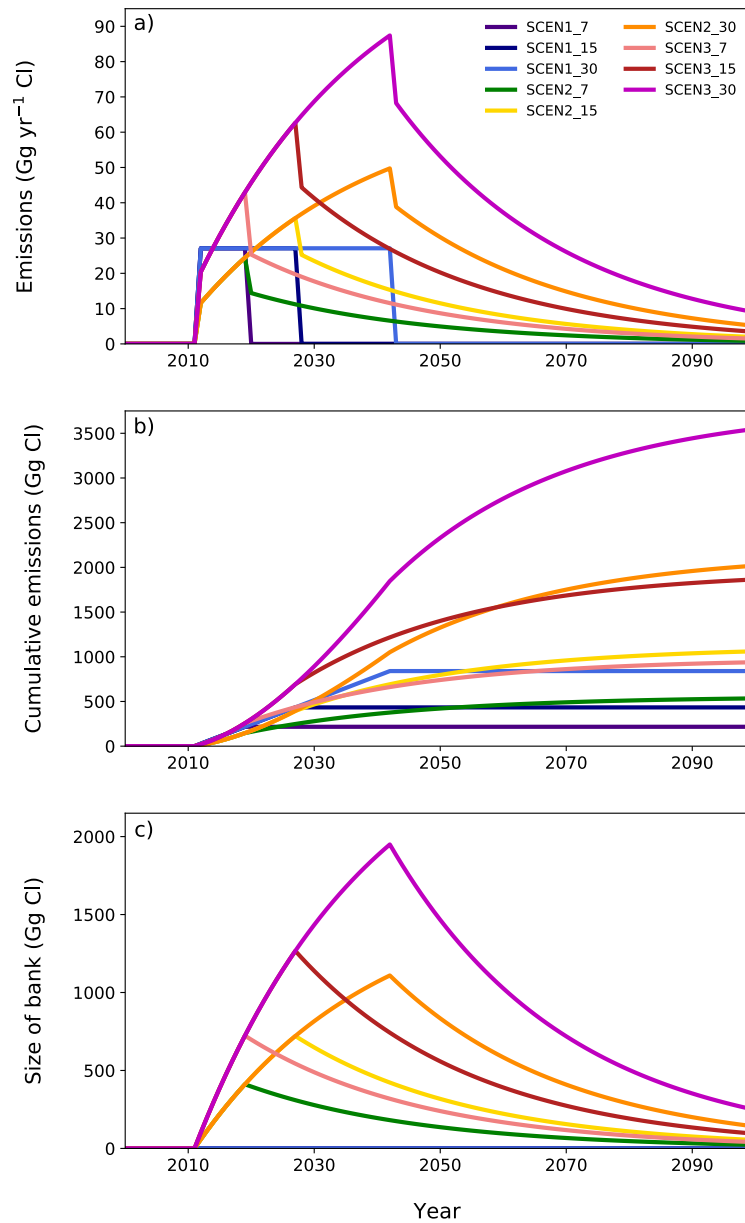


Figure 1 (a) Additional emissions (in Gg CI yr⁻¹) assumed for each of the SCEN simulations on top of those already assumed by the WMO (2014) A1 scenario. For all scenarios, the additional, uncontrolled source of emissions is assumed to start in 2012. (b) Cumulative additional emissions for each of the SCEN simulations. (c) The size of the newly created bank for the SCEN2 and SCEN3 scenarios.

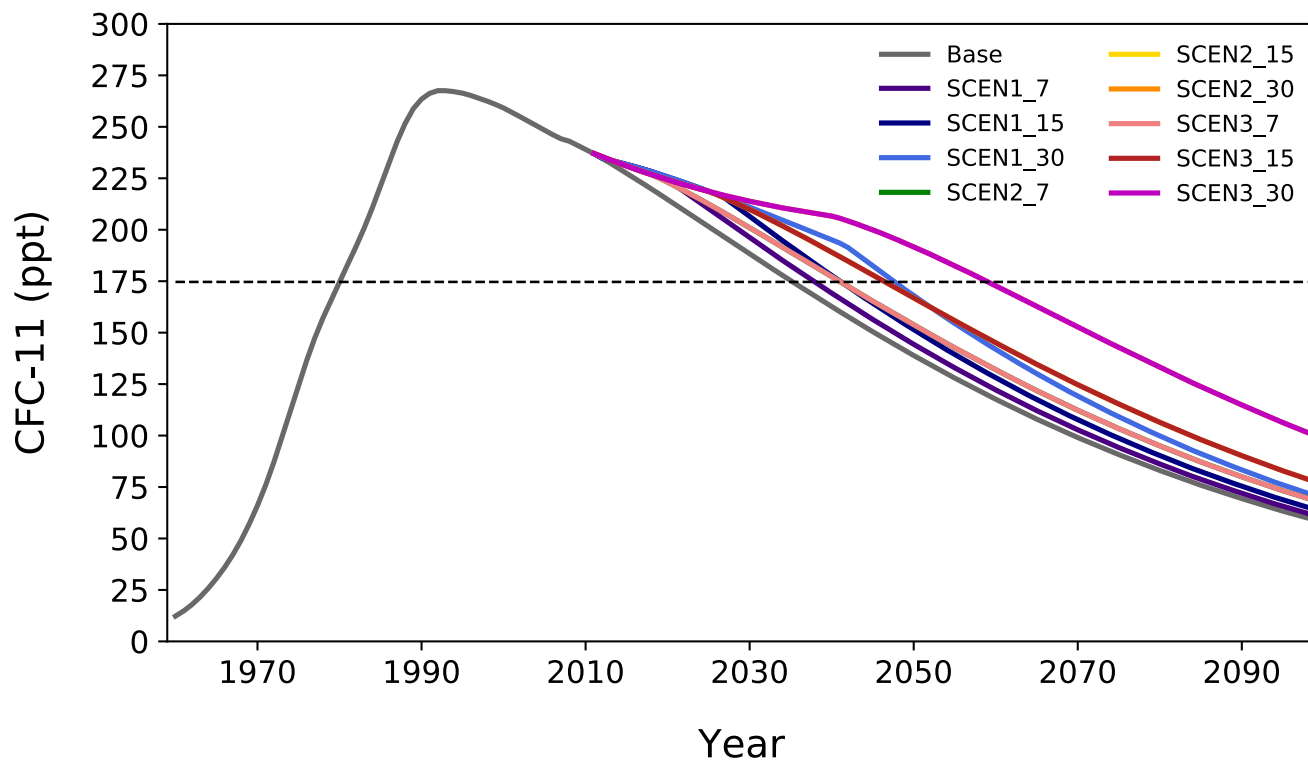


Figure 2 Prescribed global mean, annual mean surface lower boundary mixing ratio of CFC-11 used for the BASE and SCEN simulations. The dashed line represents the 1980 CFC-11 surface mixing ratio in the BASE simulation. Note that the SCEN2 and SCEN3 simulations have the same CFC-11 lower boundary conditions.

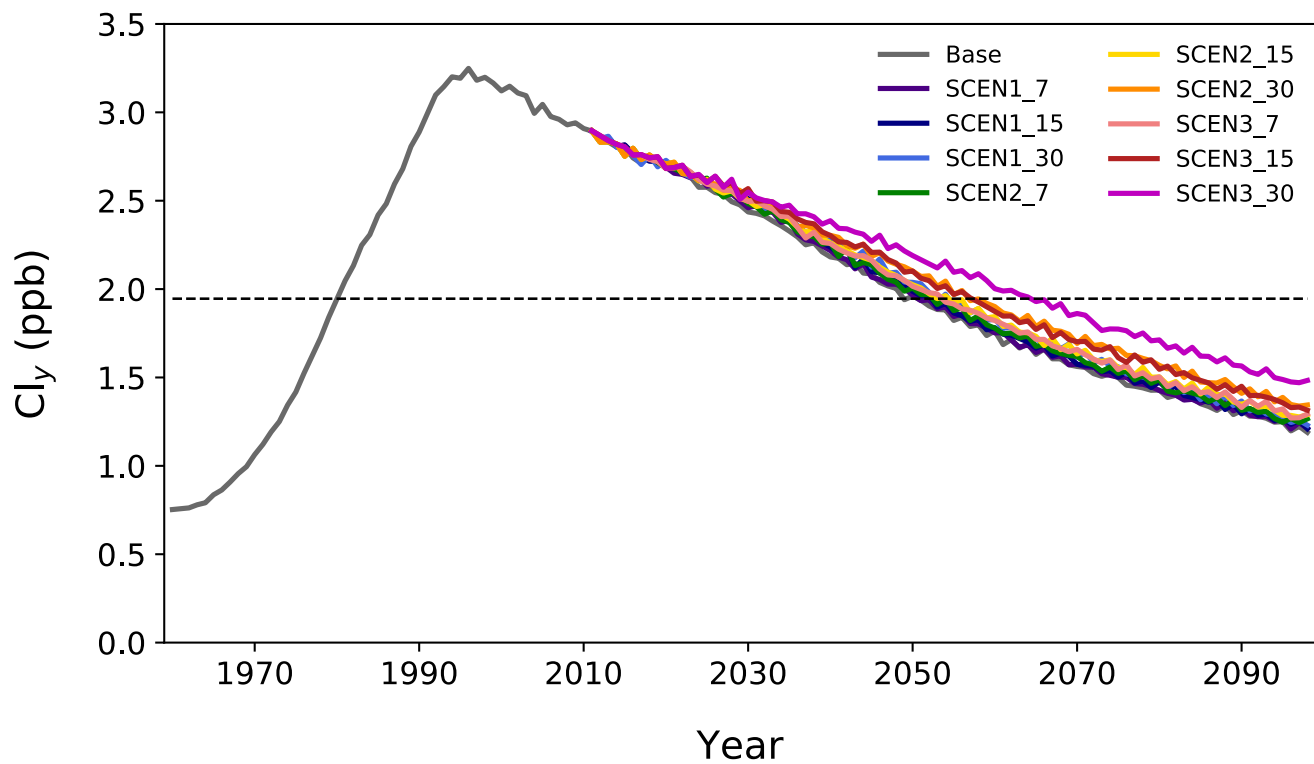


Figure 3 Modelled annual mean 40 km inorganic chlorine (Cl_y) mixing ratios, averaged from $10^{\circ}S$ - $10^{\circ}N$, for the BASE and SCEN simulations. The dashed line represents the 1980 Cl_y mixing ratio at 40 km in the BASE simulation, used as the value for calculating the Cl_y return date.

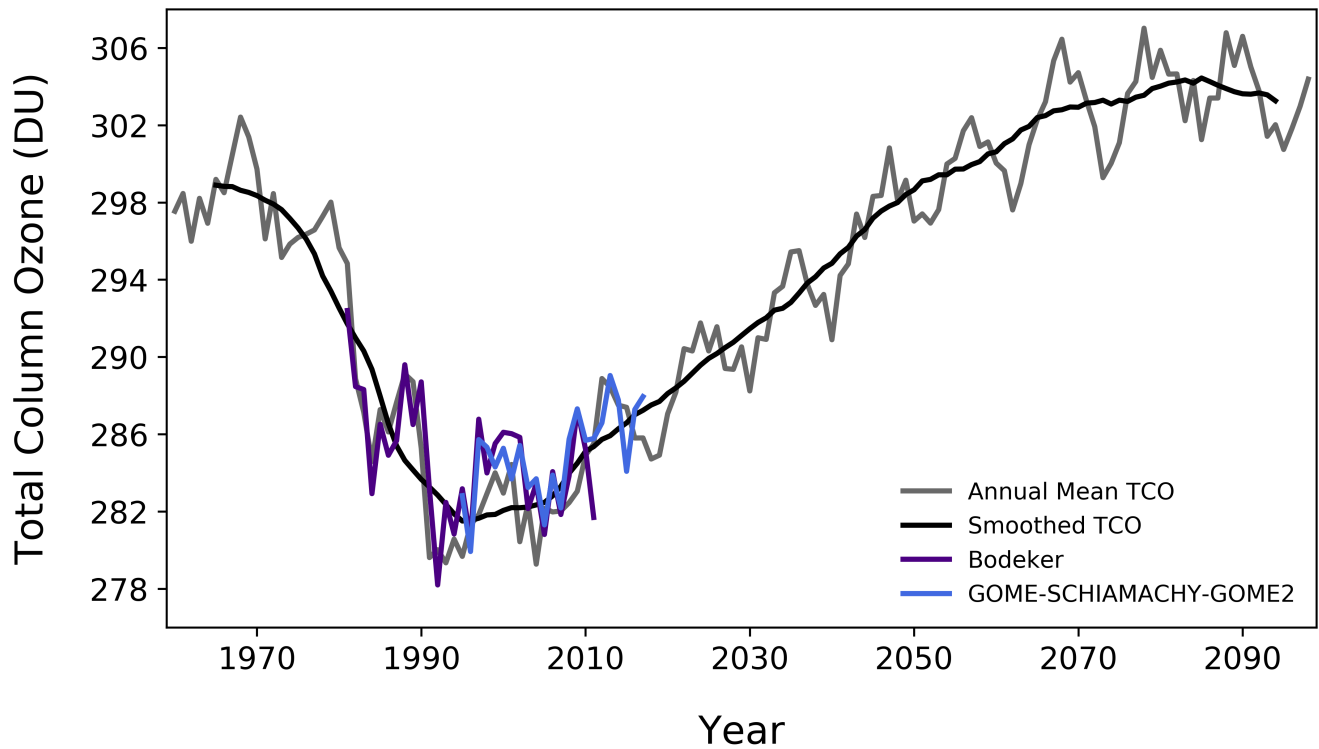


Figure 4 Modelled annual mean TCO values (in DU), averaged from 60°S-60°N, for the BASE (grey line) and smoothed data (black line) using an 11-point boxcar smoothing to reduce both the effects of variability (following Dhomse et al., 2018). Also shown are TCO values, averaged over 60°S-60°N, from v2.8 of the Bodeker dataset (purple line; Bodeker et al., 2005) and v3 of the GOME/SCIAMACHY/GOME2 Merged Total Ozone dataset (blue line; Weber et al., 2011).

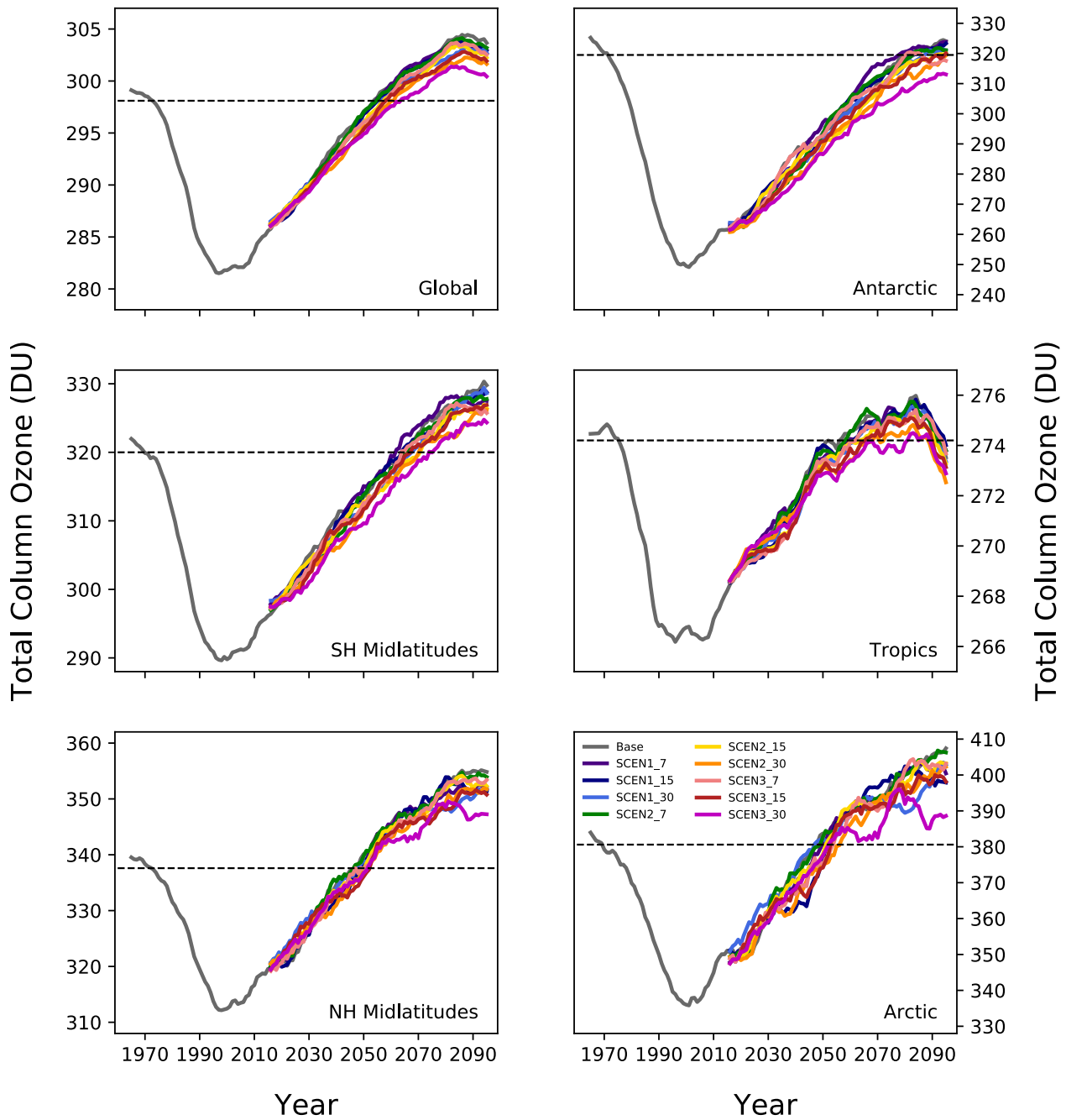


Figure 5 Smoothed TCO (in DU) for the BASE and SCEN simulations, for the global (60°S-60°N) and regional column values. Dashed line denotes the 1960-1980 baseline period, used as the value for calculating the TCO return date.

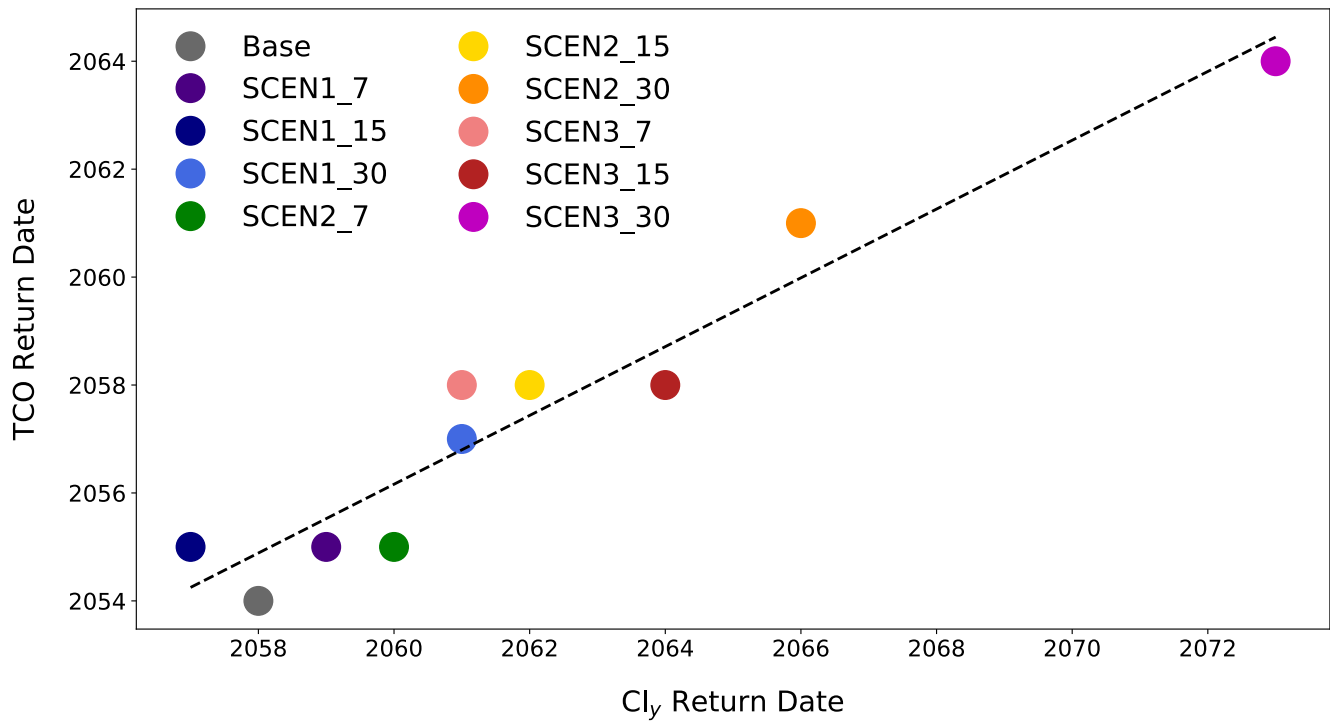


Figure 6 TCO return date (defined as the date at which 60°S-60°N averaged TCO values return to the 1960-1980 average) for the BASE and SCEN simulations versus Cl_y return date (defined as the date at which Cl_y mixing ratios at 40 km, averaged from 10°S-10°N, return to the 1980 BASE value). The dashed line gives the linear fit through the points.

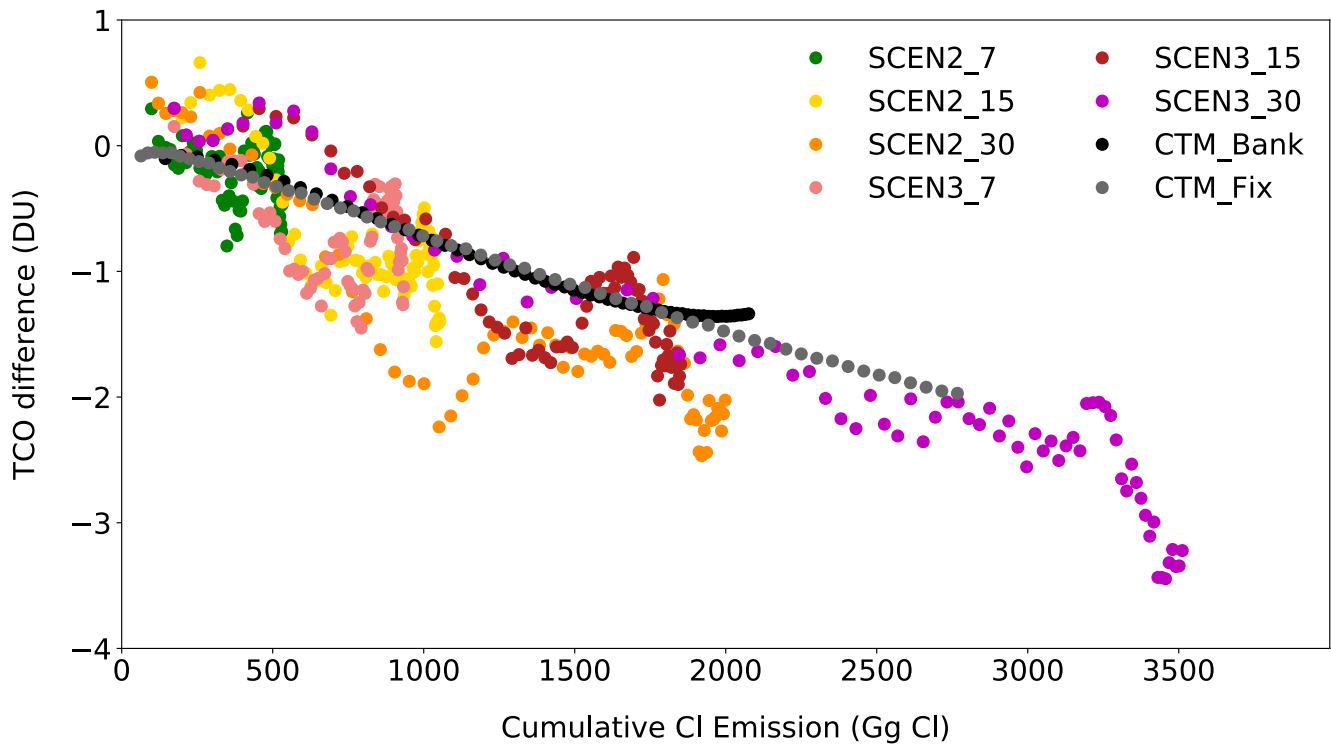


Figure 7 Annual mean TCO difference (in DU) for the UM-UKCA SCEN2 and SCEN3 simulations with respect to the BASE simulation, averaged over 60°S-60°N vs cumulative emissions (Gg Cl) from 2012 to that year. Grey and black points show the same, but are for the CTM_Fix and CTM_Bank simulations performed with the TOMCAT CTM. For these simulations, TCO differences are calculated with respect to the CTM_C baseline simulation. TOMCAT simulations described in Dhomse et al. (2019).

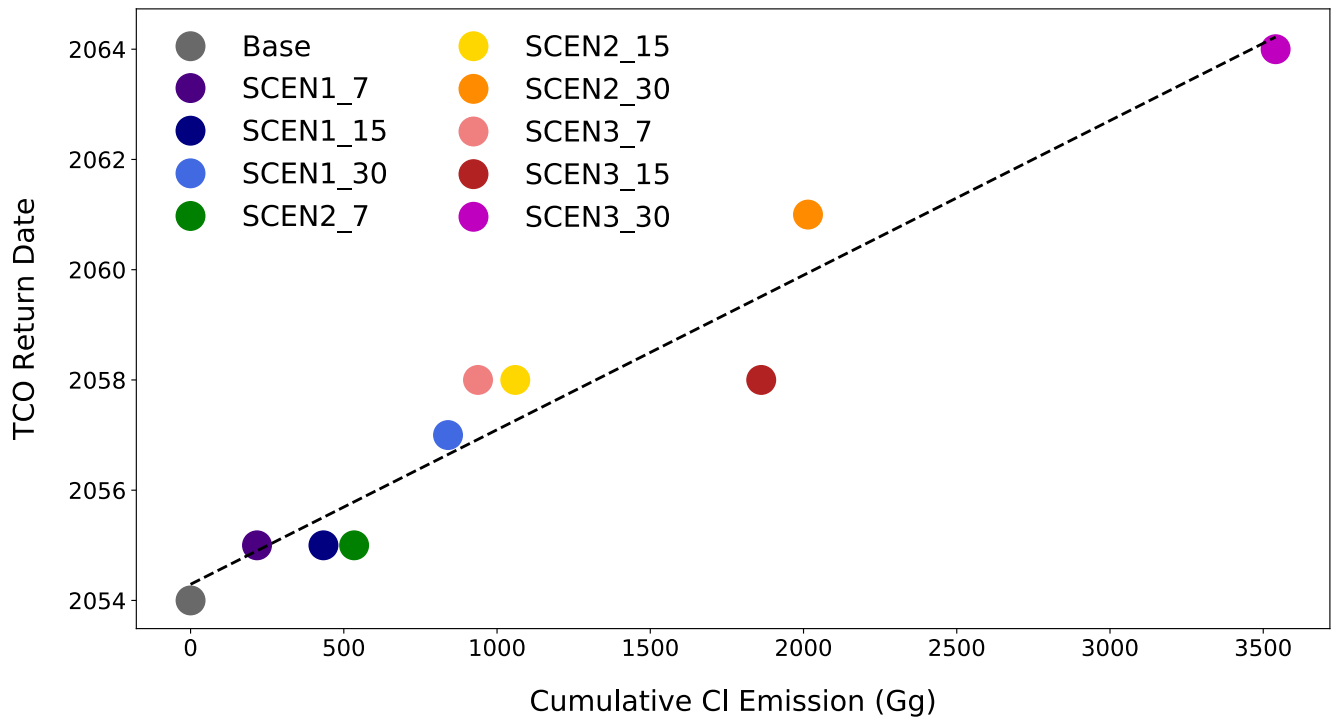


Figure 8 TCO return date (defined as the date at which TCO values return to the BASE 1960-1980 average) for the BASE and SCEN simulations vs cumulative additional emissions (Gg CI) from 2012 to the end of the simulation. The dashed line gives the linear fit through the points.

5

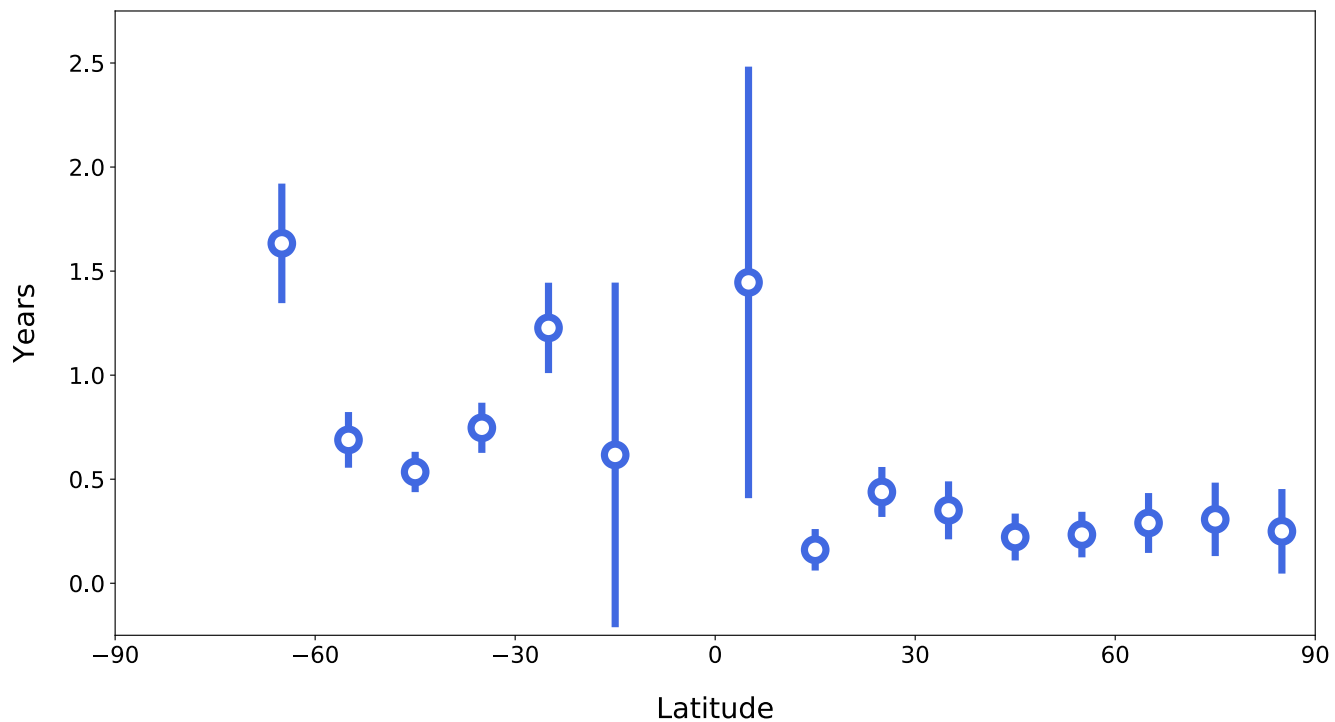


Figure 9 Delay in TCO return date (in years) per 200 Gg Cl emissions for 10-degree latitude bins. Uncertainty bars represent the standard error of the estimate (calculation method provided in text). No values are given for 90°S-80°S, 80°S-70°S and 10°S-0°N as TCO in these latitude bands does not return to the 1960-1980 mean by the end of the model simulations.