

Authors' Response to Reviewer's Comments

Manuscript No.: acp-2019-71, submitted to APC

Title: The importance of the representation of air pollution emissions for the modeled distribution and radiative effects of black carbon in the Arctic.

Authors: J.Schacht, B.Heinold, J. Quaas, et al.

We would like to thank the reviewers for their time and constructive comments, and hope that we have responded satisfactorily to all the points raised. The Authors' response and the changes in the revised manuscript are indicated by red and green text, respectively.

Anonymous Referee #1

(1) Since the study concerns the representation of emissions; could you write a few more sentences on the other studies that have looked at the importance of emissions in representing BC in the Arctic?

(2) Agreed. In the Introduction, we added a brief review of previous studies on emission uncertainties, including Bond et al. (2004), Flanner et al. (2007), and Vignati et al. (2010).

(3) The following paragraph was added to the Introduction (L6, page 3): Bond et al. (2004) estimate the uncertainty in emission inventories to be a factor of about two. Flanner et al. (2007) conclude that for the climate forcing by BC in snow, the emissions introduce a bigger uncertainty than the scavenging by snow melt water and snow aging. However, the quality of emission inventories with models is difficult to assess, because of the dependence on the model (Vignati et al., 2010).

(1) L12, page 5, L18, page 6 and L15, page 17: I am a bit puzzled by the authors claiming that the Russian BC emissions from Huang et al (2015) is 'the best source available' and 'the best estimate of global emissions' just because it is a newer estimate compared to e.g. the ECLIPSE data set. The Huang et al chose an emission factor of 2.27 g/m³ in flaring compared to 1.6 g/m³ in ECLIPSE. In the paper, Huang et al admits their value is probably on the high end, and that there are no measurements in Russia confirming such high value being a representative average. It might be the case that the emissions are that high, but we do not know, and given the large uncertainties in estimating BC emissions from flaring, it is hard to say which data set is 'the best'. I am not suggesting that the authors should not use this data set as their base line, but I miss a discussion

about uncertainties in the data sets and not just claim that one data set is the best.

(2) Thank you for this comment. We changed Section 2.2. It now explains more clearly the dataset and, in particular, the information we gain from using ECLIPSE plus Russian BC emissions compared to ECLIPSE only. The idea of the sensitivity study is to span a reasonable uncertainty range for anthropogenic emissions. Accordingly, later in the text, the BCRUS run is referred to as an upper estimate.

(3) P5L9-14 changed to:

To address the importance of local emissions, we use the anthropogenic BC emission data set for Russian BC described in Huang et al. (2015). It is available for the year 2010 and originally is in 0.1 x 0.1 horizontal resolution, but has been scaled down to model resolution. Since the data set is limited to the area of Russia, we combine it with the ECLIPSE emission data. The Russian emissions are distributed between the different months with the monthly patterns of ECLIPSE.

The emissions of Russian gas flaring are more than 40% higher than in ECLIPSE resulting in part from a high conversion factor estimated for the fossil fuels found in Russia (Huang et al., 2015). It represents a reasonable yet high estimate of local emissions and is used as the reference setup. When compared, the ECLIPSE and Huang et al. (2015) emissions span an uncertainty range concerning gas flaring emissions.

P6L15 changed to:

This way, the BC sources are supposed to represent a high estimate, addressing the possibility of underestimation in the global datasets, in particular, with respect to gas flaring emissions.

P17L15 changed to:

The run BCRUS represents a recent estimate of global emissions with the special feature of a high estimate in local Arctic emissions especially of gas flaring.

(1) L25-28, page 6: I am not sure if I understand this sentence? Contributing to layers?

(2) Agreed. The sentence was rephrased for clarity.

(3) P6L25-28 changed to:

The transport efficiency from the East Asian sources to the Arctic is comparably low but the high emissions in this region makes it important for long-range transport to the Arctic upper troposphere.

(1) L28, page 11: isn't also the difference because Zeppelin station is located on the mountain while the New Ålesund station is at ~0 m altitude?

(2) We agree, this is the case in the real world but not in the model with its coarse horizontal resolution. Since both stations are less than 2 km apart, they are located in the exact same grid cell. Therefore, the modeled values are identical, except from the fact that the averaging periods differ because of the different availability of measurements.

(1) Figure 9: I like this figure, but it is possible to make the circles a bit bigger?

(2) Adjusted Figure 9.

(1) How did you compare the flight campaigns data with your model data in time?

(2) Thank you for making us aware that this was not properly described. The closest time step of the 12-hourly model output was selected for each data point in the flight campaign. This explanation was added to the methods' part.

(3) Inserted at P13L15:

Each measurement point is compared to the nearest grid cell *at the closest time step* from the model, resulting in one average profile per campaign and run.

(1) L14, page 18: Can you add the numbers?

(2) The analysis revealed correlation coefficients better than 0.45 for most stations while at Summit, Simeonof, Zeppelin and Oulanka the temporal correlation was poor with correlation coefficients below 0.3. The information is now given in the text.

(3) Inserted at P18L15:

The correlation coefficients of near surface concentrations are generally good, *with 0.45 and higher for most stations*. This points toward a good agreement in the timing, especially of observed peak events. These peaks are most often caused by biomass burning. *The exceptions are Summit, Simeonof, Zeppelin Station, and Oulanka, with correlation coefficients below 0.3.*

(1) L30, page 18: (if possible) Is there any improvement(s) in the parameterization in the new model version you can highlight, that has led to better seasonality and vertical distribution of Arctic BC? I understand this is outside the scope of the study, but it would be interesting to know for other modelers if the information is available.

(2) The now default wet removal scheme that is taking the wet aerosol size into account plays a big role. The scheme and its effect are discussed in Croft et al. (2010). We noticed this in a short test experiment.

(3) Insert at P18L19:

This improvement over older model versions is at least partly achieved with the aerosol size dependent wet removal scheme by Croft et al. (2010).

Anonymous Referee #2

(1) 1. I found quite a few typos in the text, most of which could be fixed using a simple spell checker.

(2) Our apologies for this. The manuscript was proofread carefully again to avoid typos in the revised version.

(1) 2. I think in Section 2.2 you could explain the different emission scenarios and the differences between them a little bit better. First off, if I'm not mistaken, the wildfire emissions in ACCMIP are decadal mean values based on GFEDv2, but they nevertheless have a monthly resolution. A big difference between ACCMIP and ECLIPSE is that the latter provides monthly varying emissions for many sectors, while ACCMIP does not. Monthly changing emissions should have an effect on the time evolution of the BC concentrations in the Arctic, especially close to the surface. It is not clear from the text whether the emissions by Huang et al. also provide monthly varying

emissions and, if not, how this has been dealt with when combining them with ECLIPSE. Furthermore, it should be noted that emissions with a high spatial resolution only provide limited improvements in the simulations here, as they anyway have to be re-gridded to a T63 resolution.

(2) Thank you for this well-informed comment. It made me realize that it was not properly discussed how the BCRUS emission were implemented. The methods section was extended as suggested.

(3) At P5L2 we added: [...], linked to the Representative Concentrations Pathways (RCPs) for all later years (2000-2100) (Lamarque et al., 2010). *The anthropogenic emissions remain constant throughout the year. The biomass burning emissions vary monthly over the course of one year, but are only scaled by a factor between the years and do not differ in their location.*

At P5L6-8 the paragraph was extended: [...] Unlike the ACCMIP emission data set, *the anthropogenic emissions are seasonally varying for the different sectors, and they* also include emissions from gas flaring. However, gas flaring emissions from Northern Russia, [...], have been discussed *to be difficult to measure and therefore uncertain and possibly* too low in current emission inventories (Stohl et al., 2013).

To address the importance of local emissions, we use the anthropogenic BC emission data set for Russian BC described in Huang et al. (2015). It is available for the year 2010 only and originally comes in 0.1° x 0.1° horizontal resolution, but here is interpolated to model resolution of T63 (~1.8°). Since the data set is limited to the area of Russia, we combine it with the ECLIPSE emission data. The Russian emissions are distributed between the different months with the monthly patterns of ECLIPSE.

The emissions of Russian gas flaring are more than 40% higher than in ECLIPSE resulting partly from a high conversion factor estimated for the fossil fuels found in Russia (Huang et al., 2015). It represents a reasonable yet high estimate of local emissions and is used as the reference setup. When compared, the ECLIPSE and Huang et al. (2015) emissions span a good uncertainty range concerning the uncertainty of gas flaring emissions.

At P5L17 the sentence now reads: This allows for a representation of real-time fires in ECHAM-HAM *with daily changing emissions* and enables it to reproduce the biomass burning plumes [...].

(1)3. The procedure to calculate the DRE of BC should be explained in more detail (Section 2.4). Did you re-run the simulations without BC emissions, or leave out BC in the radiation calculations? If it was the latter, how was this done? The radiation code in ECHAM uses the aerosol wet diameter and an average refractive index of the aerosol particles (or rather the modes) to read out the optical properties from a pre-computed lookup table. The refractive index used is computed as volume-weighted average over all species in the particle. It therefore feels like one cannot just leave out one species, shouldn't you at least adjust the size of the particle (mode) accordingly?

(2) The run was performed with BC being emitted and transported, but skipped in the calculation of the refractive index. We re-evaluated this approach and noticed that the total particle number concentration was not adjusted to not include BC particles in the radiative code. This was now corrected and the manuscript was updated accordingly. The differences, however, are minor since the aerosol number of BC is small compared to the total number.

It is true, that the wet radius was not adjusted, since no separate (wet) radius is calculated for the individual species, but only for the seven aerosol modes. Adjusting for it would require major changes to the model, including specifically adding four additional tracers for the BC radii separated by mode. We agree that for future research this could be interesting.

Nonetheless, we still think that our approach is well suited to assess the radiative forcing of BC. In contrast, the approach of leaving BC out would cause non-linear effects on other aerosol species and their climate impact, making the runs hard to compare.

(3) Added at P7L10:

To calculate the DRE by BC, the ACCMIP-GFAS and BCRUS runs were repeated *with leaving BC out* in the *computation* of radiative fluxes. For this, BC was skipped in the calculation of the complex radiative index and the radiatively active number of particles while the wet radius of respective aerosol modes was not further adjusted. The DRE of BC is then derived from the difference of these

two runs to their original setup. Note that *with this method, the estimate includes the semi-direct effect of BC, which is not statically significant in the Arctic, as reported by Tegen and Heinold (2018). The DRE of BC is studied for the sub-period 2005-2009.*

(1)4. In section 4.1, are the surface station data and the model data that you show collocated in a similar fashion as the aircraft data, or do you indeed show multi-year monthly averages. If the latter, did you constrain the model data to the years of the observations, or did you use the results of the entire model period?

(2) The collocation of station and model data was done in the same way as for the aircraft observations. For each measurement data point, the closest one in time and location was selected from the model output prior to any averaging.

(3) At P11L9 we added accordingly: *Each measurement point is compared to the nearest grid cell at the closest time step from the model. The medians are calculated after this sampling.*

(1)5. On page 12, in the first paragraph, you discuss how the BC surface concentrations in Summit are so different from all other stations. I have done a plot similar to Figure 6 some years ago to evaluate ECLIPSE and ACCMIP against the same stations (not published) and asked the data providers about the same issue. It was suggested to me that the summer peak in Summit may be due to (local?) wild fire emissions, that might not be captured by observations. If this is the case, the model cannot really be blamed. Another issue is that Summit is situated at an altitude of over 3km, which may be much higher than the average orographic height of the model grid box in ECHAM. You could try correcting for that by evaluating the modelled BC concentrations in a model level that corresponds to this altitude.

(2) Thank you for sharing this experience. An underestimated influence of wildfires is possible and could explain the annual cycle. We are however not convinced that the emission inventory would be to blame. The summer 2017 fire events on the west coast of Greenland for example are shown by the GFAS emissions. The amount of BC emitted was however so low that it was barely noticeable in modeled atmospheric concentrations.

While the position of the Summit station is exceptional with 3207 m above sea level, the elevation of this area is represented in the model (with a surface geopotential of $32000 \text{ m}^{-2} \text{ s}^{-2}$).

(1)6.I agree that for model evaluation, where simulated concentrations can be compared to observational data with high temporal and spatial resolution, it is important that the emission inventories used also have a high resolution (both in time and space). This is especially true when one wants to improve how physical processes like, e.g. transport and deposition of aerosols, are modelled. However, when studying effects of changing aerosol emissions on climate, a lower resolution may be sufficient. Can you say anything about whether the monthly average arctic BC concentrations change qualitatively when using daily or monthly biomass burning emissions?

(2)For this study, we only used the daily GFAS emissions and the monthly fire emissions included in ACCMIP. Comparing the two data sets will most likely result more in a difference between constant and changing emissions. We however do agree that this comparison would be interesting. We would expect that the comparison of the monthly median values of the station measurements would give similar results, while correlations should be a lot worse. We would also expect the comparison to the aircraft campaigns to be worse.

(1)7.In the first paragraph of page 14 you briefly comment on the possibility that fire emissions may be artificially diluted in the relatively large model grid box, especially if the fire is small. Additionally to this, the way that fire emissions are inserted in the model may affect BC concentrations. If I am not mistaken, ECHAM distributes all wildfire emissions equally in vertical direction within the boundary layer. I think for monthly average emissions this is a good approximation, but for daily emissions this may lead to too fast vertical mixing. Therefore, thin fire plumes may be impossible to model correctly.

(2)Thank you for pointing this out. This is an important point that we will add in the discussion.

(3)Added at P5L18:

In ECHAM-HAM the biomass burning emissions are injected into the model boundary layer regardless of the actual injection height provided by GFAS, which is usually reasonable for most small and

moderate boreal fires while the injection height can be underestimated for specific events with high fire radiative power (Sofiev et al., ACP, 2009).

Added at P14L7:

[...] instead of being concentrated in a confined plume. In particular, small local fire plumes may be too quickly diluted when emitted the boundary layer.

(1)8. In Section 5, I think it would be helpful if you could give an arctic average TOA DRE, maybe in the form atmosphere+surface=total. In the abstract you state that the DRE is as high as 0.8 W m^{-2} – is this the yearly average for 60° - 90° ? Also, which scenario does this value correspond to?

(2) The value corresponds to the yearly average for the years 2005-2009 from the BCRUS setup but the 0.8 W m^{-2} are a local effect. We will add an additional table to clarify this. And change the abstract accordingly additionally adding an Arctic average for 60° - 90° N.

(3) At P1L12-13 we added to the abstract: Compared to commonly used fixed anthropogenic emissions for the year 2000, an up-to-date inventory with transient air pollution emissions results in *locally* up to 30% higher annual BC burden and an over 0.1 W m^{-2} higher annual mean all-sky net direct radiative effect of BC at top of the atmosphere *over the Arctic region (60° - 90° N), with locally more than 0.2 W m^{-2} over the Eastern Arctic Ocean. We estimate BC in the Arctic to lead to an annual net gain of 0.5 W m^{-2} averaged over the Arctic region, but locally up to 0.8 W m^{-2} by the direct radiative effect of atmospheric BC plus the effect by the BC-in-snow albedo reduction.*

At P16L13 we inserted: Averaged over the Arctic (60 - 90° N), we estimate the net DRE of atmospheric BC to 0.3 W m^{-2} (see Table 5).

At P16L22 we added: On average the BC-in-snow albedo effect is 0.1 W m^{-2} .

At P16L26 we added: (-0.2 W m^{-2} on spacial and annual average).

P16L30-31 we changed to: In the ACCMIP-GFAS run the TOA net all-sky positive radiative effect of BC is lower by 0.1 W m^{-2} on the

regional average (60-90° N, see Table 5), but more than 0.2 W m⁻² higher regionally over the Barents and Kara Sea.

(1) I see the point of all the panels in Figure 14 having the same data range, but on the other hand this makes it hard to see any features, especially in panels a and c. Also, do the numbers at the colour bars correspond to the centres of the coloured boxes or to the borders between them. In particular, which colour corresponds to zero?

(2) Agreed. We revised the plot to make it clearer.

Minor comments:

(1) 1.page 2, line 31: Do models really tend to over-estimate BC concentrations at the surface?

(2) Thank you for catching this. We definitely overstated this here and it should be made clear that at the surface this is only the case for some models, while most underestimate at the surface. We added two references that show this.

(3) P2L31 changed to: Despite a good agreement between BC obtained from models and observations close to source regions (Bond et al., 2013), in the remote Arctic regions, models *tend to predict a too low BC concentration at the surface in winter and spring while only some models overestimate it (Eckhardt et al. 2015). However, in the upper troposphere, models tend to overestimate the BC concentrations.*

(1) 2.section 2.3: How long was the spin-up of the simulations?

(2) The spin-up was 3 months.

(3) P5L22/23 changed to: The model simulations cover the 11-year period 2005-2015, *with a spin-up period of three months.*

(1) 3.page 6, lines 29--31: Could you try to re-formulate that sentence?

(2) Done.

(3) P6L29-31 changed to: *BC emissions from ACCMIP-GFAS are higher than those of BCRUS in North America, Europe, western*

Russia and Japan. They are, however, lower in northern Russia by more than $3500 \text{ kg km}^{-2} \text{ yr}^{-1}$ less and China by more than $2800 \text{ kg km}^{-2} \text{ yr}^{-1}$ less, respectively.

(1)4.page 12, line 17: By time correlation, do you mean the Pearson correlation coefficient of the collocated data?

(2)Correct. It is the Pearson correlation coefficient that is considered here.

(3)P12L17 changed to: *The Pearson correlation between the collocated data of measured and modeled mass concentrations for all available aerosol stations in the Arctic region is shown in Figure 9.*

(1)5.page 15, line 26: The last sentence in this paragraph seems quite redundant to me.

(2)We agree. Sorry about this. Removed.

(1)6.page 18, lines 21--24: This may also be a resolution problem, as both the cloud and the smoke plume may not "fill" the entire grid box.

(2)This is a good point, which we are happy to include.

(3)After P18L21-24 we added: *In addition, even if the modeled amount of precipitation was correct, wet removal could be underestimated due to the resolution problem that both, smoke plume and precipitating cloud, do not fill the corresponding grid cell. This is a general problem when investigating specific small-scale events in a coarsely resolved model. While in general, the BC lifetime of ECHAM-HAM was discussed to be good (Lund et al. 2018), in this example, however, the model is incapable of reproducing the observations.*

Anonymous Referee #3

(1)The only major concern I have with the work is in the scaling of the GFAS emissions dataset. The original Kaiser et al. 2012 paper suggests a scaling factor of 3.4, but this has been found to be too high in some models and is somewhat arbitrary. The authors don't discuss this scaling factor at all, or what impact it could have on the

results. Ideally another simulation with a lower (or no) scaling factor would be performed as a comparison, but the factor used and the resulting uncertainty should at least be discussed in both the technical setup and summary sections. Overall however this is a well written paper appropriate for publication in ACP after this, and the more minor points listed below, have been addressed.

(2) We originally ran the model using GFAS emissions with the scaling factor 3.4, which led to a strong overestimation in the Arctic. Since this factor seemed arbitrary, it was discarded for all subsequent runs, which instead used the emissions without any scaling.

(3) Added at the end of Section 2.2:

In previous works with ECHAM-HAM, GFAS emissions were often used with an emission factor of 3.4 as proposed by Kaiser et al. (2012). Since this led to a strong overestimation in BC concentrations in comparison to ground-based and airborne observations at mid and high-latitudes, the corresponding setup was discarded.

At P17L22 in Section 6 we added:

An emission factor of 3.4 that is commonly used for GFAS emissions (Kaiser et al., 2012) was not used since it led to a strong overestimation in BC concentrations of mid and high-latitudes.

(1)- P1L2: 'positive effect' is a bit ambiguous, perhaps use 'positive (warming) effect'

(2) Changed.

(1)- P2L12: 'conclusion, that' -> 'conclusion that'

(2) Changed.

(1)- P3L3-4: 'are contributing' -> 'contribute'

(2) Changed.

(1)- P4L7-8: This sentence is a quite difficult to understand. I believe only dust can be in the insoluble coarse and accumulation mode, but can also be in the soluble modes along with the other species. Perhaps include a table if that makes it clearer?

(2) You are correct. We changed the sentence and added a table

(3) The hydrophobic Aitken mode contains BC and OC. In the hydrophilic Aitken mode, they are internally mixed with SU. The hydrophobic accumulation and coarse mode only contain DU. The hydrophilic accumulation and coarse mode contain BC, OC, DU and SS, all internally mixed with SU. See table X.

	Nucleation	Aitken	Accumulation	Coarse
Hydrophobic		BC, OC	DU	DU
Hydrophilic	SU	BC, OC, SU	BC, OC, DU, SU, SS	BC, OC, DU, SU, SS

(1)- P5L28-29: The claim that models still use ACCMIP 2000 emissions routinely should have a citation, e.g. Sand et al 2017.

(2) We agree and have included references.

(3) References added at P5L28/29: ACCMIP emission data is still widely used for model experiments, *in some cases using the RCPs (Lund et al. 2018), or fixed for the year 2000 (Sand et al. 2017).*

(1)- P7L9-10: This will include BC semi-direct effects then though. Perhaps make this clear and say something about the uncertainty this may introduce.

(2) Correct, it does include the semi-direct effects of BC. We addressed this now.

(3) Added at P7L10:

To calculate the DRE by BC, the ACCMIP-GFAS and BCRUS runs were repeated ***with leaving BC out*** in the *computation* of radiative fluxes. For this, BC was skipped in the calculation of the complex radiative index and the radiatively active number of particles while the wet radius of respective aerosol modes was not further adjusted. The DRE of BC is then derived from the difference of these two runs to their original setup. Note that *with this method, the estimate includes the semi-direct effect of BC, which is small on large-scale average since positive and negative effects cancel each other out and is not statically significant in the Arctic (Tegen and*

Heinold, 2018). *The DRE of BC is studied for the sub-period 2005-2009.*

(1)- Figure 2b: Axis label should read '60-90 N'

(2)Fixed.

(1)P7L29-31: The MAC value of $9.8 \text{ m}^2 \text{ g}^{-1}$ quoted from Zanatta et al. 2018 comes with a relatively large uncertainty (± 1.68), what uncertainty does this introduce into the BC concentration estimates? It should be discussed at least.

(2)The uncertainty in the MAC value of ± 1.68 relates to an uncertainty in the BC concentration of -21% to +15%.

(3)Added after P7L31: Zanatta et al. (2018) give an *uncertainty of the MAC value of $\pm 1.68 \text{ m}^2 \text{ g}^{-1}$. This implies an uncertainty range of approximately -20% to +15% for the observed BC concentrations.*

(1)- P8L16: 'layering' -> 'vertical distribution'

(2)Changed.

(1)- P8L16: This should probably be backed with a citation (e.g. Samset et al. 2013)

(2)The suggested reference was added to the revised manuscript.

(1)P9L9: Typo in the 60 degrees Latex

(2)Corrected.

(1)Fig 6: It's very hard to discern these small values, would a log scale be appropriate? The plots could perhaps also be made a bit bigger.

(2)We have seen this type of plot with log scales before, but have never been a fan of that. Concerning the size, we are bound by the rules of the journal and fail to come up with an idea of how to use the given space more effectively. We are sorry to not follow your advice here.

(1)- P9L11: Avoid use of the colloquialism 'decent'. Perhaps 'sufficient'?

(2) Thank you. We were not aware the word is inappropriate here.

(3) At P9L11 the sentence was changed accordingly: Even though aircraft campaigns can only give information within a short time window, the combination of different campaigns allows to cover *the almost entire year* except from December, February, September and October, the months for which no aircraft data is available.

(1)- P9L12: I would like to see a discussion here about the uncertainties introduced when comparing the in-situ aircraft measurements with a fairly coarse resolution global model (see e.g. Schutgens et al. 2016) and how this might affect your conclusions. Of particular relevance is Lund et al. 2018 who show that using monthly mean model output in comparison with aircraft BC measurements (and similar campaigns) can introduce significant biases.

(2) In the text, we describe that we do not use monthly mean model output for any comparison but always the time and space collocated 12-hourly instantaneous output, which is then averaged in the respective months. Obviously, this was not clear enough. Anyway, we think that a general discussion about the problems of the comparison would be beneficial and fit well. We added it together with information on how the comparison with the model was done. Thank you making me aware of the Lund et al. 2018 paper.

(3) Added at P9L12: *The comparison between a coarsely resolved model and aircraft measurements is challenging because of many factors. Any observed features of subscale lifetime or spatial extent will be missed or at least underestimated by a model that is designed to estimate climate relevant effects over multiple years. Schutgens et al. (2016) suggest either spatio-temporal averaging of both measurements and spacial interpolated model data or increasing the model resolution to achieve best agreement. Lund et al. 2018 show that using only monthly mean model output introduces significant biases.*

In this study, we sample from the models twelve-hourly output for each measurement point during one campaign before averaging to one vertical profile, without prior interpolation.

(1) - P11L6: ‘...atmosphere for reasonable...’ -> ‘...atmosphere and hence reasonable...’

(2) Changed.

(1)- P13L9-10: Could you hypothesise why this might be the case?

(2) We assume that the lowest correlation coefficient for BCRUS at Tiksi is caused by the strength of peak concentrations above background caused by a pollution event at the correct time. The monthly medians are lower for ACCMIP-GFAS than for ECLIPSE, which in turn is lower than BCRUS (see Fig. 6a). Therefore, a correctly predicted pollution event increases the correlation more for ACCMIP-GFAS.

(1) - Fig 9: This is a really nice diagram but it could definitely be bigger to make it clearer. The interpretation might also be easier if the correlation was indicated with a continuous color scale.

(2) The size of Figure 9 was increased. We agree interpretation might be easier, but we prefer to keep the strong contrast over the continuous scale for good readability.

(1)- P14L5-7: Be careful with the interpretation of these ARCTAS flights since they specifically went looking for plumes to sample and so you would expect a large sampling bias. This is implicit in some of the statements of Jacob et al. 2010.

(2) Thank you for making us aware. We did not pay enough attention to the mentioned caveat, which we are happy to include in the revised manuscript.

(3) P14L5-7 we added: “This could be caused by too low emissions [...] or just an effect of the coarse resolution of the model resulting the emissions for the fire event being mixed over the grid boxes instead of being concentrated in a confined plume. *In addition, there is the possibility of a large sampling bias with fire plumes being specifically probed during the campaign (Jacob et al. 2010).* The other runs using GFAS produce similar results, [...]“

(1)- P16L3: This could also be due to an underestimation in removal as you’ve pointed out previously for other biases.

(2) Agreed. This was added here again.

(3) P16L3 extended to: Again, the BC mixing ratios are strongly overestimated [...]. This is *either* due to an overestimation in the upper-level, long-range transport of North American or Russian air pollution, or *by an underestimation in removal which could contribute to the upper-level transport*.

(1)- P17L5: It's worth reiterating that this is an uncertainty due to emissions and doesn't account for the potentially large uncertainties due to removal.

(2) Thank you for this comment. As this is one of main messages of the study we will stress it here again.

(3) Added at P17L5: The uncertainty with respect to the emissions setup is roughly 25% for TOA and BOA, but stronger in absolute values at TOA. This is solely due to the uncertainties in emission, potential uncertainties in removal shown in the evaluation with observations are not included.

(1)- P18L5: "...by the model, the run..." -> "...by the model, but the run..."

(2) Corrected.

(1)- P18L24: I agree that wet removal seems a plausible cause for this bias, however recent work with the same model (Lund et al. 2018) shows that it actually produces as good BC lifetime for the Arctic campaigns studied there so perhaps there are still transport issues.

(2) As stated above, we were unaware of said paper and will cite it here. Thank you for making us aware. However, we are sure that while the BC lifetime over the whole model and over long enough timespans can be good, in this specific example the problem would always occur merely on basis of the resolution problem with both the precipitation, the aerosol plume and the overlap of both.

(3) P18L21-24 we rewrote: *In one summer case of an observed wet removal affected biomass burning plume, described by Matsui et al. (2011), the model correctly reproduced the time and height of the*

biomass burning layer. It is known, that reproducing individual pollution events in exactly the correct way is impossible for a global model with this resolution, because both the aerosol transport, as well as the wet removal are affected by subscale processes. ECHAM-HAM overestimated the BC concentrations, because of this issue. While here the BC lifetime was overestimated, in general, the BC lifetime of ECHAM-HAM was discussed to be reasonably good (Lund et al., 2018).

(1)- P18L31: “layering” -> “vertical distribution”

(2) Changed.

(1)- P18L32: I can't see any comparison with the AeroCom average in the paper, this should be presented in the results or removed from the conclusion.

(2) Agreed. Removed the phrase in question.

The importance of the representation of air pollution emissions for the modeled distribution and radiative effects of black carbon in the Arctic

Jacob Schacht¹, Bernd Heinold¹, Johannes Quaas², John Backman³, Ribu Cherian², Andre Ehrlich², Andreas Herber⁴, Wan Ting Katty Huang⁵, Yutaka Kondo⁶, Andreas Massling⁷, P. R. Sinha⁸, Bernadett Weinzierl⁹, Marco Zanatta⁴, and Ina Tegen¹

¹Leibniz Institute for Tropospheric Research, TROPOS, Leipzig, Germany

²Leipzig Institute for Meteorology, Universität Leipzig, Leipzig, Germany

³Atmospheric Composition Research, Finnish Meteorological Institute, Helsinki, Finland

⁴Alfred Wegener Institute for Polar and Marine Research, Bremerhaven, Germany

⁵ETH Zürich, Institute for Atmospheric and Climate Science, Zurich, Switzerland

⁶National Institute for Polar Research, Tokyo, Japan

⁷Department of Environmental Science, Aarhus University, Roskilde, Denmark

⁸Department of Earth and Space Sciences, Indian Institute of Space Science Technology, Thiruvananthapuram, India

⁹Aerosol Physics and Environmental Physics, Faculty of Physics, University of Vienna, Vienna, Austria

Correspondence: Jacob Schacht (schacht@tropos.de)

Abstract. Aerosol particles can contribute to the Arctic Amplification by direct and indirect radiative effects. Specifically, black carbon (BC) in the atmosphere, and when deposited on snow and sea ice, has a positive **warming** effect on the top of atmosphere radiation balance during polar day. Current climate models, however, are still struggling to reproduce Arctic aerosol conditions. We present an evaluation study with the global aerosol-climate model ECHAM6.3-HAM2.3 to examine emission-related uncertainties in the BC distribution and the direct radiative effect of BC. The model results are comprehensively compared against latest ground and airborne aerosol observations for the period 2005 – 2017 with focus on BC. Four different setups of air pollution emissions are tested. The simulations in general match well with the observed amount and temporal variability of near-surface BC in the Arctic. Using actual daily instead of fixed biomass burning emissions is crucial to reproduce individual pollution events but has only a small influence on the seasonal cycle of BC. Compared to commonly used fixed anthropogenic emissions for the year 2000, an up-to-date inventory with transient air pollution emissions results in **locally** up to 30 % higher annual BC burden. This causes an over 0.1 W m^{-2} higher annual mean all-sky net direct radiative effect of BC at top of the atmosphere **over the Arctic region (60-90° N), with locally more than 0.2 W m^{-2}** over the Eastern Arctic Ocean. We estimate BC in the Arctic to lead to **an annual net** gain of **0.5 W m^{-2} averaged over the Arctic region, but locally** up to 0.8 W m^{-2} by the direct radiative effect of atmospheric BC plus the effect by the BC-in-snow albedo reduction. Long-range transport is identified as one of the main sources of uncertainties for ECHAM6.3-HAM2.3, leading to an overestimation of BC in atmospheric layers above 500 hPa especially in summer. This is related to a misrepresentation in wet removal in one identified case at least, that was observed during the ARCTAS summer aircraft campaign. Over all, the current

model version has significantly improved since previous intercomparison studies and performs now better than the **multi-model average in the AeroCom model comparison initiative** in terms of the spatial and temporal distribution of Arctic BC.

1 Introduction

The near-surface temperatures in the Arctic are warming at about twice the rate of the global average (Trenberth et al., 2007; Wendisch et al., 2017). Global climate models have struggled to reproduce the strength of this Arctic specific enhanced warming, that is commonly referred to as "Arctic Amplification" (AA) (Shindell, 2007; Sand et al., 2015). Aerosol particles have the potential to substantially affect the Arctic climate by modulating the Arctic energy balance through direct and indirect radiative effects. Considering these effects in models is mandatory to reproduce the observed Arctic Amplification (Shindell et al., 2009). Within the aerosol population, black carbon (BC) is considered to be the strongest warming short lived radiative forcing agent (Quinn et al., 2015), mainly by absorption of solar radiation in the atmosphere and by reducing the albedo of snow and sea ice surfaces when deposited. The direct radiative effect of BC on the Arctic has been shown to depend on many factors. Kodros et al. (2018) show that different assumptions about the mixing state of BC modulate the magnitude of the direct radiative effect, while its sign largely depends on the albedo of the underlying surface. Sand et al. (2012) come to the conclusion, that an increase of BC burdens in the mid-latitudes could have a stronger effect on Arctic sea ice concentrations and temperatures than an increase of BC concentrations in the Arctic by modulating the meridional energy transport.

The main sources of Arctic BC are located outside of the Arctic circle, and originate mainly from fossil fuel use and biomass burning. Local emissions exist in the form of shipping, domestic fuel burning in remote locations, gas flaring and biomass burning (Stohl et al., 2013). With declining sea ice concentrations, the emissions from local shipping are expected to increase (Corbett et al., 2010; Gilgen et al., 2018). Though human activities in Northern Russia represent an important source of BC in the Arctic, these emissions are often underrepresented in recent emission inventories, often missing gas flaring (Stohl et al., 2013; Huang et al., 2015). Gas flaring is important for the Arctic because of its close vicinity (Stohl et al., 2013).

The concentration of BC and other aerosol types like organic carbon, sulfate, and dust in the Arctic is the highest in late winter/early spring and shows a minimum during the summer. The maximum is often referred to as "Arctic Haze" and is caused by the southward expansion of the Arctic front, which promotes the transport of pollutants from the mid-latitude emission zones (Law and Stohl, 2007). The Arctic front is a barrier of air with a colder potential temperature, that impedes mixing of air masses, reducing wet removal (Shaw, 1995). In summer, the northward retreat of the Arctic front combined with an intensification of precipitation events leads to a minimum in the aerosol concentration (Law and Stohl, 2007). Koch et al. (2009) show that the observed seasonal variability in BC concentrations is challenging for global aerosol models. They showed a tendency to underestimate peak near-surface BC concentrations in late winter/early spring (Shindell et al., 2008). Although more recent studies show an improvement in the representation of the high late winter/early spring concentrations (e.g. Eckhardt et al., 2015; Sand et al., 2017), the model-to-model variability of simulated BC concentration remains considerable (Eckhardt et al., 2015).

Despite a good agreement between BC obtained from models and observations close to source regions (Bond et al., 2013), in the remote Arctic regions, models still tend to predict a too low BC concentration at the surface in winter and spring while only some models overestimate it (Eckhardt et al., 2015). However, in the upper troposphere, models tend to overestimate the BC concentrations (Schwarz et al., 2013). This is caused by a misrepresentation of the aerosol removal processes and transport (Schwarz et al., 2013). The mixing and aging, as well as the related removal of aerosol particles along the various transport pathways, are important processes that need to be described accurately in the models (Vignati et al., 2010). The representation of emissions is, however, a prerequisite to correctly simulate the transport fluxes and are therefore a key source of uncertainties (Stohl et al., 2013; Arnold et al., 2016; Winiger et al., 2017). Both the coverage of all BC sources and their temporal variability contribute to the ability to reproduce vertical BC distributions (Stohl et al., 2013). The relative source contributions are, however, still discussed with different results (Winiger et al., 2017)). *Bond et al. (2004) estimate the uncertainty in BC emission inventories to be a factor of about two. Flanner et al. (2007) conclude that for the climate forcing by BC in snow, the emissions introduce a bigger uncertainty than the scavenging by snow melt water and snow aging. However, the quality of emission inventories is difficult to assess with models, because of the dependence on the model (Vignati et al., 2010).*

Having pointed out the potential importance of BC for the AA and the additional uncertainties in aerosol-climate models, in this study, we thoroughly evaluate the global aerosol-climate model ECHAM-HAM for the period 2005 to 2017 with focus on BC in the Arctic. The evaluation uses a comprehensive set of ground and airborne in-situ measurements of BC all across the Arctic and throughout all seasons. In order to address emissions as one of the main sources of uncertainty, we make use of different emission setups to assess the sensitivity of our model to the emission data used. The emissions are composed of different state-of-the-art and widely used emission inventories of anthropogenic air pollution and wild fires. The sensitivity studies allow for estimating the uncertainty range of the BC burden and climate radiative effects in recent aerosol-climate model simulations that are related to emission uncertainties. Estimates of BC radiative effects presented in this study comprise the atmospheric radiative perturbation and the BC-in-snow albedo effect. The model results utilizing the different emission inventories are compared among each other in such a way that the following three points can be explored: (1) The importance of considering daily varying biomass burning emissions, (2) uncertainties in current anthropogenic emission inventories, and (3) the potential improvements by regional refinements in particular in Russian air pollution sources, including gas flaring.

The methods used in this study are discussed in Section 2, with an overview over the model setup and in-situ measurements. The sensitivity and related uncertainty in the atmospheric BC burden will be explored in Section 3. Section 4 will then discuss how well the model performs with the different setups in comparison to BC concentrations obtained by the in-situ measurements. Finally, we provide an up-to-date evaluation of the direct radiative effect of BC in the Arctic region, and quantify an uncertainty range for this effect that is related to the different emissions (Section 5).

2 Methodology

2.1 Model description

For this study the global aerosol climate model ECHAM-HAM is used. It was first described in Stier et al. (2005). We used the latest version ECHAM6.3-HAM2.3 developed by the HAMMOZ community, ECHAM6-HAM2.3 (Tegen et al., 2019). The model is based on the general circulation model ECHAM, developed by the Max Planck Institute for Meteorology MPI-M in Hamburg (Stevens et al., 2013). ECHAM is online coupled to the aerosol module HAM that is described in detail in Zhang et al. (2012). It uses the aerosol microphysics module M7 (Vignati et al., 2004; Zhang et al., 2012), in which BC, sulfate (SU), organic carbon (OC), sea salt (SS), and mineral dust (DU) are the aerosol species that are accounted for. Volcanic emissions are prescribed. The emission fluxes of mineral dust from deserts as well as, sea salt and dimethyl sulfide (DMS) originating from the ocean are calculated online, depending on the meteorology (see Zhang et al., 2012; Tegen et al., 2019). Anthropogenic and biomass burning aerosol emissions are prescribed from emission inventories for which different setups are available.

The aerosol number concentration, as well as the mass concentration are prognostic variables calculated using a “pseudo-modal” approach. The log-normal modes represent: the nucleation mode with a dry radius (r_{dry}) range of 0-5 nm and a geometric standard deviation ($\sigma_{\ln(r)}$) of 1.59, Aitken mode ($r_{dry}=5-50$ nm, $\sigma_{\ln(r)}=1.59$), accumulation mode ($r_{dry}=50-500$ nm, $\sigma_{\ln(r)}=1.59$) and coarse mode ($r_{dry} > 500$ nm, $\sigma_{\ln(r)}=2.0$). The latter three exist as hydrophilic and hydrophobic (commonly referred to as soluble and insoluble, respectively). Aerosol in the nucleation mode is always considered hydrophilic, consisting solely of sulfate. *The hydrophobic Aitken mode contains BC and OC. In the hydrophilic Aitken mode, they are internally mixed with SU. The hydrophobic accumulation and coarse mode only contain DU. The hydrophilic accumulation and coarse mode contain BC, OC, DU and SS, all internally mixed with SU. See Table 1.*

The accumulation and coarse mode contains BC, OC, and DU for both classes, and SU (internally mixed), as well as SS, for the mixed classes. Aerosol particles within a mode are assumed to be internally mixed, such that each particle can consist of multiple components. Aerosols of different modes are externally mixed, meaning that they co-exist in the atmosphere as independent particles. During the mixing, aging, and coagulation processes, that are parameterized in M7, aerosol can grow to a bigger mode and can be coated with sulfate to transfer from the hydrophobic to hydrophilic mode. The median radius of the modes can be calculated from the number and mass concentration.

The removal process in ECHAM6.3-HAM2.3 is split between sedimentation, dry deposition and wet deposition. The sedimentation process describes the removal by gravitational settling and is applied only to accumulation and coarse mode particles. In the model, dry deposition is due to turbulent mixing and affects all but the nucleation mode particles. In the wet deposition scheme, particles are removed as activated aerosol only if the cloud is precipitating. Additionally, below cloud scavenging is applied. For more details on the removal processes in ECHAM-HAM see Zhang et al. (2012). Monthly and yearly mean values of BC emissions and deposition fluxes computed by ECHAM-HAM for the Arctic are given in Table 2. Wet deposition accounts for over 90 % of the BC removal and is therefore a crucial impact factor on the Arctic BC burden.

The modeled spatial aerosol distribution affects the climate simulations through interactions with radiation and clouds. A look-up table with pre-calculated Mie parameters is used to dynamically determine the particle optical properties considering

their size, composition, and water content (Stier et al., 2005; Zhang et al., 2012). The description of cloud micro-physics in ECHAM6.3-HAM2.3 is based on the two-moment scheme of Lohmann et al. (2008), which allows to account for the impact of modeled aerosol populations on the number concentrations of cloud condensation nuclei and ice nucleating particles. Particles can collide with droplets/ice particles after they have formed. For further details on the model system we refer to Stier et al. (2005) and Zhang et al. (2012).

2.2 Emission inventories

While here we focus on BC, the details on the emissions of other aerosol species can be found in Zhang et al. (2012). BC is emitted only in the hydrophobic Aitken mode with a median radius of $r_{dry} = 30$ nm and can grow into the bigger modes by aging and coagulation. It can also become hydrophilic by getting coated with sulfate. In this study, we use and compare four different emission setups, that are built from different emission datasets as described in the following.

We use the emissions developed for the Atmospheric Chemistry and Climate Model Intercomparison Project (ACCMIP) as described by van Vuuren et al. (2011). The data has a $0.5^\circ \times 0.5^\circ$ horizontal resolution and contains anthropogenic and biomass burning emissions that do not differ between years. The ACCMIP emission inventory is available with historic emissions until the year 2000, and for four different development scenarios, linked to the Representative Concentrations Pathways (RCPs) for all later years (2000-2100) (Lamarque et al., 2010). *The anthropogenic emissions remain constant throughout the year. The biomass burning emissions vary monthly over the course of one year, but are only scaled by a factor between the years and do not differ in their location. In this study, we only use year 2000 emissions.*

The global emission data set created for Evaluating the Climate and Air Quality Impacts of Short-lived Pollutants (ECLIPSE), version 5a by Klimont et al. (2017) includes only anthropogenic emissions. The horizontal resolution is $0.5^\circ \times 0.5^\circ$. Historic emissions are available until 2010 and projections of different industrial development scenarios afterwards, that are linked to the RCPs. Unlike the ACCMIP emission data set, *the anthropogenic emissions are seasonally varying for the different sectors, and they* it also includes emissions from gas flaring. However, gas flaring emissions from Northern Russia, have been discussed to be *difficult to measure and therefore uncertain and possibly* too low in current emission inventories (Stohl et al., 2013).

To address the importance of local emissions, we use the anthropogenic BC emission data set for Russian BC described in Huang et al. (2015). It is available for the year 2010 and originally comes in $0.1^\circ \times 0.1^\circ$ horizontal resolution, but here is interpolated to model resolution of T63 (approximately 1.8°). Since the data set is limited to the area of Russia, we combine it with the ECLIPSE emission data. The Russian emissions are distributed between the different months with the monthly patterns of ECLIPSE. The emissions of Russian gas flaring are more than 40% higher than in ECLIPSE resulting partly from a high conversion factor estimated for the fossil fuels found in Russia (Huang et al., 2015). It represents a reasonable yet high estimate of local emissions and is used as the reference setup. When compared, the ECLIPSE and Huang et al. (2015) emissions span an uncertainty range concerning gas flaring emissions.

GFAS (Global Fire Assimilation System) is a dataset of biomass burning emissions. The strength of the emissions is scaled to the fire radiative power as observed by the MODIS instruments on board NASA's Aqua and Terra satellites (Kaiser et al., 2012). This allows for a representation of real-time fires in ECHAM-HAM *with daily changing emissions* and enables it

to reproduce the biomass burning plumes, that are regularly observed in the Arctic during spring and summer months. This covers natural fire events, as well as those caused by anthropogenic activities. *In ECHAM-HAM the biomass burning emissions are injected into the boundary layer regardless of the actual injection height provided by GFAS, which is usually reasonable for most small and moderate boreal fires while the injection height can be underestimated for specific events with high fire radiative power (Sofiev et al., 2009). In previous works with ECHAM-HAM, GFAS emissions were often used with an emission factor of 3.4 as proposed by Kaiser et al. (2012). In an early setup, this led to a strong overestimation in BC concentrations in comparison to ground-based and airborne observations at mid and high-latitudes, it was therefore discarded.*

2.3 Experimental setup

We run ECHAM6.3-HAM2.3 at T63 horizontal resolution (approximately 1.8°), with 47 vertical layers. The model is driven with ERA-Interim reanalysis data and prescribed sea surface temperature (SST) as well as sea ice concentrations (SIC). The model simulations cover the 11-year period 2005-2015, *with a spin-up period of three months*. One run is extended to June 2017 in order to include the period of a recent aircraft campaign. In total four model runs are realized, each with a different combination of emission datasets as described in the following. The time-averaged land emissions of BC from each setup are presented for different geographical regions in Table 3 (see Figure 1 for location).

For the first run we use the historical year 2000 ACCMIP emissions, throughout the whole simulation period. Hereafter, this run is referred to as "ACCMIP". *ACCMIP emission data is still widely used for model experiments, in some cases using the RCPs (Lund et al., 2018), or fixed for the year 2000 (Sand et al., 2017). Although fixed for the year 2000, ACCMIP emission data is still widely used for model experiments.* This simplification is a common approach to reduce degrees of freedom and control boundary conditions in non-transient climate studies. ACCMIP is the only run that does not use the daily updated GFAS emissions for biomass burning and can therefore not be expected to reproduce actual biomass burning events. Therefore, it can serve as a reference run needed to estimate the uncertainty that is related to the representation of biomass burning emission. The resulting monthly BC for the latitude bands of $30-60^\circ$ N and $60-90^\circ$ N can be seen in Figure 2. Sulfate is important for the aging and wet removal of BC, therefore the SO_2 plus sulfate (SO_x) emissions are given as well. It is the run with the highest European emissions, with 538 kt yr^{-1} , and low Central Asian emissions, see Table 3. The anthropogenic ACCMIP emissions are higher in Europe than for the other data sets used in this study, because recent changes in air quality regulations led to lower emissions there in the period examined (considered until 2011). In Southeast Asia, they are however smaller, since the Asian economy has strongly grown since 2000 and with it the air pollutant emissions.

The second run, called "ACCMIP-GFAS", combines the biomass burning emissions of GFAS with the year 2000 ACCMIP emissions from anthropogenic sources (orange line in Figure 2). This run also does not account for changes in anthropogenic emissions but considers the day-to-day variability of wild fires. Together with a setup described in the following, it can be used to assess the range of uncertainty in anthropogenic emissions. This run has the highest average BC emissions in North America, with 515 kt yr^{-1} and the lowest Central Asian emissions, with 1997 kt yr^{-1} .

In the third run, we use the ECLIPSE RCP4.5 emission data combined with GFAS emission. It is referred to as "ECLIPSE" hereafter (blue line in Figure 2). This run has the highest BC emissions in Central Asia, with about 1.5 times the emissions of the ACCMIP runs, cf. Table 3.

The fourth run, which is referred to as "BCRUS", uses the updated spatially highly resolved BC emissions from Huang et al. (2015), replacing and updating only the anthropogenic BC emissions in Russia. Elsewhere the emissions are the same as in the ECLIPSE run. *This way, the BC sources are supposed to represent a high estimate, addressing the possibility of underestimation in the global datasets, in particular, with respect to gas flaring.* For other species, most notably SO_x , the runs BCRUS and ECLIPSE do not differ (see green lines in Figure 2).

BCRUS is chosen as the reference run, since it uses the most up-to-date data and is therefore assumed to be the best estimate. In BCRUS the BC emissions north of 60°N on land are even higher than over the oceans compared to the other datasets, with 172 kt yr^{-1} and 7 kt yr^{-1} , respectively.

Figure 3a shows the emissions of BC for the reference run BCRUS. The highest emissions north of 30°N are found in the industrial regions of East Asia, Europe and North East America as well as in gas and oil extraction areas in North America and northern Russia. The anthropogenic emissions in the sparsely populated Northern Canadian and Alaskan regions are much lower than those of the densely populated European region. Additionally, the aforementioned gas flaring emissions in Russia are assumed to be higher than in northern North America. *The transport efficiency from the East Asian sources to the Arctic is comparably low but the high emissions in this region makes it important for long-range transport to the Arctic upper troposphere (Ikeda et al., 2017).*

Figures 3b-c show the difference in BC emissions for the runs ACCMIP-GFAS and ECLIPSE compared to the BCRUS setup, respectively. *BC emissions from ACCMIP-GFAS are higher than those of BCRUS in North America, Europe, western Russia and Japan. They are, however, lower in northern Russia by more than $3500 \text{ kg km}^{-2} \text{ yr}^{-1}$ less and China by more than $2800 \text{ kg km}^{-2} \text{ yr}^{-1}$ less, respectively. In northern Russia and China, however, ACCMIP-GFAS emissions of BC are locally over $3500 \text{ kg km}^{-2} \text{ yr}^{-1}$ and $2800 \text{ kg km}^{-2} \text{ yr}^{-1}$ lower, respectively.* Figure 3c shows the difference between ECLIPSE and BCRUS. There are only differences in Russia, as expected. The ECLIPSE emissions are smaller than the BCRUS emissions, because of newer information about additional sources. Among other sources, higher values are mainly due to gas flaring emissions. Figure 3d shows difference in BC emission between the runs ACCMIP and ACCMIP-GFAS that result from their difference in the biomass burning representation discussed above. ACCMIP shows higher emissions in Europe and Russia, while the emissions of ACCMIP-GFAS are higher in North America. The totals of BC emissions are summarized in Table 3.

2.4 Calculation of direct aerosol radiative effects of BC

For diagnostic output, the instantaneous radiative impact of all aerosol types is calculated in ECHAM-HAM by calling the radiation routine twice, once considering the interaction between aerosol particles and radiation and once without any aerosol. The difference between these two calls is then considered to be the direct aerosol radiative effect (DRE), which is free of any rapid adjustment (semi-direct effects).

To calculate the DRE by BC, the ACCMIP-GFAS and BCRUS runs were repeated with *leaving BC out in the computation* of radiative fluxes. *For this, BC was skipped in the calculation of the complex radiative index and the radiatively active number of particles while the wet radius of respective aerosol modes was not further adjusted. The DRE of BC is then derived from the difference of these two runs to their original setup. Note that with this method, the estimate includes the semi-direct effect of BC, which is small on large-scale average since positive and negative effects cancel each other out and is not statically significant in the Arctic (Tegen and Heinold, 2018). The DRE of BC is studied for the sub-period 2005-2009.*

The aerosol transport and radiation simulations in this study consider the reduction of snow albedo due to deposited BC. The BC-in-snow albedo effect is parameterized in terms of a lookup table based on a single-layer version of the snow, ice, and aerosol radiation (SNICAR) model from Flanner et al. (2007). The scheme was first implemented in the earth-system model version of ECHAM6 by Engels (2016), and since recently is available in ECHAM6.3-HAM2.3 (Gilgen et al., 2018). It accounts for the BC concentration within in the uppermost 2 cm of snow. Input parameters are the snow precipitation, the sedimentation, dry deposition and wet removal of BC, as well as on snow melt and glacier runoff, the latter of which leads to an enrichment of BC in the remaining snow layer. The BC-in-snow albedo effect is computed for solar radiation only because the albedo is only used for shortwave (solar near-infrared and visible) wavelengths in the model. The effect in the terrestrial spectrum is very small and can be neglected for the atmosphere. A feature not considered so far is the impact of BC deposition on bare sea ice. This, however, is expected to be negligible since the spatial extent of sea ice without snow cover is small (Gilgen et al., 2018). In this study, the parameterization is only used for diagnostics of the BC-in-snow albedo effect without any feedback on the model dynamics.

2.5 Observations

2.5.1 Near surface BC concentrations

Near surface BC concentrations are taken from different measurement sites around the Arctic, shown on the map in Figure 4 as triangles. These sites utilize different measurement principles providing BC concentrations that differ by definition. The measurement principles, measurement period, as well as the location of the measurements are summarized in Table 4.

At five of these sites light absorption was measured with Aethalometers. Of those five stations Alert and Summit measured at 467 nm, 525 nm and 637 nm, Zeppelin Station measured at 525 nm only, and Tiksi and Pallas measured at 637 nm only. *From the light absorption equivalent black carbon (eBC) concentrations were calculated using different mass absorption coefficients (MAC) depending on the wavelengths. For the stations where measurements at 525 nm were available, $9.8 \text{ m}^2 \text{ g}^{-1}$ for aged Arctic BC at 550 nm from (Zanatta et al., 2018) was used. Zanatta et al. (2018) give an uncertainty of the MAC value of $\pm 1.68 \text{ m}^2 \text{ g}^{-1}$. This implies an uncertainty range of approximately -20% to +15% for the observed BC concentrations.* For the stations where the light absorption was only available at 637 nm, a MAC of $8.5 \text{ m}^2 \text{ g}^{-1}$ for Scandinavian BC was used at this wavelength, correspondingly (Zanatta et al., 2016). The data was processed as described in Backman et al. (2017a) to reduce noise and lower the detection limit, which is important for the Arctic since concentrations tend to be about one order of magnitude lower than at mid-latitudes outside of Arctic Haze season. We use the variable collection time data from Backman

et al. (2017b), that covers January 2012 until December 2014. The sites are: Alert, Nunavut, Canada; Pallas, Finland; Tiksi, Sacha, Russia; Zeppelin, Svalbard, Norway; Summit, Greenland, Denmark.

BC concentration data measured with a continuous soot monitoring system (COSMOS), which removes volatile aerosol compounds, is available for Ny-Ålesund, Svalbard, Norway, and Barrow, Alaska, USA, for the period 1 April 2012 to 31 December 2015 and 12 August 2012 to 31 December 2015, respectively. The data collection and the retrieval of BC mass concentrations using a MAC of $8.73 \text{ m}^2 \text{ g}^{-1}$ at 565 nm is described in Sinha et al. (2017).

In addition, we use measurements of eBC concentration at Villum research station in North Greenland, that were performed with a multi-angle absorption photometer (MAAP). We use daily averaged data from 14 May 2011 to 23 August 2013. Further information on data sampling and processing can be found in Massling et al. (2015).

For Alaska we use filter collected BC data acquired by the Interagency Monitoring of Protected Visual Environments (IM-PROVE) aerosol network. The thermal protocol used to process the measurements is described in Chow et al. (2007). We use data from the sites Tuxedni, Trapper Creek, Denali National Park (NP) and Gates of the Arctic NP.

2.5.2 Aircraft campaigns

The correct representation of the modeled aerosol vertical distribution is a key prerequisite for estimating the aerosol radiative impact (Samset et al., 2013). For this reason, we collected BC measurements from five Arctic airborne campaigns. During all flights, the mass concentration of refractory black carbon (rBC) was quantified by means of the single particle soot photometer (SP2), which ensures the high time resolution and high sensitivity required in airborne observations.

The HIPPO (HIAPER Pole-to-Pole Observation) campaign consists of 5 deployments by the National Science Foundation (NSF) (data set: Wofsy et al. (2017), version 1): The HIPPO-1 (9 to 23 January 2009), HIPPO-2 (31 October to 22 November 2009), HIPPO-3 (24 March to 16 April 2010), HIPPO-4 (14 June to 11 July 2011) and HIPPO-5 (9 August to 8 September 2011). Flights included northern hemisphere high latitudes over North America, the Pacific Ocean and the Bering Sea. BC particles were measured with a SP2. The aircraft used, was the NSF/NCAR Gulfstream-V (GV).

The BC data from NASA's campaign ARCTAS (Arctic Research of the Composition of the Troposphere from Aircraft and Satellites) was collected in two deployments: Spring (April 2008) and Summer (June/July 2008), over North America and the American Arctic. The mission design and execution are described in Jacob et al. (2010) (data set: SP2_DC8, <https://www-air.larc.nasa.gov/cgi-bin/ArcView/arctas/>).

The summer campaign of ACCESS (Arctic Climate Change, Economy and Society) in July 2012 took place over Scandinavia and the European Arctic (Roiger et al., 2015). The BC mass concentration was derived from measurements of a SP2 on board of the Falcon aircraft of the DLR (Deutsches Zentrum für Luft und Raumfahrt).

Another set of airborne measurements was collected from the 2017 PAMARCMiP (Polar Airborne Measurements and Arctic Regional Climate Model Simulation Project) campaign (Herber et al., 2012). The selected flight took place in March, and was based in Longyearbyen, Spitzbergen, Norway and made use of the Polar 5 aircraft of the Alfred-Wegener-Institute (AWI).

Also based in Ny-Ålesund was the ACLOUD (Arctic CLOUD and Observations Using airborne measurements during polar Day) campaign, with measurements from 22 May to 28 June 2017 (Wendisch et al., 2018). Again, the BC concentrations were measured with an SP2 aboard the AWI Polar 5 aircraft.

The range of flight tracks of the aircraft campaigns used in this study are mapped in Figure 4 as colored boxes, with HIPPO in blue, ACCESS in red, ARCTAS in orange and the combination of ACLOUD and PAMARCMiP-2017 in green. The most western, eastern, southern and northern coordinates, at which the aircraft took measurements, form the edges of the boxes, with measurements south of 60° N being not considered. An overview over instruments and dates are given in Table 4. Even though aircraft campaigns can only give information within a short time window, the combination of different campaigns allows to cover the almost entire year except for December, February, September and October, the months for which no aircraft data is available.

The comparison between a coarsely resolved model and aircraft measurements is challenging because of many factors. Any observed feature of sub-scale lifetime or spatial extent will be missed or at least underestimated by a model that is designed to estimate climate relevant effects over multiple years. Schutgens et al. (2016) suggest either spatio-temporal averaging of both measurements and spacial interpolated model data or increasing the model resolutions to achieve best agreement. Lund et al. (2018) show that using only monthly mean model output introduces significant biases.

In this study, we sample from the model's twelve-hourly output for each measurement point during one campaign before averaging to one vertical profile, without prior interpolation.

3 Sensitivity study on emissions

In order to investigate the uncertainty range in BC burden and its direct radiative impact, that results from the uncertainty in emissions, different simulations with the aerosol climate model ECHAM6.3-HAM2.3 using four emission configurations are performed and compared as outlined in Section 2.3.

The atmospheric burden of BC averaged of the simulation period (2005-2015), that results from the different emission setups is shown in Figure 5. The distribution over the BC burden resulting from BCRUS (see Figure 5a) is comparable to the distribution of the emissions in this run (see Figure 3a). The northward transport results in a visible separation between the eastern and western hemispheres in the BC burden northern part of 60° N, with higher values of 200 to 800 $\mu\text{g m}^{-2}$ on the eastern hemisphere, compared to values of 50 to 400 $\mu\text{g m}^{-2}$ on the western hemisphere. This separation along the prime meridian is a result of higher anthropogenic emissions in the north of the eastern hemisphere, as discussed in Section 2.3. The area-weighted mean burden of BC north of 60° N of BCRUS is 254 $\mu\text{g m}^{-2}$ on the multi-year annual average, which is the highest among the model runs used for this study. The highest values north of 60° N are located in the Russian gas flaring region with over 560 $\mu\text{g m}^{-2}$.

The causes and details, as well as differences between the runs will be discussed in the following.

3.1 Recent economic changes

To estimate the range of anthropogenic emissions in currently widely used inventories, we compare the runs BCRUS and ACCMIP-GFAS. The ACCMIP run does not take recent economic changes into account, since emissions are fixed to the year 2000. BCRUS on the other hand is largely based on the ECLIPSE emissions that considers the economic development until 5 2015 and provides projections for the years after. Since both are combined with the biomass burning emissions from GFAS (that covers natural as well as human-ignited fires), the differences in BC emissions are solely in the anthropogenic emissions (excluding human-caused grass and forest fires).

The use of fixed emissions in ACCMIP-GFAS causes a remarkable difference in the atmospheric burden of BC over the source regions compared to the reference run (see Figure 5b). ACCMIP-GFAS does not catch the reduction in BC emission 10 over western countries and Japan due to the implementation of strict air quality legislation and the increased emission over China caused by its economic growth. The neglecting of the recent economic evolution and mitigation policies result in an overall underestimation of the BC burden by $63 \mu\text{g m}^{-2}$ (25 %) within the 60-90° N latitudinal band. Over the Kara Sea, the result is an underestimation that exceeds $100 \mu\text{g m}^{-2}$, a region that has been discussed as a hot spot for the connection between Arctic sea ice loss and changes in the large scale atmospheric circulation with particular sensitivity (e.g. Petoukhov 15 and Semenov, 2010).

3.2 Regional refinement

Higher, more realistic estimates of emissions for Arctic sources (e.g., gas flaring) have been discussed as a requirement to reproduce observations like locally high BC concentrations in snow (Eckhardt et al., 2017), as well as the layering and seasonality of Arctic aerosol concentration far from sources (Stohl et al., 2013). However, improving the regional accuracy of 20 BC emissions in the Russian Arctic does not impact the modeled BC spatial distribution meaningfully outside of the Russian Arctic. As seen in the comparison of the runs BCRUS and ECLIPSE (Figure 5c), the difference in BC burden between BCRUS and ECLIPSE shows only differences visible in Russia, since only there the BC emissions differ (see Table 3 and Figure 3). This results in an increase in the BC burden mainly in the eastern Arctic with up to $25 \mu\text{g m}^{-2}$ higher values over the Barents and Kara-Sea. The area-weighted annual averages north of 60° N differs by $11 \mu\text{g m}^{-2}$, with the higher BC burden produced 25 by BCRUS. However, stronger effects are found for BC near surface concentrations as discussed below, due to the vicinity of the refined sources to the Arctic and the resulting transport at lowest atmospheric levels.

3.3 Temporal variability of wildfire events

The atmospheric composition and, in particular, the BC loading is strongly influenced by wild fires, which have a strong spatio-temporal variability. The importance of considering actual biomass burning events is demonstrated by comparing the runs 30 ACCMIP-GFAS and ACCMIP. While ACCMIP-GFAS accounts for real fire events derived from satellite retrievals, ACCMIP uses fixed fire emissions for the year 2000. The ACCMIP-GFAS BC emissions are higher than the ones of ACCMIP by 64.5 kt yr^{-1} , mainly caused by North American emissions (see Figure 3d).

The patterns of BC burden of both runs are similar, with a higher burden over the western industrialized countries and a lower burden over China, compared to BCRUS. The area weighted average burden of BC estimated with ACCMIP is $186 \mu\text{g m}^{-2}$, which is $11 \mu\text{g m}^{-2}$ (6 %) less than ACCMIP-GFAS. A map of the differences in annual average burden of BC due to the different representations of biomass burning emissions is shown in Figure 5d. A clear pattern of lower BC burden over Southern Siberia and a higher burden over North America is visible. For the high Arctic both runs produce a similar burden in the 11-year mean with differences in BC burden of less than $25 \mu\text{g m}^{-2}$. However, for short time periods, influenced by biomass burning events the difference between the two runs can be dramatic, as shown below for comparisons of the BC mass concentration.

4 Evaluation with observations

4.1 Near-surface BC mass concentration

Near-surface measurements of BC mass concentrations can help evaluate the capability of ECHAM-HAM to reproduce the distribution of BC in the Arctic atmosphere and hence reasonable estimates of the warming influence of absorbing aerosol. While the data is only representative of the lowest atmospheric layer, the long time series give robust information about this specific important climate forcer. The multi-year seasonality of near-surface BC is compared to observations in the Arctic as is the temporal correlation with a spatial emphasis. Each measurement point is compared to the nearest grid cell at the closest time step from the model. The medians are calculated after this sampling.

Figures 6 through 8 each show the comparison of the observed and modeled monthly median mass concentration of near-surface BC, for four available Arctic field sites averaged over multiple years. A list with detailed information on measurement period, instrumentation and data providers can be found in Table 4. The model is compared to the measurements in terms of how well the annual cycle is reproduced by comparing median BC mass concentration values, and in terms of the ability to reproduce pollution events at the correct time by analyzing the Pearson correlation coefficients,

Of the stations used, Zeppelin Station and Ny-Ålesund are located on Svalbard. Alert and Villum Research Station are both situated in the north of the Greenland ice sheet. The annual cycle of the BC concentration is shown in Figure 6 in terms of the median, upper and lower quartiles in black; the different model runs are shown color coded. At all four stations, the maximum median BC mass concentration is observed in Spring, with 36 ng m^{-3} , 72 ng m^{-3} and 73 ng m^{-3} for Zeppelin Station, Villum Research Station and Alert in March, respectively.

For Ny-Ålesund the highest concentrations are observed in April with a median of 30 ng m^{-3} . For all stations in Figure 6 there is a minimum in summer with less than 15 ng m^{-3} median BC concentrations in the near-surface air. At all four stations, the reference run BCRUS produces higher median concentrations in January than observed. The modeled BC mass concentrations are underestimated by the model at all of these stations except Ny-Ålesund, at least for some months. The model overestimates the BC concentrations in the beginning of the year at all stations. The overestimation is largest at Ny-Ålesund with monthly median values of up to 120 ng m^{-3} for BCRUS, compared to the measured median of 20 ng m^{-3} .

For Zeppelin Station and Ny-Ålesund, BC is also overestimated in November and December. Here, the model simulates monthly median values each of 90 ng m^{-3} for December compared to measured medians of 10 ng m^{-3} and 20 ng m^{-3} for

Zeppelin Station and Ny-Ålesund, respectively. It has to be noted that, on model resolution, Zeppelin Station and Ny-Ålesund are in the same grid box. The difference in altitude is not taken into account from the models side, instead the lowest level above the modeled orography is chosen. Differences in the model results between the two stations, shown in Figure 6, are only due to the different temporal availability of the measurements. Interestingly the model agrees slightly better with the observations at Zeppelin station, which is more exposed to long-range transport while Ny-Ålesund is often subject to a blocking situation that prevents mixing of air masses because of their respective location.

Figure 7 shows the second set of stations. Tiksi, Pallas and Utqiagvik (Barrow) show the same annual cycle as the stations in Figure 6, with high concentrations in winter and spring as well as minimum concentrations in summer. The model slightly underestimates BC at Tiksi in all months with high concentrations of over 50 ng m^{-3} . For Pallas and Utqiagvik (Barrow) an overestimation by the model is found for January. Summit shows a different annual cycle in the observations, with the highest median BC mass concentrations of slightly more than 30 ng m^{-3} observed in April and with slightly lower values in summer, and a minimum was observed for January. The model was neither able to reproduce this different annual cycle, nor the peak in the quartiles during September and December that were observed. However, the amount of BC mass agrees well between model and measurements, with values generally below 30 ng m^{-3} .

Results for four Alaskan stations of the IMPROVE network are shown in Figure 8. There, the highest median BC concentrations are observed in the summer months, with 70 ng m^{-3} at Gates of the Arctic in June, 50 ng m^{-3} at Trapper Creek in July, and with 40 ng m^{-3} and 60 ng m^{-3} in Tuxedni and Simeonof in August, respectively. The model noticeably fails to reproduce these summer maxima and instead produces the highest concentrations in January to March, in a similar way as for the other Arctic stations. In Tuxedni, the simulated median concentration lies at 60 ng m^{-3} while the observed one is at 10 ng m^{-3} . The Brooks Range spans through Alaska from the Bering Sea in the West to the Beaufort Sea in the east with multiple peaks of more than 2000 m above sea level. Situated south of Brooks Range, the four stations are shielded from Arctic. An underestimation of the orographic height in the coarse-resolved model could therefore be the reason for this misrepresentation.

The Pearson correlation coefficient between the collocated data of measured and modeled BC mass concentrations for all available aerosol stations in the Arctic region is shown in Figure 9. Since pollution events in the Arctic can raise the BC concentrations to levels well above the background, the correlation coefficient is very sensitive to the model being able to reproduce the timing of pollution events. Therefore, this analysis complements the median and quartiles discussed above.

The top right segment of each circle shows the correlation coefficient between the BCRUS model run and the measurements. Following clockwise are the correlations for the runs ACCMIP, ACCMIP-GFAS and ECLIPSE, respectively. The circle for Summit is not filled, since there the correlation coefficients are negative albeit close to zero (-0.06 for BCRUS). The negative correlation corresponds to the opposite annual cycle of surface BC in the BCRUS model results compared to the observations as shown in Figure 7. For all other stations, correlation coefficients are positive. Simeonof on the Alaska Peninsula shows a very weak correlation with 0.09 for the different model runs. Tuxedni on the southern coast of Alaska also has a relatively low correlation coefficient of 0.44.

For the other Alaskan stations of the IMPROVE network, however, a correlation between observations and BCRUS model results is found that is robustly positive. Even for the stations where the annual cycle was not reproduced, the correct timing of

short term events leads to these positive correlation coefficients. Trapper Creek shows a correlation coefficient of 0.55, Denali National Park (NP) of 0.72 and Gates of the Arctic NP of 0.94. ACCMIP clearly performs worst of all experiments, with 0.14, 0.31 and 0.20, respectively, while the other runs do not differ strongly from each other. Taking the position and strength of actual biomass burning events into account is crucial for correctly reproducing the near-surface BC concentrations in Alaska.

5 The correlation coefficient at Oulanka is below 0.3 for all runs. This however is computed only on the basis of three months of measurements. The other European stations of Pallas, Ny-Ålesund and Zeppelin Station show also relatively low correlation coefficients of 0.45, 0.50 and 0.30 for BCRUS, respectively. The other runs behave similarly.

At the four northernmost stations, Tiksi, Utqiagvik (Barrow), Alert and Villum Research Station correlation coefficients of 0.55, 0.65, 0.60 and 0.60 are found for BCRUS, respectively. These four stations are located north of a big land mass, and
10 likely show a good correlation, since concentrations are drastically different, when the wind is either coming from the land or the Arctic ocean. With the exception of Tiksi, the ACCMIP run does not produce considerably weaker correlations with the observations than the other runs. At Tiksi, the highest correlation coefficient would be expected for BCRUS, since BCRUS comprises the most recent and detailed emissions specifically for Russia. With 0.56 compared to 0.71 (ACCMIP-GFAS) and 0.61 (ECLIPSE) the correlation is however the lowest.

15 4.2 Vertical distribution of BC

The BC mass mixing ratio from airborne measurements are a valuable source of information about the vertical distribution of BC. However, because of the logistical difficulties and high costs the spatial and temporal coverage is quite sparse. The aircraft campaigns used in this study for model evaluation are described in detail in Section 2.5.2, their geographical operation area is presented in Figure 4, and they are listed in Table 4. Each measurement point is compared to the nearest grid cell from the
20 model, resulting in one average profile per campaign and run. We group the campaigns based on season, resulting in at least one profile per season, with better coverage during spring and summer, with three and four campaigns, respectively.

4.2.1 Winter

For the winter months (December-January-February; DJF) only data from the HIPPO campaign is available, starting with the first deployment during January 2009. We consider only data points north of 60° N. The area covered by HIPPO is indicated
25 by the blue box in Figure 4. As shown in Figure 10, observed BC mass mixing ratios were highest near the ground. Everything below 950 hPa is removed from the plot, because of unrealistically high measured BC mass mixing ratios near the ground of over 450 ng kg⁻¹ on average, that could not be reproduced by the model. Starting at 950 hPa the simulated profile of BCRUS is very similar to the observed vertical distribution. Model results and measurements show a decrease of BC with height, with the BCRUS run overestimating the BC mass mixing ratio above 900 hPa by a factor of about two. The ECLIPSE run produces
30 almost the same profile, however the runs ACCMIP and ACCMIP-GFAS produce lower values that, while still higher, are closer to the observed profile. Since the emission of BC for these runs is only lower in Central Asia (see Table 3) this likely points toward an overestimation of the modeled transport to the Arctic, possibly caused by an underestimation of wet removal.

4.2.2 Spring

The observed and modeled profiles of BC mass mixing ratios from the ARCTAS spring campaign over the American Arctic (orange box in Figure 4) in April 2008 can be found in Figure 11a. Observations show high values near the ground with a BC mass mixing ratio of over 40 ng kg^{-1} and a steep increase from there towards a pollution layer with a maximum of almost
5 200 ng kg^{-1} at 600 hPa height. BCRUS (in green) correctly places this layer but underestimates its strength. A second BC layer is centered at about 400 hPa height, with the mixing ratio gradually decreasing above. All model runs including actual fire emissions are well able to capture the placement of the aerosol layer, while the magnitude is underestimated by a factor of up to three. This could be caused by too low emissions in the source region with a correctly predicted transport, or just an effect of the coarse resolution of the model resulting the emissions for the fire event being mixed over the grid boxes instead of
10 being concentrated in a confined plume. **In particular, small local fire plumes may be too strongly diluted when emitted into the model boundary layer. In addition, there is the possibility of a large sampling bias with fire plumes being specifically probed during the campaign (Jacob et al., 2010).** The other runs using GFAS produce similar results, with ECLIPSE and BCRUS performing best. The ACCMIP run without daily fire emissions deviates most from the observations. This shows that this BC distribution was in fact largely caused by a biomass burning fire plume.

15 The averaged profile of the measured BC mass mixing ratio for the HIPPO-3 campaign over the Pacific in March/April 2010 is plotted in Figure 11b. It shows observed mixing ratios of 20 ng kg^{-1} near the surface. There is a local minimum at 880 hPa height. The highest mass mixing ratio of BC is found at heights around 520 hPa. ECHAM-HAM is able to reproduce this profile well up to a height of about 650 hPa in all runs. From there the model underestimates the amount of BC up to the height of about 400 hPa. Above, the model overestimates the amount of BC. The overestimation at uppermost levels is twice as high
20 in the ECLIPSE and BCRUS model runs. They likely overestimate the long-range transport from Southeast Asian or Russian pollution sources. Close to the ground, BCRUS and ECLIPSE are better able to reproduce the observed mass mixing ratio.

The ALOUD campaign took place around Svalbard in May and June 2017 and therefore represents late spring and early summer. As can be seen in Figure 11c, the mixing ratio during the ALOUD campaign were low, with observed mass mixing ratios of 4 ng kg^{-1} to 5 ng kg^{-1} near the ground. A maximum with 14 ng kg^{-1} was observed at 800 hPa, above which the mass
25 mixing ratio declined with increasing altitude. ECHAM-HAM reproduced this averaged profile relatively well, only placing the maximum too high at a height of 650 hPa, where the observations again decreased to 4 ng kg^{-1} . This overshooting by ECHAM-HAM, at upper levels, is mainly found for the last flight on 16 June 2017 (not shown separately). This already hints to the tendency of ECHAM-HAM to overestimate upper-layer transport of aerosol in summer as described in the text below. Note that for ALOUD only BCRUS results can be presented because of the timeliness of the measurements.

30 4.2.3 Summer

Results for the comparison between the ARCTAS summer campaign over the American Arctic in June and July 2008 and the model results from ECHAM-HAM are shown in Figure 12a. The averaged profile over the campaign shows an increase in the BC mass mixing ratio with increasing height up to a maximum of 26 ng kg^{-1} at the 300 hPa level. As discussed by Matsui

et al. (2011), air masses during this campaign were influenced by biomass burning in East Russia. Most of the BC from these fires however was quickly removed from the atmosphere by wet depositions by heavy rain close to the source region (Matsui et al., 2011). BCRUS produced a similar profile, with BC mass mixing ratio values very close to the observations up to 700 hPa height. Above this level, the model overestimates the amount of BC. This points toward a misrepresentation in the wet removal process, or possibly a too efficient vertical mixing/uplift of fire aerosol in the model. ACCMIP strongly differs from the other runs and observations producing much higher mixing ratios below 550 hPa height. Above 570 hPa the BC mass mixing ratios modeled by ACCMIP, however, are much closer to the observations. At this height, Matsui et al. (2011) found elevated values in measured CO pointing toward an influence by biomass burning fires. ACCMIP agrees best with the measurements, because the observed fires that lead to the overestimation in the other runs are not present in the run. In this way, it produces values that are similar to the observations where biomass burning aerosol was removed.

Observations from HIPPO-4 (June/July 2011) and model results are compared in Figure 12b. Modeled and observed mixing ratios are relatively low with the highest observed BC mass mixing ratio at just above 19 ng kg^{-1} . In BCRUS this maximum is found at 820 hPa - much lower than observed (620 hPa). The modeled vertical extent of this pollution layer is also thinner than observed. The major difference are far too high BC amounts between 500 and 200 hPa in the model results for all emission setups. Noteworthy is also the difference between the runs of ACCMIP and ACCMIP-GFAS, with ACCMIP performing better than the others runs in reproducing the pollution layer in the lower troposphere. The emissions from the actual fires in the GFAS emissions seem to not have reached the observed height, but instead mostly remained below 800 hPa. The ACCMIP biomass burning emission coincidentally allowed ECHAM-HAM to reproduce a biomass burning influenced layer in the same height as observed. The fact that all runs that use GFAS produce the same profile, while the only run without it produces a different profile, shows that the BC profile at least up to a height of 300 hPa is mainly caused by fire emissions.

The profile plot for HIPPO-5 (August/September 2011) shows low observed and modeled mass mixing ratios throughout the atmosphere (see Figure 12c). The observations show the highest mass mixing ratio close to the surface with 9 ng kg^{-1} and a decrease towards 870 hPa to values just over 1 ng kg^{-1} . The observed BC mass mixing ratio stays low at layers above. BCRUS produces lower BC mass mixing ratios near the surface and overestimates the amount of BC above 850 hPa. ACCMIP is the only run producing significantly different BC mass mixing ratios from the other runs with strong overestimation throughout the profile and BC mixing ratios of up to 34 ng kg^{-1} at a height of 930 hPa. This strong overestimation is related to inappropriate biomass burning emissions in ACCMIP in this area.

Figure 12d shows the BC mass mixing ratio of the ACCESS campaign in June 2012 averaged over all flights with exception of the transfer flights. The observations show a decrease from the near-surface mixing ratios of 13 ng kg^{-1} to a layer of cleaner air at 870 hPa (5 ng kg^{-1}). The modeled BC profiles show **increasing mass mixing ratios with increasing altitude, with the exception of very high mixing ratios near the ground. The minimum mixing ratios are found at 900 hPa.** The model shows a considerable overestimation between 800 hPa and 400 hPa.

4.2.4 Fall

The second mission of the HIPPO campaign measured BC layering over the Pacific during November 2009. The fall profile is shown in Figure 13. The highest BC mass mixing ratio of up to 40 ng kg^{-1} was found near the surface with a steep decrease to 5 ng kg^{-1} just below 900 hPa. Above that height there is a lofted BC layer around 420 hPa with 26 ng kg^{-1} . The BCRUS run underestimates the mixing ratios at the surface by 14 ng kg^{-1} . The lofted BC layer is placed slightly too low between 850 and 470 hPa. The amount of BC however is well matched. With increasing altitude, the increases in amount of BC is steeper than in the observations. The other runs show a very similar vertical layering of modeled BC mixing ratio. ACCMIP and ACCMIP-GFAS underestimate the pollution layer below 500 hPa. Again, the BC mixing ratios are strongly overestimated above 280 hPa, in particular in the runs ECLIPSE and BCRUS. This is either due to an overestimation in the upper-level, long-range transport of North American or Russian air pollution, or by an underestimation in removal which could contribute to the upper-level transport.

5 Direct aerosol radiative effects of BC

Any difference in the prescribed anthropogenic and biomass burning emissions affects the atmospheric burden, the vertical layering, and deposition of BC aerosol as shown before. The corresponding uncertainties of the direct aerosol radiative effect (DRE) of BC in the atmosphere, and that of BC in snow are explored using the calculation method described in Section 2.4. We consider the top of atmosphere (TOA) DRE to estimate the impact on the atmospheric radiative balance and therefore the Arctic climate. The effect at the surface (bottom of atmosphere, BOA) is considered mainly, because of the implications on surface temperatures and sea ice melting. The multi-year average TOA DRE of atmospheric BC for the BCRUS run is shown for all-sky conditions (cloudy and non-cloudy) and the years 2005-2009 in Figure 14a. Positive values of more than 0.2 W m^{-2} are calculated across the whole Arctic, indicating a net energy gain for the Arctic climate system. Values of more than 0.4 W m^{-2} are reached over the Arctic Ocean and the Russian Arctic. *Averaged over the Arctic (60-90° N), we estimate the net DRE of atmospheric BC to 0.3 W m^{-2} (see Table 5).*

Since most of the effect results from the solar spectral range, the DRE is stronger in summer and close to zero in winter. At the surface, the DRE of atmospheric BC is negative, as shown in Figure 14e, due to the absorption of incoming solar radiation by BC in upper atmospheric layers, which reduces the amount of energy reaching the surface. This negative effect is however smaller for the Central Arctic Ocean than anywhere else in the Arctic, with -0.05 W m^{-2} to -0.1 W m^{-2} .

The BC-in-snow albedo effect for all-sky conditions, is shown in Figures 14b and f, as 2005-2009 multi-year annual mean, for TOA and surface, respectively. The difference between TOA and surface is small and mainly caused by clouds. The effect is largest in coastal Greenland with around 1 W m^{-2} , where snow is present throughout the year. Over the temporarily sea-ice and snow covered Arctic Ocean the albedo effect varies around 0.2 W m^{-2} , which compensates the negative DRE of atmospheric BC at the BOA. *On average the BC-in-snow albedo effect is 0.1 W m^{-2} in the Arctic (60-90° N, see Table 5).* The sum of the DRE of BC in the atmosphere and snow is shown in Figure 14c and Figure 14g for the TOA and surface, respectively. Over the temporarily sea ice covered Arctic Ocean the BOA DRE of all BC (in snow and atmosphere) is slightly positive (around

0.1 W m⁻²), while the TOA DRE is strongly positive with values up to 1.9 W m⁻². *The resulting average for the Arctic region is 0.5 W m⁻².* Over the Arctic Ocean the DRE of atmospheric BC is in the range of the DRE considering all aerosol species (not shown), but smaller over the continents. The all-aerosol DRE at the TOA would therefore be negative if no BC was present in the Arctic atmosphere *(-0.2 W m⁻² on spatial and annual average).*

5 The difference between the model runs is used to estimate the emission-related uncertainty of the Arctic energy budget. Therefore, difference of the total radiative effect at TOA (all sky conditions) of ACCMIP-GFAS minus BCRUS as shown in Figure 14h is analyzed. In the ACCMIP-GFAS run, the TOA net all-sky positive radiative effect of BC is lower by 0.1 W m⁻² *on the regional average (60-90° N, see Table 5), but more than 0.2 W m⁻² higher regionally over the Barents and Kara Sea.*

At the surface the difference is smaller with values of 0.05 W m⁻² less in ACCMIP-GFAS over most of the Arctic, with
10 the exception of parts of Russia, as shown in Figure 14h. The more recent and transient emission data with local refinement, therefore, results in a considerably stronger climate forcing due to anthropogenic and biomass burning BC. This shows that the TOA DRE of BC is more sensitive to an increase in BC burden due to the different emission setups, than the BOA DRE, since the net energy gain caused by the reduction of the snow albedo is canceled out to some degree by the shadowing effect of atmospheric BC.

15 We therefore conclude that, according to our best estimate, BC causes a net energy gain for the Arctic on the annual mean at TOA as well as BOA. The uncertainty with respect to the emissions setup is roughly 25 % for TOA and BOA, but stronger in absolute values at TOA. *This is solely due to the uncertainties in emission, potential uncertainties in removal shown in the evaluation with observations are not included.*

6 Summary and Conclusions

20 In this study, the representation of Arctic black carbon (BC) aerosol particles in the global aerosol-climate model ECHAM6.3-HAM2.3 is evaluated with respect to different emission inventories. As a reference BC measurements at Arctic sites and from aircraft campaigns are used comprehensively. By comparing the effects of different state-of-the-art BC emission inventories, an uncertainty range of current model estimates of the Arctic atmospheric BC burden and the local direct radiative effect (DRE) of BC is quantified. The uncertainties are explored with a focus on three influencing factors: (1) The influence of temporally
25 variable biomass burning emissions, (2) The importance of recent air quality policies and economic developments, (3) the potential improvements by regional refinements in Russian BC sources. This is achieved by comparing four different emission setups.

The run BCRUS represents a recent estimate of global emissions with the special feature of a high estimate in local Arctic emissions especially of gas flaring. It is using anthropogenic emissions from the ECLIPSE emission dataset, in Russia the BC
30 emissions of ECLIPSE are replaced with the higher resolved and more recent data from Huang et al. (2015). For the biomass burning emissions GFAS is used, which derives the location and amount of emitted gas and aerosol particles from satellite. The ECLIPSE run uses ECLIPSE emissions and GFAS emissions for the biomass burning emissions. For the ACCMIP run we use the anthropogenic part of the ACCMIP emissions, which are widely used. We fixed the emissions to year 2000, not taking

into account the recent economic changes and variable biomass burning emissions. ACCMIP does not consider gas flaring emissions. In the run ACCMIP-GFAS, the fixed year 2000 biomass burning emissions are replaced by dynamic real-time fire data from GFAS. *An emission factor of 3.4 that is commonly used for GFAS emissions (Kaiser et al., 2012) was not used since it led to a strong overestimation in mid and high-latitude BC concentrations in an early setup.*

5 The comparison between ACCMIP and ACCMIP-GFAS is used to estimate the impact of temporally variable biomass burning emissions. ACCMIP-GFAS and BCRUS are used to quantify the impact of recent developments in air quality policies and economic developments. The difference between ECLIPSE and BCRUS shows the impact of a regional refinement.

The variable biomass burning emissions, are not particularly important for the annual mean of the Arctic BC burden, but are crucial for reproducing high pollution events. The different assumptions on anthropogenic emission based on economic
10 development and air quality policies, result in an uncertainty in BC burden of more than $50 \mu\text{g m}^{-2}$ over the Arctic Ocean, which is 20% of the **local** annual mean BC load. The regional refinements in Russia mainly change the BC burden in this region and will improve the ability of the model to reproduce local measurements.

The near-surface BC concentrations could be reproduced reasonably accurately by ECHAM-HAM in most cases. The exception from this are stations that are challenging because of their surrounding orography and the horizontal model resolution,
15 namely: Summit, Ny-Ålesund and Zeppelin Station where ECHAM-HAM falsely produced similar peak concentrations in late winter and early spring as for all other stations. The sensitivity to the different emission setups is low in the summer. This is a result of low local emissions near the measurement sites in all runs and a reduced long-range transport from the mid-latitudes, as well as more precipitation in the summertime Arctic.

In the months with high modeled concentrations the model shows a high sensitivity to the changing emissions for the stations
20 closest to the Arctic ocean. The observed monthly median BC peak concentrations in Tiksi were underestimated by the model, but the run BCRUS that includes the most accurate gas flaring emissions produced the best results. For other stations, e.g. in Barrow in February, BCRUS showed a stronger overestimation, than the other runs.

A similar pattern can be observed for Zeppelin Station, Ny-Ålesund, Villum Research Station and Alert. Higher emissions lead to higher concentrations with no significant changes in the pattern of the annual cycle. Overall, however, it is difficult to
25 decide which emission setup provides satisfactory agreement with the aerosol observations for all cases. This means that the annual cycle of Arctic stations reproduced by ECHAM-HAM is mainly controlled by the transport. Changing the amount and location by using a different emission setup only modulates the amount of the BC concentrations, but unexpectedly does not affect the seasonality significantly.

The correlation coefficients of near-surface concentrations are generally reasonably good, *with 0.45 and higher for most*
30 *stations.* This points toward a good agreement in the timing, especially of observed peak events. These peaks are most often caused by biomass burning. *The exceptions are Summit, Simeonof, Zeppelin Station, and Oulanka, with correlation coefficients below 0.3.* The run ACCMIP is the only one that shows significantly smaller correlation coefficients, since the biomass burning emissions for this run are fixed and not prescribed on a daily basis from satellite observations.

The evaluation using a combination of aircraft campaigns shows that in general the vertical distribution is well reproduced
35 by ECHAM-HAM. *This improvement over older model versions is at least partly achieved with the aerosol size dependent*

wet removal scheme by Croft et al. (2010). The model results look best during spring. In summer BC is systematically overestimated by the model at heights above 500 hPa. This overestimation has been described for several models in the AeroCom model intercomparison project before (Schwarz et al., 2013, 2017).

5 *In one summer case of an observed wet removal affected biomass burning plume, described by Matsui et al. (2011), the model correctly reproduced the time and height of a biomass burning layer. It is known, that reproducing individual pollution events in exactly the correct way is impossible for a global model with this resolution, because both the aerosol transport, as well as the wet removal are affected by subscale processes. ECHAM-HAM overestimated the BC concentrations, because of this issue. While here the BC lifetime was overestimated, in general, the BC lifetime of ECHAM-HAM was discussed to be reasonably good (Lund et al., 2018).*

10 The ECHAM-HAM simulations show that over the Arctic Ocean the net (solar plus terrestrial) TOA DRE of atmospheric BC is positive, with an annual average of over 0.4 W m^{-2} . The BC-in-snow albedo effect causes an additional energy gain for the Arctic system of around 0.2 W m^{-2} over the central Arctic. Locally larger effects are calculated for coastal Greenland. The BOA DRE is stronger than the shadowing effect of BC causing a net energy gain. The emission related uncertainty of DRE both at TOA and BOA is roughly 25 %.

15 Overall, the current model version of ECHAM6-HAM2 performs considerably better than in a previous model intercomparison study (Schwarz et al., 2017). In particular, the seasonality, but also the vertical distribution of BC aerosol in the Arctic has improved. Reducing the overestimation of upper-level BC concentrations would be a big improvement since this still causes large uncertainties in climate models and recent direct radiative forcing estimates. Here, especially the representation of wet scavenging and convective mixing needs to be improved, since it is the biggest BC sink in the Arctic.

20 *Code and data availability.* The code for ECHAM-HAM is available to the scientific community according to the HAMMOZ Software Licence Agreement through the project website: <https://redmine.hammoz.ethz.ch/projects/hammoz> The model data for used for the plots will be available on through the World Data Center PANGAEA.

Author contributions. JS performed the ECHAM-HAM simulations, collected emission data and in-situ measurement data from the providers, prepared the emissions, performed the analysis and wrote the manuscript. BH provided support for the ECHAM-HAM simulations, suggested in-situ measurement data providers, and provided advice during the analysis and on the project design. JQ, MZ, AE, JB and RC provided support in writing and designing the manuscript. RC gave advice on the emission data setup. WTKH provided the code and advice on the BC in-snow parameterization for ECHAM-HAM. JB, AH, YK, AM, PRS, BW, and MZ provided in-situ measurement data and associated discussion. IT provided advice throughout the project design, setup, analysis and writing progress.

Competing interests. The authors declare that they have no conflict of interests.

Acknowledgements. We gratefully acknowledge the funding by the Deutsche Forschungsgemeinschaft (DFG, German Research Foundation) – Project Number 268020496 – TRR 172, within the Transregional Collaborative Research Center “Arctic Amplification: Climate Relevant Atmospheric and Surface Processes, and Feedback Mechanisms (AC)³” R. Cherian was supported by the DFG project under grant agreement 637230. B.W. received funding from the European Research Council under the European Community’s Horizon 2020 research and innovation framework programme under grant agreement No. 640458 (A-LIFE). The DLR SP2 data were obtained with the support of the European Union under grant agreement No. 265863 (ACCESS), and the Helmholtz Association under grant Agreement VH-NG-606 (Helmholtz-Hochschul-Nachwuchsgruppe AerCARE). The Arctic data used in this article and managed by ACTRIS are archived and accessible from the EBAS database operated at the Norwegian Institute for Air Research (NILU) (<http://ebas.nilu.no>). ACTRIS data management is provided by the WMO Global Atmosphere Watch World Data Centre for Aerosol. The ACTRIS project, providing the data, has received funding from the European Union’s Horizon 2020 research and innovation programme under grant agreement No 654109 (ACTRIS). We thank the providers of the Arctic data: ALERT: Environment and Climate Change Canada, Sangeeta Sharma, all technicians/operators and Canadian department of National Defence. BARROW: Patrick Sheridan, Elisabeth Andrews, and Betsy Andrews (NOAA Oceanic and Atmospheric Research/GMD). SUMMIT: Patrick Sheridan, Elisabeth Andrews, and Betsy Andrews (NOAA Oceanic and Atmospheric Research/GMD); Michael Bergin (Duke University); and the National Science Foundation (OPP 1546002). TIKSI: Sara Morris (NOAA Oceanic and Atmospheric Research/GMD); and the Academy of Finland project Greenhouse gas, aerosol and albedo variations in the changing Arctic (project number 269095). PALLAS: Academy of Finland project Greenhouse gas, aerosol and albedo variations in the changing Arctic (project number 269095), Academy of Finland project Novel Assessment of Black Carbon in the Eurasian Arctic: From Historical Concentrations and Sources to Future Climate Impacts (NABCEA), project number 296302 and the Academy of Finland Centre of Excellence program (project number 307331). ZEPPELIN: Swedish Environmental Protection Agency (Naturvårdsverket), Vetenskapsrådet, FORMAS, and NILU - Norsk institutt for luftforskning, and Peter Tunved (Stockholm University). The research leading to these results has received funding from the European Union’s Horizon 2020 research and innovation programme under grant agreement No 654109. IMPROVE is a collaborative association of state, tribal, and federal agencies, and international partners. US Environmental Protection Agency is the primary funding source, with contracting and research support from the National Park Service. The Air Quality Group at the University of California, Davis is the central analytical laboratory, with ion analysis provided by Research Triangle Institute, and carbon analysis provided by Desert Research Institute. We thank the principal investigators Brent Holben, Ihab Abboud, Antti Arola, Vitali Fioletov, Laurie Gregory, Rigel Kivi, Lynn Ma, Norm O’Neill, Mikhail Panchenko, Piotr Sobolewski, John R. Vande Castle, Rick Wagener, the co-investigators Piotr Glowacki, Grzegorz Karasinski, Sergey Sakerin, and their staff for establishing and maintaining the AERONET sites used in this investigation. The HIPPO 1-5 data was provided by NCAR/EOL under the sponsorship of the National Science Foundation (<https://data.eol.ncar.edu/>). We would also like to thank the German Climate Computing Center (Deutsches Klimarechenzentrum, DKRZ) for the computing time and their service. We especially thank the developers of ECHAM-HAM. The ECHAM-HAMMOZ model is developed by a consortium composed of ETH Zürich, Max Planck Institut für Meteorologie, Forschungszentrum Jülich, the University of Oxford, the Finnish Meteorological Institute, and the Leibniz Institute for Tropospheric Research, and managed by the Center for Climate Systems Modeling (C2SM) at ETH Zürich. Finally, we would like to thank the anonymous reviewers of this article for their constructive and valuable comments.

References

- Arnold, S., Law, K., Brock, C., Thomas, J., Starkweather, S., Salzen, K. v. ., Stohl, A., Sharma, S., Lund, M., Flanner, M., Petäjä, T., Tanimoto, H., Gamble, J., Dibb, J., Melamed, M., Johnson, N., Fidel, M., Tynkkynen, V.-P., Baklanov, A., Eckhardt, S., Monks, S., Browse, J., and Bozem, H.: Arctic air pollution: Challenges and opportunities for the next decade, *ELEMENTA - Science of the Anthropocene*, 5 <https://doi.org/10.12952/journal.elementa.000104>, 2016.
- Backman, J., Schmeisser, L., Virkkula, A., Ogren, J. A., Asmi, E., Starkweather, S., Sharma, S., Eleftheriadis, K., Uttal, T., Jefferson, A., Bergin, M., Makshtas, A., Tunved, P., and Fiebig, M.: On Aethalometer measurement uncertainties and an instrument correction factor for the Arctic, *Atmospheric Measurement Techniques*, 10, 5039–5062, <https://doi.org/10.5194/amt-10-5039-2017>, <https://www.atmos-meas-tech.net/10/5039/2017/>, 2017a.
- 10 Backman, J., Schmeisser, L., Virkkula, A., Ogren, J. A., Asmi, E., Starkweather, S., Sharma, S., Eleftheriadis, K., Vratolis, S., Uttal, T., Tunved, P., Jefferson, A., Bergin, M., Makshtas, A., and Fiebig, M.: Time series of aerosol light-absorption coefficients from Aethalometers at six Arctic stations between 2012 and 2014, data retrieved from World Development Indicators, <https://doi.org/10.21336/gen.1>, 2017b.
- Bond, T. C., Streets, D. G., Yarber, K. F., Nelson, S. M., Woo, J.-H., and Klimont, Z.: A technology-based global inventory of black and organic carbon emissions from combustion, *Journal of Geophysical Research: Atmospheres*, 109, <https://doi.org/10.1029/2003JD003697>, 15 <https://agupubs.onlinelibrary.wiley.com/doi/abs/10.1029/2003JD003697>, 2004.
- Bond, T. C., Doherty, S. J., Fahey, D. W., Forster, P. M., Berntsen, T., DeAngelo, B. J., Flanner, M. G., Ghan, S., Kärcher, B., Koch, D., Kinne, S., Kondo, Y., Quinn, P. K., Sarofim, M. C., Schultz, M. G., Schulz, M., Venkataraman, C., Zhang, H., Zhang, S., Bellouin, N., Guttikunda, S. K., Hopke, P. K., Jacobson, M. Z., Kaiser, J. W., Klimont, Z., Lohmann, U., Schwarz, J. P., Shindell, D., Storelvmo, T., Warren, S. G., and Zender, C. S.: Bounding the role of black carbon in the climate system: A scientific assessment, *Journal of Geophysical Research: Atmospheres*, 118, 5380–5552, <https://doi.org/10.1002/jgrd.50171>, <https://agupubs.onlinelibrary.wiley.com/doi/abs/10.1002/jgrd.50171>, 2013.
- Chow, J. C., Watson, J. G., Chen, L.-W. A., Chang, M. O., Robinson, N. F., Trimble, D., and Kohl, S.: The IMPROVE_A Temperature Protocol for Thermal/Optical Carbon Analysis: Maintaining Consistency with a Long-Term Database, *Journal of the Air & Waste Management Association*, 57, 1014–1023, <https://doi.org/10.3155/1047-3289.57.9.1014>, <https://doi.org/10.3155/1047-3289.57.9.1014>, 2007.
- 25 Corbett, J., Lack, D., Winebrake, J., Harder, S., A. Silberman, J., and Gold, M.: Arctic shipping emissions inventories and future scenarios, *Atmospheric Chemistry and Physics Discussions*, 10, <https://doi.org/10.5194/acpd-10-10271-2010>, 2010.
- Croft, B., Lohmann, U., Martin, R. V., Stier, P., Wurzler, S., Feichter, J., Hoose, C., Heikkilä, U., van Donkelaar, A., and Ferrachat, S.: Influences of in-cloud aerosol scavenging parameterizations on aerosol concentrations and wet deposition in ECHAM5-HAM, *Atmospheric Chemistry and Physics*, 10, 1511–1543, <https://doi.org/10.5194/acp-10-1511-2010>, <https://www.atmos-chem-phys.net/10/1511/2010/>, 30 2010.
- Eckhardt, S., Quennehen, B., Olivie, D. J. L., Berntsen, T. K., Cherian, R., Christensen, J. H., Collins, W., Crepinsek, S., Daskalakis, N., Flanner, M., Herber, A., Heyes, C., Hodnebrog, Ø., Huang, L., Kanakidou, M., Klimont, Z., Langner, J., Law, K. S., Lund, M. T., Mahmood, R., Massling, A., Myriokefalitakis, S., Nielsen, I. E., Nøjgaard, J. K., Quaas, J., Quinn, P. K., Raut, J.-C., Rumbold, S. T., Schulz, M., Sharma, S., Skeie, R. B., Skov, H., Uttal, T., von Salzen, K., and Stohl, A.: Current model capabilities for simulating black carbon and sulfate concentrations in the Arctic atmosphere: a multi-model evaluation using a comprehensive measurement data set, *Atmospheric Chemistry and Physics*, 15, 9413–9433, <https://doi.org/10.5194/acp-15-9413-2015>, <https://www.atmos-chem-phys.net/15/9413/2015/>, 2015.

- Eckhardt, S., Cassiani, M., Evangeliou, N., Sollum, E., Pisso, I., and Stohl, A.: Source–receptor matrix calculation for deposited mass with the Lagrangian particle dispersion model FLEXPART v10.2 in backward mode, *Geoscientific Model Development*, 10, 4605–4618, <https://doi.org/10.5194/gmd-10-4605-2017>, <https://www.geosci-model-dev.net/10/4605/2017/>, 2017.
- Flanner, M. G., Zender, C. S., Randerson, J. T., and Rasch, P. J.: Present-day climate forcing and response from black carbon in snow, *Journal of Geophysical Research: Atmospheres*, 112, <https://doi.org/10.1029/2006JD008003>, <https://agupubs.onlinelibrary.wiley.com/doi/abs/10.1029/2006JD008003>, 2007.
- Gilgen, A., Huang, W. T. K., Ickes, L., Neubauer, D., and Lohmann, U.: How important are future marine and shipping aerosol emissions in a warming Arctic summer and autumn?, *Atmospheric Chemistry and Physics*, 18, 10 521–10 555, <https://doi.org/10.5194/acp-18-10521-2018>, <https://www.atmos-chem-phys.net/18/10521/2018/>, 2018.
- 10 Herber, A. B., Haas, C., Stone, R. S., Bottenheim, J. W., Liu, P., Li, S.-M., Staebler, R. M., Strapp, J. W., and Dethloff, K.: Regular airborne surveys of Arctic sea ice and atmosphere, *Eos, Transactions American Geophysical Union*, 93, 41–42, <https://doi.org/10.1029/2012EO040001>, <https://agupubs.onlinelibrary.wiley.com/doi/abs/10.1029/2012EO040001>, 2012.
- Huang, K., Fu, J. S., Prikhodko, V. Y., Storey, J. M., Romanov, A., Hodson, E. L., Cresko, J., Morozova, I., Ignatieva, Y., and Cabaniss, J.: Russian anthropogenic black carbon: Emission reconstruction and Arctic black carbon simulation, *Journal of Geophysical Research: Atmospheres*, 120, 11,306–11,333, <https://doi.org/10.1002/2015JD023358>, <https://agupubs.onlinelibrary.wiley.com/doi/abs/10.1002/2015JD023358>, 2015.
- 15 Ikeda, K., Tanimoto, H., Sugita, T., Akiyoshi, H., Kanaya, Y., Zhu, C., and Taketani, F.: Tagged tracer simulations of black carbon in the Arctic: transport, source contributions, and budget, *Atmospheric Chemistry and Physics*, 17, 10 515–10 533, <https://doi.org/10.5194/acp-17-10515-2017>, <https://www.atmos-chem-phys.net/17/10515/2017/>, 2017.
- 20 Jacob, D. J., Crawford, J. H., Maring, H., Clarke, A. D., Dibb, J. E., Emmons, L. K., Ferrare, R. A., Hostetler, C. A., Russell, P. B., Singh, H. B., Thompson, A. M., Shaw, G. E., McCauley, E., Pederson, J. R., and Fisher, J. A.: The Arctic Research of the Composition of the Troposphere from Aircraft and Satellites (ARCTAS) mission: design, execution, and first results, *Atmospheric Chemistry and Physics*, 10, 5191–5212, <https://doi.org/10.5194/acp-10-5191-2010>, <https://www.atmos-chem-phys.net/10/5191/2010/>, 2010.
- Kaiser, J. W., Heil, A., Andreae, M. O., Benedetti, A., Chubarova, N., Jones, L., Morcrette, J.-J., Razinger, M., Schultz, M. G., Suttie, M., 25 and van der Werf, G. R.: Biomass burning emissions estimated with a global fire assimilation system based on observed fire radiative power, *Biogeosciences*, 9, 527–554, <https://doi.org/10.5194/bg-9-527-2012>, <https://www.biogeosciences.net/9/527/2012/>, 2012.
- Klimont, Z., Kupiainen, K., Heyes, C., Purohit, P., Cofala, J., Rafaj, P., Borken-Kleefeld, J., and Schöpp, W.: Global anthropogenic emissions of particulate matter including black carbon, *Atmospheric Chemistry and Physics*, 17, 8681–8723, <https://doi.org/10.5194/acp-17-8681-2017>, <https://www.atmos-chem-phys.net/17/8681/2017/>, 2017.
- 30 Koch, D., Schulz, M., Kinne, S., McNaughton, C., Spackman, J. R., Balkanski, Y., Bauer, S., Berntsen, T., Bond, T. C., Boucher, O., Chin, M., Clarke, A., De Luca, N., Dentener, F., Diehl, T., Dubovik, O., Easter, R., Fahey, D. W., Feichter, J., Fillmore, D., Freitag, S., Ghan, S., Ginoux, P., Gong, S., Horowitz, L., Iversen, T., Kirkevåg, A., Klimont, Z., Kondo, Y., Krol, M., Liu, X., Miller, R., Montanaro, V., Moteki, N., Myhre, G., Penner, J. E., Perlwitz, J., Pitari, G., Reddy, S., Sahu, L., Sakamoto, H., Schuster, G., Schwarz, J. P., Seland, O. ., Stier, P., Takegawa, N., Takemura, T., Textor, C., van Aardenne, J. A., and Zhao, Y.: Evaluation of black carbon 35 estimations in global aerosol models, *Atmospheric Chemistry and Physics*, 9, 9001–9026, <https://doi.org/10.5194/acp-9-9001-2009>, <https://www.atmos-chem-phys.net/9/9001/2009/>, 2009.
- Kodros, J. K., Hanna, S. J., Bertram, A. K., Leaitch, W. R., Schulz, H., Herber, A. B., Zanutta, M., Burkart, J., Willis, M. D., Abbatt, J. P. D., and Pierce, J. R.: Size-resolved mixing state of black carbon in the Canadian high Arctic and implications for simu-

- lated direct radiative effect, *Atmospheric Chemistry and Physics*, 18, 11 345–11 361, <https://doi.org/10.5194/acp-18-11345-2018>, <https://www.atmos-chem-phys.net/18/11345/2018/>, 2018.
- Lamarque, J.-F., Bond, T. C., Eyring, V., Granier, C., Heil, A., Klimont, Z., Lee, D., Liou, S. C., Mieville, A., Owen, B., Schultz, M. G., Shindell, D., Smith, S. J., Stehfest, E., Van Aardenne, J., Cooper, O. R., Kainuma, M., Mahowald, N., McConnell, J. R., Naik, V., Riahi, K., and van Vuuren, D. P.: Historical (1850-2000) gridded anthropogenic and biomass burning emissions of reactive gases and aerosols: methodology and application, *Atmospheric Chemistry and Physics*, 10, 7017–7039, <https://doi.org/10.5194/acp-10-7017-2010>, <https://www.atmos-chem-phys.net/10/7017/2010/>, 2010.
- Law, K. S. and Stohl, A.: Arctic Air Pollution: Origins and Impacts, *Science*, 315, 1537–1540, <https://doi.org/10.1126/science.1137695>, <http://science.sciencemag.org/content/315/5818/1537>, 2007.
- 10 Lohmann, U., Spichtinger, P., Jess, S., Peter, T., and Smit, H. G. J.: Cirrus cloud formation and ice supersaturated regions in a global climate model, *Env. Res. Lett.*, 3, 1748–9326, <https://doi.org/10.1088/1748-9326/3/4/045022>, 2008.
- Lund, M. T., Samset, B. r. H., Skeie, R. B., Watson-Parris, D., Katich, J. M., Schwarz, J. P., and Weinzierl, B.: Short Black Carbon lifetime inferred from a global set of aircraft observations, *npj Climate and Atmospheric Science*, 1, 31, <https://doi.org/10.1038/s41612-018-0040-x>, <https://doi.org/10.1038/s41612-018-0040-x>, 2018.
- 15 Massling, A., Nielsen, I. E., Kristensen, D., Christensen, J. H., Sørensen, L. L., Jensen, B., Nguyen, Q. T., Nøjgaard, J. K., Glasius, M., and Skov, H.: Atmospheric black carbon and sulfate concentrations in Northeast Greenland, *Atmospheric Chemistry and Physics*, 15, 9681–9692, <https://doi.org/10.5194/acp-15-9681-2015>, <https://www.atmos-chem-phys.net/15/9681/2015/>, 2015.
- Matsui, H., Kondo, Y., Moteki, N., Takegawa, N., Sahu, L. K., Koike, M., Zhao, Y., Fuelberg, H. E., Sessions, W. R., Diskin, G., Anderson, B. E., Blake, D. R., Wisthaler, A., Cubison, M. J., and Jimenez, J. L.: Accumulation-mode aerosol number concentrations in the Arctic during the ARCTAS aircraft campaign: Long-range transport of polluted and clean air from the Asian continent, *Journal of Geophysical Research: Atmospheres*, 116, <https://doi.org/10.1029/2011JD016189>, <https://agupubs.onlinelibrary.wiley.com/doi/abs/10.1029/2011JD016189>, 2011.
- Petoukhov, V. and Semenov, V. A.: A link between reduced Barents-Kara sea ice and cold winter extremes over northern continents, *Journal of Geophysical Research: Atmospheres*, 115, <https://doi.org/10.1029/2009JD013568>, <https://agupubs.onlinelibrary.wiley.com/doi/abs/10.1029/2009JD013568>, 2010.
- 25 Quinn, P., AMAP, and Stohl, A.: AMAP Assessment 2015: Black Carbon and Ozone as Arctic Climate Forcers, Arctic Monitoring and Assessment Programme (AMAP), Oslo, Norway, <https://www.amap.no/documents/download/2506>, 2015.
- Roiger, A., Thomas, J.-L., Schlager, H., Law, K. S., Kim, J., Schäfler, A., Weinzierl, B., Dahlkötter, F., Krisch, I., Marelle, L., Minikin, A., Raut, J.-C., Reiter, A., Rose, M., Scheibe, M., Stock, P., Baumann, R., Bouarar, I., Clerbaux, C., George, M., Onishi, T., and Fleming, J.: Quantifying Emerging Local Anthropogenic Emissions in the Arctic Region: The ACCESS Aircraft Campaign Experiment, *Bulletin of the American Meteorological Society*, 96, 441–460, <https://doi.org/10.1175/BAMS-D-13-00169.1>, <https://doi.org/10.1175/BAMS-D-13-00169.1>, 2015.
- 30 Samset, B. H., Myhre, G., Schulz, M., Balkanski, Y., Bauer, S., Berntsen, T. K., Bian, H., Bellouin, N., Diehl, T., Easter, R. C., Ghan, S. J., Iversen, T., Kinne, S., Kirkevåg, A., Lamarque, J.-F., Lin, G., Liu, X., Penner, J., Seland, O. ., Skeie, R. B., Stier, P., Takemura, T., Tsigaridis, K., and Zhang, K.: Black carbon vertical profiles strongly affect its radiative forcing uncertainty, *Atmos. Chem. Phys.*, 13, 2423–2434, <https://doi.org/10.5194/acp-13-2423-2013>, 2013.
- Sand, M., Berntsen, T., E. Kay, J., Lamarque, J.-F., Seland, O. y., and Kirkevåg, A.: The Arctic response to remote and local forcing of black carbon, *Atmospheric Chemistry and Physics Discussions*, 12, 18 379–18 418, <https://doi.org/10.5194/acpd-12-18379-2012>, 2012.

- Sand, M., Berntsen, T., von Salzen, K., Flanner, M., Langner, J., and G. Victor, D.: Response of Arctic temperature to changes in emissions of short-lived climate forcers, 6, 2015.
- Sand, M., Samset, B. H., Balkanski, Y., Bauer, S., Bellouin, N., Berntsen, T. K., Bian, H., Chin, M., Diehl, T., Easter, R., Ghan, S. J., Iversen, T., Kirkevåg, A., Lamarque, J.-F., Lin, G., Liu, X., Luo, G., Myhre, G., Noije, T. V., Penner, J. E., Schulz, M., Seland, Ø., Skeie, R. B., Stier, P., Takemura, T., Tsigaridis, K., Yu, F., Zhang, K., and Zhang, H.: Aerosols at the poles: an AeroCom Phase II multi-model evaluation, *Atmospheric Chemistry and Physics*, 17, 12 197–12 218, <https://doi.org/10.5194/acp-17-12197-2017>, <https://www.atmos-chem-phys.net/17/12197/2017/>, 2017.
- Schutgens, N. A. J., Gryspeerdt, E., Weigum, N., Tsyro, S., Goto, D., Schulz, M., and Stier, P.: Will a perfect model agree with perfect observations? The impact of spatial sampling, *Atmospheric Chemistry and Physics*, 16, 6335–6353, <https://doi.org/10.5194/acp-16-6335-2016>, <https://www.atmos-chem-phys.net/16/6335/2016/>, 2016.
- Schwarz, J. P., Samset, B. H., Perring, A. E., Spackman, J. R., Gao, R. S., Stier, P., Schulz, M., Moore, F. L., Ray, E. A., and Fahey, D. W.: Global-scale seasonally resolved black carbon vertical profiles over the Pacific, *Geophysical Research Letters*, 40, 5542–5547, <https://doi.org/10.1002/2013GL057775>, <https://agupubs.onlinelibrary.wiley.com/doi/abs/10.1002/2013GL057775>, 2013.
- Schwarz, J. P., Weinzierl, B., Samset, B. r. H., Dollner, M., Heimerl, K., Markovic, M. Z., Perring, A. E., and Ziemba, L.: Aircraft measurements of black carbon vertical profiles show upper tropospheric variability and stability, *Geophysical Research Letters*, 44, 1132–1140, <https://doi.org/10.1002/2016GL071241>, <https://agupubs.onlinelibrary.wiley.com/doi/abs/10.1002/2016GL071241>, 2017.
- Shaw, G. E.: The Arctic Haze Phenomenon, *Bulletin of the American Meteorological Society*, 76, 2403–2414, [https://doi.org/10.1175/1520-0477\(1995\)076<2403:TAHP>2.0.CO;2](https://doi.org/10.1175/1520-0477(1995)076<2403:TAHP>2.0.CO;2), [https://doi.org/10.1175/1520-0477\(1995\)076<2403:TAHP>2.0.CO;2](https://doi.org/10.1175/1520-0477(1995)076<2403:TAHP>2.0.CO;2), 1995.
- Shindell, D.: Local and remote contributions to Arctic warming, *Geophysical Research Letters*, 34, <https://doi.org/10.1029/2007GL030221>, <https://agupubs.onlinelibrary.wiley.com/doi/abs/10.1029/2007GL030221>, 2007.
- Shindell, D. T., Chin, M., Dentener, F., Doherty, R. M., Faluvegi, G., Fiore, A. M., Hess, P., Koch, D. M., MacKenzie, I. A., Sanderson, M. G., Schultz, M. G., Schulz, M., Stevenson, D. S., Teich, H., Textor, C., Wild, O., Bergmann, D. J., Bey, I., Bian, H., Cuvelier, C., Duncan, B. N., Folberth, G., Horowitz, L. W., Jonson, J., Kaminski, J. W., Marmer, E., Park, R., Pringle, K. J., Schroeder, S., Szopa, S., Takemura, T., Zeng, G., Keating, T. J., and Zuber, A.: A multi-model assessment of pollution transport to the Arctic, *Atmospheric Chemistry and Physics*, 8, 5353–5372, <https://doi.org/10.5194/acp-8-5353-2008>, <https://www.atmos-chem-phys.net/8/5353/2008/>, 2008.
- Shindell, D. T., Faluvegi, G., Koch, D. M., Schmidt, G. A., Unger, N., and Bauer, S. E.: Improved Attribution of Climate Forcing to Emissions, *Science*, 326, 716–718, <https://doi.org/10.1126/science.1174760>, <http://science.sciencemag.org/content/326/5953/716>, 2009.
- Sinha, P. R., Kondo, Y., Koike, M., Ogren, J. A., Jefferson, A., Barrett, T. E., Sheesley, R. J., Ohata, S., Moteki, N., Coe, H., Liu, D., Irwin, M., Tunved, P., Quinn, P. K., and Zhao, Y.: Evaluation of ground-based black carbon measurements by filter-based photometers at two Arctic sites, *Journal of Geophysical Research: Atmospheres*, 122, 3544–3572, <https://doi.org/10.1002/2016JD025843>, <https://agupubs.onlinelibrary.wiley.com/doi/abs/10.1002/2016JD025843>, 2017.
- Sofiev, M., Vankevich, R., Lotjonen, M., Prank, M., Petukhov, V., Ermakova, T., Koskinen, J., and Kukkonen, J.: An operational system for the assimilation of the satellite information on wild-land fires for the needs of air quality modelling and forecasting, *Atmospheric Chemistry and Physics*, 9, 6833–6847, <https://doi.org/10.5194/acp-9-6833-2009>, <https://www.atmos-chem-phys.net/9/6833/2009/>, 2009.
- Stevens, B., Giorgetta, M., Esch, M., Mauritsen, T., Crueger, T., Rast, S., Salzmann, M., Schmidt, H., Bader, J., Block, K., Brokopf, R., Fast, I., Kinne, S., Kornbluh, L., Lohmann, U., Pincus, R., Reichler, T., and Roeckner, E.: Atmospheric component of the MPI-M Earth System Model: ECHAM6, *Journal of Advances in Modeling Earth Systems*, 5, 146–172, <https://doi.org/10.1002/jame.20015>, <https://agupubs.onlinelibrary.wiley.com/doi/abs/10.1002/jame.20015>, 2013.

- Stier, P., Feichter, J., Kinne, S., Kloster, S., Vignati, E., Wilson, J., Ganzeveld, L., Tegen, I., Werner, M., Balkanski, Y., Schulz, M., Boucher, O., Minikin, A., and Petzold, A.: The aerosol-climate model ECHAM5-HAM, *Atmospheric Chemistry and Physics*, 5, 1125–1156, <https://doi.org/10.5194/acp-5-1125-2005>, <https://www.atmos-chem-phys.net/5/1125/2005/>, 2005.
- Stohl, A., Klimont, Z., Eckhardt, S., Kupiainen, K., Shevchenko, V. P., Kopeikin, V. M., and Novigatsky, A. N.: Black carbon in the Arctic: the underestimated role of gas flaring and residential combustion emissions, *Atmospheric Chemistry and Physics*, 13, 8833–8855, <https://doi.org/10.5194/acp-13-8833-2013>, <https://www.atmos-chem-phys.net/13/8833/2013/>, 2013.
- 5 Tegen, I. and Heinold, B.: Large-Scale Modeling of Absorbing Aerosols and Their Semi-Direct Effects, *Atmosphere*, 9, <https://doi.org/10.3390/atmos9100380>, <http://www.mdpi.com/2073-4433/9/10/380>, 2018.
- Tegen, I., Neubauer, D., Ferrachat, S., Siegenthaler-Le Drian, C., Bey, I., Schutgens, N., Stier, P., Watson-Parris, D., Stanelle, T., Schmidt, H., Rast, S., Kokkola, H., Schultz, M., Schroeder, S., Daskalakis, N., Barthel, S., Heinold, B., and Lohmann, U.: The global aerosol–climate model ECHAM6.3–HAM2.3 – Part 1: Aerosol evaluation, *Geoscientific Model Development*, 12, 1643–1677, <https://doi.org/10.5194/gmd-12-1643-2019>, <https://www.geosci-model-dev.net/12/1643/2019/>, 2019.
- 10 Trenberth, K. E., Jones, P. D., Ambenje, P., Bojariu, R., Easterling, D., Klein Tank, A., Parker, D., Rahimzadeh, F., Renwick, J. A., Rusticucci, M., Soden, B., and Zhai, P.: Observations: Surface and Atmospheric Climate Change, in: *Climate Change 2007: The Physical Science Basis. Contribution of Working Group I to the Fourth Assessment Report of the Intergovernmental Panel on Climate Change*, edited by Solomon, S., Qin, D., Manning, M., Chen, Z., Marquis, M., Averyt, K. B., Tignor, M., and Miller, H. L., Cambridge University Press, Cambridge, United Kingdom and New York, NY, USA, 2007.
- 15 van Vuuren, D. P., Edmonds, J., Kainuma, M., Riahi, K., Thomson, A., Hibbard, K., Hurtt, G. C., Kram, T., Krey, V., Lamarque, J.-F., Masui, T., Meinshausen, M., Nakicenovic, N., Smith, S. J., and Rose, S. K.: The representative concentration pathways: an overview, *Climatic Change*, 109, 5, <https://doi.org/10.1007/s10584-011-0148-z>, <https://doi.org/10.1007/s10584-011-0148-z>, 2011.
- 20 Vignati, E., Wilson, J., and Stier, P.: M7: An efficient size-resolved aerosol microphysics module for large-scale aerosol transport models, *Journal of Geophysical Research: Atmospheres*, 109, <https://doi.org/10.1029/2003JD004485>, <https://agupubs.onlinelibrary.wiley.com/doi/abs/10.1029/2003JD004485>, 2004.
- Vignati, E., Karl, M., Krol, M., Wilson, J., Stier, P., and Cavalli, F.: Sources of uncertainties in modelling black carbon at the global scale, *Atmospheric Chemistry and Physics*, 10, 2595–2611, <https://doi.org/10.5194/acp-10-2595-2010>, <https://www.atmos-chem-phys.net/10/2595/2010/>, 2010.
- 25 Wendisch, M., Brückner, M., Burrows, J. P., Crewell, S., Dethloff, K., Ebell, K., Lüpkes, C., Macke, A., Notholt, J., Quaas, J., Rinke, A., and Tegen, I.: Understanding causes and effects of rapid warming in the Arctic, *Eos*, 98, 22–26, <https://doi.org/10.1029/2017EO064803>, 2017.
- 30 Wendisch, M., Macke, A., Ehrlich, A., Lüpkes, C., Mech, M., Chechin, D., Dethloff, K., Barrientos, C., Bozem, H., Brückner, M., Clemen, H.-C., Crewell, S., Donth, T., Dupuy, R., Ebell, K., Egerer, U., Engelmann, R., Engler, C., Eppers, O., Gehrman, M., Gong, X., Gottschalk, M., Gourbeyre, C., Griesche, H., Hartmann, J., Hartmann, M., Heinold, B., Herber, A., Herrmann, H., Heygster, G., Hoor, P., Jafariserajehlou, S., Jäkel, E., Järvinen, E., Jourdan, O., Kästner, U., Kecorius, S., Knudsen, E. M., Köllner, F., Kretzschmar, J., Lelli, L., Leroy, D., Maturilli, M., Mei, L., Mertes, S., Mioche, G., Neuber, R., Nicolaus, M., Nomokonova, T., Notholt, J., Palm, M., van Pinxteren, M., Quaas, J., Richter, P., Ruiz-Donoso, E., Schäfer, M., Schmieder, K., Schnaiter, M., Schneider, J., Schwarzenböck, A., Seifert, P., Shupe, M. D., Siebert, H., Spreen, G., Stapf, J., Stratmann, F., Vogl, T., Welti, A., Wex, H., Wiedensohler, A., Zanatta, M., and Zeppenfeld, S.: The Arctic Cloud Puzzle: Using ALOUD/PASCAL Multi-Platform Observations to Unravel the Role of Clouds and Aerosol Particles in Arc-
- 35

- tic Amplification, *Bulletin of the American Meteorological Society*, Early Online Release, <https://doi.org/10.1175/BAMS-D-18-0072.1>, <https://doi.org/10.1175/BAMS-D-18-0072.1>, 2018.
- Winiger, P., Andersson, A., Eckhardt, S., Stohl, A., Semiletov, I. P., Dudarev, O. V., Charkin, A., Shakhova, N., Klimont, Z., Heyes, C., and Gustafsson, Ö.: Siberian Arctic black carbon sources constrained by model and observation, *Proceedings of the National Academy of Sciences*, <https://doi.org/10.1073/pnas.1613401114>, <https://www.pnas.org/content/early/2017/01/24/1613401114>, 2017.
- Wofsy, S. C., Daube, B., Jimenez, R., Kort, E., Pittman, J. V., Park, S., Commane, R., Xian g, B., Santoni, G., Jacob, D. J., Fisher, J. A., Heaps, C. A. Pickett-and Wang, H., Wecht, K. J., Wang, Q., Stephens, B. B., Shertz, S., Watt, A., Romashkin, P., Campos, T., Haggerty, J., Cooper, W. A., Rogers, D. C., Beaton, S., Hendershot, R., Elkins, J. W., Fahey, D. W., Gao, R.-S., Schwarz, J. P., Moore, F., Montzka, S. A., Perring, A. E., Hurst, D., Miller, B. R., Sweeney, C., Oltmans, S. J., Hints, E., Nance, D., Dutton, G. S., Watts, L. A., Spackman, J. R., Rosenlof, K. H., Ray, E., Hall, B., Zondlo, M., Diao, M., Keeling, R. F., Bent, J., Atlas, E., Lueb, R., and Mahoney, M. J.: HIPPO Merged 10-Second Meteorology, Atmospheric Chemistry, And Aerosol Data. Version 1.0., data retrieved from UCAR/NCAR - Earth Observing Laboratory, https://doi.org/10.3334/CDIAC/HIPPO_010, 2017.
- Zanatta, M., Gysel, M., Bukowiecki, N., Müller, T., Weingartner, E., Areskoug, H., Fiebig, M., Yttri, K., Mihalopoulos, N., Kouvarakis, G., Beddows, D., Harrison, R., Cavalli, F., Putaud, J., Spindler, G., Wiedensohler, A., Alastuey, A., Pandolfi, M., Sellegri, K., Swietlicki, E., Jaffrezo, J., Baltensperger, U., and Laj, P.: A European aerosol phenomenology-5: Climatology of black carbon optical properties at 9 regional background sites across Europe, *Atmospheric Environment*, 145, 346 – 364, <https://doi.org/https://doi.org/10.1016/j.atmosenv.2016.09.035>, <http://www.sciencedirect.com/science/article/pii/S135223101630735X>, 2016.
- Zanatta, M., Laj, P., Gysel, M., Baltensperger, U., Vratolis, S., Eleftheriadis, K., Kondo, Y., Dubuisson, P., Winiarek, V., Kazadzis, S., Tunved, P., and Jacobi, H.-W.: Effects of mixing state on optical and radiative properties of black carbon in the European Arctic, *Atmospheric Chemistry and Physics*, 18, 14 037–14 057, <https://doi.org/10.5194/acp-18-14037-2018>, <https://www.atmos-chem-phys.net/18/14037/2018/>, 2018.
- Zhang, K., O'Donnell, D., Kazil, J., Stier, P., Kinne, S., Lohmann, U., Ferrachat, S., Croft, B., Quaas, J., Wan, H., Rast, S., and Feichter, J.: The global aerosol-climate model ECHAM-HAM, version 2: sensitivity to improvements in process representations, *Atmospheric Chemistry and Physics*, 12, 8911–8949, <https://doi.org/10.5194/acp-12-8911-2012>, <https://www.atmos-chem-phys.net/12/8911/2012/>, 2012.

Table 1. Aerosol modes of the species in ECHAM-HAM, including organic carbon (OC), sulphate (SU), mineral dust (DU), and seasalt (SS)

	<i>Nucleation</i>	<i>Aitken</i>	<i>Accumulation</i>	<i>Coarse</i>
Hydrophobic		BC, OC	DU	DU
Hydrophilic	SU	BC, OC, SU	BC, OC, DU, SU, SS	BC, OC, DU, SU, SS

Table 2. Arctic BC budget averaged for the years 2005–2015 in kt mon^{-1} for BCRUS.

	<i>Sedimentation + Dry deposition</i>	<i>Wet deposition</i>	<i>Emission</i>	<i>Deposition-Emission</i>
January	2.0	14.0	12.5	3.5
February	3.3	15.1	11.7	6.4
March	1.7	16.3	11.2	6.9
April	0.9	19.8	10.5	10.2
May	0.7	19.0	11.3	8.3
June	1.0	23.0	20.5	3.5
July	2.2	38.3	41.4	-0.9
August	1.7	30.9	25.5	7.0
September	1.3	18.2	10.9	8.7
October	1.5	16.7	9.9	8.2
November	1.8	14.9	11.0	5.7
December	4.1	14.3	12.0	6.4
Year/Sum	21.9	240.5	188.2	74.1

Table 3. Area-weighted totals of BC emissions from anthropogenic sources and biomass burning fires for the main source regions (as shown in Figure 1) averaged for the years 2005–2015 in kt yr^{-1} .

<i>Model Run</i>	<i>North America</i>	<i>Europe</i>	<i>Russia</i>	<i>Central Asia</i>
BCRUS	400	408	687	2981
ECLIPSE	399	401	645	2983
ACCMIP	450	538	578	2005
ACCMIP-GFAS	515	533	542	1997

Table 4. Measurements overview. For aircraft campaigns the location of the airfield is given, unless no specific base can be defined (denoted by *).

	<i>Latitude</i>	<i>Longitude</i>	<i>Period</i>	<i>Instrument/Inlet</i>	<i>Reference</i>
Alert	82.492° N	62.508° W	01-2012 - 12-2014	Aethalometer/total	Backman et al. (2017b)
Pallas	67.973° N	24.116° E		Aethalometer/total	
Tiksi	71.973° N	128.889° E		Aethalometer/PM10	
Summit	72.580° N	38.480° E		Aethalometer/PM2.5	
Zeppelin	78.907° N	11.889° E		Aethalometer/total	
Ny-Ålesund	78.927° N	11.927° E	04-2012 - 12-2015	PSAP/PM10	Sinha et al. (2017)
Barrow	71.288° N	156.792° W	08-2012 - 12-2015	PSAP/PM10	
Villum	81.600° N	16.667° W	05-2011 - 08-2013	MAAP/total	Massling et al. (2015)
ACCESS campaign	69.307° N	16.118° E	06-2012	airborne SP2	Roiger et al. (2015)
ARCTAS campaign	64.821° N	147.855° W		airborne SP2	Yutaka Kondo
HIPPO campaigns 1-5	*	*	01-2009 - 09-2011	airborne SP2	Wofsy et al. (2017)
PAMARCMIP campaign	78.245° N	15.492° E	03-2017	airborne SP2	Herber et al. (2012)
ACLOUD campaign	78.245° N	15.492° E	05-2017 - 06-2017	airborne SP2	Wendisch et al. (2018)

Table 5. Arctic (60-90° N) field means of TOA DRE of BC averaged over the years 2005–2009 in W m^{-2} for the different emission setups.

	<i>Atmospheric BC</i>	<i>In-snow-BC</i>	<i>Sum</i>
BCRUS solar	0.35	0.13	0.48
BCRUS terrestrial	0.02	/	0.02
BCRUS net	0.33	0.13	0.46
ACCMIP-GFAS solar	0.28	0.11	0.39
ACCMIP-GFAS terrestrial	0.02	/	0.02
ACCMIP-GFAS net	0.26	0.11	0.37

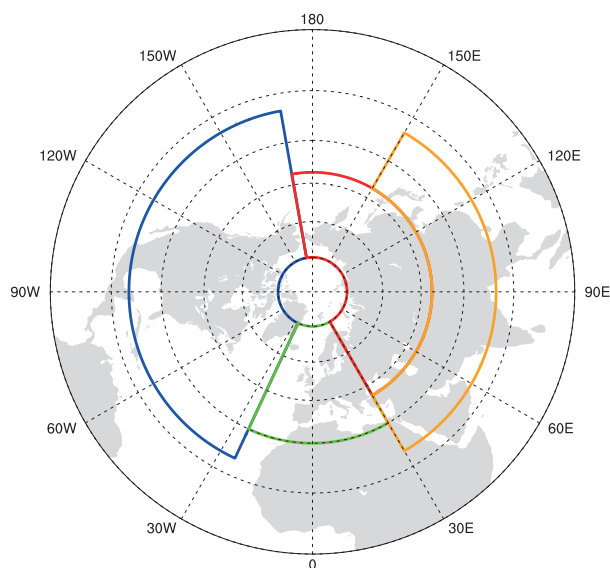


Figure 1. Regions indicate the area used for averaging presented in Table 3. North America in blue, Europe in green, Russia in red and Central Asia in orange.

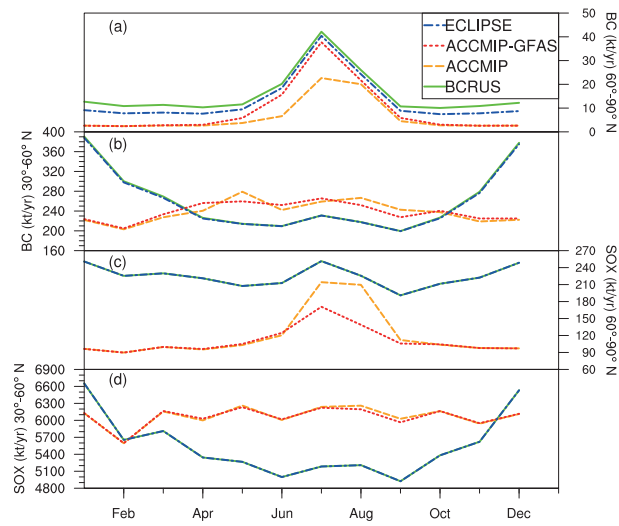


Figure 2. Multi-year monthly mean emissions of (a,b) BC and (c,d) SO_x (SO₂ plus SO₄) for the years 2005-2015. Values are integrated over the latitude band between 60° N and 90° N, and between 30° N and 60° N, respectively.

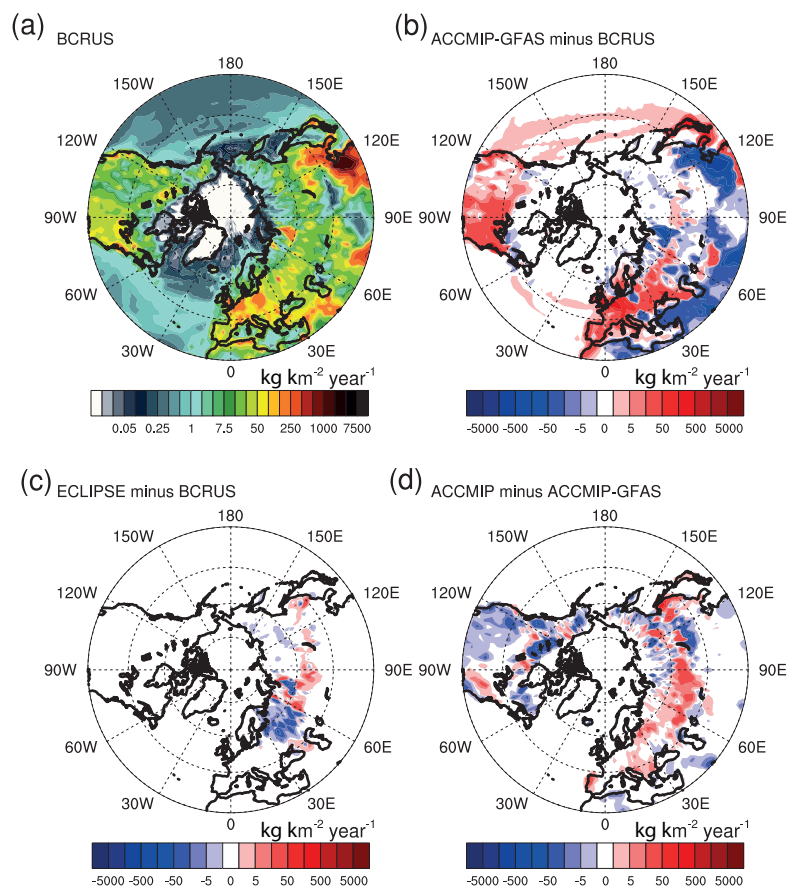


Figure 3. Maps of annual mean BC emissions for the years 2005–2015. (a) Absolute values are given for BCRUS. Difference between (b) the ACCMIP-GFAS and BCRUS results, (c) the ECLIPSE and BCRUS results and (d) between the ACCMIP and ACCMIP-GFAS results.

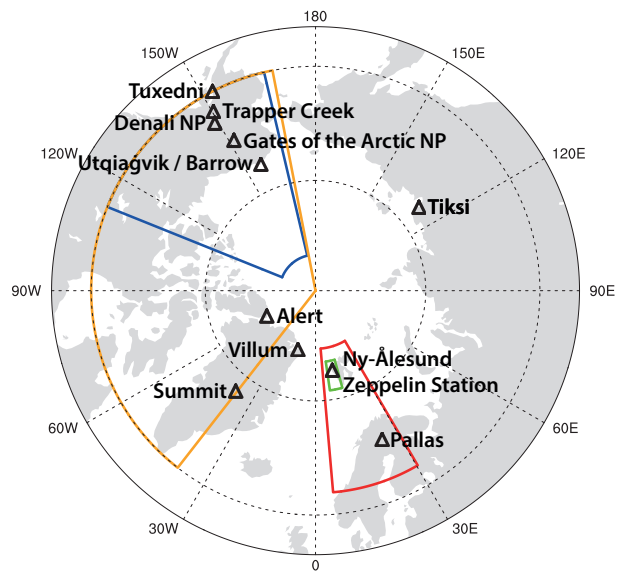


Figure 4. Geographic regions of Arctic aircraft campaigns, the data of which is used for model evaluation: HIPPO in blue, ACLOUD and PAMARCMiP-2017 in green, ACCESS in red and ARCTAS in orange. Black triangles show the location of stations with BC surface measurements.

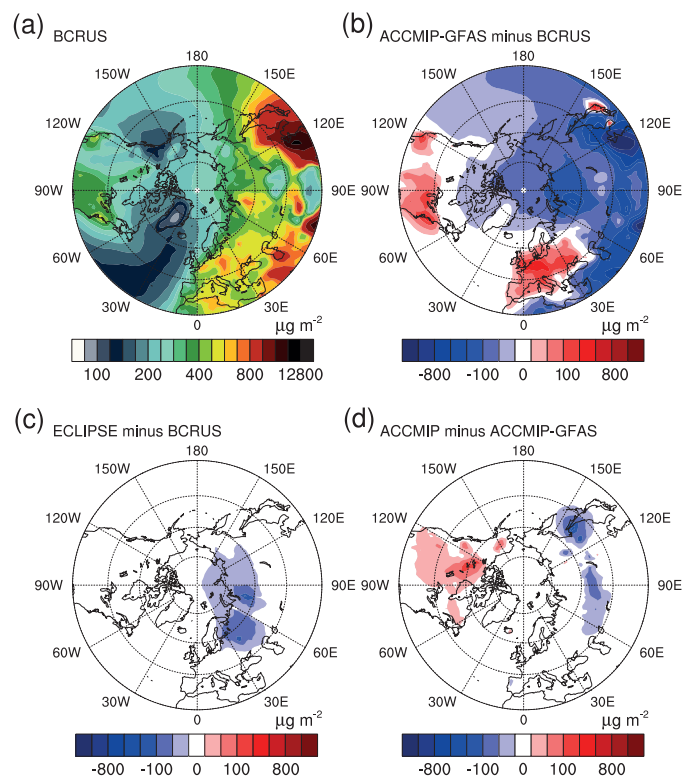


Figure 5. Contour plot showing the modelled atmospheric BC burden averaged over the simulation period (2005-2015). (a) Absolute values from the BCRUS setup, which is used as the reference. (b-c) Differences of ACCMIP-GFAS and ECLIPSE to the BCRUS run, respectively. Blue colors indicate lower BC burden than in the BCRUS run, red higher BC burden. (d) Difference in modelled atmospheric BC burden between ACCMIP and ACCMIP-GFAS.

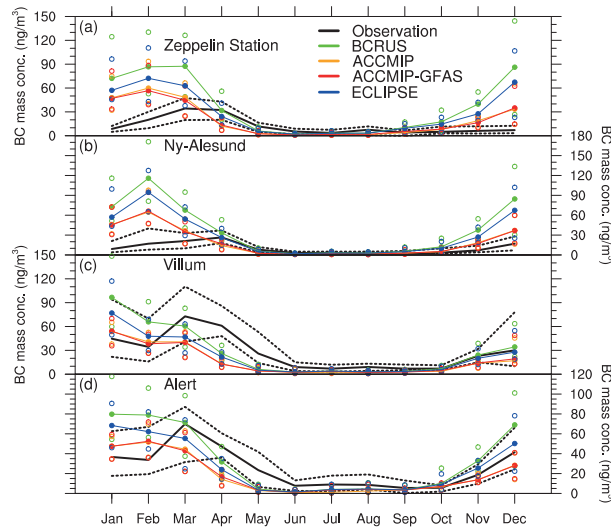


Figure 6. Near surface BC mass concentrations for Atlantic Arctic stations. Solid black line shows the multi-year monthly median BC mass concentration observed in (a) Zeppelin Station, (b) Ny-Ålesund, (c) Villum and (d) Alert. See Figure 9 for the geographical locations. Dashed black line indicates the observed upper and lower quartiles. In color the median different model runs with solid lines and filled circles, and the upper and lower quartiles with empty circles.

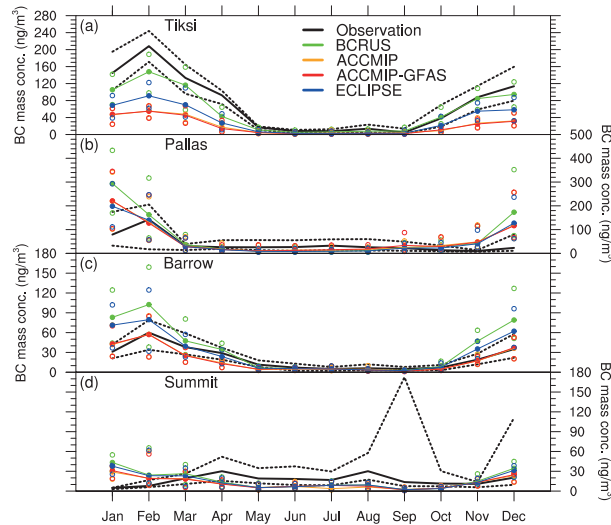


Figure 7. As Figure 6 for the stations in (a) Tiksi, Pallas, Barrow and Summit.

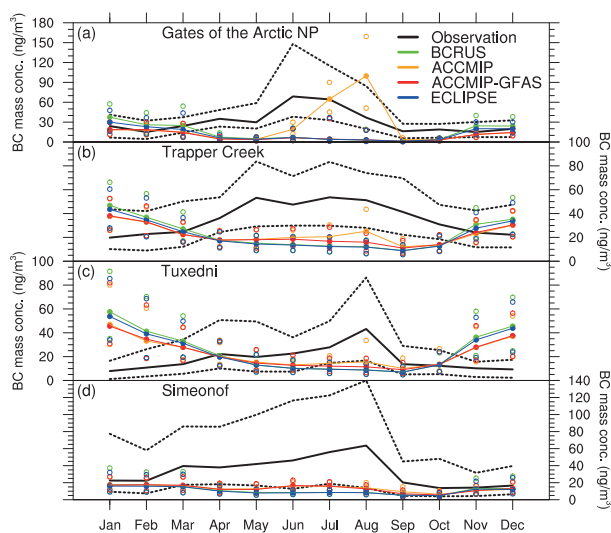


Figure 8. As Figure 6 for the American Arctic stations of the IMPROVE network in (a) Gates of the Arctic National Park, Trapper Creek, Tuxedni and Simeonof.

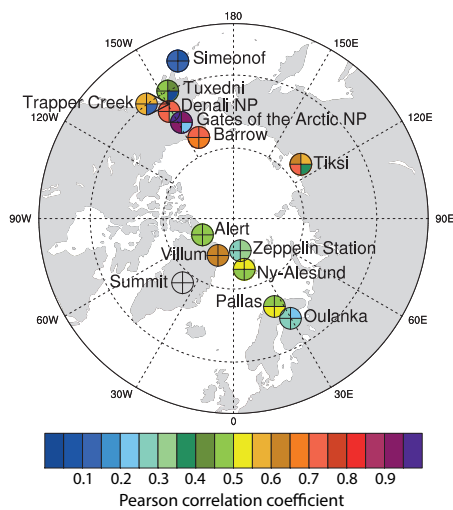


Figure 9. Map showing Arctic the sites where the near surface BC mass concentration was measured. Colors show the correlation coefficient between the measured and modeled daily averages. Correlation coefficients close to zero are not colored. Top right segment indicates the correlation coefficient for the BCRUS run, from there clockwise: ACCMIP, ACCMIP-GFAS, ECLIPSE runs, respectively. The label of Zeppelin Station is shifted to the north on the map for better visibility. The label of station Trapper Creek is shifted to the south east.

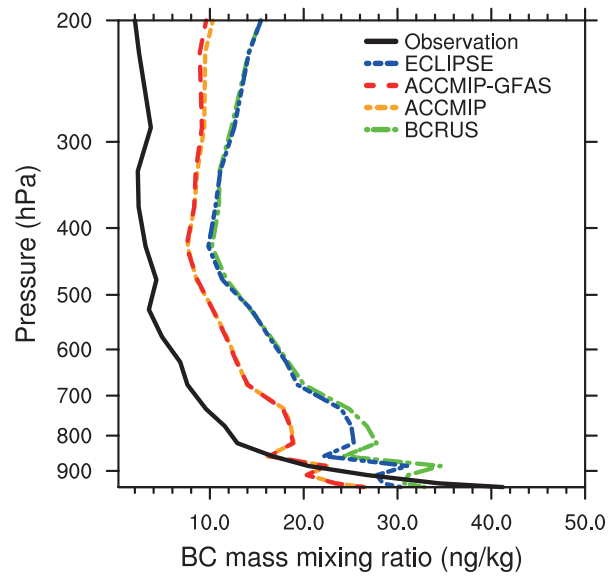


Figure 10. Vertical profiles of BC mass mixing ratios from airborne in-situ measurements during the flight campaign HIPPO-1 campaign in January 2009. The modeled BC mass mixing ratios were averaged over the vertical levels. The observations are shown in black, the different model runs are color coded (see section 4 for details).

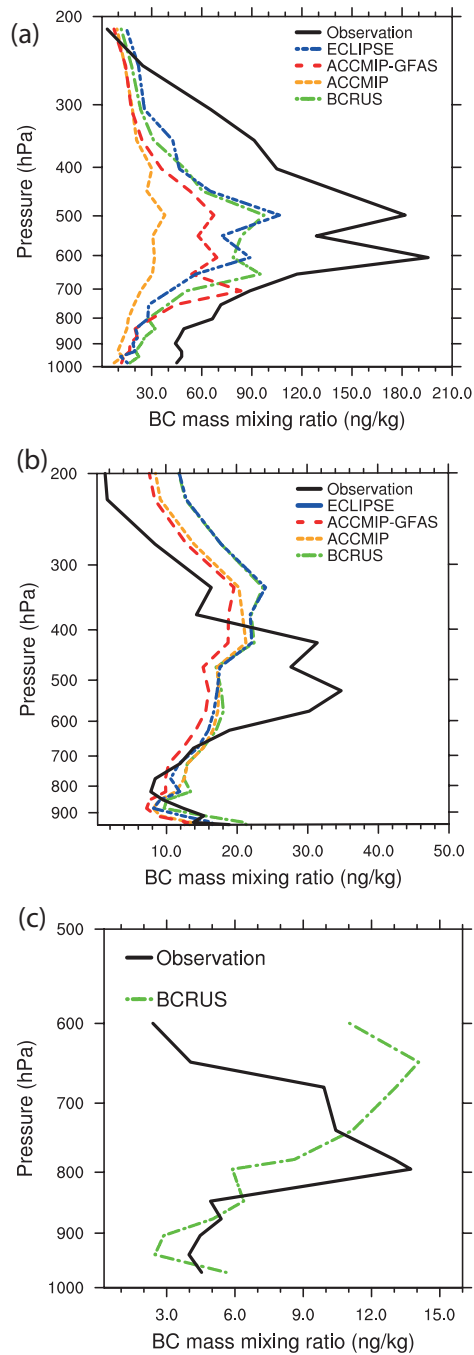


Figure 11. As in Figure 10, but spring campaigns (March/April/May). (a) ARCTAS spring campaign in April 2008. (b) HIPPO-3 campaign in March/April 2010. (c) ALOUD campaign in May/June 2017. Note that for year 2017 model results are only available from the BCRUS run.

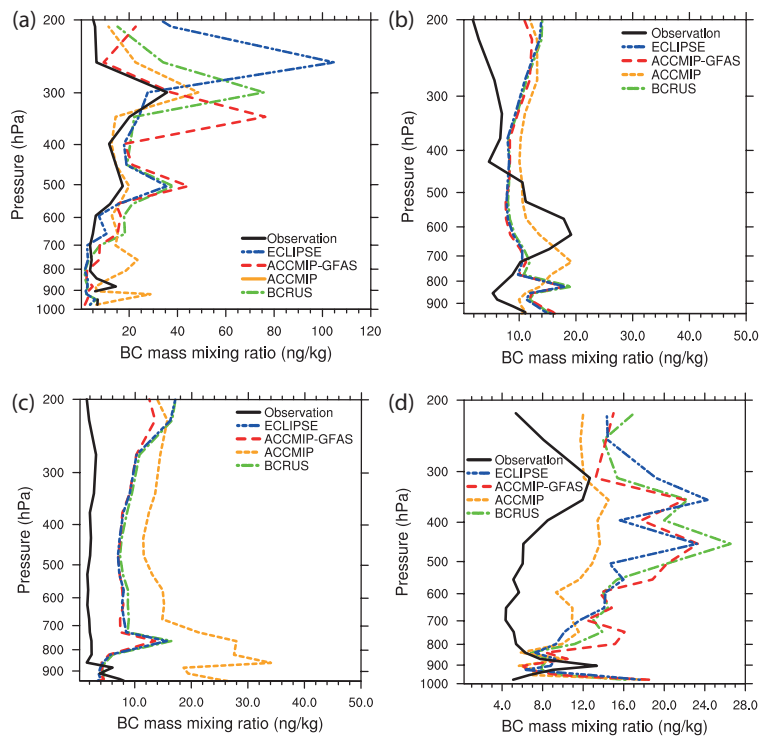


Figure 12. As in Figure 10, but for summer campaigns (June/July/August). (a) ARCTAS summer campaign in June/July 2008. (b) HIPPO-4 campaign in June/July 2011. (c) HIPPO-5 campaign in August/September 2011. (d) ACCESS campaign in June 2012.

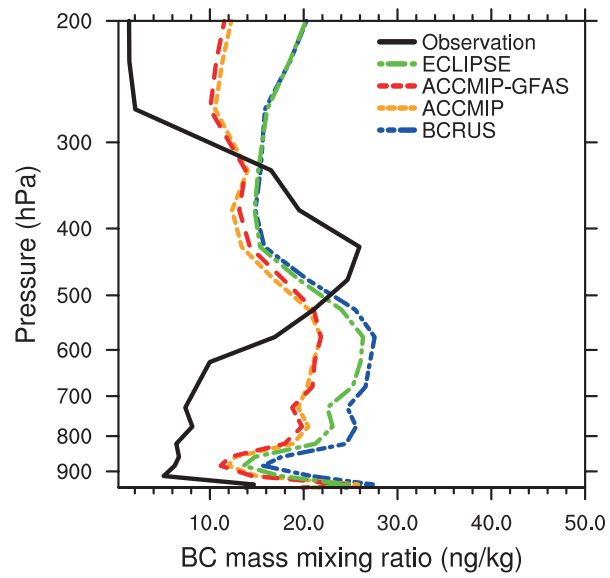


Figure 13. As in Figure 10, but for the fall campaign HIPPO-2 in November 2009.

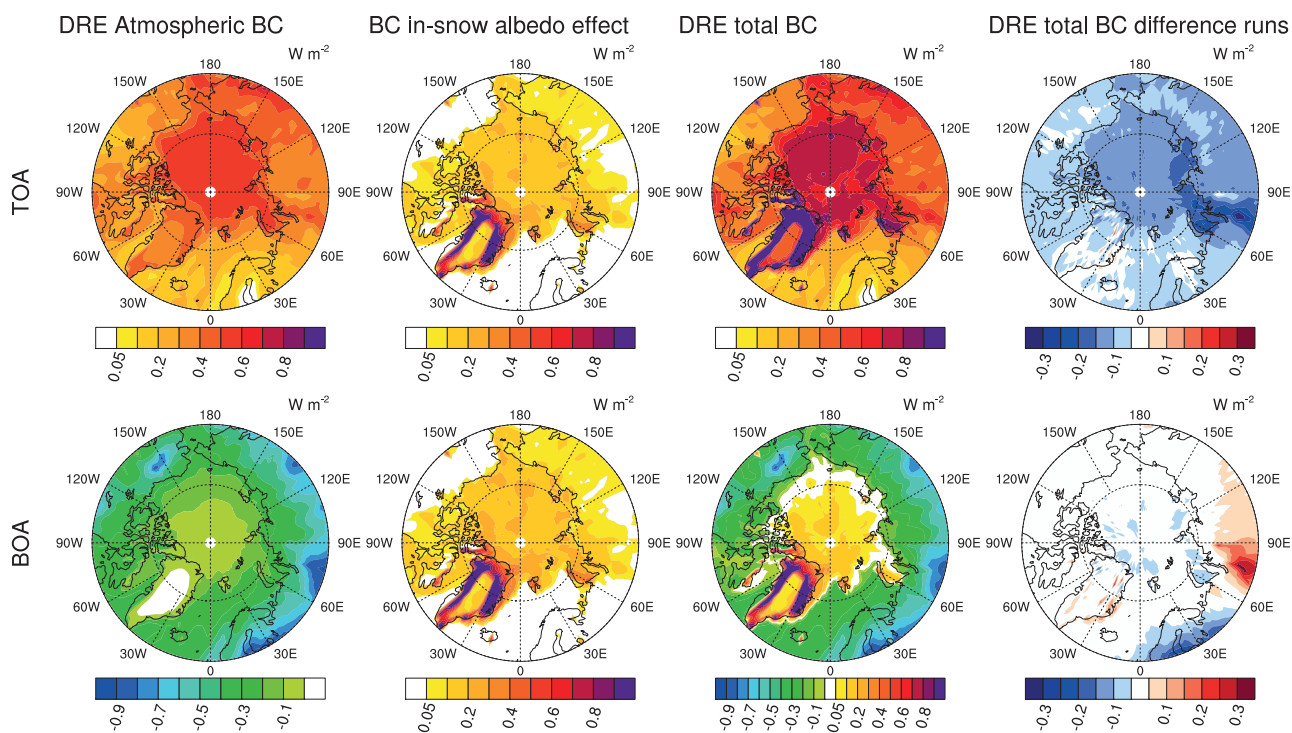


Figure 14. Multi-year mean all sky direct radiative effect (DRE) of BC for the period 2005-2009. Top row for top of the atmosphere (TOA) and bottom row for bottom of the atmosphere (BOA). Panels (a) and (e) show the BCRUS net (terrestrial + solar) DRE of atmospheric BC, panels (b) and (f) solar BC-in-snow albedo radiative effect. Panels (c) and (g) show the total of the radiative effects of BC in the atmosphere and deposited in snow (terrestrial plus solar). Panels (d) and (e) show the difference in the total BC radiative effect between the runs ACCMIP-GFAS and BCRUS (ACCMIP-GFAS minus BCRUS).