

Response to reviewers:

We thank reviewer 1 and 2 for their careful reading of our paper and their supportive and helpful comments. This document details the changes made to the manuscript. Reviewer comments are in blue. Responses are in red.

Response to R1:

I am not sure I follow the author's argumentation for $N_d = N_{d_cloud} = N_{d_scav}$. Based on your simulation strategy, you can have $N_d = N_{d_scav}$, or $N_d = N_{d_cloud}$ by decoupling individual processes from N_d variability. However, the observed variability in N_d will always be a combination of the two. That is, a fraction of the change in N_d is due to changes in N_d that could impact LWP and the remaining fraction is representative of clouds impacting N_d + environmental factors.

I agree with your point that some of the signal (or perhaps a large fraction) in the LWP- N_d relationship inferred from observations may be misinterpreted as a negative LWP adjustment, which is in truth driven by scavenging processes. However, I don't follow the logic from Equ. 8 to Equ. 9. In my mind, the terms $d\ln N_{d_scav}/d\ln N_d$ and $d\ln N_{d_cloud}/d\ln N_d$ do not always equal 1, but range between 0 and 1. Please clarify.

You bring up a very good point and this section was poorly explained. It might be better to portray 'Nd' in this case as the N_d in the regression of LWP on N_d that is used to characterize covariance between LWP and N_d . In the case where $N_d = N_{d_cloud}$ we run many simulations where we replace the N_d in the autoconversion, settling, and radiation (ASR) with a constant. The regression analysis is performed using many simulations with constant N_d in the ASR, which is then used as the independent variable in the regression. In the case where $N_d = N_{d_scav}$ we take one of these simulations where N_d in the ASR is set to a constant and regress on the N_d calculated by the nucleation scheme. In the last case where $N_d = N_{d_cloud} = N_{d_scav}$, this is just the control run where the N_{d_cloud} (eg the N_d in the ASR) is linked to the N_d calculated by the nucleation. In this case the N_d seen by the ASR, and driven by the scavenging are not distinct entities and $N_{d_cloud} = N_d = N_{d_scav}$ so the derivative of one with respect to another goes to one ($dy/dx = 1$ if $y=x$).

We have added additional text and a flow chart to the paper to try and clarify this calculation.

You nudge winds and temperature down to 1.7km altitude, yet analyse boundary layer clouds up to 3.2km in altitude. Can you be sure that your nudging has no impact on your derived relationships? And why do you nudge different variables for the different model experiments (Table 2)?

Also a great point. In the context of this calculation nudging the large-scale environment should only manifest through the inferred meteorological controls on cloud. Nudging was used in this study for two reasons: 1) because the simulations are relatively short so nudging creates more

comparable simulations for a shorter integration in the sense of looking at the same meteorological regimes 2) because we wanted to compare to the observations and wanted to try to sample similar meteorological regimes. You make a very good point about the nudging of U and T in the PI-PD simulations. This was copied from existing suites at the MetOffice used to calculate the aerosol radiative forcing (Yoshioka et al., 2019). Temperature nudging has now been turned off. This shows the same results qualitatively, but shifts the inferred and true Δ LWP between PI and PD closer together. Additional simulations were carried out with nudging starting at level 27 (~5km) instead of level 16 (~1.8km) of the model, and without wind nudging altogether. The results from these simulations are shown in the SM and do not qualitatively change the results of this study.

Equ. 4: Have you performed tests on overfitting? For instance what is the reasoning for fitting both EIS and omega_550? Is there really additional skill added to the fit by including both?

The use of both EIS and omega 550 was based on existing research showing that EIS and subsidence correlate, but have opposing effects in terms of their effect on low cloud cover (Myers and Norris, 2013; Wall et al., 2017). We have tested for overfitting by training our model in the control run and then predicting dLWP/dln(Nd) in simulations with very low and very high Nd (Fig. 8f of the main text).

P8L7ff: I found this sentence confusing (see general comment above). Isn't it rather that precipitation scavenging is the only source of Nd variability? And that this variability is not representative of cloud adjustments?

This is right except that Nd variability is also due to sources of aerosol, advection, and sinks like dry deposition. We have added a new schematic figure illustrating the links between cloud, aerosol, and meteorology and have added text to try and explain this better.

P9L25 & Fig 4. "there is significant variability in LWP associated with Nd". This is only true if the full residual LWP-LWP_fitted is entirely flat and has no remaining functional dependence (i.e. your predictors describe all of the variability, which may not be the case). Have you checked for this?

We have changed this sentence to reflect that we meant that the coefficient in the multiple linear regression is confidently greater than zero. There is no requirement for significance to mean that all variability is explained.

P12L7: It is interesting that you find the settling Nd to have the dominant effect over autoconversion. I would argue that this deserves further comment. Is there any support from this from observations? If it would be specific to the UM model, how would that affect your conclusions?

We also thought this was an interesting effect. Unfortunately it is hard to say how a metric similar to the precipitation probability Spop used in many studies to characterize the response of precipitation to aerosol (Ma et al., 2018) could be created to look at settling of cloud droplets. However, comparison to other model studies does show that in regions of low cloud with less frequent precipitation the process rate associated with settling is large compared to autoconversion (Gettelman et al., 2013), which opens the door to this process being a significant source of aerosol-cloud adjustments.

Overall, our results are insensitive to whether precipitation or settling suppression dominate adjustments as we neglect feedbacks between adjustments and scavenging. We have added text to clarify this. Thank you for suggesting this.

Typos and text edits have been changed as suggested. In regards to acronyms in Table 2 being unclear: the first column is just the unique identifier of the simulation in the MetOffice repository so that they can be requested by people wanting to replicate our analysis. Are these what you were referring to? We added some additional text to the descriptions to make it clearer what the simulation with PI and PD simulations are for. Thank you also for finding these.

R2:

Page 2, line 19-21: The sentence does not read well. The first half of the sentence stated that aerosol-cloud interactions play a minor role, but the second half of the sentence stated the importance of making data volume available. I don't understand the logic here. Moreover, it might be necessary to substantiate the statement "Aerosol- cloud interactions are likely to contribute a relatively small fraction of overall variability in cloud properties" by providing some references.

This was unclearly expressed. What we meant to convey is that detecting aerosol-cloud adjustments above the background of meteorological variability presents us with a signal-to-noise problem with the small amount of variability in LWP that is due to aerosol-cloud adjustments against the large amount of variability driven by dynamics and thermodynamics. To overcome small signal to noise ratio we need to use a lot of data to be able to detect a signal. We have changed the sentence to try and better communicate this. We have added a reference that puts an upper limit on the amount of variance explained by adjustments, and which is generally small.

2. This study focuses on the interstitial regions between cyclones only, but there are many other cloud regimes where aerosols can have similar or different impacts on clouds. It might be helpful to add a paragraph to discuss the applicability as well as limitations of this study.

Great point- we did a previous study in cyclones, which is noted in the introduction and in the conclusions. We have added a few sentences to expand on this and to discuss how adjustments might look in the tropics and subtropics and limitations in our analysis technique.

Page 4, line 13: add "to" before "explain"?

Changed.

What is the effect of the degradation of spatial resolution (when all the data is regridded to 1-degree) on the covariance analysis? Is ACI derived from the gridded data still representing the physics? Could you discuss if this is an important issue (as discussed in McComiskey and Feingold, 2012) that affects the conclusion of the study?

(McComiskey and Feingold, 2012) examined the first indirect effect (the Twomey effect), but it is still important to consider the effects of resolution on our results. It is reasonable to suppose that degradation of the spatial resolution will lead to weakening the multiple linear regression coefficients as a function of decreasing variance in the dataset. However, we validate our projected aerosol-cloud adjustment by comparing the change in LWP inferred from the variance in the PD of the GCM to the change in LWP between the PI and PD calculated by the GCM (Fig. 9b) as well as the response in simulations with prescribed Nd in the cloud microphysics (Fig. 8f). The change inferred by the 1x1° daily-mean UM GA7.1 data in the PD agrees with both these tests, neither of which are sensitive to resolution. We have added text discussing resolution.

5. Page 6, line 13-14: Do you mean aerosol emissions or concentrations are set to PI and PD for the two simulations? If emissions, please provide the reference for the emission data. If concentrations, please provide the reference for the concentration data.

It is aerosol and chemistry emissions. Anthropogenic emissions are the CMIP6 emissions (Eyring et al., 2016). Natural emissions are from MEGAN-MACC (Sindelarova et al., 2014) over land and POET (Granier et al., 2005) over ocean. This has been added to the document.

Section 2.5, I understand that you intend to separate the scavenging effect from other microphysical processes. However, these processes of course are nonlinear. Could you provide a discussion on the applicability and limitation of the linear assumption here as well as the use of multiple linear regression?

Additional discussion has been added to the end of Section 2.5 noting that the relationship between LWP and Nd appears to be approximately linear and discussing that in regimes or models with very large adjustments moderated through precipitation our analysis framework will break down.

Eyring, V., Bony, S., Meehl, G. A., Senior, C. A., Stevens, B., Stouffer, R. J., and Taylor, K. E.: Overview of the Coupled Model Intercomparison Project Phase 6 (CMIP6) experimental design and organization, *Geosci. Model Dev.*, 9, 1937-1958, 10.5194/gmd-9-1937-2016, 2016.

Gettelman, A., Morrison, H., Terai, C., and Wood, R.: Microphysical process rates and global aerosol–cloud interactions, *Atmospheric Chemistry and Physics*, 13, 9855-9867, 2013.

Granier, C., Lamarque, J. F., Mieville, A., Muller, J. F., Olivier, J., Orlando, J., Peters, J., Petron, G., Tyndall, G., and Wallens, S.: POET, a database of surface emissions of ozone precursors, 2005.

Ma, P.-L., Rasch, P. J., Chepfer, H., Winker, D. M., and Ghan, S. J.: Observational constraint on cloud susceptibility weakened by aerosol retrieval limitations, *Nature Communications*, 9, 2640, 10.1038/s41467-018-05028-4, 2018.

McComiskey, A., and Feingold, G.: The scale problem in quantifying aerosol indirect effects, *Atmos. Chem. Phys.*, 12, 1031-1049, 10.5194/acp-12-1031-2012, 2012.

Myers, T. A., and Norris, J. R.: Observational Evidence That Enhanced Subsidence Reduces Subtropical Marine Boundary Layer Cloudiness, *Journal of Climate*, 26, 7507-7524, 10.1175/JCLI-D-12-00736.1, 2013.

Sindelarova, K., Granier, C., Bouarar, I., Guenther, A., Tilmes, S., Stavrakou, T., Müller, J. F., Kuhn, U., Stefani, P., and Knorr, W.: Global data set of biogenic VOC emissions calculated by the MEGAN model over the last 30 years, *Atmos. Chem. Phys.*, 14, 9317-9341, 10.5194/acp-14-9317-2014, 2014.

Wall, C. J., Hartmann, D. L., and Ma, P.-L.: Instantaneous Linkages between Clouds and Large-Scale Meteorology over the Southern Ocean in Observations and a Climate Model, *Journal of Climate*, 30, 9455-9474, 10.1175/jcli-d-17-0156.1, 2017.

Yoshioka, M., Regayre, L. A., Pringle, K. J., Johnson, J. S., Mann, G. W., Partridge, D. G., Sexton, D. M. H., Lister, G. M. S., Schutgens, N., Stier, P., Kipling, Z., Bellouin, N., Browne, J., Booth, B. B. B., Johnson, C. E., Johnson, B., Mollard, J. D. P., Lee, L., and Carslaw, K. S.: Ensembles of Global Climate Model Variants Designed for the Quantification and Constraint of Uncertainty in Aerosols and their Radiative Forcing, *Journal of Advances in Modeling Earth Systems*, 0, 10.1029/2019ms001628, 2019.

Untangling causality in midlatitude aerosol-cloud adjustments

Daniel T. McCoy¹, Paul Field^{1,2}, Hamish Gordon¹, Gregory S. Elsaesser³, Daniel P. Grosvenor^{1,4}

¹Institute of Climate and Atmospheric Sciences, University of Leeds, UK

²Met Office, UK

5 ³Department of Applied Physics and Applied Mathematics, Columbia University and NASA Goddard Institute for Space Studies, New York, NY, USA

⁴National Centre for Atmospheric Science, Leeds, UK

Correspondence to: Daniel T. McCoy (D.T.McCoy@leeds.ac.uk)

Abstract. Aerosol-cloud interactions represent the leading uncertainty in our ability to infer climate sensitivity from the
10 observational record. The forcing from changes in cloud albedo driven by increases in cloud droplet number (N_d) (the first
indirect effect) is confidently negative and has narrowed its probable range in the last decade, but the sign and strength of
forcing associated with changes in cloud macrophysics in response to aerosol (aerosol-cloud adjustments) remain uncertain.
This uncertainty reflects our inability to accurately quantify variability not associated with a causal link flowing from the
cloud microphysical state to cloud macrophysical state. Once variability associated with meteorology has been removed,
15 covariance between the liquid water path averaged across cloudy and clear regions (LWP, here, characterizing the
macrophysical state) and N_d (characterizing the microphysical) is the sum of two causal pathways linking N_d to LWP: N_d
altering LWP (adjustments) and precipitation scavenging aerosol and thus depleting N_d . Only the former term is relevant to
constraining adjustments, but disentangling these terms in observations is challenging. We hypothesize that the diversity of
constraints on aerosol-cloud adjustments in the literature may be partly due to not explicitly characterizing covariance
20 flowing from cloud to aerosol, and aerosol to cloud. Here, we restrict our analysis to the regime of extratropical clouds
outside of low-pressure centers associated with cyclonic activity. Observations from MAC-LWP, and MODIS are compared
to simulations in the MetOffice Unified Model (UM) GA7.1 (the atmosphere model of HadGEM3-GC3.1 and UKESM1).
The meteorological predictors of LWP are found to be similar between the model and observations. There is also agreement
with previous literature on cloud-controlling factors finding that increasing stability, moisture, and sensible heat flux
25 enhance LWP, while increasing subsidence, and sea surface temperature decrease it. A simulation where cloud microphysics
are insensitive to changes in N_d is used to characterize covariance between N_d and LWP that is induced by factors other than
aerosol-cloud adjustments. By removing variability associated with meteorology and scavenging we infer the sensitivity of
LWP to changes in N_d . Application of this technique to UM GA7.1 simulations reproduces the true model adjustment
strength. Observational constraints developed using simulated covariability not induced by adjustments and observed
30 covariability between N_d and LWP predict a 25-30% overestimate by the UM GA7.1 in LWP change and a 30-35%
overestimate in associated radiative forcing.

1 Introduction

Uncertainty in the radiative forcing due to aerosol-cloud interactions is the leading uncertainty limiting our ability to accurately diagnose the Earth's climate sensitivity from the observational record (Forster, 2016). The best estimate of the radiative forcing due to aerosol-cloud interactions (also called the first indirect effect (Twomey, 1977)) has narrowed to -1.2 to -0.34 Wm⁻² in a recent survey of forcing from aerosol-cloud interactions (Storelvmo, 2017; Bellouin et al., 2019), but the sign and strength of the forcing due to changes in cloud macrophysical properties in response to aerosol (aerosol-cloud adjustments) remain uncertain (Bellouin et al., 2019). This uncertainty reflects the difficulty in disentangling the many factors that determine cloud macrophysical properties. Unlike cloud droplet number concentration (N_d), which is primarily driven by the availability of suitable aerosol, cloud macrophysical properties are primarily determined by the state of the atmosphere, but may be modulated by N_d (Stevens and Feingold, 2009).

Here, we focus on liquid clouds. Within liquid clouds two main processes are hypothesized to alter cloud liquid content in response to changes in N_d . As N_d is increased there may occur (1) a suppression of precipitation by enhanced N_d (Albrecht, 1989; Pincus and Baker, 1994), and (2) strengthened entrainment of dry air (Ackerman et al., 2004; Bretherton et al., 2007; Wang et al., 2003; Xue and Feingold, 2006). These processes drive the liquid content of cloud in opposite directions following a perturbation in microphysics, further complicating the interpretation of covariability between cloud macrophysical and microphysical properties. Because these processes exist at a time and length scale far below those resolved in climate models they must be parameterized, resulting in substantial uncertainty. Because of this, constraining the cloud macrophysical response to changes in cloud microphysics using observations is an essential step towards constraining aerosol forcing. Aerosol-cloud adjustments are likely to contribute a relatively small fraction of overall variability in cloud macrophysical properties (Bender et al., 2019) - making the data volume available from remote-sensing observations particularly relevant to providing an observational constraint by detecting the small signal from aerosol-cloud adjustments hidden in meteorologically-induced cloud variability. The literature has produced numerous careful analyses of the observational record, but these analyses have produced divergent estimates of the aggregate effect of increased N_d on liquid clouds. These impacts range from increased N_d increasing liquid content in clouds (Chen et al., 2014; Rosenfeld et al., 2019), to almost no response in in-cloud and area-averaged LWP (Toll et al., 2017; Malavelle et al., 2017), to decreasing liquid content (Gryspeerd et al., 2019; Sato et al., 2018). In contrast, the response in cloud cover to N_d has tended to be consistently inferred as producing a forcing equal or larger than the first indirect effect (Gryspeerd et al., 2016; Christensen et al., 2017; Andersen et al., 2017). A simulation of deep, open, cellular boundary layers has shown an increase in cloud fraction, and a decrease in in-cloud LWP, ultimately resulting in an increase in reflected shortwave in the simulation (Possner et al., 2018). Given the wide range of potential observational constraints it remains difficult to offer advice on what cloud microphysical parameterizations are the most realistic.

However, the causal link flowing from N_d to clouds is not the only mechanism relating cloud macrophysics to cloud microphysics. As shown in Wood et al. (2012), the spatial pattern in N_d observed in nature is primarily determined by

Deleted: interactions

Deleted: S

Deleted:

Deleted:

precipitation scavenging. That is to say, N_d may both alter cloud macrophysical properties, and be altered by them and interpreting observations as a constraint on only microphysical to macrophysical causality is erroneous, as discussed in Gryspeerdt et al. (2019). To be able to constrain cloud responses to aerosol-driven changes in N_d we must be able to characterize the effects of cloud macrophysical properties on N_d (by precipitation scavenging) and covariability between N_d and LWP induced by confounding factors such as the relative location of aerosol sources and climatological cloud cover, or meteorological modulation of aerosol and clouds.

Bender et al. (2019) proposed utilizing the observed covariance between N_d and LWP as an aggregate measure of aerosol-cloud-radiation behavior across climate models and reanalysis. For a model to be able to realistically reproduce aerosol-cloud behavior, one precondition is that covariance flowing from clouds to aerosol, and from aerosol to clouds as well as the non-causal covariance induced by air mass history must result in a total covariance consistent with observations. Similarly, Gryspeerdt et al. (2019) examined covariance between N_d and in-cloud LWP, but proposed to separate variability induced by adjustments from other sources of covariability by using clustering on global data. This study follows on from these earlier studies and attempts to partition covariance between LWP and N_d related to causality flowing from N_d to LWP from other covariance. We utilize empirical analysis of observations and model output to try and disentangle variability driven by meteorological ‘cloud-controlling factors’ (Stevens and Brenguier, 2009) and variability related to changes in cloud microphysics. Within this framework we focus on the midlatitudes. Previous work has performed similar analysis on cyclonic midlatitude systems, finding a distinct increase in LWP at a fixed precipitation rate (McCoy et al., 2018c). These large synoptic systems account for roughly half the midlatitudes (Bodas-Salcedo et al., 2014). Here, we turn our attention to the remaining interstitial regions between cyclones. This regime tends to be less cloudy, has an overall lower albedo, and lower cloud optical depth (an example is shown in Fig. 1a). Thus, while these regions do not host dramatic fronts and cloud shields, changes in their liquid cloud due to anthropogenic aerosol may contribute strongly to the overall aerosol forcing because cloud areal coverage and cloud optical depth are farther below saturation.

2 Methods

2.1 Region and variable selection

The empirical analysis on both observational and simulated data in this work follows pioneering studies investigating meteorological controls on subtropical (Myers and Norris, 2013, 2015; Qu et al., 2015; Klein et al., 2017; Seethala et al., 2015) and midlatitude (Miyamoto et al., 2018) marine boundary-layer cloudiness. The selection of variables used in this study is based on the findings of these earlier studies. The predictors examined here are sea surface temperature (SST), large scale subsidence (ω) at 550 hPa, the strength of the inversion at the top of the boundary layer (estimated inversion strength, EIS, as defined in Wood and Bretherton (2006)), the total water vapor path (WVP), and sensible heat flux (SHF). A summary is given in Table 1. A priori we expect that increasing SST should lead to decreasing cloudiness (Myers

Deleted: That is to say, for

Deleted: ,

Deleted: ve

Deleted: Fig. 1

Deleted: Table 1

and Norris, 2015; Qu et al., 2015; McCoy et al., 2017; Bretherton and Blossey, 2014). Increasing subsidence should decrease liquid water path (Myers and Norris, 2013). Increasing inversion strength should lead to increasing cloud fraction (Wood and Bretherton, 2006; Klein and Hartmann, 1993; Qu et al., 2015; Myers and Norris, 2015; Seethala et al., 2015). As shown in Miyamoto et al. (2018) from examination of midlatitude ocean fronts, increased SHF should increase cloudiness. Finally, while less extensively studied, an overall increase in WVP seems likely to lead to increased cloudiness as the atmospheric column moisture increases, holding all else equal (McCoy et al., 2018b).

The central goal of this study is to develop an empirical constraint on aerosol-cloud adjustments. However, direct measurements of the aerosol state to constrain aerosol-cloud adjustments have been found to be sensitive to errors in pristine conditions (Ma et al., 2018). To develop a constraint on aerosol-cloud adjustments we examine the cloud microphysical state in addition to the meteorological parameters listed above. Cloud droplet number concentration is the state variable relating cloud macrophysics to aerosol concentration (Wood, 2012; Grosvenor et al., 2018) and is the predictor used in this study to characterize aerosol-cloud adjustments.

We hasten to note that the list of predictors described above is not intended to be complete (that is to say, we do not anticipate that we will be able to explain 100% of the variability in clouds with these predictors). Our goal is to explain enough variability with these predictors to be able to infer statistically-robust relationships between cloud macrophysical and microphysical properties in the variance unexplained by meteorological variability. The predictive ability of these inferred relationships will be tested within the context of a global climate model (GCM).

Having discussed predictors, we will now discuss predictands. Out of cyclone cloud cover is primarily liquid, boundary layer cloud, which substantially affects shortwave radiation, but has little effect on longwave radiation (Hartmann and Short, 1980). Thus, we focus on liquid water path (LWP) averaged over cloudy and clear regions. This variable allows observations and model output to be compared without needing to simulate output from a passive spectroradiometer (Bodas-Salcedo et al., 2011) or considering cloud overlap, as would be required for in-cloud LWP.

Analysis is carried out in the northern hemisphere (here 30°-60°N) over oceans. This choice has been made for several reasons: First, there is a large variability in N_d across the northern midlatitudes that is not strongly driven by the seasonal cycle. In the Southern Ocean cloud condensation nuclei (CCN) variability is primarily due to biogenic sources and their variability is strongly driven by the seasonal cycle, making analysis in the context of meteorological controls difficult to interpret (Ayers and Gras, 1991; McCoy et al., 2015a; Charlson et al., 1987). Second, Southern Ocean N_d is still poorly represented in the MetOffice Unified Model GA7.1 (discussed in section 2.4) with both too low a mean value and generally too small a seasonal cycle – in contrast to the Northern Hemisphere, which compares well with observations (Mulcahy et al., 2018).

2.2 Outside of cyclone-compositing

The passage of synoptic systems is the central mode of variability in midlatitude cloudiness. McCoy et al. (2018c) focused on cyclone systems and showed that once meteorological variability was accounted for the effects of changes in cloud microphysics driven by changes in N_d on liquid content are revealed. This work utilized the Field and Wood (2007) cyclone compositing algorithm, which uses sea level pressure (SLP) to identify cyclone centers. Here we utilize the same compositing approach, but focus on all data that is 2000 km away from a cyclone center, following Bodas-Salcedo et al. (2014). This separates the midlatitudes into times when a cyclone is nearby and when there is no cyclone nearby. Once cyclone centers are identified all data within 2000km of an identified cyclone center is masked out of the data set. All data over land is also masked because microwave observations are unavailable (see next section).

A schematic representation of the frequency of occurrence of out-of-cyclone states is shown in Fig. 1b and is 42% in the 30°N-60°N region focused on in this study. All data is regridded to a common 1°x1° spatial resolution before analysis. All data is daily-mean, except for observed N_d , which is only available for the MODIS Aqua overpass; however the diurnal cycle of N_d is thought to be relatively slight (Dong et al., 2014) and it is unlikely that this retrieval limitation significantly impacts our results. Our choice of resolution is motivated by the natural resolution of the MAC-LWP data set. Performing the analysis with a coarser resolution might change the regression coefficients derived in section 2.5, as has been reported for analysis of the first indirect effect (McComiskey and Feingold, 2012). However, in section 3.4 we validate the adjustments inferred from this resolution against the true adjustments in UMGA7.1 and find agreement which demonstrates that our choice of resolution does not affect our results.

Deleted: Fig. 1

2.3 Observations

Cloud liquid water path (LWP) is calculated based on the aggregated observations from multiple satellite microwave sensors following the methodology of the multisensory advanced climatology of LWP (MAC-LWP; Elsaesser et al. (2017)) at daily-mean resolution. Microwave radiometers are sensitive to total liquid. This means that the retrieval must calculate a partitioning between precipitating and non-precipitating liquid. Here, the liquid water path in clouds is calculated following Elsaesser et al. (2017). Previous analysis has shown that the midlatitude partitioning of rain and cloud in MAC-LWP compares favorably with convection-permitting simulations (McCoy et al., 2018c). The MAC-LWP data set estimates that 7% of total liquid path is rain in the NH midlatitudes outside of cyclones. Because of the low fraction of rain water in the midlatitudes outside of cyclones it is unlikely that the need to partition the observations into rain and cloud water substantially affects observational constraints as calculated in section 3.3. Liquid water path is defined as the average of cloudy and clear regions and is insensitive to overlying ice cloud (unlike passive optical retrievals). This definition of LWP is consistent with the definition from GCMs. Microwave retrievals are only available over ocean.

Observations of N_d are calculated based on MODIS observations of cloud optical depth and droplet effective radius. Level-2 swath data (joint product) from MODIS collection 5.1 (King et al., 2003) is filtered by removing pixels with solar

zenith angles greater than 65° to eliminate problematic retrievals at a pixel-level (Grosvenor and Wood, 2014). The daily-mean N_d at 1°x1° resolution is calculated from the filtered level 2 swath data and only low (cloud tops below 3.2 km), liquid clouds were used to calculate N_d . Only 1°x1° regions where the liquid cloud fraction exceeds 80% are considered valid (Bennartz et al., 2011) and the N_d is calculated using effective radius from the 3.7µm MODIS channel. This data set is evaluated in Grosvenor et al. (2018) and in McCoy et al. (2018a), where it shows consistency with measurements from aircraft.

We feel that this combination of radiometers in constraining adjustments is particularly advantageous because there is no shared information between the microwave retrieval of LWP, and the shortwave and near-infrared retrieval of N_d . This is in contrast to the common practice of utilizing MODIS retrievals of cloud droplet effective radius and optical depth to calculate both the in-cloud LWP and N_d , making it conceptually difficult to cleanly infer changes in LWP due to changes in N_d .

The meteorological state of the atmosphere is characterized using reanalysis from MERRA2 (Molod et al., 2015) and microwave observations of water vapor path (WVP) from MAC-LWP. The period during which all of these observations are available stretches from 2003 to 2015. A list of variables and data sources is given in Table 1.

Deleted: Table 1

2.4 Simulations

Simulations are carried out in atmosphere-only simulations in the MetOffice Unified (UM) model version 10.8 at N96 horizontal resolution. The version of the atmosphere model is GA7.1 coupled to the UKCA aerosol model as described in (Muleahy et al., 2018). The GA7.1 atmosphere model is the physical basis for the atmosphere model included in the HadGEM3-GC3.1 and UKESM1 climate model submission to CMIP6 (Walters et al., 2019). All simulations are two years and three months starting in September of 2013. Simulations are nudged to European Centre for Medium-Range Weather Forecasts (ECMWF) reanalysis winds above model level 16 (approximately 1.8 km). Paired simulations are conducted with emissions of aerosol and precursor gases set to pre-industrial (henceforth labeled PI) and to present day levels (labeled PD). Anthropogenic emissions use the CMIP6 inventory (Eyring et al., 2016), natural emissions over land use the MEGAN-MACC inventory (Sindelarova et al., 2014), and natural emissions over ocean follow the POET inventory (Granier et al., 2005). These simulations are conducted to calculate the response of cloud to anthropogenic aerosol. Additional sensitivity studies were carried out starting nudging at level 27 (approximately 5 km) and without nudging. In the latter case simulations of the PI and PD were run for ten years and three months starting in September 2003. The results of this analysis are shown in the supplementary materials and do not differ substantially from the results in the main text.

Deleted: and a half

Deleted: 1.7

Deleted: aerosols

Deleted: (Granier, 2005)

Deleted: and are nudged to temperature and wind above 1.7 km.

In GA7.1 aerosol number concentration has the potential to affect cloud microphysics in three places: First, the conversion of cloud water to rain, where enhanced N_d suppresses the conversion of cloud water to rain water. This is parameterized using the scheme in Khairoutdinov and Kogan (2000), bias corrected as described in (Boutle et al., 2014). The conversion rate of cloud to rain is parameterized as

$$P_{Cloud \rightarrow Rain} \propto q_{Cloud}^{2.47} \cdot N_d^{-1.79}$$

[1]

where q_{cloud} is the cloud liquid water mixing ratio. Second, the gravitational settling of cloud droplets, where enhanced N_d suppresses the settling of cloud droplets out of the cloud. The flux of water settling out of a cloud layer is given as

$$P_{settle} \propto q_{cloud}^{5/3} N_d^{-2/3} \quad [2]$$

Third, enhanced cloud albedo from changes in N_d in the radiative transfer code (Twomey, 1977).

5 However, clouds may affect aerosol concentrations via wet scavenging. UKCA allows scavenging to be configured in two ways: the default configuration, or using the scavenging coefficients in the ECHAM5-HAM model (Stier et al., 2005). To evaluate some of the uncertainty related to scavenging we perform simulations with both sets of coefficients. A list of model simulations conducted is given in Table 2.

Deleted: as

2.5 Analyzing covariance in the system

10 Our goal in this paper is to characterize how N_d drives LWP. However, to reveal robust correlations between N_d and LWP, meteorological variability must be accounted for. To achieve this we follow previous empirical analysis of cloud controlling factors and utilize multiple linear regression to characterize the dependence of various cloud properties as predictands on the predictors described above (Myers and Norris, 2015). As with all empirical analyses of observations, correlation between predictors and the predictand does not necessarily mean that they are causally linked. The meteorological predictors selected
15 here have had mechanisms hypothesized to link them to cloud variability. Another issue with this, and similar analyses of the response of cloud to cloud-controlling factors is that thermodynamic and dynamical predictors within the Earth's atmosphere are correlated (McCoy et al., 2017; Myers and Norris, 2015, 2013). As the variance shared by predictors grows, the uncertainty in the coefficients calculated by multiple linear regression increases. While this is an issue, it is inescapable in trying to disentangle the effects of different cloud controlling factors on cloud properties. Examples of meteorological
20 variables that are correlated, but have opposing effects on cloud cover include subsidence and stability; and stability and SST (Myers and Norris, 2013; Qu et al., 2015; Wall et al., 2017).

To reduce predictor covariance we bin our $1^\circ \times 1^\circ$ daily-mean data from model output and observations into the space of SST and WVP. All output over oceans is considered in the analysis. We choose these predictors to bin our data by before performing regression analysis because they represent two of the most basic meteorological state variables, they
25 covary strongly, and because LWP varies significantly as a function of WVP and SST in both observations and simulations (Fig. 2). Nine bins are used to span WVP (0-40 kg/m²) and ten for SST (275-305 K). We propose that a multiple linear regression model of the form

$$LWP = a_{ccn} CCN + a_2 \omega_{550} + a_3 EIS + a_4 WVP + a_5 SST + a_6 SHF + a_7 \quad [3]$$

be trained in each bin of SST and WVP. All the predictors within the regression model are environmental drivers that are
30 external to the clouds being influenced. However, robust remote-sensing observations of CCN are lacking and $\ln(N_d)$ is used in its place. As discussed above, N_d is predominantly a function of CCN availability. Thus, the multiple linear regression model

$$LWP = \alpha_1 \ln(N_d) + \alpha_2 \omega_{550} + \alpha_3 EIS + \alpha_4 WVP + \alpha_5 SST + \alpha_6 SHF + \alpha_7 \quad [4]$$

is trained in each bin of WVP and SST. Bins that contain fewer than 3000 data points are excluded. Units of LWP are in g m^{-2} , N_d is in cm^{-3} , subsidence is in Pa s^{-1} , EIS is in K, WVP is in kg m^{-2} , SST is in K, and SHF is in Wm^{-2} . A 99% confidence interval is used to determine if a coefficient is significant (different than zero). The initiation of precipitation in boundary layer cloud can substantially impact LWP within a given cloud with a timescale longer than the daily sampling time scale utilized here (Berner et al., 2013). However, the spatial scale of our analysis ($1^\circ \times 1^\circ$) samples clouds at many stages of their lifecycle. This means we do not need to consider rain as a predictor of LWP, and may think of it as scaling with cloud LWP.

Training the regression model in Eq. 4 produces a measure of the covariance between predictors and predictand. In particular, it produces a measure of the covariability between $\ln(N_d)$ and LWP (a_1). However, this covariance does not show causality. N_d may enhance LWP by, for instance, suppressing rain (Albrecht, 1989), and it is this relationship where causality runs from N_d to LWP that is of interest in understanding adjustments. However, the observed covariability between N_d and LWP is also the product of causality running from LWP to N_d due to precipitation removing aerosol and reducing N_d (Wood et al., 2012). The overall covariance between N_d and LWP is the product of these two causal pathways as well as correlation induced by environmental factors driving both clouds and aerosol, and by geographic and seasonal distribution of sources of aerosol relative to cloud. Fig. 3 shows a schematic of these causal flows.

How do we constrain adjustments based on examination of modeled and observed N_d and LWP if we can't disentangle causality? The solution we propose is to use a simplified version of the model to characterize the sensitivity of N_d to precipitation and other factors and use this sensitivity to interpret the full model. To conceptualize why this process can estimate the sensitivity of LWP to N_d we can write an equation describing small changes in LWP in the space of small changes in N_d . First, we consider N_d acting on cloud microphysics ($N_{d_{cloud}}$) and N_d when precipitation scavenging is the only causal factor linking cloudiness and N_d ($N_{d_{scav}}$) as separate entities. In the latter case air mass history and sinks unrelated to precipitation can affect N_d , in addition to the effect of precipitation scavenging, but precipitation scavenging is the only causal link between cloud and aerosol (see Fig. 3). We consider changes in LWP relative to $N_{d_{cloud}}$, and $N_{d_{scav}}$. That is to say we consider $LWP = fn(\ln(N_{d_{cloud}}), \ln(N_{d_{scav}}))$, where the logs are added for consistency with Eq. 4 and all other terms in equation 1 are held fixed and the first term is expanded.

Conceptually, LWP is increased with increasing $N_{d_{cloud}}$ (Fig. 4b) and $N_{d_{scav}}$ is reduced by increasing rain-rates, which increase with LWP (Fig. 4c). In the topographic space describing LWP in terms of $N_{d_{cloud}}$ and $N_{d_{scav}}$, reduced $N_{d_{scav}}$ corresponds to increased precipitation rates, and in turn, LWP. That is to say

$$\frac{dN_{d_{scav}}}{dR} < 0, \quad \frac{dR}{dLWP} > 0 \quad [5]$$

where R is rain rate, so the reciprocal of the product of these terms gives

$$\frac{dLWP}{dN_{d_{scav}}} < 0 \quad [6]$$

Thus, a small change in LWP in terms of changes in these two variables alone is

Deleted: Fig. 3

$$dLWP = \frac{\partial LWP}{\partial \ln(N_{dScav})} d\ln(N_{dScav}) + \frac{\partial LWP}{\partial \ln(N_{dCloud})} d\ln(N_{dCloud}) \quad [7]$$

We assume that scavenging is unaffected by changes in N_{dCloud} affecting rain rates, so there are no higher-order terms, although this may not be the case in reality (Wood et al., 2012), and this feedback is found to substantially enhance the strength of adjustments in some models (Jing and Suzuki, 2018). A visualization of Eq. 7 is shown in Fig. 4a. The best fit of LWP to N_d gives the sum of the partial derivatives of the two terms.

$$\frac{dLWP}{d\ln(N_d)} = \left(\frac{\partial LWP}{\partial \ln(N_{dScav})} \right)_{N_{dCloud}} \frac{d\ln(N_{dScav})}{d\ln(N_d)} + \left(\frac{\partial LWP}{\partial \ln(N_{dCloud})} \right)_{N_{dScav}} \frac{d\ln(N_{dCloud})}{d\ln(N_d)} \quad [8]$$

where subscripts on the partial derivatives indicate that they are evaluated holding that variable constant. In the control simulation $N_d = N_{dCloud} = N_{dScav}$ because N_{dCloud} and N_{dScav} are not distinct entities. That is to say, the cloud microphysics and radiation see the N_d calculated by the nucleation scheme and aerosol experiences the effects of scavenging and meteorology. In this particular case the derivative of N_{dScav} and N_{dCloud} each go to unity because the N_d seen by the cloud and affected by scavenging are equal and we are left with

$$\frac{dLWP}{d\ln(N_d)} = \left(\frac{\partial LWP}{\partial \ln(N_{dScav})} \right)_{N_{dCloud}} + \left(\frac{\partial LWP}{\partial \ln(N_{dCloud})} \right)_{N_{dScav}} \quad [9]$$

We always sample along the dashed line in Fig. 4a in the observational record or in a model where clouds are sensitive to N_d and aerosol is scavenged, giving the curve in Fig. 4d. This curve combines the effects of causality flowing from N_d to LWP, and from LWP to precipitation to aerosol and onto N_d . The term $\frac{\partial LWP}{\partial \ln(N_{dCloud})}$ is the key to constraining adjustments because it describes the sensitivity of LWP to changes in N_d (in this analogy the slope of LWP along the red line in Fig. 4a). While we cannot disentangle causality in observations or in a model where N_d affects cloud microphysics, we propose that in a model configuration where cloud microphysics (e.g. radiation, settling, and autoconversion in UM GA7.1) are unaffected by N_d we may estimate the term $\frac{\partial LWP}{\partial \ln(N_{dScav})}$. That is to say, if $N_{dCloud} = constant$ and $N_d = N_{dScav}$ then

$$\frac{dLWP}{d\ln(N_d)} = \left(\frac{\partial LWP}{\partial \ln(N_{dScav})} \right)_{N_{dCloud}} \quad [10]$$

and the best fit of LWP to N_d in the scavenging-only simulation is just a measure of the scavenging of aerosol by precipitation and the non-causal covariance between N_d and LWP induced by other confounding factors.

Thus, the sensitivity $\frac{\partial LWP}{\partial \ln(N_{dCloud})}$ can be estimated as the difference between the regression of LWP on N_d trained in a simulation where clouds are insensitive to N_d ($N_{dCloud} = constant$, scavenging-only) and the regression in a control simulation ($N_d = N_{dCloud} = N_{dScav}$) because

$$\left(\frac{\partial LWP}{\partial \ln(N_{dCloud})} \right)_{N_{dScav}} = \frac{dLWP}{d\ln(N_d)} - \left(\frac{\partial LWP}{\partial \ln(N_{dScav})} \right)_{N_{dCloud}} \quad [11]$$

We will use this correction for variability induced by factors besides adjustments throughout the paper to infer the effects of N_d on cloud properties in model configurations and the observations. We note that this methodology is subject to several

Moved down [1]: In the real world $N_d = N_{dCloud} = N_{dScav}$ and t

Deleted: following

Moved (insertion) [1]

Deleted: real world

Formatted: Font: Italic

Formatted: Font: Italic, Subscript

Formatted: Font: Italic

Formatted: Font: Italic, Subscript

Formatted: Font: Italic

Formatted: Font: Italic, Subscript

Formatted: Font: Italic

Formatted: Font: Italic, Subscript

Formatted: Font: Italic

Deleted: and where subscripts on the partial derivatives indicate that they are evaluated holding that variable constant.

limitations. First, as noted above, it assumes that feedbacks between adjustments and scavenging are small. This assumption will break down as adjustments become stronger. However, the response in cloud to transient changes in aerosol does not appear to permit very strong adjustments (Malavelle et al., 2017; Toll et al., 2019; Toll et al., 2017). Second, it is assumed here that the relationship between LWP and $\ln(N_d)$ is linear. Empirically this assumption appears to hold in the models and observations (as shown in the following section) and inclusion of higher-order polynomials of $\ln(N_d)$ in Eq. 3 did not alter our results.

To reiterate, non-causal factors also lead to correlation between N_d and LWP because air mass history is important for both clouds and aerosol (Mauger and Norris, 2007). In the discussion of the conceptual model presented above we focused on the impact of changes in N_d on LWP, and vice-versa. Spurious correlation due to air mass history will affect both terms on the right-hand side of Eq. 11 when they are calculated using regression. Thus, the correction for scavenging-induced variability in Eq. 11 also corrects for variability induced by air mass history simultaneously affecting N_d and LWP.

3 Results

3.1 Variance in LWP as a function of N_d

As described in the methods section, data from observations and the control simulation in the UM between 30°N and 60°N over oceans and 2000 km from cyclone centers at daily-mean resolution is binned by WVP and SST and the regression model shown in Eq. 4 is trained in each bin. If we plot the quantity

$$LWP - a_2\omega_{500} - a_3EIS - a_4WVP - a_5SST - a_6SHF - a_7 \quad [12]$$

as a function of N_d we can see that the coefficient relating LWP to N_d is greater than zero at 99% confidence, once variability associated with meteorological predictors is removed (Fig. 5). The residual variance in LWP covaries with N_d similarly between the observations and UM simulations where observations exist. However, one key difference is the span of N_d values in the observations and simulations. Observed N_d almost never falls below 30 cm^{-3} (the dashed line in Fig. 5), while the N_d calculated by the model occasionally falls below this value (~10% of modeled $\ln(N_d)$). This is not surprising because the model suffers from no retrieval limitations and can always measure an N_d , even when cloud is extremely tenuous. Ultimately the goal of this study is to utilize the slope of LWP with respect to N_d to infer adjustment strength. However, using the slope from the observations and the models will produce quite different values due to the strong increase in LWP with N_d below 30 cm^{-3} . In order to compare observations and models fairly we exclude data for $N_d < 30 \text{ cm}^{-3}$.

For $N_d > 30 \text{ cm}^{-3}$ residual LWP decreases with increasing N_d in both observations and models. This agrees with the notion that precipitation variability drives N_d (Wood et al., 2012), and agrees with previous analysis (Gryspeerd et al., 2019). Clearly, this does not mean that the model reduces cloudiness in response to aerosol. The cloud microphysics within the UM GA7.1 must increase LWP in response to a change in N_d , and analysis of the model response to changes from pre-industrial (PI) to present day (PD) aerosol have confirmed a negative forcing from adjustments (Mulcahy et al., 2018). As discussed in the methods, the difference in slopes between the scavenging-only and control simulation is a proxy for the

Deleted: there

Deleted: is significant variability in

Deleted: associated with

response in cloud microphysics to N_d . Before analyzing this difference, we will briefly discuss the covariance between LWP and meteorological predictors in the observations and the control simulations.

3.2 Covariances between LWP and meteorology

Before returning to discussing aerosol-cloud adjustments, we discuss the covariances between observed LWP and the other predictors in Eq. 4. This is shown in Fig. 6. The explained variance (R^2) by the regression model exceeds 40% except at low WVP and SST. The variance explained across all bins of SST and WVP is 46% of daily-mean $1 \times 1^\circ$ variability. That is to say, nearly half the day-to-day variability in LWP across the midlatitudes away from cyclones can be explained as a simple linear combination of five variables.

Several of the predictors have uniform effects on LWP: LWP decreases with subsidence (consistent with Myers and Norris (2013)); increases with WVP; decreases with increasing SST (consistent with Qu et al. (2015), and references therein); and increases with sensible heat flux (consistent with Miyamoto et al. (2018)). We note that at very low SST it appears that LWP may increase with SST. It is possible that this feature is related to ice to liquid transitions (McCoy et al., 2015b; McCoy et al., 2016; Tsushima et al., 2006; Senior and Mitchell, 1993; Tan et al., 2016), but this region only accounts for a small fraction of the overall data volume. The only meteorological predictor that correlates positively and negatively with LWP across the SST-WVP phase space is EIS. At higher WVP and lower SST EIS and LWP are negatively correlated, while at low WVP and high SST they are positively correlated. The latter effect is consistent with increasing EIS increasing cloud fraction (Wood and Bretherton, 2006). One possibility is that because clouds are closer to 100% in areal coverage at higher WVP and lower SST, increasing stability suppresses thickening of cloud in this regime, while the clouds cannot expand horizontally.

Examination of the control simulation shows very similar covariances between meteorological predictors and LWP (Fig. 7). Notable differences are the stronger positive covariance between SST and LWP at low SST, and uniform negative covariance between EIS and LWP across the SST-WVP phase space. However, the relationship between LWP and meteorology is strikingly similar between observations and the UM. The explained variance by predictors tends to be higher in the UM GA7.1 (64%), but it is hard to say how much of this difference in explained variance is due to simplification of the real atmosphere and cloud physics by the model, and how much is due to observational error.

In this framework we also characterize the covariance between $\ln(N_d)$ and LWP. The correlation between $\ln(N_d)$ and LWP is primarily negative in the observations, with positive correlations only occurring at high WVP and low SST. The correlation between LWP and $\ln(N_d)$ in the model is almost uniformly negative (in the data set restricted to $N_d > 30 \text{ cm}^{-3}$). Standardization of the predictor strength estimates the effect of a standard deviation change in each predictor in standard deviations of LWP. In both the observations and models the impact of a standard deviation in meteorological predictors dwarfs the effect of a standard deviation in $\ln(N_d)$, with contributions from subsidence and SHF dominating variability. That is to say, the relative contributions of variability in N_d are quite small in comparison to variability that is simply due to the weather.

3.3 Inferring the effect of N_d on LWP

As we have seen, the correlation between LWP and N_d is mostly negative. The slope relating $\ln(N_d)$ to LWP in the context of Eq. 4 is reproduced in Fig. 8ab. However, if we manually set the N_d seen by autoconversion, radiation, and settling to 75 cm^{-3} in the UM GA7.1 (the approximate mean value in the study region) the negative covariance strengthens substantially (Fig. 8c). This model version is termed ‘scavenging-only’ because scavenging is the only causal link between cloud and aerosol (Fig. 3). As discussed in the methods section, the effect of changes in N_d on LWP may be approximated by the difference between Fig. 8b and Fig. 8c. This is shown in Fig. 8e. This agrees with our expectation based on our knowledge of how the UM GA7.1 treats liquid cloud processes. We know that the effect of increasing N_d on autoconversion and settling is to inhibit the conversion of cloud to rain and reduce cloud droplet fall speed.

To evaluate the accuracy of this method in inferring the sensitivity of LWP to N_d we conduct simulations where causality is forced to flow from the N_d to LWP. This is done by setting the N_d seen by the autoconversion, settling, and radiation to constant values. Two simulations are conducted for each mechanism with N_d set to 100 cm^{-3} , and 300 cm^{-3} . The N_d seen by the other mechanisms is held constant at 30 cm^{-3} . A further three simulations are conducted where N_d seen by all three mechanisms is set to 30 cm^{-3} , 100 cm^{-3} , and 300 cm^{-3} (Table 2). This yields a set of simulations describing the effects on LWP of an increase in N_d in the autoconversion, settling, or radiation, as well as via all three mechanisms simultaneously. Analysis of the effects of increased N_d seen by the radiation code showed negligible changes in LWP and are not shown here.

As in Fig. 7, the fit in Eq. 4 is trained in each bin of WVP and SST across each set of three simulations. The N_d seen by the model parameterization is used in the multiple linear regression (Eq. 4). As expected, given the functional form of these parameterizations (Eq. 1 and Eq. 2) the effect of increasing N_d in either autoconversion or settling results in an increase in LWP, as does the case where N_d in the settling, autoconversion, and radiation are all varied together. The effect of a perturbation in the N_d seen by autoconversion, radiation, and settling on LWP is nearly identical to the slope inferred by subtracting the slope in the scavenging-only run from the control run following Eq. 11 (Fig. 8f). This comparison between the true model sensitivity of LWP to changes in N_d supports the validity of the multiple linear regression-based inference approach pursued here.

Autoconversion and settling are likely to interact with each other in a non-linear manner. As one is suppressed as a sink of cloud liquid, the other will grow (for example, if the conversion of cloud to rain is rendered inefficient then the gravitational settling of cloud droplets will become more efficient as the liquid content grows). Analysis of cross talk between these terms is not the focus of this article, but sensitivity of LWP to changes in each mechanism is shown in Fig. 8f. The effect of perturbing settling N_d on LWP is larger than the effect of perturbing the autoconversion N_d , singling it out as an important lever in controlling adjustment strength for future study. This result is consistent with the large process rate for settling relative to autoconversion found in weakly precipitating low cloud regimes in CAM5 (Gettelman et al., 2013). It is

Formatted: Font: Italic

Formatted: Font: Italic, Subscript

also possible that interactions between settling and N_d may decrease the sensitivity of warm rain to autoconversion representation that is diagnosed in other models (Michibata et al., 2019; Jing et al., 2019). Overall, the results of this study are insensitive to whether settling or autoconversion have a stronger effect on aerosol-cloud adjustments because we assume that feedbacks between scavenging and adjustments are small.

Formatted: Font: Italic

Formatted: Font: Italic, Subscript

5 Given that the scavenging-only simulation can be used to infer the adjustment strength in the UM, we also attempt to use the scavenging-only simulation to infer the strength of adjustments in the real world (Fig. 8d). This assumes that the statistical relationship between LWP and rain rates in the UM GA7.1, and the scavenging of CCN-relevant aerosol by precipitation in the UM GA7.1 are realistic.

10 Based on the covariance between N_d and LWP in the scavenging-only simulations in the UM GA7.1 and observations we offer an estimate of adjustment strength. The adjustment strength inferred from observations is stronger than the UM for low SST and high WVP. Unlike the UM, weak negative covariance between LWP and N_d exists for high SST and low WVP. This may indicate that the scavenging of aerosol by the UM is too efficient, or some other confounder of the relationship between LWP and N_d is poorly represented in the model, or it may point to thinning of cloud via enhanced entrainment (Ackerman et al., 2004), which is not represented in the UM. Overall, the effect of increasing N_d in the UM is to
15 increase LWP.

We have discussed how to infer adjustment strength from the total covariance between N_d and LWP, which mixes covariance induced by causality flowing from cloud to aerosol and aerosol to cloud. In the next section we show how this inferred adjustment strength from the simple regression model is able to predict LWP adjustments in response to anthropogenic aerosols within the full GCM simulation.

20

3.4 Reproducing simulated adjustments between the pre-industrial and present day

We have produced an estimate of the sensitivity of LWP to changes in N_d in the UM GA7.1 model (Fig. 8e). Does this simple regression model hold skill in reproducing the actual change in LWP within the model between the present day (PD) and pre-industrial (PI) aerosol emissions? Simulations are carried out setting aerosol emission to pre-industrial values.

25 This is done for simulations using the GA7.1 scavenging parameterization. A second set of simulations is conducted where the ECHAM-HAM5 scavenging coefficients are used to estimate the sensitivity to the representation of scavenging. PI, PD, and scavenging-only simulations are conducted for each scavenging configuration.

Deleted: is

30 The change in LWP between the PI and PD ($\Delta\text{LWP}_{\text{PD-PI}}$) simulated by the UM is 2.9 g/m^2 averaged across the 30-60°N region. Using the UM-simulated change in N_d ($\Delta N_{d\text{PD-PI}}$) and the slope relating $\ln(N_d)$ to LWP diagnosed from present-day variability (Fig. 8) we calculate $\Delta\text{LWP}_{\text{PD-PI}}$. If the covariance between $\ln(N_d)$ and LWP observed in the control run (Fig. 8b) of the model and $\Delta N_{d\text{PD-PI}}$ are used to predict $\Delta\text{LWP}_{\text{PD-PI}}$, the negative correlation introduced by precipitation scavenging leads to a negative $\Delta\text{LWP}_{\text{PD-PI}}$ (Fig. 9a, in disagreement with the UM-simulated $\Delta\text{LWP}_{\text{PD-PI}}$). If the covariance in the scavenging-only simulation (causality flows from clouds to precipitation to aerosol to N_d) is used (Fig. 8c), the regression

Deleted: 3.6

model-predicted decrease in LWP between PI and PD aerosol levels doubles. However, if we difference the sensitivity in the control and scavenging-only simulation to yield the sensitivity of LWP to changes in N_d (Fig. 8e), the $\Delta\text{LWP}_{\text{PD-PI}}$ predicted by the regression model and the UM-simulated $\Delta N_{d\text{PD-PI}}$ agrees well with the UM-simulated $\Delta\text{LWP}_{\text{PD-PI}}$ (Fig. 9). This result supports the utility of the inferred sensitivity of LWP to N_d in examining adjustments due to PD aerosol.

5 What does the covariance between LWP and $\ln(N_d)$ in the real world tell us about the model? Use of the observational estimate of adjustment strength (Fig. 8d) calculates a $\Delta\text{LWP}_{\text{PD-PI}}$ that is two thirds of the $\Delta\text{LWP}_{\text{PD-PI}}$ inferred from the control run and $\Delta N_{d\text{PD-PI}}$ (Fig. 9). This is because, while the inferred sensitivity of LWP to N_d from observations is quite strong in some regions, it is weakly negative in the most commonly-occurring WVP-SST regimes (Fig. 8d). That is to say, if the efficacy of precipitation in removing CCN-relevant aerosol in the real-atmosphere is near to the efficacy in UM, 10 the relationship between LWP and rain rates in the real atmosphere is near to the relationship in the UM, and the covariability between N_d and LWP induced by other confounders of the N_d -LWP relationship are realistic, then the adjustments ($\Delta\text{LWP}_{\text{PD-PI}}$) simulated by the UM are not unreasonable, albeit a little large. This result is consistent with constraints provided by simulation of the Holuhraun eruption (Malavelle et al., 2017), which showed that the anomaly predicted by HadGEM3 was within the observed range. However, the observationally-inferred sensitivity of LWP to 15 changes in N_d is stronger in low SST, and high WVP regimes than it is in the UM GA7.1, but much weaker, or even slightly negative in low WVP and high SST regimes. This results in a strong latitudinal gradient in $\Delta\text{LWP}_{\text{PD-PI}}$ between 30°N and 60°N inferred from observations (Fig. 9b).

The predicted $\Delta\text{LWP}_{\text{PD-PI}}$ based on the control and scavenging-only simulations (Fig. 8e) underestimates the UM-simulated $\Delta\text{LWP}_{\text{PD-PI}}$ by around 10%. This may result from disregarding feedbacks between precipitation suppression and N_d 20 (Jing and Suzuki, 2018), ~~may simply be due to shortcomings in the simple linear model relating $\ln(N_d)$ to LWP, or may relate to meteorological differences between the PI and PD simulations not accounted for by meteorological predictors or compositing.~~ However, the fractional reduction in inferred $\Delta\text{LWP}_{\text{PD-PI}}$ when observations are used to constrain the sensitivity of LWP to N_d suggests that $\Delta\text{LWP}_{\text{PD-PI}}$ should be around 60-70% of the value predicted by the UM GA7.1 averaged across the NH. $\Delta\text{LWP}_{\text{PD-PI}}$ inferred from observations is extremely dependent on latitude with almost no change in 25 LWP over lower latitudes and warmer SSTs. We hasten to note that the change in N_d between the PI and PD ~~is uncertain and its prediction by UM GA7.1 may be biased,~~ making the absolute values of the constrained $\Delta\text{LWP}_{\text{PD-PI}}$ less relevant than the fractional overestimation in UM-simulated $\Delta\text{LWP}_{\text{PD-PI}}$. ~~This analysis is repeated using simulations that are only nudged above level 27 of the model (Fig. S1), and not nudged at all (Fig. S2) with minimal differences from the results presented in the main text.~~

30 We have focused on changes in LWP in this work because it is a variable that we have good observations of, it can be compared between models and observations in a straight-forward way, and it clearly links to adjustments. However, this variable is not the key variable in discussing radiative forcing and climate sensitivity. How does the radiative forcing from adjustments scale with LWP? Determining the precise effects of adjustments on shortwave cloud radiative effect is difficult,

Deleted: 25-35

Deleted: or

Deleted: may not be perfectly reflect the real change in N_d

but if we assume that the perturbations in LWP induced by adjustments are similar to the perturbations that are driven by meteorology we can offer a simple estimate to inform our understanding of the modeled forcing from adjustments.

Examination of the relationship between LWP and albedo within the UM GA7.1 shows a rapid climb in albedo for low LWP, followed by saturation at higher values, as expected from saturation of cloud fraction and optical depth (Fig. 10).

5 This curve can be fit by a second-degree polynomial, meaning that the sensitivity of albedo to changes in LWP is a function of the LWP. That is to say, regions where LWP is already high are going to have a smaller increase in albedo for a unit change in LWP. The change in LWP between PI and PD is much smaller than the range of the variation of LWP in the climate mean-state, so we use the average of monthly-mean LWP between PI and PD to calculate the sensitivity of albedo to changes in LWP for the NH midlatitudes. This sensitivity ($d\alpha/dLWP$) is multiplied by the change in LWP to yield change
10 in albedo. This change in albedo is scaled by downwelling shortwave to give the change in reflected shortwave.

The change in reflected shortwave predicted from LWP changes in the UM GA7.1 is 1.9-2.0 Wm^{-2} , depending on the scavenging parametrization used. The change in shortwave inferred from the regression model of LWP trained in the control run and corrected by the scavenging-only run is 1.5 Wm^{-2} . If the observed sensitivity of LWP to N_d is used to constrain ΔLWP , the predicted change in reflected shortwave is approximately 1.0 Wm^{-2} . Thus, we estimate that GA7.1
15 overpredicts the change in reflected shortwave due to adjustments in response to a given change in N_d by around 50%. This estimate is subject to the caveat that changes in LWP due to adjustments may not affect albedo in the same way as suggested by examining the total variability. For example, adjustments might only increase the liquid content of the very thickest clouds and have a relatively slight impact on albedo. However, it is unclear how to provide a more complex calculation than presented here. ▼

Deleted: ¶

20 4 Discussion

As the possible range for the radiative forcing from the first indirect effect has narrowed aerosol-cloud adjustments have become an increasingly central source of uncertainty in aerosol-cloud radiative forcing (Bellouin et al., 2019). Here we focus on the northern midlatitudes, where the majority of anthropogenic aerosol is emitted (Myhre et al., 2013). Previous work has examined aerosol-cloud adjustments in midlatitude cyclones, showing that cyclone liquid water path (LWP)
25 increases with cloud droplet number concentration (N_d) (McCoy et al., 2018c). This work focuses on the remainder of cases in the midlatitudes when there is no cyclone center within 2000 km (roughly 42% of the time between 30°N-60°N, see Fig. 1).

Deleted: Fig. 1

Untangling the effect of cloud microphysics on cloud macrophysics from the total variability in cloud macrophysics is challenging. In the observational record we can only characterize the covariance between predictors and predictands. In
30 interrogating the observed covariances between cloud properties and different meteorological predictors we find many of the relationships that have been described in the literature documenting cloud controlling factors (Myers and Norris, 2015). Once meteorological variability is accounted for, statistically significant relationships between cloud microphysics (N_d) and

cloud macrophysics (LWP) appear. In keeping with previous studies (Gryspeerd et al., 2019), LWP and N_d are found to be negatively correlated. However, this is clearly not consistent with the UM GA7.1 GCM's actual response in LWP to changes in aerosol emissions between PI and PD. This negative correlation is due to a combination of N_d being driven by scavenging, as shown in Wood et al. (2012), and spurious correlation between N_d and LWP driven by external variables affecting both terms (Mauger and Norris, 2007) overwhelming any positive covariance driven by aerosol cloud adjustments.

While we cannot disentangle the covariance due to adjustments and covariance due to scavenging and other confounders in the observational record, we can create simulations in which causality is forced to flow from clouds to Nd (scavenging-only). Using this measure of non-adjustment-induced variability in N_d , we can infer the effect of changing Nd on LWP. This inferred sensitivity of LWP to N_d agrees well with simulations where N_d is manually varied in the cloud microphysics (Fig. 8f). The inferred sensitivity of LWP to N_d , combined with the UM-predicted change in N_d reproduces the UM-predicted change in LWP between the PI and PD ($\Delta\text{LWP}_{\text{PD-PI}}$, Fig. 9). These two tests support this method's relevance to understanding aerosol-cloud adjustments.

The analysis presented here, combined with the enhancement in LWP in cyclone systems shown in McCoy et al. (2018c), points toward an overall increase in LWP across the NH midlatitudes in response to anthropogenic aerosol. Ultimately, while the regimes examined here, and in McCoy et al. (2018c) are very different, the detection of a change in LWP in response to changes in N_d rests on the ability of the technique to account for non-adjustment-induced variability in N_d . In McCoy et al. (2018c) this was done by stratifying the dataset by cyclone precipitation rate, which is well-constrained by the large-scale environment (Field and Wood, 2007), which in turn stratifies the data set by the scavenging of aerosol.

Assuming that scavenging in the UM GA7.1 model is realistic, that the relationship between LWP and precipitation is reasonable, and that the non-causal covariance produced by other factors is replicated in the model, we evaluate the strength of adjustments based on observations. This reveals that the present version of the UM GA7.1 overestimates the sensitivity of LWP to changes in N_d by approximately 50% outside of midlatitude cyclones. Calculation of the implied change in shortwave shows a similar overestimate in forcing due to adjustments by the UM. Observations also imply that aerosol-cloud adjustments in the UM GA7.1 are occurring in the wrong regime. Adjustments in the UM favor warmer SSTs and lower WVP, while the observations favor colder SSTs and higher WVP. This difference in regime may be due to early precipitation onset in the UM GA7.1.

The present study and McCoy et al. (2018c) project a negative forcing due to adjustments in the midlatitudes. Extension of this study to the subtropics, and tropics is reserved for a future analysis. While extrapolating the present results to the tropics is difficult, it seems reasonable to suppose that the pattern of adjustments in the subtropics is relatively similar to the inter-cyclone regime analyzed here and to expect a negative forcing in this region due to adjustments, although this may be weaker than the midlatitude adjustments due to decreasing LWP for increasing Nd over higher SSTs and lower WVP over some of the subtropics (Fig. 8d). One important limitation of this study is that it assumes weak feedbacks between adjustments and scavenging. If some regimes have very strong feedback between precipitation and adjustments then our analysis will infer adjustments that are too weak.

Formatted: Font: Italic

Formatted: Font: Italic, Subscript

Deleted: ¶

Our result is in contradiction with previous empirical constraint studies that have postulated that changes in N_d greatly enhance LWP (Rosenfeld et al., 2019), have little effect (Malavelle et al., 2017; Toll et al., 2017), or reduce LWP (Sato et al., 2018; Gryspeerd et al., 2019). We suggest that this diversity within the literature is because a range of constraints may be arrived at depending on the degree to which precipitation scavenging and meteorological driving of aerosol and cloud occludes aerosol-cloud adjustments and what steps are taken in the analysis to account for scavenging-induced and meteorologically-induced covariability. Based on the analysis presented here we believe that positive, zero, or extremely strongly negative radiative forcings due to aerosol-cloud adjustments in the midlatitudes are not supported by the observations.

Acknowledgements

DTM and PRF acknowledge support from the PRIMAVERA project, funded by the European Union's Horizon 2020 programme, Grant Agreement no. 641727. GE acknowledges support from the NASA MEaSUREs program (via subcontract with the Jet Propulsion Laboratory; Grant no. GG008658). We acknowledge use of the MONSOON system, a collaborative facility supplied under the Joint Weather and Climate Research Programme, a strategic partnership between the Met Office and the Natural Environment Research Council.

Data availability

MERRA-2 data were downloaded from the Giovanni data server

(https://disc.gsfc.nasa.gov/datasets/M2T1NXSLV_V5.12.4/summary?keywords=merra-2; last access: 22 July 2019). CERES

data were downloaded through the ordering interface at https://ceres.larc.nasa.gov/order_data.php (last access: 22 July 2019).

Author contributions

All authors contributed ideas and helped edit the paper. DTM and PRF planned the paper. Data analysis and writing were undertaken by DTM. Present day and pre-industrial simulation suites were set up by HG. Simulations were run by DTM.

Idealized simulations were set up by DTM. Development of simulations was conducted by HG, PRF, DPG, and DTM.

MODIS data was created by DPG. MAC-LWP data was created by GSE.

Competing interests

The authors declare that they have no conflict of interest.

References

- Ackerman, A. S., Kirkpatrick, M. P., Stevens, D. E., and Toon, O. B.: The impact of humidity above stratiform clouds on indirect aerosol climate forcing, *Nature*, 432, 1014, 2004.
- 5 Albrecht, B. A.: Aerosols, Cloud Microphysics, and Fractional Cloudiness, *Science*, 245, 1227-1230, 10.1126/science.245.4923.1227, 1989.
- Andersen, H., Cermak, J., Fuchs, J., Knutti, R., and Lohmann, U.: Understanding the drivers of marine liquid-water cloud occurrence and properties with global observations using neural networks, *Atmos. Chem. Phys.*, 17, 9535-9546, 10.5194/acp-17-9535-2017, 2017.
- Ayers, G. P., and Gras, J. L.: Seasonal relationship between cloud condensation nuclei and aerosol methanesulphonate in marine air, *Nature*, 353, 834-835, 1991.
- 10 Bellouin, N., Quaas, J., Gryspeerdt, E., Kinne, S., Stier, P., Watson-Parris, D., Boucher, O., Carslaw, K. S., Christensen, M. W., Daniau, A.-L., Dufresne, J.-L., Feingold, G., Fiedler, S., Forster, P. M., Gettelman, A., Haywood, J. M., Malavelle, F., Lohmann, U., Mauritsen, T., McCoy, D. T., Myhre, G., Müllmenstädt, J., Neubauer, D., Possner, A., Rugenstein, M., Sato, Y., Schulz, M., Schwartz, S. E., Sourdeval, O., Storelvmo, T., Toll, V., Winker, D., and Stevens, B.: Bounding aerosol radiative forcing of climate, *Reviews of Geophysics*, 2019.
- 15 Bender, F.-M., Frey, L., McCoy, D. T., Grosvenor, D. P., and Mohrmann, J. K.: Assessment of aerosol–cloud–radiation correlations in satellite observations, climate models and reanalysis, *Climate Dynamics*, 52, 4371-4392, 2019.
- Bennartz, R., Fan, J., Rausch, J., Leung, L. R., and Heidinger, A. K.: Pollution from China increases cloud droplet number, suppresses rain over the East China Sea, *Geophysical Research Letters*, 38, n/a-n/a, 10.1029/2011gl047235, 2011.
- Berner, A. H., Bretherton, C. S., Wood, R., and Muhlbauer, A.: Marine boundary layer cloud regimes and POC formation in a CRM coupled to a bulk aerosol scheme, *Atmos. Chem. Phys.*, 13, 12549-12572, 10.5194/acp-13-12549-2013, 2013.
- 20 Bodas-Salcedo, A., Webb, M. J., Bony, S., Chepfer, H., Dufresne, J. L., Klein, S. A., Zhang, Y., Marchand, R., Haynes, J. M., Pincus, R., and John, V. O.: COSP: Satellite simulation software for model assessment, *Bulletin of the American Meteorological Society*, 92, 1023-1043, 10.1175/2011BAMS2856.1, 2011.
- Bodas-Salcedo, A., Williams, K. D., Ringer, M. A., Beau, I., Cole, J. N. S., Dufresne, J. L., Koshiro, T., Stevens, B., Wang, Z., and Yokohata, T.: Origins of the Solar Radiation Biases over the Southern Ocean in CFMIP2 Models, *Journal of Climate*, 27, 41-56, 10.1175/jcli-d-13-00169.1, 2014.
- Boutle, I. A., Abel, S. J., Hill, P. G., and Morcrette, C. J.: Spatial variability of liquid cloud and rain: observations and microphysical effects, *Quarterly Journal of the Royal Meteorological Society*, 140, 583-594, 10.1002/qj.2140, 2014.
- Bretherton, C. S., Blossey, P. N., and Uchida, J.: Cloud droplet sedimentation, entrainment efficiency, and subtropical stratocumulus albedo, *Geophysical Research Letters*, 34, 10.1029/2006gl027648, 2007.
- 30 Bretherton, C. S., and Blossey, P. N.: Low cloud reduction in a greenhouse-warmed climate: Results from Lagrangian LES of a subtropical marine cloudiness transition, *Journal of Advances in Modeling Earth Systems*, 6, 91-114, 10.1002/2013MS000250, 2014.
- Charlson, R. J., Lovelock, J. E., Andreae, M. O., and Warren, S. G.: OCEANIC PHYTOPLANKTON, ATMOSPHERIC SULFUR, CLOUD ALBEDO AND CLIMATE, *Nature*, 326, 655-661, 10.1038/326655a0, 1987.
- 35 Chen, Y.-C., Christensen, M. W., Stephens, G. L., and Seinfeld, J. H.: Satellite-based estimate of global aerosol–cloud radiative forcing by marine warm clouds, *Nature Geoscience*, 7, ngeo2214, 2014.
- Christensen, M. W., Neubauer, D., Poulsen, C., Thomas, G., McGarragh, G., Povey, A. C., Proud, S., and Grainger, R. G.: Unveiling aerosol-cloud interactions Part 1: Cloud contamination in satellite products enhances the aerosol indirect forcing estimate, *Atmos. Chem. Phys. Discuss.*, 2017, 1-21, 10.5194/acp-2017-450, 2017.
- 40 Dong, X., Xi, B., and Wu, P.: Investigation of the Diurnal Variation of Marine Boundary Layer Cloud Microphysical Properties at the Azores, *Journal of Climate*, 27, 8827-8835, 10.1175/jcli-d-14-00434.1, 2014.
- Elsaesser, G. S., O'Dell, C. W., Lebock, M. D., Bennartz, R., Greenwald, T. J., and Wentz, F. J.: The Multi-Sensor Advanced Climatology of Liquid Water Path (MAC-LWP), *Journal of Climate*, 0, null, 10.1175/jcli-d-16-0902.1, 2017.
- Eyring, V., Bony, S., Meehl, G. A., Senior, C. A., Stevens, B., Stouffer, R. J., and Taylor, K. E.: Overview of the Coupled Model Intercomparison Project Phase 6 (CMIP6) experimental design and organization, *Geosci. Model Dev.*, 9, 1937-1958, 10.5194/gmd-9-1937-2016, 2016.
- 45 Field, P. R., and Wood, R.: Precipitation and Cloud Structure in Midlatitude Cyclones, *Journal of Climate*, 20, 233-254, doi:10.1175/JCLI3998.1, 2007.
- Forster, P. M.: Inference of climate sensitivity from analysis of Earth's energy budget, *Annual Review of Earth and Planetary Sciences*, 44, 85-106, 2016.
- 50 Gettelman, A., Morrison, H., Terai, C., and Wood, R.: Microphysical process rates and global aerosol–cloud interactions, *Atmospheric Chemistry and Physics*, 13, 9855-9867, 2013.
- Granier, C., Lamarque, J. F., Mieville, A., Muller, J. F., Olivier, J., Orlando, J., Peters, J., Petron, G., Tyndall, G., and Wallens, S.: POET, a database of surface emissions of ozone precursors, 2005.

- Grosvenor, D. P., and Wood, R.: The effect of solar zenith angle on MODIS cloud optical and microphysical retrievals within marine liquid water clouds, *Atmos. Chem. Phys.*, 14, 7291-7321, 10.5194/acp-14-7291-2014, 2014.
- Grosvenor, D. P., Sourdeval, O., Zuidema, P., Ackerman, A., Alexandrov, M. D., Bennartz, R., Boers, R., Cairns, B., Chiu, J. C., Christensen, M., Deneke, H., Diamond, M., Feingold, G., Fridlind, A., Hünerbein, A., Knist, C., Kollias, P., Marshak, A., McCoy, D., Merk, D., Painemal, D., Rausch, J., Rosenfeld, D., Russchenberg, H., Seifert, P., Sinclair, K., Stier, P., van Diedenhoven, B., Wendisch, M., Werner, F., Wood, R., Zhang, Z., and Quaas, J.: Remote Sensing of Droplet Number Concentration in Warm Clouds: A Review of the Current State of Knowledge and Perspectives, *Reviews of Geophysics*, 56, 409-453, 10.1029/2017rg000593, 2018.
- 5 Gryspeerdt, E., Quaas, J., and Bellouin, N.: Constraining the aerosol influence on cloud fraction, *Journal of Geophysical Research: Atmospheres*, n/a-n/a, 10.1002/2015JD023744, 2016.
- 10 Gryspeerdt, E., Goren, T., Sourdeval, O., Quaas, J., Mülmenstädt, J., Dipu, S., Unglaub, C., Gettelman, A., and Christensen, M.: Constraining the aerosol influence on cloud liquid water path, *Atmos. Chem. Phys.*, 19, 5331-5347, 10.5194/acp-19-5331-2019, 2019.
- Hartmann, D. L., and Short, D. A.: On the Use of Earth Radiation Budget Statistics for Studies of Clouds and Climate, *Journal of the Atmospheric Sciences*, 37, 1233-1250, 10.1175/1520-0469(1980)037<1233:OTUOER>2.0.CO;2, 1980.
- Jing, X., and Suzuki, K.: The Impact of Process-Based Warm Rain Constraints on the Aerosol Indirect Effect, *Geophysical Research Letters*, 45, 10.729-710,737, 10.1029/2018gl079956, 2018.
- 15 Jing, X., Suzuki, K., and Michibata, T.: The Key Role of Warm Rain Parameterization in Determining the Aerosol Indirect Effect in a Global Climate Model, *Journal of Climate*, 32, 4409-4430, 10.1175/jcli-d-18-0789.1, 2019.
- Khairoutdinov, M., and Kogan, Y.: A new cloud physics parameterization in a large-eddy simulation model of marine stratocumulus, *Monthly weather review*, 128, 229-243, 2000.
- 20 King, M. D., Menzel, W. P., Kaufman, Y. J., Tanre, D., Bo-Cai, G., Platnick, S., Ackerman, S. A., Remer, L. A., Pincus, R., and Hubanks, P. A.: Cloud and aerosol properties, precipitable water, and profiles of temperature and water vapor from MODIS, *Geoscience and Remote Sensing, IEEE Transactions on*, 41, 442-458, 10.1109/TGRS.2002.808226, 2003.
- Klein, S. A., and Hartmann, D. L.: The Seasonal Cycle of Low Stratiform Clouds, *Journal of Climate*, 6, 1587-1606, 10.1175/1520-0442(1993)006<1587:tscals>2.0.co;2, 1993.
- 25 Klein, S. A., Hall, A., Norris, J. R., and Pincus, R.: Low-Cloud Feedbacks from Cloud-controlling Factors: A Review, *Surveys in Geophysics*, 38, 1307-1329, 10.1007/s10712-017-9433-3, 2017.
- Ma, P.-L., Rasch, P. J., Chepfer, H., Winker, D. M., and Ghan, S. J.: Observational constraint on cloud susceptibility weakened by aerosol retrieval limitations, *Nature Communications*, 9, 2640, 10.1038/s41467-018-05028-4, 2018.
- 30 Malavelle, F. F., Haywood, J. M., Jones, A., Gettelman, A., Clarisse, L., Bauduin, S., Allan, R. P., Karset, I. H. H., Kristjánsson, J. E., Oreopoulos, L., Cho, N., Lee, D., Bellouin, N., Boucher, O., Grosvenor, D. P., Carslaw, K. S., Dhomse, S., Mann, G. W., Schmidt, A., Coe, H., Hartley, M. E., Dalvi, M., Hill, A. A., Johnson, B. T., Johnson, C. E., Knight, J. R., O'Connor, F. M., Partridge, D. G., Stier, P., Myhre, G., Platnick, S., Stephens, G. L., Takahashi, H., and Thordarson, T.: Strong constraints on aerosol-cloud interactions from volcanic eruptions, *Nature*, 546, 485-491, 10.1038/nature22974
<http://www.nature.com/nature/journal/v546/n7659/abs/nature22974.html#supplementary-information>, 2017.
- 35 Mauger, G. S., and Norris, J. R.: Meteorological bias in satellite estimates of aerosol-cloud relationships, *Geophysical Research Letters*, 34, 10.1029/2007gl029952, 2007.
- McComiskey, A., and Feingold, G.: The scale problem in quantifying aerosol indirect effects, *Atmos. Chem. Phys.*, 12, 1031-1049, 10.5194/acp-12-1031-2012, 2012.
- 40 McCoy, D. T., Burrows, S. M., Wood, R., Grosvenor, D. P., Elliott, S. M., Ma, P. L., Rasch, P. J., and Hartmann, D. L.: Natural aerosols explain seasonal and spatial patterns of Southern Ocean cloud albedo, *Sci Adv*, 1, e1500157, 10.1126/sciadv.1500157, 2015a.
- McCoy, D. T., Hartmann, D. L., Zelinka, M. D., Ceppi, P., and Grosvenor, D. P.: Mixed-phase cloud physics and Southern Ocean cloud feedback in climate models, *Journal of Geophysical Research: Atmospheres*, 120, 9539-9554, 10.1002/2015jd023603, 2015b.
- McCoy, D. T., Tan, I., Hartmann, D. L., Zelinka, M. D., and Storelvmo, T.: On the relationships among cloud cover, mixed-phase partitioning, and planetary albedo in GCMs, *Journal of Advances in Modeling Earth Systems*, 8, 650-668, 10.1002/2015ms000589, 2016.
- 45 McCoy, D. T., Eastman, R., Hartmann, D. L., and Wood, R.: The Change in Low Cloud Cover in a Warmed Climate Inferred from AIRS, MODIS, and ERA-Interim, *Journal of Climate*, 30, 3609-3620, 10.1175/jcli-d-15-0734.1, 2017.
- McCoy, D. T., Bender, F. A. M., Grosvenor, D. P., Mohrmann, J. K., Hartmann, D. L., Wood, R., and Field, P. R.: Predicting decadal trends in cloud droplet number concentration using reanalysis and satellite data, *Atmospheric Chemistry and Physics*, 18, 2035-2047, 10.5194/acp-18-2035-2018, 2018a.
- 50 McCoy, D. T., Field, P. R., Elsaesser, G. S., Bodas-Salcedo, A., Kahn, B. H., Zelinka, M. D., Kodama, C., Mauritsen, T., Vanniere, B., Roberts, M., Vidale, P. L., Saint-Martin, D., Voldoire, A., Haarsma, R., Hill, A., Shipway, B., and Wilkinson, J.: Cloud feedbacks in extratropical cyclones: insight from long-term satellite data and high-resolution global simulations, *Atmospheric Chemistry and Physics Discussions*, 2018, 1-44, 10.5194/acp-2018-785, 2018b.
- 55 McCoy, D. T., Field, P. R., Schmidt, A., Grosvenor, D. P., Bender, F. A. M., Shipway, B. J., Hill, A. A., Wilkinson, J. M., and Elsaesser, G. S.: Aerosol midlatitude cyclone indirect effects in observations and high-resolution simulations, *Atmospheric Chemistry and Physics*, 18, 5821-5846, 10.5194/acp-18-5821-2018, 2018c.

- Michibata, T., Suzuki, K., Sekiguchi, M., and Takemura, T.: Prognostic Precipitation in the MIROC6-SPRINTARS GCM: Description and Evaluation Against Satellite Observations, *Journal of Advances in Modeling Earth Systems*, 11, 839-860, 10.1029/2018ms001596, 2019.
- Miyamoto, A., Nakamura, H., and Miyasaka, T.: Influence of the Subtropical High and Storm Track on Low-Cloud Fraction and Its Seasonality over the South Indian Ocean, *Journal of Climate*, 31, 4017-4039, 10.1175/jcli-d-17-0229.1, 2018.
- 5 Molod, A., Takacs, L., Suarez, M., and Bacmeister, J.: Development of the GEOS-5 atmospheric general circulation model: evolution from MERRA to MERRA2, *Geosci. Model Dev.*, 8, 1339-1356, 10.5194/gmd-8-1339-2015, 2015.
- Mulcahy, J. P., Jones, C., Sellar, A., Johnson, B., Boutle, I. A., Jones, A., Andrews, T., Rumbold, S. T., Mollard, J., Bellouin, N., Johnson, C. E., Williams, K. D., Grosvenor, D. P., and McCoy, D. T.: Improved Aerosol Processes and Effective Radiative Forcing in HadGEM3 and UKESM1, *Journal of Advances in Modeling Earth Systems*, 0, 10.1029/2018MS001464, 2018.
- 10 Myers, T. A., and Norris, J. R.: Observational Evidence That Enhanced Subsidence Reduces Subtropical Marine Boundary Layer Cloudiness, *Journal of Climate*, 26, 7507-7524, 10.1175/JCLI-D-12-00736.1, 2013.
- Myers, T. A., and Norris, J. R.: On the Relationships between Subtropical Clouds and Meteorology in Observations and CMIP3 and CMIP5 Models, *Journal of Climate*, 28, 2945-2967, 10.1175/JCLI-D-14-00475.1, 2015.
- Myhre, G., Samsset, B. H., Schulz, M., Balkanski, Y., Bauer, S., Bernsten, T. K., Bian, H., Bellouin, N., Chin, M., Diehl, T., Easter, R. C., 15 Feichter, J., Ghan, S. J., Hauglustaine, D., Iversen, T., Kinne, S., Kirkevåg, A., Lamarque, J. F., Lin, G., Liu, X., Lund, M. T., Luo, G., Ma, X., van Noije, T., Penner, J. E., Rasch, P. J., Ruiz, A., Seland, Ø., Skeie, R. B., Stier, P., Takemura, T., Tsigaridis, K., Wang, P., Wang, Z., Xu, L., Yu, H., Yu, F., Yoon, J. H., Zhang, K., Zhang, H., and Zhou, C.: Radiative forcing of the direct aerosol effect from AeroCom Phase II simulations, *Atmos. Chem. Phys.*, 13, 1853-1877, 10.5194/acp-13-1853-2013, 2013.
- Pincus, R., and Baker, M. B.: Effect of precipitation on the albedo susceptibility of clouds in the marine boundary layer, *Nature*, 372, 250, 20 1994.
- Possner, A., Wang, H., Wood, R., Caldeira, K., and Ackerman, T. P.: The efficacy of aerosol-cloud radiative perturbations from near-surface emissions in deep open-cell stratocumuli, *Atmos. Chem. Phys.*, 18, 17475-17488, 10.5194/acp-18-17475-2018, 2018.
- Qu, X., Hall, A., Klein, S. A., DeAngelis, and Anthony, M.: Positive tropical marine low-cloud cover feedback inferred from cloud-controlling factors, *Geophysical Research Letters*, n/a-n/a, 10.1002/2015GL065627, 2015.
- 25 Rosenfeld, D., Zhu, Y., Wang, M., Zheng, Y., Goren, T., and Yu, S.: Aerosol-driven droplet concentrations dominate coverage and water of oceanic low-level clouds, *Science*, 363, eaav0566, 2019.
- Sato, Y., Goto, D., Michibata, T., Suzuki, K., Takemura, T., Tomita, H., and Nakajima, T.: Aerosol effects on cloud water amounts were successfully simulated by a global cloud-system resolving model, *Nature Communications*, 9, 985, 2018.
- Seethala, C., Norris, J. R., and Myers, T. A.: How Has Subtropical Stratocumulus and Associated Meteorology Changed since the 1980s?, 30 *Journal of Climate*, 28, 8396-8410, 10.1175/JCLI-D-15-0120.1, 2015.
- Senior, C. A., and Mitchell, J. F. B.: Carbon-dioxide and Climate - The Impact of Cloud Parameterization, *Journal of Climate*, 6, 393-418, 10.1175/1520-0442(1993)006<0393:cdacti>2.0.co;2, 1993.
- Sindelarova, K., Granier, C., Bouarar, I., Guenther, A., Tilmes, S., Stavrou, T., Müller, J. F., Kuhn, U., Stefani, P., and Knorr, W.: 35 Global data set of biogenic VOC emissions calculated by the MEGAN model over the last 30 years, *Atmos. Chem. Phys.*, 14, 9317-9341, 10.5194/acp-14-9317-2014, 2014.
- Stevens, B., and Brenguier, J.-L.: Cloud controlling factors: Low clouds, in, MIT Press Cambridge, Mass., 173-196, 2009.
- Stevens, B., and Feingold, G.: Untangling aerosol effects on clouds and precipitation in a buffered system, *Nature*, 461, 607-613, 2009.
- Stier, P., Feichter, J., Kinne, S., Kloster, S., Vignati, E., Wilson, J., Ganzeveld, L., Tegen, I., Werner, M., Balkanski, Y., Schulz, M., Boucher, O., Minikin, A., and Petzold, A.: The aerosol-climate model ECHAM5-HAM, *Atmos. Chem. Phys.*, 5, 1125-1156, 10.5194/acp- 40 5-1125-2005, 2005.
- Storelvmo, T.: Aerosol Effects on Climate via Mixed-Phase and Ice Clouds, *Annual Review of Earth and Planetary Sciences*, 45, 199-222, 10.1146/annurev-earth-060115-012240, 2017.
- Tan, I., Storelvmo, T., and Zelinka, M. D.: Observational constraints on mixed-phase clouds imply higher climate sensitivity, *Science*, 352, 224-227, 10.1126/science.aad5300, 2016.
- 45 Toll, V., Christensen, M., Gassó, S., and Bellouin, N.: Volcano and Ship Tracks Indicate Excessive Aerosol-Induced Cloud Water Increases in a Climate Model, *Geophysical Research Letters*, 44, 12,492-412,500, 10.1002/2017GL075280, 2017.
- Toll, V., Christensen, M., Quaas, J., and Bellouin, N.: Weak average liquid-cloud-water response to anthropogenic aerosols, *Nature*, 572, 51-55, 10.1038/s41586-019-1423-9, 2019.
- Tsushima, Y., Emori, S., Ogura, T., Kimoto, M., Webb, M. J., Williams, K. D., Ringer, M. A., Soden, B. J., Li, B., and Andronova, N.: 50 Importance of the mixed-phase cloud distribution in the control climate for assessing the response of clouds to carbon dioxide increase: a multi-model study, *Climate Dynamics*, 27, 113-126, 10.1007/s00382-006-0127-7, 2006.
- Twomey, S.: INFLUENCE OF POLLUTION ON SHORTWAVE ALBEDO OF CLOUDS, *Journal of the Atmospheric Sciences*, 34, 1149-1152, 10.1175/1520-0469(1977)034<1149:tiopot>2.0.co;2, 1977.
- Wall, C. J., Hartmann, D. L., and Ma, P.-L.: Instantaneous Linkages between Clouds and Large-Scale Meteorology over the Southern Ocean in Observations and a Climate Model, *Journal of Climate*, 30, 9455-9474, 10.1175/jcli-d-17-0156.1, 2017.

- Walters, D., Baran, A. J., Boutle, I., Brooks, M., Earnshaw, P., Edwards, J., Furtado, K., Hill, P., Lock, A., Manners, J., Morcrette, C., Mulcahy, J., Sanchez, C., Smith, C., Stratton, R., Tennant, W., Tomassini, L., Van Weverberg, K., Vosper, S., Willett, M., Browse, J., Bushell, A., Carslaw, K., Dalvi, M., Essery, R., Gedney, N., Hardiman, S., Johnson, B., Johnson, C., Jones, A., Jones, C., Mann, G., Milton, S., Rumbold, H., Sellar, A., Ujiie, M., Whitall, M., Williams, K., and Zerroukat, M.: The Met Office Unified Model Global Atmosphere 7.0/7.1 and JULES Global Land 7.0 configurations, *Geosci. Model Dev.*, 12, 1909-1963, 10.5194/gmd-12-1909-2019, 2019.
- 5 Wang, S., Wang, Q., and Feingold, G.: Turbulence, condensation, and liquid water transport in numerically simulated nonprecipitating stratocumulus clouds, *Journal of the atmospheric sciences*, 60, 262-278, 2003.
- Wood, R., and Bretherton, C. S.: On the relationship between stratiform low cloud cover and lower-tropospheric stability, *Journal of Climate*, 19, 6425-6432, 10.1175/jcli3988.1, 2006.
- 10 Wood, R.: Stratocumulus Clouds, *Monthly Weather Review*, 140, 2373-2423, 10.1175/MWR-D-11-00121.1, 2012.
- Wood, R., Leon, D., Lebsock, M., Snider, J., and Clarke, A. D.: Precipitation driving of droplet concentration variability in marine low clouds, *Journal of Geophysical Research-Atmospheres*, 117, D19210 10.1029/2012jd018305, 2012.
- 15 Xue, H., and Feingold, G.: Large-Eddy Simulations of Trade Wind Cumuli: Investigation of Aerosol Indirect Effects, *Journal of the Atmospheric Sciences*, 63, 1605-1622, 10.1175/jas3706.1, 2006.

Table 1 List of observed variables.

Variable	Description	Source
LWP	Microwave liquid water path averaged over cloudy and clear sky.	(Elsaesser et al., 2017)
N_d	MODIS cloud droplet number concentration.	(McCoy et al., 2018c; Grosvenor and Wood, 2014)
SST	OSTIA sea surface temperature as used by MERRA2 reanalysis as a boundary condition.	(Molod et al., 2015)
WVP	Column water vapor path as observed by MAC-LWP.	(Elsaesser et al., 2017)
ω_{550}	550 hPa subsidence calculated by MERRA2.	(Molod et al., 2015)
EIS	Estimated inversion strength calculated following Wood and Bretherton (2006) using MERRA2 data.	(Molod et al., 2015; Wood and Bretherton, 2006)
SHF	Sensible heat flux calculated from MERRA2 data following Miyamoto et al. (2018).	(Molod et al., 2015)

Table 2 List of simulations. The MetOffice model designation, a short description, the scavenging coefficients used, the value of N_d used in the radiation, settling, and autoconversion parameterizations, and aerosol emissions period used (present day (PD) or pre-industrial (PI)). A tilde in the N_d for a given parameterization indicates that N_d was not set to a constant value.

Model label	Description	Scavenging	Radiation N_d [cm ⁻³]	Settling N_d [cm ⁻³]	Autoconversion N_d [cm ⁻³]	Emissions
u-ph860	Control	UM	~	~	~	PD _↓
u-bi580	Control	ECHAM	~	~	~	PD _↓
u-bi674	Scavenging-only	UM	75	75	75	PD _↓
u-bi677	Scavenging-only	ECHAM	75	75	75	PD _↓
u-bh86 _↓	Control with PI aerosol	UM	~	~	~	PI _↓
u-po314 _↓	Control with PI aerosol	ECHAM	~	~	~	PI _↓
u-bi239	Cloud microphysics $N_d=30$	UM	30	30	30	PD _↓
u-bi971	Cloud microphysics $N_d=100$	UM	100	100	100	PD _↓
u-bi972	Cloud microphysics $N_d=300$	UM	300	300	300	PD _↓
u-bi284	Autoconversion $N_d=100$	UM	30	30	100	PD _↓
u-bi285	Autoconversion $N_d=300$	UM	30	30	300	PD _↓
u-bi248	Settling $N_d=100$	UM	30	100	30	PD _↓
u-bi250	Settling $N_d=300$	UM	30	300	30	PD _↓
u-bi283	Radiative transfer $N_d=100$	UM	100	30	30	PD _↓
u-bi282	Radiative transfer $N_d=300$	UM	300	30	30	PD _↓

Deleted: the nudging (winds, or temperature)

Deleted: Nudging

Deleted: bh800

Deleted: U

Deleted: U

Deleted: U

Deleted: U

Deleted: bh721

Deleted: U,T

Deleted: u-bh722

... [1]

Deleted: bi780

Deleted: U,T

Deleted: u-bi781

... [2]

Deleted: U

Deleted: U

Deleted: U

Deleted: U

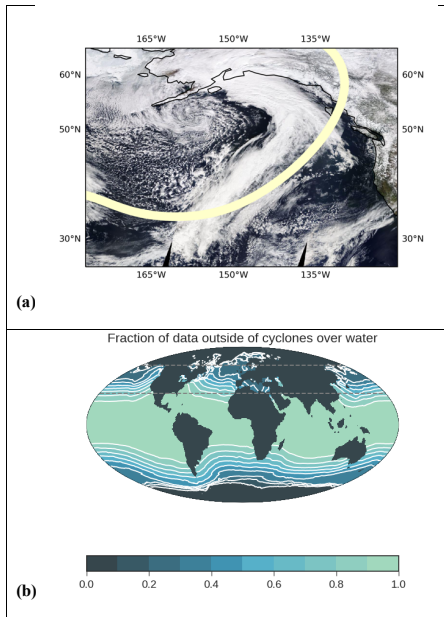
Deleted: U

Deleted: U

Deleted: U

Deleted: U

Deleted: U



5 **Fig. 1** (a) An example of a cyclone off the coast of North America from MODIS Aqua. The cyclone center has been identified south of the Aleut Peninsula based on MERRA2 sea-level pressure (SLP). A line shows the edge of the area considered to lie within the cyclone following Field and Wood (2007). (b) The fraction of data outside of cyclones averaged between 2003 and 2015. The mean within the 30°N-60°N region is 42%.

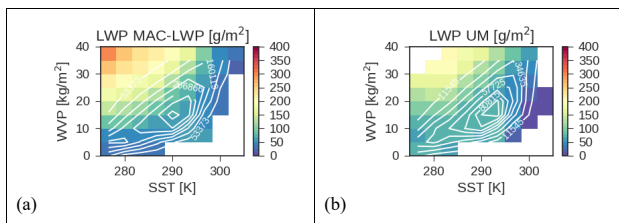


Fig. 2 MAC-LWP observed (a) and UM-simulated (b) LWP in the space of SST and WWP in the region 30°-60°N. White lines show the distribution of data in SST-WWP space. The contours of number of observations in each bin are shown in white.

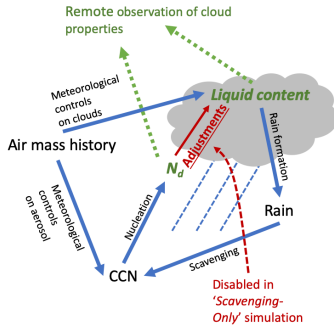


Fig. 3 A schematic illustration of the mechanisms linking cloud, aerosol, and meteorology considered in this study. Observed quantities are shown in green (in this case N_d and LWP). Adjustments (shown in red) are the causal link that flow from N_d to LWP and inferring them is the focus of this study. In the 'scavenging-only' simulation the N_d seen by the cloud physics is set to a constant value.

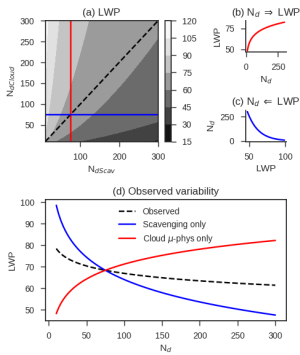


Fig. 4 A simple conceptual model demonstrating how variance due to precipitation-driving of N_d and due to N_d driving changes in LWP through cloud microphysics affects total covariance between N_d and LWP in observations and models. N_d where scavenging is the only causal link between cloud and aerosol (N_{dScav}) and N_d affecting the cloud microphysics (N_{dCloud}) are considered as distinct entities. The contour map in (a) illustrates a potential topological LWP space in terms of N_{dCloud} and N_{dScav} . The case where N_{dCloud} is set to a constant value is shown with a blue line and where N_{dCloud} is increased independently is shown with a red line. In a causal sense this implies N_{dCloud} driving LWP (shown in b) and N_{dScav} being driven by LWP (shown in c), where N_{dScav} is negatively correlated with LWP because $dN_{dScav}/dR < 0$ and $dLWP/dR > 0$, where R is rain rate. The observed variability of LWP in terms of N_d is shown in (d) for the cases $N_{dCloud} = N_d$ and $N_{dScav} = constant$ (red); $N_{dScav} = N_d$ and $N_{dCloud} = constant$ (blue); and $N_{dCloud} = N_{dScav} = N_d$ (the real world, dashed line).

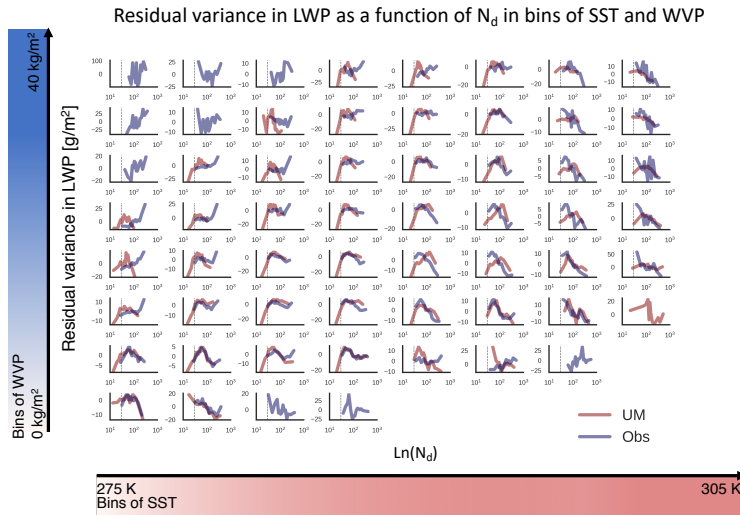
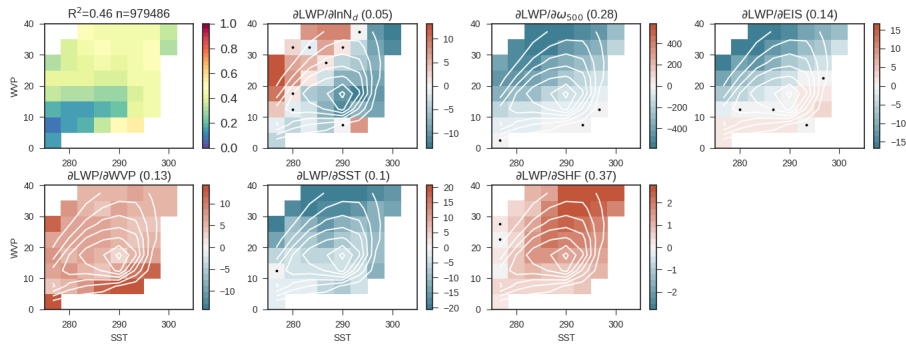


Fig. 5 Residual variance in LWP after removing variability associated with other predictors (Eq. 12) plotted as a function of N_d in the UM GA7.1 and observations. Each subplot corresponds to a bin of WVP and SST. Due to retrieval limitations, values of N_d below 30 cm^{-3} (dashed grey line) are almost never observed, but occur in model output.



5 **Fig. 6** The regression coefficients relating observed LWP to predictors in the phase space of SST and WVP. Regression coefficients not significant at 99% confidence are marked with a dot. White contours show the distribution of observations in the WVP-SST phase space. The first plot shows the explained variance in each bin. The explained variance within the entire data set is noted in the title along with the number of observations. The remaining plots show the coefficients relating each predictor to LWP. In the title the weighted mean of the absolute value of the standardized coefficient ($\langle \partial \sigma LWP / \partial \sigma x_i \rangle$) is shown in brackets to give an estimate of contribution of each predictor to the variance. Regression coefficients are as described in Eq. 4.

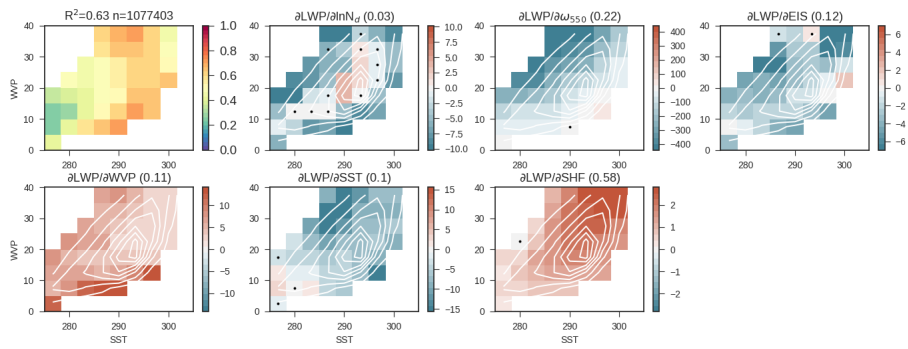
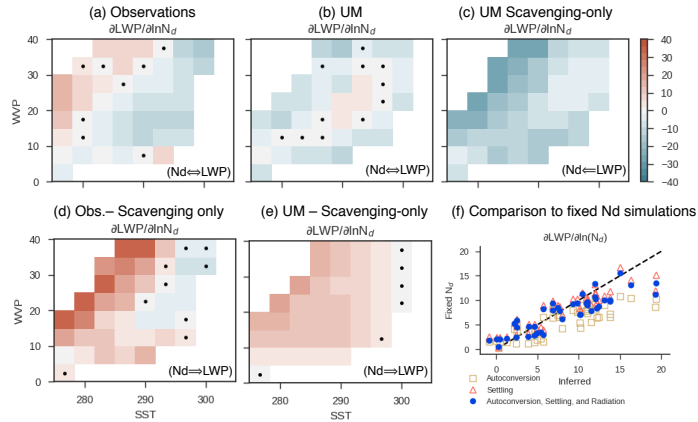
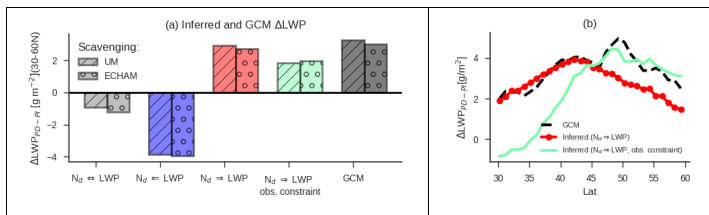


Fig. 7 as in Fig. 6, but showing the covariance within the UM.



5 **Fig. 8** The observed covariance between N_d and LWP and the inferred effect of N_d on LWP. Notations in the bottom right of plots indicate the expected direction of causality. The covariance between N_d and LWP is shown in (a) the observational record (as in Fig. 6); (b) the control simulation of the UM GA7.1 (as in Fig. 7), and (c) a simulation where the N_d seen by the autoconversion, settling, and radiation is set to 75 cm^{-3} and only scavenging links N_d and LWP. The inferred strength of adjustments in observations (d) calculated as the difference in slope between (a) and (c) as in Eq. 11, and in (e) the UM calculated as the difference in slope between (b) and (c). Inferred and true adjustment strength for the UM are compared in (f). The inferred adjustment strength in (e) is compared to the sensitivity of LWP to N_d in a set of simulations where N_d is fixed in the autoconversion, settling, and radiation to a range of values, forcing causality to flow from N_d to LWP. The one-to-one line is shown with dashes. Different symbols indicate whether the N_d seen by the autoconversion, settling, or radiation was varied while others were held constant. Each symbol corresponds to a bin in WVP and SST, as in (e).

10



5 **Fig. 9** The change in LWP between the PI and PD aerosol emissions simulations (ΔLWP_{PD-P1}) inferred by covariance between N_d
 and LWP in the PD, and as simulated by the UM. The inferred ΔLWP_{PD-P1} is calculated using the UM-simulated change in N_d .
 Subplot (a) shows the inferred ΔLWP_{PD-P1} based on variance in different simulations. The direction of causality is indicated for
 10 each case. From left to right: ΔLWP_{PD-P1} inferred from covariance in the control simulation ($N_d \Leftrightarrow LWP$, causality between N_d
 and LWP goes both directions Fig. 8b), inferred from the scavenging-only simulation ($N_d \Leftarrow LWP$, causality from LWP to N_d Fig.
 8c), inferred by correcting the total covariance using covariance in the scavenging-only simulation ($N_d \Rightarrow LWP$, causality goes
 15 from N_d to LWP Fig. 8d - this is the adjustment strength in UM-GA7.1 inferred by the method presented in this paper), and when
 the covariance in observations is combined with the scavenging-only simulation (listed as obs. constraint). The ΔLWP_{PD-P1}
 simulated by the GCM is shown on the right in black. This is the true aerosol-cloud adjustment in the GCM that is compared to
 the value being inferred in the UM GA7.1 as shown by the red bars. ΔLWP_{PD-P1} is provided for simulations using the UM
 GA7.1 default scavenging and ECHAM-HAM5 scavenging. In (b), as in (a), but resolved in latitude and only showing the case when the UM
 GA7.1 default scavenging is used.

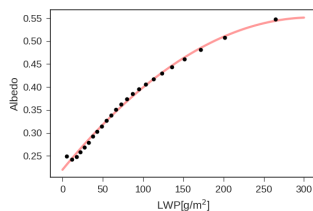


Fig. 10 UM GA7.1 daily-mean albedo as a function of LWP over ocean between 30-60°N and outside of cyclones in equal quantiles
 of LWP (black circles). A second-order polynomial fit is shown using a red line.

Page 23: [1] Deleted

Daniel McCoy

11/1/19 5:06:00 PM

Page 23: [2] Deleted

Daniel McCoy

11/1/19 5:06:00 PM