

Response to the comments of Reviewer #1

At the outset, we thank the reviewer for the observation that “overall, the present work appears to be a scientifically sound exploration of this topic” and also recognizing that “Aerosol-monsoon interactions over South Asia is a very active research topic for which many open questions remain.” We fully agree with this. However, while thankfully acknowledging the reviewer’s overall appreciation of our paper; we disagree to some of the comments and inferences, which apparently led to the negative recommendation. Our reasons are given below:

1. The joint INDO-UK campaign SWAAMI was conceived to address to some of the most important gaps in aerosol monsoon interactions; in which, the vertical profiles of SSA over the core Indian monsoon region (that is the Indo-Gangetic Plains, IGP) prior to the onset of Summer monsoon and its maturing phase is identified as one of the key parameters to be measured; as this information is lacking over this region, and this period, when the aerosol system of the IGP is most complex; being a mixture of advected mineral dust and local emissions (including BC, sulphates, nitrates and organics) and the meteorology is in the transformation; with moist air from the northern Indian ocean super posed over the dry air from West Asia and the intense heating of the Gangetic plains (with temperatures typically above 40°C over the entire region, leading to intense convective mixing. The time of the campaign and the type of instruments and the flight paths all were chosen accordingly, and of the several measurements of aerosols, clouds and radiation made using the FAAM aircraft of UK, we address to the specific topic of SSA and its vertical distribution just before and just after the onset of Indian Summer Monsoon to understand how the energetics changes due to change in aerosol distribution and also interaction with the monsoon system. This way, the experiment and its results are scientifically very important.
2. To our knowledge, there are no in situ measurements of SSA over this region, during the monsoon-onset phase, going as high as 6 km or above and in that way our results are the first of their kind and most relevant to the objectives of the bigger campaign. (We address to the specific issues pointed out by the reviewer, separately under other specific comments.) As such, we believe it to be apt for the reputed journal of ACP, which is bringing out a special issue on South Asian Aerosols and monsoon interaction, recognizing its topical importance. As such, we humbly disagree with the reviewers notion implying that this is ‘yet another study’. In fact, this is unique, for the first time measurement of SSA over the Indian mainland up to almost mid-troposphere.
3. Further, our results very clearly have brought out the importance of the altitude resolved SSA and the large difference it makes to the vertical structure of aerosol heating rate over this region than those estimated using the currently available columnar SSA values (derived from sunphotometer networks or combination of space borne data). Such a result also not reported so far from many places over the globe; but not at all from South Asia.

We have revised the manuscript to bring out the above aspects in focus.

Responses to Specific Comments:

- **Significant variation in the SSA was observed during the campaign, with values ranging from near unity to as low as 0.7 in one region”.**

Yes, we agree and in fact, this itself is a very important finding; especially the low values of SSA at higher altitudes have significant implications for aerosol cloud interactions and monsoons, besides in direct atmospheric warming due to absorption of radiation, above low-level monsoon clouds. We have emphasized this aspect in the revised version of the manuscript (page 6, lines 21-22).

- **Only six different profiles are presented, and only one pair of these consists of measurements made before and during the monsoon at the same location.**

Yes, we agree and also wish we had more flights from different locations. However, technical and logistical constraints and the delay in getting the aircraft readied before onset of monsoon had put a limitation on the number of sorties that could be made before onset. Nevertheless the results from the limited number of flights are quite significant

- **Many other studies have explored monsoon-aerosol interactions over India using aircraft data (see Li et al., 2016)—including an analysis of measurements from the same period as the present manuscript (Vaishya et al., 2018)—and it is not clear to me what makes the data presented in the present work particularly unique.**

We partly agree and partly disagree. Firstly, there are not ‘many other studies’ over this region. In fact, there were none before SWAAMI; as has been said in our general response #2. A few aircraft measurements that are available over the IGP pertained to winter and early spring, when the meteorology is different, convection is weak and long-range transport is subdued. Even the paper mentioned by the reviewer (Vaishya et al 2018, which itself was part of the SWAAMI campaign) had limitations in its vertical extent (covering only up to 3 km above ground level) and also pertained only to the scenario prior to onset of monsoon. It did not examine the changes as the monsoon progressed. Our measurements yielded SSA profiles as high as 5 km in its vertical coverage and covered the pre-onset and main phases of the monsoon. Presence of absorbing aerosols at higher altitudes (below low-level monsoon clouds) are very important due to two processes; one amplification of absorption due to the reflective clouds underneath and two, the higher warming for same amount of radiation absorbed, due to the thinner air at higher altitudes. These are the uniqueness of our results and we have better focused on these in the revised manuscript (page 10, lines 11-13).

The other measurements available (on which Ramanathan et al 2007 relied upon greatly) are the ones during the Indian Ocean Experiment airborne measurements (Ramanathan et al 2001), and by Corrigan et al 2008; both of which were confined to the south Asian outflow over the Indian Ocean and Southeast Asia, during late winter to early spring when the synoptic meteorology was different. It did not cover any part of the Indian landmass; not even the southern peninsula and thus did not provide the information prior to onset of monsoon, especially over the IGP with its unique characteristics.

On the other hand, the Li et al. (2016) paper is a sort of overview paper, based primarily on modelling and past observational data. The paper did not use any realistic SSA profile over Indian / South Asian landmass (for any season) and this vindicates the absence of this critical information and the dire need for it. This is the knowledge-gap SWAAMI aimed to bridge. We are revising the ms to bring these novelties to clear focus of the reader.

References

- Corrigan, C.E., Roberts, G.C., Ramana, M.V., Kim, D., Ramanathan, V., 2008. Capturing vertical profiles of aerosols and black carbon over the Indian Ocean using autonomous unmanned aerial vehicles. *Atmos. Chem. Phys.* 8, 737-747.
- Li, Z., Lau, W.M., Ramanathan, V., Wu, G., Ding, Y., Manoj, M.G., Liu, J., Qian, Y., Li, J., Zhou, T., 2016. Aerosol and monsoon climate interactions over Asia. *Reviews of Geophysics* 54, 866-929.
- Ramanathan, V., Crutzen, P.J., Lelieveld, J., Althausen, D., Anderson, J., Andreae, M.O., Cantrell, W., Cass, G., Chung, C.E., Clarke, A.D., Collins, W.D., Coakley, J.A., Dulac, F., Heintzenberg, J., Heymsfield, A.J., Holben, B., Hudson, J., Jayaraman, A., Kiehl, J.T., Krishnamurti, T.N., Lubin, D., Mitra, A.P., MacFarquhar, G., Novakov, T., Ogren, J.A., Podgorny, I.A., Prather, K., Prospero, J.M., Priestley, K., Quinn, P.K., Rajeev, K., Rasch, P., Rupert, S., Sadourny, R., Satheesh, S.K., Sheridan, P., Shaw, G.E., Valero, F.P.J., 2001. Indian Ocean Experiment: An integrated analysis of the climate forcing and effects of the great Indo-Asian haze. *Journal of Geophysical Research* 106, 28,371 - 328,398.
- Ramanathan, V., Ramana, M.V., Roberts, G., Kim, D., Corrigan, C., Chung, C., Winker, D., 2007. Warming trends in Asia amplified by brown cloud solar absorption. *Nature* 448, 575-578.
- Vaishya, A., Babu, S.N.S., Jayachandran, V., Gogoi, M.M., Lakshmi, N.B., Moorthy, K.K., Satheesh, S.K., 2018. Large contrast in the vertical distribution of aerosol optical properties and radiative effects across the Indo-Gangetic Plain during the SWAAMI-RAWEX campaign. *Atmospheric Chemistry and Physics* 18, 17669-17685.

Responses to the comments of Reviewer #2

We appreciate the summary evaluation and the positive recommendation of the reviewer. Our point-by-point responses to the comments of reviewer/ clarification sought are given below and the manuscript is revised accordingly.

Major Comments:

1. At several places (for example lines 16-20 in page 12), it is mentioned that the present results matches well with previous reported results (not all but at least few) where they have used single SSA values. Is it not contradicting in saying that height profile of SSA will give more information when compared to use of single value?

We are sorry that this paragraph, discussing figure 9 was a bit confusing and thank the reviewer for pointing this out. We have revised the manuscript to avoid confusing statements.

It has been revealed in this study that using height resolved SSA measurements in radiative forcing estimates (rather than a single columnar value) has resulted in the sharp increase in the aerosol induced atmospheric heating around 3 km altitude (Figure 9), rather than the high value near the surface (where aerosol loading and extinction is high) when the single value was used (Figure 9a). In such cases, the heating rates profiles would tend to show higher values where extinction is higher, rather than where SSA is lower, which should be more realistic. This is because of the absence of altitude resolved SSA information, when a single value is used. This under-estimation of heating rate while using a single SSA value becomes severe when the elevated aerosol layers have more absorbing aerosols leading to lower SSA than those closer to the surface as can be seen in Figure 9c. In addition to the effect due to lower SSA, elevated aerosol layers will tend to increase the heating rate at higher altitudes, because for the same amount of radiation absorbed, more heating would be produced at higher regions of the atmosphere, where the air is rarer. Consequence of this is clearly seen in Figure 9d, where the heating rate profiles using single SSA and using height resolved SSA are quite similar, yet there is significant underestimation in the instantaneous atmospheric forcing by as much as $\sim 2.4 \text{ W m}^{-2}$. In some of the previous studies, which have reported peaks in the heating rate profiles around 2-4 km altitude region, would have this under-estimation, as those did not use height resolved SSA information. With the use of height resolved SSA, our study provides a more realistic estimate of the heating; with higher values around more absorbing aerosol layers.

In Figure 9b the SSA values vary between 0.95 and 0.87. To clearly demonstrate the effect of altitude resolved SSA on heating rate profiles, we have shown the heating rate profiles below (Figure S2) in which we have plotted the heating rate profiles calculated for the same extinction profile, but with two single SSA values at the extremes (0.87 and 0.95) and also the realistic altitude varying SSA. Though the position of the peak occurs around the same altitude, the peak heating rate as well as integrated heating rates differ significantly. The importance of our study is to demonstrate this through measurements. This is now clearly provided in the revised manuscript (page 12, line numbers 10 and 12-15).

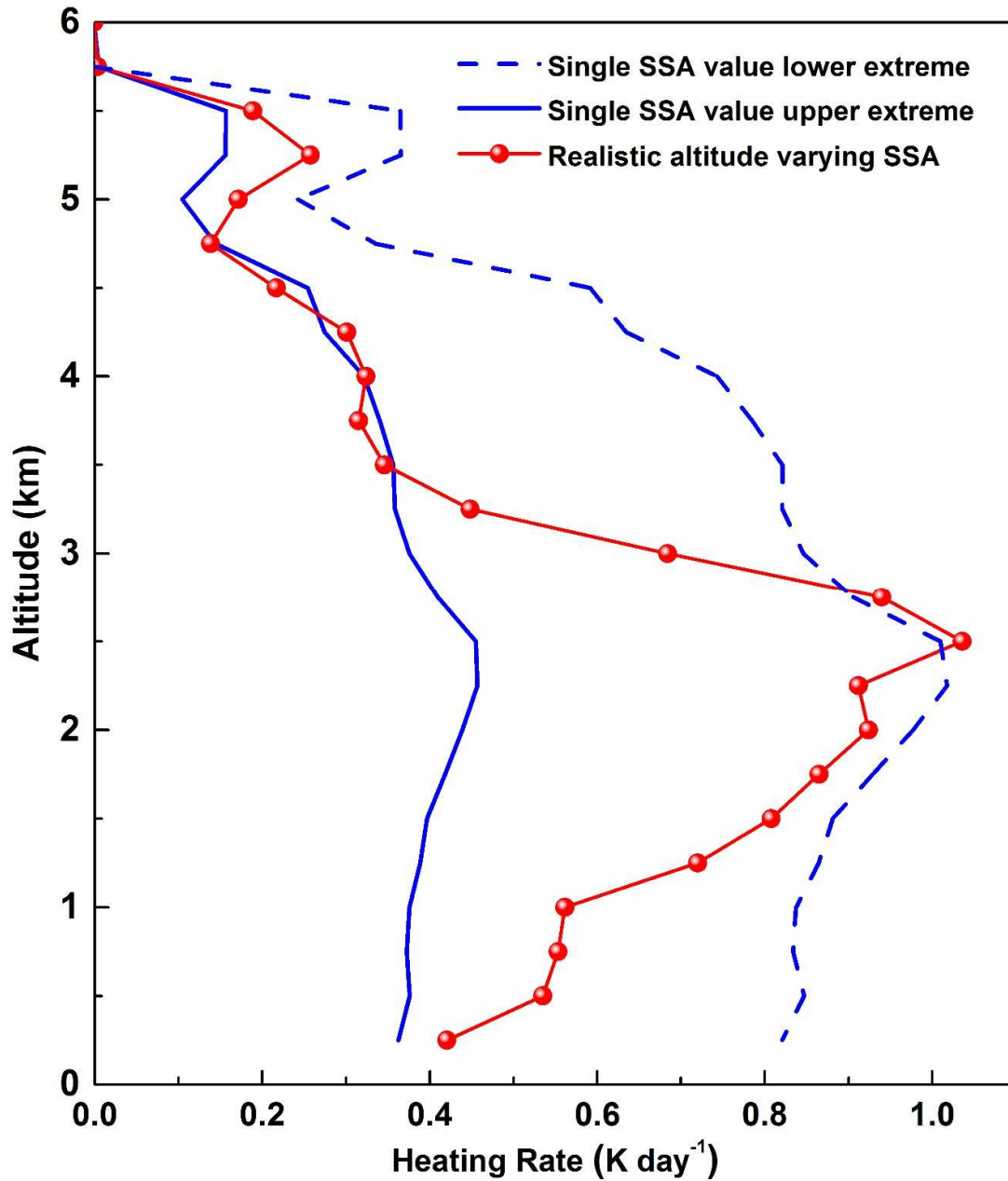


Figure S1: The heating rate profile shown in Figure 9b in the manuscript is reproduced to show the effect of using height varying SSA over a single SSA. The extreme values of SSA in this case are 0.87 and 0.95. The blue lines (solid and dashed) represent the heating rate profiles using the single SSA value (the extremes) and the red line shows the realistic height-varying SSA. When a single SSA (0.95) is assumed there is a large disagreement close to the absorbing layer. On the other hand assuming a low SSA (0.87) will reduce the disagreement near the absorbing layer, at the cost of an increase in the disagreement near the highly scattering layers.

2. Page 12, Lines 18-20: ‘Strong meridional and zonal gradients in aerosol induced heating rates over AS and BoB across the peninsular landmass (from $<0.1 \text{ K day}^{-1}$ over

the south - western Arabian Sea, increasing to 0.5 K day^{-1} over the north - eastern Bay of Bengal).

Here we have referred to a result reported earlier by Nair et al., 2013. This study, though used altitude resolved temperature, pressure and humidity in RF estimation, did use only columnar value of SSA, because the height resolved SSA was not available. This was recognized as a major gap area and SWAAMI made special efforts to close this gap as much as possible. Our measurements providing height-resolved SSA up to 6 km is a major contribution towards this. This is made explicit in the revised manuscript (page 12, line numbers 27-29).

It is mentioned that realistic observations are used in estimating the heating rates. However, it is not mentioned anywhere on what is the uncertainty in estimating the heating rates? Have you considered the uncertainty in several parameters that are used in estimating the heating rates?

Yes we have considered the uncertainties due to the parameters used to estimate the forcing. The sensitivity of various parameters including Aerosol Optical Depth (AOD), SSA and asymmetry parameter has been estimated following McComiskey et al. (2008). The uncertainty due to the combined effect of AOD, SSA and asymmetry parameter on the top of the atmosphere forcing was found to be $\sim 1.8 \text{ W m}^{-2}$. Estimation of uncertainty has been discussed in detail in many papers from the group (Moorthy et al., 2009, Satheesh et al., 2010) and hence not repeated here. We also found that the uncertainty in the instantaneous atmospheric forcing for the cases shown in figure 9 was $\sim 4.2 \text{ W m}^{-2}$. Unfortunately, the value was not explicitly mentioned in the manuscript. The magnitudes of the atmospheric forcing estimated with and without the use of SSA profiles are shown in Figure 9. The atmospheric forcing estimates increased by $\sim 14.6\%$ (8.7% to 24.09%) on an average, on using the measured SSA profiles. This is made explicit in the revised manuscript (page 10, line numbers 28-29 and page 11, line numbers 1-2).

3. Page 6, Lines 22-25: It is mentioned that ‘Extinction coefficient, decreases near exponentially with altitude over most of the mainland, while over the oceanic regions of the Arabian Sea and Bay of Bengal, an increase in extinction is indicated above 2 km, attributed to elevated layers of aerosols. These layers appear to be stronger over the Arabian Sea than over Bay of Bengal. In general, highest values are observed within 3 km from the surface where the aerosol abundance is more.’

This paragraph has several contradicting statements. Why elevated aerosols are not seen over mainland? In fact several earlier studies have reported elevated aerosol layers over mainland (Mishra et al., 2010; Ganguly et al., 2006; Niranjana et al., 2007; Sinha et al., 2013; Venkat Ratnam et al., 2018). Further, it is mentioned that highest values are observed within 3 km from the surface. Then question arises why they are not washed out after the onset of monsoon?

Thank you for pointing out this, we have revised the sentences to avoid confusion and to make the point clear (page 6, line numbers 23-24). The variation in the extinction coefficient profiles is much sharper over the land compared to the oceanic region. At an altitude of 3 km over the land, the extinction coefficient values fall to less than 50% of the value near the surface. Elevated aerosol layers are observed all over the Indian mainland and the surrounding oceans

during pre-monsoon and early monsoon season, due to lofted dust (regional as well as advected). Over the oceanic region the magnitudes of extinction coefficients as well as the fall in the magnitudes of extinction coefficients with height are lower compared to that over the mainland. Over the Arabian Sea and Bay of Bengal elevated aerosol layers are observed above 2 km. The magnitude of extinction coefficient in these layers are larger over the Arabian Sea than over the Bay of Bengal, because of the proximity of Arabian Sea to major dust sources of west Asia and western India. In general, the strongest elevated layers appear within 3 km from the surface.

Minor comments:

1. Page 7, Lines 23-26. ‘Examining our values with those reported earlier for this region, based on airborne measurements, Earlier observations over this region have reported a columnar (up to 3 km altitude) mean SSA of 0.86 at 520 nm over Lucknow during pre-monsoon period (Babu et al., 2016) which is just a shade higher than our value of 0.83 ± 0.08 (for the altitude range 0-3 km for the same season).’

Previously you have mentioned that SSA has been estimated for 550 nm (Equation 2). Are you comparing the values for same wavelengths?

No, we are not comparing the SSA here as the values are reported for different wavelengths. Although SSA has a wavelength dependence, the magnitude of SSA is almost the same in 520-550 nm range. Mishra et al. (2015) have shown that the SSA has very small variation (approximately ± 0.02) in this wavelength region for dust, polluted dust and pollution aerosols. We want to show that low SSA values similar to our observations have been reported earlier from the region in the 0-3 km altitude range, for the same season. We have modified the statement to convey this clearly (page 7, line numbers 25-26).

2. Page 10, Lines 3-5 and also Page 12, Lines 8-9: ‘At Lucknow, as stated earlier, significant washout leads to very low extinction above 3 km, while at the lower altitudes, the SSA has increased compared to the pre-monsoon with values remaining around 0.9 up to 2 km and decreasing above to be less than 0.8 at 3 km.’

Why washout should happen only above 3 km. Are you talking about rainout? In fact washout should happen throughout the altitude as mentioned in many recent papers (for example Venkat Ratnam et al., 2018).

Yes it is mostly washout. In the IGP region (near Lucknow) high altitude aerosols mainly consist of transported dust, while near the surface it is a mixture of transported and locally produced aerosols. The effect of rain is seen throughout the column. The magnitude of extinction coefficients reduces even at lower altitudes during monsoon. The aerosols removed from near the surface are quickly replenished, due to large local production. The aerosols are not replenished as quickly at higher altitudes. We agree that the sentence gives the wrong impression that the removal of aerosols is happening only above 3 km. We have modified the statement to convey this clearly (page 10, line number 4 and page 12, line number 10).

Our observations cannot be completely explained by the cases discussed in Ratnam et al., (2018) as 1) our measurements do not show the extinction profiles immediately after rain and 2) the measurements were made around the local noon when the local sources are active.

References

- Mishra, A.K., Koren, I., Rudich, Y., 2015. Effect of aerosol vertical distribution on aerosol-radiation interaction: A theoretical prospect. *Heliyon* 1.
- McComiskey, A., Schwartz, S.E., Schmid, B., Guan, H., Lewis, E.R., Ricchiazzi, P., Ogren, J.A., 2008. Direct aerosol forcing: Calculation from observables and sensitivities to inputs. *Journal of Geophysical Research: Atmospheres* 113.
- Moorthy, K. K., Nair, V. S., Babu, S. S., and Satheesh, S. K.: Spatial and vertical heterogeneities in aerosol properties over oceanic regions around India: Implications for radiative forcing, *Quarterly Journal of the Royal Meteorological Society*, 135, 2131-2145, 10.1002/qj.525, 2009.
- Nair, V.S., Babu, S.S., Moorthy, K.K., Prijith, S.S., 2013. Spatial Gradients in Aerosol-Induced Atmospheric Heating and Surface Dimming over the Oceanic Regions around India: Anthropogenic or Natural? *Journal of Climate* 26, 7611-7621.
- Ratnam, M.V., Prasad, P., Roja Raman, M., Ravikiran, V., Bhaskara Rao, S.V., Krishna Murthy, B.V., Jayaraman, A., 2018. Role of dynamics on the formation and maintenance of the elevated aerosol layer during monsoon season over south-east peninsular India. *Atmospheric Environment* 188, 43-49.
- Satheesh, S. K., Vinoj, V., and Krishnamoorthy, K.: Assessment of aerosol radiative impact over oceanic regions adjacent to Indian subcontinent using multisatellite analysis, *Advances in Meteorology*, 2010, 2010.

Vertical profiles of sub-micron aerosol single scattering albedo over Indian region immediately before monsoon onset and during its development: Research from the SWAAMI field campaign

Mohanam. R. Manoj¹, Sreedharan. K. Satheesh^{1,2}, Krishnaswamy. K. Moorthy¹, Hugh Coe³

¹Centre for Atmospheric and Oceanic Sciences, Indian Institute of Science, Bangalore, India

²Divecha Centre for Climate Change, Indian Institute of Science, Bangalore, India

³Centre for Atmospheric Science, School of Earth and Environmental Sciences, University of Manchester, Manchester, UK

Correspondence to: M. R. Manoj (manojshibika@gmail.com)

Abstract. Vertical structures of aerosol single scattering albedo (SSA), from near the surface through the free troposphere, have been estimated for the first time at distinct geographical locations over the Indian mainland and adjoining oceans, using in-situ measurements of aerosol scattering and absorption coefficients aboard the FAAM BAe-146 aircraft during the South West Asian Aerosol Monsoon Interactions (SWAAMI) campaign from June to July 2016. These are used to examine the spatial variation of SSA profiles and also to characterize its transformation from just prior to the onset of Indian Summer Monsoon (June 2016) to its active phase (July 2016). Very strong aerosol absorption, with SSA values as low as 0.7, persisted in the lower altitudes (< 3 km) over the Indo-Gangetic Plains (IGP), prior to the onset of monsoon, with a west-to-east gradient; lower values occurred in the north-western arid regions, peaking in the central IGP and somewhat decreasing towards the eastern end. During the active phase of the monsoon, the SSA is found to increase remarkably, indicating far less absorption. Nevertheless, significant aerosol absorption persisted in the lower and middle troposphere over the IGP. Inputting these SSA and extinction profiles in a radiative transfer model, we examined the effects of using height-resolved information in estimating atmospheric heating rates due to aerosols, over similar estimates made using a single columnar value. It was noticed that use of a single SSA value leads to an underestimation (over-estimation) of the heating rates over regions with low (high) SSA emphasizing the importance of height resolved information. Further, the use of realistic profiles showed the significant heating of the atmosphere by sub-micron aerosol absorption at the middle troposphere, which would have strong implications for clouds and climate.

1 Introduction

The Indian Summer Monsoon (ISM) is a large-scale climate system, having direct implications for South Asia. The role of atmospheric aerosols (both natural and anthropogenic) in significantly perturbing the ISM through direct and indirect radiative interactions have been well recognized (Ramanathan et al., 2001; Lau et al., 2006; Gautam et al., 2009; Jones et al., 2009; Vinoj et al., 2014; Solmon et al., 2015; Jin et al., 2016); yet remain not accurately quantified, especially due to the complex

nature of the interactions on the one hand and the highly complex aerosol system (being a mixture of abundant natural and anthropogenic species) that shows large heterogeneity in space and time (for example Moorthy et al. (2016) and references therein). As such, aerosol-monsoon interaction over South Asia remains a very active topic in climate research (Kuhlmann and Quaas, 2010; Turner and Annamalai, 2012; Bollasina et al., 2014; Li et al., 2016; Nair et al., 2016). Improving the accuracy of the description of aerosol perturbation of atmospheric thermodynamics requires critical information on aerosol properties. One of the most important of these are the spectral optical depth and size distribution, and the vertical variation of aerosol single scattering albedo (SSA), which is a measure of the relative contribution of scattering and absorption by aerosol to the total light extinction. Absorbing aerosol layers can critically modify the thermal structure of the atmosphere; hence information on both the vertical distribution of aerosols and type of aerosols at various altitudes are essential to understand their net radiative impact. The relative position of clouds with respect to the aerosol layers also is important.

The importance of the information on vertically resolved aerosol properties in improving the accuracy of aerosol direct and indirect radiative forcing have been emphasized by a few regional studies. Clarke et al. (2004) have advocated the need to study the vertical heterogeneities of aerosol properties, as the values estimated for near-surface aerosols poorly represent the variations within the column. Using air-borne lidar measurements, Satheesh et al. (2008) have shown the role of elevated aerosol layers over the Indian peninsula in producing large heating at 4 to 5 km altitude, just above the low-level clouds which could even locally affect the environmental lapse rate (Babu et al., 2011). Combining data from ground-based and airborne measurements over oceanic regions adjoining India during the ICARB, Moorthy et al. (2009) have demonstrated the large differences in the atmospheric heating rates due to aerosols in the lower free troposphere, when height resolved scattering and absorption coefficients are used. However, their vertical measurements were confined to about 3 km above ground, over the peninsular landmass and nearby oceans and also limited to pre-monsoon seasons only. In these studies, in-situ measurements were limited to about 3 km (Babu et al., 2010; Babu et al., 2016), primarily due to technical limitations of the aircraft sampling system. During 2009, airborne atmospheric measurements of aerosol vertical profiles extending up to 6 km asl were carried out over different parts of India as part of Cloud Aerosol Interactions and Precipitation Enhancement EXperiment (CAIPEEX), which revealed the presence of elevated aerosol layers during both pre-monsoon and monsoon (Padmakumari et al., 2013a).

During the monsoon, ground-based (or even satellite borne) measurements of AOD and extinction coefficient profiles are limited due to extensive cloudiness and precipitation. Most of the existing measurements were made during the winter/ pre-monsoon period (January to April) and hence limited measurements on the vertical distribution of aerosol characteristics just before the onset of the monsoon and during its evolving phase, especially over the central Indian regions, where the aerosol abundances and type undergo rapid changes due to changes meteorological conditions. Though the CAIPEEX campaign addressed to this to some extent (Kulkarni et al., 2012) only its phase -I (2009) covered the evolving phase of the monsoon. During the phase-I elevated aerosol layers were observed (mainly in the 2-4 km region) over the Gangetic Plains, which led to large increases in the aerosol and CCN concentrations (Padmakumari et al., 2013b). However, the main focus of CAIPEEX was to understand the aerosol-cloud-precipitation linkages from the perspective of precipitation enhancement and as such aerosol properties relevant only towards this have been explored.

To reduce the uncertainties in the aerosol-cloud monsoon interactions it is required to bring together different datasets of aerosol properties from India, including in-situ measurements, ground-based and space based remote sensing data, and aircraft measurements. In addition, it is important to measure key aerosol physical and chemical properties required to assess the regional and vertical distribution of aerosol-induced atmospheric heating, by conducting campaign mode measurements involving in situ measurements of aerosol properties using aircraft, supplemented with ground based and space based measurements across the Indian domain, with special focus on the Indo-Gangetic Plain and northern Bay of Bengal, immediately before monsoon onset and during its development.

The joint Indo-UK field experiment, SWAAMI was formulated to meet the above goals. During this campaign, extensive airborne measurements of aerosols were made in the altitude range from very close to the surface to as high as 8 km, using UK's BAe-146-301 atmospheric research aircraft (Highwood et al., 2012; Johnson et al., 2012) over the Indian domain, during June-July 2016 covering the pre-onset and evolving phases of the ISM (Brooks et al., 2018), perhaps for the first time in this detail. This was closely preceded by airborne measurements of aerosol properties across the IGP aboard an Indian aircraft up to an altitude of ~3.5 km (Vaishya et al., 2017). In this paper, we report the vertical distribution of extinction coefficients and single scattering albedo during SWAAMI campaign and discuss the climate implications.

2 Airborne Measurements and Data

The airborne measurements were carried out aboard the BAe-146-301 atmospheric research aircraft operated by the Facility for Airborne Atmospheric Measurements (FAAM). The strategy was to make in situ measurements of aerosols and meteorological fields, for the first time from near the surface to ~8 km altitude, just prior to the onset of Indian summer monsoon over the Central Indian plains and during its progress to the active phase; over the landmass and adjoining oceans.

While the observations in the Indo-Gangetic Plain (IGP) and Western India, which covered a range of surface types in the South Asian region, focused on the transition of aerosol properties from dry to wet climatic zones, the observations in the peninsular Indian region focused on the transitions from land to ocean and across the orography (of the Western Ghats). The airborne measurements were carried out from five locations (base stations); Lucknow (LCK - 26.84 °N, 80.94 °E, 126 m asl) in the central IGP, Jaipur (JPR - 26.91 °N, 75.78 °E, 431 m asl) in the western IGP; Nagpur (NGP - 21.14 °N, 79.08 °E, 310 m asl) Central India; and over the Arabian Sea (AS - 13 °N, 72 °E) and Bay of Bengal (BoB - 11 °N, 84 °E,) from the base station Bengaluru (77.59 °N, 12.97 °E, 920 m asl) in the southern Peninsula (Figure 1). Of these, the measurements over LCK covered periods just prior to the onset of monsoon, as well its active phase, while the measurements in the southern peninsula and oceanic regions were carried out during the evolving phase of the monsoon. The details of the measurements from each base station, the regions covered during the flight and the period of measurements with respect to the phase of the monsoon are summarized in Table 1. More details of the flights during the campaign are provided in the supplementary material (Table S1 and Figure S1). The center of operations for phases 1 and 3 was Lucknow and that for phase-2 was Bengaluru. The first phase measurements covered regions around Lucknow, as well as east-west transects across the IGP covering Jaipur (west)

and Bhubaneswar east) before moving over to Bengaluru, via Nagpur. The second phase focused on monsoon and the measurements were made over the Arabian Sea (western part of Indian peninsula) and Bay of Bengal (on the eastern part). The third phase covered regions to the west of Lucknow (near Jaipur) and southeast of Lucknow (near Bhubaneswar) similar to the first phase and in addition measurements were made near Ahmedabad and over Ganga en route Lucknow to Delhi (as far as Kachhla).

During the measurements, the aircraft moved at a typical ascend rate of 5.5 m s^{-1} and descended at a rate of 6.5 m s^{-1} making measurements at a vertical resolution of $\sim 7 \text{ m}$. Thus, during its ascent from near surface to $\sim 7 \text{ km}$ during a profiling, the aircraft covers a horizontal distance of $\sim 130 \text{ km}$ with a horizontal velocity of $\sim 100 \text{ m s}^{-1}$. In all, the aircraft made 22 dedicated scientific flights spanning approximately 100 hours in three phases: Phase-1: 11-Jun-2016 to 13-Jun-2016 (3 flights); Phase-2: 21-Jun-2016 to 30-Jun-2016 (10 flights); and Phase-3: 02-Jul-2016 to 11-Jul-2016 (9 flights). A list of the aerosol instruments aboard, the parameters retrieved from the measurements, the relevant reference to the principle of instrument and data deduction details, general aircraft data and met data is provided in Table 2. The locations of vertical profiling are marked in Figure 1, along with the important base stations on the ground and the phases of the campaign. The detailed flight track for the three phases are given in the supplementary material. The symbols indicate the phase of measurement and the square boxes over symbols indicate the availability of data from surface to $> 4 \text{ km}$.

Measurements using the Particle Soot Absorption Photometer (PSAP) from Radiance Research are used to estimate aerosol absorption coefficients at 567 nm . The measurements were made under ambient pressure and the PSAP data was corrected for pressure, spot size, flow rate and the presence of scattering particles on the filter following Bond et al. (1999) and Ogren (2010). The scattering coefficient required for this correction was taken from the nephelometer. The nephelometer (TSI-3563) gives the scattering coefficients at three wavelengths (450 , 550 and 700 nm). The scattering coefficients were corrected for the angular truncation (due to the measurement angle being limited to the range 7° to 170°), non-Lambertian nature of the light source and the dependence of the scattering on the particle size following Anderson and Ogren (1998). In addition to these, vertical distribution of static pressure from the aircraft Reduced Vertical Separation Minima (RVSM) system, temperature from Rosemount de-iced temperature sensor and water vapour from the Water Vapour Sensing System Version 2 (WVSS-II) fed through a Rosemount inlet are also used in this study. The WVSS-II, which uses a $1.37 \mu\text{m}$ laser, is used to estimate the atmospheric water vapour. This wavelength is chosen as it is not absorbed by ice crystals or aerosols but it can be scattered at cold dry regions of the upper troposphere. To ensure reliable performance, the inlet is aerodynamically designed to prevent particles from reaching the sensing cavity (Fleming and May, 2004; Vance et al., 2015). More details are available in the FAAM website <https://www.faam.ac.uk>.

The absorption coefficient at 567 nm , estimated using the PSAP, is extrapolated to 550 nm (where the Nephelometer measurements are available) using the inverse dependence (Angstrom exponent; (Ogren, 2010)). The corrected absorption coefficient (σ_{ab}) at 550 nm is given by

$$\sigma_{ab}^{550} = 0.873 C_{spot} C_{flow} 0.98 \frac{\sigma_{ab}^{567}}{k_2} - \sigma_{sca}^{550} \frac{k_1}{k_2} \quad (1)$$

where 0.873 accounts for the difference in spot area of the PSAP filter spot and the manufacturer's reference instrument, $C_{spot} = 1.186$ and $C_{flow} = 0.909$ are the correction factors for PSAP filter spot area and flow respectively specific to the instrument used, 0.98 is the adjustment factor used to convert the σ_{ab} measured at 567 nm to σ_{ab} at 550 nm assuming an inverse wavelength dependence $(567/550)^{-0.5} = 0.98$, σ_{ab}^{567} and σ_{sca}^{550} are the uncorrected absorption and scattering coefficients at 567 nm and 550 nm respectively and $k_1 = 0.02$ and $k_2 = 1.22$ are coefficients of the empirical relation suggested by Bond et al. (1999) to remove the effect of aerosol scattering from the absorption coefficient measurements.

The scattering coefficients (σ_{sca}) obtained from the nephelometer are corrected for angular truncation error and errors arising due to the dependence of light scattering on particle size. This is done following Anderson and Ogren (1998) and assuming no size cut. In practice the nephelometer does not represent the full scattering coefficient from dust due to the limitation set by the inlet. Despite the inlet having a 50% cut-off efficiency at 3 μm , (Highwood et al., 2012) the assumption of no size-cut was considered for the correction as both sub-micron and super-micron particles are simultaneously observed by the nephelometer. The SSA is calculated using the corrected scattering and absorption coefficients at 550 nm the SSA is estimated as

$$SSA = \frac{\sigma_{sca}}{\sigma_{sca} + \sigma_{ab}} \quad (2)$$

Filter based absorption measurements generally overestimate absorption by up to 45% and can lead to underestimations in the SSA (up to 0.07) (Davies et al., 2019). The radiative effects of these aerosols are estimated using a radiative transfer scheme taking into account the vertical distribution of extinction coefficient, SSA, pressure, temperature, water vapour and ozone.

3 Synoptic Meteorology during the Campaign

The year 2016 experienced delayed monsoon onset; with onset at the southern tip of the peninsula occurring on 8th June (instead of the normal onset date of 1st June). Following the delayed onset, the monsoon reached Nagpur and Lucknow by the 19th and 21st June respectively and covered the entire Indian region only by 13th July (which climatologically happens towards the end of June). The advance of the southwest monsoon is shown in Figure 1 (red line). Despite this delay, the rainfall for the season was near normal; about 97% of the long-term average for the season (Purohit and Kaur, 2016). The mean wind field on selected days during the progression of the monsoon throughout the campaign period are shown in Figure 2. The winds were strong during the start of the campaign (June-11) weakened by June-19, before picking up and reaching the peak values by June-28 and again weakened by July-7. The rainfall during the season was close to the long term average and had two long deficient spells of more than 10 days (Purohit and Kaur, 2016). But during the period of the campaign the rainfall did not show

much deviation from the normal. The maximum rainfall was received during the first week of July with nearly 50% excess rain during this period mainly in central, eastern and northeastern India.

4 Results and Discussions

4.1 Vertical profiles of SSA and σ_{ext} : Spatial variation

5 The mean altitude profiles of extinction coefficient (σ_{ext}), scattering Angstrom exponent (α_{sca}) and SSA, their spatial variation across the mainland and oceans, as well as temporal changes from just prior to the onset of monsoon to peak monsoon activity are presented in the different panels of Figure 3. In the figure, panels 3a, 3c, 3e, 3g, 3i and 3k represent the vertical distributions of σ_{ext} (bottom axis) and α_{sca} (top axis) while panels 3b, 3d, 3f, 3h, 3j and 3l show the vertical distribution of SSA. The y-axes in all the panels represent the height in km asl. Panels 3a-3b and 3g-3h represent the conditions just before the onset of monsoon over Central IGP (Lucknow) and Central India (Nagpur) respectively, while the other panels show the features during monsoon over Central IGP (LCK (panels c-d)), the northwestern India (Jaipur (panels e-f)) and the oceanic regions Arabian Sea (panels i-j) and Bay of Bengal (panels k-l). Panels 3 c-d show the features at LCK during the peak of the monsoon activity and thus characterize mostly the changes brought about by the monsoon rains. The following results emerge:

- Prevalence of strongly absorbing aerosol layers over most of the locations, as revealed by the low values (≤ 0.9) of SSA. Profiles of SSA show sharp decrease in the altitude ranges 1 - 2.5 km and 1.5 - 3 km respectively over Lucknow and Nagpur, especially just prior to the onset of monsoon, followed by an increase, at higher altitudes. In contrast, SSA over Jaipur (having the strongest influence of dust, of all the regions in the figure) keep decreasing steadily with altitude up to 6 km reaching values < 0.9 above 5 km. An elevated layer of enhanced absorption is observed over the Arabian Sea near 2 km, while highly absorbing aerosol layer is observed over the Bay of Bengal at around 1 km and between 3 and 4 km; with SSA going as low as 0.7. Such strongly absorbing aerosol layers at higher altitudes would have stronger implications for aerosol cloud interactions and monsoons, besides in direct atmospheric warming due to absorption of radiation, above low-level monsoon clouds.
- In general, a sharp decrease in the extinction coefficient, σ_{ext} , is observed over the entire region with increase in altitude. Over the oceanic regions of the Arabian Sea and Bay of Bengal, an increase in extinction is observed above 2 km, attributed to elevated layers of aerosols. These layers appear to be stronger over the Arabian Sea than over Bay of Bengal. In general, highest values are observed within 3 km from the surface where the aerosol abundance is more.
- The scattering Angstrom exponent (α_{sca}) indicates a decline in the relative dominance of fine mode particles at altitudes above 2 km over the entire region ($\alpha_{\text{sca}} < 1$). Over the central Gangetic plains (LCK) strong accumulation abundance is indicated closer to the surface (below 1 km).
- During active phase of the monsoon, higher α_{sca} values occur in the entire profile over Lucknow, (Fig 3c) suggesting the wet removal of coarse particles by the rain.

Deleted: increasing

Deleted: for aerosol induced atmospheric heating

Deleted: E

Deleted: decreases near-exponentially

Deleted:

Deleted: over most of the mainland, while o

Looking ~~more closely into~~ the details, we see the presence of a strongly absorbing region (layer) over Central IGP (represented by Lucknow) in the altitude region 1 to 2.5 km (marked by a dashed oval in figure 3b) just before the onset of monsoon, where the SSA drops to as low as 0.7 from its nearly steady higher values (~ 0.93) below. Above this region, the SSA increased steadily to reach ~ 0.97 above 5 km. Notwithstanding this, the extinction coefficient decreased rather monotonically from $> 100 \text{ Mm}^{-1}$ near the surface to reach $\sim 20 \text{ Mm}^{-1}$ near 5 km. The variation of α_{sca} with altitude indicates the abundance of sub-micron mode particles ($1.2 < \alpha_{\text{sca}} < 1.8$) in the strongly absorbing layer in the altitude range 1 to 2.5 km, and a decline in the fine mode dominance above and below this altitude. The 7-day back-trajectories (Figure 4a) arriving at 2 km (absorbing layer) and 6 km (weaker absorption) over LCK, show distinctively different source region influences; respectively from the Persian Gulf, across the northern Arabian sea, passing across the Indian (Thar) desert and from the northern regions of the Middle East. The mineral dust aerosols from the Gulf regions and Indian desert as well as the alluvial soil over the IGP are known to have higher absorption (Moorthy et al., 2007) due to higher hematite content (Chinnam et al., 2006) in the soil and depict a brown colour compared to the more white African dust. These are also of finer size. This might be, at least partly, responsible for the observed lower SSA and higher α_{sca} in this layer. Additional possibilities are mixing of the absorbing dust (with high porosity) with locally emitted absorbing species such as BC. During the peak monsoon activity (Figure 3c) the same region shows a rapid depletion of aerosols above 3 km. Even within the first 3 km, aerosols are now far less absorbing (Figure 3d) with SSA hovering around 0.9, until 2.5 km. The decrease above that could be at least partly due to the very rapid decrease in the extinction coefficient due to the depleted aerosol concentration. Interestingly, this region is dominated by submicron aerosol, $\alpha_{\text{sca}} > 1.5$ throughout the column up to ~ 2.5 km, during the monsoon, showing probable washout of coarse mode aerosols by the monsoon rains. Airborne measurements during CAIPEEX has shown cloud base altitude in the range 0.65 to 1.17 km in the IGP, with a large vertical extent (Konwar et al., 2012). There is a large shift in the back-trajectories arriving at 2 km and 6 km over LCK (Figure 4b) during this period. They are almost confined over the Indian landmass, with little advection of mineral dust from the west and hence are conducive for advection of anthropogenic aerosols (mostly produced locally) to the receptor site leading to fine mode dominance ($\alpha_{\text{sca}} > 1.5$) over this region. Examining our values with those reported earlier for this region, based on airborne measurements, Earlier observations over this region have reported a columnar (up to 3 km altitude) mean SSA of 0.86 at 520 nm over Lucknow during pre-monsoon period (Babu et al., 2016), ~~while we observed an SSA of 0.83 ± 0.08 at 550 nm~~ (for the altitude range 0-3 km for the same season).

Above the Central Indian region (Nagpur, Figure 3h), the broad features of the vertical profile of SSA observed over the IGP prior to onset of monsoon recurred, however, with some difference. It is important to note that even at Nagpur, the profiling was just prior to the onset of monsoon there, which occurred only by June 19 (Figure 1). While the main features of the profile (higher SSA closer to the ground, an elevated layer of absorbing aerosols above the boundary layer where the SSA drops to lower values followed by a rapid increase to higher altitudes) remained quite similar, the magnitudes were higher than those seen over the IGP. Near to the surface (within the boundary layer) a uniform SSA of 0.95 is seen, extending up to almost 2 km; above which there is a layer of reduced SSA (~ 0.89) extending up to 3 km. Above that, SSA increases rapidly, approaching values as high as 0.98 at 5 km altitude. The column integrated SSA (up to 5 km) increases from 0.88 ± 0.08 at LCK to $0.93 \pm$

Deleted: r

Deleted: which

Deleted: is just a shade higher than our value of

0.02 at NGP suggesting an overall change to predominantly scattering aerosols as we move southward of the IGP. Similarly, the magnitudes of the extinction coefficients near the surface are lower than those seen over the IGP (Figure 3g), decreasing more slowly with altitude, and becoming comparable to the IGP values above around 4 km. Scattering Angstrom exponent shows values remaining consistently below 1.0. Furthermore, α_{sca} decreases with increase in altitude, reaching values as low as 0.5 at around 5 km, showing very small fraction of sub-micron aerosols in the composite aerosol system. The back trajectories (Figure 5) show strong marine aerosol advection in the lower altitudes (1.5 km), while aerosols advected from Persian Gulf passing over the northern Arabian Sea influence the 2-3 km region which shows enhanced absorption. Above that (at 4 km) the influence of the Thar Desert becomes significant, the influence of marine aerosols become negligible and the SSA values become comparable to that at LCK. This is the region where there is significant coarse mode dominance (α_{sca} ~0.5) and high values of SSA (~0.95). The trajectories reaching NGP at 5 km trace back to the northern Indian landmass and the SSA values are again comparable to those observed over LCK at this altitude.

By the start of second phase of the campaign, which mainly covered the oceanic regions on either side of the peninsula (Arabian Sea on the west and Bay of Bengal on the east), monsoon winds have fully established over the regions and the rainfall has covered the entire domain. The measurements in this phase were limited to ~4 km asl partly due to the focus on cloud characteristics during this period and partly due to the poor quality of data above this altitude due to extensive cloudiness.

The vertical structure of extinction and SSA show distinctive differences over the two oceans, primarily attributed to the differences in the advected components. Over the Arabian Sea, the aerosols near the surface are almost entirely scattering in nature (SSA very close to 1, Figure 3j). The SSA decreases towards higher altitudes, with a well-defined and strongly absorbing layer occurring between 1.5 and 2 km, where the SSA drops to as low as 0.8., followed by a gradual increase to reach ~0.95 at 4 km, indicating prevalence of absorbing aerosols aloft. This feature is quite similar to what was seen over the IGP (LCK), except that the SSA values are slightly higher over the ocean, probably due to absence of local emissions of absorbing species such as BC or fine dust and presence of sea-salt. However, most important to note is the perseverance of the rather strongly absorbing layer in the altitude range 1.5 to 3 km over the entire region (IGP, Central Peninsula and Arabian Sea, in which the particles are more coarse in nature as revealed by the lower value of the Angstrom exponent (values ~0.6 within the first 2 km range, while the values decrease to ~0.5 near 2-3 km region where the lowest values of SSA are observed). The values again increase to ~0.6 above this region. Examining the back-trajectories over this region (Figure 6a), it is interesting to note that those arriving at 2 km altitude (where the strongly absorbing layer is seen) pass across the Somali and Horn of Africa regions where the absorption efficiency of dust has been observed to be very high (Deepshikha et al., 2005). The SSA at 500 nm over New Delhi (which also lies in the IGP) where both desert dust and anthropogenic aerosols has been shown to decrease from 0.84 in March to 0.74 in June (Pandithurai et al., 2008). Similar values of SSA were also reported by Ge et al. (2010) from Zhangye, northwest China (a semi-arid area) where the mean SSA at 500 nm was reported to be 0.75 ± 0.02 during April - May.

Over the BoB (Figure 3k), the most striking feature are the low values of SSA (0.9) even near the surface which are in sharp contrast with Arabian Sea having an SSA ~0.98 near the surface. There are two absorbing layers; one just below 1 km (SSA

~0.8) and another strongly absorbing layer above 3 km (SSA ~0.7) with higher values (~0.9) in between. The extinction coefficient (Figure 3j) decreased from ~45 Mm⁻¹ at the surface to a lowest value of ~15 Mm⁻¹ at 2 km above which σ_{ext} values sharply increase to ~30 and remain more or less constant (weak decrease) above this altitude. The α_{sca} remains <1; indicating the dominance of coarse mode particles throughout the column. The values are close to 1 near the surface, while the lowest values (α_{sca} ~0.6) are observed in the 2-3 km range, again within the layer of strong absorption as seen in the earlier cases. Again the α_{sca} values increase to ~1 above 3.5 km where an absorbing layer is observed (SSA ~0.7). It is interesting to note that the back trajectories (Figure 6b) reaching this region at 1 km, originate close to the Persian Gulf region. Coincidentally, low SSA was observed (near 2 km) over the Arabian Sea also, when the trajectories originated from this region. It is likely that both these regions receive the same aerosol type from the same region. This is also supported by the occurrence of this layer at lower altitude (~1 km) over BoB (compared to ~2 km over the Arabian Sea) and with extinction coefficient of a comparable magnitude. It is interesting to notice the elevated layer of higher extinction coefficient (between 3.5 and 4 km) over BoB, has similar properties to that seen over the Arabian Sea, but is less intense. These difference in the positions of the sharp decrease in SSA and decrease in the magnitude of the extinction coefficients are likely to be resulting from washout by the extensive monsoon rains, aided by sinking motion of air while reaching BoB. The role of the low level monsoon jets across the Arabian Sea in maintaining the elevated absorbing aerosol layers over the whole of southern peninsula has been reported recently by Ratnam et al. (2018).

Despite these linkages, on an average the columnar and near surface values of SSA over BoB remains much lower than that over the Arabian Sea. The column integrated values of SSA over BoB and AS are 0.84 ± 0.07 and 0.89 ± 0.04 respectively during this campaign. This is perhaps the first-time the vertical structure of SSA over oceanic regions around the Indian peninsula has been reported. However, a few ship board measurements earlier (mostly during winter and pre monsoon) have shown that aerosols over BoB are generally more absorbing (lower SSA) than over the Arabian Sea, and also show a sharp north-south gradient (Nair et al., 2008; Satheesh et al., 2010). The SSA values reported by Nair et al. (2008) based on extensive cruise measurements during the pre-monsoon season are very close to our values near the surface. Back-trajectory analysis in Fig 6 (b) shows significant advection, across the peninsular landmass at lower levels, supporting the higher extinction coefficients and lower SSA. The α_{sca} values in the range 0.5-0.8 suggest the relative dominance of fine mode particles is weak over this region and the σ_{ext} values are found to increase when airmasses arrives from continental regions. The additional continental input as the airmass transits across the peninsula is likely to lead to the lower SSA over BoB, consistent with several previous ship-board measurements (Nair et al., 2008; Babu et al., 2012).

During the final phase of the ~~campaign~~ when the Indian monsoon was in its active phase in July, the measurements were repeated over the IGP at locations near Jaipur (JPR) and Lucknow (LCK). Jaipur is located in northwest India, characterized by arid/semi-arid terrain and is weakly influenced by the monsoon, while LCK is now well within the monsoon trough region. The vertical variation of SSA over JPR still shows presence of absorbing aerosols (mostly dust), with SSA decreasing gradually from its value close to 0.95 near the surface to ~0.88 at 6 km altitude, with a weak dip around 3.5 km where SSA goes down to ~0.85 (the shape resembles the IGP profile prior to the onset of the monsoon; but the magnitudes are higher). The back

Deleted: project

trajectories (Figure 7) show two distinct branches with one arriving from the northwest from continental region or from northern Arabian Sea and another from Southeast Asia traveling across the IGP region. The low values of $\alpha_{\text{sca}} (<1)$ show again the low concentrations of fine mode aerosols over this region at all altitudes up to 7 km. At Lucknow, as stated earlier, significant washout leads to very low extinction above 3 km, ~~where the replenishment is slow.~~ At the lower altitudes, the SSA has increased compared to the pre-monsoon with values remaining around 0.9 up to 2 km and decreasing ~~thereafter to~~ less than 0.8 at 3 km.

In summary, all the measurements have revealed a vertical heterogeneity in SSA over the IGP, AS and BoB, with indication of lower SSA (higher aerosol absorption) in the lower free troposphere (2 to 3 km); which ~~would remain below the convective~~ clouds during the pre-monsoon, but just above the low-level clouds (cloud base around 1 km during monsoon season, (Konwar et al., 2012)) during the peak monsoon activity. Back trajectory as well as spectral scattering suggest these layers to be dominated ~~by~~ (if not entirely due to) ~~advected absorbing dust.~~ Such absorbing layers at higher altitudes ~~(below low-level monsoon clouds) is very important due to two processes; one amplification of absorption due to the reflective clouds underneath and two, the higher warming for same amount of radiation absorbed, due to the rarer air at higher altitudes.~~ The radiative implications are examined below.

4.2 Radiative forcing estimates using measured extinction and SSA profiles

The radiative effects were estimated using the measured vertical distribution of aerosol properties (σ_{ext} , SSA) and atmospheric parameters (pressure, temperature and water vapour) from 6 locations LCK, NGP, AS, BoB, BBR and JPR. The instantaneous atmospheric forcing corresponding to the local noon were calculated. In most of the existing studies the aerosol forcing is estimated assuming a constant value of SSA throughout the atmosphere and very often SSA values obtained from either near surface measurements (Ganguly et al., 2005; Moorthy et al., 2009) or columnar SSA retrieved ~~from sky radiance measurements~~ (Dubovik et al., 2000; Choi and Chung, 2014) are used. However, these would not consider the vertical heterogeneity, which is important. To examine this aspect, we estimated the atmospheric radiative forcing due to aerosols (difference between the surface and TOA forcing) using the measured SSA and extinction profiles along with the concurrent atmospheric parameters (measured during the experiment) using the SBDART radiative transfer scheme (Ricchiuzzi et al., 1998). We also evaluated the atmospheric forcing by replacing the SSA profile with a single SSA value, computed as the weighted average of the profile.

$$SSA = \frac{\sum_i SSA_i \cdot height_i}{\sum_i height_i} \quad (3)$$

The results are shown in Figure 8, in which the black bars represent the values estimated using the weighted average SSA and the red bars represent the values obtained using the measured SSA profiles. ~~The uncertainty in the instantaneous atmospheric forcing for the cases shown in Figure 9 is $\sim 4.2 \text{ W m}^{-2}$. The magnitudes of the atmospheric forcing estimated with and without~~

Deleted: while a

Deleted: above to be

Deleted: while

Deleted: by

Deleted: would produce more warming of the atmosphere (due to reduced air density) and would have implications for clouds and precipitation.

Deleted: for

the use of SSA profiles are shown in Figure 9. The atmospheric forcing estimates increased by ~14.6% (8.7% to 24.09%) on an average, on using the measured SSA profiles. It can be clearly seen that, with exception of the Arabian Sea, the use of a single SSA value (even after giving the weightings for the vertical variation) results in forcing estimates that are lower by 2-6 W m⁻² than the estimate making use of the actual SSA profile; with higher differences over the IGP. As the monsoon progresses to its active phase, the atmospheric forcing decreases significantly by as much as 10 Wm⁻² from the values that persisted just prior to the onset of monsoon. Nevertheless, the forcing is significant over the IGP with the monsoon values at LCK being nearly same as the pre-monsoon value over NGP. However, most interestingly, the pattern is significantly reversed over the Arabian Sea, with higher forcing value when a constant SSA is used. It has to be recalled that this location has absorbing aerosol layers at high altitudes and also high values of extinction coefficients (higher than that near the surface) at higher altitudes.

4.3 Estimation of Heating rates and its vertical profiles

To examine the possible effects of the elevated aerosol layer and elevated heating on atmospheric heating rates, we have estimated the vertical distribution of the aerosol induced atmospheric heating rate for all the locations, using height resolved

SSA and a constant weighted mean SSA. The aerosol induced heating rates ($\frac{\partial T}{\partial t}$ (K day⁻¹)) were calculated as

$$\frac{\partial T}{\partial t} = \frac{g}{C_p} \frac{\Delta F}{\Delta P} \quad (4)$$

where g is the acceleration due to gravity, C_p is the specific heat capacity of air at constant pressure and ΔF and ΔP are the aerosol induced layer forcing and change in pressure between the top and bottom of the layer respectively.

The estimated heating rate profiles for three locations Lucknow, Nagpur and Jaipur are shown in Figure 9. The black lines represent the cases where mean SSA is used and the blue lines represent the cases where the SSA profile is used for the heating rate estimation. Figure 9 a & b represent the heating rate profiles prior to the onset of monsoon, while Figure 9 c & d represent the heating rates profiles during the active phase of the monsoon. The striking feature revealed is that the elevated heating layers which exist during both pre-monsoon and monsoon periods, when the height resolved measured SSA has been used, are totally absent when a single weighted mean SSA was used (despite both being location specific and season specific). This implies that wherever the weighted mean SSA is greater than the height-resolved (actual) SSA there is an underestimation in the layer heating and vice versa. Hence, the heating induced by elevated absorbing layers would not be captured properly by simply using extinction coefficient profiles and a single SSA value, even if it is station-specific and season specific. Hence, it emerges that the higher forcing over the Arabian Sea when a single SSA value is used (in contrast with other locations) is due to the high extinction coefficients at higher altitude (Figure 3i) and the low SSA at high altitude (Figure 3j). While using the profiles of σ_{ext} and SSA, the region where the SSA is less does not have significant increase in heating due to low σ_{ext} while

the region where σ_{ext} is high has low heating due to high SSA. This very clearly emphasizes the importance of using height-resolved extinction coefficients and SSA for improving the atmospheric heating due to aerosols and assessing their climate implications.

Similarly from Figure 9a it can be seen that the large heating rate below 1 km, which resulted because of using the weighted mean SSA in the region where high extinction coefficients were present (Figure 3a), instead of using realistic SSAs; which when used produce much higher heating rates (blue line). Using the realistic SSA results in the peak in the heating rate occurring close to 2 km where the highly absorbing elevated layer was present. A similar peak coincident with the absorbing layer above 2 km (Figure 3h) is seen in NGP (Figure 9b) also. At JPR (Figure 9c) and LCK (Figure 9d) also we notice an enhancement in the heating rate close to the absorbing layers. The observed height of peak heating rates match well with those reported to have a peak in the extinction coefficient by Satheesh et al. (2009) for the pre-monsoon season. Using modelling studies Kuhlmann and Quaas (2010) also obtained a peak shortwave heating rate in the 2-4 km range in the IGP region; however, their estimates were much smaller in magnitude than those seen in this study. It has to be noted that in cases where a single SSA value is used, the heating rates profiles would tend to show higher values at altitudes where extinction is higher, rather than where SSA is lower. The advantage of using SSA vertical profiles over the use of single SSA values is demonstrated in the supplementary material (Figure S2). At LCK it can be seen that during pre-monsoon more heating occurs at higher altitudes, while during the monsoon, higher values occur near the surface and is influenced by the near surface absorbing aerosols arising from local emissions. Even so, during peak monsoon, a weak peak of elevated aerosol heating persists around 3 km (Figure 9d), which appears to be due to the advected dust, that manifested as a stronger peak above 3 km at Jaipur, during the monsoon (Figure 7). Such elevated heating layers may well affect the water cycle dynamics and the surface energy feedback leading to strong impact on the Indian Summer Monsoon and would support the elevated heat pump hypothesis (Lau et al., 2006). The results from the Indian aircraft measurements Vaishya et al. (2018), which almost culminated during the Phase-1 of the FAAM, fall close to our observations for the western and central IGP; however their measurements were limited to ~3.5 km due to limitations with the aircraft being flown in unpressurized mode. The existence of a meridional gradient in SSA and atmospheric heating, increasing gradually from the northern Indian Ocean to central India and over both AS and BoB has been reported by Satheesh et al. (2010). Using extensive shipboard measurements, Nair et al. (2013) have reported strong meridional and zonal gradients in aerosol induced heating rates over AS and BoB across the peninsular landmass (from $<0.1 \text{ K day}^{-1}$ over the south-western Arabian Sea, increasing to 0.5 K day^{-1} over the north-eastern Bay of Bengal), estimating the heating rate using a single SSA value. The lack of height resolved measurements in these studies was recognized as a major gap area and SWAAMI made special efforts to close this gap as much as possible. Our study provides for the first time the vertical profiles of SSA and aerosol heating rate, its spatial variation across the Indian landmass and temporal changes during the evolution of monsoon. This information would be important in better modelling the aerosol-cloud-monsoon interactions.

Deleted: , which are due to the wash out of aerosols at higher levels and persistence of

Deleted: to

Deleted: also

Deleted: However, these studies used a single SSA value for the entire altitude range, unlike the present case, which

5 Summary

Vertical distributions of sub-micron aerosol properties at five locations Lucknow (LCK), Nagpur (NGP), Arabian Sea (AS), Bay of Bengal (BoB) and Jaipur (JPR) were studied during the period June-July of 2016 using in-situ measurements made from an aircraft. This study depicts the spatial variations of aerosol properties over the Indian region immediately prior and during the onset of the monsoon. This is the first study where high resolution vertical profiles of SSA and extinction coefficients extending from the surface to ~ 6 km have been used to estimate the aerosol radiative forcing over the Indian region. The major findings are given below.

- Strongly absorbing aerosol layers prevailed over the Indian region throughout the campaign period. These layers were mostly observed in the 1-3 km region, over the Indian mainland and the surrounding oceans. On an average, a drop of ~ 0.2 was observed in the sub-micron aerosol SSA values near these absorbing layers, which were associated with long range transport of aerosols from the Persian Gulf, Middle East and Thar Desert.
- During the monsoon period, large spatial variation was observed in the SSA over the Indian region. In the central IGP (LCK), the near surface SSA was lower compared to the western IGP (JPR), revealing an east-to-west gradient in the SSA over this region.
- The relative dominance of fine mode aerosols declined ($\alpha_{\text{scat}} < 1$) above 2 km over the entire Indian region indicating significant influence of dust. Following the onset of monsoon, dust transport over LCK declined (α_{scat} increased), while dust aerosols continued to dominate over JPR. It was also observed that the coarse mode aerosols over JPR extended up to 6 km even during monsoon asserting the rather minor influence of the monsoon at removing aerosol in this region. As a result, a steady decrease in the SSA values with increasing altitude was observed over JPR during monsoon.
- Meanwhile, over the oceanic region, near surface SSA values over the BoB were lower compared to those over the AS conforming to earlier studies. We found that the low values of SSA were not restricted to lower altitudes, but extended throughout the column.
- The observed absorbing layers have significant influence on the regional radiative balance. The use of SSA profiles to estimate the aerosol forcing revealed significant difference (2-6 W m⁻²) in the forcing estimates compared to those obtained by using constant SSA.
- The atmospheric heating rate profiles revealed an underestimation of the heating rates in those layers where the measured SSA was lower than the average value and vice versa. The magnitude of the difference in the estimated heating rates in each layer also depends on the extinction coefficients of these layers. This difference becomes significantly large if low SSA and large extinction coefficients coexist in these atmospheric layers. While the maximum heating rates in the absorbing layers (near 3 km) can be as high as 1 K day⁻¹, the underestimation in these layers can be greater than 0.5 K day⁻¹. Such large elevated warming layers have significant climate implications as

they can perturb the onset of monsoon through their impact on the atmospheric stability. Incorporating such realistic aerosol profiles into climate models will significantly reduce the uncertainties in the modelled climatic impacts.

References

- Anderson, T. L., and Ogren, J. A.: Determining aerosol radiative properties using the TSI 3563 integrating nephelometer, *Aerosol Science and Technology*, 29, 57-69, 1998.
- Babu, S. S., Krishna Moorthy, K., and Satheesh, S. K.: Vertical and horizontal gradients in aerosol black carbon and its mass fraction to composite aerosols over the east coast of Peninsular India from Aircraft measurements, *Advances in Meteorology*, 2010, 2010.
- Babu, S. S., Moorthy, K. K., Manchanda, R. K., Sinha, P. R., Satheesh, S. K., Vajja, D. P., Srinivasan, S., and Kumar, V. H. A.: Free tropospheric black carbon aerosol measurements using high altitude balloon: Do BC layers build “their own homes” up in the atmosphere?, *Geophysical Research Letters*, 38, 10.1029/2011GL046654, 2011.
- Babu, S. S., Nair, V. S., Gogoi, M. M., and Moorthy, K. K.: Seasonal variation of vertical distribution of aerosol single scattering albedo over Indian sub-continent: RAWEX aircraft observations, *Atmospheric Environment*, 125, 312-323, <https://doi.org/10.1016/j.atmosenv.2015.09.041>, 2016.
- Bollasina, M. A., Ming, Y., Ramaswamy, V., Schwarzkopf, M. D., and Naik, V.: Contribution of local and remote anthropogenic aerosols to the twentieth century weakening of the South Asian Monsoon, *Geophysical Research Letters*, 41, 680-687, 10.1002/2013gl058183, 2014.
- Bond, T. C., Anderson, T. L., and Campbell, D.: Calibration and intercomparison of filter-based measurements of visible light absorption by aerosols, *Aerosol Science & Technology*, 30, 582-600, 1999.
- Brooks, J., Allan, J. D., Williams, P. I., Liu, D., Fox, C., Haywood, J., Langridge, J. M., Highwood, E. J., Kompalli, S. K., O'Sullivan, D., Babu, S. S., Satheesh, S. K., Turner, A. G., and Coe, H.: Vertical and horizontal distribution of sub-micron aerosol chemical composition and physical characteristics across Northern India, during the pre-monsoon and monsoon seasons, *Atmos. Chem. Phys.*, 19, 5615–5634, <https://doi.org/10.5194/acp-19-5615-2019>, 2019.
- Chinnam, N., Dey, S., Tripathi, S. N., and Sharma, M.: Dust events in Kanpur, northern India: Chemical evidence for source and implications to radiative forcing, *Geophysical Research Letters*, 33, 2006.
- Choi, J.-O., and Chung, C. E.: Sensitivity of aerosol direct radiative forcing to aerosol vertical profile, *Tellus B: Chemical and Physical Meteorology*, 66, 24376, 2014.
- Clarke, A. D., Shinozuka, Y., Kapustin, V. N., Howell, S., Huebert, B., Doherty, S., Anderson, T., Covert, D., Anderson, J., and Hua, X.: Size distributions and mixtures of dust and black carbon aerosol in Asian outflow: Physiochemistry and optical properties, *Journal of Geophysical Research: Atmospheres*, 109, 2004.

Deleted: Atmos. Chem. Phys. Discuss., 2018, 1-31, 10.5194/acp-2018-1109, 2018.

- Davies, N. W., Fox, C., Szpek, K., Cotterell, M. I., Taylor, J. W., Allan, J. D., Williams, P. I., Trembath, J., Haywood, J. M., and Langridge, J. M.: Evaluating biases in filter-based aerosol absorption measurements using photoacoustic spectroscopy, *Atmos. Meas. Tech. Discuss.*, 2019, 1-38, 10.5194/amt-2018-411, 2019
- Dee, D. P., Uppala, S. M., Simmons, A. J., Berrisford, P., Poli, P., Kobayashi, S., Andrae, U., Balmaseda, M. A., Balsamo, G., and Bauer, d. P.: The ERA-Interim reanalysis: Configuration and performance of the data assimilation system, *Quarterly Journal of the royal meteorological society*, 137, 553-597, 2011.
- Deepshikha, S., Satheesh, S. K., and Srinivasan, J.: Regional distribution of absorbing efficiency of dust aerosols over India and adjacent continents inferred using satellite remote sensing, *Geophysical Research Letters*, 32, L03811, 10.1029/2004gl022091, 2005.
- Dubovik, O., Smirnov, A., Holben, B., King, M., Kaufman, Y., Eck, T., and Slutsker, I.: Accuracy assessments of aerosol optical properties retrieved from Aerosol Robotic Network(AERONET) Sun and sky radiance measurements, *Journal of Geophysical Research*, 105, 9791-9806, 2000.
- Fleming, R. J., and May, R. D.: The 2nd generation water vapor sensing system and benefits of its use on commercial aircraft for air carriers and society, UCAR, Boulder, CO, available at: <https://www.eol.ucar.edu/system/files/spectrasensors.pdf> (last access: 16 December 2014), 2004., 2004.
- Ganguly, D., Gadhavi, H., Jayaraman, A., Rajesh, T. A., and Misra, A.: Single scattering albedo of aerosols over the central India: Implications for the regional aerosol radiative forcing, *Geophysical research letters*, 32, 2005.
- Gautam, R., Hsu, N. C., Lau, K. M., and Kafatos, M.: Aerosol and rainfall variability over the Indian monsoon region: distributions, trends and coupling, *Annales geophysicae*, 27, 3691-3703, 2009.
- Ge, J. M., Su, J., Ackerman, T. P., Fu, Q., Huang, J. P., and Shi, J. S.: Dust aerosol optical properties retrieval and radiative forcing over northwestern China during the 2008 China-US joint field experiment, *Journal of Geophysical Research: Atmospheres*, 115, 2010.
- Haywood, J. M., Pelon, J., Formenti, P., Bharmal, N., Brooks, M., Capes, G., Chazette, P., Chou, C., Christopher, S., and Coe, H.: Overview of the dust and biomass-burning experiment and African monsoon multidisciplinary analysis special observing period-0, *Journal of Geophysical Research: Atmospheres*, 113, 2008.
- Highwood, E. J., Northway, M. J., McMeeking, G. R., Morgan, W. T., Liu, D., Osborne, S., Bower, K., Coe, H., Ryder, C., and Williams, P.: Aerosol scattering and absorption during the EUCAARI-LONGREX flights of the Facility for Airborne Atmospheric Measurements (FAAM) BAe-146: can measurements and models agree?, *Atmospheric Chemistry and Physics*, 12, 7251-7267, 2012.
- Jin, Q., Yang, Z.-L., and Wei, J.: Seasonal Responses of Indian Summer Monsoon to Dust Aerosols in the Middle East, India, and China, *Journal of Climate*, 29, 6329-6349, 10.1175/JCLI-D-15-0622.1, 2016.
- Johnson, B., Turnbull, K., Brown, P., Burgess, R., Dorsey, J., Baran, A. J., Webster, H., Haywood, J., Cotton, R., Ulanowski, Z., Hesse, E., Woolley, A., and Rosenberg, P.: In situ observations of volcanic ash clouds from the FAAM aircraft during the

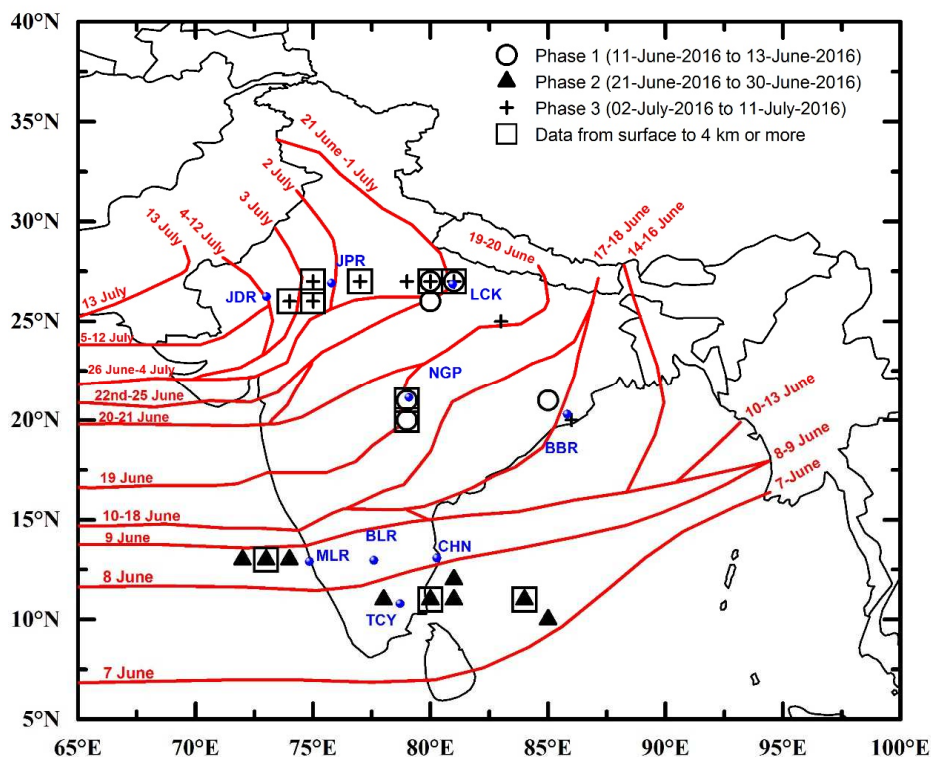
- eruption of Eyjafjallajökull in 2010, *Journal of Geophysical Research: Atmospheres* (1984–2012), 117, 10.1029/2011JD016760, 2012.
- Jones, T. A., Christopher, S. A., and Quaas, J.: A six year satellite-based assessment of the regional variations in aerosol indirect effects, *Atmos. Chem. Phys.*, 9, 4091–4114, 10.5194/acp-9-4091-2009, 2009.
- 5 Konwar, M., Mahes Kumar, R. S., Kulkarni, J. R., Freud, E., Goswami, B. N., and Rosenfeld, D.: Aerosol control on depth of warm rain in convective clouds, *Journal of Geophysical Research: Atmospheres*, 117, 2012.
- Kuhlmann, J., and Quaas, J.: How can aerosols affect the Asian summer monsoon? Assessment during three consecutive pre-monsoon seasons from CALIPSO satellite data, *Atmos. Chem. Phys.*, 10, 4673–4688, 10.5194/acp-10-4673-2010, 2010.
- Kulkarni, J. R., Mahes Kumar, R. S., Morwal, S. B., Padmakumari, B., Konwar, M., Deshpande, C. G., Joshi, R. R., Bhalwankar, R. V., Pandithurai, G., and Safai, P. D.: The cloud aerosol interactions and precipitation enhancement experiment (CAIPEEX):
 10 overview and preliminary results, *Curr. Sci.*, 102, 413–425, 2012.
- Lau, W. K. M., Kim, M. K., and Kim, K. M.: Asian summer monsoon anomalies induced by aerosol direct forcing: the role of the Tibetan Plateau, *Clim Dyn.*, 26, 855–864, 10.1007/s00382-006-0114-z, 2006.
- Li, Z., Lau, W. M., Ramanathan, V., Wu, G., Ding, Y., Manoj, M. G., Liu, J., Qian, Y., Li, J., and Zhou, T.: Aerosol and
 15 monsoon climate interactions over Asia, *Reviews of Geophysics*, 54, 866–929, 2016.
- Marenco, F., Johnson, B., Turnbull, K., Newman, S., Haywood, J., Webster, H., and Ricketts, H.: Airborne lidar observations of the 2010 Eyjafjallajökull volcanic ash plume, *Journal of Geophysical Research*, 116, 10.1029/2011jd016396, 2011.
- Moorthy, K. K., Babu, S. S., Satheesh, S. K., Srinivasan, J., and Dutt, C. B. S.: Dust absorption over the “Great Indian Desert” inferred using ground-based and satellite remote sensing, *Journal of Geophysical Research: Atmospheres*, 112, D09206,
 20 10.1029/2006jd007690, 2007.
- Moorthy, K. K., Nair, V. S., Babu, S. S., and Satheesh, S. K.: Spatial and vertical heterogeneities in aerosol properties over oceanic regions around India: Implications for radiative forcing, *Quarterly Journal of the Royal Meteorological Society*, 135, 2131–2145, 10.1002/qj.525, 2009.
- Moorthy, K. K., Satheesh, S. K., and Kotamarthi, V. R.: Evolution of aerosol research in India and the RAWEX–GVAX: an
 25 overview, *CURRENT SCIENCE*, 111, 53–75, 2016.
- Nair, V. S., Suresh Babu, S., and Krishna Moorthy, K.: Spatial distribution and spectral characteristics of aerosol single scattering albedo over the Bay of Bengal inferred from shipborne measurements, *Geophysical Research Letters*, 35, L10806, 10.1029/2008gl033687, 2008.
- Nair, V. S., Babu, S. S., Moorthy, K. K., and Priji, S. S.: Spatial Gradients in Aerosol-Induced Atmospheric Heating and
 30 Surface Dimming over the Oceanic Regions around India: Anthropogenic or Natural?, *Journal of Climate*, 26, 7611–7621, 10.1175/JCLI-D-12-00616.1, 2013.
- Nair, V. S., Babu, S. S., Manoj, M. R., Moorthy, K. K., and Chin, M.: Direct radiative effects of aerosols over South Asia from observations and modeling, *Clim Dyn.*, 1–18, 2016.

- Ogren, J. A.: Comment on “Calibration and intercomparison of filter-based measurements of visible light absorption by aerosols”, *Aerosol Science and Technology*, 44, 589-591, 2010.
- Padmakumari, B., Maheskumar, R. S., Harikishan, G., Morwal, S. B., Prabha, T. V., and Kulkarni, J. R.: In situ measurements of aerosol vertical and spatial distributions over continental India during the major drought year 2009, *Atmospheric Environment*, 80, 107-121, <https://doi.org/10.1016/j.atmosenv.2013.07.064>, 2013a.
- Padmakumari, B., Maheskumar, R. S., Morwal, S. B., Harikishan, G., Konwar, M., Kulkarni, J. R., and Goswami, B. N.: Aircraft observations of elevated pollution layers near the foothills of the Himalayas during CAIPEEX-2009, *Quarterly Journal of the Royal Meteorological Society*, 139, 625-638, 10.1002/qj.1989, 2013b.
- Pandithurai, G., Dipu, S., Dani, K. K., Tiwari, S., Bisht, D. S., Devara, P. C. S., and Pinker, R. T.: Aerosol radiative forcing during dust events over New Delhi, India, *Journal of Geophysical Research: Atmospheres* (1984–2012), 113, 10.1029/2008JD009804, 2008.
- Purohit, M. K., and Kaur, S.: *Rainfall Statistics of India – 2016*, Hydromet Division, India Meteorological Department (Ministry of Earth Sciences), New Delhi, 2016.
- Ramanathan, V., Crutzen, P. J., Kiehl, J. T., and Rosenfeld, D.: Aerosols, Climate, and the Hydrological Cycle, *Science*, 294, 2119-2124, 2001.
- Ratnam, M. V., Prasad, P., Roja Raman, M., Ravikiran, V., Bhaskara Rao, S. V., Krishna Murthy, B. V., and Jayaraman, A.: Role of dynamics on the formation and maintenance of the elevated aerosol layer during monsoon season over south-east peninsular India, *Atmospheric Environment*, 188, 43-49, <https://doi.org/10.1016/j.atmosenv.2018.06.023>, 2018.
- Ricchiazzi, P., Yang, S., Gautier, C., and Sowle, D.: SBDART: A research and teaching software tool for plane-parallel radiative transfer in the Earth's atmosphere, *Bulletin of the American Meteorological Society*, 79, 2101-2114, 1998.
- Satheesh, S. K., Moorthy, K. K., Babu, S. S., Vinoj, V., and Dutt, C. B. S.: Climate implications of large warming by elevated aerosol over India, *Geophysical Research Letters*, 35, L19809, 10.1029/2008gl034944, 2008.
- Satheesh, S. K., Vinoj, V., Babu, S. S., Moorthy, K. K., and Nair, V. S.: Vertical distribution of aerosols over the east coast of India inferred from airborne LIDAR measurements, *Annales geophysicae: atmospheres, hydrospheres and space sciences*, 2009, 4157.
- Satheesh, S. K., Vinoj, V., and Krishnamoorthy, K.: Assessment of aerosol radiative impact over oceanic regions adjacent to Indian subcontinent using multisatellite analysis, *Advances in Meteorology*, 2010, 2010.
- Solmon, F., Nair, V. S., and Mallet, M.: Increasing Arabian dust activity and the Indian summer monsoon, *Atmospheric Chemistry and Physics*, 15, 8051, 2015.
- Trembath, J.: Airborne CCN measurements, 2013.
- Turner, A. G., and Annamalai, H.: Climate change and the South Asian summer monsoon, *Nature Climate Change*, 2, 587, 2012.
- Vaishya, A., Singh, P., Rastogi, S., and Babu, S. S.: Aerosol black carbon quantification in the central Indo-Gangetic Plain: Seasonal heterogeneity and source apportionment, *Atmospheric Research*, 185, 13-21, 10.1016/j.atmosres.2016.10.001, 2017.

Vaishya, A., Babu, S. N. S., Jayachandran, V., Gogoi, M. M., Lakshmi, N. B., Moorthy, K. K., and Satheesh, S. K.: Large contrast in the vertical distribution of aerosol optical properties and radiative effects across the Indo-Gangetic Plain during the SWAAMI-RAWEX campaign, *Atmospheric Chemistry and Physics*, 18, 17669-17685, 2018.

Vance, A. K., Abel, S. J., Cotton, R. J., and Woolley, A. M.: Performance of WVSS-II hygrometers on the FAAM research aircraft, *Atmospheric Measurement Techniques*, 8, 1617-1625, 2015.

Vinoj, V., Rasch, P. J., Wang, H., Yoon, J.-H., Ma, P.-L., Landu, K., and Singh, B.: Short-term modulation of Indian summer monsoon rainfall by West Asian dust, *Nature Geoscience*, 7, 308-313, 2014.



10 Figure 1: The locations corresponding to the vertical profiles are marked in the figure with the symbol indicating the phase of measurement. The locations where high altitude data is available are indicated by the big square. The red lines show the position of the monsoon trough on the dates of the year 2016 shown at the ends of the lines, taken from the India Meteorological Department's website: http://www.imd.gov.in/pages/monsoon_main.php and is used to infer on the phase of the monsoon (prior to onset, active etc) for the different regions.

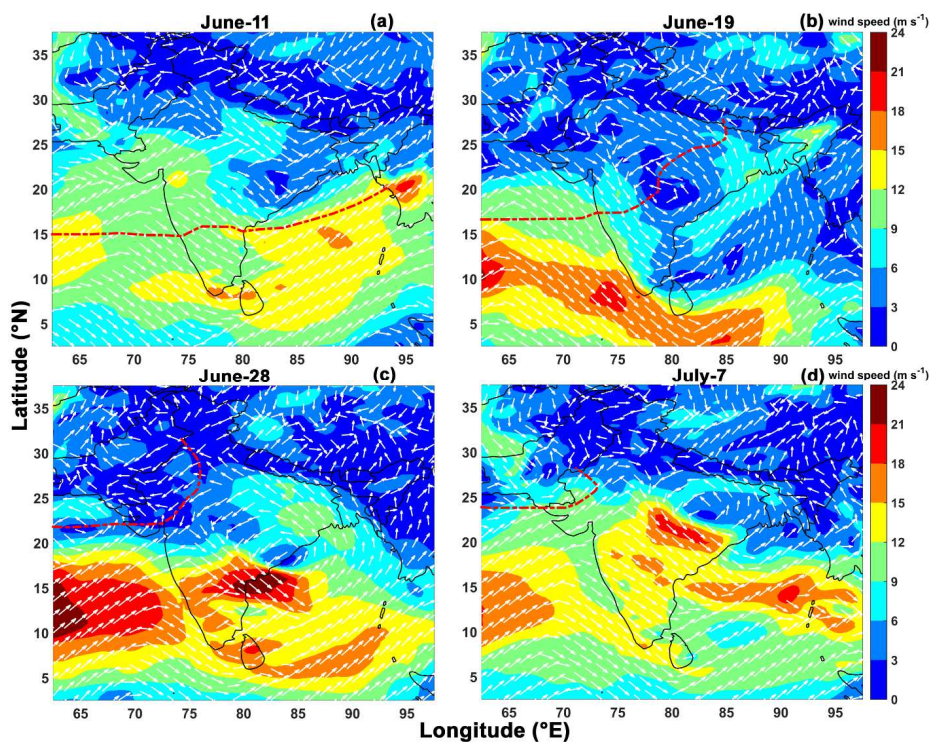


Figure 2: The mean wind field at 850 hPa during different days of the campaign period (Dee et al., 2011) with the colours representing the magnitude of the wind in m s^{-1} . The colour-bars represent the magnitude of wind speed. The arrows indicate the direction of the mean wind. The northern most position of the monsoon trough for the day is shown by the dashed red line on each panel (data source: http://www.imd.gov.in/pages/monsoon_main.php).

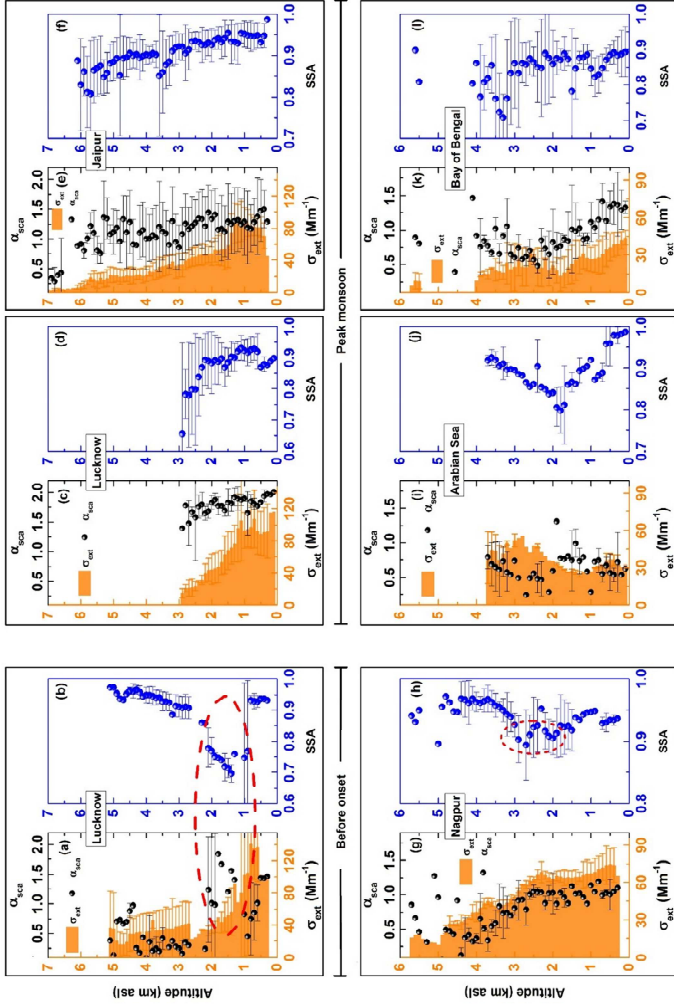


Figure 3: The vertical distribution of extinction coefficients (σ_{ext}) and single scattering albedo (SSA) and the vertical distribution of scattering Angstrom exponent (α_{scat}) during the SWAAMI campaign are shown for five locations, Lucknow, Jaipur, Nagpur, Arabian Sea and Bay of Bengal. Data for both pre-monsoon (a and b) and monsoon (c and d) is available only for Lucknow. The data available from Bhubaneswar was limited due to instrument failure during pre-monsoon (phase I) measurements and poor data quality during monsoon (phase III) and hence not included in the discussion.

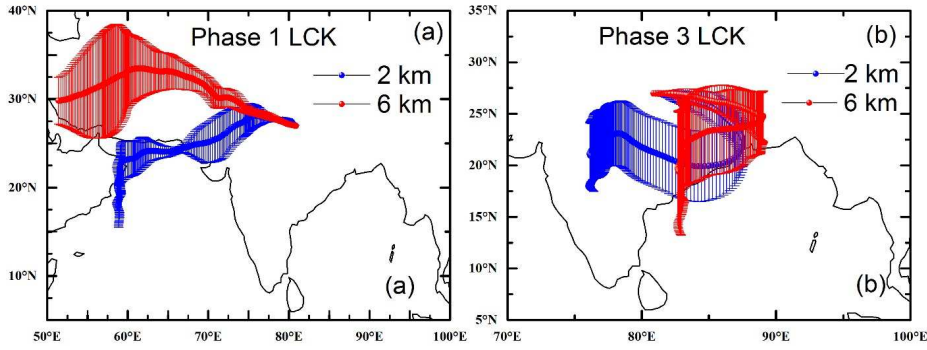


Figure 4: Back trajectories showing the distinct air masses reaching Lucknow during, (a) pre-monsoon and (b) monsoon. The altitude indicates the height above sea level at which the airmass reaches the receptor site.

5

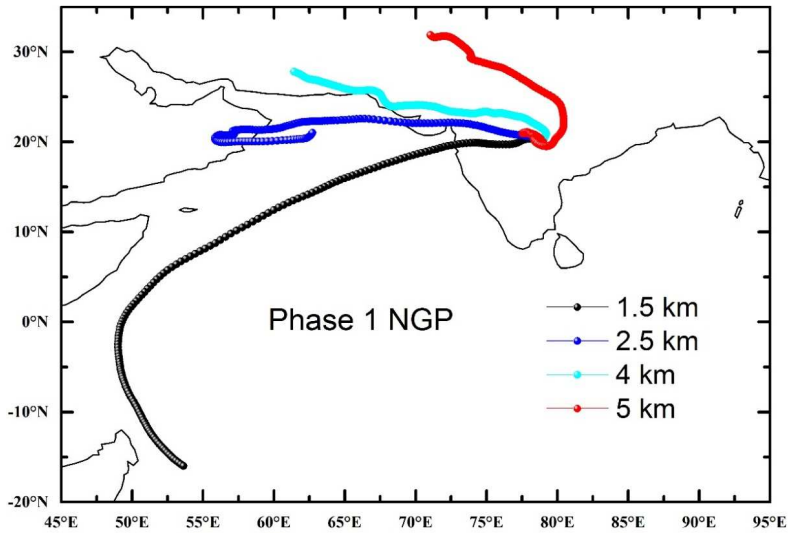


Figure 5: Back trajectories showing the distinct air masses reaching Nagpur during the period of observation. The altitude indicates the height above sea level at which the airmass reaches the receptor site.

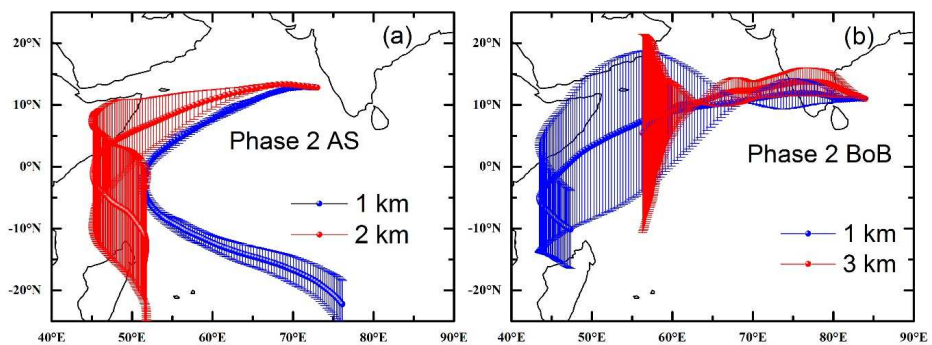


Figure 6 Back trajectories showing the distinct air masses reaching (a) Arabian Sea and (b) Bay of Bengal during the period of observation. The altitude indicates the height above sea level at which the air mass reaches the receptor site.

5

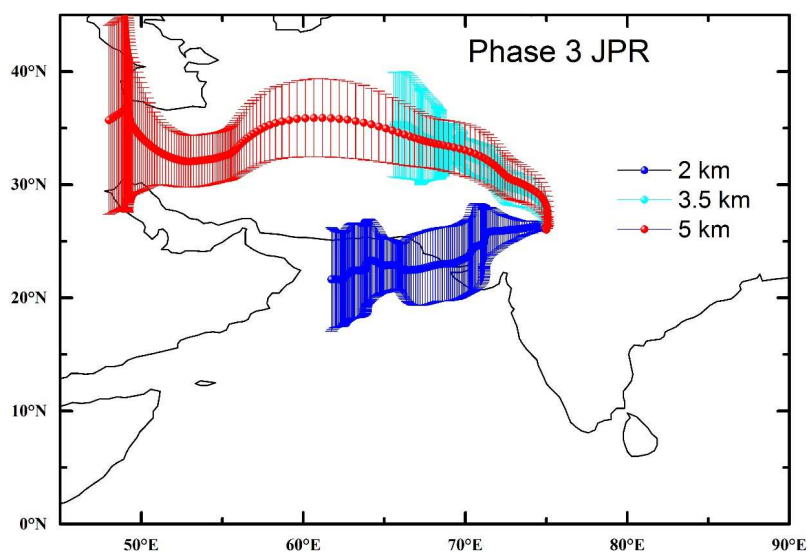


Figure 7 Back trajectories showing the distinct air masses reaching Jaipur during the period of observation. The altitude indicates the height above sea level at which the air mass reaches the receptor site.

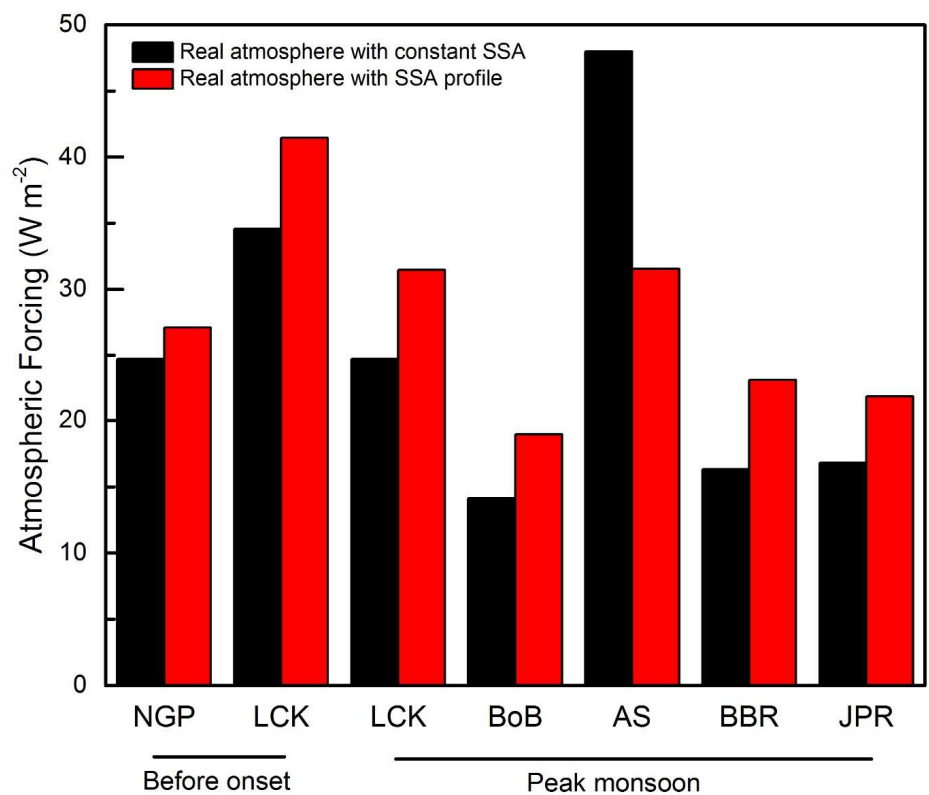


Figure 8: The instantaneous aerosol forcing for selected profiles estimated for the local noon and averaged for the locations is shown. The first two pair of bars correspond to pre-monsoon measurements and the rest correspond to monsoon conditions.

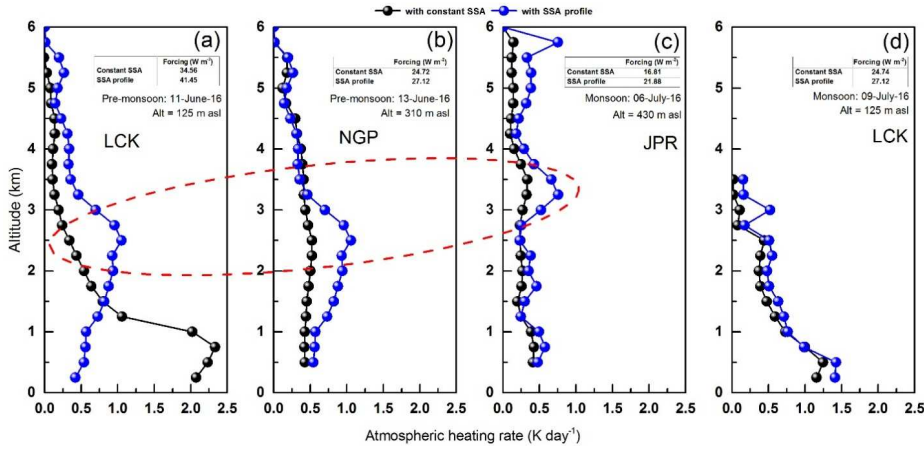


Figure 9 Equivalent heating profiles (corresponding to local noon) for Central IGP (Left Panel) and Central Peninsula (Nagpur, second left) just before the onset of monsoon. The right panels show the profiles during active monsoon phase, on the western IGP (Jaipur) and Central IGP (Lucknow). The black lines joining the black spheres represent the heating rate profile estimated using altitude resolved extinction coefficients and columnar SSA, for the realistic atmosphere (measured pressure, temperature and water vapour) in the RT computation while the blue lines joining the blue spheres represent the heating rate profile altitude-resolved SSA values are used in place of columnar. The occurrence of the elevated layers of enhanced aerosol heating of the atmosphere is clearly seen in the latter case, emphasizing the importance of using realistic SSA profile. It is also interesting to note that the enhanced heating occurs at cloud layer altitude.

Base Station	Date	Regions Covered	Phase of Monsoon
LCK	11 - 13 June	Lucknow, Bhubaneswar, Jaipur and Nagpur	Pre-monsoon
BLR	13 - 28 June	Bengaluru, Arabian Sea, Bay of Bengal and Nagpur	Peak monsoon
LCK	30 June - 11 July	Lucknow, Bhubaneswar, Ahmedabad and Jaipur	Peak monsoon

Table 1: The period of measurement form each base station and details of regions covered during different phase of the monsoon.

Aerosol Instruments	Parameter	Details	Reference
PSAP	Aerosol absorption coefficient	Radiance Research Wavelength = 567 nm	(Bond et al., 1999)
LIDAR	Elastic backscatter and depolarization	Leosphere ALS450 Wavelength = 355 nm	(Marenco et al., 2011)
Nephelometer	Aerosol scattering coefficient	TSI 3563 Wavelength = 450, 550, 700 nm	(Anderson and Ogren, 1998)
Broadband radiometer	Radiation	Eppley radiometers Clear dome: wavelength = 0.3-3 μm , Red dome: wavelength = 0.7-3 μm	(Haywood et al., 2008)
Solar Hemispheric Integrating Measurement System (SHIMS)	Radiation	Spectral radiances at 303.4 nm to 1706.5 nm	(Haywood et al., 2008)
Airborne Infra-Red Interferometer Evaluation System (ARIES)	Radiation	Radiance at 3.3–18 μm	(Johnson et al., 2012)
Passive cavity aerosol spectrometer probe (PCASP)	Aerosol optical diameter and concentration	Droplet Measurement Technologies (PCASP-100x) Size range: 0.1–3 μm (depends on refractive index of aerosol)	(Highwood et al., 2012)
Cloud condensation nuclei (CCN) counter	CCN	Droplet Measurement Technologies (CCN-200) Size range: 0.5 to 10 μm	(Trembath, 2013)
Aerodyne time-of-flight aerosol mass spectrometer (ToF-AMS)	Aerosol composition and mass	Aerodyne Research (AMS) Size range: 50-800 nm	(Highwood et al., 2012)
Single Particle Soot Photometer (SP2)	Refractory black carbon aerosol mass	Droplet Measurement Technologies (SP2) Size range: 70-600 nm	(Highwood et al., 2012)

Aircraft Instruments	Parameter
GPS aided Inertial Navigation	Latitude, Longitude, Pitch angle, Roll angle, Heading, Solar zenith, Solar azimuth, Aircraft velocity down, east and north from POS AV 510
Turbulence Probe	Angle of attack, Angle of sideslip, True airspeed
WVSS-II	Water Vapour Measurement from Flush inlet and Rosemount inlet
Pitot Static System	Static Pressure, Airspeed, Altitude
Temperature Sensor	True air temperature from the Rosemount deiced and non-deiced temperature sensor
Buck CR2 Cryogenic Hygrometer	Water vapour volume mixing ratio
General Eastern Instrument	Dew point

Table 2: Details of aerosol instruments and aircraft instruments measuring various aerosol, meteorological and aircraft parameters.