

Evaluation of aerosol and cloud properties in three climate models using MODIS observations and its corresponding COSP simulator, and their application in aerosol-cloud interactions

Giulia Saponaro¹, Moa K. Sporre², David Neubauer³, Harri Kokkola¹, Pekka Kolmonen¹, Larisa Sogacheva¹, Antti Arola¹, Gerrit de Leeuw¹, Inger H.H. Karset², Ari Laaksonen¹, and Ulrike Lohmann³

¹Finnish Meteorological Institute, P.O. Box 503 FI-00101 Helsinki

²Department of Geosciences, University of Oslo, Norway

³Institute for Atmospheric and Climate Science, ETH Zurich, Zurich, 8092, Switzerland

Correspondence to: Giulia Saponaro (giulia.saponaro@fmi.fi)

Abstract.

The evaluation of modeling diagnostics with appropriate observations is an important task that establishes the capabilities and reliability of models. In this study we compare aerosol and cloud properties obtained from three different climate models 5 ECHAM-HAM, ECHAM-HAM-SALSA, and NorESM with satellite observations using MODerate Resolution Imaging Spectrometer (MODIS) data. The simulator MODIS-COSP version 1.4 was implemented into the climate models to obtain MODIS-like cloud diagnostics, thus enabling model to model and model to satellite comparisons. Cloud droplet number concentrations (CDNC) are derived identically from MODIS- 10 COSP simulated and MODIS-retrieved values of cloud optical depth and effective radius. For CDNC, the models capture the observed spatial distribution of higher values typically found near the coasts, downwind of the major continents, and lower values over the remote ocean and land areas. However, the COSP-simulated CDNC values are higher than those observed, whilst the direct model CDNC output is significantly 15 lower than the MODIS-COSP diagnostics. NorESM produces large spatial biases for ice cloud properties and thick clouds over land. Despite having identical cloud modules, ECHAM-HAM and ECHAM-HAM-SALSA diverge in their representation of spatial and vertical distribution of clouds. From the spatial distributions of aerosol optical depth (AOD) and aerosol index (AI), we find that NorESM shows large biases

for AOD over bright land surfaces, while discrepancies between ECHAM-HAM and ECHAM-HAM-SALSA can be observed mainly over oceans. Overall, the AIs from the different models are in good agreement globally, with higher negative biases on the Northern Hemisphere. We evaluate the aerosol-cloud interactions by computing the sensitivity parameter $ACI_{CDNC} = d\ln(CDNC)/d\ln(AI)$ on a global scale. However, one year of data may be considered not enough to assess the similarity or dissimilarities of the models due to large temporal variability in cloud properties. This study shows how simulators facilitate the evaluation of cloud properties and expose model deficiencies, which are necessary steps to further improve the parametrization in climate models.

1 Introduction

A climate model is a powerful tool for investigating the response of the climate system to various forcings, enabling climate forecasts on seasonal to decadal time scales, and therefore can be used for estimating projections of the future climate over the coming centuries based on future greenhouse gas and aerosol forcing scenarios (Flato, 2011). Based on physical principles, climate models reproduce many key aspects of the observed climate and aid to understand the dynamics of the physical components of the climate systems.

The evaluation of modeling diagnostics is an important task that establishes the capabilities and reliability of models. When key properties of the atmosphere (e.g., clouds, aerosols) are considered, the model assessment is relevant to assure that the climate model correctly captures key features of the climate system. The interest in the reliability of climate models reaches outside the scientific community, as these simulations will form the basis for future climate assessments and negotiations. Therefore, understanding the level of reliability is a necessary step to strengthen the robustness of climate projections and, if necessary, improve the model parametrizations for the relevant processes.

For the evaluation of parametrizations of aerosol indirect effects in global models, satellite data have been proven to be useful (Quaas et al., 2009; Boucher et al., 2013) as they provide large spatial coverage at suitable temporal resolution. Satellite instruments measure the intensity of radiation coming from a particular direction in a selected wavelength range. From the observed radiances, the geophysical quantities are then inferred by inverse modeling using a retrieval algorithm.

The compensation of modeling errors, the intrinsic uncertainties of observational data, and the possible discrepant definitions of variables between models and observational data are major issues affecting the crucial task of model evaluation. For that, satellite simulators have been developed to mimic the retrieval of observational data and to avoid ambiguities in the definition of variables mentioned above. Simulators recreate what the satellite would retrieve when observing the modeled atmosphere. By reprocessing model fields using radiative transfer calculations, they generate physical quantities fully consistent with the satellite retrievals. By including microphysical assumptions, which usually differ between models, inconsistencies in the simulators are avoided. Hence, simulators represent a robust and consistent approach not only for the application of satellite data to evaluate models, but also for model-to-model comparisons. Simulators have been widely used, and their implementation in several models enables intercomparison studies on atmospheric variables, such as clouds, aerosols (Quaas et al., 2009; Williams and Bodas-Salcedo, 2017; Zhang et al., 2010; Luo et al., 2017), and upper atmospheric humidity (Bodas-Salcedo et al., 2011).

Two prominent examples of simulators are the simulator developed as part of the International Satellite Cloud Climatology Project, ISCCP, (Klein and Webb, 2009; Yu et al., 1996) and the CFMIP (Cloud Feedback Model Intercomparison Project) Observation Simulator Package, COSP (Bodas-Salcedo et al., 2011). CFMIP is part of The Coupled Model Intercomparison Project (CMIP) (Eyring et al., 2016b; Webb et al., 2017), which is a framework providing the modeling community with guidelines for the development, tuning and evaluation of models (Eyring et al., 2016a, c). COSP is a software tool developed within the CFMIP (Webb et al., 2017), which extracts parameters for several spaceborne active sensors, such as the Cloud-Aerosol Lidar with Orthogonal Polarization (CALIOP) and the Cloud Profiling Radar (CPR), as well as for passive sensors, such as the Multi-angle Imaging SpectroRadiometer (MISR) and the Moderate Resolution Imaging Spectroradiometer (MODIS).

In this study the COSP version 1.4 was implemented in three climate models, namely ECHAM-HAM, ECHAM-HAM-SALSA and NorESM, and the diagnostic outputs of the MODIS simulator were compared to MODIS observational data collected during the year 2008. The main goal of this study is to evaluate the models' capability to realistically represent clouds by employing MODIS satellite observations and its corresponding COSP simulator. A secondary goal of the study is to estimate the aerosol-cloud interactions through the application of the cloud droplet number concentration (CDNC) derived from observed and COSP simulated values of cloud

optical thickness and effective radius. Aerosol-cloud interactions are based on the role of aerosol particles in changing cloud properties, which involves several processes (Bellouin et al., 2019). In this study we focus one of these processes, known as the first aerosol indirect effects or Twomey effect, which can be quantified by an indicator parameter, called ACI, defined as the change in an observable cloud property (e.g., cloud optical depth, cloud effective radius, cloud droplet number concentration) to a change in a cloud condensation nuclei proxy (e.g. aerosol optical depth, aerosol index, or aerosol particle number concentration). The analysis of aerosol-cloud interactions has been reported in literature by a variety of methods: studies presenting results from global scales (Feingold et al., 2001; Quaas et al., 2010) to regional scales (e.g. Saponaro et al., 2017; Ban-Weiss et al., 2014; Liu et al., 2017, 2018) and in-situ observations (e.g. Sporre et al., 2014), using different approaches, i.e. observations from satellites, airborne and ground based instrumentation, or modelling. Nonetheless, the quantification of the aerosol-cloud interactions is still a major uncertainty in understanding climate change (e.g. Lohmann et al., 2007; Quaas et al., 2009; Storelvmo, 2012; Flato et al., 2013; Lee et al., 2016; Seinfeld et al., 2016; Bellouin et al., 2019).

The choice of observations and spatial scale of a study presents intrinsic uncertainties when quantifying aerosol-cloud interactions, and some of them relate to spatial or temporal limitations or artifacts (McComiskey and Feingold, 2012). When considering satellite observations, cloud and aerosols properties are provided at a quite comprehensive spatial and temporal coverage; however several aspects bring challenges in the analysis of these observations. The primary artifacts known to affect satellite estimation of aerosol-cloud interactions are related to (1) the inability of untangling aerosol and cloud retrievals from meteorology (e.g. aerosol humidification, entrainment, cloud regimes dependency), (2) inaccuracies in the retrieval algorithms (e.g. near-cloud impacts on radiative transfer, contamination, statistical aggregation) and (3) assumptions in the retrieval algorithms (Koren et al., 2007; Oreopoulos et al., 2017; Christensen et al., 2017; Wen et al., 2007).

In this work, the Cloud Feedback Model Intercomparison Project (CFMIP) Observation Simulator Package (COSP) (Bodas-Salcedo et al., 2011) is implemented in three climate models to obtain satellite-like diagnostics that enable a direct comparison with satellite retrieval fields. In particular, we focus on liquid cloud properties, which are used to derived CDNC. Cloud droplet number concentration is computed for both satellite observations and satellite-simulated values in a consistent way using an algorithm presented in Bennartz (2007). Aerosol-cloud interactions are quantified over

ocean by parameter $ACI_{CDNC} = d\ln(CDNC)/d\ln(AI)$. By considering the changes in CDNC, it is possible to isolate the microphysical component of the ACI without the need for constraining the liquid water path.

In Section 2 we provide details of the MODIS data, the models, and the COSP simulator. Section 3 presents the methods used in the analysis of the data. The evaluation of the simulator cloud diagnostics with MODIS satellite data on a global scale is presented in subsections 4.1 and 4.2, while the ACI results are shown in subsection 4.3. Conclusions are summarised in Section 5.

2 Data

2.1 MODIS

The Moderate Resolution Imaging Spectrometer (MODIS) is a 36-channel radiometer flying aboard the Terra and Aqua platforms since 2000 and 2002, respectively, which views the entire Earth's surface every 1 to 2 days, thus representing an extensive data set of global Earth observations. MODIS delivers a wide range of atmospheric products including aerosol properties, water vapour, cloud properties, and atmospheric stability variables.

We consider data for the year 2008 from MODIS-Aqua since its equatorial crossing time (13:30 local time) ensures a more complete development of the cloud during its daily cycle. MODIS Level-1 (L1) products are geo-located brightness and temperature values, which are elaborated into geophysical data products at Level-2 (L2), and aggregated onto a uniform space-time grid at Level-3 (L3). We used the latest Collection 6.1 daily MODIS/Aqua MYD08L3, which is a regular gridded Level-3 daily global product (Hubanks et al., 2016). The dataset is limited to observations made during daytime, because these contain a richer set of retrievals and better accuracy in cloud detection. As the L3 $1^\circ \times 1^\circ$ gridded average values of atmospheric properties, along with a suite of statistical quantities, are derived from the corresponding L2 atmosphere data product, a brief description of Level-2 MODIS aerosol and cloud products is now presented.

The Level-2 MODIS aerosol products provide information regarding the aerosol loading and aerosol properties over cloud-, snow-, and ice-free land and ocean surfaces at a spatial resolution of 10 km x 10 km. The primary aerosol product is the aerosol optical depth (AOD), derived globally at the wavelength of 550 nm, while the other parameters accounting for the aerosol size distribution, such as the Ångström

exponent (AE) or fine-mode aerosol optical depth, are only derived over ocean (Levy et al., 2013). Additionally, the aerosol index (AI) can be derived by multiplying AOD by AE. The MODIS aerosol products have been extensively validated using highly-accurate observations made by the Aerosol Robotic Network (AERONET) (Sayer et al., 2014) showing good agreement with in-situ measurements. The uncertainty in MODIS retrievals of AOD from validation studies (Levy et al., 2007) was quantified at $0.03 + 0.05 \times \tau_A$ over ocean and $0.05 + 0.15 \times \tau_A$ over land, where τ_A is the reference AOD value from AERONET. In this study we primarily focus on the analysis of liquid cloud properties. However, MODIS aerosol data (Levy et al., 2013) is needed to assess aerosol-cloud interactions.

The Level-2 MODIS physical and optical cloud properties are derived through a combination of infrared emission and shortwave reflectance techniques at a spatial resolution varying from 1 km to 5 km, depending on the parameter (Platnick et al., 2017). Collection 6.1, which is used in this work, provides cloud optical parameters divided into different products accordingly to the cloud phase and retrieved at wavelengths of 2.1 μm , at 1.6 μm and 3.7 μm (Hubanks et al., 2016; Platnick et al., 2017). As the COSP simulator simulates cloud properties at 2.1 μm , the same wavelength is selected in the MODIS observations for both ice and liquid clouds. MODIS offers two scientific L3 cloud fractions datasets, namely the cloud mask cloud fraction and the cloud optical properties cloud fraction (datasets with prefix 'Cloud Fraction' and 'Cloud Retrieval Fraction', respectively). From now on we refer to the cloud mask cloud fraction as CF, and to the cloud optical properties cloud fraction as COP CF. While the CF counts the proportion of the pixels classified by the cloud mask as cloudy or partly cloudy, the COP CF counts the proportion of the pixels for which cloud optical properties have been successfully derived. The main difference between these two definitions roots in the approach of handling partly cloudy pixels. As the task of the cloud mask is to identify fully clear pixels, partly cloudy pixels are counted as cloudy in CF, while in the COP CF they are counted as clear because the retrieval algorithm aims to include only fully cloudy pixels. The different treatment of partly cloudy pixels directly impacts the number of cloud pixels, and consequently many other retrieved cloud properties. Therefore differences are expected in our results and as already reported by Pincus et al. (2012). MODIS observations are here used as a reference dataset. However, MODIS data contains its own errors and limitations. Many studies compared MODIS liquid cloud microphysical properties with in-situ and airborne campaign measurements finding strong correlations for COT but a systematic

significant overestimation of MODIS cloud-top droplet effective radius (CER) for marine stratus and stratus cumulus clouds due to possible instrument limitation and algorithm retrieval assumptions (e.g. Noble and Hudson, 2015; Painemal and Zuidema, 2011; Min et al., 2012). A good CER correlation between MODIS and in-situ data was
5 however observed by e.g. Preißler et al. (2016) for marine warm stratiform clouds at higher latitudes. A bias in MODIS CER is propagated into the derivation of MODIS LWP, which also shows a positive bias with respect to the observations (e.g. King et al., 2013; Noble and Hudson, 2015; Painemal and Zuidema, 2011; Min et al., 2012). Overestimated MODIS LWP were also found over a high-latitude measurement land
10 site (e.g. Sporre et al., 2016) for clouds from all altitudes in the atmosphere. Marchant et al. (2016) showed that the C6 cloud phase discrimination algorithm is significantly improved over C5 but some situations continue to be problematic over regions located at higher latitudes (i.e., polar areas, Greenland, and large desert areas).

In this study, we derive CDNC following the method presented in Bennartz (2007)
15 and this additional cloud parameter is used in the computation of ACI. More information is provided in Sect. 3.2.

2.2 COSP - The CFMIP Observation Software Package

The simulator COSP (Bodas-Salcedo et al., 2011) is a publicly available software package (<https://www.earthsystemcog.org/projects/cfmip/>) developed by the CMIP com-
20 munity (Webb et al., 2017). It consists of a module coded in FORTRAN90, which simulates cloud properties and can be implement in any model.

The simulator's working principle is based on using climate model fields to mimic radiances to which a retrieval algorithm is applied to obtain satellite-like fields for the comparison with satellite observations.

25 This process is summed up in three main phases. As model grids are very coarse (~ 100 km), the model fields are first down-scaled: each model gridbox mean profile is broken into subcolumns, whose size is more representative of a satellite retrieval area (~ 10 km). Details of this downscaling process and corresponding assumptions are provided in Pincus et al. (2012). Next, each sub-column profile is processed by a
30 forward radiative transfer model to create synthetic radiances at the satellite retrieval area-level. The last step aggregates the simulator outputs to produce diagnostics (for example temporal averages and histograms) statistically comparable to the real satellite observations. A comprehensive explanation about the methodology and results of the COSP MODIS simulator is presented in Pincus et al. (2012).

2.3 Models

2.3.1 ECHAM-HAM

ECHAM-HAMMOZ (echam6.3-ham2.3-moz1.0) is a global aerosol-chemistry climate model (Schultz et al., 2018; Kokkola et al., 2018; Tegen et al., 2019; Neubauer et al., 2019) where ECHAM refers to the atmospheric model of the model configuration, HAM to the aerosol model, and MOZ to the chemistry model. In this study only the global aerosol-climate model part of ECHAM-HAMMOZ is used. Instead of the comprehensive MOZ chemistry model, sulphate chemistry is calculated in HAM for which the details have been given by Zhang et al. (2012) and references therein.

ECHAM-HAMMOZ, referred to here as ECHAM-HAM, consists of the general circulation model ECHAM (Stevens et al., 2013) coupled to the latest version of the aerosol module HAM (Tegen et al., 2019) and uses a two-moment cloud microphysics scheme that includes prognostic equations for the cloud droplet and ice crystal number concentrations as well as cloud water and cloud ice (Lohmann and Diehl, 2006; Lohmann et al., 2007, 2008; Lohmann and Hoose, 2009). Aerosol microphysical processes such as nucleation, coagulation, condensational growth are computed by the modal scheme M7 (Vignati et al., 2004). HAM computes further processes such as emissions, sulfur chemistry (Feichter et al., 1996), dry deposition, wet deposition, sedimentation, aerosol optical properties, aerosol-radiation and aerosol-cloud interactions.

Next to the two-moment cloud microphysics scheme the stratiform cloud scheme includes an empirical cloud cover scheme (Sundqvist et al., 1989).

The cirrus scheme is based on Kärcher and Lohmann (2002) and described in Lohmann et al. (2008), cloud droplet activation uses the Abdul-Razzak and Ghan (2000) parameterization, the autoconversion of cloud droplets to rain follows the method from Khairoutdinov and Kogan (2000), immersion and contact freezing in mixed-phase clouds follows the scheme from Lohmann and Diehl (2006), and cumulus convection is represented by the parameterization of Tiedtke (1989) with modifications developed by Nordeng (1994) for deep convection.

Simulations were performed at T63 ($1.9^\circ \times 1.9^\circ$) spatial resolution using 31 vertical levels (L31) and COSP v1.4. Horizontal winds and surface pressure were nudged towards the ERA-Interim (Dee et al., 2011) reanalysis for 2008, and observed sea surface temperatures and sea ice cover for 2008 were used (Taylor et al., 2000). Three-hourly instantaneous output was used. The output of the COSP satellite simulator is also three-hourly. The implementation of the COSP satellite simulator in ECHAM-

HAM does not allow instantaneous output. The COSP satellite simulator is called every radiation time step (i.e. every two hours) and the output of the COSP satellite simulator is averaged over the three hourly output period. This means that on average 50% of the values in the output of the COSP satellite simulator are instantaneous values (i.e. from only one time step) and 50% of the values are an average over two radiation time steps (i.e. an average over two instantaneous values which are two hours apart).

2.3.2 ECHAM-HAM-SALSA

ECHAM-HAM-SALSA is identical to the ECHAM-HAM setup (echam6.3-ham2.3-moz1.0), with the difference that the sectional aerosol module SALSA (Kokkola et al., 2008, 2018) is used instead of the modal model M7 used in the ECHAM-HAM setup. SALSA calculates the aerosol microphysical processes: nucleation, coagulation, condensation, and hydration. In this setup, the aerosol model HAM applies also the sectional scheme for the rest of the aerosol processes, i.e. emissions, removal, aerosol radiative properties, and aerosol-cloud interactions. In addition to differences in the aerosol size distribution scheme, also the wet deposition schemes differ between the ECHAM-HAM and ECHAM-HAM-SALSA setups. In addition, while ECHAM-HAM uses the cloud activation parameterization for modal models (Abdul-Razzak and Ghan, 2000), SALSA uses the activation parameterization for the sectional representation (Abdul-Razzak and Ghan, 2002). Along with the details of these differences, the implementation and the evaluation of SALSA with the ECHAM-HAMMOZ model version which is used in this study has been presented by Kokkola et al. (2018).

Similarly to ECHAM-HAM, simulations were performed at T63 ($1.9^\circ \times 1.9^\circ$) spatial resolution using 47 vertical levels (L47) and COSP v1.4. Horizontal winds and surface pressure were nudged towards the ERA-Interim (Dee et al., 2011) reanalysis for 2008, and observed sea surface temperatures and sea ice cover for 2008 were used (<http://www-pcmdi.llnl.gov/projects/amip/>). Three-hourly instantaneous output was used.

2.3.3 NorESM

The Norwegian Earth System Model (NorESM) (Kirkevåg et al., 2013; Bentsen et al., 2013; Iversen et al., 2013) is largely based on the Community Earth System Model (CESM) model (<http://www.cesm.ucar.edu>) but uses a different ocean model and a different aerosol scheme in the Community Atmospheric Model (CAM) (Neale et al., 2010).

The aerosol microphysics scheme in the NorESM version of CAM, called CAM-Oslo, consists of 12 log-normally shaped background modes which are tagged according to emission source and chemical composition (Kirkevåg et al., 2018). The shape of these modes can change due to condensation and coagulation.

5 In the current simulations, the NorESM model was run with the CAM-Oslo version 5.3 (Kirkevåg et al., 2018), which is configured with the microphysical two moment scheme MG1.5 (Morrison and Gettelman, 2008; Gettelman et al., 2015) for stratiform clouds. The scheme includes prognostic equations for liquid (mass and number) and ice (mass and number) and a version of the Khairoutdinov and Kogan (2000) autoconversion scheme where subgrid variability of cloud water (Morrison and Gettelman, 2008) has been included. The aerosol activation into cloud droplets is based on Abdul-Razzak and Ghan (2000) and the heterogeneous freezing in CAM5.3-Oslo is based on Wang et al. (2014) with a correction applied to the contact angle model (Kirkevåg et al., 2018). Moreover, CAM5.3-Oslo has a shallow convection scheme 15 (Park and Bretherton, 2009) and a deep convection scheme (Zhang and McFarlane, 1995). The simulation was run with the Community Land Model (CLM) version 4.5 (Oleson et al., 2010) with satellite phenology. Included in CLM is the Model of Emissions of Gases and Aerosols from Nature (MEGAN) version 2.1 (Guenther et al., 2012), which interactively calculates the emissions of biogenic volatile organic vapors. Both isoprene and monoterpenes take part in the formation of secondary organic aerosol in CAM5.3-Oslo. The sea surface temperatures and sea ice in the simulation were prescribed monthly averages for the years 1982-2001.

The resolution for the simulation was $0.9^\circ \times 1.25^\circ$ and the surface pressures as well as horizontal winds were nudged against ERA-Interim reanalysis data (Berrisford et al., 2011) from 2008. CAM-Oslo was run with COSP version 1.4 producing three-hourly instantaneous outputs.

3 Methods

3.1 Post-processing of the datasets

30 The comparison of satellite retrievals and model variables is not always straightforward. Satellite-retrieved physical quantities may be derived slightly differently than the corresponding parameters in the model, and differences can be attributed to discrepancies in the retrieved quantities viewed from space versus model fields (i.e. retrieval assumptions, sensor limitations, spatial resolution) (Bodas-Salcedo et al.,

2011). In this study we aim at highlighting the differences between observations and models, which stem from different aerosol and cloud physical parametrization by using the COSP satellite simulator. Satellite simulators, such as COSP, represent a compromise between model fields and retrieved fields. Simulators use model fields to re-
5 produce what the satellite sensor would see if the atmosphere had the clouds of a climate model. By taking the characteristics of the MODIS instrument into account COSP generates simulated fields of cloud parameters, which can be quantitatively compared to MODIS observations. The COSP diagnostics are then successively aggregated to the simulator outputs and are provided at the original model resolution.
10 Prior to their intercomparison, post-processing of the COSP diagnostics and satellite data is necessary for obtaining a robust evaluation. COSP-derived parameters are in the original model resolution and represent grid-averaged values. As MODIS observations are grid values representative only of in-cloud pixels, the COSP grid-averaged values are divided by the corresponding cloud fractions. The three-hour outputs from
15 the models were aggregated to daily averages and successively re-gridded and collocated by linear interpolation onto the finer satellite regular grid of $1^\circ \times 1^\circ$. Each grid point of cloud variables from MODIS observations and MODIS diagnostics was screened using a minimum threshold of 30% of cloud fraction to minimize the source of errors introduced by the retrieval algorithm and to ensure the existence of large-
20 scale clouds. The screening does not introduce a significant loss in the data pool and provide grounds for a robust intercomparison as also shown in Bennartz (2007) and Ban-Weiss et al. (2014). For each time step, only grid points having a valid observation simultaneously in each one of the four datasets were included in the final dataset for the statistical analysis.

25 The MODIS algorithm retrieves cloud properties in the proximity of the top of a cloud while the direct model outputs provide values through the entire vertical structure of a simulated atmospheric column. To overcome this issue, when comparing the direct model output CDNC and satellite-derived CDNC, for each grid box we selected the column maximum value of the CDNC direct output of the models. Additionally,
30 we selected only gridpoints with temperature $T > 273^\circ \text{ K}$ to exclude mixed-phase and ice clouds.

Note that all discussed cloud parameter are diagnosed using satellite simulators and are compared to the corresponding MODIS satellite observations. However, we use two direct model diagnostics in the study:

- AOD, which is used to derive the AI, a proxy for cloud condensation nuclei for the computation of ACI
- CDNC_{direct}, which is compared with COSP-simulated and MODIS-derived estimates

5 3.2 Cloud droplet number concentration (CDNC)

The CDNC were derived from CER and COT from MODIS observations and COSP simulations by combining Eqs. (6) and (9) from Bennartz and Rausch (2017) in the following equation:

$$\text{CDNC} = \gamma \cdot \text{COT}^{0.5} \cdot \text{CER}^{-2.5}, \quad (1)$$

10 where COT is cloud optical thickness, CER is the cloud droplet effective radius and $\gamma = 1.37 \cdot 10^{-5} \text{ m}^{0.5}$ (Quaas et al., 2006). The assumption of not accounting for temperature effect and setting γ as a bulk constant applies rather well to the stratiform clouds in the marine boundary layer but less so for convective clouds (Bennartz, 2007; Rausch et al., 2010). The assumption of not accounting for temperature effect and setting γ as a bulk constant applies rather well to the warm stratiform clouds in the marine boundary layer but less for convective clouds (Bennartz, 2007; Rausch et al., 2010; Grosvenor et al., 2018). The equation represents the "Idealized Stratiform Boundary Layer Cloud" (ISBLC) model (Bennartz and Rausch, 2017) which is based on the following assumptions:

- 20
- the cloud is horizontally homogeneous;
 - the LWC increases linearly from the cloud base to the cloud top;
 - the CDNC is constant throughout the vertical extent of the cloud.

While the ISBLC model describes important aspects of stratiform boundary layer clouds, its assumption will never be fully valid for a real cloud. Issues related to the IS-
 25 BLC model assumptions are extensively elaborated in Bennartz (2007) and Bennartz and Rausch (2017) and references therein. Despite the above mentioned approach for deriving CDNC is less reliable over land areas, we will provide MODIS CDNC values globally (land and ocean). These estimates will be used as a reference dataset, rather than "truth" data, for enabling the comparison of COSP-derived CDNC and the model
 30 direct output of CDNC.

3.3 Assessing the aerosol-cloud-interactions

The aerosol-cloud-interactions is quantified here through the parameter ACI_{CDNC} defined as the change in the selected cloud property, CDNC, to a change in AI, which is used here as a proxy for cloud condensation nuclei (CCN):

$$5 \quad ACI_{CDNC} = \frac{d\ln(CDNC)}{d\ln(AI)} \quad (2)$$

The CDNC was computed from the CER and COT from the COSP-MODIS simulations and MODIS retrievals. Additionally, AI was derived from ECHAM-HAM, ECHAM-HAM-SALSA, and NorESM MODIS-COSP diagnostics, and MODIS satellite observations following Feingold et al. (2001). The mean values and standard deviations of the parameters involved in the computation of ACI_{CDNC} are presented in Table 1. We discarded pixels retrieved when liquid cloud fraction is ≤ 0.3 to reduce noise-contamination and to focus on large-scale clouds. The screened parameters were used to derive CDNC. The ACI_{CDNC} parameter was calculated globally for each season. When calculating the ACI_{CDNC} for the $1^\circ \times 1^\circ$ gridboxes Eq.2 is applied to data for the selected season and grid box. This methodology (Grandey and Stier, 2010) can be thought of as computing the linear regression slope of a scatter plot of $\ln(CDNC)$ versus $\ln(AI)$, where each point represents a day for which both aerosol and cloud data exist for the considered grid box. When computing ACI_{CDNC} for large areas, the ACI_{CDNC} of each gridbox needs to be weighted by the corresponding number of data points (Grandey and Stier, 2010). This step was included in the post-processing of the datasets.

4 Results

4.1 Global bias distributions

In this section we compare on a global scale aerosol and cloud properties from the three models by subtracting MODIS retrievals from the modeled COSP diagnostics. From now on we will refer to the difference between the simulated parameters and MODIS retrieved values using the term bias.

Overall, the spatial distributions of the biases (Fig. 1-5) show large discrepancies around the polar and ice-covered areas, such as Greenland and Antarctica. Over these areas large discrepancies are expected due to the inaccuracy of the MODIS retrieval

algorithm due to viewing geometry (i.e. large zenith or viewing angles) and to correctly classify opaque clouds, snow/ice surfaces and optically thin clouds over really bright or warm surfaces (Marchant et al., 2016).

Figure 1 presents the differences between the MODIS-COSP cloud fraction diagnostics and COP CF for ice clouds CF_{ice} (Fig. 1b-d), and liquid clouds CF_{liq} (Fig. 1f-h), as well as the differences between MODIS total COP CF (Fig. 1j-l), and CF (Fig. 1n-p). Additionally, for each comparison the MODIS spatial distribution is presented as reference (Fig. 1a,e,i,m). It was already highlighted in section 2.1 that the cloud fraction retrieved from the optical properties (CF_{ice} , CF_{liq} and COP CF) excludes partly cloudy pixels, representing a limitation in the comparison of the data. Thus, lower values of MODIS COP cloud fractions are expected. A widespread positive bias is observed for CF_{ice} and CF_{liq} , indicating higher values of the COSP-simulated cloud fractions than the MODIS observations. Prevalent cloud regimes can be recognized in the bias distributions. ECHAM-HAM and ECHAM-HAM-SALSA well represent the amount of ice clouds which are generally found in the intertropical convergence zone (ITCZ) and the marine subtropical stratocumulus and stratus regions, whereas liquid clouds are better represented over land areas and in the subtropical stratocumulus region. NorESM shows positive biases for ice cloud amount over stratus clouds regions and around the ITCZ, but shows smaller biases for liquid stratus cloud regimes than ECHAM-HAM and ECHAM-HAM-SALSA

The total cloud fraction bias shows a positive bias between the MODIS-COSP CF simulated by the three models and MODIS COP CF (Fig. 1j-l) and a negative bias when MODIS CF is considered (Fig. 1n-p). Consequently, MODIS CF is higher than the MODIS COP CF product. This outcome is to be expected, and possibly originates from the different treatment in the MODIS algorithm of partly cloudy pixels in the computation of CF and COP CF, as discussed in section 2.1. Additionally, all models underestimate CF in marine subtropical stratocumulus regions.

The spatial distribution of the cloud physical and optical properties is remarkably similar among the model datasets with the exception of CER_{ice} , IWP (Fig. 2 d and l) and COT (Fig. 3g,k) for NorESM. These strong biases are explained by the fact that in the NorESM COSP 1.4 implementation code includes radiative active snow in the computation of the effective radius and optical thickness of ice clouds. However, this does not affect the properties of liquid clouds.

CER_{ice} and IWP are underestimated in ECHAM-HAM and ECHAM-HAM-SALSA. This is likely caused by the cirrus scheme which does not account for heterogenous

nucleation or pre-existing ice crystals during formation of cirrus clouds (Neubauer et al., 2019; Lohmann and Neubauer, 2018). Interestingly, dissimilarities can also be observed between ECHAM-HAM and ECHAM-HAM-SALSA, despite the fact that the models share the same cloud module. ECHAM-HAM CER_{liq} is on average 5 μm smaller than in ECHAM-HAM-SALSA in the mid-latitude belt, and ECHAM-HAM-SALSA CER_{liq} is larger around the polar areas (Fig. 2g) and shows a large positive bias for LWP over ocean (Fig. 2o) in comparison to ECHAM-HAM. LWP is also overestimated by NorESM but over land areas (Fig. 2p), while ECHAM-HAM shows a good agreement with MODIS (Fig. 2n).

10 The evaluation of COT shows homogeneous results and comparable values of root mean square errors (Fig. 3) with the exception of NorESM COT biases for ice and liquid clouds, which are particularly high over land. It appears that some tuning parameters, for example the autoconversion parameter, are particularly low and affect the convection scheme by suppressing precipitation, thus creating thick clouds. The comparison of the differences between the biases of ECHAM-HAM and of ECHAM-HAM-SALSA shows localized differences over India, China and Russia for IWP (Fig. 2j,k) and over China for water cloud COT (Fig. 3e,f). These are also regions where aerosol microphysics has a fundamental role as shown in Kokkola et al. (2018). ECHAM-HAM and ECHAM-HAM-SALSA generally overestimate COT. The atmospheric model ECHAM shows a similar estimation when running without an aerosol model. This overestimation has been previously reported by Stevens et al. (2013).

Figure 4 shows global biases for CDNC derived from the MODIS retrievals and the COSP diagnostics following the method presented in Sect.3.2 (Fig. 4b-d), and the daily averages of the direct output of the models (Fig. 4e-g). The CDNC derived from MODIS (Fig. 4a) are shown globally (land and ocean) despite the assumptions described in 1 are less reliable over land areas, which are highlighted with contour lines. The differences between MODIS-COSP diagnostics and MODIS observations are very clear. Overall the MODIS derived CDNC is lower than that derived from COSP simulated values, but higher than the direct output values. Consequently, the CDNC from direct model output is lower than MODIS-COSP diagnostics. Possible explanations could be either related to the COSP method for deriving CER_{liq} and COT_{liq} or the approach used for deriving CDNC from CER_{liq} and COT_{liq} or related to the fact that the computation of the direct CDNC requires a minimum number of CDNC set to 40 cm^{-3} . This outcome is very similar to what has been found by Ban-Weiss et al. (2014), where the CDNC satellite-simulated values are higher than the

standard CAM5 model output near cloud top as well as the column maximum values. Therefore, this result represent an interesting topic that extends beyond the scope of this paper but it should further developed in future work. The biases between CDNC COSP-derived and modeled direct values are very different, but within each product

5 the biases are similar, although local differences are observed. For example, the CDNC values from ECHAM-HAM-SALSA are lower in the polar regions and higher in the mid-latitude belt in comparison with the ECHAM-HAM and NorESM diagnostics. Local differences can also be observed in the direct output where ECHAM-HAM-SALSA shows higher values of CDNC over the oceans in the southern Hemisphere

10 (Fig. 4f). A direct comparison of CDNC derived from MODIS-COSP simulated variable and the model CDNC direct outputs is shown in the supplementary material. ECHAM-HAM and ECHAM-HAM-SALSA were run with identical tuning parameter settings which were optimized for ECHAM-HAM. This choice was made to distinguish the differences in aerosol-cloud interactions coming from different aerosol

15 microphysics modules. The differences in CDNC between these two model setups originates from the cloud activation schemes, i.e. for HAM the modal cloud activation scheme of Abdul-Razzak and Ghan (2000) and for HAM-SALSA the sectional cloud activation scheme (Abdul-Razzak and Ghan, 2002). The cloud activation scheme of ECHAM-HAM-SALSA produces a higher number of CDNC than ECHAM-HAM

20 (Fig. 4c) because SALSA microphysics module simulates generally higher number of particles larger than 100 nm in diameter which act as cloud condensation nuclei. Despite the higher CDNC, CER_{liq} is larger in ECHAM-HAM-SALSA than in ECHAM-HAM. Although it is expected that CER_{liq} decreases with increasing CDNC, higher LWP in ECHAM-HAM-SALSA in turn results in larger CER_{liq} and outweighs the

25 CDNC effect on CER_{liq} . The causes for differences in LWP between the two model versions are very difficult to diagnose but candidates for causing them are differences in wet scavenging, convective detrainment or freezing.

Figure 5 presents AOD and AI biases. The biases between values of AI from direct model output and MODIS observations are quite close among the model as their average is about of +0.2. The main divergence is observed in the ECHAM-HAM bias where higher AI values are simulated around the mid-latitude belt. Tegen et al. (2019) found indications that the particle size of mineral dust and sea salt aerosol particles may be too small in ECHAM-HAM. More discrepancies can be observed in the AOD bias: ECHAM-HAM-SALSA AOD values are higher over ocean, and NorESM AOD

35 are much higher over deserts and other bright surfaces (such as Africa and Australia).

Other localized distinctions in aerosol loading distribution can be observed over regions which are typically strongly affected by primary emissions (such as the Sahara, India, Southeast Asia, Russia, Canada, central Africa, and South America). The different representation of size distribution, microphysical processing of aerosols and sink processes has a significant effect on the modelled AOD as shown for the aerosol module SALSA2.0 by Kokkola et al. (2018). The overestimation of AOD in the tropical oceans and underestimation of AOD at higher latitudes and over land in ECHAM-HAM has also been found by Tegen et al. (2019).

4.2 Joint histogram

The analysis of the CTP-COT joint histogram enables to determine how well the data sources represent the vertical cloud structures and regimes. Figure 6 shows the comparison of the simulated and observed global mean cloud fraction as a function of cloud top pressure and cloud optical thickness. ECHAM-HAM and ECHAM-HAM-SALSA (Fig. 6a,b) show a nearly identical result by concentrating a large fraction of clouds at low level ($CTP \leq 680$ hPa) and in the interval $3.6 \leq COT \leq 23$. NorESM (Fig. 6c) also concentrates its largest amount of clouds at low levels in the same COT interval as in Fig. 6a and Fig. 6b, but detects also a higher fraction (about 2-2.5%) of optically thick clouds $9.4 \leq COT \leq 60$ throughout the atmosphere. A second cloud fraction peak is observed for optically thin clouds ($COT \leq 1.3$) at very high levels ($180 \leq CTP \leq 310$) for NorESM. This bimodal distribution resembles the vertical distribution of the MODIS cloud fraction shown in Fig.6d. The MODIS observations are mostly in the category of high-level clouds ($CTP \leq 440$ hPa) and low-level clouds (680 hPa $\leq CTP$). MODIS shows on average more mid-level clouds than NorESM and a higher fraction at low-level for $3.6 \leq COT \leq 23$ similarly to ECHAM-HAM and ECHAM-HAM-SALSA. Figure 6e shows the differences in cloud vertical distribution where MODIS is generally having the highest cloud fraction except for mid-level. MODIS also presents the highest percentage of clouds for $COT \geq 3.6$. NorESM and MODIS detects nearly the same amount of clouds for $1.3 \leq COT \leq 3.6$, while for optically very thin clouds ($COT \leq 1.3$) a good agreement is obtained between all datasets and NorESM shows the highest percentage of cloud fractions.

4.3 Aerosol-cloud interactions

The daily mean values of CDNC and AI were used to assess how clouds are affected by the changes of the CCN proxy. Uncertainties were computed as the 95% confidence

intervals using daily averages. Positive estimates of ACI_{CDNC} indicate an increase of CDNC as a function of AI, which could be an indication of the aerosol indirect effects. The potential limitations to this approach are discussed in Sect.refsummary.

Figure 7 shows estimates of ACI_{CDNC} on a global scale, although over ocean areas only, for each season and, separately, for the entire period under study as 'All'. The same analysis is iterated on a regional scale, including both land and ocean areas, and presented in the supplementary material (Fig.S4) Error bars are representative of the boundaries of the 95% confidence interval. The positive ACI_{CDNC} values resulting from MODIS and the three models suggest that changes in AI are connected with an increase of CDNC and the trend seems to be independent of the time of the year. The modeling ACI_{CDNC} estimates are similar in the models; however, the results are statistically indistinguishable owing to fully overlapping confidence bars (Cumming et al., 2007). MODIS ACI_{CDNC} estimates show negative values for the winter months (DJF), especially over the Northern Hemisphere (Fig.S4). As these negative values are derived over land regions, it could be indicative of retrieval biases over bright surfaces (i.e. snow or ice). Furthermore, it is important to inform the readers that MODIS aerosol size parameters over land (i.e. AE or fine-AOD) are no longer official products directly provided by the MODIS aerosol team. The publication of these variable were discontinued due to low quantitative MODIS skill (Mielonen et al., 2011; Levy et al., 2013). Using spectral AOD, we derived AE over land and derived AI on a global scale to allow estimates of ACI_{CDNC} on a global scale (Fig.S4). However, the AE values over land were not evaluated. However, negative ACI_{CDNC} values may be associated with the presence of different types of aerosol (i.e. hydrophobic aerosol such as dust, black carbon) and their proximity to clouds, which may affect or inhibits the growth of cloud droplets (Chen et al., 2018; Jiang et al., 2018; Costantino and Bréon, 2013). Over ocean negative ACI_{CDNC} values from MODIS observations have been systematically found over subtropical marine stratuscumulus regions (i.e. N. Atlantic Ocean, N.America, S.Atlantic Ocean). In these regions Chen et al. (2014) found a decrease in LWP with increasing AI for non-precipitating scenes. Additionally, negative ACI_{CDNC} values were suggested owing to wet scavenging or mixing of environmental air by entrainment (Ackerman et al., 2004). While both processes affect LWP, CDNC is not necessarily changing. This indicates limits in the derivation of CDNC from retrieved quantities for MODIS. Also water uptake by aerosol particles and effects of meteorology can have a significant impact on the estimation of ACI_{CDNC} derived from the relationship between CDNC and AI (Neubauer et al., 2017).

Cloud properties (Fig. 2 and Fig. 3) are more similar for ECHAM-HAM and ECHAM-HAM-SALSA, which share the same atmospheric model, rather than between the two and NorESM. Nevertheless, the ACI_{CDNC} estimates show good agreement between the three models and, even more important, with ACI_{CDNC} derived from MODIS observations.

5 Summary, discussion and conclusions

The differences between observed and modeled aerosol and cloud properties can be related to many factors, among which are the different parametrizations of aerosol and cloud physical processes in the models, or differences in observation characteristics by satellite, as well as meteorological influences on aerosol-cloud interactions. In this study we focus on the differences due to the physical parametrization of aerosol and cloud properties, and minimize the impact of the other factors. This objective was achieved by using a satellite simulator, which resolves the issue related to the incongruities between model and satellite views, and by nudging modeled winds to meteorological observation, solving the discrepancies between observed and modeled meteorology.

The results show that the aerosol module in a climate model, in our case ECHAM-HAM and ECHAM-HAM-SALSA, has a smaller effect on the simulation of cloud properties than switching to another atmospheric model, NorESM. However, the three models differ from each other in the spatial and vertical representation of clouds. The COSP cloud fraction diagnostics are comparable to MODIS products but the difference between the two MODIS products of total cloud fractions is significant. Despite having identical cloud modules, ECHAM-HAM and ECHAM-HAM-SALSA diverge when comparing liquid water cloud properties yet both fail to represent high level clouds. The discrepancies between ECHAM-HAM and ECHAM-HAM-SALSA may originate from different amounts of activated droplets and different ice nucleation rates. While the NorESM cloud vertical distribution is closer to MODIS, large biases are found globally for cloud droplet size and water content in ice clouds due to the contribution of radiatively active snow (Kay et al., 2012). The inclusion of radiatively active snow in the physical model and the COSP module mitigates the underestimation of model mid-level and high clouds but heavily impacts the magnitude of the global values of the cloud properties in ice clouds.

The differences observed in the simulation of cloud properties are reflected in the estimations of ACI_{CDNC} . ACI_{CDNC} is generally larger for ECHAM-HAM-SALSA, while similarly lower values are found for ECHAM-HAM, NorESM and MODIS.

Although satellite simulators allow robust comparisons, their reliability is flawed
5 when the observational data is not well explained or the simulator itself fails to address specific characteristics. Therefore, their strengths and weaknesses need to be accounted for as to successfully use simulation diagnostics in model-observation comparisons as illustrated in details by Pincus et al. (2012), and Kay et al. (2012) to successfully use simulator diagnostics in model-observation comparisons. For example,
10 simulators have limitations in depicting horizontally heterogeneous cloud regimes as they do not account for sub-pixel clouds, which may explain the differences in the detection of small cloud fractions between observations and models. However, simulator and observational errors are here neglected because we considered them to be less important in the explanation of the model biases. The observed biases in the modeled
15 clouds could originate from errors in the model calculation as well from the cloud parametrization; the identification of the specific reasons for these discrepancies is beyond the scope of this study.

The results presented here indicate that the cloud droplet number concentration appears to be more sensitive to changes in aerosols in models than observations and these
20 results are in agreement with many previous studies found in the literature (e.g. Ban-Weiss et al., 2014; Quaas et al., 2004; McComiskey and Feingold, 2012; Penner et al., 2011). Some of the challenges and limitations in assessing ACI_{CDNC} are now highlighted. AOD retrievals are limited to cloud-free conditions, which creates challenges to studying the ACI_{CDNC} where the intention is to study collocated aerosol and cloud
25 observations. Unless height-resolving instruments (i.e. lidars) are considered, the vertical location of the AOD level is unknown. Aerosol and cloud measurements may contain retrieval errors, which are further propagated to ACI_{CDNC} estimates, as well as they reciprocally may bias the respective retrievals (Jia et al., 2019). The interpretation of the observed aerosol-cloud relationships is complicated by the effect of
30 meteorology (Quaas et al., 2010; Gryspeerdt et al., 2014, 2016; Brenguier et al., 2003). As cloud formation happens in high humidity conditions, aerosol humidification can severely affect the assessment of ACI by causing positive correlation between AOD and cloud properties (Myhre et al., 2007; Quaas et al., 2010; Grandey et al., 2013; Gryspeerdt et al., 2014). Additionally to aerosol particles, water vapour also affects
35 precipitation (Boucher et al., 2013), obviously linked to the presence of clouds, and

consequently causes spurious correlations between aerosols and clouds (Koren et al., 2012). Therefore, some of the differences in the ACI_{CDNC} estimates from satellites and models could be associated with limitations in satellite measurements. For example, the estimates of ACI_{CDNC} might suffer from an averaging effect due to the large
5 spatial averages of satellite aerosol and cloud properties. L3 data can introduce spurious relationships between aerosols and cloud properties (e.g. McComiskey and Feingold, 2012; Christensen et al., 2017), and provide a rather limited pool of data samples enabling the analysis only over large regions. This was not explored in this study because we used the same spatial resolution for both the true model estimate and for the
10 satellite-based model estimate for the ACI_{CDNC} . Neubauer et al. (2017) performed a detailed study on the impact of meteorology, cloud regimes, aerosol swelling, and wet scavenging on microphysical cloud properties using ECHAM-HAM. The results highlight that a minimum distance between cloud and aerosol gridded data should be taken into account in the analysis of satellite data, and that dry aerosols should be
15 selected to reduce the influence of aerosol growth due to humidity for model simulations when comparing satellite-based and model estimates for ACI_{CDNC} . Similarly to our results, Neubauer et al. (2017) find a systematical overestimation of the sensitivity of modeled LWP and CDNC compared to MODIS observations, and often a disagreement in sign in the comparison of cloud parameters. The results suggest
20 that the derivation of CDNC from satellite observations may be limited by entrainment mixing of environmental air or precipitation. Furthermore, the models can not resolve the entrainment mixing at the top of stratocumulus clouds, which puts the LWP sensitivity to aerosol change in the models into question. In conclusion, this study identified limitations and deficiencies in the models, and their acknowledgment
25 is important for the model development process and the correct interpretation of modelling diagnostics. We highlighted many discrepancies in cloud spatial and vertical representations and the results showed that the three models overall similarly underestimate cloud fraction for the stratocumulus cloud regime being when compared to MODIS. We discovered that IWC is systematically lower in ECHAM-HAM-SALSA
30 than in ECHAM-HAM due to a higher cloud droplet freezing rate which consecutively triggers a reduced sedimentation of ice clouds. This outcome explains the contradictory result in ECHAM-HAM-SALSA that shows the largest global averages for CER among the models despite having the highest number of CDNC. Further investigation is needed to explain the differences in ice cloud properties between ECHAM-HAM
35 and ECHAM-HAM-SALSA. The clouds simulated by NorESM are too thick over

land and this issue is not only seen in COSP-variables but also in the default model output due to a very low autoconversion parameter which caused the suppression of precipitation over land, thus thicker clouds. Additionally, in support to Ban-Weiss et al. (2014), the study revealed that the direct model CDNC is systematically larger than the values derived from COSP-diagnostics and MODIS observation. This discrepant results from the comparison of COSP-derived CDNC and the modeled direct output of CDNC, where the MODIS data represents solely the reference dataset rather than "truth" data, stem from the aerosol model set-up and this discrepancy has potentially important implications for the modelling community, using satellite observations to evaluate standard (not satellite-simulated) model output.

Finally, we point out that the model deficiencies identified here may lead to an improvement of model parametrization and to more robust results. As future work, a regional-based analysis would enable a better understanding of the physical processes responsible for the model biases. Additional research should be conducted to evaluate the aerosol-cloud-interaction following the approach suggested by Neubauer et al. (2017). These further steps would potentially benefit the modeling community interested in climate applications.

Data availability. The MODIS satellite data used in this study are publicly available at <https://ladsweb.nascom.nasa.gov>. ECHAM-HAM data are available from David Neubauer (david.neubauer@env.ethz.ch), ECHAM-HAM-SALSA data are available from Harri Kokkola (harri.kokkola@fmi.fi) and NorESM data from Moa K. Sporre (moa.sporre@nuclear.lu.se).

Author contributions. ECHAM-HAM-SALSA, ECHAM-HAM, and NorESM data (and corresponding descriptive text in Sect. 2.3 Data) were provided by DN, HK, and MS, respectively. IH assisted in setting up the NorESM simulations. GS conducted the data analysis, and wrote the majority of manuscript, except for the sections describing the models. PK, HK, AA participated in reading the results. GL, UL, PS helped to set up the concept idea of the paper. MS, DV, HK, PK, UL and GL contributed to review the manuscript.

Competing interests. No competing interests to declare.

Acknowledgements. The research leading to these results has received funding from the European Union's Seventh Framework Programme (FP7/2007-2013) Project BACCHUS under Grant Agreement 603445. We would like to thank Jennifer E. Kay for support in the implementation of COSP1.4 in NorESM. The ECHAM-HAMMOZ model is developed by a consortium composed of ETH Zurich, Max Planck Institut für Meteorologie, Forschungszentrum Jülich, University of Oxford, the Finnish Meteorological Institute and the Leibniz Institute for Tropospheric Research, and managed by the Center for Climate Systems Modeling (C2SM) at ETH Zurich. Finally, we gratefully thank Anonymous Referee 1 for carefully reading our paper and provide valuable feedback.

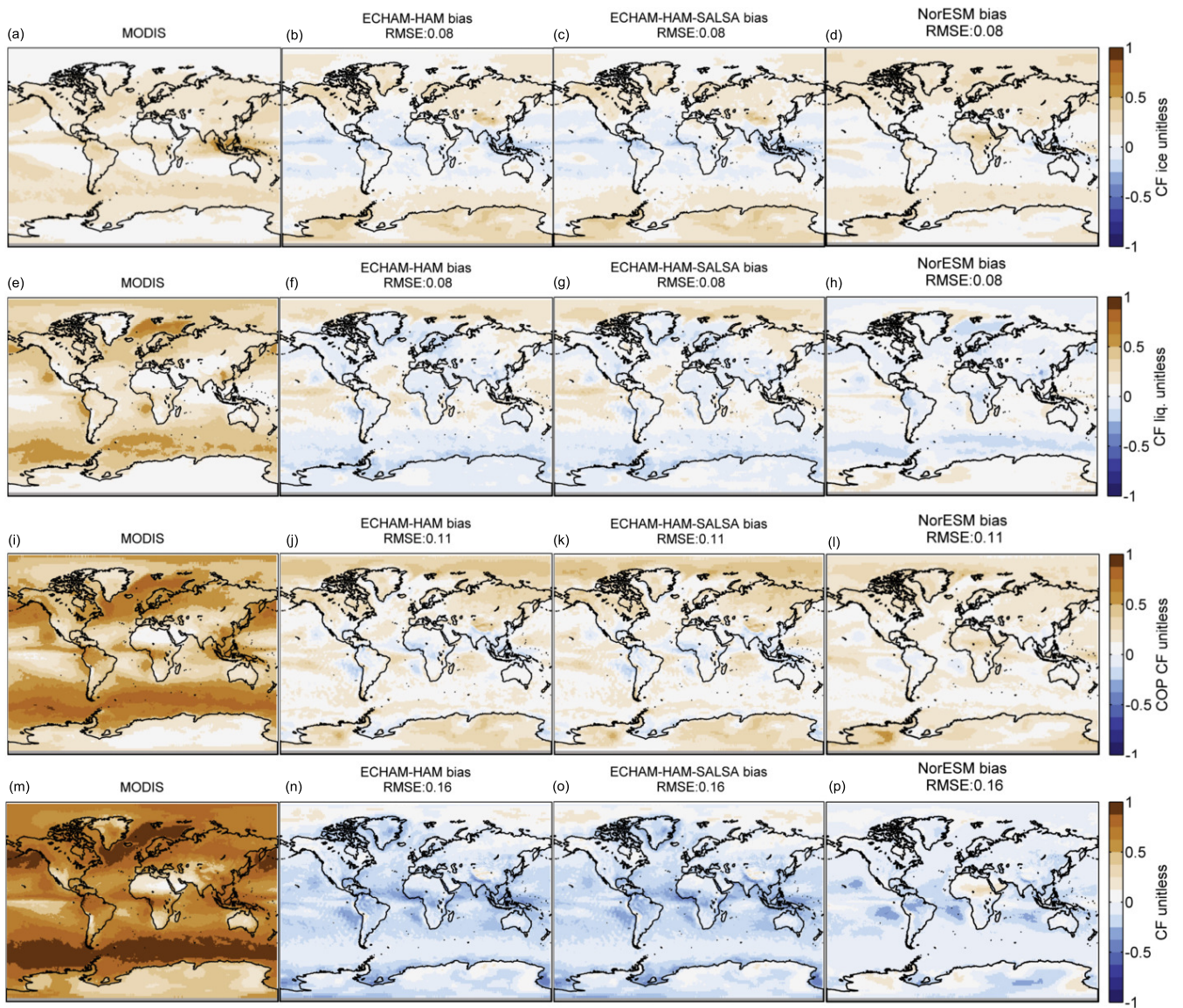


Figure 1. Annual global mean bias in cloud fraction. The bias represents the difference between MODIS-COSP diagnostics from ECHAM-HAM, ECHAM-HAM-SALSA, NorESM and MODIS observations. COSP-simulated total ice and liquid cloud fractions are compared with MODIS retrieval ice fraction (b-d), and with MODIS retrieval liquid cloud fraction (f-h), respectively. COSP-simulated total cloud fraction is compared with MODIS retrieval total cloud fraction (COP CF) (j-l), and cloud mask cloud fraction (CF) (n-p). Pixels with liquid cloud fraction $\leq 30\%$ are screened. The averages represent in-cloud values. High latitudes (Lat $> 60^\circ$ N or Lat $> 60^\circ$ S) are excluded in the computation of the root mean square error (RMSE). MODIS spatial distribution is presented as reference (a,e,i,m).

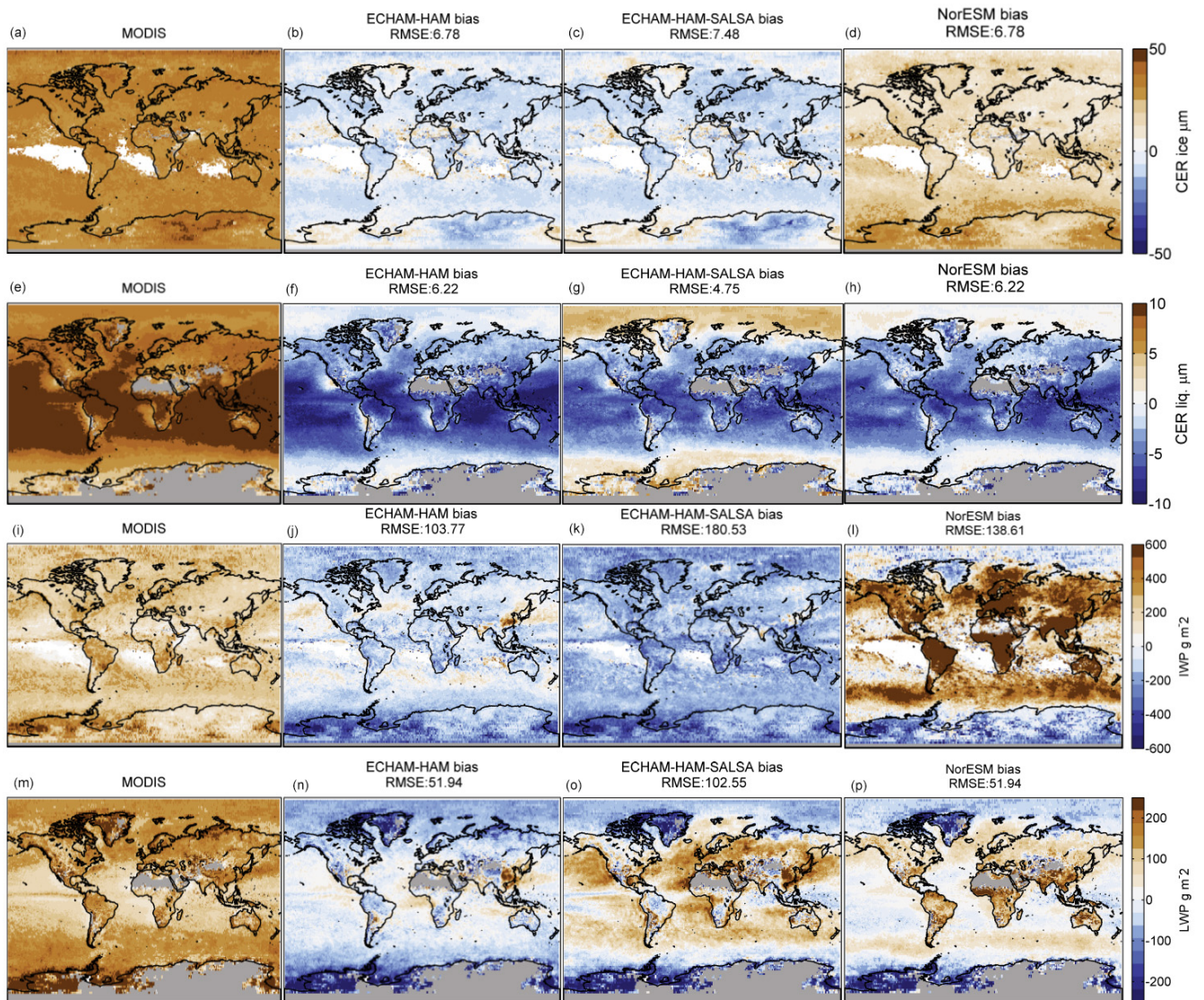


Figure 2. Annual global mean bias in cloud effective radius and water path. The bias represents the difference calculated subtracting MODIS observation to MODIS-COSP diagnostics from ECHAM-HAM, ECHAM-HAM-SALSA, and NorESM. Ice cloud effective radius (CER_{ice}) from MODIS-COSP is compared with MODIS observations in (b)-(d) and liquid cloud effective radius (CER_{liq}) in (f)-(h). The biases related to the comparison of COSP-simulated ice water path (IWP) are showed in (j)-(l) and for liquid water path (LWP) in (n)-(p). Pixels with liquid cloud fraction $\leq 30\%$ are screened. The averages represent in-cloud values. Pixels with liquid cloud fraction $\leq 30\%$ are screened. Values are in-cloud concentrations. High latitudes ($Lat > 60^\circ N$ or $Lat > 60^\circ S$) are excluded in the computation of the root mean square error (RMSE). MODIS spatial distribution is presented as reference (a,e,i,m).

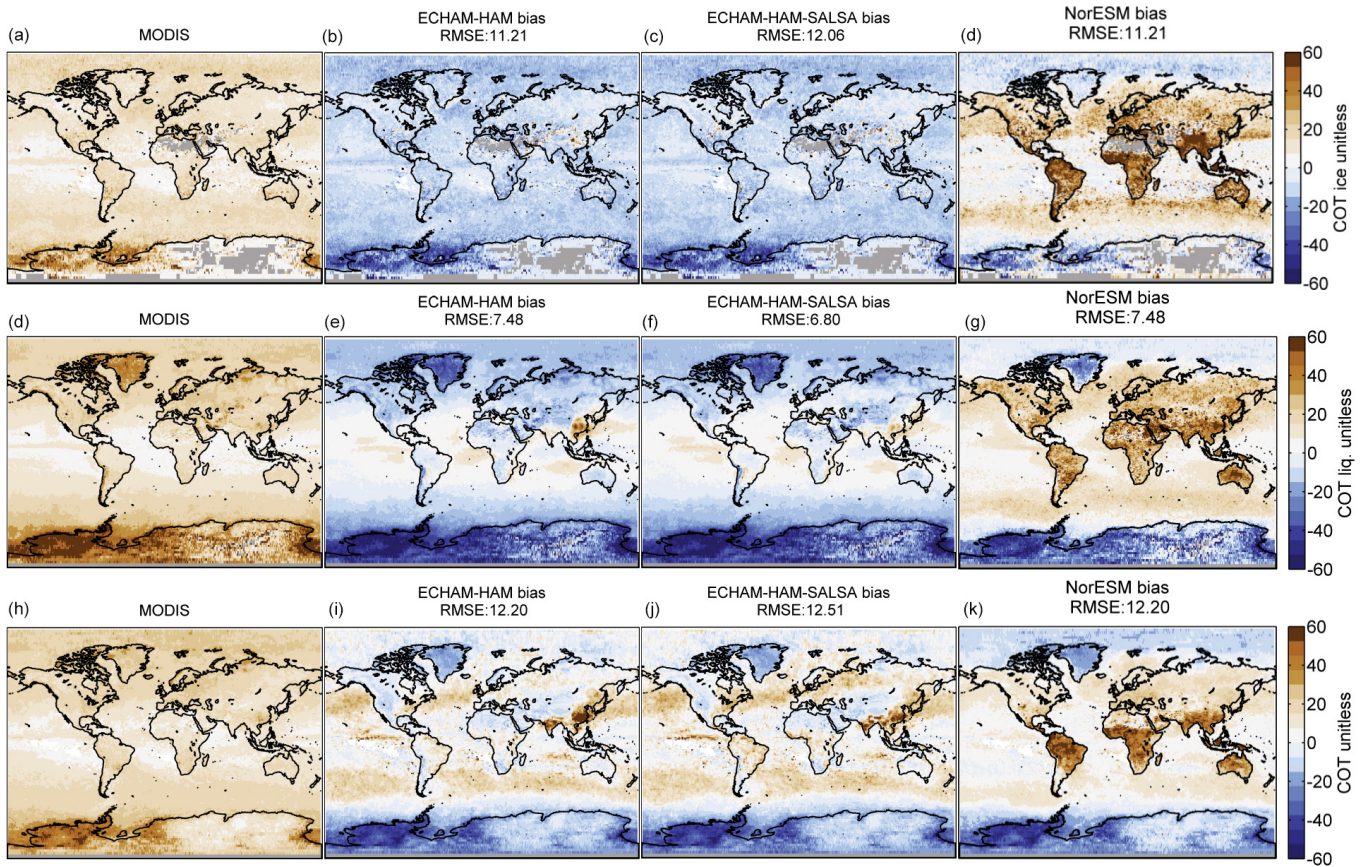


Figure 3. Annual global mean bias in cloud optical thickness for ice clouds (b-d), liquid water clouds (e-g) and total (combined ice and water clouds) COT (i-k) between MODIS and ECHAM-HAM, ECHAM-HAM-SALSA, and NorESM. The bias represents the difference between MODIS-COSP diagnostics and MODIS observations. Pixels with liquid cloud fraction $\leq 30\%$ are screened. The averages represent in-cloud values. High latitudes (Lat $> 60^\circ$ N or Lat $> 60^\circ$ S) are excluded in the computation of the root mean square error (RMSE). MODIS spatial distribution is presented as reference (a,d,h).

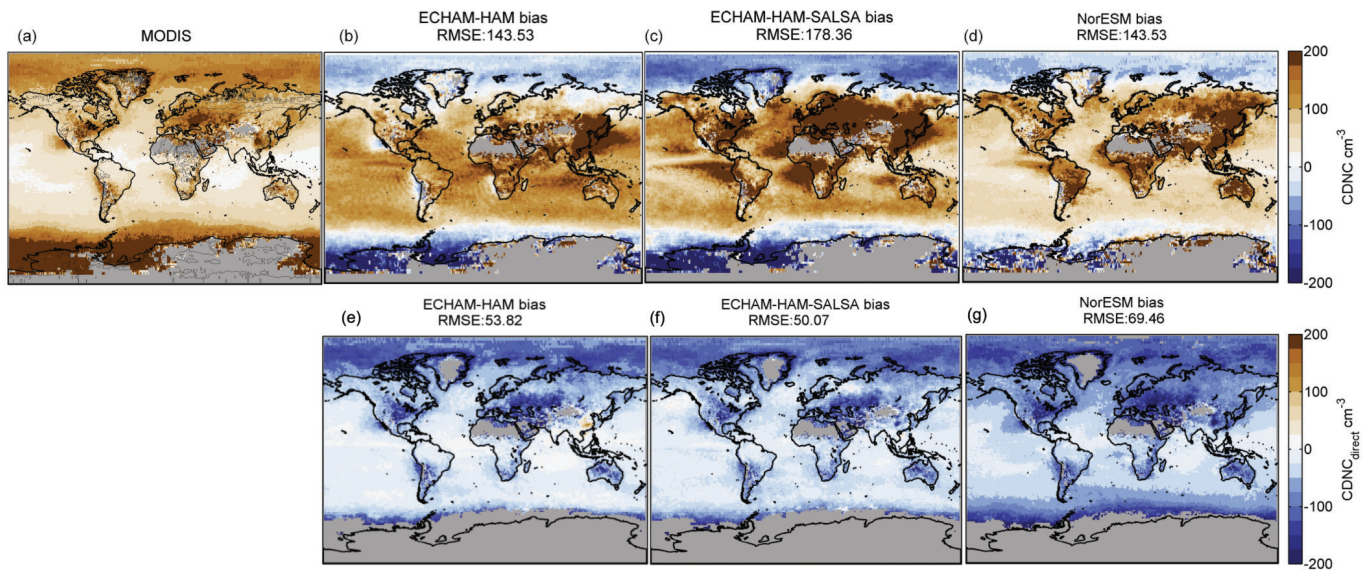


Figure 4. Cloud droplet number concentration (CDNC) annual mean bias. The bias represents the difference between CDNC derived from MODIS-COSP diagnostics and MODIS observations (b-d), and the model direct outputs and MODIS observations (f-h). Pixels with liquid cloud fraction $\leq 30\%$ are screened. The averages represent in-cloud values. High latitudes ($\text{Lat} > 60^\circ \text{ N}$ or $\text{Lat} > 60^\circ \text{ S}$) are excluded in the computation of the root mean square error (RMSE). MODIS spatial distribution is presented as reference (a). Contour lines highlight the land areas where the assumptions for deriving MODIS CDNC are less reliable.

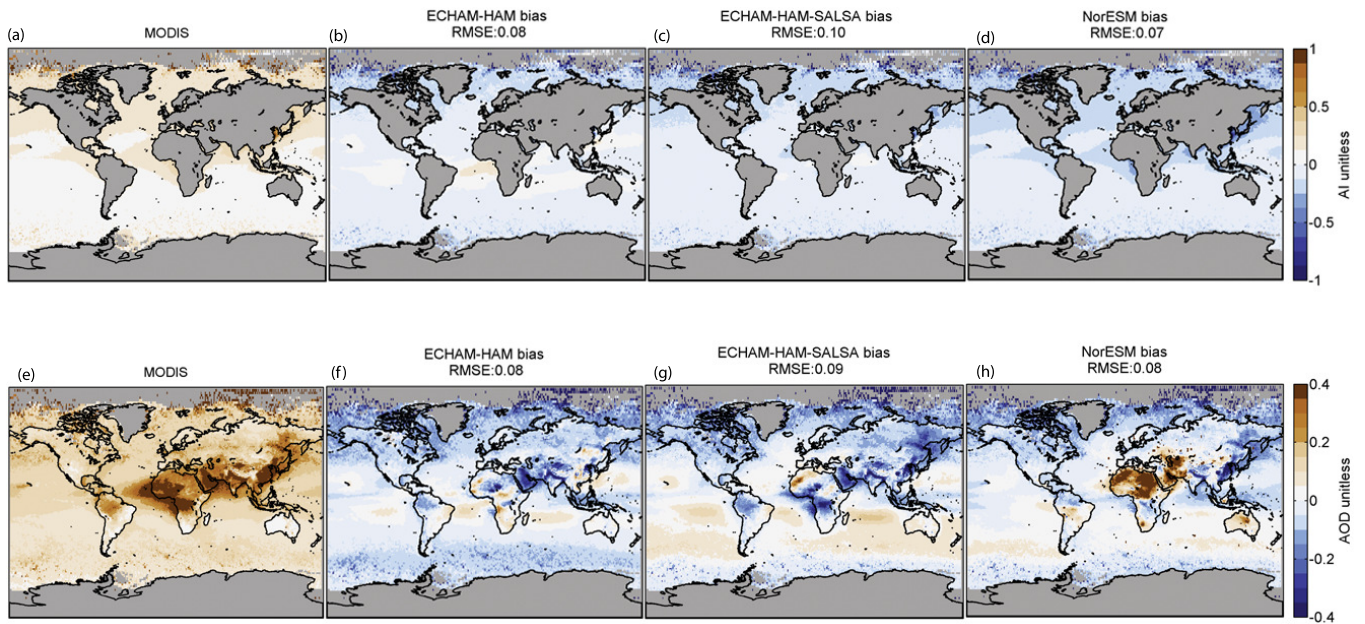


Figure 5. Aerosol Index (AI) (b-d) and Aerosol Optical Depth (f-h) annual mean bias. AI are representative of ocean values only. The bias represents the difference between the model direct outputs and MODIS observations. High latitudes ($\text{Lat} > 60^\circ \text{ N}$ or $\text{Lat} > 60^\circ \text{ S}$) are excluded in the computation of the root mean square error (RMSE). MODIS spatial distribution is presented as reference (a,e).

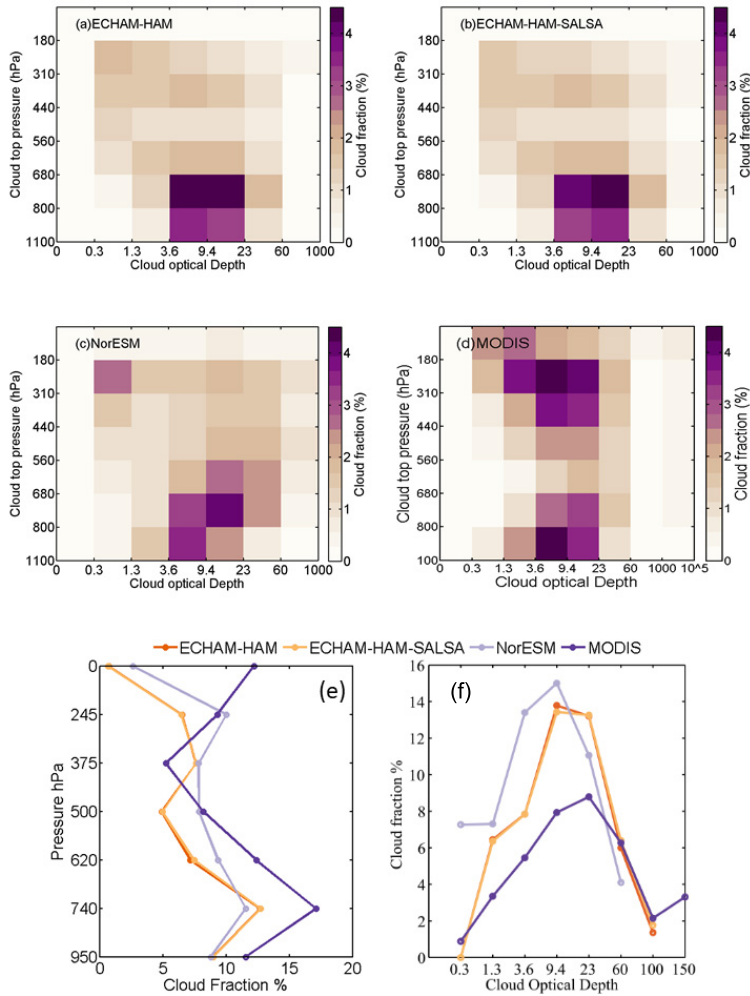


Figure 6. Vertical distribution analysis. Cloud fraction as a function of cloud top pressure and optical thickness for (a) ECHAM-HAM, (b) ECHAM-HAM-SALSA, (c) NorESM and (d) MODIS. The color scale represents the cloud fraction percentage. (e) Cloud fraction as a function of CTP (sum of all optical depth ≥ 0.3 , and (f) cloud fraction as a function of COT (sum of all CTP layers for each COD-bin).

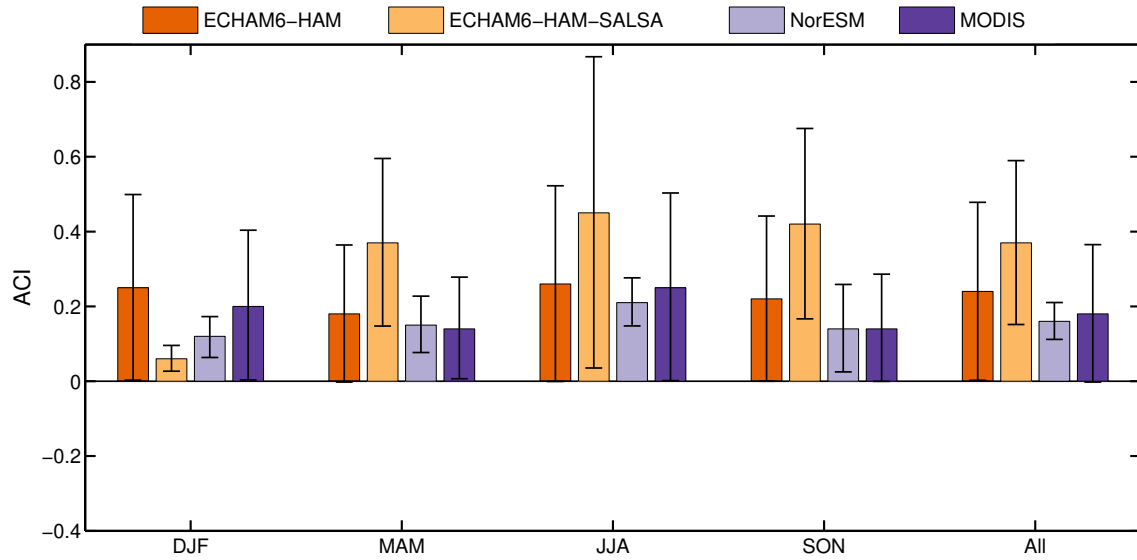


Figure 7. Global (over ocean only) estimates of the ACI_{CDNC} computed as the changes of $\ln(CDNC)$ to $\ln(AI)$. $CDNC$ are derived from corresponding daily grid points of LWP and COT from MODIS observations and COSP-MODIS outputs following Bennartz (2007). ACI_{CDNC} values are calculated by season and for the entire period (1 January 2008 – 31 December 2008). Uncertainties estimates are calculated as 95% confidence interval from the daily values.

Table 1. Annual global in-cloud mean value \pm standard deviation for the parameters used in the study. If a grid point has $CF \leq 30\%$, the point is set to fill values in all the datasets. The process leads to a reduction of 35% of datapoints in each dataset. 'CF all' is not screened for $CF \leq 30\%$. AI are representative of ocean values only

Source	CF all	CF	LWP gm^{-2}	CER μm	COT	CDNC cm^{-3}	AI
MODIS	0.68 ± 0.35	0.83 ± 0.21	140 ± 142	15.3 ± 4.7	18.5 ± 18.7	82 ± 82.12	0.15 ± 0.20
ECHAM-HAM	0.56 ± 0.36	0.70 ± 0.21	106 ± 83	11 ± 1.9	9.6 ± 11.9	168 ± 122	0.14 ± 0.20
ECHAM-HAM-SALSA	0.56 ± 0.36	0.70 ± 0.20	168 ± 159	12.5 ± 3.5	9.9 ± 11.9	177 ± 183	0.11 ± 0.18
NorESM	0.63 ± 0.34	0.42 ± 0.28	161 ± 133	11.9 ± 2.7	28.3 ± 53.6	167 ± 124	0.17 ± 0.26

Table 2. Summary of the the models used in the study.

Model	Reference	Resolution	Aerosol scheme	Cloud microphysics
ECHAM-HAM	Tegen et al. (2019)	1.9° lat × 1.9° lon, 31 levels	HAM 2.3-M7	2-moment scheme
ECHAM-HAM-SALSA	Kokkola et al. (2018)	1.9° lat × 1.9° lon, 31 levels	HAM2.3-SALSA	2-moment scheme
NorESM	Kirkevåg et al. (2018)	0.9 ° lat × 1.25 ° lon, 30 levels	OsloAero	2-moment scheme MG1.5

References

- Abdul-Razzak, H. and Ghan, S. J.: A parameterization of aerosol activation: 2. Multiple aerosol types, *Journal of Geophysical Research: Atmospheres*, 105, 6837–6844, <https://doi.org/10.1029/1999JD901161>, <https://agupubs.onlinelibrary.wiley.com/doi/abs/10.1029/1999JD901161>, 2000.
- 5 Abdul-Razzak, H. and Ghan, S. J.: A parameterization of aerosol activation 3. Sectional representation, *J. Geophys. Res.*, 107(D3), <https://doi.org/10.1029/2001JD000483>, 2002.
- Ackerman, A. S., Kirkpatrick, M. P., Stevens, D. E., and Toon, O. B.: The impact of humidity above stratiform clouds on indirect aerosol climate forcing, *Nature*, 432, 1014–1017, <https://doi.org/10.1038/nature03174>, 2004.
- 10 Ban-Weiss, G. A., Jin, L., Bauer, S. E., Bennartz, R., Liu, X., Zhang, K., Ming, Y., Guo, H., and Jiang, J. H.: Evaluating clouds, aerosols, and their interactions in three global climate models using satellite simulators and observations, *Journal of Geophysical Research: Atmospheres*, 119, 10,876–10,901, <https://doi.org/10.1002/2014JD021722>, <https://agupubs.onlinelibrary.wiley.com/doi/abs/10.1002/2014JD021722>, 2014.
- 15 Bellouin, N., Quaas, J., Gryspeerdt, E., Kinne, S., Stier, P., Watson-Parris, D., Boucher, O., Carslaw, K., Christensen, M., Daniau, A.-L., Dufresne, J.-L., Feingold, G., Fiedler, S., Forster, P., Gettelman, A., Haywood, J., Lohmann, U., Malavelle, F., Mauritsen, T., McCoy, D., Myhre, G., Mülmenstädt, J., Neubauer, D., Possner, A., Rugenstein, M., Sato, Y., Schulz, M., Schwartz, S., Sourdeval, O., Storelvmo, T., Toll, V., Winker, D., and Stevens, B.: Bounding global aerosol radiative forcing of climate change, *Reviews of Geophysics*, 2019.
- Bennartz, R.: Global assessment of marine boundary layer cloud droplet number concentration from satellite, *Journal of Geophysical Research: Atmospheres*, 112, <https://doi.org/10.1029/2006JD007547>, <https://agupubs.onlinelibrary.wiley.com/doi/abs/10.1029/2006JD007547>, 2007.
- 25 Bennartz, R. and Rausch, J.: Global and regional estimates of warm cloud droplet number concentration based on 13 years of AQUA-MODIS observations, *Atmospheric Chemistry and Physics*, 17, 9815–9836, <https://doi.org/10.5194/acp-17-9815-2017>, <https://www.atmos-chem-phys.net/17/9815/2017/>, 2017.
- 30 Bentsen, M., Bethke, I., Debernard, J. B., Iversen, T., Kirkevåg, A., Seland, Ø., Drange, H., Roelandt, C., Seierstad, I. A., Hoose, C., and Kristjánsson, J. E.: The Norwegian Earth System Model, NorESM1-M “ Part 1: Description and basic evaluation of the physical climate, *Geoscientific Model Development*, 6, 687–720, <https://doi.org/10.5194/gmd-6-687-2013>, <https://www.geosci-model-dev.net/6/687/2013/>, 2013.
- 35 Berrisford, P., Kållberg, P., Kobayashi, S., Dee, D., Uppala, S., Simmons, A. J., Poli, P., and Sato, H.: Atmospheric conservation properties in ERA-Interim, *Quarterly Journal of*

- the Royal Meteorological Society, 137, 1381–1399, <https://doi.org/10.1002/qj.864>, <https://rmets.onlinelibrary.wiley.com/doi/abs/10.1002/qj.864>, 2011.
- 5 Bodas-Salcedo, A., Webb, M. J., Bony, S., Chepfer, H., Dufresne, J.-L., Klein, S. A., Zhang, Y., Marchand, R., Haynes, J. M., Pincus, R., and John, V. O.: COSP: Satellite simulation software for model assessment, *Bulletin of the American Meteorological Society*, 92, 1023–1043, <https://doi.org/10.1175/2011BAMS2856.1>, <https://doi.org/10.1175/2011BAMS2856.1>, 2011.
- 10 Boucher, O., Randall, D., Artaxo, P., Bretherton, C., Feingold, G., Forster, P., Kerminen, V.-M., Kondo, Y., Liao, H., Lohmann, U., Rasch, P., Satheesh, S. K., Sherwood, S., Stevens, B., and Zhang, X. Y.: Clouds and aerosols, pp. 571–657, Cambridge University Press, Cambridge, UK, <https://doi.org/10.1017/CBO9781107415324.016>, 2013.
- 15 Brenguier, J.-L., Pawlowska, H., and Schüller, L.: Cloud microphysical and radiative properties for parameterization and satellite monitoring of the indirect effect of aerosol on climate, *Journal of Geophysical Research: Atmospheres*, 108, <https://doi.org/10.1029/2002JD002682>, <https://agupubs.onlinelibrary.wiley.com/doi/abs/10.1029/2002JD002682>, 2003.
- Chen, J., Liu, Y., Zhang, M., and Peng, Y.: Height Dependency of Aerosol-Cloud Interaction Regimes, *Journal of Geophysical Research: Atmospheres*, 123, 491–506, <https://doi.org/10.1002/2017JD027431>, <https://agupubs.onlinelibrary.wiley.com/doi/abs/10.1002/2017JD027431>, 2018.
- 20 Chen, Y.-C., Christensen, M. W., Stephens, G. L., and Seinfeld, J. H.: Satellite-based estimate of global aerosol–cloud radiative forcing by marine warm clouds, *Nature Geoscience*, 7, <https://doi.org/10.1038/ngeo2214>, <https://doi.org/10.1038/ngeo2214>, 2014.
- 25 Christensen, M. W., Neubauer, D., Poulsen, C. A., Thomas, G. E., McGarragh, G. R., Povey, A. C., Proud, S. R., and Grainger, R. G.: Unveiling aerosol–cloud interactions – Part 1: Cloud contamination in satellite products enhances the aerosol indirect forcing estimate, *Atmospheric Chemistry and Physics*, 17, 13 151–13 164, <https://doi.org/10.5194/acp-17-13151-2017>, <https://www.atmos-chem-phys.net/17/13151/2017/>, 2017.
- 30 Costantino, L. and Bréon, F.-M.: Aerosol indirect effect on warm clouds over South-East Atlantic, from co-located MODIS and CALIPSO observations, *Atmospheric Chemistry and Physics*, 13, 69–88, <https://doi.org/10.5194/acp-13-69-2013>, <https://www.atmos-chem-phys.net/13/69/2013/>, 2013.
- Cumming, G., Fidler, F., and Vaux, D. L.: Error bars in experimental biology, *The Journal of Cell Biology*, 177, 7–11, <https://doi.org/10.1083/jcb.200611141>, <http://jcb.rupress.org/content/177/1/7>, 2007.
- 35 Dee, D. P., Uppala, S. M., Simmons, A. J., Berrisford, P., Poli, P., Kobayashi, S., Andrae, U., Balmaseda, M. A., Balsamo, G., Bauer, P., Bechtold, P., Beljaars, A. C. M., van de Berg, L., Bidlot, J., Bormann, N., Delsol, C., Dragani, R., Fuentes, M., Geer, A. J., Haimberger, L., Healy, S. B., Hersbach, H., Hólm, E. V., Isaksen, L., Kållberg, P., Köhler, M., Matricardi, M.,

- McNally, A. P., Monge-Sanz, B. M., Morcrette, J.-J., Park, B.-K., Peubey, C., de Rosnay, P., Tavolato, C., Thépaut, J.-N., and Vitart, F.: The ERA-Interim reanalysis: configuration and performance of the data assimilation system, *Quarterly Journal of the Royal Meteorological Society*, 137, 553–597, <https://doi.org/10.1002/qj.828>, <https://rmets.onlinelibrary.wiley.com/doi/abs/10.1002/qj.828>, 2011.
- 5
- Eyring, V., Bony, S., Meehl, G. A., Senior, C. A., Stevens, B., Stouffer, R. J., and Taylor, K. E.: Overview of the Coupled Model Intercomparison Project Phase 6 (CMIP6) experimental design and organization, *Geoscientific Model Development*, 9, 1937–1958, <https://doi.org/10.5194/gmd-9-1937-2016>, <https://www.geosci-model-dev.net/9/1937/2016/>,
- 10 2016a.
- Eyring, V., Gleckler, P. J., Heinze, C., Stouffer, R. J., Taylor, K. E., Balaji, V., Guilyardi, E., Joussaume, S., Kindermann, S., Lawrence, B. N., Meehl, G. A., Righi, M., and Williams, D. N.: Towards improved and more routine Earth system model evaluation in CMIP, *Earth System Dynamics*, 7, 813–830, <https://doi.org/10.5194/esd-7-813-2016>, [https://www.](https://www.earth-syst-dynam.net/7/813/2016/)
- 15 [earth-syst-dynam.net/7/813/2016/](https://www.earth-syst-dynam.net/7/813/2016/), 2016b.
- Eyring, V., Righi, M., Lauer, A., Evaldsson, M., Wenzel, S., Jones, C., Anav, A., Andrews, O., Cionni, I., Davin, E. L., Deser, C., Ehbrecht, C., Friedlingstein, P., Gleckler, P., Gottschaldt, K.-D., Hagemann, S., Juckes, M., Kindermann, S., Krasting, J., Kunert, D., Levine, R., Loew, A., Mäkelä, J., Martin, G., Mason, E., Phillips, A. S., Read, S., Rio, C., Roehrig, R., Senftleben, D., Sterl, A., van Ulft, L. H., Walton, J., Wang, S., and Williams, K. D.: ESM-
- 20 ValTool (v1.0) – a community diagnostic and performance metrics tool for routine evaluation of Earth system models in CMIP, *Geoscientific Model Development*, 9, 1747–1802, <https://doi.org/10.5194/gmd-9-1747-2016>, <https://www.geosci-model-dev.net/9/1747/2016/>, 2016c.
- 25 Feichter, J., Kjellström, E., Rodhe, H., Dentener, F., Lelieveld, J., and Roelofs, G.-J.: Simulation of the tropospheric sulfur cycle in a global climate model, *Atmospheric Environment*, 30, 1693 – 1707, [https://doi.org/https://doi.org/10.1016/1352-2310\(95\)00394-0](https://doi.org/https://doi.org/10.1016/1352-2310(95)00394-0), <http://www.sciencedirect.com/science/article/pii/S1352231095003940>, joint 8th CAGCP and 2nd IGAC Conference on Global Atmospheric Chemistry, 1996.
- 30 Feingold, G., Remer, L. A., Ramaprasad, J., and Kaufman, Y. J.: Analysis of smoke impact on clouds in Brazilian biomass burning regions: An extension of Twomey’s approach, *Journal of Geophysical Research: Atmospheres*, 106, 22 907–22 922, <https://doi.org/10.1029/2001JD000732>, <https://agupubs.onlinelibrary.wiley.com/doi/abs/10.1029/2001JD000732>, 2001.
- 35 Flato, G., Marotzke, J., Abiodun, B., Braconnot, P., Chou, S., Collins, W., Cox, P., Driouech, F., Emori, S., Eyring, V., Forest, C., Gleckler, P., Guilyardi, E., Jakob, C., Kattsov, V., Reason, C., and Rummukainen, M.: Evaluation of Climate Models, book section 9, p. 741–866, Cambridge University Press, Cambridge, United Kingdom and New York,

- NY, USA, <https://doi.org/10.1017/CBO9781107415324.020>, www.climatechange2013.org, 2013.
- Flato, G. M.: Earth system models: an overview, *Wiley Interdisciplinary Reviews: Climate Change*, 2, 783–800, <https://doi.org/10.1002/wcc.148>, <https://onlinelibrary.wiley.com/doi/abs/10.1002/wcc.148>, 2011.
- 5 Gattelman, A., Morrison, H., Santos, S., Bogenschütz, P., and Caldwell, P. M.: Advanced Two-Moment Bulk Microphysics for Global Models. Part II: Global Model Solutions and Aerosol–Cloud Interactions, *Journal of Climate*, 28, 1288–1307, <https://doi.org/10.1175/JCLI-D-14-00103.1>, <https://doi.org/10.1175/JCLI-D-14-00103.1>, 10 2015.
- Grandey, B. S. and Stier, P.: A critical look at spatial scale choices in satellite-based aerosol indirect effect studies, *Atmospheric Chemistry and Physics*, 10, 11459–11470, <https://doi.org/10.5194/acp-10-11459-2010>, <https://www.atmos-chem-phys.net/10/11459/2010/>, 2010.
- 15 Grandey, B. S., Stier, P., and Wagner, T. M.: Investigating relationships between aerosol optical depth and cloud fraction using satellite, aerosol reanalysis and general circulation model data, *Atmospheric Chemistry and Physics*, 13, 3177–3184, <https://doi.org/10.5194/acp-13-3177-2013>, <https://www.atmos-chem-phys.net/13/3177/2013/>, 2013.
- Grosvenor, D. P., Sourdeval, O., Zuidema, P., Ackerman, A., Alexandrov, M. D., Bennartz, 20 R., Boers, R., Cairns, B., Chiu, J. C., Christensen, M., Deneke, H., Diamond, M., Feingold, G., Fridlind, A., Hünerbein, A., Knist, C., Kollias, P., Marshak, A., McCoy, D., Merk, D., Painemal, D., Rausch, J., Rosenfeld, D., Russchenberg, H., Seifert, P., Sinclair, K., Stier, P., van Diedenhoven, B., Wendisch, M., Werner, F., Wood, R., Zhang, Z., and Quaas, J.: Remote Sensing of Droplet Number Concentration in Warm Clouds: A Review 25 of the Current State of Knowledge and Perspectives, *Reviews of Geophysics*, 56, 409–453, <https://doi.org/10.1029/2017RG000593>, <https://agupubs.onlinelibrary.wiley.com/doi/abs/10.1029/2017RG000593>, 2018.
- Gryspeerdt, E., Stier, P., and Grandey, B. S.: Cloud fraction mediates the aerosol optical depth–cloud top height relationship, *Geophysical Research Letters*, 41, 3622–3627, 30 <https://doi.org/10.1002/2014GL059524>, <https://agupubs.onlinelibrary.wiley.com/doi/abs/10.1002/2014GL059524>, 2014.
- Gryspeerdt, E., Quaas, J., and Bellouin, N.: Constraining the aerosol influence on cloud fraction, *Journal of Geophysical Research: Atmospheres*, 121, 3566–3583, <https://doi.org/10.1002/2015JD023744>, <https://agupubs.onlinelibrary.wiley.com/doi/abs/10.1002/2015JD023744>, 35 2016.
- Guenther, A. B., Jiang, X., Heald, C. L., Sakulyanontvittaya, T., Duhl, T., Emmons, L. K., and Wang, X.: The Model of Emissions of Gases and Aerosols from Nature version 2.1 (MEGAN2.1): an extended and updated framework for modeling biogenic emissions, *Geo-*

- scientific Model Development, 5, 1471–1492, <https://doi.org/10.5194/gmd-5-1471-2012>, <https://www.geosci-model-dev.net/5/1471/2012/>, 2012.
- Hubanks, P., Platnick, S., King, M., and Ridgway, B.: MODIS Algorithm Theoretical Basis Document No.ATBD–MOD–30 for Level–3 Global Gridded Atmosphere Products (08 D3, 08 E3, 08 M3) and User Guide (Collection 6.0 6.1), 2016.
- Iversen, T., Bentsen, M., Bethke, I., Debernard, J. B., Kirkevåg, A., Seland, Ø., Drange, H., Kristjansson, J. E., Medhaug, I., Sand, M., and Seierstad, I. A.: The Norwegian Earth System Model, NorESM1-M “ Part 2: Climate response and scenario projections, *Geoscientific Model Development*, 6, 389–415, <https://doi.org/10.5194/gmd-6-389-2013>, <https://www.geosci-model-dev.net/6/389/2013/>, 2013.
- Jia, H., Ma, X., Quaas, J., Yin, Y., and Qiu, T.: Is positive correlation between cloud droplet effective radius and aerosol optical depth over land due to retrieval artifacts or real physical processes?, *Atmospheric Chemistry and Physics*, 19, 8879–8896, <https://doi.org/10.5194/acp-19-8879-2019>, <https://www.atmos-chem-phys.net/19/8879/2019/>, 2019.
- Jiang, J. H., Su, H., Huang, L., Wang, Y., Massie, S., Zhao, B., Omar, A., and Wang, Z.: Contrasting effects on deep convective clouds by different types of aerosols, 9, <https://doi.org/10.1038/s41467-018-06280-4>, <https://doi.org/10.1038/s41467-018-06280-4>, 2018.
- Kay, J. E., Hillman, B. R., Klein, S. A., Zhang, Y., Medeiros, B., Pincus, R., Gettelman, A., Eaton, B., Boyle, J., Marchand, R., and Ackerman, T. P.: Exposing Global Cloud Biases in the Community Atmosphere Model (CAM) Using Satellite Observations and Their Corresponding Instrument Simulators, *Journal of Climate*, 25, 5190–5207, <https://doi.org/10.1175/JCLI-D-11-00469.1>, <https://doi.org/10.1175/JCLI-D-11-00469.1>, 2012.
- Khairoutdinov, M. and Kogan, Y.: A New Cloud Physics Parameterization in a Large-Eddy Simulation Model of Marine Stratocumulus, *Monthly Weather Review*, 128, 229–243, [https://doi.org/10.1175/1520-0493\(2000\)128<0229:ANCPPI>2.0.CO;2](https://doi.org/10.1175/1520-0493(2000)128<0229:ANCPPI>2.0.CO;2), [https://doi.org/10.1175/1520-0493\(2000\)128<0229:ANCPPI>2.0.CO;2](https://doi.org/10.1175/1520-0493(2000)128<0229:ANCPPI>2.0.CO;2), 2000.
- King, N. J., Bower, K. N., Crosier, J., and Crawford, I.: Evaluating MODIS cloud retrievals with in situ observations from VOCALS-REx, *Atmospheric Chemistry and Physics*, 13, 191–209, <https://doi.org/10.5194/acp-13-191-2013>, <https://www.atmos-chem-phys.net/13/191/2013/>, 2013.
- Kirkevåg, A., Iversen, T., Seland, Ø., Hoose, C., Kristjánsson, J. E., Struthers, H., Ekman, A. M. L., Ghan, S., Griesfeller, J., Nilsson, E. D., and Schulz, M.: Aerosol–climate interactions in the Norwegian Earth System Model “ NorESM1-M, *Geoscientific Model Development*, 6, 207–244, <https://doi.org/10.5194/gmd-6-207-2013>, <https://www.geosci-model-dev.net/6/207/2013/>, 2013.
- Kirkevåg, A., Grini, A., Olivíć, D., Seland, Ø., Alterskjær, K., Hummel, M., Karset, I. H. H., Lewinschal, A., Liu, X., Makkonen, R., Bethke, I., Griesfeller, J., Schulz, M., and

- Iversen, T.: A production-tagged aerosol module for Earth system models, OsloAero5.3 – extensions and updates for CAM5.3-Oslo, *Geoscientific Model Development*, 11, 3945–3982, <https://doi.org/10.5194/gmd-11-3945-2018>, <https://www.geosci-model-dev.net/11/3945/2018/>, 2018.
- 5 Klein, S. and Webb, M.: ISCCP simulator implementation instructions: Readme, <http://cfmip.metoffice.com/README>, 2009.
- Kokkola, H., Korhonen, H., Lehtinen, K. E. J., Makkonen, R., Asmi, A., Järvenoja, S., Anttila, T., Partanen, A.-I., Kulmala, M., Järvinen, H., Laaksonen, A., and Kerminen, V.-M.: SALSA: a Sectional Aerosol module for Large Scale Applications, 8, 2469–2483, 10 <http://www.atmos-chem-phys.net/8/2469/2008/>, 2008.
- Kokkola, H., Kühn, T., Laakso, A., Bergman, T., Lehtinen, K. E. J., Mielonen, T., Arola, A., Stadtler, S., Korhonen, H., Ferrachat, S., Lohmann, U., Neubauer, D., Tegen, I., Siegenthaler-Le Drian, C., Schultz, M. G., Bey, I., Stier, P., Daskalakis, N., Heald, C. L., and Romakkaniemi, S.: SALSA2.0: The sectional aerosol module of the aerosol-chemistry-climate 15 model ECHAM6.3.0-HAM2.3-MOZ1.0, *Geoscientific Model Development Discussions*, 2018, 1–43, <https://doi.org/10.5194/gmd-2018-47>, <https://www.geosci-model-dev-discuss.net/gmd-2018-47/>, 2018.
- Koren, I., Remer, L. A., Kaufman, Y. J., Rudich, Y., and Martins, J. V.: On the twilight zone between clouds and aerosols, *Geophysical Research Letters*, 34, 20 <https://doi.org/10.1029/2007GL029253>, <https://agupubs.onlinelibrary.wiley.com/doi/abs/10.1029/2007GL029253>, 2007.
- Koren, I., Oreopoulos, L., Feingold, G., Remer, L. A., and Altaratz, O.: Aerosol-induced intensification of rain from the tropics to the mid-latitudes, *Nature Geoscience*, 4, <https://doi.org/10.1038/ngeo1364>, <https://doi.org/10.1038/ngeo1364>, 2012.
- 25 Kärcher, B. and Lohmann, U.: A Parameterization of cirrus cloud formation: Homogeneous freezing including effects of aerosol size, *Journal of Geophysical Research: Atmospheres*, 107, AAC 9–1–AAC 9–10, <https://doi.org/10.1029/2001JD001429>, <https://agupubs.onlinelibrary.wiley.com/doi/abs/10.1029/2001JD001429>, 2002.
- Lee, L. A., Reddington, C. L., and Carslaw, K. S.: On the relationship between aerosol model 30 uncertainty and radiative forcing uncertainty, *Proceedings of the National Academy of Sciences*, 113, 5820–5827, <https://doi.org/10.1073/pnas.1507050113>, <https://www.pnas.org/content/113/21/5820>, 2016.
- Levy, R. C., Remer, L. A., Mattoo, S., Vermote, E. F., and Kaufman, Y. J.: Second-generation operational algorithm: Retrieval of aerosol properties over land from inversion of Moderate Resolution Imaging Spectroradiometer spectral reflectance, *Journal of Geophysical Research: Atmospheres*, 112, <https://doi.org/10.1029/2006JD007811>, <https://agupubs.onlinelibrary.wiley.com/doi/abs/10.1029/2006JD007811>, 2007.
- 35

- Levy, R. C., Mattoo, S., Munchak, L. A., Remer, L. A., Sayer, A. M., Patadia, F., and Hsu, N. C.: The Collection 6 MODIS aerosol products over land and ocean, *Atmospheric Measurement Techniques*, 6, 2989–3034, <https://doi.org/10.5194/amt-6-2989-2013>, <https://www.atmos-meas-tech.net/6/2989/2013/>, 2013.
- 5 Liu, Y., de Leeuw, G., Kerminen, V.-M., Zhang, J., Zhou, P., Nie, W., Qi, X., Hong, J., Wang, Y., Ding, A., Guo, H., Krüger, O., Kulmala, M., and Petäjä, T.: Analysis of aerosol effects on warm clouds over the Yangtze River Delta from multi-sensor satellite observations, *Atmospheric Chemistry and Physics*, 17, 5623–5641, <https://doi.org/10.5194/acp-17-5623-2017>, <https://www.atmos-chem-phys.net/17/5623/2017/>, 2017.
- 10 Liu, Y., Zhang, J., Zhou, P., Lin, T., Hong, J., Shi, L., Yao, F., Wu, J., Guo, H., and de Leeuw, G.: Satellite-based estimate of the variability of warm cloud properties associated with aerosol and meteorological conditions, *Atmospheric Chemistry and Physics*, 18, 18 187–18 202, <https://doi.org/10.5194/acp-18-18187-2018>, <https://www.atmos-chem-phys.net/18/18187/2018/>, 2018.
- 15 Lohmann, U. and Diehl, K.: Sensitivity Studies of the Importance of Dust Ice Nuclei for the Indirect Aerosol Effect on Stratiform Mixed-Phase Clouds, *Journal of the Atmospheric Sciences*, 63, 968–982, <https://doi.org/10.1175/JAS3662.1>, <https://doi.org/10.1175/JAS3662.1>, 2006.
- Lohmann, U. and Hoose, C.: Sensitivity studies of different aerosol indirect effects in mixed-phase clouds, *Atmospheric Chemistry and Physics*, 9, 8917–8934, <https://doi.org/10.5194/acp-9-8917-2009>, <https://www.atmos-chem-phys.net/9/8917/2009/>, 2009.
- 20 Lohmann, U. and Neubauer, D.: The importance of mixed-phase and ice clouds for climate sensitivity in the global aerosol–climate model ECHAM6-HAM2, *Atmospheric Chemistry and Physics*, 18, 8807–8828, <https://doi.org/10.5194/acp-18-8807-2018>, <https://www.atmos-chem-phys.net/18/8807/2018/>, 2018.
- 25 Lohmann, U., Stier, P., Hoose, C., Ferrachat, S., Kloster, S., Roeckner, E., and Zhang, J.: Cloud microphysics and aerosol indirect effects in the global climate model ECHAM5-HAM, *Atmospheric Chemistry and Physics*, 7, 3425–3446, <https://doi.org/10.5194/acp-7-3425-2007>, <https://www.atmos-chem-phys.net/7/3425/2007/>, 2007.
- 30 Lohmann, U., Spichtinger, P., Jess, S., Peter, T., and Smit, H.: Cirrus cloud formation and ice supersaturated regions in a global climate model, *Environmental Research Letters*, 3, 045 022, <https://doi.org/10.1088/1748-9326/3/4/045022>, 2008.
- 35 Luo, Z. J., Anderson, R. C., Rossow, W. B., and Takahashi, H.: Tropical cloud and precipitation regimes as seen from near-simultaneous TRMM, CloudSat, and CALIPSO observations and comparison with ISCCP, *Journal of Geophysical Research: Atmospheres*, 122, 5988–6003, <https://doi.org/10.1002/2017JD026569>, <https://agupubs.onlinelibrary.wiley.com/doi/abs/10.1002/2017JD026569>, 2017.

- Marchant, B., Platnick, S., Meyer, K., Arnold, G. T., and Riedi, J.: MODIS Collection 6 shortwave-derived cloud phase classification algorithm and comparisons with CALIOP, *Atmospheric Measurement Techniques*, 9, 1587–1599, <https://doi.org/10.5194/amt-9-1587-2016>, <https://www.atmos-meas-tech.net/9/1587/2016/>, 2016.
- 5 McComiskey, A. and Feingold, G.: The scale problem in quantifying aerosol indirect effects, *Atmospheric Chemistry and Physics*, 12, 1031–1049, <https://doi.org/10.5194/acp-12-1031-2012>, <https://www.atmos-chem-phys.net/12/1031/2012/>, 2012.
- Mielonen, T., Levy, R. C., Aaltonen, V., Komppula, M., de Leeuw, G., Huttunen, J., Li-havainen, H., Kolmonen, P., Lehtinen, K. E. J., and Arola, A.: Evaluating the assump-
10 tions of surface reflectance and aerosol type selection within the MODIS aerosol retrieval over land: the problem of dust type selection, *Atmospheric Measurement Techniques*, 4, 201–214, <https://doi.org/10.5194/amt-4-201-2011>, <https://www.atmos-meas-tech.net/4/201/2011/>, 2011.
- Min, Q., Joseph, E., Lin, Y., Min, L., Yin, B., Daum, P. H., Kleinman, L. I., Wang, J.,
15 and Lee, Y.-N.: Comparison of MODIS cloud microphysical properties with in-situ measurements over the Southeast Pacific, *Atmospheric Chemistry and Physics*, 12, 11 261–11 273, <https://doi.org/10.5194/acp-12-11261-2012>, <https://www.atmos-chem-phys.net/12/11261/2012/>, 2012.
- Morrison, H. and Gettelman, A.: A New Two-Moment Bulk Stratiform Cloud Mi-
20 crophysics Scheme in the Community Atmosphere Model, Version 3 (CAM3). Part I: Description and Numerical Tests, *Journal of Climate*, 21, 3642–3659, <https://doi.org/10.1175/2008JCLI2105.1>, <https://doi.org/10.1175/2008JCLI2105.1>, 2008.
- Myhre, G., Stordal, F., Johnsrud, M., Kaufman, Y. J., Rosenfeld, D., Storelvmo, T., Kristjansson, J. E., Berntsen, T. K., Myhre, A., and Isaksen, I. S. A.: Aerosol-cloud interaction inferred
25 from MODIS satellite data and global aerosol models, *Atmospheric Chemistry and Physics*, 7, 3081–3101, <https://doi.org/10.5194/acp-7-3081-2007>, <https://www.atmos-chem-phys.net/7/3081/2007/>, 2007.
- Neale, R. B., Gettelman, A., Park, S., Conley, A. J., Kinnison, D., Marsh, D., Smith, A. K., Vitt, F., Morrison, H., Cameron-smith, P., Collins, W. D., Iacono, M. J., Easter, R. C., Liu, X., Tay-
30 lor, M. A., chieh Chen, C., Lauritzen, P. H., Williamson, D. L., Garcia, R., francois Lamarque, J., Mills, M., Tilmes, S., Ghan, S. J., Rasch, P. J., and Meteorology, M.: Description of the NCAR Community Atmosphere Model (CAM 5.0), Tech. Note NCAR/TN-486+STR, Natl. Cent. for Atmos, in: 6of7 ZHAO ET AL.: AEROSOL FIELD SIMULATED BY CAMS L08806, pp. 2009–038 451, 2010.
- 35 Neubauer, D., Christensen, M. W., Poulsen, C. A., and Lohmann, U.: Unveiling aerosol–cloud interactions – Part 2: Minimising the effects of aerosol swelling and wet scavenging in ECHAM6-HAM2 for comparison to satellite data, *Atmospheric Chemistry and Physics*, 17,

- 13 165–13 185, <https://doi.org/10.5194/acp-17-13165-2017>, <https://www.atmos-chem-phys.net/17/13165/2017/>, 2017.
- Neubauer, D., Ferrachat, S., Siegenthaler-Le Drian, C., Stier, P., Partridge, D. G., Tegen, I., Bey, I., Stanelle, T., Kokkola, H., and Lohmann, U.: The global aerosol-climate model ECHAM6.3-HAM2.3 - Part 2: Cloud evaluation, aerosol radiative forcing and climate sensitivity, *Geoscientific Model Development Discussions*, 2019, 1–52, <https://doi.org/10.5194/gmd-2018-307>, <https://www.geosci-model-dev-discuss.net/gmd-2018-307/>, 2019.
- Noble, S. and Hudson, J.: MODIS comparisons with northeastern Pacific in situ stratocumulus microphysics, *Journal of geophysical research. Atmospheres : JGR*, 120, 8332–344, <https://doi.org/10.1002/2014JD022785>, <https://www.ncbi.nlm.nih.gov/pubmed/27708990>, 2015.
- Nordeng, T. E.: Extended versions of the convective parameterization scheme at ECMWF and their impact on the mean and transient activity of the model in the tropics, 1994.
- Oleson, K. W. and Lawrence, D. M., Gordon, B., Flanner, M. G., Kluzek, E., Peter, J., Levis, S., Swenson, S. C., Thornton, E., and Feddema, J.: Technical description of version 4.0 of the Community Land Model (CLM), 2010.
- Oreopoulos, L., Cho, N., and Lee, D.: Using MODIS cloud regimes to sort diagnostic signals of aerosol-cloud-precipitation interactions, *Journal of Geophysical Research: Atmospheres*, 122, 5416–5440, <https://doi.org/10.1002/2016JD026120>, <https://agupubs.onlinelibrary.wiley.com/doi/abs/10.1002/2016JD026120>, 2017.
- Painemal, D. and Zuidema, P.: Assessment of MODIS cloud effective radius and optical thickness retrievals over the Southeast Pacific with VOCALS-REx in situ measurements, *Journal of Geophysical Research: Atmospheres*, 116, <https://doi.org/10.1029/2011JD016155>, <https://agupubs.onlinelibrary.wiley.com/doi/abs/10.1029/2011JD016155>, 2011.
- Park, S. and Bretherton, C. S.: The University of Washington Shallow Convection and Moist Turbulence Schemes and Their Impact on Climate Simulations with the Community Atmosphere Model, *Journal of Climate*, 22, 3449–3469, <https://doi.org/10.1175/2008JCLI2557.1>, <https://doi.org/10.1175/2008JCLI2557.1>, 2009.
- Penner, J. E., Xu, L., and Wang, M.: Satellite methods underestimate indirect climate forcing by aerosols, 108, 13 404–13 408, <https://doi.org/10.1073/pnas.1018526108>, 2011.
- Pincus, R., Platnick, S., Ackerman, S. A., Hemler, R. S., and Hofmann, P. R. J.: Reconciling Simulated and Observed Views of Clouds: MODIS, ISCCP, and the Limits of Instrument Simulators, *Journal of Climate*, 25, 4699–4720, <https://doi.org/10.1175/JCLI-D-11-00267.1>, <https://doi.org/10.1175/JCLI-D-11-00267.1>, 2012.
- Platnick, S., Meyer, K. G., King, M. D., Wind, G., Amarasinghe, N., Marchant, B., Arnold, G. T., Zhang, Z., Hubanks, P. A., Holz, R. E., Yang, P., Ridgway, W. L., and Riedi, J.: The MODIS Cloud Optical and Microphysical Products: Collection 6 Updates and Examples

- From Terra and Aqua, *IEEE Transactions on Geoscience and Remote Sensing*, 55, 502–525, <https://doi.org/10.1109/TGRS.2016.2610522>, 2017.
- Preißler, J., Martucci, G., Saponaro, G., Ovadnevaite, J., Vaishya, A., Kolmonen, P., Ceburnis, D., Sogacheva, L., de Leeuw, G., and O’Dowd, C.: Six years of surface remote sensing of stratiform warm clouds in marine and continental air over Mace Head, Ireland, *Journal of Geophysical Research: Atmospheres*, 121, 14,538–14,557, <https://doi.org/10.1002/2016JD025360>, <https://agupubs.onlinelibrary.wiley.com/doi/abs/10.1002/2016JD025360>, 2016.
- Quaas, J., Boucher, O., and Bréon, F.-M.: Aerosol indirect effects in POLDER satellite data and the Laboratoire de Météorologie Dynamique–Zoom (LMDZ) general circulation model, *Journal of Geophysical Research: Atmospheres*, 109, n/a–n/a, <https://doi.org/10.1029/2003JD004317>, <http://dx.doi.org/10.1029/2003JD004317>, d08205, 2004.
- Quaas, J., Boucher, O., and Lohmann, U.: Constraining the total aerosol indirect effect in the LMDZ and ECHAM4 GCMs using MODIS satellite data, *Atmospheric Chemistry and Physics*, 6, 947–955, <https://doi.org/10.5194/acp-6-947-2006>, <https://www.atmos-chem-phys.net/6/947/2006/>, 2006.
- Quaas, J., Ming, Y., Menon, S., Takemura, T., Wang, M., Penner, J. E., Gettelman, A., Lohmann, U., Bellouin, N., Boucher, O., Sayer, A. M., Thomas, G. E., McComiskey, A., Feingold, G., Hoose, C., Kristjánsson, J. E., Liu, X., Balkanski, Y., Donner, L. J., Ginoux, P. A., Stier, P., Grandey, B., Feichter, J., Sednev, I., Bauer, S. E., Koch, D., Grainger, R. G., Kirkevaring, A., Iversen, T., Seland, Ø., Easter, R., Ghan, S. J., Rasch, P. J., Morrison, H., Lamarque, J.-F., Iacono, M. J., Kinne, S., and Schulz, M.: Aerosol indirect effects - general circulation model intercomparison and evaluation with satellite data, *Atmospheric Chemistry and Physics*, 9, 8697–8717, <https://doi.org/10.5194/acp-9-8697-2009>, <https://www.atmos-chem-phys.net/9/8697/2009/>, 2009.
- Quaas, J., Stevens, B., Stier, P., and Lohmann, U.: Interpreting the cloud cover - aerosol optical depth relationship found in satellite data using a general circulation model, *Atmospheric Chemistry and Physics*, 10, 6129–6135, <https://doi.org/10.5194/acp-10-6129-2010>, <https://www.atmos-chem-phys.net/10/6129/2010/>, 2010.
- Rausch, J., Heidinger, A., and Bennartz, R.: Regional assessment of microphysical properties of marine boundary layer cloud using the PATMOS-x dataset, *Journal of Geophysical Research: Atmospheres*, 115, <https://doi.org/10.1029/2010JD014468>, <https://agupubs.onlinelibrary.wiley.com/doi/abs/10.1029/2010JD014468>, 2010.
- Saponaro, G., Kolmonen, P., Sogacheva, L., Rodriguez, E., Virtanen, T., and de Leeuw, G.: Estimates of the aerosol indirect effect over the Baltic Sea region derived from 12 years of MODIS observations, *Atmospheric Chemistry and Physics*, 17,

- 3133–3143, <https://doi.org/10.5194/acp-17-3133-2017>, <https://www.atmos-chem-phys.net/17/3133/2017/>, 2017.
- Sayer, A. M., Munchak, L. A., Hsu, N. C., Levy, R. C., Bettenhausen, C., and Jeong, M.-J.: MODIS Collection 6 aerosol products: Comparison between Aqua’s e-Deep Blue, Dark Target, and “merged” data sets, and usage recommendations, *Journal of Geophysical Research: Atmospheres*, 119, 13,965–13,989, <https://doi.org/10.1002/2014JD022453>, <https://agupubs.onlinelibrary.wiley.com/doi/abs/10.1002/2014JD022453>, 2014.
- Schultz, M. G., Stadtler, S., Schröder, S., Taraborrelli, D., Franco, B., Krefting, J., Henrot, A., Ferrachat, S., Lohmann, U., Neubauer, D., Siegenthaler-Le Drian, C., Wahl, S., Kokkola, H., Kühn, T., Rast, S., Schmidt, H., Stier, P., Kinnison, D., Tyndall, G. S., Orlando, J. J., and Wespes, C.: The chemistry–climate model ECHAM6.3-HAM2.3-MOZ1.0, *Geoscientific Model Development*, 11, 1695–1723, <https://doi.org/10.5194/gmd-11-1695-2018>, <https://www.geosci-model-dev.net/11/1695/2018/>, 2018.
- Seinfeld, J. H., Bretherton, C., Carslaw, K. S., Coe, H., DeMott, P. J., Dunlea, E. J., Feingold, G., Ghan, S., Guenther, A. B., Kahn, R., Kraucunas, I., Kreidenweis, S. M., Molina, M. J., Nenes, A., Penner, J. E., Prather, K. A., Ramanathan, V., Ramaswamy, V., Rasch, P. J., Ravishankara, A. R., Rosenfeld, D., Stephens, G., and Wood, R.: Improving our fundamental understanding of the role of aerosol-cloud interactions in the climate system, *Proceedings of the National Academy of Sciences*, 113, 5781–5790, <https://doi.org/10.1073/pnas.1514043113>, <https://www.pnas.org/content/113/21/5781>, 2016.
- Sporre, M. K., Swietlicki, E., Glantz, P., and Kulmala, M.: Aerosol indirect effects on continental low-level clouds over Sweden and Finland, *Atmospheric Chemistry and Physics*, 14, 12 167–12 179, <https://doi.org/10.5194/acp-14-12167-2014>, <https://www.atmos-chem-phys.net/14/12167/2014/>, 2014.
- Sporre, M. K., O’Connor, E. J., Håkansson, N., Thoss, A., Swietlicki, E., and Petäjä, T.: Comparison of MODIS and VIIRS cloud properties with ARM ground-based observations over Finland, *Atmospheric Measurement Techniques*, 9, 3193–3203, <https://doi.org/10.5194/amt-9-3193-2016>, <https://www.atmos-meas-tech.net/9/3193/2016/>, 2016.
- Stevens, B., Giorgetta, M., Esch, M., Mauritsen, T., Crueger, T., Rast, S., Salzmann, M., Schmidt, H., Bader, J., Block, K., Brokopf, R., Fast, I., Kinne, S., Kornbluh, L., Lohmann, U., Pincus, R., Reichler, T., and Roeckner, E.: Atmospheric component of the MPI-M Earth System Model: ECHAM6, *Journal of Advances in Modeling Earth Systems*, 5, 146–172, <https://doi.org/10.1002/jame.20015>, <https://agupubs.onlinelibrary.wiley.com/doi/abs/10.1002/jame.20015>, 2013.
- Storelvmo, T.: Uncertainties in aerosol direct and indirect effects attributed to uncertainties in convective transport parameterizations, *Atmospheric Research*, 118, 357 – 369, <https://doi.org/https://doi.org/10.1016/j.atmosres.2012.06.022>, <http://www.sciencedirect.com/science/article/pii/S0169809512002190>, 2012.

- Sundqvist, H., Berge, E., and Kristjánsson, J. E.: Condensation and Cloud Parameterization Studies with a Mesoscale Numerical Weather Prediction Model, *Monthly Weather Review*, 117, 1641–1657, [https://doi.org/10.1175/1520-0493\(1989\)117<1641:CACPSW>2.0.CO;2](https://doi.org/10.1175/1520-0493(1989)117<1641:CACPSW>2.0.CO;2), [https://doi.org/10.1175/1520-0493\(1989\)117<1641:CACPSW>2.0.CO;2](https://doi.org/10.1175/1520-0493(1989)117<1641:CACPSW>2.0.CO;2), 1989.
- 5 Taylor, K., Williamson, D., and Zwiers, F.: The sea surface temperature and sea ice concentration boundary conditions for AMIP II simulations. PCMDI Report 60, Program for Climate Model Diagnosis and Intercomparison, Lawrence Livermore National Laboratory, 25 pp., <https://pcmdi.llnl.gov/report/pdf/60.pdf?id=86>, 2000.
- Tegen, I., Neubauer, D., Ferrachat, S., Siegenthaler-Le Drian, C., Bey, I., Schutgens, N., Stier, P.,
10 Watson-Parris, D., Stanelle, T., Schmidt, H., Rast, S., Kokkola, H., Schultz, M., Schroeder, S., Daskalakis, N., Barthel, S., Heinold, B., and Lohmann, U.: The global aerosol–climate model ECHAM6.3–HAM2.3 – Part 1: Aerosol evaluation, *Geoscientific Model Development*, 12, 1643–1677, <https://doi.org/10.5194/gmd-12-1643-2019>, <https://www.geosci-model-dev.net/12/1643/2019/>, 2019.
- 15 Tiedtke, M.: A Comprehensive Mass Flux Scheme for Cumulus Parameterization in Large-Scale Models, *Monthly Weather Review*, 117, 1779–1800, [https://doi.org/10.1175/1520-0493\(1989\)117<1779:ACMFSF>2.0.CO;2](https://doi.org/10.1175/1520-0493(1989)117<1779:ACMFSF>2.0.CO;2), [https://doi.org/10.1175/1520-0493\(1989\)117<1779:ACMFSF>2.0.CO;2](https://doi.org/10.1175/1520-0493(1989)117<1779:ACMFSF>2.0.CO;2), 1989.
- Vignati, E., Wilson, J., and Stier, P.: M7: An efficient size-resolved aerosol microphysics
20 module for large-scale aerosol transport models, *Journal of Geophysical Research: Atmospheres*, 109, <https://doi.org/10.1029/2003JD004485>, <https://agupubs.onlinelibrary.wiley.com/doi/abs/10.1029/2003JD004485>, 2004.
- Wang, Y., Liu, X., Hoose, C., and Wang, B.: Different contact angle distributions for heterogeneous ice nucleation in the Community Atmospheric Model version 5, *Atmospheric Chemistry and Physics*, 14, 10411–10430, <https://doi.org/10.5194/acp-14-10411-2014>, <https://www.atmos-chem-phys.net/14/10411/2014/>, 2014.
- 25 Webb, M. J., Andrews, T., Bodas-Salcedo, A., Bony, S., Bretherton, C. S., Chadwick, R., Chepfer, H., Douville, H., Good, P., Kay, J. E., Klein, S. A., Marchand, R., Medeiros, B., Siebesma, A. P., Skinner, C. B., Stevens, B., Tselioudis, G., Tsushima, Y., and Watanabe,
30 M.: The Cloud Feedback Model Intercomparison Project (CFMIP) contribution to CMIP6, *Geoscientific Model Development*, 10, 359–384, <https://doi.org/10.5194/gmd-10-359-2017>, <https://www.geosci-model-dev.net/10/359/2017/>, 2017.
- Wen, G., Marshak, A., Cahalan, R. F., Remer, L. A., and Kleidman, R. G.: 3-D aerosol-cloud radiative interaction observed in collocated MODIS and ASTER images of cumulus cloud fields, *Journal of Geophysical Research: Atmospheres*, 112, <https://doi.org/10.1029/2006JD008267>, <https://agupubs.onlinelibrary.wiley.com/doi/abs/10.1029/2006JD008267>, 2007.

- Williams, K. D. and Bodas-Salcedo, A.: A multi-diagnostic approach to cloud evaluation, *Geoscientific Model Development*, 10, 2547–2566, <https://doi.org/10.5194/gmd-10-2547-2017>, <https://www.geosci-model-dev.net/10/2547/2017/>, 2017.
- 5 Yu, W., Doutriaux, M., Sèze, G., Le Treut, H., and Desbois, M.: A methodology study of the validation of clouds in GCMs using ISCCP satellite observations, *Climate Dynamics*, 12, 389–401, <https://doi.org/10.1007/BF00211685>, <https://doi.org/10.1007/BF00211685>, 1996.
- Zhang, G. and McFarlane, N.: Sensitivity of climate simulations to the parameterization of cumulus convection in the Canadian climate centre general circulation model, *Atmosphere-Ocean*, 33, 407–446, <https://doi.org/10.1080/07055900.1995.9649539>, <https://doi.org/10.1080/07055900.1995.9649539>, 1995.
- 10 Zhang, Y., Klein, S. A., Boyle, J., and Mace, G. G.: Evaluation of tropical cloud and precipitation statistics of Community Atmosphere Model version 3 using Cloud-Sat and CALIPSO data, *Journal of Geophysical Research: Atmospheres*, 115, n/a–n/a, <https://doi.org/10.1029/2009JD012006>, <http://dx.doi.org/10.1029/2009JD012006>, d12205,
- 15 2010.
- Zhang, Z., Ackerman, A. S., Feingold, G., Platnick, S., Pincus, R., and Xue, H.: Effects of cloud horizontal inhomogeneity and drizzle on remote sensing of cloud droplet effective radius: Case studies based on large-eddy simulations, *Journal of Geophysical Research: Atmospheres*, 117, n/a–n/a, <https://doi.org/10.1029/2012JD017655>, <http://dx.doi.org/10.1029/2012JD017655>, d19208, 2012.
- 20