

Answers to Referee 1

December 23, 2019

Influence of clouds

Comment by Referee

My main concern is that the simulations are under clear atmospheric conditions without discussion about possible cloud effects. Bernhard and Petkov(2019) mentioned that "The sky was free of clouds in the direction of the Sun, with small clouds lingering only near the horizon." This is consistent with GOES-16 images (see <http://www2.mmm.ucar.edu> [...]) Even though thin cirrus clouds were not in the direction of the observer and the Sun, they could be potentially important generating significant amount of diffuse radiation reaching the surface near and in the totality region. Could the presence of thin cirrus clouds explain the larger observed spectral irradiance compared to the model simulations? Maybe, a simple simulation for a fraction of thin cirrus cloud not shading the Sun could help to answer this question. The results could be included in discussion section.

Authors' Response

The visible amount of clouds were really negligible. The sentence mentioned in Bernhard and Petkov (2019) refers to the clouds visible in Figure 1. Besides these, the only other feature visible on the clear sky is a thin layer close to the horizon in the gap between the mountains in the far right in Figure 2. It is not clear, whether they are attributable to clouds or aerosols. Looking at satellite pictures, the larger area around the observation spot was mostly free of clouds as well (Compare to Figure 3 and Figure 4). Concerning these circumstances, clear atmospheric conditions seemed the most reasonable assumption for our setup.

1 Comment

1.1 Comment by Referee

Spell out MYSTIC in line 7 in abstract and line 54 in introduction section.

1.2 Authors' Response

Changed accordingly.

1.3 Changes to manuscript

...the radiative transfer model MYSTIC (Monte Carlo code for the phYSically correct Tracing of photons In Cloudy atmospheres;Mayer (2009); ...

2 Comment

2.1 Comment by Referee

"contribution function" is introduced in line 70 of section 2. This is an important concept in this paper. However it is not very clear to me. A better explanation will be helpful.

2.2 Authors' Response

We tried to make the concept more clear in section 2.2., especially by adding the following explanation.

2.3 Changes to manuscript

If a photon leaves at the TOA into the direction of the sun, it is traced further to the Sampling Plane (compare Figure 1), where it is counted at the incident position. Averaging over many photons, this creates a map of contributions, i.e. how much every point in the sampling plane contributes to the irradiance at the observer position. We call this map the contribution function $C(\vec{d}, \lambda, t)$.

3 Comment

3.1 Comment by Referee

Remove Mayer (2009); Emde and Mayer (2007) in line 50 in section 2.2 since they were already referenced before.

3.2 Authors' Response

Changed accordingly

4 Comment

4.1 Comment by Referee

Is $w(d_0, \lambda, t)$ e -tau in line 16 of section 2.3 the direct component for partial eclipse conditions? If so, make it clear

4.2 Authors' Response

Yes, it is the direct component under partial conditions, if evaluated at the corresponding times. w describes the intensity of solar irradiance at every position and time in the sampling plane, including the moon's shadow. Evaluating it at the described position d_0 and multiplying by the atmospheric transmittance, we get direct radiation under non-, partial or total eclipse conditions (=0 in the latter case).

4.3 Changes to manuscript

Because for partial eclipse conditions, the light of the sun reaching the sensor directly...

5 Comment

5.1 Comment by Referee

"Because its time dependence is in the order of weeks, it is kept constant during the eclipse." in line 25 of section 2.3. Consider to remove this sentence since it was referenced.

5.2 Authors' Response

Sentence was removed and replaced by: The factor $\kappa(t)$ corrects the ETS for variations in the earth-sun distance by use of the formula from Iqbal1983, evaluated for August 21.

6 Comment

6.1 Comment by Referee

"The spectral irradiance of the 315 nm wavelength is remarkably lower than the visible irradiances, which is mainly due to ozone absorption." Is that really true? Perhaps one needs to compare irradiance during the totality with that in partial eclipse. If we look at 17:15:00, the relative difference between irradiance at 315 nm and 555 nm is about that same. I understand that ozone absorption reduces the irradiance at 315 nm reaching the troposphere, where most of the scattering takes place. Of course, the Rayleigh scattering is strongest among all

wavelength considered. A better discussion will help readers to understand this point.

6.2 Authors' Response

We changed the sentence in the following way:

6.3 Changes to manuscript

The spectral irradiance of the 315 nm wavelength is remarkably lower than the visible irradiances, which is mainly due to the naturally lower irradiance values under non-eclipse condition.

7 Comment

7.1 Comment by Referee

Figure 7 is very confusing. "Most of the diffuse photons originate from the vicinity of a line (black in Figure 7) at TOA between the point directly above the observer (black dot in Figure 7) and the intersection point of the observer-sun line with the TOA (yellow dot)." in line 65 of section 3.1. Not sure about a line at TOA because the scattering occurs in the atmosphere. "Black dot" should be green dot? "the vicinity of a line" is confusing. It seems that most of the diffuse photons originate from an area about 20 km in radius around the yellow dot. Is figure 7 (upper panel) for the partial eclipse at the observer's site since it says for 17:20 and the observer is out of the ellipse? If possible, it would be nice to have the artifact white circle removed.

7.2 Authors' Response

Indeed, this figure might be difficult to understand at the moment. The key point is, that the contribution function in the sampling plane is shown, located 120km above the observer. To enhance understanding, we propose to change Figure 1 in the manuscript according to Figure 5, which should explain the whole setup better. In Figure 5, we introduced the location of the green and yellow points as defined in Figure 7 of the manuscript. Basically, Figure 5 provides a side view of the setup, while Figure 7 in the manuscript can be interpreted as a view from above.

The "black dot" in the manuscript should of course be "green dot".

Concerning the white circles: In our setup, they are difficult to remove technically. Because they are present in the contribution function in the model, we decided to show them in Figure 7 in the manuscript as well.

7.3 Changes to manuscript

Caption of Figure 7 in manuscript: "The upper image illustrates the relative contribution from each point in the sampling plane to the diffuse irradiance. Shown is a 150 km x 300 km cutout of the contribution function at 17:20 and 490 nm wavelength. The green dot is located directly above the observer, the yellow dot marks the origin of the direct solar radiation (compare to Figure 1). Small black circles indicate the center of the lunar shadow on its way from west to east in 5 s steps with times annotated every minute. The dashed ellipse represents the shape of the umbral shadow at 17:20. The lower histogram shows the contribution function along the black line, integrated within the area bounded by the two grey lines. The white circles visible in the upper image are an artifact from the projection of the spherical grid of the simulation to the flat sampling plane."

8 Comment

8.1 Comment by Referee

In Figure 9 caption, suggest to indicate 17:20 (totality) and 17:12 (partial eclipse).

8.2 Authors' Response

Changed accordingly.

9 Comment

9.1 Comment by Referee

A discussion of the physical mechanism of different surface albedo on surface irradiance for partial and total eclipse will be useful (first paragraph on pager 6)

9.2 Authors' Response

Please specify, which features should be explained in more detail, because some of them are already discussed in the paragraph. We added the following sentence:

9.3 Changes to manuscript

[...which decreases relatively smoothly towards the near infrared.] This is due to the smaller contribution of diffuse irradiance, which is the only part affected by changes in the albedo, in the near infrared under partial eclipse conditions. [If however...]

10 Comment

10.1 Comment by Referee

Figure 10 is hard to understand. Why "From this, it can be seen that areas in a distance between 20 km and 400 km are the reason for most of the observed changes." (line 43 on page 6)? The purpose of this is to assess the validity of assumption of spatially uniform albedo, which may not valid for the Pacific Ocean. Perhaps ignore this figure and just make a statement to about the result: surface albedo is not important beyond 400 km, and the results of simulations will not change even if the albedo is different from the ocean albedo for the Pacific.

10.2 Authors' Response

So far, we have changed the surface albedo globally, without discussing the importance of different areas. With Figure 10, we wanted to make a quantitative statement about the importance of surface areas within a certain distance. "20km-400km" comes from the fact, that the jump from 0 to 1 of the blue curve occurs almost completely between 20km and 400km (90%). Should a future study decide to implement a detailed map of the surface, we hope to provide some advice on the necessary coverage and resolution with these results.

11 Comment

11.1 Comment by Referee

11. line 80 on page 6, "+-20% at 304 nm". 20% is out of scale in Figure 11. At least mention it in the figure caption.

11.2 Authors' Response

Changed accordingly.

12 Comment

12.1 Comment by Referee

Paragraph line 81 on page 6, "Here the contribution of the direct irradiance is larger than in the ultraviolet, and direct radiation is not affected by the vertical distribution of the absorber but only by the column." Perhaps mention ozone absorption optical depth at the peak of the Chappuis bands is about 0.04 compared to the absorption optical depth of 1.8 at 304 nm, or a sentence about ozone absorption cross section in Fig. 11 since it is already there.

12.2 Authors' Response

Changed accordingly.

12.3 Changes to manuscript

[...changes in irradiance of $\pm 20\%$ at 304 nm and $\pm 0.5\%$ around 600 nm] (At 304 nm, the optical depth due to ozone is around 2.1, in the Chappuis bands between 400 nm and 650 nm, it peaks at 0.05).

13 Comment

13.1 Comment by Referee

Would be nice to have the same legends for both upper and lower panels in Figure 11.

13.2 Authors' Response

We changed the Figure according to Figure 6.

14 Comment

14.1 Comment by Referee

line 4 on page 7, "+30% at 304 nm". But 30% is out of scale in Figure 11.

14.2 Authors' Response

See section 11

15 Comment

15.1 Comment by Referee

line 3 on page 8, "The last series will be denoted as P2017. The overall effect shares many characteristics with the curves in Figure 9, where the surface albedo was changed. Eight minutes before the totality, changes of up to 2% can be observed for the shorter wavelengths. The increase in direct irradiance is the reason for the vanishing differences at longer wavelengths. Observations during totality show reductions in irradiance of up to 60%. This shows that a disproportionately high amount of radiation is coming from the horizon (For isotropically incoming radiance, we would expect only 3% reduction in irradiance.). . ." I don't get it. Figure 9 shows the theoretical calculations. I don't see why changes of irradiance (relative to what?) can be observed.

15.2 Authors' Response

There was definitely a reference missing in the manuscript. The paragraph refers primarily to Figure 12.

15.3 Changes to manuscript

The last series will be denoted as *P2017*. The results can be seen in Figure 12.

16 Comment

16.1 Comment by Referee

Description of Figure 12 should be included in the text. Maybe in the last paragraph of section 4.2.

16.2 Authors' Response

See section 15

17 Comment

17.1 Comment by Referee

Line 45 on page 10, "To correct the simulation for these errors, which have nothing to do with the eclipse, the simulation values were multiplied by the average deviation between 19:00 and 20:00 for each wavelength." Do not understand this? Also, do you assume that the atmospheric state didn't change?

17.2 Authors' Response

Yes, our model does not include any changes in the atmosphere, especially none that might be caused by the eclipse itself (like for example an eclipse feedback on the amount of ozone, see e.g. Zerefos et. al. 2000). All of our parameterization are either general standard values (the midlatitude summer profile), or derived from irradiance measurements after the eclipse at 19.00 UTC like water vapor concentration or the aerosol optical depth. With these values, we can model non-eclipse irradiances with less than 5% deviation to the measurements around 19.00. To correct for these non eclipse-related deviations, all simulated channels were multiplied by a correction factor to fit the time from 19.00 to 20.00 (the procedure is similar to Bernhard & Petkov 2019, section 7.1).

18 Comment

18.1 Comment by Referee

Suggest to combine figures 15, 16, 17 to Figure 15a, 15b, 15c to reduce the number of figures. Suggest to remove "ratio" since the "ratio" is already in the title of Y-axis

18.2 Authors' Response

Changed accordingly.



Figure 1: Picture taken at 9:57 local time (partial eclipse already started at 9.06), about 23 minutes before the start of totality.



Figure 2: Picture taken at 9:25 local time.



Figure 3: The large scale situation around the measurement site (red dot) at August 21, 2017. The red circle shows a 175 km radius. The white plumes visible in this area are from wildfires. Corrected Reflectance MODIS Image from Terra satellite, accessible via NasaWorldView: [https://worldview.earthdata.nasa.gov/?v=-125.74822628736678,42.11048430043591,-117.31072628736678,46.68958586293591&t=2017-08-21-T06%3A00%3A00Z&l=Reference_Labels,Reference_Features\(hidden\),Coastlines,VIIRS_SNPP_CorrectedReflectance_TrueColor\(hidden\),MODIS_Aqua_CorrectedReflectance_TrueColor\(hidden\),MODIS_Terra_CorrectedReflectance_TrueColor](https://worldview.earthdata.nasa.gov/?v=-125.74822628736678,42.11048430043591,-117.31072628736678,46.68958586293591&t=2017-08-21-T06%3A00%3A00Z&l=Reference_Labels,Reference_Features(hidden),Coastlines,VIIRS_SNPP_CorrectedReflectance_TrueColor(hidden),MODIS_Aqua_CorrectedReflectance_TrueColor(hidden),MODIS_Terra_CorrectedReflectance_TrueColor)

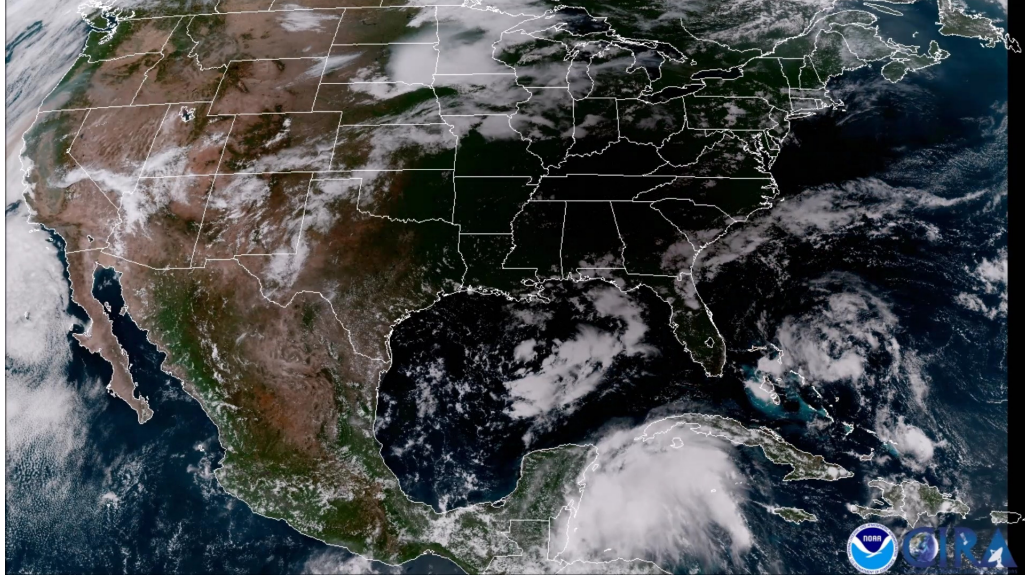


Figure 4: Picture taken by Goes 16 imager. The shadow of the moon is visible in the eastern part of the US. Snapshot from video available via https://www.goes-r.gov/multimedia/originalVideoCopies/dataAndImagery/GOES16/conus_leaving_east_coast.mp4

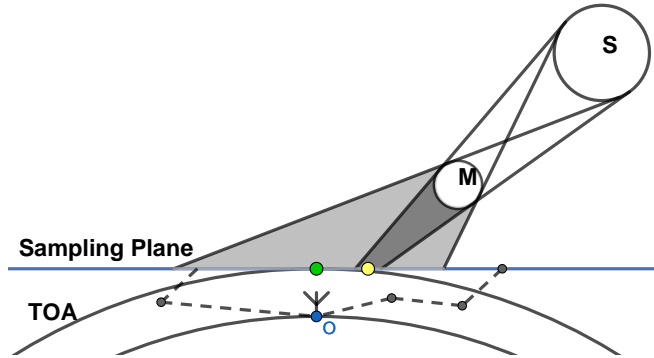


Figure 5: Schematic illustration of a solar eclipse, including umbral (dark gray) and penumbral (light gray) shadow and the definition of sampling plane and TOA (Top Of Atmosphere). S denotes the sun, M the moon and O the observer. The green dot is located vertically above the observer. The yellow dot represents the intersection of the observer-sun line with the sampling plane. The dashed lines show exemplary photon paths. In the atmospheric part, the solar angle is assumed to be constant, atmospheric refraction is neglected.

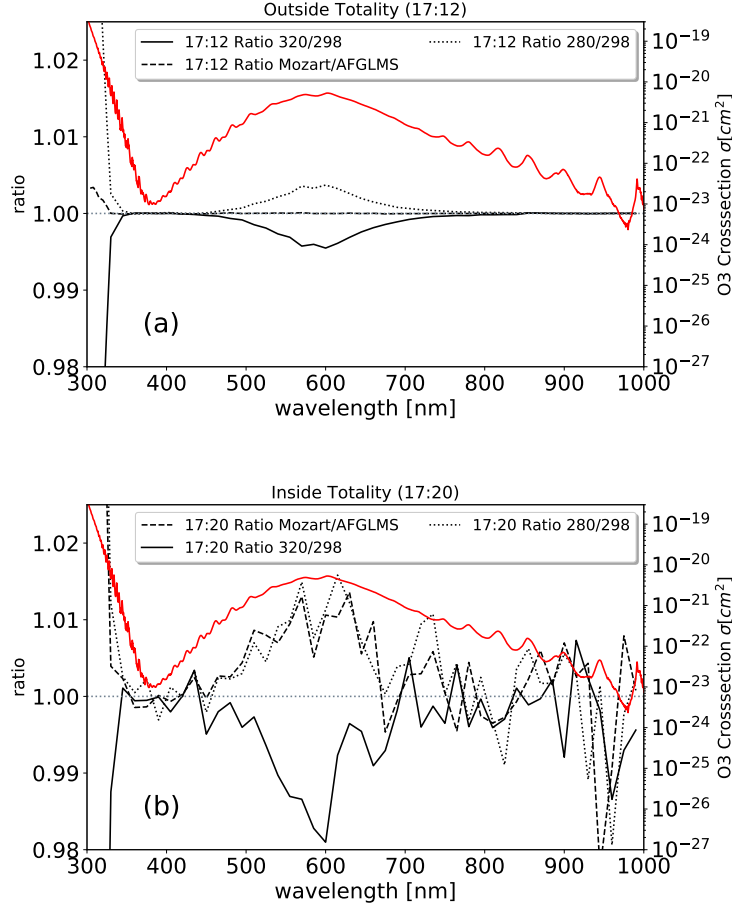


Figure 6: Simulated irradiance for a partial eclipse (panel (a)) and totality (panel (b)) for different wavelengths, normalized to the irradiance at the corresponding wavelength with the midlatitude summer profile scaled to 298 DU TOC. The solid line corresponds to an increase to 320 DU TOC, the dotted line to a decrease to 280 DU TOC. For the dashed line, the TOC was kept constant to 298 DU TOC, but the midlatitude summer profile was replaced with the one from MOZART. The position of 1.0 is indicated by a coordinate line for better readability. The red curve shows the total ozone absorption cross section, referenced to the right axis. For 304nm, changes are $\pm 20\%$ outside totality and $\pm 30\%$ inside (not shown).

Answers to Referee 3

December 23, 2019

1 Influence of aerosol

1.1 Comment by Referee

[...]But at the same time it is at least equally important to adequately handle (page 8, lines 8-9; page 13, lines 3-6; page 18, lines 5-16) the aerosol presence and loading (measurements used just at 19:00).[...]

1.2 Authors' Response

We agree with Referee #3 that aerosols are another important factor. So far, aerosols were included in the final simulations, but were not discussed in the sensitivity analysis, mainly to keep the study short and because they were already discussed in Emde et al. 2007, however only for wavelengths between 300 nm and 500 nm. Following the Referee's suggestion, we include the following section together with an additional Figure in the manuscript:

1.3 Changes in manuscript

Aerosols

Another factor which influences direct as well as diffuse irradiance is aerosol. During the measurements by Bernhard et al. 2019, used for the comparison in subsection 3.6, several wildfires were burning in the region. Therefore, the authors derived aerosol optical depth (AOD) from measurements of direct spectral irradiance for each channel. At times 16:03 and 19:00, i.e. before the first and after the fourth contact, they fitted Ångström functions of the form $\tau = \beta\lambda^{-\alpha}$ to the data. The coefficients for the first measurement are $\alpha = 1.96$ and $\beta = 0.057$, for the second measurement they got $\alpha = 2.1$ and $\beta = 0.0394$. In our reference simulation, we specify aerosol the same way as they did and similar to Emde et al. 2007. This includes an aerosol model of Shettle 1990. Single scattering albedo was set to 0.95 and asymmetry parameter to 0.7. This profile is scaled to an AOD described by the Ångström function at 19:00. Furthermore, the settings from the sections above are applied: dry grass albedo, MOZART ozone profile and realistic mountain profile. In Figure 1, the blue curve shows the relative change in irradiance during totality if no aerosol would be present. In the

near infrared the effect is strongest, with signal reductions up to 60% despite the generally lower AOD. To get an estimate of the uncertainty of the reference simulation, the orange curve was produced with the Ångström parameters from 16:03. Maximal changes are 10%. To summarize, consideration of aerosol is very important, however the effect of aerosol differences before and after the eclipse were smaller than 10%. Again, we see the red and near infrared wavelength to be more sensitive to the surrounding during totality, which we will explain in the following section.

Abstract:

[...]The influence of the surface reflectance, the ozone profile, mountains surrounding the observer and aerosol is investigated. An increased sensitivity during totality is found for the reflectance, aerosol and topography, compared to non-eclipse conditions.[...]

Introduction:

[..]as well as the surface reflectance, topography and aerosol[..]

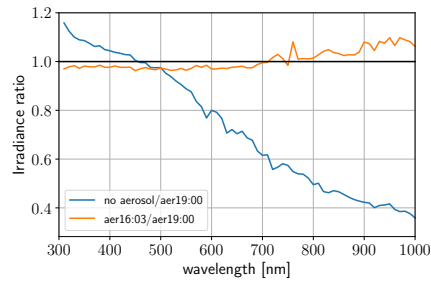


Figure 1: Simulated irradiance during totality (17:20) for different wavelengths, relative to irradiance with the Ångström parameters derived at 19:00. For the blue curve, no aerosol was specified, for the orange curve aerosol was parameterized with the Ångström parameters derived at 16:03.

2 Influence of clouds

2.1 Comment by Referee

I suggest the authors to include some sensitivity analysis taking into account the microphysics and optical characteristics of the existing formations (possibly cirrus)

2.2 Author's Response

Clouds are definitely an interesting factor, especially because they are likely present in most eclipse observations. However, as we already discussed with Referee #2, in our case the visible sky as well as the larger area were nearly

cloud free. Therefore, for modelling the observations, a cloudless setup seemed most reasonable to us. A general sensitivity analysis would be interesting as well, but would require non-trivial changes to our model which does not permit simulations with three-dimensional clouds, spherical geometry, and eclipse condition. These are planned as a future project.

Accurate 3D radiative transfer simulation of spectral solar irradiance during the total solar eclipse of August 21, 2017.2017

Paul Ockenfuß¹, Claudia Emde¹, Bernhard Mayer¹, and Germar Bernhard²

¹Meteorological Institute, Ludwig-Maximilians-University, Theresienstr. 37, 80333 Munich, Germany

²Biospherical Instruments Inc., San Diego, CA 92110, USA

Correspondence: Paul Ockenfuß (paul.ockenfuss@physik.uni-muenchen.de)

Abstract. We calculate the variation of spectral solar irradiance in the umbral shadow of the total solar eclipse of August 21, 2017 and compare it to observations. Starting from the sun's and moon's positions, we derive a realistic profile of the lunar shadow at the top of the atmosphere, including the effect of solar limb darkening. Subsequently, the Monte-Carlo model MYSTIC ([Monte Carlo code for the phYSically correct Tracing of photons In Cloudy atmospheres](#)) is used to simulate the transfer of solar radiation through the earth's atmosphere. Among the effects taken into account are the atmospheric state (pressure, temperature), concentrations of major gas constituents and the curvature of the earth, as well as the reflectance and elevation of the surrounding area. We apply the model to the total solar eclipse on August 21, 2017 at a position located in Oregon, where irradiance observations were performed for wavelengths between 306 nm and 1020 nm. The influence of the surface reflectance, the ozone profile, mountains surrounding the observer and aerosol is investigated. An increased sensitivity during totality is found for the reflectance, aerosol and topography, compared to non-eclipse conditions. During the eclipse, the irradiance at the surface does not only depend on the total ozone column (TOC) but also the vertical ozone distribution, which in general complicates derivations of the TOC from spectral surface irradiance. The findings are related to an analysis of the prevailing photon path and its difference compared to non-eclipse conditions. Using the most realistic estimate for each parameter, the model is compared to the irradiance observations. During totality, the relative difference between model and observations is less than 10% in the spectral range from 400 nm to 1020 nm. Slightly larger deviations occur in the ultraviolet range below 400 nm and at 665 nm.

Copyright statement. TEXT

1 Introduction

When modeling real world processes, we generally want to achieve one of two main purposes: if measurements have not yet been performed, we can use the simulation to make predictions about the expected outcome and give recommendations for the experimental setup. If however, measured data exists, we can validate and enhance our conceptual understanding of the phenomenon under investigation by comparison with the model results. In this case, one can also use the measurements to

verify the model itself, in order to increase the credibility in model predictions. The following study is carried out with the intention to serve all of these points.

25 In the past, the influence of a solar eclipse on surface radiation measurements and the derived state of the atmosphere were discussed in several studies. Zerefos et al. (2000) performed measurements in the UV domain during the total solar eclipse 1999 over Europe. They discussed the implications of solar limb darkening and the ratio of diffuse to direct irradiance during a solar eclipse on ozone measurements.

Kazantzidis et al. (2007) further examined the temporal change in the wavelength ratios for ultraviolet and visible wave-
30 lengths. Along with this study, the radiative transfer model MYSTIC ([Monte Carlo code for the phYSically correct Tracing of photons In Cloudy atmospheres](#); Mayer (2009); Emde and Mayer (2007)) was used to model the observations in three dimensions for the first time. The wavelengths discussed were 312 nm, 340 nm and 380 nm. During totality, the 3D model reproduced the measured irradiance at 380 nm with up to 5% accuracy, but deviated from the measurements by a factor of three for 312 nm. Kazantzidis et al. (2007) already pointed out that the ozone profile as well as the surrounding topography
35 could possibly have an influence on the surface irradiance, which was not yet included in their model. The detailed model functionality is described in Emde and Mayer (2007), where the usefulness of a total solar eclipse to validate 3D radiative transfer codes was pointed out as well: in contrast to e.g. large scale cloud fields, the shape of the lunar shadow exhibits a very well defined geometry and therefore allows for an accurate representation of the reality within the model. Moreover, a 3D model is essential to simulate irradiance in the umbral shadow, where every detected photon has to be scattered from regions
40 outside the shadow towards the observer.

For the total solar eclipse over North America on August 21, 2017, different groups performed irradiance measurements, e.g. Calamas et al. (2018) and Bernhard and Petkov (2019). The latter measured solar irradiance at 14 different wavelengths between 306nm and 1020nm with a sensitivity high enough to yield significant results also during totality. In their publication, they discussed the time outside the totality, i.e. the pre-umbra region, extensively, concluding that changes in the ozone column
45 derived from spectral irradiance measurements reported in previous studies could potentially be attributed to uncertainties in the limb darkening parametrization. The importance of limb darkening, in particular when deriving ozone, is also supported by findings from Groebner et al. (2017) for the solar eclipse on March 20, 2015. To get a general overview of the results from many studies on atmospheric changes caused by solar eclipses, the reader is referred to Aplin et al. (2016)

In this study, we perform 3D model calculations for the conditions during the observations at totality by Bernhard and
50 Petkov (2019). The comparison of the modelling results to the observations is an validation of our 3D radiative transfer model from ultraviolet to near infrared. Moreover, we continue the work of Emde and Mayer (2007) and Kazantzidis et al. (2007) by analyzing the model's sensitivity towards changes in the ozone column and profile, as well as the surface reflectance~~and topography~~, [topography and aerosol](#), in order to understand how the environmental conditions influence the radiative fluxes during totality. Altogether, this provides us with the ability to precisely estimate the time evolution of radiative fluxes for
55 the eclipse analyzed here as well as for upcoming eclipses. Where this gets important is during the totality, when the sun is completely covered by the lunar disk. Because intensities are reduced by up to four orders of magnitude compared to the uncovered sun, common measurement devices often operate close to their detection limit. Astronomical devices could produce

better results at this time, but due to their high sensitivities, they would have to be protected as soon as intensities start to increase again, which can be a matter of only a few minutes or seconds. Therefore, pre-estimating irradiance in advance is crucial to prepare measurement campaigns.

2 Methods and Techniques

The basis for modeling irradiances during totality of the solar eclipse is the Monte Carlo solver MYSTIC (~~Monte Carlo code for the phYSically correct Tracing of photons In Cloudy atmospheres~~) (Mayer (2009)) with the adaptations already made in a previous study (Emde and Mayer, 2007). MYSTIC is operated as one of several radiative transfer solvers of the libRadtran package (www.libradtran.org, Mayer and Kylling (2005), Emde et al. (2016)) We enhanced and generalized this model in different aspects to make calculations at arbitrary observer positions on earth possible. In general, the simulation process can be divided into two distinct parts: in the celestial part, we calculate the distribution of solar irradiance under eclipse conditions in a plane tangential to the top of atmosphere (TOA) for given positions of sun and moon. We call this plane the "sampling plane" SP , as illustrated in Figure 1. In the atmospheric part, the Monte Carlo model is used to determine the relative influence of every pixel in the sampling plane to the measured result at the observer position under non-eclipse conditions. This function is called the "contribution function" C . Multiplication of the contribution function with the irradiance distribution and subsequent summation yields the final model result. In this approach, the atmospheric part, which is costly to simulate, depends only on the solar position. Therefore, it is sufficient to calculate this part only once for the total eclipse with a duration typically around two minutes. The fast movement of the lunar shadow is contained in the easier to calculate celestial part.

2.1 Celestial part

Ephemeris data of sun and moon was gathered using Giorgini et al. (1996). The service provides access to the JPL Horizons system operated by the Solar System and Dynamics Group of the Jet Propulsion Laboratory (JPL). It offers the possibility to create ephemeris for various celestial bodies in the solar system for arbitrary times and observer positions on earth. The data we used were azimuth, elevation, angle diameter and distance from observer respectively for sun and moon. These quantities can be interpreted as spherical coordinates of sun and moon in a local coordinate system centered at the observer. The calculation of extraterrestrial solar irradiance for a given position, time and wavelength λ was done following the geometrical considerations in Koepke et al. (2001). The basic idea is to integrate the solar irradiance over the visible part of the solar disk, i.e. the part which is not covered by the lunar disk. The key quantities in the calculation of the relative solar irradiance $w(X, R_M, \lambda)$ are the celestial distance X of solar and lunar disk and the radius of the lunar disk R_M . For this and all further calculations, celestial distances are always measured in radii of the solar disk R_S , where R_S is the angle radius of the solar disk in *arcsec*. An overview over the definition of the different geometrical quantities we use is given in Figure 2. In order to get the celestial distance $X(\mathbf{d}, t)$ at arbitrary positions \mathbf{d} relative to the observer, we have to calculate the angle between the position vectors of

Sun and Moon as seen from \mathbf{d} . We obtain:

$$X(\mathbf{d}, t) = \arccos \left(\frac{(\mathbf{P}_S - \mathbf{d}) \cdot (\mathbf{P}_M - \mathbf{d})}{|\mathbf{P}_S - \mathbf{d}| |\mathbf{P}_M - \mathbf{d}|} \right) \quad (1)$$

90 with $\mathbf{P}_S(t)$ and $\mathbf{P}_M(t)$ the position vectors of sun and moon relative to the observer at time t . While the information about the shape of the lunar shadow is mainly contained in the spatial variation of X , the variation of $R_M(\mathbf{d}, t)$ provides a small correction. An expression can be derived from the geometry shown in Figure 2 with the distance $|\mathbf{P}_M - \mathbf{d}|$ of the moon and the actual lunar radius which was set to $Rad_M = 1737.4$ km (Archinal et al. (2018)).

$$R_M(\mathbf{d}, t) = \arcsin \left(\frac{Rad_M}{|\mathbf{P}_M - \mathbf{d}|} \right) \quad (2)$$

95 Evaluating Equation 2 directly at the observer position ($\mathbf{d} = 0$) shows a maximum deviation of 0.02 arcsec from the angle diameter predicted directly by JPL Horizons. Evaluations in 500 km distance of the observer change the lunar radius by ± 1 arcsec. For the sun, a similar calculation shows that the relative change of the disk radius due to movements in the sampling plane is of the order 10^{-6} because of the much greater distance to the earth, so it is safe to set $R_S(\mathbf{d}, t) = R_S(t)$. Because every evaluation of $w(X, R_M, \lambda)$ requires an expensive numerical integration over the visible solar disk, in the first step we
100 precalculate w for 4000 values of X and nine values of R_M . In the second step, we calculate $X(\mathbf{d}, t)$ and $R_M(\mathbf{d}, t)$ for every pixel in the sampling plane and get w by linear interpolation. In Figure 3, $w(X, R_M, \lambda)$ is shown for $\lambda = 555$ nm at time 17:20.

An important fact one has to consider when integrating over the visible part of the solar disk is the darkening towards the outside of the disk. The cause is that the sun has a diffuse border with an optical thickness like an atmosphere. Looking
105 directly at the center, we can see to deeper and therefore hotter layers than looking at the rim. The parametrization for this "limb darkening" effect used by Koepke et al. (2001) is based on theoretical considerations from Waldmeier (1955). For our study, we follow the recommendations by Bernhard and Petkov (2019) and implemented the more accurate parametrization developed by Pierce et al. (1977), based on two measurement campaigns (Pierce and Slaughter (1977), Pierce et al. (1977)). The limb darkening factor Γ describes the radiance relative to the center of the solar disk and is expressed as a fifth degree
110 polynomial in $\mu = \cos(\Psi(r))$. Definition of Ψ is shown in Figure 4. The coefficients are given for discrete wavelengths λ_i in the spectral range from 304 nm to 1046 nm. In between, the values were interpolated linearly. The effect of limb darkening for different wavelengths is illustrated in Figure 5.

2.2 Atmospheric Part

To obtain the two dimensional contribution function at \mathbf{C} at the TOA, the fully spherical 3D Monte Carlo solver MYSTIC was
115 applied (Mayer (2009); Emde and Mayer (2007)). For the details of this part of the simulation process, the reader is referred to Emde and Mayer (2007). In this setup, the photons are starting from the observer and traced backwards through the atmosphere until they hit the TOA or (Due to the reversibility of light paths, this is equivalent to tracing them from the sun to the observer.). If a photon hits one of the domain boundaries, it is destroyed. This is necessary, because in spherical

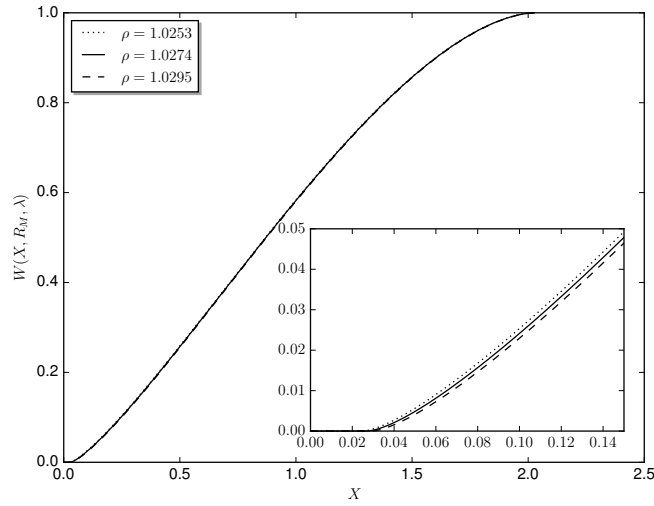


Figure 3. The relative solar irradiance $w(X, R_M, \lambda)$ compared to the uncovered sun, calculated for $\lambda = 555$ nm with the limb darkening parametrization from Pierce and Slaughter (1977) for different $\rho := R_M/R_S$.

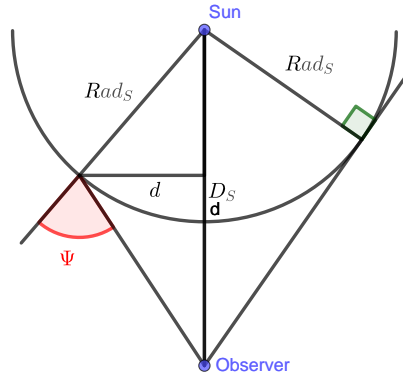


Figure 4. Definition of the angle Ψ used in the equations for the limb darkening coefficient. If d , D_S and $Rad_S = 695.700$ km are given, it is possible to derive Ψ using simple trigonometric relations.

If a photon leaves at the TOA into the direction of the sun, it is traced further to the Sampling Plane (compare Figure 1), where it is counted at the incident position. Averaging over many photons, this creates a map of contributions, i.e. how much every point in the sampling plane contributes to the irradiance at the observer position. We call this map the contribution function $C(d, \lambda, t)$.

125 To speed up the convergence, the "local estimate technique" (Marshak and Davis, 2005) is applied.

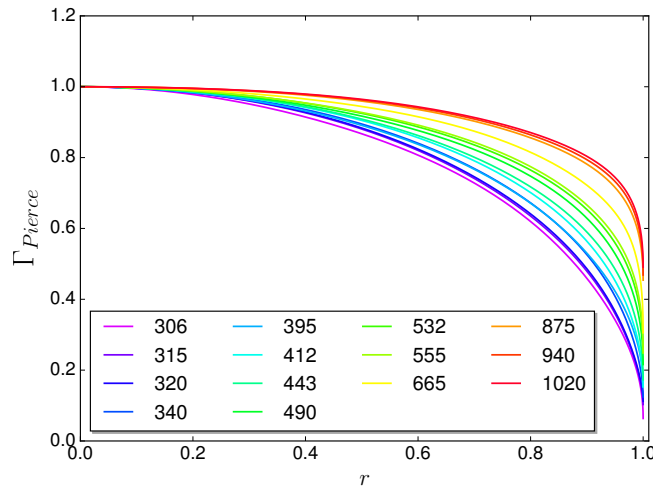


Figure 5. Values of the limb darkening factor Γ from Pierce. Curves are for different wavelengths, given in nm. r denotes the position on the visible solar disk, with $r = 0$ at the center and $r = 1$ at the limb.

2.3 Modeled irradiance at location of observer

With the solar irradiance weighting function $w(\mathbf{d}, \lambda, t)$ and the contribution function $C(\mathbf{d}, \lambda, t)$ both available, we are now finally able to bring the parts together to obtain the irradiance at the sensor position. Summing up the product of w and C for every point in the sampling plane yields the diffuse fraction of the sunlight reaching the sensor. Because [for partial eclipse conditions](#), the light of the sun reaching the sensor directly without any scattering in the atmosphere is not included in the inverse Monte Carlo results, we have to add it as an extra term $w(\mathbf{d}_0, \lambda, t) \cdot e^{-\tau}$. The exponential factor describes the direct atmospheric transmittance, depending on the total optical thickness τ which is obtained using libRadtran. \mathbf{d}_0 is the position where the line from the observer to the sun intersects the sampling plane. Multiplying the sum of direct and diffuse fraction of sunlight at the observer position with the extraterrestrial spectrum (ETS) under non-eclipse conditions, finally gives the values we were looking for. The factor $\kappa(t)$ corrects the ETS for variations in the earth-sun distance by use of the formula from Iqbal (1983). ~~Because its time-dependence is in the order of weeks, it is kept constant during the eclipse.~~ [evaluated for August 21.](#) The final expression reads:

$$I(\lambda, t) = \kappa \cdot ETS(\lambda) \cdot \left(e^{-\tau} \cdot w(\mathbf{d}_0, \lambda, t) + \sum_{\mathbf{d} \in SP} C(\mathbf{d}, \lambda, t) \cdot w(\mathbf{d}, \lambda, t) \right) \quad (3)$$

2.4 The eclipse 2017

In the following, we will apply the model to simulate solar irradiance for the total solar eclipse 2017 at a location in Smith Rock State Park near Terrebonne, Oregon. Irradiance measurements from this site are available from Bernhard and Petkov (2019). At first, we will rebuild the environmental and atmospheric conditions at the measurement site, starting from a basic setup which will serve as a proof of concept. Stepwise, we will go on to more specific settings and analyze their sensitivity

towards the result. Finally, we will simulate time series of solar irradiance for the measured wavelengths and compare them to
145 the observed values.

The eclipse 2017 occurred on August 21 in the northern hemisphere, with the umbral shadow starting in the central pacific, passing over the area of the United States and finally going further across two-thirds of the Atlantic Ocean. The penumbral shadow hit the US western coastline at about 16:00UTC , before the umbral shadow has its first contact with the earth in the pacific at 16:48UTC. In the following, all times will be given in UTC. Measurements were taken at 121°08'22.8''W and
150 44°21'46.6''N. At this place, approximately 37 ~~km~~-km away from the umbral shadow's center line, the totality started at 17:19:46 and lasted for 1:~~22min~~22 min. The detailed start and end times at the measurement site can be obtained from Table 1. The ratio of lunar and solar disk radius varies for the time of the partial eclipse between 1.0250 and 1.0290. The diameters of the minor axis of the elliptical shadow calculates to 3436 ~~km~~-km for the penumbral shadow at the time of totality, and 94 ~~km~~ km for the umbral shadow.

155 The celestial data was created with JPL Horizons at the position 121°08'22.8''W, 44°21'46.6''N and an altitude of 866.8 m. From 14:30 until 20:00 values were taken every 120 s, while from 17:10 until 17:30, the time around the totality, a higher resolution of 5 s was chosen. Up to 675.5 ~~nm~~-nm the spectrum 2004JD004937-ETS_GUEYMARD described in Bernhard et al. (2004) and available at http://uv.biospherical.com/Version2/Paper/2004JD004937-ETS_GUEYMARD.txt was used. Above 675.5 ~~nm~~nm, the extraterrestrial spectrum published by Gueymard (2004) was used. Both were corrected for day 233 of the
160 year (August 21). Profiles of pressure, temperature, density and the major gas concentrations (O₃, O₂, H₂O, CO₂, NO₂) were taken from the midlatitude summer profiles by Anderson et al. (1986). The thereby specified molecular ozone profile was scaled to a total ozone column of 298 ~~DU~~DU, corresponding to the value derived in Bernhard and Petkov (2019). The other profiles are not modified and aerosol is not included. Following the experiences made previously in Emde and Mayer (2007), a sampling grid of 2000 ~~km~~-km x 2000 ~~km~~-km was used in the horizontal with 1 ~~km~~-km step size for the contribution function
165 at TOA. 10⁷ photons were traced for each wavelength.

Event	Time[UT]	Elev[°]	Azim[°]
Start partial (1. contact)	16:06:29	29.4	102.7
Start total (2. contact)	17:19:46	41.6	118.9
Maximum	17:20:27	41.7	119.1
End total (3. contact)	17:21:08	41.8	119.3
End partial (4. contact)	18:41:05	52.6	143.6

Table 1. Times and solar elevation, azimuth for different characteristic events of the eclipse 2017 at the measurement position. Elevation is given relative to the horizon, azimuth is measured clockwise from the north (JPL convention). Created with use of Espenak (2018).

3 Results

3.1 Time series

Figure 6 gives an overview over the change of irradiance with time between 10 min before and after totality. As described above, the celestial part was fully time resolved, including the sun's position. The atmospheric part is based on one Monte Carlo simulation at 17:20. Comparing with Fig. 13 in Emde and Mayer (2007), we can see the same qualitative behavior. All wavelengths undergo a sudden drop as soon as totality occurs. The spectral irradiance of the 315 nm wavelength is remarkably lower than the visible irradiances, which is mainly due to ~~ozone absorption~~the naturally lower irradiance values under non-eclipse condition. The strong increase of the Rayleigh scattering cross section towards shorter wavelengths is the reason for the stronger variation in irradiance during the totality period between 17:19 and 17:21 at 315 nm. Looking at the 875 nm near infrared wavelength, one finds that it decreases by nearly four orders of magnitude, leading to totality intensities almost as low as in the UV-part of the spectrum around 315 nm. The reason is again the proportionality of the Rayleigh scattering cross section to $\frac{1}{\lambda^4}$, making the scattering into the umbral shadow much less efficient for near infrared radiation than it is for shorter wavelengths. For all wavelengths, there is a slight asymmetry in the irradiance gradient at the beginning and at the end of the eclipse. This can be explained similarly to the arguments for radiance in Emde and Mayer (2007), with the contribution function at TOA. Most of the diffuse photons originate from the vicinity of a line (black in Figure 7) at TOA between the point directly above the observer (~~black-green~~ dot in Figure 7) and the intersection point of the observer-sun line with the TOA (yellow dot). The histogram in Figure 7 shows the photon density along this line. The visible asymmetry in this plot is a geometrical effect caused by the deviation of the sun from the zenith position. Because the sun is located in the South-East and the lunar shadow travels from West to East, the bulk in the histogram is covered before the direct beam vanishes at the beginning of totality. As soon as totality starts, irradiance makes a sudden drop. In the second half of totality, the bulk is released step by step, resulting in a measurable increase of irradiance since the direct solar beam is still suppressed. As soon as this is not the case anymore, it outweighs the diffuse radiation.

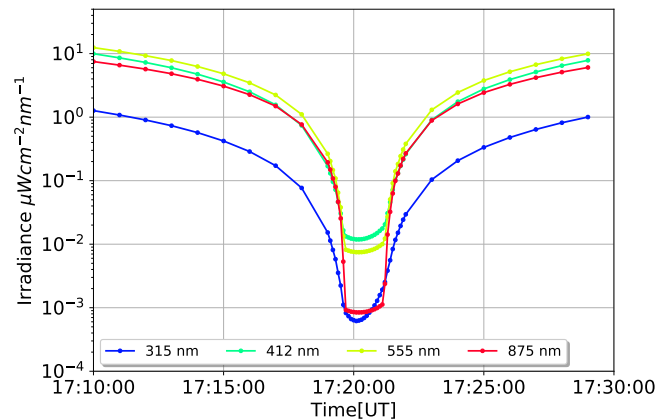


Figure 6. Time series of irradiance for different wavelengths from 10 min before to 10 min after totality.

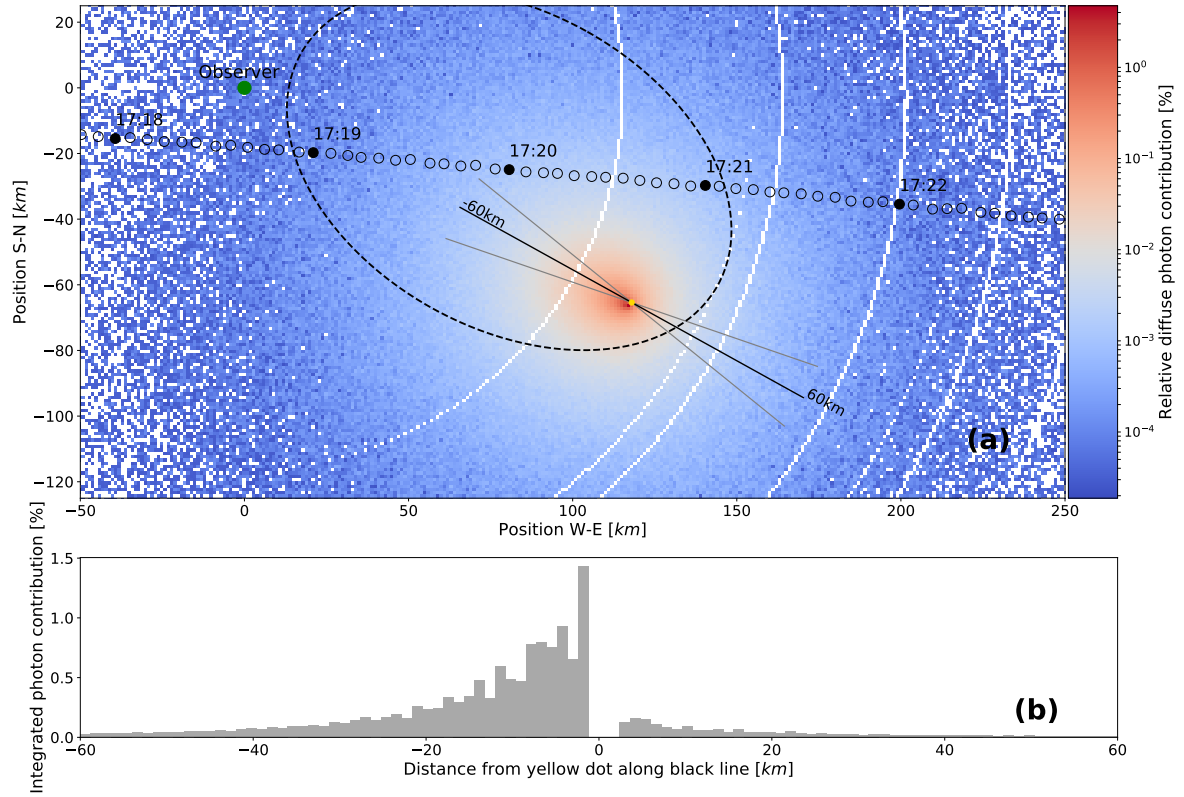


Figure 7. The upper image Panel (a) illustrates the relative contribution from each point in the sampling plane to the diffuse irradiance at the observer position (green dot). Shown is an a 150 km-km x 300 km-km cutout of the domain-contribution function at 17:20 and 490 nm wavelength. The green dot is located directly above the observer, the yellow dot marks the origin of the direct solar radiation (compare to Figure 1). Small black circles indicate the center of the lunar shadow on its way from west to east in 5 s steps with times annotated every minute. The dashed ellipse represents the shape of the umbral shadow at 17:20. The lower histogram Panel (b) shows the contribution function along the black line, integrated within the area bounded by the two grey lines as histogram. The white circles visible in the upper image panel (a) are an artifact from the projection of the spherical grid of the simulation to the flat sampling plane.

3.2 Surface Albedo

So far, the results above were produced with a spatially and spectrally constant Lambertian surface albedo of 0.05. This does not seem to be a very reasonable assumption since, especially in the near infrared, the albedo over vegetation can reach values up to 0.5. At the time of the measurements, the environment around the sensor was mainly covered by dried vegetation. The first step to get a more realistic albedo setup is to use a wavelength dependent, spatially constant surface albedo representing the surrounding area. For this task, the dataset AV87-2 from Clark et al. (1993) was used, which refers to dry, long grass, shown in Figure 8.

The behavior of irradiance over the full spectrum can be seen in Figure 9. The results are normalized to values obtained with albedo 0.05 and the same settings otherwise. There is an increase in irradiance of about 20% for the UV wavelengths using the constant surface albedo outside totality (curves for 17:12), which decreases relatively smoothly towards the near infrared. This is due to the smaller contribution of diffuse irradiance, which is the only part affected by changes in the albedo, in the near infrared under partial eclipse conditions. If however the wavelength dependent dry grass albedo from Figure 8 is applied, there is almost no difference in the irradiance ~~outside totality for a partial eclipse~~ over the complete spectrum, compared to the albedo 0.05 surface. The strong increase in the grass' albedo towards longer wavelengths is balanced by the decreased sensitivity of the irradiance in the near infrared towards changes in the surface reflectance. This is not the case any more as soon as totality has started (curves 17:20). Setting the albedo from 0.05 to 0.5, the corresponding curve in Figure 9 reveals a strong wavelength dependence. There are two conspicuous dips around 720 nm and 940 nm, indicating a coupling between the albedo sensitivity and water vapor absorption. Absorption and more Rayleigh scattering are also the reason for the lower sensitivity in the ultraviolet compared to the near infrared. In general, an absorbing medium suppresses longer photon paths, which in turn are more likely to interact with the surface. Qualitatively, this behaviour is also valid for the grass albedo, however with a smaller effect due to the lower albedo values and increasing curves resulting from the grass albedo increase towards longer wavelengths.

For a future implementation of detailed maps of the surrounding, it is necessary to know the influence of different areas in the simulation domain, in order to choose an appropriate resolution of the maps. Therefore, in this second part of the albedo study, several idealized simulations were performed with white disks on an otherwise black surface of albedo 0.0, centered around the observer. All following simulations correspond to 17:19:55 and 555 nm wavelength.

In Figure 10, fully filled white disks, centered around the observer, were used. The derivative of the relative irradiance with respect to the radius r of the disks expresses the influence of areas located in a distance r . From this, it can be seen that areas in a distance between 20 km and 400 km are the reason for most of the observed changes. The albedo of areas more than 600 km away from the observer has almost no effect on the measurements. In our case, this means the Pacific in the western part of the simulation domain can be neglected. From similar simulations with annuli of different radius, but fixed area, we see that a unit surface in greater distance has less influence on the result. However, this is compensated by the growth of the circle area proportional to r^2 . This leads to a maximal influence for the region around the observer in 100 km distance.

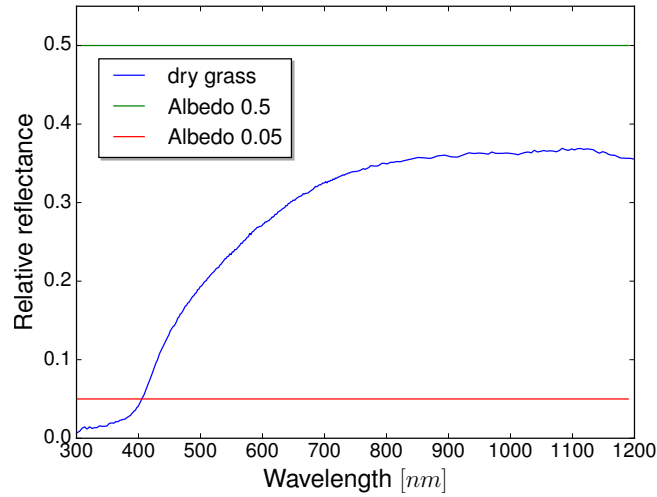


Figure 8. Reflectance of dry, brown vegetation, Dataset AV87-2 (Clark et al. (1993)).

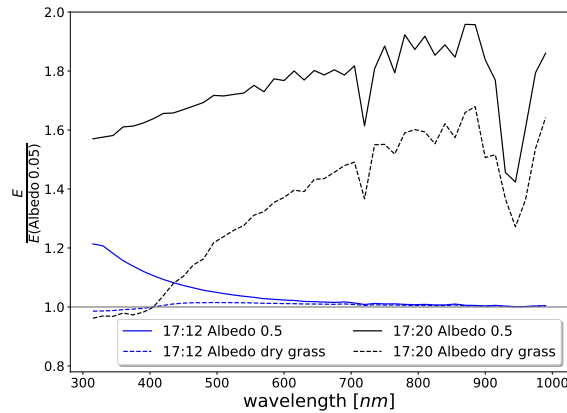


Figure 9. Relative spectral irradiance at 17:20 ([totality](#)) and 17:12 ([partial eclipse](#)) for different spectral, spatially homogenous distributions of the surface albedo. Values are normalized to the corresponding values obtained at 17:12 and 17:20 with an albedo of 0.05.

From Figure 10, we conclude that an ideal map should cover the surrounding up to a distance of at least 400 ~~km~~km, possibly at the cost of a lower resolution.

3.3 Ozone Profile

225 The total column of ozone (TOC) at the measurement site was derived in Bernhard and Petkov (2019) to be 293 ~~DU~~DU directly before the eclipse and 294 ~~DU~~DU after the end. These values can be compared with measurements of the TOC from the Ozone Monitoring Instrument (OMI) at the Aura satellite, which measured 298 ~~DU~~DU TOC the day before (Veefkind,

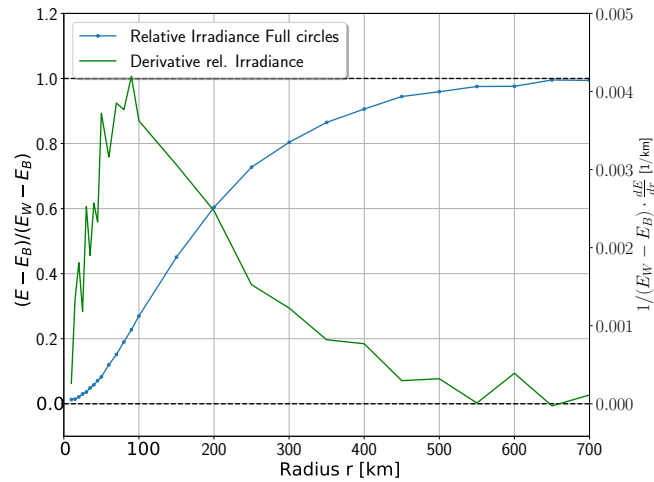


Figure 10. Blue graph: change in irradiance at 17:19:55 and 555 nm for white, filled circles with different radii centered around the observer. Shown is the difference to the values from a black surface (subscript B), normalized to the difference if the surface is completely white (subscript W). In the latter case, irradiance is increased by a factor 2.96 compared to the black surface. The green graph shows the derivative with respect to the circle radius.

2012). In addition, the influence of the vertical distribution of ozone is analyzed using a profile produced with MOZART, the Model for Ozone and Related Chemical Tracers (Emmons et al. (2010)). Compared to the midlatitude summer profile, in the MOZART profile there are 15 DU ozone shifted from the lower stratosphere between 10 km and 20 km to the altitude range between 20 km and 35 km. Both profiles are scaled to 298 DU TOC.

Results can be seen in Figure 11. There was again no aerosol included in the simulations, but the albedo file for dried grass introduced in subsection 3.2 was used. Outside the totality at 17:12, a decrease in the total ozone column leads to an increase in irradiance like one would expect it for a reduction of an absorbing gas. The sensitivity depends strongly on the ozone cross section, causing changes in irradiance of $\pm 20\%$ at 304 nm and $\pm 0.5\%$ around 600 nm (At 304 nm, the optical depth due to ozone is around 2.1, in the Chappuis bands between 400 nm and 650 nm, it peaks at 0.05).

A change in the ozone distribution has much smaller influence than a change in the total column outside totality in the region of the Chappuis bands between 400 nm and 650 nm. Here the contribution of the direct irradiance is larger than in the ultraviolet, and direct radiation is not affected by the vertical distribution of the absorber but only by the column. In the UV part of the spectrum, the irradiance increases a little using the profile from MOZART with more ozone in the upper atmosphere. This indicates that most of the photons travel horizontally below 20 km, in accordance with findings in subsection 3.6. Results inside the totality agree with the results outside in the typical features. Due to the missing direct radiation, the sensitivity to ozone is generally increased, with changes of up to $\pm 30\%$ at 304 nm and $\pm 2\%$ at 600 nm. Since the actual intensities are much smaller, the Monte Carlo simulation is more noisy. Without the direct solar radiation, it is possible to see the influence of the difference between MOZART and the midlatitude summer profile around 600 nm as well. The influence is comparable

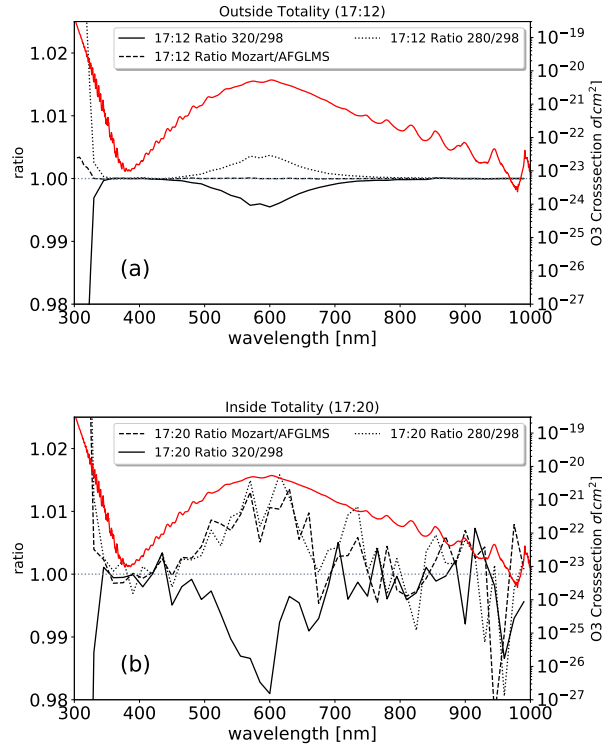


Figure 11. Simulated irradiance for [a partial eclipse \(panel \(a\)\) and totality \(panel \(b\)\)](#) for different wavelengths, normalized to the irradiance at the corresponding wavelength with the midlatitude summer profile scaled to 298 DU TOC. The solid line corresponds to an increase to 320 DU TOC, the dotted line to a decrease to 280 DU TOC. For the dashed line, the TOC was kept constant to 298 DU TOC, but the midlatitude summer profile was replaced with the one from MOZART. The position of 1.0 is indicated by a coordinate line for better readability. The red curve shows the total ozone absorption cross section, referenced to the right axis. ~~Note the different scales inside~~ ~~and~~ For 304 nm, changes are $\pm 20\%$ outside totality and $\pm 30\%$ inside (not shown).

to a change in the TOC of 20 DU . This leads to the conclusion that one has to be careful when deriving the total ozone column during totality from irradiance measurements at the surface.

3.4 Topography

Looking at pictures of solar eclipses, one will see a bright, reddish horizon under a black sky, indicating that mountains likely have an influence and should be included to accurately model the data. The site where Bernhard and Petkov (2019) made the

measurements was surrounded by a mountain range. The profile given in Table 2 was estimated from photos. To model the effect on the measured irradiance to the first order, we assume completely black mountains which are blocking all the radiance by setting photons coming from angles below θ_m over the horizon equal to zero. There were three spectral series produced, one without mountains ($\theta_m = 0^\circ$), one with $\theta_m = 10^\circ$ and one with the mountain profile around the sensor at the measurement site 2017 shown in Table 2. The last series will be denoted as *P2017*. The ~~overall effect shares many results can be seen in~~ Figure 12. ~~The curves shares some~~ characteristics with the curves in Figure 9, where the surface albedo was changed. Eight minutes before the totality, changes of up to 2% can be observed for the shorter wavelengths. The increase in direct irradiance is the reason for the vanishing differences at longer wavelengths. Observations during totality show reductions in irradiance of up to 60%. This shows that a disproportionally high amount of radiation is coming from the horizon (For isotropically incoming radiance, we would expect only 3% reduction in irradiance.) Like already noticed before, during totality the longer wavelengths are more sensitive towards changes in the surrounding. Again, there are two clearly visible spikes in regions of high absorption, where longer photon paths are suppressed: here, contribution from photons with shorter paths through the atmosphere is enhanced, which are coming from higher angle positions over the hilltops. This agrees with the observation that the sky appears more bluish overhead during an eclipse. Between the 10° mountains and the P2017 profile, there are no major differences despite the smaller decrease due to the lower average mountain height in P2017.

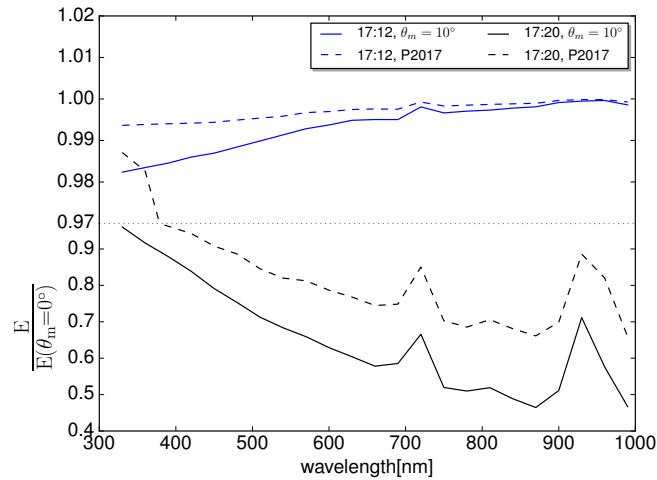


Figure 12. Simulated irradiance for different wavelengths and mountain heights, normalized to the irradiance at the corresponding wavelength without mountains ($\theta_m = 0^\circ$). Note the scale change on the y-axis indicated by the dashed, grey line. Blue lines are values outside totality, black lines during totality. Solid lines are for mountains with constant height everywhere around the observer, dashed lines represent the mountain profile "P2017" given in Table 2.

3.5 Aerosol

E				S			
0	22.5	45	67.5	90	112.5	135	157.5
7°	7°	5°	5°	5°	3°	2°	2°
W				N			
180	202.5	225	247.5	270	292.5	315	337.5
7°	7°	3°	9°	7°	7°	9°	7°

Table 2. Azimuth angle (second row) and corresponding height of the mountains over the horizon (third row) in °. Values taken from Bernhard and Petkov (2019)

Another factor which influences direct as well as diffuse irradiance is aerosol. During the measurements by Bernhard and Petkov (2019), used for the comparison in subsection 3.7, several wildfires were burning in the region. Therefore, the authors derived aerosol optical depth (AOD) from measurements of direct spectral irradiance for each channel. At times 16:03 and 19:00, i.e. before the first and after the fourth contact, they fitted Ångström functions of the form $\tau = \beta \lambda^{-\alpha}$ to the data. The coefficients for the first measurement are $\alpha = 1.96$ and $\beta = 0.057$, for the second measurement they got $\alpha = 2.1$ and $\beta = 0.0394$. In our reference simulation, we specify aerosol the same way as they did and similar to Emde and Mayer (2007). This includes an aerosol model of Shettle (1990). Single scattering albedo was set to 0.95 and asymmetry parameter to 0.7. This profile is scaled to an AOD described by the Ångström function at 19:00. Furthermore, the settings from the sections above are applied: dry grass albedo, MOZART ozone profile and realistic mountain profile. In Figure 13, the blue curve shows the relative change in irradiance during totality if no aerosol would be present. In the near infrared the effect is strongest, with signal reductions up to 60% despite the generally lower AOD. To get an estimate of the uncertainty of the reference simulation, the orange curve was produced with the Ångström parameters from 16:03. Maximal changes are 10%. To summarize, consideration of aerosol is very important, however the effect of aerosol differences before and after the eclipse were smaller than 10%. Again, we see the red and near infrared wavelength to be more sensitive to the surrounding during totality, which we will explain in the following section.

3.6 Photon paths

Many of the effects analyzed in the sections above can be qualitatively understood by looking at the photon paths through the atmosphere. It is important to include the Monte Carlo weighting of the photons, which expresses the effect of the eclipse as well as the air's optical thickness and scattering direction probabilities (For details about the weights, refer to Marshak and Davis (2005)). To simplify the geometry, simulations are done for an observing point directly in the shadow center at 17:20:00 and without any mountains obstructing the horizon. Otherwise, the settings are the same as before, in particular the dry grass albedo from subsection 3.2 and the MOZART ozone profile from subsection 3.3 are used. In Figure 14, the elevation angle under which the photons arrive at the observer is shown for photons of different scattering order. The results include a cosine weighting to account for the effective area of the sensor. At 306 nm, most of the measured irradiance is coming from photons

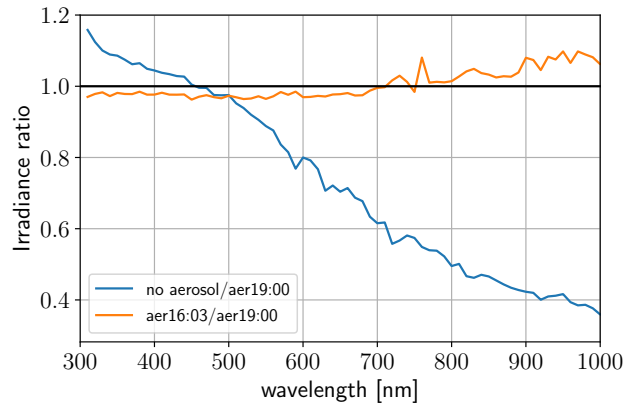


Figure 13. Simulated irradiance during totality (17:20) for different wavelengths, relative to irradiance with the Ångström parameters derived at 19:00. For the blue curve, no aerosol was specified, for the orange curve aerosol was parameterized with the Ångström parameters derived at 16:03.

of order two (20%), contrary to diffuse irradiance under non-eclipse conditions, where single scattered photons make up almost half of the result (not shown). Higher orders than two have monotonically decreasing importance, with 1% contribution from order ten (non-eclipse: 0.2%). The higher order angle distributions approximately follow the $\sin \theta \cdot \cos \theta$ distribution one would expect for isotropically incoming photons, whereas photons of order one show a distortion towards the horizon. For order two and higher, sometimes single photons exhibit an exceptionally high weight, showing up as strong peaks in the histogram. These photons enter the atmosphere with a high initial weight due to the large distance to the umbra (up to 800 km away from the observer) and then travel horizontally 60 km above the surface until they are vertically scattered down to the observer. At 875 nm, most of the contribution is coming from doubly scattered photons as well. However, photons with large incident angles are much more important than at 306 nm, as well as for diffuse irradiance under normal conditions at 875 nm. This explains the red horizon during an eclipse and the influence of the topography (subsection 3.4). The underlying reason can be seen in Figure 15, which shows the spatial density of scattering events for photons of order one and two. For the first scattering event, the lunar shadow creates a forbidden volume with the shape of a cylinder in the 3D atmosphere, inclined towards the sun. Longwave photons have their last scattering event on average in a larger distance than shortwave photons (compare Figure 15 a), e) and b), f)) and therefore larger incident angles. The higher reflectivity of the surface at 875 nm adds to this effect. Actually, most of the multiply scattered photons at longer wavelengths have contact with the Earth's surface, which can be clearly seen in Figure 15 d) and explains the surface influence found in subsection 3.2. Relating the maximum in Figure 15 c) to the one in Figure 15 e), the main photon paths likely contain a 50 – 70 km horizontal part below 20 km. This is in agreement with the findings in subsection 3.3 that the MOZART profile, with more ozone above 20 km, leads to increased irradiance during totality.

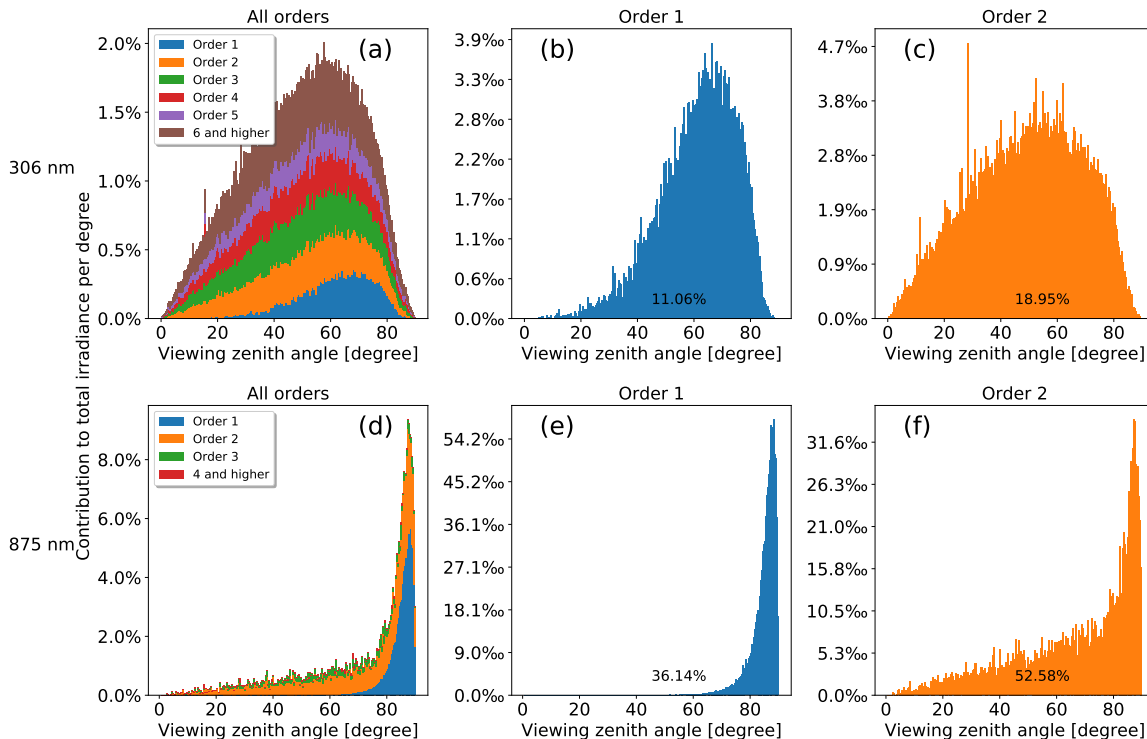


Figure 14. Contribution of photons at 306 nm (top a-c) and 875 nm (bottom d-f) to the total spectral irradiance per degree incident angle, split into the contributions from different scattering orders. 0° corresponds to zenith direction, 90° to the horizon. The left histograms Panel (a) and (d) show the stacked combination of the order-specific plots (b,c,e,f) as histograms. The black percentages represent the total contribution from photons of this scattering order.

3.7 Comparison with measurements

Measurements of global spectral irradiance at different wavelengths were taken by Bernhard and Petkov (2019). Details of the measurement conditions and the calibration process can be found there, the following provides a short summary. The instrument was placed on a field near the Crooked River that flows through Smith Rock State Park and is surrounded by dry gras. In the west and north-east, mountains are obstructing the horizon by up to 12°. The sky this morning was almost clear with only a few clouds near the horizon. It is important to mention that there were several ~~Several~~ wildfires in the region burning at the measurement time. On the day of the measurement however, the wind direction changed in favor of a decrease of aerosol loading. The instrument used was a GUVIS-3511 multi-channel filter radiometer constructed by Biospherical Instruments Inc.

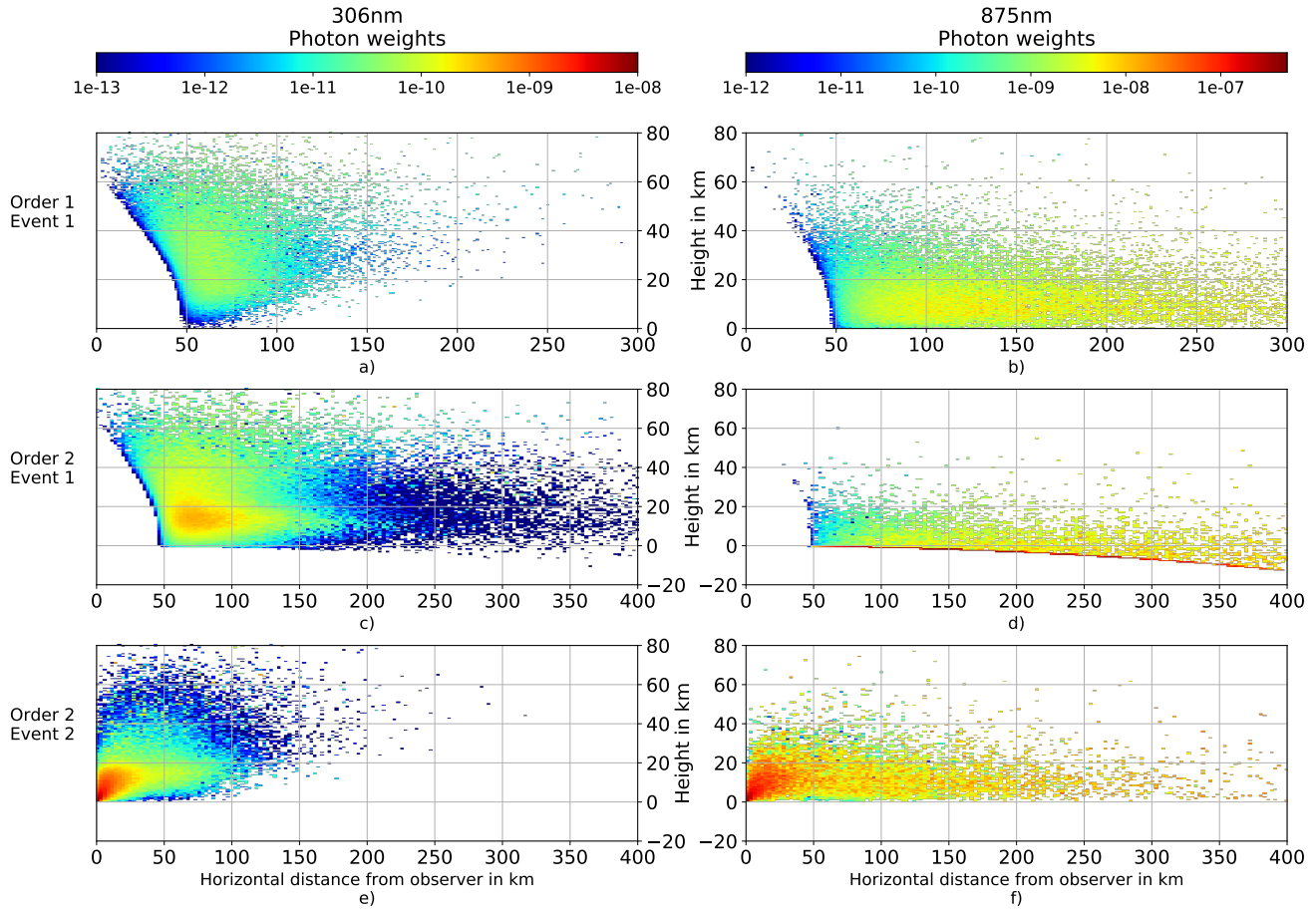


Figure 15. Contribution to solar irradiance for photons of different scattering orders and events. 'Order' denotes the total number of scatterings, 'Event' numbers the scattering event on a path from top of atmosphere to the sensor. The horizontal axis denotes the horizontal distance from the observer, the vertical axis the distance from the observer in zenith direction. Contributions are summed radially. Due to the usage of cartesian coordinates in combination with the curvature of the earth, negative scattering heights are possible.

The sensor was placed approximately two meters above the ground. It was equipped with a computer controlled shadowband allowing to calculate direct and global spectral irradiance from the instruments measurements at 306, 315, 320, 340, 380, 395, 412, 443, 490, 532, 555, 665, 875, 940, and 1020 nm with a spectral resolution of 1 nm.

When comparing the measurements around the totality with results from the model, we included the most realistic settings, i.e. we used the spectral dependence of dry grass for the albedo, the ozone profile from MOZART and the mountain profile from Table 2. Furthermore, we specified aerosol in the same manner as proposed by Bernhard and Petkov (2019), based on measurements at 19:00 and the reference aerosol settings from subsection 3.5. The column of precipitable water was set to 11 kgm⁻² by scaling the midlatitude summer profile. The value was chosen to achieve best agreement between the measurements

from 19:00 to 20:00 and the 940 ~~nm~~-nm channel, which is strongly influenced by water vapor. This is 20% less than the value of 13.85 kgm^{-2} given by the ERA-Interim global reanalysis at the place and time of the eclipse (Dee et al., 2011).

In a first step, these settings are applied to the 1D radiative transfer solver "disort", which is part of libRadtran as well. At 19:00 (~~20min-20 min~~ after the 4th contact), the results agree with the measurements to better than 5% at each wavelength. 330 This deviation might be caused by uncertainties in the measurements or in the parametrization of the atmospheric state, e.g. the aerosol loading. To correct the simulation for these errors, which have nothing to do with the eclipse, the simulation values were multiplied by the average deviation between 19:00 and 20:00 for each wavelength.

The comparison of the results of the 3D calculations and the measurements from 17:18 until 17:23 can be seen in Figure 16a, Figure 16b and Figure 16c. In each case, the corrected simulations and the measured values are shown in ~~the upper part panel~~ 335 (a) of the figure. In ~~the lower half panel~~ (b), the ratio of observation and simulation is shown. From 17:20:00 until 17:21:15, the shadowband swept over the sensor, indicated by the grey gap in the time series. In all three domains, the deviations are increased directly before and after the totality, where the temporal gradient of irradiance is very large. Here, the measurements exceed the simulation up to 60% (at 320 ~~nm~~nm), giving information about temporal uncertainties which are intensified in these regions. Because the peaks indicate lower simulation results both before and after the totality, the deviation is likely not a 340 temporal shift in one direction, but a difference of 1 - 2 seconds between the actual duration of totality and the period assumed by the simulation. The reasons could be manifold, e.g. small errors in the lunar disk radius or the moon's deviation from a perfect sphere could change the shadow's size easily and therefore affect the totality time.

The spectral ratio of measurement and simulation during totality is also shown in Figure 17, together with the ratio of clearsky calculations (i.e. without lunar occultation) to totality simulations. Generally, absorbing wavelengths are attenuated 345 more compared to clearsky conditions, with ranges from 7170 at 350 ~~nm~~-nm to 140000 at 940 ~~nm~~nm. These values agree with the ones obtained by Bernhard and Petkov (2019).

Looking at the wavelength domains separately, the best results are achieved between 400 ~~nm~~-nm and 600 ~~nm~~-nm (Figure 16b). Agreement outside the totality is within 3%, during totality the values agree within 10%. There are several reasons why these wavelengths are easier to simulate and measure. On the one hand, their clearsky intensities exceed the other domains 350 by at least 50%, on the other hand, there are only few absorbing trace gases. However, there seems to be a systematic deviation towards longer wavelengths, being simulated too high during totality (compare to the downward trend in the black line in Figure 17 between 400 ~~nm~~-nm and 700 ~~nm~~nm). From the sensitivity analysis, one could attribute this observation to the ozone profile, which affects the 500 ~~nm~~-nm - 700 ~~nm~~-nm range only during totality. Comparing to Figure 11, a change in 10% for 555 ~~nm~~-nm might be possible, but would certainly induce changes by more than 10% in the ultraviolet as a consequence.

355 For 600 ~~nm~~-nm - 1020 ~~nm~~-nm (Figure 16c), the results are comparable, with somewhat more fluctuations due to the lower solar intensities. The 1020 ~~nm~~-nm curve shows nearly perfect agreement regarding the intensities, but the temporal uncertainty is one of the highest for all channels. 665 ~~nm~~-nm shows better temporal agreement, but continues the trend of higher simulation results at totality also described for the 400 ~~nm~~-nm - 600 ~~nm~~-nm domain. As already mentioned, the 940 ~~nm~~-nm channel depends highly on the water vapor concentration in the atmosphere, a quantity with typically large fluctuations in time and 360 space. Nevertheless, the agreement outside the totality is as good as for the other wavelengths in this domain. Of course, one

has to remember that the total water vapor column was scaled to fit this channel. Inside the totality, there is too much noise in the 940 nm measurement signal to make a precise statement, although the mean value fits the simulation well.

Between 300 nm and 400 nm (Figure 16a), the discrepancy between measurements and simulations is larger compared to the other wavelength domains. Since the intensities are comparably low here, the sensor operates close to its detection limit for 306 nm and 315 nm during totality, which is clearly visible in the large fluctuations. The ratio for 306 nm is not plotted therefore. Outside the totality, all wavelengths are simulated too low. This is likely not attributable to ozone, which affects mostly the wavelengths below 350 nm. It is interesting, that the simulation agrees much better with the measurement at 412 nm than at 395 nm. These wavelengths are close to a critical region in the limb darkening parametrizations, where hydrogen can get fully ionized from the second shell (364.66 nm). Exactly the same behaviour can be seen in Bernhard and Petkov (2019) (compare Figure 9, *ibid.*) using 1D simulations, even with different limb darkening parametrizations. In addition, 395 nm is right between the strong Ca+ Fraunhofer lines at 393 and 396.5 nm. As a consequence, there is some uncertainty in the measurements from converting the measurements with the GUV's 10 nm wide filters to spectral irradiance at 1 nm resolution. This effect could contribute to the larger difference at 395 compared to 412 nm.

4 Conclusions

In this study, the three-dimensional radiative transfer model MYSTIC was used to simulate irradiance at the ground during a total eclipse. The celestial part includes the precise geometry of sun and moon, as well as parametrizations for the limb darkening of the sun. The atmosphere contains realistic gas profiles, a surface with spectrally dependent reflection and a simple topography model. The approach relies only on the time resolved position of sun and moon in space, all further properties like the position, orientation and the elliptical shape of the lunar shadow are derived from this information. The agreement with the observations illustrate the high accuracy of the umbra calculations using the data from JPL Horizons. There are no restrictions on the observer, e.g. it could be out of the shadows center line, like it was the case in this study, or even out of the totality path.

The simulation was applied to the total solar eclipse of August 21, 2017, and the effects of the surface reflectance, ozone profile and the topography were analyzed. In general, we found that the eclipse enhances the sensitivity of global irradiance towards changes in the albedo and topography, which is to a large fraction explained by the absence of direct radiation and the stronger sensitivity of diffuse irradiance to these parameters. Comparing to diffuse irradiance for near infrared wavelengths under non-eclipse conditions, more radiation is coming from the horizon. The importance of single scattered photons is generally reduced. Higher orders are able to interact with the surface before reaching the observer, which is why the surface reflectance may cause changes up to 200% in the measured irradiance for near infrared wavelengths (completely absorbing versus reflecting surface). Depending on the wavelength, photons from distances of up to 400 km contribute to the result. Due to the long horizontal photon paths even for ultraviolet wavelengths, not only the total column, but also the vertical distribution of ozone becomes important. Therefore, derivations of the total amount of ozone during totality by comparing surface irradiance measurements at different wavelengths might be misleading. In general, these features of a solar eclipse pose a challenge for models and the assumptions used here are only first order corrections.

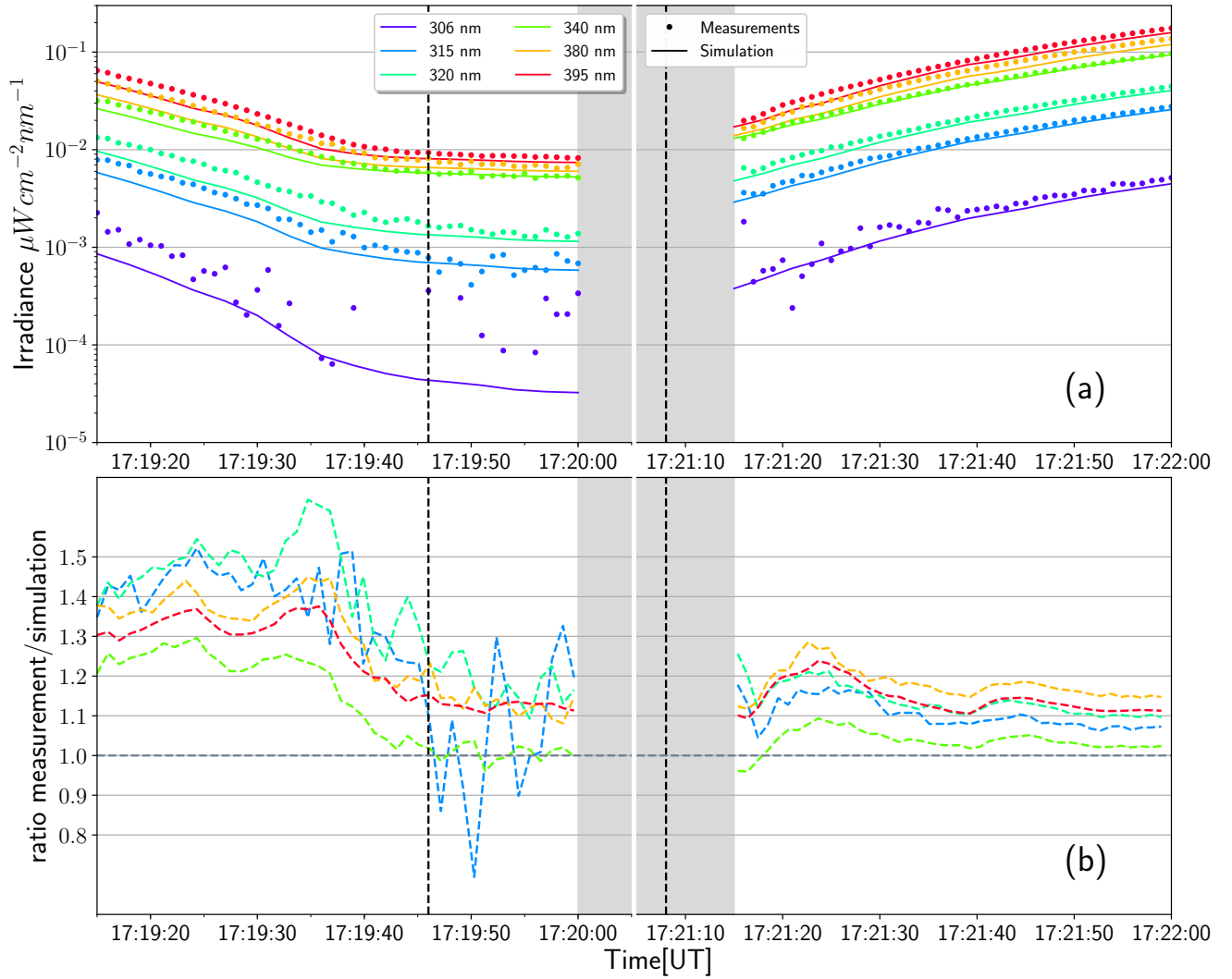


Figure 16a. Comparison of simulation and measurements for wavelengths from 300 nm to 400 nm. The upper curves refer to the logarithmic axis on the left and show Panel (a) shows simulated (solid line) and measured (dotted line) irradiance for different wavelengths. The lower part of each figure Panel (b) shows the measurements divided by the simulation values (dashed line). The x-axis is discontinuous and does not show the period between 17:20:05 and 17:21:05 because the shadowband swiped over the sensor between 17:20:00 and 17:21:10 (grey shading). The vertical, dashed lines show the theoretical start and end of totality.

The comparison with measurements reveals that solar irradiance over the course of the eclipse can be modeled with high accuracy, considering that solar irradiance drops by four to five orders of magnitude during an eclipse. Showing less than 10% deviation during the totality at most wavelengths, this also represents a validation of the 3D radiative transfer model MYSTIC as the core of our model.

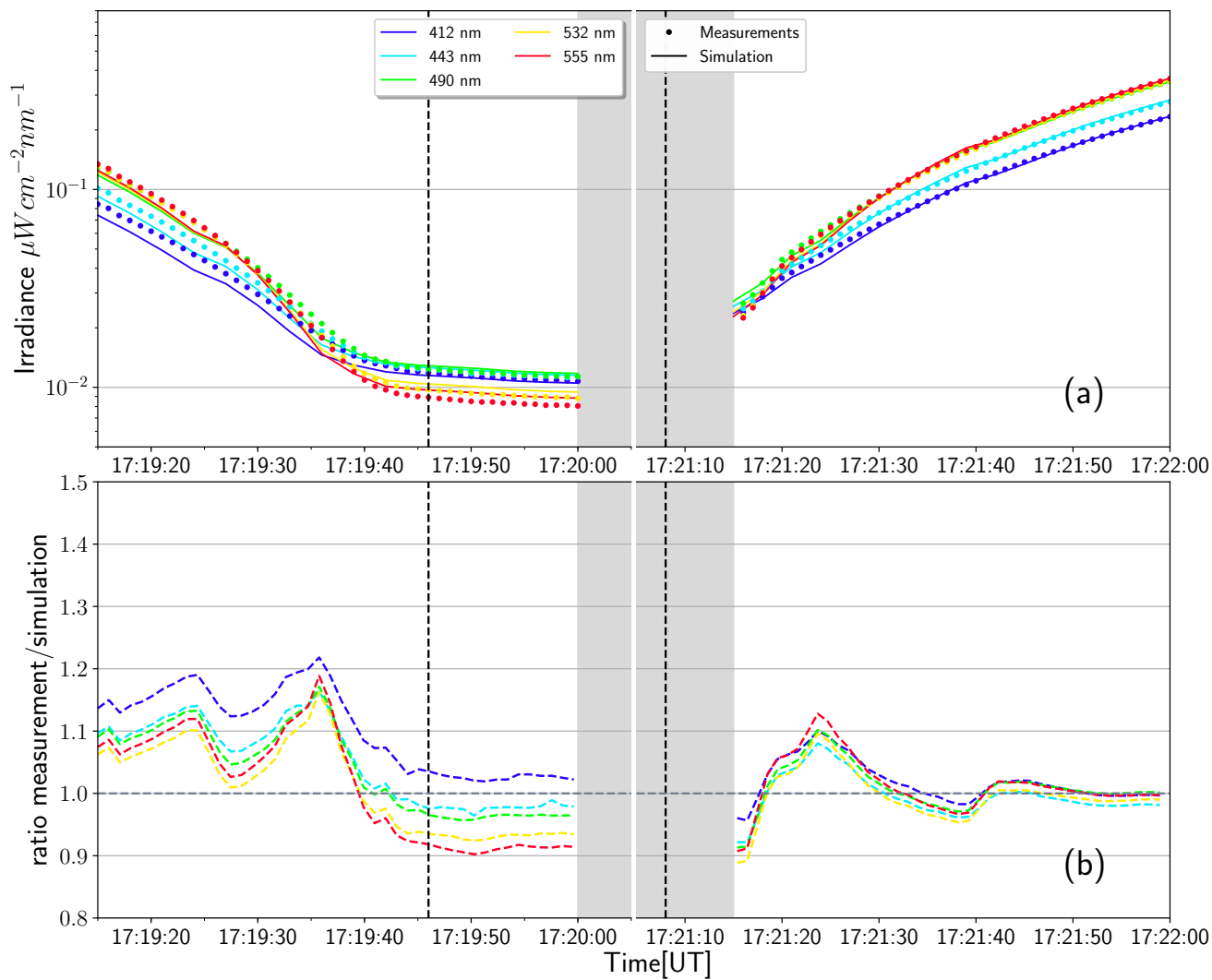


Figure 16b. Same as Figure 16a, but for wavelengths from 400 nm to 600 nm.

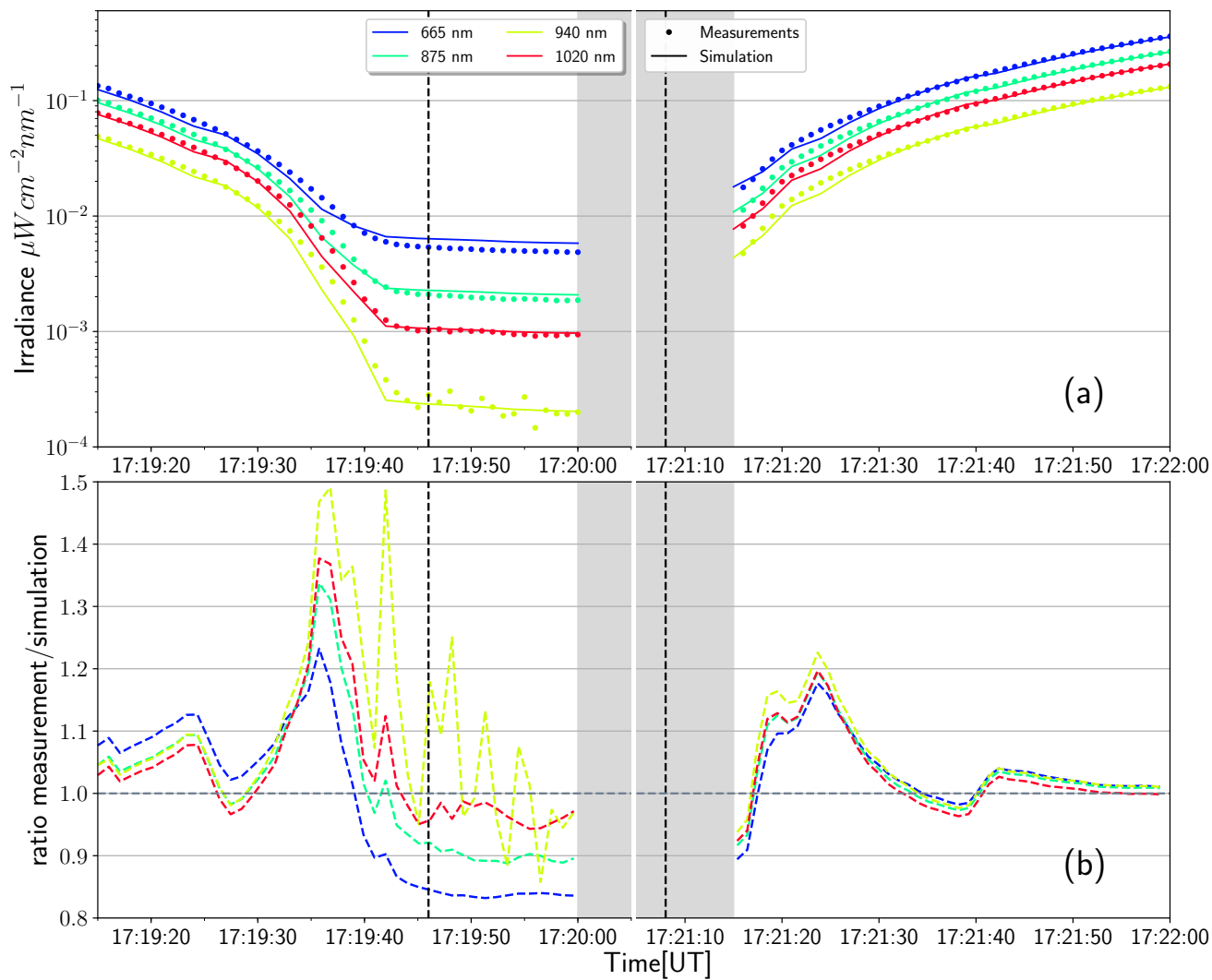


Figure 16c. Same as Figure 16a, but for wavelengths from 600 nm to 1020 nm.

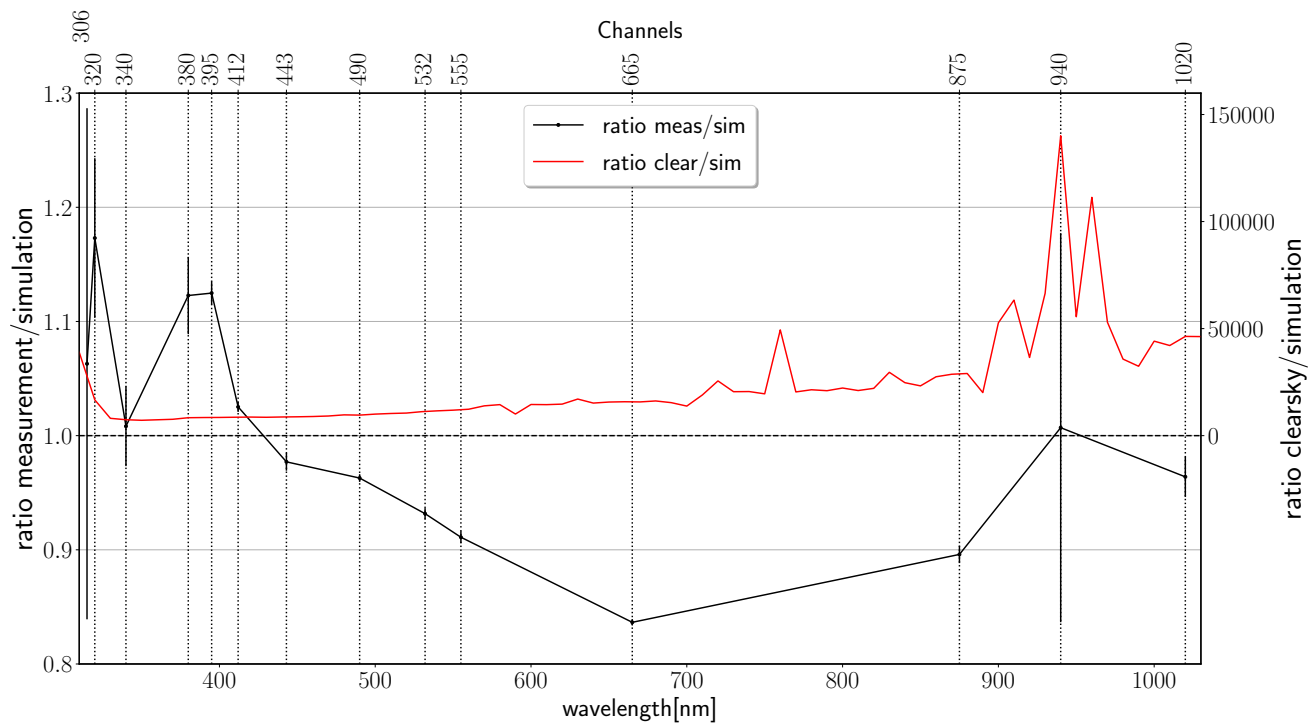


Figure 17. Spectral Irradiance during totality (17:20). The black curve shows the deviation of the measurements from the totality simulations, averaged over the 12 data points during totality (17:19:48-17:20:00). The errorbars indicate 1σ -deviation of the original values from the mean. Vertical lines indicate the position of the measurement channels. The red curve shows the ratio of the simulated clearsky irradiance (i.e. without lunar occultation) to simulated totality irradiance at 17:20:00.

Data availability. Data available on request.

Author contributions. BM and CE developed MYSTIC and the general setup to simulate a solar eclipse. PO further adapted the setup,
400 performed the model analysis and wrote the paper. GB designed and executed the measurements.

Competing interests. GB is employed by Biospherical Instruments Inc., which is also the manufacturer of the GUVis-3511 radiometer used for the measurements.

References

- Anderson, G., Clough, S., Kneizys, F., Chetwynd, J., and Shettle, E.: AFGL Atmospheric Constituent Profiles(0-120km), 1986.
- 405 Aplin, K. L., Scott, C. J., and Gray, S. L.: Atmospheric changes from solar eclipses, *Philosophical Transactions of the Royal Society A: Mathematical, Physical and Engineering Sciences*, 374, 20150217, <https://doi.org/10.1098/rsta.2015.0217>, 2016.
- Archinal, B. A., Acton, C. H., A'Hearn, M. F., Conrad, A., Consolmagno, G. J., Duxbury, T., Hestroffer, D., Hilton, J. L., Kirk, R. L., Klioner, S. A., McCarthy, D., Meech, K., Oberst, J., Ping, J., Seidelmann, P. K., Tholen, D. J., Thomas, P. C., and Williams, I. P.: Report of the IAU Working Group on Cartographic Coordinates and Rotational Elements: 2015, *Celestial Mechanics and Dynamical Astronomy*, 130, 410 <https://doi.org/10.1007/s10569-017-9805-5>, 2018.
- Bernhard, G. and Petkov, B.: Measurements of spectral irradiance during the solar eclipse of 21 August 2017: reassessment of the effect of solar limb darkening and of changes in total ozone, *Atmospheric Chemistry and Physics*, 19, 4703–4719, <https://doi.org/10.5194/acp-19-4703-2019>, 2019.
- Bernhard, G., Booth, C., and Ebrahimian, J.: Version 2 data of the National Science Foundation's Ultraviolet Radiation Monitoring Network, 415 *Solar Energy*, 74, 423–453, 2004.
- Calamas, D. M., Nutter, C., and Guajardo, D. N.: Effect of 21 August 2017 solar eclipse on surface-level irradiance and ambient temperature, *International Journal of Energy and Environmental Engineering*, <https://doi.org/10.1007/s40095-018-0290-8>, 2018.
- Clark, R. N., Swayze, G. A., Gallagher, A. J., King, T. V., and Calvin, W. M.: The U. S. Geological Survey, Digital Spectral Library: Version 1 (0.2 to 3.0um), <https://doi.org/10.3133/ofr93592>, 1993.
- 420 Dee, D. P., Uppala, S. M., Simmons, A. J., Berrisford, P., Poli, P., Kobayashi, S., Andrae, U., Balmaseda, M. A., Balsamo, G., Bauer, P., Bechtold, P., Beljaars, A. C. M., van de Berg, L., Bidlot, J., Bormann, N., Delsol, C., Dragani, R., Fuentes, M., Geer, A. J., Haimberger, L., Healy, S. B., Hersbach, H., Hólm, E. V., Isaksen, I., Kallberg, P., Koehler, M., Matricardi, M., McNally, A. P., MongeSanz, B. M., Morcrette, J.-J., Park, B.-K., Peubey, C., de Rosnay, P., Tavolato, C., Thépaut, J.-N., and Vitart, F.: The ERAInterim reanalysis: configuration and performance of the data assimilation system, *Quarterly Journal of the Royal Meteorological Society*, 137, 553–597, 425 <https://doi.org/10.1002/qj.828>, <https://rmets.onlinelibrary.wiley.com/doi/abs/10.1002/qj.828>, 2011.
- Emde, C. and Mayer, B.: Simulation of solar radiation during a total eclipse: a challenge for radiative transfer, *Atmospheric Chemistry and Physics*, 7, 2259–2270, <https://www.atmos-chem-phys.net/7/2259/2007/>, 2007.
- Emde, C., Buras-Schnell, R., Kylling, A., Mayer, B., Gasteiger, J., Hamann, U., Kylling, J., Richter, B., Pause, C., Dowling, T., and Bugliaro, L.: The libRadtran software package for radiative transfer calculations (version 2.0.1), *Geoscientific Model Development*, 9, 1647–1672, 430 <https://doi.org/10.5194/gmd-9-1647-2016>, <https://www.geosci-model-dev.net/9/1647/2016/>, 2016.
- Emmons, L. K., Walters, S., Hess, P. G., Lamarque, J.-F., Pfister, G. G., Fillmore, D., Granier, C., Guenther, A., Kinnison, D., Laepple, T., Orlando, J., Tie, X., Tyndall, G., Wiedinmyer, C., Baughcum, S. L., and Kloster, S.: Description and evaluation of the Model for Ozone and Related chemical Tracers, version 4 (MOZART-4), *Geoscientific Model Development*, 3, 43–67, <https://doi.org/10.5194/gmd-3-43-2010>, <https://www.geosci-model-dev.net/3/43/2010/>, 2010.
- 435 Espenak, F.: EclipseWise.com, <http://www.eclipsewise.com/solar/SEgmap/2001-2100/SE2017Aug21Tgmap.html>, 2018.
- Giorgini, J. D., Yeomans, D. K., Chamberlin, A. B., Chodas, P. W., Jacobson, R. A., Keesey, M. S., Lieske, J. H., Ostro, S. J., Standish, E. M., and Wimberly, R. N.: JPL's On-Line Solar System Data Service, in: AAS/Division for Planetary Sciences Meeting Abstracts #28, vol. 28 of *Bulletin of the American Astronomical Society*, p. 1158, <http://adsabs.harvard.edu/abs/1996DPS....28.2504G>, 1996.

- Groeber, J., Kazadzis, S., Kouremeti, N., Doppler, L., Tagirov, R., and Shapiro, A. I.: Spectral solar variations during the eclipse of March 20th, 2015 at two European sites, vol. 1810, p. 080008, <https://doi.org/10.1063/1.4975539>, 2017.
- Gueymard, C.: The sun's total and spectral irradiance for solar energy applications and solar radiation models, *Journal of Geophysical Research*, 109, <https://doi.org/10.1029/2004JD004937>, 2004.
- Iqbal, M.: *An Introduction to Solar Radiation*, Academic Press, Don Mills, Ontario, Canada, 1983.
- Kazantzidis, A., Bais, A. F., Emde, C., Kazadzis, S., and Zerefos, C. S.: Attenuation of global ultraviolet and visible irradiance over Greece during the total solar eclipse of 29 March 2006, *Atmospheric Chemistry and Physics*, 7, 5959–5969, <https://doi.org/10.5194/acp-7-5959-2007>, 2007.
- Koepke, P., Reuder, J., and Schween, J.: Spectral variation of the solar radiation during an eclipse, *Meteorologische Zeitschrift*, 10, 179–186, <https://doi.org/10.1127/0941-2948/2001/0010-0179>, 2001.
- Marshak, A. and Davis, A.: *3D Radiative Transfer in Cloudy Atmospheres*, Springer-Verlag, Berlin, Heidelberg, 2005.
- Mayer, B.: Radiative transfer in the cloudy atmosphere, *European Physical Journal Conferences*, 1, 75–99, <https://doi.org/10.1140/epjconf/e2009-00912-1>, 2009.
- Mayer, B. and Kylling, A.: Technical note: The libRadtran software package for radiative transfer calculations - description and examples of use, *Atmospheric Chemistry and Physics*, 5, 1855–1877, <https://doi.org/10.5194/acp-5-1855-2005>, 2005.
- Pierce, A. K. and Slaughter, C. D.: Solar limb darkening, *Solar Physics*, 51, 25–41, <https://doi.org/10.1007/bf00240442>, 1977.
- Pierce, A. K., Slaughter, C. D., and Weinberger, D.: Solar limb darkening in the interval 7404–24 018, II, *Solar Physics*, 52, 179–189, <https://doi.org/10.1007/bf00935800>, 1977.
- Shettle, E.: Models of aerosols, clouds, and precipitation for atmospheric propagation studies, *AGARD Conf. Proce.*, -1, 1990.
- Veefkind, P.: OMI/Aura Ozone (O3) DOAS Total Column Daily L3 Global 0.25deg Lat/Lon Grid, NASA Goddard Earth Sciences Data and Information Services Center, accessed through <https://worldview.earthdata.nasa.gov>, <https://doi.org/10.5067/aura/omi/data3005>, 2012.
- Waldmeier, M.: *Ergebnisse und Probleme der Sonnenforschung*, vol. 2, Akademische Verlagsgesellschaft Geest&Portig K.G., 1955.
- Zerefos, C. S., Balis, D. S., Meleti, C., Bais, A. F., Tourpali, K., Kourtidis, K., Vanicek, K., Cappellani, F., Kaminski, U., Colombo, T., Stuebi, R., Manea, L., Formenti, P., and Andreae, M. O.: Changes in surface solar UV irradiances and total ozone during the solar eclipse of August 11, 1999, *Journal of Geophysical Research: Atmospheres*, 105, 26 463–26 473, <https://doi.org/10.1029/2000jd900412>, 2000.