

## **Interactive comment on “Conceptual model of diurnal cycle of stratiform low-level clouds over southern West Africa”**

**Response to reviewer 1**

**Dear reviewer 1,**

**We thank the reviewer for his/her suggestion which led to clarify the contribution of the different terms to the total local cooling.**

**Measurements examining the low-level stratocumulus clouds over southern West Africa are summarized and integrated into a conceptual model that explains the general diurnal cycle and three different scenarios for the breakup of the clouds. The paper follows a clear, logical path that incorporates all available data processed with proper methods to support the proposed conceptual model. It is well-written with appropriate figures. Publication is recommended. The only suggestion pertains to the interpretation of the horizontal advection and how it relates to the local cooling. Horizontal advection is just a transport of some atmospheric property by the motion of air, so it represents moving air around but it cannot actually cool the air to saturation. Since measurements are at a fixed point (Eulerian), it is necessary to include horizontal advection. However, the cooling rate following a parcel is driven by diabatic processes or through adiabatic cooling associated with upward vertical motion. Those are the processes that are actually responsible for cooling air to saturation. So, it would be good to acknowledge and discuss this caveat since it is stated several times that horizontal advection contributes to 50% of the total cooling. It might be helpful to refer to the cooling as ‘local cooling’ to reflect the idea that cooling is at a fixed point.**

**We agree with reviewer that it would be clearer to precise “total local cooling” instead of “total cooling”. This has been changed at different places in the text. Also, the term TOT in equation 1 in the manuscript is now defined as local tendency of the potential temperature. We think that a discussion about this would puzzle the reader since everything is clearly defined in equation (1). Equation (1) is an Eulerian equation and the term TOT (partial derivative of potential temperature with respect to time) is the cooling at fixed point which is the local cooling. Because it is the local cooling, the equation includes the horizontal and vertical advection terms.**

## Interactive comment on “Conceptual model of diurnal cycle of stratiform low-level clouds over southern West Africa”

Response to reviewer 2

Dear reviewer 2,

We thank the reviewer for his/her valuable and constructive suggestions, which led to significant improvements of the quality of our manuscript. Below we detailed how his/her comments are addressed in the revised version of the manuscript. The major corrections made in the manuscript and cited in this document appear in *italic*. All the typographic, orthographic, syntactic corrections detailed in the supplement were more than appreciated! We hope we included all of them correctly in the text; however, we must admit that we could not read three of them (see at the end of the response).

Major Comments:

1) Important to have consistency throughout. In the abstract the phrase "low-level stratiform clouds" occurs while in the title it is written as "stratiform low-level clouds". Because "low-level stratiform clouds" is used throughout the manuscript, a more consistent title would be "Conceptual model of the diurnal cycle of low-level stratiform clouds over southern West Africa".

We absolutely agree with the reviewer and the title has been changed.

2) A better initialism than "LLC" for "low-level stratiform clouds" would be "LLSC", and for three reasons. The first reason is that "stratiform" is an integral adjective in the clouds studied in this manuscript. A second reason is that to sound out in one's mind "LLC" the word "stratiform" does not occur, so only "low-level clouds" appear, but one knows that "stratiform" is important so one has to insert the word into the "LLC" initialism, making it just a tad bit harder to read the paper. The third, and final, reason is that "LLC" is too close to "LCL", inviting confusion. In one place (at least) the authors mix them up too. Whoops!

We also agree with the reviewer; we actually used the initialism LLSC in one of the paper submitted at the same ACP special issue (Dione et al), and it make sens to be consistent with it. This will help the reader AND the authors not to mix LLC and LCL up.

3) Figure 2 must be perfect, yet it has a number of things that need to be improved.

In the figure caption the words "The greenish rectangles and triangles" occur. First, the figure looks to contain more blues than greens.

“Greenish” has been replaced by “Blue” in the legend.

Second, the horizontal advection symbol is neither a rectangle nor a triangle. As a result, this part of the caption is not helpful and needs to be cleaned up.

The shapes have been chosen according to the contribution of each term to the total local cooling, as a function of height. The radiative term is symbolized by a rectangle because it is constant with height. The turbulent term is symbolized by a triangle because it decreases with height. The horizontal advection is maximum at  $Z^*=1$  but is half of its maximum value at surface and at  $Z^* = 2$ , so it is symbolized neither by a triangle nor by a rectangle, but by an appropriate shape corresponding to this profile. A sentence about the choice of the shape is included now in the legend (see below).

Second, the sentence in the caption that reads "The white dashed curves indicate the lifting condensation level (LCL)." needs more explanation in the caption than provided. It is not until Pages 13-14 that they are discussed. Something like "Each of the three LCL curves represents one scenario (of three) of CBL development found during the DACCIWA field campaign (Section 3.2.3)." should be added to the caption. Also, "Scenario 1", "Scenario 2", and "Scenario 3" should be used as labels for the dashed lines in the figure. See marked up manuscript.

Scenario 1, 2 and 3 have been added in the figure.

Each little rotation symbol in columns 2 and 3 of Figure 2 needs a precise meaning.

For example, based on the text, the clockwise rotating symbols in the middle of the stratus layer in column 3 would seem to indicate downward mixing caused by cloud-top cooling. If this is correct, the symbols make sense; if this is not correct, this is an example of these symbols causing confusion. The clockwise rotating symbols in the sub-cloud layer of column 3 seem to indicate downward mixing caused by the jet shear. Correct? If so, what does the counter-clockwise rotation symbol mean near the surface along the low level jet curve in column 2? Right above it is a clockwise rotating symbol so the juxtaposition of the two is confusing. Moreover, in a conceptual model the juxtaposition of two such symbols should be made perfectly clear in the text. In column 2 there is also a counter-clockwise rotation symbol at  $Z^* = 1.5$ . What does this mean? According to its location along the low level jet curve, it might be taken to mean upward mixing due to shear. But in column 3 the rotation symbol at about  $Z^* = 2.2$  is clockwise, perhaps indicating downward mixing due to cloud-top cooling. If so, why is it placed right on top of the low level jet curve in column 3?

We are so sorry to cause the reviewer such a trouble trying to find a logic in the rotation of the symbol. We did not intend to put signification to the clockwise or counter-clockwise rotation symbol; they were put at places where turbulent mixing is known to be important. The results of our analyses do not allow to discuss the downward or upward mixing at different levels in the cloud or subcloud layers. We agree with the reviewer that the two rotations, clockwise and counter-clockwise, were puzzling. Only one rotation for the symbol is now used in Figure 2 and its signification is defined in the legend.

For Figure 2 to be most effective, every drop of ink on it needs a clear purpose and one that is described in the text and easily remembered.

We agree with all the suggestions of the reviewer; the figure has been modified and the caption is now: *"Conceptual model for the LLSC diurnal cycle over southern West Africa. The height is normalized by the LLSC base height (CBH) when the clouds form. The grey shades represent the LLSC (stratus-fractus or stratus) or cumulus cloud. The three white dashed curves indicate the lifting condensation level (LCL). Each of them represents one scenario (of three) of CBL development found during the DACCIWA field campaign (Section 3.2.3). The dark blue lines reproduce the vertical profiles of the wind with an indication of its maximum value for each phase. The various blue symbols at the bottom represent the processes involved in the potential temperature tendency equation (their shape is adapted to the contribution of each term to the local total cooling, as a function of height) (Section 3.1.2).  $H$  stands for the surface sensible heat flux and is symbolized by an orange arrow during the convective phase. The white rotating arrows symbolize nocturnal dynamical turbulence either due to the radiative cooling at the cloud summit or to the wind shear in the NLLJ."*

4) Figures 2 and 3 work really well together. Fun to read about them. The text on Pages 10 and 11 was a bit ambiguous in making perfectly clear that the curves in Figures 4 and 5 were averages over different phases. Or perhaps stated differently, it is disconcerting to see figures based on averages over different phases when the point of the paper is a conceptual model of the distinctness of the phases themselves. Figures 4 and 5 must contain averages over the four distinct phases to be most effective, even if some of the averages from one phase to the next are similar. All in all, Figures 4 and 5 were not intellectually satisfying, especially in comparison to Figures 2 and 3.

The Figures 4 and 5 objective is to quantify the processes involved in the air saturation (so before the stratus phase), this is why we focus here on the stable and jet phases. Adding the same figures for the stratus phase would add the difficulty to estimate the latent heat release due to condensation. This can not be estimated since we do not have the liquid water content for low level cloud only (we do have LWP but some higher clouds are often present). The radiative term would also be very difficult to estimate.

We agree with the reviewer that these figures for the stable and jet phase separately would have been much more satisfactory. But we really wanted to show, in this paper, the results over the different DACCWA sites as much as possible, in order to generalize this conceptual model, first established with data acquired at Savè (the most instrumented site), to other locations in southern west Africa. Separated analyses for Stable and Jet phases were done by Adler et al (2019) for Savè because the number of radiosoundings were sufficient for most of the IOPs (1 radiosoundings every 1.5hrs). The number of radiosoundings was not sufficient at Kumasi (1 radiosoundings every 3hrs) which prevents separated analyses for the two phases and the start of the Jet phase has not been established at this site by the fuzzy method detailed in Dione et al, 2019.

We made clear in the text page 10 and 11 that these two figures are averages over Stable and Jet phases. Page 10: *“Figure 4 shows averaged vertical profiles, over stable and jet phases, of specific humidity and temperature contributions to the total change in RH at the Savè and Kumasi sites. The height is normalized by the cloud base when the stratus form. The median value of the cloud-base at Savè and Kumasi are 227 m a.g.l. and 137 m a.g.l., respectively (Kalthoff et al., 2018). At Savè, the cooling causes at least 80 % of the RH increase. Adler et al. (2019), who analyzed the moistening for separated stable and jet phases at Savè, pointed out a weak moistening during the stable phase which is almost compensated by a drying occurring during the jet phase, leading to a 20 % contribution of the moisture to the increase in RH at the end of the two phases (Fig.4a).”*

Page 11: *“ The vertical profiles of all these terms, averaged over stable and jet phases, are presented in Figure 5. If such an analysis was performed separately for stable and jet phases at the Savè site (Adler et al., 2019) (not shown), it is however not feasible at the Kumasi site because, among other reasons, the MI and NLLJ arrival times were not established, so that the start of the jet phase is unknown.”*

#### Minor Details:

0) A marked-up manuscript is being returned to the authors. It may contain detailed comments that they may find useful. The handwriting on the manuscript is not always so good, which is unfortunate. My apologies! The more important points in the marked-up manuscript now follow.

1) The first paragraph on Page 5 (Lines 1-11) is not relevant to the main story of the manuscript and can be removed. The sentence on Lines 6-8 was relevant and can be moved to Page 16, Lines 20-25, as additional factors to consider.

We agree that the paragraph does not respect the logic of the introduction. So we moved it in the conclusion (penultimate paragraph) and removed two of the references which were not directly linked to LLSC studies. The paragraph is now : *“A factor to also consider in the study of LLSC diurnal cycle is the aerosol effect in the context of rapid and significant socioeconomic changes that are happening in the southern West Africa (Knippertz et al., 2011). Deetz et al., 2018 performed highly resolved process study simulations for 2–3 July 2016 with COSMO-ART to assess the aerosol direct and indirect effect on meteorological conditions over southern West Africa. They find that MI and stratus-to-cumulus transition are highly susceptible to the aerosol direct effect, leading to a spatial shift of the MI front and a temporal shift of the stratus-to-cumulus transition with changes in the aerosol amount. On the other hand, aircraft measurements of aerosols and clouds over southern West Africa during the 2016 summer monsoon show pollution and polluted clouds across the whole region (Taylor et al., 2019, Haslett et al., 2019)”*.

2) The legends of color dots in Figures 1a and 1b need labels.

The labels have been added to the legend of color dots.

3) "Q" is not defined in Eq. 1 on Page 10.

The definition of Q has been added on page 10: *“ where  $u$ ,  $v$ ,  $w$  are the wind components,  $\rho$  the mean air density,  $Q$  the net radiation flux,...”*.

4) The authors need to rethink their use of "the day after." This finally became clear on the bottom of Page 11. Here, it is stated that stratus occurs from 2200 UTC on day 1 out to 0500 UTC on day 2. In this case "the day after" on Line 26 would mean there is a day 3. Maybe just using "day 1" and "day 2" would be simpler and more exact.

We thank the reviewer for taking note of this mistake. The sentence has been modified as follow: *“The stratus appears after 2200 UTC on day  $D$  and, for most of the cases, between 0000 and 0500 UTC on day  $D+1$ . The breakup occurs before 1500 UTC on day  $D+1$ .”*

In the abstract, the sentence *“The LLSC, inaccurately represented in the climate and weather forecasts, form in the monsoon flow during the night and break up the day after,...”* is now : *“The LLSC, inaccurately represented in the climate and weather forecasts, form in the monsoon flow during the night and break up during the following morning or afternoon,...”*.

5) The change in significant digits on Page 11, Lines 8-21, was a bit jarring.

The significant digit is now uniform in the text.

6) Not sure that the sentence on Page 13, Lines 13-15, means exactly the same thing as the sentence on Lines 3-5 of the Figure 7 caption.

We do agree with the reviewer that the standard deviation of the cloud fraction within the time it is estimated (30 min) does not mean anything. The right information was given in the legend and the

sentence in the text is now: *“The half-hourly standard deviation of the cloud base, the cloud fraction (percentage of cloud base below 1000 m a.g.l. over 30 minutes) and the difference between cloud base height and LCL are indicated on the bottom panel.”*

7) Page 13, Line 12: Never seen the word "summit" in this context. How about "radar cloud top"? If not "radar cloud top" this word needs to be defined.

“Cloud top” was what we meant. “Summit” has been replaced by “top” everywhere in the text.

8) The words "most likely" and "can" showed up a bit on Page 16. These are weak words in this context because they imply a weaker conceptual model. They should be removed from the manuscript in some way.

Yes, this comes from a personal tendency not to be too peremptory. I removed this verbs which weaken the conclusion.

9) Figure 3: The x-axis tick marks must represent hours. So, the x-axis labels should have the units of time in them. Perhaps "(hr)"?

We agree with the reviewer that the unit is missing. The unit “(hr)” has been added to the x-axis label.

10) Figures 4a and 4b: The y-axis tick mark labels should have the same number of significant digits.

The two "RES" lines in Figure 4b should have the same color because they both represent residual curves. To distinguish between them, one can add (TURB) to "RES" in the left column legend and (TURB+RAD) to "RES" in the right column legend.

The figure has been modified as suggested.

And again, one set of curves for each phase would be much more effective.  
See response to major comment #4.

11) Figure 7 visible and infrared images: The features in the visible and infrared images do not seem to line up. Is the because their fields of view and their orientations do not line up? The infrared images seem to have a color bar at the bottom of the images whereas the visible images have no grey scale. It would be helpful to have visible and infrared images with the same fields of view and the same orientation relative to north (top), south (bottom), west (left), and east (right) relative to the page. Also, some sort of grey and color bars with labels would be helpful. These changes would make the images work better together.

As indicated in the section 2, the visible images were full sky images whereas the aperture angles for the infrared camera were  $43^\circ$  times  $32^\circ$ , which corresponds to a 158 m times 114 m area at a height of 200 m. To make this information clearer in figure 7, and following the suggestion of the reviewer, we added a black rectangle in the visible images corresponding to the area of the infrared images. Concerning the color scale, the infrared camera is a security camera. Up to now we failed to establish a simple law between the color scale and a brightness temperature, this is why we only use it in a

qualitative way. The color scale and the brightness temperature are now qualitatively linked in the legend; this information was sorely lacking. The legend is now: “(a) 8 July (IOP 8), (c) 27 July (IOP 14), and (e) 18 July (IOP 11) illustrate scenarios 1, 2 and 3, respectively. The temporal evolution of the cloud base height (red dots) and cloud summit (grey dots) and LCL with its uncertainty (black line with grey shading) are presented in the top panels. The LCL uncertainty is based on the uncertainties of the temperature and humidity sensors used for the LCL estimation. The temporal evolution of the cloud fraction (blue line), the standard deviation of the cloud base over 30 minutes (black line), and the difference between LCL and CBH (black dashed line) are presented in the bottom panels. The vertical green dashed lines indicate the stratus onset and breakup times. The vertical red lines indicate the times of the visible and infrared cameras pictures presented on (b), (d), and (f) for IOP 8, IOP 14, and IOP 11, respectively. The times are 0814 and 1028 UTC on 8 July, 0718 and 1214 UTC on 27 July, and 0702 and 1036 UTC on 18 July. The color scale for the infrared images (indicated at the bottom of the images) ranges from blue for colder brightness temperatures, to white for the warmer brightness temperatures. The black rectangle on the visible images indicate the area corresponding to the infrared images. The white dot in the infrared images, at 1214 UTC on 27 July and 1036 UTC on 18 July, is due to the sun and is located at the center of the solar disk.”

By "incertitude", is "uncertainty" meant"? If so, why not use "uncertainty"?

Sorry we meant uncertainty. The changes have been done.

About the corrections in the supplement:

P5 l12 and P15 l12: The reviewer suggests “the most important details” instead of “the most important lessons”. “most important” and “details” seemed contradictory to us, so we did not make the change.

P12 l3-5 and P15 l15-20: we could not read the reviewer’s comments in the left margin.

## Interactive comment on “Conceptual model of diurnal cycle of stratiform low-level clouds over southern West Africa”

Response to reviewer 3

Dear reviewer 3,

We thank the reviewer for his/her valuable and constructive suggestions, which led to significant improvements of the quality of our manuscript. Below we detailed how his/her comments are addressed in the revised version of the manuscript. The major corrections made in the manuscript and cited in this document appear in *italic*.

### Major Issues

In Figure 6 you have shown the scatter plot of degree to decoupling (Bretherton and Wyant, 1997; Jones et al. 2011) and the bulk Richardson number. Maybe you can show the same plot colored by the different phases of the boundary layer mentioned in table 1, or color code them with the cloud fraction. This will show if the stratus clouds are coupled to the surface or not and whether the shallow cumulus form due to surface heating or shear (Zhu et al. 2001 JAS). Consistent with previous studies mentioned above, maybe you can calculate the ratio of cloud top cooling and surface heating, and contrast that with decoupling index.

Figure 6 is built with data acquired during the stratus phase; the objective was to analyze the coupling during that phase before the start of the surface thermal convection (the coupling during the convective phases is out of the scope of this paper). During that phase the cloud fraction is 100%. We do agree with the reviewer that this should clearly be indicated in the text and in the legend and those have been modified.

The sentence P12-118 is now: *“Figure 6, where the bulk Richardson number in the subcloud layer is plotted against the difference between the CBH and the LCL estimated from the radiosondes **launched during the stratus phase** at Savè and at Kumasi.”*

The legend is now: *“Bulk Richardson number ( $Ri_b$ ) in the subcloud layer against height difference between cloud base height (CBH) and lifting condensation level (LCL) **estimated from the radiosondes launched during the stratus phase** at Savè and at Kumasi. Colors stand for the different IOPs.”*

We do agree with the reviewer that the convective phase and especially the stratus to cumulus transition is also interesting in term of coupling. The convective phase is currently analyzed in details and the results will be submitted soon in an other manuscript. Unfortunately, it is quite difficult to estimate the cloud top cooling with the collected data as suggested by the reviewer, but we do try to give some clue on that point.

Figure 8 and associated text: Please mention some previous studies that have shown any relationship between the “integrated flux” and “LLC breakup time”.

As suggested by the reviewer 3, we use now the averaged flux instead of the integrated flux (see response to following comment). The following sentence: “As expected,  $\langle Rn \rangle$ ,  $\langle LE \rangle$ , and  $\langle H \rangle$  are negatively correlated with the stratus breakup time with correlation coefficients below -0.64 for Savè and Kumasi (Fig. 8).” is now *“Figure 8 shows a negative correlation between  $\langle Rn \rangle$ ,  $\langle LE \rangle$ , and  $\langle H \rangle$  and the stratus breakup time with correlation coefficients below -0.64 for Savè and Kumasi.”*



It is unclear what you mean by integrated flux and how it was calculated. Also, why do you choose to calculate integrated flux rather than the average flux itself like that has been done by numerous studies? This is especially crucial as the measurements are made in a Eulerian setting and there is no way of knowing the “history” of the parcels.

We agree with the reviewer that the averaged flux can be used in this study and all the figures are modified consequently. The way the integrated fluxes was calculated was indicated p14: “...the temporally integrated flux from 0600 UTC to 1600 UTC.”. The unit was  $\text{Jm}^{-2}$  as indicated in Figures 8 and 9. The averaged flux is the ratio of this integrated flux by the time duration (36 000 sec in our case - from 6 to 16 UTC). Consequently the scatter plot are perfectly similar with integrated or averages flux.

Also, how do you define the LLC breakup time, what is the objective criteria for determining it? Thanks.

The response to this comment is merged with the response to comment about cloud fraction (see below).

Similarly, in Figure 9 you have shown a scatter plot between surface flux and LCL. Under high surface flux conditions due to stronger mixing, the mixed layers are deeper than those under weaker surface flux conditions. Not sure if this is something worth showcasing in a paper.

We fully agree with the reviewer that this figure shows a very common results but we decided to keep this figure for three reasons:

- 1/ it is the only figure that presents some data from the third site Ile-Ife.
- 2/ it is part of the following argumentation (see comment below)
- 3/ very few measurements exist in this part of the world, so it seems important to show them when they exist even if the results are confirming some expected relationship.

However, it is puzzling to see that in Figure 9b that a lower LCL results in a later breakup. Do you have any physical explanation of this? The text only describes the figure without drawing any conclusions. Thanks.

This results is not that surprising considering the figures 8 and 9a. We improved the text to better emphasize this *“Finally, the link between the CBL development and the stratus breakup time is shown, for the Savè and Kumasi sites, in Figure 9b. Latter stratus breakup implies lower net radiation at surface (Fig. 8) and therefore weaker surface flux conditions (Fig. 9a) which lead to a lower vertical development of the CBL. The LCL is half, when LLSC breakup occurs after 1100 UTC, that compared to an LCL associated with early-morning LLSC breakup. The impacts of this on the moist convection during the afternoon need detailed investigations.”*

Line 17 on page 12 says that “the stratus reduces the NLLJ strength because of turbulent mixing in the cloud layer”. It is unclear to me where in the manuscript have you have shown this, or any other manuscripts that have shown this? The Stratus clouds can surely modify the boundary layer turbulence, but the LLJ is a meso-gamma scale phenomenon ( $\sim 200$  km), much greater than the typical scales of stratocumulus clouds. Please show evidence of this or remove the sentence.

We have no mean to show evidence of this except that the wind is reduced in the stratus layer as soon as this one forms. We tried to compare the vertical profile of the wind speed for cloudy nights and clear

nights but the clear nights are rare (1 or 2 in Savè). The conditions very special for these two cases with very weak NLLJ. We think that the turbulence in the cloud is able to induce the decrease of the wind speed because the NLLJ and the LLC do have the same horizontal scale. There are both meso-gamma phenomena. The stratus in southern west Africa extends over more than 800 000 km<sup>2</sup>. The NLLJ can be mixed up in the stratus layer from the Guinean coast to Savè. However, we changed the sentence and suggest this as an explanation.

The following paragraph: “As shown in Figure 3, the stratus and the NLLJ could interact in two ways: (1) the stratus may reduce the NLLJ strength because of the turbulent mixing in the cloudy layer, and (2) the turbulence below the NLLJ core modifies the conditions in the subcloud layer.” is now “As shown in Figure 3, the stratus and the NLLJ could interact in two ways. First, the stratus could reduces the NLLJ strength because of the turbulent mixing in the cloudy layer. Such an effect of the stratus turbulent mixing on the meso-scale phenomenon that is the NLLJ, is possible because the stratus extend over more than 800 000 km<sup>2</sup> from the Guinean coast up to 10° N latitude. Secondly, the turbulence below the NLLJ core modifies the conditions in the subcloud layer.”

The moisture advection can bring saturation at the top of the boundary layer causing cooling. Thereby forming clouds and not needing surface moisture. This seems to be the case scenario 2 (Figure 7c and 7e). In other cases, it seems that the clouds are coupled to the surface even at night (Figure 7a). It is unclear to me how you objectively defined the three scenarios.

We do not understand what period or stage the reviewer is discussing in his comment. Concerning the stratus formation, we showed in Figure 4 that the change in relative humidity is due to the cooling and not to the moistening. The three scenarios have been objectively defined looking, case by case:

- the cloud base height relatively to the LCL along the stratus and convective phases; we interpret the departure between both in terms of coupling.
- the standard deviation of the cloud base; this discriminates stratus (low standard deviation) from cumulus clouds (high standard deviation).

All the stratus nights during the campaign at Savè follow one of the three scenarios described in the paper. We agree with the reviewer that we defined all the parameters shown in Figure 7 but they are not explicitly mentioned as criteria for the definition of the scenarios.

The following paragraph : “The way in which the stratus layer and the surface are coupled (or not), as discussed in the previous section, plays a determining role on the breakup. Three scenarios have been observed at Savè, illustrated in Figure 7.” is now “ The way in which the stratus layer and the surface are coupled (or not), as discussed in the previous section, plays a determining role on the breakup. Based on CBH evolution relatively to LCL and CBH standard deviation along the stratus and convective phases, three scenarios have been defined at Savè, illustrated in Figure 7.”

Page 6, Line 14: you calculated the stratus cloud fraction by using the cloud base height values below 600 m, however in schematic shown in Figure 2 it is apparent that stratus clouds can exist with bases above 1 km. Would it be possible to re-do the figure with bases below 1 or 1.5 km? this also contradicts the text on Page 13, line 13 that uses 1 km threshold.

- We thank the reviewer for pointing this inconsistency in the text. The cloud fraction estimate using the cloud base below 600 m was first used by Adler et al, 2019. They used a 600 m height threshold because their focus was the stratus phase and the breakup time. Once the study has been extended to the convective phase and especially to the stratus-cumulus transition, the threshold has been increased to 1000 m because cumulus base can be higher than 600m.

- The stratus breakup time is determined as indicated p13-18: “A cloud fraction larger than 95 % is chosen as a criterion to determine the presence of stratus clouds above the supersite.”. We agree with the reviewer that this explanation should be also given p6 when the method for cloud fraction estimate is presented.
- The height in Figures 2 and 3 is normalized by the LLC base when the stratus forms. So these figures do not indicate directly the height of the base. However, we realized that the LLC base when the stratus forms is not quantified in the text.

Then, considering the three points above, several passages in the text have been modified:

P6, 14: “A ceilometer was deployed at the Savè and Kumasi sites, continuously providing the cloud-base height (CBH). The LLSC fraction (Adler et al., 2019) was deduced from the percentage of CBHs measured below 1000 m. Adler et al., 2019 used a 600 m height threshold for the stratus phase analysis. This threshold is increased up to 1000 m in the present study, consistently with Dione et al. (2019), to allow the stratus to cumulus transition analysis during the convective phase. A cloud fraction larger than 95 % is chosen as a criterion to determine the presence of stratus clouds above the supersite, from which the stratus appearance and breakup times are deduced. An other method for these two times estimate was use of the infrared cloud camera (Dione et al., 2019).”

P9, 127: “Figure 4 shows averaged vertical profiles, over stable and jet phases, of specific humidity and temperature contributions to the total change in RH at the Savè and Kumasi sites. The height is normalized by the cloud base when the stratus form. The median value of the cloud-base at Savè and Kumasi are 227 m a.g.l. and 137 m a.g.l., respectively (Kalthoff et al., 2018). At Savè, the cooling causes at least 80 % of the RH increase.”

#### Minor Issues

Abstract, page 1 line 14: Insert “surface” before buoyancy. Thanks. This has been modified.

Page 2 line 1: I would say “form” rather than “appear”. This has been modified.

Page 2, line 15: Insert “the” before “daytime”. This has been modified.

Figure 1: The thick circle denoting it to be a super-site at Ile-Ife doesn’t line up with the other filled circles in both panels.

The filled circle for the permanent synoptic meteorologic station does not line up with the circle for the super site instrumented for the DACCWA field experiment because the two sites are not exactly at the same location. We used the GPS coordinates.

Page 6 line 25: use “at which” rather than “when”.

CBH stands for Cloud Base Height. “...cloud base height at which the low level cloud form...” does not seem correct to me. We wanted to say that, for the normalization, we use the height of the clouds when they form. We think that “CBH when the LLC form” is the good sentence to say this.

Page 7 text: It doesn’t have line numbers so difficult to point out, but it needs to be revamped for grammar. Thanks.

We are sorry but we did not find in these 4 lines what needs to be corrected. Some minor changes have been made, suggested by reviewer 2

The UTC time is same as Local time. This needs to be mentioned somewhere in the text. Thanks.

We agree with the reviewer that difference between Local Solar time and UTC must be defined for each site. The following sentence has been added P, 1: “UTC and local solar time are only about 6 min,

10 min, and 18 min apart at Kumasi (-1.5601° E, 6.6796° N), Savè (2.4275° W, 8.0009°N), and Ile-Ife (4.5574°W, 7.5532°N), respectively. The results are henceforth presented according to UTC.”

Table 1: Would it be possible for you to mention in a column the average and standard deviation of surface fluxes, cloud fraction, cloud top height and cloud base height for each phases? Thanks.

We understand that the reviewer 2 ask these information for stratus and convective phases only and not for the stable and jet phases (since the stratus is not formed yet). All these information are sometimes difficult to provide; others are now included in the text or a reference is added :

- The surface flux are very low during the night (stratus phase) and furthermore very difficult to estimate for different reasons: (1) the sonic anemometer and the Licor hygrometer measurements are not systematic because of high level of relative humidity (~100%) or even some remaining droplets on the sensors, and (2) the hypothesis of homogeneity and stationary are very often not verified. This is why we started the temporal integration of the surface flux at 6 UTC. Concerning the convective phase, the average fluxes are given in Figure 8 and 9.
- There was a cloud radar in Savè, but the cloud summit was very often difficult to estimate from these measurements (Adler et al. , 2019). Furthermore this information was not available in Kumasi.
- As explained in a previous response, we added the median value of the LLC base during stratus phase at the two sites. The temporal evolution of the cloud base is presented in Kalthoff et al., 2018, and this information is now provided in the text. *“Kalthoff et al. (2018) present the temporal evolution of the distribution of the cloud base estimates by the ceilometer along the stratus and convective phases at the Savè and Kumasi sites.”*

Page 13, Line 7: Change to “between this level and the bases of cumulus clouds forming in the afternoon”. This has been modified.

Page 13 Line 12: Please change “summit” to “cloud top”. It is also elsewhere like caption of Figure 7. This has been corrected.

Figure 3: There are no “red numbers” in the figure. This has been corrected.

Figure 4 and 5: Please mention the significance of the dashed line.

The following sentence has been added to the legend of figure 3, 4 and 5: *“The horizontal dashed line ( $Z^*=1$ ) indicates the CBH when the stratus form.”*

# Conceptual model of diurnal cycle of low-level stratiform clouds over southern West Africa

Fabienne LOHOU<sup>1</sup>, Norbert KALTHOFF<sup>2</sup>, Bianca ADLER<sup>2</sup>, Karmen BABIĆ<sup>2</sup>, Cheikh DIONE<sup>1</sup>, Marie LOTHON<sup>1</sup>, Xavier PEDRUZO-BAGAZGOITIA<sup>3</sup>, and Maurin ZOUZOUA<sup>4</sup>

<sup>1</sup>Laboratoire d'Aérodynamique, Université de Toulouse, CNRS, UPS, France

<sup>2</sup>Institute of Meteorology and Climate Research, Karlsruhe Institute of Technology (KIT), Germany

<sup>3</sup>Wageningen University and Research, The Netherlands

<sup>4</sup>Université Felix Houphouët Boigny, Ivory Coast

Correspondence to: Fabienne LOHOU (fabienne.lohou@aero.obs-mip.fr)

## Abstract.

DACCIWA (Dynamics Aerosol Chemistry Cloud Interactions in West Africa) project and the associated ground-based field experiment, which took place during the summer 2016, provided a comprehensive dataset on the low-level stratiform clouds (LLSC) which develop almost every night over southern West Africa. The LLSC, inaccurately represented in climate and weather forecasts, *form in the monsoon flow during the night and break up during the following morning or afternoon*, affecting considerably the radiation budget. Several published studies give an overview of the measurements during the campaign, analyze the dynamical features in which the LLSC develop, and quantify the processes involved in the LLSC formation. Based on the main results of these studies and new analyses, we propose in this paper a conceptual model of the diurnal cycle of the LLSC over southern West Africa. Four main phases compose the diurnal cycle of the LLSC. The stable and the jet phases are the two steps during which the relative humidity increases, due to the cooling of the air, until the air is saturated and the LLSC form. Horizontal advection of cold air from the Guinean coast by the maritime inflow and the nocturnal low level jet (NLLJ) represents 50% of the local total cooling. The remaining half is mainly due to divergence of net radiation and turbulence flux. The third step of the LLSC diurnal cycle is the stratus phase which starts during the night and lasts until the onset of surface buoyancy driven turbulence on the following day. During the stratus phase, interactions between the LLSC and NLLJ lead to a modification of the wind speed vertical profile in the cloud layer, and a mixing of the subcloud layer by shear-driven turbulence below the NLLJ core. The breakup of the LLSC occurs during the convective phase and follow three different scenarios which depend on the intensity of the shear-driven turbulence observed during the night. The breakup time has a considerable impact on the energy balance of the Earth's surface and, consequently, on the depth of the convective boundary layer, which could vary by a factor of two from day-to-day.

**Keywords:** Low-level clouds, monsoon flow, maritime inflow, nocturnal low-level jet, diurnal cycle, southern West Africa

## 1 Introduction

Low-level stratiform clouds (LLSC) frequently develop over southern West Africa during the monsoon season. They form during the night, cover an extensive area and break up in the following day (Schrage and Fink, 2012; Schuster et al., 2013; Linden et al., 2015). LLSC significantly affect the radiation, the diurnal cycle of the convective boundary layer (CBL), and consequently, the regional climate (Knippertz et al., 2011; Hannak et al., 2017). However, strong biases exist between LLSC representation in weather and climate models and observations, which lead to an overestimation of the solar radiation across southern West Africa by the models (Knippertz et al., 2011; Hannak et al., 2017).

Before the DACCWA (Dynamics Aerosol Chemistry Cloud Interactions in West Africa) project (Knippertz et al., 2015), most of the knowledge about the physical processes involved in the diurnal cycle of the LLSC were based on numerical simulations, satellite images, or synoptic meteorological station network measurements. LLSC form in the monsoon flow, where meteorological phenomena and geographical features have combined impacts on them. Schrage and Fink (2012), Schuster et al. (2013), Adler et al. (2017), and Deetz et al. (2018) suggested that orographic and gravity wave lifting, horizontal cold air advection, and shear-driven turbulence associated with the nocturnal low level jet (NLLJ) could all play a role in the LLSC formation.

The continuous horizontal advection of cold air from the Guinean coast is maintained by the monsoon flow, but continental southern West Africa is also impacted by the sea breeze. During the daytime, the turbulence in the CBL over land decelerates the south westerly flow, which leads to a convergence zone along a line parallel to the coast (Knippertz et al., 2017; Adler et al., 2017; Deetz et al., 2018) between the cold maritime air to the south and the warmer air in the CBL to the north. Grams et al. (2010) investigated such a stationary sea breeze front during the day along the Mauritanian coast, that propagates farther inland at the end of the afternoon when the turbulence collapses. In numerical simulations, the convergence zone has been shown to move slowly several tens of kilometers inland during the day. In the late afternoon, when turbulence vanishes in the CBL, the flow accelerates and the convergence zone moves farther and faster northwards over land (Adler et al., 2017; Deetz et al., 2018). This phenomenon is called the Gulf of Guinea Maritime Inflow (MI) in Adler et al. (2019).

Schrage and Fink (2012) and Schuster et al. (2013) suggested a dominant role played by the NLLJ on the LLSC formation over southern West Africa because it intensifies the cold air advection and generates shear-driven turbulent mixing. The NLLJ typically forms over land at the end of the day when daytime buoyancy driven turbulence ceases and the Coriolis force predominates, accelerating the wind towards low pressure (Blackadar, 1957). Although the NLLJ is observed almost every night in West Africa during the monsoon season (Parker et al., 2005; Lothon et al., 2008), this formation mechanism may not be applicable at these low latitudes where the Coriolis force is weak. Parker et al. (2005) interpreted a laboratory experiment

of Linden and Simpson (1986) to suggest that when turbulence rapidly diminishes, the flow is then able to respond to the pressure-gradient force. So, when the flow at low layers is decoupled from the surface and the friction force is reduced, the NLLJ develops.

One of the objectives of the DACCIIWA project was to enhance, with extensive local observations, the knowledge about the LLSC diurnal cycle, and determine what are the important processes that need to be addressed in the weather and climate models to correctly simulate the LLSC. Comprehensive instrumentation suites were deployed to three supersites, Kumasi (Ghana), Savè (Benin) and Ile-Ife (Nigeria), from mid-June to the end of July 2016. Figure 1 shows LLSC occurrence and average cloud fraction during the DACCIIWA field campaign reported over a synoptic 55-station network at 0600 UTC. Only LLSC with more than 4 octas are considered in the statistics. In Kumasi and Ile-Ife, a 5-6 octas LLSC coverage is observed with an occurrence of 80-90 %, whereas the cloud fraction is 7-8 octas with a slightly lower occurrence (70-80 %) in Savè than in Kumasi and Ile-Ife. Kalthoff et al. (2018) and Bessardon (2019) provide an overview of the measurements during the DACCIIWA field experiment at the three sites, and detail the datasets available in the BAOBAB (Base Afrique de l'Ouest Beyond AMMA Base) data base.

The most comprehensive dataset, acquired in Savè (180 km north of the Gulf of Guinea), allowed three complementary studies on the LLSC. Using the 41-day period, Dione et al. (2019) give a statistical overview and a day-to-day quantification of the LLSC appearance and breakup times, and of the MI and NLLJ arrival times at Savè. Statistical characteristics of the monsoon flow and the NLLJ are also provided. In addition to this statistical overview, the days with occurrence of a density current, due to convection in the surroundings of Savè, or rain, which are common phenomena during summer season and likely influence the LLSC formation, are listed. Babić et al. (2019a) analyze the diurnal cycle of the LLSC at Savè on 8 July 2016, which is representative of the typical LLSC development at Savè. Babić et al. (2019a) split the diurnal cycle into 5 phases (stable, jet, stratus I, stratus II, and convective phases) whose characteristics are analyzed. The terms of the relative humidity tendency equation are quantified and show that the cooling occurring during the two first phases is the main contribution to the saturation. Heat budget terms during the different phases are then analyzed to study the processes involved in the LLSC formation. Adler et al. (2019) generalize this approach to a selection of 11 IOPs out of 15. The first locations of the LLSC appearance in southern West Africa and the way the LLSC extend horizontally during the night varied a lot from one IOP to the next, but confirm that the LLSC are not advected from the Guinean coast. Adler et al. (2019) and Babić et al. (2019a) quantify and confirm the importance of the MI and NLLJ as the main processes for the low layer cooling before the cloud formation. The shear-driven turbulence in the subcloud layer, below the NLLJ core, is also a driver of the coupling between the LLSC and the surface. Additionally, Babić et al. (2019b) compared conditions during cloudy and clear nights and find that the interplay



between the onset time and strength of the NLLJ, horizontal cold-air advection, and background moisture level are crucial for LLSC formation during the monsoon season.

The objective of this paper is to draw the most important lessons learned from Adler et al. (2019), Babić et al. (2019a), and Dione et al. (2019) in order to build a conceptual model of the LLSC diurnal cycle observed over southern West Africa. The LLSC breakup stage and the LLSC impact on radiation and CBL vertical development, not addressed in Adler et al. (2019), Babić et al. (2019a), and Dione et al. (2019), are also analyzed in this study. Our synthetic analysis is mostly based on the Savè supersite dataset. When possible, according to the instrumentation availability, we also apply our conceptual model to the Kumasi and Ile-Ife datasets in order to test it at different geographical places.

The second Section presents the three instrumented supersites of the DACCIIWA campaign. The differences in instrumentation and operations between Savè and the two other supersites are emphasized to explain whether the analyses can also be applied to the Kumasi or Ile-Ife datasets. The third Section introduces the four-phase representation of the diurnal cycle of the LLSC. In a first subsection, the two phases prior to LLSC formation are described, and the main processes responsible for the LLSC formation are addressed and quantified. In the second subsection, LLSC and lower troposphere characteristics and their interactions are analyzed during nocturnal and turbulent convection conditions until LLSC breakup. Discussion and conclusions are presented in Section 4.

## 2 Instrumented sites and data

Three supersites were deployed for the DACCIIWA field campaign between 14 June and 31 July 2016: Kumasi in Ghana, Ile-Ife in Nigeria, and Savè in Bénin (Kalthoff et al., 2018). *UTC and local solar time are only about 6 min, 10 min, and 18 min apart at Kumasi ( $-1.5601^{\circ}E$ ,  $6.6796^{\circ}N$ ), Savè ( $2.4275^{\circ}W$ ,  $8.0009^{\circ}N$ ), and Ile-Ife ( $4.5574^{\circ}W$ ,  $7.5532^{\circ}N$ ), respectively. The results are henceforth presented according to UTC.* The ground-based campaign consisted of a 48-day period with continuous in situ and remote sensing observations during which 15 IOPs were conducted at the three supersites. In addition to the continuous measurements, frequent radiosondes were released at the three sites during the IOPs (Bessardon, 2019).

The study of the diurnal cycle of the LLSC was conducted using the comprehensive instrumentation at the Savè site (Adler et al. (2019), Babić et al. (2019a), Dione et al. (2019)). To the extent possible, we apply the same approach and methodology to the two other site's datasets. The instruments used most to support the conceptual model are listed below.

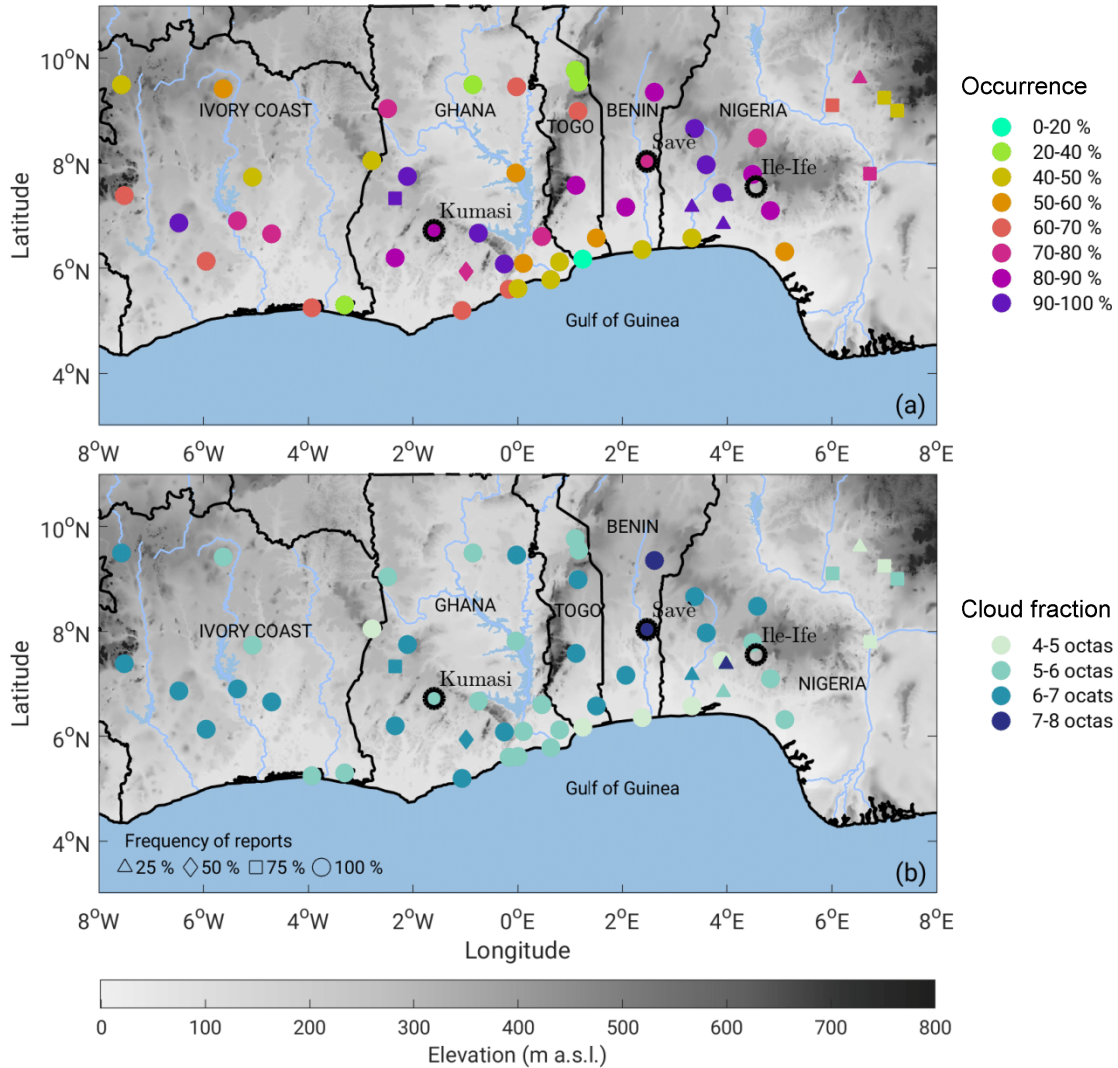
- Radiosondes were launched in Savè every 1.0 to 1.5 hrs, depending on the IOP, between 1700 UTC on day D and 1100 UTC on day D+1 in Savè. The temperature, relative humidity, and wind vertical profiles in the lower (0.0-1.5 km) atmosphere were used at Savè to study the processes involved in LLSC formation (Adler et al. (2019), Babić

et al. (2019a)) and dissolution. The same methodology was partly applied to the Kumasi dataset where the radiosondes were released every 1.5-3.0 hrs during some IOPs. Unfortunately, this approach was not applicable for the Ile-Ife site where the soundings with a tethered balloon were sparse (every 3 hrs at the best) and did not reach a sufficiently high level. Bessardon (2019) provide an overview of all radiosondes released and tethered balloon soundings made at each supersite.

- A ceilometer was deployed at the Savè and Kumasi sites, continuously providing the cloud-base height (CBH). The LLSC fraction (Adler et al., 2019) was deduced from the percentage of CBHs measured below 1000 m. Adler et al. (2019) used a 600 m height threshold for the stratus phase analysis. This threshold is increased up to 1000 m in the present study, consistently with Dione et al. (2019), to allow the stratus to cumulus transition analysis during the convective phase. A cloud fraction larger than 95 % is chosen as a criterium to determine the presence of stratus clouds above the supersite, from which the stratus appearance and breakup times are deduced. An other method for these two times estimate was use of the infrared cloud camera (Dione et al., 2019).
- The three sites were instrumented with surface energy balance and meteorological surface stations, which were used to study the impact of the LLSC on the surface energy balance and CBL vertical development.
- Images from infrared and visible cameras deployed at the Savè supersite were used in this study to illustrate the evolution of the state of the cloudy layer before it breaks up. The visible images were full sky images and the aperture angles for the IR camera were  $43^\circ \times 32^\circ$ , which corresponds to a  $158 \text{ m} \times 114 \text{ m}$  area at a height of 200 m.

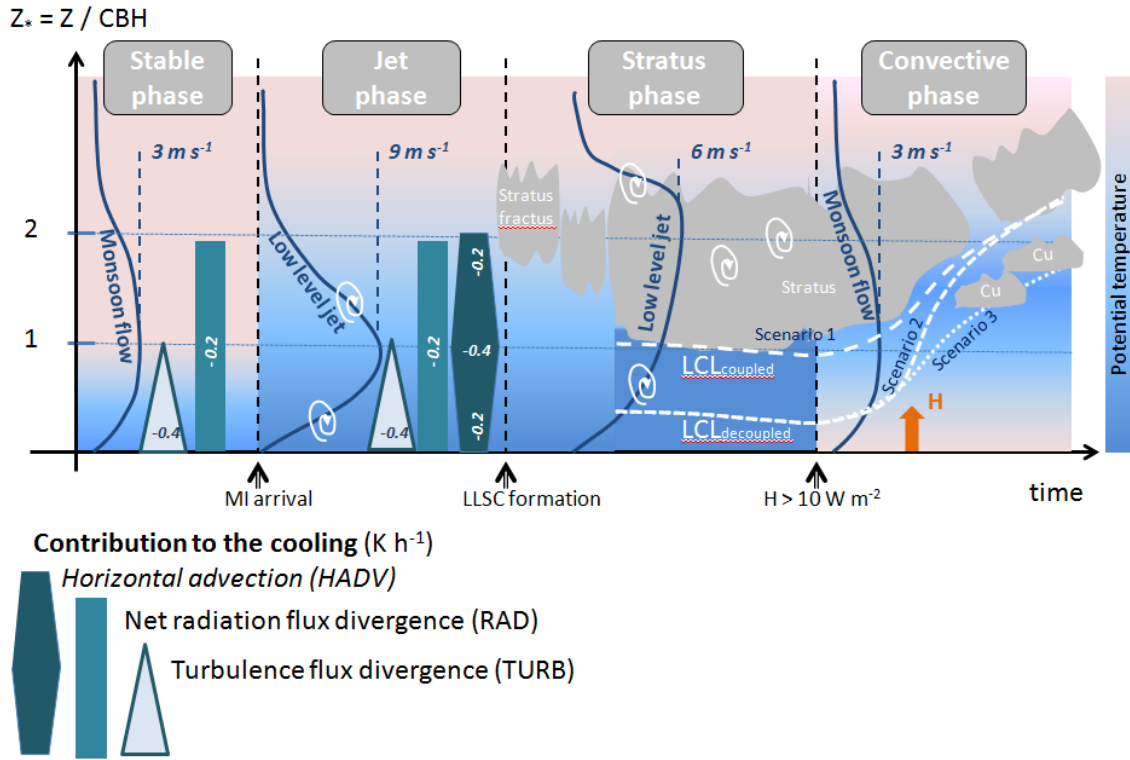
### 3 The four main phases of the LLSC diurnal cycle

A schematic representing our conceptual model of the diurnal cycle of LLSC is presented in Figure 2. The diurnal cycle is decomposed into 4 main phases, each of which will be addressed in more detail in the subsections. The height in Figure 2 is normalized by the CBH when the LLSC form ( $Z_* = Z/CBH$ ). The first phase, named the stable phase, starts around sunset. During this phase, the monsoon flow is weak and buoyancy driven convection stops. A stable layer forms close to the surface. The stable phase duration ranges 0-3 hours, depending on the IOPs used to build the conceptual model (Table 1). The second phase is named the jet phase. It starts with the MI arrival at the site and is characterized by the NLLJ settlement. Stable and jet phases are key phases because the processes which take place during the two periods lead to an increase of the relative humidity up to saturation. The jet phase ends when LLSC form, and, depending on IOP, lasts 4 to 9 hours (Table 1). The third phase is the stratus phase. In some cases, a stratus fractus deck forms before the appearance of a more homogeneous deck. During this



**Figure 1.** Topography (grey shading) of southern West Africa with superimposed (color scale) (a) occurrence and (b) average cloud fraction of low level clouds reported at the synoptic 55-station network at 0600 UTC during the DACCWA field campaign (14 June-31 July 2016). Only low clouds with more than 4 octas coverage are considered in the statistics. Frequency of reports (shape of the markers) indicates the percentage of days with available data during the whole period. The three supersites, Kumasi in Ghana, Savè in Benin and Ile-Ife in Nigeria, are indicated with black circles.

phase, strong interactions between the stratus and the sheared wind in the NLLJ exist. The stratus phase lasts between 2.5 and 16.0 hours (Table 1). Last, the convective phase starts with the increase of buoyancy driven turbulence and ends with the LLSC breakup, between 0730 and 1500 UTC. Three different scenarios explaining LLSC breakup have been proposed.



**Figure 2.** Conceptual model for the LLSC diurnal cycle over southern West Africa. The height is normalized by the LLSC base height when the stratus form ( $Z_* = Z / CBH$ ). The grey shades represent the LLSC (stratus-fractus or stratus) or cumulus cloud. The three white dashed curves indicate the lifting condensation level (LCL). Each of them represents one scenario (of three) of CBL development found during the DACCWA field campaign (Section 3.2.3). The dark blue lines reproduce the vertical profiles of the wind with an indication of its maximum value for each phase. The various blue symbols at the bottom represent the processes involved in the potential temperature tendency equation (their shape is adapted to the contribution of each term to the local total cooling, as a function of height) (Section 3.1.2).  $H$  stands for the surface sensible heat flux and is symbolized by an orange arrow during the convective phase. The white rotating arrows symbolize nocturnal dynamical turbulence either due to the radiative cooling at the cloud top or to the wind shear in the NLLJ.

**Table 1.** Variation in the duration of the four phases and variation range of MI arrival, stratus fractus and stratus onset and breakup times for the 11 IOPs included in the statistics for Fig. 3.

Duration (hour)		Time (UTC)	
Stable phase	0 - 3	MI arrival	1600 - 2000
Jet phase	4 - 9	Stratus Fractus onset	1900 - 0350
		Stratus onset	2210 - 0500
Stratus phase	2.5 - 16.5	Buoyancy driven turbulence onset	0730 - 0900
Convective phase	0.0 - 7.5	LLC breakup	0730 - 1500

The characteristics of the four phases in terms of wind speed, potential temperature, relative humidity, and bulk Richardson number are presented in Figure 3. The height-time sections composing Figure 3 are built by (i) normalizing the height by the CBH when the stratus forms for each individual radiosounding launched at the Savè supersite, (ii) setting the origin of time with a time reference appropriately chosen according to the considered phase, and (iii) hourly averaging the radiosoundings.

5 In the left column, the origin of time is set to the MI arrival time (Dione et al., 2019): the negative and positive times stand for stable and jet phases, respectively. The jet phase stops when the stratus fractus or the stratus form. On the right column, the origin of time is set to the start of the convective phase defined as when surface sensible heat flux ( $H$ ) is larger than  $10 \text{ W m}^{-2}$ . These panels present the conditions from the stratus appearance to the stratus breakup. The negative and positive times stand for stratus phase and the convective phase, respectively. The 9 IOPs included in the statistics for the stable and jet phases  
10 are those performed after the 30 June, when the Ultra High Frequency wind profiler and the microwave radiometer data are available to determine the MI arrival time (Dione et al., 2019)(Section 3.1.1). The other panels (stratus and convective phases) include 11 IOPs during which stratus clouds form and which are not disturbed by rain or meso-scale systems close to Savè (Dione et al., 2019).

### 3.1 Before cloud formation

#### 15 3.1.1 The stable and jet phases

The MI arrival time, used here as the reference time for the stable and jet phases, has been determined by Dione et al. (2019) using a fuzzy logic method that combines an increase in the wind and a decrease in the temperature. The MI arrival time ranges from 1600 UTC to 2000 UTC and is negatively correlated to the monsoon strength in the afternoon. Indeed, a strong monsoon flow favors an early MI arrival (Dione et al., 2019). When the MI arrival occurs before the establishment of the stable  
20 conditions near the surface (with negative surface sensible heat flux) the stable phase can not be defined. This situation occurred on 4 IOPs out of the 9.

The stable phase is characterized by a weak monsoon flow, which persists until the MI arrival time (Fig. 3). The low layer stabilizes with an increase of the Richardson number because of the decrease of the temperature near the ground. The jet phase starts when the MI reaches the site. The NLLJ usually sets in shortly thereafter (about 1 hr) (Dione et al., 2019). Because the  
25 MI and NLLJ are both associated with cessation of the buoyancy driven turbulence, and due to the distance from the coast to Savè, both processes settle almost at the same time at Savè (Adler et al., 2019; Babić et al., 2019a; Dione et al., 2019). They lead to a progressive increase of the wind, which reaches  $9 \text{ m s}^{-1}$  at the end of the jet phase. The jet core height is located at  $Z_* = 1$ . At the same time, a cooling and an increase in relative humidity occur up to  $Z_* = 4$ . An additional impact of the wind

increase during the jet phase is the decrease of the Richardson number below the height  $Z_* = 2.5$ , due to the wind shear in the layer below the jet core. Wind speed and potential temperature vertical profiles are shown schematically for stable and jet phases in Figure 2.

### 3.1.2 Relevant processes leading to saturation

5 The contributions of temperature and specific humidity changes to the RH changes have been quantified for a case study (Babić et al., 2019a) and for 11 IOPs (Adler et al., 2019) using radiosondes released at the Savè site. *Figure 4 shows averaged vertical profiles, over stable and jet phases, of specific humidity and temperature contributions to the total change in RH at the Savè and Kumasi sites. The height is normalized by the cloud base when the stratus form. The median value of the cloud-base at Savè and Kumasi are 227 m a.g.l. and 137 m a.g.l., respectively (Kalthoff et al., 2018). At Savè, the cooling causes at least 80*  
 10 *% of the RH increase. Adler et al. (2019) who analyzed the moistening for separated stable and jet phases at Savè, pointed out a weak moistening during the stable phase which is almost compensated by a drying occurring during the jet phase, leading to a 20 % contribution of the moisture to the increase in RH at the end of the two phases (Fig. 4a). Using the frequent radiosondes released at Kumasi, the temperature and moisture contributions to the RH change have been estimated with the same method (Fig. 4b). The results for the two sites are similar, and confirm that the cooling is responsible for the saturation of the lower*  
 15 *layer of the atmosphere.*

In order to quantify the processes responsible for the cooling, Babić et al. (2019a) and Adler et al. (2019) used the budget equation for the mean potential temperature ( $\theta$ ) (Stull, 1988):

$$\underbrace{\frac{\delta\theta}{\delta t}}_{TOT} = \underbrace{-u\frac{\delta\theta}{\delta x} - v\frac{\delta\theta}{\delta y}}_{HADV} - \underbrace{w\frac{\delta\theta}{\delta z}}_{VADV} + \underbrace{\frac{1}{\rho c_p}\frac{\delta Q}{\delta z}}_{RAD} - \underbrace{\frac{1}{\rho c_p}\frac{\delta H}{\delta z}}_{TURB} - \underbrace{\frac{1}{\rho c_p}\frac{\delta L_v E}{\delta z}}_{SQ}, \quad (1)$$

where  $u$ ,  $v$ ,  $w$  are the wind components,  $\rho$  is the mean air density,  $Q$  the net radiation flux,  $c_p$  the specific heat capacity of  
 20 the air at constant pressure,  $H$  the sensible heat flux,  $L_v$  the latent heat of water vaporization and  $E$  the evaporation rate. The contributions to the local tendency of the potential temperature ( $TOT$ ) are, the horizontal ( $HADV$ ) and vertical ( $VADV$ ) advection of potential temperature, the divergence of the net radiation flux ( $RAD$ ) and of the sensible heat flux ( $TURB$ ) and the phase change ( $SQ$ ). However,  $SQ$  can be neglected because the heat budget analysis is applied before the cloud formation. As the vertical component of the wind ( $w$ ) is very difficult to retrieve from the observations,  $VADV$  is not estimated, but is  
 25 expected to be small. The two remaining terms,  $TOT$  and  $HADV$ , are then estimated using the measurements at the Kumasi

and Savè supersites.  $TOT$  is deduced from the radiosonde profiles launched at the supersite.  $HADV$  is calculated combining radiosondes launched at the supersite and at three coastal stations (Abidjan, Accra, and Cotonou) (see Adler et al. (2019) for details of the method). At last, the Santa Barbara DISORT Atmospheric Radiative Transfer (SBDART) model (Ricchiazzi et al., 1998) is applied to estimate  $RAD$  (see Babić et al. (2019a) for details of the method) at the Savè site only. This method  
5 could not be applied to the Kumasi dataset because too few radiosoundings were launched during the jet phase. Additionally, applying the SBDART model to atmospheric soundings with clouds requires some cloud characteristics (cloud top, liquid water content) which are not available at the Kumasi site. Finally, the residual term ( $RES$ ) includes  $TURB$  at the Savè site and both the  $TURB$  and  $RAD$  at the Kumasi site. *The vertical profiles for all these terms, averaged over stable and jet phases, are presented in Figure 5. If such an analysis was performed separately for the jet phase at the Savè site (Adler et al., 2019) (not*  
10 *shown), it is however not feasible at the Kumasi site because, among other reasons, the MI and NLLJ arrival times were not established, so that the start of the jet phase is unknown.*

Figure 5a shows a local total cooling that decreases with height from  $-0.80 \text{ K h}^{-1}$  at the surface to  $-0.15 \text{ K h}^{-1}$  at  $Z_* = 4$ .  $HADV$  is also height dependent, with a vertical profile closely linked to the horizontal wind profile of the NLLJ (Adler et al., 2019; Dione et al., 2019).  $HADV$  is  $-0.20 \text{ K h}^{-1}$  at the surface and at  $Z_* = 2.5$ , with a maximum cooling of  $-0.40 \text{ K h}^{-1}$   
15 at the jet core height.  $RAD$  slightly increases with height from  $-0.15 \text{ K h}^{-1}$  at surface to  $-0.10 \text{ K h}^{-1}$  at  $Z_* = 4$ . This means that  $RES$ , which is mainly the sensible heat flux divergence term at Savè, is the main contribution to the cooling close to the ground, with a decreasing effect with height. Above  $Z_* = 1.5$  the sum of  $RAD$  and  $HADV$  is nearly equal to  $TOT$ . These three processes and their respective role during the stable and jet phases are indicated in Figure 2. Adler et al. (2019) conclude, when integrating the vertical profiles with height for Savè, that the advection is the main cooling process, responsible for 50 % of  
20 the cooling of the atmosphere during the stable and jet phases. Each of radiation and heat flux divergences contributes around 22% to the local total cooling.

Very similar results are obtained with the Kumasi dataset, though a slightly lower total local cooling is observed at Kumasi. Close to the surface, it is 25% lower than the one observed at Savè, with a cooling of  $-0.60 \text{ K h}^{-1}$  at Kumasi instead of  $-0.80 \text{ K h}^{-1}$  at Savè. It remains 16% lower at  $Z_* = 1$ . Nevertheless, as for Savè,  $HADV$  contributes about 50% to the local  
25 total cooling at around  $Z_* = 1$  and above, while cooling near the surface is mainly caused by the sensible and radiation flux divergence.

### 3.2 From stratus onset to breakup

The two phases presented in this section are the stratus phase (stratus fractus and stratus) and the convective phase during which the stratus breakup occurs. Dione et al. (2019), using an infrared camera, show that the stratus occurs on average 3 hours after the NLLJ settlement at the Savè site. *The stratus appears after 2200 UTC on day D and, for most of the cases, between*  
5 *0000 UTC and 0500 UTC on day D+1. The breakup occurs before 1500 UTC on day D+1.* Kalthoff et al. (2018), using net long-wave radiation from surface measurements (available at the three supersites) as an indicator for the mean onset of LLSC, shows that on average the stratus appears earlier at Ile-Ife (2100 UTC) and Kumasi (0000 UTC) than at Savè (0300 UTC).

#### 3.2.1 The stratus and convective phases

According to the right column in Figure 3 presenting the stratus and convective phases, the highest values of the horizontal  
10 wind speed, defining the NLLJ core, are observed between  $Z_* = 1.0$  and  $Z_* = 1.5$  at the beginning of the stratus phase. The correspondence of the stratus base height with the NLLJ core can be explained by the high cooling due to horizontal advection at this level during the stable and stratus phases (Fig. 5). During the stratus phase, the wind speed decreases and becomes more constant with height between  $Z_* = 0.5$  and  $Z_* = 2.0$  (Fig. 3). The modification of the wind vertical profile is likely due to the turbulent mixing within the cloudy layer induced by long-wave cooling at the cloud top. Although reduced, the maximum  
15 values of the wind speed are found towards the top of the cloudy layer during the stratus phase (Adler et al., 2019; Babić et al., 2019a; Dione et al., 2019) as schematically represented in Figure 2. The potential temperature in the subcloud layer is often well mixed and two processes could contribute to this: the shear-driven turbulence below the NLLJ core and the turbulence induced by the stratus due to the radiative cooling at the cloud top. When the convective phase starts, the wind speed is almost back to monsoon flow daytime conditions, that is a weak wind of about  $4 \text{ m s}^{-1}$ . The potential temperature increases with time.  
20 The relative humidity decreases with time close to the surface and above  $Z_* = 2$ , which indicates a thinning of the stratus from both the base and the top. The cloudy layer rises as the CBL develops, with the typical features of a convective mixed layer: a warming of the near-neutral stratified subcloud layer and a decrease of the Richardson number.

#### 3.2.2 Relevant processes linking the stratus to the surface

*As shown in Figure 3, the stratus and the NLLJ could interact in two ways. First, the stratus could reduce the NLLJ strength*  
25 *because of the turbulent mixing in the cloudy layer. Such an effect of the stratus turbulent mixing on the meso-scale phenomenon that is the NLLJ, is possible because the stratus extend over more than  $800\,000 \text{ km}^2$  from the Guinean coast up to  $10^\circ \text{ N}$  latitude. Secondly, the turbulence below the NLLJ core modifies the conditions in the subcloud layer. As already observed*



during the AMMA experiment (African Monsoon Multidisciplinary Analysis, Redelsperger et al. (2006)) by Lothon et al. (2008), the NLLJ can induce dynamical turbulence down to the surface, reflected by an increase of nighttime turbulent kinetic energy up to  $0.6 \text{ m}^2 \text{ s}^{-2}$  and  $0.3 \text{ m}^2 \text{ s}^{-2}$ , on average, at Kumasi and Savè, respectively (Kalthoff et al., 2018). If the shear-driven and the cloud-top driven turbulence is strong enough, the subcloud layer is well mixed and the lifting condensation level (LCL) (Romps, 2017) will correspond to the stratus base. The stratus is considered coupled to the surface (Adler et al., 2019) (indicated by  $LCL_{coupled}$  in Fig. 2). On the contrary, a subcloud layer with low turbulence will be less mixed. The cloud is then decoupled from the surface, with its base higher than the LCL (indicated by  $LCL_{decoupled}$  in Fig. 2). This is shown in Figure 6, where the bulk Richardson number in the subcloud layer is plotted against the difference between the CBH and the LCL estimated from the radiosondes launched during the stratus phase at Savè and at Kumasi. For a Richardson number below 0.1, the CBH is less than 75 m below or above the LCL. For larger values of the Richardson number, the CBH is at least 150 m above the LCL. One can note only 4 radionsoundings for which the Richardson number is above 0.1 at Kumasi, indicating larger turbulence in the subcloud layer at Kumasi than at Savè.

### 3.2.3 Stratus breakup and boundary-layer evolution

The stratus breakup occurs during the convective phase, when the CBL develops vertically due to the heating of the surface. The frequent radiosondes released during the convective phase are unfortunately very difficult to use to determine the CBL height because of the very weak measured gradients. An estimate of the subcloud-layer height is given by the LCL. This LCL-based estimate is motivated by the very good accordance between this level and the base height of the cumulus cloud forming in the afternoon. In addition, this method has the advantage to continuously provide the subcloud-layer height and can easily be applied to the Kumasi and Ile-Ife sites where the radiosondes are less frequent.

The way in which the stratus layer and the surface are coupled (or not), as discussed in the previous section, plays a determining role on the breakup. Based on CBH evolution relatively to LCL and CBH standard deviation along the stratus and convective phases, three scenarios have been defined at Savè, illustrated in Figure 7. For each scenario, Figure 7 presents, on the top panel, the temporal evolution, from 0000 to 1600 UTC, of the cloud base (measured by the ceilometer) and cloud top (measured by the cloud radar, see Adler et al. (2019) for the method) and LCL. The half-hourly standard deviation of the cloud base, the cloud fraction (percentage of cloud base below 1000 m a.g.l. over 30 minutes) and the difference between cloud base and LCL are indicated on the bottom panel. A cloud fraction larger than 95 % is chosen as a criterium to determine the presence of stratus clouds above the supersite (Adler et al., 2019). Examples of visible and infrared images from the cloud

cameras at two distinct times illustrate the cloud coverage, and allow one to make the link between the quantified parameters presented previously and the state of the sky as recorded by the cameras.

- Scenario 1 (Fig 7a and b): LLSC coupled to the surface. It is illustrated by the 8 July case (IOP 8) (Babić et al., 2019a). During the night, the CBH is very close to the LCL ( $LCL_{coupled}$  in Fig. 2) and the CBH standard deviation is very small, which indicates a very regular and constant stratus base. The visible and infrared images indicate at 0814 UTC a homogeneous stratus layer. After 0800 UTC, the LCL steadily increases to reach 1000 m a.g.l. at 1600 UTC. Until 1200 UTC, the increases of the LCL and CBH are simultaneous and identical. After that time, the cloud base fraction decrease indicates the stratus breakup. The low values of the standard deviation of the CBH during daytime, and the visible and infrared images at 1028 UTC indicate a stratus layer evolution towards a thinner cloud layer and a stratocumulus cloud. Among the 8 IOPs for which the LLSC breakup has been analyzed, 3 follow this scenario. This breakup scenario is schematically presented in Figure 2 with an LCL close to the CBH during the convective phase (*scenario1*).

When the stratus is decoupled from the surface during the night, meaning that the stratus base is above the LCL ( $LCL_{decoupled}$  in Fig. 2), two scenarios occur.

- Scenario 2 (Fig 7c and d): Progressive coupling of the LLSC to the surface. In this scenario, the LCL rises up to the stratus base, as illustrated with the 27 July case (IOP 14) and schematized in Figure 2 (*scenario2*). After 0800 UTC, once the stratus layer is coupled to the surface, the CBH rises with the subcloud layer height as in scenario 1. On IOP 14, the stratus breakup occurs at 1200 UTC, shown by the decrease of the cloud base fraction. In that case, the high standard deviation of the CBH indicates cumulus cloud development. The ceilometer is not only sensitive to the base of clouds, but also to the edges when the clouds pass over the instrument. In the case of cumulus clouds, the ceilometer indicates scattered heights. Visible and infrared images illustrate the passage from the stratus layer at 0718 UTC to cumulus clouds at 1214 UTC. Two IOPs among 8 follow scenario 2.
- Scenario 3 (Figure 7e and f): Cumulus cloud formation below the stratus layer. This scenario is illustrated by IOP 11. The stratus layer is decoupled from the surface with a CBH base 150 m above the LCL during the night, increasing to 300 m at 0700 UTC. The infrared image is a mix of orange and yellow colors, which indicates colder bases than the ones observed on IOP 8 and IOP 14 early in the morning. After 0715 UTC, the ceilometer measures a quite scattered cloud base, but coupled with the surface. This indicates some cumulus cloud formation below the stratus layer. Two cloudy layers coexist until 0830 UTC, as indicated by the 100 % cloud coverage. A thin stratocumulus layer persists after 0900 UTC with a very low standard deviation of the base which is at about 400 m a.g.l. When the low stratocumulus layer is broken enough, higher cloud bases at around 1500 m a.g.l. are detected

by the ceilometer, between 1000 and 1100 UTC. Visible and infrared images at 1036 UTC illustrate this higher stratocumulus layer. Three IOPs among 8 follow scenario 3. This breakup scenario is schematically presented in Figure 2 with an LCL below the stratus base for the entire convective phase and with some boundary layer cumulus formation below the stratus base (*scenario3*).

5 The stratus clouds modify the surface energy balance (SEB) and, consequently, the diurnal cycle of the CBL. In order to investigate the effect of the stratus on the SEB, the temporally averaged flux from 0600 UTC to 1600 UTC (indicated by  $\langle \rangle$ ) of the net radiation ( $Rn$ ), the latent heat flux ( $LE$ ), and the sensible heat flux ( $H$ ) are calculated for 21 days for Savè and Kumasi and 20 days for Ile-Ife.

Figure 8 shows a negative correlation between  $\langle Rn \rangle$ ,  $\langle LE \rangle$ , and  $\langle H \rangle$  and the stratus breakup time, with correlation coefficients below -0.64 for Savè and Kumasi. The variability is certainly due to the variation of the soil moisture from day-to-day which is more important at the beginning of the campaign than at the end, when frequent rain events maintained an almost constant soil moisture.  $\langle Rn \rangle$  is reduced by 25% and 50% when LLSC breakup occurs after 1300 UTC in Savè and Kumasi, respectively. This difference may be due to LLSC macrophysical characteristics, like deeper clouds or larger liquid water path, but also to higher cloudy layers which also impact the net radiation. Unfortunately, the same plot cannot be provided for Ile-Ife because the breakup time of the stratus cannot be determined.

The impact of the SEB on the CBL vertical development is shown in Figure 9a. The CBL development is represented by the LCL at 1600 UTC at the three sites and plotted against  $\langle H \rangle$ . As expected, the lower the  $\langle H \rangle$ , the lower the LCL, which ranges between 300 and 1000 m a.g.l. over the three sites. *Finally, the link between the CBL development and the stratus breakup time is shown, for the Savè and Kumasi sites, in Figure 9b. Latter stratus breakup implies lower net radiation at surface (Fig. 8), and therefore, weaker surface flux conditions (Fig. 9a), which lead to a lower vertical development of the CBL. The LCL is half, when LLSC breakup occurs after 1100 UTC, that compared to an LCL associated with early-morning LLSC breakup. The impacts of this on the moist convection during the afternoon need detailed investigations.*

#### 4 Discussions and Conclusions

The DACCWA ground-based field campaign, conducted over southern West Africa during the 2016 monsoon season, provided a comprehensive dataset allowing the analysis of the diurnal cycle of LLSC. The most important lessons drawn from the analyses of the Savè supersite dataset (Adler et al., 2019; Babić et al., 2019a; Dione et al., 2019), and additional results on LLSC breakup scenarios and their impact on the CBL vertical development on the following day, are used to build a conceptual

model for LLSC diurnal cycle and are generalized, when possible, to the two other supersites of the DACCIWA ground-based field campaign located at Kumasi and Ile-Ife.

The conceptual model proposed in this study divides the LLSC diurnal cycle into four main phases and characterizes, for each of them, the main atmospheric processes involved.

- 5      – The stable and jet phases constitute the period during which the cooling of the air leads to saturation and stratus formation. The cooling starts at the end of the afternoon, during the stable phase, and intensifies after the MI arrival and the NLLJ settlement, during the jet phase. Three processes are in play during these phases: horizontal advection, which contributes to 50 % of the air temperature decrease, net radiation divergence and sensible heat flux divergence, both of which contribute 22 % each. In Kumasi and Savè, 94 % of the cooling prior to the LLSC formation is then explained  
10      by these three processes. Savè and Kumasi are both at the same distance from the coast and the contributions of the three processes might change according to the distance inland, and other processes may come into play. As an example, gravity waves and orographic effects, previously pointed out in modeling studies are import factors for cloud formation; however, these processes could not actually be evaluated with DACCIWA ground-based field experiment measurements.
- 15      – The stratus phase is characterized, on average, by a reduction of the NLLJ in the stratus layer and often a well-mixed subcloud layer. The shear-driven turbulence associated with the NLLJ in the subcloud layer and the turbulence induced by the radiative cooling at the cloud top are the relevant processes. The Bulk Richardson number in the subcloud layer takes into account the shear-driven turbulence, but the static stability may result from both processes. Looking at day-to-day variability, large values of Bulk Richardson number correspond to CBHs higher than the LCL: the LLSC are then said to be decoupled from the surface. Close to zero Bulk Richardson numbers are associated with CBHs close to  
20      the LCL: the LLSC are considered as coupled to the surface. Interestingly, only coupled cases have been observed at Kumasi during the studied IOPs, with the Bulk Richardson number in Kumasi being lower than in Savè. The coupling to the surface might play a role on LLSC characteristics, because coupled LLSC have a more steady CBH during the night.
- 25      – The convective phase starts with buoyancy driven turbulence in the CBL on the following day. The breakup of the LLSC follows three scenarios. Scenario 1 has the LLSC coupled to the surface, whereas the two other scenarios have the LLSC decoupled from the surface. Further analyses of the processes in play in the LLSC breakup according to the scenario would be interesting. The breakup time of the LLSC impacts the averaged (from 0600 UTC to 1600 UTC) net radiation at the surface during the following day, with a 25 % reduction at the Savè site and a 50 % reduction at Kumasi for late LLSC breakup times compared to early LLSC breakup times. The reasons for such a difference would be interesting to investigate. The vertical development of the subcloud layer is directly impacted by the reduction of the available energy

at surface, with a 50 % reduction of its height for a late LLSC breakup time compared to an early LLSC breakup time.

The impacts of this on the moist convection during the afternoon need detailed investigations.

*A factor to also consider in the study of LLSC diurnal cycle is the aerosol effect in the context of rapid and significant socioeconomic changes that are happening in the southern West Africa (Knippertz et al., 2011). Deetz et al. (2018) performed highly resolved process study simulations for 2–3 July 2016 with COSMO-ART to assess the aerosol direct and indirect effect on meteorological conditions over southern West Africa. They find that MI and stratus-to-cumulus transition are highly susceptible to the aerosol direct effect, leading to a spatial shift of the MI front and a temporal shift of the stratus-to-cumulus transition with changes in the aerosol amount. On the other hand, aircraft measurements of aerosols and clouds over southern West Africa during the 2016 summer monsoon show pollution and polluted clouds across the whole region (Taylor et al., 2019; Haslett et al., 2019).*

As shown in the present study, the formation and dissipation of the LLSC results from a combination of several processes, the intensity of each of them being important in the diurnal cycle of the LLSC. Thus, an accurate representation of LLSC in the models requires a proper simulation of these atmospheric processes in the lower atmospheric layer. The results presented in this study help to highlight the weaknesses of the numerical models in the representation of the diurnal cycle of the LLSC.

*Author contributions.* N

. Kalthoff, F. Lohou, M. Lothon, and B. Adler designed the DACCWA ground-based field experiment. N. Kalthoff, F. Lohou, M. Lothon, B. Adler, C. Dione, and X. Pedruzo-Bagazgoitia performed the measurements at the Savè site, processed and analyzed the data. K. Babić and M. Zouzoua processed and analyzed the data. F. Lohou prepared the manuscript with contributions from all co-authors.

*Data availability.* T

he data used in this study are available on the BAOBAB database (Derrien et al., 2016; Handwerker et al., 2016; Kohler et al., 2016; Wieser et al., 2016).

*Competing interests.* T

he authors declare that they have no conflict of interest.

*Acknowledgements.* The DACCIWA project has received funding from the European Union Seventh Framework Programme (FP7/2007-2013) under grant agreement no. 603502. The authors thank also Laboratoire d'Aérodynamique, Université de Toulouse, CNRS, UPS, France and KIT (Karlsruhe Institute of Technology) and UPS (Université Toulouse) for helping to install the equipment as well as the people from  
5 INRAB in Savè for allowing the equipment on their ground. We thank the Aeris data infrastructure for providing access to the data used in this study.

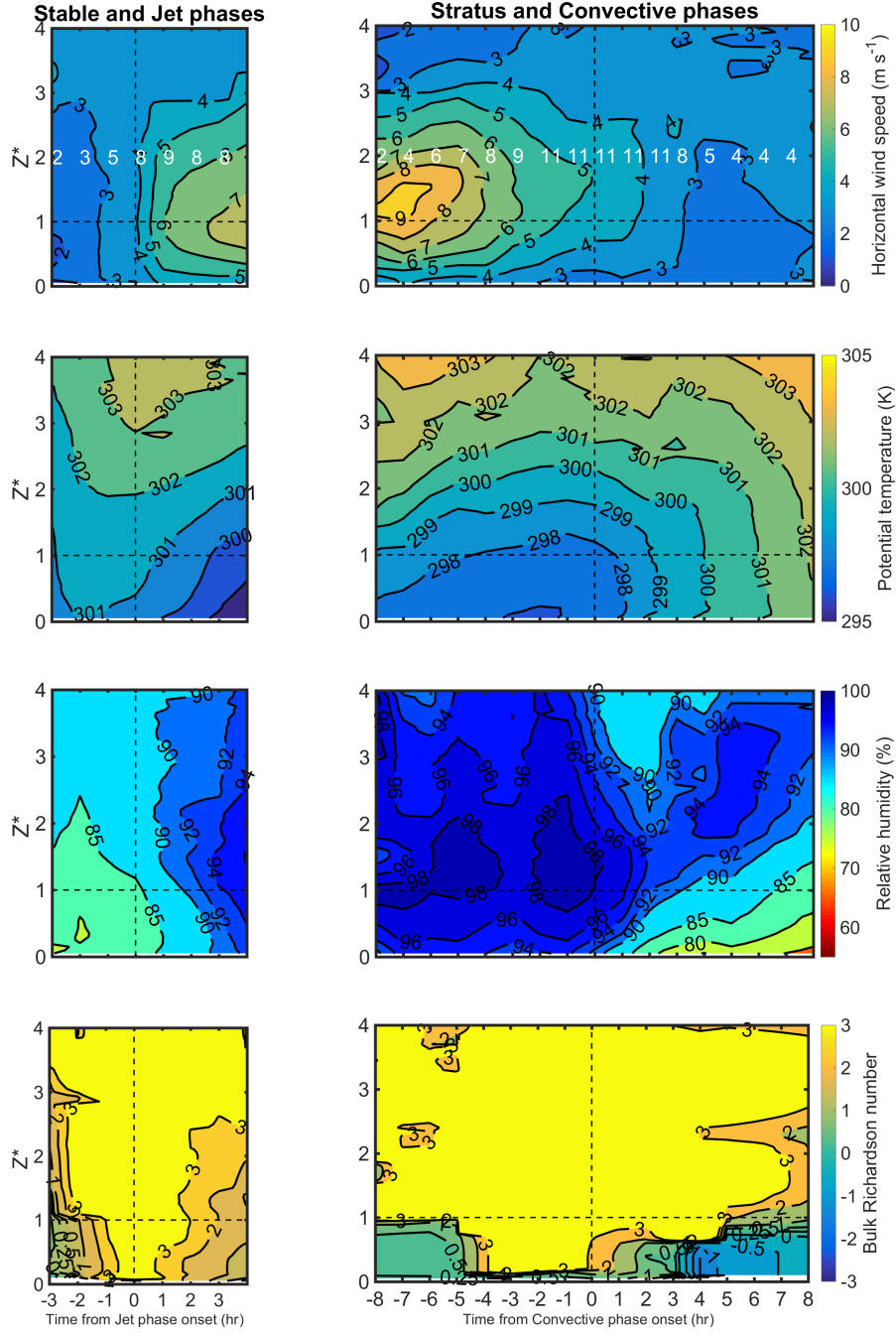
## References

- Adler, B., Kalthoff, N., and Gantner, L.: Nocturnal low-level clouds over southern West Africa analysed using high-resolution simulations, *Atmospheric Chemistry and Physics*, 17, 899–910, <https://doi.org/10.5194/acp-17-899-2017>, 2017.
- Adler, B., Babić, K., Kalthoff, K., Lohou, F., Lothon, M., Dione, C., Pedruzo-Bagazgoitia, X., and Andersen, H.: Nocturnal low-level clouds  
5 in the atmospheric boundary layer over southern West Africa: an observation-based analysis of conditions and processes, *Atmos. Chem. Phys.*, 19, 663–681, <https://doi.org/10.5194/acp-2018-775>, 2019.
- Babić, K., Adler, B., Kalthoff, N., Andersen, H., Dione, C., Lohou, F., Lothon, M., and Pedruzo-Bagazgoitia, X.: The observed diurnal cycle of nocturnal low-level stratus clouds over southern West Africa: a case study, *Atmos. Chem. Phys.*, 19, 1281–1299, <https://doi.org/10.5194/acp-19-1281-2019>, 2019a.
- 10 Babić, K., Kalthoff, N., Adler, B., Quinting, J. F., Lohou, F., Dione, C., and Lothon: What controls the formation of nocturnal low-level stratus clouds over southern West Africa during the monsoon season?, *Atmos. Chem. Phys.*, submitted, 2019b.
- Bessardon, G.: A new high-quality dataset of the diurnal cycle of the souther West Africa atmospheric boundary layer during the Monsoon season - an overview from the DACCIIWA campaign, *Nature, science data*, 2019.
- Blackadar, A. K.: Boundary layer wind maxima and their significance for the growth of nocturnal inversions, *Bull. Amer. Meteorol. Soc.*,  
15 38, 283–290, 1957.
- Deetz, K., Vogel, H., Knippertz, P., Adler, B., Taylor, J., Coe, H., Bower, K., Haslett, S., Flynn, M., Dorsey, J., Crawford, I., Kottmeier, C., and Vogel, B.: Cloud and aerosol radiative effects as key players for anthropogenic changes in atmospheric dynamics over southern West Africa, *Atmospheric Chemistry and Physics Discussions*, pp. 1–36, <https://doi.org/10.5194/acp-2018-186>, <https://www.atmos-chem-phys-discuss.net/acp-2018-186/>, 2018.
- 20 Derrien, S., Bezombes, Y., Bret, G., Gabella, O., Jarnot, C., Medina, P., Piques, E., Delon, C., Dione, C., Campistron, B., Durand, P., Jambert, C., Lohou, F., Lothon, M., Pacifico, F., and Meyerfeld, Y.: DACCIIWA field campaign, Savè super-site, UPS instrumentation, <https://doi.org/10.6096/dacciwa.1618>, 2016.
- Dione, C., Lohou, F., Lothon, M., Adler, B., Babić, K., Kalthoff, N., Pedruzo-Bagazgoitia, X., Bezombes, Y., and Gabella, O.: Low Level Cloud and Dynamical Features within the Southern West African Monsoon, *Atmospheric Chemistry & Physics Discussions*, 2019.
- 25 Grams, C. M., Jones, S. C., Marsham, J. H., Parker, D. J., Haywood, J. M., and Heuveline, V.: The Atlantic inflow to the Saharan heat low: Observations and Modelling, *Quarterly Journal of the Royal Meteorological Society*, 136, 125–140, <https://doi.org/10.1002/qj.429>, 2010.
- Handwerker, J., Scheer, S., and Gamer, T.: DACCIIWA field campaign, Savè super-site, Cloud and precipitation, <https://doi.org/10.6096/dacciwa.1686>, 2016.
- Hannak, L., Knippertz, P., Fink, A. H., Kniffka, A., and Pante, G.: Why do global climate models struggle to represent low-level clouds in  
30 the west african summer monsoon?, *Journal of Climate*, 30, 1665–1687, <https://doi.org/10.1175/JCLI-D-16-0451.1>, 2017.

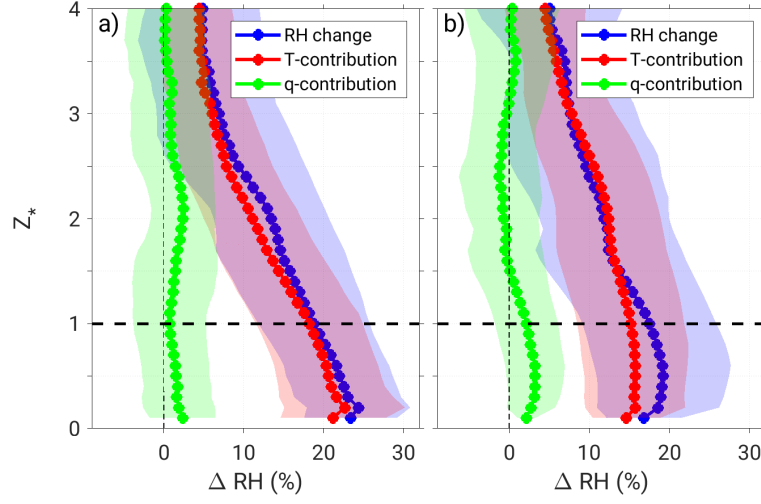
- Haslett, S. L., Taylor, J. W., Evans, M., Morris, E., Vogel, B., Dajuma, A., Brito, J., Batenburg, A. M., Borrmann, S., Schneider, J., Schulz, C., Denjean, C., Bourrianne, T., Knippertz, P., Dupuy, R., Schwarzenböck, A., Sauer, D., Flamant, C., Dorsey, J., Crawford, I., and Coe, H.: Remote biomass burning dominates southern West African air pollution during the monsoon, *Atmos. Chem. Phys. Discuss.*, 2019, 1–23, <https://doi.org/10.5194/acp-2019-38>, 2019.
- 5 Kalthoff, N., Lohou, F., Brooks, B., Jegede, G., Adler, B., Babić, K., Dİone, C., Ajao, A., Amekudzi, L. K., Aryee, J. N., Ayoola, M., Bessardon, G., Danuor, S. K., Handwerker, J., Kohler, M., Lothon, M., Pedruzo-Bagazgoitia, X., Smith, V., Sunmonu, L., Wieser, A., Fink, A. H., and Knippertz, P.: An overview of the diurnal cycle of the atmospheric boundary layer during the West African monsoon season: Results from the 2016 observational campaign, *Atmospheric Chemistry and Physics*, 18, 2913–2928, <https://doi.org/10.5194/acp-18-2913-2018>, 2018.
- 10 Knippertz, P., Fink, A. H., Schuster, R., Trentmann, J., Schrage, J. M., and Yorke, C.: Ultra-low clouds over the southern West African monsoon region, *Geophysical Research Letters*, 38, n/a–n/a, <https://doi.org/10.1029/2011GL049278>, <http://doi.wiley.com/10.1029/2011GL049278>, 2011.
- Knippertz, P., Coe, H., Chiu, J. C., Evans, M. J., Fink, A. H., Kalthoff, N., Liousse, C., Mari, C., Allan, R. P., Brooks, B., Danour, S., Flamant, C., Jegede, O. O., Lohou, F., and Marsham, J. H.: The DACCİWA Project: Dynamics–Aerosol–Chemistry–Cloud Interactions in  
15 West Africa, *B. Am. Meteorol. Soc.*, 96, 1451–1460, <https://doi.org/10.1175/BAMS-D-14-00108.1>, 2015.
- Knippertz, P., Fink, A. H., Deroubaix, A., Morris, E., Tocquer, F., Evans, M. J., Flamant, C., Gaetani, M., Lavaysse, C., Mari, C., Marsham, J. H., Meynadier, R., Affo-Dogo, A., Bahaga, T., Brosse, F., Deetz, K., Guebsi, R., Latifou, I., Maranan, M., Rosenberg, P. D., and Schlueter, A.: A meteorological and chemical overview of the DACCİWA field campaign in West Africa in June–July 2016, *Atmospheric Chemistry and Physics*, 17, 10893–10918, <https://doi.org/10.5194/acp-17-10893-2017>, 2017.
- 20 Kohler, M., Kalthoff, N., Seringer, J., and Kraut, S.: DACCİWA field campaign, Savè super-site, Surface measurements, <https://doi.org/10.6096/dacciwa.1690>, 2016.
- Linden, P. F. and Simpson, J. E.: Gravity driven flows in a turbulent fluid, *J. Fluid Mech.*, 172, 481–497, 1986.
- Linden, R., Fink, A. H., and Redl, R.: Satellite-based climatology of low-level continental clouds in southern West Africa during the summer monsoon season, *J. Geophys. Res. Atmos.*, 120, 1–16, <https://doi.org/10.1002/2014JD022614>.Received, 2015.
- 25 Lothon, M., Saïd, F., Lohou, F., and Campistron, B.: Observation of the Diurnal Cycle in the Low Troposphere of West Africa, *Mon. Wea. Rev.*, 136, 3477–3500, <https://doi.org/10.1175/2008MWR2427.1>, 2008.
- Parker, D. J., Burton, R. R., Diongue-Niang, A., Ellis, R. J., Felton, M., Taylor, C. M., Thorncroft, C. D., Bessemoulin, P., and Tompkins, A. M.: The diurnal cycle of the West African monsoon circulation, *Quarterly Journal of the Royal Meteorological Society*, 131, 2839–2860, <https://doi.org/10.1256/qj.04.52>, 2005.
- 30 Redelsperger, J.-L., Thorncroft, C. D., Diedhiou, A., Lebel, T., Parker, D. J., and Polcher, J.: African monsoon multidisciplinary analysis, *Bull. Amer. Meteorol. Soc.*, 87, 1739–1746, <https://doi.org/10.1175/BAMS-87-12-1739>, 2006.



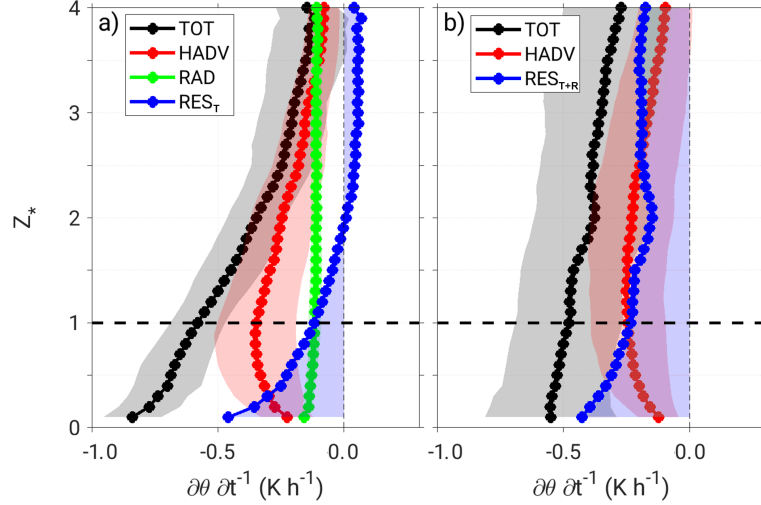
- Ricchiazzi, P., Yang, S., Gautier, C., and Sowle, D.: SBDART: A research and teaching software tool for plane-parallel radiative transfer in the Earth's atmosphere., *Bulletin of the American Meteorological Society*, 79, 2101–2114, 1998.
- Romps, D. M.: Exact Expression for the Lifting Condensation Level, *Journal of the Atmospheric Sciences*, 74, 3891–3900, <https://doi.org/10.1175/jas-d-17-0102.1>, 2017.
- 5 Schrage, J. M. and Fink, A. H.: Nocturnal Continental Low-Level Stratus over Tropical West Africa: Observations and Possible Mechanisms Controlling Its Onset, *Monthly Weather Review*, 140, 1794–1809, <https://doi.org/10.1175/MWR-D-11-00172.1>, <http://journals.ametsoc.org/doi/abs/10.1175/MWR-D-11-00172.1>, 2012.
- Schuster, R., Fink, A. H., and Knippertz, P.: Formation and Maintenance of Nocturnal Low-Level Stratus over the Southern West African Monsoon Region during AMMA 2006, *Journal of Atmospheric Sciences*, 70, 2337–2355, <https://doi.org/10.1175/JAS-D-12-0241.1>, 2013.
- 10 Stull, R. B.: An introduction to boundary layer meteorology, Kluwer Academic Publishers, Dordrecht, The Netherlands, 1988.
- Taylor, J. W., Haslett, S. L., Bower, K., Flynn, M., Crawford, I., Dorsey, J., Choularton, T., Connolly, P. J., Hahn, V., Voigt, C., Sauer, D., Dupuy, R., Brito, J., Schwarzenboeck, A., Bourriane, T., Denjean, C., Rosenberg, P., Flamant, C., Lee, J. D., Vaughan, A. R., Hill, P. G., Brooks, B., Catoire, V., Knippertz, P., and Coe, H.: Aerosol influences on low-level clouds in the West African monsoon, *Atmos. Chem. Phys. Discuss.*, 2019, 1–45, <https://doi.org/10.5194/acp-2019-40>, <https://www.atmos-chem-phys-discuss.net/acp-2019-40/>, 2019.
- 15 Wieser, A., Adler, B., and Deny, B.: DACCIIWA field campaign, Savè super-site, Thermodynamic data sets, <https://doi.org/10.6096/dacciwa.1659>, 2016.



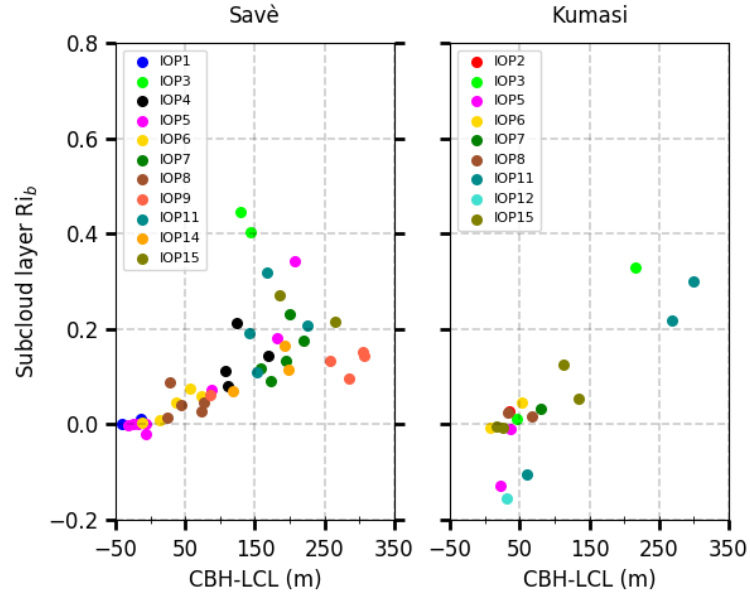
**Figure 3.** Mean height-time sections for, from top to bottom, wind speed ( $\text{ms}^{-1}$ ), potential temperature (K), relative humidity (%) and bulk Richardson number (color scale and isolines). These height-time sections are built by (i) normalizing the height by the CBH when the stratus forms for each individual radiosounding, (ii) setting the origin of time with a time reference appropriately chosen according to the considered phase, and (iii) hourly averaging the radiosoundings. The horizontal dashed line ( $Z_* = 1$ ) indicates the CBH when the stratus form. White numbers in the top panels indicate the number of radio soundings available for the hourly-average. The origin of time is set to (left column) MI arrival time (negative and positive times standing for stable and jet phases, respectively), and (right column) start of the convective phase ( $H > 10 \text{ W m}^{-2}$ ) (negative and positive times standing for stratus phase and convective phase, respectively)



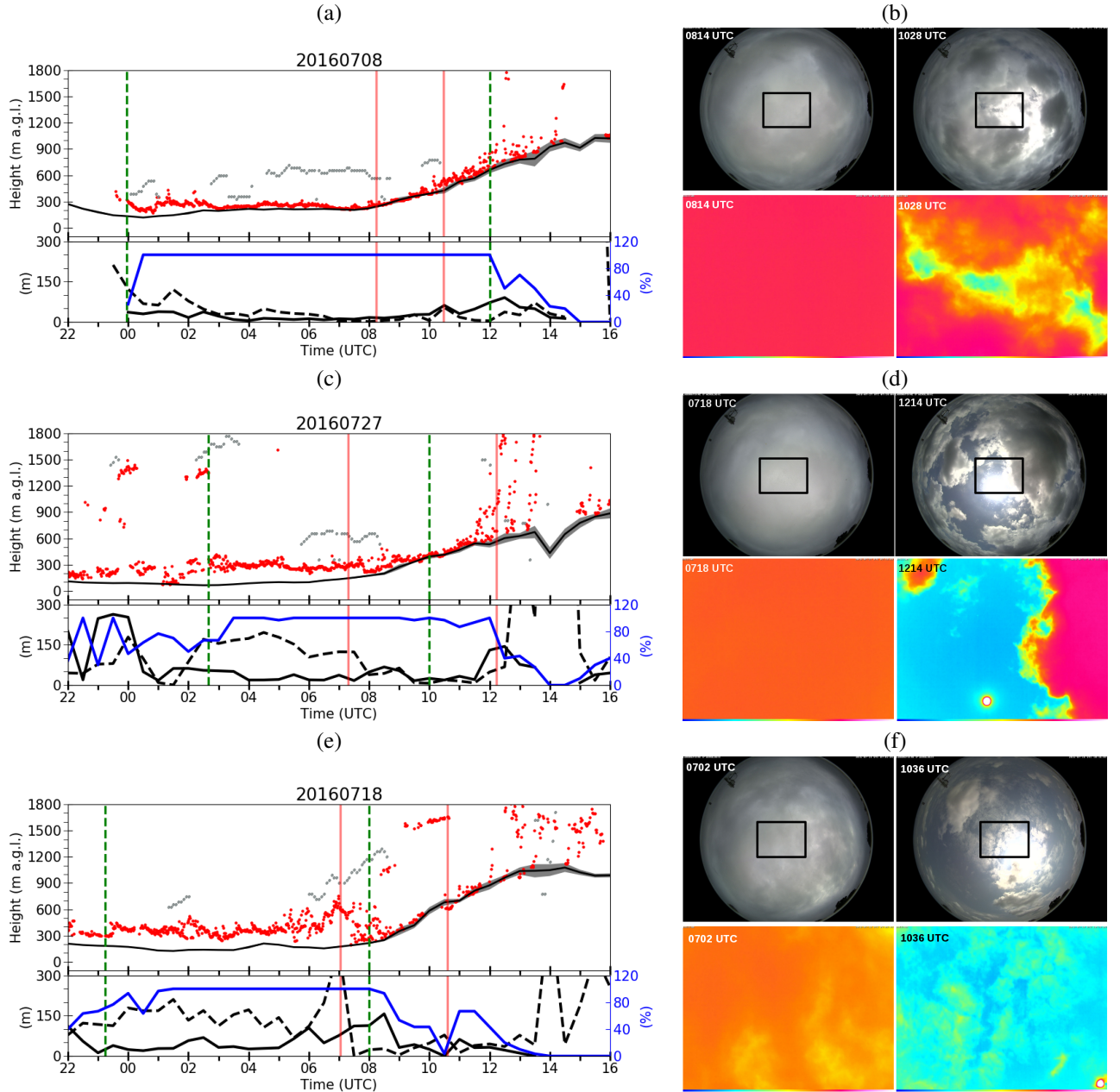
**Figure 4.** Specific humidity ( $q$ ) and temperature ( $T$ ) mean contributions to the mean total change in relative humidity ( $RH$ ) at (a) Savè and (b) Kumasi averaged over all available IOPs. The shading indicates the standard deviation. The horizontal dashed line ( $Z_* = 1$ ) indicates the CBH when the stratus form.



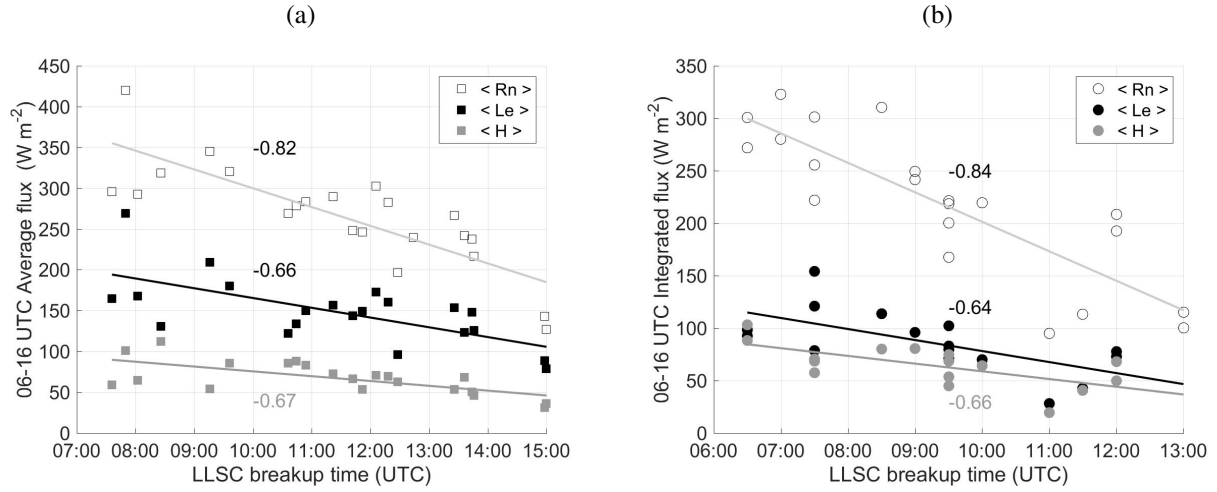
**Figure 5.** (a) Vertical profiles of local total cooling rate ( $TOT$ ) and estimates of contribution of horizontal advection ( $HADV$ ) and net radiation flux divergence ( $RAD$ ) terms for the Savè site during the stable and jet phases. (b) Vertical profiles of  $TOT$  and  $HADV$  for the Kumasi site during the stable and jet phases. The residual term includes the turbulent flux divergence at Savè ( $RES_T$ ) and both the net radiation and turbulent flux divergences at Kumasi ( $RES_{T+R}$ ). The shading indicates the standard deviation. The horizontal dashed line ( $Z_* = 1$ ) indicates the CBH when the stratus form.



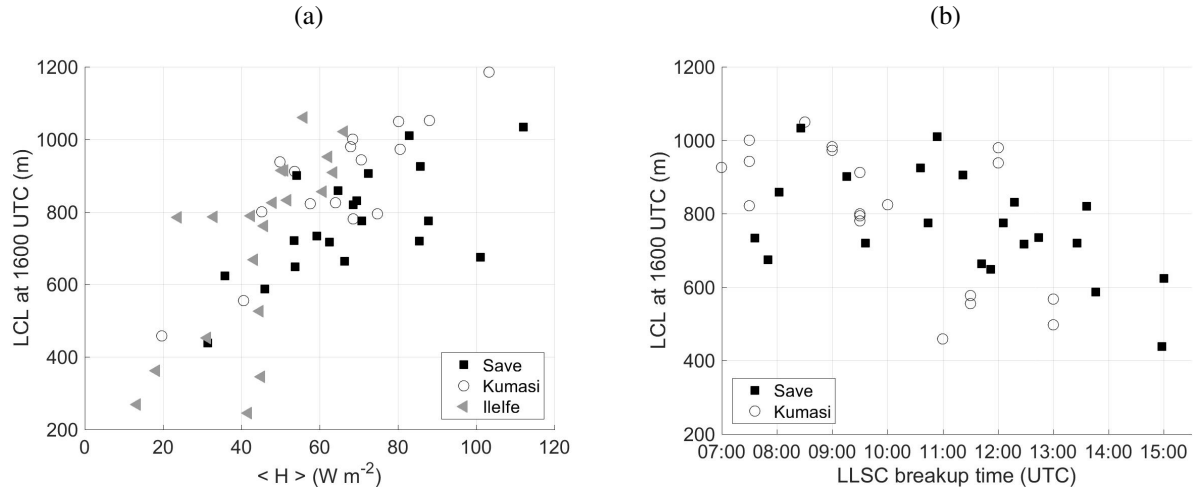
**Figure 6.** Bulk Richardson number ( $Ri_b$ ) in the subcloud layer against height difference between cloud base height (CBH) and lifting condensation level (LCL) estimated from the radiosondes launched during the stratus phase at Savè and at Kumasi. Colors stand for the different IOPs.



**Figure 7.** (a) 8 July (IOP 8), (c) 27 July (IOP 14), and (e) 18 July (IOP 11) illustrate scenarios 1, 2 and 3, respectively. The temporal evolution of the cloud base height (red dots) and cloud top (grey dots) and LCL with its uncertainty (black line with grey shading) are presented in the top panels. The LCL uncertainty is based on the uncertainties of the temperature and humidity sensors used for the LCL estimation. The temporal evolution of the cloud fraction (blue line), the standard deviation of the cloud base over 30 minutes (black line), and the difference between LCL and CBH (black dashed line) are presented in the bottom panels. The vertical green dashed lines indicate the stratus onset and breakup times. The vertical red lines indicate the times of the visible and infrared cameras pictures presented on (b), (d), and (f) for IOP 8, IOP 14, and IOP 11, respectively. The times are 0814 and 1028 UTC on 8 July, 0718 and 1214 UTC on 27 July, and 0702 and 1036 UTC on 18 July. The color scale for the infrared images (indicated at the bottom of the images) ranges from blue for colder brightness temperatures, to white for the warmer brightness temperatures. The black rectangle on the visible images indicate the area corresponding to the infrared images. The white dot in the infrared images, at 1214 UTC on 27 July and 1036 UTC on 18 July, is due to the sun and is located at the center of the solar disk.



**Figure 8.** Averaged net radiation ( $\langle R_n \rangle$ ), latent heat flux ( $\langle Le \rangle$ ) and sensible heat flux ( $\langle H \rangle$ ) heat flux from 0600 UTC to 1600 UTC versus LLSC breakup time at (a) Savè and (b) Kumasi. Linear regressions are plotted and correlation coefficients are indicated.



**Figure 9.** (a) LCL at 1600 UTC against  $\langle H \rangle$  at the three sites. (b) LCL at 1600 UTC against LLSC breakup time at Savè and Kumasi. The LLSC breakup time can not be estimated in Ile-Ife.