

Dear Editor Spracklen,

We appreciate your comment and recommendation on our manuscript. We have incorporated your suggestions and revised our manuscript. The below is the point to point responses to your two specific comments:

Your comment:

In response to Referee #1 (Line 402) it is important to mention the uncertainties involved in evaluating aerosol emissions using AOD. This is due to the uncertainties in calculating AOD from simulated aerosol due to uncertainties in aerosol size distribution, optical properties, aerosol water uptake, vertical distribution of aerosol, meteorology etc. See Reddington et al. (2019), comparing 3 emission datasets in one model over the Amazon against both AOD and vertical aerosol profiles (<https://www.atmos-chem-phys.net/19/9125/2019/acp-19-9125-2019.html>). It is possible to correctly simulate the aerosol vertical profile but still underestimate AOD.

Our response:

In Sect. 4.3, we have added this paragraph “Given the sparsity of the measurements of surface and vertical concentrations at the global scale, we implemented an approach to evaluate model simulation uncertainty globally due to biomass burning aerosol emissions by evaluating the resulting AOD against those from satellite data and AERONET measurements, following the studies by Petrenko et al. (2012) and Zhang et al. (2014). We acknowledge the uncertainties in calculating AOD, such as uncertainties associated with assumptions of aerosol size distribution, optical properties, aerosol water uptake, and vertical distribution of aerosol (e.g., Reddington et al., 2019). In addition, Ge et al. (2017) showed that the choice of different meteorological fields can also lead to uncertainty in simulating the modelled aerosol loading. For instance, meteorological fields from ECMWF and National Centers for Environmental Prediction (NCEP) can yield a factor of two difference in the resulting surface PM<sub>2.5</sub> concentration during the fire season of September in the Maritime continents.”

Your comment:

It would also be useful to stress that not all the emission datasets include peat combustion. GFED3.1 and GFED4 do, but FINN1.5 does not. Peat combustion is an important emission source in some regions such as Equatorial Asia. For example, see: Kiely et al (2019) (<https://www.atmos-chem-phys.net/19/11105/2019/acp-19-11105-2019.html>). This will contribute to the differences in emissions between emission datasets in some regions.

Our response:

In Sect.4.2, we have added a new sub-section as below:

**Biome types.** The uncertainty of estimating BB emission could be partially attributed to different definitions of major biome types, because the scaling factor of emission coefficient for the FRP-

based BB datasets (i.e., GFAS and QFED), or the emission factor used by all BB datasets will be assigned accord to the biome type where the fire event occurs. The six BB emission datasets examined in this study have different definitions of major biome types, for example, six major biome types applied in GFED4.1s (Table 1 in van der Werf et al., 2017), but eight in GFAS1.2 (Table 2 in Kaiser et al., 2012), and only four in QFED2.4 (Table 2 in Darmanov and da Silva, 2015). In particular, peat combustion is an important emission source in some regions, such as Equatorial Asia (e.g., Kiely et al., 2019). However, not all the emission datasets include peat biome or consider its unique characteristics. Among the emission datasets based on burned areas, GFED3.1 and GFED4s consider peat, but FINN1.5 does not. In QFED2.4 and FEER1.0, the peat biome is not explicitly identified. Thus, such differences in the approaches to the processing of contributions from specific biomes may contribute to the differences between emission datasets in some regions.

#### References:

Kiely, L., Spracklen, D. V., Wiedinmyer, C., Conibear, L., Reddington, C. L., Archer-Nicholls, S., Lowe, D., Arnold, S. R., Knute, C., Khan, M. F., Latif, M. T., Kuwata, M., Budisulistiorini, S. H., and Syaufina, L.: New estimate of particulate emissions from Indonesian peat fires in 2015, *Atmos. Chem. Phys.*, 19, 11105–11121, <https://doi.org/10.5194/acp-19-11105-2019>, 2019.

# Six Global Biomass Burning Emission Datasets: Inter-comparison and Application in one Global Aerosol Model

Xiaohua Pan<sup>1,2,\*</sup>, Charles Ichoku<sup>3</sup>, Mian Chin<sup>2</sup>, Huisheng Bian<sup>4,2</sup>, Anton Darmenov<sup>2</sup>, Peter Colarco<sup>2</sup>, Luke Ellison<sup>5,2</sup>, Tom Kucsera<sup>6,2</sup>, Arlindo da Silva<sup>2</sup>, Jun Wang<sup>7</sup>, Tomohiro Oda<sup>6,2</sup>, Ge Cui<sup>7</sup>

1. Earth System Science Interdisciplinary Center, University of Maryland, College Park, MD, USA
2. NASA Goddard Space Flight Center, Greenbelt, MD, USA
3. Howard University, Washington DC, USA
4. Joint Center for Earth Systems Technology, University of Maryland Baltimore City, Baltimore, MD, USA
5. Science Systems and Applications, Inc., Lanham, MD, USA
6. Universities Space Research Association, Columbia, MD, USA
7. University of Iowa, College of Engineering, Iowa City, IA, USA

\* xpan333@umd.edu

## Abstract

Aerosols from biomass burning (BB) emissions are poorly constrained in global and regional models, resulting in a high level of uncertainty in understanding their impacts. In this study, we compared six BB aerosol emission datasets for 2008 globally as well as in 14 regions. The six BB emission datasets are: (1) GFED3.1 (Global Fire Emissions Database version 3.1); (2) GFED4s (GFED version 4 with small fires); (3) FINN1.5 (Fire INventory from NCAR version 1.5); (4) GFAS1.2 (Global Fire Assimilation System version 1.2); (5) FEER1.0 (Fire Energetics and Emissions Research version 1.0), and (6) QFED2.4 (Quick Fire Emissions Dataset version 2.4). The global total emission amounts from these six BB emission datasets differed by a factor of 3.8, ranging from 13.76 to 51.93 Tg for organic carbon and from 1.65 to 5.54 Tg for black carbon. In most of the regions, QFED2.4 and FEER1.0, which are based on satellite observations of fire radiative power (FRP) and constrained by aerosol optical depth (AOD) data from the Moderate Resolution Imaging Spectroradiometer (MODIS), yielded higher BB emissions than the rest by a factor of 2-4. By comparison, the BB emission estimated from GFED4s and GFED3.1, which are based on satellite burned-area data, without AOD constraints, were at the low end of the range. In order to examine the sensitivity of model simulated AOD to the different BB emission datasets, we ingested these six BB emission datasets separately into the same global model, the NASA Goddard Earth Observing System (GEOS) model, and compared the simulated AOD with observed AOD from the AErosol RObotic NETwork (AERONET) and the Multiangle Imaging SpectroRadiometer (MISR) in the 14 regions during 2008. In Southern hemisphere Africa (SHAF) and South America (SHSA), where aerosols tend to be clearly dominated by smoke in September, the simulated AOD were underestimated almost in all experiments compared to MISR, except for the QFED2.4 run in SHSA. The model-simulated AOD based on FEER1.0 and QFED2.4 were the closest to the corresponding AERONET data, being, respectively, about 73% and 100% of the AERONET observed AOD at Alta-Floresta in SHSA, and about 49% and 46% at Mongu in SHAF. The simulated AOD based on the other four BB emission datasets accounted for only ~ 50% of the AERONET AOD at Alta Floresta and ~ 20% at Mongu. Overall, during the biomass burning peak seasons, at most of the selected AERONET sites in each region,

Deleted: sub-

Deleted: the

Deleted: but

Deleted: no

Deleted: sub-

the AOD simulated with QFED2.4 were the highest and closest to AERONET and MISR observations, followed closely by FEER1.0. However, the QFED2.4 run tends to overestimate AOD in the region of SHSA, and the QFED2.4 BB emission dataset is tuned with the GEOS model. In contrast, the FEER1.0 BB emission dataset is derived in a more model-independent fashion and is more physical-based since its emission coefficients are independently derived at each grid box. Therefore, we recommend the FEER1.0 BB emission dataset for aerosol-focused hindcast experiments in the two biomass-burning dominated regions in the southern hemisphere, SHAF and SHSA (as well as in other regions but with lower confidence). The differences between these six BB emission datasets are attributable to the approaches and input data used to derive BB emissions, such as whether AOD from satellite observations is used as a constraint, whether the approaches to parameterize the fire activities are based on burned area, FRP, or active fire count, and which set of emission factors is chosen.

Deleted: to choose

## 1. Introduction

Biomass burning (BB) is estimated to contribute about 62% of the global particulate organic carbon (OC) and 27% of black carbon (BC) emissions annually (Wiedinmyer et al., 2011). Therefore, biomass burning emissions significantly affect air quality by acting as a major source of particulate matter (PM), and the climate system by modulating solar radiation and cloud properties. For instance, a number of studies have revealed that wildfire smoke exposure is harmful to human health by causing general respiratory morbidity and exacerbating asthma, because approximately 80–90% of the smoke particles produced by biomass burning fall within the PM<sub>2.5</sub> size range (PM with aerodynamic diameter less than 2.5 µm) (Reid et al., 2005, 2016). Moreover, biomass burning emissions have been shown to impact the atmospheric composition in different regions, such as South America (Reddington et al., 2016), Central America (Wang et al., 2006), sub-Saharan African region (Yang et al., 2013), Southeast Asia (Wang et al., 2013; Pan et al., 2018), Indo-China (Zhu et al., 2017), and Western Arctic (Bian et al., 2013). Additionally, BB-produced aerosols can also directly impact the upper troposphere and lower stratosphere via extreme pyro-convection events associated with intense wildfires that generate the storms injecting smoke particles and trace gases to high altitudes (e.g., Peterson et al., 2018). Therefore, emissions from biomass burning constitute a significant component of the climate system, and are crucial inputs required by chemical transport and atmospheric circulation models used to simulate the atmospheric compositions, radiation, and circulation processes **involved in** air-quality and climate-impact studies (e.g., van Marle et al., 2017).

With the advent of satellite remote sensing of active fire and burned areas **in the** last couple of decades, a number of global BB emission datasets based on these observations have become available (e.g., Ichoku et al., 2012). Six of such major BB datasets will be compared in this study, including three datasets based on burned area approaches, namely, the Fire Inventory from NCAR (FINN, Wiedinmyer et al., 2011) and two versions of the Global Fire Emissions Database (GFED, van der Werf et al., 2006, 2010, 2017), and three datasets based on fire radiative power (FRP) approaches, namely, the Global Fire Assimilation System (GFAS, Kaiser et al., 2012) developed in the European Centre for Medium-Range Weather Forecasts (ECMWF), and two National Aeronautics and Space Administration (NASA) products, i.e., the Fire Energetics and Emissions Research algorithm (FEER, Ichoku and Ellison, 2014) and the Quick Fire Emissions Dataset (QFED, Darmenov and da Silva, 2015).

Although much progress has been made over the last couple of decades in improving the quality of BB emission datasets, for example, by incorporating more recent satellite measurements with better calibration and spatial resolution (e.g., van der Werf et al. 2010; 2017), biomass-burning aerosol emissions still have large uncertainty, and thus are still poorly constrained in models at global and regional levels (e.g., Liousse et al., 2010; Kaiser et al., 2012; Petrenko et al., 2012, 2017; Bond et al., 2013; Zhang et al., 2014; Pan et al., 2015; Ichoku et al., 2016a; Reddington et al., 2016; Pereira et al., 2016). Specifically, large uncertainty exists in the description of the magnitude, patterns, and drivers of wildfires and types of biomass burning (e.g., Hyer et al, 2011). For instance, a global enhancement of particulate matter BB emission by a factor of 3.4 was

Deleted: in

Deleted: needed for

Deleted: products

recommended for GFAS by Kaiser et al. (2012) to match the **corresponding** observed aerosol loading. Andreae (2019) commented that “In contrast to gaseous compounds, which are chemically well defined, aerosols are complex and variable mixtures of organic and inorganic species and comprise particles across a wide range of sizes. This affects in particular the measurements of organic aerosol, black/elemental carbon, and size fractionated aerosol mass”.

A recent analysis with multiple models has been conducted under the auspices of the Aerosol Comparisons between Observations and Models (AeroCom) Phase III biomass burning emission experiments using the GFED version 3.1 (GFED3.1) **emission dataset** as input to several models (hereinafter, “The AeroCom multi-model study”, <https://wiki.met.no/aerocom/phase3-experiments>) (M. Petrenko, **personal communication**). The AeroCom Multi-model study concluded that the modelled aerosol optical depth (AOD) from different models exhibits large diversity in most regions, i.e. some models overestimate while other models underestimate. However, over two major biomass burning dominated regions, South America and southern hemisphere Africa, all models consistently underestimate AOD. **That** result suggests that the underestimation of AOD in these two regions was more likely attributable to the GFED3.1 biomass burning emission dataset rather than the model configurations.

Our study aims to explore multiple BB emission datasets, including GFED3.1, GFED version 4 with small fires (GFED4s), FINN version 1.5, GFAS version 1.2, QFED version 2.4, and FEER version 1.0, in order to investigate the discrepancies between these six BB emission datasets by comparing them at both regional and global levels. Such a comparative evaluation of BB emission datasets would show the differences between them as well as how these differences propagate through the physical processes of related aerosols in models, e.g., dry and wet deposition, transport, atmospheric abundance, and the resulting AOD. Our study is expected to provide further insight into the development of possible mitigation for the current large uncertainties in BB emissions. **Similar** comparative studies of multiple BB aerosol emission datasets **were** previously conducted at regional scales, e.g., by Zhang et al. (2014) in the northern sub-Saharan African region, Pereira et al. (2016) **and Reddington et al. (2019)** in South America, and Reddington et al. (2016) in the entire tropical region. The current study not only provides a global assessment and analysis of these six BB emission datasets to provide a world-wide perspective, but also examines their performance within 14 regions (Fig. 1) **which** were previously defined for a series GFED-based studies (e.g., Van der Werf et al., 2006, 2010, and 2017).

In the rest of this paper, we first describe these six BB emission datasets, the GEOS model configuration and experimental designs, and observations in Sect. 2, then we show comparisons of the biomass burning emission datasets and the resulting model simulated AOD in Sect. 3. We discuss possible attributions of the differences between the six BB emission datasets to the sources of uncertainty associated with the biomass burning emissions and the aerosol modeling in Sect. 4. Conclusions and recommendations are presented in Sect. 5.

**Deleted:** Petrenko et al., manuscript in preparation

**Deleted:** is

**Deleted:** The s

**Deleted:** have been

**Deleted:** for the first time

**Deleted:** , with local evaluation of AOD simulations driven by these emissions using AERONET ground-based measurements

**Deleted:** . The 14 regions

**Deleted:** ion

**Deleted:** .

**Deleted:** s

**Deleted:** ion

**Deleted:** ion

**Deleted:** ion

## 2. Methodology

### 2.1 Six BB emission datasets

General information about each of the six biomass burning emission datasets investigated in this study, namely GFED3.1, GFED4s, FINN1.5, GFAS1.2, FEER1.0, and QFED2.4, is given below. Their main attributes, such as their spatial and temporal resolutions, the methods used to estimate burned area (where applicable), the method to derive emission coefficients (where applicable), and the references for the emission factors, are compared in Table 1. Overall, all datasets provide daily global biomass burning emissions since at least 2003.

#### 2.1.1 GFED3.1

The total dry matter consumed by biomass burning in GFED3.1 (van der Werf et al., 2010) is estimated by the multiplication of the MODIS burned area product at 500-m spatial resolution (Giglio et al. 2010, for the MODIS era) and fuel consumption per unit burned area, the latter being the product of the fuel loads per unit area and combustion completeness. This estimation is conducted using the Carnegie–Ames–Stanford approach (CASA) biogeochemical modeling framework that provides estimates of biomass in various carbon “pools” including leaves, grasses, stems, coarse woody debris, and litter. Fuel loads in CASA are estimated according to carbon input information on vegetation productivity, and carbon outputs through heterotrophic respiration, herbivory, fires, and tree mortality (Giglio et al., 2010; van der Werf et al., 2010). Then, the biomass burning emission of a given species is calculated by multiplying the dry matter with an emission factor of that species (*EF*, with a unit of g species per kg dry matter burned). The *EF* used in GFED3.1 (and most of the other datasets) is mainly chosen from Andreae and Merlet (2001) and/or Akagi et al. (2011), but may also be obtained from various other sources. The GFED3.1 dataset can be accessed through the link:

[https://daac.ornl.gov/VEGETATION/guides/global\\_fire\\_emissions\\_v3.1.html](https://daac.ornl.gov/VEGETATION/guides/global_fire_emissions_v3.1.html).

#### 2.1.2 GFED4s

Compared to GFED3.1, the latest GFED version, GFED4s, has a few significant upgrades as described in detail by van der Werf et al. (2017), including (1) additional burned area associated with small fires which were previously omitted by the burned area product but now are compensated by including the active fires to augment the burned area product MCD64A1 (Giglio et al., 2013; Randerson et al., 2012); (2) a revised fuel consumption parameterization optimized using field observations (e.g., van Leeuwen et al., 2014); (3) further dividing forest into temperate and boreal forest ecosystems and applying different sets of emission factors. Among the existing BB emission datasets, GFED4s has hitherto been the most widely used by modeling communities, such as the Coupled Model Intercomparison Project phase 6 (CMIP6, Van Marle et al., 2017) and AeroCom phase III experiment (<https://wiki.met.no/aerocom/phase3-experiments>). The link to the GFED4s dataset is <http://www.globalfiredata.org>.

#### 2.1.3 FINN1.5

The FINN1.5 biomass burning emission dataset is developed from its previous version FINN1 (Wiedinmyer et al., 2011) with several updates. It uses satellite observation of active fire (with confidence level greater than 20%) and land cover from the MODIS

Deleted: total consumed

Formatted: No underline

Field Code Changed

Formatted: No underline

Deleted: partitioning of the extratropical forest category into temperate and boreal forests; (4)

Deleted: widely

Deleted: 3

instruments onboard the NASA Terra and Aqua polar orbiting satellites, together with the estimated fuel consumption to derive biomass burning emissions. The burned area in each active fire pixel is assumed as 1 km<sup>2</sup>, except for grasslands and savannas where it is assigned a value of 0.75 km<sup>2</sup>. The fuel consumption at each fire pixel is estimated according to its generic land use/land cover type (LULC) which is assigned using values updated from Table 2 of Hoelzemann et al. (2004) in the various world regions based on Global Wildland Fire Emission Model (GWEM). With the estimated burned area, fuel consumption, and *EF* of individual species, the daily global open biomass burning emissions of each species are then calculated at a 1 km spatial resolution. The FINN1.5 emissions dataset is archived at: <http://bai.acom.ucar.edu/Data/fire/>.

#### 2.1.4 GFAS1.2

The GFAS (Kaiser et al., 2012) estimates dry matter combustion rate by multiplying FRP and biome-specific conversion factors or emission coefficients  $C_e$  (units: kg (dry matter) per MJ). The global distribution of FRP observations are obtained from the MODIS instruments onboard the Terra and Aqua satellites and then are assimilated into the GFAS system. The gaps in FRP observations, which are mostly due to cloud cover and spurious FRP observations of volcanoes, gas flares and other industrial activity, are corrected or filtered in the GFAS system. Eight biome-specific  $C_e$  are calculated by linear regressions between the GFAS FRP and the dry matter combustion rate of GFED3.1 in each biome (see Table 2 and Fig. 3 in Kaiser et al., 2012). The biomass burning emission of a given species is calculated by multiplying the dry matter with an emission factor of that species. More information on the latest GFAS product can be found at <https://confluence.ecmwf.int/display/CKB/CAMS++Global+Fire+Assimilation+System+%28GFAS%29+data+documentation>.

#### 2.1.5 FEER1.0

The FEER1.0 (Ichoku and Ellison, 2014) multiplies its emission coefficients  $C_e$  with MODIS FRP data that have been preprocessed and gridded in the GFAS1.2 analysis system (Kaiser et al., 2012) to derive biomass burning aerosol emission rates. The  $C_e$  in FEER1.0 for smoke aerosol total particulate matter (TPM) was derived through zero-intercept regression of the emission rate of smoke aerosol (i.e.,  $R_{sa}$ ) against the corresponding FRP (Ichoku and Kaufman, 2005; Ichoku and Ellison, 2014) at pixel-level within each grid.  $C_e$  corresponds to the slope of the linear regression fitting. In the FEER methodology,  $R_{sa}$  is estimated through a spatio-temporal analysis of MODIS AOD data along with wind fields from the NASA Modern-Era Retrospective Analysis for Research and Applications (MERRA) reanalysis dataset (Rienecker et al., 2011). The smoke aerosol  $C_e$  in FEER1.0 is available at 1°×1° spatial resolution global grid, and covers most of the land areas where fires have been detected by MODIS for at least 30 times during the period 2003-2010 (Ichoku and Ellison, 2014) to ensure statistical representativeness. In the current version of FEER1.0 emission dataset,  $C_e$  for other smoke constituents, say OC, at each grid cell are obtained by scaling the  $C_e$  of smoke aerosol according to the ratio of their emission factors, such as  $EF_{oc}$  to  $EF_{sa}$  (i.e., ratio of emission factor for OC to that for total smoke aerosol). The FEER1.0 dataset is available at <http://feer.gsfc.nasa.gov/data/emissions/>.

Formatted: No underline

Formatted: No underline

Field Code Changed

Deleted: 1.2

Deleted: biomass burning

Deleted: emissions

Deleted: rates

Deleted: ,

Deleted: EFs

Deleted: with

Deleted: the conversion factors (Units: kg species per MJ)

Deleted: conversion factors

Deleted: Therefore, the biomass burning emission calculated by GFAS1.2 is close to that of GFED3.1.

Deleted: Then the biomass burning emission from a certain aerosol species is converted by multiplying the total consumed dry matter with the *EF* of that species.

Formatted: No underline

Field Code Changed

Formatted: No underline

Formatted: No underline

Deleted:  $C_e$  (Units: kg species per MJ)

Deleted: aerosol

Deleted: i

Field Code Changed

Formatted: No underline

Formatted: No underline



### 2.1.6 QFED2.4

In QFED (Darmenov and da Silva, 2015) biomass burning aerosol emissions are estimated using gridded MODIS/Terra and MODIS/Aqua FRP and emission coefficients  $C_e$  which are the product of a constant value  $C_0$  (1.37 kg per MJ, reported by Kaiser et al., 2009), satellite factor and a biome-specific scaling factor. The scaling factors used in QFED2.4, the version applied in this study, were obtained by comparing AOD from the Goddard Earth Observing System model (GEOS) and MODIS aerosol product in multiple sub-regions (Figure 4 in Darmenov and da Silva, 2015). These scaling factors were further reduced to four values representative of fires in savanna, grassland, tropical forests, and extratropical forests - 1.8, 1.8, 2.5, and 4.5, respectively. The QFED2.4 used a sequential model with temporally damped emissions to estimate the emissions in cloudy areas. QFED is the standard fire emissions dataset in the near real-time GEOS data assimilation system and the MERRA-2 reanalysis (Randles, et al., 2017). QFED2.4 emissions are available from <https://portal.nccs.nasa.gov/datashare/ies/aerosol/emissions/QFED/v2.4r6/>.

## 2.2 Application of the BB emission datasets in the NASA GEOS model

### 2.2.1 Description of the NASA GEOS model

The GEOS model consists of an atmospheric general circulation model, a catchment-based land surface model, and an ocean model, all coupled together using the Earth System Modeling Framework (ESMF, Rienecker et al., 2011; Molod et al., 2015). Within the GEOS model architecture, several interactively coupled atmospheric constituent modules have been incorporated, including an aerosol and carbon monoxide (CO) module based on the Goddard Chemistry Aerosol Radiation and Transport model (GOCART, Chin et al., 2000, 2002, 2009, 2014; Colarco et al., 2010; Bian et al., 2010) and a radiation module from the Goddard radiative transfer model (Chou and Suarez, 1999; Chou et al., 2001). The GOCART module used in this study includes representations of dust, sea salt, sulfate, nitrate, and black and organic carbon aerosol species. A conversion factor of 1.4 is used to scale organic carbon mass to organic aerosol (OA), which is on the low end of current estimates (Simon and Bhawe, 2012). More discussion on this conversion factor can be referred to Sect. 4.3.

In this study the GEOS model (Heracles-5.2 version) was run globally on a cubed-sphere horizontal grid (c180, ~50 km resolution) and with 72 vertical hybrid-sigma levels extending from the surface to ~85 km for the year 2008. The reason we chose 2008 is because it is the year assigned as a benchmark year by AeroCom community with which this study is associated; it is also because the AeroCom Multi-model study of biomass burning lead by Petrenko (mentioned in the introduction part) also chose 2008 as a focus year. As such, the results from these two studies can be intercompared to draw some synthesized conclusions. In addition, 2008 was chosen because it is a neutral ENSO year, which represents normal burning conditions. The model was run in a “replay” mode, where the winds, pressure, moisture, and temperature are constrained by the MERRA-2 reanalysis meteorological data (Gelaro et al., 2017), a configuration that allows a similar simulation of real events as in a traditional off-line chemistry transport model (CTM) but exercises the full model physics for, e.g., radiation, and moist physics processes. We used

Deleted: The earlier version of

Deleted: estimated

Deleted: by

Deleted: multiplying

Deleted: level 2

Deleted: with an

Deleted: is

Deleted: the initial

Deleted: This, with the scaling factor is calculated by regressing the carbon monoxide (CO) BB emission (product of FRP,  $C_0$  and CO emission factor) to that in the GFED version 2.

Deleted: by

Deleted: the

Deleted:

Deleted: used

Deleted: as

Deleted: by further regressing

Deleted: Model simulated AOD

Deleted: to the

Deleted: AOD

Deleted: 46

Deleted: , and then t. The resulting scaling factors in the 46 sub-regions were then

Deleted: aggregated

Deleted: into

Deleted: four major fire-prone biomes, i.e.,

Deleted: , as values of

Deleted:

Deleted: also

Deleted: The real-time

Deleted: emissions were used in the MERRA2 reanalysis (Randles, et al., 2017).

Deleted: aerosol emission rate is produced on a daily basis by multiplying the real-time FRP with the initial constant value  $C_0$  and the scaling factor in respective biome type. The real-time QFED2.4 fire emission is produced on a daily basis and used in the operational

Deleted: In addition to the near real-time emissions, a longer historical record dataset, which is what we have used, is stored at

Deleted:

Formatted: Font color: Text 1

the HTAP2 anthropogenic emissions (Janssens-Maenhout et al., 2015) that provides high-spatial resolution monthly emissions. The BB emissions are uniformly distributed within the boundary layer without considering the specific injection height of each plume. All six BB emissions are daily emissions with the diurnal cycle prescribed in the model: the maximum is around local noon, which is more prominent in the tropics, and is gradually weakened in the extra-tropics (Randles et al., 2017). The natural aerosols are either generated by the model itself (i.e., wind-blown dust and sea salt) or from prescribed emission files (i.e., volcanic and biogenic aerosols).

## 2.2.2 Experiment design

In order to investigate the sensitivity of the modelled AOD to different BB emission datasets, seven experiments were conducted with the GEOS model, differing only in the source of biomass burning emissions. The first six runs are GFED3.1, GFED4s, FINN1.5, GFAS1.2, FEER1.0, and QFED2.4, using the corresponding biomass burning datasets described above in Section 2.1. A seventh run is called “NOBB,” where the model is run without including biomass burning emissions.

## 2.4. AOD Observations

### 2.4.1 MISR retrievals

We evaluated the simulated monthly AOD at 550 nm with the monthly level 3 total AOD data at 558 nm wavelength from the Multiangle Imaging SpectroRadiometer sensor on board the EOS-Terra satellite (Kalashnikova and Kahn, 2006; Kahn et al., 2010). We used MISR version 23, data products (MISR v23, with filename tagged as F15\_0032) in half-degree, which can be downloaded from the website: [https://eosweb.larc.nasa.gov/project/misr/mil3mae\\_table](https://eosweb.larc.nasa.gov/project/misr/mil3mae_table).

### 2.4.2 AERONET sites

We also evaluated the modelled 3 hourly and monthly AOD at 550nm and Angström Exponent (AE, 440–870 nm) with corresponding measurements from the ground-based Aerosol RObotic NETwork (AERONET, Holben et al., 1998) sites situated in biomass burning source regions. AERONET Version 3 Level 2.0 data, which are cloud-screened and quality-assured aerosol products with a 0.01 uncertainty (Giles et al., 2019), were used in this study. The data can be downloaded from the website: [https://aeronet.gsfc.nasa.gov/new\\_web/download\\_all\\_v3\\_aod.html](https://aeronet.gsfc.nasa.gov/new_web/download_all_v3_aod.html). The AERONET AOD at 550nm is interpolated from the measurements at 440 and 675nm. AE is calculated with AOD at 440 and 870nm. We compared model simulations with AERONET data at 14 selected sites, representing the aerosol spatiotemporal characteristics at the different biomass burning regions shown in Fig. 1. The 14 regions were defined previously in GFED-related series of studies (e.g., Van der Werf et al., 2006, 2010, and 2017). Some regions, such as Northern Hemisphere South America (NHSA) and Equatorial Asia (EQAS), have no AERONET sites with data measured in 2008, thus we also used the average of multiple years or climatology of AERONET AOD at each site for reference. Locations of these 14 selected AERONET sites are represented by the numbered magenta dots in Fig.1.

## 3. Results

Deleted: half-degree

Deleted: Multiangle Imaging SpectroRadiometer version 23 (MISR v23, with the filename tagged as F15\_0032)

Deleted:

Deleted: The

Deleted: that

Deleted: s

Formatted: No underline

Formatted: No underline

Field Code Changed

Deleted: each

Deleted: a

Deleted: by

Deleted: the

Deleted: Since s

### 3.1 Inter-comparison of the six biomass burning emission datasets

The biomass burning OC emissions were compared throughout this study, since OC is the major constituent in fresh biomass burning smoke particles, with mass fractions ranging from 37% to 67% depending on fuel type (e.g., grassland/savanna, forests, or others), according to various studies based on thermal evolution techniques (Reid et al., 2005, part II, Table 2). These inter-comparisons were carried out in terms of both annual and seasonal variations in Sect. 3.1.1 and Sect. 3.1.2, respectively.

#### 3.1.1 Annual total

Figure 2 shows the spatial distributions of annual total biomass burning OC emissions in 2008 from the six BB emission datasets. The regions with high emission of OC in Africa, boreal Asia, and South America are pronounced in all six BB emission datasets, albeit to different degrees. The regional differences of the annual total biomass burning OC emissions in different BB emission datasets can be appreciated more quantitatively in Fig. 3. Relevant statistics for the six BB emission datasets in the 14 regions are also listed at the top of the panel in Fig. 3, with the mean of the six BB emission datasets in the first row (*mean*). We also used three different measures to quantify the spread of the annual total from the six BB emission datasets: (1) standard deviation (*std*), (2) ratio of maximum to minimum (*max/min*), and (3) the coefficient of variation (*cv*, defined as the ratio of the *std* to the *mean*). The cv values for the 14 regions are also ranked in Fig. 3 for easy reference (e.g., a ranking of 1 means that this region shows the least spread among the six BB emission datasets, while a ranking of 14 indicates that this region has the largest spread). The best agreements among the six emission datasets occurred in Northern Hemisphere Africa (NHAF), Equatorial Asia (EQAS), Southern Hemisphere Africa (SHAF), and Southern Hemisphere South America (SHSA), which have the top *cv* ranks (1-4) and relatively low *max/min* ratio (a factor of 3-4). The worst agreements occurred in the Middle East (MIDE), Temperate North America (TENA), Boreal North America (BONA), and Europe (EURO), which have the bottom *cv* ranks (14-11) and large *max/min* ratio (a factor of 66-10). This diversity was mostly driven by the QFED2.4 emission dataset, which estimated the largest emission amount for almost all regions (except EQAS), especially in MIDE where the BB emission from QFED2.4 is more than 50 times higher than those from the two GFED versions. Globally, the QFED2.4 dataset showed the highest OC emission of 51.93 Tg C in 2008, which was nearly four times that of GFED4s at 13.76 Tg C (the lowest among the six BB datasets).

Overall, two FRP-based BB emissions, QFED2.4 and FEER1.0, were a factor of 2-4 larger than the other BB datasets. This result is consistent with the findings of Zhang et al. (2014) over sub-Saharan Africa. It is worth noting that the BB emission amount of GFAS1.2 was close to that of GFED3.1, reflecting the fact that GFAS1.2 is tuned to GFED3.1 (described in Sect. 2.1.4). Globally, FINN1.5 yielded more OC emissions than the two GFED datasets and GFAS1.2 (e.g., 40% larger than GFED4s). Regionally, FINN1.5 was generally comparable to the two GFED datasets in most of the regions, but was higher than them in the tropical regions, such as EQAS, Southeast Asia (SEAS), Central America (CEAM), and Northern Hemisphere South America (NHS). Interestingly, FINN1.5 was even the largest among all six datasets over the EQAS region, which might be associated with its assumption of continuation of burning into the second

Deleted: subject to

Deleted: we

Deleted: averaged over

Deleted: rank of

Deleted: each of

Deleted: is also listed

Deleted:

Deleted: datasets

Deleted:

day in that region (to be discussed in Sect. 4.1.2). The global OC emissions from GFED4s were lower than those from its GFED3.1 counterpart, although higher in several other regions, such as TENA, CEAM, NHSA, Boreal Asia (BOAS) and Central Asia (CEAS). Possible explanations for these differences among the six global BB emissions datasets are provided in Sect. 4.1.

### 3.1.2 Seasonal variation

Biomass burning is generally characterized by distinct seasonal variations in each of the 14 regions and globally, as shown in Fig. 4. Overall, there were four peak fire seasons across the regions: (1) During the boreal spring (March-April-May), fires peak in BOAS mainly because of forest fires (see the contribution of different fire categories in Table 3 of van der Werf et al., 2017), in CEAM, NHSA, and SEAS because of savanna and deforestation fires, and in Central Asia (CEAS) mainly due to the agricultural waste burning to prepare the fields for spring crops. (2) During the boreal summer (June-July-August), fires peak in BONA and TENA, mostly due to wildfires that occur under the prevailing dry and hot weather, in EURO probably associated with the burning of agricultural waste. In addition, we found that fire peaked in MIDE in the three FRP-based datasets, i.e., QFED2.4, FEER1.0 and GFAS1.2. This might be associated with the failure to filter out the gas flares from the FRP fire product, especially in QFED2.4 (Darmenov and da Silva 2015). (3) During the austral spring (September-October-November), fires peak in the southern hemispheric regions of SHSA, SHAF, and AUST, associated with savanna burning (in addition to deforestation fires in SHSA). In SHSA, the two GFED versions peaked in August, one month earlier than the rest; (4) During the boreal winter (December and January), fires peak in NHAF, particularly along the sub-Sahel belt (Fig. 2), where savanna fires are associated with agricultural management and pastoral practices across that region (e.g., Ichoku et al., 2016b). Overall, all six BB emission datasets exhibited similar seasonal variations, although they differed in magnitude. In particular, it is noteworthy that in EQAS, the annual OC emissions from GFED4s was lower than that of GFED3.1 by 18%, but higher by a factor of two in the month of August when peatland burning is predominant.

For reference, biomass burning black carbon (BC) emissions were also shown, but in the supplement (Fig. S1, S2 for annual total and Fig. S3 for seasonal variation), which exhibited similar features as OC. The amounts of biomass burning BC emission were almost proportional to their OC counterparts (about 1/10 to 1/15 of OC).

### 3.2 Comparison of model-simulated AOD with remote sensing data

As in other similar situations where several different datasets are available to be chosen from (e.g. Bian et al., 2007), a question that invariably comes to mind is: which BB emission dataset is the most accurate or should be used in a given situation? In fact, it is difficult to give a conclusive answer, as it is often challenging to measure the emission rate of an active fire in real time or to disentangle the contribution of smoke aerosols from the total atmospheric aerosol loading/concentration in observations. Therefore, in this study we have implemented all six global BB emission datasets separately in the GEOS model, and evaluated their respective simulated aerosol loadings. More specifically, we compared the simulated AOD with the satellite-retrieved AOD data from

Deleted: section

Deleted: It

Deleted: in particular

Deleted: y

MISR (primarily to examine the spatial coverage) as well as with ground-based measurements from AERONET sites near biomass burning source regions to examine the seasonal variation. Our analysis was focused on the regional biomass burning peak seasons, when smoke aerosol emissions dominate those from other sources, such as pollution or dust. With such an effort to evaluate the sensitivity of the simulated AOD to the different BB emission datasets, the results from this study may shed some light on answering the aforementioned question, i.e., which BB dataset is the most accurate or should be used in a given situation? We acknowledge that although the result from a particular model (e.g., GEOS in this case) can potentially introduce additional uncertainty through various complicated and non-linear procedures employed to calculate the AOD, such as the modelled relative humidity and the related aerosol's hygroscopic growth (Bian et al., 2009; Pan et al., 2015), still, evaluation of the model-simulated AOD has proven to be a feasible approach to compare various BB emission datasets in reference to the currently available observations (e.g., Petrenko et al. 2012; Zhang et al., 2014).

Aiming to evaluate the sensitivity of the modelled AOD to different BB emissions datasets, we compared the spatial distribution of the GEOS model-simulated AOD with MISR-retrieved AOD in Sect. 3.2.1 and with the AERONET measured AOD at 14 AERONET sites in Sect. 3.2.2. We also conducted an in-depth study at two AERONET sites, Alta Floresta (in the southern hemisphere South America, SHSA) and Mongu (in the southern hemisphere Africa, SHAF), as discussed in Sect. 3.3.

### 3.2.1 Global spatial distribution

Comparisons for September and April in 2018 are shown in Fig. 5 and Fig. 6 respectively, representing the peak biomass burning months in the southern hemisphere, and many regions in the northern hemisphere, respectively. The MISR AOD is displayed on the top left panel and the model biases (model minus MISR) from the seven individual experiments are shown on the rest of the panels.

In September 2008, the high AOD observed from MISR (Fig. 5a) in the southern hemisphere was mostly attributable to biomass burning. A large fraction of the southern hemisphere Africa (SHAF) featured high AOD (greater than 0.5). The area-averaged AOD over the entire SHAF was 0.331 (see Table S1 for the area-averaged MISR AOD in each region). The observed AOD peaked in southern Congo (nearly 1.0) and gradually decreased westwards. A large negative model bias (-0.283) was found in the NOBB run over the region of SHAF (greenish shading in Fig. 5b; see Table S1 for the area-averaged model biases in each region). The negative bias was reduced most significantly in the QFED2.4 run (see Fig. 5h), to -0.044, followed by the FEER1.0 run (see Fig. 5g), to -0.079, but only to a limited extent in GFED4s and GFAS1.2 (see Fig. 5d and f, respectively), whose biases were still as large as -0.208.

In southern hemisphere South America (SHSA), where the area-averaged MISR AOD was 0.188, the maximum AOD was ~0.7 in central Brazil (Fig. 5a). The negative bias averaged over SHSA was -0.132 in the NOBB run (Fig. 5b). The bias was most significantly reduced in the FEER1.0 run to -0.021 (Fig. 5g), but appeared overcorrected in the QFED2.4 run to 0.020 (see reddish shading in Fig. 5h). The reduction of negative

Deleted: were

Deleted: with

Deleted: the

Deleted: L

Deleted: the least

Deleted: the

Deleted: the

Deleted: a value of

Deleted: It

Deleted: reduced



600 bias was again the least in the GFED4s run (Fig. 5d) and the GFAS1.2 run (Fig. 5f),  
 601 whose biases were still as large as -0.081 and -0.080, respectively.

Deleted: again

602  
 603  
 604 Being mixed with and often surpassed by other aerosol types, however, the contribution  
 605 of biomass burning aerosols to the total AOD is hardly distinguishable from those of  
 606 other sources in the peak biomass burning months in certain regions, such as April (Fig.  
 607 6) in the regions of Southeast Asia (SEAS), Central Asia (CEAS), and Boreal Asia  
 608 (BOAS). Such complicated situations lead to the difficulties in evaluating the BB  
 609 emission datasets with AOD observations, especially when the background AOD  
 610 represented by the NOBB run was already overestimated, for example, in the region of  
 611 CEAS, or when the MISR AOD was missing, for example, in the region of BOAS (where  
 612 MODIS AOD was missing as well, not shown).

Deleted: the

Deleted: in particular

Deleted: in the latter two regions

### 614 3.2.2 Seasonal variations of AOD at AERONET sites

615 In order to better quantify the sensitivity of the simulated AOD to the six different BB  
 616 emission datasets, we further compared the simulated monthly AOD with the ground-  
 617 based AOD observations from AERONET stations by choosing one representative station  
 618 in each region (see Fig. 7; the panels representing the AERONET stations in Fig. 7 were  
 619 arranged in a way that their placements correspond to those of their respective regions in  
 620 Fig. 4 for easy reference). The exceptions are two regions NHSA and EQAS, where valid  
 621 AERONET observations could not be found during 2008. Thus, we used the multi-year  
 622 climatology of AOD at Medellin and Palangkaraya to represent NHSA and EQAS,  
 623 respectively. We also included the climatology of AERONET AOD in the other 12  
 624 AERONET sites for reference. As shown in Fig. 7, the annual cycle of AOD in 2008 at  
 625 available sites (brown thin bars) were similar to their respective climatology (light gray  
 626 thick bars) to within 0.05. The MISR AOD was plotted for reference as green diamond.  
 627 In this section, the modelled monthly mean AOD was calculated by averaging over the  
 628 modelled instantaneous AOD in each month; while the monthly AOD of AERONET and  
 629 MISR were simply calculated by averaging over available observations in each month.

Deleted: , and

Deleted: is in

Deleted: there are no

Deleted: a

630  
 631 Contributions from non-BB emissions to the total AOD are represented by NOBB  
 632 experiment (black line in Fig. 7). Runs with different BB emission datasets showed  
 633 almost identical AOD during non-biomass burning seasons at each selected AERONET  
 634 station in each region, thereby allowing their differences to be noticeable during the  
 635 biomass burning peak seasons. At Alta Floresta in Brazil (Fig. 7(5)), Mongu in Zambia  
 636 (Fig. 7(9)), and Chiang Mai Met Sta in Thailand (Fig. 7(12)), where the biomass burning  
 637 emissions dominated the peak AOD, almost all experiments underestimated AOD during  
 638 the respective peak biomass burning seasons. However, the fact is that the contribution of  
 639 non-BB AOD was usually more than that of BB AOD during the burning seasons at most  
 640 of the selected AERONET sites, except at the above three sites. Therefore, it is difficult  
 641 to disentangle the effect of biomass burning on the total AOD in most situations,  
 642 especially when the model has difficulty representing the non-BB AOD, leading, for  
 643 example, to overestimation at three high-latitude ( $> 55^{\circ}\text{N}$ ) AERONET sites (the three  
 644 panels in the top row of Fig. 7), i.e., Fort McMurray in Canada (Fig. 7(1)), Toravere in  
 645 Estonia (Fig. 7(6)), and Moscow MSU MO in Russia (Fig. 7(10)). However, it is

Deleted: .

Deleted: .

Deleted: .

Deleted: above

Deleted: .

Deleted: .

Deleted: .

apparent that the simulated AOD ~~based on~~ QFED2.4 were overestimated during October and November at Fort McMurray in USA, indicating that QFED2.4 overestimated BB organic carbon emission during these two months. In general, at most of ~~the~~ AERONET sites, the simulated AOD based on QFED2.4 were the highest and closest to AERONET AOD during the corresponding peak of the biomass burning seasons, followed by FEER1.0 and FINN1.5, and then GFED3.1, GFEDv4 and GFAS1.2.

Deleted: with

### 3.3 Case studies in biomass burning dominated regions

In order to investigate the relationship between AOD and biomass burning emission in the context of daily variation, we focused on two AERONET stations, namely, Alta Floresta in Brazil and Mongu in Zambia during September, for the in-depth analysis in this section. Biomass burning emissions are known to be dominant at ~~these~~ locations and month, as estimated by Chin et al. (2009), who found that 50-90% of the AOD was attributable to biomass burning emissions according to GOCART model simulations. Based on other previous studies also, e.g., ~~two studies with multiple BB datasets applied to one model~~, Pereira et al. (2016) in southern hemisphere South America, and Reddington et al. (2016) in tropical regions including southern hemisphere South America ~~as well as~~ Africa, ~~or~~ the AeroCom Multi-model study (M. Petrenko, ~~personal communication~~) with one biomass burning emission dataset (i.e., GFED3.1) mentioned earlier in the introduction, there appears to be a general consensus that ~~the~~ simulated AOD is consistently underestimated over southern hemisphere South America and Africa in many models. ~~Therefore, in~~ this study, we ~~further examined these two sites: Alta Floresta in Brazil and Mongu in Zambia~~. We calculated the 3-hourly AOD by sorting the instantaneous AOD from both AERONET and model outputs for each day into eight time-steps, namely, 0, 3, 6, 9, 12, 15, 18, and 21Z. The modelled monthly mean AOD was calculated by averaging over the modelled 3-hourly AOD, which coincided with 3-hourly AERONET AOD in that month. The detailed analyses are discussed below.

Deleted: such

Deleted: and

Deleted: and

Deleted: lead by Dr.

Deleted: part

Deleted: the

Deleted: with different BB emission datasets

Deleted: I

#### 3.3.1 Alta Floresta in Brazil (Southern Hemisphere South America, SHSA)

The monthly ~~mean~~ AOD observed from AERONET at Alta Floresta is 0.47 during September 2008 (Fig. 8a). It shows that the simulated AOD from all six experiments captured the ~~high~~ aerosol episode observed in the AERONET dataset during September 13, (AERONET AOD is about 1.0-1.2). The simulation with QFED2.4 BB emission produced the closest agreement with the AERONET observed AOD with an average ratio of 1.00. In contrast, the simulated AOD with FEER1.0 (ratio=0.73), FINN1.5 (ratio=0.55), GFAS1.2 (ratio=0.42), GFED3.1 (ratio=0.40), and GFED4s (ratio=0.36) tended to ~~be~~ underestimated, most of the time. All experiments showed relatively low skill ~~at~~ capturing the temporal variability of the observed AOD at Alta Floresta (corr=0.24-0.60). The Angström Exponent (AE: an indicator of particle size) from AERONET is 1.66 (not shown), indicating that small particles, most likely those from smoke, dominated the total aerosol loading at Alta Floresta (Eck et al., 2001). All experiments matched the observed AE (not shown).

Deleted: averaged

Deleted: sustained

Deleted: -14

Deleted: 5

Deleted: -

Deleted: for

Deleted: of

Deleted: s

The OC column mass loading (Fig. 8b) ~~in each run~~ resembled ~~its~~ corresponding AOD (Fig. 8a), implying that the day-to-day variation of OC column mass loading in this dry season dominates the ~~simulated~~ AOD in the model, rather than other factors such as

Deleted: the

Deleted: change of

Deleted: result

relative humidity (RH). The OC column mass loading is determined by the regional scale of emission, transport, and removal processes of aerosols; the latter two processes being the same across the six experiments, given that the same model configurations were used. Therefore, the differences of OC column mass loading and thus AOD across the six experiments are attributed to the different choices of biomass burning emission datasets. Figure 8c shows the local biomass burning OC emissions (i.e., at the 0.5°×0.5° grid box where this site is located) in the different biomass burning emission datasets. We found that there was a large contrast in the local biomass burning OC emission between September 25 (as high as 1-2  $\mu\text{g m}^{-2} \text{ s}^{-1}$ ) and the other days (close to zero) across all six experiments, although in different degrees. Similar emission patterns are found when averaged over nine or 25 surrounding grid boxes (not shown). Such sharp contrast was completely absent in the simulated OC column mass density (Fig. 8b) and AOD (Fig. 8a).

All of the foregoing evidence collectively suggest that the temporal variations of AOD (and aerosol mass loading) in Alta Floresta during the burning season do not directly respond to the local BB emission at the daily and sub-daily time scales, but to the regional emission. The regional emission is further adjusted by the multiple processes determining the residence time of aerosols in air (typically a few days), such as the regional scale transport and removal of aerosols. The MODIS-Terra true color image overlaid with active fire detections (red dots) on September 13, 2008 (Fig. 8d) confirms that there were no active fires (represented by red dots) detected at Alta Floresta (blue circle), and thus the dense smoke over there during this peak aerosol episode must have been transported from the upwind areas rather than from localized BB emission sources. Therefore, accurate estimation of both the magnitude and spatial pattern of regional emissions is quite important.

### 3.3.2 Mongu in Zambia (Southern Hemisphere Africa, SHAF)

The case of Mongu is different from that of Alta Floresta. Figure 9d reveals that there were numerous active fire detections (represented by the red dots in this MODIS-Aqua true color image) at and close to Mongu (blue circle) on September 12, 2008, one of peak aerosol episodes as Figure 9a shows. The simulated AOD from all six experiments captured two peak aerosol episodes observed from the AERONET dataset during September 11-12 and September 2-3 (AOD about 1.0), albeit underestimated (Fig. 9a). All experiments also underestimated the sustained aerosol episode after September 20. However, all model experiments almost reproduced the AERONET AE value of 1.80 throughout September at this site (not shown), confirming that the dominance of the fine-mode aerosol particles in smoke aerosols is captured by the model irrespective of the BB emission dataset used.

The biomass burning OC emissions averaged over the grid box of Mongu exhibited distinct daily variations in each BB dataset (Fig. 9c). Similar emission patterns are found when averaged over nine or 25 surrounding grid boxes (not shown). At this site, the day-to-day variations of AOD still cannot be totally explained by the corresponding local emission at Mongu. For example, emission from FEER1.0 on September 17 is six times higher than that on September 2 (Fig. 9c), but the simulated AOD on September 17 is twice lower than that on September 2 (Fig. 9a). However, the magnitude of AOD at

Deleted: ,

Deleted: of which are

Deleted: (i.e., at the 0.5°×0.5° grid box where this site is located)

Deleted: 24-

Deleted: the

Deleted: ,

Deleted: in spite of the differences in magnitude

Deleted: is

Deleted: ,

Deleted: therefore,

Deleted: . T

Deleted: was

Deleted: instead

Deleted: during this peak aerosol episode

Deleted: are rather

Deleted: at

Deleted: at

Deleted: T

Deleted: , as revealed by Fig. 9d

Deleted: .

Deleted: The visibility over the entire region was apparently low due to smoke aerosols.

Deleted: that t

Deleted: September 2-3 and

Deleted: But a

Deleted: failed to capture

Deleted: (the observed AOD is about 0.5)

Deleted: A



Mongu in each experiment corresponded to the magnitude of BB emission at the regional scale, since it is apparent that **the** overall higher regional BB emissions still resulted in higher column mass loading and thus AOD. For instance, FEER1.0 and QFED2.4, which have the largest monthly total biomass burning OC emission over the region of SHAF among the six BB emission datasets during September (2.27 and 2.92 Tg mon<sup>-1</sup>, respectively, as shown in Fig. 4), corresponded to the highest AOD (*ratio*=49% and 46%, respectively, as shown in Fig. 9a); while FINN1.5 and GFED4s, which represent the lowest monthly mean biomass burning OC emission over the region of SHAF (0.87 and 0.85 Tg mon<sup>-1</sup>, respectively, as shown in Fig.4), corresponded to very low AOD (15% and 19% of the observed, respectively).

Although the temporal variation of the ambient RH may partially contribute to the day-to-day changes of the emission-AOD relationship, the close resemblance between the model simulated AOD and column OC mass loading (Fig. 9b) excludes such possibility. **These** evidence therefore suggest that the temporal variations of AOD (and aerosol mass loading) in Mongu, where **daily** local BB emissions were present **instead, do not** directly respond to the local BB emission at the daily and sub-daily time scales during the burning season **either as the case in Alta Floresta. It** further confirms the importance of accurate estimation of both the magnitude and spatial pattern of regional emissions as mentioned in the case of Alta Floresta. Therefore, over southern hemisphere Africa and southern hemisphere South America, **an** enhancement of regional BB aerosol emission amounts in all the BB emission datasets **except for QFED2.4 in the latter region** is suggested by this study in order to reproduce the observed AOD level **although to different degrees**.

#### 4. Discussion

The simulated AOD is biased low in biomass burning dominated regions and seasons **almost** across all six BB emission datasets as demonstrated in this study. More explanations on differences among the six BB emissions datasets are discussed in Sect. 4.1. Basically, the uncertainty of the simulated AOD could be attributable to two main sources: (1) BB emissions-related biases; (2) Model-related biases. They are discussed in Sections 4.2 and 4.3, respectively.

#### 4.1 The possible explanations of differences among the six BB emission datasets

##### 4.1.1 Higher BB emissions estimated from QFED2.4 and FEER1.0

This study has shown that the QFED2.4 and FEER1.0 BB emission datasets are consistently higher than the others, with QFED2.4 being the highest overall. Some of the possible reasons responsible for this difference include:

**Constraining with MODIS AOD.** The emission coefficients ( $C_e$ ) used to derive biomass burning aerosol emissions in both QFED2.4 and FEER1.0 are constrained by the MODIS AOD, although in different ways (detailed in Sect. 2.1.6 and 2.1.5, respectively). This is not the case for **the** other BB emission datasets. **Although, GFAS1.2** uses the same FRP products as FEER1.0 in deriving dry mass combustion rate, **its emission** is tuned to that of GFED3.1. QFED2.4 applied four biome-dependent scaling factors to the initial constant value  $C_0$  when deriving its  $C_e$ , by minimizing the discrepancy between the AOD simulated by the GEOS model and that from MODIS in **corresponding** biomes. The

Deleted: is

Deleted: again

Deleted: do not also

Deleted: ,

Deleted: ing

Deleted: except for QFED2.4,

Deleted: other

Deleted: (although to different degrees)

Deleted: .

Deleted: tions

Deleted:

Deleted: , especially GFAS1.2, a

Deleted: it also

Deleted: (it

Deleted: instead)

Deleted: the respective

resulting QFED2.4 scaling factors are 1.8 for savanna and grassland fires, 2.5 for tropical forests, and 4.5 for extratropical forests (Darmenov and da Silva, 2015). This partially explains its very high OC biomass burning emission over the extratropical regions of TENA, BONA and BOAS relative to the other emission datasets (Fig. 2-4). However, the high BB emission estimated by QFED2.4 is questionable during October and November of 2008 in the region of BONA (Fig. 4) according to the evaluation of its resulting AOD relative to the AERONET AOD at the Fort McMurray site (Fig. 7(1)). As for FEER1.0, the process of deriving  $C_e$  involved calculating the near-source smoke-aerosol column mass with the MODIS AOD (total minus the background) for individual plumes, thereby limiting influence from other emission sources (Ichoku and Ellison, 2014).

**Fuel consumption.** In general, the FRP-based estimation approaches, such as GFAS1.2, QFED2.4, and FEER1.0, may enable more direct estimates of fuel consumption from energy released from fires, without being affected by the uncertainties associated with the estimates of fuel loads and combustion completeness (e.g., Kaufman et al., 1998; Wooster et al., 2003, 2005; Ichoku and Kaufman, 2005; Ichoku et al., 2008; Jordan et al., 2008). However, FRP from non-BB sources, such as the gas flare, could be mistakenly identified as BB sources. One example is over bare land in the eastern border of Algeria in MIDE (refer the land type to the website: <http://maps.elie.ucl.ac.be/CCI/viewer/index.php>), where QFED2.4 shows high OC emission contrary to expectation (see Fig. 2f). Thus, additional screening of FRP fire product is required.

#### 4.1.2 Features of FINN1.5

Globally, the FINN1.5 dataset is lower than QFED2.4 and FEER1.0, but larger than GFAS1.2, GFED3.1 and GFED4s (Fig. 3). Although FINN1.5 can capture the location of the large wildfires using the active fire products, the estimation of burned area is rather simple without the complicated spatial and temporal variability in the amount of burned area per active fire detection or variability in fuel consumption within biomes. For example, it estimates 1 km<sup>2</sup> burned area per fire pixel for all biomass types except for savanna and grassland where 0.75 km<sup>2</sup>/fire pixel is estimated instead. That might partially explain why FINN1.5 is extremely low in AUST, as suggested by Wiedinmyer et al. (2011). Additionally, the FINN1.5 dataset is the least over boreal regions, such as in regions of BOAS and BONA, where FINN1.5 is only 1/3 and 3/5 of GFED4s, respectively. Large forest fires dominate in BOAS and BONA, such that the direct mapping of burned area as done in GFED4s and GFED3.1 produces more biomass burning emissions (van der Werf et al., 2017). On the other hand, the BB emission in FINN1.5 dataset is relatively large near the equator. For instance, it is the largest among the six datasets over the region EQAS, and the second largest over the regions of CEAM and SEAS (see Fig. 3). This might be attributed to the smoothing of the fire detections in these tropical regions to compensate for the limited daily coverage by the MODIS instruments due to gaps between adjacent swaths and higher chances of cloud coverage in tropical regions (Wiedinmyer et al., 2011). Thus, in FINN1.5, each fire detected in the equatorial region only is counted for a 2-day period by assuming that fire continues into the next day but at half of its original size.

Deleted: .

Formatted: Font color: Text 1

Deleted: by

Deleted: ,

Deleted: t

Deleted: the

#### 4.1.3 Difference between GFED4s and GFED3.1

Globally and in some regions, biomass burning OC emission in GFED4s is lower than that in GFED3.1 (see Fig. 2-4), although the former has 11% higher global carbon emissions and includes small fires (van der Werf et al., 2017). There are a few possible reasons, of which two major ones are as follows: (1) For aerosols, the implementation of lower *EF* for certain biomes in GFED4s than in GFED3.1 reduces the aerosol biomass burning emissions. As for the savanna and grassland, for instance, the GFED4s dataset mainly applies *EF* value recommended by Akagi et al. (2011), which is 2.62 g OC per kg dry matter burned, 18% lower than the *EF* from Andreae and Merlet (2001) used in GFED3.1, which is 3.21 g OC per kg dry matter burned (see Table 2). The new estimation of *EF* is  $3.0 \pm 1.5$  g OC per kg dry matter burned as suggested by Andreae (2019). With it, the OC emissions in savanna and grassland can be slightly enhanced, but would still be lower than those in GFED3.1. (2) The improvement in including small fires in GFED4s over GFED3.1 is probably offset by the occasional optimization of fuel consumption using field observations for overall carbon emissions. For instance, the turnover rates of herbaceous leaf (e.g., savanna) are increased in GFED4s, leading to the lower fuel loading and thus lower consumption for this land-cover type in GFED4s (van Leeuwen et al., 2014; van der Werf et al., 2017). Therefore, the biomass burning OC emissions are lower in GFED4s over SHAF, NHAf, and AUST (Fig. 3 and 4), where ~88% of the BB carbon emission is from savanna and grassland (van der Werf et al., 2017).

On the other hand, there are regions in the northern hemisphere where GFED4s is higher than GFED3.1. For example, over CEAS and EURO, small fires associated with burning of agricultural residues contribute to 43.6% and 58.6% of the carbon emissions, respectively (van der Werf et al., 2017). In spite of the 30% reduction of the *EF* in these two regions, the effect of including small fires in GFED4s is greater, resulting in the biomass burning OC emission from GFED4s being twice as high as that from GFED3.1. Another example is in BOAS where the biomass burning OC emissions are 10% higher in GFED4s than in GFED3.1. This is likely attributable to the higher *EF* used in GFED4s for boreal forest fires than that in GFED3.1 (9.60 vs. 9.14 g OC per kg dry matter, see Table 2), where 86.5 % of the carbon emission is from the Siberian forest (van der Werf et al., 2017).

It is interesting that the yearly total biomass burning OC emission from GFED4s is 20% lower than that from GFED3.1 in EQAS (Fig. 4), even though the small fires are included and the *EF* of peatland and tropical forest are higher in the former (Table 2). By examining the monthly variations over EQAS (Fig. 4), however, we found that GFED4s is actually higher than GFED3.1 in August by a factor of two when peatland burning is predominant, but equal to or lower than GFED3.1 in other months, particularly in May, leading to the overall lower annual total value in GFED4s.

#### 4.2 Sources of the uncertainty associated with biomass burning emissions

Uncertainty in any of the six BB emissions datasets considered in this study could have been introduced from a variety of measurement and/or analysis procedures, including: detection of fire or area burned, retrieval of FRP, emission factors (see Table 1), biome,

Deleted: ;

Deleted: In addition, t

Deleted: ,

Deleted: f

Deleted: where

Deleted: the

Deleted: former BB

Deleted: dataset

Deleted: than in the latter one

Deleted: land cover

Deleted:

types, burning stages, and fuel consumption estimates, some of which are explained in detail below.

Deleted: maps

**Fire detection.** Most of the current global estimations of biomass burning emissions are heavily dependent on polar-orbiting satellite measurements from MODIS on Terra and Aqua (e.g., MCD14DL, MOD14A1, MYD14A1, and MCD14ML as listed in Table 1). The temporal and spatial resolutions of these measurements impose limitations on their ability to detect and characterize the relevant attributes of fires, such as the locations and timing of active fires and the extent of the burned areas. Each of the two MODIS sensors, from which all of the major BB datasets derive their inputs, can only possibly observe a given fire location twice in 24 hours, which leaves excessive sampling gaps in the diurnal cycle of fire activity (Saide et al., 2015). Even for these few times that MODIS makes observations at its nominal spatial resolution of 1 km at nadir, it has the potential to miss a significant number of smaller fires (e.g. Hawbaker et al., 2008, Burling et al, 2011, Yokelson et al., 2011), as well as to miss fires obstructed by clouds, and those located in the gaps between MODIS swaths in the tropics (Hyer et al., 2009; Wang et al., 2018). In addition, MODIS fire detection sensitivity is reduced at MODIS off nadir views, with increasing view zenith angles especially toward the edge of scan, where its ground pixel size is almost a factor of 10 larger than at nadir (Peterson and Wang, 2013; Roberts et al., 2009; Wang et al., 2018), resulting in dramatic decreases in the total number of detected fire pixels and total FRP (Ichoku et al., 2016b; Wang et al., 2018). Moreover, all operational remote sensing fire products have difficulty accounting for understory fires or fires with low thermal signal or peatland fires such as those in Indonesia, where smoldering can last for months (Tansey et al, 2008). These issues can propagate into the uncertainties of the emissions datasets that are dependent on active fire detection products, especially those based on FRP, e.g., GFAS1.2 (Kaiser et al., 2012), FEER1.0 (Ichoku and Ellison, 2014), and QFED2.4 (Darmenov and da Silva, 2015). This issue also affects FINN1.5 (Wiedinmyer et al., 2011), which derives the burned area by assuming each active fire pixel to correspond to a burned area of 1 km<sup>2</sup> for most biome types (see details in Sect. 2.1.3), and GFED4s, which uses burned area product for large fires but derives burned areas for small fires using the MODIS active fire product.

On the other hand, although the sparse diurnal sampling frequency may not necessarily be an issue for the MODIS burned area product, upon which some of the emission datasets are based (e.g., GFED3.1), burned area product may not account for small fires due to its low spatial resolution of 500-m, which may limit the identification of small burned scars such as those generated by small fires from crop lands. In addition, the estimation of biomass burning emission based on the burned area product, e.g., GFED, is subject to the uncertainty associated with the estimation of fuel load and combustion completeness as mentioned earlier.

Deleted: (fire size < 21 ha)

**Emission factor (EF).** The EF, used for deriving individual particulate or gaseous species of smoke emissions from burned dry matter in all major BB emission datasets, heavily depends on the two papers by Andreae and Merlet (2001) and Akagi et al. (2011). The authors of these two studies made significant contributions by compiling the values of EFs from hundreds of papers. However, the EFs can have significant uncertainties

(Andreae, 2019), because each EF results from a particular experiment or field campaign. Some EFs are derived from lab-based studies whereby samples of fuels are burned in combustion chambers (e.g., Christian et al., 2003; Freeborn et al., 2008), where the combustion characteristics can be very different from those of large-scale open biomass burning and wildfires; and some EFs are derived from field campaigns, where the measurement locations are often not close enough to the biomass burning source due to personnel safety and other logistic factors (Aurell et al., 2019). As discussed earlier in Sect. 4.1.3, the discrepancy between GFED4s and GFED3.1 can be partially explained by the fact that different emission factors were used to derive these two products (also see Table 2). This situation will not change much even if the EF value from the latest estimation by Andreae (2019) were used.

**Biome types.** The uncertainty of estimating BB emission could be partially attributed to different definitions of major biome types, because the scaling factor of emission coefficient for the FRP-based BB datasets (i.e., GFAS and QFED), or the emission factor used by all BB datasets will be assigned accord to the biome type where the fire event occurs. The six BB emission datasets examined in this study have different definitions of major biome types, for example, six major biome types applied in GFED4.1s (Table 1 in van der Werf et al., 2017), but eight in GFAS1.2 (Table 2 in Kaiser et al., 2012), and only four in QFED2.4 (Table 2 in Darmanov and da Silva, 2015). In particular, peat combustion is an important emission source in some regions, such as Equatorial Asia (e.g., Kiely et al., 2019). However, not all the emission datasets include peat biome or consider its unique characteristics. Among the emission datasets based on burned areas, GFED3.1 and GFED4s consider peat, but FINN1.5 does not. In QFED2.4 and FEER1.0, the peat biome is not explicitly identified. Thus, such differences in the approaches to the processing of contributions from specific biomes may contribute to the differences between emission datasets in some regions.

**Burning stages.** Most current BB emission datasets do not distinguish the different burning stages, such as the flaming and smoldering stages that have distinctive emission characteristics. Typically, flaming dominates the earlier stage of a fire while smoldering dominates the later part. In the case of boreal forest fires, for example, about 40% of the combustion originates from the flaming phase while 60% comes from the smoldering phase (Reid et al., 2005). In addition, smoldering combustion produces more OC and CO than flaming combustion; whereas flaming combustion produces more BC and carbon dioxide (CO<sub>2</sub>) than smoldering (e.g., Freeborn et al., 2008).

#### 4.3 Sources of the uncertainty associated with aerosol modeling

The model-related biases in the GEOS model, which other models most probably also suffer from, include, for example, inaccurate representations of horizontal and vertical transport of aerosol by wind, fire emission plume height, and estimation of aerosol removal in models. Furthermore, the production of secondary organic aerosol (SOA) in biomass burning plumes, which has been observed in lab studies and ambient plumes (e.g., Bian et al., 2017; Ahern et al., 2019), are missing in these GEOS simulations. Given the sparsity of the measurements of surface and vertical concentrations at the global scale, we implemented an approach to evaluate model simulation uncertainty globally

Deleted: ¶

Deleted: It is somewhat surprising that the aerosol emissions from GFED4s are lower than those from GFED3.1 in most of the savanna regions (e.g., SHAF, NHAF, and SHSA), even though the former includes smaller fires and has 11% higher global carbon emissions.

Deleted: T

Deleted: i

Deleted: s

Deleted: , with the lower EF used for savanna in the former dataset taken from Andreae and Merlet (2001), whereas the higher EF used in the latter dataset was obtained from Akagi et al. (2011)

Deleted: , as explained earlier in Sect. 4.1.3

Deleted: the

Deleted: with

Moved (insertion) [1]

Deleted: in



due to biomass burning aerosol emissions by evaluating the resulting AOD against those from satellite data and AERONET measurements, following the studies by Petrenko et al. (2012) and Zhang et al. (2014). We acknowledge the uncertainties in calculating AOD, such as uncertainties associated with assumptions of aerosol size distribution, optical properties, aerosol water uptake, and vertical distribution of aerosol (e.g., Reddington et al., 2019). In addition, Ge et al. (2017) showed that the choice of different meteorological fields can also lead to uncertainty in simulating the modelled aerosol loading. For instance, meteorological fields from ECMWF and National Centers for Environmental Prediction (NCEP) can yield a factor of two difference in the resulting surface PM<sub>2.5</sub> concentration during the fire season of September in the Maritime continents. Furthermore, the ratio of OA to OC is 1.4 in our study, as first determined by White and Roberts (1977). However, this OA/OC ratio of 1.4 is at the low end of the generally suggested range of 1.2-2.5 (Turpin and Lim, 2001; Zhang et al., 2005; Bae et al., 2006; El-Zanan et al., 2006; Aiken et al., 2008; Chan et al., 2010). Observations suggest that OA/OC values of 1.6±0.2 should be used for urban aerosols and 2.1±0.2 for non-urban aerosols (Turpin and Lim, 2001). Enhancing this ratio can obviously increase the resulting AOD, but a more accurate measurement of this ratio during biomass burning is needed.

## 5. Conclusions and recommendations

In this study, we compared six global biomass burning aerosol emission datasets in 2008, i.e., GFED3.1, GFED4s, FINN1.5, and GFAS1.2, FEER1.0 and QFED2.4. We also examined the sensitivity of the modelled AOD to the different BB emission datasets in the NASA GEOS model globally and in 14 regions. The main results are summarized as follows:

- The biomass burning OC emissions derived from GFED3.1, GFED4s, FINN1.5, GFAS1.2, FEER1.0, and QFED2.4 can differ by up to a factor of 3.8 on an annual average, with values of 15.65, 13.76, 19.48, 18.22, 28.48, and 51.93 Tg C in 2008, respectively. The biomass burning BC emissions can differ by up to a factor of 3.4 on an annual average, with values of 1.76, 1.65, 1.83, 1.99, 3.66, and 5.54 Tg C in 2008, respectively. In general, higher biomass burning OC and BC emissions are estimated from QFED2.4 globally and regionally, followed by FEER1.0.
- The best agreement among the six emission datasets occurred in Northern Hemisphere Africa (NHAF), Equatorial Asia (EQAS), Southern Hemisphere Africa (SHAF), and South Hemisphere South America (SHSA), where the biomass burning emissions are predominant in determining aerosol loading, with the top coefficient of variation rankings (1-4) and relatively low *max/min* ratio (a factor of 3-4). The least agreement occurred in the Middle East (MIDE), Temperate North America (TENA), Boreal North America (BONA), and Europe (EURO), with the bottom coefficient of variation rankings (14-11) and large *max/min* ratios (a factor of 66-10). It seems that the diversity among the six BB emission datasets is largely driven by QFED2.4, which estimates the largest emission amount for almost all regions (except for equatorial Asia).
- In Southern Hemisphere Africa (SHAF) and Southern Hemisphere South America (SHSA) during September 2008, where and when biomass burning aerosols are dominant over other aerosol types, the amounts of biomass burning OC emissions

Deleted: through

Moved (insertion) [2]

Deleted: have

Deleted: n

Deleted: , such as

Deleted: those

Deleted: ,

Deleted: ¶

Deleted: Modeling of AOD properties such as optical properties and water uptake probably generates additional uncertainty.

Deleted: T

Deleted: this

Moved up [1]: Furthermore, the production of secondary organic aerosol (SOA) in biomass burning plumes, which has been observed in lab studies and ambient plumes (e.g., Bian et al., 2017; Ahern et al., 2019), are missing in these GEOS simulations.

Moved up [2]: In addition, Ge et al. (2017) have shown that the choice of different meteorological fields, such as those from ECMWF and National Centers for Environmental Prediction (NCEP), can yield a factor of two difference in the resulting surface PM<sub>2.5</sub> concentration during the fire season of September in the Maritime continents.

Deleted: have

Deleted: separate

Deleted: -sub

Deleted: ), as these are regions where biomass burning is either not dominant in total aerosol loading or QFED2.4 is extremely large.

from QFED2.4 and FEER1.0 are at least double those from the remaining four BB emission datasets. The AOD simulated by the NASA GEOS based on these two BB emission datasets are the closest to those from MISR and AERONET, but still biased low. In particular, at Alta Floresta in SHSA, they can account for 36%-100% of the observed AOD, and at Mongu in SHAF, the AOD simulated with the six biomass burning emission datasets only account for 15%-49% of the observed AOD. Overall, during the biomass burning peak seasons at most of the representative AERONET sites selected in each region, the AOD simulated with QFED2.4 is the highest and closest to AERONET and MISR observations, followed by that of FEER1.0. Considering that regional scale transport and removal processes as well as wind fields are the same across the six BB emission experiments since they were run under the same model configurations except for BB emission, it is evident that enhancement of BB emission amounts in all six BB emission datasets will be needed (although to different degrees) for the model AOD simulations to match observations, particularly in SHAF (Mongu) and SHSA (Alta Floresta), except for QFED2.4 in SHSA. Although the result of this study is partially model-dependent, nevertheless, it sheds some light on our understanding of the uncertainty of the simulated AOD associated with the choice of biomass burning aerosol emission datasets.

Deleted: except for QFED2.4 (although to different degrees)

Based on the results of the current study, it is appropriate to make some recommendations for future studies on improving BB emission estimation. Our understanding of the complexity, variability, and interrelationships between different fire characteristics (behavior, energetics, emissions) still need to be improved (Hyer et al, 2011). More accurate estimation of emission factors (*EF*) for different ecosystem types and burning stages would greatly improve the emission overall, as demonstrated by the discrepancy between GFED3.1 and GFED4s (see Sect. 4.1.3). The global BB emission datasets driven by fire remote sensing and retrievals of FRP and burned-area products, which have hitherto depended heavily on MODIS, can be augmented with products from higher resolution sensors such as Visible Infrared Imaging Radiometer Suite (VIIRS), and the global suite of geostationary meteorological satellites such as Meteosat (covering Europe, Africa and the Indian Ocean), Geostationary Operational Environmental Satellite (GOES, covering North, Central, and South America) and Himawari (covering east Asia, southeast Asia, and Australia). Also, measurements from the recent field campaigns such as WE-CAN ([https://www.eol.ucar.edu/field\\_projects/we-can](https://www.eol.ucar.edu/field_projects/we-can)) and FIREX-AQ (<https://www.esrl.noaa.gov/csd/projects/firex-aq/science/motivation.html>) are expected to contribute toward advancing our knowledge of biomass burning emissions in North America. The evaluation in this study has been solely based on remotely sensed AOD data, including retrievals from both satellite (MISR) and ground-based (AERONET) sensors. Continuous mass concentration measurements are needed to validate the fire-generated aerosol loading in specific contexts, such as in analyzing collocated surface and vertical aerosol concentrations and composition, at least in the major BB regions.

Deleted:

Deleted: ing

Deleted: l

#### Data availability

The GFED3.1 biomass burning dataset can be accessed through the link: [https://daac.ornl.gov/VEGETATION/guides/global\\_fire\\_emissions\\_v3.1.html](https://daac.ornl.gov/VEGETATION/guides/global_fire_emissions_v3.1.html). The link to the GFED4s dataset is <http://www.globalfiredata.org>. The FINN1.5 emissions dataset

is archived at: <http://bai.acom.ucar.edu/Data/fire/>. The GFAS1.2 emissions dataset is available at: <https://apps.ecmwf.int/datasets/data/cams-gfas/>. The FEER1.0 dataset is available at <http://feer.gsfc.nasa.gov/data/emissions/>. The QFED2.4 can be downloaded from the website : <https://portal.nccs.nasa.gov/datashare/iesa/aerosol/emissions/QFED/v2.4r6/>. MISR level 3 AOD data can be downloaded from website: [https://eosweb.larc.nasa.gov/project/misr/mil3mae\\_table](https://eosweb.larc.nasa.gov/project/misr/mil3mae_table). AERONET Version 3 Level 2.0 data can be downloaded from the websites: [https://aeronet.gsfc.nasa.gov/new\\_web/download\\_all\\_v3\\_aod.html](https://aeronet.gsfc.nasa.gov/new_web/download_all_v3_aod.html). The GEOS model results can be obtained by contacting the corresponding author.

Deleted: downloaded

### Author contribution

CI, MC, and XP conceived this project. XP conducted the data analysis and the model experiments. XP and CI wrote the majority of this manuscript, and all other authors participated in the writing process and interpretation of the results. HB, AD, PC and AS helped with model set-up. CI, AD, and LE provided the biomass burning emission datasets and interpretation of these datasets. TK, JW, and GC provided the help to apply the biomass burning emission datasets in the model. CI and MC provided funding supports.

Deleted: provid

Deleted: with

### Acknowledgement

MISR AOD data were obtained from the NASA Langley Research Center Atmospheric Science Data Center. We thank the AERONET networks for making their data available. Site PIs and data managers of those networks are gratefully acknowledged. We acknowledge the use of imagery from the NASA Worldview application (<https://worldview.earthdata.nasa.gov/>), part of the NASA Earth Observing System Data and Information System (EOSDIS). Computing resources supporting this work were provided by the NASA High-End Computing (HEC) Program through the NASA Center for Climate Simulation (NCCS) at Goddard Space Flight Center. We also thank the providers of biomass burning emission datasets of GFED, FINN, and GFAS. We acknowledge supports from various NASA earth science programs, including the NASA Atmospheric Composition Modeling, Analysis, and Prediction Program (ACMAP), the Modeling, Analysis, and Prediction program (MAP), the Interdisciplinary Studies Program (IDS), and Carbon Cycle Science program. CI is also grateful for partial support received during the preparation of this article from the Educational Partnership Program of the National Oceanic and Atmospheric Administration (NOAA), U.S. Department of Commerce, under Agreement No. #NA16SEC4810006. TO is supported by NASA under Grant No. NNX14AM76G. We appreciate the constructive comments from two reviewers, which help us to improve the quality of this manuscript. XP also acknowledges the valuable suggestions from Dr. Dongchul Kim. The contents of this article are solely the responsibility of the authors and do not represent the official views of any agency or institution.

Deleted: on

### Reference

Ahern, A. T., Robinson, E. S., Tkacik, D. S., Saleh, R., Hatch, L. E., Barsanti, K. C., et al. Production of secondary organic aerosol during aging of biomass burning smoke from fresh fuels and its relationship to VOC precursors. *Journal of Geophysical Research: Atmospheres*, 124. <https://doi.org/10.1029/2018JD029068>, 2019.



1261 Aiken, A. C., Decarlo, P. F., Kroll, J. H., Worsnop, D. R., Huffman, J. A., Docherty, K.  
 1262 S., Ulbrich, I. M., Mohr, C., Kimmel, J. R., Sueper, D., Sun, Y., Zhang, Q., Trimborn, A.,  
 1263 Northway, M., Ziemann, P. J., Canagaratna, M. R., Onasch, T. B., Alfarra, M. R., Prevot,  
 1264 A. S. H., Dommen, J., Duplissy, J., Metzger, A., Baltensperger, U., and Jimenez, J. L.:  
 1265 O/C and OM/OC ratios of primary, secondary, and ambient organic aerosols with  
 1266 highresolution time-of-flight aerosol mass spectrometry, *Environ. Sci. Technol.*, 42,  
 1267 4478–4485, doi:10.1021/es703009q, 2008.  
 1268  
 1269 Akagi, S. K., Yokelson, R. J., Wiedinmyer, C., Alvarado, M. J., Reid, J. S., Karl, T.,  
 1270 Crounse, J. D., and Wennberg, P. O.: Emission factors for open and domestic biomass  
 1271 burning for use in atmospheric models, *Atmos. Chem. Phys.*, 11, 4039–4072,  
 1272 <https://doi.org/10.5194/acp-11-4039-2011>, 2011.  
 1273  
 1274 Andreae, M. O.: Emission of trace gases and aerosols from biomass burning – an updated  
 1275 assessment, *Atmos. Chem. Phys.*, 19, 8523–8546, [https://doi.org/10.5194/acp-19-8523-](https://doi.org/10.5194/acp-19-8523-2019)  
 1276 2019, 2019.  
 1277  
 1278 Andreae, M. O. and Merlet, P.: Emission of trace gases and aerosols from biomass  
 1279 burning, *Global Biogeochem. Cy.*, 15, 955–966, <https://doi.org/10.1029/2000GB001382>,  
 1280 2001.  
 1281  
 1282 Aurell, J., Mitchell B., Greenwell D., Holder A., Tabor D., Kiros F., and Gullett B.:  
 1283 Measuring Emission Factors from Open Fires and Detonations. AWMA Air Quality  
 1284 Measurement Methods and Technology, Durham, North Carolina, April 02 - 04, 2019.  
 1285  
 1286 Bae, M. S., Demerjian, K. L., and Schwab, J. J.: Seasonal estimation of organic mass to  
 1287 organic carbon in PM<sub>2.5</sub> at rural and urban locations in New York state, *Atmos. Environ.*,  
 1288 40, 7467–7479, 2006.  
 1289  
 1290 Bian, H., M. Chin, R. Kawa, B. Duncan, A. Arellano Jr., and R. Kasibhatla, Uncertainty  
 1291 of global CO simulations constraint by biomass burning emissions. *J. Geophys. Res.*,  
 1292 112, D23308, doi:10.1029/2006JD008376, 2007.  
 1293  
 1294 Bian, H., Chin, M., Rodriguez, J. M., Yu, H., Penner, J. E., and Strahan, S.: Sensitivity of  
 1295 aerosol optical thickness and aerosol direct radiative effect to relative humidity, *Atmos.*  
 1296 *Chem. Phys.*, 9, 2375–2386, <https://doi.org/10.5194/acp-9-2375-2009>, 2009.  
 1297  
 1298 Bian, H., M. Chin, S. R. Kawa, H. Yu, T. Diehl, Multi-scale carbon monoxide and  
 1299 aerosol correlations from MOPITT and MODIS satellite measurements and GOCART  
 1300 model: implication for their emissions and atmospheric evolutions, *J. Geophys. Res.*, 115,  
 1301 D07302, doi:10.1029/2009JD012781, 2010.  
 1302  
 1303 Bian, H., P. Colarco, M. Chin, G. Chen, J.M. Rodriguez, Q. Liang, et al. Investigation of  
 1304 source attributions of pollution to the Western Arctic during the NASA ARCTAS field  
 1305 campaign. *Atmos. Chem. and Phys.*, 13, 4707–4721, doi:10.5194/acp-13-4707-2013,  
 1306 2013.  
 1307

1308 Bian, Q., Jathar, S. H., Kodros, J. K., Barsanti, K. C., Hatch, L. E., May, A. A.,  
 1309 Kreidenweis, S. M., and Pierce, J. R.: Secondary organic aerosol formation in biomass-  
 1310 burning plumes: theoretical analysis of lab studies and ambient plumes, *Atmos. Chem.*  
 1311 *Phys.*, 17, 5459-5475, <https://doi.org/10.5194/acp-17-5459-2017>, 2017.  
 1312  
 1313 Bond, T., Doherty, S. J., Fahey, D. W., Forster, P. M., Berntsen, T., DeAngelo, B. J.,  
 1314 Flanner, M. Ghan, Kärcher, B., Koch, D., Kinne, S., Kondo, Y., Quinn, P. Sarofim, M.  
 1315 C., Schultz, M., Schulz, M., Venkataraman, C., Zhang, H., Zhang, S., Bellouin, N.  
 1316 Guttikunda, S. Hopke, P. K., Jacobson, M. Z., Kaiser, J. W., Klimont, Z., Lohmann, U.,  
 1317 Schwarz, J. P., Shindell, D., Storelvmo, T., Warren, S. G., and Zender, C. S.: Bounding  
 1318 the role of black carbon in the climate system: A scientific assessment, *J. Geophys. Res.*,  
 1319 118, 5380–5552, doi:10.1002/jgrd.50171, 2013.  
 1320  
 1321 Buchard, V., C. A. Randles, A. da Silva, A. S. Darmenov, et al. The MERRA-2 Aerosol  
 1322 Reanalysis, 1980-onward, Part II: Evaluation and Case Studies. *Journal of Climate*,  
 1323 doi:10.1175/jclid-16-0613.1, 2017.  
 1324  
 1325 Burling, I. R., Yokelson, R. J., Akagi, S. K., Urbanski, S. P., Wold, C. E., Griffith, D. W.  
 1326 T., Johnson, T. J., Reardon, J., and Weise, D. R.: Airborne and ground-based  
 1327 measurements of the trace gases and particles emitted by prescribed fires in the United  
 1328 States, *Atmos. Chem. Phys. Discuss.*, 11, 18677–18727, doi:10.5194/acpd-11-18677-  
 1329 2011, 2011.  
 1330  
 1331 Chan, T. W., Huang, L., Leaitch, W. R., Sharma, S., Brook, J. R., Slowik, J. G., Abbatt,  
 1332 J. P. D., Brickell, P. C., Liggio, J., Li, S.-M., and Moosmüller, H.: Observations of  
 1333 OM/OC and specific attenuation coefficients (SAC) in ambient fine PM at a rural site in  
 1334 central Ontario, Canada, *Atmos. Chem. Phys.*, 10, 2393-2411,  
 1335 <https://doi.org/10.5194/acp-10-2393-2010>, 2010.  
 1336  
 1337 Chin, M., R. B. Rood, S.-J. Lin, J.-F. Müller, and A. M. Thompson, Atmospheric sulfur  
 1338 cycle in the global model GOCART: Model description and global properties, *J. Geophys.*  
 1339 *Res.*, 105, 24,661-24,687, 2000.  
 1340  
 1341 Chin, M., P. Ginoux, S. Kinne, O. Torres, B. N. Holben, B. N. Duncan, R. V. Martin, J.  
 1342 A. Logan, A. Higurashi, and T. Nakajima, Tropospheric aerosol optical thickness from  
 1343 the GOCART model and comparisons with satellite and sun photometer measurements, *J.*  
 1344 *Atmos., Sci.*, 59, 461-483, 2002.  
 1345  
 1346 Chin, M., T. Diehl, O. Dubovik, T. F. Eck, B. N. Holben, A. Sinyuk, and D. G. Streets,  
 1347 Light absorption by pollution, dust and biomass burning aerosols: A global model study  
 1348 and evaluation with AERONET data, *Ann. Geophys.*, 27, 3439-3464, 2009.  
 1349  
 1350 Chin, M., T. Diehl, Q. Tan, J. M. Prospero, R. A. Kahn, L. A. Remer, H. Yu, A. M.  
 1351 Sayer, H. Bian, I. V. Geogdzhayev, B. N. Holben, S. G. Howell, B. J. Huebert, N. C.  
 1352 Hsu, D. Kim, T. L. Kucsera, R. C. Levy, M. I. Mishchenko, X. Pan, P. K. Quinn, G. L.  
 1353 Schuster, D. G. Streets, S. A. Strode, O. Torres, and X.-P. Zhao, Multi-decadal variations

1354 of atmospheric aerosols from 1980 to 2009: a perspective from observations and a global  
 1355 model, *Atmos. Chem. Phys.*, 14, 3657–3690, 2014.  
 1356  
 1357 Chou, M.-D. and M. J. Suarez, A solar radiation parameterization for atmospheric  
 1358 studies, NASA/TM-1999- 104606, Vol. 15, 1999.  
 1359  
 1360 Chou, M.-D., M. J. Suarez, X.-Z. Liang, and M.-H. Yan, A thermal infrared radiation  
 1361 parameterization for atmospheric studies. NASA Tech. Memo. 104 606, 55 pp, 2001.  
 1362  
 1363 Christian, T., Kleiss, B., Yokelson, R. J., Holzinger, R., Crutzen, P. J., Hao, W. M.,  
 1364 Saharjo, B. H., and Ward, D. E.: Comprehensive laboratory measurements of biomass-  
 1365 burning emissions: 1. Emissions from Indonesian, African, and other fuels, *J. Geophys.*  
 1366 *Res.*, 108(D23), 4719, doi:10.1029/2003JD003704, 2003.  
 1367  
 1368 Colarco, P. R., A. da Silva, M. Chin, T. Diehl. Online simulations of global aerosol  
 1369 distributions in the NASA GEOS-4 model and comparisons to satellite and ground-based  
 1370 aerosol optical depth, *J. Geophys. Res.*, 115, D14207, doi:10.1029/2009JD012820, 2010.  
 1371  
 1372 Darmenov, A. and da Silva. A. The quick fire emissions dataset (QFED)—documentation  
 1373 of versions 2.1, 2.2 and 2.4, NASA Technical Report Series on Global Modeling and  
 1374 Data Assimilation, NASA TM-2015-104606, 38, 2015.  
 1375  
 1376 Eck, T. F., Holben, B. N., Ward, D. E., Dubovik, O., Reid, J. S., Smirnov, A., et al..  
 1377 Characterization of the optical properties of biomass burning aerosols in Zambia during  
 1378 the 1997 ZIBBEE field campaign. *Journal of Geophysical Research*, 106(D4), 3425–  
 1379 3448. <https://doi.org/10.1029/2000JD900555>, 2001.  
 1380  
 1381 El-Zanan, H. S., Lowenthal, D. H., Zielinska, B., Chow, J. C., and Kumar, N.:  
 1382 Determination of the organic aerosol mass to organic carbon ratio in IMPROVE samples,  
 1383 *Chemosphere*, 60, 485–496, 2005.  
 1384  
 1385 Freeborn, P. H., M. J. Wooster, W. M. Hao, C. A. Ryan, B. L. Nordgren, S. P. Baker, and  
 1386 C. Ichoku. Relationships between energy release, fuel mass loss, and trace gas and  
 1387 aerosol emissions during laboratory biomass fires, *J. Geophys. Res.*, 113, D01301,  
 1388 doi:10.1029/2007JD008679, 2008.  
 1389  
 1390 Ge, C., J. Wang, J. S. Reid, D. Posselt, P. Lynch, E. Hyer, Mesoscale modeling of smoke  
 1391 transport from equatorial Southeast Asian Maritime Continent to the Philippines: First  
 1392 comparison of ensemble analysis with in situ observations, *J. Geophys. Res.- Atmos.*,  
 1393 122, 5380–5398, 2017.  
 1394  
 1395 Gelaro, R., W. McCarty, M.J. Suárez, R. Todling, A. Molod, L. Takacs, C.A. Randles, A.  
 1396 Darmenov, M.G. Bosilovich, R. Reichle, K. Wargan, L. Coy, R. Cullather, C. Draper, S.  
 1397 Akella, V. Buchard, A. Conaty, A.M. da Silva, W. Gu, G. Kim, R. Koster, R. Lucchesi,  
 1398 D. Merkova, J.E. Nielsen, G. Partyka, S. Pawson, W. Putman, M. Rienecker, S.D.  
 1399 Schubert, M. Sienkiewicz, and B. Zhao: The Modern-Era Retrospective Analysis for

Research and Applications, Version 2 (MERRA-2). *J. Climate*, 30, 5419–5454,  
<https://doi.org/10.1175/JCLI-D-16-0758.1>, 2017.

Giglio, L., Randerson, J. T., van der Werf, G. R., Kasibhatla, P. S., Collatz, G. J., Morton,  
D. C., and DeFries, R. S.: Assessing variability and long-term trends in burned area by  
merging multiple satellite fire products, *Biogeosciences*, 7, 1171–1186,  
<https://doi.org/10.5194/bg-7-1171-2010>, 2010.

Giglio, L., Randerson, J. T., and van der Werf, G. R.: Analysis of daily, monthly, and  
annual burned area using the fourth-generation global fire emissions database (GFED4),  
*J. Geophys. Res.-Biogeo.*, 118, 317–328, <https://doi.org/10.1002/jgrg.20042>, 2013.

Giles, D. M., Sinyuk, A., Sorokin, M. G., Schafer, J. S., Smirnov, A., Slutsker, I., Eck, T.  
F., Holben, B. N., Lewis, J. R., Campbell, J. R., Welton, E. J., Korkin, S. V., and  
Lyapustin, A. I.: Advancements in the Aerosol Robotic Network (AERONET) Version 3  
database – automated near-real-time quality control algorithm with improved cloud  
screening for Sun photometer aerosol optical depth (AOD) measurements, *Atmos. Meas.*  
*Tech.*, 12, 169–209, <https://doi.org/10.5194/amt-12-169-2019>, 2019.

Hawbaker, T. J., Radeloff, V. C., Syphard, A. D., Zhu, Z. L., and Steward, S. I.:  
Detection rates of the MODIS active fire product in the United States. *Remote Sens.*  
*Environ.*, 112(5) 2656–2664, 2008.

Hoelzemann, J. J., Schultz, M. G., Brasseur, G. P., Granier, C., and Simon, M.: Global  
Wildland Fire Emission Model (GWEM): Evaluating the use of global area burnt satellite  
data, *J. Geophys. Res.*, 109, D14S04, doi:10.1029/2003JD003666, 2004.

Holben, B. N., Eck, T. F., Slutsker, I., Tanre, D., Buis, J. P., Setzer, A., Vermote, E.,  
Reagan, J. A., Kaufman, Y. J., Nakajima, T., Lavenu, F., Jankowiak, I., and Smirnov, A.:  
AERONET – a federated instrument network and data archive for aerosol  
characterization, *Remote Sens. Environ.* 66, 1–16, 1998.

Hyer, E. J., and J. S. Reid. Baseline uncertainties in biomass burning emission models  
resulting from spatial error in satellite active fire location data, *Geophys. Res. Lett.*, 36,  
L05802, doi:10.1029/2008GL036767, 2009.

Hyer, E. J., J. S. Reid, and J. Zhang: An over-land aerosol optical depth data set for data  
assimilation by filtering, correction, and aggregation of MODIS collection 5 optical depth  
retrievals, *Atmos. Meas. Tech.*, 4, 379–408, doi:10.5194/amt-4-379-2011, 2011.

Ichoku, C., and Ellison, L. Global top-down smoke-aerosol emissions estimation using  
satellite fire radiative power measurements. *Atmospheric Chemistry and Physics*, 14(13),  
6643–6667. doi:10.5194/acp-14-6643-2014, 2014.

1444 Ichoku, C., Ellison, L. T., Yue, Y., Wang, J., & Kaiser, J. W. Fire and Smoke Remote  
 1445 Sensing and Modeling Uncertainties. Natural Hazard Uncertainty Assessment: Modeling  
 1446 and Decision Support, 215-230, doi: 10.1002/9781119028116.ch14, 2016a.  
 1447  
 1448 Ichoku, C., Ellison, L.T., Willmot, K.E., Matsui, T., Dezfuli, A.K., Gatebe, C.K., Wang,  
 1449 J., Wilcox, E.M., Lee, J., Adegoke, J. and Okonkwo, C. Biomass burning, land-cover  
 1450 change, and the hydrological cycle in Northern sub-Saharan Africa. *Environmental*  
 1451 *Research Letters*, 11(9), p.095005, 2016b.  
 1452  
 1453 Ichoku, C., L. Giglio, M. J. Wooster, and L. A. Remer. Global characterization of  
 1454 biomass-burning patterns using satellite measurements of fire radiative energy. *Remote*  
 1455 *Sensing of Environment*, 112 (6): 2950-2962 [10.1016/j.rse.2008.02.009], 2008.  
 1456  
 1457 Ichoku, C., R. Kahn, and M. Chin. Satellite contributions to the quantitative  
 1458 characterization of biomass burning for climate modeling, *Atmos. Res.*, 111, 1–28, 2012.  
 1459  
 1460 Ichoku, C., and Y. Kaufman. A method to derive smoke emission rates from MODIS fire  
 1461 radiative energy measurements. *IEEE Trans on Geosc & Rem Sens*, **43 (11)**: 2636-2649  
 1462 [10.1109/TGRS.2005.857328], 2005.  
 1463  
 1464 Janssens-Maenhout, G., Crippa, M., Guizzardi, D., Dentener, F., Muntean, M., Pouliot,  
 1465 G., Keating, T., Zhang, Q., Kurokawa, J., Wankmüller, R., Denier van der Gon, H.,  
 1466 Kuenen, J. J. P., Klimont, Z., Frost, G., Darras, S., Koffi, B., and Li, M.: HTAP\_v2.2: a  
 1467 mosaic of regional and global emission grid maps for 2008 and 2010 to study  
 1468 hemispheric transport of air pollution, *Atmos. Chem. Phys.*, 15, 11411–11432,  
 1469 <https://doi.org/10.5194/acp-15-11411-2015>, 2015.  
 1470  
 1471 Jordan, N., Ichoku, C., and Hoff, R.: Estimating smoke emissions over the U.S. Southern  
 1472 Great Plains using MODIS fire radiative power and aerosol observations, *Atmos. Env.*,  
 1473 42, 2007–2022, 2008.  
 1474  
 1475 Kahn, R.A., Gaitley B.J., Garay M.J., Diner D.J., Eck T., Smirnov A., and Holben B.N.:  
 1476 Multiangle Imaging SpectroRadiometer global aerosol product assessment by comparison  
 1477 with the Aerosol Robotic Network. *J. Geophys. Res.* 115, D23209, doi:  
 1478 10.1029/2010JD014601, 2010.  
 1479  
 1480 Kalashnikova O. V., and Kahn R.A.: Ability of multiangle remote sensing observations  
 1481 to identify and distinguish mineral dust types: Part 2. Sensitivity over dark water *J.*  
 1482 *Geophys. Res.*, D11207, 111 10.1029/2005JD006756, 2006.  
 1483  
 1484 Kaiser, J. W., Heil, A., Andreae, M. O., Benedetti, A., Chubarova, N., Jones, L.,  
 1485 Morcrette, J.-J., Razinger, M., Schultz, M. G., Suttie, M., and van der Werf, G. R.:  
 1486 Biomass burning emissions estimated with a global fire assimilation system based on  
 1487 observations of fire radiative power, *Biogeosciences*, 9, 527-554, doi:10.5194/bg-9-527-  
 1488 2012, 2012.

1489 Kaiser, J.W., Flemming, J., Schultz, M. G., Suttie, M., and Wooster, M. J.: The MACC  
1490 Global Fire Assimilation System: First Emission Products (GFASv0), Tech. Memo. 596,  
1491 ECMWF, Reading, UK, 2009.

1492

1493 Kaufman, Y. J., C. O. Justice, L. P. Flynn, J. D. Kendall, E. M. Prins, L. Giglio, D. E.  
1494 Ward, W. P. Menzel, and A. W. Setzer. Potential global fire monitoring from EOS-  
1495 MODIS, *J. Geophys. Res.*, 103(D24), 32,215–32,238, doi:10.1029/98JD01644, 1998.

1496

1497 Kiely, L., Spracklen, D. V., Wiedinmyer, C., Conibear, L., Reddington, C. L., Archer-  
1498 Nicholls, S., Lowe, D., Arnold, S. R., Knote, C., Khan, M. F., Latif, M. T., Kuwata, M.,  
1499 Budisulistiorini, S. H., and Syaifina, L.: New estimate of particulate emissions from  
1500 Indonesian peat fires in 2015, *Atmos. Chem. Phys.*, 19, 11105–11121,  
1501 <https://doi.org/10.5194/acp-19-11105-2019>,  
1502

1503 Liousse, B., Guillaume, J. M., Grégoire, M., Mallet, C., Galy, C., Pont, V., Akpo, A.,  
1504 Bedou, M., Castéra, P., Dungall, L., Gardrat, E., Granier, C., Konaré, A., Malavelle, F.,  
1505 Mariscal, A., Mieville, A., Rosset, R., Serça, D., Solmon, F., Tummon, F., Assamoi, E.,  
1506 Yoboué, V., and Van Velthoven, P.: Updated African biomass burning emission  
1507 inventories in the framework of the AMMAIDAF program, with an evaluation of  
1508 combustion aerosols, *Atmos. Chem. Phys.*, 10, 7347–7382, doi:10.5194/acp-10-7347-  
1509 2010, 2010.

1510

1511 Molod, A. M., L. L. Takacs, M. J. Suarez, and J. Bacmeister. Development of the GEOS  
1512 atmospheric general circulation model: evolution from MERRA to MERRA2 ." *Geosci.*  
1513 *Model Dev.* 8 1339-1356 [10.5194/gmd-8-1339-2015], 2015.

1514

1515 Pan, X., Chin, M., Gautam, R., Bian, H., Kim, D., Colarco, P. R., Diehl, T. L., Takemura,  
1516 T., Pozzoli, L., Tsigaridis, K., Bauer, S., and Bellouin, N.: A multi-model evaluation of  
1517 aerosols over South Asia: common problems and possible causes, *Atmos. Chem. Phys.*,  
1518 15, 5903-5928, <https://doi.org/10.5194/acp-15-5903-2015>, 2015.

1519

1520 Pan, X., Chin, M., Ichoku, C. M., & Field, R. D. Connecting Indonesian fires  
1521 and drought with the type of El Niño and phase of the Indian Ocean dipole during 1979–  
1522 2016. *Journal of Geophysical Research: Atmospheres*, 123.  
1523 <https://doi.org/10.1029/2018JD028402>, 2018.

1524

1525 Peterson, D., & Wang, J. A Sub-pixel-based calculate of fire radiative power from  
1526 MODIS observations: 2. Sensitivity analysis and potential fire weather application.  
1527 *Remote Sensing of Environment*, 129, 231–249, 2013.

1528

1529 Peterson, D. A., J. R. Campbell, E. J. Hyer, M. D. Fromm, G. P. Kablick, J. H. Cossuth,  
1530 and M. T. DeLand. Wildfire-driven thunderstorms cause a volcano-like stratospheric  
1531 injection of smoke. *npj Climate and Atmospheric Science*, 1, 30, 2018.

1532

1533 Petrenko, M., R. Kahn, M. Chin, A. Soja, T. Kucsera, and Harshvardhan. The use of  
1534 satellite-measured aerosol optical depth to constrain biomass burning emissions source

1535 strength in the global model GOCART, *J. Geophys. Res.*, 117, D18212,  
1536 doi:10.1029/2012JD017870, 2012.

1537

1538 Petrenko, M., Kahn, R., Chin, M., & Limbacher, J. Refined use of  
1539 satellite aerosol optical depth snapshots to constrain biomass burning emissions  
1540 in the GOCART model. *Journal of Geophysical Research: Atmospheres*, 122, 10,983–  
1541 11,004. <https://doi.org/10.1002/2017JD026693>, 2017.

1542

1543 Pereira, G., Siqueira, R., Rosário, N. E., Longo, K. L., Freitas, S. R., Cardozo, F. S.,  
1544 Kaiser, J. W., and Wooster, M. J.: Assessment of fire emission inventories during the  
1545 South American Biomass Burning Analysis (SAMBBA) experiment, *Atmos. Chem.*  
1546 *Phys.*, 16, 6961–6975, doi:10.5194/acp-16-6961-2016, 2016.

1547

1548 Randerson, J. T., Chen, Y., van der Werf, G. R., Rogers, B. M., and Morton, D. C.:  
1549 Global burned area and biomass burning emissions from small fires, *J. Geophys. Res.-*  
1550 *Biogeo.*, 117, G04012, <https://doi.org/10.1029/2012JG002128>, 2012.

1551

1552 Randles, C. A., A. da Silva, V. Buchard, et al. 2017: The MERRA-2 Aerosol Reanalysis,  
1553 1980-onward, Part I: System Description and Data Assimilation Evaluation. *J. Clim.*, doi:  
1554 10.1175/jclid-16-0609.1

1555

1556 [Reddington, C. L., Morgan, W. T., Darbyshire, E., Brito, J., Coe, H., Artaxo, P., Scott, C.](#)  
1557 [E., Marsham, J., and Spracklen, D. V.: Biomass burning aerosol over the Amazon:](#)  
1558 [analysis of aircraft, surface and satellite observations using a global aerosol model,](#)  
1559 [Atmos. Chem. Phys., 19, 9125–9152, <https://doi.org/10.5194/acp-19-9125-2019>, 2019.](#)

1560

1561 Reddington, C. L., Spracklen, D. V., Artaxo, P., Ridley, D. A., Rizzo, L. V., and Arana,  
1562 A.: Analysis of particulate emissions from tropical biomass burning using a global  
1563 aerosol model and long-term surface observations, *Atmos. Chem. Phys.*, 16, 11083–  
1564 11106, <https://doi.org/10.5194/acp-16-11083-2016>, 2016.

1565

1566 Reid, J. S., R. Koppmann, T. F. Eck, and D. P. Eleuterio. A review of biomass burning  
1567 emissions part II: Intensive physical properties of biomass burning particles, *Atmos.*  
1568 *Chem. Phys.*, 5, 799–825, 2005.

1569

1570 Reid, C.E.; Brauer, M.; Johnston, F.H.; Jerrett, M.; Balmes, J.R.; Elliott, C.T. Critical  
1571 Review of Health Impacts of Wildfire Smoke Exposure. *Environ. Health Perspect*, 124,  
1572 1334–1343, 2016.

1573

1574 Rienecker, M. M., M. J. Suarez, R. Gelaro, R. Todling, J. Bacmeister, E. Liu, M. G.  
1575 Bosilovich, S. D. Schubert, L. Takacs, G.-K. Kim, S. Bloom, J. Chen, D. Collins, A.  
1576 Conaty, A. da Silva, W. Gu, J. Joiner, R. D. Koster, R. Lucchesi, A. Molod, T. Owens, S.  
1577 Pawson, P. Pegion, C. R. Redder, R. Reichle, F. R. Robertson, A. G. Ruddick, M.  
1578 Sienkiewicz, J. Woollen, MERRA - NASA's Modern-Era Retrospective Analysis for  
1579 Research and Applications. *J. Climate*, 24, 3624–3648, 2011.

1580

1581 Roberts, G., Wooster, M., & Lagoudakis, E. Annual and diurnal African biomass burning  
1582 temporal dynamics. *Biogeosciences*, 6, 2009.  
1583  
1584 Saide, P. E., et al.: Revealing important nocturnal and day-to-day variations in fire smoke  
1585 emissions through a multiplatform inversion, *Geophys. Res. Lett.*, 42, 3609–  
1586 3618, doi:10.1002/2015GL063737, 2015.  
1587  
1588 Simon, H. and Bhawe, P. V.: Simulating the Degree of Oxidation in Atmospheric Organic  
1589 Particles, *Environ. Sci. Technol.*, 46, 331–339, doi:10.1021/es202361w, 2012.  
1590  
1591 Tansey, K., J. Beston, A. Hoscilo, S. E. Page, and C. U. Paredes Hernandez, Relationship  
1592 between MODIS fire hotspot count and burned area in a degraded tropical peat swamp  
1593 forest in Central Kalimantan, Indonesia, *J. Geophys. Res.*, 113, D23112,  
1594 doi:10.1029/2008JD010717, 2008.  
1595  
1596 Turpin, B. J. and Lim, H. J.: Species contributions to PM<sub>2.5</sub> mass concentrations:  
1597 Revisiting common assumptions for estimating organic mass, *Aerosol Sci. Tech.*, 35,  
1598 602–610, doi:10.1080/02786820152051454, 2001.  
1599  
1600 van der Werf, G. R., Randerson, J. T., Giglio, L., Collatz, G. J., Kasibhatla, P. S., and  
1601 Arellano Jr., A. F.: Interannual variability in global biomass burning emissions from 1997  
1602 to 2004, *Atmos. Chem. Phys.*, 6, 3423–3441, [https://doi.org/10.5194/acp-6-3423-](https://doi.org/10.5194/acp-6-3423-2006)  
1603 2006, 2006.  
1604  
1605 van der Werf, G. R., Randerson, J. T., Giglio, L., Collatz, G. J., Mu, M., Kasibhatla, P.  
1606 S., Morton, D. C., DeFries, R. S., Jin, Y., and van Leeuwen, T. T.: Global fire emissions  
1607 and the contribution of deforestation, savanna, forest, agricultural, and peat fires (1997–  
1608 2009), *Atmos. Chem. Phys.*, 10, 11707–11735, [https://doi.org/10.5194/acp-10-11707-](https://doi.org/10.5194/acp-10-11707-2010)  
1609 2010, 2010.  
1610  
1611 van der Werf, G. R., Randerson, J. T., Giglio, L., van Leeuwen, T. T., Chen, Y., Rogers,  
1612 B. M., Mu, M., van Marle, M. J. E., Morton, D. C., Collatz, G. J., Yokelson, R. J., and  
1613 Kasibhatla, P. S.: Global fire emissions estimates during 1997–2016, *Earth Syst. Sci.*  
1614 *Data*, 9, 697–720, <https://doi.org/10.5194/essd-9-697-2017>, 2017.  
1615  
1616 van Leeuwen, T. T., van der Werf, G. R., Hoffmann, A. A., Detmers, R. G., Ruecker, G.,  
1617 French, N. H. F., Archibald, S., Carvalho, J. A. J., Cook, G. D., de Groot, W. J., Hely, C.,  
1618 Kasischke, E. S., Kloster, S., McCarty, J. L., Pettinari, M. L., Savadogo, P., Alvarado, E.  
1619 C., Boschetti, L., Manuri, S., Meyer, C. P., Siegert, F., Trollope, L. A. and Trollope, W.  
1620 S. W.: Biomass burning fuel consumption rates: a field measurement database,  
1621 *Biogeosciences*, 11(24), 7305–7329, doi:10.5194/bg-11-7305-2014, 2014.  
1622  
1623 van Marle, M. J. E., Kloster, S., Magi, B. I., Marlon, J. R., Daniau, A.-L., Field, R. D.,  
1624 Arneeth, A., Forrest, M., Hantson, S., Kehrwald, N. M., Knorr, W., Lasslop, G., Li, F.,  
1625 Mangeon, S., Yue, C., Kaiser, J. W., and van der Werf, G. R.: Historic global biomass  
1626 burning emissions for CMIP6 (BB4CMIP) based on merging satellite observations with



proxies and fire models (1750–2015), *Geosci. Model Dev.*, 10, 3329–3357, <https://doi.org/10.5194/gmd-10-3329-2017>, 2017.

Wang, J., C. Ge, Z. Yang, E. J. Hyer, J. S. Reid, B.-N. Chew, M. Mahmud, Y. Zhang, and M. Zhang, Mesoscale modeling of smoke transport over the Southeast Asian Maritime Continent: interplay of sea breeze, trade wind, typhoon, and topography, *Atmospheric Research*, 122, 486–503, doi: 10.1016/j.atmosres.2012.05.009, 2013.

Wang, J., S.A. Christopher, U.S. Nair, J.S. Reid, E.M. Prins, J. Szykman, and J.L. Hand, Mesoscale modeling of Central American smoke transport to the United States, 1: "top-down" assessment of emission strength and diurnal variation impacts, *J. Geophys. Res.*, 11, D05S17, doi:10.1029/2005JD006416, 2006.

Wang, J., Yue, Y., Wang, Y., Ichoku, C., Ellison, L., & Zeng, J. Mitigating satellite-based fire sampling limitations in deriving biomass burning emission rates: Application to WRF-Chem model over the Northern sub-Saharan African Region. *Journal of Geophysical Research: Atmospheres*, 123, 507–528. <https://doi.org/10.1002/2017JD026840>, 2018.

White, W. H. and Roberts, P. T.: On the nature and origins of visibility-reducing aerosols in the Los Angeles air basin, *Atmos. Environ.*, 11, 803–812, 1977.

Wiedinmyer, C., Akagi, S. K., Yokelson, R. J., Emmons, L. K., Al-Saadi, J. A., Orlando, J. J., and Soja, A. J. The Fire Inventory from NCAR (FINN): a high resolution global model to estimate the emissions from open burning, *Geosci. Model Dev.*, 4, 625–641, doi:10.5194/gmd-4-625-2011, 2011.

Wooster, M. J., G. Roberts, G. L. W. Perry, and Y. J. Kaufman. Retrieval of biomass combustion rates and totals from fire radiative power observations: FRP derivation and calibration relationships between biomass consumption and fire radiative energy release, *J. Geophys. Res.*, 110, D24311, doi:10.1029/2005JD006318, 2005.

Wooster, M. J., B. Zhukov, and D. Oertel. Fire radiative energy for quantitative study of biomass burning: Derivation from the BIRD experimental satellite and comparison to MODIS fire products, *Remote Sens. Environ.*, 86(1), 83–107, doi:10.1016/S0034-4257(03)00070-1, 2003.

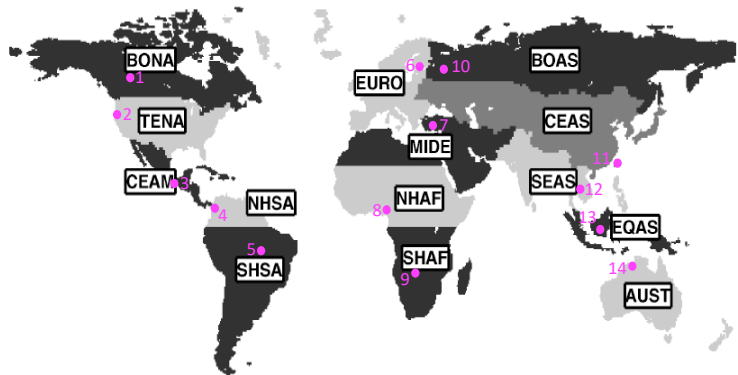
Yang, Z., J. Wang, C. Ichoku, E. Hyer, and J. Zeng, Mesoscale modeling and satellite observation of transport and mixing of smoke and dust particles over northern sub-Saharan African region, *J. Geophys. Res. Atmos.*, 118, 12,139–12,157, doi:10.1002/2013JD020644, 2013.

Yokelson, R. J., Burling, I. R., Urbanski, S. P., Atlas, E. L., Adachi, K., Buseck, P. R., Wiedinmyer, C., Akagi, S. K., Toohey, D. W., and Wold, C. E.: Trace gas and particle emissions from open biomass burning in Mexico, *Atmos. Chem. Phys.*, 11, 6787–6808, doi:10.5194/acp-11-6787-2011, 2011.

1674 Zhang, F., J. Wang, C. M. Ichoku, et al.. Sensitivity of mesoscale modeling of smoke  
 1675 direct radiative effect to the emission inventory: a case study in northern sub-Saharan  
 1676 African region. *Environmental Research Letters*, 9 (7): 075002 (14 pp) [10.1088/1748-  
 1677 9326/9/7/075002], 2014.  
 1678  
 1679 Zhang, Q., Worsnop, D. R., Canagaratna, M. R., and Jimenez, J. L.: Hydrocarbon-like  
 1680 and oxygenated organic aerosols in Pittsburgh: insights into sources and processes of  
 1681 organic aerosols, *Atmos. Chem. Phys.*, 5, 3289–3311, 2005b, [http://www.atmos-chem-](http://www.atmos-chem-phys.net/5/3289/2005/)  
 1682 [phys.net/5/3289/2005/](http://www.atmos-chem-phys.net/5/3289/2005/).  
 1683  
 1684 Zhu, J., X. Xia, J. Wang, C. Wiedinmyer, J. A. Fisher, C. A. Keller. Impact of Southeast  
 1685 Asian smoke on aerosol properties in Southwest China: first comparison of model  
 1686 simulations with satellite and ground observation, *J. Geophys. Res.-Atmos.*, 122, 3904–  
 1687 3919, 2017.  
 1688

1689  
1690  
1691  
1692  
1693

FIGURES



BONA	Boreal North America	NHAF	Northern Hemisphere Africa
TENA	Temperate North America	SHAF	Southern Hemisphere Africa
CEAM	Central America	BOAS	Boreal Asia
NHSA	Northern Hemisphere South America	CEAS	Central Asia
SHSA	Southern Hemisphere South America	SEAS	Southeast Asia
EURO	Europe	EQAS	Equatorial Asia
MIDE	Middle East	AUST	Australia and New Zealand

1694  
1695  
1696  
1697

Figure 1. Map showing the 14 regions used in this study, following GFED regionalization defined by Giglio et al. (2006) and van der Werf et al. (2006; 2017). The fourteen AERONET sites selected for detailed analysis in the respective regions are represented by the numbered magenta dots. These AERONET sites and the included data (years in parentheses) for calculating aerosol climatology are: 1-Fort McMurray (2005-2018), 2-Monterey (2002-2018), 3-Tuxtla Gutierrez (2005-2010), 4-Medellin (2012-2016), 5-Alta Floresta (1993-2018), 6-Toravere (2002-2017), 7-IMS METU ERDEMLI (1999-2017), 8-Ilorin (1998-2018), 9-Mongu (1997-2010), 10-Moscow MSU MO (2001-2017), 11-EPA NCU (2004-2018), 12-Chiang Mai Met Sta (2007-2017), 13-Palangkaraya (2012-2017), 14-Lake Argyle (2001-2017).

Deleted: years

# OC biomass burning emission for 2008

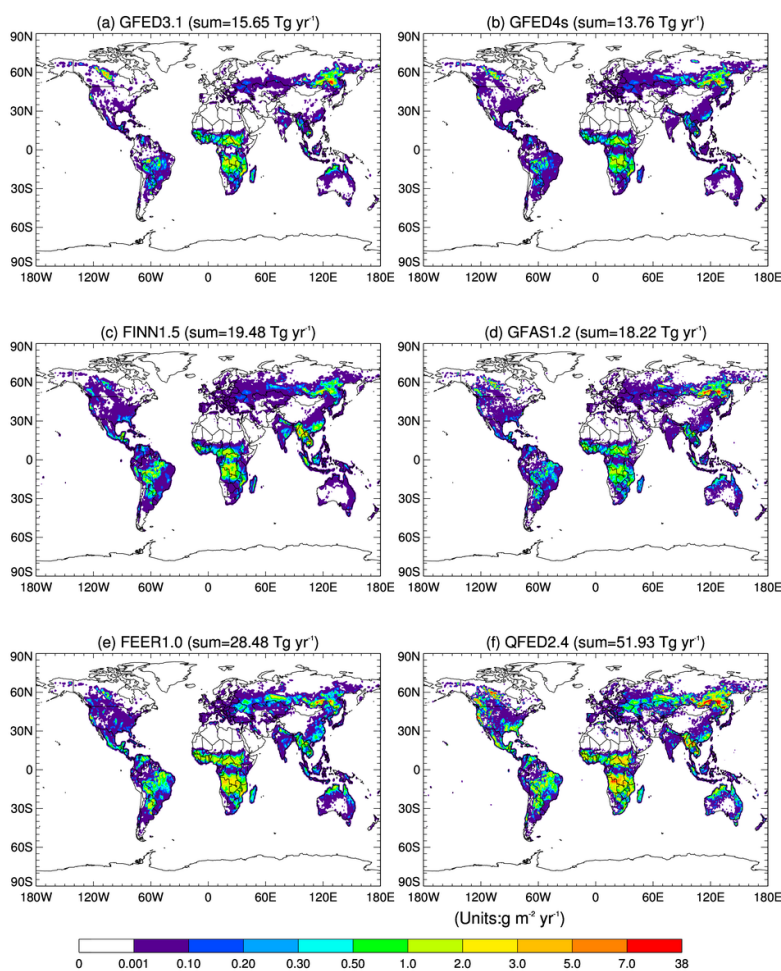


Figure 2. The spatial distribution of annual total organic carbon (OC) biomass burning emissions for 2008 estimated by six biomass burning emission datasets (units: g m<sup>-2</sup> yr<sup>-1</sup>). The global annual total amount for each dataset in 2008 is indicated in the parentheses.

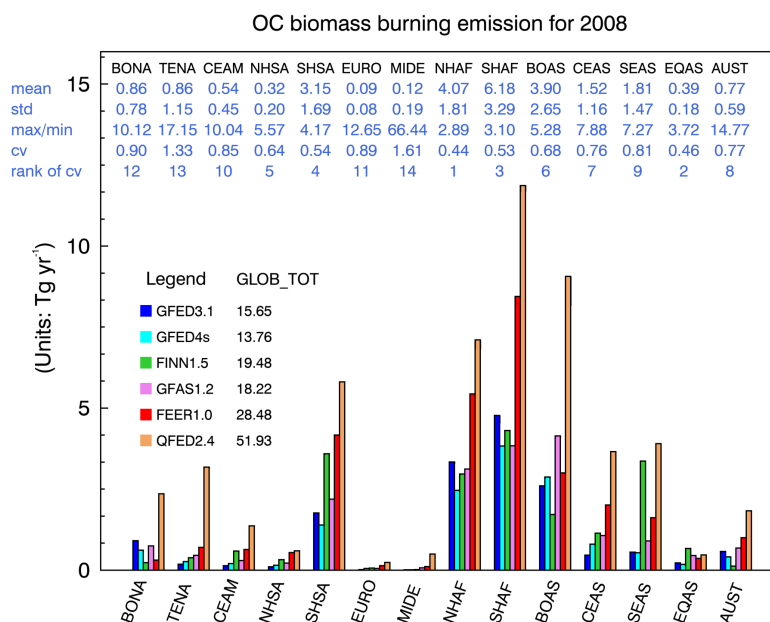


Figure 3. The regional annual total organic carbon (OC) biomass burning emissions for 2008 in six biomass burning emission datasets in 14 regions (units: Tg yr<sup>-1</sup>). The global annual total amount is listed after the name of each dataset (GLOB\_TOT). Relevant statistics for the six BB emission datasets in each region are also listed at the top of the panel in blue under the short name of each region, with the mean of the six BB emission datasets in the first row. Three different methods to measure the spread of the six BB emission datasets are shown as well: one absolute method, i.e., the standard deviation (std) in the second row, and two relative methods, i.e., the ratio of max to min (i.e., maximum/minimum) shown in the third row, and the coefficient of variation (cv), defined as the ratio of the std to the mean, in the fourth row. The rankings of the regions reflecting the spread of the BB emissions datasets according to cv are shown in the fifth row (i.e., a ranking of 1 means that this region shows the least spread among the six BB emissions datasets, while a ranking of 14 indicates that this region has the largest spread among the 14 regions).

Deleted: on the top of the panel in blue

Deleted: gard

Monthly variation of OC biomass burning emission for 2008

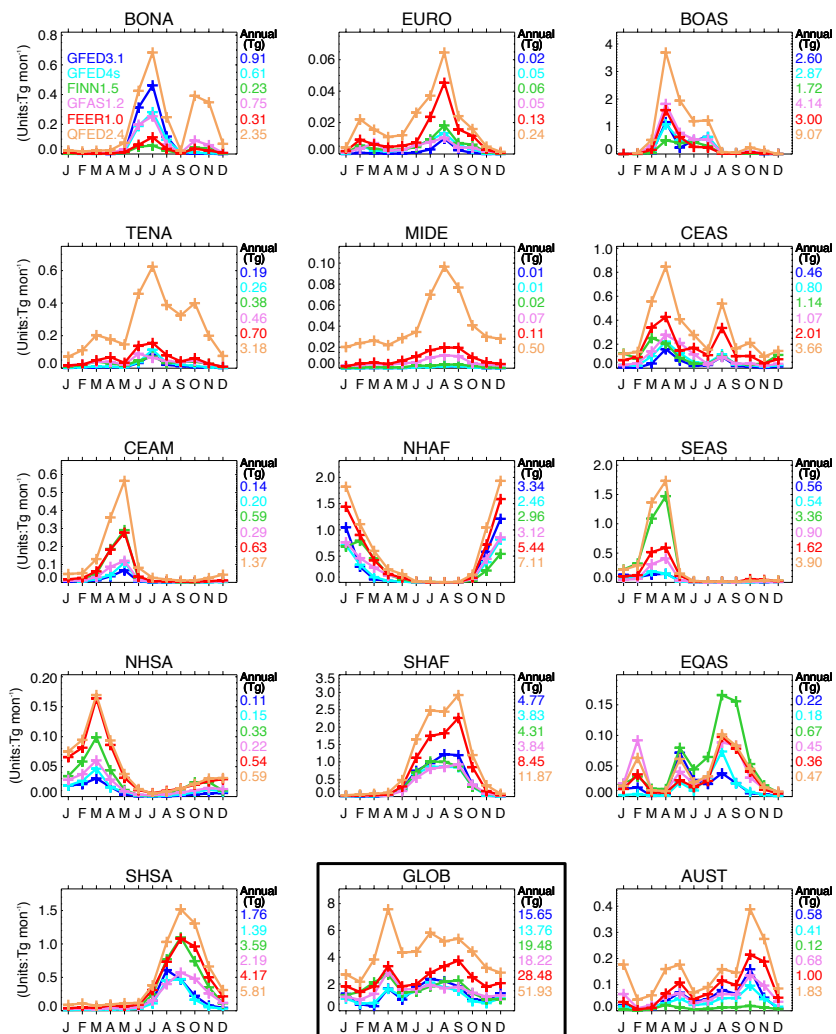


Figure 4. Monthly variation of organic carbon (OC) biomass burning emissions for 2008 in six biomass burning emission datasets in 14 regions and the globally (i.e., GLOB, highlighted with a black box). The annual total emission is listed on the right side of each panel.

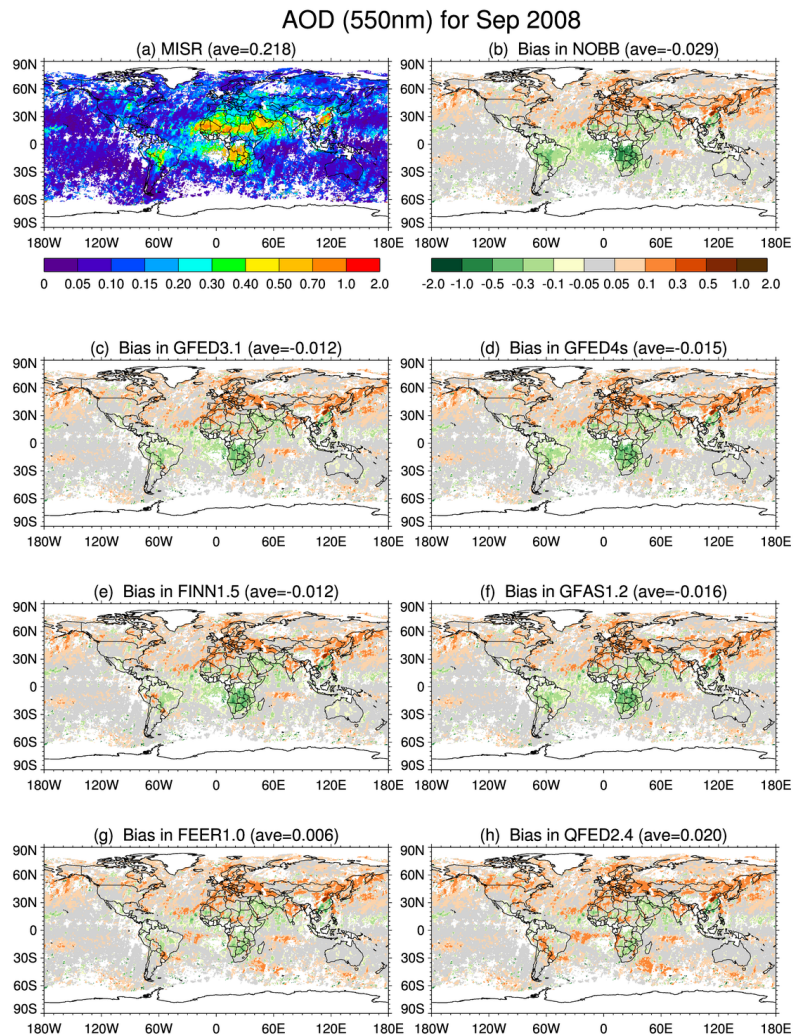


Figure 5. (a) The spatial distribution of monthly mean AOD at 558nm for September 2008 from MISR with the white color representing missing value. The global average value (ave) is shown in parentheses. (b)-(h) are for GEOS model biases (i.e., model at 550nm minus MISR at 558nm) in seven model experiments, i.e., bias in (b) NOBB, (c) GFED3.1, (d) GFED4s, (e) FINN1.5, (f) GFAS1.2, (g) FEER1.0, (h) QFED2.4.

Deleted: d

Deleted: the

Deleted: , respectively



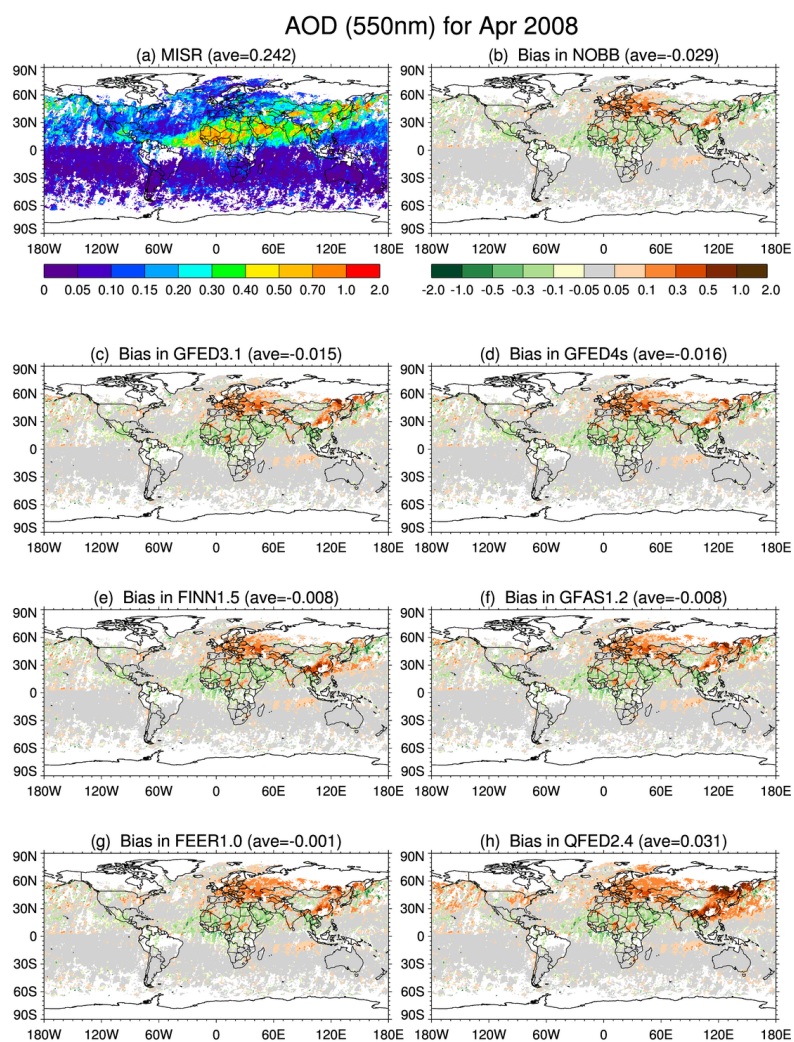


Figure 6. Same as Figure 5 except for April 2008.



Monthly AOD (550nm) at AERONET sites for 2008

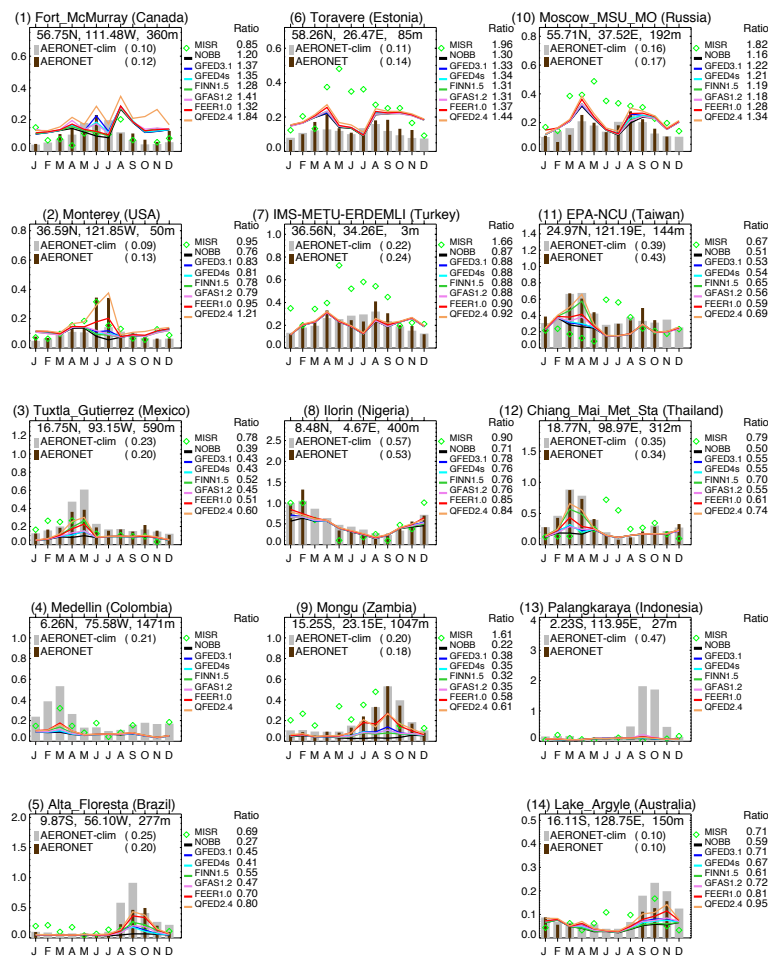


Figure 7. Monthly variation of AOD (at 550nm wavelength) for 2008 over 14 AERONET sites selected from the respective 14 regions (with the country of each site indicated in parentheses). The climatology of AERONET AOD (i.e., AERONET-clim) is represented by light gray thick bars and the monthly mean AERONET AOD for 2008 by brown thin bars, with their corresponding annual mean values shown in parentheses. MISR monthly mean AOD at 558nm is represented by the green diamonds, and the seven GEOS experiments with different biomass burning emission options are represented by the lines in different colors. The corresponding annual ratios (Ratio=model/AERONET) listed on the right-hand side of each panel are estimated by averaging over monthly ratios.

Deleted: its

Deleted: yearly

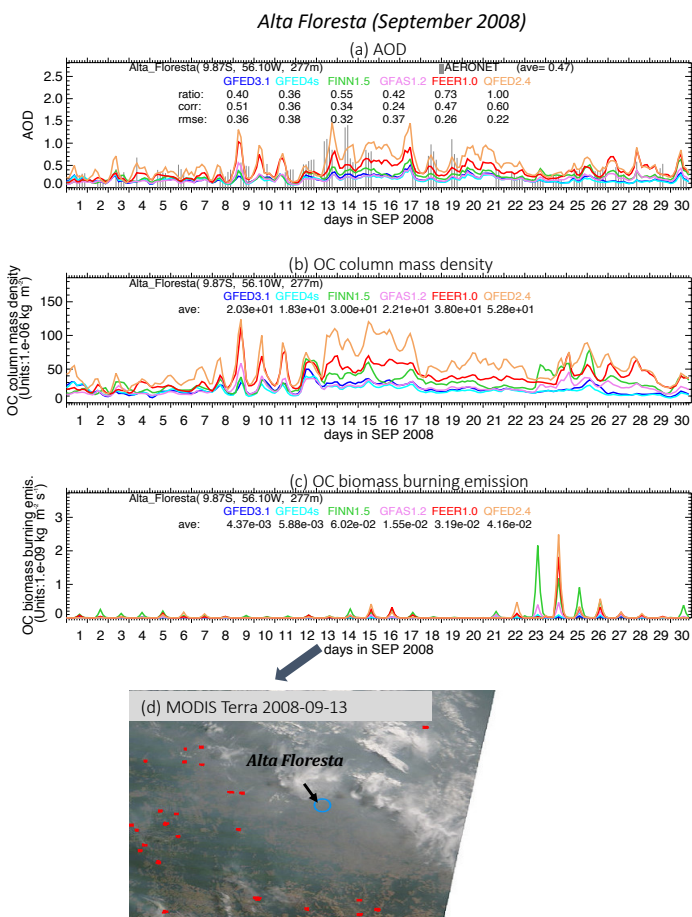
Deleted: the

Deleted: i

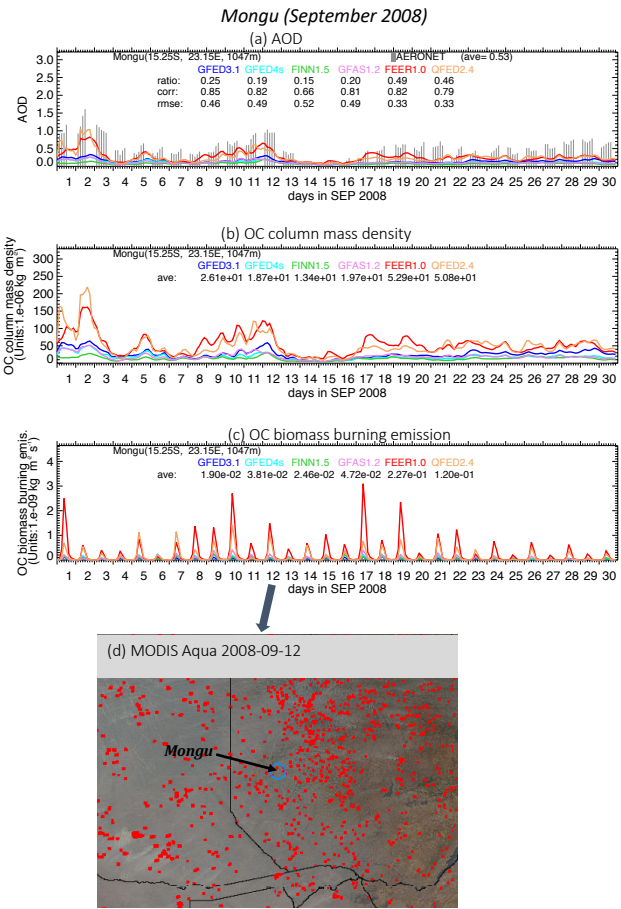
Deleted: after its name, along with the monthly AERONET AOD represented by brown thin bars

Deleted:

Deleted: is



1764 Figure 8. Characteristics of the observed and the simulated aerosols at Alta Floresta during  
 1765 September 2008: (a) The 3-hourly time series of AOD at 550nm. The AERONET AOD is  
 1766 represented by vertical gray bars, and the outputs from the six model experiments are represented  
 1767 by the color curves. The relevant statistics are listed: *ave* is the monthly average, *ratio* is the  
 1768 fraction of the simulated to the observed AOD at all observed hours, *corr* is correlation  
 1769 coefficient between the observed and the simulated AOD, and *rmse* is root mean square error. (b)  
 1770 The 3-hourly time series of OC column mass density over the grid box where Alta Floresta is  
 1771 located (units:  $1.e-06 \text{ kg m}^{-2}$  or  $\text{mg m}^{-2}$ ). (c) Same as (b) but for biomass burning OC emission  
 1772 rate (units:  $1.e-09 \text{ kg m}^{-2} \text{ s}^{-1}$  or  $\mu\text{g m}^{-2} \text{ s}^{-1}$ ). (d) MODIS-Terra true color image around Alta  
 1773 Floresta on September 13, 2008, overlaid with the active fire detections in red dots (Image credit:  
 1774 [https://aeronet.gsfc.nasa.gov/cgi-bin/bamgommas\\_interactive](https://aeronet.gsfc.nasa.gov/cgi-bin/bamgommas_interactive) and  
 1775 <https://worldview.earthdata.nasa.gov>).



1777  
1778  
1779  
1780  
1781  
1782  
1783  
1784  
1785  
1786  
1787  
1788  
1789

Figure 9. Characteristics of the observed and the simulated aerosols at Mongu during September 2008: (a) The 3-hourly time series of AOD at 550nm. The AERONET AOD is represented by vertical gray bars, and the outputs from the six model experiments are represented by the color curves. The relevant statistics are listed: ave is the monthly average, ratio is the fraction of the simulated to the observed AOD at all observed hours, corr is correlation coefficient between the observed and the simulated AOD, and rmse is root mean square error. (b) The 3-hourly time series of OC column mass density over the grid box where Mongu is located (units: 1.e-06 kg m<sup>-2</sup> or mg m<sup>-2</sup>). (c) Same as (b) but for biomass burning OC emission rate (units: 1.e-09 kg m<sup>-2</sup> s<sup>-1</sup> or µg m<sup>-2</sup> s<sup>-1</sup>). (d) MODIS-Aqua true color image around Mongu on September 12, 2008, overlaid with the active fire detections in red dots (Image credit: [https://aeronet.gsfc.nasa.gov/cgi-bin/bamgommas\\_interactive](https://aeronet.gsfc.nasa.gov/cgi-bin/bamgommas_interactive) and <https://worldview.earthdata.nasa.gov>).

1790 **Table 1.** Summary of six biomass burning emission datasets during MODIS-era (i.e., 2000-present)

a. Burned-area based approaches						
BB Emission Dataset	Original Grid	Time-Frame/Frequency	Burned Area	Active Fire Product	Fuel Consumption	Emission Factor
GFED3.1	0.5°×0.5° (lon×lat)	2000-2012/ 3-hourly, daily, monthly	MOD09GHK and/or MYD09GHK	Gridded composite L3 fire product MOD14A1 and/or MYD14A1	Estimated in CASA by product of fuel load and combustion completeness	Mainly from Andreae and Merlet (2001) with annual updates
GFED4s	0.25°×0.25° (lon×lat)	2000-2016/ 3-hourly, daily, monthly	Daily MCD64A1 product in Collection 5.1 at 500m spatial resolution	L3 MOD14A1 and MYD14A1; fire location product MCD14ML	Revised CASA by optimizing parameterization, reorientation of fuel consumption in frequently burned landscapes	Mainly from Akagi et al. (2011), supplemented by Andreae and Merlet (2001) and other
FINN1.5	1km <sup>2</sup>	2002-2015/ daily	Estimated by active fire counts: 0.75 km <sup>2</sup> for savannas at each fire pixel, 1km <sup>2</sup> for other types	MODIS NRT active fire product (MCD14DL)	Assigned according to the global wildland fire emission model (Hoelzemann et al., 2004) with updates	Mainly from Andreae and Merlet (2001) and Akagi et al. (2011), with updates through 2015
b. FRP based approaches						
BB Emission Dataset	Original Grid	Time-Frame/Frequency	FRP	Emission Coefficient (C <sub>e</sub> )	Emission Factor	
GFAS1.2	0.1×0.1 (lon×lat)	2003-Present/daily	Assimilation of level 2 MOD14 and MYD14 FRP	Linear regression between FRP, dry matter and combustion rate of GFED v3.1 in eight biome types	Mainly from Andreae and Merlet (2001) with updates from literatures through 2009	
FEER1.0	0.1×0.1 (lon×lat)	2003-Present/ daily, monthly	From GFASv1.2 (Kaiser et al., 2012, see above)	Linear regression between FRP and total particulate matter (PM) emission rate estimated from MODIS AOD at each grid	Andreae and Merlet (2001) with updates provided by Andreae in 2014	
QFED2.4	0.1×0.1 (lon×lat)	2000-Present/ daily, monthly	Level 2 fire products MOD14/MYD14	Based on comparison of MODIS and GEOS AODs and obtaining 4 biome-specific emission coefficients	Andreae and Merlet (2001)	

CASA: Carnegie-Ames-Stanford-Approach biogeochemical

1809  
1810

**Table 2.** Comparison of emission factor (units: g species per kg dry matter burned) used by GFED3.<sup>1</sup> and GFED4s<sup>2</sup> (listed in the upper and lower part of the cell respectively, bold if GFED4s is larger).

	Savanna and Grassland	Tropical Forest	Temperate Forest <sup>3</sup>	Boreal forest <sup>3</sup>	Peat Fires <sup>4</sup>	Agricultural Residues
<b>OC</b>	3.21 2.62	4.30 <b>4.71</b>	9.14 <b>9.60</b>	9.14 <b>9.60</b>	4.30 <b>6.02</b>	3.71 2.30
<b>BC</b>	0.46 0.37	0.57 0.52	0.56 0.50	0.56 0.50	0.57 0.04	0.48 <b>0.75</b>
<b>SO<sub>2</sub></b>	0.37 <b>0.48</b>	0.71 <b>0.40</b>	1.00 <b>1.10</b>	1.00 <b>1.10</b>	0.71 0.40	0.40 0.40
<b>PM<sub>2.5</sub></b>	4.94 <b>7.20</b>	9.05 <b>9.10</b>	12.84 <b>12.90</b>	12.84 <b>15.30</b>	9.05 <b>9.10</b>	8.25 6.30
<b>CO<sub>2</sub></b>	1646 <b>1686</b>	1626 <b>1643</b>	1572 <b>1647</b>	1572 1489	1703 1703	1452 <b>1585</b>
<b>CO</b>	61 <b>63</b>	101 93	106 88	106 <b>127</b>	210 210	94 <b>102</b>

<sup>1</sup>. Mainly from Andreae and Merlet (2001) with annual updates  
<sup>2</sup>. Mainly from Akagi et al. (2011), supplemented by Andreae and Merlet (2001) and other sources  
<sup>3</sup>. GFED4s (van der Werf et al., 2017) further divides extra-tropical forest in GFED3 (van der Werf et al., 2010) into temperate forest and boreal forest.  
<sup>4</sup>. Based on Christian et al. (2003) for CO<sub>2</sub> and CO.

Deleted: U

Deleted: ¶

# BC biomass burning emission for 2008

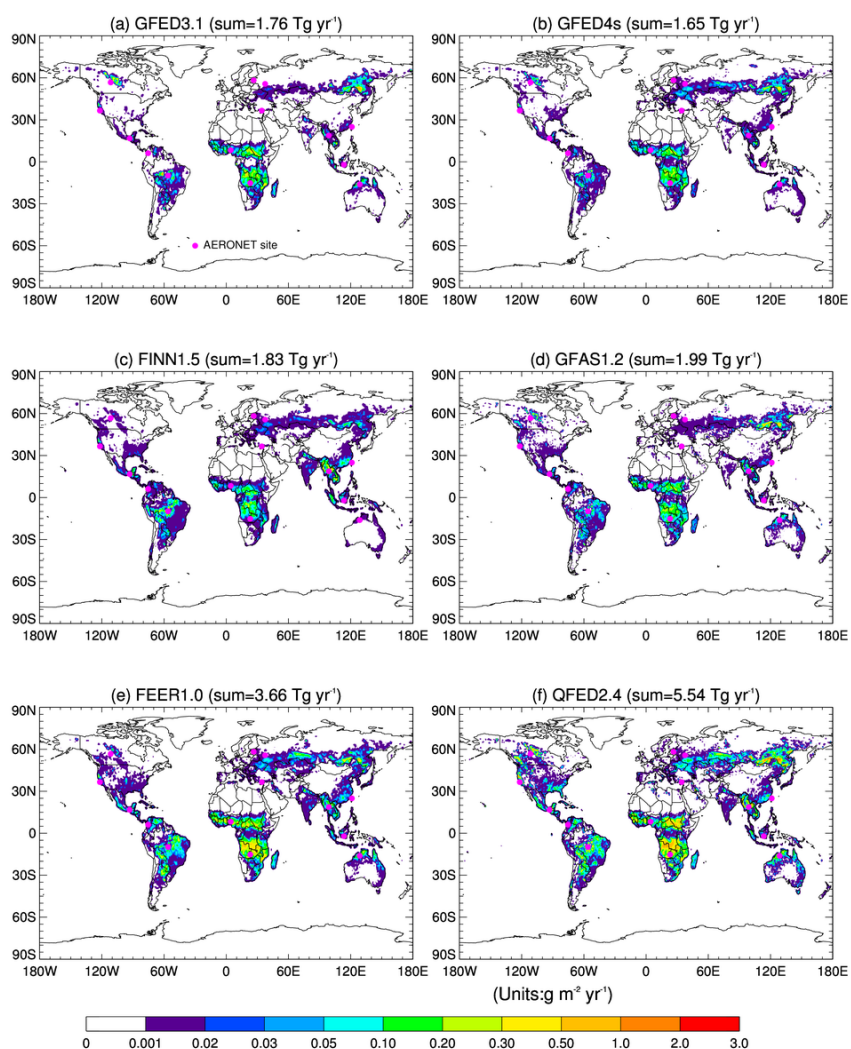


Figure S1. The spatial distribution of annual total black carbon (BC) biomass burning emissions for 2008 estimated by six biomass burning emission datasets. The global total amount is indicated in the parentheses. The fourteen selected AERONET sites are labeled as magenta dots.

Deleted: SUPPLEMENT

Page Break

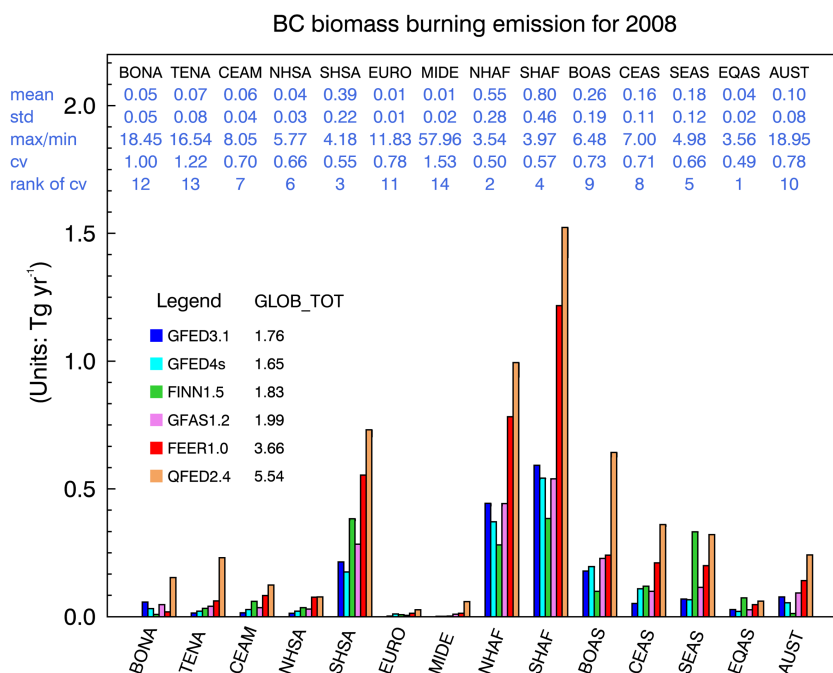


Figure S2. The regional annual total black carbon (BC) biomass burning emissions for 2008 in six biomass burning emission datasets in 14 regions (units: Tg yr<sup>-1</sup>). The global annual total amount is listed after the name of each dataset (GLOB\_TOT). Relevant statistics for the six BB emission datasets in each region are also listed at the top of the panel in blue under the short name of each region, with the mean of the six BB emission datasets in the first row. Three different methods to measure the dispersion of the six BB emission datasets are shown as well: one absolute method, i.e., the standard deviation (std) in the second row, and two relative methods, i.e., the ratio of max (maximum) to min (minimum) shown in the third row, and the coefficient of variation (cv), defined as the ratio of the std to the mean, in the fourth row. The rankings of the regions reflecting the dispersion of the BB emissions datasets according to cv are shown in the fifth row (i.e., a ranking of 1 means that this region shows the least spread among the six BB emissions datasets, while a ranking of 14 indicates this region has the largest spread in the 14 regions).

Deleted: this

Deleted: on the top of the panel in blue

Deleted: gard

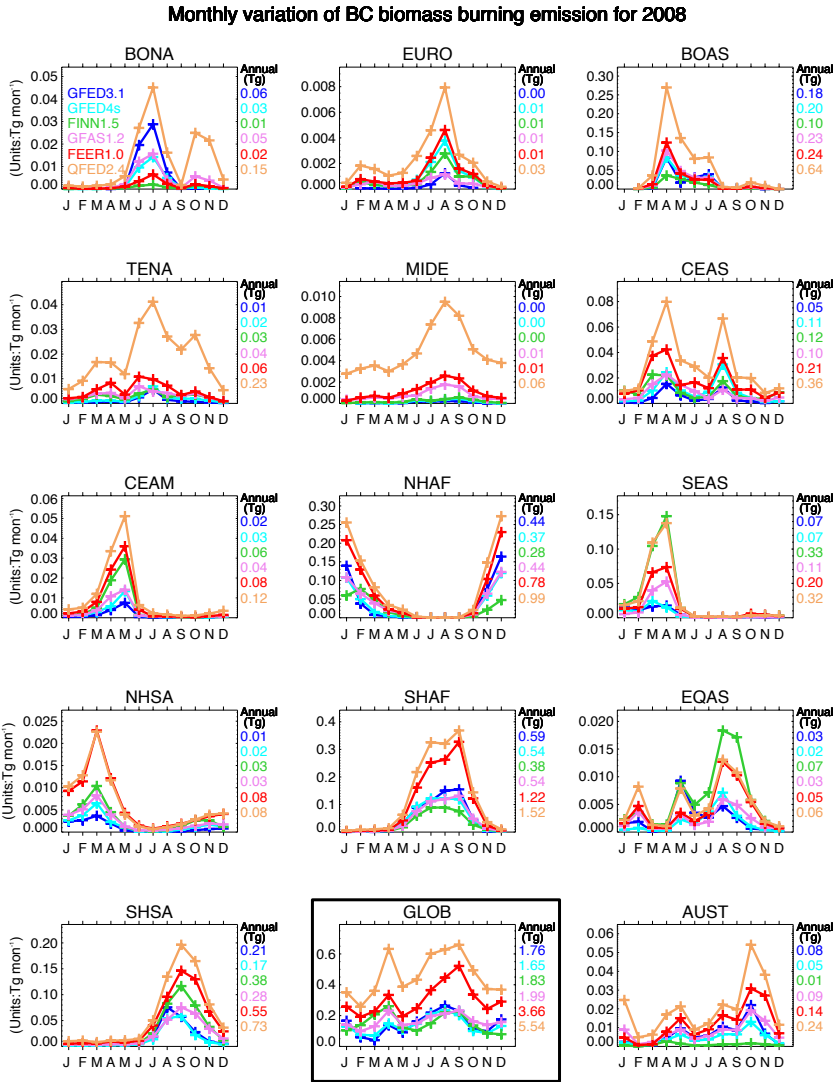


Figure S3. Monthly variation of black carbon (BC) biomass burning emissions for 2008 in six biomass burning emission datasets in 14 regions and the global (GLOB, highlighted with a black box). The annual total emission is listed in the right side of each panel.



1851 **Table S1.** The regionally-averaged monthly mean AOD from MISR along with model biases (i.e., model minus MISR) in seven model  
1852 experiments, i.e., NOBB, GFED3.1, GFED4s, FINN1.5, GFAS1.2, FEER1.0, and QFED2.4, for September and April 2008.  
1853

Dataset	BONA	TENA	CEAM	NHSA	SHSA	EURO	MIDE	NHAF	SHAF	BOAS	CEAS	SEAS	EQAS	AUST	GLOB
September 2008															
MISR	0.127	0.129	0.133	0.141	0.188	0.139	0.334	0.411	0.331	0.135	0.219	0.257	0.138	0.085	0.218
NOBB	0.04	0.011	-0.031*	-0.083	-0.132	0.084	-0.013	-0.05	-0.283	0.043	0.053	0.025	-0.047	-0.031	-0.029
GFED3.1	0.042	0.013	-0.031	-0.074	-0.078	0.085	-0.012	-0.046	-0.178	0.048	0.055	0.026	-0.039	-0.02	-0.012
GFED4s	0.044	0.014	-0.031	-0.075	-0.081	0.085	-0.012	-0.047	-0.208	0.047	0.056	0.025	-0.04	-0.023	-0.015
FINN1.5	0.041	0.013	-0.031	-0.07	-0.04	0.08	-0.013	-0.047	-0.21	0.045	0.05	0.016	-0.033	-0.025	-0.012
GFAS1.2	0.042	0.013	-0.031	-0.074	-0.08	0.08	-0.013	-0.047	-0.208	0.046	0.05	0.016	-0.029	-0.02	-0.016
FEER1.0	0.044	0.016	-0.03	-0.061	-0.021	0.088	-0.009	-0.039	-0.079	0.049	0.061	0.027	-0.032	-0.01	0.006
QFED2.4	0.058	0.04	-0.023	-0.058	0.02	0.097	-0.004	-0.035	-0.044	0.058	0.068	0.028	-0.029	-0.002	0.02
April 2008															
MISR	0.192	0.16	0.182	0.207	0.067	0.148	0.381	0.446	0.096	0.221	0.324	0.363	0.118	0.049	0.242
NOBB	-0.041	-0.016	-0.083	-0.086	-0.016	0.077	-0.059	-0.082	-0.042	-0.005	0.017	-0.074	-0.028	-0.004	-0.029
GFED3.1	-0.023	-0.008	-0.077	-0.082	-0.014	0.079	-0.058	-0.078	-0.04	0.104	0.055	-0.057	-0.027	-0.002	-0.015
GFED4s	-0.026	-0.008	-0.076	-0.081	-0.015	0.081	-0.057	-0.079	-0.039	0.095	0.05	-0.063	-0.027	-0.002	-0.016
FINN1.5	-0.031	-0.006	-0.056	-0.072	-0.013	0.075	-0.055	-0.068	-0.037	0.041	0.069	0.014	-0.024	-0.002	-0.008
GFAS1.2	-0.014	-0.005	-0.07	-0.075	-0.014	0.073	-0.057	-0.073	-0.039	0.164	0.07	-0.058	-0.025	-0.001	-0.008
FEER1.0	-0.017	0.003	-0.054	-0.059	-0.011	0.089	-0.053	-0.068	-0.036	0.162	0.083	-0.028	-0.024	0	-0.001
QFED2.4	0.018	0.027	-0.026	-0.054	-0.008	0.099	-0.047	-0.059	-0.032	0.329	0.17	0.038	-0.022	0.004	0.031

\*Highlighted in blue if negative bias.

Deleted:

Deleted: at 550nm

Deleted: , respectively