

Supplement of

Dimethyl sulfide and its role in aerosol formation and growth in the Arctic summer – a modelling study

Roghayeh Ghahremaninezhad¹, Wanmin Gong¹, Martí Galí², Ann-Lise Norman³, Stephen R. Beagley¹, Ayodeji Akingunola¹, Qiong Zheng¹, Alexandru Lupu¹, Martine Lizotte², Maurice Levasseur², W. Richard Leitch¹.

¹Environment and Climate Change Canada, Toronto, Ontario, Canada

²Québec-Océan, Department of Biology, Université Laval, Québec, Canada

³Department of Physics and Astronomy, University of Calgary, Calgary, Canada

Correspondence to: Wanmin Gong (wanmin.gong@canada.ca)

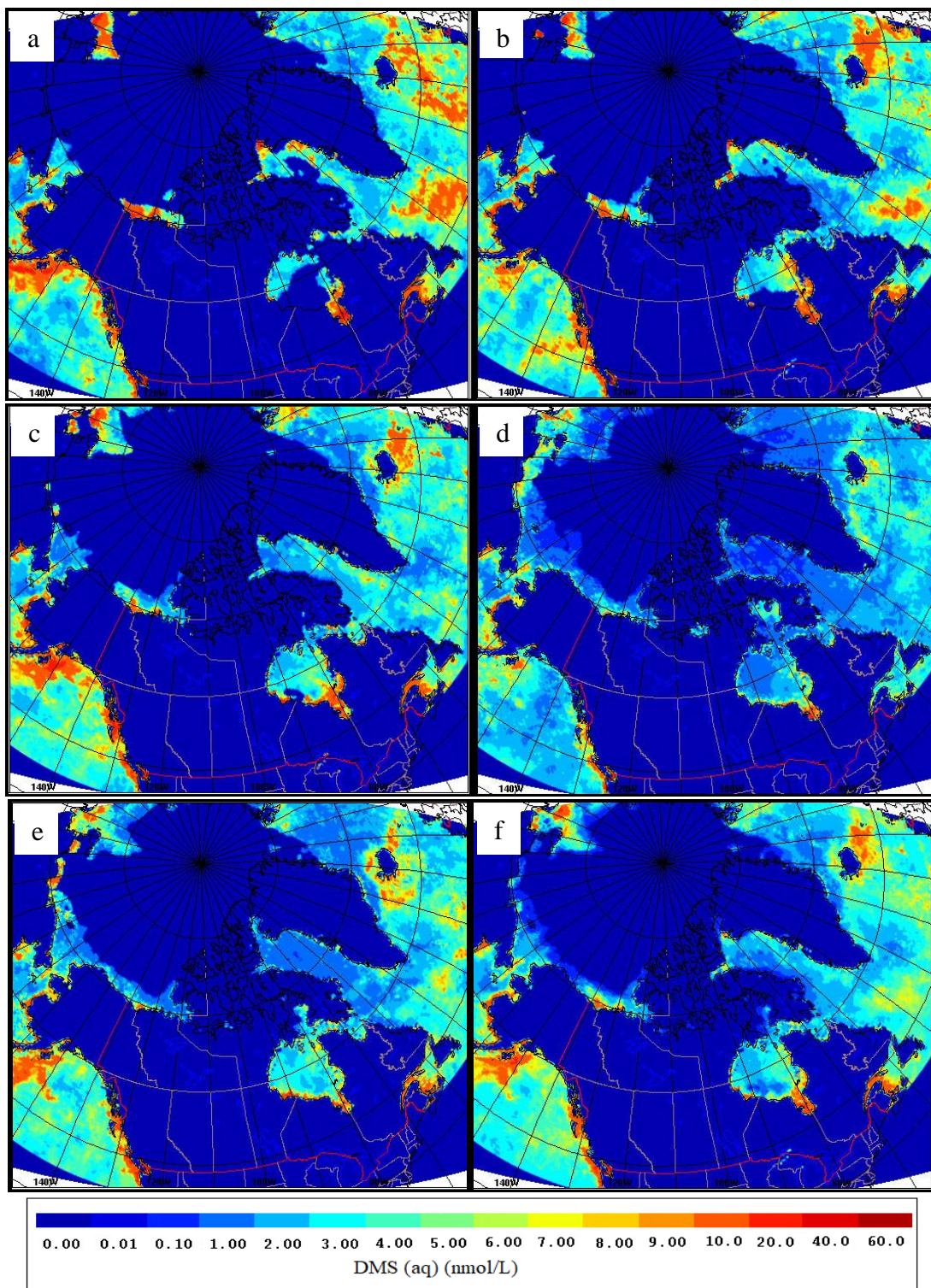


Figure S1: SAT DMS(aq) (nmol/L) for a. July 1st to 3rd, b. July 4th to 11th, c. July 12th to 19th, d. July 20th to July 27th, e. July 28th to August 4st, and f. August 5th to 8th, 2014.

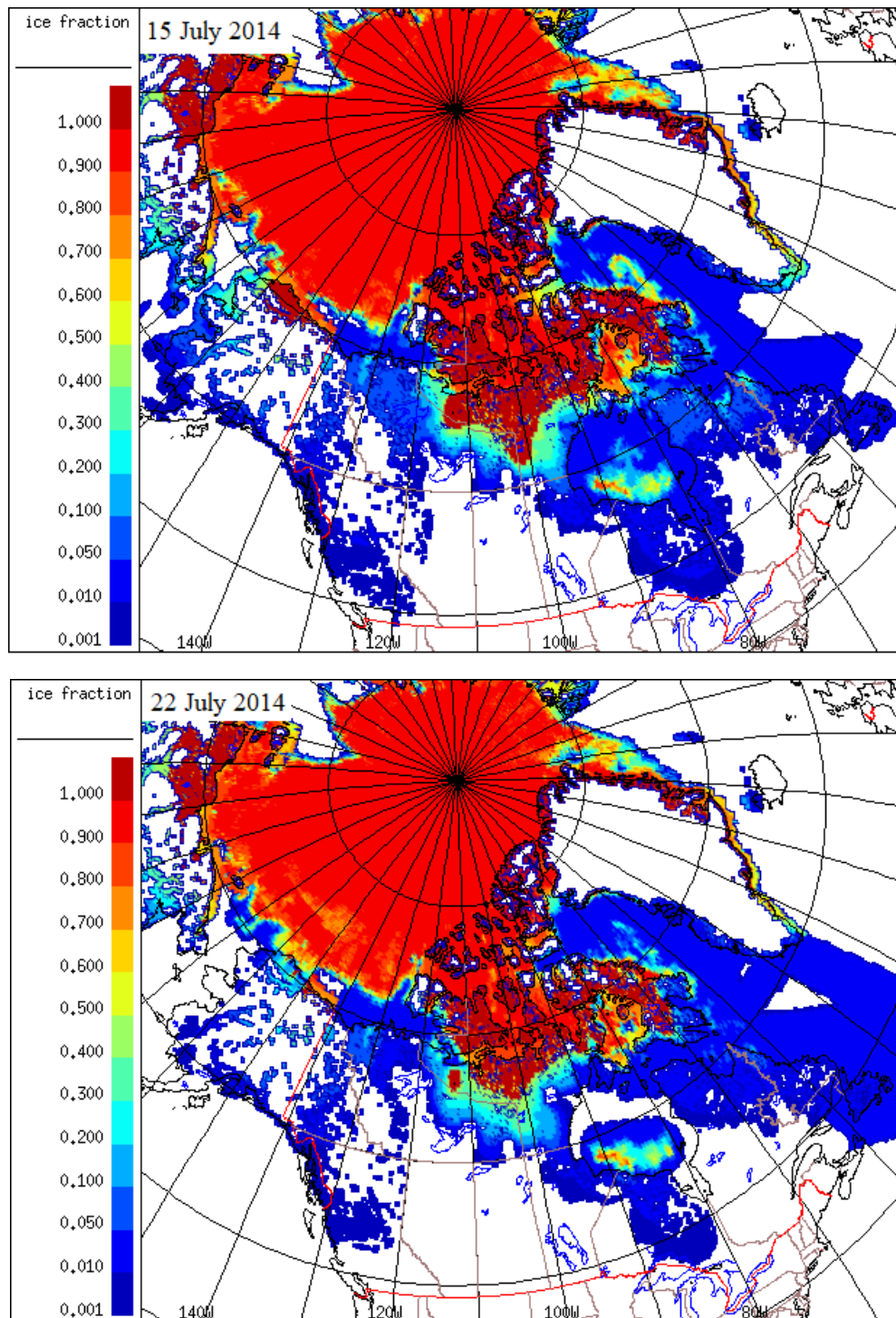


Figure S2: Ice fraction for July 15th (upper panel) and July 22nd (lower panel), 2014.