

# ***Interactive comment on “Chlorine partitioning near the polar vortex boundary observed with ground-based FTIR and satellites at Syowa Station, Antarctica in 2007 and 2011” by Hideaki Nakajima et al.***

**Hideaki Nakajima et al.**

nakajima@nies.go.jp

Received and published: 17 June 2019

The submitted draft has a mistake in Figure 7. We used wrong figure for Fig. 7 (22 km, 2007; instead of 22 km, 2011). I attached correct (new) Figure 7, in addition to the full draft which include correct Figure 7. We are sorry for the mistake.

Please also note the supplement to this comment:

<https://www.atmos-chem-phys-discuss.net/acp-2019-443/acp-2019-443-AC1-supplement.pdf>

Printer-friendly version

Discussion paper



---

Interactive comment on Atmos. Chem. Phys. Discuss., <https://doi.org/10.5194/acp-2019-443>, 2019.

ACPD

---

Interactive  
comment

Printer-friendly version

Discussion paper



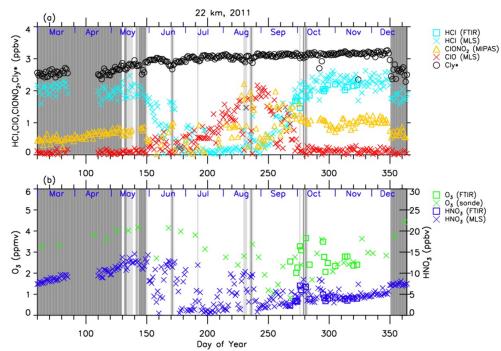


Figure 7. Same as Figure 5 but at 22 km.

Fig. 1.

C3

Printer-friendly version

Discussion paper

