

Reply to Referee #1

This paper uses a single model (CLaMS) to calculate stratospheric water vapour values on the basis of a simple dehydration scheme combined with a simple methane oxidation scheme. The model is driven by reanalysis winds and temperatures (winds to determine transport and temperature to specify dehydration). Three different reanalysis datasets (ERA-I, JRA-55 and MERRA-2) are used to drive the model and the objective of the paper to compare predictions of stratospheric water vapour concentrations that result from the use of each of the three datasets. I think that this paper potentially makes a useful contribution. Reanalysis datasets are in wide use for many different types of calculations and it is important to have on record different measures of the differences between the datasets in common use. There have been previous studies of the differences in transport characteristics between these datasets, but the calculation of stratospheric water vapour considered here on the one hand requires a particular combination of transport and temperature information and on the other is of significant general interest, because of the radiative and chemical importance of stratospheric water vapour and of the continuing challenges in measuring its concentrations and in establishing a long-term observational record.

We are grateful for the reviewer1's comments and suggestions, which are very helpful to improve this work. The changes corresponding to the comments can be tracked by the text in red in the manuscript. The responses or clarifications are specified following each suggestion below.

However, I do consider that the paper could be improved in various ways to make it as valuable as possible to researchers working in this general subject area.

1. p2 l21: 'water vapour values entering the stratosphere are determined by ... in the upper troposphere' - seems odd statement - previous papers (e.g. Liu et al 2010, Fig. 12) have suggested LDPs are distributed over a layer centred on about 90hPa. 'in the TTL' would be a more usual description.

Agree, the sentence has been reformulated.

2. p2 l22: 'Lagrangian models provide more accurate records of the temperature histories of air parcels compared to Eulerian models' – statement is true by definition (Eulerian models don't provide such records) or could be misread as 'provide a more accurate representation of transport' which is questionable - there are advantages and disadvantages to the two different formulations.

Agreed, the sentence has been reformulated as 'Lagrangian approaches provide accurate records of the temperature histories of air parcels that Eulerian models cannot provide, and therefore provide more reliable representations of entry mixing ratios in SWV'.

3. p3 l13-: '30% too fast', '30% too slow' are based on the tape recorder considered over some a particular range of heights - give range explicitly.

The range has been added. The altitude given in Schoeberl et al. (2012) is 17-22km.

4. p4 l8: You don't give sufficient information here to specify the dehydration scheme – e.g. the fall speed has to be combined with a length scale (specified in Ploeger et al 2013 as 300m). A first point is that if I look at the references you give – e.g. Poshyvailo et al (2018) I don't see sufficient information to be able to reproduce the scheme (e.g. that paper doesn't seem to say what the assumed fall speed it). My suggestion is that you provide all the necessary information together in an Appendix. A second point is that you mention various details such as sedimentation rate but then you fail to mention the length scale - which is surely chosen on a completely ad hoc basis. So the naive reader might will infer that dehydration scheme is based on a precise physical model, whereas in fact it requires choice of length scale - which is surely ad hoc. (Ploeger et al 2013 note that it is comparable to the vertical resolution of the model - but that is hardly a physical justification.) So more clarity is needed - both for reproducibility and for an honest description of what is being done.

Here we added the information: 'The sedimentation fall speed is calculated by assuming a mean ice particle radius. Ice sedimentation is then determined by the comparison of the sedimentation length over the model time step against a characteristic length ~300m (Hobe et al., 2011; Ploeger et al., 2013).'

5. p4 l12: The information that greater intensity of small-scale mixing leads to moistening by 0.5ppmv and amplification of the annual cycle by 0.2 ppmv can't really be interpreted sensibly without more information. For example you could say that the range of mixing strength being considered is representative of actual uncertainty in small-scale mixing (which is what is said in the Poshyvailo et al 2018 paper).

Agree. The statement has been changed to 'the range of mixing strength they considered was representative of actual uncertainty in small-scale mixing'.

6. p4 l14: 'best agreement with MLS observations' - I found this sentence a bit misleading. Of the papers cited, only Poshyvailo et al 2018 gives explicit information on the effect of varying mixing strength. So I don't see that the others provide any useful information on what choice of mixing strength gives the best agreement with MLS.

It is true. The other two studies used long-term CLaMS water vapor output which is valid with MLS observations. However, that is not the sensitivity study of mixing strength. Thus, they are removed.

7. p4 l23: How are you calculating saturation mixing ratio exactly? Simmons et al (1999 QJRMS) make the point that the precise form of the expression used for saturation mixing ratio can be important. Again this is the sort of information that needs to be easily available to ensure that others can reproduce your calculations.

Saturation mixing ratio is calculated by:

$$\chi_{H_2O} = p_s / p_{cp}$$

where p_s is given by $10^{-2663.5/T+12.537}$ (Marti and Mauersberger, 1993).

The information has been added to manuscript in Page 4 Line 6-7.

8. p4 l25: 'The effects of tuning ...' - this sentence would be clearer as 'The effects of tuning the critical supersaturation threshold in CLaMS have a similar effect to the effect of applying a frost point offset to the Lagrangian dry point temperature noted by Liu et al., (2010) and Fueglistaler et al., (2013), in that increase in the

supersaturation threshold enhances both the mean value and the amplitude of the annual cycle in simulated H₂O.'

We reformulated the sentence as the reviewer recommended.

9. p4 l28: I couldn't follow the logic of these two sentences - to me the point is that given uncertainty over the precise relation between temperature and saturation, e.g. due to the uncertainty in the appropriate value of supersaturation threshold, it is impossible to be interpret differences between predicted water vapour and observations as being due to errors in LDP temperatures.

The sentence is revised to 'Due to the uncertainty in the appropriate value of supersaturation thresholds, the differences among the modelled values of H₂O entry mixing ratio or between modelled values against observations cannot be unequivocally interpreted as errors in Lagrangian dry point temperatures in these reanalyses'.

10. p4 l16: My experience is that the re-analyses don't provide diabatic heating as a single quantity, but as various components. Confirm that you are using all components (e.g. including latent heating).

We deduce cross-isentropic vertical velocity from the total diabatic heating rates, which includes the all-sky radiation, latent heat release as well as the diffusive turbulent heat transport from each reanalysis product.

The information has been added to the manuscript.

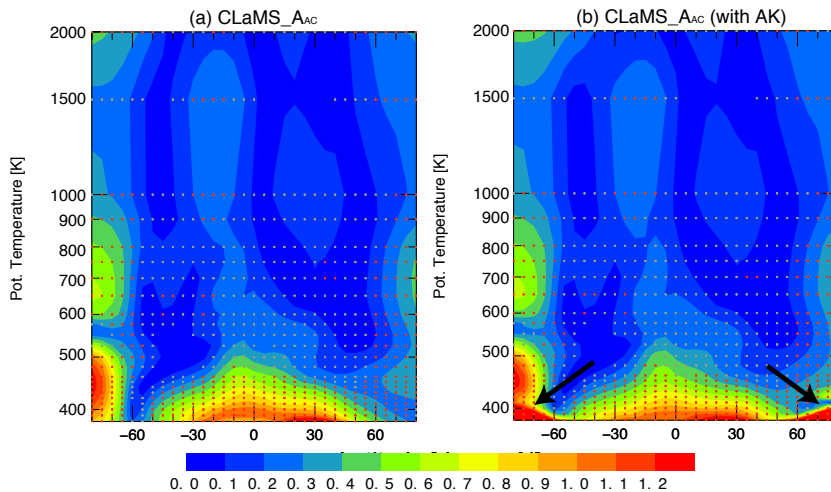
11. p5 l5: My understanding is that you are estimating methane supplied water from (1), using a mode prediction of CH_4^{rec} . But how are you specifying alpha?

It was not so clear in the previous version. Alpha is calculated following CH_4^{rec} (eq. 2), by $(CH_4^{rec}-CH_4)/CH_4^{rec}$. This equation is now isolated from eq.(1).

12. p6 l12-15: It seems important not to ignore the fact that the MLS weighting functions do not only produce 'artefacts' when applied to the CLaMS output, but that these artefacts may also be part of what is presented as the MLS observation - i.e. the MLS observations imply vertical structure that may be quite

different to what is actually present. (At least that was my interpretation of Ploeger et al 2013.)

It is true. We compared the differences between CLaMS results of AC amplitude with and without application of AK (see the figure below). The differences are only visible in high latitudes at lower stratosphere. Similar result is shown in Ploeger et al 2013.



The region showing differences (high latitudes at lower stratosphere) are not the main concern in this paper.

We made a note at Page 6 line 23-24.

13. p6 l20: My understanding here is that you are simply extracting the semiannual cycle on the basis of its semi-annual frequency - not implying a direct relation to the phenomenon 'the Semi-Annual Oscillation (SAO)' that is identified in the low-latitude upper stratosphere. In other words, there is a potential difference in meaning between 'the SAO' and 'the semi-annual harmonic'.

Yes, we confused SAO with semi-annual harmonic. The related terms are revised to semi-annual harmonic throughout the manuscript.

14. p6 l26: It would be helpful here to note that the amplitudes and phases are what is presented in specific later figures.

The corresponding figures are specified.

15. p8 l21: It's a minor point, but you don't seem to have said explicitly that CLaMS-MRA is the MERRA simulation.

The brief name of three CLaMS runs is explained in the new manuscript at Page 5 line 17-18.

16. p12 l7: 'Moreover, this makes it possible that an optimisation of the dehydration scheme...' - this sentence doesn't seem very relevant at this point in the text (and you have said something similar on p4).

Agree, this repeated information is deleted.

17. p12 l14: 'However the AC phase of H₂O entry values based on CLaMS-MRA is in better agreement with the SWOOSH data' - given the uncertainty indicated in SWOOSH one wonders whether the better agreement is actually significant. The comment is mostly about September/October - i.e. the judgement all comes down to September-October differences. Whether or not CLaMS-MRA or CLaMS-JRA is in better agreement with SWOOSH during the J-F-M-A period is also open to question.

The fact is that it is hard to judge which run shows the best phase agreement to SWOOSH. For the boreal spring when the minimum comes, the shapes of three runs are quite close. The visible differences only show for the maximum months. However, we agree that the differences are not significant. Thus, here we only state the fact and we also reformulated this part in conclusion accordingly.

18. p12 l31: For me a strong part of the evidence for the importance of different regions are LDP distributions based on trajectory studies - again Fueglistaler et al (2005) given the relevant distributions.

The citation has been added.

19. p13 l6: Can the slow upwelling alone account for the seasonal signal in H₂O_CH₄? - i.e. isn't the seasonal cycle in in-mixing at least as important?

Yes, we reformulated to 'This feature is a joint effect of the slow tropical upwelling and stronger in-mixing from the extratropics, resulting in...'

20. p14 Figure 6: It would be helpful to have the propagation of the maximum values as well as the propagation of the minimum values explicitly marked on the Figures.

We did not plot both the maximum and minimum propagation lines. The first reason is that the propagation line now is determined by the largest correlation of each layer with the layer below. Therefore, this propagation should represent both the maximum and minimum propagations. The second reason is to avoid the complication in the figure since it already has two propagation lines in each panel: one from the CLaMS run and one from SWOOSH for comparison. If we follow this idea, there will be four lines in each panel without giving more information.

21. p15/16: Figures 7 and 8 - it would be much better if Figure 7 could be immediately followed by Figure 8 - perhaps they could even be combined into a single Figure. I found the overlaid dots in Figure 7 quite difficult to see and to interpret – of course when reading the paper on a screen one can zoom to look in more detail at interesting features, so one isn't applying the same rules of legibility that might have been applied for paper publications. But given that the dots represent relative error, the fact that some of them are the same colours as are used for the values of the depicted field is confusing. It might be clearer to do something like use overprinted + and - (of different size to indicate size of relative difference).

We agree. Here we combined the two figures (also later figures of QBO). And the overlaid dots are removed for Figure 7, which are then replaced by symbols '+' and '-'. The plus and minus symbols are shown in a schematic way, where is discussed in the text. Although some accurate information about the differences are lost, the figure becomes more reader-friendly.

22. p17 l3: 'The phase of the QBO effect at the tropopause is therefore consistent with that of the 50hPa QBO wind' - the 'therefore' only makes sense if you say explicitly that it is the 50hPa wind (rather than the wind at some other level) that is correlated with the tropopause temperature.

Since the tropopause is colder (warmer) during the easterly (westerly) phase of the QBO (referring to 50hPa wind) (Plumb and Bell, 1982), the phase of the QBO effect at the tropical tropopause shown in Fig.8 is related to the phase of 50hPa QBO wind. The change is made in Page 17 line 13-15.

23. p17 l6: 'both overestimate A_QBO at isentropic levels between 450K and 550K' ... 'both biases can be traced back to strong diabatic upwelling' - the key point surely is not necessarily that the diabatic upwelling is strong, but that the the circulation (upwelling + eddy mixing) is such that the tape recorder signal in these two analyses decreases in amplitude in the vertical slowly relative to MLS and MERRA (as you show for the annual cycle in Figure 6 and 7).

We agree that both upwelling and eddy mixing (the circulation) are working. Moreover, slow upwelling makes the residence time longer, which will give more time for mixing process (at least in the model) and thus bring more exchange between tropics and extratropics. The sentence has been changed, please find it at Page 17 line 22-23.

24. p17 Figure 9: Give information in the caption on the dashed box. You could call this 'region 3'. Incidentally this region doesn't really seem to be characterised by a 'clear peak' - contrary to what you say on p16 l14.

It is named to region 3 as suggested. And we changed the statement about 'clear peak' as 'A peak in the tropical middle stratosphere (region 3) is clearly shown in CLaMS-ERA and CLaMS-JRA but not clear in MLS and CLaMS-MRA.'

25. p17 l9: You say 'the large values of A_QBO in region 2 are mainly linked to QBO related modulation of the stratospheric circulation.' You should provide a reference for this. For example this aspect of the QBO signal was considered in the Baldwin et al (2001) review. That was quoting previously published studies. There may have been more recent work on this topic.

The citation is added.

26. p17 l11: This reference should be 'Lossow et al 2017b'. The 2017a reference doesn't mention the QBO at all.

It is corrected.

27. p18 l3: 'The amplitude and phase of the QBO signal in SWV show pronounced uncertainty in the middle stratosphere' - what do you mean by this? Do you mean that the observational signal is uncertain? (I don't think so.) If you mean that there is disagreement between the different CLaMS simulations and between the CLaMS simulations and the re-analysis then say that directly.

Yes, we meant disagreement between the different CLaMS simulations. The sentence is rewritten.

28. p18 Figure 10: As previously noted for Figures 7 and 8, it would be helpful for the reader if Figures 9 and 10 were immediately adjacent (or combined into a single Figure).

The original Fig. 9 and 10 are combined as new Figure 8 and we revised as we did for original Fig. 7 and 8.

29. p18 A key point about the QBO signal in water vapour is that it results in part from upward propagation of the water vapour variations 'imprinted' by the QBO temperature variation at the tropical tropopause and in part from QBO variations in the meridional circulation (which seem likely to be primarily to be responsible for the QBO signal in water vapour seen in the upper stratosphere). You don't really exploit the distinction between these two processes generally in interpreting Figure 10 (which at first sight looks rather complicated). For example, you have identified from the annual cycle that ERA-I and JRA-55 seem to propagate signals too rapidly in the vertical in the lower stratosphere – presumably this means that their QBO signals are different in phase to the observed in the lower stratosphere, though you don't identify this as a significant difference (i.e. there is no vertical arrow marked corresponding to this in the lower stratosphere), presumably because the associated phase error is only a month or so. You do mark an arrow for JRA-55 - but don't comment on it. Do you interpret this as resulting from the strong vertical upwelling in JRA-55?

After checking the phase difference again for an interval of 1 month, we confirm that differences in the region1 is around 1 month. Therefore, we added the smaller arrows indicate 1 month differences.

In the revised figure 8, it is seen that the phase of CLaMS-ERA and CLaMS-JRA in region 1 again propagate faster with larger amplitudes. CLaMS-MRA shows the contradictory result for the MLS period and whole period, which seem to result from the influence of QBO-wind differences before and after 1990 to FUB wind as shown also in region 3.

The text is revised accordingly.

30. p18 l12: The fact that MERRA-2 doesn't match the observed QBO during the 1980s and early 1990s seems a pretty major and obvious problem to me. If that is the main cause of the difference in phase errors for MERRA between Figures D1 and D2 (indicated by the arrows in different directions) then it is probably clearer to omit D2 (and say why you have done that).

Agree, we follow the suggestion.

31. p26 l6: I've noted previously that the difference in annual cycle phase between predictions of different reanalyses seems to be judged almost on the basis of small differences between two months - and my question is whether that difference is really significant.

We agreed that the difference is not significant. As we mentioned in the response to question 17, this part of text has been revised in a similar way.

Reply to Referee #2

This paper evaluates the simulated stratospheric water vapor in three modern reanalyses in comparison with observations to better understand the inter-reanalysis differences.

Overall, this paper is well written and well-supported in its arguments, and will be a nice contribution to the literature particularly for those wishing to better understand how the choice of input reanalysis for models (such as CTMs) will impact model results.

We are grateful for reviewer2's suggestions, which are very helpful to improve the paper. We mark the changes in the manuscript in blue color. The responses or clarifications are specified following each suggestion below.

I have a few minor suggestions that should be considered:

1. Title/abstract: I believe through most of the paper the British English spelling of vapor (i.e., vapour) is used, but the American English spelling is used in the title and abstract. A consistent spelling should be used throughout the paper.

All has been revised to 'water vapor' consistently.

2. Line 17: There have been other attempts at merging observational records of WV. In particular, Froidevaux et al 2015.

Yes, it is added as citation.

3. Lines 30-31: What versions of SWOOSH and MLS are you using?

We use SWOOSH version2.5 and MLS version 4.2, which has been included in corresponding places in the manuscript.

4. Paragraph ending line 8, page 2: Substantial uncertainties also include those from artificial jumps introduced by changes in the observing system used as input to reanalyses. These jumps and their potential to impact temperatures that affect WV should be mentioned.

This information is added in the Page2 line 9-10.

5. Page 5, line 28: Why does this analysis end in 2013? All of the reanalyses and obs. extend to present, and cutting out 5 of the 15 years of the MLS record seems imprudent.

The period of 1979.01-2013.12 is noted as the "S-RIP base period", which makes the inter-comparison easier among various studies.

6. Section 2.3, page 6: This is more of a general comment, but this paper makes no mention of previous efforts at extracting SWV variability in obs. and reanalysis-driven simulations. In particular, several papers by Dessler et al. have used a similar regression analysis. I believe the results of this paper are broadly consistent with the previous analyses, but some discussion of similarities and differences is warranted.

Yes, we agree that the studies by Dessler et al. should be mentioned, especially in section 6.

The changes for this point is added at Page19 line 21-25.

7. Page 6, line 32: "signals such as . . . QBO have zero long-term trend." This is not necessarily true over short periods of time where endpoint effects could come into play (e.g., if the record started in a westerly phase and ended in an easterly phase). This is not an issue for AC as long as full years of data are used (given that sine/cosine pairs are periodic by construction).

Agreed. More precisely, the QBO might contribute to trend even when the full cycle is taken. So information is added as 'The quasiperiodic signal like QBO does not show long-term trend in the H2O entry over the considered period' at Page 7 line 10-11.

8. Page 7, line 7: ". . . regression model explains over 90% of the variations..." This is not correct. Fig 1 top panel shows an $R=0.91$, which means the percent variance explained is $0.91^2 = .83 \rightarrow 83\%$

Thanks for pointing it out, it is revised.

9. Page 8, line 8: "Appendix" -> "Appendix"

Corrected.

10. Page 8, line 25: Remove “a”

Corrected.

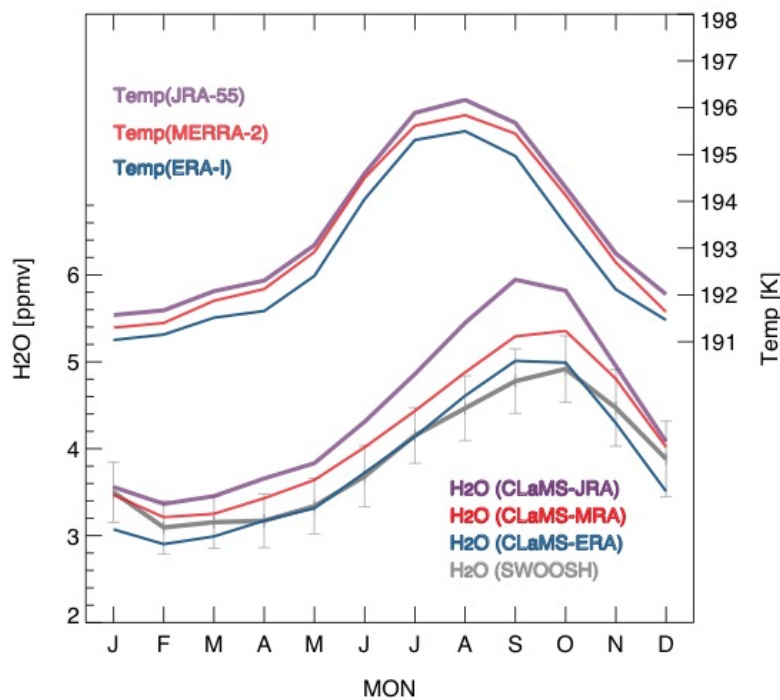
11. Page 10, line 5: You should cite Randel and Jensen (2013) here

Agreed, the citation has been added.

12. Page 11, figure 4: Are the time periods used the same here between the reanalyses and obs.?

No, we used the full simulation period (1980.01-2013.12) for CLaMS runs, which is longer than the SWOOSH period. We clarify this in the caption of Figure 4.

The main objective of this figure is to compare the climatological AC among reanalysis while the validation with SWOOSH data is only supporting information. Thus, we did use the same period. For your information, the conclusion stays the same when we use exactly the same ‘SWOOSH period’ for model results, with only some quantity changes. Please check the plot below when using ‘SWOOSH period’ for all.



13. Page 11, line 14: Should read “cold point that controls”

Corrected.

14. Page 13, line 10: I'm confused as to why the H₂O-CH₄ variations are opposite in phase relative to seasonal variations in H₂O. I thought that the peak H₂O (i.e., boreal summer) coincided with peak in-mixing, and hence anomalously high values of H₂O-CH₄ from old midlatitude air being mixed into the tropics. Please clarify.

It is true that the H₂O-CH₄ peak coincides with the peak of H₂O. But these two signals occur at different altitudes. H₂O seasonal cycle starts at the tropical tropopause while H₂O-CH₄ seasonal cycle due to in-mixing of mid-latitude air occurs over the full layer from 380-450 K (in CLaMS-MRA with slow circulation in the lower stratosphere). Therefore, they have a shift of phases when these two seasonal signals (or 'tape recorder') propagates to the same altitude.

15. Page 14, figure 6: What is month 0? Is it December? Or January?

Month 0 is January and month 12 is Jan. again. We didn't notice it is a bit odd to label x-axis in this way. The labels have been changed explicitly to the month names.

16. Page 19, sentence beginning line 4: I think the consistency is more likely due to the greatly improved quality and quantity of SWV data from MLS, rather than a sudden improvement in the quality of the reanalyses. This possibility should at least be recognized in this paragraph.

Agreed. There are two aspects: 1) the improvement of SWOOSH data due to the kick-in of MLS; 2) the improvement in the quality of the reanalyses. The sentences have been reformulated.

17. Page 20, line 11 and line 18: Dessler et al. 2014 found similar results for volcano and ENSO impacts on SWV.

Added.

18. Page 20, line 31: "intercomparison" -> "intercompare"

Corrected.

19. Page 21, Table 1: Some measure of statistical significance would be useful here (e.g., put significant trends in bold)

The significant trends in the table have been marked in bold.

20. Page 22, Figure 12, top row: This is the standard deviation, not the variance (i.e., the square of the standard deviation). The caption and text mistakenly refer to this as the variance.

The caption of figure and the relevant text are revised.

21. Page 23, lines 12-14: This is hard to see given the coarse color scale in Figure 12.

Yes, the sentence is too strong. Actually, the following arguments are just intended to say the variance fractions are 'qualitatively' consistent. Therefore, we revised this sentence accordingly.

22. Page 24, figure 13: It is hard to see the different symbols in this figure. This could be fixed by using a small horizontal offset of the symbols, or using symbols that can be more easily overlaid on one another.

The smaller symbols in each panel are changed to another shape, which makes them easier to be seen. However, we insist to plot the symbols together. In this way, it emphasizes virtually that the same bins are used for each reanalysis. Meanwhile, since the symbols are repeated in each panel, the offset of the symbols seems not so necessary.

23. Page 25, line 6: I don't think the phrase "in combination with the analysis increment" is needed in this sentence. It makes the sentence confusing.

Changed as the suggestion.

24. Page 25, line 9: What is the "assimilation increment"? Maybe the authors mean the "assimilation tendency"?

Yes, we meant "analysis tendency". Changed as suggestion.

25. Page 26, line 19: “produces more” -> “produces a more”

Corrected.

26. Page 26, line 28: “indicates” -> “indicate”

Corrected.

27. Page 27, line 8: text spacing messed up at the end of this line.

Corrected.

28. Page 28, line 12: remove “the”

Corrected.

Reply to reviewer 3

The paper presents an intercomparison of stratospheric water vapor as produced by the Lagrangian transport model CLaMS driven by meteorological winds and temperature from three modern reanalyses. The results are compared with SWOOSH and MLS observations. In addition to comparing the magnitude of the entry values, which are dependent on the tropical tropopause temperature in each reanalysis, the annual cycle, QBO, ENSO and volcanic signals are compared, as well as the linear trends. The results are accurately presented and the paper is well written. I recommend publication after the following minor issues are corrected.

We are grateful for reviewer3's suggestions, which are very helpful to improve this work. The changes corresponding to the comments can be tracked by the text in orange in the manuscript. The responses or clarifications are specified following each suggestion below.

- Page 1 Line 15: cloud effect

Corrected to 'long-wave cloud radiative effect'.

,

- Page 6 Line 19: here and in other parts of the paper: the QBO is not a periodic signal, please correct 'periodic' by 'quasi-periodic'.

Corrected throughout the paper.

- Section 2.3: The authors are confusing the SAO signal, which is present in the upper stratosphere, with a semi-annual harmonic component of the annual cycle. The terminology 'SAO' should only refer to the former.

We agree. This point was also made by Reviewer 1. The usages of 'SAO' are corrected to semi-annual harmonic (SAH).

- Page 7 Line 7: 'variation' should be 'variance'

Corrected.

- Page 11 Line 8: 'tropical tropopause temperatures': are these Lagrangian cold point temperatures? Please specify.

No, they are not the Lagrangian cold point. Here tropical tropopause temperatures refer to the minimum of tropical mean (averaged over 20S-20N) temperature between $\theta=360\text{K}$ and 420K . The caption is revised accordingly.

- Page 12 Line 17: In addition to tropical upwelling, Glanville and Birner (2017, ACP) argue that mixing effects could be important for the tape recorder. This relevant information could be included here, as it implies that not all differences in the tape recorder signal should be attributed to tropical upwelling.

Thanks for the remark, which is indeed relevant. The information is added with the reference at Page 13 line 2-3.

- Page 14 Line 12: 'Although we use different methods to estimate the AC amplitude': Why are different methods used and which method is used here?

In section 4.1, we simply used climatological monthly mean to represent AC as shown in Figure 6. The phase propagation is determined by strongest correlation for each layer to the layer below. In section 4.2 (original Fig. 7 and 8; new Fig.7 in the revised version), the harmonic regression with a sine and cosine term is used to determine the amplitude and phase of AC.

- Page 15 Line 5-6: can you point to specific 'small-scale processes that must be parameterized in the model'?

More explicitly, that means the choice of mixing parameter (or mixing strength) in the model (which describes the small-scale processes in reality) might be of importance in the modelling of water vapor in the Southern Hemisphere subtropical lower stratosphere.

- Figures 8 and 10: I do not understand the meaning of the arrows, please explain more clearly.

The arrows show the primary regions where the phase differs from the benchmark phase (referring to the leftmost panel in each row). Upward arrows show phases that

lag behind the benchmark phase while downward arrows show phases that lead the benchmark phase.

- Page 16 Line 9: quasi-periodic

Corrected.

- Section 5 (Figure 10): it would be much easier for the reader if you describe the interpretation of the QBO phase representation in Fig. 10 here, instead of having to go back and look for the information.

Agree. We now combined the two figures as the new Figure 8 for QBO and did the same for AC (new figure 7).

- Figure 11 caption: Please remind the reader that these are values at 400 K.

The information is added to the caption of Figure 9 in revised manuscript.

- Page 20 Line 21: Why is the lag for the ENSO signal on H₂O entry anomalies so long? One year seems an excessive time lag, since the signal in tropical upwelling maximizes only after a few months.

The lag for ENSO from our regression is 10-11 months. There are two reasons for the long lag time:

1) *The lag time is location-dependent. When considering the zonally resolved lag time distribution for AoA at 17km to ENSO, the response time is mostly below 4 months. However, the tropical mean data we used shows lag time around 10-11 months. One potential reason is the effect of smoothing of localized signals.*

2) *Note that we used H₂O at 400 K isentrope. The propagation from cold point tropopause to 400K typically takes 1-2 months.*

- Page 21 Line 5: since this result is not shown in Table I, I recommend adding '(not shown)'

Added.

- Page 25 Line 33: remove 'relatively'

Removed.

- Page 27 Line 8: typo 'n ext'

Corrected.

Multi-timescale variations of modelled stratospheric water vapor derived from three modern reanalysis products

Mengchu Tao¹, Paul Konopka¹, Felix Ploeger^{1,2}, Xiaolu Yan¹, Jonathon S. Wright³, Mohamadou Diallo¹, Stephan Fueglistaler⁴, and Martin Riese¹

¹Forschungszentrum Jülich (IEK-7: Stratosphere), Jülich, Germany

²Department of Physics, University of Wuppertal, Wuppertal, Germany

³Department of Earth System Science, Tsinghua University, Beijing, China

⁴Princeton University, Princeton, USA

Correspondence: Mengchu Tao (m.tao@fz-juelich.de)

Abstract. Stratospheric water vapor (SWV) plays important roles in the radiation budget and ozone chemistry and is a valuable tracer for understanding stratospheric transport. Meteorological reanalyses provide variables necessary for simulating this transport; however, even recent reanalyses are subject to substantial uncertainties, especially in the stratosphere. It is therefore necessary to evaluate the consistency among SWV distributions simulated using different input reanalysis products. In this study, we evaluate the representation of SWV and its variations on multiple timescales using simulations over the period 1980–2013. Our simulations are based on the Chemical Lagrangian Model of the Stratosphere (CLaMS) driven by horizontal winds and diabatic heating rates from three recent reanalyses: ERA-Interim, JRA-55 and MERRA-2. We present an inter-comparison among these model results and observationally-based estimates, using a multiple linear regression method to study the annual cycle (AC), the quasi-biennial oscillation (QBO), and longer-term variability in monthly zonal-mean H₂O mixing ratios forced by variations in the El Niño–Southern Oscillation and the volcanic aerosol burden. We find reasonable consistency among simulations of the distribution and variability of SWV with respect to the AC and QBO. However, the amplitudes of both signals are systematically weaker in the lower and middle stratosphere when CLaMS is driven by MERRA-2 than when it is driven by ERA-Interim or JRA-55. This difference is primarily attributable to relatively slow tropical upwelling in the lower stratosphere in simulations based on MERRA-2. Two possible contributors to the slow tropical upwelling in the lower stratosphere are suggested to be the large long-wave **cloud** radiative effect and the unique assimilation process in MERRA-2. The impacts of ENSO and volcanic aerosol on H₂O entry variability are qualitatively consistent among the three simulations despite differences of 50–100% in the magnitudes. Trends show larger discrepancies among the three simulations. CLaMS driven by ERA-Interim produces a neutral to slightly positive trend in H₂O entry values over 1980–2013 (+0.01 ppmv decade⁻¹), while both CLaMS driven by JRA-55 and CLaMS driven by MERRA-2 produce negative trends but with significantly different magnitudes (−0.22 ppmv decade⁻¹ and −0.08 ppmv decade⁻¹, respectively).

1 Introduction

Water vapor is one of the most influential greenhouse gases (Forster and Shine, 1999), modulating not only the surface radiative forcing (Forster and Shine, 2002; Solomon et al., 2010; Riese et al., 2012) but also stratospheric ozone loss (e.g. Vogel et al., 2011). The extreme dryness of the stratosphere results from ‘freeze-drying’ of air entering the stratosphere, as initially explained in relation to the Brewer-Dobson circulation (BDC; Brewer, 1949). Mixing ratios of water vapor in the lower stratosphere are extremely low as a result, but nonetheless vary substantially in time and space.

There remain substantial inconsistencies among observational estimates of stratospheric water vapor (SWV), including both balloon-based and satellite-based instruments (e.g. Hegglin et al., 2014; Lossow et al., 2017b; Khosrawi et al., 2018). Artificial jumps introduced by changes in the observing system influence the reanalysis temperatures through the assimilation affect reanalysis water vapor. The inconsistencies are even more pronounced among atmospheric reanalyses and independent observations (Davis et al., 2017). Uncertainties in balloon- or aircraft-based observations arise primarily due to insufficient spatiotemporal coverage (Müller et al., 2016) and the unreliability of operational sondes at stratospheric altitudes (e.g. Dirksen et al., 2014). Inconsistencies in satellite observations of SWV reflect limited observational periods and short overlap times (Hegglin et al., 2014), which make it difficult to control for platform-specific biases or differences in temporal or spatial sampling patterns (Lossow et al., 2017b; Khosrawi et al., 2018). Observations of SWV are rarely assimilated in reanalysis systems, for which estimates of SWV are effectively model products, in some cases nudged to climatologies (Fujiwara et al., 2017). Differences in H₂O observations in the upper troposphere and stratosphere and the unreliability of reanalysis estimates of SWV have motivated several efforts to merge observational records from different satellites (Hegglin et al., 2014; Froidevaux et al., 2015; Davis et al., 2016). Such homogenized records facilitate analysis of long-term changes in SWV across the most recent 2–3 decades.

Chemical transport models (CTMs) provide another approach to understanding the multi-timescale variability and global distribution of SWV (e.g. Schoeberl et al., 2012; Tao et al., 2015). Water vapor values entering the stratosphere are determined primarily by the lowest temperature along their advective transport pathway in the tropical tropopause layer (TTL) (Mote et al., 1996; Gettelman et al., 2000; Liu et al., 2010). Lagrangian approaches provide accurate records of the temperature histories of air parcels that Eulerian models cannot provide, and therefore provide more reliable representations of entry mixing ratios in SWV (e.g. Fueglistaler et al., 2005; Schoeberl et al., 2012). This distinction is particularly relevant around the tropopause, where temperature gradients are both large and highly variable (Fueglistaler et al., 2009a). In addition to transport across the tropical tropopause, photochemical oxidation of methane (CH₄) is an important source of SWV, especially in the middle and upper stratosphere. Previous studies have concluded that recent increases in CH₄ have substantially contributed to long-term variability of H₂O in the stratosphere (e.g. Rohs et al., 2006; Hurst et al., 2011; Hegglin et al., 2014). In this study, we use a forward Lagrangian transport model with implanted methane chemistry to study the climatological features of SWV, and compare the results against observational estimates from the Stratospheric Water and OzOne Satellite Homogenized (SWOOSH) dataset version 2.5 (Davis et al., 2016) and the Aura Microwave Limb Sounder (MLS) version 4 (Livesey et al., 2017).

Key aspects affecting the performance of CTMs with respect to SWV are the meteorological fields selected to drive the transport and freeze-drying in TTL. Modern meteorological reanalyses, as ‘best estimates’ of the historical evolution of the atmospheric state (Fujiwara et al., 2017), are commonly used to provide the necessary meteorological variables for CTMs. Current widely-used reanalysis products include the European Centre for Medium-range Weather Forecasting (ECMWF) Interim Reanalysis (ERA-I; Dee et al., 2011), the Japanese 55-yr Reanalysis (JRA-55; Kobayashi et al., 2015), the Modern-Era Retrospective Analysis for Research and Applications Version 2 (MERRA-2; Gelaro et al., 2017), and the Climate Forecast System Reanalysis (CFSR; Saha et al., 2010). Substantial uncertainties among these reanalyses have been identified by previous studies, including significant differences in temperature and wind structures (e.g. Mitchell et al., 2015; Kawatani et al., 2016; Long et al., 2017), diabatic heating rates in the tropical upper troposphere and lower stratosphere (UTLS) (e.g. Fueglistaler et al., 2009b; Wright and Fueglistaler, 2013), and representations of the BDC (e.g. Abalos et al., 2015). Such differences among reanalysis products are critical for simulations of atmospheric composition but have rarely been discussed in this context.

Schoeberl et al. (2012) evaluated SWV simulated using the same trajectory model with meteorological fields taken from MERRA (the predecessor of MERRA-2; Rienecker et al., 2011), ERA-I, and CFSR. The trajectory model based on ERA-I produced a low bias of H₂O in the lower stratosphere and a ‘tape-recorder’ signal (Mote et al., 1996) that was 30% too fast in the 17-22km layer. By contrast, use of MERRA resulted in reasonable H₂O entry values but a tape-recorder signal that was 15% too slow within a similar altitude range, while use of CFSR resulted in a wet bias in H₂O entry values but a reasonable propagation of the tape-recorder signal. An earlier study by Wright et al. (2011) reported similar biases in simulated water vapor entering the stratosphere via the Asian monsoon, with trajectories based on MERRA indicating systematically larger entry mixing ratios relative to trajectories based on ERA-I. Further evaluation of how uncertainties in current reanalysis products impact simulations of H₂O in the stratosphere is lacking, particularly with respect to the more recently released JRA-55 and MERRA-2 products. The former is currently the most recent full-input reanalysis (which assimilates the full observing system) to provide coverage of the pre-satellite era, while the model used for the latter has been reported to have a more realistic spontaneous QBO than its predecessor MERRA (Coy et al., 2016).

In this study, we provide an intercomparison of SWV produced using a Lagrangian transport model driven by three recent reanalysis products: ERA-I, MERRA-2 and JRA-55. We also present comparisons against SWV estimates from satellite observations. Our evaluations of simulated SWV focus on the climatological annual mean, the annual cycle (AC) and the quasi-biennial oscillation (QBO). We also discuss some key sources of variability, including the El Niño–Southern Oscillation (ENSO) and variations in volcanic aerosol, as well as long-term linear trends in H₂O entry mixing ratios. The objective of this work is to evaluate the sensitivity of simulated H₂O variability to uncertainties in the driving meteorological fields among recent reanalysis products. The study also sheds light on the quality of reanalysis products in the stratosphere, especially their representations of dynamical fields (e.g. winds, heating rates and temperatures). Few independent observational datasets are available to evaluate these dynamical variables in the upper troposphere and stratosphere, especially with respect to their influences on SWV.

2 Data and Methods

2.1 CLaMS simulations

Our simulations of SWV cover the period 1980–2013 using the Chemical Lagrangian Model of the Stratosphere (CLaMS; McKenna et al., 2002; Konopka et al., 2004; Pommrich et al., 2014). Modelled water vapor mixing ratios entering the stratosphere are based on a simplified dehydration scheme as described in details by Ploeger et al. (2013); Poshyvailo et al. (2018). The saturation volume mixing ratio is calculated for each trajectory, where the saturation pressure (p_s) is given by $p_s = 10^{-2663.5/T+12.537}$ (Marti and Mauersberger, 1993). If saturation occurs along a CLaMS air parcel trajectory, the amount of water vapor in excess of the critical saturation mixing ratio (100% with respect to ice) is instantaneously transformed to the ice phase. The sedimentation fall speed is calculated by assuming a mean ice particle radius. Ice sedimentation is then determined by comparison of the sedimentation length over the model time step against a characteristic length ($\sim 300\text{m}$) (Hobe et al., 2011; Ploeger et al., 2013). Furthermore, if ice exists in a sub-saturated parcel, this ice is instantaneously evaporated until saturation is reached.

Temperatures and horizontal winds are prescribed from the ERA-I (Dee et al., 2011), JRA-55 (Kobayashi et al., 2015), and MERRA-2 (Gelaro et al., 2017) reanalyses. The cross-isentropic vertical velocity ($\dot{\theta}$) is derived from the total diabatic heating rates, which includes all-sky radiation, latent heat release and the diffusive turbulent heat transport from each reanalysis product (e.g. Fueglistaler et al., 2009a). Water vapor mixing ratios at pressures greater than $\sim 500\text{hPa}$ are set equal to water vapor mixing ratio products from the corresponding reanalysis. The CLaMS runs driven by ERA-I, JRA-55, and MERRA-2 are respectively referred to CLaMS-ERA, CLaMS-JRA and CLaMS-MRA. Additional information regarding the structures of these reanalysis systems has been provided by Fujiwara et al. (2017). We exclude CFSR because the model and data assimilation system used to produce this reanalysis changed abruptly at the beginning of 2011 (Fujiwara et al., 2017). This and other stream transitions produced substantial discontinuities in stratospheric variables based on CFSR during the 1980–2013 analysis period (Davis et al., 2017; Long et al., 2017).

We use the critical saturation rate of 100% with respect to ice, although supersaturation with respect to ice is frequently observed at these altitudes (e.g. Krämer et al., 2009). Within CLaMS, we have the freedom to ‘optimize’ supersaturation thresholds to produce better agreement with observed H_2O values. The effects of tuning the critical supersaturation threshold in CLaMS have an effect similar to that of applying a frost point offset to the Lagrangian dry point temperature (Liu et al., 2010; Fueglistaler et al., 2013), in that an increase in the supersaturation threshold enhances both the mean value and the amplitude of the annual cycle in simulated H_2O . Due to uncertainty in the appropriate value of the supersaturation threshold, differences among the modelled values of H_2O entry mixing ratio or between modelled values against observations cannot be unequivocally interpreted as errors in Lagrangian dry point temperatures in these reanalyses. Our intercomparison among modelled and observed H_2O values is thus limited to uncertainties related to using different reanalyses under the standard configuration of the model.

Besides the freedom in optimization of supersaturation threshold, additional degrees of freedom are in the parameterized small-scale mixing in the model. The Modelled water vapor mixing ratios are influenced by parameterized small-scale mixing

driven by large-scale deformation (McKenna et al., 2002; Konopka et al., 2004). Poshyvailo et al. (2018) tested the sensitivity of modelled H₂O entry mixing ratio to mixing parameters in CLaMS and found that **the range of mixing strength they considered was representative of actual uncertainty in small-scale mixing**. Our study uses the reference configuration of mixing parameters, which has been shown to produce the best agreement with MLS observations by Poshyvailo et al. (2018).

5 The model calculations include methane oxidation, which is a source of water vapor mainly in the middle and upper stratosphere, with concentrations of hydroxyl, atomic oxygen, and chlorine radicals taken from model-generated climatologies (Pommrich et al., 2014). We explicitly diagnose the fraction of water vapor supplied by methane oxidation. Methane-supplied water vapor (H₂O_{CH₄}) at any given location is calculated as

$$\text{H}_2\text{O}_{\text{CH}_4} = 2 \cdot (\text{CH}_4^{\text{rec}} - \text{CH}_4), \quad (1)$$

where CH₄ is modelled methane accounting for loss by oxidation and CH₄^{rec} is the passively-transported methane assuming
 10 the same source and circulation without photochemical loss. Reconstructed methane values (CH₄^{rec}) are calculated as the mean tropospheric CH₄ prescribed at the lower boundary of the model (see Figure B1 in Appendix B), lagged by the mean age of air (Γ) in each run (Ploeger et al., 2015):

$$\text{CH}_4^{\text{rec}}(x, t) = \text{CH}_4^{\text{LB}}(t - \Gamma(x, t)). \quad (2)$$

The fractional release factor of CH₄ (α) is expressed as:

$$\alpha = (\text{CH}_4^{\text{rec}} - \text{CH}_4) / \text{CH}_4^{\text{rec}} \quad (3)$$

Note that Ostermüller et al. (2017) showed that chemical loss can increase the time dependence of α. Our calculation of α
 15 neglects this effect, as Ostermüller et al. (2017) also suggested that this influence should be very small for tracers with weak tropospheric trends, like CH₄ (~0.2-0.3% yr⁻¹).

Stratospheric water vapor without the contribution from methane oxidation (H₂O_{nCH₄}) is then diagnosed as

$$\text{H}_2\text{O}_{\text{nCH}_4} = \text{H}_2\text{O} - \text{H}_2\text{O}_{\text{CH}_4}. \quad (4)$$

Our intercomparison of the three reanalysis-driven CLaMS runs covers the period from January 1980 through December
 20 2013 (hereafter referred to as the ‘CLaMS period’) within the vertical range from θ=350 K to θ=2000 K. A reference monthly-mean SWV is calculated by averaging the three reanalysis-driven runs (hereafter referred to as the Multi-Reanalysis Mean or MRM). The MRM is used as a benchmark to more effectively highlight differences among the three model runs.

2.2 Observational estimates

The Stratospheric Water and Ozone Satellite Homogenized (SWOOSH) database provided by the NOAA Chemical Sciences
 25 Division (CSD) contains vertically resolved ozone and water vapor data from the SAGE-II/III, UARS HALOE, UARS MLS, and Aura MLS satellite instruments starting from 1984 (Davis et al., 2016). We use the SWOOSH [version 2.5](#) zonal-mean monthly-mean time series of merged water vapor mixing ratios with 2.5° resolution on 21 isentropic levels from 300 K to

650 K. The homogenization process, which has been described by Davis et al. (2016), is designed to minimize artificial jumps in time and account for inter-satellite biases. The merged SWOOSH data thus provide a long-term time series with reliable representations of interannual to decadal variability.

We compare monthly mean water vapor from CLaMS runs with SWOOSH water vapor on the same vertical grid (21 θ levels from 350 K to 650 K). For each latitude– θ grid location, comparison between CLaMS and SWOOSH starts from the first month when SWOOSH has more than 12 months of available H₂O data within the following 2 years and ends in December 2013. In the following, we refer to this period as the ‘SWOOSH period’. Note that while CLaMS provides continuous temporal coverage, the SWOOSH data may include some gaps. Additional details regarding SWOOSH data coverage are provided in Appendix A.

In addition to SWOOSH, we use Aura MLS version 4 retrievals of H₂O (Livesey et al., 2017) for comparison with CLaMS simulations during the period 2005–2013 (the ‘MLS period’). MLS provides over 3000 profiles per day, with water vapor estimates at 30 pressure levels from 316 hPa to 1 hPa. The vertical resolution in the stratosphere is approximately 3 km (2.5–3.5 km). Uncertainties in the water vapor retrievals are of the order of $\sim 10\%$ in the lower stratosphere and $\sim 5\%$ in the upper stratosphere. The relatively high frequency of horizontal sampling and high quality of vertical profiles allows MLS H₂O to reliably represent the zonally- and monthly-averaged distribution of SWV. We interpolate MLS H₂O profiles to 26 isentropic levels, chosen to span the range 350 K–2000 K at a vertical resolution close to that of the original retrievals.

The SWOOSH dataset is also based in part on Aura MLS version 4 retrievals, particularly during the MLS period. Thus, the comparisons of CLaMS against SWOOSH and comparisons of CLaMS against MLS during the MLS period are not independent. Differences between the comparisons are due to the homogenization procedure applied in SWOOSH. We did not apply the MLS averaging kernels to CLaMS H₂O simulations. It is because the application of MLS averaging kernels to CLaMS H₂O simulations can potentially produce artefacts, especially at high latitudes (more details provided by Ploeger et al., 2013, their Fig. 2). Our main focus is on the comparison among the reanalyses and to apply averaging kernels could smear out the differences among the CLaMS runs. **However, it is worth noting that artefacts may appear in MLS observations, especially in high latitudes, when MLS retrievals are compared to model results without MLS weighting functions.**

2.3 Extraction of variability at multiple timescales

The objective of this study is to examine and compare the climatological features of variability in model-based and observationally-based estimates of SWV. Pronounced periodic and quasi-periodic signals in SWV include the annual cycle (AC), the Quasi-Biennial Oscillation (QBO) and semi-annual harmonic (SAH). The AC, QBO and SAH are therefore considered explicitly in our regression model:

$$\chi(t) = \bar{\chi} + \chi_{AC}(t) + \chi_{SAH}(t) + \chi_{QBO}(t) + \chi_{res}(t). \quad (5)$$

After determining the mean value calculated over the whole considered time series ($\bar{\chi}$), we extract AC ($\chi_{AC}(t)$), SAH ($\chi_{SAH}(t)$) and QBO ($\chi_{QBO}(t)$) signals following the harmonic regression method used by Lossow et al. (2017b). In this method, one sine/cosine pair terms are used for each regressions (AC and SAH), respectively. Two quasi-orthogonal QBO time

series (namely, the zonal wind signals at 50 hPa and 30 hPa over Singapore provided by Freie Universität Berlin) are used for the QBO regression. The AC, QBO and SAH variables are assessed from two aspects of periodic variations: amplitudes (A_{AC} and A_{QBO} shown in the first half of Figure 7 and 8, A_{SAH} in top of Figure C) and phases (P_{AC} and P_{QBO} shown in the second half of Figure 7 and 8, P_{SAH} in the bottom of Figure C). Note that 1) the amplitude represents half the corresponding variation from maximum to minimum, 2) P_{AC} and P_{SAH} are defined as the month of the annual maximum in the regression fit, and 3) P_{QBO} is defined as the month (within 0–28) with the largest lag-correlations between the QBO fit and the 50 hPa Singapore wind.

The linear trend (C_{trd}) is estimated by applying a least-squares linear fit to the residuum of H₂O variability ($\chi_{res}(t)$ in eq. (5)) after removing the AC, QBO and SAH signals. Note that the linear trend for $\chi_{res}(t)$ is identical to the trend of the original H₂O time series since periodic signals such as AC has zero long-term trend **when the full cycle is taken. The quasi-periodic signal like QBO does not show long-term trend in the H₂O entry over the considered period.** Additional variability after subtracting the AC, QBO and SAH signals may result from the influences of ENSO (e.g. Randel et al., 2004; Fueglistaler and Haynes, 2005; Konopka et al., 2016; Yan et al., 2018), variations in stratospheric aerosol (e.g. Joshi and Shine, 2003; Diallo et al., 2017). The contributions of such variations to H₂O entry mixing ratios are discussed in sec. 6.

Figure 1 provides example regression results for SWV on the 400 K isentropic surface in the tropics (20°S–20°N) based on the SWOOSH monthly merged satellite dataset. This time series approximates that of H₂O values entering the stratosphere (H₂O_e) at the base of the ‘tropical pipe’ (Plumb, 1996), and is characterized by a climatological annual mean of 3.83 ppmv and a negative trend of 0.22 ppmv decade⁻¹. The regression model explains **over 80%** of the **variance** in H₂O_e. According to the correlation coefficient of each variable, the periodic terms listed in descending order of influence are AC, QBO and then SAH. The AC represents the most pronounced variation in H₂O at this level, with a correlation coefficient of 0.88, an amplitude of $A_{AC} = 0.89$ ppmv and an annual maximum in $P_{AC} =$ October. The QBO is also a significant factor, with an amplitude of 0.21 ppmv and a maximum lag-correlation (correlation coefficient=0.16) against the 50 hPa Singapore winds of $P_{QBO} = 1$ month. The bottom panel of Figure 1 shows other variability in H₂O entry mixing ratios (the residuum of the regression in eq. (5)). This residual variability represents a substantial component of the total variability, and contains intraseasonal variability, inter-annual variability and the long-term trend. Features of the AC, QBO and the other variability are compared and discussed in more detail in section 4, section 5 and section 6, respectively. Since the contribution of SAH to the total variance is generally smaller than that of other variables, we defer discussion of the SAH influence to [Appendix C](#).

3 Climatological annual mean of stratospheric water vapor

Figure 2 shows climatological annual-mean simulated SWV from the three CLaMS runs, as well as the components of SWV with and without CH₄ oxidation (H₂O_{CH₄} and H₂O_{nCH₄}). The climatological mean is based on the period 1985–2013 because CH₄^{rec} cannot be diagnosed during the first few years of the simulation. Zonal-mean H₂O matches zonal-mean H₂O_{nCH₄} well in the lower stratosphere but consists mainly of H₂O_{CH₄} in the upper stratosphere.

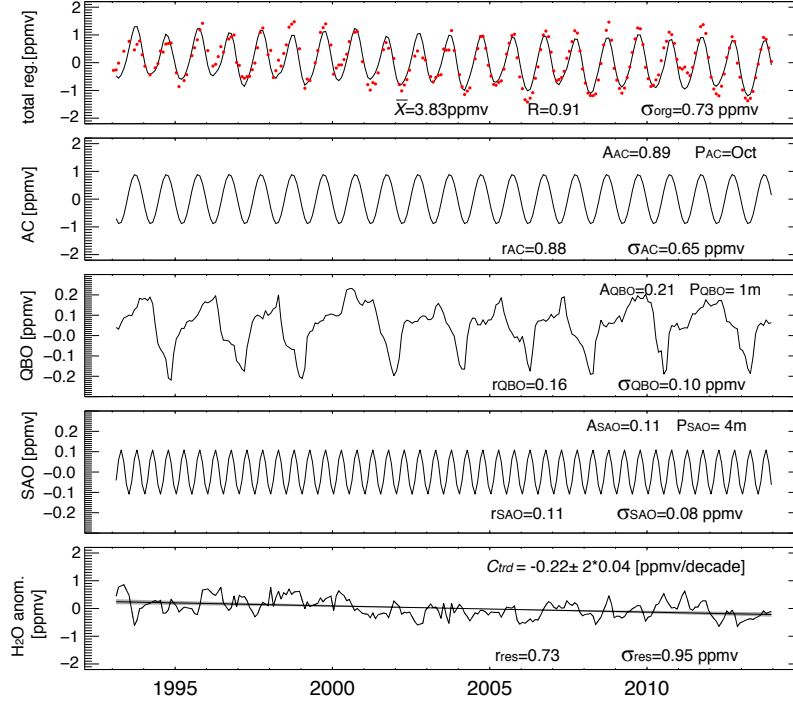


Figure 1. Multiple linear regression results for monthly-averaged tropical mean (20°S – 20°N) water vapor on the $\theta = 400\text{ K}$ isentropic surface from SWOOSH. The top panel shows anomalies of SWOOSH data relative to the mean value over the 1993–2013 period (red dots) and the regression fit (black line) based on eq. (5) (correlation coefficient $r = 0.91$). The AC, QBO and SAH components of the regression are shown in the following three panels, respectively. Additional variability beyond the three periodic and quasi-periodic components (residuum of the regression) is shown in the bottom panel. The linear trend in this time series is also shown, with $\pm 2\sigma$ uncertainty shown as grey shading. Note the different y -axis ranges across the different panels. The amplitudes and phases of the AC, QBO and SAH signals are listed in the upper right corners of the corresponding panels. The standard deviations corresponding to each contribution are listed near the bottom of each panel, together with correlation coefficients for each term against the original time series. The standard deviation of the original SWOOSH time series (σ_{org}) is 0.73 ppmv.

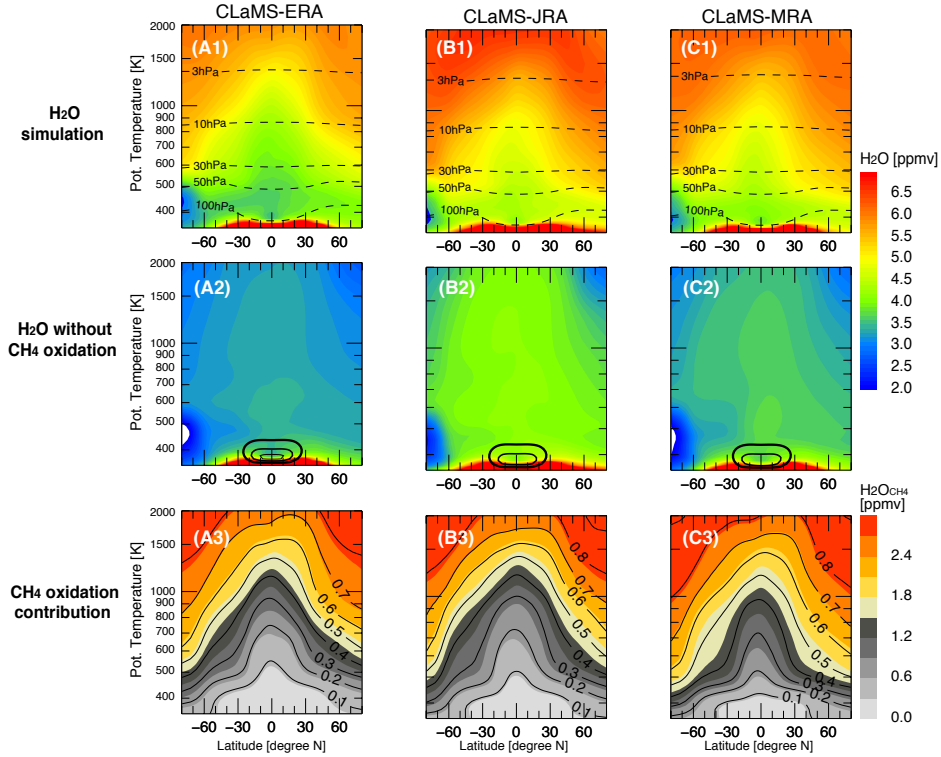


Figure 2. Comparison of climatological annual mean SWV during the CLaMS period (1985–2013). Top row (A1-C1): annual-mean zonal-mean simulated H₂O based on (left-to-right) CLaMS-ERA, CLaMS-JRA and CLaMS-MRA. Dashed lines mark the zonal-mean locations of isobaric surfaces. Middle row (A2-C2): as in (A1-C1), but for simulated H₂O without methane oxidation. These distributions highlight the effects of variations in H₂O entry values (tropopause temperature). Black contours show zonal-mean temperatures of 192.5 K, 195 K and 200 K (from thin to thick lines) near the tropical tropopause. Bottom row (A3-C3): as in (A1-C1), but for simulated H₂O from CH₄ oxidation. The distributions reflect the effect of the BDC on water vapor produced by methane oxidation. Black contours show the fractional CH₄ oxidation ratio (α).

The driest stratosphere is simulated by CLaMS-ERA, while the wettest is simulated by CLaMS-JRA. This difference is mainly attributable to $\text{H}_2\text{O}_{\text{nCH}_4}$, as shown in Figure 2(A2-C2), which is in turn controlled primarily by entry mixing ratios at the tropical tropopause (with the notable exception of dehydration in the Southern Hemisphere polar vortex). These differences reflect differences in tropical tropopause temperatures among the reanalyses (black contours in middle panel; see also Figure 4).

- 5 Tropical tropopause temperatures differ by about 1 K between ERA-I and JRA-55, consistent with a difference of ~ 0.6 ppmv in H_2O mixing ratios assuming the same 100% saturation threshold applied in the CLaMS model.

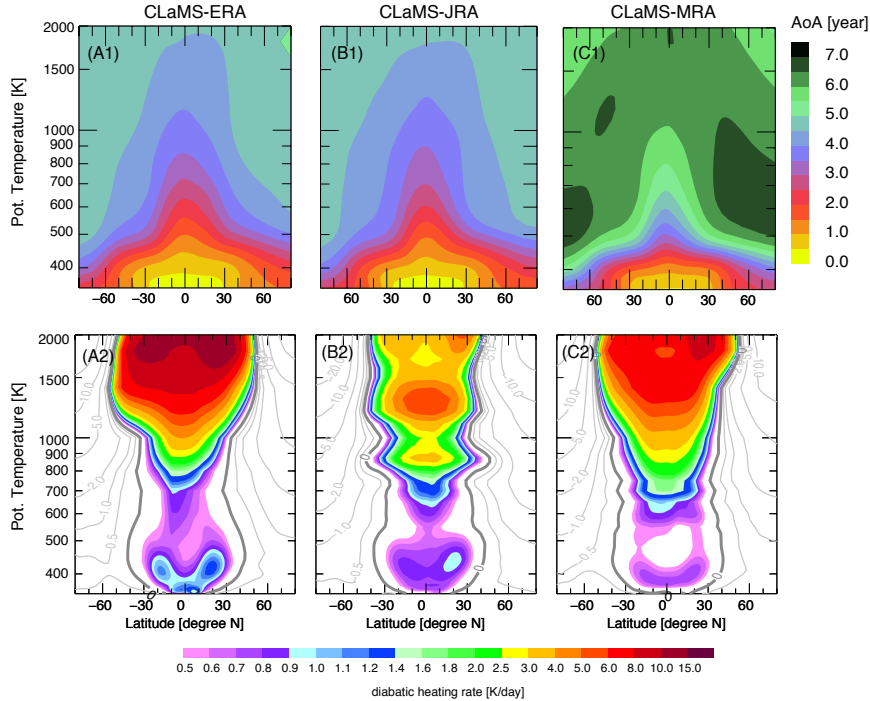


Figure 3. Comparison of climatological annual-mean zonal-mean age-of-air from the CLaMS-ERA, CLaMS-JRA and CLaMS-MRA simulations (A1-C1), along with corresponding cross-isentropic velocities ($\dot{\theta}$) based on total diabatic heating rates for each reanalysis product (A2-C2). Color shading in the lower panels indicates zonal-mean diabatic upwelling rates that exceed 0.5 K day^{-1} . The thick grey line shows the zero-contour of diabatic heating rates. Lighter thin grey lines show diabatic downwelling.

- 10 The amount of H_2O from CH_4 oxidation is related to the time an air parcel has spent in the stratosphere. This time is measured by the stratospheric age-of-air as shown in the upper panels of Figure 3. Values of $\text{H}_2\text{O}_{\text{CH}_4}$ from the CLaMS-MRA simulation are systematically larger than those from the CLaMS-ERA or CLaMS-JRA simulations (see Fig. 2 A3-C3). The most pronounced high biases in $\text{H}_2\text{O}_{\text{CH}_4}$ and α in CLaMS-MRA relative to the other two simulations are co-located with the sharpest gradients in $\text{H}_2\text{O}_{\text{CH}_4}$ and α . Figure 3 provides useful context for interpreting these differences, as high values of $\text{H}_2\text{O}_{\text{CH}_4}$ are accompanied by systematically older stratospheric air in CLaMS-MRA. Note that [consistent climatological mean](#)

age differences within the same model framework are presented by Ploeger et al. (2019). The lower panels of Fig. 3 show differences in reanalysis heating rates, which are used to drive vertical transport in the CLaMS model. Tropical upwelling in the shallow branch of the BDC is weaker in MERRA-2 than in ERA-I or JRA-55, thus producing larger gradients of AoA and $\text{H}_2\text{O}_{\text{CH}_4}$ between the lower and middle stratosphere. Quantitatively, relative differences in time-mean zonal-mean diabatic heating rates at 400–500 K are as large as 50% between MERRA-2 and ERA-I, resulting in large differences in the vertical advection of SWV and other tracers. It is worth noting that differences among the reanalyses in the lower stratosphere are larger in the NH subtropics than in the deep tropics or the SH subtropics (not shown).

Although diabatic upwelling in the tropical lower stratosphere is weakest in MERRA-2, upwelling in the tropical middle stratosphere ($\theta = 600\text{ K}–1000\text{ K}$) is stronger and covers a wider range of latitudes in MERRA-2 than in ERA-I or JRA-55. Above $\theta = 1000\text{ K}$, the deep BDC as represented in JRA-55 is noticeably weaker than that in MERRA-2 or ERA-I. Previous studies have pointed out that the mean magnitudes of tropical upwelling in the lower stratosphere are substantially different among different reanalysis products (Randel and Jensen, 2013; Wright and Fueglistaler, 2013; Abalos et al., 2015).

4 Annual cycle

The annual cycle is the largest contributor to total variability in SWV. Moreover, seasonal variations in SWV give essential insight into the overall behavior of H_2O , as these variations reflect the effects of seasonal changes in both the stratospheric circulation and temperatures at the tropical tropopause.

4.1 The H_2O tape-recorder

Before discussing the global features of the annual cycle in SWV, we first report the simulated climatological seasonalities of H_2O entry mixing ratios (H_2O_e) from the three simulations. Values of H_2O_e are mainly controlled by ‘freeze-drying’ around the tropical tropopause and the upward propagation of signals imprinted by variations in the conditions under which this ‘freeze-drying’ takes place. The upward propagation of these signals produces the well-known stratospheric tape-recorder structure described by Mote et al. (1996). In this study, we define water vapor entry mixing ratios (H_2O_e) as averages over the $20^\circ\text{S}–20^\circ\text{N}$ tropical band on the $\theta = 400\text{ K}$ isentropic surface.

Figure 4 summarizes the relationship between the climatological annual cycles of tropical tropopause temperatures (upper set of lines) and H_2O_e (lower set of lines). The annual cycles in tropical mean tropopause temperatures based on the three reanalyses (upper set of lines) are similar in both amplitude and phase, but with $\pm 1\text{ K}$ differences in mean value. Mean H_2O_e differences among the three CLaMS runs are roughly consistent with the corresponding differences in mean tropopause temperatures, with a 1 K difference in temperature corresponding to a ~ 0.6 ppmv difference in H_2O entry mixing ratios. Although the differences in the mean tropical tropopause temperature are consistent with the H_2O differences, it is actually the Lagrangian cold point that controls the H_2O entry values and makes the H_2O differences, which will be indicated by the next figure. Compared with SWOOSH, simulated annual cycles of H_2O_e from CLaMS-ERA and CLaMS-MRA are relatively reasonable in terms of both absolute value and amplitude (i.e. generally within uncertainties). By contrast, H_2O_e from CLaMS-JRA is

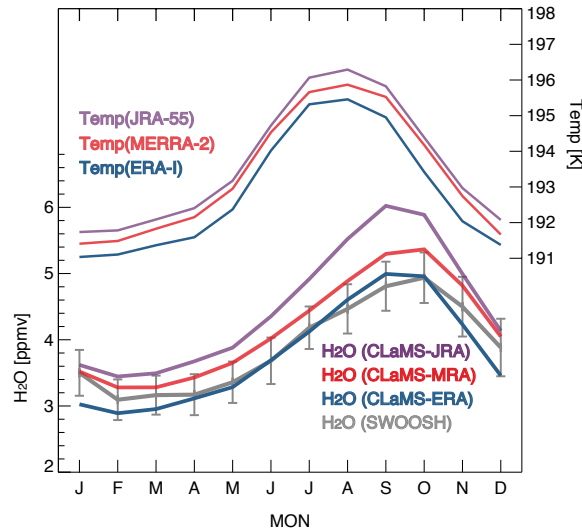


Figure 4. Relationships between tropical tropopause temperatures and water vapor entry mixing ratios (mean H_2O mixing ratios on $\theta = 400$ K averaged over 20°S - 20°N). Here tropical tropopause temperatures refer to the minimum in the mean temperature profile within the tropics (20°S - 20°N) between $\theta = 360$ K and 420 K. The upper set of lines shows the climatological annual cycles for tropical tropopause temperatures, while the lower set of lines shows the climatological annual cycles for water vapor entry mixing ratios. Note that the model results of annual cycles is based on 'CLaMS period' (1980-2013), which is longer than 'SWOOSH period' starting around 1990.

systematically larger than that indicated by SWOOSH or the other two runs. Simulated values based on CLaMS-JRA are ~ 0.5 ppmv larger than SWOOSH estimates in February and ~ 1 ppmv higher than SWOOSH estimates in September. Thus, CLaMS-JRA produces ~ 0.5 ppmv larger peak-to-peak annual amplitude than other estimates. This is qualitatively consistent with non-linearity in the Clausius-Clapeyron equation, which mean that the effects of temperature offsets on H_2O values are larger when the average temperature is higher (Liu et al., 2010; Fueglistaler et al., 2013). Thus, a larger annual amplitude in entry mixing ratios is expected when the average tropopause temperature is larger.

The annual cycle in tropical tropopause temperature leads that of H_2O_e by 1–2 months because ascent within the tropical tropopause layer is relatively slow. Given the strong consistency among tropopause temperature annual cycle phases as represented in the reanalyses, we find the modeled phases of entry H_2O annual cycle are in a good agreement with only small discrepancies. CLaMS-ERA and CLaMS-JRA indicate very consistent phases of the AC, with the annual minimum occurring in February and the annual maximum occurring in September. CLaMS-MRA shows the annual minimum occurring from February to March and the annual maximum in October. SWOOSH data indicates that the annual minimum occurs in February and the maximum in October. The maximum value of H_2O_e based on both of these estimates occurs in October, one month later than the maximum values based on CLaMS-ERA and CLaMS-JRA. This phase shift is related to fact that the ascent in

the tropical tropopause layer is slower in MERRA-2 compared to JRA-55 or ERA-I (see also comparison of MERRA and ERA-I diabatic heating rates by Wright and Fueglistaler, 2013). Another relevant fact is that the strength of vertical mixing in tropical lowermost stratosphere is important for reproducing the observed seasonality of H_2O_e , especially during boreal summer (Glanville and Birner, 2017). We did not specify the strength of vertical mixing in this study, but intend to examine its impacts in future work.

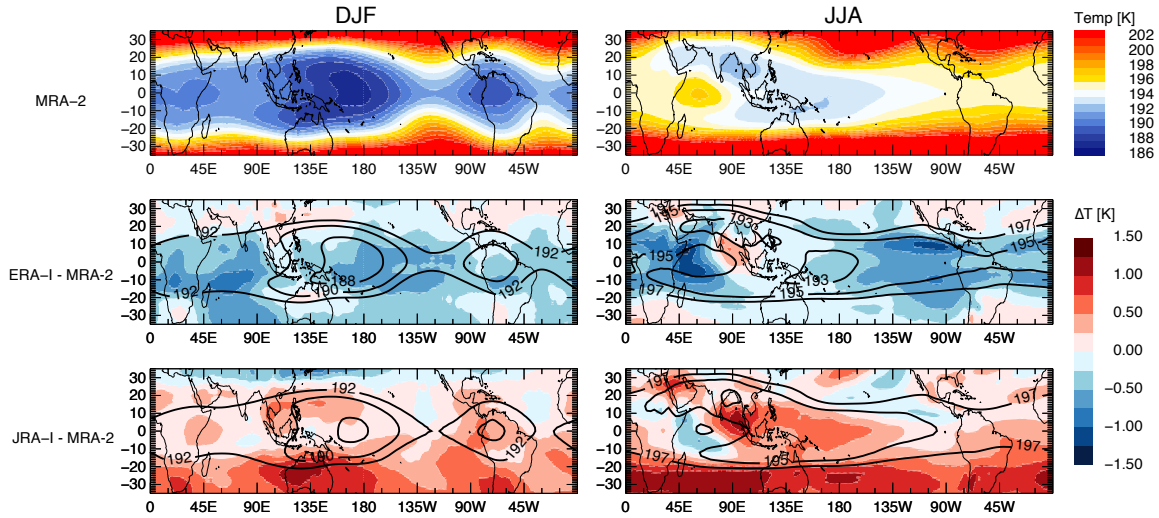


Figure 5. Climatological mean cold point tropopause temperatures during boreal winter (DJF, left) and boreal summer (JJA, right) from MERRA-2 (top row), along with differences in ERA-I (middle row) and JRA-55 (bottom row) relative to MERRA-2. Isolines in the middle and lower rows show absolute values of tropopause temperature. Cold point tropopause temperatures are defined here as minimum temperatures between $\theta = 360$ K and $\theta = 420$ K.

In addition to mean tropical tropopause temperature, the spatial distribution of climatological tropopause temperatures is also an important factor in determining the mean entry mixing ratio. Figure 5 shows this spatial pattern based on MERRA-2 during boreal winter (DJF) and boreal summer (JJA), along with differences in tropopause temperatures from ERA-I and JRA-55 relative to those in MERRA-2. Differences in tropopause temperatures among the three reanalysis products vary considerably with both location and season. ERA-I shows relatively large negative differences (≤ -0.5 K) relative to MERRA-2 over the tropical Indian and Pacific Oceans during DJF. Differences are particularly notable over the tropical western Pacific, where tropopause temperatures based on ERA-I are substantially colder than those based on MERRA-2 during boreal winter. Tropopause temperatures in this region are widely believed to play a key role in determining the value of H_2O_e during boreal winter (Randel et al., 2004; Fueglistaler et al., 2005). Warmer tropopause temperatures in JRA-55 during JJA are located mainly in the Southern Hemisphere subtropics, as well as over the Bay of Bengal and tropical Pacific, with differences relative to MERRA-2 reaching magnitudes of ~ 1 K in these regions. The latter two regions are also widely recognized as playing

influential roles in troposphere-to-stratosphere transport and the final dehydration of air parcels entering the stratosphere during boreal summer (Gettelman et al., 2004; Fueglistaler et al., 2005; Bannister et al., 2004; Wright et al., 2011).

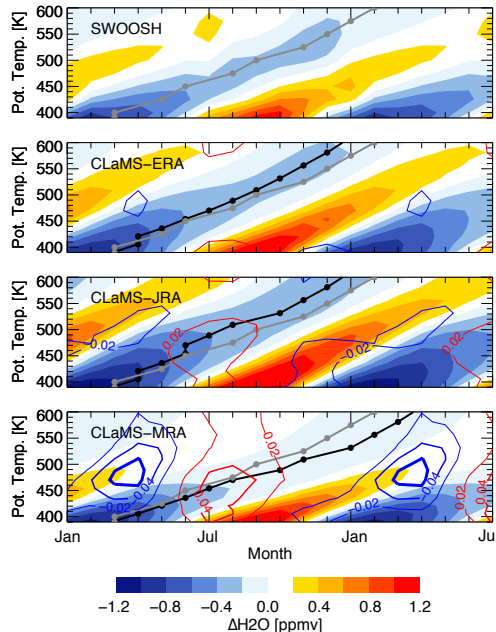


Figure 6. Climatological structure of the stratospheric tape-recorder signal based on SWOOSH and the three CLaMS runs. The tape-recorder is defined as anomalies in tropical (20°S - 20°N) mean H_2O relative to the climatological mean at each level (color shading). The phase of upward propagation (solid circles connected by a line) is defined by the largest correlation with the layer below. For ease of comparison, propagation based on SWOOSH is marked in each panel using gray circles connected by a gray line. Red and blue contours indicate positive and negative contributions of CH_4 to H_2O anomalies (in units of ppmv, at intervals of 0.02 ppmv).

A complementary picture of H_2O entry values is provided in Fig. 6, which depicts the tape-recorder signal in SWV averaged over 20°S - 20°N . Upward propagation of the tape-recorder signal between 450 K and 600 K is 0.5–1.5 months faster in CLaMS-ERA and CLaMS-JRA relative to SWOOSH, and 1–1.5 months slower in CLaMS-MRA than in SWOOSH. Similarly, the amplitude of the tape-recorder signal is systematically stronger than SWOOSH in CLaMS-ERA and CLaMS-JRA, but weaker above 450 K in CLaMS-MRA. These differences are attributable in part to the relatively slow upwelling in MERRA-2 (as shown in Fig. 3). Slower upwelling not only delays the propagation of the signal but also allows more time for horizontal advection and mixing of the middle latitude air into the tropics, which tend to damp the signal. We can also see the remarkably strong contribution of CH_4 oxidation in CLaMS-MRA, which is shown by the blue and red contour lines in Fig. 6. The contribution of $\text{H}_2\text{O}_{\text{CH}_4}$ to the tape-recorder signal is substantially larger in CLaMS-MRA than in the other two runs. This feature is a joint effect of slower tropical upwelling and stronger in-mixing from the extratropics, resulting in a relatively pronounced seasonal cycle in $\text{H}_2\text{O}_{\text{CH}_4}$ in CLaMS-MRA with a maximum amplitude of ~ 0.05 ppmv near the 450 K isentropic.

The amplitude of $\text{H}_2\text{O}_{\text{CH}_4}$ in CLaMS-MRA is twice as large as that in CLaMS-JRA. Meanwhile, CLaMS-ERA shows virtually no anomalies in $\text{H}_2\text{O}_{\text{CH}_4}$ at these levels due to relatively rapid rates of ascent in the lower branch of the BDC. Seasonal variations in $\text{H}_2\text{O}_{\text{CH}_4}$ are opposite in phase relative to seasonal variations in H_2O_e , and account for $\sim 20\%$ of the reduced amplitude of the H_2O tape-recorder above 450 K in CLaMS-MRA.

5 4.2 Global features of the H_2O annual cycle

We now consider differences in the representation of the annual cycle in H_2O throughout the global stratosphere. The amplitude of the simulated annual cycle, A_{AC} , and its phase, P_{AC} , are shown in Figure 7. Here, we examine the CLaMS simulations in the context of Aura MLS observations during the MLS period (2005–2013). In general, these comparisons show good agreement between the CLaMS simulations and MLS. Results for comparisons against SWOOSH H_2O between $\theta = 350$ K and $\theta = 650$ K are qualitatively similar to those against MLS and are not shown here.

The enhanced amplitude of the AC in ‘region 1’ (see Fig. 7A1 and A2) reflects the tape-recorder signal in the tropical lower stratosphere, which propagates from tropopause to the middle stratosphere and extends into subtropics and mid-latitudes. Significant differences in both the amplitude and phase of the AC are evident in the transition layer between the tropical lower stratosphere and the tropical middle stratosphere ($\theta = 450$ – 600 K). These differences are again linked to discrepancies in the strength of tropical upwelling described above (lower panels of Fig. 3 and corresponding discussion). Consistent with our intercomparison of tape-recorder amplitudes shown in the section 4.1, the amplitude of the AC between $\theta = 450$ K and $\theta = 600$ K is larger in CLaMS-JRA and smaller in CLaMS-MRA relative to that inferred from MLS observations (see the signs of ‘+’ and ‘-’ over-plotted on Fig. 7B1-D1). Examination of the phase of the AC likewise confirms that AC-related signals propagate faster in CLaMS-ERA and CLaMS-JRA and slower in CLaMS-MRA than indicated by MLS observations (see arrows over-plotted on Fig. 7B3-D3). Although we use different methods to estimate the AC amplitude in this section relative to section 4.1, both approaches produce similar results with respect to differences among the simulated AC signals in ‘region 1’.

MLS observations further indicate a hemispheric asymmetry in the AC amplitude in ‘region 1’ (NH $>$ SH), possibly related to the transport of relatively moist air from the ASM anticyclone to the stratosphere during boreal summer (e.g. Bannister et al., 2004; Wright et al., 2011). This feature is also evident in all three model-based estimates of H_2O . However, all three CLaMS runs overestimate the amplitude of the AC in the SH subtropics (around 380 K–450 K). One potential reason is that water vapor in the Southern Hemisphere subtropical lower stratosphere is highly sensitive to small-scale mixing processes that must be parameterized in the model (Poshyvailo et al., 2018).

Additional local maxima in the AC amplitude are found in the subtropical upper stratosphere of both hemispheres, marked as ‘region 2’ in Fig. 7. The AC phase in ‘region 2’ indicates that this feature propagates quasi-meridionally. Both the enhanced amplitude of the AC and the hemispheric asymmetry (SH $>$ NH) in this part of the stratosphere are related to seasonal variations in the deep branch of the BDC (Lossow et al., 2017a). The amplitude of the feature in ‘region 2’ is largest in CLaMS-JRA, followed by CLaMS-ERA and CLaMS-MRA. The amplitude implied by the MLS observations falls between those produced by CLaMS-JRA and CLaMS-ERA, and is approximately double the amplitude produced by CLaMS-MRA. Thus,

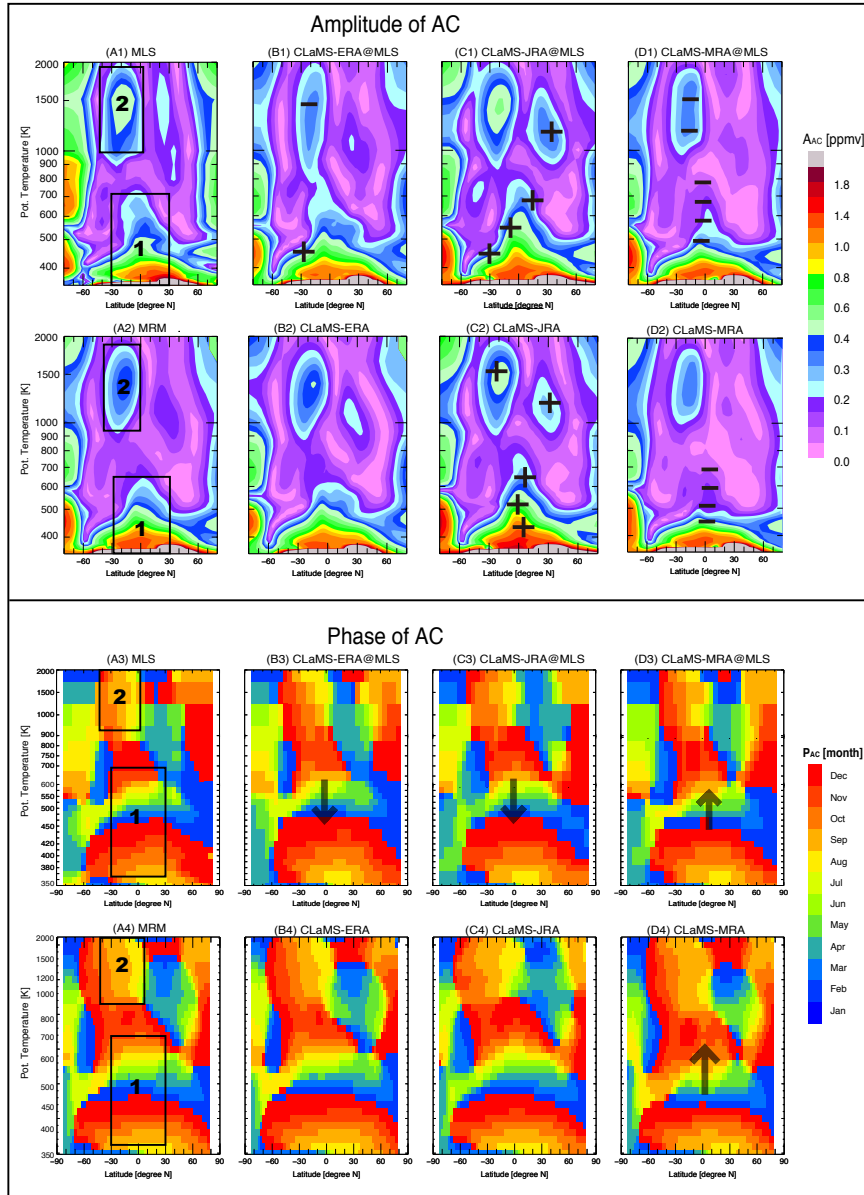


Figure 7. AC amplitudes (A_{AC}) and corresponding phases (P_{AC}) during the MLS period ($\sim 2005-2013$, the first and third row) and the entire CLaMS period (1980-2013, the second and fourth row). The leftmost panels show A_{AC} and P_{AC} based on Aura MLS observations (A1,A3) and the mean of the three reanalysis-driven models (MRM, A2 and A4). The corresponding A_{AC} values from CLaMS-ERA, CLaMS-JRA and CLaMS-MRA are shown in the rightmost three panels of each row. Overprinted '+' and '-' in panels (B1)-(D1) and (B2)-(D2) demonstrate major differences by more than $\pm 30\%$ in simulated A_{AC} relative to the benchmark estimate shown in the corresponding leftmost panel. Arrows in panels (B3)-(D3) and (B4)-(D4) indicate the major region with phase differences by more than 1 month against the benchmark estimate of P_{AC} shown in the corresponding leftmost panel. The upward arrows show phase lagging behind of the benchmark phase while the downward arrows show phase ahead of the benchmark phase.

the relative strength of this AC signal in the subtropical upper stratosphere is consistent with the respective strength of diabatic upwelling in the tropical lower and middle stratosphere (see Fig. 3), which is strongest in CLaMS-JRA and weakest in CLaMS-MRA. Weaker upwelling in the lower part of the BDC ascending branch in CLaMS-MRA produces strong gradients in tracer concentrations (including both H_2O and CH_4) in the lower stratosphere and weak gradients in the upper stratosphere (see also 5 Fig. 2).

5 The Quasi-Biennial Oscillation

We now shift our focus to another quasi-periodic oscillation in SWV: the Quasi-Biennial Oscillation (QBO). Zonal-mean distributions of the climatological amplitudes and phases of the QBO are shown in Figure 8. As above, metrics based on MLS observations are provided in the upper row and metrics based on the MRM are provided in the lower row of each figure. Two 10 regions show clear peaks in A_{QBO} : the tropical lower stratosphere (region 1) and the tropical upper stratosphere (region 2). A peak in the tropical middle stratosphere (region 3) is evident in CLaMS-ERA and CLaMS-JRA but not in MLS or CLaMS-MRA.

The large values of A_{QBO} in region 1 are due to QBO effects on tropical tropopause temperature. Since the tropopause is colder (warmer) during the easterly (westerly) phase of the QBO (referring here to the 50 hPa wind) (Plumb and Bell, 1982), 15 the phase of the QBO effect at the tropical tropopause shown in Fig. 8 is related to the phase of the 50 hPa QBO wind. This water vapor signal then propagates upward at a speed similar to that of the canonical tape-recorder signal. Further details about the QBO modulation of the tape-recorder were suggested by Diallo et al. (2018b). Similar to what we found for AC, CLaMS-ERA and CLaMS-JRA both overestimate A_{QBO} and show upward phase propagation ~ 1 month faster than MLS at isentropic levels between 450 K and 550 K. The QBO amplitude in region 1 based on CLaMS-MRA compares better with 20 A_{QBO} based on MLS observations. These amplitude differences among CLaMS runs evokes similar differences in A_{AC} in the tropical lower stratosphere. Both biases can be traced back to strong upward transport in the lower to middle stratosphere in ERA-I and JRA-55 (Fig. 3), which results in weaker damping in the amplitudes of tropopause-originating signals (such as A_{AC} in Fig. 7 region 1 and A_{QBO} in Fig. 8 region 1) in the vertical direction by mixing.

The large values of A_{QBO} in region 2 are mainly linked to QBO-related modulation of the stratospheric circulation (Baldwin et al., 2001, and references therein). The corresponding phase is effectively simultaneous with the 50 hPa QBO wind, with very little spatial shift. Satellite-derived estimates of this QBO signal indicate that amplitudes are in the range of 0.2 to 0.6 ppmv (Lossow et al., 2017b). MLS H_2O is on the lower end of this range with an amplitude of ~ 0.2 ppmv. However, CLaMS runs during the MLS period produce even smaller amplitudes of 0.1 to 0.2 ppmv, below the range implied by satellite measurements. The smallest amplitude is produced by CLaMS-ERA. This discrepancy may be related to lower values 30 of $\text{H}_2\text{O}_{\text{CH}_4}$ and α in the upper stratosphere as shown in Fig. 2(A3), which result from a systematically faster stratospheric circulation in ERA-I.

The amplitude and phase of the QBO signal in SWV show pronounced discrepancies in the middle stratosphere among the CLaMS simulations driven by different reanalyses (region 3 in Fig. 8). This region coincides with the strongest QBO signal

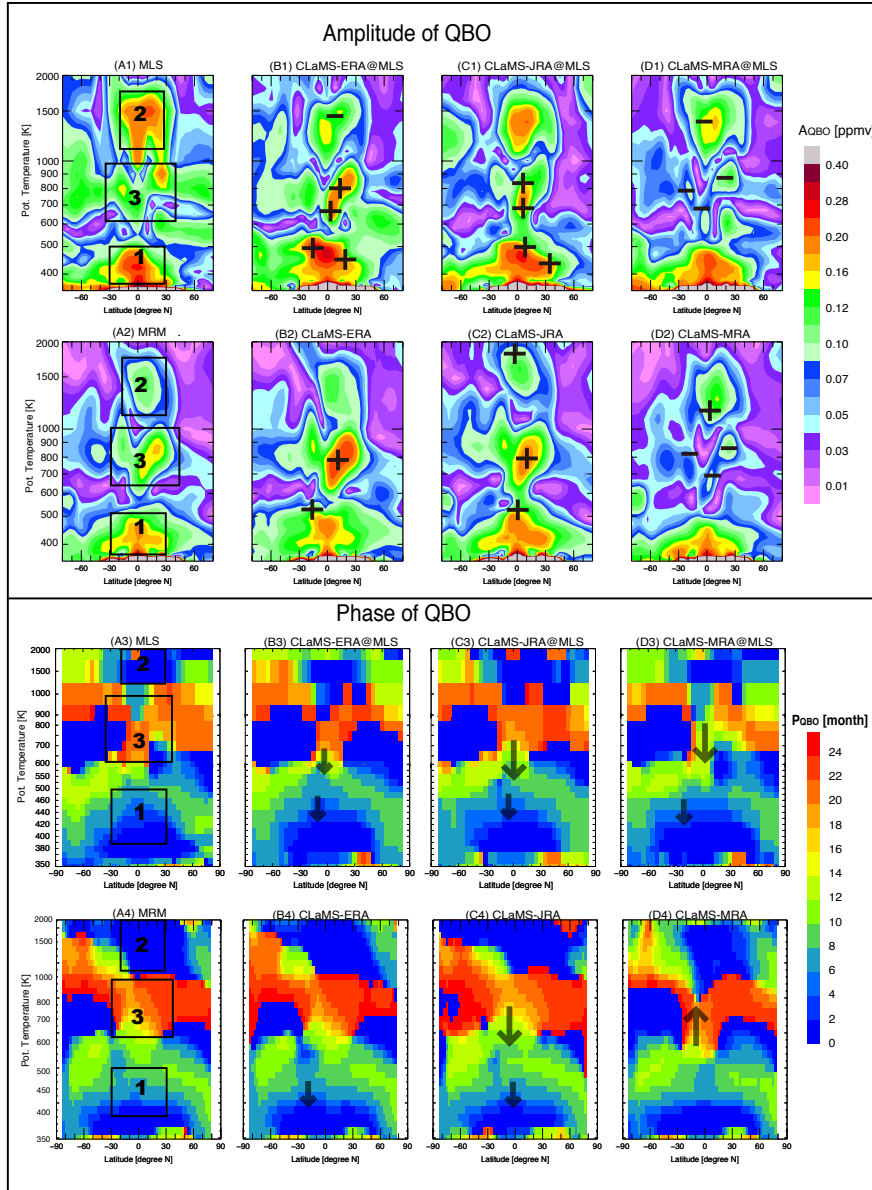


Figure 8. Same as Fig.7 but for QBO amplitudes and phases. Note that the scale of color bars are different from that in Fig.7. Overprinted ‘+’ and ‘-’ in panels (B1)-(D1) and (B2)-(D2) demonstrate major differences by more than $\pm 30\%$ in simulated QBO amplitudes relative to the benchmark estimate shown in the corresponding leftmost panel. The large and small arrows respectively show the major region with phase differences by more than 1 month and 3 month against the benchmark P_{QBO} shown in the corresponding leftmost panel. The upward arrows show phase lagging behind of the benchmark phase while the downward arrows show phase ahead of the benchmark phase.

in zonal wind. During the MLS period (2005–2013), both CLaMS-ERA and CLaMS-JRA overestimate A_{QBO} in this region, particularly within the 0–20°N latitude band. These overestimates can be attributed to strong upward transport of H_2O_e from the lower stratosphere. Although CLaMS-MRA underestimates A_{QBO} in this region, the spatial pattern produced by CLaMS-MRA in the middle stratosphere is more consistent with that indicated by MLS. The estimate of phase in this region from CLaMS-MRA shows ~ 6 months difference when years before MLS period are included or excluded (see Fig. 8D3-D4, where phase shifts are indicated by arrows). Uncertainties in QBO-related H_2O anomalies arise not only from different circulation responses but also from disagreements in zonal wind at the equator among the reanalyses. Equatorial winds at 10 hPa (~ 800 –900 K) in MERRA-2 are clearly different from the FUB records, ERA-I, and JRA-55 during the 1980s and early 1990s, when the assimilated observations are less able to pull the forecast model away from its own internally-generated QBO signal (Coy et al., 2016; Kawatani et al., 2016). **Considering the consistency in QBO wind between MERRA-2 during MLS period and the FUB records, the QBO phase for CLaMS-MRA (D3) is more reliable than that during the whole CLaMS period (D4).**

6 Trends and residual sources of natural variability

As mentioned in section 2.3 and observed in the SWOOSH record (see bottom panel of Fig.1), residual variability beyond the AC, QBO and SAH ($\chi_{\text{res}}(t)$ in eq.(5)) also contributes substantially to variations in H_2O entry mixing ratios. Figure 9A shows that the three CLaMS simulations produce similar interannual variability in the $\chi_{\text{res}}(t)$ term. Within the SWOOSH period (1993–2013), representations of interannual variability among the simulations and the SWOOSH analysis are more consistent during the Aura MLS period (2004–2013) than the pre-MLS period (1993–2004), likely due to **significant improvement in SWOOSH data once MLS observations were incorporated as well as** the contemporaneous improvements in the quantity and quality of satellite observations assimilated by the reanalysis systems (Fujiwara et al., 2017). However, significant differences are evident in the simulated H_2O entry mixing ratio trends, as discussed later in this section.

Dessler et al. (2013) have discussed the causes of interannual variability of SWV using a regression model, which considered variability in the QBO, BDC and tropical tropospheric temperature. Although this regression model is successfully captures most of the variability, it is difficult to disentangle the effects from each regressor. We intend to explore the processes that ultimately control the H_2O variability; i.e. the processes that might influence SWV by modulating BDC or tropical tropospheric temperatures. Among the potential controlling processes, ENSO and stratospheric volcanic aerosols have been shown to modulate both the tropical ascending branch of the BDC (e.g. Diallo et al., 2017, 2018a, b) and tropical tropopause temperatures (e.g. Holton and Gettelman, 2001; Mitchell et al., 2015; Hu et al., 2016). Consequently, variations in ENSO and stratospheric volcanic aerosols have significant influences on H_2O entry mixing ratios (e.g. Scaife et al., 2003; Fueglistaler and Haynes, 2005; Konopka et al., 2016; Diallo et al., 2017). To clarify the ENSO and volcanic aerosol impacts on the H_2O entry mixing ratios in each simulation, we analyze the residuum of H_2O entry values ($\chi_{\text{res}}(t)$ in eq.(5)) using the following multiple regression model:

$$\chi_{\text{res}}(t) = a * P_{\text{volcano}}(t - \tau_{\text{volcano}}) + b * P_{\text{ENSO}}(t - \tau_{\text{enso}}) + \chi'_{\text{res}}(t), \quad (6)$$

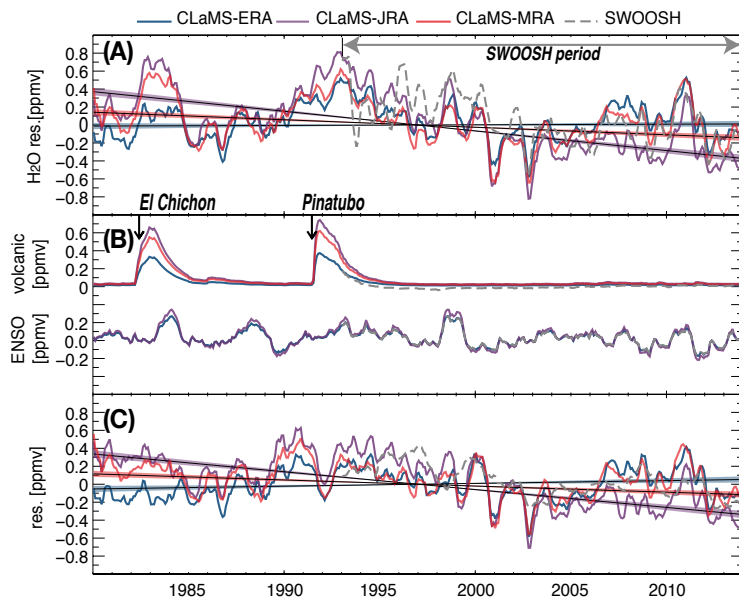


Figure 9. Comparison of residual variability after removing the AC, QBO and SAH from H_2O entry values (mean H_2O mixing ratios on $\theta = 400$ K averaged over 20°S - 20°N) based on CLaMS simulations and SWOOSH. Panel A shows the residual term (χ_{res}) after applying a 3-month running mean. The long-term linear fit is plotted as a solid line with $\pm 2\sigma$ uncertainties. Panel B shows additional components of the multiple linear regression, including the influences of variations in volcanic aerosol (upper set of lines) and ENSO (lower set of lines). Panel C shows the residuum of A after subtracting all contributors shown in B, along with the corresponding trend.

where P_{ENSO} is the normalized Multivariate ENSO Index (MEI; (Wolter and Timlin, 2011)) and P_{volcano} is the aerosol optical depth (AOD) as recorded in satellite data (Vernier et al., 2011). The coefficients are the amplitude a and lag τ_{volcano} associated with volcanic aerosols and the amplitude b and lag τ_{enso} associated with ENSO. We determine the parameters a , b , τ_{volcano} and τ_{enso} as the parameter set that minimizes the residual (χ'_{res}) in the least-squares sense. Additional details of the method and its application have been summarized by Diallo et al. (2017).

Figure 9B shows the response of H_2O to stratospheric volcanic aerosol (upper set in panel B) and ENSO (lower set in panel B) based on the simulations and the observations. Beyond some differences in magnitude, the volcanic aerosol-induced changes in H_2O entry values agree well in terms of response signs and lags. The increase in modelled H_2O associated with volcanic aerosols arises mainly from aerosol-induced warming of the TTL (Dessler et al., 2014; Mitchell et al., 2015; Diallo et al., 2017). Positive H_2O entry anomalies induced by the two major volcanic eruptions during the CLaMS period are twice as large in CLaMS-JRA and CLaMS-MRA (0.6 ppmv for El Chichón and 0.8 ppmv for Pinatubo) as in CLaMS-ERA (0.3 ppmv for El Chichón and 0.4 ppmv for Pinatubo). Note that among these three reanalyses, only MERRA-2 explicitly includes perturbations to the stratospheric aerosol burden following volcanic eruptions (Fujiwara et al., 2017), although the effects of these

Table 1. Trend estimates in H₂O entry mixing ratios and contributions from different sources of variability based on the three CLaMS simulations and SWOOSH over the SWOOSH period (1993–2013) and the longer CLaMS period (1980–2013). Trends are reported in units of ppmv decade⁻¹ (left of the slash) and % decade⁻¹ (right of the slash). **Statistically significant trends are marked in bold.**

	SWOOSH	CLaMS-ERA	CLaMS-JRA	CLaMS-MRA
<i>C_{trd}</i>				
1993–2013	-0.22/-5.8	-0.06/-1.6	-0.39/-8.6	-0.06/-1.5
1980–2013		0.01/0.2	-0.22/-4.9	-0.08/-2.0
$\Delta C_{trd}(\text{ENSO})$				
1993–2013	-0.05/-1.3	-0.06/-1.5	-0.07/-1.6	-0.05/-1.3
1980–2013		-0.02/-0.6	-0.03/-0.6	-0.02/-0.5
$\Delta C_{trd}(\text{volcano})$				
1993–2013	0.00/0.0	0.02/0.4	0.03/0.7	0.03/0.6
1980–2013		0.00/0.0	0.00/0.0	0.00/0.0
$\Delta C_{trd}(\text{res})$				
1993–2013	-0.18/-4.6	-0.02/-0.6	-0.35/-7.8	-0.03/-0.8
1980–2013		0.03/0.7	-0.19/-4.3	-0.06/-1.5

perturbations may also enter all of the reanalyses indirectly through the assimilation of temperature, ozone and other affected quantities.

As with the volcanic aerosol-induced effects, ENSO impacts on H₂O entry values from CLaMS and SWOOSH agree well with respect to the main characteristics of the response. All four estimates show positive H₂O entry anomalies during El Niño and negative anomalies during La Niña, consistent with previous studies (e.g. Randel et al., 2009; Calvo et al., 2010; Dessler et al., 2014; Konopka et al., 2016; Diallo et al., 2018b). Lags (τ_{enso}) in ENSO-induced **tropical mean** H₂O anomalies at $\theta=400\text{K}$ relative to the ENSO signal (here represented by the MEI index) are likewise consistently **between 10-11 months** among all three simulations and the observations. However, there are notable quantitative differences in the magnitude of H₂O entry mixing ratio changes induced by ENSO variability. CLaMS-JRA and CLaMS-MRA show increases in H₂O entry mixing ratios about ~ 0.1 ppmv larger than CLaMS-ERA during strong El-Niño events (1982/1983, 1986/1987 and 1997/1998). However, the response in the latter exhibits the best agreement with SWOOSH during the 1997/1998 El Niño.

Figure 9C shows the residual terms (χ'_{res}) and the trends related to the residual terms after removing ENSO and volcanic aerosol-induced variability. We notice that the significant differences among the trend estimates shown in Fig. 9A largely remain in the residual variability. Further quantification of contributions to the trends is listed in Table 1. We also notice a substantial quasi-decadal variability remaining in the residuals. After removing the high-frequency variability and the linear trends, this quasi-decadal variability agrees well among the three simulations as well as with the SWOOSH data. Further interpretation of this consistent quasi-decadal signal is out of the scope of this study, which aims mainly to **intercompare** different reanalyses.

Table 1 lists the trends in H₂O entry mixing ratios along with the estimated contributions of ENSO and volcanic aerosols to trends in the three reanalyses-driven simulations and SWOOSH over the shorter period (1993–2013) and the longer-term period (1980–2013). Trends are calculated by analyzing the residual of the H₂O entry anomalies with and without the ENSO and volcanic aerosol signals. The trend produced by CLaMS-ERA is very consistent with that produced by CLaMS-MRA after 5 1985 (not shown), as is the residual variability shown in Fig. 9C. By contrast, CLaMS-JRA produces a strong negative trend. As non-periodic variability, such as ENSO variability and the volcanic aerosol burden, may contribute to these trends, their estimated contributions are listed in the second and third rows of Table 1. ENSO variability contributes to negative trends in both modelled and observed H₂O entry mixing ratios over the 1993–2013 SWOOSH period. For the entire simulation period (1980–2013), the ENSO contribution to trends is also negative but with a reduced magnitude. The variability due to volcanic 10 eruptions has zero-trend contribution to the H₂O entry values over the longer period (1980–2013), which is consistent with the volcanic-aerosol induced zero-effect on the trends of mean age of air at the tropical lower stratosphere shown in Diallo et al. (2017). However, it has a positive trend contribution during the 1993–2013 SWOOSH period, likely due to the increased frequency of minor volcanic eruptions after 2008 (Diallo et al., 2017). Conversely, the volcanic aerosol contribution to the trend from 1980 to 2008 (not shown) is negative due to the forcing of the two major eruptions. This analysis suggests that the 15 contribution of volcanic aerosols to interannual variability in H₂O entry values is highly period-dependent. Although we find near compensation over the CLaMS period used in this work (1980–2013), trends in SWV can be substantially influenced by periods of enhanced or reduced supplies of volcanic aerosol to the stratosphere.

Differences among the trend estimates persist in the residual variability even after accounting for the effects of ENSO and volcanic aerosol (Fig. 9C and last row in Table 1), indicating that uncertainties in the model-based trends do not emerge from 20 different responses to major volcanic eruptions or strong ENSO events. The model-based H₂O trends are sensitive to the representation of the tropical tropopause temperature from reanalyses, especially for the early years of the satellite era (e.g. 1980–1985) (Fueglistaler et al., 2013). Differences in the observations assimilated by the three reanalyses or in the representation of the BDC may also contribute to differences in the trend estimates. Reliable attribution of differences in simulated SWV trends will require disentangling complex interactions among changes in tropopause temperature, the stratospheric circulation, 25 and anthropogenic factors such as the amount of methane entering the stratosphere at global scale.

7 Discussion

In the sections above, we relate differences in representations of the climatological mean, AC and QBO signals of SWV to differences in upwelling rates in the shallow branch of the BDC among the reanalysis products used to drive the model. One remaining question is whether these differences in upwelling strength are also responsible for differences in AC or QBO 30 variance. Analysis of the total standard deviation and its contributors in each simulation can shed light on this question. If different upwelling strengths are the main factor, then these different rates of vertical advection should influence each contributor similarly to the total variance. In other words, a larger (or smaller) magnitude of the AC or QBO variance should be approximately in proportion to a larger (or smaller) magnitude of the total variance. We use the standard deviation from

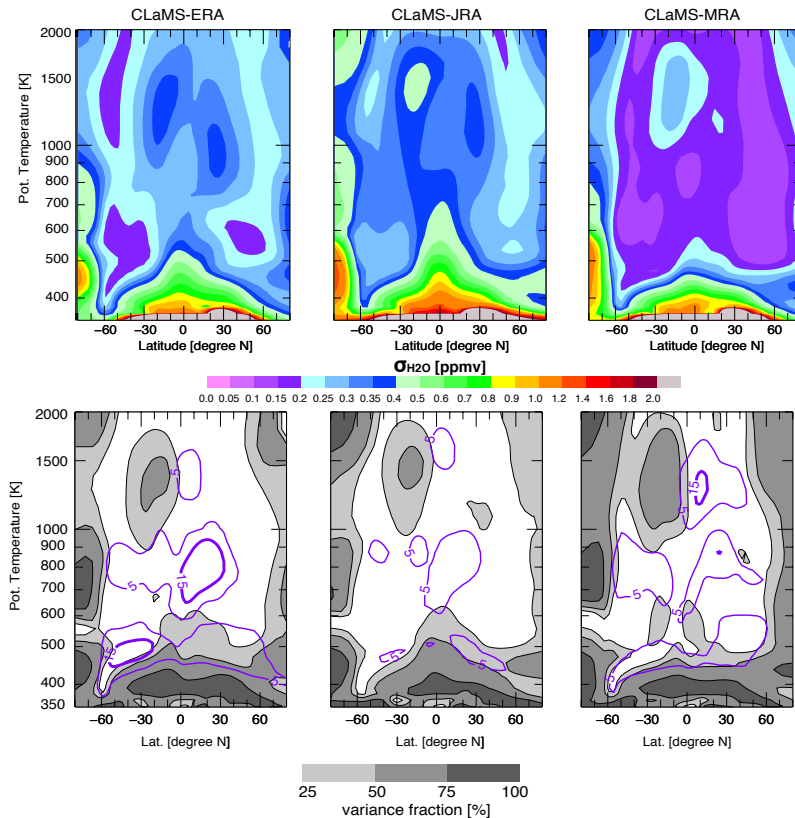


Figure 10. The standard deviation in monthly-mean H₂O (σ_χ ; upper row) and the fraction of AC and QBO variance relative to total variance (in %; bottom row) for CLaMS-ERA (left), CLaMS-JRA (center) and CLaMS-MRA (right). Shading in the lower panels shows the variance fraction attributed to the annual cycle, ($\sigma_{\chi_{AC}}^2/\sigma_\chi^2$), while purple contours show the variance fraction attributed to the QBO, ($\sigma_{\chi_{QBO}}^2/\sigma_\chi^2$).

the full H₂O time series (σ_χ , where χ is the H₂O volume mixing ratio) to quantify the magnitude of total variability. This metric is shown for each of the three simulations in the upper row of Figure 10. We then check the fraction of the total variance attributable to the AC and QBO, respectively: $\sigma_{\chi_{AC}}^2/\sigma_\chi^2$ and $\sigma_{\chi_{QBO}}^2/\sigma_\chi^2$. The variance fractions attributable to the AC and QBO components of the total signal are shown in the bottom row of Figure 10 as grey shading and purple contours, respectively.

- 5 Figure 10 indicates that zonal-mean distributions of AC and QBO variance fractions are qualitatively consistent across all three simulations (bottom row), although the magnitudes of total variance differ to some extent among the three CLaMS runs (top row). For example, CLaMS-MRA produces the smallest amplitudes of both the AC and QBO signals in the lower and middle stratosphere among the three simulations. The top right panel of Fig. 10 (corresponding to CLaMS-MRA) shows that these smaller amplitudes are in turn associated with weaker total variance in the middle stratosphere. By contrast, the fractional
- 10 contributions attributed to the AC and QBO (bottom right panel) are comparable to if not larger than the corresponding frac-

tional contributions based on CLaMS-ERA or CLaMS-JRA. This similarity among variance fractions implies that differences in the strength of the tropical upwelling introduced via the prescribed reanalysis diabatic heating rates can adequately explain differences in the amplitudes of the AC and QBO signals produced by the CLaMS simulations.

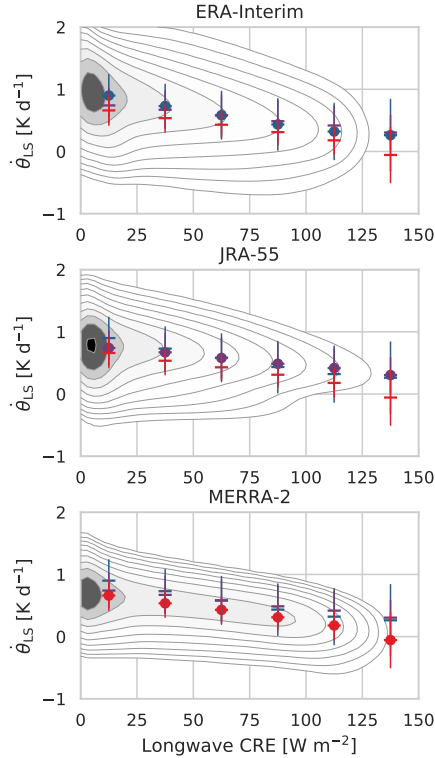


Figure 11. Joint distributions of daily-mean gridded diabatic heating rates ($\dot{\theta}$) in the tropical lower stratosphere ($\theta = 380$ K to $\theta = 460$ K) against the corresponding long-wave cloud radiative effect (LWCRE) based on ERA-I (upper), JRA-55 (center), and MERRA-2 (lower) during 1980–2013. The LWCRE is calculated as clear-sky minus all-sky outgoing long-wave radiation. Also shown are means and standard deviations of $\dot{\theta}_{LS}$ composited into LWCRE bins in intervals of 25 W m^{-2} starting from zero. Estimates based on ERA-I (blue), JRA-55 (purple), and MERRA-2 (red) are shown on all three panels to facilitate comparison. Distributions are based on variables archived on $1^\circ \times 1^\circ$ (ERA-I) and $1.25^\circ \times 1.25^\circ$ (JRA-55 and MERRA-2) latitude–longitude grids between 30°S and 30°N .

The reason that diabatic heating rates in the tropical lower stratosphere are smaller in MERRA-2 than in ERA-I or JRA-55 is as yet unclear. Although a full attribution is beyond the scope of this study, we consider here two possible contributors that may be informative for other users of these data products: 1) the larger long-wave cloud radiative effect (LWCRE) in MERRA-2 than ERA-I or JRA-55; and 2) the unique assimilation process used in MERRA-2.

Diabatic heating rates immediately above the tropical tropopause are dominated by radiative heating Q (e.g. Wright and Fueglistaler, 2013), which, under the plane parallel assumption applied in the reanalysis models, indicates the net vertical convergence of energy in the form of radiation. Adopting the Newtonian cooling approximation $Q \sim -\alpha(T - T_{eq})$ (with α

the inverse of the radiative relaxation time), radiative heating rates Q can be treated as inversely proportional to the difference between the local temperature T and a local radiative equilibrium temperature T_{eq} (e.g. Fueglistaler et al., 2009a). The latter depends on the vertical profile of temperature, the chemical composition, and the radiative effects of aerosol and clouds within the atmospheric column. Figure 11 illustrates the relationship between daily-mean gridded diabatic heating rates in the tropical lower stratosphere $\dot{\theta}_{LS}$ (30°S – 30°N ; $\theta = 380\text{ K}$ to $\theta = 460\text{ K}$) and the corresponding LWCRE (defined as clear-sky minus all-sky outgoing long-wave radiation at the nominal top of atmosphere) based on ERA-I, JRA-55, and MERRA-2. Daily-mean diabatic heating rates and associated upwelling in the tropical lower stratosphere are negatively correlated with LWCRE in all three reanalyses, with r ranging from -0.18 in JRA-55 to -0.38 in ERA-I and -0.54 in MERRA-2. This negative relationship may be explained by noting that clouds occur almost exclusively within the troposphere, so that a larger LWCRE corresponds to a smaller upward flux of long-wave radiation across the tropopause. All else remaining equal, a reduced upward flux across the tropopause acts to reduce T_{eq} and the net convergence of radiant energy, and therefore implies a smaller diabatic heating rate. Moreover, values of the LWCRE in MERRA-2 (median value: 15.9 W m^{-2}) are systematically larger than those in ERA-I (10.0 W m^{-2}) or JRA-55 (6.8 W m^{-2}), especially at the upper end of the range (cf. 90th percentile values of 82.9, 50.1, and 34.8 W m^{-2} , respectively). It is thus unsurprising that MERRA-2 produces weaker diabatic upwelling near the base of the tropical pipe. However, this effect does not appear to account for the entire difference, as lower stratospheric heating rates composited for the same ranges of LWCRE are still systematically smaller in MERRA-2 than in ERA-Interim or JRA-55 (Fig. 11).

Another potential contributor is the unique assimilation process used in MERRA-2 (and its predecessor MERRA), which includes an additional ‘corrector’ step after the initial 3D-Var analysis (i.e. an ‘iterative predictor-corrector approach’; see also Bloom et al., 1996; Rienecker et al., 2011; Fujiwara et al., 2017). During the corrector step, all analysis increments are applied gradually over time as additional tendency terms. This procedure improves the internal consistency among analyzed variables and other model variables. However, it also means that the diabatic tendency and other physical tendency terms in MERRA-2 are archived during the corrector step whereas other reanalyses produce these terms during an initial forecast analogous to the predictor step in MERRA-2. This may have the unintended effect of systematically damping (or amplifying) the tendency terms produced by the physical parameterizations. Again adopting the Newtonian cooling approximation, systematic biases in T or radiatively active constituents could result in the analysis tendency constantly acting to reduce $T - T_{\text{eq}}$ in the lower stratosphere, thereby damping radiative heating rates and associated diabatic upwelling. Using ‘replay’ simulations, which mimic the corrector forecast using a modified version of the atmospheric model and data assimilation system used for MERRA-2, Orbe et al. (2017) showed that a simulation constrained by time-averaged assimilated fields produced approximately 30% slower ascent in the tropical lower stratosphere than one based on instantaneous analysis fields. Although Orbe et al. (2017) concluded that the slower ascent in the simulation based on time-averaged assimilated fields produced output in better agreement with available observations, their result nonetheless highlights the potential impact of the predictor–corrector approach on upwelling in the tropical lower stratosphere. Additional evidence that data assimilation may suppress lower stratospheric upwelling in MERRA-2 is provided by comparison against the MERRA-2 AMIP dataset (Collow et al., 2017), a ten-member ensemble of free-running simulations generated using the same model and boundary conditions as MERRA-2 but without

data assimilation. Time-mean zonal-mean diabatic heating rates in the tropical lower stratosphere are about $0.1\sim 0.2\text{ K day}^{-1}$ smaller in MERRA-2 than in MERRA-2 AMIP over the period 1980–2017 (see Figure D1 in Appendix D).

8 Conclusions

We evaluate representations of SWV and its variations at multiple timescales using the Chemical Lagrangian Model of the Stratosphere (CLaMS) driven by horizontal winds and diabatic heating rates from three recent atmospheric reanalyses: ERA-I, JRA-55 and MERRA-2. The analysis is based on CLaMS simulations of monthly-mean zonal-mean H_2O from 1980–2013. We present an intercomparison of simulated variations in H_2O in the context of observational estimates from Aura MLS and the Stratospheric Water and Ozone Satellite Homogenized (SWOOSH) database, focusing on the annual cycle (AC), the quasi-biennial oscillation (QBO), and long-term variability and trends. Based on the results of this intercomparison, we reach the following conclusions.

The climatological means of SWV, that represents a combination of H_2O entering the stratosphere through the tropical tropopause (dominant in the lower stratosphere) and H_2O supplied by CH_4 oxidation (dominant in the upper stratosphere), are in a good agreement (within $\pm 10\%$ differences) among the three simulations. The age-of-air and the ratio of H_2O from CH_4 oxidation in the lower stratosphere are larger in CLaMS-MRA than in the other two runs, consistent with relatively weaker diabatic upwelling in the lower and middle tropical stratosphere in MERRA-2 relative to ERA-I or JRA-55. Mean tropopause temperatures in ERA-I are approximately 1 K colder than those in JRA-55, resulting in a tropical lower stratosphere that is ~ 0.6 ppmv drier in CLaMS-ERA than in CLaMS-JRA. CLaMS-MRA produces a moderate H_2O entry mixing ratios close to observed as a result of moderate mean tropopause temperature among the three reanalyses.

Differences in amplitudes of modelled H_2O entry mixing ratio ACs can largely be explained by differences in mean tropical tropopause temperatures. Tuning of the dehydration scheme could possibly eliminate differences in both mean entry values and the AC amplitude, but not the phase (see also Liu et al., 2010; Fueglistaler et al., 2013). The spatial distribution of tropopause temperatures is also important to understanding differences in seasonal H_2O entry mixing ratios. The relative dryness of CLaMS-ERA is most pronounced in boreal winter, consistent with especially large negative biases in tropopause temperatures over the western Pacific in ERA-I relative to MERRA-2. By contrast, CLaMS-JRA produces particularly large values of H_2O entry mixing ratios during boreal summer, consistent with systematically warmer tropopause temperatures over the Bay of Bengal and tropical Pacific.

The AC and QBO signals in simulated SWV are robust across the three simulations and reasonably consistent with observations. The main discrepancies in the AC and QBO components of H_2O variability are located in the tropical lower and middle stratosphere. The observed AC and QBO signals are generally located between those produced by CLaMS-ERA and CLaMS-JRA (too strong) and those produced by CLaMS-MRA (too weak). That is mainly linked to the fact that the upwelling rates in the tropical lower stratosphere are smaller in MERRA-2 than ERA-I or JRA-55, which is attributable to the larger long-wave cloud radiative effect and the unique assimilation process in MERRA-2. CLaMS-MRA produces a more realistic pattern of QBO-related signals in SWV (but a bit weaker than observation) than the other two runs, especially in the middle

stratosphere. The ‘tape recorder’ signal is 25% weaker and ~ 1.5 month slower (between 450 K and 600 K) in CLaMS-MRA relative to SWOOSH. By contrast, the tape-recorder signals are both stronger and faster than observed in CLaMS-ERA (20% stronger and ~ 1 month faster than SWOOSH) and CLaMS-JRA (40% stronger and ~ 1 month faster than SWOOSH). We find that differences in the rate of tropical upwelling among the reanalyses not only modulate the propagation of the simulated
5 tape-recorder signal, but also interact with CH₄ photochemistry in ways that tend to amplify the differences due to propagation rates alone (section 4.1).

With respect to residual variability in SWV, the consistency among the model results and the SWOOSH analysis improves with time, including the responses of SWV to variations in ENSO and volcanic aerosol. All simulations indicate strong and consistent quasi-decadal variability. Trends in H₂O entry mixing ratios over the 1980–2013 period are highly sensitive to the
10 reanalysis used to drive the model, leading to different magnitudes and even different signs. This sensitivity of simulated H₂O trends to choice of reanalysis cannot be fully explained by discrepancies in the response of modelled H₂O to ENSO variability or major volcanic eruptions. The H₂O trends are particularly sensitive to the quality of the reanalyses during the first five years of the analysis period (1980–1985).

As best estimates of the true state of the atmosphere, meteorological reanalyses are widely used to drive tracer transport or constrain the meteorological state during model simulations. Our study indicates that the ERA-I, JRA-55, and MERRA-
15 2 reanalyses are all capable of reproducing the seasonality and interannual variability of SWV related to QBO, ENSO and volcanic aerosol. However, particular attention should be paid to potential reanalysis-dependent biases when studying longer-term variability in SWV or other atmospheric tracers. Moreover, the available observations allow no conclusions about which reanalysis is most realistic. Therefore, multiple reanalyses should be used whenever possible to better characterize the effects
20 of uncertainties in the atmospheric state.

Appendix A: SWOOSH-period of H₂O data used for comparison with CLaMS

In section 2.2, we have clarified the procedure used to determine the ‘SWOOSH period’. The start time for each latitude- θ grid location is the first month when SWOOSH H₂O has more than 12 months of available data within the next 2 years. The end time is always December 2013. This procedure excludes some early months of the SWOOSH record (mainly intermittent
25 observations from SAGE-II in the lower stratosphere), thereby improving the continuity of the H₂O time series. Figure A1 shows the distribution of ‘SWOOSH period’ start years identified via this procedure. Due to data filtering applied during the production of SWOOSH (Davis et al., 2016), the ‘SWOOSH period’ is typically: 1) shorter at lower levels than at higher levels; 2) shorter in the tropics and polar regions than in the mid-latitudes; 3) shorter in the Southern Hemisphere than in the Northern Hemisphere. The shortest ‘SWOOSH periods’ start from 2004, and are found in the tropical lower stratosphere and
30 at Southern Hemisphere high latitudes. The longest ‘SWOOSH period’ starts from 1986, in the mid-latitudes between $\theta=550$ K and $\theta=650$ K.

Although SWOOSH H₂O data has some gaps from the start month (shown in Fig. A1) to end of 2013, the full monthly and zonal mean modelled H₂O are taken into account for comparison. This allows us to keep the modelled H₂O time series as

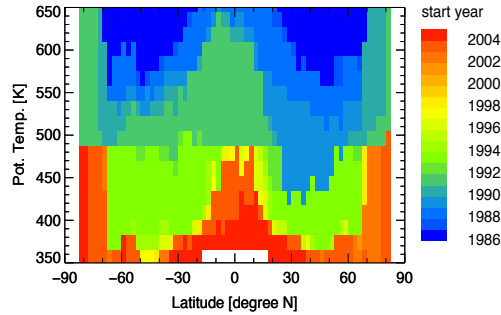


Figure A1. Distribution of start years for the ‘SWOOSH period’ used to compare against the model results. The start time for each latitude- θ grid point is the first month for which more than 12 months of SWOOSH H₂O data are available over the following 2 yr.

continuous as possible, which in turn allows us to extract more reliable variance estimates. The results are virtually unchanged when (SWOOSH) missing months are also excluded from the CLaMS runs.

Appendix B: Tropospheric methane in CLaMS

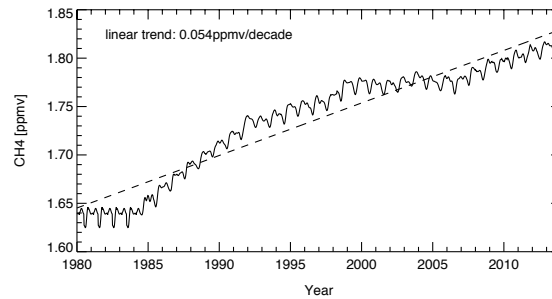


Figure B1. Temporal variations from 1980–2013 in the global mean methane mixing ratio prescribed at the model lower boundary, i.e. the hybrid vertical coordinate $\zeta = 0-100$ K.

The boundary condition for CH₄ mixing ratios in CLaMS is prescribed in the lowest model layer, corresponding to the hybrid
 5 vertical coordinate $\zeta = 0-100$ K. For the simulation period between 1985 and 2012, CH₄ measurements from the NOAA/CMDL ground-based measurement network are used (Masarie and Tans, 1995; Novelli et al., 2003). For simulations in 2012 and later, observations from the AIRS instrument are used. The CH₄ mixing ratios between 1980 and 1984 in Fig. B1 are just repetition of the year 1985 since the NOAA/CMDL data is not available before 1985. As CH₄ is a long-lived tracer, we use zonal mean

mixing ratios to prescribe the lower boundary condition. Figure B1 shows the time series of global-mean CH₄ mixing ratios prescribed at the model lower boundary. Since the time series before 1985 is artificial, Fig. B1 shows a start of the methane from the mid-1980s before leveling off in the mid-1990s. The long-term trend in CH₄ at the model lower boundary (1980–2013) is 0.054 ppmv decade⁻¹. In fact, there is one option to extend the period of tropospheric methane before 1985 following

5 Fueglistaler and Haynes (2005) by using the Antarctic ice core data (Etheridge et al., 1992). We consider this option for the lower boundary condition [in future applications of CLaMS](#).

Appendix C: Semi-Annual variation

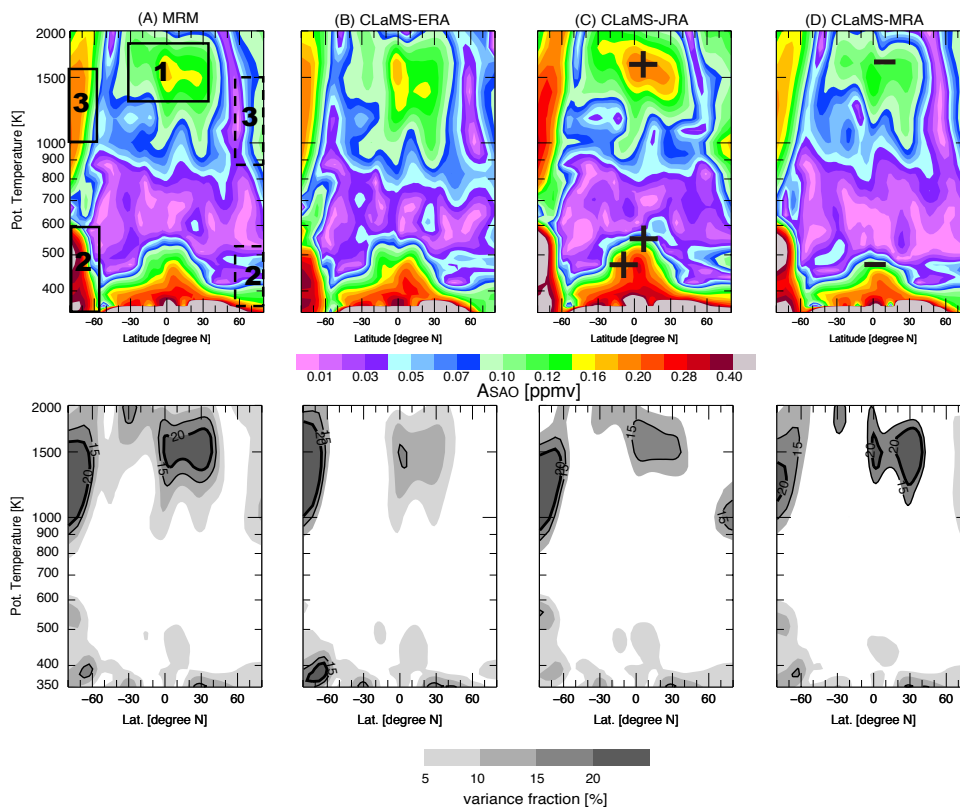


Figure C1. The top row shows SAH amplitudes in the same way as in the second row of Figure 7. The bottom row shows the fraction of SAH variance relative to total variance, similar to the bottom row of Figure 9.

Figure C shows the spatial distribution of the amplitude and corresponding variance fraction of semi-annual harmonic (SAH) signals in simulated SWV. The enhanced SAH signal in region 1 is associated with the semi-annual oscillation (SAO) of the

10 upper stratospheric circulation. Satellite observations of the SAH feature in the tropical upper stratosphere and the mechanisms

behind this feature have been studied by Jackson et al. (1998), Randel et al. (1998), and Jackson et al. (1998). The enhanced SAH signals in region 2 and region 3 are located between two strong AC signals in the polar regions (SH > NH; see Fig. 7). The mechanism behind the SAH signals in regions 2 and 3 is related to the combined effects of seasonality in the formation of PSCs and seasonality in vertical transport (e.g. Lossow et al., 2017b).

5 The SAH fraction shows that the SAH contributed more than 10% of the total variance in region 1 and region 3 (both located in the upper stratosphere). The SAH amplitudes in region 1 simulated by the CLaMS runs are in good agreement (within 0.1-0.2 ppmv), and also agree well with HALOE and MLS observations (Jackson et al., 1998; Lossow et al., 2017b). As with the AC and QBO features, the SAH signal in region 1 is most pronounced in CLaMS-JRA, followed by CLaMS-ERA and CLaMS-MRA. Similarly, the SAH fraction relative to the total variance is again higher in CLaMS-MRA (greater than 15–20%) due to
10 the low total variance simulated by CLaMS-MRA in the mid-upper stratosphere.

Appendix D: MERRA-2 versus MERRA-2 AMIP diabatic heating rates

The MERRA-2 AMIP dataset is an ensemble of ten Atmospheric Model Intercomparison Project (AMIP)-type simulations conducted using the atmospheric model used to produce MERRA-2. All simulations used identical boundary conditions and model configurations to MERRA-2 but did not assimilate observations (Collon et al., 2017). Therefore, a comparison of
15 MERRA-2 against that of MERRA-2 AMIP gives a rough indication of the effect of the iterative predictor–corrector data assimilation procedure used in MERRA-2. The comparison of the diabatic heating rates is shown in Figure D1. The climatological patterns in MERRA-2 and MERRA-2 AMIP are qualitatively similar; however, their quantitative differences are substantial (bottom panel). Most notably, diabatic heating rates are about $0.2\sim 0.4\text{ K day}^{-1}$ larger in MERRA-2 than in MERRA-2 AMIP at pressures greater than 200 hPa, while diabatic heating rates in the lower stratosphere (pressures less than 100 hPa)
20 are $0.1\sim 0.2\text{ K day}^{-1}$ smaller in MERRA-2 than in MERRA-2 AMIP. These results suggest that the data assimilation procedure suppresses upwelling in the tropical lower stratosphere by as much as 20–40%.

Author contributions. M. Tao carried out the analysis on the simulations and on the reanalysis data. P. Konopka and F. Ploeger contributed the code for analysis. J.S. Wright prepared the MERRA-2 reanalysis data and provided the attribution for slow upwelling rates in MERRA-2 for the discussion section. P. Konopka, F. Ploeger and X. Yan performed the simulations driven by ERA-I, JRA-55 and MERRA-2,
25 respectively. M. Diallo contributed the regression on natural variability. S. Fueglistaler and M. Riese gave helpful suggestions, especially on the dehydration scheme in the model and the interpretation of trend. M. Tao wrote the manuscript. All the co-authors provided helpful discussions and comments on the manuscript.

Acknowledgements. This research was supported by a joint DFG-NSFC Research project with DFG project number 392169209 and NSFC project number 20171352419. Mengchu Tao thanks the German Helmholtz-Gemeinschaft within the Helmholtz-CAS joint research group
30 (JRG) “Climatological impact of increasing anthropogenic emissions over Asia”, enabling her research position in Institute of Energy and

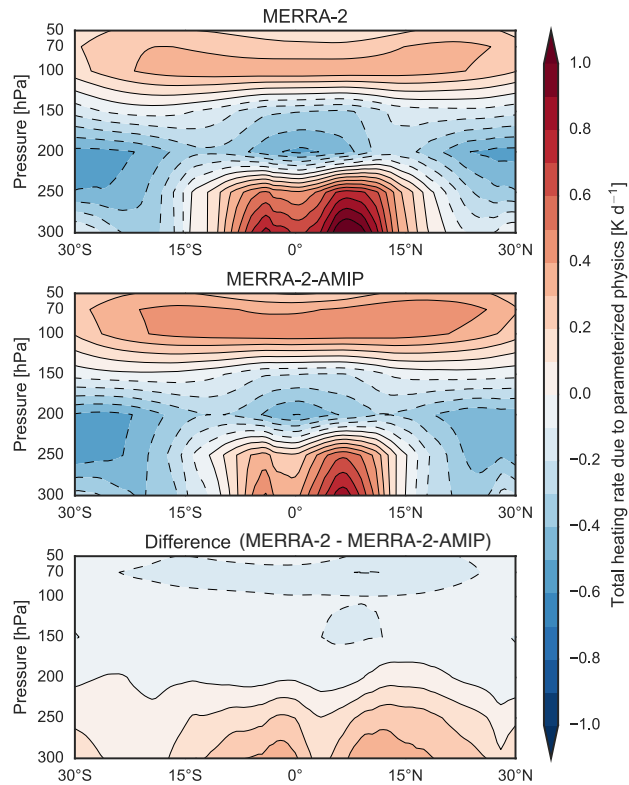


Figure D1. Comparison of time-mean zonal-mean diabatic heating rates in the tropical (30°N - 30°S) lower stratosphere between the MERRA-2 reanalysis (top panel) and the MERRA-2 AMIP ensemble mean (middle panel) over 1980–2017. Differences between MERRA-2 and MERRA-2 AMIP are shown in the bottom panel.

Climate Research, Stratosphere (IEK-7), Forschungszentrum in Jülich during which this work was carried out. We thank the Helmholtz Association under grant number VH-NG-1128 (Helmholtz-Hochschul-Nachwuchsforschergruppe), providing the research funding for the young investigator group in IEK-7 including the co-authors Felix Ploeger and Mohamadou Diallo. We thank Krzysztof Wargan for assistance with the MERRA-2-AMIP data.

References

- Abalos, M., Legras, B., Ploeger, F., and Randel, W. J.: Evaluating the advective Brewer-Dobson circulation in three reanalyses for the period 1979–2012, *J. Geophys. Res. A*, 120, 7534–7554, 2015.
- Baldwin, M., Gray, L., Dunkerton, T., Hamilton, K., Haynes, P., Randel, W., Holton, J., Alexander, M., Hirota, I., Horinouchi, T., et al.: The quasi-biennial oscillation, *Reviews of Geophysics*, 39, 179–229, 2001.
- Bannister, R., O’neill, A., Gregory, A., and Nissen, K.: The role of the south-east Asian monsoon and other seasonal features in creating the ‘tape-recorder’ signal in the Unified Model, *Q. J. R. Meteorol. Soc.*, 130, 1531–1554, 2004.
- Bloom, S. C., Takacs, L. L., da Silva, A. M., and Ledvina, D.: Data assimilation using incremental analysis updates, *Mon. Wea. Rev.*, 124, 1256–1271, 1996.
- Brewer, A. W.: Evidence for a world circulation provided by the measurements of helium and water vapour distribution in the stratosphere, *Q. J. R. Meteorol. Soc.*, 75, 351–363, 1949.
- Calvo, N., Garcia, R., Randel, W., and Marsh, D.: Dynamical mechanism for the increase in tropical upwelling in the lowermost tropical stratosphere during warm ENSO events, *J. Atmos. Sci.*, 67, 2331–2340, 2010.
- Collow, A. B. M., Mahanama, S. P., Bosilovich, M. G., Koster, R. D., and Schubert, S. D.: An evaluation of teleconnections over the United States in an ensemble of AMIP simulations with the MERRA-2 configuration of the GEOS atmospheric model, Technical Report Series on Global Modeling and Data Assimilation, No. 47, NASA/TM-2017-104606, Greenbelt, Maryland, available at <https://ntrs.nasa.gov/search.jsp?R=20180001607> (accessed November 2018), 2017.
- Coy, L., Wargan, K., Molod, A. M., McCarty, W. R., and Pawson, S.: Structure and dynamics of the quasi-biennial oscillation in MERRA-2, *J. Climate*, 29, 5339–5354, 2016.
- Davis, S. M., Rosenlof, K. H., Hassler, B., Hurst, D. F., Read, W. G., Vömel, H., Selkirk, H., Fujiwara, M., and Damadeo, R.: The Stratospheric Water and Ozone Satellite Homogenized (SWOOSH) database: A long-term database for climate studies, *Earth system science data*, 8, 461, 2016.
- Davis, S. M., Hegglin, M. I., Fujiwara, M., Dragani, R., Harada, Y., Kobayashi, C., Long, C., Manney, G. L., Nash, E. R., Potter, G. L., Tegtmeier, S., Wang, T., Wargan, K., and Wright, J. S.: Assessment of upper tropospheric and stratospheric water vapor and ozone in reanalyses as part of S-RIP, *Atmos. Chem. Phys.*, 17, 12 743–12 778, <https://doi.org/10.5194/acp-17-12743-2017>, 2017.
- Dee, D. P., Uppala, S. M., Simmons, A. J., Berrisford, P., Poli, P., Kobayashi, S., Andrae, U., Balmaseda, M. A., Balsamo, G., Bauer, P., Bechtold, P., Beljaars, A. C. M., van de Berg, L., Bidlot, J., Bormann, N., Delsol, C., Dragani, R., Fuentes, M., Geer, A. J., Haimberger, L., Healy, S. B., Hersbach, H., Holm, E. V., Isaksen, I., Kallberg, P., Kohler, M., Matricardi, M., McNally, A. P., Monge-Sanz, B. M., Morcrette, J. J., Park, B. K., Peubey, C., de Rosnay, P., Tavolato, C., Thepaut, J. N., and Vitart, F.: The ERA-Interim reanalysis: configuration and performance of the data assimilation system, *Q. J. R. Meteorol. Soc.*, 137, 553–597, <https://doi.org/10.1002/qj.828>, 2011.
- Dessler, A., Schoeberl, M., Wang, T., Davis, S., and Rosenlof, K.: Stratospheric water vapor feedback, *Proceedings of the National Academy of Sciences*, 110, 18 087–18 091, 2013.
- Dessler, A., Schoeberl, M., Wang, T., Davis, S., Rosenlof, K., and Vernier, J.-P.: Variations of stratospheric water vapor over the past three decades, *J. Geophys. Res. A*, 119, 12–588, 2014.
- Diallo, M., Ploeger, F., Konopka, P., Birner, T., Müller, R., Riese, M., Garny, H., Legras, B., Ray, E., Berthet, G., et al.: Significant contributions of volcanic aerosols to decadal changes in the stratospheric circulation, *Geophys. Res. Lett.*, 44, 2017.

- Diallo, M., Konopka, P., Santee, M. L., Müller, R., Tao, M., Walker, K. A., Legras, B., Riese, M., and Ploeger, F.: Structural changes in the shallow and transition branch of the Brewer–Dobson circulation induced by El Niño, *Atmos. Chem. Phys.*, 2018, 1–29, <https://doi.org/10.5194/acp-2018-688>, <https://www.atmos-chem-phys-discuss.net/acp-2018-688/>, 2018a.
- Diallo, M., Riese, M., Birner, T., Konopka, P., Müller, R., Hegglin, M. I., Santee, M. L., Baldwin, M., Legras, B., and Ploeger, F.: Response of stratospheric water vapor and ozone to the unusual timing of El Niño and the QBO disruption in 2015–2016, *Atmos. Chem. Phys.*, 18, 13 055–13 073, 2018b.
- Dirksen, R. J., Sommer, M., Immler, F. J., Hurst, D. F., Kivi, R., and Vömel, H.: Reference quality upper-air measurements: GRUAN data processing for the Vaisala RS92 radiosonde, *Atmos. Meas. Tech.*, 7, 4463–4490, <https://doi.org/10.5194/amt-7-4463-2014>, <https://www.atmos-meas-tech.net/7/4463/2014/>, 2014.
- 10 Etheridge, D., Pearman, G., and Fraser, P.: Changes in tropospheric methane between 1841 and 1978 from a high accumulation-rate Antarctic ice core, *Tellus B*, 44, 282–294, 1992.
- Forster, P. and Shine, K. P.: Stratospheric water vapour change as possible contributor to observed stratospheric cooling, *Geophys. Res. Lett.*, 26, 3309 – 3312, <https://doi.org/10.1029/1999GL010487>, 1999.
- Forster, P. and Shine, K. P.: Assessing the climate impact of trends in stratospheric water vapor, *Geophys. Res. Lett.*, 29, <https://doi.org/10.1029/2001GL013909>, 2002.
- 15 Froidevaux, L., Anderson, J., Wang, H.-J., Fuller, R., Schwartz, M., Santee, M., Livesey, N., Pumphrey, H., Bernath, P., Russell III, J., et al.: Global OZone Chemistry And Related trace gas Data records for the Stratosphere (GOZCARDS): methodology and sample results with a focus on HCl, H₂O, and O₃, *Atmos. Chem. Phys.*, 15, 10 471–10 507, 2015.
- Fueglistaler, S. and Haynes, P. H.: Control of interannual and longer-term variability of stratospheric water vapor, *J. Geophys. Res.*, 110, <https://doi.org/10.1029/2005JD006019>, 2005.
- 20 Fueglistaler, S., Bonazzola, M., Haynes, P., and Peter, T.: Stratospheric water vapor predicted from the Lagrangian temperature history of air entering the stratosphere in the tropics, *J. Geophys. Res. A*, 110, <https://doi.org/10.1029/2004JD005516>, 2005.
- Fueglistaler, S., Dessler, A. E., Dunkerton, T. J., Folkins, I., Fu, Q., and Motte, P. W.: Tropical tropopause layer, *Rev. Geophys.*, RG1004, <https://doi.org/10.1029/2008RG000267>, 2009a.
- 25 Fueglistaler, S., Legras, B., Beljaars, A., Morcrette, J.-J., Simmons, A., Tompkins, A. M., and Uppapla, S.: The diabatic heat budget of the upper troposphere and lower/mid stratosphere in ECMWF reanalyses, *Q. J. R. Meteorol. Soc.*, 135, 21–37, <https://doi.org/10.1002/qj.361>, 2009b.
- Fueglistaler, S., Liu, Y., Flannaghan, T., Haynes, P., Dee, D., Read, W., Remsberg, E., Thomason, L., Hurst, D., Lanzante, J., et al.: The relation between atmospheric humidity and temperature trends for stratospheric water, *J. Geophys. Res. A*, 118, 1052–1074, 2013.
- 30 Fujiwara, M., Wright, J. S., Manney, G. L., Gray, L. J., Anstey, J., Birner, T., Davis, S., Gerber, E. P., Harvey, V. L., Hegglin, M. I., et al.: Introduction to the SPARC Reanalysis Intercomparison Project (S-RIP) and overview of the reanalysis systems, *Atmos. Chem. Phys.*, 17, 1417–1452, 2017.
- Gelaro, R., McCarty, W., Suárez, M. J., Todling, R., Molod, A., Takacs, L., Randles, C. A., Darmenov, A., Bosilovich, M. G., Reichle, R., et al.: The modern-era retrospective analysis for research and applications, version 2 (MERRA-2), *J. Geophys. Res.*, 30, 5419–5454, 2017.
- 35 Gettelman, A., Holton, J. R., and Douglass, A. R.: Simulations of water vapor in the lower stratosphere, *J. Geophys. Res.*, 105, 9003 – 9023, 2000.
- Gettelman, A., Kinnison, D. E., and Dunkerton, T. J.: Impact of monsoon circulations on the upper troposphere and lower stratosphere, *J. Geophys. Res.*, 109, D22101, <https://doi.org/10.1029/2004JD004878>, 2004.

- Glanville, A. A. and Birner, T.: Role of vertical and horizontal mixing in the tape recorder signal near the tropical tropopause, *Atmos. Chem. Phys.*, 17, 4337–4353, <https://doi.org/10.5194/acp-17-4337-2017>, 2017.
- Hegglin, M., Plummer, D., Shepherd, T., Scinocca, J., Anderson, J., Froidevaux, L., Funke, B., Hurst, D., Rozanov, A., Urban, J., et al.: Vertical structure of stratospheric water vapour trends derived from merged satellite data, *Nat. Geosci.*, 7, 768–776, 2014.
- 5 Hobe, M. v., Groß, J.-U., Günther, G., Konopka, P., Gensch, I., Krämer, M., Spelten, N., Afchine, A., Schiller, C., Ulanovsky, A., et al.: Evidence for heterogeneous chlorine activation in the tropical UTLS, *Atmos. Chem. Phys.*, 11, 241–256, 2011.
- Holton, J. R. and Gettelman, A.: Horizontal transport and the dehydration of the stratosphere, *Geophys. Res. Lett.*, 28, 2799–2802, 2001.
- Hu, D., Tian, W., Guan, Z., Guo, Y., and Dhomse, S.: Longitudinal asymmetric trends of tropical cold-point tropopause temperature and their link to strengthened Walker circulation, *J. Climate*, 29, 7755–7771, 2016.
- 10 Hurst, D. F., Oltmans, S. J., Vömel, H., Rosenlof, K. H., Davis, S. M., Ray, E. A., Hall, E. G., and Jordan, A. F.: Stratospheric water vapor trends over Boulder, Colorado: Analysis of the 30 year Boulder record, *J. Geophys. Res. A*, 116, 2011.
- Jackson, D., Burrage, M., Harries, J., Gray, L., and Russell III, J.: The semi-annual oscillation in upper stratospheric and mesospheric water vapour as observed by HALOE, *Q. J. R. Meteorol. Soc.*, 124, 2493–2515, 1998.
- Joshi, M. M. and Shine, K. P.: A GCM study of volcanic eruptions as a cause of increased stratospheric water vapor, *J. Climate*, 16, 3525–
- 15 3534, 2003.
- Kawatani, Y., Hamilton, K., Miyazaki, K., Fujiwara, M., and Anstey, J. A.: Representation of the tropical stratospheric zonal wind in global atmospheric reanalyses, *Atmos. Chem. Phys.*, 16, 6681–6699, <https://doi.org/10.5194/acp-16-6681-2016>, <https://www.atmos-chem-phys.net/16/6681/2016/>, 2016.
- Khosrawi, F., Lossow, S., Stiller, G. P., Rosenlof, K. H., Urban, J., Burrows, J. P., Damadeo, R. P., Eriksson, P., García-Comas, M., Gille,
- 20 J. C., et al.: The SPARC water vapour assessment II: comparison of stratospheric and lower mesospheric water vapour time series observed from satellites, *Atmos. Meas. Tech.*, 11, 4435–4463, 2018.
- Kobayashi, S., Ota, Y., Harada, Y., Ebata, A., Moriya, M., Onoda, H., Onogi, K., Kamahori, H., Kobayashi, C., Endo, H., et al.: The JRA-55 reanalysis: General specifications and basic characteristics, *Journal of the Meteorological Society of Japan. Ser. II*, 93, 5–48, 2015.
- Konopka, P., Steinhorst, H.-M., Groß, J.-U., Günther, G., Müller, R., Elkins, J. W., Jost, H.-J., Richard, E., Schmidt, U., Toon, G., and
- 25 McKenna, D. S.: Mixing and Ozone Loss in the 1999-2000 Arctic Vortex: Simulations with the 3-dimensional Chemical Lagrangian Model of the Stratosphere (CLaMS), *J. Geophys. Res.*, 109, D02315, <https://doi.org/10.1029/2003JD003792>, 2004.
- Konopka, P., Ploeger, F., Tao, M., and Riese, M.: Zonally resolved impact of ENSO on the stratospheric circulation and water vapor entry values, *J. Geophys. Res. A*, 121, 2016.
- Krämer, M., C. Schiller, C., Afchine, A., Bauer, R., Gensch, I., Mangold, A., Schlicht, S., Spelten, N., Sitnikov, N., de Reus, S. B. M., and
- 30 Spichtinger, P.: Ice supersaturations and cirrus cloud crystal numbers, *Atmos. Chem. Phys.*, 9, 3505–3522, <http://www.atmos-chem-phys.net/9/3505/2009/>, 2009.
- Liu, Y. S., Fueglistaler, S., and Haynes, P.: Advection-condensation paradigm for stratospheric water vapor, *J. Geophys. Res. A*, 115, 2010.
- Livesey, N., Read, W., Wagner, P., Froidevaux, L., Lambert, A., Manney, G., Millán, L., Pumphrey, H., Santee, M., Schwartz, M., et al.: Earth Observing System (EOS), Aura Microwave Limb Sounder (MLS), Version 4.2 x Level 2 data quality and description document, Version
- 35 4.2 x-3.0, D-33509, Jet Propulsion Laboratory, California Institute of Technology, Pasadena, California, available at: <https://mls.jpl.nasa.gov/data/datadocs.php>, last access, 7, 2017.
- Long, C. S., Fujiwara, M., Davis, S., Mitchell, D. M., and Wright, C. J.: Climatology and interannual variability of dynamic variables in multiple reanalyses evaluated by the SPARC Reanalysis Intercomparison Project (S-RIP), *Atmos. Chem. Phys.*, 17, 14 593, 2017.

- Lossow, S., Garny, H., and Jöckel, P.: An “island” in the stratosphere—on the enhanced annual variation of water vapour in the middle and upper stratosphere in the southern tropics and subtropics, *Atmos. Chem. Phys.*, 17, 11 521, 2017a.
- Lossow, S., Khosrawi, F., Nedoluha, G. E., Azam, F., Bramstedt, K., Burrows, J. P., Dinelli, B. M., Eriksson, P., Espy, P. J., García-Comas, M., et al.: The SPARC water vapour assessment II: comparison of annual, semi-annual and quasi-biennial variations in stratospheric and lower mesospheric water vapour observed from satellites, *Atmos. Meas. Tech.*, 10, 1111, 2017b.
- Marti, J. and Mauersberger, K.: A survey and new measurements of ice vapor pressure temperatures between 170 and 250 K, *Geophys. Res. Lett.*, 20, 363–366, <https://doi.org/10.1029/93GL00105>, 1993.
- Masarie, K. and Tans, P.: Extension and integration of atmospheric carbon dioxide data into a globally consistent measurement record, *J. Geophys. Res.*, 100, 11 593–11 610, 1995.
- 10 McKenna, D. S., Konopka, P., Groöß, J.-U., Günther, G., Müller, R., Spang, R., Offermann, D., and Orsolini, Y.: A new Chemical Lagrangian Model of the Stratosphere (CLaMS): 1. Formulation of advection and mixing, *J. Geophys. Res.*, 107, 4309, <https://doi.org/10.1029/2000JD000114>, 2002.
- Mitchell, D., Gray, L., Fujiwara, M., Hibino, T., Anstey, J., Ebisuzaki, W., Harada, Y., Long, C., Misios, S., Stott, P., et al.: Signatures of naturally induced variability in the atmosphere using multiple reanalysis datasets, *Q. J. R. Meteorol. Soc.*, 141, 2011–2031, 2015.
- 15 Mote, P. W., Rosenlof, K. H., McIntyre, M. E., Carr, E. S., Gille, J. G., Holton, J. R., Kinnersley, J. S., Pumphrey, H. C., Russell III, J. M., and Waters, J. W.: An atmospheric tape recorder: The imprint of tropical tropopause temperatures on stratospheric water vapor, *J. Geophys. Res.*, 101, 3989 – 4006, 1996.
- Müller, R., Kunz, A., Hurst, D. F., Rolf, C., Krämer, M., and Riese, M.: The need for accurate long-term measurements of water vapor in the upper troposphere and lower stratosphere with global coverage, *Earth’s future*, 4, 25–32, 2016.
- 20 Novelli, C., P., Masarie, K. A., Lang, P. M., Hall, B. D., Myers, R. C., and Elkins, J. W.: Reanalysis of tropospheric CO trends: Effects of the 1997-1998 wildfires, *J. Geophys. Res.*, 108, 4464, 2003.
- Orbe, C., Oman, L. D., Strahan, S. E., Waugh, D. W., Pawson, S., Takacs, L. L., and Molod, A. M.: Large-Scale Atmospheric Transport in GEOS Replay Simulations, *Journal of Advances in Modeling Earth Systems*, 9, 2545–2560, 2017.
- Ostermöller, J., Bönisch, H., Jöckel, P., and Engel, A.: A new time-independent formulation of fractional release, *Atmos. Chem. Phys.*, 17, 3785–3797, <https://doi.org/10.5194/acp-17-3785-2017>, <https://www.atmos-chem-phys.net/17/3785/2017/>, 2017.
- 25 Ploeger, F., Günther, G., Konopka, P., Fueglistaler, S., Müller, R., Hoppe, C., Kunz, A., Spang, R., Groöß, J.-U., and Riese, M.: Horizontal water vapor transport in the lower stratosphere from subtropics to high latitudes during boreal summer, *J. Geophys. Res.*, 118, 8111–8127, <https://doi.org/10.1002/jgrd.50636>, 2013.
- Ploeger, F., Riese, M., Haanel, F., Konopka, P., Müller, R., and Stiller, G.: Variability of stratospheric mean age of air and of the local effects of residual circulation and eddy mixing, *J. Geophys. Res.*, 120, 716–733, 2015.
- 30 Ploeger, F., Legras, B., Charlesworth, E., Yan, X., Diallo, M., Konopka, P., Birner, T., Tao, M., Engel, A., and Riese, M.: How robust are stratospheric age of air trends from different reanalyses?, *Atmospheric Chemistry and Physics Discussions*, 2019, 1–32, <https://doi.org/10.5194/acp-2018-1281>, <https://www.atmos-chem-phys-discuss.net/acp-2018-1281/>, 2019.
- Plumb, R. A.: A “tropical pipe” model of stratospheric transport, *J. Geophys. Res.*, 101, 3957–3972, 1996.
- 35 Plumb, R. A. and Bell, R. C.: A model of the quasi-biennial oscillation on an equatorial beta-plane, *Q. J. R. Meteorol. Soc.*, 108, 335–352, 1982.

- Pommrich, R., Müller, R., Groß, J.-U., Konopka, P., Ploeger, F., Vogel, B., Tao, M., Hoppe, C., Günther, G., Spelten, N., et al.: Tropical troposphere to stratosphere transport of carbon monoxide and long-lived trace species in the Chemical Lagrangian Model of the Stratosphere (CLaMS), *Geosci. Mod. Dev.*, 7, 2895–2916, 2014.
- Poshyvailo, L., Müller, R., Konopka, P., Günther, G., Riese, M., and Ploeger, F.: Sensitivities of modelled water vapour in the lower stratosphere: temperature uncertainty, effects of horizontal transport and small-scale mixing, *Atmos. Chem. Phys.*, 18, 8505–8527, 2018.
- 5 Randel, W. J. and Jensen, E. J.: Physical processes in the tropical tropopause layer and their roles in a changing climate, *Nature Geoscience*, 6, 169, 2013.
- Randel, W. J., Wu, F., Russell, J. M., Roche, A., and Waters, J. W.: Seasonal cycles and QBO variations in stratospheric CH₄ and H₂O observed in UARS HALOE data, *J. Atmos. Sci.*, 55, 163–185, 1998.
- 10 Randel, W. J., Wu, F., Oltmans, S. J., Rosenlof, K., and Nodoluha, G. E.: Interannual Changes of Stratospheric Water Vapor and Correlations with Tropical Tropopause Temperatures, *J. Atmos. Sci.*, 61, 2133–2148, 2004.
- Randel, W. J., Garcia, R. R., Calvo, N., and Marsh, D.: ENSO influence on zonal mean temperature and ozone in the tropical lower stratosphere, *Geophys. Res. Lett.*, 36, 2009.
- Rienecker, M. M., Suarez, M. J., Gelaro, R., Todling, R., Bacmeister, J., Liu, E., Bosilovich, M. G., Schubert, S. D., Takacs, L., Kim, G.-K., et al.: MERRA: NASA's modern-era retrospective analysis for research and applications, *J. Climate*, 24, 3624–3648, 2011.
- 15 Riese, M., Ploeger, F., Rap, A., Vogel, B., Konopka, P., Dameris, M., and Forster, P. M.: Impact of uncertainties in atmospheric mixing on simulated UTLS composition and related radiative effects, *J. Geophys. Res.*, 117, D16, <https://doi.org/doi:10.1029/2012JD017751>, 2012.
- Rohs, S., Schiller, C., Riese, M., Engel, A., Schmidt, U., Wetter, T., Levin, I., Nakazawa, T., and Aoki, S.: Long-term changes of methane and hydrogen in the stratosphere in the period 1978–2003 and their impact on the abundance of stratospheric water vapor, *J. Geophys. Res. A*, 111, 2006.
- 20 Saha, S., Moorthi, S., Pan, H.-L., Wu, X., Wang, J., Nadiga, S., Tripp, P., Kistler, R., Woollen, J., Behringer, D., et al.: The NCEP climate forecast system reanalysis, *Bull. Am. Meteorol. Soc.*, 91, 1015–1058, 2010.
- Scaife, A. A., Butchart, N., Jackson, D. R., and Swinbank, R.: Can changes in ENSO activity help to explain increasing stratospheric water vapor?, *Geophys. Res. Lett.*, 30, 2003.
- 25 Schoeberl, M., Dessler, A., and Wang, T.: Simulation of stratospheric water vapor and trends using three reanalyses, *acp*, 12, 6475–6487, 2012.
- Solomon, S., Rosenlof, K., Portmann, R., Daniel, J., Davis, S., Sanford, T., and Plattner, G.-K.: Contributions of stratospheric water vapor to decadal changes in the rate of global warming, *Science*, 327, 1219–1222, <https://doi.org/10.1126/science.1182488>, 2010.
- Tao, M., Konopka, P., Ploeger, F., Riese, M., Müller, R., and Volk, C. M.: Impact of stratospheric major warmings and the quasi-biennial oscillation on the variability of stratospheric water vapor, *Geophys. Res. Lett.*, 42, 4599–4607, <https://doi.org/10.1002/2015GL064443>, 2015GL064443, 2015.
- 30 Vernier, J.-P., Thomason, L. W., Pommereau, J.-P., Bourassa, A., Pelon, J., Garnier, A., Hauchecorne, A., Blanot, L., Treppe, C., Degenstein, D., et al.: Major influence of tropical volcanic eruptions on the stratospheric aerosol layer during the last decade, *Geophys. Res. Lett.*, 38, 2011.
- 35 Vogel, B., Feck, T., and Groß, J.-U.: Impact of stratospheric water vapor enhancements caused by CH₄ and H₂O increase on polar ozone loss, *J. Geophys. Res. A*, 116, 2011.
- Wolter, K. and Timlin, M. S.: El Niño/Southern Oscillation behaviour since 1871 as diagnosed in an extended multivariate ENSO index (MEI. ext), *International Journal of Climatology*, 31, 1074–1087, 2011.

Wright, J. and Fueglistaler, S.: Large differences in reanalyses of diabatic heating in the tropical upper troposphere and lower stratosphere, *Atmos. Chem. Phys.*, 13, 9565–9576, 2013.

Wright, J., Fu, R., Fueglistaler, S., Liu, Y., and Zhang, Y.: The influence of summertime convection over Southeast Asia on water vapor in the tropical stratosphere, *J. Geophys. Res. A*, 116, 2011.

- 5 Yan, X., Konopka, P., Ploeger, F., Tao, M., Müller, R., Santee, M. L., Bian, J., and Riese, M.: El Niño Southern Oscillation influence on the Asian summer monsoon anticyclone, *Atmos. Chem. Phys.*, 18, 8079, 2018.