

## Response to the comments from reviewer and editor

The initial reviewer's comments are indicated in black, the authors' reply in blue. After the second round of review, the comments from editor and reviewer to the authors are shown in green, and the author's second reply in pink.

### Editor's comments:

Comments to the Author:

Dear Authors,

Thank you very much again for your comprehensive explanations and answers to the reviewer questions related to the initially submitted version of the manuscript. Reviewer #1 (and the editor) is quite satisfied with the given answers. Also the points of reviewer #2 have been adequately addressed. The manuscript is on a good way, the revised version shows considerable improvement. Nevertheless, some content of your replies did not enter the revised manuscript, but it should to make a few points clearer. So your paper is "accepted subject to minor changes".

As your answers given in your response reports are of good quality you should take up some of the formulated content (in a condensed manner) into the manuscript. You can find good hints for this in the new referee report (09/09/19). There, reviewer makes clear suggestions (colour coded in green) how to update your manuscript. Please follow this suggestion to generate the final manuscript.

Non-public comments to the Author:

Dear authors, please try to follow the suggestions made in the referee report to extend a little your manuscript. That means, take up some of the points formulated in your answers to the referees into the manuscript. The referee gives good hints for this in his report (colour coded in green). Try to be concise.

So everything is there, it just needs to find its way into the manuscript.

R: It's very delighted to receive the comments from editor. Accordingly, we have made related revision of the manuscript by following the referee report. Please refer to the detailed response to the reviewer.

**Referee Report (09/09/19):** Referee comments on the revised manuscript "Surveillance of SO<sub>2</sub> and NO<sub>2</sub> from ship emissions by MAX-DOAS measurements and implication to compliance of fuel sulfur content" of Cheng et al., 2019 for submission in ACP.

The authors addressed all comments and suggestions in an adequate way. The corrections significantly improve the quality of the revised manuscript. However, the authors reply to some of the reviewer's comments in detail only in the response to comments file, but did not update the manuscript. As the explanations in the reply are of good quality which does improve the understanding of the manuscript, I do recommend considering the manuscript for publication in ACP with the below minor

changes:

I do reply to selected authors reply on the first reviewer #1 and #2 comments.

R: Thanks again to the reviewer for helpful suggestions, which are very positive on the scientific content of the manuscript and make the content more robust and persuasive. Based on these suggestions, we have added some short notes and explanations to the manuscript. We addressed all the minor revision for consideration as below. All line numbers mentioned below refer to the modified original without tracking changes.

Reviewer #1

3. Results presented in section 3.1 do represent only one measurement at one day. If the authors have “more than a dozen cycles” (line 220-221), why they don’t show an average of all cycles. The presented cycle is a snapshot and might be not representative to draw conclusions. Well, even an average over one afternoon does represent only a snapshot of the situation. The authors should consider this in their discussion or should skip this section.

R: There may be some misunderstandings due to the unclear description. The purpose of Section 3.1 is to investigate the 2-D distribution of retrieved NO<sub>2</sub> and SO<sub>2</sub> DSCDs using 2-D scanning measurement of MAX-DOAS. The hotspots of NO<sub>2</sub> and SO<sub>2</sub> are related to the azimuth of the berth where the ship is docked and the corresponding ship operation status. It is obviously that the 2-D distribution of NO<sub>2</sub> and SO<sub>2</sub> DSCDs changes with time, so that it seems unreasonable to show the average of all scan cycles, which may weaken the spatial distribution of hotspots. However, the results of the rest of the cycles were also shown in Figure 6. It can be seen that the concentration at a given azimuth and elevation is constantly changing throughout the day.

→ The authors could summarize this description and add it to the manuscript introduction.

2<sup>nd</sup> R: Considering the hotspots of NO<sub>2</sub> and SO<sub>2</sub> in each 2-D distributions are related to the azimuth of the berth where the ship is docked and the corresponding ship operation status, it is not suitable to present in averaged values. The results of each cycles during the afternoon were shown in Fig. 6.

We have summarized this description and added it to the section 3.1. Please refer to Line 236-239, i.e. “In view of the identified emission source position above, considering that the hotspots of NO<sub>2</sub> and SO<sub>2</sub> in each 2-D distributions are related to the azimuth of the berth where the ship is docked and the corresponding ship operation status, the DSCDs of NO<sub>2</sub> and SO<sub>2</sub> observed at elevation 4° and azimuth angle between 31°-33° were selected to display the temporal pattern of emissions at berth without averaging.”

11. Line 190: What is located opposite the berth? Any industry which might emit NO<sub>x</sub> or SO<sub>2</sub>?

R: Opposite the berth is the South Channel of the Yangtze Estuary. The only sources of NO<sub>x</sub> and SO<sub>2</sub> could be the ships emissions on the channel, and the main channel is more than two kilometers away from the berth. Behind the building of Pudong MSB, there are green land and residential area. The container yard was located between the building

and berths.

→ Ok, but the authors should add a short statement to the manuscript that there are no other sources for SO<sub>2</sub> and NO<sub>2</sub> than emissions from ships.

2<sup>nd</sup> R: We have improved it and added the short statement to the manuscript. Please refer to Line 203-204, i.e. “There are no other obvious sources for SO<sub>2</sub> and NO<sub>2</sub> than emissions from ships.”

16. Line 253: ships in navigation or maneuver? Do the authors can exclude emissions from the industry behind the river (visible in Fig 2 (c)) as a source?

R: The ships were in the state of navigation. According to Figure R4, we can see the main green land areas behind the river, including villages and forest parks. In addition, the opposite of the river is a small dock and a station for transporting containers. Due to the lack of relevant research and observations in this region, it is very difficult to estimate the amount of NO<sub>2</sub> and SO<sub>2</sub> emitted from the opposite side, and we have to ignore this part of the source compared with the ship emissions on the channel.

→ Ok, but if the authors cannot exclude this influence the measurements, they have to make a short note in the manuscript. E.g. “A small dock and a station for transport container are located opposite the river, which might slightly influence the measurements.” or something similar.

2<sup>nd</sup> R: We have improved it. The short note have been added. Please refer to Line 270-271, i.e. “The observed signal of pollutants mainly come from the emissions of ships in navigation. Nevertheless, a small dock and a station for transport container are located opposite the river, which might slightly influence the measurements.”

**Figure R6. Relationship between DSCDs of (a) NO<sub>2</sub> and (b) SO<sub>2</sub> and ship density.**

Corresponding to Fig. 9 in the revised manuscript

→ In the figure caption the authors have to explain the meaning of the squares, stars and bars or have to refer to Figure 7 for explanation.

2<sup>nd</sup> R: We have added the explanations in the figure caption of Fig. 9. Please refer to Line 320-323.

21. Line 282-283: To support the conclusion that the ships are the main source for NO<sub>2</sub>, the authors should roughly estimate the influence of the surrounding emission sources (especially the main roads and highway, because this could be a significant NO<sub>2</sub> source).

R: Due to the lack of relevant research in the areas of Wusong site, we are unable to obtain the influence of the surrounding emission sources accurately. We have installed two active LP-DOAS (Long-Path DOAS) in the Wusong MSB and Fudan University Jiangwan Campus in March of 2018, respectively. The locations of Wusong and Fudan have been shown in Figure R7 (a), and the red arrow indicates the light path of the two LP-DOAS. The campus is 4 kilometers away from Wusong and is considered to be free of pollution because the campus is almost covered by green spaces and have no major emission sources. Considering the synchronization of data, concentration of NO<sub>2</sub> from March 15 to March 30, 2018 have been analyzed. During the observation, the average value of NO<sub>2</sub> in Fudan campus and Wusong site is 12.42 ppb and 30.50 ppb, respectively.

In order to make a clearer explanation, we have shown the time series of NO<sub>2</sub> in a short segments of three days as an example in Figure R7 (b). We have calculated the difference of NO<sub>2</sub> between Wusong and Fudan campus, which is considered to represent the sum of NO<sub>2</sub> emissions from ships and surrounding sources at Wusong area. For the red line in Figure R7 (b), the rapidly changing part is discharged by the ships, while the smooth part may come from surrounding emission sources such as roads and highway. After a rough estimation, the proportion of NO<sub>2</sub> emitted by ships is more than 47%. However, this estimation are quite rough and more accurate conclusion need be furthered with multiple measurements and technical method.

→ Ok, but the authors should make a short note in the manuscript that the reader can follow this explanation.

2<sup>nd</sup> R: We have made the short note in the manuscript that the amount of NO<sub>2</sub> contributed by these sources cannot be ignored. Please refer to Line 332-333, i.e. “It is another shortcoming of this measurement that the MAX-DOAS measured NO<sub>2</sub> are considerably impacted by surrounding other emission sources, such as main roads and highways nearby, which contribute un-ignored amounts to the ambient NO<sub>2</sub>.”

23. Line 292: largest container ports related to what? China, Asia, World?

R: Yantian Port in Shenzhen is the largest single port area with the largest container throughput in China. According to the survey, Shenzhen Port is the third port of the world container port in 2017, and Yantian Port is the main port of Shenzhen Port. So the Yantian Port is one of the largest container port in China and even in the world.

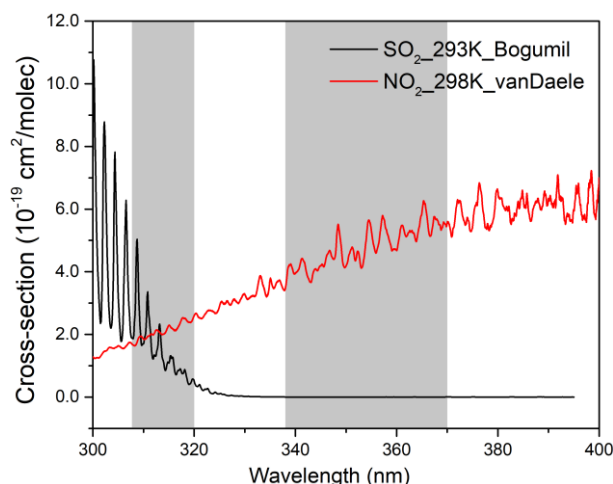
→ Ok, but the authors should also mention in the manuscript that Yantian Port is one of the largest container ports in China and even in the world.

2<sup>nd</sup> R: We have mentioned in the manuscript that Yantian Port is one of the largest container ports in China and even in the world. Please refer to Line 343.

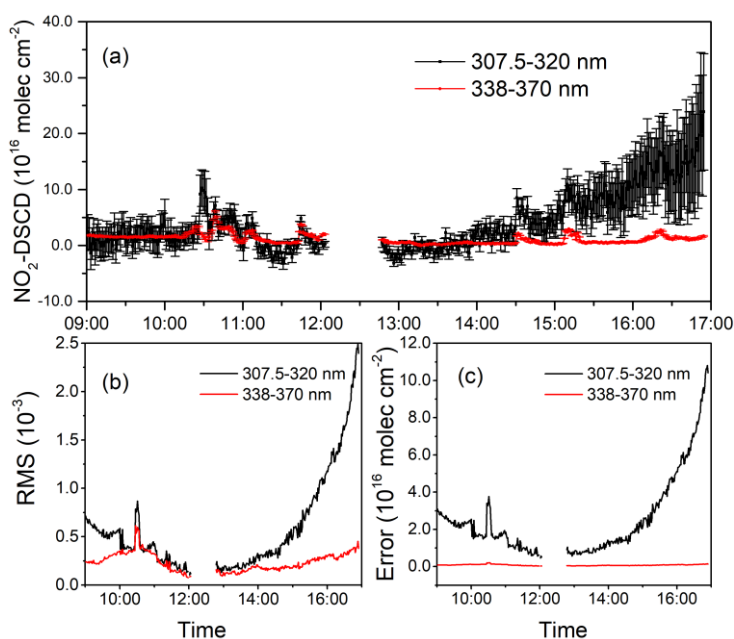
Reviewer #2

3. In section 2.3, the SO<sub>2</sub> and NO<sub>2</sub> DSCDs are retrieved at different spectral ranges. How do the authors compensate the effect of wavelength dependency? If it is not considered in the retrieval, an error analysis is required.

R: The configuration of SO<sub>2</sub> and NO<sub>2</sub> spectral analysis was based on many previous studies, e.g. Hendrick et al., 2014; Irie et al., 2011; Seyler et al., 2017; Wang et al., 2014. So the common fitting window of 307.5-320 nm and 338-370 were used for SO<sub>2</sub> and NO<sub>2</sub>, respectively. As it can be seen in Fig. R3, the strong absorption band of SO<sub>2</sub> is below 325 nm, where the NO<sub>2</sub> absorption are relatively weak. It means that the wavelength band of SO<sub>2</sub> analysis window should be shorter than that of NO<sub>2</sub>.



**Figure R3. Absorption cross section of  $\text{NO}_2$  and  $\text{SO}_2$  in the wavelength range of 300~400 nm.** Since it is obvious that the  $\text{SO}_2$  analysis cannot be performed well in longer wavelength over 325 nm, we have tried the analysis of  $\text{NO}_2$  with the same fitting interval of  $\text{SO}_2$  in 307.5~320 nm. As shown in the Fig. R4 (a), we found that the  $\text{NO}_2$  DSCD values from fitting window of 307.5~320 nm are larger than that in 338~370 nm and simultaneously shows considerable uncertainties. In addition, Fig. R4 (b) and (c) show that fitting interval of 307.5~320 nm for  $\text{NO}_2$  generates even larger RMS and DSCDs error compared to the results from fitting within 338~370 nm. It suggests that the DSCDs from same fitting window will bring large uncertainty and error in the results. Finally, we decided to use the different fitting intervals for  $\text{SO}_2$  and  $\text{NO}_2$ .



**Figure R4. Comparison of  $\text{NO}_2$  retrieval with different fitting intervals of 307.5-320 nm and 338-370 nm on 26 June 2018: (a)  $\text{NO}_2$  DSCD with error bars, (b) RMS and (c) DSCD error.** Regarding to the compensation of wavelength dependency effect, we think the way to use the ratio of  $\text{SO}_2$  to  $\text{NO}_2$  DSCDs to identify the ship emission will not be impacted by the effect of wavelength dependency. Because the fixed analysis fitting window was applied for all campaigns and the ratio will not contain the wavelength dependency

effect (or in presence as the systematic deviations).

→ Ok, but the authors should add at least some of this response to the manuscript to make it more robust.

2<sup>nd</sup> R: Thanks for the comments. We have improved it and added a short explanation to the Sect. 2.2 in the manuscript. Please refer to Line 154-155 and 156-158.

In addition, we have made several technical corrections to the manuscript.

1. There is a clerical error in the Line 156, the “405-430 nm” has been changed to “338-370 nm”.
2. Line 304, in order to keep in a uniform format, the “1.5” has been changed to “1.50”.
3. Line 627, the name of journal “Atmospheric Chemistry and Physics” was repeated and has been deleted.

# Surveillance of SO<sub>2</sub> and NO<sub>2</sub> from ship emissions by MAX-DOAS measurements and implication to compliance of fuel sulfur content

Yuli Cheng<sup>1</sup>, Shanshan Wang<sup>1,2,\*</sup>, Jian Zhu<sup>1</sup>, Yanlin Guo<sup>1</sup>, Ruifeng Zhang<sup>1</sup>, Yiming Liu<sup>1</sup>, Yan Zhang<sup>1,2,3</sup>, Qi Yu<sup>1,2</sup>, Weichun Ma<sup>1,2</sup> and Bin Zhou<sup>1,2,3,\*</sup>

<sup>1</sup> Shanghai Key Laboratory of Atmospheric Particle Pollution and Prevention (LAP<sup>3</sup>), Department of Environmental Science and Engineering, Fudan University, Shanghai, China

<sup>2</sup> Shanghai Institute of Eco-Chongming (SIEC), No.3663 Northern Zhongshan Road, Shanghai, 200062, China

<sup>3</sup> Institute of Atmospheric Sciences, Fudan University, Shanghai, 200433, China

10 *Correspondence to:* Shanshan Wang ([shanshanwang@fudan.edu.cn](mailto:shanshanwang@fudan.edu.cn)) and Bin Zhou ([binzhou@fudan.edu.cn](mailto:binzhou@fudan.edu.cn))

## Abstract.

With the increased concerns on the shipping emitted air pollutants, the feasible technology for the surveillance is in high demand. Here we presented the shore-based Multi-Axis Differential Optical Absorption Spectroscopy (MAX-DOAS) measurements of emitted SO<sub>2</sub> and NO<sub>2</sub> from ships under different traffic conditions in China's ship emission control area (ECA) of Shanghai and Shenzhen, China. Three typical measurement sites were selected in these two regions to represent emission scenarios of ships docked at berth, navigation in the inland waterway and inbound/outbound in the deep water port. With 2-dimensional scanning, the observation shows that the hotspots of SO<sub>2</sub> and NO<sub>2</sub> can be quickly and easily located from multiple berths. Although the MAX-DOAS measurements can not distinguish the single ship plume in the busy shipping lanes of inland waterway area, it certifies that the variations of SO<sub>2</sub> and NO<sub>2</sub> levels are mainly impacted by the ship traffic density and atmospheric dispersion conditions. In the open water area with low density of vessels, the MAX-DOAS measurements can capture the pulse signal of ship emitted SO<sub>2</sub> and NO<sub>2</sub> very well, and characterize the peaks altitude and insistent duration of the individual ship plumes. Combined with the ship information of activity data, rated power of engine and fuel sulfur content, it was found that the SO<sub>2</sub>/NO<sub>2</sub> ratio in single plume is usually low (<1.5) for inbound vessel due to the usage of auxiliary engine with less power and clean fuel of low sulfur content. Meanwhile, the unexpected high SO<sub>2</sub>/NO<sub>2</sub> ratio implies the fuel usage with sulfur content exceeding limit of regulations. Therefore, the observed SO<sub>2</sub>/NO<sub>2</sub> ratio in the plume of single ship can be used as the index for the compliance of fuel sulfur content, and then tag the suspicious ship for further enforcement. Combining the ship emission estimated by actual operation parameters and logical sulfur content, the shore-based MAX-DOAS measurement will provide the fast and more accurate way for the surveillance of ship emissions.

## 30 1 Introduction

Sulphur dioxide (SO<sub>2</sub>) and nitrogen dioxide (NO<sub>2</sub>) are the important air pollutants, and also recognized as the non-negligible pollutants of ship emissions (Corbett et al., 1999; Endresen et al., 2003; Eyring et al., 2010; Matthias et al., 2010). Both of

them can engage in the atmospheric chemical reactions to produce aerosols and acid rain, and further have negative effects on the air quality, climate system, and human health, as well as acidification of terrestrial and marine ecosystem (Berglen et al., 2004; Seinfeld and Pandis, 2006; Singh, 1987). Moreover, NO<sub>2</sub> is also the key substance to form photochemical smog (Dimitriadis, 1972). With the rapid growth of the transportation volume, air pollution has become the most challenging environmental issue in the shipping industry, such as the emissions of CO<sub>2</sub>, SO<sub>2</sub>, NO<sub>x</sub>, particles and greenhouse gases. CO<sub>2</sub> and NO are the main pollutants emitted by ships, and NO is rapidly converted to NO<sub>2</sub> by reaction with O<sub>3</sub>. (Eyring et al., 2005; Becagli et al., 2012; Coggon et al., 2012; Diesch et al., 2013; Lauer et al., 2007; Seyler et al., 2017). Eyring et al. (2010) reported that ships contribute 15% of global NO<sub>x</sub> emissions and 4-9% of SO<sub>2</sub>, respectively. In the view of spatial distribution, global hotspots with high SO<sub>2</sub> and NO<sub>2</sub> emissions were identified to be the regions in Eastern and Southern China Seas, the sea areas in the south-eastern and southern Asia, the Red Sea, the Mediterranean, North Atlantic near the European coast, and along the western coast of North America, etc. (Johansson et al., 2017). In China, ship emitted pollutants play important roles in the air quality, human health and climate (Lai et al., 2013; Liu et al., 2016; Yang et al., 2007). It not only affects the air quality in coastal areas, but even influences the inland areas hundreds of kilometers away from the emission sources (Lv et al., 2018). The port city is most affected by ship pollution, followed by cities along the river. As an example, ship emitted SO<sub>2</sub> and NO<sub>x</sub> occupied for 12.4% and 11.6% of total emissions of the whole city of Shanghai in 2012, respectively, while there could be 64% of primary PM<sub>2.5</sub> contributed by ships in Shanghai Port transported to inland region (Fan et al., 2016; Zhao et al., 2013).

50

In order to reduce the negative impacts of ship emissions, the European Union and the United States have implemented regulations in an effort to decrease ship emissions (Kattner et al., 2015), among which the fuel quality regulation has been proven to be the most effective measures for addressing the issue of sulphur oxides (SO<sub>x</sub>) and particulate matter (PM) emissions in many countries. Besides, the International Maritime Organization (IMO, 2009) also has set up multiple emission control areas (ECA) worldwide. By 2020, the maximum FSC is 0.50% S m/m all over the world, and it is worth noting that the maximum fuel sulfur content in ECAs at the US coast and Europe is 0.10 % S m/m, while in China's ECA it is 0.50 % S m/m. The regulations also set limits for pollutant emissions such as NO<sub>x</sub> and CO<sub>2</sub> in the exhaust gas. Alternatively, the exhaust gas treatment system could be another option. Since January 1st, 2017, ships berth at the core ports of three designated Domestic Emission Control Area (DECA) in Pearl River Delta (PRD), the Yangtze River Delta (YRD) and the Bohai Rim (Beijing-Tianjin-Hebei area) of China should use fuel with sulphur content less than or equal to 0.50% (MOT, 2015). As of January 1, 2019, the ship entering the ECAs should use fuel with a sulfur content of not more than 0.50 % m/m, whether it is sailing or docking. Currently, the scrubber is also the alternative way to reduce the ship emission in China. As a consequence, it is obviously that the reliable and practical monitoring system are highly demanded for the implementation of ECA regulations.

65



The common options to monitor ship emissions can be classified into two categories: estimates based on activity data or written documentation; and measurements of on-board fuel sample and exhaust gas made on board the ship. Basically, the continuous online monitoring of fuel and exhaust gas on-board is the highly effective and accurate supervision means, but less operability in practice. For the regulatory party, fuel sampling and document inspection are currently the common measures and the sulfur content in the fuel is usually fast detecting after the ship is docked in dozen of minutes. Besides, other technical methods has been developed to determine both SO<sub>2</sub> and NO<sub>x</sub> emissions, such as a new type of ship exhaust gas detection technology that mounts a portable sniffer/instrument on board a ship or on a helicopter (Beecken et al., 2015; Berg et al., 2012; Murphy et al., 2009; Villa et al., 2016). Alternatively, shore-based remote sensing is another effective way to measure the ship plume and further estimate the sulfur content, when ships pass the lanes or dock at berth (Kattner et al. 2015; Seyler et al. 2017).

Remote sensing technique shows the advantages of fast detection, easy operation and high automation. Besides the passive “sniffing” method with in-situ instrumentation, optical remote sensing technique can detect the variation of the light properties after interaction with the exhaust plume and corresponding SO<sub>2</sub> and NO<sub>2</sub> emission in the plume, such as differential optical absorption spectroscopy (DOAS), light detection and ranging (LIDAR), and the ultraviolet camera (UV-CAM) technique (Balzani et al., 2014; Seyler et al., 2017). LIDAR system can be used to retrieve a 2-dimensional concentration distribution by scanning through the ship plume, and to obtain the ship emissions combing the wind and concentration profiles. McLaren et al. (2012) employed active long-path DOAS technique to measure NO<sub>2</sub>-to-SO<sub>2</sub> ratios in ship plumes and speculate on its relationship with the sulfur content of fuels. UV camera has been successfully applied to measure the SO<sub>2</sub> concentrations and emission rates of moving and stationary ship plumes (Prata, 2014).

DOAS technique allows to identify and quantify the absorption of variety of species showing characteristic absorption features in the wavelength range (Platt and Stutz, 2008). It has been widely used for trace gases measurements in several decades, especially very mature for NO<sub>2</sub> and SO<sub>2</sub> (Edner et al., 1993; Mellqvist and Rosén, 1996; Platt et al., 1979). As an expanded apparatus, the multi-axis differential optical absorption spectroscopy (MAX-DOAS) measurements are high sensitivity to aerosols and trace gases in the lower troposphere by observing scattered sunlight under different viewing angles close to the horizontal and the zenith directions (Hönninger et al., 2004; Ma et al., 2013; Sinreich et al., 2005; Wang et al., 2014). Due to its portability, MAX-DOAS instrument can be carried on the ship to observe the vertical column densities (VCDs) of NO<sub>2</sub> and SO<sub>2</sub> along the cruise, during which high levels of pollutants were found close to the busy port and dense lanes (Hong et al., 2018; Schreier et al., 2015; Takashima et al., 2012; Tan et al., 2018). In addition, MAX-DOAS has been successfully employed for monitoring shipping emissions directly. Premuda et al. (2011) used the ground-based MAX-DOAS measurements to evaluate the NO<sub>2</sub> and SO<sub>2</sub> levels in ship plume discharged from the single ship in the Giudecca Strait of the Venetian Lagoon. Seyler et al. (2017) have utilized MAX-DOAS to perform long-term measurements of NO<sub>2</sub> and SO<sub>2</sub> from shipping emissions in the German Bight, and evaluated the reduction in SO<sub>2</sub> levels after implement stricter sulfur limits in shipping fuel.

100 In this study, the shore-based MAX-DOAS measurements were employed to measure the NO<sub>2</sub> and SO<sub>2</sub> in ship plumes for  
different ship traffic environments of Shanghai and Shenzhen, China. Combined with the photos taken by the camera of the  
instrument and AIS (Automatic Identification System) information, it is verified that emissions of ships at berth, passing  
through the inland waterway and open sea areas can be successfully detected. The measurements can also provide the fuel  
sulfur content information of individual ship by comparing the emitted NO<sub>2</sub> and SO<sub>2</sub> in the plume considering the effects of  
105 plume age. With the fuel sample analysis and ship activity data, it suggests that the shore-based MAX-DOAS method shows  
the feasibility and reliability of surveillance for ship emitted SO<sub>2</sub> and NO<sub>2</sub> and further allows to know compliance of fuel sulfur  
content.

## 2 Measurements and method

### 110 2.1 Instrument setup and sites

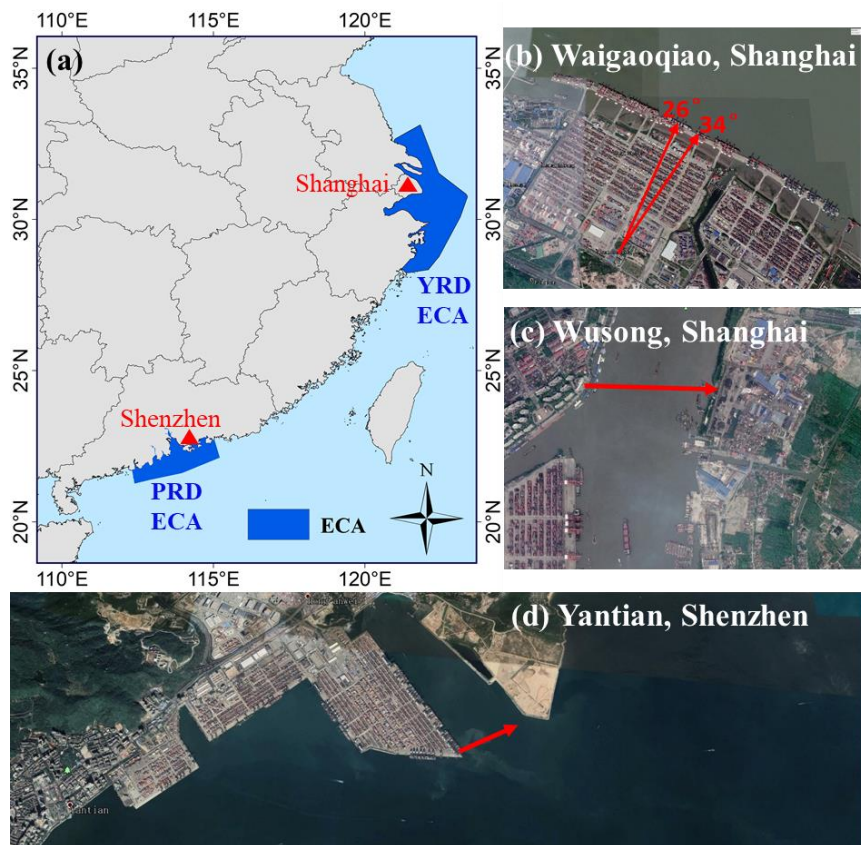
In this study, the MAX-DOAS instrument has been designed and assemble by the authors (Zhang et al., 2018a). It mainly  
consists of a receiving telescope, a spectrometer (Ocean Optics, QE65 Pro), and a computer to control the measurements.  
Driven by the two-dimensional stepper motor system, the telescope can collect the scattered sunlight from different elevation  
angles in vertical and azimuth angles in horizontal. The scattered light is converged by the lens to the fiber bundle connected  
115 to the spectrometer. The receiving sunlight is dispersed by a grating, detected by a CCD detector and recorded by the  
spectrometer covering the wavelength range from 300 to 480 nm with a resolution about 0.5 nm Full Width at Half Maximum  
(FWHM). As a new designed feature, a camera has been configured on the MAX-DOAS apparatus, which moves coaxially  
with the receiving telescope and can record the scene and sky conditions same as the views of telescope. The scanning of  
telescope can be set in the sequence of several elevation angles from close to horizontal and 90° and then move to next azimuth  
120 angle for another vertical scanning sequence. Due to the different ship traffic conditions, the types of ship passing in inland  
waterway and seaside ports are different in size and tonnage. Therefore, the configuration of observing geometric angels were  
adjusted dependent on the conditions of ships, as referred in Table 1.

The MAX-DOAS measurements of ship emissions were performed in two typical port cities of Shanghai and Shenzhen in  
125 China. As shown in Fig. 1(a), sea areas in surrounding Shanghai and Shenzhen city are located in the ECA of Yangtze River  
Delta and Pearl River Delta. In Shanghai, two different ship traffic scenarios were considered, i.e. ships at berth in Waigaoqiao  
container port area (31.36° N, 121.58° E, Fig. 1(b)), and ships passing through inland waterway of the downstream of Huangpu  
River at Wusong area (31.37° N, 121.50° E, Fig. 1(c)). In Shenzhen, the measurements were carried out in the deep water port  
of Yantian (114.29° E, 22.56° N, Fig. 1(d)). More details about the environments and operation configurations of measurement  
130 were listed in Table 1.

**Table 1. Measurements details and operation configurations of MAX-DOAS.**

Sites	Locations and periods	Operations*	Environment types
Waigaoqiao, Shanghai	31.36° N, 121.58° E 28/08/2017	AZ: 26° to 34°; ELE: 3°, 4°, 5°, 6°, 7°; Spectrum temporal resolution: 15-30 s; Completed scanning cycle: 15 min.	Viewing to: berths; Ships: container ship.
Wusong, Shanghai	31.37° N, 121.50° E 30/12/2017-18/05/2018	AZ: 85°; ELE: 0°, 1°, 2°, 3°, 4°, 5°, 6°, 8°, 65°; Spectrum temporal resolution: 40 s; Completed scanning cycle: 7 min.	Viewing to: inland waterway with high traffic volume; Ships: a wide variety of ships and small in size
Yantian, Shenzhen	114.29° E, 22.56° N 23/05/2018-30/06/2018	AZ: 75°; ELE: 2°, 3°, 5°, 7°, 10°, 15°, 30°, 90°; Spectrum temporal resolution: 60 s; Completed scanning cycle: 9 min.	Viewing to: open sea areas with smaller traffic volume; Ships: container ship as the main part

\*AZ: azimuth angle in horizontal direction; ELE: elevation angle in vertical direction.



135

**Figure 1.** The YRD and PRD Domestic Emission Control Area (DECA) in China and locations of the MAX-DOAS measurements in coastal cities of Shanghai and Shenzhen: Waigaoqiao Port and Wusong Wharf in Shanghai, and Yantian Port in Shenzhen. The viewing direction of instrument azimuth angle is indicated by a red arrow. (b) to (d) cited from Google Earth.

## 140 2.2 DOAS spectral analysis

The algorithm of DOAS is basically based on Lambert-Beer law, which describes the extinction of radiation through the atmosphere (Platt and Stutz, 2008). MAX-DOAS instrument observes scattered sunlight from various viewing directions and records the spectrum (e.g. Hönninger et al., 2004; Sinreich et al., 2005). The spectral analysis generates the measured SCD (slant column densities), defined as the integral of the trace gas concentration along the entire optical path including the SCDs in the troposphere and the stratosphere. (e.g. Platt and Stutz, 2008, Wagner, et al., 2010). The stratospheric absorption has been assumed as the same level in all spectra taken within one scan cycle, so we generally choose the spectrum with less trace gas absorption as the reference, such as the spectrum measured in zenith direction. The slant column concentration of the trace gas measured at each lower elevation angle ( $\alpha$ ) is represented by DSCD (differential SCD), which is the gas information of the measured slant column densities minus background densities in the reference spectrum.

145

$$\begin{aligned}
150 \quad \text{DSCD}(\alpha) &= \text{SCD}(\alpha) - \text{SCD}(\text{ref}) \\
&= \text{SCD}(\alpha)_{\text{trop}} + \text{SCD}_{\text{strat}} - \text{SCD}(\text{ref})_{\text{trop}} - \text{SCD}_{\text{strat}} \\
&= \text{SCD}(\alpha)_{\text{trop}} - \text{SCD}(\text{ref})_{\text{trop}}
\end{aligned} \tag{1}$$

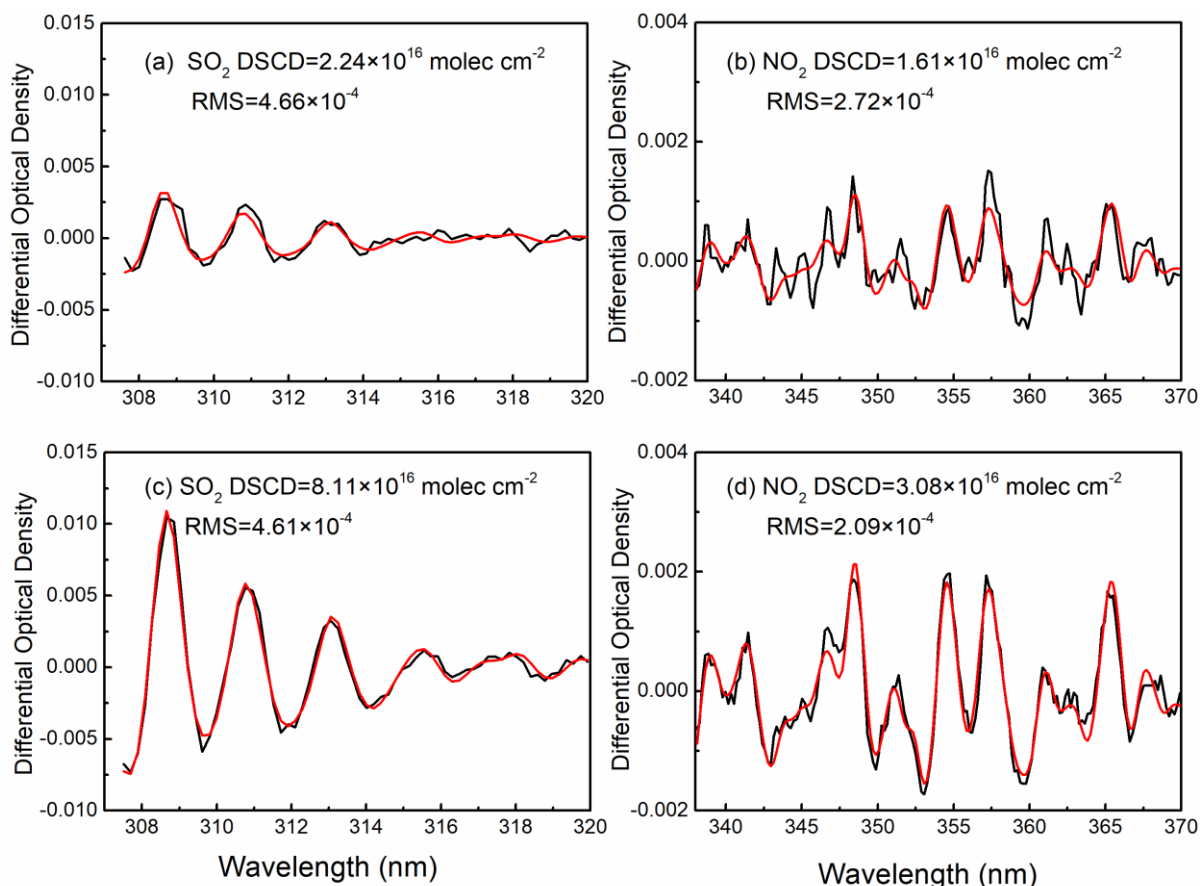
Based on the DOAS principle, the measured scattered sun-light spectra are analyzed using the QDOAS spectral fitting software, which is developed by BIRA-IASB (<http://uv-vis.aeronomie.be/software/QDOAS/>). The strong absorption band of SO<sub>2</sub> is below 325 nm, where the NO<sub>2</sub> absorption are relatively weak. Therefore, the fitting wavelength intervals of SO<sub>2</sub> and NO<sub>2</sub> are 307.5-320 nm and 405-430/338-370 nm, respectively. Although the generated DSCDs are related to the wavelength of fitting interval, the usage of ratio of SO<sub>2</sub> to NO<sub>2</sub> DSCDs retrieved at different spectral ranges will not impacted by the effect of wavelength dependency. Trace gases with absorptions in relevant fitting windows and Ring spectrum were included. The details of spectral fitting configuration are listed in Table 2. Wavelength calibration was performed by using high-resolution solar reference spectrum (Chance and Kurucz, 2010). The offset and the signal of the dark current were measured every night and extracted automatically from the measured spectra before spectral analysis. Consequently, the DSCDs of SO<sub>2</sub> and NO<sub>2</sub> were yielded by taken the measured spectrum at 90° as the Fraunhofer reference spectrum.

**Table 2. Configuration of spectral fitting for SO<sub>2</sub> and NO<sub>2</sub>**

Parameters	SO <sub>2</sub>	NO <sub>2</sub>
Fitting window	307.5–320 nm	338–370 nm
NO <sub>2</sub>	298 K (Vandaele et al., 1998)	
SO <sub>2</sub>	293 K (Bogumil et al., 2003)	/
O <sub>4</sub>	/	293 K (Thalman and Volkamer, 2013)
O <sub>3</sub>	223 K & 243 K (Serdyuchenko et al., 2014)	223 K (Serdyuchenko et al., 2014)
BrO	/	293 K (Fleischmann et al., 2004)
CH <sub>2</sub> O	298K (Meller and Moortgat, 2000)	
Ring	Calculated by QDOAS	
Polynomial Degree	3	5
Intensity Offset	Constant	

Figure 2 shows the typical spectral fitting of measured spectra with and without ship plume contamination. The obvious absorbing structures of SO<sub>2</sub>, NO<sub>2</sub> and fairly low residuals can be observed in both conditions of polluted spectrum (collected at elevation angle of 5° at 10:39 LT on 22 June, 2018) and clean spectrum (collected at elevation angle of 5° at 09:53 LT on 22 June, 2018). By contrast, the retrieved SO<sub>2</sub> and NO<sub>2</sub> DSCDs of 8.11×10<sup>16</sup> and 3.08×10<sup>16</sup> molec cm<sup>-2</sup> in polluted case are significantly higher than those in clean condition of 2.24×10<sup>16</sup> and 1.61×10<sup>16</sup> molec cm<sup>-2</sup>. It demonstrates the high sensitivity of measurements to ship plumes and the good performance of the spectral fitting. In this study, a threshold of residual < 1×10<sup>-</sup>

<sup>3</sup> is used for screen out the unsatisfied spectral fitting, and 94.57% of NO<sub>2</sub> DSCDs results and 76.26% of SO<sub>2</sub> fitting results remains in further discussion. The uncertainties for the spectral analysis of SO<sub>2</sub> were higher because of the weak scatter sunlight intensity and lower signal-to-noise at the short wavelengths.



175

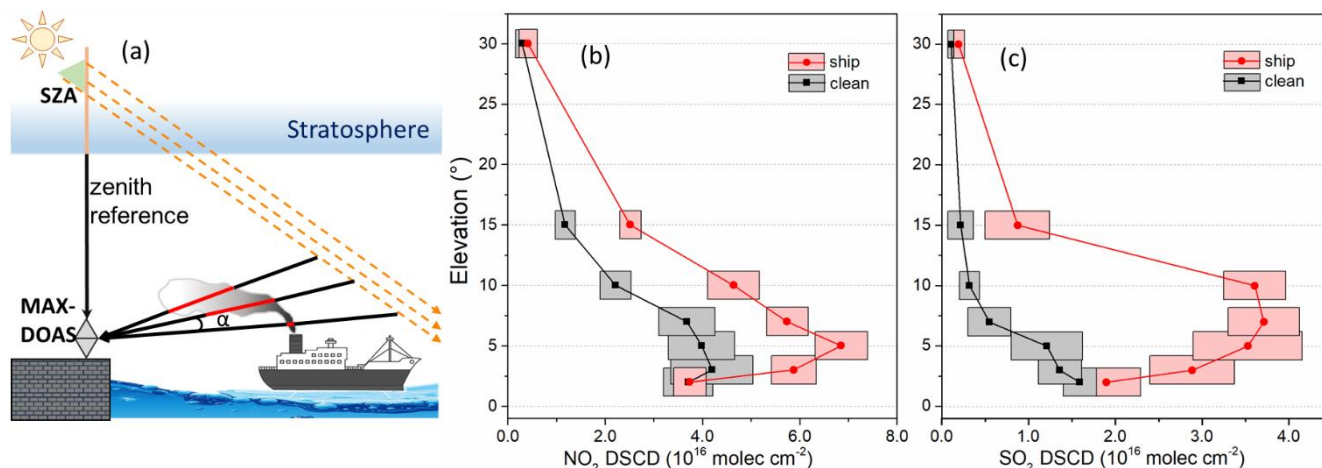
**Figure 2. Typical DOAS spectral fitting for SO<sub>2</sub> and NO<sub>2</sub>. (a) and (b) show the clean condition of spectrum collected at an elevation angle of 5° at 10:39 LT on 22 June, 2018, while (c) and (d) are the ship plumes polluted case of spectrum measured at an elevation angle of 5° at 09:53 LT on 22 June, 2018. Black lines show the measured atmospheric spectrum and the red line shows the reference absorption cross-section.**

### 180 2.3 MAX-DOAS measurements for ship emissions

For ship emissions measurements, the DSCDs of pollutants at low elevation angles should express the change of integrated concentrations along the light path after contamination by the exhaust plume, which collects scattered sunlight passing through ship plumes. Figure 3 (a) depicts the schematic diagram of ground-based MAX-DOAS measurements of ship emissions. The telescope is pointed towards the ship lanes or the direction of ship passed through. Consequently, the measured spectra at low elevation angle will be impacted by the plumes of ship emissions.

185

In order to better demonstrate the background concentration of  $\text{NO}_2$  and  $\text{SO}_2$ , several typical cycles on June 29 were selected as examples. Figure 3 (b) and (c) show the vertical distributions of  $\text{NO}_2$  and  $\text{SO}_2$  DSCDs with the elevation angle when there is a ship passing through and not. It can be observed that the DSCDs of  $\text{NO}_2$  and  $\text{SO}_2$  decrease slowly with increasing angle under clean conditions, during which the maximum values of  $\text{NO}_2$  and  $\text{SO}_2$  DSCDs are  $5.03 \times 10^{16}$  molec  $\text{cm}^{-2}$  at elevation  $3^\circ$  and  $1.78 \times 10^{16}$  molec  $\text{cm}^{-2}$  at elevation  $2^\circ$ , respectively. In contrast, the  $\text{NO}_2$  and  $\text{SO}_2$  DSCDs increased significantly when ships passed, showing the maximum values of  $\text{NO}_2$  and  $\text{SO}_2$  DSCDs of  $7.36 \times 10^{16}$  molec  $\text{cm}^{-2}$  at elevation  $5^\circ$  and  $4.15 \times 10^{16}$  molec  $\text{cm}^{-2}$  at elevation  $5^\circ$ , respectively. And the highest value of  $\text{SO}_2$  generally appears between elevation angle  $5^\circ$  and  $10^\circ$ .



195

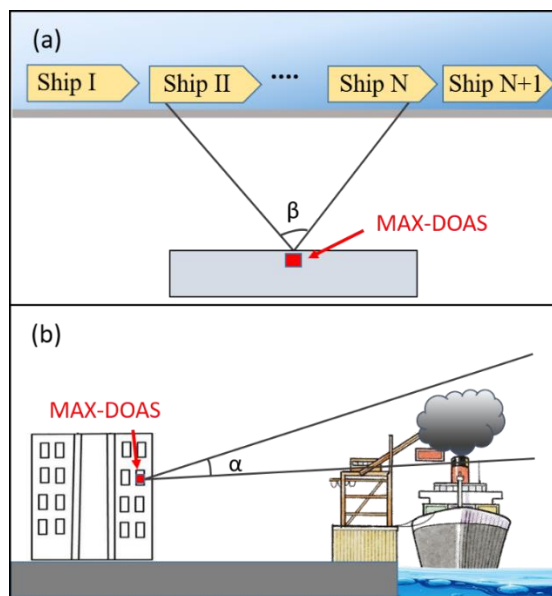
**Figure 3. (a) Schematic diagram of MAX-DOAS measurement geometry for monitoring ship emissions, and the distributions of (b)  $\text{NO}_2$  and (c)  $\text{SO}_2$  DSCDs with elevation angle on June 29, 2018.**

### 3 Results and discussion

#### 3.1 Identifying the emissions of ship at berth

200 The measurement site at Waigaoqiao Container Terminal is located on the south bank of the Yangtze River, and close to the confluence of Yangtze River and Huangpu River. The Terminal has a total quay length of more than one kilometer, and its three container berths are able to accommodate the fifth and sixth generation container ships. The special location determines that it is the important traffic route for ships to enter or leave the Yangtze River, Shanghai Port, and Waigaoqiao wharf. There are no other obvious sources for  $\text{SO}_2$  and  $\text{NO}_2$  than emissions from ships. In order to detect the emissions of ship at berths, the  
 205 MAX-DOAS instrument is placed on a fifth floor at the building of Pudong MSB (Maritime Safety Bureau). The distance between the instrument and berth is about 1.4 km. Since no other constructions obscured, multiple berths can be seen directly in the viewing of the MAX-DOAS instrument. Considering the size and chimney height of berthed ships, the MAX-DOAS

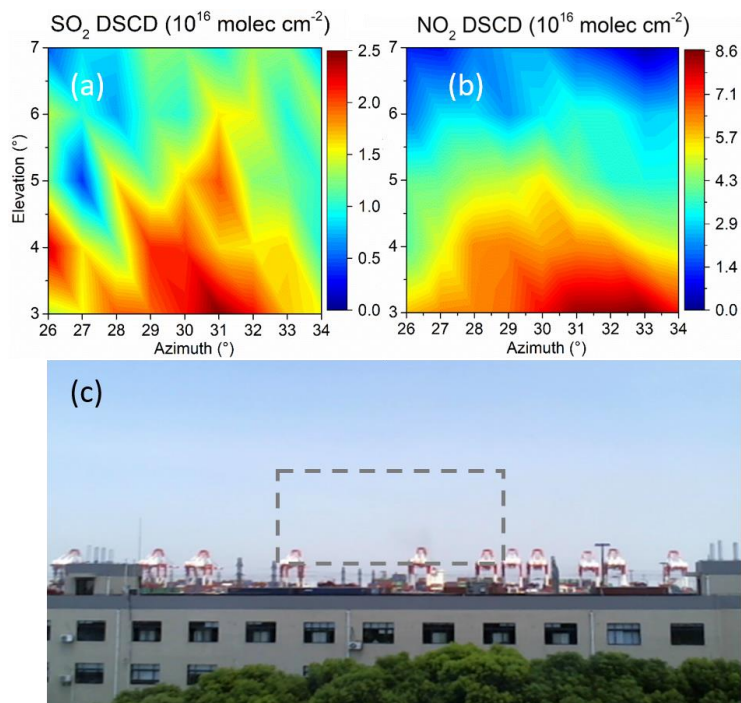
telescope was set to scan vertically in sequence of  $3^\circ$ ,  $4^\circ$ ,  $5^\circ$ ,  $6^\circ$ , and  $7^\circ$  (indicated with angle  $\alpha$  in Fig. 4). In horizontal, telescope ranged from  $26^\circ$  to  $34^\circ$  (the viewing angle from north in clockwise) and yielded a range of angle  $\beta$ , which covers about 195 m quay length. After completing one full scanning in both vertical and horizontal, a 2-D distributions of DSCDs in front view of the instrument can be generated. To avoid the interference of pollutants absorptions in the reference spectrum, the spectrum measured at azimuth angle of  $10^\circ$  was considered as the reference spectrum in the background area without the direct ship emissions pollution.



215 **Figure 4. The observational geometry of MAX-DOAS for identifying the emissions of ship at berth in Waigaoqiao port, Shanghai:**  
 (a) top view and (b) side view.

Figure 5(a) and (b) shows the spatial distributions of  $\text{SO}_2$  and  $\text{NO}_2$  DSCDs in horizontal and vertical during a complete scanning sequence, respectively. Large spatial gradients can be observed for both  $\text{SO}_2$  and  $\text{NO}_2$  levels, while the pollutants concentrations are in general higher at lower elevation angles and declined with the increase of height. The highest  $\text{SO}_2$ , i.e. DSCDs up to  $2.5 \times 10^{16}$  molec  $\text{cm}^{-2}$ , appeared in horizontal azimuth of  $31^\circ$  and elevation of  $3^\circ$  and attenuated in the direction toward left-upward. Similarly, hot-spots of  $\text{NO}_2$  with DSCDs of  $7.0 \sim 8.0 \times 10^{16}$  molec  $\text{cm}^{-2}$  are centered between  $31^\circ$  and  $33^\circ$  in horizontal at elevation of  $3^\circ$ , and decreases in periphery. It should be noted that the hot-spots of  $\text{SO}_2$  and  $\text{NO}_2$  distribution are shifted to the left accordingly while the height is raised. It is implied that the plumes containing  $\text{SO}_2$  and  $\text{NO}_2$  emitted at the bottom in the observational field of view, dispersed and diluted in left-up ward, and the weather recorded that the wind at this test site mainly came from the south. Combined with the real scene shown in Fig. 5(c), the rectangle encircled by dash line indicates the range of MAX-DOAS telescope scanning. It can be seen that there are smoke clusters discharged by ship at the right part of the picture, which is correspond to the azimuth angle between  $31^\circ$  and  $33^\circ$ . And under the action of the wind, the plume spreads to the left of the observational view.





230

**Figure 5. Distributions of measured DSCDs of (a) SO<sub>2</sub> and (b) NO<sub>2</sub> from emissions of ship at berth during 12:04~12:20 in 28 August, 2017 and (c) live photo captured by camera of MAX-DOAS instrument. The dash line rectangle indicates the observational view of MAX-DOAS.**

235

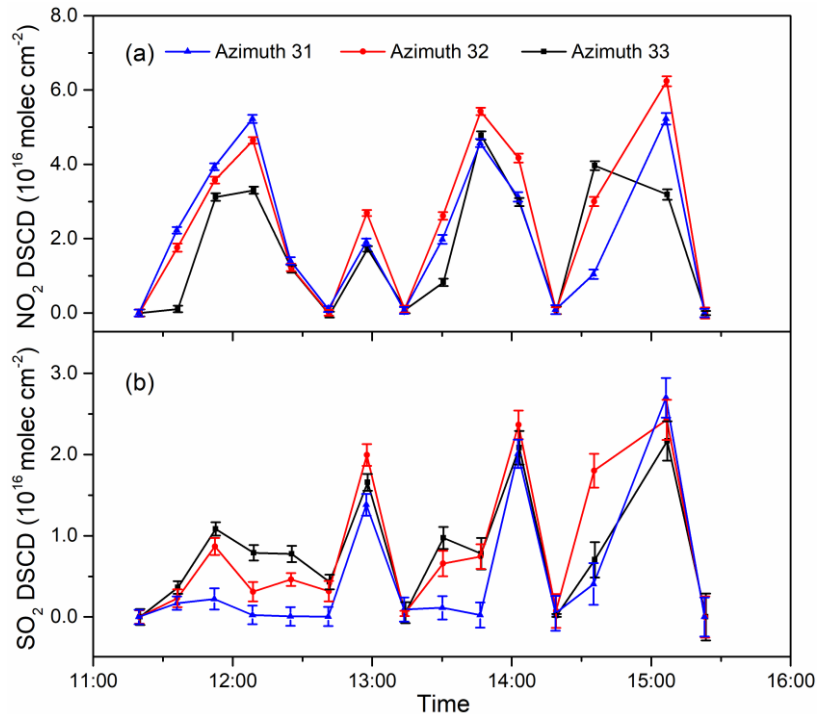
Since a full 2-D scanning sequence in horizontal and vertical directions took about 15 minutes, more than a dozen cycles in total can be performed during the afternoon. In view of the identified emission source position above, considering that the hotspots of NO<sub>2</sub> and SO<sub>2</sub> in each 2-D distributions are related to the azimuth of the berth where the ship is docked and the corresponding ship operation status, the DSCDs of NO<sub>2</sub> and SO<sub>2</sub> observed at elevation 4° and azimuth angle between 31°-33° were selected to display the temporal pattern of emissions at berth without averaging. In general, the level of NO<sub>2</sub> DSCDs is

240

much higher than SO<sub>2</sub>, because there are considerable NO<sub>x</sub> emission of in port trucks between the berth and the instrument, whereas there no other obvious emission source of SO<sub>2</sub>. In order to show the variations of DSCDs with less interference due to light path change, we used the mathematic method to remove the slowly change from the trend line of NO<sub>2</sub> and SO<sub>2</sub> DSCDs, and kept the residual after background subtraction in the Fig. 6. The baseline is modeled as a low-pass signal, while the series of peaks is modeled as sparse with sparse derivatives. Moreover, to account for the positivity of peaks, both asymmetric and

245

symmetric penalty functions are utilized (Ning et al., 2014). Afterwards, four significant increases of SO<sub>2</sub> levels can be observed during this afternoon, accompanied with NO<sub>2</sub> enhancements at approximately same moment, which can be verified by the real scene photos showing evidently the emitted plumes from the expected exhausting position.



**Figure 6. Time series of DSCD of (a) NO<sub>2</sub> and (b) SO<sub>2</sub> measured at 4° elevation angle in three azimuths on August 28, 2017.**

250

Therefore, it can be concluded that the concentration of NO<sub>2</sub> and SO<sub>2</sub> gases contained in the plume emitted by the container ships and the corresponding discharge position at berth were identified and monitored remotely by the 2-D MAX-DOAS observation. This application of 2-D MAX-DOAS is similar to the Imagine DOAS (IDOAS) technique, which is also used to map the 2-dimensional spatial distribution of polluted gases, such as the distribution of SO<sub>2</sub> in plumes of the industrial point sources (General et al., 2014; Pikel'naya et al., 2013). It suggests that the 2-D DOAS technique has the potential to measure the polluted gases mapping from the ships.

255

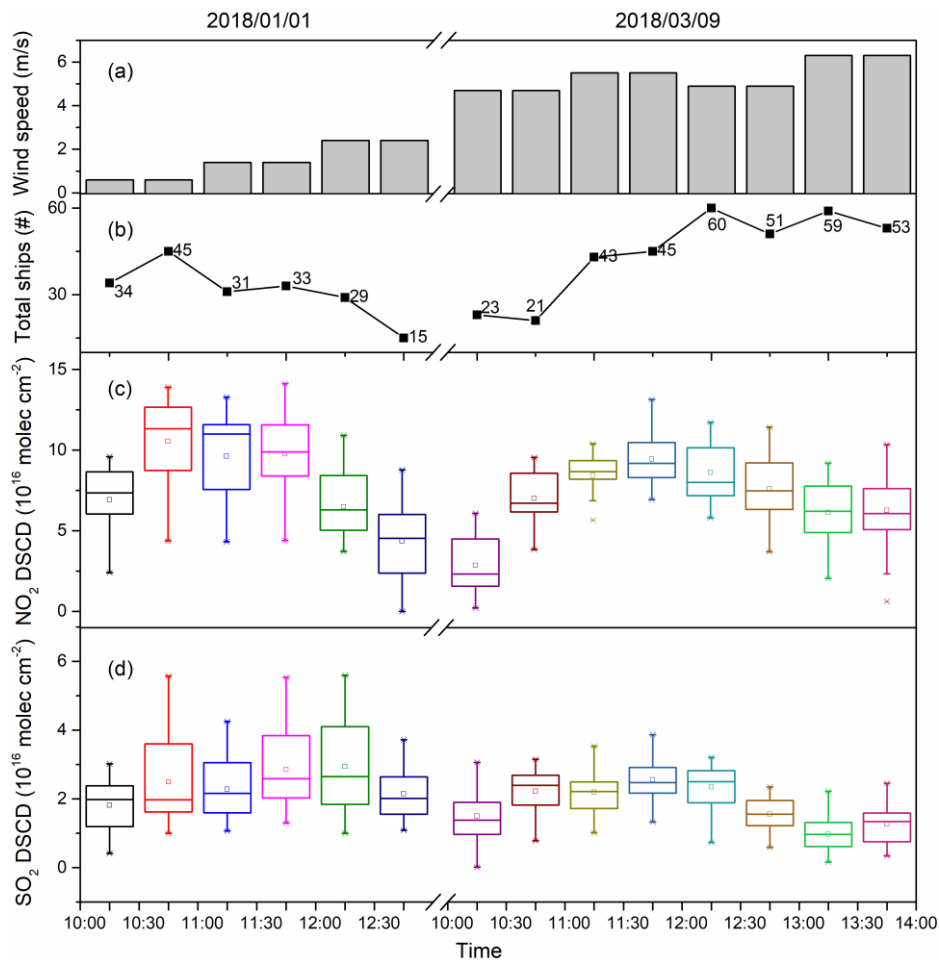
### 3.2 Ship emissions at inland waterway

Besides of ocean-going ships, inland waterway vessels also contribute significantly to the amount ship emissions (Kurtenbach et al., 2016; Pillot et al., 2016; Zhang et al., 2017). To consider this situation, the MAX-DOAS instrument was installed at the outside windowsill on the third floor of Wusong MSB Building (121°29' E, 31°22' N) from December 30, 2017 to May 18, 2018. The measurement site is located in the downstream of Huangpu River and close to the confluence into the Yangtze River. It is only channel to the upstream of Huangpu River. There are some non-container terminals near the measurement site, which mainly handles goods in domestic trading. As a consequence, a large number of ships entering and leaving the wharf area every day, and the lanes in the downstream of Huangpu River suffers from dense ship traffic. By checking the synchronized

265

270 photos taken by the camera attached to the instrument, it is found that the types of vessels passing through are in a wide variety, such as medium and small sized container ships, passenger vessels, bulker and cargo ships. In addition, the traffic volume in the area is quite high, even up to hundreds of ships per hour. As shown in Fig. 1(c), the view direction of MAX-DOAS measurements in Wusong area is pointed perpendicularly to the river lane. The observed signal of pollutants mainly come from the emissions of ships in navigation. Nevertheless, a small dock and a station for transport container are located opposite the river, which might slightly influence the measurements. The elevations angles were set in scanning sequence of 0°, 1°, 2°, 3°, 4°, 5°, 6°, and 8°. The spectrum measured at 65° was utilized as the reference since the zenith direction is blocked to some extent by the MSB building.

275 In order to illustrate the impact of ship traffic volume and meteorological conditions, measurement data of 30-min averaged wind speed, observed NO<sub>2</sub> and SO<sub>2</sub> DSCD on two representative days of January 1, and March 9, 2018 were shown in Fig. 7, as well as the corresponding number of passing ships. It can be seen from Fig. 7(a) that January 1 and March 9 were selected to represent days under stable and unstable atmospheric conditions. The average SO<sub>2</sub> DSCDs changed from 1.8×10<sup>16</sup> to 3.0×10<sup>16</sup> molec cm<sup>-2</sup>, while average NO<sub>2</sub> DSCDs varied between 4.0×10<sup>16</sup> and 1.1×10<sup>17</sup> molec cm<sup>-2</sup> on January 1. On March 280 9, the SO<sub>2</sub> and NO<sub>2</sub> average DSCDs ranged 1.0×10<sup>16</sup> to 2.7×10<sup>16</sup> molec cm<sup>-2</sup> and 2.5×10<sup>16</sup> to 1.0×10<sup>17</sup> molec cm<sup>-2</sup>, respectively. According to the ship traffic density shown in Fig. 7(b), the diurnal variations of SO<sub>2</sub> and NO<sub>2</sub> DSCDs are obviously closely related to the flow of the ships (quantitative information). Although the averaged SO<sub>2</sub> and NO<sub>2</sub> DSCDs levels are comparable during these two days, the ship traffic flow on March 9 was overall 50% higher than January 1, which may imply the important role of meteorological conditions. Considering the dense ship lanes, the ship emitted pollutants are easily to be accumulated 285 under the unfavorable condition with lower wind speed less than 2 m·s<sup>-1</sup> on January 1. In the contrary, the ship emissions along the lanes can be spread for better diffusion when the averaged wind speed is around 5 m·s<sup>-1</sup> on March 9.



**Figure 7. 30-min averaged wind speed, ship traffic volume, observed NO<sub>2</sub> and SO<sub>2</sub> DSCDs from 10:00 to 13:00 on January 1 and 10:00 to 14:00 on March 9 at Wusong Wharf measurement site.** The hollow squares in the middle of the box represent the mean value, and the solid lines in the middle represent the median. Whiskers extend from each end of the box to the internal and external limits. “-” represents the maximum and minimum, and “x” are 1% and 99% quantiles. The upper and lower edges of the box are 25% and 75% quantiles, respectively.

In order to investigate the impacts of wind on the observed DSCDs, the wind rose diagrams of NO<sub>2</sub> and SO<sub>2</sub> DSCDs at elevation 5° from January to March 2018 are shown in of Fig. 8(a) and (b). It can be found that the wind mainly comes from NNW during the observation period. The average of NO<sub>2</sub> DSCDs is small under the wind conditions from North. When the wind direction is parallel to the observation direction (i.e. E and W, the viewing direction of the telescope is pointing to the East), the average DSCDs of NO<sub>2</sub> is significantly higher. Similarly, the averaged SO<sub>2</sub> DSCDs under the east and west wind is higher than that in the S and N. It suggests that the optical length inside the polluted air and therefore the response signal is probably increased when the wind transports the polluted air parallel to the DOAS viewing direction. In Figure 8 (c) and (d), the

perpendicular direction for N and S is considered wind from  $0^\circ \pm 15^\circ$  and  $180^\circ \pm 15^\circ$ , and the parallel direction for E and W is considered wind from  $90^\circ \pm 15^\circ$  and  $270^\circ \pm 15^\circ$ . It can be seen that the  $\text{NO}_2$  and  $\text{SO}_2$  DSCDs are quite different in these two types of wind directions. When the wind is parallel to the observation direction (E and W), 34% of  $\text{NO}_2$  DSCDs and 31% of  $\text{SO}_2$  DSCDs are greater than  $3.00 \times 10^{16}$  molec  $\text{cm}^{-2}$  and  $1.50 \times 10^{16}$  molec  $\text{cm}^{-2}$ , respectively. However, under the perpendicular direction (N and S), the occurrence of high DSCDs of  $\text{NO}_2$  and  $\text{SO}_2$  significantly decreased compared to parallel direction.

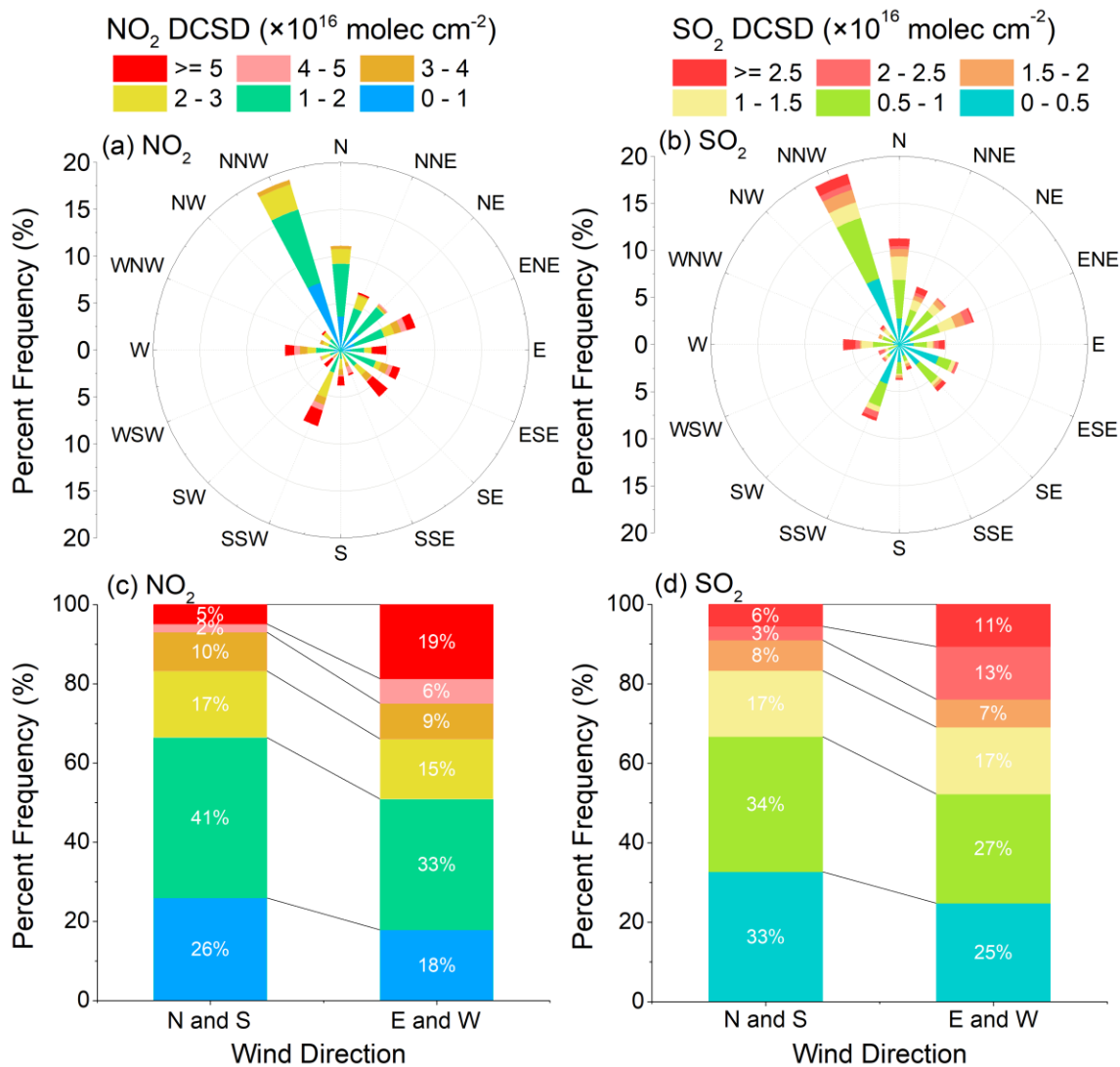
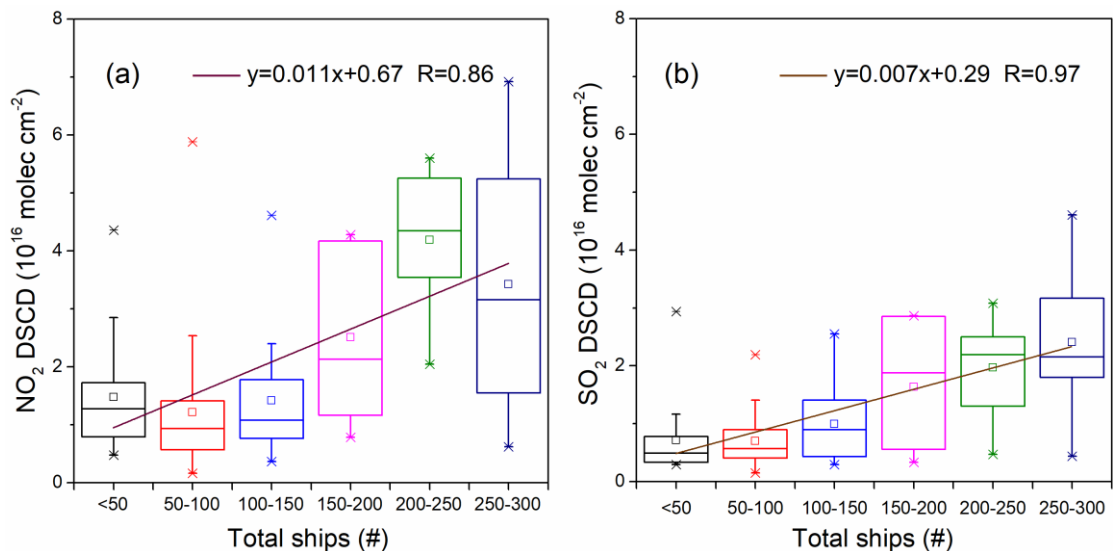


Figure 8. The dependence of (a) and (c) of  $\text{NO}_2$  and (b) and (d) of  $\text{SO}_2$  DSCDs at elevation  $5^\circ$  on wind directions from January to March 2018.

310

Based on the real-time photos taken by the instrument, we have counted the ship density manually to discuss its relationship with observed DSCDs of  $\text{NO}_2$  and  $\text{SO}_2$  at elevation  $5^\circ$ , as shown in Figure 9. It is obvious that the hourly means of  $\text{NO}_2$  and

SO<sub>2</sub> DSCDs show an upward trend as the ship density increases. Since the fuel used by the ship is inconsistent, and the wind speed and direction also affect the DSCDs, it is difficult to find the clear linear relationship between hourly data of ship density and DSCDs in this busy inland waterway environment. From the prospective of statics, the averaged NO<sub>2</sub> and SO<sub>2</sub> DSCDs of binned ship density group (the hollow squares in the middle of the box) shows a strong positive correlation with the ship density, showing the correlation coefficient R of 0.86 and 0.97, respectively. The relatively higher R of SO<sub>2</sub> also suggests that the main impacts of SO<sub>2</sub> from ship emission source over there, however, more complex sources of NO<sub>2</sub> nearby.



320 **Figure 9. Relationship between DSCDs of (a) NO<sub>2</sub> and (b) SO<sub>2</sub> at elevation 5° and ship density.** The hollow squares in the middle of the box represent the mean value, and the solid lines in the middle represent the median. Whiskers extend from each end of the box to the internal and external limits. “-” represents the maximum and minimum, and “x” are 1% and 99% quantiles. The upper and lower edges of the box are 25% and 75% quantiles, respectively.

325 In general, it can be concluded from the continuous several months measurements at Wusong MSB site that the ship density and meteorological conditions are the two major factors influencing the observed NO<sub>2</sub> and SO<sub>2</sub> levels in this typical inland waterways. For similar diffusion situations, the MAX-DOAS instrument can accurately detect the elevated pollutants concentrations with the increased number of ships. However, due to the busy ship lanes in front of the instrument, the MAX-DOAS instrument usually observes signal of pollutants in the plumes from multiple ships together, and the navigation speed of ships are relatively faster compared to the period of a completed scan measurement. So it is very hard to distinguish the single plume from the mixture. It is another shortcoming of this measurement that the MAX-DOAS measured NO<sub>2</sub> are considerably impacted by surrounding other emission sources, such as main roads and highways nearby, which contribute un-  
 330 ignored amounts to the ambient NO<sub>2</sub>. Since it is less practical for regulatory authorities to achieve fuel detection for each ship in this busy inland waterways, the remote sensing of MAX-DOAS measurement still offer the prospect of surveillance of ship  
 335 emissions. Based on the legally sulfur content and ship activity data, the theoretical NO<sub>2</sub> an SO<sub>2</sub> concentration of plume

exhausted from the chimney can be calculated. By combining with the diffusion model of plume, the theoretical concentration of SO<sub>2</sub> on the light path of MAX-DOAS observation can be obtained. Afterwards, the suspicious ship using fuel with excess sulfur content can be identified.

### 340 3.3 Ocean-going ship emissions

Another shipping traffic scenario was also considered for the MAX-DOAS measurements at Yantian Port (114°29' E, 22°56' N), located on the east side of Shenzhen in the Pearl River Delta emission control zone (see Fig. 1). Yantian Port is one of the largest container ports in China and even in the world, which has 20 large deep-water berths with a quay length of 8,212 m and water depth alongside of 17.4 m, which is benefit to the ocean-going vessels with a length of more than 300 m docked.

345 Unlike the measurement sites above, the distinct feature of shipping traffic in Yantian Port is the huge size of inbound and outbound vessels and the much less traffic density. The MAX-DOAS instrument was installed at the shore of the central operation zone of the Yantian Port from May 23, 2018. As can be seen in Fig. 1(d), the view direction of MAX-DOAS was pointed to the lanes in the eastward sea area. Due to lack of other emission sources in the front, the MAX-DOAS observation can easily capture the pollutants in single plume from the individual inbound and outbound ship, as manifested in Fig. 10.

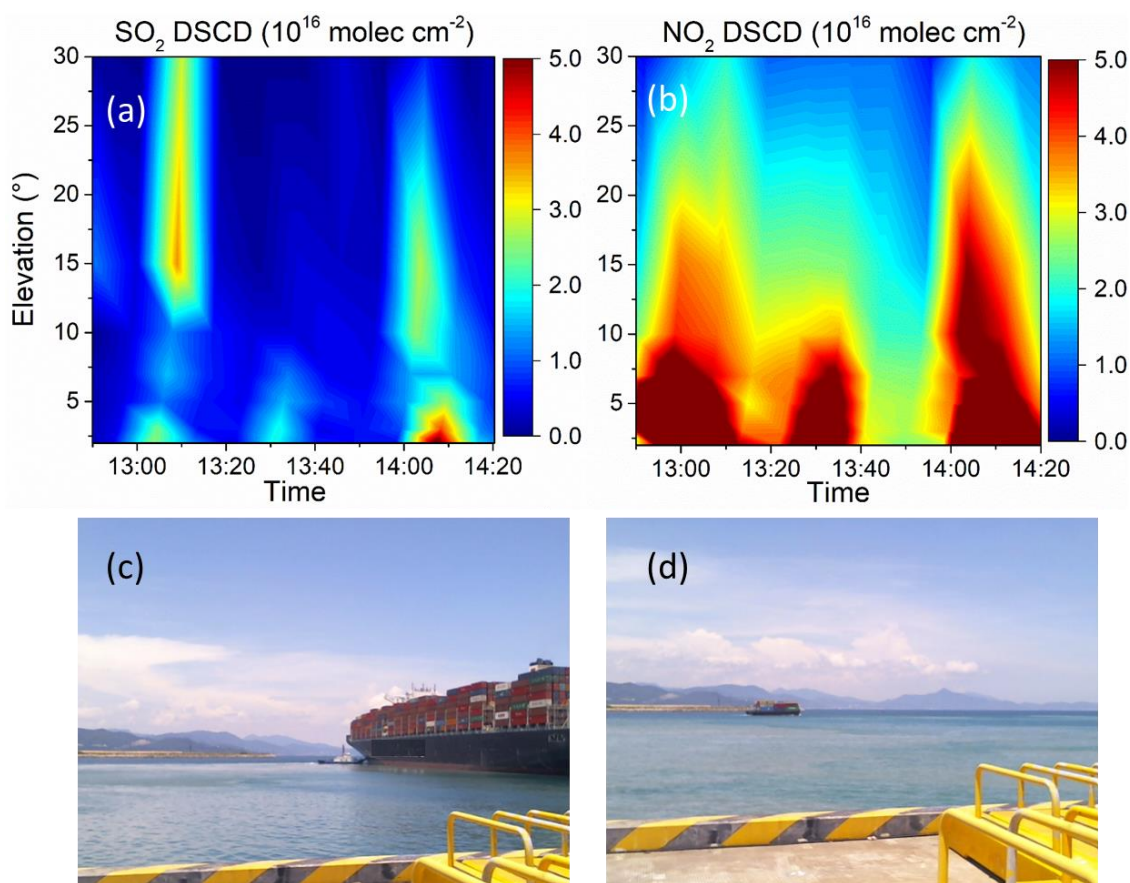
350

Figure 10(a) and (b) presents the altitude dependence of observed SO<sub>2</sub> and NO<sub>2</sub> DSCDs around noontime on May 26, 2018. During the observational period, there were three apparent peaks of SO<sub>2</sub> and NO<sub>2</sub> DSCDs, i.e. 13:00, 13:30 and 14:10. The increases of both pollutants levels occurred simultaneously. For the first pulse around 13:00, the higher levels of SO<sub>2</sub> DSCDs are distributed above 10° elevation, whereas the strong signals of NO<sub>2</sub> are concentrated below elevation angle of 5°. This can

355 be explained by the fact that the container ocean-going vessel and tugboat behave differently in emission and operation. Fig. 10(c) proved that there a large container ship is outbound at 12:55 with assistance of two tugs. It is obvious that height of outlet is very high for large container ships, but quite low for the tugboat. Since the tugboat are usually operated in the port area, its fuel usage always obey the regulations of ECA and shows high quality. Thus, stronger SO<sub>2</sub> signal appeared at high altitude due to the container ship emission, while NO<sub>2</sub> hotspots closed to the sea surface contributed by the tugboat emission. During

360 the period around 13:30, both DSCDs of SO<sub>2</sub> and NO<sub>2</sub> were slightly increased and allocated below elevation 7°. According to the live photo in Fig. 10(d), there only a small container ship was passing through about 1 km away in front view of the instrument. Considering the distance between the ship and instrument, the height of exhaust outlet should be related to a lower elevation angle, where the corresponding strong signal of emitted pollutants are expected to be observed. Additionally, obvious SO<sub>2</sub> and NO<sub>2</sub> signals were found around 14:10, during which high SO<sub>2</sub> were distributed among elevation angle 10° to 15°, but

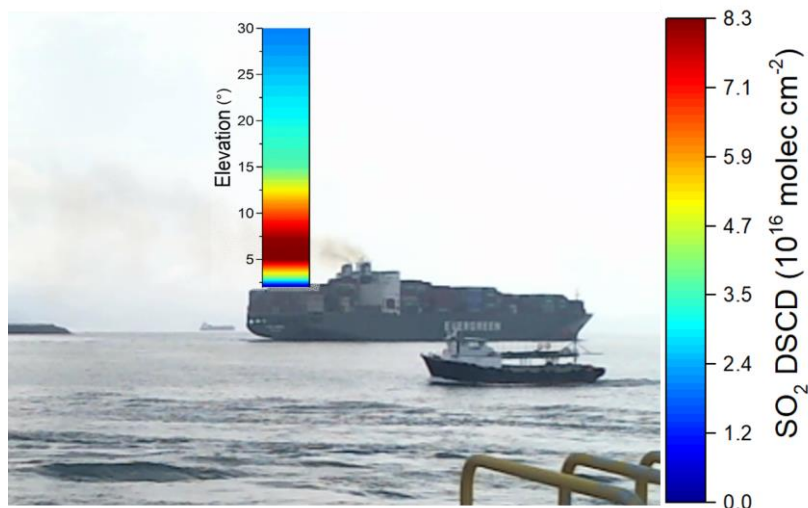
365 strong signals of SO<sub>2</sub> and NO<sub>2</sub> were both found near the sea surface. However, no ship was captured by the live photos. It can be inferred from the AIS information that the observed signal of plume was dispersed from the ship in another lane instead of this in the front view of the instrument. Besides, the AIS information also confirmed that there are no other ship emissions disturbances for the two earlier measurements.



370 **Figure 10. Measured DSCDs of (a) SO<sub>2</sub> and (b) NO<sub>2</sub> during 12:55–14:20 and live photos taken by the camera at (c) 12:56 and (d) 13:22 on May 26, 2018.**

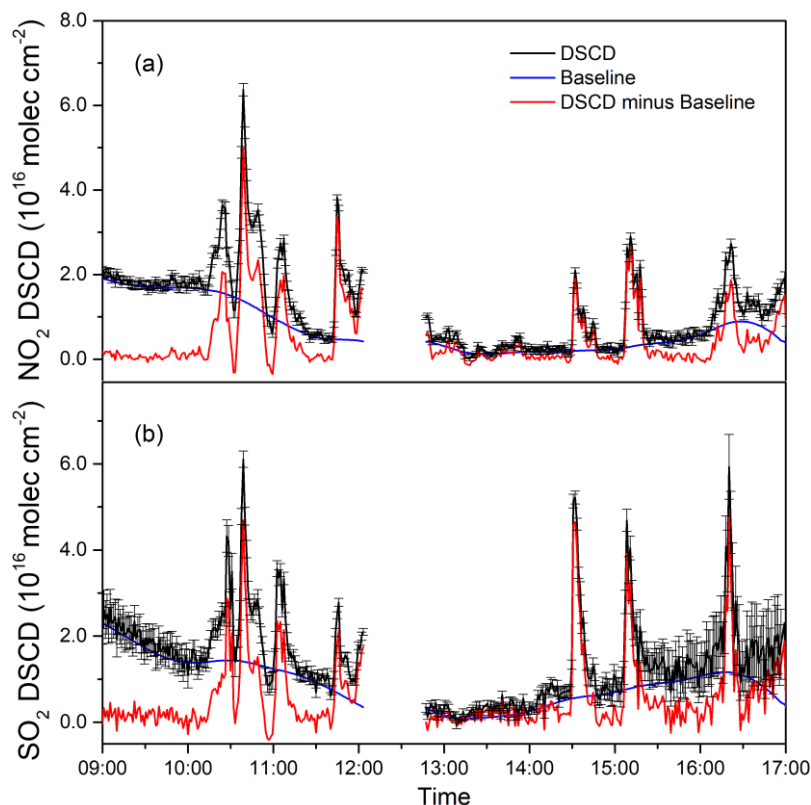
In general, the characteristics of observed SO<sub>2</sub> and NO<sub>2</sub> DSCDs distributions on height are to some extent related to the ship  
 375 size, its distance from the instrument and operational status, as well as the atmospheric stability. Based on the example  
 discussion above, the MAX-DOAS measurement in Yantian port can detect the pollutants in single plume from individual ship  
 and provide the information about vertical distribution of pollutants for conditions of low ship traffic volume. Considering the  
 large discrepancies of SO<sub>2</sub> signals in altitudes, we try to analyze the detected plumes in more detail and obtain the representative  
 observation elevation. According to the live photos, a large container ship entered the field of view at 09:51 on June 22, 2018,  
 380 which moved very slowly and emitted a distinct black smoke. Figure 11 shows the distribution of SO<sub>2</sub> DSCDs in plumes at  
 different elevation angles. The SO<sub>2</sub> DSCDs peaked at  $8.17 \times 10^{16}$  molec cm<sup>-2</sup> between elevation angles of 5° and 7°, and  
 decreased with height. It was found that the DSCDs observed at elevation angle 7° are suitable to represent the peak  
 concentrations in the plumes considering the chimney height of ship and its horizontal distance from MAX-DOAS instrument.





385 **Figure 11. A typical distribution of SO<sub>2</sub> DSCDs in the smoke plume of ship on June 22, 2018**

Instead of the full elevations scanning, with the temporal high resolved measurements (60 s) at single 7° elevation, it is possible to resolve individually the plume signal of passing ships. Thus, the diurnal profiles of SO<sub>2</sub> and NO<sub>2</sub> DSCDs at 7° elevation on June 26, 2018 were further investigated as presented in Fig. 12. There multiple peaks of SO<sub>2</sub> and NO<sub>2</sub>, with the highest DSCDs of SO<sub>2</sub> and NO<sub>2</sub> exceeding  $6.00 \times 10^{16}$  molec cm<sup>-2</sup>, occurred due to the emissions of the occasional passing ships. By applying the mathematical method, a baseline (the blue dotted line in Fig. 12) can be extracted from the DSCDs trend lines (the black solid line in Fig. 12). The baseline represents the diurnal variations of DSCDs, mostly due to the change of light path caused by solar zenith angle and the background emissions. Finally, it can be found that seven synchronous peaks of SO<sub>2</sub> and NO<sub>2</sub> levels higher than  $2.00 \times 10^{16}$  molec cm<sup>-2</sup> are present in the trend line (the red solid line in Fig. 12). Validated by the live photos of the instrument and the AIS information, these kind of sharp increased concentration of pollutants are originated from the ship plumes passed by. It suggests the high sensitivity of MAX-DOAS measurements to the change of SO<sub>2</sub> and NO<sub>2</sub> contents in the atmosphere. The increases of pollutants levels lasted from 10 min to half an hour, which is related to the durations of the ship movement in the field of view.



400

**Figure 12. Diurnal variations of DSCDs of (a) NO<sub>2</sub> and (b) SO<sub>2</sub> measured at 7° elevation angle on 26 June 2018.**

Moreover, it should be noticed that the amplitude of each peak varied differently, which implies that the DSCDs ratio of SO<sub>2</sub> to NO<sub>2</sub> for each peak may reveal the emission information of fuel sulfur content of individual vessels (Seyler et al., 2017; Mellqvist et al., 2017). However, it is important to note that the NO<sub>2</sub> is formed by the reaction of NO and O<sub>3</sub> in the plume, so the SO<sub>2</sub>/NO<sub>2</sub> ratio depends on the age of the plume to a certain extent. The ambient O<sub>3</sub> between 08:00 and 17:00 was averaged at 63.7 ppb in Yantian during the campaign. Considering the abundance of ozone, the NO emitted by the ship will react with O<sub>3</sub> rapidly to form NO<sub>2</sub> within a few minutes or even faster (Seyler et al., 2017). In addition, the conversion between NO and NO<sub>2</sub> is very fast and maintains a dynamic balance with sunlight during the daytime considering the photolysis of NO<sub>2</sub> (Singh et al., 1987). Therefore, the SO<sub>2</sub>/NO<sub>2</sub> ratio in the observed plume could be in a stable conditions and less impacted by the fresh emitted NO. Thus, the linear regression analysis between SO<sub>2</sub> and NO<sub>2</sub> DSCDs were performed to infer the fuel sulfur content.

Figure 13 presents the analysis results of 24 different vessels. The strong correlation relationship between SO<sub>2</sub> and NO<sub>2</sub> DSCDs are the obvious evidence of the significant homologies of emission sources between SO<sub>2</sub> and NO<sub>2</sub>. Nevertheless, the slope of different vessels highly changed from 0.28 to 2.90, indicating the diversity of the SO<sub>2</sub> emission intensity in the ship plumes. In general, the SO<sub>2</sub> emission are directly related to the fuel sulfur content and engine operation status of the ships according to

415

the emission model estimation, e.g. the power, activity time and the speed of ship (Fan et al., 2016; Zhang et al., 2018b). The outbound vessels usually leave from the shore slowly with the help of tugboat, and then speed up sailing into the sea. It calls the main engine to power the navigation during this process, and the fuel used by the main engine has a higher sulfur content than the auxiliary machine. In contrast, the main engine of vessel is usually shut down during the inbound process. Therefore, the ratio of  $\text{SO}_2/\text{NO}_2$  DSCDs in the plume emitted by the outbound vessel could be higher than the inbound one.

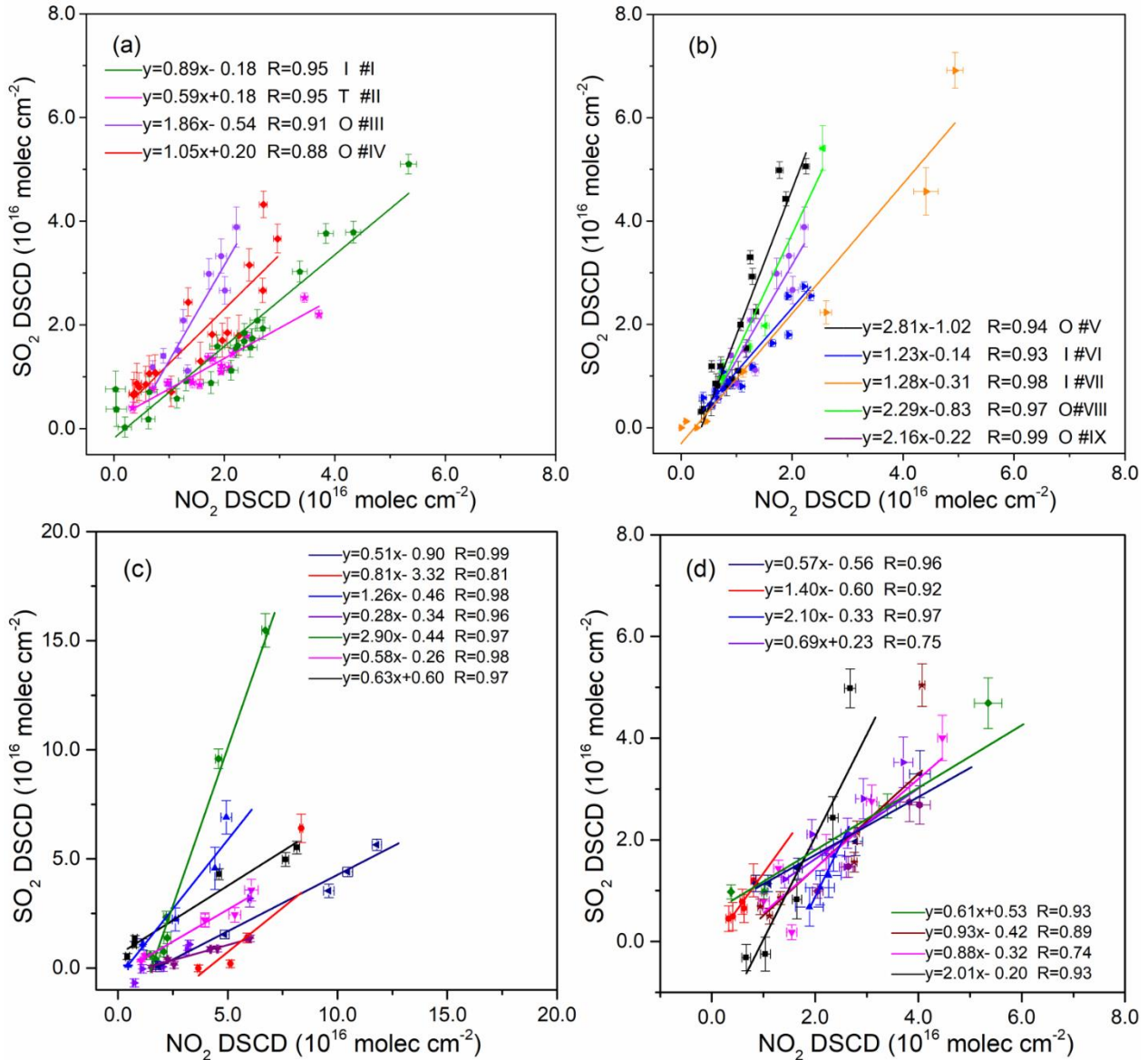


Figure 13. The relationship between  $\text{SO}_2$  and  $\text{NO}_2$  emitted by several typical vessels.

During the MAX-DOAS observation, we have also carried out some fuel sample analysis, investigation on the activity data and engine parameters of these vessels, among which five of them are the vessels in Fig. 12. Therefore, we indicated the different status of nine vessels in Fig. 14, along with the information on the rated power of engine and fuel sulfur content individually, in which the inbound and outbound shows the rated power of main and auxiliary engine, respectively. The vessel #II is a tugboat operated in the port area, which uses the fuel with lowest sulfur content of 0.001% and shows minimum ratio of  $\text{SO}_2/\text{NO}_2$  in DSCDs. Furthermore, the inbound vessel #I, #VI and #VII (indicated by diamond in Fig. 14) have switched off the main engine when it arrived in the front of the MAX-DOAS instrument, moved under the towing of tugboat and docked by inertia finally. Additionally, the sulfur content of fuel are much lower in auxiliary engine than main engine. So  $\text{SO}_2/\text{NO}_2$  ratios of inbound vessels is much lower than that of outbound vessels. The other vessels, indicated by circle in Fig. 14, are all in outbound. Under the launch of main engine and high sulfur content in fuel, these vessels exhibited relatively higher ratios of  $\text{SO}_2/\text{NO}_2$  over 2.0, except for vessel #IV. Due to the usage of much more cleaner fuel with sulfur content of 1.28%, the vessel #IV presented the lowest ratio of  $\text{SO}_2/\text{NO}_2$  among all the outbound vessels. Compared to vessel #III with similar rated power of engine, it can be observed that the ratio of  $\text{SO}_2/\text{NO}_2$  in the plume increased with the increase of fuel sulfur content for vessels. This phenomenon is also applicable to cases of vessel #V and #VIII. It is worth to note that the circle of outbound cargo #IX is deviated from others, which has very low rated power but very high ratio of  $\text{SO}_2/\text{NO}_2 > 2.0$ . So it can be recognized as a suspicious ship using fuel with sulfur content exceeding the regular limit.

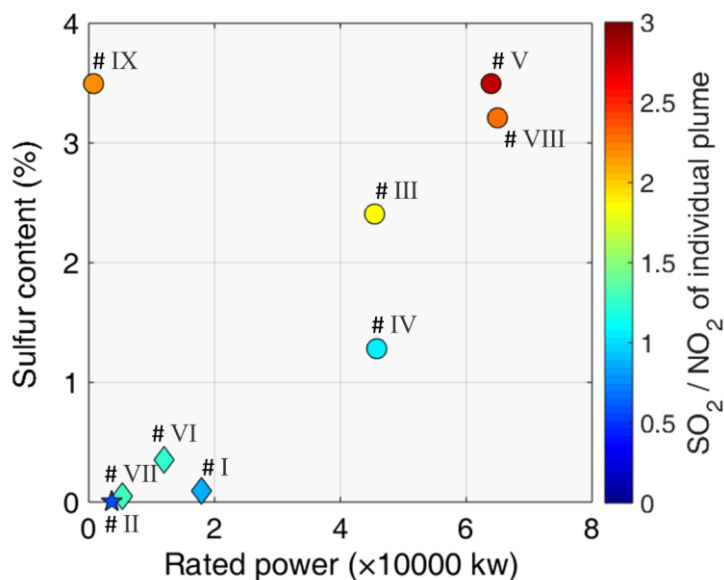
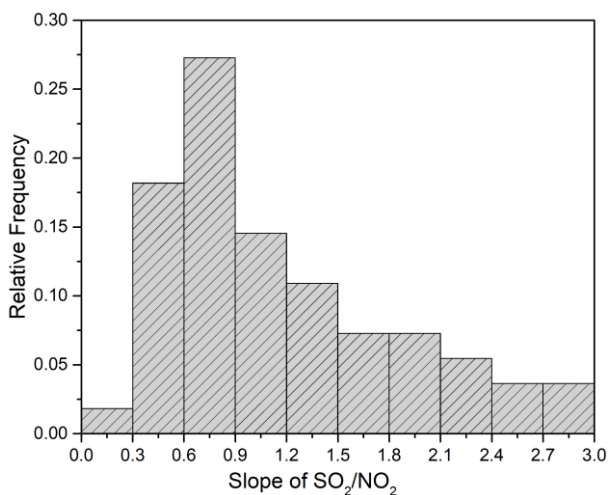


Figure 14. The relationship between the ratio of  $\text{SO}_2/\text{NO}_2$  obtained by linear regression, the fuel sulfur content and engine rated power of all nine vessels. Tugboat, inbound and outbound vessels are represented by pentagram, diamond and circles, respectively.

Basically, the ratios of  $\text{SO}_2/\text{NO}_2$  in the plume discharged from the inbound vessel and the tugboat are usually lower than 1.5 for normal condition, which is much smaller than that of outbound vessels using high rated power engine and high sulfur content fuel. For outbound vessels, the ratios of  $\text{SO}_2/\text{NO}_2$  are more related to the fuel sulfur content. The irregular observed ratio of  $\text{SO}_2/\text{NO}_2$  can tag the vessel not obeyed to the sulfur content limitation. Therefore, the MAX-DOAS measurement provides a promising technology for compliance monitoring of fuel sulfur content by investigating the ratio of  $\text{SO}_2/\text{NO}_2$  in the plume and the more accurate estimation with load factor and emission factor for the actual operation. Besides, the statistics of  $\text{SO}_2/\text{NO}_2$  ratios in discharges were performed for 55 ships during the observation. The frequency distribution of the slope of  $\text{SO}_2/\text{NO}_2$  is shown in Figure 15. It shows that the values of  $\text{SO}_2/\text{NO}_2$  were mostly distributed less 1.5, which occupied about 72.7%. Ships with the ratio of  $\text{SO}_2/\text{NO}_2$  between 0.6 and 0.9 shared the highest proportion. It indicates that most of the fuel used by ships in Yantian Port could be qualified. However, there are still some ships may use non-compliant fuel, because the ships with a value of  $\text{SO}_2/\text{NO}_2$  greater than 1.5 account for 27%.



**Figure 15. Frequency distribution of the slope of  $\text{SO}_2/\text{NO}_2$  from samples of 55 vessels.**

## 460 **Conclusion**

In this study, we performed the MAX-DOAS measurements observe ship emissions of  $\text{SO}_2$  and  $\text{NO}_2$  in Shanghai and Shenzhen, China for three different typical ship traffic conditions. At Waigaoqiao container terminal in Shanghai, the  $\text{SO}_2$  and  $\text{NO}_2$  exhausted by ship at berth can be easily identified for the locations and intensity of emission from the 2-dimensional MAX-DOAS observation. At the inland waterway area of Wusong Wharf it is difficult to determine the single ship emissions due to the dense traffic volume and complex background environment. The long-term MAX-DOAS measurements shows that the changes of  $\text{SO}_2$  and  $\text{NO}_2$  are correlated to ship traffic density at stable and unstable atmospheric conditions. However, better dispersion under unstable atmospheric condition are favorable for the decrease of pollutants levels. For open sea waters in

Yantian deep water port, the DSCDs of SO<sub>2</sub> and NO<sub>2</sub> measured by MAX-DOAS are highly sensitive to the emitted plumes of vessels passing through in front of the shore-based instrument, which shows the significant increase of pollutants concentrations and 10-30 min duration of the emission signals. Considering the distance and size of the vessels, the DSCDs observed at elevation angle 7° are the hotspots of the concentration in altitude, and further selected to investigate the fuel sulfur content. According to the linear regression of SO<sub>2</sub> and NO<sub>2</sub> DSCDs, the ratio of SO<sub>2</sub>/NO<sub>2</sub> are found to be very helpful to infer the levels of sulfur emission. Combined the fuel sample analysis and inquiry of the vessel data, the SO<sub>2</sub>/NO<sub>2</sub> ratio in the plume are usually lower than 1.5 for the inbound vessel and the tugboat, whereas is much smaller than that of other vessels. The abnormal high ratio of SO<sub>2</sub>/NO<sub>2</sub> in the plume usually implies the vessel could not be in compliance with the sulfur content limitation.

In summary, the advantages of optical remote sensing and mature for SO<sub>2</sub> and NO<sub>2</sub> detection are beneficial to MAX-DOAS measurement for the ship emission. These applications at different ship traffic scenarios demonstrated the feasibility of shore-based MAX-DOAS to observe the emitted SO<sub>2</sub> and NO<sub>2</sub> from vessels docked at berth, navigation in the lanes, inbound and outbound operations. Nevertheless, the main ship emitted pollutants of NO and CO<sub>2</sub> cannot be monitored due to the limitation of the observed wavelength range. Since MAX-DOAS uses solar scattered light as the source, it cannot be measured at night when there is no sunlight, and there is a large error during twilight and rainy observations. For the prospects, the combination of MAX-DOAS remote sensing of ship plumes and the estimation on emissions with theoretical fuel sulfur contents and actual operation data will provide the promising approach for surveillance in the future.

**Data availability.** Data are available for scientific purposes upon request to the corresponding authors.

**Author contributions.** YC, SW and BZ designed and implemented the research, as well as prepared the manuscript; JZ, YG and RZ contributed to the MAX-DOAS measurements at different sites; YC and SW carried out the MAX-DOAS retrieval and analysis combined with other auxiliary data; YL, YZ, YQ and WM provided constructive comments and support for the ship emissions research of this study.

**Competing interests.** The authors declare that they have no conflict of interest.

495

## Acknowledgements

This research was supported by grants from National Key Research and Development Program of China (2016YFC0200401, 2017YFC0210002), National Natural Science Foundation of China (41775113, 21777026, 21677038), Shanghai Pujiang Talent Program (17PJC015), Pudong Science and Technology committee of Shanghai (PKJ2018-C05). We would like to thank

500 Shenzhen Maritime Safety Administration, Wusong and Pudong Maritime Safety Bureau of Shanghai for the coordination of field measurement, respectively.

## References

- Balzani Lööv, J. M., Alfoldy, B., Gast, L. F. L., Hjorth, J., Lagler, F., Mellqvist, J., Beecken, J., Berg, N., Duyzer, J., Westrate, H., Swart, D. P. J., Berkhout, A. J. C., Jalkanen, J.-P., Prata, A. J., vander Hoff, G. R., and Borowiak, A.: Field test of available methods to measure remotely SO<sub>x</sub> and NO<sub>x</sub> emissions from ships, *Atmos. Meas. Tech.*, 7, 2597–2613, <https://doi.org/10.5194/amt-7-2597-2014>, 2014.
- Beecken, J., Mellqvist, J., Salo, K., Ekholm, J., Jalkanen, J.-P., Johansson, L., Litvinenko, V., Volodin, K., and Frank-Kamenetsky D. A.: Emission factors of SO<sub>2</sub>, NO<sub>x</sub> and particles from ships in Neva Bay from ground-based and helicopter-borne measurements and AIS-based modeling, *Atmos. Chem. Phys.*, 15, 5229–5241, <https://doi.org/10.5194/acp-15-5229-2015>, 2015.
- Becagli, S., Sferlazzo, D. M., Pace, G., di Sarra, A., Bommarito, C., Calzolari, G., Ghedini, C., Lucarelli, F., Meloni, D., Monteleone, F., Severi, M., Traversi, R., and Udisti, R.: Evidence for heavy fuel oil combustion aerosols from chemical analyses at the island of Lampedusa: a possible large role of ships emissions in the Mediterranean, *Atmos. Chem. Phys.*, 12, 3479–3492, <https://doi.org/10.5194/acp-12-3479-2012>, 2012.
- Berg, N., Mellqvist, J., Jalkanen, J. P., and Balzani, J.: Ship emissions of SO<sub>2</sub> and NO<sub>2</sub>: DOAS measurements from airborne platforms. *Atmos. Meas. Tech.*, 5, 1085–1098, <https://doi.org/10.5194/amt-5-1085-2012>, 2012.
- Berglen, T.F., Bernsten, T.K., Isaksen, I.S.A., and Sundet, J.K.: A global model of the coupled sulfur/oxidant chemistry in the troposphere: the sulfur cycle. *J. Geophys. Res.* 109, D19310, 2004.
- Bogumil, K., Orphal, J., Homann, T., Voigt, S., Spietz, P., Fleischmann, O. C., and Vogel, A., Hartmann, M., Bovensmann, H., Frerik, J., and Burrows, J. P.: Measurements of Molecular Absorption Spectra with the SCIAMACHY Pre-Flight Model: Instrument Characterization and Reference Data for Atmospheric Remote-Sensing in the 230–2380 nm Region, *J. Photoch. Photobio. A.*, 157, 167–184, [https://doi.org/10.1016/S1010-6030\(03\)00062-5](https://doi.org/10.1016/S1010-6030(03)00062-5), 2003.
- Chance, K. and Kurucz, R.: An improved high-resolution solar reference spectrum for earth's atmosphere measurements in the ultraviolet, visible, and near infrared, *J. Quant. Spectrosc. Ra.*, 111, 1289–1295, <https://doi.org/10.1016/j.jqsrt.2010.01.036>, 2010.
- Coggon, M. M., Sorooshian, A., Wang, Z., Metcalf, A. R., Frossard, A. A., Lin, J. J., Craven, J. S., Nenes, A., Jonsson, H. H., Russell, L. M., Flagan, R. C., and Seinfeld, J. H.: Ship impacts on the marine atmosphere: insights into the contribution of 20 shipping emissions to the properties of marine aerosol and clouds, *Atmos. Chem. Phys.*, 12, 8439–8458, <https://doi.org/10.5194/acp-12-8439-2012>, 2012.

- Corbett, J. J., Fischbeck, P. S., and Pandis, S. N.: Global nitrogen and sulfur inventories for oceangoing ships, *J. Geophys. Res.*, 104(D3): 3457–3470, <https://doi.org/10.1029/1998JD100040>, 1999.
- Diesch, J. M., Drewnick, F., Klimach, T., and Borrmann, S.: Investigation of gaseous and particulate emissions from various marine vessel types measured on the banks of the Elbe in Northern Germany, *Atmos. Chem. Phys.*, 13, 3603–3618, 535 <https://doi.org/10.5194/acp-13-3603-2013>, 2013.
- Dimitriadis, B.: Effects of hydrocarbon and nitrogen oxides on photochemical smog formation, *Environ. Sci. Tech.*, 6(3), 253–260, 1972.
- Edner, H., Ragnarson, P., Spännare, S., Svanberg, S.: Differential optical absorption spectroscopy (DOAS) system for urban atmospheric pollution monitoring, *Applied optics*, 32(3), 327–333, <https://doi.org/10.1364/AO.32.000327>, 1993.
- 540 Endresen, Ø., Sørsgård, E., Sundet, J. K., Dalsøren, S. B., Isaksen, I. S. A., Berglen, T. F., and Gravir, G.: Emissions from International Sea Transportation and Environmental Impact, *J. Geophys. Res.-Atmos.*, 108, 4560, <https://doi.org/10.1029/2002JD002898>, 2003.
- Eyring, V., Köhler, H. W., van Aardenne, J., and Lauer, A.: Emissions from international shipping: 1. The last 50 years, *J. Geophys. Res.*, 110, D17305, <https://doi.org/10.1029/2004JD005619>, <https://doi.org/10.1029/2004JD005619>, 2005.
- 545 Eyring, V., Isaksen, I. S., Berntsen, T., Collins, W. J., Corbett, J. J., Endresen, O., Grainger, R. G., Moldanova, J., Schlager, H., and Stevenson, D. S.: Transport impacts on atmosphere and climate: Shipping, *Atmos. Environ.*, 44, 4735–4771, <https://doi.org/10.1016/j.atmosenv.2009.04.059>, 2010.
- Fan, Q., Zhang, Y., Ma, W., Ma, H., Feng, J., Yu, Q., Yang, X., Ng, S. K. W., Fu, Q., and Chen, L.: Spatial and seasonal dynamics of ship emissions over the Yangtze River Delta and East China Sea and their potential environmental influence, 550 *Environ. Sci. Technol.*, 50, 1322–1329, <https://doi.org/10.1021/acs.est.5b03965>, 2016
- Fleischmann, O. C., Hartmann, M., Burrows, J. P., and Orphal, J.: New ultraviolet absorption cross-sections of BrO at atmospheric temperatures measured by time-windowing Fourier transform spectroscopy, *J. Photoch. Photobio. A*, 168, 117–132, <https://doi.org/10.1016/j.jphotochem.2004.03.026>, 2004.
- General, S., Pöhler, D., Sihler, H., Bobrowski, N., Frieß, U., Zielcke, J., Horbanski, M., Shepson, P. B., Stirm, B. H., Simpson, 555 W. R., Weber, K., Fischer, C., and Platt, U.: The Heidelberg Airborne Imaging DOAS Instrument (HAIDI) – a novel imaging DOAS device for 2-D and 3-D imaging of trace gases and aerosols, *Atmos. Meas. Tech.*, 7, 3459–3485, <https://doi.org/10.5194/amt-7-3459-2014>, 2014.
- Hong, Q., Liu, C., Chan, K., Hu, Q., Xie, Z., Liu, H., Si, F., and Liu, J.: Ship-based MAX-DOAS measurements of tropospheric NO<sub>2</sub>, SO<sub>2</sub>, and HCHO distribution along the Yangtze River, *Atmos. Chem. Phys.*, 18(18), 1–39, <https://doi.org/10.5194/acp-18-5931-2018>, 560 2018.
- Hönninger, G., Friedeburg, C. V., and Platt, U.: Multi axis differential optical absorption spectroscopy (MAX-DOAS). *Atmos. Chem. Phys.*, 4, 231–254, <https://doi.org/10.5194/acp-4-231-2004>, 2004.
- International Maritime Organization (IMO): Second GHG study 2009: Prevention of Air Pollution from Ships, IMO, London, 2009.



- 565 Johansson, L., Jalkanen, J. P., and Kukkonen, J.: Global assessment of shipping emissions in 2015 on a high spatial and temporal resolution, *Atmos. Environ.*, 167, 403-415, <https://doi.org/10.1016/j.atmosenv.2017.08.042>, 2017.
- Kattner, L., Mathieu-Üffing, B., Burrows, J. P., Richter, A., Schmolke, S., Seyler, A., and Wittrock, F.: Monitoring compliance with sulfur content regulations of shipping fuel by in situ measurements of ship emissions, *Atmos. Chem. Phys.*, 15, 10087–10092, <https://doi.org/10.5194/acp-15-10087-2015>, 2015.
- 570 Kurtenbach, R., Vaupel, K., Kleffmann, J., Klenk, U., Schmidt, E., and Wiesen, P.: Emissions of NO, NO<sub>2</sub> and PM from inland shipping, *Atmos. Chem. Phys.*, 16, 14285-14295, <https://doi.org/10.5194/acp-16-14285-2016>, 2016.
- Lai, H. K., Tsang, H., Chau, J., Lee, C. H., McGhee, S. M., Hedley, A. J., and Wong, C. M.: Health impact assessment of marine emissions in Pearl River Delta region, *Marine Pollution Bulletin*, 66, 158-163, <https://doi.org/10.1016/j.marpolbul.2012.09.029>, 2013.
- 575 Lauer, A., Eyring, V., Hendricks, J., Joeckel, P., and Lohmann, U.: Global model simulations of the impact of ocean-going ships on aerosols, clouds, and the radiation budget, *Atmos. Chem. Phys.*, 7, 5061-5079, <https://doi.org/10.5194/acp-7-5061-2007>, 2007.
- Liu, H., Fu, M., Jin, X., Shang, Y., Shindell, D., Faluvegi, G., Shindell, C., and He, K.: Health and climate impacts of ocean-going vessels in East Asia, *Nat. Clim. Change.*, 6, 1037-1041, 2016.
- 580 Lv, Z., Liu, H., Ying, Q., Fu, M., Meng, Z., Wang, Y., Wei, W., Gong, H., and He, K.: Impacts of shipping emissions on PM<sub>2.5</sub> air pollution in China, *Atmos. Chem. Phys.*, 18, 15811-15824, <https://doi.org/10.5194/acp-18-15811-2018>, 2018.
- Ma, J., Beirle, S., Jin, J., Shaiganfar, R., Yan, P., and Wagner, T.: Tropospheric NO<sub>2</sub> vertical column densities over Beijing: results of the first three years of ground-based MAX-DOAS measurements (2008-2011) and satellite validation. *Atmos. Chem. Phys.* 13, 1547-1567, <https://doi.org/10.5194/acp-13-1547-2013>, 2013.
- 585 Matthias, V., Bewersdorff, I., Aulinger, A., and Quante, M.: The contribution of ship emissions to air pollution in the North Sea regions, *Environ. Pollut.*, 158, 2241–2250, <https://doi.org/10.1016/j.envpol.2010.02.013>, 2010.
- Mclaren, R., Wojtal, P., Halla, J. D., Mihele, C., and Brook, J. R.: A survey of NO<sub>2</sub>: SO<sub>2</sub> emission ratios measured in marine vessel plumes in the Strait of Georgia. *Atmos. Environ.*, 46, 655-658, <https://doi.org/10.1016/j.atmosenv.2011.10.044>, 2012.
- Meller, R. and Moortgat, G. K.: Temperature dependence of the absorption cross sections of formaldehyde between 223 and  
590 323 K in the wavelength range 225–375 nm, *J. Geophys. Res.-Atmos.*, 105, 7089–7101, <https://doi.org/10.1029/1999JD901074>, 2000.
- Mellqvist, J., Rosén, A.: DOAS for flue gas monitoring—II. Deviations from the Beer-Lambert law for the UV/visible absorption spectra of NO, NO<sub>2</sub>, SO<sub>2</sub> and NH<sub>3</sub>, *J. Quant. Spectrosc. Radiat. Transfer.*, 56(2), 209-224, [https://doi.org/10.1016/0022-4073\(96\)00043-X](https://doi.org/10.1016/0022-4073(96)00043-X), 1996.
- 595 Mellqvist, J.; Beecken, J.; Conde, V.; Ekholm, J.: Surveillance of Sulfur Emissions from Ships in Danish Waters. Report to the Danish Environmental Protection Agency. Available online: <http://dx.doi.org/10.17196/DEPA.001>, 2017.
- MOT: Implementation of the Ship Emission Control Area in Pearl River Delta, the Yangtze River Delta and the Bohai Rim (Beijing-Tianjin-Hebei area), Ministry of Transport, C., 8, 2015.

- Murphy, S. M., Agrawal, H., Sorooshian, A., Padro, L. T., Gates, H., Hersey, S., Welch, W. A., Jung, H., Miller, J. W., Cocker, D. R., Nenes, A., Jonsson, H. H., Flagan, R. C., and Seinfeld, J. H.: Comprehensive simultaneous shipboard and airborne characterisation of exhaust from a modern container ship at sea, *Environ. Sci. Technol.*, 43, 4626–4640, <https://doi.org/10.1021/es802413j>, 2009.
- Ning, X., Selesnick, I., and Duval, L.: Chromatogram baseline estimation and denoising using sparsity (BEADS). *Chemom. Intell. Lab. Syst.*, 139, 156–167, <https://doi.org/10.1016/j.chemolab.2014.09.014>, 2014.
- Pikelnaya, O., Flynn, J. H., Tsai, C., and Stutz, J.: Imaging DOAS detection of primary formaldehyde and sulfur dioxide emissions from petrochemical flares, *J. Geophys. Res. Atmos.*, 118, 8716–8728, doi:10.1002/jgrd.50643, 2013.
- Platt, U., Perner, D., and Patz, H. W.: Simultaneous Measurement of Atmospheric CH<sub>2</sub>O, O<sub>3</sub> and NO<sub>2</sub> by Differential Optical Absorption, *J. Geophys. Res.*, 84, 6329–6335, <https://doi.org/10.1029/JC084iC10p06329>, 1979.
- Platt, U., and Stutz, J.: *Differential Optical Absorption Spectroscopy*, ISBN 978-3-540-21193-8, Springer, Berlin-Heidelberg, 2008.
- Pillot, D., Guiot, D., Le Cottier, B., Perret, P., and Tassel, P.: Exhaust emissions from in-service inland waterways vessels, *J. Earth Sci. Geotech. Eng.*, 6, 205–225, <https://hal.archives-ouvertes.fr/hal-01488528>, 2016.
- Prata, A. J.: Measuring SO<sub>2</sub> ship emissions with an ultraviolet imaging camera, *Atmos. Meas. Tech.*, 7, 1213–1229, <https://doi.org/10.5194/amt-7-1213-2014>, 2014.
- Premuda, M., Masieri, S., Bortoli, D., Kostadinov, I., Petritoli, A., and Giovanelli, G.: Evaluation of vessel emissions in a lagoon area with ground based Multi axis DOAS measurements, *Atmos. Environ.*, 45, 5212–5219, <https://doi.org/10.1016/j.atmosenv.2011.05.067>, 2011.
- Schreier, S. F., Peters, E., Richter, A., Lampel, J., Wittrock, F., Burrows, J.P.: Ship-based MAX-DOAS measurements of tropospheric NO<sub>2</sub> and SO<sub>2</sub> in the South China and Sulu Sea, *Atmos. Environ.*, 102, 331–343, <https://doi.org/10.1016/j.atmosenv.2014.12.015>, 2015.
- Seinfeld, J. H. and Pandis, S. N.: *Atmospheric chemistry and physics: From air pollution to climate change*, 2nd Edn., John Wiley and Sons, Hoboken, NJ, 2006.
- Serdyuchenko, A., Gorshelev, V., Weber, M., Chehade, W., and Burrows, J. P.: High spectral resolution ozone absorption crosssections – Part 2: Temperature dependence, *Atmos. Meas. Tech.*, 7, 625–636, <https://doi.org/10.5194/amt-7-625-2014>, 2014.
- Seyler, A., Wittrock, F., Kattner, L., Mathieu-Üffing, B., Peters, E., Richter, A., Schmolke, S., and Burrows, J. P.: Monitoring shipping emissions in the German Bight using MAX-DOAS measurements. *Atmospheric Chemistry and Physics*, *Atmos. Chem. Phys.*, 17, 10997–11023, <https://doi.org/10.5194/acp-17-10997-2017>, 2017.
- Singh, H. B.: Reactive nitrogen in the troposphere, *Environ. Sci. Technol.*, 21, 320–327, <https://doi.org/10.1021/es00158a001>, 1987.
- Sinreich, R., Frieß, U., Wagner, T., and Platt, U.: Multi axis differential optical absorption spectroscopy (MAX-DOAS) of gas and aerosol distributions, *Faraday Discuss.*, 130, 153–164, <https://doi.org/10.1039/b419274>, 2005.

- Tan, W., Liu, C., Wang, S., Xing, C., Su, W., Zhang, C., Xia, C., Liu, H., Cai, Z., and Liu, J.: Tropospheric NO<sub>2</sub>, SO<sub>2</sub>, and HCHO over the East China Sea, using ship-based MAX-DOAS observations and comparison with OMI and OMPS satellites data, *Atmos. Chem. Phys.*, 18(20), 15387-15402, <https://doi.org/10.5194/acp-2018-578>, 2018.
- 635 Takashima, H., Irie, H., Kanaya, Y., and Syamsudin, F.: NO<sub>2</sub> observations over the western Pacific and Indian Ocean by MAX-DOAS on Kaiyo, a Japanese research vessel. *Atmos. Meas. Tech.* 5, 2351-2360, <https://doi.org/10.5194/amt-5-2351-2012>, 2012.
- Thalman, R. and Volkamer, R.: Temperature dependent absorption cross-sections of O<sub>2</sub>-O<sub>2</sub> collision pairs between 340 and 630 nm and at atmospherically relevant pressure., *Phys. Chem. Chem. Phys.*, 15, 15371–15381, <https://doi.org/10.1039/C3CP50968K>, 2013.
- 640 Van Roy, W. and Scheldeman, K.: Best Practices Airborne MARPOL Annex VI Monitoring, Royal Belgian Institute of Natural Sciences, OD Nature, Scientific service MUMM (Management Unit of the Mathematical Model of the North Sea), Brussels, Belgium, [https://www.trafi.fi/filebank/a/1482762219/d80cdd7de80e58885ce5a4dd0af86c02/23541-](https://www.trafi.fi/filebank/a/1482762219/d80cdd7de80e58885ce5a4dd0af86c02/23541-Best_Practices_Airborne_MARPOL_Annex_VI_Monitoring.pdf)
- 645 [Best\\_Practices\\_Airborne\\_MARPOL\\_Annex\\_VI\\_Monitoring.pdf](https://www.trafi.fi/filebank/a/1482762219/d80cdd7de80e58885ce5a4dd0af86c02/23541-Best_Practices_Airborne_MARPOL_Annex_VI_Monitoring.pdf) , 2016.
- Vandaele, A. C., Hermans, C., Simon, P. C., Carleer, M., Colin, R., Fally, S., Merienne, M.-F., Jenouvrier, A., and Coquart, B.: Measurements of the NO<sub>2</sub> absorption cross-section from 42 000 cm<sup>-1</sup> to 10 000 cm<sup>-1</sup> (238–1000 nm) at 220 K and 294 K, *J. Quant. Spectrosc. Radiat. Transfer.*, 59, 171-184, [https://doi.org/10.1016/S0022-4073\(97\)00168-4](https://doi.org/10.1016/S0022-4073(97)00168-4), 1998.
- Villa, T. F., Salimi, F., Moryon, K., Morawska, L., and Gomezalez, F.: Development and validation of a UAV based system for air pollution measurements, *Sensors*, 16(12), 2202, <https://doi.org/10.3390/s16122202>, 2016.
- 650 Wagner, T., Ibrahim, O., Shaiganfar, R., and Platt, U.: Mobile MAX-DOAS observations of tropospheric trace gases, *Atmos. Meas. Tech.*, 3, 129-140, <https://doi.org/10.5194/amt-3-129-2010>, 2010.
- Wang, T., Hendrick, F., Wang, P., Tang, G., Clémer, K., Yu, H., Fayt, C., Hermans, C., Gielen, C., Müller, J.-F., Pinardi, G., Theys, N., Brenot, H., and Van Roozendaal, M.: Evaluation of tropospheric SO<sub>2</sub> retrieved from MAX-DOAS measurements in Xianghe, China, *Atmos. Chem. Phys.*, 14, 11149–11164, <https://doi.org/10.5194/acp-14-11149-2014>, 2014.
- 655 Yang, D., Kwan, S., Lu, T., Fu, Q., Cheng, J., Streets, D. G., Wu, Y., and Li, J.: An emission inventory of marine vessels in Shanghai in 2003. *Environ. Sci. Technol.*, 41(15), 5183-5190, <https://doi.org/10.1021/es061979c>, 2007.
- Zhao, M., Zhang, Y., Ma, W., Fu, Q., Yang, X., Li, C., Zhou, B., Yu, Q., and Chen, L.: Characteristics and ship traffic source identification of air pollutants in China's largest port, *Atmos. Environ.*, 64, 277-286, <https://doi.org/10.1016/j.atmosenv.2012.10.007>, 2013.
- Zhang, J., Wang, S., Guo, Y., Zhang, R., Qin, X., Huang, K., Wang, D., Fu, Q., Wang, J., and Zhou, B.: Aerosol vertical profile retrieved from ground-based MAX-DOAS observation and characteristic distribution during wintertime in Shanghai, China, *Atmos. Environ.*, 192:193-205, <https://doi.org/10.1016/j.atmosenv.2018.08.051>, 2018a.

- 665 Zhang, Y., Gu, J., Wang, W., Peng, Y., Wu, X., and Feng, X.: Inland port vessel emissions inventory based on Ship Traffic  
Emission Assessment Model–Automatic Identification System, *Adv. Mech. Eng.*, 9(7), 1–9,  
<https://doi.org/10.1177/1687814017712878>, 2017.
- Zhang Y., Deng, F., Man, H., Fu, M., Lv, Z., Xiao, Q., Jin, X., Liu, S., He, K., and Liu, H.: Compliance and port air quality  
features of ship fuel switching regulation: by a field observation SEISO-Bohai, *Atmos. Chem. Phys. Discuss.*,  
670 <https://doi.org/10.5194/acp-2018-1233>, 2018b.