

# **Size-segregated characteristics of OC, EC and organic matters in PM emitted from different types of ships in China**

**Fan Zhang<sup>1,2</sup>, Hai Guo<sup>1\*</sup>, Yingjun Chen<sup>2,3,4\*</sup>, Volker Matthias<sup>5</sup>, Yan Zhang<sup>2</sup>, Xin Yang<sup>2,4</sup>, Jianmin Chen<sup>2</sup>**

5 <sup>1</sup>Air Quality Studies, Department of Civil and Environmental Engineering, The Hong Kong Polytechnic University, Hong Kong, P.R. China

<sup>2</sup>Shanghai Key Laboratory of Atmospheric Particle Pollution and Prevention (LAP3), Department of Environmental Science and Engineering, Fudan University, Shanghai 200092, P.R. China

10 <sup>3</sup>Key Laboratory of Pollution Control and Resource Reuse, College of Environmental Science and Engineering, Tongji University, Shanghai 200092, P.R. China

<sup>4</sup>Shanghai Institute of Pollution Control and Ecological Security, Shanghai 200092, P.R. China

15 <sup>5</sup>Helmholtz-Zentrum Geesthacht, Institute of Coastal Research, Max-Planck-Straße 1, 21502 Geesthacht, Germany

**Correspondence:** Hai Guo (hai.guo@polyu.edu.hk)

Yingjun Chen (yjchenfd@fudan.edu.cn)

20

## Abstract

Studies of detailed chemical compositions in particles with different size ranges emitted from ships are in serious shortage. In this study, size-segregated distributions and characteristics of particle mass, organic carbon (OC), elemental carbon (EC), 16 EPA PAHs and 25 n-alkanes measured on board of 12 different vessels in China were given. The results showed that: (1) More than half of the total particle mass, OC, EC, PAHs and n-alkanes were concentrated in fine particles with aerodynamic diameter ( $D_p$ ) < 1.1  $\mu\text{m}$  for most of the tested ships, basically presenting downward distribution trends with the increase of particle size. However, different types of ships showed quite different particle size-dependent chemical compositions. (2) In fine particles, the OC and EC were the dominant components, while in coarse particles, OC and EC only accounted for very small proportions. With the increase of particle size, the OC to EC ratios first decreased and then increased, having the lowest values for particle sizes between 0.43  $\mu\text{m}$  and 1.1  $\mu\text{m}$ . (3) OC1, OC2 and OC3 were the dominant OC fragments for all the tested ships, while EC1 and EC2 were the main EC fragment for ships running on heavy fuel oil (HFO) and marine diesel fuel, respectively; Different OC and EC fragments presented different distributions in different particle sizes. (4) 4-stroke low-power diesel fishing boat (4-LDF) had much higher PAHs emission ratios than 4-stroke high-power marine-diesel vessel (4-HMV) and 2-stroke high-power heavy-fuel-oil vessel (2-HHV) in fine particles, and 2-HHV had the lowest values. (5) PAHs and n-alkanes showed different profile patterns for different types of ships and also between different particle size bins, which meant that the particle size should be considered when source apportionment was conducted. It is also noteworthy from the results in this study that the smaller the particle size, the more toxic the particle was, especially for the fishing boats in China.

## 1. Introduction

Particulate matter (PM) emitted from ships have significant impacts on human health and air quality (Schröder et al., 2017; Liu et al., 2016; Oeder et al., 2015; Viana et al., 2014). Ship emission is one of the most important sources of fine particulate

matter (PM<sub>2.5</sub>) in harbor or offshore areas. PM from both heavy fuel oil and marine diesel fuel shipping emissions shows strong biological effects on human lung cells (Oeder et al., 2015). A previous study indicated that shipping emissions in East Asia lead to 8,700-25,500 premature deaths per year due to PM<sub>2.5</sub> (Liu et al., 2016). PM emitted from ships in harbor cities or areas accounts for non-ignorable proportions of primary PM<sub>2.5</sub> (Gregoris et al., 2016; Zhao et al., 2013; Agrawal et al., 2009). This fraction can reach up to 17-30% if the contribution of shipping emissions to secondary particles is considered, too (Pandolfi et al., 2011; Liu et al., 2017). The chemical composition of PM emitted from ships is complex. Organic matter (OM), elemental carbon (EC) or black carbon (BC), water-soluble ions and heavy metals are the main components. In addition, PAHs in PM emitted from ships have drawn much attention due to their significantly negative impact on human health, as well as their diagnostic characteristics for source apportionment (Vieira de Souza and Corrêa, 2015; Pongpiachan et al., 2015; Alves et al., 2015). Ships are considered to be one of the most important sources for BC emissions in Arctic areas (Schröder et al., 2017; Quinn et al., 2011; Corbett et al., 2010) that could lead to the increase of ice melt due to its strong light absorbing properties. BC-containing aerosols in the Arctic can perturb the radiation balance with either a warming effect or a cooling effect on climate depending on the albedo of the underlying surface relative to the albedo of the BC haze itself (Quinn et al., 2011). Besides, as a key component of soot, BC is also considered to have substantial negative consequences for health. Furthermore, as important components, water-soluble ions such as SO<sub>4</sub><sup>2-</sup>, NO<sub>3</sub><sup>-</sup>, NH<sub>4</sub><sup>+</sup>, Cl<sup>-</sup> and Na<sup>+</sup> are routinely studied due to their unique emission characteristics in PM of ships, different from other sources (Sippula et al., 2014; Moldanová et al., 2013; Moldanová et al., 2009; Agrawal et al., 2008). Notably, heavy metals generally have high levels in PM emitted from ships compared to other sources. This especially holds for HFO fueled ships where metals like vanadium can be used as tracers (Moldanová et al., 2009; Agrawal et al., 2009). In addition, because a large number of particles emitted from ships are very small (<0.1 μm), which may have significant impacts on cloud formation (Fridell et al., 2008),

80 particle number concentrations particularly for ultrafine particles have gained more and more attention in recent years.

The size-resolved number and mass distributions of particles emitted from ship engines have been investigated for more than one decade due to their potential climate impacts and influence on human health. Three measurement methods including engine  
85 test, onboard test and plume tracking are usually reported in the literature. However, most of the previous studies focused on the size-resolved particle number distributions (Wu et al., 2018; Cappa et al., 2014; Beecken et al., 2014; Moldanová et al., 2013; Juwono et al., 2013; Diesch et al., 2013; Alfoeldy et al., 2013; Winnes and Fridell, 2010; Kasper et al., 2007; Cooper, 2003), which reported that the total particle number  
90 concentrations were dominated by ultrafine particles (nucleation mode) or fine particles. For example, the mean particle diameter was between 25 and 40 nm for a two-stroke marine diesel engine (Kasper et al., 2007) and between 40 and 60 nm for a four-stroke marine diesel engine measured on a test bench (Petzold et al., 2008). Unimodal characteristics with the peak at 0.1  $\mu\text{m}$  (Sinha et al., 2003; Fridell et al., 2008) or 40-50  
95 nm (Chu-Van et al., 2017) or 30-40 nm (Winnes and Fridell, 2010) or even 10 nm (Moldanová et al., 2013) were observed during onboard tests. Bimodal patterns were found in plumes with maxima at 10-20 nm and 100 nm (Petzold et al., 2008), and 10 nm and 35 nm (Diesch et al., 2013), respectively. Particles with a marked nucleation mode (10-100 nm) (Hobbs et al., 2000; Healy et al., 2009) and 58-131 nm (Juwono et  
100 al., 2013) were also found in the plumes from different marine fuel oil commercial ships and berthing bulk and container ships. It should be noted that the engine type and operating mode could affect the particle number distribution (Juwono et al., 2013; Cappa et al., 2014).

Few studies involved in size-resolved particle mass distributions emitted from  
105 ships (Chu-Van et al., 2017; Moldanová et al., 2013; Murphy et al., 2009; Moldanová et al., 2009; Fridell et al., 2008). Although most of the particles from ships were concentrated in nucleation mode in terms of number concentration, the particle mass was dominated by particles in the accumulation mode or even coarse mode. For

example, it was found that the mass distribution of hot-exhaust particles from a large  
110 ship diesel engine had two main peaks: one in the accumulation mode at  $D_p$  around  $0.5 \mu\text{m}$   
and the other in the coarse mode at  $D_p$  around  $7 \mu\text{m}$  (Moldanová et al., 2009).  
Another earlier study also found that particles with a diameter of approximately  $8 \mu\text{m}$   
presented the largest mass peak in the mass spectrum for three tested ships (Fridell et  
al., 2008). The size-resolved mass distribution of particles has not been fully studied.  
115 One reason is that although the coarse particles account for non-ignorable proportions  
of the total mass, they are relatively few in number concentration, which has not caught  
much attention. Moreover, particles with size around  $8 \mu\text{m}$  are usually not detected by  
particle counters when the counting method is used to calculate the particle mass. Only  
one study collected particles from ships using in-stack cascade impactor, which  
120 revealed different mass distribution patterns from the particle counting method (Cooper,  
2003). The result indicated that though the smaller particles ( $<1 \mu\text{m}$ ) were dominant in  
number concentration, they only accounted for 10-50% of the total mass (Cooper, 2003).  
The counting method was simple but had drawback; namely, the mass could bias  
towards larger particles.

125 A handful of studies on detailed chemical compositions of particles in different  
sizes were conducted (Wu et al., 2018; Murphy et al., 2009). An aerosol mass  
spectrometer (AMS) was used in a previous study to give organic carbon and sulfate  
contents in ultrafine particles, but no black carbon and detailed molecular chemical  
components could be monitored (Lu et al., 2006). In addition, in-stack ship-based  
130 particle measurement was performed using micro-orifice uniform deposit impactor  
(MOUDI) with off-line analysis. The results showed that freshly emitted particles from  
ship exhaust comprised approximately 30% organic carbon and 70% sulfuric acid by  
mass (Murphy et al., 2009). However, chemical compositions and their characteristics  
in particles at different sizes emitted from ships are still unclear, especially for fine or  
135 ultrafine particles. Only one study investigated detailed PAH speciation and total-BaP<sub>eq</sub>  
in size-segregated PM in the exhaust of a container ship with HFO and diesel oil (DO)  
as fuel, and found that health risks increased with the decrease of particle size (Wu et

al., 2018). Hence, it is urgent to gain detailed chemical compositions such as OC, EC and organic matters in size-segregated particles from different ships.

140 In this study, size-segregated particle samples from 12 different vessels were collected using an 8-stage cascade impactor. The mass, OC, EC, 16 EPA PAHs and 25 n-alkanes in particles of each size bin were detected. Size-segregated distributions and characteristics of mass, OC, EC and the detected organic matters were given. Potential health impact, source apportionment and particle formation mechanism of ship exhaust  
145 were also explored in this study.

## **2. Materials and methods**

### **2.1 Tested vessels and fuels**

Size-segregated particle samples on quartz filters from 12 different vessels were collected in this study, including one heavy fuel oil ocean-going vessel, eight fishing  
150 boats, one engineering ship, and two research ships. Their technical parameters are shown in Table S1. These vessels were classified into three types based on their engine type and fuel type, namely, 4-stroke low-power diesel fishing boat (4-LDF), 4-stroke high-power marine-diesel vessel (4-HMV) and 2-stroke high-power heavy-fuel-oil vessel (2-HHV) (see Table S1 for detail). Notably, most of the vessels had high-speed  
155 marine engines in this study, except for YK and DFH, which had low-speed engine and medium-speed engine, respectively. The parameters of all the fuels used for each tested vessel are shown in Table S2. Marine distillate oil was used as the fuel of the high-power-diesel vessels. Non-standard marine distillate oil was used for the 4-stroke low-power diesel fishing boats, which was introduced in our previous study (Zhang et al.,  
160 2016), while heavy fuel oil was used for the tested HFO vessel in this study. A total of 28 sets of size-segregated samples were obtained, shown in Table S3. The main operating modes of each vessel were chosen according to actual operating conditions. More information about the sampling systems and fuels used for the tested vessels can be found in our previous studies (Zhang et al., 2016; Zhang et al., 2018; Zhang et al.,  
165 2019). Notably, the sampling system applied for the HFO vessel of YK was the same diluted system used for the fishing boats (see Fig. 1 for detail).

## 2.2 Sampling instrument

An 8-Stage Andersen Cascade Impactor (TE-20-800, Tisch Environmental Inc, USA) was used for particle collection. The flow rate was 28.3 liter per minute. The particles were separated into 9 size bins by the impactor, and the particle size range, sampling spot number/sampling area for each stage are shown in Table S4. The sampling duration for each sample varied from 10 to 30 minutes according to emission conditions and dilution ratios (see Table S3 for detail).

## 2.3 Chemical analysis

The mass, organic carbon, element carbon, sixteen priority PAHs indicated by US EPA (the detailed information is shown in Table S5), and n-alkanes from C10 to C34 in each particle size bin were measured. The mass of the particles on each filter was obtained by gravimetric method. OC and EC were measured with a 0.544 cm<sup>2</sup> punch aliquot of each filter sample by thermal optical reflectance (TOR) following the IMPROVE-A protocol with a DRI Model 2001 Thermal/Optical Carbon Analyzer (Atmoslytic Inc., Calabasas, CA). The measuring range of TOR was from 0.05 to 750 µg C cm<sup>-2</sup> with an error of less than 10%. The PAHs and n-alkanes were measured by an optical-4 thermal desorption (TD) sample injection port coupled with an Agilent GC7890B/MS5977A (Agilent Technologies, Santa Clara, CA) system (Han et al., 2018). The detailed information of TD-GC/MS method for PAHs and n-alkanes was shown as follows.

Each of the collected Quartz filter samples was punched with an area of 5 mm in diameter with a sampling spot as the center for PAHs and n-alkanes analysis. The filter was cut to small pieces and loaded into a TD glass tube. 1 µL deuterium marked compounds and 6-methyl benzene with concentrations of 10 ppm was injected into the tube as internal standards. The TD glass tube was then placed into the TD inject port, and was heated to 310 °C at a rate of 12 °C/min and thermally desorbed at 310 °C for 3 min. The desorbed organic compounds were trapped on the head of a GC-column (DB-5MS: 5% diphenyl-95% dimethyl siloxane copolymer stationary phase, 0.25 mm i.d., 30 m length, and 0.25 mm thickness). The initial GC oven temperature was 60 °C

and held for 4 min, then rose to 300 °C at a rate of 6 °C/min and was held at 300 °C for 8 min (Han et al., 2018). D8-Naphthalene, D10-acenaphthene, D10-phenanthrene, D12-chrysene, D12-perylene, D-C16, D-C20, D-C24, and D-C30 were used for the analytical recovery check. The detection limit for the TD-GC/MS method ranged from 200 0.2 pg mm<sup>-2</sup> (Ace) to 0.6 pg mm<sup>-2</sup> (Icdp).

#### 2.4. Quality assurance/quality control

Rigorous quality assurance and control were conducted during the whole experiments. Filter blanks were analyzed in the same way as the above procedures to determine the background concentration. Duplicate samples as well as standard samples 205 were examined after analyzing a batch of 10 samples to ensure that the error was within 5%. The average recoveries of the deuterium surrogates ranged from 84.3% to 101% in this study (shown in Table S6). The results of each sample were subtracted by the filter blank results. The final data reported in this study were not corrected by the recoveries.

### 3 Results and discussions

#### 210 3.1 Total mass distributions between different particle size bins

Emission factors for the total PM and particle mass size-distribution of all the 12 tested ships with different modes are shown in Fig. 1. The emission factor for PM was discussed in our previous studies (Zhang et al., 2016; Zhang et al., 2018; Zhang et al., 2019). In general, 4-stroke low-power diesel fishing boats had much higher PM 215 emission factors than other types of ships, while 4-stroke high-power marine-diesel vessels showed lower PM emission factors, especially for the high-quality fuel ships. Notably, the 4-stroke high-power marine-diesel vessels used an undiluted sampling system, which was inferred as one reason for the lower PM emission factors (Robinson, 2010). Besides, low load operating modes showed higher PM emission factors for 220 almost all the tested ships. In this study, we focused on the particle mass size-distribution of the tested ships. It was found that more than half of the particle mass was concentrated in fine particles with  $D_p < 1.1 \mu\text{m}$  (33-91%). However, there were still non-ignorable proportions (5-53%) in coarse particles with  $D_p > 3.3 \mu\text{m}$ . The findings were in line with the previous studies which reported that the mass distributions of ship



225 emissions were dominated by accumulation mode and/or coarse mode particles (Moldanová et al., 2009, 2013; Murphy et al., 2009).

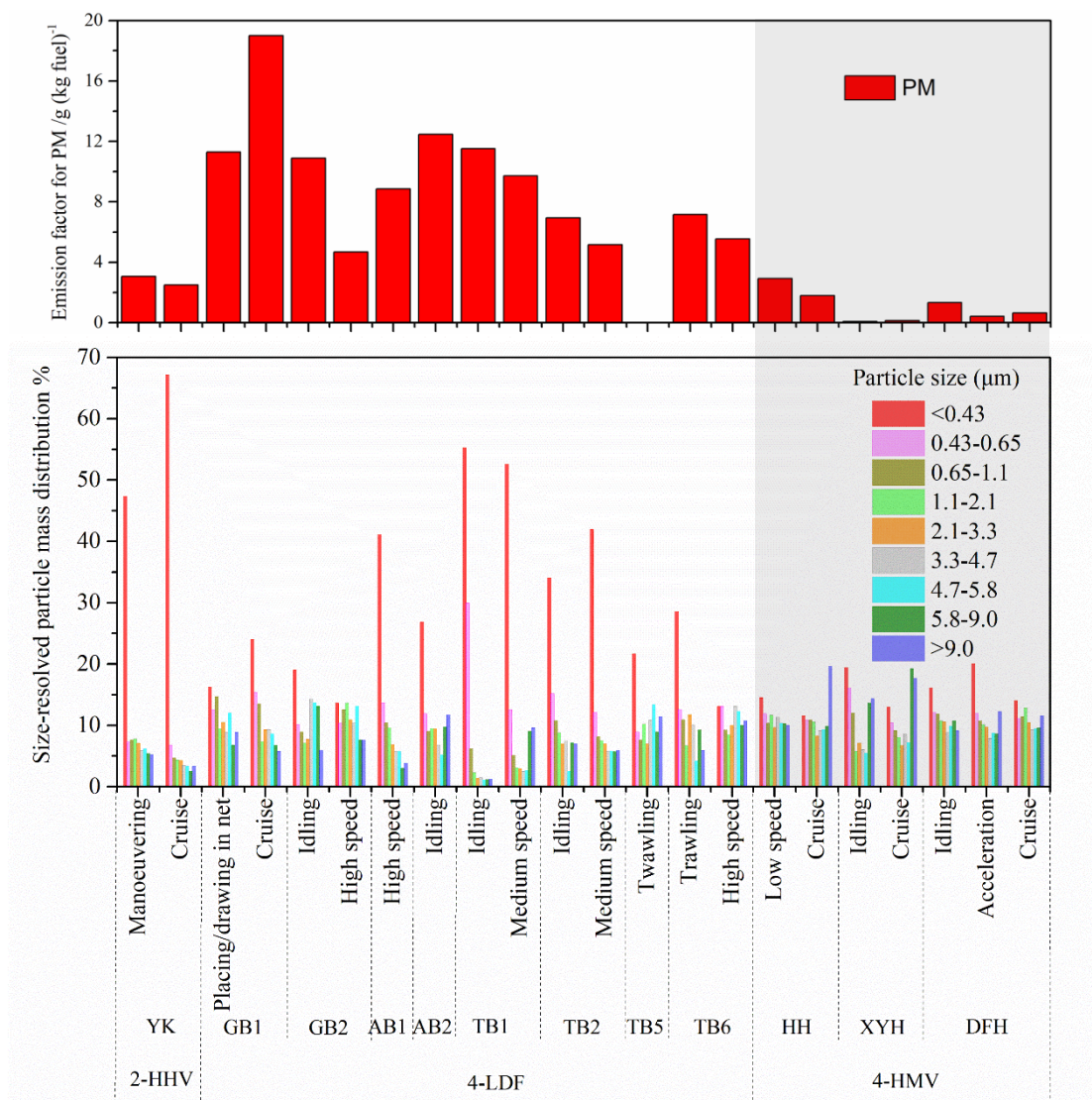


Figure 1 Emission factor for total PM and size-resolved particle mass distributions with different modes for the 12 tested ships (the vessels on the right light gray side used the undiluted system, and the rest vessels used the diluted system)

230

Different types of ships showed rather different particle mass size-distributions. As shown in Fig. 1, the mass was concentrated on particles with  $D_p < 0.43 \mu\text{m}$  for the HFO driven ship YK, coincident with the results of a previous study that found the particle mass peaked at around 50 nm for a HFO ship (Chu-Van et al., 2017), but inconsistent with a study on hot-exhaust particles from a HFO driven cargo vessel

235

which revealed bimodal particle mass distribution with peaks at  $\sim 7 \mu\text{m}$  and  $\sim 0.5 \mu\text{m}$ , attributed to the HFO combustion and the various nature and composition of the ship-exhaust particulates (Moldanová et al., 2009). In this study we found that 4-stroke high-  
240 power marine-diesel vessels had relatively smaller fractions of particle mass in the fine mode with  $D_p < 0.43 \mu\text{m}$  but larger fractions in the coarse mode with  $D_p > 5.8 \mu\text{m}$  than those of the HFO ship. This pattern was also consistent with the result of Fridell et al. (2008) who found a large peak at  $\sim 10 \mu\text{m}$  from the emissions of large diesel fuel engines. Furthermore, different fishing boats (GB1 to TB6 in Fig 1.) showed different particle  
245 mass size-distributions in this study. It can be seen that lower engine power fishing boats had high percentages of fine particles with  $D_p < 1.1 \mu\text{m}$ , while higher engine power fishing boats showed high proportions of coarse particles. The different particle mass size-distributions for different types of ships were likely caused by the quality of fuel and its combustion efficiency in the engines, and also the sampling method. For  
250 example, compared to diesel oil, HFO contains high percentage of aromatics, which are known to contribute to nucleation mode particle formation (Zetterdahl et al., 2017). Moreover, incomplete combustion could enhance the formation of nucleation mode particles from the unburned fuel and lubrication oil (Zetterdahl et al., 2017). Hence, the relatively lower combustion efficiency of HFO ship led to higher proportions of fine  
255 particles than diesel-fueled ship. Moreover, the quality of fuel used for the same type of ships such as fishing boats varied largely in China, which might, at least to some extent, was also responsible for the different size distributions. Compared to higher engine power fishing boats, relatively lower combustion efficiencies of the lower engine power fishing boats resulted in higher proportions of fine particles (Zhang et al.,  
260 2018). The use of undiluted sampling system could be one reason of the lower proportions of fine particles of 4-HMV, which has been proved that under the condition of diluted sampling system, the soluble organic fractions could pass from gas phase to particle phase to form new particles (Heywood, 1988; Kittelson, 1998).

The particle mass size-distribution in different operating modes of different ships  
265 were also compared in this study. The results showed that when the ships were operated

with higher engine loads, there were more particles in coarse modes for most of the ships, which was similar to a previous study on mass distribution from measurements onboard of three ships (Fridell et al., 2008). Besides, a previous study on a marine engine reported that the particle mass distribution centered at 0.1-0.2  $\mu\text{m}$  with much fewer coarse particles under at-berth condition with auxiliary engine compared to maneuvering and ocean-going conditions (Chu-Van et al., 2017). Coincidentally, emissions from two auxiliary engines in the HFO driven ship YK and engineering ship HH were measured in this study (Fig. S1). Both showed high proportions of fine particles with  $D_p < 0.43 \mu\text{m}$  and small percentages of coarse particles, similar to the findings of Chu-Van et al. (2017). Overall, fuel type, fuel quality, engine type, and operating mode might have comprehensive influence on particle mass distributions from ships.

### **3.2 Characteristics of OC and EC in size-segregated particles**

#### **3.2.1 The OC and EC mass distributions between different particle size bins**

Figure 2 and Table S7 present the total OC and EC mass distributions between different particle size bins for the three ship types. Notably, OC and EC levels given in this study were the average values of all samples that were classified into these three types. The OC and EC distributions between different particle size bins showed similar but distinguished characteristics compared to the PM mass distribution. All the tested ships presented similar trends, namely, the proportions of OC and EC decreased with the increase of particle size. About 53-86% of OC and 68-86% of EC were in the particles with  $D_p < 1.1 \mu\text{m}$ . Only very small percentages of OC and EC existed in the coarse particles. Among the three types of ships, 2-HHV showed significantly higher OC and EC proportions in particles with  $D_p < 0.43 \mu\text{m}$  (75% and 66%, respectively) than the other two types of ships operated with diesel fuel, while the OC and EC proportions were lower in the other particle size bins of 2-HHV than those of the other two types of ships. For example, 4-HMV only accounted for 23% OC and 27% EC in particles with  $D_p < 0.43 \mu\text{m}$  compared to 2-HHV which had 75% OC and 66% EC in particles with  $D_p < 0.43 \mu\text{m}$ . This is in accordance with the characteristics of total PM mass

295 distributions; that is, diesel fuel vessels had relatively smaller proportions of fine particles with  $D_p < 0.43 \mu\text{m}$  and larger proportions of coarse mode particles than HFO ships. Notably, the proportion of EC in particle size bin of  $0.43\text{-}0.65 \mu\text{m}$  had almost the same level as that in particle size bin of less than  $0.43 \mu\text{m}$  for 4-LDF. The higher proportions of OC and EC in fine particles from the HFO driven vessel compared to the

300 diesel fuel ships might be attributed to both the combustion efficiency and the use of HFO. Due to the large fuel to air ratio in the HFO engine (Kittelson et al., 1998), higher fractions of unburned fuel with heavier molecular weight as well as lubrication oil could more easily leak into the exhaust and raise the carbonaceous fractions (Hardy and Reitz, 2006). Besides, the incomplete combustion and the high content of aromatics in HFO

305 both could enhance the formation of new nucleation mode particles (Zetterdahl et al., 2017), which would eventually promote a high fraction of fine mode carbonaceous particles.

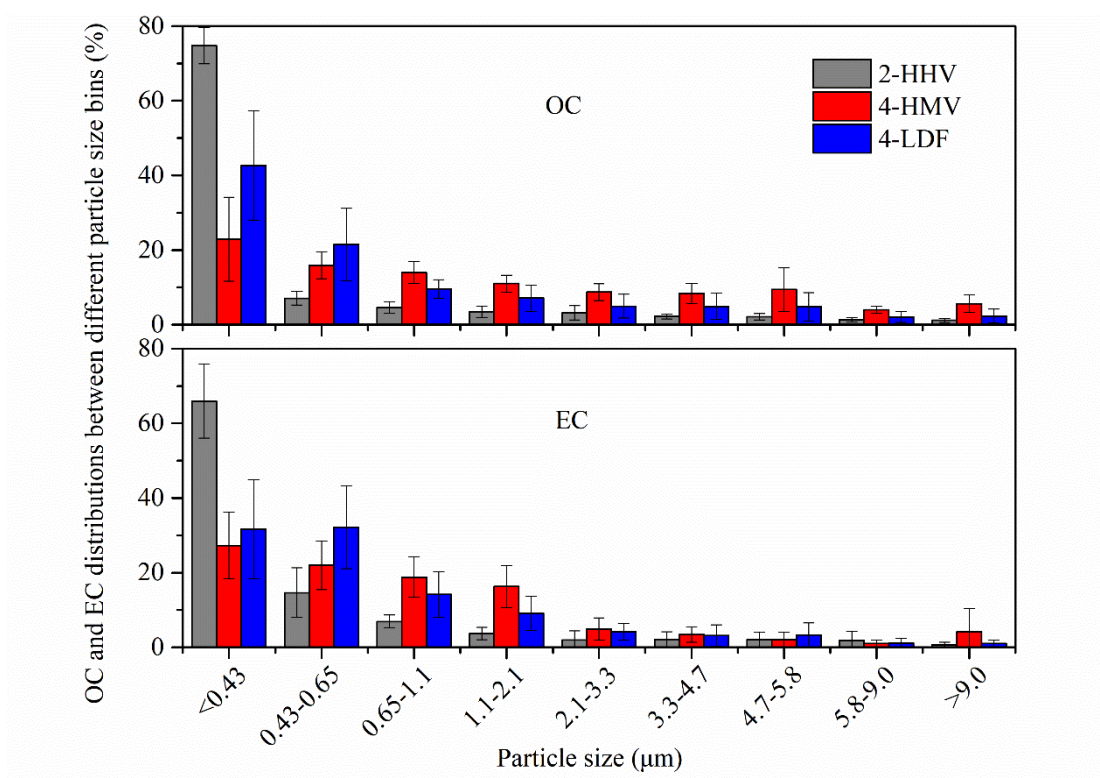


Figure 2 Total OC and EC distributions between different particle size bins

310

### 3.2.2 OC and EC proportions in each particle size bin

In order to figure out the carbonaceous components in size-segregated particles,

percentages of OC and EC in each particle size bin are given in Fig. 3. In general, both OC and EC proportions showed overall decreasing trends with the increase of particle sizes for all three types of ships. The OC+EC accounted for large proportions of the total particle mass in fine particles, between 40 and 65 % for particles smaller than 0.65  $\mu\text{m}$ . However, OC+EC only explained small proportions in coarse particles, less than 15% for particles larger than 5.8  $\mu\text{m}$  diameter, suggesting that most of the coarse particle mass was dominated by other non-carbonous components, such as ash and hydrated sulfates. The coarse particles could be seriously influenced by natural-based substances such as ash that was introduced into the cylinder by the air to maintain a certain-reliable equivalent ratio in the cylinder. This was confirmed in a previous study about the ship-exhaust particle composition based on transmission electron microscopy (TEM) study. Mineral/ash particles containing lime, calcite, vanadium oxide and nickel sulfide were also found to be dominant in coarse particles (Moldanová et al., 2009).

In addition, the differences of OC+EC proportion patterns among the three types of ships were large. OC+EC accounted for >60% in particles with  $D_p < 0.65 \mu\text{m}$  for 2-HHV, then decreased sharply to less than 30% in particles with  $D_p > 0.65 \mu\text{m}$ , and only explained ~10% in particles with  $D_p > 9.0 \mu\text{m}$ . The OC+EC for 4-LDF showed similar trend to that for 2-HHV, but had higher proportions in particles with  $D_p$  of 0.65-3.3  $\mu\text{m}$ . In contrast, the OC+EC only accounted for ~40% in particles with  $D_p < 1.1 \mu\text{m}$  for 4-HMV, and decreased to less than 10% in particles with  $D_p > 9.0 \mu\text{m}$ . Because the OC and EC compositions in size-segregated particles from ships were not studied in the past, this study compared components of  $\text{PM}_{10}$  or hydrated sulfate and organic carbon in size-resolved particles with earlier studies. Diesch et al. (2013) found that organic matter (OM) was the most abundant component in  $\text{PM}_{10}$ , while EC contributed only 6% on average to  $\text{PM}_{10}$ . This result was similar to the composition of 2-HHV emissions in this study but significantly different from that of the 4-HMV and 4-LDF, likely due to the different types of engine and fuel. Moreover, Healy et al. (2009) found that hydrated sulfate and organic carbon were the dominant components of size-resolved PM from ship plumes, while Murphy et al. (2009) reported that the fraction of unknown mass

was much higher at small particle sizes, which were different from our results. The large discrepancies might be caused by the different sampling, analytical methods and the fuel quality. In addition, the unidentified components in each particle size bin should be clarified in the future, especially in coarse particles.

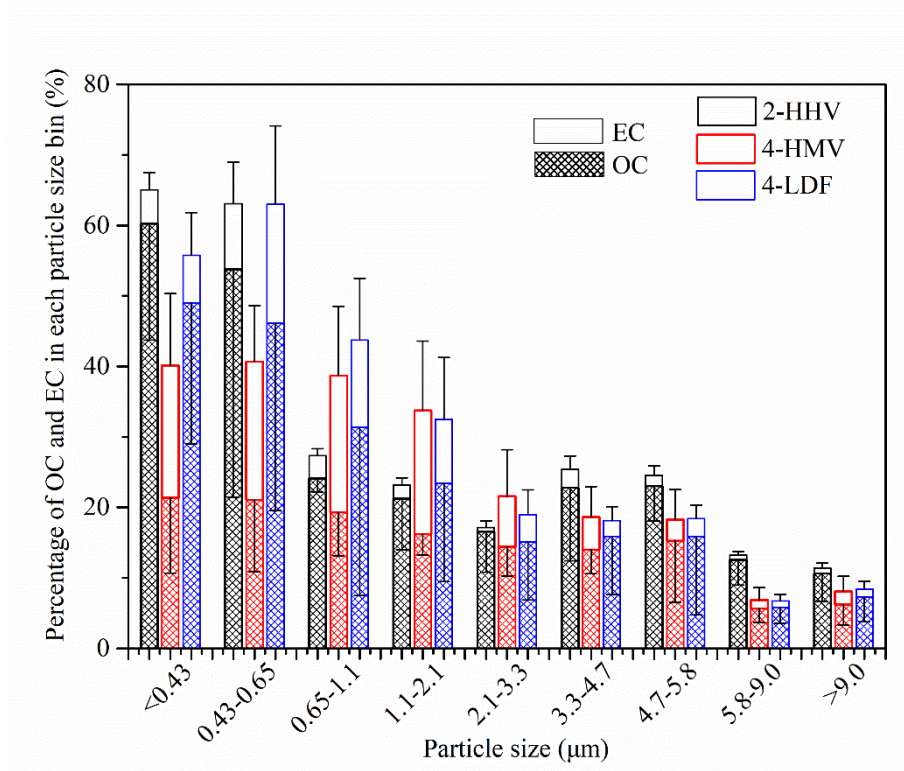
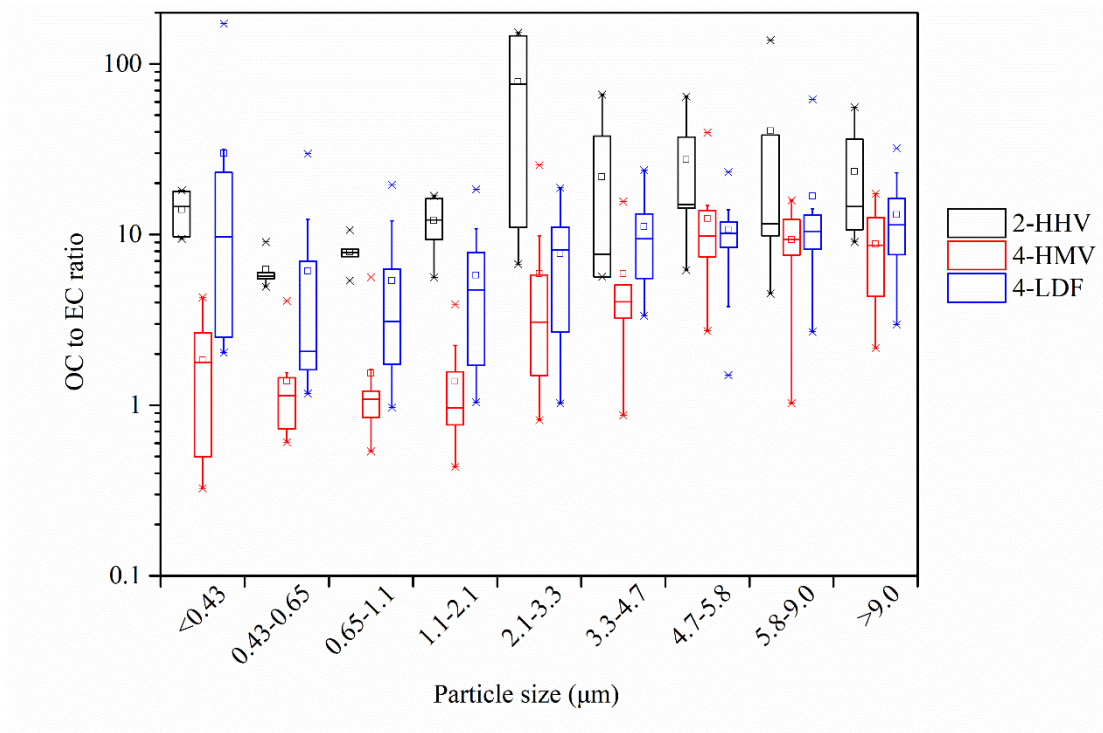


Figure 3 Percentage of OC and EC mass in each particle size bin (the upper error bar represents EC, and the lower error bar represents OC)

The average proportions of OC were higher than EC in each individual particle size bin for all the tested ships. For better comparison, OC to EC ratios in all particle size bins are given for the three types of ships in Fig. 4. The OC/EC ratio of 2-HHV in each particle size bin was the highest, followed by 4-LDF and 4-HMV. The OC/EC ratios in fine particles from 2-HHV were more than 10, while they were less than 3 for 4-HMV. In addition, with the increase of particle size, the OC to EC ratios decreased first and then increased, with the lowest values in particle sizes of 0.43-1.1 µm. However, all the ships had similar median OC/EC ratios of ~10 in coarse particles with  $D_p > 4.7$  µm.





360

Figure 4 OC to EC ratio in different particle size bins

It is well known that particles emitted from diesel engines are formed through a complex process, starting with soot precursors generated from thermal decomposition of the large hydrocarbon molecules, through processes such as dehydrogenation, PAH formation, growth in molecular weight, particle inception, growth by surface reaction and coagulation, agglomeration and oxidation, etc. (Lighty et al., 2000). In these processes, several factors can influence the size of the emitted particles: 1) surface growth involves the attachment of gas-phase species to the existing particles and results in increase of PM diameter and mass; 2) aggregation leads to chains and clusters of primary soot particles and an increase in particle size (to 10-100 nm in diameter) (Heywood, 1988); and 3) oxidation occurs during the formation and growth processes of the particles, resulting in the formation of gaseous species and reduction of soot particles and their precursors. In addition, the exhaust gases continue to cool down and are diluted with air in the exhaust gas channel. The decreased temperature has an impact on the condensation and adsorption of hydrocarbons and other volatile compounds, but not on the soot particles (Heywood, 1988). The volatile compounds in the exhaust gas

375

channel may form new particles via transformation, nucleation, adsorption and condensation, depending on the conditions in the exhaust gas channel (Kittelson, 1998).

Soot particles are mainly formed through pyrolysis of diesel fuel and lubrication oil, and the organic fraction is formed through incomplete combustion of fuel and lubrication oil (Zetterdahl, 2016). Incomplete combustion of fuel and lubrication oil can significantly enhance the formation of fine particles, which might be the reason for the higher OC to EC ratio in particles with  $D_p < 0.43 \mu\text{m}$  in this study. This study also found that most EC were in the particles with  $D_p < 1.1 \mu\text{m}$ , coincident with the fact that soot is primarily in accumulation mode with particles of  $0.1 < D_p < 1 \mu\text{m}$  (Kasper et al., 2007). Although OC was also concentrated in fine particles with  $D_p < 1.1 \mu\text{m}$  (Section 3.1), its percentage was higher in particles with  $D_p < 0.43 \mu\text{m}$ , and lower in particles with  $0.43 < D_p < 1.1 \mu\text{m}$ , compared to the EC distribution. Therefore, OC to EC ratios were the lowest in particles with  $0.43 < D_p < 1.1 \mu\text{m}$  for all the tested ships. For the coarse particles in this study, though non-carbonyl components were the dominant parts, OM increased after the cooling of the exhaust gas while content of EC and ash remained unchanged through adsorption of hydrocarbons and other volatile compounds (Zetterdahl, 2016; Heywood, 1988), which enhanced the formation of coarse particles. Consequently, OC to EC ratios also showed high values in coarse particles with  $D_p > 3.3 \mu\text{m}$ . 2-HHV showed higher OC to EC ratio than the diesel fuel ships of both 4-HMV and 4-LDF, which might be caused by the relatively lower combustion efficiency and higher EC emissions of 4-LDF (Zhang, 2018). Similarly, because 4-HMV ships had higher combustion efficiencies due to the higher fuel quality and better engine maintenance in this study, and also the influence of the use of undiluted sampling system that adverse to the transmission of gas-phase organic matters to particle phase (Heywood, 1988; Kittelson, 1998), OC to EC ratios of 4-HMV showed the lowest levels.

### 3.2.3 OC and EC fragments in size-segregated particles

According to the IMPROVE-A protocol used in the thermal-optical carbon analysis, fragments of OC (OC1, OC2, OC3, and OC4 fragments obtained in 120, 250, 450, and 550 °C in pure He atmosphere, respectively) and EC (EC1, EC2, and EC3



fragments obtained in 550, 700, and 840 °C in 98% He/2% O<sub>2</sub> atmosphere, respectively) were obtained and used to understand different formation processes (Sippula et al., 2014). In this study, percentages of OC and EC fragments in different particle size bins are shown in Fig. 5. Typically, OC1+OC2 were classified as volatile organic compounds while OC3+OC4 were categorized as refractory organic compounds. EC was divided into char and soot. EC1 was classified as char-EC and EC2+EC3 were classified as soot-EC (Han et al., 2018). OC1, OC2 and OC3 were the dominant OC fragments for all the tested ships, while EC2 was the prevailing EC fragment for diesel fuel ships and EC1 was the main EC fragment for HFO ship. In comparison, OC1+OC2 in 4-LDF ships accounted for higher percentages than other types of ships, especially OC1, while OC3+OC4 in 2-HHV had more fractions than in 4-LDF and 4-HMV, revealing that more pyrolytic organic matters were emitted from 2-HHV ships.

The results are consistent with a previous study which found that 37-57% of the OC were heavier OC fragments (OC3, OC4, and pyrolytic carbon) in PM emitted from heavy fuel oil ships, while the PM from diesel fuel ships was dominated by the most volatile OC1 and OC2 fragments (Sippula et al., 2014). Since OC was mainly formed through incomplete combustion of the fuel and lubrication oil, the different OC fragments in PM between HFO and diesel fuel ships (4-LDF and 4-HMV) reflected the variations of the fuel composition. This result was coincident with the fact that heavy fuel oil has longer carbon chains than diesel fuel. For EC, the amount of soot particles emitted from cylinder depends on the difference between the formation rate and the oxidation rate during the expansion stroke (Zetterdahl, 2016). From Fig. 5 we inferred that the 2-stroke low-speed HFO engine (2-HHV) had higher oxidation rate than the 4-stroke medium/high-speed diesel engines (4-HMV and 4-LDF), leading to lower soot-EC percentages.

The OC and EC fragments had different percentages in different size particles. On one hand, OC1 in diesel fuel ships presented obvious decreasing trend with the increase of particle size. However, though the highest proportion of OC1 was observed in particles with  $D_p < 0.43 \mu\text{m}$  for 2-HHV, there was an opposite variation trend of the other

435 particle size bins to that of diesel fuel ships. Furthermore, for diesel fuel ships, both  
OC2 and OC3 had lower proportions in small particles and higher proportions in coarse  
particles. For 2-HHV, OC2 accounted for the largest proportion in particles with  
 $D_p < 0.43 \mu\text{m}$ , whereas its proportion in other particle size bins was similar. In contrast,  
OC3 occupied the smallest proportion of 2-HHV in particles with  $D_p < 0.43 \mu\text{m}$ , and was  
440 constant in other particle size bins. In addition, OC4 showed no significant variations  
among the particle size bins for all the tested ships. On the other hand, EC1 showed  
decreasing trends with the increase of particle size for all the tested ships, while EC2  
had the highest proportions in particles with  $0.65 < D_p < 1.1 \mu\text{m}$  for diesel fuel ships, with  
overall higher proportions in small particles and lower proportions in coarse particles.  
445 However, EC2 of 2-HHV showed no significant variations. In addition, EC3 had very  
small proportions for all the tested ships and showed no significant variations with  
particle sizes.

It is known that particles in the nucleation mode consist of both solid particles and  
condensable organic and sulphur compounds that are usually formed during dilution  
450 and cooling of the exhaust gas (Kittelson, 1998). Hydrocarbons and carbon fragments  
are the main source of tiny particles from engines running under normal conditions with  
low-sulfur fuels (Kittelson, 1998). Besides, it has been proved that new particle  
formation via nucleation is more favorable than adsorption on existing particles if there  
is small surface area on which to adsorb when hydrocarbons transfer from gas phase to  
455 particle phase (Kittelson, 1998). Therefore, high volatile organic matter in nucleation  
mode particles might be the reason for higher proportions of OC1 in small particles. It  
is also known that the majority of accumulation-mode particles are solid agglomerates  
with adsorbed compounds (Kittelson, 1998). Due to the smaller relative surface areas  
of accumulation and coarse mode particles, fewer volatile organic matters can be  
460 adsorbed with the increase of particle size, leading to the decreased proportions of OC1.  
In addition, OC3 and OC4 stem from low volatile organic matters with large molecular  
weights, which might be formed directly inside the cylinder under high temperature and  
pressure. The existence and formation of large size particles containing OC3 and OC4

have been proved in a previous study (Han et al., 2018). In this study, EC was primarily  
 465 found in the accumulation mode. This is to some extent consistent with the findings of  
 Kittelson (1998) that accumulation mode particles are mainly carbonaceous soot  
 agglomerates formed directly by combustion, and those of Moldanová et al. (2009) that  
 char and char-mineral particles were concentrated in a size range of 0.2-5  $\mu\text{m}$ . Moreover,  
 the decreased temperature in the exhaust gas channel has an impact on the condensation  
 470 and adsorption of hydrocarbons and other volatile compounds during the coarse particle  
 formation, but not on the soot particles (Heywood, 1988). As a result, EC fragments  
 showed obvious decreasing trends with the increase of particle size in coarse-mode. The  
 formation of OC and EC fragments could be influenced by many factors, such as engine  
 condition (temperature, pressure), fuel type (fuel composition and structure), operating  
 475 conditions, etc. (Tree and Svensson, 2007). However, detailed formation mechanism of  
 OC and EC fragments in size-segregated particles still need to be further studied.

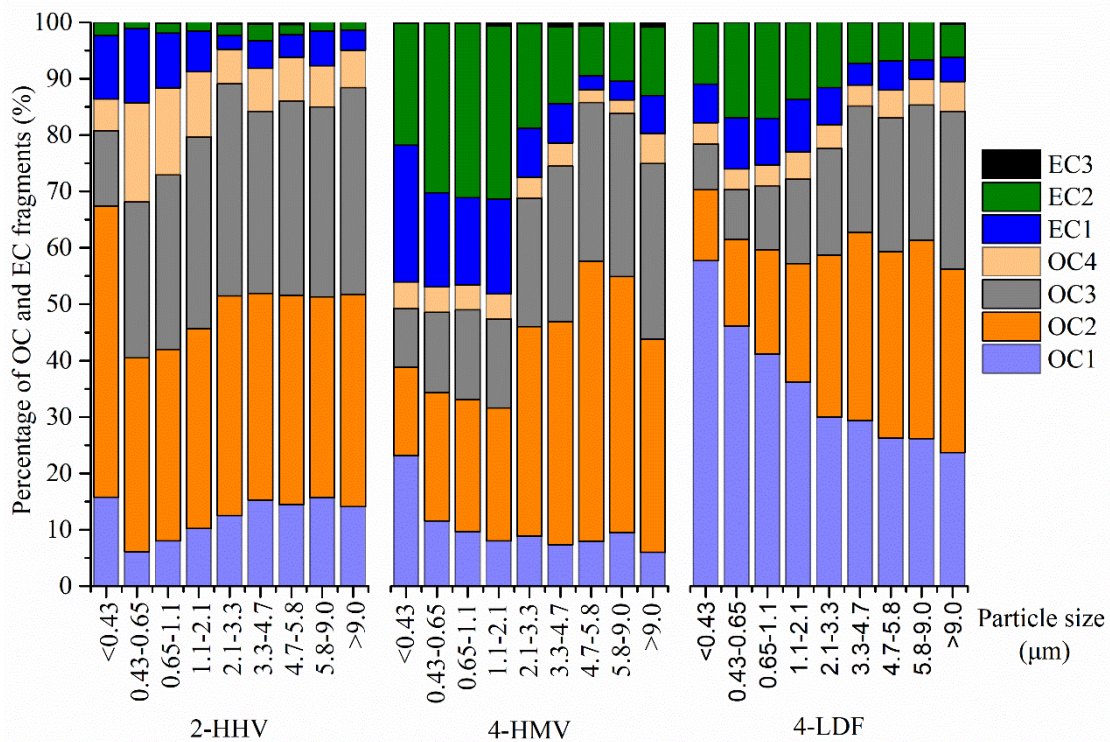


Figure 5 Percentage of OC and EC fragments in different particle size bins

### 480 3.3 Characteristics of PAHs and n-alkanes in size-segregated particles

#### 3.3.1 Distributions of total PAHs and total n-alkanes between different particle size bins

The distributions of total PAHs and total n-alkanes in different size particles emitted from these three types of ships in China are shown in Fig. 6 and Table S8. Same  
485 as OC and EC, the levels of PAHs and n-alkanes provided in this study were the average values of all samples that were classified into these three types. Clearly, large proportions of identified organic compounds were concentrated in fine particles. About 66.3% to 88.0% of PAHs were in particles with  $D_p < 1.1 \mu\text{m}$ . The results are consistent with the finding of a previous study that revealed >69% particle-PAH was associated  
490 with  $\text{PM}_{2.5}$  emitted from residential coal combustion (Shen et al., 2010). Similar observations were also reported from indoor crop burning (Shen et al., 2011) and motorcycles (Yang et al., 2005). In addition, a previous study about PM from a typical container ship has demonstrated that the smaller the particles are, the greater their toxicity is (Wu et al., 2018). In comparison, n-alkanes in fine particles with  $D_p < 1.1 \mu\text{m}$   
495 accounted for higher proportions than PAHs, with a range of 79.0~94.6%. Both PAHs and n-alkanes in particles with  $D_p < 1.1 \mu\text{m}$  from 2-HHV had the highest proportions among the three types of ships, and they were the lowest from 4-HMV. Thus, large proportions of PAHs (33.7%) and n-alkanes (21.0%) were still in particles with  $D_p > 1 \mu\text{m}$  for 4-HMV, which were seldom reported in previous studies of ship engine exhausts.

500 It is well documented that incomplete combustion of fuel and lubrication oil was one of the major sources of organic compounds in PM and enhanced the new particle formation (Agrawal et al., 2010; Zetterdahl et al., 2017). Higher PAHs contents in heavy fuel oil and lower combustion efficiencies in 2-stroke low-speed engines could lead to enhanced nucleation-mode particle formation, which could contain more PAHs and n-  
505 alkanes. In contrary, lower PAHs contents in diesel fuel of 4-HMV ships, together with better maintenance of the engines, might lead to better combustion conditions and less nucleation-mode particle formation that had lower organic matter proportions. In addition, new particles could be formed in the exhaust gas channel through

transformation of nucleation, adsorption and/or condensation. Therefore, the varied  
 510 conditions in the exhaust gas channels caused the differences in organic matter  
 proportions in coarse particles. The relatively longer exhaust gas channel in the channel  
 of 2-HHV enhanced the formation of new secondary nucleation-mode and/or  
 accumulation-mode particles from gas-phase organic compounds, leading to higher  
 proportions of organic matters in fine particles, which has been proved in a previous  
 515 study (Kittelson, 1998).

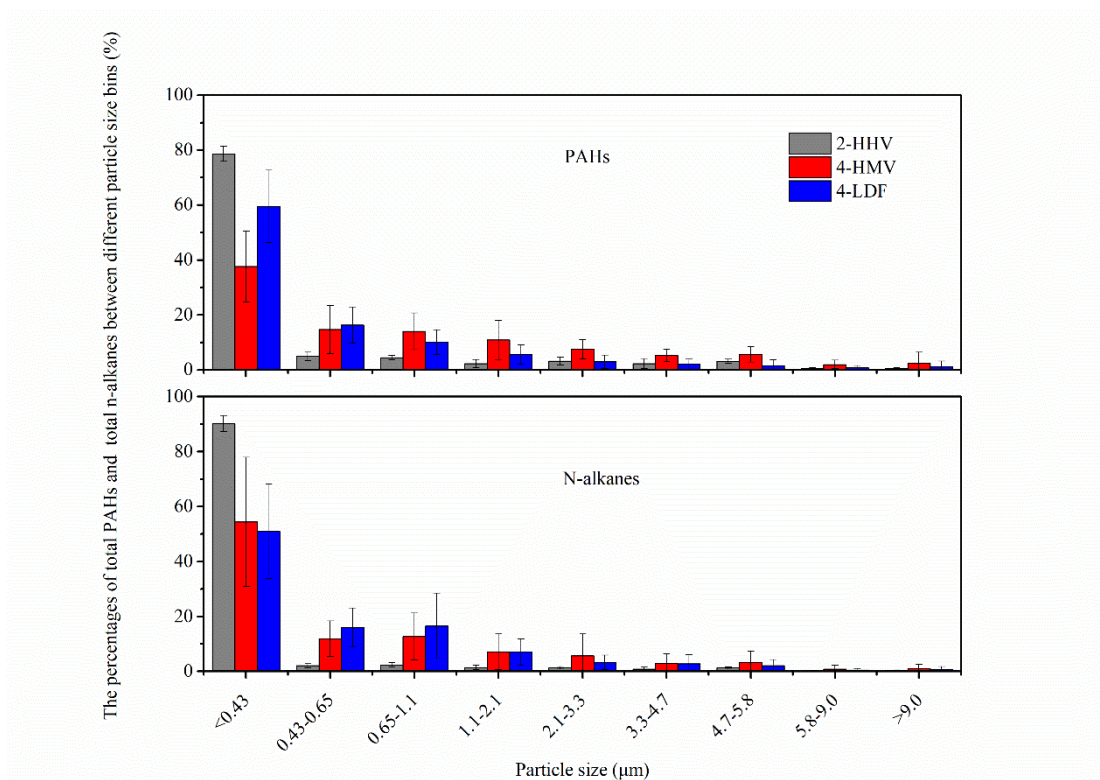


Figure 6 The distribution of total PAHs and total n-alkanes between different particle size bins (%)

### 520 3.3.2 Emission ratios of PAHs and n-alkanes in each particle size bin

In order to explore the variations of total PAHs and total n-alkanes in different size particle bins, the emission ratio ( $\mu\text{g (g}^{-1} \text{ PM)}$  and  $\text{mg (g}^{-1} \text{ PM)}$ ) was defined and discussed in this study. It is calculated by dividing the total PAHs or n-alkanes mass ( $\mu\text{g/mg}$ ) through the particle mass (g) in each particle size bin. The emission ratios of total PAHs and total n-alkanes in size-segregated particles are shown in Fig. 7. Obviously, the emission ratios of both PAHs and n-alkanes decreased with the increase

of particle size, and they were more than two orders of magnitude higher in fine particles than in coarse particles. Namely, much more organic matter was contained in fine particles than in coarse particles. This is consistent with previous findings that nucleation-mode particles usually contain a large proportion of organic compounds (Kittelson, 1998; Moldanová et al., 2009).

Among the three types of ships, 4-LDF had the highest PAHs emission ratios in fine particles with  $D_p < 1.1 \mu\text{m}$ , and the 2-HHV had the lowest values. However, no significant difference of PAHs emission ratios was observed in particles with  $D_p > 1.1 \mu\text{m}$  for all the tested ships ( $p > 0.05$ ), so was for n-alkanes. In particular, the 4-stroke low-power diesel fuel fishing boats in China had not only high levels of PM emission factor, but also high proportion and emission ratio of organic matters in fine particles, implying their severe influence on human health and the environment.

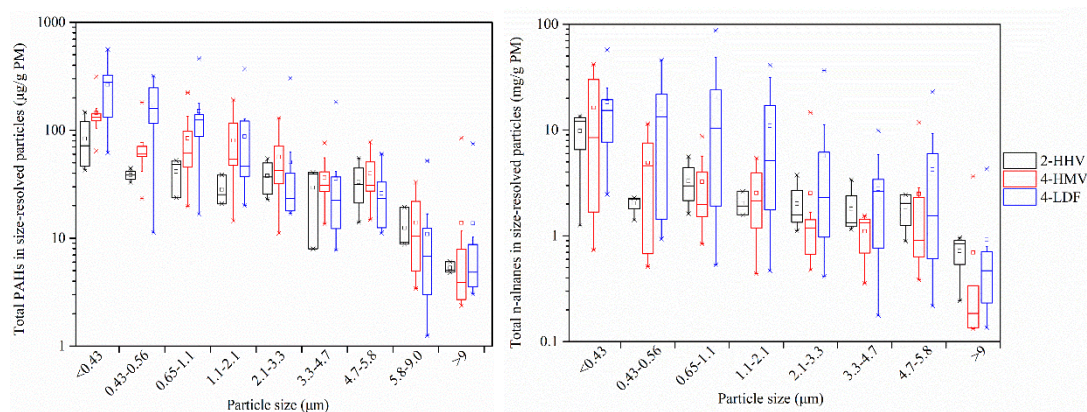


Figure 7 Emission ratios of total PAHs (in  $\mu\text{g} (\text{g}^{-1} \text{PM})$ ) and n-alkanes (in  $\text{mg} (\text{g}^{-1} \text{PM})$ ) in size-resolved particles

### 3.3.3 Profiles of speciated PAHs and n-alkanes in size-segregated particles

The speciated profiles of PAHs and n-alkanes in size-segregated particles emitted from the three types of ships are shown in Fig. 8. Phe, Flua, Pyr, BaA, Flu and Chr (full names and their abbreviations are shown in Table S5) were the most dominant PAHs, while their relative percentages in different types of ships and in different particle size bins varied. For 2-HHV, the levels of Flua, Phe, BaA and Pyr were higher than other PAH species, while the profiles of PAHs in different particle sizes were similar. For 4-HMV, Phe, Flu, BaA and Pyr were the main PAHs, with Phe having the highest

proportions in all the particle size bins. Furthermore, the percentages of Phe and BaA were lower in coarse particles. This is in accordance with the fact that synthetic PAHs have higher concentrations in freshly formed particles (Pergal et al., 2013). However, the percentages of Pyr and Chr increased with the increase of particle size. For 4-LDF, 555 Pyr, BaA, Phe, Flua and Chr were the dominant components. The percentage of BaA decreased with the increase of particle size, whereas Pyr and Chr presented opposite trends. The various profiles of PAHs in different particle size bins indicated their different formation processes, which were likely related to the fuel quality, engine type and the condition in the exhaust gas channel (Lombaert et al., 2006). It should be noted 560 that when diagnostic characteristics of PAHs in PM emitted from ships is used in source apportionment, particle size needs to be taken into consideration.

c



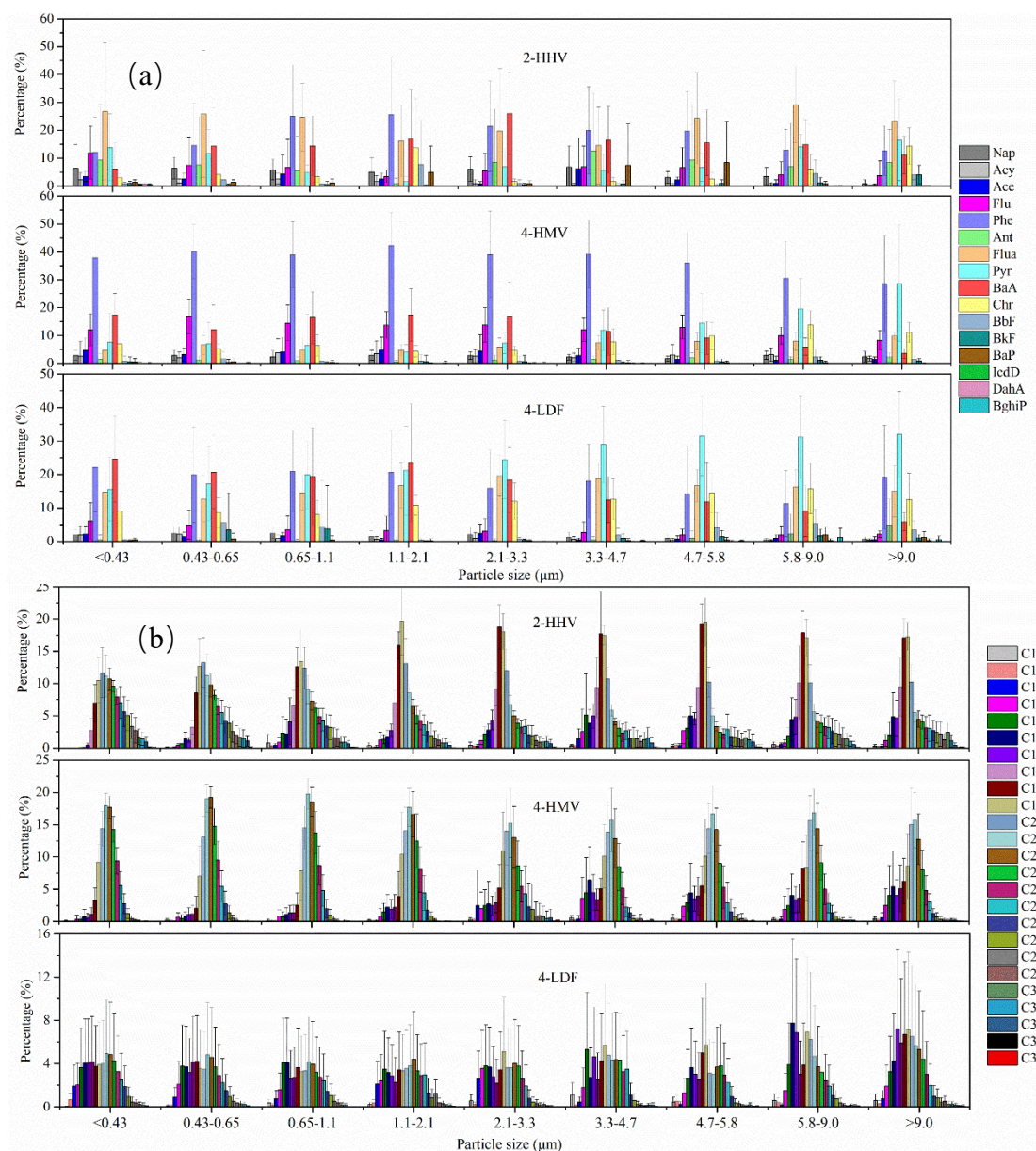


Figure 8 Speciated profiles of PAHs (a) and n-alkanes (b) in size-resolved particles

565

The ratio of high molecular weight (HMW) PAH (four to six rings) to low molecular weight (LMW) PAH (two and three rings) is shown in Fig. S2. The 4-LDF had the highest HMW to LMW ratios (2.96-8.25), while the 4-HMV had the lowest ratios (0.62-1.98). The results indicated that 4-LDF and 2-HHV had unfavorable combustion conditions compared to 4-HMV, which is consistent with our previous conclusion. The HMW to LMW ratios were generally higher in fine particles and decreased with the increase of particle size, except for 2-HHV which still showed high

570



ratios when particle size was larger than 5.8  $\mu\text{m}$ . Since HMW PAHs have high toxic equivalence (TEQ), the higher HMW/LMW PAHs ratios in fine particles implied that small particles emitted from the three types of ships might be more toxic than coarse particles. Furthermore, from our previous study the 4-LDF showed not only higher HMW to LMW ratios than other ships, but also much higher amount of total PAHs emission (Zhang et al., 2019), implying the necessity of more stringent control on the emissions of particles from fishing boats in China.

From Fig. 8, it can be seen that n-alkanes showed different percentage distributions between different particle size bins from different types of ships. There were larger maximum carbon numbers ( $C_{\text{max}}$ ) in smaller size particles, such as C20/C21 for 2-HHV, C21/C22 for 4-HMV and C21/C22 for 4-LDF. However, with the increase of particle size, the  $C_{\text{max}}$  of n-alkanes switched to C18/C19, C20/C21 and C18/C19 for 2-HHV, 4-HMV and 4-LDF, respectively. Similar to PAHs, when diagnostic characteristics of n-alkanes in PM emitted from ships is used in source apportionment, particle size needs to be taken into consideration.

#### 4. Conclusions and implications

Particulate matters emitted from ships have gained more and more attention in recent years due to their adverse impacts on human health and ambient air quality. However, our knowledge on the abundance and chemical speciation in different particle sizes are limited. In this study, size-segregated distributions and characteristics of mass, OC, EC, 16 PAHs and 25 n-alkanes from 12 different vessels in China were presented.

This study found that over 50% of the total particle mass was explained by the particles with  $D_p < 1.1 \mu\text{m}$  for most of the tested ships. Specifically, the mass was concentrated in particles with  $D_p < 0.43 \mu\text{m}$  for 2-HHV, and in particles with  $D_p < 1.1 \mu\text{m}$  for lower power diesel fuel fishing boats, while the mass was accounted for higher percentages by coarse particles for higher power diesel fuel fishing boats and 4-HMV.

Similar to the total particle mass distribution, about 53-86% of total OC and 68-86% of total EC were in the particles with  $D_p < 1.1 \mu\text{m}$ , presenting downward trend with the increase of particle size. The OC+EC accounted for major proportions of the total

particle mass in fine particles. However, OC+EC only explained small proportions in coarse particles, suggesting that most of the coarse particle mass was dominated by other non-carbonous components. In addition, the OC to EC ratio of 2-HHV in each  
605 particle size bin was the highest, followed by 4-LDF and 4-HMV. With the increase of particle size, the OC to EC ratios decreased first and then increased, with the lowest values in particle sizes of 0.43-1.1 $\mu$ m. Moreover, fragments of OC and EC were obtained and used to understand different formation processes. OC1, OC2 and OC3 were the dominant OC fragments for all the tested ships, while EC2 was the prevailing  
610 EC fragment for diesel fuel ships and EC1 was the main EC fragment for HFO ship. Different OC and EC fractions showed different distributions between different particle size bins because of the different formation mechanisms.

16 PAHs and 25 n-alkanes in different particle bins were identified in this study. Results showed that large proportions of the organic compounds were concentrated in  
615 fine particles, with about 66.3 - 88.0% of PAHs and 79.0 - 94.6% of n-alkanes were in particles with  $D_p < 1.1 \mu$ m. 4-LDF had the highest PAHs and n-alkanes emission ratios in fine particles with  $D_p < 1.1 \mu$ m, and the 2-HHV had the lowest values, but no significant differences were observed in particles with  $D_p > 1.1 \mu$ m. Results of the speciated profiles of PAHs showed that Phe, Flua, Pyr, BaA, Flu and Chr were the most  
620 dominant PAHs, while their relative percentages in different types of ships and between different particle size bins varied. In addition, the HMW PAHs to LMW PAHs ratios were generally higher in fine particles and decreased with the increase of particle size. N-Alkanes also showed different percentage distributions between different particle size bins from different types of ships. Moreover, there were larger  $C_{max}$  in smaller size  
625 particles, but switched to smaller  $C_{max}$  with the increase of particle size for all the tested ships.

This study confirmed that the particle mass distributions in different size bins from ships were significantly different from the particle number distributions, and different types of ships had their own distinct mass distributions. The different profiles of  
630 chemical components in size-segregated particles implied that size-segregated chemical

profiles should be considered when source apportionment was conducted. Furthermore, this study found more toxic organics such as PAHs in small particles emitted from fishing boats, suggesting the necessity of more stringent control on this type of boats in China. In addition, detailed formation mechanisms of chemical composition in size-segregated particles need in-depth investigation. Finally, the large proportion of unidentified components in coarse particles still needs to be figured out. Due to the limitation of instrumental analysis, only very small proportion of specific organic compounds in each size particle bin were identified in this study, implying that innovative analytical technology such as real-time measurements of particle-associated organic compounds using thermo-desorption aerosol gas-chromatograph approach should be urgently developed.

**Data availability.** The data used for this study can be obtained from fzhangtj@tongji.edu.cn upon request.

**Author contributions.** FZ did the sampling, led the writing and data analysis for the manuscript with significant contributions and comments from all co-authors. YC designed the field measurements and HG reviewed and edited the manuscript. VM, YZ, XY and JC contributed to the data analysis, the manuscript structure, and the writing of the text.

**Competing interests.** The authors declare that they have no conflict of interest.

**Acknowledgement.** The authors wish to thank Min Cui, Yong Han, Zhe Qian, Yajing Lu for the help of experimental work. This study was financially supported by the Natural Science Foundation of China (grant numbers 41761134083, 91744203, 41603090, and 21677038), National Research Program for Key Issues in Air Pollution Control (grant numbers DQGG0201), and the Hong Kong PolyU internal grants (1-ZVJT and 1-BBW4).

## References

- Agrawal, H., Malloy, Q. G. J., Welch, W. A., Miller, J. W., and Cocker, D. R., III: In-use gaseous and particulate matter emissions from a modern ocean going container vessel, *Atmos. Environ.*, 42, 5504-5510, 10.1016/j.atmosenv.2008.02.053, 2008.
- Agrawal, H., Eden, R., Zhang, X., Fine, P. M., Katzenstein, A., Miller, J. W., Ospital, J., Teffera, S., and Cocker, D. R., III: Primary Particulate Matter from Ocean-Going Engines in the Southern California

- Air Basin, *Environ. Sci. Technol.*, 43, 5398-5402, 10.1021/es8035016, 2009.
- 665 Agrawal, H., Welch, W. A., Henningsen, S., Miller, J. W., and Cocker, D. R.: Emissions from main propulsion engine on container ship at sea, *J. Geophys. Res.-Atmos.*, 115, 10.1029/2009jd013346, 2010.
- Alfoeldy, B., Loeoev, J. B., Lagler, F., Mellqvist, J., Berg, N., Beecken, J., Weststrate, H., Duyzer, J., Bencs, L., Horemans, B., Cavalli, F., Putaud, J. P., Janssens-Maenhout, G., Csordas, A. P., Van Grieken, R., Borowiak, A., and Hjorth, J.: Measurements of air pollution emission factors for marine transportation in SECA, *Atmos. Meas. Tech.*, 6, 1777-1791, 10.5194/amt-6-1777-2013, 2013.
- 670 Alves, C. A., Barbosa, C., Rocha, S., Calvo, A., Nunes, T., Cerqueira, M., Pio, C., Karanasiou, A., and Querol, X.: Elements and polycyclic aromatic hydrocarbons in exhaust particles emitted by light-duty vehicles, *Environ. Sci. Pollut. Res.*, 22, 11526-11542, 10.1007/s11356-015-4394-x, 2015.
- Beecken, J., Mellqvist, J., Salo, K., Ekholm, J., and Jalkanen, J. P.: Airborne emission measurements of SO<sub>2</sub>, NO<sub>x</sub> and particles from individual ships using a sniffer technique, *Atmos. Meas. Tech.*, 7, 1957-1968, 10.5194/amt-7-1957-2014, 2014.
- 675 Cappa, C. D., Williams, E. J., Lack, D. A., Buffaloe, G. M., Coffman, D., Hayden, K. L., Herndon, S. C., Lerner, B. M., Li, S. M., Massoli, P., McLaren, R., Nuaaman, I., Onasch, T. B., and Quinn, P. K.: A case study into the measurement of ship emissions from plume intercepts of the NOAA ship Miller Freeman, *Atmos. Chem. Phys.*, 14, 1337-1352, 10.5194/acp-14-1337-2014, 2014.
- 680 Chu-Van, T., Ristovski, Z., Pourkhesalian, A. M., Rainey, T., Garaniya, V., Abbassi, R., Jahangiri, S., Enshaei, H., Kam, U. S., Kimball, R., Yang, L., Zare, A., Bartlett, H., and Brown, R. J.: On-board measurements of particle and gaseous emissions from a large cargo vessel at different operating conditions, *Environ. Pollut.*, <https://doi.org/10.1016/j.envpol.2017.11.008>, 2017.
- Cooper, D. A.: Exhaust emissions from ships at berth, *Atmos. Environ.*, 37, 3817-3830, 10.1016/s1352-685 2310(03)00446-1, 2003.
- Corbett, J. J., Lack, D. A., Winebrake, J. J., Harder, S., Silberman, J. A., and Gold, M.: Arctic shipping emissions inventories and future scenarios, *Atmos. Chem. Phys.*, 10, 9689-9704, 10.5194/acp-10-9689-2010, 2010.
- 690 Diesch, J. M., Drewnick, F., Klimach, T., and Borrmann, S.: Investigation of gaseous and particulate emissions from various marine vessel types measured on the banks of the Elbe in Northern Germany, *Atmos. Chem. Phys.*, 13, 3603-3618, 10.5194/acp-13-3603-2013, 2013.
- Fridell, E., Steen, E., and Peterson, K.: Primary particles in ship emissions, *Atmos. Environ.*, 42, 1160-1168, 2008.
- Gregoris, E., Barbaro, E., Morabito, E., Toscano, G., Donato, A., Cesari, D., Contini, D., and Gambaro, A.: Impact of maritime traffic on polycyclic aromatic hydrocarbons, metals and particulate matter in Venice air, *Environ. Sci. Pollut. Res.*, 23, 6951-6959, 10.1007/s11356-015-5811-x, 2016.
- 695 Han, Y., Chen, Y. J., Ahmad, S., Feng, Y. L., Zhang, F., Song, W. H., Cao, F., Zhang, Y. L., Yang, X., Li, J., and Zhang, G.: High Time- and Size-Resolved Measurements of PM and Chemical Composition from Coal Combustion: Implications for the EC Formation Process, *Environ. Sci. Technol.*, 52, 6676-6685, 10.1021/acs.est.7b05786, 2018.
- 700 Hardy, W. L., and Reitz, R. D.: A Study of the Effects of High EGR, High Equivalence Ratio, and Mixing

- Time on Emissions Levels in a Heavy-Duty Diesel Engine for PCCI Combustion, SAE International, 2006.
- 705 Healy, R. M., O'Connor, I. P., Hellebust, S., Allanic, A., Sodeau, J. R., and Wenger, J. C.: Characterisation of single particles from in-port ship emissions, *Atmos. Environ.*, 43, 6408-6414, 10.1016/j.atmosenv.2009.07.039, 2009.
- Heywood, J. B.: *Internal combustion engine fundamentals*, McGraw-hill New York, 1988.
- 710 Hobbs, P. V., Garrett, T. J., Ferek, R. J., Strader, S. R., Hegg, D. A., Frick, G. M., Hoppel, W. A., Gasparovic, R. F., Russell, L. M., Johnson, D. W., O'Dowd, C., Durkee, P. A., Nielsen, K. E., and Innis, G.: Emissions from ships with respect to their effects on clouds, *J. Atmos. Sci.*, 57, 2570-2590, 10.1175/1520-0469(2000)057<2570:efswrt>2.0.co;2, 2000.
- Juwono, A. M., Johnson, G., Mazaheri, M., Morawska, L., Roux, F., and Kitchen, B.: Investigation of the airborne submicrometer particles emitted by dredging vessels using a plume capture method, *Atmos. Environ.*, 73, 112-123, 2013.
- 715 Kasper, A., Aufdenblatten, S., Forss, A., Mohr, M., and Burtscher, H.: Particulate Emissions from a Low-Speed Marine Diesel Engine, *Aerosol Sci. Technol.*, 41, 24-32, 10.1080/02786820601055392, 2007.
- Kittelson, D. B.: Engines and nanoparticles: a review, *J. Aerosol. Sci.*, 29, 575-588, [https://doi.org/10.1016/S0021-8502\(97\)10037-4](https://doi.org/10.1016/S0021-8502(97)10037-4), 1998.
- 720 Lighty, J. S., Veranth, J. M., and Sarofim, A. F.: Combustion aerosols: Factors governing their size and composition and implications to human health, *J. Air Waste Manage. Assoc.*, 50, 1565-1618, 10.1080/10473289.2000.10464197, 2000.
- Liu, H., Fu, M., Jin, X., Shang, Y., Shindell, D., Faluvegi, G., Shindell, C., and He, K.: Health and climate impacts of ocean-going vessels in East Asia, *Nat. Clim. Chang.*, 6, 1037-1041, 10.1038/nclimate3083, 2016.
- 725 Liu, Z., Lu, X., Feng, J., Fan, Q., Zhang, Y., and Yang, X.: Influence of Ship Emissions on Urban Air Quality: A Comprehensive Study Using Highly Time-Resolved Online Measurements and Numerical Simulation in Shanghai, *Environ. Sci. Technol.*, 51, 202-211, 10.1021/acs.est.6b03834, 2017.
- 730 Lombaert, K., Le Moyne, L., De Maleissye, J. T., and Amouroux, J.: Experimental study of PAH in engine soot by isotopic tracing, *Combust. Sci. Technol.*, 178, 707-728, 10.1080/0010220500248417, 2006.
- Lu, G., Brook, J. R., Alfarra, M. R., Anlauf, K., Leaitch, W. R., Sharma, S., Wang, D., Worsnop, D. R., and Phinney, L.: Identification and characterization of inland ship plumes over Vancouver, BC, *Atmos. Environ.*, 40, 2767-2782, 10.1016/j.atmosenv.2005.12.054, 2006.
- 735 Moldanová, J., Fridell, E., Popovicheva, O., Demirdjian, B., Tishkova, V., Faccinetto, A., and Focsa, C.: Characterisation of particulate matter and gaseous emissions from a large ship diesel engine, *Atmos. Environ.*, 43, 2632-2641, 10.1016/j.atmosenv.2009.02.008, 2009.
- 740 Moldanová, J., Fridell, E., Winnes, H., Holmin-Fridell, S., Boman, J., Jedynska, A., Tishkova, V., Demirdjian, B., Joulie, S., Bladt, H., Ivleva, N. P., and Niessner, R.: Physical and chemical characterisation of PM emissions from two ships operating in European Emission Control Areas, *Atmos. Meas. Tech.*, 6, 3577-3596, 10.5194/amt-6-3577-2013, 2013.

- Murphy, S. M., Agrawal, H., Sorooshian, A., Padró, L. T., Gates, H., Hersey, S., Welch, W., Jung, H., Miller, J., and Cocker III, D. R.: Comprehensive simultaneous shipboard and airborne characterization of exhaust from a modern container ship at sea, *Environ. Sci. Technol.*, 43, 4626-4640, 2009.
- 745
- Oeder, S., Kanashova, T., Sippula, O., Sapcariu, S. C., Streibel, T., Arteaga-Salas, J. M., Passig, J., Dilger, M., Paur, H.-R., Schlager, C., Mulhopt, S., Diabate, S., Weiss, C., Stengel, B., Rabe, R., Harndorf, H., Torvela, T., Jokiniemi, J. K., Hirvonen, M.-R., Schmidt-Weber, C., Traidl-Hoffmann, C., Berube, K. A., Wlodarczyk, A. J., Prytherch, Z., Michalke, B., Krebs, T., Prevot, A. S. H., Kelbg, M., Tiggesbaumker, J., Karg, E., Jakobi, G., Scholtes, S., Schnelle-Kreis, J., Lintelmann, J., Matuschek, G., Sklorz, M., Klingbeil, S., Orasche, J., Richthammer, P., Muller, L., Elsasser, M., Reda, A., Groger, T., Weggler, B., Schwemer, T., Czech, H., Ruger, C. P., Abbaszade, G., Radischat, C., Hiller, K., Buters, J. T. M., Dittmar, G., and Zimmermann, R.: Particulate Matter from Both Heavy Fuel Oil and Diesel Fuel Shipping Emissions Show Strong Biological Effects on Human Lung Cells at Realistic and Comparable In Vitro Exposure Conditions, *PLoS One*, 10, 10.1371/journal.pone.0126536, 2015.
- 750
- 755
- Pandolfi, M., Gonzalez-Castanedo, Y., Alastuey, A., de la Rosa, J. D., Mantilla, E., Sanchez de la Campa, A., Querol, X., Pey, J., Amato, F., and Moreno, T.: Source apportionment of PM10 and PM2.5 at multiple sites in the strait of Gibraltar by PMF: impact of shipping emissions, *Environ. Sci. Pollut. Res.*, 18, 260-269, 10.1007/s11356-010-0373-4, 2011.
- 760
- Pergal, M. M., Tesic, Z. L., and Popovic, A. R.: Polycyclic Aromatic Hydrocarbons: Temperature Driven Formation and Behavior during Coal Combustion in a Coal-Fired Power Plant, *Energy Fuels*, 27, 6273-6278, 10.1021/ef401467z, 2013.
- Petzold, A., Hasselbach, J., Lauer, P., Baumann, R., Franke, K., Gurk, C., Schlager, H., and Weingartner, E.: Experimental studies on particle emissions from cruising ship, their characteristic properties, transformation and atmospheric lifetime in the marine boundary layer, *Atmos. Chem. Phys.*, 8, 2387-2403, 2008.
- 765
- Pongpiachan, S., Hattayanone, M., Choochuay, C., Mekmok, R., Wuttijak, N., and Ketranakul, A.: Enhanced PM10 bounded PAHs from shipping emissions, *Atmos. Environ.*, 108, 13-19, 10.1016/j.atmosenv.2015.02.072, 2015.
- 770
- Quinn, P. K., Stohl, A., Arneth, A., Berntsen, T., Burkhart, J. F., Christensen, J., Flanner, M., Kupiainen, K., Lihavainen, H., and Shepherd, M.: The Impact of Black Carbon on Arctic Climate, *Arctic Monitoring and Assessment Programme*, 2011.
- Robinson, A. L., Grieshop, A. P., Donahue, N. M., Hunt, S. W.: Updating the conceptual model for fine particle mass emissions from combustion systems Allen L. Robinson, *J. Air Waste Manage. Assoc.* 60(10): 1204-1222, 2010.
- 775
- Schröder, C., Reimer, N., and Jochmann, P.: Environmental impact of exhaust emissions by Arctic shipping, *Ambio*, 46, 400-409, 10.1007/s13280-017-0956-0, 2017.
- Shen, G., Wang, W., Yang, Y., Zhu, C., Min, Y., Xue, M., Ding, J., Li, W., Wang, B., Shen, H., Wang, R., Wang, X., and Tao, S.: Emission factors and particulate matter size distribution of polycyclic aromatic hydrocarbons from residential coal combustions in rural Northern China, *Atmos. Environ.*,
- 780

- 44, 5237-5243, <https://doi.org/10.1016/j.atmosenv.2010.08.042>, 2010.
- 785 Shen, G., Wang, W., Yang, Y., Ding, J., Xue, M., Min, Y., Zhu, C., Shen, H., Li, W., Wang, B., Wang, R., Wang, X., Tao, S., and Russell, A. G.: Emissions of PAHs from Indoor Crop Residue Burning in a Typical Rural Stove: Emission Factors, Size Distributions, and Gas-Particle Partitioning, *Environ. Sci. Technol.*, 45, 1206-1212, 10.1021/es102151w, 2011.
- Sinha, P., Hobbs, P. V., Yokelson, R. J., Christian, T. J., Kirchstetter, T. W., and Bruintjes, R.: Emissions of trace gases and particles from two ships in the southern Atlantic Ocean, *Atmos. Environ.*, 37, 2139-2148, 10.1016/s1352-2310(03)00080-3, 2003.
- 790 Sippula, O., Stengel, B., Sklorz, M., Streibel, T., Rabe, R., Orasche, J., Lintelmann, J., Michalke, B., Abbaszade, G., Radischat, C., Groeger, T., Schnelle-Kreis, J., Harndorf, H., and Zimmermann, R.: Particle Emissions from a Marine Engine: Chemical Composition and Aromatic Emission Profiles under Various Operating Conditions, *Environ. Sci. Technol.*, 48, 11721-11729, 10.1021/es502484z, 2014.
- 795 Tree, D. R., and Svensson, K. I.: Soot processes in compression ignition engines, *Prog. Energy Combust. Sci.*, 33, 272-309, 10.1016/j.peccs.2006.03.002, 2007.
- Viana, M., Hammingh, P., Colette, A., Querol, X., Degraeuwe, B., de Vlieger, I., and van Aardenne, J.: Impact of maritime transport emissions on coastal air quality in Europe, *Atmos. Environ.*, 90, 96-105, 10.1016/j.atmosenv.2014.03.046, 2014.
- 800 Vieira de Souza, C., and Corrêa, S. M.: Polycyclic aromatic hydrocarbon emissions in diesel exhaust using gas chromatography-mass spectrometry with programmed temperature vaporization and large volume injection, *Atmos. Environ.*, 103, 222-230, <http://dx.doi.org/10.1016/j.atmosenv.2014.12.047>, 2015.
- 805 Winnes, H., and Fridell, E.: Emissions of NO<sub>x</sub> and particles from manoeuvring ships, *Transport. Res. Part D-Transport. Environ.*, 15, 204-211, 10.1016/j.trd.2010.02.003, 2010.
- Wu, D., Li, Q., Ding, X., Sun, J., Li, D., Fu, H., Teich, M., Ye, X., and Chen, J.: Primary Particulate Matter Emitted from Heavy Fuel and Diesel Oil Combustion in a Typical Container Ship: Characteristics and Toxicity, *Environ. Sci. Technol.*, 10.1021/acs.est.8b04471, 2018.
- 810 Yang, H.-H., Chien, S.-M., Chao, M.-R., and Wang, Y.-F.: Size Distribution of Particulate Polycyclic Aromatic Hydrocarbons in the Diluted Four-stroke Motorcycle Exhausts, *Aerosol Air Qual. Res.*, 5, 225-235, 10.4209/aaqr.2005.12.0008, 2005.
- Zetterdahl, M.: Particle Emissions from Ships, Thesis, Chalmers University of Technology, Gothenburg, Sweden, 2016.
- 815 Zetterdahl, M., Salo, K., Fridell, E., and Sjoblom, J.: Impact of Aromatic Concentration in Marine Fuels on Particle Emissions, *Aerosol Air Qual. Res.*, 16, 352-361, 10.1007/s11804-017-1417-7, 2017.
- Zhang, F., Chen, Y. J., Tian, C. G., Lou, D. M., Li, J., Zhang, G., and Matthias, V.: Emission factors for gaseous and particulate pollutants from offshore diesel engine vessels in China, *Atmos. Chem. Phys.*, 16, 6319-6334, 10.5194/acp-16-6319-2016, 2016.
- 820 Zhang, F., Chen, Y., Chen, Q., Feng, Y., Shang, Y., Yang, X., Gao, H., Tian, C., Li, J., Zhang, G., Matthias, V., and Xie, Z.: Real-World Emission Factors of Gaseous and Particulate Pollutants from Marine Fishing Boats and Their Total Emissions in China, *Environ. Sci. Technol.*, 52, 4910-4919,

10.1021/acs.est.7b04002, 2018.

825 Zhang, F., Chen, Y., Cui, M., Feng, Y., Yang, X., Chen, J., Zhang, Y., Gao, H., Tian, C., Matthias, V., and Liu, H.: Emission factors and environmental implication of organic pollutants in PM emitted from various vessels in China, *Atmos. Environ.*, 200, 302-311, <https://doi.org/10.1016/j.atmosenv.2018.12.006>, 2019.

Zhao, M., Zhang, Y., Ma, W., Fu, Q., Yang, X., Li, C., Zhou, B., Yu, Q., and Chen, L.: Characteristics and ship traffic source identification of air pollutants in China's largest port, *Atmos. Environ.*, 64, 277-286, [10.1016/j.atmosenv.2012.10.007](https://doi.org/10.1016/j.atmosenv.2012.10.007), 2013.