

Supplement of

China's Clean Air Action has suppressed unfavorable influences of climate on wintertime PM_{2.5} concentrations in Beijing since 2002

Meng Gao et al.

Correspondence: Meng Gao (mmgao2@hkbu.edu.hk), Zifa Wang (zifawang@mail.iap.ac.cn) and Michael B. McElroy (mbm@seas.harvard.edu)

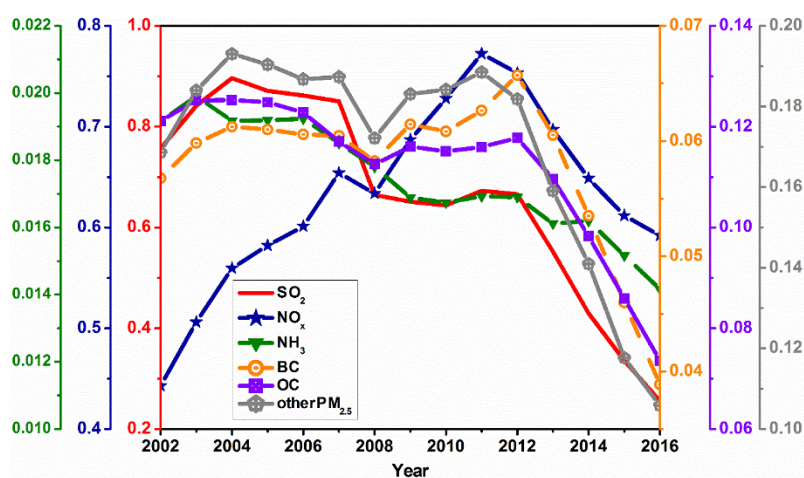


Fig. S1. Trends of wintertime emissions of air pollutants (SO₂, NO_x, NH₃, BC, OC, and other PM_{2.5}, unit: 10⁶ Mg) in Beijing-Tian-Hebei region from 2002 to 2016.

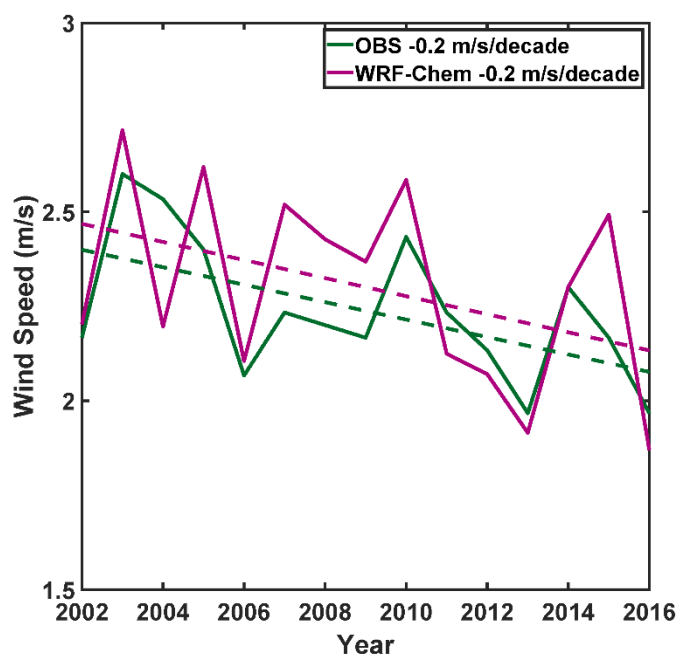


Fig. S2. Simulated and observed winter mean wind speeds in Beijing and the declining rates.