

The revised manuscript and response letter have fairly addressed the reviewers' comments. Now following the reviewer 2's discussion, I have one more concern that I hope the authors can address to improve the manuscript. The key message of this study is as claimed by the title, "China's Clean Air Action has suppressed unfavorable influences of climate on wintertime PM_{2.5} concentrations in Beijing since 2002". The Clean Air Action were enforced during the period of 2013-2017, while it was used by the authors to explain the trends of PM_{2.5} levels and haze days in Beijing over winters 2002-2016. The inconsistency between the two time periods needs caution. Based on the two sensitivity experiments (CTL: varying emissions, and MET: 2002 fixed emissions), the study did only separate the role of varying anthropogenic emissions over the whole period of 2002-2016, and did not separate the role of emission reductions due to the Clean Air Action alone over 2013-2017. Thus, attributing the trends over 2002-2016 to the Clean Air Action may not fully correct based the current model experiments. One evidence to support this argument is in Fig 4, the turning points driven the trend of PM_{2.5} were in 2010 and 2011, these were before the Clean Air Action. Therefore, I think what suppressed the unfavorable climate influences is not the Clean Air Action alone, but all emission control strategies over 2002-2016, based on the analyses in the present manuscript.

Response: Thanks for careful reading and mentioning this very important issue. We agree that the Clean Air Action might not be a good description in this context. However, emission control measures started even before 2013. Before 2013, strengthening the emission standards for power and industrial sectors was the key pollution control measure (Zheng et al., 2018). In the revised manuscript, we have replace "clean air action" with "Emission control strategies" to avoid confusion.

Zheng, B., Tong, D., Li, M., Liu, F., Hong, C., Geng, G., Li, H., Li, X., Peng, L., Qi, J., Yan, L., Zhang, Y., Zhao, H., Zheng, Y., He, K., and Zhang, Q.: Trends in China's anthropogenic emissions since 2010 as the consequence of clean air actions, *Atmos. Chem. Phys.*, 18, 14095–14111, <https://doi.org/10.5194/acp-18-14095-2018>, 2018.

Other Comments:

Page 8, Line 241: The two sentences here "there is no notable declining trend in number of haze days inferred from observations over 2005-2016" and "it is consistent that both model and observations indicate rapid declines in number of haze days (-4.8 days and -3.0 days per winter, respectively)" are inconsistent. Was the second sentence for the period of 2011-2016?

Response: Yes, the second sentence was for the period of 2012-2016. We have added it to the second sentence.

Page 9, Line 275:

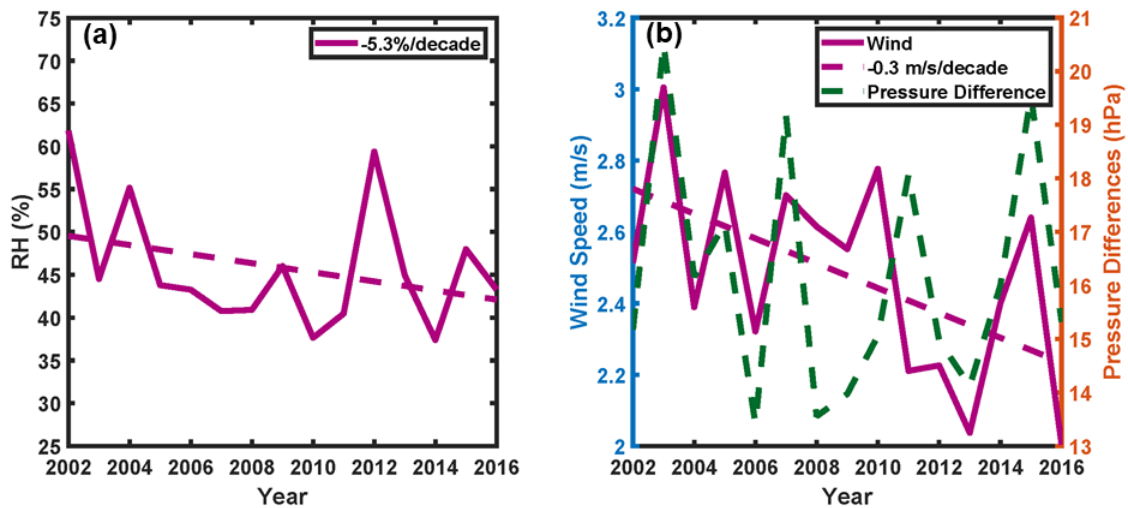
What is the difference of RH and RH2? Please clarify.

Response: RH denotes relative humidity in general, while RH2 represents relative humidity at 2 meters, which was analyzed in this study. In the revised manuscript, we have added clarification about RH, but replace RH with RH2 in most sentences to avoid confusion.

Page 10, Figure 5:

What is a blue y-axis “wind speed” in Fig 5 panel (c)for? Is it the same as panel (b) and why not merge panel (b) and panel (c)?

Response: Yes, it is the same as panel (b). Following your suggestion, we have merged (b) and (c) in the revised manuscript.



China's ~~Clean Air Action~~ emission control strategies have suppressed unfavorable influences of climate on wintertime PM_{2.5} concentrations in Beijing since 2002

Meng Gao^{1,2,3}, Zirui Liu⁴, Bo Zheng^{5,6}, Dongsheng Ji⁴, Peter Sherman⁷, Shaojie Song³, Jinyuan Xin⁴, Cheng Liu⁸, Yuesi Wang⁴, Qiang Zhang⁵, Jia Xing⁹, Jingkun Jiang⁹, Zifa Wang⁴, Gregory R. Carmichael¹⁰, Michael B. McElroy^{3,7}

1 Department of Geography, Hong Kong Baptist University, Hong Kong SAR, China

2 State Key Laboratory of Environmental and Biological Analysis, Hong Kong Baptist University, Hong Kong SAR, China

3 John A. Paulson School of Engineering and Applied Sciences, Harvard University, Cambridge, MA, USA

4 State Key Laboratory of Atmospheric Boundary Layer Physics and Atmospheric Chemistry, Institute of Atmospheric Physics, Chinese Academy of Sciences, Beijing, China

5 Ministry of Education Key Laboratory for Earth System Modeling, Department for Earth System Science, Tsinghua University, Beijing, China

6 Laboratoire des Sciences du Climat et de l'Environnement, CEA-CNRS-UVSQ, UMR8212, Gif-sur-Yvette, France

7 Department of Earth and Planetary Sciences, Harvard University, Cambridge, Massachusetts 02138, United States

8 University of Science and Technology of China, Hefei, Anhui, China

9 State Key Joint Laboratory of Environment Simulation and Pollution Control, School of Environment, Tsinghua University, Beijing, 100084, China

10 Department of Chemical and Biochemical Engineering, University of Iowa, Iowa City, IA, USA

Correspondence: Meng Gao (mmgao2@hkbu.edu.hk), Zifa Wang (zifawang@mail.iap.ac.cn) and Michael B. McElroy (mbm@seas.harvard.edu)

45 **Abstract**

Severe wintertime PM_{2.5} pollution in Beijing has been receiving increasing worldwide attention, yet the decadal variations remain relatively unexplored. Combining field measurements and model simulations, we quantified the relative influences of anthropogenic emissions and meteorological conditions on PM_{2.5} concentrations in Beijing over winters of 2002-2016.

50 Between the winters of 2011 and 2016, stringent emission control measures resulted in a 21% decrease in mean mass concentrations of PM_{2.5} in Beijing, with 7 fewer haze days per winter on average. Given the overestimation of PM_{2.5} by model, the effectiveness of stringent emission control measures might have been slightly overstated. With fixed emissions, meteorological conditions over the study period would have led to an increase of haze in Beijing, but the strict
55 emission control measures have suppressed the unfavorable influences of recent climate. The unfavorable meteorological conditions are attributed to the weakening of the East Asia Winter Monsoon associated particularly with an increase in pressure associated with the Aleutian low.

60

65

70

1 Introduction

In recent years, persistent and severe haze episodes with high PM_{2.5} concentrations occur frequently in China, attracting worldwide attention (*Cheng et al., 2016; Gao et al., 2016*). High aerosol concentrations during haze have been reported to cause traffic jams and flight cancelations (*Wu et al., 2005*), and have been linked to health damages (*Dockery et al., 1993*), climate change (*Ramanathan and Carmichael, 2008*) and ecosystem degradation (*Chameides et al., 1999*). The annual mean PM_{2.5} concentrations in Beijing exceeded 90 µg/m³ in 2013, nearly twice the China's National Ambient Air Quality Standard (NAAQS) of 35 µg/m³ (*MEP, 2012*). January 2013 was reported as the haziest month over the past 60 years in Beijing, with maximum hourly and daily mean PM_{2.5} concentrations exceeding 1000 µg/m³ and 500 µg/m³, respectively (*Wang et al., 2014*).

Since then, the State Council of China issued the Air Pollution Prevention and Control Action Plan (APPCAP, ~~denoted as the Clean Air Action hereafter~~), which describes explicitly the pollution control measures, and proposed specific goals for concentrations by 2017 (*China State Council, 2013*). This action has been considered the most stringent air pollution control policy in Chinese history. The Jing-Jin-Ji, Yangtze River Delta, and Pearl River Delta regions were required to reduce annual mean PM_{2.5} concentrations by 15-25% compared with the concentrations in 2013, and the annual mean concentrations of PM_{2.5} in Beijing should not exceed 60 µg/m³ (*Cheng et al., 2018; China State Council, 2013*). Specific control measures included eliminating small coal-fired boilers, phasing out small, high-emitting factories, installing control facilities for emissions of VOCs (volatile organic compounds), and replacing residential coal burning with electricity and natural gas among others. (*Zheng et al., 2018*). With these rigorous control measures, China has made impressive progress, with annual mean PM_{2.5} concentrations reduced in major metropolitan regions by 28-40% between 2013 and 2017 (*Zheng et al., 2018*).

A number of studies have used visibility as a surrogate to indicate trends of haze pollution in China over the past several decades (*Che et al., 2009; Chen and Wang, 2015; Ding and Liu, 2014; Wang and Chen, 2016*). *Chen and Wang (2015)* reported that haze days increased rapidly

100 in the 1970s and remained relatively stable up to present. However, *Che et al. (2009)* illustrated
that there was a decreasing haze trend in winter for many cities over the interval 1981-2005.
Wang et al. (2019) argued that visibility is impacted significantly by meteorological factors,
especially relative humidity, and thus visibility does not accordingly reflect the real changes in
air pollution. The influences of anthropogenic emissions and meteorological conditions on air
105 quality over shorter periods have been investigated extensively (Gao et al., 2017a; Y. Gao et
al., 2011; Liu et al., 2017; Wang et al., 2016; Xing et al., 2011). Due to the lack of long-term
measurements of PM_{2.5} in China, limited studies have been conducted exploring the roles of
anthropogenic emissions and meteorological conditions for the long-term variations of PM_{2.5}
in China. *Yang et al. (2016)* used the GEOS-Chem model to simulate PM_{2.5} in China between
110 1985 and 2005, and concluded that the increase of winter PM_{2.5} was dominated over this period
by the increase in anthropogenic emissions. They found that weakening of winds was the
dominant meteorological factor. The variability of winds in North China has also been linked
to air quality over the Yangtze River Delta, which is a downwind region of North China (*Kang
et al., 2019*). While *Yang et al. (2016)* has explored the relative roles of emissions and
115 meteorology, no model validation of PM_{2.5} was provided, and the recent decades were not
covered in the study period. Long-term measurements of PM_{2.5} in Beijing reveal a slight
decreasing trend of annual mean concentration over 2004-2012 (*Liu et al., 2015*). With the
increase in availability of recent measurements, a closer reading of long-term variations is
needed to better define the relative roles of anthropogenic emissions and meteorology.
120 In this study, we present a comprehensive analysis of the decadal trend of wintertime PM_{2.5} in
Beijing based on regional meteorology-chemistry modeling, a new decadal emission inventory,
and long-term observations of PM_{2.5}, including their composition. We address the following
questions: (1) the influences of decadal changes in anthropogenic emissions and meteorology
on the variations of winter PM_{2.5} in Beijing; and (2) the key driving factors for the decadal
125 variation of meteorology. The descriptions of model, emissions, and numerical experiments are
presented in Sect. 2. The two questions highlighted above are addressed in detail in Sect. 3;
Sect. 4 provides an overall summary of the study.

2 Model Description and Configurations

130 2.1 Meteorology-chemistry modeling

We used the WRF-Chem (Weather Research and Forecasting model coupled with chemistry) model version 3.6.1 to simulate meteorology and emissions, transport, mixing, and the chemical transformation of trace gases and aerosols. Two nested domains were applied with the outer domain covering East Asia and part of Southeast Asia, with the inner domain focusing on North China (Fig. 1). Horizontal resolutions of 81km and 27km were configured respectively for these two domains, and the model accounted for 27 vertical layers extending from the surface to 50 hPa. The gas phase chemical mechanism CBMZ (Zaveri and Peters, 1999) coupled with the 8-bin sectional MOSAIC model with aqueous chemistry (Zaveri et al., 2008) was adopted. The model treats all the important aerosol species, including sulfate, nitrate, chloride, ammonium, sodium, black carbon (BC), primary organic and inorganic material. The Fast-j radiation scheme (Wild et al., 2000) was selected to calculate photolysis rates. These configurations have been shown in previous studies (Gao et al., 2016a, 2016b, 2017b) to be capable of reproducing winter haze episodes in North China.

145 2.2 Emissions

The monthly Multi-resolution Emission Inventory for China (MEIC, <http://www.meicmodel.org/>) covering the years 2002-2017 (Zheng et al., 2018) was used for anthropogenic emissions. This inventory considers emissions of sulfur dioxide (SO₂), nitrogen oxides (NO_x), carbon monoxide (CO), non-methane volatile organic compounds (NMVOC), ammonia (NH₃), black carbon (BC), organic carbon (OC), PM_{2.5}, PM₁₀, and carbon dioxide (CO₂) associated with power generation, and the industrial, residential, transportation, and agricultural sectors. The trends of wintertime emissions of these species in Beijing-Tianjin-Hebei region over the interval 2002-2016 are displayed in Fig. S1. Emissions of SO₂ have decreased continuously since 2004, while NO_x emissions have declined since 2011. Emissions of all involved species have decreased rapidly since 2012. Biogenic emissions were calculated online using the MEGAN model (Guenther et al., 2006). Emissions from biomass burning were taken from the GFED v3 dataset (Randerson et al., 2015). Dust emissions and online sea-salt emissions were

also calculated online.

160 **2.3 Numerical experiments**

Meteorological initial and boundary conditions were obtained from the National Centers for Environmental Prediction (NCEP) Final Analysis (FNL) dataset. Chemical initial and boundary conditions were taken from the climatological data provided by the NOAA Aeronomy Lab Regional Oxidant Model (NALROM). Wintertime periods defined as the last
165 month of the year and the following two months of the next year were simulated for years 2002-2016. For example, the winter of 2002 includes December of 2002, January of 2003 and February of 2003. Nudging (assimilation) of the analyses was applied to produce realistic meteorological simulations. The simulations were conducted month by month (15 years \times 3 month/year = 45 months). To overcome the impacts of initial conditions, five more days were
170 simulated for each month and discarded as spin-up. Two sets of simulations were performed to elucidate the relative roles of changes in anthropogenic emissions and meteorological conditions: (1) CTL simulation, simulations of winter periods from 2002 to 2016 with varying meteorological conditions and anthropogenic emissions; and (2) MET simulation, simulations of winter periods from 2002 to 2016 with varying meteorological conditions only, with
175 anthropogenic emissions fixed at levels that applied in 2002. The MET simulation can be used to answer the question: what the climate would have done to the variations of $PM_{2.5}$ if emissions were not changing? The CTL simulation contains the information of changes in both meteorological conditions and emissions.

180 **3 Results and Discussion**

3.1 Model evaluation

Model evaluation was conducted in terms of both $PM_{2.5}$ concentrations and $PM_{2.5}$ chemical compositions, using measurements from urban Beijing (location is marked with red dot in Fig. 1). $PM_{2.5}$ was measured using the Two tapered Element Oscillating Microbalances (TEOM)
185 system at the Institute of Atmospheric Physics site. More descriptions of the observations were archived in *Liu et al. (2015)*. Fig. 2 displays the variations of simulated and observed daily

mean PM_{2.5} concentrations over winters from 2002 to 2016. Temporal variations of simulated and observed PM_{2.5} concentrations are generally consistent, with correlation coefficients ranging from 0.75 to 0.83 (Fig. 2). Notably, the model overestimates PM_{2.5} concentrations for all periods. However, the overestimations decline gradually over time. Values of the mean bias decrease from 54.1 μg/m³ over the 2004-2006 period to 15.9 μg/m³ for recent winters. The broad ranges of errors in different periods reflect the changing uncertainty of emission inventories for different periods. In early times, documentations of emission sources were not as comprehensive as those available for recent years, leading to larger errors in early inventories.

According to results reported by *Zheng et al. (2018)*, SO₂ emissions decreased by 59%, NO_x emissions decreased by 21%, BC emissions decreased by 28%, and OC emissions decreased by 32% for China between 2013 and 2017. These remarkable changes in emissions are expected to lead to notable changes in both the abundance and composition of PM_{2.5}. As shown in Fig. 3, sulfate and OC exhibit the largest declines, ammonium and BC show slight decreases, while nitrate concentrations remain relatively stable over 2013-2017. These measured trends are captured generally well by the model, except that sulfate is still underestimated, and BC is overestimated in Beijing. The underestimate of sulfate by models and the overestimate of BC in Beijing have been well documented in previous studies (*Cheng et al., 2006; Gao et al., 2016a, 2018a; Song et al., 2018*), attributed to missing reaction pathways and aging/deposition treatments in models (*Song et al., 2019*). Several heterogeneous reaction pathways for sulfate formation have been proposed, including the oxidation of SO₂ by NO₂, transition-metal-catalyzed O₂, or H₂O₂ in aerosol water, and by NO₂ or O₂ on aerosol surfaces (*Cheng et al., 2016; He et al., 2014; Hung et al., 2018; Li et al., 2018*). More recently, *Song et al. (2019)* proposed that the heterogeneous production of hydroxymethanesulfonate (HMS) from the reaction of SO₂ and formaldehyde could be an important chemical mechanism for wintertime haze in China. With the rapid declines in sulfate in Beijing, the relative importance of nitrate in PM_{2.5} is enhanced, a circumstance worthy of special attention for future pollution control policy.

215

3.2 Influences of Anthropogenic Emissions and Meteorological Conditions on Haze in

Beijing

Fig. 4 illustrates the wintertime mean concentrations of PM_{2.5} and the numbers of haze days from the CTL and MET simulations. Haze days are defined as occasions with daily mean concentrations exceeding 150 µg/m³. With fixed anthropogenic emissions, wintertime averaged concentrations of PM_{2.5} would have increased at a rate of 2.1 µg/m³/year in Beijing (Fig. 4a). Due to the implementation of China's ~~Clean Air Action~~ emission control strategies, the wintertime averaged concentrations of PM_{2.5} have been declining since 2012. Over 2002-2016 winters, mean concentrations of PM_{2.5} in Beijing decreased at a rate of 1.4 µg/m³/year. Compared to concentrations in the MET simulation, the mean mass concentrations of PM_{2.5} decreased by 21% in Beijing over the winters of 2011-2016.

The effectiveness of China's ~~Clean Air Action~~ emission control strategies has been highlighted also in the decline in the number of haze days in Beijing. In the MET simulation, the total number of haze days over 2011-2016 winters amounted to 157 days, reduced by 44 days as a result of the emission controls implemented over this period (Fig. 4b). On average, China's ~~Clean Air Action~~ emission control strategies resulted in 7 fewer haze days per winter over 2011-2016. Over the entire study period 2002-2016, China's ~~emission control strategies~~ Clean Air Action altered the direction of changes in wintertime haze days, with rates changing from 0.8 day/year to -0.3 day/year. The differences in both mean concentrations of PM_{2.5} and numbers of haze days from the two sets of simulations underscore the impressive success of China's ~~emission control strategies~~ Clean Air Action. Given the more serious overestimate of PM_{2.5} in early periods (Fig. 2), the declining rates inferred from the CTL simulation might have been slightly overstated. With unchanged anthropogenic emissions, the increasing trend of haze pollution that would have occurred for Beijing highlights the unfavorable influences of recent changes in local meteorology. We explored if different thresholds of haze days would change the findings and found the variations are similar when a threshold of 75 µg/m³ was used (Fig. S2). Due to the overestimation of number of haze days by the model in early years, the declining rates of number of haze days inferred from the CTL simulation might have been overstated. As seen from Fig. S3, there is no notable declining trend in number of haze days inferred from observations over 2005-2016. However, it is consistent that both model and observations indicate rapid declines in number of haze days (-4.8 days and -3.0 days per winter,

respectively) over 2012-2016. With fixed emissions, the MET simulation suggests that unfavorable climate conditions would have led to more haze days, emphasizing the significance of emission control in recent years.

250 Using similar approach, *Cheng et al. (2019)* found that meteorological conditions explain 12.1% of the improved PM_{2.5} air quality during 2013-2017, while large portions of the improvement are dominated by local (65.4%) and regional (22.5%) emission reductions. *Zhou et al. (2019)* concluded that emission reductions play a more important than meteorological conditions in determining the declines in PM_{2.5} over 2011/2012-2017/2018. The current study examines
255 longer term trend since 2002, but the more favorable meteorological conditions mentioned in *Cheng et al. (2019)* are illustrated also in Fig. 4. Our findings highlight also the significance of emission reductions, especially after 2013, while the long-term trend of meteorological conditions since 2002 differs from it during 2013-2017.

260 3.3 Significance of Different Meteorological Variables

To identify the key meteorological variables for the unfavorable influences on air quality, we applied the stepwise linear regression model (SLR) to determine the relative significance of multiple meteorological variables in terms of their contributions to the variations of PM_{2.5} concentrations. In a SLR model, the selected predictors are included in the regression equation
265 one by one. The predictor that contributes the most to the model is included first, and the process is continued if the additional predictor can statistically improve the regression (*Bendel and Afifi, 1977*). Thus, the SLR model is widely used to select meaningful predictors. In this study, boundary layer heights (BLH), precipitation (PREC), near surface relative humidity (RH2), near surface temperature (T2) and near surface wind speeds (WS10) were selected as
270 predictors for the SLR model. These variables were extracted from the WRF-Chem meteorological simulations with analyses nudging applied. Table 1 summarizes the p values for each predictor. RH2 and WS10 were selected as the most significant predictors for wintertime PM_{2.5} in Beijing (p values < 0.05). The influence of WS10 is greater than that for RH2. *Shen et al. (2018)* and Zhang et al. (2018) reported also that relative humidity (RH) and
275 meridional wind speeds drive stagnation and chemical production of PM_{2.5} in Beijing. The impacts of RH on aerosol composition and processes in winter were examined using

Formatted: Font: Not Italic

measurements in Beijing, and the largest impacts were found for the growth of sulfate and organic aerosols associated with coal combustion (*Sun et al., 2013; Wang et al., 2017*).

Although RH₂ has been shown to be a good predictor for PM_{2.5}, it decreases slightly (-5.3 %/decade) between 2002 and 2016 period (Fig. 5a), which contradicts the predicted increasing trend of PM_{2.5} under fixed emissions (Fig. 4a). RH₂ has been found to explain the interannual variability of PM_{2.5}, but not the increasing trend. Thus, the variability of RH₂ is unlikely to be the driver of enhanced PM_{2.5} under changing conditions of climate. As suggested by Ding et al. (2014), the decrease of RH₂ was partly caused by the increase of surface temperature.

Between 2002 and 2016, simulated wintertime WS10 in Beijing declined gradually at a rate of 0.3 m/s/decade (Fig. 5b), in agreement with the declining trends inferred from observations (Fig. S4). Weaker wintertime near surface wind speeds are associated with enhanced PM_{2.5} concentrations and increasing numbers of haze days since 2002. In winter, the North China plain features northwesterly winds associated with the East Asian Winter Monsoon (EAWM), properties of which depend largely on the development of both the Siberian high and the Aleutian low (*Jhun and Lee, 2004*). We calculated the intensity of the EAWM index using the pressure difference between area mean sea level pressure (SLP, data were taken from MERRA-2 reanalysis) over the region 90° E-110° E, 40° N-50° N and the area mean SLP over the region 120° -170° E, 40°-60° N. These two regions represent the central focal areas of the Siberian high and the Aleutian low, respectively. Fig. 5(eb) indicates that the variations of EAWM intensity has declined gradually over time, consistent with the variations of wind speeds in Beijing. The weakening of EAWM intensity is due partially to the increasing pressure in the regions of the Aleutian low. As shown in Fig. 6, there is no significant change in SLP over the regions of the Siberian high, but SLP of the Aleutian low intensity decreased significantly between 2002 and 2016 (more than 50 Pa/year). Although no significant trend was observed for the strength of the Siberian high, the changes in the position of the Siberian high has been linked to wintertime air quality in China over the past decades (*Jia et al., 2015*).

Yin et al. (2015) found a significant negative correlation between winter haze and the East Asia Winter Monsoon from 1986 to 2010. Deterioration of air quality in China has been linked also to a weaker East Asia Summer Monsoon (*Chin et al., 2012*). The slacking of winds is observed

not only for China (*Sherman et al., 2017*), but also for other countries including India (*Gao et al., 2018b*). Analyses using climate projections suggest that wind speeds in continental regions in the Northern Hemisphere will continue to decline under a warming climate (*Karnauskas et al., 2018*), imposing greater pressure on measures for future control of air pollution.

4 Summary

Combining field measurements and model simulations, we quantified the relative influences on PM_{2.5} concentrations in Beijing of anthropogenic emissions and meteorological conditions over winters of 2002-2016. China's emission control strategies ~~Clean Air Action~~ has have been effective in reducing both mass concentrations of PM_{2.5} and the number of haze days. With fixed emissions, meteorological conditions over the study period should have resulted in an increase in haze in Beijing, but the strict emission control measures implemented by the government have suppressed the unfavorable influences associated with recent climate. Using a statistical method, we concluded that RH2 and WS10 offer useful predictors for wintertime PM_{2.5} in Beijing, with the variations of WS10 in particularly good agreement with the increasing trend of PM_{2.5} concentrations with fixed emissions. The increasing trend of PM_{2.5} under unfavorable meteorological conditions was attributed further to the weakening of Aleutian low and the EAWM. The variations of PM_{2.5} concentrations were investigated in this study for the urban Beijing region, so were the changes in wind speeds. We do not exclude the possibility that the trend may have been influenced by other factors, including for example increases in surface roughness (*Vautard et al, 2010*).

330

4 figures are listed in the supplement.

Author contribution

M.G. and M.B.M designed the study; M.G. performed model simulations and analyzed the data with the help from S.S., P.S., J.X., J.K.J. and G.R.C.; B.Z. and Q. Z. provided the emission

335

inventory; Z.W., Y.W., Z.L., D.J., J.Y.X., and C.L. provided measurements. M.G. and M.B.M. wrote the paper with inputs from all other authors.

Data availability

340 The measurements and model simulations data can be accessed through contacting the corresponding authors.

Competing interests

The authors declare that they have no conflict of interests.

345

Acknowledgement

This work was supported by the special fund of State Key Joint Laboratory of Environment Simulation and Pollution Control (19K03ESPCT), ~~and~~ the Harvard Global Institute, [Natural Science Foundation of Guangdong Province \(2019A1515011633\)](#), and [National Natural Science Foundation of China \(NSFC91543202\)](#). -

350

References:

- Bendel, R. B. and Afifi, A. A.: Comparison of stopping rules in forward “stepwise” regression, *J. Am. Stat. Assoc.*, 72(357), 46–53, doi:10.1080/01621459.1977.10479905, 1977.
- Chameides, W., Yu, H., Liu, S., Bergin, M., Xhou, X., Mearns, L., Wang, G., Kiang, C., Saylor, R. D., Luo, C., Huang, Y., Steiner, A. and Giorgi, F.: Study of the effects of atmospheric regional haze on agriculture : enhance crop yields in China through emission controls?, *Proc. Natl. Acad. Sci.*, 96(24), 13626–13633, 1999.
- 360 Che, H., Zhang, X., Li, Y., Zhou, Z., Qu, J. J. and Hao, X.: Haze trends over the capital cities of 31 provinces in China, 1981-2005, *Theor. Appl. Climatol.*, 97(3–4), 235–242, doi:10.1007/s00704-008-0059-8, 2009.
- Chen, H. and Wang, H.: Haze days in North China and the associated atmospheric circulations based on daily visibility data from 1960 to 2012, *J. Geophys. Res. Atmos.*, 1–15, doi:10.1002/2015JD023225, 2015.
- 365 Cheng, J., Su, J., Cui, T., Li, X., Dong, X., Sun, F., Yang, Y., Tong, D., Zheng, Y., Li, Y. and Li, J., 2019.

- Dominant role of emission reduction in PM 2.5 air quality improvement in Beijing during 2013–2017: a model-based decomposition analysis. *Atmospheric Chemistry and Physics*, 19(9), pp.6125-6146.
- Cheng, Y., Zheng, G., Wei, C., Mu, Q., Zheng, B., Wang, Z., Gao, M., Zhang, Q., He, K., Carmichael, G., and Pöschl, U.: Reactive nitrogen chemistry in aerosol water as a source of sulfate during haze events in China, *Sci. Adv.*, 2(12), e1601530, doi:10.1126/sciadv.1601530, 2016.
- China State Council: Action Plan on Prevention and Control of Air Pollution, China State Council, Beijing, China, http://www.gov.cn/zwqk/2013-09/12/content_2486773.htm (last access:30 March 2019), 2013.
- Chin, M.: Atmospheric science: Dirtier air from a weaker monsoon, *Nat. Geosci.*, 5(7), 449–450, doi:10.1038/ngeo1513, 2012.
- 375 Ding, Y. H. and Liu, Y. J.: Analysis of long-term variations of fog and haze in China in recent 50 years and their relations with atmospheric humidity, *Sci. China Earth Sci.*, 57(1), 36–46, doi:10.1007/s11430-013-4792-1, 2014.
- Dockery, D.W., Pope, C.A., Xu, X., Spengler, J.D., Ware, J.H., Fay, M.E., Ferris Jr, B.G., and Speizer, F. E. : An association between air pollution and mortality in six U.S. cities, *N. Engl. J. Med.*, 329(24), 1753–380 1759, 1993.
- Gao, M., Carmichael, G. R., Wang, Y., Saide, P. E., Yu, M., Xin, J., Liu, Z. and Wang, Z.: Modeling study of the 2010 regional haze event in the North China Plain, *Atmos. Chem. Phys.*, 16, 1673–1691, doi:10.5194/acp-16-1673-2016, 2016a.
- Gao, M., Carmichael, G. R., Saide, P. E., Lu, Z., Yu, M., Streets, D. G. and Wang, Z.: Response of winter 385 fine particulate matter concentrations to emission and meteorology changes in North China, *Atmos. Chem. Phys.*, 16, 11837-11851, <https://doi.org/10.5194/acp-16-11837-2016>, 2016b.
- Gao, M., Han, Z., Liu, Z., Li, M., Xin, J., Tao, Z., Li, J., Kang, J. E., Huang, K., Dong, X., Zhuang, B., Li, S., Ge, B., Wu, Q., Cheng, Y., Wang, Y., Lee, H. J., Kim, C. H., Fu, J. S., Wang, T., Chin, M., Woo, J. H., Zhang, Q., Wang, Z. and Carmichael, G. R.: Air quality and climate change, Topic 3 of the Model 390 Inter-Comparison Study for Asia Phase III (MICS-Asia III) - Part 1: Overview and model evaluation, *Atmos. Chem. Phys.*, 18(7), 4859–4884, doi:10.5194/acp-18-4859-2018, 2018a.
- Gao, M., Ding, Y., Song, S., Lu, X., Chen, X. and McElroy, M. B.: Secular decrease of wind power potential in India associated with warming in the Indian Ocean, *Sci. Adv.*, 4(12), eaat5256, doi:10.1126/sciadv.aat5256, 2018b.
- 395 Gao, M., Liu, Z., Wang, Y., Lu, X., Ji, D., Wang, L., Li, M., Wang, Z., Zhang, Q. and Carmichael, G.R.:

- Distinguishing the roles of meteorology, emission control measures, regional transport, and co-benefits of reduced aerosol feedbacks in “APEC Blue”, *Atmos. Env.*, <https://doi.org/10.1016/j.atmosenv.2017.08.054>, 2017a.
- Gao, M., Saide, P. E., Xin, J., Wang, Y., Liu, Z., Wang, Y., Wang, Z., Pagowski, M., Guttikunda, S. K. and Carmichael, G. R.: Estimates of Health Impacts and Radiative Forcing in Winter Haze in Eastern China through Constraints of Surface PM_{2.5} Predictions, *Environ. Sci. Technol.*, 51(4), 2178–2185, doi:10.1021/acs.est.6b03745, 2017b.
- Gao, Y., Liu, X., Zhao, C. and Zhang, M.: Emission controls versus meteorological conditions in determining aerosol concentrations in Beijing during the 2008 Olympic Games, *Atmos. Chem. Phys.*, 11, 12437–12451, <https://doi.org/10.5194/acp-11-12437-2011>, 2011.
- Geng, G., Zhang, Q., Hong, C., Yan, L., Li, H., Tong, D., Li, M., Zheng, Y., Zhao, H., Peng, L., Qi, J., Zhang, Y., Liu, F., He, K., Li, X. and Zheng, B.: Trends in China’s anthropogenic emissions since 2010 as the consequence of clean air actions, *Atmos. Chem. Phys.*, 18(19), 14095–14111, doi:10.5194/acp-18-14095-2018, 2018.
- Guenther, A., Karl, T., Harley, P., Wiedinmyer, C., Palmer, P. I. and Geron, C.: Estimates of global terrestrial isoprene emissions using MEGAN (Model of Emissions of Gases and Aerosols from Nature), *Atmos. Chem. Phys.*, 6(1), 107–173, doi:10.5194/acpd-6-107-2006, 2006.
- He, H., Wang, Y., Ma, Q., Ma, J., Chu, B., Ji, D., Tang, G., Liu, C., Zhang, H. and Hao, J.: Mineral dust and NO_x promote the conversion of SO₂ to sulfate in heavy pollution days, *Sci. Rep.*, 4(2), 1–6, doi:10.1038/srep04172, 2014.
- Hung, H. M., Hsu, M. N. and Hoffmann, M. R.: Quantification of SO₂ Oxidation on Interfacial Surfaces of Acidic Micro-Droplets: Implication for Ambient Sulfate Formation, *Environ. Sci. Technol.*, 52(16), 9079–9086, doi:10.1021/acs.est.8b01391, 2018.
- Jhun, J. G. and Lee, E. J.: A new East Asian winter monsoon index and associated characteristics of the winter monsoon, *J. Clim.*, 17(4), 711–726, doi:10.1175/1520-0442(2004)017<0711:ANEAWM>2.0.CO;2, 2004.
- Jia, B., Wang, Y., Yao, Y. and Xie, Y.: A new indicator on the impact of large-scale circulation on wintertime particulate matter pollution over China, *Atmos. Chem. Phys.*, 15, 11919–11929, doi:10.5194/acp-15-11919-2015, 2015.
- Kang, H., Zhu, B., Gao, J., He, Y., Wang, H., Su, J., Pan, C., Zhu, T., and Yu, B.: Potential impacts of cold

- frontal passage on air quality over the Yangtze River Delta, China, *Atmos. Chem. Phys.*, 19, 3673-3685, <https://doi.org/10.5194/acp-19-3673-2019>, 2019.
- Karnauskas, K. B., Lundquist, J. K. and Zhang, L.: Southward shift of the global wind energy resource under high carbon dioxide emissions, *Nat. Geosci.*, 11(1), 38–43, doi:10.1038/s41561-017-0029-9, 2018.
- 43Li, L., Hoffmann, M. R. and Colussi, A. J.: Role of Nitrogen Dioxide in the Production of Sulfate during Chinese Haze-Aerosol Episodes, *Environ. Sci. Technol.*, 52(5), 2686–2693, doi:10.1021/acs.est.7b05222, 2018.
- Liu, T., Gong, S., He, J., Yu, M., Wang, Q., Li, H., Liu, W., Zhang, J., Li, L., Wang, X. and Li, S.: Attributions of meteorological and emission factors to the 2015 winter severe haze pollution episodes in China's 435 Jing-Jin-Ji area, *Atmos. Chem. Phys.*, 17(4), <https://doi.org/10.5194/acp-17-2971-2017>, 2017.
- Liu, Z., Hu, B., Wang, L., Wu, F., Gao, W. and Wang, Y.: Seasonal and diurnal variation in particulate matter (Pm10 and pm25) at an urban site of Beijing: Analyses from a 9-year study, *Environ. Sci. Pollut. Res.*, 22(1), 627–642, doi:10.1007/s11356-014-3347-0, 2015.
- Ministry of Environmental Protection of China and General Administration of Quality Supervision and 440 Inspection Quarantine, Ambient air quality standard (GB 3095-2012), www.chinacsrmap.org/CSRTool_Show_EN.asp?ID=285, 2012.
- Ramanathan, V., and Carmichael, G.: Global and regional climate changes due to black carbon, *Nat. Geosci.*, 1(4), p.221, 2008.
- Randerson, J.T., Van Der Werf, G.R., Giglio, L., Collatz, G.J., and Kasibhatla, P.S.: Global fire emissions 445 database, 2015.
- Shen, L., J. Jacob, D., J. Mickley, L., Wang, Y. and Zhang, Q.: Insignificant effect of climate change on winter haze pollution in Beijing, *Atmos. Chem. Phys.*, 18(23), 17489–17496, doi:10.5194/acp-18-17489-2018, 2018.
- Sherman, P., Chen, X. and McElroy, M. B.: Wind-generated Electricity in China: Decreasing Potential, Inter- 450 annual Variability and Association with Changing Climate, *Sci. Rep.*, 7(1), 1–10, doi:10.1038/s41598-017-16073-2, 2017.
- Song, S., Gao, M., Xu, W., Shao, J., Shi, G., Wang, S., Wang, Y., Sun, Y. and McElroy, M. B.: Fine-particle pH for Beijing winter haze as inferred from different thermodynamic equilibrium models, *Atmos. Chem. Phys.*, 18(10), 7423–7438, doi:10.5194/acp-18-7423-2018, 2018.
- 455Song, S., Gao, M., Xu, W., Sun, Y., Worsnop, D.R., Jayne, J.T., Zhang, Y., Zhu, L., Li, M., Zhou, Z. and

- Cheng, C., Lv, Y., Wang, Y., Peng, W., Xu, X., Lin, N., Wang, Y., Wang, S., Munger, J.W., Jacob, D.J., and McElroy, M.B.: Possible heterogeneous chemistry of hydroxymethanesulfonate (HMS) in northern China winter haze, *Atmos. Chem. Phys.*, 19(2), 1357–1371, doi:10.5194/acp-19-1357-2019, 2019.
- Sun, Y., Wang, Z., Fu, P., Jiang, Q., Yang, T., Li, J. and Ge, X.: The impact of relative humidity on aerosol composition and evolution processes during wintertime in Beijing, China, *Atmos. Environ.*, 77, 927–934, doi:10.1016/j.atmosenv.2013.06.019, 2013.
- Vautard, R., Cattiaux, J., Yiou, P., Thépaut, J. N. and Ciais, P.: Northern Hemisphere atmospheric stilling partly attributed to an increase in surface roughness, *Nat. Geosci.*, 3(11), 756–761, doi:10.1038/ngeo979, 2010.
- Wang, H. J. and Chen, H. P.: Understanding the recent trend of haze pollution in eastern China: Roles of climate change, *Atmos. Chem. Phys.*, 16(6), 4205–4211, doi:10.5194/acp-16-4205-2016, 2016.
- Wang, L. T., Wei, Z., Yang, J., Zhang, Y., Zhang, F. F., Su, J., Meng, C. C. and Zhang, Q.: The 2013 severe haze over southern Hebei, China: model evaluation, source apportionment, and policy implications, *Atmos. Chem. Phys.*, 14(6), 3151–3173, doi:10.5194/acp-14-3151-2014, 2014.
- Wang, L., Ji, D., Li, Y., Gao, M., Tian, S., Wen, T., Liu, Z., Wang, L., Xu, P., Jiang, C. and Wang, Y.: The impact of relative humidity on the size distribution and chemical processes of major water-soluble inorganic ions in the megacity of Chongqing, China, *Atmos. Res.*, 192, 19–29, doi:10.1016/j.atmosres.2017.03.016, 2017.
- Wang, X., Zhang, R. and Yu, W.: The Effects of PM 2.5 Concentrations and Relative Humidity on Atmospheric Visibility in Beijing, *J. Geophys. Res. Atmos.*, 2235–2259, doi:10.1029/2018JD029269, 2019.
- Wang, Y., Zhang, Y., Schauer, J.J., de Foy, B., Guo, B., and Zhang, Y.: Relative impact of emissions controls and meteorology on air pollution mitigation associated with the Asia-Pacific Economic Cooperation (APEC) conference in Beijing, China, *Sci. Total Env.*, <https://doi.org/10.1016/j.scitotenv.2016.06.215>, 2016.
- Wild, O., Zhu, X. and Prather, M. J.: Fast-J: Accurate simulation of in- and below-cloud photolysis in tropospheric chemical models, *J. Atmos. Chem.*, 37, 245–282, doi:10.1029/2006JD008007, 2000.
- Wu, D., Tie, X., Li, C., Ying, Z., Lau, A. K. H., Huang, J., Deng, X. and Bi, X.: An extremely low visibility event over the Guangzhou region: A case study, *Atmos. Environ.*, 39(35), 6568–6577, doi:10.1016/j.atmosenv.2005.07.061, 2005.
- Xing, J., Zhang, Y., Wang, S., Liu, X., Cheng, S., Zhang, Q., Chen, Y., Streets, D.G., Jang, C., Hao, J. and

Wang, W.: Modeling study on the air quality impacts from emission reductions and atypical meteorological conditions during the 2008 Beijing Olympics, *Atmos. Env.*, <https://doi.org/10.1016/j.atmosenv.2011.01.025>, 2011.

490 Yang, Y., Liao, H. and Lou, S.: Increase in winter haze over eastern China in recent decades: Roles of variations in meteorological parameters and anthropogenic emissions, *J. Geophys. Res.*, 121(21), 13,050-13,065, doi:10.1002/2016JD025136, 2016.

Yin, Z., Wang, H. and Yuan, D.: Interdecadal increase of haze in winter over North China and the Huang-huai Area and the weakening of the East Asia Winter Monsoon, *Chinese Sci. Bull.*, 60(15), 1395, doi:10.1360/n972014-01348, 2015.

495 Zaveri, R. a., Easter, R. C., Fast, J. D. and Peters, L. K.: Model for Simulating Aerosol Interactions and Chemistry (MOSAIC), *J. Geophys. Res.*, 113(D13), D13204, doi:10.1029/2007JD008782, 2008.

Zaveri, R. a. and Peters, L. K.: A new lumped structure photochemical mechanism for large-scale applications, *J. Geophys. Res.*, 104(D23), 30387, doi:10.1029/1999JD900876, 1999.

500 Zhang, Z., Kim, S.J. and Ma, Z.: Significant decrease of PM_{2.5} in Beijing based on long-term records and Kolmogorov-Zurbenko filter approach, *Aero. Air Qual. Res.*, 18, 711-718, <https://doi.org/10.4209/aaqr.2017.01.0011>, 2018.

Zheng, B., Tong, D., Li, M., Liu, F., Hong, C., Geng, G., Li, H., Li, X., Peng, L., Qi, J., Yan, L., Zhang, Y., Zhao, H., Zheng, Y., He, K., and Zhang, Q.: Trends in China's anthropogenic emissions since 2010 as the consequence of clean air actions, *Atmos. Chem. Phys.*, 18, 14095-14111,

505 <https://doi.org/10.5194/acp-18-14095-2018>, 2018.

Zhou, W., Gao, M., He, Y., Wang, Q., Xie, C., Xu, W., Zhao, J., Du, W., Qiu, Y., Lei, L., Fu, P., Wang, Z., Worsnop, D.R., Zhang, Q. and Sun, Y.: Response of aerosol chemistry to clean air action in Beijing, China: Insights from two-year ACSM measurements and model simulations, *Env. Pol.*, doi: <https://doi.org/10.1016/j.envpol.2019.113345>, 2019.

510

515

Formatted: Font: (Default) Times New Roman, 11 pt, Font color: Auto

Formatted: Font: (Default) Times New Roman, 11 pt, Font color: Auto, Subscript

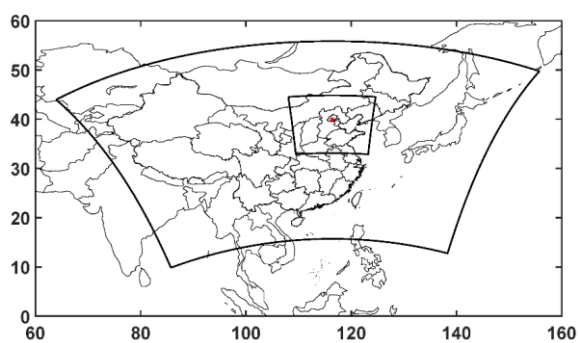
Formatted: Font: (Default) Times New Roman, 11 pt, Font color: Auto

Formatted: Font: (Default) Times New Roman, 11 pt, Pattern: Clear (White)

Formatted: Left

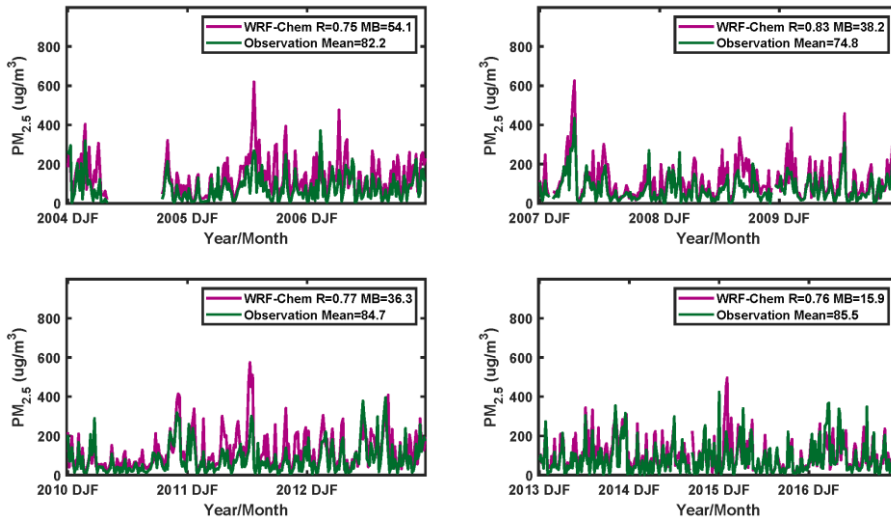
Table 1. p-values for stepwise linear regression model for Beijing.

Meteorological Variables	p-values
BLH	0.38
PREC	0.64
RH2	0.02
T2	0.95
WS10	0.00

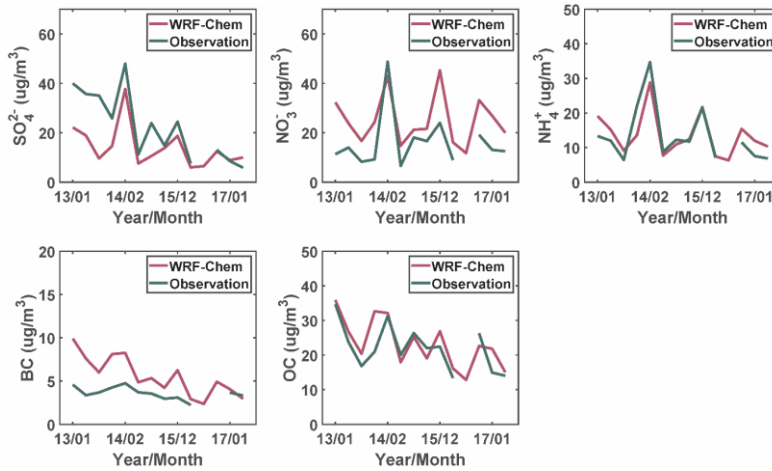


520

Fig.1. WRF-Chem modeling domain settings and locations of observations.



525 Fig. 2. Simulated and observed temporal variations of daily mean $PM_{2.5}$ concentrations in Beijing, with correlation coefficient and mean bias.



530 Fig. 3. Simulated and observed temporal variations of monthly mean concentrations of $PM_{2.5}$ chemical from 2013 to 2017.

535

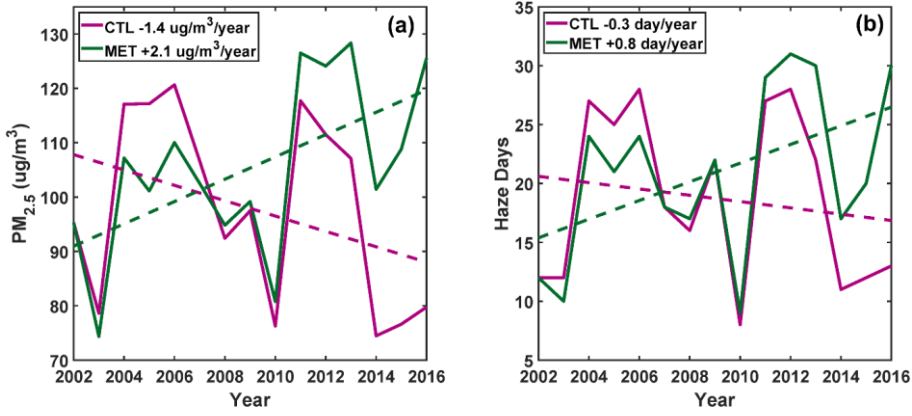
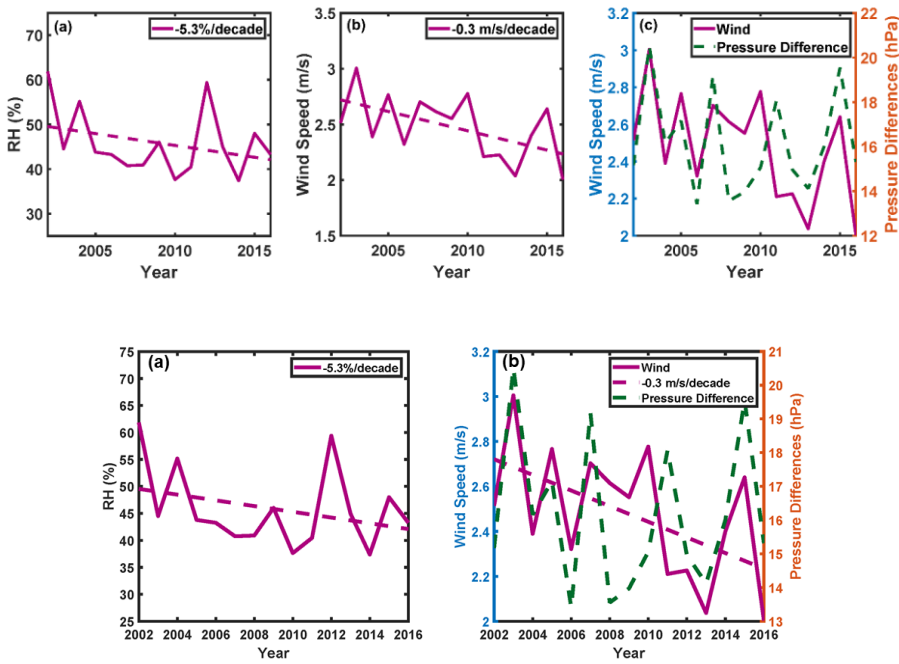


Fig. 4. Wintertime mean concentrations of $PM_{2.5}$ and number of haze days (defined with daily mean concentration above $150 \mu g/m^3$) from the CTL and MET simulations.

540



545

Fig. 5. Simulated winter mean near surface RH, wind speeds in Beijing with declining rates, and pressure difference indicating the intensity of East Asia Winter Monsoon.

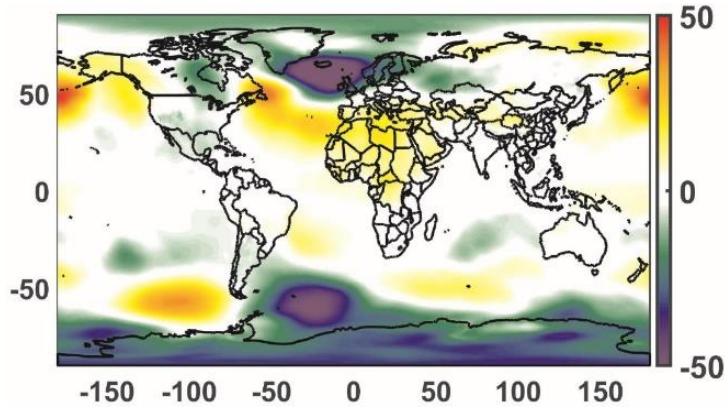


Fig. 6. Trends of winter sea level pressure during 2002-2016 period (unit: Pa/year).

550

555

560