

Response to the Comments of Referees

Using wavelet transform to analyse on-road mobile measurements of air pollutants: a case study to evaluate vehicle emission control policies during the 2014 APEC summit

Yingruo Li, Ziqiang Tan, Chunxiang Ye, Junxia Wang, Yanwen Wang, Yi Zhu, Pengfei Liang, Xi Chen, Yanhua Fang, Yiqun Han, Qi Wang, Di He, Yao Wang, and Tong Zhu

We thank the referees for the critical comments, which are very helpful in improving the quality of the manuscript. We have made revision based on the critical comments and suggestions of the reviewers. Our point-by-point responses to the comments are listed in the following.

Referee #1:

Comment NO.1: *This manuscript shows the observed concentration of the air pollutions in Beijing before/after the air quality control by the government for the 2014 APEC summit. The manuscript is generally well written, but several points should be clarified. First, although the WTM-observed results are evaluated using other instruments, i.e., moving low percentile method (MLPM), the evaluation of the MLPM itself is unclear. Second, the quantification to evaluate the results is inadequate in some parts like Figures 7 and 8. Third, O_3 is the secondary component, so its discussion should be separated from that in the primary components, i.e., NO , (NO_x) , BC , CO and SO_2 . In overall, the manuscript would be acceptable for publication if these comments can be satisfactorily addressed.*

Response: We agree with the comments of the referee and made revision according to the referee's advice. The referee's concerns are responded and addressed as bellow.

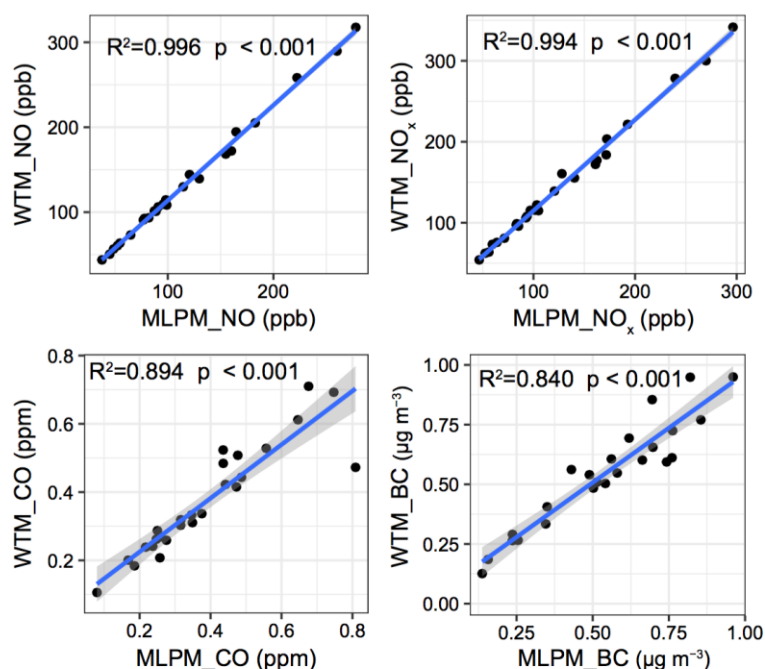
(1). The comparison of the WTM and the MLPM.

It is true there is no absolute value for both the MLPM (moving low percentile method) and the WTM to compare with. The MLPM is developed by Bukowiecki et al. (2002) and is a tested method for separating concentration of on-road background (i.e. $C_{bg.}$ or $C_{L_freq.}$) and concentration from immediate vehicle emissions (i.e. $C_{veh.}$ or $C_{H_freq.}$), which is useful in evaluation of on-road emission reduction. In this study, we developed the WTM method and compared it with the MLPM. The result suggests that both the WTM and the MLPM are capable of effectively separating $C_{veh.}$ and thus evaluating on-road emission reduction during the 2014 APEC summit. This point has been further clarified in the revised manuscript (Page 5 Line 29-31, Page 8 Line 34-40, Page 9 Line 15-18).

(2). The quantification in Figure 7 and 8.

We agree that the quantification in Figure 7 and 8 is essential for the evaluation of results of the WTM. Therefore we strengthened this part in our revised manuscript following the referee's comments. The correlation coefficient (R^2) of $C_{veh.}$ decomposed by the WTM and the MLPM was calculated and showed in Fig.S4. The correlation of

the WTM and the MLPM in on-road emission concentration ($C_{veh.}$) is high. The correlation coefficients (R^2) between $C_{veh.}$ from the WTM and the MLPM were 0.996, 0.994, 0.894, and 0.840 for NO, NO_x, CO, and BC, respectively (Fig. S4). This comparison indicates the agreement of both methods in signal decomposition.



(3). The discussions on O₃.

We agree that O₃ is not a tracer for vehicle emissions. As a measured pollutant in our experiment, it was presented in the general discussion section. However, as we discuss the on-road emission reduction, O₃ is not included as suggested. Related revision in our manuscript can be found Page 8 Line 38-40.

Changes in Manuscript: We made revision according to the referee’s advice, please refer to Page 5 Line 29-31, Page 8 Line 34-40, Page 9 Line 15-18 in the revised manuscript and Fig. S4 and S5 in the revised supplement for the revisions.

Comment NO.2: *P.1, L27-28: I don’t think the current manuscript adequately shows the feasibility and stability of the WTM. Also, which point of the WTM is useful for the evaluation of pollution control policies? These are unclear.*

Response: We agree that the sentence here is arbitrary and unclear. We rewrote the sentences in the revised manuscript. “Using on-road mobile measurements in combination with the WTM we developed a newly method for the evaluation of pollution control policies.”

Changes in Manuscript: We rewrote the related sentence, please refer to Page 1 Line 27-28 in the revised manuscript for this revision.

Comment NO.3: *P.5, L24-25: What is the moving low percentile method (MLPM)?*

Response: The moving low percentile method (MLPM) is developed by Bukowiecki

et al. (2002) and is a tested method for separating concentration of on-road background (i.e. C_{bg} or $C_{L_freq.}$) and concentration from immediate vehicle emissions (i.e. $C_{veh.}$ or $C_{H_freq.}$), which is useful in evaluation of on-road emission reduction.

Changes in Manuscript: We added the definition of the MLPM in the revised manuscript, please refer to Page 5 Line 29-31 in the revised manuscript for the changes.

Comment NO.4: *P.5, L33-L36: Do the authors discuss an impact of the assumption on main results?*

Response: Yes, we added discussion on the impact of the assumption. The referee's concern is responded below.

Firstly, we have considered the impact of meteorological conditions in the experimental design. All observation trips started at the same period of 1 day (i.e. about 10:00 am LT in the daytime and about 1:00 am LT in the nighttime), with relatively stable atmospheric boundary layer during the selected observation period, which can eliminate the meteorological influence to some extent. We chose the wide main road (i.e. the 4th Ring Road) for observation to reduce the impact of micro-scale turbulence and meteorological disturbances which is complex on narrow roads. Secondly, direct measurements of wind speed and wind direction from the mobile lab during driving may have large deviations (Johansson, 2009; Wang et al., 2011). The observation data of wind speed and direction at the ground based site (such as the Nanjiao site) is hourly mean data, with low time resolution and limited spatial representation. It is difficult to obtain high time-resolution and accurate meteorological data matching the concentration of gaseous pollutants. The lack of high time resolution meteorological data makes it difficult to accurately evaluate and eliminate the meteorological impacts. Therefore, we thought the short-term micro-scale meteorology has little effect on our assessment results, and the discussion and accurate quantification of micro-scale meteorological influences are beyond the scope of this study. In this paper, we assumed that the high-frequency component is confined to much shorter time scales than those of the meteorological factors, and that changes in meteorological conditions were reflected only in the low-frequency component, such that changes in meteorological conditions did not influence our evaluation of control policies.

Changes in Manuscript: We added discussion on the impact of the assumption according to the referee's concerns in the revised manuscript, please refer to Page 6 Line 16-29 for the changes.

Comment NO.5: *P.6, L17-L19: The authors use "comparable", but this is not suitable for CO and SO₂ shown in L20. The difference in CO and SO₂ between this study and the reference is more than twice. Also, I think the level of O₃ in China is relatively lower than that in the other regions.*

Response: Accepted. The word "comparable" used here is not rigorous. Our results indeed showed that the air pollution problems in Beijing and among the worst in the world (Zhu et al., 2016). The differences in concentration of CO and SO₂ in this study with the reference (Zhu et al., 2016) may ascribed to the different measurement area and seasons. As for the low level of O₃ concentration in this study mainly due to the high on-road concentration of NO induced strong titration reaction of O₃. The ground based measurement showed that the O₃ pollution in Beijing is quite severe and the

hourly average concentration of O₃ in the downwind area of Beijing ever reached 286 ppb (Wang et al., 2008).

Changes in Manuscript: We have adjusted the related sentences in the revised manuscript to make more rigorous discussion. Please refer to Page 6 Line 33-34 and Line 42-43 for the changes.

Comment NO.6: *P.8, L12-L13: How about SO₂ and O₃?*

Response: Vehicle emissions have quite limited contribution to the concentration of SO₂ (Zhu et al., 2016). The spatial distribution of SO₂ also indicates that it is not a typical tracer for vehicle emissions (Fig. 5). O₃ is a secondary pollutant which is affected by the titration of high-concentration NO and regional transport. The atmospheric physical and chemical processes of O₃ are complicated, and it is not an ideal tracer for studying vehicle emissions and evaluating vehicle control policies. Therefore, we did not focus on SO₂ and O₃ during the evaluation of vehicle control policies in this study.

Changes in Manuscript: We gave the clarification for the reason of missing discussion on SO₂ and O₃ in Sect. 3. Please refer to Page 8 Line 38-40 for the changes.

Comment NO.7: *P.8, L30-L31: There is no information about the statistic metrics such as bias, correlation coefficient, and root-mean-square-error. Please show them for the comparison. In addition, the uncertainties are estimated in Tables 3 and 4, but actually how are they calculated? I don't exactly understand the meaning of "the SD of on-road concentrations estimated using different schemes in the WTM divided by the mean pollutant concentration" on Tables 2 and 3. What is the different scheme? Does the SD determine the uncertainty?*

Response: We agree that using the "the SD of on-road concentrations estimated using different schemes in the WTM divided by the mean pollutant concentration" to calculate the uncertainty is unreasonable here and information of statistic metrics is needed. We made revision to address these issues according to the referee's advice. The different scheme in Table 2 and 3 is the decomposition schemes with different decomposition parameters, such as different mother wavelet function ('dbN') and decomposition levels (level4-8) for the WTM as well as different percentiles (1%, 5%, and 10%) and time windows (1 min, 3min, 5 min, 8min and 10 min) for the MLPM. In the revised manuscript we use the SD to evaluate the stability of the method. The SD of the WTM results is smaller than that of the MLPM method, which indicated the WTM is a more stable method for decomposition. The correlation coefficient (R^2) of $C_{veh.}$ decomposed by the WTM and the MLPM was calculated and showed in Fig.S4.

Changes in Manuscript: We made changes in Table 2 and Table 3 as well as the discussions in the revised manuscript to give more clear and reasonable analysis according to the referee's suggestions. Please refer to Page 8 Line 34-40, Page 9 Line 15-18, Page 24 Table 3, and Page 25 Table 4 in the revised manuscript and Page 4 Figure S4 in the revised supplement for the revisions.

Comment NO.8: *Table 5: Does it show the ratio of C_H to the sum of C_H and C_L ? If so, this result may show a failure of the decomposition of C_H and C_L . I expected the value in full-APEC is lower than that in the other period, but it is not. Perhaps, the total*

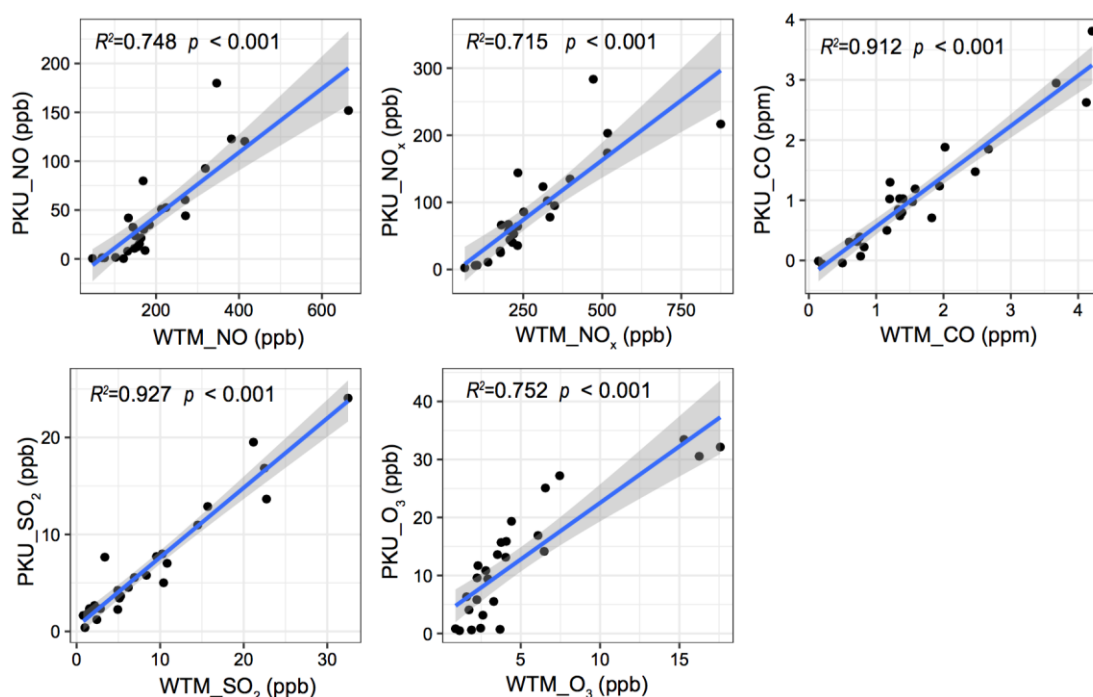
amount of the sum of C_H and C_L in full-APEC is also lower than that in the other period, so that the proportion in full-APEC is not lowest among the periods. In this sense, I don't understand what the main message in this table is.

Response: The total amount of the sum of C_H and C_L in full-APEC is also lower than that in the other period, so that the proportion in full-APEC is not lowest among the periods. But the proportions analysis here can give some clue of the reasonable of the WTM results and also further indicate that NO and NO_x is the most suitable and typical tracers for the evaluation of vehicle emissions.

Comment NO.9: Are the R values corrected? They look high, even though the points are well scattered. Please check them again. The authors can insert the statistic metrics into Figures 7 and 8.

Response: Accepted. We have carefully checked the results and the R values and corrected the errors in the revised manuscript. The correlation coefficients (R^2) between $C_{L_freq.}$ from the WTM and PKU site observations were 0.748, 0.715, 0.912, 0.927, and 0.752 for NO, NO_x , CO, SO_2 , and O_3 , respectively (Fig. S5). We tried insert the statistic metrics into Figure 7 and 8, but the figures are not good for reading. So we keep them in the supplement.

Changes in Manuscript: Please refer to Page 9 Line 24 in the revised manuscript and Page 5 Fig.S5 in the revised supplement for the changes.



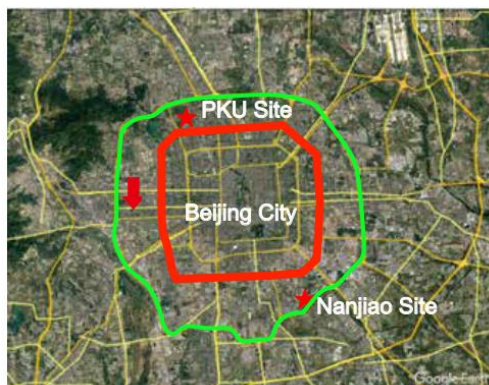
Comment NO.10: P.1, L23-L24 & P.10, L16-L18: 50% →50.0%; P.3, L4: “In Sect. 3” can be removed.

Response: Accepted.

Changes in Manuscript: We have check the decimal places be quoted of the results and removed “In Sect. 3”. Please refer to Page 1 Line 24-26, Page 10 Line 23-24, Page 11 Line 5-8 and Page 3 Line 4 in the revised manuscript for the revision.

Comment NO.11: *P.3, L31: Where is the 5th Ring in Figure 1?*

Response: The 5th Ring Road of Beijing was marked by the green line in the following Figure.



Changes in Manuscript: We revised Figure 1 in the revised Manuscript to give the information of the 5th Ring Road for easy reading. Please refer to Page 15 Figure 1 in the revised manuscript for the revision.

Comment NO.12: *P.6, L11-13: These references may be not exactly related to the current manuscript. Are these important in this manuscript?*

Response: We agree that the references and discussion here is beyond the scope of this paper.

Changes in Manuscript: We deleted the sentences and corresponding references in the revised manuscript, please refer to Page 6 Line 14-15 in the revised manuscript for the changes.

Comment NO.13: *P.13, L25 Please add the name of journal.*

Response: Accepted. We have removed the unrelated discussions and sentences in the revised manuscript as mentioned in Comment NO. 12. We also check carefully for the format of the references.

Changes in Manuscript: Please refer to Page 6 and Page 14 in the revised manuscript for the revisions.

Comment NO.14: *Figures 4-8: The blue shaded covers the important color. The shaded is not good.*

Response: We agree that the blue shaded covers the important color in Figure 4-8 and is not good for reading.

Changes in Manuscript: We have changed the way of marking for APEC period. Please refer Figure 4-8 in the revised manuscript for the revisions.

Comment NO.15: *Figure 7: How about SO₂ and O₃?*

Response: As we mentioned in Comment NO.6. SO₂ and O₃ is not typical tracer for the evaluation and investigation of vehicle emissions. Thus, we do not give the composition results for SO₂ and O₃ in Figure7.

Comment NO.16: *Figure 8: How about BC?*

Response: Due to lack of BC observation data at the PKU site, there is no comparison result for BC in Figure 8.

Comment NO.17: *Table 6: Does it show the sum of CH and CL?*

Response: Table 6 showed the mean on-road emission concentrations, which is expressed as $C_{veh.}$ or $C_{H_freq.}$ in the manuscript.

Changes in Manuscript: This point has been clarified in the revised manuscript. Please refer Page 26 Line 1 for the changes.

Comment NO.18: *Table 7: Does it show the CH?*

Response: Table 7 showed the mean on-road emission concentrations, which is expressed as $C_{veh.}$ or $C_{H_freq.}$ in the manuscript.

Changes in Manuscript: This point has been clarified in the revised manuscript. Please refer Page 26 Line 6 for the changes.

Referee #2:

Comment NO.1: *This work evaluates the control effect for vehicle emissions during the 2014 APEC summit by using on-road mobile measurements in combination with a newly developed wavelet transform method (WTM). The WTM successfully distinguishes the signals of air pollutant emitted by vehicle exhausts from those existing in ambient air and thus provides a good reference for similar data analysis. The results confirm the control policies on vehicle emissions were effective. The manuscript is generally well written with clear logic and full discussion. It is recommended to be accepted after addressing the following minor comments. 1. Line 15 on Page 3, sampling inlet is very important for the data quality in an on road mobile measurements. Elaborate the detailed configuration of the inlet including material, size, shape, direction, and the retention time of the air flow.*

Response: Accepted. The sampling inlet is important for the data quality of on-road mobile measurements. The sampling system included inlets for gaseous pollutants, volatile organic compounds (VOCs), particulate matter and black carbon. The inlets for gaseous pollutants and particulate matter are located separately at the front top of the van, 3.2 m above the ground to reduce sampling of the van exhaust. The gaseous sampling inlet is composed of a glass manifold and Teflon branched tubes. The total length of the glass manifold is about 2 m, and the retention time between the sampling inlet and the instrument is about 8 s. Detailed configuration information of the inlet can be found in previous study (Wang et al., 2009).

Changes in the manuscript: We have added the configuration information of the inlet system to the revised manuscript. Please refer to the revised manuscript from Page 3 Line 15-20.

Comment NO.2: *Line 40 on Page 6 and Line 8 and 18 on Page 7, what are the major reasons for the elevated values of NO_x, BC and ozone in the southern part of the Ring Road, busy traffic, concentrated industries, or both?*

Response: The distribution of NO_x, BC and O₃ on the 4th Ring Road of Beijing was determined both by vehicle emissions and regional transport (Wang et al., 2009; Zhu et al., 2016). The previous studies indicated that vehicle emission have important contribution to the NO_x and BC concentration (Cheng et al., 2013; Westerdahl et al., 2009). It is well known that the southern part of Beijing is close to the economically developed areas, with busier traffic and relatively dense industrial emissions in the southern surrounding area of Beijing. Thus, it is speculated that the major reason for the elevated values of NO_x and BC in the southern part of the 4th Ring Road is busy traffic, while the concentrated industries also is one of the reasons. The high ozone values in the southern part is mainly due to the regional transport from southern area where ozone photochemical reaction is strong (Li et al., 2016).

Changes in Manuscript: We added the discussion on the reasons of the distributions of the gaseous pollutants in the revised manuscript, please refer to Page 7 Line 41 to Page 8 Line 2 for the revisions.

Comment NO.3: *Line 4 on Page 7, point out the criteria of the selected three days, for example similar meteorological conditions and/or pollution levels.*

Response: The criteria of the selected three days for Figure 5 is the similar meteorological conditions. The meteorological conditions are unfavorable for the dispersion of atmospheric pollutants on these three days. The weather circulation field is homogenous or weak pressure field, the wind speed near the ground is small, and the atmospheric static stability is high. The average hourly wind speed on 31 October, 9 November and 15 November, 2014 is 1.19, 1.28 and 1.07 m s⁻¹ respectively.

Changes in Manuscript: We gave the criteria for the selection of the three days in the revised manuscript, please refer to Page 7 Line 20-24 for the changes.

Comment NO.4: *Line 28-31 on Page 9, in addition to the missing nighttime data and the gradually implemented control policies in the pre-APEC period, do the less favorable meteorological conditions (see Line 5 on Page 6) and the increased energy consumption due to household heating also contribute to the higher decrease in C_{veh} relative to the post-APEC period?*

Response: The referee's concerns about other possible reasons contribute to the decrease in C_{veh} in this comment are responded below:

(1) Meteorological Conditions.

Firstly, we have considered the impact of meteorological conditions in the experimental design. All observation trips started at the same period of 1 day (i.e. about 10:00 am LT in the daytime and about 1:00 am LT in the nighttime), with relatively stable

atmospheric boundary layer during the selected observation period, which can eliminate the meteorological influence to some extent. Secondly, direct measurements of wind speed and wind direction from the mobile lab during driving may have large deviations (Johansson, 2009; Wang et al., 2011). Meanwhile the observation data of wind speed and direction at the ground based site (such as the Nanjiao site) is hourly mean data, with Low time resolution and limited spatial representation. It is difficult to obtain high time-resolution and accurate meteorological data matching the concentration of gaseous pollutants. The lack of high time resolution meteorological data makes it difficult to accurately evaluate and eliminate the meteorological impacts. Therefore, we thought that the short-term micro-scale meteorology has little effect on our assessment results, and the discussion and accurate quantification of micro-scale meteorological influences are beyond the scope of this study. In this paper, we assumed that the high-frequency component is confined to much shorter time scales than those of the meteorological factors, and that changes in meteorological conditions were reflected only in the low-frequency component (C_{bg}), such that changes in meteorological conditions did not influence our evaluation of control policies.

(2) The increased energy consumption due to household heating.

As we mentioned in the manuscript, the sudden drop in temperature may have led to an increase in heating demand, which could have had an impact on household pollutant emissions (Liu et al., 2016). However, since our observations are at specific time of 1 day, the emission variations of the household heating sources are considered to be relatively stable compared to the vehicle emission sources throughout the post-APEC phase. Thus we thought the changes in energy consumption due to household heating were reflected only in the low-frequency component (C_{bg}). And the increased energy consumption due to household heating do not contribute to the higher decrease in C_{veh} relative to the post-APEC period.

Changes in Manuscript: We added discussion on the impact of meteorological conditions and household heating in the revised manuscript, please refer to Page 6-7 and Page 6 Line 16-29 and Page 10 Line 17-18 for the changes.

References:

- Bukowiecki, N., Dommen, J., Prévôt, A. S. H., Richter, R., Weingartner, E., and Baltensperger, U.: A mobile pollutant measurement laboratory—measuring gas phase and aerosol ambient concentrations with high spatial and temporal resolution, *Atmos. Environ.*, 36, 5569-5579, doi:10.1016/S1352-2310(02)00694-5, 2002.
- Cheng, S., Lang, J., Zhou, Y., Han, L., Wang, G., and Chen, D.: A new monitoring-simulation-source apportionment approach for investigating the vehicular emission contribution to the PM_{2.5} pollution in Beijing, China, *Atmos. Environ.*, 79, 308-316, doi:10.1016/j.atmosenv.2013.06.043, 2013
- Johansson, M., Rivera, C., de Foy, B., Lei, W., Song, J., Zhang, Y., Galle, B., and Molina, L.: Mobile mini-doas measurement of the outflow of NO₂ and HCHO from Mexico city, *Atmos. Chem. Phys.*, 9, 5647–5653, doi:10.5194/acp-9-5647-2009, 2009.
- Li, Y., Ye, C., Liu, J., Zhu, Y., Wang, J., Tan, Z., Lin, W., Zeng, L., and Zhu, T.: Observation of regional air pollutant transport between the megacity Beijing

- and the North China Plain, *Atmos. Chem. Phys.*, 16, 14265-14283, doi:10.5194/acp-16-14265-2016, 2016.
- Wang, M., Zhu, T., Zheng, J., Zhang, R. Y., Zhang, S. Q., Xie, X. X., Han, Y. Q., and Li, Y.: Use of a mobile laboratory to evaluate changes in on-road air pollutants during the Beijing 2008 Summer Olympics, *Atmos. Chem. Phys.*, 9, 8247-8263, doi:10.5194/acp-9-8247-2009, 2009.
- Wang, M., Zhu, T., Zhang, J. P., Zhang, Q. H., Lin, W. W., Li, Y., and Wang, Z. F.: Using a mobile laboratory to characterize the distribution and transport of sulfur dioxide in and around Beijing, *Atmos. Chem. Phys.*, 11, 11631-11645, doi:10.5194/acp-11-11631-2011, 2011.
- Wang, T., Ding, A., Gao, J., and Wu, W. S.: Strong ozone production in urban plumes from Beijing, China, *Geophys. Res. Lett.*, 33, L21806, doi:10.1029/2006GL027689, 2006.
- Westerdahl, D., Wang, X., Pan, X. C., and Zhang, K. M.: Characterization of on-road vehicle emission factors and microenvironmental air quality in Beijing, China, *Atmos. Environ.*, 43, 697-705, doi: 10.1016/j.atmosenv.2008.09.042, 2009.
- Zhu, Y., Zhang, J., Wang, J., Chen, W., Han, Y., Ye, C., Li, Y., Liu, J., Zeng, L., Wu, Y., Wang, X., Wang, W., Chen, J., and Zhu, T.: Distribution and sources of air pollutants in the North China Plain based on on-road mobile measurements, *Atmos. Chem. Phys.*, 16, 12551-12565, doi:10.5194/acp-16-12551-2016, 2016.

Using wavelet transform to analyse on-road mobile measurements of air pollutants: a case study to evaluate vehicle emission control policies during the 2014 APEC summit

Yingruo Li^{1,2#}, Ziqiang Tan^{1#}, Chunxiang Ye¹, Junxia Wang¹, Yanwen Wang¹, Yi Zhu¹, Pengfei Liang¹,
5 Xi Chen¹, Yanhua Fang¹, Yiqun Han¹, Qi Wang¹, Di He³, Yao Wang³, and Tong Zhu^{1*}

¹BIC-ESAT and SKL-ESPC, College of Environmental Sciences and Engineering, Peking University, Beijing 100871, China

²Institute of Urban Meteorology, China Meteorological Administration, Beijing, 100089, China

³Environmental Meteorology Forecast Center of Beijing-Tianjin-Hebei, China Meteorological Administration, Beijing, 100089, China

10 #These authors contributed equally to the paper.

*Correspondence to: tzhu@pku.edu.cn

Abstract

Vehicle emissions are a major source of air pollution in urban areas, and thus greatly impact air quality in the megacity Beijing. Various vehicle emission control policies have been implemented at great cost, but there is a lack of appropriate methods to
15 evaluate the effectiveness of such policies. Here we developed a wavelet transform method (WTM) to evaluate the effectiveness of vehicle emission control policies during the 2014 Asia-Pacific Economic Cooperation (APEC) summit, taking advantage of high time resolution mobile measurements of NO, NO_x, BC, CO, SO₂, and O₃ made around the 4th Ring Road of Beijing. The WTM decomposed on-road mobile measurements into low- and high- frequency components, where the former represents immediate vehicle emissions, and the latter represents the atmospheric background in addition to accumulated on-
20 road emissions. The high-frequency component of the WTM (C_{H_freq}), which represents the concentrations of pollutants from vehicle emissions (C_{veh}), was used to evaluate the changes in vehicle emission intensity in the full-APEC period (3–12 November 2014) relative to the pre-APEC (28 October to 2 November 2014) and post-APEC (13–22 November 2014) periods, during which different vehicle emission control policies were implemented. Our results suggest that the C_{veh} of NO, NO_x, BC, and CO in the full-APEC period were 19.4%, 17.7%, 0.0%, and 50.0% lower, respectively, than those in the pre-APEC period
25 during daytime, and were 50.0%, 47.3%, 62.5%, and 50.0% lower than those in the post-APEC period during daytime. The C_{veh} of NO, NO_x, BC, and CO in the full-APEC period were 65.3%, 65.4%, 14.3%, and 50.0% lower than those in the post-APEC period during nighttime. These results indicate that the vehicle emission control policies implemented during the full-APEC period were effective. Using on-road mobile measurements in combination with the WTM we developed a newly method for the evaluation of pollution control policies.

30 1 Introduction

Due to socioeconomic development and fast urbanisation, vehicle usage in megacities has increased rapidly, resulting in increasing on-road emissions of air pollutants. Beijing is one megacity that suffers from serious air pollution (Parrish and Zhu, 2009; Kelly and Zhu, 2016), where vehicle emissions are important contributors to the concentrations of nitrogen oxides (NO_x = NO + NO₂), black carbon (BC), carbon monoxide (CO), volatile organic compounds (VOCs), ammonia (NH₃), and fine
35 particulate matter (PM_{2.5}) (Cao et al., 2016; Gao et al., 2018; Sun et al., 2017; Zhu et al., 2016).

To improve air quality, the Beijing municipal government has implemented a range of vehicle emission control policies since the 2000s, with more comprehensive policies implemented since the 2008 Olympic Games (He et al., 2010; Wang et al., 2009; Wang et al., 2010). These policies have improved the air quality of Beijing to some extent, but have also brought inconvenience to residents and high economic and social costs. Evaluation of the effectiveness of vehicle emission control policies is

important in air pollution control (Kelly and Zhu, 2016), but appropriate methods are still quite limited (Bukowiecki et al., 2002; Cheng et al., 2012; Riley et al., 2014; Liang et al., 2017; Zhou et al., 2009).

On-road mobile measurements can be used to obtain the spatial and temporal distributions of air pollutants with high time resolution. They have been widely used in the evaluation of air pollution control policies (Wang et al., 2009), and regional transport into megacities and over a large-scale area (Wang et al., 2011; Zhu et al., 2016). These on-road measurements sampled air pollutants originating from both immediate on-road emissions and their backgrounds (atmospheric background in addition to accumulated on-road emissions). The immediate on-road vehicle emissions result in narrow and sharp spikes (i.e., high-frequency variations) in time series of pollutant concentrations, which we hereafter refer to as the concentrations from immediate vehicle emissions ($C_{veh.}$). Atmospheric background and accumulated vehicle emissions also contribute to variations in time series of pollutant concentrations, with characteristic broad and low peaks (i.e., low-frequency variations), which we hereafter refer to as on-road background concentrations ($C_{bg.}$). Therefore, finding an effective method to separate the high- and low-frequency parts may help us to evaluate vehicle emission control policies.

Some efforts have been made to separate the $C_{veh.}$ and $C_{bg.}$ components of on-road mobile measurements, including but not limited to: comparing the concentrations of pollutants measured on a major road with suburban/urban background observations (Riley et al., 2014), using the low percentiles of on-road pollutant concentrations to estimate $C_{bg.}$ (Bukowiecki et al., 2002), and using model simulations and source apportionment methods to estimate $C_{veh.}$ (Thornhill et al., 2010; Cheng et al., 2013). However, these methods usually have large uncertainties due to the spatial and temporal mismatch of on-road measurements and ground-based site measurements, reliance on subjective judgement for the selection of appropriate time windows and percentiles, and inherent uncertainties in model construction and inputs.

The wavelet transform (WT) is a time–frequency analysis method developed from the Fourier transform (FT) (Daubechies et al., 2015; Domingues et al., 2005). The FT allows for the transformation of signals from the time to the frequency domain. However, in the FT process, time information that may be quite important is discarded. Therefore, the short-term Fourier transform (STFT) was developed for transforming signals from the time to the time–frequency domain with uniform time–frequency windows to preserve such time information (Avargel et al., 2007). However, the WT allows for variable time and frequency windows, which are adjusted according to dynamic changes in the signals during signal processing. The WT is a powerful technique for time–frequency analysis of non-stationary signals. It has a wide range of applications in image processing, signal processing (e.g., monitoring signal discontinuity), identifying signal trends, and achieving noise reduction (Akansu et al., 2010; Daubechies et al., 2015; Domingues et al., 2005). The WT has also been successfully applied to many problems in the field of atmospheric science (Dunea et al., 2015; Li et al., 2016; Tian et al., 2014). The pollutant concentrations obtained by on-road mobile measurements can essentially be regarded as non-stationary signals that consist of different frequencies, as discussed above. Therefore, WTs can be used to extract the narrow and sharp spikes in time series of air pollutants by decomposing the signals of on-road mobile measurements to different frequencies, and in theory, the WT can be used to evaluate the effectiveness of vehicle emission control policies.

The 21st Asia-Pacific Economic Cooperation Forum (APEC) summit was held in Beijing from 5 to 11 November 2014. To achieve good air quality during the APEC summit, the government implemented a series of air pollution control policies, with a particular focus on vehicle emissions (Chen et al., 2015; Liang et al., 2017; Liu et al., 2016; Wen et al., 2016). The APEC summit thus provides an ideal opportunity to evaluate the effectiveness of vehicle emission control policies. In this study, we carried out daytime and nighttime on-road mobile measurements around the 4th Ring Road of Beijing during the APEC summit period from 28 October to 22 November 2014, including the periods “pre-APEC” (28 October to 2 November 2014), “full-APEC” (3–12 November 2014), and “post-APEC” (13–22 November 2014). Air pollutants, including nitric oxide (NO), NO_x, BC, CO, sulfur dioxide (SO₂), and ozone (O₃) were measured, as well as corresponding auxiliary parameters, such as the GPS information latitude and longitude, temperature (T), relative humidity (RH), and pressure (P).

We developed a wavelet transform method (WTM) based on the WT to decompose the measured pollutant concentrations into low- and high-frequency components. As mentioned above, the low-frequency component represents C_{bg} . The high-frequency component represents C_{veh} , and was used to evaluate the vehicle emission control policies implemented during the 2014 APEC summit. We give detailed descriptions of the experimental design and a brief introduction to the WTM in Sect. 2. We first give an overview of the on-road mobile measurements in Sect. 3.1, and then we give the results of the WTM and compare it with other methods in Sect. 3.2. Finally, in Sect. 3.3, we used the WTM to evaluate the effectiveness of vehicle emission control policies implemented during the 2014 APEC summit in Beijing as a case study.

2 Experimental design and methods

2.1 Experimental design

The mobile measurement platform for the on-road air pollutant measurements was integrated into a diesel van (IVECO Turin V; length \times width \times height = 6.0 m \times 2.4 m \times 2.8 m), as shown in Fig. 1. The mobile measurement platform mainly consists of sampling, damping, cooling, power, and auxiliary measurement systems. Detailed information regarding the platform can be found in previous studies (Wang et al., 2009, 2011; Zhu et al., 2016). The sampling system included gaseous and particle sampling systems. The gaseous sampling system used a pump and two mass flow controllers to ensure a stable airflow unaffected by vehicle driving state. The sampling inlet is important for the data quality of on-road mobile measurements. The sampling system included inlets for gaseous pollutants, volatile organic compounds (VOCs), particulate matter and black carbon. The inlets for gaseous pollutants and particulate matter are located separately at the front top of the van, 3.2 m above the ground to reduce sampling of the van exhaust. The gaseous sampling inlet is composed of a glass manifold and Teflon branched tubes. The total length of the glass manifold is about 2 m, and the retention time between the sampling inlet and the instrument is about 8 s. Detailed configuration information of the inlet can be found in previous study (Wang et al., 2009). The damping system was designed to prevent damage to the instruments during driving and ensure stable measurements and data transmission. The cooling system was used to keep the temperature inside the van constant. The power system consisted of six sets of 48 V/110 Ah lithium battery packs and two sets of uninterruptible power supplies (UPSs). Each set of UPSs controlled three sets of battery packs to allow for 5 h of uninterrupted measurements. The auxiliary measurement system was used to collect GPS, traffic condition, and meteorological data. Concentrations of SO_2 , NO, NO_x , O_3 , CO, BC, and the auxiliary data, including latitude and longitude, T , RH, and P , were collected in this study. Details of the instruments onboard are referred to previous studies (Wang et al., 2009, 2011; Zhu et al., 2016). The gas analysers for NO- NO_x , CO, SO_2 , and O_3 were calibrated once a week and more frequently when necessary. Occasionally, instrument failure resulted in missing data for NO, NO_x , BC, and RH.

The on-road measurement route is shown in Fig. 1. For each experiment, the van started from the Peking University (PKU), and drove around the 4th Ring Road of Beijing (circumference \sim 65 km) and then returned to PKU. The driving routes were always counter-clockwise except for 28 October 2014. The 4th Ring Road of Beijing was chosen to carry out the experiment for the following reasons. First, PKU is close to the 4th Ring Road, which is convenient for vehicle dispatch. Second, the 4th Ring Road is the boundary of the central and suburban districts of Beijing and also an important reference line for vehicle restriction policies. For example, vehicle licence plate restrictions were implemented within but not including the 5th Ring Road of Beijing from 07:00 to 20:00 local time (LT) every weekday. Finally, the 4th Ring Road is an important and representative main road of Beijing.

Figure 1. Here

On-road measurements were carried out around the 4th Ring Road of Beijing from 28 October to 22 November 2014. The APEC summit was held in Beijing from 5 to 11 November 2014. The Chinese government implemented a series of air pollution control policies to ensure good air quality in Beijing during the APEC summit. The Ministry of Environmental Protection of

China formulated “the assurance program of air quality during the APEC summit”. The area covered by air pollution control policies included Beijing, Tianjin, Hebei, Shanxi, Inner Mongolia, and Shandong. The air pollution control policies were implemented in a stepwise manner before the APEC summit commenced. In this study, the observation period (28 October to 22 November 2014) was divided into three time periods according to when air pollution control policies were implemented, with a particular focus on the odd–even vehicle licence plate rule (i.e., only vehicles with odd last digits on their licence plates were allowed to drive on one day, and only those with even last digits on the next day, and so on), imposed during the APEC summit:

1. *Pre-APEC (28 October to 2 November 2014)*. During this period, control policies on vehicles and coal combustion were implemented gradually. An early warning system for air quality was established, with a series of contingency plans developed that would be put in place should heavy pollution episodes occur during the 2014 APEC summit.
2. *Full-APEC (3–12 November 2014)*. During this period, air pollution control policies on coal combustion, industrial, dust, and vehicle emissions were fully implemented. Some heavily-polluting industrial factories were shut down. Strict temporary vehicle emission control policies and the odd–even vehicle licence plate rule were also imposed during this period.
3. *Post-APEC (13–22 November 2014)*. During this period, the odd–even vehicle licence plate rule was lifted and the normal licence plate restriction policy was resumed. Industrial factories gradually resumed production.

Further details of these air pollution control policies are given in Table 1.

Table 1. Here

Over the 26 days of observations, on-road mobile measurements were conducted during 44 circuits of the 4th Ring Road (Table S1). The morning observation period was from 09:50 to 12:00 LT, and the nighttime from 01:00 to 02:30 LT. The observation vehicle started around 10:00 LT in the morning, mainly for better development of the atmospheric boundary layer and the reduced traffic congestion during this time (i.e., after the morning rush hour) (Tao et al., 2007; Han et al., 2014). We also conducted on-road mobile measurements during the nighttime to explore the differences in vehicle emission control policies between daytime and nighttime (Table 1). According to Bukowiecki et al. (2002), the probability of measured results being affected by self-pollution is only 5% when the driving speed of a mobile laboratory exceeds 5 km/h. The driving speed in this study was kept at ~60 km/h to maintain a constant sampling flow rate and reduce self-pollution. The effects of self-pollution can thus be neglected for most of the observations. The total driving times for the measurements were around 1–1.5 h, except for 14, 18, 20, and 21 November 2014, during which there was substantial traffic congestion that led to longer measurement times.

2.2 The wavelet transform method (WTM)

The WT is a powerful technique for time–frequency analysis and is widely used in seismic data analysis, transient signal analysis, and other signal processing applications (Tian et al., 2014; Domingues et al., 2005; Kang et al., 2007). Unlike the STFT, which decomposes a signal into a set of equal-bandwidth basis functions in the spectrum, the WT provides a decomposition based on constant-Q (equal bandwidth on a logarithmic scale) basis functions with improved multi-resolution characteristics in the time–frequency plane (Akansu et al., 2010). The WT maps the function $f(t)$ in $L^2(\mathbb{R})$ to another signal $W_f(a, b)$ in $L^2(\mathbb{R}^2)$, where a and b are continuous and referred to as the scaling and shift parameters, respectively. The continuous WT of a time series $f(t)$ is defined as:

$$W_f(a, b) = \{f(t), \psi_{ab}(t)\} = \int_{-\infty}^{\infty} f(t) \bar{\psi}_{ab}(t) dt \quad a > 0, \quad (1)$$

$$\psi_{ab}(t) = \frac{1}{\sqrt{a}} \psi\left(\frac{t-b}{a}\right), \quad (2)$$

where $f(t)$ represents the time series of a signal, $\psi(t)$ is the mother wavelet function, and $\bar{\psi}_{ab}(t)$ is the conjugate complex of $\psi_{ab}(t)$. Selecting the appropriate mother wavelet function ($\psi(t)$) is key to the WTM. The continuous scaling and shift

parameters (a , b) make the continuous WT quite redundant and result in high computational cost. Thus, the discrete WT, which uses discrete values of scale (j) and localization (k), was used instead. If we let the sampling grid $a = a_0^j$ and $b = kb_0a_0^j$, the discrete WT is defined as:

$$\{\psi_{jk}(t)\} = \psi_{jk}(t) = a_0^{-j} \psi(a_0^{-j}t - kb_0) \quad (3)$$

5 The commonly used mother wavelet function include Haar (denoted by “haar”), Daubechies (“dbN”, where N is an integer), Coiflet (“coifN”), Symlets (“symN”), Morlet (“morl”), Mexican Hat (“mexh”), and Meyer (“meyr”) (Fig. S1). In this study, the Daubechies wavelet functions (“dbN”) were chosen as mother wavelet functions to conduct the discrete WT, mainly based on the similarity principle (Daubechies et al., 1992; Sang and Wang, 2008; Thornhill et al., 2010) (Fig. S1). The number of decomposition levels was set in the range 5–9 based on considerations of computational costs, information integrity, and boundary effects. A sensitivity test was conducted to investigate how the parameters, such as the mother wavelet function and decomposition level, affected the results of the WTM. MATLAB (R2016a) was used to conduct the WT decomposition. After WT decomposition, the original signals (measured on-road pollutant concentrations in this study) were divided into low- and high-frequency components that reflect the approximated and detailed information of the original signals, respectively (Fig. S2). The results of the WT decomposition included both positive and negative values for the high-frequency component, which were due to the mother wavelet vibrating near zero. To reconcile this problem, the high-frequency component was moved up using a REF-line (i.e., reference, based on a running 5 min minimum of the raw data) and the low-frequency component was moved down in a homologous manner (Fig. S3). Through WT decomposition and REF-line adjustment, we obtained the results of the WTM as follows:

$$C_{\text{Total}} = C_{\text{L.freq.}} + C_{\text{H.freq.}} = C_{\text{bg.}} + C_{\text{veh.}} \quad (4)$$

20 where C_{Total} is the measured on-road pollutant concentrations and corresponds to their original signals, and $C_{\text{L.freq.}}$ and $C_{\text{H.freq.}}$ are the low- and high-frequency components of the WTM, respectively. For the pollutants typically related to vehicle emissions, such as NO, NO_x, BC, and CO, $C_{\text{L.freq.}}$ is equivalent to their on-road background concentrations ($C_{\text{bg.}}$) and $C_{\text{H.freq.}}$ is equivalent to the contributions from immediate vehicle emissions ($C_{\text{veh.}}$). The vehicle emission control policies implemented during the full-APEC period could have affected both traffic flow and the vehicle fleet profile (which could change emission intensities), and thus could influence the contributions of vehicle emissions to pollutant concentrations. Therefore, the high-frequency component of the WTM can be used to evaluate the vehicle emission control policies.

To verify the suitability and efficacy of the WTM in the signal decomposition of on-road measured pollutant concentrations, the results of the WTM were compared with the moving low percentile method (MLPM), observations at the PKU site, and a previous study. The moving low percentile method (MLPM) is developed by Bukowiecki et al. (2002) and is a tested method for separating concentration of on-road background (i.e. $C_{\text{bg.}}$ or $C_{\text{L.freq.}}$) and concentration from immediate vehicle emissions (i.e. $C_{\text{veh.}}$ or $C_{\text{H.freq.}}$), which is useful in evaluation of on-road emission reduction.

3 Results and discussion

3.1 Results of on-road mobile measurements

We give an overview of the results of the on-road mobile measurements in this section. Both meteorological conditions and the temporal and spatial distributions of air pollutants were investigated.

Meteorological conditions, especially wind direction (WD) and speed (WS), play key roles in the dispersal and transport of air pollutants. Comprehensive understanding of the transport of air pollutants between megacities and their surrounding areas and separation of the contributions of meteorological conditions and air pollution control policies is important for the objective evaluation of such control policies (Li et al., 2016, 2019; Liang et al., 2017).

As shown in Fig. 2, the meteorological conditions (measured at the Nanjiao site, see Fig. 1) varied over the course of the measurement period. The average wind speed during the pre-APEC period was 1.8 m s^{-1} , and there were strong contributions from the northwest (~25%) and northeast (~30%) wind sectors. The average wind speed during the full-APEC period was 2.1 m s^{-1} , which is higher than that during the pre- and post-APEC periods. The prevailing winds during the full-APEC period were from the northwest (~20%) and southwest (~25%). The average wind speed for the post-APEC period was 1.5 m s^{-1} , which is the lowest of the three periods. The prevailing winds during the post-APEC period were from the northeast (~35%) and southwest (~25%). For Beijing, the northwest sector generally corresponds to clean air masses, while the northeast and south wind sectors have many hotspots of air pollutant emissions (Wu et al., 2011; Lin et al., 2011; Li et al., 2016). Thus, the WD and WS during the post-APEC period were less favourable for the dispersal of air pollutants than during the other two periods, whereas the dispersion and transport conditions during the pre- and full-APEC periods were virtually indistinguishable. Figure 2. Here

As shown in Fig. 2, RH was higher during the full- and post-APEC periods relative to the pre-APEC period, especially at night. T decreased significantly after 6 November 2014, with a maximum of $< 15 \text{ }^\circ\text{C}$ in the daytime and a minimum of $\sim 5 \text{ }^\circ\text{C}$ at night. Similar to WD and WS, RH and T during the post-APEC period were less conducive to good air quality than during the other two periods.

In this study, we have considered the impact of meteorological conditions in the experimental design. All observation trips started at the same period of 1 day (i.e. about 10:00 am LT in the daytime and about 1:00 am LT in the nighttime), with relatively stable atmospheric boundary layer during the selected observation period, which can eliminate the meteorological influence to some extent. We chose the wide main road (i.e. the 4th Ring Road) for observation to reduce the impact of micro-scale turbulence and meteorological disturbances, which is complex on narrow roads. Meanwhile, direct measurements of wind speed and wind direction from the mobile lab during driving may have large deviations (Johansson, 2009; Wang et al., 2011). The observation data of wind speed and direction at the ground-based site (such as the Nanjiao site) is hourly mean data, with low time resolution and limited spatial representation. It is difficult to obtain high time-resolution and accurate meteorological data matching the concentration of gaseous pollutants. The lack of high time resolution meteorological data make it difficult to accurately evaluate and eliminate the meteorological impacts. The short-term micro-scale meteorology has little effect on our assessment results, and the discussion and accurate quantification of micro-scale meteorological influences are beyond the scope of this study. Here we assumed that the high-frequency component is confined to much shorter time scales than those of the meteorological factors, and that changes in meteorological conditions were reflected only in the low-frequency component, such that changes in meteorological conditions did not influence our evaluation of control policies.

Figure 3. Here

Figure 3 shows time series of NO, NO_x, BC, CO, SO₂, and O₃ observations from 28 October to 22 November 2014, for which the mean ± 1 standard deviation (SD) concentrations were $337.7 \pm 330.4 \text{ ppb}$, $416.6 \pm 373.2 \text{ ppb}$, $4.3 \pm 3.7 \text{ } \mu\text{g m}^{-3}$, $2.1 \pm 1.6 \text{ ppm}$, $11.8 \pm 9.5 \text{ ppb}$, and $5.0 \pm 5.0 \text{ ppb}$, respectively (Table 2). The measured concentrations are higher than those in Europe and America, which indicates that the air pollution problems in Beijing is among the worst in the world (Zhu et al., 2016; Hagemann et al., 2014; Padró-Martínez et al., 2012; Westerdahl et al., 2005). For example, on-road mobile measurements in the North China Plain (NCP) during summer 2013 yielded mean NO_x, BC, CO, and SO₂ concentrations of 422 ppb, $5.8 \text{ } \mu\text{g m}^{-3}$, 1006 ppb, and 15 ppb, respectively (Zhu et al., 2016). The mean concentrations of NO_x for mobile measurements made during 2010 in Karlsruhe, Germany, were 20 ppb in inner-city areas and 30 ppb in traffic-influenced locations (Hagemann et al., 2014). The measured average on-road concentrations of NO, NO_x, BC, and CO were about 30 ppb, 50 ppb, $1 \text{ } \mu\text{g m}^{-3}$, and 0.5 ppm, respectively, in Somerville, USA during 2009–2010 (Padró-Martínez et al., 2012). The average measured on-road concentrations of NO_x were 140 and 230–470 ppb on arterial roads and freeways, respectively in Los Angeles, USA, during spring 2003 (Westerdahl et al., 2005). The low level of O₃ concentration in this study ($5.0 \pm 5.0 \text{ ppb}$) mainly due to the high on-road concentration of NO induced strong titration reaction of O₃.

The mean \pm 1 SD concentrations of NO, NO_x, BC, CO, SO₂, and O₃ during the full-APEC period were 207.3 \pm 135.7 ppb, 262.7 \pm 151.4 ppb, 2.3 \pm 2.4 $\mu\text{g m}^{-3}$, 1.3 \pm 0.9 ppm, 6.1 \pm 4.3 ppb, and 6.8 \pm 6.5 ppb, respectively, which reflect substantial decreases compared to those in the pre-APEC period, and are much lower than those in the post-APEC period (Table 2). The decreases in pollutant concentrations during the full-APEC period are partially attributed to the implementation of air pollution control policies, in addition to changes in local emissions (e.g., commencement of the heating season in the post-APEC period) and the regional transport of air pollutants.

Table 2. Here

Figures 4 and 5 show the spatial distributions of pollutants around the 4th Ring Road of Beijing during the observation period. In general, for NO, NO_x, and CO, the spatial distributions were non-uniform with several short-term spikes observed during circuits of the ring road. The spatial distributions of BC, SO₂, and O₃ were relatively uniform compared to those of NO, NO_x, and CO.

Figure 4. Here

The measured on-road concentrations of NO (Fig. 4) and NO_x (data not shown) were > 500 ppb on some polluted days. These high values were often found in the southern part of the 4th Ring Road and were observed during both daytime and nighttime. For example, during the nights of 14, 15, 18, and 21 November 2014, the concentrations of NO and NO_x in the eastern part of the Ring Road were > 500 ppb, and sometimes even > 1000 ppb. During the nights of 16 and 20 November 2014 and in the daytime on 16 November 2014, the concentrations of NO and NO_x in the western part of the Ring Road were also high, while their concentrations in the northwestern part were relatively low.

Figure 5. Here

Three days, namely 31 October, 5 November, and 15 November 2014, were selected based on the similar meteorological conditions to explore the temporal and spatial distributions of air pollutants (Fig. 5). The meteorological conditions are unfavourable for the dispersion of atmospheric pollutants on these three days. The weather circulation field is homogenous or weak pressure field, the wind speed near the ground is small, and the atmospheric static stability is high. The average hourly wind speed on 31 October, 9 November and 15 November, 2014 is 1.19, 1.28 and 1.07 m s⁻¹, respectively. The measured on-road concentrations of NO, NO_x, BC, and CO were higher during nighttime than during daytime. The measured on-road concentrations of BC increased to > 10 $\mu\text{g m}^{-3}$, and even 20 $\mu\text{g m}^{-3}$, in some parts of the 4th Ring Road of Beijing during the post-APEC period, such as during the nights of 15–21 November 2014 and in the daytime on 16, 19, and 20 November 2014. High BC concentrations were often found in the southeastern part of the Ring Road. From 18 to 21 November 2014, the concentration of on-road measured CO reached up to 10 ppm in some parts of the Ring Road. The concentration of CO was generally higher in the southern part than the northern part of the Ring Road. High concentrations also appeared in the northwest and northeast. The measured on-road concentration of SO₂ sometimes increased to above 20 ppb during the post-APEC period, such as during the nights of 15–16 and 18–21 November 2014 and in the daytime on 16 and 18–20 November 2014. In contrast to other pollutants, there was no significant difference in the concentrations of SO₂ between daytime and nighttime. The spatial distribution of SO₂ shows more obvious regional characteristics, with a lack of short-term peaks in its concentration. The temporal distribution of O₃ was quite different from other pollutants, in that its concentration increased significantly during the full-APEC period. During the nighttime of 6 November 2014 and in the daytime on 2 and 12 November 2014, the on-road concentrations of O₃ increased to > 20 ppb. In general, daytime O₃ concentrations were higher than those during nighttime. High concentrations of O₃ were often found in the northeastern, southeastern, and southwestern parts of the Ring Road.

We obtained the spatial distribution characteristics of pollutants around the 4th Ring Road of Beijing using on-road mobile measurements. The concentrations of NO_x, BC and O₃ showed some elevated values in the southern part of the 4th Ring Road. It is speculated that the major reason for the elevated values of NO_x and BC in the southern part of the 4th Ring Road is busy traffic, while the concentrated industries also is one of the reasons (Cheng et al., 2013; Wang et al., 2009; Westerdahl et al.,

2009; Zhu et al., 2016). The high ozone values in the southern part is mainly due to the regional transport from southern area where ozone photochemical reaction is strong (Li et al., 2016). The concentrations of NO, NO_x, BC, CO, and SO₂ during the full-APEC period were lower than those during the pre-APEC period and substantially lower than the post-APEC period. The reasons for the dramatic increases in pollutant concentrations after the APEC summit may be attributed to: increases in emissions due to the stoppage of air pollution control policies (Table 1), increases in the energy demand for heating due to temperature reductions (Liu et al., 2016), and unfavourable meteorological conditions (Fig. 2). The increase in O₃ concentrations during the full-APEC period was related to reductions in the NO-titration effect, i.e., due to decreases in NO concentrations (Wang et al., 2017). The concentrations of NO, NO_x, BC, and CO during nighttime were higher than those during daytime, which may be partially attributed to decreases in the boundary layer height and increased truck emissions during nighttime (Fan et al., 2016). SO₂ concentrations showed no significant difference between the nighttime and daytime, which is consistent with previous observations of a double peak in the diurnal profile of SO₂ observations in Beijing (Lin et al., 2012).

Vehicle emissions make important contributions to the concentrations of NO, NO_x, BC, and CO (Zhou et al., 2012; Cheng et al., 2013), thus on-road measurements of these species have previously been used to investigate vehicle emissions (Wang et al., 2009; Zhu et al., 2016). Short-term peaks in on-road measured NO, NO_x, and CO concentrations reflect their immediate emissions from on-road vehicles (Westerdahl, et al., 2009; Han et al., 2014). However, in the present work, the short-term peaks in BC and CO were not as obvious as those of NO and NO_x. The reasons for these differences are as follows. First, the lifetimes of NO and NO_x in the atmosphere are only a few hours (Li et al., 2016), which are much shorter than those of BC and CO with lifetimes of 1 week (Samset et al., 2014) and nearly 1 month (Li et al., 2016), respectively. Therefore, NO and NO_x concentrations were more sensitive to the impacts of immediate vehicle emissions compared with BC and CO. Second, the response times of instruments usually used for BC and CO measurements are longer than those for NO and NO_x, which limits mobile measurements in their ability to capture instantaneous vehicle emission plumes during on-road observations.

On-road mobile measurements can be used to obtain spatial distributions of pollutants with high time-resolution over large areas. Here we investigated the spatial distributions of pollutants around the 4th Ring Road of Beijing to understand the distribution characteristics of different pollutants. According to their distribution features, we found that the typical pollutants NO, NO_x, BC, and CO (NO and NO_x in particular) were suitable for the evaluation of vehicle control policies in this study. We also observed differences in pollutant behaviour between daytime and nighttime.

3.2 Results of the WTM and comparison with other methods

To select appropriate parameters for the WTM, we chose different mother wavelet functions (db4–db8) and numbers of decomposition levels (5–9 levels) to carry out the WT. The average high-frequency components (i.e., C_{H_freq}) of the WTM for NO, NO_x, BC, CO, SO₂, and O₃ using different mother wavelet functions and decomposition levels are listed in Table 3. We first conducted the WTM using a fixed mother wavelet function (db4) and varied the number decomposition levels (5–9 levels). The results in Table 3 showed that the decomposition result was insensitive to the number of decomposition levels. We carefully investigated the time series of the WT results and found that an eight-level decomposition could describe the characteristics of on-road vehicle emissions correctly (Westerdahl et al., 2009; Han et al., 2014). We then conducted the WTM with a fixed decomposition level (eight levels) and varied the mother wavelet function (db4–db8). Considering the head–tail effect of the WT, we chose db6 as the most appropriate mother wavelet function (Figs. S2 and S3). The SD in the WTM for NO, NO_x, BC, and CO was only 1.1, 1.2, 0, 0.1, 0.3, 0.1, respectively, which highlights the stability of the WTM. It should be noted that SO₂ and O₃ are not good tracers for vehicle emissions. They were presented in the general discussion section as a measured pollutant in our experiment. However, as we discuss the on-road emission reduction, SO₂ and O₃ is not included.

Table 3. Here

Figure 6. Here

Figure 6 shows the time series obtained from the WTM for NO, NO_x, BC, CO, SO₂, and O₃ during the observation period, using db6 as the mother wavelet function and eight levels of decomposition. The measured on-road pollutant concentrations were decomposed into a high-frequency component ($C_{H_freq.}$) and a low-frequency component ($C_{L_freq.}$). For the typical pollutants NO, NO_x, BC, and CO, $C_{L_freq.}$ is equivalent to $C_{bg.}$ and $C_{L_freq.}$ is equivalent to $C_{veh.}$, as discussed previously. As shown in Fig. 6, $C_{H_freq.}$ could only account for a small proportion of the measured concentrations of SO₂ and O₃. The variations in $C_{H_freq.}$ ($C_{veh.}$) for NO and NO_x were the largest among the measured pollutants, whereas the variations in $C_{H_freq.}$ ($C_{veh.}$) for CO and BC were not as significant.

To verify the accuracy and efficacy of the WTM, the following techniques were used. First, we used the MLPM to separate $C_{veh.}$ and $C_{bg.}$ (Fig. 7) and compared this to the results of the WTM. Second, $C_{L_freq.}$ from the WTM was compared with the pollutant concentrations observed at the PKU site (Fig. 8 and Fig. S1). Finally, we calculated the proportion of $C_{H_freq.}$ in the WTM, and compared our results with a previous study.

The MLPM is traditionally used to separate $C_{veh.}$ and $C_{bg.}$ (Bukowiecki et al., 2002). In this study, we also used the MLPM and compared its results with the WTM. Figure 8 shows the time series of MLPM decomposition results for NO, NO_x, BC, and CO. $C_{bg.}$ was regarded as the 5th percentile of 5 min pollutant concentrations. $C_{veh.}$ was estimated by subtracting $C_{bg.}$ from $C_{Total.}$ Table 4 shows the decomposition results of the MLPM for different schemes. The correlation coefficients (R^2) between $C_{veh.}$ decomposed by the WTM and the MLPM were 0.996, 0.994, 0.894, and 0.840 for NO, NO_x, CO, and BC, respectively (Fig. S4). This comparison indicates the agreement of both methods in signal decomposition (Fig. S4), but the decomposition results show that the WTM is more stable than the MLPM (Figs. 7 and 8, Tables 3 and 4).

Figure 7. Here

Table 4. Here

Figure 7 shows the comparison of $C_{L_freq.}$ obtained by the WTM with observed concentrations of NO, NO_x, CO, SO₂, and O₃ at the PKU site. The variations in on-road background concentrations obtained by the WTM were similar to the concentrations observed at the PKU site. The correlation coefficients (R^2) between $C_{L_freq.}$ from the WTM and PKU site observations were 0.748, 0.715, 0.912, 0.927, and 0.752 for NO, NO_x, CO, SO₂, and O₃, respectively (Fig. S5). However, for NO and NO_x, the absolute values of $C_{L_freq.}$ ($C_{bg.}$) from the WTM were higher than the concentrations observed at the PKU site. This is attributed to the following reasons. First, PKU is a fixed ground-based site with limited regional representation, but the on-road measurement covered large areas. Second, $C_{bg.}$ obtained by the WTM for NO and NO_x included both their atmospheric background concentrations and their accumulated concentrations from vehicle emissions. The above comparison indicates that the WTM could be a feasible way to separate $C_{veh.}$ from the on-road measured concentrations of air pollutants.

Figure 8. Here

The proportion of $C_{H_freq.}$ decomposed by the WTM is listed Table 5. For the whole observation period, the mean contributions of $C_{H_freq.}$ ($C_{veh.}$) relative to the original signals were 42% ± 51%, 36% ± 47%, and 19% ± 32% for NO, NO_x, and CO, respectively, with little change between the pre-APEC, full-APEC, and post-APEC periods. The proportion of $C_{L_freq.}$ for BC and SO₂ increased by ~10% during the post-APEC period relative to the pre- and full-APEC periods, which may be attributed to increases in the contributions from coal combustion emissions. It is well known that NO and NO_x are strongly affected by immediate vehicle emissions, thus the variations in $C_{H_freq.}$ ($C_{veh.}$) for NO and NO_x were the largest. BC is also affected by vehicle emissions to some extent, but since the instrument response time for BC in our study was relatively long (60 s), we speculate that the decomposition results of the WTM could not fully capture the immediate on-road emission changes for BC. Therefore, both emission sources and instrument response times have impacts on the decomposition results of the WTM.

Table 5. Here

Cheng et al. (2013) used environmental monitoring data combined with model simulations and source apportionment methods to investigate the impacts of vehicle emissions. The results showed that vehicle emissions contributed ~66% and ~27% of the concentrations of NO_x and BC, respectively, for measurements made during the autumns of 2011 and 2012 in Beijing. The

proportions of $C_{veh.}$ for NO_x (36%) and BC (14%) in our study are about half of the percentages calculated by Cheng et al. (2013). Such differences may be attributed to the fact that $C_{veh.}$ in our study is defined as the immediate vehicle emissions, whereas the contributions calculated by Cheng et al. (2013) also included accumulated on-road background concentrations.

3.3 Case study: evaluation of vehicle emission control policies

5 Air pollution control policies were gradually implemented prior to the APEC summit and were quickly abandoned after the summit. Stricter vehicle emission control policies were implemented during the full-APEC period, such as the odd–even licence plate rule instead of the normal licence plate restriction policy, and limits on driving time and range were more stringent for non-local vehicles, trucks, and government cars. Table 6 shows the mean ± 1 SD $C_{veh.}$ of the WTM and the relative changes in NO, NO_x , BC, and CO during different observation periods. Our results show that the changes in $C_{veh.}$ of NO, NO_x , BC, and
10 CO during the full-APEC period were -2.3% , -3.9% , $+66.7\%$, and -25.0% , respectively, relative to $C_{veh.}$ in the pre-APEC period, and -56.1% , -55.4% , -28.6% , and -40.0% relative to $C_{veh.}$ in the post-APEC period. The changes in $C_{veh.}$ of NO, NO_x , BC, and CO during the full-APEC period demonstrate that the vehicle emission control policies implemented for the APEC summit were successful. This can firstly be attributed to the reduced population of vehicles on road, and secondly to more fluid traffic flow in the full-APEC period relative to the pre- and post-APEC periods. The magnitudes of the decreases in $C_{veh.}$
15 relative to the pre-APEC period were lower than those relative to the post-APEC period, which may be due to missing nighttime measurement data in the pre-APEC period and/or the fact that some pollution control policies were gradually implemented prior to the APEC summit. **The less favourable meteorological conditions and the increased energy consumption due to household heating (Liu et al., 2016) contributed to $C_{bg.}$ and do not influence the evaluation results.**

Table 6. Here

20 Meanwhile, the emission control policies for cars and trucks were more stringent in the daytime than at night. Table 7 shows the changes in $C_{veh.}$ during different observation periods and between daytime and nighttime. The mean $C_{veh.}$ of NO, NO_x , BC, and CO during daytime in the full-APEC period were 19.4% , 17.7% , 0.0% , and 50.0% lower, respectively, than those in the pre-APEC period, and were 50.0% , 47.3% , 62.5% , and 50.0% lower than those in the post-APEC period. The magnitudes of the decreases in $C_{veh.}$ for daytime NO, NO_x , and BC relative to the pre-APEC period were lower than those relative to the post-
25 APEC period, which confirms that the gradual implementation of control policies during the pre-APEC period had impacts on air quality, as discussed above. The mean $C_{veh.}$ of NO and NO_x during nighttime in the full-APEC period were 65.3% and 65.4% lower, respectively, than those in the post-APEC period. The nighttime $C_{veh.}$ of NO, NO_x and CO in the full- and post-APEC periods were comparable. The magnitude of the decrease in $C_{veh.}$ for nighttime BC in the full-APEC period relative to the post-APEC period was less than that for the daytime, which is related to the differences in vehicle emission control policies between
30 day and night, i.e., the less stringent control policies for trucks (which run on heavy-duty diesel and emit much more BC than cars) for the hours 02:00–06:00 over the entire observation period. As shown in Figure 9, BC/CO ratios reflect changes in the fleet profile, i.e., due to the reduced controls on trucks overnight compared with other vehicles during the APEC summit.

Table 7. Here

Figure 9. Here

35 Conclusions

In this study, we developed and validated a WTM to evaluate the effectiveness of vehicle emission control policies implemented during APEC. The results of the WTM were carefully compared with observations at a ground-based site, the MLPM, and the results of a previous studies. These comparisons as well as sensitivity tests showed that the WTM is a feasible and stable method for separation of the concentrations contributed by immediate vehicle emissions ($C_{veh.}$) and on-road
40 background pollutant concentrations ($C_{bg.}$) and can thus be used to evaluate vehicle emission control policies.

The on-road mobile measurements could be used to obtain the temporal and spatial distributions of air pollutants and capture the characteristics of on-road vehicle emissions. The data from on-road measurements around the 4th Ring Road of Beijing from 28 October to 22 November 2014, including the pre-APEC (28 October to 2 November 2014), full-APEC (3–12 November 2014), and post-APEC (13–22 November 2014) periods, were used to conduct a case study.

5 The $C_{veh.}$ of NO, NO_x, BC, CO during daytime in the full-APEC period were 19.4%, 17.7%, 0.0%, and 50.0% lower, respectively, than those in the pre-APEC period, and were 50.0%, 47.3%, 62.5%, and 50% lower than those in the post-APEC period. The $C_{veh.}$ of NO, NO_x, BC, and CO during nighttime in the full-APEC period were 65.3%, 65.4%, 14.3%, and 50.0% lower than those in the post-APEC period. Overall, our results indicate that the vehicle emission control policies implemented during the full-APEC period were effective. Further exploration of the differences in emission reductions between nighttime and daytime suggested that the effectiveness of the vehicle control policies was relatively uniform. However, the less stringent controls on trucks for the hours 02:00–06:00 resulted in less effective abatement of BC emissions, since heavy-duty diesel trucks are an important source of BC (Westerdahl et al., 2009).

10 However, it should be noted that this study also has some limitations. First, the instrument time resolution was not able to fully capture the instantaneous emission signals during the on-road mobile measurements, especially for BC. Therefore, faster time response air pollution instruments are needed for future studies. Meanwhile, the measurements were only conducted around the 4th Ring Road of Beijing and thus the results are not fully representative of vehicle emissions in Beijing. Future experiments should include observations for different road conditions and different types of road to enable a more comprehensive study of the contribution of vehicle emissions to air pollution in Beijing. Finally, data on traffic flow and vehicle fleet profiles were lacking, which will be needed to further understand the effectiveness of vehicle emission control policies. We assumed that changes in meteorological conditions were reflected in the low-frequency components and did not influence our evaluation of pollution control policies. The impact of meteorological conditions must be completely eliminated to allow for more accurate assessments of pollution control policies in future studies.

Author contributions. T. Zhu designed the experiments. Z. Tan, P. Liang, T. Zhu, Y. Zhu, X. Chen, Y. Han, Y. Fang, and Q. Wang., carried out the experiments. Y. Li conducted the data analysis with contributions from all co-authors. J. Wang managed the data. D. He and Y. Wang provided the data for meteorological parameters at the Nanjiao site. Y. Li prepared the manuscript with help from T. Zhu and C. Ye.

Data availability. The data for mobile and stationary measurements used in this paper are available on request.

Acknowledgements. This study was supported by the National Natural Science Foundation Committee of China (41421064, 21190051, 41121004, 41571130024). We are thankful to Yong Zhao who participated in the on-road measurements during APEC 2014. We acknowledge the help of Robert Woodward-Massey in finalising the manuscript.

References

- Akansu, A. N., Serdijn, W. A., and Selesnick, I. W.: Emerging applications of wavelets: a review, *Phys. Commun.*, 3, 1-18, doi:10.1016/j.phycom.2009.07.001, 2010.
- 35 Avargel, Y., and Cohen, I.: System identification in the short-time Fourier transform domain with crossband filtering, *IEEE Transactions on Audio, Speech, and Language Processing*, 15, 1305-1319, doi: 10.1109/tasl.2006.889720, 2007.
- Bukowiecki, N., Dommen, J., Prévôt, A. S. H., Richter, R., Weingartner, E., and Baltensperger, U.: A mobile pollutant measurement laboratory—measuring gas phase and aerosol ambient concentrations with high spatial and temporal resolution, *Atmos. Environ.*, 36, 5569-5579, doi:10.1016/S1352-2310(02)00694-5, 2002.
- 40 Cao, X., Yao, Z., Shen, X., Ye, Y., and Jiang, X.: On-road emission characteristics of VOCs from light-duty gasoline vehicles in Beijing, China, *Atmos. Environ.*, 124, 146-155, doi:10.1016/j.atmosenv.2015.06.019, 2016.

- Chen, C., Sun, Y. L., Xu, W. Q., Du, W., Zhou, L. B., Han, T. T., Wang, Q. Q., Fu, P. Q., Wang, Z. F., Gao, Z. Q., Zhang, Q., and Worsnop, D. R.: Characteristics and sources of submicron aerosols above the urban canopy (260 m) in Beijing, China, during the 2014 APEC summit, *Atmos. Chem. Phys.*, 15, 12879-12895, doi:10.5194/acp-15-12879-2015, 2015.
- 5 Cheng, S., Lang, J., Zhou, Y., Han, L., Wang, G., and Chen, D.: A new monitoring-simulation-source apportionment approach for investigating the vehicular emission contribution to the PM_{2.5} pollution in Beijing, China, *Atmos. Environ.*, 79, 308-316, doi:10.1016/j.atmosenv.2013.06.043, 2013
- Daubechies, I.: The wavelet transform, time-frequency localization and signal analysis, *J. Renew. Sustain. Ener.*, 36, 961-1005, doi: 10.1109/ 18.57199, 2015.
- 10 Daubechies, I.: Ten lectures on wavelets, Society for Industrial and Applied Mathematics, 1671-1671., 1992.
- Domingues, M. O., Mendes, O., and da Costa, A. M.: On wavelet techniques in atmospheric sciences, *Adv. Space. Res.*, 35, 831-842, doi:10.1016/j.asr.2005.02.097, 2005.
- Dunea, D., Pohoata, A., and Iordache, S.: Using wavelet-feedforward neural networks to improve air pollution forecasting in urban environments, *Environ. Monit. Assess.*, 187-477, doi:10.1007/s10661-015-4697-x, 2015.
- 15 Fan, S., Tian, L., Zhang, D., and Guo, J.: Evaluation on the effectiveness of vehicle exhaust emission control measures during the APEC conference in Beijing, *Environ. Sci.*, 37(1), 74-81, doi: 10.13227/j.hjxx.2016.01.011, 2016.
- Gao, J., Zhu, B., Xiao, H., Kang, H., Pan, C., Wang, D., and Wang, H.: Effects of black carbon and boundary layer interaction on surface ozone in Nanjing, China, *Atmos. Chem. Phys.*, 18, 7081-7094, doi:10.5194/acp-18-7081-2018, 2018.
- Hagemann, R., Corsmeier, U., Kottmeier, C., Rinke, R., Wieser, A., and Vogel, B.: Spatial variability of particle number concentrations and NO_x in the Karlsruhe (Germany) area obtained with the mobile laboratory 'AERO-TRAM', *Atmos. Environ.*, 94, 341-352, doi:10.1016/j.atmosenv.2014.05.051, 2014.
- 20 Han, Y., Ye, W. U., Zhang, S., Song, S., Lixin, F. U., Hao, J., and Environment, S. O.: Emission characteristics and concentrations of vehicular black carbon in a typical freeway traffic environment of Beijing, *Acta Scientiae Circumstantiae*, 34, 1891-1899, doi: 10.13671/j.hjkxxb.2014.0523, 2014. (in Chinese with English abstract)
- 25 He, S. Z., Chen, Z. M., Zhang, X., Zhao, Y., Huang, D. M., Zhao, J. N., Zhu, T., Hu, M., and Zeng, L. M.: Measurement of atmospheric hydrogen peroxide and organic peroxides in Beijing before and during the 2008 Olympic Games: Chemical and physical factors influencing their concentrations, *J. Geo. Res.: Atmos.*, 115, D17307, doi:10.1029/2009jd013544, 2010.
- Johansson, M., Rivera, C., de Foy, B., Lei, W., Song, J., Zhang, Y., Galle, B., and Molina, L.: Mobile mini-doas measurement of the outflow of NO₂ and HCHO from Mexico city, *Atmos. Chem. Phys.*, 9, 5647-5653, doi:10.5194/acp-9-5647-2009, 2009.
- 30 Kang, S., and Lin, H.: Wavelet analysis of hydrological and water quality signals in an agricultural watershed, *J. Hydrol.*, 338, 1-14, doi:10.1016/j.jhydrol.2007.01.047, 2007.
- Kelly, F. J., and Zhu, T.: Transport solutions for cleaner air, *Science*, 352, 934-936, doi:10.1126/science.aaf3420, 2016.
- 35 Liang, P., Zhu, T., Fang, Y., Li, Y., Han, Y., Wu, Y., Hu, M., and Wang, J.: The role of meteorological conditions and pollution control strategies in reducing air pollution in Beijing during APEC 2014 and Victory Parade 2015, *Atmos. Chem. Phys.*, 17, 13921-13940, doi:10.5194/acp-17-13921-2017, 2017.
- Li, Y., Ye, C., Liu, J., Zhu, Y., Wang, J., Tan, Z., Lin, W., Zeng, L., and Zhu, T.: Observation of regional air pollutant transport between the megacity Beijing and the North China Plain, *Atmos. Chem. Phys.*, 16, 14265-14283, doi:10.5194/acp-16-14265-2016, 2016.
- 40 Li, Y., Wang J., Han T., Wang Y., He D., Quan W., Ma Z.: Using multiple linear regression method to evaluate the impact of meteorological conditions and control measures on air quality in Beijing during APEC 2014. *Environ. Sci.*, 40, 1024-1034, 2019. (in Chinese with English abstract)

- Lin, W., Xu, X., Ge, B., and Liu, X.: Gaseous pollutants in Beijing urban area during the heating period 2007–2008: variability, sources, meteorological, and chemical impacts, *Atmos. Chem. Phys.*, 11, 8157-8170, doi:10.5194/acp-11-8157-2011, 2011.
- Lin, W., Xu, X., Ma, Z., Zhao, H., Liu, X., and Wang, Y.: Characteristics and recent trends of sulfur dioxide at urban, rural, and background sites in north China: effectiveness of control measures, *J. Environ. Sci.*, 24, 34-49, doi:10.1016/S1001-0742(11)60727-4, 2012.
- Liu, J., Mauzerall, D. L., Chen, Q., Zhang, Q., Song, Y., Peng, W., Klimont, Z., Qiu, X., Zhang, S., Hu, M., Lin, W., Smith, K. R., and Zhu, T.: Air pollutant emissions from Chinese households: a major and underappreciated ambient pollution source, *Proc. Natl. Acad. Sci.*, 113, 7756-7761, doi:10.1073/pnas.1604537113, 2016.
- Padró-Martínez, L. T., Patton, A. P., Trull, J. B., Zamore, W., Brugge, D., and Durant, J. L.: Mobile monitoring of particle number concentration and other traffic-related air pollutants in a near-highway neighborhood over the course of a year, *Atmos. Environ.*, 61, 253-264, doi:10.1016/j.atmosenv.2012.06.088, 2012.
- Parrish, D. D., and Zhu, T.: Clean Air for Megacities, *Science*, 326, 674-675, doi:10.1126/science.1176064, 2009.
- Riley, E. A., Banks, L., Fintzi, J., Gould, T. R., Hartin, K., Schaal, L., Davey, M., Sheppard, L., Larson, T., Yost, M. G., and Simpson, C. D.: Multi-pollutant mobile platform measurements of air pollutants adjacent to a major roadway, *Atmos. Environ.*, 98, 492-499, doi:10.1016/j.atmosenv.2014.09.018, 2014.
- Samset, B. H., Myhre, G., Herber, A., Kondo, Y., Li, S.-M., Moteki, N., Koike, M., Oshima, N., Schwarz, J. P., Balkanski, Y., Bauer, S. E., Bellouin, N., Bernsten, T. K., Bian, H., Chin, M., Diehl, T., Easter, R. C., Ghan, S. J., Iversen, T., Kirkevåg, A., Lamarque, J.-F., Lin, G., Liu, X., Penner, J. E., Schulz, M., Seland, Ø., Skeie, R. B., Stier, P., Takemura, T., Tsigaridis, K., and Zhang, K.: Modelled black carbon radiative forcing and atmospheric lifetime in AeroCom Phase II constrained by aircraft observations, *Atmos. Chem. Phys.*, 14, 12465-12477, doi:10.5194/acp-14-12465-2014, 2014.
- Sang Y.F., and Wang D.: Wavelets selection method in hydrologic series wavelet analysis, *J. Hydraul. Eng.*, 39(3), 295-300, doi: 10.3321/j.issn:0559-9350.2008.03.006, 2008. (in Chinese with English abstract)
- Sun, K., Tao, L., Miller, D. J., Pan, D., Golston, L. M., Zondlo, M. A., Griffin R. J., Wallace H. W., Leong Y. J., Yang M. M., Zhang Y., Mauzerall D. L., and Zhu T.: Vehicle emissions as an important urban ammonia source in the United States and china. *Environ. Sci. Tech.*, 51(4), doi: 10.1021/acs.est.6b02805, 2017.
- Thornhill, D. A., Williams, A. E., Onasch, T. B., Wood, E., Herndon, S. C., Kolb, C. E., Knighton, W. B., Zavala, M., Molina, L. T., and Marr, L. C.: Application of positive matrix factorization to on-road measurements for source apportionment of diesel- and gasoline-powered vehicle emissions in Mexico City, *Atmos. Chem. Phys.*, 10, 3629-3644, doi:10.5194/acp-10-3629-2010, 2010.
- Tao, S., Wang, Y., Wu, S., Liu, S., Dou, H., Liu, Y., Lang, C., Hu, F., and Xing, B.: Vertical distribution of polycyclic aromatic hydrocarbons in atmospheric boundary layer of Beijing in winter, *Atmos. Environ.*, 41, 9594-9602, doi:10.1016/j.atmosenv.2007.08.026, 2007.
- Tian, G., Qiao, Z., and Xu, X.: Characteristics of particulate matter (PM₁₀) and its relationship with meteorological factors during 2001-2012 in Beijing, *Environ. Pollut.*, 192, 266-274, doi:10.1016/j.envpol.2014.04.036, 2014.
- Wang, M., Zhu, T., Zheng, J., Zhang, R. Y., Zhang, S. Q., Xie, X. X., Han, Y. Q., and Li, Y.: Use of a mobile laboratory to evaluate changes in on-road air pollutants during the Beijing 2008 Summer Olympics, *Atmos. Chem. Phys.*, 9, 8247-8263, doi:10.5194/acp-9-8247-2009, 2009.
- Wang, M., Zhu, T., Zhang, J. P., Zhang, Q. H., Lin, W. W., Li, Y., and Wang, Z. F.: Using a mobile laboratory to characterize the distribution and transport of sulfur dioxide in and around Beijing, *Atmos. Chem. Phys.*, 11, 11631-11645, doi:10.5194/acp-11-11631-2011, 2011.

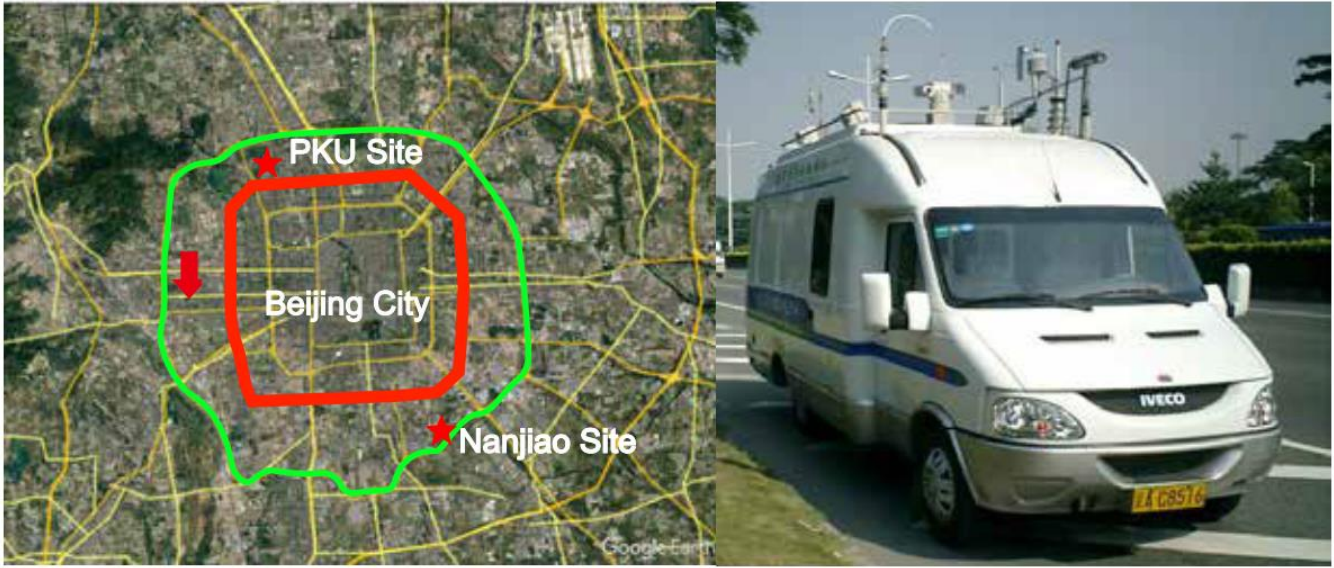
- Wang, T., Nie, W., Gao, J., Xue, L. K., Gao, X. M., Wang, X. F., Qiu, J., Poon, C. N., Meinardi, S., Blake, D., Wang, S. L., Ding, A. J., Chai, F. H., Zhang, Q. Z., and Wang, W. X.: Air quality during the 2008 Beijing Olympics: secondary pollutants and regional impact, *Atmos. Chem. Phys.*, 10, 7603-7615, doi:10.5194/acp-10-7603-2010, 2010.
- Wang, T., Xue, L., Brimblecombe, P., Lam, Y. F., Li, L., and Zhang, L.: Ozone pollution in China: a review of concentrations, meteorological influences, chemical precursors, and effects, *Sci. Total. Environ.*, 575, 1582-1596, doi:10.1016/j.scitotenv.2016.10.081, 2017.
- Wen, W., Cheng, S., Chen, X., Wang, G., Li, S., Wang, X., and Liu, X.: Impact of emission control on PM_{2.5} and the chemical composition change in Beijing-Tianjin-Hebei during the APEC summit 2014, *Environ. Sci. Pollut. Res.*, 23, 4509-4521, doi:10.1007/s11356-015-5379-5, 2016.
- 10 Westerdahl, D., Wang, X., Pan, X. C., and Zhang, K. M.: Characterization of on-road vehicle emission factors and microenvironmental air quality in Beijing, China, *Atmos. Environ.*, 43, 697-705, doi: 10.1016/j.atmosenv.2008.09.04 2, 2009.
- Wu, Q. Z., Wang, Z. F., Gbaguidi, A., Gao, C., Li, L. N., and Wang, W.: A numerical study of contributions to air pollution in Beijing during CAREBeijing-2006, *Atmos. Chem. Phys.*, 11, 5997-6011, doi:10.5194/acp-11-5997-2011, 2011.
- 15 Zhou, Y., Wu, Y., Yang, L., Fu, L. X., He, K. B., Wang, S. X., Hao, J. M., Chen, J. C., and Li, C. Y.: The impact of transportation control measures on emission reductions during the 2008 Olympic Games in Beijing, China, *Atmos. Environ.*, 44, 285-293, doi:10.1016/j.atmosenv.2009.10.040, 2010.
- Zhu, T., Shang, J., and Zhao, D.: The roles of heterogeneous chemical processes in the formation of an air pollution complex and gray haze, *Sci. China. Chem.*, 54, 145-153, doi:10.1007/s11426-010-4181-y, 2011.
- Zhu, Y., Zhang, J., Wang, J., Chen, W., Han, Y., Ye, C., Li, Y., Liu, J., Zeng, L., Wu, Y., Wang, X., Wang, W., Chen, J., and 20 Zhu, T.: Distribution and sources of air pollutants in the North China Plain based on on-road mobile measurements. *Atmos. Chem. Phys.* 16, 12551-12565, doi:10.5194/acp-16-12551-2016, 2016.

25

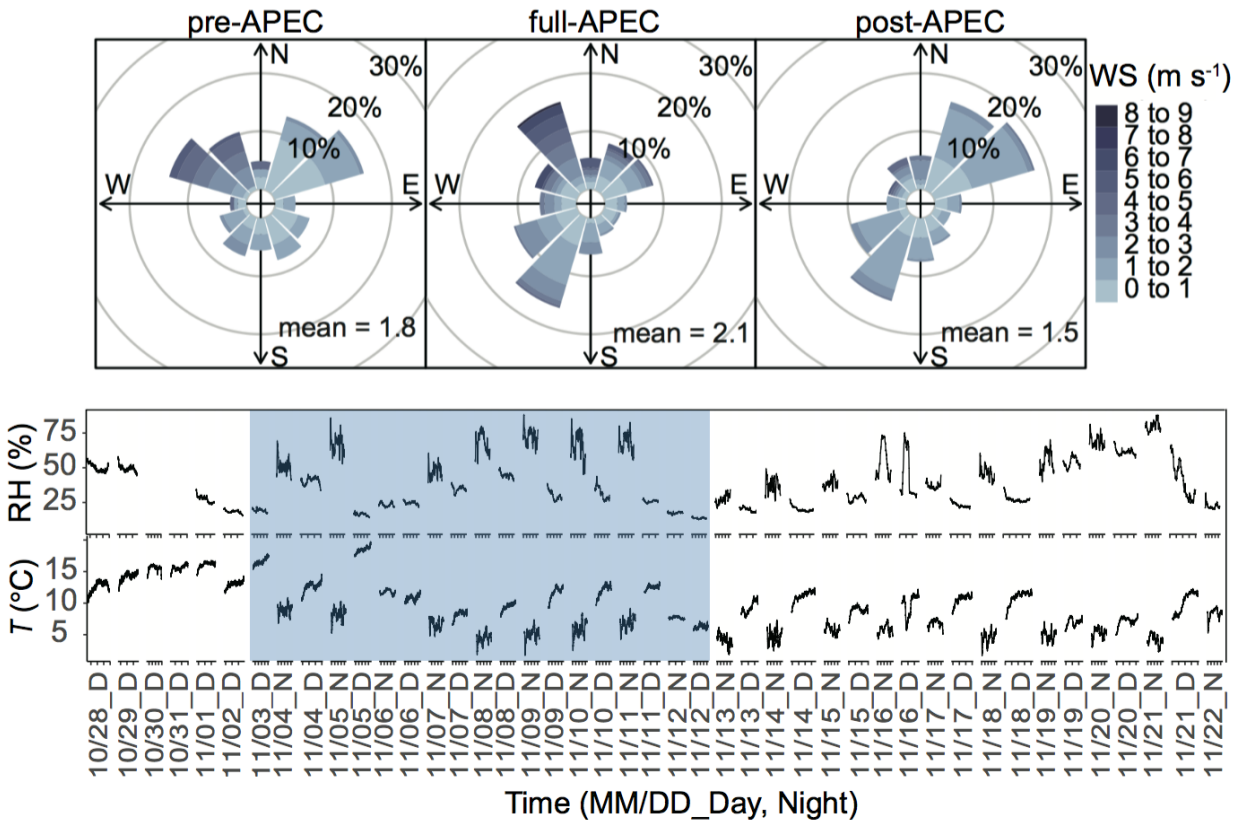
30

35

Figures



5 **Figure 1.** The measurement route (left) and the mobile measurement platform (right). The route started from the Peking University (PKU), driving counter-clockwise around (indicated by the red arrow) the 4th Ring Road of Beijing (circumference ~65 km) before returning to PKU. The red line represents the 4th Ring Road of Beijing, the green line represents the 5th Ring Road, and the red stars show the ground-based observation sites (PKU and Nanjiao).



10 **Figure 2.** Upper panel: rose plots of wind direction (WD) and speed (WS) measured at the Nanjiao site during the pre-APEC (24 October to 2 November, 2014), full-APEC (3–12 November, 2014), and post-APEC (12–22 November, 2014) periods. Lower panel: time series of the on-road observed temperature (T) and relative humidity (RH) during the observation period; the blue shaded area indicates the full-APEC period. APEC refers to the 2014 Asia-Pacific Economic Cooperation summit.

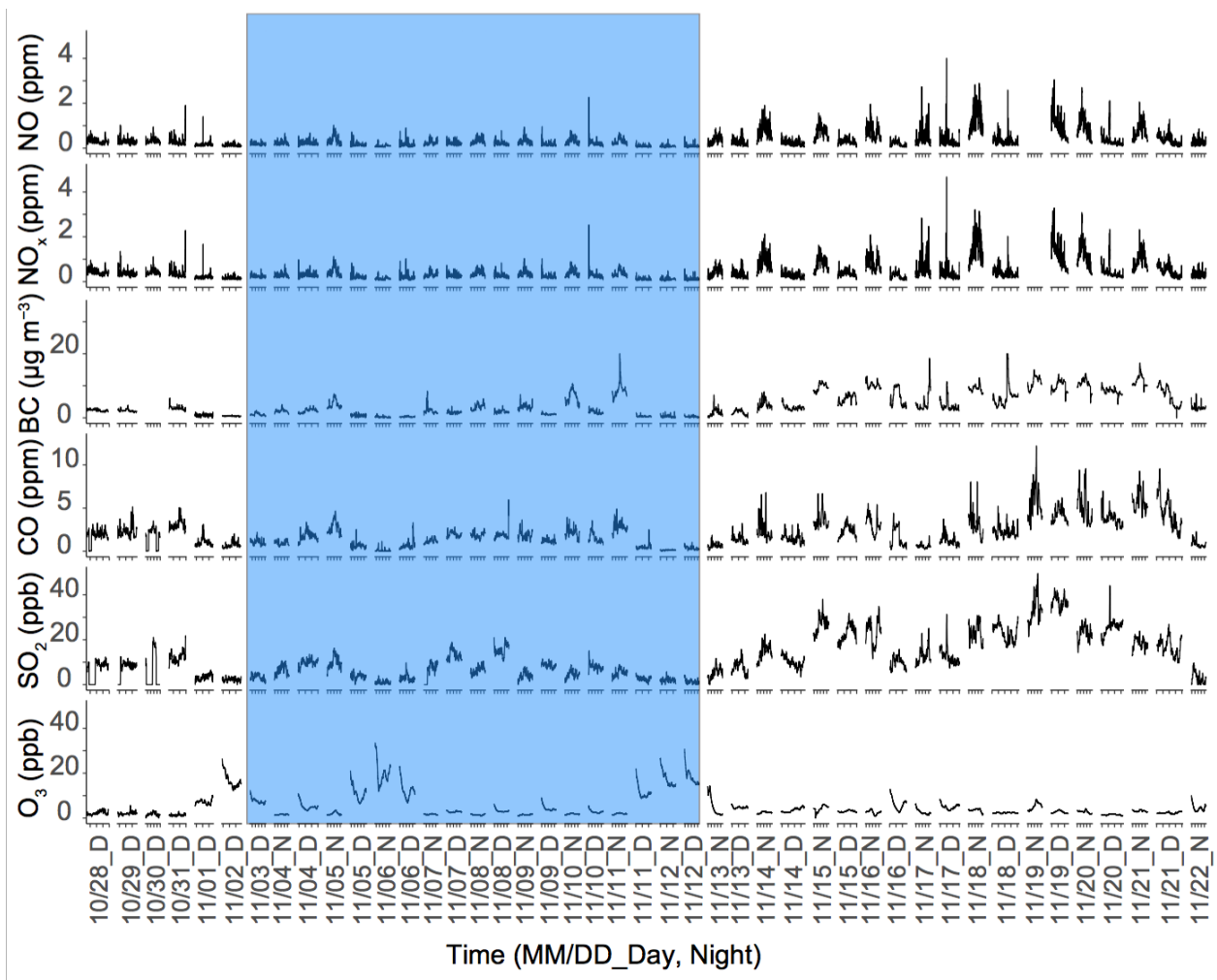


Figure 3. Time series of on-road mobile measurements of NO, NO_x, black carbon (BC), CO, SO₂, and O₃ concentrations around the 4th Ring Road of Beijing from 28 October to 22 November 2014. The blue shaded area indicates the full-APEC period.



Figure 4. The spatial distributions of NO around the 4th Ring Road of Beijing from 28 October to 22 November 2014. The subtitle for each circuit indicates the observation time in the form “MM/DD_Day, Night”. The red dotted rectangle area indicates the full-APEC period.

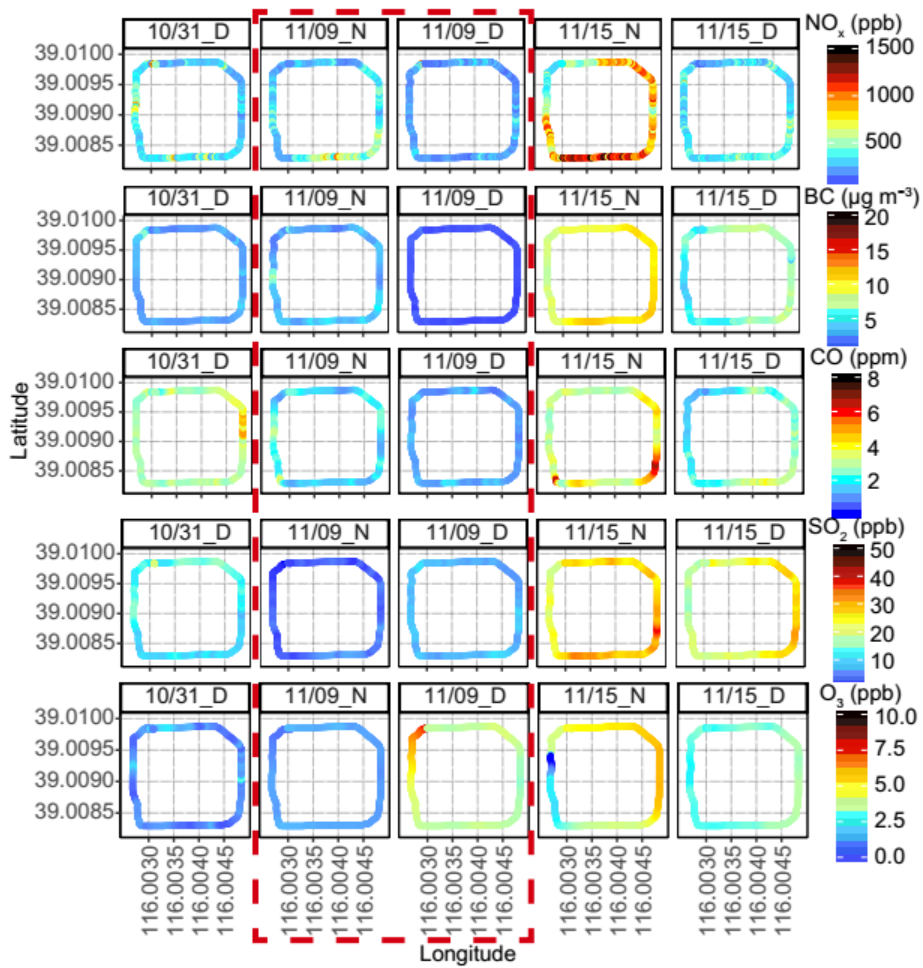


Figure 5. The spatial distributions of NO_x , BC, CO, SO_2 , and O_3 observed around the 4th Ring Road of Beijing. 31 October, 9 November, and 15 November 2014 were selected to represent the pre-APEC, full-APEC, and post-APEC periods, respectively. The subtitle for each circuit indicates the observation time in the form “MM/DD_Day, Night”. The red dotted rectangle area indicates the full-APEC period.

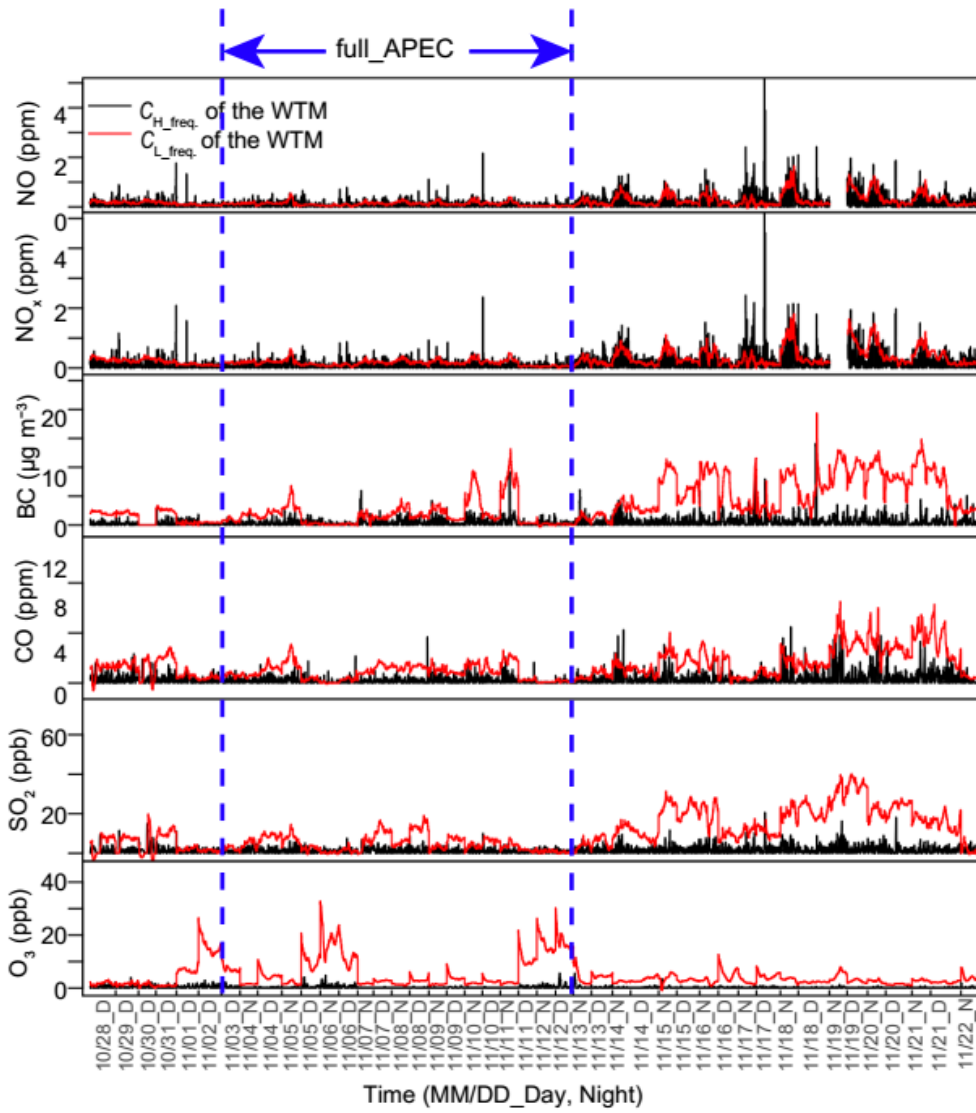


Figure 6. Time series of the decomposition results of the wavelet transform method (WTM) for NO, NO_x, BC, CO, SO₂, and O₃ (db6, eight levels; see text for details). The black lines represent the high-frequency components of the WTM, which should originate from immediate vehicle emissions. The red lines represent the low-frequency components of the WTM, which correspond to the atmospheric background plus accumulated on-road emissions.

5

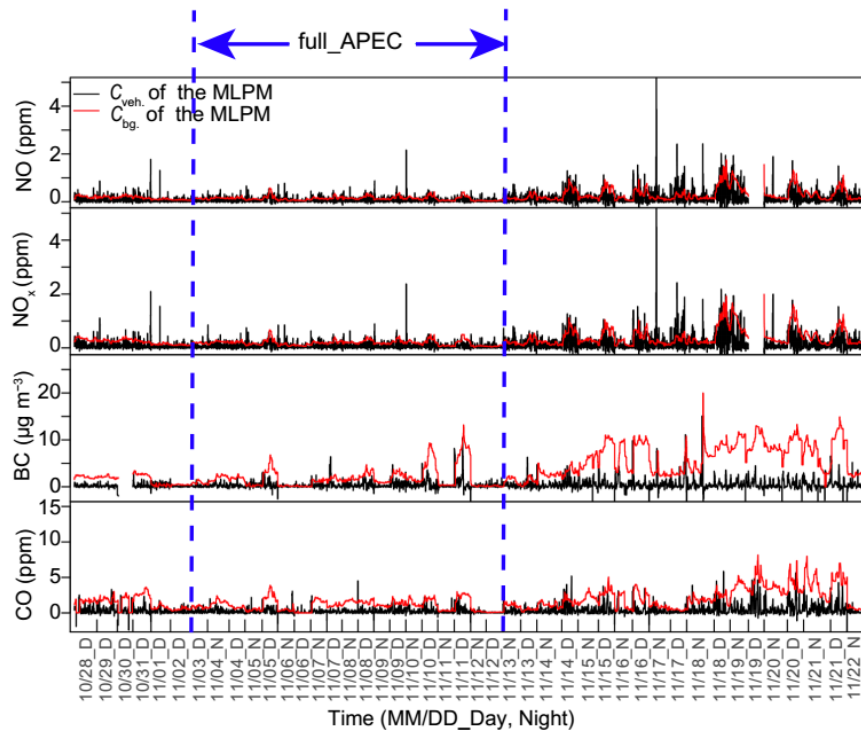


Figure 7. Time series of the separation results using the moving low percentile method (MLPM) for NO, NO_x, BC, CO, SO₂, and O₃. The red lines represent moving 5 min 5th percentiles of the measured pollutant concentrations to determine on-road background concentrations. The black lines represent estimated on-road emission concentrations, which were obtained by subtracting the background concentrations from the original concentrations.

5

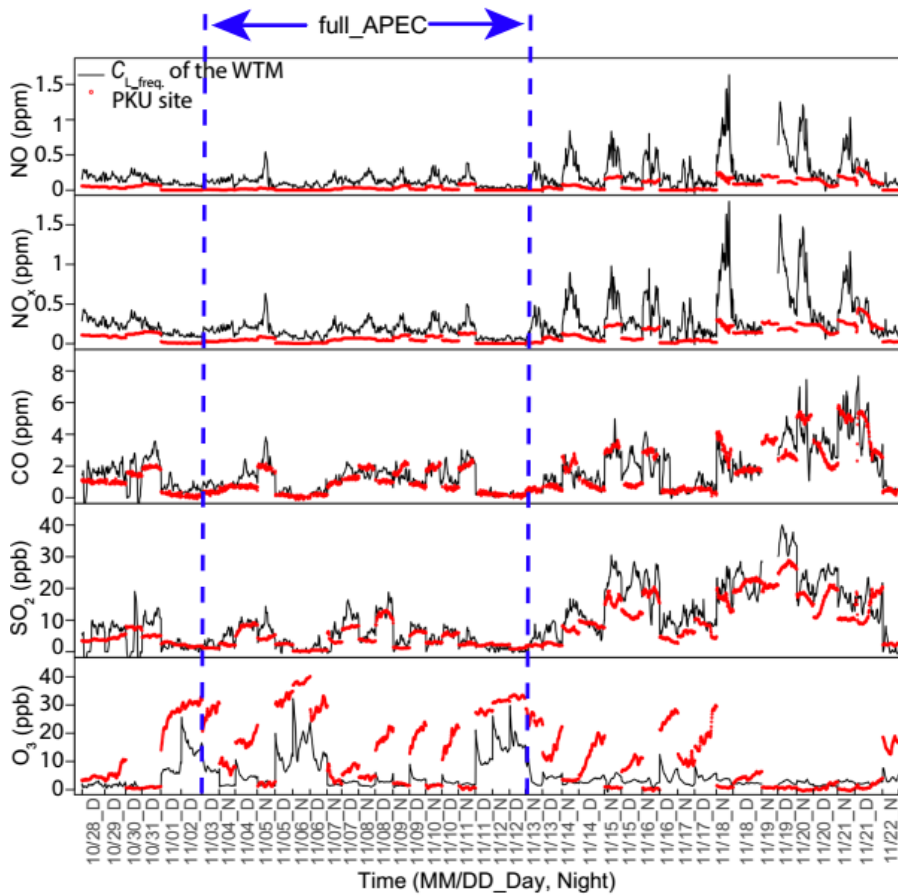


Figure 8. Comparisons between time series of the low-frequency components of the WTM and concentrations observed at the PKU site for NO, NO_x, BC, CO, SO₂, and O₃. The black lines represent the low-frequency components of the WTM. The red line represents the 1 min average concentrations of pollutants observed at the PKU site.

10

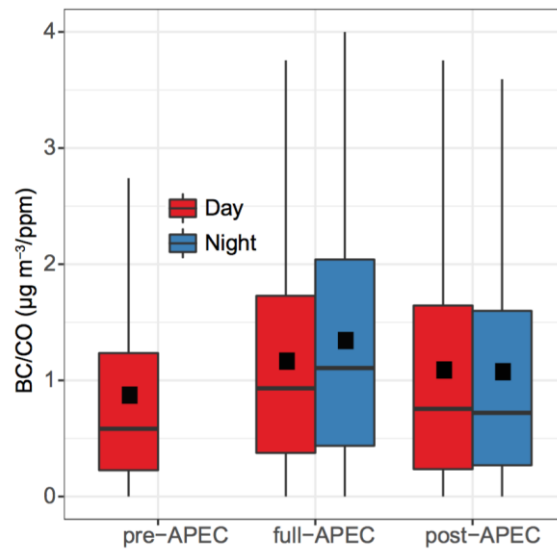


Figure 9. The distributions (boxplots) of BC/CO ratios derived from C_{veh} , obtained from the WTM for the pre-, full-, and post-APEC periods. The black boxes and whiskers denote the 5th, 25th, 75th, and 95th percentiles. The black horizontal bars indicate median values. The black squares represent mean values. Red boxes indicate observations in the daytime and blue boxes indicate observations in the nighttime.

Tables

Table 1. Air pollution control measures implemented during the pre-APEC, full-APEC, and post-APEC periods.

Period	Control Measures	Details of Control Measures
Pre-APEC (28 October to 2 November 2014)	<i>Forecasting and early warning</i>	Forecast medium- and short-range air quality Make air pollution emergency plan Strengthen air quality monitoring and early warning forecasts
	<i>Coal-emission controls</i>	Reconstruction of coal-fired boilers to improve efficiency Reduce output of coal-fired power plants Postpone central heating
	<i>Vehicle emission controls</i>	Implement the normal licence plate restriction policy on weekdays (07:00–20:00) within (but not including) the 5th Ring Road Local trucks and special vehicles forbidden from driving within (not including) the 5th Ring Road every day (06:00–23:00) Yellow-labelled cars forbidden from driving within (including) the 6th Ring Road all day Non-local trucks and special vehicles forbidden from driving within (not including) the 6th Ring Road every day (06:00–00:00) Non-local vehicles with Beijing Entrance Permit forbidden from driving within (not including) the 6th Ring Road, passenger service vehicles forbidden from driving within (including) the 5th Ring Road on weekdays during peak hours (07:00–9:00 and 17:00–20:00) Motorcycles forbidden from driving within (not including) the 6th Ring Road all day
Full-APEC (3–12 November 2014)	<i>Vehicle emission controls</i>	Implement odd–even licence plate rule every day (03:00–00:00) for the areas of Beijing, Tianjin, Hebei and parts of Shandong Yellow-labelled cars, construction trucks, and hazardous material vehicles forbidden from driving in Beijing all day Non-local trucks and special vehicles forbidden from driving within (including) the 6th Ring Road everyday (06:00–00:00)

		<p>Non-local vehicles forbidden from driving within (including) the 5th Ring Road on weekdays during peak hours (07:00–9:00 and 17:00–20:00)</p> <p>Motorcycles forbidden from driving within (including) the 5th Ring Road all day</p> <p>Stop use of government cars by 70%, and increase the capacity of public transport</p> <p>Heavily-polluting trucks, tractors, and tricycles forbidden from driving within (including) the 6th Ring Road every day (06:00–00:00), and special postal trucks forbidden from driving within (not including) the 6th Ring Road every day (06:00–00:00)</p>
	<i>Industrial emission controls</i>	<p>Shut down 148 factories in Beijing</p> <p>Reduce pollutant emissions by more than 30%</p> <p>Reduce production or shut down more than 10,000 factories in Hebei, Tianjin, Shandong, Shanxi, Inner Mongolia, and other areas surrounding Beijing</p>
	<i>Dust pollution controls</i>	<p>Shut down or reduce the activities of dust emitting factories and outdoor construction in Beijing and its surrounding area</p> <p>Increase road cleaning and spraying in Beijing</p>
	<i>Emergency measures</i>	<p>Further reduce production at state-owned enterprises</p> <p>Reduce output of coal-fired units in Beijing by 40%</p> <p>Strengthen the emission controls on special pollutants, such as VOCs in Beijing</p> <p>National and public institutions, social organizations, and schools closed during 7–12 November</p>
Post-APEC (13–22 November 2014)	<i>Vehicle emission controls</i>	<p>Stop the odd–even licence plate rule and resume the normal tail number restriction policy</p>

Table 2. The mean concentrations of pollutants measured around the 4th Ring Road of Beijing and their relative changes between the pre-APEC, full-APEC, and post-APEC periods.

Measured Species	All (mean \pm SD)	Pre-APEC (mean \pm SD)	Full-APEC (mean \pm SD)	Post-APEC (mean \pm SD)	D1 ^a (%)	D2 ^b (%)
NO (ppb)	337.7 \pm 330.4	242.4 \pm 130	207.3 \pm 135.7	488.2 \pm 426.1	-16.9	-57.5
NO _x (ppb)	416.6 \pm 373.2	315.5 \pm 155.6	262.7 \pm 151.4	590.5 \pm 478	-20.1	-55.5
BC ($\mu\text{g m}^{-3}$)	4.3 \pm 3.7	1.6 \pm 1.1	2.3 \pm 2.4	6.7 \pm 3.6	+21.7	-65.7
CO (ppm)	2.1 \pm 1.6	1.8 \pm 1.0	1.3 \pm 0.9	2.8 \pm 1.9	-38.5	-53.6
SO ₂ (ppb)	11.8 \pm 9.5	6.1 \pm 5.0	6.1 \pm 4.3	18.5 \pm 9.5	0	-67.0
O ₃ (ppb)	5.0 \pm 5.0	5.4 \pm 5.8	6.8 \pm 6.5	3.4 \pm 1.7	+20.6	+100

SD: Standard Deviation

^aD1 = (full-APEC – pre-APEC) \div pre-APEC

5 ^bD2 = (full-APEC – post-APEC) \div post-APEC

Table 3. The on-road emission concentrations obtained from the WTM for NO, NO_x, BC, CO, SO₂, and O₃ with different mother wavelet functions (i.e., db4–db8) and decomposition levels (5–9 levels).

	NO (ppb) (mean \pm SD)	NO _x (ppb) (mean \pm SD)	BC ($\mu\text{g m}^{-3}$) (mean \pm SD)	CO (ppm) (mean \pm SD)	SO ₂ (ppb) (mean \pm SD)	O ₃ (ppb) (mean \pm SD)
db4_level5	140.4 \pm 190.2	148.0 \pm 197.0	0.5 \pm 0.6	0.2 \pm 0.3	0.8 \pm 0.6	0.1 \pm 0.1
db4_level6	140.7 \pm 188.9	150.7 \pm 197.5	0.5 \pm 0.7	0.3 \pm 0.4	1.3 \pm 1.2	0.2 \pm 0.2
db4_level7	142.0 \pm 196.0	152.1 \pm 204.8	0.5 \pm 0.8	0.4 \pm 0.5	1.6 \pm 1.6	0.2 \pm 0.4
db4_level8	138.9 \pm 199.3	149.1 \pm 208.2	0.6 \pm 0.9	0.4 \pm 0.6	1.7 \pm 1.8	0.3 \pm 0.5
db4_level9	138.6 \pm 201.3	148.7 \pm 210.8	0.6 \pm 1.0	0.4 \pm 0.6	1.7 \pm 1.9	0.3 \pm 0.5
db5_level8	140.0 \pm 201.4	150.3 \pm 210.9	0.6 \pm 0.9	0.4 \pm 0.6	1.8 \pm 1.9	0.3 \pm 0.5
db6_level8	140.3 \pm 200.6	150.3 \pm 210.0	0.6 \pm 0.9	0.4 \pm 0.6	1.8 \pm 1.9	0.3 \pm 0.5
db7_level8	139.3 \pm 198.6	149.4 \pm 207.6	0.6 \pm 0.9	0.4 \pm 0.6	1.7 \pm 1.8	0.3 \pm 0.5
db8_level8	138.7 \pm 199.3	148.9 \pm 208.5	0.6 \pm 0.9	0.4 \pm 0.6	1.7 \pm 1.8	0.3 \pm 0.5
SD^a (%)	1.1	1.2	0.0	0.1	0.3	0.1

^aSD the SD of on-road concentrations estimated using different schemes in the WTM

Table 4. The mean on-road emission concentrations estimated using the moving low percentile method (MLPM) for NO, NO_x, BC, CO, SO₂, and O₃ with different time windows (i.e., 1–10 min) and percentiles (i.e., 1%, 5% and 10%).

	NO (ppb) (mean ± SD)	NO _x (ppb) (mean ± SD)	BC (µg m ⁻³) (mean ± SD)	CO (ppm) (mean ± SD)	SO ₂ (ppb) (mean ± SD)	O ₃ (ppb) (mean ± SD)
5%_1min	128.5 ± 194.3	136.8 ± 202.4	0.6 ± 0.9	0.4 ± 0.6	1.7 ± 1.9	0.4 ± 0.8
5%_3min	119.3 ± 195.8	126.5 ± 204.2	0.5 ± 1.0	0.4 ± 0.6	1.5 ± 1.9	0.2 ± 0.5
5%_5min	122.7 ± 198.8	130.0 ± 207.3	0.5 ± 1.0	0.4 ± 0.6	1.6 ± 2.0	0.3 ± 0.5
5%_8min	135.4 ± 210.7	144.2 ± 221.8	0.7 ± 1.3	0.5 ± 0.7	2.1 ± 2.4	0.3 ± 0.6
5%_10min	142.7 ± 216.2	152.6 ± 228.0	0.8 ± 1.4	0.5 ± 0.7	2.3 ± 2.5	0.4 ± 0.7
1%_5min	138.1 ± 204.1	147.8 ± 214.0	0.5 ± 1.0	0.4 ± 0.6	1.7 ± 2.0	0.3 ± 0.5
10%_5min	107.2 ± 193.2	113.8 ± 202.1	0.5 ± 1.0	0.3 ± 0.6	1.4 ± 2.0	0.2 ± 0.5
SD^a	11.4	12.5	0.1	0.1	0.3	0.1

^aSD is the SD of on-road concentrations estimated using different schemes in the MLPM

5 Table 5. The proportion of on-road emission concentrations decomposed by the WTM for the entire observation period (All) and the pre-APEC, full-APEC, and post-APEC periods.

Measured Species	All (%) (mean ± SD)	pre-APEC (%) (mean ± SD)	full-APEC (%) (mean ± SD)	post-APEC (%) (mean ± SD)
NO	42 ± 51	38 ± 63	41 ± 56	42 ± 51
NO _x	36 ± 47	32 ± 56	35 ± 52	37 ± 47
BC	14 ± 20	17 ± 29	22 ± 22	11 ± 24
CO	19 ± 32	22 ± 36	21 ± 27	18 ± 30
SO ₂	14 ± 17	26 ± 30	23 ± 23	11 ± 19
O ₃	6 ± 9	11 ± 10	4 ± 7	6 ± 20

Table 6. The mean on-road emission concentrations (i.e. $C_{veh.}$) obtained from the WTM and their relative changes between the pre-APEC, full-APEC, and post-APEC periods.

db6_level8	Pre-APEC (mean \pm SD)	Full-APEC (mean \pm SD)	Post-APEC (mean \pm SD)	D1 ^a (%)	D2 ^b (%)
NO (ppb)	92.5 \pm 104.8	90.4 \pm 96.6	206.1 \pm 266	-2.3	-56.1
NO _x (ppb)	101.5 \pm 115.3	97.5 \pm 102.6	218.7 \pm 277.6	-3.9	-55.4
BC ($\mu\text{g m}^{-3}$)	0.3 \pm 0.4	0.5 \pm 0.7	0.7 \pm 1.1	+66.7	-28.6
CO (ppm)	0.4 \pm 0.5	0.3 \pm 0.3	0.5 \pm 0.7	-25.0	-40.0
SO ₂ (ppb)	1.6 \pm 2	1.4 \pm 1.3	2 \pm 2.1	-12.5	-30.0
O ₃ (ppb)	0.6 \pm 0.6	0.2 \pm 0.4	0.2 \pm 0.4	-66.7	0.0

^aD1 = (full-APEC - pre-APEC) \div pre-APEC

^bD2 = (full-APEC - post-APEC) \div post-APEC

5

Table 7. The mean on-road emission concentrations (i.e. $C_{veh.}$) obtained from WTM and their relative changes between the pre-APEC, full-APEC, and post-APEC periods, divided into daytime and nighttime.

	Measured Species	Pre-APEC (mean \pm SD)	Full-APEC (mean \pm SD)	Post-APEC (mean \pm SD)	D1 ^a (%)	D2 ^b (%)
Day	NO (ppb)	92.5 \pm 104.8	74.6 \pm 89.9	149.2 \pm 237.4	-19.4	-50.0
	NO _x (ppb)	101.5 \pm 115.3	83.5 \pm 98.1	158.3 \pm 243.6	-17.7	-47.3
	BC ($\mu\text{g m}^{-3}$)	0.3 \pm 0.4	0.3 \pm 0.3	0.8 \pm 1.3	0.0	-62.5
	CO (ppm)	0.4 \pm 0.5	0.2 \pm 0.3	0.4 \pm 0.5	-50.0	-50.0
	SO ₂ (ppb)	1.6 \pm 2.0	1.3 \pm 1.2	1.7 \pm 1.8	-18.8	-23.5
	O ₃ (ppb)	0.6 \pm 0.6	0.3 \pm 0.6	0.2 \pm 0.2	-50.0	+50.0
Night	NO (ppb)	-	98.5 \pm 97.0	283.8 \pm 282.9	-	-65.3
	NO _x (ppb)	-	104.3 \pm 100.9	301.2 \pm 299.1	-	-65.4
	BC ($\mu\text{g m}^{-3}$)	-	0.6 \pm 0.9	0.7 \pm 0.9	-	-14.3
	CO (ppm)	-	0.3 \pm 0.3	0.6 \pm 0.9	-	-50.0
	SO ₂ (ppb)	-	1.4 \pm 1.3	2.3 \pm 2.4	-	-39.1
	O ₃ (ppb)	-	0.2 \pm 0.5	0.2 \pm 0.5	-	0.0

^aD1 = (full-APEC - pre-APEC) \div pre-APEC

^bD2 = (full-APEC - post-APEC) \div post-APEC

10

Using wavelet transform to analyse on-road mobile measurements of air pollutants: a case study to evaluate vehicle emission control policies during the 2014 APEC summit

5 Yingruo Li^{1, 2#}, Ziqiang Tan^{1#}, Chunxiang Ye¹, Junxia Wang¹, Yanwen Wang¹, Yi Zhu¹, Pengfei Liang¹,
Xi Chen¹, Yanhua Fang¹, Yiqun Han¹, Qi Wang¹, Di He³, Yao Wang³, and Tong Zhu^{1*}

¹BIC-ESAT and SKL-ESPC, College of Environmental Sciences and Engineering, Peking University, Beijing 100871, China

²Institute of Urban Meteorology, China Meteorological Administration, Beijing, 100089, China

³Environmental Meteorology Forecast Center of Beijing-Tianjin-Hebei, China Meteorological Administration, Beijing, 100089, China

10 #These authors contributed equally to the paper.

*Correspondence to: tzhu@pku.edu.cn

Supplement

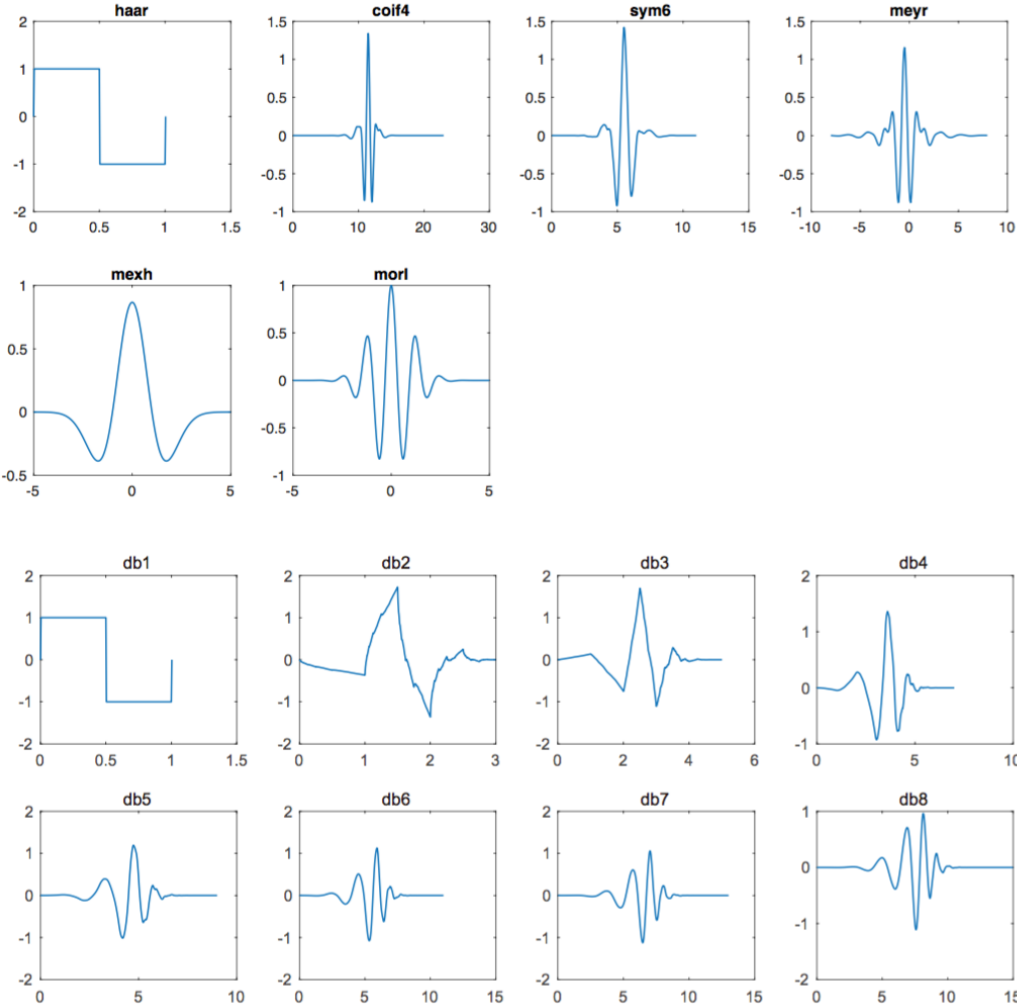


Figure S1. The commonly used mother wavelet functions and the “dbN” family wavelet functions used in this study.

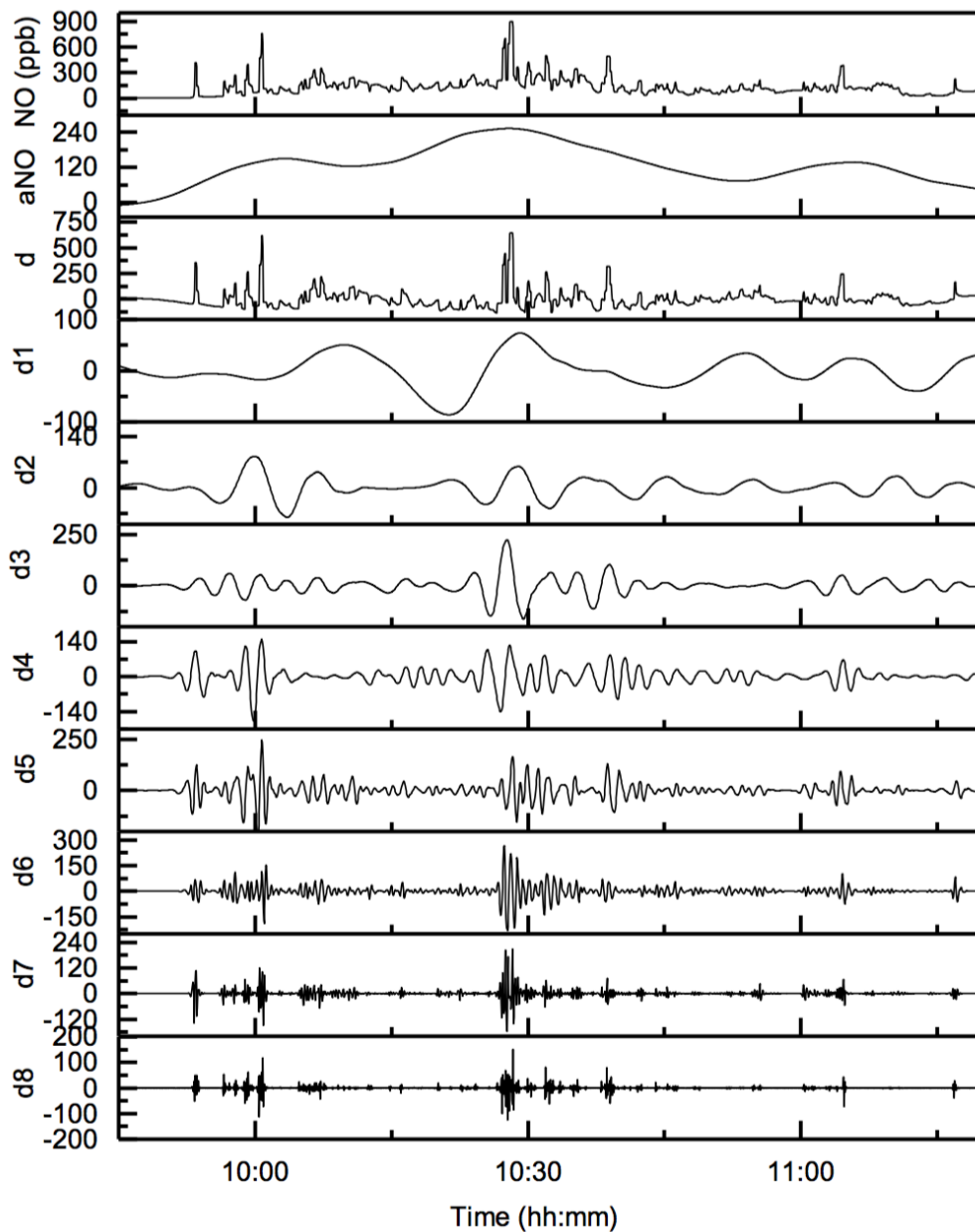
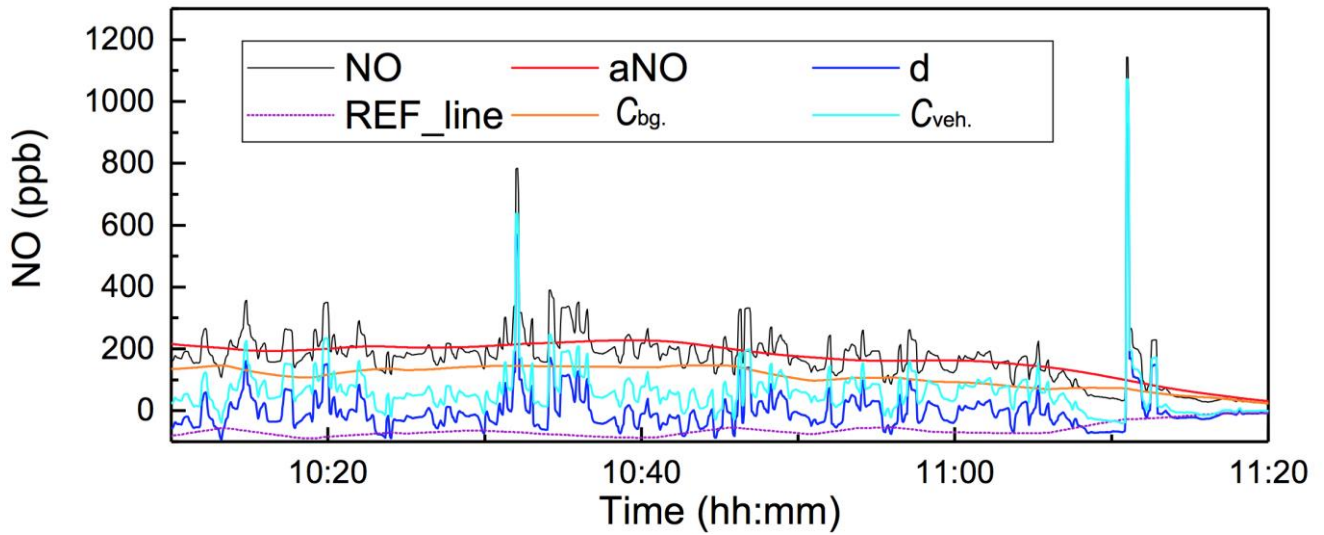
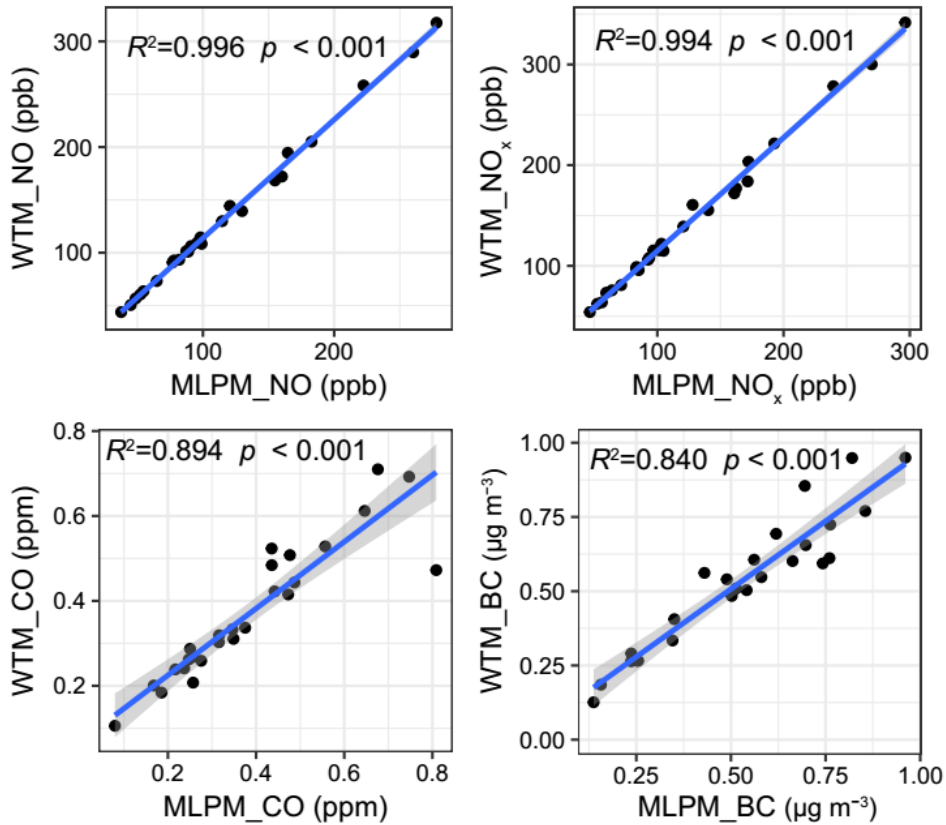


Figure S2. The original decomposition results of the WTM using db6 and eight decomposition levels for 6 November 2014. NO is the on-road mobile measurement concentration, aNO is the decomposed signal representing the trend in the background, and d ($= d1 + d2 + \dots + d8$) is the decomposed signal representing trends in vehicle emissions. $d1$ – $d8$ are the decomposed signals representing variations at different frequencies.

5



5 **Figure S3.** Moving the decomposed result of the WTM by taking REF_line as the reference line (example data from 8 November 2014). The black line represents the original measured on-road NO concentrations, the red line represents original high-frequency concentrations decomposed by the WTM, and the blue line represents original low-frequency concentrations decomposed by the WTM. The purple dotted line represents a moving reference line, which is a 5 min moving minimum of line “d”. The orange line represents $C_{bg.}$ and was obtained by adding “aNO” to “REF_line”, and the cyan line represents $C_{veh.}$ and was obtained by subtracting “REF_line” from “d”. The principle of the selection of the REF_line is to keep the original shape of “aNO” and “d” but avoid negative values as much as possible.



10 **Figure S4.** Correlations between the on-road emission concentrations (i.e. $C_{veh.}$) obtained by the wavelet transform method (WTM) and the moving low percentile method (MLPM) in each day for NO, NO_x, BC, CO, SO₂, and O₃. The blue line shows the linear fit curve and the gray area is the 95% confidence interval.

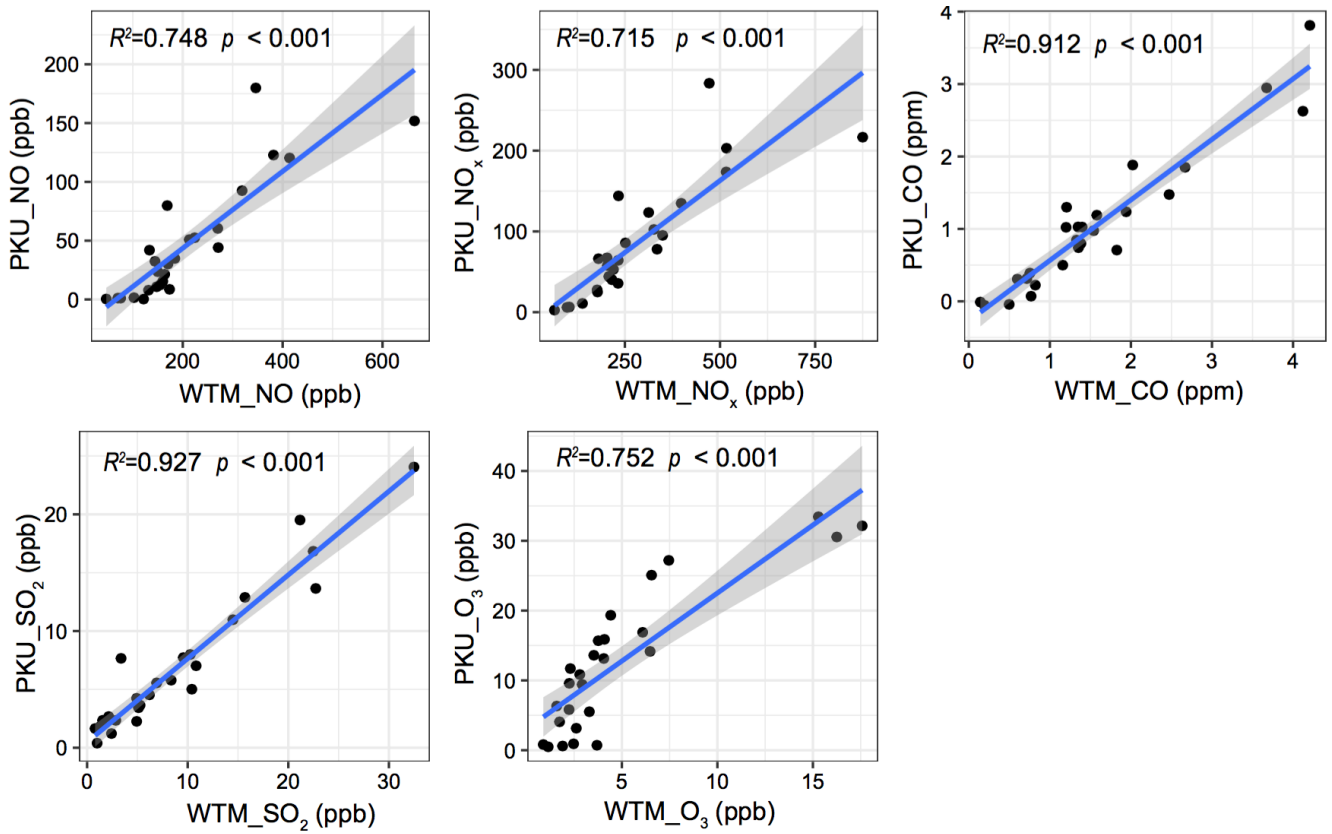


Figure S5. Correlations between the on-road background concentrations (i.e. C_{bg}) obtained by the wavelet transform method (WTM) and observations at the PKU site in each day for NO, NO_x, BC, CO, SO₂, and O₃. The blue line shows the linear fit curve and the gray area is the 95% confidence interval.

Table S1. Timing of on-road measurements made around the 4th Ring Road of Beijing.

Date (MM/DD_Night, Day)	Start time ^a (hh:mm)	End time ^b (hh:mm)	Driving duration ^c (h)
10/28_Day	10:17	11:55	1.63
10/29_Day	09:52	11:20	1.47
10/30_Day	20:06	21:13	1.12
10/31_Day	10:09	11:28	1.32
11/01_Day	09:53	11:18	1.42
11/02_Day	09:56	11:24	1.46
11/03_Day	10:05	11:17	1.20
11/04_Night	00:58	02:06	1.13
11/04_Day	09:56	11:29	1.55
11/05_Night	00:58	02:12	1.23
11/05_Day	09:56	11:10	1.23
11/06_Night	01:10	02:22	1.20
11/06_Day	09:58	11:10	1.20
11/07_Night	01:04	02:05	1.02
11/07_Day	09:58	11:08	1.17
11/08_Night	00:56	02:05	1.15
11/08_Day	09:58	11:12	1.23
11/09_Night	00:58	02:07	1.15
11/09_Day	09:58	11:07	1.15
11/10_Night	00:59	02:07	1.13
11/10_Day	09:59	11:08	1.15
11/11_Night	00:59	2:09	1.17
11/11_Day	10:01	11:12	1.18
11/12_Night	00:59	02:11	1.20
11/12_Day	09:58	11:06	1.13
11/13_Night	00:58	02:08	1.17
11/13_Day	09:57	11:18	1.35
11/14_Night	00:58	02:08	1.17
11/14_Day	09:57	11:45	1.80
11/15_Night	00:58	02:08	1.17
11/15_Day	10:00	11:28	1.47
11/16_Night	00:58	02:10	1.20
11/16_Day	10:02	11:19	1.28
11/17_Night	00:58	02:08	1.17
11/17_Day	09:57	11:29	1.53
11/18_Night	00:59	02:08	1.15
11/18_Day	10:03	12:03	2.00
11/19_Night	00:58	02:06	1.13

11/19_Day	09:57	011:16	1.32
11/20_Night	00:59	02:09	1.17
11/20_Day	09:57	11:38	1.68
11/21_Night	00:58	02:10	1.2
11/21_Day	10:02	11:59	1.95
11/22_Night	00:58	02:06	1.13

^aStart-time is when the monitoring vehicle entered the 4th Ring Road.

^bStart-time is when the monitoring vehicle left the 4th Ring Road.

^cDriving duration is the length of time when the monitoring vehicle driving along the 4th Ring Road.