

We would like to thank both referees for their help to improve this manuscript. Below is a list with point for point answers to both referees. The referee comments are repeated in italic font, eventual comments are given in normal font. Eventual changes to the text are explained in blue colour.

Referee #1

1) Page 5, line 12:

Within the description of the data sets, it is mentioned that only supply vessels for the offshore oil industry are considered in the pollution emission of ships (p.5, l.9). This raises the question why not all ships are considered. There is no information given if these type of ships are the main pollutant emitter or if they contribute only by little to the total ship emissions. As the analysis of the contribution of ship emissions to the total air pollution is one of the major points of the manuscript, this question must clearly be answered within the text.

We have explained qualitatively the relative impact of the supply-vessels compared to other relevant ship types.

2) Page 8, line 9 and page 11, line 29:

During the presentation of the results in Sect. 4, the different used scenarios are mentioned at various points. Although, in Sect. 3.2.1, all considered meteorological conditions are mentioned and listed in Table 2, a list is missing which shows the actually conducted simulations with the used combinations of parameters. Such a table is also referenced on page 11, line 29 but is not part of the manuscript. Also, the naming of the scenarios is not explained in the text. An explanation is given below Table 2, but the explanation is incorrect and needs to be updated.

The mentioned reference to Table 1 was wrong and should have been a reference to Table 2. This is corrected in the text. We included a new paragraph into section 3.2.1 in order to explain the naming syntax and to explicitly state, what meteorological scenarios were conducted only as 12 h precursor runs and what scenarios were also conducted using the additional 6 h emission sensitivity simulations.

3) Page 12, line 26:

In the discussion section, it is mentioned, that a resolution of at least 100m should be used to correctly resolve the diffusion processes of air pollutants within the Bergen region (p.12, l.26). I am missing a justification for this statement. Why can I also use 100m for such a study? Is there a grid-sensitivity study conducted which suggested a resolution of 100m or finer? A quotation is needed at this point. Otherwise, this has to be corrected to 10m resolution as this is the resolution used for this study.

At 100 m or finer resolution, models begin to simulate turbulent eddies in the Kolmogorov inertial subrange. Coarser resolution eddies should thus be resolved explicitly, while finer resolution eddies can be parameterised.

We included a reference justifying the 100 m resolution threshold into the text.

4) On page 10, line 26, it is mentioned that areas with higher density of fireplaces can easily be identified using Fig. 6 and Fig. 1. In my opinion, it is very hard to compare Fig. 1 and Fig. 6 because I cannot identify the coastlines in Fig. 6 (and also in Figs. 5-12). As I am not familiar with the area around Bergen, I need some help to navigate within the figures and the coastlines would drastically help. My suggestion is, either try to draw the coastlines into Figs. 5-12 or remove the white colour from the colour shading.

We agree that the coastlines might not be visible at first glance. However, attempts to include coastlines in Figures 5-12 were problematic due to an overload of information in the figures. A

removal of the white colour shading would not help to mitigate this problem. An advantage of the chosen presentation with Google maps is the possibility to see the same map projection.

- 5) - p.4, l.9: Should be '2.5km ***spacial*** resolution'. - p.5, l.22: Remove comma between 'atmospheric model' and 'which is'. - p.6, l.18: The sentence 'This nudging is enabled only above the first local grid level over the surface' sounds a bit complicated. I suggest to write: 'This nudging is enabled starting from the second grid level above the local surface.' - p.8, l.14: Missing space between 'N_i' and the following word. - p.8, l.28: What is meant by '... at the level of the third-fourth floors'? Do you mean '...at heights between the third and fourth floor'? - p.9, l.19: '...junctions at DP and around (the sub-area 4)', better: '...junctions at DP (around sub-area 4)'. - p.11, l.10: Replace the semi-colons by comma and remove 'the' from the list. - p.11, l.11: 'Figure 8 shows that ***the fireplaces***...' - p.14, l.20: This sentence is hard to understand. Please rephrase it. - Table 1: Entries are hard to read. Reduce the space between lines which belong to the same entry within the table to enhance readability. - Table 2: The explanation below is wrong. Scenarios are not named as 'boh_...'. - Figure 3: Why is the figure caption written in italic? - Figure 5 and 7: The unit of the concentration does not use superscript for cubic-metres within the figure caption. - p.38, l.5: author names are written in capitals while all other entries are not.

Correction 1: The model is a spectral model. This should be indicated here. We corrected the description of the model resolution in the text.

We included all other corrections directly into the text.

Referee #2

- 1) Page 1, line 5:

Abstract Could you make novel findings more explicit?

We included two sentences describing the most relevant results for the pollution in Bergen.

Page 6, line 25:

- 2) 3.1 The PALM Model The assumption that loss processes are omitted in the simulations seems to be plausible under the condition used in this study. But it is better to quantitatively show that typical time scales of these loss processes are sufficiently longer than typical transport time scale to justify the assumption for readers.

Is dry deposition process not considered?

The relevant time scales for the different mentioned pathways are up to today not entirely understood, especially for the cold winter-time temperature inversion conditions as they are found in Bergen (see for example the white paper of ALPACA, a planned large-scale campaign for the assessment of air pollution in cold climates: <http://www.igacproject.org/publication/other-publications/alaskan-layered-pollution-and-chemical-analysis-alpaca-white-paper>). A full description of these would therefore go well beyond the scope of this study.

Since the particles are treated as passive tracers, dry deposition is not considered, as mentioned in the paper.

- 3) 4.1. Baseline scenario simulations p. 10, l. 10-11: "This was also confirmed with a detailed analysis of local pollutant measurements at the two reference" p. 10, l. 23- 24: "This was visible in the PALM simulations as well as in the detailed analysis of the available air pollution observations at the tow reference stations." How did you confirm the dominant sources of NO₂ and PM_{2.5} using

measurement data and the consistency with the PALM simulation? Could you explain them briefly in the text or cite the references?

The analysis of the relevance of the different sources to the peak pollution levels in Bergen was based on the timing of the occurrence of peak pollution levels. The typical usage of wood-ovens is known to be during the evening. In addition, the timing of the rush-traffic with its distinct maxima in emissions in the early morning and late afternoon during workdays are known. This, together with the activity log in the harbour, and a relationship between the mean wind direction at different meteorological stations and the location of the emission sources and the reference stations can be used to assess the likely contribution of the three emission sources. The description of this is, however, well beyond the scope of this manuscript and therefore stated as “(not shown)”. A reference is only available in a technical report and in Norwegian and therefore not of much help to international readers.

We included a short information into the text.

- 4) *p. 10, l. 20-21: “Some urban areas might be affected by pollution transport over several kilometers and accumulation of emitted substances strongly different from the emission pattern.” It is difficult to see the differences between concentration and emission patterns from Figures 1 and 5. Could you make emission flux maps used in the PALM simulations?*

Emissions are indicated in Figure 1 and explained in section 3. The original data are stated in Table 1. A detailed emission map is not possible to present at such a high resolution in a format compatible with the journal requirements (e.g. emissions from roads could not be recognised on such a small map).

- 5) *4.3. Air pollution pattern sensitivity to meteorological scenarios You show results from only three scenarios. How do you choose the three scenarios? You find no significant difference between the baseline simulation and other scenario simulations. Or These scenarios can be representative for all scenarios.*

This is explained in section 4.3.

We included an improved description of the different meteorological scenarios and which were simulated including the 6 h emission simulations (see comments for referee #1, point 2).

- 6) *p. 3, l. 28: please correct “air.pollution”*

We corrected misprints in the manuscript.

A very high-resolution assessment and modelling of urban air quality

Tobias Wolf*, Lasse H. Pettersson and Igor Esau
Nansen Environmental and Remote Sensing Center, Thormøhlens gate 47, 5006, Bergen, Norway
*Correspondence to: Tobias Wolf (tobias.wolf@nersc.no)

Abstract. Urban air quality is one of the most prominent environmental concerns for modern city residents and authorities. Accurate monitoring of air quality is difficult due to intrinsic urban landscape heterogeneity and superposition of multiple polluting sources. Existing approaches often do not provide the necessary spatial details and peak concentrations of pollutants, especially at larger distances from monitoring stations. A more advanced integrated approach is needed. This study presents a very high-resolution air quality assessment with the large-eddy simulation model PALM, capitalizing on local measurements. This fully three-dimensional primitive-equation hydro-dynamical model resolves both structural details of the complex urban surface and turbulent eddies larger than 10 m in size. We ran a set of 27 meteorological weather scenarios in order to assess the dispersion of pollutants in Bergen, a middle-sized Norwegian city embedded in a coastal valley. This set of scenarios represents typically observed weather conditions with high air pollution from nitrogen dioxide (NO₂) and particulate matter (PM_{2.5}). The modelling methodology helped to identify pathways and patterns of air pollution caused by the three main local air pollution sources in the city. These are road vehicle traffic, domestic house heating with wood-burning fireplaces and ships docked in the harbour area next to the city centre. The study produced vulnerability maps, highlighting the most impacted districts for each weather and emission scenario. Overall the largest contribution to air pollution over inhabited areas in Bergen was caused by road traffic emissions for NO₂ and wood-burning fireplaces for PM_{2.5} pollution. The effect of emission from ships in the port was mostly restricted to the areas close to the harbour and moderate in comparison. However, the results have contributed to implementation of measures to reduce emissions from ships in Bergen harbour, including provision of shore power.

Deleted: nine

Deleted: scenario.

1 Introduction

Patterns of atmospheric pollution in the urban environment are rather variable and spatially heterogeneous. Air quality may regularly deteriorate to harmful levels in the vicinity of near-surface emission sources, such as major traffic junctions and low-raised chimneys. Widely accepted statistical models provide reasonably accurate assessment of pollutant concentrations near the strong emission sources assuming availability of representative meteorological input (e.g. Isakov et al., 2017). At larger distances from the sources, or in more complex flow settings, however, their accuracy drastically deteriorates. It has been understood that pockets of polluted air could be trapped in a weakly turbulent (weakly diffusive) flow and transported over longer distances. This turbulent transport by larger eddies cannot be successfully described by phenomenological statistical

methods. Its adequate representation requires hydro-dynamic modelling where at least the largest carrying eddies would be explicitly resolved. Moreover, intricate configurations of buildings, streets and other urban surface objects create preferable pathways for wind and turbulent diffusion. Along those pathways, the pollutants disperse over much larger distances, thus, raising air quality concerns in distant districts that otherwise would be considered as unaffected.

5 The highest concentrations of atmospheric pollutants are often found under persistent calm and cold weather conditions. This is also the case for the coastal city of Bergen, Norway, that is subject to this study. Such conditions are characterized by a stably stratified lower atmosphere and strongly suppressed turbulent diffusion (Davy and Esau, 2016; Zilitinkevich and Esau, 2005). In the most extreme cases, known as temperature inversions, the air temperature is increasing with height (Wolf et al., 2014) trapping the turbulence, and therefore, pollutants, in a shallow layer near the surface. Even in such conditions there
10 could be non-negligible turbulence as well as horizontal transport of pollutants driven by local circulations (Wolf-Grosse et al., 2017a). If the calm weather conditions persist sufficiently long, concentrations of air pollutants may reach levels in excess of regulatory thresholds for air pollution (Bergen Kommune, 2019; European Commission, 2019), while their spatial pattern would be highly heterogeneous.

Deleted: legal

Local air quality is frequently assessed with simplified statistical models, such as a family of Gaussian models, e.g. CALINE, or with more sophisticated models, which include parametrized turbulent diffusion, such as e.g. AIRMOD (Daly and Zannetti, 2007). A set of models recommended by the US and European environmental protection agencies could be found correspondingly on EPA (2019) and on EEA (2019). Statistical models are poor in predicting horizontal pollution transport in turbulent atmospheric boundary layers (ABLs) as they do not account for turbulent eddies, meandering flows and flow-surface structure interactions (Sun et al., 2016). In recent years, computational fluid dynamics models have been tried in assessments
20 of the urban and road-level dispersion. As an example, one may mention simulations by Steffens et al. (2014) of the wind tunnel experiment conducted by Heist et al. (2009). This study investigated concentration gradients of a tracer gas under twelve different roadway configurations. It concluded that near-road structures impact dispersion of pollutants near roadways, and therefore, atmospheric modelling is needed to design barriers to control the impact of vehicular emissions.

Recent advances in computational fluid dynamics and growing performance of parallel computers open an opportunity to
25 further extent the model-based urban air quality assessment. Turbulence-resolving, or at least turbulence-permitting, large-eddy simulation models have been already used in several cities to investigate turbulent flows and atmospheric pollution (e.g. Castillo et al., 2009; Gronemeier et al., 2017; Keck et al., 2014; Letzel et al., 2008; Park et al., 2015; Resler et al., 2017). Cécé et al. (2016) used a turbulence-permitting model to study air quality (nitrogen oxides, NOx) in a coastal mountain area of a tropical island where local circulations are well developed and influential. A consistent description of the circulation and pollution effects in a coastal mountain valley can be found in Fernando et al. (2010). These and other studies convinced us that
30 the large-eddy simulation models could accurately resolve the dispersion of pollutants even in a complex environment without the current need for potentially unsuitable statistical fitting.

Deleted: (e.g. Castillo et al., 2009; Gronemeier et al., 2017; Keck et al., 2014; Letzel et al., 2008; Park et al., 2015; Resler et al., 2017)

This study makes the next step on the bridge between idealized feasibility studies and applied air quality assessments. It utilizes the Large-Eddy Simulation (LES) Model PALM (Maronga et al., 2015) to investigate the dispersion of pollutants in a weakly

turbulent ABL under archetypical, but frequently observed, weather conditions, which lead to dangerous deterioration of the air quality, in our case in Bergen. Bergen is embedded in a relatively deep and narrow valley ending in a large ocean fjord. The minimum distance between the mountains is approximately 1 km when measured across the valley floor; it is approximately 4 km when measured between the mountain peaks, being up to 650 meters high. The polluted air during cold winter days tends to accumulate and stagnate in the bottom of the valley, whereas local circulations redistribute the pollutions across the central city districts. Thus, the local circulations are likely to determine air quality for the districts' populations. The effect of the local circulations could be accounted for in the PALM simulations (Wolf-Grosse et al., 2017a), but not in statistical models relying on coarse spatial resolution (~ 1 km) mesoscale models.

In this study, the dispersion of nitrogen dioxide (NO₂) and small-fraction particulate matter (PM_{2.5}) is modelled over the densely populated central Bergen under weak winds and typical scenarios of measured severe air pollution. As such, this study presents a necessary element of a an integrated urban pollution assessment and warning system envisaged in Baklanov et al. (2007). The chosen approach could be useful for the design of high-resolution local climate information services assessing informed decision-making at the municipal level (e.g. Bauer et al., 2015; Letzel et al., 2012; Ronda et al., 2017). Results from this study have already been adopted by the Bergen Port Authority (BOH) to assist their routine assessment of the impact of exhaust from ships in the harbour.

The manuscript has the following structure. The next section describes the local geographical and data context for the city of Bergen. The third section presents the modelling approach with PALM and the analysed meteorological scenarios. The fourth section presents the analysis and modelling results of this study. The fifth section provides a broader discussion with generalizations of the methodology, data usage and policy implications. The final section briefly summarizes the conclusions.

2. Data

2.1 Site description

The western coast of Norway is known for its picturesque mountain landscapes with sea inlets (fjords) penetrating deep into coastal valleys. Similar, if not as dramatic, settings with coastal valleys opening into sea inlets and bays are frequently accommodating harbour cities in other parts of the globe as well. Therefore, as we believe, the methodology and experience described in this study might be of interest to the research and urban management communities worldwide.

Bergen is the second largest city in Norway. This coastal city is located at 60.4°N and 5.3°E. The mountains around the city have peak elevations between 284 m and 643 m above sea level. They protect the valley from storms, significantly reducing the surface layer wind speed (Jonassen et al., 2013). The northern location with its weak solar irradiation during wintertime and cold air pooling in lower parts of the relief causes frequently observed but highly local temperature inversions during periods with persistently calm and clear weather. These inversions can last through several days. The resulting weak turbulent mixing of the lower valley atmosphere fosters the accumulation of locally emitted pollutants despite only moderate emissions. A climatology of temperature inversions and air pollution events in Bergen was previously reported in Wolf et al. (2014).

Deleted: .

Deleted: (Baklanov et al., 2007). The chosen approach could be useful for the design of high-resolution

Deleted: Harbour

Deleted: ship

Deleted: The

Bergen has more than 275,000 inhabitants. More than 75,000 of them reside in the central districts, located in the elongated central Bergen valley, which is in focus of this study. The valley opens toward a sea inlet (Byfjorden) in the northwest. It widens towards a large brackish water lake and more residential areas in the southwest. Figure 1 shows the relief of the studied area, the [model](#) simulation domain, as well as the location of the major air pollution sources in the city.

A reader may would like to know that the air quality in Bergen is monitored continuously since 2002 with an increasing number of measurement stations. In addition, a routine air quality forecast exists within the “Bedre Byluft” national project for monitoring and prediction of air pollution in Norwegian cities. The results from the measurements are available under (NILU, 2019). The predictions can be found under (Miljødirektoratet, 2019). Both, measurements and predictions are regularly summarised (Bergen Kommune, 2018; Tarrasón et al., 2017). The forecast system has recently been changed. It was based on the AirQuis/EPISODE air quality model using meteorological input from a 1 km mesoscale numerical weather prediction (NWP) model specifically run for this application. The new forecast system is based on the “[Nasjonalt Bergningsverktøy](#)” (NBV) tool. The NBV uses uEMEP as a dispersion model and the control run of the standard METCoOp Ensemble Prediction System (MEPS) for Norway with a 2.5 km [spatial resolution](#) ~~to calculate physics in the dynamical spectral model as~~ meteorological input (Denby and Stüld, 2015). With this, the previous AirQuis/EPISODE model at least to some degree included the valley topography into the dispersion calculations via a higher resolution of the meteorological input and a meteorological pre-processor that created a divergence-free wind field in the valley (Baklanov et al., 2007; The World Bank, 2009).

2.2. Data sets

This study demonstrates the high-resolution modelling methodology using the comprehensive local data context. The model simulations require high-resolution topographic data, emission inventories for the different sources of pollution, and vertical profiles of the large-scale (geostrophic) wind and temperature. All data sources are summarized in Table 1. Their detailed description is presented below.

The added value of the high-resolution model simulations is created by their ability to resolve the local relief features, which control the air flow and the turbulent dispersion. We run the PALM model with 10 m spatial resolution. To obtain the adequate relief, we used a topographic laser-based data set as described in Wolf-Grosse et al. (2017a). These topographic data were processed to ensure consistency and eliminate artefacts in the airborne [laser](#) data. The processed data constitute a Digital Elevation Model (DEM) for the Bergen municipality. However, this DEM does not cover the entire simulation domain, as we run the simulations over a significantly larger area to resolve multiple local flows steered by the topographic relief. We extended the DEM adopting Digital Surface Model (DSM) data. The DSM does not include buildings, ~~(the DEM does), but~~ outside the urbanized central districts, and sufficiently far away from the focus area, we assume that it is sufficient to resolve the major features of the relief and coastal line.

We selected the typical air pollution scenarios for this study based on joint air quality and meteorological data analysis. Routine air pollution measurements since 2003 are available from two of the local air pollution stations, namely, from the

Deleted: Nasjonal

Deleted: spectral

Deleted: as

Deleted: ,

Danmarksplass (DP) and Rådhuset (RH) stations in the central Bergen districts (see Fig. 1). The DP station represents an area affected by heavy road traffic, whereas the RH station serves as an urban background reference. We jointly analysed the air quality and meteorological records for several pollution episodes, when high concentrations of NO₂ and PM_{2.5} were observed. As local meteorological data we used measurements from the automatic weather stations located at the Florida neighbourhood (on top of the Geophysical Institute), the Ulriken summit, and in the Jekteviken and Skolten harbour areas. For the large-scale weather conditions we used data from the retrospective meteorological analysis ERA-Interim (Dee et al., 2011), and from the local boundary layer temperature profiles observed by a microwave radiometer MTP-5HE, which the Nansen Center has operated on top of the Geophysical Institute since 2011.

The central Bergen districts are affected by emissions from three major polluting sources: vehicles on the road network; ships in the Bergen harbour; and wood-burning fireplaces in private residences. There are no major industrial sources. The road network is contributing to both, emissions of NO₂ and PM_{2.5}. To specify these emissions, we used the gridded traffic density per road segment. It was available from registers at the national road authority for the main streets and from a traffic model run by the national road authority for the side-streets.

Emissions from ships at berth in the harbour are contributing to both, emissions of NO₂ and PM_{2.5}. The Bergen harbour is located in the historic city centre, and therefore, ships docked at berth in the harbour can directly contribute to the local air pollution. Here we considered only emissions from supply-vessels for the offshore oil industry, during their periods at berth in Bergen harbour. Due to their often-large number and their large sizes, these ships are major contributors to the emissions from the harbour compared to other relevant ship types like the frequent, but small short-range public transportation ferries or the less frequent, but larger freight or passenger ships. In summertime, emissions from cruise ships can exceed the emissions from the offshore supply-vessels in the harbour. In recent years, the cruise traffic seems to expand also into other seasons. The impact of these supply-vessels, that are docked right in the city centre of Bergen for extensive periods of time, to local air pollution is still highly disputed by the local population and therefore a matter of public interest and concern. The BOH provided us with data to specify the ships' location in the harbour between January 2015 and March 2016. For the emission rates per ship we used the emission factors from the certification documentation of two representative ships.

Domestic heating with wood-burning fireplaces only contributes to emissions of PM_{2.5}. We assessed these emissions through accounting for estates with registered active fireplaces. These data were provided by the Bergen Fire Department. For the emission rates per fireplace we used typical emission factors for the existing mixture of new, clean burning wood ovens and older ones with higher emissions. All three emission sources are graphically summarised in Figure 1.

3. Model

3.1 The PALM Model

The high-resolution air-quality assessment requires a proper atmospheric model, which can resolve the most energetic turbulence eddies in fully three-dimensional simulations. This ability to resolve the turbulent motions and interactions across

Deleted: ships being

Deleted: ,

Deleted: is able to

a multitude of scales distinguishes the turbulence-resolving, or at least turbulence-permitting, LES models from more traditional meteorological and cloud-resolving models. The traditional meteorological models have the whole turbulence spectrum collapsed in their closure schemes, even if those models are running at 1 km or sometimes higher resolutions. The turbulence closure schemes are designed for weakly stratified, horizontally homogenous ABLs over a flat terrain. Their application to a strongly stably stratified ABL commonly results in excessive vertical mixing, and hence, in erroneous pollutant transport. The results of the GABLS inter-comparison exercises are instructive to one working with this issue (Cuxart et al., 2006; Holtslag et al., 2013; Vignon et al., 2017).

We used the PALM (version 4.0, revision 1550) code in this study. The PALM code is developed by the PALM group at the Leibnitz University of Hannover, Germany (Maronga et al., 2015). This model solves the primitive hydro- and thermo-dynamic equations for incompressible, Boussinesq fluid. We ran the model for dry atmospheric conditions. This choice simplifies the model setup and is motivated by the fact that the worst air quality was always observed during fair-weather conditions, under prolonged occurrence of temperature inversions in the Bergen valley. Thus, the model was initiated only with temperature and wind profiles. The initial wind profiles also serve as geostrophic wind profiles or forcing, which drives the PALM simulations via the geostrophic wind term.

We ran PALM over a geographical domain centred on Bergen municipality. The domain spans 12.79 km in the zonal (East-West) and 17.27 km in the meridional (North-South) directions (left panel, Fig. 1). The surface geometry was set by the DEM-DSM data. The lateral boundary conditions in the model runs were periodic. The domain includes a 1000 m wide buffer zone at the outer boundaries of the model domain. This buffer was necessary to linearly interpolate the surface geometry, making it periodic in both lateral directions. We set the model grid resolution to 10 m. The grid is vertically stretched by 1% for each subsequent grid level above 750 m. In total there were 128 vertical grid levels reaching 1450 m above the sea level, which is more than two times the height of the highest mountain peak within the model domain. The surface boundary conditions were different for the land and water surfaces. We used the Neumann (constant flux) condition for the land grid cells, as they have low heat capacity and quickly adjust the skin temperature. For the water grid cells, we used the Dirichlet (constant temperature) condition, as water has a large heat capacity and retains an almost constant skin temperature over the simulation time window.

Turbulent mixing is an irreversible process. It changes the temperature stratification and the wind profiles in the model also during the model spin-up. We counteract this difficulty by introducing a nudging routine. It relaxes the horizontally averaged temperature profile towards the initial temperature profile. This nudging is enabled starting from the second grid level above the local surface. The relaxation time scale is $\tau = 43200$ s at elevations $z < 400$ m above the sea level. This time scale linearly decreases to $\tau = 1800$ s at $z > 600$ m. Nudging is therefore very weak in the lower parts of the atmosphere, allowing the temperature profile inside the Bergen valley to be determined dynamically through the boundary conditions. In the free atmosphere above the mountains, we applied much stronger nudging, retaining the initial temperature profile. A simpler setup of the PALM model has been tested successfully in its application to the stably stratified ABL inside the Bergen valley (Wolf-Grosse et al., 2017a).

Deleted: only

Deleted: first

Deleted: grid level over the

In order to simulate the dispersion of pollutants from the relevant sources, we used constant emission rates per grid cell [in the model](#). The emission rates were set separately for each of the three emission sources. Hence, NO₂ and PM_{2.5} tracers from the harbour, chimneys and roads are simulated independently. In the applied model version of PALM, all pollutants are treated as passive tracers. We argue that this is a reasonable choice for the wintertime air quality assessment in a local high-latitude domain. The background near surface ozone (O₃) that could serve as a source of additional NO₂ from existing NO is greatly depleted during the winter months. Sunlight that could lead to a photolytic conversion of NO₂ to NO and O₃ is largely absent. The nucleation of NO₂ into nitrate particles is slow compared to the transport and mixing processes. The particle growth beyond the PM_{2.5} limits is also a slow process, whereas the particle wet scavenging is minimal under the clear sky conditions considered in this study. Gravitational settling of particles for the size range below 2.5 µm is slow.

Deleted: .

3.2. Scenarios

The high-resolution environmental assessment and modelling is still a costly and computationally demanding exercise. Therefore, we selected the most relevant and impactful scenarios of high air pollution using joint statistical analysis of the long-term air quality and meteorological observations (Wolf-Grosse et al., 2017b; Wolf et al., 2014; Wolf and Esau, 2014). Here we will not repeat the details of that analysis. Nevertheless, a brief summary might be useful for new readers. Studies of the extreme deterioration of the air quality may frequently benefit from the fact that the high concentrations of pollutants are reached after several hours (or even days) of persistently calm clear-sky weather. Such weather conditions are limited to a few specific sets of local values of the meteorological parameters. The high concentrations are mostly observed under south-easterly winds over the Bergen valley. Due to a complex interaction between the locally forced circulation and the large-scale winds, the wind direction in the city is mostly south-easterly, too. That means, the air moves from the city towards the Bergen fjord [and harbour](#). The local wind therefore transports air pollution from the locations with the most intensive emission and towards the fjord. The efficiency of this transport is dependent on a convergence zone that can, dependent on the interplay between the local and larger-scale drivers, be located either over the fjord or over the city areas in proximity to the harbour. Different inhabited areas might therefore be affected by emissions from some or all local emission sources.

Deleted:

3.2.1. Meteorological conditions

As the baseline scenario for this study, we used the dominant weather conditions, which were observed during the cases with measured hourly mean NO₂ concentrations above the [regulatory](#) threshold of 200 µg m⁻³ at the DP site (Bergen Kommune, 2019). The initial and nudging temperature profile is the average of the temperature profiles measured over central Bergen during these high air pollution conditions as shown in Fig. 2. The geostrophic wind profile is the mean of the wind profile taken from [the](#) ERA-Interim [reanalysis](#) over all high air pollution conditions. Due to the low resolution of ERA-Interim and the specific topography at the Norwegian west coast, the lowest grid level from ERA-Interim is located at around z = 410 m, dependent on large-scale air pressure. Therefore, the local scale flows are missing. To define a wind profile adapted to the realistic topography, we modified the wind speed profile to linearly increase from zero below z = 300 m to the actual ERA-

Deleted: legal

Interim value at $z = 450$ m. Additional sensitivity experiments included the wind speed being 0.5 and 1.5 times of the baseline wind speed. The geostrophic wind direction in the baseline scenario was set to $wd = 110^\circ$. Sensitivity experiments used the wind directions of $wd = 90^\circ$ and $wd = 130^\circ$, which cover the interval of the relevant wind directions found in the ERA-Interim data. The wind profiles for the different scenarios are shown in Fig. 3.

5 During each single PALM simulation, we kept the model forcing constant, meaning that we conducted simulations with static boundary conditions. This is a necessary simplification in order to limit the computational efforts. Each scenario was initialised with a precursor simulation running over 12 hours in order to stabilise the model circulation. At the end of the precursor run, the mean meteorological parameters were not drifting any longer. After the initialisation, the simulations were continued for another six hours with emissions applied. For multiple simulations of the same meteorological condition, we used a restart option.

We do not have consistent surface heat budget observations in Bergen. To circumvent this problem, we inferred an approximate budget. The reviewed literature (Brümmer and Schultze, 2015; Nordbo et al., 2012) suggested as a reasonable value for the scenario a constant kinematic heat flux of $H_s = -0.02 \text{ K m s}^{-1}$ ($\sim 20 \text{ W m}^{-2}$) over the land cells. Over the water cells (lakes and fjord), we applied a constant surface temperature to reflect the very high heat capacity of the water mixed layer. We run three sensitivity experiments with the water surface temperature set to 0°C , 2.5°C , and 5°C . The baseline scenario is characterised by temperature inversions in the shallow ABL over Bergen.

15 All meteorological conditions for the different scenarios are summarised in Table 2. As a brief syntax for the naming of the different model scenarios, we use the three meteorological parameters (wind-speed, -direction and sea surface temperature in the fjord) separated by underscores e.g. ws01_wd01_ft01 for the baseline scenario. For all possible 27 combinations of meteorological scenarios we conducted the 12 h precursor runs, including dummy emissions from large streets (see below). These were not used for the final in-detail dispersion assessments but allowed for an initial assessment of the dispersion patterns in the valley for each meteorological scenario. The strong topographic steering in the valley restricts deviations in the simulated patterns produced by the sensitivity runs. The precursor sensitivity simulations therefore showed similar geographical concentration patterns but with varying accumulation strengths. In order to reduce the computational load from repeating all emission simulations for all 27 meteorological scenarios we conducted emission simulations only for the most notably different meteorological scenarios. These were the six scenarios ws01_wd01_ft01, ws02_wd01_ft01, ws03_wd01_ft01, ws03_wd02_ft01, ws03_wd02_ft02 and ws03_wd02_ft03.

3.2.2 Emissions

We obtained the road traffic emission rates from the annual mean daily traffic data. For this, we converted the traffic counts in the grid cell i of the PALM model to the emission rates, R_i , as

$$R_i = e_r \cdot N_i \cdot l_i$$

Deleted: reduce

Deleted: sea inlets

Moved down [1]: All meteorological conditions for the different scenarios are summarised in Table 2.

Deleted:

Moved (insertion) [1]

where N_i is the annual mean daily number of vehicles (ADT) passing a certain grid cell; l_i is the length of the road links per grid cell; e_r is a suitable emission factor for the existing park of vehicles and their emission characteristics in Bergen. The calculation of the emission factors for NO_2 and $\text{PM}_{2.5}$ from road traffic is described in detail in Appendix A.

We obtained the emission rates from wood-burning fireplaces (only $\text{PM}_{2.5}$), C_i , in a grid cell i as

$$C_i = e_c \cdot n_i$$

where n_i is the number of real estate properties with at least one registered wood-burning fireplace, per model grid cell i ; e_c is the typical emission factor for the wood-burning fireplaces. The calculation of this emission factor is described in detail in Appendix B.

Both emission rates R_i and C_i are defined as the surface fluxes in the model. It should be noted here that the *a posteriori* evaluation of the $\text{PM}_{2.5}$ concentrations in the simulations revealed that the provided emission rates from wood-burning fireplaces are too high. Therefore, we keep the concentration patterns but uniformly scale the calculated magnitudes by a factor of 0.1 in order to achieve reasonable concentrations, compared to the available measurements. This inconsistency in the emission rates may be because either the emission rates per oven were overestimated or the fireplaces are much less used than suggested by the local fire department. There is also a degree of uncertainty related to the actual effective emission height. In the areas with the highest densities of chimneys, they typically have their exhaust at the heights between the third and fourth floor. The effect of the emission height in the complex settings in the Bergen area should be assessed in more detail in future studies. However, at least the relative distribution of the pollutants should be reasonably represented assuming that the usage of ovens is similar between different neighbourhoods.

We obtained emission factors S_i for the grid cell i , in which the offshore supply vessels typically are docked as

$$S_i = e_s \cdot v_s$$

where e_s is the average emission factor per fuel spent for two representative ships provided by a local ship owning company; and v_s is the typical fuel usage for the ships while at berth. Both numbers are factors describing the emissions from the ship's secondary engines that are smaller than the main engines used for travel and provide the ships with power while at berth. The calculation of this emission factor is described in detail in Appendix C.

To compare to the most severe air pollution conditions in Bergen, all emission factors are calculated for typical high emission conditions, meaning rush-hour traffic, active usage of ovens for heating and standard ship emissions at berth for a busy day in the harbour in terms of the number of ships at berth.

Deleted: .

Deleted: level of

Deleted: -

Deleted: floors

Deleted: times

Deleted: daytime

4. Results

4.1. Baseline scenario simulations

The scenario ws01_wd01_ft01 is the baseline scenario for the air quality simulations (see Table 2). This scenario describes the most typical meteorological conditions during episodes with high air pollution in Bergen. The baseline scenario maintains a low-level (surface) temperature inversion in the lowermost 100 m above sea level almost everywhere over land in the Bergen simulation domain. The weak winds and wind channelling by the valley relief could be noted over the lowermost 400 m. Figure 4 shows the relief and vertical temperature and wind profiles in two selected areas of interest and 5 selected sub-areas for more detailed analysis. Area (a) represents the harbour area at the city centre, while area (b) represents an area with dense population and heavy traffic at the southwest from the city centre. Area (a) is strongly affected by the sea-land temperature contrast. The enhanced mixing over the water surface dilutes the temperature inversion there. Area (b) includes the heavily trafficked road junctions at DP and its direct surroundings (the sub-area 4). It also includes the Bergen meteorological observatory with a large amount of meteorological instrumentation collocated in sub-area 3.

Deleted: center

Deleted: center

Deleted: around

The wind speed and directions in the baseline scenario clearly indicate a low-level air transport in the Bergen valley towards its opening into Byfjorden – the sea inlet where the harbour is located. This channelled local circulation is likely enhanced by the sea-land temperature contrast as it has been described already through statistical analysis in Wolf et al. (2014) and dynamical analysis in Wolf-Grosse et al. (2017a). The latter study also addressed the distinct rotation in the wind-direction from down-valley near the ground to up-valley at around $z = 300$ m and down-valley again above that altitude. This rotation with altitude is believed to be caused by an interaction between the large-scale meteorological circulation, the local topographic steering and the local forcing through the land-sea temperature contrast.

The temperature inversion in the simulated baseline scenario was most pronounced in sub-area 4. We assume this sub-area to be the most representative of the interior valley. The other sub-areas show more or less pronounced effects of the cold air passing over warm water bodies. The simulated inversion profiles show multiple inversion layers that are not resolved in the measured vertical temperature observations (resolution at 50 m). The maximum heights of the inversion profiles in the simulations are somewhat shallower than what is typically observed. A more thorough discussion of the simulated and observed inversion profiles in Bergen can be found in Wolf-Grosse et al. (2017).

Deleted: .

Due to its high spatial resolution, the PALM simulations created a detailed geographical dispersion pattern of the NO₂ and PM_{2.5} concentrations in and around the city. Figure 5 shows the NO₂ concentration pattern created by the road traffic emission in the baseline scenario. The underlying geographical map (land and water surfaces) is given by grey shading as a Google Maps® picture. The use of geo-information tools to visualize the model simulations may facilitate the use of the simulated quantitative information in decision-making processes. The familiar map design simplifies orientation of and identification with the complicated pollution pattern.

The simulations revealed that emissions from road traffic are the dominant emission source for NO₂ over the populated parts of the Bergen valley during high air pollution episodes. This was also confirmed with a detailed analysis of the timing of peak

pollution levels from the local measurements at the two reference stations together with considerations of the local mean measured wind directions during high air pollution conditions (not shown). The baseline scenario indicates that the NO₂ concentrations are rather high (> 100 µg/m³) not only in direct proximity to the major roads but also in many adjacent urban areas. The exact shape and structure of the valley topography imprints strongly on the local dispersion conditions. Downwind of the major road transecting through the valley areas with a channelled flow appear. These are visible as streaks of elevated pollution concentrations sometimes as high as 150 µg/m³. These streaks are separated by areas with pollutant concentrations below 50 µg/m³. The atmospheric channelling follows the areas with the lowest topographic height. In addition, the small water bodies (lakes and fjords) appear as areas with relatively lower air pollutant concentrations due to their comparatively higher surface temperature and the subsequent enhanced ventilation of the lowest air layers. This fine-scale structure of the dispersion pattern is especially relevant, since the simulations indicated elevated concentrations also in areas without continuous measurements with a sufficient temporal resolution. Some urban areas might be affected by pollution transport over several kilometres and accumulation of emitted substances strongly different from the emission pattern.

Deleted: pollutant

The dominant emission sources for PM_{2.5} during high air pollution episodes in the central Bergen valley turned out to be the wood-burning fireplaces. This was visible in the PALM simulations as well as in the detailed analysis of the available air pollution observations at the two reference stations (not shown). Therefore, one could expect the highest concentrations of the PM_{2.5} in the densely populated areas. Figure 6 shows the pattern of the PM_{2.5} concentrations in the baseline scenario. Distinct to the NO₂ pattern, the PM_{2.5} pattern is more evenly distributed over the entire city. The concentrations peak in the areas of the near-surface flow convergence in the lower parts of the relief. Since the wind is weak, areas with higher density of fireplaces are clearly identifiable (Fig. 1).

4.2. The simulated patterns from different emission sources

A major advantage of the high-resolution modelling is related to the model's ability to simulate separately the impact and patterns of the different emission sources. As for NO₂, the most significant emission sources in Bergen are related to the ships in the harbour and the road traffic. This is likely a typical situation for many coastal cities around the globe. We have a reasonably good estimation of the absolute ship and traffic (road vehicles) emission rates and their spatial distribution to run independent simulations of their pathways and the NO₂ concentration patterns. The combined assessment of the absolute and relative contributions from these two local air pollution sources is provided in Fig. 7. The road traffic emission dominates the urban air pollution almost everywhere in the city. The absolute emission rate per ship in port is, however, quite high. Assuming that within the assessed time, each vehicle is moved by 10 km, the emission from each ship would correspond to the emission from 1377 typical vehicles in Bergen. Using the concrete counts of the cars passing the central area, it gives us that 16 ships at berth in the harbour emit about 127% of the total car emission in the considered area. Such a significantly higher emission has, however, smaller contribution to the street-level concentrations of air pollutants. The ships emit at higher elevations. As the vertical mixing is strongly reduced, their emission does not reach the ground before they are either transported offshore over the Byfjorden or diluted by the horizontal air movements.

Deleted: arrangement

Deleted: Byfjord

There are three major sources of the PM_{2.5} emission in Bergen, namely: ships, road traffic, and wood-burning fireplaces. Figure 8 shows that fireplaces dominate in their contribution to the local pollutant loadings, even after the rescaling to provide more reasonable concentrations. The emissions per ship are approximately 34 times of that from a single wood-burning fireplace after applying the scaling factor of 0.1. However, the fireplaces are emitting at lower heights above the ground and clustered in the most populated area. The ships emit the PM_{2.5} in the harbour area where the emitted pollution is, in many weather conditions, effectively transported offshore and diluted over the unpopulated fjord area. The PM_{2.5} concentrations from the road traffic are overall low.

At this point, however, the high uncertainty of PM_{2.5} emissions should be emphasized, as emissions by road, tire and brake abrasion have been neglected in this study, in addition to the necessary correction of the emission strength. Deposition of small and larger sized particulate (PM) may in addition play a crucial role and correct the simulated pattern to some degree. PM deposited on the ground can lead to high peak PM concentrations, when moist urban surfaces are drying off after several days with fair weather. This is especially relevant for major roads, where car induced turbulence can lead to a resuspension of dust greater than what the local wind conditions would generate.

4.3. Air pollution pattern sensitivity to meteorological scenarios

The baseline weather scenario represents the most typical meteorological conditions leading to build-up of the air pollution in the city. The concrete observed weather conditions, however, vary and may differ from the considered scenario. Therefore, the air quality assessment needs to characterize sensitivity of the pollution distribution patterns to imposed perturbations of the meteorological parameters. The strong topographic steering in the valley restricts deviations in the simulated patterns produced by the sensitivity runs. Overall, the precursor sensitivity simulations showed very similar geographical concentration patterns but with varying accumulation strengths. The baseline and sensitivity scenarios are listed in Table 2. Only the weather scenarios with the most notable differences in the local dispersion conditions will be discussed below for shortness of presentation.

The stronger off-shore (easterly) wind (scenarios ws03_wd02_ft01 and ws03_wd02_ft02) deflect the pollutant plumes over the fjord water (Fig. 9 for NO₂ and Fig. 10 for PM_{2.5}) reducing the pollutant transport out of the inhabited city centre and the harbour area. The waterfront takes most of the impact. The concentration patterns in the valley interior remain largely unchanged. We note that the pollution patterns became more fragmented in those scenarios indicating somewhat reduced stagnation and accumulation of pollutants in the valley.

The most influential weather scenario with respect to the local dispersion conditions is ws03_wd02_ft03 (see Figs 11 and 12). A reversal of the flow at some elevation can be recognised from the up-valley transport of the emissions from ships in the harbour in Fig. 11, while the wind vectors at the lower (z = 55 m) level still suggests a down-valley flow closer to the ground.

This reversal was already visible in the vertical profiles in Fig. 4 but at the higher levels, so that it was invisible in the plume-dispersion at the surface (Fig. 7). The flow reversal is also vertically more extended in this simulation (not shown). The reason for this is a change of the interplay between the locally forced circulation due to the land-sea temperature contrast, the topographic steering and the large-scale meteorological circulation. The weaker convergence over the fjord due to the lower

Deleted: the

Deleted: ; the

Deleted: ;

Deleted: the

Deleted: the last source (

Deleted:) absolutely dominates

Deleted: its

Deleted: cases

Deleted: emissions

Deleted: allow for

Deleted: 1

water surface temperatures and the stronger large-scale winds weaken the down-valley circulation, reducing venting of the pollutants from inhabited areas to the water surface in Byfjorden. Hence, the populated areas close to the water, front experience increased accumulation of pollutants, especially visible for the PM_{2.5} concentrations in Fig. 12. This result is counter-intuitive, as a stronger large-scale wind allows for the increased accumulation. At the same time, the highest concentrations of NO₂ are reduced as the large road junctions in the interior of the valley are now affected by stronger winds and hence dispersion of the pollutants.

5. Discussion

The routine monitoring of urban air quality with a few accredited measurement stations is nowadays the main instrument of environmental protection and control mechanisms. The decision-making process is frequently assisted with statistical assessment, zonation and forecasting of the concentrations of pollution levels. As the monitoring becomes cheaper and more accessible, a more detailed monitoring of the concentration levels in the urban environment is gradually emerging (see e.g., the CurieuzeNeuzen project; CurieuzeNeuzen, 2019). For example, the area of the Bergen municipality is monitored today with five stations measuring the air quality that characterize the concentrations in the most populous districts. However, as we demonstrate in this study, such an observational network is sub-optimal and not fully representing the complexity caused by the topography of a coastal valley environment. The typical spatial scales of the surface topography and heterogeneity require in principle a denser monitoring network and refinement of the forecast models in order to reach a deeper understanding of the local dispersion conditions at adequate spatial scales. In the case of Bergen, the model's resolutions of a hundred meters or finer is necessary in order to resolve the processes for distribution and accumulation of air pollutants near the surface, (Chevnet et al., 2017).

Such high-resolution models are now available. The existing computer capacity allows running the model simulations for several typical meteorological scenarios, which are associated with the typically observed air pollution episodes. In Bergen, it was found that mainly a few meteorological scenarios result in high pollution concentrations (Wolf et al., 2014). Therefore, the high-resolution scenario modelling is not only technically feasible but also would create an added value for the risk and vulnerability assessment for urban areas. In future, high-resolution models could be coupled with existing routine numerical weather forecasts and data assimilated from measurement stations. The present study was, however, limited to the air quality assessment tasks, which are related to a local policy making and planning processes. It does not intend to advance to the routine local air quality forecast.

All emissions of air pollution are harmful to the environment at large, however in development of pollution policies and mitigation strategies quantification of the major sources of pollution and in particular their impact on the observed elevated concentrations of the pollutive substances at the street level is needed. This is a difficult assessment task as the emitted pollution is transported and dispersed by an intricate pattern of the turbulent local flows in an urban environment. The dynamic nature of the concentration patterns and their sensitivity to the variations of the meteorological conditions are not fully considered.

Deleted: fjord

Deleted:

Deleted: pattern

Deleted: urban

Deleted: covered

Deleted: .

Deleted: only

Deleted: of the

Deleted: process.

Deleted: is

This study demonstrates that the use of high-resolution atmospheric models can contribute to overcome this challenge. The models can simulate the dynamics and specific contribution of each of the individual air pollution sources into the total concentration of each pollutant, here demonstrated for NO₂ and PM_{2.5}. Such simulation results might be utilized to tune policies and regulations in a dialog with the major polluters and the citizens. In the presented case of the Bergen Port Authorities, they assess the simulated concentration patterns to minimize the impact of the ship exhaust on the city air quality. It should be noted here that the high-resolution dispersion pattern produced in this study is based on physical meteorological fields with an equally high resolution, thus including the effect of topographic steering and other local forcing, consistent with how the simulations are defined. Other attempts to produce high resolution dispersion patterns in Bergen and other places are to our knowledge based on lower resolution meteorological fields but high-resolution emission maps (e.g. Miljødirektoratet, 2019). This gives the maps an erroneously high-resolution appearance that however neglects the important impact of local flow steering.

The high-resolution modelling is a relatively new approach in meteorology and air quality studies. Several scientific challenges need to be resolved in future studies. Model simulations with this amount of spatial detail are difficult to validate against observations. While it is possible to state that the simulated pollutant pattern and meteorological conditions are reasonably similar to the observations, a rigorous validation is challenging. Usual validation against operational weather stations run by meteorological services is not possible due to a too low spatial density of the observations. Including the abundantly available citizen observations might be a pathway for future validation (Johansson et al., 2015; Schneider et al., 2017; Zilitinkevich et al., 2015) but goes beyond the scope of this study. General validation of the modelling technique is required with dedicated measurement campaigns or experiments (e.g. Hertwig, 2013). The Bergen test bed with its high density of meteorological observations could serve as a proper validation case.

The scenarios for the initialisation of the model simulations should be improved in order to increase correspondence between observed and modelled conditions (e.g. Maronga et al., 2019). This is necessary both, for improving the realism of the simulations but also for their validation. The subset of simulated conditions needs to be compared to the relevant subset of observed conditions. For this, a better correspondence with observed cases is necessary. It is clear that model simulations with periodic boundary conditions, as it has been used in this study, are only an intermediate step. Simultaneously, a reduction of the computational costs should be assessed. Both could be achieved through nesting of model domains with different spatial resolutions as it is already routinely done for coarser scale simulations with e.g. the Weather Research and Forecasting (WRF) model (Cécé et al., 2016; Muñoz-Esparza et al., 2017).

6. Conclusions

This study applied the turbulence-resolving model PALM in the local air quality context to assess the conditions and consequences of low-level emission of nitrogen dioxide (NO₂) and particulate matter (PM_{2.5}) from the major polluters in the city of Bergen, Norway. We ran simulations at 10 m resolution over a very large geographic domain spanning 12.79 km in the

Deleted: pollution category. The

Deleted: .

Deleted: harbour authorities, the harbour administration assesses

Deleted: a faulty

Deleted: science

Deleted: Initialisation

Deleted: (e.g. Maronga et al., 2019)

zonal (East-West) and 17.27 km in the meridional (North-South) directions. In order to assess the possible bandwidth of circulation conditions inside the valley we conducted a set of eight sensitivity runs with varying model forcing in addition to the baseline scenario reflecting the most typically observed air pollution conditions. We simulated separately the emissions from the three major local emission sources of air pollution. These are car traffic, heating in wood-burning fireplaces and emissions from offshore supply vessels docked in the harbour area, located next to the city centre.

The results support the following conclusions: The very high-resolution numerical atmospheric simulations change our perspective on the magnitude and dynamics of the air quality under the most typical air quality hazard situations. Small topographic features like the shape of the valley floor or local water bodies strongly affect the dispersion and accumulation conditions for air pollutants. This results in areas with a channelled flow, where air with a high pollution load (in excess of 150 µg/m³ for NO₂) can be transported over several hundred meters or even kilometres. Especially for PM_{2.5} both, areas with maximum emissions, but also areas with minimum ventilation show higher concentrations in the dispersion maps. The sensitivity runs highlight the relevance of the interplay between the local surface conditions and the larger-scale atmospheric circulation. Attempts to model the dispersion of pollutants in this city at resolutions that are unable to resolve this interplay and the local fine-scale topographic features, will most likely fail to produce the necessary details of the dispersion map.

The separate analysis of emissions from the three major emission sources was helpful in a source-appointment of the overall pollution levels in the city centre. An assumed high impact of the ships located in Bergen harbour as the major polluter in the city was not generally confirmed in the simulations during winter conditions. Despite the 16 supply-vessels in the harbour emitting 27% more NO₂ than all cars in the simulated domain, their relative impact on the air pollution over inhabited parts of the valley near the ground, exceeds 25% over a larger area only for one of the simulated scenarios. This could however be different for other, similar harbours, as our simulations attributed this lower impact to the intrinsic structure of the local circulations at the waterfront.

The usage of high resolution data and numerical model simulations for meteorological services gives a so-far unprecedented amount of detail for end-users and allows for a direct connection of the scientific issues with an understanding of the societal dimensions as stated in the Pan-Eurasian Experiment (PEEX) white paper addressing a holistic understanding of the feedbacks and interactions in the land-atmosphere-ocean-society continuum (Lappalainen et al., 2016). The Bergen Port Authority (BOH) deemed the results from this study as helpful for their efforts to manage and reduce the impact of emissions from ships in the harbour on the local population. This study serves as a demonstration of a concept for an approach of statistical dynamical downscaling applied to high resolution services by making LES usable for a reduced and therewith feasible amount of possible model simulations under selected meteorological scenarios.

30 Author contribution

All co-authors conceptualised the study and designed the applied methodology. LHP and TW collected the data. LHP and TW acquired the funding. IE was the project manager. IE and TW designed and applied the software. IE had a role of supervision

Deleted: scenarios

Deleted: .

Deleted: are clearly visible

Deleted: .

Deleted: ships

Deleted: coast

Deleted: Harbour

Deleted: their

Deleted: on

for TW. TW developed the visualisation with support from IE and LHP. IE initialised the manuscript. TW wrote the first manuscript. All authors contributed to the review and editing of the manuscript.

Deleted: final

Acknowledgements

This study is performed within the GC Rieber Climate Research Institute at the Nansen Center under a contract with Bergen Port Authority (BOH). The initial developments were done through a PhD fellowship and subsequent additional funding from the GC Rieber foundation. Ulrik Jørgensen, Sverre Østvold, Nils Møllerup and Even Husby - BOH, and Eva Britt Isager and Per Vikse – Climate section, Mette Iversen and Nils-Eino Langhelle – Section for Plan- and Geodata, Per Hallstein Fauske and Arve Bang, Health Care Agency, all Bergen municipality, provided the user-perspective and valuable cooperation.

Deleted: This study

The study has used external data from the following sources: Endre Leivestad and Trond Grindheim - Bergen Municipality, Haso Bradaric – Norwegian Mapping Authority, Ole Edvard Grov and Joachim Reuder – University of Bergen, Rita Våler – Norwegian Institute for Air Research, Stig Nyland Andersen – Norwegian Public Road Authority, Even Husby – BOH, and the European Centre for Medium-Range Weather Forecasts (ECMWF). The PALM model is developed and maintained at the Institute of Meteorology and Climatology, Leibniz University Hannover. CPU time was provided through the Norwegian Supercomputing Project (NOTUR II grant numbers nn2993k and nn9528k). The illustrations were prepared as a colour-coded semi-transparent contour and shading layers on top of a Google Maps background (<http://code.google.com/apis/maps/>), using the `get google map version 2.0` function from the MathWorks file exchange <https://se.mathworks.com/matlabcentral/fileexchange/27627-zoharby-plot-google-map>).

Deleted: This study was funded by Bergen Harbour Authority (BOH). Ulrik Jørgensen, Sverre Østvold, Nils Møllerup and Even Husby - BOH, and Eva Britt Isager and Per Vikse – Climate section, Mette Iversen and Nils-Eino Langhelle – Section for Plan- and Geodata, Per Hallstein Fauske and Arve Bang, Health Care Agency, all Bergen municipality, provided the user-perspective and valuable cooperation. Initial developments were funded through the GC Rieber foundation PhD fellowship.¶

Table 1. Data sets used for this study

Dataset	source	Format, data type (period)
Topographic data		
Laser measurements from over the square area of size 10 x 10 km centred over Bergen city hall.	Bergen municipality, already combined and filtered in previous project	LAS point cloud
Topographic height for Bergen municipality	Bergen municipality	DSM, GeoTiff, 10 m horizontal resolution
Topographic height for surrounding municipalities	Norwegian mapping authority	DSM, GeoTiff, 10 m horizontal resolution
Water surfaces	Bergen municipality	Shape file, polygon
Local measurements and large-scale circulation		
Microwave radiometer measurements (inversions)	Own data, NERSC	ASCII, time series (2011-2016)
Weather stations Geophysical Institute	University of Bergen (UiB)	ASCII, time series (2011-2016)
ERA-Interim (large scale meteorology)	European Centre for Medium Range Weather Forecasts (ECMWF)	Netcdf, map with different resolutions and time scales
Weather stations at Skolten and Jekteviken	BOH	ASCII, time series (2014-2016)
Air pollution measurements	Norwegian Institute for Air Research (NILU, 2019)	ASCII, time series (2003-2016)
Emission data		
Main streets (centre line and traffic)	Bergen municipality	Shape file, traffic information
Side-streets (centreline and traffic)	National road authority	Shape file, traffic information
Traffic at Danmarksplass	National road authority	Excel list with traffic counts for different time periods
Properties with fire places	Bergen fire department	Shape file, point data, list
Harbour log	BOH	Excel list with ship type, name, arrival and departure, docking time (2015-2016)

Formatted: Line spacing: single

Formatted: Line spacing: single

Formatted: Line spacing: single

Formatted: Line spacing: single

Formatted: Line spacing: single

Formatted: Line spacing: single

Formatted: Line spacing: single

Formatted: Line spacing: single

Formatted: Line spacing: single

Formatted: Line spacing: single

Formatted: Line spacing: single

Formatted: Line spacing: single

Formatted: Line spacing: single

Formatted: Line spacing: single

Formatted: Line spacing: single

Formatted: Line spacing: single

Formatted: Line spacing: single

Formatted: Line spacing: single

Table 2: Parameters for the different meteorological scenarios. *

Parameter	Name	Description
Wind-speed	ws01	Vertical profile baseline scenario
	ws02	0.5 times baseline scenario
	ws03	1.5 times baseline scenario
Wind-direction	wd01	Baseline scenario, 110°
	wd02	90°
	wd03	130°
Surface temperature Bergen fjord	ft01	Baseline scenario, 2.5°C
	ft02	5°C
	ft03	0°C

*As a brief syntax for the naming of the different model scenarios we use the three meteorological parameters (wind-speed, -direction and sea surface temperature in the fjord) separated by underscores e.g. ws01_wd01_ft01 for the baseline scenario.

- Deleted: The
- Deleted: identification
- Deleted: different
- Formatted: Font: Not Bold
- Formatted: Font: Not Bold
- Formatted: Font: Not Bold
- Formatted: Font: Not Bold
- Formatted: Font: Not Bold
- Deleted: is boh_ followed by
- Formatted: Font: Not Bold
- Formatted: Font: Not Bold
- Deleted: boh_
- Formatted: Font: Not Bold
- Deleted:).
- Formatted: Font: Not Bold

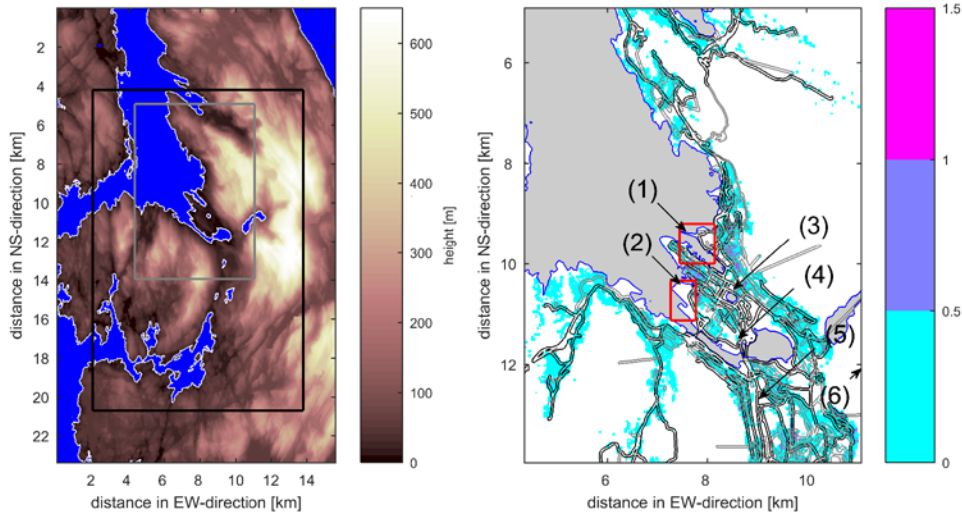


Figure 1: Left: Topographic map of the Bergen area. The black square indicates the final model domain used for the PALM simulations; the grey square indicates the focus area for the analysis of the PALM simulations. Right: Emission map for Bergen City Centre used in the PALM simulations. Colour shading indicates the number of parcels of land with registered active fireplaces (for domestic heating) per 10 x 10 m² grid-square. Black/grey lines indicate the location of main/side roads. The main harbour areas Jekteviken (southwest, 2) and Skolten (northeast, 1) are indicated with two red squares. The numbered arrows point at the location of the automatic weather stations at (1) Skolten, (2) Jekteviken, (4) Florida and (6) Ulriken, and the air pollution stations at (3) Rådhuset and (5) Danmarksplass.

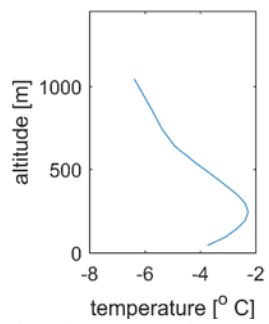


Figure 2: The mean vertical temperature profile used for nudging in the PALM model domain.

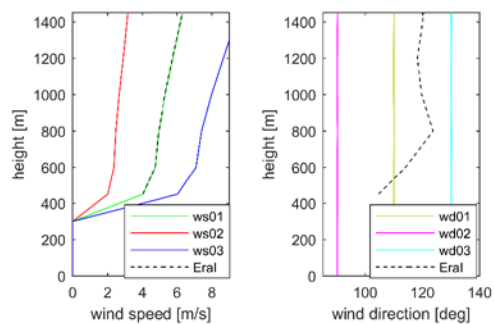


Figure 3: Mean wind speed (left panel) and wind direction (right panel) profiles in the three considered scenarios and sensitivity experiments. In addition, the original ERA-Interim profiles (ERA-I) are given as dashed lines.

Formatted: Font: Not Italic

Formatted: Font: Not Italic

Formatted: Font: Not Italic

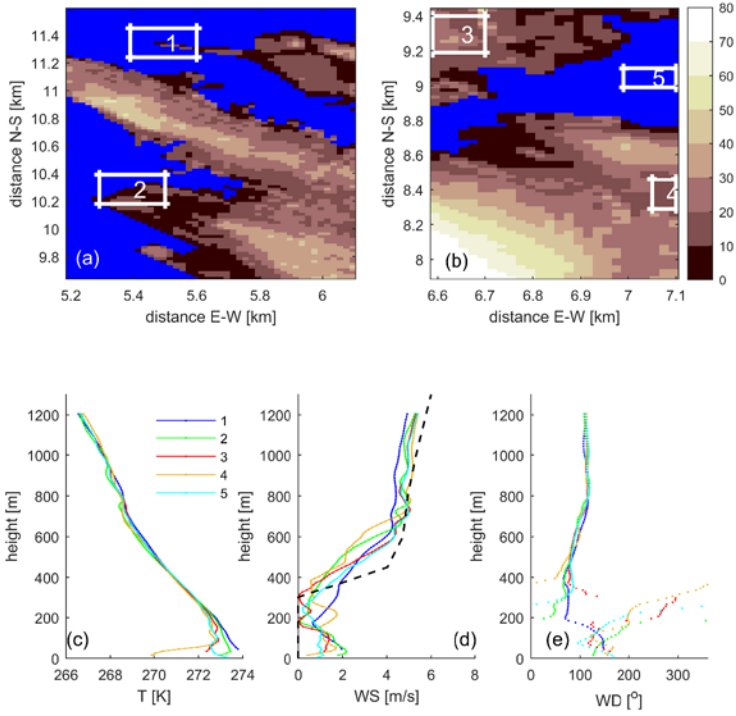


Figure 4: The meteorological conditions averaged over the last 15 min of the 12 h precursor simulation for the baseline scenario ws01_wd01_ft01. The conditions were sampled in two areas: (a) the harbour area at the northwest end of the city centre where the profiles 1 and 2 were sampled; (b) the heavy traffic and densely populated area at the southeast end of the city centre where the profiles 3, 4 and 5 were sampled. The temperature profiles (c) and the wind speed (d) and direction (e) profiles were averaged over the sub-areas shown by the white rectangles.

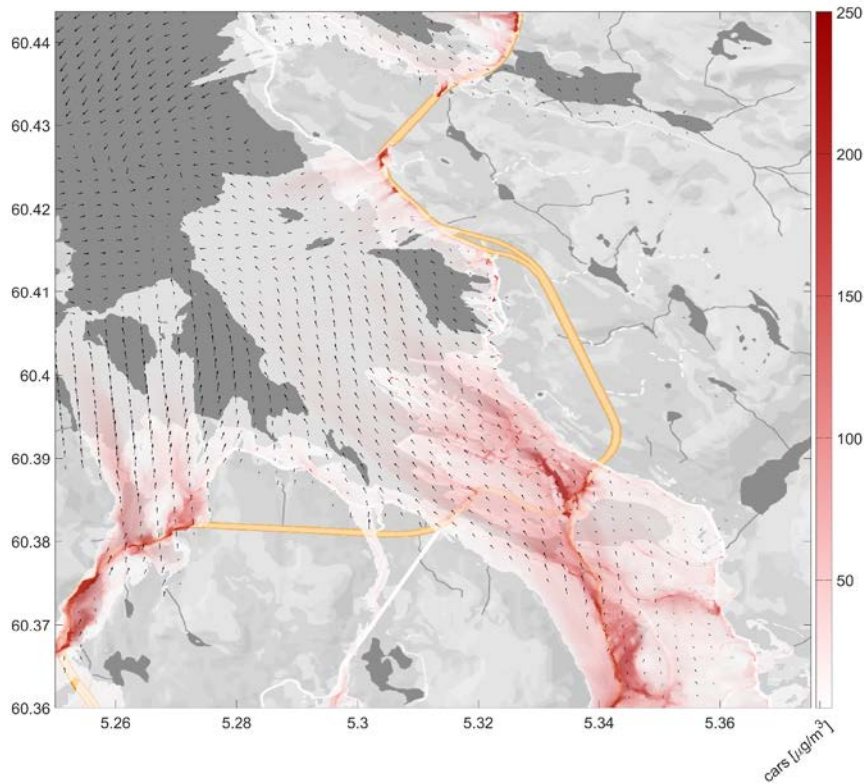


Figure 5: The simulated NO₂ concentration pattern in the baseline scenario ws01_wd01_ft01 in the central part of the model domain. The emission source is the road traffic (cars). The concentrations were sampled at 5 m above the surface. Concentrations below 5 µg/m³ are omitted. The wind vectors characterize the flow 55 m above the surface. The sampled data were averaged over the last 15 min of the 6 h dispersion run. The concentrations are given by semi-transparent colour shading overlaid the grayscale land and water surface, taken from Map data @2019 Google.

Deleted: The concentrations are given by semi-transparent colour shading. ...

Formatted: Superscript

Deleted: underlaying

Deleted: was

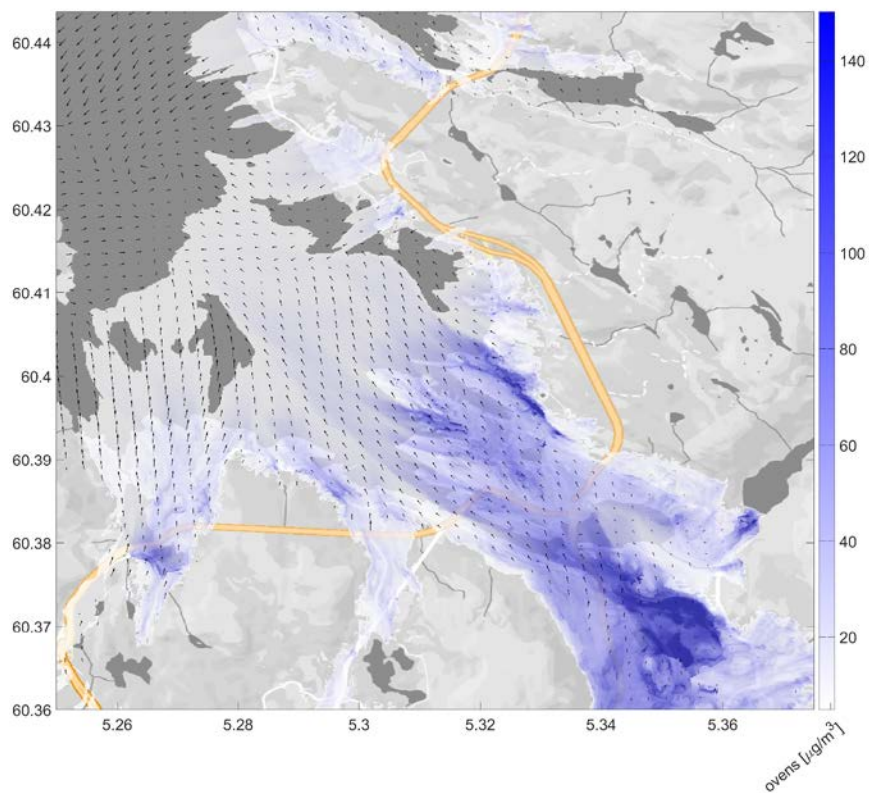


Figure 6: The same as in Fig. 5 but for the PM_{2.5} concentration pattern. The emission source of PM_{2.5} here was associated with the wood-burning fireplaces. The concentrations are given by semi-transparent colour shading overlaid the grayscale land and water surface, taken from Map data © 2019 Google.

Deleted: underlaying

Deleted: was

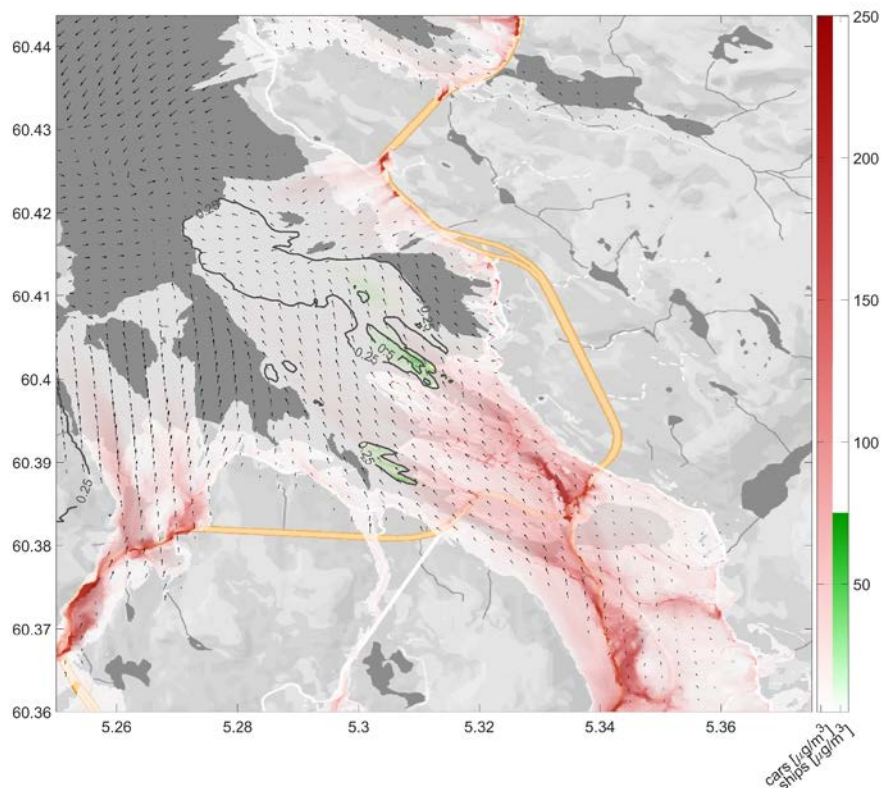


Figure 7: The same as in Fig. 5 but for the road traffic emission (red shading) and the ships in the harbour emission (green shading) plotted together through the artificial colour palette. Concentrations below 5 µg/m³ are omitted. The relative contribution of the ship emissions into the total local NO₂ concentration are given by contours. The concentrations are given by semi-transparent colour shading overlaid the grayscale land and water surface, taken from Map data @2019 Google.

Formatted: Superscript

Deleted: underlaying

Deleted: was

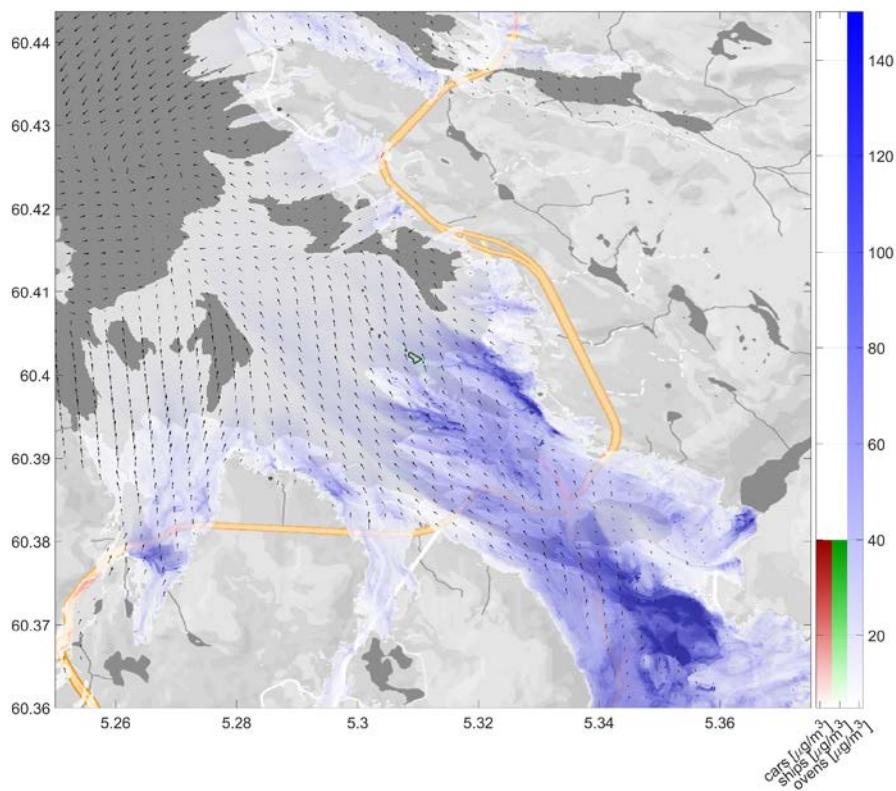


Figure 8: The same as in Fig. 7 but for the $PM_{2.5}$ emissions from the road traffic (red shading), ships in the harbour (green shading) and wood-burning fireplaces (blue shading). Due to the dominating impact of the emissions from wood-burning fireplaces, the red and green colours are only visible at their emission hot spots in the harbour and at the major roads in the south-eastern part of the domain. The concentrations are given by semi-transparent colour shading overlaid the grayscale land and water surface taken from Map data @2019 Google.

Deleted: underlying

Deleted: was

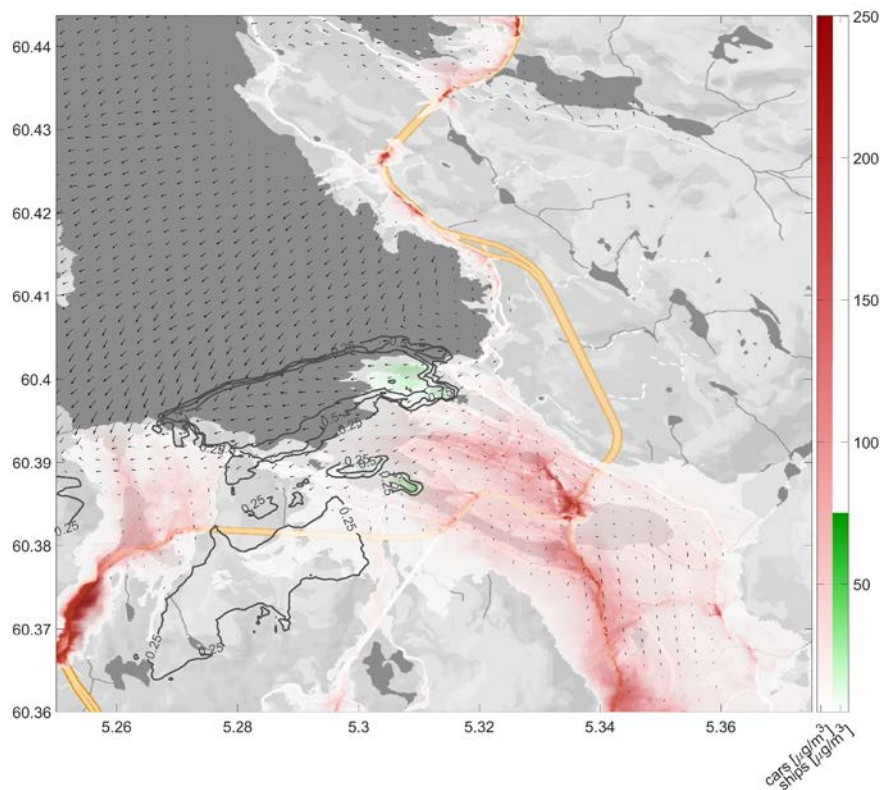


Figure 9: The same as in Fig. 7 but for the scenario ws03_wd02_ft02. The concentrations are given by semi-transparent colour shading overlaid the grayscale land and water surface taken from Map data @2019 Google.

Deleted: underlying

Deleted: was

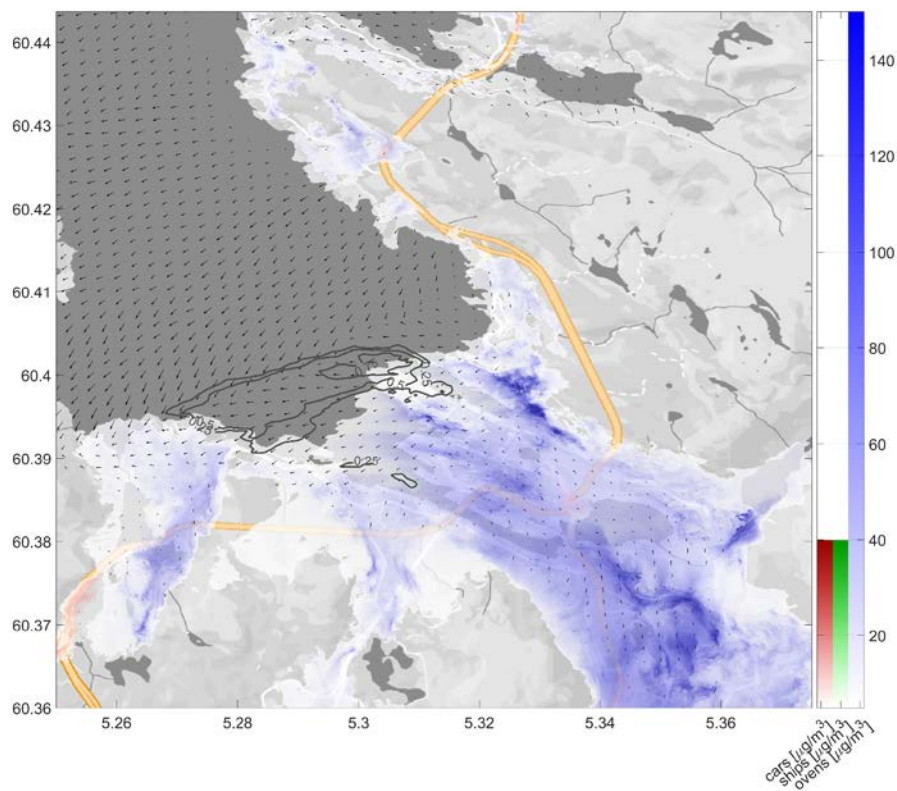


Figure 10. The same as in Fig. 8 but for the scenario ws03_wd02_ft02. The concentrations are given by semi-transparent colour shading overlaid the grayscale land and water surface taken from Map data @2019 Google.

Deleted: underlaying

Deleted: was

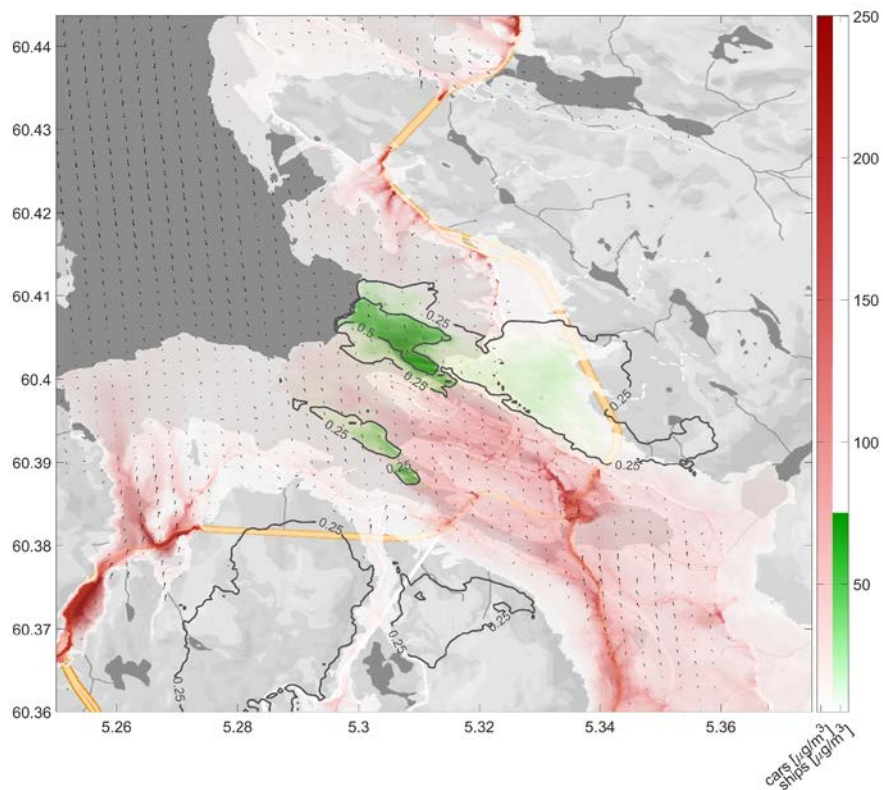


Figure 11. The same as in Fig. 7 but for the scenario ws03_wd02_ft03. The concentrations are given by semi-transparent colour shading overlaid the grayscale land and water surface, taken from Map data @2019 Google.

Deleted: underlaying

Deleted: was

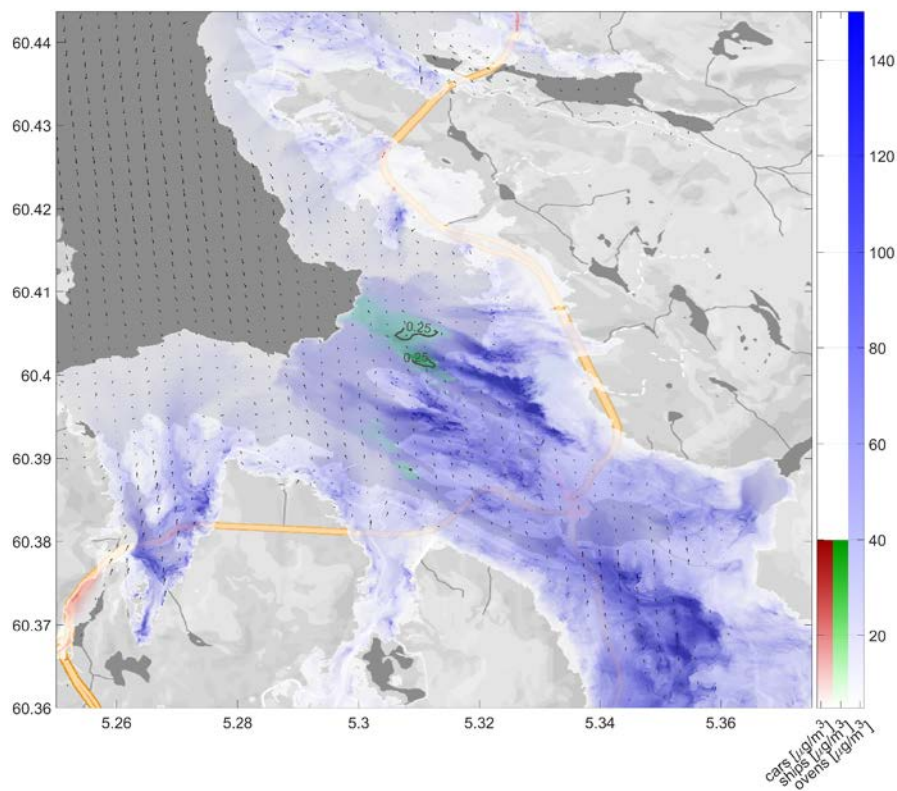


Figure 12. The same as in Fig. 8 but for the scenario ws03_wd02_ft03. The concentrations are given by semi-transparent colour shading overlaid the grayscale land and water surface taken from Map data @2019 Google.

Deleted: underlaying

Deleted: was

Appendix A: Emissions from road-traffic

The emissions from road-traffic vary strongly with the composition of the vehicle fleet passing a road link. We calculated emission factors specifically for the vehicle fleet at use in Bergen.

Traffic flow information from the national road authority overlaps with the traffic flow information from Bergen municipality (section 2.2). Both include information on main roads. We assume the measurement-based traffic flow information from Bergen municipality to be more representative than the model-based traffic flow information from the national road authority. We therefore combined both into one consistent dataset giving preference to information from Bergen municipality wherever possible. The information used from the two datasets are shown in Fig. A1.

We decided to neglect the emissions from tunnels. This is in contrast to another study recently conducted for the Bergen area based on statistical modelling (Denby, 2014). This study split all emissions from within tunnels equally to both ends. This approach neglects the ventilation system especially at use in longer tunnels that always runs either towards one side or removes air through vertical ventilation shafts at some distance from the tunnel ends, mostly away from inhabited areas. This will lead to an underestimation of street emissions at the positions of the ventilation shafts and some tunnel exits but avoids the problem of an unknown overestimation of emissions at all tunnel openings.

For the separation of the vehicle fleet in Bergen into different vehicle classes we used information from an Oslo-based survey (Hagman and Amundsen, 2011). In this survey small passenger cars account for 72 % of all road-traffic. The remaining 28 % are composed of small diesel driven delivery cars (15 %), heavy transportation with lorries (10 %) and busses (3 %). The passenger cars are furthermore divided into 47.6 % diesel driven cars, 49.7 % gasoline driven cars and 2.6 % electric cars. Due to the high road taxes for any other than electric cars and the increasing number of electric cars over time, especially in the Bergen area, we assume that electric cars are used four times as often than other types. This leads to the final distribution of passenger cars of 44 % diesel driven, 46 % gasoline driven and 10 % electric. From the 3 % bus traffic, 27 % are gas driven (Målfrid Vik Sønstabø, public transport authority, personal communication, 2016). These are assumed to have negligible emissions of NO₂ and PM_{2.5}.

For the specific emissions per driving distance we use constant values for all streets in Bergen and a constant composition of the traffic pattern. Due to a lack of information on the specific vehicles, speeds and driving patterns along each street we assume all vehicles to have emission class Euro 5 and that the vehicles are standing in congested traffic for 50 % of the time. This gives some errors due to different driving pattern or vehicle-fleet compositions along specific roads, but a more detailed specification of the emissions would be beyond the scope of this work. The emission factors per distance and vehicle type are stated in Table A1.

The traffic flow information is given in annual mean daily traffic flow. Typically, the highest NO₂ pollutant concentrations are measured between 07:00 UTC and 17:00 UTC during working days and in February. For the assessment of the traffic during these times we used the traffic information from Danmarksplass, close to the DP air pollution reference station. This area should be representative of the traffic in Bergen, as it is one of the main streets handling the city traffic. During the 10

Deleted: work

hours 67 % and 75 % of all traffic happens with passenger cars/ small delivery vans and heavy lorries/city buses, respectively.

In addition, 1.125 and 1.011 times of the annual mean daily traffic happens during working days and February for passenger cars/small delivery vans. The corresponding numbers for heavy lorries/ city buses are 0.965 and 1.298, respectively.

The resulting total emission factors for road-traffic are thus, $e_r = 5.54 \cdot 10^{-5} \mu\text{g}/(\text{m}^3 \cdot \text{s})$ for NO_2 and $e_r = 2.10 \cdot$

5 $10^{-6} \mu\text{g}/(\text{m}^3 \cdot \text{s})$ for $\text{PM}_{2.5}$ distributed over the 100 m^2 large grid cells. All emissions from road traffic are averaged over 3×3 grid cells to follow the width of large streets, where most of the emissions take place and include the effects of vehicle-induced turbulence.

Deleted: work

Tabell A1: Emission factors e_r for NO₂ og PM_{2.5} for the different vehicle types.

Vehicle type	NO ₂ (g/km) *		Mean emission factors (µg/m ³ s) **	PM _{2.5} (g/km) *		Mean emission factor (µg/m ³ s) **
	Congested city traffic	Freely flowing city traffic		Congested city traffic	Freely flowing city traffic	
Passenger car diesel	0.350	0.183	2.51 10 ⁻⁵	0.0043	0.0017	3.52 10 ⁻⁷
Passenger car gasoline	0.004	0.002		0.0009	0.0006	
Passenger car electric	0	0		0	0	
Small delivery vans	0.300	0.217	5.47 10 ⁻⁵	0.0050	0.0021	7.51 10 ⁻⁷
Heavy lorries	0.899	0.481	1.79 10 ⁻⁴	0.0904	0.0385	1.68 10 ⁻⁵
City bus diesel	2.530	1.430	3.76 10 ⁻⁴	0.0083	0.0041	1.22 10 ⁻⁶
City bus gas	0	0		0	0	

* Source: Hagman and Amundsen (2011). **Calculated for this study.

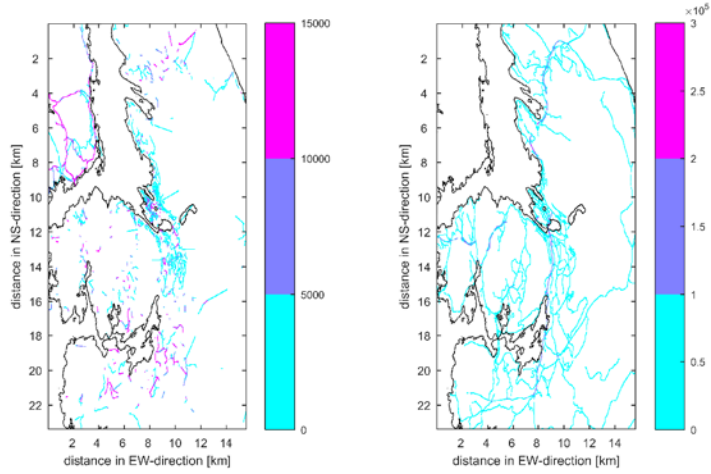


Figure A1: Annual mean daily traffic flow in vehicle meters ($N_i \cdot l_i$) in each PALM grid cell for side-streets (left panel) and main roads (right panel). Both colour shadings have the unit [m]. Roads in the left panel that are appearing to go straight into mountainous areas are sporadically used small utility roads. For simplicity of the underlying traffic model they are indicated as straight roads instead of following their actual path. Emissions from these roads are negligible.

Appendix B: Emissions from wood-burning fireplaces

The emission factors from wood-burning fireplaces assume constant emissions per oven according to the existing mix of oven types in Bergen and their estimated typical usage (both provided by the Bergen Fire Department). According to these numbers, there are 25 % modern ovens with catalysator, 25 % modern ovens without catalysator and 50 % old ovens presently in use in Bergen. These have emissions factors of 5, 10 and 30 g/kg burned wood, of which 90 % are assumed in the size fraction PM_{2.5}. Like the street related emissions, we averaged the emissions per oven over 3 x 3 grid cells.

70 % of all wood-burning fireplaces are assumed in use during cold winter days. In addition, each property that is registered to have fireplaces might have at least one fireplace, possibly more. Together it is therefore roughly assumed that one wood-burning fireplace per property might be used on a daily basis. Figure A2 shows the number of wood-burning fireplaces per grid cell after special averaging. During a typical firing cycle, a total of 11 kg wood is assumed to be used and we assume that most use of the firing occurs between 16:00 and 23:00 UTC, after people come home from work. The final emission factor per property with a fireplace registered is therefore $e_c = 74.21 \mu\text{g}/\text{m}^2\text{s}$ for PM_{2.5} distributed over the 100 m² large grid cells. wood-burning fireplaces are assumed not to contribute significantly to the local NO₂ emissions.

Deleted: fire department

Deleted: are

Deleted: takes place

Deleted: fire place

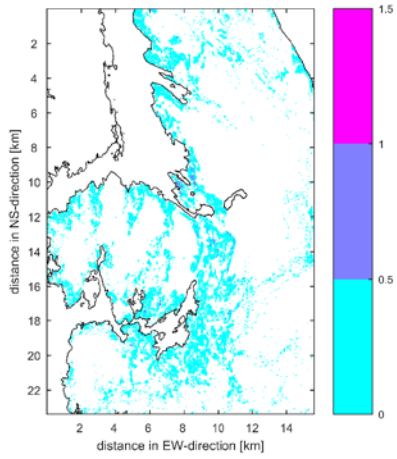


Figure A2: Number of wood-burning fireplaces per PALM grid cell (n_i) after spatial averaging

Appendix C: Emissions from ships

Figure A3 shows the position of the harbour docks frequented by supply ships in Bergen together with the number of hours with supply ships docked at these locations from January 2015 to March 2016. In order to identify the most typically used locations, we specified emissions in PALM from all harbour docks with more than 2000 h of ship docking time in the analysed period. This reduced the number of supply ships with emissions specified in the PALM simulations to 16. This can be seen as a higher threshold for the number of supply ships typically in the harbour, describing a busy day. For the emissions we assumed that the ships were running their secondary engines for on-board energy supply during docking.

For the assessment of the emissions per ship we used the mean numbers for two offshore oil-exploration related ship types that are the most typical in Bergen. These are the smaller offshore platform supply vessels (represented by Normand Carrier, Solstad Shipping) and the larger anchor handling vessels (represented by Normand Ranger, Solstad Shipping), both are for simplicity reasons referred to as offshore supply vessels in this study. The larger ship had a weight of 3051 gross tonnage (GT) and typical NO_x emissions of 41.05 g/kg spent fuel. The smaller ship had a weight of 4750 GT and typical NO_x emissions of 39.28 g/kg spent fuel. According to Volker Matthias (Helmholtz Centre for Materials and Coastal Research Geesthacht, personal communication, 2016) of the total NO_x emissions from these ships 10 % are NO_2 . The average NO_2 emission of both

ships is therefore $e_s = 4.02 \text{ g/kg}$ spent fuel. We calculated the typical fuel usage of the ships based on their weight as suggested in Hulskotte et al. (2014). The typical mean fuel usage for both ships, when at berth for these two ships were $v_s = 67 \text{ kg/h}$ for the mean ship weight of 3900 GT. This results in a typical emission factor per supply ship of 275 g/h or $S_i = 763.31 \mu\text{g}/(\text{m}^2 \cdot \text{s})$ distributed over the 100 m^2 large grid cells. For the $\text{PM}_{2.5}$ emissions we used $e_s = 1.5 \text{ g/kg}$ spent fuel for both ships with 90 % of the particles in the $\text{PM}_{2.5}$ size range (Volker Matthias, Helmholtz Centre for Materials and Coastal Research Geesthacht, personal communication, 2016). This led to emission factors of 90 g/h or $S_i = 251.03 \mu\text{g}/(\text{m}^2 \cdot \text{s})$ distributed over the 100 m^2 large grid cells for $\text{PM}_{2.5}$. All these numbers assume that no specific fuel cleaning technology was in use while the ships are at berth as recommended by Even Husby (BOH, personal communication, 2016). The emission numbers are in agreement with measurements of ship plumes some distance from the ships in Finland (Pirjola et al., 2014).

In order to account for the elevated emission from ships we artificially increased topography at the location of the ships to a typical height of the chimneys on top of the assessed supply vessels plus an offset to account for initial plume rise. This way we could specify the emissions as fluxes from the ground. Elevated fluxes were not readily available in the used PALM version. The total increase of the topographic height at the location of the ships is 40 m. This gives an elevated plume rise but not too strong disturbance of the local flow pattern, since the increase in topographic height for the entire domain only covered 16 grid points. Additional plume rise is considered by setting a positive surface heat flux on top of the elevated topography of 1000 W/m^2 .



Figure A3: Ship positions in Bergen harbour. The numbers behind the names of the harbour docks indicate the number of hours with supply ships docked at each of the harbour docks from January 2015 to March 2016.

Appendix D: A list of research peer-review articles and on-line materials certifying the quality and applicability of the PALM model for the urban air quality, turbulent dynamics and pollution diffusion studies.

Castillo, M. C. L., Kanda, M. and Letzel, M. O.: Heat ventilation efficiency of urban surfaces using large-eddy simulation, *Annu. J. Hydraul. Eng.*, 53, 175–180, 2009.

5 [Gronemeier, T.](#), [Inagaki, A.](#), [Gryschka, M.](#) and [Kanda, M.](#): Large-Eddy Simulation of an Urban Canopy Using a Synthetic Turbulence Inflow Generation Method, *J. Japan Soc. Civ. Eng. Ser. B1 (Hydraulic Eng.*, 71(4), I_43-I_48, doi:10.2208/jscejhe.71.i_43, 2016.

Kanda, M., Inagaki, A., Miyamoto, T., Gryschka, M. and Raasch, S.: A New Aerodynamic Parametrization for Real Urban Surfaces, *Boundary-Layer Meteorol.*, 148(2), 357–377, doi:10.1007/s10546-013-9818-x, 2013.

10 Kurppa, M., Hellsten, A., Auvinen, M., Raasch, S., Vesala, T. and Järvi, L.: Ventilation and air quality in city blocks using large-eddy simulation-urban planning perspective, *Atmosphere (Basel)*, 9(2), 1–27, doi:10.3390/atmos9020065, 2018.

Letzel, M. O., Krane, M. and Raasch, S.: High resolution urban large-eddy simulation studies from street canyon to neighbourhood scale, *Atmos. Environ.*, 42(38), 8770–8784, doi:10.1016/j.atmosenv.2008.08.001, 2008.

Letzel, M. O., Helmke, C., Ng, E., An, X., Lai, A. and Raasch, S.: LES case study on pedestrian level ventilation in two neighbourhoods in Hong Kong, *Meteorol. Zeitschrift*, 21(6), 575–589, doi:10.1127/0941-2948/2012/0356, 2012.

15 Maronga, B., Gryschka, M., Heinze, R., Hoffmann, F., Kanani-Sühring, F., Keck, M., Ketelsen, K., Letzel, M. O., Sühring, M. and Raasch, S.: The Parallelized Large-Eddy Simulation Model (PALM) version 4.0 for atmospheric and oceanic flows: model formulation, recent developments, and future perspectives, *Geosci. Model Dev.*, 8(8), 2515–2551, doi:10.5194/gmd-8-2515-2015, 2015.

20 Maronga, B., Gross, G., Raasch, S., Banzhaf, S., Forkel, R., Heldens, W., Kanani-Sühring, F., Matzarakis, A., Mauder, M., Pavlik, D., Pfafferoth, J., Schubert, S., Seckmeyer, G., Sieker, H. and Winderlich, K.: Development of a new urban climate model based on the model PALM – Project overview, planned work, and first achievements, *Meteorol. Zeitschrift*, 28(2), 105–119, doi:10.1127/metz/2019/0909, 2019.

25 Park, S.-B., Baik, J.-J., Raasch, S. and Letzel, M. O.: A Large-Eddy Simulation Study of Thermal Effects on Turbulent Flow and Dispersion in and above a Street Canyon., *J. Appl. Meteorol. Climatol.*, 51(5), 829–841, doi:10.1175/JAMC-D-11-0180.1, 2012.

References

30 Baklanov, A., Hänninen, O., Slørdal, L. H., Kukkonen, J., Bjergene, N., Fay, B., Finardi, S., Hoe, S. C., Jantunen, M., Karppinen, A., Rasmussen, A., Skouloudis, A., Sokhi, R. S., Sørensen, J. H. and Ødegaard, V.: Integrated systems for forecasting urban meteorology, air pollution and population exposure, *Atmos. Chem. Phys.*, 7(3), 855–874, doi:10.5194/acp-7-855-2007, 2007.

Deleted: GRONEMEIER

Deleted: INAGAKI

Deleted: GRYSCHKA

Deleted: KANDA

Bauer, P., Thorpe, A. and Brunet, G.: The quiet revolution of numerical weather prediction, *Nature*, 525(7567), 47–55, doi:10.1038/nature14956, 2015.

Bergen Kommune: Luftkvalitet i Bergen 2017. [online] Available from: http://luftkvalitet.info/Libraries/Rapporter/Luftkvalitet_i_Bergen_2017.sflb.ashx, 2018.

- 5 Bergen Kommune: Beredningsplan for episoder med høy luftforurensning i Bergen. [online] Available from: http://www3.bergen.kommune.no/BKSAK_filer/bksak%5C0%5CVEDLEGG%5C2016122000-5831708.pdf, 2019.

Brümmer, B. and Schultze, M.: Analysis of a 7-year low-level temperature inversion data set measured at the 280 m high Hamburg weather mast, *Meteorol. Zeitschrift*, 24(5), 481–494, doi:10.1127/metz/2015/0669, 2015.

- Castillo, M. C. L., Kanda, M. and Letzel, M. O.: Heat ventilation efficiency of urban surfaces using large-eddy simulation, *Annu. J. Hydraul. Eng.*, 53, 175–180, 2009.

Cécé, R., Bernard, D., Brioude, J. and Zahibo, N.: Microscale anthropogenic pollution modelling in a small tropical island during weak trade winds: Lagrangian particle dispersion simulations using real nested LES meteorological fields, *Atmos. Environ.*, 139, 98–112, doi:10.1016/j.atmosenv.2016.05.028, 2016.

- 15 [Cheynet, E., Jakobsen, J., Snæbjörnsson, J., Mann, J., Courtney, M., Lea, G. and Svandal, B.: Measurements of Surface-Layer Turbulence in a Wide Norwegian Fjord Using Synchronized Long-Range Doppler Wind Lidars, *Remote Sens.*, 9\(10\), 977, doi:10.3390/rs9100977, 2017.](#)

CurieuzeNeuzen: CurieuzeNeuzen is a citizen science project in which 2000 citizens of Antwerp measure the air quality outside their window, [online] Available from: <http://www.curieuzeneuzen.eu/en/>, 2019.

- 20 Cuxart, J., Holtslag, A. A. M., Beare, R. J., Bazile, E., Beljaars, A., Cheng, A., Conangla, L., Ek, M., Freedman, F., Hamdi, R., Kerstein, A., Kitagawa, H., Lenderink, G., Lewellen, D., Mailhot, J., Mauritsen, T., Perov, V., Schayes, G., Steeneveld, G.-J., Svensson, G., Taylor, P., Weng, W., Wunsch, S. and Xu, K.-M.: Single-Column Model Intercomparison for a Stably Stratified Atmospheric Boundary Layer, *Boundary-Layer Meteorol.*, 118(2), 273–303, doi:10.1007/s10546-005-3780-1, 2006.

- 25 Daly, A. and Zannetti, P.: An Introduction to Air Pollution – Definitions , Classifications , and History, in *Ambient Air Pollution*, edited by P. Zannetti, D. Al-Ajmi, and S. Al-Rashied, pp. 1–14, The Arab School for Science and Technology (ASST) and The EnviroComp Institute., 2007.

Davy, R. and Esau, I.: Differences in the efficacy of climate forcings explained by variations in atmospheric boundary layer depth, *Nat. Commun.*, 7(1), 11690, doi:10.1038/ncomms11690, 2016.

- Dee, D. P., Uppala, S. M., Simmons, a. J., Berrisford, P., Poli, P., Kobayashi, S., Andrae, U., Balmaseda, M. a., Balsamo, G., Bauer, P., Bechtold, P., Beljaars, a. C. M., van de Berg, L., Bidlot, J., Bormann, N., Delsol, C., Dragani, R., Fuentes, M., Geer, a. J., Haimberger, L., Healy, S. B., Hersbach, H., Hólm, E. V., Isaksen, I., Kållberg, P., Köhler, M., Matricardi, M., McNally, a. P., Monge-Sanz, B. M., Morcrette, J.-J., Park, B.-K., Peubey, C., de Rosnay, P., Tavolato, C., Thépaut, J.-N. and Vitart, F.: The ERA-Interim reanalysis: configuration and performance of the data assimilation system, Q. J. R. Meteorol. Soc., 137(656), 553–597, doi:10.1002/qj.828, 2011.
- Denby, B. R.: Mapping of NO₂ concentrations in Bergen (2012 - 2014), MET Rep., (12/15) [online] Available from: https://www.met.no/publikasjoner/met-report/met-report-2015/_/attachment/download/aa2f69b4-0dff-4986-b5e6-c5e1d4ed5fe2:76616e08289a1a97253602a9098d291e62a6982f/MET-report-12-2015.pdf, 2014.
- 10 Denby, B. R. and Süld, J. K.: METreport NBV report on meteorological data for 2015 METreport. [online] Available from: http://luftkvalitet-nbv.no/Shared/pdf/NBV_MET_report_2016_v3.pdf, 2015.
- EEA: Using models for air quality assessment and planning: a guide, [online] Available from: <https://www.eea.europa.eu/highlights/using-models-for-air-quality>, 2019.
- 15 EPA: Air Quality Dispersion Modeling - Preferred and Recommended Models, [online] Available from: <https://www.epa.gov/scram/air-quality-dispersion-modeling-preferred-and-recommended-models>, 2019.
- European Commission: Air Quality Standards, [online] Available from: <http://ec.europa.eu/environment/air/quality/standards.htm>, 2019.
- Fernando, H. J. S. S., Zajic, D., Di Sabatino, S., Dimitrova, R., Hedquist, B. and Dallman, A.: Flow, turbulence, and pollutant dispersion in urban atmospheres, Phys. Fluids, 22(5), 051301, doi:10.1063/1.3407662, 2010.
- 20 Gronemeier, T., Raasch, S. and Ng, E.: Effects of Unstable Stratification on Ventilation in Hong Kong, Atmosphere (Basel), 8(12), 168, doi:10.3390/atmos8090168, 2017.
- Hagman, R. and Amundsen, A. H.: NO₂ -utslipp fra kjøretøyparken i norske storbyer. [online] Available from: <https://www.toi.no/getfile.php?mmfileid=22618>, 2011.
- 25 Heist, D. K., Perry, S. G. and Brixey, L. A.: A wind tunnel study of the effect of roadway configurations on the dispersion of traffic-related pollution, Atmos. Environ., 43(32), 5101–5111, doi:10.1016/j.atmosenv.2009.06.034, 2009.
- Hertwig, D.: On Aspects of Large-Eddy Simulation Validation for Near-Surface Atmospheric Flows, PhD dissertation, University of Hamburg. [online] Available from: <http://ediss.sub.uni-hamburg.de/volltexte/2013/6289/pdf/Dissertation.pdf>, 2013.

- Holtslag, A. A. M., Svensson, G., Baas, P., Basu, S., Beare, B., Beljaars, A. C. M., Bosveld, F. C., Cuxart, J., Lindvall, J., Steeneveld, G. J., Tjernström, M. and Van De Wiel, B. J. H.: Stable Atmospheric Boundary Layers and Diurnal Cycles: Challenges for Weather and Climate Models, *Bull. Am. Meteorol. Soc.*, 94(11), 1691–1706, doi:10.1175/BAMS-D-11-00187.1, 2013.
- 5 Hulskotte, J. H. ., Wester, B. and Snijder, A. M.: International survey of fuel consumption of seagoing, , (March), 4–31, 2014.
- Isakov, V., Barzyk, T. M., Smith, E. R., Arunachalam, S., Naess, B. and Venkatram, A.: A web-based screening tool for near-port air quality assessments, *Environ. Model. Softw.*, 98(x), 21–34, doi:10.1016/j.envsoft.2017.09.004, 2017.
- Johansson, L., Epitropou, V., Karatzas, K., Karppinen, A., Wanner, L., Vrochidis, S., Bassoukos, A., Kukkonen, J. and Kompatsiaris, I.: Environmental Modelling & Software Fusion of meteorological and air quality data extracted from the web
 10 for personalized environmental information services, *Environ. Model. Softw.*, 64, 143–155, doi:10.1016/j.envsoft.2014.11.021, 2015.
- Jonassen, M. O., Ólafsson, H., Valved, A. S., Reuder, J. and Olseth, J. A.: Simulations of the Bergen orographic wind shelter, *Tellus A Dyn. Meteorol. Oceanogr.*, 65(1), 19206, doi:10.3402/tellusa.v65i0.19206, 2013.
- Keck, M., Raasch, S., Letzel, M. O. and Ng, E.: First Results of High Resolution Large-Eddy Simulations of the Atmospheric
 15 Boundary Layer, *J. Heat Isl. Inst. Int.*, 9, 39–43, 2014.
- Lappalainen, H. K., Kerminen, V.-M., Petäjä, T., Kurten, T., Baklanov, A., Shvidenko, A., Bäck, J., Vihma, T., Alekseychik, P., Andreae, M. O., Arnold, S. R., Arshinov, M., Asmi, E., Belan, B., Bobylev, L., Chalov, S., Cheng, Y., Chubarova, N., de Leeuw, G., Ding, A., Dobrolyubov, S., Dubtsov, S., Dyukarev, E., Elansky, N., Eleftheriadis, K., Esau, I., Filatov, N., Flint, M., Fu, C., Glezer, O., Gliko, A., Heimann, M., Holtslag, A. A. M., Hörrak, U., Janhunen, J., Juhola, S., Järvi, L., Järvinen, H., Kanukhina, A., Konstantinov, P., Kotlyakov, V., Kieloaho, A.-J., Komarov, A. S., Kujansuu, J., Kukkonen, I., Duplissy, E.-M., Laaksonen, A., Laurila, T., Lihavainen, H., Lisitzin, A., Mahura, A., Makshtas, A., Mareev, E., Mazon, S., Matishov, D., Melnikov, V., Mikhailov, E., Moiseev, D., Nigmatulin, R., Noe, S. M., Ojala, A., Pihlatie, M., Popovicheva, O., Pumpanen, J., Regerand, T., Repina, I., Shcherbinin, A., Shevchenko, V., Sipilä, M., Skorokhod, A., Spracklen, D. V., Su, H., Subetto, D. A., Sun, J., Terzhevik, A. Y., Timofeyev, Y., Troitskaya, Y., Tynkkynen, V.-P., Kharuk, V. I., Zaytseva, N., Zhang, J., Viisanen, Y., Vesala, T., Hari, P., Hansson, H. C., Matvienko, G. G., Kasimov, N. S., Guo, H., Bondur, V., Zilitinkevich, S. and Kulmala, M.: Pan-Eurasian Experiment (PEEX): towards a holistic understanding of the feedbacks and interactions in the land–atmosphere–ocean–society continuum in the northern Eurasian region, *Atmos. Chem. Phys.*, 16(22), 14421–14461, doi:10.5194/acp-16-14421-2016, 2016.
- Letzel, M. O., Krane, M. and Raasch, S.: High resolution urban large-eddy simulation studies from street canyon to
 30 neighbourhood scale, *Atmos. Environ.*, 42(38), 8770–8784, doi:10.1016/j.atmosenv.2008.08.001, 2008.
- Letzel, M. O., Helmke, C., Ng, E., An, X., Lai, A. and Raasch, S.: LES case study on pedestrian level ventilation in two neighbourhoods in Hong Kong, *Meteorol. Zeitschrift*, 21(6), 575–589, doi:10.1127/0941-2948/2012/0356, 2012.

Maronga, B., Gryschka, M., Heinze, R., Hoffmann, F., Kanani-Sühring, F., Keck, M., Ketelsen, K., Letzel, M. O., Sühring, M. and Raasch, S.: The Parallelized Large-Eddy Simulation Model (PALM) version 4.0 for atmospheric and oceanic flows: model formulation, recent developments, and future perspectives, *Geosci. Model Dev.*, 8(8), 2515–2551, doi:10.5194/gmd-8-2515-2015, 2015.

5 Maronga, B., Gross, G., Raasch, S., Banzhaf, S., Forkel, R., Heldens, W., Kanani-Sühring, F., Matzarakis, A., Mauder, M., Pavlik, D., Pfafferoth, J., Schubert, S., Seckmeyer, G., Sieker, H. and Winderlich, K.: Development of a new urban climate model based on the model PALM – Project overview, planned work, and first achievements, *Meteorol. Zeitschrift*, 28(2), 105–119, doi:10.1127/metz/2019/0909, 2019.

Miljødirektoratet: Luftkvalitet i Norge, [online] Available from: <https://luftkvalitet.miljostatus.no/> (Accessed 22 February 2019), 2019.

10

Muñoz-Esparza, D., Lundquist, J. K., Sauer, J. A., Kosović, B. and Linn, R. R.: Coupled mesoscale-LES modeling of a diurnal cycle during the CWEX-13 field campaign: From weather to boundary-layer eddies, *J. Adv. Model. Earth Syst.*, 9(3), 1572–1594, doi:10.1002/2017MS000960, 2017.

NILU: Luftkvalitet i Norge, [online] Available from: <http://www.luftkvalitet.info/home.aspx> (Accessed 22 February 2019), 2019.

15

Nordbo, A., Järvi, L. and Vesala, T.: Revised eddy covariance flux calculation methodologies – effect on urban energy balance, *Tellus B Chem. Phys. Meteorol.*, 64(1), 18184, doi:10.3402/tellusb.v64i0.18184, 2012.

Park, S.-B., Baik, J.-J. and Lee, S.-H.: Impacts of Mesoscale Wind on Turbulent Flow and Ventilation in a Densely Built-up Urban Area, *J. Appl. Meteorol. Climatol.*, 54(4), 811–824, doi:10.1175/JAMC-D-14-0044.1, 2015.

20 Pirjola, L., Pajunoja, A., Walden, J., Jalkanen, J.-P., Rönkkö, T., Kousa, A. and Koskentalo, T.: Mobile measurements of ship emissions in two harbour areas in Finland, *Atmos. Meas. Tech.*, 7(1), 149–161, doi:10.5194/amt-7-149-2014, 2014.

Resler, J., Krč, P., Belda, M., Juruš, P., Benešová, N., Lopata, J., Vlček, O., Damašková, D., Eben, K., Derbek, P., Maronga, B. and Kanani-Sühring, F.: **PALM-USM v1.0: A new urban surface model integrated into the PALM large-eddy simulation model**, *Geosci. Model Dev.*, **10(10)**, 3635–3659, doi:10.5194/gmd-10-3635-2017, 2017.

25 Ronda, R. J., Steeneveld, G. J., Heusinkveld, B. G., Attema, J. J. and Holtslag, A. A. M.: Urban Finescale Forecasting Reveals Weather Conditions with Unprecedented Detail, *Bull. Am. Meteorol. Soc.*, 98(12), 2675–2688, doi:10.1175/BAMS-D-16-0297.1, 2017.

30 Schneider, P., Castell, N., Vogt, M., Dauge, F. R., Lahoz, W. A. and Bartonova, A.: Mapping urban air quality in near real-time using observations from low-cost sensors and model information, *Environ. Int.*, 106(May), 234–247, doi:10.1016/j.envint.2017.05.005, 2017.

Deleted: in

Deleted: PALM

Deleted: . Discuss., (March), 1–26

Deleted: -61

- Steffens, J. T., Heist, D. K., Perry, S. G., Isakov, V., Baldauf, R. W. and Zhang, K. M.: Effects of roadway configurations on near-road air quality and the implications on roadway designs, *Atmos. Environ.*, 94, 74–85, doi:10.1016/j.atmosenv.2014.05.015, 2014.
- Sun, J., Lenschow, D. H., LeMone, M. A. and Mahrt, L.: The Role of Large-Coherent-Eddy Transport in the Atmospheric Surface Layer Based on CASES-99 Observations, *Boundary-Layer Meteorol.*, 160(1), 83–111, doi:10.1007/s10546-016-0134-0, 2016.
- Tarrasón, L., Santos, G. S., Thanh, D. V., Vogt, M., López-aparicio, S., Denby, B., Tønnesen, D., Sundvor, I., Røen, H. V. and Høiskar, B. A.: Air quality in Norwegian cities in 2015. [online] Available from: https://www.luftkvalitet-nbv.no/Shared/pdf/NBV-Luftkvalitet_AP4_D4_Final.pdf, 2017.
- 10 The World Bank: Air Pollution in Ulaanbaatar - Initial Assessment of Current Situation and Effects of Abatement Measures. [online] Available from: <http://documents.worldbank.org/curated/en/866561468274261208/pdf/529700REPLACEM1paper0FINAL002110110.pdf>, 2009.
- 15 Vignon, E., Hourdin, F., Genthon, C., Gallée, H., Bazile, E., Lefebvre, M.-P., Madeleine, J.-B. and Van de Wiel, B. J. H.: Antarctic boundary layer parametrization in a general circulation model: 1-D simulations facing summer observations at Dome C, *J. Geophys. Res. Atmos.*, 122(13), 6818–6843, doi:10.1002/2017JD026802, 2017.
- Wolf-Grosse, T., Esau, I. and Reuder, J.: Sensitivity of local air quality to the interplay between small- and large-scale circulations: a large-eddy simulation study, *Atmos. Chem. Phys.*, 17(11), 7261–7276, doi:10.5194/acp-17-7261-2017, 2017a.
- 20 Wolf-Grosse, T., Esau, I. and Reuder, J.: The large-scale circulation during air quality hazards in Bergen, Norway, *Tellus A Dyn. Meteorol. Oceanogr.*, 69(1), 1406265, doi:10.1080/16000870.2017.1406265, 2017b.
- Wolf, T. and Esau, I.: A proxy for air quality hazards under present and future climate conditions in Bergen, Norway, *Urban Clim.*, 10(1), 801–814, doi:10.1016/j.uclim.2014.10.006, 2014.
- Wolf, T., Esau, I. and Reuder, J.: Analysis of the vertical temperature structure in the Bergen valley, Norway, and its connection to pollution episodes, *J. Geophys. Res. Atmos.*, 119(18), 10,645–10,662, doi:10.1002/2014JD022085, 2014.
- 25 Zilitinkevich, B. S., Kulmala, M. and Esau, I.: Megacities – Refining Models to Client Environment, *WMO Bull.*, 64(1), 20–22 [online] Available from: <http://public.wmo.int/en/resources/bulletin/megacities—refining-models-client-environment>, 2015.
- Zilitinkevich, S. S. and Esau, I. N.: Resistance and heat-transfer laws for stable and neutral planetary boundary layers: Old theory advanced and re-evaluated, *Q. J. R. Meteorol. Soc.*, 131(609), 1863–1892, doi:10.1256/qj.04.143, 2005.

