

*Supplement of*

## Fine particulate matter (PM<sub>2.5</sub>) trends in China, 2013-2018: contribution from meteorology

Shixian Zhai<sup>1,2,\*</sup>, Daniel J. Jacob<sup>2</sup>, Xuan Wang<sup>2</sup>, Lu Shen<sup>2</sup>, Ke Li<sup>2</sup>, Yuzhong Zhang<sup>2</sup>, Ke Gui<sup>3</sup>,  
5 Tianliang Zhao<sup>1</sup>, Hong Liao<sup>4</sup>

<sup>1</sup>Key Laboratory for Aerosol-Cloud-Precipitation of China Meteorological Administration, Collaborative Innovation Center on Forecast and Evaluation of Meteorological Disasters, School of Atmospheric Physics, Nanjing University of Information Science & Technology, Nanjing 210044, China

10 <sup>2</sup>John A. Paulson School of Engineering and Applied Sciences, Harvard University, Cambridge, Massachusetts 02138, USA

<sup>3</sup>Key Laboratory for Atmospheric Chemistry, Chinese Academy of Meteorological Sciences, CMA, Beijing 100081, China

15 <sup>4</sup>Jiangsu Key Laboratory of Atmospheric Environment Monitoring and Pollution Control, Collaborative Innovation Center of Atmospheric Environment and Equipment Technology, School of Environmental Science and Engineering, Nanjing University of Information Science & Technology, Nanjing 210044, China

\*Correspondence to: Shixian Zhai (zhaisx@g.harvard.edu).

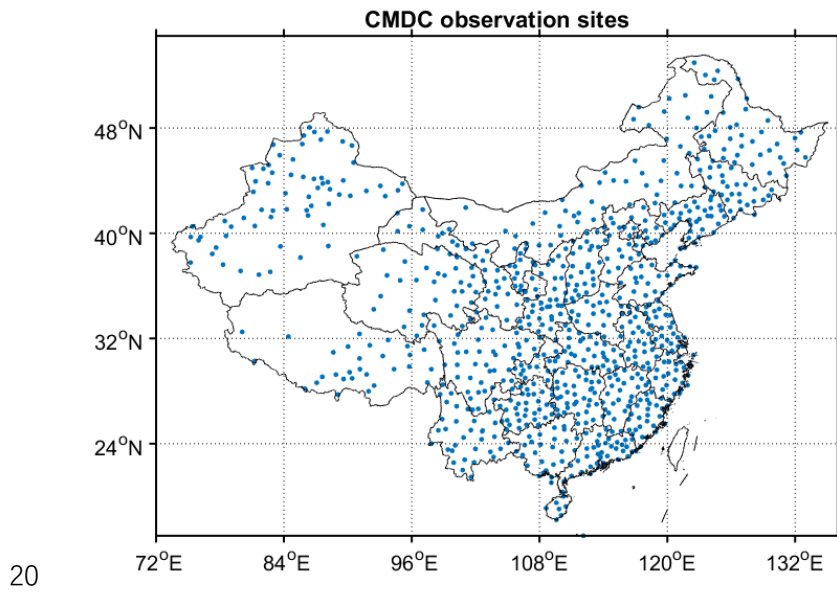
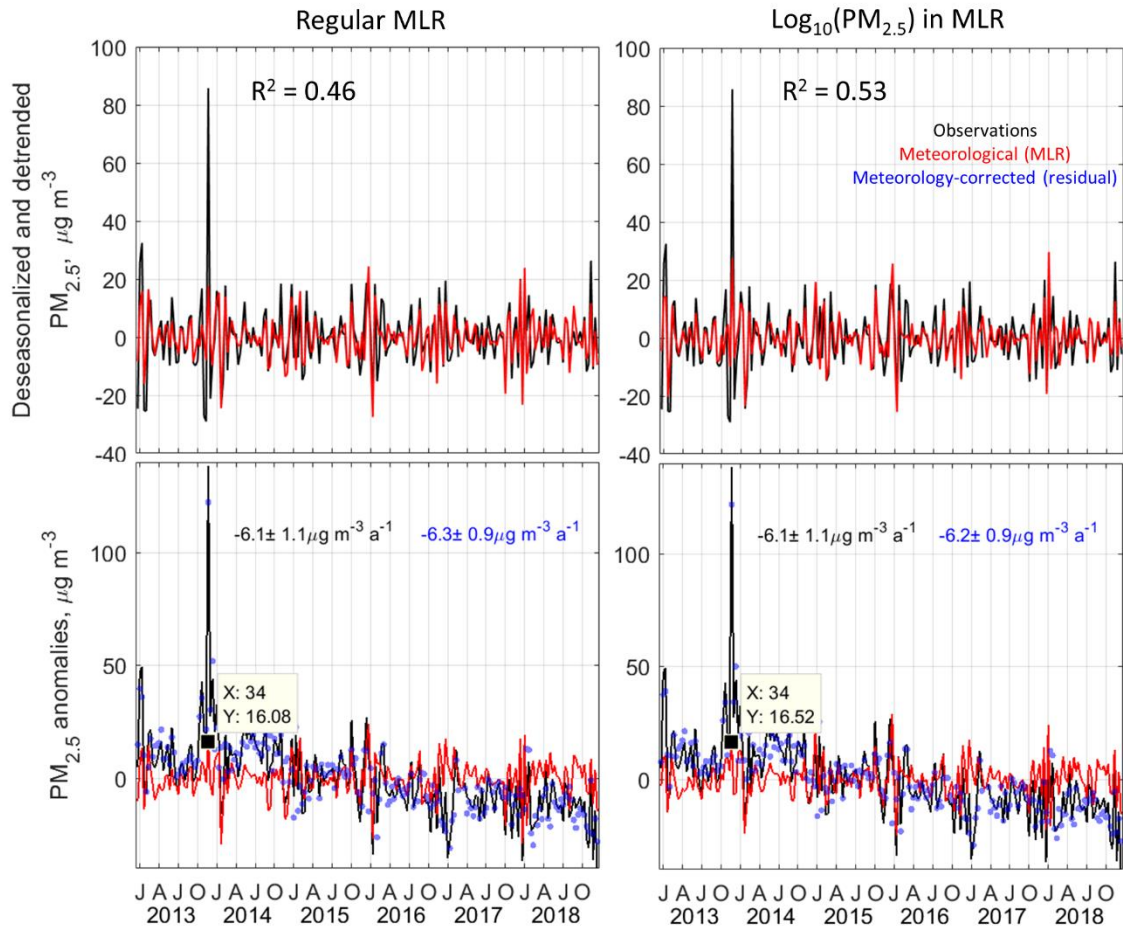


Figure S1 Distribution of meteorological observation sites archived in the Surface Daily Climate Dataset (V3.0) from the China National Meteorological Information Center (CNMIC; <http://data.cma.cn/>).

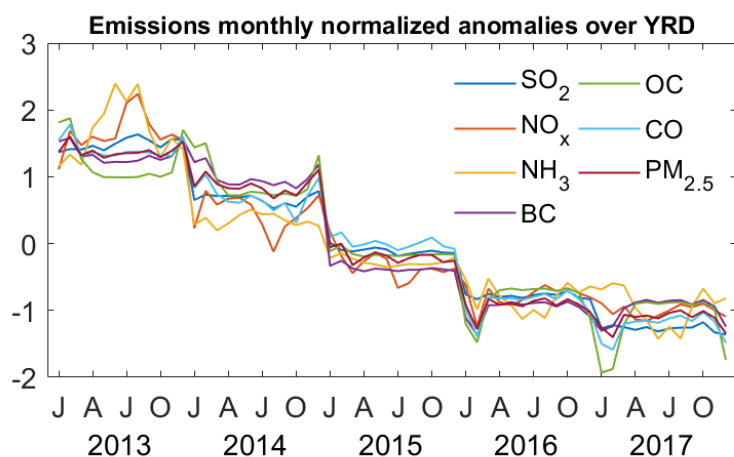


25

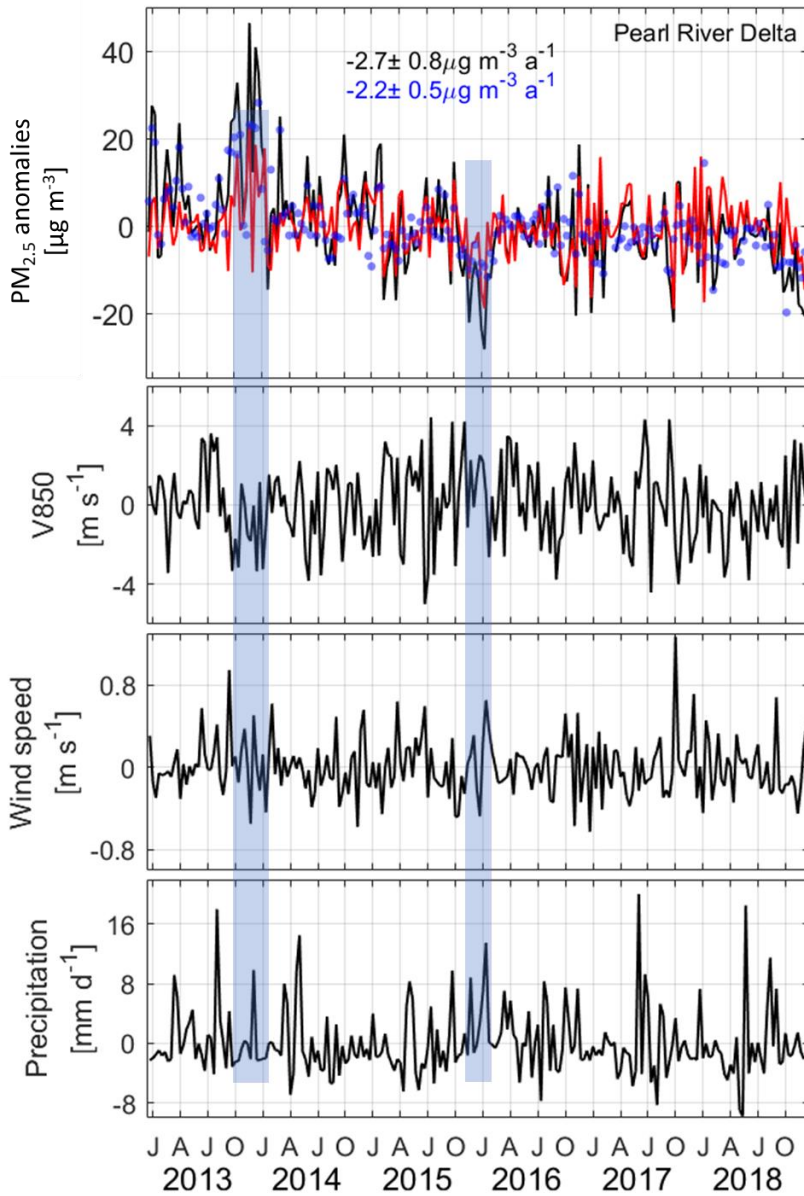
Figure S2 Top panels: Observed and MLR model fitted deseasonalized and detrended PM<sub>2.5</sub> over YRD for ‘regular MLR’ (left; MLR used in this study) and for relating log<sub>10</sub>(PM<sub>2.5</sub>) to meteorological variables in MLR (right). Bottom panels: Observed and MLR model fitted PM<sub>2.5</sub> anomalies over YRD for ‘regular MLR’ (left) and for relating log<sub>10</sub>(PM<sub>2.5</sub>) to meteorological variables in MLR (right). We take the logarithm of PM<sub>2.5</sub> to reduce the influence of extreme values. The top panels confirm the unfavorable meteorological conditions in December 2013 over YRD.

Note: As the ‘regular MLR’ performs better overall correlations for our study region, and the improvement over YRD does not change the conclusion, we adopted the ‘regular MLR’ in our main text.

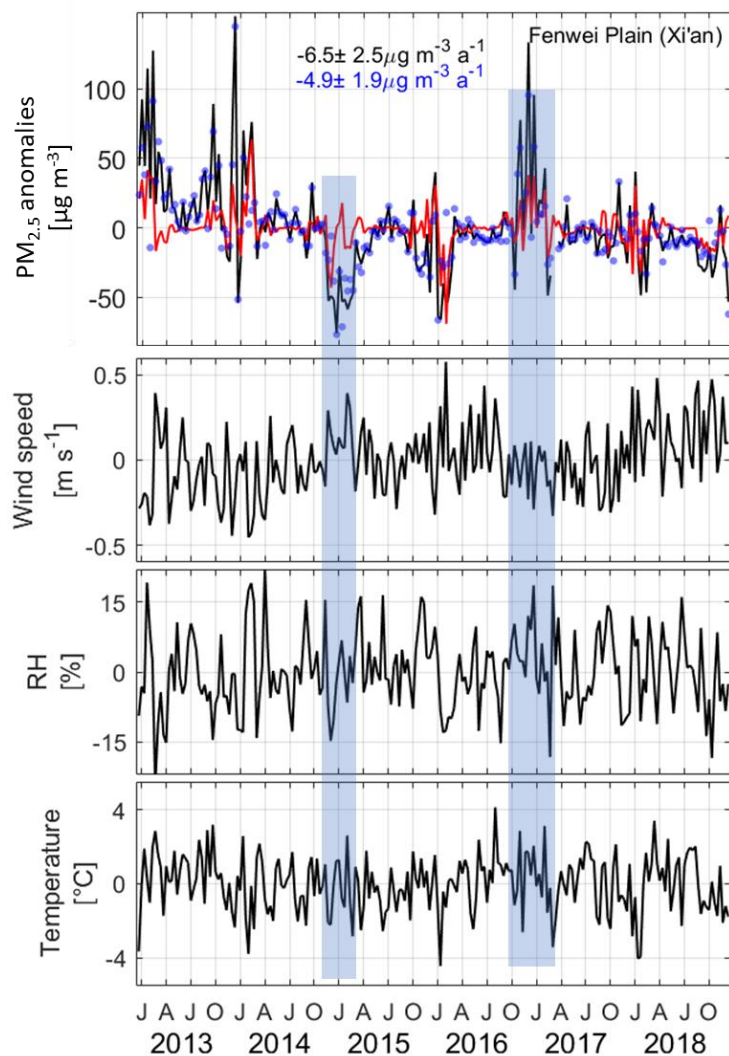
35



40 Figure S3 Monthly normalized anomalies of SO<sub>2</sub>, NO<sub>x</sub>, NH<sub>3</sub>, BC, OC, CO, and primary PM<sub>2.5</sub> emission intensities from the Multi-resolution Emission Inventory for China (MEIC; <http://www.meicmodel.org>). January 2017 has anomalously low OC, CO and primary PM<sub>2.5</sub> emission intensities compared with previous years at the same month.



45 Figure S4 Time series of 2013-2018 10-day mean anomalies for  $PM_{2.5}$  (same as the PRD panel in Figure 6), 850 hPa meridional wind velocity ( $V_{850}$ ), wind speed, and precipitation over PRD. The high  $PM_{2.5}$  in autumn 2013 to winter 2013-2014 are associated with anomalously low  $V_{850}$ . The low  $PM_{2.5}$  in Dec. 2015 and early Jan. 2016 are associated with anomalously high  $V_{850}$ , high wind speed, and more precipitation.



50 Figure S5 Time series of 2013-2018 10-day mean anomalies for  $PM_{2.5}$  (same as the FWP panel in Figure 6), wind speed, RH, and temperature over FWP. The low  $PM_{2.5}$  in winter 2014-2015 are associated with anomalously high wind speed, low RH, and low temperature. The several high peaks from Nov. 2016- Feb. 2017 in FWP are associated with anomalously low wind speed, high RH and high temperature.

55 Table S1 Meteorological variables included in the final MLR models.

Regions Seasons	BTH	YRD	PRD	SCB	FWP (Xi'an)
Winter	PRECIP(-) RH(+) TEM(+) V850(+)	WIN(-) TEM(+)	WIN(-) RH(-) V850(-)	WIN(-) RH(-) TEM(+) V850(+)	WIN(-) V850(+)
Spring	PRECIP(-) RH(+) TEM(+) V850(+)	TEM(+)	WIN(-) TEM(+) V850(-)	WIN(-) RH(-) TEM(+)	PRECIP(-) RH(+)
Summer	WIN(-) V850(+)	WIN(-) PRECIP(-)	WIN(-) RH(-) V850(-)	WIN(-) RH(-) V850(+/-)	PRECIP(-)
Autumn	RH(+) TEM(+) V850(+)	WIN(-) TEM(+)	WIN(-) RH(-)	WIN(-) RH(-)	WIN(-) TEM(+)

60 Note: The signs in brackets indicate the sign of their correlations to PM<sub>2.5</sub>. Variables in red are variables selected by most of the grids in a region. For each grid, at most 3 meteorological variables were retained in the final MLR model after the stepwise selection procedure. The final meteorological variables in the MLR show regional consistency with occasionally heterogeneity. Only variables appear in at least 2 grids are listed.