

1 **Reply to Referee Comment (RC2)**

2 We thank referee No.2 for the time taken and additional comments which helped to further improve
3 the manuscript. Below we address all comments (in italics), with the revised text shown in blue and
4 line numbers referring to the new non-tracked changes manuscript submitted to ACP.

5
6 **RC2:** *The authors revised the manuscript to clarify many points. Unfortunately, many references in
7 the response seem to refer to the wrong (or missing) sections, figures, and/or tables (eg., reference
8 to section 3.4.4 at top of page 2 of response; reference to aerosol data in Fig 16 in RC2 reply on
9 page 8 of response, etc). This made my assessment difficult and means that I may have accidentally
10 missed certain changes when trying to go between the response and manuscript. My questions and
11 comments are detailed below, with line numbers referring to the non-tracked changes manuscript.*

12 **Reply:** As explained, our reply in the discussion forum refers to the ACPD online version, includ-
13 ing all references to sections, tables and figures. Some section and figure numbers changed in the
14 revised manuscript submitted to ACP as we rearranged the section order following the reviewer's
15 suggestion; yet all changes were marked up in the tracked changes manuscript. We apologise if this
16 made it more difficult to review.

17
18 **RC2:** *Page 5 Line 4, Page 9, Line 20, and Figure S3: This methods section describes the aerosol
19 size distribution measurements, and therefore the header should state such. Sea salt aerosol was
20 not chemically identified by the methods described, and using such a header is misleading. Similarly,
21 the response Figure 4 (referred to as manuscript Figure S3) states "Sea Salt CLASP", but again,
22 the CLASP measures all particles, not just sea salt, and therefore, it should be labeled simply as
23 "CLASP". Further, since the CLASP measures number concentration, it is critical that the assump-
24 tions used to convert from number concentration to mass concentration are included in the figure
25 caption, in addition to the text. Data are not available to verify that all of the particles were indeed
26 sea salt, and this needs to be clear. In the results, "the size spectra of sea salt aerosol" are referred
27 to, which again is misleading, as this was not measured.*

28 **Reply:** The method section clearly describes, what the CLASP is measuring. However, we agree
29 that CLASP output is not equivalent to SSA and therefore amended the text by replacing SSA with
30 aerosol, when referring to CLASP data. The underlying assumptions of the estimate of sea salt mass
31 concentration from the CLASP are clarified in the text and now also included in the caption of Figure
32 S3:

33 [Page 5, Line 8: Atmospheric aerosol](#)

34 [Page 9, Lines 22-23: ... followed by the discussion of chemical fractionation of aerosol and snow and
35 size spectra of aerosol above sea ice \(section 3.2\) ...](#)

36 [Page 11, Line 7: The sea ice source of aerosol](#)

37 [Page 14, Line 27: Aerosol size distributions](#)

38
39 **Reply:** The underlying assumptions of the estimate of sea salt mass concentration from the CLASP
40 are clarified in the text and now also included in the caption of Figure S3:

41 [Page 25, Lines 3–9: To do this atmospheric sea salt mass concentrations were estimated in two
42 ways for the time period when *RVPolarstern* was well within the FYI zone \(18 June to 21 July 2013;
43 Fig. 1\). One by converting spectral particle number densities \$N_{0.4-12}\$ at 29 m into sea salt mass con-
44 centration assuming that all particles are spherical and consist of sea salt with the density of NaCl
45 \(\$= 2160 \text{ kg m}^{-3}\$ \). Contributions from non-sea salt \(nss\) aerosol to CLASP \$N_{0.4-12}\$ can lead to an over-
46 estimate of the calculated sea salt mass but are considered to be small as nss-aerosol has a winter
47 minimum in coastal Antarctica \(e.g. Weller et al., 2011; Abram et al., 2013\).](#)

48 [Fig S3 caption: Comparison of atmospheric sea salt mass concentrations during the 8 June to 26 July
49 2013 period estimated from filter \(ss-filter\) and CLASP \(ss-CLASP\) measurements at 29 m above
50 the sea surface \(\$R= 0.32\$, \$p<0.01\$ \). ss-filter was derived by multiplying the \$\text{Na}^+\$ concentration mea-
51 sured on aerosol filters with a conversion factor of 3.262 based on the \$\text{Na}^+\$ mass fraction in reference
52 seawater. ss-CLASP was estimated based on median number densities \$N_{0.4-12}\$ during filter sampling
53 intervals assuming that all particles are spherical and consist of sea salt with the density of NaCl \(\$=\$](#)

54 2160 kg m⁻³) (see details in main text). Symbols are color coded based on wind speed U_{10m} .

55

56 **RC2:** Page 7, Lines 20-22: What is the justification for removing this bromide-enriched data? The
57 measurement uncertainty reported just not justify these samples as outliers. Surface snow is often
58 significantly enriched in bromide (e.g., see Maffezzoli et al, 2017, The Cryosphere, for East Antarctic
59 snow; see Peterson et al, 2019, Elementa, for Arctic snow), and blowing snow in Antarctica has been
60 shown to be bromide-enriched (Hara et al 2018, Sci Rep). Therefore, removing such samples from
61 the study biases the results. Further, bromide enrichment supports gas-phase bromine chemistry.

62 **Reply:** Agreed. We now include all available DF-Br data in aerosol and snow, and updated accord-
63 ingly Tables 4 and 5, Figures 4 and 6, and text. Note all median DF-Br values changed only slightly
64 or remained the same, and therefore our conclusions also remain the same.

65

66 **RC2:** Page 11 Line 2: Please clarify "blowing sea ice source".

67 **Reply:** Clarified as follows:

68 Page 11, Lines 8–9: Below we discuss aerosol properties characteristic for a sea ice source from
69 blowing snow, including the chemical fractionation of SO_4^{2-} and Br^- as well as aerosol size distribu-
70 tions observed above sea ice.

71

72 **RC2:** Page 14, Line 12: The recent work of Artiglia et al. (2017, Nature Commun.) also shows dark
73 ozone oxidation of bromide and doesn't require low pH.

74 **Reply:** We added the reference to Artiglia et al. (2017) and clarified as follows:

75 Page 14, Lines 18–22: However, the early laboratory study by Oum et al. (1998) has shown that HOBr
76 required for Br^- oxidation can be chemically produced in darkness through the reaction of ozone with
77 bromide, a reaction which takes place most rapidly at the air-substrate interface, where acidity plays
78 a minor role (Abbatt et al., 2012, and references therein), and where it was recently observed to occur
79 at neutral pH for the case of a aqueous phase-vapour interface (Artiglia et al., 2017).

80 Page 14, Lines 25–27: It therefore appears plausible that the same reactions may have caused sig-
81 nificant bromide depletion observed here in aerosol above sea ice.

82

83 **RC2:** Page 14, Lines 26-27: Table 1 does not show aerosol data, so it is not clear how it supports the
84 sentence here. Further, it is not clear how lower concentrations at wind speeds below the threshold
85 for sea salt support "the absence of any local sources and the long distance to the nearest open
86 ocean". Sea salt aerosol emissions from leads increase with wind speed (Nilsson et al, 2001, JGR),
87 so one would expect increased concentrations at higher wind speeds. Further, May et al (2016,
88 JGR) show contributions from sea salt aerosol from open ocean and leads in the Arctic only for wind
89 speeds above the 4 m/s threshold, so looking at data here at only ≈ 4 m/s (below the threshold for sea
90 salt aerosol production) to rule out leads and open ocean influence is confusing.

91 **Reply:** We clarified as follows:

92 Page 15, Lines 2–5: Thus a lower aerosol background above sea ice compared to the open ocean
93 during calm conditions is consistent with the inactivity of local sources from blowing snow or poten-
94 tially open leads combined with the long distance between the ship's position and the nearest open
95 water during 18 June to 21 July 2013 (Fig. 1, Table 1).

96

97 **RC2:** Page 15 Lines 1-2 and Page 26 Lines 13-16: This statement of higher fluxes above sea ice than
98 open ocean needs to be supported by data, as fluxes depend on wind speed, and while the relative
99 increase (%) appears to be higher in Figure 7 for the sea ice data, the open ocean concentrations
100 are higher. Without calculated absolute values calculated for similar wind conditions, this statement
101 is not clear to me.

102 **Reply:** We agree that relative and absolute increases in aerosol number and volume concentrations
103 need to be considered separately. The statement about expected fluxes above sea ice and open
104 ocean is reworded accordingly in abstract and main text:

105 Page 1, Lines 14-18: The relative increase of aerosol concentrations with wind speed was much
106 larger above sea ice than above the open ocean highlighting the importance of a sea ice source

107 in winter and early spring for the aerosol burden above sea ice. Comparison of absolute increases
108 of aerosol concentrations during storms suggests that to a first order corresponding aerosol fluxes
109 above sea ice can rival those above the open ocean depending on particle size.

110 Page 15, Lines 18-28: It is striking that the relative increase of aerosol number densities ($d_p < 2 \mu\text{m}$)
111 during storms was larger above sea ice compared to the open ocean with mean enhancements by
112 a factor of ~ 3.2 and ~ 1.8 , respectively (Fig. 7a). Similarly, the relative increase of aerosol volume
113 concentrations ($d_p 1-8 \mu\text{m}$) during storms was larger above sea ice compared to the open ocean with
114 mean increases by a factor of ~ 3.6 and ~ 1.2 , respectively (Fig. 7b). The above highlights the im-
115 portance of a winter time sea ice source for the aerosol burden above sea ice. For comparison, the
116 absolute increase of aerosol number densities ($d_p < 2 \mu\text{m}$) during storms above sea ice was larger
117 compared to the open ocean only for the two smallest size bins ($d_p 0.36-0.48 \mu\text{m}$) (Fig. 7a). And
118 the absolute increase of aerosol volume concentrations ($d_p 1-8 \mu\text{m}$) during storms above sea ice was
119 larger compared to the open ocean only for the larger particle sizes ($d_p 3.5-6.9 \mu\text{m}$) (Fig. 7b). This
120 suggests that to a first order corresponding aerosol number and mass fluxes during storms above
121 sea ice can rival those above the open ocean depending on particle size. Direct flux measurements
122 are needed to further corroborate these findings under varying environmental conditions.

123 Page 27, Lines 6-10: The relative increase of aerosol concentrations with wind speed was much
124 larger above sea ice than above the open ocean highlighting the importance of a sea ice source in
125 winter and early spring for the aerosol burden above sea ice. Comparison of absolute increases of
126 aerosol concentrations during storms suggests that to a first order corresponding aerosol number
127 and mass fluxes above sea ice can rival those above the open ocean depending on particle size.

128
129 **RC2:** Page 15 Line 10: This should be 1 μm . Please check the mass balance of NaCl. See also Fig.
130 3 of Yang et al. (2019). The factor of 1000 in the above equation (Page 15 Line 8) is so that you can
131 use psu (g/kg) directly. For example, if your salinity is 0.06 psu, i.e. 0.06 g/kg, then you just use 0.06,
132 not 0.06E-3, in the above dry equation. Please re-check.

133 **Reply:** We corrected the computation error and adjusted the text as follows:

134 Page 15, Lines 11-17: A significant increase of small particle number densities ($d_p < 2 \mu\text{m}$) during
135 storms above sea ice (Fig. 7a; section 3.3) is consistent with a blowing snow SSA source based
136 on physical arguments: snow particles of low salinity as observed during this study can gener-
137 ate a significant proportion of small sea salt particles after complete loss of water ice by sublima-
138 tion. Assuming one snow particle produces one aerosol the dry particle diameter d_{dry} is given by
139 $d_{dry} = d_p (S_p / 1000 \rho_{ice} / \rho_{NaCl})^{1/3}$, where ρ_{ice} and ρ_{NaCl} are densities of ice ($= 917 \text{ kg m}^{-3}$) and NaCl ($=$
140 2160 kg m^{-3}), respectively. Taking the medians of salinity observed in surface snow ($= 0.06 \text{ psu}$) and
141 of mean snow particle size \bar{d}_p ($= 115-129 \mu\text{m}$) (Tables 5, 6) we would then expect a potential median
142 d_{dry} of 3-4 μm .

143
144 **RC2:** Page 15 Line 14: How do you come to the following conclusion? "Observations from this study
145 support the former requirement, but not the latter". This discussion is not clear. Also, please include
146 references for the previous work, as ice core concentrations also depend on boundary layer heights,
147 cloud formation, dry and wet deposition, etc., and this seems to be a simplified argument that sea
148 salt emissions from sea ice are higher than for open water. In my opinion, this paragraph could be
149 deleted, or at least moved out of the results section, because ice cores were not examined in this
150 study.

151 **Reply:** Agreed. We removed the paragraph from the results section and made a note in the conclu-
152 sions regarding ice core interpretation as follows:

153 Page 27, Lines 10-15: Lower SSA concentrations above sea ice relative to the open ocean may have
154 been due to a combination of low storm frequency and low snow salinities in the area sampled. Model
155 calculations suggest that size distribution and associated flux of SSA originating from blowing snow
156 are very sensitive to snow salinity S_p , e.g. decreasing S_p from 0.92 to 0.06 psu causes SSA spectral
157 number densities to decrease by about one order of magnitude (Yang et al., 2019). Upscaling of the
158 SSA source flux of Weddell sea ice and atmospheric modelling similar to the study of Levine et al.
159 (2014) are needed to address this issue as well as implications for the interpretation of sea salt in ice

160 cores as a proxy for sea ice.

161

162 **RC2:** *Page 26 Lines 2-3: This is related to an above comment. Please explain how you get submi-*
163 *cron particle produced from blowing snow sublimation at the salinity and blowing snow particle size*
164 *reported in Tables 5 and 6. This discussion does not agree with the results of inputting these data*
165 *into Fig. 3 of the related manuscript by Yang et al. (2019, ACP).*

166 **Reply:** Agreed. In line with the above reply we also changed the text in the conclusions:

167 **Page 26, Lines 12-14:** Significant enhancement of small aerosol particles ($d_p < 2 \mu\text{m}$) during storms is
168 consistent with sublimation of low-salinity ($< 0.1 \text{ psu}$) snow particles assuming complete loss of water
169 ice.

170

171 **RC2:** *Figure 3: Please increase the font sizes in this figure to make them readable.*

172 **Reply:** The font size in Fig. 3 has been increased in the revised manuscript.

173

174 References

- 175 Abbatt, J. P. D., Thomas, J. L., Abrahamsson, K., Boxe, C., Granfors, A., Jones, A. E., King, M. D.,
176 Saiz-Lopez, A., Shepson, P. B., Sodeau, J., Toohey, D. W., Toubin, C., von Glasow, R., Wren, S. N.,
177 and Yang, X.: Halogen activation via interactions with environmental ice and snow in the polar
178 lower troposphere and other regions, *Atmos. Chem. Phys.*, 12, 6237–6271, doi:10.5194/acp-12-
179 6237-2012, 2012.
- 180 Abram, N. J., Wolff, E. W., and Curran, M. A.: A review of sea ice proxy information from polar ice
181 cores, *Quaternary Science Reviews*, 79, 168–183, doi:10.1016/j.quascirev.2013.01.011, 2013.
- 182 Artiglia, L., Edebeli, J., Orlando, F., Chen, S., Lee, M.-T., Corral Arroyo, P., Gilgen, A., Bartels-Rausch,
183 T., Kleibert, A., Vazdar, M., Andres Carignano, M., Francisco, J. S., Shepson, P. B., Gladich, I., and
184 Ammann, M.: A surface-stabilized ozonide triggers bromide oxidation at the aqueous solution-
185 vapour interface, *Nat. Commun.*, 8, 700, doi:10.1038/s41467-017-00823-x, 2017.
- 186 Levine, J. G., Yang, X., Jones, A. E., and Wolff, E. W.: Sea salt as an ice core proxy for past sea ice
187 extent: A process-based model study, *J. Geophys. Res.*, 119, doi:10.1002/2013JD020925, 2014.
- 188 Oum, K. W., Lakin, M. J., and Finlayson-Pitts, B. J.: Bromine activation in the troposphere by the dark
189 reaction of O_3 with seawater ice, *Geophys. Res. Lett.*, 25, 3923–3926, doi:10.1029/1998GL900078,
190 1998.
- 191 Weller, R., Wagenbach, D., Legrand, M., Elsässer, C., Tian-Kunze, X., and König-Langlo, G.: Con-
192 tinuous 25-yr aerosol records at coastal Antarctica – I: inter-annual variability of ionic compounds
193 and links to climate indices, *Tellus B*, 63, 901–919, doi:10.1111/j.1600-0889.2011.00542.x, 2011.
- 194 Yang, X., Frey, M. M., Rhodes, R. H., Norris, S. J., Brooks, I. M., Anderson, P. S., Nishimura, K.,
195 Jones, A. E., and Wolff, E. W.: Sea salt aerosol production via sublimating wind-blown saline snow
196 particles over sea ice: parameterizations and relevant microphysical mechanisms, *Atmos. Chem.*
197 *Phys.*, 19, 8407–8424, doi:10.5194/acp-19-8407-2019, 2019.

First direct observation of sea salt aerosol production from blowing snow above sea ice

Markus M. Frey¹, Sarah J. Norris², Ian M. Brooks², Philip S. Anderson³, Kouichi Nishimura⁴, Xin Yang¹, Anna. E. Jones¹, Michelle G. Nerentorp Mastro Monaco⁵, David H. Jones^{1,6}, and Eric W. Wolff⁷

¹Natural Environment Research Council, British Antarctic Survey, Cambridge, UK

²University of Leeds, Leeds, UK

³Scottish Association for Marine Science, Oban, UK

⁴Nagoya University, Nagoya, Japan

⁵IVL Swedish Environmental Institute, Stockholm, Sweden

⁶now at: Neptec, UK Ltd., Oxford, UK

⁷University of Cambridge, Cambridge, UK

Correspondence: M. M. Frey (maey@bas.ac.uk)

Abstract. Two consecutive cruises in the Weddell Sea, Antarctica, in winter 2013 provided the first direct observations of sea salt aerosol (SSA) production from blowing snow above sea ice, thereby validating a model hypothesis to account for winter time SSA maxima in the Antarctic. Blowing or drifting snow often lead to increases in SSA during and after storms. ~~Observed aerosol gradients suggest that net production of SSA takes place near the top of the blowing or drifting snow layer. The observed relative increase of SSA concentrations with wind speed suggests that on average the corresponding aerosol mass flux during storms was equal or larger above sea ice than above the open ocean, demonstrating the importance of the blowing snow source for SSA in winter and early spring.~~ For the first time it is shown that snow on sea ice is depleted in sulfate relative to sodium with respect to sea water. Similar depletion in bulk aerosol ~~observed in the sized~~ $\sim 0.3\text{-}6\ \mu\text{m}$ ~~range suggests above sea ice provided the evidence~~ that most sea salt originated from snow on sea ice and not the open ocean or leads, e.g. ~~based on median values~~ $>90\%$ during the 8 June ~~and to~~ 12 August 2013 period. A ~~mass budget calculation shows that sublimation of snow even with temporally very close association of snow and aerosol particle dynamics together with the long distance to the nearest open ocean further supports SSA originating from a local source. A mass budget estimate shows that snow on sea ice contains even at low salinity (<40.1 psu) can more than enough sea salt to~~ account for observed increases of atmospheric ~~sea salt from blowing snow~~ SSA during storms if released by sublimation. Furthermore, snow on sea ice and blowing snow showed no or small depletion of bromide relative to sodium with respect to sea water, whereas aerosol was enriched at 2 m and depleted at 29 m suggesting that significant bromine loss takes place in the aerosol phase further aloft and that SSA from blowing snow is a source of atmospheric reactive bromine, an important ozone sink, even ~~in winter. during winter darkness. The relative increase of aerosol concentrations with wind speed was much larger above sea ice than above the open ocean highlighting the importance of a sea ice source in winter and early spring for the aerosol burden above sea ice. Comparison of absolute increases of aerosol concentrations during~~

storms suggests that to a first order corresponding aerosol fluxes above sea ice can rival those above the open ocean depending on particle size.

Evaluation of the current model for SSA production from blowing snow showed that the parameterisations used can generally be applied to snow on sea ice. Snow salinity, a sensitive model parameter, depends to a first order on snowpack depth and therefore ~~is~~was higher above first-year (FYI) than above multi-year sea ice (MYI). Shifts in the ratio of FYI and MYI over time are therefore expected to change the seasonal SSA source flux and contribute to the variability of SSA in ice cores, which both represents an opportunity and a challenge for the quantitative interpretation of ~~the sea salt sea ice proxy~~sea salt in ice cores as a proxy for sea ice.

Copyright statement. TEXT

1 Introduction

Atmospheric aerosol represents the largest source of uncertainty in global climate predictions (Boucher et al., 2013), and includes sea salt aerosol (SSA), which is the main background aerosol above the oceans. In general global climate and aerosol models strongly under-predict Aitken and accumulation mode particle concentrations compared to observations (Mann et al., 2014) and do not capture the winter maximum of SSA observed at several locations in the Arctic and Antarctica (e.g. Huang and Jaeglé, 2017). A quantitative understanding of SSA sources is critical since SSA influences radiative forcing and therefore climate both directly by absorbing and scattering sunlight and indirectly by modifying the reflectivity, lifetime, and extent of clouds (O’Dowd et al., 1997; DeMott et al., 2016). Uncertainties in cloud properties explain much of the spread in the modelled climate sensitivity (Flato et al., 2013) and are due in large part to lacking knowledge about aerosol sources. SSA plays also an important role in polar tropospheric ozone and halogen chemistry through the release of active bromine in polar spring contributing to ozone depletion events (ODEs) (e.g. Yang et al., 2010; Kalnajs et al., 2013; Choi et al., 2018). Furthermore, SSA is easily measured in polar ice cores but its use as a quantitative proxy of past sea ice conditions is complicated by uncertainties related to SSA source contributions and processes as well as transport meteorology (Abram et al., 2013; Levine et al., 2014; Rhodes et al., 2017), and more recently in the case of bromide Br^- (e.g. Spolaor et al., 2013) also to post-depositional processing associated with the bromine explosion chemistry of ODEs (Simpson et al., 2005; Pratt et al., 2013).

Globally most SSA originates from the open ocean, where sea spray is produced by wave breaking and bubble bursting generating film and jet drops (de Leeuw et al., 2011). However, previous observations in Antarctica provide two-fold evidence of the existence of a significant SSA source associated with sea ice. First, SSA exhibits maxima during winter/spring in the atmosphere (Rankin and Wolff, 2003; Jourdain et al., 2008; Legrand et al., 2017) and in seasonally resolved ice core records (e.g. Frey et al., 2006); in deep ice cores highest values are seen during glacial periods (Wolff et al., 2003). Thus the highest values are observed when sea ice is at its seasonal or long-term

maximum. And second, SSA in the lower atmosphere above coastal Antarctica is strongly depleted in sulfate (SO_4^{2-}) compared to seawater (Wagenbach et al., 1998) as are also brine and frost flowers in the sea ice nearby (Rankin et al., 2000). Fractionation of SO_4^{2-} and to much lesser extent of sodium (Na^+) in sea ice occurs during the cooling of sea ice brine down to its eutectic point due to precipitation of the mineral mirabilite ($\text{Na}_2\text{SO}_4 \cdot 10\text{H}_2\text{O}$) at temperatures
5 below -6.4°C resulting in ion ratios in liquid and solid phase that are different compared to sea water (Butler et al., 2016). At first it had been thought that observed fractionated SSA originates mostly from highly saline frost flowers, which exhibit a similar sulfate depletion (Rankin et al., 2000). However, recent laboratory (Roscoe et al., 2011; Yang et al., 2017) and model (Huang and Jaeglé, 2017) studies indicate that frost flowers likely play only a minor role in producing SSA because they do not get easily airborne and do not occur widely enough in space and time to
10 produce large enough SSA quantities. A more recent hypothesis based on a numerical model suggests that salty blowing snow that undergoes sublimation may be a significant source of SSA with a production per unit area equal or larger than that above the open ocean (Yang et al., 2008). Indeed, model agreement with SSA winter maxima observed at a number of locations in the polar regions is much improved when a SSA source from blowing snow based on the parameterisation of (Yang et al., 2008) is included in the model (Huang and Jaeglé, 2017; Yang et al.,
15 2019). A recent observational study in the Ross Sea sector of coastal Antarctica also shows a significant association between increased SSA and high wind speed suggesting a link to blowing snow above sea ice as a source (Giordano et al., 2018).

However, the blowing snow hypothesis and mechanism lack validation by direct observation. In particular, the applicability of the scheme used by all model studies to date (Huang and Jaeglé, 2017; Rhodes et al., 2017; Yang et al., 2019) for sea ice is not known, because model parameterisations are based on blowing snow measurements
20 above ice sheets (Budd, 1966; Mann et al., 2000; Nishimura and Nemoto, 2005) and the Canadian prairies (Déry and Yau, 2001, and ref. therein). In this study we report the first direct observations of sea salt aerosol from within the Antarctic sea ice zone during winter, when the blowing snow source is expected to be most active. We discuss the chemical fractionation in aerosol and snow as well as SSA variability and origin during and after blowing snow
25 events supported by a unique set of measurements of physical and chemical properties of atmospheric aerosol, snow particles and the snowpack on sea ice. We then critically evaluate the current model parameterisation of sea salt aerosol production from blowing snow based on the *in situ* observations and discuss the mass budget of sea salt aerosol above sea ice. A comparison between our observations and a global chemistry transport model is described in a companion study (Yang et al., 2019).

30 2 Methods

Two consecutive Antarctic expeditions were carried out in the Weddell Sea aboard the German icebreaker *RV Polarstern* in 2013, the *Antarctic Winter Ecosystem Climate Study (AW ECS)*, ANT-XXIX/6 between 8 June and 12 August (Lemke, 2014), and the spring expedition ANT-XXIX/7 between 14 August and 16 October

(Meyer, 2014) (Fig. 1). We report mainly on results from ANT-XXIX/6, which provided a significantly more extensive dataset. Atmospheric measurements and sampling were carried out continuously from the crow’s nest of *RV Polarstern*, and on the sea ice during nine 3–104 hr long ice stations (Table 1). Ice station S3 was occupied for 3 hr (Table 1) allowing only for collection of snow samples. Instruments were set up on the sea ice typically at 0.8 to 5 1.5 km distance from the ship. Sea ice thickness measurements during ANT-XXIX/6 (Arndt and Paul, 2018) showed that ice stations S1-6 in the eastern sector of the Weddell Sea were on first-year sea ice, whereas ice stations S7-S9 near the Antarctic Peninsula were on multi-year sea ice (Fig. 1). This is in agreement with the observation that persistent multi-year sea ice in the Weddell sea occurs only east of the Antarctic peninsula due to a circulating ocean current. The distance to the nearest open water was ~ 600 – 1000 km for ice stations S1-6 and ~ 200 – 400 km for ice 10 stations S7-9 (Fig. 1, Table 1). Sea ice concentrations in mid July 2013 derived from Nimbus-7 satellite microwave radiometer measurements (Comiso, 2018) show areas with 85-95% ice cover near ice stations S2-3 and S7-9 indicating that open leads may be present (Fig. 1). As *RV Polarstern* travelled south day lengths decreased until the sun remained entirely below the horizon between 23 June and 7 July providing only a few hours of twilight per day. All times are in UTC. A summary of instrumentation and temporal coverage is given in Table 2 and experimental 15 details for each measurement are described below.

2.1 Airborne snow particles

Size resolved number densities of airborne snow particles in the diameter range 36–490 μm were measured at a mean height of ~ 0.16 m (range 0.07-0.37 m) on the sea ice, and at 29 m from the crow’s nest of *RV Polarstern* using an open-path snow particle counter (SPC-95, Niigata Electric Co., Ltd) described previously (Nishimura and Nemoto, 20 2005; Nishimura et al., 2014). In brief, the SPC is a single-slit sensor with a laser diode and measures diameter and number of drifting snow particles by detecting their shadows. The SPC is mounted on a self-steering wind vane, and hence, the sampling area A ($2 \times 10^{-3} \text{m} \times 25 \times 10^{-3} \text{m}$) and volume ($A \times 0.5 \times 10^{-3} \text{m}$) are maintained perpendicular to the prevailing wind direction. Electric pulse signals resulting from snow particles passing through the sampling volume are sent to a transducer and an analysing data logging system. Assuming that the detected particle size is 25 the equivalent diameter d_p of a sphere each signal is classified into one of 64 mean particle diameter classes between 36 and 490 μm . The SPCs were calibrated by the manufacturer in Japan at -10 and -30 $^{\circ}\text{C}$ for particle diameters 137, 229, 314, 399 and 449 μm , respectively. The instrument output at the calibration temperature of -10 $^{\circ}\text{C}$, close to the ANT-XXIX/6 median of -11.8 $^{\circ}\text{C}$, showed very good agreement with the expected representative particle diameter. Therefore no temperature corrections were applied. Particle counts from the smallest diameter class ($d_p=36$ μm) 30 have large uncertainties due to the instrument’s detection limit, whereas particle counts from the largest diameter class ($d_p=490$ μm) showed frequent spikes due to detection of precipitating snow. Particle counts from the smallest and largest diameter class were therefore discarded. Particle counts h measured at a sampling rate SR of 1 Hz are integrated to 1-minute values and divided by sampling area A to obtain particle number flux F in units of $\text{m}^{-2} \text{minute}^{-1}$. Snow particle number densities for the diameter range 46–478 μm , N_{46-478} , are then computed using

$N_{46-478} = FU^{-1}$ with horizontal wind speed U and are reported at ambient temperature, pressure and relative humidity in units of m^{-3} . Wind speeds measured near the crow's nest at 39 m by the ship's meteorology observatory (see section 2.5) and on the sea ice at 2 m by a sonic anemometer (see section 2.5) were extrapolated to the respective instrument heights. To do this a logarithmic wind profile $U(z)$ is assumed given by $U(z) = u_*/\kappa \ln(z/z_0)$ (e.g. Li and Pomeroy, 1997), with measurement height z , the von Karman constant κ ($= 0.4$), friction velocity u_* and the surface roughness length of momentum z_0 set to 5.6×10^{-5} m as measured very consistently above snow at Halley (King and Anderson, 1994). Wind speed at instrument level is then derived using $U(z_2) = U(z_1) \ln(z_2/z_0) / \ln(z_1/z_0)$. It should be borne in mind that the distortion of flow caused by the ship may mean both that speed at 39 m is not representative of flow in the far field at that height, and further, the turbulent field strength, which governs the gradient of the logarithmic profile, may be a residual from a different, likely lower, height. Thus, we suggest care when interpreting the data, and estimate that the conversion from particle counts to number density be seen as an estimate suitable for comparison, rather than quantitative with a well behaved uncertainty.

2.2 ~~Sea salt~~ Atmospheric aerosol

Size-resolved number densities of SSA sized particles were measured at mean heights of 0.19 m (range 0.13-0.25 m) and 2.16 m (range 1.98-2.2 m) on the sea ice, and at 29 m from the crow's nest of *RV Polarstern* using a Compact Lightweight Aerosol Spectrometer Probe (CLASP) (Hill et al., 2008; Norris et al., 2008). The CLASP is a closed-path optical particle spectrometer, which aspirates sample air at a nominal flow rate Q of $\sim 3 \text{ STP-L min}^{-1}$, which is actively controlled by onboard electronics, and recorded to allow subsequent correction of the particle spectra for any minor flow variations. An improved version of the CLASP instrument as used by Norris et al. (2012) was deployed, which measures a 16-channel size spectrum covering particle diameters d_p in the range of 0.36–11.62 μm at ambient humidity at a sampling rate SR of 1 Hz. CLASP pump and scatter cell were calibrated in the lab before and after the cruise. Particle losses to inlet walls are minimised by using a short and straight inlet tube of 0.3 m length similar to the original configuration (Hill et al., 2008, Figure 9). We assume as an upper limit of particle losses those estimated previously for a similar inlet configuration (Norris et al., 2012), which amount to 43% at $d_p = 11.32 \mu\text{m}$, 19% at $d_p = 6.06 \mu\text{m}$ and 0.1% at $d_p = 0.44 \mu\text{m}$, respectively. With an estimated cut-off diameter of $>11 \mu\text{m}$ all but the coarsest SSA particles are expected to be detected. Number densities $N_{0.4-12}$ are computed from particle counts h with $N_{0.4-12} = h SR Q^{-1}$ at IUPAC standard temperature (273.15 K) and pressure (1 bar) and then averaged to 1-minute means. Due to pump failure of the CLASP unit in the crow's nest usable data at the 29 m level are only available from 8 June to 26 July 2013. Raw aerosol number concentrations at the crow's nest showed significant spikes, when air came from the direction of the ship's engine stack, whereas no evidence of pollution was detected in the observations on the sea ice. Pollution spikes were effectively filtered out prior to averaging by excluding all data when relative wind direction was in the 135–225° sector encompassing the ship's engine stack. A total of 21% of the available 1-second data was removed from the crow's nest data.

2.3 Aerosol chemical composition

Aerosol was collected on filters via continuous low-volume sampling using open-face filter holders protected by a wind shield following the approach from a previous study in coastal Antarctica (Wolff et al., 1998). One sampling unit was deployed on the sea ice for the duration of each ice station, and another one was operated continuously from the crow's nest of *RV Polarstern*. Aerosol filters were polytetrafluoroethylene (PTFE) 1.0- μm pore membrane filters of 37 mm diameter (Zefluor[®] P5PL037 Pall Lab.) with an aerosol retention of >99.99% as stated by the manufacturer. Filters were pre-mounted prior to the expedition in 3-piece styrene acrylonitrile (SAN) filter holders onto porous cellulose support pads (Pall International Sarl). At the head of each sampling unit, the filter holder was mounted, open-face downward, inside an upturned polyethylene jar intended to prevent blowing snow blocking the filter. On the sea ice the jar was attached to a metal mast at $\sim 2\text{m}$ above the snowpack and on the crow's nest to a horizontal metal arm at $\sim 29\text{m}$ above the sea ice surface, and was free to swing in the wind, aiding the removal of snow and rime. An air pump was attached with PFA tubing $\sim 10\text{m}$ downstream of the sampling head to pull ambient air through the filters. The sea ice unit had a 12 VDC diaphragm vacuum pump (22 W, N815-KNDC, KNF Neuenberger) powered by a rechargeable lead-acid battery (12-5000X, Sunlyte) with an average flow rate of 9.8 STP-L min^{-1} , whereas the crow's nest unit had a 220 VAC diaphragm vacuum pump (420 W, Mod-No. DOA-P725-BN, GAST, Michigan, USA) with a mean flow rate of 8.8 STP-L min^{-1} . Total sample air volume was measured upstream of the pump using a diaphragm gas meter (KG-2-G1.6, BES), which was not temperature compensated. However, gas meter temperature continuously recorded with a TinyTag logger (RS, Gemini) and atmospheric pressure available from the ship's meteorology observatory (see section 2.5) allowed to determine the total air sample volume at IUPAC standard temperature and pressure. Rotameters with glass float (ColeParmer) installed upstream of the gas meter were used to manually check flow rates 1-2 times daily. Post-season lab tests confirmed accuracy of the crow's nest gas meter, whereas the sea ice gas meter showed a negative bias of 30%, which is accounted for in the computation of final atmospheric concentrations. Filter sampling intervals were on average 6 hr (range 1.5-8.6 hr) at 2 m and 12 hr (range 3.5-31 hr) at 29 m, with more frequent filter changes applied during storms. The resulting sample air STP-volumes were 3.3 (range 0.8-5.1) m^3 at 2 m and 6.4 (range 1.8-17.3) m^3 at 29 m.

Filters were estimated to collect aerosol in the diameter range $\sim 0.3\mu\text{m}$ to less than $6\mu\text{m}$. The lower end of the range is based on previous measurements of collection efficiencies of PTFE filters as a function of particle size (Soo et al., 2016). The upper end, the cut-off diameter of the air intake system, which critically controls the observed aerosol load, is estimated as follows. Previously a cut-off diameter of $6\mu\text{m}$ was empirically estimated for a similar sampling set up with filter face velocities of 1.1m s^{-1} (Wagenbach et al., 1998). In this study average filter face velocities were 0.15m s^{-1} implying a cut-off diameter smaller than $6\mu\text{m}$. Since isokinetic sampling could not be applied, sea salt aerosol concentrations are expected to be generally underestimated, especially during high wind speeds. The filter low-bias for sea salt is found to depend weakly on wind speed and is on average 26% compared to median values during filter sampling intervals derived from CLASP measurements as discussed in section 3.5.

35 Filter units, consisting of filters, support pads and filter holders were cleaned and assembled prior to shipping to Antarctica in a Class 100 clean laboratory in Cambridge (United Kingdom). Filters and support pads were soaked over-night in methanol (ACS >99.9%, Fisher Scientific) in batches of 25, rinsed 4 times with ultra-high purity water (UHP, electric resistivity 18.2 M Ω cm), micro-waved for 3 minutes then rinsed once more with UHP. Filters were dried on their support pads under vacuum in a clean dessiccator. Filter holders were UHP-rinsed, placed for 10 minutes
5 into an ultra-sonic bath, UHP-rinsed 3 times and micro-waved for 5 minutes, then soaked over-night in UHP, followed by 4 UHP rinses and 5 minute microwaving. Filter holders were then dried in the incoming, filtered airflow of the Class 100 laboratory. Filter units were assembled in the Class 100 laboratory, sealed air-tight with plugs and then bagged in 2 layers of polyethylene bags. In Antarctica, filter units were removed from the bags, mounted onto the sampling head by removing one plug, then opened to give open-face sampling. Field blanks were collected at regular
10 intervals by placing a filter onto the head and leaving it for a few minutes without pumping. After sampling the procedure was reversed, and filter units were shipped in a freezer (-20 °C) back to the United Kingdom and kept frozen until prior to extraction. Filters were transferred in the Class 100 laboratory into 10 ml pre-cleaned polystyrene sample vials (Dionex AS-AP Autosampler vial). Pre-cleaning of vial, lid and septum involved UHP-rinsing followed by 3-minute micro-waving repeated 5 times, soaking over-night in UHP, repeating the same set of UHP-rinse and
15 microwaving before drying and double-bagging. Filters were then extracted in 8 ml of UHP by repeated shaking and immersion into an ultra-sonic bath for >30 min. Samples were analysed using ion chromatography (IC) as described in the following section. The field blank, mostly due to the filter itself with contributions from field and extraction procedures, was significant for all ions (Table 3). A mean value has been subtracted from all concentrations leading in some cases to negative values. The combination of small air sample volumes and high field blanks led to relatively
20 high limits of detection (LOD) defined here as 2 times the standard deviation of the field blank (Table 3).

Chemical fractionation of ion x ($=\text{SO}_4^{2-}$, Br^- , Na^+) relative to ion y ($=\text{Na}^+$ or Cl^-) in aerosol and snow with respect to sea water is evaluated based on the depletion factor $DF_x = 1 - R_{spl}/R_{RSW}$, with R being the $x:y$ mass ratio in sample (spl) and reference sea water (RSW) after Millero et al. (2008), respectively. Throughout $DF_{\text{SO}_4^{2-}(\text{Na}^+)}$ and $DF_{\text{Br}^-(\text{Na}^+)}$ refer to sulfate and bromide depletion relative to Na^+ , and $DF_{\text{Na}^+(\text{Cl}^-)}$ refers to sodium depletion
25 relative to Cl^- . DF_x between 0 and 1 indicates 0-100% depletion, whereas $DF_x < 0$ indicates enrichment. For example, $DF_x = -1.5$ or 150% enrichment means the respective ion concentration is 2.5 times that in reference sea water. A total of 6 ($\approx 6\%$ of all crow's nest samples) $DF_{\text{SO}_4^{2-}}$ values were below that of pure mirabilite ($= -7.3$) and are attributed either to sulfate contamination from the ship's engine emissions discussed below or measurement error. We therefore removed all ion concentrations of the corresponding filter samples from the dataset. ~~$DF_{\text{smaller than}}$~~
30 ~~-7 were considered outliers due to measurement error and also removed: a total of 4 ($= 3\%$ of all samples) from the crow's nest data, and a total of 6 ($= 14\%$ of all samples) from the sea ice data.~~ Propagation of the analytical error yields mean uncertainties in DF_x of 0.03–0.04.

About 7% (10 out of 151) of all filters collected at the crow's nest during June to September 2013 were visibly grey from exposure to ship exhaust and therefore not analysed in order to protect the IC columns. In order to

assess the impact of potential pollution on reported bulk aerosol chemistry from filters collected at the crow's nest we calculated for each filter sample the fraction of the total filter run time during which relative wind direction was within the 135–225° sector encompassing the ship's engine stack. Considering all filters sampled from June to September 2013 (N=141) the fraction of total filter run time with winds from the polluted sector was on average 9.5%. Polluted time fraction and atmospheric concentrations of Na⁺ and Cl⁻ were uncorrelated (R<0.05, p>0.1) not suggesting any impact of pollution on the respective ion concentration. ~~A weak~~ Weak, but significant ~~negative correlation was~~ correlations were found between polluted time fraction and SO₄²⁻ (R=-~~0.21~~0.21, p<0.05), DF_{SO₄²⁻} (R=-0.44, p<0.01), Br⁻ (R=-~~0.17~~0.17, p<0.06) and DF_{Br⁻} (R=-0.37, p<0.01) suggesting that enrichment in sulfate (and bromide) may be more likely during polluted conditions. The bulk aerosol chemistry observations on the sea ice showed no evidence of pollution. Thus, in the case of sulfate we cannot rule out that some of the sulfate enrichment in atmospheric aerosol observed at the crow's nest may be due to ship exhaust rather than presence of mirabilite. It follows that estimates of sea ice contributions to total SSA inferred from depletion factors in this study have to be considered as lower bounds of true values.

2.4 Snow chemical composition

In order to determine the snow chemical composition a total of 24 snow pits was sampled at 9 ice stations during ANT-XXIX/6, between 1–2 snow pits at shorter ice stations and up to 8 at the multi-day ice stations S6 and S8 (Table 1). Snow pit profiles were sampled at 2 cm depth resolution with a custom-built, cylindrical, stainless-steel sampling tool yielding a sample volume of ~60 cm³. Blowing or drifting snow was collected at approximately 0.3, 0.9 and 1.6 m above the snow surface using modified Mellor gauges with a clear thermoplastic body (Schmidt et al., 1984) referred to as rocket traps. Snow samples were transferred into 50 ml polypropylene tubes with screw-caps (Corning CentriStar), which prior to field deployment had been UHP-rinsed and dried in a Class 100 clean laboratory in Cambridge. One set of snow samples was melted onboard *RV Polarstern* to measure aqueous conductivity using a conductivity meter (SensIon 5, Hach) with a measurement range of 0–200 mS cm⁻¹ and a maximum resolution of 0.1 μS cm⁻¹ at low conductivities (0–199.9 μS cm⁻¹). The conductivity meter has an automatic non-linear temperature compensation based on a NaCl solution and reference temperature of 25 °C and was calibrated with a standard salt solution (12.880 mS cm⁻¹ at 25.1 °C), certified and traceable to NIST (REAGECON Prod. No. CSKC12880, Lot No. CS1288012K1). Conductivity values were converted into practical salinity S_p using the Gibbs-SeaWater (GSW) Oceanographic Toolbox (McDougall and Barker, 2011), which applies the algorithm of the Practical Salinity Scale of 1978 (PSS-78) (Unesco, 1981, 1983) with an extension to salinities $S_p < 2$ psu (Hill and Woods, 1986). S_p is reported in psu (practical salinity unit), approximately equivalent to the weight of dissolved inorganic matter in grams per kilogram of seawater, and has an accuracy as stated by the manufacturer of ±0.001 psu at low salinities (<1 psu).

The other snow samples were shipped frozen back to Cambridge and only melted prior to analysis in spring 2014 and December 2016. Elevated salinities required dilution of samples with UHP water, typically by a factor 100 for most snow samples and a factor 10000 for sea ice and frost flower samples. Samples were analysed for major

ions using Dionex ICS2000 ion chromatography systems with reagent free eluent generation. Cation analysis was performed with a CS12A separator column with isocratic methylsulfonic acid elution and a 250 μl sample loop. Anion analysis was performed using an AS17 separator column, gradient elution with potassium hydroxide and a 250 μl sample loop. Measurement accuracies were evaluated using European reference materials ERM-CA408 (simulated rain water) and CA616 (groundwater) and were all within 5% and respective LODs $\sim 2 \text{ ng g}^{-1}$. Here we only report and discuss concentrations of ions relevant to this study: Na^+ , Cl^- , SO_4^{2-} and Br^- .

2.5 Ancillary measurements

General meteorology measurements were taken from *RV Polarstern* onboard sensors described in detail [at-elsewhere](https://spaces.awi.de/display/EFPW/Weather+Station) (<https://spaces.awi.de/display/EFPW/Weather+Station>; last accessed January 2020), and include ambient temperature T_a and relative humidity with respect to water RH_{aq} at 29 m (HMT337, Vaisala, Finland), wind speed U and direction at 39 m (Sonic 2D a, Thies, Germany) and global radiation (Pyranometer CM11, Kipp&Zonen, Netherlands). Still images recorded every minute by a webcam in the crow's nest provided further qualitative information on the presence of airborne snow particles, when light conditions were adequate. During ice stations the three-dimensional wind components (u , v , w) were measured above the sea ice at 25 Hz with an unheated sonic anemometer (Metek USA-1) that was mounted on a mast at ~ 2 m. Processing of raw sonic data in 1-min blocks included temperature cross-wind correction and a double coordinate rotation to force mean w to zero (Kaimal and Finnigan, 1994; Van Dijk et al., 2006), followed by computation of friction velocity u_* . T_a and RH_{aq} were also measured above the sea ice on a 2-m mast at approximately 0.6, 1.2 and 2.0 m, respectively, using temperature-humidity probes (HMP45, VAISALA). RH_{aq} was converted to relative humidity with respect to ice RH_{ice} . RH_{ice} from the HMP45 was further corrected after Anderson (1994) to extend the calibrated temperature range to $T_a < -20^\circ\text{C}$. Based on the available data the calibration of RH_{ice} is most accurate for the -40 to -20°C range, and has greater uncertainty in RH_{ice} in near freezing conditions. Accurate correction of the HMT337 output was not possible since available RH_{aq} values are biased as they had been post-processed by accepting only values up to 105% and setting any values $> 100\%$ to 100%. In general, measuring RH_{ice} during blizzards is very difficult and its estimated non-systematic error of $\sim 5\%$ limits its use for blowing snow calculations. We therefore discuss below only RH_{ice} trends.

3 Results and discussion

The presentation and discussion of results in the sections below are organised as follows. An overview of observed meteorology and particle concentrations (section 3.1) is followed by the discussion of chemical fractionation of aerosol and snow and size spectra of ~~sea-salt~~ aerosol above sea ice (section 3.2). Blowing snow events are then described in detail during two time periods (section 3.3). We then evaluate the current model mechanism proposed by Yang et al. (2008, 2019) for SSA production from blowing snow (section 3.4) and finally discuss the air-snow budget of sea salt aerosol above sea ice (section 3.5).

3.1 Overview of atmospheric observations

Near-zero or positive ambient temperatures T_a in degrees Celsius occurred when *RVPolarstern* was in the open ocean at the start and end of ANT-XXIX/6, as well as from the 22 July 2013 onwards, when the ship had moved into the marginal sea ice zone (MIZ) closer to open water (marker B in Fig. 1,2b). After entry into the sea ice zone on 17 June 2013 (marker A in Fig. 1) T_a decreased to below -20°C but showed thereafter frequent increases associated with storms (Fig. 1,2a-b). The correlation between T_a and U_{39m} is weak but significant ($R = 0.37$, $p < 0.05$). Winter storms occurred frequently with wind speeds ranging between 10 and 20 m s^{-1} , occasionally exceeding 20 m s^{-1} (Fig. 2a), and coincided often with snowfall based on the ship's 3-hourly weather report, occasional webcam images and presence of clouds (data not shown). Bearing in mind that wind direction and origin of air mass depend on the ship's position relative to the path of a low or high pressure system the following is observed: winds were most of the time from W to SSW advecting cold (-15 to -30°C) air of a low water load with specific humidities $q_v < 3\text{ g kg}^{-1}$ (Fig. 3). Second most frequent were winds from SSE to SE advecting relatively warm air often between -5 and 0°C with higher q_v values often between 3 – 5 g kg^{-1} (Fig. 3) indicating origin from lower latitudes. And third most frequent were winds from the N coinciding with the highest wind speeds (Fig. 3). The air was (super)saturated with respect to ice most of the time ($RH_{ice} > 100\%$), with increased frequency of subsaturation ($RH_{ice} < 100\%$) when the winds were from SE (Fig. 3d). Horizontal wind speed at 2 and 39 m correlated well with friction velocity u_* ($R=0.9$, $p < 0.05$) (Fig. S1) indicating a well-mixed near-neutral turbulent boundary layer above the sea ice during blowing snow (Nishimura and Nemoto, 2005; Jacobson, 2005).

Airborne snow particle concentrations at 29 m showed strong variability and a weak but significant correlation with wind speed ($R=0.27$, $p < 0.01$) (Fig. 2a,c). During most storms measured snow particle concentrations have contributions from both blowing snow from the sea ice and precipitation from above as further discussed in section 3.4.2. At 29 m mean total number densities N_{46-478} were $8.7 \times 10^3\text{ m}^{-3}$ during ANT-XXIX/6 and very similar $7.2 \times 10^3\text{ m}^{-3}$ during ANT-XXIX/7 (Table S1, Fig. S2c). Near the sea ice surface snow particles were measured for a total sampling time of 6 days and showed a mean N_{46-478} of $2.6 \times 10^5\text{ m}^{-3}$, on average ~ 60 times the number density observed during the same time at 29 m.

Aerosol concentrations $N_{0.4-12}$ at 29 m showed strong variability with many but not all increases associated with storms and blowing snow (Fig. 2d), illustrated by a weak but significant correlation with wind speed ($R=0.18$, $p < 0.01$). At 29 m mean total number densities $N_{0.4-12}$ were $2.1 \times 10^6\text{ m}^{-3}$ during ANT-XXIX/6 (Table S2, Fig. 2d). $N_{0.4-12}$ mean values at 2.0 and 0.2 m during ice stations were 1.4×10^6 and $1.7 \times 10^6\text{ m}^{-3}$, respectively, about the same as the number densities observed during the same time at 29 m (Table S2). The median aerosol particle diameters \bar{d}_p at the measurement heights 0.2, 2.0 m and 29 m ranged between 0.60 and 0.66 μm (Table S2) showing dominance of sub-micron sized particles in atmospheric aerosol below the instrument particle size cut-off ($> 11\text{ }\mu\text{m}$).

Descriptive statistics of the aerosol chemistry are summarised in Table 4. The Na^+ concentrations of bulk aerosol showed strong variability with most increases coinciding with storms and aerosol number density $N_{0.4-12}$ peaks

(Fig. 2e). Note as discussed in section 3.5 the correlation between atmospheric sea salt concentrations estimated based on filters and $N_{0.4-12}$ is weak but significant ($R=0.32$ $p<0.01$) indicating that CLASP captures some SSA variability. Na^+ and sea salt concentrations were in general higher at 29 m than at 2 m (Table 4) except during S8 (Fig. 2e). $DF_{\text{SO}_4^{2-}}$ values of aerosol at 29 and 2 m showed strong variability ranging most of the time between values near 0 (small depletion) and close to 1 (strong depletion), with occasional $DF_{\text{SO}_4^{2-}} < 0$ indicating enrichment (Fig. 2e). Median $DF_{\text{SO}_4^{2-}}$ values at 29 m were similar during ANT-XXIX/6 (=0.29) and ANT-XXIX/7 (=0.21), but larger near the sea ice surface (=0.48), although vertical differences were not statistically significant based on the Wilcoxon rank-sum test ($p<0.01$). Non-zero $DF_{\text{SO}_4^{2-}}$ values suggest throughout a significant contribution to the total SSA burden from a fractionated sea ice source (Table 4, Fig. S1e). Conversely, when in open water at the beginning and end of ANT-XXIX/6 Na^+ concentrations of bulk aerosol were relatively large but with small or no sulfate depletion consistent with the open ocean as the main SSA source, except for the very first and last sample (Fig. 2e).

3.2 The sea ice source of ~~sea salt~~-aerosol

Below we discuss ~~sea salt~~-aerosol properties characteristic for ~~the blowing a~~ sea ice source from blowing snow, including the chemical fractionation of SO_4^{2-} and Br^- as well as aerosol size distributions observed above sea ice.

3.2.1 Chemical fractionation of SO_4^{2-}

In non-summer months when biogenic non-ss SO_4^{2-} is at a minimum Antarctic aerosol was observed to be depleted in SO_4^{2-} (relative to Na^+) and in Na^+ (relative to Cl^-) (Wagenbach et al., 1998; Legrand et al., 2017). Similar fractionation in brine and frost flowers in the sea ice nearby attributed to precipitation of the mineral mirabilite ($\text{Na}_2\text{SO}_4 \cdot 10\text{H}_2\text{O}$) suggested that the observed SSA must originate from the sea ice and not from the open ocean (Wagenbach et al., 1998; Rankin et al., 2000). Here we show for the first time that snow on sea ice is depleted in sulfate (Fig. 4a). $DF_{\text{SO}_4^{2-}}$ of most snow samples was positive, showing large scatter and no particular dependence on snowpack depth or sea ice age (Fig. 4a). Negative $DF_{\text{SO}_4^{2-}}$ suggests presence of mirabilite precipitated during freezing. The median volume-integrated $DF_{\text{SO}_4^{2-}}$ in snow ranged between 0.24 and 0.35 (Table 5) overlapping with the sulfate depletion found in aerosol during the period the snow was sampled (ANT6) with median $DF_{\text{SO}_4^{2-}}$ ranging between 0.29 and 0.48 (Table 4). Considering all $DF_{\text{SO}_4^{2-}}$ values no statistical difference is detected between snow and aerosol based on the Wilcoxon rank-sum test ($p<0.01$). The similarity of sulfate depletion in both snow and aerosol strongly suggests that snow sea ice in the Weddell Sea is the dominant source of regional sea salt aerosol.

The sulfate depletion observed in aerosol and snow (Figs. 2f, 4a) is consistent with mirabilite precipitation. Mean temperatures during all ice stations except S3 were below the -6.4°C threshold of mirabilite precipitation (Table 1). And a recent lab study found that mirabilite precipitation results in $DF_{\text{SO}_4^{2-}}$ of 0.93 in sea water brine cooled down to -20.6°C (Butler et al., 2016). Conversely, $DF_{\text{SO}_4^{2-}} < 0$ in snow or aerosol suggests contributions from non-sea salt SO_4^{2-} or crystallized mirabilite, which has a $DF_{\text{SO}_4^{2-}}$ of -7.3. The latter is supported by the observation that most

$DF_{\text{SO}_4^{2-}} < 0$ occur in or near the sea ice surface, where most of the partitioning between brine and mineral is expected to have occurred during freezing (Fig. 4a). If the partitioning of crystallized $\text{Na}_2\text{SO}_4 \cdot 10 \text{H}_2\text{O}$ between brine and the snow-ice matrix is the dominating SO_4^{2-} fractionation process then Na^+ should be depleted as well in the brine.

5 Further Na^+ depletion may arise from the precipitation of hydrohalite ($\text{NaCl} \cdot 2\text{H}_2\text{O}$) once ambient temperature drops below the threshold of -22.9°C (e.g. Butler et al., 2016), which occurred here during some periods of time (Fig. 2b, Table 1). In the analysis below however we consider only the precipitation of mirabilite. Following the approach of Wagenbach et al. (1998) we take Cl^- as the reference species for bulk sea water and find from a mass balance calculation that the Cl^- to Na^+ mass ratio would then be linearly related to the SO_4^{2-} to Na^+ ratio with a

10 slope of -0.98 and an intercept of 2.04 . From that a theoretical relationship between DF_{Na^+} (with respect to Cl^-) and $DF_{\text{SO}_4^{2-}}$ (with respect to Na^+) is derived and compared to observations (Fig. 5). The observed fractionation is largely in agreement with the model prediction. Snow on sea ice follows closely the theoretical mirabilite fractionation line, whereas aerosol shows large scatter and a tendency to apparent Na^+ enrichment with respect to Cl^- of up to 20% , equivalent to Cl^- depletion with respect to Na^+ of 17% (Fig. 5). Dechlorination of sea salt aerosol observed

15 in Antarctica has a maximum in spring/summer, when gaseous acidic species (nitric, sulfuric and methanesulfonic acid) are available to replace chloride on sea-salt aerosol (Wagenbach et al., 1998; Rankin and Wolff, 2003; Legrand et al., 2017). Acidic sulfur species are close to zero during winter in coastal Antarctica e.g. at Neumayer (Weller et al., 2011), whereas nitric acid is low but non-zero, e.g. $1\text{-}2 \text{pptv}$ at Halley (Jones et al., 2011). Thus nitric acid induced Cl^- loss from sea salt is a plausible explanation for the observed Cl^- depletion either in airborne SSA or

20 as a sampling artefact from sea salt already accumulated on the filter surface as suggested previously (Wagenbach et al., 1998; Legrand et al., 2017). Unfortunately no usable filter data of aerosol nitrate are available from this study to further test the association between nitrate and sea salt due to a very high lab procedure blank. It is noted that if all sulfate is removed by mirabilite precipitation ($DF_{\text{SO}_4^{2-}} = 1$) then sodium depletion reaches a theoretical maximum of $\sim 12\%$ ($DF_{\text{Na}^+} = 0.1204$) (Fig. 5).

25 The median $DF_{\text{SO}_4^{2-}}$ values of bulk aerosol observed during this study were smaller than previous winter observations at coastal Antarctic sites, where the sea-ice surface was shown to be the dominant source of sea-salt aerosol. Wagenbach et al. (1998) reported sulfate depletion in aerosol corresponding to $DF_{\text{SO}_4^{2-}}$ of 0.72 at Halley (75°S , 26°W), of 0.76 at Neumayer (70°S , 85°W), and of 0.62 at Dumont d’Urville (66°S , 140°E). The main cause of smaller $DF_{\text{SO}_4^{2-}}$ observed in aerosol above the Weddell Sea in winter 2013 appears to be the snow source being

30 less depleted in sulfate during that particular year. In summary, $DF_{\text{SO}_4^{2-}}$ in Antarctic winter aerosol can be used as a tracer to estimate sea ice SSA fractions of the total aerosol burden at a specific location (e.g. Legrand et al., 2017), however temporal and spatial variability in $DF_{\text{SO}_4^{2-}}$ of the sea ice source introduce additional uncertainty if not accounted for.

3.2.2 Chemical fractionation of Br^-

Modelling studies suggest that sea salt may be an important source of atmospheric bromine species in the mid to high southern latitudes, and that SSA from blowing snow releases bromine (Yang et al., 2008, 2010) driving ozone depletion events observed during or after snow storms (Jones et al., 2009). One of a number of processes identified to cause halogen release from aerosol or ice surfaces involves the reaction of HOBr with halides (Br^- and Cl^-) on acidic ice surfaces forming BrCl and Br_2 that are subsequently photolyzed to form reactive halogen atoms (Abbatt et al., 2012, and references therein). This is a multiphase process which, depending upon the substrate, may or may not proceed faster under acidic conditions (Abbatt et al., 2012), and associated uncertainties are currently still significantly limiting the modelling of impacts on tropospheric halogen chemistry (Sander et al., 2003; Long et al., 2014). Multi-phase bromine chemistry models use observed sea salt aerosol depletion of bromide relative to sodium (or chloride) with respect to seawater composition, i.e. bromide depletion factors DF_{Br^-} , to estimate the bromine flux from sea-salt aerosol (e.g. Yang et al., 2008; Long et al., 2014). However, to date observations of bromide aerosol depletion are only available from north of 55°S (Sander et al., 2003, and references therein), with the exception of two recent pioneering studies in Antarctica (Legrand et al., 2016; Hara et al., 2018). Below we discuss bromine chemistry observations above the Weddell Sea during this study.

Bulk aerosol concentrations of bromide ranged between <1 and 19 ng m^{-3} (Fig. 6a), showing occasional large increases to levels seen elsewhere in coastal Antarctica only during summer (Legrand et al., 2016). However, median bulk aerosol concentrations of Br^- (Table 4) were similar to coastal observations at Dumont d’Urville during winter (Legrand et al., 2016). It should be borne in mind that the bromide aerosol concentrations were often below the estimated LOD due to the short filter exposure times employed (Fig. 6a). Median bromide concentrations in snow ranged between 0.07 and $0.18 \mu\text{g g}^{-1}$ (Table 5). ~~It is found~~ Median DF_{Br^-} values show that aerosol at 29 m was ~~on~~ average strongly depleted in bromide relative to sodium with respect to seawater, whereas aerosol near the sea ice surface at 2 m showed mostly strong enrichment (Table 4, Fig. 6b). Median DF_{Br^-} in the snowpack ranged between -0.01 and 0.05 suggesting overall no or small depletion in bromide (Table 5). However, examination of individual snow layers as well as blowing snow samples shows large scatter with both positive and negative DF_{Br^-} , suggesting both bromide depletion and enrichment (Fig. 4b). The sea ice surface below the snow was with the exception of one sample always enriched in bromide (Fig. 4b). During the storm on 14-15 July (see section 3.3.2) it is found that the median DF_{Br^-} in blowing snow collected on 15 July at <1 m was close to zero but 0.39 in aerosol at 29 m sampled over the same time interval. These observations are in agreement with previous studies in coastal Antarctica: Legrand et al. (2016) were the first to report year-round bromide depletion in aerosol at Dumont D’Urville (DDU) including during winter months except June. And Hara et al. (2018) observed at Syowa Station bromide depletion in aerosol also year-round, but not in blowing snow, which was enriched, and concluded that heterogeneous chemistry driving bromine activation occurs on sea salt aerosol and not on blowing snow. Lieb-Lappen and Obbard (2015) observed bromide depletion in blowing snow near McMurdo station, but only at >5 m above the surface.

From this study it is concluded that air-ice recycling of bromine occurs on surface snow, airborne snow and aerosol particles. However, the vertical gradient in $DF_{\text{Br}^- (\text{Na}^+)}$ observed in aerosol suggests that significant net bromine release must take place in the aerosol phase between 2 and 29 m above the sea ice surface. The bromine net release from large snow particles is expected to be reduced compared to aerosol due to a combination of shorter atmospheric lifetime and smaller specific surface area limiting diffusional outgassing. The bromine release from SSA produced by blowing snow may be more efficient because it has a large fraction of [micron to sub-micron sized particles](#) (see section 3.2.3), and resides at the well ventilated top of the blowing snow layer. Thus sea salt aerosol from blowing snow provides an additional bromine reservoir, which is readily depleted. Detailed measurements of participating bromine species in air, snow and aerosol are needed to further understand relevant processes and constrain the mass budget.

Models assume a dependence of DF_{Br^-} on season and aerosol diameter (Yang et al., 2008; Sander et al., 2003). The observed DF_{Br^-} of aerosol showed a weak but significant trend ($R=0.19$, $p<0.05$) from winter into spring largely due to less frequent negative values during August and September (Fig. 6b, Table 4). This becomes more evident considering monthly median DF_{Br^-} values of aerosol at 29 m, which increased from June (0.25), July (0.43), August (0.50) into September (0.59). DF_{Br^-} values would be even higher had they been referenced to a sea water ratio adjusted for the maximum possible removal of sodium due to precipitation of mirabilite as done by Legrand et al. (2016). For comparison, at DDU DF_{Br^-} in bulk aerosol increased gradually from a minimum in June (0.04), intermediate values in July to Sep (0.22-0.39) to a maximum in October (0.42) (Legrand et al., 2016). Increasing DF_{Br^-} is consistent with enhanced bromine loss from aerosol as incident radiation increases concurrent with activation of the reactive bromine (BrO_x) cycle (Fig. 6b). Assuming that observed DF_{Br^-} is representative of SSA with median particle diameters d_p of ~ 0.60 - $0.66 \mu\text{m}$ (Table S2), it is also found that the observed bromide depletion is larger than that reported by Sander et al. (2003) who state a maximum of 0.4 for a d_p of $1.3 \mu\text{m}$, dropping to 0.1 at $10 \mu\text{m}$.

Contrary to expectation bromide depletion of aerosol was significant even during winter darkness from mid June to mid July (Fig. 6b), whereas previous observations at DDU showed a similar trend but less bromide depletion and none in June (Legrand et al., 2016). Light conditions are unlikely a cause of differences in bromide depletion, since DDU is located at a similar latitude ($66^\circ 40'S$) as the area covered by this study. However, the early laboratory study by Oum et al. (1998) has shown that HOBr required for Br^- oxidation can be chemically produced in darkness through the reaction of ozone with bromide. ~~Another study,~~ [a reaction which takes place most rapidly at the air-substrate interface, where acidity plays a minor role \(Abbatt et al., 2012, and references therein\), and where it was recently observed to occur at neutral pH for the case of a aqueous phase-vapour interface \(Artiglia et al., 2017\). Furthermore, field observations](#) during the ANT-XXIX/6 expedition ~~reports show~~ significant bromoform (CH_3Br) production in sea ice during winter darkness (Abrahamsson et al., 2018), which requires HOBr (and organic matter) as precursors, and therefore indicates that bromine loss processes were active in the sea ice in the absence of sunlight. It therefore appears plausible that the same reactions may have caused significant bromide depletion observed here in ~~sea-salt aerosol,~~ ~~provided the pH was low enough~~ [aerosol above sea ice](#).

3.2.3 Aerosol size ~~distribution~~ distributions

Average aerosol number density and volume distributions observed in the Weddell sea show that during calm conditions ($U_{10m} < 4 \text{ m s}^{-1}$) concentrations across most of the size spectrum were smaller above sea ice than above the open ocean (Fig. 7). Depending on particle size the variability was relatively large as illustrated by the standard deviation of the mean values (Fig. 7). Thus differences in mean size distributions were statistically significant only for $d_p < 2 \mu\text{m}$ in the case of aerosol number density, and d_p 1-8 μm in the case of aerosol volume distributions (Fig. 7). The wind speed threshold chosen for calm conditions is well below the mean snowdrift threshold wind speed U_t of 7.1 m s^{-1} observed during this study (section 3.4.1) and within the range when breaking of waves commences ($3\text{-}4 \text{ m s}^{-1}$; O'Dowd et al., 1997). ~~A low sea salt~~ Thus a lower aerosol background above ~~compact sea ice~~ sea ice compared to the open ocean during calm conditions is consistent with the ~~absence of any active local sources and inactivity of local sources from blowing snow or potentially open leads combined with~~ the long distance ~~to the nearest open ocean~~ (between the ship's position and the nearest open water during 18 June to 21 July 2013 (Fig. 1, Table 1). The average aerosol volume distribution shows two modes, one at 1-2 and the other at 5-9 (Fig. 7b), indicating that most of the aerosol particle mass resides in the super-micron range as expected for sea salt aerosol. During stormy conditions ($U_{10m} > 9 \text{ m s}^{-1}$) average aerosol number densities above sea ice increased significantly for particle diameters $d_p < 2 \mu\text{m}$, reaching at the lower end of the size spectrum levels similar to those observed above the open ocean (Fig. 7a). ~~Average aerosol volume~~ The average aerosol volume distribution shows two modes, one at 1-2 μm and the other at 5-9 μm (Fig. 7b), indicating that most of the aerosol particle mass resides in the super-micron range as expected for sea salt aerosol. During storms average aerosol volume concentrations above sea ice also showed an increase during storms, significant for particle sizes d_p 0.8 to 9 μm (Fig. 7b). ~~It is striking that above the sea ice the relative increase of aerosol number and volume concentrations~~

A significant increase of small particle number densities ($d_p < 2 \mu\text{m}$) during storms above background levels was equal or larger than above the open ocean sea ice (Fig. 7). This implies that corresponding aerosol number and mass fluxes during storms were also equal or larger above sea ice than above the open ocean consistent with Yang et al. (2008) and underlining the importance of a winter sea ice source for atmospheric sea salt aerosol.

~~The main observational constraint for the origin of the observed sea salt aerosol comes from its chemical source signature as discussed above. In addition, the relatively larger increase of small particle number densities provides further support for the a;~~ section 3.3) is consistent with a blowing snow SSA source based on physical arguments: snow particles of low salinity as observed during this study ~~will generate very~~ can generate a significant proportion of small sea salt particles after complete loss of water ice by sublimation. ~~Taking~~ Assuming one snow particle produces one aerosol the dry particle diameter d_{dry} is given by $d_{dry} = d_p (S_p / 1000 \rho_{ice} / \rho_{NaCl})^{1/3}$, where ρ_{ice} and ρ_{NaCl} are densities of ice ($= 917 \text{ kg m}^{-3}$) and NaCl ~~, respectively, we would expect based on observed~~ ($= 2160 \text{ kg m}^{-3}$), respectively. Taking the medians of salinity observed in surface snow ($= 0.06 \text{ psu}$) and of mean snow salinity and snow particle size (\bar{d}_p ($= 115\text{-}129 \mu\text{m}$) (Table 5, 6) potential ~~we would then expect a potential median~~ d_{dry} on the order of 10^{-3} of

~~3-4 μm , or larger if not all water is lost. Instruments with a lower size detection limit than available in this study are needed to further investigate very small particle formation from blowing snow.~~

It is important to note that the use of sea salt measured in ice cores as a proxy of past sea ice conditions requires ~~that average emissions striking that the relative increase of aerosol number densities ($d_p < 2 \mu\text{m}$) during storms was larger~~ above sea ice ~~exceed those above an equivalent area of open ocean and consequently lead to a comparatively larger burden of atmospheric SSA.~~ Observations from this study support the former requirement, but not the latter. ~~The low SSA background concentrations observed compared to the open ocean with mean enhancements by a factor of ~ 3.2 and ~ 1.8 , respectively (Fig. 7a). Similarly, the relative increase of aerosol volume concentrations ($d_p 1-8 \mu\text{m}$) during storms was larger~~ above sea ice ~~may have been due to a combination of low storm frequency and low snow salinities in the area. Indeed, model calculations suggest that size distribution and associated flux of SSA originating from blowing snow are very sensitive to snow salinity S_p , e.g. decreasing S_p from 0.92 to 0.06 compared to the open ocean with mean increases by a factor of ~ 3.6 and ~ 1.2 , respectively (Fig. 7b). The above highlights the importance of a winter time sea ice source for the aerosol burden above sea ice. For comparison, the absolute increase of aerosol number densities ($d_p < 2 \mu\text{m}$) causes SSA spectral number densities to decrease by about one order of magnitude (Yang et al., 2019). Further atmospheric modelling is needed to address this issue and will be subject of future research~~ μm) during storms above sea ice was larger compared to the open ocean only for the two smallest size bins ($d_p 0.36-0.48 \mu\text{m}$) (Fig. 7a). And the absolute increase of aerosol volume concentrations ($d_p 1-8 \mu\text{m}$) during storms above sea ice was larger compared to the open ocean only for the larger particle sizes ($d_p 3.5-6.9 \mu\text{m}$) (Fig. 7b). This suggests that to a first order corresponding aerosol number and mass fluxes during storms above sea ice can rival those above the open ocean depending on particle size. Direct flux measurements are needed to further corroborate these findings under varying environmental conditions.

3.3 Blowing snow events

Below we discuss key features of blowing snow events and associated SSA increases that were frequently observed during ANTXXIX-6 (Fig. 2c). A total of seven events occurred during the 14 days of total time spent at ice stations. Two periods, one lasting 7 days and another 10 days, were chosen based on data coverage.

3.3.1 Period 23 June to 3 July 2013

The period 23 June to 3 July featured a major storm with 4 wind speed maxima between 15 and 25 m s^{-1} centred around midnight of the 24, 25, 27 and 28 June (Fig. 8a). Temperature T_a increased during that time from -20°C on 23 June to -3°C on 26 June before dropping again to -20°C on 30 June (Fig. 2b). Wind speed U extrapolated to 10 m increased from $< 5 \text{ m s}^{-1}$ in the late evening of 23 June over a 24 hr period to $> 20 \text{ m s}^{-1}$ (Fig. 8a). First snow particles were detected at 29 m once U exceeded a threshold of $\sim 9 \text{ m s}^{-1}$ with spectral number densities N_{46-478} reaching values on the order of 10^4 m^{-3} including large snow particles with $d_p > 300 \mu\text{m}$ (Fig. 8b). Near-surface N_{46-478} measured at ice station S2 on 24 June (Table 1) showed very large number densities on the order of 10^6

m^{-3} across the entire particle size spectrum confirming blowing snow from the sea ice surface as the main [snow](#) particle source (Fig. 8c). A decrease in wind speed U always concurred with a drop in snow particle number densities at 29 m and often also in RH_{ice} (25 June, 26 and 28 June) indicative of air being sub-saturated with respect to ice (Fig. 8a-b).

Aerosol at 29 m showed background spectral number densities $N_{0.4-12}$ of 10^5 m^{-3} for particles with $d_p < 2 \mu\text{m}$ during the calm periods on 23 June, 30 June and 2 July ($U_{39m} < 5 \text{ m}^{-1}$), when no blowing snow or precipitation was present (Fig. 8d). During or after the 4 wind speed maxima on 24, 25, 27 and 28 June large increases of aerosol spectral number densities were observed especially of sub-micron sized particles reaching up to 10^7 m^{-3} , often at $RH_{ice} < 100\%$ ([Fig. 8a,d](#)) consistent with a source from sublimating snow particles (~~Fig. 8a,d~~ [with low salinity \(section 3.2.3\)](#)). Near the surface spectral number densities $N_{0.4-12}$ for particles with $d_p < 2 \mu\text{m}$ during the storm on 24 June remained with 10^5 m^{-3} below those seen at 29 m (10^6 m^{-3}) likely due to scavenging of aerosol by snow particles (Fig. 8d-e). Na^+ concentrations in aerosol at 29 m show strong increases from background values of $\sim 0.1 \mu\text{g m}^{-3}$ to $1.4 \mu\text{g m}^{-3}$ on 25 June and to $1.1-1.7 \mu\text{g m}^{-3}$ during 28-29 June coinciding with wind speed maxima and increased number densities of aerosol and snow particles (Fig. 8). Na^+ concentrations returned to background values after the storm on 30 June coinciding with low wind speeds $U_{39m} < 5 \text{ m s}^{-1}$, reduction in aerosol number concentrations and absence of any airborne snow particles (Fig. 8). Na^+ concentrations also dropped to background values during the storm on 26-27 June, consistent with the absence of blowing snow particles due to wind speed falling below the drift threshold (section 3.4.1) and a concurrent slight decrease in aerosol concentrations (Fig. 8). During the calm periods on 24 June, 26-27 June and 29 June $DF_{\text{SO}_4^{2-}}$ of aerosol was negative or near 0, while during the storm episodes aerosol became increasingly more depleted in sulfate with $DF_{\text{SO}_4^{2-}}$ maxima of 0.53-0.59 coinciding with peaks in aerosol Na^+ concentration (Fig. 8f). In order to constrain the origin of the observed aerosol three snow pit profiles were sampled at ice station S2 on 24 June. The mean snow depth was 33 cm, and bulk mean Na^+ concentrations were 50, 6 and $17 \mu\text{g g}^{-1}$ and bulk median $DF_{\text{SO}_4^{2-}}$ values were 0.30, 0.24 and 0.48, respectively. Assuming a linear mixing model and that measured snow chemistry at S2 is representative of the regional snowpack the $DF_{\text{SO}_4^{2-}}$ in aerosol and snow suggest that up to 80-90% of the sea salt aerosol observed during the storm originates from snow on sea ice. Negative $DF_{\text{SO}_4^{2-}}$ in aerosol during calm periods may arise either from contamination by ship's engine exhaust or contributions of non-local nss- SO_4^{2-} . The local snowpack near ice station S2 was less likely a contributing source as only one snow pit showed some snow layers with $DF_{\text{SO}_4^{2-}} < 0$.

3.3.2 Period 10 to 16 July 2013

From 10 to 16 July 2013, prior and during ice station S6 (Table 1), three snow drift episodes on 11, 12 and 14 July 2013, and a major blowing snow event from 14 to 16 July 2013 concurrent with strong warming were observed (Fig. 9). Starting on 14 July ambient temperature T_a rapidly increased over a 12-hr period from ~ -22 to -1°C (Fig. 2b). During the snow drift episodes wind speed extrapolated to 10 m, U_{10m} , peaked at $6-9 \text{ m s}^{-1}$ (Fig. 9a) near or above the estimated snowdrift threshold (section 3.4.1), snow particle spectral number densities N_{46-478} reached

up to 10^6 m^{-3} near the surface, but remained relatively low at 29 m with $10^2\text{--}10^3 \text{ m}^{-3}$ with $d_p < 100 \mu\text{m}$ except on 11 July (Fig. 9b-c). During the blowing snow event 14-16 July U_{10m} ranged between 13 and 18 m s^{-1} (Fig. 9a). Spectral number densities $N_{46\text{--}478}$ reached again up to 10^6 m^{-3} near the surface but 10^4 m^{-3} at 29 m for particle diameters d_p 50-200 μm (Fig. 9b-c). The air within 2 m of the surface was supersaturated with respect to ice during drifting or blowing snow, but then became undersaturated towards the end of the snow drift episodes on 11 and 12 July as
5 wind speed and snow particle concentrations decreased (Fig. 9a-c).

Aerosol at 29 and 2 m above the sea ice showed during the calm periods on 10, 12 and 14 July background spectral $N_{0.4\text{--}12}$ of 10^4 to 10^5 m^{-3} for particle sizes $d_p < 2 \mu\text{m}$ (Fig. 9d-e). During or a few hours after snow drift episodes aerosol number densities increased significantly especially of sub-micron sized particles at both measurement heights showing more particles near the surface, with spectral $N_{0.4\text{--}12}$ of up to 10^7 m^{-3} for $d_p < 2 \mu\text{m}$ (Fig. 9d-e). During
10 blowing snow spectral number densities $N_{0.4\text{--}12}$ showed similar increases as during drifting snow, however at 29 m concentrations were higher and particles were larger ($d_p > 9 \mu\text{m}$) than at 2 m (Fig. 9d-e). Similar to the observations from 24 June this is consistent with net production of SSA taking place near the top of the layer containing suspended snow particles at $RH_{ice} < 100\%$. Within the blowing snow layer SSA net production is suppressed due to saturated conditions and scavenging by snow particles which is efficient at warmer temperatures. Na^+ concentrations in aerosol
15 at 29 m showed strong increases from a background of $0.1 \mu\text{g m}^{-3}$ to $1.8 \mu\text{g m}^{-3}$ a few hours after the drift episode on 11 July, and to $1.2 \mu\text{g m}^{-3}$ during the blowing snow event on 14-16 July (Fig. 9f). During the same times Na^+ concentrations in aerosol at 2 m showed only small increases by $0.1 \mu\text{g m}^{-3}$ (Fig. 9f). $DF_{\text{SO}_4^{2-}}$ of aerosol showed large scatter and mostly positive values, with the exception of 2 samples (15-16 July), varying between 0.1 and 1 (Fig. 9f, 10d). Median $DF_{\text{SO}_4^{2-}}$ values from 11 to 16 July were 0.61 at 29 m and 0.48 at 2 m confirming that SSA originates
20 from a fractionated sea ice source.

A more detailed view of the blowing snow event from 14 to 16 July reveals trends and phasing of particle number densities and chemical composition, which are consistent with the hypothesised sequence of processes from the onset of blowing snow to the release of sea salt aerosol due to snow sublimation (Fig. 10). Onset of snow drift at 0.1 m above the snow surface occurred once wind speed U_{10m} exceeded 11 m s^{-1} followed about 1 hr later by detection
25 of blowing snow at 29 m (Fig. 10b). Total snow particle number densities $N_{46\text{--}478}$ near the surface and at 29 m decreased again a few hours later despite constant wind speeds of 13.5 m s^{-1} (Fig. 10b) due to strong warming during the storm causing an increase in drift threshold wind speed and therefore less uplift of particles, as shown in section 3.4.1.

Two hours after the onset of snow drift total aerosol number densities $N_{0.4\text{--}12}$ started to gradually increase at
30 2 and 29 m to reach peak values first at 29 m after an initial spike, and with a delay of 2 hr also at 2 m coinciding with a decrease in snow particle concentrations (Fig. 10b-c). Despite $RH_{ice} > 100\%$ within 2 m of the sea ice surface during the blowing snow event on 15 July (Fig. 9a) sub-saturation cannot be ruled out because of the large error in RH_{ice} near 0°C . Thus, the observed anti-correlation between aerosol and snow particle number densities at both measurement heights is consistent with (a) increased aerosol production from snow particle sublimation near the top

35 or above the blowing snow layer, where undersaturated conditions are more likely, and (b) reduced aerosol scavenging by snow particles. Na^+ concentrations in aerosol followed the observed total $N_{0.4-12}$ showing first a maximum at 29 m and then near the surface at 2 m albeit of smaller magnitude (Fig. 10d) suggesting that much of the observed increase of aerosol particles consists of sea salt aerosol. Non-zero $DF_{\text{SO}_4^{2-}}$ in aerosol suggest that the sea salt particles originate from a fractionated sea ice source.

5 In order to further constrain the origin of the aerosol Na^+ and $DF_{\text{SO}_4^{2-}}$ of the snowpack were measured. Blowing snow was collected during the storm every two hours over a 12 hr period and snow pit profiles were sampled at various ice floe locations from 11 to 14 July prior to the storm. During the storm blowing snow Na^+ concentrations on average more than doubled from 4.5 to 12 $\mu\text{g g}^{-1}$ and salinities S_p increased from 0.02 to 0.04 psu, whereas $DF_{\text{SO}_4^{2-}}$ remained fairly constant at a median of ~ 0.54 (Fig. 10e-f). The large spatial variability in Na^+ concentrations and S_p of the snowpack masked any temporal trend, yet the snowpack profiles could be grouped into two types, one showing a very steep S_p (Na^+) decline with snow layer height from 1–10 psu ($10^2 \mu\text{g g}^{-1}$) near the bottom to 10^{-3} psu ($10^{-1} \mu\text{g g}^{-1}$) near the surface, and the other showing a less steep decline from 30 psu ($10^3 \mu\text{g g}^{-1}$) to 10^{-2} psu ($10^1 \mu\text{g g}^{-1}$) (Fig. 11a-b). $DF_{\text{SO}_4^{2-}}$ profiles exhibited large scatter: except at one location surface-near snow showed no or small depletion, whereas most profiles showed significant depletion in deeper layers within 5-10 cm of the sea
10 ice surface (Fig. 11c). Negative $DF_{\text{SO}_4^{2-}}$ was found at the snow-ice interface and in some snow layers suggesting the presence of mirabilite (Fig. 11c).
15

Comparison shows that the range of Na^+ concentrations and S_p values observed in blowing snow can be explained by mixing between the two snowpack types (Fig. 11a-b). An increase over time of salinity or Na^+ concentration in airborne snow is also consistent with snowpack erosion during the storm and exposure to uplift of deeper and more saline snow layers. However, the $DF_{\text{SO}_4^{2-}}$ values of blowing snow were at the top end of the range observed only in the deeper and more saline local snowpack (Fig. 11c). A plausible explanation for this observation during the storm on 15 July is that blowing snow integrates snow contributions from a wider area. And given the spatial heterogeneity of local snowpack thickness and composition blowing snow contributions must have dominated from areas where fractionated snow was at or near the surface such as seen in one of the profiles sampled on 12 July (Fig. 11c). Taking
20 the median $DF_{\text{SO}_4^{2-}}$ values in aerosol ($=0.48-0.61$) and blowing snow ($=0.54$) it can be concluded that 89-100% of the observed aerosol comes from the local fractionated snow source.

In summary, observations show that blowing or drifting snow leads to increases in aerosol number densities during and after a storm. Aerosol size spectra show that number densities of particles with size $d_p < 2 \mu\text{m}$ increased during individual storms by 2-3 orders of magnitude above background levels. Concurrent increases in aerosol Na^+
30 concentration suggest that the observed new particles consist mainly of sea salt aerosol. Observed aerosol gradients suggest that net production of SSA takes place near the top of the blowing or drifting snow layer. Furthermore, similar sulfate depletion in aerosol, blowing snow and the local snowpack is strong evidence that the bulk of the observed SSA originated from snow on sea ice and not the open ocean, which is consistent with the independent model results of Yang et al. (2019). Advection of SSA from the open ocean cannot be ruled out during storms with

warm and moist air, but plays only a minor role due to the large distance to the nearest open water, in particular at
 5 ice stations S1-S6 (Table 1). The scale-length for SSA removal over an ice shelf had been estimated previously to be
 $\sim 30\%$ per 100 km, thus the reduction of the SSA burden during advection over 600 to 1000 km would be larger than
 a factor 6 to 20 (Wagenbach et al., 1998, and refs. therein). Distance to the open ocean together with a temporally
 very close association of snow particle and aerosol number density dynamics (Fig. 10) further support the above
 finding that a local SSA sea ice source dominates over advection. Open leads, which may have been present in areas
 10 of reduced sea ice concentration e.g. near ice stations S2-3 and S7-9 (Fig. 1) are another potential wind-dependent
 source of SSA from open water as observed in the Arctic (Nilsson et al., 2001; May et al., 2016), albeit with a much
 smaller flux contribution per surface area compared to the open ocean due to reduced fetch and low fraction of
 surface coverage ($<15\%$). Observations show also that snow drift is conceptually not different from a blowing snow
 event with the same physical processes leading to SSA production.

15 3.4 Evaluation of SSA production scheme from blowing snow

It has been proposed that the production or mass flux of SSA from blowing snow, Q_{SSA} , is proportional to the bulk
 sublimation flux of suspended snow particles, Q_s in units of $\text{kg m}^{-2}\text{s}^{-1}$, and snow salinity, S_p in psu (Yang et al.,
 2008, 2019). The model scheme however relies on blowing snow measurements above ice sheets (Budd, 1966; Mann
 et al., 2000; Nishimura and Nemoto, 2005), and parameterisations developed for in-land regions in the high Arctic
 20 (Déry and Yau, 2001, and ref. therein). Below we briefly summarise the model mechanism and then evaluate its
 applicability to snow on sea ice based on the Weddell Sea observations.

The mass flux of SSA from blowing snow Q_{SSA} in units of $\text{kg m}^{-2}\text{s}^{-1}$ is computed as

$$Q_{SSA} = \frac{Q_s}{1000} \int_0^\infty \int_0^\infty f(d_p) S_p \psi(S_p) d(d_p) d(S_p) \quad (1)$$

where d_p is the snow particle diameter (m), $f(d_p)$ is the particle size distribution of blowing snow and $\psi(S_p)$ the
 25 snow salinity probability distribution. The quantities $f(d_p)$ and $\psi(S_p)$ are compared to direct observations from
 this study, whereas the blowing snow bulk sublimation flux Q_s was not amenable to direct measurement under
 field conditions. However, the model parameterisation used for Q_s (Déry and Yau, 2001) depends on observable
 quantities, which are validated below against measurements from this study.

3.4.1 Blowing snow bulk sublimation flux Q_s

5 The blowing snow bulk sublimation flux Q_s is the local bulk sublimation rate integrated over the entire blowing
 snow column. Q_s is parameterised after Déry and Yau (1999, 2001),

$$Q_s = K A' Q'_s \frac{q_{bsalt}}{q_{b0}} \quad (2)$$

where K ($= 1.1574 \times 10^{-5}$) is a factor to convert Q'_s into units of $\text{kg m}^{-2} \text{s}^{-1}$, A' is an empirical snow age factor, Q'_s is a normalised column-integrated sublimation rate (mm day^{-1} , snow water equivalent), q_{bsalt} is the saltation layer blowing snow mixing ratio (kg kg^{-1}) under ambient conditions, and q_{b0} the value it would have when the 10-m threshold wind speed U_t , below which no snow drift occurs, has its minimum value U_{t0} ($= 6.975 \text{ m s}^{-1}$) based on the empirical model of Li and Pomeroy (1997). The saltation layer is a layer just above the snow surface usually several centimetres thick (e.g. Déry and Yau, 1999). The ratio q_{bsalt}/q_{b0} comes from the required introduction of a lower boundary condition for particle number densities in the saltation layer and scales the normalised Q'_s accordingly.

Values for q_{bsalt} are computed with

$$q_{bsalt} = 0.385 \left(1 - \frac{U_t}{U_{10m}}\right)^{2.59} u_*^{-1} \quad (3)$$

where U_{10m} is the 10-m wind speed (m s^{-1}) and u_* is the friction velocity (Eq.24 in Déry and Yau, 1999). For the 10-m threshold wind speed U_t an empirical model for dry snow was previously derived based on observations in the prairies of Western Canada, which applies to dry snow conditions and is a function of ambient temperature T_a (Li and Pomeroy, 1997)

$$U_t = U_{t0} + 0.0033(T_a + 27.27)^2 \quad (4)$$

This expression is compared to observations above sea ice from this study as follows. The onset of drifting or blowing snow is defined similar to Mann et al. (2000) as the moment when snow drift density μ right above the snow surface exceeds a critical value μ_c ($= 0.005 \text{ kg m}^{-3}$). For comparison a lower value of μ_c ($= 0.001 \text{ kg m}^{-3}$) is also considered. The snow drift density is calculated as $\mu = \frac{4}{3}\pi \rho_{ice} \int_0^\infty N_s(d_p) \left(\frac{d_p}{2}\right)^3 dd_p$ with the density of ice ρ_{ice} ($= 917 \text{ kg m}^{-3}$) and the measured spectral number density N_s . U_{10m} is extrapolated from the sonic anemometer measurements at 2 m assuming a logarithmic wind profile and T_a comes from the uppermost sensor on the sea ice at ~ 2 m. The observed threshold wind speed U_t and friction velocity u_{*t} are the respective measurements at the onset of drifting or blowing snow. Using the lower threshold μ_c ($= 0.001 \text{ kg m}^{-3}$) most observed U_t values fall still within the model range of uncertainty (Fig. 12) and show a mean U_t of 7.1 (range 2.2-9.8) m s^{-1} corresponding to u_{*t} of 0.37 (range 0.08 - 0.58) m s^{-1} . For comparison, u_{*t} for blowing snow above an Antarctic ice shelf during winter was observed to range between 0.18 and 0.38 m s^{-1} (Dover, 1993; Mann et al., 2000). Earlier work on land based snowpacks found u_{*t} to range from 0.15 m s^{-1} for loose, fresh, dry snow to 0.4 m s^{-1} for old, wind-hardened snow (Dover, 1993, and references therein). Thus, u_{*t} observed for snow on sea ice are on average at the upper end of previous observations for snow on land or ice shelves. It is concluded that Eq. 4 provides robust estimates of U_t above sea ice for the snowpack conditions encountered during this study exhibiting in general very low salinities (Table 5). However, temperature alone may not be a good predictor of U_t if surface snow on sea ice exposed to wind is very saline with a relatively larger liquid fraction at a given temperature due to freezing point depression leading to increased snow crystal cohesion.

In a next step blowing snow mixing ratios in the saltation layer q_{bsalt} were computed by dividing observed drift density μ by the density of air and then compared to q_{bsalt} predicted by the empirical parameterisation after D ery and Yau (1999) (Eq. 3). Considered were only observations when $\mu > 0.001 \text{ kg m}^{-3}$ and when the SPC was mounted below reported values of the saltation layer depth ($=0.1 \text{ m}$). It is found that the model overpredicts observed q_{bsalt} on average by at least a factor ~ 10 (Fig. 13) suggesting that the conditions during this study were likely different to those in the Canadian Prairie for which Eq. 3 was developed. One model uncertainty is the assumption that the saltation layer is saturated with respect to ice, which has not been confirmed yet for the dry and cold polar boundary layer due to the lack of sufficiently accurate humidity measurements. However, relative changes of q_{bsalt} are well captured by the model, in general showing an increase with wind speed (Fig. 13a,c). Except during the blowing snow event on 14-15 July (ice station S6) q_{bsalt} decreased even though wind speed remained constant at $\sim 12 \text{ m s}^{-1}$ (Fig. 13b), as noted above for total N_{46-478} near the snow surface (Fig. 10b). Strong warming during the storm of $\sim 20 \text{ K}$ increased snow particle cohesion and therefore the drift threshold wind speed U_t as predicted by the model, thereby reducing the uplift of snow particles (Fig. 13b). A similar case occurred during 26-27 June, when warming increased the theoretical drift threshold and wind speed dropped at the same time below U_t consistent with the absence of blowing snow particles at 29 m (Fig. 8b). The model bias in q_{bsalt} is expected to cancel out in estimates of bulk sublimation rate Q_s (Eq. 2) and therefore also of SSA production Q_{SSA} (Eq. 1) because the calculation uses not absolute values but ratios of actual q_{bsalt} and its maximum q_{b0} .

3.4.2 Snow particle size distribution $f(d_p)$ above sea ice

Previous studies concluded that a 2-parameter gamma probability density function gives a reasonable fit to observed distributions of snow particle diameter $f(d_p)$ (Budd, 1966; Schmidt, 1982; Dover, 1993):

$$f(d_p) = \frac{e^{-\frac{d_p}{\beta}} d_p^{\alpha-1}}{\beta^\alpha \Gamma(\alpha)} \quad (5)$$

with shape and scale parameter α and β , and mean particle diameter $\overline{d_p} = \alpha\beta$. Particle size distributions of blowing snow have been found to vary with wind speed and height: at a given height, $\overline{d_p}$ increases with wind speed, whereas at a given wind speed, preferential removal of large snow particles due to gravitational settling leads to a decrease in $\overline{d_p}$ (e.g. Dover, 1993; Mann et al., 2000) and an increase in α with height (Nishimura and Nemoto, 2005). Increasing α is equivalent to a shift from skewed to more symmetrical size distributions. Model predictions of the mass flux of SSA from blowing snow Q_{SSA} depend critically on $f(d_p)$ (Eq. 1) and therefore on α and β (Eq. 5).

In this study we derived $\overline{d_p}$ and α by fitting a 2-parameter gamma distribution to observed particle size spectra. Confidence in retrieved values of α and β is affected by two limitations of the SPC measurements. Firstly, SPC size spectra are clipped due to instrument configuration and exclude very small snow particles ($d_p < 46 \mu\text{m}$). And secondly, SPC data include noise in the particle number count due to natural variability. A Monte Carlo model, which generates multiple noisy gamma distributions of known α and β shows that retrieving these parameters is robust,

even when the data are limited to $d_p > \overline{d_p}$, that is capture only the tail of the data. Furthermore, the uncertainty
10 from under-sampling and data noise in α and β can be retrieved from the relative scale of the smallest size bin and the residual noise.

During blowing snow episodes when U_{10m} was above the mean observed 10-m drift threshold wind speed U_t of 7.1 m s^{-1} $\overline{d_p}$ decreased with height, whereas α increased with height as shown by the respective median values (Table 6) consistent with previous observations. Increase of α with height during blowing snow was found previously
15 at Mizuho station on the Antarctic Plateau where α was ~ 3 near the surface and increased to values > 10 further aloft (Nishimura and Nemoto, 2005). Another study at Halley in coastal Antarctica found no gradient in α within the lower 4 m (Dover, 1993), which was set to 2 following the analysis of King et al. (1996). However, the observed decrease in mean particle size $\overline{d_p}$ with height was much smaller than that inferred from previous studies. For example, median $\overline{d_p}$ at 29 m was 43% larger than d_p observed between 1.0 and 9.6 m ($= 80 \mu\text{m}$ regardless of wind speed) at
20 Mizuho station (Nishimura and Nemoto, 2005) and ~ 4 times the d_p predicted by a parameterisation based on the Halley vertical d_p profiles between 0.1 and 4.0 m (King et al., 2001). Further examination of the snow particle size distributions at 29 m reveals in general an unexpected long tail indicating significant relative contributions from large particles. For example, during the blowing snow event on 14 July $\overline{d_p}$ and α near the surface were $105 \mu\text{m}$ and 5.2, respectively (Fig. 14b). At 29 m total N_{46-478} was as expected about two orders of magnitude smaller than near
25 the surface. Yet compared to the near-surface values average $\overline{d_p}$ was larger ($131 \mu\text{m}$) and the size distribution more skewed ($\alpha = 3.2$) with a long tail showing significant contributions from particles with $d_p > 200 \mu\text{m}$ (Fig. 14a).

It is suggested that small or no decrease of $\overline{d_p}$ with height and the long tail in $f(d_p)$ at 29 m can be explained by contributions from falling snow particles since blowing snow frequently coincided with precipitation. In order to analyse $f(d_p)$ of snow precipitation only, a calm 17 h period (3 July 14:30 to 4 July 7:00) was chosen during
30 which light snowfall ($N_{46-478} < 800 \text{ m}^{-3}$ at both levels) but no snow drift occurred with U_{10m} ($= 2.7 \text{ m s}^{-1}$) $< U_t$. For the early morning of 4 July 2013 webcam images from the crow's nest confirmed the presence of large airborne snow crystals visible during darkness in the beam of the ship's search lights, whereas the ship's 3-hourly weather report noted the presence of airborne ice needles. It is found that the size distribution ($\overline{d_p}$, α) of precipitation at 29 m (Fig. 14c) was very similar to that during a blowing snow event (Fig. 14a). The size spectrum of falling snow also showed no preferential large size mode as observed previously at Mizuho station (Nishimura and Nemoto, 2005), which prevents a correction of blowing snow particle spectra for snow precipitation based on particle size. The spectral shift to smaller particles near the surface during the snowfall event (Fig. 14d) was likely due to a combination of two processes: sublimation of larger snow particles supported by a mean RH_{ice} of 98.0% between
5 0.2 and 2.0 m. And fragmentation of snow particles by more vigorous and smaller eddies near the surface during calm conditions, either through direct break-up of the dendrites or through separation of snow flakes that have loosely adhered on the decent. Similar size distributions ($\overline{d_p}$, α) near the snow surface and at 29 m during blowing snow imply that at 29 m particle sizes lost from the blowing snow size spectrum due to gravitational settling were being replenished by falling snow. Plotting the fitted parameters $\overline{d_p}$ and α against wind speed allows to evaluate the

10 parameter range characteristic for blowing snow: $\overline{d_p}$ shows the expected increase near the surface but large scatter and little change at 29 m (Fig. 15a-b). Values of α show at both heights some dependence on wind speed (Fig. 15c-d) and cluster between 3 and 6 when $U_{10m} > U_t$. Median, lower and upper quartiles of $\overline{d_p}$ and α for blowing snow, i.e. when windspeed U_{10m} is above the observed mean drift threshold wind speed U_t ($=7.1 \text{ m s}^{-1}$), are summarised in Table 6 as guidance for model sensitivity studies. Due to the increase in the fraction of precipitating snow with
 15 height snow particle size distributions measured at 29 m have additional uncertainty, whereas those observed near the surface are representative of blowing snow.

3.4.3 Salinity probability distribution $\psi(S_p)$ of snow on sea ice

Correct modelling of SSA production from blowing snow (Eq. 1) requires choosing a snow salinity probability distribution $\psi(S_p)$ representative of the region and season under consideration (Massom et al., 2001). High salinities
 20 near the snow-sea ice interface originate from incorporation of frost flowers or upwards migration of brine due to capillary action. Brine is found at the top of sea ice as a result of ion exclusion during the freezing of seawater or of flooding due to negative freeboard. Top snow layers in deeper snowpacks not affected by brine migration receive sea salt aerosol through dry or wet deposition of background aerosol or sea spray. Vertical profiles of snow salinity S_p measured during this study (Frey, 2017) showed a marked decrease with height above the sea ice surface (Fig. 16a)
 25 in agreement with previous sea ice surveys in Antarctica (Massom et al., 2001). High salinities S_p (1–43 psu) were found in basal snow, the sea ice surface and frost flowers, whereas very low salinities (<0.2 psu) were observed in snow layers >20 cm above the snow-ice interface and in blowing snow (range 0.01–0.12 psu) (Fig. 16a). The inferred mean migration distance of ~ 20 cm above sea ice that brine can affect the snowpack falls within the range of those reported by previous studies, up to 17 cm in the Arctic (Domine et al., 2004), and 30 cm in the Weddell sea (Massom
 30 et al., 2001).

From the above follows that to a first order the distance of individual snow layers to the sea ice surface determines their salinity, and therefore snowpack depth determines to a first order mean volume-integrated salinity and salinity probability distributions $\psi(S_p)$ in snow on sea ice. Average ($\pm\sigma$) snowpack depth based on snow pits from this study was 21 (± 8) cm above first-year sea ice (FYI) and 50 (± 32) cm above multi-year sea ice (MYI) (Table 5), in the range of previous observations in the Weddell sea sector, e.g. mean snowpack depth during winter 1992 was 14 cm (Massom et al., 2001, and references therein). As expected the median salinity of the shallow FYI snowpack (0.11 psu) was significantly larger than that of the deep MYI snowpack (0.02 psu) (Table 5) based on the Wilcoxon rank-sum test ($p < 0.01$), and corresponding salinity probability distributions $\psi(S_p)$ for snow on FYI are shifted to higher salinities
 5 when compared to $\psi(S_p)$ above MYI (Fig. 16b). Secondary factors identified previously (e.g. Massom et al., 2001), which contribute to higher salinities of snow on FYI in comparison to snow on MYI are more frequent flooding of thin FYI with sea water due to negative freeboard and brine rejection and drainage, which decreases MYI salinity over time.

Previous modelling of SSA production from blowing snow based $\psi(S_p)$ on much higher mean snow salinities S_p than observed during this study: 8.5 psu from observations in the Indian ocean sector in August 1995 (Yang et al., 2008) and half that value in a later study (Levine et al., 2014). Bearing in mind that only surface snow, which often has lower density and crystal cohesion, is likely to get airborne, it is sensible to include only the top snow layers in the calculation of average snow salinity. For example, in this study the mean S_p of snow layers within the top 10 cm of the snow surface was 0.31 psu (Table 5), a factor 28 smaller than that used for $\psi(S_p)$ by Yang et al. (2008). More recent studies updated the model scheme accordingly using the very low salinities found here in surface and blowing snow (Rhodes et al., 2017; Yang et al., 2019). It should be noted that snow on sea ice even at the lower end of the S_p spectrum contains amounts of sea salt large enough to produce significant SSA especially in the sub-micron range (e.g. Yang et al., 2019), and is on average significantly saltier than snow in inner Antarctica. For example, mean ice core Cl^- or Na^+ concentrations on the West Antarctic ice sheet are $\sim 100 \text{ ng g}^{-1}$ or less (Frey et al., 2006), equivalent to S_p of $\sim 10^{-3}$ psu, thus up to 4 orders of magnitude smaller than in snow on sea ice (Fig. 16a). In summary, model parameterisations for SSA production from blowing snow require a snow salinity probability distribution $\psi(S_p)$, which takes into account regional and seasonal variabilities. Snow depth on sea ice, retrievable from satellite measurements, may be a good predictor of mean snow salinity as more field measurements become available.

3.5 The sea salt atmosphere-snow mass budget

Assessing the sea salt mass distribution between atmosphere and snow during calm and blowing snow conditions provides further evidence for the importance of snow on sea ice as a SSA source (Fig. 17). To do this atmospheric sea salt mass concentrations were estimated in two ways for the time period when *RVPolarstern* was well within the FYI zone (18 June to 21 July 2013; Fig. 1). One by converting spectral particle number densities $N_{0.4-12}$ at 29 m into ~~total particle sea salt~~ mass concentration assuming ~~spherical particles that all particles are spherical and consist of sea salt~~ with the density of ~~NaCl(=2160)~~. Contributions from non-sea salt (nss) aerosol to CLASP $N_{0.4-12}$ can lead to an overestimate of the calculated sea salt mass but are considered to be small as nss-aerosol has a winter minimum in coastal Antarctica (e.g. Weller et al., 2011; Abram et al., 2013). And the other by multiplying the Na^+ concentration measured on aerosol filters at 29 m ~~by~~ with a conversion factor of 3.262 based on the Na^+ mass fraction in reference seawater (Millero et al., 2008). Note that as shown in section 3.2.1 depletion of SO_4^{2-} due to the precipitation of mirabilite decreases Na^+ by up to 12%. Reduction in both ions decreases the mass fraction of Na^+ in the depleted sea salt aerosol by a maximum of $\sim 0.7\%$ compared to reference seawater. Thus, by not considering the depletion effect conversion factor and calculated SSA mass are underestimated by up to $\sim 0.7\%$, which is negligible given all other uncertainties. The sea salt mass estimates show that most filter-based values have a low bias compared to median sea salt concentrations derived from $N_{0.4-12}$ during filter sampling intervals (Fig. S3), on average of $\sim 26\%$. The bias also shows a weak but significant positive correlation with wind speed ($R=0.40$, $p<0.01$) (Fig. S3). A low bias of the filter samples especially during high wind speeds is expected because

the smaller cut-off diameter ($<6\ \mu\text{m}$) compared to the ~~optical particle counter~~ CLASP ($>11\ \mu\text{m}$) limits capture of coarse sea salt aerosol, where much of the particle mass is located (Fig. 7b).

10 During storms median atmospheric sea salt concentrations from both estimates showed increases above background values (Fig. 17a) that were statistically significant based on the Wilcoxon rank-sum test ($p<0.01$). For example, median sea salt concentration based on $N_{0.4-12}$ increased by a factor ~ 4 , from 0.37 to $1.48\ \mu\text{g m}^{-3}$ when comparing calm ($<4\ \text{m s}^{-1}$) with windy ($>9\ \text{m s}^{-1}$) conditions (Fig. 17a). A potential atmospheric sea salt concentration if surface snow released its sea salt content by blowing snow sublimation is estimated as follows: taking a typical
15 column total blowing snow sublimation rate of $0.1\ \text{mm day}^{-1}$ observed at Halley during winter (King et al., 2001) and assuming a mean storm duration of 1 day ~~on average then, on average,~~ the sea salt within the top 0.1 mm of snow can potentially be released. Total sea salt mass concentration observed in the top 0.1 mm of surface snow was converted into atmospheric mass concentration assuming a snow density ρ_{snow} of $300\ \text{kg m}^{-3}$ and complete mixing into a winter atmospheric boundary layer with an estimated mean depth of 100 m (Fig. 17a). Further assuming that
20 the atmospheric concentration measured at 29 m is constant throughout the 100 m atmospheric column it is found that the potential snow reservoir is more than a factor 10 larger in comparison to the total atmospheric burden during calm or windy conditions, and therefore easily accounts for the sea salt aerosol increase observed during blowing snow (Fig. 17a).

Sulfate depletion in winter aerosol and snow in Antarctica provides a means to estimate source contributions from
25 the open ocean and the blowing snow source above sea ice as discussed in section 3.2.1. The overlap in $DF_{\text{SO}_4^{2-}}$ (relative to Na^+) in aerosol and snow suggests that most of the aerosol observed during storms ($U_{10\text{m}}>9\ \text{m s}^{-1}$) had its origin in the regional snow on sea ice (Fig. 17b). During ~~the~~ 8 June ~~and to~~ 12 August 2013 (ANT6) median $DF_{\text{SO}_4^{2-}}$ of aerosol ~~observed~~ at 29 m was 0.29 and that of the top 10 cm of snowpack was 0.27 (Tables 4,5). Assuming linear mixing between two end members, i.e. SSA from the open ocean and the snow source, and assuming they
30 are constant in space and time, one finds based on the median values that $>90\%$ of the aerosol observed ~~originates~~ originated from snow on sea ice.

4 Conclusions

Two consecutive sea ice cruises in the Weddell sea, Antarctica, during winter/spring 2013 provided the first direct observations of sea salt aerosol production from blowing snow above sea ice, thereby validating a model hypothesis to account for winter time sea salt maxima in the Antarctic. Blowing or drifting snow often lead to increases in aerosol during and after storms consisting mostly of sea salt inferred from the concurrent increase in atmospheric sodium concentrations. Observed aerosol gradients suggest that net production of SSA takes place near the top of
5 the atmospheric layer containing suspended snow particles at $RH_{\text{ice}}<100\%$. Within the blowing snow layer SSA net production is suppressed due to saturated conditions and scavenging by snow particles which is efficient at the warmer temperatures encountered during storms.

The main evidence for the sea ice origin of the observed sea salt aerosol ~~observed~~ comes from its chemical fractionation: for the first time we show that snow on sea ice is depleted in sulfate relative to sodium with respect to
10 sea water. Similar ~~depletion observed in the~~ sulfate depletion in bulk aerosol above the sea ice ~~observed in the~~ sized
 $\sim 0.3\text{-}6\ \mu\text{m}$ ~~range~~ suggests that most sea salt originated from snow on sea ice with possibly minor contributions from
frost flowers, and not the open ocean or leads, e.g. ~~based on median values~~ $>90\%$ during the 8 June and 12 August
2013 period ~~based on median~~ DF_{SO_4} values. This finding is consistent with the independent modelling results of
Yang et al. (2019). A temporally very close association of snow particle and aerosol number density dynamics to-
15 gether with the far distance to the open ocean further support that the local blowing snow source of SSA dominates
over advection. A mass budget calculation shows that ~~even snow with~~ sublimation of $<1\ \text{mm}$ of snow on sea ice at
even low salinity (<10.1 psu) can account for ~~observed increases of sea salt from blowing snow~~. Significant increases
~~of sub-micron aerosol are also~~ increases of atmospheric sea salt observed during storms. Significant enhancement
of small aerosol particles ($d_p < 2\ \mu\text{m}$) during storms is consistent with sublimation of ~~snow particles of low salinity~~
20 low salinity (<10.1 psu) generating very small aerosol particles, potentially down to size if all water ice is lost
particles assuming complete loss of water ice. The degree of ~~water~~ ice loss from particles has implications for particle
surface area and heterogeneous chemistry, which future experiments will need to address.

It is found that SSA further aloft produced by blowing snow is depleted in bromide suggesting it is a source of
reactive bromine to the atmosphere even in winter, which then can contribute to ozone depletion events. On average
25 snow on sea ice and blowing snow showed no or small depletion of bromide relative to sodium with respect to sea
water, whereas aerosol at 2 m was enriched and at 29 m depleted suggesting that significant bromine loss takes place
in the aerosol phase between 2 and 29 m above the sea ice surface.

During storms average size spectra of ~~SSA aerosol~~ number densities over the sea ice ~~show~~ showed a significant
increase above background concentrations for particle diameters $< 2\ \mu\text{m}$, with sub-micron particles reaching levels
30 similar to those observed above the open ocean. The relative increase of ~~SSA aerosol~~ concentrations with wind
speed ~~suggests that on average the corresponding aerosol mass flux during storms was equal or~~ was much larger
above sea ice than above the open ocean ~~; demonstrating highlighting~~ the importance of ~~the blowing snow source~~
~~for atmospheric sea salt aerosol a sea ice source~~ in winter and early spring ~~for the aerosol burden above sea ice~~.
Comparison of absolute increases of aerosol concentrations during storms suggests that to a first order corresponding
35 aerosol number and mass fluxes above sea ice can rival those above the open ocean depending on particle size. Lower
SSA concentrations above sea ice relative to the open ocean may have been due to a combination of low storm
frequency and low snow salinities in the area sampled. Indeed, model calculations suggest that size distribution and
associated flux of SSA originating from blowing snow are very sensitive to snow salinity S_p , e.g. decreasing S_p from
0.92 to 0.06 psu causes SSA spectral number densities to decrease by about one order of magnitude (Yang et al., 2019)
5 Upscaling of the SSA source flux of Weddell sea ice and atmospheric modelling similar to the study of Levine et al.
(2014) are needed to address this issue as well as implications for the ~~sea ice proxy interpretation~~ interpretation of
sea salt in ice cores as a proxy for sea ice.

Evaluation of the current model mechanism for sea salt aerosol production from blowing snow (Yang et al., 2008, 2019) showed that the model parameterisations used can generally be applied to snow on sea ice:

- 10 - estimates of snow drift threshold wind speed based on the empirical model of (Li and Pomeroy, 1997) that depends on temperature ~~only~~ agreed well with observations above the low-salinity snow encountered during this study. However, temperature alone may not be a good predictor if the surface snow is very saline, implying a relatively larger liquid fraction at a given temperature and therefore increased snow crystal cohesion and drift threshold wind speed. Further measurements above a variety of sea ice surfaces will be needed to address this issue.
- 15 - modelled saltation layer snow mixing ratios exceed absolute values by a factor of 10, but the relative changes match the observations, and so the impact on calculating the SSA mass flux from blowing snow Q_{SSA} is minor
 - retrieval of mean particle diameter \bar{d}_p and shape parameter α from fitting a 2-parameter gamma distribution to observed snow particle size spectra is robust, even when data exclude very small snow particles ($d_p < 46 \mu\text{m}$); a ~~recommend~~recommended range of \bar{d}_p and α values is given for blowing snow episodes. Relative contributions from
- 20 precipitating snow to total suspended snow particles become more important a few tens of meters above the sea ice surface and need to be accounted for when interpreting snow particle size spectra. Future work needs to fill the observational gap (d_p 12-46 μm) between very small snow particles and aerosol due to the importance for the formation of sub-micron aerosol and associated climate impacts.

- at a given salt migration distance from the sea ice surface it is total snowpack depth, that determines the salinity probability distribution of snow on sea ice consistent with previous studies (Domine et al., 2004; Massom et al.,
- 5 2001). ~~FYI can therefore be distinguished from MYI based on snow salinity, because snow~~ Since snow on FYI is in general more shallow than on MYI, salinity probability distributions of FYI and MYI are different, which needs to be accounted for in model studies. Secondary factors potentially increasing the difference in salinity between FYI and MYI and identified previously (e.g. Massom et al., 2001) are more frequent flooding of FYI with seawater due to negative freeboard and MYI desalination due to brine drainage. Snow depth retrieved from satellites may allow
- 10 estimating snow salinity in the absence of ground-based measurements.

Snow salinity was shown to be a sensitive model parameter (Yang et al., 2019), which implies that SSA production above FYI should be larger than above MYI. Therefore, shifts in the ratio of FYI and MYI over time are expected to contribute to the variability of SSA in ice cores, which both represents an opportunity and a challenge for the quantitative interpretation of the ~~sea salt sea ice proxy~~ice core proxy for sea ice. Similar in situ measurements are

15 needed to corroborate the importance of sea salt aerosol production from blowing snow also in the Arctic to validate atmospheric and ice core models (e.g. Rhodes et al., 2017; Huang and Jaeglé, 2017).

Data availability. All data are stored in the UK Polar Data Centre, Natural Environment Research Council, UK Research and Innovation (<https://doi.org/10.5285/853dd176-bc7a-48d4-a6be-33bcc0f17eeb>, Frey et al., 2019).

Author contributions. MF, EW, AJ and PA designed the field experiments. MF, DJ and MNM carried out the field measurements. SN and IB contributed to CLASP, KN and PA to SPC instruments and data interpretation. MF prepared the manuscript and led the data interpretation with contributions from all co-authors.

Competing interests. The authors declare that they have no conflict of interest.

Acknowledgements. We are grateful to the Alfred Wegener Institute for Polar and Marine Research to enable our participation in expedition ANT-XXIX/6 and ANT-XXIX/7, cruise leader P. Lemke, captain and crew of *RV Polarstern*, and participating scientists for providing scientific and logistical support. We gratefully acknowledge financial support from the Natural Environment Research Council (UK) through the BLOWSEA project (NE/J023051/1 and NE/J020303/1). We thank E. Ludlow and R. Tuckwell for support of the IC analysis at BAS, J. Klepacki, A. Webb (BAS) and S. Rodwell (SAMS) for invaluable engineering support, K.C. Leonard for helpful discussions and lending the rocket traps, T. Phillips for generating the Antarctic sea ice map, and LL & MM for continued inspiration.

- Abbatt, J. P. D., Thomas, J. L., Abrahamsson, K., Boxe, C., Granfors, A., Jones, A. E., King, M. D., Saiz-Lopez, A., Shepson, P. B., Sodeau, J., Toohey, D. W., Toubin, C., von Glasow, R., Wren, S. N., and Yang, X.: Halogen activation via interactions with environmental ice and snow in the polar lower troposphere and other regions, *Atmos. Chem. Phys.*, 12, 6237–6271, doi:10.5194/acp-12-6237-2012, 2012.
- 35 Abrahamsson, K., Granfors, A., Ahnoff, M., Cuevas, C. A., and Saiz-Lopez, A.: Organic bromine compounds produced in sea ice in Antarctic winter, *Nature Communications*, 9, 5291, doi:10.1038/s41467-018-07062-8, 2018.
- Abram, N. J., Wolff, E. W., and Curran, M. A.: A review of sea ice proxy information from polar ice cores, *Quaternary Science Reviews*, 79, 168–183, doi:10.1016/j.quascirev.2013.01.011, 2013.
- Anderson, P. S.: A Method for Rescaling Humidity Sensors at Temperatures Well below Freezing, *J. Atmos. Ocean Tech.*, 11, 1388–1391, doi:10.1175/1520-0426(1994)011<1388:AMFRHS>2.0.CO;2, 1994.
- 5 Arndt, S. and Paul, S.: Variability of winter snow properties on different spatial scales in the Weddell Sea, *J. Geophys. Res.*, doi:10.1029/2018JC014447, 2018.
- [Artiglia, L., Edebeli, J., Orlando, F., Chen, S., Lee, M.-T., Corral Arroyo, P., Gilgen, A., Bartels-Rausch, T., Kleibert, A., Vazdar, M., Andres Carignano, M., Francisco, J. S., Shepson, P. B., Gladich, I., and Ammann, M.: A surface-stabilized ozonide triggers bromide oxidation at the aqueous solution-vapour interface, *Nat. Commun.*, 8, 700, doi:10.1038/s41467-017-00823-x, 2017.](#)
- 10 Boucher, O., et al., IPCC, 5th Assess. Rep. - WG1, Ch.7, 571–658 (2013).
- Budd, W.: The drifting of non-uniform snow particles, in: *Studies in Antarctic Meteorology*, edited by Rubin, M. J., vol. 9 of *Antarct. Res. Ser.*, pp. 59–70, American Geophysical Union, 1966.
- Butler, B. M., Papadimitriou, S., Santoro, A., and Kennedy, H.: Mirabilite solubility in equilibrium sea ice brines, *Geochimica et Cosmochimica Acta*, 182, 40 – 54, doi:10.1016/j.gca.2016.03.008, 2016.
- 15 Choi, S., Theys, N., Salawitch, R. J., Wales, P. A., Joiner, J., Canty, T. P., Chance, K., Suleiman, R. M., Palm, S. P., Cullather, R. I., Darmenov, A. S., Silva, A., Kurosu, T. P., Hendrick, F., and Van Roozendaal, M.: Link Between Arctic Tropospheric BrO Explosion Observed From Space and Sea-Salt Aerosols From Blowing Snow Investigated Using Ozone Monitoring Instrument BrO Data and GEOS-5 Data Assimilation System, *J. Geophys. Res.*, 123, 6954–6983, doi:10.1029/2017JD026889,
- 20 2018.
- Comiso, J. C. 2017. Bootstrap Sea Ice Concentrations from Nimbus-7 SMMR and DMSP SSM/I-SSMIS, Version 3, Boulder, Colorado USA. NASA National Snow and Ice Data Center Distributed Active Archive Center, doi:10.5067/7Q8HCCWS4I0R, accessed on 22 February 2018.
- de Leeuw, G., Andreas, E. L., Anguelova, M. D., Fairall, C. W., Lewis, E. R., O’Dowd, C., Schulz, M., and Schwartz, S. E.: Production flux of sea spray aerosol, *Rev. Geophys.*, 49, doi:10.1029/2010RG000349, 2011.
- 25 DeMott, P. J., Hill, T. C. J., McCluskey, C. S., Prather, K. A., Collins, D. B., Sullivan, R. C., Ruppel, M. J., Mason, R. H., Irish, V. E., Lee, T., Hwang, C. Y., Rhee, T. S., Snider, J. R., McMeeking, G. R., Dhaniyala, S., Lewis, E. R., Wentzell, J. J. B., Abbatt, J., Lee, C., Sultana, C. M., Ault, A. P., Axson, J. L., Diaz Martinez, M., Venero, I., Santos-Figueroa, G., Stokes, M. D., Deane, G. B., Mayol-Bracero, O. L., Grassian, V. H., Bertram, T. H., Bertram, A. K., Moffett, B. F.,

- 30 and Franc, G. D.: Sea spray aerosol as a unique source of ice nucleating particles, *Proc. Natl. Acad. Sci.*, 113, 5797–5803, doi:10.1073/pnas.1514034112, 2016.
- Déry, S. and Yau, M. K.: Simulation Of Blowing Snow In The Canadian Arctic Using A Double-Moment Model, 99, 297–316, doi:10.1023/A:1018965008049, 2001.
- Déry, S. J. and Yau, M.: A Bulk Blowing Snow Model, *Bound.-Lay. Meteorol.*, 93, 237–251, doi:10.1023/A:1002065615856, 1999.
- 35 Dominé, F., Sparapani, R., Ianniello, A., and Beine, H. J.: The origin of sea salt in snow on Arctic sea ice and in coastal regions, *Atmos. Chem. Phys.*, 4, 2259–2271, doi:10.5194/acp-4-2259-2004, 2004.
- Dover, S. E.: Numerical Modelling of Blowing Snow, Ph.D. thesis, 233 pages, University of Leeds, Leeds, 1993.
- Flato, G., et al., IPCC, 5th Assess. Rep. - WG1, Ch.9, 741—866, 2013.
- Frey, M.: Salinity profiles of snow on sea ice in the Weddell Sea (Antarctica) during austral winter 2013, Tech. rep., NERC - Polar Data Centre, Cambridge, UK, <http://doi.org/b9c6>, 2017.
- Frey, M. M., Bales, R. C., and McConnell, J. R.: Climate sensitivity of the century-scale hydrogen peroxide (H₂O₂) record
5 preserved in 23 ice cores from West Antarctica, *J. Geophys. Res.*, 111, doi:10.1029/2005JD006816, 2006.
- Giordano, M. R., Kalnajs, L. E., Goetz, J. D., Avery, A. M., Katz, E., May, N. W., Leemon, A., Mattson, C., Pratt, K. A., and DeCarlo, P. F.: The importance of blowing snow to halogen-containing aerosol in coastal Antarctica: influence of source region versus wind speed, *Atmos. Chem. Phys.*, 18, 16 689–16 711, doi:10.5194/acp-18-16689-2018, 2018.
- Hara, K., Osada, K., Yabuki, M., Takashima, H., Theys, N., and Yamanouchi, T.: Important contributions of sea-salt aerosols
10 to atmospheric bromine cycle in the Antarctic coasts, *Scientific Reports*, 8, 13 852, doi:10.1038/s41598-018-32287-4, 2018.
- Hill, M. K., Brooks, B. J., Norris, S. J., Smith, M. H., Brooks, I. M., and de Leeuw, G.: A Compact Lightweight Aerosol Spectrometer Probe (CLASP), *J. Atmos. Ocean Tech.*, 25, 1996–2006, doi:10.1175/2008JTECHA1051.1, 2008.
- Hill, K. D., T. M. D. and Woods, D. J.: The extension of the Practical Salinity Scale 1978 to low salinities, *IEEE J. Oceanic Eng.*, 11, 109–112, 1986.
- 15 Huang, J. and Jaeglé, L.: Wintertime enhancements of sea salt aerosol in polar regions consistent with a sea ice source from blowing snow, *Atmos. Chem. Phys.*, 17, 3699–3712, doi:10.5194/acp-17-3699-2017, 2017.
- Jacobson, M. Z.: *Fundamentals of Atmospheric Modeling*, Cambridge University Press, Cambridge, United Kingdom, 2005.
- Jones, A. E., Wolff, E. W., Ames, D., Bauguitte, S. J.-B., Clemitshaw, K. C., Fleming, Z., Mills, G. P., Saiz-Lopez, A., Salmon, R. A., Sturges, W. T., and Worton, D. R.: The multi-seasonal NO_y budget in coastal Antarctica and its link
20 with surface snow and ice core nitrate: results from the CHABLIS campaign, *Atmos. Chem. Phys.*, 11(17), 9271–9285, doi:10.5194/acp-11-9271-2011, 2011.
- Jones, A. E., Anderson, P. S., Begoin, M., Brough, N., Hutterli, M. A., Marshall, G. J., Richter, A., Roscoe, H. K., and Wolff, E. W.: BrO, blizzards, and drivers of polar tropospheric ozone depletion events, *Atmos. Chem. Phys.*, 9, 4639–4652, 2009.
- Jourdain, B., Preunkert, S., Cerri, O., Castebrunet, H., Udisti, R., and Legrand, M.: Year-round record of sizesegregated aerosol
25 composition in central Antarctica (Concordia station): Implications for the degree of fractionation of sea-salt particles, *J. Geophys. Res.*, 113, doi:10.1029/2007JD009584, 2008.
- Kaimal, J. and Finnigan, J. J.: *Atmospheric Boundary Layer Flows*, Oxford University Press, Oxford, United Kingdom, 1994.
- Kalnajs, L. E., Avallone, L. M., and Toohey, D. W.: Correlated measurements of ozone and particulates in the Ross Island region, Antarctica, *Geophys. Res. Lett.*, 40, 6319–6323, doi:10.1002/2013GL058422, 2013.

- 30 King, J. C., Anderson, P. S., and Mann, G. W.: The seasonal cycle of sublimation at Halley, Antarctica, *J. Glaciol.*, 47, 1–8, 2001.
- King, J. C., Anderson, P. S., Smith, M. C., and Mobbs, S. D.: The surface energy and mass balance at Halley, Antarctica during winter, *J. Geophys. Res.*, 101, 19 119, 1996.
- King, J. C. and Anderson, P. S.: Heat and water vapor fluxes and scalar roughness lengths over an Antarctic ice shelf, 35 *Bound.-Lay. Meteorol.*, 69, 101–121, 1994.
- Legrand, M., Yang, X., Preunkert, S., and Theys, N.: Year-round records of sea salt, gaseous, and particulate inorganic bromine in the atmospheric boundary layer at coastal (Dumont d’Urville) and central (Concordia) East Antarctic sites, *J. Geophys. Res.*, doi:10.1002/2015JD024066, 2016.
- Legrand, M., Preunkert, S., Wolff, E., Weller, R., Jourdain, B., and Wagenbach, D.: Year-round records of bulk and size-segregated aerosol composition in central Antarctica (Concordia site) – Part 1: Fractionation of sea-salt particles, *Atmos. Chem. Phys.*, 17, 14 039–14 054, doi:10.5194/acp-17-14039-2017, 2017.
- 5 Lemke, P.: The Expedition of the Research Vessel Polarstern to the Antarctic in 2013 (ANT-XXIX/6), Reports on Polar and Marine Research, 679, 154 pp., doi:10.2312/BzPM-0679-2014, 2014.
- Levine, J. G., Yang, X., Jones, A. E., and Wolff, E. W.: Sea salt as an ice core proxy for past sea ice extent: A process-based model study, *J. Geophys. Res.*, 119, doi:10.1002/2013JD020925, 2014.
- Li, L. and Pomeroy, J. W.: Estimates of Threshold Wind Speeds for Snow Transport Using Meteorological Data, *J. Appl. Meteorol.*, 36, 205–213, doi:10.1175/1520-0450(1997)036<0205:EOTWSF>2.0.CO;2, 1997.
- 10 Lieb-Lappen, R. M. and Obbard, R. W.: The role of blowing snow in the activation of bromine over first-year Antarctic sea ice, *Atmos. Chem. Phys.*, 15, 7537–7545, doi:10.5194/acp-15-7537-2015, 2015.
- Long, M. S., Keene, W. C., Easter, R. C., Sander, R., Liu, X., Kerkweg, A., and Erickson, D.: Sensitivity of tropospheric chemical composition to halogen-radical chemistry using a fully coupled size-resolved multiphase-chemistry global climate system: halogen distributions, aerosol composition, and sensitivity of climate-relevant gases, *Atmos. Chem. Phys.*, 14, 3397–3425, doi:10.5194/acp-14-3397-2014, 2014.
- 15 Mann, G. W., Carslaw, K. S., Reddington, C. L., Pringle, K. J., Schulz, M., Asmi, A., Spracklen, D. V., Ridley, D. A., Woodhouse, M. T., Lee, L. A., Zhang, K., Ghan, S. J., Easter, R. C., Liu, X., Stier, P., Lee, Y. H., Adams, P. J., Tost, H., Lelieveld, J., Bauer, S. E., Tsigaridis, K., van Noije, T. P. C., Strunk, A., Vignati, E., Bellouin, N., Dalvi, M., Johnson, C. E., Bergman, T., Kokkola, H., von Salzen, K., Yu, F., Luo, G., Petzold, A., Heintzenberg, J., Clarke, A., Ogren, J. A., Gras, J., Baltensperger, U., Kaminski, U., Jennings, S. G., O’Dowd, C. D., Harrison, R. M., Beddows, D. C. S., Kulmala, M., Viisanen, Y., Ulevicius, V., Mihalopoulos, N., Zdimal, V., Fiebig, M., Hansson, H.-C., Swietlicki, E., and Henzing, J. S.: Intercomparison and evaluation of global aerosol microphysical properties among AeroCom models of a range of complexity, *Atmos. Chem. Phys.*, 14, 4679–4713, doi:10.5194/acp-14-4679-2014, 2014.
- 20 Mann, G., Anderson, P., and Mobbs, S.: Profile measurements of blowing snow at Halley, Antarctica, *J. Geophys. Res.*, 105, 24 491–24 508, doi:10.1029/2000JD900247, 2000.
- Massom, R. A., Eicken, H., Hass, C., Jeffries, M. O., Drinkwater, M. R., Sturm, M., Worby, A. P., Wu, X., Lytle, V. I., Ushio, S., Morris, K., Reid, P. A., Warren, S. G., and Allison, I.: Snow on Antarctic Sea Ice, *Rev. Geophys.*, 39, 413–445, doi:10.1029/2000RG000085, 2001.

- 30 May, N. W., Quinn, P. K., McNamara, S. M., and Pratt, K. A.: Multiyear study of the dependence of sea salt aerosol on wind speed and sea ice conditions in the coastal Arctic, *J. Geophys. Res.*, 121, 9208–9219, doi:10.1002/2016JD025273, 2016JD025273, 2016.
- McDougall, T. and Barker, P.: Getting started with TEOS-10 and the Gibbs Seawater (GSW) Oceanographic Toolbox, Tech. Rep. ISBN 978-0-646-55621-5, SCOR/IAPSO WG127, <http://www.teos-10.org>, 2011.
- 35 Meyer, B.: The Expedition of the Research Vessel Polarstern to the Antarctic in 2013 (ANT-XXIX/7), Reports on Polar and Marine Research, 674, 130 pp., doi:10.2312/BzPM-0674-2014, 2014.
- Millero, F. J., Feistel, R., Wright, D. G., and McDougall, T. J.: The composition of standard seawater and the definition of the reference-composition salinity scale, *Deep-Sea Res. Part I-Oceanographic Research Papers*, 55, 50–72, 2008.
- Nilsson, E. D., Rannik, Ü., Swietlicki, E., Leck, C., Aalto, P. P., Zhou, J., and Norman, M.: Turbulent aerosol fluxes over the Arctic Ocean: 2. Wind-driven sources from the sea, *J. Geophys. Res.*, 106, 32 139–32 154, doi:10.1029/2000JD900747, 2001.
- Nishimura, K., Yokoyama, C., Ito, Y., Nemoto, M., Naaim-Bouvet, F., Bellot, H. and Fujita, K. (2014), Snow particle speeds
5 in drifting snow, *J. Geophys. Res. Atmos.*, 119, doi:10.1002/2014JD021686.
- Nishimura, K. and Nemoto, M.: Blowing snow at Mizuho station, Antarctica, *Phil. Trans. R. Soc. A*, 363, 1647–1662, doi:10.1098/rsta.2005.1599, 2005.
- Norris, S. J., Brooks, I. M., Hill, M. K., Brooks, B. J., Smith, M. H., and Sproson, D. A. J.: Eddy covariance measurements of the sea spray aerosol flux over the open ocean, *J. Geophys. Res.*, 117, doi:10.1029/2011JD016549, 2012.
- 10 Norris, S. J., Brooks, I. M., de Leeuw, G., Smith, M. H., Moerman, M., and Lingard, J. J. N.: Eddy covariance measurements of sea spray particles over the Atlantic Ocean, *Atmos. Chem. Phys.*, 8, 555–563, doi:10.5194/acp-8-555-2008, 2008.
- O’Dowd, C. D., Smith, M. H., Consterdine, I. E., and Lowe, J. A.: Marine aerosol, sea-salt, and the marine sulphur cycle: a short review, *Atmos. Environ.*, 31, 73 – 80, doi:10.1016/S1352-2310(96)00106-9, 1997.
- Oum, K. W., Lakin, M. J., and Finlayson-Pitts, B. J.: Bromine activation in the troposphere by the dark reaction of O₃ with
15 seawater ice, *Geophys. Res. Lett.*, 25, 3923–3926, doi:10.1029/1998GL900078, 1998.
- Pratt, K. A., Custard, K. D., Shepson, P. B., Douglas, T. A., Pohler, D., General, S., Zielcke, J., Simpson, W. R., Platt, U., Tanner, D. J., Huey, G., Carlsen, M., and Stirm, B. H.: Photochemical production of molecular bromine in Arctic surface snowpacks, *Nature Geosci*, doi:10.1038/ngeo1779, 2013.
- M. Rankin, A. and W. Wolff, E.: A year-long record of size-segregated aerosol composition at Halley, Antarctica, *J. Geophys. Res.*, 108, doi:10.1029/2003JD003993, 2003.
- 20 Rankin, A. M., Auld, V., and Wolff, E. W.: Frost flowers as a source of fractionated sea salt aerosol in the polar regions, *Geophys. Res. Lett.*, 27, 3469–3472, doi:10.1029/2000GL011771, 2000.
- Rhodes, R. H., Yang, X., Wolff, E. W., McConnell, J. R., and Frey, M. M.: Sea ice as a source of sea salt aerosol to Greenland ice cores: a model-based study, *Atmos. Chem. Phys.*, 17, 9417–9433, doi:10.5194/acp-17-9417-2017, 2017.
- 25 Roscoe, H. K., Brooks, B., Jackson, A. V., Smith, M. H., Walker, S. J., Obbard, R. W., and Wolff, E. W.: Frost flowers in the laboratory: Growth, characteristics, aerosol, and the underlying sea ice, *J. Geophys. Res.*, 116, doi:10.1029/2010JD015144, 2011.
- Sander, R., Keene, W. C., Pszenny, A. A. P., Arimoto, R., Ayers, G. P., Baboukas, E., Caine, J. M., Crutzen, P. J., Duce, R. A., Hönninger, G., Huebert, B. J., Maenhaut, W., Mihalopoulos, N., Turekian, V. C., and Van Dingenen, R.: Inorganic

- 30 bromine in the marine boundary layer: a critical review, *Atmos. Chem. Phys.*, 3, 1301–1336, doi:10.5194/acp-3-1301-2003, 2003.
- Schmidt, R. A.: Vertical profiles of wind speed, snow concentration, and humidity in blowing snow, *Boundary-Layer Meteorology*, 23, 223–246, doi:10.1007/BF00123299, 1982.
- Schmidt, R., Meister, R., and Gubler, H.: Comparison of snow drifting measurements at an alpine ridge crest, *Cold Regions Science and Technology*, 9, 131 – 141, doi:10.1016/0165-232X(84)90005-3, 1984.
- 35 Simpson, W. R., Alvarez-Aviles, L., Douglas, T. A., Sturm, M., and Domine, F.: Halogens in the coastal snow pack near Barrow, Alaska: Evidence for active bromine air-snow chemistry during springtime, *Geophys. Res. Lett.*, 32, L04811, 104811, 2005.
- Soo, J.-C., Monaghan, K., Lee, T., Kashon, M., and Harper, M.: Air sampling filtration media: Collection efficiency for respirable size-selective sampling, *Aerosol Sci. Technol.*, 50, 76–87, 2016.
- Spolaor, A., Vallelonga, P., Plane, J. M. C., Kehrwald, N., Gabrieli, J., Varin, C., Turetta, C., Cozzi, G., Kumar, R., Boutron, C., and Barbante, C.: Halogen species record Antarctic sea ice extent over glacial-interglacial periods, *Atmos. Chem. Phys.*, 13, 6623–6635, doi:10.5194/acp-13-6623-2013, 2013.
- Unesco: Algorithms for computation of fundamental properties of seawater., *Unesco technical papers in marine science* 44, 53
1095 pp., 1983.
- Unesco: The Practical Salinity Scale 1978 and the International Equation of State of Seawater 1980, *Unesco technical papers in marine science* 36, 25pp, 1981.
- Van Dijk, A., Moen, A., and De Bruin, H.: The principles of surface flux physics: theory, practice and description of the ECPACK library, Internal Report 2004/1, Meteorology and Air Quality Group, Wageningen University, Wageningen, The
1100 Netherlands, 2006.
- Wagenbach, D., Ducroz, F., Mulvaney, R., Keck, L., Minikin, A., Legrand, M., Hall, J. S., and Wolff, E. W.: Sea-salt aerosol in coastal Antarctic regions, *J. Geophys. Res.*, 103, 10 961–10 974, doi:10.1029/97JD01804, 1998.
- Weller, R., Wagenbach, D., Legrand, M., Elsässer, C., Tian-Kunze, X., and König-Langlo, G.: Continuous 25-yr aerosol records at coastal Antarctica – I: inter-annual variability of ionic compounds and links to climate indices, *Tellus B*, 63, 901–919,
1105 doi:10.1111/j.1600-0889.2011.00542.x, 2011.
- Wolff, E. W., Rankin, A. M., and Rothlisberger, R.: An ice core indicator of Antarctic sea ice production?, *Geophys. Res. Lett.*, 30, 2158, 2003.
- Wolff, E. W., Legrand, M. R., and Wagenbach, D.: Coastal Antarctic aerosol and snowfall chemistry, *J. Geophys. Res.*, 103, 10 927–10 934, 1998.
- 1110 Yang, X., Frey, M. M., Rhodes, R. H., Norris, S. J., Brooks, I. M., Anderson, P. S., Nishimura, K., Jones, A. E., and Wolff, E. W.: Sea salt aerosol production via sublimating wind-blown saline snow particles over sea ice: parameterizations and relevant microphysical mechanisms, *Atmos. Chem. Phys.*, 19, 8407–8424, doi:10.5194/acp-19-8407-2019, 2019.
- Yang, X., Neděla, V., Runštuk, J., Ondrušková, G., Krausko, J., Vetráková, Ā., and Heger, D.: Evaporating brine from frost flowers with electron microscopy and implications for atmospheric chemistry and sea-salt aerosol formation, *Atmos. Chem.*
1115 *Phys.*, 17, 6291–6303, doi:10.5194/acp-17-6291-2017, 2017.
- Yang, X., Pyle, J. A., Cox, R. A., Theys, N., and Van Roozendaal, M.: Snow-sourced bromine and its implications for polar tropospheric ozone, *Atmos. Chem. Phys.*, 10, 7763–7773, doi:10.5194/acp-10-7763-2010, 2010.

Yang, X., Pyle, J. A., and Cox, R. A.: Sea salt aerosol production and bromine release: Role of snow on sea ice, *Geophys. Res. Lett.*, 35, doi:10.1029/2008GL034536, 2008.

Table 1. Overview of duration Δt , mean position, distance to the nearest open water Δx and meteorology (ambient temperature T_a , wind speed U_{39m} and wind direction at 39 m) for ice stations S1-S9 during ANT-XXIX/6 (8 June to 12 August 2013).

Station ID ^a	begin – end (UTC)	Δt (hr)	lat / lon (°)	Δx^b (km)	T_a (°C)	U_{39m} (m s ⁻¹)	wdir (°)
S1 (PS81/0493-2)	21.06.2013 14:23 – 22.06.2013 00:29	10	-66.445 / 0.116	607	-20.6	8.2	207
S2 (PS81/0496-1)	24.06.2013 08:23 – 24.06.2013 18:18	10	-67.470 / -0.033	721	-12.6	12.5	51
S3 (PS81/0497-1)	26.06.2013 11:20 – 26.06.2013 14:20	3	-68.049 / -0.340	786	-3.4	13.2	19
S4 (PS81/0500-5)	03.07.2013 08:32 – 05.07.2013 20:52	60	-67.909 / -6.762	993	-23.2	5.2	200
S5 (PS81/0503-2)	08.07.2013 11:50 – 08.07.2013 23:39	12	-67.192 / -13.225	913	-14.0	3.8	251
S6 (PS81/0506-1)	11.07.2013 09:38 – 15.07.2013 12:41	99	-67.203 / -23.165	803	-16.8	6.3	167
S7 (PS81/0515-1)	26.07.2013 11:30 – 27.07.2013 00:00	13	-63.415 / -51.246	381	-19.6	13.9	246
S8 (PS81/0517-2)	29.07.2013 12:35 – 02.08.2013 20:24	104	-63.400 / -51.170	379	-25.2	6.8	208
S9 (PS81/0518-3)	04.08.2013 13:44 – 05.08.2013 20:18	31	-62.918 / -53.265	214	-7.8	9.1	273

^astation ID used in this paper (Figs. 1,2); in brackets *RV Polarstern* nomenclature

^b horizontal distance to the nearest open water on the ice station longitude based on sea ice extent on 15-June for S1-S3, on 15-July for S4-S7, and 15-Aug for S8-S9 (Fig. 1).

Table 2. Overview of observed parameters, instruments used and reported data resolution Δt during ANT-XXIX/6 (ANT6) from 8 June to 12 August 2013, and ANT-XXIX/7 (ANT7) from 14 August to 16 October 2013.

Parameter	Instrument	Δt	ANT6	ANT7
1. Crow's nest (height 29 m)	continuous			
snow particle number density, N_{46-478} (d_p 46-478 μm)	Snow Particle Counter ^a	1 min	✓	✓
aerosol number density, $N_{0.4-12}$ (d_p 0.36-11.62 μm)	CLASP ^b	1 min	✓	
bulk aerosol chemistry (Na^+ , Cl^- , SO_4^{2-} , Br^-)	Low-Volume Filter Samples	3-48 h	✓	✓
meteorology ($T, p, RH, U, wdir$)	<i>RV Polarstern</i> Observatory ^c	1 min	✓	✓
2. Sea ice (height 0.07-2.0 m)	during ice stations			
snow particle number density, N_{46-478} (d_p 46-478 μm)	Snow Particle Counter ^a	1 min	✓	
aerosol number density, $N_{0.4-12}$ (d_p 0.36-11.62 μm)	CLASP ^b	1 min	✓	
bulk aerosol chemistry (Na^+ , Cl^- , SO_4^{2-} , Br^-)	Low-Volume Filter Samples	3-48 h	✓	
snow chemistry (Na^+ , Cl^- , SO_4^{2-} , Br^- , S_p)	Ion Chromatography, Salinometer ^d	hr-days	✓	
3-D wind field (u, v, w)	Sonic Anemometer ^e	1 min	✓	
T, RH	Temperature/ Humidity Probe ^f	1 min	✓	

^aSPC-95, Niigata Electric Co., Ltd. (Nishimura et al., 2014) ^bCompact Light-Weight Aerosol Spectrometer Probe (CLASP) (Hill et al., 2008; Norris et al., 2008) ^cdetails at <https://spaces.awi.de/confluence/display/PSdevices/Bordwetterwarte>

^dSensIon 5, Hach ^eMETEK USA-1 ^fVAISALA HMP45

Table 3. Overview of mean aerosol filter procedure blanks and resulting limit of detection (LOD): 1. ultra-high purity (UHP) water, 2. filter extraction, 3. cleaned and unused filter and 4. field blank (see text). Field blank values are used to correct the raw filter ion concentration.

Parameter	Na ⁺	Cl ⁻	SO ₄ ²⁻	Br ⁻	N ^a
A) Aerosol filter procedure blank					
1. UHP (electric resistivity 18.2 MΩcm) (ng g ⁻¹)	0.4	4.0	4.5	0.0	85
2. extraction (ng g ⁻¹)	3.6	4.8	8.6	3.4	14
3. filter (ng g ⁻¹)	2.3	9.5	8.5	0.0	8
4. field (ng g ⁻¹)	6.0	16.8	9.1	0.5	10
ratio field blank : sample mean (%)	3.1	4.9	20.3	34.3	183
B) Limit of detection (LOD)					
LOD (ng g ⁻¹) ^b	13.4	27.9	17.1	1.0	10
LOD (ng m ⁻³) ^c	22.6	47.2	29.0	1.7	141

^asample size ^bdefined as $2 \times 1-\sigma$ of the field blank ^cbased on crow's nest mean sample air STP-volume (6.4 m³); mean sample air STP-volume for filters deployed on the sea ice was 3.3 m³ increasing respective LODs by a factor 1.6

Table 4. Descriptive statistics of the aerosol chemistry during ANT-XXIX/6 (ANT6) and ANT-XXIX/7 (ANT7) with mean and median values weighted by the filter sampling interval. Ion and sea salt concentrations are in units of ng m^{-3} . See section 2.3 for definition of depletion factors DF .

Parameter	ANT6			ANT7				
	at 2 m			at 29 m				
	mean $\pm\sigma$	median	N^a	mean $\pm\sigma$	median	N^a	mean $\pm\sigma$	median
sea-salt ^b	707 \pm 1500	336	43	1253 \pm 2319	639	106	559 \pm 486	425
Na ⁺	217 \pm 460	103	43	384 \pm 711	196	106	171 \pm 149	130
Cl ⁻	379 \pm 765	179	43	656 \pm 1225	302	106	311 \pm 282	232
SO ₄ ²⁻	28 ^c \pm 61	19 ^c	38	75 \pm 152	45	84	33 \pm 30	23 ^c
Br ⁻	2.0 \pm 1.0	1.9	42	1.5 ^c \pm 3.0	0.7 ^c	98	0.5 ^c \pm 0.6	0.5 ^c
$DF_{\text{SO}_4^{2-}}$	0.29 \pm 0.57	0.48	38	0.07 \pm 0.94	0.29	74	0.12 \pm 0.60	0.21
DF_{Na^+}	-0.08 \pm 0.29	-0.03	43	-0.46 \pm 2.29	-0.04	97	-0.02 \pm 0.19	-0.01
DF_{Br^-}	-1.66 -4.59 \pm 1.86 7.92	-1.86 -1.93	36 42	0.04 -1.44 \pm 0.96 17.36	0.37 0.36	89 93	0.05 \pm 1.26	0.49

^asample size ^bsea salt concentration is derived by multiplying the Na⁺ concentration by 3.262 based on the Na⁺ mass fraction in reference seawater after Millero et al. (2008) ^cbelow the estimated LOD (Table 3)

Table 5. Descriptive statistics of the volume-integrated snow chemistry during ANT-XXIX/6 on first-year sea ice (FYI) at ice stations S1-S6, on multi-year sea ice (MYI) at ice stations S7-9, and for snow layers within 10 cm of the snow surface (TOP10). Ion and sea salt concentrations are in units of $\mu\text{g g}^{-1}$. See section 2.4 for definition of depletion factors DF .

Parameter	FYI			MYI			TOP10
	mean $\pm\sigma$	median	N^a	mean $\pm\sigma$	median	N^a	mean $\pm\sigma$
snow depth (cm)	20.9 \pm 8.3	19.0	17	50.0 \pm 32.2	33.0	7	-
S_p (psu)	1.40 \pm 3.99	0.11	110	0.82 \pm 4.31	0.02	104	0.31 \pm 0.90
sea salt ^b	1176 \pm 3518	83	86	590 \pm 3157	22	95	249 \pm 729
Na^+	361 \pm 1079	26	86	181 \pm 968	7	95	76 \pm 223
Cl^-	680 \pm 2035	48	87	305 \pm 1842	13	98	141 \pm 415
SO_4^{2-}	61 \pm 182	6	87	30 \pm 166	1	98	17 \pm 62
Br^-	4.28 \pm 12.23	0.18	85	1.76 \pm 10.92	0.07	90	1.01 \pm 3.72
$DF_{\text{SO}_4^{2-}}$	0.19 \pm 0.41	0.24	86	0.33 \pm 0.44	0.35	94	0.27 \pm 0.39
DF_{Na^+}	0.01 \pm 0.38	0.06	86	-1.09 \pm 8.88	0.07	94	-0.11 \pm 0.99
DF_{Br^-}	-0.25 -0.33 \pm 0.98 1.22	0.05	83 84	-0.28 -0.37 \pm 1.16 1.43	-0.01	86 87	-0.21 -0.30 \pm 0.99 1.25

^asample size ^bsea salt concentration is derived by multiplying the Na^+ concentration by 3.262 based on the Na^+ mass fraction in reference seawater after Millero et al. (2008)

Table 6. Summary of snow particle size distribution properties during blowing snow, i.e. when $U_{10m} > U_t$ ($=7.1 \text{ m s}^{-1}$ as observed during this study): median, lower ($Q_{0.25}$) and upper quartile ($Q_{0.75}$) of particle mean diameter \bar{d}_p ($=\alpha\beta$) in μm and shape parameter α , both derived from fitting a 2-parameter gamma probability density function (Eq. 5) to observations; Δt is total sampling time. Note that the parameter range based on near-surface measurements is representative of blowing snow, whereas that based on measurements at 29 m has additional uncertainties due to precipitating snow (see text).

parameter	median	$Q_{0.25}$	$Q_{0.75}$	Δt (hr)
\bar{d}_p at $<0.2 \text{ m}$	129	117	152	47
\bar{d}_p at 29 m^{a}	115	95	139	47
\bar{d}_p at 29 m	115	93	147	867
α at $<0.2 \text{ m}$	4.8	4.0	11.2	47
α at 29 m^{a}	8.0	4.1	11.8	47
α at 29 m	6.4	4.2	11.0	867

^aincluding only data when also measurements at $<0.2 \text{ m}$ are available during blowing snow ($U_{10m} > U_t$).

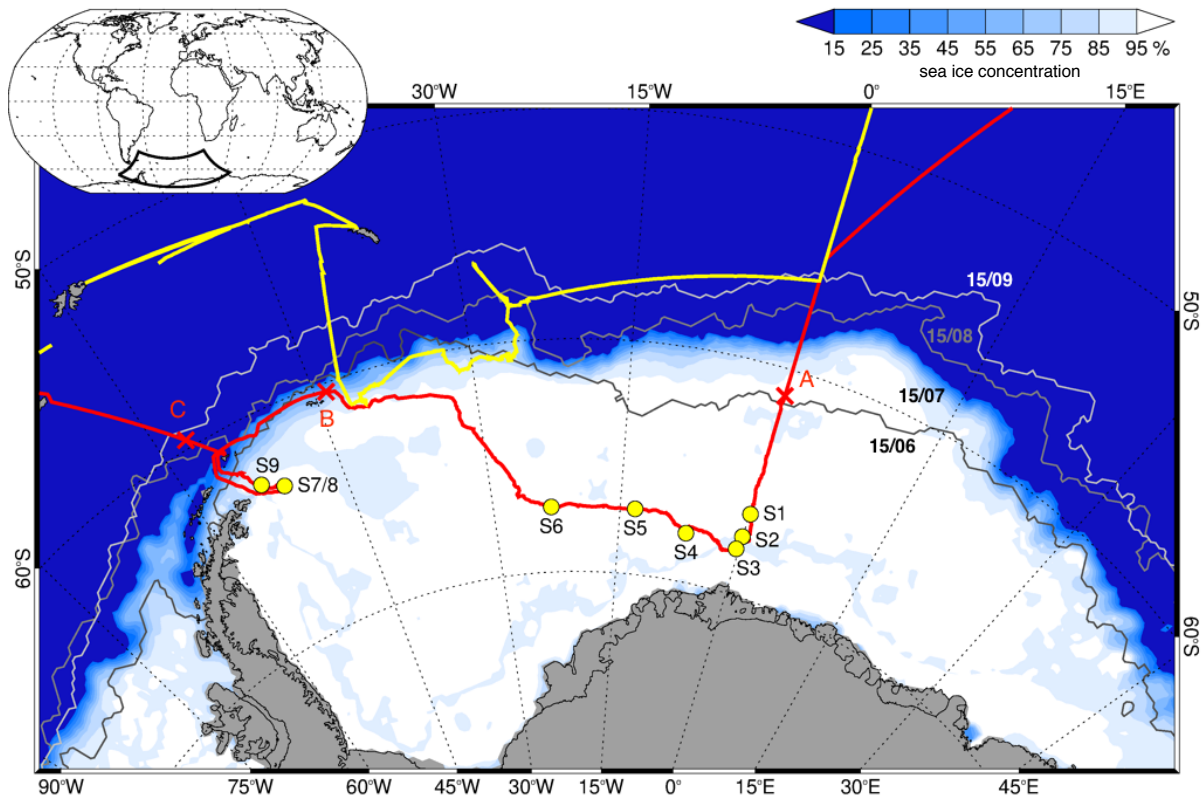


Figure 1. Cruise tracks of *RV Polarstern* in the Weddell Sea for the winter expedition ANT-XXIX/6 from 8 June to 12 August 2013 (red line) and the spring expedition ANT-XXIX/7 from 14 August to 16 October 2013 (yellow line). Circles indicate the location of ice stations S1–9 (Table 1). Crosses show ship positions when entering the sea ice on 17 June (A), reaching the marginal sea ice zone MIZ on 22 July (B) and returning to the open ocean on 9 August (C). Sea ice concentrations on 15 July 2013 are shown as areas shaded in white to blue, and sea ice extent on 15 June, 15 August and 15 September 2013, respectively, as grey solid lines, all based on Nimbus-7 satellite microwave radiometer measurements (Comiso, 2018).

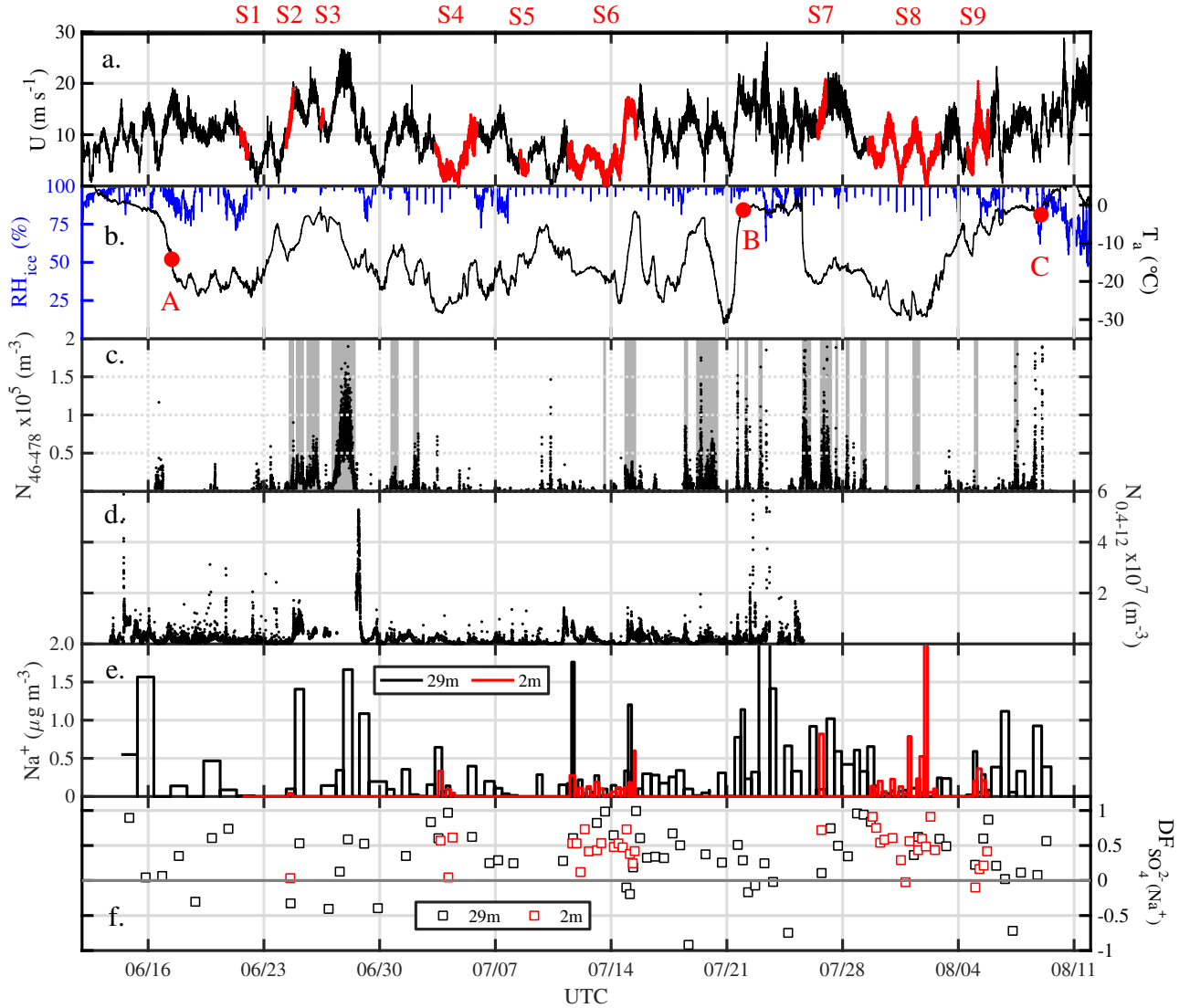


Figure 2. Overview of atmospheric observations in the Weddell Sea from 8 June to 12 August 2013 (ANT-XXIX/6): (a) horizontal wind speed U at 39 m; time periods at ice stations S1-9 (Table 1) are highlighted in red. (b) ambient temperature T_a and relative humidity with respect to ice RH_{ice} at 29 m; red symbols refer to *RVPolarstern* positions shown in Fig. 1, indicating when the ship entered the sea ice on 17 June (A), reached the marginal sea ice zone (MIZ) on 22 July (B) and returned to the open ocean on 9 August (C). (c) total number densities N_{46-478} of airborne snow particles at 29 m with grey shaded areas indicating periods with observed drifting or blowing snow. (d) total number densities $N_{0.4-12}$ of aerosol at 29 m, (e) aerosol Na^+ concentrations and (f) sulfate depletion factor $DF_{\text{SO}_4^{2-}}(\text{Na}^+)$, both at 29 m and 2 m, respectively.

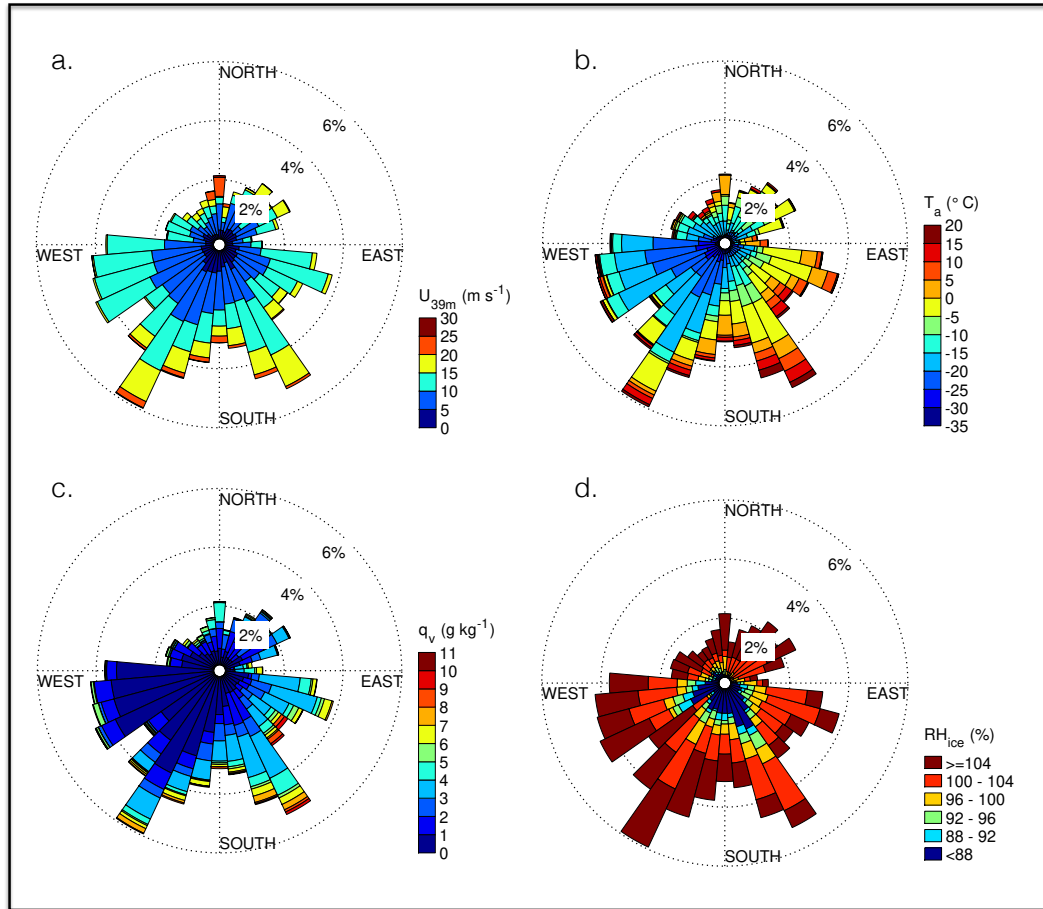


Figure 3. Wind rose plots for the position of *RV Polarstern* during ANT-XXIX/6 (8 June–12 August 2013): (a) horizontal wind speed U at 39 m, (b) ambient temperature T_a , (c) specific humidity of air q_v , and (d) relative humidity with respect to ice RH_{ice} (b–d at 29 m).

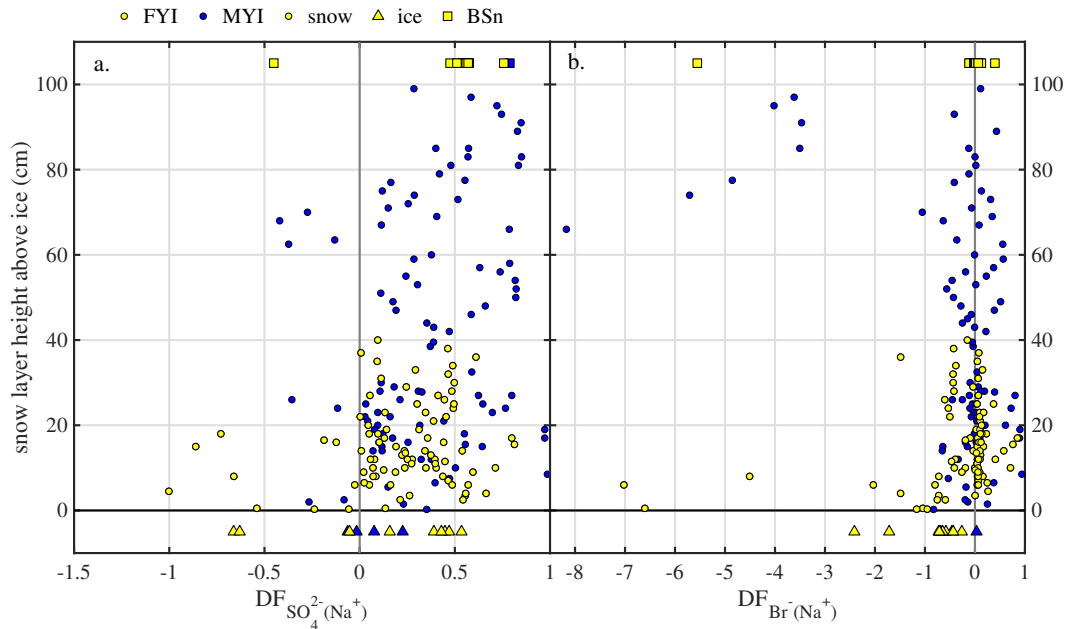


Figure 4. Chemical fractionation of snow on sea ice in the Weddell Sea during austral winter 2013. Panel (a) shows sulfate depletion factors $DF_{SO_4^{2-}}$ (relative to Na^+) of snow on first-year sea ice (FYI, yellow symbols) at ice stations S1-6 and multi-year sea ice (MYI, blue symbols) at ice stations S7-9 in the Weddell Sea as a function of snow layer height above the sea ice surface. For comparison $DF_{SO_4^{2-}}$ of the sea ice surface (triangles) and blowing snow at 1-17 cm above the snowpack (squares) are shown as well. Panel (b) shows the same but for bromide depletion factors DF_{Br^-} (relative to Na^+). The sample statistics are summarised in Table 5.

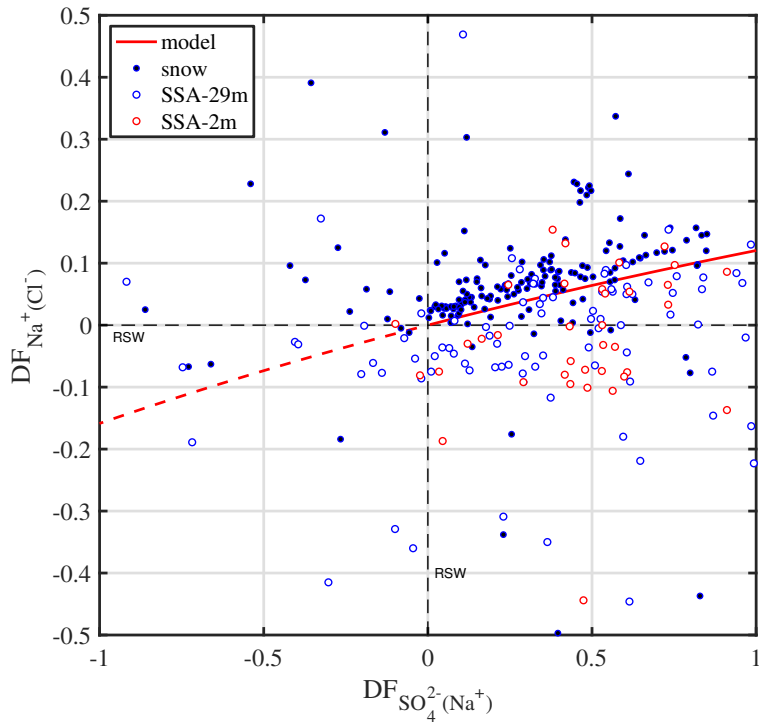


Figure 5. Theoretical relationship between depletion factors of sodium DF_{Na^+} (relative to Cl^-) and of sulfate $DF_{SO_4^{2-}}$ (relative to Na^+) in freezing seawater if mirabilite ($Na_2SO_4 \cdot 10H_2O$) is progressively precipitated and instantaneously removed (red line). When all sulfate is removed ($DF_{SO_4^{2-}} = 1$) sodium depletion reaches its theoretical maximum ($DF_{Na^+} = 1.1204$). See section 2.4 for definition of depletion factors DF , which are zero in reference seawater (RSW) (black dashed lines). Data refer to all observations from this study in snow (solid symbols), and aerosol at 2 m and 29 m above the sea ice surface (open symbols).

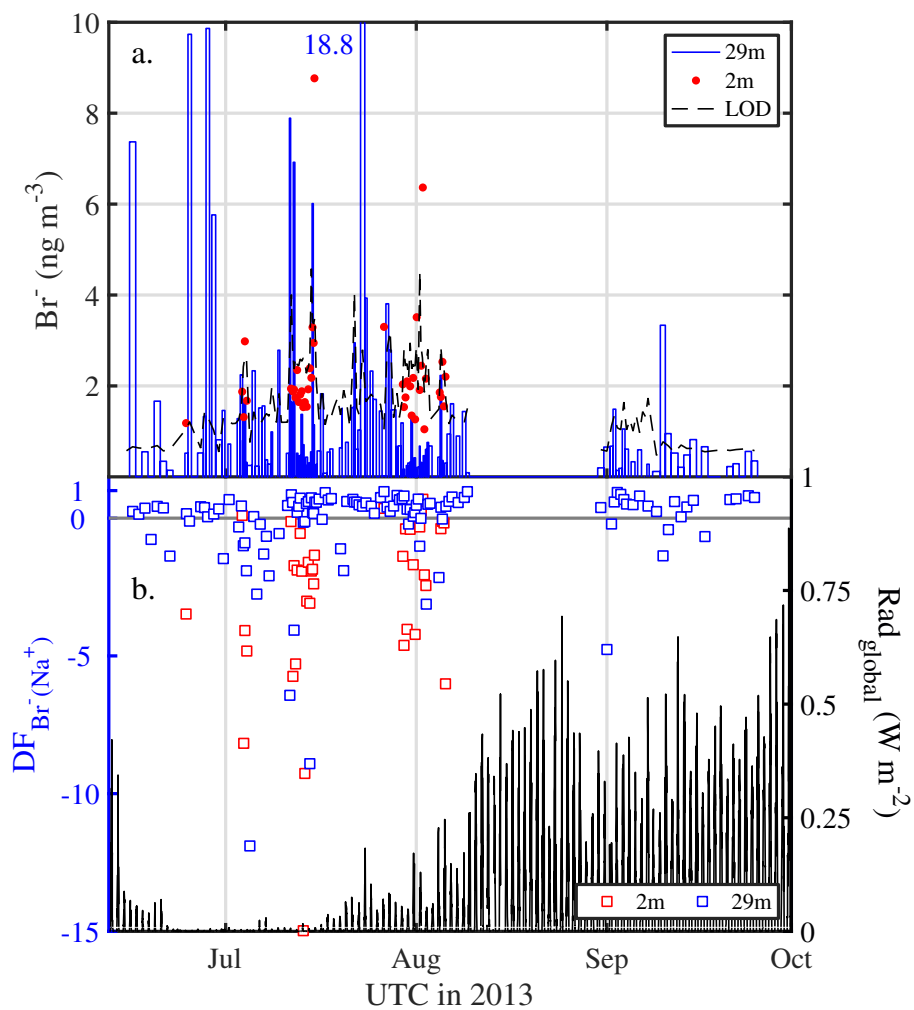


Figure 6. Aerosol bromine chemistry above sea ice observed in the Weddell Sea during austral winter/spring 2013. (a) aerosol Br^- concentrations at 29 and 2 m with the dashed line indicating the theoretical LOD (Table 3); (b) depletion factors of bromide DF_{Br^-} (relative to Na^+) in aerosol at 29 and 2 m and global radiation to indicate light conditions.

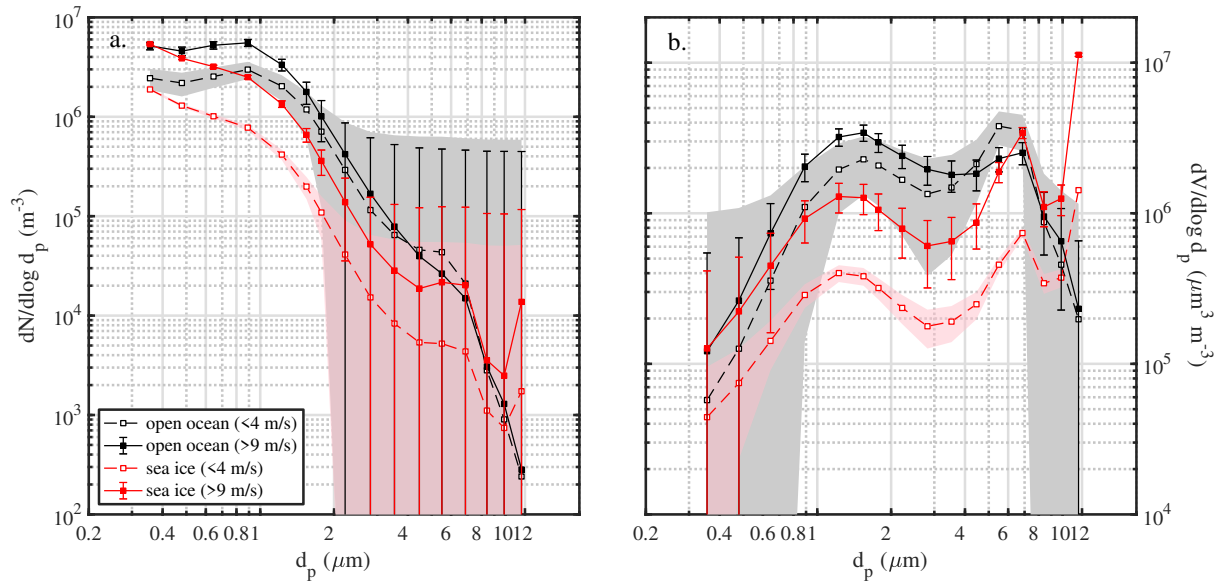


Figure 7. Comparison of mean number distributions (a.) and volume distributions (b.) of aerosol above the open ocean (13 to 16 June 2013) and sea ice in the Weddell Sea (18 June to 21 July 2013) during calm ($U_{10m} < 4 \text{ m s}^{-1}$) and windy ($U_{10m} > 9 \text{ m s}^{-1}$) conditions. Shaded areas and error bars show the standard deviation of the mean during calm and windy conditions, respectively. Data included are observations from 29 m above the sea surface at ambient RH .

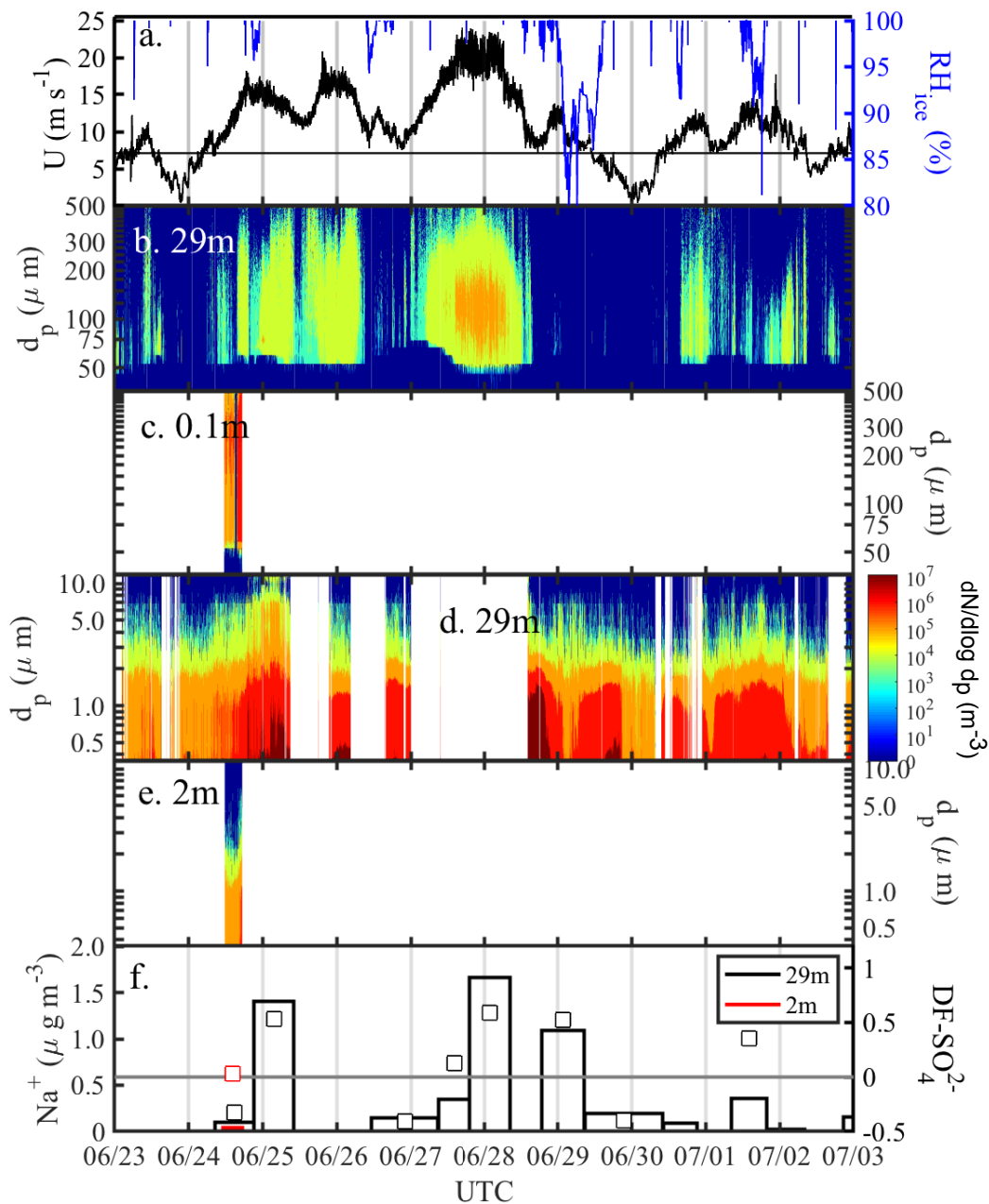


Figure 8. Blowing snow events during the 23 June – 3 July 2013 period: (a) wind speed U extrapolated to 10 m with the horizontal black line showing the snow drift threshold wind speed U_t (section 3.4.1) and RH_{ice} at 29 m, (b) snow particle size distribution $dN/\log d_p$ ($46 \mu\text{m} < d_p < 478 \mu\text{m}$) at 29 m and (c) at 0.1 m; (d) aerosol size distribution $dN/\log d_p$ ($0.36 \mu\text{m} < d_p < 11.62 \mu\text{m}$) at 29 m and (e) at 2 m; dark blue shading indicates zero particle counts and white background that no data are available. (f) aerosol Na^+ concentrations (vertical bars) and sulfate depletion factor $DF_{\text{SO}_4^{2-}}$ (open symbols) at 29 m and 2 m, respectively.

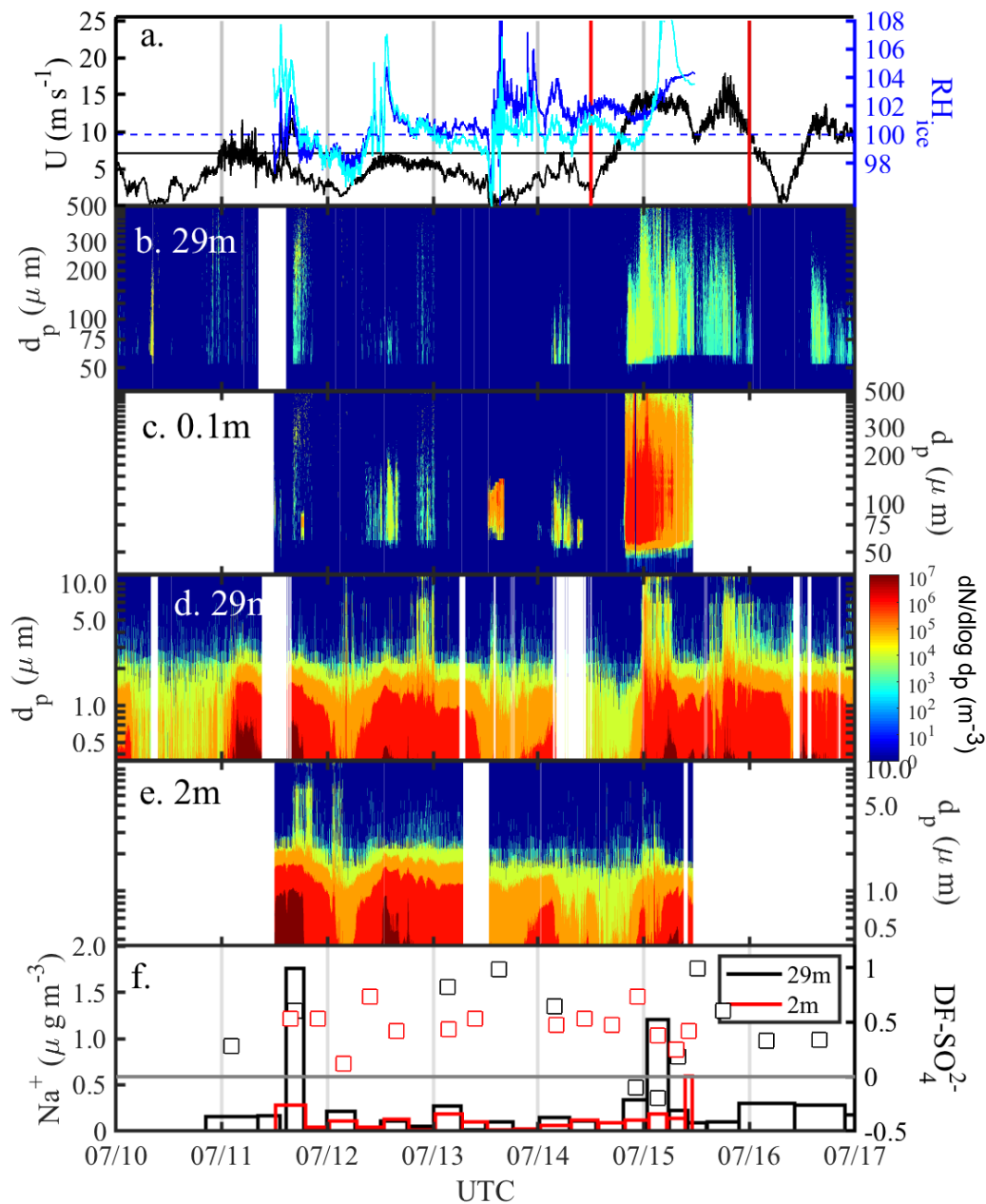


Figure 9. Blowing snow events during the 10–16 July 2013 period: (a) wind speed U extrapolated to 10 m with the horizontal black line showing the snow drift threshold wind speed U_t (section 3.4.1) and RH_{ice} at 1.2 and 2.0 m (blue and cyan solid lines, respectively); vertical red lines delimit the period shown in more detail in Fig. 10. (b) snow particle size distribution $dN/\log d_p$ ($46 \mu\text{m} < d_p < 478 \mu\text{m}$) at 29 m and (c) at 0.1 m; (d) aerosol size distribution $dN/\log d_p$ ($0.36 \mu\text{m} < d_p < 11.62 \mu\text{m}$) at 29 m and (e) at 2 m; dark blue shading indicates zero particle counts and white background that no data are available; (f) aerosol Na^+ concentrations (vertical bars) and sulfate depletion factor $DF_{SO_4^{2-}}$ (open symbols) at 29 m and 2 m, respectively.

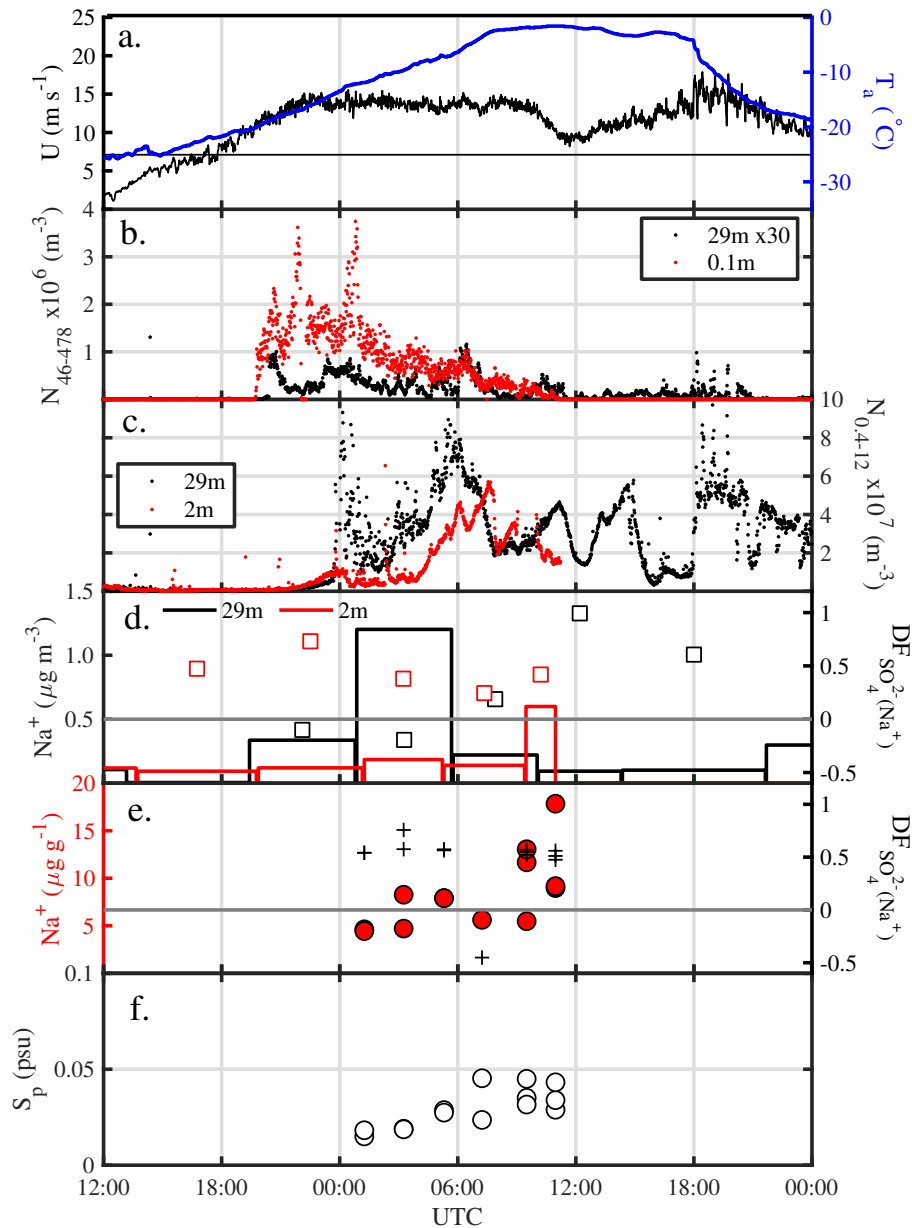


Figure 10. Details of the blowing snow event from 14 to 15 July 2013 (period marked by vertical red lines in Fig. 9a): (a) ambient temperature T_a at 29m and wind speed U extrapolated to 10m with the horizontal black line showing the snow drift threshold wind speed U_t (see section 3.4.1), (b) total number densities N_{46-478} of airborne snow particles at 29 and 0.1m, (c) total number densities $N_{0.4-12}$ of aerosol at 29 and 2m, (d) aerosol Na^+ concentrations (vertical bars) and $DF_{\text{SO}_4^{2-}}$ (open symbols) at 29m and 2m, respectively; (e) Na^+ concentrations, sulfate depletion factor $DF_{\text{SO}_4^{2-}}$ and (f) salinity S_p in blowing snow collected 1-17 cm above the surface.

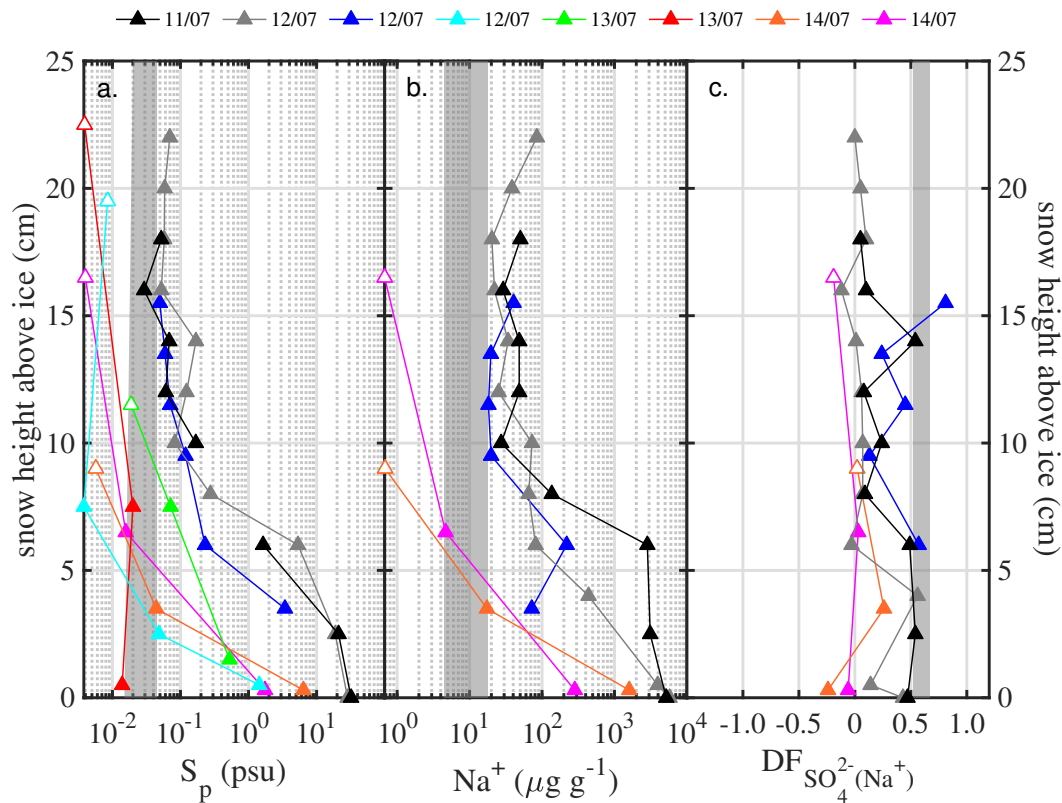


Figure 11. Vertical snowpack profiles sampled at various locations on the ice floe of ice station S6 during the 11–14 July 2013 period (color indicates day of sampling): (a) salinity S_p , (b) Na^+ concentrations and (c) sulfate depletion factor $DF_{\text{SO}_4^{2-}(\text{Na}^+)}$ with respect to Na^+ as a function of snow height above the sea ice surface. Symbols illustrate averages for snow layers of 2 cm thickness, except those with white face color indicating 0.5–1.0 cm layer thickness. Data points at the top of each profile represent the surface snow layer, thus adding half the snow layer thickness to snow height yields total snowpack depth. Shaded areas illustrate the range of the respective parameter measured in blowing snow on 15 July 2013 (Fig. 10e–f).

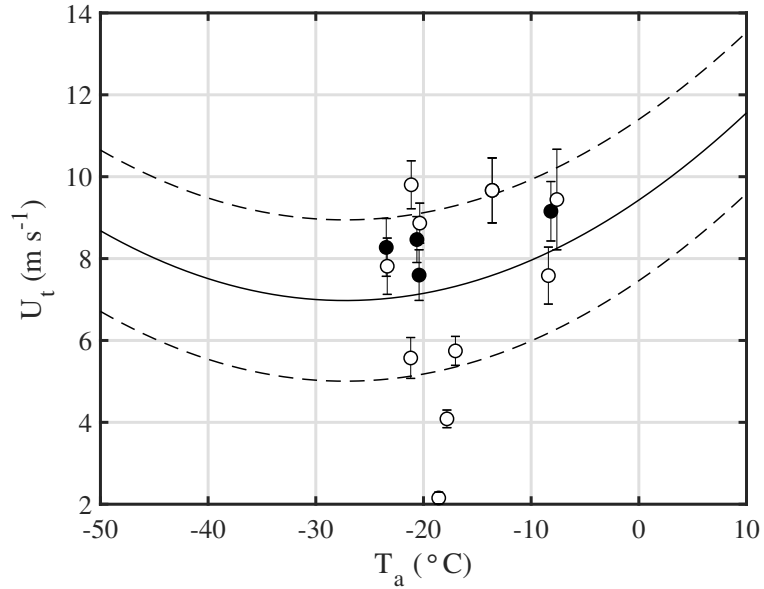


Figure 12. The threshold wind speed of blowing snow U_t at 10 m as a function of ambient temperature T_a at 2 m, above the sea ice in the Weddell Sea. Plotted are 10-minute means of observations centred on the time, when the snow drift density μ right above the snow surface exceeds a threshold of 0.005 kg m^{-3} (closed symbols) and 0.001 kg m^{-3} (open symbols), respectively; errorbars indicate $\pm 1\sigma$. Shown for comparison are predictions by the parameterisation of Li and Pomeroy (1997) (Eq. 4) and their stated uncertainties as solid and dashed lines, respectively.

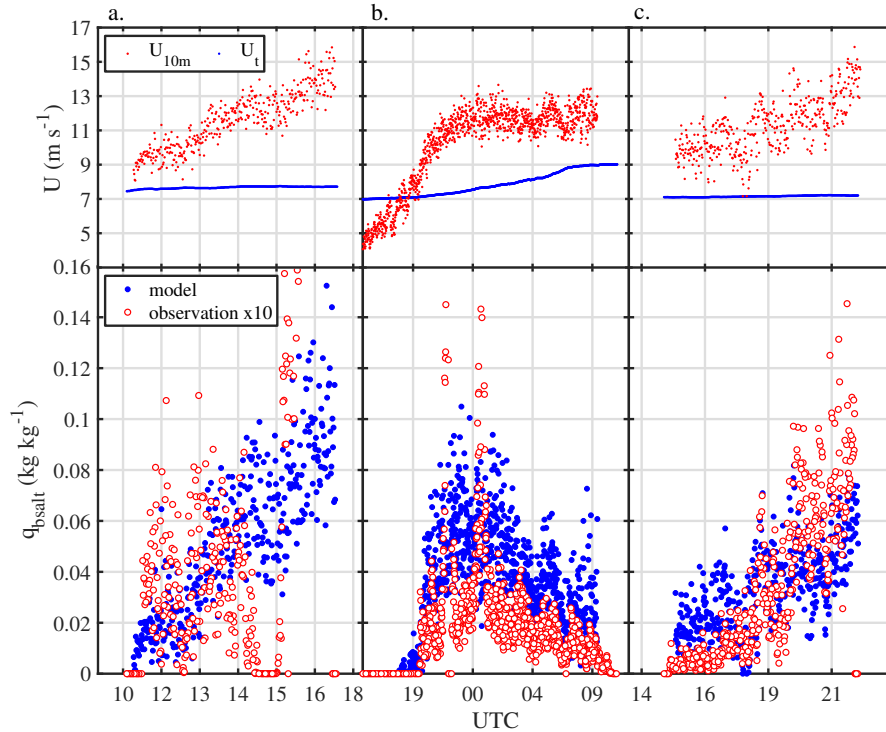


Figure 13. Snow mixing ratios in the saltation layer, q_{bsalt} , during (a) 24 June (ice station S2), (b) 14-15 July (ice station S6) and (c) 26 July (ice station S7), where the snow particle counter was mounted below the reported value of the saltation layer depth ($=0.1$ m). Observations multiplied by ten are compared to predictions by the parameterisation of Déry and Yau (1999) (Eq. 3). The top panels show observed wind speed U_{10m} and the 10-m drift threshold wind speed U_t computed with the empirical model of Li and Pomeroy (1997) (Eq. 4), both at 10 m.

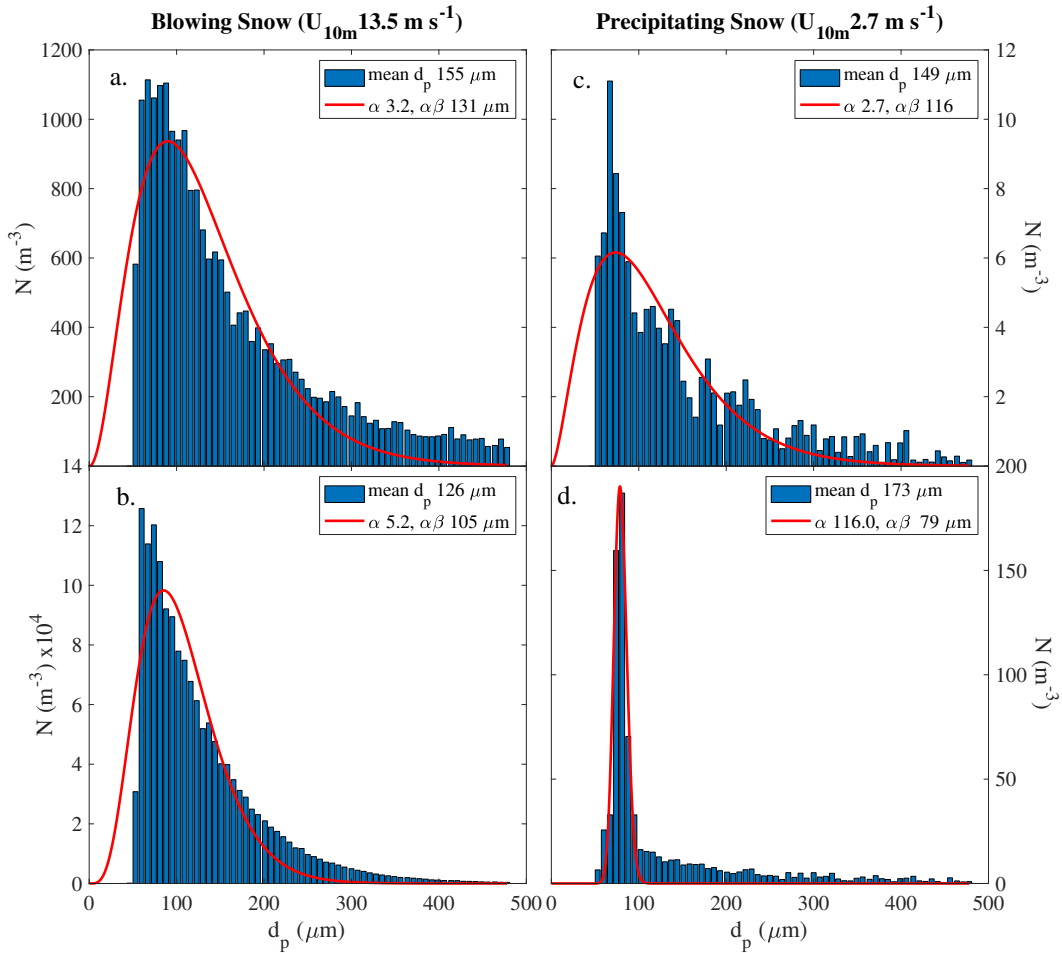


Figure 14. Average snow particle size spectra $f(d_p)$ ~~measured at 29 m and <0.2 m~~ during blowing snow on 14 July 23:15-23:25 (a; at 29 m and (b) at <0.2 m, and during light snowfall ~~coinciding with very low winds~~ on 3 July 14:30 - 4 July 7:00 coinciding with very low winds (c; at 29 m and (d) at <0.2 m). Solid lines indicate the fit obtained with a 2-parameter gamma probability density function (Eq. 5). Note that \bar{d}_p computed from observations show a positive bias compared to $\bar{d}_p (= \alpha\beta)$ retrieved from the fitting procedure, since the SPC ~~instrument~~ does not detect small particles (below $d_p \leq 46 \mu\text{m}$).

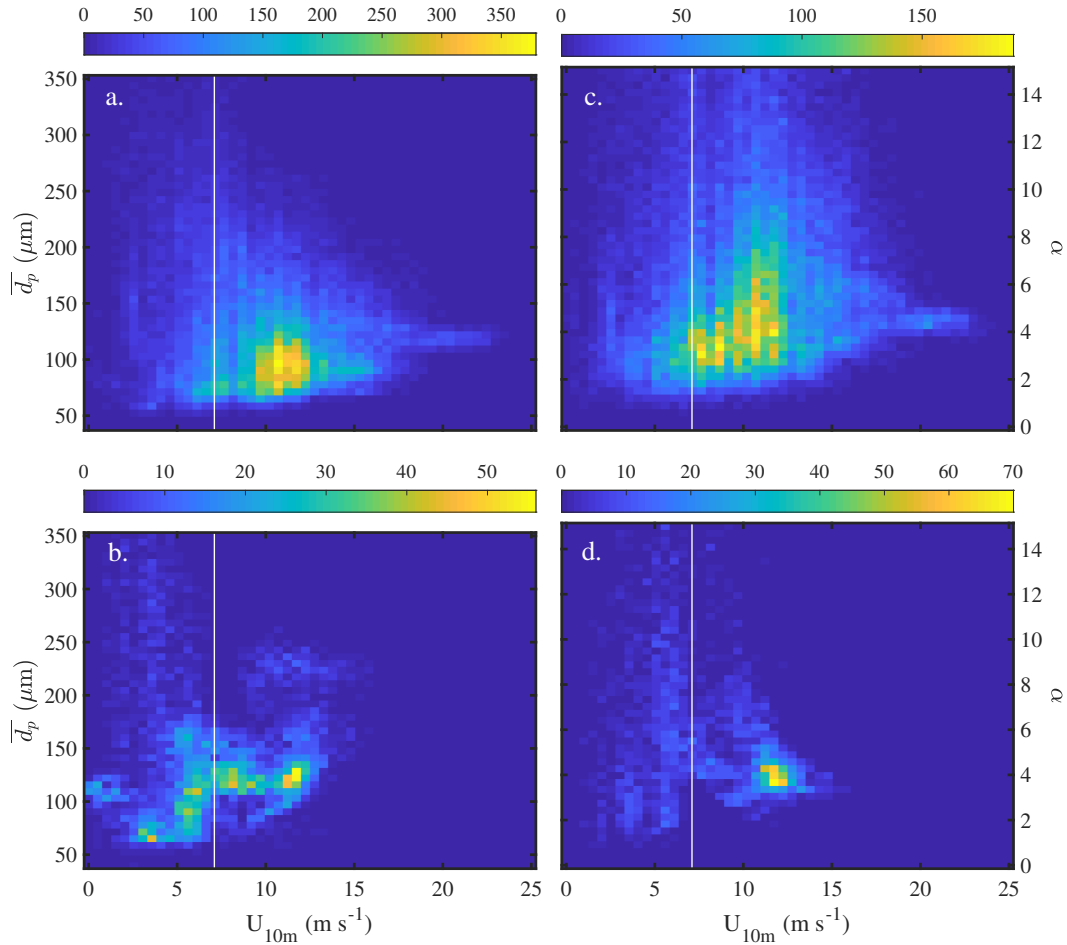


Figure 15. Properties of blowing snow particle size distributions above sea ice as a function of the 10-m wind speed U_{10m} retrieved from fitting a 2-parameter gamma probability density function (Eq. 5) to observations. Mean snow particle diameters \bar{d}_p ($=\alpha\beta$) (a) at 29 m during ANT-XXIX/6 and 7, and (b) at $<0.2 \text{ m}$ during ANT-XXIX/6. The shape parameter α (c) at 29 m and (d) at $<0.2 \text{ m}$. The vertical line represents the observed mean snowdrift threshold wind speed U_t of 7.1 m s^{-1} corresponding to u_{*t} of 0.37 m s^{-1} . Data were binned into 50 bins in x and y direction, with the colour indicating the sample density in each bin.

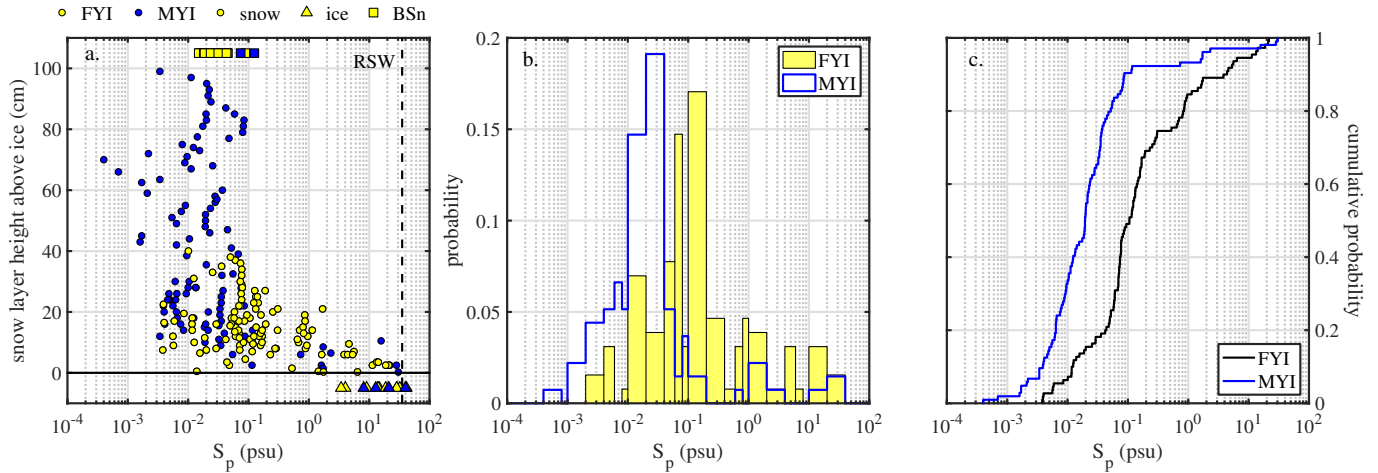


Figure 16. Panel (a) shows salinity S_p of snow on first-year sea ice (FYI, yellow symbols) at ice stations S1-6 and multi-year sea ice (MYI, blue symbols) at ice stations S7-9 in the Weddell Sea during austral winter 2013 as a function of snow layer height above the sea ice surface. For comparison S_p of the sea ice surface (triangles) and blowing snow at 1-17 cm above the snowpack (squares) are shown as well. The vertical dashed line indicates S_p ($=35.165$ psu) of reference sea water (RSW). Panel (b) shows salinity S_p probability distributions for shallow snowpacks (mean depth 21 cm) above first-year sea ice (FYI) at ice stations S1-6 and for deep snowpacks (mean depth 50 cm) above multi-year sea ice (MYI) at ice stations S7-S9 in the Weddell Sea during austral winter 2013. Panel (c) shows respective cumulative probabilities of S_p . The distribution statistics are summarised in Table 5.

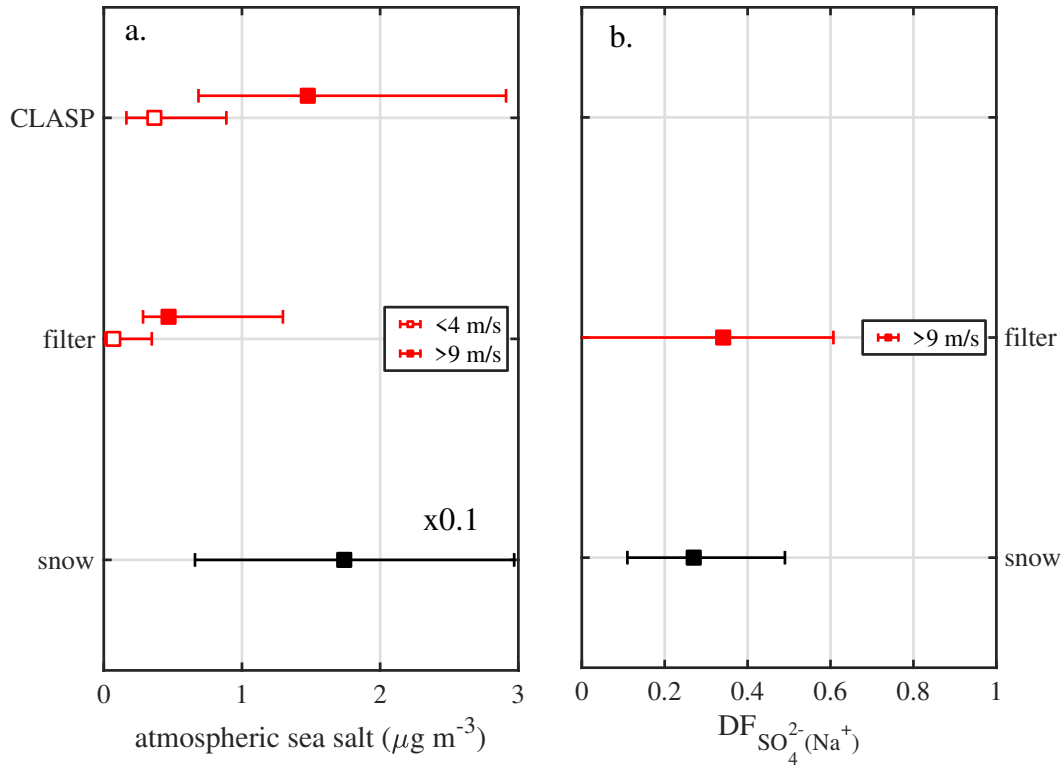


Figure 17. The partitioning of sea salt between atmosphere and snow, and sulfate depletion above first year sea ice from 18 June to 21 July 2013. Panel (a) shows median atmospheric sea salt concentrations during calm ($U_{10m} < 4 \text{ m s}^{-1}$) and windy ($U_{10m} > 9 \text{ m s}^{-1}$) conditions derived from aerosol filter measurements (filter) and spectral particle number densities $N_{0.4-12}$ (CLASP) (see text). For comparison, a potential atmospheric concentration is calculated assuming that all sea salt observed in the top 0.1 mm of snow on sea ice was released by sublimation and mixed into a 100 m thick boundary layer (for better comparison multiplied here by 0.1). Panel (b) shows for the same time period median sulfate depletion factors $DF_{\text{SO}_4^{2-}}$ (with respect to Na^+) in surface snow and in aerosol during windy ($U_{10m} > 9 \text{ m s}^{-1}$) conditions. Symbols and errorbars represent median and lower and upper quartiles, respectively.

Supplementary information.

immediate

Supplementary information to Frey et al., First direct observation of sea salt aerosol production from blowing snow above sea ice.

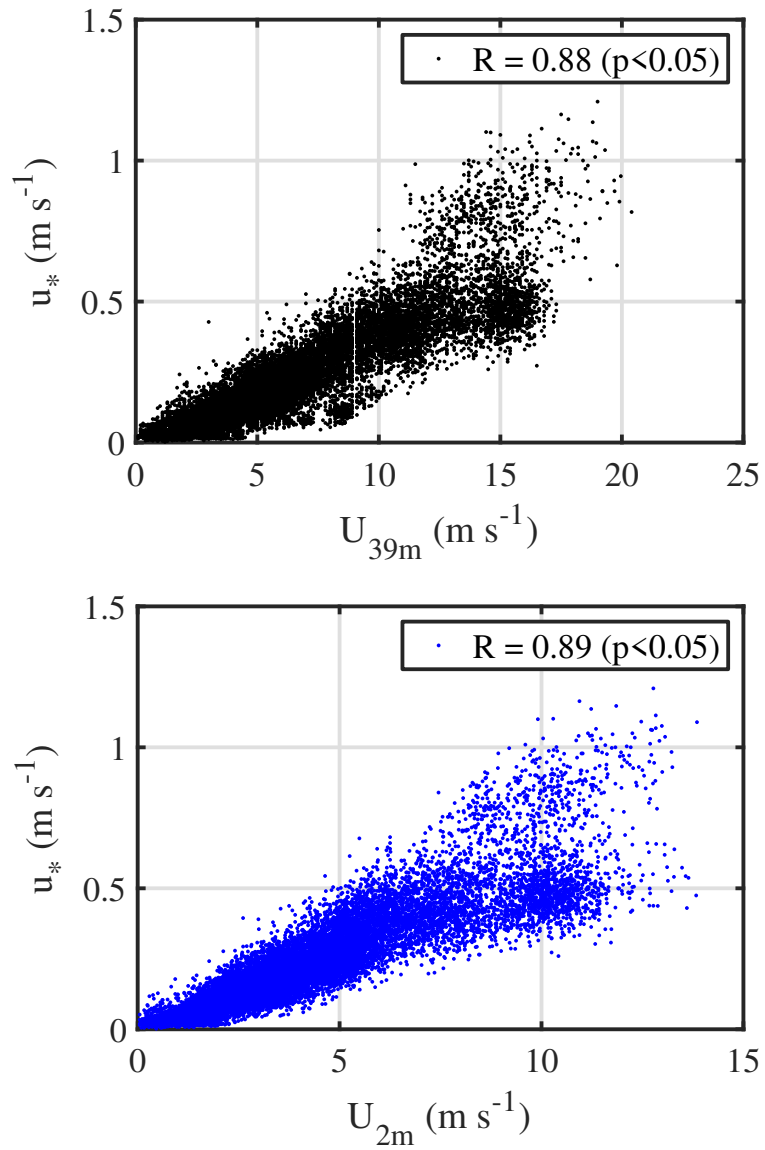


Figure S 1. Comparison between friction velocity u_* and horizontal wind speed U at 2 and 39 m above the sea ice surface. The legends shows respective correlation coefficients. Note that $U_{2\text{m}}$ has been derived from the 3-D wind measurements of the sonic anemometer.

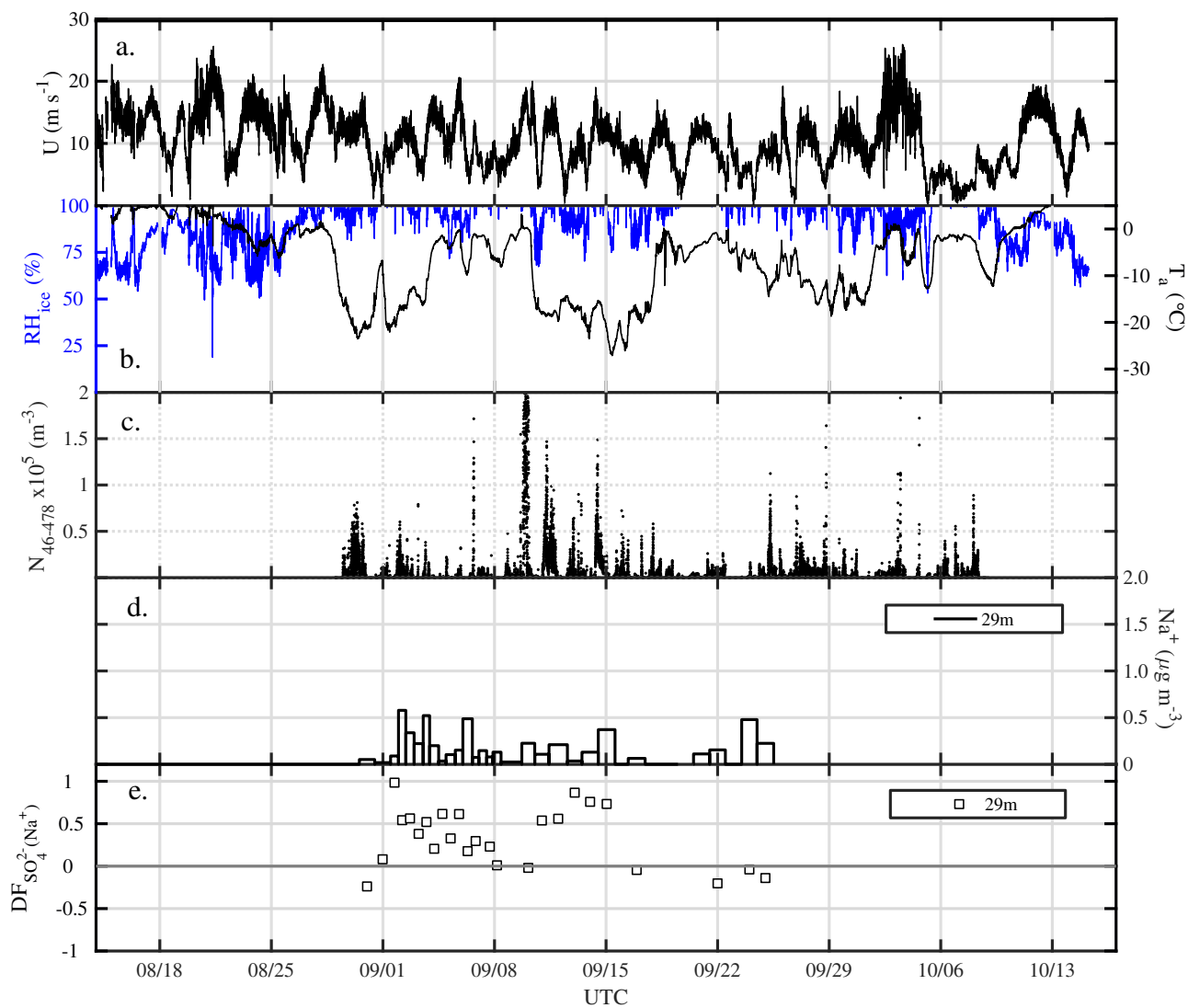


Figure S 2. Overview of atmospheric observations in the Weddell Sea from 14 August to 17 October 2013 (ANT-XXIX/7): (a) horizontal wind speed U at 39 m. (b) ambient temperature T_a and relative humidity with respect to ice RH_{ice} at 29 m. (c) total number densities N_{46-478} of airborne snow particles at 29 m. (d) aerosol Na^+ concentrations and (e) sulphate depletion factor $DF_{SO_4^{2-}}$, both at 29 m.

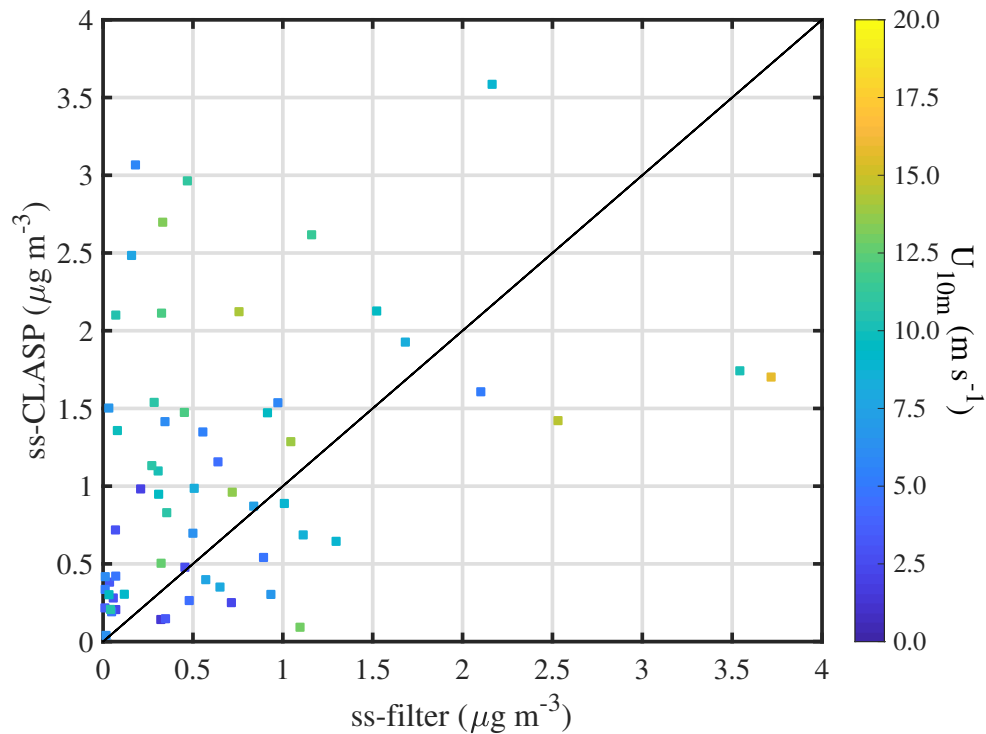


Figure S 3. Comparison of atmospheric sea salt mass concentrations during the 8 June to 26 July 2013 period derived-estimated from filter measurements-(ss-filter) and from-CLASP (ss-CLASP) measurements at 29 m above the sea surface ($R= 0.32$, $p<0.01$). ss-filter was derived by multiplying the Na^+ concentration measured on aerosol filters with a conversion factor of 3.262 based on the Na^+ mass fraction in reference seawater. ss-CLASP was estimated based on median number densities $N_{0.4-12}$ measured-with-the-CLASP during filter sampling intervals. Data-included-assuming-that-all-particles are observations from-29-m-above-the-spherical-and-consist-of sea surfacesalt with the density of NaCl ($= 2160 \text{ kg m}^{-3}$) (see details in main text). Symbols are color coded based on wind speed U_{10m} .

Table S 1. Descriptive statistics of airborne snow particles observed for 8 June to 12 August 2013 (ANT6) and for 14 August to 16 October 2013 (ANT7): total number densities N_{46-478} and particle diameter d_p . Statistics refer to periods when airborne snow particles were present, i.e. times with no snow particles observed were removed prior to averaging.

Parameter	ANT6		ANT7	
	at 0.2 m	at 29 m ^a	at 29 m	at 29 m
N_{46-478} (m ⁻³)				
mean	2.6×10^5	4.0×10^3	8.7×10^3	7.2×10^3
σ	7.4×10^3	9.5×10^3	2.7×10^4	2.2×10^4
median	4.7×10^3	7.7×10^2	9.9×10^2	1.3×10^3
d_p (μm)				
mean	138	132	133	143
σ	59	59	53	53
median	132	117	124	136
N^b	8608	11766	42959	37123
sampling time (days) ^c	6	8	30	26

^a for direct comparison of vertical differences statistics of the 29 m measurements only for times when sea ice observations at 0.2 m were available ^bsample size ^ctotal aggregated time during which airborne snow particles were detected

Table S 2. Descriptive statistics of aerosol observed during 8 June - 26 July 2013 (ANT6): total number densities $N_{0.4-12}$ and particle diameter d_p .

Parameter	at 0.2 m	at 2 m	at 29 m ^a	at 29 m
$N_{0.4-12}$ (m^{-3})				
mean	1.7×10^6	1.4×10^6	1.4×10^6	2.1×10^6
σ	2.5×10^6	1.9×10^6	1.6×10^6	6.4×10^6
median	8.6×10^5	5.6×10^5	8.0×10^5	1.1×10^6
d_p (μm)				
mean	0.67	0.60	0.67	0.69
σ	0.11	0.06	0.11	0.14
median	0.66	0.60	0.65	0.66
N^b	13077	14907	9963	48892
sampling time (days) ^c	9	10	7	34

^a for direct comparison of vertical differences statistics of the 29 m measurements only for times when sea ice observations at 2 m were available ^bsample size ^ctotal aggregated sampling time