

Long-lived high frequency gravity waves in the atmospheric boundary layer: observations and simulations

Mingjiao Jia^{1,*}, Jinlong Yuan^{1,2,*}, Chong Wang^{1,2}, Haiyun Xia^{1,2}, Yunbin Wu², Lijie Zhao², Tianwen Wei², Jianfei Wu², Lu Wang², Sheng-Yang Gu³, Liquan Liu⁴, Dachun Lu⁵, Rulong Chen⁵, Xianghui Xue², Xiankang Dou³

¹Glory China Institute of Lidar Technology, Shanghai, 201315, China

²CAS Center for Excellence in Comparative Planetology, University of Science and Technology of China, Hefei, 230026, China

³School of Electronic Information, Wuhan University, Wuhan, 430072, China

⁴Anqing Meteorological Bureau, China Meteorological Administration, Anqing, 246001, China

⁵Technical Support Center for Atmosphere Observation, Anhui Meteorological Administration, Hefei, 230031, China

*These authors contributed equally to this work.

Correspondence to: Haiyun Xia (hsia@ustc.edu.cn)

Abstract. A long-lived gravity wave (GW) in the atmospheric boundary layer (ABL) during a field experiment in Anqing, China (116°58' E, 30°37' N) is analysed. Persistent GWs with periods ranging from 10 to 30 min over 10 hours in the ABL within a 2 km height are detected by a coherent Doppler lidar from 4 to 5 September 2018. The amplitudes of the vertical wind due to these GWs are approximately 0.15~0.2 m s⁻¹. The lifetimes of these GWs are longer than 20 wave cycles. There is no apparent phase progression with altitude. The vertical and zonal perturbations in the GWs are 90° out of phase with vertical perturbations generally leading ahead of zonal ones. Based on experiments and simplified two dimensional computational fluid dynamics (CFD) numerical simulations, a reasonable generation mechanism of this persistent wave is proposed. A westerly low-level jet of ~5 m s⁻¹ exists at an altitude of 1~2 km in the ABL. The wind shear around the low-level jet leads to wave generation under the condition of light horizontal wind. Furthermore, a combination of thermal and Doppler ducts occurs in the ABL. Thus, the ducted wave motions are trapped in the ABL and have long lifetimes.

1 Introduction

The atmospheric boundary layer (ABL) is the most important atmospheric environment affecting human life. Gravity waves (GWs) and corresponding physical processes have important impacts on synoptic systems, atmospheric models, and aircraft departures and landings in the ABL (Clark et al., 2000; Fritts and Alexander, 2003; Holton and Alexander, 2000; Sun et al., 2015b). GWs are ubiquitous in the atmosphere and usually generated by topography, convection, wind shear, jet streams, frontal systems and other tropospheric sources (Banakh and Smalikho, 2016; Blumen et al., 1990; Chouza et al., 2016; Fritts and Alexander, 2003; Plougonven and Zhang, 2014; Pramitha et al., 2015; Toms et al., 2017; Wu et al., 2018). In general, most of these GWs will propagate upward into the upper atmosphere, e.g., upper troposphere, stratosphere, mesosphere and

even thermosphere. This leading to the transport of energy and momentum from the lower atmosphere to the upper atmosphere, thus affecting the coupling between the lower atmosphere and upper atmosphere and the dynamic and thermal structure of the global atmosphere (Fritts and Alexander, 2003; Holton and Alexander, 2000). However, trapped GWs, e.g., trapped lee waves and ducted motions with high frequency and coherent variability, can only propagate horizontally. In the lower atmosphere, these horizontally propagating GWs may be linked to low-level turbulence (e.g. rotors), the initiation of convection and low-level wave drag (Birch et al., 2013; Grubišić et al., 2008; Lac et al., 2002; Lapworth and Osborne, 2016; Marsham and Parker, 2006; Tsiringakis et al., 2017). Therefore, such trapped GWs play a key role in weather forecasts, climate models and aviation safety.

In previous studies, in the ABL, excluding lee waves, ducted GWs are mainly high-frequency GWs with periods less than one hour (Banakh and Smalikho, 2018; Banakh and Smalikho, 2016; Fritts et al., 2003; Viana et al., 2009). However, these GWs and their sources are difficult to be resolved in global general circulation models due to smaller spatial and temporal scales. Only mesoscale and large-scale GWs can be resolved in global atmospheric models (Preusse et al., 2014; Wu et al., 2018). GW parameterizations are always used in global models to increase their reliability and precision (Fritts and Alexander, 2003). Thus, must improve our understanding of high-frequency ducted GWs and their sources.

However, wave motions in the ABL are usually difficult to be detected due to contamination from strong turbulence. Therefore, most wave motions are observed in the stably stratified ABL (Banakh and Smalikho, 2016; Fritts et al., 2003; Mahrt, 2014; Sun et al., 2015a; Sun et al., 2015b; Toms et al., 2017). These wave motions can be maintained for more than a few periods if atmospheric wave ducting properties are present, while such monochromatic waves are infrequently observed (Mahrt, 2014; Toms et al., 2017). In addition, due to the capabilities of ground-based measurements, most of these previous studies are limited to the surface layer within tens or hundreds of metres near the ground, not the whole ABL.

Numerous instruments have been utilized to detect wave motions in the ABL. Fixed point measurements from a tower or at the surface (Einaudi and Finnigan, 1981; Finnigan and Einaudi, 1981; Poulos et al., 2002; Sun et al., 2015a; Sun et al., 2004); in-situ measurements on a mobile platform, such as a balloon (Corby, 1957) or an aircraft (Fritts et al., 2003; Kuettner et al., 2007); and remote sensing measurements such as sodar (Beran et al., 1973; Hooke and Jones, 1986; Lyulyukin et al., 2015), radar (Cohn et al., 1997; Cohn et al., 2001) and lidar (Chouza et al., 2016; Mayor, 2017; Neiman et al., 1988; Newsom and Banta, 2003; Poulos et al., 2002; Witschas et al., 2017) have been widely used in recent decades. All of these techniques are sensitive to only a certain portion of the wave spectra and wave characteristics; given limited spatial and temporal ranges. Among these instruments, lidar can provide measurements alone with a sufficient long detection range, multi-scanning mode, and high temporal/spatial resolution. Recently, a micro-pulse coherent Doppler lidar (CDL) was developed to measure the wind field with a temporal resolution of 2 s and spatial resolution of 60 m in the ABL (Wang et al., 2017). Wave motions such as high frequency GWs can be revealed from the vertical wind measured by this lidar in the whole ABL.

Numerical simulations are also used to study GWs. Mesoscale and large-scale GWs can be resolved in high-spatial and high-temporal resolution models such as Whole Atmosphere Community Climate Model (WACCM) and Weather Research and Forecasting (WRF) (Wu et al., 2018). For high-frequency GWs at smaller scales, high-resolution Computational Fluid

Dynamics (CFD) simulations have been used in recent years (Chouza et al., 2016; Watt et al., 2015). CFD simulation is able to resolve the flow field at different spatial scales, ranging from a mesoscale of ~ 200 km to an indoor environment of ~ 10 m (Berg et al., 2017; Fernando et al., 2018; Mann et al., 2017; Remmler et al., 2015; Ren et al., 2018; Toparlar et al., 2015; Toparlar et al., 2017; Vasiljević et al., 2017; Watt et al., 2015). With the help of CFD simulation, the generation mechanisms and characteristics of GWs can be resolved, as well as the subsequent evolution of GWs.

In this paper, we report long-lived, high-frequency GWs in the whole ABL detected by the CDL. The characteristics and the generation mechanisms are analysed using experiments and CFD simulations. Section 2 describes the field experiments and instruments used in this study. Section 3 presents the observational results. The CFD model and simulation results are described and discussed in Sect. 4. Section 5 gives a discussion of the generation mechanism of the persistent GWs. Finally, the conclusion is drawn in Sect. 6. If not specified, local time is used in this paper.

2 Experiments and instruments

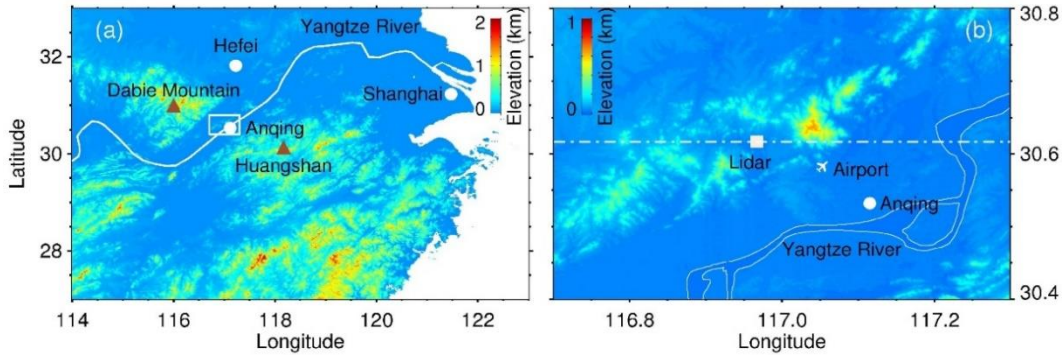


Figure 1. (a) Terrain elevation map. (b) Zoom over Anqing station in the white hollow rectangle in (a). The computational domain is roughly along the white dash dotted line in latter numerical simulations.

A field experiment is conducted to study the generation mechanism of GWs by the CDL at the National Meteorological Observing Station of Anqing ($116^{\circ}58'$ E, $30^{\circ}37'$ N) from 16 August to 5 September 2018. Anqing is located near the Yangtze River and between Huangshan ($118^{\circ}10'$ E, $30^{\circ}08'$ N) to the southeast and the Dabie Mountains ($115^{\circ}\sim 117^{\circ}$ E, $30^{\circ}\sim 32^{\circ}$ N) to the southwest, as shown in Fig. 1a. The station is surrounded by hills with a relative elevation of 200~600 m, as shown in Fig. 1b. An airport is located to the southeast of the station.

2.1 Coherent Doppler wind lidar

A compact micro-pulse CDL working at an eye-safe wavelength of $1.5\ \mu\text{m}$ is used in this study. The pulse duration and pulse energy of the laser are 300 ns and 110 μJ , respectively. A double D-shaped telescope is employed. The absolute overlap distance and blind distance are ~ 1 km and 60 m, respectively. This lidar has full hemispheric scanning capability with the rotatable transmitting and receiving system. Benefiting from coherent detection, this lidar can perform all-day measurement

of radial wind speed based on the Doppler effect. Compared with traditional lidars, this CDL is small in size and robust in stability due to the all-fibre configuration. More details of this lidar are described in Wang et al. (2017). The key parameters of the CDL are listed in Table 1.

Table 1. Key Parameters of the CDL

Parameter	Value
Wavelength	1548 nm
Pulse Duration	300 ns
Pulse Energy	110 μ J
Repetition frequency	10 kHz
Diameter of telescope	80 mm
Spatial resolution	60 m
Temporal resolution	2 s
Maximum range	15 km
Azimuth scanning range	0 - 360 $^{\circ}$
Zenith scanning range	0 - 90 $^{\circ}$

5 The wind field is composited by pointing the rotatable scanner in three directions during the experiment. First, the laser beam is pointed at two orthogonal azimuths sequentially, north and west, with a zenith angle of 30 $^{\circ}$. Then, the laser beam is pointed vertically upward. In each direction, the measurement duration is set to 10 s during this experiment. The full period of the measurement cycle is 41 s. The observational results, such as the vertical and horizontal wind components; and carrier to noise ratio (CNR) in the vertical beam, are shown in Appendix A. The blank areas without measurements are caused by
10 the rainy summers. For example, the No. 18 Typhoon Rumbia passed by around 17 August 2018. To guarantee the precision of the wind measurements, the data with CNR less than -35 dB is excluded (Wang et al., 2017; Wang et al., 2019).

2.2 Radiosonde

The National Meteorological Observing Station of Anqing is one of 120 operational radiosonde stations in China (excluding Hong Kong and Taiwan) (Li, 2006). The China Meteorological Administration has deployed an L-band (1675 MHz)
15 sounding system at this station. Air temperature, pressure, relative humidity and wind from the ground to middle stratosphere can be measured twice a day at 07:15 and 19:15 by this sounding system, which combines a GTS1 digital radiosonde with a secondary wind-finding radar. Previous studies have confirmed the accuracy measured by this type of radiosonde (Bian et al., 2010). A comparison of the wind measurements between the CDL and radiosonde was carried out recently by Wei et al. (2019) to validate the performance of the CDL.

2.3 ERA5 reanalysis data

ERA5 is the fifth generation of the ECMWF (European Centre for Medium-Range Weather Forecasts) atmospheric reanalysis of the global climate. The ERA5 reanalysis assimilates a variety of observations and models in 4 dimensions. The data has 137 levels from the surface up to an 80 km altitude and a horizontal resolution of 0.3° both longitudinally and latitudinally (Hersbach and Dee, 2016). The hourly temperature data from the high resolution realisation sub-daily deterministic forecasts of ERA5 are used to calculate buoyancy frequency near the station in a later analysis in this study.

3 Observations and analysis

3.1 The long-lived GWs

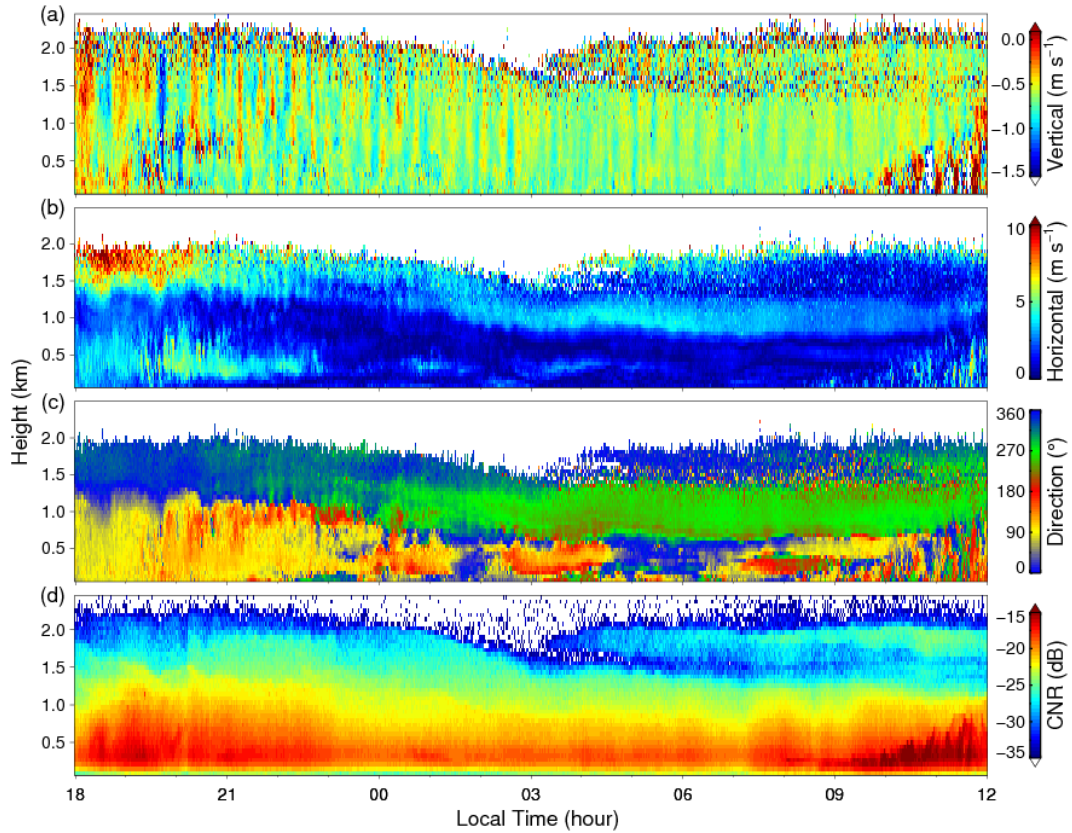


Figure 2. Height-time cross sections of the (a) vertical wind, (b) horizontal wind speed, (c) horizontal wind direction and (d) CNR in vertical obtained by the CDL from 4 to 5 September 2018. The direction is defined as the angle clockwise from the north.

Figure 2a shows the persistent wave motions in the vertical wind longer than 10 hours in the ABL between 4 and 5 September 2018. These waves exist for longer than 20 periods and then dissipate during the evolution of the convective ABL in the morning on 5 September 2018. The corresponding horizontal wind speed and wind direction are shown in Fig. 2b and

2c, respectively. Two weak low-level jets are observed at heights of approximately 0.5 and 1.5 km. The lower easterly jet stream lasts only a few hours with speed of approximately 5 m s^{-1} , while the higher jet stream exists during the whole lifetime of the wave motion. The speed of the higher jet stream is approximately 10 m s^{-1} and then decreases to approximately $3\sim 5 \text{ m s}^{-1}$ after 21:00. The corresponding direction of this northerly jet stream is also changed to westerly. The

5 CNR from the vertical beam is shown in Fig. 2d, varies slowly with time and is nearly stratified with altitude. Thus, the ABL seems to be stably stratified because the CNR may represent the aerosol concentration in some cases.

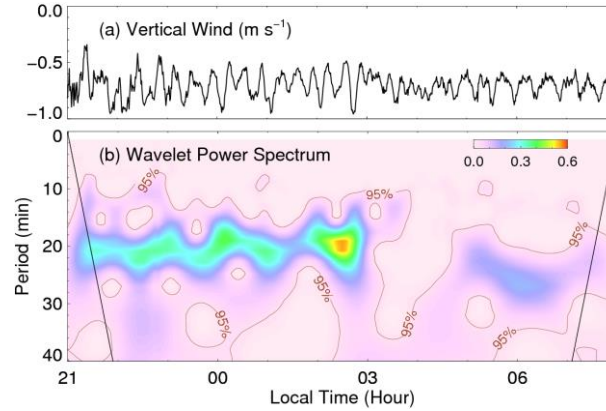


Figure 3. (a) Mean vertical wind between 600 m and 1000 m. (b) Corresponding wavelet power spectrum of the vertical wind in (a). The brown contours indicate significance level of 95%. The black solid lines represent the Cone-of-Influence.

10 The periods of these wave motions are typically approximately 10~30 min. The temporal profiles of the average vertical wind between 600 m and 1000 m is plotted in Fig. 3a. Oscillations in the vertical wind can be seen clearly. The amplitudes of these wave motions are approximately 0.2 m s^{-1} before 03:00 and then decrease to approximately 0.15 m s^{-1} , while the periods increased after 04:00. The wavelet power spectrum of the vertical wind in Fig. 3a is shown in Fig. 3b by using the

15 Morlet mother wavelet. There are obvious waves with periods of 15~25 min before 03:00 and waves with periods of 20~30 min after ~04:30. Relatively weak waves with periods of approximately 10 min are also observed between 03:00 and 05:00. These wave motions could be regarded as quasi monochromatic waves as the periods varies within the range of 15~30 min. The change in periods may be in relation to the changes in the background ABL, such as changes in the height of the upper jet stream.

Zonal wind can be derived from the horizontal wind speed and direction. The height-averaged perturbations in the vertical

20 wind w' and zonal wind u' between 600 m and 1000 m are shown in Fig. 4. First, the raw vertical/zonal winds are averaged between 600 m and 1000 m. Second, the temporal profile of the averaged vertical/zonal winds is smoothed by a 1-hour window as the background. Third, the background is subtracted to remove the trend. Finally, the perturbation is smoothed by averaging the adjacent three points to reduce high frequency noises. It is obvious that wave motions also exist in the horizontal wind. The periods of zonal perturbations are similar to those of vertical perturbations. Specifically, the vertical

25 and zonal perturbations are 90° out of phase with the vertical perturbations w' , generally leading to zonal perturbations u' , especially after 02:00. Note that the wave motions exhibit highly coherent vertical motions with no apparent phase

progression with altitude as shown in Fig. 2a. These characteristics of wave motions indicate ducting wave structures within the ABL (Fritts et al., 2003).

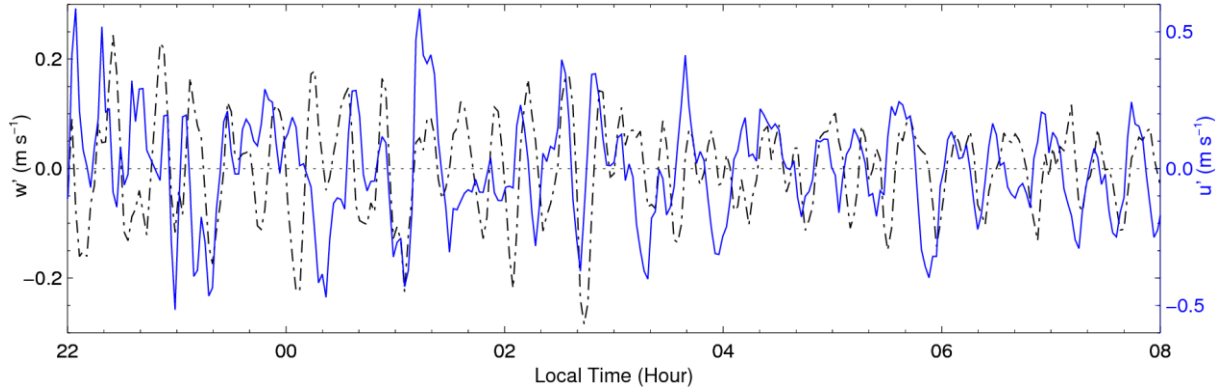


Figure 4. Perturbations of vertical wind w' (black dash dotted, left axis) and zonal wind u' (blue solid, right axis) obtained between 600 m and 1000 m altitude from 22:00 on 4 September to 08:00 on 5 September 2018.

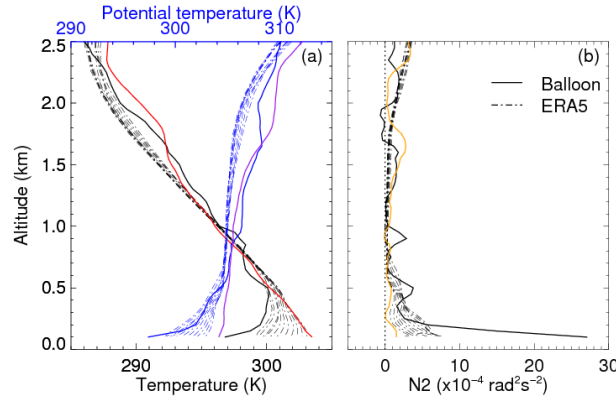


Figure 5. (a) Temperature (black solid line) and potential temperature profiles from radiosonde (red solid line) and ERA5 (dot dashed lines) between 22:00 on 4 September and 08:00 on 5 September. (b) Corresponding buoyancy frequencies. Profiles of Temperature (red solid line), potential temperature (purple solid line) and buoyancy frequency (orange solid line) from radiosonde at 19:15 on 4 September are also plotted.

- 10 Temperature profiles measured by the radiosonde attached to a weather balloon and hourly temperature profiles from ERA5 during the wave motions are shown in Fig. 5a. An inversion layer is observed below an altitude of ~ 500 m. The corresponding squares of the buoyancy frequency:

$$N^2 = \frac{g}{\theta} \frac{\partial \theta}{\partial z} \quad (1)$$

- are plotted in Fig. 5b, where g is the gravitational acceleration and θ is the potential temperature at altitude z . Maxima values of N^2 larger than $5 \times 10^{-4} \text{ rad}^2 \text{ s}^{-2}$ appear in the inversion layer from both the radiosonde and ERA5 data, indicating a strongly stratified stable boundary layer near ground. Between ~ 600 and ~ 2000 m altitude, the values of N^2 are so small that they are close to zero and even negative at 1800–2000 m via the radiosonde. These results suggest thermal ducting between the ground and approximately ~ 2000 m, in which the wave motions are trapped, especially under the inversion. This is why

such wave motions have a lifetime longer than 20 periods. The buoyancy periods from Fig. 5b are typically 2~10 min. Since the background wind speeds are relatively small, less than $\sim 10 \text{ m s}^{-1}$, we neglect the Doppler effects here. These wave motions should be GWs instead of internal acoustic waves. Therefore, these waves are suggested to be ducted gravity waves trapped in the ABL.

5 3.2 Background wind

There are complex relationships between GWs and background wind conditions. Submeso scale wavelike motions, which are defined as any nonturbulent motion at a horizontal scale smaller than 2 km and with a period at the scale of tens of minutes, are primarily generated under very weak winds in the nocturnal boundary layer (Mahrt, 2014). Note that the wind speed from 4 to 5 September 2018 is weakest during the whole field experiment, as shown in Fig. A2. To understand the relationship between this ducted GW and the background wind, a spatiotemporal window of 1-hour length and 200-m height and temporal and vertical spatial step shifts of 1 hour and 100 m, respectively, are used. The mean horizontal wind speed and wind direction in each window during the whole field campaign in Anqing are easily obtained.

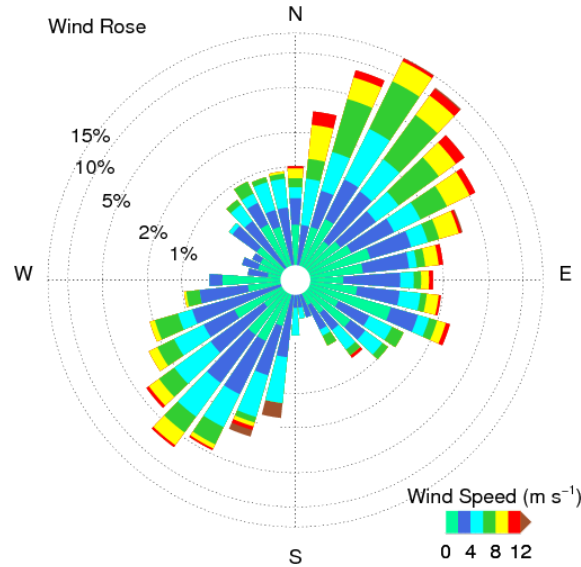


Figure 6. Wind rose of horizontal wind in all temporal spatial window during this experiment. It should be noted that the value of the radius is logarithmic.

The wind rose of the horizontal wind during the field experiment is shown in Fig. 6. It is apparent that a northeasterly wind and southwesterly wind are prevailing around the station in the ABL during the whole field campaign. The infrequently observed ducted GWs in Fig. 2 accompany an infrequent westerly wind. It is interesting to note that the long-narrow plain area along the Yangtze River around Anqing between Huangshan and the Dabie Mountains is also along the northeast-southwest direction, as shown in Fig. 1a. The typical elevations of Huangshan and the Dabie Mountains are approximately 1~2 km. Strong winds along northwest-southeast direction may be blocked in the ABL, thus leading to weak wind along the

northwest-southeast direction after the wind flows over Huangshan or the Dabie Mountains and the prevailing wind flows along the northeast-southwest direction. As the GWs are favourable for generation under weak wind conditions, we can imagine that the Dabie Mountains and Huangshan may have an impact on GWs in Anqing. However, the surrounding hills around the station, as shown in Fig. 1b, may also affect the generation and existence of GWs. The effect of surrounding hills will be studied by numerical simulations in the next section.

4 CFD simulations

Wavelike motions are common in the stably stratified ABL and maybe generated by topography or the jet stream (Mahrt, 2014). There is a complex topography around the station, as shown in Fig. 1b, and a low-level jet in the ABL as shown in Fig. 2. Both of these phenomena may be responsible for the generation of persistent GWs. To identify the potential source of the ducted GWs, a numerical simulation based on CFD is performed to simulate the fluid flow field. The impact of different boundary conditions, e.g., wind profile and topography, on atmospheric dynamics can be effectively evaluated by changing the boundary conditions. In addition, the numerical simulations can provide complete information on the GWs; this information cannot be obtained by lidar in this experiment, such as horizontal wavelength, horizontal phase speed and so on. Therefore, CFD simulations are helpful to investigate GWs in the ABL.

4.1 Model description

Reynolds-averaged Navier-Stokes Simulation (RANS) has been widely used to investigate the wind field over the past few decades (Toparlak et al., 2017). Compared with Large Eddy Simulation (LES), RANS has the advantages of low computational cost and sufficient accuracy. In this study, a two-equation RANS model based on renormalisation group (RNG) method is used to simulate the wind field. The RNG k- ϵ model was developed to renormalize the Navier-Stokes equations, which account for the effects of small scale motions (Yakhot et al., 1992). The RNG k- ϵ model is a mature model that has been widely verified in the simulation of wind flow over complex terrain in recent years (El Kasmi and Masson, 2010; Yan et al., 2015). The RNG k- ϵ turbulence model used in this work is based on OpenFOAM. OpenFOAM is the leading free, open source software for CFD simulations. The model transport equations are obtained as follows:

$$\frac{\partial}{\partial t}(\rho k) + \frac{\partial}{\partial x_i}(\rho k u_i) = \frac{\partial}{\partial x_j} \left(\alpha_k \mu_{eff} \frac{\partial k}{\partial x_j} \right) + G_k + G_b - \rho \epsilon - Y_M + S_k \quad (2)$$

$$\frac{\partial}{\partial t}(\rho \epsilon) + \frac{\partial}{\partial x_i}(\rho \epsilon u_i) = \frac{\partial}{\partial x_j} \left(\alpha_\epsilon \mu_{eff} \frac{\partial \epsilon}{\partial x_j} \right) + G_1 \epsilon \frac{\epsilon}{k} (G_k + C_{3\epsilon} G_b) - C_{2\epsilon} \rho \frac{\epsilon^2}{k} - R_\epsilon + S_\epsilon \quad (3)$$

where t and ρ are time and air density, respectively; k and ϵ are turbulence kinetic energy (TKE) and TKE dissipation rate, respectively; x_i and x_j are the displacement in dimensions i and j , respectively; u_i is the velocity in dimension i ; α_k and α_ϵ are the inverse effective Prandtl numbers for k and ϵ , respectively; μ_{eff} is the effective viscosity; G_k and G_b represent the generation of TKE due to the mean velocity gradient and buoyancy, respectively; Y_M represents the contribution of the

fluctuating dilatation in compressible turbulence to the overall dissipation rate; S_k and S_ε are user-defined source terms; and $G_{1\varepsilon}$, $C_{2\varepsilon}$ and $C_{3\varepsilon}$ are constants. In this paper, the input turbulent parameters recommended by OpenFOAM are applied. The default model coefficients of RNG k- ε are: $G_{1\varepsilon} = 1.42$; $G_{2\varepsilon} = 1.42$; $G_{3\varepsilon} = -0.33$; $\alpha_k = 1$; and $\alpha_\varepsilon = 1.22$.

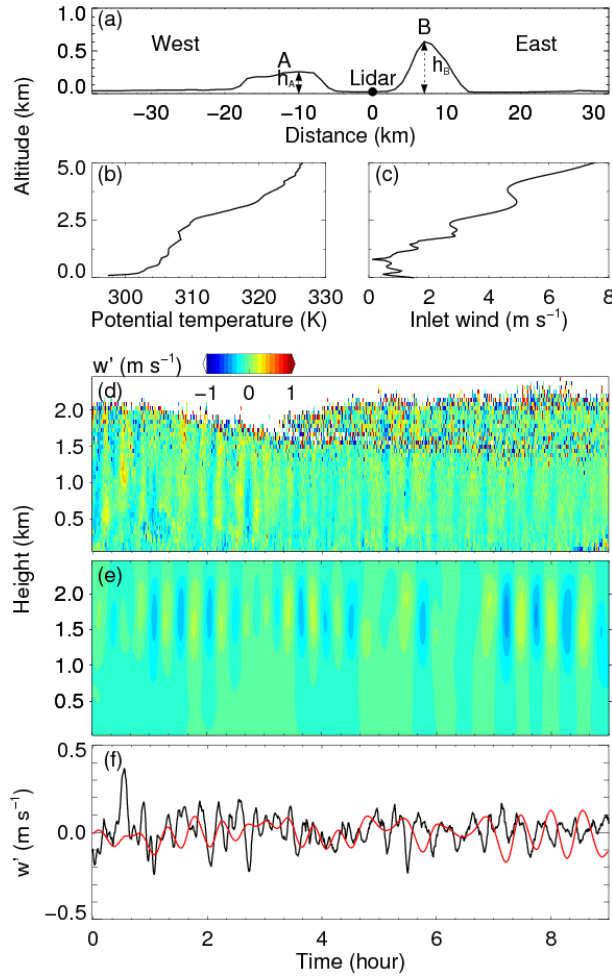


Figure 7. (a) The topography used in CFD simulations. A/B represents west/east hill. h_A and h_B represent the height of A and B. (b) The vertical profile of potential temperature used in the CFD model. (c) The vertical profile of the inlet wind in the CFD model. (d) The vertical wind perturbation from lidar during 00:00~09:00 LT in 5 September 2018. A mean value is subtracted. (e) The CFD simulated results of vertical wind. (f) Observed (black) and simulated (red) vertical perturbations at 1 km altitude. The observed perturbation is smoothed with five-point smoothing.

To simplify the numerical simulation processes, a two-dimensional (2D) rectangular computational domain is applied in this study, with a range of 70 km in horizontal and 5 km in vertical from sea level. The upper interface extended to 5 km is set as the symmetric condition to prevent the influence of the upper interface on the region below 2 km. Under this condition, a zero gradient is set for all vertical physical variables, and the vertical velocity is set to zero. The vertical height of the first layer of grid cells is 5 m. The spatial resolution is approximately 20 m in both the horizontal and vertical. The total number of computational grid cells is 875,000. The velocity-inlet is westerly and constant in the western boundary of the

computational domain. The easterly interface is set as a pressure-outlet boundary to improve reversed flow. The topography is set to have a no-slip wall condition. A rough-wall function is adopted, of which the formula is as follows (Ren et al., 2018):

$$\frac{u}{u^*} = \frac{1}{K} \ln\left(\frac{Ez_c}{Ck_s}\right) \quad (4)$$

where $E=9.793$ is the wall constant, $C = 0.327$ is a roughness constant, $K \approx 0.4$ is the von Karman constant, k_s is the roughness height, z_c is the distance to the cell center of the first adjacent wall cell, u is the velocity in the cell center, and u^* is the friction velocity. The simulation is run with a time step of 0.5 s.

The CFD cases conducted in this study are used to reveal the influence of topography and wind shear on the generation of persistent GWs. The initial thermal field is assumed to be uniform in horizontal. The temperature profile from the radiosonde on 5 September is applied as inlet and outlet boundary in this model. The topography is set as fixed temperature wall, since heat flux on the ground is unavailable. In this work, buoyant flows are developed with low velocity and small temperature variations in each layer. Boussinesq approximation is applied for each thin layer. Boussinesq approximation treats density $\rho_{ref}(z)$ as a constant value at altitude z in all solved equations, except for the gravity and buoyancy term in the momentum equation. The fluctuation of $\rho(z)$ is caused by temperature $T(z)$, neglecting the influence of pressure. The density $\rho(z)$ is approximated as:

$$\rho(z) = \rho_{ref}(z) - \rho_{ref}(z)\beta(T(z) - T_{ref}(z)) \quad (5)$$

where β is the thermal expansivity and $T_{ref}(z)$ is the reference temperature at altitude z . Boussinesq approximation is similar with anelastic approximation in this form. The main difference between Boussinesq approximation and anelastic approximation is that anelastic approximation considers the influence of both pressure and temperature in fluctuations of ρ . Considering computational convenience and convergence, Boussinesq approximation is adopted in this work.

4.2 Numerical simulations

The initial smoothed topography is shown in Fig. 7a. The horizontal location of the domain is roughly along the zonal white dash dotted line in Fig. 1b. This is because the low-level jet and the background wind are mainly in the zonal (east-west) direction. The influence of terrain on atmospheric flow is mainly in this direction. The left (west) hill is defined as A with a height of h_A , and the right (east) hill is defined as B with a height of h_B in this study. The maximum elevation of A and B are approximately 250 m and 600 m, respectively. The lidar is located between A and B. The 1-hour mean zonal wind under 2 km from the lidar and the zonal wind above 2 km from the ERA5 reanalysis data at 00:00 on 5 September 2018 are merged into a sustained imported wind profile u_0 along the western boundary of the computational domain. The vertical profiles of potential temperature and u_0 used in the CFD models are shown in Fig. 7b and 7c, respectively. The measured vertical wind perturbation w' with the mean value subtracted from it is shown in Fig. 7d. The vertical wind from the CFD simulations is shown in Fig. 7e. The measured and simulated vertical perturbation at 1.0 km are compared in Fig. 7f. It is obvious that a similar wave motion with similar amplitude and period exists in the ABL. This result verifies the accuracy of the CFD numerical simulation results in this study. A small movie of the zonal wind and vertical wind in the whole computational

domain can be downloaded from the Supplement. From this movie, the zonal wavelength can be estimated as ~ 3 km, and the corresponding zonal phase speed of ~ 2 m s $^{-1}$. In addition, Kelvin-Helmholtz billows exist in the low-level jet around an altitude of 2 km. These billows may be in relation to the GWs.

Based on this result, wind profiles u_z with different wind shear and topography with different height of hills A and B are employed in the CFD numerical simulations. A detailed list of boundary conditions is presented in Table 2. The corresponding simulated results of the zonal wind and vertical wind above the lidar for all cases are shown in Fig. 8. It should be noted that a time of 0 represents a stable state in all cases except cases 7 and 8, not the real time after the simulations started running. Here, the stable state indicates the state when the atmospheric flow varies stably with mean flow, wave motions and turbulence due to the fully developed turbulent activities, i.e., when the wind-inlet passed through the ABL and varies stably above the lidar station. In case 7 and case 8, a time of 0 is defined as when the simulations started running and the velocity-inlet flowed from the west boundary at the same time.

In case 1, persistent wave motions not only exist in the vertical wind but also in the zonal wind near and below the low-level jet at approximately 2 km as shown in Fig. 8. This is consistent with lidar detections, as shown in Fig. 4. It is obvious that no wave motions are generated, with uniform wind speeds of 1, 5 and 10 m s $^{-1}$ in cases 2~4, respectively. Thus, GWs cannot be excited without wind shear. From the results of cases 1, 5 and 6, the wave amplitudes and frequencies increase with the enhancement in the wind shear. For cases 1, 7 and 8, no persistent wave motions exist with the increase in wind speed without enhancement in the wind shear. Only several solitary wavelike motions can be found when the wind flow passes by the lidar and dissipates rapidly. In addition, the wave motions in cases 1~8 mainly exist under 2.5 km, where the wind speeds are relatively weak. Therefore, it can be inferred that it is beneficial to the generation of persistent waves under persistent weak wind conditions, which is consistent with the previous result in Sect. 3.2.

Table 2. The wind profile and topography for each case in CFD simulations.

Case	Wind profile	Topography	Case	Wind profile	Topography
1	$u_z = u_0$	$h_A \times 1, h_B \times 1$	9	$u_z = u_0$	$h_A \times 0, h_B \times 0$
2	$u_z = 1$ m s $^{-1}$	$h_A \times 1, h_B \times 1$	10	$u_z = u_0$	$h_A \times 0, h_B \times 1$
3	$u_z = 5$ m s $^{-1}$	$h_A \times 1, h_B \times 1$	11	$u_z = u_0$	$h_A \times 1, h_B \times 0$
4	$u_z = 10$ m s $^{-1}$	$h_A \times 1, h_B \times 1$	12	$u_z = u_0$	$h_A \times 2, h_B \times 0$
5	$u_z = u_0 \times 2$	$h_A \times 1, h_B \times 1$	13	$u_z = u_0$	$h_A \times 4, h_B \times 0$
6	$u_z = u_0 \times 4$	$h_A \times 1, h_B \times 1$	14	$u_z = u_0$	$h_A \times 6, h_B \times 0$
7	$u_z = u_0 + 5$ m s $^{-1}$	$h_A \times 1, h_B \times 1$	15	$u_z = u_0$	$h_A \times 0, h_B \times 2$
8	$u_z = u_0 + 10$ m s $^{-1}$	$h_A \times 1, h_B \times 1$	16	$u_z = u_0$	$h_A \times 0, h_B \times 4$

What will happen when the heights of hills A and B near the lidar location change? In cases 9~11, persistent wave structures still exist with only a few changes when hills A and/or B disappear. From cases 9 and 11~13, persistent wave structures always exist and do not change significantly. When the height of hill A increases to $h_A \times 6$ in case 14, i.e., the height of the

low-level jet near a 2 km altitude, the zonal wind structure changes significantly. In cases 9~10 and 15~16, wave motions also exist and do not change significantly even though the height of hill B increases to the height of the low-level jet, $h_B \times 4$.

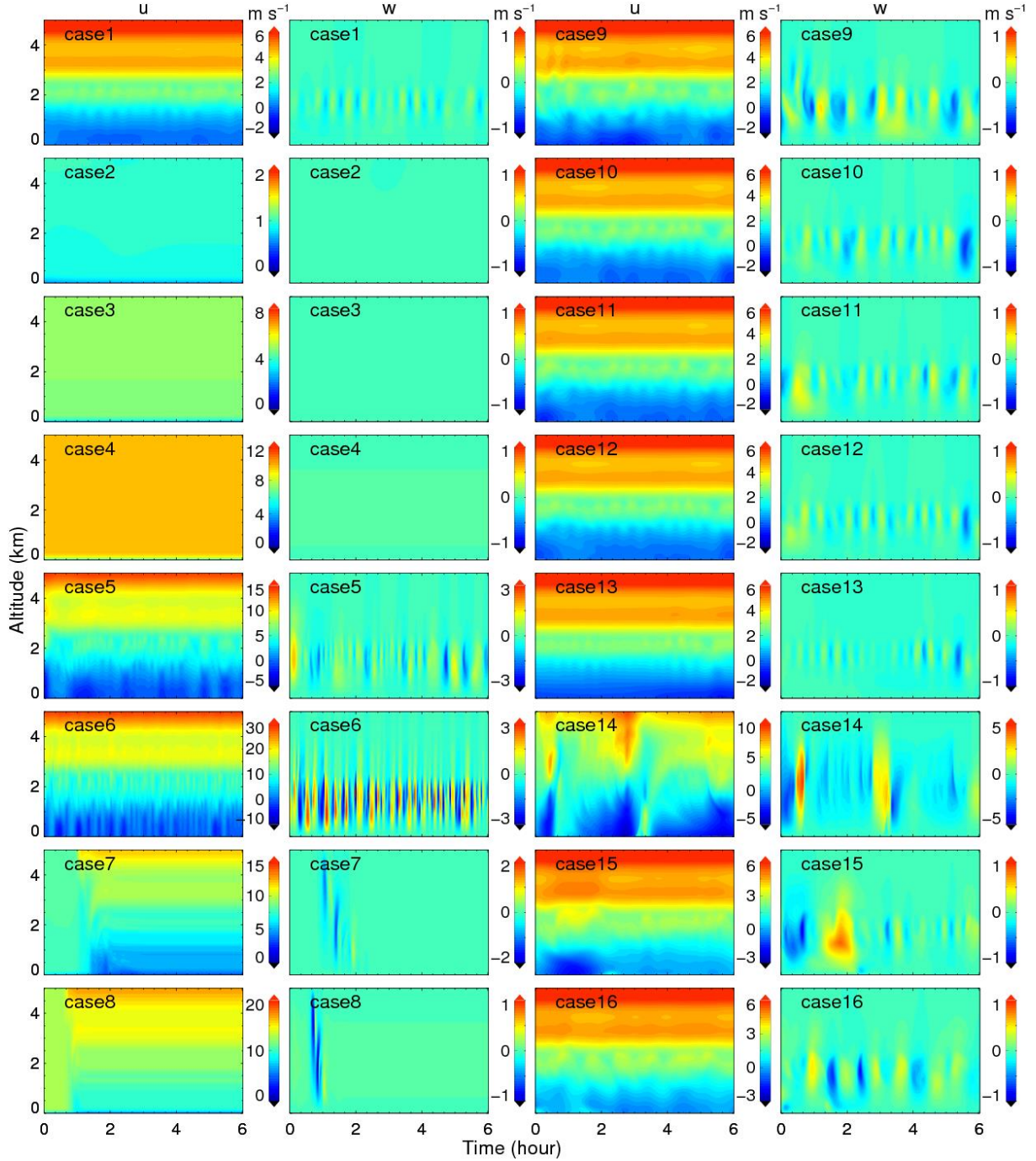


Figure 8. The simulated zonal wind u and vertical wind w above the lidar for all 16 cases as described in Table 2.

Therefore, based on these results from the simulation cases, persistent GWs are excited by persistent wind shear around the low-level jet. The wave structures mainly occur under weak winds. The topography, i.e., the hills near the station as shown in Fig. 1b, plays a negligible role in GW generation. Nevertheless, the topography may play a more important role downstream when the height of the jet is comparable with the height of the terrain.

5 Discussion

Based on the above experiments and simulations, the mechanism of the persistent wave motions can be inferred as follows. A westerly low-level jet of $\sim 5 \text{ m s}^{-1}$ exists above the light southeasterly background wind. The light wind may be in relation to Huangshan and the Dabie Mountains. The weak wind shear around the low-level jet may lead to the occurrence of wave motions in the light wind. In addition, a strongly stable thermal stratified ABL with an inversion layer occurs during the night in Anqing. Negative values of N^2 appear near an altitude of $\sim 2 \text{ km}$. Therefore, the wave motions may be trapped in a ducted structure with a long lifetime. The GWs exist without apparent phase progression with altitude in the whole ABL from the surface to a height of $\sim 2 \text{ km}$.

Such quasi monochromatic waves with multi wave cycles and approximately constant periods and amplitudes are infrequently observed in the ABL (Mahrt, 2014). Nevertheless, similar quasi monochromatic wave motions with multi wave cycles have been reported in several studies. Banakh and Smalikho (2016) revealed a coastal-mountain lee wave with period of $\sim 9 \text{ min}$ during the daytime on 23 August 2015 in the stably stratified ABL over the coast of Lake Baikal. The wave existed between the 100 m and 900 m height range with a lifetime of approximately 4 hours. This wave was suggested to be in relation to the presence of two narrow jet streams at heights of approximately 200 m and 700 m above ground level. Similar wave motions were also detected in the vertical wind accompanied with a low-level jet in Banakh and Smalikho (2018). It is regrettable that the authors did not give a discussion on the contaminated wavelike motions from 01:00 to 08:00, except for the internal wave with a period of $\sim 6 \text{ min}$ at 07:00. Fritts et al. (2003) reported wave motions with typical periods of 4–5 min below a height of $\sim 800 \text{ m}$ under light wind with low-level jet and clear-sky conditions throughout the night of 14 October 1999. These wave motions were interpreted as ducted GWs that propagated horizontally along the maxima of the stratification and mean wind and were evanescent above and possibly below and/or between the ducting level(s) (Fritts et al., 2003). Viana et al. (2009) also reported a ducted mesoscale gravity wave over a weakly stratified nocturnal ABL. This wave lasted less than 10 wave cycles, approximately 2 hours, with a period of $\sim 16 \text{ min}$. Román-Cascón et al. (2015) analysed non-local GWs generated by wind shear or the low-level jet trapped within the stable ABL. With an acoustic echo sounder, similar wave motions were also observed without apparent phase progression with altitude in a stably stratified ABL several decades ago (Beran et al., 1973; Hooke and Jones, 1986).

The wave motions mentioned above were mainly observed in the stable boundary layer under a height of $\sim 1000 \text{ m}$ or even $\sim 100 \text{ m}$, while wave motions exist from the surface layer to as high as $\sim 2000 \text{ m}$ in our study due to different capabilities of the measurements. In addition, the lifetime of the ducted GWs is more than 10 hours and 20 wave cycles, while in the

previous studies listed above, most of the lifetimes are less than hours with several wave cycles. These characteristics make these ducted GWs unique and novel. However, in one of our previous studies, obvious wave motions with periods of 10~30 min in the vertical wind were observed in the whole residual layer from 1 June 2018 to 2 June 2018 by a similar CDL system (Wang et al., 2019).

- 5 The mechanism of these long-lived GWs is in consistent with that of other similar wave motions referenced above in some aspects. The low-level jet or wind shear is one of the main sources of such wavelike motions in the ABL. A stably stratified ABL usually leads to effective ducting quasi monochromatic wave motions with a long lifetime and multi wave cycles. Although wind shear near the low-level jet is the main source of GWs as discussed in Sect. 4.2, weaker wind shear is more favourable to the existence of high frequency GWs. Similarly, the surrounding hills play negligible roles in generating the ducted GWs while the Dabie Mountains and Huangshan may have an impact on the generation and existence of GWs.

The vertical structure of GWs is described by the Taylor-Goldstein equation (Gossard and Hooke, 1975):

$$m^2 = \frac{N^2}{c_i^2} + \frac{\bar{u}_{zz}}{c_i} - k_h^2 - \frac{1}{4H^2} \quad (6)$$

- where m is the vertical wavenumber, c_i is the intrinsic phase speed in the direction of propagation, \bar{u}_{zz} is the second derivative with the height of the mean wind in the direction of wave propagation, k_h is the horizontal wavenumber, and H is the scale height. A sufficiently deep atmospheric layer is required for a wave duct with positive values of m^2 . To resolve this equation, the vertical profile of squared buoyancy frequency, which is calculated by the temperature profile measured by the radiosonde, is shown in Fig. 5b. Simultaneous hourly mean wind, which is required to resolve c_i and \bar{u}_{zz} , can be obtained from the lidar measurements. However, the horizontal structures of this wave motion, i.e., c_i and k_h , are still unclear in this study. The horizontal structures of wavelike motions in the ABL can be detected by airborne lidar (Chouza et al., 2016; Witschas et al., 2017) and ground-based lidar with range height indicator (RHI) scans (Poulos et al., 2002; Wang, 2013) or plan position indicator (PPI) scans (Mayor, 2017). GW parameters, such as horizontal phase speed, horizontal wavelength, propagation direction, and intrinsic frequency, can be resolved from these measurements. Nevertheless, we try to illustrate the characteristics of this ducted wave to determine a plausible propagation direction and horizontal wavelength from the CFD simulations. The propagation direction is assumed to be westerly here, as the simulated wave is westerly from the movie in the Supplement. Thus, the horizontal wavelength is equal to the zonal wavelength, which is estimated as ~3 km in Sect. 4.2.

- The vertical profile of vertical wave number squared is shown in Fig. 9. The singular point of the relative maxima m^2 in the right panel is caused by a critical level where the intrinsic frequency is Doppler-shifted close to zero. A ducting process occurs between ~1.5 km altitude and the ground where $m^2 > 0$. This is the result of a combination of thermal and Doppler ducts. The thermal duct is dominant under the temperature inversion with a maximum buoyancy frequency squared for all propagation directions, as shown in Fig. 5. The Doppler duct is dominant between the ~0.5 and ~1.5 km altitude range due to the critical level induced by the low-level jet of wind maximum in a particular direction. Thus, the ducted motions give a plausible explanation for the trapped long-lived GWs in the ABL.

It should be noted that the retrieval of horizontal wind is based on the hypothesis of a homogeneous wind field on a horizontal plane. Accompanying the wave activities, the radius of the scanning beam cone leads to a bias in the retrieved horizontal wind. If the radius is equivalent to or larger than the scale of the horizontal wavelength of the GWs, these biases may significantly affect the result in the horizontal, especially the amplitude of the retrieved GWs. Nevertheless, the bias in the period of the wave motion is negligible. If the radius is smaller than the scale of the horizontal wavelength of the GWs, the biases in both amplitude and period can be ignored. In this study, the horizontal wavelength is estimated to be ~3 km in Sect. 4.2. The radii are approximately about 580 m and 870 m at 1 km and 2 km altitude, respectively. Thus, the retrieved bias can be ignored in this study.

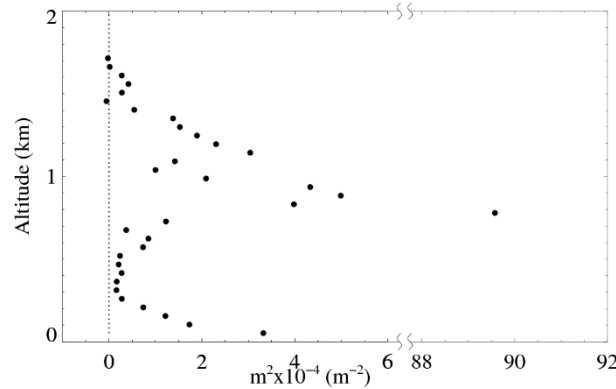


Figure 9. The vertical profile of vertical wave number squared. The dotted line represents zero line.

Comparing with 2D model, 3D model can simulate the atmospheric flow with complete information. The simulation results will be more accurate with reasonable boundary conditions in 3D model. Considering the direction of the low-level jet and the maximum background wind, this zonal transect is appropriate in this 2D model. The influence of terrain on atmospheric flow is mainly in this direction. However, the 2D model cannot simulate the information in another dimension, e.g., lateral flow around the hillside and the blocking effect of the low terrain on both sides, leading to additional errors compared with 3D model. Nevertheless, as a simplification of the actual mountain model, the comparison between the numerical simulation results and field experiments shows that the two-dimensional model can simulate the actual topographic flow well in some cases (Miller and Davenport, 1998; Toparlar et al., 2017; Walmsley et al., 1984). Some basic theories and empirical formulas of complex mountain wind field are built on the basis of a two-dimensional model. In addition, 2D model consumes much less computing resources and time than 3D models. Therefore, the two-dimensional terrain simulation of the mountain wind field has a wide range of theoretical significance and practicability. The additional errors with only 2D model are acceptable for studying GWs. By using this simplified 2D model, the influence of terrain on GWs can be still analyzed.

6 Conclusion

A persistent wave motion was investigated by experiments and numerical simulations. From 4 to 5 September 2018, GWs with periods of 10~30 min were observed in the whole ABL from the ground to a height of ~2 km by a coherent Doppler

lidar during a field experiment in Anqing. The amplitudes of these GWs were approximately $0.15\sim0.2\text{ m s}^{-1}$ in the vertical wind. These GWs existed for longer than 20 wave cycles. The periods were approximately 15~25 min before 03:00 LT and 20~30 min after 03:00 LT. A westerly low-level jet was observed at an altitude of 1~2 km in the ABL with maxima speeds of $5\sim10\text{ m s}^{-1}$. Simultaneous temperature profiles from radiosonde measurements and ERA5 reanalysis data confirmed the existence of a strong stably stratified ABL. There was an inversion layer below the altitude of ~500 m and a negative buoyancy frequency squared near the height of ~2 km. Note that there was no apparent phase progression with altitude for these GWs. Moreover, the vertical and zonal perturbations in the GWs were 90° out of phase with the vertical perturbations, generally leading zonal perturbations. These characteristics suggested that such GW motions are ducted GWs trapped in the ABL, which is also verified by the vertical structure of the wave motions. Based on simplified 2D CFD numerical simulations, the generation mechanisms of such GWs were discussed. The low-level jet streams were considered to be responsible for the excitation of GW motion in the present study. Wave motions mainly occurred under weaker wind conditions, which was consistent with other studies of ducted waves. The contributions from wind flow over the surrounding hills could be ignored.

The current study contributes to our understanding of the GW generation mechanism in the ABL, which plays a key role in atmospheric dynamics. Furthermore, the National Meteorological Observing Station of Anqing is close to an airport, as shown in Fig. 1b, which will be affected by clear air turbulence caused by breaking GWs and rotors affected by the trapped GWs. The application of such a coherent Doppler lidar will enhance measurement capability with high-quality data in the ABL, thus enriching our knowledge and improving aviation safety, weather forecasting and climate modelling in the future. However, the horizontal structures of GWs are still unclear in this study. Simultaneous measurements with multi lidars and multi scanning modes are required in additional studies.

Data availability

The ERA5 data sets are publicly available from ECMWF website at <https://www.ecmwf.int/en/forecasts/datasets/reanalysis-datasets/era5>, last access: 1 March 2019. The elevation data are available at SRTM website (<http://srtm.csi.cgiar.org>, last access: 1 March 2019). Lidar and radiosonde data can be downloaded from http://www.lidar.cn/datashare/Jia_et_al_2019.rar, last access: 16 March 2019.

Appendix A: Lidar observational results during the experiment

The vertical wind, horizontal wind speed, wind direction and CNR during the field experiment from 16 August to 5 September 2018 are shown in Fig. A1~A4, respectively.

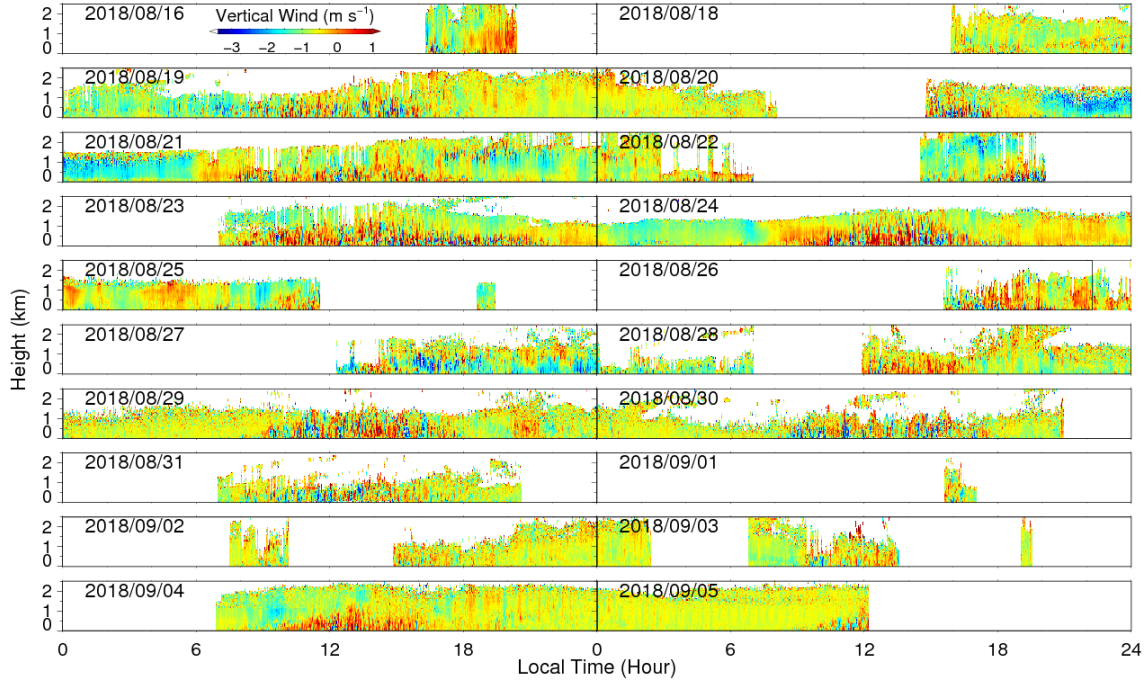


Figure A1. Time height cross section of vertical wind speed per day during the experiment. Dates are shown in the top left of each panel, and are read as YYYY/MM/DD.

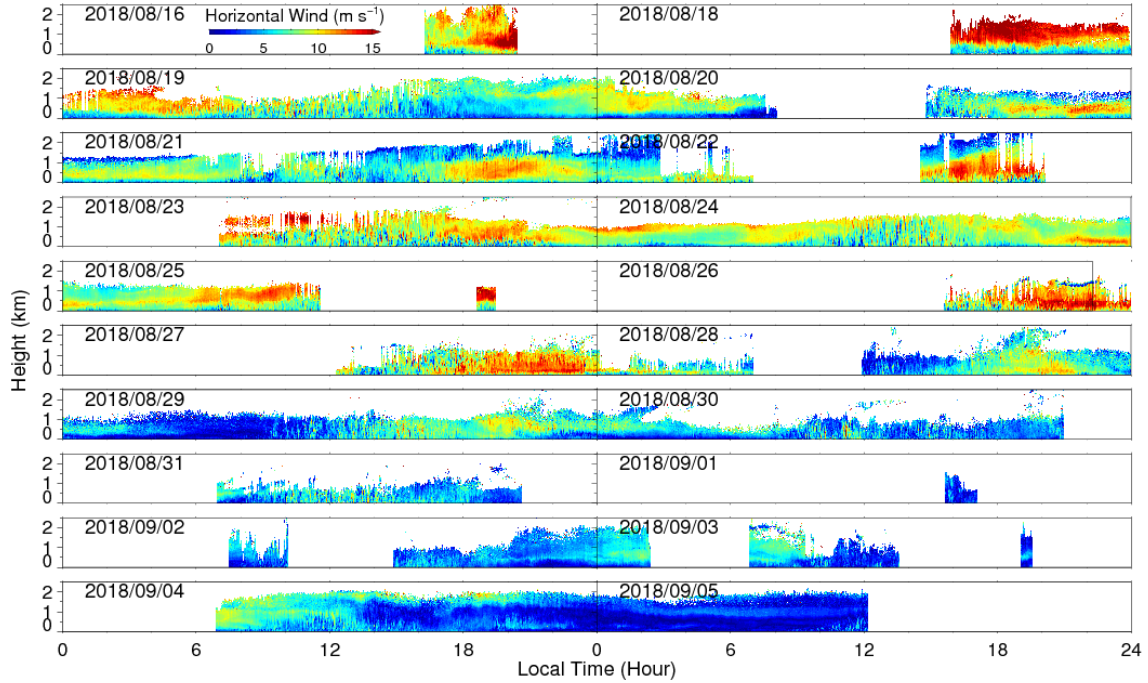


Figure A2. Similar to Fig. A1 but for horizontal wind speed.

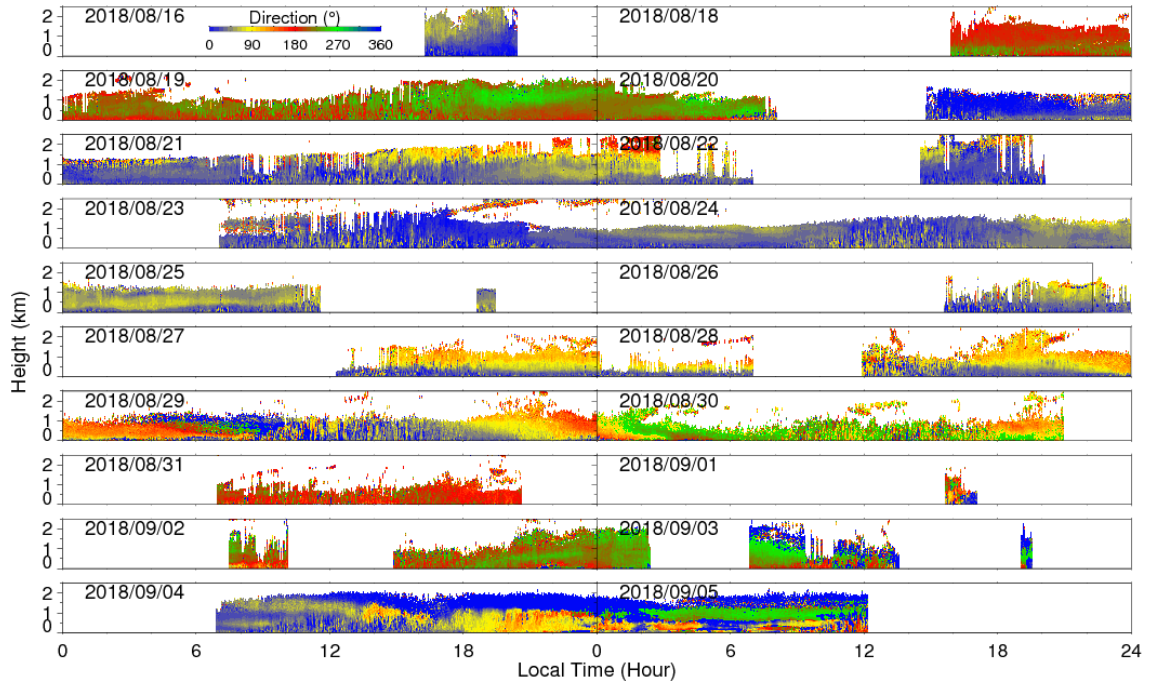


Figure A3. Similar to Fig. A1 but for horizontal wind direction.

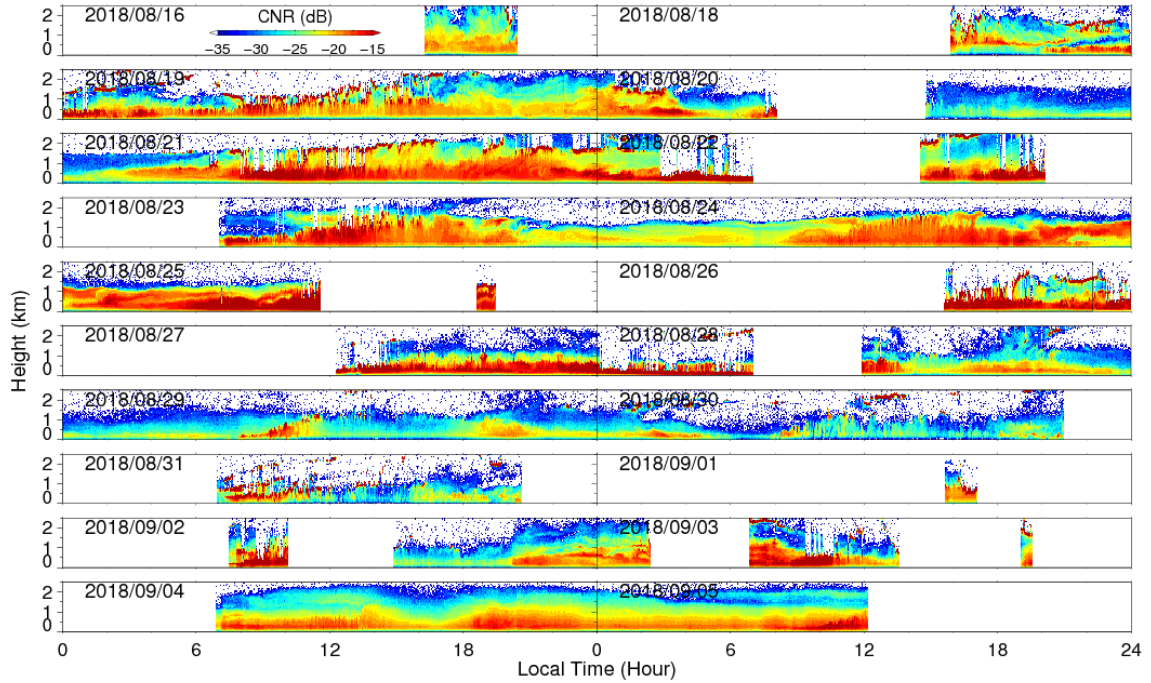


Figure A4. Similar to Fig. A1 but for CNR.

Author contribution

HX conceived, designed the study. YW, LZ CW and MJ performed the lidar experiments. MJ, CW and TW performed the lidar data analysis. LL, DL and RC provide the field experiment site and the radiosonde data. JW analyzed ERA5 data. JY performed the CFD numerical simulations. MJ and JY carried out the analysis and prepared the figures, with comments from other co-authors. MJ, HX, XX and XD interpreted the data. MJ, JY and HX wrote the manuscript. All authors read and approved the final manuscript.

Competing interests.

The authors declare that they have no conflict of interest.

Acknowledgements.

- 10 We acknowledge the use of ERA5 data sets from ECMWF website at <https://www.ecmwf.int/en/forecasts/datasets/reanalysis-datasets/era5>. We acknowledge the use of elevation data sets from SRTM website at <http://srtm.csi.cgiar.org>.

References

- Banakh, V., and Smalikho, I.: Lidar Studies of Wind Turbulence in the Stable Atmospheric Boundary Layer, Remote Sensing, 10, 1219, 10.3390/rs10081219, 2018.
- 15 Banakh, V. A., and Smalikho, I. N.: Lidar observations of atmospheric internal waves in the boundary layer of the atmosphere on the coast of Lake Baikal, Atmospheric Measurement Techniques, 9, 5239-5248, 10.5194/amt-9-5239-2016, 2016.
- Beran, D. W., Hooke, W. H., and Clifford, S. F.: Acoustic echo-sounding techniques and their application to gravity-wave, turbulence, and stability studies, Boundary-Layer Meteorology, 4, 133-153, 10.1007/bf02265228, 1973.
- 20 Berg, J., Trolborg, N., Sørensen, N. N., Patton, E. G., and Sullivan, P. P.: Large-Eddy Simulation of turbine wake in complex terrain, Journal of Physics: Conference Series, 854, 012003, 10.1088/1742-6596/854/1/012003, 2017.
- Bian, J., Chen, H., Vömel, H., Duan, Y., Xuan, Y., and Lü D.: Intercomparison of humidity and temperature sensors: GTS1, Vaisala RS80, and CFH, Advances in Atmospheric Sciences, 28, 139-146, 10.1007/s00376-010-9170-8, 2010.
- Birch, C. E., Parker, D. J., O'Leary, A., Marsham, J. H., Taylor, C. M., Harris, P. P., and Lister, G. M. S.: Impact of soil moisture and convectively generated waves on the initiation of a West African mesoscale convective system, Quarterly Journal of the Royal Meteorological Society, 139, 1712-1730, 10.1002/qj.2062, 2013.
- 25 Blumen, W., Banta, R. M., Berri, G., Blumen, W., Carruthers, D. J., Dalu, G. A., Durran, D. R., Egger, J., Garratt, J. R., Hanna, S. R., Hunt, J. C. R., Meroney, R. N., Miller, W., Neff, W. D., Nicolini, M., Paegle, J., Pielke, R. A., Smith,

- R. B., Strimaitis, D. G., Vukicevic, T., and Whiteman, C. D.: Atmospheric Processes over Complex Terrain, Meteorological Monographs, 57, American Meteorological Society, Boston, MA, 1990.
- Chouza, F., Reitebuch, O., Jähn, M., Rahm, S., and Weinzierl, B.: Vertical wind retrieved by airborne lidar and analysis of island induced gravity waves in combination with numerical models and in situ particle measurements, Atmospheric Chemistry and Physics, 16, 4675-4692, 10.5194/acp-16-4675-2016, 2016.
- Clark, T. L., Hall, W. D., Kerr, R. M., Middleton, D., Radke, L., Ralph, F. M., Neiman, P. J., and Levinson, D.: Origins of aircraft-damaging clear-air turbulence during the 9 December 1992 Colorado downslope windstorm: Numerical simulations and comparison with observations, Journal of the Atmospheric Sciences, 57, 1105-1131, Doi 10.1175/1520-0469(2000)057<1105:Ooadca>2.0.Co;2, 2000.
- Cohn, S. A., Holloway, C. L., Oncley, S. P., Doviak, R. J., and Lataitis, R. J.: Validation of a UHF spaced antenna wind profiler for high-resolution boundary layer observations, Radio Science, 32, 1279-1296, 10.1029/97rs00578, 1997.
- Cohn, S. A., Brown, W. O. J., Martin, C. L., Susedik, M. E., Maclean, G. D., and Parsons, D. B.: Clear air boundary layer spaced antenna wind measurement with the Multiple Antenna Profiler (MAPR), Annales Geophysicae, 19, 845-854, 10.5194/angeo-19-845-2001, 2001.
- Corby, G. A.: A preliminary study of atmospheric waves using radiosonde data, Quarterly Journal of the Royal Meteorological Society, 83, 49-60, 10.1002/qj.49708335505, 1957.
- Einaudi, F., and Finnigan, J. J.: The interaction between an internal gravity wave and the planetary boundary layer. Part I: The linear analysis, Quarterly Journal of the Royal Meteorological Society, 107, 793-806, 10.1002/qj.49710745404, 1981.
- El Kasmi, A., and Masson, C.: Turbulence modeling of atmospheric boundary layer flow over complex terrain: a comparison of models at wind tunnel and full scale, Wind Energy, 13, 689-704, 10.1002/we.390, 2010.
- Fernando, H. J. S., Mann, J., Palma, J. M. L. M., Lundquist, J. K., Barthelmie, R. J., BeloPereira, M., Brown, W. O. J., Chow, F. K., Gerz, T., Hocut, C. M., Klein, P. M., Leo, L. S., Matos, J. C., Oncley, S. P., Pryor, S. C., Bariteau, L., Bell, T. M., Bodini, N., Carney, M. B., Courtney, M. S., Creegan, E. D., Dimitrova, R., Gomes, S., Hagen, M., Hyde, J. O., Kigle, S., Krishnamurthy, R., Lopes, J. C., Mazzaro, L., Neher, J. M. T., Menke, R., Murphy, P., Oswald, L., Otarola-Bustos, S., Pattantyus, A. K., Rodrigues, C. V., Schady, A., Sirin, N., Spuler, S., Svensson, E., Tomaszewski, J., Turner, D. D., van Veen, L., Vasiljević, N., Vassallo, D., Voss, S., Wildmann, N., and Wang, Y.: The Perdigaõ: Peering into Microscale Details of Mountain Winds, Bulletin of the American Meteorological Society, 10.1175/bams-d-17-0227.1, 2018.
- Finnigan, J. J., and Einaudi, F.: The interaction between an internal gravity wave and the planetary boundary layer. Part II: Effect of the wave on the turbulence structure, Quarterly Journal of the Royal Meteorological Society, 107, 807-832, 10.1002/qj.49710745405, 1981.
- Fritts, D. C., and Alexander, M. J.: Gravity wave dynamics and effects in the middle atmosphere, Reviews of Geophysics, 41, 10.1029/2001rg000106, 2003.

- Fritts, D. C., Nappo, C., Riggan, D. M., Balsley, B. B., Eichinger, W. E., and Newsom, R. K.: Analysis of Ducted Motions in the Stable Nocturnal Boundary Layer during CASES-99, *Journal of the Atmospheric Sciences*, 60, 2450-2472, 10.1175/1520-0469(2003)060<2450:aodmit>2.0.co;2, 2003.
- 5 Gossard, E. E., and Hooke, W. H.: *Waves in the atmosphere: atmospheric infrasound and gravity waves-their generation and propagation*, Atmospheric Science, Developments in Atmospheric Science, No. 2, Elsevier Scientific Publishing Co., Amsterdam, 1975.
- Grubišić, V., Doyle, J. D., Kuettner, J., Mobbs, S., Smith, R. B., Whiteman, C. D., Dirks, R., Czyzyk, S., Cohn, S. A., Vosper, S., Weissmann, M., Haimov, S., De Wekker, S. F. J., Pan, L. L., and Chow, F. K.: The Terrain-Induced Rotor Experiment, *Bulletin of the American Meteorological Society*, 89, 1513-1534, 10.1175/2008bams2487.1, 10
2008.
- Hersbach, H., and Dee, D.: ERA5 reanalysis is in production, Shinfield Park, Reading, Berkshire RG2 9AX, UK, 7, 2016.
- Holton, J. R., and Alexander, M. J.: The role of waves in the transport circulation of the middle atmosphere, in: *Atmospheric Science Across the Stratopause*, edited by: Siskind, D. E., Eckermann, S. D., and Summers, M. E., Geophysical Monograph Series, 21-35, 2000.
- 15 Hooke, W. H., and Jones, R. M.: Dissipative Waves Excited by Gravity-Wave Encounters with the Stably Stratified Planetary Boundary Layer, *Journal of the Atmospheric Sciences*, 43, 2048-2060, 10.1175/1520-0469(1986)043<2048:dwebgw>2.0.co;2, 1986.
- Kuettner, J. P., Hildebrand, P. A., and Clark, T. L.: Convection waves: Observations of gravity wave systems over convectively active boundary layers, *Quarterly Journal of the Royal Meteorological Society*, 113, 445-467, 20
10.1002/qj.49711347603, 2007.
- Lac, C., Lafore, J. P., and Redelsperger, J. L.: Role of gravity waves in triggering deep convection during TOGA COARE, *Journal of the Atmospheric Sciences*, 59, 1293-1316, Doi 10.1175/1520-0469(2002)059<1293:Rogwit>2.0.Co;2, 2002.
- Lapworth, A., and Osborne, S. R.: Evidence for gravity wave drag in the boundary layer of a numerical forecast model: a comparison with observations, *Quarterly Journal of the Royal Meteorological Society*, 142, 3257-3264, 25
10.1002/qj.2909, 2016.
- Li, F.: New developments with upper-air sounding in China, WMO, Instruments and Observing Methods Report 94, Geneva, Switzerland, 2006.
- Lyulyukin, V. S., Kallistratova, M. A., Kouznetsov, R. D., Kuznetsov, D. D., Chunchuzov, I. P., and Chirokova, G. Y.: Internal gravity-shear waves in the atmospheric boundary layer from acoustic remote sensing data, *Izvestiya, Atmospheric and Oceanic Physics*, 51, 193-202, 10.1134/s0001433815020103, 2015.
- 30 Mahrt, L.: Stably Stratified Atmospheric Boundary Layers, *Annual Review of Fluid Mechanics*, 46, 23-45, 10.1146/annurev-fluid-010313-141354, 2014.

- Mann, J., Angelou, N., Arnqvist, J., Callies, D., Cantero, E., Arroyo, R. C., Courtney, M., Cuxart, J., Dellwik, E., Gottschall, J., Ivanell, S., Kuhn, P., Lea, G., Matos, J. C., Palma, J. M., Pauscher, L., Pena, A., Rodrigo, J. S., Soderberg, S., Vasiljevic, N., and Rodrigues, C. V.: Complex terrain experiments in the New European Wind Atlas, Philosophical transactions. Series A, Mathematical, physical, and engineering sciences, 375, 10.1098/rsta.2016.0101, 2017.
- 5 Marsham, J. H., and Parker, D. J.: Secondary initiation of multiple bands of cumulonimbus over southern Britain. II: Dynamics of secondary initiation, Quarterly Journal of the Royal Meteorological Society, 132, 1053-1072, 10.1256/qj.05.152, 2006.
- Mayor, S. D.: Observations of microscale internal gravity waves in very stable atmospheric boundary layers over an orchard canopy, Agr Forest Meteorol, 244, 136-150, 10.1016/j.agrformet.2017.05.014, 2017.
- 10 Miller, C. A., and Davenport, A. G.: Guidelines for the calculation of wind speed-ups in complex terrain, Journal of Wind Engineering and Industrial Aerodynamics, 74-76, 189-197, 10.1016/s0167-6105(98)00016-6, 1998.
- Neiman, P. J., Hardesty, R. M., Shapiro, M. A., and Cupp, R. E.: Doppler Lidar Observations of a Downslope Windstorm, Monthly Weather Review, 116, 2265-2275, 10.1175/1520-0493(1988)116<2265:dload>2.0.co;2, 1988.
- Newsom, R. K., and Banta, R. M.: Shear-Flow Instability in the Stable Nocturnal Boundary Layer as Observed by Doppler
- 15 Lidar during CASES-99, Journal of the Atmospheric Sciences, 60, 16-33, 10.1175/1520-0469(2003)060<0016:sfiits>2.0.co;2, 2003.
- Plougonven, R., and Zhang, F.: Internal gravity waves from atmospheric jets and fronts, Reviews of Geophysics, 52, 33-76, 10.1002/2012rg000419, 2014.
- Poulos, G. S., Blumen, W., Fritts, D. C., Lundquist, J. K., Sun, J., Burns, S. P., Nappo, C., Banta, R., Newsom, R., Cuxart, J.,
- 20 Terradellas, E., Balsley, B., and Jensen, M.: CASES-99: A Comprehensive Investigation of the Stable Nocturnal Boundary Layer, Bulletin of the American Meteorological Society, 83, 555-581, 10.1175/1520-0477(2002)083<0555:caciot>2.3.co;2, 2002.
- Pramitha, M., Venkat Ratnam, M., Taori, A., Krishna Murthy, B. V., Pallamraju, D., and Vijaya Bhaskar Rao, S.: Evidence
- 25 for tropospheric wind shear excitation of high-phase-speed gravity waves reaching the mesosphere using the ray-tracing technique, Atmospheric Chemistry and Physics, 15, 2709-2721, 10.5194/acp-15-2709-2015, 2015.
- Preusse, P., Ern, M., Bechtold, P., Eckermann, S. D., Kalisch, S., Trinh, Q. T., and Riese, M.: Characteristics of gravity waves resolved by ECMWF, Atmospheric Chemistry and Physics, 14, 10483-10508, 10.5194/acp-14-10483-2014, 2014.
- Ren, H., Laima, S., Chen, W.-L., Zhang, B., Guo, A., and Li, H.: Numerical simulation and prediction of spatial wind field
- 30 under complex terrain, Journal of Wind Engineering and Industrial Aerodynamics, 180, 49-65, 2018.
- Román-Cascón, C., Yagüe, C., Mahrt, L., Sastre, M., Steeneveld, G. J., Pardyjak, E., van de Boer, A., and Hartogensis, O.: Interactions among drainage flows, gravity waves and turbulence: a BLLAST case study, Atmospheric Chemistry and Physics, 15, 9031-9047, 10.5194/acp-15-9031-2015, 2015.

- Sun, J., Mahrt, L., Nappo, C., and Lenschow, D. H.: Wind and Temperature Oscillations Generated by Wave–Turbulence Interactions in the Stably Stratified Boundary Layer, *Journal of the Atmospheric Sciences*, 72, 1484-1503, 10.1175/jas-d-14-0129.1, 2015a.
- Sun, J., Nappo, C. J., Mahrt, L., Belušić, D., Grisogono, B., Stauffer, D. R., Pulido, M., Staquet, C., Jiang, Q., Pouquet, A.,
5 Yagüe, C., Galperin, B., Smith, R. B., Finnigan, J. J., Mayor, S. D., Svensson, G., Grachev, A. A., and Neff, W. D.: Review of wave-turbulence interactions in the stable atmospheric boundary layer, *Reviews of Geophysics*, 53, 956-993, 10.1002/2015rg000487, 2015b.
- Sun, J. L., Lenschow, D. H., Burns, S. P., Banta, R. M., Newsom, R. K., Coulter, R., Frasier, S., Ince, T., Nappo, C., Balsley,
10 B. B., Jensen, M., Mahrt, L., Miller, D., and Skelly, B.: Atmospheric disturbances that generate intermittent turbulence in nocturnal boundary layers, *Boundary-Layer Meteorology*, 110, 255-279, Doi 10.1023/A:1026097926169, 2004.
- Toms, B. A., Tomaszewski, J. M., Turner, D. D., and Koch, S. E.: Analysis of a Lower-Tropospheric Gravity Wave Train Using Direct and Remote Sensing Measurement Systems, *Monthly Weather Review*, 145, 2791-2812, 10.1175/mwr-d-16-0216.1, 2017.
- 15 Toparlar, Y., Blocken, B., Vos, P., van Heijst, G. J. F., Janssen, W. D., van Hooff, T., Montazeri, H., and Timmermans, H. J. P.: CFD simulation and validation of urban microclimate: A case study for Bergpolder Zuid, Rotterdam, *Building and Environment*, 83, 79-90, 10.1016/j.buildenv.2014.08.004, 2015.
- Toparlar, Y., Blocken, B., Maiheu, B., and van Heijst, G. J. F.: A review on the CFD analysis of urban microclimate, *Renewable and Sustainable Energy Reviews*, 80, 1613-1640, 10.1016/j.rser.2017.05.248, 2017.
- 20 Tsiringakis, A., Steeneveld, G. J., and Holtslag, A. A. M.: Small-scale orographic gravity wave drag in stable boundary layers and its impact on synoptic systems and near-surface meteorology, *Quarterly Journal of the Royal Meteorological Society*, 143, 1504-1516, 10.1002/qj.3021, 2017.
- Vasiljević, N., L. M. Palma, J. M., Angelou, N., Carlos Matos, J., Menke, R., Lea, G., Mann, J., Courtney, M., Frölen
25 Ribeiro, L., and M. G. C. Gomes, V. M.: Perdigo 2015: methodology for atmospheric multi-Doppler lidar experiments, *Atmospheric Measurement Techniques*, 10, 3463-3483, 10.5194/amt-10-3463-2017, 2017.
- Viana, S., Yagüe, C., and Maqueda, G.: Propagation and Effects of a Mesoscale Gravity Wave Over a Weakly-Stratified Nocturnal Boundary Layer During the SABLES2006 Field Campaign, *Boundary-Layer Meteorology*, 133, 165-188, 10.1007/s10546-009-9420-4, 2009.
- Walmsley, J. L., Taylor, P. A., and Salmon, J. R.: Simple guidelines for estimating windspeed variations due to small-scale
30 topographic features—an update, *Climatological bulletin*, 23, 3-14, 1984.
- Wang, C., Xia, H., Shangguan, M., Wu, Y., Wang, L., Zhao, L., Qiu, J., and Zhang, R.: 1.5 μm polarization coherent lidar incorporating time-division multiplexing, *Optics express*, 25, 20663-20674, 10.1364/OE.25.020663, 2017.

- Wang, C., Jia, M., Xia, H., Wu, Y., Wei, T., Shang, X., Yang, C., Xue, X., and Dou, X.: Relationship analysis of PM_{2.5} and boundary layer height using an aerosol and turbulence detection lidar, *Atmospheric Measurement Techniques*, 12, 3303-3315, 10.5194/amt-12-3303-2019, 2019.
- Wang, Y.: Investigation of nocturnal low-level jet-generated gravity waves over Oklahoma City during morning boundary layer transition period using Doppler wind lidar data, *Journal of Applied Remote Sensing*, 7, 073487, 10.1117/1.jrs.7.073487, 2013.
- Watt, S. F. L., Gilbert, J. S., Folch, A., Phillips, J. C., and Cai, X. M.: An example of enhanced tephra deposition driven by topographically induced atmospheric turbulence, *Bulletin of Volcanology*, 77, 10.1007/s00445-015-0927-x, 2015.
- Wei, T., Xia, H., Hu, J., Wang, C., Shangguan, M., Wang, L., Jia, M., and Dou, X.: Simultaneous wind and rainfall detection by power spectrum analysis using a VAD scanning coherent Doppler lidar, *Optics express*, 27, 31235, 10.1364/oe.27.031235, 2019.
- Witschas, B., Rahm, S., Dörnbrack, A., Wagner, J., and Rapp, M.: Airborne Wind Lidar Measurements of Vertical and Horizontal Winds for the Investigation of Orographically Induced Gravity Waves, *Journal of Atmospheric and Oceanic Technology*, 34, 1371-1386, 10.1175/jtech-d-17-0021.1, 2017.
- Wu, J. F., Xue, X. H., Liu, H. L., Dou, X. K., and Chen, T. D.: Assessment of the Simulation of Gravity Waves Generation by a Tropical Cyclone in the High-Resolution WACCM and the WRF, *Journal of Advances in Modeling Earth Systems*, 10, 2214-2227, 10.1029/2018ms001314, 2018.
- Yakhot, V., Orszag, S., Thangam, S., Gatski, T., and Speziale, C.: Development of turbulence models for shear flows by a double expansion technique, *Physics of Fluids A: Fluid Dynamics*, 4, 1510-1520, 1992.
- Yan, B. W., Li, Q. S., He, Y. C., and Chan, P. W.: RANS simulation of neutral atmospheric boundary layer flows over complex terrain by proper imposition of boundary conditions and modification on the k- ϵ model, *Environmental Fluid Mechanics*, 16, 1-23, 10.1007/s10652-015-9408-1, 2015.