

Dear Reviewer,

We thank you for doing this review and for your suggestions that helped to improve our manuscript. Below, please find your original comments in blue and our responses in black. When referencing page and line numbers, we are always referring to the original versions of manuscript and SI.

This study reported the new particle formation, aerosol hygroscopicity, and ice nucleation activities in the atmosphere at Cyprus. The manuscript is well-written and very clear. But, there are several questions should be addressed in the revised version.

(1) In conclusions, the author mentioned “frequently NPF and growth events were observed”. As described in the text, most of bursts in nucleation particles attribute to airport emissions, but not NPF. The wording “frequently” may not be properly.

We followed your recommendation, removed the “frequently” in this sentence. In this study, we only focused on 3 NPF events, since particles grown to this sizes makes them potential CCN. There are ~2 more NPF events that were observed in sub-10 nm but during these, particles did not grow to larger sizes. There will be an upcoming paper to discuss the NPF in the sub-10nm size range which will also compare with the data in this study.

However, here we would like to stress that the pollution from the airport was filtered out when we analyzed NPF events and CCN number concentration (as we say in 3.2: “Therefore, in the following, time periods affected by pollution from the airport were excluded from further analysis.”).

(2) The samples were separated into “ocean” and “land” samples. How about the effects of “land and sea breeze” on the samples? The “land” air may blow to the ocean, and later will come back again. This may explain why the “ocean” samples is similar to that of “land”.

We followed your recommendation, and extended the discussion after line 21, page 11.

“A source apportionment for INP examined in this study is therefore difficult to do. Considering that Cyprus is only a small island surrounded by ocean, its effect might be limited. Besides, for a

location such as Cyprus, it is difficult to determine sources for different air masses only based on wind direction, alone.”

(3) In the abstract, “with a median κ value of 0.57, suggesting the presence of sulfate.”. Actually, 0.57 means almost of pure sulfate. The sea salt can also go down to accumulation mode particles. A high k value may indicate the presence of sea salt.

Following one of the second reviewer’s remarks, we extended the discussion in lines 25- 30, page 10 and changed the abstract and conclusion accordingly.

“A few sea salt particles mixed with organic carbon might also be present in the accumulation mode, according to a previous study (Prather et al., 2013). But the absolute number concentration of sea salt mixed with organic carbon particle in the size range <200 nm is likely limited.”

(4) In page 6, Line 10: “Each filter was immersed into 1 mL ultrapure water”. 1 ml is enough to wash the particle off from the filter?

Obviously, N_{INP} from LINA (1 mL ultrapure water washed) agreed well with INSEKT (8 mL ultrapure water washed). Therefore, we think 1 mL ultrapure water is enough to wash off all particles.

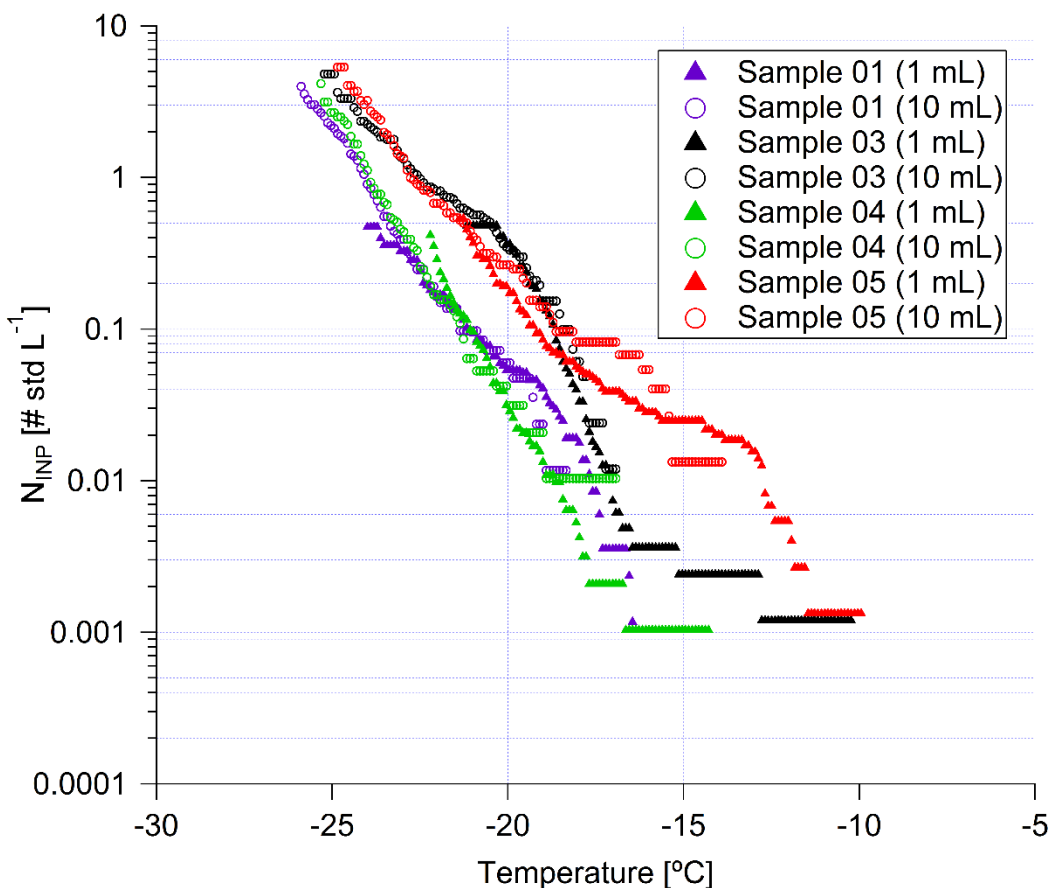


Figure S3. N_{INP} measured by LINA as a function of temperature. The solid triangles and hollow circles show N_{INP} from the samples washed with 1 mL and 10 mL ultrapure water, respectively.

When data evaluation was started for this set of samples, tests were made (as these were the first atmospheric samples on polycarbonate for which we did an analysis). A set of measurements was done in which filters were washed off with 1 mL of ultrapure water, first. This was done by shaking the centrifuge tube in which filter and water were situated. From this, 0.1 mL was used for a first analysis, directly taken from the tube in which the shaking had been done. Then 9.1 mL were added to the tube and the sample was shaken again, followed by a second analysis. The results from both dilutions can be seen in Fig. S3, and data in the overlapping temperature region are well in agreement. Based on this, we decided to use only 1 mL for washing, as this allows us to retrieve INP concentrations already at higher temperatures.

We added the above text and the figure to the SI, and the text below to the main text:

“It should be mentioned that results from separate tests using 1 mL and 10 mL of washing water were well in agreement (see Fig. S3).”

(5) Typically, the particle surface areas concentration is calculated assuming a spherical shape. While, dust particle may be more irregular, as a result, lead to increase in the surface areas.

We calculated the particle surface area concentrations by assuming a spherical shape. Actually, we considered the particle shape when we corrected the MPSS measured number concentration for multiple charged particles in the APS size range. The electrical mobility diameter (measured by MPSS) and aerodynamic diameter (measured by APS) were converted to the volume equivalent particle diameter.

The dry dynamic shape factor χ of mineral dust is $\chi = 1.25$ (Kaaden et al., 2009) for 1 μm particles, whereas the dynamic shape factor for sodium chloride is $\chi = 1.08$ (Kelly and McMurry, 1992; Gysel et al., 2002). We used the average shape factor of 1.17 in this study. We added this information in the Section 2.2.

References:

Gysel, M., Weingartner, E., and Baltensperger, U.: Hygroscopicity of Aerosol Particles at Low Temperatures. 2. Theoretical and Experimental Hygroscopic Properties of Laboratory Generated Aerosols, *Environmental Science & Technology*, 36, 63-68, 10.1021/es010055g, 2002.

Kaaden, N., Massling, A., Schladitz, A., Müller, T., Kandler, K., Schütz, L., Weinzierl, B., Petzold, A., Tesche, M., Leinert, S., Deutscher, C., Ebert, M., Weinbruch, S., and Wiedensohler, A.: State of mixing, shape factor, number size distribution, and hygroscopic growth of the Saharan anthropogenic and mineral dust aerosol at Tinfou, Morocco, *Tellus B*, 61, 51-63, doi:10.1111/j.1600-0889.2008.00388.x, 2009.

Kelly, W. P., and McMurry, P. H.: Measurement of Particle Density by Inertial Classification of Differential Mobility Analyzer–Generated Monodisperse Aerosols, *Aerosol Science and Technology*, 17, 199-212, 10.1080/02786829208959571, 1992.

Prather, K. A., Bertram, T. H., Grassian, V. H., Deane, G. B., Stokes, M. D., DeMott, P. J., Aluwihare, L. I., Palenik, B. P., Azam, F., Seinfeld, J. H., Moffet, R. C., Molina, M. J., Cappa, C. D., Geiger, F. M., Roberts, G. C., Russell, L. M., Ault, A. P., Baltrusaitis, J., Collins, D. B., Corrigan, C. E., Cuadra-Rodriguez, L. A., Ebben, C. J., Forestieri, S. D., Guasco, T. L., Hersey, S. P., Kim, M. J., Lambert, W. F., Modini, R. L., Mui, W., Pedler, B. E., Ruppel, M. J., Ryder, O. S., Schoepp, N. G., Sullivan, R. C., and Zhao, D.: Bringing the ocean into the laboratory to probe the chemical complexity of sea spray aerosol, *Proceedings of the National Academy of Sciences*, 110, 7550-7555, 10.1073/pnas.1300262110, 2013.

Characterization of aerosol properties at Cyprus, focusing on cloud condensation nuclei and ice nucleating particles

Xianda Gong¹, Heike Wex¹, Thomas Müller¹, Alfred Wiedensohler¹, Kristina Höhler², Konrad Kandler³, Nan Ma¹, Barbara Dietel², Thea Schiebel², Ottmar Möhler², and Frank Stratmann¹

¹Experimental Aerosol and Cloud Microphysics Department, Leibniz Institute for Tropospheric Research, Leipzig, Germany

²Institute for Meteorology and Climate Research – Atmospheric Aerosol Research, Karlsruhe Institute of Technology, Karlsruhe, Germany

³Institute for Applied Geosciences, Technical University Darmstadt, Darmstadt, Germany

Correspondence: Xianda Gong (gong@tropos.de)

Abstract. As part of the A-LIFE (Absorbing aerosol layers in a changing climate: aging, **lifetime** and dynamics) campaign, ground-based measurements were carried out in Paphos, Cyprus, for characterizing the abundance, properties and sources of aerosol particles in general, and cloud condensation nuclei (CCN) and ice nucleating particles (INP), in particular. New particle formation (NPF) events with subsequent growth of the particles into the CCN size range were observed. Aitken mode particles featured κ values of 0.21 to 0.29, indicating the presence of organic materials. Accumulation mode particles featured a higher hygroscopicity parameter, with a median κ value of 0.57, suggesting the presence of sulfate, [and maybe sea salt particles mixed with organic carbon](#). A clear downward trend of κ with increasing supersaturation and decreasing d_{crit} was found. Super-micron particles originated mainly from sea spray aerosol (SSA) and partly from mineral dust.

INP concentrations (N_{INP}) were measured in the temperature range from -6.5 to -26.5 °C, using two freezing array type instruments. N_{INP} at a particular temperature span around 1 order of magnitude below -20 °C, and about 2 orders of magnitude at warmer temperatures ($T > -18$ °C). Few samples showed elevated concentrations at temperatures > -15 °C, which suggests a significant contribution of biological particles to the INP population, which possibly could originate from Cyprus. Both measured temperature spectra and N_{INP} probability density functions (PDFs) indicate that the observed INP (ice active in the temperature range between -15 and -20 °C) mainly originate from long-range transport. There was no correlation between N_{INP} and particle number concentration in the size range > 500 nm ($N_{>500\text{nm}}$). Parameterizations based on $N_{>500\text{nm}}$ were found to overestimate N_{INP} by about 1 to 2 orders of magnitude. There was also no correlation between N_{INP} and particle surface area concentration. The ice active surface site density (n_s) for the [anthropogenically](#) polluted aerosol encountered [in the eastern Mediterranean](#) in this study is about 1 to 3 orders of magnitude lower than the n_s found for dust aerosol particles in previous studies. This suggests that observed N_{INP} -PDFs as those derived here could be a better choice for modelling N_{INP} if the aerosol particle composition is unknown or uncertain.

1 Introduction

The Mediterranean region is one of the hot-spot areas of the globe being severely threatened by climate change (Giorgi and Lionello, 2008) with the direct and indirect effects of aerosol particles therein still remaining unclear. The Mediterranean region is rich in a variety of aerosols (fuel combustion, biomass burning, secondary biogenic, sea spray and mineral dust aerosols) from both continental and marine sources (Chester et al., 1993; Piazzola and Despiiau, 1997; Lelieveld et al., 2002). The sensitivity of this region, together with the large number of influencing factors, makes it a difficult task to understand all ongoing processes and their interconnections. This, however, is needed in order to better be able to protect the region or mitigate upcoming changes. Our goal in this frame is to better understand the varied aerosol that occurs in this region. In the next paragraphs, we will start by giving an overview on what is known about the Mediterranean aerosol.

Regarding anthropogenic sources of aerosol particles, Sciare et al. (2003) found that the major contributions in the eastern Mediterranean were from Turkey and central Europe. Central Europe was identified as the major source of black carbon over the eastern Mediterranean. In the Po Valley, which is in the western Mediterranean, but which we still consider here, due to the comparable climatic conditions, Sandrini et al. (2016) found that particles in the size range from 50 to 140 nm were mainly from traffic emissions. The photochemical oxidation of inorganic and organic gaseous precursors was identified as the important mechanism of secondary aerosol formation, which caused the accumulation mode (420-1200 nm) aerosol particles to be constituted mainly of ammonium nitrate, organic carbon and sulfate. Bougiatioti et al. (2013) found that organic carbon and element carbon concentrations made up 2/3 for the PM_{10} , with organic carbon being mostly secondary and therefore highly oxidized and water-soluble to a great extent.

Biomass burning is another important anthropogenic aerosol source over the Mediterranean, and it was mainly observed in the driest months of the year, July and August (Pace et al., 2005). Long-term observations of absorbing aerosol particles have clearly shown that they originated from agriculture waste burning (post-harvest wheat residual) in the countries surrounding the Black Sea (Sciare et al., 2008). Bougiatioti et al. (2016) examined in the eastern Mediterranean potential cloud condensation nuclei (CCN) and hygroscopicity properties and found that an increased organic content in the aerosol particles decreased the values of the hygroscopicity parameter κ for all particle sizes. Furthermore, they observed CCN concentrations (N_{CCN}) to be enhanced by a factor from 1.6 to 2.5 during biomass burning plumes compared to background conditions.

Natural aerosol particles such as mineral dust and sea salt are however the major contributing factors to particle mass in the Mediterranean (Rodríguez et al., 2002). Mineral dust particles from the Sahara were regularly observed at different locations across the Mediterranean. A record-breaking dust storm originating from desert regions in northern Syria and Iraq occurred over the eastern Mediterranean in September 2015. The PM_{10} concentrations were close to $8000 \mu\text{g m}^{-3}$ and the observed meteorological optical range (MOR) was reduced to 300-750 m (Mamouri et al., 2016). By using the Weather Research and Forecasting model in a Sahara outflow region, Smoydzin et al. (2012) found that the presence of mineral dust can enhance the CCN concentration and formation of ice crystals.

Sea spray aerosols (SSA) are another main natural aerosol type observed in the Mediterranean. Claeys et al. (2017) found that primary marine aerosols mass concentration reached up to $6.5 \mu\text{g m}^{-3}$, representing more than 40% of the total PM_{10}

mass in the western Mediterranean. Salameh et al. (2007) reported AOD around 0.15-0.20 (at 865 nm) within a SSA plume during strong wind events with wind speeds up to 18 m s^{-1} .

Clouds in the atmosphere form when water vapor condenses on aerosol particles that serve as CCN. Clouds in the atmosphere glaciate at temperatures above $-38 \text{ }^\circ\text{C}$ if droplet freezing is initiated by aerosol particles called ice nucleating particles (INP), or at temperatures below $-38 \text{ }^\circ\text{C}$ also through homogeneous freezing (without INP) (Pruppacher and Klett, 2010). Therefore, a change in atmospheric aerosol particles, especially CCN and INP, is bound to impact cloud properties, precipitation, and cloud radiative effects (Fan et al., 2016). Even though clouds are omnipresent in the Earth's atmosphere, and constitute an important role in regulating the radiative budget of the planet, the response of clouds to climate change remains highly uncertain, in particular with regard to aerosol-cloud interactions and feedback mechanisms.

In-situ observations of CCN on Crete were reported by Kalivitis et al. (2015), highlighting new particle formation (NPF) as a source of CCN. At Finokalia, Crete, Bougiatioti et al. (2011) found that air masses originating from central eastern Europe tend to be associated with higher N_{CCN} , and slightly lower hygroscopicity ($\kappa = 0.18$), than other air masses.

Seldomly, measurements of INP have been carried out in the Mediterranean. Excluding situations characterized by high altitude transport of dust plumes, Rinaldi et al. (2017) found that at a measurement station in the Po valley basin, INP number concentration (N_{INP}) was roughly double that of what they observed at the top of an Apeninne mountain. Schrod et al. (2017) found that mineral dust, or a constituent related to dust, was a major contributor to INP on Cyprus. However, due to Sahara dust plumes travelling at several kilometer altitude, N_{INP} at higher altitudes was 10 times higher than at ground level (height $\sim 700 \text{ m}$).

As outlined above, the aerosol in the Mediterranean region represents a complex mixture of primary and secondary aerosol particles from both natural and anthropogenic sources, with these sources being non-uniformly distributed across the greater Mediterranean region. Most regional and global climate simulations have investigated impacts of global warming on the Mediterranean climate without detailed considerations of possible radiative influences and climatic feedback from different types of Mediterranean aerosols (Mallet et al., 2016). Besides, to the best of our knowledge, seldom studies paid attention to the CCN and INP simultaneously, which both have an effect on climate. The aim of this study is to provide a quantitative understanding concerning the abundance, properties and source of CCN and INP in the eastern Mediterranean.

2 Experimental

2.1 Sampling site and campaign setup

Measurements were performed from 2 to 30 of April 2017, on the island of Cyprus, as part of the A-LIFE (Absorbing aerosol layers in a changing climate: aging, lifetime and dynamics) project, which had the purpose to investigate properties of absorbing aerosols during their atmospheric lifetime, and their distribution throughout the tropospheric column. Cyprus, an island located in the eastern Mediterranean region, is approximately 100 km south of the Turkish mainland, 100 km west of the Syrian, and 300 km north of the Egyptian coast. This geographical location makes Cyprus an unique spot in the eastern Mediterranean Sea, where different and complex aerosol mixtures occur. On one hand, the Sahara Desert in the southwest, and the desert of the

Arabian Peninsula in the southeast, favor a regular occurrence of mineral-dust-rich air masses. On the other hand, Cyprus is influenced by anthropogenic emissions from southeastern Europe, as well as the Middle East, and of course, local pollution. This exposure to diverse air masses makes Cyprus an ideal place for investigating the abundance and properties of climate relevant aerosol particles in general, and CCN and INP, in particular. As shown in Fig. 1, the measurement site was located in Paphos, Cyprus ($34^{\circ}43' \text{ N}$, $32^{\circ}29' \text{ E}$). The measurements took place at the side of a fairly calm coastal highway, facing the Mediterranean Sea. On the northeastern side of the measurement site, 1 km away, is the Paphos International Airport.

The instrumental setup used for these investigations is shown in Fig. S1. An aerosol PM_{10} inlet, employed to remove particles larger than $10 \mu\text{m}$ in aerodynamic diameter, was installed on top of a measurement container. Downstream of the PM_{10} inlet, a vertical tube (inner diameter of 1.65 cm), and a diffusion dryer (130 cm), were arranged before the aerosol was lead into the measurement container. The diffusion dryer was installed vertically to avoid gravitational losses of larger particles. Downstream of the dryer and inside the container, the sampled aerosol was split to supply the aerosol to various instruments, measuring particle number size distribution (PNSD), number concentration, as well as hygroscopic and optical (not discussed in this paper) properties.

For the measurement of N_{INP} , two different filter-based sampling systems were utilized. For one set of samples, total suspended particles were collected with a flow rate of $\sim 10 \text{ L min}^{-1}$. For a second set of samples, a separate PM_{10} inlet was used as inlet, and an air flow of $\sim 15 \text{ L min}^{-1}$ was sampled onto the filters. No dryer was arranged in the filter sampling system.

The CCN hygroscopicity was derived from N_{CCN} combined with the PNSD. INP freezing behavior and N_{INP} were determined by filter sampling and off-line analysis using freezing array type instruments. In the following, we will briefly introduce the different measurement techniques applied in this study, including calibrations, measurements and data processing.

And lastly, to get additional information on the presence of super-micron particles, depositing aerosol particle were collected at ambient conditions outside of the measurement container.

2.2 Particle number size distribution

PNSDs were measured in the size range from 10 nm to $10 \mu\text{m}$ using a TROPOS-type MPSS (Mobility Particle Size Spectrometer) (Wiedensohler et al., 2012), and an APS (Aerodynamic Particle Sizer, model 3321, TSI Inc., St. Paul, MN, USA). For the multiple charge correction (Wiedensohler, 1988) of the MPSS data, the APS data was accounted for in the inversion of the measured PNSD (Pfeifer et al., 2016). The combined PNSD is then given on the base of the volume equivalent particle diameter, [where a dynamic shape factor of 1.17 was used for particles \$>1 \mu\text{m}\$, based on Schladitz et al. \(2011\)](#). More details about the combined MPSS and APS PNSD can be found in Schladitz et al. (2011). Size-dependent particle losses due to diffusion, deposition and sedimentation within the inlet were corrected for utilizing the empirical particle loss calculator (von der Weiden et al., 2009), as shown in Fig. S2. Total particle number concentrations (N_{total}) were calculated from the measured PNSDs and the size-dependent particle losses. The calibration of the MPSS before, during and after the intensive field study was done following the recommendations given in Wiedensohler et al. (2018).

2.3 Cloud condensation nuclei

N_{CCN} was measured using a Cloud Condensation Nuclei counter (CCNc, Droplet Measurement Technologies (DMT), Boulder, USA). The CCNc is a cylindrical continuous-flow thermal-gradient diffusion chamber, establishing a constant streamwise temperature gradient to adjust a quasi constant centerline supersaturation. The sampled aerosol particles are guided within a sheath flow through this chamber and can become activated into droplets, depending on the supersaturation and the particles' ability to act as CCN. The details of the CCNc are described in Roberts and Nenes (2005).

During our study, the supersaturation was varied from $\sim 0.08\%$ to $\sim 0.77\%$ at a constant total flow rate of 0.5 L min^{-1} . To assure stable column temperatures, the first 5 minutes and the last 30 seconds of the 12-minute long measurement at each supersaturation, were excluded from the data analysis. The remaining data points were averaged. A supersaturation calibration (following the protocol by Gysel and Stratmann, 2013) was done at the cloud laboratory of the Leibniz Institute for Tropospheric Research (TROPOS) prior to and after the measurement campaign, to determine the relationship between the temperature gradient along the column and the effective supersaturation. Calibrated supersaturation set-points were 0.08% , 0.19% , 0.31% , 0.54% and 0.77% . These calibrated values were used for further calculations.

According to Köhler theory (Köhler, 1936), whether or not a particle can act as a CCN depends on its dry size, chemical composition and the maximum supersaturation it encounters. Petters and Kreidenweis (2007) presented a method to describe the water activity term in the Köhler equation by utilizing the hygroscopicity parameter κ . The κ values reported in this study were calculated as follows, assuming the surface tension of the examined solution droplets $\sigma_{s/\alpha}$ to be that of pure water:

$$\kappa = \frac{4A^3}{27d_{\text{crit}}^3 \ln^2 S} \quad (1)$$

with

$$A = \frac{4\sigma_{s/\alpha} M_w}{RT \rho_w} \quad (2)$$

where d_{crit} is the critical diameter above which all particles activate into cloud droplets for a given supersaturation. M_w and ρ_w are the molar mass and density of water, while R and T are the ideal gas constant and the absolute temperature, respectively. To derive d_{crit} , simultaneously measured N_{CCN} and PNSD are used. Thereto, it is assumed that all particles in the neighborhood of a given particle diameter have a similar κ , meaning that the aerosol particles are internally mixed. At a given supersaturation, a particle can be activated to a droplet once its dry size is equal to or larger than d_{crit} . Therefore, d_{crit} is the diameter at which N_{CCN} is equal to the value of cumulative particle number concentration, determined via integration from the upper towards the lower end of the PNSD. Hygroscopicity κ can be calculated with d_{crit} and the corresponding supersaturation, based on Eq.(1). Note that the particle losses inside the CCNc (discussed in Rose et al., 2008) are also considered before κ is calculated. More details about the correction method and data processing can be found in previous literature (Kristensen et al., 2016; Herenz et al., 2018).

2.4 Ice nucleating particles

We used two setups to sample airborne particles for further analysis. With the first setup, particles were collected on 200 nm pore size polycarbonate filters (Nuclepore Track-Etch Membrane, Whatman) with ~ 20 hours time resolution and a flow rate of $\sim 10 \text{ L min}^{-1}$. As shown in Fig. S1, we used a computer-based system to switch between filters based on wind directions.

5 Two sectors were distinguished, i.e., the ocean sector comprising wind directions from 120 to 240 degree, and the land sector, covering the remaining directions. During the campaign, we collected 4 filters with air from the ocean sector, 17 from the land sector, and 2 blind filter samples in total. All of the filters were stored at $-18 \text{ }^\circ\text{C}$ on Cyprus and cooled below $0 \text{ }^\circ\text{C}$ during transportation. The start and end times of sampling, flow rates, duration and total sample volumes, are shown in Tab. S1. These filters were transported to TROPOS for analysis. At TROPOS, all filters were stored at $-18 \text{ }^\circ\text{C}$ until they were prepared for
10 the measurement. Each filter was immersed into 1 mL ultrapure water (Type 1, Millipore) and shaken for 25 minutes to wash off the particles. The resulting water samples were characterized with the Leipzig Ice Nucleation Array (LINA). [It should be mentioned that results from separate tests using 1 mL and 10 mL of washing water were well in agreement \(see Fig. S3\).](#) LINA is based on the freezing array technique and follows the design described in Budke and Koop (2015). Briefly, 90 droplets with a volume of $1 \text{ } \mu\text{L}$ are pipetted from the water samples onto a thin hydrophobic glass slide, with the droplets being separated
15 from each other inside individual compartments. The compartments are sealed at the top with another glass slide, to minimize evaporation of the droplets and to prevent ice seeding from neighbouring droplets. The bottom glass slide is cooled with a Peltier element with a cooling rate of 1 K min^{-1} . A camera takes pictures every 6 seconds, corresponding to a temperature resolution of 0.1 K. The number of frozen versus unfrozen droplets was derived automatically. More details concerning the experimental parameters and temperature calibration of LINA can be found in Chen et al. (2018).

20 For the second filter-based sampling system, 200 nm pore size polycarbonate filters (Nuclepore Track-Etch Membrane, Whatman) were pre-treated with 10% H_2O_2 solution, washed with particle free ultrapure water and dried prior to insertion into the filter holder. Daily filter samples with an air flow rate of $\sim 15 \text{ L min}^{-1}$ for ~ 8 hours were taken. In total 25 day time and 2 blind filter samples were collected. All of the filters were stored at $-18 \text{ }^\circ\text{C}$ in Cyprus and cooled below $0 \text{ }^\circ\text{C}$ during transportation. The start and end times of sampling, flow rates and duration are shown in Tab. S2. These filters were
25 transported to the Karlsruhe Institute of Technology (KIT) for analysis with the Ice Nucleation SpEctrometer of the Karlsruhe Institute of Technology (INSEKT). INSEKT is a droplet freezing device, the design of which was inspired by the Colorado State University Ice Spectrometer (Hiranuma et al., 2015). For the analysis, each filter was washed with 8 mL ultrapure water, which had been passed through a $0.1 \text{ } \mu\text{m}$ filter (Nuclepore Track-Etch Membrane, Whatman). $50 \text{ } \mu\text{L}$ samples of the resulting suspension/solution were pipetted into 24 to 36 sections of two 96-well PCR trays. Other wells of the trays were filled with
30 15- and 225-fold (and for some samples also 3375-fold) dilutions of the filter washing water. Also, in each experiment at least 24 wells were filled with pure and particle free water, to be able to account for impurities resulting from the washing water and PCR tray surfaces. The PCR trays were then placed into aluminum cooling blocks. Those blocks have been customized by drilling channels into the bulk aluminum, through which the cooling agent thermostated by means of an external chiller (LAUDA PROLINE RP 855) is directed. The temperature of the cooling agent is then lowered by 0.33 K min^{-1} and monitored

by eight calibrated temperature sensors inserted into the aluminum blocks. The number of frozen versus unfrozen wells was derived visually in 0.5 K steps.

For both measurement systems, the cumulative concentration of INP per air volume as a function of temperature can be calculated based on Vali (1971):

$$5 \quad N_{\text{INP}}(\theta) = \frac{\ln N_t - \ln N(\theta)}{V} \quad (3)$$

where N_t is the number of droplets/wells and $N(\theta)$ is the number of unfrozen droplets/wells at temperature θ . V means the volume (at 0 °C and 1013 hPa) of air distributed into each droplet/well.

The background freezing signal of ultrapure water and water samples resulting from washing of blind filters is determined for the two sampling systems as well. Measured N_{INP} is corrected by subtracting the background concentrations determined for the blind filters and the ultrapure water.

Due to the usually small number (order of tens and lower per examined droplet/well) of INP present in the washing water, and the limited number of droplets/wells considered in our measurements, static errors need to be considered in the data evaluation. Therefore, confidence intervals for the frozen fraction (f_{ice}) were determined using the method suggested by Agresti and Coull (1998). More details about the background subtraction and measurement uncertainties can be found in the supplement.

2.5 Chemical composition

Aerosol particle dry deposition was collection with a flat plate type sampler (Ott and Peters, 2008) on carbon adhesive mounted to standard electron microscopy stubs. Sample substrates were exposed for approximately 24 hours, collecting particles approximately between 1 and 100 μm particle diameter at ambient conditions. Samples were subject to automated electron microscopy single particle analysis, yielding particles size (projected area diameter) and average elemental composition for each particle. Particles were classified according to the composition in group based on a static rules set. For more information on sampling, analysis and data processing refer to Kandler et al. (2018). In this study, we calculated the particle mass deposition rate in the size range from 1 to 8 μm .

3 Results and discussion

3.1 Overview of the meteorology and air quality

Time series of meteorological and air quality parameters as measured from 2 to 30 April are shown in Fig. 2. The relative humidity (RH), temperature, wind speed, wind direction, NO_x and N_{total} (retrieved from MPSS and APS measured PNSD) were determined at the measurement site. Note that all times presented here are in UTC (corresponding to local time−3).

RH exhibited large variability throughout the campaign, varying from 22.6% to 89.2%, with a mean of 68.4%. Temperature varied from 10.0 to 26.5 °C, with a mean of 17.5 °C. The local wind speeds ranged from 0.1 to 10.1 m s^{-1} , with a mean of 2.8 m s^{-1} . Fig. S4 shows the wind rose plot based on 10 minutes mean of wind speed and wind direction. It is clear that winds

are mainly from northwest, west and northeast. The winds from northwest and west featured higher wind speeds while winds from northeast featured lower wind speeds.

NO_x varied from 0.0027 to 25 ppbv, with a median of 0.67 ppbv. N_{total} varied from 658 to 61308 cm⁻³, with a median of 3954 cm⁻³. The NO_x and N_{total} were relatively low during most of the campaign. However, sharp increases in NO_x and N_{total} were observed frequently and extremely high concentrations (NO_x>1.6 ppbv, N_{total} >8000 cm⁻³) only occurred for few hours. A good correlation ($R^2=0.62$) was found between such extremely high concentrations of NO_x and N_{total} (Fig. S5), indicating a nearby pollution source. The extremely high concentrations of NO_x and N_{total} together with the wind direction typically connected to their occurrences, suggests the nearby airport as the source for these pollutions, as will be discussed in more detail in Sec. 3.2.

To get indications concerning possible particle sources, we studied the air mass origin and transport by means of backward trajectory analysis. The calculations were performed with the HYSPLIT (HYbrid Single-Particle Lagrangian Integrated Trajectory) Model (Stein et al., 2015; Rolph, 2003). Fig. 3(a) shows the 6-day backward trajectories with 1 hour time resolution ending at 500 m above the measurement site. Fig. 3(b) shows the relative frequency of backward trajectories. The majority (more than 30%) of the trajectories featured paths over central and southern Europe. Around 10% of the trajectories were traced back to the northern Atlantic Ocean and travelled through the western Mediterranean Sea to the site. ~~Less than~~ Approximately 5% of the trajectories touched the Sahara Desert and the desert regions in Syria and Iraq, indicating that mineral dust particles could have been transported to Cyprus during the campaign.

3.2 Particle number size distribution and sources

Particles of different sizes have different formation pathways, sources and behaviors. Fig. 4(a) presents measured super-micron PNSDs as contour plot, together with wind speed information. The super-micron particle concentration varied from 0 to 11 cm⁻³, with a mean of 2 cm⁻³. Fig. 5 shows the time series of particle mass deposition rate for different compounds at Cyprus, for particles between 1 and 8 μm dry diameter. Overall, sea salt accounted for more than 60% of the super-micron particle mass throughout the whole campaign.

Higher super-micron particle number concentrations were mainly observed from 6 to 7, 12 to 14 and 21 to 22 April, with the corresponding air masses originating from ~~the Sahara Desert or the desert regions in Syria and Iraq~~ dust areas, as shown in Fig. 4(a) by brown dots. As shown in Fig. 5, high dust deposition rates of ~1 mg m⁻² d⁻¹ were also observed during these periods. Therefore, mineral dust was another important constituent of super-micron particle mass during these periods. However, the observed super-micron particle concentrations were relatively low compared to those reported in previous studies (Mamouri et al., 2016; Schrod et al., 2017) for Cyprus during dust plumes. Low concentrations of super-micron particles were observed on 15 April although the respective backward trajectories featured paths over the Sahara dust region. In summary, the super-micron particles observed during the campaign, were a mixture of ~60% sea salt, ~32% mineral dust and ~8% others (mainly sodium sulfate), with the relative contributions being dependent on the actual meteorological conditions and source regions.

Fig. 4(b) presents contour plots of PNSDs observed for submicron particles. Extremely high concentrations of ultrafine particles (pronounced mode with a maximum at about 15 nm, median dN/dlogDp value larger than 10⁴ cm⁻³), were frequently

observed throughout the whole campaign. When ultrafine particles featured high concentrations, extremely high concentrations of NO_x were also observed. An exemplary case is shown in Fig. S6. Such kind of behavior usually appeared from 03:00 to 06:00 UTC and 17:00 to 22:00 UTC. A wind rose plot shown in the supplement indicates that during these periods, winds were from the northeast (Fig. S7), i.e., the direction where the Paphos International Airport is located. This is highly suggestive for the airport being the origin of the observed ultrafine particles and NO_x . Fig. 6 shows the comparison of medians of PNSDs observed during airport affected (PNSDa) and non-affected time periods. The error bars indicate the range between the 25% and 75% percentiles. It is clearly seen that airport affected PNSDa exhibit a very pronounced ultrafine particle mode with a maximum at diameters of about 15 nm. Such a mode is indicative for a nearby particles source, such as the combustion of fuel at the airport. Previous studies found that airport emitted particles featured similar PNSDs (Hudda and Fruin, 2016; Jasinski and Przylebska, 2018). Therefore, in the following, time periods affected by pollution from the airport were excluded from further analysis. The pollution-free median PNSD (black line in Fig. 6) features clear Atiken, accumulation and coarse modes, with the Hoppel minimum (Hoppel et al., 1986) being located at approximately 80 nm.

Based on the criteria reported by Dal Maso et al. (2005), we identified several NPF and growth events during the campaign. The criteria are, first of all, the appearance of a distinct new mode (in the nucleation mode size range) in the size distribution. Secondly, the mode must prevail over a time span of hours. Lastly, the new mode must show signs of growth. For example, newly formed particles occurred at 07:00 UTC 5 April, 08:00 UTC 12 April and 07:00 UTC 22 April, with subsequent particle growth in the next few hours up to days. All observed NPF started during daytime, suggesting that photochemistry products were likely to contribute to the formation of the new particles. The NPF events, which occurred at 07:00 UTC 5 April and 07:00 UTC 22 April, featured continuous particle growth up to several tens of nanometers. The NPF event occurring at 08:00 UTC 12 April exhibits a more complicated time evolution. Around 15:30 UCT 12 April, the PNSDs were affected by pollution from the airport due to the wind direction shifting to the northeast. Around 00:00 UTC 13 April, the wind speed increased and wind directions were from the clean ocean, i.e., clean air mass weakened the particle growth process. Later on, i.e., at 01:00 UTC 14 April, precipitation occurred. This influenced the evolution of the NPF and growth event, but the growing trend in particle size is still to be seen. The observed particle growth events show that newly formed particles can grow up to sizes where they can act as CCN. However, there are several more NPF and growth events which we do not discuss here, because particles did not grow up to sizes making them potential CCN.

3.3 CCN and particle hygroscopicity

Fig. 7 shows time series of N_{total} and N_{CCN} (corrected with particle losses) in the upper panel, d_{crit} in the middle panel, and κ in the lower panel. N_{CCN} exhibit large variability throughout the campaign, including a few remarkably elevated concentrations (maximum value $\sim 3730 \text{ cm}^{-3}$ at supersaturation of 0.31%), and one exceptionally low concentration (minimum value $\sim 170 \text{ cm}^{-3}$ at supersaturation of 0.31%). The median values of N_{CCN} at different supersaturation are given in Tab. 1, and vary from 295 cm^{-3} for a supersaturation of 0.08% to 2004 cm^{-3} for a supersaturation of 0.77%.

The low N_{CCN} around 03:00 UTC 14 April was associated with precipitation as can be seen in Fig. 2. Most of the time, high N_{CCN} are associated with NPF and growth events. For example, around 09:00 UTC 5 April, N_{CCN} at higher supersaturations

(0.54% and 0.77%) started to increase. The N_{CCN} at lower supersaturations (0.19% and 0.31%) followed at 04:00 UTC 6 April. However, N_{CCN} at the lowest supersaturation (corresponding the d_{crit} around 163 nm) did not increase in connection with the NPF and growth event. Newly formed particles did not grow into that size range, i.e., N_{CCN} at the lowest supersaturation was not affected. The same behavior was observed from 08:00 UTC 22 to 00:00 UTC 23 April. From 13 to 14 April, the NPF and growth were affected by changing wind directions and precipitation. N_{CCN} also shows respective influences, but the overall trend still can be seen.

The probability density functions (PDFs) of N_{CCN} at different supersaturations are shown in the upper panel of Fig. 8. As discussed, N_{CCN} at lowest supersaturation was not affected by the NPF and growth events, so a unimodal PDF was observed. However, the PDFs of N_{CCN} at other supersaturations are bimodal, with the larger mode (higher concentrations) representing the NPF and growth events. Kalivitis et al. (2015) also found that CCN production resulted from NPF in the eastern Mediterranean during the summertime. The small mode (lower concentrations) of the PDFs are representative for the time periods without NPF and growth events.

The d_{crit} at different supersaturations were almost constant throughout the campaign, even during the NPF events. The PDFs of d_{crit} are unimodal, as shown in Fig. 8. The d_{crit} at different supersaturations, and the standard deviations of their PDFs, are included in Tab. 1. For the supersaturations of 0.77% and 0.54%, the d_{crit} were below 60 nm, i.e., inside the Aitken mode. However, for the lowest supersaturation of 0.08%, d_{crit} is located in the accumulation mode. Consequently, hygroscopicities derived at these supersaturations, can be assumed to be representative for the Aitken (at supersaturations of 0.77% and 0.54%) and the accumulation mode (at a supersaturation of 0.08%), respectively.

The particle hygroscopicity, expressed as κ , can be seen as a measure for average particle chemical composition. Time series of calculated κ values are depicted in the lower panel of Fig. 7. The κ values at different supersaturations show little variability over time, with 1 standard deviation from 0.09 to 0.13, i.e., there is no clear trend in κ over time during the campaign. At the supersaturations of 0.54% and 0.77%, corresponding to d_{crit} of 40 ± 8 and 55 ± 7 nm (median ± 1 standard deviation), the medians of κ are 0.21 ± 0.10 and 0.29 ± 0.10 , respectively. These low κ values in Aitken mode suggest the presence of organic material, which has also been observed in previous studies (Kalivitis et al., 2015; Kristensen et al., 2016). At the lowest supersaturation of 0.08%, corresponding to the d_{crit} of 163 ± 10 nm, the median of κ is 0.57 ± 0.09 . Particles in this size range are members of the accumulation mode, and have undergone cloud processing and aging. This results in higher amounts of sulfates being present, and consequently higher hygroscopicities. [A few sea salt particles mixed with organic carbon might also be present in the accumulation mode, according to a previous study \(Prather et al., 2013\). But the absolute number concentration of sea salt mixed with organic carbon particle in the size range <200 nm is likely limited.](#) A clear downward trend of κ is observed with increasing supersaturations and decreasing d_{crit} (Fig. 9). The κ values in the Aitken and accumulation modes are clearly different, with the error bars considered, indicating significant differences in particle chemical composition for the two modes.

The PDFs of κ change from unimodal to bimodal to unimodal with decreasing supersaturation. As mentioned above, the κ values at supersaturations of 0.77% and 0.54% are representative for the Aitken mode particles, while the κ values at supersaturation of 0.08% are a measure for the accumulation mode particles. Therefore, the κ values at these supersaturations feature unimodal distributions. κ at supersaturations of 0.31% and 0.19%, corresponding to d_{crit} of 92 ± 8 and 70 ± 8 nm,

respectively, exhibit bimodal distributions. These κ values are influenced by both Aitken and accumulation mode particles, indicating an external mixture of particles in that size range.

The determined particle hygroscopicities confirm those given in previous studies. For example, Kalivitis et al. (2015) reported that κ values in the Aitken mode were 0.20-0.40 lower than those in the accumulation mode during the NPF events in the eastern Mediterranean, and highlighted NPF as a source of CCN. Pringle et al. (2010) used an atmospheric chemistry model to derive global distributions of effective particle hygroscopicity κ . The annual mean value at the surface of the eastern Mediterranean was roughly 0.45, with an annual cycle ranging from 0.35 in December to 0.50 in February. For April, the period of this study, the value of 0.40 was reported, which is consistent with what we obtained ($\kappa=0.39$) for this campaign.

3.4 Ice nucleating particles

3.4.1 Temperature spectra of cumulative N_{INP}

Ice fractions (f_{ice}) as determined with both, LINA and INSEKT, are shown in Fig. S8. The corresponding N_{INP} from both instruments are shown in Fig. 10 as a function of temperature. Samples collected from the land and ocean sectors (measured by LINA) are represented by black circles and red rectangles, respectively. These filter samples were all active at -16 °C and the highest freezing temperature was found to be -6.5 °C. Samples collected during day time (measured by INSEKT) are represented by blue rectangles. With two or three dilution steps, by measuring suspensions with different aerosol concentrations, the INSEKT measurements cover a larger temperature range, from -7.5 °C to -26.5 °C. The measurement uncertainty for both instruments is shown in Fig. S9. As mentioned in the experimental section, filters examined with LINA were switched according to wind direction. From Fig. 10, it is obvious that there is no very pronounced difference in N_{INP} between the land and ocean sectors. It is, however, noticeable that the freezing curves from the ocean sector are rather at the lower end of the measured curves. To test if there was a pronounced contribution to INP from the land sector, we examined the INSEKT data in more depth. Fig. S10 shows the N_{INP} from the INSEKT measurements in dependence on the fraction of time sampled from the ocean sector. No clear trend was found. ~~These observations are indicative for the absence of nearby sources, and hence we conclude that the sampled INP, at least those ice active at < -15 °C, originate from long range transport.~~ A source apportionment for INP examined in this study is therefore difficult to do. Considering that Cyprus is only a small island surrounded by ocean, its effect might be limited. Besides, for a location such as Cyprus, it is difficult to determine sources for different air masses only based on wind direction, alone.

The measured N_{INP} in this study are within the N_{INP} range presented by Welti et al. (2018), who characterized INP sampled at the Cape Verde Atmospheric Observatory (CVAO) over a time period of 4 years (shown in Fig. 10 as yellow shadow). This is surprising as those atmospheric aerosols at CVAO and Cyprus should be expected to be different. It might, however, point towards a similar background of INP worldwide. N_{INP} are lower than those proposed in Fletcher (1962), while the slope is similar to that of the Fletcher (1962) line. N_{INP} increased exponentially from -10 to -25 °C, indicating the presence a of broad variety of INP, featuring e.g., different size, composition, ice active surface sites.

N_{INP} at a particular temperature span about 1 order of magnitude below $-20\text{ }^{\circ}\text{C}$, and about 2 orders of magnitude at the warmer temperatures ($T > -18\text{ }^{\circ}\text{C}$). This is consistent with the previous study of O' Sullivan et al. (2018), who carried out field measurement in northwestern Europe. Few samples (LINA sample05, 20, 22 and INSEKT sample01, 06, 12, 13, 19, 28) showed elevated concentrations at temperatures above $-15\text{ }^{\circ}\text{C}$. Biological particles (e.g., bacteria, fungal spores, pollen, viruses, and plant fragments) usually contributed to the INP at this moderate supercooling temperatures (Kanji et al., 2017; O' Sullivan et al., 2018). These high signals observed in both instruments might have been caused by biogenic INP, originating from the Cyprus island, as such high signals did not occur for the four samples from the ocean sector. However, as there are only four samples from the ocean sector, and as no additional tests were possible with the limited amount of sampled material, it should suffice to express this hypothesis here.

Overall, N_{INP} of the land samples are not clearly different from those of the ocean samples, besides for some samples at $> -15\text{ }^{\circ}\text{C}$ for which a biogenic contribution is expected. Therefore, a contribution of INP from pollution from the airport is not expected. This would be in line with Chen et al. (2018), who found that aerosol in Beijing did not contain higher N_{INP} during strong pollution events, compared with clean phases.

3.4.2 Time series and PDFs

Fig. 11(a) shows the time series of N_{INP} during the campaign. Here we present N_{INP} derived from LINA (ocean sector in green and land sector in red) and INSEKT (in blue) measurements at -15 , -18 and $-20\text{ }^{\circ}\text{C}$. N_{INP} varied from 0.001 to 0.1, 0.004 to 0.2 and 0.03 to 0.4 std L^{-1} at -15 , -18 and $-20\text{ }^{\circ}\text{C}$, respectively. N_{INP} varies non-synchronously at different temperatures. Here we compared data from different temperatures with each other and determine a regression line between them. Taking, e.g., the results from the LINA measurements, the coefficient of determination (R^2) are 0.45, 0.26 and 0.0033 for -15 to $-18\text{ }^{\circ}\text{C}$, -18 to $-20\text{ }^{\circ}\text{C}$, -15 to $-20\text{ }^{\circ}\text{C}$, indicating the different natures and origins of the INP active at different temperatures.

Welti et al. (2018) found that log-normal distributions best approximate the measured variability in concentrations at each individual temperature. Here we used two methods to test our N_{INP} frequency distributions, which are both described in more detail in the supplemental information. Both methods indicate that the INP distributions at -15 , -18 and $-20\text{ }^{\circ}\text{C}$ are indeed log-normally distributed. This analysis was only done for these temperatures, as only in this temperature range, almost all samples contributed data. As log-normally distributed N_{INP} are indicative for the observed INP population having undergone a series of random dilutions while being transported (Welti et al., 2018), the performed tests yield prove for the INP (ice active at $-20 \leq T \leq -15\text{ }^{\circ}\text{C}$) sampled during our measurements originating from long-range transport rather than local sources, [as the proximity of sources would cause a more strongly skewed frequency distribution \(Ott, 1990; Welti et al., 2018\)](#).

Fig. 11(b) depicts the PDFs of N_{INP} at different temperatures. Thereby, a PDF is shown, if at the particular temperature, most of investigated samples featured a quantifiable ($0 < f_{\text{ice}} < 1$) freezing behavior. For example, there were three LINA-measured samples which did not freeze at $-15\text{ }^{\circ}\text{C}$ ($f_{\text{ice}}=0$), therefore, we do not show the PDF of LINA-measured N_{INP} at $-15\text{ }^{\circ}\text{C}$. At $-20\text{ }^{\circ}\text{C}$ the data from Welti et al. (2018) is omitted, because more than half of all samples were fully frozen ($f_{\text{ice}}=1$). As can be seen from Fig. 11(b), our results are comparable to those given in Welti et al. (2018) (black curves) derived from long-term measurement at CVAO. Note that it is not possible to directly compare the N_{INP} measured by LINA and INSEKT,

as they always had different sampling times and INSEKT always sampled air from all directions whereas LINA got it from the different sectors separately. But in general, no systematic deviation can be seen, as can be seen when looking at the PDFs. To the best of our knowledge, the only in-situ observations at $-20\text{ }^{\circ}\text{C}$ for supersaturated conditions (101%) in the eastern Mediterranean was reported by Schrod et al. (2017) during a heavy dust plume at high altitude with 0.03 to 3 std L^{-1} .

5 3.4.3 Correlation of N_{INP} with particle number/surface area concentration and parameterization

Scatter plots of LINA- and INSEKT-measured N_{INP} at temperatures of -15 , -18 and $-20\text{ }^{\circ}\text{C}$ against particle number concentration in the size range $>500\text{ nm}$ ($N_{>500\text{nm}}$) are shown in Fig. 12(a) and Fig. 12(b). The averaged $N_{>500\text{nm}}$ during each filter sample varied from 2 to 14 cm^{-3} . The $N_{>500\text{nm}}$ in this study is much lower than that observed during the dust plume period in Cyprus (maximum 75 cm^{-3} Schrod et al., 2017). The R^2 between $N_{>500\text{nm}}$ and N_{INP} are shown in Tab. S4. The R^2 were all below 0.25, indicating no correlation between N_{INP} and $N_{>500\text{nm}}$.

Based on nine field studies occurring at a variety of locations over 14 years, DeMott et al. (2010) proposed a parameterization of the “global” average INP distribution. Besides, Tobo et al. (2013) present a similar parameterization method with adjusted coefficients to predict INP populations in a forest ecosystem. Fig. 12(c) and Fig. 12(d) compare the N_{INP} we measured with LINA and INSEKT to the predicted N_{INP} on the basis of the DeMott et al. (2010) and Tobo et al. (2013) parameterizations. As can be seen, the DeMott et al. (2010) parameterization overestimates the observed values by about 2 orders of magnitude on average. The Tobo et al. (2013) parameterization can reproduce only 24% and 25% of the N_{INP} measured by LINA and INSEKT within a factor of 2, respectively. The Tobo et al. (2013) parameterization overestimates the observed values about 1 order of magnitude on average. This, together with N_{INP} not being correlated with $N_{>500\text{nm}}$ (see Tab. S4), indicates that the application of parameterizations in connection with measured particle number concentrations has to be done with extreme caution, as the encountered particle populations may significantly differ from those considered when developing the parameterizations.

Fig. S12 shows the median particle surface area size distribution (PSSD) for the whole campaign (excluding the airport pollution events). Two different modes were observed, i.e., a small mode (20-500 nm) and a larger mode (500-7000 nm). Based on the PSSD, the concentrations for the total surface area of the small mode ($S_{<500\text{nm}}$), the large mode ($S_{>500\text{nm}}$) and for both modes combined (S_{all}) were calculated. The $S_{<500\text{nm}}$ is about 4 times higher than $S_{>500\text{nm}}$. Scatter plots of LINA and INSEKT measured N_{INP} against $S_{<500\text{nm}}$, $S_{>500\text{nm}}$ and S_{all} are shown in Fig. S13(a) and Fig. S13(b). The R^2 between N_{INP} and particle surface area concentration are shown in Tab. S5. The R^2 are all below 0.20, indicating no correlation between N_{INP} and particle surface area concentration.

The ice nucleating properties of aerosol particles may be characterized by its ice active surface site density (n_s). The n_s is a measure of how well an aerosol acts as a seed surface for ice nucleation. The n_s can be calculated as:

$$n_s = \frac{N_{\text{INP}}(\theta)}{S} \quad (4)$$

Where S is the particle surface area concentration.

Depending on which particle size range was investigated, previous studies calculated n_s based on either the total surface area concentration (S_{all}) or on the surface area concentration of particles larger than 500 nm ($S_{>500\text{nm}}$). Here, both approaches were

used, resulting in n_{s_all} and $n_{s>500\text{ nm}}$, respectively. Fig. 13 shows the $n_{s>500\text{ nm}}$ as black box plot and the n_{s_all} as red box plot at -15 , -18 and -20 °C. As can be seen, n_s increases towards lower temperature, which is expected. The n_s results, calculated using LINA and INSEKT measured N_{INP} , are shown in Fig. 13(a) and Fig. 13(b), respectively. The n_s values determined from LINA measurements are consistent with those from INSEKT measurements.

5 To the best of our knowledge, many studies dealt with the n_s for dust aerosol particles, while no study investigated the n_s for [anthropogenically the type of polluted aerosol we encountered in the eastern Mediterranean](#). In the following, we compare our n_{s_all} for the [anthropogenically](#) polluted aerosol on Cyprus, with n_{s_all} based on existing parameterizations (Niemand et al., 2012; Ullrich et al., 2017) for dust aerosols (Fig. 13). However, the n_{s_all} values from the parameterizations are more than 2 orders of magnitude larger than the n_{s_all} found in this study. Price et al. (2018) carried out an airborne measurement in dust laden air
10 over the tropical Atlantic. The n_{s_all} reported in Price et al. (2018) (shown in Fig.13 as yellow shadow) is about 1 to 2 orders of magnitude higher than our results. Based on airborne measurement, Schrod et al. (2017) found that the $n_{s>500\text{nm}}$ at Cyprus ranged between 10^5 to 10^8 m^{-2} at $T=-20$ °C, $RH_{\text{water}}=101\%$, shown as green shadow in Fig. 13.

In short summary, parameterizations purely based on $N_{>500\text{ nm}}$ or particle surface area concentration in mineral dust dominated model systems overestimate the N_{INP} [in the anthropogenically of the polluted aerosol we encountered](#) on Cyprus. ~~This was also~~
15 [found](#) [Although we cannot clearly say to which extent the aerosol we observed was influenced by anthropogenic pollution, our results here fit to what was found](#) in a different context, anthropogenically polluted air masses in Beijing (Chen et al., 2018), and is based on the fact that more strongly [anthropogenically-influenced polluted](#) air masses have larger numbers of particles in the size range above 500 nm than naturally ones.

4 Conclusions

20 The A-LIFE campaign took place in April 2017 on the island of Cyprus to investigate the aerosols prevailing in the eastern Mediterranean region. As part of the A-LIFE campaign, ground-based measurements were carried out in Paphos, Cyprus, to characterize the abundance, properties (size distribution, hygroscopicity, ice activity), and sources of aerosol particles in general, CCN and INP in particular.

During these activities, [frequently](#) NPF and growth events were observed. Following NPF, during some events, on time scales
25 of few hours to days, particles grew into the CCN size range. In fact, the highest observed N_{CCN} were connected with NPF and growth events, which confirms the importance of NPF as source of CCN in the eastern Mediterranean.

Usually, trimodal (Aitken, accumulation, coarse mode) PNSDs were observed. Aitken mode particles featured low hygroscopicities (κ values about 0.21 to 0.29), indicating the presence of organic materials. Accumulation mode particles featured higher κ values of about 0.57, indicating that particles in the accumulation mode underwent cloud processing and aging,
30 resulting in higher amounts of sulfate being present. [A few sea salt particles mixed with organic carbon might also be present in the accumulation mode](#). The super-micron particles were mainly from SSA and partly mineral dust.

PDFs of κ in both, the Aitken and the accumulation mode, exhibit a unimodal structure, while the κ -PDFs for particles sizes close to the Hoppel minimum, feature a bimodal shape. This indicates the presence of both, non-cloud-processed (Aitken mode)

and cloud-processed (accumulation mode particles), in the size range around the Hoppel minimum. The average observed κ of 0.39 confirms values found in previous field measurements (Kalivitis et al., 2015) and in model results (Pringle et al., 2010) for the Mediterranean region.

Atmospheric N_{INP} were determined in the temperature range from -6.5 to -26.5 °C, using two freezing array type instruments (LINA, TROPOS, and INSEKT, KIT). N_{INP} at a particular temperature span around 1 order of magnitude below -20 °C, and about 2 orders of magnitude at warmer temperature ($T > -18$ °C). Few samples showed elevated concentrations at temperatures $T > -15$ °C, which suggests a significant contribution of biological particles to the INP population, which might have originated from the Cyprus island. No significant difference in N_{INP} were found when selectively sampling wind directions from the land or sea sector for INP that were ice active in the temperature range between -15 and -20 °C. PDFs of N_{INP} at a particular temperature follow log-normal distributions. For example, of at -18 °C, the N_{INP} ranged from 0.004 to 0.2 std L^{-1} during the campaign, which is consistent with the previous study of Welti et al. (2018). This indicates, that these sampled INP which are ice active below -15 °C originate from long-range transport rather than local sources.

No correlations were found between N_{INP} and $N_{>500\text{nm}}$. Parameterizations (DeMott et al., 2010; Tobo et al., 2013) based on $N_{>500\text{nm}}$ were found to overestimate the N_{INP} by about 1 to 2 orders of magnitude. There was also no correlation between N_{INP} and particle surface area concentration. The n_s for ~~anthropogenically influenced~~ the polluted aerosol we encountered on Cyprus was found to be 1 to 3 orders of magnitude lower than the n_s for dust aerosol particles resulting from previous studies (Niemand et al., 2012; Ullrich et al., 2017; Price et al., 2018). This clearly highlights, that usage of such parameterizations, just based on measured particle number or surface area size distributions, is not always feasible for predicting N_{INP} , as the parameterizations were derived for particular aerosol types. In other words, basing modelling efforts on, e.g., PDFs from observed N_{INP} , rather than on parameterizations, might be the method of choice, if the aerosol particle and/or INP composition is unknown.

Data availability. The data are available through the World Data Center PANGAEA (<https://www.pangaea.de/>) in the near future. A link to the data can be found under this paper's assets tab on ACP's journal website.

Author contributions. X. Gong wrote the manuscript with contributions from H. Wex, F. Stratmann, K. Höhler, K. Kandler, T. Müller and A. Wiedensohler. N. Ma and T. Müller performed particle number size distribution measurement and X. Gong performed data evaluation. Chemical composition measurements and data evaluation were performed by K. Kandler. CCN measurements and data analysis were performed by X. Gong. LINA measurements and data evaluation were performed by X. Gong. INSEKT measurements and data evaluation were performed by B. Dietel, T. Schiebel, K. Höhler and X. Gong. X. Gong, H. Wex and F. Stratmann discussed the results and further analysis after the campaign. All co-authors proofread and commented the manuscript.

Competing interests. The authors declare that they have no conflict of interests.

Acknowledgements. The works were carried out in the framework of the A-LIFE project. This project has received funding from the European Research Council (ERC) under the European Union's Horizon 2020 research and innovation programme under grant agreement No. 640458. We would like to thank Dr. Umar Javed from Institute of Energy and Climate Research, Troposphere (IEK-8) and Dr. Anywhere Tsokankunku from Max Plank Institute for Chemistry to provide the NO_x data. K. Kandler is funded by the Deutsche Forschungsgemeinschaft (DFG, German Research Foundation) – 264907654; 264912134; 378741973; 416816480.

References

- Agresti, A. and Coull, B. A.: Approximate is Better than “Exact” for Interval Estimation of Binomial Proportions, *The American Statistician*, 52, 119–126, <https://doi.org/10.1080/00031305.1998.10480550>, <https://doi.org/10.1080/00031305.1998.10480550>, 1998.
- Bougiatioti, A., Nenes, A., Fountoukis, C., Kalivitis, N., Pandis, S. N., and Mihalopoulos, N.: Size-resolved CCN distributions and activation kinetics of aged continental and marine aerosol, *Atmos. Chem. Phys.*, 11, 8791–8808, <https://doi.org/10.5194/acp-11-8791-2011>, <https://www.atmos-chem-phys.net/11/8791/2011/>, 2011.
- Bougiatioti, A., Zampas, P., Koulouri, E., Antoniou, M., Theodosi, C., Kouvarakis, G., Saarikoski, S., Mäkelä, T., Hillamo, R., and Mihalopoulos, N.: Organic, elemental and water-soluble organic carbon in size segregated aerosols, in the marine boundary layer of the Eastern Mediterranean, *Atmospheric Environment*, 64, 251–262, <https://doi.org/http://dx.doi.org/10.1016/j.atmosenv.2012.09.071>, <http://www.sciencedirect.com/science/article/pii/S1352231012009454>, 2013.
- Bougiatioti, A., Bezantakos, S., Stavroulas, I., Kalivitis, N., Kokkalis, P., Biskos, G., Mihalopoulos, N., Papayannis, A., and Nenes, A.: Biomass-burning impact on CCN number, hygroscopicity and cloud formation during summertime in the eastern Mediterranean, *Atmos. Chem. Phys.*, 16, 7389–7409, <https://doi.org/10.5194/acp-16-7389-2016>, <https://www.atmos-chem-phys.net/16/7389/2016/>, 2016.
- Budke, C. and Koop, T.: BINARY: an optical freezing array for assessing temperature and time dependence of heterogeneous ice nucleation, *Atmos. Meas. Tech.*, 8, 689–703, <https://doi.org/10.5194/amt-8-689-2015>, <http://www.atmos-meas-tech.net/8/689/2015/>, 2015.
- Chen, J., Wu, Z., Augustin-Bauditz, S., Grawe, S., Hartmann, M., Pei, X., Liu, Z., Ji, D., and Wex, H.: Ice-nucleating particle concentrations unaffected by urban air pollution in Beijing, China, *Atmos. Chem. Phys.*, 18, 3523–3539, <https://doi.org/10.5194/acp-18-3523-2018>, <https://www.atmos-chem-phys.net/18/3523/2018/>, 2018.
- Chester, R., Nimmo, M., Alarcon, M., Saydam, C., Murphy, K., Sanders, G., and Corcoran, P.: Defining the chemical character of aerosols from the atmosphere of the Mediterranean-Sea and surrounding regions, *Oceanologica Acta*, 16, 231–246, 1993.
- Claeys, M., Roberts, G., Mallet, M., Arndt, J., Sellegri, K., Sciare, J., Wenger, J., and Sauvage, B.: Optical, physical and chemical properties of aerosols transported to a coastal site in the western Mediterranean: a focus on primary marine aerosols, *Atmos. Chem. Phys.*, 17, 7891–7915, <https://doi.org/10.5194/acp-17-7891-2017>, <https://www.atmos-chem-phys.net/17/7891/2017/>, 2017.
- Dal Maso, M., Kulmala, M., Riipinen, I., Wagner, R., Hussein, T., Aalto, P. P., and Lehtinen, K. E.: Formation and growth of fresh atmospheric aerosols: eight years of aerosol size distribution data from SMEAR II, Hyytiälä, Finland, *Boreal Environment Research*, 10, 323, 2005.
- DeMott, P. J., Prenni, A. J., Liu, X., Kreidenweis, S. M., Petters, M. D., Twohy, C. H., Richardson, M. S., Eidhammer, T., and Rogers, D. C.: Predicting global atmospheric ice nuclei distributions and their impacts on climate, *Proceedings of the National Academy of Sciences*, 107, 11 217–11 222, <https://doi.org/10.1073/pnas.0910818107>, <http://www.pnas.org/content/107/25/11217.abstract>, 2010.
- Fan, J., Wang, Y., Rosenfeld, D., and Liu, X.: Review of Aerosol–Cloud Interactions: Mechanisms, Significance, and Challenges, *Journal of the Atmospheric Sciences*, 73, 4221–4252, <https://doi.org/10.1175/jas-d-16-0037.1>, <https://journals.ametsoc.org/doi/abs/10.1175/JAS-D-16-0037.1>, 2016.
- Fletcher, N. H.: *The physics of rainclouds*, Cambridge University Press, 1962.
- Giorgi, F. and Lionello, P.: Climate change projections for the Mediterranean region, *Global and Planetary Change*, 63, 90–104, <https://doi.org/https://doi.org/10.1016/j.gloplacha.2007.09.005>, <http://www.sciencedirect.com/science/article/pii/S0921818107001750>, 2008.

- Gysel, M. and Stratmann, F.: WP3 - NA3: In-situ chemical, physical and optical properties of aerosols, Deliverable D3.11: Standardized protocol for CCN measurements, Tech. rep., <http://www.actris.net/Publications/ACTRISQualityStandards/tabid/11271/language/en-GB/Default.aspx>, 2013.
- 5 Herenz, P., Wex, H., Henning, S., Kristensen, T. B., Rubach, F., Roth, A., Borrmann, S., Bozem, H., Schulz, H., and Stratmann, F.: Measurements of aerosol and CCN properties in the Mackenzie River delta (Canadian Arctic) during spring–summer transition in May 2014, *Atmos. Chem. Phys.*, 18, 4477–4496, <https://doi.org/10.5194/acp-18-4477-2018>, <https://www.atmos-chem-phys.net/18/4477/2018/>, 2018.
- Hiranuma, N., Augustin-Bauditz, S., Bingemer, H., Budke, C., Curtius, J., Danielczok, A., Diehl, K., Dreischmeier, K., Ebert, M., and Frank, F.: A comprehensive laboratory study on the immersion freezing behavior of illite NX particles: a comparison of 17 ice nucleation measurement techniques, *Atmospheric Chemistry and Physics*, 15, 2489–2518, 2015.
- 10 Hoppel, W., Frick, G., and Larson, R.: Effect of nonprecipitating clouds on the aerosol size distribution in the marine boundary layer, *Geophysical Research Letters*, 13, 125–128, <https://doi.org/doi:10.1029/GL013i002p00125>, <https://agupubs.onlinelibrary.wiley.com/doi/abs/10.1029/GL013i002p00125>, 1986.
- Hudda, N. and Fruin, S. A.: International Airport Impacts to Air Quality: Size and Related Properties of Large Increases in Ultrafine Particle Number Concentrations, *Environmental Science & Technology*, 50, 3362–3370, <https://doi.org/10.1021/acs.est.5b05313>, <https://doi.org/10.1021/acs.est.5b05313>, 2016.
- 15 Jasinski, R. and Przylibska, K.: Analysis of the particle size distribution near the civil airport runway, *IOP Conference Series: Materials Science and Engineering*, 421, 042 030, <https://doi.org/10.1088/1757-899x/421/4/042030>, <https://doi.org/10.1088%2F1757-899x%2F421%2F4%2F042030>, 2018.
- Kalivitis, N., Kerminen, V. M., Kouvarakis, G., Stavroulas, I., Bougiatioti, A., Nenes, A., Manninen, H. E., Petäjä, T., Kulmala, M., and 20 Mihalopoulos, N.: Atmospheric new particle formation as a source of CCN in the eastern Mediterranean marine boundary layer, *Atmos. Chem. Phys.*, 15, 9203–9215, <https://doi.org/10.5194/acp-15-9203-2015>, <https://www.atmos-chem-phys.net/15/9203/2015/>, 2015.
- Kandler, K., Schneiders, K., Ebert, M., Hartmann, M., Weinbruch, S., Prass, M., and Pöhlker, C.: Composition and mixing state of atmospheric aerosols determined by electron microscopy: method development and application to aged Saharan dust deposition in the Caribbean boundary layer, *Atmos. Chem. Phys.*, 18, 13 429–13 455, <https://doi.org/10.5194/acp-18-13429-2018>, <https://www.atmos-chem-phys.net/18/13429/2018/>, 2018.
- 25 Kanji, Z. A., Ladino, L. A., Wex, H., Boose, Y., Burkert-Kohn, M., Cziezo, D. J., and Krämer, M.: Overview of Ice Nucleating Particles, *Meteorological Monographs*, 58, 1.1–1.33, <https://doi.org/10.1175/amsmonographs-d-16-0006.1>, <https://journals.ametsoc.org/doi/abs/10.1175/AMSMONOGRAPHS-D-16-0006.1>, 2017.
- Köhler, H.: The nucleus in and the growth of hygroscopic droplets, *Transactions of the Faraday Society*, 32, 1152–1161, 1936.
- 30 Kristensen, T. B., Müller, T., Kandler, K., Benker, N., Hartmann, M., Prospero, J. M., Wiedensohler, A., and Stratmann, F.: Properties of cloud condensation nuclei (CCN) in the trade wind marine boundary layer of the western North Atlantic, *Atmos. Chem. Phys.*, 16, 2675–2688, <https://doi.org/10.5194/acp-16-2675-2016>, <http://www.atmos-chem-phys.net/16/2675/2016/>, 2016.
- Lelieveld, J., Berresheim, H., Borrmann, S., Crutzen, P. J., Dentener, F. J., Fischer, H., Feichter, J., Flatau, P. J., Heland, J., Holzinger, R., Korrmann, R., Lawrence, M. G., Levin, Z., Markowicz, K. M., Mihalopoulos, N., Minikin, A., Ramanathan, V., de Reus, M., 35 Roelofs, G. J., Scheeren, H. A., Sciare, J., Schlager, H., Schultz, M., Siegmund, P., Steil, B., Stephanou, E. G., Stier, P., Traub, M., Warneke, C., Williams, J., and Ziereis, H.: Global Air Pollution Crossroads over the Mediterranean, *Science*, 298, 794–799, <https://doi.org/10.1126/science.1075457>, 2002.

- Mallet, M., Dulac, F., Formenti, P., Nabat, P., Sciare, J., Roberts, G., Pelon, J., Ancellet, G., Tanré, D., Parol, F., Denjean, C., Brogniez, G., di Sarra, A., Alados Arboledas, L., Arndt, J., Auriol, F., Blarel, L., Bourriane, T., Chazette, P., Chevallier, S., Claeys, M., D'Anna, B., Derimian, Y., Desboeufs, K., Di Iorio, T., Doussin, J. F., Durand, P., Féron, A., Freney, E., Gaimoz, C., Goloub, P., Gómez-Amo, J. L., Granados-Muñoz, M. J., Grand, N., Hamonou, E., Jankowiak, I., Jeannot, M., Léon, J. F., Maillé, M., Mailler, S., Meloni, D.,
5 Menut, L., Momboisse, G., Nicolas, J., Podvin, T., Pont, V., Rea, G., Renard, J. B., Roblou, L., Schepanski, K., Schwarzenboeck, A., Sellegri, K., Sicard, M., Solmon, F., Somot, S., Torres, B., Totems, J., Triquet, S., Verdier, N., Verwaerde, C., Waquet, F., Wenger, J., and Zapf, P.: Overview of the Chemistry-Aerosol Mediterranean Experiment/Aerosol Direct Radiative Forcing on the Mediterranean Climate (ChArMEx/ADRMED) summer 2013 campaign, *Atmos. Chem. Phys.*, 16, 455–504, <https://doi.org/10.5194/acp-16-455-2016>, <https://www.atmos-chem-phys.net/16/455/2016/>, 2016.
- 10 Mamouri, R. E., Ansmann, A., Nisantzi, A., Solomos, S., Kallos, G., and Hadjimitsis, D. G.: Extreme dust storm over the eastern Mediterranean in September 2015: satellite, lidar, and surface observations in the Cyprus region, *Atmos. Chem. Phys.*, 16, 13 711–13 724, <https://doi.org/10.5194/acp-16-13711-2016>, <https://www.atmos-chem-phys.net/16/13711/2016/>, 2016.
- Niemand, M., Möhler, O., Vogel, B., Vogel, H., Hoose, C., Connolly, P., Klein, H., Bingemer, H., DeMott, P., Skrotzki, J., and Leisner, T.: A Particle-Surface-Area-Based Parameterization of Immersion Freezing on Desert Dust Particles, *Journal of the Atmospheric Sciences*, 69,
15 3077–3092, <https://doi.org/10.1175/jas-d-11-0249.1>, <http://journals.ametsoc.org/doi/abs/10.1175/JAS-D-11-0249.1>, 2012.
- O' Sullivan, D., Adams, M. P., Tarn, M. D., Harrison, A. D., Vergara-Temprado, J., Porter, G. C. E., Holden, M. A., Sanchez-Marroquin, A., Carotenuto, F., Whale, T. F., McQuaid, J. B., Walshaw, R., Hedges, D. H. P., Burke, I. T., Cui, Z., and Murray, B. J.: Contributions of biogenic material to the atmospheric ice-nucleating particle population in North Western Europe, *Scientific Reports*, 8, 13 821, <https://doi.org/10.1038/s41598-018-31981-7>, <https://doi.org/10.1038/s41598-018-31981-7>, 2018.
- 20 Ott, D. K. and Peters, T. M.: A Shelter to Protect a Passive Sampler for Coarse Particulate Matter, $PM_{10-2.5}$, *Aerosol Science and Technology*, 42, 299–309, <https://doi.org/10.1080/02786820802054236>, <https://doi.org/10.1080/02786820802054236>, 2008.
- Ott, W. R.: A Physical Explanation of the Lognormality of Pollutant Concentrations, *Journal of the Air & Waste Management Association*, 40, 1378–1383, <https://doi.org/10.1080/10473289.1990.10466789>, <https://doi.org/10.1080/10473289.1990.10466789>, 1990.
- Pace, G., Meloni, D., and Di Sarra, A.: Forest fire aerosol over the Mediterranean basin during summer 2003, *Journal of Geophysical
25 Research: Atmospheres*, 110, 2005.
- Petters, M. D. and Kreidenweis, S. M.: A single parameter representation of hygroscopic growth and cloud condensation nucleus activity, *Atmos. Chem. Phys.*, 7, 1961–1971, <https://doi.org/10.5194/acp-7-1961-2007>, <http://www.atmos-chem-phys.net/7/1961/2007/>, 2007.
- Pfeifer, S., Müller, T., Weinhold, K., Zikova, N., Martins dos Santos, S., Marinoni, A., Bischof, O. F., Kyal, C., Ries, L., Meinhardt, F., Aalto, P., Mihalopoulos, N., and Wiedensohler, A.: Intercomparison of 15 aerodynamic particle size spectrometers (APS 3321): uncertainties in
30 particle sizing and number size distribution, *Atmos. Meas. Tech.*, 9, 1545–1551, <https://doi.org/10.5194/amt-9-1545-2016>, <http://www.atmos-meas-tech.net/9/1545/2016/>, 2016.
- Piazzola, J. and Despiou, S.: Contribution of marine aerosols in the particle size distributions observed in Mediterranean coastal zone, *Atmospheric Environment*, 31, 2991–3009, [https://doi.org/http://dx.doi.org/10.1016/S1352-2310\(97\)00088-5](https://doi.org/http://dx.doi.org/10.1016/S1352-2310(97)00088-5), <http://www.sciencedirect.com/science/article/pii/S1352231097000885>, 1997.
- 35 Prather, K. A., Bertram, T. H., Grassian, V. H., Deane, G. B., Stokes, M. D., DeMott, P. J., Aluwihare, L. I., Palenik, B. P., Azam, F., Seinfeld, J. H., Moffet, R. C., Molina, M. J., Cappa, C. D., Geiger, F. M., Roberts, G. C., Russell, L. M., Ault, A. P., Baltrusaitis, J., Collins, D. B., Corrigan, C. E., Cuadra-Rodríguez, L. A., Ebben, C. J., Forestieri, S. D., Guasco, T. L., Hersey, S. P., Kim, M. J., Lambert, W. F., Modini, R. L., Mui, W., Pedler, B. E., Ruppel, M. J., Ryder, O. S., Schoepp, N. G., Sullivan, R. C., and Zhao, D.: Bringing the ocean into the

- laboratory to probe the chemical complexity of sea spray aerosol, *Proceedings of the National Academy of Sciences*, 110, 7550–7555, <https://doi.org/10.1073/pnas.1300262110>, <http://www.pnas.org/content/110/19/7550.abstract>, 2013.
- Price, H. C., Baustian, K. J., McQuaid, J. B., Blyth, A., Bower, K. N., Choularton, T., Cotton, R. J., Cui, Z., Field, P. R., Gallagher, M., Hawker, R., Merrington, A., Miltenberger, A., Neely III, R. R., Parker, S. T., Rosenberg, P. D., Taylor, J. W., Trembath, J., Vergara-
5 Temprado, J., Whale, T. F., Wilson, T. W., Young, G., and Murray, B. J.: Atmospheric Ice-Nucleating Particles in the Dusty Tropical Atlantic, *Journal of Geophysical Research: Atmospheres*, 123, 2175–2193, <https://doi.org/doi:10.1002/2017JD027560>, <https://agupubs.onlinelibrary.wiley.com/doi/abs/10.1002/2017JD027560>, 2018.
- Pringle, K. J., Tost, H., Pozzer, A., Pöschl, U., and Lelieveld, J.: Global distribution of the effective aerosol hygroscopicity parameter for
10 CCN activation, *Atmos. Chem. Phys.*, 10, 5241–5255, <https://doi.org/10.5194/acp-10-5241-2010>, <http://www.atmos-chem-phys.net/10/5241/2010/>, 2010.
- Pruppacher, H. and Klett, J.: *Microphysics of Clouds and Precipitation*, vol. 18, Springer Science & Business Media, 2010.
- Rinaldi, M., Santachiara, G., Nicosia, A., Piazza, M., Decesari, S., Gilardoni, S., Paglione, M., Cristofanelli, P., Marinoni, A., Bonasoni, P.,
and Belosi, F.: Atmospheric Ice Nucleating Particle measurements at the high mountain observatory Mt. Cimone (2165 m a.s.l., Italy),
15 *Atmospheric Environment*, 171, 173–180, <https://doi.org/https://doi.org/10.1016/j.atmosenv.2017.10.027>, <http://www.sciencedirect.com/science/article/pii/S135223101730688X>, 2017.
- Roberts, G. C. and Nenes, A.: A Continuous-Flow Streamwise Thermal-Gradient CCN Chamber for Atmospheric Measurements, *Aerosol
Science and Technology*, 39, 206–221, <https://doi.org/10.1080/027868290913988>, <http://dx.doi.org/10.1080/027868290913988>, 2005.
- Rodríguez, S., Querol, X., Alastuey, A., and Plana, F.: Sources and processes affecting levels and composition of atmo-
spheric aerosol in the western Mediterranean, *Journal of Geophysical Research: Atmospheres*, 107, AAC 12–1–AAC 12–14,
20 <https://doi.org/10.1029/2001JD001488>, <http://dx.doi.org/10.1029/2001JD001488>, 2002.
- Rolph, G.: Real-time environmental applications and display system (READY) website, <http://www.arl.noaa.gov/ready.php>, 2003.
- Rose, D., Gunthe, S. S., Mikhailov, E., Frank, G. P., Dusek, U., Andreae, M. O., and Pöschl, U.: Calibration and measurement un-
certainties of a continuous-flow cloud condensation nuclei counter (DMT-CCNC): CCN activation of ammonium sulfate and sodium
chloride aerosol particles in theory and experiment, *Atmos. Chem. Phys.*, 8, 1153–1179, <https://doi.org/10.5194/acp-8-1153-2008>,
25 <https://www.atmos-chem-phys.net/8/1153/2008/>, 2008.
- Salameh, T., Drobinski, P., Menut, L., Bessagnet, B., Flamant, C., Hodzic, A., and Vautard, R.: Aerosol distribution over the western Mediter-
ranean basin during a Tramontane/Mistral event, in: *Annales Geophysicae*, vol. 25, pp. 2271–2291, 2007.
- Sandrini, S., van Pinxteren, D., Giulianelli, L., Herrmann, H., Poulain, L., Facchini, M. C., Gilardoni, S., Rinaldi, M., Paglione, M., Turpin,
B. J., Pollini, F., Bucci, S., Zanca, N., and Decesari, S.: Size-resolved aerosol composition at an urban and a rural site in the Po Valley
30 in summertime: implications for secondary aerosol formation, *Atmos. Chem. Phys.*, 16, 10879–10897, <https://doi.org/10.5194/acp-16-10879-2016>, <https://www.atmos-chem-phys.net/16/10879/2016/>, 2016.
- Schladitz, A., Müller, T., Nowak, A., Kandler, K., Lieke, K., Massling, A., and Wiedensohler, A.: In situ aerosol characterization at Cape
Verde, *Tellus B*, 63, 531–548, <https://doi.org/10.1111/j.1600-0889.2011.00569.x>, <http://dx.doi.org/10.1111/j.1600-0889.2011.00569.x>,
2011.
- Schrod, J., Weber, D., Drücke, J., Keleshis, C., Pikridas, M., Ebert, M., Cvetković, B., Nickovic, S., Marinou, E., Baars, H., Ansmann, A.,
Vrekoussis, M., Mihalopoulos, N., Sciare, J., Curtius, J., and Bingemer, H. G.: Ice nucleating particles over the Eastern Mediterranean
measured by unmanned aircraft systems, *Atmos. Chem. Phys.*, 17, 4817–4835, <https://doi.org/10.5194/acp-17-4817-2017>, <https://www.atmos-chem-phys.net/17/4817/2017/>, 2017.

- Sciare, J., Bardouki, H., Moulin, C., and Mihalopoulos, N.: Aerosol sources and their contribution to the chemical composition of aerosols in the Eastern Mediterranean Sea during summertime, *Atmos. Chem. Phys.*, 3, 291–302, <https://doi.org/10.5194/acp-3-291-2003>, <https://www.atmos-chem-phys.net/3/291/2003/>, 2003.
- Sciare, J., Oikonomou, K., Favez, O., Liakakou, E., Markaki, Z., Cachier, H., and Mihalopoulos, N.: Long-term measurements of carbonaceous aerosols in the Eastern Mediterranean: evidence of long-range transport of biomass burning, *Atmos. Chem. Phys.*, 8, 5551–5563, <https://doi.org/10.5194/acp-8-5551-2008>, <https://www.atmos-chem-phys.net/8/5551/2008/>, 2008.
- Smoydzin, L., Teller, A., Tost, H., Fnais, M., and Lelieveld, J.: Impact of mineral dust on cloud formation in a Saharan outflow region, *Atmos. Chem. Phys.*, 12, 11 383–11 393, <https://doi.org/10.5194/acp-12-11383-2012>, <https://www.atmos-chem-phys.net/12/11383/2012/>, 2012.
- Stein, A. F., Draxler, R. R., Rolph, G. D., Stunder, B. J. B., Cohen, M. D., and Ngan, F.: NOAA's HYSPLIT Atmospheric Transport and Dispersion Modeling System, *Bulletin of the American Meteorological Society*, 96, 2059–2077, <https://doi.org/10.1175/bams-d-14-00110.1>, <https://journals.ametsoc.org/doi/abs/10.1175/BAMS-D-14-00110.1>, 2015.
- Tobo, Y., Prenni, A. J., DeMott, P. J., Huffman, J. A., McCluskey, C. S., Tian, G., Pöhlker, C., Pöschl, U., and Kreidenweis, S. M.: Biological aerosol particles as a key determinant of ice nuclei populations in a forest ecosystem, *Journal of Geophysical Research: Atmospheres*, 118, 10,100–10,110, <https://doi.org/10.1002/jgrd.50801>, <http://dx.doi.org/10.1002/jgrd.50801>, 2013.
- Ullrich, R., Hoose, C., Möhler, O., Niemand, M., Wagner, R., Höhler, K., Hiranuma, N., Saathoff, H., and Leisner, T.: A New Ice Nucleation Active Site Parameterization for Desert Dust and Soot, *Journal of the Atmospheric Sciences*, 74, 699–717, <https://doi.org/10.1175/jas-d-16-0074.1>, <https://journals.ametsoc.org/doi/abs/10.1175/JAS-D-16-0074.1>, 2017.
- Vali, G.: Quantitative Evaluation of Experimental Results an the Heterogeneous Freezing Nucleation of Supercooled Liquids, *Journal of the Atmospheric Sciences*, 28, 402–409, [https://doi.org/10.1175/1520-0469\(1971\)028<0402:qeoea>2.0.co;2](https://doi.org/10.1175/1520-0469(1971)028<0402:qeoea>2.0.co;2), <http://journals.ametsoc.org/doi/abs/10.1175/1520-0469%281971%29028%3C0402%3AQEOERA%3E2.0.CO%3B2>, 1971.
- von der Weiden, S. L., Drewnick, F., and Borrmann, S.: Particle Loss Calculator - a new software tool for the assessment of the performance of aerosol inlet systems, *Atmos. Meas. Tech.*, 2, 479–494, <https://doi.org/10.5194/amt-2-479-2009>, <http://www.atmos-meas-tech.net/2/479/2009/>, 2009.
- Welti, A., Müller, K., Fleming, Z. L., and Stratmann, F.: Concentration and variability of ice nuclei in the subtropical maritime boundary layer, *Atmospheric Chemistry and Physics*, 18, 5307–5320, 2018.
- Wiedensohler, A.: An approximation of the bipolar charge distribution for particles in the submicron size range, *Journal of Aerosol Science*, 19, 387–389, [https://doi.org/http://dx.doi.org/10.1016/0021-8502\(88\)90278-9](https://doi.org/http://dx.doi.org/10.1016/0021-8502(88)90278-9), <http://www.sciencedirect.com/science/article/pii/0021850288902789>, 1988.
- Wiedensohler, A., Birmili, W., Nowak, A., Sonntag, A., Weinhold, K., Merkel, M., Wehner, B., Tuch, T., Pfeifer, S., Fiebig, M., Fjåraa, A. M., Asmi, E., Sellegri, K., Depuy, R., Venzac, H., Villani, P., Laj, P., Aalto, P., Ogren, J. A., Swietlicki, E., Williams, P., Roldin, P., Quincey, P., Hüglin, C., Fierz-Schmidhauser, R., Gysel, M., Weingartner, E., Riccobono, F., Santos, S., Gröning, C., Faloon, K., Beddows, D., Harrison, R., Monahan, C., Jennings, S. G., O'Dowd, C. D., Marinoni, A., Horn, H. G., Keck, L., Jiang, J., Scheckman, J., McMurry, P. H., Deng, Z., Zhao, C. S., Moerman, M., Henzing, B., de Leeuw, G., Löschau, G., and Bastian, S.: Mobility particle size spectrometers: harmonization of technical standards and data structure to facilitate high quality long-term observations of atmospheric particle number size distributions, *Atmos. Meas. Tech.*, 5, 657–685, <https://doi.org/10.5194/amt-5-657-2012>, <https://www.atmos-meas-tech.net/5/657/2012/>, 2012.
- Wiedensohler, A., Wiesner, A., Weinhold, K., Birmili, W., Hermann, M., Merkel, M., Müller, T., Pfeifer, S., Schmidt, A., Tuch, T., Velarde, F., Quincey, P., Seeger, S., and Nowak, A.: Mobility particle size spectrometers: Calibration procedures and measurement uncertainties,

Table 1. Median values of N_{CCN} , d_{crit} , κ and one standard deviation of d_{crit} and κ at different supersaturations.

Supersaturation (%)	N_{CCN} (cm^{-3})	d_{crit} (nm)	κ	$\sigma_{d_{\text{crit}}}$ (nm)	σ_{κ}
0.08	295	163	0.57	10	0.09
0.19	872	92	0.49	8	0.12
0.31	1332	70	0.42	8	0.13
0.54	1743	55	0.29	7	0.10
0.77	2004	48	0.21	8	0.10

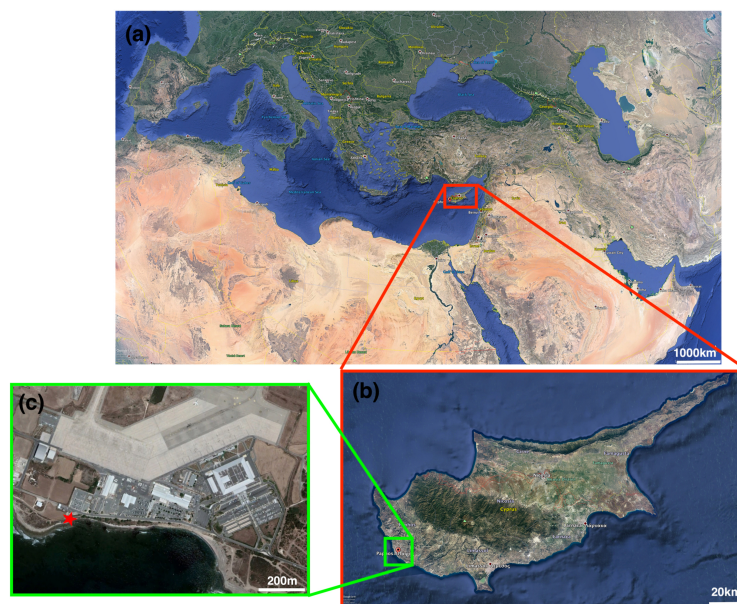


Figure 1. Maps of the Mediterranean region, Cyprus and sampling location. (a) Position of Cyprus in the Mediterranean region. (b) Position of Paphos city in the Cyprus island. (c) The sampling site is displayed as red star. On the northeast of the sampling site is the Paphos International Airport.

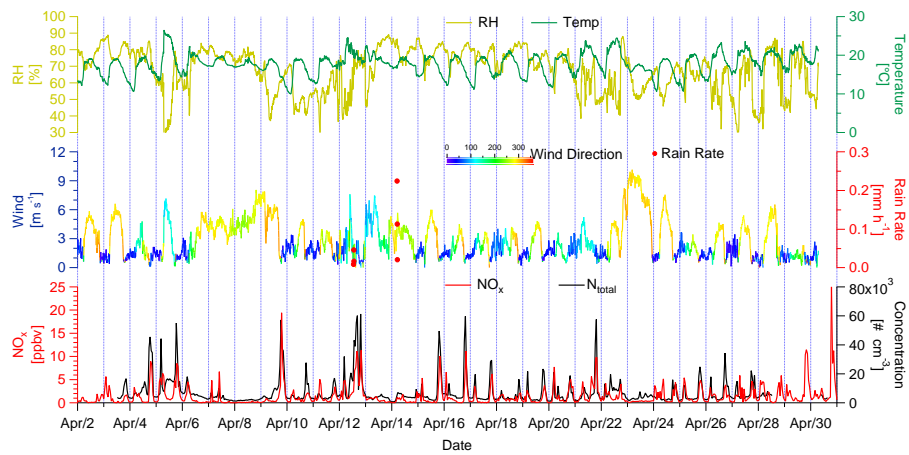


Figure 2. Time series of RH, temperature, wind speed, and wind direction with 10 minutes resolution, NO_x and N_{total} with 1 hour resolution,

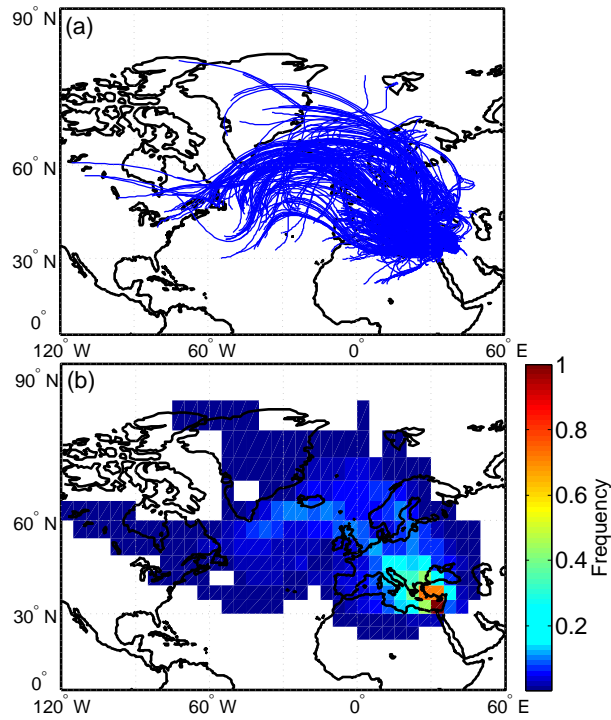


Figure 3. (a) 6-day backward trajectories (blue lines) ended at 500 m above the measurement station with 1 hour resolution. (b) Relative frequency of trajectories arriving at the station, based on a 5° by 5° grid size.

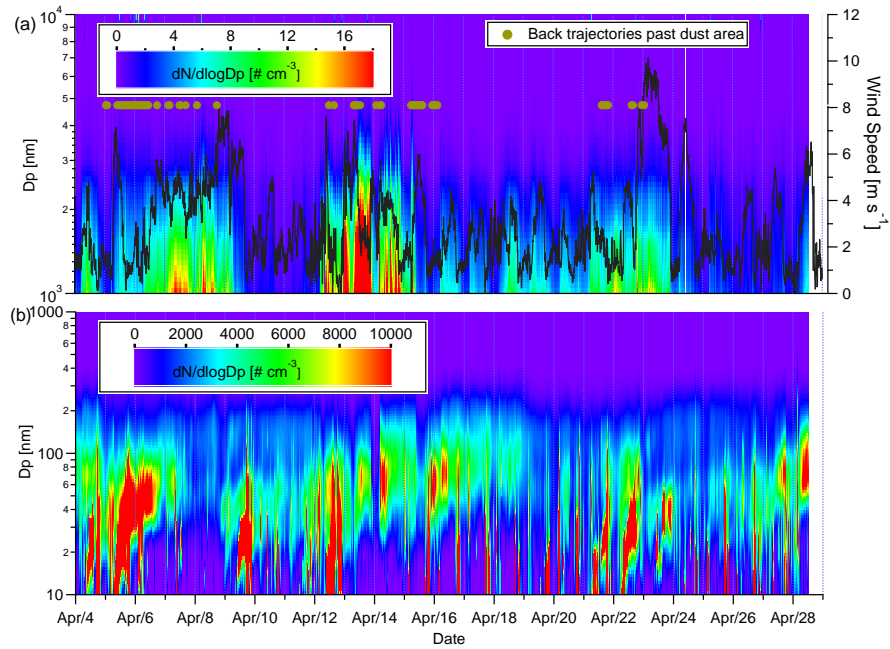


Figure 4. Contour plots for PNSDs during the whole campaign. The color scale indicates $dN/d\log D_p$ in cm^{-3} . (a) Contour plots for PNSDs of 1000 to 10000 nm. Black line shows time series of wind speed and the brown dots show the time when backward trajectories passed the dust area. (b) Contour plots for PNSDs of 10 to 1000 nm.

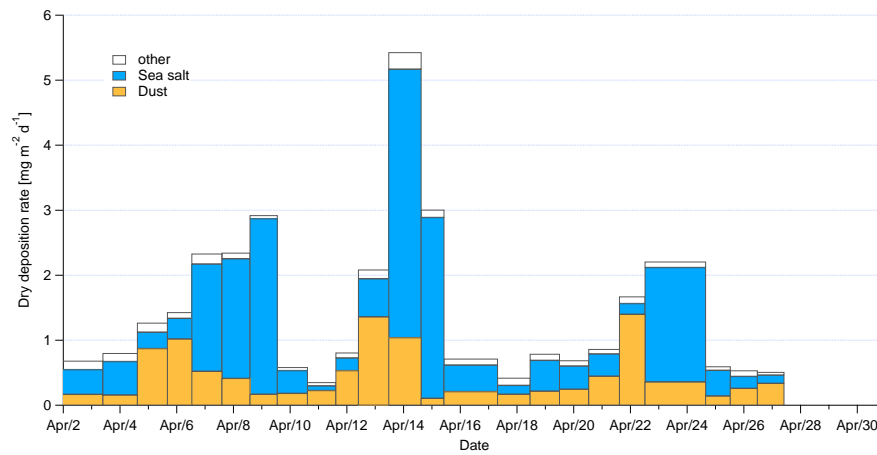


Figure 5. Time series of dry mass deposition rate for different compounds for particles between 1 and 8 μm dry diameter. The ‘Dust’ class includes silicate and carbonate particles, the ‘Other’ class mainly consists of sodium sulfate. Mixed particles are evenly distributed between the according groups.

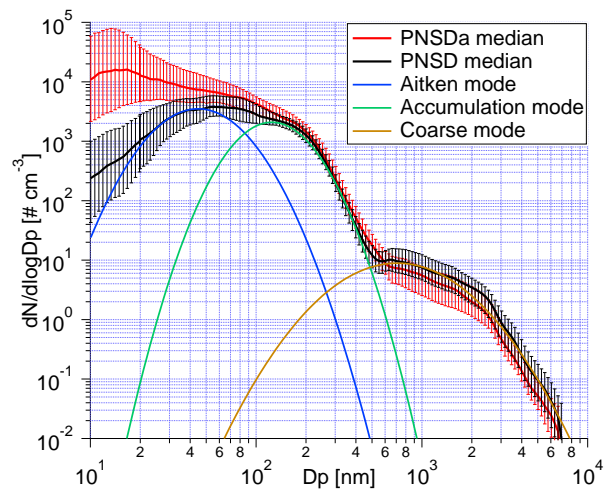


Figure 6. Comparison of the median PNSD during airport affected (red line) and non-affected (black line) time periods . The error bar indicates the range between the 25 % and 75 % percentiles. Aitken, accumulation and coarse modes are fitted with log-normal distribution, displayed in blue, green and brown lines, respectively.

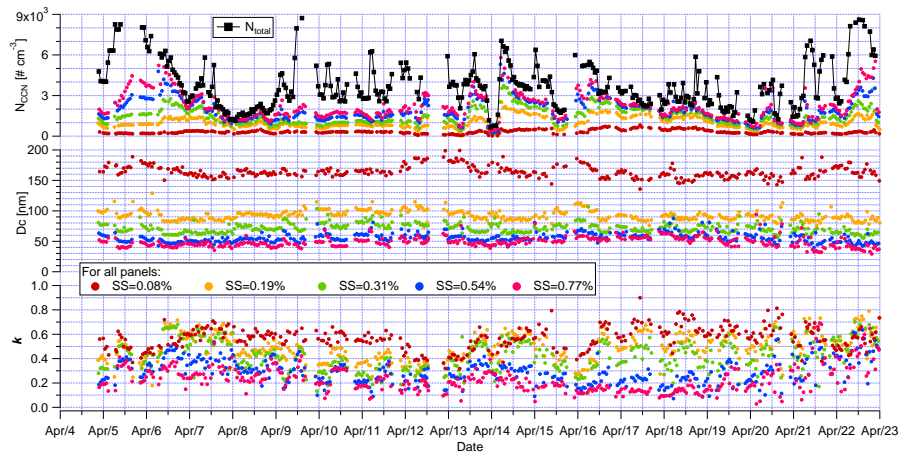


Figure 7. Time series of N_{total} , N_{CCN} , the inferred d_{crit} and κ values at different supersaturations.

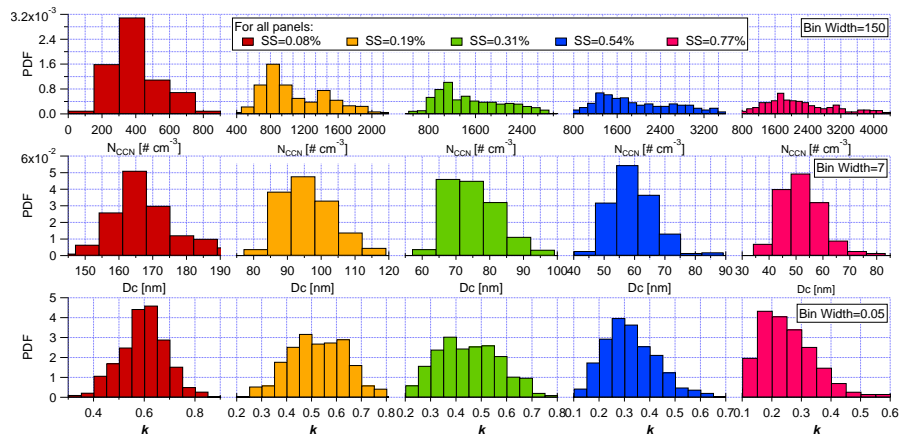


Figure 8. PDFs of N_{CCN} , d_{crit} and κ values at different supersaturations.

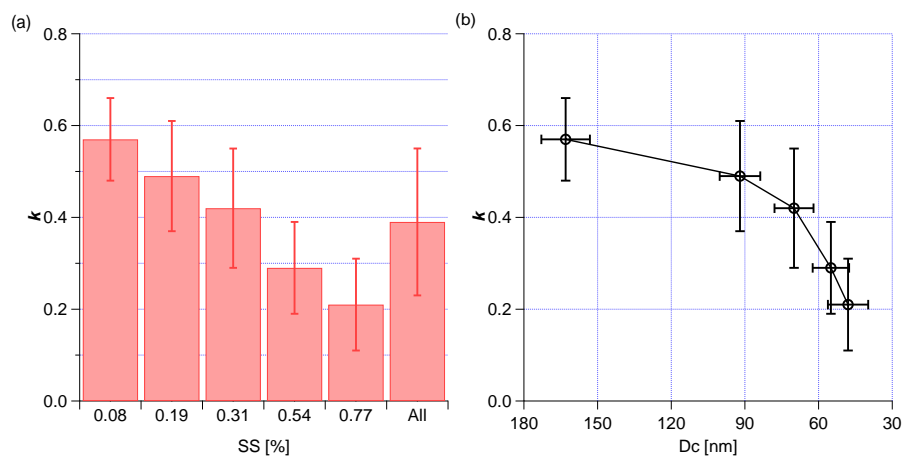


Figure 9. (a) Derived κ values at different supersaturations. (b) κ values as a function of corresponding d_{crit} . Error bar represents the one standard deviation.

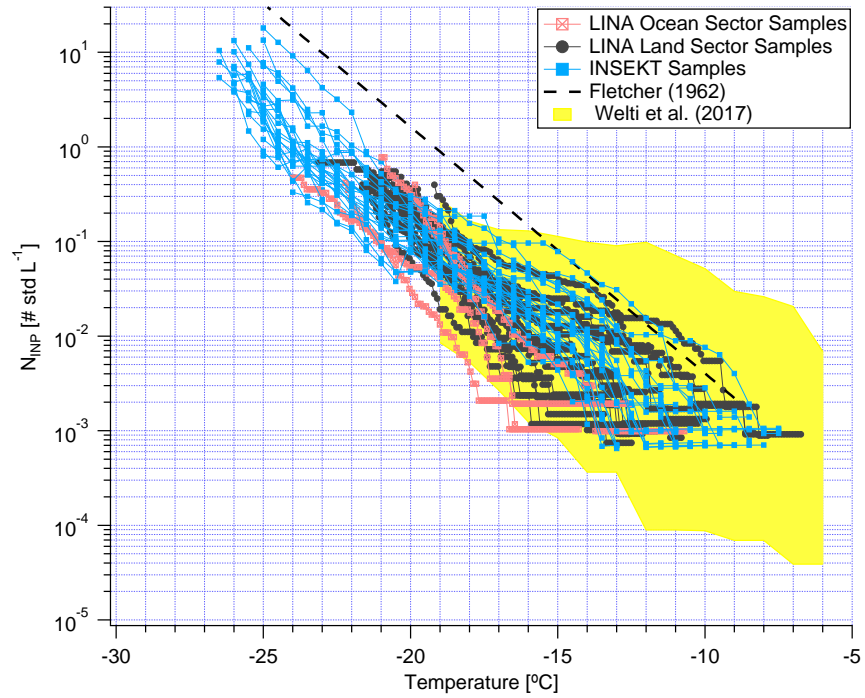


Figure 10. N_{INP} (measured by LINA and INSEKT) as a function of temperature. Parameterization from Fletcher (1962) in the valid temperature range is given for comparison, as shown in dashed line. The yellow shadow represents the measured N_{INP} from a ground-based station at CVAO (Welti et al., 2018).

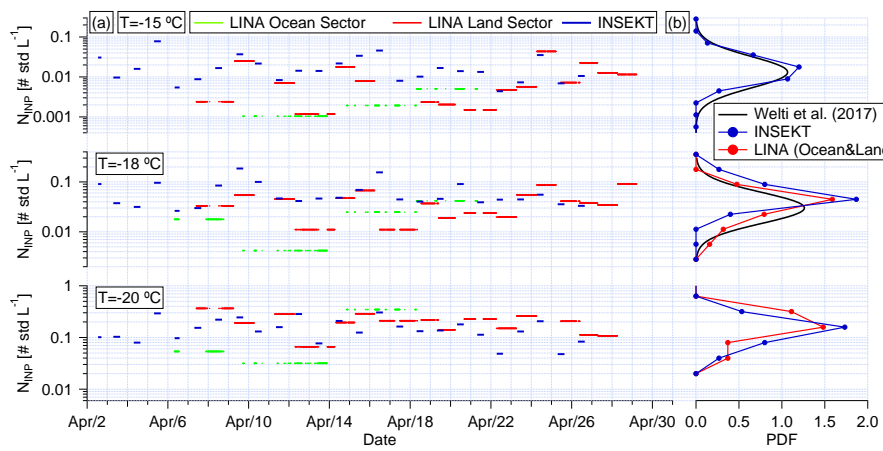


Figure 11. (a) Time series and (b) PDF of N_{INP} at -15 , -18 and $-20\text{ }^{\circ}\text{C}$.

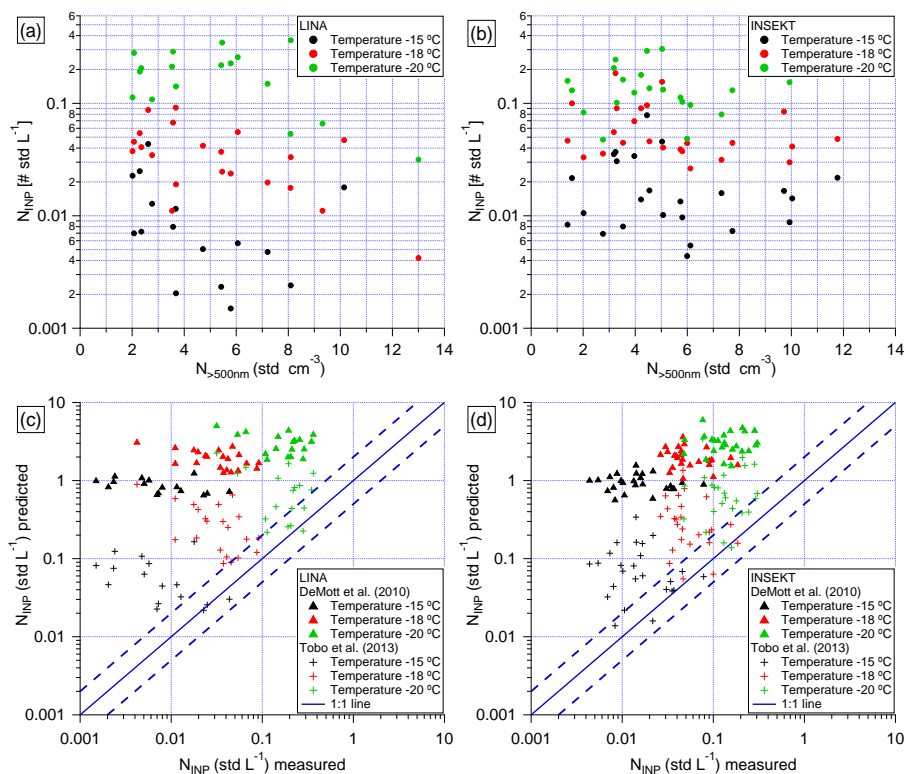


Figure 12. Scatter plot of N_{INP} measured by LINA (a) and INSEKT (b) against $N_{>500\text{nm}}$. Scatter plot of N_{INP} measured by LINA (c) and INSEKT (d) against the N_{INP} predicted by DeMott et al. (2010) and Tobo et al. (2013). The dashed lines outline a range of a factor of 2 about the 1:1 line (solid line).

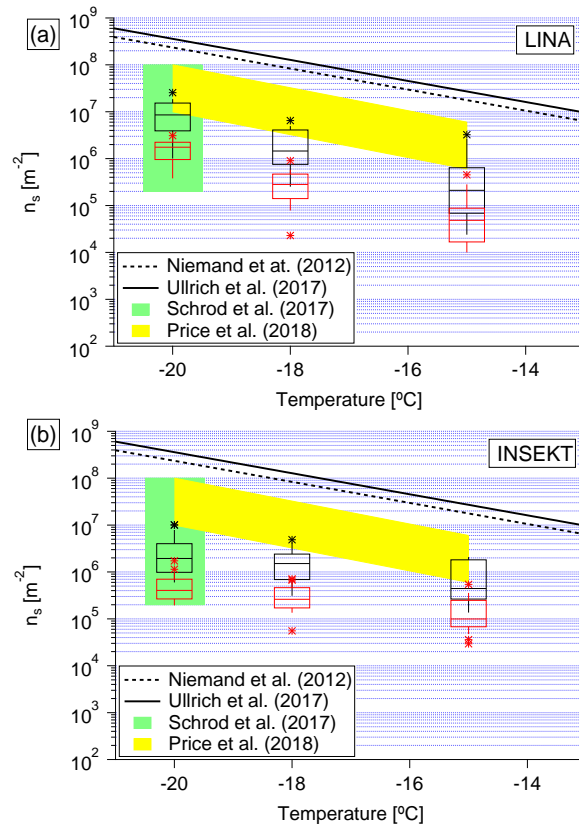


Figure 13. $n_{s>500\text{ nm}}$ (black box plot) and $n_{s,\text{all}}$ (red box plot) as a function of temperature. The results were determined based on LINA-measured N_{INP} in Fig.(a) and INSEKT-measured N_{INP} in Fig.(b). The boxes represent the interquartile range. Data not included between the whiskers are plotted as an outlier with a star. Two n_s parameterizations (Niemand et al., 2012; Ullrich et al., 2017) for desert dust are shown in dashed and solid line. We also compare to recent data from airborne measurement by Schrod et al. (2017) and Price et al. (2018), as shown in green and yellow shadow, respectively.

Supplement of Characterization of aerosol properties at Cyprus, focusing on cloud condensation nuclei and ice nucleating particles

Xianda Gong¹, Heike Wex¹, Thomas Müller¹, Alfred Wiedensohler¹, Kristina Höhler², Konrad Kandler³, Nan Ma¹, Barbara Dietel², Thea Schiebel², Ottmar Möhler², and Frank Stratmann¹

¹Experimental Aerosol and Cloud Microphysics Department, Leibniz Institute for Tropospheric Research, Leipzig, Germany

²Institute for Meteorology and Climate Research – Atmospheric Aerosol Research, Karlsruhe Institute of Technology, Karlsruhe, Germany

³Institute for Applied Geosciences, Technical University Darmstadt, Darmstadt, Germany

Correspondence: Xianda Gong (gong@tropos.de)

S1 Instrumentation

As shown in Fig. S1.

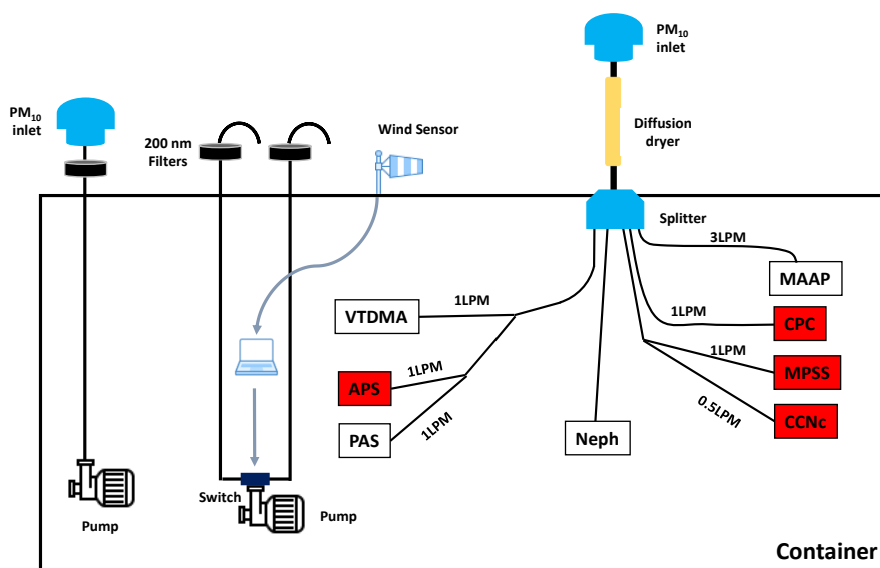


Figure S1. A schematic diagram of the measurement system and flow rate partitioning to the measurement devices. Indicated by the word "Switch" is a computer-based system that switched between two filters according to wind directions. The on-line instruments discussed in this paper are marked with red background. MPSS, APS and CCNc represent Mobility Particle Size Spectrometer, Aerodynamic Particle Sizer and Cloud Condensation Nuclei counter, respectively.

S2 Accounting for particle losses

The particle losses related to the transport of aerosol particles within the inlet tube system are determined using the Particle Loss Calculator (PLC) (von der Weiden et al., 2009). Size-dependent particle losses due to diffusion, sedimentation, turbulent inertial deposition, inertial deposition in a bend, and inertial deposition in a contraction are accounted for. The result is shown in Fig. S2, which depicts particle losses in % as a function of particle size.

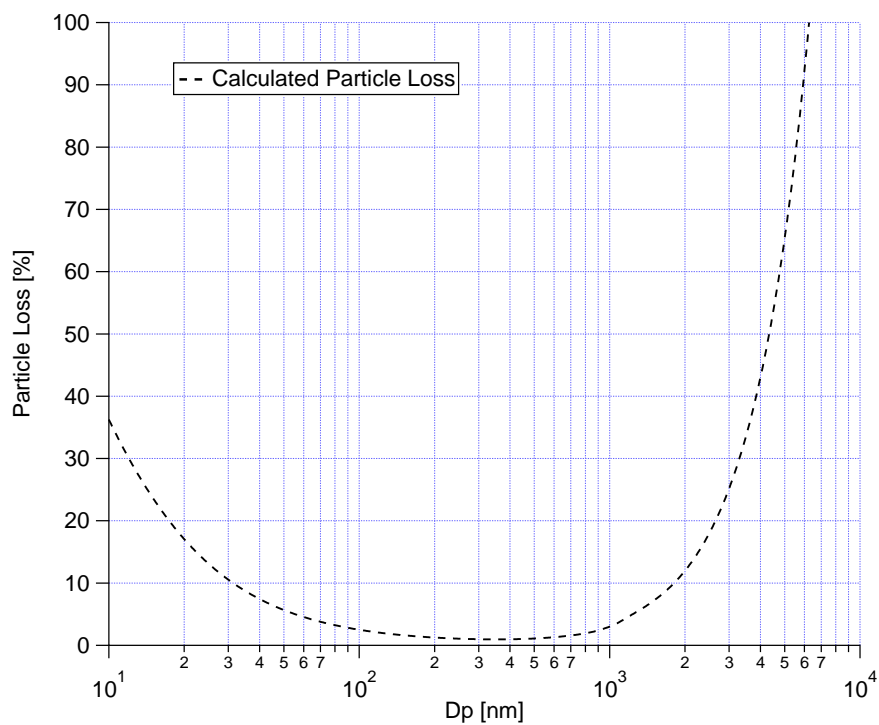


Figure S2. Size-dependent particle loss through the inlet.

S3 Filter sample information [and pre-experiment](#)

Table S1. The information of TROPOS filter samples, including the sample number, start time, start flow, stop time, end flow, duration and status.

Sample number	Start time (UTC)	Start flow (L min ⁻¹)	Stop time (UTC)	End flow (L min ⁻¹)	Duration (h)	Status
Sample 01	2017/04/06 07:50:00	10.76	2017/4/09 06:10:00	9.95	23.07	Ocean sector
Sample 02	-	-	-	-	-	Blind filter
Sample 03	2017/04/07 09:50:00	10.00	2017/4/09 06:10:00	7.92	26.09	Land sector
Sample 04	2017/04/09 07:30:00	10.61	2017/4/14 06:30:00	12.10	23.76	Ocean sector
Sample 05	2017/04/09 07:30:00	9.85	2017/4/10 06:20:00	8.74	22.63	Land sector
Sample 07	2017/04/11 07:00:00	9.73	2017/4/12 06:30:00	8.89	22.00	Land sector
Sample 08	2017/04/12 07:00:00	9.86	2017/4/14 06:30:00	8.68	25.65	Land sector
Sample 09	2017/04/14 07:50:00	9.83	2017/4/18 07:10:00	4.19	20.65	Ocean sector
Sample 10	2017/04/14 07:50:00	9.55	2017/4/15 06:20:00	6.11	21.04	Land sector
Sample 11	2017/04/15 06:40:00	9.80	2017/4/16 06:40:00	8.79	23.73	Land sector
Sample 12	2017/04/16 07:00:00	9.67	2017/4/18 11:00:00	7.74	18.21	Land sector
Sample 13	2017/04/18 07:30:00	9.68	2017/4/21 08:00:00	8.4	20.87	Ocean sector
Sample 14	2017/04/18 11:20:00	9.60	2017/4/19 09:40:00	8.12	18.12	Land sector
Sample 15	2017/04/19 09:50:00	9.49	2017/4/20 09:20:00	9.07	19.83	Land sector
Sample 16	2017/04/20 09:40:00	9.70	2017/4/22 06:30:00	9.34	26.20	Land sector
Sample 17	-	-	-	-	-	Blind filter
Sample 18	2017/04/22 06:40:00	9.74	2017/4/23 06:20:00	8.28	22.20	Land sector
Sample 19	2017/04/23 06:40:00	9.53	2017/4/24 06:20:00	7.95	23.05	Land sector
Sample 20	2017/04/24 06:40:00	9.65	2017/4/25 06:20:00	8.08	23.61	Land sector
Sample 21	2017/04/25 06:40:00	9.65	2017/4/26 09:40:00	8.71	20.42	Land sector
Sample 22	2017/04/26 09:50:00	9.65	2017/4/27 06:50:00	8.91	20.95	Land sector
Sample 23	2017/04/27 07:00:00	9.67	2017/4/28 06:30:00	8.11	22.95	Land sector
Sample 24	2017/04/28 06:40:00	9.57	2017/4/29 06:20:00	6.67	23.16	Land sector

Table S2. The information of KIT filter samples, including the sample number, start time, stop time, flow and duration.

Sample number	Start time (UTC)	Stop time (UTC)	Flow (L min ⁻¹)	Duration (h)
Sample01	2017/04/02 13:00:00	2017/04/02 17:00:00	15	4.00
Sample02	2017/04/03 07:08:00	2017/04/03 15:13:00	15	8.08
Sample04	2017/04/04 07:29:00	2017/04/04 15:17:00	15	7.80
Sample06	2017/04/05 07:34:00	2017/04/05 15:36:00	15	8.03
Sample08	2017/04/06 08:06:00	2017/04/06 13:58:00	15	5.87
Sample10	2017/04/07 07:31:00	2017/04/07 15:40:00	15	8.15
Sample11	2017/04/08 08:20:00	2017/04/08 16:20:00	15	8.00
Sample12	2017/04/09 09:35:00	2017/04/09 17:35:00	15	8.00
Sample13	2017/04/10 07:30:00	2017/04/10 15:30:00	15	8.00
Sample14	2017/04/11 08:30:00	2017/04/11 16:30:00	15	8.00
Sample15	2017/04/12 07:35:00	2017/04/12 15:35:00	15	8.00
Sample16	2017/04/13 07:35:00	2017/04/13 15:35:00	15	8.00
Sample17	2017/04/14 07:35:00	2017/04/14 15:35:00	15	8.00
Sample18	2017/04/15 07:35:00	2017/04/15 15:35:00	15	8.00
Sample19	2017/04/16 07:35:00	2017/04/16 15:35:00	15	8.00
Sample20	2017/04/17 07:43:00	2017/04/17 15:43:00	15	8.00
Sample21	2017/04/18 07:43:00	2017/04/18 15:43:00	15	8.00
Sample22	2017/04/19 07:43:00	2017/04/19 15:43:00	15	8.00
Sample23	2017/04/20 07:43:00	2017/04/20 15:43:00	15	8.00
Sample24	2017/04/21 07:43:00	2017/04/21 15:43:00	15	8.00
Sample25	2017/04/22 06:55:00	2017/04/22 14:20:00	15	7.42
Sample27	2017/04/23 07:15:00	2017/04/23 15:15:00	15	8.00
Sample28	2017/04/24 06:42:00	2017/04/24 14:42:00	15	8.00
Sample30	2017/04/25 07:26:00	2017/04/25 15:26:00	15	8.00
Sample32	2017/04/26 07:32:00	2017/04/26 15:32:00	15	8.00

When data evaluation was started for this set of samples, tests were made (as these were the first atmospheric samples on polycarbonate for which we did an analysis). A set of measurements was done in which filters were washed off with 1 mL of ultrapure water, first. This was done by shaking the centrifuge tube in which filter and water were situated. From this, 0.1 mL was used for a first analysis, directly taken from the tube in which the shaking had been done. Then 9.1 mL were added to the tube and the sample was shaken again, followed by a second analysis. The results from both dilutions can be seen in Fig. S3, and data in the overlapping temperature region are well in agreement. Based on this, we decided to use only 1 mL for washing, as this allows us to retrieve INP concentrations already at higher temperatures.

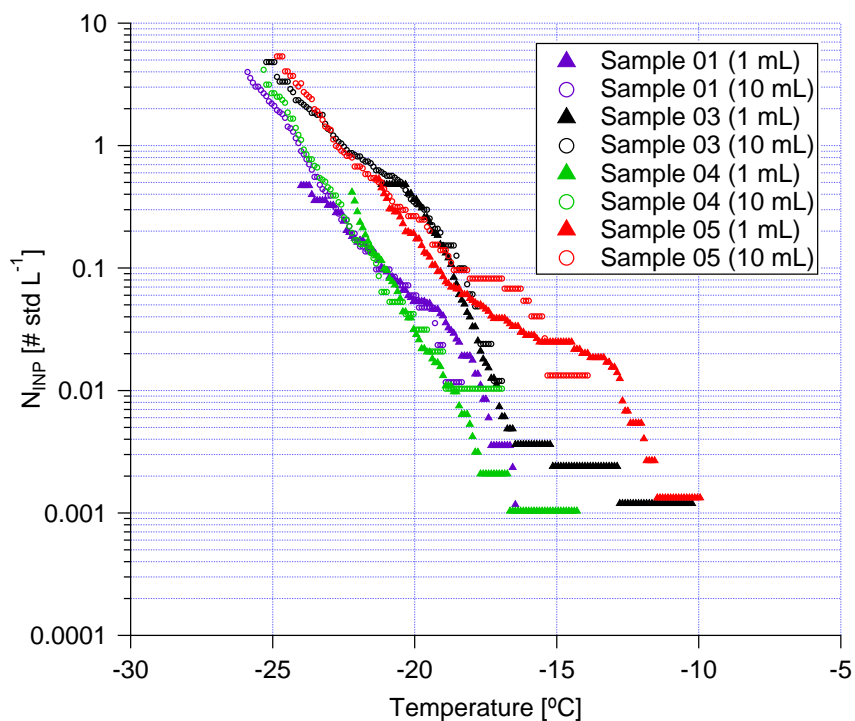


Figure S3. N_{INP} measured by LINA as a function of temperature. The solid triangles and hollow circles show N_{INP} from the samples washed with 1 mL and 10 mL ultrapure water, respectively.

S4 Wind speed and direction

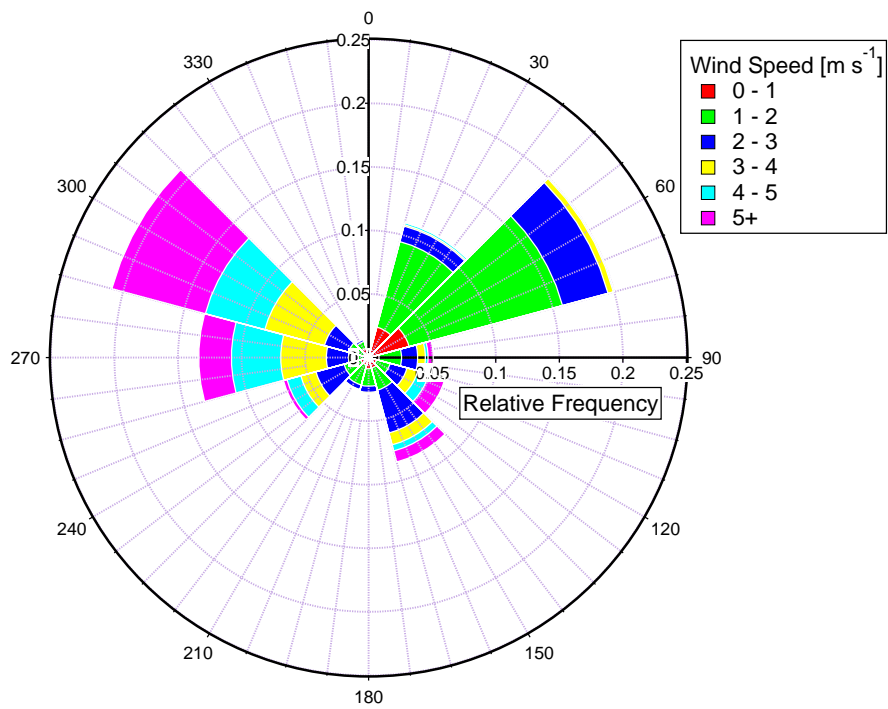


Figure S4. Wind rose based on 10 minutes mean of wind speed and direction measured at the station for whole campaign.

S5 Correlation of NO_x and N_{total}

Fig. S5 shows the scatter plot of N_{total} against NO_x . A good correlation ($R^2=0.62$) was found between extremely high concentrations of NO_x and N_{total} (upper panel in Fig. S5). No correlation was observed at lower concentrations of NO_x and N_{total} (lower panel in Fig. S5).

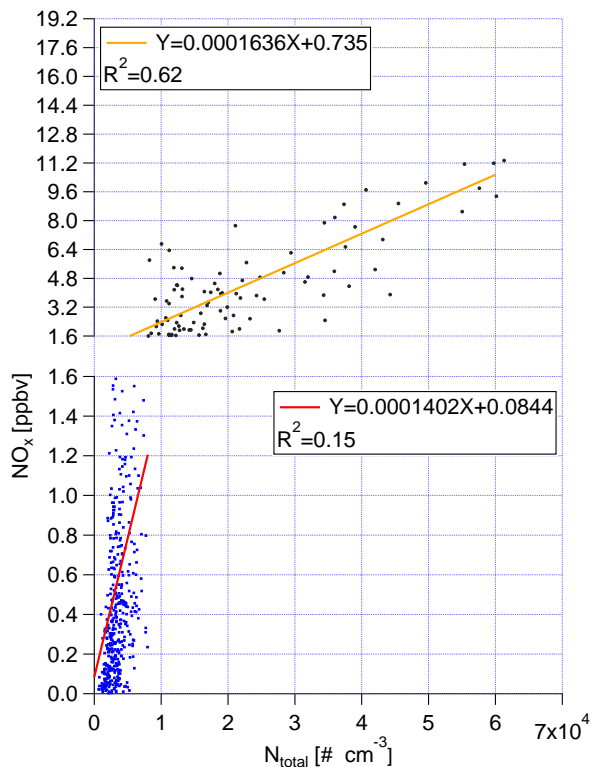


Figure S5. Scatter plot of N_{total} versus NO_x . R^2 and fitting function are given in the panels.

5 S6 Identification of pollution periods

Fig. S6 shows the measured super-micron PNSDs as contour plot, together with NO_x information from 06:00 UTC 16 to 00:00 UTC 18 April. Pollution events were identified based on the PNSDs. The criteria are, first of all, the appearance of a distinct ultrafine particle mode with a dN/dlogDp value large than 3000 cm^{-3} at 15 nm. Secondly, the ultrafine particle mode featured similar PNSDs, without any sign of growth.

10 The resulting PNSDs during the pollution events featured a pronounced mode with a maximum at about 15 nm (median dN/dlogDp value larger than 10^4 cm^{-3}). Three pollution periods were observed in the example shown here, i.e., from 18:10

to 22:20 UTC 16 Apr, 04:50 to 05:10 UCT, 17:30 to 20:50 UTC 17 Apr. During the pollution periods, high concentrations of NO_x were also observed.

Once we identified all the pollution periods. We made the wind rose plot for all the pollution periods, as shown in Fig. S7.

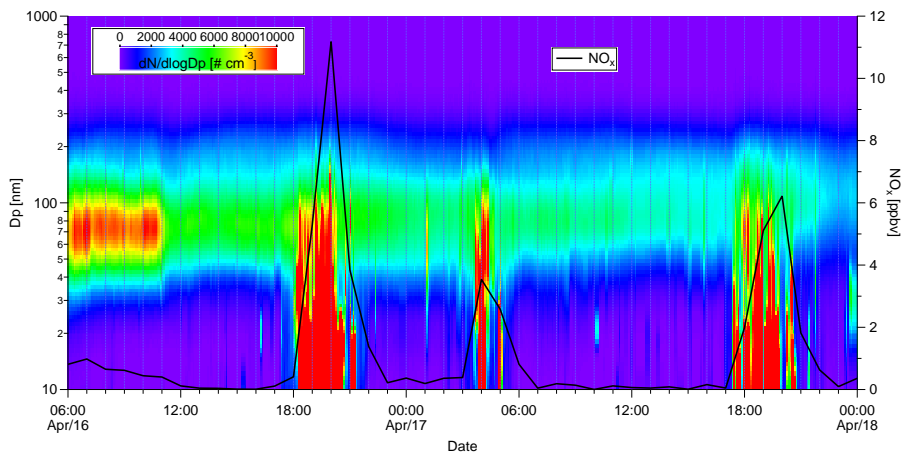


Figure S6. Contour plots for PNSDs from 06:00 UTC 16 to 00:00 UTC 18 April. Black line shows time series of NO_x concentration.

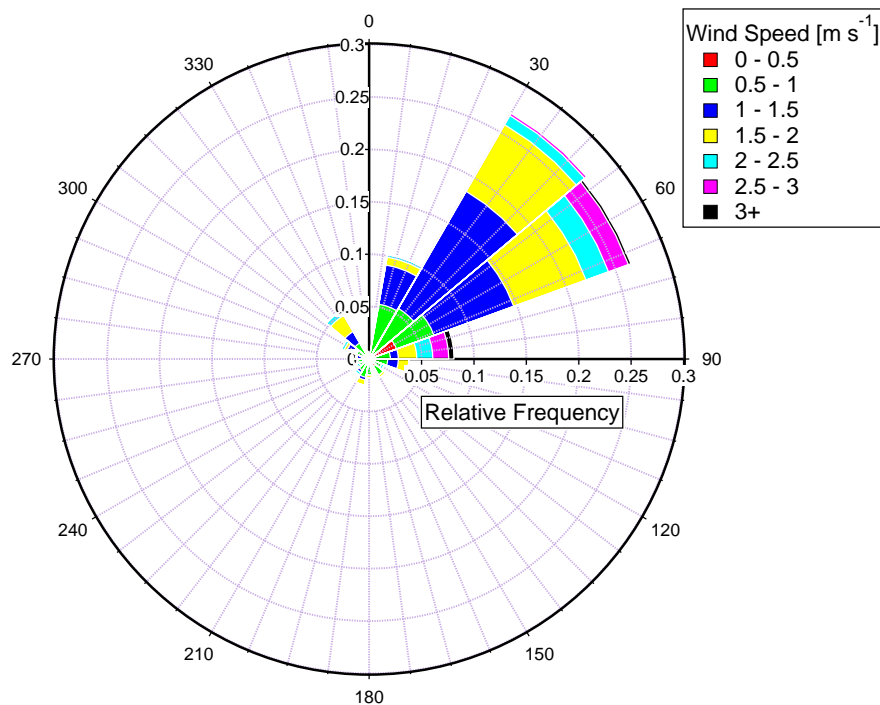


Figure S7. Wind rose based on 10 minutes average of wind speed and direction measured at the station for pollution periods.

S7 Filter background and measurement uncertainty

As shown in Fig. S8, the background of LINA and INSEKT measurement is tested. The ultrapure water droplets started to freeze at -20 °C. Compared to the ultrapure water, the frozen fraction (f_{ice}) curve from blind filters washed with ultrapure water is shifted approx 1 °C towards higher temperatures. The f_{ice} curves determined for atmospheric filter samples are clearly above those obtained for the blind filters, while the f_{ice} of 225- and 3375-fold dilutions of the filter washing water is close to that of ultrapure water.

For the subtraction of background, we used the same method as proposed by Umo et al. (2015). Thereto, the cumulative concentration of INP per air volume determined for the blind filters (KT_{blind}) was subtracted from that for filter samples (KT_{filter}):

$$10 \quad N_{INP} = KT_{filter} - KT_{blind} \quad (1)$$

Based on Agresti and Coull (1998), the confidence interval of f_{ice} can be calculated by:

$$\left(f_{ice} + \frac{z_{\alpha/2}^2}{2n} \pm z_{\alpha/2} \sqrt{[f_{ice}(1 - f_{ice}) + z_{\alpha/2}^2/(4n)]/n} \right) / \left(1 + \frac{z_{\alpha/2}^2}{n} \right) \quad (2)$$

where $z_{\alpha/2}^2$ is the standard score at a confidence level $\alpha/2$, which for a 95% confidence interval is 1.96. n is the droplet number of each experiment.

15 The uncertainty of N_{INP} is calculated based on the uncertainty of the f_{ice} as we outlined above. The error bar in Fig. S9 represents 95% confidence interval for N_{INP} .

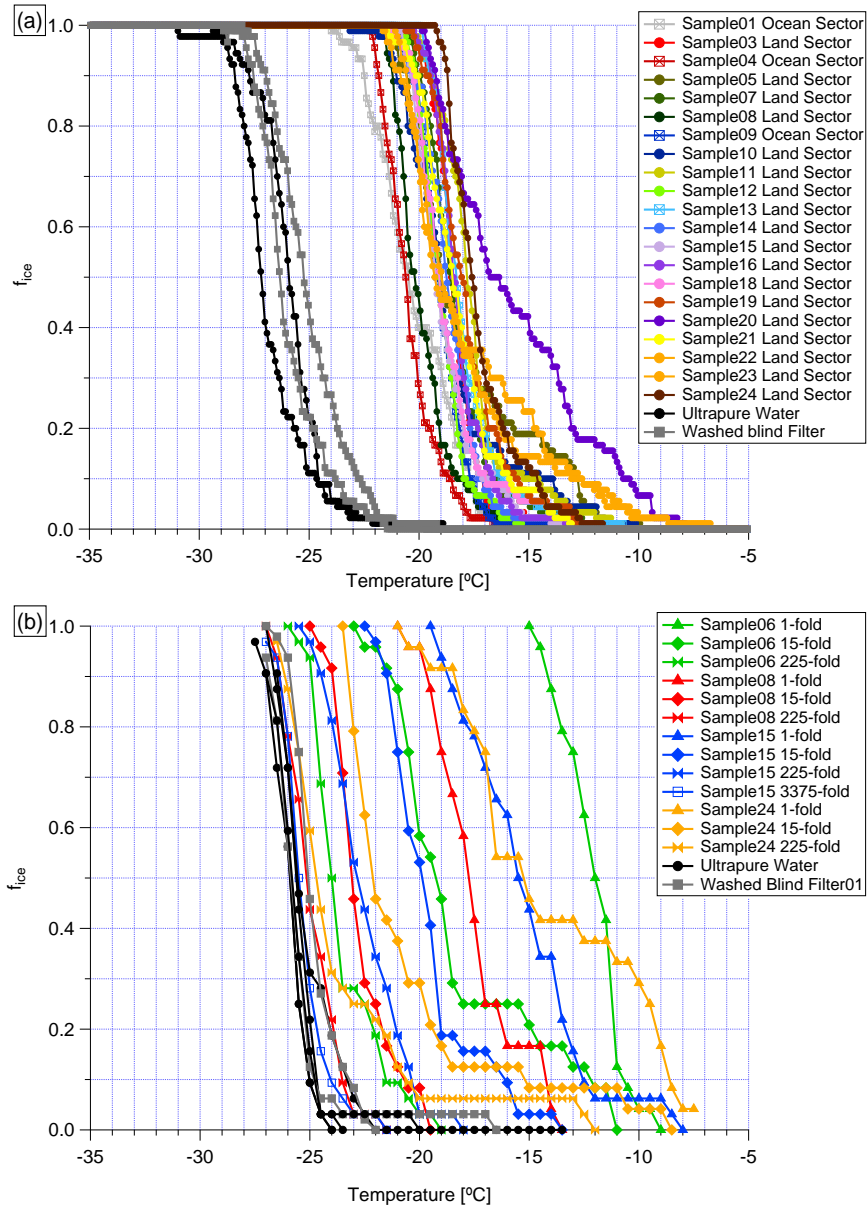


Figure S8. The f_{ice} of washed filter samples, together with background signals of ultrapure water and ultrapure water washed blind filter samples of LINA (a) and INSEKT (b) measurement results. For INSEKT, only a subset of all samples is shown exemplarily, to enable seeing curves for the same sample from different dilutions.

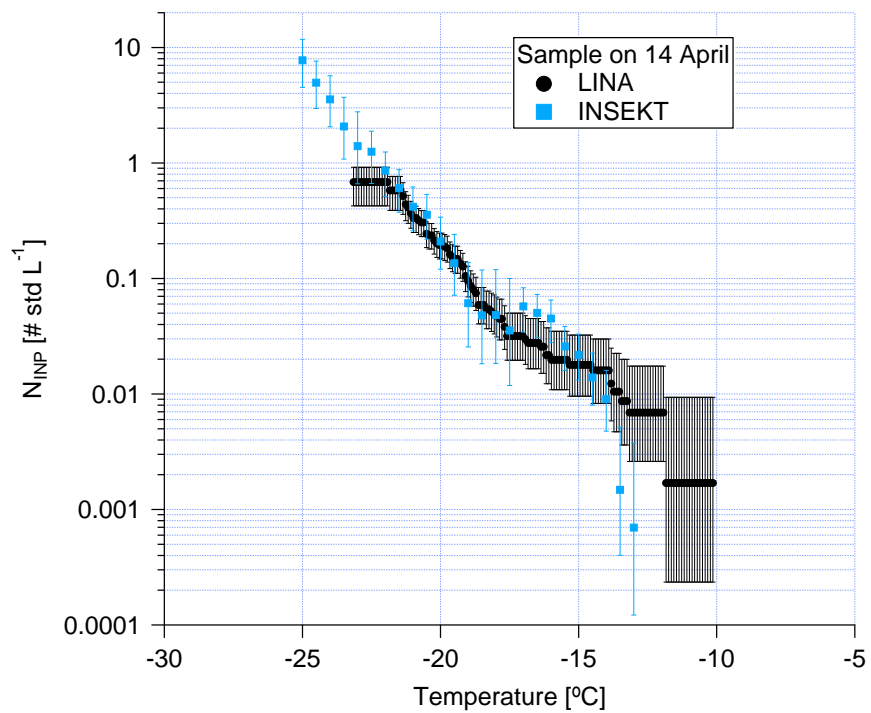


Figure S9. N_{INP} measured by LINA (black) and INSEKT (blue) as a function of temperature. For comparison, the LINA and INSEKT results here were both sampled on 14 April. The error bar shows the 95% confidence interval in N_{INP} .

S8 INSEKT measured N_{INP} against the ratio of time sampling from the ocean sector

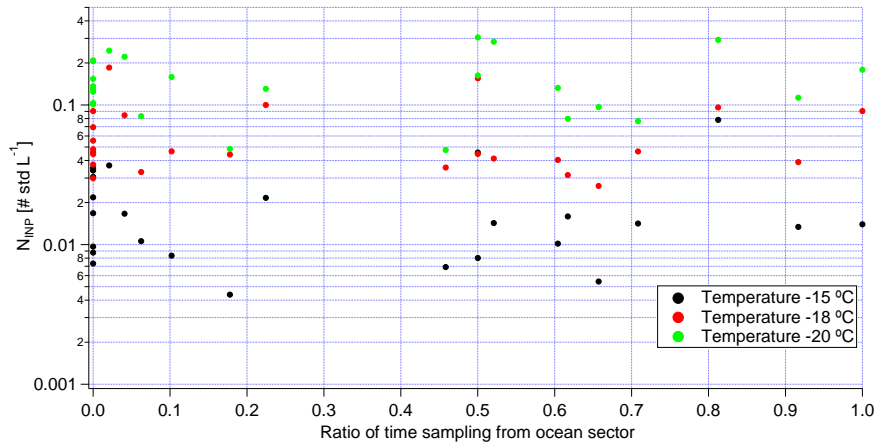


Figure S10. Scatter plot of N_{INP} (measured by INSEKT) versus the ratio of time sampling from the ocean sector at -15 , -18 and -20 °C.

S9 Log-normal distribution of N_{INP} test

Here we used two methods to test our N_{INP} frequency distributions. The quantile-quantile plot was originally proposed by Wilk and Gnanadesikan (1968) to compare two distributions by plotting quantiles of one versus quantiles of the other. Here, we plot logarithmic N_{INP} at -18 °C versus a standard normal distribution, as shown in Fig. S11. The measured N_{INP} is close to the reference line, indicating that the N_{INP} follows the log-normal distribution. Note that the quantile-quantile plot provides only a rough measure how similar the compared distributions are.

Table S3. Lillifors test results.

Temperature	LINA		INSEKT	
	h	p	h	p
-15 °C	0	0.3455	0	0.4461
-18 °C	0	0.1810	0	0.1400
-20 °C	0	0.0355	0	0.5000

Furthermore, we used the Lilliefors test (Lilliefors, 1967) to determine if the observed N_{INP} frequency distributions follow a log-normal distribution. In statistics, the Lilliefors test is a normality test based on the Kolmogorov-Smirnov test (Sachs, 2012). It is used to test the null hypothesis of the data following a normal distribution, with the null hypothesis not including the actual

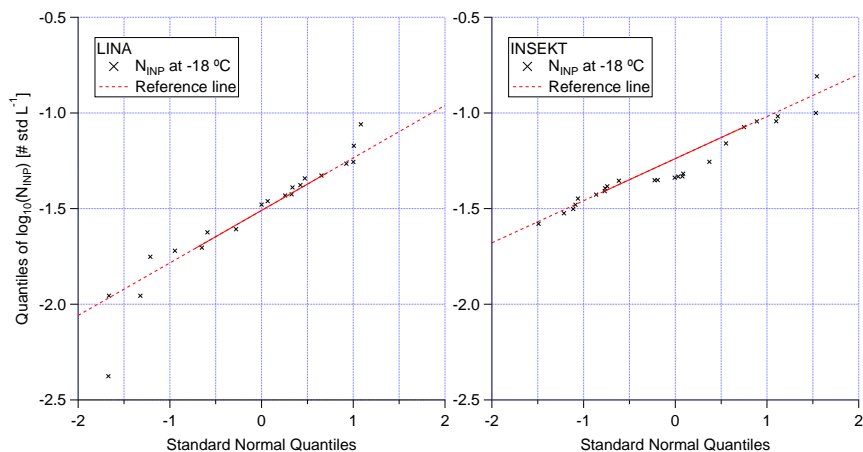


Figure S11. The quantile-quantile plot of logarithmic N_{INP} measured by LINA and INSEKT at $-18\text{ }^{\circ}\text{C}$ with a random normal distribution.

parameters (mean and standard deviation) of the normal distribution. Results (h-value and p-value) of the carried out Lilliefors tests are shown in Tab. S3. A return value of $h = 0$ indicates that the logarithmic N_{INP} (measured by LINA and INSEKT) follow normal distributions at -15 , -18 and $-20\text{ }^{\circ}\text{C}$. As log-normally distributed N_{INP} are indicative for the observed INP population having undergone a series of random dilutions while being transported (Welti et al., 2018), the performed Lilliefors tests yield
5 additional prove for the INP sampled during our measurements originating from long-range transport rather than local sources.

S10 Correlation of N_{INP} with particle number/surface area concentration

Table S4. Coefficient of determination (R^2) of LINA and INSEKT measured N_{INP} with $N_{>500\text{nm}}$.

Temperature	LINA	INSEKT
$-15\text{ }^{\circ}\text{C}$	0.0877	0.0277
$-18\text{ }^{\circ}\text{C}$	0.2369	0.0602
$-20\text{ }^{\circ}\text{C}$	0.0950	0.0006

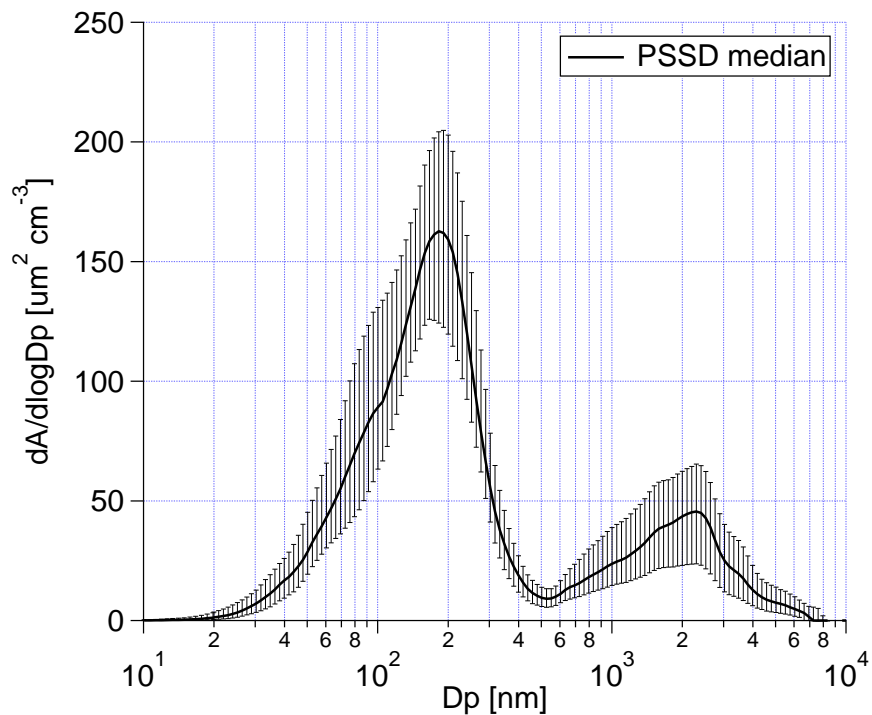


Figure S12. The median PSSD (excluding airport pollution period) during the whole campaign. The error bar indicates the range between the 25 % and 75 % percentiles.

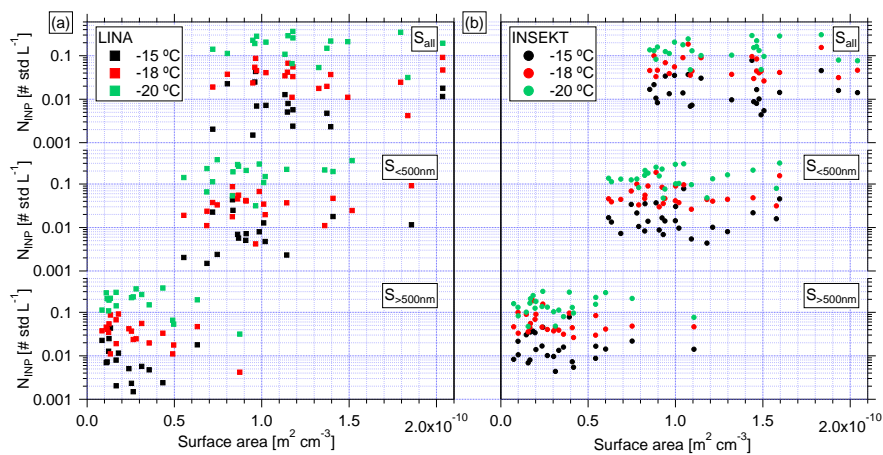


Figure S13. Scatter plot of N_{INP} (measured by LINA (a) and INSEKT (b)) against S_{all} , S_1 , S_2 at -15 , -18 and -20 °C.

Table S5. R^2 of LINA and INSEKT measured N_{INP} with particle surface area concentration.

Temperature	LINA			INSEKT		
	S_{all}	S_1	S_2	S_{all}	S_1	S_2
−15 °C	0.0009	0.0011	0.0319	0.0016	0.0153	0.0055
−18 °C	0.0002	0.0905	0.1945	0.0059	0.0079	0.0521
−20 °C	0.0001	0.0852	0.1255	0.0395	0.0362	0.0057

References

- Agresti, A. and Coull, B. A.: Approximate is Better than “Exact” for Interval Estimation of Binomial Proportions, *The American Statistician*, 52, 119–126, <https://doi.org/10.1080/00031305.1998.10480550>, <https://doi.org/10.1080/00031305.1998.10480550>, 1998.
- Lilliefors, H. W.: On the Kolmogorov-Smirnov Test for Normality with Mean and Variance Unknown, *Journal of the American Statistical Association*, 62, 399–402, <https://doi.org/10.1080/01621459.1967.10482916>, <https://doi.org/10.1080/01621459.1967.10482916>, 1967.
- Sachs, L.: *Applied statistics: a handbook of techniques*, Springer Science & Business Media, 2012.
- Umo, N., Murray, B., Baeza-Romero, M., Jones, J., Lea-Langton, A., Malkin, T., O’Sullivan, D., Neve, L., Plane, J., and Williams, A.: Ice nucleation by combustion ash particles at conditions relevant to mixed-phase clouds, *Atmospheric Chemistry and Physics*, 15, 5195–5210, 2015.
- von der Weiden, S. L., Drewnick, F., and Borrmann, S.: Particle Loss Calculator - a new software tool for the assessment of the performance of aerosol inlet systems, *Atmos. Meas. Tech.*, 2, 479–494, <https://doi.org/10.5194/amt-2-479-2009>, <http://www.atmos-meas-tech.net/2/479/2009/>, 2009.
- Welti, A., Müller, K., Fleming, Z. L., and Stratmann, F.: Concentration and variability of ice nuclei in the subtropical maritime boundary layer, *Atmospheric Chemistry and Physics*, 18, 5307–5320, 2018.
- Wilk, M. B. and Gnanadesikan, R.: Probability plotting methods for the analysis for the analysis of data, *Biometrika*, 55, 1–17, <https://doi.org/10.1093/biomet/55.1.1>, <http://dx.doi.org/10.1093/biomet/55.1.1>, 1968.