

Author's response

Journal: ACP

Title: Satellite inference of water vapor and aerosol-above-cloud combined effect on radiative budget and cloud top processes in the Southeast Atlantic Ocean

Author(s): Lucia T. Deaconu et al.

MS No.: acp-2019-189

Authors want to thank Referee #1, for his / her contribution and interactive comments. The answers to specific questions are addressed below, while the modifications made in the manuscript are in red.

Anonymous Referee #1

Received and published: 23 April 2019

This paper presents an analysis of the variation and covariation of aerosol and cloud properties, as well as meteorological conditions, in the SE Atlantic region based on satellite observations. Compared to many previous studies on this topic, this paper sheds an important light on the co-variation of water vapor and above-cloud aerosols, and the implications for radiative effects on cloud. Overall, this paper is well written and well-organized. The topic is a good fit to ACP. On the other hand, it can be further improved if the following questions and issues can be addressed and clarified.

Comments/questions/suggestions:

1. A few important papers on the above-cloud aerosols in the SE Atlantic region are missing from the Introduction. They should be cited.
 - Page 2 Line 7~8: Swap et al. (1996) is perhaps the first one documenting the long-range transport of smoke aerosol from African continent to Atlantic.
 - Page 2, line 16: Recently, Zhang et al. (2016) provide a nice analysis of how DRE of above-cloud aerosol depends on AOT and COT (see their Figure 9).
 - Page 2, line 25: A few recent papers have studied the Twomey effect of above-cloud aerosols in the SE Atlantic region (Costantino and Bréon 2013; Lu et al. 2018). In particular, Lu et al. (2018), showed that the brightening effect due to entrained aerosols is actually stronger than the DRE and semi-direct effect.
 - Page 4, line 5~15: A recent study by Zhou et al. (2017) provides a more comprehensive picture of the radiative interactions between above-cloud aerosols and low clouds in the SE region.

Thank you for the suggestions.

2. Section 2.1: The Single-scattering albedo (SSA) is used later for deriving the absorption AOT. Is SSA a retrieved parameter or an a-priori assumption in the retrieval? √

The SSA is parameter retrieved by POLDER, pixel by pixel (6x6 km²) when the COT given by MODIS is larger than 3.0., therefore it varies both spatially and temporally. The details can be read in Peers et al., 2015.

3. POLDER retrievals are done at the 6x6 km. At this scale, a significant fraction of pixels would be partly cloudy. How are partly cloudy pixels treated in the analysis? If they are simply screened out, would that lead to sampling bias? MODIS Reff retrieval is not really biased when above-cloud aerosol is present. But MODIS COT retrieval can be substantially biased (underestimated). See Meyer et al. (2013). It needs to be clarified how the COT retrieval bias is accounted for the LWP estimation. ✓

The POLDER retrievals at 6x6 km² use the 1x1 km² MODIS cloud fraction and Reff and COD as mask. All the MODIS pixels with cloud fraction lower than 1 and COD lower than 3 are not considered. We cite here Waquet et al., 2009: “We also used a cloud screening criterion to ensure that our analysis was only applied to cloudy pixels associated with an overcast cloud cover and a high cloud optical thickness (to ensure that the polarization cloud signal is saturated). The cloud screen took advantage of the high spatial resolution retrieval capabilities of MODIS (1x1km² at nadir) to estimate within each PARASOL pixel (6 x 6km²) a mean value and a standard deviation for both the cloud optical thickness and the cloud droplet effective radius. In the analysis presented here, we only keep the PARASOL pixels associated with a mean cloud optical thickness larger than 5, a cloud optical thickness standard deviation smaller than 4, and a cloud droplet effective radius standard deviation smaller than 2.”

In our study we compute the LWP using POLDER COT, which is corrected for the presence of absorbing aerosols above clouds. Indeed, the SSA and COT are retrieved simultaneously, and all details and uncertainties are described in Peers et al, 2015.

4. Page 7, Line 25: Indeed, CALIOP retrieval of above-cloud smoke AOT can be significantly biased, as pointed out by the authors and many other previous studies. This is because CALIOP cannot “see” the low portion of a thick smoke layer, i.e., it puts the bottom of aerosol layer too high. Therefore, simply using the extinction profile for HR computation seems to be a bad idea. It needs to be clarified here why this is justified. ✓

We agree with the reviewer’s comment that CALIOP underestimates the aerosol base altitude. However, this is the only available product to describe the vertical profile of aerosol above clouds from satellite. An alternative approach would consist in using the CALIOP data at 1064 nm, but this requires the development of a new CALIOP algorithm, which is out of the scope of this paper.

The aerosol layer base is generally high biased by approximately 500 m (see Rajapakshe et al., 2017). We recall that the CALIOP AOD at 532 nm is rescaled using POLDER AOD above clouds. Which means that the calculation of the heating rates is confined within a geometrical aerosol layer slightly thinner (by 500 m). The heating caused by the aerosols could occur further lower in the atmosphere (see Figure 11 – instead of a layer situated between 2.5 and 4.5 km we would go at 2 and 4.5 km), which doesn’t change much the conclusions of our study. In the analysed area, aerosols are **mostly detached** from the cloud below, even considering the 500 m bias. Indeed, aerosol-cloud interaction is possible, but from our data, most of the retrievals

show detached situations. It is true that uncertainty in the aerosol layer height propagates to an uncertainty on the heating rate profile: the maximum of heating could be lower in the aerosol layer and the SW heating might be slightly closer to the cloud top (for example in Figure 11b, the mean HR_SW might not reach 10 K/day between the altitudes 3 and 4 km, and it might be higher around 2 km).

5. Page 8 Line 30: Again, is SSA a retrieved parameter or a pre-assumption. Is it a constant or it can vary spatially or temporally, and how? ✓

Please see the answer to question 2.

6. Page 9 Line 10: It is interesting that the COT bias is pointed out here, but not in Section 2.1. ✓

We have modified the text accordingly.

7. Page 13, The analysis in this section is somewhat superficial. Overall, it remains unclear after reading if those differences between low and high AOT loading cases in Figure 9 and 10 are significant and meaningful. Are they simply coincidence or there are some underlying physics? Significant revision is needed here. In particular, these differences should be put in the context of previous studies, e.g., Lu et al. 2018; Zhou et al. 2017 ✓

We thank the reviewer for pointing out the lack of clarity in section 4.1, as it is one piece of our demonstration of aerosol above cloud effects. In this section we show the difference in cloud properties between low and high aerosol-above-cloud loading, and it gives results consistent with Wilcox, 2010: there is a coincidence between the increase of aerosol loading and increase of liquid water content. The scope is to analyse and understand this coincidence. By choosing a time period and a small region, we have reduced the variability of meteorological parameters and thus its potential effects that could explain differences in cloud properties.

Firstly, we showed a significant difference in cloud water content: LWP increase systematically with 20 g/m² between the low and high polluted cases, from East to West over the zone. This increase is significant as it represents between 33% and 66%, from West to East, over the zone: +20g/m² is +66% on the East and 33 % on the West.

What can be noticed is a difference in water vapor amounts over the zone (not very surprising after the results of Section 3.3) and in the covariance water vapor – LWP (Figure 10c). This difference in the covariance can be interpreted as a result of the reduction of negative feedbacks that are ordinarily at play for stratocumulus cloud field (Wood, 2002). One explanation could be due to difference in cloud top processes (forced by radiative effects) between low and high smoke loading. The rest of the paper presents the importance of smoke-over-cloud radiative effect and the estimate of water vapor and aerosol distinct contributions. Another explanation for Figure 10c is the presence of precipitable clouds in the low case scenario, which is supported by the existence of larger cloud droplet effective radii (> 11 μm, Figure 9a) associated to large specific humidity between 8° and 6° E (Figure 9d). These could lead to the shift in LWP observed in Figure 10c, where LWP decreases abruptly for q_v larger than 9g/kg. Therefore, the difference observed between LWP-q_v for the high and

low situations might be explained by two hypotheses: the radiative effect of smoke layer on the underlying cloud or the loss of precipitable water. We modified the text.

8. Page 14 Line 4~7: It remains puzzling to me why Figure 10c “seems well illustrating the cloud-radiation-entrainment feedback”. It needs to be explained better and, in more detail, here. What is the underlying physics of this feedback? Why does the decrease of LWP with q_v “illustrate” this feedback? ✓

Thank you for your comment. Please refer to the previous comment and answer.

In Discussion section 4.4 we interpret this figure, making the link with the study of the smoke radiative forcing and the potential forcing of cloud top processes and feedbacks, while discussing the physical link of LWP with q_v at 925 hPa, depending on the location of this pressure level compared with the cloud top altitude. We have also considered a second hypothesis that could explain this behaviour.

9. Page 15 Line 5: The total HR at cloud top for the unpolluted case is -13.5 K/day and the corresponding value for polluted cases is -12.9 K/day. Considering that the LW cooling rate for both groups is the same (i.e., -17.79 K/day). This difference indicates that the SW heating at the cloud top for the polluted case is actually stronger (i.e., more positive). Isn't this counterintuitive? Shouldn't the extinction of above-cloud aerosol layer reduce the SW heating rate at cloud top in the polluted cases? This SW heating difference should be pointed out here and explained in detail. ✓

Thank you for pointing this out. The SW heating at the top of the cloud in figure 11 was a labelling mistake. The correct values show a cooling of 0.56 K/day at the cloud top due to the presence of aerosols above. We corrected the figures and the text.

10. The overall values between the polluted and unpolluted cases in Figure 11 seem pretty close. Some statistical test (e.g., T-test) need to be performed to tell if the differences are statistically significant. ✓

In figure 11 we were interested in the broad difference between an unpolluted atmospheric profile (that contains only water vapor) and one that also includes an aerosol layer above the cloud. For all the CALIOP extinction profiles with an aerosol layer above clouds we selected the associated water vapor and temperature profiles and computed the heating rates by turning on and off the aerosols above the clouds in the model. The 6 K/day warming between 2.5 and 4.5 km due to the aerosols is clearly showing the effect of aerosols. Indeed, at the cloud top the effect of both aerosol and water vapor is less obvious, due to the different cloud altitudes retrieved from CALIOP that position the strong cloud-top cooling associated to LW cooling at different altitudes. This is obvious from the large values of the standard deviation resulted after averaging these profiles (horizontal bars in Figure 11). This is another reason why for the next part of the study we have analysed a single profile. A t-test would show significant differences at the aerosol layer, but almost no statistical difference at the cloud top, which is what we expect from this figure.

- Costantino, L., and F. M. Bréon (2013), Aerosol indirect effect on warm clouds over South-East Atlantic, from co-located MODIS and CALIPSO observations, *Atmospheric Chemistry and Physics*, 13(1), 69–88, doi:10.5194/acp-1369-2013.
- Lu, Z., X. Liu, Z. Zhang, C. Zhao, K. Meyer, C. Rajapakshe, C. Wu, Z. Yang, and J. E. Penner (2018), Biomass smoke from southern Africa can significantly enhance the brightness of stratocumulus over the southeastern Atlantic Ocean, *PNAS*, 115(12), 201713703–2929, doi:10.1073/pnas.1713703115.
- Meyer, K., S. Platnick, L. Oreopoulos, and D. Lee (2013), Estimating the direct radiative effect of absorbing aerosols overlying marine boundary layer clouds in the southeast Atlantic using MODIS and CALIOP, *Journal of Geophysical Research-Atmospheres*, 118(10), 4801–4815, doi:10.1002/jgrd.50449.
- Swap, R., M. Garstang, S. A. Macko, P. D. Tyson, W. Maenhaut, P. Artaxo, P. Kållberg, and R. Talbot (1996), The long-range transport of southern African aerosols to the tropical South Atlantic, *J. Geophys. Res.*, 101(D19), 23777–23791, doi:10.1029/95JD01049.
- Zhang, Z., K. Meyer, H. Yu, S. Platnick, P. Colarco, Z. Liu, and L. Oreopoulos (2016), Shortwave direct radiative effects of above-cloud aerosols over global oceans derived from 8 years of CALIOP and MODIS observations, *Atmospheric Chemistry and Physics*, 16(5), 2877–2900, doi:10.5194/acp-16-2877-2016.
- Zhou, X., A. S. Ackerman, A. M. Fridlind, R. Wood, and P. Kollias (2017), Impacts of solar-absorbing aerosol layers on the transition of stratocumulus to trade cumulus clouds, *Atmospheric Chemistry and Physics*, 17(20), 12725–12742, doi:10.5194/acp17-12725-2017.

Authors want to thank Referee #2, Meloe Kacenelenbogen for her contribution and interactive comments. The answers to specific questions are addressed below, while the modifications made in the manuscript are in red.

Meloe Kacenelenbogen (Referee)

meloe.s.kacenelenbogen@nasa.gov

Received and published: 2 May 2019

The authors use a combination of POLDER, MODIS, CALIOP and modelled meteorological profiles to evaluate the changes in met. parameters (e.g., Temperature, RH, Specific Humidity, Winds), cloud properties (droplet effective radius, top height, liquid water path), and heating rates as a function of more or less overlying AAOD. This paper is of good quality, well written and structured. It will be worthy of publication, once the issues below are addressed.

Overall comments:

1. Section 2.1. could benefit from a Table listing all the products and corresponding satellites/ models used in their method. ✓

Thank you. We have added a table summarizing all the satellite and models, with the parameters used in this study.

2. The authors base their study near the coast because this is where “aerosols are mainly detached from clouds” using CALIOP (by the way, CALIOP will likely miss the base of the aerosols). But then, further in their study, they analyze potential aerosol-cloud interactions. It would be worth adding some information on aerosol-cloud contact frequency over the region

In this study we are not analysing the aerosol/cloud interaction due to physical contact (first indirect effect). Instead, we focus on the “semi-direct effect” (more specifically: we study the changes in the radiative budget above cloud and at cloud top and their implications for the cloud dynamical development).

Regarding the aerosol-cloud contact frequency in this region, please refer to Figure 13 of Constantino and Breon, 2013 (ACP), where they show the number concentration of coincident MODIS-CALIOP retrievals for mixed aerosol-cloud layer and aerosols above clouds. Based on their results, we notice that our small region of interest is associated to few contact (or mixed) situations. Indeed, aerosol-cloud interaction is possible, but from our data, most of the retrievals show detached situations

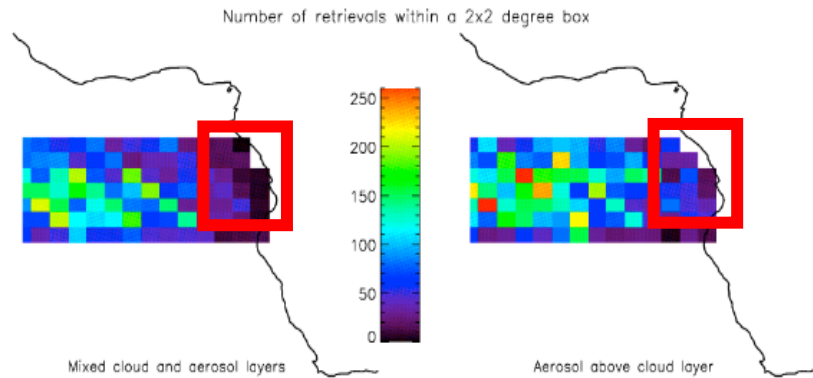


Fig. 13. Number concentration of coincident MODIS-CALIPSO retrievals for all aerosol regimes, in the region within [2S–15S; 14W–18E]. Colour scale represents number of measurements within a 2×2 degree box, for cases of mixed (left image) and well separated (right image) cloud-aerosol layers.

3. The reader could benefit from an explanation of their AAOD thresholds (i.e., >0.01 and <0.04); If AAOD is the threshold, and it says “high” or “low” aerosol loading, does this mean that the authors assume a constant SSA value? If not, shouldn’t they say “higher loading and higher absorption” instead? ✓

These values are empirically chosen. The strategy behind the choice is: with $AAOD > 0.04$, we select the cases where the radiative impact of the smoke layer is expected to be maximized (and conversely minimized for < 0.01) to better highlight the potential semi-effect of smoke layer on the below cloud. The SSA is not constant, it is retrieved by POLDER at $6 \times 6 \text{ km}^2$ spatial resolution (see Peers et al., 2015 ACP).

If not, shouldn’t they say “higher loading and higher absorption” instead?

Thank you, we modified the text.

Detailed comments: .

4. I had to read the title multiple times to understand it. “Combined effects of water vapor and aerosols on underlying cloud top processes and radiative budget from satellites over the South East Atlantic Ocean” or something along those lines would make it clearer. ✓

Thank you, but we prefer our current title.

5. P1, line 14: “it is a prerequisite” . ✓
6. P1, line 21: “sensing techniques” . ✓
7. P2, Line 10: “negligible wet scavenging” needs more references.

We are referring to wet scavenging of aerosols above stratocumulus clouds, without overlaid cirrus clouds, which by definition is negligible.

8. P3, line 11, line 30 (and other places): should read “cloud properties”, “particle size”, “droplet effective radius” etc.. ✓
9. P3, line 20: I suggest briefly describing the “assumptions” (i.e., mostly the CALIOP lidar ratio) ✓

10. P3, line 21: when introducing the depolarization method, I suggest saying “first introduced by Hu et al., 2007 and further implemented by e.g., Liu et al., 2015, Kacenelenbogen et al., 2019 Deaconu et al., 2017” . ✓
11. P3, L22: “AAC properties” . ✓
12. P3, L31: I suggest mentioning SSA from Peers et al.(2015) is retrieved above clouds. ✓
13. P4, L3: please consider referring to Table 1 or 2 of Kacenelenbogen et al. [2019] . ✓
14. P4, L15: “high loadings of smoke” . ✓
15. P5, L14: I suggest describing the “semi-direct effect” . ✓ We modified the text
16. P5, L30: available at 490 and 865 nm . ✓
17. P5, L31: I suggest briefly describing the Angstrom exponent . ✓
18. P5, L32: “the aerosol model prescribed in the POLDER (?) satellite algorithm” . ✓
19. P6, L6: Are MODIS cloud properties corrected for AAC? . ✓

The MODIS cloud effective radius is not corrected for absorption, but the bias due to absorbing aerosol above clouds on the MODIS Reff retrievals are of about 2 %. We do not use MODIS COD in our study. The POLDER COT is indeed corrected for absorption.

20. P6, L7: “cloud altitude derived from POLDER (ZO2)” . ✓
21. P6, L7: “ZO2 is calculated using. . .” . ✓
22. P6, Section 2.1: As said in the overall comments, this section could benefit from a Table listing all the products and corresponding satellites/ models used in the method. . ✓ We added a table in the study
23. P7, L3: “The GAME model” . ✓
24. P7, L4: Instead of “for this”, I suggest “inputs to GAME are. . .” . ✓
25. P7, L10: Instead of “we”, I suggest “GAME uses” . ✓
26. P7, L12: Instead of “the CALIOP method”, I suggest “the standard CALIOP product can underestimate. . .” And this is happening also when aerosols are below a certain detection threshold. You could reference Kacenelenbogen et al. [2014]. . ✓
27. P7, L24: “using the POLDER method” . ✓
28. P7, L25: I suggest mentioning that, although this might not affect your study, the aerosol base height might still very likely be biased high after scaling the extinction profile as seen on Fig. 1 . ✓ We modified the text
29. P8, L7: Consider replacing easterlies by easterly winds . ✓
30. P8, L27: I suggest “decrease” instead of “go down” . ✓
31. P8, L28: I suggest “value prescribed for the dust model in the POLDER algorithm” if I understand this correctly. ✓.
32. P9, L1: For SSA values during ORACLES-2016, I suggest referencing Pistone et al., [2019] . ✓
33. P9, L13: I suggest describing Fig. 2g before Fig. 3 . ✓
34. P9, L17: “lower than” . ✓
35. P9, L19: “Nevertheless, the stratocumuli are low-level clouds, so, an underestimation of around 300 m by the POLDER product is more likely”: this is not clear to me. . ✓

Oxygen pressure technique developed for POLDER tends to slightly underestimate the cloud top altitude in cases of low-level clouds underlying by BBA (first observed in Waquet et al, 2009 and now quantified in Figure 3 with more data)

36. P9, L21: “stratocumulus become more fractioned” would it be worth showing the cloud fraction as well? . ✓

We meant that stratocumulus change into cumulus. We modified the text

37. P10, L9: I suggest explaining the thresholds of 0.01 and 0.04 for AAOD. Could it be an AOD of 0.2 at 865nm with an SSA of 0.8? . ✓

Please refer to the answer given at question 3

38. P10, L17: “aerosols are mainly detached from low level clouds”: I suggest to be more quantitative. Again, CALIOP aerosol base height is biased high. There is likely more contact than what is seen from CALIOP. Maybe use results from Rajapakshe et al. [2017]? . ✓

We agree with the reviewer’s comment that CALIOP underestimates the aerosol base altitude. The aerosol layer base is generally high biased by approximately 500 m (Rajapakshe et al., 2017). The CALIOP AOD at 532 nm is rescaled using POLDER AOD above clouds. Which means that the calculation of the heating rates is confined within a geometrical aerosol layer slightly thinner (by 500 m). The heating caused by the aerosols could occur further lower in the atmosphere (see Figure 11 – instead of a layer situated between 2.5 and 4.5 km we would go at 2 and 4.5 km), which doesn’t change much the conclusions of our study. In the analysed area, aerosols are mostly detached from the cloud below, even considering the 500 m bias.

39. P10, L31: “June to August (JJA) 2008” . ✓

40. P11, L7: “from 7.5 to 10 g.kg⁻¹” . ✓

41. P11, L8: “smoke plume level (i.e., between 850 and 700 hPa)” . ✓

42. P11, L18: “plumes resulting from” . ✓

43. P11, L30: “Figure 7b and 7c” . ✓

44. P12, L1: I suggest “smoke” instead of “polluted” (urban pollution and smoke being two different aerosol types when using satellite remote sensing) . ✓

45. P12, L25: the authors choose the sampling area so that “aerosols are mainly detached” from clouds. Are you implying more aerosol-cloud contact here? . ✓

We believe the reviewer misunderstood this sentence. “Mainly detached” stands for less aerosol-cloud contact situations. Figure 4 shows PDFs of aerosol base and top altitudes and cloud top altitudes retrieved from CALIOP along bins of longitude, over the entire SOA region. Between May and July, we can notice less contact between 13° and 9° E - average aerosol base altitude is 2.21 ± 0.84 km, while the average cloud top altitude is 0.84 ± 0.3 km - and 9° and 5° E - average aerosol base altitude is 1.85 ± 0.75 km, while the average cloud top altitude is 1.14 ± 0.32 km. In August – October period the aerosol layers even more elevated from the clouds. As discussed previously, these values may be biased by 500 m, but we can expect more detached situations closer to the coast. Here is a figure presenting the mean per bin of longitude of the cloud top altitude, as well as aerosol base and top altitudes retrieved from CALIOP, for JJA over the region of interest. Please also notice the standard deviation vertical bars for cloud top altitude and aerosol base altitude. Indeed, aerosol-cloud interaction is possible, but from our data, most of the retrievals show detached situations. We added this figure in the paper.

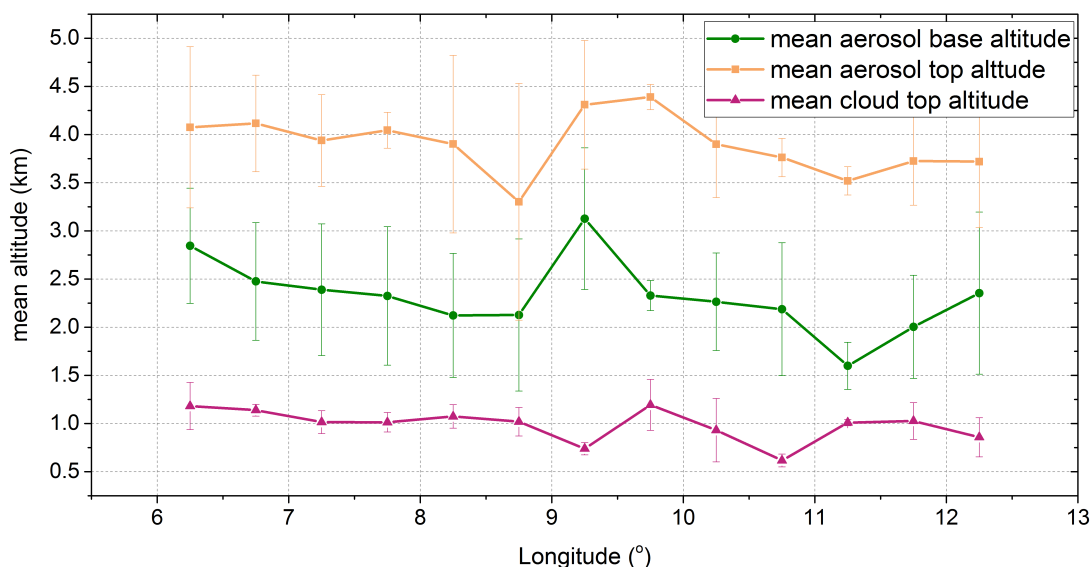


Figure X: Mean cloud top altitude, aerosol base altitude and aerosol top altitude as a function of longitude, over the sample region for June-August 2008. Vertical bars represent the standard deviation

46. P 13, L1: This is not clear. I would rephrase. . ✓ We modified the text

47. P13, L14: I would quantify how low the difference is. . ✓

48. P13, L20: "wind speed (see figure 10)" . ✓

49. P17, L12: "South East Atlantic Ocean" . ✓

50. P17, L13: "increase in size, decrease in absorption" . ✓

51. P17, L20: why "advanced"?; replace "forcing" by "effects" . ✓

52. P17, L21: I would quantify "lower" . ✓

53. Fig. 4: I suggest adding that these results use CALIOP data in the legend; First row could say MJJ and second row could say ASO . ✓

54. Fig. 5, 6, 7: An illustration of the mean aerosol and cloud layer heights for the sampling domain and period would help the reader . ✓ We added the figure as a supplement

55. Fig. 7d: Legend is confusing: is it now blue for august and red for June-July? . ✓

56. Fig. 9: It would not hurt to remind the reader that this is about clouds only and add "at 925hPa" to the y-axis of Fig. 9d . ✓

57. Fig. 7, 9, 10: I find it non-intuitive to color the "low" aerosol loading conditions in red and the "high" aerosol loading conditions in blue. I would have done the opposite. ✓

Thank you for the good suggestion.

- Deaconu, L. T., Waquet, F., Josset, D., Ferlay, N., Peers, F., Thieuleux, F., Ducos, F., Pascal, N., Tanré, D., Pelon, J., and Goloub, P.: Consistency of aerosols above clouds characterization from A-Train active and passive measurements, *Atmos. Meas. Tech.*, 10, 3499–3523, <https://doi.org/10.5194/amt-10-3499-2017>, 2017.
- Kacenelenbogen, M. S., Vaughan, M. A., Redemann, J., Young, S. A., Liu, Z., Hu, Y., Omar, A. H., LeBlanc, S., Shinozuka, Y., Livingston, J., Zhang, Q., and Powell, K. A.: Estimations of global shortwave direct aerosol radiative effects above opaque water clouds using a combination of A-Train satellite sensors, *Atmos. Chem. Phys.*, 19, 4933-4962, <https://doi.org/10.5194/acp-19-4933-2019>, 2019.

- Kacenelenbogen, M., et al. "An evaluation of CALIOP/CALIPSO's aerosol above cloud detection and retrieval capability over North America." *Journal of Geophysical Research: Atmospheres* 119.1 (2014): 230-244.
- Liu, Z., Winker, D., Omar, A., Vaughan, M., Kar, J., Trepte, C., Hu, Y., and Schuster, G.: Evaluation of CALIOP 532 nm aerosol optical depth over opaque water clouds, *Atmos. Chem. Phys.*, 15, 1265–1288, <https://doi.org/10.5194/acp-151265-2015>, 2015.
- Pistone, Kristina, et al. "Intercomparison of biomass burning aerosol optical properties from in-situ and remote-sensing instruments in ORACLES-2016." Interactive comment on *Atmos. Chem. Phys. Discuss.*, <https://doi.org/10.5194/acp-2019-189>,2019.

Authors want to thank Referee #2 for his / her contribution and interactive comments. The answers to specific questions are addressed below, while the modifications made in the manuscript are in red.

Anonymous Referee #3

Received and published: 6 May 2019

This paper provides a study of aerosols and clouds over the southeast Atlantic Ocean during the northern hemisphere summer season when smoke aerosols are transported over low-level stratocumulus clouds. The study is largely complementary to prior studies of the area. The unique contributions are the presentation of POLDER cloud properties in relation to the POLDER-retrieved aerosol optical thickness above the clouds and a radiative transfer model analysis constrained by observations and model reanalysis products to separate the contributions of aerosols and water vapor to changes in the radiative flux profiles during periods of high smoke concentration over the ocean.

The study largely confirms characteristics of the region previously described in the literature and, for the most part, supports prior hypotheses for how clouds respond to periods of high smoke transport in the layer above the clouds. The authors mount a hypothesis that variations in tropospheric humidity impact clouds through a weakening of cloud-top cooling. The paper may be suitable for publication in ACP, however I feel some the physical reasoning offered to support the authors' hypothesis for the impact on clouds of humidity variations requires a bit more rigor in its description, and I am concerned that it may rest on variations in a model-derived humidity profile that does not adequately resolve the vertical distribution of moisture to support the argument. Further comments on these and some other minor matters follows.

Major comments:

1. Page 13, lines 29-30 the authors claim that a difference in humidity at 925 hPa can explain the differences in LWP between the high and low AOT cases, but they do not explicitly describe the mechanism. Is the 925 hPa layer within the cloud layer or boundary layer where greater humidity is therefore able to condense, or is the 925 hPa level above the clouds and the authors are referring to a different mechanism? The physics behind this conclusion needs to be explained here. ✓

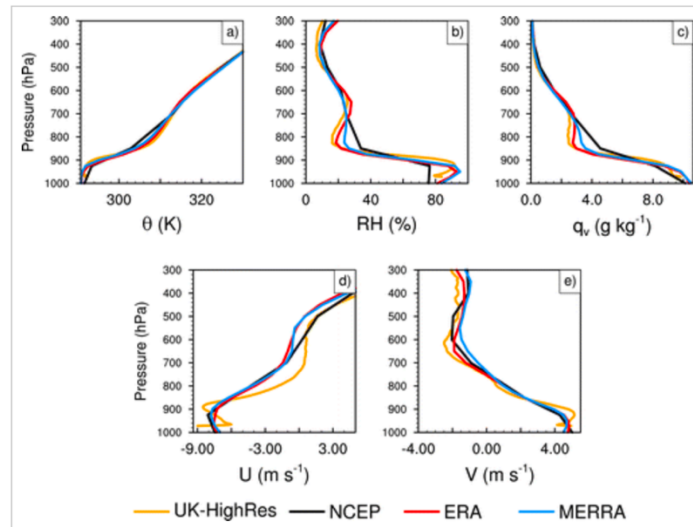
The authors agree with the reviewer's comment. From the ECMWF reanalysis data, the model-derived humidity profile has an uncertainty. Also, from this estimated profile, it is not really obvious that the 925 hPa level is every time within the stratocumulus layer or just above it. From the analysis of model-derived humidity profile over the zone, values of specific humidity between 8 to 12 g/kg would correspond to humidity within the cloud layers. Values for layers just above the cloud top would be mostly around 6g/kg, at the 900 hPa level. It is true that for the two cases (humidity above the cloud layers or within them), the covariance between humidity at 925 hPa and LWP does not have the same implication. From the analysis of model-derived humidity profile over the area, values of specific humidity between 8 to 12 g/kg would correspond to increased humidity within the cloud, hence more condensable water. Alternatively, if this humidity is present above the cloud, the entrainment process

would also lead to more condensed water in the cloud. Either way the increased humidity can lead to increased condensable water within the cloud layer. We modified the text in order to describe in a more careful way the figure that shows the covariance between humidity at 925 hPa and LWP (Figure 10c). We keep for later in the text (Discussion section 4.4) an interpretation of this figure, discussing the physical link of LWP with q_v at 925 hPa, depending on the location of this pressure level compared with the cloud top altitude. We make the link with the study of the smoke radiative forcing and the potential forcing of cloud top processes and feedbacks. We have also considered a second hypothesis related to the loss of precipitable water that could explain this behaviour.

2. Related to the previous comment, the physical reasoning described in the first two paragraphs of section 4.4 is difficult to follow. As mentioned above, the interpretation would seem to depend on whether the greater humidity at 925 hPa is considered in the cloud layer or not. Is it possible that the cloud-top pressure is sometimes below and sometimes above the 925 hPa level? If that is the case then there could be an artefact that appears as a difference between the high and low AOT cases, especially if the cloud-top height and cloud thickness is different between the two groups.

Also related to this is a concern about whether the ERA reanalysis is capturing the altitude and narrow thickness of the inversion layer at the top of the boundary layer. Is there some confidence that the inversion height is properly located in the vertical and that the 925 hPa humidity in ERA corresponds well with observed humidity? ✓

Please refer to Adebisi et al., 2015, Figures 13 and 14, in which they show temperature, relative humidity and wind profile at St. Helena island, in the South East Atlantic Ocean, from radiosonde measurements and reanalysis data. We cite here: “Averages over the terciles show that **the reanalyses largely capture the mean thermodynamical structure of the soundings** (Fig. 13), with the largest discrepancies between 700 and 1000 hPa, where the reanalyses with higher vertical resolutions (MERRA and ERA-Interim) perform better than NCEP, although all have difficulty representing the boundary layer-top inversions.” From the below figure, we notice that ERA-Interim captures best the potential temperature profile compared to the radiosondes measurements, and shows good results for relative humidity and specific humidity. The wind components are less well captured by all the reanalyses data.



Minor comments:

3. Some of the imager-based cloud products from satellite sensors assume that clouds are plane-parallel and homogenous within the field of view of the instrument. Are the retrievals shown in figure 2 and discussed on page 9 lines 7-22 based on a similar assumption? ✓

Yes, the clouds are considered plane-parallel and homogeneous within the field of view.

4. Often the clouds over the southeast Atlantic Ocean are broken or otherwise horizontally heterogeneous at scales smaller than satellite footprints. If this is a source of uncertainty for the POLDER retrievals, it should be discussed here. ✓

POLDER retrievals are only performed for homogeneous and optically thick cloud cover. The variability of the cloud properties is quantified using MODIS product retrieved at a finer resolution and the heterogeneous and broken-field clouds are removed from the POLDER retrievals. Various filters and criteria are used to improve POLDER above cloud products quality, we refer to Waquet et al., 2015 for details. Moreover, the 3D radiative impacts in the POLDER above cloud retrievals were studied in Waquet et al., 2013 (AMT) for the polarization data and in Peers et al., 2015 (ACP) for the total intensity measurements.

5. In sections 3.1 and 3.2 it talks about justification for the sampling area and time period, but arbitrarily sets the AOT thresholds that define “low” and “high”. How are these values selected?

These values are empirically chosen. The strategy behind the choice is: with $AAOD > 0.04$, we select the cases where the radiative impact of the smoke layer is expected to be maximized (and conversely minimized for < 0.01) to better highlight the potential semi-effect of smoke layer on the below cloud.

6. Section 3.3 is titled “covariance between humidity and aerosol loading”, but in the discussion the word “correlation” is used several times. On line 9 of page 11 it is even described as a “strong correlation”. Nevertheless, there is no correlation analysis

shown in this paper. Certainly, the word “strong” should not be used without actually evaluating a correlation coefficient and presenting it as such. I would recommend avoiding the word “correlation” here unless the correlation coefficient is evaluated and reported in the paper. A high/low grouping analysis can show statistically significant differences in a property even if the correlation coefficient between the grouping property (AOT in this case) and the other observed property (humidity) is low. ✓

We followed the reviewer’s comment: we modified the text and replaced “correlation” with “covariance” on line 9 of Section 3.3, and everywhere in the manuscript.

7. Page 12 lines 3-5 discusses changes in subsidence that are expected with smoke aerosol loading, but it is not explained why they are expected. What is the physical reasoning for a relationship between the smoke loading the environmental subsidence? ✓

The coincidence between smoke loading and change in subsidence is the result of large and regional scales circulation, as described by Adebisi et al (2015). They described from ERA-Interim reanalysis a reduction of free-tropospheric subsidence when more absorbing aerosols are present, also seen in the model results of Sakaeda et al. (2011). We modified the text with: “... aerosols are present above the clouds (mainly during June-July). It confirms the description of Adebisi et al. (2015), see their Figure 15, that the large-scale subsidence decreases when aerosol loadings are higher, which would tend to push the cloud to rise in altitude.”

8. In section 4.2 there is discussion of the radiative fluxes and the it appears to me that the values are instantaneous values for the afternoon overpass time of the satellite. I think it is important to clarify if the radiative fluxes correspond to mid-day values because in other papers values are reported as estimates of diurnal mean radiative fluxes. ✓

Indeed, the reported values are instantaneous, at the POLDER overpass hour (around 13:30 local time). We have also calculated the diurnal variation of the heating rate profile (K/day) in the shortwave and longwave spectrum, as well as their total (see figure below), using the mean values of the aerosol, cloud and meteorological parameters, but we haven’t reported it in this paper. We noticed that in the shortwave spectrum the warming between 3 and 4.5 km increases from 2 K/day in the morning (at 6 h) to approximately 8 K/day around noon, and after 14 h the heating rate starts to decrease. Similar variation in shortwave spectrum is observed at the cloud top. In longwave we do not observe a dependence of the heating rate with the hour, because the water vapor longwave absorption/emission is not affected by the solar zenith angle. We notice more cooling (around -4 K/day) between 3.5 and 5.5 km due to the water vapor content in the atmospheric column, and a strong cooling at the cloud top. The scale is fixed between -8.0 and 0.0 K/day, but the true value goes down to -70 K/day. The total heating rate also varies during the day; the longwave cooling only partially compensates the shortwave heating between 8 h and 16 h. We observe a maximum heating of 5 K/day at noon at 4 km; early in the morning and late in the afternoon we notice, however, a total cooling of -1.7 K/day. The cloud top remains under strong cooling.

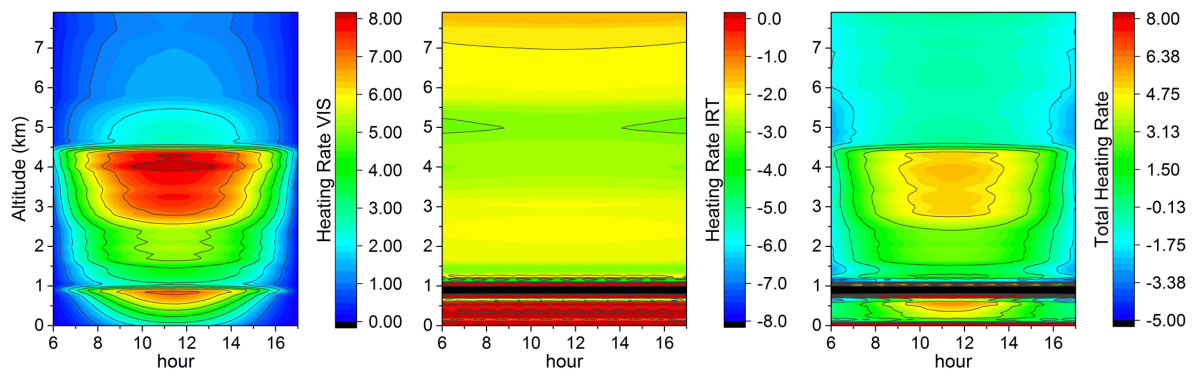


Figure 1 Average diurnal variation of heating rate profiles calculated in shortwave spectrum (VIS), in longwave spectrum (IRT) and total heating rate, within the selected area.

9. Page 4, line 16: The Sakaeda et al. study used the global atmospheric model (CAM) coupled to a slab ocean. This is a coarse resolution model, not a large-eddy model, which usually refers to models that resolve some cloud-scale dynamics, which CAM does not. ✓

We modified the text and deleted “large-eddy”.

Satellite inference of water vapor and aerosol-above-cloud combined effect on radiative budget and cloud top processes in the Southeast Atlantic Ocean

Lucia T. Deaconu^{1,2}, Nicolas Ferlay², Fabien Waquet², Fanny Peers³, François Thieuleux², Philippe Goloub²

¹ Department of Physics, University of Oxford, OX1 3PU, Oxford, UK

² Université de Lille, CNRS, UMR 8518, LOA – Laboratoire d’Optique Atmosphérique, 59000 Lille, France

³ College of Engineering, Mathematics and Physical Sciences, University of Exeter, Exeter, UK

Correspondence to: Lucia T. Deaconu (lucia.deaconu@physics.ox.ac.uk) and Nicolas Ferlay (nicolas.ferlay@univ-lille.fr)

Abstract. Aerosols have a direct effect on the Earth’s radiative budget and can also affect the cloud development and lifetime, and the aerosols above clouds (AAC) are particularly associated with high uncertainties in global climate models. Therefore, it is a prerequisite to improve the description and understanding of these situations. During the austral winter, large loadings of biomass burning aerosols originating from fires in the southern African subcontinent are lifted and transported westwards, across the Southeast Atlantic Ocean. The negligible wet scavenging of these absorbing aerosols leads to a near-persistent smoke layer above one of the largest stratocumulus cloud deck on the planet. Therefore, the Southeast Atlantic region is a very important area for studying the impact of above cloud absorbing aerosols, their radiative forcing and their possible effects on clouds.

In this study we aim to analyse and quantify the effect of smoke loadings on cloud properties using a synergy of different remote sensing techniques, from A-Train retrievals (methods based on the passive instruments POLDER and MODIS and the operational method of the spaceborne lidar CALIOP), collocated with ERA-Interim re-analysis meteorological profiles. To analyse the possible mechanisms of AACs effects on cloud properties, we developed a *high* and *low* aerosol loading approach, that consists in evaluating the change in radiative quantities (i.e. cloud-top cooling, heating rate vertical profiles) and cloud properties with the smoke loading. During this analysis, we account for the variation in the meteorological conditions over our sample area.

The results show that the region we focus on is primarily under the energetic influence of absorbing aerosols, leading to a significant positive shortwave direct effect at the top of the atmosphere. For larger loads of AACs, clouds are optically thicker, with an increase in liquid water path of 20 g m^{-2} and lower cloud top altitudes by 100 m. These results do not contradict the semi-direct effect of above cloud aerosols, explored in previous studies. Furthermore, we observe a strong correlation between the aerosol and the water vapor loadings, which has to be accounted for. A detailed analysis of the heating rates shows that the absorbing aerosols are 90 % responsible for warming the ambient air where they reside, with approximately +5.7 K/day, while the accompanying water vapour above clouds has a longwave effect of +4.7 K/day (equivalent to 7% decrease) on the cloud-top cooling. We infer that this decreased cloud-top cooling in particular, in addition with the higher humidity above the clouds, might modify the cloud-top entrainment rate and its effect, leading to thicker clouds. Therefore, smoke (the

Deleted: cs

Deleted:

Deleted:

Deleted:

Deleted:

combination of aerosol and water vapor) events would have the potential to modify and probably reinforce the underlying cloud cover.

1 Introduction

The South Atlantic Ocean (SAO) is covered almost permanently by the largest stratocumulus cloud deck on the planet. These clouds play a very important role in the climate system, as they cool the tropics by reflecting sun radiation back into space (Bretherton et al., 2004; Wood, 2012). Between June and October, biomass-burning aerosols originating from fires in the southern African subcontinent are lifted and transported long distances westwards, mostly above the low-level clouds (Ichoku et al., 2003; Waquet et al., 2009). The southern African subcontinent is the main annual contributor of biomass burning aerosols, as most of this region is covered by savannah. Due to agricultural practices, the savannah vegetation is burned and a large amount of aerosol is injected into the atmosphere (Labonne et al., 2007). The negligible wet scavenging of the aerosols transported above the clouds leads to a near-persistent smoke layer above the stratocumulus deck, that can be suspended in the atmosphere for several days. These dark-coloured aerosols are efficient in absorbing shortwave radiation, which can warm the lower troposphere and can modify the radiative budget, with a large-scale effect on climate that is not yet well understood. For instance, at the top of the atmosphere, the sign and amplitude of the direct radiative effect (DRE) depends on the aerosol properties and on the reflective properties of the underlying surface. The aerosol DRE can be positive or negative, depending on the cloud albedo, the aerosol type and its level of absorption (Lenoble et al., 1982; Keil and Haywood, 2003; Peers et al., 2015). The aerosol effects are, in fact, even more complex and may stabilize, promote or suppress the cloud formation, as a function of the position of the absorbing aerosol layer with respect to the cloud layer and the contact with the cloud droplets. In case of absorbing aerosols above stratocumulus clouds, the warming of the layers located above the clouds would tend to stabilize the boundary layer. This stabilization would induce a lower entrainment rate and a moister boundary layer. The resulting effects would be an increase of the liquid water content and preservation of cloud cover (Brioude et al., 2009; Johnson et al., 2004). On the contrary, if the aerosols are within the cloud, the warming of the atmospheric layer due to aerosol absorption tends to reduce the relative humidity and the liquid water content, decreasing the stratocumulus cloud cover (Hill et al., 2008). Additionally, an increase in the number of aerosols serving as cloud condensation nuclei (CCN) could lead to a larger number of smaller cloud droplets that bring about more reflective clouds, inducing a cooling of the Earth-Atmosphere system (Twomey, 2007). The reduction of cloud droplet size may potentially have other impacts on precipitation and cloud properties.

All these considered, the Southeast Atlantic region is well suited to investigate the interactions of aerosols above clouds (AAC) with radiation and clouds. Currently the complexity of these interactions in the Southeast Atlantic and their influence on local and global climate are, however, not well captured by models. This is mainly due to limitations in accurately representing the aerosol and cloud spatial and vertical distributions, the aerosol absorption capacity and the cloud properties, such as cloud optical thickness, liquid water path and effective radius. In-situ measurements can be used to improve our

understanding of the aerosol direct radiative forcing and cloud adjustments to the presence of aerosols. Recent airborne campaigns aim to answer several scientific questions related to the smoke-and-cloud regime over the Atlantic region using multiple aircraft and surface-based instrumentation located at different measurement sites, over the period 2016 to 2018 (Zuidema et al., 2016). The three campaigns (ORACLES, CLARIFY and AEROCLO-sA) offer the opportunity for international scientists to collaboratively verify and validate different satellite measurements and constrain the climate models.

Although in-situ measurements are more detailed and provide a better characterization of aerosols and their effects, these local measurements are not sufficient for regional or global climate studies. Space borne observations allow retrieving aerosol and cloud properties over large spatial-temporal scale, facilitating the study of their effects on climate and reducing the related uncertainties. The A-Train satellite constellation includes different passive and active sensors that provide near-simultaneous measurements of aerosol and cloud properties, allowing the combination and comparison of various methods and also the possibility to perform instrumental synergies. The study of the aerosol above clouds properties and radiative impacts as well as their potential interactions with the underlying clouds using satellite observations is a relatively recent topic in the field of remote sensing. Until now, different methods and instruments were used for the retrieval of the aerosol above clouds (AAC) properties. Lidar instruments that provide the vertical profile of the atmosphere are valuable tools for the study of aerosol above cloud scenes. The lidar CALIOP (Cloud-Aerosol Lidar with Orthogonal Polarization), installed on the CALIPSO (Cloud-Aerosol Lidar and Infrared Pathfinder Satellite Observation) satellite, uses backscatter measurements to determine the vertical structure of the atmosphere and the properties of the aerosol and cloud layer (Vaughan et al., 2009; Winker et al., 2009; Young and Vaughan, 2009). The operational method developed for CALIOP allows the retrieval of the aerosol properties (i.e. mainly the aerosol optical thickness, AOT) for scenes with aerosols above clouds. However, the method relies on assumptions on the extinction-to-backscatter ratio of aerosols and alternative CALIOP-based research methods have also been introduced to retrieve the above-cloud AOT (ACAOT). The depolarization ratio method (first introduced by Hu et al., 2007a, and further implemented by e.g. Deaconu et al., 2017; Kacenenbogen et al., 2019; Liu et al., 2015) and the colour ratio method (Chand et al., 2008) use fewer assumptions for the retrieval of AAC properties. These techniques are based on light transmission methods and treat the liquid water clouds situated underneath the aerosol layer as a target. Passive sensors have also been used to obtain information on aerosols above clouds. The multidirectional polarization measurements have shown sensitivity to scenes with aerosols above clouds (Waquet et al., 2009; Hasekamp, 2010; Knobelspiesse et al., 2011), as they strongly modify the polarized light reflected back to space by the cloud layer. Waquet et al. (2013) have developed an operational method for retrieving the properties of AACs that relies on the polarized radiances measured by POLDER (Polarization and Directionality of Earth Reflectances) instrument, on-board of the PARASOL (Polarization and Anisotropy of Reflectances for Atmospheric Science coupled with Observations from a Lidar) satellite. The method is able to retrieve the AOT at 865 nm and the Ångström exponent, which is a parameter indicative of the particle size. Furthermore, Peers et al. (2015) have developed a complementary method that uses additional total multidirectional radiances measured by POLDER, to retrieve the aerosol single scattering albedo (SSA) and the cloud optical thickness (COT). Passive sensor techniques that solely use total radiance measurements have also been used to obtain information on aerosols above clouds. Torres et al.,

Deleted: (

Deleted:)

Deleted: Hu et al., 2007)

Deleted: s

Deleted: . The method provides the

Deleted: cs

(2012) have developed an algorithm to retrieve the ACAOT and the underlying COT, using radiance measurements performed in the ultra violet (UV) by the with Ozone Monitoring Instrument (OMI) instrument. Similar methods that can retrieve the above cloud AOT and, simultaneously, the cloud properties have been also developed for the Moderate Resolution Imaging Spectroradiometer (MODIS) instrument (Jethva et al., 2013; Meyer et al., 2015a). [For more methods, please refer to Table 1 and 2 of Kacenenbogen et al., \(2019\), which reports earlier studies that observed AAC using passive and active satellite sensors.](#)

Previous studies that aimed to analyse the impact of absorbing aerosols on the cloud properties and radiative forcing were based on the exploitation of several A-Train satellite observations and modelling. Costantino and Bréon (2013) used MODIS to retrieve aerosol and cloud properties, collocated with CALIOP estimates of aerosol and cloud altitudes. Their objective was to use the simultaneous satellite retrieved aerosol and cloud properties to contribute to the knowledge of aerosol effect on low-level stratocumulus cloud microphysics (cloud droplet effective radius, r_{eff}), optical properties (COT) and liquid water path (LWP). Their results showed that the aerosol effects on the cloud microphysics are strong when the layers are in contact: effective radius can decrease from 15-16 μm down to 10-11 μm for an aerosol index that varies from 0.02 to 0.5, suggesting a potential indirect effect of aerosols. Wilcox (2010) also used the aerosol and cloud altitudes retrieved with CALIOP in combination with OMI aerosol index, in order to analyse the link between the absorbing aerosols located above clouds and the marine stratocumulus cloud properties. His results showed that the presence of absorbing aerosol layers lead to a heating (by nearly 1 K at 700 hPa) in the lower troposphere that stabilizes the atmosphere. This warming coincides with LWP values greater by more than 20 $\text{g}\cdot\text{m}^{-2}$ and cloud top altitude lower by 200 m in cases when high loading of smoke are transported above the cloud. Sakaeda et al. (2011) obtained similar results using the Community Atmospheric Model 3.0 (CAM) constrained by satellite observations.

As mentioned above, the effect of aerosols on the cloud cover can be complex and indirect and it can result from the modification of the atmospheric thermodynamics by the aerosol loading, e.g. a modification of atmospheric stability. But to go further, a difficulty and challenge in the analysis of aerosol effects on clouds comes from the fact that cloud properties are also, and often primarily, sensitive to meteorological conditions and corresponding atmospheric thermodynamics and dynamics. Studies dedicated to aerosol effects should thus aim to disentangle, if possible, aerosol effects on cloud properties from effects of meteorological conditions only (Brennguier and Wood, 2009; Stevens and Brennguier, 2009). A level of complexity comes from the fact that covariances exist between meteorological parameters and aerosol concentration and properties. Climatology of biomass-burning events may coincide with changes in meteorological regimes. For example, Adebisi et al. (2015) showed a shift southward in circulation patterns and thermodynamics between July-August and September-October, as the southern African anticyclone strengthens. Also, while the aforementioned studies depict dry smoke plumes, biomass-burning aerosol events can be accompanied by varying water vapour production. Depending on the moisture content of fresh biomass (Parmar et al., 2008), the natural or anthropogenic biomass fires are indeed releasing water vapour in the atmosphere, in addition to organic and black carbon, CO_2 and CO (Levine, 1990). It might be important to account for the effect of this accompanying moisture, and to identify the different air circulation patterns that will lead the biomass-burning

Deleted: s

transportation off coast of South Africa. It was done by Adebisi et al. (2015) who incorporated radiosondes measurements from St. Helena Island of temperature and specific humidity, MODIS AOT_{550nm}, CALIOP aerosol altitude data and reanalysis data (ERA-Interim) to provide a unique dataset of thermodynamic profiles linked to clear and polluted conditions. They also investigated the radiative effect of moisture and absorbing aerosol in different cloudy conditions at St. Helena. They show that the specific humidity (q_v) is higher within the aerosol plumes (around 700 hPa). This was previously observed during the UK-SAFARI 2000 campaign (Haywood et al., 2003) with q_v values larger than 2 to 4 g.kg⁻¹ within the aerosol layer, while outside the smoke plume the q_v values are less than 1 g.kg⁻¹. The moisture may have a role in the aerosol aging (Dubovik et al., 2002; Haywood et al., 2003; Kar et al., 2018) and a radiative significance in both shortwave and longwave spectra. Radiative transfer calculations show that mid-tropospheric moisture generates a net diurnal cooling of approximately 0.45 K/day, decreasing the impact of the shortwave heating caused by the biomass-burning aerosols that reaches 1.5 K/day. As in Wilcox (2010), this study shows a decrease in the cloud top altitude of about 112 m near St. Helena under polluted conditions.

Starting from all these studies, we have developed our own strategy in order to better understand the effect of aerosols and meteorological parameters on clouds. Our strategy exploits several satellite measurements and meteorological reanalysis data as constraints of a radiative transfer model. We focus on situations with large amounts of absorbing aerosols above the clouds and compare them with cases characterized by low values of absorbing AOT. Also, in order to minimize the meteorological impact, we analysed only a limited time period over a smaller area off coast of Angola. Smoke layer elevated above the clouds can induce a semi-direct effect through an energetic forcing due to both the effects of biomass burning aerosol and water vapour. The semi-direct effect is defined as a change in the vertical profiles of temperature in the atmosphere due to the presence of absorbing aerosol layers located above clouds. This modification may affect the process of evaporation and cloud formation. We therefore developed a method to calculate the profiles of heating rates in the visible and thermal infrared by combining POLDER and CALIOP data as well as meteorological data. In section 2, we present the different parameters used to estimate the AAC, cloud properties and the meteorological variables and some elements of climatology available for the South East Atlantic Ocean. We also describe the CALIOP / POLDER synergy and the radiative transfer calculations. Section 3 describes a “*low* and *high* approach”, which consists in distinguishing between two different aerosol-loading situations, and analysing the difference in the statistic of cloud properties and meteorological parameters. We present this strategy in terms of selected area, time period and covariance between aerosol load and meteorological data. Section 4 shows the changes in cloud properties with respect to the aerosol loadings, the overall radiative effect of the smoke layer for the selected region and an attempt to separate the radiative effects of the biomass-burning aerosols from those of the water vapour. Section 5 provides the conclusions and perspectives.

2 Dataset and methodology

2.1 Description of the dataset

In this study, we use the version 4.00 of the official output product PARASOL_PM02-L2 for AAC scenes (available at ICARE website, <http://www.icare.univ-lille1.fr/parasol/products/>) to retrieve the properties of aerosols above clouds. The parameters used in our study are the aerosol optical thickness, the aerosol single scattering albedo and the aerosol-corrected cloud optical thickness. All these parameters are retrieved at a resolution of $6 \times 6 \text{ km}^2$ and available at 490 and 865 nm. We also use the Ångström exponent, which is primarily indicative of the particle size (i.e. with the AOT retrieved at 865 and 670 nm). The aerosol model prescribed by the POLDER satellite algorithm (i.e. particle size and absorption) is also used to extrapolate these optical properties over a large spectral range. The uncertainties associated with these variables are thoroughly described in Peers et al. (2015) and Waquet et al. (2013). The lidar CALIOP is primarily used to determine the aerosol layer vertical extent. We used the level 2 version 3.01 of the inversion products, officially named CAL_LID_L2_05kmALay for the aerosol base and top altitudes, CAL_LID_L2_05kmCLay for the cloud top altitude and CAL_LID_L2_05km_APro for the vertical profile of aerosol extinction at 532 nm (data can be found at <http://www.icare.univ-lille1.fr/calipso/products/>) (Vaughan et al., 2009; Young and Vaughan, 2009). Other cloud parameters considered are the cloud droplet effective radius, r_{eff} inferred by MODIS, the liquid water path (LWP), the cloud altitude (Z_{O_2}) and the aerosol-corrected cloud optical thickness (COT) retrieved with POLDER. Z_{O_2} is calculated using the POLDER oxygen pressure method (P_{Oxygen}), which is determined from differential absorption between two spectral bands centred on the oxygen A-band (763 and 765 nm respectively) (Buriac et al., 1997; Vanbauce et al., 2003). In our study, the Z_{O_2} product is used as proxy for the cloud top altitude estimate outside the CALIOP track. The liquid water path is computed with the homogeneous assumption, using POLDER COT and the MODIS r_{eff} :

$$LWP = \frac{2\rho_w}{3} \times COT \times r_{eff} \quad (\text{Eq. 1})$$

where ρ_w is the water density. The MODIS r_{eff} bias for biomass-burning aerosols above clouds (Meyer et al., 2015b), is expected to be of about 2% on average and then should have a small effect on the LWP computation.

In order to estimate the main thermodynamic quantities of the atmosphere, we use the ERA-Interim product provided by the European Centre for Medium-Range Weather Forecast (ECMWF) model (Berrisford et al., 2011). This reanalysis meteorological database delivers various parameters, including profiles of temperature (K), specific humidity (g.kg^{-1}), pressure (hPa), wind speed (m.s^{-1}), wind direction ($^\circ$) and ozone (atm-cm). The assimilating model is configured for 60 vertical levels, from the surface up to 0.1 hPa. The horizontal resolution of the products is 0.5 degree and the reanalysis data are provided every 6 hours (Dee et al., 2011). In our study, these data were spatially and temporally collocated with the POLDER and CALIOP observations. All these parameters are summarized in Table 1.

Deleted: provided

Deleted: between

Deleted: s

Deleted: s

Deleted: b

Deleted: b

Deleted: The other properties that we analyse for the clouds

Deleted: s

Deleted: ,

Deleted: and

Deleted: ,

Deleted:

Deleted: derived from

Deleted: The cloud altitude

Deleted: the aerosol-corrected cloud optical thickness from PARASOL

Deleted: droplets effective radius

Formatted: Font: Italic

2.2 Radiative transfer calculation and synergy CALIOP / POLDER

To compute fluxes and heating rates at different levels in the atmosphere, in the visible and also in the thermal infrared, we use the Global Atmospheric Model (GAME), which is a fast and high spectral resolution radiative transfer code that allows the calculations of radiances (and fluxes) in horizontal and plan-parallel atmospheric layers (Dubuisson, P., J. C. Roger, M. Mallet, 2006). The model accounts for the Rayleigh scattering effects and for the scattering and absorbing properties of clouds and aerosols that have to be computed over the different spectral intervals: 208 spectral intervals for the shortwave spectrum (from 220 nm to 4 μm) and 115 spectral intervals for the longwave spectrum (from 4 to 50 μm). This method allows discretizing the radiation field in a finite number of propagation directions and allows to efficiently compute the multiple scattering processes occurring in the atmosphere whatever the value of the optical thickness.

The GAME model requires information on the vertical distribution of aerosol and clouds, their optical and microphysical properties and the vertical structure of the atmosphere. Inputs to GAME are the collocated POLDER, CALIOP and ERA-Interim re-analysis data for the temperature and humidity profiles, which are crucial for the radiative computation in the longwave spectrum.

In GAME the computation is made for plane-parallel layers of atmosphere, each layer characterized by particular values of aerosol (or cloud) and meteorological parameters. We have divided the lower troposphere into 100 m-thick layers from the surface up to 8 km. Above this altitude (up to 100 km) the layers are more roughly distributed, as the upper atmosphere is not under the influence of biomass-burning aerosols and less our field of interest. For each 100 m-aerosol layer we provided the CALIOP extinction coefficient (σ_e , $\text{km}^{-1} \cdot \text{sr}^{-1}$).

However, the standard CALIOP product can underestimate the geometrical thickness of the aerosol layer when the optical thickness is large enough, due to the attenuation of the backscattered signal (Jethva et al., 2014). It can also underestimate the AOT when aerosols are below a certain detection threshold (Kacenenbogen et al., 2014; Watson-Parris et al., 2018). The CALIOP miscalculation of the aerosol bottom altitude would implicitly underestimate the aerosol extinction profile (i.e. the AOT), hence the aerosol radiative forcing. A recent study that uses independent lidar backscattering measurements at 1064 nm of the Cloud-Aerosol Transport System (CATS) (Yorks et al., 2014), shows that the CALIOP algorithm probably overestimates the base of the aerosol layer by 500 m (Rajapakshie et al., 2017). Indeed, aerosol-cloud interaction is possible, but from our data, most of the retrievals show detached situations. Deaconu et al. (2017) showed that the CALIOP operational algorithm underestimates the AOT above clouds with a factor of 2 to 4 depending on the aerosol type, when compared to other methods dedicated for aerosol above cloud retrievals - the POLDER polarisation method (Waquet et al., 2009) and the CALIOP depolarisation ratio method DRM (Deaconu et al., 2017; Hu et al., 2007b). By analysing the consistency between the aerosol above cloud retrievals from POLDER method and CALIOP DRM, they also found good agreement for AOT retrievals when the microphysics of the aerosols is well defined (such as biomass-burning aerosols) and when the aerosol layer is detached from the cloud. These results give confidence in our ability to measure the properties of AAC over the South Atlantic region using the POLDER method. Therefore, in our study we will use the POLDER $\text{AOT}_{865\text{nm}}$

Deleted: For this

Deleted: we use

Deleted: method

retrieved under the CALIOP track to scale the CALIOP σ_e profile used in GAME (Figure 1). As the POLDER AOT is retrieved at 865 nm and the CALIOP σ_e is at 532 nm, the σ_e scaling firstly requires an extrapolation of POLDER AOT at 532 nm. Afterwards, we infer the resulted CALIOP $\sigma_{e, \text{scaled}}$ at 550 nm, which is the native wavelength used for AOT in the radiative transfer model. As mentioned before, the base of the aerosol layer is biased high, which means that the calculation of the heating rates is confined within a slightly thinner geometrical aerosol layer (by 500 m). This however, doesn't alter the results and conclusions of our study.

Deleted: Figure 1

We compute the instantaneous heating rate (HR) profiles (K/day) in the shortwave and in the longwave domains (HR_{SW} and HR_{LW}). The first is due to the shortwave absorption of aerosols and water vapour. The second is the result of infrared absorption and emission processes, and depends mainly on the profile of atmospheric component, cloud and water vapour, with their temperatures. In the longwave spectrum we considered a negligible effect of aerosols. The sum between HR_{SW} and HR_{LW} gives the total heating rate, referred as HR_{total} in the following.

2.3 Elements of climatology in the South East Atlantic Ocean

2.3.1 Meteorological patterns

The pattern of the atmospheric circulation plays a determinant role in the transport of aerosols emitted from the African continent. Meteorology and circulation patterns can also impact the stratocumulus clouds by changing the thermodynamic environment, regardless of the presence (or absence) of aerosols above clouds. Therefore, it is necessary to separate (or constrain) the effects of meteorology on clouds from the variations caused by AAC in order to study the aerosol effects on clouds in the SAO. In this area, the main atmospheric circulation is dominated by easterly winds throughout the air column and south-easterlies close to the surface, as shown in the study of Adebisi et al. (2015) figures 8 to 10. From July to October the southern hemisphere is influenced by the Atlantic anticyclone between 600 hPa and 800 hPa, and the trade winds at the surface (with winds stronger than $5 \text{ m}\cdot\text{s}^{-1}$). The September-October period presents differences compared to the July-August period, as different circulation patterns cause a maximum coverage of the stratocumulus clouds, and more importantly, a maximum in the continental aerosol loading transported westwards over the Atlantic basin, around 10°S . This region is also characterized by two different humidity and temperature regimes: larger values are found north of 20°S compared to the southern region. Adebisi et al. (2015) also described a general increase in the mid-tropospheric moisture at 600 hPa during September-October, suggesting an association between the aerosol loading and moisture.

Deleted: easterlies

2.3.2 Aerosol and cloud properties

The maps shown in Figure 2, present the average values of different POLDER and MODIS aerosol and cloud retrievals at a horizontal resolution of $6\times 6 \text{ km}^2$, acquired from May to October 2006 to 2009 over an area that extends from 30°S to 5°N and from 12°W to 14°E in the SAO.

Deleted: Figure 2

Large aerosol loadings are found close to the coast, where the average above-cloud AOT exceeds 0.3 at 865 nm. Towards the west, the ACAOT decreases to an average of 0.2 at 865 nm due to transportation and deposition of aerosols (Figure 2a). As expected, the mean values of the Ångström exponent ($AE_{670/865}$) along the shoreline are larger than 2.0, characteristic of very fine particles of smoke (Dubovik et al., 2002), while westwards the mean $AE_{670/865}$ values slightly decrease to around 1.85 (Figure 2b). This suggests an increase in the particle size, as the plume is transported towards the open sea. The decrease of the mean AE values with longitude can suggest the evolution of the aerosol properties, such as growth of the smoke aerosols associated to aging (Kar et al., 2018; Müller et al., 2007; Waquet et al., 2013; Reid et al., 1998). Also, between 0° and 5° North, the values of the $AE_{670/865}$ decrease to 0.4 (not showed on the colour scale), which correspond to values prescribed for the dust model in the POLDER algorithm, indicating that dust particles could be preferentially transported above clouds over this area.

Information related to the absorption property of the aerosols is given by the single scattering albedo and/or by the absorption AOT_{865nm} , which is the product of the extinction (total) AOT by $(1 - SSA)$. For this region we observe high values of absorption AOT_{865nm} , which exceed 0.04 close to the coast (Figure 2c) and decrease progressively westwards. These estimates are consistent with the values retrieved for the SSA_{865nm} of 0.80 at seashore that increase to 0.87 around 12°W (Figure 2d). The observations are in agreement with the typical values provided by AERONET (Dubovik et al., 2002; Sayer et al., 2014) and the field campaigns Southern African Regional Science Initiative (SAFARI-2000; Leahy et al., 2007; Swap et al., 2002), Observations of Aerosols above CLouds and their intERactions (ORACLES-2016; Pistone et al., 2019) and Dust and Biomass Experiment (DABEX; Johnson et al., 2008) for the biomass-burning aerosols. North of the latitude of 5°S, the SAO region is under the influence of dust particles and the retrieved SSA_{865nm} is up to 0.97, which is expected for mineral dust particles that do not much absorb light in the near-infrared (Dubovik et al., 2002).

Low-level stratocumulus clouds typically cover the South Atlantic Ocean. Generally, these clouds are characterized by rather small droplets (r_{eff} of approximately 10 μm) and by optical thickness values of around 10-15 (Szczodrak et al., 2001). In the presence of above-cloud biomass-burning aerosols, MODIS retrieved COT can be underestimated by more than 20 %, especially over bright clouds with large COT (Haywood et al., 2004; Peers et al., 2015). Figure 2e presents the mean POLDER COT that was corrected for the aerosol induced bias due to aerosol above-cloud absorption (Peers et al., 2015). The MODIS cloud droplet effective radius (r_{eff}) (Figure 2f) is increasing from the coast towards the open sea, from 10 to 15 μm . In Figure 2g we observe a minimum cloud altitude of 1.2 km central to the stratocumulus deck, which increases radially as the stratocumulus transition into cumulus clouds or when the frequency of other types of clouds increases (Warren et al., 1988). Figure 3 compares the POLDER ZO_2 product with the CALIOP cloud top altitude (CTA). In case of geometrically thick clouds, the Oxygen pressure method indicates mainly the cloud middle pressure (Ferlay et al., 2010), instead of cloud top pressure. This explains the difference that we observed between POLDER ZO_2 and the CALIOP (CTA) over a period of six months (May to October) from 2006 to 2010 along the CALIOP track: the two altitude measurements are well correlated but ZO_2 is lower than CTA. From the side histograms, we notice that the majority of CTA values are centred around 1.25 km,

Deleted: Figure 2

Deleted: Figure 2

Deleted: go down

Deleted: the dust particles in the POLDER method

Deleted: Figure 2

Deleted: calculated

Deleted: Figure 2

Formatted: Not Highlight

Deleted: (

Deleted: the satellite

Deleted: Figure 2

Deleted: Figure 2

Deleted: Figure 3

Deleted: t

while ZO_2 values are centred around 0.9 km. The difference between the products increases systematically when CTA exceeds 1.5 km. ~~In this region an underestimation of around 300 m by the POLDER product is more likely.~~

Figure 4 shows the variation with longitude of cloud and aerosol altitudes retrieved with CALIOP over the South Atlantic for a period of six months (May to October) from 2006 to 2010. We reported the mean values of cloud top altitude, aerosol top altitude (ATA) and aerosol base altitude (ABA) for longitude bins of 4° . The data are shown for May-July in the first row and for August-October in the second row. The mean, standard deviation and median, as well as the number of measurements for each 4° bin are provided in the associated tables. For both time periods, we notice the cloud top altitude increasing from 1 to 1.5 km towards the west. This suggests that the clouds develop and become more convective further away from the coast. The average aerosol top altitude is higher during the second interval (August-October), and we observe a higher number of AAC situations. This is likely due to the fact that the biomass-burning events that reach higher altitudes are most frequent during the late austral winter. We also observe a double layer aerosol profile in the first period, mainly west of 1°E (upper left profiles): one mode around 3.0 km and another around 1 km, which are likely to correspond to sea salt aerosols located in the boundary marine layer. In the first period the aerosol base and top altitudes don't show strong variability across the longitude, while in the second period the average aerosol altitude decreases from east to west. This suggests that contact situations between the cloud and the aerosol layers are less frequent close to the coast and increase as the aerosols are transported westwards.

3 The high and low smoke loading and absorption approach

3.1 Strategy of analysis

One objective of the current study is to analyse the changes in cloud properties, with aerosol loading and absorption, as previously observed (e.g. Wilcox, 2010), and if these differences can be understood and attributed to the overlying aerosols or to the meteorological variability. We also consider the potential effect of the water vapour and its variability. Another objective is to evaluate the radiative forcing of smoke events, which could help in understanding the impact of atmospheric processes that lead to differences in cloud properties. We propose a low and high approach which consists in distinguishing between two different smoke loading situations, and analysing the difference in the statistic of cloud properties and meteorological parameters, for a selected temporal and spatial domain. In the following, for the high cases the above cloud absorption $\text{AOT}_{865\text{nm}}$ is larger than 0.04, while the low cases are characterized by absorption $\text{AOT}_{865\text{nm}}$ lower than 0.01. In this section, we first justify the choice of the sample area and time period selected for this study. We then analyse the covariance relationship between the aerosol load and the water vapour content and explore the meteorological patterns for the selected area in function of the high and low scenario. Analysis of the differences in cloud properties will follow in Section 4.

Deleted: Nevertheless, the stratocumuli are low-level clouds, so,

Deleted: In Figure 2g we observe a minimum cloud altitude of 1.2 km central to the stratocumulus deck, which increases radially as the stratocumulus become more fractioned (i.e. cumulus) or when the frequency of other types of clouds increases (Warren et al., 1988).

Deleted: Figure 4

Deleted: The final

Deleted: if there are differences

Deleted: as a function of

Deleted:

Deleted: s

Deleted: Here,

Deleted: w

Deleted: aerosol

Deleted:

3.2 Selection of a sample area and time period

We selected a region close to Angola's coast that expands from 15° to 10°S and 6° to 14° E (Figure 2a - black box), which is close to the main stratocumulus region identified by Klein and Hartmann (1993). The spatial size of the domain is limited in order to control the natural variability of cloud properties and meteorology. Also, the domain is close to the coast so that aerosol loading is high (Figure 2) and aerosols are mainly detached from low level clouds (Figure 4 and Figure 5). This is important in order to minimize the microphysical interactions between aerosols and cloud droplets (i.e. indirect effect) and the probability of aerosols within the clouds, which could affect the retrieval of aerosol properties with the POLDER polarisation method (Deaconu et al., 2017).

The variability of meteorological parameters in this sample area is emphasized in Figure 6, which presents ERA-Interim monthly mean meteorological parameters from June to October 2008. We can observe that the temperature profile doesn't change much throughout this period, while the relative humidity (RH) and the specific humidity (q_v) change from month to month. In June and July, moisture levels are comparable, with values of q_v lower than 2.5 g.kg⁻¹ at 700 hPa, in contrast with August and September where q_v is reaching 5 g.kg⁻¹ at 700 hPa. In October, RH shows a strong peak between 700 and 500 hPa, and q_v is also larger compared to previous months. The average monthly horizontal winds show a significant difference between the months of SO compared to JJA. The winds are much stronger in SO and much more westwards above 800 hPa. The wind speed also increases above 800 hPa during these months. Winds in August differ from the winds in June/July, but not significantly below 800 hPa.

Knowing these temporal variations of mean meteorological parameters, we chose to analyse the aerosol and cloud parameters and their correlation over the months of June to August (JJA) 2008. Doing so, we mostly select one meteorological regime characterized by few differences at the cloud altitudes in terms of wind, temperature and humidity and a moderate water vapour content at the aerosol layer.

3.3 Covariance between humidity and aerosol loading

We analysed the mean values of the specific humidity from June to August 2008 over the sampling area, at different pressure levels, as a function of the aerosol loading. Figure 7 shows the ERA-Interim q_v values at 6 pressure levels in function of the POLDER AOT at 865 nm. At the surface and at 950 hPa, the average q_v is almost constant, varying slightly with the AOT from 10 to 12 g.kg⁻¹ and from 7.5 and 10 g.kg⁻¹, respectively. Higher in altitude, at 500 and 400 hPa the mean values of q_v are very small, regardless of the aerosol loading. On the other hand, at the smoke plume level (i.e. between 850 and 700 hPa) we notice a strong increase of the q_v with the AOT, from 2 to 7 g.kg⁻¹ and from 1 to 5 g.kg⁻¹, respectively. So, there is a covariance between humidity and aerosol loading at aerosol's altitudes, which confirm previous funding from Adebisi et al., 2015.

An interpretation of the humidity reinforcement with larger biomass-burning AOT could originate from combustion processes. Depending on the fire intensity and the meteorological conditions, smoke parcels can be saturated with water vapour

Deleted: Figure 2

Deleted: Figure 2

Deleted: Figure 4

Deleted: Figure 5

Deleted: Figure 6

Deleted: , at

Deleted: strong correlation

and the latent heat resulted from the condensation of the water vapour can enhance the vertical development of convection due to additional buoyancy. It is possible that smoke and water vapour released during biomass combustion are both advected at higher altitudes, which contributes to the humidity in the aerosol plumes. Through laboratory measurements and experimental studies scientists have attempted to confirm that water vapour from wild-land or grass fires can significantly modify the dynamic of the lower troposphere. Some of their results suggested that the fuel moisture could make a significant contribution to the humidity within the aerosol plumes resulting from biomass combustion (Clements et al., 2006; Hudspith et al., 2017; Parmar et al., 2008).

3.4 Meteorological patterns for high and low situations

We investigate the mean temperature, specific humidity, relative humidity and atmospheric subsidence provided by ERA-Interim, over JJA 2008, for smoke situations with high and low absorption and loading. Because of the covariance between aerosol and water vapour, in our study smoke loading means aerosol and water vapour loading.

Figure 8a shows that the temperature profile is almost identical between high and low cases throughout the atmospheric column. In both cases, we notice a temperature inversion, called subsidence inversion, that occurs as result of adiabatic compression when high-pressure systems sink the upper air layers. A moderate to strong temperature inversion almost always caps stratocumulus clouds located under a high-pressure centre (such as the South Atlantic anticyclone). When smoke layers heated by the solar radiation cover low-level stratocumulus clouds, the temperature inversion is strengthened (Kaufman et al., 2005). In our case, we can observe a small increase by 1 K at 850 hPa for high smoke loadings.

The average humidity profiles (Figure 8b and 7c) show some significant differences between the two cases. For the high cases the average relative humidity (RH) is almost saturated at the cloud level and presents a strong peak at 700 hPa (RH \approx 40 %). The RH difference between high and low situations reaches a maximum between 800 and 600 hPa, where the smoke layer resides. Also, the specific humidity is higher (up to 2.5 g.kg⁻¹) everywhere throughout the air column for the smoke cases and we notice an increase of q_v by 300 % at 700 hPa compared with only 35.7 % at 925 hPa (pressure level mostly associated to the cloud level). On the contrary, subsidence is stronger by about 1 Pa/min at 700 hPa when low loadings of aerosols are present above the clouds (mainly during June-July). It confirms the description of Adebisi et al. (2015) (see Figure 15), that the large-scale subsidence decreases when aerosol loadings are higher, which would tend to push the cloud to rise in altitude.

The meteorological database allows us to compute wind speed roses and specific humidity roses, representative for high and low aerosol situations. This will give information on the circulation of air masses (e.g. wind direction) that put in motion the humidity and the aerosols close to the coast. Figure 9 presents the frequency distribution of these parameters over the sample area in JJA 2008 period, for two pressure levels: 925 hPa – mainly corresponding to the cloud top altitude (Figure 9a) and 700 hPa – where aerosols are found (Figure 9b). At 925 hPa we notice that both situations are characterized by southeasterly winds, with wind speeds of 6 to 9 ms⁻¹ for more than 50 % of the cases and with specific humidity that is usually larger than 9 g.kg⁻¹. Figure 9b shows that the meteorological parameters at 700 hPa are, however, very different for the two conditions. It is obvious that the air masses carrying high loads of smoke are predominantly coming from the land (direction E-NE), while

Deleted: ed

Deleted: smoke

Deleted: situations

Deleted: correlation

Deleted: Figure 7

Deleted: Figure 7

Deleted: 8

Deleted: polluted

Deleted: are present above the clouds (mainly during June-July). It is expected that the large-scale subsidence decreases when aerosol loadings are higher (Adebisi et al., 2015 see Figure 15), which would allow the cloud to rise in altitude.

Formatted: Font color: Auto

Deleted: Figure 8

Formatted: Font color: Auto

Deleted: Figure 8

Formatted: Font color: Auto

Deleted: Figure 8

Deleted: ies

Formatted: Font color: Auto

Deleted: Figure 8

the air circulation responsible for *low* absorption AOT is originating from the open ocean (main direction W-NW). Even if it was expected, it can be considered as an interesting result because it shows the consistency between the POLDER AOT retrievals and the ERA-Interim meteorological parameters. The wind speed is generally 1-2 m.s⁻¹ higher in case of larger absorption AOT and the q_v is 4 to 6 times larger for these cases.

To conclude, few meteorological differences are found between the *high* and *low* situations at lower altitudes and where the clouds reside: similar temperature inversion, similar wind direction and specific humidity. However, humidity close to the surface is higher for the *high* cases. At 700 hPa the wind direction and moisture are very different for the two situations: easterlies are associated to larger AOTs and larger humidity values, while the wind coming from the open ocean is characterized by low values of AOT and humidity. We consider these differences when we analyse below the change in cloud properties between the *low* and *high* smoke loading situations.

4 Results

4.1 Difference in cloud properties

We follow our strategy and analyse here the variation of cloud parameters for different scenarios of smoke (aerosol and water vapour) loadings, between June-August 2008. The variations of cloud parameters are analysed as a function of longitude and as a function of meteorological parameters. By choosing a particular time period and a spatial domain, we showed in the previous section that we reduced the meteorological variability and thus its potential effect on cloud properties.

Figure 10 presents different cloud properties as a function of longitude for the two AOT conditions. We observe a westwards evolution of some parameters with longitude, regardless of the *high* or *low* situations. For example, POLDER COT, MODIS r_{eff} and LWP show an increase westwards (panels a, b and d) that might result from changes in clouds optical and microphysical properties, driven by changes in sea surface temperature (SST) and meteorological conditions away from the coast (also consistent with the fact that the wind direction is mostly westwards).

Most of the parameters display a difference between the *low* and *high* situations, as there is a visible gap between the values corresponding to the two situations, independently on longitude. MODIS r_{eff} increases from E to W from 6.5 to 11 μm when the aerosol loading is low. One can also observe a weaker increase when the aerosol loading is high, from 8 to 10 μm (Figure 10b). This difference may suggest that the cloud microphysics is different for the situations with and without aerosols.

Due to the bias in the CALIOP retrievals of aerosol base altitude, we cannot exclude the possibility of aerosol-cloud contact cases that could lead to a reduction of r_{eff} for the polluted cases. We also notice thicker clouds when the absorption AOT is larger than 0.04, as POLDER COT corrected from absorption, increases by approximately 3 units along the longitude (Figure 10a). As a result, the inferred LWP is systematically larger by approximately 20 g.m⁻² (Figure 10d), from E to W over the interest area. This increase is significant here, as it represents between 33% and 66% larger LWP: +20g.m⁻² is 66% more LWP in the E and 33 % in the W. When analysing the LWP as a function of the SST and the surface wind speed (Figure 10e and f), we notice that the difference between the *low* and *high* situations is almost independent on longitude. As in Figure 10d, the

Formatted	... [1]
Formatted	... [2]
Formatted	... [3]
Formatted	... [4]
Formatted	... [5]
Deleted:	Following our strategy to make a distinction between, [6]
Deleted:	Figure 9
Deleted:	a and c
Deleted:	an evolution
Deleted:	that vary
Deleted:	fundamentally in the same way
Deleted:	, which may be linked to the air mass transport
Deleted:	The
Deleted:	the
Deleted:	c
Deleted:	. This
Deleted:	be a result of the evolution of the clouds optical and ... [7]
Deleted:	Furthermore, most
Deleted:	n
Deleted:	but the increase is weaker.
Deleted:	Figure 9
Deleted:	a
Formatted	... [8]
Formatted	... [9]
Deleted:	as POLDER COT
Deleted:	
Deleted:	(not shown here)
Deleted:	and with
Deleted:	Figure 9
Deleted:	c
Deleted:	.
Formatted	... [10]
Formatted	... [11]
Formatted	... [12]
Formatted	... [13]
Formatted	... [14]
Formatted	... [15]
Formatted	... [16]
Formatted	... [17]
Formatted	... [18]

results show a difference in the liquid water path for the two scenarios regardless of the meteorological conditions, with LWP being systematically larger for the *high* cases. LWP is increasing with surface wind speed away from the coast (Figure 10e) but behaving very differently as a function of SST (Figure 10f). For the low case, LWP is clearly decreasing with SST, while a tendency is much less clear in the high case.

Another cloud parameter we analysed is the POLDER cloud altitude, Z_{O_2} (Figure 10c). In case of *low* absorption / burden, Z_{O_2} slightly increases with longitude, while in the *high* cases, we observe slightly lower cloud altitudes that remain under 1 km. It is unlikely that the lower cloud altitudes are the result of stronger atmospheric subsidence, as Figure 8d shows the subsidence is lower (with 1 Pa/ min) for polluted situations while cloud altitudes are also lower. The small altitude difference might be the result of enhanced convection away from the coast in the *low* situation. The effect of an upper level of aerosol on the estimate of cloud altitude derived from oxygen pressure is questionable.

The analysis of the cloud parameters variation over the zone shows a common feature of their variations - a westward increase of cloud parameters. Significant differences between the *low* and *high* aerosol situations, with a larger LWP for the *high* case, remain for different meteorological conditions (wind, SST). These results do not contradict a “cloud thickening” effect described by Wilcox (2010) who obtained from microwave measurements an increased LWP by 20 $g \cdot m^{-2}$ and around 200 m decrease of the cloud top altitude retrieved with CALIOP.

The last parameter that we analysed is the variation of the specific humidity at 925 hPa as a function of longitude over the zone, in complement to the results presented in Sections 3.3 and 3.4 (Figure 11a). Not surprisingly after the previous results, the humidity is higher when large loads of absorbing aerosols are present above clouds. It is also rather constant on average along the longitude with values between 8.5 and 10 g/kg. Its variation is very different in the *low* case, with a westward increase from 5.5 g/kg to 9 g/kg. This difference is not directly understandable as the wind direction and amplitude is not very different between the two cases (see Figure 9a).

Furthermore, we studied the covariance between the specific humidity and the LWP because of very obvious physical links. Figure 11b shows the relationship between LWP computed for the *high* and *low* situations as a function of the specific humidity at 925 hPa. We notice that in both cases, the average LWP increases linearly with q_v up to 55 $g \cdot m^{-2}$ at 9 $g \cdot kg^{-1}$, where a shift occurs. In the *low* case a decrease of LWP with larger humidity is observed, while in the *high* case the LWP increase is not perturbed. It is one additional argument that shows difference between the two smoke loading situations. One interpretation is that processes leading to some negative feedback could be significantly perturbed by the presence of the smoke layers overlying the stratocumulus cloud layer. In Section 4.4 we will analyse this figure in more depth, with a discussion about the actual location of this pressure level compared with the cloud top altitude. We make the link with the study of the smoke radiative forcing and the potential forcing of cloud top processes and feedbacks. In addition, we have also considered a second hypothesis related to the loss of precipitable water that could explain this behaviour.

Deleted:

Deleted: Figure 9

Deleted: b

Deleted: AOT situations

Deleted: ,

Deleted: what may be the result of enhanced convection away from the coast.

Deleted: I

Deleted: case of high AOT situations

Formatted: Font: Italic

Formatted: Font: Italic

Deleted: ,

Formatted: Font: Italic

Deleted: The atmospheric subsidence shown in Figure 7d cannot explain the difference in altitude, as the cloud altitudes retrieved from POLDER measurements are lower for the polluted situations, for which the subsidence is lower

Deleted: Therefore, it is unlikely that the lower cloud altitudes are a result of stronger atmospheric subsidence. The difference in altitude is weak, and the effect of an upper level of aerosol on the cloud altitude derived from oxygen pressure is questionable.

Deleted: The specific humidity also presents different behaviours as a function of longitude between the polluted and less polluted situations (Figure 9d). We notice that when large loads of absorbing aerosols are present above clouds, the humidity at 925 hPa is rather constant along the longitude with values between 8.5 and 10 g/kg, while in the *low* case the humidity increases westwards from 5.5 g/kg to 9 g/kg.

Formatted: Font: Italic

Formatted: Font: Italic

Formatted: Font: Italic

Moved (insertion) [1]

Deleted: The relationship between LWP and q_v for the *low* case seems well illustrating the strong cloud–radiation–turbulent–entrainment feedback (Zhu et al., 2005) that would exist for stratocumulus cloud field. Wood, (2012) describes this negative feedback as the following: a thickening cloud drives stronger entrainment [of warm, dry air], which results in cloud thinning. The interesting result that the behaviour is different in the *high* smoke case, with a continuous increase of LWP with q_v , suggests that processes leading to the negative feedback could be significantly perturbed by the presence of the overlying aerosol layers and the accompanying increased water vapour in above-cloud layers.

Formatted: Font: (Asian) MS Mincho, English (CAN)

4.2 Overall radiative impact of the smoke layers.

Our hypothesis is that a smoke layer elevated above the clouds can induce a semi-direct effect through a change in the radiative budget above the cloud and/or at cloud top. More precisely, the presence of a layer-containing aerosol within a moisture profile will modify the radiative heating rates in the atmospheric column, as a consequence of radiative processes that are absorption, scattering and emission of radiation. It is also the case when high-level clouds overly stratocumulus clouds (Christensen et al., 2013). If the heating rates vary at the cloud level, they will directly impact cloud processes and development. Stratocumulus clouds are characterized by a strong cloud-top cooling, which is the result of a radiative and evaporative cooling. Both act as drivers to create cloud-top turbulence, mixing in the cloud layer, and small-scale dry air entrainment (Zuidema et al., 2009). Modification of radiative heating rates at the cloud top and its surrounding would eventually modify cloud top processes, the thermodynamic state of entrained air and its impact on clouds (Bretherton et al., 2004).

Figure 12 presents our results of the smoke layer's overall radiative effect estimated over the sample area close to Angola's coast and for the entire period of June to August 2008. The simulations were performed for individual CALIOP tracks, thus considering the variability of aerosol and cloud properties as well as their different altitudes.

The shortwave radiative transfer results under the CALIOP track show that over the sample area, the instantaneous shortwave direct radiative effect (DRE) at the top of the atmosphere (TOA) has values between 50 and 120 Wm^{-2} , with an average of $66.7 \pm 23.2 \text{ Wm}^{-2}$. The maximum value corresponds to the largest POLDER AOT_{865nm} and COT (not presented here). These positive values of DRE show that the aerosols reduce the local albedo by absorbing solar radiation, generating a radiative warming of the atmospheric column.

In Figure 12, the mean profile of the shortwave, longwave and total heating rates (K/day), for clean situations (in which we consider only the water vapour profiles, panel a) and for smoke events (panel b) are shown. This gives a better appreciation of the average aerosol and water vapour contributions on the radiative budget in the area. We computed the heating rate initially for individual profiles, and then we averaged over the entire region. This explains the different peaks between 0.5 and 1.5 km, as the cloud top altitude varies for each profile.

We observe that most of the warming in the atmosphere occurs where the smoke resides (between 2.5 and 4.5 km). The HR_{SW} maximum value is 9 K/day, of which the water vapour contributes with 3 K/day (seen in panel a). The heating observed above 4.5 km is due to the shortwave radiation absorbed by the water vapour; at the cloud level the warming comes from solar absorption by water vapour and cloud droplets. There is a longwave cooling at the cloud level, with mean HR_{LW} of approximately -18 K/day and in the upper atmosphere a mean cooling up to -5 K/day. In case of polluted situations, the budget of the heating rates at the aerosol level shows that the aerosols warm the layer with an average HR_{total} of 6 K/day, while water vapour has an overall effect close to null over the cloud layer, with a compensation between its induced solar heating and infrared cooling. At the cloud level the mean HR_{total} has negative values: in the unpolluted cases the HR_{total} at cloud top reaches -12.9 K/day, while in the presence of above cloud aerosols, the value decreases to -13.5 K/day. This difference represents the average effect of aerosol above cloud on the cloud-top heating rate, as they absorb part of the shortwave radiation. At surface

Deleted: ¶

We also analysed the LWP as a function of the sea surface temperature (SST) and the surface wind speed. As in Figure 9c, the results show a difference in the liquid water path for the two scenarios regardless of the meteorological conditions, with LWP being systematically larger for the high cases. LWP is increasing with surface wind speed (Figure 10a) but behaving very differently as a function of SST (Figure 10b). For the low case, LWP is clearly decreasing with SST, while a tendency is much less clear in the high case. The analysis of the cloud parameters variation over the zone shows a common feature of their variations (a westward increase of cloud parameters), and significant differences between the low and high aerosol situations with a higher LWP for the high case. This difference remains for different meteorological conditions (wind, SST). These results do not contradict a "cloud thickening" effect described by Wilcox (2010) who obtained from microwave measurements an increase of LWP by 20 $\text{g}\cdot\text{m}^{-2}$ and around 200 m decrease of the cloud top altitude retrieved with CALIOP. Still, the result of Figure 9d suggests as a first analysis that the higher level of humidity in the high case could explain the higher amount of LWP. ¶ The last covariance that we studied is the one between specific humidity at 925 hPa and LWP. The correlation should exist and be positive, based on the physical ground that more water vapour in the convective lower layers should be generally associated with more condensed water and LWP. Figure 10c shows the LWP retrieved for the high and low situations, as a function of the specific humidity. We notice that in both cases, the LWP increases linearly with q_v up to 9 $\text{g}\cdot\text{kg}^{-1}$, where a shift occurs in the low case and the LWP is decreasing, while in the high case the LWP continues to increase. The relationship between LWP and q_v for the low case seems well illustrating the strong cloud-radiation-turbulent-entrainment feedback (Zhu et al., 2005) that would exist for stratocumulus cloud field. Wood, (2012) describes this negative feedback as the following: a thickening cloud drives stronger entrainment [of warm, dry air], which results in cloud thinning. The interesting result that the behaviour is different in the high smoke case, with a continuous increase of LWP with q_v , suggests that processes leading to the negative feedback could be significantly perturbed by the presence of the overlying aerosol layers and the accompanying increased water vapour in above-cloud layers. In the next section, we perform ... [19]

Moved up [1]: The relationship between LWP and q_v for the low case seems well illustrating the strong cloud-radiation-turbulent-entrainment feedback (Zhu et al., 2005) that would exist for stratocumulus cloud field. Wood, (2012) describes this negative feedback as the following: a thickening cloud drives stronger entrainment [of warm, dry air], which results in cloud thinning. The

Formatted ... [20]

Formatted ... [21]

Deleted: ...op cooling, which is the result of a radiative and evaporative cooling. Both act as drivers to create cloud- ... [22]

Deleted: Figure 11

Deleted: Figure 11 ... presents ...he mean profile of the shortwave, longwave and total heating rates (K/day), for unpolluted ... [23]

Formatted ... [24]

Deleted: -13.5 K/day... while in the presence of above cloud aerosols, the value decreasesincreases...to -13.5 K/day -12.9 K/day... This difference represents the average effect of aerosol above cloud on the cloud- ... [25]

the longwave absorption leads to a strong warming, with values larger than 20 K/day, due to the absorption of the ocean's longwave contribution by the cloud and water vapour.

Overall, we observe that the sample area is globally under the energetic influence of absorbing aerosols, leading to warming at the altitudes where aerosols reside. They create also a global positive shortwave direct effect at the top of the atmosphere. Finally, we observe that over the sample area there is a radiative cooling at the cloud top layers, slightly different between the *unpolluted* case and the case with aerosols.

However, in order to understand the aerosol and water vapour effects we have to account for the covariance between humidity and aerosol instead of only simulating cases with and without aerosols in the atmospheric column.

4.3 Distinction between water vapour and aerosol effects

The radiative study over the sampled area has already given us information on the average aerosol and water vapour contribution to the heating rates, mainly at the aerosol level. In this section, we analyse two different simulations for average *high* and *low* loadings of aerosol /water vapour. We define a cloud type characterized by r_{eff} of 10 μm and COT of 10, in order to consider the same contribution of the cloud droplets multiple scattering and heating rates in both situations. The objective is to investigate how different aerosol loadings and meteorological parameters could influence the heating rates and to separate in the end their different contributions and effects.

Figure 13 presents the first simulation, for which we calculated the heating rates in shortwave and longwave spectrums and their total by considering the average aerosol properties in case of *high* and *low* situations (see Table 2) and the associated water vapour profiles (see Figure 8c). The left panel shows the heating rate profiles for polluted situations - large AOT and water vapour content; the middle panel presents the heating rate of the less polluted situations - low AOT and water vapour, and the right panel presents the difference between the resulted heating rates of the *high* and *low* cases. We observe a strong cooling at the cloud top level (at 1 km), with values that reach -70 K/day (panels a and b) and a warming at the smoke level (between 2 and 4.5 km), more visible for the polluted case. The net heating rate profile (panel c) shows a maximum warming of about 6 K/day and a warming at the cloud top with 5 K/day between the *high* and *low* scenarios. These effects can be attributed to the presence of a smoke layer above the cloud, as the cumulative effect of aerosols and water vapour at the smoke level and at the cloud top.

In order to separate the water vapour from the aerosol contributions, we performed a second simulation for which the above-cloud AOT is the same (0.21 at 865 nm), but with distinct typical water vapour profiles for high and low cases. Therefore, the aerosol radiative contribution is equal for the two cases, and the subtraction of the heating rates obtained for the two profiles will provide the water vapour only radiative contribution in the column. Results are shown in Figure 14. In the shortwave, the difference of HR computation shows that the increase of water vapour has a warming effect in the aerosol layer of only 0.8 K/day, and a cooling effect in the cloud layer, due to a shadowing effect. At the cloud top the water vapour is the main agent to drive the net warming of about 5 K/day, which is equivalent to 7 % loss in cloud top cooling. The synthesis between the shortwave heating rates computed in the first simulation (water vapour and aerosol contribution) and those

Deleted: Figure 12

Deleted: Table 1

Deleted: Figure 7

Deleted: Figure 13

Deleted:

computed in the second scenario (water vapour only after the subtraction), provides the distinct contributions of moisture and aerosols in the heating rate difference between polluted and less polluted situations (see Table 3 and 4).

Deleted: Table 2

Deleted: 3

4.4 Discussion

The results of the radiative transfer simulations provide an estimate of the distinct contributions of water vapour and aerosols to the smoke radiative forcing. Aerosols above cloud accompanied by water vapour impact not only the layers where they reside by heating or cooling their environment, but also have a distant effect on the underlying cloud systems. Results show that overlaying aerosols drive the (instantaneous) warming within the smoke layer (typically +6 K/day at the A Train passage time), while the water vapour could be responsible of a significant reduction (7% loss) of the radiative cooling at the cloud top level.

Deleted: These radiative transfer simulations help us understand the water vapour radiative contribution in the shortwave and longwave spectrum, and to separate its effects from those of the aerosol loading in the visible domain. It demonstrates that the aerosols accompanied by water vapour impact not only the layer where they reside, by heating or cooling their environment, but also have a distant effect on the underlying cloud systems. Results show that overlaying aerosols drive the warming within the aerosol layer, while the water vapour is responsible for a significant reduction of the cloud top radiative cooling. These effects eventually affect the cloud evolution in a way that could lead to a cloud thickening.

Formatted: Indent: First line: 0 cm

Deleted: ¶

As said above in Section 4.2, the cloud-top radiative cooling is the main driver of cloud-top turbulence and air entrainment. Modification of radiative heating rates at the cloud top and its surrounding could eventually modify atmospheric processes (layer stability, cloud-top turbulence) and the evolution of clouds. One can wonder if the smoke radiative forcing could impact the cloud-related processes and cloud evolution in a way that could lead to the observed cloud thickening between low and high smoke loading situations. The observed thickening could be associated with the difference in the statistical relationship between LWP and q_w at 925 hPa. High values of LWP (up to 80-90 $g\cdot m^{-2}$) are observed in the *high* case, while in the *low* case LWP is below 50-60 $g\cdot m^{-2}$. In the *low* case, the inversion of LWP with increasing specific humidity could suggest the existence of a negative feedback that limits the average LWP values. We hypothesise that some cloud-related processes are different in the *low* and *high* cases, as a consequence of changes in the cloud-top cooling with the presence of overlaying smoke.

Formatted: Subscript

Formatted: Superscript

Formatted: Font: Italic

Formatted: Font: Italic

Formatted: Superscript

Formatted: Font: Italic

Formatted: Font: Italic

Formatted: Font: Italic

Formatted: Superscript

Formatted: Superscript

One should be careful in the analysis of Figure 11b as there is an uncertainty in the actual location of the 925 hPa level compared to the top of the stratocumulus layer. From the analysis of the average model-derived humidity profile over the zone, values of specific humidity between 8 and 12 $g\cdot kg^{-1}$ would indicate the presence of increased humidity within the cloud layers. Values for humidity layers just above the cloud top would be approximately 6 $g\cdot kg^{-1}$ at 900 hPa. The data in Figure 11b is hypothesised to be for a specific humidity profile within the cloud. However, even if it were to lie above the cloud, we would still expect that the increased humidity would lead to an increase in the amount of condensable water within the cloud layer, although it would be caused by the entrainment process instead.

The underlying mechanism responsible for the LWP- q_w inversion above 55 $g\cdot m^{-2}$ remains unknown. One explanation could be that this relationship seems to illustrate a strong cloud-radiation-turbulent-entrainment feedback (Zhu et al., 2005) that would exist for stratocumulus clouds. Wood, (2012) describes this negative feedback as the following: a thickening cloud drives stronger entrainment [of warm, dry air], which results in cloud thinning. A thickening cloud is more efficiently cooled at its cloud top, and as a response, mixing and turbulence increase. The increase in dry air entrainment could lead to a thinning cloud (Wood, 2012). For the high cases, the cloud-top radiative cooling is reduced mainly by the radiative effects of water vapour, and the temperature inversion above the cloud is reinforced by the SW absorption of aerosols. Thus, a combined effect

Formatted: Superscript

of increased atmospheric stability and of cloud-top cooling reduction would eventually lead to a decrease of entrainment rate and its moderating effect on clouds, further amplified by the fact that the entrained air would be moister. This would explain a cancellation or reduction of the cloud thinning effect, illustrated in Figure 11b.

A second hypothesis for the negative slope of LWP larger than 55 g m^{-2} for large humidity values is the loss of condensed water due to precipitation. Figure 10b shows a weaker increase of r_{eff} when the aerosol loading is high. Due to the CALIOP high bias on aerosol base altitude, we do not exclude the possibility of some aerosol-cloud contact cases that could lead to a Twomey effect, hence lower r_{eff} values. For the low cases on the contrary, we notice a strong r_{eff} increase followed by a flattening at around $11 \text{ }\mu\text{m}$, between 5 and $9 \text{ }^\circ\text{E}$. Studies (e.g. Freud and Rosenfeld, 2012) show that a precipitable droplet size is around (or over) $12 \text{ }\mu\text{m}$. The average doesn't reach this value, but there are definitely large droplets in the low case that could lead to precipitation. Sufficient humidity is present in both cases, but precipitable droplets only seem to exist in the clean case, which could correspond to the decrease in LWP due to precipitation.

This study indicates the importance of separating the aerosol and water vapour contributions when studying cloud adjustments to above cloud aerosols.

5 Conclusions and perspectives

In our study, we focused on the impact of absorbing aerosol layers overlying a lower cloud layer, their associated radiative forcing and their potential effects on the underlying clouds. The main objective was to disentangle the effect of aerosols on clouds from the meteorological effect, and to calculate their radiative impact. The region of interest was the South Atlantic Ocean due to the large loads of African biomass-burning absorbing aerosols that are frequently transported over the main South Atlantic stratocumulus deck.

We realized a synergy between CALIOP and POLDER measurements of aerosols above clouds, to which we added meteorological parameters provided by the ERA-Interim reanalysis. We analysed the properties of aerosols and clouds for the period May - October 2006 to 2009, in particular the information about the vertical distance between the two layers: along the longitude, the clouds develop vertically as they are transported further westwards; the aerosols are mainly detached from the cloud close to the coast and afterwards they lose altitude, which is explained by the wet and dry deposition processes and the atmospheric circulation over the South of Africa and South East Atlantic Ocean. The evolution of aerosol properties travelling westward (increase in size, decrease in absorption and Ångström exponent) suggests an aging of aerosols.

For a more detailed analysis we selected a small area close to the coast of Angola that is near the main stratocumulus deck identified in the region, and where large loads of aerosols are transported at higher altitudes, mainly detached from the clouds below. The study was limited to three months (June to August 2008) in order to constrain the meteorological variability that can affect the clouds and the overlaid aerosols, but also to maintain a sufficiently large dataset for a better statistical analysis.

Formatted: Font: Italic

Formatted: Font: Italic

Field Code Changed

Deleted: (

Formatted: Not Highlight

Deleted: At this point we can attempt to explain the differences in the cloud properties observed in Section 4.1. If we consider again Figure 10c, we notice that for the same value of specific humidity at 925 hPa we have different behaviour of LWP between polluted and less polluted situations. These differences could result from a perturbation of cloud top processes (turbulence, entrainment) and from differences in the thermodynamics of above cloud layers. In the nonpolluted case, and as the cloud thickens, mixing and turbulence increase. The stronger entrainment that follows would result in a thinning cloud (Wood, 2012). We can notice this tendency in Figure 10c for the low cases, where the values of LWP increase up to 55 g m^{-2} followed by a decrease. In the polluted case instead, where larger AOTs and water vapour are present above the cloud, the cloud top radiative cooling is reduced (mainly by water vapour radiative effects), the layers above the clouds are warmer (mainly due to SW absorption of aerosols), that reinforces the temperature inversion (see Figure 9b and Figure 12c). Thus, a combined effect of increased atmospheric stability and of cloud top cooling reduction would eventually lead to a decrease of entrainment rate and its moderating effect on clouds, all the more because the air that is entrained would be moister. It would explain a cancellation or reduction of the cloud thinning effect, illustrated in Figure 10c with a linear increase of LWP with moisture for humidity higher than 8 g kg^{-1} . This study indicates the importance of separating the aerosol and water vapour contributions when studying cloud adjustments to above cloud aerosols.

Deleted: e

Deleted: of their

Deleted: of their

A first interesting result of our approach is that we are able, using a CALIOP / POLDER / ERA-Interim synergy and a radiative transfer model, to provide estimates of the aerosol radiative effects and the vertical heating rate profiles when aerosol layers are above low-level clouds (below 1.5 km), in both the shortwave and longwave domains. Over the area, we estimated that smoke layers located above clouds significantly perturb TOA net flux and the solar illumination of clouds at the time of the overpass of POLDER (13:30 UTC). The study revealed positive average values of the DRE at TOA, between 50 and 120 Wm⁻², with an average of 66.7 Wm⁻² and a standard deviation of 23.2 Wm⁻², which signifies a reduced scene's albedo and a warming of the atmospheric column strongly correlated to the aerosol loading. The shortwave heating rate shows a warming of 9 K/day at the aerosol layer, of which 3 K/day are due to the water vapour shortwave absorption. However, the total effect of water vapour is almost null, as the shortwave heating is compensated by its longwave radiative cooling. Another estimate is the heating rate at the cloud top layers. We observed a net cloud top radiative cooling dominated by infrared transfer, around -60 K/day for each pixel under the CALIOP track, and a mean of -13 K/day over the area, as clouds are diversely vertically located. Removing aerosols from the calculation show a slight increased cooling. In the total balance between shortwave and longwave heating rates, we notice a small effect of the presence of aerosols above clouds (of 0.56 K/day), which is explained by the shadowing effect of aerosols, that attenuate the solar radiation to reach the cloud top.

For this area and for this time period, we observed a strong covariance between the increase of the specific humidity and the increase of AOT, especially at 850 and 700 hPa (Figure 7). One explanation could come from the release of water vapor together with aerosols from the African sources (Parmar et al., 2008). Another explanation, not explored here, could come from the rapid adjustments of water vapour to the presence of aerosols (Smith et al., 2018).

This covariance motivated us to analyse the relationship between cloud and meteorological parameters for two distinct regimes: highly absorbing aerosols and aerosol layers with low absorption. This distinction confirmed two different humidity profiles characteristic of high and low situations. At 700 hPa, the difference clearly originates from two distinct air masses: the high loads of aerosols come from the land (direction east-west), with high amounts of water vapour, while the low cases originate from the open ocean, with lower moisture quantities. The analysis of meteorological conditions at 925 hPa shows some differences, but mainly common features of wind directions, temperature inversion and humidity. The larger difference was observed above the cloud layers, at 700 hPa, where the aerosol layer resides.

Our results confirm previous satellite observations and studies that showed that clouds contain more water and are at slightly lower altitudes when large loads of absorbing aerosols are located above them. Indeed, we observed a significant increase of LWP between low and high cases, whatever the meteorological conditions (Figure 10 and Figure 11).

The cause and effect of the cloud "thickening" is a challenge to untangle. Stabilization of above-cloud layers that experience a warming – which should lead to temperature inversion reinforcement, decrease of air entrainment and humidity preservation – have been suggested in previous studies. Our results of layer warming due to aerosol SW absorption is not contradictory, but aerosol layers seem here quite distant from the cloud top to confidently confirm this explanation. For the two smoke scenarios, two distinct relationships have been obtained between the specific humidity at 925 hPa and the LWP: below 55g m⁻² the LWP increases systematically for both cases, followed by a negative slope for the low cases and a continuous

Deleted: advanced

Deleted: forcing

Deleted: er

Deleted:

Deleted: Figure 6

Deleted: correlation

Deleted: Figure 9

Deleted: Figure 10

Deleted: water vapor

Formatted: Superscript

Formatted: Font: Italic

increase for the *high* cases. This suggests that the negative feedback evoked by Wood (2012) (a cloud thinning that follows a stronger entrainment, consequence of a cloud thickening) is attenuated, if not cancelled, in the high case. A possible explanation is a reduction of cloud-top entrainment and its consequence due to two factors: a decrease of cloud-top turbulence due to a decrease of cloud-top cooling, and that air entrained is more humid in the high case. Another hypothesis is the sink of

LWP in the low cases due to loss of condensable water via precipitation.

We evaluated the difference in cloud-top cooling between the *low* and *high* scenarios by performing two radiative transfer simulations with two typical covariant loadings of aerosol and humidity. The results of the radiative transfer simulations show that, while an increase in aerosols is 90 % responsible for increasing the heating of the layer where they reside, the increase of the water vapour amount is responsible for a decrease of cloud-top cooling of + 4.7 K/day (7%), while a slight increase of the aerosol's shadowing leads to a cooling of -0.23 K/day. Thus, the presence of smoke layers in the scene significantly impacts its radiative budget and modifies the heating rates, with an increase of heating in the aerosol layers, and a decrease of the cooling at the cloud-top, which may significantly impact the cloud-top dynamics. Accounting for the covariance between aerosol loading and water vapour seems important for understanding the observed cloud thickening (these are identified mechanisms for AAC semi-direct effects on clouds).

As perspectives, we propose to validate our computed heating rates by comparing them with the AEROCLO-sA, CLARIFY and ORACLES airborne data. During these field campaigns, various lidar and polarimeter were deployed and could be used to estimate in synergy the heating rates profiles. An exercise of validation would consist in validate the heating rates with the concomitant flux measurements performed at different level through the smoke layers. Furthermore, we plan to combine our database with a climate or regional model to check the consistency of our data. The model can be constrained using observations (aerosol and cloud parameters, water vapour content, meteorological profiles), and can provide simulations made with and without aerosols and to help disentangle the effects of meteorology versus the aerosol effects. Such new strategies combining models and active/passive remote sensing data with meteorological data and airborne sounding will help to better understand the impacts of aerosols on the clouds and climate at regional and global scale. Using our large database, we can further calculate the heating rates of aerosols above clouds for a larger region to better study the transport effect, or even at a global scale.

Author Contributions.

LD, NF and FW conceived the study. FW and PG acquisitioned the funding. LD generated the database and analysed the data with the help of NF, FW and FP. NF analysed the meteorological data and helped interpreting the changes in cloud properties. FW modified the GAME models in VIS and IRT for the purpose of this study and defined the "high" and "low" strategy for investigating the aerosol effects on clouds. FT provided IT support. LD wrote the paper with reviews from all authors.

Data availability.

Deleted: a common high and positive correlation is observed for LWP below 55g.m-2 in both cases but, above this level, the correlation is continued only for the high case.

Formatted: Font: Italic

Deleted: that we promote here

Deleted:

Deleted:

Deleted:

Formatted: Font color: Auto

Deleted:

Deleted:

Deleted:

Deleted:

All data are available at ICARE website on-line archive: <http://www.icare.univ-lille1.fr/archive>. POLDER aerosol above cloud products and CALIOP extinction profiles can be obtained by email request to ICARE. The reanalysis data are distributed by ECMWF Meteorological Archival and Retrieval System (MARS).

5 Acknowledgments.

Lucia Deaconu's grant was provided by the CaPPA project (Chemical and Physical Properties of the Atmosphere), which is funded by the French National Research Agency (ANR) through the PIA (Programme d'Investissement d'Avenir) under contract ANR-11-LABX-0005-01 and by the Regional Council Hauts-de-France and the European Funds for Regional Economic Development (FEDER). The authors would like to acknowledge Philippe Dubuisson, for his insights on the GAME
10 model, Fanny Minvielle for helping to provide ECMWF data, and ICARE Data Service Centre for providing the satellite retrievals.

6 References

- Adebisi, A. A., Zuidema, P. and Abel, S. J.: The convolution of dynamics and moisture with the presence of shortwave absorbing aerosols over the southeast Atlantic, *J. Clim.*, 28(5), 1997–2024, doi:10.1175/JCLI-D-14-00352.1, 2015.
- 5 Berrisford, P., Dee, D. P., Poli, P., Brugge, R., Fielding, K., Fuentes, M., Kllberg, P. W., Kobayashi, S., Uppala, S. and Simmons, A.: The ERA-Interim archive Version 2.0, ERA Rep. Ser., (1), 23, 2011.
- Brenguier, J.-L. and Wood, R.: Observational Strategies from the Micro- to Mesoscale, in *Clouds in the Perturbed Climate System*, pp. 487–510, The MIT Press., 2009.
- Bretherton, C. S., Uttal, T., Fairall, C. W., Yuter, S. E., Weller, R. A., Baumgardner, D., Comstock, K., Wood, R. and
10 Raga, G. B.: The EPIC 2001 stratocumulus study, *Bull. Am. Meteorol. Soc.*, 85(7), 967–977, doi:10.1175/BAMS-85-7-967, 2004.
- Brioude, J., Cooper, O. R., Feingold, G., Trainer, M., Freitas, S. R., Kowal, D., Ayers, J. K., Prins, E., Minnis, P., McKeen, S. A., Frost, G. J. and Hsie, E.-Y.: Effect of biomass burning on marine stratocumulus clouds off the California coast, *Atmos. Chem. Phys.*, 9(22), 8841–8856, doi:10.5194/acp-9-8841-2009, 2009.
- 15 Buriez, J. C., Vanbauce, C., Parol, F., Goloub, P., Herman, M., Bonnel, B., Fouquart, Y., Couvert, P. and Seze, G.: Cloud detection and derivation of cloud properties from POLDER, *Int. J. Remote Sens.*, 18(13), 2785–2813, doi:10.1080/014311697217332, 1997.
- Chand, D., Anderson, T. L., Wood, R., Charlson, R. J., Hu, Y., Liu, Z. and Vaughan, M.: Quantifying above-cloud aerosol using spaceborne lidar for improved understanding of cloudy-sky direct climate forcing, *J. Geophys. Res.*, 113(D13),
20 D13206, doi:10.1029/2007JD009433, 2008.
- Christensen, M. W., Carrió, G. G., Stephens, G. L. and Cotton, W. R.: Radiative Impacts of Free-Tropospheric Clouds on the Properties of Marine Stratocumulus, *J. Atmos. Sci.*, 70(10), 3102–3118, doi:10.1175/JAS-D-12-0287.1, 2013.
- Clements, C. B., Potter, B. E. and Zhong, S.: In situ measurements of water vapor, heat, and CO₂ fluxes within a prescribed grass fire, *Int. J. Wildl. Fire*, 15(3), 299–306, doi:10.1071/WF05101, 2006.
- 25 Costantino, L. and Bréon, F. M.: Aerosol indirect effect on warm clouds over South-East Atlantic, from co-located MODIS and CALIPSO observations, *Atmos. Chem. Phys.*, 13(1), 69–88, doi:10.5194/acp-13-69-2013, 2013.
- Deaconu, L. T., Waquet, F., Jossset, D., Ferlay, N., Peers, F., Thieuleux, F., Ducos, F., Pascal, N., Tanré, D., Pelon, J. and Goloub, P.: Consistency of aerosols above clouds characterization from A-Train active and passive measurements, *Atmos. Meas. Tech.*, 10(9), 3499–3523, doi:10.5194/amt-10-3499-2017, 2017.
- 30 Dee, D. P., Uppala, S. M., Simmons, A. J., Berrisford, P., Poli, P., Kobayashi, S., Andrae, U., Balmaseda, M. A., Balsamo, G., Bauer, P., Bechtold, P., Beljaars, A. C. M., van de Berg, L., Bidlot, J., Bormann, N., Delsol, C., Dragani, R., Fuentes, M., Geer, A. J., Haimberger, L., Healy, S. B., Hersbach, H., Hólm, E. V., Isaksen, L., Kállberg, P., Köhler, M.,

- Matricardi, M., McNally, A. P., Monge-Sanz, B. M., Morcrette, J. J., Park, B. K., Peubey, C., de Rosnay, P., Tavolato, C., Thépaut, J. N. and Vitart, F.: The ERA-Interim reanalysis: Configuration and performance of the data assimilation system, *Q. J. R. Meteorol. Soc.*, 137(656), 553–597, doi:10.1002/qj.828, 2011.
- Dubovik, O., Holben, B., Eck, T. F., Smirnov, A., Kaufman, Y. J., King, M. D., Tanré, D. and Slutsker, I.: Variability of Absorption and Optical Properties of Key Aerosol Types Observed in Worldwide Locations, *J. Atmos. Sci.*, 59(3), 590–608, doi:10.1175/1520-0469(2002)059<0590:VOAAOP>2.0.CO;2, 2002.
- Dubuisson, P., J. C. Roger, M. Mallet, and O. D.: A code to compute the direct solar radiative forcing: Application to anthropogenic aerosols during the Escompte experiment, in *IRS 2004: Current Problems in Atmospheric Radiation*, edited by H. Fischer and B.-J. Sohn, pp. 127–130, Hampton, Va., 2006.
- 10 Ferlay, N., Thieuleux, F., Cornet, C., Davis, A. B., Dubuisson, P., Ducos, F., Parol, F., Riédi, J. and Vanbauce, C.: Toward new inferences about cloud structures from multidirectional measurements in the oxygen a band: Middle-of-cloud pressure and cloud geometrical thickness from POLDER-3/PARASOL, *J. Appl. Meteorol. Climatol.*, 49(12), 2492–2507, doi:10.1175/2010JAMC2550.1, 2010.
- Freud, E. and Rosenfeld, D.: Linear relation between convective cloud drop number concentration and depth for rain
15 initiation, *J. Geophys. Res. Atmos.*, 117(D2), n/a-n/a, doi:10.1029/2011JD016457, 2012.
- Hasekamp, O. P.: Capability of multi-viewing-angle photo-polarimetric measurements for the simultaneous retrieval of aerosol and cloud properties, *Atmos. Meas. Tech.*, 3(4), 839–851, doi:10.5194/amt-3-839-2010, 2010.
- Haywood, J. M., Osborne, S. R., Francis, P. N., Keil, A., Formenti, P., Andreae, M. O. and Kaye, P. H.: The mean physical and optical properties of regional haze dominated by biomass burning aerosol measured from the C-130 aircraft
20 during SAFARI 2000, *J. Geophys. Res. Atmos.*, 108(D13), 8473, doi:10.1029/2002JD002226, 2003.
- Haywood, J. M., Osborne, S. R. and Abel, S. J.: The effect of overlying absorbing aerosol layers on remote sensing retrievals of cloud effective radius and cloud optical depth, *Q. J. R. Meteorol. Soc.*, 130(598), 779–800, doi:10.1256/qj.03.100, 2004.
- Hill, A. A., Dobbie, S. and Yin, Y.: The impact of aerosols on non-precipitating marine stratocumulus. I: Model
25 description and prediction of the indirect effect, *Q. J. R. Meteorol. Soc.*, 134(634 A), 1143–1154, doi:10.1002/qj.278, 2008.
- Hu, Y., Vaughan, M., Liu, Z., Powell, K. and Rodier, S.: Retrieving Optical Depths and Lidar Ratios for Transparent Layers Above Opaque Water Clouds From CALIPSO Lidar Measurements, *IEEE Geosci. Remote Sens. Lett.*, 4(4), 523–526, doi:10.1109/LGRS.2007.901085, 2007a.
- Hu, Y., Vaughan, M., Liu, Z., Powell, K. and Rodier, S.: Retrieving Optical Depths and Lidar Ratios for Transparent
30 Layers Above Opaque Water Clouds From CALIPSO Lidar Measurements, *IEEE Geosci. Remote Sens. Lett.*, 4(4), 523–526, doi:10.1109/LGRS.2007.901085, 2007b.
- Hudspith, V. A., Belcher, C. M., Barnes, J., Dash, C. B., Kelly, R. and Hu, F. S.: Charcoal reflectance suggests heating duration and fuel moisture affected burn severity in four Alaskan tundra wildfires, *Int. J. Wildl. Fire*, 26(4), 306–316, doi:10.1071/WF16177, 2017.

- Ichoku, C., Remer, L. A., Kaufman, Y. J., Levy, R., Chu, D. A., Tanré, D. and Holben, B. N.: MODIS observation of aerosols and estimation of aerosol radiative forcing over southern Africa during SAFARI 2000, *J. Geophys. Res. Atmos.*, 108(D13), 8499, doi:10.1029/2002JD002366, 2003.
- Jethva, H., Torres, O., Remer, L. A. and Bhartia, P. K.: A color ratio method for simultaneous retrieval of aerosol and cloud optical thickness of above-cloud absorbing aerosols from passive sensors: Application to MODIS measurements, *IEEE Trans. Geosci. Remote Sens.*, 51(7), 3862–3870, doi:10.1109/TGRS.2012.2230008, 2013.
- Jethva, H., Torres, O., Waquet, F., Chand, D. and Hu, Y.: How do A-train sensors intercompare in the retrieval of above-cloud aerosol optical depth? A case study-based assessment, *Geophys. Res. Lett.*, 41(1), 186–192, doi:10.1002/2013GL058405, 2014.
- Johnson, B. T., Shine, K. P. and Forster, P. M.: The semi-direct aerosol effect: Impact of absorbing aerosols on marine stratocumulus, *Q. J. R. Meteorol. Soc.*, 130(599), 1407–1422, doi:10.1256/qj.03.61, 2004.
- Johnson, B. T., Osborne, S. R., Haywood, J. M. and Harrison, M. A. J.: Aircraft measurements of biomass burning aerosol over West Africa during DABEX, *J. Geophys. Res. Atmos.*, 113(23), D00C06, doi:10.1029/2007JD009451, 2008.
- Kacenenbogen, M., Redemann, J., Vaughan, M. A., Omar, A. H., Russell, P. B., Burton, S., Rogers, R. R., Ferrare, R. A. and Hostetler, C. A.: An evaluation of CALIOP/CALIPSO's aerosol-above-cloud detection and retrieval capability over North America, *J. Geophys. Res. Atmos.*, 119(1), 230–244, doi:10.1002/2013JD020178, 2014.
- Kacenenbogen, M. S., Vaughan, M. A., Redemann, J., Young, S. A., Liu, Z., Hu, Y., Omar, A. H., LeBlanc, S., Shinozuka, Y., Livingston, J., Zhang, Q. and Powell, K. A.: Estimations of global shortwave direct aerosol radiative effects above opaque water clouds using a combination of A-Train satellite sensors, *Atmos. Chem. Phys.*, 19(7), 4933–4962, doi:10.5194/acp-19-4933-2019, 2019.
- Kar, J., Vaughan, M., Tackett, J., Liu, Z., Omar, A., Rodier, S., Trepte, C. and Lucker, P.: Swelling of transported smoke from savanna fires over the Southeast Atlantic Ocean, *Remote Sens. Environ.*, 211, 105–111, doi:10.1016/j.rse.2018.03.043, 2018.
- Kaufman, Y. J., Koren, I., Remer, L. A., Rosenfeld, D. and Rudich, Y.: The effect of smoke, dust, and pollution aerosol on shallow cloud development over the Atlantic Ocean, *Proc. Natl. Acad. Sci.*, 102(32), 11207–11212, doi:10.1073/pnas.0505191102, 2005.
- Keil, A. and Haywood, J. M.: Solar radiative forcing by biomass burning aerosol particles during SAFARI 2000: A case study based on measured aerosol and cloud properties, *J. Geophys. Res. Atmos.*, 108(D13), 8467, doi:10.1029/2002JD002315, 2003.
- Klein, S. A. and Hartmann, D. L.: The seasonal cycle of low stratiform clouds, *J. Clim.*, 6(8), 1587–1606, doi:10.1175/1520-0442(1993)006<1587:TSCOLS>2.0.CO;2, 1993.
- Knobelspiess, K., Cairns, B., Ottaviani, M., Ferrare, R., Hair, J., Hostetler, C., Obland, M., Rogers, R., Redemann, J., Shinozuka, Y., Clarke, A., Freitag, S., Howell, S., Kapustin, V. and McNaughton, C.: Combined retrievals of boreal forest fire aerosol properties with a polarimeter and lidar, *Atmos. Chem. Phys.*, 11(14), 7045–7067, doi:10.5194/acp-11-7045-2011,

2011.

Labonne, M., Bréon, F. M. and Chevallier, F.: Injection height of biomass burning aerosols as seen from a spaceborne lidar, *Geophys. Res. Lett.*, 34(11), L11806, doi:10.1029/2007GL029311, 2007.

Leahy, L. V., Anderson, T. L., Eck, T. F. and Bergtrom, R. W.: A synthesis of single scattering albedo of biomass burning aerosol over southern Africa during SAFARI 2000, *Geophys. Res. Lett.*, 34(12), L12814, doi:10.1029/2007GL029697, 2007.

Levine, J. S.: Global biomass burning: Atmospheric, climatic and biospheric implications, *Eos, Trans. Am. Geophys. Union*, 71(37), 1075–1077, doi:10.1029/90EO00289, 1990.

Liu, Z., Winker, D., Omar, A., Vaughan, M., Kar, J., Trepte, C., Hu, Y. and Schuster, G.: Evaluation of CALIOP 532 nm aerosol optical depth over opaque water clouds, *Atmos. Chem. Phys.*, 15(3), 1265–1288, doi:10.5194/acp-15-1265-2015, 2015.

Meyer, K., Platnick, S. and Zhang, Z.: Simultaneously inferring above-cloud absorbing aerosol optical thickness and underlying liquid phase cloud optical and microphysical properties using MODIS, *J. Geophys. Res. Atmos.*, 120(11), 5524–5547, doi:10.1002/2015JD023128, 2015a.

Meyer, K., Platnick, S. and Zhang, Z.: Simultaneously inferring above-cloud absorbing aerosol optical thickness and underlying liquid phase cloud optical and microphysical properties using MODIS, *J. Geophys. Res. Atmos.*, 120(11), 5524–5547, doi:10.1002/2015JD023128, 2015b.

Müller, D., Ansmann, A., Mattis, I., Tesche, M., Wandinger, U., Althausen, D. and Pisani, G.: Aerosol-type-dependent lidar ratios observed with Raman lidar, *J. Geophys. Res. Atmos.*, 112(16), D16202, doi:10.1029/2006JD008292, 2007.

Parmar, R. S., Welling, M., Andreae, M. O. and Helas, G.: Water vapor release from biomass combustion, *Atmos. Chem. Phys. Atmos. Chem. Phys.*, 8, 6147–6153, doi:10.5194/acp-8-6147-2008, 2008.

Peers, F., Waquet, F., Cornet, C., Dubuisson, P., Ducos, F., Goloub, P., Szczap, F., Tanré, D. and Thieuleux, F.: Absorption of aerosols above clouds from POLDER/PARASOL measurements and estimation of their direct radiative effect, *Atmos. Chem. Phys.*, 15(8), 4179–4196, doi:10.5194/acp-15-4179-2015, 2015.

Pistone, K., Redemann, J., Doherty, S., Zuidema, P., Burton, S., Cairns, B., Cochrane, S., Ferrare, R., Flynn, C., Freitag, S., Howell, S. G., Kacenelenbogen, M., LeBlanc, S., Liu, X., Schmidt, K. S., Sedlacek III, A. J., Segal-Rozenhaimer, M., Shinozuka, Y., Stammes, S., van Diedenhoven, B., Van Harten, G. and Xu, F.: Intercomparison of biomass burning aerosol optical properties from in situ and remote-sensing instruments in ORACLES-2016, *Atmos. Chem. Phys.*, 19(14), 9181–9208, doi:10.5194/acp-19-9181-2019, 2019.

Rajapakshe, C., Zhang, Z., Yorks, J. E., Yu, H., Tan, Q., Meyer, K., Platnick, S. and Winker, D. M.: Seasonally Transported Aerosol Layers over Southeast Atlantic are Closer to Underlying Clouds than Previously Reported, *Geophys. Res. Lett.*, doi:10.1002/2017GL073559, 2017.

Reid, J. S., Hobbs, P. V., Ferek, R. J., Blake, D. R., Martins, J. V., Dunlap, M. R. and Liousse, C.: Physical, chemical,

- and optical properties of regional hazes dominated by smoke in Brazil, *J. Geophys. Res. Atmos.*, 103(D24), 32059–32080, doi:10.1029/98JD00458, 1998.
- Sakaeda, N., Wood, R. and Rasch, P. J.: Direct and semidirect aerosol effects of southern African biomass burning aerosol, *J. Geophys. Res. Atmos.*, 116(12), D12205, doi:10.1029/2010JD015540, 2011.
- 5 Sayer, A. M., Hsu, N. C., Eck, T. F., Smimov, A. and Holben, B. N.: AERONET-based models of smoke-dominated aerosol near source regions and transported over oceans, and implications for satellite retrievals of aerosol optical depth, *Atmos. Chem. Phys.*, 14(20), 11493–11523, doi:10.5194/acp-14-11493-2014, 2014.
- Smith, C. J., Kramer, R. J., Myhre, G., Forster, P. M., Soden, B. J., Andrews, T., Boucher, O., Faluvegi, G., Fläschner, D., Hodnebrog, Ø., Kasoar, M., Kharin, V., Kirkevåg, A., Lamarque, J.-F., Mülmenstädt, J., Olivé, D., Richardson, T., Samset, 10 B. H., Shindell, D., Stier, P., Takemura, T., Voulgarakis, A. and Watson-Parris, D.: Understanding Rapid Adjustments to Diverse Forcing Agents, *Geophys. Res. Lett.*, 45(21), 12,023-12,031, doi:10.1029/2018GL079826, 2018.
- Stevens, B. and Brenguier, J.: Cloud controlling factors: Low clouds. In J Heintzenberg, & R. Charlson (Eds.), *Clouds in the perturbed climate*, Cambridge, Mass. MIT Press, 173–196, 2009.
- Swap, R. J., Annegarn, H. J., Suttles, J. T., Haywood, J., Helmlinger, M. C., Hely, C., Hobbs, P. V., Holben, B. N., 15 Ji, J., King, M. D., Landmann, T., Maenhaut, W., Otter, L., Pak, B., Piketh, S. J., Platnick, S., Privette, J., Roy, D., Thompson, A. M., Ward, D. and Yokelson, R.: The Southern African Regional Science Initiative (SAFARI 2000): Overview of the dry season field campaign., in *South African Journal of Science*, vol. 98, pp. 125–130, National Research Foundation. [online] Available from: <https://pennstate.pure.elsevier.com/en/publications/the-southern-african-regional-science-initiative-safari-2000-over> (Accessed 21 February 2019), 2002.
- 20 Szczodrak, M., Austin, P. H. and Krummel, P. B.: Variability of Optical Depth and Effective Radius in Marine Stratocumulus Clouds, *J. Atmos. Sci.*, 58(19), 2912–2926, doi:10.1175/1520-0469(2001)058<2912:VOODAE>2.0.CO;2, 2001.
- Torres, O., Jethva, H. and Bhartia, P. K.: Retrieval of Aerosol Optical Depth above Clouds from OMI Observations: Sensitivity Analysis and Case Studies, *J. Atmos. Sci.*, 69(3), 1037–1053, doi:10.1175/JAS-D-11-0130.1, 2012.
- 25 Twomey, S.: Pollution and the Planetary Albedo, *Atmos. Environ.*, 41(SUPPL.), 120–125, doi:10.1016/j.atmosenv.2007.10.062, 2007.
- Vanbauce, C., Cadet, B. and Marchand, R. T.: Comparison of POLDER apparent and corrected oxygen pressure to ARM/MMCR cloud boundary pressures, *Geophys. Res. Lett.*, 30(5), 1212, doi:10.1029/2002GL016449, 2003.
- Vaughan, M. A., Powell, K. A., Winker, D. M., Hostetler, C. A., Kuehn, R. E., Hunt, W. H., Getzewich, B. J., Young, 30 S. A., Liu, Z. and McGill, M. J.: Fully Automated Detection of Cloud and Aerosol Layers in the CALIPSO Lidar Measurements, *J. Atmos. Ocean. Technol.*, 26(10), 2034–2050, doi:10.1175/2009JTECHA1228.1, 2009.
- Waquet, F., Riedi, J., Labonnote, L. C., Goloub, P., Cairns, B., Deuzé, J.-L. and Tarré, D.: Aerosol Remote Sensing over Clouds Using A-Train Observations, *J. Atmos. Sci.*, 66, 2468–2480, doi:10.1175/2009JAS3026.1, 2009.
- Waquet, F., Cornet, C., Deuzé, J.-L., Dubovik, O., Ducos, F., Goloub, P., Herman, M., Lapyonok, T., Labonnote, L.

C., Riedi, J., Tarré, D., Thieuleux, F. and Vanbauce, C.: Retrieval of aerosol microphysical and optical properties above liquid clouds from POLDER/PARASOL polarization measurements, *Atmos. Meas. Tech.*, 6(4), 991–1016, doi:10.5194/amt-6-991-2013, 2013.

5 Watson-Parris, D., Schutgens, N., Winker, D., Burton, S. P., Ferrare, R. A. and Stier, P.: On the Limits of CALIOP for Constraining Modeled Free Tropospheric Aerosol, *Geophys. Res. Lett.*, 45(17), 9260–9266, doi:10.1029/2018GL078195, 2018.

Wilcox, E. M.: Stratocumulus cloud thickening beneath layers of absorbing smoke aerosol, *Atmos. Chem. Phys.*, 10(23), 11769–11777, doi:10.5194/acp-10-11769-2010, 2010.

10 Winker, D. M., Vaughan, M. A., Omar, A., Hu, Y., Powell, K. A., Liu, Z., Hunt, W. H. and Young, S. A.: Overview of the CALIPSO Mission and CALIOP Data Processing Algorithms, *J. Atmos. Ocean. Technol.*, 26(11), 2310–2323, doi:10.1175/2009JTECHA1281.1, 2009.

Wood, R.: Stratocumulus Clouds, *Mon. Weather Rev.*, 140(8), 2373–2423, doi:10.1175/MWR-D-11-00121.1, 2012.

15 Yorks, J. E., McGill, M. J., Scott, V. S., Wake, S. W., Kupchock, A., Hlavka, D. L., Hart, W. D. and Selmer, P. A.: The airborne Cloud-Aerosol transport system: Overview and description of the instrument and retrieval algorithms, *J. Atmos. Ocean. Technol.*, 31(11), 2482–2497, doi:10.1175/JTECH-D-14-00044.1, 2014.

Young, S. A. and Vaughan, M. A.: The Retrieval of Profiles of Particulate Extinction from Cloud-Aerosol Lidar Infrared Pathfinder Satellite Observations (CALIPSO) Data: Algorithm Description, *J. Atmos. Ocean. Technol.*, 26(6), 1105–1119, doi:10.1175/2008JTECHA1221.1, 2009.

20 Zuidema, P., Painemal, D., De Szoeko, S. and Fairall, C.: Stratocumulus cloud-top height estimates and their climatic implications, *J. Clim.*, 22(17), 4652–4666, doi:10.1175/2009JCLI2708.1, 2009.

Zuidema, P., Redemann, J., Haywood, J., Wood, R., Piketh, S., Hipondoka, M., Formenti, P., Zuidema, P., Redemann, J., Haywood, J., Wood, R., Piketh, S., Hipondoka, M. and Formenti, P.: Smoke and Clouds above the Southeast Atlantic: Upcoming Field Campaigns Probe Absorbing Aerosol's Impact on Climate, *Bull. Am. Meteorol. Soc.*, 97(7), 1131–1135, doi:10.1175/BAMS-D-15-00082.1, 2016.

25

Table 1. Satellites and models and their associated parameters used in this study.

Satellites and models	Parameters	References
<u>POLDER</u>	<u>AOT (865 nm)</u> <u>SSA 865 nm (and absorption AOT)</u> <u>COT, corrected for absorption</u> <u>Cloud altitude Z₀₂ (km)</u>	<u>Waquet et al., 2009</u> <u>Waquet et al., 2013</u> <u>Peers et al., 2015</u> <u>Vanbaucce et al., 2003</u>
<u>MODIS</u>	<u>τ_{eff} (μm)</u>	<u>Meyer et al., 2015</u>
<u>CALIOP</u>	<u>σ_{aer} at 532 nm (and AOT)</u> <u>Aerosol base and top altitudes (km)</u> <u>Cloud top altitudes (km)</u>	<u>Vaughan et al., 2009;</u> <u>Young and Vaughan, 2009</u>
<u>ECMWF</u>	<u>Temperature (K)</u> <u>Relative humidity (%)</u> <u>Specific humidity (g.kg^{-1})</u> <u>Wind direction ($^{\circ}$)</u> <u>Wind amplitude (m.s^{-1})</u>	<u>Berrisford et al., 2011</u> <u>Dee et al., 2011</u>
<u>GAME radiative transfer model</u>	<u>Heating rates in SW and LW (Kday^{-1})</u> <u>DRE at TOA (Wm^{-2})</u>	<u>Dubuisson et al., 2006</u>

- Formatted: Indent: First line: 0 cm
- Formatted: Caption, Keep with next
- Formatted: Centered, Indent: First line: 0 cm, Line spacing: single
- Formatted: Centered, Indent: First line: 0 cm
- Formatted Table
- Formatted: Centered, Indent: First line: 0 cm
- Formatted: Centered, Indent: First line: 0 cm
- Formatted: Centered
- Formatted: Centered, Indent: First line: 0 cm, Line spacing: single
- Formatted: Centered, Indent: First line: 0 cm, Line spacing: single
- Formatted: Centered, Indent: First line: 0 cm, Line spacing: single
- Formatted: Centered, Indent: First line: 0 cm
- Formatted: Centered, Indent: First line: 0 cm
- Formatted: Centered, Indent: First line: 0 cm
- Formatted: Centered, Indent: First line: 0 cm

5

Table 2. Mean values of aerosol properties over the specific area from June to August 2008, in case of HIGH values of absorption AOT (> 0.04) and in case of LOW values of absorption AOT (< 0.01), respectively.

POLDER aerosol properties	absorption AOT _{865nm}	AOT _{865nm}	SSA _{865nm}	AE _{670/865}
HIGH	0.05	0.26	0.80	2.03
LOW	0.005	0.06	0.86	1.75

Deleted: 1

10

Table 3: Shortwave and longwave heating rate (K/day) values for large and low AOT and specific humidity (q_v) values (first simulation) and for a constant AOT and high and low values of the specific humidity profile (second simulation), obtained at the cloud top level and at 4 km at noon.

Deleted: 2

		HIGH or LOW AOT and q_v [K/day] (1 st)			HIGH or LOW q_v , constant AOT [K/day] (2 nd)		
		HR _{SW}	HR _{LW}	HR _{SW} + HR _{LW}	HR _{SW}	HR _{LW}	HR _{SW} + HR _{LW}
Cloud top (1 km)	HIGH	6.09	-67.53	-61.44	6.31	-67.53	-61.22
	LOW	7.88	-73.79	-65.91	7.69	-73.79	-66.1
	HIGH- LOW	-1.79	6.26	4.47	-1.56	6.26	4.7
Aerosol layer (4 km)	HIGH	9.86	-2.86	7	8.78	-2.86	5.92
	LOW	3.41	-2.72	0.69	8.02	-2.72	5.3
	HIGH- LOW	6.45	-0.14	6.31	0.76	-0.14	0.62

5

Table 4: Subtraction of aerosol (A) and water vapour (WV) contributions in shortwave (SW) and longwave (LW) between the first and second simulation.

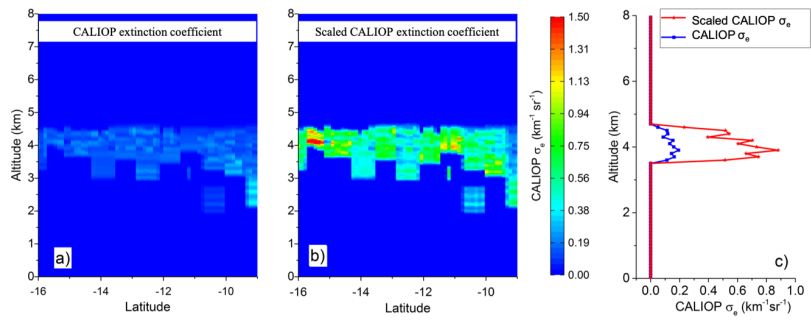
Deleted: 3

	Simulations subtraction: 1 st - 2 nd	
	In SW	In LW
Cloud top	A: $-1.79 - (-1.56) = -0.23$ K/day WV: -1.56 K/day	WV: 6.26 K/day
Aerosol layer	A: $6.45 - 0.76 = 5.69$ K/day WV: 0.76 K/day	WV: -0.14 K/day

10

15

5



10

Figure 1: Biomass-burning study case: (a) CALIOP initial extinction coefficient (m^{-1}) at 532 nm ($\sigma_{e,532\text{nm}}$), (b) scaled CALIOP $\sigma_{e,532\text{nm}}$ as a function of latitude; (c) example of CALIOP extinction coefficient profile at 532 nm (blue) and the result of scaling (red) with the POLDER AOT extrapolated at 532 nm.

15

20

25

Formatted: Font color: Auto

Formatted: Normal

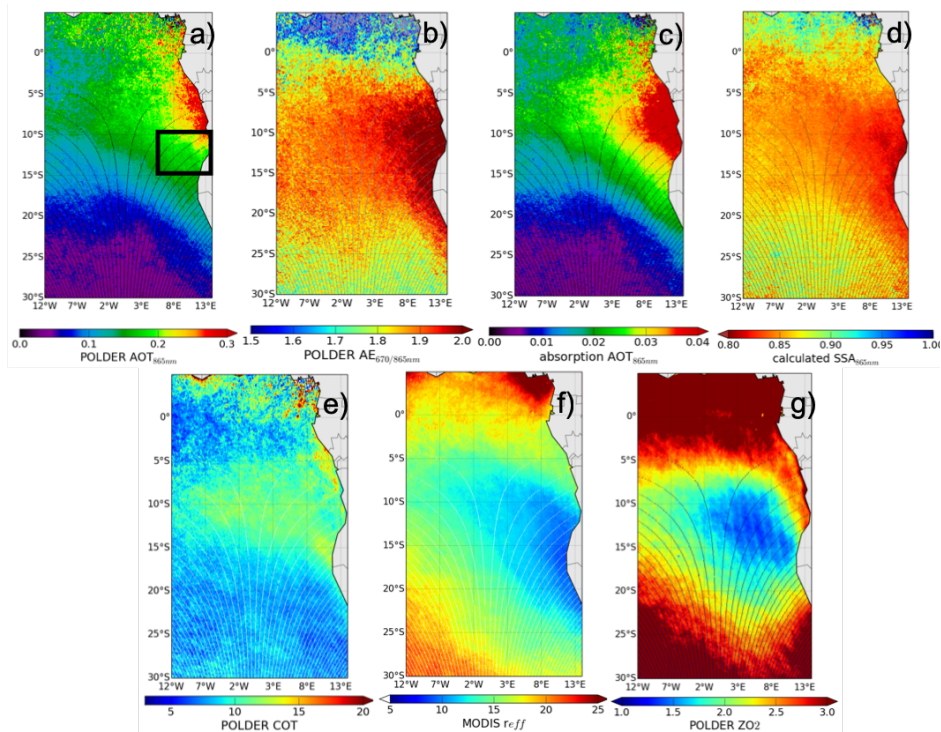
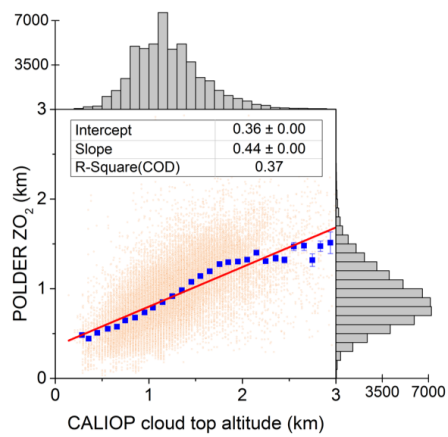


Figure 2: Mean values of aerosol above cloud and cloud properties above the South Atlantic Ocean, for a period of six months (May to October) from 2006 to 2009: a) POLDER $AOT_{865\text{ nm}}$. The black box represents the sample area close to Angola's coast described in Sect. 3.2; b) POLDER $AE_{670/865\text{ nm}}$; c) POLDER absorption $AOT_{865\text{ nm}}$; d) POLDER $SSA_{865\text{ nm}}$; e) POLDER COT (corrected for above cloud absorbing aerosols); f) MODIS effective radius, r_{eff} (μm); g) POLDER Cloud Altitude (Z_{O_2}) derived from Oxygen Pressure (km).

5



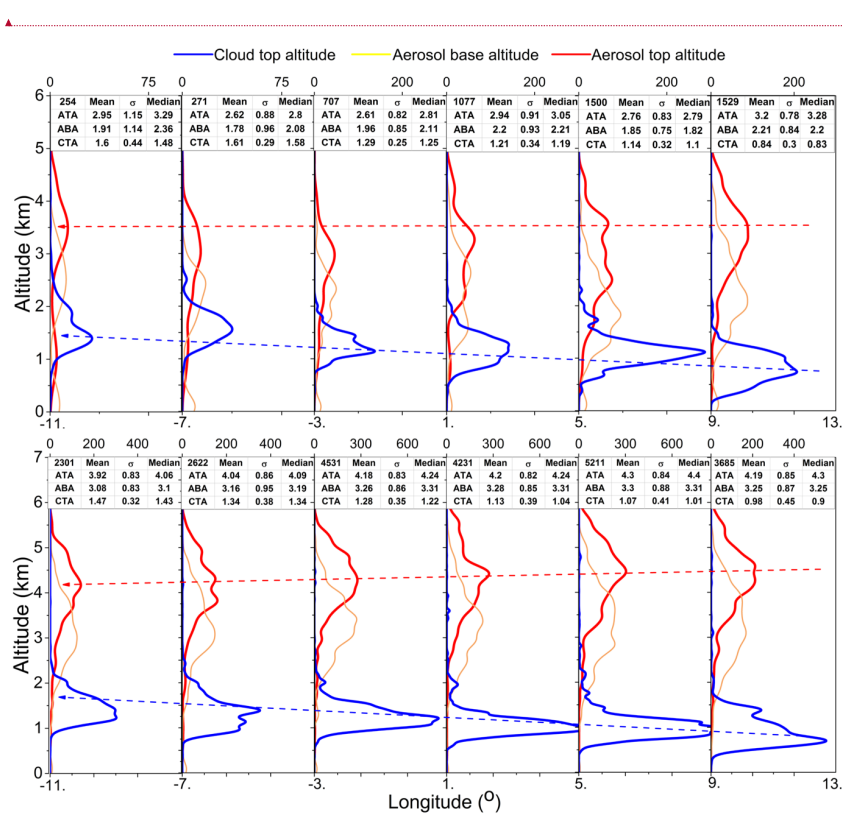
Formatted: Font color: Auto
Formatted: Normal

10

Figure 3: POLDER cloud altitude (ZO₂) compared to CALIOP cloud top altitude, over a period of six months (May to October) from 2006 to 2010 along the CALIOP track. Lateral histograms show the data distribution.

15

20



Formatted: Font color: Auto
Formatted: Normal

5 Figure 4: First and second row of the panel present the histograms of the cloud top altitude (CTA), the aerosol top altitude (ATA) and the aerosol base altitude (ABA) retrieved using CALIOP, as a function of longitude for two time periods: first row - May to July and second row - August to October, respectively, from 2006 to 2010. The mean, median and standard deviation over four degrees of longitude as well as the number of measurements are shown in the associated tables. The selected area extends from 30° S to 5° N and 12° W to 14° E over the South Atlantic Ocean (SAO).

10

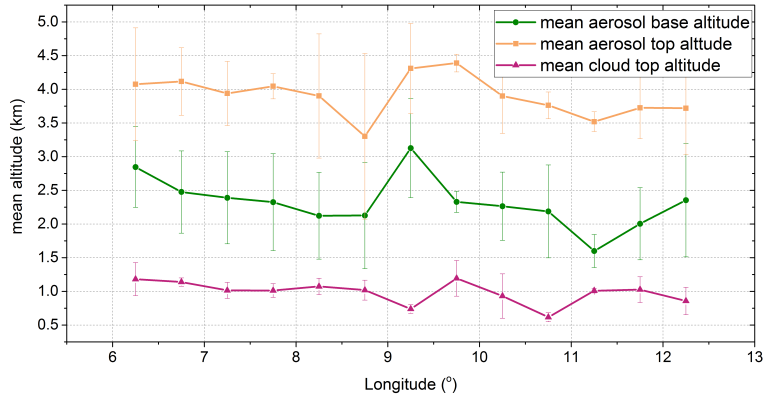


Figure 5: Mean cloud top altitude, aerosol base altitude and aerosol top altitude retrieved with CALIOP operational product, as a function of longitude, between 6° and 13° E for June-August 2008. Vertical bars represent the standard deviation

Formatted: Centered, Indent: First line: 0 cm, Keep with next

Formatted: Caption

5

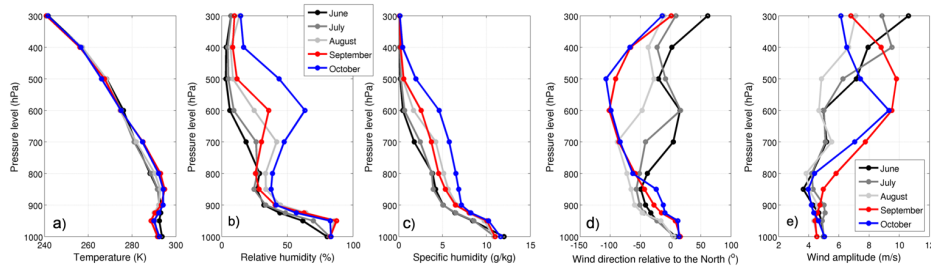


Figure 6: Monthly mean meteorological parameters computed with ERA-Interim models at 12h UTC, from June to October 2008, over the sample area: a) temperature (K); b) relative humidity (%); c) specific humidity ($g \cdot kg^{-1}$); d) wind direction relative to the North ($^{\circ}$); e) wind amplitude ($m \cdot s^{-1}$).

Deleted: 5

10

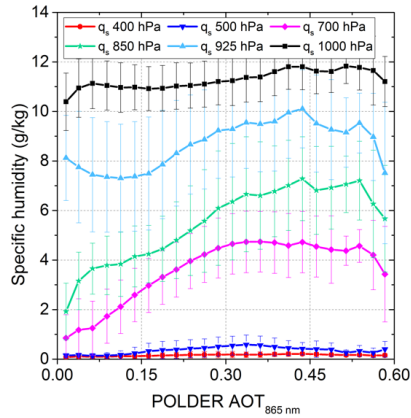


Figure 7: Mean specific humidity as a function of POLDER AOT_{865nm} retrieved at different pressure levels, within the selected region over June-August 2008. The vertical bars represent the standard deviation for the specific humidity.

Deleted: 6

5

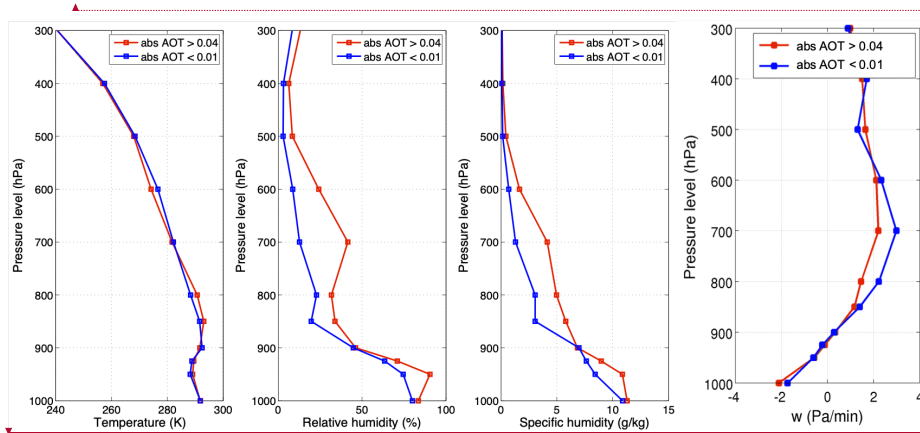


Figure 8: Mean values of (a) temperature profile and (b) relative humidity profile, (c) specific humidity profile and (d) atmospheric subsidence at noon, w (downwelling wind, Pa/min), within the sample region, from June to August 2008 selected for two situations: POLDER absorption AOT_{865nm} smaller than 0.01 (red lines, mainly June-July 2008) and POLDER absorption AOT_{865nm} larger than 0.04 (blue lines, mainly August 2008).

Formatted: Font color: Auto

Formatted: Normal

Deleted:

Formatted: Left, Indent: First line: 0 cm

Deleted: 7

10

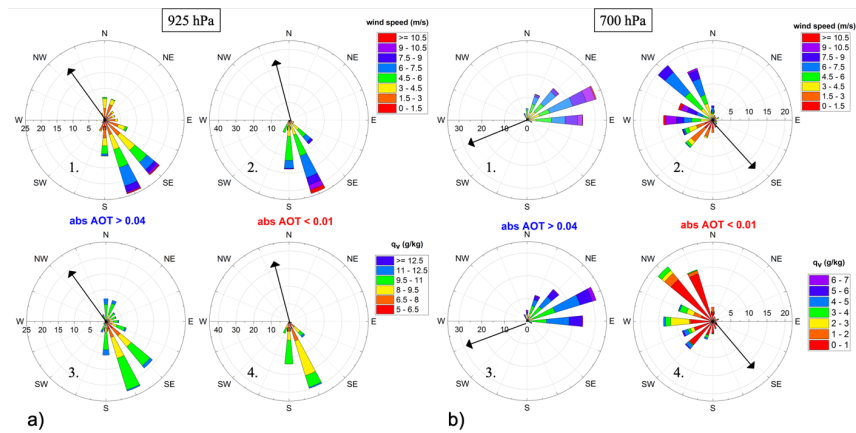
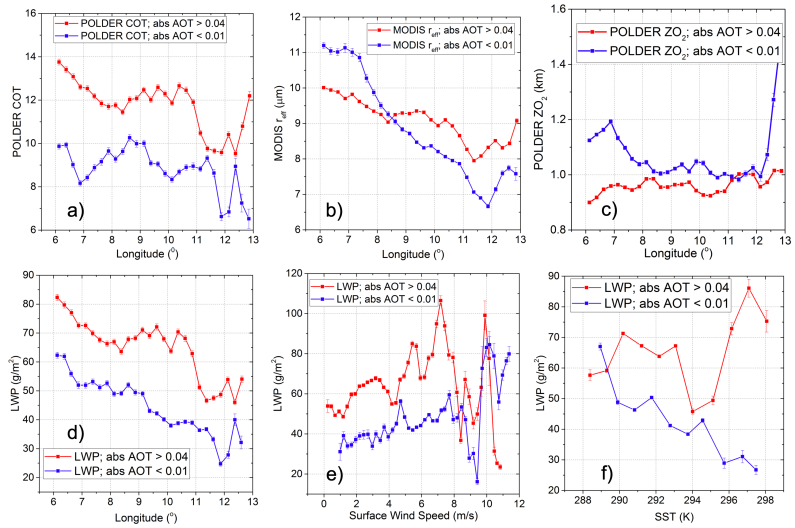


Figure 9: Wind speed rose (1-2) and specific humidity rose (3-4) at 925 hPa (a) and 700 hPa (b) for situations with absorption AOT larger than 0.04 (1-3) and with absorption AOT smaller than 0.01 (2-4). The radius shows the frequency of wind direction. The arrow represents the main wind direction.

Deleted: 8



Formatted: Font color: Auto

Formatted: Normal

Formatted: Centered, Indent: First line: 0 cm

Deleted: 9

Deleted: a

Deleted: b

Deleted: c

Deleted: and specific humidity at 925 hPa

Formatted: Font color: Auto

Formatted: Normal

Figure 10: Mean values of POLDER COT (a), MODIS r_{eff} (b) POLDER ZO_2 (c), Liquid Water Path (LWP) (d) as a function of longitude. Mean values of LWP as a function of meteorological parameters: surface wind speed (e), Sea Surface Temperature (SST) (f) are also presented. The data are separated into situations with POLDER absorption $AOT_{865\text{ nm}}$ smaller than 0.01 (red lines) and with POLDER absorption $AOT_{865\text{ nm}}$ larger than 0.04 (blue lines).

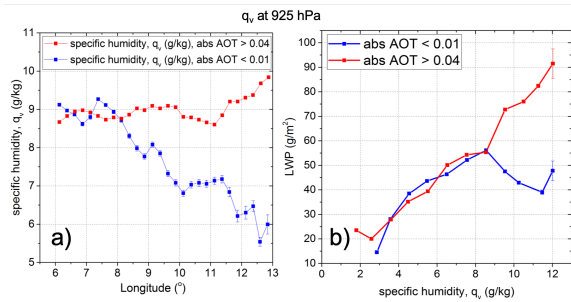


Figure 11: Mean values of specific humidity at 925 hPa as a function of longitude (a) and LWP versus ERA-Interim specific humidity at 925 hPa (b). The data are separated into situations with POLDER absorption $AOT_{865\text{ nm}}$ smaller than 0.01 (red lines) and with POLDER absorption $AOT_{865\text{ nm}}$ larger than 0.04 (blue lines).

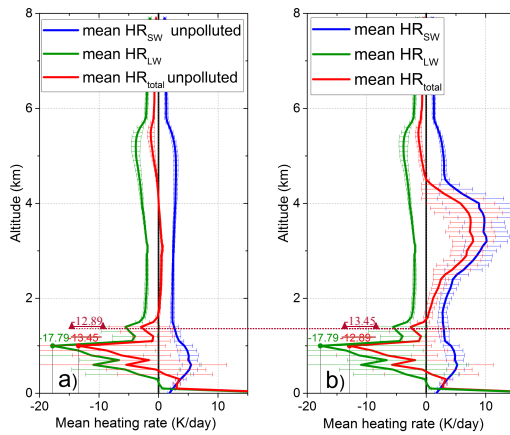
Formatted: Centered

Deleted: 10

Deleted: as a

Deleted: function of meteorological parameters: surface wind speed (a), Sea Surface Temperature (SST) (b) and

5



Formatted: Font color: Auto

Formatted: Normal

Formatted: Font: 6.5 pt

Formatted: Indent: First line: 0 cm

Formatted: Font: 6.5 pt, English (US)

Formatted: Font: 6.5 pt

Formatted: Font: 6.5 pt, English (US)

Formatted: Indent: First line: 0 cm

Deleted: 11

Deleted: ¶

Formatted: Font color: Auto

Formatted: Indent: First line: 0 cm

Figure 12: Average heating rate for “unpolluted” cases (a) and polluted situations (b), over the sample area, from June to August 2008: shortwave HR (blue line), longwave HR (green line) and total HR (red line). The horizontal bars represent the standard deviation.

10

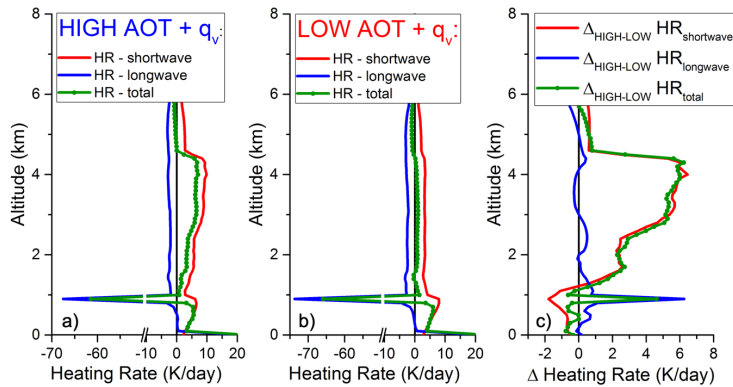


Figure 13: Calculated heating rates profiles (K/day) in shortwave (red line), longwave (blue line) and total budget (green dot line) at 12 h, for (a) average HIGH cases ($AOT_{865nm} = 0.26$ and water vapour typical for HIGH situations), (b) average LOW cases ($AOT_{865nm} = 0.06$ and water vapour typical for LOW situations) and (c) the difference between the HIGH and LOW heating rate profiles.

Deleted: 12

Formatted: Font color: Auto

Formatted: Normal

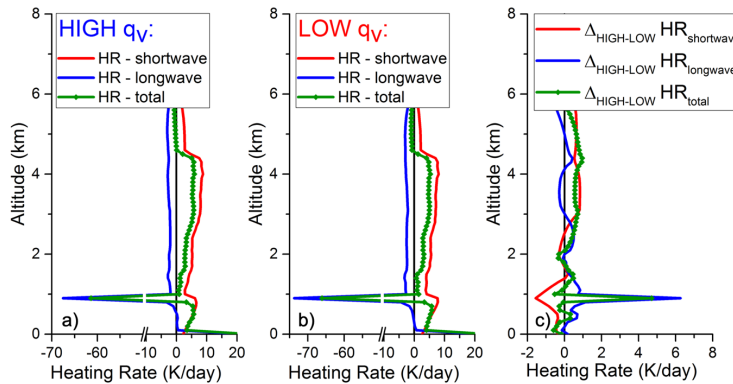


Figure 14: Calculated heating rates profiles (K/day) in shortwave (red line), longwave (blue line) and total budget (green dot line) at 12 h, for an average AOT_{865nm} over the region of 0.21 and (a) water vapour typical of the HIGH situation and (b) water vapour typical of the LOW situations, respectively. The last panel (c) presents the difference between the HIGH and LOW heating rate profiles.

Formatted: Caption

Deleted: 13

Deleted: ¶

Page 13: [1] Formatted Lucia Deaconu 7/21/19 9:11:00 PM

Font color: Auto

Page 13: [2] Formatted Lucia Deaconu 7/21/19 9:14:00 PM

Font: Italic

Page 13: [3] Formatted Lucia Deaconu 7/21/19 9:14:00 PM

Font: Italic

Page 13: [4] Formatted Lucia Deaconu 7/21/19 9:11:00 PM

Font color: Auto

Page 13: [5] Formatted Lucia Deaconu 7/21/19 9:11:00 PM

Font: (Default) +Body (Times New Roman)

Page 13: [6] Deleted Lucia Deaconu 7/22/19 11:30:00 AM

Page 13: [7] Deleted Lucia Deaconu 7/19/19 9:56:00 PM

Page 13: [8] Formatted Lucia Deaconu 7/22/19 2:30:00 PM

Font: Italic

Page 13: [9] Formatted Lucia Deaconu 7/22/19 2:30:00 PM

Font: Italic, Subscript

Page 13: [10] Formatted Lucia Deaconu 7/22/19 12:18:00 PM

Font: 10 pt

Page 13: [11] Formatted Lucia Deaconu 7/22/19 12:18:00 PM

Font: 10 pt

Page 13: [12] Formatted Lucia Deaconu 7/22/19 12:18:00 PM

Font: 10 pt

Page 13: [13] Formatted Lucia Deaconu 7/22/19 12:18:00 PM

Font: 10 pt

Page 13: [14] Formatted Lucia Deaconu 7/22/19 12:18:00 PM

Font: 10 pt

Page 13: [15] Formatted Lucia Deaconu 7/22/19 12:18:00 PM

Font: 10 pt

Page 13: [16] Formatted Lucia Deaconu 7/22/19 2:32:00 PM

Page 13: [17] Formatted Lucia Deaconu 7/22/19 2:40:00 PM

Font: Italic

Page 13: [18] Formatted Lucia Deaconu 7/22/19 2:40:00 PM

Font: Italic

Page 15: [19] Deleted Lucia Deaconu 7/23/19 2:56:00 PM

Page 15: [20] Formatted Lucia Deaconu 7/23/19 3:04:00 PM

Font color: Auto

Page 15: [20] Formatted Lucia Deaconu 7/23/19 3:04:00 PM

Font color: Auto

Page 15: [20] Formatted Lucia Deaconu 7/23/19 3:04:00 PM

Font color: Auto

Page 15: [20] Formatted Lucia Deaconu 7/23/19 3:04:00 PM

Font color: Auto

Page 15: [20] Formatted Lucia Deaconu 7/23/19 3:04:00 PM

Font color: Auto

Page 15: [20] Formatted Lucia Deaconu 7/23/19 3:04:00 PM

Font color: Auto

Page 15: [20] Formatted Lucia Deaconu 7/23/19 3:04:00 PM

Font color: Auto

Page 15: [20] Formatted Lucia Deaconu 7/23/19 3:04:00 PM

Font color: Auto

Page 15: [20] Formatted Lucia Deaconu 7/23/19 3:04:00 PM

Font color: Auto

Page 15: [20] Formatted Lucia Deaconu 7/23/19 3:04:00 PM

Font color: Auto

Page 15: [20] Formatted Lucia Deaconu 7/23/19 3:04:00 PM

Font color: Auto

Page 15: [20] Formatted Lucia Deaconu 7/23/19 3:04:00 PM

Font color: Auto

Page 15: [20] Formatted Lucia Deaconu 7/23/19 3:04:00 PM

Font color: Auto

▲
Page 15: [20] Formatted

Lucia Deaconu

7/23/19 3:04:00 PM

Font color: Auto

▲
Page 15: [20] Formatted

Lucia Deaconu

7/23/19 3:04:00 PM

Font color: Auto

▲
Page 15: [20] Formatted

Lucia Deaconu

7/23/19 3:04:00 PM

Font color: Auto

▲
Page 15: [20] Formatted

Lucia Deaconu

7/23/19 3:04:00 PM

Font color: Auto

▲
Page 15: [20] Formatted

Lucia Deaconu

7/23/19 3:04:00 PM

Font color: Auto

▲
Page 15: [20] Formatted

Lucia Deaconu

7/23/19 3:04:00 PM

Font color: Auto

▲
Page 15: [20] Formatted

Lucia Deaconu

7/23/19 3:04:00 PM

Font color: Auto

▲
Page 15: [20] Formatted

Lucia Deaconu

7/23/19 3:04:00 PM

Font color: Auto

▲
Page 15: [20] Formatted

Lucia Deaconu

7/23/19 3:04:00 PM

Font color: Auto

▲
Page 15: [20] Formatted

Lucia Deaconu

7/23/19 3:04:00 PM

Font color: Auto

▲
Page 15: [20] Formatted

Lucia Deaconu

7/23/19 3:04:00 PM

Font color: Auto

▲
Page 15: [20] Formatted

Lucia Deaconu

7/23/19 3:04:00 PM

Font color: Auto

▲
Page 15: [20] Formatted

Lucia Deaconu

7/23/19 3:04:00 PM

Font color: Auto

▲
Page 15: [20] Formatted

Lucia Deaconu

7/23/19 3:04:00 PM

Font color: Auto

▲
Page 15: [20] Formatted

Lucia Deaconu

7/23/19 3:04:00 PM

Font color: Auto

▲
Page 15: [20] Formatted

Lucia Deaconu

7/23/19 3:04:00 PM

Page 15: [20] Formatted Lucia Deaconu 7/23/19 3:04:00 PM

Font color: Auto

Page 15: [20] Formatted Lucia Deaconu 7/23/19 3:04:00 PM

Font color: Auto

Page 15: [20] Formatted Lucia Deaconu 7/23/19 3:04:00 PM

Font color: Auto

Page 15: [20] Formatted Lucia Deaconu 7/23/19 3:04:00 PM

Font color: Auto

Page 15: [20] Formatted Lucia Deaconu 7/23/19 3:04:00 PM

Font color: Auto

Page 15: [20] Formatted Lucia Deaconu 7/23/19 3:04:00 PM

Font color: Auto

Page 15: [20] Formatted Lucia Deaconu 7/23/19 3:04:00 PM

Font color: Auto

Page 15: [20] Formatted Lucia Deaconu 7/23/19 3:04:00 PM

Font color: Auto

Page 15: [20] Formatted Lucia Deaconu 7/23/19 3:04:00 PM

Font color: Auto

Page 15: [20] Formatted Lucia Deaconu 7/23/19 3:04:00 PM

Font color: Auto

Page 15: [20] Formatted Lucia Deaconu 7/23/19 3:04:00 PM

Font color: Auto

Page 15: [21] Formatted Lucia Deaconu 7/23/19 3:04:00 PM

Font color: Auto, Not Superscript/ Subscript

Page 15: [21] Formatted Lucia Deaconu 7/23/19 3:04:00 PM

Font color: Auto, Not Superscript/ Subscript

Page 15: [21] Formatted Lucia Deaconu 7/23/19 3:04:00 PM

Font color: Auto, Not Superscript/ Subscript

Page 15: [21] Formatted Lucia Deaconu 7/23/19 3:04:00 PM

Font color: Auto, Not Superscript/ Subscript

Page 15: [21] Formatted Lucia Deaconu 7/23/19 3:04:00 PM

Page 15: [21] Formatted Lucia Deaconu 7/23/19 3:04:00 PM

Font color: Auto, Not Superscript/ Subscript

Page 15: [21] Formatted Lucia Deaconu 7/23/19 3:04:00 PM

Font color: Auto, Not Superscript/ Subscript

Page 15: [21] Formatted Lucia Deaconu 7/23/19 3:04:00 PM

Font color: Auto, Not Superscript/ Subscript

Page 15: [21] Formatted Lucia Deaconu 7/23/19 3:04:00 PM

Font color: Auto, Not Superscript/ Subscript

Page 15: [21] Formatted Lucia Deaconu 7/23/19 3:04:00 PM

Font color: Auto, Not Superscript/ Subscript

Page 15: [21] Formatted Lucia Deaconu 7/23/19 3:04:00 PM

Font color: Auto, Not Superscript/ Subscript

Page 15: [21] Formatted Lucia Deaconu 7/23/19 3:04:00 PM

Font color: Auto, Not Superscript/ Subscript

Page 15: [21] Formatted Lucia Deaconu 7/23/19 3:04:00 PM

Font color: Auto, Not Superscript/ Subscript

Page 15: [21] Formatted Lucia Deaconu 7/23/19 3:04:00 PM

Font color: Auto, Not Superscript/ Subscript

Page 15: [21] Formatted Lucia Deaconu 7/23/19 3:04:00 PM

Font color: Auto, Not Superscript/ Subscript

Page 15: [21] Formatted Lucia Deaconu 7/23/19 3:04:00 PM

Font color: Auto, Not Superscript/ Subscript

Page 15: [21] Formatted Lucia Deaconu 7/23/19 3:04:00 PM

Font color: Auto, Not Superscript/ Subscript

Page 15: [22] Deleted Lucia Deaconu 7/23/19 7:38:00 PM

Page 15: [22] Deleted Lucia Deaconu 7/23/19 7:38:00 PM

Page 15: [23] Deleted Lucia Deaconu 7/22/19 12:15:00 PM

Page 15: [23] Deleted Lucia Deaconu 7/22/19 12:15:00 PM

▼ ▲
Page 15: [23] Deleted Lucia Deaconu 7/22/19 12:15:00 PM

▼ ▲
Page 15: [24] Formatted Lucia Deaconu 7/23/19 3:09:00 PM

Font: Not Italic

▼ ▲
Page 15: [24] Formatted Lucia Deaconu 7/23/19 3:09:00 PM

Font: Not Italic

▼ ▲
Page 15: [25] Deleted Lucia Deaconu 7/18/19 5:17:00 PM

▼ ▲
Page 15: [25] Deleted Lucia Deaconu 7/18/19 5:17:00 PM

▼ ▲
Page 15: [25] Deleted Lucia Deaconu 7/18/19 5:17:00 PM

▼ ▲
Page 15: [25] Deleted Lucia Deaconu 7/18/19 5:17:00 PM