

# Response to Referee #1

*In this study, the authors examined evaluate the roles of aerosol-radiation interaction (ARI), aerosol-cloud interaction (ACI), black carbon (BC) and none BC (non-BC) aerosols in the formation and maintenance of the heavy fog event in early 15 December 2013 in the Yangtze River Delta (YRD) region in eastern China using WRF-Chem model. They found that ARI dominates this fog-haze episode while the effects of ACI are negligible. BC plays a more important role in fog formation than non-BC aerosols, inducing temperature contrast over land and sea and transports moister air to the YRD region. The topic of this study is interesting and the manuscript is well written. I would suggest publishing after addressing my comments below.*

## **Response:**

We are appreciated the comments, which are helpful to further improve the article.

*My main concern is the method to distinguish the role of BC and non-BC. First, the authors turned off ARI and ARI+ACI to separate the roles of ARI and ACI, which is reasonable. Then the authors compare the simulation with ARI+ACI turned off and with anthropogenic BC emission removed to separate to roles of non-BC and BC, which could be inappropriate. These roles were quantified using different methods and comparing them could lead to an apple and orange comparison. Without BC emission, the internal mixing state could be changed, the impact of BC on vegetation could be changed, chemistry on aerosol surface could be changed, besides the BC-radiation and BC-cloud interactions. To separate the role of BC and non-BC, I would suggest the authors do another parallel simulation with all aerosol emissions turned off. Or at least discuss the biases of the results.*

## **Response:**

We have conducted four parallel numerical experiments in this study. At first, the control experiment (EXP\_CTL) is conducted with complete emission and with ARI+ACI turned on. Then, anthropogenic BC emission was removed from the model with both ARI+ACI still turned on (EXP\_NOBC). After that, we conducted the experiments that turned off both ARI and ACI (EXP\_NOAER), which has neither ARI nor ACI from the BC and non-BC aerosols at all. In EXP\_NOAER, we shut off the aerosol impact on the radiation transfer and cloud as well as the wet removal and cloud chemistry, which make this experiment equivalent to a parallel experiment that remove all aerosols regarding the interacting between aerosols and fog formation. So, the effect of BC can be calculated as the  $EXP\_CTL - EXP\_NOBC$ , the effect of non-BC is  $EXP\_NOBC - EXP\_NOAER$ . This method well separated the role of ARI and ACI, and distinguished the role of BC from the non-BC with less computational cost. And the role of BC was later proved be an important finding in this article, which was to enhance the moisture advection mainly through its radiative effect during the fog-haze event in the early December 2013 in the YRD region. To clarify this, we added more description about the experimental design in section 2.2. Please see Page 4-5. In EXP\_CTL, the BC and other aerosol are assumed to be internally mixed within each bin. Without BC emission, in EXP\_NOBC, the

particle aerosol would absorb much less shortwave radiation, since BC is the largest absorption particle in WRF (<https://ruc.noaa.gov/wrf/wrf-chem/tutorial2018.htm>, Page 11). This change due to BC's removal is mostly accountable for the cooling of the ambient atmosphere where high loadings of BC locate, thus indicating the heating effect of BC's role in this study. Not only that, the change to the mixing state of BC and other aerosols can also leads to the significant change to the optical property of the aerosol particle, which is not discussed in this paper. While, other changes, such as the change to the surface chemistry and the vegetation can also be important influencing factors. They are also not discussed in this work, since they do not affect the main mechanism for the advection-radiation fog that we investigated. However, this argument provides us some insight to the BC roles on affecting the fog in a more generally way, which needs more attention in the future work.

*Minor comments:*

*Page 1 Line 24: 'heave' -> 'heavy'*

**Response:**

Accepted. We corrected it in the revision. Please see Page 1 Line 24

*Page 2 Line 15: In addition to impact on PBL, recent study also found BC can change land-sea thermal contrast and weaken the East Asian winter monsoon (Lou et al., 2019), which mechanism is very similar to this study, as well as large-scale circulations (Yang et al., 2019).*

*Lou, S., Y. Yang, H. Wang, S. J. Smith, Y. Qian, and P. J. Rasch, Black carbon amplifies haze over the North China Plain by weakening the East Asian winter monsoon, Geophys. Res. Lett., 46, 452–460, doi:10.1029/2018GL080941, 2019.*

*Yang, Y., S. J. Smith, H. Wang, C. M. Mills, and P. J. Rasch, Variability and timescales in the climate response to black carbon emissions, Atmos. Chem. Phys., 19, 2405-2420, doi:10.5194/acp-19-2405-2019, 2019.*

**Response:**

Indeed, these references are quite related to this work. We have discussed and added these two new studies in the introduction part.

*Page 4 Line 26: Please clarify that how did the authors turn off ARI and ACI in the model. What variables they excluded or fixed in model?*

**Response:**

According to user guide of WRF-Chem ([https://ruc.noaa.gov/wrf/wrf-chem/Users\\_guide.pdf](https://ruc.noaa.gov/wrf/wrf-chem/Users_guide.pdf)) page 26 - 27, both of ARI and ACI can be turned on and off by configuring the namelist.input.

The ARI is turned off by setting `aer_ra_feedback = 0`. The ACI is further turned off by setting the `chem_opt` to 201 (mosaic without aq), `wet_scav_onoff = 0` (wet scavenging off), `clchem_onoff = 0` (cloud chemistry), and `progn = 0` (turns off prognostic cloud droplet number), then the aerosol would have no impact on the cloud/fog droplet. The effect of the ACI calculated this way represented the ACI effect from the fog-haze event, which is reasonable to be insignificant compared with the ARI under heavy polluted condition.

*Page 5 Line 4: Please provide the sites or data reservoir where the authors got all these data.*

**Response:**

Here list the dataset used in this work. To make it more clear, we added all the links in the acknowledgments.

1. NCDC dataset was obtain from <https://gis.ncdc.noaa.gov/maps/ncei/cdo/hourly>
2. The vertical profile sounding was retrieved from <http://weather.uwyo.edu/upperair/sounding.html>
3. The CNEMC dataset was gather from <http://106.37.208.233:20035/> since 2013.

As for the sensible heat, shortwave radiation flux and BC concentration observation, they were retrieved from SORPES at NJU, Xianlin Campus, which we've like to provide to those who are interesting on the subject.

*Figure 4: It should be days 2,5,6,“9”.*

**Response:**

Accepted. Figure 4 has been corrected in the revised manuscript.

*Page 6 Line 22: underestimated during the occurrence of fog in Nanjing “in the model”.*

**Response:**

Accepted. We revised this sentence. Please sea Page 6 Line 27.

*Page 6 Line 26: a possible enhancement of the formation of secondary aerosols through aqueous phase or heterogeneous reactions “in the real world”.*

**Response:**

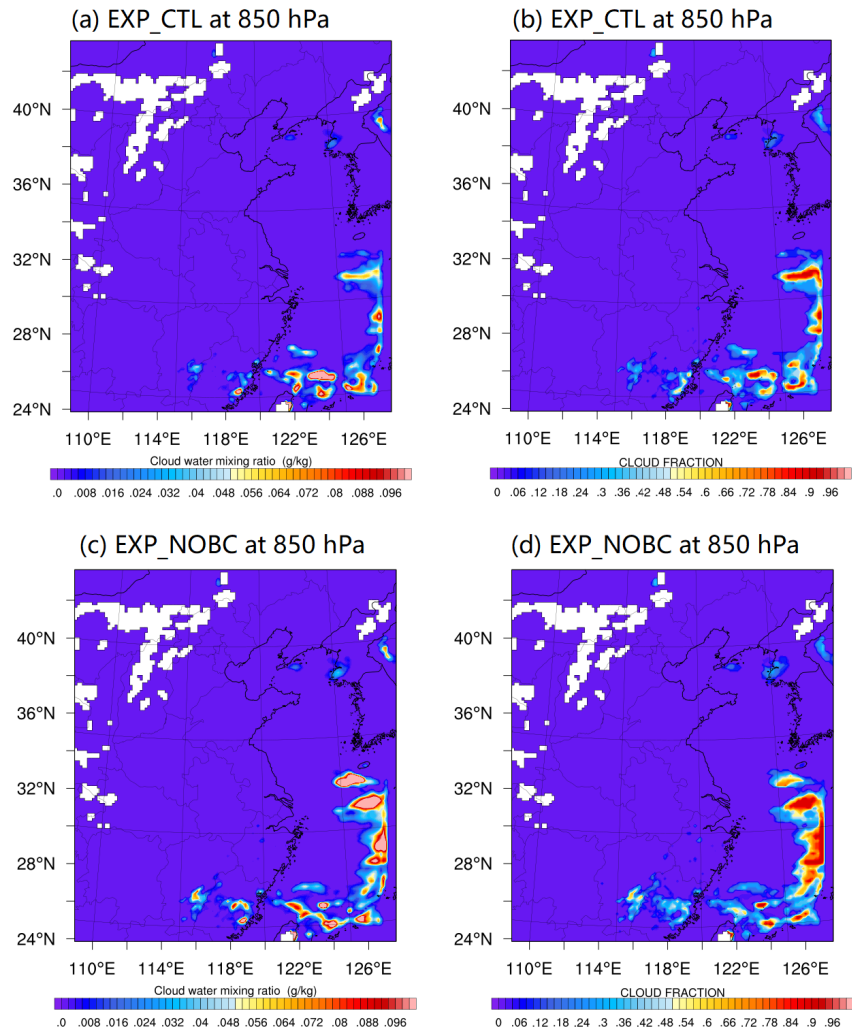
Accepted. Please see Page 6 Line 32.

*Page 7 Line 23-28: I am confused that why temperature over the sea was less sensitive to the reduction of incoming solar radiation but sensitive to aerosol warming effect? Both of them are changes in radiative fluxes. Large heat storage capacity only implies that ocean is insensitive to heat or cooling effects (changes in radiative fluxes) compared to land. Instead, Lou et al. (2019)*

*found that BC-induced heating over Bohai Sea, Yellow Sea, and East China Sea evaporated low cloud and increased high cloud, leading to larger warming over oceans east of China mainland.*

**Response:**

Since the clean atmosphere only absorbs a small fragment of the incoming solar radiation. The near surface layer, being close to the land/sea surface, is mostly warmed up during daytime by taking the sensible or latent heat that emitted from the surface. This process essentially transfers the solar energy into the internal energy of the underlying surface, and then pass it to the air near the surface. However, the water body has a large heat storage capacity than the land. That means the fact that the heating of the near-surface atmosphere would be slower over the water body (which is actually the main cause for the sea breeze). Thus, when the aerosols reduce the incoming solar radiation, the aerosol cooling effect on the near surface atmosphere is correspondingly less sensitive over the sea than that over the land. With the same amount of aerosol concentration increased over both land and sea, the near surface air temperature would have less reduction over the sea than the land surface. Part of the intercepted solar energy is absorbed by the particle like BC, if present, and warm the atmosphere directly. This heating effect from absorbing aerosol can be more efficient than taking the heat from the underlying water body during the daytime. Therefore, over the sea, the near surface temperature is generally more sensitive to the heating effect than the cooling effect of the aerosol. In our case, the BC's distribution over the sea surface and corresponding heating region matched well (Figure 10 and Figure S4), suggesting the heating effect from BC increase the air temperature in the near surface over the offshore region in the East China sea. Similar to our study, Wang et al. (2015) found as large as +0.3 °C feedback from aerosol heating effect over Gulf of Mexico and Atlantic Ocean and – 0.3 °C feedback over eastern U.S. during July 2006. As for the change to the cloud, the simulation result from both EXP\_CTL (Figure R1a and b) show that the cloud cover over the eastern China is low before the formation of fog on 7 December. After, the BC is excluded from the model, less cloud cover condition merely changes (Figure R1c and d). And below or above the 850 hPa, the cloud cover or its change due to BC is much smaller. On the other hand, if BC change the cloud cover over the sea which lead to the heating over the surface, there would be a corresponding positive change in the Downward Shortwave Radiation (DSW). However, there're only negative change in the DSW (Figure R2e) in the heating region over the eastern China Sea (Figure R2b). By comparisons, impact from Total or non-BC indicate the increase of temperature over the East China Sea was mostly result from BC effect (Figure R2d and f). Therefore, in this study, we conclude the warming over the East China Sea is the direct result from the BC's heating effect over the sea for the early December 2013. This leads to the enhancement of moisture advection and consequently the increase of the moisture in YRD and adjacent offshore region in the near surface (Figure R2i) as discussed in the article.



**Figure R1.** The mean cloud water mixing ratio and cloud fraction at 850 hPa over the eastern China during LST 8:00-17:00 6 December 2013. (a) and (b) are results from EXP\_CTL, while (c) and (d) are result from EXP\_NOBC.

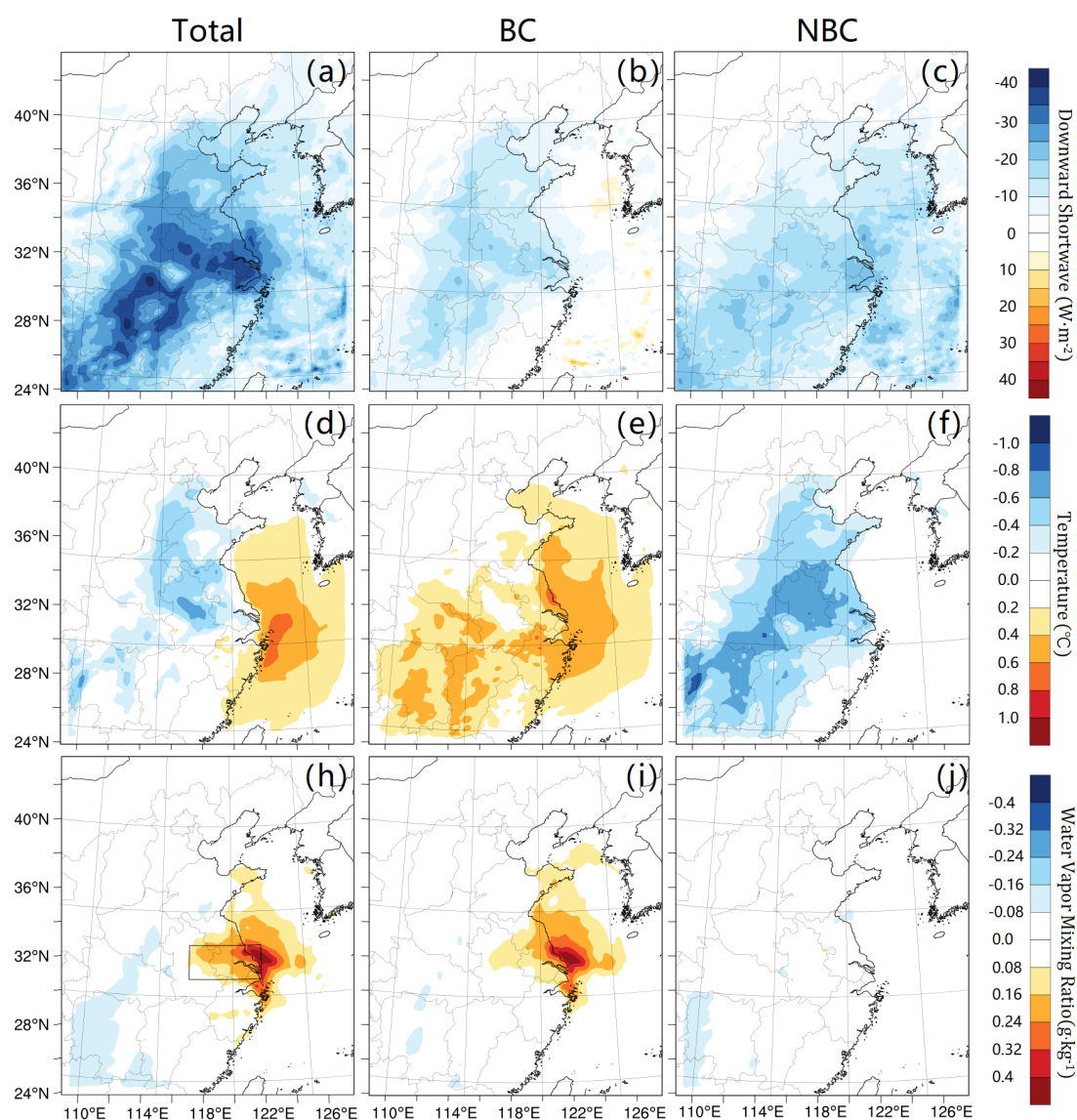


Figure R2. Average changes of DSR (upper), Temperature in the near surface (middle) and water vapor mixing ratio in the near surface (lower) induced by total effect of aerosols (left), effect of BC (middle) and effect of non-BC aerosols (right) in the daytime (08:00 – 17:00 LST) during 1-10 December 2013.

Page 8 Line 30: *The BC impact on surface temperature depends on vertical location of BC and also depends on models.*

**Response:**

Accepted. We added more explanations to the response of near-surface atmospheric temperature to the radiative effect of BC being different to that of non-BC aerosols. And the statement of the uncertainties in simulating the BC impact on the near surface temperature in numerical modellings has been also included. Please refer to Page 9 Line 1-3.

*Page 9 Line 2: What does “other forcings” mean.*

**Response:**

Here, the “other forcings” is referred to the other cause of the RH increase rather than the decrease air temperature induced by local aerosol cooling effect. Here, it was indicated that the moisture advection from outside the YRD region might be the cause of the large increase in RH over the YRD region on 6 December 2013. We have changed “other forcing” to “other factors such as moisture advection” in order to avoid being ambiguous.

**References:**

Wang, K., Zhang, Y., Yahya, K., Wu, S. Y., and Grell, G.: Implementation and initial application of new chemistry-aerosol options in WRF/Chem for simulating secondary organic aerosols and aerosol indirect effects for regional air quality, *Atmos. Environ.*, 115, 716-732, doi: 10.1016/j.atmosenv.2014.12.007, 2015.

## Response to Referee #2

*This study investigates the impact of aerosol-cloud interactions (ACI) and aerosol radiation interactions (ARI) on fog formation. The important roles of changing of advection and PBL dynamics in fog formations are revealed. It highlights the role of BC in the formation and maintenance of fog. In general, the manuscript is well organized. Thus, I suggest a minor revision before publication. The suggestions and comments are lists as following:*

### **Response:**

We appreciated the referee to offer us these insightful suggestions. We have revised this article accordingly.

*1. Introductions, Line 30, Page 2: I think it is not appropriated to claims “the impact of BC on fog has been rarely investigated by existing studies” after listing two references of “the impact of absorbing aerosols on fog formations”. Since BC is one of the most important absorbing aerosols.*

### **Response:**

Accepted. We have revised “rarely investigated” to “not fully understood” in the introduction. Please see Page 2, Line 34.

*2. Could you describe whether nudging is employed and the detailed method of nudging? Because nudging can affect the estimation of ARI.*

### **Response:**

The application of nudging can affect the feedback from chemistry module to the meteorology. So we did not apply any nudging while simulating of ARI or ACI. We have clearly demonstrated this point in the revision. Please refer to Page 5, Line 5.

*3. As mentioned in Aerosol-Radiation-Microphysics Interactions ([https://ruc.noaa.gov/wrf/wrf-chem/wrf\\_tutorial\\_2018/AerosolInteractions.pdf](https://ruc.noaa.gov/wrf/wrf-chem/wrf_tutorial_2018/AerosolInteractions.pdf), page 42), “Comparing runs with chem\_opt = 8 (without cloud-borne aerosols) with chem\_opt = 10 (with cloud-borne aerosols) for MOSAIC coupled to Lin microphysics does not quantify the indirect effect, since the autoconversion scheme used in the Lin microphysics scheme will be different”. I’m not sure if it is the same for Morrison module? Could you describe the prescribed aerosol used in EXP\_NOAER scenario?*

### **Response:**

In all experiments, the cloud water mixing ratio is predicted by the Morrison schemes. In EXP\_NOAER, model simulated aerosol has no impact on the cloud/fog droplet. Instead, a constant value of cloud droplet number ( $250 \text{ cm}^{-3}$ ) is used, which is a default treatment in the WRF model. In other experiments (EXP\_CTL, EXP\_NORAD and EXP\_NOBC), the

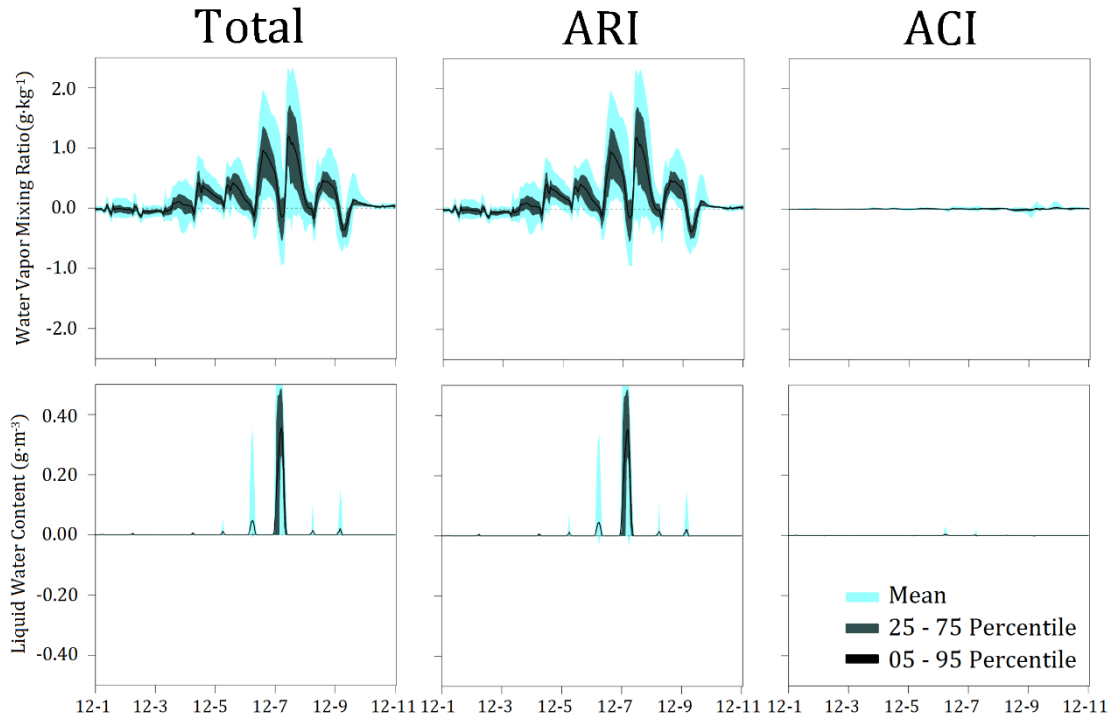


prognostic cloud droplet number is applied. The purpose of the autoconversion is to convert cloud droplet or ice (mass and number) into snow or rain due to collision-coalescence between cloud droplets. The Lin scheme would have a different autoconversion parameterization when switching from constant value to prognostic droplet number, which is why it's not qualified for estimating the indirect effect. But in the Morrison scheme, the same autoconversion parameterization is implemented for either constant or prognostic droplet number (Yang et al., 2011). Moreover, in our result, the episode of fog-haze event is neither affected by precipitation during the early December 2013, nor the fog process are largely influenced by the autoconversion in the microphysics schemes since very little fog is predicted in the YRD region on 7 December in EXP\_NOAER scenario.

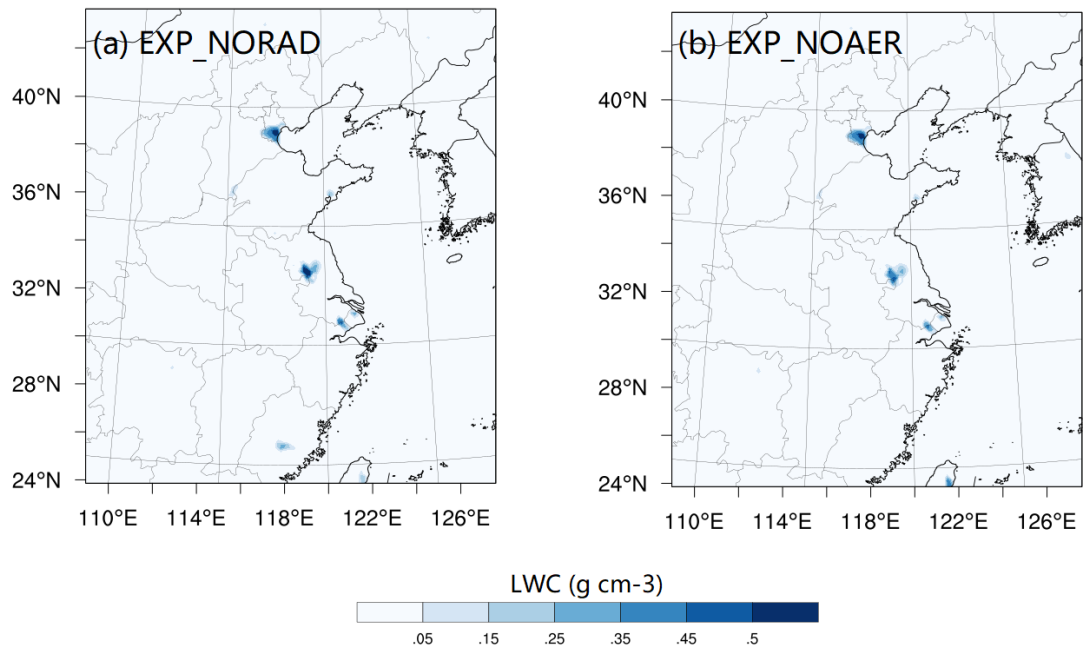
*4. Mentioned in Line 15, page 11, "Comparison between ARI and ACI shows that the effect of ARI was dominant over the effect of ACI. The reason may be that during this haze pollution episode there was little cloud and ACI was very weak." However, the role of ACI is not limited as the change of solar radiation and PBL dynamics. One of the most important ways is acting as CCN during fog formations. I'm curious if the number and radius of fog droplet are changed. Could you show some results?*

**Response:**

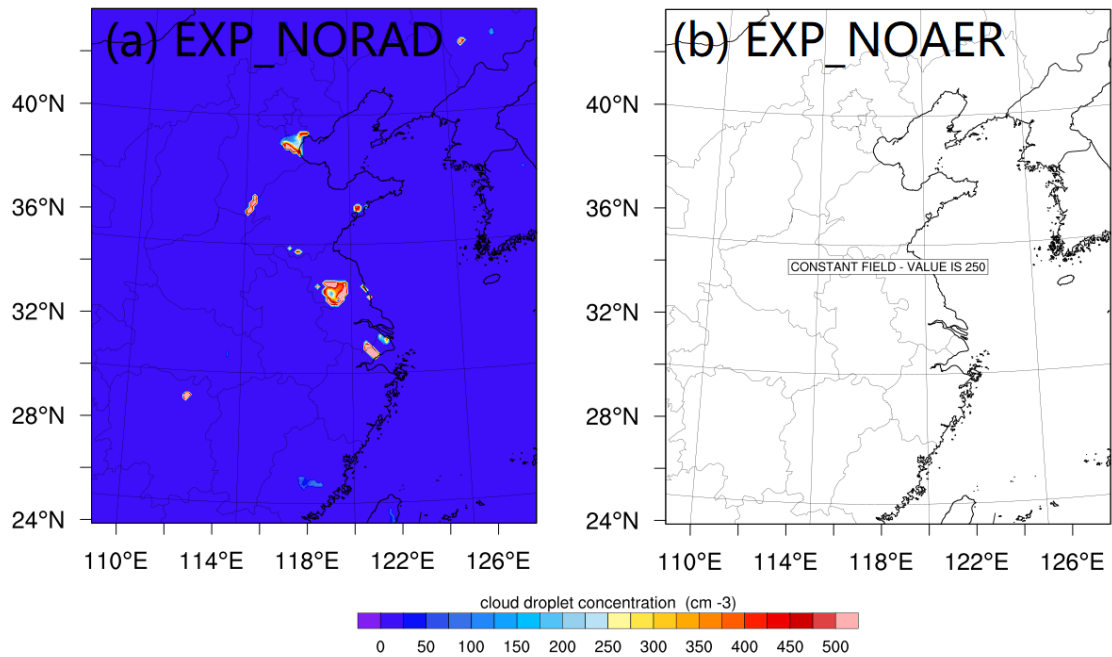
The ARI took a dominate role in both affecting the meteorological condition and inducing the fog occurrence. If without the enhanced moisture advection induced by the ARI, the moisture level in the YRD region would be relatively unfavorable for the formation of fog, and the ACI effect of aerosols acting as the fog nuclei can be limited (under low relative humidity). As a result, the ACI has a very small impact on the liquid water content in the near surface (LWCns) of the YRD region at 10 LST on 7 December in Figure S3b (which is provided in the supplemental information of the article). Figure R1 shows the time series of the ARI, ACI and aerosols' total impact on the water vapor mixing ratio (Qns) and LWC in the near surface of the YRD region. It also suggests that during the fog episode of 7 December, the ARI took a dominate role in both introducing the Qns and LWCns. There is only a small contribution from ACI (less than  $0.05 \text{ g m}^{-3}$ ) on enhancing the LWCns. The effect of ACI is calculated as the difference between EXP\_NORAD and EXP\_NOAER. In EXP\_NORAD, which remove only ARI, both of the cloud water mixing ratio and number concentration is predicted. In EXP\_NOAER, which remove both ARI and ACI, the cloud water mixing ratio is predicted but the number concentration is fixed to  $250 \text{ cm}^{-3}$ . Figure R2-R4 shows the liquid water content (LWC), number concentration and the effective radius of cloud droplet at LST 7:00 7 December 2013 in EXP\_NORAD and EXP\_NOAER. A small enhancement of LWCns can be seen in the northern part of the YRD region due to ACI (Figure R2). Accordingly, in EXP\_NORAD, the number concentration is above  $350 \text{ cm}^{-3}$  which is above the constant value of  $250 \text{ cm}^{-3}$  in EXP\_NOAER (Figure R3), and the effective radius of the droplet is mildly decreased (Figure R4) from EXP\_NORAD to EXP\_NOAER.



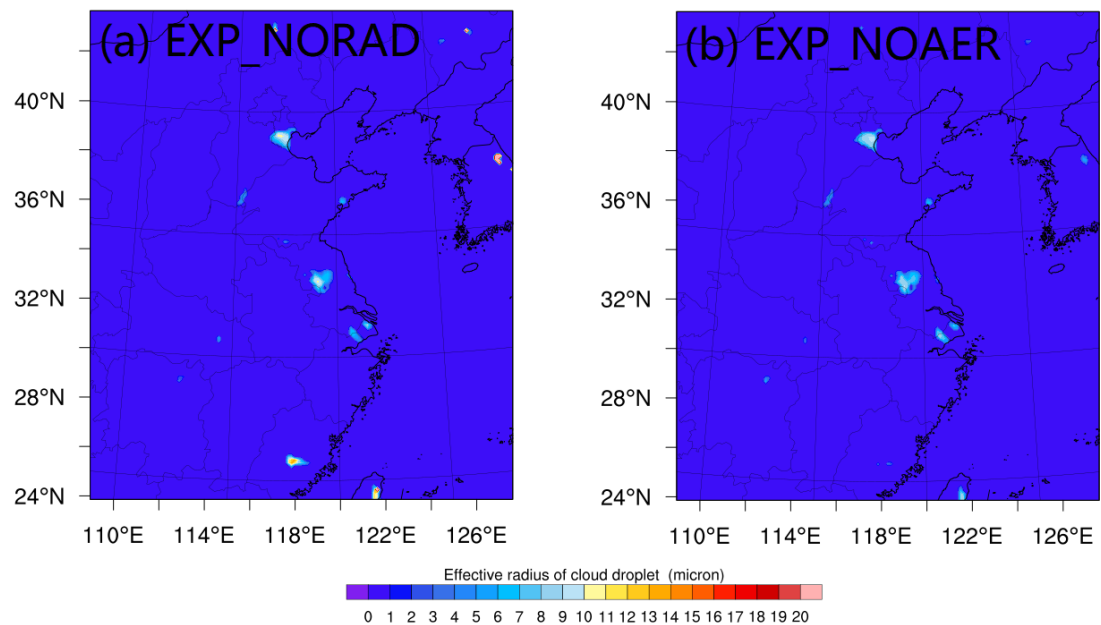
**Figure R1.** The ARI, ACI and aerosols' total impact on the near surface water vapor mixing ratio and liquid water content during 1-10 December 2013 in the YRD region.



**Figure R2.** Liquid water content in the near surface over the eastern China, LST 7:00 December 2013, from (a) EXP\_NORAD and (b) EXP\_NOAER.



**Figure R3.** Number concentration of cloud droplet in the near surface over the eastern China, LST 7:00 December 2013, from (a) EXP\_NORAD and (b) EXP\_NOAER.



**Figure R4.** Effect radius of droplet in the near surface over the eastern China, LST 7:00 December 2013, from (a) EXP\_NORAD and (b) EXP\_NOAER.

5. I think some statements in abstract and conclusion are too strong as a case study, like “We find that the ARI dominates this fog-haze episode while the effects of ACI are negligible.” It would be more appropriate if the statement could be limited as for specific scenarios. Further, it would be interesting to investigate under which conditions ARI is more important and under which conditions, ACI is more important in future studies. Maybe it is beyond the scope of this study.

**Response:**

Accepted and thanks for the suggestions. Some modifications was applied to avoid strong statements about the experiment result. This sentence has been rephased to “We find that the effects of ARI during the fog-haze episode in the early December 2013 played a dominant role while the effects of ACI were negligible”. Please see Page 1 Line 19-20. We are also interested in the question about under which condition the ARI/ACI is more effective in affect fog formation. Although it is not easy to answer this question from one single case study, we will include this suggestion in our future work.

*6. I'm not sure whether the sharp decrease of PM<sub>2.5</sub> and BC on Dec 7 in Figure 4 is due to wet removal or not. I guess the sharp decrease and rapid increase may be caused by the activation of the interstitial aerosol to the cloud-borne aerosol, and resuspension from the cloud-borne aerosol to the interstitial aerosol. And cloud-borne aerosol is not counted in CTL\_EXP scenario. If so, could you check if the cloud-borne aerosol is calculated in the optical module and discuss whether ARI is underestimated during fog episode?*

**Response:**

Accepted. The PM<sub>2.5</sub> and BC that measured in our observation is dehumidified particle which include both interstitial and cloud-borne aerosols. However, the PM<sub>2.5</sub> and BC provide by the simulation result is the dry mass from only interstitial aerosol. The cloud-borne aerosol is processed in the CTL\_EXP separately as aerosols-in-cloud-water type variables, which is not included in the Figure 4. So, we have revised the explanation for the underestimation of the PM<sub>2.5</sub> and BC on Dec 7 accordingly. Please see Page 6 Line 27-30. Also, the optical effects from the cloud-borne aerosol are not directly estimated, in the optical module from the WRF-Chem that we used (version 3.8.1). In fact, many climate models tend to omit the treatment of optical effect from cloud-borne aerosol as well, because the scattering of the sunlight can be less efficient once the aerosol particle attached to the droplet (Ghan and Easter, 2006). However, Bond et al. (2013) pointed out the absorption of the BC can be increased when it is coated with non-absorbing material include water, and the neglect of this effect can influence the general estimation of the radiative forcing in global scale. However, in this study, the cloud cover is low during the fog-haze event. So, the neglect of the optical effect from the cloud-borne aerosol did not have much influence on the radiation flux or other meteorological fields. And it would not affect the fog formation since it mostly took place during nighttime. Only after the sunrise, when the fog top is heated by the solar radiation, the cloud-borne BC can absorb more sunlight, warm the ambient atmosphere and speed up the evaporation of the droplets at the top fog layer. The absence of the optical effect from cloud-borne aerosol may, to some extent, slow down the dissipation of fog. From another perspective, under the heavy fog condition, the reduction of the incoming solar radiation mostly resulted from the light extinction of fog droplets, which can overwhelm the direct ARI from cloud-borne aerosol particle.

**References :**

Bond, T. C., Doherty, S. J., Fahey, D. W., Forster, P. M., Berntsen, T., DeAngelo, B. J., Flanner, M. G., Ghan, S., Karcher, B., Koch, D., Kinne, S., Kondo, Y., Quinn, P. K., Sarofim, M. C., Schultz, M. G., Schulz, M., Venkataraman, C., Zhang, H., Zhang, S., Bellouin, N., Guttikunda, S. K., Hopke, P. K., Jacobson, M. Z., Kaiser, J. W., Klimont, Z., Lohmann, U., Schwarz, J. P., Shindell, D., Stordalmo, T., Warren, S. G., and Zender, C. S.: Bounding the role of black carbon in the climate system: A scientific assessment, *J. Geophys. Res.-Atmos.*, 118, 5380–5552, <https://doi.org/10.1002/jgrd.50171>, 2013.

Ghan, S. J. and Easter, R. C.: Impact of cloud-borne aerosol representation on aerosol direct and indirect effects, *Atmos. Chem. Phys.*, 6, 4163-4174, <https://doi.org/10.5194/acp-6-4163-2006>, 2006.

Yang, Q., W. I. Gustafson Jr., Fast, J. D., Wang, H., Easter, R. C., Morrison, H., Lee, Y.-N., Chapman, E. G., Spak, S. N., and Mena-Carrasco, M. A.: Assessing regional scale predictions of aerosols, marine stratocumulus, and their interactions during VOCALS-REx using WRF-Chem, *Atmos. Chem. Phys.*, 11, 11951-11975, <https://doi.org/10.5194/acp-11-11951-2011>, 2011.

# Impacts of black carbon on the formation of advection-radiation fog during a haze pollution episode in eastern China

Qiuji Ding<sup>1,2,3</sup>, Jianning Sun<sup>1,2,3</sup>, Xin Huang<sup>1,2,3</sup>, Aijun Ding<sup>1,2,3</sup>, Jun Zou<sup>1,2,3</sup>, Xiuqun Yang<sup>1,2,3</sup>, and Congbin Fu<sup>1,2,3</sup>

5 <sup>1</sup> Joint International Research Laboratory of Atmospheric and Earth System Sciences, Nanjing University, Nanjing, China

<sup>2</sup> School of Atmospheric Sciences, Nanjing University, Nanjing, China

<sup>3</sup> Collaborative Innovation Center of Climate Change, Jiangsu Province, China

*Correspondence to:* Jianning Sun (jnsun@nju.edu.cn) and Xin Huang (xinhuang@nju.edu.cn)

10 **Abstract.** Aerosols can not only participate in fog formation by acting as condensation nuclei of droplets but also modify the meteorological conditions such as air temperature and moisture, planetary boundary layer height (PBLH) and regional circulation during haze event. The impact of aerosols on fog formation, yet to be revealed, can be critical in understanding and predicting of fog-haze event. In this study, we used the Weather Research and Forecasting model coupled with Chemistry (WRF-Chem) to investigate a heavy fog event during a multiday intense haze pollution episode in early December 2013 in the  
15 Yangtze River Delta (YRD) region in eastern China. Using the WRF-Chem model, we conducted four parallel numerical experiments to evaluate the roles of aerosol-radiation interaction (ARI), aerosol-cloud interaction (ACI), black carbon (BC) and none BC (non-BC) aerosols in the formation and maintenance of the heavy fog event. Only when the aerosols' feedback processes are considered can the model well capture the haze pollution and the fog event. We find that the effects of ARI during the fog-haze episode in the early December 2013 played a dominant role while the effects of ACI were negligible. Our  
20 analyses show that BC was more important in inducing the fog formation in the YRD region on 7 December than non-BC aerosols. The dome effect of BC leads to an increase in air moisture over the sea by reducing PBLH and weakening vertical mixing, thereby confining more water vapor in the near-surface layer. The strengthened daytime onshore flow by a cyclonic wind anomaly, induced by contrast temperature perturbation over land and sea, transported moister air to the YRD region, where the suppressed PBLH and weakened daytime vertical mixing maintained the high moisture level. Then the heavy fog  
25 formed due to the surface cooling at night. This study highlights the importance of anthropogenic emissions in the formation of advection-radiation fog in the polluted coastal areas.

## 1 Introduction

Fog, defined as visible water droplets or ice crystals suspended in the near-surface atmosphere (Gultepe et al., 2007), has been considered as hazardous weather that affects airline, marine transport, and high-way traffic (S. Niu et al., 2010). The economic  
30 loss caused by low visibility due to fog becomes comparable to that of tornadoes or even hurricanes (Gultepe et al., 2007). Fog

often forms in polluted atmosphere when the air moisture is relatively high, so the relationship between aerosols and fog droplets is complex in the polluted area (Guo et al., 2015). On one hand, aerosols can act as cloud condensation nuclei (CCN) during the activation and diffusion growth of fog droplets (Kuroiwa, 1951), and determine the property of droplets such as its microstructure (Hudson, 1980) or chemical composition (Munger et al., 1983; Wang et al., 2011; Yang et al., 2012). On the other hand, the fog water can provide a medium for aqueous-phase reactions and transform primary pollutants into secondary aerosols (Graedel et al., 1985; Dall'Osto et al., 2009; Xie et al., 2015; Wang et al., 2016; Cheng et al., 2016). As an important removal process of aerosols, wet scavenging effect of fog can also significantly reduce aerosol concentration in the atmosphere (Yuskiewicz et al., 1998; S. Niu et al., 2010). Thus, the interrelations between fog and aerosols are crucial for better understanding of the formation and evolution of both fog and haze pollution.

Due to the intensive emission and unfavorable meteorological conditions, China has been undergoing a number of severe haze pollution events during last two [decades](#) (D. Wu et al., 2005; Ding et al., 2013a; Zhao et al., 2013; Y. Zhang et al., 2016; Huang et al., 2018). Many studies investigated the responses of mesoscale circulation to the high aerosol loading during air pollution events over eastern China (Ding et al., 2013b; J. Wang et al., 2014; H. Wang et al., 2015; Gao et al., 2015; Ding et al., 2016a; Huang et al., 2018). Recently, black carbon (BC) has attracted a lot of attention (Bond et al., 2013), since it can significantly influence the planetary boundary layer (PBL) structure (Ding et al., 2016a; Wang et al., 2018; Huang et al., 2018). By absorbing the incident shortwave radiation and warming the atmosphere, BC can stabilize the PBL, which leads to heavy air pollution in megacities (Ding et al., 2016a; Huang et al., 2018; Wang et al., 2018), and even changes the weather such as precipitation in heavily polluted area (Ding et al., 2013b; Huang et al., 2016). [In addition to impact on PBL, recent studies also found BC can change land-sea thermal contrast and weaken the East Asian winter monsoon \(Lou et al., 2019\), as well as large-scale circulations \(Yang et al., 2019\).](#)

Meteorological conditions are important to the persistent severe fog and haze event over eastern China (Zhang et al., 2014; Y. Zhang et al., 2016). The winter fog over eastern China is typically advection-radiation fog (Lin et al., 2017). It results from radiative cooling of moist air which is advected from any nearby large water body (Ryznar, 1977). Since that aerosols can impact meteorological field, such as changing the distribution of temperature and moisture and modifying the atmospheric stratification, their influences on the fog formation should not be neglected. Bott et al. (1991) pointed out that the radiative effect of absorbing aerosols can modify the structure of nocturnal PBL and favor the formation of fog in an urban environment. F. Niu et al. (2010) studied the impact of high-loading aerosols on the increase of winter fog and found that the warming effect of absorbing aerosols can promote the fog formation over southern China by weakening the eastern Asian monsoon circulation and increasing the aerosol concentration. Since the dynamics and/or thermodynamics of the interaction between atmosphere and aerosols are complex, the details about the impacts of aerosols on fog process have not been well understood yet. The eastern China has a relatively high BC emission rate and a high loading of BC (Qin and Xie, 2012; Andersson et al., 2015), which has been found to significantly influence the PBL structure and to enhance haze pollution (Ding et al., 2016a). However, the impact of BC on fog, an important PBL phenomenon in winter, [has not been fully understood](#) by existing studies.

During 1-10 December 2013, eastern China was suffering from a multi-day severe haze and fog event with high PM<sub>2.5</sub> concentrations and low visibility (Ding et al., 2016a; Sun et al., 2017). On 7 December, heavy fog event was recorded by many meteorological stations in the Yangtze River Delta (YRD) region. In this work, we study the impacts of aerosols, especially the BC, on this fog event and the associated meteorological conditions based on numerical simulations using the Weather Research and Forecasting model coupled with Chemistry (WRF-Chem). In section 2, the WRF-Chem model, observational data and experiment design are introduced. In section 3, the simulation results are evaluated by observational data, the different roles of Aerosol Radiation Interaction (ARI), Aerosol Cloud Interaction (ACI), BC and non-BC aerosols in affecting the meteorological conditions and fog processes are analysed, and the mechanism of enhanced moisture advection induced by radiative effect of BC is investigated. Section 4 provides summaries and conclusions.

## 10 **2 Data and Methodology**

### **2.1 WRF-Chem model and configuration**

In numerical simulation of fog, not only the accurate meteorological background conditions are needed (Gultepe, et al., 2007), but also the high grid resolution and adequate representation of underlying surface are vital to resolve the physical process and patchy structure of fog (Steenefeld et al., 2015). Therefore the mesoscale weather model has been extensively applied to simulate the fog episodes (Shi et al., 2010; Lin et al., 2017). However, in the previous studies the effects of ARI or ACI on fog are rarely considered. Hence, in this study we use the mesoscale non-hydrostatic WRF-Chem model (version 3.8.1) to investigate the heavy fog-haze event over eastern China during 1-10 December 2013. WRF-Chem is an on-line coupled air quality model which can simultaneously calculate the meteorology field, the transport, mixing, and chemical transformation of trace gas and aerosols, and the effects of ARI and ACI (Grell et al., 2005; Fast et al., 2006; Chapman et al., 2009).

The physical and chemical parameterization schemes adopted in this study are listed in Table 1. The Morrison double-moment microphysics scheme is linked with cloud chemistry, washout of trace gases, and explicit aerosol aqueous-phase chemistry (Morrison et al., 2009). The Grell-3D cumulus scheme which allows subsidence in neighbouring columns is coupled with cloud chemistry and tracer transport (Grell and Devenyi, 2002). The RRTMG radiation scheme (Iacono et al., 2008), which is linked with aerosol optical properties, is applied to both longwave and shortwave radiations. The Noah Land Surface scheme is used together with land-use data from the Moderate Resolution Imaging Spectro-radiometer (MODIS) (Chen and Dudhia, 2001), where the urban surface process was simulated by the single-layer urban canopy model (UCM) (Chen et al., 2011). The PBL scheme of Mellor-Yamada-Nakanishi-Niino level-2.5 (MYNN2) (Nakanishi and Niino, 2006) is a 1.5-order and local turbulence closure scheme, which can estimate the PBL height (PBLH) according to the prognostic turbulence kinetic energy (TKE). The gas-phase mechanism of Model for Ozone And Related chemistry Tracers (MOZART) contains a detailed description of tropospheric chemistry (Emmons et al., 2010). The aerosol scheme of Model for Simulating Aerosol Interactions and Chemistry (MOSAIC) (Zaveri et al., 2008) treats major aerosol species including sulfate, sulfonate, nitrate, chloride, carbonate, ammonium, sodium, calcium, black carbon, primary organic mass, and other inorganic matters etc. Secondary



organic aerosol formation based on Lane et al. (2008) is included in MOSAIC with a volatility basis set which provides an empirical representation of the aging and volatility of the organic aerosol and its precursors. Four sectional size bins are employed to represent particle size distribution in the MOSAIC scheme, where aerosols are assumed to be internally mixed within each bin. The photolysis rates are simulated with Fast Tropospheric Ultraviolet-Visible (FTUV) model (Tie et al., 2003).  
5 Anthropogenic emission is Hemispheric Transport of Air Pollution (HTAP v2.2) monthly sector-specific emission inventory for the year 2010 at a spatial resolution of  $0.1^\circ \times 0.1^\circ$  grid maps. Figure 1 shows the horizontal distribution of BC emission over eastern China. This dataset, which combines nationally reported emissions and regional scientific inventories, is obtained from Emission Database for Global Atmospheric Research (EDGAR) (Janssens-Maenhout et al., 2015). Biogenic emission is calculated online by Model of Emissions of Gases and Aerosol from Nature (MEGAN) (Guenther et al., 2006) while dust  
10 emission is simulated online using the Georgia Tech/Goddard Global Ozone Chemistry Aerosol Radiation and Transport (GOCART) parameterization (Zhao et al., 2010).

The period of simulation is from 30 November to 10 December in 2013 with the first 24 hours as the spin-up time. The simulation domain, as shown in Fig. 1, covers eastern China and the surrounding area by a horizontal resolution of 15 km. There are 26 vertical levels extending from the ground surface up to 50 hPa, with about 15 levels below the altitude of 1.5 km.  
15 The lowest level is located at approximately 60 m above the ground. The initial and boundary conditions of meteorological field are provided by National Centers for Environmental Prediction (NCEP) with a horizontal resolution of  $1^\circ \times 1^\circ$  for every 6 hours. The chemical initial and boundary conditions are provided by MOZART-4 global model output at  $1.9^\circ \times 2.5^\circ$  for WRF-Chem (Emmons et al., 2010).

## 2.2 Experiment design

20 In WRF-Chem, ARI is simulated through coupling the aerosol optical properties with the radiation transfer calculation. The radiative properties of aerosols are estimated based on Mie theory. ACI is simulated by coupling the cloud physics and aerosol scheme. Based on Kohler theory, CCN is calculated as a function of aerosol number concentrations and updraft velocity according to the parameterization of aerosol's activation by Abdul-Razzak and Ghan (2002). Since that both ARI and ACI play important roles in affecting meteorology, parallel numerical experiments were designed to quantify their individual effect.  
25 The control experiment (EXP\_CTL), in which both ARI and ACI are turned on, represents the scenario including the complex physical and chemical processes between aerosols and the atmosphere. Two experiments, one turns off ARI (EXP\_NORAD) and the other turns off both ARI and ACI (EXP\_NOAER), are conducted to simulate the scenarios in absence of aerosol radiative effect and without any aerosols' effects, respectively. Thus, the difference between EXP\_CTL and EXP\_NORAD represents the effect of ARI (EF\_ARI). The difference between EXP\_NORAD and EXP\_NOAER is expected to represent the  
30 effect of ACI (EF\_ACI). The roles of BC and non-BC aerosols in modifying meteorological conditions can be very different and need to be treated separately. Hence, another experiment was designed to include only scattering aerosol's effect, in which anthropogenic BC emission is removed but both ARI and ACI are turned on (EXP\_NOBC). In EXP\_NOAER, we shut off the aerosol feedback to the radiation and cloud as well as the wet removal and cloud chemistry, which makes this experiment

equivalent to the one that remove all aerosol (either from emission or new particle formation) in the respective of affecting the meteorological condition and fog formation. So the difference between EXP\_CTL and EXP\_NOBC is regarded as the effect of BC (EF\_BC), and the difference between EXP\_NOBC and EXP\_NOAER can be considered as the effect of non-BC (EF\_NBC). The total effect of aerosols (EF\_TOT) is derived from the difference between EXP\_CTL and EXP\_NOAER. We did not apply any nudging in all the aforementioned simulation so as to well separate the perturbations caused by aerosol. To make it more clear, the brief description on the aforementioned experiments and the effects of different aerosol feedback processes are listed in Table 2.

## 2.3 Observational data

The observational data on both meteorology and air quality are employed to evaluate the model performance. Hourly measurement of air temperature and relative humidity (RH) at the altitude of 2 meter above the ground (T2 and RH2), and wind speed at the altitude of 10 meter above the ground (WS10) at 153 meteorological stations in eastern China are collected from the National Climate Data Center (NCDC) of China. Hourly PM<sub>2.5</sub> concentrations are obtained from China National Environmental Monitoring Center (CNEMC). This dataset includes hourly concentrations of SO<sub>2</sub>, NO<sub>2</sub>, CO, O<sub>3</sub>, PM<sub>2.5</sub> and PM<sub>10</sub> at 74 cities covered emission-intensive regions such as the YRD and Beijing-Tianjin-Hebei (BTH). The observational data of all sites within each city is averaged to represent the local pollution levels. The geographical positions of NCDC and CNEMC observations are illustrated in Fig. 1. The data of vertical profiles of air temperature, RH and water vapor mixing ratio (Q) in Nanjing are obtained from the atmospheric sounding dataset of Earth Observing Laboratory, National Center for Atmospheric Research (NCAR). The data of downward shortwave radiation (DSR) and the surface sensible heat flux (SHF) in north-eastern suburban of Nanjing are used to validate the simulation results. These datasets are obtained from the Station for Observing Regional Processes of the Earth System (SORPES) in the Xianlin Campus of Nanjing University (Ding et al., 2013a; Ding et al., 2016b; Zou et al., 2017).

## 3 Results and discussion

### 3.1 Validation of simulated meteorological variables, PM<sub>2.5</sub> concentration and Fog events

The interaction between atmosphere and aerosols influences both meteorological conditions and the spatiotemporal distribution of aerosols (Ding et al., 2013b; Ding et al., 2016a; Huang et al., 2016). In this section, evaluations of meteorological field and PM<sub>2.5</sub> concentration are carried out for the EXP\_CTL, the experiment including full physical and chemical processes. The statistics of T2, RH2, WS10 and PM<sub>2.5</sub> mass concentration between the simulation and observation are summarized in Table 3. Mean observation (Mean Obs.), simulation (Mean Sim.), bias (MB), root mean square error (RMSE) and correlation coefficient (R) are calculated for T2, RH2, and WS10 over 153 NCDC stations and PM<sub>2.5</sub> concentrations over 74 CNEMC sites. Overall, the model reproduced a satisfying representation of meteorological conditions with acceptable biases. T2 is simulated with a cold bias of  $-0.76^{\circ}\text{C}$ , a RMSE of 2.92 and a correlation of 0.86. RH2 simulation has a negligible MB of  $-$

0.09, a RMSE of 15.70 and a correlation of 0.69. WS10 is overestimated with a MB of +0.78 m s<sup>-1</sup>. As for surface pollutants, the model successfully reproduces PM<sub>2.5</sub> concentration with a relatively small MB of +8.88 μg m<sup>-3</sup>. The mean simulated and observed PM<sub>2.5</sub> concentrations are 159.07 μg m<sup>-3</sup> and 150.19 μg m<sup>-3</sup> respectively. The simulated PM<sub>2.5</sub> concentrations agree well with the observations at 74 sites over eastern China during this haze event (Fig. 2). However, PM<sub>2.5</sub> temporal variations are not well reproduced with a relatively large RMSE of 108.77 μg m<sup>-3</sup> and relatively small correlation of 0.48. This is probably because that the measured PM<sub>2.5</sub> concentrations are averaged in a city scale, which doesn't match with the exact grid of WRF-Chem.

Previous observational study has demonstrated that the reduced DSR and SHF are subject to the increase of aerosol concentration, which consequently leads to suppression of daytime PBL development (Zou et al., 2017). We also compared the simulated DSR and SHF in different experiments with the observations at the SORPES station in Nanjing. The comparisons show that DSR and SHF in EXP\_CTL agreed well with the observational data, however, they were overestimated by EXP\_NORAD, EXP\_NOAER and EXP\_NOBC (Fig. S1). These results suggest that the radiative effect of aerosols can be reproduced reasonably when both the ARI and ACI processes are included in the simulations.

The evolution of fog-haze event during 1-10 December 2013 over eastern China is illustrated in four stages as shown in Fig. 3 and Fig. 4. First, during the daytime of 2 December, the northern part of eastern China was under the control of southwest wind, and the horizontal distribution of air pollutant shows that PM<sub>2.5</sub> concentration was relatively high in BTH while relatively low in YRD (Fig. 3a). The air quality measurements show that surface PM<sub>2.5</sub> concentration was high in Zhengzhou and Nanjing (about 150 μg m<sup>-3</sup>), and relatively low in Beijing (less than 100 μg m<sup>-3</sup>) (Fig. 4). Second, on 5 December large amount of PM<sub>2.5</sub> was transported to the mid-eastern China from BTH by the north wind. Meanwhile the west wind transported PM<sub>2.5</sub> to the Yellow Sea (Fig. 3b). In Nanjing, the surface concentration of PM<sub>2.5</sub> exceeded 300 μg m<sup>-3</sup> during the daytime with the maximum value of 370 μg m<sup>-3</sup> at 12:00 LST (Fig. 4). Third, on 6 December the heavy haze pollution in YRD region continued and the PM<sub>2.5</sub> concentration in Nanjing stayed around 300 μg m<sup>-3</sup>. As shown in Fig. 3c, the PM<sub>2.5</sub> concentration in the southern part of this region reached a very high level with the maximum value of about 400 μg m<sup>-3</sup>. Moreover, the eastward wind transported a large amount of PM<sub>2.5</sub> from YRD region into the northern part of East China Sea. Finally, the fog-haze event in eastern China dissipated on 9 December (Fig. 3d) due to the arrival of strong cold air from northern China. Figure 4 shows that the model can successfully capture the main feature of fog-haze evolution. However, PM<sub>2.5</sub> and BC concentrations were substantially underestimated during the occurrence of fog in Nanjing in the model. This discrepancy may be caused by the absence of cloud-borne aerosol in simulation result of PM<sub>2.5</sub>. During the fog occurrences, the cloud-borne aerosol and interstitial aerosol are both measured, but the PM<sub>2.5</sub> provided by the simulation result was the dry mass that only include interstitial aerosol. A relatively larger bias between observation and simulation in PM<sub>2.5</sub> than BC during the daytime of 7 December also indicates a possible enhancement of the formation of secondary aerosols through aqueous phase or heterogeneous reactions in the real world (Xie et al., 2015; Zheng et al., 2015; Wang et al., 2016; Cheng et al. 2016).

On 7 December, fog events were recorded by many meteorological stations in the YRD region. Simulation results show that this fog episode was successfully predicted by EXP\_CTL (fog is simulated by the numerical model when RH reaches 100%

and liquid water accumulated near surface). Figures S2a and S2b show the comparisons between the observed and simulated RH2 and T2 at Lukou site which locates at 36 km south of Nanjing. They agree very well before the onset of fog and during the fog event. The fog began at 00:00 LST on 7 December when RH2 reached 100% (Figs. S2a). Before this time, T2 decreased in the early night on 6 December due to radiative cooling, which led to an increase of RH2 and finally made the water vapor saturated. During the fog event, T2 remained almost unchanged, because the radiative cooling can be compensated by the latent heat release in the process of fog formation during the night, while after sunrise the heating effect of solar radiation can be exhausted by the evaporation of fog droplets. The fog dissipated at about 12:00 LST on 7 December. The EXP\_CTL can capture the evolution of T2 and RH2 during this fog episode (Figs. S2a and S2b) and also the vertical profiles of Q and RH in the PBL at 08:00 LST on 7 December (Figs. S2c and S2d).

## 10 3.2 Impact of aerosols on the formation and evolution of the fog event

### 3.2.1 Effects of ARI and ACI

High loading of BC and non-BC aerosols can substantially reduce the solar radiation reaching the Earth's surface, resulting in significant change in surface meteorological conditions (Ding et al., 2013b; Gao et al., 2015; H. Wang et al., 2015; Ding et al., 2016a; Huang et al., 2018). Meanwhile, aerosol particles can act as CCN, and ACI can modify the solar radiation which also leads to the change of surface meteorological conditions (K. Wang et al., 2015; Liu et al., 2016). To disentangle their individual contribution, Figure 5 shows the average distributions of EF\_TOT, EF\_ARI and EF\_ACI on the DSR, the near surface temperature (Tns) and the near surface water vapor mixing ratio (Qns) in the daytime (08:00 - 17:00 LST) during 1-10 December. It shows that the magnitude of EF\_ACI on DSR, Tns and Qns was negligible small, suggesting an insignificant role of ACI during this fog-haze episode. Since the winter haze in eastern China often associates with high pressure system, subsidence of air mass can lead to less cloud cover condition which consequently weakens the effect of ACI (B. Zhang et al., 2015). Figure 5b and 5e show that  $\Delta$ DSR and  $\Delta$ Tns had different patterns in spatial distribution. The distribution of  $\Delta$ DSR followed the pattern of PM<sub>2.5</sub> concentration shown in Fig. 2. In the YRD region,  $\Delta$ DSR was more than  $-75 \text{ W m}^{-2}$ , while in the adjacent offshore region  $\Delta$ DSR ranged from  $-25$  to  $-50 \text{ W m}^{-2}$  (Fig. 5b). However, as shown in Fig. 5e, the EF\_ARI resulted in a cooling effect over land but a warming effect over sea. The maximum cooling effect occurred in the eastern part of the YRD region, where the magnitude of  $\Delta$ Tns reached  $-1.0 \text{ }^\circ\text{C}$ . The maximum warming effect took place in the East China Sea with the magnitude of  $\Delta$ Tns as high as  $+0.8 \text{ }^\circ\text{C}$ . The different patterns of  $\Delta$ DSR and  $\Delta$ Tns were attributed to the competition of warming effect of BC in the atmospheric and cooling effect of the extinction caused by both BC and non-BC aerosols. The distribution of  $\Delta$ Tns suggests that the cooling effect exceeded the warming effect over the land while the inverse situation occurred over the sea. To our knowledge, by scattering and absorbing the solar radiation, aerosols reduce DSR reaching the Earth's surface, which leads to the reduction of surface temperature. However, the atmospheric heating due to absorbing aerosols (e.g., BC) would somehow offset by the surface dimming through turbulent heat exchange. Comparatively, the sea surface has larger capacity to storage heat than the land, and hence the near surface temperature over the sea was less sensitive

to the reduction of incoming solar radiation and would be more effectively increased by the aerosol warming effect (K. Wang et al., 2015). This is why the cooling effect was found over the land while warming effect over the sea. Figure 5g shows a significant EF\_ARI on Qns in the YRD region and the East China Sea. In this area, the increase of the near surface water vapor mixing ratio was associated with the occurrence of an advection-radiation fog on 7 December.

5 For the fog episode on 7 December, Fig. 6 shows the simulation results of liquid water content (LWC) near the surface and the temporal change of vertical distribution of LWC in EXP\_CTL and EXP\_NOAER. When considering the feedback processes of all aerosols, the spatial distribution of near surface LWC in EXP\_CTL shows that at 08:00 LST the dense fog was located mainly in the YRD region (Fig. 6a). The temporal change of vertical distribution of LWC in Nanjing shows that the fog episode began at 00:00 LST and dissipated at 12:00 LST (Fig. 6b). In the EXP\_NOAER which excluded the effects of  
10 both ARI and ACI, the fog only appeared in a very small area located at the upper edge of YRD region (Fig. 6c), and no fog occurred in Nanjing (Fig. 6d). These discrepancies confirm that the fog formation was promoted by ARI and ACI. However, the results in Fig. 5 suggest that the EF\_ACI is negligible small in this fog-haze episode. It can be expected that the widely spread fog in YRD region was mainly induced by the EF\_ARI. The mechanism for the fog formation will be discussed later.

### 3.2.2 Contributions from BC and non-BC aerosols

15 The physical processes of fog development are subject to various factors such as radiative cooling, moisture advection, evaporation, and even turbulent mixing. Our simulations show that during the haze-fog event ARI played a dominant role, which was caused by the radiative effects of BC and non-BC aerosols. To investigate the roles of different types of aerosols, as well as their total effect, we evaluated the contribution of each feedback process on DSR, SHF, surface water vapor flux (QFX), Tns, Qns, RHns and PBLH based on different experiments. How to calculate the contribution of the corresponding  
20 feedback process is explained in Table 2. For example, the contribution of BC was derived from the difference between EX\_CTL and EX\_NOBC. Calculations were only conducted in the significantly influenced area, i.e., the YRD region, at 14:00 LST during 1-10 December. The quantities were averaged over this area (the grid points of waterbody are excluded). The relative contributions are illustrated in Fig. 7.

The highest concentrations of BC ( $13.56 \mu\text{g m}^{-3}$ ) and non-BC aerosols ( $174.42 \mu\text{g m}^{-3}$ ) appeared on 6 December (Fig. 7a),  
25 and the corresponding contributions of BC and non-BC aerosols to the decrease of DSR are  $-86.39 \text{ W m}^{-2}$  and  $-78.98 \text{ W m}^{-2}$  respectively (Fig. 7b). Although the concentration of BC was much smaller than that of non-BC aerosols, the cooling effect of BC on the incoming solar radiation at the surface was comparable to that of non-BC aerosols. As a result, the decreases of SHF induced by BC and non-BC aerosols were comparable, and the maximum decreases occur on 6 December (Fig. 7c). The relative contributions and variation patterns were similar in terms of QFX (Fig. 7d). However, the response of near surface  
30 atmospheric temperature to the radiative effect of BC was quite different to that of non-BC aerosols. As shown in Fig. 7e, the non-BC aerosols had a negative contribution to Tns (i.e., to decrease the near surface temperature), while BC had a positive impact on Tns (i.e., to increase the near surface temperature). This is because BC would trap parts of the solar energy in the atmosphere that was supposed to reach the ground surface. [On one hand, this effect reducing incoming solar radiation and cool](#)

the near surface atmosphere, on the other, the near-surface BC particle can absorb the sunlight and directly warm the surrounding air. The BC impact on Tns is highly relied on the vertical distribution of BC (Wang et al., 2018), and even depend on models. Our simulations suggest that, during this heavy air pollution event in the YRD region, the warming effect of BC can exceed its cooling effect and the net effect is to increase the air temperature. A decrease of temperature directly led to an increase of relative humidity. Thus, Fig. 7h shows that non-BC aerosols increased RHns. However, this figure also shows that BC decreased RHns before 6 December but have a positive contribution to RHns during 6-7 December. The positive contribution of BC to RHns on 6-7 December implies that RH was **not only** influenced by the local temperature perturbation but also **could be affected other factors such as moisture advection**. Figure 7f shows that the BC has a positive contribution to Qns during 6-7 December, suggesting that the effect of BC was to increase the moisture in this area by other processes. Figure 7g shows that the non-BC aerosols always have a negative contribution to PBLH, because the shadowing effect reduces the SHF and consequently decreases the PBLH (Zou et al. 2017). Meanwhile, BC also had a negative impact on PBLH during 6-7 December, although BC aerosols tended to increase the near surface temperature in this period. The reason is that during the heavy air pollution event the heating effect of BC was more effective in the upper air than in that of the lower part of PBL, which stabilized the atmospheric stratification and suppressed the PBL development in the daytime. This effect has been well documented and named as the dome effect of BC (Ding et al., 2016; Wang et al., 2018).

To better understand the roles of BC and non-BC aerosols on the fog episode, we calculated their individual contributions to Tns, Qns, RHns and LWCns from 14:00 LST on 6 December to 14:00 LST on 7 December in YRD region. Figure 8a shows that the total effect of BC and non-BC aerosols was to decrease the near surface air temperature, although BC tended to increase the temperature on 6 December. It means that Tns in EXP\_CTL is lower than that in EXP\_NOAER and the cooling effect of aerosols was **favorable** for fog formation. However, Fig. 8b shows that BC significantly increased Qns in the afternoon and early night on 6 December while the contribution of non-BC aerosols was quite small. Significant increase of water vapor induced by BC led to a relatively high RHns (above 60%) in the afternoon. Due to the decrease in temperature, the RHns increased, and then the fog formed around 00:00 LST on 7 December (Fig. 8c). After the onset of fog, the Qns decreases (Fig. 8b) and the LWCns increased (Fig. 8d), because the condensation process changed water vapor into liquid water during fog development. As shown in Figure 8d, BC played a dominant role in fog formation. Spatially, the contribution of BC is also significantly larger than that of non-BC aerosols on enlarging the fog area (Fig. S3). Overall, the above results suggest that in this fog episode the most important factor is the increase of water vapor in this area and BC plays an important role in the fog formation. However, as pointed out previously, the local effect of BC on meteorological conditions alone cannot explain the increase of water vapor. It can be expected that the significant increase of water vapor in YRD region is caused by moisture advection.

### 3.3 BC-induced moisture advection between ocean and land

Besides the radiative cooling of the surface and the adjacent atmosphere, a long-duration and thick-layered fog often requires other conditions such as turbulent mixing and advection (Wobrock et al., 1992). When not considering BC aerosol

(EXP\_NOBC), in the coastal area of the north of YRD region the wind was from the Yellow Sea towards the land, and the onshore flow brought the moist air to the north of YRD region, producing an isolated high moisture area at 14:00 LST on 6 December (See the central part around 32°N in Fig. 9b). At the same time in the EXP\_CTL which included BC's effect, the moisture over the Yellow Sea was increased and the onshore flow was enhanced. This led to an enlarged and amplified high moisture center in the northern part of the YRD region (the central part in Fig. 9a). The comparison between EXP\_CTL and EXP\_NOBC suggests that BC enhanced the moisture advection from the Yellow Sea to the northern part of the YRD region. Figure 9 also shows that the southward wind in this area was enhanced by BC, which increased the transport of the moister air into YRD region where the fog formed that night.

Fig. 10a shows that high value of BC concentration covered the eastern part of the YRD region and the nearby offshore area at 14:00 LST on 6 December (denoted by the isolines), which led to a warming effect on near-surface layer atmosphere in this area. Then the warmed atmosphere resulted in a low-pressure perturbation in this area, which consequently led to a cyclonic anomaly in wind field (Fig. 10b). This cyclonic anomaly strengthened the onshore wind speed in the north-eastern part of YRD region because the background wind here was approximately in the same direction. Meanwhile, the surface layer over the nearby sea was moisturized due to the heating effect of BC (Fig. 10d). Thus, the moisture advection from the sea to the land was mainly promoted by BC. To better understand the enhancement of moisture advection induced by BC, we calculated the difference of horizontal moisture flux in the surface layer between EXP\_CTL and EXP\_NOBC. The horizontal moisture flux  $MF$  is defined as the production of specific humidity  $q$  (with a unit of  $g\ m^{-3}$ ) and velocity  $V$ . We calculate the magnitude of  $\Delta MF$  as  $|\Delta MF| = |MF_{BC}| - |MF_{NOBC}|$  (i.e., the difference in magnitude of horizontal moisture flux between the two cases), and denote the direction of  $\Delta MF$  by an arrow, whose direction is the direction of  $\Delta V$  and whose length represents the magnitude of  $\Delta V$ . Figure 10c shows that the area with a large value of  $|\Delta MF|$  was located at the northern edge of YRD region and the nearby offshore area at 14:00 on 6 December, and the enhanced advection was onshore (only the arrows with the magnitude larger than  $3\ m\ s^{-1}$  are denoted in this figure). Since the wind direction in this area was mainly southward, the enhanced moisture advection would move into YRD region in the later time. To make it more clear, a cartoon, which demonstrates BC's perturbation on moisture advection and the fog evolution, is provided in the Supplemental Information. The cartoon is linked by a sign in the figure caption of Figure S4, which shows the state at the beginning time 10:00 on 6 December.

Another role of BC is to depress the PBLH in the daytime. Figure S5 shows a vertical cross-section at the location denoted in Fig. 10d. The largest increase of air temperature caused by the heating effect of BC occurred in the upper part of PBL over the land, and the PBLH over Nanjing was only half of that when excluding BC's effect. This is consistent with the previous study by Ding et al. (2016a), in which the dome effect of BC, which stabilizes the PBL and suppresses PBL development in the daytime, has been discovered for the first time. A decreased PBLH restricted the water vapor within a shallow layer near the ground surface, which can increase the moisture in the PBL (if the PBL is well developed, the water vapor will be spread vertically in a deeper layer, which can reduce the water vapor content at the ground surface). The stabilized PBL weakened the vertical mixing, which made near-surface air moister (Fig. S5), which promoted the accumulation of water vapor near surface in the daytime when the moister air was transported to the land. Therefore, the fog can form in the whole YRD region

in the night when the role of BC was included. Meanwhile, a stabilized PBL and a decreased PBLH caused by the dome effect of BC can also explain the increase of moisture in the surface layer over the sea. We provide more evidences in Fig. S6.

#### 4 Conclusions

5 During 1-10 December 2013 eastern China underwent a haze pollution episode, and on 7 December a heavy fog, associated with a haze event with high concentration  $PM_{2.5}$ , occurred over the YRD region. In order to better understand the impacts of aerosols on fog formation and the associated meteorological conditions, we applied numerical **modelling** with the online-coupled air quality model WRF-Chem to simulate this fog-haze event and to explore the main mechanisms of haze-fog interaction. By conducting four parallel numerical experiments, we analyzed the effects of ARI, ACI, BC and non-BC aerosols.  
10 We find that BC played the key role in this fog-haze event by producing **favorable** local and regional meteorological conditions for the formation of advection-radiation fog in the YRD region.

First of all, evaluation of model performance shows that WRF-Chem can well capture the air pollution process and the fog episode. The simulated meteorological conditions, such as temperature, relative humidity and wind speed in the surface layer, agree well with the observations. However, when excluding the interaction between meteorology and aerosols, there are large  
15 biases in meteorological conditions and the fog cannot be reproduced. Our results support that intense atmospheric pollution can modify weather in previous studies (e.g., Ding et al. 2013b; Huang et al., 2016).

Comparison between ARI and ACI shows that the effect of ARI was dominant over the effect of **ACI in the surface meteorological condition in the early December**. The reason may be that during this haze pollution episode there was little cloud and ACI was very weak. Further analyses are made to reveal the different roles of BC and non-BC aerosols in the fog  
20 formation. The results show that they both contribute to the fog formation. However, non-BC aerosols have a relatively small contribution by decreasing temperature in the surface layer, while BC has a larger contribution by significantly increasing moisture in this layer. The radiative effect of BC was to reduce the local surface evaporation, which can reduce the air moisture, but BC-induced circulation anomalies could increase moisture by enhanced advection between land and sea.

The mechanism of BC-induced moisture advection was explored based on detailed analysis of **modelling** results from different  
25 experiments. High loading of BC in the YRD region and the nearby offshore area exerted a dome effect on the PBL, which directly increased moisture over the sea by reducing PBLH and weakening vertical mixing, because more water vapor was confined in the lower part of a shallow PBL. The regional warming effect of BC on the air temperature led to a low-pressure perturbation in this area, and consequently resulted in a cyclonic anomaly in wind field. The cyclonic anomaly enhanced the onshore flow, which brought more moisture from the sea into the YRD region in the north during the daytime. Then the  
30 increased moisture helped to form a heavy advection-radiation fog during night time. Meanwhile, the dome effect of BC produced lower PBLH and weaker vertical mixing in the daytime. These were favorable for maintaining high moisture in the daytime and the formation of fog in the night.



This study highlights a complexity of interaction among ARI, regional circulation and PBL, in which the effect of BC is very important in the fog formation of the YRD region in early December 2013, and suggests that in heavy polluted area the numerical weather prediction model should include the feedback processes, especially those induced by radiatively active species like BC.

5

Acknowledgements The work is supported by National Natural Science Foundation of China (91544231) and Ministry of Science and Technology of China (2016YFC0200500). We are grateful to the High-Performance Computing & Massive Data Center (HPC&MDC) of School of Atmospheric Science, Nanjing University for supporting the numerical calculations in this paper. The reanalysis and observational datasets used in this work are available at NCDC dataset (<https://gis.ncdc.noaa.gov/maps/ncei/cdo/hourly>), CNEMC observation (<http://106.37.208.233:20035/>) and atmospheric sounding dataset from Earth Observing Laboratory of NCAR (<http://weather.uwyo.edu/upperair/sounding.html>).

10

## References

- Abdul-Razzak, H., and Ghan, S. J.: A Parameterization of Aerosol Activation. 3. Sectional Representation, *J. Geophys. Res.*, 107(D3), 4026, doi:10.1029/2001JD000483, 2002.
- 15 Andersson, A., Deng, J., Ke, D., Zheng, M., Yan, C., Sköld, M., and Gustafsson, Ö.: Regionally-varying combustion sources of the January 2013 severe haze events over eastern China, *Environ. Sci. Technol.*, 49, 2038–2043, doi:10.1021/es503855e, 2015.
- Bond, T. C., Doherty, S. J., Fahey, D. W., Forster, P. M., Berntsen, T., DeAngelo, B. J., Flanner, M. G., Ghan, S., Karcher, B., Koch, D., Kinne, S., Kondo, Y., Quinn, P. K., Sarofim, M. C., Schultz, M. G., Schulz, M., Venkataraman, C., Zhang, H., Zhang, S., Bellouin, N., Guttikunda, S. K., Hopke, P. K., Jacobson, M. Z., Kaiser, J. W., Klimont, Z., Lohmann, U., Schwarz, J. P., Shindell, D., Storz, T., Warren, S. G., and Zender, C. S.: Bounding the role of black carbon in the climate system: A scientific assessment, *J. Geophys. Res.-Atmos.*, 118, 5380–5552, <https://doi.org/10.1002/jgrd.50171>, 2013.
- 20 Bott, A.: On the influence of the physico-chemical properties of aerosols on the life cycle of radiation fogs, *J. Aerosol. Sci.*, 21, 1-31, doi:10.1007/BF00119960, 1990.
- 25 Chapman, E. G., Gustafson Jr., W. I., Easter, R. C., Barnard, J. C., Ghan, S. J., Pekour, M. S., and Fast, J. D.: Coupling aerosol-cloud-radiative processes in the WRF-Chem model: Investigating the radiative impact of elevated point sources, *Atmos. Chem. Phys.*, 9, 945–964, doi:10.5194/acp-9-945-2009, 2009.
- Chen, F. and Dudhia, J.: Coupling an advanced land surface hydrology model with the Penn State-NCAR MM5 modeling system – Part I: Model implementation and sensitivity, *Mon. Weather Rev.*, 129, 569–585, 2001.
- 30 Chen, F., Kusaka, H., Bornstein, R., Ching, J., Grimmond, C. S. B., Grossman-Clarke, S., Loridan, T., Manning, K., Martilli, A., Miao, S., Sailor, D., Salamanca, F., Taha, H., Tewari, M., Wang, X., Wyszogrodzki, A., and Zhang, C.: The integrated

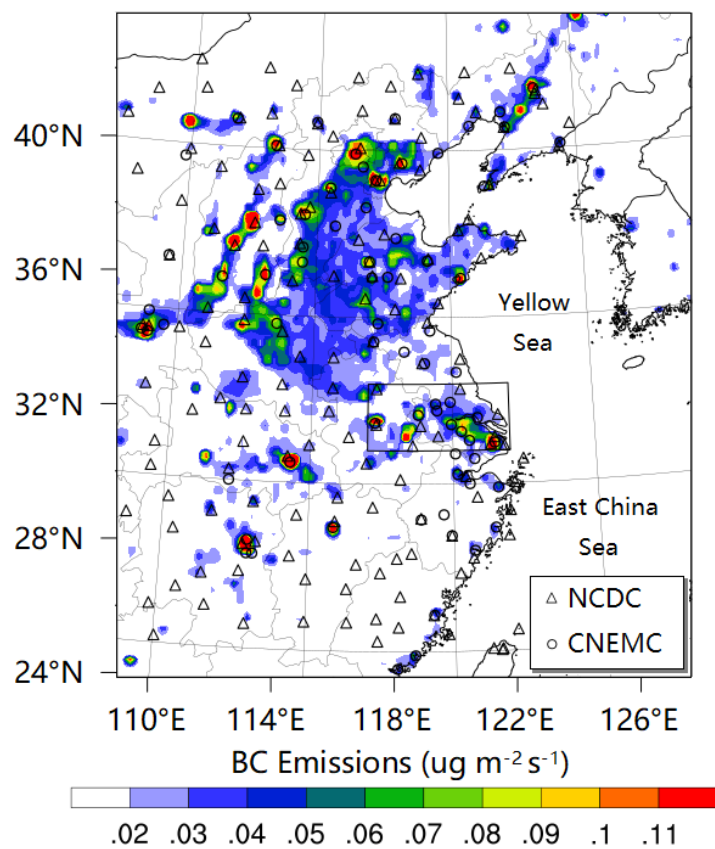
- WRF/urban modeling system: development, evaluation, and applications to urban environmental problems. *Int. J. Climatol.*, 31, 273-288. doi:10.1002/joc.2158, 2011.
- Cheng, Y., Zheng, G., Wei, C., Mu, Q., Zheng, B., Wang, Z., Gao, M., Zhang, Q., He Q., Carmichael, G., Pöschl, U. and Su, H.: Reactive nitrogen chemistry in aerosol water as a source of sulfate during haze events in China, *Sci. Adv.*, 2, 12, e1601530, doi: 10.1126/sciadv.1601530, 2016.
- Dall'Osto, M., Harrison, R. M., Coe, H., and Williams, P.: Real-time secondary aerosol formation during a fog event in London, *Atmos. Chem. Phys.*, 9, 2459-2469, <https://doi.org/10.5194/acp-9-2459-2009>, 2009.
- Ding, A. J., Fu, C. B., Yang, X. Q., Sun, J. N., Zheng, L. F., Xie, Y. N., Herrmann, E., Nie, W., Petäjä, T., Kerminen, V.-M., and Kulmala, M.: Ozone and fine particle in the western Yangtze River Delta: an overview of 1 yr data at the SORPES station, *Atmos. Chem. Phys.*, 13, 5813-5830, <https://doi.org/10.5194/acp-13-5813-2013>, 2013a.
- Ding, A. J., Fu, C. B., Yang, X. Q., Sun, J. N., Petäjä, T., Kerminen, V. M., Wang, T., Xie, Y., Herrmann, E., Zheng, L. F., Nie, W., Liu, Q., Wei, X. L., and Kulmala, M.: Intense atmospheric pollution modifies weather: a case of mixed biomass burning with fossil fuel combustion pollution in eastern China, *Atmos. Chem. Phys.*, 13, 10545-10554, <https://doi.org/10.5194/acp-13-10545-2013>, 2013b.
- Ding, A. J., Huang, X., Nie, W., Sun, J. N., Kerminen, V. M., Petäjä, T., Su, H., Cheng, Y. F., Yang, X. Q., Wang, M. H., Chi, X. G., Wang, J. P., Virkkula, A., Guo, W. D., Yuan, J., Wang, S. Y., Zhang, R. J., Wu, Y. F., Song, Y., Zhu, T., Zilitinkevich, S., Kulmala, M., and Fu, C. B.: Enhanced haze pollution by black carbon in megacities in China, *Geophys. Res. Lett.*, 43, <https://doi.org/10.1002/2016GL067745>, 2016a.
- Ding, A., Nie, W., Huang, X., Chi, X., Sun, J., Kerminen, V.-M., Xu, Z., Guo, W., Petäjä, T., Yang, X., Kulmala, M. and Fu, C.: Long-term observation of air pollution-weather/climate interactions at the SORPES station: a review and outlook, *Front. Environ. Sci. Eng.*, 10 (5): 15, di:10.1007/s11783-016-0877-3, 2016b.
- Emmons, L. K., Walters, S., Hess, P. G., Lamarque, J.-F., Pfister, G. G., Fillmore, D., Granier, C., Guenther, A., Kinnison, D., Laepple, T., Orlando, J., Tie, X., Tyndall, G., Wiedinmyer, C., Baughcum, S. L., and Kloster, S.: Description and evaluation of the Model for Ozone and Related chemical Tracers, version 4 (MOZART-4), *Geosci. Model Dev.*, 3, 43–67, <https://doi.org/10.5194/gmd-3-43-2010>, 2010
- Fast, J. D., Gustafson, Jr., W. I., Easter, R. C., Zaveri, R. A., Barnard, J. C., Chapman, E. G., Grell, G. A., and Peckham, S. E.: Evolution of Ozone, Particulates and Aerosol Direct Radiative Forcing in the Vicinity of Houston Using a Fully Coupled Meteorology-Chemistry-Aerosol Model, *J. Geophys. Res.*, 111, D21305, doi:10.1029/2005JD006721, 2006.
- Gao, Y., Zhang, M., Liu, Z., Wang, L., Wang, P., Xia, X., Tao, M., and Zhu, L.: Modeling the feedback between aerosol and meteorological variables in the atmospheric boundary layer during a severe fog–haze event over the North China Plain, *Atmos. Chem. Phys.*, 15, 4279-4295, <https://doi.org/10.5194/acp-15-4279-2015>, 2015.
- Graedel, T. E., Weschler, C. J., and Mandich, M. L.: Influence of transition metal complexes on atmospheric droplet acidity, *Nature*, 317, 240-242, doi: 10.1038/317240a0, 1985.

- Grell, G. A., and Devenyi, D.: A generalized approach to parameterizing convection combining ensemble and data assimilation, *Geophys. Res. Lett.*, 29, 587-590, doi: 10.1029/2002GL015311, 2002.
- Grell, G. A., Peckham, S. E., Schmitz, R., Mckeen, S. A., Frost, G., Skamarock, K., and Eder, B.: Fully coupled “online” chemistry within the WRF model, *Atmos. Environ.*, 39, 6957–6975, 2005.
- 5 Guenther, A., Karl, T., Harley, P., Wiedinmyer, C., Palmer, P. I., and Geron, C.: Estimates of global terrestrial isoprene emissions using MEGAN (Model of Emissions of Gases and Aerosols from Nature), *Atmos. Chem. Phys.*, 6, 3181-3210, <https://doi.org/10.5194/acp-6-3181-2006>, 2006.
- Gultepe, I., Tardif, R., Michaelides, S. C., Cermak, J., Bott, A., Bendix, J., Müller, M. D., Pagowski, M., Hansen, B., and Ellrod, G.: Fog Research: A Review of Past Achievements and Future Perspectives, *Pure. Appl. Geophys.*, 164, 1121-1159, doi:10.1007/s00024-007-0211-x, 2007.
- 10 Guo, L. J. , Guo, X. L. , Fang, C. G. , and Zhu, S. C.: Observation analysis on characteristics of formation, evolution and transition of a long-lasting severe fog and haze episode in North China, *Sci. China. Earth. Sci.*, 58, 329-344, doi:10.1007/s11430-014-4924-2 ,2015.
- Huang, X., Ding, A., Liu, L., Liu, Q., Ding, K., Niu, X., Nie, W., Xu, Z., Chi, X., Wang, M., Sun, J., Guo, W., and Fu, C.: Effects of aerosol–radiation interaction on precipitation during biomass-burning season in East China, *Atmos. Chem. Phys.*, 16, 10063-10082, <https://doi.org/10.5194/acp-16-10063-2016>, 2016.
- 15 Huang, X., Wang, Z. L., and Ding, A. J.: Impact of Aerosol-PBL Interaction on Haze Pollution: Multi-Year Observational Evidences in North China, *Geophys. Res. Lett.*, 45, <https://doi.org/10.1002/2018GL079239>, 2018.
- Hudson, J. G.: Relationship Between Fog Condensation Nuclei and Fog Microstructure, *J. Atmos. Sci.*, 37, 1854-1867, doi: 10.1175/1520-0469(1980)037<1854:0.CO;2>2.0.CO;2, 1980.
- 20 Iacono, M. J., Delamere, J. S., Mlawer, E. J., Shephard, M. W., Clough, S. A., and Collins, W. D.: Radiative forcing by long-lived greenhouse gases: Calculations with the AER radiative transfer models, *J. Geophys. Res.*, 113, D13103, <https://doi.org/10.1029/2008JD009944>, 2008.
- Janssens-Maenhout, G., Crippa, M., Guizzardi, D., Dentener, F., Muntean, M., Pouliot, G., Keating, T., Zhang, Q., Kurokawa, J., Wankmüller, R., Denier van der Gon, H., Kuenen, J. J. P., Klimont, Z., Frost, G., Darras, S., Koffi, B., and Li, M.: HTAP\_v2.2: a mosaic of regional and global emission grid maps for 2008 and 2010 to study hemispheric transport of air pollution, *Atmos. Chem. Phys.*, 15, 11411-11432, <https://doi.org/10.5194/acp-15-11411-2015>, 2015.
- 25 Jones, A., Roberts, D. L., and Slingo, A.: A Climate Model Study of Indirect Radiative Forcing by Anthropogenic Sulphate Aerosols, *Nature*, 370, 450–453, doi: 10.1038/370450a0, 1994.
- 30 Kuroiwa, D.: Electron-microscope study of fog nuclei, *J. Atmos. Sci.*, 8, doi:10.1175/1520-0469(1951)008<0157:emsofn>2.0.co;2, 1951.
- Lane, T. E., Donahue, N. M., and Pandis, S. N.: Simulating secondary organic aerosol formation using the volatility basis-set approach in a chemical transport model, *Atmos. Environ.*, 42(32), 7439–7451, doi: 10.1016/j.atmosenv.2008.06.026, 2008.

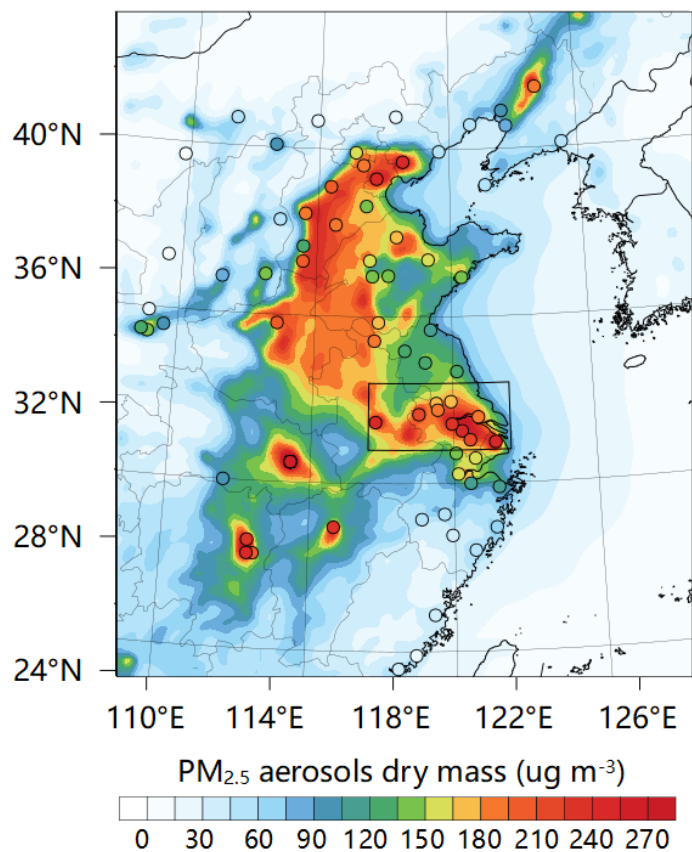
- Lin, C., Zhang, Z., Zhao, P. U., and Wang, F.: Numerical simulations of an advection fog event over shanghai pudong international air-port with the WRF model. *J. Meteorol. Res-PRC*, 31(5), 874-889, doi: 10.1007/s13351-017-6187-2, 2017.
- Liu, X. Y., Zhang, Y., Zhang, Q., and He, K. B.: Application of online-coupled WRF/Chem-MADRID in East Asia: Model evaluation and climatic effects of anthropogenic aerosols, *Atmos. Environ.*, 124, doi:321-336,10.1007/s13351-017-6187-2, 5 2016.
- Lou, S., Yang, H., Wang, S. J., Smith, Y., Qian, and P. J. Rasch, Black carbon amplifies haze over the North China Plain by weakening the East Asian winter monsoon, *Geophys. Res. Lett.*, 46, 452–460, doi: 10.1029/2018GL080941, 2019.
- Morrison, H., Thompson, G., and Tatarskii, V.: Impact of cloud microphysics on the development of trailing stratiform precipitation in a simulated squall line: comparison of one- and two-moment schemes, *Mon. Weather Rev.*, 137, 991–1007, 10 doi:10.1175/2008MWR2556.1, 2009.
- Munger, J. W., Jacob, D. J., Waldman, J. M., and Hoffmann, M. R.: Fog water Chemistry in an Urban Atmosphere, *J. Geophys. Res. Oceans.*, 88, doi: 5109-5121,10.1029/JC088iC09p05109, 1983.
- Nakanishi, M., and Niino, H.: An Improved Mellor–Yamada Level-3 Model: Its Numerical Stability and Application to a Regional Prediction of Advection Fog, *Bound-Lay. Meteorol.*, 119, 397-407, doi: 10.1007/s10546-005-9030-8, 2006.
- 15 Niu, F., Li, Z., Li, C., Lee, K. H., and Wang, M.: Increase of wintertime fog in China: Potential impacts of weakening of the Eastern Asian monsoon circulation and increasing aerosol loading, *J. Geophys. Res.-Atmos.*, 115, D00K20, <https://doi.org/10.1029/2009JD01348>, 2010.
- Niu, S., Lu, C., Yu, H., Zhao, L., and Lu, J.: Fog research in China: An overview. *Adv. Atmos. Sci.*, 27, 639–662, doi: 10.1007/s00376-009-8174-8, 2010.
- 20 Qin, Y., and Xie, S. D.: Spatial and temporal variation of anthropogenic black carbon emissions in China for the period 1980–2009, *Atmos. Chem. Phys.*, 12, 4825–4841, 2012.
- Ryznar, E.: Advection-radiation fog near lake Michigan, *Atmos. Environ.*, 11, 427-430, doi: 10.1016/0004-6981(77)90004-X, 1977.
- Shi, C., Yang, J., Qiu, M., Hao, Z., Su, Z., and Li, Z.: Analysis of an extremely dense regional fog event in Eastern China 25 using a mesoscale model, *Atmos. Res.*, 95, 428-440, doi: 10.1016/j.atmosres.2009.11.006, 2010.
- Steenefeld, G. J., Ronda, R. J., and Holtslag, A. A. M.: The Challenge of Forecasting the Onset and Development of Radiation Fog Using Mesoscale Atmospheric Models, *Bound-Lay. Meteorol.*, 154, 265-289, doi:10.1007/s10546-014-9973-8, 2015.
- Sun, K., Liu, H., Wang, X., Peng, Z., and Xiong, Z.: The aerosol radiative effect on a severe haze episode in the Yangtze River Delta, *J. Meteorol. Res-PRC*, 31, 865-873, doi: 10.1007/s13351-017-7007-4, 2017.
- 30 Tie, X., Madronich, S., Walters, S., Rasch, P., and Collins, W.: Effect of Clouds on photolysis and oxidants in the troposphere, *J. Geophys. Res.*, 108, 4642, doi:10.1029/2003JD003659, 2003.
- Wang, H., Shi, G. Y., Zhang, X. Y., Gong, S. L., Tan, S. C., Chen, B., Che, H. Z., and Li, T.: Mesoscale modelling study of the interactions between aerosols and PBL meteorology during a haze episode in China Jing–Jin–Ji and its near surrounding

- region – Part 2: Aerosols' radiative feedback effects, *Atmos. Chem. Phys.*, 15, 3277-3287, <https://doi.org/10.5194/acp-15-3277-2015>, 2015.
- Wang, J., Wang, S., Jiang, J., Ding, A., Mei, Z., Zhao, B., Wong, D. C., Wei, Z., Zheng, G., and Long, W.: Impact of aerosol–meteorology interactions on fine particle pollution during China’s severe haze episode in January 2013, *Environ. Res. Lett.*, 9, 094002, doi:10.1088/1748-9326/9/9/094002, 2014.
- Wang, K., Zhang, Y., Yahya, K., Wu, S. Y., and Grell, G.: Implementation and initial application of new chemistry-aerosol options in WRF/Chem for simulating secondary organic aerosols and aerosol indirect effects for regional air quality, *Atmos. Environ.*, 115, 716-732, doi: 10.1016/j.atmosenv.2014.12.007, 2015.
- Wang, G. et al., Persistent sulfate formation from London Fog to Chinese haze, *PNAS*, 13630-13635, 113, 48, 2016.
- 10 Wang, Y., Guo, J. Wang, T., Ding, A., Gao, J., Zhou, Y., Collett, J. L. Jr., and Wang, W.: Influence of regional pollution and sandstorms on the chemical composition of cloud/fog at the summit of Mt. Taishan in northern China, *Atmos. Res.*, 99 (3-4), 434-442, doi: 10.1016/j.atmosres.2010.11.010, 2011.
- Wang, Z., Huang, X., and Ding, A.: Dome effect of black carbon and its key influencing factors: a one-dimensional modelling study, *Atmos. Chem. Phys.*, 18, 2821-2834, <https://doi.org/10.5194/acp-18-2821-2018>, 2018.
- 15 Wobrock, W., Schell, D., Maser, R., Kessel, M., Jaeschke, W., Fuzzi, S., Facchini, M. C., Orsi, G., Marzorati, A., and Winkler, P.: Meteorological characteristics of the Po Valley fog, *Tellus. B*, 44, 469-488, doi:10.1034/j.1600-0889.1992.t014-00003.x, 2010.
- Wu, D., Li, T. C., Ying, Z., Lau, K. H., Huang, J., Deng, X., and Bi, X.: An extremely low visibility event over the Guangzhou region: A case study, *Atmos. Environ.*, 39, 6568-6577, doi: 10.1016/j.atmosenv.2005.07.061, 2005.
- 20 Xie, Y., Ding, A., Nie, W., Mao, H., Qi, X., Huang, X., Xu, Z., Kerminen, V.-M. Petäjä, T., Chi, X., Virkkula, A., Boy, M., Xue, L., Guo, J., Sun, J., Yang, X., Kulmala, M., and Fu, C.: Enhanced sulfate formation by nitrogen dioxide: implications from in situ observations at the SORPES station, *J. Geophys. Res. -Atmos.*, 120, 24, 12679-12694, doi: 10.1002/2015JD023607, 2015.
- Yang, J., Xie, Y. J., Shi, C. E., Liu, D. Y., Niu, S. J., and Li, Z. H.: Ion Composition of Fog Water and Its Relation to Air Pollutants during Winter Fog Events in Nanjing, China, *Pure. Appl. Geophys.*, 169, 1037-1052, doi:10.1007/s00024-011-0342-y, 2012.
- 25 Yang, Y., S. J. Smith, H. Wang, C. M. Mills, and P. J. Rasch, Variability and timescales in the climate response to black carbon emissions, *Atmos. Chem. Phys.*, 19, 2405-2420, doi:10.5194/acp-19-2405-2019, 2019.
- Yu, H., Liu, S. C., and Dickinson, R. E.: Radiative effects of aerosols on the evolution of the atmospheric boundary layer, *J. Geophys. Res. -Atmos.*, 107, AAC-1-AAC 3-14, doi:10.1029/2001JD000754, 2002.
- 30 Yuskiewicz, B. A., Orsini, D., Stratmann, F., Wendisch, M., Wiedensohler, A., Heintzenberg, J., Martinsson, B. G., Frank, G., Wobrock, W., and Schell, D.: Changes in submicrometer particle distributions and light scattering during haze and fog events in a highly polluted environment, *Contrib. Atmos. Phys.*, 71, 33-45, 1998.

- Zaveri, R. A., Easter, R. C., Fast, J. D., and Peters, L. K.: Model for simulating aerosol interactions and chemistry (MOSAIC), *J. Geophys. Res.*, 113, D13204, <https://doi.org/10.1029/2007JD008782>, 2008.
- Zhang, B., Wang, Y., and Hao, J.: Simulating aerosol–radiation–cloud feedbacks on meteorology and air quality over eastern China under severe haze conditions in winter, *Atmos. Chem. Phys.*, 15, 2387-2404, <https://doi.org/10.5194/acp-15-2387-2015>,  
5 2015.
- Zhang, R. H., Li, Q., and Zhang, R. N.: Meteorological conditions for the persistent severe fog and haze event over eastern China in January 2013, *Science China Earth Sciences*, 57, 26-35, doi:10.1007/s11430-013-4774-3 ,2014.
- Zhang, Y., Ding, A., Mao, H., Nie, W., Zhou, D., Liu, L., Huang, X., and Fu, C.: Impact of synoptic weather patterns and inter-decadal climate variability on air quality in the North China Plain during 1980-2013, *Atmos. Environ.*, 124, 119-128,  
10 2016.
- Zhao, X. J., Zhao, P. S., Xu, J., Meng, W., Pu, W. W., Dong, F., He, D., and Shi, Q. F.: Analysis of a winter regional haze event and its formation mechanism in the North China Plain, *Atmos. Chem. Phys.*, 13, 5685-5696, <https://doi.org/10.5194/acp-13-5685-2013>, 2013.
- Zhao, C., Liu, X., Leung, L. R., Johnson, B., McFarlane, S. A., Gustafson Jr., W. I., Fast, J. D., and Easter, R.: The spatial  
15 distribution of mineral dust and its shortwave radiative forcing over North Africa: modeling sensitivities to dust emissions and aerosol size treatments, *Atmos. Chem. Phys.*, 10, 8821-8838, <https://doi.org/10.5194/acp-10-8821-2010>, 2010.
- Zheng, G. J., Duan, F. K., Su, H., Ma, Y. L., Cheng, Y., Zheng, B., Zhang, Q., Huang, T., Kimoto, T., Chang, D., Pöschl, U., Cheng, Y. F., and He, K. B.: Exploring the severe winter haze in Beijing: the impact of synoptic weather, regional transport and heterogeneous reactions, *Atmos. Chem. Phys.*, 15, 2969-2983, <https://doi.org/10.5194/acp-15-2969-2015>, 2015.
- 20 Zou, J., J. N. Sun, A. J. Ding, M. H. Wang, W. D. Guo, and C. B. Fu.: Observation-based estimation of aerosol-induced reduction of planetary boundary layer height. *Adv. Atmos. Sci.*, 34(9), 1057–1068, doi: 10.1007/s00376- 016-6259-8, 2017.



5 **Figure 1: A map showing the WRF-Chem model domain, BC emission and observation sites for meteorological parameters and air pollutants. Color filled contours represent the BC emission from EDGAR-HTAP dataset. The triangles represent the locations of 153 meteorological stations over eastern China from NCDC, and the circles represent the locations of the 74 cities from where the pollutant observations are recorded. The rectangle denotes the YRD region.**



**Figure 2. Spatial distribution of simulated (colored area) and observed (color coded dots) mean PM<sub>2.5</sub> concentrations during 1-10 December 2013 over eastern China. The black rectangle denotes the YRD region.**



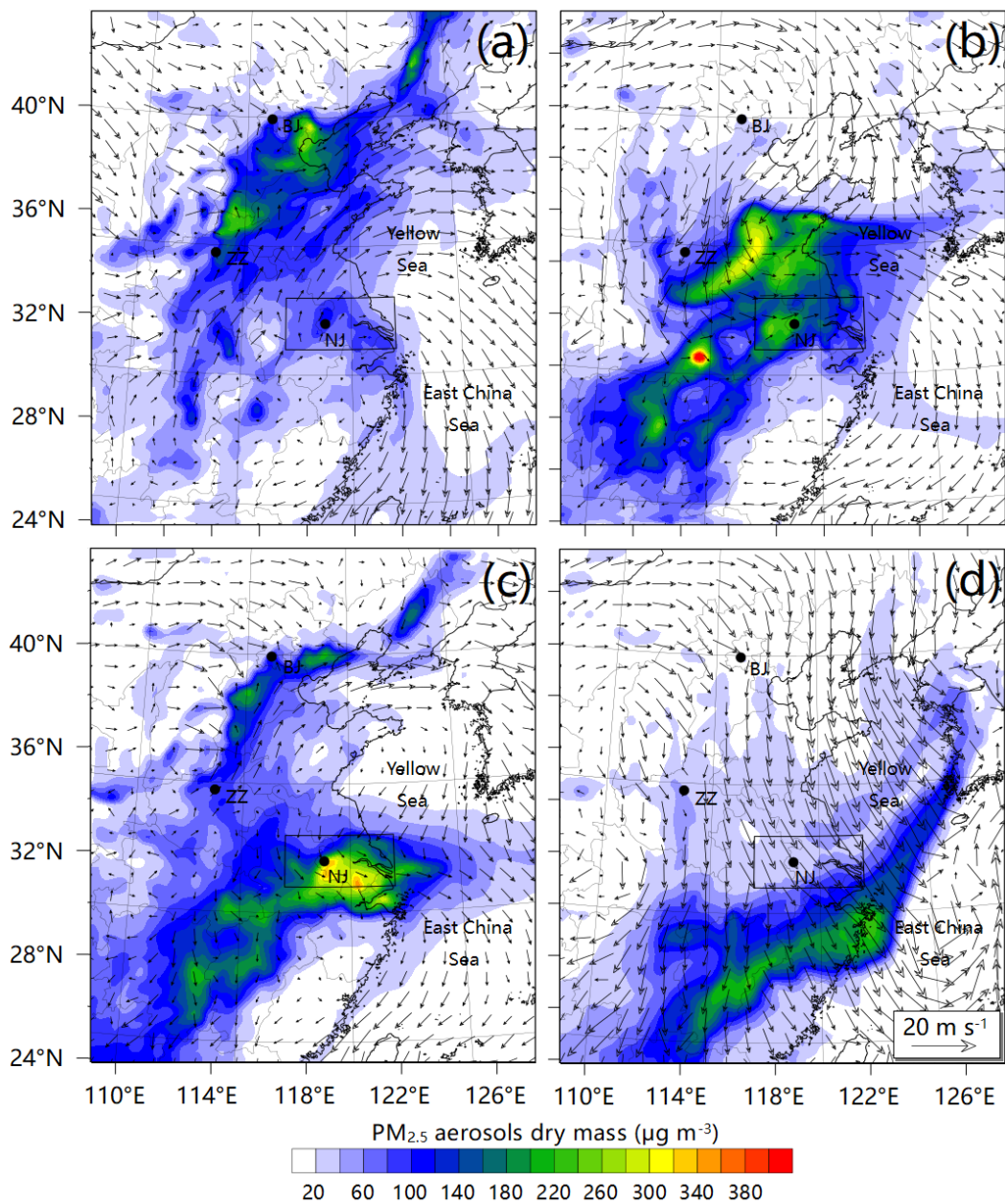
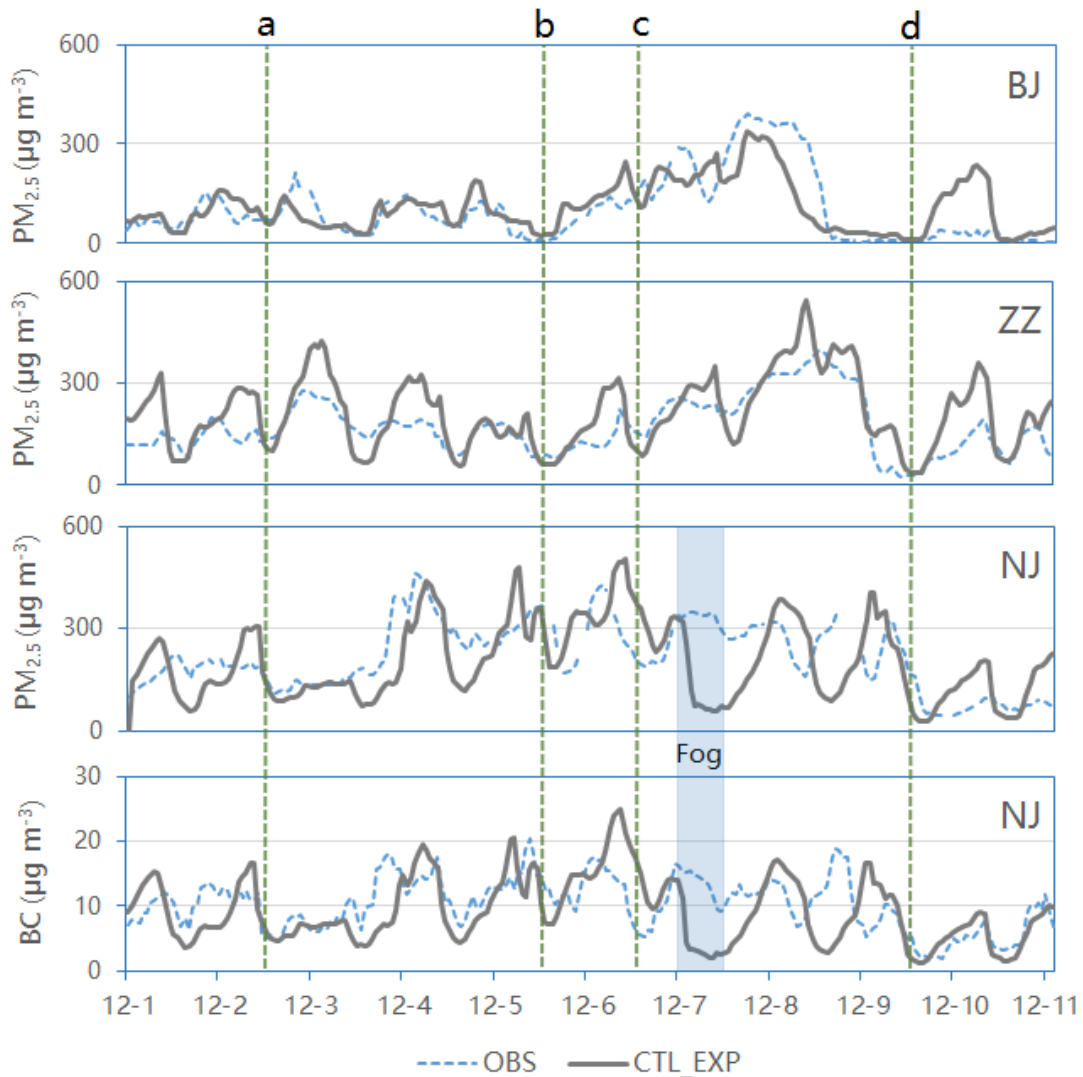
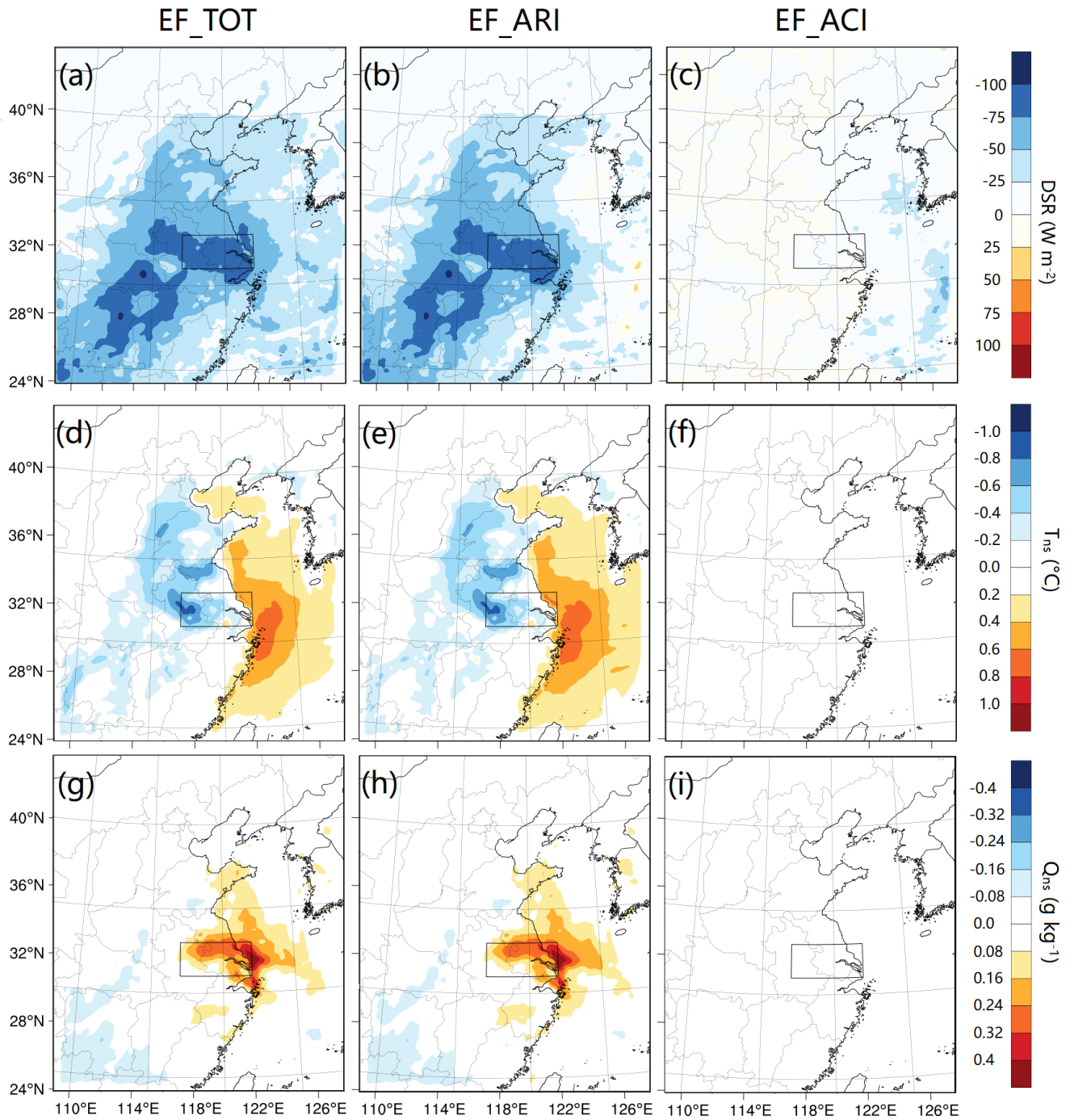


Figure 3. Spatial distribution of PM<sub>2.5</sub> mass concentration ( $\mu\text{g m}^{-3}$ ) and wind field ( $\text{m s}^{-1}$ ) near the ground surface from EXP\_CTL at 14:00 on 2 (a), 5 (b), 6 (c) and 9 (d) of December. The black rectangle denotes the YRD region, and the black dots represent locations of Beijing (BJ), Zhengzhou (ZZ) and Nanjing (NJ).

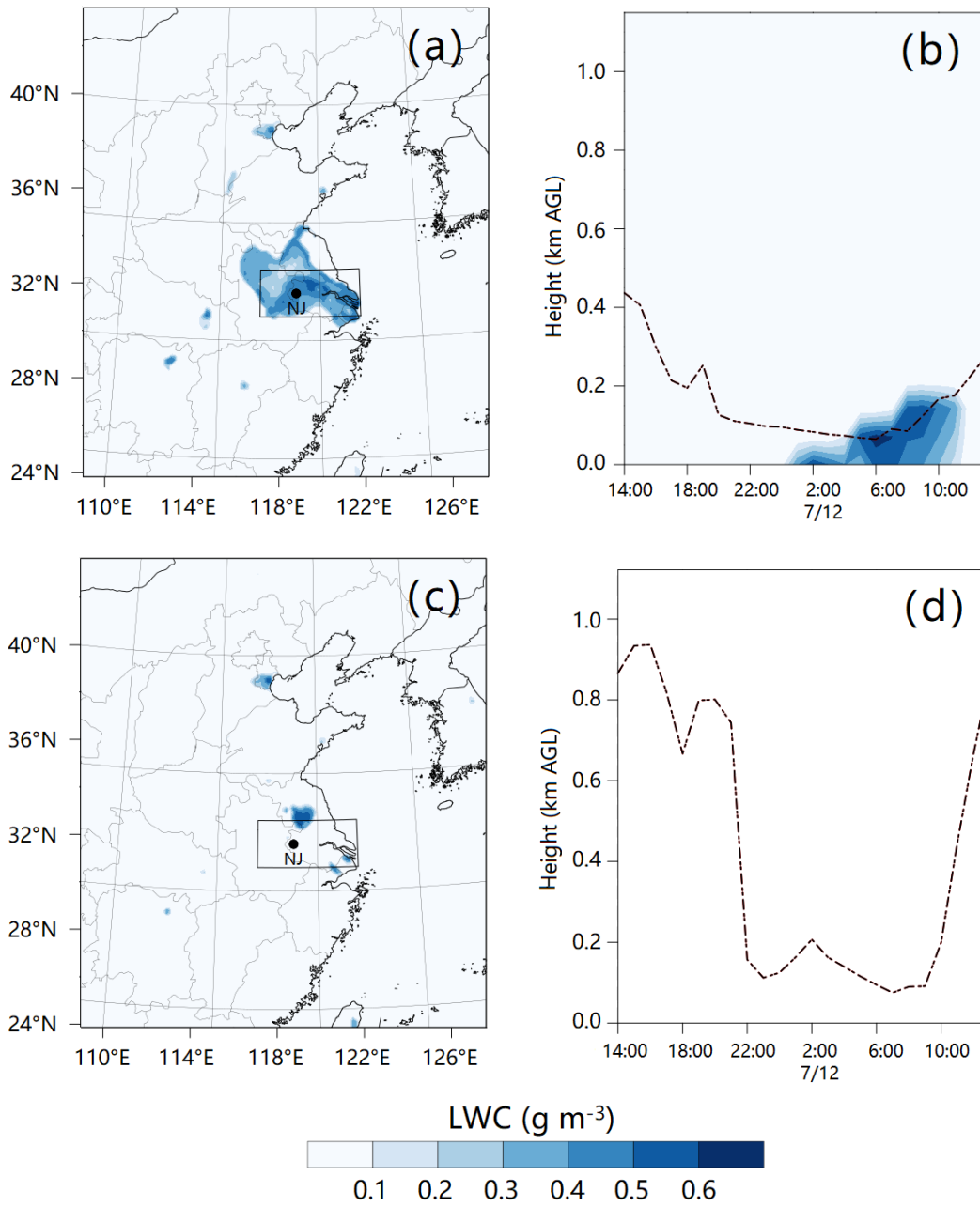


5 **Figure 4. Temporal variation of surface aerosol concentration in Beijing (BJ), Zhengzhou (ZZ), and Nanjing (NJ). Observational data (blue dashed line) of  $PM_{2.5}$  are from CNEMC and observational data of BC are from SORPES station in NJ. The simulated results are from EXP\_CTL. The vertical green dashed lines with label  $a - d$  denote the corresponding time as in Figs. 3a-d. The blue area denotes the duration of fog episode in YRD region.**



**Figure 5.** Average changes of DSR (upper),  $T_{ns}$  (middle) and  $Q_{ns}$  (lower) induced by EF\_TOT (left), EF\_ARI (middle) and EF\_ACI (right) in the daytime (08:00 – 17:00 LST) during 1-10 December 2013. The subscript “ns” represents “near the surface”, i.e., the

**surface layer. The physical properties are calculated from the simulated results at the lowest grid level (approximately 60 m above the ground).**



**Figure 6.** The distribution of  $LWC_{ns}$  from EXP\_CTL (a) and EXP\_NOAER (c) at 08:00 LST on 7 December, and the vertical distribution of LWC at Nanjing from EXP\_CTL (b) and EXP\_NOAER (d) varying from 14:00 LST on 6 December to 14:00 LST on 7 December. The dashed line denotes the PBLH.

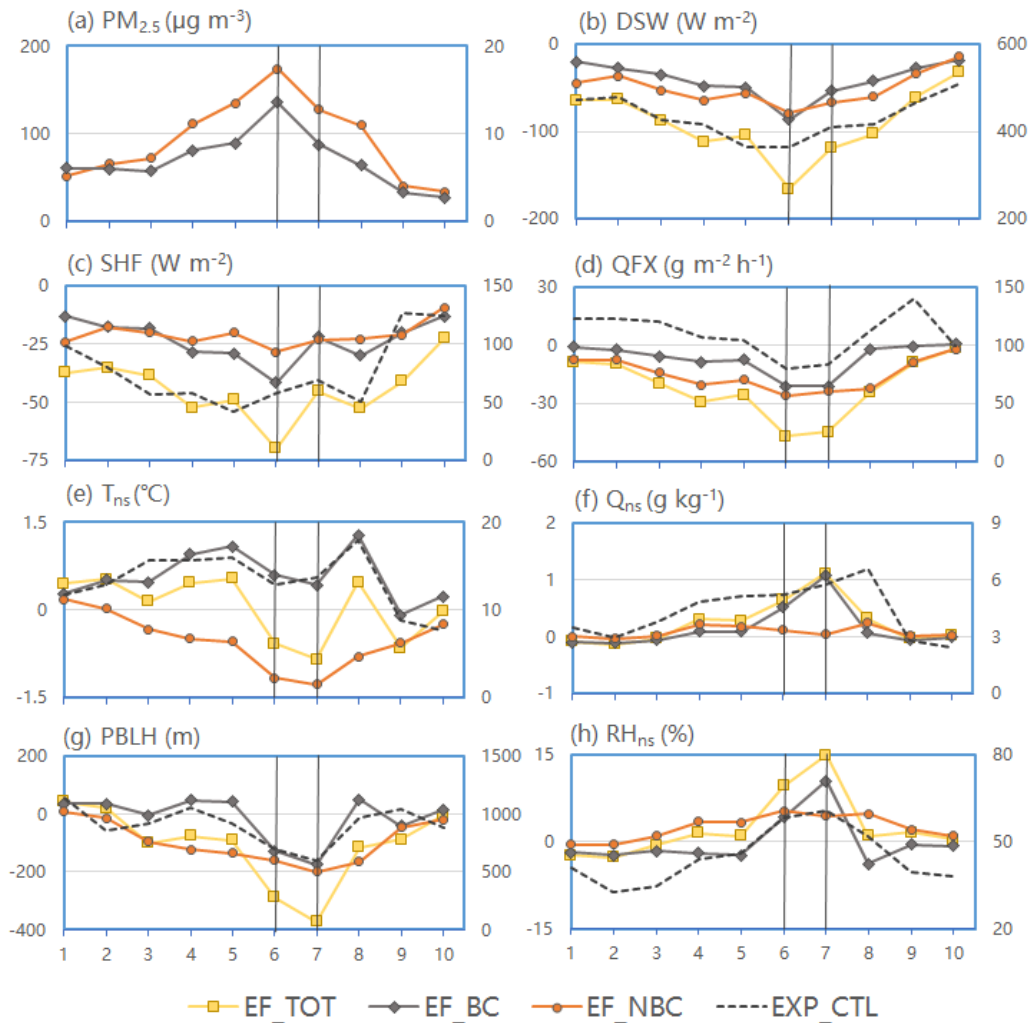
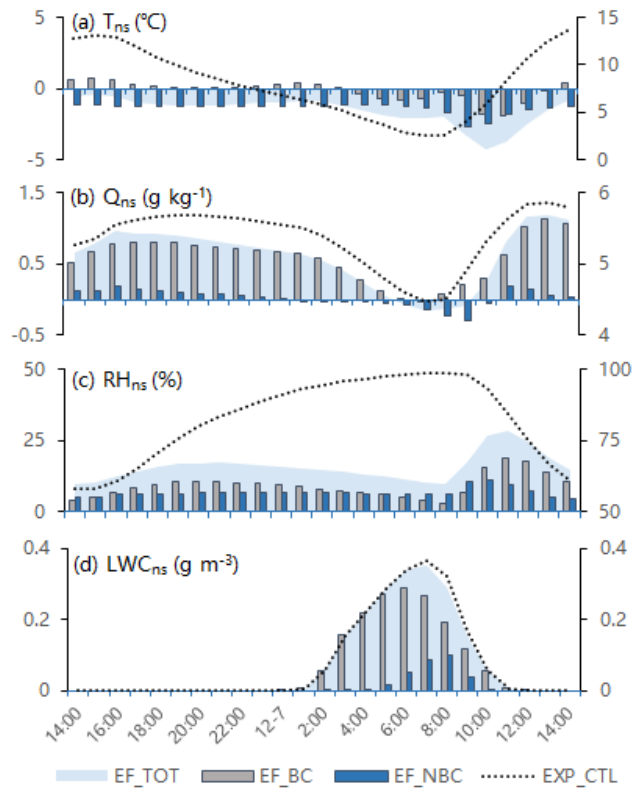


Figure 7. The contributions of EF\_TOT, EF\_BC, EF\_NBC to the change of surface layer properties (the magnitude is denoted by the left axis) at 14:00 LST in each day during 1-10 December 2013, and the results from EXP\_CTL (the magnitude is denoted by the right axis) are plotted in each panel as a conference. The data are calculated from the simulated results at the lowest grid level over the YRD region.

5



**Figure 8.** The temporal evolution of the contributions of EF\_TOT, EF\_BC, EF\_NBC to the change of  $T_{ns}$  (a),  $Q_{ns}$  (b),  $RH_{ns}$  (c) and  $LWC_{ns}$  (d) from 14:00 LST on 6 December to 14:00 LST on 7 in the YRD region (the magnitude is denoted by the left axis), and the results from EXP\_CTL (the magnitude is denoted by the right axis).

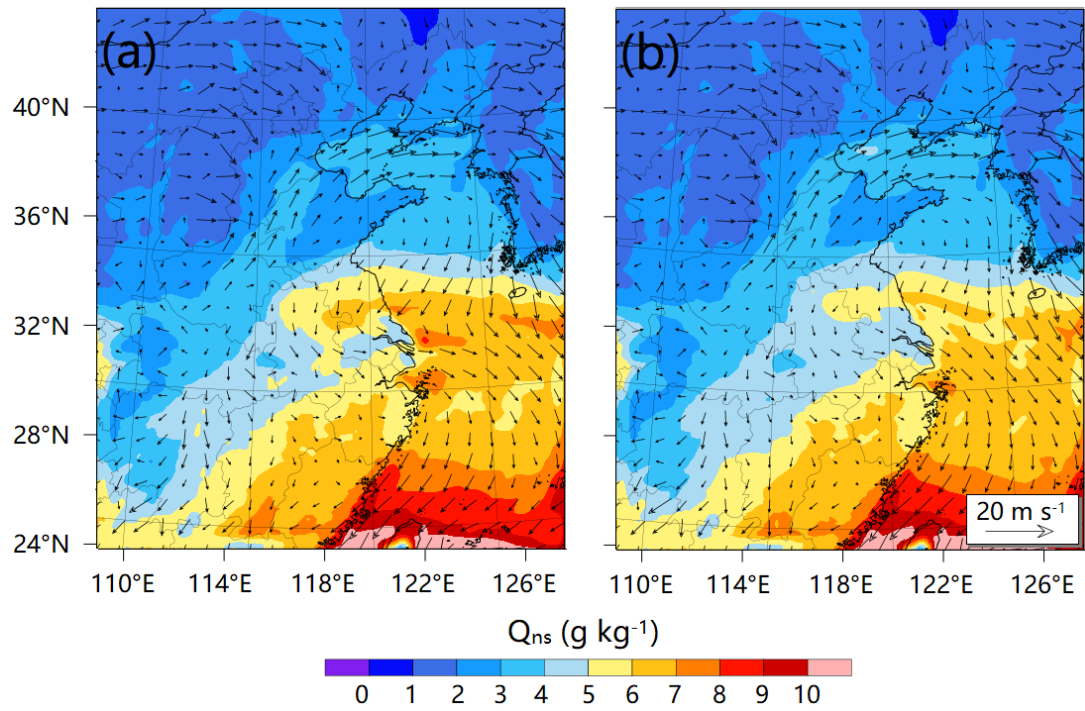


Figure 9. Spatial distribution of  $Q_{ns}$  (g kg<sup>-3</sup>) and  $V_{ns}$  (m s<sup>-1</sup>) from EXP\_CTL (a) and EXP\_NOBC (b) at 14:00 LST on 6 December.



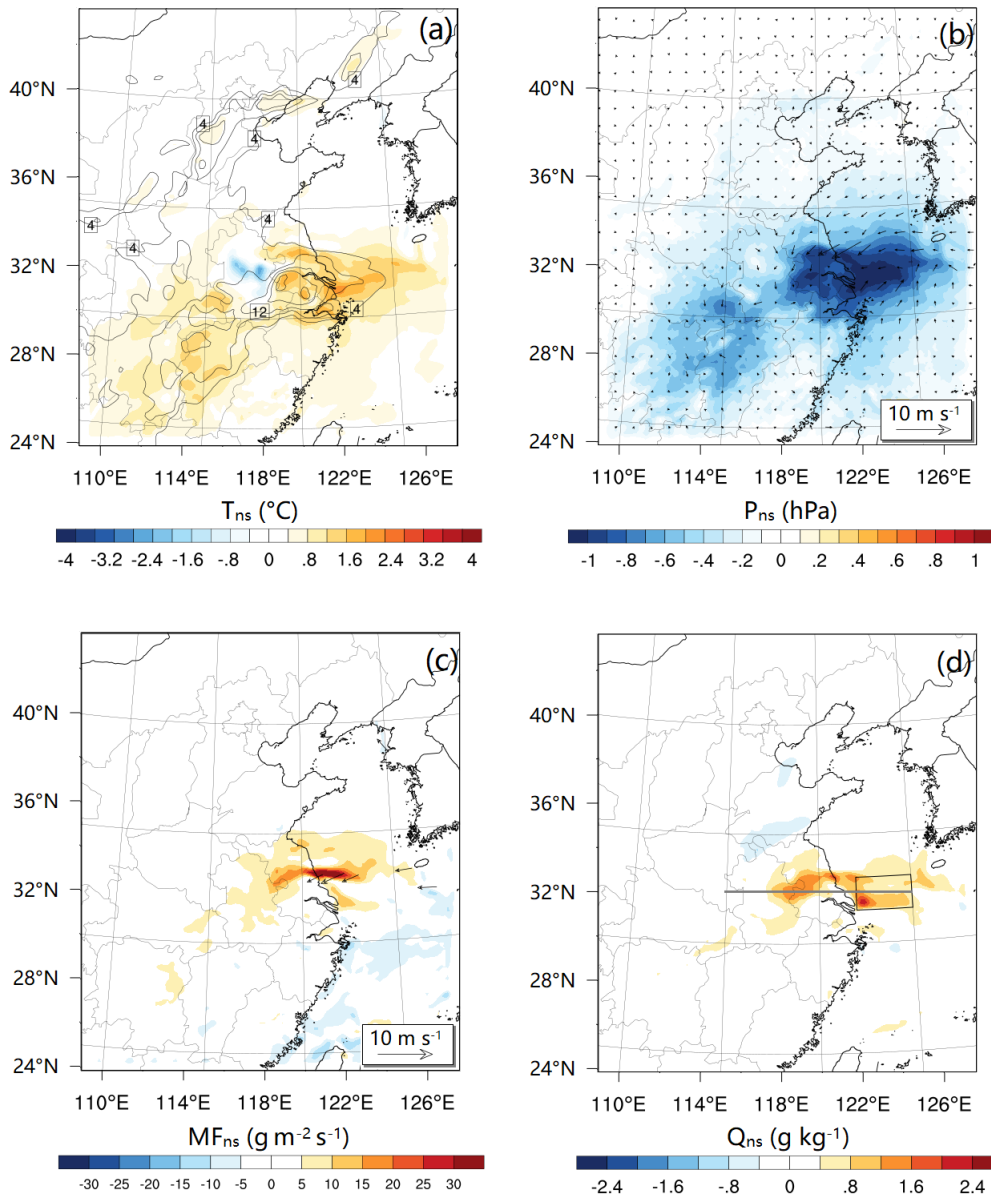


Figure 10. BC-introduced increase of air temperature (a), low-pressure perturbation and cyclonic anomaly in wind field (b), increase of moisture advection (c), and increase of water vapor mixing ratio (d) in the surface layer at 14:00 LST on 6 December. Arrows shown in (c) are the BC-induced velocity change with the magnitude larger than  $3 \text{ m s}^{-1}$ , which are used to represent the direction of enhanced horizontal moisture flux. The line in (d) denotes the location where the cross-section of BC-induced increase of temperature and moisture (as well as the PBLH in different experiments) is plotted in Fig. S5, and the rectangle denotes the offshore area, in which the average profiles of potential temperature and water vapor mixing ratio in EXP\_CTL and EXP\_NOBC are calculated and plotted in Fig. S6.

5

**Table 1.** WRF-Chem modelling configuration options

<b>Physics</b>	<b>Selected Schemes</b>
Microphysics	Morrison double-moment
Cumulus	Grell 3D ensemble
Radiation	RRTMG (LW&SW)
Land Surface	NOAH Land Surface Model
PBL	MYNN 2.5
Urban	Urban Canopy Model
<b>Chemistry</b>	<b>Selected Schemes</b>
Gas-phase	MOZART
Aerosol	4-bins MOSAIC with VBS
Photolysis	Madronich F-TUV
Dust	GOCART with AFWA
Biogenic	MEGAN 2

**Table 2.** Experiments and the effects of different aerosol feedback processes

<b>Experiments</b>	<b>Descriptions</b>	
EXP_CTL	complete emission and aerosol feedbacks	
EXP_NORAD	turn off aerosol radiative effect	
EXP_NOAER	turn off aerosol radiative and cloud effect	
EXP_NOBC	remove the emission of BC	
<b>Effect</b>	<b>Descriptions</b>	<b>Calculations</b>
EF_TOT	aerosol total impact	$EXP\_CTL - EXP\_NOAER$
EF_ARI	effect of ARI	$EXP\_CTL - EXP\_NORAD$
EF_ACI	effect of ACI	$EXP\_NORAD - EXP\_NOAER$
EF_BC	impact of BC	$EXP\_CTL - EXP\_NOBC$
EF_NBC	impact of Non-BC	$EXP\_NOBC - EXP\_NOAER$

**Table 3.** Statistics for evaluation of model (EXP\_CTL) performance against observations

<b>variables</b>	<b>Samples</b>	<b>Mean Sim.</b>	<b>Mean Obs.</b>	<b>MB</b>	<b>RMSE</b>	<b>R</b>
T2 (°C)	14588	4.65	5.41	-0.76	2.92	0.86
RH2 (%)	14586	60.28	60.20	-0.09	15.70	0.69
WS10 (m s <sup>-1</sup> )	13395	3.19	2.42	+0.78	1.87	0.56
PM <sub>2.5</sub> (µg m <sup>-3</sup> )	16201	159.07	150.19	+8.88	108.77	0.48