

We thank both reviewers for their thoughtful and constructive comments. In response to these, we have made a number of edits which we believe improve our manuscript. Attached, please find the reviewer's comments with our responses in bold. A marked-up revision of the manuscript is additionally attached, showing all changes (additions and subtractions) in response to reviewers, some minor grammatical edits, and a correction to the Figure 2 caption which was erroneously printed as the Table 2 caption. Unless otherwise specified, the line numbers cited below refer to this marked-up revised manuscript.

Anonymous Referee #1

Received and published: 21 March 2019

This manuscript presents the comparison of biomass burning aerosol optical properties namely single scattering albedo and Ångström exponents measured from in-situ and remote sensing instruments during ORACLES-2016 campaign. They presented two different case studies and found that SSA agrees within measurement uncertainties between multiple instruments. Furthermore, they found that instruments agreement is more robust if $AOD_{400} > 0.4$. Even though two case studies show agreement between instruments, campaign-wide average and range show values are highly variable between instruments.

Overall, this manuscript is well written. This work is an important contributor to connect in-situ and remote sensing measurement of biomass burning aerosol optical properties.

I have some comments for improving the manuscript and that should be considered before the publication.

Major Comments:

Even in 30s average data, PSAP shows variation in absorption by the factor of almost 6 while PTI shows about only 2. Even though, authors conclude this is due to the higher noise level in PTI but still they used PTI data to compare with remote sensing measurements. I don't get the whole point of doing that. Authors keep talking about the improvement in the PTI measurements for 2018 deployment given improved PTI data is not included in this study. I would recommend either using the data from 2018 PTI deployment or don't repeat the statement.

Thank you for the comment. This paper focuses exclusively on the 2016 deployment to allow for detailed case studies with the ER2-based instruments. Unfortunately, this limited us to the 2016-only PTI data. We believe, in the interest of completeness, it is valuable to examine the measured and archived 2016 PTI data within the context of the current paper, as it was a measure available during this campaign. However, we do agree with the reviewer's comment that given the QC state of the PTI data in 2016, the issues with these data should be made clearer. Following some internal discussion, we have reworded some of the text (p. 13, Line 13 – p. 14, Line 2) to more explicitly address the shortcomings with the 2016 PTI data. We have also moved the former Section 3.1/Figure 4 to the Appendix to de-emphasize its role, given its more suspect QC status relative to the other instruments. We believe it fits well in there, as it still presents a valuable comparison with the PSAP which places these data into context.

Increase in SSA at longer wavelengths in two 80m scan is concluded due to sea salt in the boundary layer. This fact is not evident in the AOD plot (Figure 6a). AOD for 4STAR (80 m) scan is larger than 1 km scan indicating there were absorbing aerosol on boundary layer too.

Thank you for this comment. The 4STAR is looking at the entire column above-aircraft, so the difference between the two does not mean that there was additional absorbing aerosol in the boundary layer specifically. In other words, since 4STAR sees all aerosol above the aircraft, the 80m scans are seeing boundary-layer aerosol in addition to the higher-altitude absorbing aerosol (original manuscript, p. 18, Line 30). Based on the in situ measurements observing only scattering and negligible absorption (original manuscript, p. 18, Lines 30-31), we infer that there was no significant absorbing aerosol within the boundary layer. The HSRL-2 data also support a pure marine aerosol classification within the boundary layer. The differences in AODs between the two sets of 4STAR sky scans may be due to some variability (~100s of meters, as seen by HSRL-2) in the geometric thickness of the plume, and/or measurement uncertainty. Due to this confusion, we have edited this section to make these points more clear (revised manuscript, p. 19, Lines 22-30; p. 20, Lines 33-35).

Why RSP is different than 4STAR 80 m? As expected, SSA from in situ may not exactly be correlated with remote sensing given an impact of RH, why two remote sensing method does not correlate at all (Figure 9c)? Authors should explore that in more depth than just present the result. I am not much worried about the inconsistency between in situ vs remote sensing but why AirMSPI vs 4STAR does not show correlation with any of the optical properties discussed in this study? For example, AAE measured by 4STAR shows variations between 0.8 to 1.8 while AirMSPI AAE lies between 1.2 to 1.4. Since their conclusion for this variation is higher uncertainty in derived AAE, it is better to do in depth uncertainty analysis than just to mention. Given the fact that tow remote sensing method has more inconsistency than the remote sensing and in situ, I recommend the author to explore similar relationship (as shown in figure 10) between remote sensing methods. What is the whole point of choosing remote sensing and in situ? Given in situ have unclear bias from the RH as discuss later by the authors. In addition, the difference should be mention in relative not in absolute.

Thank you for this comment. There may be a number of reasons why the remote sensing instruments report different values; i.e. 4STAR differs from RSP in Figures 5 and 6, as it also differs from AirMSPI in Figures 7 and 8). Indeed, exploring these differences is a main goal of this paper, and was previously discussed in some detail in Section 3.2.2 (original manuscript, p. 24). Each of the SSA products presented have different advantages and limitations, and make different assumptions for their given retrievals. In addition, the instruments will all differ in terms of instrument-specific errors, aerosol model assumption, a priori, and retrieval methods (a priori and retrieval methods play an important role when information content in the measurements is insufficient).

For example, for AirMSPI, the polarized radiances measured in the 470, 660, and 865 nm bands have less sensitivity to aerosol refractive index and coarse mode aerosol size than to aerosol loading and cloud microphysical properties. As a result, the AirMSPI retrieval accuracy of refractive index and coarse mode aerosol size distribution are subjected to greater measurement errors than the AOD and cloud microphysical part of the retrieval, which potentially leads to errors with SSA (cf. the error bars with SSA). Another contributing factor could be the effect of viewing geometry: it is not immediately evident that the information content of an observation above-aerosol looking down would be equivalent to that from an observation from below-aerosol looking up.

Additionally, it is important to note that there are only 9 cases with both 4STAR and AirMSPI (compared with 19 for 4STAR vs in situ). Thus, due to data availability, as well as the frequent study of in situ and AERONET retrievals of SSA in the literature, these are the two upon which we focus.

Regarding AAE specifically, considering that the AAE is function of SSA and AOD, and AAOD is a smaller fraction of AOD than is the scattering AOD, the uncertainty of AAE is more impacted by the uncertainties of SSA and AOD. This leads to the observations of lowest consistency in AAE derived from 4STAR and AirMSPI in panels j-i of Figure 9.

Contributing to the above factors, a simple explanation may also be that due to the physical inability to get directly co-located aerosol conditions seen by each instrument, the different instruments are simply seeing different amounts of aerosol loading, despite our efforts to get as close a co-location as possible. This may be a particular factor when comparing 4STAR with RSP or AirMSPI, as these instruments were on different aircrafts. However, differences in scene likely do not explain e.g. the systematic differences seen between 4STAR and AirMSPI, which are likely due to differences in the retrievals themselves. Disentangling the relative effects of each of the above factors, e.g. by applying the exact same aerosol model assumption, same a priori and same retrieval method, and obtaining much tighter comparison conditions, remains to do in future by, e.g. starting from canonical case studies, and is beyond the scope of the present study.

We have revised the text (p. 38, Lines 18-32) to add more discussion of the potential causes of the observed differences.

Minor Comments:

Page 2 Line 12: Mixing state is also an important factor.

Agreed, this has been added (p. 2, Line 12).

Page 2 Line 18: Absorbing aerosol also shown to impact the global circulation patterns (Brown et al., 2018) in addition to the facts included in line 16-20.

We thank the reviewer for suggesting this interesting reference providing another example of the potential effects of absorbing aerosols on large-scale atmospheric dynamics. It has been added (p. 2, Line 20)

Page 2 Line 23: SSA is defined already.

Thank you for pointing this out. This has been revised to be more concise (p. 2, Lines 22-24).

Page 2 Line 24: "Typically between 0.7 and 0.95" this statement is not always true for BB smoke. There are lots of laboratory and ambient studies which shows a huge range of SSA from BB emissions (Liu et al., 2014; Pokhrel et al., 2016; Vakkari et al., 2014).

We thank the reviewer for these helpful references which show that much lower SSAs can be seen under conditions of high modified combustion efficiencies. We have revised this section (p. 2, Lines 26-29)

Page 11 Line 29: Is there a specific reason to calculate SSA by extinction weighted? What is the benefit of it over SSA calculated from vertically integrated absorption and scattering coefficients?

There isn't a benefit to one method over the other, as they both give the same answer. The idea was to reproduce from the in-situ measurements what would be calculated from column-integral (i.e. remote sensing) instruments. Either calculation would accomplish this; we chose to use the extinction-weighted SSA due to the ease of this method with the available in-situ measurements.

Page 12 Line 10: What was the noise level of 30s averages PTI?

This information has been added (p. 13, Lines 23), in addition to the other revisions made to the discussion of the PTI data, as described in the response above to Major Comment #1.

Page 17 Figure 4: What is the slope of the fitting line?

This has been added to the figure caption.

Page 18 Line 23-24: Since bars on the figure represent 10-90th percentile ranges. Which factor (instrument uncertainty or variations in data) contribute more at a longer wavelength.

The quoted sentence refers to the uncertainty in the 4STAR sky scans, which are not given by percentile ranges in this figure but rather according to the process described in Section 2.1.1; namely, this is the range in retrieval output from a perturbation in both AOD and radiance inputs. The text has been edited to clarify this point (p. 20, line 7).

Page 19 Line 33: 4STAR 1km plume only or sky scan?

The 1km values referred to throughout this section are all from the sky scans performed at 1km, referred to as "plume only" to contrast with the 80m sky scans including the influence of sea salt, as described in the text. This distinction has been clarified in the text (p. 19, line 22-23).

Page 21 Figure 5: Please use the same legend in Figure 5 & 6.

These legends cannot be exactly the same, as they are showing different parameters (specifically for RSP and in situ instrumentation). However, the order of each of the instruments has been standardized to alphabetical in all figure legends.

Page 23 Line 24-26: More explanation for possible reasons.

We believe this comment is very similar to Major Comment #3 above; please see the response and revised text referenced above.

Page 23 Line 31: How aerosol loading impact the spectral dependence of SSA?

This sentence refers to the dependence of the in situ SSA spectral shape on the PSAP correction scheme used. Within this context, the aerosol loading may change the spectral dependence to a greater degree for the case from the 20th because the observed artifact (higher absorption coefficients at 470nm) would become more pronounced under higher total aerosol loading and thus total PSAP filter loading, which is the root cause of the PSAP correction artifact described in Appendix A.

Page 23 Line 32: Do PTI and PSAP SSA's comparable at higher altitude cases only?

No systematic differences in PSAP versus PTI data were observed for various flight altitudes. However, the PTI's instrument problems limited it to largely in-plume level legs, rather than full profiles, which could result in a sampling bias. This has been clarified in the text (p. 24, Line 35-p.25, Line 11), and the text for the Figure 4 (now Fig A3) caption has been edited to reflect this.

Page 24 Line 3: Why AirMSPI uncertainty increase by a huge amount from about 450 to 470 nm?

AirMSPI uncertainties are only reported for the wavelengths which are used as inputs for the retrieval runs (p. 10, Line 28). This has been clarified in the caption of this figure.

Page 25 Figure 7: Be consistent between graph and legend.

The items in the legend in Figure 7 are now in alphabetical order, consistent with the edits to Figures 5 and 6 requested above.

Page 31 Line 9: Please express difference in relative.

Thank you for this comment. We worry that the "relative" difference (we assume this refers to, e.g. taking the difference between the two as a fraction of the 4STAR SSA) is misleading here, since SSA itself is already a "relative" value (i.e., the amount of scattering relative to the total extinction). Expressing the SSA difference as a percent can be somewhat misleading, as the values are constrained between 0 and 1, and effectively further constrained between ~0.7 and 1. Consider the difference between the SSA (scattering as a fraction of total extinction) versus co-albedo (instead *absorption* as a fraction of total extinction; 1-SSA): an absolute difference of 0.85 vs 0.88 in SSA would be 3.5%, but in co-albedo these same measurements (now 0.15 vs 0.12, with the same 0.03 in absolute difference) give a difference of 20%. This is a limitation of SSA as a metric. Since the SSA at 530nm only range between ~0.87 and 0.81, Figure 11 (to which this comment refers) expressed in relative difference instead (as defined above) looks almost identical to the absolute difference plots. For these reasons, we think it best to leave this passage in terms of absolute SSA difference, rather than % differences, as the latter may be confusing to readers.

Anonymous Referee #2

Received and published: 25 March 2019

The paper presents results from several instruments to measure or retrieve aerosol optical properties, especially aerosol absorption, single scattering albedo, and their wavelength dependency during the NASA ORACLES campaign in September 2016.

The paper is well written, it is definitely worth publishing in ACP. Actually, I did not find any errors but some points I don't understand, see below. I also have some suggestions for improving the paper.

I tried to find basic info of the flights:

- Approximate flight altitude range of the two aircraft
- Thickness of plumes, flight time in plume
- Estimated age of the aerosol at the measurement location since emission from the fires

- Distance from coast and fires
- Range of scattering and absorption coefficients, RH, and AOD in the plumes

The info is within the text but very scattered. Consider giving these in a table where you present descriptive statistics of these properties. And combined to your Fig. 3.

We thank the reviewer for this comment, but believe that the suggested table would be beyond the scope of this paper. The present work is not intended to be an overview of the ORACLES as a whole, and we worry that such a detailed summary would detract from the main message of the paper, which is the observed SSA values from each instrument overall, and the comparison between them for specific, defined case studies. A table of additional parameters should focus only on the present case studies, and runs the risk of being misinterpreted as representing the campaign as a whole, when in fact many of these conditions (e.g. plume thickness, distance from coast, estimated aerosol age) were observed to be variable beyond the specific cases presented here, and will all be the subject of additional papers as they are interesting and complex scientific questions in their own right.

A more detailed overview of the ORACLES campaign and overview observations will be found in a forthcoming overview paper led by the ORACLES principal investigators. Nonetheless, we have clarified the location of some of this information in the campaign description paper (Zuidema et al., 2016, <https://doi.org/10.1175/BAMS-D-15-00082.1>), p. 8, Lines 10-11. We also anticipate that the present ACP/AMT special issue will host many of these more specific results as they become ready for publication.

There is the section " 4.2 Impacts of humidification on aerosols". The discussion concentrates on SSA, that discussion is ok. However, you used the in situ instruments also for calculating AOD. It is definitely underestimated by using dry in situ data. Actually, when I look at Figs. 6 and 8 it also looks like that. Discuss this. And I expected to see some figures on data collected with the RH-nephelometer. Why don't you use that? Some figure? How does the scattering enhancement vary in the plumes? Effects on AOD?

Thank you for this comment. We hope we have adequately justified our use of the dried scattering + absorption data in our calculation of SSA; in the interest of being consistent in all of our figures, we have thus continued to use the dried scattering and absorption in Figs 6 and 8. For panels a) in these figures, the focus is on absorption only, and the effect of humidification on absorption is not well understood (Section 4.2), but we do take the point that panels b) the in situ "AOD" would be affected by humidification of the scattering. We have revised the text to quantify this difference and discuss the causes of the lower in situ "AOD" in this figure (p. 21 Lines 22-30).

Detailed comments

P10L24, "... operational modes: step-and-stare view mode and sweep mode, " explain with a couple of sentences, not every reader knows these

More detail has now been added to this section (p. 11, line 22-28).

P11L22-23 "SSA was calculated using the measured PSAP absorption combined with dried (RH<40%) TSI nephelometer scattering interpolated to PSAP wavelengths." Shouldn't you use ambient RH scattering when comparing with the remote-sensing instruments? The same applies to calculating AOD from the in situ data.

Thank you for this comment. We intended to make it clear in our paper why we have treated the humidity of the in situ instruments as we have, but we apologize that this was not adequately communicated. We have edited the text (p. 13, Lines 5-7; p. 21, Lines 22-30) to clarify this point. The SSA as well as AOD-proxy values involved are calculated using both the PSAP and the Nephelometer, and the former is by necessity a dried value. We discuss in the paper (Section 4.2) some previous work indicating that humidification may impact not just scattering, but absorption values as well. As the goal of this paper is to assess how these values compare with the other instruments, and SSA will include the effects of humidification on both components, possibly to opposing signs, we have made the decision to present the dried values for SSA to minimize this potential effect. We believe this is consistent with previous work; e.g. Haywood et al (2003) considered the impacts of RH on their in-situ-based SSA estimate to be minimal and did not correct for it.

P12L12 "... and absorption (AAE) are calculated from PTI absorption for data within ..." How can you calculate AAE from a one-wavelength instrument? I must be missing something.

Thank you for finding this oversight. This sentence should have read "the extinction-weighted SSA are calculated from PTI absorption..." referring to how the absorption coefficient (as shown in Figure 4) is averaged to calculate the SSA in Figure 7. The PTI does not appear in Figure 8, and AAE is not calculated for it. This has been corrected (p. 13, Lines 27-28).

P13L19 "... AOD, and absorption is then derived as the change in net irradiance over the AOD differential ..." Don't understand. Isn't the change of net irradiance due to both scattering and absorption? If I am wrong, please add a short explanation.

There was some confusion in the wording; per definition, the absorbed irradiance is the difference of $F_{net_top} - F_{net_bottom}$. However, instead of using pairs of upwelling and downwelling irradiance at the top and the bottom of the layer as in previous studies, we instead use the full profile of the upwelling and downwelling irradiance, plotted versus the optical thickness as vertical coordinate and fit the upwelling and downwelling irradiance as follows:

$$F^{\uparrow} = a_0 + a_1 * AOD(z)$$

$$F^{\downarrow} = b_0 + b_1 * AOD(z)$$

Where a_0 , a_1 , b_0 , and b_1 are the linear fit coefficients.

We then obtain the absorbed irradiance as follows:

$$F_{abs} = (F_{z_top}^{\downarrow} - F_{z_top}^{\uparrow}) - (F_{z_bot}^{\downarrow} - F_{z_bot}^{\uparrow}) = a_0 - b_0 - (a_0 + a_1 * AOD(z_{bot}) - b_0 - b_1 * AOD(z_{bot})) = (b_1 - a_1) * AOD(z_{bot})$$

We changed the wording of the sentence in question as follows to make this more clear (p. 15, Lines 6-9): "A linear fit is performed on both upwelling and downwelling irradiance, using AOD as vertical coordinate. The absorption is then derived from the difference of the net irradiance at the top and the bottom of the layer."

Fig 3. Name the aircraft in the Fig. Draw approximate vertical and horizontal scales in km: plume and flight altitudes, plume thickness.

More description has been added to this figure caption. This figure is a simple schematic for the purpose of illustrating the viewing geometries used in this work, and indeed the potential viewing geometries of any similar comparison study, either over the SEA or elsewhere. Thus, we think it best to not overly define each component; for example, a similar comparison could be performed with the same instruments installed in another low-sampling aircraft aside from the P-3; for climatological conditions that show higher or lower plume altitudes; or ideally in a closer horizontal co-location than the upper bounds for separation that we give in the text. As we discussed in the overview comment from Reviewer 2 above, the plume height, cloud height, and geometric separation between the two of them was rather variable during the ORACLES deployments; thus, we think it best to not prescribe numbers on a simple illustrative schematic such as this. We have clarified the general climatological occurrence of plume heights in Section 1.1 (p. 4, Line 2).

P17L9 "... The generally lower PTI absorption could be due to several factors..." How do you know which instrument to trust?

Thank you for this comment. As we describe in the response to Reviewer 1, we have included additional discussion of the PTI, in particular emphasizing the quality of its 2016 data as it relates to data from other instruments (revisions on p. 13, also described above). Following this discussion, we have made the decision to remove the PTI from this comparison figure, to avoid the impression that these data are of similar quality to the other instruments presented. As discussed in the response to Reviewer 1, we retain the PTI vs PSAP comparison plot as justification for this decision. The text accompanying that figure may be found in Appendix A.2 and has been revised as well.

In section "3.2.1 Case study: 12 September 2016" the in-situ-derived AOD is clearly lower than that derived from the remote sensing methods (Fig. 6). It is explained by the inlet cutoff on P19. Then in section "3.2.2 Case study: 20 September 2016" the AODs are essentially the same (Fig. 8). Why is that? Why couldn't the explanation for 9/12 be an aerosol layer above the plume measured with the in situ instruments? Have you considered comparing differential AODs of the in situ and remote-sensing methods? That would help in eliminating possible error due to high-level aerosol not observed with the in situ instruments.

Thank you for this comment. Our response is similar to that for Reviewer 1, Major Comment 2. As we attempted to convey within the manuscript, we have several lines of evidence pointing towards the contribution of boundary-layer marine aerosol, and the absence of extra high-level aerosol, in the case on 12 September (and on the 20th, as well). In addition to the observation of large particles within the boundary layer (as mentioned by the reviewer), we make use of the HSRL-2 lidar data, on the ER-2 aircraft. The HSRL-2 shows the plume height during the overpass as 2.25-5.5km (original manuscript, p. 12, Line 23) and saw no higher aerosol layer than that plume during this case. Given that the profile of the in situ extends to 5.8km, and the in situ observations, we are confident that the majority of the plume is included in this analysis.

We also note that the case on the 20th exhibits a somewhat greater range of AODs from the different instruments, likely due to a change in the plume top height, again as observed by the HSRL-2, though still below the maximum profile altitude of 7.1km in this case.

We have clarified the altitude limits of the in situ profiles shown, and the HSRL-2 observations which show no higher aerosol in either case (p. 19, Line 25 and p. 24, Lines 16-17)

P27L28 "...due to the small range in AAE values retrieved from AirMSPI" Any explanations or hypotheses?

It is difficult to say definitively what caused this small range in the AirMSPI data. We note that since the AAE is function of SSA and AOD, and AAOD is a smaller fraction of AOD than is the scattering AOD, the uncertainty of AAE will be impacted by the compound uncertainties of SSA and AOD. This leads to the observations of lowest consistency in AAE derived from 4STAR and AirMSPI in panels j-i of Figure 9. This is related to the information content question discussed above; for AirMSPI, the polarized radiances measured in the 470, 660, and 865 nm bands have less sensitivity to aerosol refractive index and coarse mode aerosol size than to aerosol loading and cloud microphysical properties. As a result, the AirMSPI retrieval accuracy of refractive index and coarse mode aerosol size distribution are subjected to greater measurement errors than the AOD and cloud microphysical part of the retrieval, which potentially leads to errors with SSA which may then be compounded in the subsequent calculation of AAE. We have added some more discussion on this question (p. 29, Lines 11-15 and p. 38, Lines 18-22)

P28L4-5 "... values of AAE for a mixed aerosol (smoke) that are less than 1 (for the wavelength range 440-675nm) are suspect in that they run counter to theory ..." This is not true, it is easy to show with a Mie code that AAE can be < 1 both for uncoated and coated BC particles. Have a look at Figs. 7-9 of Gyawali et al. (2009) and Fig 8 of Lack and Cappa (2010) and the related discussions in these papers.

Thank you for this comment. We had endeavored to capture these nuances in our original draft (p. 28, "While pure BC is typically considered to have an AAE of 1, studies have shown this may vary based on particle size (e.g., Lack and Cappa, 2010; Wang et al., 2016), and may be either higher or lower than this value.") but have revised to make this more clear.

While we still advocate caution on the part of the reported AAE values if only for being uncorrelated to one another (and on the part of 4STAR, lower than the other measurements even in the presence of brown carbon, which generally has significantly higher AAE), we have nonetheless revised the text of this passage to better reflect the expected AAE values (p. 29, Lines 11-15).

Intercomparison of biomass burning aerosol optical properties from in-situ and remote-sensing instruments in ORACLES-2016

Kristina Pistone^{1,2}, Jens Redemann³, Sarah Doherty⁴, Paquita Zuidema⁵, Sharon Burton⁶, Brian Cairns⁷, Sabrina Cochrane⁸, Richard Ferrare⁶, Connor Flynn⁹, Steffen Freitag¹⁰, Steve Howell¹⁰, Meloë Kacenelenbogen², Samuel LeBlanc^{1,2}, Xu Liu⁶, K. Sebastian Schmidt⁸, Arthur J. Sedlacek III¹¹, Michal Segal-Rosenhaimer^{1,2}, Yohei Shinozuka^{2,12}, Snorre Stamnes⁶, Bastiaan van Dierenhoven⁷, Gerard Van Harten¹³, and Feng Xu¹³

¹Bay Area Environmental Research Institute, Moffett Field, CA, USA

²NASA Ames Research Center, Moffett Field, CA, USA

³University of Oklahoma, Norman, OK, USA

⁴JISAO, University of Washington, Seattle, WA, USA

⁵University of Miami/Rosenstiel School of Marine and Atmospheric Science, Miami, FL, USA

⁶NASA Langley Research Center, Hampton, VA, USA

⁷NASA Goddard Institute for Space Studies, New York, NY, USA

⁸University of Colorado, Boulder, CO, USA

⁹Pacific Northwest National Laboratory, Richland, WA, USA

¹⁰University of Hawaii at Manoa, Honolulu, HI, USA

¹¹Brookhaven National Laboratory, Brookhaven, NY, USA

¹²Universities Space Research Association, Mountain View, CA, USA

¹³Jet Propulsion Laboratory, Pasadena, CA, USA

Correspondence: Kristina Pistone (kristina.pistone@nasa.gov)

Abstract. The total effect of aerosols, both directly and on cloud properties, remains the biggest source of uncertainty in anthropogenic radiative forcing on the climate. Correct characterization of intensive aerosol optical properties, particularly in conditions where absorbing aerosol is present, is a crucial factor in quantifying these effects. The Southeast Atlantic Ocean (SEA), with seasonal biomass burning smoke plumes overlying and mixing with a persistent stratocumulus cloud deck, offers an excellent natural laboratory to make the observations necessary to understand the complexities of aerosol-cloud-radiation interactions. The first field deployment of the NASA ORACLES (ObseRVations of Aerosols above CLouds and their intEractionS) campaign was conducted in September of 2016 out of Walvis Bay, Namibia.

Data collected during ORACLES-2016 are used to derive aerosol properties from an unprecedented number of simultaneous measurement techniques over this region. Here we present results from six of the eight independent instruments or instrument combinations, all applied to measure or retrieve aerosol absorption and single scattering albedo. Most but not all of the biomass-burning aerosol was located in the free troposphere, in relative humidities typically ranging up to 60%. We present the single scattering albedo (SSA), absorbing and total aerosol optical depth (~~AOD and AAOD~~ AAOD and AOD), and absorption, scattering, and extinction Ångström exponents (AAE, SAE, EAE) for specific case studies looking at near-coincident and -colocated measurements from multiple instruments, and SSAs for the broader campaign average over the monthlong deployment. For the case studies, we find that SSA agrees within the measurement uncertainties between multiple instruments,

though, over all cases, there is no strong correlation between values reported by one instrument and another. We also find that agreement between the instruments is more robust at higher aerosol loading ($AOD_{400} > 0.4$).

The campaign-wide average and range shows differences in the values measured by each instrument. We find the ORACLES-2016 campaign-average SSA at 500nm (SSA_{500}) to be between 0.85 and 0.88, depending on the instrument considered (4STAR, AirMSPI, or in situ measurements), with the inter-quartile ranges for all instruments between 0.83 and 0.89. This is consistent with previous September values reported over the region (between 0.84 and 0.90 for SSA at 550nm). The results suggest that the differences observed in the campaign-average values may be dominated by instrument-specific spatial sampling differences and the natural physical variability in aerosol conditions over the SEA, rather than fundamental methodological differences.

10 1 Introduction

Atmospheric aerosols are an important component of the climate system in terms of their direct, semidirect, and indirect radiative effects. A primary factor governing the overall magnitude of these effects is the composition, size, mixing state, and concentration (and, consequently, the radiative properties) of the aerosol in a given location. While on the global average aerosols predominantly cool the planet by reflecting sunlight back to space, shortwave-absorbing aerosols (such as those from biomass burning sources) are also capable of warming the planet by directly absorbing sunlight (called the direct effect: Chylek and Coakley, 1974; Meyer et al., 2015; Zhang et al., 2016). Aerosols can additionally affect cloud properties by microphysical indirect effects affecting droplet size and lifetime (e.g., Twomey, 1974; Albrecht, 1989; McComiskey and Feingold, 2012; Lu et al., 2018); ~~or~~ by altering surface evaporation, cloud burn-off rates, and atmospheric dynamics, the so-called semi-direct aerosol effects (e.g., Ackerman et al., 2000; Koch and Del Genio, 2010; Wilcox, 2010; Sakaeda et al., 2011; Wilcox, 2012; Gordon et al., 2018); or by some combination the above (~~e.g., Adebisi and Zuidema, 2018~~) (e.g., Adebisi and Zuidema, 2018; Brown et al., 2018)

In this work we focus on the aerosol single-scattering albedo (SSA), the ratio of aerosol scattering to total extinction, SSA is a key intensive property which relates to the aerosol composition while being independent of the total aerosol loading. SSA is defined as the ratio of Scattering/Extinction; highly scattering Weakly-absorbing or nonabsorbing particles such as sea salt will have SSA close to 1, whereas biomass burning (BB) smoke ~~with a large fraction of~~ made up of more highly absorbing soot particles will have SSA less than ~~1, typically~~ 1. These BB SSAs are typically observed to be between 0.7 and 0.95 (~~Dubovik et al., 2002~~), and column-average (e.g., Dubovik et al., 2002; Eck et al., 2013; Sayer et al., 2014), though laboratory studies show these values can be much lower under conditions of high modified combustion efficiencies and low organic (versus black carbon) mass fraction (i.e., higher BC content) (e.g., Liu et al., 2014; Vakkari et al., 2014; Pokhrel et al., 2016).

Column-average SSA, as discussed here, may be composed of contributions from several different aerosol types. SSA, among other parameters, is essential for the determination of direct aerosol radiative effects. SSA has been shown to evolve with BB plume location, age, mixing state, emission source, and distance from source (e.g., Haywood et al., 2003; Eck et al., 2013; Konovalov et al., 2017).

Other important parameters are the aerosol optical depth (AOD) and the absorbing component of AOD (AAOD, defined as $AOD \cdot (1 - SSA)$), which indicate the magnitude of the column (absorbing) aerosol loading. In the present work, AODs from the different retrievals are presented to assess the similarity between temporally- and spatially-dislocated scenes observed by the different instruments, and since the retrievals of AOD and SSA are not necessarily uncoupled, AOD can be a useful diagnostic. However, as we focus here on intensive aerosol properties, the climatological AOD values are not discussed. Finally, we discuss the Ångström exponents from each retrieval method (AAE, SAE, and EAE for the absorption, scattering, and extinction Ångström exponents, respectively). Ångström exponents are given by the log-space slope of absorption, scattering, or extinction aerosol optical depths versus wavelength, and are frequently used to characterize atmospheric aerosol. As AAE is primarily (though not entirely) determined by aerosol composition (Russell et al., 2010; Bahadur et al., 2012) and SAE is primarily associated with aerosol size, these parameters can be instructive in understanding the nature of the aerosol in question. EAE is shown as well, to place these results in the context of other remote sensing results which measure extinction, though EAE closely follows SAE since extinction is dominated by scattering for almost all atmospheric aerosols. Accurate representation of the magnitude and variability of these aerosol properties on a regional scale has significant implications for aerosol radiative effects calculated using climate models and/or satellite data. As different instruments (such as those incorporated into this work) may rely on different physical measurement principles, each with different considerations and limitations (Table 1), an understanding of how distinct observations compare to one another is a critical piece in gaining an understanding of our observational limitations for key parameters and hence in calculating aerosol effects and their uncertainties.

This paper presents data from the NASA ORACLES (ObseRvations of Aerosols above CLouds and their intEractionS) campaign (Zuidema et al., 2016), a multi-year, multi-platform collaboration to sample clouds and BB aerosol over the Southeast Atlantic Ocean (SEA). During the 2016 ORACLES deployment, two NASA aircraft (a P-3 and an ER-2) were flown with a suite of aerosol, cloud, radiation, and meteorological instruments for remote-sensing and in-situ observations. The remainder of this section gives a brief context of previous observations over this region (Section 1.1), their implications (Section 1.2) and an overview of the ORACLES campaign (Section 1.3). Section 2 describes data and methods used, including the ORACLES instrumentation, flight paths, and comparison case criteria. ~~In Section A2 we compare the two in-situ absorption measurement techniques; Section~~ [Section 3.1](#) details two case studies of the multi-instrument comparisons (in situ and remote sensing instruments), and [Section 3.2](#) presents campaign-wide comparisons of in-situ versus remote-sensing measurements. Finally, in [Section 4](#) we describe the broader picture of the average aerosol properties measured over the region during ORACLES-2016 and discuss how these results fit within the context of previous observations. [Additional considerations of the in situ data are provided in an Appendix.](#)

30 1.1 SEA aerosol climatology

The SEA is a particularly important region in the context of understanding aerosol-radiation and aerosol-cloud interactions. This region exhibits a persistent stratocumulus cloud deck off the western coast of Africa. During the southern African biomass burning season (August to October), these clouds are situated under and/or within plumes of absorbing aerosols originating from widespread continental fires. The smoke is lofted in continental convection and then advected westward in the

southerly branch of the African Easterly jet at a typical altitude of 3-5km in September (Adebisi and Zuidema, 2016), which approximately coincides with the observed plume altitude over the region. The composition of these aerosols (as reflected in the SSA parameter) can change the magnitude and even the sign of the radiative forcing effects of aerosol over clouds (e.g., Chand et al., 2009; Zuidema et al., 2016; Cochrane et al., 2019; Kacenelenbogen et al., 2018).

5 Compared with other regions of the world, there have been relatively few studies measuring aerosol properties (microphysical or radiative) either directly over the southeast Atlantic or near their source in sub-Saharan Africa. Nonetheless, there is still a good deal of previous work which can help to place the ORACLES observations in context. A key observational dataset is from the Southern AFricAn Regional science Initiative (SAFARI 2000) campaign which used aircraft to measure aerosol properties over and in close proximity to the coast of southern Africa in September 2000, including both aged aerosol and fresh
10 biomass plumes (e.g., Haywood et al., 2003; Schmid et al., 2003; Leahy et al., 2007; Russell et al., 2010). SAFARI 2000 also resulted in the establishment of several sites of the AErosol RObotic NETwork (AERONET) on the African continent; these allow for longer-term climatological analysis near emission sources (e.g., Queface et al., 2003; Magi and Hobbs, 2003; Swap et al., 2003; Eck et al., 2003, 2013). Passive and active satellite observations have also been used to detect and quantify aerosol above clouds over the SEA region (e.g., Chand et al., 2008, 2009; Waquet et al., 2013; Jethva et al., 2014; Torres et al., 2012;
15 Liu et al., 2015), though such studies typically need to assume (through lookup tables or models) cloud and aerosol properties as well as their relative geometry. In this context, the ORACLES aircraft-based dataset, designed to sample the region of highest cloud cover and BB smoke concentration, provides important and heretofore unique observations of both aerosol and cloud over the southeast Atlantic Ocean, due to both improved instrumentation since SAFARI-2000, and because ORACLES focused on regions farther off the southern African coast than previously measured.

20 The previous studies give a somewhat limited yet still useful view of the temporal and seasonal trends in SSA for a limited set of locations within this region (Figure 1). In the SAFARI 2000 campaign, aircraft instrumentation was used to sample both the aged aerosol plume (a few days old) as well as fresh biomass aerosol (a few minutes old) over Namibia and the coastal SEA. The mean SSA of the aged haze was reported by Haywood et al. (2003) as 0.91, 0.90, and 0.87 at 450, 550, and 700 nm using a combination of an in situ aircraft-based Particle Soot Absorption Photometer (PSAP) and nephelometer. However,
25 Leahy et al. (2007) reported a lower “best estimate” (campaign-average) SSA_{550nm} of 0.85 ± 0.02 using the SAFARI airborne flux radiometry and in situ measurements combined with ground-based AERONET retrievals (the individual flux radiometry estimate is described in Bergstrom et al. (2003) and Russell et al. (2010) and included separately in Figure 1). For a SAFARI flight specifically targeting fresh biomass burning smoke, the reported SSA was lower, at 0.86, 0.84, and 0.80 (Haywood et al., 2003). Thus, even within a single campaign, past work has shown a sizable range in BB aerosol properties. It should be noted
30 that the SAFARI over-ocean flights were conducted within a more southern region (generally 15° - 25° S) than the heart of the seasonal aerosol plume typically described as extending approximately 0° - 15° S (Zuidema et al., 2016). The ORACLES sampling area spans both these latitude ranges (0° - 25° S), but frequently sampled westward of the SAFARI region. SAFARI also made many measurements over the continent, closer to biomass burning sources, whereas the ORACLES measurements were made entirely over the ocean. It is therefore likely that the SAFARI measurements were of generally younger aerosol than
35 the ORACLES measurements, including the aerosol identified as ‘aged’ within Haywood et al. (2003).

An AERONET-based climatology by Dubovik et al. (2002) indicated that the African BB site (Zambia, 15°15'S, 23°09'E) had the lowest SSA (i.e. strongest absorption) and the strongest SSA spectral dependence (i.e., steepest slope, $SSA_{440nm}=0.88$ to $SSA_{1020nm}=0.78$) among the four geographical BB regions considered. This was attributed to the greater flaming versus smoldering characteristics of these fires compared with other regions. Using data from the same long-term AERONET site at Mongu, Zambia, Eck et al. (2013) found a seasonal progression of increasing full-column SSA (decreasing relative absorption) over the July-to-November burning season based on data from 1997 to 2005. SSA increased from $SSA_{440nm}=0.84$ in July to $SSA_{440nm}=0.93$ in November (Figure 1). This same pattern was observed in a study of near-surface in situ SSA measurements at Ascension Island, showing monthly mean SSA_{529nm} increasing from 0.78 in August 2016 to 0.83 in October 2016 (Zuidema et al., 2018). We note this site is substantially westward (downwind) of the majority of ORACLES flights, and thus may represent more aged aerosol. Eck et al. (2013) also reported an average September SSA similar to that reported by Dubovik et al. (2002) for Zambia: 0.88, 0.83, 0.81, and 0.79 at 440, 675, 870, and 1020nm, respectively. They also showed that within a given month, a south-to-north increase in $SSA_{388}-SSA_{388}$ is observed, as derived from the satellite-based OMI (Ozone Monitoring Instrument) retrievals. This was hypothesized to be due to shifts in fuel type over the BB season due to both anthropogenic factors (i.e. timing/practices of agricultural burning) and environmental factors (i.e. relating to moisture variability of potential fuel types throughout the season). Variations in atmospheric humidity have also been shown to affect aerosol optical properties, including both aerosol scattering and absorption (e.g., Langridge et al., 2011; Lack and Cappa, 2010). Figure 1 summarizes the previous work in this region, and indicates that the SSA over southern Africa increases through the burning season (monthly averages from Eck et al., 2013), possibly due to changes in biomass burning fuel composition, and also that SSA may increase with distance from fire, i.e. as the aerosol ages (fresh versus aged plume of Haywood et al., 2003). However, we emphasize that the “aging” time scales observed in SAFARI-2000 were much shorter (e.g. ~5 hours in Abel et al. (2003); within a few days in Haywood et al. (2003)) than those seen in ORACLES (~2-15 days, e.g. Dobracki et al., 2019). This may account for the opposite sign (higher SSA for younger aerosol) shown in the latter work. Thus, it is clear that multiple physical factors may be responsible for variability in aerosol optical properties.

Further discussion of previous studies of SEA aerosol in the context of the ORACLES results is found in Section 4.

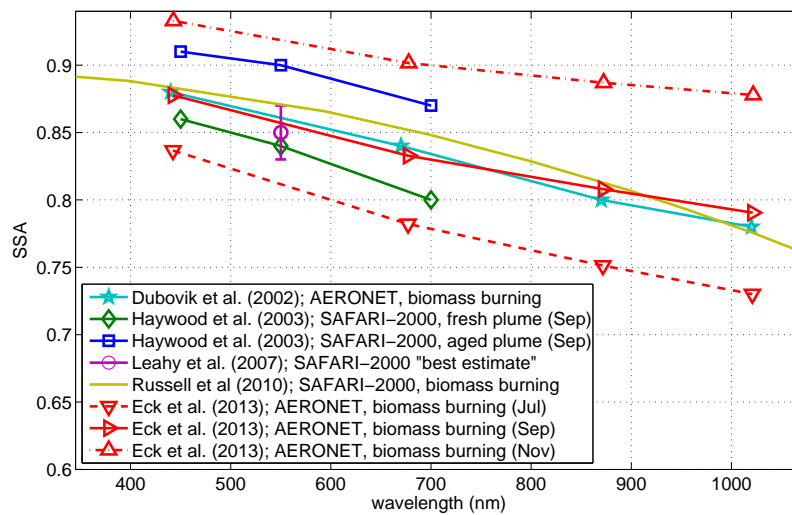


Figure 1. Summary of average SEA/African BB SSA as reported in previous studies as described in the text. The spatial and methodological variability can be noted from the Haywood et al. (2003) vs Russell et al. (2010) SAFARI 2000 results, and the seasonal changes in SSA are seen in the Eck et al. (2013) monthly averages from the Zambian AERONET site.

1.2 Impacts of SSA on aerosol radiative effects

Accurate representation of scattering versus absorption within biomass burning aerosol scenes has implications in subsequent calculations of aerosol radiative effects over the SEA. The range of SSA values shown in Figure 1 encompasses the possibility of both positive (smaller values of SSA) or negative (higher values of SSA) net direct radiative effect when this aerosol is above the partly-cloudy skies of the SEA. The specific value of SSA where the radiative effect changes sign will depend on the cloud cover fraction; for example, in Chand et al. (2009) the aerosol direct effect was positive for a mid-visible SSA of 0.85 as long as cloud fraction was greater than 40%. Wilcox (2012) found that for a perturbation to SSA of ± 0.03 , the local direct aerosol radiative effect was changed by 10-20 W/m², though this also depends on AOD and cloud albedo conditions. A perturbation of this magnitude encompasses only half the range between the lowest and highest September SSA values shown in Figure 1. As described above, some of this range may reflect seasonal variations in SSA, but even for September alone, the previously measured values of SSA_{550nm} spanned 0.84-0.90. An open question is to what degree the range in previous observations represents real variability in the SSA of smoke in this region or whether a significant part of the range is due to differences in measurement techniques and in measurement conditions; for example, the AERONET and flux radiometry retrievals are for ambient-RH aerosol, whereas the in-situ (SAFARI) measurements are of dry/low-RH aerosol. We endeavor to explore these questions in the following sections.

1.3 ORACLES overview

The overarching goal of ORACLES is to make high-quality airborne observations of aerosols and clouds in the SEA to gain a better understanding of the complex processes (direct, indirect, and semi-direct) by which BB aerosols, notable for their strong absorption of solar energy, affect radiation both directly and through their impacts on clouds (Zuidema et al., 2016). The project included three field deployments of approximately one month each: September 2016 based out of Walvis Bay, Namibia; August 2017 based out of São Tomé, São Tomé and Príncipe; and October 2018 again based out of São Tomé. The ORACLES study area time zone spans UTC and UTC+1. In the current paper we focus on the first field deployment of ORACLES in September of 2016 out of Walvis Bay, Namibia. This deployment included two NASA aircraft: a P-3 for full atmospheric profiling and low/mid-level in situ sampling, and a high-altitude ER-2 for remote sensing observations. The P-3 aircraft was flown with a suite of in situ and remote-sensing aerosol, cloud, radiation, and meteorological instruments, while the ER-2 carried only remote-sensing instrumentation. Data were collected over 15 P-3 and 12 ER-2 flights, each 7-9 hours in duration. The 2017 and 2018 deployments included the P-3 only. Hence, the simultaneous deployment of both the P-3 and the ER-2 in the 2016 deployment created a unique testbed for evaluating remote sensing retrievals of aerosol and cloud properties from a variety of instruments that have potential for future space flight.

Of the in situ and remote-sensing instruments included in ORACLES, eight teams (including the complementary AERONET sites, several of which were established to coordinate with the ORACLES deployments) observe or derive aerosol absorption (either locally or as column AAOD) and the related SSA parameter (Table 1). All considered remote-sensing instruments report an AOD product, with the exception of the Solar Spectral Flux Radiometer (SSFR), which uses AODs from the Spectrometers

for Sky-Scanning, Sun-Tracking Atmospheric Research (4STAR) as input (each of these instruments is described below). Remote-sensing SSA are reported as column-integrated values; for in-situ measurements, the SSA presented is the extinction-weighted profile-average value (i.e. SSA calculated at each altitude and weighted by the profile of extinction; Section 2.1.3). Unless otherwise noted, reported Ångström exponents are calculated using a logarithmic fit of the AOD versus wavelength using all available wavelengths between 440 and 675nm (inclusive), to have the most comparable quantity between instruments and to reduce uncertainty compared with a simple 2-wavelength calculation of AE. While previous studies have examined the agreement between the retrievals of a few of these instruments at a time (e.g., Sedlacek and Lee, 2007; Leahy et al., 2007; Knobelspiesse et al., 2011), an intercomparison including so many methods within one campaign has not previously been performed, due to the logistics of assembling such a comprehensive suite of instruments including several newly-developed algorithms. Specific instrument details are given in the following section. [A more detailed overview of the campaign design and goals may be found in Zuidema et al. \(2016\), and an overview of the results will be the focus of a future paper.](#)

2 Methods

2.1 Instruments and data

In this section we offer descriptions of the instruments and data included in this paper, as summarized in Table 1.

Table 1. Overview of ORACLES instruments as used to quantify SSA during the ORACLES campaigns, and the method used. Not all measurement approaches are included in this paper; some are still in process and will be presented in future publications. Instruments/methods presented in this paper are indicated in bold. Full archival data citations are given under Acknowledgments.

Instrument	Platform	Method (absorption parameter)	Wavelengths	Required conditions
4STAR (+SSFR)	P-3	AERONET-like sky scans (AAOD) ^[1,2,13]	hyperspectral; evaluated using AOD and radiances at 400, 500, 675, 870, 995nm	instrument below aerosol; level flight leg; cloud-free above
SSFR (+4STAR)	P-3	Profiles of spectral irradiance and AOD used with a radiative transfer model (RTM) ^[3,4]	moderate spectral resolution; evaluated at 355, 380, 452, 470, 501, 520, 530, 532, 550, 620, 660nm	radiation wall/square spirals above/below aerosol layer
PSAP + Neph	P-3	in situ nephelometer (scattering) + PSAP (absorption) ^[5,6]	Neph: 450, 550, 700nm PSAP: 470, 530, 660nm	inside aerosol layer
PTI + Neph	P-3	in situ nephelometer (scattering) + PTI (absorption) ^[7]	Neph: 450, 550, 700nm PTI: 532nm	inside aerosol layer; 30s averages on PTI
RSP	P-3 +ER-2	polarized reflectances input into RTM ^[8] neural network ^[9] MAPP algorithm: optimal estimation method using multi-angle, multi-channel total & polarized reflectances (bimodal column absorption/AAOD) ^[10]	I, Q, and U Stokes components in 410*, 469*, 555*, 670*, 864*, 960, 1594*, 1880, and 2264*nm (* denotes window channels used in the retrieval of aerosol properties)	instrument above aerosol
RSP + HSRL-2	ER-2	MAPP algorithm adapted to include HSRL-2 observed backscatter & extinction profiles (vertically-resolved absorption) ^[11]	RSP window channels +HSRL-2 channels at 355, 532, 1064nm	instrument above aerosol
AirMSPI	ER-2	multi-angle, multi-spectral polarized radiance fitted by a RTM to derive above-cloud aerosol optical and microphysical properties which are used to calculate AAOD ^[12]	Stokes component I in bands centered at 355, 380, 445, <u>470</u> , 470 , 555, 660, 865nm and <u>865</u> , and <u>935nm</u> ; Stokes components Q and U in 470, 660, 865nm bands	instrument above aerosol; operated in sweep view mode
AERONET	ground	sun radiance + multiangular sky radiances into RTM (AAOD) ^[13]	440, 675, 870, 1020nm	cloud free above instrument

2.1.1 4STAR

The Spectrometer for Sky-Scanning Sun-Tracking Atmospheric Research (4STAR) is an airborne hyperspectral (350-1700 nm) sun photometer which can make direct-beam (sun-tracking mode) measurements for retrieval of column AOD and trace gases (Dunagan et al., 2013; Shinozuka et al., 2013; Segal-Rosenheimer et al., 2014) or below-cloud measurements of transmittance for derivation of cloud optical properties (zenith mode). Under certain level-flying conditions, 4STAR can also perform an AERONET-like sky scans in either the principal-plane or almucantar (sky scanning mode), which provide the data used here. The 4STAR sky scans are processed using a modified version of the Version 2 AERONET retrieval algorithm described in Dubovik and King (2000), which retrieves aerosol size distributions, refractive indices, SSA, and AAOD, among other parameters. All scans are run through the algorithm with the minimum scattering angle set to 3 degrees to avoid stray light from the sun entering the 4STAR optical aperture. Scene (i.e., surface plus atmosphere) albedo is provided by SSFR measurements (described below). A notable modification of the 4STAR retrievals compared with AERONET retrievals is in the input wavelengths. While AERONET uses radiances measured at specific and discrete wavelengths (440, 675, 870, and 1020nm), with the hyperspectral 4STAR we are able to use AODs and sky radiances measured at a different (or larger) selection of wavelengths. Due to suspected stray light contamination within the 4STAR spectrometer around 440nm, a particular sensitivity to the 440nm channel was observed, which in some cases resulted in an anomalously low SSA (high AAOD) at shorter wavelengths compared with retrievals run without 440nm. To avoid this issue, the results presented in this paper use a modified set of inputs at wavelengths of 400, 500, 675, 870, and 995nm, with 400 and 500nm replacing 440nm. Note the longest wavelength of 995nm replaces the AERONET 1020nm due to the wavelength limits of the 4STAR visible spectrometer.

4STAR executed a total of 174 sky scans in ORACLES-2016, of which 38% (66) met the following quality control (QC) criteria (adapted from the AERONET QC available at https://aeronet.gsfc.nasa.gov/new_web/PDF/AERONETcriteria_final1.pdf):

- AOD(400nm) > 0.4
- altitude variation during scan < 50 m
- total residual sky radiance error ($|\text{measured-fit}|$) < 10% at all wavelengths
- measured scattering angle from the minimum of 3 degrees up to a maximum of at least 50 degrees (i.e. SZA > 25 degrees) (primarily relevant in almucantar scans)
- manual inspection of the retrieval output for reasonable residual sky radiance error as a function of scattering angle (i.e. uniform aerosol conditions, no cloud contamination)

Note that, unlike in the AERONET archive, we consider principal plane as well as almucantar scans when the above criteria are met. We do this because due to the timing of ORACLES flights, 4STAR sky scans were largely near solar noon, limiting the angular range available in almucantar scans. In addition to the scans meeting the above QC measures, another 16 (9% of the scans) were included based on manual QC inspection. This generally involved cases with AOD between 0.2 and 0.4. We retain

these lower-AOD, manually QC'd scans to explore the reliability of the retrievals under conditions of lower aerosol loading. This QC procedure retained 82 sky scans in total (47% of all scans) which produced credible retrievals. In the present study, we focus on a further subset of 75 lower-altitude (< 3km), QC-screened sky scans. This is because our current interest is in retrievals of aerosol properties through the entire aerosol plume, and thus the low-altitude sky scans are most comparable to the other instruments presented here. 49 of the QC-passed scans corresponded to valid in situ data and are used in the aggregate comparison figures; an additional 26 did not correspond in space and time to the other instruments, but are included in the broader analysis of Section 4. The available sky scan retrievals and their co-location with other instruments are summarized in Table 2.

The 4STAR uncertainties presented here are quantified by a sensitivity test based on AOD and radiance uncertainties. AOD uncertainties used are the archived wavelength-dependent uncertainties (LeBlanc et al., 2019), and uncertainties in the sky radiances have been quantified through laboratory calibration using a NIST-traceable 12-lamp 36-inch integrating sphere (Brown et al., 2005). AOD uncertainties are dependent on wavelength, time, and solar zenith angle (geometrical air mass factor), as well as potential window contamination in some cases. These values were typically between 0.01 and 0.02, ranging from a low of 0.008 to a high of 0.037 in an extreme case. Radiance uncertainties are wavelength-dependent, but are constant over the entire campaign, ranging between 1.0% and 1.2% for 470-995 nm. To test the impact of these two types of errors, the sky scan inversion code is run separately for an addition or subtraction case for each of these two parameters (i.e. four cases), and the result is added in quadrature for each of the upper and lower bounds. Note that an increase in AOD (without perturbing radiances) results in a lower SSA and higher AAOD, while an increase in radiance (without perturbing AOD) results in a higher SSA and lower AAOD. Uncertainties in SSA are dominated by the AOD terms, with smaller contributions from the uncertainty in the measured sky radiances. Other sources of uncertainty are not explicitly quantified in the present work.

2.1.2 AirMSPI

The Airborne Multi-angle SpectroPolarimeter Imager (AirMSPI) is an imaging polarimeter which ~~flew~~ has flown on the ER-2 aircraft since October 2010, including in ORACLES-2016 (Diner et al., 2013). The instrument ~~has been flying aboard the NASA ER-2 high altitude aircraft since October 2010 and has two operational modes: step-and-stare view mode and sweep mode, with 25-meter and 10-meter spatial resolution, respectively.~~ contains a pushbroom camera inside a programmable gimbal for along-track view angles between $\pm 67^\circ$, which is typically used for the observation of a 10×10 -km target from 9 discrete view angles (“step-and-stare mode”; 10-m resolution), or a 100-km-long target under a continuously changing view angle (“sweep mode”; 25-m resolution). Further instrument details may be found in Diner et al. (2013). The sweep view mode was adopted for cloud and above-cloud aerosol observations during the ORACLES field campaign. The AirMSPI data presented here are from a coupled stratocumulus cloud and above-cloud aerosol retrieval based on an optimization approach (Xu et al., 2018). The retrieval is run by fitting polarized radiance in a wide scattering angular range (e.g. from $\sim 90^\circ$ to 180°) at three spectral bands centered at 470, 660, and 865 nm. The retrieved above-cloud aerosol properties include refractive index, size distributions, and aerosol total volume concentration. The retrieved cloud properties include cloud-top droplet size distribution, cloud-top height, and cloud optical thickness (cloud optical thickness is derived by fitting the radiance in the three

polarimetric bands). Non-spherical particles are not accounted for in the current retrievals. The column effective AOD and SSA are calculated using Mie theory. Retrieval uncertainties are reported at the polarimetric wavelengths, and are determined by propagating the instrument errors into the retrieval uncertainties. For example, to get the retrieval uncertainty for above-cloud AOD and SSA, the fitting residual plus instrument bias are multiplied with the inverse of the Fischer matrix evaluated at the
5 retrieved solution. Then chain rule is applied to propagate the error of the retrieved aerosol properties in the solution vector to AOD and SSA, which further involves the use of a Jacobian matrix containing derivatives of AOD and SSA with respect to aerosol properties (Xu et al., 2018, 2019).

2.1.3 HiGEAR (PSAP+Nephelometer)

The Hawaii Group for Environmental Aerosol Research (HiGEAR) operated several in-situ instruments on the P-3. Total and
10 sub-micrometer aerosol light scattering coefficients (σ_{scat}) were measured onboard the aircraft using two TSI model 3563 3-wavelength nephelometers (at 450, 550, and 700 nm) corrected according to Anderson and Ogren (1998). In addition to the TSI nephelometers used in the present work, two single wavelength nephelometers (at 550 nm, Radiance Research, M903) were operated in parallel to study the increase in light scattering as function of relative humidity (RH). The humidified M903 nephelometer was operated near 80% RH while the dry unit was maintained below 40% (Howell et al., 2006). Discussion of
15 the impacts of aerosol humidification in the context of comparison with remote-sensing retrievals at ambient RH is found in Section 4.2.

Light absorption coefficients (σ_{abs}) at 470, 530, and 660 nm were measured using two Radiance Research particle soot absorption photometers (PSAPs). The humidity within the PSAP was not explicitly controlled, but the PSAP optical block was heated to approximately 50°C to reduce artifacts which would result from a changing RH; this had the effect of reducing
20 relative humidity in this instrument to much lower than the 40% within the nephelometers. The PSAP absorption corrections were performed according to an updated algorithm (Virkkula, 2010). Instrumental noise levels are 0.5 Mm^{-1} for a 240–300 s sample average, comparable to values reported previously (Anderson et al., 2003; McNaughton et al., 2011). In this paper, we primarily present results calculated with the wavelength-averaged (as opposed to the wavelength-specific) correction factors presented in Virkkula (2010). Further discussion of this decision and the differences between the two corrections are shown in
25 Appendix A1.

SSA was calculated using the measured PSAP absorption combined with dried (RH<40%) TSI nephelometer scattering interpolated to PSAP wavelengths. In the comparison cases (i.e. column values), SSA is the extinction-weighted (extinction = scattering + absorption) profile average according to the following procedure. To reduce noise, the reported 1-second scattering and absorption data, corrected to ambient temperature and pressure, were first averaged to 30s box-car averages. Time-averaged
30 data are then filtered to reject cases where $\sigma_{\text{scat},530\text{nm},30\text{s}} < 10 \text{ Mm}^{-1}$ to assure an adequate signal-to-noise ratio. Data are also discarded if >20% of the archived 1s SSAs are undefined over the averaging period, to account for manual quality flagging of SSA due to, e.g., calibration periods. Applying different averaging times (10-60 s averages) did not result in appreciably different SSA and Ångström exponents for the column-average. SSA is then calculated as $\text{SSA} = \sigma_{\text{scat}} / (\sigma_{\text{scat}} + \sigma_{\text{abs}})$, and then arithmetically weighted by its extinction in computing a profile average. In the AOD proxy shown in Section 3.1, due to

the vertical integration involved, scattering and absorption data were instead averaged into equal 100-m vertical bins (approximately 15 s of flight time) and integrated over the full profile; in this specific case, only profiles with altitudes spanning at least 1.6 km to 5.1 km are considered (Table 2).

Unless otherwise specified, the “in situ” data reported in this paper are from the PSAP+Nephelometer combination, with Virkkula wavelength-averaged corrections applied. Due to the uncertain nature of the impacts of humidification on each of the scattering and absorption components individually and how they affect the resulting SSA, we leave these in situ data as dried. The basis for and implications of this decision are discussed in more detail in Section 4.2.

2.1.4 PTI + Nephelometer

The second in situ measurement of aerosol absorption uses data from the airborne photothermal interferometer (PTI). The PTI measures aerosol light absorption by combining photothermal spectroscopy and laser interferometry (Sedlacek, 2006; Sedlacek and Lee, 2007). The hallmark of the PTI, and other photothermal-based techniques, is a complete immunity to light scattering. The unit deployed during ORACLES-2016 operated at a wavelength of 532 nm. While the baseline noise on the ground was $\sim 1.5 \text{ Mm}^{-1}$ for a 1s integration, ~~the noise floor during in-flight time, the PTI exhibited pronounced sensitivities to aircraft platform vibrations during the 2016 ORACLES campaign. These unexpected sensitivities had two immediate, and unrecoverable, effects on the performance of this measurement onboard the P3. First, the noise floor increased to $\sim 20 \text{ Mm}^{-1}$ at 1s in flight, due to platform (mechanical) vibrations. This shortcoming was addressed in a revision~~ difficulties in maintaining quadrature lock with the active quadrature lock feedback circuit. Second, platform vibration impacted the laser beam overlap between the modulated excitation laser operating at 532 nm and the 632 nm interferometer laser beam. Reduction in beam overlap resulted in an under reporting of the actual aerosol absorption since the probe beam (interferometer) was not optimally sampling the volume illuminated by the modulated green beam. Additionally, laser overheating further limited the operation of this instrument to in-plume transects.

Due to these ~~mechanical limitations, the performance impacts, the 2016 PTI data are flagged as suspect. As such, the PTI data are archived as 30s averages, with data available an uncertainty of $\sim 4 \text{ Mm}^{-1}$ subjected to the 1s-measurement noise floor, and with data available only for some periods and for a subset of P-3 flights only. Laser overheating further limited the operation of this instrument to in-plume transects. As these data are included in the ORACLES 2016 archive, we include a discussion of them in this comparison study, though with the above caveats. In the multi-instrument comparison case studies presented here~~ comparison case study which has PTI data available (Section 3.1.2), the extinction-weighted SSA and absorption (AAE) are calculated from PTI absorption for was only able to be calculated from the PTI absorption using data within the time period of the P-3 comparison case (profile and in-plume leg). The whiskers shown on PTI absorption in the comparison figures show the 10th-90th percentiles over the comparison window (i. e. the variability during a comparison window), rather than a complete profile as with the PSAP+Neph SSA. Due to the limitations with these data as described above, we do not show the PTI+Neph SSA for this case, but discuss it in qualitative terms in Section 3.1.2. A direct comparison of the absorption as measured by the two in-situ instruments (PTI and PSAP) is shown in Section Appendix A2.

[A redesign of the PTI, based in part upon lessons learned during the 2016 campaign, saw improved performance for the 2018 ORACLES campaign and will be the subject of another paper.](#)

2.1.5 RSP

The NASA GISS Research Scanning Polarimeter (RSP) is a multi-angle, multi-spectral polarimeter aboard the ER-2 that
5 measures the Stokes parameters I, Q, and U at ~ 150 angles between $\pm \sim 60^\circ$ in the along-track direction, in 9 spectral
channels centered at 410*, 469*, 555*, 670*, 864*, 960, 1594*, 1880, and 2264* nm (Cairns et al., 1999). The seven channels
denoted by an asterisk have negligible or weak and correctable water vapor absorption and were used in the microphysical
aerosol properties from polarimetry (MAPP) retrieval. The RSP MAPP algorithm (Stamnes et al., 2018) was adapted for
ORACLES observations of aerosols above water by incorporating into the retrieval an aerosol profile consisting of two layers
10 (a top layer of fine mode aerosol located at 2.25 – 5.5 km, and a base layer of coarse mode (sea salt) aerosol located at 0 – 1 km)
as approximately identified by the High Spectral Resolution Lidar (HSRL-2), which also on the ER-2 aircraft. The aerosols
are modeled as a bimodal population of spherical fine- and coarse-mode aerosols, with each mode defined by a lognormal
size distribution. The fine mode aerosol effective radius, effective variance, and complex refractive index are then retrieved.
The coarse mode aerosol is assumed to consist of nonabsorbing spherical particles with complex refractive index equal to
15 that of water, except the real part was multiplied by a factor of 1.01. The maximum allowed ~~windspeed~~-wind speed for the
one-dimensional Cox-Munk ocean was increased to 12 m/s, to allow retrieval of high ~~windspeeds~~-wind speeds consistent with
MERRA2 profiles.

Since for RSP the fine and coarse modes are retrieved separately, the total AOD is thus the sum of the fine plus coarse mode
optical depths. Due to the assumption that coarse mode aerosol is nonabsorbing sea salt, the AAOD and Ångström exponent
20 values are provided for the fine mode only, to allow for more direct comparisons to the smoke properties retrieved by the remote
sensors above clouds.

2.1.6 SSFR

The Solar Spectral Flux Radiometer (SSFR) is a moderate resolution radiative flux (irradiance) spectrometer covering the
wavelength range from 350 to 2100 nm (Pilewskie et al., 2003; Schmidt and Pilewskie, 2012). The downwelling (zenith)
25 and upwelling (nadir) solar radiation is collected by light collectors mounted to the skin of the aircraft. In the past, aerosol
absorption, SSA, and asymmetry parameter were derived from irradiance pairs collected along collocated horizontal legs above
and below the layer (Schmidt et al., 2010). For ORACLES, this approach was impractical because of the underlying albedo
variability in the presence of clouds. The alternative is to measure the irradiances in a vertical profile, realized as a spiral.
This was not an option for previous experiments where the zenith light collector was fix-mounted to the aircraft, introducing
30 uncertainties due to the changing aircraft attitude that cannot be corrected for after the fact. Specifically, for ORACLES, an
Active Leveling Platform (ALP) was built for the zenith light collector on the P-3 aircraft. By controlling its angular position,
SSFR is able to obtain zenith (downwelling) irradiance measurements throughout the vertical profile if the spirals include short
(~ 9 -30s) straight segments (typically offset by 90° in heading). This spiral profile maneuver with short straight legs is referred

to as a square spiral. The nadir (upwelling) irradiance measurements are affected by the underlying cloud and its variability, as well as by the aerosol between the cloud top and the nadir light collector. To separate the aerosol signal from that of clouds, SSFR uses the upwelling irradiance at $1.6 \mu\text{m}$ where the signal is dominated by clouds and filter the data such that only points within one standard deviation of the mean are included for final processing. The impact of the aerosol layer on the downwelling and upwelling irradiance is then quantified throughout the spiral by plotting spectral irradiance profiles with 4STAR-reported above-aircraft AOD at 532nm as the vertical coordinate. A linear fit is performed on both ~~irradiance components with respect to the AOD, and~~ upwelling and downwelling irradiance, using AOD as vertical coordinate. The absorption is then derived ~~as the change in net irradiance over the AOD differential over the full spiral~~ from the difference of the net irradiance at the top and the bottom of the layer (Cochrane et al., 2019). Since this approach uses data throughout the vertical profile, it is a more robust and accurate method than obtaining it just from the irradiance pairs above and below the layer as in a radiation wall. More importantly for measurements above clouds, this method minimizes the impact of cloud variability on the sampling of upwelling irradiances through the filtering approach described above. Any deviations from a linear relationship between AOD and irradiances are attributable to changes in the underlying cloud albedo. The filtering technique allows separation of these influences from those originating from the aerosol layer. SSA is retrieved with an algorithm that iteratively changes SSA and asymmetry parameter until the modeled irradiance profiles (based on 4STAR AOD and SSFR-derived cloud albedo) match the measurements (Schmidt et al., 2010). ~~The~~ This SSA retrieval is done independently for each wavelength, without applying spectral smoothness constraints. Uncertainties in SSFR SSA as reported here reflect the 1-sigma uncertainty as calculated from the probability of the SSA and asymmetry parameter pair within the retrieval. A description of the algorithm and the uncertainty analysis may be found in (Cochrane et al., 2019).

2.2 Instrument intercomparison conditions

Comparison cases were selected based on the available instrument data and the flight path for a given day. Identified cases included at least two of the following conditions to facilitate comparison between instruments:

1. Operational nephelometer plus PSAP and/or PTI in situ data during an aircraft profile (either a ramp or a square spiral as described in Section 2.1.6);
2. ≥ 1 sky scan (4STAR) at or below the bottom of the plume (i.e. measuring the total-column aerosol properties);
3. a square-spiral profile through the full column (SSFR);
4. an ER-2 overpass of the P-3 location (RSP and/or AirMSPI).

Due to the different flight patterns necessary for the different instruments to measure/retrieve aerosol properties, this yielded 24 potential comparison case studies over 12 (out of 14) flight days (Figure 2). Within this set of cases, temporal separation between measurements from different instruments varies between 10 minutes and 2 hours; the inter-measurement spatial spread was within approximately 1 degree in either latitude or longitude (ideally 100km or less, but up to 130km in select cases). Note that not all instruments were available for each comparison (Table 2). In selecting comparison periods, spatial coincidence was

Table 2. Summary of data available for instruments with multiple comparison cases (i.e. from 4STAR, AirMSPI, and in situ instrumentation), for campaign-wide statistics (top row; Section 4) and for comparison with other instruments (lower rows; Section 3).

	4STAR (P-3)	AirMSPI (ER-2)	in situ (P-3): full profile	in situ: partial profiles only
# valid retrievals	75 (below 3km) of 82 (total)	134 (primary) +68 (additional)	continuous	continuous
# cases total	19	9	14	9
vs 4STAR	—	9	11	14
vs AirMSPI	9	—	6	3
vs in situ	19	9	—	—

given priority over temporal coincidence. All comparison cases included at least one 4STAR sky scan; this was reduced to 20 cases when we required QC'd sky scans below 3km (considered to be below the bulk of the aerosol plume), 19 of which were coincident with an in-situ profile. Of the 24 cases, 14 had full profiles and 9 had partial profiles only, for a total of 23 of the 24 with in situ observations of SSA.

5 Below we focus in on two specific case studies, on 12 and 20 September 2016. The case on September 12 (blue star in Figure 2) was a mostly cloudless scene and included RSP retrievals from an ER-2 overpass. For the case on September 20 (orange star in Figure 2), valid SSFR retrievals were run using data from a P-3 square spiral maneuver through a cloudy scene overlaid with substantial aerosol loading. Each of the twelve ER-2 flights (including transits to/from Namibia) yielded AirMSPI ACA retrievals somewhere over the SEA; nine of the P-3 comparison cases included ER-2 overpasses, and each of these had at least one AirMSPI ACA retrieval co-located with P-3 observations. Three of these cases (including the case from 20 September discussed in Section 3) had retrievals with the highest confidence (labeled “primary” in Table 2); retrievals were run for an additional 6 cases, which are included in Section 4 to allow for broader comparison. However, these second-tier retrievals have somewhat increased potential for retrieval biases, due to small scattering angle coverage and/or broken cloud conditions. Successful above-cloud aerosol retrievals for data from the RSP have been processed for one of the cases thus far (the case study on 12 September). While the present work is thus limited to a subset of the 24 cases, future comparative analysis may be able to expand the number of cases to incorporate potential newly-available data (Table 1).

20 It is important to note that due to the different instrument methodologies, exact spatiotemporally coincident measurements are not possible, if for no reason other than the different viewing geometries alone; the comparisons presented here are chosen for their potential to obtain measurements of reasonably similar aerosol properties from different perspectives (e.g. below-versus above-aerosol remote sensing, and remotely sensed versus in situ; Figure 3). In our analysis, we first present the two individual case studies (Section 3.2.3.1) before discussing results from the aggregation of all coincident measurements from three of the instruments (Section 3.2).

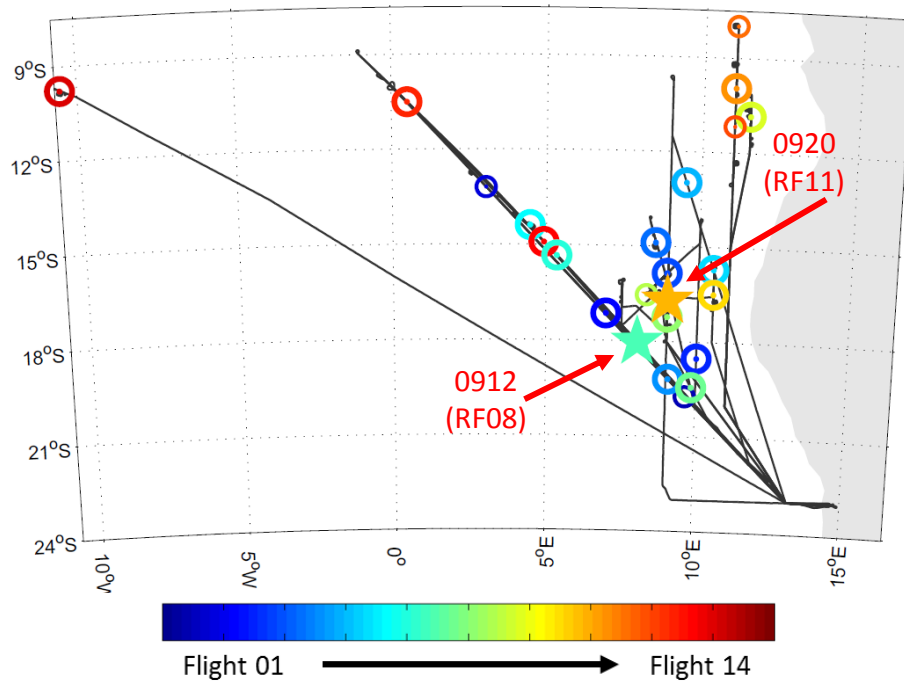


Figure 2. Summary ORACLES-2016 P-3 flight paths (all flights; black lines) showing the approximate location of data available for instruments with multiple all aerosol comparison cases (circles). e. from 4STAR, AirMSPI, and The cases highlighted in situ instrumentation), for campaign-wide statistics this paper (top row; Section 4.12 and 20 September 2016) are indicated by a star and for comparison with other instruments (lower rows; arrow, and larger circles are the cases included in the analysis in Section 3)3.2. The color indicates the timing of an individual case within the September 2016 deployment.

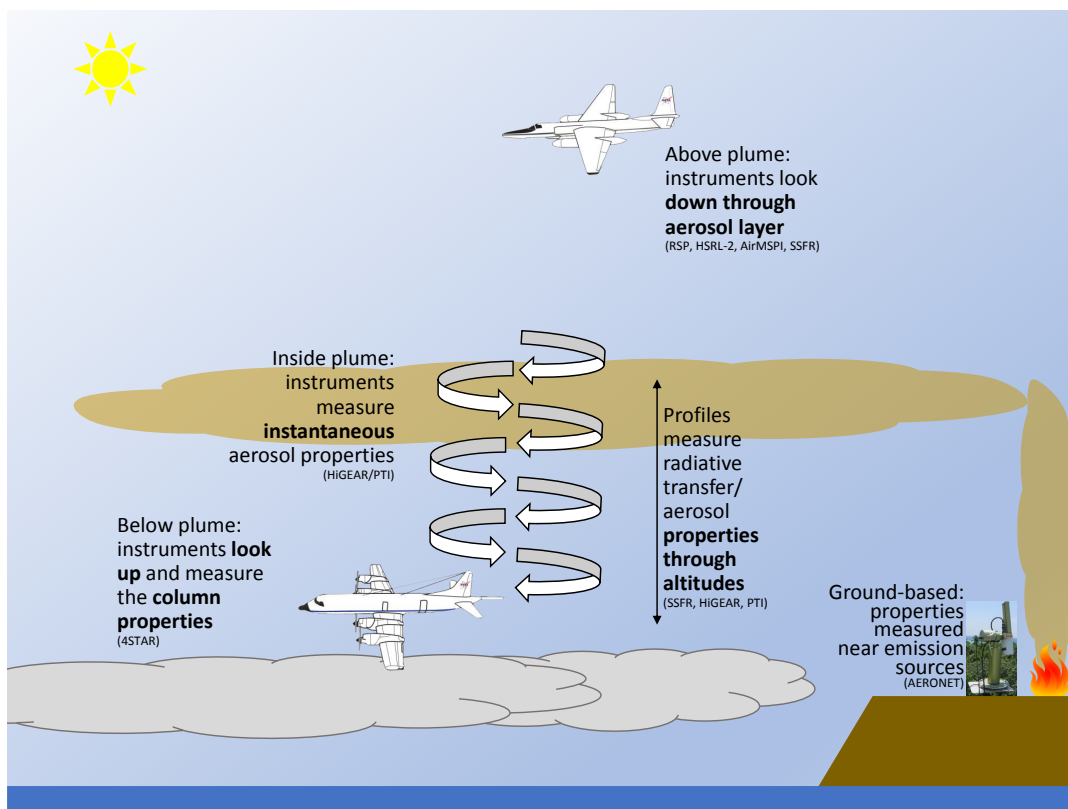


Figure 3. Schematic illustrating the different successive measurement orientations necessary for a comparison between-of aerosol properties using different instruments on-different-and aircraft in an aerosol-above-cloud environment. The aircraft shown are those used in ORACLES: the high-altitude (30km) ER-2 (top) and the propeller P-3B aircraft for tropospheric sampling (approximately 0-7km).

3 Results

3.1 Comparison of absorption from in-situ instruments

As this paper discusses SSA derived using two different in-situ methods, we first briefly discuss the two in-situ absorption instruments as they compare to one another. Figure A3 shows 30-second averages of absorption from the PTI and from the PSAP for all available coincident data for the 5 flights with the PTI operational (flights on September 10, 12, 14, 20, and 24). The effect of the high noise floor applied to the reported PTI values is evident in the data variability, and the PTI absorption is seen to be generally lower than PSAP absorption over all days, consequently with a smaller dynamic range: 5th-95th percentiles of 20.3 to 28.8 Mm^{-1} (median 22.8 Mm^{-1}) for PTI compared with 21.8 to 40.9 Mm^{-1} (median 26.6 Mm^{-1}) for the coincident PSAP measurements. The generally lower PTI absorption could be due to several factors, including: an artificially low-biased PTI signal driven by latent heat of evaporation under high-humidity aerosol conditions or an artificially high-biased PSAP signal due to multiple scattering from the filter-based measurement. Improvements in the PTI instrument design for the 2018 deployment will likely facilitate better comparative analysis between the two measurement techniques.

Comparison between PTI vs PSAP aerosol absorption coefficient (at 532 and 530nm, respectively) for all available flight data. Lines show a 1:1 relationship (red dashed) and a total-least-squares fit (green dashed) through the data.

3.1 Multi-instrument case studies

We next show two specific case studies, from flights on 12 September and 20 September 2016, where 6 of the methods can be compared.

3.1.1 Case study: 12 September 2016 (broken cloud/clear-sky)

The P-3 flight on 12 September was a radiation-targeted flight of opportunity, with two potential comparison cases identified. Both cases are included in the analysis in Section 3.2, but in this section we focus on the second case, at approximately 18.0°S, 8.0°E, between 13:44 and 14:34 UTC (Figure 2). This case starts with two consecutive 4STAR sky scans at approximately 1 km altitude (above-cloud-level; also referred to below as "plume only" within this section, for reasons which are explained below) over a broken cloud scene of albedo of 0.1, followed by a short descent and two scans at 80m, which is below typical cloud level but was, in this case, in a cloudless area (scene albedo approximately 0.05). The P-3 then flew a ramped ascent from 80m to 5.8 km, ending above the top of the aerosol plume. Measured relative humidity (RH) throughout the plume increased from near 0% below the plume level (up to \sim 2.5km) to a maximum of around 50% at plume top (5km), or generally below the RH=40% "dry" threshold for the in situ instrumentation. This corresponds to a roughly constant water vapor mixing ratio: around 5000ppmv (3.1g/kg) through the plume. The first pair of sky scans (at 1km altitude) are separated from the second pair (at 80m, at the base of the ramp) by approximately 20 minutes and 130 km. While this is slightly outside our desired spatial constraints which may give slightly poorer scene agreement for this comparison case, we believe it instructive to retain the two above-boundary-layer sky scans in examining this case, ~~first to facilitate~~. First, this facilitates better comparison with

RSP (which retrieves above-cloud fine-mode aerosol separately) and second ~~because~~, since the bulk of the ORACLES-2016 data consists of plume-only aerosol without boundary-layer influence, ~~and thus the~~ inclusion of these scans allows for better contextualization of this specific case. The ER-2 overpass of the scene, occurring during the P-3's ascending ramp, resulted in 20 RSP retrievals between 14:17 and 14:21 UTC. There were no AirMSPI retrievals during this period.

5 Figure 4 shows the SSA for each of the available instruments for this case. The most notable feature is in the 4STAR sky scans; while the retrievals agree quite well at short wavelengths (within ~ 0.01 and well within 4STAR's ~~uncertainty range~~ SSA uncertainty range determined by AOD and radiance uncertainties, as described in Section 2.1.1), at the longer wavelengths the two sets of scans diverge markedly. It may be noted that the uncertainty increases as well at these longer wavelengths, and there is overlap in the two sets of uncertainty estimates. The two sky scans performed near the surface (at 80m altitude), immediately
10 before the start of the ascending ramp, agree well with one another and give a higher long-wavelength SSA than the two scans performed above the boundary layer (at 1km altitude). However, the 1km scans are more representative of the typical SSA spectral shape observed from 4STAR for the ORACLES-2016 campaign as a whole (i.e., monotonically decreasing for wavelengths $\geq 500\text{nm}$). As the majority of the 4STAR sky scans were taken above the boundary layer, the increase in SSA at
15 longer wavelengths as seen in the two 80m scans likely reflects contribution from sea salt in the boundary layer, combined with the overlying biomass burning aerosol. In situ measurements report $\sigma_{\text{scat},530\text{nm}}$ of around 30Mm^{-1} between 80 and 600m with negligible absorption in these altitudes, suggesting purely scattering sea salt. This is additionally corroborated by the HSRL-2 retrievals of aerosol type, which identified marine aerosol below the smoke plume around this time. The AERONET climatology of aerosol from "desert dust and oceanic" sites (Bahrain/Persian Gulf, Cabo Verde, and Lanai, HI sites) by Dubovik et al. (2002) shows high, largely spectrally-flat or slightly increasing SSA between 440nm and 1020nm. Indeed, LeBlanc et al.
20 (2019) also found lower extinction Ångström exponents for "full column" (i.e. below cloud level) 4STAR AOD measurements than for those taken above the boundary layer, which is consistent with the differences seen in this case (Figure 5).

In situ measurements show a similar spectral SSA ~~with wavelength~~ compared with the other two instruments. We note that if we apply the wavelength-specific, rather than wavelength-invariant, Virkkula corrections to the PSAP data, the PSAP+Neph SSA shows a different spectral shape, with a small maximum in SSA at 530nm (Appendix A1). It is also important to note that
25 the in situ measurements will exclude a significant portion of the coarse-mode aerosol due to poor inlet passing efficiency of larger aerosol particles (a 50% size cut around ~ 4 microns), ~~which~~. This means that nominally there are twice as many $4\mu\text{m}$ particles observed by remote sensing instruments compared with in situ, and perhaps 10 times as many at larger sizes (10 - 20 μm), and thus even "full column" in situ values may be missing larger aerosol. Thus, the SSA and AEs derived from the in situ instruments will have a greater contribution from the biomass burning aerosol than will the values retrieved from 4STAR
30 ~~and~~ (and in the later comparison case, AirMSPI and SSFR), which include all ambient aerosol (as noted above, RSP models fine and coarse mode aerosol separately). The differences in SSA values are also within the instrument uncertainty (4STAR) and variability (in situ) ranges.

Figure 5 shows the AAOD and AOD for this same case. ~~The~~ Of the measurements from 4STAR, the two 80m cases have slightly higher AOD than the 1km measurements at 400nm (0.45 versus 0.42; AOD uncertainty ± 0.018), but significantly
35 higher AOD at 995nm (0.18 versus 0.11; uncertainty ± 0.02). Thus, the 80m values have markedly lower Ångström expo-

nents—a difference of 0.4 for both SAE and EAE. This is again consistent with a significant coarse-mode component in the aerosol between 80m and 1km (i.e. the boundary-layer aerosol) ~~including a significant coarse-mode aerosol component~~— for this region, very likely sea salt. Comparison with the 1km 4STAR sky scans is additionally instructive for this case as due to the very low absorption data (and consequent low signal-to-noise) in the boundary layer, the SSA values were not reported for these altitudes ~~due to low signal-to-noise~~; thus the in situ values in Figure 4 are effectively averaged over only plume altitudes, contributing to the lower "AOD" from in situ reported here. Given that RSP and 4STAR both measure the full column (including this coarse mode), we expect the retrieved column SSA to be somewhat higher than that from the measurements/retrievals of SSA for the aerosol for the BB plume altitudes only; this could be contributing to the higher SSA from RSP and to a lesser degree from 4STAR as compared with in situ instrumentation (Figure 4). Based on this we might also expect the 4STAR re-
10
trieved SSA to be higher for the retrievals from 80m than from 1km, and this is not apparent except at wavelengths 870nm and longer. However, this could potentially be explained simply by a smaller relative contribution of boundary-layer aerosol to the total aerosol loading, particularly at the shorter wavelengths (i.e. the smaller difference between the two sets of sky scans at shorter wavelengths).

The AAE and EAE are given by the slopes of the AAOD and AOD versus wavelength, and the SAE can be inferred from the two (Figure 5). In comparing with the other instruments in this case study, the 1km altitude 4STAR EAEs and SAEs are
15
more comparable to those derived from the in situ instruments. The 4STAR SAE and EAE values from 80m (including sea salt) are lower than the corresponding RSP Ångström exponents of $AOD_{\text{fine+coarse}}$. The 4STAR 1km values (plume only) agree with the RSP AOD ~~from fine mode~~ fine only for mid-visible values and the two diverge for wavelengths greater than 700nm, which may somewhat be expected given the lower signal at longer wavelengths. While RSP observes slightly higher
20
AOD (compared with 4STAR) at shorter wavelengths, at the longer wavelengths the RSP AOD is less than the 80m values (i.e. 4STAR measurements with additional coarse mode aerosol), but still greater than the 1km values. The in situ AOD proxy is ~~notably lower, likely again using dried values for consistency with the SSA values shown. The in situ is notably lower than the remote-sensing methods, as may be expected: while this profile extended above the plume top height (as seen by HSRL-2), thus including the bulk of the aerosol, the altitude limitations may give integrated AODs which are slightly lower than the remote~~
25
sensing instruments. In addition to this, the drying of the in situ scattering and absorption will also reduce the calculated optical depths, though for this case, the plume RH is largely less than 40%, with a brief maximum of 49% at plume top. As such, we expect the effect of humidification on the scattering to be less than 5% (based on the dry/wet nephelometer data), which has an effect of increasing the in situ AODs by 0.01-0.02. The lower in situ AOD values are likely primarily due to the inlet limitations ~~for larger particles as discussed above~~ described above; these instruments are likely missing larger particles seen by the remote
30
sensing instruments.

In terms of AAE, the RSP results give higher values (1.25-1.26) than 4STAR, similar to the AAE from the PSAP (1.23). The average 4STAR $AAOD_{400\text{nm}}$ is 0.057 measured at 80m ~~is 0.057~~ and is 0.049 at 1km, and $AAOD_{995\text{nm}}$ is 0.025 versus 0.023 at 80m and 1km, respectively, though the latter value is an average between 0.024 and 0.022. The resulting 4STAR AAE values for 80m versus 1km are more comparable than the pairs of SAE or EAE values: 0.79 vs 0.89, consistent with

minimal contribution of sea salt to aerosol absorption. However, these values ~~overall are notably~~ are somewhat lower than may be expected from theory; a more detailed discussion of the AAEs over the full campaign is found in Section 3.2 below.

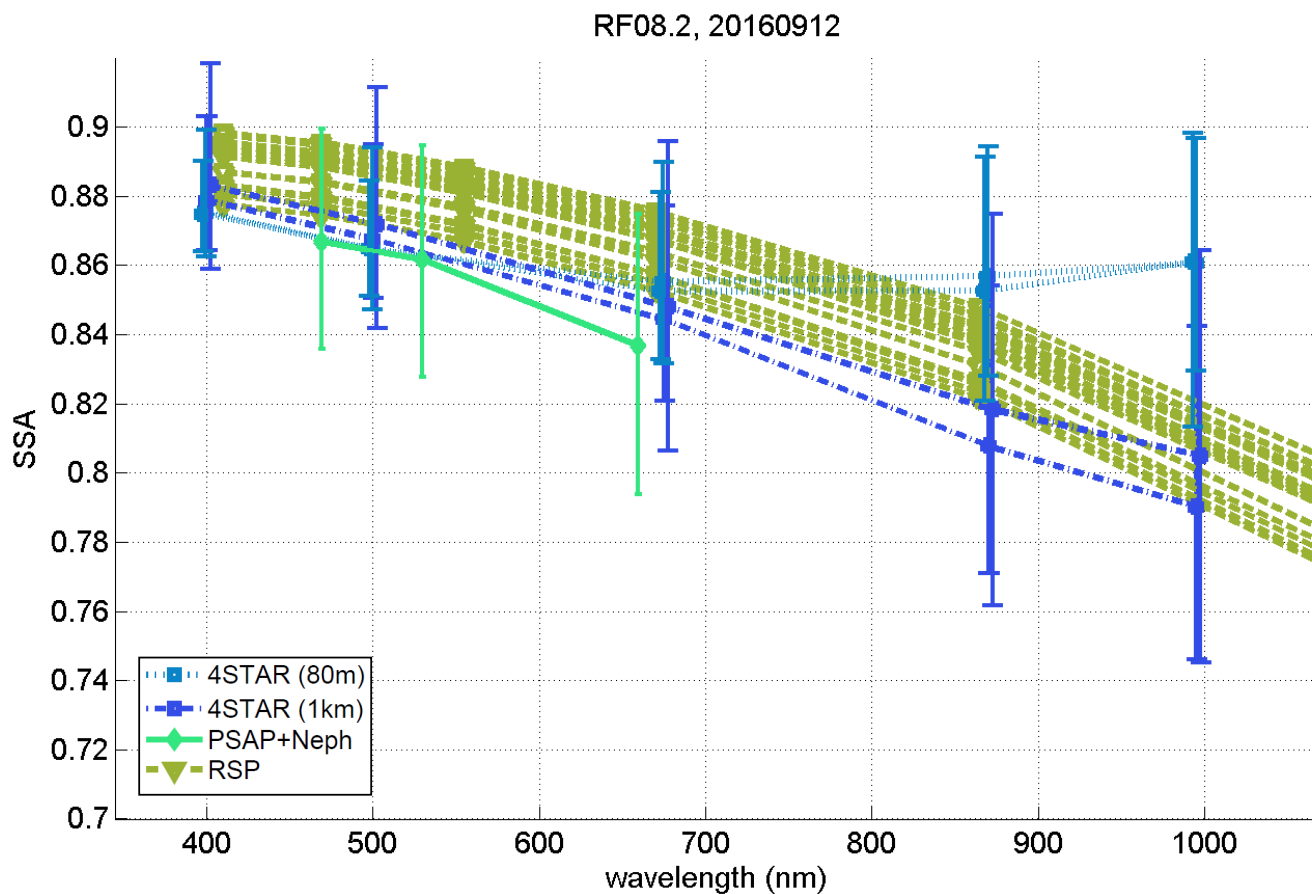


Figure 4. Spectral SSA from 4STAR (blue squares), RSP (goldenrod triangles), and in situ (green diamonds) calculations for the case on 12 September 2016. This case was centered at approximately 18.0°S, 8.0°E, between 13:44 and 14:34 UTC. The bars on the in situ measurements represent the 10-90th percentile ranges for the profile considered. The two 4STAR curves with high $SSA_{995\text{nm}}$ are from the 80m altitude scans, while the curves with low $SSA_{995\text{nm}}$ curves are from the 1km altitude scans.

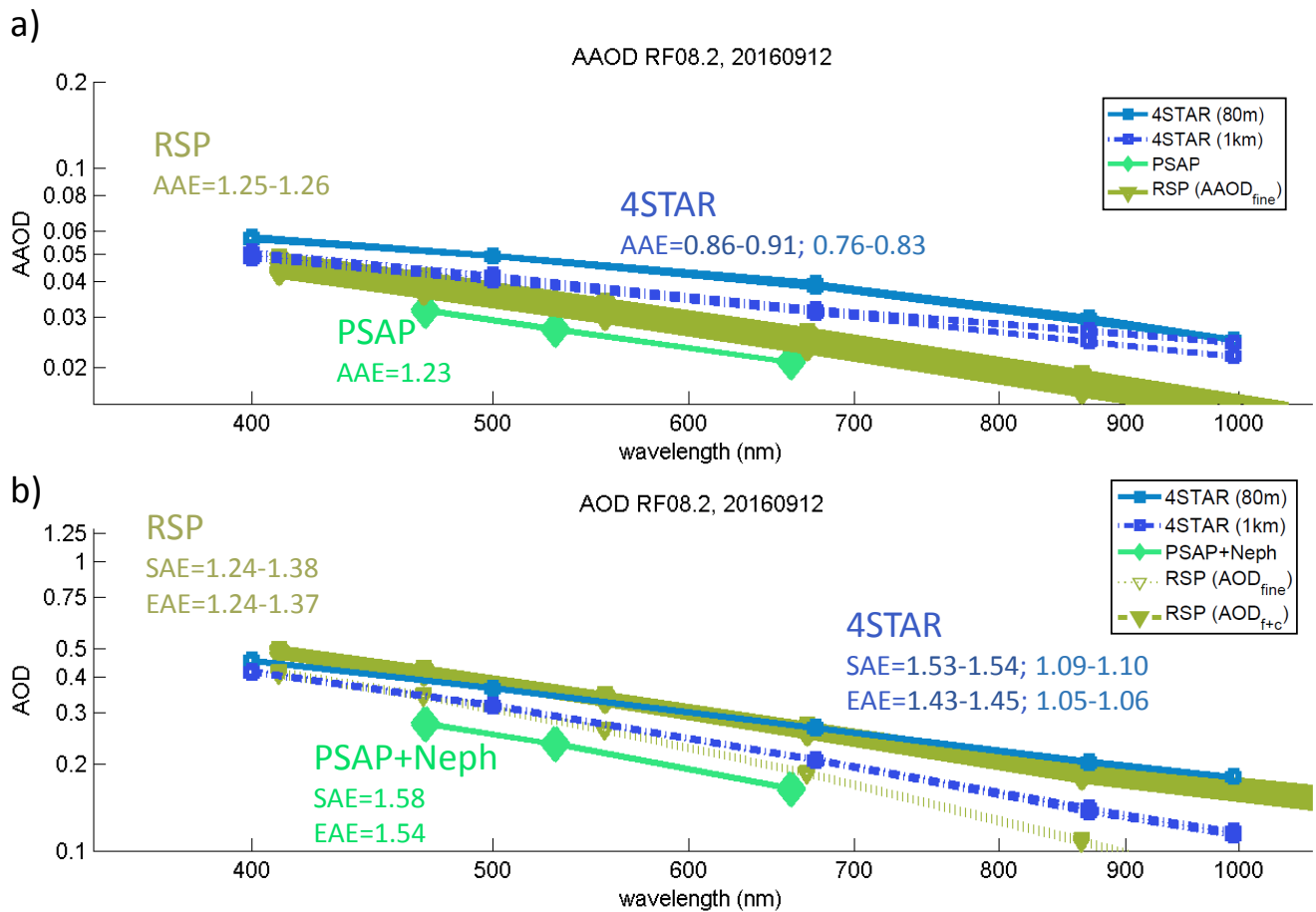


Figure 5. Spectral a) AAOD and b) AOD from 4STAR, RSP, and the in situ calculations for the case on 12 September 2016, as well as the AAE, SAE, and EAE values (derived from the slopes in log-log space of AAOD and AOD). RSP EAE and SAE include fine+coarse mode AOD, whereas RSP AAE are for fine mode only. Note that the in situ vertical profile for this case extended from 80m to 5.8km and may have undersampled the coarse-mode sea salt at lower altitudes due to inlet efficiency, whereas the two remote sensing instruments give full-column values above the P-3 (4STAR) to top-of-atmosphere, or below the ER-2 (RSP), extending to the surface. For the given 4STAR Ångström exponents, the first set refer to the sky scans from 1km, and the second refer to the scans from 80m, immediately before the aircraft ascent.

3.1.2 Case study: 20 September 2016 (cloudy scene)

The flight on September 20 (P-3 RF11) was focused on measuring atmospheric radiation with two parallel N-S flight lines along 9°E and 10.5°E. We again identify two cases which are suitable for the instrument comparison (one on each longitude line, 10.5°E and 9°E). Here we focus on the second of these two cases (P-3 RF11.2), which allowed for comparison of SSA measured by the in-situ instruments and 4STAR on the P-3 with retrievals of SSA from both AirMSPI (on the ER-2) and SSFR (on the P-3) (as with RF08, both cases are included in the analysis in Section 3.2). This case was centered at approximately 16.7°S, 9°E and began at 10:45 UTC with a partial profile descent (ramp) from plume level (4.3km) to above-cloud (600m), followed by six sky scans at above-cloud/below-plume altitude between 10:59 and 11:08 UTC, with below-aircraft scene albedo between 0.45 to 0.62. Of these, two scans passed QC (the others were excluded due to high solar elevation on almucantar scans and/or high error in the retrieval results). After the above-cloud leg, there was one [ascending](#) full-profile square spiral maneuver ([370m to 7.1km](#)) from approximately 11:52 to 12:15 UTC which provided the observations used in the SSFR retrievals. Three ER-2 overpasses occurred along this longitude line; the AirMSPI retrievals are from overpasses during the first (northward; 11:41-11:51 UTC) and second (southward; 12:18-12:25 UTC) passes. The HSRL-2 lidar retrievals show that this case consisted of an aerosol layer of primarily smoke with contribution by dust of 10-15% of the 532 nm AOD, [with a layer top height between ~5.5-6km and extending down to cloud top height](#). Measurements from the HiGEAR Aerodynamic Particle Sizer (APS) also saw dust during this profile, and indicated that <10% of scattering was due to dust. For this case, the above-BL RH was somewhat greater and also more varied with altitude compared with the case from 12 September: between 10% and 80% through the atmospheric profile (water vapor mixing ratios ranging from 3500 to 13500 ppmv, [or 2.2 to 8.4g/kg](#)), though RH remained below 40% except for the plume maximum between 4.2km and 5.6km. Again we note that while the remote-sensing (4STAR, AirMSPI, and SSFR) SSAs are measured at ambient humidity, the in-situ (PSAP+Neph and PTI+Neph) values are for aerosol dried to RH < 40%. While this difference was minimal for the first case (12 September) due to the generally lower RH, it has the potential to be higher for the second case (20 September). We discuss the implications of aerosol humidification in more detail in Section 4.2.

Figure 6 shows the spectral SSA from each instrument available for this case. We first note the general agreement between most instruments (within the stated uncertainties). While 4STAR and AirMSPI both show SSA decreasing at longer wavelengths, 4STAR reports slightly lower SSA values (particularly at longer wavelengths) than AirMSPI. This is a common feature seen in most of the comparison cases (e.g. Figures 8a-c). The in-situ observations have less wavelength range than 4STAR and AirMSPI, but again show a decrease in SSA at its longer wavelength. The rate of decrease from 530nm to 660nm is seen to be greater than from 470nm to 530nm (this is also seen in the Ångström exponents calculated from 2-wavelength pairs, discussed in Section 3.2). As in Figure 4, the wavelength-specific Ångström exponents give a different SSA spectral shape with a small maximum at 530nm; [this artifact](#) (Figure A2) ~~;-which-~~ was more pronounced here than in the case in Figure 4, possibly due to the greater aerosol loading in this case.

[The PTI-As was discussed in Section 2.1.4, the 2016 PTI absorption data are considered more suspect than the other instrument retrievals, and thus we exclude the PTI+Neph SSA_{530nm}-Neph-derived SSA from this case to focus our analysis on](#)

the more robust methods. We briefly note that PTI+Neph SSA_{532nm} for the available cases (including this one) is higher than the PSAP+Neph SSA, a result which. This result is expected in light of the lower reported absorption by the PTI (Figure A3). Additionally, due to ~~the~~ limited PTI data at lower (below-plume) altitudes, the values going into the average value are likely biased towards the higher altitudes of the plume itself. ~~As~~ This is relevant as the PSAP+Neph SSA values vertically-resolved data consistently show SSA values which were higher at higher altitudes (~~not shown~~), ~~and thus~~ this sampling pattern of the PTI (i.e. preferentially at higher-SSA altitudes) may also contribute somewhat to the PTI's higher SSA relative to the column-average extinction-weighted PSAP+Neph. The vertical structure of SSA, its spatial patterns, and relation to other ORACLES data are not explicitly discussed here, but will be the focus of future papers.

The SSFR retrieval largely agrees with 4STAR, AirMSPI, and the in-situ data (again within the given instrument uncertainties) for mid-visible wavelengths, though it reports lower SSA for the shorter (<440nm) wavelengths. The spectral shape is somewhat more spectrally flat but is consistent for all retrieved wavelengths to within the instrument uncertainty. Note that the retrieval at each individual wavelength is performed separately for SSFR. This is in contrast to 4STAR, AirMSPI, and RSP which involve assumptions about aerosol size distributions and particle shape. In addition, for these instruments the spectral refractive indices are retrieved by fitting all wavelengths simultaneously: a spectral smoothness constraint is imposed on the real and imaginary parts of aerosol refractive index to improve the retrievals. For 4STAR, this means that the inversion algorithm may converge to a different result based on small perturbations in the wavelength-dependent AOD and radiance values used as inputs; this range is what we attempt to encapsulate within the stated uncertainty bars. For AirMSPI, the polarized radiances measured in the 470, 660, and 865 nm bands have less sensitivity to aerosol refractive index and coarse mode aerosol size than to aerosol loading and cloud microphysical properties. As a result, the AirMSPI retrieval accuracy of refractive index and coarse mode aerosol size distribution are subjected to greater measurement errors than the AOD and cloud microphysical part of the retrieval, which potentially leads to errors with SSA (cf. the error bars with SSA). In contrast, the SSFR retrieval could be considered a somewhat more “direct” derivation of SSA, in that it retrieves SSA directly and individually for each wavelength on the basis of absorbed irradiance and 4STAR-measured AODs alone, with minimal constraints and assumptions on aerosol (e.g. size distribution, shape, and mixing state). At the same time, we note that the wavelength-dependence of SSA and asymmetry parameters which are retrieved from the SSFR measurements are not necessarily consistent with a physically realizable microphysical model, which may well be a drawback in trying to generalize these retrievals for related radiative transfer calculations—though particularly in complex combined aerosol-cloud scenes such as these, the positives may outweigh the potential negative aspects of this retrieval method. Regardless of the potential uncertainties of each method, the fact that retrievals using such different measurement approaches agree so well is encouraging.

Figure 7 shows the spectral optical depths for this same case, by instrument. Note that the AOD input to the SSFR retrieval ($AOD_{400nm} = 0.78$) is obtained by 4STAR at the location of the square spiral, while the AOD reported as 4STAR (Figure 7b) are from the times of the sky scans on the southbound leg directly preceding the spiral, as described above. The first scan ($AOD_{400nm} = 1.05$) was approximately 50 km from the square spiral location, which accounts for the difference in AOD between the two. The second scan ($AOD_{400nm} = 1.24$) is approximately 110 km from the spiral location (8 minutes after the previous scan in flight time). While this is on the higher end of our desired spatial spread, we show both scans here to show

RF11.2, 20160920

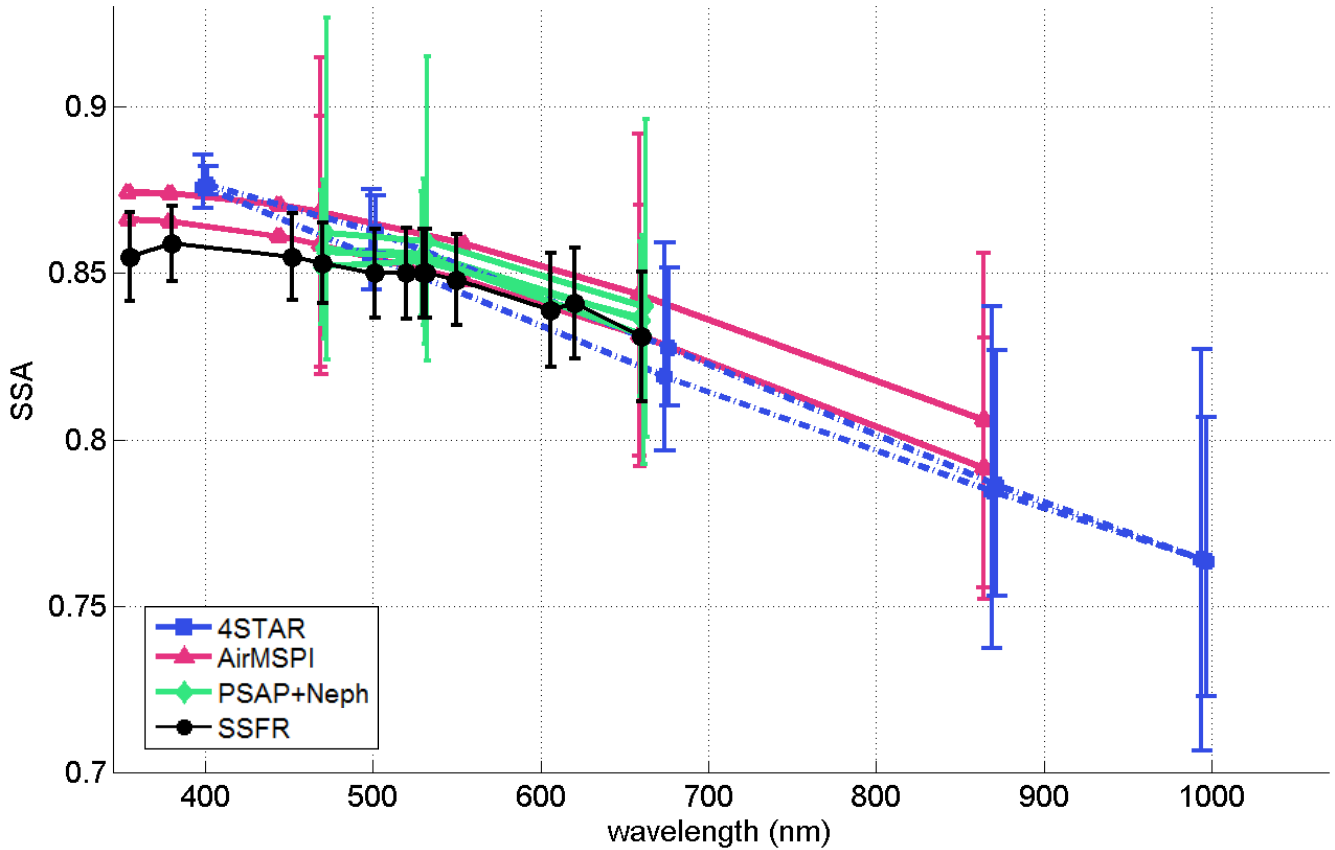


Figure 6. As in Figure 4, but showing spectral SSA for the ORACLES instruments operating on 20 September 2016: 4STAR sky scan retrievals (blue squares); AirMSPI retrievals (pink triangles); SSFR square spiral (black circles); and profile-averaged extinction-weighted SSA from the PSAP+Neph (green diamonds) and PTI+Neph (purple star). This case was centered at approximately 16.7°S, 9°E, and sampled from 10:45 UTC to 12:15 UTC. [Note that for clarity, AirMSPI uncertainties are only reported for the three wavelengths input into the polarized retrieval algorithm \(Section 2.1.2\).](#)

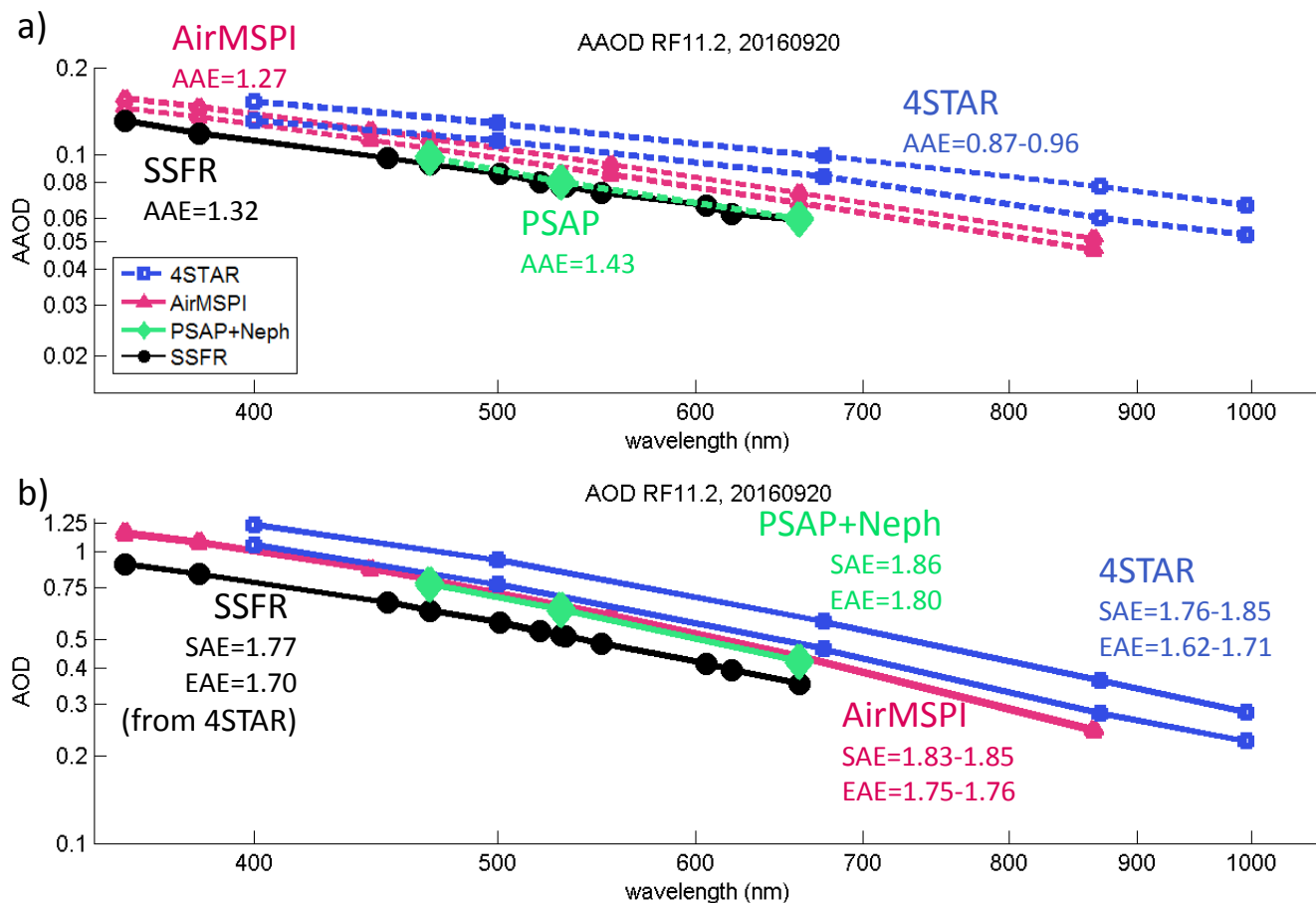


Figure 7. As in Figure 5, a) AAOD and b) AOD versus wavelength (both on log-log scales) for the case on 20 September for 4STAR, AirMSPI, SSFR, and PSAP+Neph. The PSAP+Neph optical depths are calculated from a 100m-bin average profile of nephelometer scattering and PSAP absorption, and integrated over the vertical column. This case had a full profile from 367m to 7.1km (shown) and additional partial profiles which appear in Figure 6. Note that SSFR uses 4STAR AOD as input; this coincident AOD is labeled as SSFR for clarity; thus, the differences between these three AOD spectra are due to spatial variability in the total amount of aerosol loading, likely due to variations in plume top height (~5.5-6km) as observed by the HSRL-2.

the good agreement in the spectral shape of the aerosol optical properties (i.e. spectral SSA and Ångström exponents, Figures 6 and 7) between the two retrievals even with differences in aerosol column loading (AOD and, consequently, AAOD) (Figure 7). Indeed, the Ångström exponents for this case vary within only 0.2 for all five instruments, which is better agreement than the three instruments shown in the previous case. The outlier again is the 4STAR AAE values of approximately 0.9, lower than

5 any other retrieval. This is discussed in more detail in the following section.

3.2 Campaign-wide ORACLES-2016 instrument comparisons

The two cases shown in the previous section are intended to give an idea of the range of observed cases in clear and cloudy skies, while allowing comparison with available RSP and SSFR retrievals. Next, we broaden scope to consider instrument comparisons for the campaign as a whole. We focus on in situ versus 4STAR comparisons, as these are the two methods with
5 enough coincident measurements to allow for a statistical examination. We also include a more limited number of comparisons using AirMSPI data where available.

Figure 8 shows scatter plots of several parameters (SSA, EAE, SAE, and AAE) as measured by sets of two instrument pairs—4STAR versus in situ versus AirMSPI—across the full set of comparison cases. As one case may have multiple retrievals (i.e. multiple vertical profiles, sky scans, and/or sweeps), the case-average data are indicated by filled black markers. All data
10 (i.e. multiple individual retrievals included in a comparison case) are shown as small x-marks, with grey lines indicating the range of retrievals within a given case. The top row of Figure 8 shows scatter plots of SSA_{530nm} reported by 4STAR, in situ, and AirMSPI for the aggregation of all comparison cases where two of the three can be compared ([Table 2](#)). 4STAR SSA is generally lower than the in situ SSA (Figure 8a), and AirMSPI SSA is higher than both 4STAR or in situ (Figure 8b,c). While 4STAR and in situ generally track one another, the relationship is not statistically significant ($R=0.23$, $p=0.33$). Similar results
15 are seen for EAE and SAE (Figure 8d-i), though the correlation in SAE between 4STAR and in situ is the only combination that could be considered robust: $R_{SAE}=0.66$ with $p<0.01$, whereas $R_{EAE}=0.44$ and $p=0.06$.

It is interesting to note that the one outlier in Figure 8d and g (low 4STAR SAE and EAE) is the case from 12 September described earlier (Figs 4 and 5), where the two 4STAR sky scans at lower altitude (i.e. immediately before the in situ profile) are those which result in the very low AE values which depress the average for that case. As seen in Figs 4 and 5, there is no
20 such divergence in SSA_{530nm} or AAE for this case. We also note that the correlation described above between 4STAR and in situ EAE disappears when this outlier case is excluded.

In contrast to the other parameters, the 4STAR AAE shows, if anything, a negative relationship with in-situ-derived AAE (Figure 8j), though this relationship is again not statistically significant ($R_{AAE} = -0.37$, $p=0.12$). We additionally note that the 4STAR-reported AAE values are low in general, often <1 , and are split into two populations, one in fairly good agreement
25 with in situ ($R=0.50$, $p=0.08$) and one substantially offset to lower 4STAR AAEs relative to in situ, with a similar but less robust correlation ($R=0.59$, $p=0.22$). As a whole, the full 4STAR AAE data set is negatively correlated with the in situ values. The relationships between AAE from AirMSPI and either of the other two instruments (Figure 8k,l) are also not statistically significant, due to the small range in AAE values retrieved from AirMSPI. The variability in AAE for aerosol within a given case (date and location) is also often quite large; this, combined with the lack of correlation between instruments, may simply
30 reflect [high-a higher](#) uncertainty in derived absorption Ångström exponents from all methods.

As the 4STAR retrievals frequently show AAE values less than 1, this bears some discussion. Notably, Bahadur et al. (2012) also derived very low values of AAE (as low as 0.55 for pure BC) using the same AERONET retrieval algorithm. While some previous observational studies have allowed for AAE values less than 1 (e.g., Bergstrom et al., 2007; Lack et al., 2008), ~~it is generally suspected that this is the result of~~ [these results may be due to](#) measurement artifacts or instrument uncertainties.

While pure BC is typically considered to have an AAE of 1, theoretical and practical studies have shown this may-to vary based on particle size (e.g., Lack and Cappa, 2010; Wang et al., 2016), and may be either higher or lower than this value, particularly when various coatings are applied (e.g., Gyawali et al., 2009). However, brown carbon typically has AAE greater than that of BC, and the 4STAR AAE values are lower than in the lower range of the values expected from theory even for pure BC (e.g., Schnaiter et al., 2005; Gyawali et al., 2009; Lack and Cappa, 2010) let alone a mixture. Thus, values of AAE for a mixed aerosol (smoke) that are less than 1 (for the wavelength range 440-675nm) are may be considered suspect in that they run counter to theory and to many observations of ambient-aerosol (i.e. black carbon plus brown carbon) AAE, including in this region (Bergstrom et al., 2007). As such, these results should be treated with caution; considering. Another factor to consider is the compounding uncertainties (i.e., as the slope of another derived property) inherent in the derivation of AAE by any method. As an example, the simple propagation of the AirMSPI AOD uncertainties of 0.03 in the visible range and 0.05-0.06 in the UV, and SSA retrieval error of 0.02-0.04 give an uncertainty in AAE measurements of approximately 0.4-0.5, well encompassing the difference between this instrument and either 4STAR or in situ. While 4STAR SSA uncertainties are more variable from case to case, some typical values (wavelength-dependent AOD and SSA uncertainties of 0.01-0.03 and 0.01-0.04, respectively), give a similar level of AAE uncertainty.

Figure 9 shows the difference in Ångström exponents (AAE, top row; SAE, bottom row) from the in-situ measurements versus from 4STAR retrievals as a function of AAE (top row) and SAE (bottom row) for each instrument, and as a function of AAOD (for AAE) or AOD (for SAE). This allows for visualization of the level of agreement between the two methods as a function of the retrieved properties themselves, and amount of aerosol loading.

The first two panels (Figure 9a,b) show the dependence of the difference between AAE from in situ and 4STAR measurements as a function of AAE. This shows a fairly strong correlation between higher values of in situ AAE and greater differences (in situ minus 4STAR), with the expected opposite correlation observed for high 4STAR AAE versus AAE difference ($R=0.76$ and -0.89 , respectively, both $p<0.001$). In other words, as AAE increases as measured by the in-situ observations, the difference between the in situ and 4STAR AAEs increases – and higher in situ AAE values correspond with lower 4STAR AAE values, resulting in a greater difference between the two (Figure 8j). The fact that the difference between the two is correlated with each suggests that this is not a clear case of one versus the other driving the large differences.

A weaker correlation of the same sign is observed for the difference in SAE and in situ- or 4STAR-measured SAE ($R=0.48$ and -0.57 , respectively, both $p<0.001$, though the latter shrinks to $R=-0.22$, $p=0.04$ when removing the outlier shown) (Figure 9d,e). While there is a weak ($R=0.50$) but significant correlation ($p<0.001$) between AAOD and the AAE difference between the two instruments (Figure 9c), there appears to be no correlation between total aerosol loading (4STAR AOD) and SAE (Figure 9f). This suggests that total aerosol loading does not affect the instrument agreement for this parameter, but higher values of absorbing aerosol may bias one or both of the instruments; while the filter-based PSAP instruments have well-known artifacts, there is also a weak negative correlation between $AAOD_{530nm}$ and AAE_{4STAR} ($R=-0.34$, $p=0.001$).

Figure 9 additionally shows the wavelength-dependence in AE calculated for different wavelength ranges (colored markers). This illustrates the difference in AE values (AAE and SAE), particularly from the in situ instruments, which are may result simply from altering the wavelengths used in their calculations, without significantly altering the wavelength limits. Bergstrom

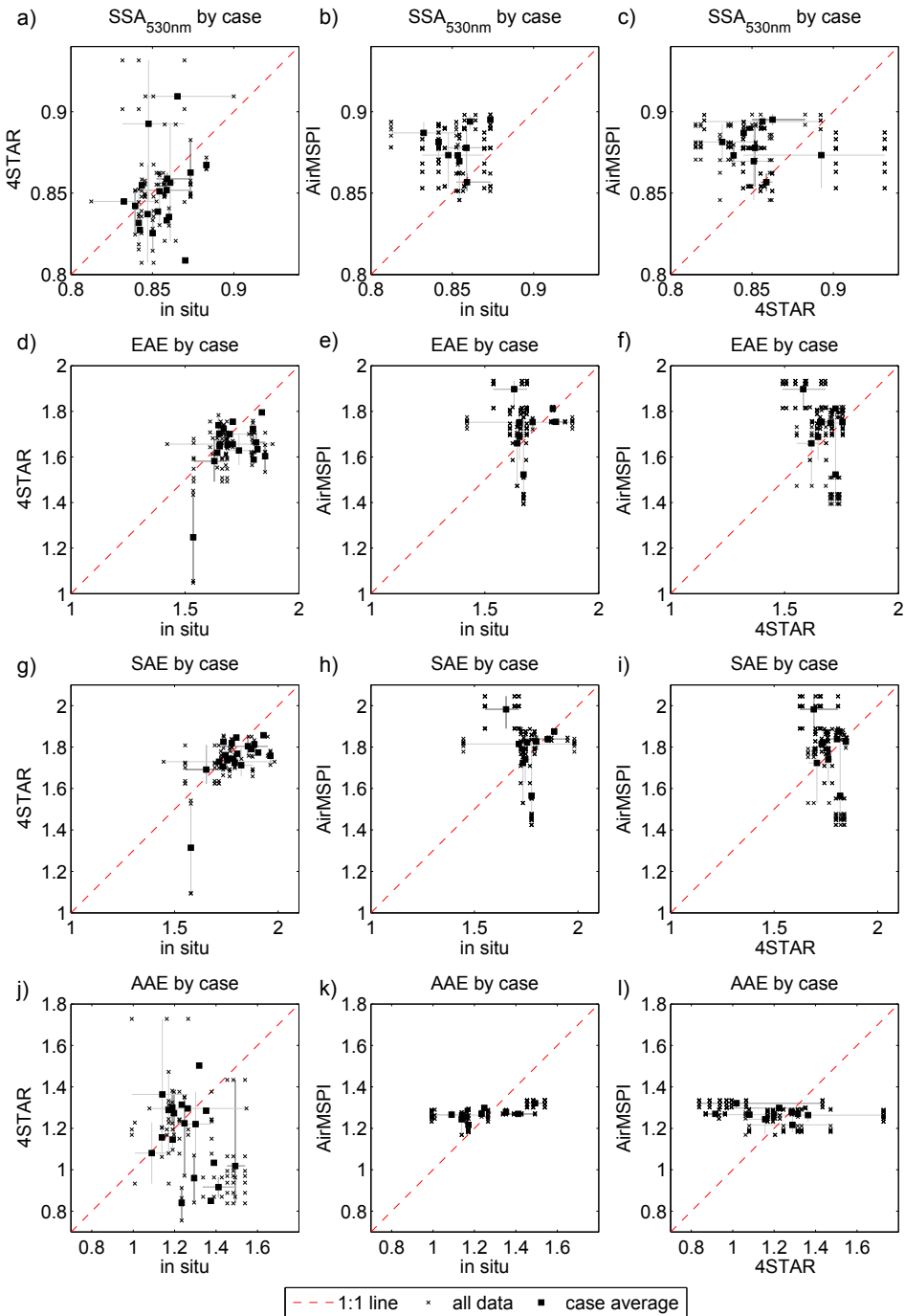


Figure 8. (top row) SSA_{530nm} , (second row) EAE, (third row) SAE, and (bottom row) AAE for (left column) 4STAR versus in situ measurements (middle column) AirMSPI versus in situ measurements, and (right column) AirMSPI versus 4STAR measurements, for all comparison cases with valid coincident observations. All individual retrievals are shown by grey x-marks; for cases with multiple retrievals from a single instrument, the average value and range for a given case is shown by a black circle with whiskers.

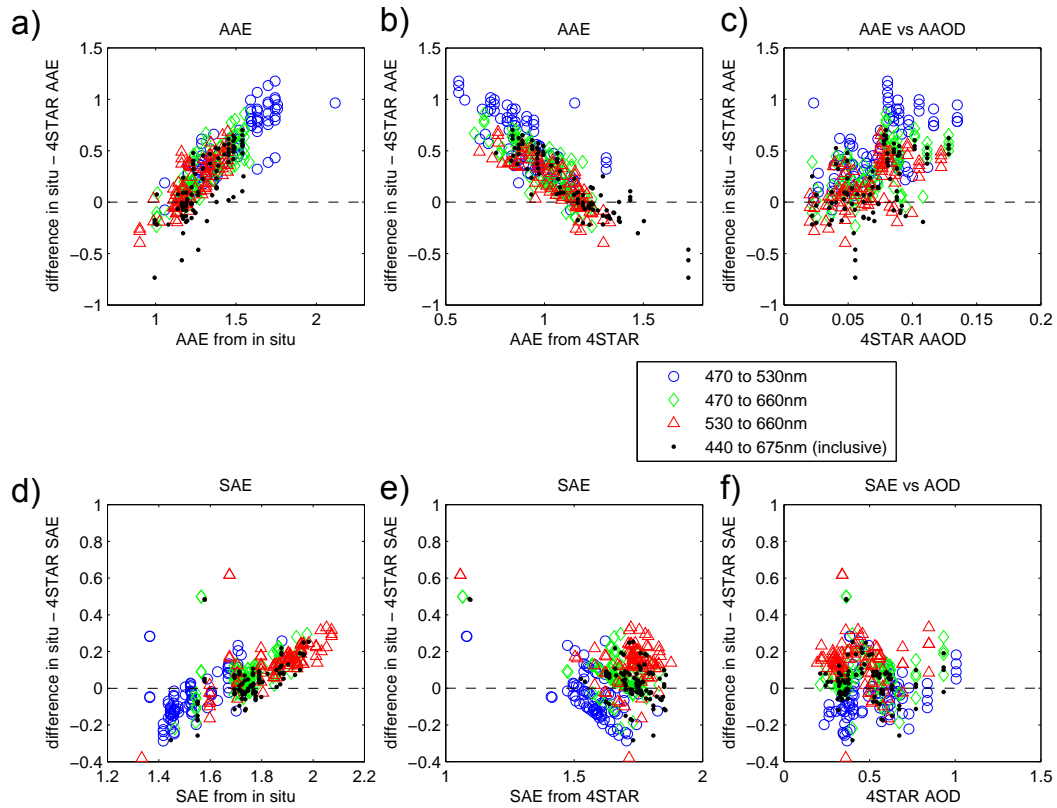


Figure 9. Difference between AAE measured in-situ versus retrieved from 4STAR (in situ - 4STAR) as a function of a) in situ AAE, b) 4STAR AAE, and c) 4STAR AAOD. The bottom panel shows the same, but for SAE differences versus d) in situ SAE, e) 4STAR SAE, and f) 4STAR AOD. Note that multiple individual points for one instrument (profiles or sky scans) may be shown for comparison cases which included >1 sample per instrument (i.e. x-marks in Figure 8). This is an indication of the variability within a specific case.

et al. (2007) showed a similar dependence of the calculated AAEs on the wavelengths used. For example, here we see a distinct spread between the AAE calculated between the two shortest wavelengths (470 to 530nm; blue circles) and the two longest wavelengths (530 to 660nm; red triangles), with the former showing the largest difference between in situ and 4STAR as well as the largest values of in situ AAEs. The same is true for the in situ SAE, except with opposite sign: the SAEs calculated using the longest wavelengths have the highest values. The differences in AAE are largely positive regardless of the wavelengths used: in other words, in situ gives higher AAE than 4STAR, with the 4STAR AAE values anomalously low relative to previous estimates of AAE, as discussed earlier. For SAE (and also EAE), the differences are more symmetrical, with negative values (4STAR greater than in situ) for the shortest wavelengths, and positive values (in situ greater than 4STAR) for the longest wavelengths. It is also worth noting that the difference between values for these two wavelength ranges (shorter minus longer) is between 0.1 and 0.4 for AAE and up to -0.5 for SAE from in situ, and up to -0.3 for AAE and SAE from 4STAR, which is a substantial range, given the range in instrument AEs over all the comparison cases were largely within 0.5 of one another. The significant variability seen here between values simply calculated from different wavelengths [again](#) suggests caution not to overinterpret Ångström exponents, particularly those calculated using only two wavelengths.

In contrast to the AE results, there is no dependence in the differences in mid-visible SSAs between the in-situ measurements and 4STAR retrievals: for $AOD_{470nm} > 0.4$ and $AAOD_{470nm} > 0.05$ (Figure 10) the differences are within ± 0.03 , within the expected uncertainties. At lower AOD/AAOD the differences are more pronounced, tending to higher values for 4STAR at lower loadings. This is consistent with the minimum AOD threshold value defined in the AERONET QC procedure ($AOD_{440nm} > 0.4$).

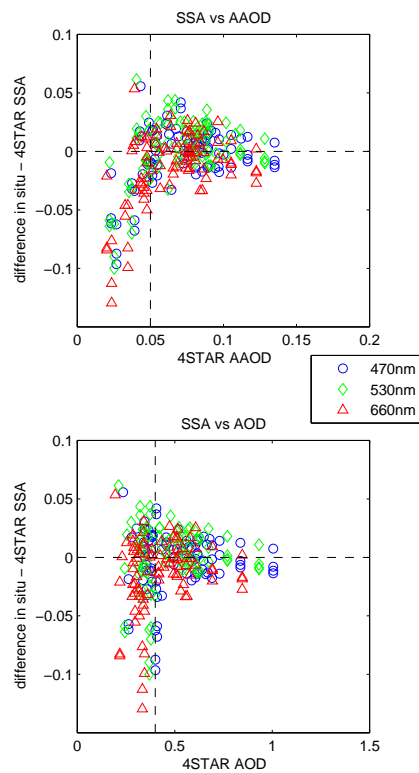


Figure 10. The difference between SSA measured in-situ versus retrieved from 4STAR (in situ - 4STAR) as a function of 4STAR (*top*) AAOD and (*bottom*) AOD, respectively.

4 Discussion

4.1 Campaign-wide measurements of SSA from multiple instruments

We now turn to the full set of SSA data from ORACLES-2016. Figure 11a shows campaign-wide averages of SSA for 4STAR, AirMSPI, and PSAP+Nephelometer. As these are campaign-wide values, they are not strictly comparable to one another; for example, the spatial coverage of the AirMSPI retrievals is larger than the other two instruments, due to the greater spatial range of the ER-2 versus P-3 flights (Figure 11a, inset). Also, the AirMSPI data considered here are from 6 flight days, compared with 13 flight days for 4STAR and 14 days for the in situ measurements. In addition, the P-3-based measurements (PSAP+Neph and 4STAR) were able to sample more coastal aerosol, which may be more influenced by variability in local aerosol sources and thus composition (compared with far-from-coast flights which would sample the upper-level plume of more uniform origin). Further discussion of the 4STAR-observed temporal and spatial variability of aerosol loading and size in ORACLES-2016 may be found in LeBlanc et al. (2019), and comprehensive discussion of the observations as they compare with model outputs will be included in a later work. Interestingly, both the offset and the sign of the difference between 4STAR and in situ measurements are similar to the results of Schafer et al. (2014), who found AERONET-derived SSAs were on average 0.011 lower than in situ (PSAP+Nephelometer) values for flights over the eastern US.

Figure 11a also shows that the variability of the SSA from the P-3-based measurements (4STAR and in situ) is fairly similar in the mid-visible range: roughly 0.025 between the first and third quartiles for 4STAR versus 0.028 for the in situ measurements. At longer wavelengths (875 and 995 nm), the 4STAR variability approximately doubles; the uncertainty for individual 4STAR sky scans is also higher at these longer wavelengths. In-situ data are not available at these wavelengths.

Figure 11b shows the ORACLES spectral SSA values compared with those from previous studies, as presented in Figure 1. SSA from the three ORACLES measurements are within the range of previous observations of SSA, with the difference in SSA between the SAFARI “fresh” versus “aged” plume (Haywood et al., 2003) bounding these observations. It is important to note that this “fresh” plume is based on a single flight directly over a terrestrial emission source (13 September 2000), whereas the “aged” values are the mean values from the remaining 8 flights, ostensibly sampling aerosol at least 2-3 days old (Haywood et al., 2003, their Table 2). While the “aged” SAFARI values should be more comparable to the expected age of ORACLES-sampled aerosol from oceanic overflights (compared with the “fresh” plume), in-field experience with aerosol model forecasts indicated the age of ORACLES-sampled free-tropospheric aerosols were typically older than four days (Dobracki et al., 2019). Both of these ORACLES and SAFARI values are based on in situ measurements (PSAP+Neph), whereas the SAFARI result shown in Russell et al. (2010) (and also described in Bergstrom et al., 2003) is from an SSFR-centered retrieval combined with data from a precursor to 4STAR, AATS-14 (the Ames Airborne Tracking Sunphotometer at 14 wavelengths) similar to the retrieval used in this paper. The retrieval is from a radiation wall within a single flight (6 September 2000). By way of comparison, flight-average SSA from the PSAP+Neph measurements on that same flight was given as 0.87, 0.86, and 0.83 at 450, 550, and 700 nm (Haywood et al., 2003), somewhat lower than the “aged” average of 0.91, 0.90, and 0.87 and only 0.01 lower than the SSFR values for the same flight. In the same work, SSA was also derived using filter measurements integrated over PCASP size distributions; the PCASP-derived values for this particular flight are given as 0.92, 0.89, and 0.87, closer to

the high end of the range. Thus, ~~even with this small amount of~~ with the available data, it is difficult to definitively say whether the variability among previous measurement methods is ~~purely a function of natural variability, or whether it is~~ predominantly due to systemic variability between different measurement methods, or whether it is purely a function of natural variability— from either seasonal changes in emission factors, evolution in aerosol properties after emission, or spatial variability such as the SSA dependence with altitude as seen in ORACLES.

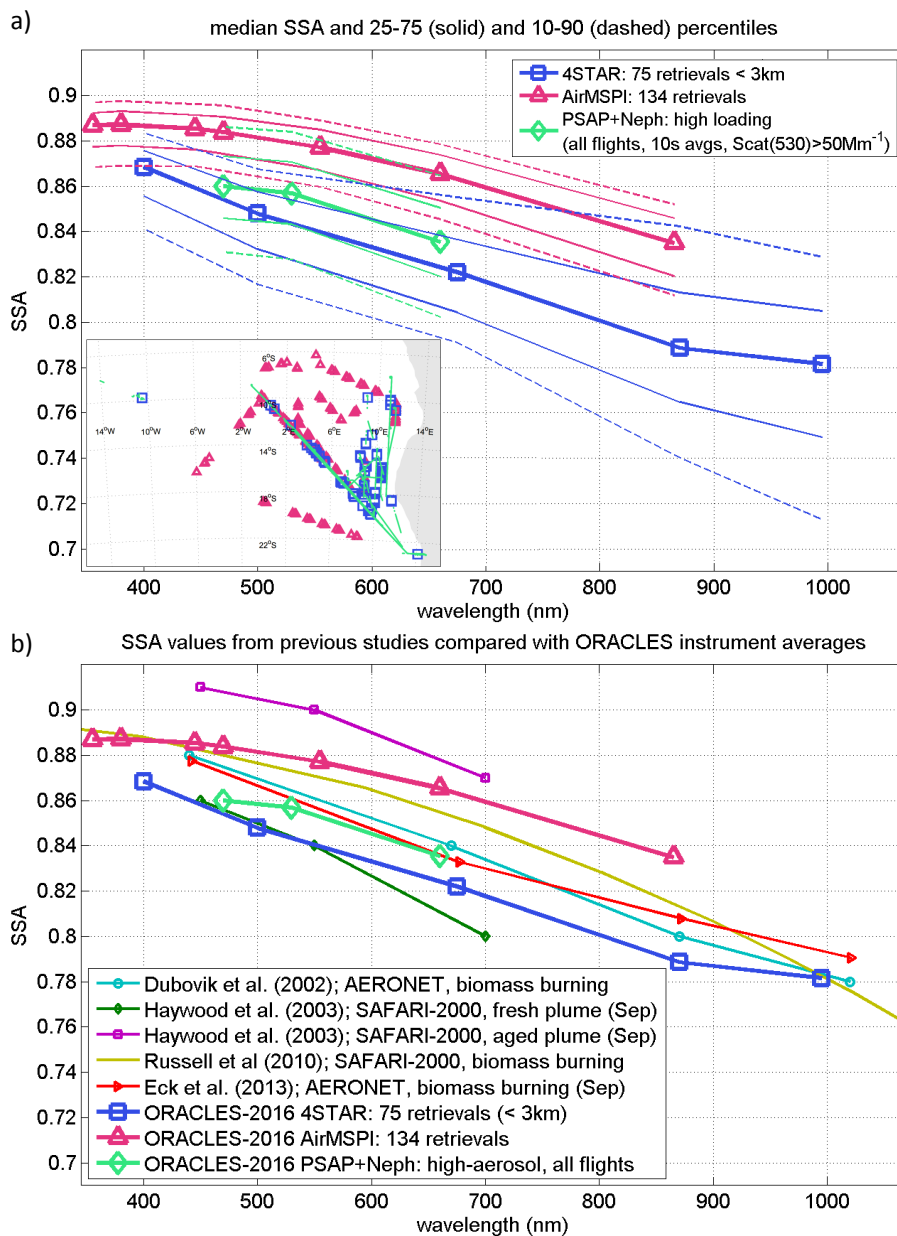


Figure 11. a) SSA from all measurements/retrievals over ORACLES-2016, from 4STAR, AirMSPI, and the nephelometer and PSAP in-situ data. The campaign-wide median is indicated by the thick solid line, 25-75th percentiles are indicated by thin solid lines, and 10-90 percentiles are indicated by the dashed lines. Note that the medians of the different instruments are not strictly comparable, as the campaign-wide averages are calculated using more data than just the coincident cases. The inset shows the spatial distribution (lat/lon) of measurements by the three instruments. b) The median SSA by instrument as shown in a) compared with SSA from previous studies in this same region (Figure 1).

4.2 Impacts of humidification on aerosols

In this work we have presented SSA as calculated from in situ measurements of scattering (from a nephelometer) and absorption (from a PSAP and a PTI); all are for aerosol dried to $RH < 40\%$. It is well-known that an increase in RH will result in an increase in scattering, which, if it is the sole consequence of the humidification, will act to increase the SSA. However, humidification of aerosol will impact both scattering and absorption, likely not to the same degree, and thus will affect the resulting SSA, potentially in competing directions. For this reason, we have presented in situ measurements as measured (i.e. dried) in this present work.

Aerosol absorption is likely affected by humidification, but the magnitude of this effect is much less well understood, due in large part to the difficulty in measuring humidified absorption directly (e.g., Arnott et al., 2003). However, several studies have attempted to address this question. One theory-based study using a BC core/shell model (Redemann et al., 2001) found that in terms of the aerosol absorption, the absorption enhancement at $RH=80\%$ was approximately a factor of 1.1, resulting in a decrease in SSA of 0.02 at 550nm. They also found that the degree to which humidification enhanced absorption is dependent on the aerosol size distribution, with absorption enhancement as high as a factor of 1.75 for certain size and humidity conditions (up to 99.5%). In a later lab-based study measuring total extinction and nephelometer-measured scattering, Brem et al. (2012) found enhancement of absorption from biomass-based OC aerosol to be significant at 467 and 530nm for $RH > 85\%$ (the 660nm data were within the instrument noise). Between 32% and 95% RH, the absorption at 467 and 530nm increased by factors of 2.2 ± 0.7 and 2.7 ± 1.2 , greater than that found by Redemann et al. (2001); combined with the observed enhancement in scattering, this corresponded to a change in SSA on the order of 0.06 for 470nm and 0.03 for 530nm, though the authors acknowledge that their method is subject to large uncertainties. We further note that the majority of studies considering the effect of humidification on aerosol absorption (and scattering) consider the more extreme values of $RH \geq 85\%$ or higher, which was a rare occurrence in the BB plume sampled in ORACLES-2016 (observed plume RH was a maximum of 80% and often lower, as described [above in earlier sections](#)). The magnitude of these effects are thus likely to be some factor smaller than the values reported in the literature. The unequal enhancement factors at different wavelengths suggest that the absorption Ångström exponents would also be affected, [adding to this uncertainty in this parameter](#). As the effects of humidification on absorption have been seen to depend on aerosol age and composition (i.e., hydrophobic vs hydrophilic; coated vs uncoated aerosol) (e.g., Mikhailov et al., 2006; Zhang et al., 2008), and even result in a decrease in absorption with increasing humidity (by 20% for an RH of 80%, in Lewis et al., 2009) the question of the magnitude of RH impacts on absorption remains an open one.

Due to this uncertainty in the cumulative effects of humidification, an open question is how humidification affects the study at hand, given that we perform comparisons between in-situ SSA values from measurements at low RH and the SSA values from the retrievals (SSFR, 4STAR, AirMSPI, RSP) which are made at ambient RH. While there was persistent elevated relative humidity within the biomass burning plume relative to the free troposphere absent the plume, in ORACLES-2016 approximately half of the time where aerosol concentrations were high ($\sigma_{\text{scat},530\text{nm}} > 50 \text{Mm}^{-1}$) – i.e. when the P-3 was in the plume – the measured relative humidity was $< 40\%$ (the “dry” threshold), and an additional 30% of the time RH was in

the range $40% < RH < 60%$. While we cannot make a reasonable estimate of the effects of humidification on absorption, we can estimate how much it might be affecting scattering, and bound the upper limit on SSA accordingly (i.e. assuming zero effect on absorption). Based on a campaign-average scattering enhancement of 1.4 for a plume RH of 80%, and making the coarse assumption of no effect of humidity on absorption, we would expect the maximum impact of typical humidification on scattering to increase instantaneous SSA (at 530nm) by a maximum of 0.03-0.05. However, in reality, this value will be lower, first due to the variability of RH with altitude as described in Section 3.1 which will have a lesser impact at lower altitudes and thus on the column-averaged values considered here; and second due to the competing impacts of humidification on absorption as described above, which likely have the opposite effect of lowering SSA. Due to the high uncertainties surrounding these competing effects, we leave it to a future work to provide more a detailed quantification of humidification effects on [aerosol absorption and](#) the SEA biomass burning SSA.

5 Conclusions

In this work we present new measurements of absorbing aerosol optical properties over the southeast Atlantic Ocean, a region with a significant and persistent seasonal biomass burning plume overlying stratocumulus clouds and which, up to now, has had a dearth of observations. For specific comparison cases, the retrievals from remote sensing (4STAR, AirMSPI, RSP, and SSFR) and in situ (derived from PSAP, Nephelometer, and PTI) agree within given uncertainty ranges, though with some indications of systematic differences between the different methods. Specifically, the modified AERONET retrievals applied to 4STAR data typically produce the lowest SSA, while the AirMSPI polarized retrieval generally yields the highest SSA. [There are a number of potential causes behind these patterns, including the different information content in the measurements from different instruments \(e.g., the AirMSPI polarized radiances are less sensitive to aerosol refractive index versus aerosol loading\), viewing geometry \(e.g., upward-looking versus downward-looking observations may have different information using transmitted versus reflected light\), retrieval assumptions \(e.g. aerosol model used, a priori assumptions, smoothness constraints\), as well as simply the degree of co-incidence which was achievable for these comparison cases.](#) Correlations between individual instruments over an aggregate of cases (using between 9 and 19 available comparison cases for different instrument pairs) were not significant in most cases, with the exception of a weak positive correlation between 4STAR- and in situ-derived SAE). AAE is the least certain of the retrieved absorption properties, as it shows a weak, yet negative correlation between the two instruments considered, with a significant portion of the data reporting AAE values less than 1. [Again, we can only speculate as to the causes of the differences; each retrieval comes with a unique set of a priori assumptions and slightly different measurement inputs, which may explain the small range in AAE values from AirMSPI, and the generally lower AAEs from 4STAR. Finally, we note that this work represents a starting point for many subsequent ORACLES-based analyses. These will include a more detailed comparison of the methodological differences between different instrument algorithms; a discussion of the SSA spatial variability and its potential causes; and an exploration of the effect of humidification on aerosol absorption.](#)

In terms of the ORACLES-2016 dataset as a whole, we find median SSAs from 4STAR to be 0.87, 0.85, 0.82, 0.79, and 0.78 at 400, 500, 675, 870, and 995nm; from AirMSPI to be 0.88, 0.87, and 0.84 at the retrieved wavelengths of 470, 660, and 865nm, and from in situ measurements to be 0.86, 0.86, and 0.84 at 470, 530, and 660nm. Campaign-wide data variability (5th-95th percentiles) are roughly equivalent for 4STAR and in situ measurements in the mid-visible (± 0.03), and is greater at the longer 4STAR wavelengths (± 0.05 at 870nm). The AirMSPI data exhibit less variability at all wavelengths (± 0.015 at 470nm and ± 0.02 at 865nm). While these are not directly comparable to one another due to differences in spatial and temporal sampling of the different instruments, they give an indication of the best estimate and range of biomass burning SSAs over the southeast Atlantic Ocean. The range of SSA values reported between different instruments during ORACLES is consistent with the range reported among previous observational studies over this region, but slightly higher than those reported [downwind](#) on Ascension Island (Zuidema et al., 2018). In Section 1.2, we discussed the radiative forcing implications of SSA; finally, we note that the range of SSAs observed from each instrument is of the magnitude expected to change local direct radiative effects by $10\text{-}20\text{W/m}^2$ ($\text{SSA} \pm 0.03$), which may give an indication of the impact of the results. Any studies which rely on a prescribed set of aerosol properties — such as SSA — as input, should thus consider a realistic spatiotemporal distribution of aerosol optical properties in order to best capture the reality of the aerosol conditions over this region. It is important to take into account the impacts of the spatial variability and uncertainty from a given instrument, as they may affect resulting determinations of radiative effects of biomass burning aerosols.

Author contributions. JR and PZ are PIs for the ORACLES campaign, with SD on the deployment leadership team and providing advisory expertise. SB and RF provided HSRL-2 data. BC, XL, SS, and BvD provided RSP data. SC and KSS provided SSFR data. KP, CF, MK, SL, and MSR provided 4STAR data. SF and SH provided HiGEAR data. AS provided PTI data. GVH and FX provided AirMSPI data. YS was ORACLES data manager and created campaign merge datasets. KP performed the bulk of the comparative analysis and wrote the paper, both with input from the other authors.

Competing interests. The authors declare no competing interests.

Acknowledgements. ORACLES is funded by NASA Earth Venture Suborbital-2 grant NNH13ZDA001N-EVS2. We thank the ORACLES deployment support teams and the science team for a successful and productive mission.

Code and data availability. The data used in this paper are publicly available at http://dx.doi.org/10.5067/Suborbital/ORACLES/P3/2016_V1 for the P-3 data (4STAR, in situ, SSFR) and at http://dx.doi.org/10.5067/Suborbital/ORACLES/ER2/2016_V1 for ER-2 data (RSP). All AirMSPI L1 data are available at <http://doi.org/10.5067/AIRCRAFT/ORACLES/RADIANCE/AirMSPI>, and the AirMSPI above-cloud

aerosol (ACA) retrieval data used here may be found at https://eosweb.larc.nasa.gov/project/airmspi/preliminary-airmspi-datasetsunderXu_etal_JGR2018_ACA_AirMSPI. The codes used in processing 4STAR sky scan data may be found at <https://doi.org/10.5281/zenodo.1492912>.

Appendix A: ~~PSAP-Virkkula-corrections~~ Additional discussion of in situ measurements

A1 PSAP Virkkula corrections

As discussed in the above text, the PSAP absorption corrections were applied as given in Virkkula (2010). Corrections of this nature must be applied due to the limitations inherent in filter-based measurements. Virkkula (2010) gives both wavelength-specific (470, 530, and 660nm) corrections, and a wavelength-averaged correction (his Table 1). We choose the latter due to the discovery during the LASIC campaign (Zuidema et al., 2018) that using wavelength-specific values resulted in an unphysical jump in AAE upon changing of the filters. The difference between the absorption coefficients, and the resulting SSA, for the two methods is shown in Figure A1. Note that the wavelength-specific values generally show $SSA_{470} < SSA_{530}$ due to higher reported absorption at 470nm. Figure ~~A.2~~ A2 highlights the difference in wavelength-averaged versus wavelength-specific SSA for the individual profiles in the 20 September case, as discussed in the text. Note that for the analysis ~~in Section 3~~ below in Section A2, the Virkkula corrections likely do not contribute to the observed differences between PTI and PSAP, as the ~~SSA absorption~~ at the 530nm wavelength is less impacted by the choice of correction factor.

A2 Comparison of absorption from in situ instruments

As ORACLES-2016 had two measures of aerosol absorption available, we think it useful to discuss these two in-situ instruments as they compare to one another, though with an eye to the technical difficulties of the PTI in that year's deployment. Figure A3 shows 30-second averages of absorption from the PTI and from the PSAP for all available coincident data for the 5 flights with the PTI operational (flights on September 10, 12, 14, 20, and 24). The effect of the high noise floor applied to the reported PTI values is evident in the data variability, and the PTI absorption is seen to be generally lower than PSAP absorption over all days, consequently with a smaller dynamic range: 5th-95th percentiles of 20.3 to 28.8 Mm^{-1} (median 22.8 Mm^{-1}) for PTI compared with 21.8 to 40.9 Mm^{-1} (median 26.6 Mm^{-1}) for the coincident PSAP measurements. The generally lower PTI absorption could be due to the mechanical difficulties in the 2016 deployment, as was described in Section 2.1.4. From a physical perspective, the difference between the two instruments may additionally be enhanced by an artificially-low-biased PTI signal driven by latent heat of evaporation under high-humidity aerosol conditions. On the part of the PSAP measurement, the multiple scattering from this filter-based measurement could potentially give an artificially-high-biased PSAP signal. Improvements in the PTI instrument design for the 2018 deployment will likely facilitate better comparative analysis between the two measurement techniques at a future date.

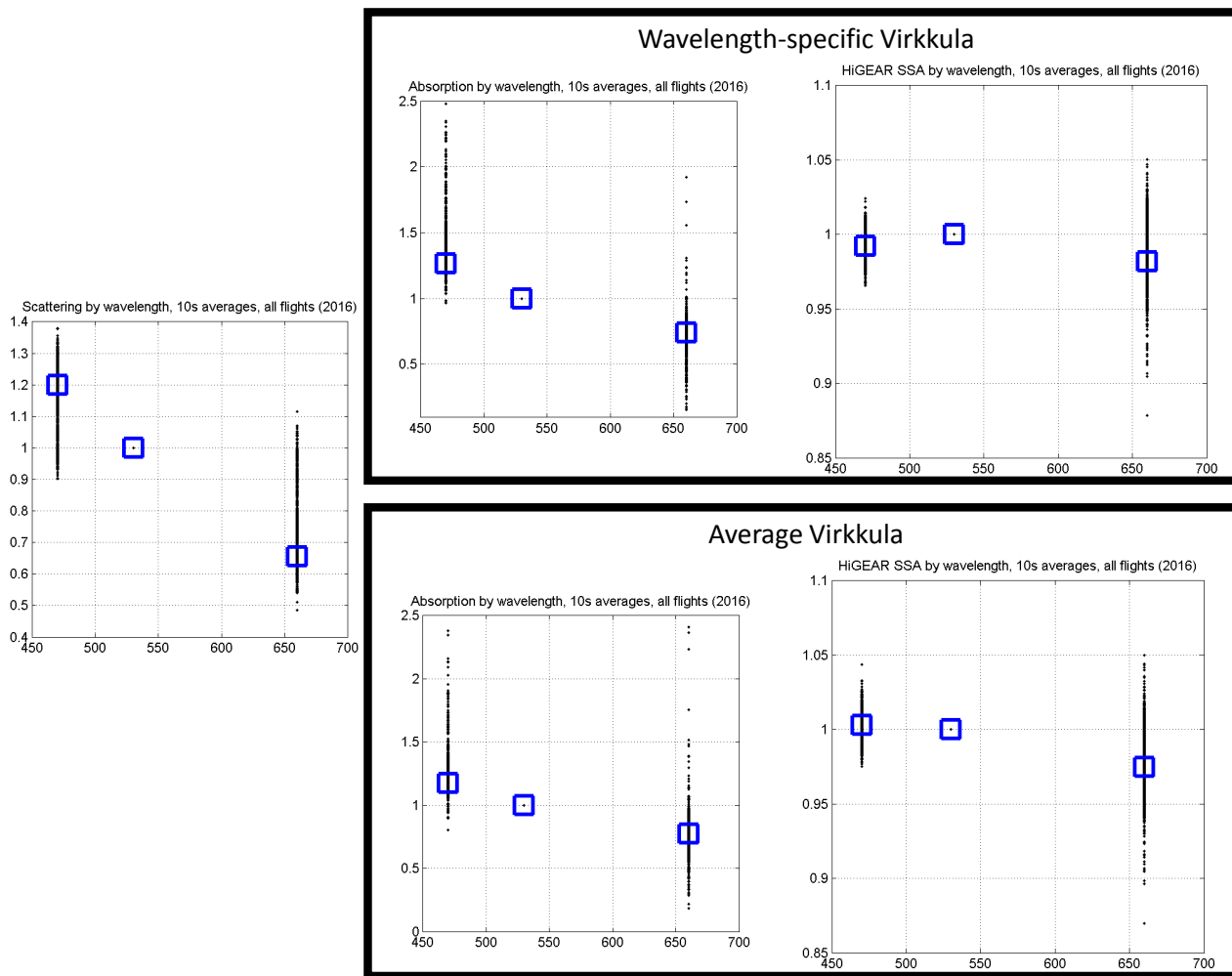


Figure A1. Normalized nephelometer scattering (left), PSAP absorption (center), and resulting SSA (right) for 470, 530, and 660nm, using wavelength-specific (top) and wavelength-averaged (bottom) Virkkula corrections. Values are normalized to highlight the relative spectral shape. Blue squares indicated the median of all observations (black). Note that while the scattering and absorption both exhibit an overall decrease with wavelength, the much sharper decrease in absorption results in a small maximum in SSA at 530nm under the standard wavelength-dependent Virkkula corrections applied to the PSAP. This spectral feature disappears in the average Virkkula case.

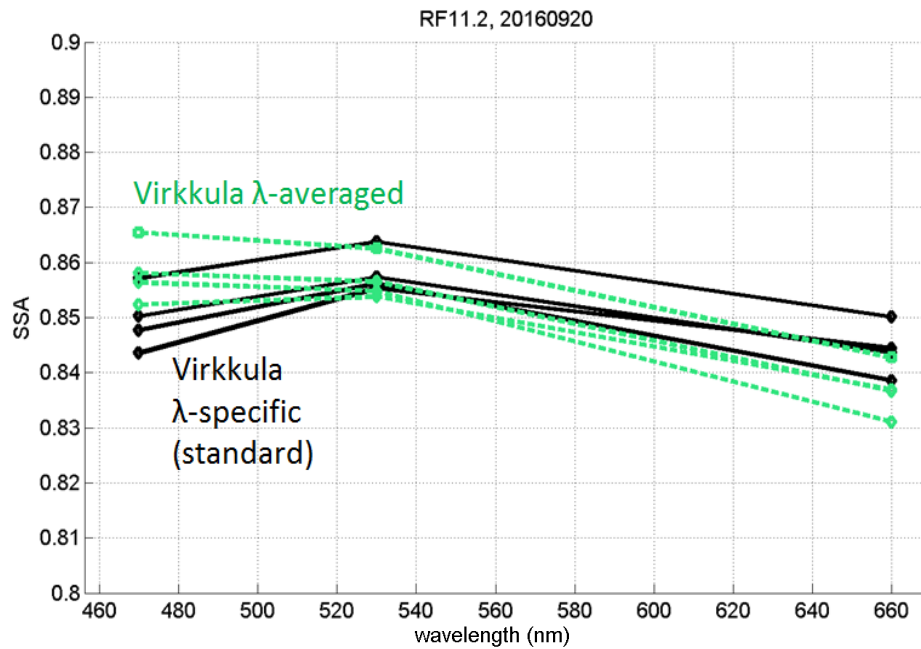


Figure A2. Profile-averaged extinction-weighted SSA for the case study shown on 20 September 2016. The impact on the 470nm SSA (and consequently, the spectral shape) is the most notable difference. We attribute this spectral shape to the stronger increase in aerosol absorption at the shortest wavelength— while scattering also increases, it exhibits a smaller wavelength dependence than does absorption (Figure A1).

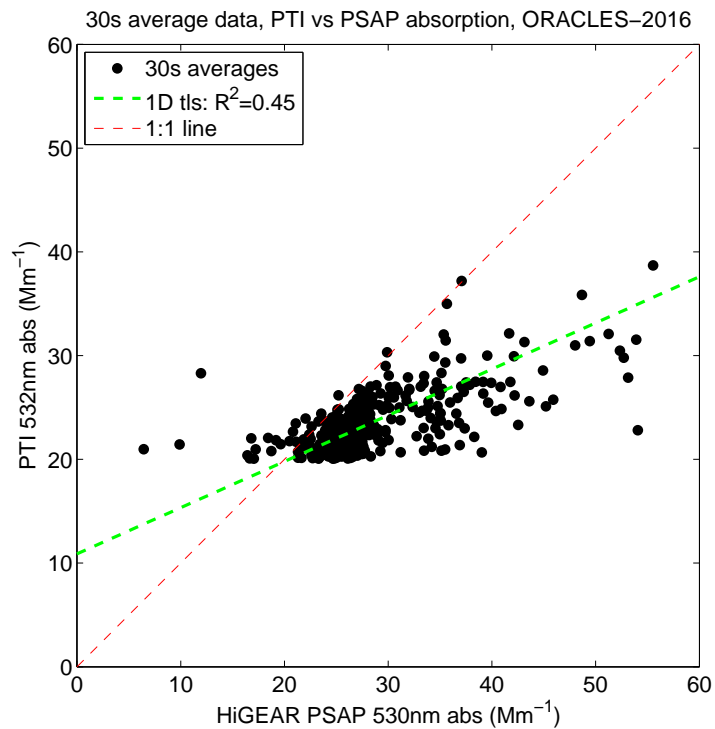


Figure A3. Comparison between PTI vs PSAP aerosol absorption coefficient (at 532 and 530nm, respectively) for all available flight data. Lines show a 1:1 relationship (red dashed) and a total-least-squares fit (green dashed) through the data. The slope of the green line is 0.445 with an intercept of 10.9. There was no discernible distinction in the fits or correlations between the two instruments either between in-plume versus profile, or by altitude.

References

- Abel, S., Haywood, J., Highwood, E., Li, J., and Buseck, P.: Evolution of biomass burning aerosol properties from an agricultural fire in southern Africa, *Geophysical Research Letters*, 30, <https://doi.org/10.1029/2003GL017342>, 2003.
- Ackerman, A., Toon, O., Stevens, D., Heymsfield, A., Ramanathan, V., and Welton, E.: Reduction of tropical cloudiness by soot, *Science*, 5 288, 1042–1047, <https://doi.org/10.1126/science.288.5468.1042>, 2000.
- Adebisi, A. A. and Zuidema, P.: The role of the southern African easterly jet in modifying the southeast Atlantic aerosol and cloud environments, *Quarterly Journal of the Royal Meteorological Society*, 142, 1574–1589, <https://doi.org/10.1002/qj.2765>, 2016.
- Adebisi, A. A. and Zuidema, P.: Low Cloud Cover Sensitivity to Biomass-Burning Aerosols and Meteorology over the Southeast Atlantic, *Journal of Climate*, 31, 4329–4346, <https://doi.org/10.1175/JCLI-D-17-0406.1>, 2018.
- 10 Albrecht, B.: Aerosols, Cloud Microphysics, and Fractional Cloudiness, *Science*, 245, 1227–1230, <https://doi.org/10.1126/science.245.4923.1227>, 1989.
- Anderson, T. and Ogren, J.: Determining aerosol radiative properties using the TSI 3563 integrating nephelometer, *Aerosol Science and Technology*, 29, 57–69, <https://doi.org/10.1080/02786829808965551>, 1998.
- Anderson, T., Masonis, S., Covert, D., Ahlquist, N., Howell, S., Clarke, A., and McNaughton, C.: Variability of aerosol optical properties derived from in situ aircraft measurements during ACE-Asia, *Journal of Geophysical Research-Atmospheres*, 108, 15 <https://doi.org/10.1029/2002JD003247>, 2003.
- Arnott, W., Moosmuller, H., Sheridan, P., Ogren, J., Raspet, R., Slaton, W., Hand, J., Kreidenweis, S., and Collett, J.: Photoacoustic and filter-based ambient aerosol light absorption measurements: Instrument comparisons and the role of relative humidity, *Journal of Geophysical Research-Atmospheres*, 108, <https://doi.org/10.1029/2002JD002165>, 2003.
- 20 Bahadur, R., Praveen, P. S., Xu, Y., and Ramanathan, V.: Solar absorption by elemental and brown carbon determined from spectral observations, *Proceedings of the National Academy of Sciences of the United States of America*, 109, 17366–17371, <https://doi.org/10.1073/pnas.1205910109>, 2012.
- Bergstrom, R., Pilewskie, P., Schmid, B., and Russell, P.: Estimates of the spectral aerosol single scattering albedo and aerosol radiative effects during SAFARI 2000, *Journal of Geophysical Research-Atmospheres*, 108, <https://doi.org/10.1029/2002JD002435>, 2003.
- 25 Bergstrom, R. W., Pilewskie, P., Russell, P. B., Redemann, J., Bond, T. C., Quinn, P. K., and Sierau, B.: Spectral absorption properties of atmospheric aerosols, *Atmospheric Chemistry and Physics*, 7, 5937–5943, <https://doi.org/10.5194/acp-7-5937-2007>, 2007.
- Bergstrom, R. W., Schmidt, K. S., Coddington, O., Pilewskie, P., Guan, H., Livingston, J. M., Redemann, J., and Russell, P. B.: Aerosol spectral absorption in the Mexico City area: results from airborne measurements during MILAGRO/INTEX B, *Atmospheric Chemistry and Physics*, 10, 6333–6343, <https://doi.org/10.5194/acp-10-6333-2010>, 2010.
- 30 Brem, B. T., Gonzalez, F. C. M., Meyers, S. R., Bond, T. C., and Rood, M. J.: Laboratory-Measured Optical Properties of Inorganic and Organic Aerosols at Relative Humidities up to 95%, *Aerosol Science and Technology*, 46, 178–190, <https://doi.org/10.1080/02786826.2011.617794>, 2012.
- Brown, H., Liu, X., Feng, Y., Jiang, Y., Wu, M., Lu, Z., Wu, C., Murphy, S., and Pokhrel, R.: Radiative effect and climate impacts of brown carbon with the Community Atmosphere Model (CAM5), *Atmospheric Chemistry and Physics*, 18, 17745–17768, 35 <https://doi.org/10.5194/acp-18-17745-2018>, <https://www.atmos-chem-phys.net/18/17745/2018/>, 2018.

- Brown, S., Johnson, B., Biggar, S., Zalewski, E., Cooper, J., Hajek, P., Hildum, E., Grant, P., Barnes, R., and Butler, J.: Radiometric validation of NASA's Ames Research Center's Sensor Calibration Laboratory, Applied Optics, 44, 6426–6443, <https://doi.org/10.1364/AO.44.006426>, 2005.
- Cairns, B., Russell, E., and Travis, L.: The research scanning polarimeter: Calibration and ground-based measurements, in: Polarization: Measurement, Analysis, and Remote Sensing II, edited by Goldstein, DH and Chenault, DB, vol. 3754 of *Proceedings of the Society of Photo-Optical Instrumentation Engineers (SPIE)*, pp. 186–196, <https://doi.org/10.1117/12.366329>, Conference on Polarization - Measurement, Analysis, and Remote Sensing II, DENVER, CO, JUL 19-21, 1999, 1999.
- Chand, D., Anderson, T. L., Wood, R., Charlson, R. J., Hu, Y., Liu, Z., and Vaughan, M.: Quantifying above-cloud aerosol using spaceborne lidar for improved understanding of cloudy-sky direct climate forcing, *Journal of Geophysical Research-Atmospheres*, 113, <https://doi.org/10.1029/2007JD009433>, 2008.
- Chand, D., Wood, R., Anderson, T. L., Satheesh, S. K., and Charlson, R. J.: Satellite-derived direct radiative effect of aerosols dependent on cloud cover, *Nature Geoscience*, 2, 181–184, <https://doi.org/10.1038/NNGEO437>, 2009.
- Chylek, P. and Coakley, J.: Aerosols and Climate, *Science*, 183, 75–77, 1974.
- Cochrane, S. P., Schmidt, K. S., Chen, H., Pilewskie, P., Kittelman, S., Redemann, J., LeBlanc, S., Pistone, K., Kacenelenbogen, M., Segal Rozenhaimer, M., Shinozuka, Y., Flynn, C., Platnick, S., Meyer, K., Ferrare, R., Burton, S., Hostetler, C., Howell, S., Dobracki, A., and Doherty, S.: Above-Cloud Aerosol Radiative Effects based on ORACLES 2016 and ORACLES 2017 Aircraft Experiments, *Atmospheric Measurement Techniques Discussions*, 2019, 1–50, <https://doi.org/10.5194/amt-2019-125>, <https://www.atmos-meas-tech-discuss.net/amt-2019-125/>, 2019.
- Diner, D. J., Xu, F., Garay, M. J., Martonchik, J. V., Rheingans, B. E., Geier, S., Davis, A., Hancock, B. R., Jovanovic, V. M., Bull, M. A., Capraro, K., Chipman, R. A., and McClain, S. C.: The Airborne Multiangle SpectroPolarimetric Imager (AirMSPi): a new tool for aerosol and cloud remote sensing, *Atmospheric Measurement Techniques*, 6, 2007–2025, <https://doi.org/10.5194/amt-6-2007-2013>, 2013.
- Dobracki, A., Freitag, S., Howell, S., Podolske, J., Redemann, J., Saide, P., Sedlacek, A., and Zuidema, P.: Total Organic Carbon Loss and Changes in Bulk Chemical Composition Seen in Vertically Stratified Aged African Biomass Burning Plumes over the Southeast Atlantic Ocean during ORACLES, in: American Meteorological Society Annual Meeting 2019, <https://ams.confex.com/ams/2019Annual/webprogram/Paper352175.html>, 2019.
- Dubovik, O. and King, M.: A flexible inversion algorithm for retrieval of aerosol optical properties from Sun and sky radiance measurements, *Journal of Geophysical Research-Atmospheres*, 105, 20 673–20 696, <https://doi.org/10.1029/2000JD900282>, 2000.
- Dubovik, O., Holben, B., Eck, T., Smirnov, A., Kaufman, Y., King, M., Tanre, D., and Slutsker, I.: Variability of absorption and optical properties of key aerosol types observed in worldwide locations, *Journal of the Atmospheric Sciences*, 59, 590–608, [https://doi.org/10.1175/1520-0469\(2002\)059<0590:VOAAOP>2.0.CO;2](https://doi.org/10.1175/1520-0469(2002)059<0590:VOAAOP>2.0.CO;2), 2002.
- Dunagan, S. E., Johnson, R., Zavaleta, J., Russell, P. B., Schmid, B., Flynn, C., Redemann, J., Shinozuka, Y., Livingston, J., and Segal-Rosenhaimer, M.: Spectrometer for Sky-Scanning Sun-Tracking Atmospheric Research (4STAR): Instrument Technology, *Remote Sensing*, 5, 3872–3895, <https://doi.org/10.3390/rs5083872>, 2013.
- Eck, T., Holben, B., Ward, D., Mukelabai, M., Dubovik, O., Smirnov, A., Schafer, J., Hsu, N., Piketh, S., Queface, A., Le Roux, J., Swap, R., and Slutsker, I.: Variability of biomass burning aerosol optical characteristics in southern Africa during the SAFARI 2000 dry season campaign and a comparison of single scattering albedo estimates from radiometric measurements, *Journal of Geophysical Research-Atmospheres*, 108, <https://doi.org/10.1029/2002JD002321>, 2003.

- Eck, T. F., Holben, B. N., Reid, J. S., Mukelabai, M. M., Piketh, S. J., Torres, O., Jethva, H. T., Hyer, E. J., Ward, D. E., Dubovik, O., Sinyuk, A., Schafer, J. S., Giles, D. M., Sorokin, M., Smirnov, A., and Slutsker, I.: A seasonal trend of single scattering albedo in southern African biomass-burning particles: Implications for satellite products and estimates of emissions for the world's largest biomass-burning source, *Journal of Geophysical Research-Atmospheres*, 118, 6414–6432, <https://doi.org/10.1002/jgrd.50500>, 2013.
- 5 Gordon, H., Field, P. R., Abel, S. J., Dalvi, M., Grosvenor, D. P., Hill, A. A., Johnson, B. T., Miltenberger, A. K., Yoshioka, M., and Carslaw, K. S.: Large simulated radiative effects of smoke in the south-east Atlantic, *Atmospheric Chemistry and Physics*, 18, 15 261–15 289, <https://doi.org/10.5194/acp-18-15261-2018>, <https://www.atmos-chem-phys.net/18/15261/2018/>, 2018.
- Gyawali, M., Arnott, W. P., Lewis, K., and Moosmueller, H.: In situ aerosol optics in Reno, NV, USA during and after the summer 2008 California wildfires and the influence of absorbing and non-absorbing organic coatings on spectral light absorption, *Atmospheric Chemistry and Physics*, 9, 8007–8015, <https://doi.org/10.5194/acp-9-8007-2009>, 2009.
- 10 Haywood, J., Francis, P., Dubovik, O., Glew, M., and Holben, B.: Comparison of aerosol size distributions, radiative properties, and optical depths determined by aircraft observations and Sun photometers during SAFARI 2000, *Journal of Geophysical Research-Atmospheres*, 108, <https://doi.org/10.1029/2002JD002250>, 2003.
- Howell, S., Clarke, A., Shinozuka, Y., Kapustin, V., McNaughton, C., Huebert, B., Doherty, S., and Anderson, T.: Influence of relative humidity upon pollution and dust during ACE-Asia: Size distributions and implications for optical properties, *Journal of Geophysical Research-Atmospheres*, 111, <https://doi.org/10.1029/2004JD005759>, 2006.
- 15 Jethva, H., Torres, O., Waquet, F., Chand, D., and Hu, Y.: How do A-train sensors intercompare in the retrieval of above-cloud aerosol optical depth? A case study-based assessment, *Geophysical Research Letters*, 41, 186–192, <https://doi.org/10.1002/2013GL058405>, <https://agupubs.onlinelibrary.wiley.com/doi/abs/10.1002/2013GL058405>, 2014.
- 20 Kacenelenbogen, M. S., Vaughan, M. A., Redemann, J., Young, S. A., Liu, Z., Hu, Y., Omar, A. H., LeBlanc, S., Shinozuka, Y., Livingston, J., Zhang, Q., and Powell, K. A.: Estimations of Global Shortwave Direct Aerosol Radiative Effects Above Opaque Water Clouds Using a Combination of A-Train Satellite Sensors, *Atmospheric Chemistry and Physics Discussions*, 2018, 1–96, <https://doi.org/10.5194/acp-2018-1090>, <https://www.atmos-chem-phys-discuss.net/acp-2018-1090/>, 2018.
- Knobelspiesse, K., Cairns, B., Redemann, J., Bergstrom, R. W., and Stohl, A.: Simultaneous retrieval of aerosol and cloud properties during the MILAGRO field campaign, *Atmospheric Chemistry and Physics*, 11, 6245–6263, <https://doi.org/10.5194/acp-11-6245-2011>, <https://www.atmos-chem-phys.net/11/6245/2011/>, 2011.
- 25 Koch, D. and Del Genio, A. D.: Black carbon semi-direct effects on cloud cover: review and synthesis, *Atmospheric Chemistry and Physics*, 10, 7685–7696, <https://doi.org/10.5194/acp-10-7685-2010>, 2010.
- Konovalov, I. B., Beekmann, M., Berezin, E. V., Formenti, P., and Andreae, M. O.: Probing into the aging dynamics of biomass burning aerosol by using satellite measurements of aerosol optical depth and carbon monoxide, *Atmospheric Chemistry and Physics*, 17, 4513–4537, <https://doi.org/10.5194/acp-17-4513-2017>, 2017.
- 30 Lack, D. A. and Cappa, C. D.: Impact of brown and clear carbon on light absorption enhancement, single scatter albedo and absorption wavelength dependence of black carbon, *Atmospheric Chemistry and Physics*, 10, 4207–4220, <https://doi.org/10.5194/acp-10-4207-2010>, 2010.
- 35 Lack, D. A., Cappa, C. D., Covert, D. S., Baynard, T., Massoli, P., Sierau, B., Bates, T. S., Quinn, P. K., Lovejoy, E. R., and Ravishankara, A. R.: Bias in filter-based aerosol light absorption measurements due to organic aerosol loading: Evidence from ambient measurements, *Aerosol Science and Technology*, 42, 1033–1041, <https://doi.org/10.1080/02786820802389277>, 2008.

- Langridge, J. M., Richardson, M. S., Lack, D., Law, D., and Murphy, D. M.: Aircraft Instrument for Comprehensive Characterization of Aerosol Optical Properties, Part I: Wavelength-Dependent Optical Extinction and Its Relative Humidity Dependence Measured Using Cavity Ringdown Spectroscopy, *Aerosol Science and Technology*, 45, 1305–1318, <https://doi.org/10.1080/02786826.2011.592745>, <http://www.tandfonline.com/doi/abs/10.1080/02786826.2011.592745>, 2011.
- 5 Leahy, L. V., Anderson, T. L., Eck, T. F., and Bergstrom, R. W.: A synthesis of single scattering albedo of biomass burning aerosol over southern Africa during SAFARI 2000, *Geophysical Research Letters*, 34, <https://doi.org/10.1029/2007GL029697>, 2007.
- LeBlanc, S. E., Redemann, J., Flynn, C., Pistone, K., Kacenelenbogen, M., Segal-Rosenheimer, M., Shinozuka, Y., Dunagan, S., Dahlgren, R. P., Meyer, K., Podolske, J., Howell, S. G., Freitag, S., Small-Griswold, J., Holben, B., Diamond, M., Formenti, P., Piketh, S., Maggs-Kölling, G., Gerber, M., and Namwoonde, A.: Above Cloud Aerosol Optical Depth from airborne observations
10 in the South-East Atlantic, *Atmospheric Chemistry and Physics Discussions*, 2019, 1–40, <https://doi.org/10.5194/acp-2019-43>, <https://www.atmos-chem-phys-discuss.net/acp-2019-43/>, 2019.
- Lewis, K. A., Arnott, W. P., Moosmüller, H., Chakrabarty, R. K., Carrico, C. M., Kreidenweis, S. M., Day, D. E., Malm, W. C., Laskin, A., Jimenez, J. L., Ulbrich, I. M., Huffman, J. A., Onasch, T. B., Trimborn, A., Liu, L., and Mishchenko, M. I.: Reduction in biomass burning aerosol light absorption upon humidification: roles of inorganically-induced hygroscopicity, particle collapse,
15 and photoacoustic heat and mass transfer, *Atmospheric Chemistry and Physics*, 9, 8949–8966, <https://doi.org/10.5194/acp-9-8949-2009>, <https://www.atmos-chem-phys.net/9/8949/2009/>, 2009.
- Liu, S., Aiken, A. C., Arata, C., Dubey, M. K., Stockwell, C. E., Yokelson, R. J., Stone, E. A., Jayarathne, T., Robinson, A. L., DeMott, P. J., and Kreidenweis, S. M.: Aerosol single scattering albedo dependence on biomass combustion efficiency: Laboratory and field studies,
20 *Geophysical Research Letters*, 41, 742–748, <https://doi.org/10.1002/2013GL058392>, <https://agupubs.onlinelibrary.wiley.com/doi/abs/10.1002/2013GL058392>, 2014.
- Liu, Z., Winker, D., Omar, A., Vaughan, M., Kar, J., Trepte, C., Hu, Y., and Schuster, G.: Evaluation of CALIOP 532 nm aerosol optical depth over opaque water clouds, *Atmospheric Chemistry and Physics*, 15, 1265–1288, <https://doi.org/10.5194/acp-15-1265-2015>, <https://www.atmos-chem-phys.net/15/1265/2015/>, 2015.
- Lu, Z., Liu, X., Zhang, Z., Zhao, C., Meyer, K., Rajapakse, C., Wu, C., Yang, Z., and Penner, J. E.: Biomass smoke from southern Africa
25 can significantly enhance the brightness of stratocumulus over the southeastern Atlantic Ocean, *Proceedings of the National Academy of Sciences of the United States of America*, 115, 2924–2929, <https://doi.org/10.1073/pnas.1713703115>, 2018.
- Magi, B. and Hobbs, P.: Effects of humidity on aerosols in southern Africa during the biomass burning season, *Journal of Geophysical Research-Atmospheres*, 108, <https://doi.org/10.1029/2002JD002144>, 2003.
- McComiskey, A. and Feingold, G.: The scale problem in quantifying aerosol indirect effects, *Atmospheric Chemistry and Physics*, 12,
30 1031–1049, <https://doi.org/10.5194/acp-12-1031-2012>, <https://www.atmos-chem-phys.net/12/1031/2012/>, 2012.
- McNaughton, C. S., Clarke, A. D., Freitag, S., Kapustin, V. N., Kondo, Y., Moteki, N., Sahu, L., Takegawa, N., Schwarz, J. P., Spackman, J. R., Watts, L., Diskin, G., Podolske, J., Holloway, J. S., Wisthaler, A., Mikoviny, T., de Gouw, J., Warneke, C., Jimenez, J., Cubison, M., Howell, S. G., Middlebrook, A., Bahreini, R., Anderson, B. E., Winstead, E., Thornhill, K. L., Lack, D., Cozic, J., and Brock, C. A.:
35 Absorbing aerosol in the troposphere of the Western Arctic during the 2008 ARCTAS/ARCPAC airborne field campaigns, *Atmospheric Chemistry and Physics*, 11, 7561–7582, <https://doi.org/10.5194/acp-11-7561-2011>, 2011.
- Meyer, K., Platnick, S., and Zhang, Z.: Simultaneously inferring above-cloud absorbing aerosol optical thickness and underlying liquid phase cloud optical and microphysical properties using MODIS, *Journal of Geophysical Research-Atmospheres*, 120, 5524–5547, <https://doi.org/10.1002/2015JD023128>, 2015.

- Mikhailov, E., Vlasenko, S., Podgorny, I., Ramanathan, V., and Corrigan, C.: Optical properties of soot-water drop agglomerates: An experimental study, *Journal of Geophysical Research-Atmospheres*, 111, <https://doi.org/10.1029/2005JD006389>, 2006.
- Pilewskie, P., Pommier, J., Bergstrom, R., Gore, W., Howard, S., Rabbette, M., Schmid, B., Hobbs, P., and Tsay, S.: Solar spectral radiative forcing during the Southern African Regional Science Initiative, *Journal of Geophysical Research-Atmospheres*, 108, <https://doi.org/10.1029/2002JD002411>, 2003.
- 5 Pokhrel, R. P., Wagner, N. L., Langridge, J. M., Lack, D. A., Jayarathne, T., Stone, E. A., Stockwell, C. E., Yokelson, R. J., and Murphy, S. M.: Parameterization of single-scattering albedo (SSA) and absorption Ångström exponent (AAE) with EC / OC for aerosol emissions from biomass burning, *Atmospheric Chemistry and Physics*, 16, 9549–9561, <https://doi.org/10.5194/acp-16-9549-2016>, <https://www.atmos-chem-phys.net/16/9549/2016/>, 2016.
- 10 Queface, A., Piketh, S., Annegarn, H., Holben, B., and Uthui, R.: Retrieval of aerosol optical thickness and size distribution from the CIMEL Sun photometer over Inhaca Island, Mozambique, *Journal of Geophysical Research-Atmospheres*, 108, <https://doi.org/10.1029/2002JD002374>, 2003.
- Redemann, J., Flynn, C. J., Shinozuka, Y., Russell, P., Kacenelenbogen, M., Segal-Rosenhaimer, M., Livingston, J., Schmid, B., Dunagan, S., Johnson, R., LeBlanc, S., Schmidt, S., Pilewskie, P., and Song, S.: Aerosol properties derived from airborne sky radiance and direct
- 15 beam measurements in recent NASA and DoE field campaigns, in: AGU 2014 Fall Meeting, San Francisco, CA, 2014.
- Redemann, J., Russell, P., and Hamill, P.: Dependence of aerosol light absorption and single-scattering albedo on ambient relative humidity for sulfate aerosols with black carbon cores, *Journal of Geophysical Research-Atmospheres*, 106, 27 485–27 495, <https://doi.org/10.1029/2001JD900231>, 2001.
- Russell, P. B., Bergstrom, R. W., Shinozuka, Y., Clarke, A. D., DeCarlo, P. F., Jimenez, J. L., Livingston, J. M., Redemann, J., Dubovik,
- 20 O., and Strawa, A.: Absorption Angstrom Exponent in AERONET and related data as an indicator of aerosol composition, *Atmospheric Chemistry and Physics*, 10, 1155–1169, <https://doi.org/10.5194/acp-10-1155-2010>, 2010.
- Sakaeda, N., Wood, R., and Rasch, P. J.: Direct and semidirect aerosol effects of southern African biomass burning aerosol, *Journal of Geophysical Research-Atmospheres*, 116, <https://doi.org/10.1029/2010JD015540>, 2011.
- Sayer, A. M., Hsu, N. C., Eck, T. F., Smirnov, A., and Holben, B. N.: AERONET-based models of smoke-dominated aerosol near source
- 25 regions and transported over oceans, and implications for satellite retrievals of aerosol optical depth, *Atmospheric Chemistry and Physics*, 14, 11 493–11 523, <https://doi.org/10.5194/acp-14-11493-2014>, <https://www.atmos-chem-phys.net/14/11493/2014/>, 2014.
- Schafer, J. S., Eck, T. F., Holben, B. N., Thornhill, K. L., Anderson, B. E., Sinyuk, A., Giles, D. M., Winstead, E. L., Ziemba, L. D., Beyersdorf, A. J., Kenny, P. R., Smirnov, A., and Slutsker, I.: Intercomparison of aerosol single-scattering albedo derived from AERONET surface radiometers and LARGE in situ aircraft profiles during the 2011 DRAGON-MD and DISCOVER-AQ experiments, *Journal of*
- 30 *Geophysical Research-Atmospheres*, 119, 7439–7452, <https://doi.org/10.1002/2013JD021166>, 2014.
- Schmid, B., Redemann, J., Russell, P., Hobbs, P., Hlavka, D., McGill, M., Holben, B., Welton, E., Campbell, J., Torres, O., Kahn, R., Diner, D., Helmlinger, M., Chu, D., Robles-Gonzalez, C., and de Leeuw, G.: Coordinated airborne, spaceborne, and ground-based measurements of massive thick aerosol layers during the dry season in southern Africa, *Journal of Geophysical Research-Atmospheres*, 108, <https://doi.org/10.1029/2002JD002297>, 2003.
- 35 Schmidt, K. S., Pilewskie, P., Bergstrom, R., Coddington, O., Redemann, J., Livingston, J., Russell, P., Bierwirth, E., Wendisch, M., Gore, W., Dubey, M. K., and Mazzoleni, C.: A new method for deriving aerosol solar radiative forcing and its first application within MILAGRO/INTEX-B, *Atmospheric Chemistry and Physics*, 10, 7829–7843, <https://doi.org/10.5194/acp-10-7829-2010>, <https://www.atmos-chem-phys.net/10/7829/2010/>, 2010.

- Schmidt, S. and Pilewskie, P.: Airborne measurements of spectral shortwave radiation in cloud and aerosol remote sensing and energy budget studies, pp. 239–288, ed. Kokhanovsky, Alexander A.; Springer Berlin Heidelberg, Berlin, Heidelberg, https://doi.org/10.1007/978-3-642-15531-4_6, https://doi.org/10.1007/978-3-642-15531-4_6, 2012.
- Schnaiter, M., Linke, C., Mohler, O., Naumann, K., Saathoff, H., Wagner, R., Schurath, U., and Wehner, B.: Absorption amplification of black carbon internally mixed with secondary organic aerosol, *Journal of Geophysical Research-Atmospheres*, 110, <https://doi.org/10.1029/2005JD006046>, 2005.
- Sedlacek, A.: Real-time detection of ambient aerosols using photothermal interferometry: Folded Jamin interferometer, *Review of Scientific Instruments*, 77, <https://doi.org/10.1063/1.2205623>, 2006.
- Sedlacek, A. and Lee, J.: Photothermal interferometric aerosol absorption spectrometry, *Aerosol Science and Technology*, 41, 1089–1101, <https://doi.org/10.1080/02786820701697812>, 2007.
- Segal-Rosenheimer, M., Russell, P. B., Schmid, B., Redemann, J., Livingston, J. M., Flynn, C. J., Johnson, R. R., Dunagan, S. E., Shinozuka, Y., Herman, J., Cede, A., Abuhassan, N., Comstock, J. M., Hubbe, J. M., Zelenyuk, A., and Wilson, J.: Tracking elevated pollution layers with a newly developed hyperspectral Sun/Sky spectrometer (4STAR): Results from the TCAP 2012 and 2013 campaigns, *Journal of Geophysical Research-Atmospheres*, 119, 2611–2628, <https://doi.org/10.1002/2013JD020884>, 2014.
- Shinozuka, Y., Johnson, R. R., Flynn, C. J., Russell, P. B., Schmid, B., Redemann, J., Dunagan, S. E., Kluzek, C. D., Hubbe, J. M., Segal-Rosenheimer, M., Livingston, J. M., Eck, T. F., Wagener, R., Gregory, L., Chand, D., Berg, L. K., Rogers, R. R., Ferrare, R. A., Hair, J. W., Hostetler, C. A., and Burton, S. P.: Hyperspectral aerosol optical depths from TCAP flights, *Journal of Geophysical Research-Atmospheres*, 118, 12 180–12 194, <https://doi.org/10.1002/2013JD020596>, 2013.
- Stamnes, S., Hostetler, C., Ferrare, R., Burton, S., Liu, X., Hair, J., Hu, Y., Wasilewski, A., Martin, W., van Diedenhoven, B., Chowdhary, J., Cetinic, I., Berg, L. K., Stamnes, K., and Cairns, B.: Simultaneous polarimeter retrievals of microphysical aerosol and ocean color parameters from the “MAPP” algorithm with comparison to high-spectral-resolution lidar aerosol and ocean products, *Applied Optics*, 57, 2394–2413, <https://doi.org/10.1364/AO.57.002394>, 2018.
- Swap, R., Annegarn, H., Suttles, J., King, M., Platnick, S., Privette, J., and Scholes, R.: Africa burning: A thematic analysis of the Southern African Regional Science Initiative (SAFARI 2000), *Journal of Geophysical Research-Atmospheres*, 108, <https://doi.org/10.1029/2003JD003747>, 2003.
- Torres, O., Jethva, H., and Bhartia, P. K.: Retrieval of Aerosol Optical Depth above Clouds from OMI Observations: Sensitivity Analysis and Case Studies, *Journal of the Atmospheric Sciences*, 69, 1037–1053, <https://doi.org/10.1175/JAS-D-11-0130.1>, <https://doi.org/10.1175/JAS-D-11-0130.1>, 2012.
- Twomey, S.: Pollution and Planetary Albedo, *Atmospheric Environment*, 8, 1251–1256, [https://doi.org/10.1016/0004-6981\(74\)90004-3](https://doi.org/10.1016/0004-6981(74)90004-3), 1974.
- Vakkari, V., Kerminen, V.-M., Beukes, J. P., Tiitta, P., van Zyl, P. G., Josipovic, M., Venter, A. D., Jaars, K., Worsnop, D. R., Kulmala, M., and Laakso, L.: Rapid changes in biomass burning aerosols by atmospheric oxidation, *Geophysical Research Letters*, 41, 2644–2651, <https://doi.org/10.1002/2014GL059396>, <https://agupubs.onlinelibrary.wiley.com/doi/abs/10.1002/2014GL059396>, 2014.
- Virkkula, A.: Correction of the Calibration of the 3-wavelength Particle Soot Absorption Photometer (3 PSAP), *Aerosol Science and Technology*, 44, 706–712, <https://doi.org/10.1080/02786826.2010.482110>, 2010.
- Wang, X., Heald, C. L., Sedlacek, A. J., de Sa, S. S., Martin, S. T., Alexander, M. L., Watson, T. B., Aiken, A. C., Springston, S. R., and Artaxo, P.: Deriving brown carbon from multiwavelength absorption measurements: method and application to AERONET and Aethalometer observations, *Atmospheric Chemistry and Physics*, 16, 12 733–12 752, <https://doi.org/10.5194/acp-16-12733-2016>, 2016.

- Waquet, F., Cornet, C., Deuzé, J.-L., Dubovik, O., Ducos, F., Goloub, P., Herman, M., Lapyonok, T., Labonnote, L. C., Riedi, J., Tanré, D., Thieuleux, F., and Vanbauce, C.: Retrieval of aerosol microphysical and optical properties above liquid clouds from POLDER/PARASOL polarization measurements, *Atmospheric Measurement Techniques*, 6, 991–1016, <https://doi.org/10.5194/amt-6-991-2013>, <https://www.atmos-meas-tech.net/6/991/2013/>, 2013.
- 5 Wilcox, E. M.: Stratocumulus cloud thickening beneath layers of absorbing smoke aerosol, *Atmospheric Chemistry and Physics*, 10, 11 769–11 777, <https://doi.org/10.5194/acp-10-11769-2010>, 2010.
- Wilcox, E. M.: Direct and semi-direct radiative forcing of smoke aerosols over clouds, *Atmospheric Chemistry and Physics*, 12, 139–149, <https://doi.org/10.5194/acp-12-139-2012>, 2012.
- Xu, F., Diner, D., Dubovik, O., and Schechner, Y.: A correlated multi-pixel inversion approach for aerosol remote sensing, *Remote Sensing*, 11, 746, <https://doi.org/10.3390/rs11070746>, 2019.
- 10 Xu, F., van Harten, G., Diner, D. J., Davis, A. B., Seidel, F. C., Rheingans, B., Tosca, M., Alexandrov, M. D., Cairns, B., Ferrare, R. A., Burton, S. P., Fenn, M. A., Hostetler, C. A., Wood, R., and Redemann, J.: Coupled Retrieval of Liquid Water Cloud and Above-Cloud Aerosol Properties Using the Airborne Multiangle SpectroPolarimetric Imager (AirMSPI), *Journal of Geophysical Research-Atmospheres*, 123, 3175–3204, <https://doi.org/10.1002/2017JD027926>, 2018.
- 15 Zhang, R., Khalizov, A. F., Pagels, J., Zhang, D., Xue, H., and McMurry, P. H.: Variability in morphology, hygroscopicity, and optical properties of soot aerosols during atmospheric processing, *Proceedings of the National Academy of Sciences of the United States of America*, 105, 10 291–10 296, <https://doi.org/10.1073/pnas.0804860105>, 2008.
- Zhang, Z., Meyer, K., Yu, H., Platnick, S., Colarco, P., Liu, Z., and Oreopoulos, L.: Shortwave direct radiative effects of above-cloud aerosols over global oceans derived from 8 years of CALIOP and MODIS observations, *Atmospheric Chemistry and Physics*, 16, 2877–2900, <https://doi.org/10.5194/acp-16-2877-2016>, 2016.
- 20 Zuidema, P., Redemann, J., Haywood, J., Wood, R., Piketh, S., Hipondoka, M., and Formenti, P.: Smoke and Clouds above the Southeast Atlantic Upcoming Field Campaigns Probe Absorbing Aerosol’s Impact on Climate, *Bulletin of the American Meteorological Society*, 97, 1131–1135, <https://doi.org/10.1175/BAMS-D-15-00082.1>, 2016.
- Zuidema, P., Sedlacek, III, A. J., Flynn, C., Springston, S., Delgadillo, R., Zhang, J., Aiken, A. C., Koontz, A., and Muradyan, P.: The Ascension Island Boundary Layer in the Remote Southeast Atlantic is Often Smoky, *Geophysical Research Letters*, 45, 4456–4465, <https://doi.org/10.1002/2017GL076926>, 2018.
- 25