

Author response

We thank the reviewer for her/his thorough assessment of our work. The following changes have been made to the manuscript:

- The term trend reversal has been removed and changed to post-1990 trend change and emphasis on this trend change has been reduced.
- We have expanded Section 4.1 in the manuscript to express the need for more studies evaluating observational SDSR datasets.
- Added a brief discussion around Norris and Wild (2009) in regards to the Japanese post-1990 brightening.
- Added some of the references suggested by the reviewer in Section 4.2 regarding sulfur dioxide emissions.

In the following we address the reviewer's concerns point by point.

Reviewer 1

General comments

Reviewer Point P 1.1 — The authors have thoroughly revised the manuscript and it now appears much improved than before, providing a more comprehensive assessment of observed SDSR trends and those simulated by CMIP6 models. I have provided a few detailed comments on the discussion of the new section 4.1 below and a few more minor comments further down on the revised manuscript.

I found the new section 4.1 very interesting, in that most (80%) of the observed positive trend in SDSR over China in the 1990s is down to instrument error. This “jump” in the 1990s also occurs in the Japan dataset (Fig. 2e) so I wonder if this could be due to the same issue here? The error in Chinese observations has been discussed in 4.1 but having read this and looking at Figure 10 in the Yang et al., (2018) paper I think more emphasis needs to be made in the text that the trend reversal is mostly an instrumental error. The trend reversal is consistently mentioned in other sections of the text and perhaps too much emphasis is still made that the models are not capturing this trend, even though we now know the observations presented over China in this period are mostly in error. There are also more similarities between the temporal trend in the SO₂ emissions and the new homogenised dataset e.g. increasing emissions up to 2005, which coincides with the minimum SDSR in the Yang et al., (2018) homogenised data.

Reply: We thank the reviewer for their comment. We agree that “trend reversal” has been a bit too strong a statement and we have reworded it to “trend change after 1990” throughout the manuscript. We disagree, however, that the issue is simply an “instrument error”. To our understanding the measurement sampling protocol was changed at the time, with 6 instead of 3 measurements per day. Difficult for further analysis is that the new homogenized data from Yang et al., 2018 have so far not been included in the GEBA database. The revised section 4.1 explains now to our best knowledge what we know and not know. We believe the gap filled GEBA data set we use can not be discarded yet. As the reviewer rightfully points out, we do see a “jump” also in Japan, albeit delayed wrt to China. We have no indication that Japan went through a nation wide instrument upgrade or change in measurement

protocol at this point. Noticeably Norris and Wild (2009) pointed to possibly, different cloud cover trends in China and Japan making the interpretation of the respective SDSR trends and timings difficult. Figure 1b in Wang and Wild (2016) also shows that multiple sun duration measurements recorded the chinese "jump" in addition to the SDSR instruments. We do not have access to the data used in Yang et al. (2018), and we would need both access and further evaluation of both the GEBA data and the homogenized data to favor one over the other. We have therefore chosen to reduce the focus of the trend reversal, respectively jump, without fully excluding it as a possibility. What remains is a significant trend change around the year 1990. We do, however, agree with the reviewer that the trend reversal was still given too much emphasis in the revised version of the manuscript, so we have reduced the emphasis even further.

Regarding the emissions trend of SO₂ (Figure A2 in the newer manuscript) versus the trend in the homogenized data (Green line in Figure 10 in Yang et al. (2018)) there are still apparent differences between the two. Emissions of SO₂ show a flattening in the end of the 1990s just before a very strong increase until again flattening in 2005, while even the new homogenized chinese SDSR data show arguably no strong trend changes between 1995 and 2010. We therefore conclude in the newer manuscript:

The modeled emissions of SO₂ as shown in Figure A2 over China showed no trace of a significant change in trend after 1990 in our observed SDSR timeseries as discussed in the previous section.

Reviewer Point P 1.2 — However, given the above I do not believe that this finding would change the main outcome of this paper much in that CMIP6 models underestimate the observed dimming signal over Asia and are unable to reproduce the recent brightening potentially due to uncertainties in the emission inventories. However, I think the direction of and timing of the temporal trends in observed and simulated SDSR over China (and Asia) would possibility match up better than with those observations currently presented in the manuscript i.e. the new observations show a dimming signal until 2005 and then brightening. I was wondering if there is anyway to include the dataset from Yang et al., (2018) on any of the figures in the manuscript to provide a more direct comparison of the new and old observations with the model simulations? Also, I think some minor changes to text to include more reference to this observational change would be beneficial. This could go some way to addressing the current comparison for China (and also for Asia in Fig 2c), where the obvious discrepancy in the figures is the sharp change in observations in the 1990s, which we now know was not really observed.

Reply: Unfortunately the dataset from Yang et al.(2018) is not available to us, and we refer to our reply to point P1.1 in that we do not disregard the observations of the "jump" completely. Without further studies evaluating the two observational datasets we reach the same conclusion as the reviewer in that models do not accurately represent observations, independent of which observational dataset we choose to compare with. Section 4.1 includes a brief update of our analysis based on the homogenized data:

We can use Figure 2(f) to compare our model data to these homogenized data, and see that even without a larger "jump" in the data there are still large discrepancies between model and observation, both in the shape and magnitude of the brightening period after 1990. All models show dimming in the flattening period of the new homogenized data. All models apart from CanESM5 show an averaged negative trend between the 6-year-means of 2003-2008 and 2009-2014, where the homogenized data show a brightening. Models do not accurately represent the strength of dimming, or the time evolution

of SDSR observed in China with or without the early 1990s brightening.

We underline that further studies on the observational datasets would prove very beneficial for the studying of model performance such as in our study.

Reviewer Point P 1.3 — As mentioned above the CMIP6 models would still underestimate the magnitude of the dimming signal across China and do not represent the observed brightening from 2005, highlighting that there are uncertainties in the magnitude and timing of emissions over China. Therefore, potentially including some brief discussion on the recent literature of emission estimates of SO₂ over China, particular for recent years, would prove beneficial and aid the conclusions of the paper regarding SO₂, SO₄ and SDSR (e.g. Lu et al., 2010; Koukouli et al., 2018; Zheng et al., 2018).

Reply: We thank the reviewer for these excellent paper suggestions. Koukouli et al. (2018) used satellite observations to make a new estimates for SO₂ emission between 2005 and 2015, and Lu et al. (2010) used technology based methodology to make estimates from 2000 to 2008. Figure 1 attached to to these author replies show the CMIP6 emission of SO₂ in China as diagnosed by four of the models in the study, together with the estimations found in Koukouli et al. (2018) and Lu et al. (2010).

These results has been taken into account and a brief discussion has been added in the newest version of the manuscript:

Previous studies estimating SO₂ emissions include Lu et al. (2010), that found sulfur dioxide emissions in China increased by 53 % between 2000 and 2006 using technology based methodology, and thereby found similar results to that of Hoesly et al. (2018). Lu et al. (2010) also compared AOD derived SDSR to GEBA based SDSR data as shown in streets et al and found the GEBA based SDSR data to not accurately represent SDSR development in East Asia, this further underlines the need for more studies evaluating SDSR observations. Other studies such as Koukouli et al. (2018) have used satellite observations to estimate a new emission inventory for SO₂ between 2005 and 2015 in China. We note that the year 2005 in Figure A2 is directly after the sharp increase in SO₂ emissions, and the biggest difference between the estimation made by Koukouli et al. (2018) and the SO₂ emission inventories in CMIP6 are a decrease in emissions after the year of 2011. This decrease in SO₂ emissions would intuitively result in a brightening, which is identified over the same time period in the homogenized data by Yang et al. (2018)(Fig 10 therein).

Reviewer Point P 1.4 — A general comment (and mentioned specifically below) is to consider making more reference in the results to the fact that aerosols influence multi-decadal trends in SDSR and other variables (clouds) are more important for short term variability.

Reply: This has been added as is mentioned in the replies to the minor comments below.

Minor comments

Reviewer Point P 1.5 — Within the revised manuscript there appear to be references to Figures, tables and Appendix items that need to be updated. For example, the results section refers to a Figure 5 but I have not seen a Figure 5 in the revised manuscript. Also there does not appear to be a reference to Figure A1 in the text.

Reply: These reference errors are not present in the actual new revised manuscript, but are present only in the "track changes" file that was added in the author response. The "track changes" file was made using the latex function `\diff` which do not always handle references between two manuscript versions correct, as has been made clear here by the reviewer. We doubled checked references and they appear to be correct now.

Reviewer Point P 1.6 — Page 2 line 31-33 – Not sure I understood this sentence properly, could do with clarifying a bit

Reply: We have tried to clarified the sentence:

Extraterrestrial influences like the 11-year cycle of the sun have not created any important trends on decadal time scales in Earths surface solar radiation in the past century (Eddy et al., 1982; Wild, 2009).

Reviewer Point P 1.7 — Page 2 lines 39-41 – Could link to the updated IPCC definitions, aerosol radiation interactions (Ari) and aerosol-cloud interactions (Aci).

Reply: Both terms ari and aci has been added with a reference to IPCC

Reviewer Point P 1.8 — Page 5 line 140 – I think hist-piNTCF does not fix CH4 at pre-industrial levels so this might need to be removed from the description.

Reply: According to Table 1 in Collins et al. (2017) hist-piNTCF has historical development of CH4, so the reviewer is right and this has been fixed in the manuscript.

Reviewer Point P 1.9 — Page 7, line 213 – remove ‘the’ before 1961

Reply: Fixed.

Reviewer Point P 1.10 — Page 8 line 229 – remove ‘between’

Reply: Fixed.

Reviewer Point P 1.11 — Page 9 line 258 – perhaps refer to multidecadal dimming signals

Reply: Thank you for the suggestion. The sentence has been changed to:

SDSR in the experiments hist-nat and hist-GHG do not show signs of dimming or brightening over the investigated period in China, which confirms that water vapor or stratospheric aerosols are not the dominant cause for multidecadal dimming signals in the fully coupled historical model simulations. This is supported by previous work as mentioned in the introduction.

Reviewer Point P 1.12 — Page 9 line 261 – perhaps include ‘changes in’ before anthropogenic aerosol emissions’

Reply: Added.

Reviewer Point P 1.13 — Page 9, line 274-275 – perhaps again include reference to ‘multidecadal trends in’ all sky SDSR

Reply: Added.

Reviewer Point P 1.14 — Page 9, line 283-284 – but could this be due to the errors in the observations pointed out in Section 4.1?

Reply: See our revised discussion in the new Section 4.1 where we do not disregard the original GEBA data (reply to P1.1.) but de-emphasize the reversal term.

Reviewer Point P 1.15 — Page 10 line 310-311 – Potentially remove/reword ‘not by changing cloud cover’ as could be misleading. Yes aerosols change the brightness of clouds but what about aerosol the effect on cloud lifetime?

Reply: We agree this sentence was misleading and has been rewritten to:

The aerosol indirect effect changes the radiative properties of clouds in two ways, by making them appear brighter, and by altering their lifetime (Boucher et al., 2013). Therefore, a weak change in cloud cover followed by a strong change in all sky and clear sky SDSR points to both the direct and the brightening indirect aerosol effect being the primary cause of SDSR change, as an altered lifetime of clouds would imply cloud cover changes.

Reviewer Point P 1.16 — Page 11 lines 329 – The calculation of the impact of changes in cloud cover on SDSR is presented but not really discussed. A simple sentence on the implications of this finding would improve its usefulness.

Reply: This calculation was made to give the reader an idea of the order of magnitude of how much cloud cover changes can affect SDSR, but can not be used to correct the SDSR model results for the effect of cloud cover changes as we do report complex simulations and observations in Table 2. We did add a sentence explaining the implications of this finding, as the reviewer suggested.

A rough calculation of the effect of 1 % cloud cover increase on SDSR in China is found in Section A3 in the Appendix, indicating that such an increase could result in a dimming of 1-3.5 Wm⁻². As such it shows that observed and modelled changes in cloud cover, as reported in Table 2, can lead to important contributions to the dimming and brightening signals in SDSR. However, this calculation is idealized, does not isolate the cloud cover change effect in the model results and does not explain the inconclusive data reported in Table 2.

Reviewer Point P 1.17 — Page 11 line 336-337 – Based on the all-sky and clear-sky results can you say then that the dimming is primarily caused by direct aerosol radiation interacts, with a smaller impact from aerosol-cloud interactions?

Reply: If one has an all sky SDSR and clear sky SDSR anomaly of equal magnitude in a cloud free atmosphere, we could say the direct effect (ari) was dominating the all sky SDSR anomaly. However, if the atmosphere is cloudy, one cannot draw the conclusion that the direct effect (ari) was dominating over aci. All sky SDSR is not the sum of clear sky SDSR and cloud SDSR anomalies, as aci may reflect beams of radiation that would have been reflected by ari given clear sky conditions. Therefore it is impossible to say whether aci or ari dominates all sky SDSR anomaly in China, when we know the country is not cloud free. This is why we write "aerosol effects" are dominating, including both ari and aci.

Reviewer Point P 1.18 — Page 11 line 340 – should you not specifically mention sulphate aerosols here, as not all aerosol scatter shortwave radiation?

Reply: This is the introductory sentence to the sulfate section, so we added the word "reflective" so clarify that we are not talking about all aerosols.

In the atmosphere, the presence of a reflective aerosol is the cause for scattered shortwave radiation, and the emission of its precursor is only an indirect indicator of its presence.

Reviewer Point P 1.19 — Page 12 line 358-359 – Based on section 4.1 can we say that GEBA, as it is presented in Figure 4b provides a reasonable representation of the historical development of SDSR over China?

Reply: See our revised discussion in the new Section 4.1 where we do not disregard the original GEBA data (reply to P1.1.) but de-emphasize the reversal term. We have modified the sentence slightly:

Assuming GEBA data provide a reasonable representation - within uncertainty bounds as discussed in section 4.1 - of the historical development of SDSR...

Reviewer Point P 1.20 — Page 15 line 458 – should we expect a trend reversal in emissions given that this was mostly identified as an observation error in section 4.1?

Reply: As discussed above we de-emphasize the term reversal, but we do not disregard the original GEBA data. We point out that the modelled SO₂ emissions do not fit with neither homogenized data (Yang et al., 2018) nor gap filled GEBA. Sentence has been simplified to:

The modeled emissions of SO₂ as shown in Figure A2 over China showed no trace of a significant change in trend after 1990 in our observed SDSR timeseries as discussed in the previous section.

Reviewer Point P 1.21 — Appendix A3 Line 518 – makes reference to rsds twice

Reply: One of them was meant to say "rsdscs", this has been fixed.

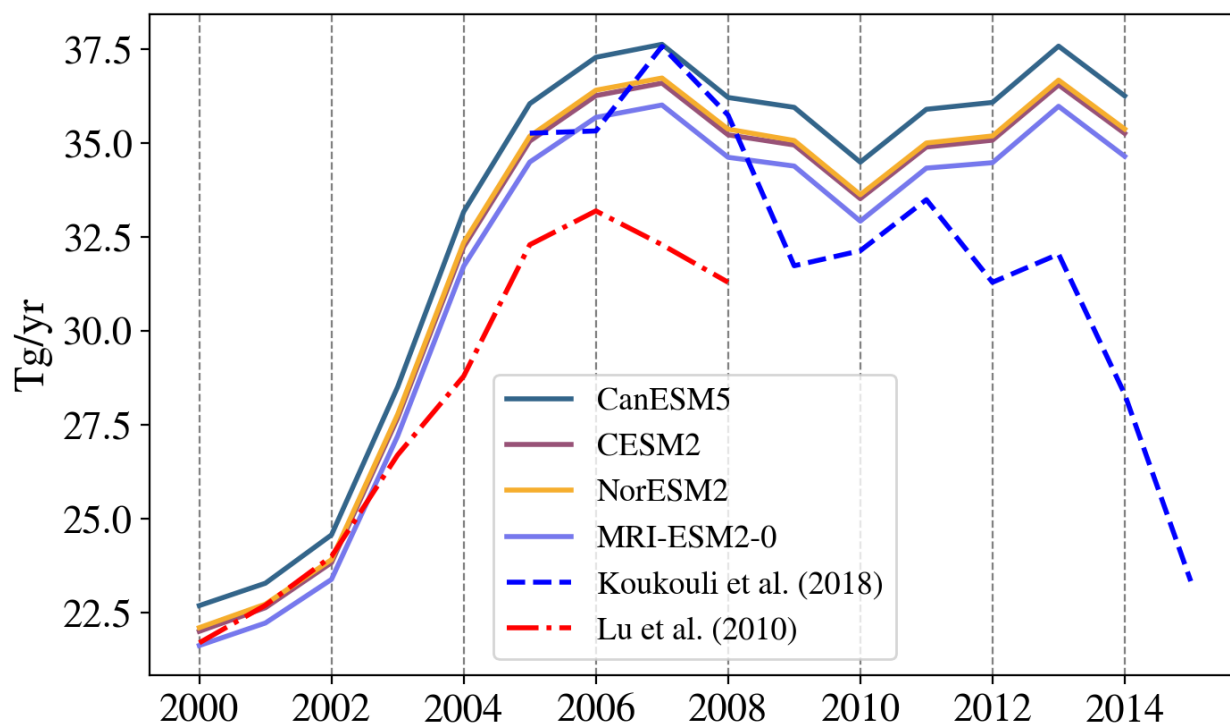


Figure 1: Emission of SO₂ in China, diagnosed by four of the models in this study. China is defined here as the area within latitudes [20°N–45°N], and longitudes [95°E–125°E]. In addition the results from Koukouli et al. (2018) and Lu et al. (2010) has been added.

References

- Boucher, O., D. Randall, P. Artaxo, C. Bretherton, G. Feingold, P. Forster, V.-M. Kerminen, Y. Kondo, H. Liao, U. Lohmann, P. Rasch, S.K. Satheesh, S. Sherwood, B. Stevens, and X.Y. Zhang (2013), *Clouds and Aerosols*, book section 7, 571–658. Cambridge University Press, Cambridge, United Kingdom and New York, NY, USA, URL www.climatechange2013.org.
- Collins, William J., Jean-François Lamarque, Michael Schulz, Olivier Boucher, Veronika Eyring, Michaela I. Hegglin, Amanda Maycock, Gunnar Myhre, Michael Prather, Drew Shindell, and Steven J. Smith (2017), “AerChemMIP: quantifying the effects of chemistry and aerosols in CMIP6.” *Geosci. Model Dev.*, 10, 585–607, URL <https://www.geosci-model-dev.net/10/585/2017/>.
- Eddy, John A., Ronald L. Gilliland, and Douglas V. Hoyt (1982), “Changes in the solar constant and climatic effects.” *Nature*, 300, 689–693, URL <https://www.nature.com/articles/300689a0>. Number: 5894 Publisher: Nature Publishing Group.
- Hoesly, Rachel M., Steven J. Smith, Leyang Feng, Zbigniew Klimont, Greet Janssens-Maenhout, Tyler Pitkanen, Jonathan J. Seibert, Linh Vu, Robert J. Andres, Ryan M. Bolt, Tami C.

- Bond, Laura Dawidowski, Nazar Kholod, June-ichi Kurokawa, Meng Li, Liang Liu, Zifeng Lu, Maria Cecilia P. Moura, Patrick R. O'Rourke, and Qiang Zhang (2018), "Historical (1750–2014) anthropogenic emissions of reactive gases and aerosols from the Community Emissions Data System (CEDS)." *Geoscientific Model Development*, 11, 369–408, URL <https://www.geosci-model-dev.net/11/369/2018/>.
- Koukouli, Mariliza, Nicolas Theys, Jieying Ding, Irene Zyrichidou, Bas Mijling, Dimitrios Balis, and Ronald A (2018), "Updated SO₂ emission estimates over China using OMI/Aura observations." *Atmospheric Measurement Techniques*, 11, 1817–1832.
- Lu, Zhongyao, D. Streets, Qian Zhang, Shihua Wang, Gregory Carmichael, Yafang Cheng, Chao Wei, Mian Chin, Tracy Diehl, and Tan Q (2010), "Sulfur dioxide emissions in China and sulfur trends in East Asia since 2000." *Atmospheric Chemistry and Physics Discussions*, 10.
- Norris, Joel R. and Martin Wild (2009), "Trends in aerosol radiative effects over China and Japan inferred from observed cloud cover, solar "dimming," and solar "brightening"." *Journal of Geophysical Research: Atmospheres*, 114, URL <https://agupubs.onlinelibrary.wiley.com/doi/abs/10.1029/2008JD011378>. eprint: <https://agupubs.onlinelibrary.wiley.com/doi/pdf/10.1029/2008JD011378>.
- Wang, Yawen and Martin Wild (2016), "A new look at solar dimming and brightening in China: CHINA DIMMING AND BRIGHTENING REVISITED." *Geophys. Res. Lett.*, 43, 11,777–11,785, URL <http://doi.wiley.com/10.1002/2016GL071009>.
- Wild, Martin (2009), "Global dimming and brightening: A review." *Journal of Geophysical Research*, 114, URL <http://doi.wiley.com/10.1029/2008JD011470>.
- Yang, Su, Xiaolan L. Wang, and Martin Wild (2018), "Homogenization and Trend Analysis of the 1958–2016 In Situ Surface Solar Radiation Records in China." *J. Climate*, 31, 4529–4541, URL <http://journals.ametsoc.org/doi/10.1175/JCLI-D-17-0891.1>.

Bias in CMIP6 models as compared to observed regional dimming and brightening

Kine Onsum Moseid¹, Michael Schulz^{1,2}, Trude Storelvmo², Ingeborg Rian Julsrud^{2,1}, Dirk Olivié¹, Pierre Nabat³, Martin Wild⁴, Jason N. S. Cole⁵, Toshihiko Takemura⁶, Naga Oshima⁷, Susanne E. Bauer⁸, and Guillaume Gastineau⁹

¹Norwegian Meteorological Institute, Research Department, Oslo, Norway

²University of Oslo, Department of Geosciences, Section for Meteorology and Oceanography, Oslo, Norway

³Centre National de Recherches Meteorologiques (CNRM), Université de Toulouse, Météo-France, CNRS, Toulouse, France

⁴Institute for Atmospheric and Climate Science, Swiss Federal Institute of Technology (ETH), Zurich, Switzerland

⁵Canadian Centre for Climate Modelling and Analysis, Environment Canada, Victoria, British Columbia, Canada

⁶Climate Change Science Section, Research Institute for Applied Mechanics, Kyushu University, Fukuoka, Japan

⁷Meteorological Research Institute, Japan Meteorological Agency, Tsukuba, Ibaraki, Japan

⁸Center for Climate Systems Research, Columbia University, NASA Goddard Institute for Space Studies, New York, NY, USA

⁹LOCEAN, IPSL, Sorbonne Université, IRD, MNHN, CNRS, Paris, France

Correspondence: Kine Onsum Moseid (kristineom@met.no)

Abstract. Anthropogenic aerosol emissions have increased considerably over the last century, but climate effects and quantification of the emissions are highly uncertain as one goes back in time. This uncertainty is partly due to a lack of observations in the pre-satellite era, making the observations we do have before 1990 additionally valuable. Aerosols suspended in the atmosphere scatter and absorb incoming solar radiation, and thereby alter the Earth's surface energy balance. Previous studies show that Earth system models (ESMs) do not adequately represent surface energy fluxes over the historical era. We investigated global and regional aerosol effects over the time period 1961-2014 by looking at surface downwelling shortwave radiation (SDSR). We used observations from ground stations as well as multiple experiments from eight ESMs participating in the Coupled Model Intercomparison Project Version 6 (CMIP6). Our results show that this subset of models reproduces the observed transient SDSR well in Europe, but poorly in China. We suggest that this may be attributed to missing emissions of sulfur dioxide in China, sulfur dioxide being a precursor to sulfate, which is a highly reflective aerosol and responsible for more reflective clouds. The emissions of sulfur dioxide used in the models do not show a temporal pattern that could explain observed SDSR evolution over China. The results from various aerosol emission perturbation experiments from DAMIP, RFMIP and AerChemMIP show that only simulations containing anthropogenic aerosol emissions show dimming, even if the dimming is underestimated. Simulated clear sky and all sky SDSR do not differ largely, suggesting that cloud cover changes are not a dominant cause to the biased SDSR evolution in the simulations. Therefore we suggest that the discrepancy between modeled and observed SDSR evolution is partly caused by erroneous aerosol and aerosol precursor emission inventories. This is an important finding as it may help interpreting whether ESMs reproduce the historical climate evolution for the right or wrong reason.

1 Introduction

20 Aerosol particles scatter and absorb radiation and change the radiative properties of clouds, thereby altering Earth's energy balance (Boucher et al., 2013). Anthropogenic aerosol emissions have substantially increased over the last century, but the quantification of the effect has been characterized by large uncertainties. Earth system models (ESMs) are evaluated based on their ability to reproduce the climate evolution of the past 165 years, and the sparsity of aerosol-related observations in the pre-satellite era plays a dominant role in the uncertainty connected to these historical experiments. An improved understanding
25 of the historical aerosol effect would increase the accuracy and credibility of ESMs future climate projections.

Aerosol particles cause changes in the amount of sunlight reaching the surface together with changes in insolation, cloud cover, water vapor and other radiatively active gases (Wild et al., 2018). ~~Insolation at the top of the atmosphere changes on millennial timescales when the Earth's orbital parameters change, but the solar~~ Extraterrestrial influences like the 11-year cycle ~~nor solar historical time variations have created multidecadal important trends in surface radiation (Eddy et al., 1982)~~
30 of the sun have not created any important trends on decadal time scales in Earths surface solar radiation in the past century (Eddy et al., 1982; Wild, 2009). Water vapor amount has not changed sufficiently in recent decades to have an effect on decadal fluctuations of incoming sunlight at the surface (Wild (2009), Wang and Yang (2014), Yang et al. (2019), Hoyt and Schatten (1993), Ramanathan and Vogelmann (1997), Solomon et al. (2010)), and radiatively active gases dominate in the longwave spectrum (Ramanathan et al. (1989)).

35 The relative roles of clouds, aerosols and their interactions in historical variations of surface downwelling shortwave radiation (SDSR) are still disputed, but previous studies have found that aerosol effects dominate on multidecadal timescales, while cloud effects are relevant on shorter timescales (Wild (2016), Romanou et al. (2007)). Aerosol effects can be divided into the direct and indirect effect. The direct effect is the scatter or absorption directly caused by a dry aerosol, also called the aerosol-radiation-interaction (ari) (Boucher et al., 2013), and the indirect effect is how aerosols change properties in clouds.
40 ~~These properties-~~ also called aerosol-cloud-interactions (aci). Aci includes both a change in cloud lifetime and most importantly a change in cloud albedo, making the cloud appear brighter (Boucher et al., 2013).

Assuming aerosol effects dominate the multidecadal timescales, SDSR can serve as a proxy for aerosol effects. The Global Energy Balance Archive (GEBA) dataset contains measurements of SDSR as far back as in 1922 (Wild et al., 2017), and as such represents a unique and valuable dataset for evaluation of simulated aerosol effects prior to the satellite era.

45 Observed SDSR from the GEBA dataset reveals a widespread negative trend from the 1950s to the late 1980s, commonly referred to as "global dimming" (Liepert (2002), Wild (2016)). The magnitude of this dimming differs vastly between regions, which is expected if the cause of dimming were regionally different increases in aerosol emissions, as has been proposed by Wild et al. (2007), Sanchez-Romero et al. (2014), and Wild (2016). In some areas a positive trend in SDSR follows the dim-
50 ming, and this SDSR increase has been termed "brightening" (Wild et al., 2005). Brightening is connected to the reduction in anthropogenic aerosol emission (Nabat et al., 2014). Fewer particles suspended in the air allow for more sunlight to reach the surface and thus an increase in the measured SDSR. Previous studies show that historical simulations from ESMs do not

reproduce the observed global transient development of SDSR (Storelvmo et al. (2018), Wild (2009), Allen et al. (2013), Wild and Schmucki (2011)). The cause of this discrepancy is not known, but may be connected to uncertainties in aerosol emission inventories of the past, or, as Storelvmo et al. (2018) suggested, other uncertainties concern how models treat processes that translate aerosol emissions into radiative forcing.

In this study we use gap-filled data based on the GEBA dataset, together with several recent CMIP6 historical model experiments from eight climate models to investigate the aerosol effect in the time period 1961-2014, globally and regionally. In the middle of this time period (around the late 1990s), the main region of high anthropogenic aerosol emissions shifted from Europe and North-America to Asia. We have chosen to focus on the regions of Europe and Asia in this study, as the models exhibit diverging abilities to reproduce the observed SDSR in these regions. We also use observational cloud cover data to briefly assess the role of cloud cover in the historical development of SDSR. We explore the relation between regional SDSR and aerosol emissions using a set of ESM experiments with differing aerosol emissions; some have pre-industrial aerosol emissions, while others use the most recent and best available historical aerosol emission inventory (Hoesly et al., 2018). This paper thereby provides new insights into the question of whether state-of-the-art ESMs can adequately reproduce a part of the changes in the surface energy budget over the historical era. This is in turn an important indication of whether the ESMs reproduce the dominant processes governing the historical climate evolution.

The paper is structured as follows: In Section 2 we begin by presenting the two observational datasets used, followed by a detailed description of the experiments simulated by the eight models chosen to be part of this study. The methods used to obtain and analyse the data finalize Section 2. The results are presented in Section 3, starting with a global view of dimming and brightening before focusing on regional assessments of SDSR, clear sky SDSR, and cloud cover. Section 4 discusses the implications of our results and how they compare to previous studies, before final conclusions are presented in Section 5.

75

2 Data and Methods

2.1 Observations

The Global Energy Balance Archive (GEBA) holds data from ground-based stations measuring energy fluxes at the Earth's surface around the globe (Wild et al., 2017). Pyranometers were used in most of the measurement sites, which have an accuracy limitation of 3-5 % of the full signal (Michalsky et al. (1999), Wild et al. (2013)). We use the monthly mean data from 1487 stations in the time period 1961-2014 measuring downwelling shortwave radiation. The GEBA data set has been complemented by a machine learning technique (random forests (Breiman, 2001)) as explained in Storelvmo et al. (2018) to cover time periods of missing observations in the measurements and facilitate comparison to the gridded model data. This allows for all 1487 stations to have data on each time step, so that all regions have a complete record and the same amount of stations throughout the entire time period in question.

85

Monthly mean cloud cover data is provided by the Climatic Research Unit (University of East Anglia) and NCAS, and we are using version 4.02 of this dataset (CRU). CRU covers the period 1901-2017 (Harris et al., 2020) and consists of a climatology made from measurements at meteorological stations around the globe, interpolated to a 0.5° latitude/longitude resolution grid covering continental areas. Information on interpolation methods and procedures used to create the gridded data set are given
90 in Harris et al. (2020) and references therein. In short, CRU has its foundation in station data, but is interpolated to a grid using angular-distance weighting. The cloud cover variable is largely derived as a secondary variable, based on measurements of other parameters such as sunshine hours and diurnal temperature range.

2.2 Models and CMIP6

Eight climate models (NorESM2, CanESM5, MIROC6, CESM2, CNRM-ESM2-1, GISS-E2-1-G, IPSL-CM6A-LR, MRI-
95 ESM2-0) were chosen for this study, based on available data and their involvement in relevant model intercomparison projects within the Coupled Model Intercomparison Project Phase 6 (CMIP6) (Eyring et al., 2016). As this study focuses on dimming and brightening, we have chosen experiments from model intercomparison projects (MIPs) that include perturbed historical simulations with which one can single out the effect of anthropogenic aerosol emissions in our diagnostic variables. An overview of models and experiments can be found in Table 1. This section will give a more detailed description of the experi-
100 ments in Table 1 and explain why they were chosen.

Every model that takes part in CMIP6 has to deliver a set of common experiments, among these is the *historical* simulation. As can be seen in Table 1 all the models have provided historical simulation results. All other experiments listed in Table 1 are simulations covering the historical period (1850-2014) but with specific alterations dependent on what model intercomparison
105 project they are a part of.

The Detection and Attribution Model Intercomparison Project (DAMIP) has the goal of improving estimations of the climate response to individual forcings (Gillett et al., 2016) and includes three relevant experiments. One experiment traces exclusively the impact of anthropogenically emitted aerosols as forcing agents over the historical period, and is called *hist-aer*. This means no anthropogenic greenhouse gas emissions or natural climate forcings are used in this simulation. The *hist-nat* experiment
110 consists of only the perturbations due to the evolution of the natural forcing, e.g. from stratospheric aerosols ~~from volcanoes~~ [of volcanic origin](#) and solar irradiance variations. Finally, the *hist-GHG* experiment has only forcings from changes in the well mixed greenhouse gases. These experiments were chosen as they give a unique insight into how a fully coupled climate model attributes responses over the historical period to the different climate forcings.

115 While DAMIP provides a good framework for one of the main questions in CMIP6, namely how the Earth system responds to forcing, RFMIP, the Radiative Forcing Model Intercomparison Project, focuses on understanding the forcing itself. RFMIP contains a large set of experiments to further understand the radiative forcing of the past and the present (Pincus et al., 2016). We use two experiments from RFMIP, both with sea surface temperatures prescribed to pre-industrial values. One experiment includes both anthropogenic and natural aerosol emissions (*piClim-histall*) while the other only includes anthropogenic aerosol

120 emissions (*piClim-histaer*). When sea surface temperatures are kept to pre-industrial values, the global surface temperature development stalls, and the simulation will keep to first order a pre-industrial climate. Sea surface temperatures changes would have an effect on cloud cover, which in turn can affect SDSR. These *piClim*-experiments will show the direct atmospheric forcing on SDSR due to greenhouse gases and aerosols, alone or in combination, without including cloud cover changes induced by global warming.

125

The third MIP included in this study is the Aerosol Chemistry Model Intercomparison Project (AerChemMIP), which is designed to answer questions regarding the specific effect of aerosols and other near-term climate forcers (NTCF) on climate. NTCFs include methane, tropospheric ozone, aerosols and their precursors (Collins et al., 2017). Three experiments have been selected from AerChemMIP, *histSST*, with all forcing agents included, and two perturbations which have pre-industrial aerosols emissions: (*hist-piAer*) and (*hist-piNTCF*). The *hist-piNTCF* experiment has in addition pre-industrial NTCF levels for ozone and methane. A difference in these two simulations would only appear if ozone or methane concentrations were computed in an interactive chemistry scheme. These two simulations are coupled and are comparable to the historical experiment. The experiment *histSST* uses all forcing agents and the sea surface temperatures derived from the historical simulation so that the temperature evolution, and hence its effect on SDSR, should be similar to the historical experiment, but removes responses involving a coupled ocean. These experiments together with the historical experiment were chosen to differentiate between historical changes in aerosol and tropospheric ozone, or whether a mixing layer in the ocean may have had an effect on dimming.

135 Data from all experiment ensembles from each of the MIPs listed above provide useful information on the role of anthropogenic aerosol emission in dimming and/or brightening.

140 2.3 Methods

The GEBA stations have been divided into regions based on the country and continent. The number of stations in a region is presented together with the first results in the caption of Figure 2. The number of stations per region remains constant throughout the time period because of our gap filling approach. A figure with the spatial distributions and trend of SDSR per station in GEBA used in this study is found in Figure 1 in Storelvmo et al. (2018).

145 All model output and CRU results have been co-located to GEBA station locations using the nearest neighbour method. This entails that if two GEBA stations are within one grid box of a model, data from that grid box will be retrieved twice by nearest neighbour interpolation, as every station has been weighted equally. A global mean is defined here as the mean of a variable across all GEBA station locations. A regional mean is a mean of a variable across the GEBA station locations registered to that same region in the GEBA data. When a result is shown as an anomaly, as opposed to an absolute value, the general formula has been to subtract the baseline value, defined as the mean of the first five years of the investigated time period (1961-2014), from the timeseries in question. To clarify - first an average value per year per region is calculated, and then a new mean is created from the first five years of this timeseries. This 5-year-mean is then subtracted from each year in the timeseries for the region in question and presented as an anomaly. We will often present data as 6-year-averages, as yearly variabilities are not

the focus of this study. These 6-year-averages are simply made by dividing the timeseries over 54 years(1961-2014) in nine
155 equal intervals and average these intervals together. When the atmospheric burdens of SO_4 is shown together with observed
SDSR from GEBA the timeseries have been smoothed using a 10-year running mean, and this is the only data in the paper
shown using this smoothing technique.

The "baseline" values for global SDSR and cloud cover in the models and observations of this study can be found in the Ap-
pendix in Table A1.

160 The model data has been retrieved from The Earth System Grid Federation (ESGF) (Cinquini et al., 2014). ESGF is a data
management system consisting of multiple geographically distributed nodes that coordinate through a peer-to-peer (P2P) pro-
tocol (Fan et al., 2015). We have used three ensemble members for the *historical* experiment to present internal variability in
the models, and one ensemble member from the rest of experiments shown, as not every experiment had requested more than
one simulation. Table A2 in the Appendix shows the resolutions, aerosol schemes, and aerosol complexity of the models in
165 this study, and Section A2 explains the variables and variant labels downloaded.

3 Results

3.1 Model variability

Figure 1 shows SDSR anomaly for each model of the study co-located to all GEBA stations, 1487 in total as compared to the
observed SDSR anomaly. The aerosol effective radiative forcing (Aerosol ERF) corresponding to each model is obtained from
170 Smith et al. (2020) and is listed in each panel to illustrate the strength of the aerosol radiative effect in the model.

Each climate model has its own internal variability and thereby represents its separate climate systems. SDSR is a highly
variable metric on a year-to-year basis, which can be seen both in the GEBA data in black in Figure 1 and in following a
single ensemble member per model. Within each model ensemble one can see that no member is equal to another, which is
a clear signal of the internal variability of each model. The spread of all three ensemble members in a 6 year period can be
175 read from the height (interquartile range) of the boxes in the 6-year-intervals, note that this spread is dominated by large inter-
annual variabilities within each member. One example is GISS-E2-1-G, where each ensemble member has large interannual
variabilities, the boxes present long whiskers and large interquartile ranges, but when comparing the ensemble member 6 year
means one by one they mostly agree on their magnitudes of SDSR anomaly, so the intra-ensemble-spread is not large for GISS-
E2-1-G. We find (not shown here) that the model with the least interannual variabilities is CNRM-ES2-1, while the model with
180 the largest inter-ensemble disagreements is CanESM5.

Figure 1 also shows that the models in general do not agree with the observed global SDSR anomaly, shown in black. Dimming
and brightening are tendencies in surface radiation that are observed on longer than interannual timescales, with this in mind
SDSR from models will in general be presented as 6-year means for the remainder of this paper. The model MRI-ESM2-0 is
showing the most similar SDSR evolution compared to the observed data according to Figure 1.

185 The model with the strongest aerosol ERF is CESM2, while the weakest aerosol ERF is presented by IPSL-CM6A-LR.

3.2 Dimming and brightening

The change in SDSR in the *historical* simulations from the eight models is presented together with GEBA data in Figure 2. Panel (a) of this figure corresponds to the results shown in Figure 1. Each model graph in Figure 2 represents the ensemble mean of the model in question averaged over 6 years, based on three ensemble members. GEBA data is shown in black, also as 6-year averages, but with the yearly time series shown in grey in the background. Model simulations show small changes of global SDSR compared to observations (Fig 2a). Global SDSR is observed to decrease over the 1487 stations until late 1980's before increasing again, clearly showing the global "dimming" and "brightening" as found in previous studies listed in the introduction.

None of the models outperform one another globally, and there is a discrepancy of about 2-3 W/m² between models and observations. To further identify from where this discrepancy originates, we consider some geographical regions separately. Asia and Europe are relevant regions in regards to anthropogenic aerosol emissions (as explained in Section 1) and thereby also relevant to global dimming and brightening. The historical SDSR evolution in Europe and Asia are presented in Figure 2 (b) and (c), respectively. European SDSR is relatively well represented by the model simulations. The yearly GEBA timeseries has values within the shaded area, that is showing the standard deviation of the total of 24 model ensemble values, in almost every 6 year period in Europe. The dimming in Europe is believed to have started before ~~the~~ 1961 (Wild, 2009), which partly explains why the initial European dimming in Figure 2(b) is weak. GEBA shows a short-term positive anomaly between 1970 and 1980, which is not caught by the models. This peak is currently unexplained, but a short assessment of its possible association to changes in cloud cover is found in Section A1 in the Appendix.

There is generally a large discrepancy between model simulations and observations of SDSR in Asia, as seen in Figure 2(c). The ground stations in Asia show a noticeable trend ~~reversal~~ change in SDSR in the transition from 1980s to 1990s that is not apparent in the model simulations. The historical model simulations show a consistent negative trend during the entire historical period in question in Asia. Historically, countries with relatively high emissions in Asia include India, Japan, and China (Hoesly et al., 2018), and the SDSR evolution for each of these countries are shown in Figure 2(d), (e), and (f), respectively.

Figure 2 (d) shows that the models capture a relatively strong negative trend of SDSR in India, with MIROC6 being the model with the most modest trend. There are evident differences between observations and simulations in both Japan and China. Ground stations in Japan show a sharp decrease in SDSR until the early 1970s followed by some variations until a new minimum value is reached around 1990 before an increase in SDSR is measured. The minimum value around 1990 and the following positive trend is similar to that of China. Japan is downwind of the Asian continent and thus believed to be influenced by aerosol emissions from China. Model simulations do not capture the magnitude of dimming in Japan, or the apparent brightening in the 1990s. The timing of minimum SDSR occurs differently in ~~between~~ models, which was also seen in Figure 2(a).

Observations from China (Figure 2(f)) show a trend ~~reversal~~ change in SDSR similar to the one identified in Figure 2(c) for Asia as a whole, with the minimum value found in 1989. We note that China consists of 119 GEBA stations while Asia as a whole consists of 311 stations, thus the Asian average is largely impacted by SDSR as measured in chinese stations. In

220 general the historical model simulations show dimming throughout the historical period in China, meaning none of them show a similar trend reversal-change to the one from the observational data set. This trend-reversal-post-1990 trend change is a source of discussion within the field, and a thorough assessment, relevant to the conclusions from this study, is found in Section 4.1.

3.3 Dimming and brightening over China in various CMIP6 experiments

In order to understand which forcing agents are responsible for the overall trends in SDSR in the models, we now investigate
225 China for the experiments listed in Table 1. Figure 3(a) shows perturbed historical simulations as performed in DAMIP together with observations of SDSR. DAMIP has two experiments without historical anthropogenic aerosol emission (dashed/*hist-nat* and stippled/*hist-GHG* lines), and one experiment with historical anthropogenic aerosol emissions (solid lines/*hist-aer*). The experiment *hist-aer* is the only experiment in DAMIP exhibiting a distinguishable dimming signal. SDSR from *hist-aer* shows patterns similar to the *historical* simulations with continuous dimming throughout the period, ~~but also still without the trend~~
230 ~~reversal-seen-in-the-observed-temporal-evolution-of-unlike the observed~~ SDSR. SDSR in the experiments *hist-nat* and *hist-GHG* do not show signs of dimming or brightening over the investigated period in China, which confirms that water vapor or stratospheric aerosols are not ~~dominant for simulated dimming-the dominant cause for multidecadal dimming signals in the fully coupled historical model simulations. This is supported by previous work as mentioned in the introduction.~~

235 Out of the three experiments from AerChemMIP only *histSST* has prescribed sea surface temperatures ~~and contains and~~ contains changes in anthropogenic aerosol emissions. This is consistent with the time evolution of SDSR in *histSST* as the simulations diverge from the other simulations as time progresses (Fig 3b). Keeping in mind that *histSST* also has anthropogenic GHG emissions in addition to natural forcings, the only difference from *histSST* to the *historical* experiment is the absence of a coupled ocean and the use of prescribed sea surface temperatures. The model MRI-ESM2-0 presents the strongest dimming in
240 both DAMIP and AerChemMIP. The simulations with pre-industrial aerosols (*hist-piAer*) and pre-industrial near term climate forcings, including aerosols and ozone (*hist-piNTCF*) show very small or negligible changes in the SDSR over the time period considered.

Recall that the experiments of RFMIP utilize pre-industrial SST's, meaning essentially there is no global warming in these
245 experiments. In the RFMIP experiments shown in Figure 3(c) both *piClim-histaer* and *piClim-histall* contain anthropogenic aerosol emissions, and all simulations show a continuous dimming throughout the period. There is no clear distinction between experiments containing GHG emissions in addition to anthropogenic aerosol emissions (solid lines/*piClim-histall*) and the experiments only containing anthropogenic aerosol emissions (stippled lines/*piClim-histaer*). This implies that greenhouse gases without their global warming effect do not affect multidecadal all sky SDSR in a significant way over China throughout the
250 period, again supported by previous work mentioned in the introduction.

Overall there is a clear difference in SDSR between experiments that include anthropogenic aerosol emissions and experiments that do not. Dimming is apparent in every simulation containing anthropogenic aerosol emissions, but absent in the simulations

using aerosols maintained at constant pre industrial levels. This points to anthropogenic aerosol emissions playing a key role
255 in dimming. Whether the sea surface temperature is pre-industrial, prescribed historical, or decided by a coupled ocean model
seems to be unimportant for the SDSR temporal evolution in China in most models.

No ~~trend-reversal or distinct flattening of the dimming~~ distinct flattening or brightening is identified in any of the simulations
in which dimming is identified, and therefore none of the model simulations show a temporal evolution of SDSR close to the
one seen in observations over China.

260

All sky SDSR changes can be further decomposed by the models into a clear sky contribution as well as a contribution from
changes in cloud cover or other cloud properties. In the next section we present the decomposed contributions to all sky SDSR
in China to further understand the discrepancy seen in Figure 3.

265 3.4 Clear sky SDSR and cloud cover in China

So far we have only evaluated all sky SDSR, which is influenced by clouds and any aerosol radiative effects. Table 2 shows
changes in cloud cover, all sky SDSR, and clear sky SDSR within three different time periods for the models and observational
data sets of this study. Between the years 1961 and 1989 GEBA shows a strong negative change in all sky SDSR in Figure 2(f).
In Table 2 we thus show changes in this time period by making two 3-year means and subtracting them from one another. This
270 is done to avoid extreme values as we are working with metrics exhibiting large year to year variations. This has been done for
two additional time periods which have been chosen based on the temporal development in the all sky SDSR as measured by
GEBA in China (see Figure 2(f)), summarized in the second lowest row in Table 2.

In the first time period the models do not agree on the sign of cloud cover change, and the simulated all sky SDSR is weaker
275 than the observed one, which was already established in the previous section. Clear sky SDSR do not differ largely from all
sky SDSR within the models. For some models the negative change in clear sky SDSR is stronger than in all sky SDSR,
meaning that the aerosol direct effect may contribute significantly to dimming for these models. The aerosol indirect effect
~~mainly~~ changes the radiative properties of clouds in two ways, by making them appear brighter, ~~not by changing cloud cover.~~
and by altering their lifetime (Boucher et al., 2013). Therefore, a weak change in cloud cover followed by a strong change in
280 all sky and clear sky SDSR ~~point to both direct and~~ points to both the direct and the brightening indirect aerosol effect being
the primary cause of SDSR change, as an altered lifetime of clouds would imply cloud cover changes.

In the second time period GEBA shows a positive change (which will be further discussed in Section 4.1), and CRU shows a
cloud cover change of +3.0 %. Intuitively, an increase in cloud cover would not create a brightening at surface level. The obser-
285 vations are thus not consistent in this time period if only cloud cover effects were important. The models disagree in their sign
of ~~both~~ cloud cover changes, all sky, and clear sky SDSR. In the final time period where GEBA shows a weak slightly positive
change in all sky SDSR, every model in this study shows a dimming. All models apart from MIROC6 show simulated clear

sky SDSR changes that are stronger than the changes found in all sky SDSR. Together with the inconsistent simulated cloud cover and all sky SDSR changes for this time period we suggest that both direct and indirect aerosol effect are responsible for the changes in SDSR found in the model simulations.

All models show dimming in clear sky and all sky SDSR in the first and last time period. Some models show a weak positive change in all sky SDSR in the same period as GEBA presents a strong brightening. Both observed and simulated changes in cloud cover neither ~~acts-act~~ as a brightening mask for clear sky dimming nor ~~is-are~~ convincingly a cause of dimming/brightening in either observed or simulated all sky SDSR. A rough calculation of the effect of 1 % cloud cover increase on SDSR in China is found in Section A3 in the Appendix, indicating that such an increase could result in a dimming of 1-3.5 Wm^{-2} . As such it shows that observed and modelled changes in cloud cover, as reported in Table 2, can lead to important contributions to the dimming and brightening signals in SDSR. However, this calculation is idealized, does not isolate the cloud cover change effect in the model results and does not explain the inconclusive data reported in Table 2. It is important to note that the robustness of observed cloud cover changes must be verified by satellite observations, which goes beyond the scope of this study.

In section 3.3 we showed that dimming was only apparent in simulations that included anthropogenic aerosol emissions. In this section we found the clear-sky SDSR to be close in value or even stronger than all-sky SDSR, indicating the simulated dimming is primarily caused by aerosol effects. Table 2 underlines previous findings, dimming in models are overall weaker than in observations. The next section will then show how the simulated aerosol burdens are connected to SDSR.

3.5 Atmospheric burden of SO_4

In the atmosphere, the *presence* of ~~an-a~~ reflective aerosol is the cause for scattered shortwave radiation, and the emission of its precursor is only an indirect indicator of its presence. All CMIP6 simulations mentioned above have utilized the same anthropogenic sulfur dioxide gas emissions, however the resultant dimming differed considerably. SO_4 aerosol burdens should be more closely linked to the radiative effect. Therefore, we present here also the simulated anomalies in burden of SO_4 in the various models over Europe, a location where dimming and brightening is fairly well represented in simulations, and over China, where dimming and brightening is poorly represented in simulations (Figure 4(a) and (b) respectively). The sulfate burdens are co-located to GEBA station locations in the respective regions. As expected, sulfate aerosols have an important role in European dimming and brightening, as the simulated burdens of SO_4 show a strikingly similar pattern (but with opposite sign) as the observed SDSR over Europe for all models. The maximum burdens are found in the early to mid 1980s depending on the model, and the minimum SDSR around the same time. The various models differ in the magnitude of change in SO_4 burden over Europe but all show similar tendencies. MRI-ESM2-0 is the model with the largest changes, and GISS-E2-1-G is the model with the smallest changes in SO_4 burden. The same is observed over China, where MRI-ESM2-0 has an SO_4 burden at the end of the time period which is more than double the burden of the other models (except NorESM2). In contrast to Europe, the observed SDSR evolution does not mirror well the simulated SO_4 burden timeseries over the GEBA stations in China. In order for the SO_4 burden to be the main cause of the observed changes in SDSR, the Asian SO_4 burden would have

to peak around the late 1980s, which is not seen in the models in Figure 4(b). All the simulated historical SO₄ burdens increase until 2010, showing no signs of either a trend ~~reversal~~ change or a flattening of aerosol induced dimming. Assuming GEBA data provide a reasonable representation - within uncertainty bounds as discussed in section 4.1 - of the historical development of SDSR and implicitly sulfur burdens in China, the problem in SO₄ burden must come from either the emissions, aerosol formation, transport or the removal processes of SO₄.

It appears, however, that the simulated burdens of SO₄ co-located to GEBA stations in China follow quite closely the time series of emitted SO₂ in the climate models over China (shown in Appendix Figure A2), which indicates that SO₄ formation and export of sulfur from the ~~chinese~~ Chinese region remains rather similar in the period investigated. Following the logic that emission correlate with burden which again anti correlates with SDSR changes, the temporal development of SDSR seen in GEBA cannot be explained from the current emission inventories, given sulfate aerosols play an important role in SDSR in China.

335 4 Discussion

The climate effect of aerosol emissions over the industrial era is poorly constrained, in part due to lack of observations and uncertainty in emissions. The uncertainty in past aerosol climate effects is an important reason for the large spread in climate projections for the future. Here, we investigate the effect of aerosols in GEBA which provides valuable observations of historical shortwave radiation at the surface.

340

We have shown that a subset of models participating in CMIP6 do not accurately represent the observed dimming and brightening trends globally and regionally in their *historical* simulation. This is comparable to that of Storelvmo et al. (2018) and Wild and Schmucki (2011), who showed that the CMIP5 and CMIP3 ensemble mean SDSR globally co-located to GEBA stations does not represent dimming or brightening. Our findings show that reproducibility of SDSR has not improved from CMIP5 to CMIP6. We find that most models show an underestimation of changes in SDSR to observations, and the development over time greatly differs between model and observations, especially in China. This is in agreement with Allen et al. (2013) who studied the CMIP5 ensemble mean and found a continuous dimming trend over China, but with a severely underestimated magnitude of modelled clear-sky SDSR during the dimming period compared to a clear-sky proxy based on GEBA data.

The simulated SDSR on decadal timescales over China does not differ significantly when comparing the RFMIP experiments (Figure 3) to the historical experiment. RFMIP experiments have pre industrial sea surface temperatures, and thus do not include global warming induced cloud cover changes. When experiments with historical cloud cover changes show dimming in the same magnitude as experiments without historical cloud cover changes, the dimming can be assumed to be dominated by aerosol effects in China. This complements the findings by Folini and Wild (2015) where sea surface temperatures correlate to cloud cover, not aerosol effects. Table 2 showed inconclusive connections between modelled and observed cloud cover,

350

355 but clear connections between clear sky SDSR and all sky SDSR, again pointing to aerosol effects dominating SDSR time evolution in China.

The climate models strongly underestimate the dimming observed in China, in addition to not representing ~~a trend reversal in the late 1980s~~the post-1990 trend change. This trend ~~reversal~~change is the topic of discussion in the next section.

360 4.1 The post-1990 trend reversal change in China

Several studies have tried to explain the trend ~~reversal~~change as presented here by GEBA in China in the transition from the 1980s to the 1990s. Streets et al. (2006) proposed a peak in combined emissions of SO₂ and black carbon in 1988-1989 as a possible explanation. A later study questions the quality of the observational data showing the trend ~~reversal~~change (Tang et al., 2011), while recent studies propose the ~~trend reversal~~post-1990 initial, strong brightening is to a considerable extent
365 an artifact of a nation wide change in SDSR measurements (Wang and Wild (2016) Yang et al. (2018)). The change in SDSR measurements include a replacement of SDSR instrumentation~~in addition to~~, an increase in measurement frequency and in addition an update in the classification of SDSR stations, and Wang and Wild (2016) conclude that the upward trend ("jump" between 1990-1999) should be considerably weaker, and that only 20 % of the "jump" has actual physical causes. Yang et al. (2018) homogenized the data from Wang and Wild (2016) and Wang et al. (2012) and presented a new SDSR evolution (results
370 can be seen in Yang et al. (2018) Figure 10). The newly homogenized data exhibit a significant dimming trend (-6.13 +/- 0.47 W/m²/decade) between 1958-1990, a flattening of the curve in 1991-2005, followed by a brightening trend (6.13 +/- 1.77 W/m²/decade) between the years 2005-2016. We can use Figure 2(f) to compare our model data to these homogenized data, and see that even without a larger "jump" in the data around 1990 there are still large discrepancies between model and observation, both in the form and magnitude of the brightening period after 1990. All models show dimming in the flattening period of the
375 ~~new~~newly homogenized data. All models apart from CanESM5 show an averaged negative trend between the 6-year-means of 2003-2008 and 2009-2014, where the newly homogenized data show a brightening. ~~Models~~A similar "jump" to the one seen in China can be identified slightly later in Japan (fig 2e). To our knowledge, we have no information of neither a replacement of instruments nor update in the classification of SDSR stations in Japan. Norris and Wild (2009) investigated the role of clouds for historical SDSR observations in China and Japan, and found the post-1990 brightening in Japan to be statistically significant, while the Chinese brightening was found nonsignificant. In this paper (published before Wang and Wild (2016)) half of the post-1990 brightening in China, and one third for Japan, was attributed to a reduction in cloud cover. These results point to a need for more studies assessing and evaluating available observational SDSR data. However, models do not accurately represent the strength of dimming ~~or~~throughout the whole period, nor the change in trend after 1990 and thus the time evolution of SDSR observed in China, with or without the early 1990s "jump" in brightening.

385 4.2 Aerosol effect on dimming

Out of all the experiments presented in Table 1 and Figure 3, only those containing anthropogenic aerosol emissions showed dimming. This is expected as aerosols have been presented as the main cause of reduction in SDSR in China by previous

studies (Wild, 2009; Yunfeng et al., 2001; Kaiser and Qian, 2002).

Storelvmo et al. (2018) argues that the discrepancy seen between observed and modelled CMIP5 model mean global SDSR can be attributed to errors in the treatment of processes that translate aerosol emissions into clear-sky and all-sky radiative forcings. Here, we can see an anti-correlation between simulated SO₄ burdens from Figure 4(a) and (b), and simulated SDSR from Figure 2(b) and (f), respectively. Therefore we suggest that the simulated SDSR is dominantly a result of simulated SO₄ burdens. Simulated SDSR agrees relatively well with observed SDSR in Europe (Fig 2b), along with simulated SO₄ burden anti-correlating relatively well with observed SDSR in Europe (Fig A24a). This means that the model code translating burdens into SDSR in Europe can simulate changes in SDSR as a consequence of changes in aerosol emissions. If models translate burden into SDSR correctly in Europe, this does not necessarily mean that they translate burden into SDSR correctly in other regions. However, we suggest that the code translating burdens into SDSR should also work correctly in China, since also in China we find, that aerosols are the main cause of dimming, in agreement with (Wild, 2009; Yunfeng et al., 2001; Kaiser and Qian, 2002). Note also that we find no consistency between observed cloud cover changes, GEBA data and simulated cloud cover and SDSR anomalies in China (Table 2). By suggesting the translation process from burden to SDSR is behaving correct in both regions, the potential source of error causing discrepancies between observed and simulated SDSR can be traced to the causes of the simulated atmospheric burdens in the first place.

The sulfur dioxide emission inventory used as input for historical model simulations in CMIP6 is shown in Hoesly et al. (2018)(Figure 3), and the emissions as translated in four of the models of this study is shown in Figure A2.

Hoesly et al. (2018) have pointed to the need ~~to study in the future for~~ emission uncertainties, but this has not been done for these emissions. Aas et al. (2019) have studied global and regional trends in atmospheric sulfur and found that uncertainties in emissions were largest in Asia, even if their study only went back to 1990.

Previous studies estimating SO₂ emissions include Lu et al. (2010), that found sulfur dioxide emissions in China increased by 53 % between 2000 and 2006 using technology based methodology, and thereby found similar results to that of Hoesly et al. (2018). Lu et al. (2010) also compared AOD derived SDSR to GEBA based SDSR data as shown in streets et al and found the GEBA based SDSR data to not accurately represent SDSR development in East Asia, this further underlines the need for more studies evaluating SDSR observations. Other studies such as Koukouli et al. (2018) have used satellite observations to estimate a new emission inventory for SO₂ between 2005 and 2015 in China. We note that the year 2005 in Figure A2 is directly after the sharp increase in SO₂ emissions, and the biggest difference between the estimation made by Koukouli et al. (2018) and the SO₂ emission inventories in CMIP6 are a decrease in emissions after the year of 2011. This decrease in SO₂ emissions would intuitively result in a brightening, which is identified over the same time period in the homogenized data by Yang et al. (2018) (Fig 10).

The modeled emissions of SO₂ as shown in Figure A2 over China showed no trace of ~~either the trend reversal("jump") a significant change in trend after 1990~~ in our observed SDSR timeseries ~~nor patterns similar to the proposed new homogenized data~~ as discussed in the previous section. Assuming sulfate burden is responsible for the observed multiyear trends of SDSR, we argue that errors in emissions inventories in China could be part of the problem.

5 Conclusions

Earlier studies have shown that previous generations of Earth System Models have not been able to reproduce the transient
425 development of surface downwelling shortwave radiation (SDSR) in the last decades since 1960 when observations became
available (Storelvmo et al. (2018), Allen et al. (2013)). This discrepancy is hypothesized to be related to increasing and then
partially decreasing trends in global aerosol emissions and subsequent aerosol radiative effects, but the exact cause is unknown.

In this paper, we compared observations to model simulated surface downwelling shortwave radiation and cloud cover in spe-
430 cific regions for the time period 1961 to 2014. We found that in the *historical* experiments, CMIP6 models reproduce the
transient development of SDSR well in Europe, but poorly in Asia. The multiple historical and associated perturbation experi-
ments performed under CMIP6 reveal that only those simulations containing anthropogenic aerosol emissions show dimming,
and the dimming is underestimated by most models. China exhibits a sharp positive trend in observed SDSR in the 1990s that
is not found in historical model simulations. This "jump" has been suggested to be an artifact, but historical simulations also do
435 not accurately represent the homogenized observed SDSR as proposed by Yang et al. (2018). We suggest that the continuous
decrease in simulated SDSR is related to the continuous increase in atmospheric sulfate burden in the *historical* simulations
over China. Following this logic, the observed transient development of SDSR points to the evolution of the sulfate burden in
the models being wrong in this region. The sulfate burden is a result of sulfur dioxide emissions, gas-to-particle conversion and
wet deposition. Sulfur dioxide emissions over China show neither sign of the observed trend ~~reversal~~ change from gap filled
440 GEBA data nor of the brightening-followed-flattening ~~in SDSR~~ from the homogenized data as proposed by Yang et al. (2018).
Sulfur dioxide emissions used in the models over China have a strong increase in the early 2000s, which can be observed as a
sharp dimming at the same time in Figure 2(f). We suggest that the cause of the discrepancy between model and observations
in transient SDSR in China is partly in erroneous emission inventories.

445 As the observed climate change is the result of warming from greenhouse gases and simultaneous cooling from aerosol radiative
effects, getting aerosol emissions correct is important in earth system models.

Since the SDSR measurements are not only sensitive to aerosol effects, they might not be the most accurate way to infer historic
aerosol loads and forcing. Further studies could include other observations and proxies for aerosol effects in the historical era,
such as long-term satellite retrieved aerosol optical depth, deposition of anthropogenic sulfur, organic carbon and nitrate in ice
450 cores, as well as daily temperature range records.

Table 1. Model participation, as used in this study, in CMIP6 model intercomparison projects (MIP) and their experiments.

Experiment	NorESM2	CanESM5	MIROC6	CESM2	CNRM-ESM2-1	GISS-E2-1-G	IPSL-CM6A-LR	MRI-ESM2-0
historical	x	x	x	x	x	x	x	x
hist-aer	x	x	x			x	x	x
hist-GHG	x	x	x	x		x	x	x
hist-nat	x	x		x		x	x	x
piClim-histaer	x	x	x			x		
piClim-histall	x	x	x			x	x	
hist-piAer	x		x					x
hist-piNTCF	x		x		x			x
histSST	x		x		x			x

Table 2. Changes in Chinese cloud cover [%], all sky SDSR AS[W/m²], and clear sky SDSR CS[W/m²] between two 3-year means for three time periods. All model results are means made from three ensemble members of the historical simulation, collocated and extracted at Chinese GEBA station locations. Changes in cloud cover are from CRU gridded data and represent means collocated to chinese GEBA stations.

Data	[1961-1963] — [1987-1989]			[1990-1992]—[1997-1999]			[2000-2002]—[2012-2014]		
	[%]	AS[W/m ²]	CS[W/m ²]	[%]	AS[W/m ²]	CS[W/m ²]	[%]	AS[W/m ²]	CS[W/m ²]
NorESM2	-1.0	-4.6	-4.0	0.6	-1.0	-0.4	0.3	-3.9	-5.0
CanESM5	-0.4	-3.5	-4.6	-0.1	0.8	0.6	-1.7	-2.4	-5.7
MIROC6	0.4	-4.4	-3.6	1.2	-1.3	-0.4	0.5	-5.5	-5.3
CESM2	-1.0	-2.6	-3.6	-0.2	0.0	-0.2	0.0	-5.3	-6.7
CNRM-ESM2-1	-0.4	-3.3	-5.2	-0.6	1.1	-1.0	-0.9	-3.5	-6.5
GISS-E2-1-G	1.3	-3.7	-6.4	-0.2	-0.7	-1.2	2.5	-8.7	-9.9
IPSL-CM6A-LR	-1.2	-3.3	-5.0	0.5	-0.6	-0.1	-1.6	-0.4	-1.9
MRI-ESM2-0	-0.1	-7.1	-6.9	-0.3	-0.8	-0.9	-1.1	-4.9	-8.8
MODELMEAN	-0.3	-4.1	-4.9	0.1	-0.3	-0.4	-0.2	-4.3	-6.2
GEBA		-15.4			6.6			0.9	
CRU	0.1			3.0			-1.0		

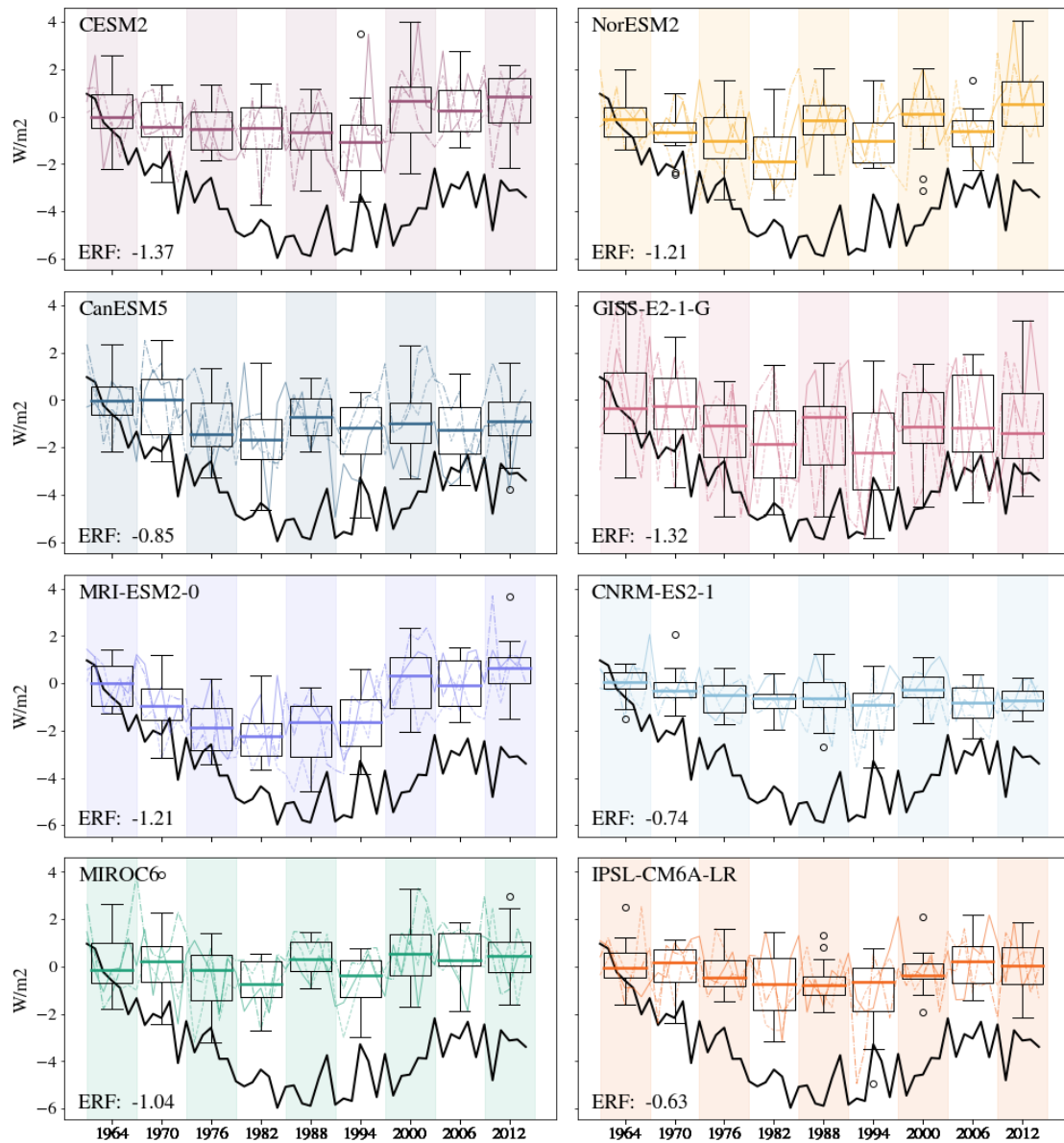


Figure 1. Global surface downwelling shortwave radiation (SDSR) anomaly at the surface for GEBA (black) and three ensemble members for the historical simulation of the eight models in this study. The boxes are made for 6-year intervals (shaded in background) based on 6 yearly means and three ensemble members per model. Colored lines behind boxes show yearly values of SDRS anomaly per ensemble member. The height of each box represents the interquartile range of the data, and the thick colored line within each box is the median. The whiskers show the minimum and maximum values of the selection of data, and the outliers are shown as a hollow dot. Results are co-located to all GEBA stations (1487) throughout the time period. The Aerosol ERF as found in Smith et al. (2020) per model is shown in the bottom left of each panel.

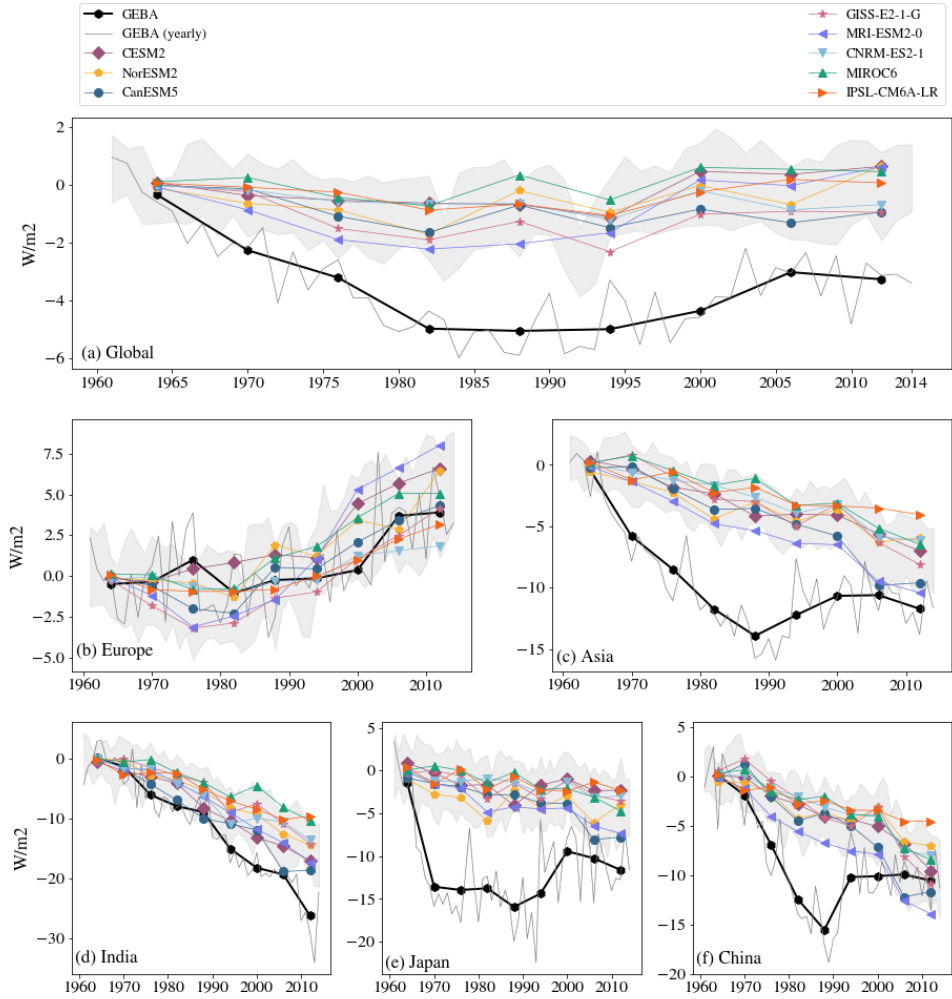


Figure 2. Six-year-averages of surface downwelling shortwave radiation (SDSR) anomaly at the surface for GEBA and eight earth system models. Results are co-located at (a) all GEBA stations (1487), (b) European (503), (c) Asian (311), (d), Indian (15), (e) Japanese (100), and (f) Chinese (119) stations. Numbers in parenthesis are number of ground stations in respective region. The entire 54-year period has been divided into intervals of 6 years and then averaged together to make nine data points as shown by the markers. The grey shading represent one standard deviation from the yearly total ensemble mean.

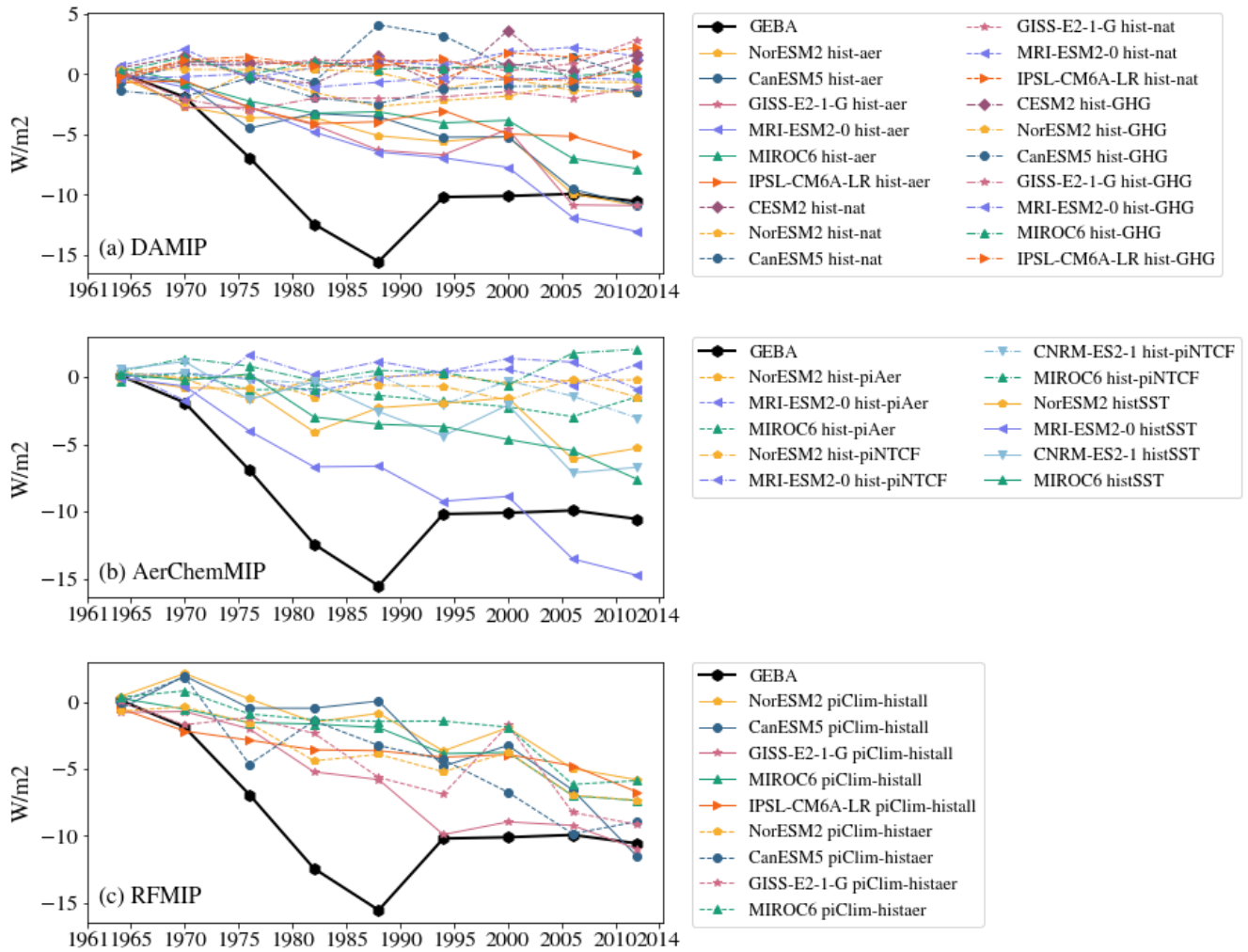


Figure 3. SDSR anomaly in China for all the CMIP6 simulations as listed in Table 1. All model results are co-located at GEBA station locations registered to China (119 stations). The entire 54-year period has been divided into intervals of 6 years and then averaged together to make nine data points as shown by the markers.

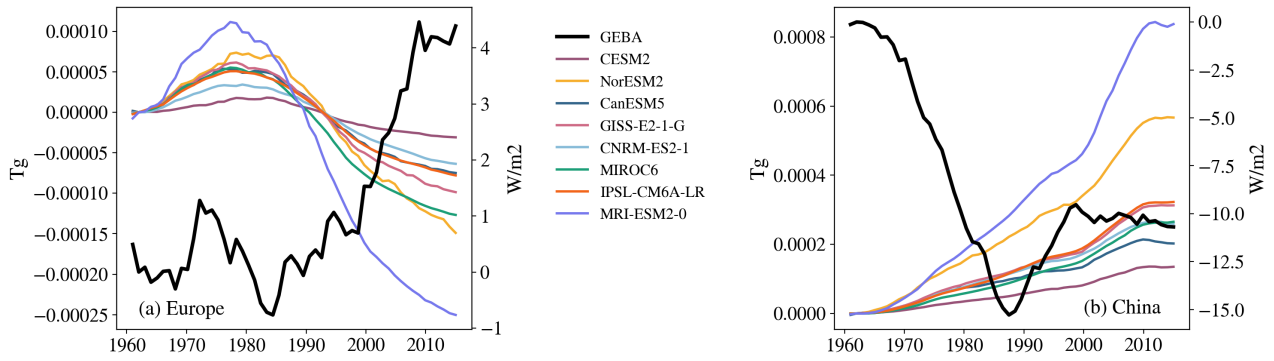


Figure 4. Anomaly of simulated atmospheric load of sulfate per model together with observed all sky SDSR anomaly in (a) Europe and (b) China. The GEBA data are shown as yearly anomalies, while the atmospheric loads have been smoothed using a 10-year running mean technique as explained in Section 2.3.

Appendix A: Additional information

A1 The European SDSR evolution

Figure A1 suggests cloud cover variation as a possible explanation of the local maximum in observed European SDSR during the period 1967-1978. Cloud cover exhibited a substantial minimum simultaneous to the maximum in SDSR. The peak is not reproduced in the historical runs of earth system models studied herein (see Figure 2(b)). Cloud cover variations that are not externally forced, but are rather a result of internal variability, cannot be expected to be reproduced in fully coupled earth system models. This might serve as an explanation why the substantial peak in SDSR between 1967 and 1978 is not reproduced in the earth system models.

A2 The data downloaded from ESGF

Table A2 shows an overview of the eight models used in this study. For the historical simulations three ensemble members per model was downloaded, with the variant labels r[1,2,3]i1p1f[1,2] for the variables rsds, ~~rsds~~ rsdscs and clt. In addition the variable loadso4 and areacella was downloaded for one ensemble member per model in the historical simulation per model. In the remaining experiments listed in Table 1 only one ensemble member per model was downloaded for the variable rsds, this was done as not every model provides more than one simulation per experiment.

A3 Effects of cloud cover change on all sky SDSR

If we assume that $E_{\text{clear sky}}$ is the diurnal average clear sky SDSR in a region and that τ_{cloud} is the average cloud optical depth, we can compute idealized effects of cloud changes on SDSR using the Beer-Lambert law:

$$E_{\text{surf}} = E_{\text{toa}} \exp(-\tau / \cos \phi),$$

where τ and ϕ denote optical depth and solar zenith angle, respectively. The change in SSR per 1% change in cloud cover can then be computed:

$$\begin{aligned} \Delta E_{\text{surf per 1\%}} &= 0.01 \times E_{\text{cloudy}} - E_{\text{clear sky}} \\ &= 0.01 \times E_{\text{toa}} \exp(-\tau_{\text{cloud}} / \cos \phi + \ln(E_{\text{clear sky}} / E_{\text{toa}})) + 0.99 \times E_{\text{clear sky}} - E_{\text{clear sky}} \end{aligned}$$

Idealized computation for China: Assuming that ϕ is between 30° and 70° , that $E_{\text{clear sky}}$ is between 100 W/m^2 and 350 W/m^2 and that $E_{\text{toa}} = 1362 \text{ W/m}^2$ in China, the theoretical effect of 1% increase in cloud cover on all sky SDSR is between -1 and -3.5 W/m^2 , using the idealized computation described above.

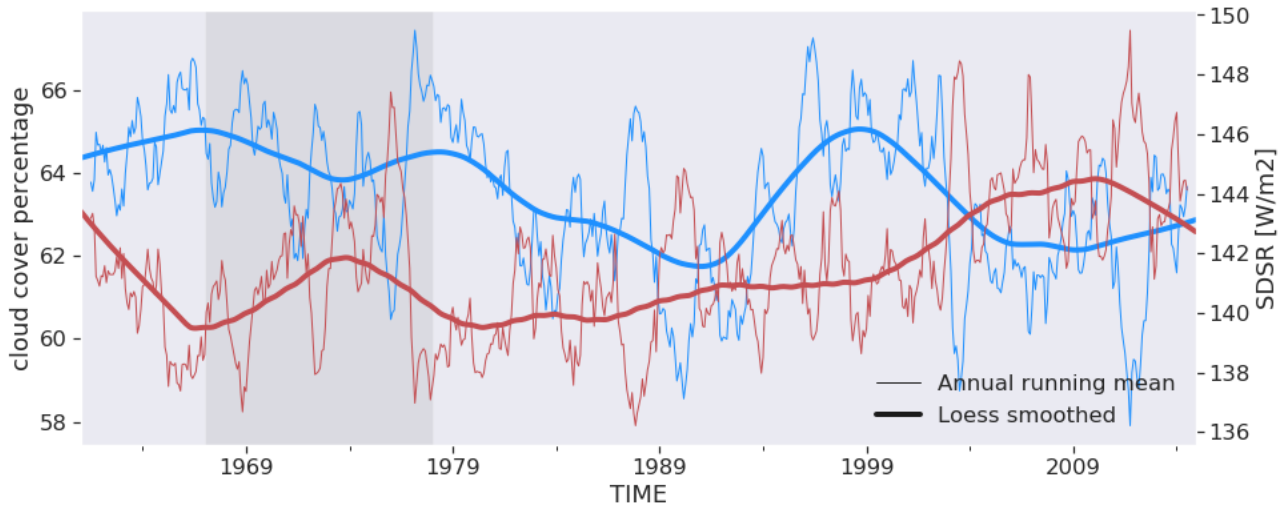


Figure A1. Timeseries of cloud cover (blue) and SDSR (red) between 1961 and 2014, co-located at GEBA sites in Europe. Thin lines show annual running means; bold lines show LOESS-smoothed variants. The shaded area delineates a period of interrupted dimming in Europe, between 1967 and 1978, which occurred simultaneous to a local minimum in the cloud cover trend.

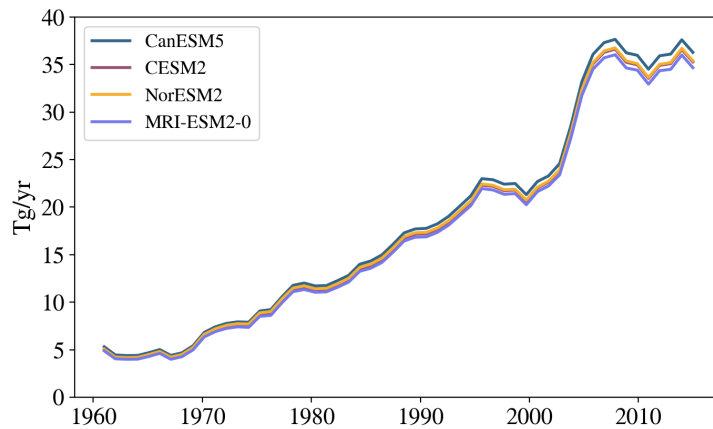


Figure A2. Emission of SO₂ in China, diagnosed by four of the models in this study. China is defined here as the area within latitudes [20°N–45°N], and longitudes [95°E–125°E].

Table A1. Global all sky SDSR and cloud cover averaged over the years 1961-1966 (baseline values) as observed (GEBA for radiation, CRU for cloud cover) and as simulated in the ensemble mean of three ensemble members in the historical experiment by each of the models of this study. Data from both CRU and models are retrieved after co-location to all GEBA sites.

Model	SDSR [W/m^2]	Cloud Cover [%]
CESM2	186.3	63.9
NorESM2	186.8	55.6
CanESM5	189.5	56.2
GISS-E2-1-G	176.6	58.6
MRI-ESM2-0	193.8	56.2
CNRM-ES2-1	192.3	57.2
MIROC6	184.3	50.4
IPSL-CM6A-LR	185.7	54.5
CRU		57.4
GEBA	171.6	

Table A2. Details on the models used. IA: interactive aerosols NIA: not interactive aerosols.

Institution	Model	Resolution	Aerosol module	Complexity	Reference
NCAR	CESM2	1.25x0.9	MAM4	IA	Danabasoglu et al. (2020)
CCCma	CanESM5	2.81x2.81	CanAM4	IA	Swart et al. (2019)
CNRM-CERFACS	CNRM-ESM2-1	1.4x1.4	TACTIC_v2	IA	Séférian et al. (2019)
IPSL	IPSL-CM6A-LR	2.5x1.27	INCA fields	NIA	Boucher et al. (2020)
NCC	NorESM2-LM	2.5x1.875	OsloAero6	IA	Seland et al. (2020)
MRI	MRI-ESM2-0	1.125x1.125	MASINGAR mk-2r4c	IA	Yukimoto et al. (2019)
MIROC	MIROC6	1.4x1.4	SPRINTARS	IA	Tatebe et al. (2019)
NASA-GISS	GISS-E2-1-G	2.5x2.0	OMA fields	NIA	Kelley et al. (2020)

Author contributions. KM wrote most of the article and did all analysis of CMIP6 data. MS and TS contributed to design of the study and helped editing the text. DO, PN, JC and TT, NO, SB, GG contributed model data via the ESGF CMIP6 archive. IJ and MW contributed with observational data, and IJ wrote part of the appendix. All co-authors contributed to the analysis and gave feedback to the manuscript.

Competing interests. No competing interests

Acknowledgements. This study benefited greatly from the CMIP6 data infrastructure for handling and providing model data for analysis. KM, MS and TS acknowledge funding from the European Union's Horizon 2020 project FORCeS under grant agreement No 821205. We acknowledge support from the Research Council of Norway funded project KeyClim (295046). Jan Griesfeller is thanked for data organisation. High performance computing and storage resources were provided by the Norwegian infrastructure for computational science (through projects NS2345K, NS9560K and NS9252K) and the Norwegian Meteorological Institute. TT was supported by the supercomputer system of the National Institute for Environmental Studies, Japan, and JSPS KAKENHI Grant Number JP19H05669. NO was supported by the Japan Society for the Promotion of Science (grant numbers: JP18H03363, JP18H05292, and JP20K04070), the Environment Research and Technology Development Fund (JPMEERF20172003, JPMEERF20202003, and JPMEERF20205001) of the Environmental Restoration and Conservation Agency of Japan, the Arctic Challenge for Sustainability II (ArCS II), Program Grant Number JPMXD1420318865, and a grant for the Global Environmental Research Coordination System from the Ministry of the Environment, Japan. GEBA is supported by the Federal Office of Meteorology and Climatology MeteoSwiss in the framework of GCOS Switzerland. MW acknowledges fundings obtained from the Swiss National Science foundation grand No.200020_188601.

References

- 495 Aas, W., Mortier, A., Bowersox, V., Cherian, R., Faluvegi, G., Fagerli, H., Hand, J., Klimont, Z., Galy-Lacaux, C., Lehmann, C. M. B., Myhre, C. L., Myhre, G., Olivíe, D., Sato, K., Quaas, J., Rao, P. S. P., Schulz, M., Shindell, D., Skeie, R. B., Stein, A., Takemura, T., Tsyro, S., Vet, R., and Xu, X.: Global and regional trends of atmospheric sulfur, *Scientific Reports*, 9, 953, <https://doi.org/10.1038/s41598-018-37304-0>, <https://www.nature.com/articles/s41598-018-37304-0>, 2019.
- Allen, R. J., Norris, J. R., and Wild, M.: Evaluation of multidecadal variability in CMIP5 surface solar radiation and inferred underesti-
500 mation of aerosol direct effects over Europe, China, Japan, and India, *Journal of Geophysical Research: Atmospheres*, 118, 6311–6336, <https://doi.org/10.1002/jgrd.50426>, <https://agupubs.onlinelibrary.wiley.com/doi/abs/10.1002/jgrd.50426>, 2013.
- Boucher, O., Randall, D., Artaxo, P., Bretherton, C., Feingold, G., Forster, P., Kerminen, V.-M., Kondo, Y., Liao, H., Lohmann, U., Rasch, P.,
Satheesh, S., Sherwood, S., Stevens, B., and Zhang, X.: Clouds and Aerosols, book section 7, p. 571–658, Cambridge University Press,
Cambridge, United Kingdom and New York, NY, USA, <https://doi.org/10.1017/CBO9781107415324.016>, www.climatechange2013.org,
505 2013.
- Boucher, O., Servonnat, J., Albright, A. L., Aumont, O., Balkanski, Y., Bastrikov, V., Bekki, S., Bonnet, R., Bony, S., Bopp, L., Bra-
connot, P., Brockmann, P., Cadule, P., Caubel, A., Cheruy, F., Codron, F., Cozic, A., Cugnet, D., D’Andrea, F., Davini, P., Laverigne,
C. d., Denvil, S., Deshayes, J., Devilliers, M., Ducharne, A., Dufresne, J.-L., Dupont, E., Éthé, C., Fairhead, L., Falletti, L., Flavoni,
S., Foujols, M.-A., Gardoll, S., Gastineau, G., Ghattas, J., Grandpeix, J.-Y., Guenet, B., Guez, E., L., Guilyardi, E., Guimberteau,
510 M., Hauglustaine, D., Hourdin, F., Idelkadi, A., Joussaume, S., Kageyama, M., Khodri, M., Krinner, G., Lebas, N., Levvasseur,
G., Lévy, C., Li, L., Lott, F., Lurton, T., Luyssaert, S., Madec, G., Madeleine, J.-B., Maignan, F., Marchand, M., Marti, O., Mel-
lul, L., Meurdesoif, Y., Mignot, J., Musat, I., Ottlé, C., Peylin, P., Planton, Y., Polcher, J., Rio, C., Rochetin, N., Rousset, C.,
Sepulchre, P., Sima, A., Swingedouw, D., Thiéblemont, R., Traore, A. K., Vancoppenolle, M., Vial, J., Vialard, J., Viovy, N., and
Vuichard, N.: Presentation and Evaluation of the IPSL-CM6A-LR Climate Model, *Journal of Advances in Modeling Earth Systems*,
515 12, e2019MS002010, <https://doi.org/10.1029/2019MS002010>, <https://agupubs.onlinelibrary.wiley.com/doi/abs/10.1029/2019MS002010>,
_eprint: <https://agupubs.onlinelibrary.wiley.com/doi/pdf/10.1029/2019MS002010>, 2020.
- Breiman, L.: Random Forests, *Machine Learning*, 45, 5–32, <https://doi.org/10.1023/A:1010933404324>, <https://doi.org/10.1023/A:1010933404324>, 2001.
- Cinquini, L., Crichton, D., Mattmann, C., Harney, J., Shipman, G., Wang, F., Ananthkrishnan, R., Miller, N., Denvil, S., Morgan, M.,
520 Pobre, Z., Bell, G. M., Doutriaux, C., Drach, R., Williams, D., Kershaw, P., Pascoe, S., Gonzalez, E., Fiore, S., and Schweitzer, R.: The
Earth System Grid Federation: An open infrastructure for access to distributed geospatial data, *Future Generation Computer Systems*, 36,
400–417, <https://doi.org/10.1016/j.future.2013.07.002>, <http://www.sciencedirect.com/science/article/pii/S0167739X13001477>, 2014.
- Collins, W. J., Lamarque, J.-F., Schulz, M., Boucher, O., Eyring, V., Hegglin, M. I., Maycock, A., Myhre, G., Prather, M., Shindell,
D., and Smith, S. J.: AerChemMIP: quantifying the effects of chemistry and aerosols in CMIP6, *Geosci. Model Dev.*, 10, 585–607,
525 <https://doi.org/10.5194/gmd-10-585-2017>, <https://www.geosci-model-dev.net/10/585/2017/>, 2017.
- Danabasoglu, G., Lamarque, J.-F., Bacmeister, J., Bailey, D. A., DuVivier, A. K., Edwards, J., Emmons, L. K., Fasullo, J., Garcia, R., Gettel-
man, A., Hannay, C., Holland, M. M., Large, W. G., Lauritzen, P. H., Lawrence, D. M., Lenaerts, J. T. M., Lindsay, K., Lipscomb, W. H.,
Mills, M. J., Neale, R., Oleson, K. W., Otto-Bliesner, B., Phillips, A. S., Sacks, W., Tilmes, S., Kampenhou, L. v., Vertenstein, M., Bertini,
A., Dennis, J., Deser, C., Fischer, C., Fox-Kemper, B., Kay, J. E., Kinnison, D., Kushner, P. J., Larson, V. E., Long, M. C., Mickelson, S.,
530 Moore, J. K., Nienhouse, E., Polvani, L., Rasch, P. J., and Strand, W. G.: The Community Earth System Model Version 2 (CESM2), Jour-

- nal of Advances in Modeling Earth Systems, 12, e2019MS001916, <https://doi.org/10.1029/2019MS001916>, <https://agupubs.onlinelibrary.wiley.com/doi/abs/10.1029/2019MS001916>, _eprint: <https://agupubs.onlinelibrary.wiley.com/doi/pdf/10.1029/2019MS001916>, 2020.
- Eddy, J. A., Gilliland, R. L., and Hoyt, D. V.: Changes in the solar constant and climatic effects, *Nature*, 300, 689–693, <https://doi.org/10.1038/300689a0>, <https://www.nature.com/articles/300689a0>, number: 5894 Publisher: Nature Publishing Group, 1982.
- 535 Eyring, V., Bony, S., Meehl, G. A., Senior, C. A., Stevens, B., Stouffer, R. J., and Taylor, K. E.: Overview of the Coupled Model Intercomparison Project Phase 6 (CMIP6) experimental design and organization, *Geoscientific Model Development*, 9, 1937–1958, <https://doi.org/https://doi.org/10.5194/gmd-9-1937-2016>, <https://www.geosci-model-dev.net/9/1937/2016/gmd-9-1937-2016.html>, 2016.
- Fan, C., Shannigrahi, S., DiBenedetto, S., Olschanowsky, C., Papadopoulos, C., and Newman, H.: Managing Scientific Data with Named Data Networking, in: *Proceedings of the Fifth International Workshop on Network-Aware Data Management, NDM '15*, pp. 1:1–
- 540 1:7, ACM, New York, NY, USA, <https://doi.org/10.1145/2832099.2832100>, <http://doi.acm.org/10.1145/2832099.2832100>, event-place: Austin, Texas, 2015.
- Folini, D. and Wild, M.: The effect of aerosols and sea surface temperature on China’s climate in the late twentieth century from ensembles of global climate simulations, *Journal of Geophysical Research: Atmospheres*, 120, 2261–2279, <https://doi.org/10.1002/2014JD022851>, <https://agupubs.onlinelibrary.wiley.com/doi/abs/10.1002/2014JD022851>, 2015.
- 545 Gillett, N. P., Shiogama, H., Funke, B., Hegerl, G., Knutti, R., Matthes, K., Santer, B. D., Stone, D., and Tebaldi, C.: The Detection and Attribution Model Intercomparison Project (DAMIP v1.0) contribution to CMIP6, *Geoscientific Model Development*, 9, 3685–3697, <https://doi.org/https://doi.org/10.5194/gmd-9-3685-2016>, <https://www.geosci-model-dev.net/9/3685/2016/>, 2016.
- Harris, I., Osborn, T. J., Jones, P., and Lister, D.: Version 4 of the CRU TS monthly high-resolution gridded multivariate climate dataset, *Scientific Data*, 7, 109, <https://doi.org/10.1038/s41597-020-0453-3>, <https://www.nature.com/articles/s41597-020-0453-3>, number: 1 Publisher: Nature Publishing Group, 2020.
- 550 Hoesly, R. M., Smith, S. J., Feng, L., Klimont, Z., Janssens-Maenhout, G., Pitkanen, T., Seibert, J. J., Vu, L., Andres, R. J., Bolt, R. M., Bond, T. C., Dawidowski, L., Kholod, N., Kurokawa, J.-i., Li, M., Liu, L., Lu, Z., Moura, M. C. P., O’Rourke, P. R., and Zhang, Q.: Historical (1750–2014) anthropogenic emissions of reactive gases and aerosols from the Community Emissions Data System (CEDS), *Geoscientific Model Development*, 11, 369–408, <https://doi.org/https://doi.org/10.5194/gmd-11-369-2018>, <https://www.geosci-model-dev.net/11/369/2018/>, 2018.
- 555 Hoyt, D. V. and Schatten, K. H.: A discussion of plausible solar irradiance variations, 1700-1992, *Journal of Geophysical Research: Space Physics*, 98, 18 895–18 906, <https://doi.org/10.1029/93JA01944>, <https://agupubs.onlinelibrary.wiley.com/doi/abs/10.1029/93JA01944>, _eprint: <https://agupubs.onlinelibrary.wiley.com/doi/pdf/10.1029/93JA01944>, 1993.
- Kaiser, D. P. and Qian, Y.: Decreasing trends in sunshine duration over China for 1954–1998: Indication of increased haze pollution?, *Geophysical Research Letters*, 29, 38–1–38–4, <https://doi.org/10.1029/2002GL016057>, <https://agupubs.onlinelibrary.wiley.com/doi/abs/10.1029/2002GL016057>, 2002.
- 560 Kelley, M., Schmidt, G. A., Nazarenko, L. S., Bauer, S. E., Ruedy, R., Russell, G. L., Ackerman, A. S., Aleinov, I., Bauer, M., Bleck, R., Canuto, V., Cesana, G., Cheng, Y., Clune, T. L., Cook, B. I., Cruz, C. A., Genio, A. D. D., Elsaesser, G. S., Faluvegi, G., Kiang, N. Y., Kim, D., Lacis, A. A., Leboissetier, A., LeGrande, A. N., Lo, K. K., Marshall, J., Matthews, E. E., McDermid, S., Mezuman, K., Miller, R. L., Murray, L. T., Oinas, V., Orbe, C., García-Pando, C. P., Perlwitz, J. P., Puma, M. J., Rind, D., Romanou, A., Shindell, D. T., Sun, S., Tausnev, N., Tsigaridis, K., Tselioudis, G., Weng, E., Wu, J., and Yao, M.-S.: GISS-E2.1: Configurations and Climatology, *Journal of Advances in Modeling Earth Systems*, 12, e2019MS002025, <https://doi.org/10.1029/2019MS002025>, <https://agupubs.onlinelibrary.wiley.com/doi/abs/10.1029/2019MS002025>, _eprint: <https://agupubs.onlinelibrary.wiley.com/doi/pdf/10.1029/2019MS002025>, 2020.

- Koukouli, M., Theys, N., Ding, J., Zyrichidou, I., Mijling, B., Balis, D., and A, R.: Updated SO₂ emission estimates over China using
570 OMI/Aura observations, *Atmospheric Measurement Techniques*, 11, 1817–1832, <https://doi.org/10.5194/amt-11-1817-2018>, 2018.
- Liepert, B. G.: Observed reductions of surface solar radiation at sites in the United States and worldwide from 1961 to 1990, *Geophysical Research Letters*, 29, 61–61–4, <https://doi.org/10.1029/2002GL014910>, <https://agupubs.onlinelibrary.wiley.com/doi/abs/10.1029/2002GL014910>, 2002.
- Lu, Z., Streets, D., Zhang, Q., Wang, S., Carmichael, G., Cheng, Y., Wei, C., Chin, M., Diehl, T., and Q, T.: Sulfur dioxide emissions in China
575 and sulfur trends in East Asia since 2000, *Atmospheric Chemistry and Physics Discussions*, 10, <https://doi.org/10.5194/acp-10-6311-2010>, 2010.
- Michalsky, J., Dutton, E., Rubes, M., Nelson, D., Stoffel, T., Wesley, M., Splitt, M., and DeLuisi, J.: Optimal Measurement of
Surface Shortwave Irradiance Using Current Instrumentation, *J. Atmos. Oceanic Technol.*, 16, 55–69, [https://doi.org/10.1175/1520-0426\(1999\)016<0055:OMOSSI>2.0.CO;2](https://doi.org/10.1175/1520-0426(1999)016<0055:OMOSSI>2.0.CO;2),
580 <https://journals.ametsoc.org/doi/full/10.1175/1520-0426%281999%29016%3C0055%3AOMOSSI%3E2.0.CO%3B2>, 1999.
- Nabat, P., Somot, S., Mallet, M., Sanchez-Lorenzo, A., and Wild, M.: Contribution of anthropogenic sulfate aerosols to the chang-
ing Euro-Mediterranean climate since 1980, *Geophysical Research Letters*, 41, 5605–5611, <https://doi.org/10.1002/2014GL060798>,
<https://agupubs.onlinelibrary.wiley.com/doi/abs/10.1002/2014GL060798>, 2014.
- Norris, J. R. and Wild, M.: Trends in aerosol radiative effects over China and Japan inferred from observed
585 cloud cover, solar “dimming,” and solar “brightening”, *Journal of Geophysical Research: Atmospheres*, 114,
<https://doi.org/10.1029/2008JD011378>, <https://agupubs.onlinelibrary.wiley.com/doi/abs/10.1029/2008JD011378>,
[_eprint: https://agupubs.onlinelibrary.wiley.com/doi/pdf/10.1029/2008JD011378](https://agupubs.onlinelibrary.wiley.com/doi/pdf/10.1029/2008JD011378), 2009.
- Pincus, R., Forster, P. M., and Stevens, B.: The Radiative Forcing Model Intercomparison Project (RFMIP): experimental protocol
for CMIP6, *Geoscientific Model Development*, 9, 3447–3460, <https://doi.org/https://doi.org/10.5194/gmd-9-3447-2016>, [https://www.
590 geosci-model-dev.net/9/3447/2016/](https://www.geosci-model-dev.net/9/3447/2016/), 2016.
- Ramanathan, V. and Vogelmann, A. M.: Greenhouse Effect, Atmospheric Solar Absorption and the Earth’s Radiation Budget: From the
Arrhenius-Langley Era to the 1990s, *Ambio*, 26, 38–46, <https://www.jstor.org/stable/4314548>, publisher: [Springer, Royal Swedish
Academy of Sciences], 1997.
- Ramanathan, V., Cess, R. D., Harrison, E. F., Minnis, P., Barkstrom, B. R., Ahmad, E., and Hartmann, D.: Cloud-radiative forcing and
595 climate: results from the Earth radiation budget experiment, *Science*, 243, 57–63, <https://doi.org/10.1126/science.243.4887.57>, 1989.
- Romanou, A., Liepert, B., Schmidt, G. A., Rossow, W. B., Ruedy, R. A., and Zhang, Y.: 20th century changes in surface solar irradiance
in simulations and observations, *Geophysical Research Letters*, 34, <https://doi.org/10.1029/2006GL028356>, [https://agupubs.onlinelibrary.
wiley.com/doi/abs/10.1029/2006GL028356](https://agupubs.onlinelibrary.wiley.com/doi/abs/10.1029/2006GL028356), _eprint: <https://agupubs.onlinelibrary.wiley.com/doi/pdf/10.1029/2006GL028356>, 2007.
- Sanchez-Romero, A., Sanchez-Lorenzo, A., Calbó, J., González, J. A., and Azorin-Molina, C.: The signal of aerosol-induced
600 changes in sunshine duration records: A review of the evidence, *Journal of Geophysical Research: Atmospheres*, 119, 4657–4673,
<https://doi.org/10.1002/2013JD021393>, <https://agupubs.onlinelibrary.wiley.com/doi/abs/10.1002/2013JD021393>, 2014.
- Seland, , Bentsen, M., Seland Graff, L., Olivié, D., Toniazzo, T., Gjermundsen, A., Debernard, J. B., Gupta, A. K., He, Y., Kirkevåg, A.,
Schwinger, J., Tjiputra, J., Schancke Aas, K., Bethke, I., Fan, Y., Griesfeller, J., Grini, A., Guo, C., Ilicak, M., Hafsaahl Karset, I. H.,
Landgren, O., Liakka, J., Onsum Moseid, K., Nummelin, A., Spensberger, C., Tang, H., Zhang, Z., Heinze, C., Iversen, T., and Schulz,
605 M.: The Norwegian Earth System Model, NorESM2 – Evaluation of theCMIP6 DECK and historical simulations, *Geoscientific*

- Model Development Discussions, pp. 1–68, <https://doi.org/https://doi.org/10.5194/gmd-2019-378>, <https://gmd.copernicus.org/preprints/gmd-2019-378/>, publisher: Copernicus GmbH, 2020.
- Smith, C. J., Kramer, R. J., Myhre, G., Alterskjær, K., Collins, W., Sima, A., Boucher, O., Dufresne, J.-L., Nabat, P., Michou, M., Yukimoto, S., Cole, J., Paynter, D., Shiogama, H., O'Connor, F. M., Robertson, E., Wiltshire, A., Andrews, T., Hannay, C., Miller, R., Nazarenko, L., Kirkevåg, A., Olivíe, D., Fiedler, S., Pincus, R., and Forster, P. M.: Effective radiative forcing and adjustments in CMIP6 models, preprint, Radiation/Atmospheric Modelling/Troposphere/Physics (physical properties and processes), <https://doi.org/10.5194/acp-2019-1212>, <https://acp.copernicus.org/preprints/acp-2019-1212/acp-2019-1212.pdf>, 2020.
- Solomon, S., Rosenlof, K. H., Portmann, R. W., Daniel, J. S., Davis, S. M., Sanford, T. J., and Plattner, G.-K.: Contributions of Stratospheric Water Vapor to Decadal Changes in the Rate of Global Warming, *Science*, 327, 1219–1223, <https://doi.org/10.1126/science.1182488>, <https://science.sciencemag.org/content/327/5970/1219>, publisher: American Association for the Advancement of Science Section: Research Article, 2010.
- Storelvmo, T., Heede, U. K., Leirvik, T., Phillips, P. C. B., Arndt, P., and Wild, M.: Lethargic Response to Aerosol Emissions in Current Climate Models, *Geophysical Research Letters*, 0, <https://doi.org/10.1029/2018GL078298>, <https://agupubs.onlinelibrary.wiley.com/doi/abs/10.1029/2018GL078298>, 2018.
- Streets, D. G., Wu, Y., and Chin, M.: Two-decadal aerosol trends as a likely explanation of the global dimming/brightening transition, *Geophysical Research Letters*, 33, <https://doi.org/10.1029/2006GL026471>, <https://agupubs.onlinelibrary.wiley.com/doi/abs/10.1029/2006GL026471>, _eprint: <https://agupubs.onlinelibrary.wiley.com/doi/pdf/10.1029/2006GL026471>, 2006.
- Swart, N. C., Cole, J. N. S., Kharin, V. V., Lazare, M., Scinocca, J. F., Gillett, N. P., Anstey, J., Arora, V., Christian, J. R., Hanna, S., Jiao, Y., Lee, W. G., Majaess, F., Saenko, O. A., Seiler, C., Seinen, C., Shao, A., Sigmond, M., Solheim, L., von Salzen, K., Yang, D., and Winter, B.: The Canadian Earth System Model version 5 (CanESM5.0.3), *Geoscientific Model Development*, 12, 4823–4873, <https://doi.org/https://doi.org/10.5194/gmd-12-4823-2019>, <https://gmd.copernicus.org/articles/12/4823/2019/>, publisher: Copernicus GmbH, 2019.
- Séférian, R., Nabat, P., Michou, M., Saint-Martin, D., Voldoire, A., Colin, J., Decharme, B., Delire, C., Berthet, S., Chevallier, M., Sénési, S., Franchisteguy, L., Vial, J., Mallet, M., Joetzjer, E., Geoffroy, O., Guérémy, J.-F., Moine, M.-P., Msadek, R., Ribes, A., Rocher, M., Roehrig, R., Salas-y-Méllia, D., Sanchez, E., Terray, L., Valcke, S., Waldman, R., Aumont, O., Bopp, L., Deshayes, J., Éthé, C., and Madec, G.: Evaluation of CNRM Earth System Model, CNRM-ESM2-1: Role of Earth System Processes in Present-Day and Future Climate, *Journal of Advances in Modeling Earth Systems*, 11, 4182–4227, <https://doi.org/10.1029/2019MS001791>, <https://agupubs.onlinelibrary.wiley.com/doi/abs/10.1029/2019MS001791>, _eprint: <https://agupubs.onlinelibrary.wiley.com/doi/pdf/10.1029/2019MS001791>, 2019.
- Tang, W.-J., Yang, K., Qin, J., Cheng, C. C. K., and He, J.: Solar radiation trend across China in recent decades: a revisit with quality-controlled data, *Atmospheric Chemistry and Physics*, 11, 393–406, <https://doi.org/https://doi.org/10.5194/acp-11-393-2011>, <https://acp.copernicus.org/articles/11/393/2011/>, publisher: Copernicus GmbH, 2011.
- Tatebe, H., Ogura, T., Nitta, T., Komuro, Y., Ogochi, K., Takemura, T., Sudo, K., Sekiguchi, M., Abe, M., Saito, F., Chikira, M., Watanabe, S., Mori, M., Hirota, N., Kawatani, Y., Mochizuki, T., Yoshimura, K., Takata, K., O'ishi, R., Yamazaki, D., Suzuki, T., Kurogi, M., Kataoka, T., Watanabe, M., and Kimoto, M.: Description and basic evaluation of simulated mean state, internal variability, and climate sensitivity in MIROC6, *Geoscientific Model Development*, 12, 2727–2765, <https://doi.org/https://doi.org/10.5194/gmd-12-2727-2019>, <https://gmd.copernicus.org/articles/12/2727/2019/>, publisher: Copernicus GmbH, 2019.

- Wang, K. C., Dickinson, R. E., Wild, M., and Liang, S.: Atmospheric Impacts on Climatic Variability of Surface Incident Solar Radiation, <https://doi.org/10.5194/acp-12-9581-2012>, <https://repositories.lib.utexas.edu/handle/2152/43322>, accepted: 2016-10-28T19:53:01Z, 2012.
- 645 Wang, Y. and Wild, M.: A new look at solar dimming and brightening in China: CHINA DIMMING AND BRIGHTENING REVISITED, *Geophys. Res. Lett.*, 43, 11,777–11,785, <https://doi.org/10.1002/2016GL071009>, <http://doi.wiley.com/10.1002/2016GL071009>, 2016.
- Wang, Y. W. and Yang, Y. H.: China's dimming and brightening: evidence, causes and hydrological implications, *Ann. Geophys.*, 32, 41–55, <https://doi.org/10.5194/angeo-32-41-2014>, <https://www.ann-geophys.net/32/41/2014/>, 2014.
- Wild, M.: Global dimming and brightening: A review, *Journal of Geophysical Research*, 114, <https://doi.org/10.1029/2008JD011470>, <http://doi.wiley.com/10.1029/2008JD011470>, 2009.
- 650 Wild, M.: Decadal changes in radiative fluxes at land and ocean surfaces and their relevance for global warming, *Wiley Interdisciplinary Reviews: Climate Change*, 7, 91–107, <https://doi.org/10.1002/wcc.372>, <https://onlinelibrary.wiley.com/doi/abs/10.1002/wcc.372>, 2016.
- Wild, M. and Schmucki, E.: Assessment of global dimming and brightening in IPCC-AR4/CMIP3 models and ERA40, *Clim Dyn*, 37, 1671–1688, <https://doi.org/10.1007/s00382-010-0939-3>, <https://link.springer.com/article/10.1007/s00382-010-0939-3>, company: Springer Distributor: Springer Institution: Springer Label: Springer Number: 7 Publisher: Springer-Verlag, 2011.
- 655 Wild, M., Gilgen, H., Roesch, A., Ohmura, A., Long, C. N., Dutton, E. G., Forgan, B., Kallis, A., Russak, V., and Tsvetkov, A.: From Dimming to Brightening: Decadal Changes in Solar Radiation at Earth's Surface, *Science*, 308, 847–850, <https://doi.org/10.1126/science.1103215>, <https://science.sciencemag.org/content/308/5723/847>, publisher: American Association for the Advancement of Science Section: Report, 2005.
- 660 Wild, M., Ohmura, A., and Makowski, K.: Impact of global dimming and brightening on global warming, *Geophysical Research Letters*, 34, <https://doi.org/10.1029/2006GL028031>, <https://agupubs.onlinelibrary.wiley.com/doi/abs/10.1029/2006GL028031>, 2007.
- Wild, M., Folini, D., Schär, C., Loeb, N., Dutton, E. G., and König-Langlo, G.: The global energy balance from a surface perspective, *Clim Dyn*, 40, 3107–3134, <https://doi.org/10.1007/s00382-012-1569-8>, <https://doi.org/10.1007/s00382-012-1569-8>, 2013.
- Wild, M., Ohmura, A., Schär, C., Müller, G., Folini, D., Schwarz, M., Hakuba, M. Z., and Sanchez-Lorenzo, A.: The Global Energy Balance Archive (GEBA) version 2017: a database for worldwide measured surface energy fluxes, *Earth System Science Data*, 9, 601–613, <https://doi.org/https://doi.org/10.5194/essd-9-601-2017>, <https://www.earth-syst-sci-data.net/9/601/2017/>, 2017.
- 665 Wild, M., Hakuba, M. Z., Folini, D., Dörig-Ott, P., Schär, C., Kato, S., and Long, C. N.: The cloud-free global energy balance and inferred cloud radiative effects: an assessment based on direct observations and climate models, *Clim Dyn*, <https://doi.org/10.1007/s00382-018-4413-y>, <https://doi.org/10.1007/s00382-018-4413-y>, 2018.
- 670 Yang, S., Wang, X. L., and Wild, M.: Homogenization and Trend Analysis of the 1958–2016 In Situ Surface Solar Radiation Records in China, *J. Climate*, 31, 4529–4541, <https://doi.org/10.1175/JCLI-D-17-0891.1>, <http://journals.ametsoc.org/doi/10.1175/JCLI-D-17-0891.1>, 2018.
- Yang, S., Wang, X. L., and Wild, M.: Causes of Dimming and Brightening in China Inferred from Homogenized Daily Clear-Sky and All-Sky in situ Surface Solar Radiation Records (1958–2016), *J. Climate*, 32, 5901–5913, <https://doi.org/10.1175/JCLI-D-18-0666.1>, <http://journals.ametsoc.org/doi/10.1175/JCLI-D-18-0666.1>, 2019.
- 675 Yukimoto, S., Kawai, H., Koshiro, T., Oshima, N., Yoshida, K., Urakawa, S., Tsujino, H., Deushi, M., Tanaka, T., Hosaka, M., Yabu, S., Yoshimura, H., Shindo, E., Mizuta, R., Obata, A., Adachi, Y., and Ishii, M.: The Meteorological Research Institute Earth System Model Version 2.0, MRI-ESM2.0: Description and Basic Evaluation of the Physical Component, *Journal of the Meteorological Society of Japan*. Ser. II, 97, 931–965, <https://doi.org/10.2151/jmsj.2019-051>, 2019.

680 Yunfeng, L., Daren, L., Xiuji, Z., Weiliang, L., and Qing, H.: Characteristics of the spatial distribution and yearly variation of aerosol optical depth over China in last 30 years, *Journal of Geophysical Research: Atmospheres*, 106, 14 501–14 513, <https://doi.org/10.1029/2001JD900030>, <https://agupubs.onlinelibrary.wiley.com/doi/abs/10.1029/2001JD900030>, 2001.