

Shipping emissions in the Iberian Peninsula and its impacts on air quality

Rafael A.O. Nunes¹, Maria C.M. Alvim-Ferraz¹, Fernando G. Martins¹, Fátima Calderay-Cayetano²,
Vanessa Durán-Grados², Juan Moreno-Gutiérrez², Jukka-Pekka Jalkanen³, Hanna Hannuniemi³, Sofia
5 I.V. Sousa¹

¹LEPABE – Laboratory for Process Engineering, Environment, Biotechnology and Energy, Faculty of Engineering, University
of Porto, Rua Dr. Roberto Frias, 4200-465, Porto, Portugal

²Departamento de Máquinas y Motores Térmicos, Escuela de Ingenierías Marina, Náutica y Radioelectrónica, Campus de
Excelencia Internacional del Mar (CEIMAR), Universidad de Cádiz, Spain

10 ³Finnish Meteorological Institute, P.O. Box 503, 00101 Helsinki, Finland

Correspondence to: Sofia I.V. Sousa (sofia.sousa@fe.up.pt)

Abstract. Marine traffic has been identified as a relevant source of pollutants, which cause known negative effects on air
quality. The Iberian Peninsula is a central point in the connection of shipping traffic between the Americas and Africa and the
rest of Europe. To estimate the effects of shipping emissions inland and around the Iberian Peninsula, EMEP MSC-W model
15 was run considering and not considering shipping emissions (obtained with STEAM3 model). Total estimated emissions of
CO, CO₂, SO_x, NO_x and particulate matter (subdivided in elementary carbon (EC), organic carbon (OC), sulphate and ash) for
the study domain in 2015 were, respectively, 49 ktonnes y⁻¹, 30000 ktonnes y⁻¹, 360 ktonnes y⁻¹, 710 ktonnes y⁻¹, 4.5 ktonnes
y⁻¹, 11 ktonnes y⁻¹, 32 ktonnes y⁻¹ and 3.3 ktonnes y⁻¹. Shipping emissions increased SO₂ and NO₂ concentrations especially
near port areas and also increased the O₃, sulphate, and particulate matter (PM_{2.5} and PM₁₀) concentrations around all over the
20 Iberian Peninsula coastline (especially in the south coastal region). Shipping emissions were responsible for exceedances of
WHO air quality guideline for PM_{2.5} in areas far from the coastline, which confirms that shipping emissions can contribute
negatively to air quality, both in coastal and in inland areas.

1 Introduction

Marine traffic has been identified as a relevant source of pollutants especially nitrogen oxides (NO_x), sulphur oxides (SO_x) and
25 particulate matter (PM), which may lead to known negative effects on air quality and health, being its contribution to human
health degradation still not well documented (Brandt et al., 2013; Corbett et al., 2007; Nunes et al., 2017b; Sofiev et al., 2018).
Studies have been reporting that shipping contributions to ambient PM in port areas are mainly secondary particles (around 60
to 70% of PM₁₀ and PM_{2.5} mass concentrations). Despite this, studies have been suggesting that could be more advantageous
to reduce shipping-related primary particle emissions than precursors of secondary particles (NO_x and SO_x), which are the
30 target of current international regulations (Viana et al., 2014). In fact, international shipping represents around 13% and 12%
of total global anthropogenic emissions of NO_x and SO_x, respectively (IMO, 2015). Moreover, according to Klimont et al.

(2017), PM emissions from international shipping contribute with about 3–4 % to global emissions, which is comparable to the contribution of road transport. As far as known, it is up to 400 km from the coast that 70% of ship emissions occur (Eyring et al., 2009). As pollutants can be transported hundreds of kilometres towards the mainland, ships may contribute to air quality degradation in coastal areas, as well as in inland areas (Corbett et al., 2007; Eyring et al., 2009). Over the past 10 years, interest has been growing in studying the impact on air quality of maritime emissions in cities and ports using experimental measures (Contini et al., 2011; Merico et al., 2016, 2017; Pandolfi et al., 2011; Viana et al., 2015; Wang et al., 2019) and applying air quality models (AQMs) at local, regional and global levels (Abrutytė et al., 2014; Aksoyoglu et al., 2016; Aulinger et al., 2016; Barregard et al., 2019; Chen et al., 2017, 2018; EEA, 2013; Eyring et al., 2007; Lauer et al., 2007; Liu et al., 2017; Marelle et al., 2016; Marmer and Langmann, 2005; Matthias et al., 2016; Monteiro et al., 2018; Sotiropoulou and Tagaris, 2017). Nevertheless, the use of AQMs, such as CMAQ, WRF, CAMx, EMEP MSC-W and others entails inevitable sources of uncertainties and some limitations, mostly conditioned by the resolution of the models, the methodological limitations as a result of the complexity of air quality assessment, the quality of the meteorological data and, the reliability of emissions inventories (Karl et al., 2019). In the last years, the activity-based method using the Automatic Identification System (AIS) has been commonly accepted as the most accurate way to estimate shipping emissions, based on the detailed information of ship specifications and the operational data. Several authors have applied this methodology, although estimations with the Ship Traffic Emission Assessment Model (STEAM) have been recognized as the best way of conducting a reliable ship emissions inventory based on ship activity (Aulinger et al., 2016; Marmer and Langmann, 2005; Nunes et al., 2017b; Russo et al., 2018). Aulinger et al. (2016) recognized in their study that the STEAM model could be more reliable than other methods using AIS to describe ship movements. Marelle et al. (2016) evaluated emissions estimated with STEAM2 and compared them with airborne measurements from the ACCESS (Arctic Climate Change, Economy and Society) aircraft campaign. They concluded that the use of STEAM2 lead to reasonable predictions of NO_x, SO₂, and O₃ in comparison with ACCESS profiles. In addition, in a study performed by Nunes et al. (2017a) that reviewed studies from 2010 based on activity-based methodology to estimate shipping emissions, STEAM model was indicated as the best procedure to predict ships power, leading to better predictions of ships movements and more reliable emission calculations. Additionally, Russo et al. (2018) reviewed and compared five different European inventories (EMEP, TNO-MACC_III, E-PRTR, EDGAR and STEAM) including or calculating emissions from shipping; this study concluded that STEAM inventory should be used for studies requiring high-resolution shipping emissions data. STEAM allows assessing emissions from each individual ship, combining highly detailed AIS data and technical knowledge of the ships (characteristics and operative mode). STEAM is currently on its third version. From the first to the second version, carbon monoxide (CO) and particulate matter (PM) emissions were included. The method of analysing ships resistance on the water was revised and modelling of the power consumption of auxiliary engines was improved. In the third version, improvements include methods to compensate the lack of technical information of some ships and satellite data in some regions, as well as, some refinements, allowing to account legislative regulations (emission control areas, on-board emission abatement equipment and fuel sulphur content) (Jalkanen et al., 2012; Johansson et al., 2017). The majority of the studies on the impact of shipping emissions on air quality was performed for global scales (Dalsøren et al., 2009; Eyring et al.,

2007; Lauer et al., 2007), using OsloCTM2 , CMAQ and ECHAM5/MESSy1-MADE models; continental scales were also addressed (Aksoyoglu et al., 2016; Marelle et al., 2016; Ramacher et al., 2019; Sotiropoulou and Tagaris, 2017), especially the Asian region (Chen et al., 2018; Liu et al., 2017; Zhang et al., 2017), using models with coarser resolutions (CAMx, WRF/Chem, CMAQ and GISS-E2 global models). There are only a few studies based on modelling results that considered the impacts of shipping emissions in local scale (Abrutyte et al., 2014; Aulinger et al., 2016; Matthias et al., 2016; Monteiro et al., 2018; Vutukuru and Dabdub, 2008) . Moreover, only few have used STEAM to estimate shipping emissions, namely for the North Sea (Aulinger et al., 2016; Jonson et al., 2015), Baltic Sea (Barregard et al., 2019; Jonson et al., 2015) and northern Norway region (Marelle et al., 2016). As far as known, there is only one local study that considered specifically the Iberian Peninsula domain, evaluating the impact of maritime emissions on air quality at European and national scales using the WRF-CHIMERE modelling system for 2016 (Monteiro et al., 2018), but not using STEAM. Shipping emissions in that study were extracted from TNO-MACC_III inventory, a high spatially resolved anthropogenic emissions data source available for Europe. This inventory has a high spatially resolution data, and the MACC-III version is an updated version with a new trend analysis for emissions for international shipping, but STEAM exhibits the highest spatially resolution in their emissions and a large number of secondary routes that do not appear in the former inventory, making emissions predicted with STEAM more precise. It also includes the disruptive changes in environmental regulations (Emission Control Areas, EU Sulphur directive) concerning sulphur in marine fuels. Moreover, it was highlighted by the MACC-III project team a clearly necessity of more research for getting data of shipping emissions (van der Gon et al., 2017; Russo et al., 2018).

The Iberian Peninsula is the most western point of the European continent and the only natural opening by sea between the Mediterranean and the Atlantic Ocean. Considering the strategical position of the Iberian Peninsula regarding international maritime transport and the need of reducing the above referred scientific gaps, this study aimed to: i) estimate shipping emissions based on STEAM3 for 2015; ii) quantify the impacts of shipping emissions on the ambient air quality of the Iberian Peninsula using the EMEP/MSC-W model; and iii) investigate the inland regions where the European Commission air quality standards and WHO air quality guidelines were exceeded due to shipping.

2 Methodology and materials

2.1 Study area

The Iberian Peninsula is located in the southwest of Europe, mainly constituted by Portugal and Spain territories (also includes Andorra and Gibraltar). It is bordered on the southeast by the Mediterranean Sea (coastline with $\approx 1\,600$ km), and on the north, west, and southwest by the Atlantic Ocean (coastline with $\approx 1\,650$ km) being a central point in the connection of shipping traffic between the Americas and Africa and the rest of Europe (Global Ocean Associates, 2004a, 2004b, 2004c). In fact, the Iberian Peninsula has a central position between the English Channel and the Strait of Gibraltar, which are two busiest maritime routes in the world (Columbia University Press, 2001a, 2001b). Fig: A1 shows shipping traffic lines for 2015 that shows the relevance of the Iberian Peninsula in the international shipping traffic context.

2.2 Shipping emissions inventory

The shipping emissions inventory for the Iberian Peninsula in 2015 was obtained from a full bottom-up approach, using STEAM. This model combines: i) the shipping activity information from the terrestrial and satellite-based Automatic Identification System (AIS) and the technical characteristics of each ship (from HIS Markit); ii) the engine type for over ninety-thousand ships and; iii) the emission factors for each type of ship and size, engine type and mode of operation to calculate emissions from each ship. According to the above information, STEAM allows calculating the power consumptions and loads of each engine, as well as the quantity of fuel consumed to overcome a specific speed based on the resistance of each ship (Jalkanen et al., 2009). The model also permits to calculate shipping emissions as a function of time and location (Jalkanen et al., 2012; Johansson et al., 2013, 2017). Emissions of CO, CO₂, SO_x, NO_x and particulate matter (subdivided in EC, OC, sulphates and ash) were estimated for the Iberian Peninsula, from ships with an IMO number (ships for which it is mandatory using AIS equipment) and some small vessels for which the IMO number is not mandatory but with a Mobile Maritime Service Identity (MMSI) that produced a valid response during 2015. To compare shipping emissions with land-based emissions, the sum of the annual mean emissions of NO_x and SO_x from the other 11 SNAP sectors for the domain of this study were calculated. Shipping emissions were analysed for monthly and seasonal patterns. Seasonal patterns were based on data from: i) January, February and March called as “winter”; ii) April, May and June called as “spring”; iii) July, August and September called as “summer”; and iv) October, November and December called as “autumn”. The non-parametric test Kruskal-Wallis for multiple samples (the four seasons) and the non-parametric Wilcoxon signed-rank test for two by two samples analyses performed at the 95% confidence interval level were used to detect statistically significant variations for all pollutants in the seasonal concentration data.

2.3 EMEP modelling system - configuration and evaluation

The open-source EMEP/MSC-W chemistry transport model, version rv4.15 was used to evaluate the contribution of shipping emissions to NO₂, SO₂, PM_{2.5}, PM₁₀, sulphate and O₃ concentrations in the Iberian Peninsula. Model was run on a subdomain that extends from -14.25°E to 9.05°E and 32.15°N to 47.35°N, and concentrations were simulated up to approximately 400 km from the Iberian Peninsula coast. The initial and the lateral boundary conditions for most of the chemical compounds were defined by functions defining concentrations in terms of latitude and time, based on measurements and/or model calculations, providing robustness which chemical transport model results sometimes lack. More information about the EMEP/MSC-W configuration for initial and boundary concentrations used in this study can be found in Simpson et al. (2012). The model was designed for two scenarios: i) shipping scenario (S-SCN) considering shipping emissions and ii) baseline scenario (B-SCN) not considering shipping emissions. Runs were made for 2015 with a horizontal resolution of 0.1°x0.1° (long-lat) and an hourly data output. Emissions (for the same year of the shipping emissions inventory) from other sources such as, industry, road traffic, public power and among other sectors, split in 11 SNAPs, were obtained from the European emission inventories that are reported under the LRTAP Convention and the NEC Directive (EMEP/CEIP, 2018). Emissions from shipping sector

130 considered in the inventory were excluded to avoid double counting of emissions. Moreover, it was also considered the
emissions of the dust from Sahara, NO_x from lightning and from forest fires (Simpson et al., 2012; Wiedinmyer et al., 2011).
The model is divided into 34 vertical layers with the lowest layer having a thickness of 50 m. Assuming that the plume rise
issue in ship exhaust dispersion is more relevant for local scale air quality assessments, and less for regional scale work. For
this reason, the ship emissions from STEAM were allocated to the first model layer of the EMEP runs. .PM concentrations
135 were modelled considering primary particulate matter originating directly from anthropogenic emissions, as well as secondary
organic and inorganic aerosols and sea salt. Other details about the model can be found in Simpson et al. (2012) and in
Norwegian Meteorological Institute (2017a). The meteorological data for 2015 were generated by the European Centre for
Medium-Range Weather forecasts with the Integrated Forecast System model. According to EMEP Status Report 1/2017,
2015 was among the warmest years in Europe with temperatures reported above normal in winter and extremely high during
140 summer in Southern Europe. Despite this, in the Iberian Peninsula temperatures below average were registered due to a
persistent south-westerly flow (Norwegian Meteorological Institute, 2017b). In spring, a prolonged high pressure was
established over the Iberian Peninsula leading to above-average temperatures in Portugal and Spain. In July, Spain was affected
by an extraordinary and long-lasting heatwave (Norwegian Meteorological Institute, 2017b). Regarding the performance of
the model, simulations from EMEP/MSC-W are regularly evaluated against measurements in the EMEP annual reports
145 (Norwegian Meteorological Institute, 2018). Moreover, there are several studies that compare model results with
measurements and calculations with other models (Angelbratt et al., 2011; Bessagnet et al., 2016; Colette et al., 2011, 2012;
Jonson et al., 2010; Karl et al., 2017; Prank et al., 2016; Soares et al., 2016) and recent studies that used the model to assess
the effects of shipping emissions (Jonson et al., 2015, 2017; Turner et al., 2017). To support the results of the present study,
model output PM_{2.5}, PM₁₀ and NO₂ concentrations for the S-SCN scenario were compared with data from the monitoring
150 stations of EU Member States reported by the European Environmental Agency for 2015 (EEA, 2020). Moreover, comparisons
between the modelling reference results reported by EMEP for the year 2015 (Norwegian Meteorological Institute, 2019) were
also compared with the data from the monitoring stations. Annual mean concentrations observed in 139 stations for PM_{2.5}, 337
stations for PM₁₀ and 446 stations for NO₂ were compared with the model results in time and space. Table 1 summarizes the
model quality indicators (Pearson correlation coefficient (Pearson's r), Mean Bias Error (MBE), Mean Absolute Error (MAE)
155 and Root Mean Square Error (RMSE)), for the present study and for the reference results reported by EMEP. Similar results
were obtained for the comparison with the present study and with the reference results of EMEP, which indicates that the
model simulations were well executed. Correlations obtained were moderately positive (Pearson's r > 0.5) for all pollutants,
with errors smaller than those reported in the literature (Monteiro et al., 2018). The annual mean concentrations for each inland
grid cell were compared with reference standards and guidelines (WHO and EU), aiming to evaluate exceedances and/or non-
160 compliances of NO₂, SO₂, PM_{2.5} and PM₁₀ due to shipping emissions. Comparisons were performed considering the
international reference values for pollutants in ambient air namely: i) EU air quality standards for NO₂ (40 µg m⁻³ for annual
mean), SO₂ (125 µg m⁻³ for daily mean), PM_{2.5} (25 µg m⁻³ for annual mean) and PM₁₀ (40 µg m⁻³ for annual mean); and ii)
WHO air quality guidelines for NO₂ (40 µg m⁻³ for annual mean), SO₂ (20 µg m⁻³ for daily mean), O₃ (SOMO35 - yearly sum

of the daily maximum of 8 h running average over 35 ppb in ppb per days), PM_{2.5} (10 µg m⁻³ for annual mean) and PM₁₀ (20 µg m⁻³ for annual mean) (European Commission, 2018; WHO, 2018). To support the results of the present study, the annual exceedances of PM_{2.5}, PM₁₀ and NO₂ found simultaneously with the modelled S-SCN scenario and with data from the monitoring stations of the EU Member States were compared (EEA, 2020). For PM_{2.5}, the exceedances to the WHO guideline found with the modelled data represented more than 60% of the exceedances calculated with the data from the stations. Regarding PM₁₀, a small agreement was found, with only 11% of the exceedances found for the modelled data. However, for NO₂ all the exceedances were estimated with the modelled data. According to these results, the model seems to predict with good reliability the exceedances of PM_{2.5} and NO₂. For PM₁₀ the results need to be used with caution.

3 Results and Discussion

3.1 Shipping emissions – spatial and seasonal variation

Table 2 summarizes the amount of emitted air pollutants from shipping and from land-based anthropogenic sources. Comparing NO_x and SO_x, shipping emissions with land-based emissions, on average the first were lower than the latter. Despite this, if NO_x and SO_x shipping emissions were added to the land-based emissions, the total would increase by 45% and 62%, respectively. Moreover, compared with emissions from the SNAP of road transport (660 ktonnes y⁻¹ of NO_x and 7.1 ktonnes y⁻¹ of SO_x), the emitted amounts of NO_x and SO_x from shipping were 1.1 and 51.3 times higher, respectively. These results show the importance of shipping emissions for these two pollutants.

Fig: 1 shows the annual mean shipping emissions of CO, CO₂, SO_x, NO_x, EC, OC, sulphates and ash (a component of the PM emitted by ships and depends on the content of marine fuels) for the Iberian Peninsula in 2015 in a 0.1°x0.1° grid cells (approximately 10 x 10 km²). Details about emission factors used in STEAM can be found in Jalkanen et al. (2009), Jalkanen et al. (2012) and Jonson et al. (2015). As can be seen, the spatial distribution was similar for all pollutants. In general, the highest emissions were established along the west coast of the Iberian Peninsula (including all Portuguese coast), in the Strait of Gibraltar and in the Mediterranean Sea, especially close to the African coast, which is consistent with world shipping traffic density (Fig: A1). It is important to emphasise that the grid cells along the coast where ports are located had also higher emissions due to hotelling activities. Although emissions during hotelling only represent a slight part of the total shipping emissions, port areas are significant receptors of these emissions due to the concentration of ships for long periods of time in some cases (Nunes et al., 2017a). The annual average and highest intensities for NO_x and SO_x reported from researches in Asian Region are present in Table 3 (Chen et al., 2016a, 2017; Fan et al., 2016). In general, the average intensities that were reported for the Asia were considerably higher than those found in this study. It was possible to identify in the present study two main hubs given the high emissions intensity: Valencia Port and the Strait of Gibraltar. At Valencia Port, ash, CO, EC and OC had the highest values, respectively, 1.46E-01 tonnes/yr/km², 1.85 tonnes/yr/km², 1.99E-01 tonnes/yr/km² and 5.09E-01 tonnes/yr/km². At the Strait of Gibraltar, CO₂, NO_x, sulphate and SO_x had the highest values, respectively, 1330 tonnes/yr/km², 24 tonnes/yr/km², 1.03 tonnes/yr/km² and 11.6 tonnes/yr/km². In accordance to what was referred above, in the Asian Region

maxima intensities were also higher than those here estimated (Chen et al., 2016b; Fan et al., 2016; Ng et al., 2013). The big differences between the average and highest emission intensities of the present study and those of the Asian studies, appear to be related with the high intensity and type of maritime traffic and to the restrict fuel regulations in Europe. In fact, seven of the ten largest container ports in the world are located in China, and Asia is the region with the highest world seaborne trade, characterized by high traffic of container ships that have already been documented as one of the most pollutant category of ships (Chen et al., 2018; Ng et al., 2013; Nunes et al., 2017b; Song and Shon, 2014; UNCTAD, 2017). Moreover, since 2010, a 0.1% maximum sulphur requirement for fuels was established for ships at berth in EU ports, however, in China, there are only some domestic emission control areas with 0.5 % maximum (Reuters, 2018). Nevertheless, in the HEI report authors described lower emission intensities for the Yangtze River Delta and Shanghai areas at 12 NM from the coast. According to these results, comparisons should be made carefully as emission intensities seem strongly dependent on the location for which they are calculated (inside the port area, at a certain distance from the coast or on the high seas) and also on the methodology used to calculating shipping emissions (Zhang et al., 2019).

Shipping emissions were also analysed for monthly and seasonal patterns. Seasonal amounts of shipping emissions for the pollutants analysed are shown in Table 4. According to 2015 data, the largest amounts of pollutants were emitted in summer and spring, accounting for approximately 26% of the annual total in both cases, being similar for the other seasons (23% and 25% for winter and autumn, respectively). Fig: 2 shows the monthly amounts of CO₂, NO_x and SO_x in tonne y⁻¹ and ash, CO, EC, OC and sulphate in kg y⁻¹ of shipping emissions in the study domain during 2015. It can be observed that emissions increased progressively from February to July, where they reached the maximum annual value. After that, a decrease during August and September was observed, followed by a stabilization during October (for some pollutants there was a slight increase) and a decrease until December. Although emissions varied throughout the year, variations were about 1-2% between months and each month represented 7.1-9.1% of the annual total emissions. In fact, according to the statistical trend analysis using the Mann-Kendall trend test, performed at the 95% confidence interval level, no statistically significant variations were achieved in the monthly emissions data for all pollutants (*p*-values > 0.05). These slight variations seem to be related to the navigation conditions (better during the spring and summer), which consequently increases the number of ships that sails in this zone (during May, June, July and August). Fan et al. (2016) also reported slight seasonal variations similar to this study, although for East China Sea higher emissions were verified during spring. Jalkanen et al. (2009) reported higher shipping emissions during summer (highest emissions during July) for Baltic Sea in 2007 and a similar seasonal variation pattern, although the variation was higher (20% between the months with the highest and lowest NO_x emissions).

3.2 Impact on Air Quality

225 Annual average concentrations

To understand shipping emissions impact on air quality over the Iberian Peninsula in 2015, EMEP model was configured considering and not considering shipping emissions. Fig: 3 shows the contribution of shipping emissions to the annual average of NO₂, SO₂, sulphate, O₃, PM_{2.5} and PM₁₀ surface concentrations in the Iberian Peninsula. Results show that when shipping

emissions were considered, the concentrations of NO₂, SO₂, sulphate, PM_{2.5} and PM₁₀ increased, especially in the Strait of Gibraltar and close to the coastal areas (mainly in port areas) as well as along the west coast of the Iberian Peninsula, (along main shipping routes). O₃ concentrations also increased due to shipping emissions especially in the Mediterranean Sea close to the African coast. An opposite behaviour was verified with a decrease of concentrations around the major shipping routes in the west coast of the Iberian Peninsula, close to the southern coastal area of Spain and in some port areas as a result of NO_x titration caused by increased NO_x shipping emissions. Aksoyoglu et al. (2016) also reported an increase in the mean O₃ concentrations of 5–10 % in the Mediterranean Sea and a decrease of the levels around some major ship lanes (English Channel and North Sea). Moreover, Merico et al. (2016) that performed experimental measurements in a port-city in Italy found correspondence between NO peaks and O₃ titration. Thus shipping emissions have the potential to decrease O₃ concentrations close to the main ship lanes and ports and increase at larger distances from the emissions source, which seems to be a local scale effect. Annual mean concentrations when shipping emissions were included (considering all grid cells of the domain) of NO₂, SO₂, sulphate, O₃, PM_{2.5} and PM₁₀ were, respectively, 1.8 µg m⁻³, 0.5 µg m⁻³, 0.8 µg m⁻³ (mean increase of 67%), 80 µg m⁻³, 8.2 µg m⁻³, 22 µg m⁻³.

Comparison with previous studies in the region

The highest differences in the annual mean concentrations of NO₂, SO₂, sulphate, O₃, PM_{2.5} and PM₁₀ w/ship case and wt/ship case were 31.7 µg m⁻³, 16.1 µg m⁻³, 3.4 µg m⁻³, 13 µg m⁻³, 4.8 µg m⁻³ and 6.9 µg m⁻³, respectively. Monteiro et al. (2018) reported for Europe similar differences of PM₁₀ (7 µg m⁻³) and of O₃ (14 µg m⁻³) and lower of NO₂ (18 µg m⁻³) evidenced in the main shipping routes of Straits of La Mancha and Gibraltar. The higher NO₂ concentrations reported in this study compared with Monteiro et al. (2018) seem to be related to the shipping emissions inventory that was used. As was already mentioned the shipping emissions used by Monteiro et al. (2018) were extracted from TNO-MACC_III inventory which seems to underestimate NO_x emissions of this sector compared with the STEAM (more precise). Aksoyoglu et al. (2016) reported lower differences for PM_{2.5} (3.5 µg m⁻³) and O₃ (12 µg m⁻³) for Europe. Fig: 4 shows the relative impact of shipping emissions on pollutant concentrations for the Iberian Peninsula. Locally, the effects were more evident in the sea areas along main shipping routes and especially in the Strait of Gibraltar and in the Mediterranean Sea, with contributions of more than 90% for NO₂ and SO₂, 80% for sulphate, 25-50% for PM_{2.5} and 20-35% for PM₁₀. Regarding O₃, shipping emissions contributed to an increase of around 15% all over the Iberian Peninsula coastline and in the Mediterranean Sea close to the African Coastline. Nevertheless, shipping emissions also contributed to decrease O₃ concentrations around 15-40% in the Strait of Gibraltar and close to Valencia Port. It is also important to emphasise that along main shipping routes and close to the Iberian Peninsula port areas (except Valencia), O₃ concentrations considering and not considering shipping emissions remained the same. Aksoyoglu et al. (2016) found higher contributions (45%) for PM_{2.5} and lower positive contributions (5-10%) for O₃ in the Mediterranean Sea. Sotiropoulou and Tagaris (2017) also reported contributions higher than 90% for NO₂ and SO₂ and 40% during winter and 50% during summer for PM_{2.5} over the Mediterranean Sea. Viana et al. (2014) reviewed studies concerning the impact of shipping emissions on air quality in European coastal areas and reported lower contributions than those estimated in this study

for the Strait of Gibraltar (2-4% for mean annual PM₁₀ and 14% for mean annual PM_{2.5}) and Southern Spain close to Bay of Algeciras (3-7% for mean annual PM₁₀ and 5-10% for mean annual PM_{2.5}). The differences between the contributions reported by Viana et al. (2014) seem to be related to the methodology used in the reviewed studies (source apportionment of PM₁₀ and PM_{2.5} by positive matrix factorization). Although the impact of shipping emissions on pollutants' concentrations has been most evident in sea areas, they also contributed to increasing inland concentrations. As shown in Fig: 4, shipping emissions generally contributed to about 50% of inland NO₂ concentrations near port areas of Portugal and Spain, reaching more than 75% in the province of Cadiz. Similar behaviour was observed for SO₂ concentrations, however, in this case, contributions of more than 75% were also noticed in the province of Malaga. As already mentioned, for O₃, contributions of around 5-15% were calculated for the entire Iberian Peninsula coastline, especially in the south coastal region. Regarding sulphate, contributions of around 60% were calculated for all the Iberian Peninsula south coastal region, with contributions of 20-40% when all the Iberian Peninsula was considered. For PM_{2.5} and PM₁₀, the highest contributions (around 20-30%) were also verified in the Iberian Peninsula south coastal region. When all the Iberian Peninsula was considered, PM_{2.5} and PM₁₀ contributions were 10% and 15%, respectively. Monteiro et al. (2018) reported for the west coast of Portugal (also the west coast of Iberian Peninsula) lower contributions for NO₂ and PM₁₀ (higher than 20% and less than 5%, respectively) than those reported in this study probably due to the different methodology applied. Moreover, according to the model validation made by Monteiro et al. (2018), their model underestimate PM₁₀ and NO₂ concentrations (negative MBE), while the model used in the present study overestimate the concentrations (positive MBE).

280

Seasonal variation

The higher contributions of shipping emissions for pollutant concentrations in coastal regions (mainly to NO₂ and SO₂ concentrations) as well as in inland regions (sulphate, O₃, PM_{2.5} and PM₁₀ concentrations) indicates that ships are a non-negligible source. Regarding the seasonal concentration data, statistically significant variations were found for all pollutants across all seasons (p -values < 0.05). In fact, according to the model results, the higher contributions of shipping emissions to the concentrations levels were registered during spring and summer periods (warm season). This pattern seems to be related to the increase in ship traffic during summer due to better meteorological conditions that allow better navigation conditions, which increases the traffic and subsequently the emissions and atmospheric pollution. Moreover, during summer months, the number of passenger ships tends to increase (due to recreational travel), especially in the Mediterranean Sea, which led to an increase of shipping emissions and their contributions to the pollutant's concentration levels. Results were consistent with those achieved by Aksoyoglu et al. (2016), Chen et al. (2017), Sotiropoulou and Tagaris (2017) and Chen et al. (2018), which also reported largest contributions of shipping emissions on PM_{2.5}, O₃, NO₂ and SO₂ concentrations during summer.

290

Ship impact on exceedances of regulatory air quality limits

295 Fig: 5 shows NO₂, SO₂, O₃, PM_{2.5} and PM₁₀ exceedances to EU air quality standards and WHO air quality guidelines in the inland regions due to shipping, as well as the differences between SOMO35 levels (in ppb.days) considering and not

considering shipping emissions. Results showed no exceedances to EU annual limit standard for SO₂, PM_{2.5} and PM₁₀. Regarding NO₂, as the annual limit for the EU air quality standards and the WHO air quality guidelines are the same (40 µg m⁻³), the analyses were joined. As can be seen from Fig: 5 a), exceedances due to shipping emissions were verified in Valencia area close of Valencia Port and in Barcelona area close of Port of Barcelona. When shipping emissions were considered PM_{2.5} WHO air quality guideline (10 µg m⁻³) exceedances increased 7%. As can be seen from Fig: 5 b), exceedances were verified in Portugal (close to the areas of Ports of Viana do Castelo, Leixões, Lisboa and Setúbal), across all Spanish coastline, in the north (in Pontevedra Province close to the area of Port of Vigo and in Asturias Province close to the areas of ports of Aviles and Gijon) and in the south (in the regions of Andalusia close to the areas of Algeciras, Malaga and Adra Ports, in Valencia close to area of Port of Valencia and in the Catalonia close to the area of Port of Barcelona) where the contribution of shipping emissions to the increase of concentrations was even more pronounced. It should be noted that shipping emissions were still responsible for exceedances in areas far from the coastline, as was verified in Viana do Castelo and more pronounced in the region of Andalusia. These results confirm that shipping emissions can contribute negatively to air quality, both in coastal and in inland areas. PM₁₀ WHO air quality guideline of 20 µg m⁻³ was exceeded 8% more when shipping emissions were considered. As can be seen from Fig: 5 c), exceedances were verified mainly across the southern Spanish coastline, in the regions of Andalusia and Catalonia. The contribution of shipping emissions to the increment of number of exceedances (in terms of concentrations $\Delta \mu\text{gm}^{-3}$) of NO₂, PM_{2.5} and PM₁₀ was also determined. This information can be found in Fig: A2 a), b) and c), respectively. Regarding WHO air quality guideline for SO₂, as the value refers to the average daily concentrations, the results are presented as the number of days per year that the threshold value was exceeded in a given grid cell when shipping emissions were considered but were not exceeded without shipping emissions. Fig: 5 d), shows that exceedances were verified in Setúbal District (Portugal) close to the area of Port of Sines, across all Spanish coastline, in the north (in Coruña Province close to the area of Port of Coruña, in Asturias Province close to the area of ports of Aviles and Gijon and close to the area of Port of Bilbao) and in the south (in Huelva close to the area of Port of Huelva, in Cadiz Province close to the Strait of Gibraltar, in Valencia close to the area of Port of Valencia, in Castellón close to the area of Port of El Grao, in Tarragona close to the area of Port of Tarragona and in Barcelona close to the area of Port of Barcelona). In the Strait of Gibraltar, it was calculated the highest number of days per year where WHO reference value for SO₂ was exceeded (maximum increment of 96 days). The spatial distribution of the number of days per year in which the WHO reference value for SO₂ was exceeded can be found in Fig: A2 d). According to the above results, mitigations measures should be studied and implemented to reduce shipping emissions mainly close to port areas, in the south of the Iberia Peninsula close to the Strait of Gibraltar and in the Mediterranean Sea. Implementing an ECA in the Mediterranean Sea can contribute to reduce shipping emissions and help these regions to attain WHO and EU standards. As SOMO35 is an indicator of health impact assessment recommended by WHO, differences between the levels considering and not considering shipping emissions were calculated to evaluate the contribution of these emissions for the O₃ inland concentrations. As it can be seen from Fig: 5 e), SOMO35 levels were negative close to the Portuguese the areas of ports of Lisboa and Setúbal and close to Spanish the areas of ports of Algeciras (Strait of Gibraltar), Valencia and Barcelona. The major contributions were calculated for the southwest coastline of the Iberian Peninsula, with

levels from 500-1000 ppb.days up to 200 km from the coastline (over all south region of Portugal), which might be explained by the highest solar radiation intensity that is felt in the southern regions of the Iberian Peninsula.

3.3 Uncertainties and Limitations

Given the complexity of any chemical transport model, it is difficult to specify the source of uncertainties, these are inherent to the uncertainties of the meteorological data, emission inventory and the imperfections of chemical mechanism and physical process on the modelling system. Nevertheless, it is known that the reliability of the emissions inventory is a major cause of uncertainty. In STEAM3, there are several sources of uncertainty that can have an impact on the accuracy of the results. There are three main categories: i) gaps in input data (incomplete AIS coverage, missing IHS Markit data), ii) power prediction (weather contributions, Hollenbach resistance inaccuracy, fouling, squat, sea currents, aux engine power profiles, engine load estimation, power transmission, propeller properties) and iii) emission factors (specific fuel oil consumption, fuel type, fuel sulphur content allocation, engine generation). Uncertainties concerning emission factors may be larger for products of incomplete combustion, like CO, NMVOC, OC and EC, than for CO₂, or NO_x, because these are strongly related to engine load, engine generation and service history. The emission factors may also depend on the fuel type assignment and fuel sulphur content, which are estimated based on engine properties and maximum sulphur content allowed in each region at the time period of the study. However, the emission factors for incomplete combustion products may be affected by engine service history and thus are notoriously difficult to estimate. VOC emissions from ships were not included in this study. Uncertainties concerning the SOMO35 indicator (for ozone) were expected since the chemical regime in the atmosphere along the ship tracks in the Mediterranean is known to be VOC sensitive (Beekmann and Vautard, 2010). STEAM has mechanisms to mitigate most of the uncertainties listed above and an improved version of STEAM model (STEAM3), that has the highest spatially detailed shipping emissions inventory and have been recognized as one of the best to estimate emissions from maritime traffic was used to provide shipping emissions input data as accurate as possible (Nunes et al., 2017b; Russo et al., 2018). Keeping the uncertainties of the atmospheric dispersion simulations in mind, efforts were made to run the EMEP-MSC/W model as accurate and detailed as possible (horizontal resolution of 0.1°x0.1°, 34 vertical levels and data output time steps of 1 h). Furthermore, EMEP-MSC/W model has been recently compared with the CMAQ and the SILAM models and showed the best spatial correlation of annual mean concentrations for NO₂, SO₂ and PM_{2.5} resulting of shipping emissions, although it seems to be underestimating PM_{2.5} concentrations and overestimating O₃ concentrations. Moreover, although it has been possible to identify variations in the emissions and concentrations near the port areas, the resolution that was used was too coarse to make a detailed analysis of emissions and concentrations inside the port areas. The EMEP-MSC/W model considers the O₃ loss by NO_x titration, the sunlight effects and NO_x to VOC ratio that promotes O₃ production, which is an approximation allowing to minimize the effects of the non-linear O₃ chemistry. Moreover, estimations were performed using meteorological data from the European Centre for Medium-Range Weather Forecasts (ECMWF) for 2015.

4 Conclusions

In this study, Ship Traffic Emission Assessment Model (STEAM3) was used to estimate shipping emissions in the Iberian Peninsula Region in 2015. According to the results, total estimated emissions for CO, CO₂, SO_x, NO_x and particulate matter (subdivided in elementary carbon (EC), organic carbon (OC), sulphates and ash) were 49, 30000, 360, 710, 4.5, 11, 32 and 3.3 ktonnes y⁻¹, respectively. The highest emissions were estimated along the west coast of the Iberian Peninsula, in the Strait of Gibraltar and in the Mediterranean Sea. The largest amount of emissions for all pollutants were emitted during summer and spring (reaching the maximum during July) which seemed to be related to the navigation conditions. The estimated shipping emissions were equivalent to 45% and 62% of NO_x and SO_x of the total land-based emissions, respectively, which shows that shipping emissions cannot be neglected. Running the EMEP/MSC-W model it was possible to observe that the effects of shipping emissions on air quality were more evident in the sea areas along the main shipping routes and especially in the Strait of Gibraltar and in Mediterranean Sea. Although the contribution of shipping emissions to pollutants concentrations has been more evident in sea areas, they also contributed to increasing the inland concentrations. It was observed that shipping emissions increased SO₂ and NO₂ concentrations around 50% near port areas of Portugal and Spain, reaching more than 75% in the provinces of Cadiz and Malaga, O₃ concentrations around 5-15% for all the Iberian Peninsula coastline, especially in the south coastal region and sulphate, and particulate matter (PM_{2.5} and PM₁₀) concentrations around 60% and 20-30%, respectively all over the Iberian Peninsula south coastal region. NO₂ exceedances due to ship emissions were detected in Valencia and Barcelona. WHO air quality guideline for PM_{2.5} and PM₁₀ were exceeded, respectively, 7% and 8% more when shipping emissions were considered. In the regions close to the Strait of Gibraltar it were observed the highest exceedances of WHO air quality guideline for SO₂ (maximum increment of 96 days). The major contributions of shipping emissions to inland SOMO35 levels were for the southwest coastline of the Iberian Peninsula, with levels of 500-1000 ppb.days up to 200 km from the coastline (overall south region of Portugal). These results confirm that shipping emissions can contribute negatively to air quality, both in coastal and in inland areas and mitigations measures should be studied and implemented to reduce shipping emissions mainly close the port areas and in the south of the Iberia Peninsula (close to the Strait of Gibraltar and in the Mediterranean Sea). In the future, it is important to study the impacts of shipping emissions on health, which are still underestimated and rarely studied.

Code availability

The EMEP model is available as Open Source (see <https://github.com/metno/emep-ctm> code version rv4.17 (201802) (EMEP MSC-W, 2018, <https://doi.org/10.5281/zenodo.3355023>). STEAM model is intellectual property of the Finnish Meteorological Institute and is not publicly available.

Author contributions

RAON performed EMEP MSC-W simulations and the analysis, did the interpretation of the results and wrote the manuscript. JPJ and HH provided the ship emission data. MCMA, FGM, JMG and JPJ reviewed the paper and helped in the interpretation of the results. FCC, VDG, and JMG gave support in the interpretation of the results for Spain and reviewed the paper. SIVS
395 designed the study and assisted in modelling scenarios and in writing the paper.

Competing interests

The authors declare that they have no conflict of interest.

Acknowledgements

This work was financially supported by: project UID/EQU/00511/2019 - Laboratory for Process Engineering, Environment,
400 Biotechnology and Energy – LEPABE funded by national funds through FCT/MCTES (PIDDAC); project “LEPABE-2-ECO-
INNOVATION” – NORTE-01-0145-FEDER-000005, funded by Norte Portugal Regional Operational Programme (NORTE
2020), under PORTUGAL 2020 Partnership Agreement, through the European Regional Development Fund (ERDF) and
project EMISSHIP (POCI – 01 – 0145 – FEDER – 032201), funded by FEDER funds through COMPETE2020 – Programa
Operacional Competitividade e Internacionalização (POCI) and by national funds (PIDDAC) through FCT/MCTES. Dr
405 Jalkanen would like to acknowledge the financial support from the Nordic Council of Ministers project EPITOME (Emissions
from shiP and the Impacts on human health and envirOnMENT - now and in the future), project number KOL-1601.

References

- Abrutyte, E., Žukauskaitė, A., Mickevičienė, R., Zabukas, V. and Paulauskienė, T.: Evaluation of NO_x emission and dispersion
410 from marine ships in Klaipėda sea port, *J. Environ. Eng. Landsc. Manag.*, 22(4), 264–273, doi:10.3846/16486897.2014.892009, 2014.
- Aksoyoglu, S., Baltensperger, U. and Prévôt, A. S. H.: Contribution of ship emissions to the concentration and deposition of
air pollutants in Europe, *Atmos. Chem. Phys.*, 16(4), 1895–1906, doi:10.5194/acp-16-1895-2016, 2016.
- Angelbratt, J., Mellqvist, J., Simpson, D., Jonson, J. E., Blumenstock, T., Borsdorff, T., Duchatelet, P., Forster, F., Hase, F.,
415 Mahieu, E., De Mazière, M., Notholt, J., Petersen, A. K., Raffalski, U., Servais, C., Sussmann, R., Warneke, T. and Vigouroux,
C.: Carbon monoxide (CO) and ethane (C₂H₆) trends from ground-based solar FTIR measurements at six
European stations, comparison and sensitivity analysis with the EMEP model, *Atmos. Chem. Phys.*, 11(17), 9253–9269,
doi:10.5194/acp-11-9253-2011, 2011.

- Aulinger, A., Matthias, V., Zeretzke, M., Bieser, J., Quante, M. and Backes, A.: The impact of shipping emissions on air pollution in the greater North Sea region – Part 1: Current emissions and concentrations, , (January 2010), 739–758, doi:10.5194/acp-16-739-2016, 2016.
- Barregard, L., Molnár, P., Jonson, E. J. and Stockfelt, L.: Impact on Population Health of Baltic Shipping Emissions, *Int. J. Environ. Res. Public Heal.*, 16(11), doi:10.3390/ijerph16111954, 2019.
- Beekmann, M. and Vautard, R.: A modelling study of photochemical regimes over Europe: robustness and variability, *Atmos. Chem. Phys.*, 10(20), 10067–10084, doi:10.5194/acp-10-10067-2010, 2010.
- Bessagnet, B., Pirovano, G., Mircea, M., Cuvelier, C., Aulinger, A., Calori, G., Ciarelli, G., Manders, A., Stern, R., Tsyro, S., Garcia Vivanco, M., Thunis, P., Pay, M.-T., Colette, A., Couvidat, F., Meleux, F., Rouvill, L., Ung, A., Aksoyoglu, S., Baldasano, J. M., Bieser, J., Briganti, G., Cappelletti, A., D’Isidoro, M., Finardi, S., Kranenburg, R., Silibello, C., Carnevale, C., Aas, W., Dupont, J.-C., Fagerli, H., Gonzalez, L., Menut, L., Prévôt, A. S. H., Roberts, P. and White, L.: Presentation of the EURODELTA III intercomparison exercise -- evaluation of the chemistry transport models’ performance on criteria pollutants and joint analysis with meteorology, *Atmos. Chem. Phys.*, 16(19), 12667–12701, doi:10.5194/acp-16-12667-2016, 2016.
- Brandt, J., Silver, J. D., Christensen, J. H., Andersen, M. S., Bønløkke, J. H., Sigsgaard, T., Geels, C., Gross, A., Hansen, A. B., Hansen, K. M., Hedegaard, G. B., Kaas, E. and Frohn, L. M.: Assessment of past, present and future health-cost externalities of air pollution in Europe and the contribution from international ship traffic using the EVA model system, *Atmos. Chem. Phys.*, 13(15), 7747–7764, doi:10.5194/acp-13-7747-2013, 2013.
- Chen, D., Zhao, Y., Nelson, P., Li, Y., Wang, X., Zhou, Y., Lang, J. and Guo, X.: Estimating ship emissions based on AIS data for port of Tianjin, China, *Atmos. Environ.*, doi:10.1016/j.atmosenv.2016.08.086, 2016a.
- Chen, D., Zhao, Y., Nelson, P., Li, Y., Wang, X., Zhou, Y., Lang, J. and Guo, X.: Estimating ship emissions based on AIS data for port of Tianjin, China, *Atmos. Environ.*, 145, 10–18, doi:10.1016/J.ATMOSENV.2016.08.086, 2016b.
- Chen, D., Wang, X., Nelson, P., Li, Y., Zhao, N., Zhao, Y., Lang, J., Zhou, Y. and Guo, X.: Ship emission inventory and its impact on the PM_{2.5}air pollution in Qingdao Port, North China, *Atmos. Environ.*, 166, 351–361, doi:10.1016/j.atmosenv.2017.07.021, 2017.
- Chen, D., Zhao, N., Lang, J., Zhou, Y., Wang, X., Li, Y., Zhao, Y. and Guo, X.: Contribution of ship emissions to the concentration of PM_{2.5}: A comprehensive study using AIS data and WRF/Chem model in Bohai Rim Region, China, *Sci. Total Environ.*, 610–611, 1476–1486, doi:10.1016/j.scitotenv.2017.07.255, 2018.
- Colette, A., Granier, C., Hodnebrog, Ø., Jakobs, H., Maurizi, A., Nyiri, A., Bessagnet, B., D’Angiola, A., D’Isidoro, M., Gauss, M., Meleux, F., Memmesheimer, M., Mieville, A., Rouvill, L., Russo, F., Solberg, S., Stordal, F. and Tampieri, F.: Air quality trends in Europe over the past decade: a first multi-model assessment, *Atmos. Chem. Phys.*, 11(22), 11657–11678, doi:10.5194/acp-11-11657-2011, 2011.
- Colette, A., Granier, C., Hodnebrog, Ø., Jakobs, H., Maurizi, A., Nyiri, A., Rao, S., Amann, M., Bessagnet, B., D’Angiola, A., Gauss, M., Heyes, C., Klimont, Z., Meleux, F., Memmesheimer, M., Mieville, A., Rouvill, L., Russo, F., Schucht, S.,

- Simpson, D., Stordal, F., Tampieri, F. and Vrac, M.: Future air quality in Europe: a multi-model assessment of projected exposure to ozone, *Atmos. Chem. Phys.*, 12(21), 10613–10630, doi:10.5194/acp-12-10613-2012, 2012.
- 455 Columbia University Press: English Channel, *Columbia Encycl. Encycl.*, 2001a.
Columbia University Press: Strait of Gibraltar, *Columbia Encycl.*, 2001b.
- Contini, D., Gambaro, A., Belosi, F., De Pieri, S., Cairns, W. R. L., Donato, A., Zanotto, E. and Citron, M.: The direct influence of ship traffic on atmospheric PM_{2.5}, PM₁₀ and PAH in Venice, *J. Environ. Manage.*, 92(9), 2119–2129, doi:10.1016/j.jenvman.2011.01.016, 2011.
- 460 Corbett, J. J., Winebrake, J. J., Green, E. H., Kasibhatla, P., Eyring, V. and Lauer, A.: Mortality from ship emissions: A global assessment, *Environ. Sci. Technol.*, 41(24), 8512–8518, doi:10.1021/es071686z, 2007.
Dalsøren, S. B., Eide, M. S., Endresen, Ø., Mjelde, A., Gravir, G. and Isaksen, I. S. A.: Update on emissions and environmental impacts from the international fleet of ships: the contribution from major ship types and ports, *Atmos. Chem. Phys.*, 9(6), 2171–2194, doi:10.5194/acp-9-2171-2009, 2009.
- 465 EC, Air Quality Standards, [online] Available from: <http://ec.europa.eu/environment/air/quality/standards.htm>, 2018.
EEA: The Impact of International Shipping on European Air Quality and Climate Forcing, Copenhagen., 2013.
EEA: Global search on data, maps and indicators, [online] Available from: https://www.eea.europa.eu/data-and-maps/find/global?c12=station&search=Search#c0=12&c6=air&c1=Data&c1=Graph&c1=Indicator&c1=Infographic&c1=Interactive data&c1=Interactive map&c1=Map&b_start=0&c12=Annual mean concentrations 2015, 2020.
- 470 EMEP/CEIP: No Title, Emiss. as used EMEP Model. [online] Available from: http://www.ceip.at/ms/ceip_home1/ceip_home/webdab_emepdatabase/emissions_emepmodels/, 2018.
Eyring, V., Stevenson, D. S., Lauer, A., Dentener, F. J., Butler, T., Collins, W. J., Ellingsen, K. and Gauss, M.: and Physics Multi-model simulations of the impact of international shipping on Atmospheric Chemistry and Climate in 2000 and 2030, , 757–780, 2007.
- 475 Eyring, V., Isaksen, I., Berntsen, T., Collins, W., Corbett, J., Endresen, O., Grainger, R., Moldanova, J., Schlager, H. and Stevenson, D.: Transport impacts on atmosphere and climate: Shipping, *Atmos. Environ.*, 44(37), 4735–4771, doi:10.1016/j.atmosenv.2009.04.059, 2009.
Fan, Q., Zhang, Y., Ma, W., Ma, H., Feng, J., Yu, Q., Yang, X., Ng, S. K. W., Fu, Q. and Chen, L.: Spatial and Seasonal Dynamics of Ship Emissions over the Yangtze River Delta and East China Sea and Their Potential Environmental Influence, 480 *Environ. Sci. Technol.*, acs.est.5b03965, doi:10.1021/acs.est.5b03965, 2016.
Global Ocean Associates: Iberian Peninsula – Atlantic Coast, An Atlas Intern. Solitary-like Waves Their Prop. [online] Available from: http://www.internalwaveatlas.com/Atlas2_PDF/IWAtlas2_Pg087_IberianPeninsula.pdf (Accessed 24 July 2018a), 2004.
Global Ocean Associates: Mediterranean Sea, An Atlas Ocean. Intern. Solitary Waves [online] Available from: 485 http://www.internalwaveatlas.com/Atlas2_PDF/IWAtlas2_Pg105_MediterraneanSea.pdf (Accessed 24 July 2018b), 2004.
Global Ocean Associates: Strait of Gibraltar, An Atlas Ocean. Intern. Solitary Waves [online] Available from:

- http://www.internalwaveatlas.com/Atlas2_PDF/IWAtlas2_Pg179_StraitofGibraltar.pdf (Accessed 24 July 2018c), 2004.
- van der Gon, H. A. C., Kuenen, J. J. P., Janssens-Maenhout, G., Döring, U., Jonkers, S. and Visschedijk, A.: TNO_CAMS high resolution European emission inventory 2000–2014 for anthropogenic CO₂ and future years following two different pathways, *Earth Syst. Sci. Data Discuss.*, 2017, 1–30, doi:10.5194/essd-2017-124, 2017.
- IMO: Third IMO Greenhouse Gas Study 2014 - Executive Summary, , 1–26, 2015.
- Jalkanen, J.-P., Brink, a., Kalli, J., Pettersson, H., Kukkonen, J. and Stipa, T.: A modelling system for the exhaust emissions of marine traffic and its application in the Baltic Sea area, *Atmos. Chem. Phys. Discuss.*, 9(4), 15339–15373, doi:10.5194/acpd-9-15339-2009, 2009.
- 495 Jalkanen, J. P., Johansson, L., Kukkonen, J., Brink, A., Kalli, J. and Stipa, T.: Extension of an assessment model of ship traffic exhaust emissions for particulate matter and carbon monoxide, *Atmos. Chem. Phys.*, 12(5), 2641–2659, doi:10.5194/acp-12-2641-2012, 2012.
- Johansson, L., Jalkanen, J. P., Kalli, J. and Kukkonen, J.: The evolution of shipping emissions and the costs of regulation changes in the northern EU area, *Atmos. Chem. Phys.*, doi:10.5194/acp-13-11375-2013, 2013.
- 500 Johansson, L., Jalkanen, J. P. and Kukkonen, J.: Global assessment of shipping emissions in 2015 on a high spatial and temporal resolution, *Atmos. Environ.*, doi:10.1016/j.atmosenv.2017.08.042, 2017.
- Jonson, J. E., Stohl, A., Fiore, A. M., Hess, P., Szopa, S., Wild, O., Zeng, G., Dentener, F. J., Lupu, A., Schultz, M. G., Duncan, B. N., Sudo, K., Wind, P., Schulz, M., Marmer, E., Cuvelier, C., Keating, T., Zuber, A., Valdebenito, A., Dorokhov, V., De Backer, H., Davies, J., Chen, G. H., Johnson, B., Tarasick, D. W., Stübi, R., Newchurch, M. J., von der Gathen, P., Steinbrecht, W. and Claude, H.: A multi-model analysis of vertical ozone profiles, *Atmos. Chem. Phys.*, 10(12), 5759–5783, doi:10.5194/acp-10-5759-2010, 2010.
- Jonson, J. E., Jalkanen, J. P., Johansson, L., Gauss, M. and Van Der Gon, H. A. C. D.: Model calculations of the effects of present and future emissions of air pollutants from shipping in the Baltic Sea and the North Sea, *Atmos. Chem. Phys.*, doi:10.5194/acp-15-783-2015, 2015.
- 510 Jonson, J. E., Jalkanen, J.-P., Schulz, M., Johansson, L. and Fagerli, H.: Effects of international shipping on European pollution levels, in *SHIPPING AND THE ENVIRONMENT - From Regional to Global Perspectives*, p. 13, Gothenburg., 2017.
- Karl, M., Jonson, J. E., Uppstu, A., Prank, M., Jalkanen, J.-P., Johansson, L., Quante, M. and Matthias, V.: Effects of ship emissions in the Baltic Sea region simulated with three different chemistry transport models, in *SHIPPING AND THE ENVIRONMENT - From Regional to Global Perspectives*, p. 7, Gothenburg., 2017.
- 515 Karl, M., Jonson, J. E., Uppstu, A., Aulinger, A., Prank, M., Sofiev, M., Jalkanen, J.-P., Johansson, L., Quante, M. and Matthias, V.: Effects of ship emissions on air quality in the Baltic Sea region simulated with three different chemistry transport models, *Atmos. Chem. Phys.*, 19(10), 7019–7053, doi:10.5194/acp-19-7019-2019, 2019.
- Klimont, Z., Kupiainen, K., Heyes, C., Purohit, P., Cofala, J., Rafaj, P., Borken-Kleefeld, J. and Schöpp, W.: Global anthropogenic emissions of particulate matter including black carbon, *Atmos. Chem. Phys.*, 17(14), 8681–8723, doi:10.5194/acp-17-8681-2017, 2017.
- 520

- Lauer, A., Eyring, V., Hendricks, J., Jöckel, P. and Lohmann, U.: Global model simulations of the impact of ocean-going ships on aerosols, clouds, and the radiation budget, *Atmos. Chem. Phys.*, 7(19), 5061–5079, doi:10.5194/acp-7-5061-2007, 2007.
- Liu, Z., Lu, X., Feng, J., Fan, Q., Zhang, Y. and Yang, X.: Influence of Ship Emissions on Urban Air Quality: A Comprehensive Study Using Highly Time-Resolved Online Measurements and Numerical Simulation in Shanghai, *Environ. Sci. Technol.*, 51(1), 202–211, doi:10.1021/acs.est.6b03834, 2017.
- Marelle, L., Thomas, J. L., Raut, J., Law, K. S., Jalkanen, J., Johansson, L., Roiger, A., Schlager, H., Kim, J., Reiter, A., Weinzierl, B., Ipsi, L., Marelle, L. and Thomas, J. L.: Air quality and radiative impacts of Arctic shipping emissions in the summertime in northern Norway : from the local to the regional scale, , (x), 2359–2379, doi:10.5194/acp-16-2359-2016, 2016.
- Marmmer, E. and Langmann, B.: Impact of ship emissions on the Mediterranean summertime pollution and climate: A regional model study, *Atmos. Environ.*, 39(26), 4659–4669, doi:10.1016/j.atmosenv.2005.04.014, 2005.
- Matthias, V., Aulinger, A., Backes, A., Bieser, J., Geyer, B., Quante, M. and Zeretzke, M.: The impact of shipping emissions on air pollution in the greater North Sea region-Part 2: Scenarios for 2030, *Atmos. Chem. Phys.*, 16(2), 759–776, doi:10.5194/acp-16-759-2016, 2016.
- Merico, E., Donato, A., Gambaro, A., Cesari, D., Gregoris, E., Barbaro, E., Dinoi, A., Giovanelli, G., Masieri, S. and Contini, D.: Influence of in-port ships emissions to gaseous atmospheric pollutants and to particulate matter of different sizes in a Mediterranean harbour in Italy, *Atmos. Environ.*, 139, 1–10, doi:10.1016/j.atmosenv.2016.05.024, 2016.
- Merico, E., Gambaro, A., Argiriou, A., Alebic-Juretic, A., Barbaro, E., Cesari, D., Chasapidis, L., Dimopoulos, S., Dinoi, A., Donato, A., Giannaros, C., Gregoris, E., Karagiannidis, A., Konstandopoulos, A. G., Ivošević, T., Liora, N., Melas, D., Mifka, B., Orlić, I., Poupkou, A., Sarovic, K., Tsakis, A., Giua, R., Pastore, T., Nocioni, A. and Contini, D.: Atmospheric impact of ship traffic in four Adriatic-Ionian port-cities: Comparison and harmonization of different approaches, *Transp. Res. Part D Transp. Environ.*, 50, 431–445, doi:https://doi.org/10.1016/j.trd.2016.11.016, 2017.
- Monteiro, A., Russo, M., Gama, C. and Borrego, C.: How important are maritime emissions for the air quality: At European and national scale, *Environ. Pollut.*, 242, 565–575, doi:10.1016/J.ENVPOL.2018.07.011, 2018.
- Ng, S. K. W., Loh, C., Lin, C., Booth, V., Chan, J. W. M., Yip, A. C. K., Li, Y. and Lau, A. K. H.: Policy change driven by an AIS-assisted marine emission inventory in Hong Kong and the Pearl River Delta, *Atmos. Environ.*, 76, 102–112, doi:10.1016/j.atmosenv.2012.07.070, 2013.
- Norwegian Meteorological Institute: EMEP/MSW Model Unofficial User’s Guide., 2017a.
- Norwegian Meteorological Institute: EMEP Status Report 1/2017 “Transboundary particulate matter, photo-oxidants, acidifying and eutrophying components.”, 2017b.
- Norwegian Meteorological Institute: EMEP publications from MSC-W, [online] Available from: http://emep.int/mscw/mscw_publications.html, 2018.
- Norwegian Meteorological Institute: MET Norway Thredds Service, [online] Available from: https://thredds.met.no/thredds/catalog/data/EMEP/2017_Reporting/catalog.html, 2019.
- Nunes, R. A. O., Alvim-Ferraz, M. C. M., Martins, F. G. and Sousa, S. I. V.: Assessment of shipping emissions on four ports

- 555 of Portugal, *Environ. Pollut.*, 231, doi:10.1016/j.envpol.2017.08.112, 2017a.
- Nunes, R. A. O., Alvim-Ferraz, M. C. M., Martins, F. G. and Sousa, S. I. V.: The activity-based methodology to assess ship emissions - A review, *Environ. Pollut.*, 231, doi:10.1016/j.envpol.2017.07.099, 2017b.
- Pandolfi, M., Gonzalez-Castanedo, Y., Alastuey, A., de la Rosa, J. D., Mantilla, E., de la Campa, A. S., Querol, X., Pey, J., Amato, F. and Moreno, T.: Source apportionment of PM₁₀ and PM_{2.5} at multiple sites in the strait of Gibraltar by PMF: 560 impact of shipping emissions, *Environ. Sci. Pollut. Res.*, 18(2), 260–269, doi:10.1007/s11356-010-0373-4, 2011.
- Prank, M., Sofiev, M., Tsyro, S., Hendriks, C., Semeena, V., Vazhappilly Francis, X., Butler, T., van der Gon, H., Friedrich, R., Hendricks, J., Kong, X., Lawrence, M., Righi, M., Samaras, Z., Sausen, R., Kukkonen, J. and Sokhi, R.: Evaluation of the performance of four chemical transport models in predicting the aerosol chemical composition in Europe in 2005, *Atmos. Chem. Phys.*, 16(10), 6041–6070, doi:10.5194/acp-16-6041-2016, 2016.
- 565 Ramacher, M. O. P., Karl, M., Bieser, J., Jalkanen, J.-P. and Johansson, L.: Urban population exposure to NO_x emissions from local shipping in three Baltic Sea harbour cities -- a generic approach, *Atmos. Chem. Phys.*, 19(14), 9153–9179, doi:10.5194/acp-19-9153-2019, 2019.
- Reuters: China's stricter rules on shipping emissions a boon for IMO 2020 compliance -Woodmac, [online] Available from: <https://af.reuters.com/article/commoditiesNews/idAFL4N1UK3QP>, 2018.
- 570 Russo, M. A., Leitão, J., Gama, C., Ferreira, J. and Monteiro, A.: Shipping emissions over Europe: A state-of-the-art and comparative analysis, *Atmos. Environ.*, doi:10.1016/j.atmosenv.2018.01.025, 2018.
- Simpson, D., Benedictow, A., Berge, H., Bergström, R., Emberson, L. D., Fagerli, H., Flechard, C. R., Hayman, G. D., Gauss, M., Jonson, J. E., Jenkin, M. E., Nyíri, A., Richter, C., Semeena, V. S., Tsyro, S., Tuovinen, J.-P., Valdebenito, A. and Wind, P.: The EMEP MSC-W chemical transport model – technical description, *Atmos. Chem. Phys. Atmos. Chem. Phys.*, 575 doi:10.5194/acp-12-7825-2012, 2012.
- Soares, J., Sofiev, M., Geels, C., Christensen, J. H., Andersson, C., Tsyro, S. and Langner, J.: Impact of climate change on the production and transport of sea salt aerosol on European seas, *Atmos. Chem. Phys.*, 16(20), 13081–13104, doi:10.5194/acp-16-13081-2016, 2016.
- Sofiev, M., Winebrake, J. J., Johansson, L., Carr, E. W., Prank, M., Soares, J., Vira, J., Kouznetsov, R., Jalkanen, J. P. and 580 Corbett, J. J.: Cleaner fuels for ships provide public health benefits with climate tradeoffs, *Nat. Commun.*, 9(1), doi:10.1038/s41467-017-02774-9, 2018.
- Song, S. K. and Shon, Z. H.: Current and future emission estimates of exhaust gases and particles from shipping at the largest port in Korea, *Environ. Sci. Pollut. Res.*, 21(10), 6612–6622, doi:10.1007/s11356-014-2569-5, 2014.
- Sotiropoulou, R. E. P. and Tagaris, E.: *Perspectives on Atmospheric Sciences*, (January 2006), 1043–1049, doi:10.1007/978-585 3-319-35095-0, 2017.
- Turner, D. R., Edman, M., Gallego-Urrea, J. A., Claremar, B., Hassellöv, I.-M., Omstedt, A. and Rutgersson, A.: The potential future contribution of shipping to acidification of the Baltic Sea, in *SHIPPING AND THE ENVIRONMENT - From Regional to Global Perspectives*, p. 51, Gothenburg., 2017.

UNCTAD: Review of Maritime Transporte, 2017., 2017.

- 590 Viana, M., Hammingh, P., Colette, A., Querol, X., Degraeuwe, B., Vlieger, I. de and van Aardenne, J.: Impact of maritime transport emissions on coastal air quality in Europe, *Atmos. Environ.*, 90, 96–105, doi:10.1016/j.atmosenv.2014.03.046, 2014.
- Viana, M., Fann, N., Tobías, A., Querol, X., Rojas-Rueda, D., Plaza, A., Aynos, G., Conde, J. A., Fernández, L. and Fernández, C.: Environmental and Health Benefits from Designating the Marmara Sea and the Turkish Straits as an Emission Control Area (ECA), *Environ. Sci. Technol.*, 49(6), 3304–3313, doi:10.1021/es5049946, 2015.
- 595 Vutukuru, S. and Dabdub, D.: Modeling the effects of ship emissions on coastal air quality : A case study of southern California, , 42, 3751–3764, doi:10.1016/j.atmosenv.2007.12.073, 2008.
- Wang, X., Shen, Y., Lin, Y., Pan, J., Zhang, Y., Louie, P. K. K., Li, M. and Fu, Q.: Atmospheric pollution from ships and its impact on local air quality at a port site in Shanghai, *Atmos. Chem. Phys.*, 19(9), 6315–6330, doi:10.5194/acp-19-6315-2019, 2019.
- 600 WHO: Ambient (outdoor) air quality and health, WHO Air Qual. Guidel. values [online] Available from: [http://www.who.int/news-room/fact-sheets/detail/ambient-\(outdoor\)-air-quality-and-health](http://www.who.int/news-room/fact-sheets/detail/ambient-(outdoor)-air-quality-and-health), 2018.
- Wiedinmyer, C., Akagi, S. K., Yokelson, R. J., Emmons, L. K., Al-Saadi, J. A., Orlando, J. J. and Soja, A. J.: The Fire INventory from NCAR (FINN): a high resolution global model to estimate the emissions from open burning, *Geosci. Model Dev.*, 4(3), 625–641, doi:10.5194/gmd-4-625-2011, 2011.
- 605 Zhang, Y., Yang, X., Brown, R., Yang, L., Morawska, L., Ristovski, Z., Fu, Q. and Huang, C.: Shipping emissions and their impacts on air quality in China, *Sci. Total Environ.*, 581–582, 186–198, doi:10.1016/j.scitotenv.2016.12.098, 2017.
- Zhang, Y., Feng, J., Liu, C., Zhao, J., Ma, W., Huang, C., An, J., Shen, Y., Fu, Q., Wang, S., Ding, D., Ge, W., Fung, F., Manokaran, K., Patton, A. P., Walker, K. D. and Kan, H.: Impacts of Shipping on Air Pollutant Emissions, Air Quality, and Health in the Yangtze River Delta and Shanghai, China Special Report 22, Boston, MA., 2019.

610

Table 1. Model quality indicators for the present study estimations and for the reference results reported by EMEP.

Indicators	This study			EMEP reference		
	PM _{2.5}	PM ₁₀	NO ₂	PM _{2.5}	PM ₁₀	NO ₂
Pearson's r	0.57	0.55	0.70	0.64	0.55	0.67
MBE ($\mu\text{g m}^{-3}$) ^a	1.32	19.51	5.78	0.34	18.70	5.19
MAE ($\mu\text{g m}^{-3}$) ^b	2.86	19.55	8.70	2.81	18.74	9.18
RMSE ($\mu\text{g m}^{-3}$) ^c	3.62	20.83	11.24	3.59	20.11	11.90

^a Mean Bias Error; ^b Mean Absolute Error; ^c Root Mean Square Error

615 **Table 2.** Annual mean amounts of emitted air pollutants from shipping and from land-based anthropogenic sources during 2015 (in tonne y⁻¹)

Pollutant	Shipping	Land-based emissions ^a	Road transport emissions
Ash	3.3E+03	-	-
EC	4.5E+03	-	-
OC	1.1E+04	-	-
NO_x	7.1E+05	1.6E+06	6.6E+05
SO_x	3.6E+05	5.8E+05	7.1E+03
Sulphate	3.2E+04	-	-
CO₂	3.0E+07	-	-
CO	4.9E+04	3.6E+06	5.7E+05
Total	3.1E+07	-	-

^a Emissions from 11 SNAP sectors, namely, public electricity and heat production, industry, other stationary combustion sources, fugitive emissions, solvents, road transport, aviation, off-road sources, waste, agriculture livestock, agriculture other sources and other sources.

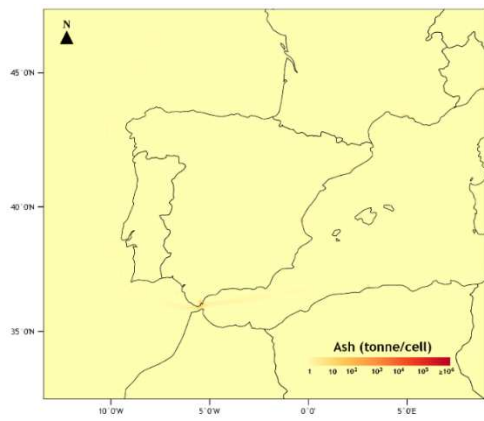
Table 3. Annual average and highest intensities of NO_x and SO_x (in tonnes/yr/km²) reported from researches in Asian Region.

Study	Port/sea area	NO _x		SO _x	
		Annual average	Highest value	Annual average	Highest value
Chen et al. (2016a)	Tianjin Port	5.06	1.51E+03	7.14	1.79E+03
Chen et al. (2017)	Qingdao Port	1.83	-	1.42	-
Fan et al. (2016)	East China Sea	1.0	1.0E+04	1.90	1.30E+03
Ng et al. (2013)	Hong Kong	-	1.1E+02		2.0E+02

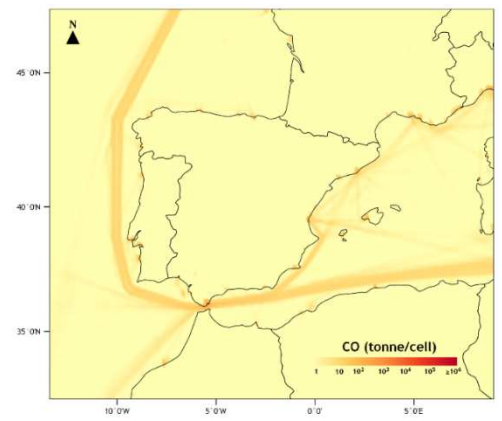
620

Table 4. Seasonal amounts of emitted air pollutants from shipping in the Iberian Peninsula in 2015 (in tonne y⁻¹)

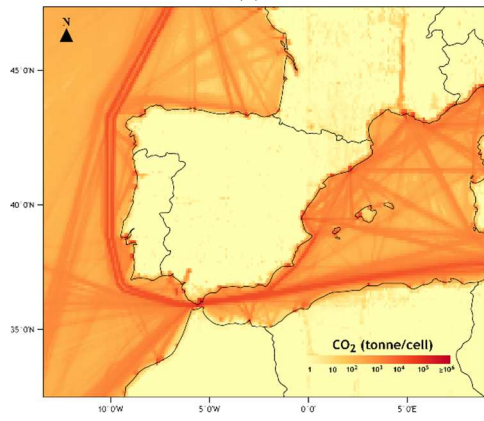
Pollutant	Spring	Summer	Autumn	Winter	Total
Ash	0.85	0.87	0.83	0.77	3.3
EC	1.2	1.2	1.1	1.0	4.5
OC	2.9	3.0	2.8	2.6	11
NO_x	1.8E+02	1.9E+02	1.8E+02	1.6E+02	7.1E+02
SO_x	92	94	91	85	36
Sulphate	8.3	8.4	8.1	7.6	32
CO₂	7.8E+03	8.0E+03	7.6E+03	7.0E+03	3.0E+04
CO	13	13	12	12	49
Total	8.3E+03	8.3E+03	7.9E+03	7.2E+03	3.1E+04



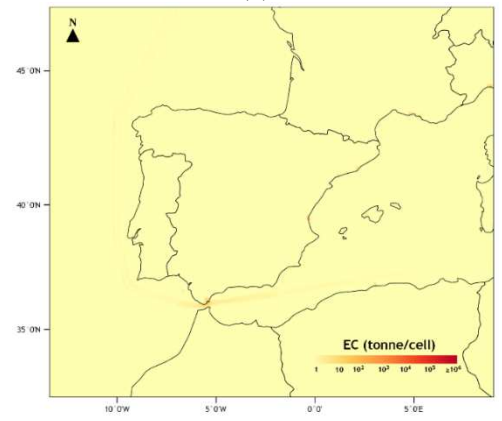
(a)



(b)

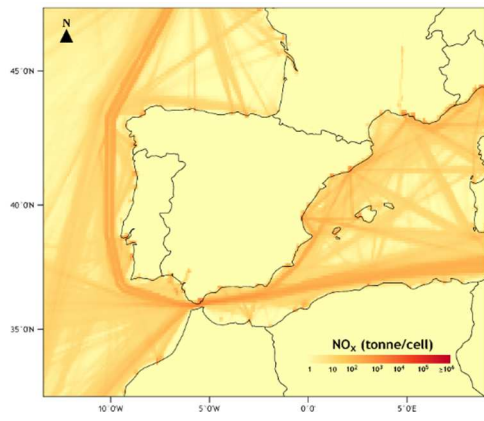


(c)

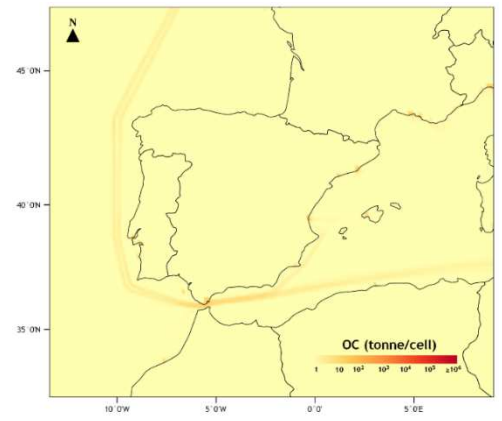


(d)

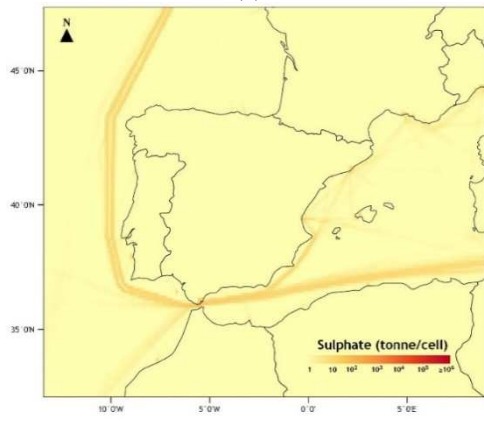
625 **Figure 1:** Shipping emissions of a) ash; b) CO; c) CO₂; d) EC; e) NO_x; f) OC; g) sulphate and h) SO_x in the study domain for 2015



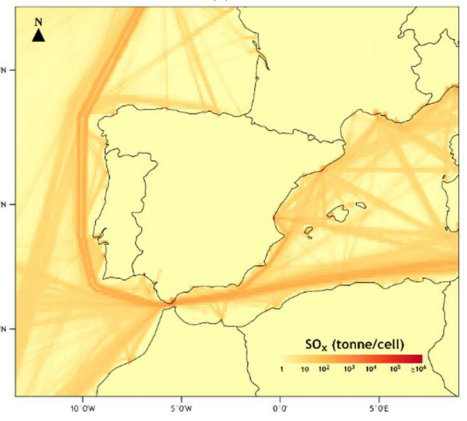
(e)



(f)



(g)



(h)

Figure 1 (continued): Shipping emissions of a) ash; b) CO; c) CO₂; d) EC; e) NO_x; f) OC; g) sulphate and h) SO_x in the study domain for 2015

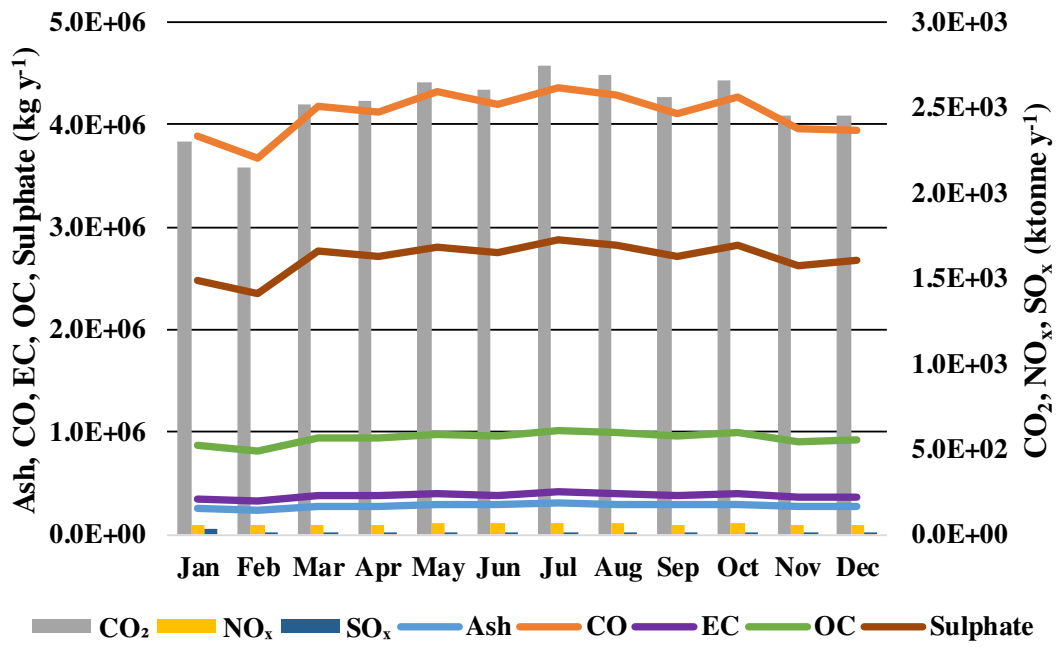
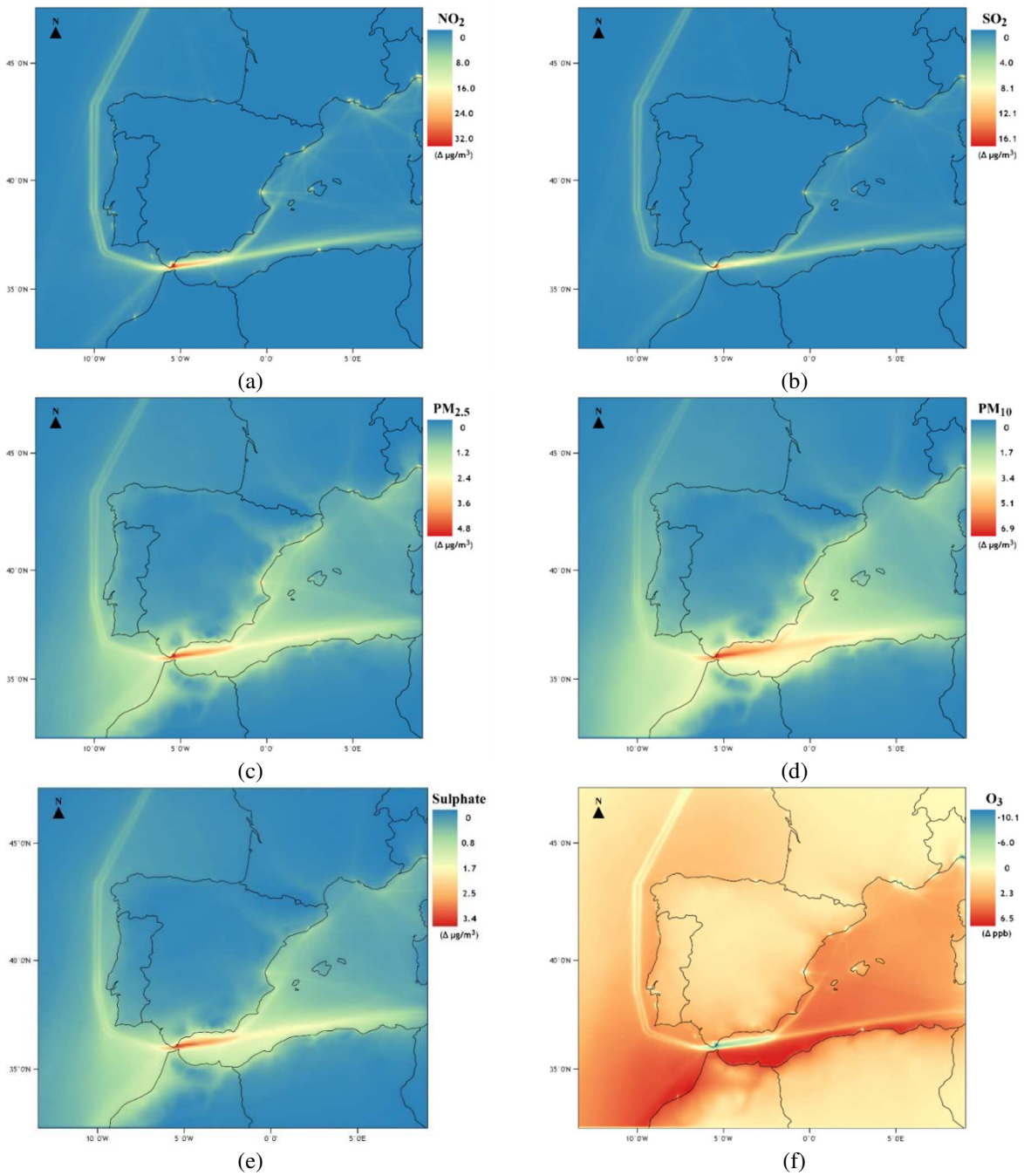


Figure 2: Monthly amounts of CO₂, NO_x and SO_x in ktonne y⁻¹ (bars-right axis) and ash, CO, EC, OC and sulphate in kg y⁻¹ (lines-left axis) shipping emissions in the study domain during 2015



635 **Figure 3:** Contribution of shipping emissions to annual mean surface concentrations of a) NO₂; b) SO₂; c) PM_{2.5}; d) PM₁₀; e) sulphate; f) O₃ in the study domain in 2015 (Δ =S-SCN - B-SCN)

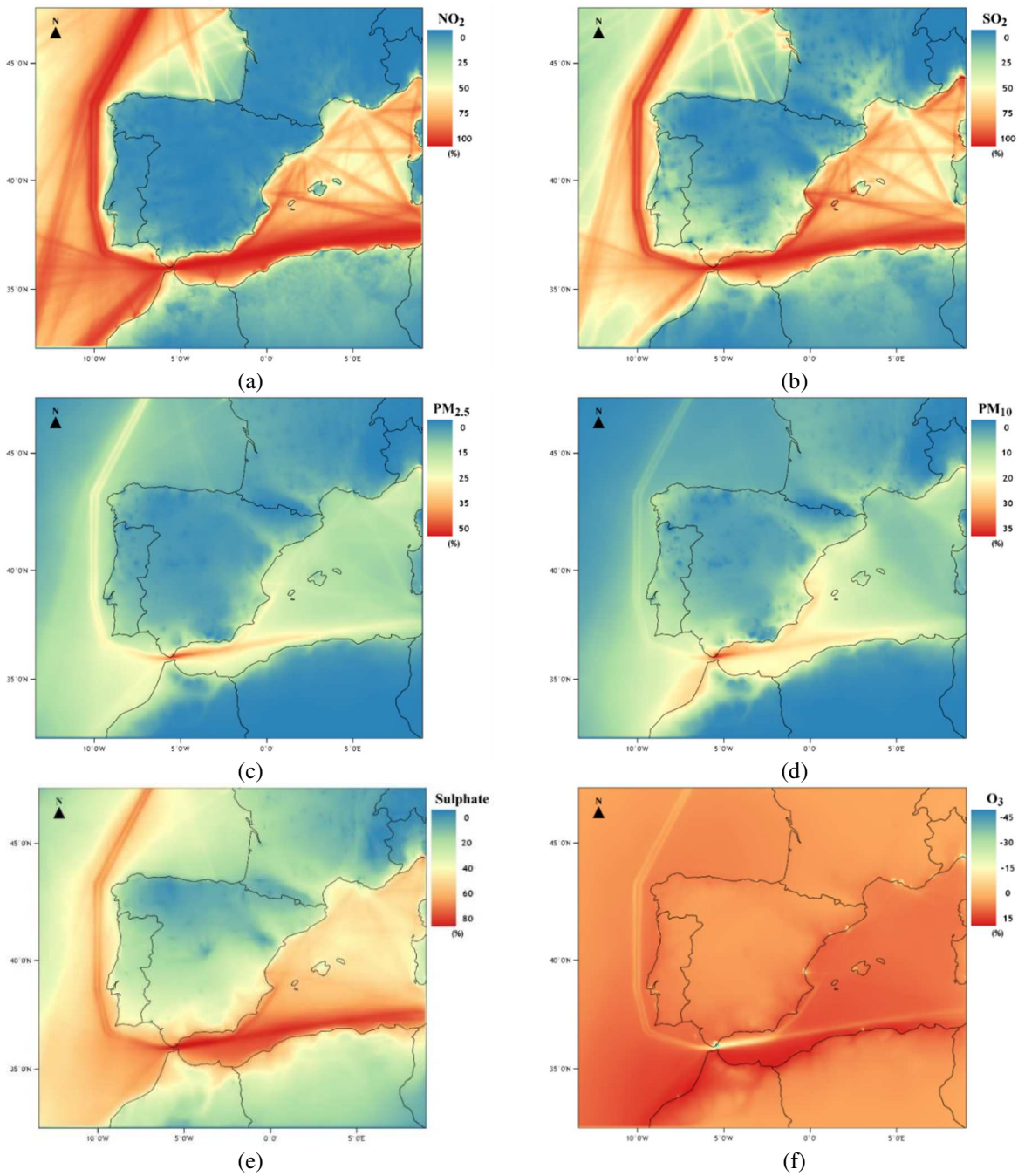


Figure 4. Contribution of shipping emissions (%) to annual mean concentrations of a) NO₂; b) SO₂; c) PM_{2.5}; d) PM₁₀; e) sulphate and f) O₃ for 2015

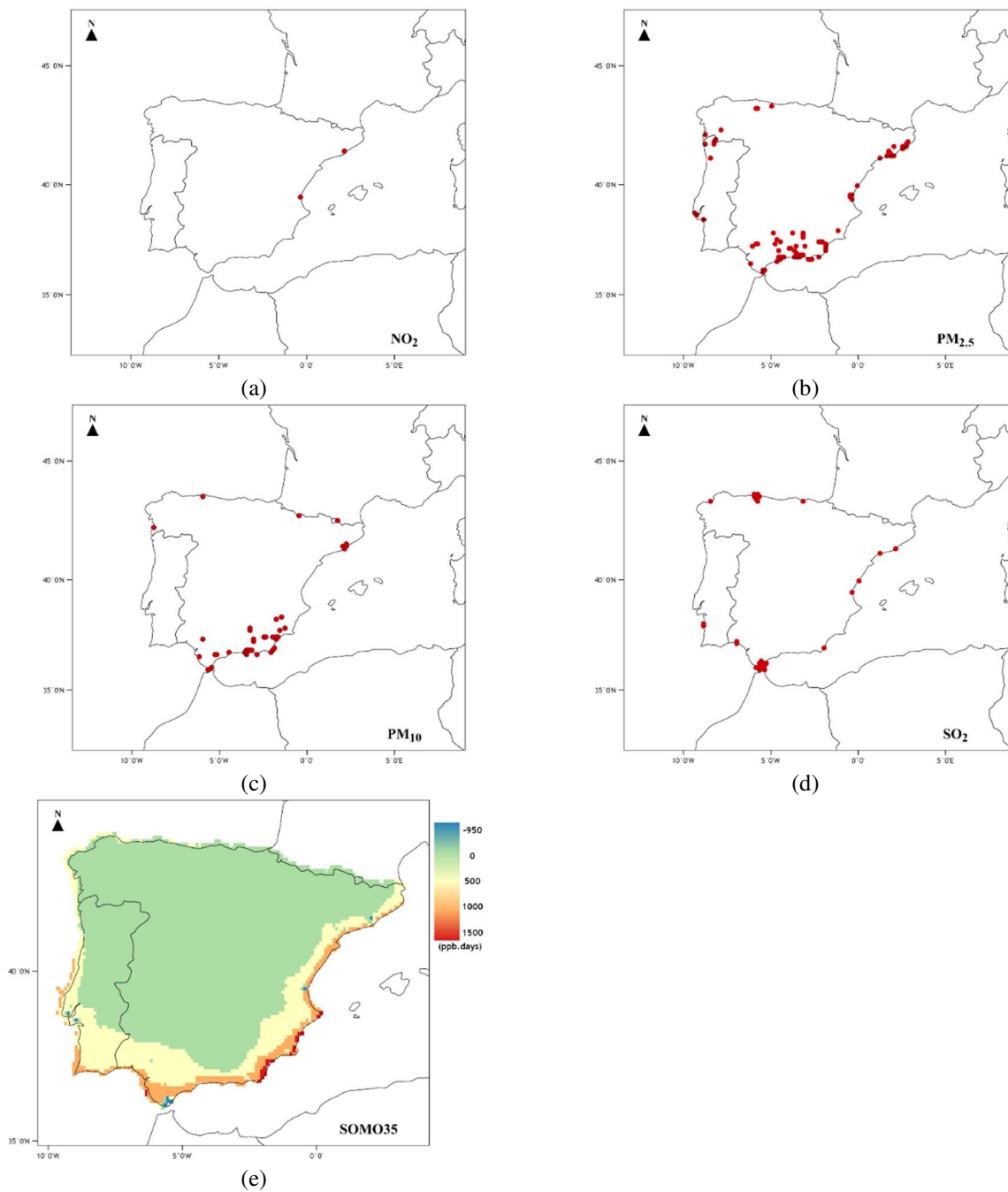
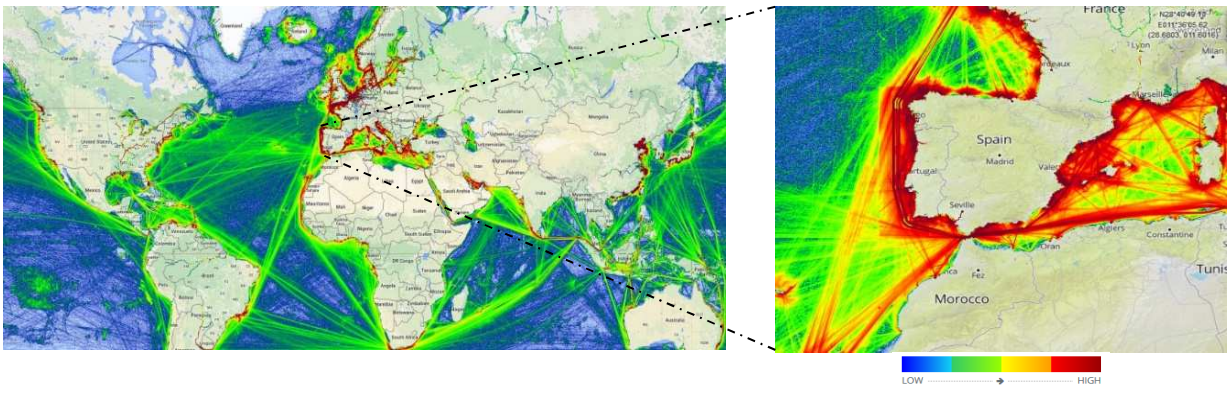


Figure 5: Spatial distribution of the inland exceedances for a) NO₂ to EU air quality standards and WHO air quality guidelines (same value); b) PM_{2.5}; c) PM₁₀ and d) SO₂ to WHO air quality guidelines and e) SOMO35 levels due to shipping emissions contributions.

640

Appendix A

This appendix contains the spatial distribution of world shipping traffic density and a zoom of the study area for 2015, as well as the spatial distribution of the contribution of shipping emissions in terms of concentration increment to the inland exceedances.



645

Figure A1. World shipping traffic density map and a zoom of the study area for 2015 (source: Marine Traffic, 2016).

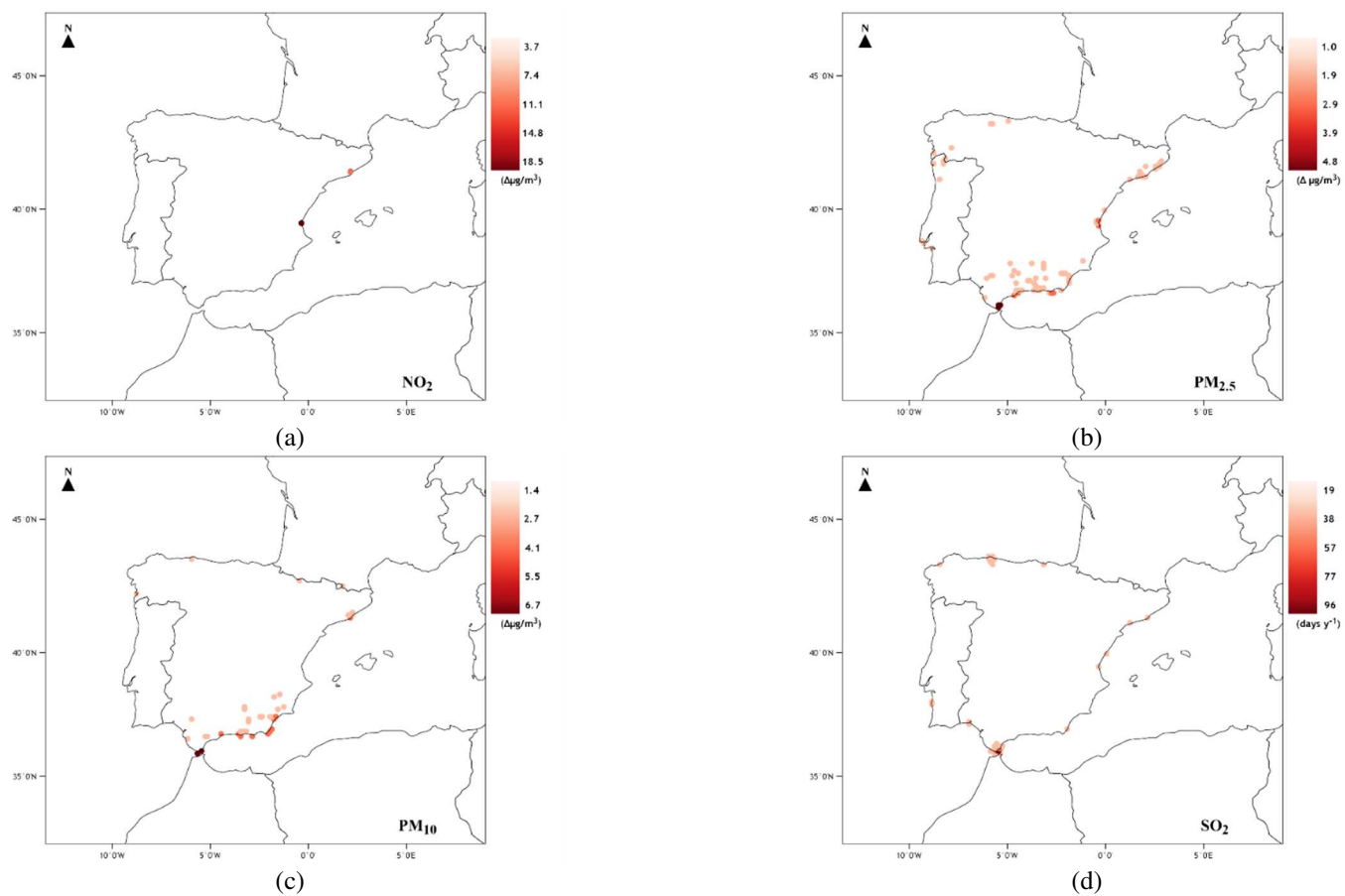


Figure A2. –Spatial distribution of the contribution of shipping emissions (concentration increment) to the inland exceedances for a) NO₂; b) PM_{2.5} and c) PM₁₀ and number of days per year that the threshold value was exceeded in a given grid cell for d) SO₂.