

Observation of absorbing aerosols above clouds over the South-East Atlantic Ocean from the geostationary satellite SEVIRI

Part 2: Comparison with MODIS and aircraft measurements from the CLARIFY-2017 field campaign

Fanny Peers¹, Peter Francis², Steven J. Abel², Paul A. Barrett², Keith N. Bower³, Michael I. Cotterell^{1,2,4}, Ian Crawford³, Nicholas W. Davies^{1,2}, Cathryn Fox², Stuart Fox², Justin M. Langridge², Kerry G. Meyer⁵, Steven E. Platnick⁵, Kate Szpek², Jim M. Haywood^{1,2}

¹ College of Engineering, Mathematics, and Physical Sciences, University of Exeter, Exeter, UK

² Met Office, Fitzroy Road, Exeter, UK

³ Centre for Atmospheric Science, School of Earth and Environmental Science, University of Manchester, Manchester, UK

⁴ Now at: School of Chemistry, University of Bristol, Bristol, UK

Abstract

To evaluate the SEVIRI retrieval for aerosols above clouds presented in the companion paper (Part 1), the algorithm is applied over the South East Atlantic Ocean during the CLARIFY-2017 field campaign period. The first step of our analysis compares the retrieved aerosol and cloud properties against equivalent products from the MODIS MOD06ACAERO retrieval (Meyer et al., 2015). While the correlation between the two satellite retrievals of the above-cloud Aerosol Optical Thickness (AOT) is good, the AOT retrieved by SEVIRI is 16.5% smaller than that obtained from the MODIS retrieval. This difference in AOT is attributed mainly to the more absorbing aerosol model assumed for the SEVIRI retrieval compared to MODIS. The underlying Cloud Optical Thickness (COT) derived from the two satellites are in good agreement. The Cloud droplet Effective Radius (CER) retrieved by SEVIRI is consistently smaller than MODIS by $\sim 2 \mu\text{m}$, which is mainly caused by the different spectral bands of the satellite instruments. In the second part of our analysis, we compare the forecast water vapour profiles used for the SEVIRI atmospheric correction as well as the aforementioned aerosol and cloud products with in situ measurements made from a research aircraft platform during the CLARIFY-2017 campaign. Around Ascension Island, the amount of water vapour used to correct the SEVIRI signal is overestimated by 3.1 mm in the forecast compared to that measured by dropsondes. However, the evidence suggests that the accuracy of the atmospheric correction improves closer to the African coast. Good consistency is observed between the SEVIRI above-cloud AOT and in situ measurements (from cavity ring-down spectroscopy instruments) when the measured single scattering albedo is close to that assumed in the retrieval algorithm. On the other hand, the satellite retrieval overestimates the AOT when the assumed aerosol model is not absorbing enough. Good agreement is also found between the cloud properties retrieved by SEVIRI and the CER measured by a cloud droplet probe and the liquid water path derived from a microwave radiometer. Despite the instrumental limitations of the geostationary satellite, the consistency obtained between SEVIRI, MODIS and the aircraft measurements demonstrates the ability of the retrieval to provide additional information on the temporal evolution of the aerosol properties above clouds.

1. Introduction

To accurately predict future climate, it is essential to reduce the uncertainty in the representation of aerosols, clouds and their radiative impacts in climate models (Myhre et al., 2013). Therefore, new in situ and remote sensing strategies are needed to improve our understanding of aerosol-cloud-radiation interactions and to constrain models (Seinfeld et al., 2016). The South East Atlantic Ocean (SEAO) is an ideal region to analyse the effects of aerosols on the radiative budget, the atmospheric stability, clouds and precipitation. The biomass burning aerosols emitted from July to October in southern Africa are mostly transported westward through the free troposphere (Abel et al., 2019). These absorbing particles are then frequently observed above the extensive stratocumulus deck covering the SEAO. For this reason, the region has been the focus of much work over the past few years. Using aircraft and surface-based instrumentation suites, large scale field campaigns have been deployed in 2016-2018 (Zuidema et al., 2016), within the NASA ORACLES (ObseRvations of Aerosols above CLouds and their intERactionS; Redemann et al., 2019), the US DOE LASIC (Layered Atlantic Smoke Interactions with Clouds; Zuidema et al., 2016), the French AEROCLO-sA (AErosol RadiatiOn and CLouds in Southern Africa; Formenti et al., 2019) and the UK CLARIFY (CLouds and Aerosol Radiative Impacts and Forcing for Year 2017, Haywood et al., 2019) programs. Airborne in situ instruments, active and passive remote sensing instruments, radiosondes as well as continuous ground-based measurements have been deployed to characterise the biomass burning aerosols, clouds and radiation. In addition to improving our knowledge about the aerosol-cloud-radiation interaction processes and constrain numerical models, this dataset provides for the first time, direct observations in aerosol-above-cloud conditions to validate emerging satellite retrievals.

Until recently, aerosol retrievals from passive satellites were limited to cloud-free skies and their validation was performed against the widely available dataset of ground-based measurements such as aerosol optical depth from the AERONET sun-photometer network. In the past few years, there has been a growing interest in developing methods to quantify aerosols above clouds from space because absorbing aerosols above cloud have long been recognised to exert a significant, but poorly quantified, positive radiative effect (e.g. Keil and Haywood, 2003). While lidar retrievals of aerosol above cloud have been available for some time from the active CALIOP instrument (Hu et al., 2007; Chand et al., 2008; Liu et al., 2014), retrievals of aerosols from passive instrumentation have also been developed. Studies based on the OMI (Torres et al., 2012), SCIAMACHY (de Graaf et al., 2012), MODIS (Jethva et al., 2013; Meyer et al., 2015, Sayer et al., 2016) and POLDER (Waquet et al., 2013; Peers et al., 2015) satellites have already demonstrated the potential of retrieving both cloud properties and above-cloud Aerosol Optical Thickness (AOT) from passive sensors or deriving the direct radiative effect of aerosols above clouds. Intercomparisons of the results from the A-train constellation have been performed to evaluate the consistency between satellite retrievals (Jethva et al., 2014; Deaconu et al., 2017). Despite independent techniques and/or instruments being compared, this type of analysis cannot be considered as a “true” validation exercise. To provide an independent validation of the above-cloud AOT from the MODIS “colour-ratio” method, Jethva et al. (2016) used airborne measurements from previous aircraft measurement campaigns. However, more direct comparison of aerosol and cloud properties are now possible with the measurements made during the latest field experiments. Data collected during ORACLES have recently been used to evaluate the above-cloud AOT retrieved by the updated Deep Blue algorithm that is used in aerosol retrievals from the MODIS satellite (Sayer et al., 2019).

In the companion (Part 1) paper (Peers et al., 2019), an algorithm to retrieve aerosols above clouds from the geostationary SEVIRI instrument was presented. The first step of the method consists of correcting the SEVIRI-measured reflectances for the large impact of the transmittance of atmospheric gases. This correction uses water vapour concentration profiles from the Met Office Unified Model forecast. Then, the above-cloud AOT, the Cloud Optical Thickness (COT) and the Cloud droplet Effective Radius (CER) are simultaneously retrieved from the spectral dependence of the signal in the visible to short wave infrared region; this retrieval method is similar to those used to assess aerosol and cloud properties from OMI and MODIS satellite data. The benefit from using data from the SEVIRI instrument is the high temporal frequency of acquisition. With an observation every 15 minutes, the satellite instrument on board the geostationary platform MSG allows tracking of the transport of biomass burning plumes above clouds and monitoring of the evolving of the cloud cover (Chang and Christopher, 2016; Seethala et al., 2018). In Section 2 of this paper, the SEVIRI retrieval will be compared against the aerosol and cloud products from the MODIS retrieval developed by Meyer et al. (2015) to assess the retrieval consistency over space and time. Section 3 is dedicated to the validation of the atmospheric correction scheme, in addition to benchmarking the retrieved aerosol and the cloud properties against the in situ measurements made from an aircraft platform during CLARIFY-2017.

2. Comparison with MODIS

a. Dataset and methodology

The first part of this analysis consists of evaluating the consistency (or lack thereof) between the aerosol and cloud products retrieved from SEVIRI and MODIS. The MODIS MOD06ACAERO approach developed by Meyer et al. (2015) also relies on the colour-ratio effect to retrieve the above-cloud AOT, the COT and the CER. The algorithm uses six channels from the visible to the Short-Wave InfraRed (SWIR). The measurements are compared with precomputed Look Up Tables (LUT) via an optimal estimation method. The cloud properties are the same as those assumed for the MODIS operational cloud retrieval MOD06 (Platnick et al., 2003) and the aerosol model corresponds to the absorbing model used for the MODIS Dark Target Land Aerosol Product MOD04 (Levy et al., 2009). The retrieval is run for both MODIS platforms, Terra and Aqua.

Although the SEVIRI and the MODIS retrieval are based on the same approach, there are inherent differences between the two satellite instruments. For instance, the SEVIRI algorithm uses three spectral bands from 0.64 to 1.64 μm while MODIS has six channels available, which cover a wider range (0.47 to 2.10 μm). The SEVIRI channels are also more affected by absorption from atmospheric gases than the MODIS channels because of their bandwidth and their position in the solar spectrum. Finally, the visible channels of SEVIRI have a sampling distance of 3 km at nadir, as opposed to the 1 km spatial resolution of MODIS. These factors suggest that MODIS retrievals of above-cloud aerosol absorption might be more sensitive and accurate compared to those from SEVIRI. Therefore, it is reasonable to assess the performance of the SEVIRI algorithm by comparing retrieved properties against those from MODIS. Note that, throughout this paper, the subscripts MODIS and SEVIRI refer to the quantity relative to the MOD06ACAERO and the SEVIRI aerosol-above-cloud retrievals respectively.

To ensure the quality of the products used for this comparison, filters have been used for both datasets. The MODIS algorithm provides pixel-level estimates of the retrieval uncertainty.

When the retrieval uncertainty is larger than 100% and/or the COT_{MODIS} is lower than 4, the above-cloud AOT_{MODIS} is rejected. Note that the filter on the AOT uncertainty partly removes the lowest AOTs. Pixels identified as partly cloudy and/or associated with cloud edges are not processed by the MOD06ACAERO retrieval. For SEVIRI, the retrieval is performed for COT_{SEVIRI} larger than 3 and poorly fitted measurements cloud edges, inhomogeneous clouds and observations in the glory backscattering region are removed using criteria described in Peers et al. (2019). Then, the aerosol and cloud properties from both methods are aggregated onto a $0.1^\circ \times 0.1^\circ$ grid. Each MODIS overpass is compared with the closest SEVIRI slot in time, which means that there is never more than 8 minutes between the two satellite observations. Throughout this study, intrinsic optical parameters and derived extrinsic properties such as optical thickness refer to values at an optical wavelength of $0.55 \mu m$.

b. Results

i. Case study

The consistency between the MODIS and SEVIRI retrievals is first assessed for a single case study. The RGB composite of the SEVIRI slot of the 4th September 2017 at 10:15 UTC is shown in Figure 1. The aerosol and cloud properties observed by SEVIRI are presented in Figure 2 together with the MODIS products from the Terra overpasses at 10:00 UTC (east) and 11:40 UTC (west). The map of the above-cloud AOT detected by SEVIRI (fig. 2a) is typical of the SEAO during the fire season. A biomass burning plume is observed close to the source, from $13^\circ S$ to $30^\circ S$ along the African coast. The above-cloud AOT is largest near to Angola, with values up to 1.5. A second plume of moderate intensity ($AOT_{SEVIRI} \approx 0.5$) is detected offshore, around $[10^\circ W, 10^\circ S]$. Between those plumes, the AOT retrieved above clouds by SEVIRI is between 0.0 and 0.3. A very good spatial agreement is observed with the MOD06ACAERO product (fig. 2d), but the values are slightly larger than the SEVIRI AOT. For instance, the local average next to the coast is 0.8 for MODIS against 0.7 for SEVIRI. A strong spatial correlation is also observed between the cloud properties retrieved with SEVIRI (fig. 2b and 2c) and MODIS (fig. 2e and 2f). Both satellites detect shallow clouds with small droplets off the coast of Namibia and optically thicker clouds with larger droplets on the north-west part of the map. However, the CER retrieved by SEVIRI are smaller than the MODIS CER by about $1.5 \mu m$. One can also see that the SEVIRI retrieval rejects more cloudy pixels than the MODIS one, especially in the more broken cloud regions in the south-west part of the map. For methods based on the colour ratio effect, the above-cloud AOT can only be retrieved when the cloud is bright enough. The SEVIRI algorithm rejects both the aerosol and cloud products when the COT is lower than 3 whereas the threshold of 4 on the COT of the MOD06ACAERO retrieval is used to reject the above-cloud AOT product only.

ii. Statistical comparisons

In this section, we extend our comparison of SEVIRI and MODIS retrievals of aerosol and cloud properties to 9 days observations between the 28th August and 5th September 2017 (i.e. during the CLARIFY-2017 deployment of the BAe146 FAAM aircraft). During this time period, there were 34 MODIS overpasses over Terra and Aqua between $0^\circ N - 30^\circ S$ and $20^\circ W - 15^\circ E$. Figure 3 shows the correlation between the SEVIRI and MODIS retrievals of aerosol and cloud properties. The mean, median and standard deviation of the collocated data have been calculated for each satellite product and are summarized in Table 1.

Similar to the single case study reported in the previous section, a good correlation (correlation coefficient R of 0.77) is obtained between the SEVIRI and the MODIS above-cloud AOT. Figure 3a shows that smaller values are retrieved by SEVIRI, with the straight-line fit of SEVIRI versus MODIS retrievals of AOT having a slope of 0.71. However, a non-linear relationship can be observed in Figure 3a between the two AOTs. A difference of 20.6% is obtained on the mean values observed by the two satellites. This is mainly explained by the differences in the aerosol model assumed for the retrieval. In the companion paper (Peers et al., 2019), it is shown that the assumption about the aerosol Single Scattering Albedo (SSA) have a large impact on the retrieved above-cloud AOT. For the MOD06ACAERO algorithm, the assumed microphysical properties of aerosols are a function of the AOT (Levy et al., 2009). This results in an SSA at 0.55 μm of 0.86, 0.87 and 0.88 for an AOT of 0.1, 0.5 and 1.5, respectively. The aerosol model assumed for the SEVIRI retrieval has a unique SSA of 0.85, which is more absorbing than the MODIS aerosols for AOT larger than 0.03. To reduce the influence of the assumed SSA on the results, the Absorbing AOT (AAOT) has been compared and is shown in Figure 3b. A better agreement is observed on the AAOT, with a slope of 0.86 and a correlation coefficient of 0.77. A slightly non-linear relationship is still observed between the two AAOTs with the SEVIRI AAOT smaller than the MODIS retrieval by 9.4% on average. The SSA assumption not only has a large impact on the scattering AOT, it also influences, to a lesser extent, the AAOT. It was also shown in the sensitivity study presented in the companion paper that the AAOT is sensitive to the assumed asymmetry factor. The asymmetry factor assumption for the MOD06ACAERO retrieval is AOT dependent (with the asymmetry factor taking values of 0.60 and 0.62 at a wavelength of 0.55 μm for AOT value of 0.5 and 1.5, respectively) and is smaller than the asymmetry factor assumed for the SEVIRI algorithm (i.e. 0.65 at 0.55 μm). The extent to which the assumptions on both the SSA and the asymmetry factor impact the SEVIRI and MODIS retrieval of the AAOT is difficult to evaluate mainly because the two algorithms use different spectral bands. However, the lower AOT and AAOT retrieved by SEVIRI compared to MODIS are consistent with the different assumptions about the SSA and the asymmetry factor of the two algorithms, as shown in the companion paper. Differences between the SEVIRI and MODIS distributions of the AOT and the AAOT can be observed, especially at low values. The fact there is more SEVIRI observations for small AOT and AAOT compared to MODIS is explained by the near zero $\text{AOT}_{\text{MODIS}}$ results being typically associated with an uncertainty larger than 100% and, therefore, being removed from the valid retrievals. This filter also contributes to the larger mean AOT and AAOT retrieved from MODIS compared to those from SEVIRI.

Figure 3c and 3d show the COT and CER comparisons and confirm the strong correlation ($R \geq 0.89$) observed in the case study. The CER linear regression is characterised by a slope of 0.937 and an intercept of -1.460 μm , which indicates that the SEVIRI CER is mostly smaller than the MODIS observations. On average, the CER values retrieved by SEVIRI and MODIS differ by 2.2 μm . For passive satellite sensors, the CER is typically retrieved from measurements in a water absorbing spectral band in the SWIR region. Here, the SEVIRI algorithm uses the 1.64 μm channel while the MODIS retrieval relies primarily on the 2.10 μm channel. Because of the different penetration depth of the reflected photons (Platnick, 2000), the MODIS retrieval of CER at 2.10 μm is sensitive to the upper cloud microphysics while the CER retrieved by SEVIRI at 1.64 μm is representative of the droplets lower down in the cloud. Therefore, if the droplet size increases from the base to the top of the cloud, the CER retrieved from the 2.10 μm channel should be larger than the CER retrieved from the 1.64 μm . To assess the impact of the difference of spectral band, the MOD06 CER retrieved from the 1.6 and 2.1 μm channels from MODIS (Platnick et al., 2105) have been compared when the above-cloud AOT is lower than 0.5 for the case study presented earlier. The CER retrieved from the

1.6 μm channel is lower than the one retrieved from the 2.1 μm by 0.5 μm , which is consistent with the analysis from Platnick (2000). Differences in the cloud parametrisation, such as the refractive index and the effective variance, also affect the CER retrieval (Arduini et al., 2005; Painemal and Zuidema, 2011, Platnick et al., 2019), although the impact is expected to depend on the observed scattering angle. Biases could also arise from an offset in the absolute calibration of the SEVIRI 1.64 μm band compared to MODIS (Meirink et al., 2013). A strong linear relationship is obtained between the SEVIRI and the MODIS COT and a difference of only 1.5 is observed between the two mean values, with the MODIS COT being larger on average. The agreement between the two satellites is better at lower COT and the differences increase with the COT. The spatial resolution of the instrument has an impact on the COT retrieval via the plane-parallel bias (Cahalan, 1994; Szczap et al., 2000). The relationship between the top-of-cloud reflectance and the COT is convex, which means that the COT derived from the mean reflectance of a pixel is smaller than the COT calculated from the mean COTs within the pixel. Zeng et al. (2012) have shown that subpixel inhomogeneities cause satellite sensors with a coarser spatial resolution, such as SEVIRI, to retrieve smaller COT. Also, as the clouds gets thicker, the visible and the Near Infra-Red (NIR) measurements become less sensitive to the COT for both instruments. Using a radiative transfer code to simulate the SEVIRI signal, we estimate that an error of +1.5 μm on the CER retrieved by SEVIRI causes a bias of +0.3 for a COT of 5.0 and +4.9 for a COT of 45. Therefore, differences in the retrieved CER could partly explain the low bias on the SEVIRI COT compared to MODIS at large COT.

3. Comparison with CLARIFY measurements

a. Instruments

i. EXtinction, SCattering and Absorption of Light for AirBorne Aerosol Research (EXSCALABAR)

EXtinction, SCattering and Absorption of Light for AirBorne Aerosol Research (EXSCALABAR) is a state-of-the-art suite of spectrometers for measuring in situ aerosol optical properties aboard the UK research aircraft (FAAM BAe-146, <https://www.faam.ac.uk>). EXSCALABAR includes several cavity ring-down spectroscopy (CRDS) and photoacoustic spectroscopy (PAS) instruments for the measurement of extinction and absorption coefficients, respectively. We now describe briefly the measurement capabilities of EXSCALABAR and how it was operated during CLARIFY-2017, while the reader is referred to previous publications for complete details on calibration, operating principles and instrument descriptions (Davies et al., 2018 & 2019; Cotterell et al., 2019a). In particular, Davies et al. (2019) outlines the same sample conditioning and operation of the spectrometers during airborne measurements as used in this work.

Four CRDS channels measured extinction at wavelengths of 405 and 658 nm, with three 405-nm channels measuring the extinction for aerosol at relative humidities (RH) of <10, 70 and 90% and the 658-nm channel operating under dry conditions (<10 % RH) only. The CRDS instruments use high finesse optical cavities formed from two highly reflective mirrors separated by ~40 cm to achieve total optical path lengths of order 5 – 11 km through the aerosol sample. Intensity modulated laser light is passively coupled into each optical cavity and a photodetector used to monitor the decay of light exiting the rear mirror following each on-off laser cycle. The signal exiting the cavity decays exponentially and is fitted to extract the $1/e$

folding time, referred to as the ring-down time. The change in ring-down time between an empty cavity (i.e. a sample devoid of any light scattering and absorbing aerosols) and a cavity filled with aerosol sample, enables the aerosol extinction coefficient α_{ext} to be calculated (Davies *et al.* 2018). The long path lengths achieved in CRDS provide measurements of aerosol extinction to a sensitivity better than 0.2 Mm^{-1} for 1-s sampling.

EXSCALABAR also included five PAS instruments that measured aerosol absorption coefficients under dry conditions ($<10 \text{ \% RH}$). Three PAS instruments sampled the dried aerosol directly, with each spectrometer operating at a different visible wavelength (405, 515 or 658 nm). Two further 405 and 658 nm spectrometers sampled aerosol that had additionally passed over a thermal denuder (a heated carbon catalyst) to remove semi-volatile organic aerosol components that can act to enhance light absorption by refractory components. However, the 658-nm spectrometer that sampled thermally denuded aerosol did not provide data during CLARIFY due to a faulty laser. Briefly, PAS measures light absorption coefficients for in situ aerosol in a non-contact manner (i.e. not using filter collection). Laser light is intensity-modulated to heat aerosol particles within an acoustic resonance cell, leading to the generation and amplification of a sound wave as particles liberate their heat to surrounding air. This sound wave is measured using a microphone and is directly proportional to the aerosol absorption coefficient, with the constant of proportionality determined by calibrating each PAS instrument using ozone-laden air with a known absorption coefficient. Again, we refer the reader to our previous publications that describe the principles of photoacoustic spectroscopy (Davies *et al.*, 2018, Cotterell *et al.*, 2019b), assess the accuracy of PAS aerosol absorption measurements (Davies *et al.*, 2018), the calibration of PAS instruments with ozone (Cotterell *et al.*, 2019a).

EXSCALABAR operated behind a $1 \mu\text{m}$ impactor and sampled from the aircraft via a modified Rosemount inlet. It extracted aerosol-laden sample from this inlet at a rate of 7 L min^{-1} . The sample underwent flow conditioning that included passing the sample through a Nafion dryer to dry the sample to $<10 \text{ \% RH}$ and then through an NO_x/O_3 scrubber to remove gas phase species that would have otherwise contributed to the measured light extinction and absorption. The conditioned sample was split using a series of Brechtel precision flow splitters to provide sample to each spectrometer.

ii. Microwave Airborne Radiometer Scanning System (MARSS)

Previous studies (e.g., English 1995; Zuidema *et al.* 2012) have demonstrated that airborne millimeter-wave radiometers can be used to retrieve liquid water path (LWP) in stratocumulus clouds. Such microwave retrievals are not contaminated by the presence of absorbing biomass burning aerosol above clouds (e.g. Haywood *et al.*, 2004). In this study, we use downward-looking views from the 89- and 157-GHz channels on the Microwave Airborne Radiometer Scanning System (MARSS) (McGrath and Hewison, 2001). Over ocean, the downward-looking measurements are sensitive to absorption and emission by cloud liquid water as the sea surface provides a relatively cold radiative background due to its low emissivity at these frequencies. LWP retrievals using downward-looking MARSS observations have been used previously by Abel *et al.* (2017) in their study of a cold-air outbreak. Our retrieval method is based on the Optimal Estimation Method (Rodgers, 1976) and is broadly similar to that described by English (1995). Radiative transfer simulations are performed using the Atmospheric Radiative Transfer Simulator (ARTS) model (Buehler *et al.* 2018), with background profiles of temperature and humidity taken from dropsondes released close to the location of the above-cloud runs. The surface emissivity is calculated using FASTEM (Liu *et*

al. 2011), with the surface temperature taken from infrared measurements during below-cloud runs and wind speed taken from the dropsondes. The cloud liquid water content is assumed to increase linearly from cloud base to cloud top, and the altitudes of the cloud base and top are estimated from aircraft profiles through the cloud layer. Cloud liquid water absorption is calculated using the Ellison (2007) model. The retrieved parameters are the liquid water path (LWP) and the column-integrated water vapour, which are used to scale the background profiles of liquid water content and water vapour in the forward model to provide the closest match to the observed brightness temperatures.

iii. Cloud Droplet Probe (CDP)

The Droplet Measurement Technologies Cloud Droplet Probe (CDP) is a forward scattering optical particle counter which can detect particles over the nominal size range of 3 to 50 μm . Light from a 658 nm diode laser illuminates the sample volume and scattered light is collected over a 1.7 to 14° solid angle. The incoming beam is split using a 50:50 optical beam splitter, where one beam is focused through an optical mask before being sampled by a so-called *qualifier* photodetector and the other by the *sizer* detector. This detection configuration is used to qualify the depth of field (DOF) where the signal from the qualifier detector multiplied by two must exceed the signal from the sizer for the particle to register as being measured within the DOF. Particles which do not meet this criterion are rejected. The signal pulses from DOF accepted particles are digitised from their raw analogue voltages; the peak value corresponding to the scattering cross section is then segregated into one of 30 bins and the sum of counts in each bin over the sampling integration period is transmitted to a logging computer running PADS (version 3.11) software and recorded.

A 10-point glass bead calibration spanning the instrument's detection range was performed before each day of flying throughout the CLARIFY campaign. The nominal bead size is corrected for the differences between the refractive indices of glass and water and the water corrected size is used to calibrate the instrument's sizing response. The calibration was found to be consistent across the campaign, resulting in an approximate 7% under-sizing correction being applied to the instrument's sizing response.

b. Atmospheric profile

The atmospheric correction is an essential step of the SEVIRI aerosol-above-cloud retrieval. The spectral contrast between the 0.6 and the 0.8 μm channels, which is used to retrieve the above-cloud AOT, is especially sensitive to the absorption from water vapour (Peers et al., 2019). To remove the contribution of water vapour from the signal, the transmittances from the cloud top to the top of the atmosphere are calculated using the humidity profiles from the operational forecast configuration of the global Met Office Unified Model (Brown et al., 2012) and the cloud top height retrieved from the SEVIRI infrared channels (Francis et al., 2008, Hamann et al., 2014). The humidity and temperature profiles used in the correction scheme are evaluated against those from the dropsondes deployed during the CLARIFY-2017 flights. The map on Figure 4 shows the location of the flights used in this paper. Note that owing to difficulties in transmitting data from such a remote location, the dropsonde measurements from the campaign have not been assimilated in the model forecasts. The above-cloud and the full column integrated water vapour are calculated from the sondes and the forecast profiles. For both the model and the measurements, the highest altitude is considered to be the altitude at which the sonde has been dropped and, for the full-column integration, the bottom altitude corresponds to the lowest altitude measured by the sonde. To be consistent with the

atmospheric correction scheme, the above-cloud water vapour from the forecast is calculated using the cloud top height from SEVIRI. For the dropsondes, the cloud top height is defined at the altitude of the temperature inversion, which is consistent with lidar and in situ observations from the aircraft. To assess the added value brought by the forecast model, the water vapour content has been calculated for the tropical atmospheric profile from McClatchey et al. (1972) using the cloud top height retrieved with SEVIRI. Figure 5 shows the integrated water vapour comparison of the dropsondes, the forecast and the McClatchey atmospheric model. The dew point and temperature profiles from the dropsonde, the NWP model and the McClatchey model are shown for each flight in Figure S1 of the supplement. The problem in assuming a single profile for water vapour from McClatchey climatologies is evident from the gross overestimation of water vapour and the limited variability which comes only from changes in the cloud height. When NWP model data is used, the amount of water vapour used for the atmospheric correction is too large, with the integrated water vapour path larger by 3.1 mm on average compared to against the dropsonde measurements. On the other hand, the full column water vapour from the forecast and the observations follow the same trend with a mean absolute difference of 1.5 mm in integrated water vapour path. Much of this difference is explained by the underestimation of the altitude of the cloud top retrieved by SEVIRI, with a mean bias of -265 m. When the cloud top height from the dropsonde is used to calculate the integrated water vapour above cloud from the forecast, the absolute difference to the measurements is reduced to 0.7 mm on average, which indicates a reasonable performance of the model in forecasting the vertical profile of humidity. The SEVIRI cloud top height retrieval is derived by conversion of the observed brightness temperature to a cloud top height assuming the temperature profile from the Met Office forecasts. Therefore, a reasonable consistency is observed between the retrieved cloud top height and the altitude of the temperature inversion from the model, with an absolute difference of 88 m. The individual profiles shown in Figure S1 in the supplement show the model does not quite capture the depth of the boundary layer. No evidence of a correlation between the cloud top height error and the presence of absorbing aerosols in the boundary layer has been observed. While identifying the causes of these biases is complex and beyond the scope of this paper, it is worth mentioning that the boundary layer depth in the model is highly influenced by the balance between the subsidence and the entrainment rate.

The overestimation of the water vapour in the atmospheric correction, which disproportionately affects the $0.8\mu\text{m}$ channel where water vapour absorption is stronger (see Figure 3 in Peers et al., 2019), indicates that an overestimation of the above-cloud AOT retrieved by SEVIRI may be expected due to an artificially enhanced spectral contrast between 0.6 and $0.8\mu\text{m}$. In Figure 4, one can see that the dropsondes have been launched in a small region around Ascension Island. Its remote location implies that the number of highly accurate measurements available for model assimilations is limited to the radiosonde releases from Ascension Island and therefore relies heavily on vertically-integrated atmospheric state variables retrieved from satellites. Therefore, it might reasonably be expected that the performance of the forecast model and the cloud top height retrieval could vary with the distance from the African continent where radiosonde launches are less sparse. In the absence of in situ atmospheric sounding between Ascension Island and the African coast, the comparison of the above-cloud aerosol properties retrieved from SEVIRI and MODIS can be considered as an indirect evaluation of the atmospheric correction scheme, since the MODIS channels used for the retrieval are barely impacted by the absorption from water vapour, provided that the differences due to the assumptions on the aerosol microphysical properties are accounted for. To minimize the influence of the aerosol model differences between the two retrievals, we have chosen to compare the AAOT. The SEVIRI and the MODIS collocated observations from section 2.b.ii (i.e. from 28th August to 5th September 2017 and over 0°N - 30°S and 20°W - 15°E) have been

used, removing $AAOT_{SEVIRI}$ lower than 0.03. Figure 6 shows the difference Δ of the mean AAOT as a function of the longitude, with $\Delta AAOT$ defined as:

$$\Delta AAOT = (AAOT_{SEVIRI} - AAOT_{MODIS}) / AAOT_{MODIS} \times 100\% \quad 1$$

An increase of $\Delta AAOT$ can be observed from east to west. The $AAOT_{SEVIRI}$ is 8.3% smaller than the $AAOT_{MODIS}$ close to the continent. The sign of the difference changes at 4°W. After 5°W, a sharp increase of $\Delta AAOT$ is observed, reaching 28.8% at 15°W. This trend between SEVIRI and MODIS is most likely related to a trend in the accuracy of the atmospheric correction scheme. As explained in section 2.b.ii, the AAOT from SEVIRI is expected to be slightly smaller than MODIS because of the different assumptions on the SSA and the asymmetry factor. The small low bias on the SEVIRI AAOT compared to MODIS suggests a good performance of the forecast model and the cloud top height retrieval next to the coast. From the coast to 9°W, the difference between the SEVIRI and the MODIS AAOT is lower than 10%. On Figure 6, the longitudes associated with the dropsonde measurements are indicated by the grey lines and corresponds to the region where $\Delta AAOT$ is the largest. Therefore, the overestimation of humidity in the forecast model (as demonstrated in Figure 5) is likely a major contributor to biases in SEVIRI retrievals of AAOT, particularly at remote locations where very little observation data for humidity is available for assimilation into model forecasts.

c. Aerosol layer

To survey the full column of aerosols and characterise the aerosol-radiation interactions, a series of manoeuvres described as a Z-pattern were performed on multiple flights during the campaign (Haywood et al., 2019). These patterns start at an altitude of about 7 km with a straight level run and dropsonde deployment above the aerosol plume, followed by a 180° turn and a profile descent through the main aerosol layers to an altitude of around a couple hundred meters above the cloud top. Then, a level 180° turn and another straight level run was performed along the same ground position as the upper run. Finally, subsequent to a further reciprocal turn, a profile descent was made through the cloud to 50 ft above sea-level. The extinction and absorption measured from EXSCALABAR during the two-part descent profiles have been used to calculate the total and absorption AOT above clouds at the wavelengths of the instrument and interpolated to 0.55 μm . The above-cloud AOT from SEVIRI has been obtained by averaging the observations acquired during the descent (i.e. four to five 15-minute time-slots) over an area within a 60-km radius from the position of the aircraft in the middle of the profile descent, which covers roughly the distance travelled by the aircraft. Additionally, the above-cloud AOT retrieved from the closest MODIS overpass (i.e. Terra in the morning and Aqua in the afternoon) have been averaged over the same area as SEVIRI. The impact of the time difference between the MODIS and the aircraft observations (lower than 2h30) on the AOT comparison is assumed to be negligible as the time and space variation of the aerosol distribution is expected to be small over this timescale.

The comparison of the above-cloud AOT from the in situ and the satellite measurements is presented in Figure 7. The darker colours represent the AAOT contribution to the AOT and the error bars correspond to the standard deviation of the MODIS and SEVIRI retrieved AOT within the 60 km radius. The (nominally dry aerosol) SSAs obtained at 0.55 μm from EXSCALABAR for each flight are indicated above the in situ measurement bars. Note however, that in the free troposphere above the marine boundary layer, the relative humidity is typically around 30% and hence any hygroscopic growth is likely to be small (i.e. lower than

2% according to Magi and Hobbs, 2003. For clarity reasons, the AAOT bar chart comparison is also shown in Figure S2 in the supplement. Except for flights C044 and C051, the above-cloud AOT measured by EXSCALABAR is within the standard deviation of the mean AOT retrieved from both SEVIRI and MODIS. The SSA derived from EXSCALABAR ranges from 0.798 to 0.858, suggesting some variations in the aerosol level of absorption. The SSA assumed for both satellite retrievals (i.e. $SSA_{MODIS} \approx 0.87$ and $SSA_{SEVIRI} \approx 0.85$) are in the upper bound of this range. As shown in the companion paper (Peers et al., 2019), colour-ratio based retrieval method are sensitive to the aerosol absorption above clouds which means that the retrieval of the AAOT above cloud is less sensitive to the assumed SSA than the AOT. This could explain why a better correlation between the in situ measurements and the satellite products is observed on the AAOT compared to the AOT for all flights except C044, C048 and C051. Both satellite AOTs for flight C044 are larger than $AOT_{EXSCALABAR}$, but the AAOT from EXSCALABAR and MODIS are in agreement while the AAOT from SEVIRI is larger. Contrary to SEVIRI, the MODIS channels used for the retrieval are barely impacted by the absorption from above-cloud water vapour. The AOT differences observed for this flight are consistent with the large overestimation of the water vapour by the SEVIRI atmospheric correction scheme in this case, as observed in Figure 5. For C048, the AOT retrieved from MODIS and SEVIRI are associated with especially large standard deviations. Although the in situ AOT is within the spread of the satellite retrievals, AOT_{SEVIRI} is about 47% larger than EXSCALABAR while AOT_{MODIS} is about 32% smaller. As confirmed by the satellite images, a broken cloud cover was observed during this flight. Additionally, the SEVIRI and MODIS observations indicate that the in situ measurements were performed at the south-western edge of an aerosol plume. The low cloud fraction together with the strong above-cloud AOT gradient in this region could explain the differences observed between the satellite retrievals and the in situ measurements. Finally, both satellite retrievals overestimate the above-cloud AOT measured by the aircraft during C051. The overestimation from SEVIRI cannot be totally attributed to the atmospheric correction scheme because the AOT from SEVIRI is consistent with MODIS.

After the descent profile through the aerosol layer, a profile descent through the cloud was typically performed which allowed sampling of marine boundary layer aerosols directly underneath the clouds. Table 2 summarises the extinction measured by EXSCALABAR directly above and under the stratocumulus cloud layer as well as the collocated CER retrieved by SEVIRI and MODIS. Note that the MODIS observations do not temporally correspond to the SEVIRI and EXSCALABAR measurements and that the purpose here is to illustrate the differences in the cloud properties between the flights. The collocated CER averaged over the CDP transect for flights C042 to C050 is around $9.1 \mu m$ for SEVIRI and $11.3 \mu m$ for MODIS. For C051, both satellites retrieve significantly smaller droplets, with a difference of 2.8 and $3.4 \mu m$ for SEVIRI and MODIS respectively, which could potentially be caused by aerosol-cloud interactions. In addition, in situ measurements indicate that the air directly underneath the stratocumulus cloud is 3.2 times more polluted for flight C051 than for the other flights, suggesting a significant entrainment of BBA into the MBL. Figure 8a and 8b show the CER retrieved by SEVIRI and MODIS as a function of the extinction measured respectively directly above and below the cloud. While the correlation obtained with the above-cloud extinction is moderate, there is a convincing relationship between below-cloud extinction and the CER. These results are consistent with the observations from Diamond et al. (2018). Using data from the ORACLES campaign, they observed a correlation between the presence of smoke in the marine boundary layer and changes in the cloud microphysics. They have also reported that the presence of smoke directly above cloud is not necessarily an indicator of aerosol-cloud interactions because of the mixing of elevated smoke into the boundary layer typically takes a couple of days. The presence of absorbing smoke within the cloud could have an impact on the

cloud albedo (Twomey, 1977), especially at shorter wavelengths. Both the SEVIRI and the MODIS algorithm assume that the entire aerosol layer is located above the clouds and do not account for aerosol within the cloud. Therefore, in the case of polluted cloud, colour-ratio based retrievals could interpret the reduction in the cloud albedo in the visible/SWIR range as an additional aerosol signal which would lead to an overestimation of the above-cloud AOT.

d. Cloud layer

i. Cloud droplet Effective Radius (CER)

The cloud droplet size distribution has been measured with a CDP during straight level runs at about 100 m below the cloud top. Figure 9 shows the comparison of the CER measured by the aircraft (blue dot) with the closest SEVIRI retrieval in space and time (red line). In addition to the aerosol-above-cloud algorithm, the CER has been retrieved considering an above-cloud AOT of zero and is plotted in orange. The grey areas represent the pixels that have been rejected by the algorithm's filters, which include measurements poorly fitted by the algorithm, observations in the backscattering glory region, COT lower than 3, cloud edges and inhomogeneous clouds. The consistency observed between the in situ measurements and the satellite retrievals is excellent with both the variation in CER during a single flight and the inter-flight differences being well represented. The range and the variation of the CER is well reproduced by SEVIRI, especially for the flights C044, C049 and C051 for which the mean difference between the satellite and the CDP is lower than 0.4 μm . On the other hand, the valid CER retrieved by SEVIRI is on average 1.5 μm lower than the aircraft measurements over the C050 transect. Compared to the other flights, there is a stronger variability in the CER measured during C050. One-dimensional cloud properties retrievals, such as the SEVIRI aerosol-above-cloud algorithm, tend to underestimate the CER in case of subpixel heterogeneity (Marshak et al., 2006). Time differences between the aircraft and the satellite observations also add uncertainty in the comparison of the cloud properties, especially when the cloud layer changes quickly. On Figure 9c, a mirror-image symmetry in the CDP measurements is observed before and after 16:09. This is caused by a 180-degree turn performed by the aircraft between 16:08 and 16:10 followed by a slightly offset reciprocal run to fly through the same cloud. The fact that the CER measured at the end of this run (i.e. after 16:18) are smaller by about 2 μm than the CER measured at the beginning of the first run (between 15:55 and 15:58) suggests a relatively fast evolution of the cloud and/or an inadequate offset in the reciprocal leg. The vertical distribution of the CER has also an influence on the comparison with the satellite retrieval as the altitude of the measurements could differ from the expected peak of the vertical weighting function of the SEVIRI 1.64 μm channel. Although the aircraft was flying at a constant altitude during the CDP measurements, it is difficult to precisely assess the relative position of the cloud top. Finally, we note that the impact of not taking the biomass burning aerosol layer above the cloud into account usually leads to an underestimation of less than 1 μm on the CER. In the grey areas of fig. 9b and 9c, unrealistically large cloud droplets are retrieved by the aerosol-above-cloud algorithm at the beginning of the C049 transect and just before and after the turn at 16:09 during C050. As confirmed by the aircraft observations, these pixels correspond to cloud edges. For partially cloudy field of view, the darker portions of the pixel (either clear sky or optically thinner cloud) decrease the reflectance resulting in an increase of the retrieved CER (Zhang et al., 2012). These biases confirm that the filters implemented for the aerosol-above-cloud retrieval are useful in enhancing the quality of the SEVIRI retrieval products.

ii. Liquid Water Path (LWP)

The LWP has been retrieved using the microwave measurements from the MARSS instrument during the lower altitude straight level runs of the Z-patterns. It is compared with the LWP derived from the COT and the CER retrieved by SEVIRI using the following relation (Stephens, 1978):

$$LWP_{SEVIRI} = \frac{2}{3} \rho_l \times COT \times CER \quad 2$$

where ρ_l is the density of liquid water. Although the aircraft measurements are collocated with the closest SEVIRI retrieval in space and time, the cloud field is expected to change between consecutive SEVIRI observations. To optimise the analysis against the satellite retrieval, we have selected the flights for which the cloud field changed the least between the observations from the top and the bottom leg of the Z-pattern by visual inspection of the radiometer signal.

Figure 10a, 10b and 10c shows the LWP from MARSS (blue) and from the SEVIRI aerosol-above-cloud algorithm (red) against the time (UTC) of the aircraft measurements for the flights C042, C049 and C050 respectively. Similarities can be observed between the variations of LWP_{MARSS} and LWP_{SEVIRI} . The observations during the C042 transect contain two main features: the first one is detected by MARSS and SEVIRI between 10:06 and 10:11 while the second one (between 10:12 and 10:17) appears slightly earlier in the satellite retrieval. The collocated LWP_{SEVIRI} also seems to be shifted to an earlier time by about 1 minute compared to MARSS for C049 and C050. Differences are also observed, notably during C050 (fig. 10c) between 15:27 and 15:30 where LWP_{MARSS} ranges from 100 to 170 $g.m^{-2}$ and LWP_{SEVIRI} is around 50 $g.m^{-2}$. Such discrepancies and shifts can be introduced by the differences in sampling time between the aircraft and the SEVIRI snapshot. We also note the large range of values obtained by MARSS, with LWP up to 868 $g.m^{-2}$. Such a high LWP translates into a COT of 130 for a CER of 10 μm . On the other hand, the maximum LWP reached by the satellite retrieval is much lower, with a value of 616 $g.m^{-2}$. The main cause is the COT upper bound in the look up tables used for the SEVIRI algorithm which has been set to 80 for computational efficiency. However, the proportion of clouds with COT larger than 80 is expected to be negligible on the regional scale as 99% of the SEVIRI observations used in fig. 3b have a COT lower than 40. An underestimation of the COT caused by the plane parallel bias (Cahalan et al., 1994; Szczap et al., 2000) can also cause lower LWP in the satellite observations. Considering the time mismatch issues and the technical limits of the algorithm, there is a very satisfactory agreement between the LWP retrieved from the aerosol-above-cloud retrieval and the aircraft observations.

The LWP retrieved by SEVIRI when the above-cloud AOT is forced to 0 is shown in Figure 10 in orange. As expected, omitting the presence of absorbing aerosol leads to an underestimation of the LWP from passive remote sensing instrument (e.g. Haywood et al., 2004), with a mean bias of 64 $g.m^{-2}$. Table 3 compares the mean LWP from MARSS and SEVIRI for each flight as well as the mean COT and CER retrieved from satellite with and without taking into account the aerosol absorption above the clouds. The impact of the biomass burning aerosol on the CER retrieval is lower than 0.8 μm and therefore represents only a small fraction of the bias on the LWP. However, the “no aerosol” retrieval underestimates the COT by 34.7% compared to the aerosol-above-cloud algorithm, which account for 93.2% of the bias on the retrieved LWP.

4. Discussion and Conclusions

The objective of this paper is to assess the performance of the SEVIRI retrieval of aerosol and cloud properties in cases where aerosols overlie clouds. The first part of the exercise consisted of the intercomparison of the MODIS and the SEVIRI products. Although both algorithms rely on the colour-ratio effect, the analysis shows the impact of the satellite instrument characteristics and the choice of the aerosol model assumption on the retrieved aerosol and cloud properties. The above-cloud AOT from SEVIRI is found to be lower than MODIS by 16.5%. This is mainly attributed to the fact that the aerosol model assumed for the SEVIRI retrieval is more absorbing than MODIS. Regarding the cloud properties, a very good agreement is observed on the COT while the CER from SEVIRI is consistently smaller than MODIS by $\sim 2\mu\text{m}$. The latter is partly explained by the difference of spectral band used for the retrieval (i.e. $1.64\mu\text{m}$ for SEVIRI and $2.1\mu\text{m}$ for MODIS) which implies different penetration depths of the photons inside the clouds.

Secondly, the SEVIRI products have been validated against a set of in situ and remote sensing measurements from a research aircraft platform during the CLARIFY-2017 field campaign. Water vapour profiles from dropsondes were used to evaluate the atmospheric correction scheme. The analysis has revealed that the algorithm tends to overestimate the amount of water vapour above clouds around the CLARIFY region, which should lead to an overestimation of the AOT. The comparison of the measured profiles with the forecast revealed that the overestimation of the water vapour above cloud is caused by an underestimation of the cloud top height retrieved by SEVIRI by an altitude of 260 m on average. Comparison of the absorbing AOT from SEVIRI and MODIS suggests that the accuracy of the atmospheric correction scheme is likely to be better closer to the coast, where the largest amounts of biomass burning aerosols are observed. Then, the AOT was calculated above clouds based on the extinction profiles from EXSCALABAR for eight flights. The satellite retrieval is found to overestimate the AOT when the sampled aerosols are more absorbing than the assumed aerosol model but a better agreement is obtained on the above-cloud AAOT. We also observed an overestimation of the AOT in a case where measurements suggest interaction between aerosol and cloud droplets. An overall good consistency has been obtained for the other cases. The CER from SEVIRI has been validated against the cloud droplet size measured by the aircraft-mounted CDP. The LWP has been calculated from the COT and CER retrieved from SEVIRI and compared to the microwave measurements from MARSS. The main cause of discrepancies on the cloud properties is the temporal mismatch between SEVIRI and the aircraft measurements. An underestimation of the LWP due to an underestimation of the COT by SEVIRI has been observed in case of extremely large LWP (i.e. $> 700\text{ g}\cdot\text{m}^{-2}$) because the algorithm is limited to a COT of 80. Given the limitations inherent to this validation exercise and the technical restrictions of the retrieval, a good agreement has been observed between the satellite products and the aircraft measurements. As expected, biases are observed on the cloud properties retrieved without considering the aerosol absorption above-cloud, notably on the COT which accounts for 93% of the low bias obtained on the LWP.

Validation and intercomparison exercises are necessary to provide confidence in the satellite-based retrievals and to understand their limitations. In the present paper, we have identified two main sources of uncertainty on the SEVIRI aerosol-above-cloud products: the accuracy of the atmospheric correction and the assumed microphysical model of aerosol, especially the SSA. For the former, the overall agreement between MODIS and SEVIRI shows that the atmospheric correction is reasonably efficient. Although its accuracy decreases far from the coast, the use of the water vapour profiles from the forecast is a significant improvement

compared to the use of simple standard atmosphere climatological values. Regarding the assumed microphysical properties of the aerosol, the recent field campaigns (Zuidema et al., 2018; Pistone et al., 2019) have indicated the variability of the SSA of biomass burning aerosol over the SEAO. Although the aerosol model used for the retrieval is based on in situ observations from CLARIFY-17, using a single aerosol model to retrieve the above-cloud AOT is a limitation. However, accounting for the variability of the aerosol microphysical properties in current satellite retrievals is not currently possible. Given the algorithmic assumptions and the technical limitations, the consistency observed between SEVIRI, MODIS and the airborne measurements is encouraging, which indicates that the geostationary instrument is able to provide complementary information on aerosols above clouds. These high temporal resolution observations would enhance significantly our knowledge on the aerosol interaction with both radiation and cloud as well as the aerosol transport in a region associated with the largest inter-model differences. The longitudinal variations in AAOT caused by inaccuracies in the atmospheric correction are unlikely to cause significant problems in assessing the temporal evolution of BBA plume radiative forcing over short timescales, but need to be borne in mind when assessing longer range plume transport.

The validation of a satellite retrieval needs a large number of observations and the analysis presented here can be considered as a first step in an ongoing continuous effort. Other datasets, such as the measurements from ORACLES and AEROCLO-sA field campaigns, can help to further assess the accuracy of the algorithm and will be the subject of future work.

Data availability

The SEVIRI data used for this study are available from the corresponding author, FP, upon reasonable request. MODIS above-cloud data products are available from KGM upon request. The FAAM aircraft data are archived at the Centre for Environmental Data Analysis (CEDA).

Author contributions

FP, PF and JMH developed the concept and the ideas for this paper. PF implemented the atmospheric correction scheme and FP the SEVIRI retrieval algorithm. The SEVIRI products have been processed by FP. KGM and SEP developed the MOD06ACAERO retrieval and generated the MODIS data. CF, SJA, KS, MIC, NWD and JML operated, calibrated and prepared the in situ measurements from EXSCALABAR. KNB and IC operated, calibrated and prepared the CDP measurements. SF calibrated the MARSS measurements and retrieved the LWP. FP carried out the analysis and prepared the paper with contributions from all co-authors.

Acknowledgements

We thank the Natural Environment Research Council (NERC) and the Norwegian Research Council for their financial support. Airborne data were obtained using the BAe-146 Atmospheric Research Aircraft operated by Directflight Ltd. and managed by Facility for Airborne Atmospheric Measurements (FAAM), which is jointly supported by NERC and the Met Office.

Financial support

This research has been supported by the Natural Environment Research Council (NERC) via the CLARIFY project (grant no. NE/L013479/1) and the Research Council of Norway via the projects AC/BC (grant no. 240372) and NetBC (grant no. 244141).

References

- Abel, S. J., Boutle, I. A., Waite, K., Fox, S., Brown, P. R., Cotton, R., Lloyd, G., Choularton, T. W., and Bower, K. N.: The role of precipitation in controlling the transition from stratocumulus to cumulus clouds in a Northern Hemisphere cold-air outbreak, *Journal of the Atmospheric Sciences*, 74, 2293–2314, <https://doi.org/10.1175/JAS-D-16-0362.1>, 2017.
- Abel, S. J., Barrett, P. A., Zuidema, P., Zhang, J., Christensen, M., Peers, F., Taylor, J. W., Crawford, I., Bower, K. N., and Flynn, M.: Open cells can decrease the mixing of free-tropospheric biomass burning aerosol into the south-east Atlantic boundary layer, *Atmospheric Chemistry and Physics Discussions*, 2019, 1–44, <https://doi.org/10.5194/acp-2019-738>, <https://www.atmos-chem-phys-discuss.net/acp-2019-738/>, 2019.
- Arduini, R., Minnis, P., Smith Jr, W., Ayers, J., Khaiyer, M., and Heck, P.: Sensitivity of satellite-retrieved cloud properties to the effective variance of cloud droplet size distribution, Tech. rep., Science Applications International Corporation, Hampton, Virginia; NASA, <https://www.osti.gov/servlets/purl/84157>, 2005.
- Brown, A., Milton, S., Cullen, M., Golding, B., Mitchell, J., and Shelly, A.: Unified modeling and prediction of weather and climate: A 25-year journey, *Bulletin of the American Meteorological Society*, 93, 1865–1877, <https://doi.org/10.1175/BAMS-D-12-00018.1>, 2012.
- Buehler, S. A., Mendrok, J., Eriksson, P., Perrin, A., Larsson, R., and Lemke, O.: ARTS, the Atmospheric Radiative Transfer Simulator version 2.2, *Geoscientific Model Development*, 11, 1537–1556, <https://doi.org/10.5194/gmd-11-1537-2018>, 2018.
- Cahalan, R. F., Ridgway, W., Wiscombe, W. J., Bell, T. L., and Snider, J. B.: The Albedo of Fractal Stratocumulus Clouds, *Journal of the Atmospheric Sciences*, 51, 2434–2455, [https://doi.org/10.1175/1520-0469\(1994\)051<2434:TAOFSC>2.0.CO;2](https://doi.org/10.1175/1520-0469(1994)051<2434:TAOFSC>2.0.CO;2), 1994.
- Chand, D., Anderson, T., Wood, R., Charlson, R., Hu, Y., Liu, Z., and Vaughan, M.: Quantifying above-cloud aerosol using spaceborne lidar for improved understanding of cloudy-sky direct climate forcing, *Journal of Geophysical Research: Atmospheres*, 113, <https://doi.org/10.1029/2007JD009433>, 2008.
- Chang, I. and Christopher, S. A.: Identifying Absorbing Aerosols Above Clouds From the Spinning Enhanced Visible and Infrared Imager Coupled With NASA A-Train Multiple Sensors, *IEEE Transactions on Geoscience and Remote Sensing*, 54, 3163–3173, <https://doi.org/10.1109/TGRS.2015.2513015>, 2016.
- Cotterell, M. I., Orr-Ewing, A. J., Szpek, K., Haywood, J. M., and Langridge, J. M.: The impact of bath gas composition on the calibration of photoacoustic spectrometers with ozone at discrete visible wavelengths spanning the Chappuis band, *Atmospheric Measurement Techniques*, 12, 2371–2385, <https://doi.org/10.5194/amt-12-2371-2019>, 2019a.
- Cotterell, M. I., Ward, G. P., Hibbins, A. P., Haywood, J. M., Wilson, A., and Langridge, J. M.: Optimizing the performance of aerosol photoacoustic cells using a finite element model. Part 1: Method validation and application to single-resonator multipass cells, *Aerosol Science and Technology*, 53, 1107–1127, <https://doi.org/10.1080/02786826.2019.1650161>, 2019b.
- Davies, N. W., Cotterell, M. I., Fox, C., Szpek, K., Haywood, J. M., and Langridge, J. M.: On the accuracy of aerosol photoacoustic spectrometer calibrations using absorption by ozone, *Atmospheric Measurement Techniques*, 11, 2313–2324, <https://doi.org/10.5194/amt-11-2313-2018>, <https://www.atmos-meas-tech.net/11/2313/2018/>, 2018.
- Davies, N. W., Fox, C., Szpek, K., Cotterell, M. I., Taylor, J. W., Allan, J. D., Williams, P. I., Trembath, J., Haywood, J. M., and Langridge, J. M.: Evaluating biases in filter-based aerosol absorption measurements using photoacoustic spectroscopy, *Atmospheric*

- Measurement Techniques, 12, 3417–3434, <https://doi.org/10.5194/amt-12-3417-2019>, <https://www.atmos-meas-tech.net/12/3417/2019/>, 2019.
- de Graaf, M., Tilstra, L. G., Wang, P., and Stammes, P.: Retrieval of the aerosol direct radiative effect over clouds from spaceborne spectrometry, *Journal of Geophysical Research: Atmospheres*, 117, <https://doi.org/10.1029/2011JD017160>, <https://agupubs.onlinelibrary.wiley.com/doi/abs/10.1029/2011JD017160>, 2012.
- Deaconu, L. T., Waquet, F., Josset, D., Ferlay, N., Peers, F., Thieuleux, F., Ducos, F., Pascal, N., Tanré, D., Pelon, J., and Goloub, P.: Consistency of aerosols above clouds characterization from A-Train active and passive measurements, *Atmospheric Measurement Techniques*, 10, 3499–3523, <https://doi.org/10.5194/amt-10-3499-2017>, <https://www.atmos-meas-tech.net/10/3499/2017/>, 2017.
- Diamond, M. S., Dobracki, A., Freitag, S., Small Griswold, J. D., Heikkila, A., Howell, S. G., Kacarab, M. E., Podolske, J. R., Saide, P. E., and Wood, R.: Time-dependent entrainment of smoke presents an observational challenge for assessing aerosol–cloud interactions over the southeast Atlantic Ocean, *Atmospheric Chemistry and Physics*, 18, 14623–14636, <https://doi.org/10.5194/acp-18-14623-2018>, <https://www.atmos-chem-phys.net/18/14623/2018/>, 2018.
- Ellison, W.: Permittivity of pure water, at standard atmospheric pressure, over the frequency range 0–25 THz and the temperature range 0–100 C, *Journal of physical and chemical reference data*, 36, 1–18, <https://doi.org/10.1063/1.2360986>, 2007.
- English, S.: Airborne radiometric observations of cloud liquid-water emission at 89 and 157 GHz: Application to retrieval of liquid-water path, *Quarterly Journal of the Royal Meteorological Society*, 121, 1501–1524, <https://doi.org/10.1002/qj.49712152702>, 1995.
- Formenti, P., D’Anna, B., Flamant, C., Mallet, M., Piketh, S. J., Schepanski, K., Waquet, F., Auriol, F., Brogniez, G., Burnet, F., et al.: The Aerosols, Radiation and Clouds in southern Africa (AEROCLO-SA) field campaign in Namibia: overview, illustrative observations and way forward, *Bulletin of the American Meteorological Society*, <https://doi.org/10.1175/BAMS-D-17-0278.1>, 2019.
- Francis, P. N., Hocking, J. A., and Saunders, R. W.: Improved diagnosis of low-level cloud from MSG SEVIRI data for assimilation into Met Office limited area models, in: *Proceedings of the 2008 EUMETSAT Meteorological Satellite Conference*, Darmstadt, 2008.
- Hamann, U., Walther, A., Baum, B., Bennartz, R., Bugliaro, L., Derrien, M., Francis, P. N., Heidinger, A., Joro, S., Kniffka, A., Le Gleau, H., Lockhoff, M., Lutz, H. J., Meirink, J. F., Minnis, P., Palikonda, R., Roebeling, R., Thoss, A., Platnick, S., Watts, P., and Wind, G.: Remote sensing of cloud top pressure/height from SEVIRI : analysis of ten current retrieval algorithms, *Atmospheric Measurement Techniques*, 7, 2839–2867, <https://doi.org/10.5194/amt-7-2839-2014>, 2014.
- Haywood, J. M., Abel, S., Barrett, P., Bellouin, N., Blyth, A., Brooks, M., Carslaw, K., Coe, H., Cotterell, M., Davies, N., Dingley, E., Field, P., Formenti, P., de Graaf, M., Johnson, B., Jones, A. C., Malavelle, F., Partridge, D. G., peers, F., Redemann, J., Stier, P., Wood, R., and Zuidema, P.: Overview of the CLOUD-Aerosol-Radiation Interaction and Forcing: Year-2017 (CLARIFY-2017) measurement campaign, in preparation.
- Haywood, J. M., Osborne, S. R., and Abel, S. J.: The effect of overlying absorbing aerosol layers on remote sensing retrievals of cloud effective radius and cloud optical depth, *Quarterly Journal of the Royal Meteorological Society*, 130, 779–800, <https://doi.org/10.1256/qj.03.100>, <https://rmets.onlinelibrary.wiley.com/doi/abs/10.1256/qj.03.100>, 2004.
- Hu, Y., Vaughan, M., Liu, Z., Powell, K., and Rodier, S.: Retrieving optical depths and lidar ratios for transparent layers above opaque water clouds from CALIPSO lidar

- measurements, *IEEE Geoscience and Remote Sensing Letters*, 4, 523–526, doi: 10.1109/LGRS.2007.901085, 2007.
- Jethva, H., Torres, O., Remer, L. A., and Bhartia, P. K.: A Color Ratio Method for Simultaneous Retrieval of Aerosol and Cloud Optical Thickness of Above-Cloud Absorbing Aerosols From Passive Sensors: Application to MODIS Measurements, *IEEE Transactions on Geoscience and Remote Sensing*, 51, 3862 – 3870, <https://doi.org/10.1109/TGRS.2012.2230008>, 2013.
- Jethva, H., Torres, O., Waquet, F., Chand, D., and Hu, Y.: How do A-train sensors intercompare in the retrieval of above-cloud aerosol optical depth? A case study-based assessment, *Geophysical Research Letters*, 41, 186–192, <https://doi.org/10.1002/2013GL058405>, 2014.
- Jethva, H., Torres, O., Remer, L., Redemann, J., Livingston, J., Dunagan, S., Shinozuka, Y., Kacenelenbogen, M., Rosenheimer, M. S., and Spurr, R.: Validating MODIS above-cloud aerosol optical depth retrieved from “color ratio” algorithm using direct measurements made by NASA’s airborne AATS and 4STAR sensors, *Atmospheric Measurement Techniques*, 9, 5053–5062, <https://doi.org/10.5194/amt-9-5053-2016>, 2016.
- Keil, A. and Haywood, J.: Solar radiative forcing by biomass aerosol particles over marine clouds during SAFARI-2000, *Journal of Geophysical Research*, 108, 8467, <https://doi.org/10.1029/2002JD002315>, 2003.
- Lack, D. A., Richardson, M. S., Law, D., Langridge, J. M., Cappa, C. D., McLaughlin, R. J., and Murphy, D. M.: Aircraft instrument for comprehensive characterization of aerosol optical properties, part 2: black and brown carbon absorption and absorption enhancement measured with photo acoustic spectroscopy, *Aerosol science and technology*, 46, 555–568, <https://doi.org/10.1080/02786826.2011.645955>, 2012.
- Levy, R. C., Remer, L. A., Tanre, D., Mattoo, S., and Kaufman, Y. J.: Algorithm for remote sensing of tropospheric aerosol over dark targets from MODIS: Collections 005 and 051: Revision 2; Feb 2009, MODIS algorithm theoretical basis document, 2009.
- Liu, Q., Weng, F., and English, S. J.: An improved fast microwave water emissivity model, *IEEE Transactions on Geoscience and Remote Sensing*, 49, 1238–1250, doi: 10.1109/TGRS.2010.2064779, 2010.
- Liu, Z., Kuehn, R., Vaughan, M., Winker, D., Omar, A., Powell, K., Trepte, C., Hu, Y., and Hostetler, C.: The CALIPSO cloud and aerosol discrimination: Version 3 algorithm and test results, in: 25th International Laser Radar Conference (ILRC), St. Petersburg, Russia, pp. 5–9, 2010b.
- Magi, B. I. and Hobbs, P. V.: Effects of humidity on aerosols in southern Africa during the biomass burning season, *Journal of Geophysical Research: Atmospheres*, 108, <https://doi.org/10.1029/2002JD002144>, <https://agupubs.onlinelibrary.wiley.com/doi/abs/10.1029/2002JD002144>, 2003.
- Marshak, A., Platnick, S., Várnai, T., Wen, G., and Cahalan, R. F.: Impact of three-dimensional radiative effects on satellite retrievals of cloud droplet sizes, *Journal of Geophysical Research: Atmospheres*, 111, <https://doi.org/10.1029/2005JD006686>, 2006.
- McClatchey, R. A., Fenn, R. W., Selby, J. A., Volz, F., and Garing, J.: Optical properties of the atmosphere, Tech. rep., Air Force Cambridge Research Labs HANSCOM AFB MA, 1972.
- McGrath, A. and Hewison, T.: Measuring the accuracy of MARSS—An airborne microwave radiometer, *Journal of Atmospheric and Oceanic Technology*, 18, 2003–2012, [https://doi.org/10.1175/1520-0426\(2001\)018<2003:MTAOMA>2.0.CO;2](https://doi.org/10.1175/1520-0426(2001)018<2003:MTAOMA>2.0.CO;2), 2001.
- Meirink, J. F., Roebeling, R. A., and Stammes, P.: Inter-calibration of polar imager solar channels using SEVIRI, *Atmospheric Measurement Techniques*, 6, 2495–2508,

<https://doi.org/10.5194/amt-6-2495-2013>,
tech.net/6/2495/2013/, 2013.

<https://www.atmos-meas->

Meyer, K., Platnick, S., and Zhang, Z.: Simultaneously inferring above-cloud absorbing aerosol optical thickness and underlying liquid phase cloud optical and microphysical properties using MODIS, *Journal of Geophysical Research: Atmospheres*, 120, 5524–5547, <https://doi.org/10.1002/2015JD023128>,

<https://agupubs.onlinelibrary.wiley.com/doi/abs/10.1002/2015JD023128>, 2015.

Myhre, G., Samset, B. H., Schulz, M., Balkanski, Y., Bauer, S., Bernsten, T. K., Bian, H., Bellouin, N., Chin, M., Diehl, T., Easter, R. C., Feichter, J., Ghan, S. J., Hauglustaine, D., Iversen, T., Kinne, S., Kirkevåg, A., Lamarque, J.-F., Lin, G., Liu, X., Lund, M. T., Luo, G., Ma, X., van Noije, T., Penner, J. E., Rasch, P. J., Ruiz, A., Seland, Ø., Skeie, R. B., Stier, P., Takemura, T., Tsigaridis, K., Wang, P., Wang, Z., Xu, L., Yu, H., Yu, F., Yoon, J.-H., Zhang, K., Zhang, H., and Zhou, C.: Radiative forcing of the direct aerosol effect from AeroCom Phase II simulations, *Atmospheric Chemistry and Physics*, 13, 1853–1877, <https://doi.org/10.5194/acp-13-1853-2013>, <https://www.atmos-chem-phys.net/13/1853/2013/>, 2013.

Painemal, D. and Zuidema, P.: Assessment of MODIS cloud effective radius and optical thickness retrievals over the Southeast Pacific with VOCALS-REx in situ measurements, *Journal of Geophysical Research: Atmospheres*, 116, <https://doi.org/10.1029/2011JD016155>, 2011.

Peers, F., Waquet, F., Cornet, C., Dubuisson, P., Ducos, F., Goloub, P., Szczap, F., Tanré, D., and Thieuleux, F.: Absorption of aerosols above clouds from POLDER/PARASOL measurements and estimation of their direct radiative effect, *Atmospheric Chemistry and Physics*, 15, 4179–4196, <https://doi.org/10.5194/acp-15-4179-2015>, 2015.

Peers, F., Francis, P., Fox, C., Abel, S. J., Szpek, K., Cotterell, M. I., Davies, N. W., Langridge, J. M., Meyer, K. G., Platnick, S. E., and Haywood, J. M.: Observation of absorbing aerosols above clouds over the south-east Atlantic Ocean from the geostationary satellite SEVIRI – Part 1: Method description and sensitivity, *Atmospheric Chemistry and Physics*, 19, 9595–9611, <https://doi.org/10.5194/acp-19-9595-2019>, 2019.

Pistone, K., Redemann, J., Doherty, S., Zuidema, P., Burton, S., Cairns, B., Cochrane, S., Ferrare, R., Flynn, C., Freitag, S., Howell, S. G., Kacenelenbogen, M., LeBlanc, S., Liu, X., Schmidt, K. S., Sedlacek III, A. J., Segal-Rozenhaimer, M., Shinozuka, Y., Stamnes, S., van Diedenoven, B., Van Harten, G., and Xu, F.: Intercomparison of biomass burning aerosol optical properties from in situ and remote-sensing instruments in ORACLES-2016, *Atmospheric Chemistry and Physics*, 19, 9181–9208, <https://doi.org/10.5194/acp-19-9181-2019>, 2019.

Platnick, S.: Vertical photon transport in cloud remote sensing problems, *Journal of Geophysical Research: Atmospheres*, 105, 22 919–22 935, <https://doi.org/10.1029/2000JD900333>, 2000.

Platnick, S., King, M. D., Ackerman, S. A., Menzel, W. P., Baum, B. A., Riédi, J. C., and Frey, R. A.: The MODIS cloud products: Algorithms and examples from Terra, *IEEE Transactions on Geoscience and Remote Sensing*, 41, 459–473, doi: 10.1109/TGRS.2002.808301, 2003.

Platnick, S., Ackerman, S., King, M., Meyer, K., Menzel, W., Holz, R., Baum, B., and Yang, P.: MODIS atmosphere L2 cloud product (06_L2), NASA MODIS Adaptive Processing System, Goddard Space Flight Center, 10, 1–53, 2015.

Platnick, S., Heidinger, A., Ackerman, S. A., Amarasinghe, N., Dutcher, S., Frey, R., Hubanks, P., Li, Y., Marchant, B., Meyer, K. G., Holz, R. E., Walther, A., Wang, C., and Wind, G.: EOS MODIS and SNPP VIIRS Cloud Properties: User Guide for the Climate Data Record

Continuity Level-2 Cloud Top and Optical Properties Product (CLDPROP), Tech. rep., NASA Goddard Space Flight Center, 2019.

Redemann, J. et al.: An overview of the ORACLES (ObseRvations of Aerosols above Clouds and their intERactionS) project: aerosol-cloud-radiation interactions in the Southeast Atlantic basin, in preparation.

Rodgers, C. D.: Retrieval of atmospheric temperature and composition from remote measurements of thermal radiation, *Reviews of Geophysics*, 14, 609–624, <https://doi.org/10.1029/RG014i004p00609>, 1976.

Rosenberg, P. D., Dean, A. R., Williams, P. I., Dorsey, J. R., Minikin, A., Pickering, M. A., and Petzold, A.: Particle sizing calibration with refractive index correction for light scattering optical particle counters and impacts upon PCASP and CDP data collected during the Fennec campaign, *Atmospheric Measurement Techniques*, 5, 1147–1163, <https://doi.org/10.5194/amt-5-1147-2012>, <https://www.atmos-meas-tech.net/5/1147/2012/>, 2012.

Sayer, A. M., Hsu, N., Bettenhausen, C., Lee, J., Redemann, J., Schmid, B., and Shinozuka, Y.: Extending “Deep Blue” aerosol retrieval coverage to cases of absorbing aerosols above clouds: Sensitivity analysis and first case studies, *Journal of Geophysical Research: Atmospheres*, 121, 4830–4854, <https://doi.org/10.1002/2015JD024729>, 2016.

Sayer, A. M., Hsu, N. C., Lee, J., Kim, W. V., Burton, S., Fenn, M. A., Ferrare, R. A., Kacenelenbogen, M., LeBlanc, S., Pistone, K., Redemann, J., Segal-Rozenhaimer, M., Shinozuka, Y., and Tsay, S.-C.: Two decades observing smoke above clouds in the southeastern Atlantic Ocean: Deep Blue algorithm updates and validation with ORACLES field campaign data, *Atmospheric Measurement Techniques*, 12, 3595–3627, <https://doi.org/10.5194/amt-12-3595-2019>, <https://www.atmos-meas-tech.net/12/3595/2019/>, 2019.

Seethala, C., Meirink, J. F., Horváth, A., Bennartz, R., and Roebeling, R.: Evaluating the diurnal cycle of South Atlantic stratocumulus clouds as observed by MSG SEVIRI, *Atmospheric Chemistry and Physics*, 18, 13 283–13 304, <https://doi.org/10.5194/acp-18-13283-2018>, <https://www.atmos-chem-phys.net/18/13283/2018/>, 2018.

Seinfeld, J. H., Bretherton, C., Carslaw, K. S., Coe, H., DeMott, P. J., Dunlea, E. J., Feingold, G., Ghan, S., Guenther, A. B., Kahn, R., Kraucunas, I., Kreidenweis, S. M., Molina, M., Nenes, A., Penner, J. E., Prather, K. A., Ramanathan, V., Ramaswamy, V., Rasch, P. J., Ravishankara, A. R., Rosenfeld, D., Stephens, G., and Wood, R.: Improving our fundamental understanding of the role of aerosol- cloud interactions in the climate system, *Proceedings of the National Academy of Sciences*, 113, 5781–5790, <https://doi.org/10.1073/pnas.1514043113>, 2016.

Stephens, G. L.: Radiation profiles in extended water clouds. I: Theory, *Journal of the Atmospheric Sciences*, 35, 2111–2122, [https://doi.org/10.1175/1520-0469\(1978\)035<2111:RPIEWC>2.0.CO;2](https://doi.org/10.1175/1520-0469(1978)035<2111:RPIEWC>2.0.CO;2), 1978.

Szczap, F., Isaka, H., Saute, M., Guillemet, B., and Ioltukhovski, A.: Effective radiative properties of bounded cascade nonabsorbing clouds: Definition of the equivalent homogeneous cloud approximation, *Journal of Geophysical Research: Atmospheres*, 105, 20 617–20 633, <https://doi.org/10.1029/2000JD900146>, 2000.

Torres, O., Jethva, H., and Bhartia, P. K.: Retrieval of Aerosol Optical Depth above Clouds from OMI Observations: Sensitivity Analysis and Case Studies, *Journal of the Atmospheric Sciences*, 69, 1037–1053, <https://doi.org/10.1175/JAS-D-11-0130.1>, <https://doi.org/10.1175/JAS-D-11-0130.1>, 2012.

Twomey, S.: The influence of pollution on the shortwave albedo of clouds, *Journal of the atmospheric sciences*, 34, 1149–1152, [https://doi.org/10.1175/1520-0469\(1977\)034<1149:TIOPOT>2.0.CO;2](https://doi.org/10.1175/1520-0469(1977)034<1149:TIOPOT>2.0.CO;2), 1977.

Waquet, F., Peers, F., Ducos, F., Goloub, P., Platnick, S., Riedi, J., Tanré, D., and Thieuleux, F.: Global analysis of aerosol properties above clouds, *Geophysical Research Letters*, 40, 5809–5814, <https://doi.org/10.1002/2013GL057482>, <https://agupubs.onlinelibrary.wiley.com/doi/abs/10.1002/2013GL057482>, 2013.

- 5 Zeng, S., Cornet, C., Parol, F., Riedi, J., and Thieuleux, F.: A better understanding of cloud optical thickness derived from the passive sensors MODIS/AQUA and POLDER/PARASOL in the A-Train constellation, *Atmospheric Chemistry and Physics*, 12, 11 245–11 259, <https://doi.org/10.5194/acp-12-11245-2012>, 2012.

- 10 Zhang, Z., Ackerman, A. S., Feingold, G., Platnick, S., Pincus, R., and Xue, H.: Effects of cloud horizontal inhomogeneity and drizzle on remote sensing of cloud droplet effective radius: Case studies based on large-eddy simulations, *Journal of Geophysical Research: Atmospheres*, 117, <https://doi.org/10.1029/2012JD017655>, 2012.

- 15 Zuidema, P., Leon, D., Pazmany, A., and Cadetdu, M.: Aircraft millimeter-wave passive sensing of cloud liquid water and water vapor during VOCALS-REx, *Atmospheric Chemistry and Physics*, 12, 355–369, <https://doi.org/10.5194/acp-12-355-2012>, <https://www.atmos-chem-phys.net/12/355/2012/>, 2012.

- 20 Zuidema, P., Redemann, J., Haywood, J., Wood, R., Piketh, S., Hipondoka, M., and Formenti, P.: Smoke and clouds above the southeast Atlantic: Upcoming field campaigns probe absorbing aerosol's impact on climate, *Bulletin of the American Meteorological Society*, 97, 1131–1135, <https://doi.org/10.1175/BAMS-D-15-00082.1>, 2016.

- 25 Zuidema, P., Sedlacek III, A. J., Flynn, C., Springston, S., Delgadillo, R., Zhang, J., Aiken, A. C., Koontz, A., and Muradyan, P.: The Ascension Island boundary layer in the remote southeast Atlantic is often smoky, *Geophysical Research Letters*, 45, 4456–4465, <https://doi.org/10.1002/2017GL076926>, 2018.

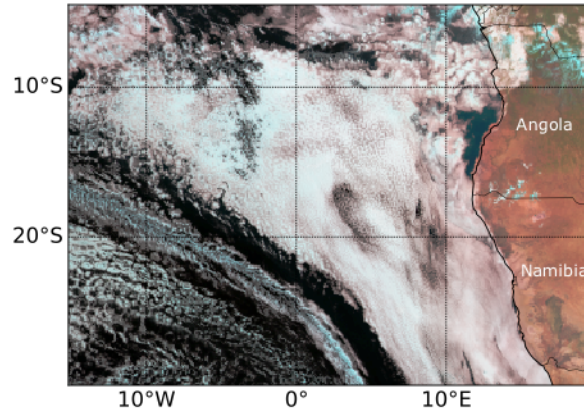


Figure 1: RGB composite obtained from the SEVIRI 0.64 (blue), 0.81 (green) and 1.64 μm (red) channels for the 4th September 2017 at 10:15 UTC over the SEAO.

5

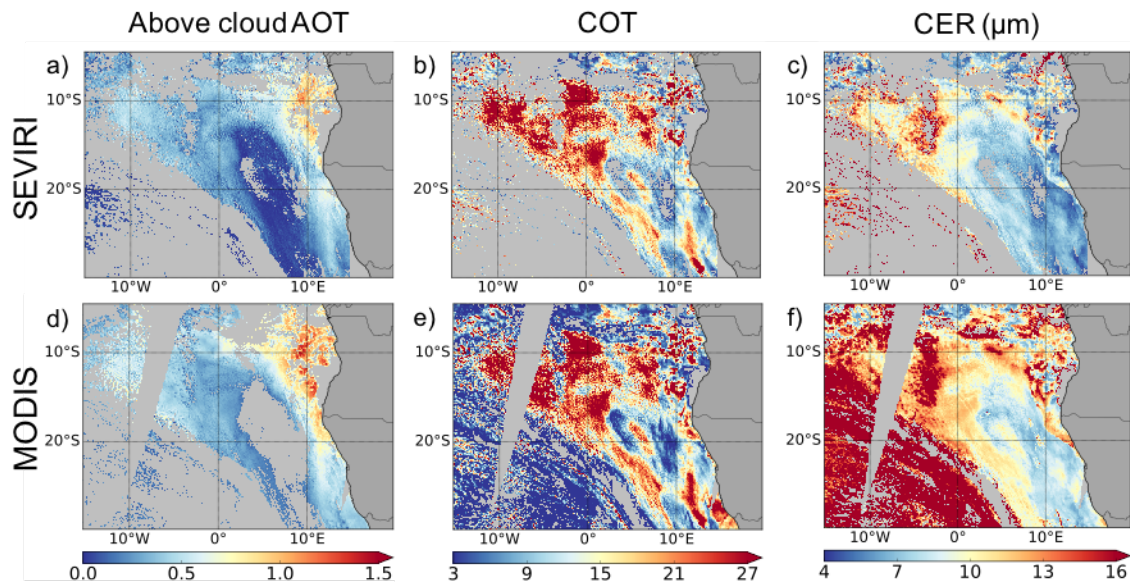


Figure 2: Above cloud AOT at the 0.55 μm optical wavelength and cloud properties retrieved from SEVIRI measurements on the 4th September 2017 at 10:15 UTC over the SEAO (a to c) and corresponding Terra-MODIS observations (10:00 UTC for the east overpass and 11:40 UTC for the west overpass) from the MOD06ACAERO algorithm (d to f).

10

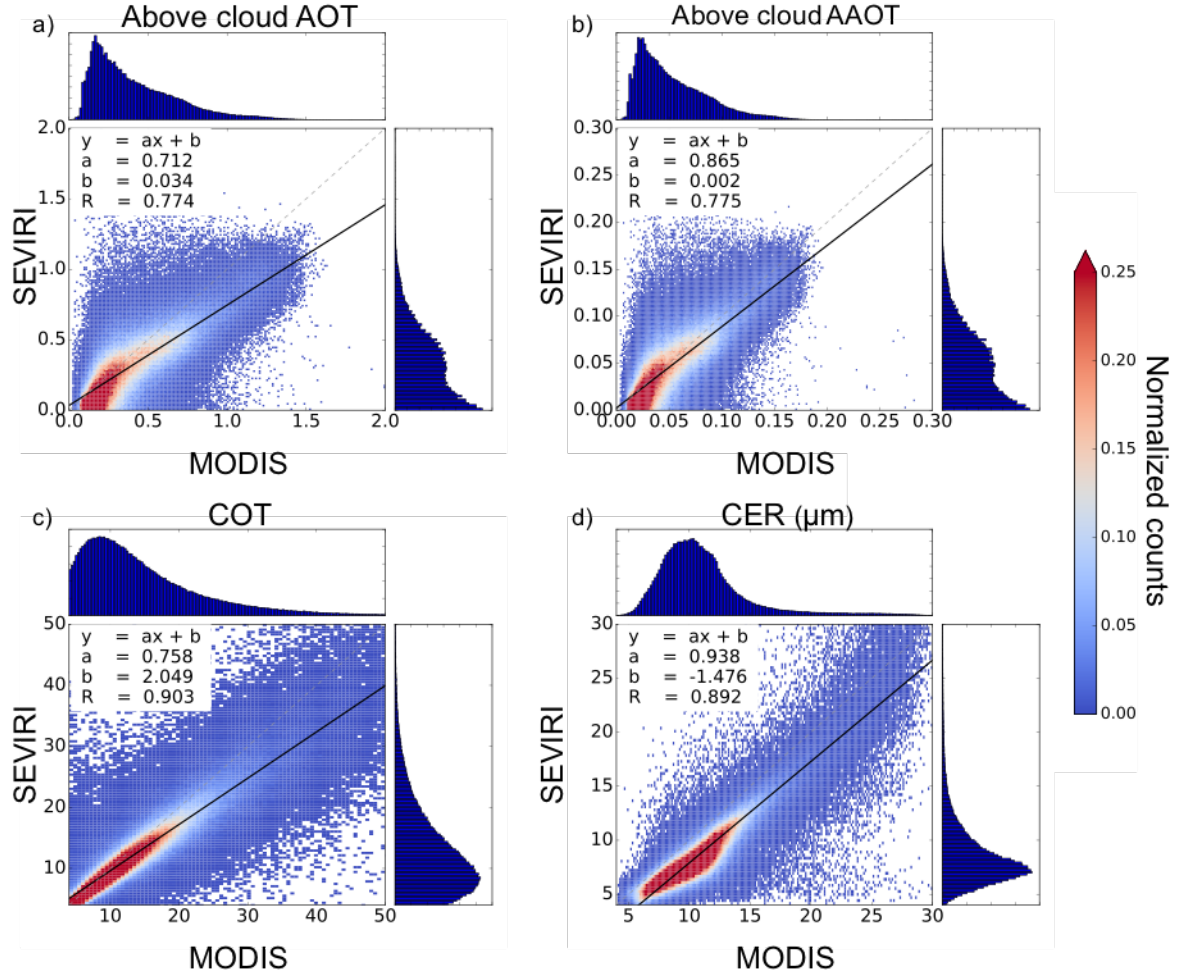


Figure 3: Scatterplots and data distributions for the comparison of the above-cloud AOT (a), AAOT (b), COT(c) and CER (d) from SEVIRI and MODIS MOD06ACAERO retrieval between the 28th August and 5th September 2017 over the area between 0°N - 30°S and 20°W - 15°E. The black lines represent the linear regression.

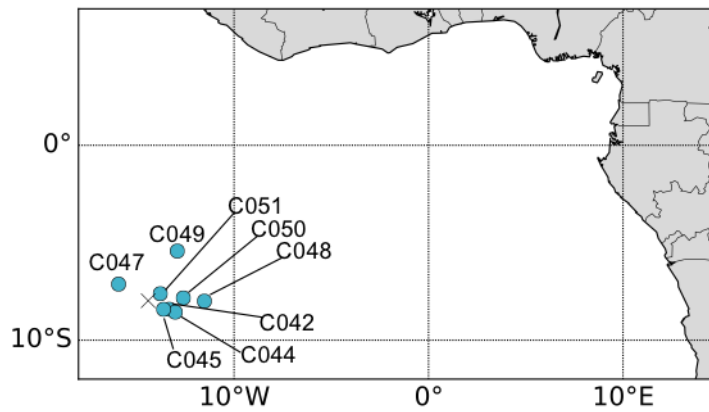


Figure 4: Map showing the geographical location of the dropsonde observations used in section 3. The cross corresponds to Ascension Island.

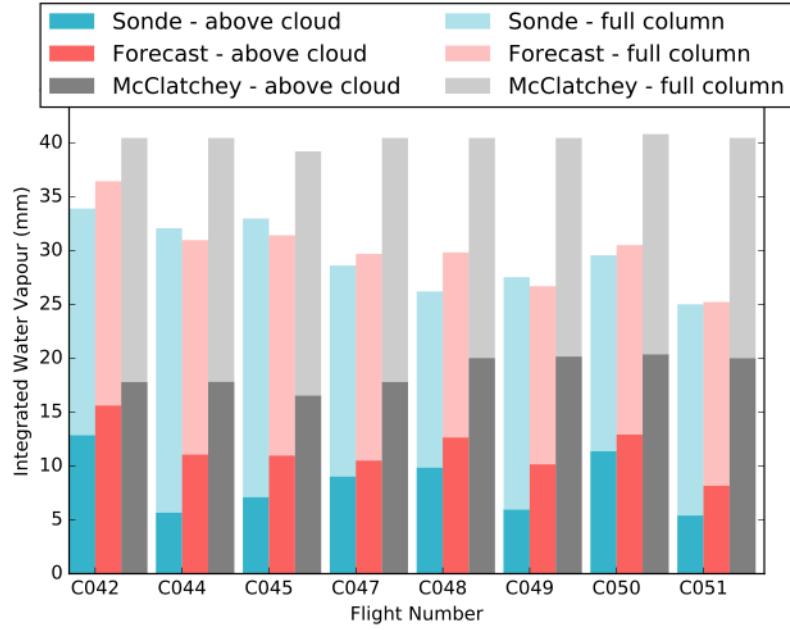


Figure 5: Comparison of the water vapour integrated over the full column (lighter shades) and above clouds (darker shades) from the dropsondes, the forecast and the McClatchey tropical atmospheric profile. For the McClatchey and the forecast, the top of the cloud is based on the cloud top height retrieved by SEVIRI.

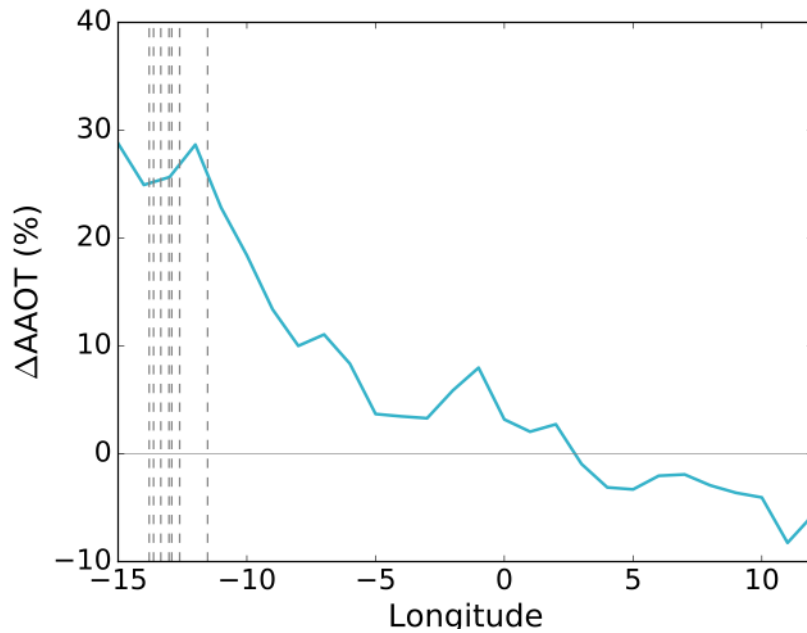


Figure 6: Longitudinal variation of the difference ΔAAOT (in %) between the SEVIRI and MODIS AAOT for the data used in Figure 3. The dashed lines correspond to the location of the dropsondes used in Figure 5.

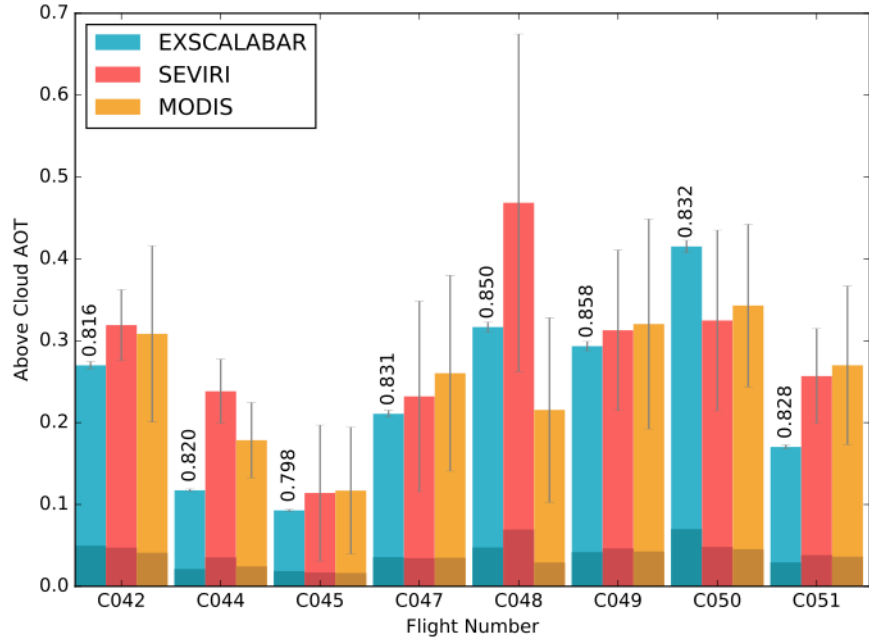


Figure 7: Comparison of the above-cloud AOT (lighter shades) and AAOT (darker shades) retrieved by SEVIRI and MODIS and measured by EXSCALABAR during descent profiles. The error bars represent the uncertainties of the EXSCALABAR measurements and the standard deviation of the satellite product within a 60 km radius around the aircraft measurements for SEVIRI and MODIS. The SSA has been calculated at $0.55 \mu\text{m}$ from the EXSCALABAR observations and included as an annotation over the EXSCALABAR above-cloud AOT.

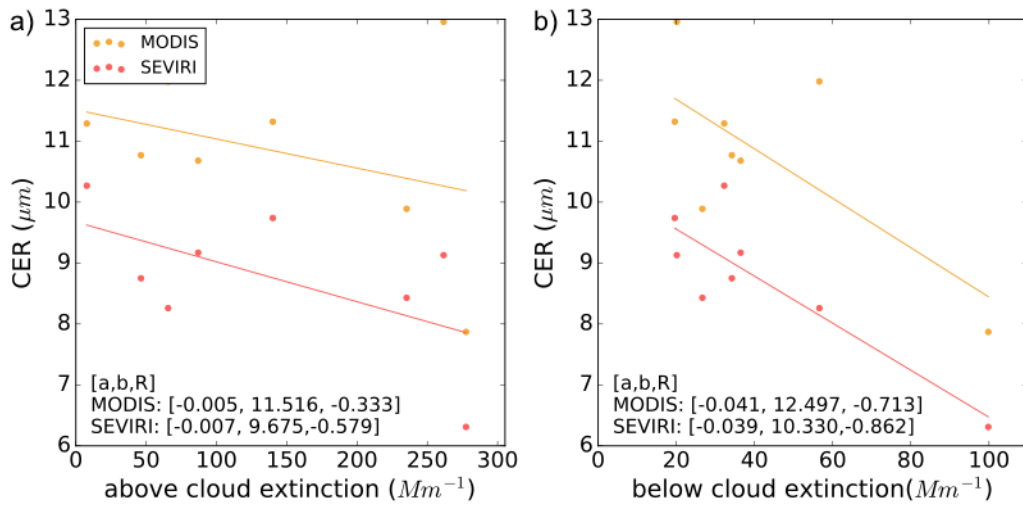


Figure 8: CER (in μm) retrieved by SEVIRI (red) and MODIS (orange) as a function of the dry extinction (in Mm^{-1}) measured by EXSCALABAR at 405 nm and averaged over 100m directly above (a) and below the cloud (b). The linear regression fits are defined by the slope a , the intercept b and the correlation coefficient R .

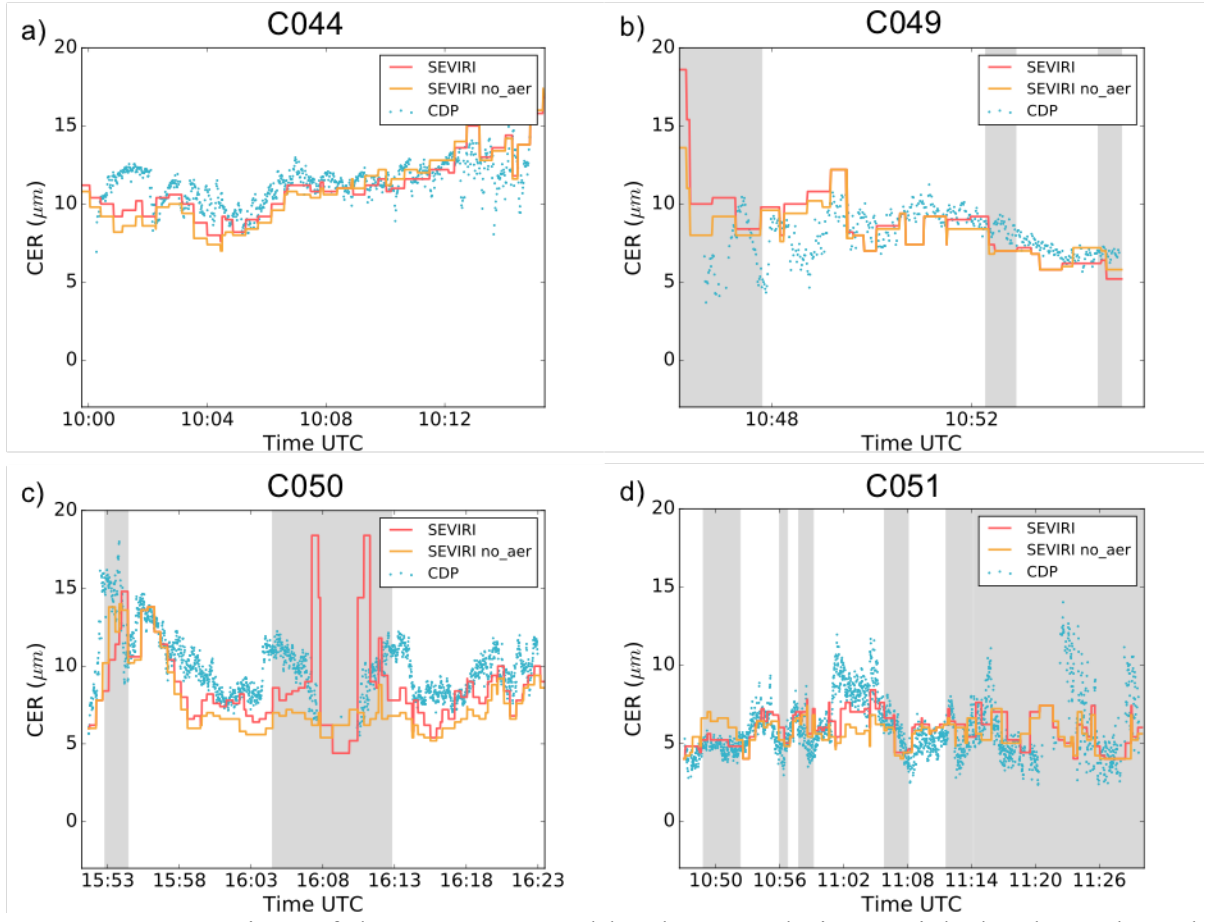


Figure 9: Comparison of the CER measured by the CDP during straight level run through clouds and collocated SEVIRI retrievals with and without taking into account the absorption of aerosol above clouds. The grey areas correspond to the SEVIRI pixels that are rejected because of the filters on cloud inhomogeneity, cloud edges and/or unsatisfying fit of the measurements by the forward model.

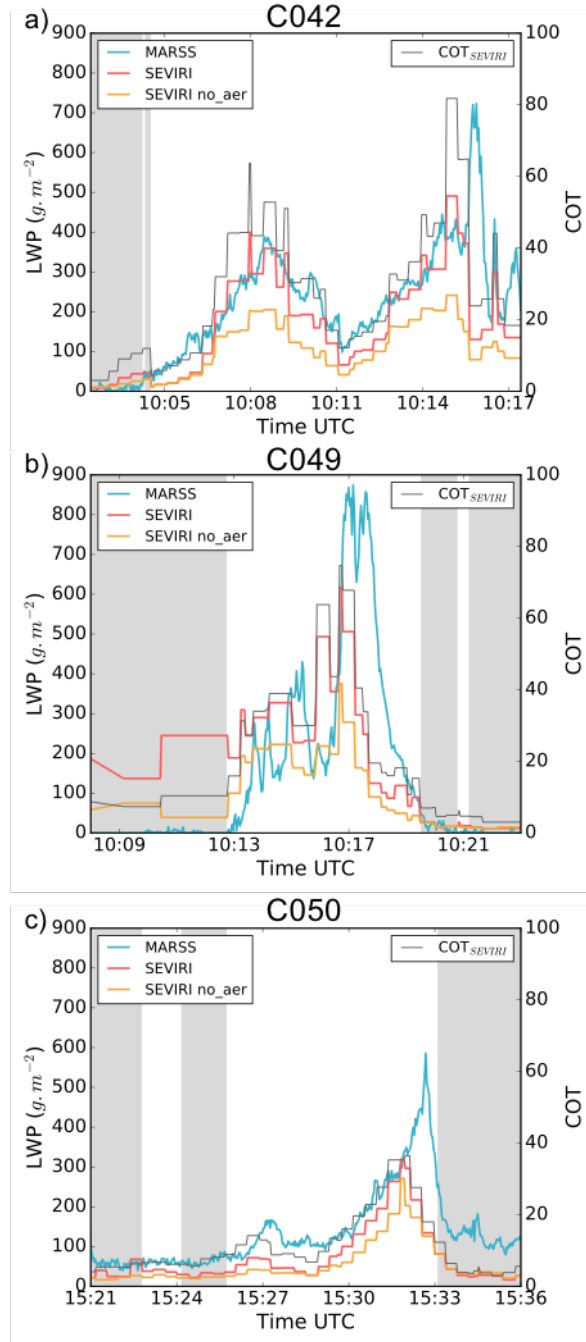


Figure 10: Comparison of the LWP measured from MARSS (blue) during straight level run above the clouds and collocated LWP from SEVIRI calculated based on the COT and CER retrieved with (red) and without (orange) taking into account the absorption of aerosol above clouds. The COT retrieved by SEVIRI taking into account the overlying aerosols is plotted in black. The grey areas correspond to the SEVIRI pixels that are rejected because of the filters on cloud inhomogeneity, cloud edges and/or unsatisfying fit of the measurements by the forward model.

	SEVIRI			MODIS		
	mean	median	standard deviation	mean	median	standard deviation
AOT	0.327	0.294	0.243	0.412	0.340	0.264
AAOT	0.048	0.043	0.032	0.053	0.045	0.032
COT	13.07	11.22	7.65	14.54	12.22	9.12
CER (μm)	8.94	7.92	3.92	11.10	10.41	3.72

Table 1: Summary statistics of the aerosol and cloud properties retrieved by SEVIRI and MODIS compared in Figure 3.

Flights	C042	C044	C045	C047	C048	C049	C050	C051
$\text{ext}_{\text{above}}$	235.27	140.12	7.78	65.67	87.01	46.33	261.61	277.55
$\text{ext}_{\text{below}}$	26.68	19.61	32.26	56.60	36.47	34.21	20.13	99.80
$\text{CER}_{\text{SEVIRI}}$	8.43	9.74	10.27	8.26	9.17	8.75	9.13	6.31
$\text{CER}_{\text{MODIS}}$	9.89	11.32	11.29	11.98	10.68	10.77	12.96	7.87

Table 2: Dry extinction (ext) measured by EXSCALABAR at 405 nm averaged over 100m above and below the cloud (in Mm^{-1}) and collocated CER (in μm) retrieved by SEVIRI and MODIS.

		MARSS	SEVIRI	SEVIRI no aerosol
C042	LWP (g.m^{-2})	244.83	191.82	117.03
	COT	-	30.15	18.90
	CER (μm)	-	9.04	8.64
C049	LWP (g.m^{-2})	287.32	250.97	150.02
	COT	-	31.94	19.48
	CER (μm)	-	11.47	10.73
C50	LWP (g.m^{-2})	155.82	88.22	64.66
	COT	-	13.71	10.90
	CER (μm)	-	8.56	7.76

Table 3: Mean LWP observed by MARSS during the straight level run above the clouds and collocated cloud properties retrieved by SEVIRI with and without taking into account the absorption of aerosol above clouds.