

Interactive comment on “Nepal Emission Inventory (NEEMI): a high resolution technology-based bottom-up emissions inventory for Nepal 2001–2016” by Pankaj Sadavarte et al.

Pankaj Sadavarte et al.

p.sadavarte@sron.nl

Received and published: 12 July 2019

The comment was uploaded in the form of a supplement:
<https://www.atmos-chem-phys-discuss.net/acp-2019-113/acp-2019-113-AC2-supplement.pdf>

Interactive comment on Atmos. Chem. Phys. Discuss., <https://doi.org/10.5194/acp-2019-113, 2019>.

C1

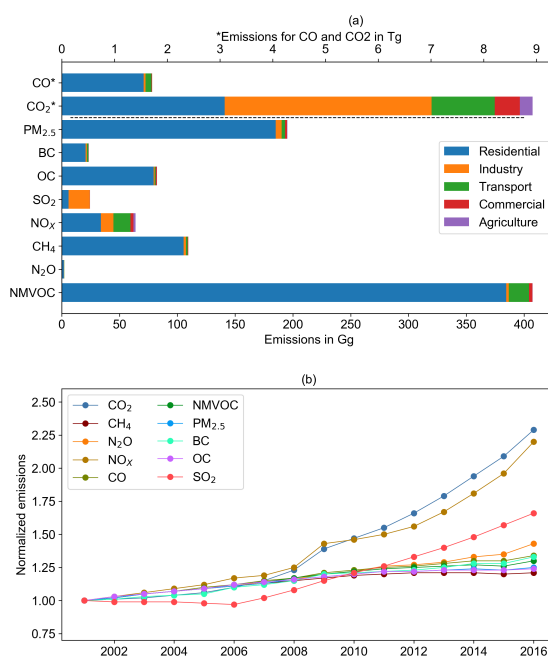


Fig. 1. Figure 5. National emissions estimates for aerosols and trace gases for (a) each sector in 2011 and (b) normalized trends for a period 2001–2016

C2

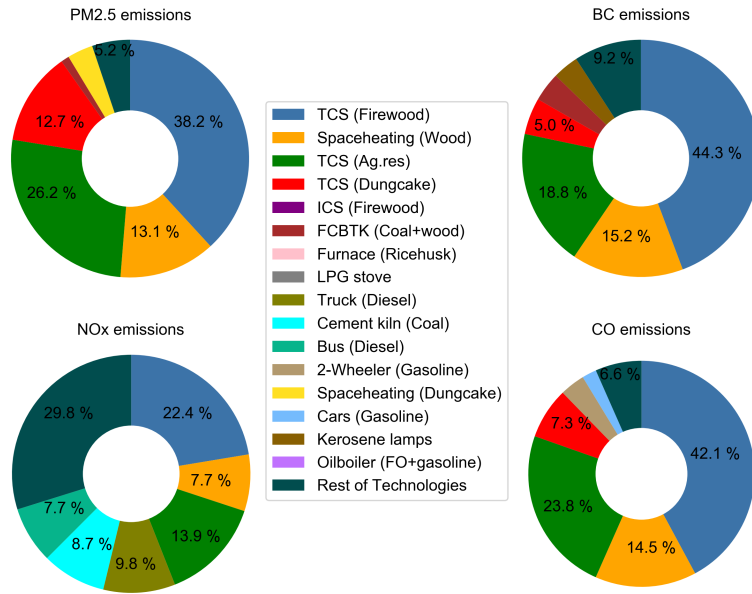


Fig. 2. Figure 6. Top six polluting technologies contributing to (a) PM2.5 (b) BC (c) NOx (d) CO emissions

C3

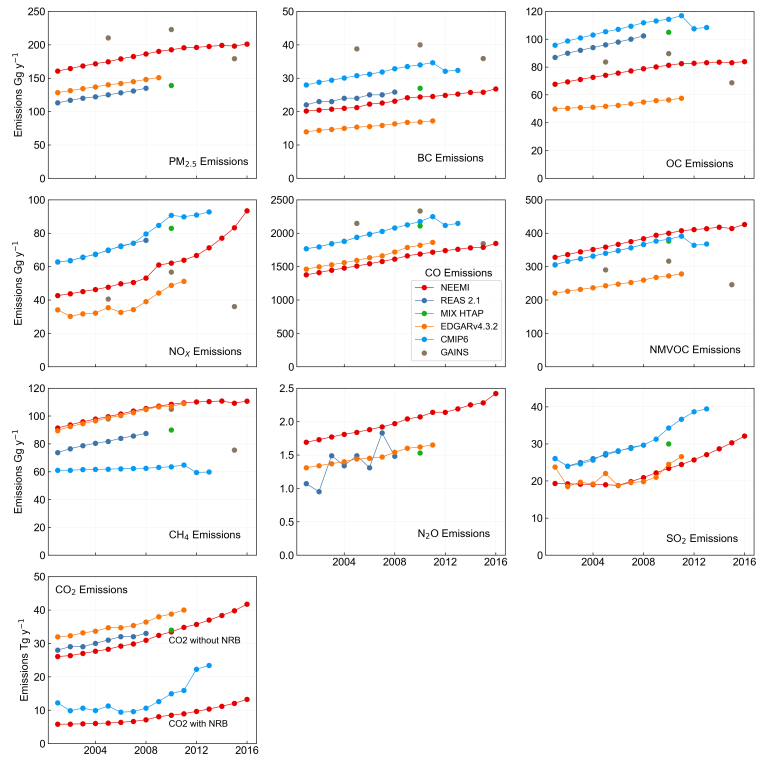


Fig. 3. Figure 7. Emissions comparison with EDGAR, CMIP6, ECLIPSE-GAINS, REAS and MIX HTAP emission inventories

C4