

## ***Interactive comment on “Nepal Emission Inventory (NEEMI): a high resolution technology-based bottom-up emissions inventory for Nepal 2001–2016” by Pankaj Sadavarte et al.***

**Pankaj Sadavarte et al.**

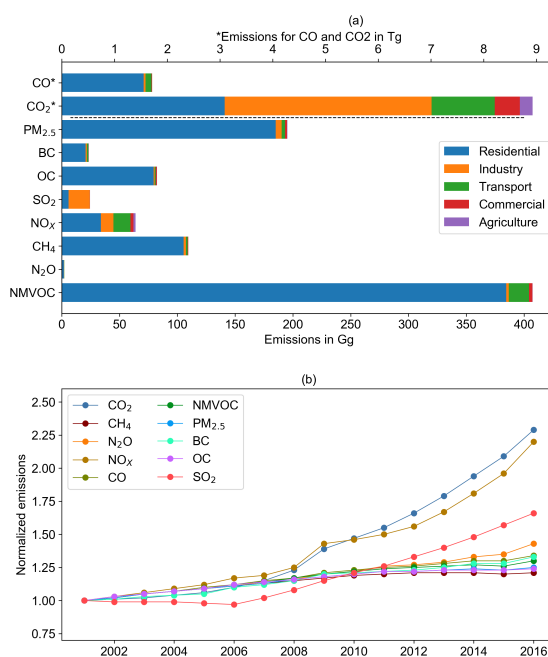
p.sadavarte@sron.nl

Received and published: 12 July 2019

The comment was uploaded in the form of a supplement:  
<https://www.atmos-chem-phys-discuss.net/acp-2019-113/acp-2019-113-AC1-supplement.pdf>

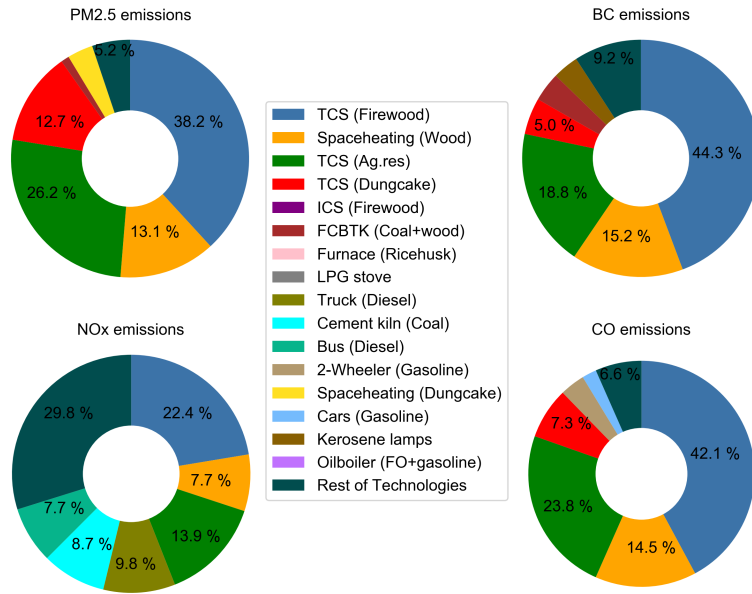
Interactive comment on Atmos. Chem. Phys. Discuss., <https://doi.org/10.5194/acp-2019-113, 2019>.

C1



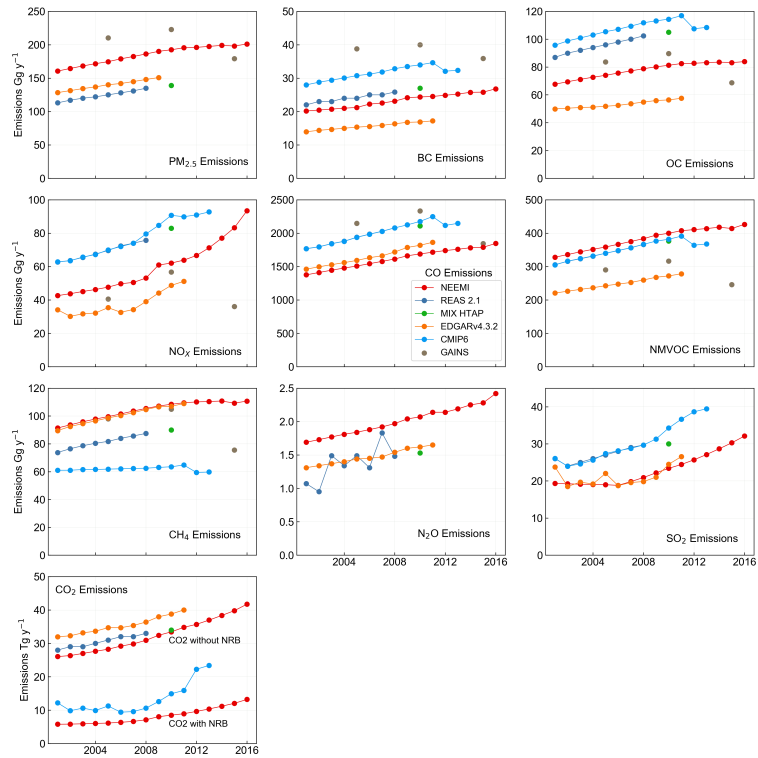
**Fig. 1.** Figure 5. National emissions estimates for aerosols and trace gases for (a) each sector in 2011 and (b) normalized trends for a period 2001–2016

C2



**Fig. 2.** Figure 6. Top six polluting technologies contributing to (a) PM2.5 (b) BC (c) NOx (d) CO emissions

C3



**Fig. 3.** Figure 7. Emissions comparison with EDGAR, CMIP6, ECLIPSE-GAINS, REAS and MIX HTAP emission inventories

C4