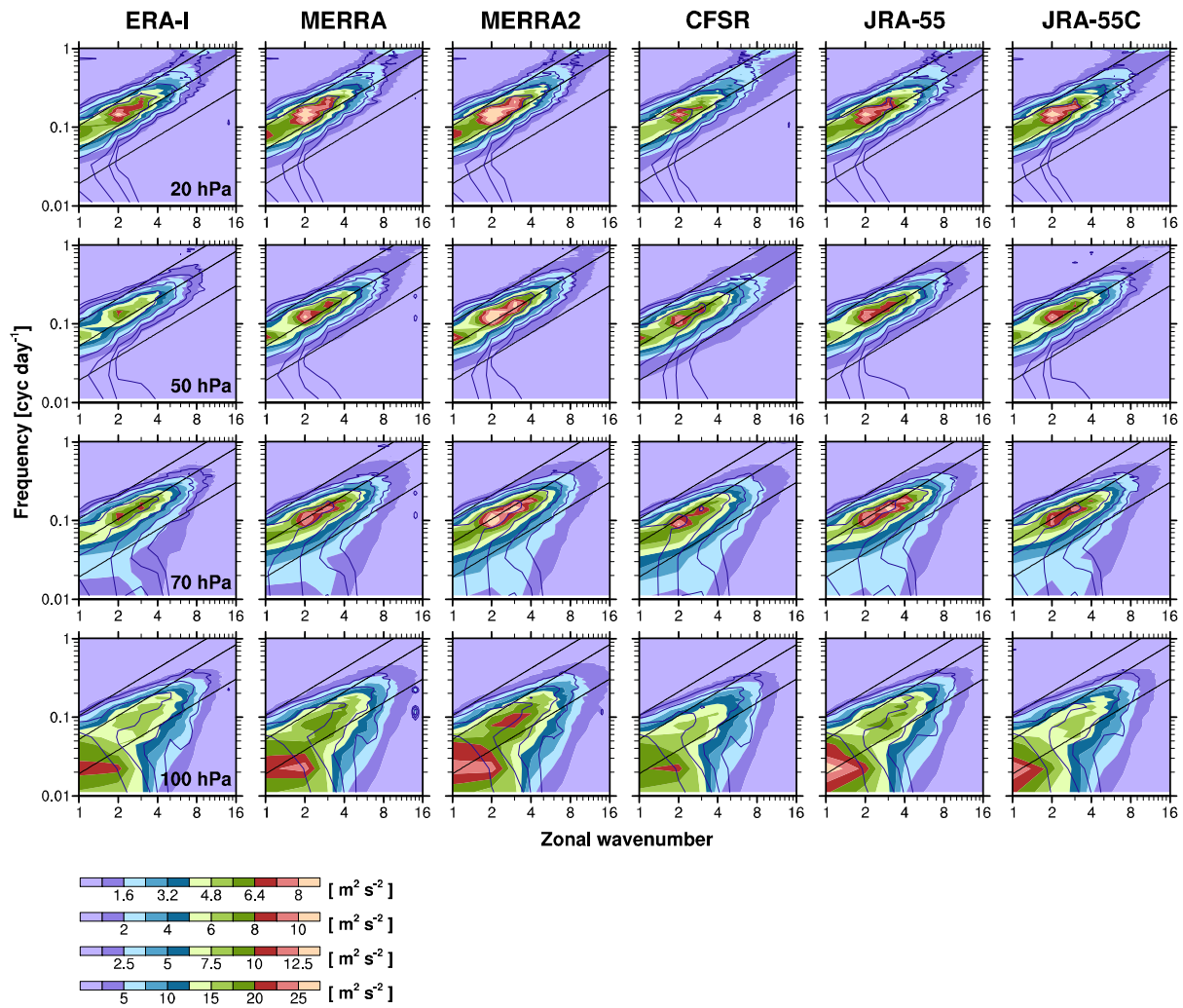


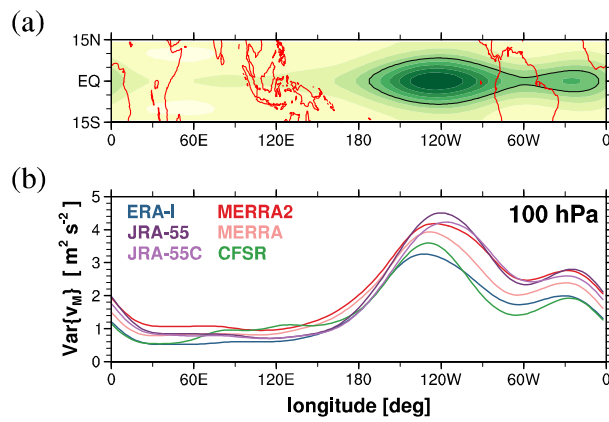
*Supplement of*

**Comparison of equatorial wave activity in the tropical tropopause layer and stratosphere represented in reanalyses**

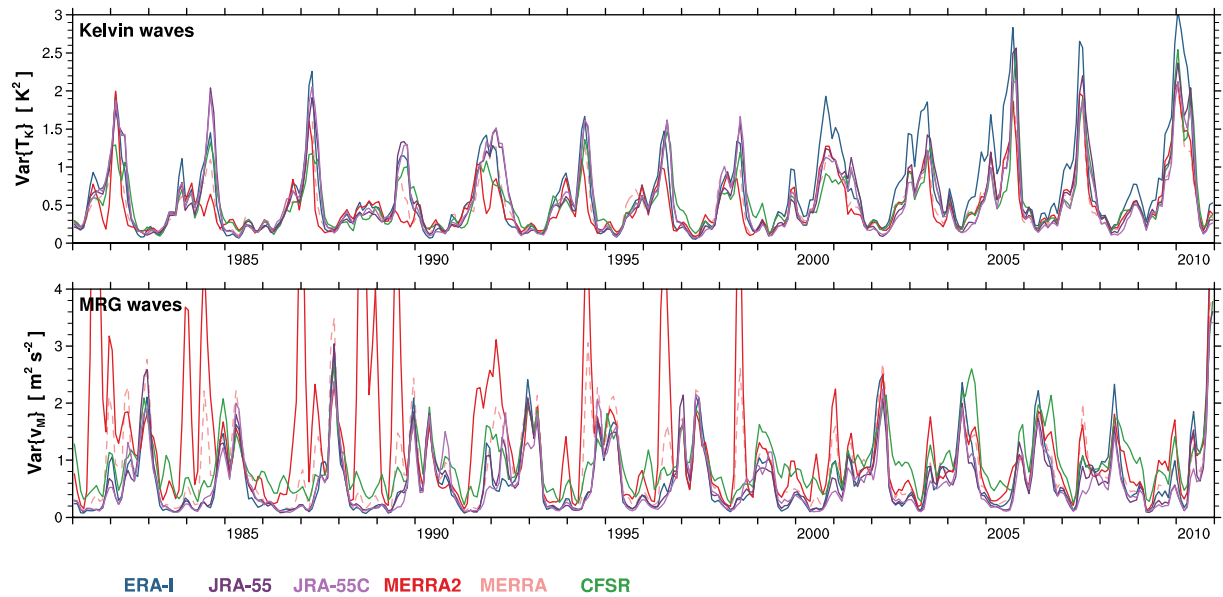
Young-Ha Kim et al.



**Figure S1.** The same as in Fig. 1 except for the zonal wind.



**Figure S2.** The same as in Fig. 3 except for the 100-hPa symmetric meridional wind filtered for  $-10 \leq k < 0$  and  $0.033 \leq \omega < 0.1$  cyc day<sup>-1</sup>.



**Figure S3.** Monthly time series of variances of (upper) temperature for the Kelvin waves ( $T_{\text{Kelvin}}$ ) and (lower) meridional wind for the MRG waves ( $v_{\text{MRG}}$ ) at 10 hPa averaged over  $15^\circ\text{N}$ – $15^\circ\text{S}$ . The MERRA results are from the standard-level datasets (dashed), and the others from the model-level datasets (solid). See the text in Section 3.1 for the definitions of  $T_{\text{Kelvin}}$  and  $v_{\text{MRG}}$ .