

## Response to Referee#1

First of all, we would like to thank the anonymous reviewer for the detailed and rich bibliography return.

- 5 The general remark is the non-consideration of temperature-humidity covariance via a pure thermodynamical variable.

**RC1-1: 1st general comment is: “the authors do not use the correct definition of thermodynamics in their analysis”**

- 10 It is true that our study focused in part on the temperature and humidity, as well as on the precipitation trends observed in the Paris area. There are many thermodynamical variables in the bibliography proposed by the referee#1. Most of them are based on different comfort algorithms as detailed in Buzan et al. (2015). These variables give a better indication of human heat stress, hence the terms "thermal comfort" or "feel-like" temperature are used, as highlighted by Matthews et al. (2017). The majority of these indicators, such as HI (Heat Index), HUMIDEX or Tw (Wet Bulb Temperature), use both temperature and relative humidity and are based on risk levels determined by thresholds. In this study, our objective is not to characterize heat stress via a purely thermodynamic variable but to characterize the part of the changes in temperature and precipitation that are related to thermodynamical processes, i.e all the processes which modify the content of heat and moisture of the atmosphere but large-scale advection (through surface heat and radiative fluxes, phase changes, radiative effects of particles, Clausius-Clapeyron equation...).

- 20 To better understand what we mean when we say dynamic and thermodynamic term, we added a paragraph Page 23, lines 12 to 21 in the track changes version below:

- 25 *“The partitioning method used in the manuscript to determine the dynamical and thermodynamical contributions of the trend is widely used (Cassano et al., 2007; Uotila et al., 2007; Horton et al., 2015; Screen, 2017). This method assumes that each weather regime is stationary in time, which is probably not perfect. Hence, the dynamical contribution corresponds to the changes in the occurrence frequency of each circulation pattern, assuming that the circulation patterns are the same during the two periods (but they have been computed over all years covering at least the two periods so that the differences between the two periods are minimized). The thermodynamical contribution inside a weather regime is the result of influences unrelated to circulation, such as changes in long-wave radiation from increasing greenhouse gas concentrations or different cloud macro- and micro-physical properties, or changes in surface fluxes of moisture and/or radiation. The third component represents the interaction between dynamic and thermodynamic changes, and captures contributions that result from changes in the dynamical component acting on changes in the thermodynamical component.”*

- 40 The first version of the manuscript omits the residual term in the contribution tables. In the new version, an additional column is added, see the new Table 2 and Table 3; and some modifications about values have been corrected for example Page 23, Line 23

**RC1-2: 2<sup>nd</sup> general comment is: “Temperature and humidity are analyzed independently, when there is well established literature demonstrating these variables are co-dependent. Temperature and humidity covary together, and non-linearly in extreme regimes. [...] I cannot determine if this was taken into account.”**

5 Indeed, in this paper, temperature and relative humidity are measured and analyzed independently. The specific humidity  $q$ , is computed as a thermodynamical variable based on temperature and relative humidity via the formula below:

$$q = \frac{0.622 * p_{sat}(T) * RH}{101325 - p_{sat}(T) * RH}$$

10

With  $p_{sat}(T) = \exp \left[ 23.3265 - \frac{3802.7}{T} - \left( \frac{472.668}{T} \right)^2 \right]$

RH: relative humidity from 0 to 1

T: temperature in Kelvin

$p_{sat}(T)$ : saturated vapour pressure in Pascal

15

To address the question of referee#1, we completed our analysis by computing the Wet bulb temperature ( $T_w$ ) based on the formulation of Davies-Jones (2008) as advised by the referee#1. The figures below present the analysis of  $T_w$  at the Montsouris station because the pressure is required for  $T_w$  estimations, and it is available since 1979 only for Montsouris, so we can't do this analysis with the other stations. From a seasonal analysis (Figure A) no trend is significant for  $T_w$ , unlike  $T_{2m}$ . In Summer (JJA), although the PDFs of  $T_{2m}$  (in black) present changes in the extreme values, the PDFs of  $T_w$  do not evolve because the decrease in relative humidity compensates the increase in temperature, causing little change in heat stress.

20

25 The same characteristics are observed by classifying the summer season into four weather regimes (Figure B).

The referee#1 proposed to change Figure 13 of the manuscript to only represent  $T_w$  and PRCP (Figure C). Although  $T_w$  is interesting to analyze we think that  $T_w$  does not really reflect our objective, which is relative to the understanding of the modification of the local water cycle, especially the presence of a possible surface drying which will impact the formation of clouds and precipitation. For such topic, relative and specific humidity are better adapted. The other reason is that precipitation depends on temperature and humidity and we need to have these two informations independently.

30

Figure D shows the seasonal averages of the  $T_{2m}/q$  relationship and the  $T_{2m}/T_w$  relationship (same as figure 14 in the paper but exclusively for Montsouris). Very similar patterns between  $q$  and  $T_w$  supports the idea that  $q$  plays the role of thermodynamic variable without necessarily needing information on heat stress.

35

The referee#1 suggests to use the "maximum wet bulb temperature" used by Sherwood and Huber (2010) on figure 13 of the manuscript. They calculated  $T_{w_{max}}$  histograms as the annual maxima accumulated over the globe (ERA-Interim grid) and year (1999-2008). In our case if we apply the same method we would have a PDF<sub>1979-2002</sub> built with only 24 points (one location, 24 years) and a second PDF<sub>2003-2017</sub> built with 15 points. This sampling size is not representative enough to plot a distribution.

40

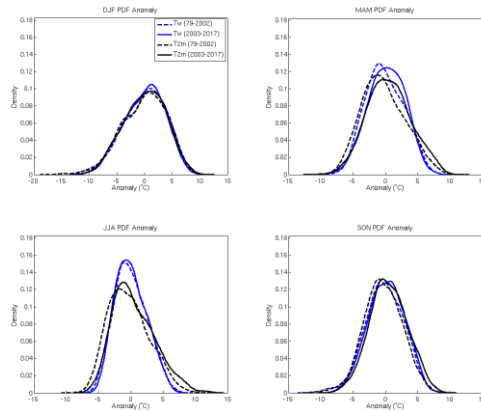
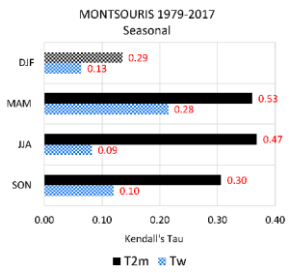
Regarding the calculation of "heat stress", in addition to HI, Diffenbaugh et al. (2007) also use Tmax and Tmin. Mueller and Seneviratne (2012), who show that surface moisture deficits are a relevant factor for the occurrence of hot extremes, define Tmax over the 90th percentile. In our paper we don't use any co-dependent variables but Tmax and Tmin are used for extreme index calculations, giving a first indication of the trend of the thermal extremes.

In our paper we focus on the observed trends and we want to keep the independent analysis between temperature and relative humidity, because this surface drying can play a major role in the trend of other variables such as turbulent flows, and thus can intensify or inhibit existing surface-atmosphere feedbacks. Specific humidity allows to account for the link between temperature & humidity. As thermal comfort is not the main object of the article and do not bring very different information compares to specific and relative humidity, the choice was made not to add information on thermal comfort in the article.

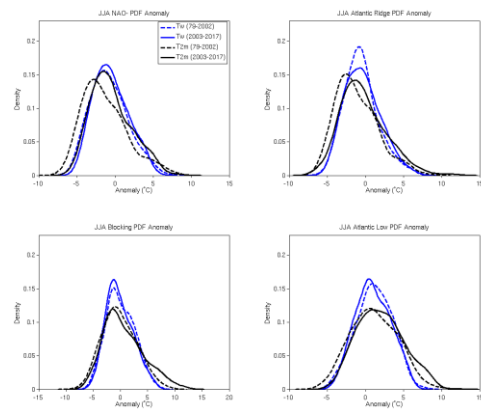
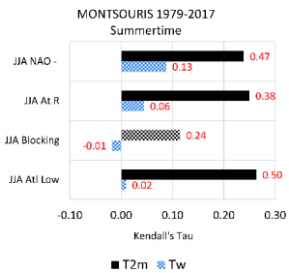
The perspective of this study is to use SIRTA supersite (near Paris) which measures more meteorological variables at hourly resolution since 2003, in order to identify the processes explaining the trends and to improve our knowledge on these surface-atmosphere processes at the local scale.

We added a paragraph (below) in the discussion, on the choice to independently analyze temperature and relative humidity, and the choice to keep specific humidity as a co-dependent variable. Page 29, lines 4 to 14 in the track changes version:

*“Theoretically, with global warming, the rise of temperature should be accompanied by an increase of the specific humidity for a given relative humidity. At Paris scale, the increase in the water retention capacity of the atmosphere (related to the increase in temperature) is not accompanied by an increase in the surface moisture (q), which leads to a decrease in surface relative humidity. There are several thermodynamical variables that take into account this co-dependence between temperature and relative humidity, which is often used to calculate heat stress (Buzan et al., 2015; Davies-Jones, 2008; Sherwood and Huber, 2010; Willet and Sherwood, 2012). We observed that the evolution on the specific humidity is similar to other coupled temperature and humidity variables, as the wet bulb temperature calculated via the formula of Davies-Jones (2008), meaning that the heat stress is constant (temperature increases but relative humidity decreases). In this paper, we use the specific humidity as one of these co-dependent variables. We then observe a surface drying, which can play a major role in the trend of other variables such as turbulent flows, and thus can intensify or inhibit existing surface-atmosphere feedbacks.”*

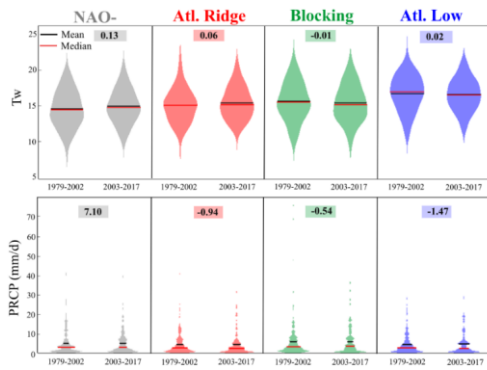


**Figure A.** Left: Mann Kendall seasonal trends for T2m in black and Tw in blue. The red value represents the Sen slope in units per decade. A solid bar indicates a significant trend for a confidence interval of  $p=0.05$ , and a mosaic bar indicates a non-significant trend. Right: Seasonal PDF of the daily anomalies of T2m in black and Tw in blue. Dashed lines for 1979-2002 period and solid lines for the 2003-2017 period. Anomalies are compute over the period 1979-2017.

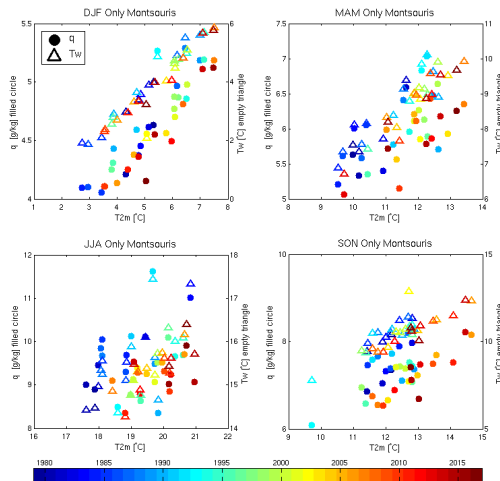


10

**Figure B.** Same as Figure 1 but for summer weather regimes.



5 **Figure C.** Violin plot of daily  $T_w$  (first line) and  $PRCP$  (second line) for the four weather regimes between the periods 1979-2002 and 2003-2017. Box numbers represent trends in unit decade<sup>-1</sup> over the period 1979-2017.



10 **Figure D.**  $T_{2m} - q$  seasonal relationship in Montsouris in filled circle, and  $T_{2m} - T_w$  seasonal relationship in Montsouris in empty triangle. Each point represents the seasonal average of one years.

- Buzan, J. R., Oleson, K. and Huber, M.: Implementation and comparison of a suite of heat stress metrics within the Community Land Model version 4.5, *Geosci. Model Dev.*, 8(2), 151–170, doi:10.5194/gmd-8-151-2015, 2015
- 5 Cassano, J. J., Uotila, P., Lynch, A. H. and Cassano, E. N.: Predicted changes in synoptic forcing of net precipitation in large Arctic river basins during the 21st century, *J. Geophys. Res. Biogeosciences*, 112(G4), n/a-n/a, doi:10.1029/2006JG000332, 2007
- Davies-Jones, R.: An Efficient and Accurate Method for Computing the Wet-Bulb Temperature along Pseudoadiabats, *Mon. Weather Rev.*, 136(7), 2764–2785, doi:10.1175/2007MWR2224.1, 2008
- 10 Diffenbaugh, N. S., Pal, J. S., Giorgi, F. and Gao, X.: Heat stress intensification in the Mediterranean climate change hotspot, *Geophys. Res. Lett.*, 34(11), doi:10.1029/2007GL030000, 2007
- Horton, D. E., Johnson, N. C., Singh, D., Swain, D. L., Rajaratnam, B. and Diffenbaugh, N. S.: Contribution of changes in atmospheric circulation patterns to extreme temperature trends, *Nature*, 522, 465, 2015
- Mathews, T. K. R., Wilby, R. L. and Murphy, C.: Communicating the deadly consequences of global warming for human heat stress, *Proc. Natl. Acad. Sci.*, 114(15), 3861–3866, doi:10.1073/pnas.1617526114, 2017
- 15 Mueller, B. and Seneviratne, S. I.: Hot days induced by precipitation deficits at the global scale, *Proc. Natl. Acad. Sci.*, 109(31), 12398–12403, doi:10.1073/pnas.1204330109, 2012
- Screen, J. A.: The missing Northern European winter cooling response to Arctic sea ice loss, *Nat. Commun.*, 8, 14603, 2017
- Sherwood, S. C. and Huber, M.: An adaptability limit to climate change due to heat stress, *Proc. Natl. Acad. Sci.*, 107(21), 9552–9555, doi:10.1073/pnas.0913352107, 2010
- 20 Uotila, P., Lynch, A. H., Cassano, J. J. and Cullather, R. I.: Changes in Antarctic net precipitation in the 21st century based on Intergovernmental Panel on Climate Change (IPCC) model scenarios, *J. Geophys. Res. Atmospheres*, 112(D10), doi:10.1029/2006JD007482, 2007
- Willett, K. M. and Sherwood, S.: Exceedance of heat index thresholds for 15 regions under a warming climate using the wet-bulb globe temperature, *Int. J. Climatol.*, 32(2), 161–177, doi:10.1002/joc.2257, 2012.

### Response to Referee#3

We want to thank the reviewer for these relevant comments. You'll find below our answer to each of your remarks

#### 5 Major comments:

**RC3-1: Since the temperature and moisture are codependent and they vary together, it seems to me that it is not correct enough to discuss them separately. Therefore, the authors may not discuss the thermodynamic contributions using the correct definition.**

10

In this paper, temperature and relative humidity are measured and analyzed independently. That's why the specific humidity  $q$ , is computed as a thermodynamical variable based on temperature and relative humidity via the formula below:

15

$$q = \frac{0.622 * p_{sat}(T) * RH}{101325 - p_{sat}(T) * RH}$$

With  $p_{sat}(T) = \exp\left[23.3265 - \frac{3802.7}{T} - \left(\frac{472.68}{T}\right)^2\right]$

20

RH: relative humidity from 0 to 1  
T: temperature in Kelvin  
 $p_{sat}(T)$ : saturated vapour pressure in Pascal

25

Theoretically, with global warming, the rise of temperature should be accompanied by an increase of the specific humidity at constant relative humidity. However, at the Paris scale, the increase of the water holding capacity of the atmosphere (associated with the temperature increase) is not accompanied by an increase of surface humidity ( $q$ ) leading to a decrease of surface relative humidity.

30

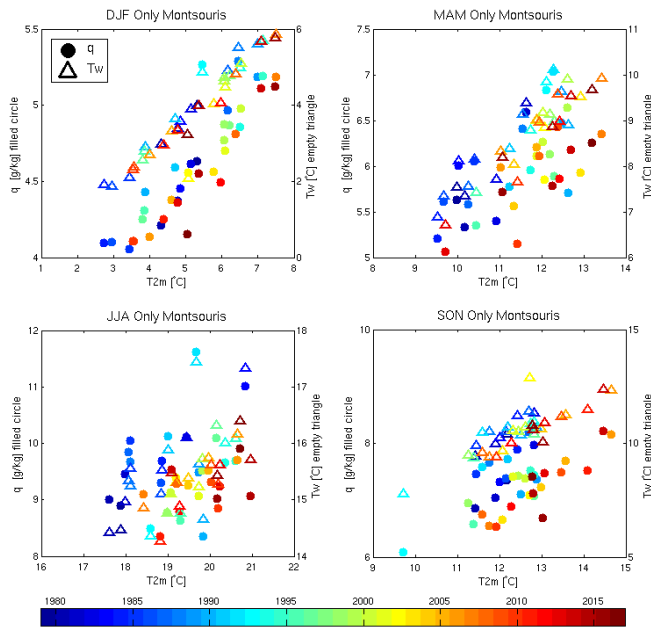
In our paper we focus on the observed trends and we want to keep the independent analysis between temperature and relative humidity, because this surface drying can play a major role in the trend of other variables such as turbulent flows, and thus can intensify or inhibit existing surface-atmosphere feedbacks. However, specific humidity allows to account for the link between temperature & humidity.

35

Moreover, as an answer to referee#1, we completed our analysis by computing the Wet bulb temperature ( $T_w$ ) based on the formulation of Davies-Jones (2008). As the specific humidity,  $T_w$  keeps the codependence between temperature and moisture.

40

Figure A below shows the seasonal averages of the T2m/ $q$  relationship and the T2m/ $T_w$  relationship (same as figure 14 in the paper but exclusively for Montsouris). Very similar patterns between  $q$  and  $T_w$  supports the idea that  $q$  plays the role of thermodynamic variable without necessarily needing information on heat stress. As thermal comfort is not the main object of the article and do not bring very different information compares to specific, the choice was made not to add information on thermal comfort in the article.



5 **Figure A.**  $T2m - q$  seasonal relationship in Montsouris in filled circle, and  $T2m - Tw$  seasonal relationship in Montsouris in empty triangle. Each point represents the seasonal average of one years.

The comments of the referee#3 may actually refer to the estimation of the dynamical and thermodynamical contributions of the observed changes. Indeed, such terms are commonly used in the literature with the same approach that we used (Cassano et al., 2007; Uotila et al., 2007; Horton et al., 2015; Screen, 2017).

10 To better understand what we mean when we say dynamic and thermodynamic term, we added a paragraph Page 23, lines 12 to 21 in the track changes version below:

15 *“The partitioning method used in the manuscript to determine the dynamical and thermodynamical contributions of the trend is widely used (Cassano et al., 2007; Uotila et al., 2007; Horton et al., 2015; Screen, 2017). This method assumes that each weather regime is stationary in time, which is probably not perfect. Hence, the dynamical contribution corresponds to the changes in the occurrence frequency of each circulation pattern, assuming that the circulation patterns are the same during the two periods (but they have been computed over all years covering at least the two periods so that the differences between the two periods are minimized). The thermodynamical contribution inside a weather regime is the result of influences unrelated to circulation, such as changes in long-wave radiation from increasing greenhouse gas concentrations or different cloud macro- and micro-physical properties, or changes in surface fluxes of*

20



moisture and/or radiation. The third component represents the interaction between dynamic and thermodynamic changes, and captures contributions that result from changes in the dynamical component acting on changes in the thermodynamical component.”

5

We also added a paragraph in the discussion, on the choice to independently analyze temperature and relative humidity, and the choice to keep specific humidity as a co-dependent variable. Page 29, lines 4 to 14 in the track changes version:

10

“Theoretically, with global warming, the rise of temperature should be accompanied by an increase of the specific humidity for a given relative humidity. At Paris scale, the increase in the water retention capacity of the atmosphere (related to the increase in temperature) is not accompanied by an increase in the surface moisture ( $q$ ), which leads to a decrease in surface relative humidity. There are several thermodynamical variables that take into account this co-dependence between temperature and relative humidity, which is often used to calculate heat stress (Buzan et al., 2015; Davies-Jones, 2008; Sherwood and Huber, 2010; Willet and Sherwood, 2012). We observed that the evolution on the specific humidity is similar to other coupled temperature and humidity variables, as the wet bulb temperature calculated via the formula of Davies-Jones (2008), meaning that the heat stress is constant (temperature increases but relative humidity decreases). In this paper, we use the specific humidity as one of these co-dependent variables. We then observe a surface drying, which can play a major role in the trend of other variables such as turbulent flows, and thus can intensify or inhibit existing surface-atmosphere feedbacks.”

15

20

25

**RC3-2: The methodology section is so lengthy that bury the effective information. I would like to suggest to rewritten this section to make your key method more clear.**

Following this comment, we deleted the part “3.3 Statistical characteristics of the PDFs” in methodology and the coefficients associated in Figures 4 and 6, to reduce information.

30

We moved the paragraph “3.4 Climate indices” in data part especially in the part “2.1. Observation” (Page 13, lines 14 to 23).

We also made some changes within the remaining sections.

The corrected version of this section appears on Pages 15 to 18 of the track changes version below.

35

#### **Minor comments:**

40

**RC3-3: The classification of four seasons appear twice in the manuscript, one is around Page 3, Line 23, the other one is around Page 9, Line 43.**

Thank you for this observation, we keep the details of the seasons at the first appearance Page 13, line 22 in the track changes version and we have deleted the sentence Page 20, lines 2-4:

45

“Our study area is marked by a high seasonal cycle (Fig. 2). For each variable, we apply our analysis for the four seasons as follows: the winter season from December to February (DJF), the spring season from March to May (MAM), the summer season from June to August (JJA) and the autumn season from September to November (SON).”

**RC3-4: Given the uncertainty of your calculated Kendall Tau, the differences among these  $\tau$ s may not significantly. Could you please provide the CI of your calculated Kendall Tau?**

Kendall tau is a rank coefficient. It is calculated as:

$$\tau = \frac{(\text{concordant pairs}) - (\text{discordant pairs})}{\text{number of pair combinations}}$$

10 That is to say that in each pair of points if the trend increases then there is a concordance (+1) inversely if the trend decreases there is discordance (-1).

In this paper the significance test is performed on the Sen Slope. So we can't give the confidence interval of the calculated Kendall Tau.

15 **RC3-5: The short citation in the text is not in good format. There should be parentheses covering the year. For instance, Donat et al., 2013 (Page 2, Line 1) should be Donat et al. (2013).**

This is now corrected throughout the paper

**RC3-6: Page 5, Line 19, "with d  $\in$  D [1 à 365]" could be a symbol issue.**

20 There must be a problem of encoding in pdf. Now it's: Page 16, line 4: "with  $d$ , ranging from 1 to 365"

**RC3-7: For those tables, horizontal lines should normally only appear above and below the table.**

This is now modified in the revised paper

25 **RC3-8: Figure 11: please add the meaning of each horizontal lines into the figure caption.**

Corrected: this is the new legend for the Figure 11:

30 *"Figure 11: "Summer Days" frequency ( $T_{max} > 25^{\circ}\text{C}$ ) in number of days for the JJA season (black boxplot) and for each summer weather regime calculated over the period 1979-2017. The bottom and top edges of the box indicate the 25th and 75th percentiles, respectively and the central line the median. The bottom and top lines outside the box indicate the minimal and maximal values respectively."*

Buzan, J. R., Oleson, K. and Huber, M.: Implementation and comparison of a suite of heat stress metrics within the Community Land Model version 4.5, Geosci. Model Dev., 8(2), 151–170, doi:10.5194/gmd-8-151-2015, 2015

35 Cassano, J. J., Uotila, P., Lynch, A. H. and Cassano, E. N.: Predicted changes in synoptic forcing of net precipitation in large Arctic river basins during the 21st century, J. Geophys. Res. Biogeosciences, 112(G4), n/a-n/a, doi:10.1029/2006JG000332, 2007

Davies-Jones, R.: An Efficient and Accurate Method for Computing the Wet-Bulb Temperature along Pseudoadiabats, Mon. Weather Rev., 136(7), 2764–2785, doi:10.1175/2007MWR2224.1, 2008

40 Horton, D. E., Johnson, N. C., Singh, D., Swain, D. L., Rajaratnam, B. and Diffenbaugh, N. S.: Contribution of changes in atmospheric circulation patterns to extreme temperature trends, Nature, 522, 465, 2015

Screen, J. A.: The missing Northern European winter cooling response to Arctic sea ice loss, Nat. Commun., 8, 14603, 2017

Sherwood, S. C. and Huber, M.: An adaptability limit to climate change due to heat stress, Proc. Natl. Acad. Sci., 107(21), 9552–9555, doi:10.1073/pnas.0913352107, 2010

45 Uotila, P., Lynch, A. H., Cassano, J. J. and Cullather, R. I.: Changes in Antarctic net precipitation in the 21st century based on Intergovernmental Panel on Climate Change (IPCC) model scenarios, J. Geophys. Res. Atmospheres, 112(D10), doi:10.1029/2006JD007482, 2007

Willett, K. M. and Sherwood, S.: Exceedance of heat index thresholds for 15 regions under a warming climate using the wet-bulb globe temperature, Int. J. Climatol., 32(2), 161–177, doi:10.1002/joc.2257, 2012.

# Recent trends in climate variability at the local scale using 40 years of observations: the case of the Paris region of France

Justine Ringard<sup>1</sup>, Marjolaine Chiriaco<sup>1</sup>, Sophie Bastin<sup>1</sup>, Florence Habets<sup>2-3</sup>

<sup>1</sup>LATMOS/IPSL, UVSQ Université Paris-Saclay, Sorbonne Université, CNRS, Guyancourt France

<sup>2</sup>METIS/IPSL, Sorbonne Université, CNRS, Paris France

<sup>3</sup>Laboratoire de Géologie, Ecole normale supérieure, PSL Research University, CNRS UMR 8538, 24 rue Lhomond, 75005 Paris, France

Correspondence to: Justine Ringard ([justine.ringard@latmos.ipsl.fr](mailto:justine.ringard@latmos.ipsl.fr))

**Abstract.** For several years, global warming has been unequivocal, leading to climate change at global, regional and local scales. A good understanding of climate characteristics and local variability is important for adaptation and response. Indeed, the contribution of local processes and their understanding in the context of warming are still very little studied and poorly represented in climate models. Improving the knowledge of surface-atmosphere feedback effects at local scales is therefore important for future projections. Using observed data in the Paris region from 1979 to 2017, this study characterizes the changes observed over the last 40 years for six climatic parameters (e.g., mean, maximum and minimum air temperature at 2 metres, 2 metres relative and specific humidities and precipitation) at the annual and seasonal scales and in summer, regardless of large-scale circulation, with an attribution of which part of the change is linked to large scale circulation or thermodynamic. The results show that some trends differ from the ones observed at the regional or global scale. Indeed, in the Paris region, the maximum temperature increases faster than does the minimum temperature. The most significant trends are observed in spring and in summer, with a strong increase in temperature and a very strong decrease in relative humidity, while specific humidity and precipitation show no significant trends. The summer trends can be explained more precisely using large-scale circulation, especially regarding the evolution of the precipitation and specific humidity. The analysis indicates the important role of surface-atmosphere feedback in local variability and that this feedback is amplified or inhibited in a context of global warming, especially in an urban environment.

## 1 Introduction

The climate system warming is unequivocal, and since the 1950s, many observed changes have been unprecedented (GIEC, 2014). At the global scale, this warming has shown a trend of approximately 0.12 °C per decade since 1951 (GIEC, 2014), with a greater change in daily minimum temperatures (Tmin) than daily maximum (Tmax) ones (Donat and Alexander, 2012). Donat et al. (2013) analysed 27 indices of temperature and precipitation recommended by the Expert Team on Climate Change

Detection and Indices (ETCCDI; Karl et al., 1999; Peterson et al., 2001; Peterson, 2005) over the last century in different regions of the globe and concluded that more significant change has occurred in T<sub>min</sub> extremes, especially in recent decades and that most regions have experienced an increase in precipitation intensities and frequencies.

Previous studies suggested that a change in average temperatures largely explains the change in observed extreme temperatures

5 (McKinnon et al., 2016; Rhines and Huybers, 2013; Tingley and Huybers, 2013). Donat and Alexander, (2012) studied the maximum and minimum daily temperature variations on the globe, comparing the probability density functions (PDF) of the variables between 1951-1980 and 1981-2010. Comparisons showed that both maximum and minimum daily temperatures have shifted to higher values over the last 30 years in all regions of the world. However, changes in variance and asymmetry of distributions between the two periods are spatially heterogeneous. This result is also confirmed by Kodra and Ganguly, (2015) and McKinnon et al., (2016), who show that the change in distribution depends on the region and the season. At these regional and local scales, changes in temperature distribution may be more complex than at the global scale (Huntingford et al., 2013). We still do not know how to determine if extreme climate change is simply a result of an increase in the mean or higher order changes, such as variance, skewness and / or kurtosis (Lewis and King, 2017), because, according to Donat et al., (2013), regional changes affect the higher order of the statistical moments of a distribution.

15 Western Europe is warming much faster than expected, with an increase of temperatures of 0.5°C per decade over the past 30 years (Van Oldenborgh et al., 2009) and summer temperatures increasing more rapidly since the mid-1990s (Dong et al., 2017). Climate variability in Western Europe is influenced by both large-scale dynamics and regional / local physical processes. Global warming causes dynamic and thermodynamic changes that modify the extreme event probabilities (Horton et al., 2015).

20 In a pioneering study, Reinhold and Pierrehumbert, (1982) suggested that observed changes at the surface may result from a progressive change in the frequencies of occurrence of different climatic regimes, but the change in atmospheric circulation controlled by large-scale dynamics, linked to global warming, shows sources of uncertainty, notably in projections (Cohen et al., 2014; Shepherd, 2014). Several studies show that in winter, changes in atmospheric circulation are the main drivers of surface weather trends in Europe (Van Oldenborgh et al., 2009; Vautard and Yiou, 2009; Yiou et al., 2018). In summer, this is not always the case because of the strong interaction between the temperature and the water cycle (Van Oldenborgh et al.,

25 2009; Vautard and Yiou, 2009). Cattiaux et al., (2012) have nonetheless suggested that the observed increase in interannual variability could be partly explained by atmospheric dynamics. However, the influence of other processes (such as heat fluxes or evapotranspiration driven by soil moisture), which are more important in summer and spring, suggests that recent and future warming in Europe is incompatible with changes in atmospheric circulation alone, and surface-atmosphere processes are mainly responsible for increasing temperature variability, especially summer temperatures (Zampieri et al., 2009). In addition,

30 various studies, such as those of Chiriaco et al., (2014) and Miralles et al., (2014), show that the development of summer heat waves, their frequency and their intensity result from a combination of large-scale specific atmospheric circulation and specific surface-atmosphere interactions. Some thermodynamic changes related to global warming are well understood and observed, such as humidity-temperature positive feedback (Cattiaux et al., 2015; Fischer et al., 2012; Miralles et al., 2014; Seneviratne et al., 2010; Vogel et al., 2017). However, other surface-atmosphere feedbacks are still very little studied in the context of

Commenté [JR1]: RC3-5: The format is now corrected in all the paper

global warming and are poorly represented in the models (Vautard et al., 2018). For example, in Western Europe, the number of anticyclonic situations increases, but the amount of rainfall does not decrease, which indicates an increase in the amount of rain per event and not an increase in the number of events (Vautard and Yiou, 2009). However, Rasmussen et al. (2017) determined that downstream of the Rockies in the US Great Plains during summer, both the magnitude of the Convective Available Potential Energy (CAPE) and the Convective Inhibition (CIN) increase in a warmer future climate. This means that the triggering of precipitation will be more difficult, reducing the frequency of weak to moderate precipitation, but the intensity of precipitation when it occurs will increase in a future climate, thereby modifying the spatial and temporal occurrence of precipitations. Bastin et al. (2019) highlighted the importance of surface-atmosphere processes, particularly at the local scale, because triggering thresholds are a function of local moisture sources. The contribution of local processes and their understanding in a warming context is therefore an important factor in improving future projections.

The purpose of this article is to characterize, at the local scale, trends and changes in temperature distributions (T2m, Tmax and Tmin), relative and specific humidities and precipitation over the last four decades in the Paris area, and to deduce the possible modifications of the surface-atmosphere feedbacks. The study focuses on the Paris region for the following several reasons: i) as a densely populated area (11 million inhabitants), it is sensitive to extreme events such as floods (2001, 2016, 2018) and heat waves (2003, 2006, 2018), which are projected to become more common in the future; ii) the Paris area is conditioned by an urban microclimate (urban heat island), which intensifies extremes, while very few tools related to climate modelling are adequate to study the impact of urban areas; and iii) the supersite SIRTa (Site Instrumental de Recherche par Télédétection Atmosphérique / Instrumental Research Site of Atmospheric Teledetection in Palaiseau (Haeffelin et al., 2005), cyan in Fig. 1), which monitors long-term multiple variables with high-level measurements, is located in the area. These specific observations are not used in the current paper.

The current paper examines changes in temperature distributions (T2m, Tmax and Tmin), humidity (relative and specific) and precipitation at the following different time scales: annually, seasonally (winter DJF, spring MAM, summer JJA and autumn SON) and especially during the summer season, according to the large-scale circulations; the paper also compares these changes between a past period (1979-2002) and current period (2003-2017). The observations used and their comparisons to reanalysis products are presented in Section 2 in order to check the ability of the commonly used atmospheric reanalyses to detect local scale trends. Section 3 describes the methodology used to calculate trends and describe PDFs, as well as the method used to define continuous time weather regimes. In Section 4, trends and changes in distributions of the different parameters are analysed on an annual and seasonal scale. In Section 5, a focus is made on the summer season to analyse trends and distributions for the four main large-scale circulations. Section 6 discusses the results and their possible relationships according to the nature of the change (dynamic, thermodynamic or anthropic).

## 2 Data

### 2.1 Observations

This study analyses climate trends at the local scale, in the region of Paris, France, from 1979 to 2017 using five Météo France (MF) daily observation stations (in yellow in Fig. 1). The choice of these stations is motivated by i) their good temporal sampling (few measurement gaps), ii) their temporal availability, since at least 1979, and iii) the fact that all considered variables are measured at the station. We performed a sensitivity analysis to compare the variability between each station as well as their differences with the ensemble of the five stations' mean. For all variables, the five stations show a very strong correlation between them (not shown). The Montsouris (Trappes) station, located downtown (outside) Paris, has slightly warmer (colder) temperatures but similar variability to the other stations. Regarding the relative humidity, Montsouris has slightly drier conditions and Trappes slightly wetter conditions. Note that the other three stations show a correlation and variability almost identical to the average of the stations. This is why the five stations are averaged together to obtain a single daily observation series corresponding to the "Paris region". For the sake of comparison (Section 2.2 and Appendix A), for precipitation, the average of the four stations located within the SAFRAN grid (in orange in Fig. 1) is computed.

Based on these observations, we used the climate indices recommended by the joint CCI (WMO Commission for Climatology) / CLIVAR (World Climate Research Programme Project for Climate Variability and Predictability) / JCOMM (Joint Technical Commission for Oceanography and Marine Meteorology) Expert Team on Climate Change Detection and Indices (ETCCDI) (Karl et al., 1999; Peterson et al., 2001; Peterson, 2005; Zhang et al., 2011) calculated from T<sub>max</sub>, T<sub>min</sub> and PRCP (Table 1). With regard to precipitation, the indices are generally calculated according to a threshold of 1 mm; this threshold differentiates a rainy day from a non-rainy day. In this study, we modified this threshold to 0.2 mm. This choice is motivated by the World Meteorological Organization (WMO), which recommends an accuracy of 0.2 mm for rain gauges (WMO, 2014), considering that minimal rainfall for a rainy day is 0.2 mm d<sup>-1</sup>. Finally, when the indices use percentiles, they are calculated on the annual series when looking at annual trends and calculated over the season when looking at seasonal trends.

**Commenté [JR2]: RC3-2:** This paragraph, previously in the methodology part, has been placed here in the observation data.

### 2.2 Comparison of the local observation with the ERA-Interim reanalyses and SAFRAN analysis

Although the main data sources in this study come from direct observation, it is interesting to test the ability of well-known reanalyses to represent the fine-scale behaviour. To do so, we used the reanalysis from the European Centre for Medium-Range Weather Forecasts (ECMWF) ERA-Interim (Simmons et al., 2014), as well as the high resolution meteorological analysis SAFRAN (Quintana-Seguí et al., 2008), for precipitations. ERA-I shows a general pattern of underestimation of temperatures (T<sub>2m</sub>, T<sub>max</sub> and T<sub>min</sub>) relative to observations, which is more marked seasonally, especially in spring and summer (Fig. A1b and A1e). In addition, ERA-I also shows a strong overestimation of relative humidity annually and seasonally, whereas the specific humidity is rather well estimated by ERA-I. For precipitation, SAFRAN shows rather

satisfactory results in terms of bias despite the high daily variability (Fig. A1b and A1e). However, the statistical analyses carried out on the monthly accumulations show very good results, confirming that SAFRAN is well adapted to inform the precipitation at local scale, at least for this area. The detailed results obtained from the two datasets are presented in Appendix A. The reasons for the discrepancies between direct observation and ERA-I / SAFRAN are out of the scope of this paper, but the presence of significant bias at this local scale motivates the use of observations and not reanalysis for the current issues.

### 2.3 Local climate

The temporal evolution of the six daily variables, namely, the daily temperature at 2 metres (T2m), the daily maximum temperature at 2 metres (Tmax), the daily minimum temperature at 2 metres (Tmin), the relative humidity (RH), the specific humidity ( $q$ ) and the precipitation (PRCP), on an annual basis and for seasonal scales are presented in Fig. 2. The local climate is characterized by cold and humid winters in contrast to warm and increasingly drier summers. The seasonal averages of T2m and Tmax are similar in spring and autumn; however, autumn has warmer Tmin and wetter conditions than does spring. The relative humidity is the only variable for which the decrease tendency, especially in the spring-summer, clearly appears. Regarding precipitation, the Paris region shows no preferential season when considering the total amount.

## 3 Methodology

### 3.1 Mann-Kendall Trend Test

Trends were calculated using the Mann-Kendall test (Kendall, 1955; Mann, 1945). This test detects the presence of a monotonic tendency in a chronological series of a variable. It is a non-parametric method; that is, it makes no assumptions about the underlying distribution of the data, and its rank-based measure is not influenced by extreme values. This method mainly gives three types of information.

- The Kendall Tau, or Kendall rank correlation coefficient, measures the monotony of the slope. ~~Kendall's Tau varies between -1 and 1; -1 is positive when the trend increases and vice-versa. Kendall's Tau varies between -1 and 1; the closer Kendall's Tau is to 1 (-1), the more positive (negative) correlation of the variable with time is certain.~~
- ~~The significance, which represents the threshold for which the hypothesis that there is no trend is accepted. The trend is statistically significant when the p-value is less than 0.05.~~
- The ~~slope of Sen~~ Sen slope, which estimates the overall slope of the time series. This slope corresponds to the median of all the slopes calculated between each pair of points in the series.
- ~~The significance, which represents the threshold for which the hypothesis that there is no trend is accepted. The trend is statistically significant when the p-value is less than 0.05.~~

**Commenté [JR3]: RC3-2:** We deleted the part "3.3 Statistical characteristics of the PDFs" in methodology and the coefficients associated in Figures 4 and 6, to reduce information. We moved the paragraph "3.4 Climate indices" in data part especially in the part "2.1. Observation". We also made some changes within the remaining sections: see below the new paragraph: "3. Methodology"

### 3.2 Anomaly and Normalization

To compare two periods, we use the probability density function of normalized anomalies. The data of an  $X$  variable are exploited as anomalies  $X'$  with respect to climatology  $\bar{X}$ . Here, we take as climatology the whole period of study, the normal of a day  $d$  of the year  $y$ , with  $d$ , ~~€-ranging from 1 à to 365+~~, as the average of this day over the period 1979-2017 (Eq. (1)) as follows:

$$\bar{X}(d) = \frac{1}{N} \sum_{y=1979}^{2017} X(d) \quad (1)$$

with  $N$  number of years. To obtain a non-noisy signal, the climatology  $\bar{X}$  is smoothed by a "LOcally Weighted Scatterplot Smoother" (LOWESS), ~~with a spar = 0.3. The spar represents the fraction of data used to smooth the series; it is between 0 and 1. Here, we retain a spar of 0.3 to sufficiently smooth the series by attenuating the residual component, i.e., the noise, while maintaining the appearance of the trend.~~ Once the climatology is obtained, we calculate the daily anomaly (Eq. (2)) as follows:

$$X'(d) = X(d) - \bar{X}(d) \quad (2)$$

Monthly or seasonal anomalies are directly obtained by averaging  $\bar{X}(d)$  over months or seasons. Finally, the anomalies  $X'(d)$  are normalized over the period 1979-2017 according to the temporal scale studied  $t$ , where  $t \in 1, \dots, Nt$  (year or season) as follows:

$$\bar{X}'_t = \frac{X'_t - \mu_{X'_t}}{\sigma_{X'_t}} \quad (3)$$

With

$$\mu_{X'_t} = \frac{1}{N_t} \sum_t X'_t \quad (4)$$

$$\sigma_{X'_t}^2 = \frac{1}{N_t - 1} \sum_t (X'_t - \mu_{X'_t})^2 \quad (5)$$

We normalized the anomalies with respect to the entire 1979-2017 studied period because, according to Huntingford et al., (2013) and Sippel et al., (2015), when anomaly normalization is performed relative to a reference period, then standardization tends to increase the variability and extremes.

~~With normalized anomaly we compute the distributions for two periods (1979-2002, 2003-2017). The choice of separation between these two periods 1979-2002 and 2003-2017 is mainly motivated by the fact that over the period 2003-2017, observations of various meteorological parameters are available at the supersite SIRTA (see Fig. 1) and have been reanalysed to produce the SIRTA-ReOBS dataset at an hourly time scale (Chiriaco et al., 2018). This dataset is not used in this study, but~~

**Commenté [JR4]: RC3-6:** There must be a problem of encoding in pdf. Now it's: "with  $d$ , ranging from 1 to 365"

**Mis en forme :** Police :Non Italique

**Mis en forme :** Police :Non Italique

**Commenté [JR5]: RC3-2:** We deleted this part to reduce information



it will be used in a forthcoming paper focused on the understanding of the processes responsible for the changes detected in the current paper.

### 3.3 Statistical characteristics of the PDFs

Global warming is accompanied by changes in the distributions of climate variables. Several kinds of changes can occur, including i) a "change in the mean", where there is an increase or decrease of the probability distribution by shifting to the right or to the left, ii) a "change in symmetry", for example, the distribution spreads to the right so that the lowest tail of distribution would remain approximately at historical intensities and the distribution of the highest extremes would increase, and iii) a "change in variability", where there is a symmetrical widening, i.e., a flattening of the distribution, leading to an increase in both cold and warm extremes in the case of temperature (Donat and Alexander, 2012; Field et al., 2012; Lewis and King, 2017).

Normalized anomaly distributions for two periods (1979-2002, 2003-2017) are analysed and the Probability Density Functions (PDF) are calculated. For each PDF, we calculate the symmetry coefficient or skewness "S", as well as the shape coefficient or kurtosis "K". The symmetry coefficient, which is the moment of order 3, is without unity. If the distribution is symmetrical, this coefficient is equal to zero; if the distribution spreads to the left (right), it is negative (positive). The shape coefficient, which is the moment of order 4, measures the flattening of the distribution. The kurtosis of any normal distribution is 3. The larger the value, the sharper the distribution. Conversely, the smaller the coefficient, the flatter the distribution, which leads to greater variability. The choice of separation between these two periods 1979-2002 and 2003-2017 is mainly motivated by the fact that over the period 2003-2017, observations of various meteorological parameters are available at the supersite SIRTA (see Fig. 1) and have been reanalysed to produce the SIRTA ReOBS dataset at an hourly time scale (Chiriaco et al., 2018). This dataset is not used in this study, but it will be used in a forthcoming paper focused on understanding the processes responsible for the changes detected in the current paper.

### 3.4 Climate indices

We used the climate indices recommended by the joint CCI (WMO Commission for Climatology) / CLIVAR (World Climate Research Programme Project for Climate Variability and Predictability) / JCOMM (Joint Technical Commission for Oceanography and Marine Meteorology) Expert Team on Climate Change Detection and Indices (ETCCDI) (Karl et al., 1999; Peterson et al., 2001; Peterson, 2005; Zhang et al., 2014) calculated from T<sub>max</sub>, T<sub>min</sub> and PRCP (Table 1). With regard to precipitation, the indices are generally calculated according to a threshold of 1 mm; this threshold differentiates a rainy day from a non rainy day. In this study, we modified this threshold to 0.2 mm. This choice is motivated by the World Meteorological Organization (WMO), which recommends an accuracy of 0.2 mm for rain gauges (WMO, 2014), considering that minimal rainfall for a rainy day is 0.2 mm d<sup>-1</sup>. Finally, when the indices use percentiles, they are calculated on the annual series when looking at annual trends and calculated over the season when looking at seasonal trends.

Mis en forme : Normal

### 3.5.3 Weather Regimes

In winter and summer, climate variability in Western Europe is controlled by different dynamic states called weather regimes (Cassou et al., 2005, 2011). These regimes are interpreted as quasi-stationary states of daily atmospheric circulation that can persist from a few days to a few weeks. Michelangeli et al. (1995) show that four regimes are relevant for the study of climate variability in the North Atlantic-European basin. These regimes are defined according to the geopotential height at 500 hPa or the sea level pressure (SLP) by the k-means method. Thus, each day is associated with a preferential regime (Legras and Ghil, 1985; Vautard, 1990; Yiou et al., 2008). Weather regime analysis allows observing climate trends at constant air mass; that is, large-scale circulation is fixed, and thus the variability detected is rather explained by smaller scale processes. This study uses a regime classification, calculated from the SLP over a reference period 1970-2010 and available at the following link <https://a2c2.lscce.ipsl.fr/index.php/deliverables> (for more details see Cattiaux, 2010; Yiou et al., 2011, 2018). Such classification is efficient for stable seasons such as winter and summer, and less for spring and fall, which are transition seasons and therefore more subject to rapid large-scale changes. We mainly focused on summer because of the strong local variability related to the thermodynamical processes that affect the summer season and whose changes are more marked in summer than in winter.

In summer, there are four preferential regimes, as detailed below (Fig. B1 in the Appendix B represents the anomalies of SPL associated with these four summer regimes).

- The NAO- phase (Fig. B1) is characterized by a weakening of the Icelandic Low. The jet stream is pushed back to the south on its arrival in Western Europe, causing cold conditions over most of Europe. In the Paris area, this regime is marked by cooler and wetter conditions.
- The Atlantic Ridge phase is characterized by high pressures over the Atlantic Ocean and low pressures over the northwest of Europe, favouring cold conditions via the reinforcement of a polar flux. On the other hand, it inflates the Azores Anticyclone in its subtropical part and thus warms the rest of Europe. In the Paris area, this regime is marked by cool temperature and slightly humid conditions.
- The Blocking phase is characterized by a strong anticyclone over the British Isles, which blocks the inflow of maritime air and allows warm conditions to develop in Western Europe. Southeast Europe is rather cold. In the Paris region, this regime favours hot and dry temperature conditions.
- The Atlantic Low phase slows down the polar flow in favour of a southerly flow favourable to warm conditions over all of Western Europe. In the Paris region, this regime favours warmer and drier conditions than other regimes.

Thus, each summer day of our study is associated with one of the four weather regimes above, and we can separate at first order the evolutions of the parameters due to circulation changes to those due to local changes.

## 4 General results

In this section, the observed trends for several variables and climate extremes indices at the annual scale since 1979 are presented. Then, in a second step, each variable and each climate extreme index is studied at the seasonal scale.

### 4.1 Annual Trends

5 At the annual scale, Mann-Kendall trends from observations (Fig. 3a) show a significant increase in T2m of approximately 1.6°C since 1979 (0.4°C decade<sup>-1</sup>), 1.9°C for Tmax (0.47°C decade<sup>-1</sup>) and 1.5°C for Tmin (0.37°C decade<sup>-1</sup>). In addition, as the Tmin Kendall Tau is higher than that of Tmax, this means that although Tmin warms up less quickly than the Tmax, its increase is more monotonic. The relative humidity decreases significantly (4.3 %, i.e., 1.24 % decade<sup>-1</sup>) from 79.2 % (origin of Sen slope in 1979) to 74.5 % in 2017, and it appears to be guided by the temperature trend, as no significant trend is detected  
10 for specific humidity. For precipitation, despite an observed decline, there is no significant trend.

Figure 3b shows the trends, on an annual scale, of climate indices calculated from Tmax, Tmin and PRCP (see Table 1 for definition).

- For the warm part of the distribution, warm Tmin (Tn90p) increases significantly, and the number of summer days (SU) shifts from approximately 37.7 days in 1979 to 50.3 days in 2017.
- 15 - For the cold part of the distribution, Tx10p and Tn10p decrease significantly, as well as the number of frost days (FD) from approximately 44 days in 1979 to 26 days in 2017.
- For precipitation, only the maximum number of consecutive wet days decreases significantly, with a maximum period of consecutive rainy days equal to 12 days on average in 1979 and 8 days in 2017.

Hence, on an annual scale, in the Paris region, the changes of the last four decades are mainly on the relative humidity, which  
20 presents a strong decrease, and on the temperatures (average, maximum and minimum), with a shift of the distribution towards warmer temperatures leading to more warm days, fewer cold days, and higher minimum and maximum temperatures, which is a rather typical trend, although Tmax presents a stronger positive trend than Tmin. No significant trend can be detected for precipitation because the variability is too great, except for the decrease of the maximum number of consecutive rainy days.

This result is opposite to the one reported by Zolina et al., (2010), who found that wet spells increase over 60 years in Europe  
25 by approximately 15 to 20 %. However, the period of study differs substantially as they carry out their analysis over the 1950-2008 period, and their threshold between a rainy and non-rainy day is 1 mm versus 0.2 mm for the current study. The analysis of precipitation can be sensitive to these differences and to local effects. It is expected that the decrease in relative humidity observed in the Paris area affects some indices of precipitation, especially indices concerning occurrence (Bastin et al., 2019).

## 4.2 Seasonal Trends

~~Our study area is marked by a high seasonal cycle (Fig. 2). For each variable, we apply our analysis for the four seasons as follows: the winter season from December to February (DJF), the spring season from March to May (MAM), the summer season from June to August (JJA) and the autumn season from September to November (SON).~~

**Commenté [JR6]: RC3-3:** We delete this part because we keep the details of the seasons at the first appearance

### 5 4.2.1 Temperatures

For all seasons except winter, T2m increases significantly (Fig. 4a), approximately 2.1°C (0.52°C decade<sup>-1</sup>) in spring and 1.8°C (0.46°C decade<sup>-1</sup>) in summer, with a strong positive monotonic relationship (Kendall's tau). Warming is also significant for Tmax (Fig. 4b) and Tmin (Fig. 4c) at all seasons except for DJF. Tmax increases strongly in MAM (2.9°C, i.e., 0.73°C decade<sup>-1</sup>) and JJA (2.1°C, i.e., 0.52°C decade<sup>-1</sup>), while the Tmin increase is slightly weaker (1.6°C, i.e., 0.41°C decade<sup>-1</sup> in MAM, 1.8°C, i.e., 0.46°C decade<sup>-1</sup> in JJA). However, the Kendall Tau of Tmin is greater than 0.4 in JJA; this is the largest Tau for all temperatures and all seasons, reflecting a constant increase in Tmin in JJA since 1979.

In terms of PDF and extremes, DJF shows little change in the mean of the PDF (Fig. 4d), but the number of very cold anomalies of T2m (<-3σ) decreases. The same results are observed for Tmax and Tmin (not shown), but there are no trends in temperature climate indices (Fig. 5a).

In MAM (Fig. 4e), the average of the T2m anomalies over the current period increases, marked by a shift of the PDF to the right, which means more warm anomalies. The number of days where Tmax is lower than the 10<sup>th</sup> percentile (Tx10p) decreases (Fig. 5b), consistent with the strong increase in Tmax for this season. On average, Tmax warms up very strongly (2.9°C in 39 years, from approximately 13.9°C to 16.7°C, Fig. 4b), with constant behaviour (strong Kendall tau, Fig. 4b). However, there is no change in the cold anomalies tail of the distribution of Tmax (not shown). This indicates that the presence of very cold events persists in spring, but with a decline in frequency (Tx10p, Fig. 5b). Figure 5b also shows that the percentage of days when the minimum temperature is greater than the 90th percentile (Tn90p) increases in spring.

In JJA (Fig. 4f), the average T2m anomalies increase (PDF less flattened with  $K > 3$  and shifted to the right with  $S = 0.6$ ), as well as very warm anomalies greater than 2σ. The same characteristics of PDF evolution are observed on Tmax and Tmin (not shown). The temperature indices show strong significant trends (Fig. 5c). The cold indices (Tx10p and Tn10p) decrease continuously, whereas warm indices (Tx90p, Tn90p, TR) increase. In summer, high values of Tmin (higher than the 90<sup>th</sup> percentile) were reached for 3.8 % of the days in the past compared with 13.6 % now; at the same time, the lowest temperatures (10<sup>th</sup> percentile) were reached for 15.7 % of the summer days in the past and only 4.4 % of present days. These trends are linked to the strong increase in Tmax and Tmin observed in JJA and in particular the right shift of the PDF.

In SON (Fig. 4g), the same as for the other seasons, the average T2m anomalies increase, cold anomalies are less cold and warm anomalies are more likely to occur. Tmax and Tmin show the same characteristics. Significant trends are observed for the coldest temperature indices (Fig. 5d). The number of days where the Tmin is less than the 10<sup>th</sup> percentile (Tn10p) and the

number of days where the  $T_{min}$  is below  $0^{\circ}\text{C}$  (FD) decreases significantly. These results come from the increase in  $T_{min}$  ( $1.5^{\circ}\text{C}$ ), which in autumn is larger than for the  $T_{max}$  ( $1.1^{\circ}\text{C}$ ).

In summary, the largest temperature changes appear in MAM and JJA. Spring shows a strong increase in temperatures, but climate indices show fewer changes due to variability, allowing the presence of punctually cold  $T_{max}$  and  $T_{min}$ . In summer, the temperatures increase strongly, as do the very warm anomalies higher than  $2\sigma$ ; warm (cold) extremes are more (less) frequent. In the autumn, cold extremes decrease due to the stronger increase of  $T_{min}$  than  $T_{max}$ .

#### 4.2.2 Humidity

The relative humidity (Fig. 6a) decreases significantly in all seasons except DJF. This is due to the fact the specific humidity increases are less than what could be expected by Clausius–Clapeyron, according to the increase of the temperature. Indeed, specific humidity shows no significant trends and even shows a slope of zero in JJA (Fig. 6b). The strong monotonic decrease of RH is approximately  $7.7\%$  ( $1.92\%$  decade<sup>-1</sup>) in MAM and  $8\%$  ( $1.99\%$  decade<sup>-1</sup>) in JJA. For JJA, RH shows an average value of  $72.3\%$  in 1979 and decreases to  $64.7\%$  on average in 2017. This strong decrease in relative humidity is observed on PDFs (Fig. 6c-f). For all seasons, the average of the anomalies decreases (current PDF shifted to the left). However, this shift is more marked in MAM (Fig. 6d) and JJA (Fig. 6e). In addition, DJF shows little change in the extremes (Fig. 6c), while in MAM and JJA, the number of moist anomalies decreases, and the number of dry anomalies increases. Finally, in SON, the number of very humid anomalies decreases, and the number of very dry anomalies increases (Fig. 6f).

In summary, in spring, summer and autumn, the evolution of RH distribution leads to a decrease in the frequency of humid anomalies (very humid anomalies in autumn) and an increase in the frequency of dry anomalies (very dry anomalies in autumn). This decrease appears to be guided by the temperature trend, as the amount of water in the atmosphere near the surface, ie, specific humidity, remains almost unchanged at all seasons.

#### 4.2.3 Precipitation

At the seasonal scale, the trends in rainfall are not significant (Fig. 7a). Figure 7b-e shows the PDFs of observed daily intensities only for rainy days ( $>0.2\text{ mm day}^{-1}$ ) for the past period (1979-2002) and the current period (2003-2017). In DJF (Fig. 7b), the frequency of daily intensity decreases over the current period, also observed on climatic indices with a decrease in  $R90pTOT$  (Fig. 8a). In addition, the maximum number of consecutive wet days (CWD) decreases (Fig. 8a) from approximately 10.1 to 6.8 days. In MAM, the extreme intensities of precipitation are slightly more frequent over the current period (Fig. 7c). Furthermore, Fig. 8b shows a decrease in the percentage of rainy days (% rainy), a decrease in the maximum number of consecutive wet days (CWD) and an increase in the maximum number of consecutive dry days (CDD). The spring shows, on average,  $48.5\%$  of rainy days in 1979 versus  $36.3\%$  in 2017, and the average maximum periods of consecutive dry days evolve from 8.7 to 15.4 days. In spring, the weather is drier with fewer rainy days, but slightly more extremes. This is consistent with the decrease in relative humidity that affects the triggering of precipitation (Bastin et al., 2019; Rasmussen et al., 2017). In JJA (Fig. 7d), the frequency of mean intensities (PRCP between 12 and  $20\text{ mm day}^{-1}$ ) increases and the frequency of extreme

intensities decreases. However, in JJA, despite all rainfall indices showing an increase, none is significant (Fig. 8c). In SON (Fig. 7e), the frequency of daily intensity decreases over the current period, a result also observed with the significant decrease of the SDII (Fig. 8d), i.e., a decrease in the daily mean intensity.

In summary, the high variability of precipitation does not allow the detection of significant trends for most climate indices.

5 Nevertheless, the indices emphasize some results: extremes of precipitation occur less frequently in DJF, MAM becomes drier but heavy precipitation is stronger, JJA shows no significant trends and SON is marked by a decrease of the mean daily intensity.

The analysis shows that unexpected changes are occurring in summer at first order: precipitations exhibit an increasing trend (not significant), while it is the only season for which the specific humidity does not increase. To further study this season, it is necessary to understand what happens for each of the main atmospheric circulations. In the following section of this study, we focus on the summer season and we perform our trend analyses independent of large-scale circulations in order to characterize the changes coming only from thermodynamical processes.

## 5 Focus on the summer season

Changes in temperature, relative humidity, and precipitation, both in trends and distribution patterns, are more pronounced in spring and summer. The intra-seasonal changes are identified based on a classification of each summer day based on weather regimes, which allows characterizing both the changes associated with large-scale circulation (in frequency) and the changes within each weather regime. Van Oldenborgh et al.; (2009) and Vautard and Yiou; (2009) found that changes in atmospheric circulation are not the main drivers of surface weather patterns in summer, unlike in winter. Indeed, local physical processes play a major role in summer variability. In the rest of this study, we focus on summer rather than spring because i) the large-scale dynamics are more stable, which allows the definition of weather regimes and then the separation of the variability due to the large scale from that due to more local processes, ii) the relative humidity decreases significantly in summer and spring, but the increase (nonsignificant) of specific humidity is particularly reduced in summer, and iii) the evolution of precipitation indices in MAM is consistent with the decrease of relative humidity, but not those in summer. For each regime, the percentages of frequency are computed for the past period (1979-2002) and the current period (2003-2017). The frequency of NAO- and Atlantic Low regimes increased by 9.1 % and 3 %, respectively; and the frequency of Atlantic Ridge and Blocking regimes decreased by 5.9 % and 6.2 %, respectively. Using the weather regimes, we can write the temperature T2m (or precipitation PRCP) as the sum, for the four regimes, of the occurrence of regime  $i$  \* the mean value of temperature (or the daily mean intensity of precipitation RR) in this regime. Then, between the two periods, we can calculate the dynamical and thermodynamical contributions of the change of the variable considered ( $\Delta T$  for temperature or  $\Delta PRCP$  for precipitation) adapted from Cassano et al.; (2007) and Screen; (2017) according to the following equations:

$$\Delta T = \sum_{i=1}^4 (\Delta f_i \bar{T}_i + \Delta \bar{T}_i \bar{f}_i + \Delta f_i \Delta T_i) \quad (6)$$

$$\Delta PRCP = \sum_{i=1}^4 \Delta PRCP_i \quad (7)$$

$$\text{with } \Delta PRCP_i = \Delta f_i \overline{RR}_i + \Delta RR_i \overline{f}_i + \Delta f_i \Delta RR_i \quad (8)$$

5

For example, with precipitation for a weather regime  $i$ ,  $\Delta f_i$  and  $\overline{f}_i$  are respectively the difference in the frequency of occurrence of the regime between the two periods and the mean value of frequency of occurrence in the past period;  $\Delta RR_i$  and  $\overline{RR}_i$  are, respectively, the difference in the daily mean intensity of the precipitation between the two periods and the daily mean intensity of the precipitation in the past period. Then,  $(\Delta f_i * \overline{RR}_i)$  is considered the dynamical term (change of precipitation due to dynamical change),  $(\Delta RR_i * \overline{f}_i)$  the thermodynamical term (change of precipitation due to thermodynamical change) and  $(\Delta f_i * \Delta RR_i)$  is the residue.

10

The partitioning method used in the manuscript to determine the dynamical and thermodynamical contributions of the trend is widely used (Cassano et al., 2007; Horton et al., 2015; Screen, 2017; Uotila et al., 2007). This method assumes that each weather regime is stationary in time. Hence, the dynamical contribution corresponds to the changes in the occurrence frequency of each circulation pattern, assuming that the circulation patterns are the same during the two periods (but they have been computed over all years covering at least the two periods so that the differences between the two periods are minimized). The thermodynamical contribution inside a weather regime is the result of influences unrelated to circulation, such as changes in long-wave radiation from increasing greenhouse gas concentrations or different cloud macro- and micro-physical macro and microphysics properties, or changes in surface fluxes of moisture and/or radiation. The third component represents the interaction between dynamic and thermodynamic changes, and captures contributions that result from changes in the dynamical component acting on changes in the thermodynamical component.

15

20

Using Eq. (7), in summer, the precipitation changes observed (Table 2) are explained at ~~67.41-8 %~~ by the thermodynamical contribution and ~~32.32-5 %~~ by the dynamics of occurrence, whereas at the weather regime time scale, the dynamics of occurrence are greater than the thermodynamics (ie. contribution in mm) , contributing between 47.82 % and 87.68 % to the precipitation change observed.

25

For climatic indices based on percentiles, we computed one value of the percentiles using the distribution of the entire summer season and the whole period but not a value for each weather regime. In this way, it is possible to characterize the evolution of each index inside a regime but also to compare the indices between regimes.

### 5.1 NAO-

30

The NAO- regime is characterized by a weakening of the Icelandic Low. Conditions are generally cooler over most of Europe. Since 1979, for NAO-, T2m increases significantly by 1.9°C (0.49°C decade<sup>-1</sup>; Fig. 9), Tmax by 2°C (0.52°C decade<sup>-1</sup>; not shown) and Tmin by 1.8°C (0.45°C decade<sup>-1</sup>; not shown). This weather regime shows the largest increase in T2m (and Tmin)

**Commenté [JR7]: RC1-1 + RC3-1:** Paragraph added to better understand the dynamical and thermodynamical terms used here.

**Commenté [JR8]: RC1:** From here the percentages are slightly modified due to the addition of the residual term

5 compared to other summer regimes. Climatic indices' trends are not significant (Fig. 10a), but we observe fewer days below the 10<sup>th</sup> percentile for Tmin and Tmax and more hot days, while it is a weather regime associated with fresh conditions. Specific humidity (Fig. 9) shows little difference in the distribution, although most humidity is advected from the Atlantic Ocean during this regime. Such an evolution, associated with a temperature increase, is consistent with a decrease in the relative humidity (Fig. 9), but this decrease is weaker than for the other summer regimes. Rainfall increases, but not significantly (Fig. 9 and PRCPTOT Fig. 10a). NAO- is the only weather regime that shows an increase in PRCPTOT (Fig. 10); the intensity of this increase (~ 8 mm decade<sup>-1</sup>) corresponds to the total increase observed in JJA (Fig. 8). Two reasons could explain this trend: precipitation increases during this regime (occurrence or intensity by event or both), or this trend is related to the increase in the number of days in NAO-. By applying Eq. (8) to determine the origin of change in precipitation between the two periods, the results presented in Table 2 show a contribution of the dynamical term, which is preponderant over the thermodynamical term, ~~+20.39 mm and -2.85 mm respectively, with mainly explained by~~ an increase in the frequency of occurrence of days in NAO- (+9.1 %, i.e., approximately 8 days), ~~explaining 87.68 % of precipitation change observed in this regime.~~ Furthermore 1) the mean and median daily precipitation values are the same between the two periods (Fig. 9) and 2) the mean intensity of rainy days (SDII Fig. 10a) and the percentage of rainy days (% rainy Fig. 10a) show almost zero trends. All of these reasons 15 confirm that the increase in PRCPTOT in NAO- (hence in JJA) is more related to an increase in the occurrence of days in NAO-.

## 5.2 Atlantic Ridge

20 The Atlantic Ridge regime is characterized by high pressures over the Atlantic Ocean and low pressures over northwestern Europe, favouring cold conditions through the enhancement of polar flux towards Western Europe. On the other hand, it inflates the Azores Anticyclone in its subtropical part and thus warms the rest of Europe. Under this regime, the temperatures over the Paris area increase significantly for T2m (1.7°C, i.e., 0.43°C decade<sup>-1</sup>; Fig. 9b) and especially for Tmin (1.8°C, ie, 0.45°C decade<sup>-1</sup>; not shown). Warm and very warm anomalies are more frequent, but most striking is the change of shape of the violin, with a crushing of the bottom of the distribution and a stretching of its top. The number of days with a minimum temperature below the threshold of the 10<sup>th</sup> percentile (Tn10p, Fig. 10b) decreases in accordance with the consequent increase 25 in Tmin. The relative humidity decreases (7 % i.e., 1.75 % decade<sup>-1</sup>, Fig. 9), and this decline is completely driven by the temperature increase, as specific humidity shows no trend except a decrease in its variability during the current period (Fig. 9). Finally, there is no trend for precipitation (Fig. 9), which is linked to the fact that the thermodynamic tends to increase the precipitation (Table 2) while the atmospheric circulation tends to decrease the occurrence of this regime (Fig. 9).

## 5.3 Blocking

30 The Blocking regime is defined by a strong anticyclone over the British Isles, which blocks the inflow of maritime air and allows warm conditions to develop, especially over Western Europe. For this regime, the Paris area is isolated from the oceanic advection, and local processes become even more influent on the climate variability. On average under this regime, only Tmin



warms up significantly ( $1.1^{\circ}\text{C}$  or  $0.28^{\circ}\text{C decade}^{-1}$ , not shown). The T2m violin plots show the same median for the two periods (Fig. 9), but a warmer mean due to the upward distribution and more hot extremes for the current period. The stretching of this side of the distribution is also observed for Tmax and Tmin (not shown). The percentage of days with a maximum temperature below the 10<sup>th</sup> percentile (Tx10p, Fig. 10c) decreases from approximately 4.6 % in 1979 to 1.9 % in 2017. The relative humidity also decreases (7.2 %, i.e.,  $1.79\% \text{ decade}^{-1}$ , Fig. 9), marked by an increase in the occurrence of events with low relative humidity. Specific humidity does not change (Fig. 9). For precipitation, there is no significant trend (Fig. 9); however, there is an increase in the frequency of rainy days and a decrease in the contribution of very wet days (Fig. 10c), which is not a consistent result with Vautard and Yiou, (2009) at the European scale. It is the only regime in which the thermodynamical contribution to the change of precipitation is greater than the dynamical contribution (Table 2). However, these two contributions compensate each other, because the dynamical term explains ~~47.82 % of~~ the decrease in precipitation variation up to -8.7 mm (Table 2) whereas the thermodynamical term explains ~~52.07 % of~~ the increase in precipitation variation up to +9.47 mm. We observe a change of precipitation in Blocking, which is not visible on the trends because this change is compensated by a decrease in the frequency of occurrence of the number of days in Blocking (6.2 %, ie, approximately 5.6 fewer days).

#### 15 5.4 Atlantic Low

The Atlantic Low regime slows polar flow in favour of a southerly flow favourable to warm conditions throughout Western Europe. This regime shows the greatest changes in terms of trends (Fig. 9) from the point of view of T2m, Tmax, and Tmin, and a strong significance of trends on temperature extremes (Fig. 10d). The T2m increases by  $1.9^{\circ}\text{C}$  ( $0.47^{\circ}\text{C decade}^{-1}$ ), the Tmax by  $2.3^{\circ}\text{C}$  ( $0.58^{\circ}\text{C decade}^{-1}$ ) and the Tmin by  $1.7^{\circ}\text{C}$  ( $0.42^{\circ}\text{C decade}^{-1}$ ). Warm and very warm anomalies increase, and cold anomalies decrease. The relative humidity decreases very strongly, by approximately 12.3 % ( $3.07\% \text{ decade}^{-1}$ ; Fig. 9), from approximately 72 % to 60.3 % in 39 years, while there is no trend for specific humidity on average. However, the median and the mean of the current boxplot are slightly lower, and the shape of the violin is strongly modified between the two periods, with the emergence of a bimodal distribution (Fig. 9). Precipitation and extreme rainfall indices show no trends (Fig. 9 and 10d), but once again some differences between the two distributions appear, with a bimodal shape and a small increase in the occurrence of the number of days in Atlantic Low (3 %, ie, 2.7 days), accounting for only +3.9 mm-81.15 % of the precipitation change observed (Table 2).

#### 25 5.5 The contribution of regimes to warm extremes.

Blocking and Atlantic Low are the two regimes that favour hot conditions in summer. Most heat waves over Europe occur when the Blocking or Atlantic Low regimes are installed (e.g., Cassou et al., 2005). We have seen previously that the largest trends are observed for Atlantic Low and that Blocking shows the weakest trends for temperature. If we focus on the “Summer Days” (SU; Table 1), ie, the number of days with Tmax >  $25^{\circ}\text{C}$ , the Blocking (Fig. 11 green) and Atlantic Low (Fig. 11 blue) regimes are the two regimes showing the highest frequency of SU. Figure 12 shows the evolution of the SU (number of summer

days per year) for the JJA season and for each regime. In this figure, we compute the trend for different segment sizes (minimum size of 5 years); the x-axis indicates the first year and the y-axis the final year. Red (blue) colour indicates an increasing (decreasing) trend. When considering the entire period (starting from 1979), SU increases, but this is not the case when reducing the period and starting from the middle-end of the nineties, reinforcing the idea of a temperature warming slowdown in the 2000s, although there is still no consensus on the existence of a hiatus at the global scale, with the slowdown being the result of internal climate variability (e.g., Dai et al., 2015). The increasing trend in SU over the season (Fig. 12a) is partly due to the increase of these events during the Atlantic Low weather type (Fig. 12e), as well as in the NAO- since the end of 1990 (Fig. 12b). The Blocking regime, which is suitable to heat waves, shows a decrease of SU. This is associated with a decrease in the frequency of Tmax ranging from 25 and 30°C, even if they are more events with Tmax above 30°C increase (Fig. 13). There is therefore an increase in episodes of very intense heat in Blocking, which is not detectable via the SU index (Fig. 12d). Similar analysis can be done for the warm Tmin (Tn90p; not shown) which is predominant in Blocking and in Atlantic Low, and which is an important factor in heat wave definition. In terms of trends, the occurrence of warm Tmin increases in summer over the entire period, which is linked to an increase of events during the Atlantic Low from 1980 to the 2000s, followed by an increase of events during NAO- since the 2000s.

In summary, the "hot" weather regimes (Atlantic Low and Blocking) continue to contribute to extreme temperature events. However, the NAO- regime, with colder and wetter conditions compared to the first two regimes, shows strong warming trends, which leads to an increasing number of warm extremes since the 1990s, thus increasing the total probability of extreme events in summer in the Paris area.

## 6 Discussion

On an annual scale, the climate of the Paris area has changed during the last four decades mainly due to warmer temperatures (average, maximum and minimum), with more warm extremes, fewer cold extremes and a strong decrease of the relative humidity. No significant changes are found for the specific humidity or precipitation. The rate of warming is similar to that observed in the rest of Western Europe (Van Oldenborgh et al., 2009; Xoplaki, 2005). However, we observe a stronger increase in Tmax than in Tmin over the last 40 years, whereas Donat and Alexander (2012) observed the opposite across different regions of the globe since the middle of the 20<sup>th</sup> century. In addition, they concluded that daily temperatures have become "more extreme" and that these changes are related to changes in the mean but also in the extremes; this result is also observed in our trends. One issue is to determine if the changes we found can be attributed to dynamic, thermodynamic or local anthropogenic modifications.

### 6.1 Changes associated with large-scale dynamics

Dynamical changes are by definition related to large-scale atmospheric circulation changes. According to Vautard and Yiou (2009), changes in atmospheric circulation are the main drivers of surface weather patterns in winter. In the Paris area over the

past 40 years, we have seen very few significant trends in temperature, relative humidity and precipitation during the winter season. Comparing the two periods, Table 3 shows that the temperature change is four times lower in winter ( $\Delta T$ ) than in summer. Changes in occurrence of winter regimes contribute to  $\frac{1}{4}$  of the observed change versus  $\frac{3}{4}$  for thermodynamic changes (Table 3). Indeed, in terms of dynamics, Yiou et al. (2018) detected significant trends in the stability of the circulation and the return period since the 1970s in winter; that is, winters tend to be similar to those already known, which increases the predictability of winter circulations. In Europe, Francis and Vavrus (2012) and Petoukhov et al. (2013) showed that the wave amplitude in winter is changing, particularly through a connection between the Arctic sea ice cover and the sinuosity of the jet stream which brings prolonged weather conditions enhance the probability for extreme weather as cold spell. These cold winters may be related to the acceleration of Arctic warming associated with ice retreat (Cohen et al., 2014, 2012; Tang et al., 2013; Vihma, 2014; Walsh, 2014; Zappa and Shepherd, 2017) by ice-albedo feedbacks (Screen and Simmonds, 2010). Recently, Kretschmer et al. (2018) showed that in recent decades, the stratospheric polar vortex has shifted to more frequent weak states, which may explain Eurasian cooling trends in northern winter. However, it remains controversial whether this European winter cooling could also be related to internal atmospheric variability (Sun et al., 2016), tropical trends (Palmer, 2014), Arctic trends (Cohen et al., 2014, 2012; Tang et al., 2013; Vihma, 2014; Walsh, 2014; Zappa and Shepherd, 2017), or a combination of all these variabilities. All of these processes appear to indicate that winter is marked by a stability of the circulation and that some observed trends, such as colder winters, appear to be related to modification of the atmospheric states themselves. This is why this study focuses on summer, when the changes are more significant and more related to thermodynamical processes (+103.2 %; Table 3).

In spring, the T2m and Tmax show the strongest increase compared to the other seasons, associated with a strong decrease in RH with punctually very cold Tmax and Tmin. According to Brunner et al. (2017), this increase in temperatures in spring associated with the presence of cold extremes is also related to the position of the Blocking regime. The Blocking regime induces cold conditions in winter but warm episodes in summer. In spring, the Blocking position varies and impacts the distribution of extreme temperatures: cold waves in early spring are induced by a Blocking position over the northeast Atlantic, while heat waves in late spring are associated with high-pressure centre over Central Europe. Cassou and Cattiaux (2016) found a stretching of the summer period with an earlier onset of summer by ~10 days between the 1960s and the 2000s. Moreover, Boé and Habets (2014) identified multidecadal variability with differences of river flow over France by up to 40 % in spring, which is linked with precipitation and temperature variabilities in France in spring by up to 30 % and 1°C. Part of the increase in temperature observed in this study in the spring may therefore be associated with such multidecadal variability. Regarding precipitation in spring, the number of rainy days decreases, increasing (decreasing) dry (wet) periods, but with more extremes of rainfall. This is consistent with the multidecadal variability of the precipitation described in Boé and Habets (2014) and Bonnet et al. (2017). These studies also suggest that these fluctuations are modulated by the Atlantic Multidecadal Variability (AMV) and that the North Pacific sea surface temperature, which exhibits variations in phase with the AMV, could also play a role in the multidecadal variability of the main French rivers, including the Seine river, which

flows in Paris. As these strong multidecadal variations can seriously impact short-term trends, it is difficult to disentangle the trends we observed that are linked to natural variability from those associated with climate change.

Another aspect is that our study area is in a transition zone in term of weather regimes. Summer regimes drive different climatic conditions at the European scale, but this distinction between regimes is not obvious when considering the Paris area, as already

5 shown in Dione et al., (2017). For instance, the Blocking regime is often considered as favouring heat waves, but in Paris, it is characterized by cold extremes and mean values of T2m, Tmax and Tmin closer to those of the regimes favouring colder conditions (Atlantic Ridge and NAO-). Such uncertainties are also found in precipitation, despite the use of different indices that allow the identification of the contribution of dynamics in the change of precipitation characteristics, as we did in Section 5.1. However, for more local studies, it would be interesting to carry out a sensitivity analysis on the size of the domain to be  
10 taken into account in the calculation of weather regimes, as was done by Jézéquel et al., (2018), to select the best analogues for studying specific events in Western Europe. These results confirm that the dynamical component in climatic variability is very strong and must be taken into account, but that the thermodynamical component also plays a very important role.

## 6.2 Changes associated with thermodynamic and radiative processes

In summer, the temperature strongly interacts with the water cycle (Van Oldenborgh et al., 2009). Vautard and Yiou, (2009)  
15 even show that in summer, atmospheric circulation changes are not the main factors of surface weather trends. Over Europe, Sousa et al., (2018) analysed different forcing mechanisms associated with Blocking and Atlantic Ridge regimes, and they showed the importance of horizontal and vertical advection processes on summer temperature anomalies, especially diabatic heating processes. Although we found some changes in the occurrence of the four summer weather types, we also observed a strong evolution of the characteristics of each weather type. Table 3 shows that in summer, the average temperature change is  
20 +0.9484°C between the two periods. If the thermodynamical component were the only contribution to change, this increase would have been 0.87°C; conversely, if the dynamical component, ie, the change in the occurrence, were the only contribution to the change, then we would observe a very slight decrease in temperature of approximately 0.05°C.

In summer in the Paris area, T2m, Tmax and Tmin increase strongly due to high changes in temperature extremes, while relative humidity decreases strongly with more dry anomalies. Vogel et al., (2017) show that the projected regional Tmax  
25 response in several mid-latitude terrestrial regions can be divided into (i) the global mean warming trend and (ii) an additional temperature increase, strongly influenced by soil temperature feedbacks, linked to increasingly dry soil. They also show that this feedback is mostly related to multidecadal trends in soil moisture rather than its subseasonal or interannual variability and contribute to more than 70 % of the additional warming of regional hot extremes beyond global mean warming. At the Paris scale, surface layer drying is observed from spring to autumn, as shown in Figure 14 by plotting the relationship between the  
30 seasonal surface temperature and specific humidity for each year; in this figure, colder colours are for older years and warmer colours for more recent years. In winter (Fig. 14a), there is a linear relationship between seasonal averaged T2m and q2m, meaning that if the seasonal temperature of one winter is higher, there is also more humidity and vice versa; we can even almost predict the value of seasonal humidity. It is not obvious that the more recent years have higher seasonal temperature

for this season. For summer (Fig. 14c), as for winter, the temperature increase at the seasonal scale is not obvious. However, in recent years from the end of 1990s, for a similar temperature as older years, the specific humidity shows lower average values. For spring (Fig. 14b), this lack of humidity starts slightly later, from 2000, but we can also see that more recent springs present higher seasonal temperatures than older years, which amplifies the departure from the linear relationship. Theoretically,

5 with global warming, the rise of temperature should be accompanied by an increase of the specific humidity for a given relative humidity. At Paris scale, the increase in the water retention capacity of the atmosphere (related to the increase in temperature) is not accompanied by an increase in the surface moisture ( $q$ ), which leads to a decrease in surface relative humidity. There are several thermodynamical variables that take into account this co-dependence between temperature and relative humidity, which is often used to calculate heat stress (Buzan et al., 2015; Davies-Jones, 2008; Sherwood and Huber, 2010; Willett and  
10 Sherwood, 2012). We observed that the evolution on the specific humidity is similar to other coupled temperature and humidity variables, as the wet bulb temperature calculated via the formula of Davies-Jones (2008), meaning that the heat stress is constant (temperature increases but relative humidity decreases). In this paper, we use the specific humidity as one of these co-dependent variables. We then observe a surface drying, which can play a major role in the trend of other variables such as turbulent flows, and thus can intensify or inhibit existing surface-atmosphere feedbacks. In Spain, (Vicente-Serrano et al.,

15 (2014) observe the same trends with an increase in temperature leading to a decrease in relative humidity which is not accompanied by an increase in the surface water vapor content. They show that these trends are related to two constraints: 1) a terrestrial constraint related to a decrease of the precipitations and a decrease of soil moisture; 2) an oceanic constraint related to a limitation in the advection of moisture from ocean surfaces.

Through the analysis of future projections, Cattiaux et al.; (2015), show that the variation in diurnal temperatures increases in summer due to the decrease in surface evapotranspiration (linked to the European summer drying) and the reduction in cloud cover. This variation in diurnal temperatures is already observed in the Paris area with an increase in  $T_{max}$  above  $T_{min}$  observed in spring and summer. In autumn (Fig. 14d), there are also lower humidity values for similar temperatures, but the signal is weaker than for summer. However, there is a striking increase in seasonal temperature for this season, associated with a nearly linear increase of humidity, unlike MAM. For the recent period, the warmer autumn seasonal averages associated with  
25 higher specific humidities are notably due to warmer and moister November months. At the seasonal time scale on the SIRTA supersite near Paris, Bastin et al.; (2018) show that temperature variability is mainly controlled by surface fluxes.

At the Paris scale, in summer, the total rain amount increases but not significantly, and there is no change in specific humidity. The link between increasing temperatures (seen previously) and increasing precipitation has been highlighted by Rasmussen et al.; (2017), who show, using a climatic simulation at convective-permitting resolution, the change in convective population  
30 in a warmer future climate, induced by both the increase of the CAPE (Convective Available Potential Energy) but also of the CIN (Convective INhibition). Convection becomes more difficult to trigger, but once triggered, the energy available for convection is increased, favouring heavier precipitation. This means that weak to moderate convection will decrease and strong convection will increase in frequency in a future climate. This result therefore leads to a modification of the spatial and temporal occurrence of the precipitations. This may explain the bimodal structure displayed by the violin plot of humidity and

Commenté [JR9]: With reference to comment: RC1-2 and RC3-1

Code de champ modifié

precipitation in Fig. 9 for the Atlantic Low regime. The link between soil moisture and precipitation remains poorly understood. Indeed, [Boé \(2013\)](#) shows that in summer in France, previous soil moisture conditions could have a limited impact on precipitation through a modulation of large-scale circulation and the absolute effect of soil moisture on evapotranspiration is much larger than its effect on precipitation. Additionally, [Vogel et al. \(2017\)](#) show that changes in precipitation can also influence temperature and soil moisture variations.

Within the summer season, we observe very significant changes over 40 years independent of large-scale circulation, thus raising questions about the role played by local surface-atmosphere feedbacks in the context of warming. Temperatures in regimes favouring "cold conditions" warm up very clearly and even contribute for some years to very warm temperatures. Regimes favouring "hot conditions" continue to contribute very significantly to extreme heat events, such as heat waves. In particular, the Atlantic Low regime shows a very strong increase in the temperatures and a very strong decrease in the relative humidity, whereas precipitation and specific humidity show no trend but a change of their distribution. In a recent study, [Bastin et al. \(2019\)](#) analysed the spatial variability over Europe of the temperature thresholds over which the relative humidity starts to decrease using an integrated water vapour dataset from GPS stations. They suspect that the spatial variability of this threshold is strongly linked to local processes that drive moisture sources, in particular surface-atmosphere interactions and coastal/orographic circulations.

As shown by [Zampieri et al. \(2009\)](#) and [Cattiaux et al. \(2012\)](#), recent and future warming in Europe are incompatible with changes in atmospheric circulation alone, and surface-atmosphere processes are the mainly responsible for increasing temperature variability, especially summer temperatures. Furthermore, uncertainties in regional temperature projections can be linked to this long-term soil moisture-temperature feedback ([Vogel et al., 2017](#)).

### 6.3 Changes associated with local anthropogenic effects

Finally, some of the changes detected can be attributed to anthropogenic influence on land use, such as urbanization and irrigation. Changing a vegetated area to pavement strongly modifies the surface processes, with more run-off, less evapotranspiration, and more heat. The enlargement of suburban areas affects the urban heat island processes. This is not the purpose of the paper, but it is an indispensable aspect to discuss in observed changes. [Daniel \(2017\)](#) compares different representations of urban areas within an atmospheric model with an explicit representation of the urban areas and concludes that cities can influence their environment on a regional scale. Thus, the largest French cities induce a warming trend of the temperature near the surface. This warming can reach up to 1.5°C in summer Tmin in Paris. Thus, according to [Wilcox et al. \(2018\)](#), anthropogenic forcing may have slightly increased the risk of dry summers and greatly increased the risk of hot summers.

Code de champ modifié

Mis en forme : Anglais (États-Unis)

## 7 Conclusion

This study characterizes the main changes in trends and extremes of temperature, humidity and precipitation at the local scale in the Paris area, which is favoured by an urban heat island. The analysis was carried out annually and seasonally, including the effect of large-scale circulations in summer. The comparison of the observations with the ERA-I reanalysis shows that it strongly underestimates the temperatures (especially in summer) and overestimates the relative humidity. The local trends are not adequately characterized by ERA-I, especially for the climate extreme indices. This analysis thus confirms the importance of direct observation when dealing with local scale. This study uses observation data from 5 stations in the Paris area since 1979 to characterize observed changes in temperatures, relative humidity and precipitation at different time scales. Although some trends are similar to the ones found at regional (Europe) or global scales, there are specific local patterns:

- Tmax increases more strongly than Tmin at annual, seasonal (except SON) and summer scales.
- There are few significant trends in winter, unlike in summer.
- Summer temperatures increase due to a strong thermodynamical contribution.
- In summer, the temperatures increase for the cooler weather regimes, especially NAO-, contributing to high temperatures. During this time, the hottest weather regimes keep warming even more. This is due to the advection of warming air masses from the ocean and a probable intensification of temperature in the air.
- The relative humidity decreases considerably, especially in spring and summer. This is particularly true for the Atlantic Low weather regime in summer.
- The specific humidity shows little or no trends, although it was expected to increase associated with warming, and the proximity to the English Channel.
- Rainfall has a high variability from one year to the next, but the trend, even if not truly significant, appears to be decreasing (except in summer). There appears to be a change in the precipitation regime with a less rainy winter, a generally drier spring with more intense rainfall and a wetter summer, one third explained by mainly due to a change in occurrence in summer weather regimes and two third explained by a change in thermodynamic unrelated to circulation.

It is important to understand the physical processes behind these changes at the local scale and especially during the summer season, as they are likely to intensify or become inhibited with the current climate change. Some of these processes have been discussed in the previous section; however, there are several feedbacks that are still poorly understood in the context of global warming, particularly in such an urbanised area. As this very recent study by Schwingshackl et al., (2018) shows, it is crucial to take into account local and regional processes to properly assess inter-annual variability in temperature and future trends in temperature.

One of the perspectives of this study is to understand these current changes using the rather complete set of atmospheric observations from the supersite of SIRTa (Chiriaco et al., 2018), which collects more than 50 meteorological and atmospheric

parameters at hourly time steps since 2003 over the full boundary layer. The strong correlation between the stations as well as the average of the stations encourages us to use this dataset.

#### **Author contributions**

JR carried out the data analysis and prepared all the figures. JR, MC, SB and FH contributed to the data analysis and interpretation of results. JR wrote the manuscript with contributions from all co-authors.

#### **Competing interests**

The authors declare that they have no conflict of interest.

#### **Acknowledgements**

The study was supported by the LABEX L-IPSL, funded by the French Agence Nationale de la Recherche, under the programme « Investissements d’Avenir » (grant ANR-10-LABX-18-01). We would like to acknowledge Météo France for the provision of observation measurements and the SAFRAN analysis and P. Yiou, supported by the ERC grant 338965-A2C2, who provided the weather regime classification. To process the data, this study benefited from the IPSL mesocenter ESPRI facility which is supported by CNRS, UPMC, Labex L-IPSL, CNES and Ecole Polytechnique.

#### **References**

- 15 Bastin, S., Chiriaco, M. and Drobinski, P.: Control of radiation and evaporation on temperature variability in a WRF regional climate simulation: comparison with collocated long term ground based observations near Paris, *Clim. Dyn.*, 51(3), 985–1003, doi:10.1007/s00382-016-2974-1, 2018.
- Bastin, S., Drobinski, P., Chiriaco, M., Bock, O., Roehrig, R., Gallardo, C., Conte, D., Dominguez-Alonso, M., Li, L., Lionello, P. and Parracho, A. C.: Impact of humidity biases on light precipitation occurrence: observations versus modelisation, *ACP Spec. Issue Hymex*, 1–37, doi:10.5194/acp-2018-624, 2019.
- 20 Boé, J.: Modulation of soil moisture–precipitation interactions over France by large scale circulation, *Clim. Dyn.*, 40(3–4), 875–892, doi:10.1007/s00382-012-1380-6, 2013.
- Boé, J. and Habets, F.: Multi-decadal river flow variations in France, *Hydrol. Earth Syst. Sci.*, 18(2), 691–708, doi:10.5194/hess-18-691-2014, 2014.
- 25 Bonnet, R., Boé, J., Dayon, G. and Martin, E.: Twentieth-Century Hydrometeorological Reconstructions to Study the Multidecadal Variations of the Water Cycle Over France, *Water Resour. Res.*, 53(10), 8366–8382, doi:10.1002/2017WR020596, 2017.



- Brunner, L., Hegerl, G. C. and Steiner, A. K.: Connecting Atmospheric Blocking to European Temperature Extremes in Spring, *J. Clim.*, 30(2), 585–594, doi:10.1175/JCLI-D-16-0518.1, 2017.
- Buzan, J. R., Oleson, K. and Huber, M.: Implementation and comparison of a suite of heat stress metrics within the Community Land Model version 4.5, *Geosci. Model Dev.*, 8(2), 151–170, doi:10.5194/gmd-8-151-2015, 2015.
- 5 Cassano, J. J., Uotila, P., Lynch, A. H. and Cassano, E. N.: Predicted changes in synoptic forcing of net precipitation in large Arctic river basins during the 21st century, *J. Geophys. Res. Biogeosciences*, 112(G4), n/a-n/a, doi:10.1029/2006JG000332, 2007.
- Cassou, C. and Cattiaux, J.: Disruption of the European climate seasonal clock in a warming world, *Nat. Clim. Change*, 6(6), 589–594, doi:10.1038/nclimate2969, 2016.
- 10 Cassou, C., Terray, L. and Phillips, A. S.: Tropical Atlantic Influence on European Heat Waves, *J. Clim.*, 18(15), 2805–2811, doi:10.1175/JCLI3506.1, 2005.
- Cassou, C., Minvielle, M., Terray, L. and Périgaud, C.: A statistical–dynamical scheme for reconstructing ocean forcing in the Atlantic. Part I: weather regimes as predictors for ocean surface variables, *Clim. Dyn.*, 36(1–2), 19–39, doi:10.1007/s00382-010-0781-7, 2011.
- 15 Cattiaux, J.: Extrêmes de température en Europe: mécanismes et réponses au changement climatique, Paris 6, Paris., 2010.
- Cattiaux, J., Yiou, P. and Vautard, R.: Dynamics of future seasonal temperature trends and extremes in Europe: a multi-model analysis from CMIP3, *Clim. Dyn.*, 38(9–10), 1949–1964, doi:10.1007/s00382-011-1211-1, 2012.
- Cattiaux, J., Douville, H., Schoetter, R., Parey, S. and Yiou, P.: Projected increase in diurnal and interdiurnal variations of European summer temperatures, *Geophys. Res. Lett.*, 42(3), 899–907, doi:10.1002/2014GL062531, 2015.
- 20 Chiriaco, M., Bastin, S., Yiou, P., Haeffelin, M., Dupont, J.-C. and Stéfanon, M.: European heatwave in July 2006: Observations and modeling showing how local processes amplify conducive large-scale conditions: July 2006 heatwave at SIRTA observatory, *Geophys. Res. Lett.*, 41(15), 5644–5652, doi:10.1002/2014GL060205, 2014.
- Chiriaco, M., Dupont, J.-C., Bastin, S., Badosa, J., Lopez, J., Haeffelin, M., Chepfer, H. and Guzman, R.: ReOBS: a new approach to synthesize long-term multi-variable dataset and application to the SIRTA supersite, *Earth Syst. Sci. Data*, 10(2), 919–940, doi:10.5194/essd-10-919-2018, 2018.
- 25 Cohen, J., Screen, J. A., Furtado, J. C., Barlow, M., Whittleston, D., Coumou, D., Francis, J., Dethloff, K., Entekhabi, D., Overland, J. and Jones, J.: Recent Arctic amplification and extreme mid-latitude weather, *Nat. Geosci.*, 7, 627, 2014.
- Cohen, J. L., Furtado, J. C., Barlow, M. A., Alexeev, V. A. and Cherry, J. E.: Arctic warming, increasing snow cover and widespread boreal winter cooling, *Environ. Res. Lett.*, 7(1), 014007, doi:10.1088/1748-9326/7/1/014007, 2012.
- 30 Dai, A., Fyfe, J. C., Xie, S.-P. and Dai, X.: Decadal modulation of global surface temperature by internal climate variability, *Nat. Clim. Change*, 5(6), 555–559, doi:10.1038/nclimate2605, 2015.
- Daniel, M.: Villes, climat urbain et climat régional sur la France: étude par une approche de modélisation climatique couplée, Université de Toulouse, Université Toulouse III-Paul Sabatier., 2017.
- Davies-Jones, R.: An Efficient and Accurate Method for Computing the Wet-Bulb Temperature along Pseudoadiabats, *Mon. Weather Rev.*, 136(7), 2764–2785, doi:10.1175/2007MWR2224.1, 2008.
- 35

- Dee, D. P. and Uppala, S.: Variational bias correction of satellite radiance data in the ERA-Interim reanalysis, *Q. J. R. Meteorol. Soc.*, 135(644), 1830–1841, doi:10.1002/qj.493, 2009.
- Dee, D. P., Uppala, S. M., Simmons, A. J., Berrisford, P., Poli, P., Kobayashi, S., Andrae, U., Balmaseda, M. A., Balsamo, G., Bauer, P., Bechtold, P., Beljaars, A. C. M., van de Berg, L., Bidlot, J., Bormann, N., Delsol, C., Dragani, R., Fuentes, M., Geer, A. J., Haimberger, L., Healy, S. B., Hersbach, H., Hólm, E. V., Isaksen, I., Kållberg, P., Köhler, M., Matricardi, M., McNally, A. P., Monge-Sanz, B. M., Morcrette, J.-J., Park, B.-K., Peubey, C., de Rosnay, P., Tavolato, C., Thépaut, J.-N. and Vitart, F.: The ERA-Interim reanalysis: configuration and performance of the data assimilation system, *Q. J. R. Meteorol. Soc.*, 137(656), 553–597, doi:10.1002/qj.828, 2011.
- Dione, C., Lohou, F., Chiriaco, M., Lathon, M., Bastin, S., Baray, J.-L., Yiou, P. and Colomb, A.: The Influence of Synoptic Circulations and Local Processes on Temperature Anomalies at Three French Observatories, *J. Appl. Meteorol. Climatol.*, 56(1), 141–158, doi:10.1175/JAMC-D-16-0113.1, 2017.
- Donat, M. G. and Alexander, L. V.: The shifting probability distribution of global daytime and night-time temperatures, *Geophys. Res. Lett.*, 39(14), n/a-n/a, doi:10.1029/2012GL052459, 2012.
- Donat, M. G., Alexander, L. V., Yang, H., Durre, I., Vose, R., Dunn, R. J. H., Willett, K. M., Aguilar, E., Brunet, M., Caesar, J., Hewitson, B., Jack, C., Klein Tank, A. M. G., Kruger, A. C., Marengo, J., Peterson, T. C., Renom, M., Oria Rojas, C., Rusticucci, M., Salinger, J., Sclafani, A. S., Sekele, S. S., Srivastava, A. K., Trewin, B., Villarroel, C., Vincent, L. A., Zhai, P., Zhang, X. and Kitching, S.: Updated analyses of temperature and precipitation extreme indices since the beginning of the twentieth century: The HadEX2 dataset, *J. Geophys. Res. Atmospheres*, 118(5), 2098–2118, doi:10.1002/jgrd.50150, 2013.
- Dong, B., Sutton, R. T. and Shaffrey, L.: Understanding the rapid summer warming and changes in temperature extremes since the mid-1990s over Western Europe, *Clim. Dyn.*, 48(5–6), 1537–1554, doi:10.1007/s00382-016-3158-8, 2017.
- Durand, Y., Brun, E., Merindol, L., Guyomarc’h, G., Lesaffre, B. and Martin, E.: A meteorological estimation of relevant parameters for snow models, *Ann. Glaciol.*, 18, 65–71, doi:10.3189/S0260305500011277, 1993.
- Fischer, E. M., Rajczak, J. and Schär, C.: Changes in European summer temperature variability revisited, *Geophys. Res. Lett.*, 39(19), n/a-n/a, doi:10.1029/2012GL052730, 2012.
- Francis, J. A. and Vavrus, S. J.: Evidence linking Arctic amplification to extreme weather in mid-latitudes, *Geophys. Res. Lett.*, 39(6), n/a-n/a, doi:10.1029/2012GL051000, 2012.
- GIEC: Changements climatiques 2014: Rapport de synthèse. Contribution des Groupes de travail I, II et III au cinquième Rapport d’évaluation du Groupe d’experts intergouvernemental sur l’évolution du climat [Sous la direction de l’équipe de rédaction principale, R.K. Pachauri et L.A. Meyer], Rapport de synthèse, Genève, Suisse., 2014.
- Haefelin, M., Barthès, L., Bock, O., Boitel, C., Sony, S., Bouniol, D., Chepfer, H., Chiriaco, M., Cuesta, J., Delanoë, J., Drobinski, P., Dufresne, J.-L., Flamant, C., Grall, M., Hodzic, A., Hourdin, F., Lapouge, F., Lemaître, Y., Mathieu, A., Morille, Y., Naud, C., Noël, V., O’Hirok, W., Pelon, J., Pietras, C., Protat, A., Romand, B., Scialom, G. and Vautard, R.: SIRTA, a ground-based atmospheric observatory for cloud and aerosol research, *Ann. Geophys.*, 23(2), 253–275, 2005.
- Horton, D. E., Johnson, N. C., Singh, D., Swain, D. L., Rajaratnam, B. and Diffenbaugh, N. S.: Contribution of changes in atmospheric circulation patterns to extreme temperature trends, *Nature*, 522, 465, 2015.
- Huntingford, C., Jones, P. D., Livina, V. N., Lenton, T. M. and Cox, P. M.: No increase in global temperature variability despite changing regional patterns, *Nature*, 500(7462), 327–330, doi:10.1038/nature12310, 2013.

- Jézéquel, A., Yiou, P. and Radanovics, S.: Role of circulation in European heatwaves using flow analogues, *Clim. Dyn.*, 50(3–4), 1145–1159, doi:10.1007/s00382-017-3667-0, 2018.
- Karl, T. R., Nicholls, N. and Ghazi, A.: CLIVAR/GCOS/WMO workshop on indices and indicators for climate extremes: Workshop summary, *Clim. Change*, 42(3–7), 1999.
- 5 Kendall, M. G.: Rank correlation methods, Hafner Publishing Co., Oxford, England., 1955.
- Kodra, E. and Ganguly, A. R.: Asymmetry of projected increases in extreme temperature distributions, *Sci. Rep.*, 4(1), doi:10.1038/srep05884, 2015.
- Kretschmer, M., Coumou, D., Agel, L., Barlow, M., Tziperman, E. and Cohen, J.: More-Persistent Weak Stratospheric Polar Vortex States Linked to Cold Extremes, *Bull. Am. Meteorol. Soc.*, 99(1), 49–60, doi:10.1175/BAMS-D-16-0259.1, 2018.
- 10 Legras, B. and Ghil, M.: Persistent Anomalies, Blocking and Variations in Atmospheric Predictability, *J. Atmospheric Sci.*, 42(5), 433–471, doi:10.1175/1520-0469(1985)042<0433:PABAVI>2.0.CO;2, 1985.
- Lewis, S. C. and King, A. D.: Evolution of mean, variance and extremes in 21st century temperatures, *Weather Clim. Extrem.*, 15, 1–10, doi:10.1016/j.wace.2016.11.002, 2017.
- Mann, H. B.: Nonparametric Tests Against Trend, *Econometrica*, 13(3), 245, doi:10.2307/1907187, 1945.
- 15 McKinnon, K. A., Rhines, A., Tingley, M. P. and Huybers, P.: The changing shape of Northern Hemisphere summer temperature distributions, *J. Geophys. Res. Atmospheres*, 121(15), 8849–8868, doi:10.1002/2016JD025292, 2016.
- Michelangeli, P.-A., Vautard, R. and Legras, B.: Weather Regimes: Recurrence and Quasi Stationarity, *J. Atmospheric Sci.*, 52(8), 1237–1256, doi:10.1175/1520-0469(1995)052<1237:WRRASQ>2.0.CO;2, 1995.
- 20 Miralles, D. G., Teuling, A. J., van Heerwaarden, C. C. and Vilà-Guerau de Arellano, J.: Mega-heatwave temperatures due to combined soil desiccation and atmospheric heat accumulation, *Nat. Geosci.*, 7, 345, 2014.
- Palmer, T.: Record-breaking winters and global climate change, *Science*, 344(6186), 803–804, doi:10.1126/science.1255147, 2014.
- Peterson, T. C.: Climate Change Indices, *WMO Bull.*, 54(2), 83–86, 2005.
- 25 Peterson, T. C., Folland, C. K., Gruza, G., Hogg, W. and Mokssit, A.: Report on the Activities of the Working Group on Climate Change Detection and Related Rapports 1998–2001., WMO-TD 1071, WMO, Geneva, Switzerland., 2001.
- Petoukhov, V., Rahmstorf, S., Petri, S. and Schellnhuber, H. J.: Quasiresonant amplification of planetary waves and recent Northern Hemisphere weather extremes, *Proc. Natl. Acad. Sci.*, 110(14), 5336–5341, doi:10.1073/pnas.1222000110, 2013.
- 30 Quintana-Seguí, P., Le Moigne, P., Durand, Y., Martin, E., Habets, F., Baillon, M., Canellas, C., Franchisteguy, L. and Morel, S.: Analysis of Near-Surface Atmospheric Variables: Validation of the SAFRAN Analysis over France, *J. Appl. Meteorol. Climatol.*, 47(1), 92–107, doi:10.1175/2007JAMC1636.1, 2008.
- Rasmussen, K. L., Prein, A. F., Rasmussen, R. M., Ikeda, K. and Liu, C.: Changes in the convective population and thermodynamic environments in convection-permitting regional climate simulations over the United States, *Clim. Dyn.*, doi:10.1007/s00382-017-4000-7, 2017.

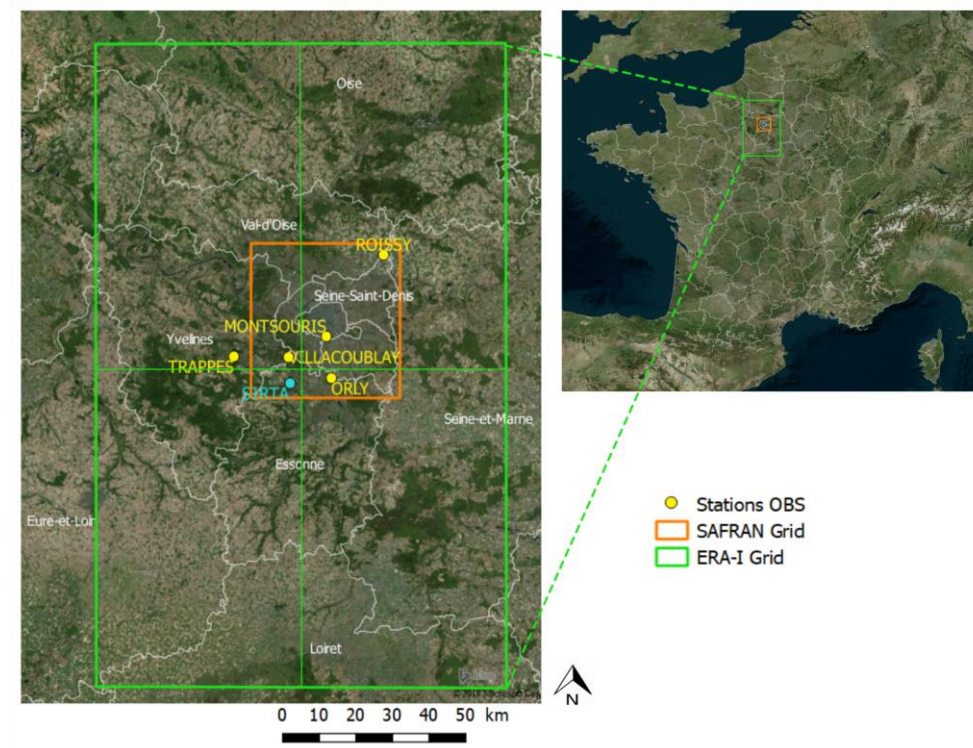
- Reinhold, B. B. and Pierrehumbert, R. T.: Dynamics of Weather Regimes: Quasi-Stationary Waves and Blocking, *Mon. Weather Rev.*, 110(9), 1105–1145, doi:10.1175/1520-0493(1982)110<1105:DOWRQS>2.0.CO;2, 1982.
- Rhines, A. and Huybers, P.: Frequent summer temperature extremes reflect changes in the mean, not the variance, *Proc. Natl. Acad. Sci.*, 110(7), E546–E546, doi:10.1073/pnas.1218748110, 2013.
- 5 Schwingshackl, C., Hirschi, M. and Seneviratne, S. I.: Global Contributions of Incoming Radiation and Land Surface Conditions to Maximum Near-Surface Air Temperature Variability and Trend, *Geophys. Res. Lett.*, 45(10), 5034–5044, doi:10.1029/2018GL077794, 2018.
- Screen, J. A.: The missing Northern European winter cooling response to Arctic sea ice loss, *Nat. Commun.*, 8, 14603, 2017.
- Screen, J. A. and Simmonds, I.: The central role of diminishing sea ice in recent Arctic temperature amplification, *Nature*, 10 464(7293), 1334–1337, doi:10.1038/nature09051, 2010.
- Seneviratne, S. I., Corti, T., Davin, E. L., Hirschi, M., Jaeger, E. B., Lehner, I., Orlowsky, B. and Teuling, A. J.: Investigating soil moisture–climate interactions in a changing climate: A review, *Earth-Sci. Rev.*, 99(3–4), 125–161, doi:10.1016/j.earscirev.2010.02.004, 2010.
- 15 Shepherd, T. G.: Atmospheric circulation as a source of uncertainty in climate change projections, *Nat. Geosci.*, 7(10), 703–708, doi:10.1038/ngeo2253, 2014.
- Sherwood, S. C. and Huber, M.: An adaptability limit to climate change due to heat stress, *Proc. Natl. Acad. Sci.*, 107(21), 9552–9555, doi:10.1073/pnas.0913352107, 2010.
- Simmons, A. J., Poli, P., Dee, D. P., Berrisford, P., Hersbach, H., Kobayashi, S. and Peubey, C.: Estimating low-frequency variability and trends in atmospheric temperature using ERA-Interim: Atmospheric Temperature Variability and Trends using ERA-Interim, *Q. J. R. Meteorol. Soc.*, 140(679), 329–353, doi:10.1002/qj.2317, 2014.
- 20 Sippel, S., Zscheischler, J., Heimann, M., Otto, F. E. L., Peters, J. and Mahecha, M. D.: Quantifying changes in climate variability and extremes: Pitfalls and their overcoming, *Geophys. Res. Lett.*, 42(22), 9990–9998, doi:10.1002/2015GL066307, 2015.
- 25 Sousa, P. M., Trigo, R. M., Barriopedro, D., Soares, P. M. M. and Santos, J. A.: European temperature responses to blocking and ridge regional patterns, *Clim. Dyn.*, 50(1–2), 457–477, doi:10.1007/s00382-017-3620-2, 2018.
- Sun, L., Perlwitz, J. and Hoerling, M.: What caused the recent “Warm Arctic, Cold Continents” trend pattern in winter temperatures?, *Geophys. Res. Lett.*, 43(10), 5345–5352, doi:10.1002/2016GL069024, 2016.
- Tang, Q., Zhang, X., Yang, X. and Francis, J. A.: Cold winter extremes in northern continents linked to Arctic sea ice loss, *Environ. Res. Lett.*, 8(1), 014036, doi:10.1088/1748-9326/8/1/014036, 2013.
- 30 Tingley, M. P. and Huybers, P.: Recent temperature extremes at high northern latitudes unprecedented in the past 600 years, *Nature*, 496, 201, 2013.
- Uotila, P., Lynch, A. H., Cassano, J. J. and Cullather, R. I.: Changes in Antarctic net precipitation in the 21st century based on Intergovernmental Panel on Climate Change (IPCC) model scenarios, *J. Geophys. Res. Atmospheres*, 112(D10), doi:10.1029/2006JD007482, 2007.

- Van Oldenborgh, G. J., Drijfhout, S., van Ulde, A., Haarsma, R., Sterl, A., Severijns, C., Hazeleger, W. and Dijkstra, H.: Western Europe is warming much faster than expected, *Clim. Past*, 5(1), 1–12, 2009.
- Vautard, R.: Multiple Weather Regimes over the North Atlantic: Analysis of Precursors and Successors, *Mon. Weather Rev.*, 118(10), 2056–2081, doi:10.1175/1520-0493(1990)118<2056:MWROTN>2.0.CO;2, 1990.
- 5 Vautard, R. and Yiou, P.: Control of recent European surface climate change by atmospheric flow, *Geophys. Res. Lett.*, 36(22), doi:10.1029/2009GL040480, 2009.
- Vicente-Serrano, S. M., Azorin-Molina, C., Sanchez-Lorenzo, A., Morán-Tejeda, E., Lorenzo-Lacruz, J., Revuelto, J., López-Moreno, J. I. and Espejo, F.: Temporal evolution of surface humidity in Spain: recent trends and possible physical mechanisms, *Clim. Dyn.*, 42(9–10), 2655–2674, doi:10.1007/s00382-013-1885-7, 2014.
- 10 Vihma, T.: Effects of Arctic Sea Ice Decline on Weather and Climate: A Review, *Surv. Geophys.*, 35(5), 1175–1214, doi:10.1007/s10712-014-9284-0, 2014.
- Vogel, M. M., Orth, R., Cheruy, F., Hagemann, S., Lorenz, R., van den Hurk, B. J. J. M. and Seneviratne, S. I.: Regional amplification of projected changes in extreme temperatures strongly controlled by soil moisture-temperature feedbacks, *Geophys. Res. Lett.*, 44(3), 1511–1519, doi:10.1002/2016GL071235, 2017.
- 15 Walsh, J. E.: Intensified warming of the Arctic: Causes and impacts on middle latitudes, *Glob. Planet. Change*, 117, 52–63, doi:10.1016/j.gloplacha.2014.03.003, 2014.
- Wilcox, L. J., Yiou, P., Hauser, M., Lott, F. C., van Oldenborgh, G. J., Colfescu, I., Dong, B., Hegerl, G., Shaffrey, L. and Sutton, R.: Multiple perspectives on the attribution of the extreme European summer of 2012 to climate change, *Clim. Dyn.*, 50(9–10), 3537–3555, doi:10.1007/s00382-017-3822-7, 2018.
- 20 Willett, K. M. and Sherwood, S.: Exceedance of heat index thresholds for 15 regions under a warming climate using the wet-bulb globe temperature, *Int. J. Climatol.*, 32(2), 161–177, doi:10.1002/joc.2257, 2012.
- WMO: Chap. 6 Measurement of precipitation, in *Guide to Meteorological Instruments and Methods of Observation: (CIMO guide)*, vol. 8, pp. 186–219., 2014.
- Xoplaki, E.: European spring and autumn temperature variability and change of extremes over the last half millennium, *Geophys. Res. Lett.*, 32(15), doi:10.1029/2005GL023424, 2005.
- 25 Yiou, P., Goubanova, K., Li, Z. X. and Nogaj, M.: Weather regime dependence of extreme value statistics for summer temperature and precipitation, *Nonlinear Process. Geophys. Eur. Geosci. Union EGU*, 3(15), 365–378, 2008.
- Yiou, P., Malamud, B. D. and Rust, H. W.: Extreme Events: Nonlinear Dynamics and Time Series Analysis, *Nonlinear Process. Geophys.*, 18(6), 895–897, doi:10.5194/npg-18-895-2011, 2011.
- 30 Yiou, P., Cattiaux, J., Ribes, A., Vautard, R. and Vrac, M.: Recent Trends in the Recurrence of North Atlantic Atmospheric Circulation Patterns, *Complexity*, 2018, 1–8, doi:10.1155/2018/3140915, 2018.
- Zampieri, M., D’Andrea, F., Vautard, R., Ciais, P., de Noblet-Ducoudré, N. and Yiou, P.: Hot European Summers and the Role of Soil Moisture in the Propagation of Mediterranean Drought, *J. Clim.*, 22(18), 4747–4758, doi:10.1175/2009JCLI2568.1, 2009.

Zappa, G. and Shepherd, T. G.: Storylines of Atmospheric Circulation Change for European Regional Climate Impact Assessment, *J. Clim.*, 30(16), 6561–6577, doi:10.1175/JCLI-D-16-0807.1, 2017.

5 Zhang, X., Alexander, L., Hegerl, G. C., Jones, P., Tank, A. K., Peterson, T. C., Trewin, B. and Zwiers, F. W.: Indices for monitoring changes in extremes based on daily temperature and precipitation data: Indices for monitoring changes in extremes, *Wiley Interdiscip. Rev. Clim. Change*, 2(6), 851–870, doi:10.1002/wcc.147, 2011.

Zolina, O., Simmer, C., Gulev, S. K. and Kollet, S.: Changing structure of European precipitation: Longer wet periods leading to more abundant rainfalls, *Geophys. Res. Lett.*, 37(6), n/a-n/a, doi:10.1029/2010GL042468, 2010.



10 **Figure 1: Study area in the Paris region (France). Yellow: the Météo France observation stations (OBS). Cyan: the SIRTAs super site. The green area represents the ERA-I coverage (4 pixels) and the orange area reflects the SAFRAN coverage (36 detailed pixels not shown).**

Index	Name	Definition	Units
SU	Summer Days	Annual count of days when Tmax > 25 °C	days
ID	Icing Days	Annual count of days when Tmax < 0°C	days
Tx90p	Warm Days	Percentage of days when Tmax > 90 <sup>th</sup> percentile	%
Tx10p	Cool Days	Percentage of days when Tmax < 10 <sup>th</sup> percentile	%
Tn90p	Warm Nights	Percentage of days when Tmin > 90 <sup>th</sup> percentile	%
Tn10p	Cool Nights	Percentage of days when Tmin < 10 <sup>th</sup> percentile	%
TR	Tropical Nights	Annual count of days when Tmin > 20°C	days
FD	Frost Days	Annual count of days when Tmin < 0°C	days
%Rainy	Annual rainy days	Percentage of days when RR > 0.2 mm	%
R90pTOT	Very wet days	Annual total PRCP when RR > 90 <sup>th</sup> percentile	mm
PRCPTOT	Annual total wet-day precipitation	Annual total PRCP in wet days (RR > 0.2 mm)	mm
SDII	Simple daily intensity index	Annual total precipitation divided by the number of wet days	mm day <sup>-1</sup>
CWD	Consecutive wet days	Maximum number of consecutive days with RR ≥ 0,2 mm	days
CDD	Consecutive dry days	Maximum number of consecutive days with RR < 0,2 mm	days

**Table 1: Climate indices (temperature in the 8 first lines and precipitation in the 6 last lines) based on Climdex indices. In this study, the threshold between a dry day and a rainy day (RR) is set at 0.2 mm day<sup>-1</sup>, unlike ETCCDI, which uses a threshold of 1 mm day<sup>-1</sup>.**

**Commenté [JR10]: RC3-7:** We delete the lines between each indices.

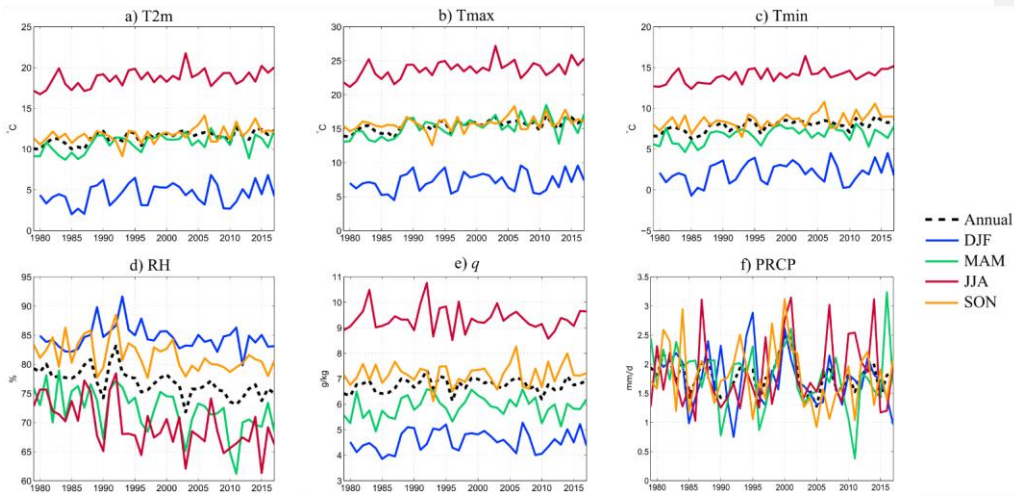
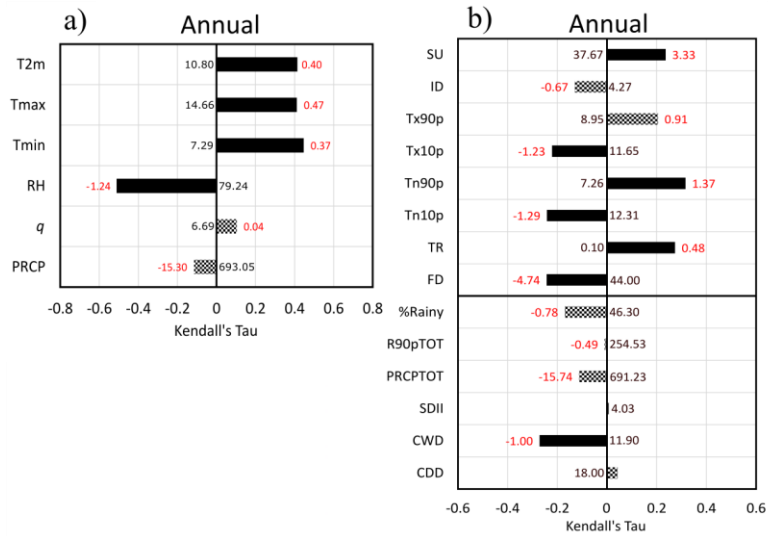


Figure 2: Annual averages (dashed black line) and seasonal averages (coloured lines) of T2m (°C), b) Tmax (°C), c) Tmin (°C), d) RH (%), e) q (g.kg<sup>-1</sup>) and f) daily PRCP average (mm.d<sup>-1</sup>). DJF is in blue, MAM in green, JJA in red, and SON in orange.





5

Figure 3: Mann-Kendall annual trends in observational data for (a) T2m, Tmax, Tmin, RH,  $q$  and PRCP, and for (b) climate indices from Tmax, Tmin and precipitation. On the abscisse, Kendall's Tau represents the rank correlation coefficient between the variable and time. The red value represents the Sen slope, i.e., the median slope in units per decade, and the black value represents the average original value in 1979 (in units). A solid bar indicates a significant trend for a confidence interval of  $p = 0.05$ , and a mosaic bar indicates a non-significant trend.

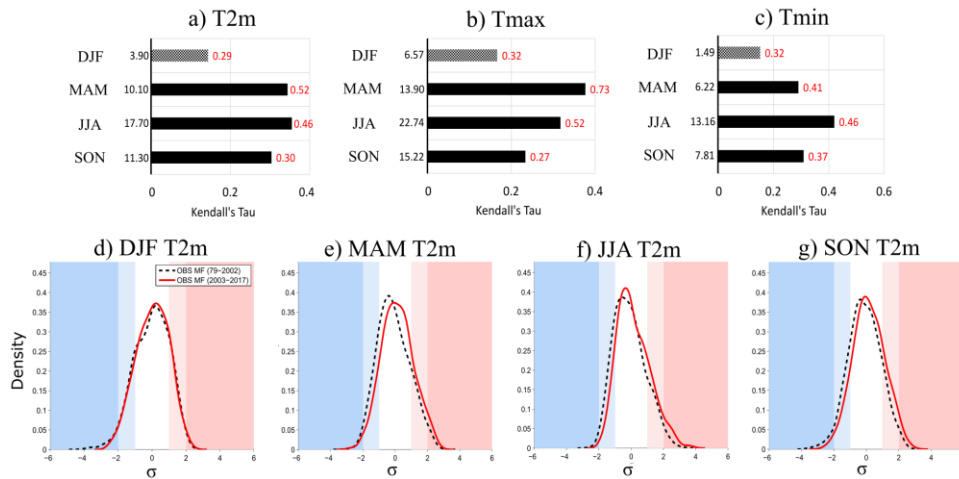


Figure 4: Top, Mann-Kendall seasonal trends in observational data for (a) T2m, (b) Tmax and (c) Tmin. Characteristics of the figure are the same as for Fig. 3. Bottom, seasonal PDF of the daily anomalies of T2m, normalized over the period 1979-2017, for (d) DJF, (e) MAM, (f) JJA and (g) SON. Dashed black: the past period from 1979 to 2002; red line: the current period from 2003 to 2017. For each period is calculated the symmetry coefficient (S) and the shape coefficient (K). The white part of the figure corresponds to  $[-1 < \sigma < +1]$ , light colours to  $[-2 < \sigma < -1; 1 < \sigma < 2]$ , and dark colours to  $[\sigma < -2; \sigma > 2]$ .

10

Commenté [JR11]: RC3-2: To reduce methodology part we delete the part "3.3 Statistical characteristics of the PDFs", so the coefficients on the PDF are no longer visible, because indeed, they were little commented in the manuscript.

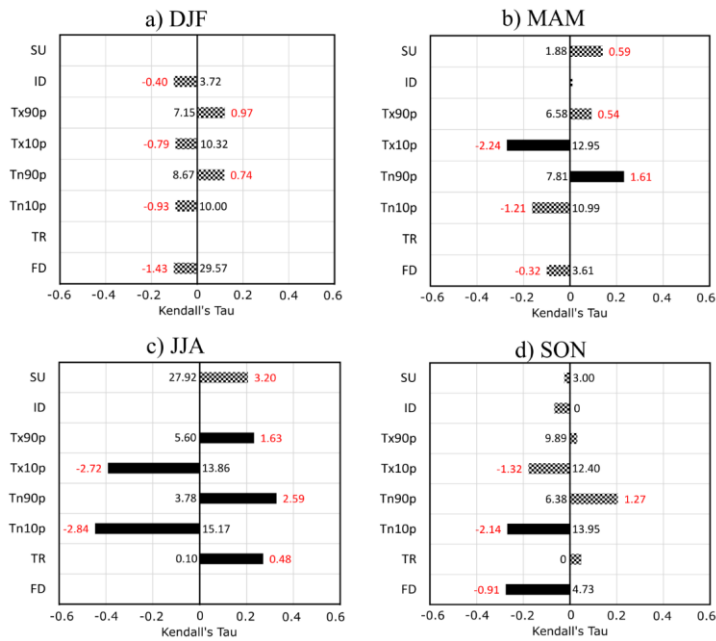


Figure 5: Mann-Kendall seasonal trends of temperature climate indices calculated from Météo France observations stations for the four seasons (a) DJF, (b) MAM, (c) JJA, (d) SON. See Table 1 for temperature climate indices. On the abscisse, Kendall's Tau represents the rank correlation coefficient between the variable and time. The red value represents the Sen slope, i.e., the median slope in units per decade, and the black value represents the average original value in 1979 (in unit). A solid bar indicates a significant trend for a confidence interval of  $p = 0.05$ , and a mosaic bar indicates a non-significant trend.

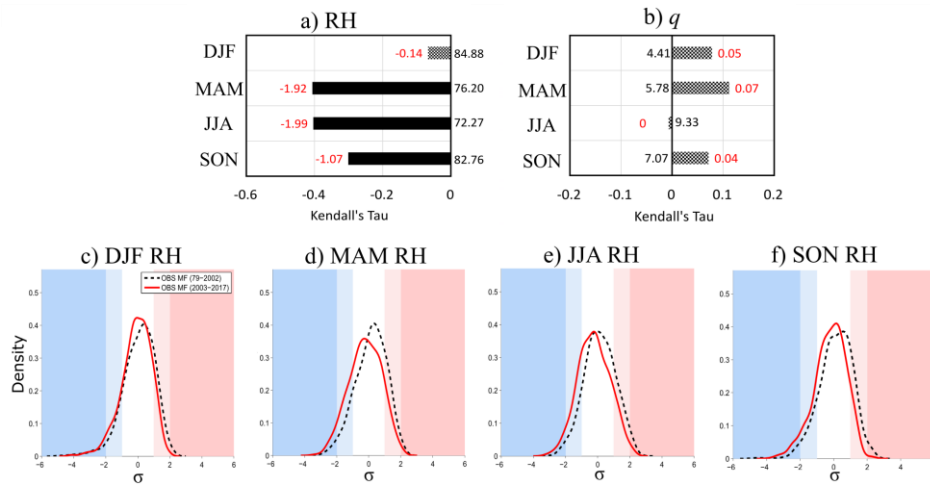
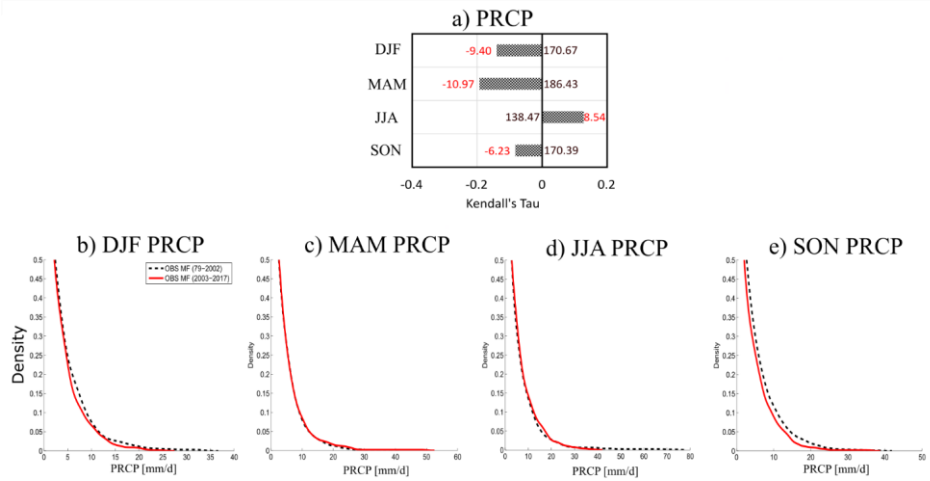


Figure 6: Same as Fig. 4 for RH (a, c, d, e, f) and q (b).

**Commenté [JR12]: RC3-2:** To reduce methodology part we delete the part "3.3 Statistical characteristics of the PDFs", so the coefficients on the PDF are no longer visible, because indeed, they were little commented in the manuscript.



5 Figure 7: Top, same as Fig. 4a but for PRCP. Bottom, seasonal PDF of daily intensities of rainy days only (> 0.2 mm day<sup>-1</sup>) for b) DJF, c) MAM, d) JJA and e) SON. Dashed black: the past period from 1979 to 2002; red line: the current period from 2003 to 2017.

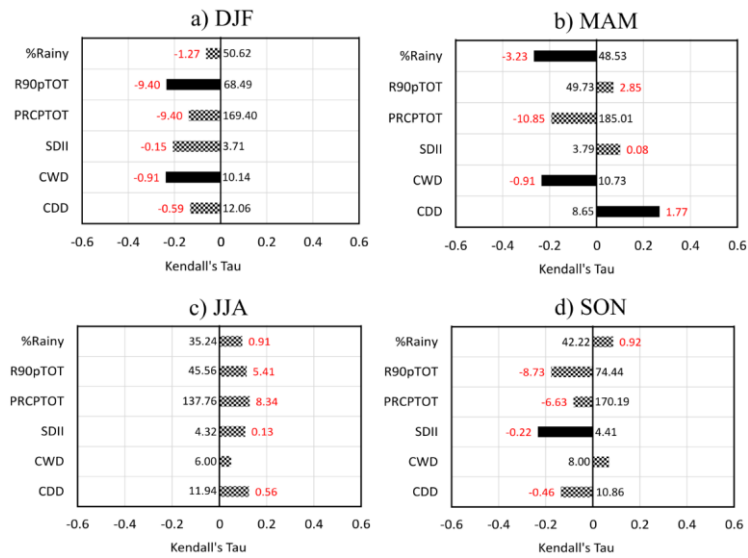


Figure 8: Same as Fig. 5, but for precipitation climate indices.

	Dynamical contribution [mm (%)]	Thermodynamical contribution [mm (%)]	Residual term [mm (%)]	$\Delta PRCP$ [mm]
SUMMER (JJA)	5.32 (32.5)	11.10 (67.8)	-0.04 (-0.3)	16.38
NAO-	20.39	-2.85	-0.02	17.5
Atlantic Ridge	-10.27	3.57	-0.01	-6.7
Blocking	-8.70	9.47	-0.02	0.8
Atlantic Low	3.90	0.90	0	4.8

Table 2: Dynamical, thermodynamical and residual contributions of the precipitation change ( $\Delta PRCP$ ) in mm for summer (JJA) and for the four weather regimes in summer. Values in parenthesis give the ratio (in %) between the change components and the total change.

Commenté [JR13]: RC1-1: New table with residual term  
RC3-7: We delete the lines between summer season and weather regimes.

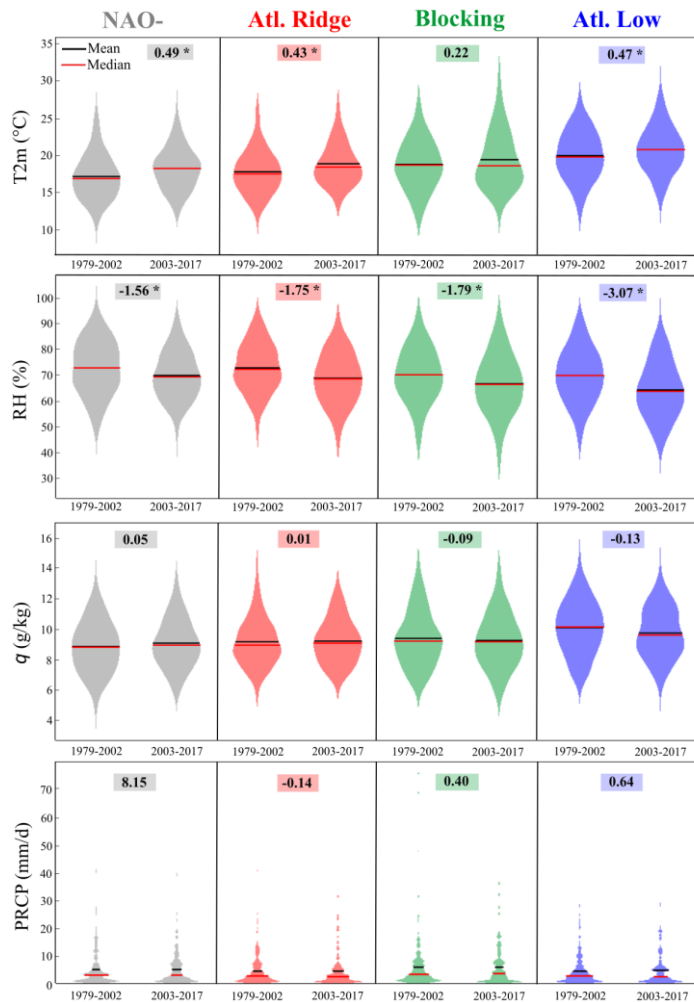
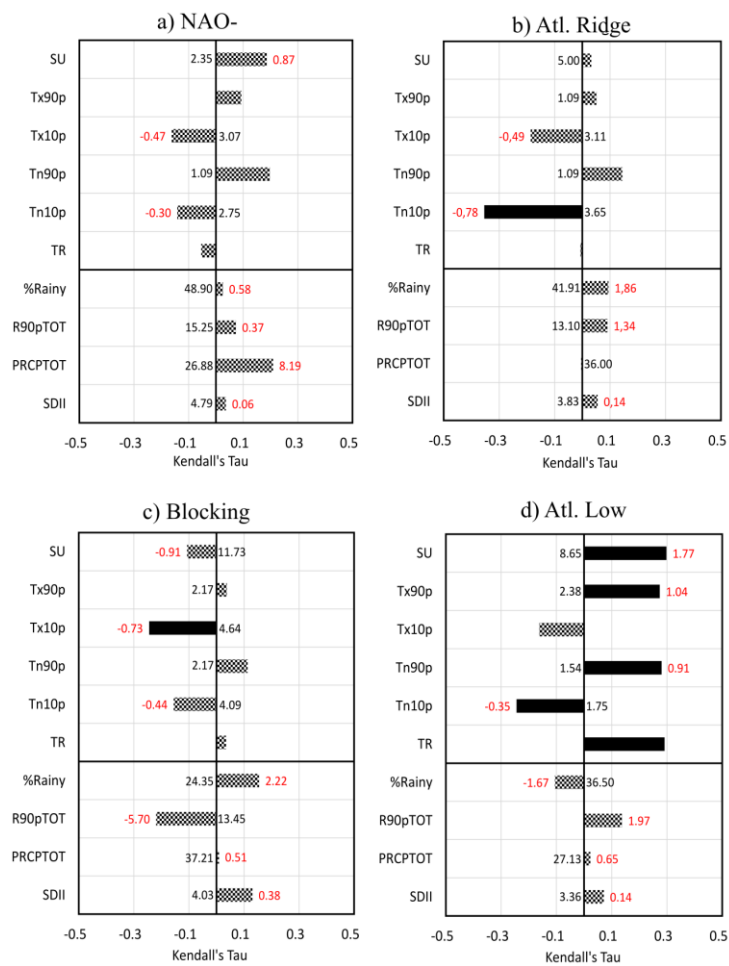


Figure 9: Violin plot of daily T2m (first line), RH (second line),  $q$  (third line) and PRCP (fourth line) for the four summer weather regimes between the periods 1979-2002 and 2003-2017 (one regime, one column). The black bar represents the mean, and the red bar the median. Boxed numbers represent trends in unit decade<sup>-1</sup> over the period 1979-2017. The asterisk represents a significant trend for a confidence interval of  $p = 0.05$ .

5



5 **Figure 10: Mann-Kendall trends in observational data for climate indices for the four summer weather regimes a) NAO-, (b) Atlantic Ridge, (c) Blocking and (d) Atlantic Low. Figure characteristics are the same as for Fig. 7.**

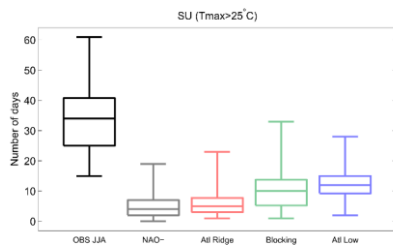
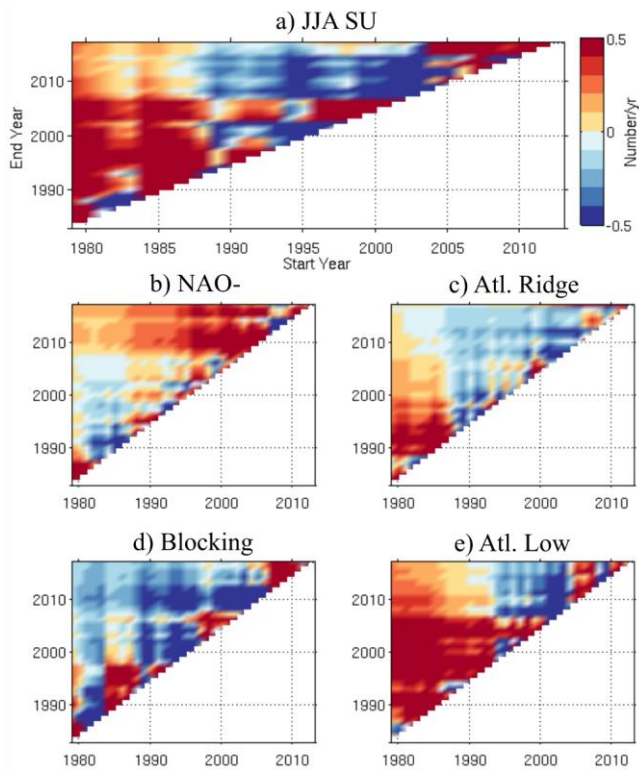


Figure 11: “Summer Days” frequency ( $T_{max} > 25^{\circ}\text{C}$ ) in number of days for the JJA season (black boxplot) and for each summer weather regime calculated over the period 1979-2017. The bottom and top edges of the box indicate the 25th and 75th percentiles, respectively and the central line the median. The bottom and top lines outside the box indicate the minimal and maximal values respectively.

5

Commenté [JR14]: RC3-8: the new legend



**Figure 12: Linear trends of SU (in number of day yr<sup>-1</sup>) as a function of length of segment (y-axis represents the end year of the segment, and x-axis represents the starting year of the segment) for a) Summer, b) NAO-, c) Atlantic Ridge, d) Blocking and e) Atlantic Low. The minimum segment size is 5 years, and the trend is calculated by linear regression.**



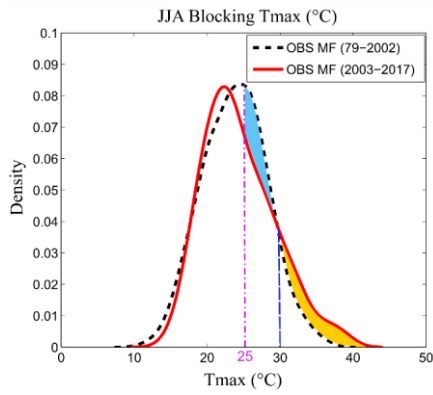


Figure 13: PDF of the Tmax for the Blocking regime. The dotted black line represents the past period from 1979 to 2002, and the solid red line reflects the current period from 2003 to 2017. The purple vertical segment represents the threshold of the SU (Summer Days), i.e., 25°C. The blue vertical segment represents the temperature at which a frequency inversion occurs between the past period, with a higher frequency of temperatures between 25 and 30°C (blue coloured zone), and the current period, with a higher frequency of temperatures above 30°C (zone coloured orange).

5

	Dynamical contribution [°C (%)]	Thermodynamical contribution [°C (%)]	Residual term [°C (%)]	$\Delta T$ [°C]
WINTER (DJF)	0.06 (29.6)	0.17 (78.9)	-0.02 (-8.5)	0.21
SUMMER (JJA)	-0.05 (-5.9)	0.87 (103.2)	0.02 (2.7)	0.84

Table 3: Dynamical, thermodynamical and residual contributions of the temperature change ( $\Delta T$ ) in °C in winter (DJF) and in summer (JJA). Values in parenthesis give the ratio (in %) between the change components and the total change.

Commenté [JR15]: RC1-1: New table with residual term

RC3-7: We delete the lines between winter and summer

10

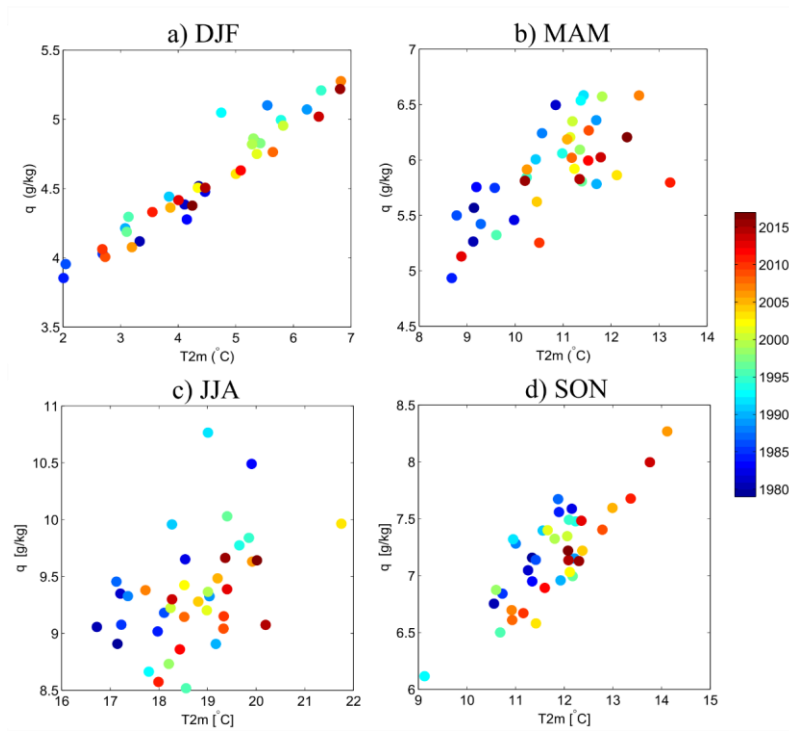


Figure 14: T2m (°C) – q (g kg<sup>-1</sup>) seasonal relationship in the Paris area from observations. Each point represents the seasonal average of one year.

## Appendix A: Comparison of the local observation with the ERA-Interim reanalyses and SAFRAN analysis

### ERA-Interim

The ERA-Interim reanalysis (ERA-I) developed by the European Centre for Medium-Range Weather Forecasts (ECMWF) is a global atmospheric reanalysis available from 1979 to today, every 6 hours and at a spatial resolution of  $0.75^{\circ} \times 0.75^{\circ}$  (Dee et al., 2011; Dee and Uppala, 2009; Simmons et al., 2014). The ERA-I dataset contains both analyses and forecasts. Unlike T2m, which contain analyses four times per day (00 h, 06 h, 12 h and 18 h), Tmax and Tmin series under ERA-I are built from daily forecasts. There are five time values per day: 0, 6, 12, 18 and 24 h, corresponding to the 5 forecasting steps (12, 18, 24, 30, and 36 h) starting at the reference time 12 h of the day before; thus, the daily value Tmax and Tmin of ERAI are selected by selecting the maximum or minimum daily values from the 5 values available on the corresponding day. The configuration of the ERA-I grid imposes a grid point in the near centre of our study area, involving the presence of observation stations on four different ERA-I pixels (green square, Fig. 1). We performed a sensitivity analysis to compare each pixel to the average of the four pixels. The result shows that the differences between each pixel, as well as the average of the four pixels, is very weak for all considered variables. We only observed a slightly different variability for the northwestern pixel at the seasonal scale, with a slightly warmer and drier pixel for T2m in winter and a little colder and slightly wetter pixel for T2m and Tmax in the summer. This pixel is located closer to the English Channel (only 55 km), so it is more subject to oceanic conditions with milder winters and cooler summers. We chose to average the four pixels in order to obtain a spatial coverage including all the observation stations. The data of T2m, Tmax, Tmin and RH are collected for the four ERA-I pixels (green square, Fig. 1) and then averaged to obtain a daily spatial average.

### 20 SAFRAN

For precipitation, we use a meteorological analysis system named SAFRAN (*Système d'Analyse Fournissant des Renseignements Adaptés à la Nivologie*) (Durand et al., 1993) developed by the *Centre National de Recherches Météorologiques et le Centre d'études de la Neige* (CNRM/CEN). The main characteristic of SAFRAN is its treatment of a limited area divided into non-regular and climatologically homogeneous areas. As input, SAFRAN uses vertical profiles derived from the meteorological model as well as numerous sources of observations. The data are analysed by altitude range (300 m steps) via optimal interpolation (6 h time steps, and 24 h time steps for precipitation). The analyses are then interpolated at the hourly time step; then, a spatial interpolation is performed to project the data on a regular grid. In output, the SAFRAN meteorological analysis system has a spatial resolution

of 8 km x 8 km and an hourly temporal resolution. These data are available from 1958 to 2016. This study collects and averages 36 pixels, whose spatial coverage represents the "small Parisian crown" (orange in Fig. 1).

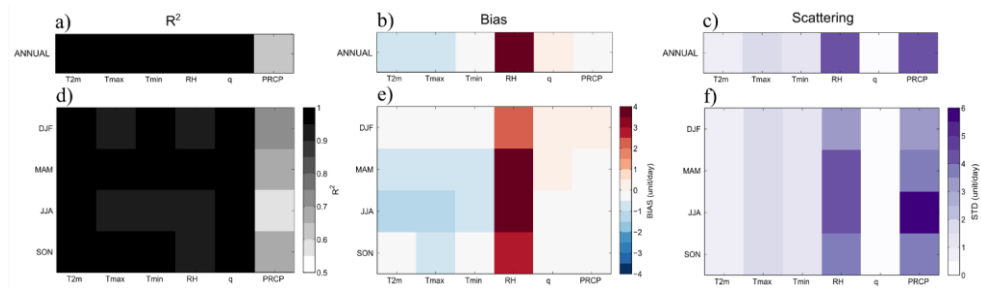
### Statistical comparisons

The daily average of the five Météo France observation stations for T2m, Tmax, Tmin, RH and  $q$  are compared to the daily average of the 4 pixels of ERA-I grid, which encompasses the MF stations (in green in Fig. 1). For precipitation, we compare the daily average of the four MF stations (without Trappes) with the daily average of the SAFRAN grid (in orange in Fig. 1). The statistical comparison uses the correlation coefficient, the bias and the standard deviation.

On an annual scale (Fig. A1 a-c, Appendix A), all variables except precipitation show a very good correlation coefficient between observations and analysis (Fig. A1a). ERA-I underestimates T2m, especially Tmax with  $-1^{\circ}\text{C}$  (Fig. A1b), and overestimates RH (about  $+4\%$ ). The standard deviation from the diagonal is very small for temperatures and specific humidity but more significant for relative humidity (Fig. A1c). For precipitation, SAFRAN bias is very low (Fig. A1b), but probably due to compensatory errors, since the correlation coefficient is not very high and associated with a significant standard deviation (Fig. A1c).

At the seasonal scale (Fig. A2 d-f), the correlation coefficient for temperatures and humidities is very good in all seasons, but not for precipitation (Fig. A1d). This is certainly a signature of the very high variability of precipitation. The annual underestimate of temperature by ERA-I is the result of an underestimate of temperatures for all seasons. It is, however, more significant in summer, with  $-1.4^{\circ}\text{C}$  for Tmax and  $-1^{\circ}\text{C}$  for T2m (Fig. A1e). This strong underestimation of ERA-I is also marked in spring and for Tmax in autumn (Fig. A1e). Several reasons explain this underestimation of ERA-I on the temperatures. First, the coverage taken into account of the ERA-I grid is greater than the "Parisian crown". Second, for T2m, the daily temperatures are averaged over the analyses performed every 6 hours. Third, Tmax and Tmin are not analyses but daily forecasts. ERA-I overestimates relative humidity for all seasons, especially in MAM and JJA with values near  $4\%$  (Fig. A1e). Moreover, the standard deviation from the diagonal is very strong (Fig. A1f). These are months with humidity coming from surface evaporation playing an important role in the total relative humidity amount. This overestimate by ERA-I suggests stronger latent heat flux in ERA-I than in observations. For rainfall, the SAFRAN bias is relatively low at all seasons (Fig. A1e), but summer has less correlation (Fig. A1d) and more scattering than other seasons (Fig. A1f). JJA corresponds to a period when precipitations are mostly convective, and more locally and suddenly impact the local measurements. The statistical evaluation at the daily time scale is thus very challenging. The statistical

analysis of SAFRAN performed from the monthly accumulation gives better results, confirming that SAFRAN is an analysis module that represents the precipitation at the local scale rather well.



5 Figure A1: Statistical comparison between daily ERA-I and daily MF observation for T2m, Tmax, Tmin, RH, and q (one column one variable in each sub-figure); and between daily SAFRAN and daily MF observation for PRCP (last column in each figure). a-c) Annual statistical comparison and d-f) seasonal statistical comparison. a) and d) For  $R^2$ , the correlation coefficient. b) and e) For the bias (in units  $\text{day}^{-1}$ ). c) and f) For scattering, the standard deviation from the diagonal.

## Appendix B: North Atlantic Weather Regimes in Summer

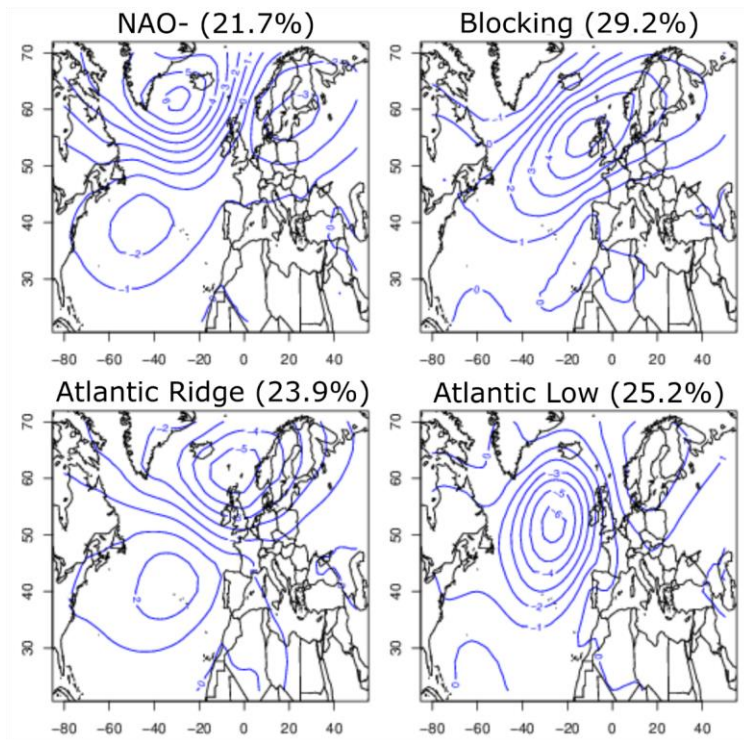


Figure B1: Summer North Atlantic weather regimes computed on the sea level pressure from National Centres for Environmental Prediction reanalysis based on reference periods from 1970 to 2010. The weather regimes were determined on seasonal anomalies of SLP. The isolines show SLP anomalies in hPa for NAO-, Atlantic Ridge, Blocking and Atlantic Low. The average frequencies of the regimes over the 1979-2017 period are indicated by percent signs. Figure from <https://a2c2.lscce.ipsl.fr/index.php/deliverables>