

Interactive comment on “Exploring the inconsistent variations in atmospheric primary and secondary pollutants during the G20 2016 Summit in Hangzhou, China: implications from observation and model” by Gen Zhang et al.

Gen Zhang et al.

zhanggen@cma.gov.cn

Received and published: 8 February 2020

The revised figures are shown below.

Interactive comment on Atmos. Chem. Phys. Discuss., <https://doi.org/10.5194/acp-2019-1061>, 2020.

Printer-friendly version

Discussion paper



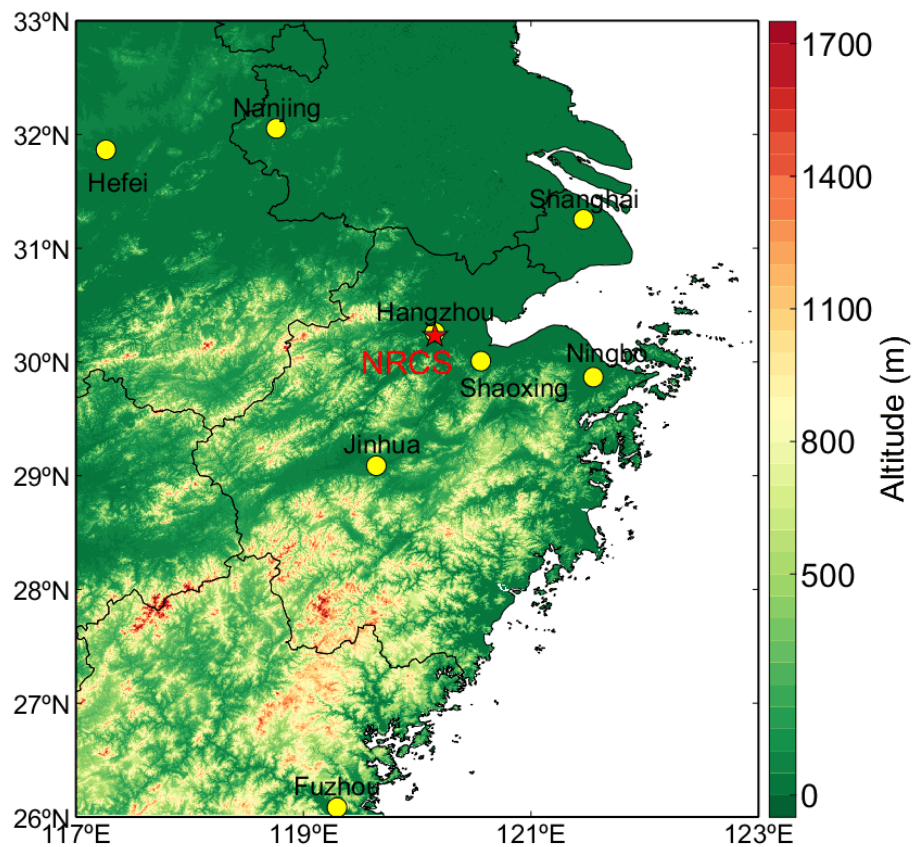


Fig. 1. The topography of National Reference Climatological Station (NRCS) (30.22 °N, 120.17 °E, 41.7 m a.s.l) in Hangzhou, China. The pentagram represents the location of NRCS.

[Printer-friendly version](#)[Discussion paper](#)

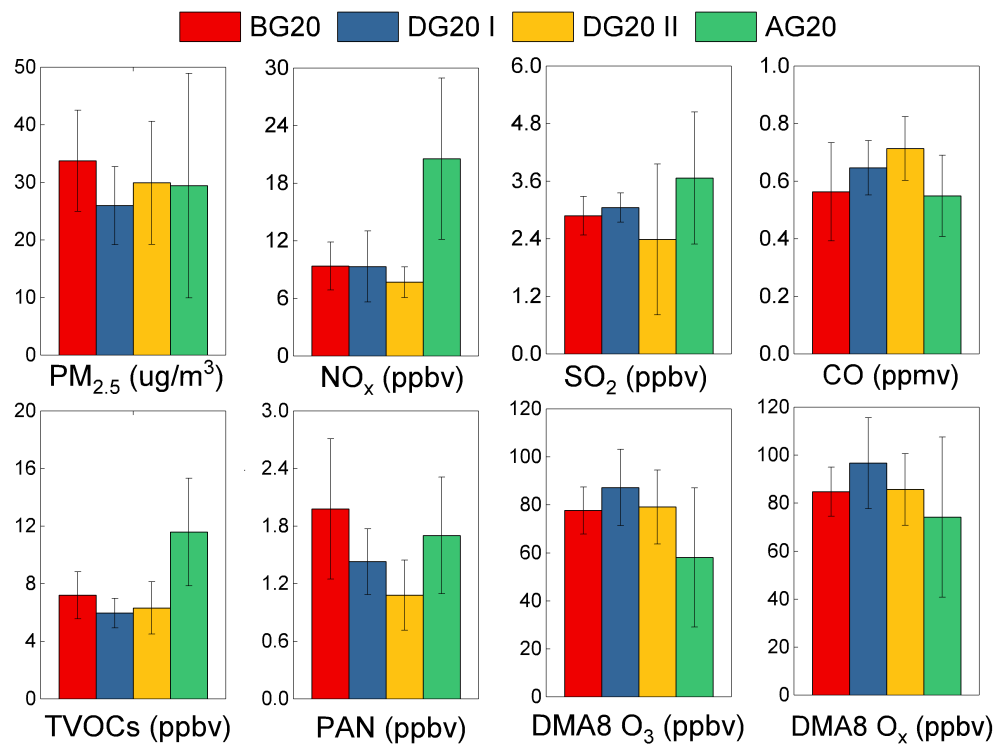


Fig. 2. The comparisons of daytime PM_{2.5}, NO_x, SO₂, CO, TVOCs, PAN, DMA8 O₃, and DMA8 O_x before, during, and after G20, denoted as BG20, DG20, and AG20, respectively. The error bars represent the standard de