

## ***Interactive comment on “Exploring the inconsistent variations in atmospheric primary and secondary pollutants during the G20 2016 Summit in Hangzhou, China: implications from observation and model” by Gen Zhang et al.***

**Gen Zhang et al.**

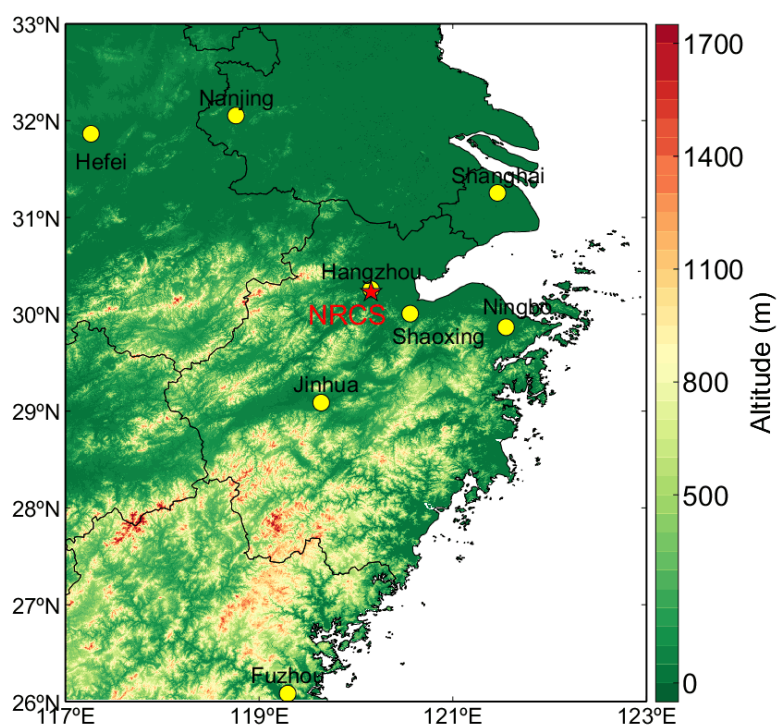
zhanggen@cma.gov.cn

Received and published: 8 February 2020

The revised figures are shown below.

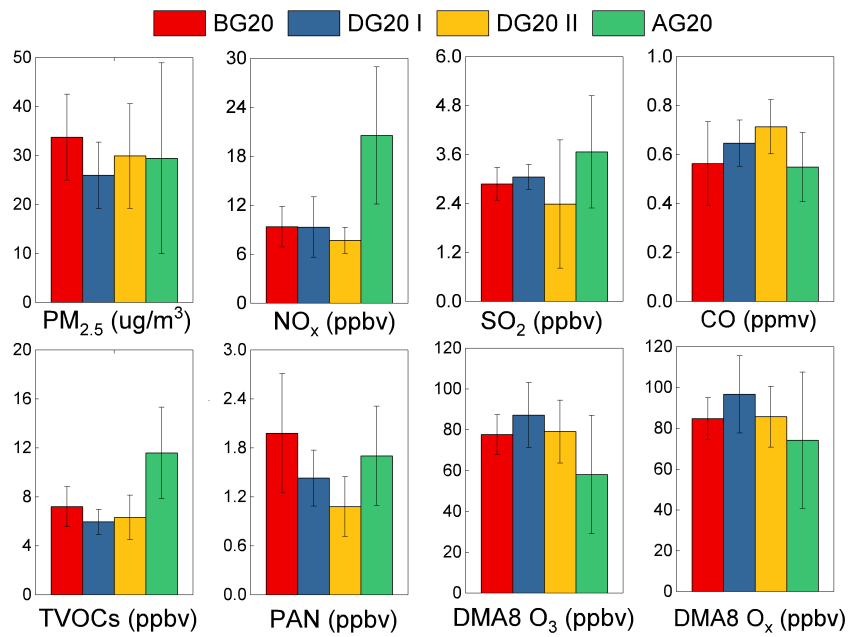
Interactive comment on Atmos. Chem. Phys. Discuss., <https://doi.org/10.5194/acp-2019-1061>, 2020.

C1



**Fig. 1.** The topography of National Reference Climatological Station (NRCS) (30.22 °N, 120.17 °E, 41.7 m a.s.l.) in Hangzhou, China. The pentagram represents the location of NRCS.

C2



**Fig. 2.** The comparisons of daytime PM<sub>2.5</sub>, NO<sub>x</sub>, SO<sub>2</sub>, CO, TVOCs, PAN, DMA8 O<sub>3</sub>, and DMA8 O<sub>x</sub>. before, during, and after G20, denoted as BG20, DG20, and AG20, respectively. The error bars represent the standard de