

Authors' Responses to Reviewer #1's comments for ACP-2019-1046

April 28, 2020

General comments

This paper investigates the effect of four-dimensional propagation of gravity waves in time-varying background winds on their properties (pseudomomentum fluxes, wavenumber) during the occurrence of a sudden stratospheric warming. The main motivation is that GW parameterizations implemented in climate models generally neglect these effects (columnar, instantaneous propagation is generally enforced in the GW schemes), and it is important to assess the missing effects on the redistribution of momentum flux and GW forcing. The authors do not find a big difference between 4D and 2D propagation in terms of latitude-height structure of the total momentum fluxes, but do find a significant difference in terms of the magnitude of the momentum fluxes, with much larger fluxes in the 4D scheme. The effects of curvature on the magnitude of the fluxes seems to be as important as the effect of horizontal wind shear.

The study is well-written and easy to follow, and the results are relevant and timing, aligning with current efforts to better understand GW processes in order to improve their parameterizations in climate models. I have a few, very minor comments, and I believe the paper is basically publishable as is.

- Authors would like to thank the reviewer for reading and evaluating the original manuscript. We have corrected our manuscript according to the reviewer's comments. Please refer to the track-change version of our revised manuscript for figure and line numbers to be mentioned below.

Minor comments

1. Some parts of the introduction seem a succession of references, and sometimes it is difficult to follow/understand the line of argument (e.g., paragraphs in page 2).
 - Following reviewer's comment, some redundant references are excluded and the Introduction is somewhat reduced (see pages 2–3 in the track-change version of the revised manuscript).
2. Page 3, line 8-9. Richter et al (2010) attributed the improvement in the SSW frequency in WACCM to the turbulent mountain stress parameterization (which improves near-surface winds and planetary wave generation), not to the source-based nonorographic GW scheme.
 - Following reviewer's comment, discussion about Richter et al. (2010) is deleted (see lines 18–19 on page 3 of the track-change version of the revised manuscript).

References

Richter, J. H., Sassi, F., and Garcia, R. R.: Toward a physically based gravity wave source parameterization in a general circulation model, *J. Atmos. Sci.*, 67, 136–156, <https://doi.org/10.1175/2009JAS3112.1>, 2010.

3. Section 3. Why do the authors use both ERA-Interim and MERRA fields, if they basically cover the same altitude range? Why not just one reanalysis?

- We think the overlap of the two reanalysis data can help reduce biases especially in regions where the two reanalyses have quite different structure.
- Each reanalysis has its own reliable altitude range or focuses more on particular altitude range. ERA-Interim reanalysis data are available up to 0.1 hPa for model-level data, but we did not use the ERA-Interim in the mesosphere where effects of spurious Rayleigh damping used instead of nonorographic gravity-wave drag parameterization become large (Fujiwara et al. 2017). In the mesosphere, we used the MERRA2 reanalysis data (together with the NOGAPS-ALPHA) because the Microwave Limb Sounder (MLS) data on the AURA satellite, not used in the ERA-Interim, are assimilated in the MERRA2 (Gelaro et al. 2017). The NOGAPS-ALPHA uses the sounding of the atmosphere using broadband emission radiometry (SABER) data on the thermosphere ionosphere mesosphere energetics and dynamics (TIMED) satellite in addition to the Aura MLS in the mesosphere (Eckermann et al. 2009).

References

Eckermann, S. D., Hoppel, K. W., Coy, L., McCormack, J. P., Siskind, D. E., Nielsen, K., et al.: High-altitude data assimilation system experiments for the northern summer mesosphere season of 2007, *J. Atmos. Solar-Terr. Phys.*, 71, 531–551, <https://doi.org/10.1016/j.jastp.2008.09.036>, 2009.

Fujiwara, M., Wright, J. S., Manney, G. L., Gray, L. J., Anstey, J., Birner, T., et al.: Introduction to the SPARC Reanalysis Intercomparison Project (S-RIP) and overview of the reanalysis systems, *Atmos. Chem. Phys.*, 17, 1417–1452, <https://doi.org/10.54194/acp-17-1417-2017>, 2017.

Gelaro, R., McCarty, W., Suárez, M. J., Todling, R., Molod, A., Takacs, L., et al.: The Modern-Era Retrospective Analysis for Research and Applications, Version 2 (MERRA-2), *J. Climate*, 30, 5419–5454, <https://doi.org/10.1175/JCLI-D-16-0758.1>, 2017.

4. Page 10 line 11-12. “Zonal F p s in each OGW ensemble member have locally substantial deviations from the ensemble mean (Fig. 3c) in the major mountain areas”. This may be true, but it is not discernible in the figure.

- Following reviewer’s comment, Fig. 3 is modified. Note that some panels are removed following the reviewer 2’s comments (see page 35 of the track-change version of the revised manuscript).

5. Figure 8. I may be missing something, but how is it possible that the number of GW packets increase with height in the 2D simulation? If I understand correctly, in the 2D case the only

process adding wave packets to a given column is wave generation at the source level.

- As reviewer said, GW packets are regularly launched upward at the source levels, but their upward propagation is not uniform in the vertical direction even in the 2D simulation. The vertical group velocities (c_{gz}) can vary in the vertical direction depending on the background wind and temperature. That is, GW packets can converge (diverge) in the vertical direction when $\partial c_{gz}/\partial z < 0$ ($\partial c_{gz}/\partial z > 0$).

Authors' Responses to Reviewer #2's comments for ACP-2019-1046

April 28, 2020

General comments

Recommendation: Accept with minor revisions

This is a nicely done, comprehensive study of gravity wave (GW) propagation from tropospheric sources into the middle atmosphere under background wind conditions prevailing during the sudden stratospheric warming of 2009. The authors use a ray tracing model to show how spatial inhomogeneity and evolution of the background flow alters the characteristics of propagating GW; and how this 4D $(x, y, z; t)$ propagation model differs from 2D $(z; t)$ propagation in many nontrivial ways.

The study is well-written and easy to follow, and the results are relevant and timing, aligning with current efforts to better understand GW processes in order to improve their parameterizations in climate models. I have a few, very minor comments, and I believe the paper is basically publishable as is.

- Authors would like to thank the reviewer for carefully reading and evaluating the original manuscript. We think we have corrected faithfully our original manuscript according to reviewer's comments. Please refer to the track-change version of revised manuscript for figure, page and line numbers to be mentioned below.

Specific comments (page, line)

1. (1, 16) "may have profound impacts": Why "may"? GW are the main component of the eddy momentum budget in the mesosphere and above. I would have written "have profound impacts".
 - "may" is deleted in the line 19 on the page 1 of the track-change version of the revised manuscript.
2. (1, 24) "radiatively-driven latitudinal temperature gradient across the two poles" → "pole-to-pole radiatively-driven latitudinal temperature gradient".
 - The phrase is modified in the line 4 on the page 2 of the track-change version of the revised manuscript following the reviewer's suggestion.
3. (2, 1) "Irreversible heat and heat fluxes": This does not make sense. I believe you mean to say "irreversible heat and momentum flux divergences".
 - Modified sentences can be found in the lines 5–7 on the page 2 of the track-change version of the revised manuscript.

4. (3, 1) “predominance of non-dissipative wave-mean interaction”: “Predominance” overstates the case. Kruse and Smith (2018) stated (their abstract) that “Non-dissipative accelerations are non-negligible and influence a [mountain wave’s] approach to breaking, *but breaking and dissipative decelerations quickly develop and dominate the subsequent evolution*” (my italics). Perhaps you meant to say “importance” or “relevance” of non-dissipative interactions? In any case, irreversible changes of the background flow ultimately occur only through dissipation.
- Modified sentences can be found in the lines 6–12 on the page 3 in the track-change version of the revised manuscript.
5. (3, 18) “GW activities” → GW activity (this is the standard usage, “activity” here being used as a collective noun).
- Modifications can be found in several places on the pages 3 and 21 of the track-change version of the revised manuscript.
6. (4, 19) “where Λ_n s ($n = 1, \dots, N$) denote”: This is awkward and confusing because the trailing “s”, which I believe is intended to denote a plural, could be taken to be part of the symbol. The standard usage for mathematical symbols is that they do not normally takes an “s” to denote plural. Replace this with “where Λ_n ($n = 1, \dots, N$) denote ...”. Note that this occurs many other times through the paper when referring to Λ_n and other symbols. Please do a thorough check.
- Λ_n s is changed into Λ_n in the line 30 on the page 4 of the track-change version of the revised manuscript.
7. (7, 19) “Then, τ_{def} s are computed” → Then, τ_{def} is computed. See previous comment. In standard usage τ_{def} stands for all cases of the “deformation” time scale. No trailing “s” needed.
- The trailing “s” is removed in the line 28 on the page 7 of the track-change version of the revised manuscript.
8. (10, 4) Figure 3: I would delete panels (a) and (d) of this figure, which do not contain any information that cannot be succinctly explained in the text. On the other hand, there could be a little more discussion of the interesting panels (b)-(c) and (e)-(f). In particular, panel (b) indicates that OGW flux, F_p , is well organized in space in a single ensemble member. I presume this is due to the fact that F_p is strongly constrained by the OGW source parameterization, which depends explicitly on orography and low-level wind. By contrast, organization of F_p for the NOGW case only emerges in the ensemble because any single ensemble member is completely stochastic (panels (e) vs. (f)).
- Following the reviewer’s suggestion, Fig. 3 is modified, and thus panels for the stochastic parameters are removed (see the page 35 of the track-change version of the revised manuscript). Also, more discussions are added at the end of the page 10 and at the beginning of the page 11 of the track-change version of the revised manuscript.

9. (10, 32) “but being weakened” → but is much weakened.
- The phrase is changed as suggested in the line 17 on the page 11 of the track-change version of the revised manuscript.
10. (10, 32) “Transparently shaded areas”: This is confusing. “Transparent” implies no shading at all. I believe you are referring to the areas overlain by gray(ish) shading. If so, please explain more clearly. Better yet would be to use some other means (e.g., cross-hatching) to denote the regions of non-significant differences to avoid confusion with the color shading meant to denote flux magnitude/sign.
- Following the reviewer’s suggestion, the shaded areas are replaced with hatched areas in all the figures that contained the “transparently shaded regions”. Also, “transparently shaded“ is changed into “hatched” everywhere in the main text of the revised manuscript.
11. (11, 4): “westward Fps in the 4D are about 10 (28) times enhanced ...”: This sentence is nearly incomprehensible. Please break it up into two digestible parts, the first referring to the 10X difference between 4D and 2D models in all but one of the parameterizations; and the second referring to the 28X difference in the case of the WM96b non-orographic parameterization. Also, omit the “s” at the end of F_p , here and in many other instances; see comment (4, 19).
- The sentence is broken into two around the lines 21–24 on the page 11 of the track-change version of the revised manuscript.
12. (11, 26) “zonal-mean ks”: Here and elsewhere this should be “zonal-mean k”; see comment (4, 19).
- ks is replaced with k everywhere as well as in the line 13 on the page 12 of the track-change version of the revised manuscript.
13. (12, 6) “thermodynamic forcing terms”: What are these? Are you referring to the dependence on N?
- “thermodynamic forcing terms” is removed, and some explanations are added in the line 28–29 on the page 12 of the track-change version of the revised manuscript.
14. (12, 29) “meridional wavenumbers (ls)” → Here and elsewhere, “ls” should be replaced simply by “l”; see comment (4, 19).
- “ls” is replaced by “l” in the line 18 on the page 13 of the track-change version of the revised manuscript. Plural form of mathematical symbols is modified everywhere in the revised manuscript following the reviewer’s comment.

15. (13, 19) Figure 8: This figure shows the striking difference between the 4D and 2D models, especially in the discontinuous (in latitude) appearance of OGW F_p . This is a common problem in comprehensive global models, which usually employ 2D columnar GW parameterizations. Although wave-mean flow interaction will tend to reduce these effects, this does not necessarily happen for the right reasons; see discussion about “compensation” of parameterized vs. resolved wave forcing in Cohen et al. (JAS 2013, 2014). It might be worth mentioning this problem.

- Following the reviewer’s comments, some discussions are added in the lines 9–20 on the page 15 and the lines 12–14 on the page 21 of the track-change version of the revised manuscript.

16. (15, 19) Figure 11: You might consider showing panels (a) through (f) in vector form (vector background wind, U , vector horizontal group velocity, c_g). This would show more clearly the relationship between U and c_g ; and also (for the intrinsic group velocity) the regions where that vector is non-negligible.

- Following the reviewer’s comments, some panels on Fig. 11 are replotted in vector field format. Please see the page 43 of the track-change version of the revised manuscript. Related discussions are rewritten for clarification on the page 17 of the track-change version of the revised manuscript.

17. (17, 12) “These enhanced eastward F_{ps} , if they exist, may induce more rapid recovery of the stratospheric jets, accelerating downward movement of the ES”: This is an interesting effect, which would not be captured by the 2D columnar parameterizations used in most comprehensive models. Note again that “ F_{ps} ” should be simply “ F_p ” (no trailing “s”).

- Please see the lines 28–29 on the page 18 of the track-change version of the revised manuscript. Again, the plural form of mathematical symbols is modified everywhere in the revised manuscript as the reviewer suggested.

Authors' Responses to Reviewer #3's comments for ACP-2019-1046

April 28, 2020

General comments

Overall this is a nice study that puts together a really unique and well-designed set of experiments. The math is explained very clearly and completely and the paper provides a well-documented citation list. Moreover, just getting the various GWD schemes running in WACCM is a noteworthy achievement. In terms of the application of the new GWD packages to a problem, I am excited to see the topic of the effects of GWD on SSWs see more attention and the inclusion of orographic and nonorographic schemes in a sophisticated model setting like WACCM offers the possibility to explore some noteworthy questions.

That said, I do feel like some of those noteworthy questions were not addressed and I think that this is a real missed opportunity. In the text below, I suggest a few ideas (which would require a few additional figures) that I think would be very worth the effort to include. I suggest these ideas because as it stands, this paper does not really discuss the mechanistic effects of GWD on SSWs, rather it simply provides some momentum budgets. Not that providing momentum budgets is not interesting, I just really think that a few additional figures could turn this paper into a something of very high value to the community. To be clear, my acceptance of this paper is not contingent on the authors adding my suggestions, I am simply trying to help improve the relevance of the paper.

- Authors would like to thank the reviewer for reading and evaluating the original manuscript. We think that the reviewer's questions really help improve discussions on the time evolution of the GW pseudomomentum fluxes in our original manuscript. We have added more figures (Figs. 13–14) and related discussions in our revised manuscript according to reviewer's comments. Please refer to the track-change version of revised manuscript for figure, page and line numbers to be mentioned below.

Major comments

1. There are two overarching concepts that I think would make compelling additions to your paper. One involves the effects of GWD on the pre-warming evolution of the vortex (i.e., preconditioning) and the second involves the possibility that GWD increases or decreases the probability of SSW occurrence. For each of these topics, I suggest two figures from the current literature that would provide a good starting point for figures to provide in the current manuscript.
2. Topic one – preconditioning: Your paper only shows figures for Jan. 20, but one could argue that it is the overall vortex evolution from Jan. 10-20 that is of prime interest in understanding the triggering of this particular SSW. Indeed Figs. 6-10 of Albers and Birner (JAS 2014) show that this period was of notable interest in the development of the SSW and in particular for GWD, it is the zonally asymmetric momentum fluxes that may play an important role in

SSW development. Thus can you provide a few additional figures that show the differences in the vortex evolution and zonally asymmetric momentum fluxes for Jan. 10-20? In particular, zonally asymmetric views with GW momentum fluxes and geopotential height contours to indicate vortex shape (as in Figs. 6 and 7 of Albers and Birner) would be very interesting for the various cases that you have run.

- Following the reviewer's suggestion, two new figures (Figs. 13–14) are added in the revised manuscript. Please find the new figures on the pages 45–46 of the track-change version of the revised manuscript. Thanks to this reviewer's question, we realized we missed opportunity to discuss the importance of the enhanced eastward OGW pseudomomentum fluxes in the middle stratosphere in the early stage of the SSW evolution. Newly added discussions can be found from the bottom of the page 18 to the middle of the page 20. Figures 13 and 14 demonstrate that the zonal-wavenumber-2 structure of the OGW pseudomomentum fluxes is much more enhanced in the middle stratosphere on 11 January 2009 in the 4D than in the 2D. Also, we discuss that this enhanced zonal-wavenumber-2 structure in the 4D interact more actively with the polar vortex in the early period, inducing the formation of the polar vortex of the zonal-wavenumber-2 structure (i.e., Rossby waves with the zonal-wavenumber-2 structure).

3. Topic two – probability of SSW occurrence: I'm not sure that my second suggestion is possible to accomplish with your current ensemble setup, but in case it is possible, I think it would provide a very interesting result. In de la Camara et al. (JAS 2017), it was shown that perturbations to the vortex prior to a SSW can cause the vortex to evolve in very different ways. In particular, Figs. 2b, 6b, and 7 provide a very interesting way of seeing how perturbations to the vortex can disrupt vortex evolution, and in some cases, even disrupting the SSW from occurring at all. Now, I realize that your ensembles start about two weeks before the SSW central date, which means that most (all?) of your ensembles have a SSW, but even so, are there systematic differences in how the vortex evolves for the different model setups? Are there ensembles where a SSW does not occur or just barely occurs? In a similar fashion to what I suggest above, I would be particularly interested in seeing figures similar to de la Camara et al. Fig.7 (which is itself similar in character to Figs. 6 and 7 of Albers and Birner); that is, how does a stereographic view of the vortex evolution look between the various model setups?

- In the present study, we cannot show how sensitive the evolution of polar vortex is to the perturbations in the stratosphere because the simulations are all offline calculations carried out for fixed time evolution of the large-scale flow. We can understand that there is a possibility of active interaction between GWs and polar vortex (or planetary waves) when the 4D formulations are employed. However, we cannot actually measure how much the different spatial distributions of the GW pseudomomentum fluxes can affect the vortex evolution. But, we added some discussions about the sensitivity to the stratospheric flow in summary and discussion (see texts from the line 34 on the page 21 to the line 12 on the page 22 of the track-change version of the revised manuscript).

Minor comments

1. Figure 9, 10 and S7: These figures are quite difficult to read. Since you are really only concerned with the NH, why not truncate the figures to include on the NH, or perhaps even just 30-90 N?
 - Following the review's suggestion, the southern hemispheric parts of Figs. 9, 10 and S7 are truncated. Please find the modified Figs 9 and 10 on the pages 41 and 42 of the track-change version of the revised manuscript.

Propagation of gravity waves and its effects on pseudomomentum flux in a sudden stratospheric warming event

In-Sun Song¹, Changsup Lee¹, Hye-Yeong Chun², Jeong-Han Kim¹, Geonhwa Jee¹,
Byeong-Gwon Song¹, and Julio T. Bacmeister³

¹Korea Polar Research Institute, Incheon, Korea

²Department of Atmospheric Sciences, Yonsei University, Seoul, Korea

³National Center for Atmospheric Research, Boulder, CO, USA

Correspondence: In-Sun Song (isong@kopri.re.kr)

Abstract. Effects of realistic propagation of gravity waves (GWs) on distribution of GW pseudomomentum fluxes (F_{ps}) are explored using a global ray-tracing model for the 2009 sudden stratospheric warming (SSW) event. Four-dimensional (4D) ($x-z, t$) and two-dimensional (2D) (z, t) results are compared for various parameterized F_{ps} pseudomomentum fluxes. In ray-tracing equations, refraction due to horizontal wind shear and curvature effects are found important and comparable to one another in magnitude. In the 4D, westward F_{ps} pseudomomentum fluxes are enhanced in the upper troposphere and northern stratosphere, due to refraction and curvature effects around fluctuating jet flows associated with large-scale waves. In the northern polar upper mesosphere and lower thermosphere, eastward F_{ps} pseudomomentum fluxes are increased in the 4D. GWs are found to propagate more to the upper atmosphere in the 4D, since horizontal propagation and change in wavenumbers due to refraction and curvature effects can make it more possible that GWs elude critical-level filtering and saturation in the lower atmosphere. GW focusing and ray-tube effects have some impacts on changes in F_{ps} . Focusing effects occur around jet cores, and ray-tube effects appear where the polar stratospheric jets vary substantially in space and time. Increase in the F_{ps} in the northern upper stratosphere and the lower thermosphere. Enhancement of the structure of zonal wavenumber 2 in pseudomomentum fluxes in the middle stratosphere begins from the early stage of the SSW evolution, and it. Increase in pseudomomentum fluxes in the upper atmosphere is present even after the onset in the 4D. Significantly enhanced F_{ps} in the northern stratosphere are likely pseudomomentum fluxes when polar vortex is disturbed are related to GWs with small intrinsic group velocity (wave capture), and they would change nonlocally nearby large-scale vortex structure without changing substantially local mean flows.

1 Introduction

Atmospheric gravity waves (GWs) may have profound impacts in momentum and energy budgets of global circulations in the middle and upper atmospheres. GW pseudomomentum fluxes can induce large-scale momentum forcing, which can substantially change ambient winds, when either transience related to unsteady propagation or dissipation due to breaking or damping occurs (e.g., Fritts and Alexander, 2003; Bühler, 2014).

GWs may also affect global thermal structure through adiabatic vertical motions and heat deposition. GW momentum forcing induces the meridional and vertical mass circulations that can contribute to temperature structure related to the Brewer-Dobson circulation in the stratosphere (e.g., Rosenlof and Holton, 1993; Chun et al., 2011; Seviour et al., 2012) (e.g., Rosenlof and Holton, 1993; Chun et al., 2011; Seviour et al., 2012) and can reverse the pole-to-pole radiatively-driven latitudinal temperature gradient across the two poles in the upper mesosphere (e.g., Kim et al., 2003; Smith et al., 2012). Irreversible heat and heat fluxes can occur when GW momentum forcing is induced (e.g., Becker and Schmitz, 2002; Medvedev and Klaassen, 2003; Yiğit and Medvedev, 2009), and they produce (e.g., Becker and Schmitz, 2002; Medvedev and Klaassen, 2003), and it contributes to GW-induced heat deposition.

In general, excitation of GWs is unsteady, and GWs propagate at finite group velocities in the form of localized packets or wavetrains. Hence, studies on propagation of GW packets in slowly-varying large-scale flows have been carried out using ray-tracing modeling based on the spatial ray theory (e.g. Dunkerton, 1984; Marks and Eckermann, 1995). Hasha et al. (2008) extended the ray theory to the spherical geometry. Ribstein et al. (2015) presented more complete formulations in which the magnitude of the three-dimensional (3D) wavenumber vector is invariant with respect to the earth's curvature under deep atmosphere approximation.

In-However, GW parameterizations (GWPs) for global climate and numerical prediction models, however, have dealt with propagation of GWs has been dealt with under simplifying assumptions that steady GWs propagate instantaneously only in the vertical direction from tropospheric sources to model top. To consider horizontal and time propagation of GWs, Song and Chun (2008) developed a ray-based GWP for convective GWs for use in Whole Atmosphere Community Climate Model (WACCM). Senf and Achatz (2011) employed a ray-based method to compute Senf and Achatz (2011) discussed validity of the simplifying assumptions of conventional GWPs by computing GW-induced forcing in the spatiotemporally varying large-scale flow associated with the thermal tides in the mesosphere and lower thermosphere (MLT) and they discussed validity of simplifying assumptions in conventional GWPs based on a ray-based method. Kalisch et al. (2014) showed importance of momentum forcing due to poleward propagating GWs using a ray-tracing model, and they discussed implementation of effects of poleward propagation in global models. Amemiya and Sato (2016) presented a quasi-columnar way of implementing a ray-based GWP in global models, ignoring time propagation of GWs. Yet, it is not clear how ray-based GWPs can be formulated in a way consistent with theories on interaction between GW packets and slowly-varying mean flows. Besides, implementation of ray GWPs in models is not straightforward since it requires overcoming limitations of conventional modeling frameworks where all parameterizations are columnar, and subgrid-scale processes across timesteps (e.g., time-propagating GWs) are ignored.

There have been studies in idealized settings to understand effects of horizontal and transient propagation of GWs on interaction between GWs and slowly-varying mean flows. Bühler and McIntyre (2003) presented a theory on wave-mean interaction associated with horizontal refraction of GWs. Bühler and McIntyre (2005) demonstrated a new type of interaction (wave capture) between GWs and horizontally varying vortices using conservation law for the sum of GW pseudomomentum and impulse for GW packets in slowly-varying mean flows. Eckermann et al. (2015) investigated horizontal spreading of orographic GW rays and Eckermann et al. (2015) showed that horizontal spreading of GWs can be as important as refraction of vertical wavenumbers in the wave-mean interaction.

~~Dunkerton (1981) demonstrated analytically and numerically for orographic GWs. Dunkerton (1981) demonstrated~~ that transient waves with finite vertical group velocities can induce spontaneous mean-flow responses such as descent of mean shear layers. Fritts and Dunkerton (1984) and Fritts et al. (2015) explored roles of self-acceleration of GW phase speeds in wave-induced instabilities and momentum deposition. ~~Murasehko et al. (2015) developed~~ Muraschko et al. (2015) presented a method based on the phase-space WKB theory to accurately compute time-height evolution of wave activity in the time-dependent background flow. ~~Bölöni et al. (2016) showed importance of direct~~ (Kruse and Smith (2018) confirmed that non-dissipative ~~and weakly nonlinear) interaction between transient GWs and mean flow, extending Murasehko et al. (2015)'s method to the anelastic airflow system. Kruse and Smith (2018) confirmed predominance of non-dissipative~~ wave-mean interaction due to transience of orographic GWs ~~over the dissipative interaction~~ is non-negligible over dissipative interaction at initial stages.

However, despite these various individual efforts, further researches are currently needed to consider properly effects of horizontal and time propagation of GWs on interaction between GWs and slowly-varying mean flows in representing subgrid-scale GW processes in global models (Plougonven et al., 2020).

Planetary-scale flows in the middle atmosphere, through which GWs propagate, can exhibit substantial spatial inhomogeneity and transience. Substantially disturbed large-scale flows are often found during sudden stratospheric warming (SSW) events in association with large planetary wave (PW) ~~activities~~ activity (e.g., Albers and Birner, 2014; Song and Chun, 2016), and they may result in substantial change in horizontal wavenumbers and frequencies of propagating GWs. This change in GW spectral properties results in spatiotemporal variations of GW pseudomomentum fluxes.

There have been various modeling studies on roles of GWs in SSWs. ~~Richter et al. (2010) showed that source-based GWPs influence PW activities and improves frequency of SSW occurrence in WACCM.~~ Limpasuvan et al. (2012) demonstrated using WACCM that GW momentum forcing is involved in both SSW initiation and recovery from SSWs. Albers and Birner (2014) discussed roles of GWs in PW resonance before the onset of the 2009 SSW. In recovery phases of SSWs, modeling studies (e.g., Chandran et al., 2013; Limpasuvan et al., 2016) have also reported that combined effects of PWs and GWs are important in generation and evolution of elevated stratopauses (ESs) ~~(Manney et al., 2008)~~. However, given that GW refraction and transient propagation cannot be considered in these models with conventional columnar GWPs, there may be limitations in the model-based assessment of relative importance between PWs and GWs in evolutions of SSWs and ESs.

Satellite observations have presented evidences of substantial variations of GW ~~activities~~ activity around SSW onset dates. ~~GW activities are~~ activity is often found to be enhanced in the upper stratosphere before SSW onsets and in high-altitude regions where ESs form in the recovery phase of SSWs (e.g., Yamashita et al., 2013; Thuraiajah et al., 2014). These variations of GW ~~activities~~ activity are also supported by GW-resolving model results for the 2009 SSW (e.g., Yamashita et al., 2010; Limpasuvan et al., 2011). de Wit et al. (2014) demonstrated substantial change in GW momentum fluxes and forcing in the upper mesosphere around the onset of the 2013 SSW using meteor radar observations over Trondheim, Norway. They showed that the magnitude and evolution of estimated GW momentum forcing are comparable to results from WACCM. However, it is unclear how the two estimates of momentum forcing can be similar, even though the modeled upper-mesospheric winds look quite different from the radar observations. This inconsistency may possibly be attributed to long-distance horizontal

propagation of GWs between the lower atmosphere and the upper mesosphere (e.g., Sato et al., 2009; de Wit et al., 2014; Thurairajah et al., 2017).

The present study explores effects of the 4D $(x-z, t)$ propagation of GWs on distributions of pseudomomentum fluxes, a central quantity in GW-mean flow interaction, for the 2009 SSW. Ray-tracing model for inertia-gravity waves (IGWs) on sphere, whose prototype was used by Song et al. (2017), is employed to compute trajectories and pseudomomentum fluxes of GWs for specified (time-varying) large-scale flows. Diagnosis of mean-flow responses to change in GW pseudomomentum fluxes is not attempted in this study, since slowly-varying mean-flows are not only modified by GW pseudomomentum but also by the second-order mean pressure fields that can induce mean motions in regions far from localized GW packets (Bühler, 2014). For statistical robustness, ensemble simulations are carried out, similar to experiments for stochastic GWPs (e.g., Dunkerton, 1982; Eckermann, 2011). In each simulation, properties of a monochromatic GW packet at a horizontal grid point are randomly drawn from populations for properties of orographic or nonorographic GWs used in GWPs.

The paper is organized as follows. Section 2 presents formulations of the ray-tracing model. Section 3 describes specification of large-scale flow from the ground to the lower thermosphere. Ensembles for parameterized orographic and nonorographic GWs are presented in Sect. 4. In Sect. 5, ray-tracing simulation results for the 2009 SSW are demonstrated by comparing 4D $(x-z, t)$ and 2D (z, t) results. Summary and discussion is given in the last section.

2 Ray-tracing model for IGWs on sphere

2.1 Kinematic wave theory

A wave packet is defined by a group of phase surfaces over distance of the order of a dominant wavelength. A ray is a curve whose tangents coincide with a sequence of wave propagation directions (Landau and Lifshitz, 1975).

Kinematic wave theory (Hayes, 1970) relates the ground-based (observed) frequency ω and the 3D wavenumber \mathbf{k} to a variable $\psi(\mathbf{r}, t)$ called the phase as follows:

$$\omega(\mathbf{r}, t) = -\partial\psi(\mathbf{r}, t)/\partial t, \quad (1)$$

$$\text{and } \mathbf{k}(\mathbf{r}, t) = \nabla_{\mathbf{r}}\psi(\mathbf{r}, t), \quad (2)$$

where $\nabla_{\mathbf{r}} = \mathbf{e}_{\lambda}/(r \cos \phi)\partial/\partial\lambda + (\mathbf{e}_{\phi}/r)\partial/\partial\phi + \mathbf{e}_r\partial/\partial r$ in the spherical coordinate system; \mathbf{e}_{λ} , \mathbf{e}_{ϕ} , and \mathbf{e}_r are orthogonal unit vectors in the eastward, northward, and radial directions, respectively; λ , ϕ , and r are the longitude, latitude, and radial distance, respectively; \mathbf{r} is a position vector; t is time; \mathbf{k} can be written as $k\mathbf{e}_{\lambda} + l\mathbf{e}_{\phi} + m\mathbf{e}_r$; k , l , and m are zonal, meridional, and vertical wavenumber components, respectively.

At each (\mathbf{r}, t) , ω is related to \mathbf{k} through a dispersion function (Ω) (Bretherton and Garrett, 1968) given by

$$\omega = \Omega(\mathbf{k}, \Lambda_1, \dots, \Lambda_N), \quad (3)$$

where Λ_n ($n = 1, \dots, N$) denote properties of wave propagation medium that vary slowly with respect to phase $\psi(\mathbf{r}, t)$.

2.2 Ray-tracing equations

Time evolutions of position, wavenumber and observed frequency of a wave packet are described as follows:

$$(d\mathbf{r}/dt, d\mathbf{k}/dt) = (\nabla_{\mathbf{k}}\Omega, -\nabla_{\mathbf{r}}\Omega), \quad (4)$$

$$\text{and } d\omega/dt = (\partial\Omega/\partial\Lambda_n) \partial\Lambda_n/\partial t. \quad (5)$$

- 5 Here, d/dt is the time rate of change following the group velocity (c_g) of a wave packet; $\nabla_{\mathbf{k}}$ and $\nabla_{\mathbf{r}}$ are the partial derivatives with respect to wavenumbers and spatial coordinates, respectively; $\nabla_{\mathbf{k}}\Omega = \partial\Omega/\partial\mathbf{k} = \partial\Omega/\partial k_i \mathbf{e}_i = c_{gi} \mathbf{e}_i = c_g$, where i ($= 1, 2, \text{ or } 3$) is the summation index that denotes the zonal, meridional, or radial component in order; $\nabla_{\mathbf{r}}\Omega = (\partial\Omega/\partial\Lambda_n) \nabla_{\mathbf{r}}\Lambda_n$.

Equation (4) is isomorphic to the Hamilton's equation for a physical system characterized by a Hamiltonian denoted by Ω . In deriving the \mathbf{k} equation [Eq. (4)] from the local time derivative of Eq. (2), a term $c_{gi}(\nabla_{\mathbf{r}}\mathbf{e}_i) \cdot \mathbf{k}$ shows up, where \mathbf{e}_i originates
 10 from $k_i = \mathbf{e}_i \cdot \mathbf{k} = \mathbf{e}_i \cdot (k\mathbf{e}_\lambda + l\mathbf{e}_\phi + m\mathbf{e}_r)$, but it must become zero for the form of ray-tracing equations to be independent of choice of coordinate systems (Ribstein et al., 2015). This constraint gives the \mathbf{k} equation shown in Eq. (4).

In the computation of Eqs. (4) and (5), component forms are used (see Appendix A1), and the shallow-atmosphere approximation [$r = a + z \approx a$, where a is the mean radius of the earth, and z ($\ll a$) is the height] is applied (Phillips, 1966; Senf and Achatz, 2011). Under this approximation, $\nabla_{\mathbf{r}} \approx \nabla = \mathbf{e}_\lambda/(a \cos\phi)\partial/\partial\lambda + (\mathbf{e}_\phi/a)\partial/\partial\phi + \mathbf{e}_z\partial/\partial z$, and the magnitude of
 15 horizontal wavenumber $|\mathbf{k}_h| [= (k^2 + l^2)^{1/2}]$ is invariant with respect to the earth's curvature.

2.3 Dispersion relation

Dispersion function Ω is required to compute the ray-tracing equations, and is given by wave dispersion relation.

In the model, the anelastic dispersion relation for IGWs (Marks and Eckermann, 1995) is employed:

$$\hat{\omega}^2 = (\omega - \mathbf{k} \cdot \mathbf{U})^2 = \frac{N^2(k^2 + l^2) + f^2(m^2 + \alpha^2)}{k^2 + l^2 + m^2 + \alpha^2}, \quad (6)$$

- 20 where $\hat{\omega}$ (> 0) is the intrinsic frequency; \mathbf{U} is the wind vector given by $(U, V, 0)$; U and V are the zonal and meridional wind components, respectively; N is the static stability; f is the Coriolis parameter; $\alpha = 1/(2H)$; H is the large-scale density ($\bar{\rho}$) scale height given by $[-(1/\bar{\rho})\partial\bar{\rho}/\partial z]^{-1}$.

The large-scale flow variables (U , V , N^2 , and α^2) and f^2 correspond to Λ_n in Eq. (3), and they are assumed to vary slowly in space and time with respect to GW phases.

25 2.4 Amplitude equation

Time evolution of wave amplitude in slowly varying large-scale flows is described by the wave action conservation law (Bretherton and Garrett, 1968):

$$\partial A/\partial t + \nabla \cdot (c_g A) = -A/\tau_{\text{dis}}, \quad (7)$$

where A is the GW action density [$= E/\hat{\omega}$ (> 0)]; E is the phase-averaged GW energy per unit volume; τ_{dis} (> 0) is the wave dissipation timescale (see Appendix A2 for details).

For computation of wave amplitude along a ray, the conservation law [Eq. (7)] is changed into an equation for vertical action flux $F_A (= c_{gz}A)$ after multiplying Eq. (7) by c_{gz} :

$$5 \quad dF_A/dt - F_A/\tau_{\text{def}} = -F_A/\tau_{\text{dis}}. \quad (8)$$

Here, τ_{def} is the wave packet deformation timescale (Marks and Eckermann, 1995), at which $|F_A|$ can increase (decrease) for $\tau_{\text{def}} > 0$ ($\tau_{\text{def}} < 0$), and is given by

$$\begin{aligned} \tau_{\text{def}} = & c_{gz} / [\partial c_{gz} / \partial t + (c_{g\lambda} \partial c_{gz} / \partial \lambda - c_{gz} \partial c_{g\lambda} / \partial \lambda) / h_\lambda \\ & + \{c_{g\phi} \cos \phi \partial c_{gz} / \partial \phi - c_{gz} \partial (c_{g\phi} \cos \phi) / \partial \phi\} / h_\lambda], \end{aligned} \quad (9)$$

10 where $c_{g\lambda}$, $c_{g\phi}$, and c_{gz} are the zonal, meridional, and vertical components of group velocity, respectively; $h_\lambda = a \cos \phi$.

In the wave-mean interaction, the vertical flux of IGW horizontal pseudomomentum ($\mathbf{F}_p = c_{gz} \mathbf{p}_h = c_{gz} \mathbf{k}_h A$, where \mathbf{p}_h is the pseudomomentum), rather than the action flux, is a central quantity (Bühler, 2014). Time evolution of \mathbf{F}_p along a ray can be obtained by combining results of \mathbf{k}_h in Eq. (4) and F_A in Eq. (8). In general, the magnitude and direction of \mathbf{F}_p are changed by refraction due to horizontally varying medium, but $|\mathbf{F}_p|$ does not vary owing to curvature terms, as $|\mathbf{k}_h|$ is invariant with
15 respect to the curvature (Sect. 2.2).

The action conservation equation [Eq. (7)] is related to conservation of the angular pseudomomentum of IGWs. Combining the component-form equation for k [Eq. (A13)] multiplied by $a \cos \phi$ and the non-dissipative form of Eq. (7) gives the angular pseudomomentum conservation law:

$$d\mathcal{P}/dt + \mathcal{P} \nabla \cdot \mathbf{c}_g = \partial \mathcal{P} / \partial t + \nabla \cdot (\mathbf{c}_g \mathcal{P}) = 0, \quad (10)$$

20 where $\mathcal{P} (= kAa \cos \phi)$ is the angular pseudomomentum.

2.5 Dissipation mechanisms

For dissipation of GWs, two separate processes are employed: Nonlinear wave saturation and molecular diffusion.

Nonlinear saturation is computed by forcing $|\mathbf{F}_p|$ not to exceed values for saturated GWs in GW-induced turbulence fields (Lindzen, 1981). The saturation flux ($F_{p,\text{sat}}$) formulated under the mid-frequency approximation (Senf and Achatz, 2011, SA11
25 hereafter) is employed and can be written as

$$F_{p,\text{sat}} = \text{Fr}_c^2 (\bar{\rho}/2) (|\mathbf{k}_h|/N) |U_h - c_p|^3, \quad (11)$$

where Fr_c is the critical Froude number (McFarlane, 1987, M87 hereafter), and is set equal to $1/\sqrt{2}$ (Hasha et al., 2008); U_h is the horizontal wind parallel to \mathbf{k}_h ($U_h = \mathbf{U} \cdot \mathbf{k}_h / |\mathbf{k}_h|$); and c_p is the ground-based phase speed ($c_p = \omega / |\mathbf{k}_h|$).

Molecular diffusion is important above the upper mesosphere. Dividing total GW energy equation by $\hat{\omega}$ gives the term τ_{dis} due to viscous damping [Eq. (A24)]. In the model, kinematic viscosity is set equal to thermal diffusivity (i.e., $\text{Pr} = 1$, where Pr is the viscous Prandtl number), and thus complete form of τ_{dis} Eq. (A26) is simplified as follows:

$$\tau_{\text{dis}} = 1 / [2\nu (k^2 + l^2 + m^2 + \alpha^2)], \quad (12)$$

5 where ν is the kinematic molecular viscosity.

Kinematic viscosity (ν) is defined as $\mu/\bar{\rho}$, and viscosity μ is determined as $1.3 \times 10^{-5} \text{ kg m}^{-1} \text{ s}^{-1}$ considering reported values of ν . Vadas and Fritts (2005) employed $\nu = 6.5 \text{ m}^2 \text{ s}^{-1}$ at $z = 90 \text{ km}$, and Pitteway and Hines (1963) suggested $\nu = 4 \text{ m}^2 \text{ s}^{-1}$ at the same height. These two values are roughly consistent with the above-mentioned value of μ for possible range of $\bar{\rho}$ at $z = 90 \text{ km}$.

10 2.6 Numerical implementation

Time integrations of the ray-tracing equations [Eqs. (4)–(5) or Eqs. (A10)–(A16)] are carried out using the Livermore solver for ordinary differential equation (ODE) with automatic method switching (LSODA) based on the stiffness of an ODE system (Petzold, 1983; Hindmarsh, 1983).

Solutions (λ , ϕ , z , k , l , m , and ω) of the ray-tracing equations proceed in time over a period of multiples of a timestep (δt). The timestep (δt) is determined as 900 s through some tests (see Figs. S1 and S2 in supplement). Large-scale flow variables (U , V , N^2 , and α^2) are given at an interval of Δt , and Δt should be a multiple of δt for proper time marching of the LSODA. In this study, $\Delta t = 1 \text{ h}$ is used.

The solver requires interpolation of $\Lambda_n \mathbf{s}$ at space and time locations of a GW packet. For spatial interpolation, a local, C^1 -continuous, tricubic method (Lekien and Marsden, 2005) is employed. The C^1 continuity allows for accurate computation of the equation for \mathbf{k} that involves the first-order spatial derivatives of $\Lambda_n \mathbf{s}$. For temporal interpolation, simple linear interpolation is used, since $\Lambda_n \mathbf{s}$ are assumed to vary linearly during the time interval (Δt) of large-scale variables.

Action flux equation [Eq. (8)] is actually an equation for $|F_A|$. Note that τ_{def} and τ_{dis} required for computation of Eq. (8) do not change the sign of F_A .

Dissipation timescale (τ_{dis}) can be computed along individual rays using ray solutions and large-scale variables at the positions of rays [see Eq. (A26)]. Meanwhile, computation of deformation timescale (τ_{def}) requires ray-tube information related to spatiotemporal variations of $c_{g\lambda}$, $c_{g\phi}$, and c_{gz} in the neighborhood of a ray [see Eq. (9)]. In the model, τ_{def} is estimated through a gridding method: $c_{g\lambda}$, $c_{g\phi}$, and c_{gz} of rays are recorded and accumulated at vertices of grid cells ($\Delta\lambda\Delta\phi\Delta z$) that contain ray paths during δt . Then, τ_{def} ~~s are computed at grid points~~ is computed at each grid point using a finite difference form of Eq. (9) and gridded group-velocity components averaged over overlapped rays. This gridding method is crude compared with the 2D (z - t) phase-space theory (Muraschko et al., 2015), but it is used to estimate, even roughly, ray-tube effects in the 4D (\mathbf{r} - t) space.

After τ_{def} and τ_{dis} are obtained, Eq. (8) is computed using the Euler method for the time step δt . In case that vertical propagation direction is reversed after δt , the sign of F_A is changed considering the sign of m because $\text{sgn}(F_A) = \text{sgn}(c_{gz}) = -\text{sgn}(m)$. Further details of numerical implementation are described in Appendix A3.

3 Large-scale atmospheric flow

5 Time-varying large-scale flows during the 2009 SSW are specified by combining 6-hourly reanalysis data sets and empirical model results. The reanalysis data are linearly interpolated at an hour interval ($\Delta t = 1$ h). The empirical model results are obtained at the hourly interval using daily 10.7-cm solar flux (F10.7) and 3-hourly geomagnetic activity (A_p) indices. Hourly whole-atmospheric flows for ray modeling are obtained by fitting the 3rd-order B-spline curves in the vertical to the time-interpolated hourly reanalysis data and empirical model results in four overlapping layers. Details of the B-spline fit can be
 10 found in Song et al. (2018).

The four vertical layers are (i) $p = 10^3$ –1 hPa ($z \approx 0$ –48 km), (ii) 400–0.1 hPa (7–65 km), (iii) 1 – 5×10^{-4} hPa (48–94 km), and (iv) 5×10^{-3} – 10^{-8} hPa (84–331 km), respectively. Data used in the four layers are as follows (in order of layer altitudes): (i) European Centre for Medium Range Forecast (ECMWF) Interim (ERA-Interim, Dee et al., 2011) reanalysis, (ii) Modern-Era Retrospective Analysis for Research and Applications, Version 2 (MERRA-2, Gelaro et al., 2017) reanalysis, (iii)
 15 the advanced-level physics high-altitude prototype of the navy operational global atmospheric prediction system (NOGAPS-ALPHA, Eckermann et al., 2009) data, and (iv) empirical model results for [temperature \(NRLMSISE-00, Picone et al., 2002\)](#) and geomagnetically quiet-time horizontal winds (HWM14, Drob et al., 2015) and disturbed horizontal winds (DWM07, Emmert et al., 2008) [and temperature \(NRLMSISE-00, Picone et al., 2002\)](#).

Figure 1 shows latitude-height cross sections of ground-to-space (G2S) zonal wind and temperature at 60°W at 00 UTC
 20 on 23 January 2009, one day before the central date (24 January) of the 2009 SSW. The G2S data demonstrate that vertically smooth whole atmospheric wind and temperature profiles can be constructed by fitting the B-spline curves in the vertical direction to the reanalysis data and empirical model results. In the Northern Hemisphere (NH), the polar-night jet is already reversed above the lower stratosphere north of 60°N , and the weakened eastward jet is tilted from the midlatitudes towards the equator in the lower mesosphere. In association with the jet structure, substantial warming is found in the northern (winter)
 25 polar stratosphere, and temperature maximum (≈ 280 K) is as high as that in the summer polar stratopause. In the Southern Hemisphere (SH), typical summertime wind and temperature structure is found: Easterly flow in the middle atmosphere below the upper mesosphere, warm temperature near the polar stratopause region, and coldest temperature and wind reversals in the polar upper mesosphere.

For ray simulations, G2S data at hourly interval are spatially smoothed using the vertical 1-2-1 smoother and horizontal
 30 moving averaging on spherical surface. Horizontal averaging is done using variables within the area of a spherical cap centered at every lat-long grid point. A spherical cap is defined by an angle between two lines from the sphere center to the center of the spherical cap's surface and to the cap's boundary. The angle is set equal to about 2.7° , and for this angle, the area of the

spherical cap's surface is equivalent to the area of a circle with a radius of 300 km [$\pi(300 \text{ km})^2$] on a flat surface. Smoothed G2S data are regridded at $2.5^\circ \times 2.5^\circ$ horizontal resolution for use in ray simulations.

4 GW ensembles

In this study, orographic and nonorographic GWs are separately considered. Properties of orographic GWs are given by the M87 scheme. Nonorographic GWs are specified based on SA11 and Warner and McIntyre (1996) (WM96 hereafter).

4.1 Orographic GWs

Orographic GWs (OGWs) are assumed to be excited when low-level horizontal winds are strong, and vertical parcel displacements due to subgrid topography are large (M87).

The vertical displacement (h_m) is given by $2\sigma_h$, where σ_h is the standard deviation of the subgrid-scale topography. Reynolds stress due to stationary OGWs ($\omega = 0$ and $c_p = 0$) is given by $(k_{ho}/2) \min(h_m^2, U_s^2/N_s^2) \rho_s N_s U_s$, where k_{ho} is the horizontal wavenumber [$= 2\pi/(100 \text{ km})$], and ρ_s , N_s , and U_s are air density, stability, and horizontal wind magnitude, respectively, averaged within the source layer between the ground to the h_m . Grid- and subgrid-scale topography are obtained by averaging and regridding NCAR Community Earth System Model (CESM) auxiliary data with horizontal resolutions close to $2.5^\circ \times 2.5^\circ$.

Directions of horizontal wavenumber vectors are set opposite to horizontal wind vectors averaged within source layer. OGWs are launched at the top of the source layers.

4.2 Nonorographic GWs

For nonorographic GWs (~~NGWs~~NOGWs), three 14 discrete wave schemes as in SA11 are considered. One is a modified version of SA11, and the other two are derived from the empirical spectra of WM96.

The empirical GW energy spectrum (\hat{E}) in WM96 is given by a separable function of m , $\hat{\omega}$, and the azimuth angle (φ) [i.e., $\hat{E} = E_0 A(m) B(\hat{\omega}) \Phi(\varphi)$]. The pseudomomentum flux spectrum $\bar{\rho} c_{gz} \hat{E}(m, \hat{\omega}, \varphi) \mathbf{k} / \hat{\omega}$ can be written as a function of k , ω , and φ by multiplying the spectrum by the Jacobian factor ($J = m/|\mathbf{k}|$). This spectrum is discretized to obtain 14-wave schemes through numerical integrations around appropriately chosen k s- and ω s- for 14 sets of φ and c_p as in SA11 in a quiescent atmosphere with a specified stability (0.01 rad s^{-1}). Two 14-wave WM96 schemes are obtained by using two different values (1 and 5/3) of p in the spectrum $B(\hat{\omega})$ given by $B_0(p) \hat{\omega}^{-p}$. ~~NGWs~~NOGWs are launched at every horizontal grid point at $z = 6.8 \text{ km}$ near 400 hPa.

Figure 2 illustrates angular histograms of spectral properties and Reynolds stress in the three 14-wave ~~NGW~~NOGW schemes. In these schemes, horizontal propagation directions (φ s) and ground-based phase speeds (c_p s) are given for each of 14 GWs, and they are identical to those in SA11. The horizontal wavelength (λ_h) in SA11 ranges from 385 to 596 km. In WM96 with $p = 5/3$ (WM96a), the range of λ_h is broader (309–782 km) compared with SA11, and in WM96 with $p = 1$ (WM96b), the range is much broader (128–942 km).

Each GW has identical amount of Reynolds stress in the three schemes. For this, the stresses for GWs with $c_p > 20 \text{ m s}^{-1}$ are reduced in SA11, and integration intervals of k and ω for the spectra in WM96 are appropriately adjusted. As a result, ~~NGWs~~NOGWs with c_p s smaller (larger) than 20 m s^{-1} have Reynolds stress of the order of 10^{-3} (10^{-5}) N m^{-2} . Reynolds stresses exhibit slightly more westward flux, but they are almost isotropic. The total magnitudes of Reynolds stresses used in this study are $3.6 \times 10^{-3} \text{ N m}^{-2}$ in the eastward, northward and southward directions and $4.1 \times 10^{-3} \text{ N m}^{-2}$ in the westward direction. These magnitudes are comparable to the total momentum flux of $3.75 \times 10^{-3} \text{ N m}^{-2}$ in each Cardinal direction at 450 hPa that is employed in the ECMWF model (Orr et al., 2010). Details of GW properties shown in Fig. 2 are found in Table S1 in the supplement.

4.3 Generation of GW ensembles

In ray simulations, single GW packet, stochastically chosen from GW source ensembles, is launched at a horizontal grid point where GWs are supposed to be generated. This approach is computationally efficient, allowing for statistical significance tests for differences between ray simulations.

The OGW scheme (M87) launches single OGW at a horizontal grid point, but ~~NGW~~NOGW schemes usually specify multiple GWs. Hence, GW ensembles are separately generated for OGWs and ~~NGWs~~NOGWs. For OGWs, the vertical displacement h_m is assumed to be given by $s_f \sigma_h$, where the scale factor s_f has a uniform probability distribution between 1 and 3 around its default value 2. ~~For NGWs~~For NOGWs, single GW is selected with uniform chance from 14 discrete waves. GW ensembles are precomputed using a random-number generator for reproducibility.

Figure 3 demonstrates horizontal distributions of ~~stochastic parameters~~, zonal OGW and ~~NGW~~NOGW pseudomomentum fluxes (F_p s) at individual launch levels for a particular ensemble member, and the ensemble averages of the zonal ~~F_p s~~pseudomomentum fluxes at 00 UTC on 20 January 2009, four days before the 2009 SSW onset. The stochastic parameters for OGWs and ~~NGWs~~NOGWs are the displacement scale factors (s_f) and wave IDs (1–14), respectively. For each of GW source schemes, 20 ensemble members are generated.

For OGWs, s_f varies randomly between 1 and 3 at grid points where σ_h is nonzero. In the mid-latitude tropospheric eastward jet regions, westward OGW F_p are large and may reach about -1 N m^{-2} over major mountainous regions: The Alps, the Tibetan plateau, the Rockies, and the Andes. Large eastward OGW F_p s are found in the higher-latitude regions such as Greenland and the Antarctica. Zonal F_p s in each OGW ensemble member have locally substantial deviations from the ensemble mean (Fig. 3e3b) in the major mountain areas. Maximum value of the standard deviation from the ensemble mean is about 0.7 N m^{-2} and found in the Tibetan areas.

~~For NGWs~~For NOGWs, wave IDs of 1–14 are randomly spread on the globe. The magnitude of ensemble-averaged zonal ~~NGW~~NOGW F_p s is $O(10^{-3} \text{ N m}^{-2})$. The horizontal distribution of zonal F_p s ~~in each NGW~~in each NOGW ensemble member (Fig. 3e3c) looks noisy, but characteristic structure is more clearly revealed in its ensemble average (Fig. 3f)-3d). The sign of zonal ~~NGW~~NOGW F_p s is generally opposite to that of the tropospheric zonal flows. The organized spatial structure of the zonal NOGW F_p only emerges in the ensemble because any single ensemble member is completely stochastic. Meanwhile,

the OGW F_p are well organized in single ensemble member because they are constrained by the OGW source parameterization that depends explicitly on orography.

5 Results

GW ray simulations are carried out for the time period of 25 days from 00 UTC on 8 January 2009 to 00 UTC on 2 February 2009 for the 20 OGW and ~~NGW-NOGW~~ ensemble members.

For each GW ensemble member, two kinds of simulations are carried out: Four-dimensional (4D) ($x-z, t$) and two-dimensional (2D) (z, t) experiments. In 4D experiments, GW rays propagate horizontally as well as vertically in spatially varying background media, but in 2D, rays are allowed to propagate only in the vertical direction. In both 4D and 2D, GW rays propagate through time-varying flows, and therefore modulations of the observed frequencies of GWs occur. In 4D cases for M87 and SA11, additional simulations where $\tau_{\text{def}} = 0$ in the amplitude equation are carried out to see ray-tube effects. In all simulations, 3-h averaged gridded outputs are generated. GW rays are launched every 3 h, and 3-day old rays are eliminated. These launch interval and ray life time are chosen considering computational time, the time scale of the large-scale flow, and elapsed time for rays launched in the troposphere to reach the upper mesosphere and lower thermosphere (UMLT) (see Figs. S1–S3).

5.1 Zonally-averaged GW properties

Figure 4 shows latitude-height distributions of zonal-mean zonal wind and ensemble averages of zonal-mean zonal F_p ~~s~~-of OGWs and three ~~NGWs-NOGWs~~ in the 4D and 2D experiments at 00 UTC on 20 January 2009. The NH polar vortex is not reversed ~~yet but being weakened. Transparently shaded, but is much weakened. Hatched~~ areas indicate regions where differences between 4D and 2D are not statistically significant. The signs of the zonal-mean zonal ~~F_p s~~-pseudomomentum fluxes below $z = 80$ km are overall similar in the 4D and 2D and seem to be related to structure of the zonal wind, but they become different from each other above $z = 80$ km in the NH polar regions.

Statistically significant differences between the 4D and 2D are found in five regions. (i) In the latitude-height region of 40°N – 70°N and 40–50 km, westward F_p ~~s~~-in the 4D are about 10 ~~(28)~~-times enhanced when compared with 2D results for OGW, ~~NGW-NOGW~~_{SA11}, and ~~NGW-NOGW~~_{WM96a} ~~(NGW, and they are about 28 times increased when compared with 2D results for NOGW~~_{WM96b}~~).~~. (ii) In the NH polar UMLT (70°N – 80°N and 85–100 km), the magnitude of eastward F_p ~~s~~-in the 4D is 1.5–5 times larger than that of westward F_p ~~s~~-in the 2D for both OGWs and ~~NGWs-NOGWs~~. This result implies that 4D results may better explain the mesospheric cooling around the SSW central dates, compared to the 2D, given that the cooling can be induced by eastward GW momentum forcing in the UMLT. (iii) In the upper troposphere and lower stratosphere (UTLS) above the tropospheric jets, westward F_p ~~s~~-of ~~NGWs-of~~ ~~NOGWs~~ are 1.6–2.6 time larger in the 4D. (iv) In the SH mesosphere, eastward F_p ~~s~~-of ~~NGWs-of~~ ~~NOGWs~~ in the mid-latitudes are reduced by more than half in the 4D. (v) Eastward F_p ~~s~~-of OGWs at $z = 30$ – 80 km around 70°S are 5–6 times enhanced in the 4D. As a result, the magnitude of zonal F_p ~~s~~-in the middle atmosphere and their structure in the UMLT can be substantially changed in the 4D where horizontal propagation and refraction are allowed, even though F_p ~~s~~-are given identically at source levels in the 4D and 2D experiments.

Additional 4D OGW and NGWNOGW_{SA11} experiments (Fig. S4) where no ray-tube effects are considered ($\tau_{\text{def}} = 0$) give similar results to those with $\tau_{\text{def}} \neq 0$ shown in Fig. 4, except for the NH upper stratosphere and lower mesosphere (USLM). Statistically significant differences between nonzero and zero τ_{def} ~~s~~ are found in relatively narrow regions around the NH jet core (75°N and 40 km at 00 UTC on 20 January 2009) (see Fig. S4). It is interesting that ray-tube effects become important in regions near the jet where the large-scale winds vary rapidly in space (see Sect. 5.2). In these regions, the magnitude of westward F_p ~~s~~ when $\tau_{\text{def}} \neq 0$ is reduced by less than half compared with when $\tau_{\text{def}} = 0$. These differences are localized compared with the differences between the 4D and 2D experiments, which may indicate that ray-tube effects be relatively limited. However, it should be noted that ray simulations in this study may underestimate ray-tube effects, given that horizontal spread of GW fields that emanate from local sources cannot be considered in the current ray simulations where single GW ray is launched at a grid point.

Figure 5 shows latitude-height distributions of zonal-mean zonal wind and ensemble means of zonally-averaged zonal wavenumbers (k ~~s~~) for OGWs and NGWsNOGWs in the 4D and 2D experiments at 00 UTC on 20 January 2009. It is clear that the sign of zonal-mean k ~~s~~ is overall the same as that of the zonal F_p ~~s~~ shown in Fig. 4, except for some regions in the NH USLM. This similarity in the signs of k ~~s~~ and zonal F_p ~~s~~ implies that the zonal-mean zonal F_p (Fig. 4) is mostly due to upward propagating GWs, since the sign of zonal F_p ($= kF_A$) is determined by the sign of k alone in case that $c_{gz} > 0$ and thus $F_A > 0$. In the NH USLM, however, GWs in the 4D are found to propagate downward in some areas, and positive k ~~s~~ at $z = 30\text{--}50$ km are related to the GWs with negative c_{gz} and westward F_p (see Sect. 5.2 for details).

Statistically significant differences of zonal-mean k ~~s~~ between the 4D and 2D are also found in similar regions to those of zonal-mean zonal F_p ~~s~~ shown in Fig. 4. In the NH polar UMLT, the sign of k ~~s~~ is reversed between the 4D and 2D, and the magnitude of positive k ~~s~~ in the 4D is 1.2–6.3 times larger than that of negative k ~~s~~ in the 2D for both OGWs and NGWsNOGWs. In the UTLS, negative k ~~s~~ of NGWsNOGWs are 1.4–2.4 times larger in the 4D. In the SH mesosphere, positive k ~~s~~ of NGWsNOGWs in the mid-latitude regions are reduced by about half in the 4D, and positive k ~~s~~ of OGWs around 70°S are about 1–3 times enhanced in the 4D. These changes in k ~~s~~ in the 4D with respect to the 2D are roughly similar to those in the zonal F_p ~~s~~ shown in Fig. 4. This result indicates that differences in the zonal F_p between the 4D and 2D experiments can be accounted for to a substantial degree by changes in the k ~~s~~ between the 4D and 2D.

Time rate of change of k ~~s~~ along rays is determined by the five forcing terms [Eqs. (A13) and (A17)]. Among the 5 terms, the two zonal shear forcing terms [$-k/(a \cos \phi) \partial U / \partial \lambda$ and $-l/(a \cos \phi) \partial V / \partial \lambda$] and curvature term ($lc_{g\lambda} \tan \phi / a$) are predominant in most cases. ~~Thermodynamic forcing terms~~ The other forcing terms in M_λ / h_λ [Eq. (A17)] that depend on the stability (N^2) and vertical density variation (α^2) are usually 2–3 order of magnitude smaller (see Fig. S5).

Figure 6 shows latitude-height distributions of the total and three major forcing terms in the k equation for OGWs and NGWNOGW_{SA11} in the 4D experiment at 00 UTC on 20 January 2009. Note that the forcing terms in the k equation in the 2D are all zero. ~~For NGWs~~ For NOGWs, results for SA11 are presented since the other NGWNOGW schemes give roughly similar results. It is clear that the magnitude of the curvature term is as large as the two zonal shear forcing terms in the mid-latitudes as well as the polar regions, which supports importance of the curvature term presented by Hasha et al. (2008). In the UTLS, the total forcing term for NGWsNOGWs is generally negative above the tropospheric jet cores (60°S–40°S and

20°N–50°N) where the negative k ~~s-are-is~~ predominant and enhanced in the 4D, and the negative total forcing is due mainly to the zonal shear term of zonal winds and curvature effects. For OGWs around 70°S, the enhancement of the positive k in the stratosphere is attributed to curvature effects. ~~For NGWs~~For NOGWs, curvature effects are predominant over the other two major forcing terms in the SH stratosphere where winds are steady, but ~~it-becomes~~they are a little smaller than the two zonal shear forcing terms in the NH where the polar vortex varies rapidly in space and time.

Structure of the three major forcing terms in the k equation (Fig. 6) is different from that of k ~~s-~~(Fig. 5) except for the NH USLM. This difference may occur in relation to space and time propagation of GWs, since certain k ~~s-~~substantially changed in some regions may not be changed a lot as GWs propagate to the other regions. In fact, positive k ~~s-of-NGWs-of-NOGWs~~ with eastward F_p in the UTLS of the SH mid- to high-latitude regions are increased by positive zonal shear terms for the zonal wind and curvature terms (Fig. S5). The increase in positive k ~~s-~~enhances eastward F_p in the SH UTLS. However, the eastward F_p ~~s-of-NGWs-of-NOGWs~~ is reduced in the SH middle atmosphere, even though total forcing in the k equation for ~~NGWs-NOGWs~~ with eastward F_p is positive (Fig. S5). It is seen that the GWs with enhanced eastward F_p would be dissipated through the saturation as they propagate northward toward the SH mid-latitude USLM. This dissipation results in reduction in eastward F_p and positive k in the SH mesosphere (Figs. 4–5). In contrast, distributions of k ~~s-~~and major forcing terms (Fig. 6) are correlated with each other in the NH USLM, which indicate that structure of k ~~s-~~in the NH USLM can locally be generated by forcing terms around $z = 40$ km.

Figure 7 shows latitude-height distributions of zonal-mean zonal wind and ensemble means of zonally-averaged meridional wavenumbers (l ~~s-~~) for OGWs and ~~NGW~~NOGW_{SA11S} in the 4D and 2D experiments at 00 UTC on 15 and 20 January 2009. It is found that structural difference of l ~~s-~~between the 4D and 2D is substantial for both OGWs and ~~NGWs~~NOGWs, and is more significant than the difference in structure of k ~~s-~~. This result may be related to larger meridional variations of the large-scale flow than its zonal variations, given that the time rates of ~~change-changes~~ of l and k are determined by meridional and zonal variations of the large-scale flow, respectively.

In the SH, large positive l ~~s-~~of OGWs appear around 70°S in the 4D compared with the 2D on both the two dates, and these are due to the positive meridional shear forcing term related to zonal wind [$-(k/a)\partial U/\partial\phi$], where $k > 0$, and $\partial U/\partial\phi < 0$ (see Fig. S6). In the NH USLM, positive (negative) l ~~s-~~of OGWs in the 4D appears roughly south (north) of the eastward jet axis on 15 January, but significantly enhanced positive l ~~s-~~are predominant on 20 January. The signs of l ~~s-~~across the jet on 15 January means northward (southward) propagation of OGWs relative to large-scale meridional winds. Therefore, OGWs in the 4D can in fact be converged along the jet axis in the NH USLM, as long as the meridional variations of meridional winds are not significant. On 20 January, as the jet is moved towards 80°N, it is seen in the 4D that positive l ~~s-~~of OGWs and poleward propagation of OGWs become predominant south of the jet axis. In the 2D, structure of l ~~s-~~of OGWs in the NH does not seem to exhibit significant responses to spatiotemporal variations of the large-scale flow.

Structure of l ~~s-for-NGWs-for-NOGWs~~ is coherent with the large-scale flow structure in the 4D, but it seems more or less random in the 2D. In the SH, l ~~s-of-NGWs-of-NOGWs~~ in the 4D are overall positive in the high-latitude stratosphere above $z = 10$ km and in the mid-latitude middle atmosphere above $z = 30$ km, and $c_{g\lambda}$ is overall negative due to the westward winds. This explains why the curvature term ($lc_{g\lambda} \tan\phi/a$) in the k equation is positive for ~~NGWs-NOGWs~~ in the SH ($\phi < 0$) middle

atmosphere, as shown in Fig. 6h. The positive l ~~s-of-NGWs-of~~ NOGWs in the SH are due mainly to the forcing term related to the meridional shear of zonal winds and curvature term ($-kc_{p\lambda} \tan \phi/a$) in the l equation (see Fig. S6). Positive k ~~s-above~~ $z = 40$ km (Fig. 5) and change in the sign of $\partial U/\partial \phi$ around the axis of the westward winds ($\partial U/\partial \phi < 0$ south of the axis and $\partial U/\partial \phi > 0$ north of the axis) make the meridional shear forcing term in the l equation positive in the SH polar USLM and negative in the SH mid-latitude USLM. In the NH USLM, as in OGWs, structure of the l ~~s-on~~ NOGWs on 15 January may indicate latitudinal convergence of NGW-NOGW rays along the axis of the stratospheric jet. On 20 January, positive l ~~s-are~~ NOGWs are predominant in the NH USLM, and NGWs-NOGWs south of 80°N propagate northward.

Figure 8 shows latitude-height distributions of zonal-mean zonal wind and ensemble means of zonally-averaged number of GW packets for OGWs and NGW-NOGW_{SA11S} in the 4D and 2D experiments at 00 UTC on 15 and 20 January 2009. The number of GW packets corresponds to the ray counter used for averaging in the gridding method. Comparison between the 4D and 2D indicates that there is convergence of GW packets in the 4D along the jet axis in the NH USLM and in the NH polar stratosphere on 15 January for both OGWs and NGWs-NOGWs. In the latitude-height region of 40°N – 70°N and 40–90 km on 15 January, zonally averaged number of rays for OGWs (NGWsNOGWs) is about 0.9 (1.9) in the 4D, and it is 1.7 (1.3) times larger than in the 2D. In this region, GWs with westward F_p outnumber GWs with eastward F_p , and therefore the ray convergence may increase the westward F_p . In the NH mid- to high-latitude lower thermosphere (30°N – 90°N and 120–140 km), zonally averaged number of rays for OGWs (NGWsNOGWs) is about 2.5 (1.9) times larger in the 4D on 15 January. This difference is due mainly to OGWs and NGWs-NOGWs with eastward F_p (not shown).

As the eastward jet in the stratosphere moves towards the North pole on 20 January, the number of GW packets in the 4D increases in the NH polar mid- to upper-stratosphere (50°N – 80°N and 30–50 km). In this region, zonally averaged number of rays for OGWs (NGWsNOGWs) is about 0.9 (2.3) in the 4D, and it is 1.7 (1.1) times larger than in the 2D. As in 15 January, GWs with westward F_p are predominant in the NH stratosphere, resulting in some enhancement of westward F_p ~~s-~~. In the NH lower thermosphere (30°N – 90°N and 120–140 km), zonally averaged number of rays for both OGWs and NGWs-NOGWs is about 1.8 times larger in the 4D. This increase is mostly attributed to OGWs and NGWs-NOGWs with eastward F_p ~~s,~~ as in 15 January.

GWs generally propagate more to the thermosphere in the 4D. Even though the eastward winds are still large in the NH middle atmosphere on 15 and 20 January, both OGWs and NGWs-NOGWs with eastward F_p (i.e., $k > 0$ and $c_{p\lambda} - U > 0$, where $c_{p\lambda}$ is the ground-based zonal phase speed) can propagate better to the thermosphere in the 4D, being less dissipated in the middle atmosphere. There seems a tendency in the 4D for GWs to better elude critical-level filtering or nonlinear saturation in the lower atmosphere. This tendency may be attributed to larger degree of freedom in propagation, associated with change in wavenumber directions due to refraction and curvature effects that can occur before either filtering or saturation is initiated as GWs approach critical levels.

Similar results can also be found for NGWs-NOGWs in the SH. More-NGW-More-NOGW packets in the 4D are found in the SH middle atmosphere, and they are related to reduced restriction in the propagation of GWs with eastward F_p towards the middle atmosphere. Also, as GWs propagate better toward the upper atmosphere, GW packets (with eastward F_p) in the 4D look vertically more spread near $z = 90$ km in the SH where the zonal-mean zonal wind is reversed. This spread in the 4D

compared with the 2D implies that GWs in the 4D may better avoid filtering without being trapped in a narrow vertical layer close to critical levels.

Convergence (or focusing) of GW packets may have some effects on distribution of the GW pseudomomentum fluxes. Song and Chun (2008) emphasized this effect as an important mechanism that account for differences between ray-based and columnar GWPs. Discussion regarding Fig. 8 indicates that convergence or divergence (spread of GW packets) effects in the 4D would be smaller than a factor of 2 in terms of the magnitude of $F_p \mathbf{s}$. These convergence and divergence effects are, however, likely relatively small compared with impacts due to change in horizontal wavenumbers shown in Figs. 4–5, although the refraction effects would not entirely lead to local change in mean flows (see Sect. 5.2).

The spatial distribution of GW packets in the 4D is generally more contiguous in the latitudinal direction than that in the 2D in which latitudinal discontinuity is clear. This difference indicates more than improvement in the smoothness of the GW pseudomomentum fluxes in the 4D. Since McLandress and McFarlane (1993), various modeling studies have suggested that PW momentum forcing tends to be compensated by parameterized GW momentum forcing. Cohen et al. (2013) noted that the GW momentum forcing on small latitudinal scales can induce instability that generates PWs to be involved in the compensation. Given that the latitudinal discontinuity of the pseudomomentum fluxes in the 2D is unrealistic compared with the 4D, the discontinuity due to columnar GWPs can possibly generate spurious PWs in models. Therefore, it cannot be said that compensation between PW and GW forcing always occurs for right reasons in models with columnar GWPs. For further understanding of the compensation, the 4D formulation beyond columnar GWPs can be required because change in the GW pseudomomentum due to the horizontal refraction can induce change in mixing of the mean potential vorticity (PV) around an aggregate of the refracted GWs. This GW-induced PV mixing can produce change in PW-induced PV mixing in the surf zone related to PW breaking, resulting in compensation between PW and GW effects (Cohen et al., 2014).

5.2 Horizontal distributions of GW characteristics

Figure 9 shows longitude-latitude distributions of zonal and meridional winds and ensemble averages of zonal pseudomomentum fluxes ($F_p \mathbf{s}$) and zonal and vertical wavenumbers ($k \mathbf{s}$ and $m \mathbf{s}$) for OGWs at $z = 38$ km in the 4D and 2D experiments at 00 UTC on 20 January 2009. Zonal and meridional winds demonstrate that ~~planetary-scale waves~~ PWs of zonal wavenumber 2 (ZWN2) are significantly enhanced in the NH stratosphere. ~~The planetary waves~~ The PWs are accompanied by large spatial gradients of horizontal winds in the NH mid- to high-latitude regions. As shown in the previous section, zonal $F_p \mathbf{s}$ and $k \mathbf{s}$ can be significantly changed in association with zonal gradients of horizontal winds.

Horizontal structure of zonal $F_p \mathbf{s}$ is significantly different between the 4D and 2D. First of all, zonal $F_p \mathbf{s}$ of OGWs in the 4D are widespread in the NH mid- to high-latitude regions, and they are significantly enhanced in some particular areas where large zonal gradients of horizontal winds appear. In the 4D, nonzero zonal $F_p \mathbf{s}$ are newly found over the Western Europe, north of Northern Europe, north of the Kamchatka peninsula, west of North America, and over Greenland. This regional difference in nonzero zonal $F_p \mathbf{s}$ indicates effects of horizontal propagation. In polar regions and west of North America, zonal $F_p \mathbf{s}$ of OGWs become eastward in the 4D. These eastward $F_p \mathbf{s}$ are related to positive $k \mathbf{s}$ induced by refraction or curvature effects.

In the 2D, eastward F_p s of OGWs appear only over Greenland ~~and some regions along the Antarctic coastlines~~ where F_p s are eastward from launch levels.

Increase in the magnitudes of zonal F_p s and k s appears together in narrow areas between southward and northward winds (80°E and 80°W–140°W around 30°N–70°N), between westward and eastward winds (20°E–60°E and 30°N), and along the polar eastward jets. This enhancement is spatially correlated with the two zonal shear forcing and curvature terms in the k equation (not shown), and therefore it is thought of as being locally induced by the wind shear and curvature terms. In these narrow areas, the magnitudes of k s and m s become $O(10^{-4}$ – 10^{-3} rad m^{-1}) and $O(10^{-2}$ – 10^{-1} rad m^{-1}), respectively. That is, zonal and vertical wavelengths can be as small as $O(1$ – 10 km) and $O(10$ – 100 m), respectively. In some areas between southward and northward winds (60°E and 130°W), m s are positive (i.e., $c_{gz} < 0$), positive k s are large, and as a result, westward F_p s are enhanced. This situation shows that large increase in F_p s can occur locally, as GWs propagate downward experiencing substantial horizontal refraction.

Horizontal distributions of zonal F_p s, ~~and zonal and vertical wavenumbers (k s and m s) for NGW~~ for NOGW_{SA11}s at $z = 38$ km at 00 UTC on 20 January 2009 (Fig. 10) can also be accounted for in similar ways as in case of OGWs shown in Fig. 9. ~~Statistically significant difference~~ Statistically significant differences in zonal F_p s between the 4D and 2D are mostly found in the NH mid- to high-latitude regions. Similar to OGWs, zonal F_p s ~~of NGWs~~ of NOGWs are significantly enhanced in regions where the zonal gradients of horizontal wind components and curvature effects are large (not shown). Enhancement of westward F_p s near 60°E (north of Canada) is largely due to the zonal shear term of zonal (meridional) winds. Along narrow regions where large zonal gradients of meridional winds appear (Fig. 10b), positive k s are substantially increased, m s are positive (i.e., $c_{gz} < 0$), and as a result, zonal F_p s become westward. In these regions, westward F_p s become significantly large, and zonal and vertical wavelengths of ~~NGWs~~ NOGWs can also be $O(1$ – 10 km) and $O(10$ – 100 m), respectively, owing to horizontal refraction related to the zonally varying meridional wind.

Figure 11 shows longitude-latitude distributions of ~~zonal and meridional winds and~~ horizontal wind velocity (U) and ensemble averages of ~~horizontal components of the~~ the horizontal group velocity ($e_{g\lambda}$ and $e_{g\phi}$), ~~horizontal components of the~~ c_{gb} , the horizontal intrinsic group velocity ($e_{g\lambda} - U$ and $e_{g\phi} - V$, $c_{gb} - U$), vertical component of the group velocity (c_{gz}), and ratio of intrinsic frequency to Coriolis parameter ($\hat{\omega}/|f|$) for OGWs at $z = 38$ km in the 4D experiment at 00 UTC on 20 January 2009. ~~Distributions of horizontal components of the group velocity and horizontal winds~~ Distributions of the horizontal group velocity and horizontal wind velocity look similar to each other, but in fact they exhibit distinct clear differences, as shown in the intrinsic group velocity.

Over the Tibetan plateau and ~~North America in which the eastward jet cores are located, both components of~~ Rockies, the horizontal intrinsic group velocity are is not close to zero. Therefore, in these regions, OGWs propagate relative to the horizontal winds.

Meanwhile, in ~~narrow regions around the meridionally elongated regions near~~ 60°E and 130°W, ~~the meridional wind component varies rapidly, and both components of the horizontal intrinsic group velocity are roughly close to zero, when judged from zero contour lines for both intrinsic group velocity components in the narrow regions~~. Also, in the elongated ~~areas along the axis of the polar eastward jet (Arctic areas centered on the longitudes of 0° and~~ 100°E–140°E, in the zonally

elongated regions around the longitude of 180°), there are large zonal gradients of the zonal wind, and between 60°N and 80°N and in isolated regions near (60°N , 160°W), (50°N , 90°W) and (70°N , 60°W), the magnitude of the horizontal intrinsic group velocity is nearly zero – roughly close to zero (see white areas in Fig. 11c). Therefore, OGW packets roughly move at the large-scale horizontal wind velocity in these narrow and elongated areas. That is, OGW packets behave like tracers advected by the horizontal winds. The stratospheric jets (Fig. 11a) meander around these regions, but the jet cores are somewhat displaced with respect to the regions except for the meridionally elongated regions near 60°E and 130°W . Vertical group velocity components (c_{gz}) are at least one order of magnitude smaller than horizontal components of the the magnitude of the horizontal intrinsic group velocity [$O(1-10 \text{ m s}^{-1})$] in these narrow and elongated regions. Near elongated and isolated regions. In regions near (60°EN , 160°W), (70°N , 60°W) and (60°N , 60°E) among the regions of the small horizontal intrinsic group velocity, c_{gz} is particularly close to zero. Positive Relatively large positive c_{gz} s of $O(1-10 \text{ m s}^{-1})$ are found at a few grid points near 130°W , but c_{gz} s (with negative and positive signs) are largely $O(0.1 \text{ m s}^{-1})$. Along the polar eastward jets, c_{gz} s are also $O(0.1 \text{ m s}^{-1})$ 40°W , $20^\circ\text{E}-40^\circ\text{E}$ and $80^\circ\text{E}-100^\circ\text{E}$. These regions are roughly found in the peripheries of the regions of the small horizontal intrinsic group velocity.

Equation (13) shows the magnitude of the 3D intrinsic group velocity as a function of wavenumbers and intrinsic frequency under the Boussinesq approximation ($m^2 \gg \alpha^2$):

$$|\hat{c}_g| = \frac{1}{\kappa} \sqrt{\frac{(N^2 - \hat{\omega}^2)(\hat{\omega}^2 - f^2)}{\hat{\omega}^2}}, \quad (13)$$

where κ is the magnitude of the 3D wavenumber vector ($\kappa = \sqrt{k^2 + l^2 + m^2}$). From Eq. (13), it is clear that the magnitude of the intrinsic group velocity approaches zero in case κ significantly increases.

It is already seen that the magnitude of zonal and vertical wavenumbers (Fig. 9) are substantially increased in the narrow and elongated regions around 60°E and 130°W and along the axis of the polar eastward jets. In these regions, ($c_{g\lambda}$, $c_{g\phi}$) $\approx (U, V)$, as shown in Fig. 11. For small $|\hat{c}_g|$, intrinsic frequency need not to be necessarily small [Eq. (13)], although the ratio $\hat{\omega}/|f|$ becomes close to the limiting value ($\sqrt{2}$) as the magnitude of wavenumber approaches infinity (Bühler, 2014). The ratios in fact have broad range of values in the narrow regions – regions of the small $|\hat{c}_g|$. The ratios are quite small (1–2) over western Greenland west of Greenland and west of Alaska, but they are quite large (10–20) north along 130°W east of Alaska and north of Northern Europe western Russia.

The significant enhancement of zonal F_p s ($= kc_{gz}A$) in the narrow and elongated areas elongated areas along 60°E and along 80°N around the longitude of 180° implies increase in zonal GW pseudomomentum (kA), since c_{gz} s are not particularly increased. Increase of the zonal pseudomomentum in these regions where the intrinsic group velocity is quite small indicates that there is possibility of occurrence of the wave capture (Bühler and McIntyre, 2005) in the narrow and elongated areas during the evolution of the SSW event. When $|\hat{c}_g|$ is small in the highly strained large-scale flow, GW packets behave like tracers, and their shape is also substantially stretched, which leads to increase of wavenumbers and thus pseudomomentum. For GW packets in slowly varying mean flows, the change in the pseudomomentum should be balanced by change in a quantity called impulse defined by mean-flow vortex structure away from GW packets, unless there are external forces (Bühler, 2014). Hence, the enhanced pseudomomentum of GWs captured by distorted mean flows can cause change in vortical motions far from GW

packets. The However, the surged pseudomomentum in the narrow areas may not lead to significant local change in mean flows even when the GWs are dissipated, as described by Bühler (2014).

As shown in Figs. 4–5, zonally-averaged eastward F_p s-in-the-in the NH UMLT are enhanced in the 4D, and they are related to positive k s-. At $z = 92$ km, differences in zonal F_p s-of-NGWs-of NOGWs between the 4D and 2D appear over broad
5 longitudes in the NH polar region north of 60°N (Fig. S7). In the 4D, eastward F_p s-in the NH polar region are correlated with positive k s, and m s are negative ($c_{gz} > 0$). The positive k s are not locally induced by zonal shear or curvature terms near $z = 92$ km (not shown), and they seem to be gradually acquired, as NGWs-NOGWs propagate upward through the middle atmosphere.

5.3 Time variations of pseudomomentum fluxes

10 Figure 12 shows time-height cross-sections of zonal-mean zonal wind and ensemble averages of zonal F_p s-of OGWs and NGWNOGW_{SA11S} averaged between 30°N and 90°N in the 4D and 2D experiments from 8 January to 2 February 2009. Time-height distributions of zonal F_p s are also quite different between the 4D and 2D. First, westward F_p s in the 4D are significantly enhanced in the upper stratosphere from 13 January, about ten days before the onset date (24 January). Increase of westward F_p s-is stronger-is larger in OGWs than in NGWs-NOGWs. Second, there are larger eastward F_p s-of OGWs and NGWs-in
15 the-lower-thermosphere-NOGWs-in the middle stratosphere ($z = 30\text{--}40$ km) and lower thermosphere ($z = 120\text{--}160$ km) in the 4D from the early stage of the SSW evolution. Third, eastward F_p s are substantially enhanced in the upper mesosphere a few days earlier than the onset date in the 4D. Fourth, eastward F_p s-of OGWs are increased in the 4D in the USLM around $z = 40$ km in the recovery phase after the onset.

Enhanced westward F_p s in the upper stratosphere before onset are clearly related to the surge of pseudomomentum associated with GWs captured by vortical mean flows. The other enhancements in the magnitude of zonal F_p s in the 4D, however, are-not-do not seem to be related to the wave capture, and they are likely due to GWs in the 4D that propagate upward better avoiding filtering or saturation in the lower atmosphere. In the 2D, significant eastward F_p s in the lower thermosphere are not found before the onset, which may indicate that vertical propagation is quite restrictive in the 2D. Eastward F_p s-of-NGWs-of NOGWs in the USLM near the onset occur in both the 4D and 2D, but eastward F_p s-of OGWs appear only in the 4D. The
25 eastward F_p s are increased around $z = 40$ km below the recovered eastward jets a few days after the onset date in the 4D for both OGWs and NGWs-NOGWs. For OGWs, these enhanced eastward F_p s are induced by upward propagating OGWs with eastward F_p s from source layers, since westward winds prevails from the ground to $z = 40\text{--}50$ km for several days after the onset. These enhanced eastward F_p s, if they exist, may induce more rapid recovery of the stratospheric jets, accelerating downward movement of the ES.

30 Close inspection of Fig. 12 for the early stage of the SSW evolution indicates that difference between the 4D and 2D begins from the middle stratosphere around 10–11 January 2009. Albers and Birner (2014) showed that this early period can be important in the development of the SSW especially in terms of the interaction between PWs and zonally asymmetric GW forcing. In fact, results of the 4D experiments in this study demonstrate a possibility of strong interaction between GWs and distorted vortex (or PWs) in the early period, while such a possibility seems to be low in the 2D. In the 4D, it can also be said

that there exists a possibility of a positive feedback between GW pseudomomentum fluxes and vortex evolution such that the large-scale flow can finally evolve into structure of ZWN2.

Figure 13 shows time evolutions of relative vorticity at 5 hPa and zonal pseudomomentum fluxes (F_p) for OGWs at $z = 38$ km at 00 UTC from 11 January to 19 January in 2009 for the 4D and 2D experiments. On 11 January, relative vorticity exhibits a slightly elliptical shape, and PW activity looks relatively weak. In fact, there is almost no PW activity in the NH stratosphere from 1 January to 10 January, as shown in Albers and Birner (2014). Although PW activity is weak on 11 January, the zonal F_p of OGWs already exhibit longitudinal structure of ZWN2. The ZWN2 structure is much more enhanced in the 4D in association with the eastward F_p of OGWs in wide areas over the northern Pacific and northern Atlantic oceans. The OGW F_p in the 2D are confined only over the mountainous regions, but such restriction of the geographical structure of the OGW F_p does not exist in the 4D. Similar zonally asymmetric structure is found in the meridional F_p of OGWs at $z = 38$ km (see Fig. 14), although there are some phase shifts in the longitudinal direction compared with the zonal F_p .

It is clear from Figs. 13 and 14 that time evolution of the ZWN2 structure of the F_p in the 4D correlates spatially and temporally with the evolution of the vorticity. The eastward F_p over the Atlantic ocean on 11 January move eastward along the edge of the positive relative vorticity, and its structure is distorted on 15 January as the mean vortex is distorted. The eastward F_p over the northern Pacific ocean gradually disappear moving eastward on 15 January. On 17 January, the structure of the eastward F_p near the longitude of 0° (the prime meridian) is more distorted and become elongated in the meridional direction along the vortex edge between 0° and 30° E. In the narrow elongated vortex region, the southward F_p are substantially enhanced, while the northward F_p are increased over the Asia and North America. On 19 January, the eastward F_p disappears, while the westward F_p are overall enhanced in and around the vortex. At the time, the northward F_p become predominant around the North Pole.

On 11 January, between 40° N– 60° N outside of the near-circular vortex (i.e., in the regions of near-zero or weakly negative relative vorticity), the eastward F_p are found near 30° W and 150° E in the 4D, and the relatively weak westward F_p appear in the remaining longitudinal sectors (Fig. 13a). In order to understand the distribution of the OGW F_p and possible feedback between OGWs and vortex (or PWs) in the early period of the SSW evolution, we consider a simplified ray-tracing equation for a zonally symmetric vortex. Relative vorticity is presumed to be positive within the vortex and negative outside of the vortex. Time rate of change in the meridional wavenumber due to horizontal wind shear can be locally approximated in the mid-latitude regions by

$$\frac{dl}{dt} = -\frac{\partial U}{\partial y} k \approx \zeta k, \quad (14)$$

where k and l are the zonal and meridional wavenumbers, respectively; ζ is the relative vorticity; U is the zonal wind.

For an initially given aggregate of OGWs with the eastward F_p (i.e., $k > 0$ for upward propagation) and zero l near 30° W and 150° E between 40° N– 60° N outside of the zonally symmetric vortex, dl/dt becomes negative (away from the North pole) because $\zeta < 0$ outside the vortex, and therefore the pseudomomentum vectors F_p point in the south-east direction. The generation of the southward F_p near 30° W and 150° E associated with $dl/dt < 0$ is seen in Fig. 14. In case that these F_p are dissipated, according to the conservation rule of the pseudomomentum and impulse (Bühler, 2014), the OGW aggregate with

the south-eastward F_p near 30°W can induce the impulse defined by the positive vorticity over the northern Europe or western Russia and the negative vorticity over the Atlantic ocean west of Africa. The aggregate of OGWs with the south-eastward F_p near 150°W can generate the impulse defined by the positive vorticity over the Alaska and the negative vorticity over the Pacific ocean.

5 The OGWs with the south-eastward F_p in fact disappear at $z = 48$ km, and change in the OGWs with the north-westward F_p between $z = 38$ and 48 km is not clear (see Figs. S8–S9). The vertical change in the south-eastward OGW F_p can generate the positive vorticity over the northern Europe or western Russia and over the Alaska. This GW-induced vorticity structure can advect the pre-existing positive vorticity eastward and stretch the vortex towards Russia and North America across the North pole. This deformation of the vortex can result in enhancement of PWs with ZWN2. Indeed, the positive vortex is enhanced
10 over the Russia, the negative vortex develops west of Africa, and the positive vortex is elongated on 15 January along the meridian across 90°W and 90°E .

On 15 January, there exists an aggregate of OGWs with the large south-eastward F_p along the prime meridian at $z = 38$ km (Figs. 13–14). This pseudomomentum fluxes almost disappear at $z = 48$ km (Figs. S8–S9). Therefore, this change in the south-eastward pseudomomentum between $z = 38$ – 48 km yields the impulse defined by the positive vorticity west of the prime
15 meridian and the negative vorticity east of the prime meridian. This vortex structure to be induced by GWs on 15 January is consistent with the the vortex structure on 17 January. Contrast between the positive and negative vorticities near 30°N and 0° – 30°E becomes larger on 17 January, and the south-eastward F_p is more enhanced along the vortex boundaries. This result suggests a possibility of positive feedback between GW-induced vortices and mean-flow vortices (or between GW momentum forcing and PWs) in the stratosphere in the early period of the SSW evolution.

20 6 Summary and discussion

Effects of realistic propagation of parameterized GWs on GW pseudomomentum fluxes are investigated using a global ray-tracing model for the 2009 SSW event. Two kinds [4D (x – z , \mathbf{t}) and 2D (z , \mathbf{t})] of ray simulations are carried out to understand propagation effects for 20 ensemble members of OGWs and ~~NGWs~~ NOGWs for the time period of 25 days from 8 January to 2 February 2009. In each ensemble member of OGWs and ~~NGWs~~ NOGWs, single GW packet is launched at a horizontal
25 grid point, and properties (wavelength, phase speed, propagation direction, and Reynolds stress) of GW packets are randomly chosen from a precomputed set of parameters made based on previous GWP studies for OGWs and ~~NGWs~~ NOGWs.

Global ray-tracing model used in this study is composed of two parts: Ray-tracing and amplitude equations. Ray-tracing equations are formulated considering the curvature effects on spherical earth, and they compute trajectory of GW packets and refraction due to spatiotemporal variations of the large-scale flow. Time evolution of vertical flux of GW action flux is
30 computed using the amplitude equation. In the amplitude equation, ray-tube effects associated with geometry of neighboring rays are considered by evaluating group velocity components of GW packets at grid points. For dissipative processes, nonlinear saturation and molecular viscosity are computed along ray trajectories. These dissipations only act on the action flux without affecting GW propagation.

In realistic 4D propagation, horizontal refractions related to large-scale wind shear and curvature effects are essential compared with spatial gradients of thermodynamic large-scale properties such as stability and density. Latitude-height structure of the zonal pseudomomentum fluxes ($F_p \mathbf{s}$) is overall similar to that of the zonal wavenumbers except for the NH UMLT region. This structural agreement indicates that most of GWs propagate upward in the ray simulations in this study. The magnitude of zonal $F_p \mathbf{s}$, however, is locally quite different between the 4D and 2D experiments. In the 4D, westward $F_p \mathbf{s}$ are enhanced in the UTLS in both hemispheres and in the NH upper stratosphere, and eastward $F_p \mathbf{s}$ are reduced in the SH USLM. In the NH UMLT, the sign of zonal $F_p \mathbf{s}$ are reversed between the 4D and 2D. It is seen that eastward $F_p \mathbf{s}$ in the NH UMLT for the 4D are due to GWs that can propagate upward better avoiding critical-level filtering and saturation in the lower atmosphere. As GW packets are refracted, GW packets can be converged around the axis of the stratospheric jet. Locally increased number of GW packets can have some effects on the zonal $F_p \mathbf{s}$ in a factor of 2 or less in terms of magnitude. Ray-tube effects are present in the NH upper stratosphere where planetary-scale wave activities are large, but they are not significant in the other regions. Latitudinal distribution of the number of GW packets exhibit discontinuity in the 2D, and this discontinuity can induce instability that generate PWs. Given that the discontinuity in the 2D is unrealistic compared with the 4D, the 4D formulation can help minimize spurious generation of PWs due to columnar GWP.

In the NH upper stratosphere, westward $F_p \mathbf{s}$ are significantly enhanced in the 4D experiment along narrow and elongated areas in the mid- to high-latitude regions where spatial variations of the large-scale winds are substantial in association with large planetary-wave activities. The significant enhancement in zonal $F_p \mathbf{s}$ is due mainly to the horizontal refraction related to the horizontal wind shear and curvature effects. In the narrow regions, In the elongated regions, the magnitude of the horizontal intrinsic group velocity components are is quite small, which means that GWs travel roughly following the large-scale winds. This result indicates that the wave capture phenomena may occur along the meandering eastward jets during the evolution of the SSW. For GW packets in slowly-varying mean flows, change in GW pseudomomentum due to refraction and curvature terms is balanced by change in the impulse defined by the structure of nearby mean-flow vortices. The enhanced $F_p \mathbf{s}$ of captured GWs may not affect directly local mean flows where GW packets are located, even if dissipative wave-mean interaction is involved.

Enhancement of GW $F_p \mathbf{s}$ in the 4D experiment begins about 10 days before the SSW onset date, and it remains several days even after the onset in the recovery phase. Significant increase of the westward $F_p \mathbf{s}$ related to the wave capture starts 10 days before the onset date in the USLM, and enhancement of the eastward $F_p \mathbf{s}$ in the middle stratosphere and the lower thermosphere also begins from early stage of the SSW evolution. In the 2D experiment, vertical propagation is quite restrictive, and significant $F_p \mathbf{s}$ are not found in the lower thermosphere before the SSW onset. In the mesosphere, eastward $F_p \mathbf{s}$ are substantially enhanced a few days before the onset in the 4D for both OGWs and NGWs, but NOGWs, but in the 2D relatively weak eastward $F_p \mathbf{s}$ are induced near the onset in the 2D for NGWs alone, for NOGWs alone. In the recovery phase, eastward $F_p \mathbf{s}$ are also enhanced around $z = 40$ km in the 4D, which implies that recovery of the stratospheric jets would possibly be accelerated when realistic propagation is considered.

In the early stage of the 2009 SSW evolution, it is interesting that the spatial distribution of the OGW F_p exhibits much clearer ZWN2 structure in the 4D than in the 2D. The clearer ZWN2 structure is associated with enhancement of the eastward

OGW F_p in wide areas over the Atlantic and Pacific oceans. In the 4D experiment where restriction such as GW propagation in the vertical direction alone is removed, the OGW activity can be found over the oceans. This enhanced ZWM2 structure of the GW F_p in the 4D shows a possibility of strong interaction and positive feedback between GWs and the vortical mean flow. Dissipation of the enhanced eastward OGW F_p can advect or stretch the pre-existing vortex, and the eastward OGW F_p can possibly be further enhanced owing to the modified vortex structure. Interaction between GWs and vortex in the stratosphere can be far more active in the 4D than in the 2D. Given that substantial sensitivity of the SSW to stratospheric conditions has been found in global models with conventional columnar GWPs (e.g., de la Camara et al., 2017), the increased degree of interaction may affect the sensitivity. However, it is hard at the moment to assess how the more active interaction between GWs and vortex (or PWs) in the 4D can modify the sensitivity of the SSW evolution to small perturbations in GW fields or vortex in the stratosphere. Sensitivity might increase in proportional to the enhanced activity of the interaction, or it might not as in the case that total wave driving remains unchanged as the resolved wave forcing compensates parameterized wave effects (e.g., Cohen et al., 2013).

Interpretation of results shown in this paper may depend on the gridding method designed to generate gridded model outputs. In this method, the spatial size of GW packets is assumed to be as large as horizontal and vertical grid spacings used in this study. This implicit assumption may lead to overestimation of the magnitude of the GW F_p s-enhanced by the horizontal refraction, since severe horizontal refraction may stretch significantly anisotropically (anisotropically) GW packets. In this case of substantial deformation of GW packets, the packets may not occupy entirely grid spacings. Physically, the size and shape of GW packets are also important, since they may affect how GWs interact with mean flows. As Bühler (2014) described, as GW packets occupy more and more spaces in the longitudinal direction, they can influence more locally the large-scale flows where the packets are located. GW packets confined in limited areas may affect the ambient flows in more nonlocal ways. In order to consider properly size of GW packets in space and time, one may need information about how much GW fields are steadily generated from sources [e.g., A generation time scale Δt_g is large (small) for steady (intermittent) sources] and how much GW fields occupy horizontal and vertical spaces from the sources (e.g., $|c_{gh}|\Delta t_g$ and $|c_{gz}|\Delta t_g$).

In the present study we have not discussed about how GW momentum forcing can be estimated from the ray simulation results. As described above, consideration of realistic propagation of localized GW packets in the slowly varying large-scale flows requires for GWPs to compute influences of GWs in more nonlocal ways in space and time, which violates the basic assumptions of current modeling frameworks. In SSW cases as considered in this study, large-scale flows can vary rapidly in space and time, and the nonlocal approach may particularly be more important, since GWs can change vortex structure located around the GWs. However, at this point, it is not straightforward to present in a clear way how to estimate the nonlocal influences of GWs. In order to consider the nonlocality in models, one might either somehow extend columnar GWPs or explicitly implement implement ray-tracing formulations. One way or the other, further theoretical developments on GW processes seem to be necessary, as long as physically-based methods with minimal ad-hoc treatments are preferred.

Code availability. The HWM14 and DWM07 model codes (Fortran) are included in the supporting information of Drob et al. (2015). The NRLMSISE-00 model code (Fortran) is provided by Community Coordinated Modeling Center at NASA GSFC (Hedin, 2001). The source codes of the ODEPACK (Fortran) can be downloaded at Lawrence Livermore National Laboratory (Hindmarsh, 2006). The tricubic interpolation code (C++) is obtained from a GitHub repository (Bigaouette, 2015).

- 5 *Data availability.* The ERA-Interim data are obtained using Meteorological Archival and Retrieval System (MARS) of the European Centre for Medium-Range Weather Forecasts (ECMWF, 2009). The MERRA-2 data are obtained through Goddard Earth Sciences Data and Information Services Center (GES DISC, GMAO, 2015). The NOGAPS-ALPHA data are available at a public domain managed by US Naval Research Laboratory (NRL, 2009). The F10.7 solar flux and geomagnetic A_p indices are provided by NOAA National Centers for Environmental Information (NCEI, 2018). Grid- and subgrid-scale topography data are obtained from NCAR CESM inputdata repository
10 (NCAR, 2019)

Appendix A: Detailed model description

A1 Derivation of ray-tracing equations

Local time change of ω is obtained by taking the time derivative of Eq. (3) and can be written using Eqs. (1)–(3) as

$$\partial\omega/\partial t = -\partial\Omega/\partial\mathbf{k} \cdot \nabla_{\mathbf{r}}\omega + (\partial\Omega/\partial\Lambda_n)\partial\Lambda_n/\partial t, \quad (\text{A1})$$

- 15 where $\partial\Omega/\partial\mathbf{k}$ corresponds to the group velocity \mathbf{c}_g .

From the definition of $d/dt (= \partial/\partial t + \mathbf{c}_g \cdot \nabla_{\mathbf{r}})$, it is clear that Eq. (A1) is the same as Eq. (5). By definition, $\mathbf{c}_g = d\mathbf{r}/dt$ (where $\mathbf{r} = r\mathbf{e}_r$). This is proved by substituting $\mathbf{r} = r\mathbf{e}_r$ into $d\mathbf{r}/dt$ and by using $\partial\mathbf{r}/\partial t = 0$, $\partial\mathbf{r}/\partial\lambda = r\cos\phi\mathbf{e}_\lambda$, $\partial\mathbf{r}/\partial\phi = r\mathbf{e}_\phi$, and $\partial\mathbf{r}/\partial r = \mathbf{e}_r$ (i.e., $d\mathbf{r} = r\cos\phi d\lambda\mathbf{e}_\lambda + rd\phi\mathbf{e}_\phi + dr\mathbf{e}_r$). As a result, a trajectory of a wave packet is described as follows:

$$(r\cos\phi d\lambda/dt, rd\phi/dt, dr/dt) = (c_{g\lambda}, c_{g\phi}, c_{gr}). \quad (\text{A2})$$

- 20 Local time change of \mathbf{k} is obtained by taking the time derivative of Eq. (2) and is written using Eqs. (1)–(3) as

$$\partial\mathbf{k}/\partial t = -\partial\Omega/\partial\mathbf{k} \cdot \nabla_{\mathbf{r}}\mathbf{k} - \partial\Omega/\partial\Lambda_n\nabla_{\mathbf{r}}\Lambda_n, \quad (\text{A3})$$

where $\partial\Omega/\partial\mathbf{k} \cdot \nabla_{\mathbf{r}}\mathbf{k}$ is expressed using summation index as $\partial\Omega/\partial k_i\nabla_{\mathbf{r}}k_i$ because the two \mathbf{k} s contract with each other.

Since $k_i = \mathbf{e}_i \cdot \mathbf{k}$, $\partial\Omega/\partial k_i\nabla_{\mathbf{r}}k_i = \partial\Omega/\partial k_i\nabla_{\mathbf{r}}(\mathbf{e}_i \cdot \mathbf{k})$, and thus Eq. (A3) becomes

$$d\mathbf{k}/dt = -c_{gi}(\nabla_{\mathbf{r}}\mathbf{e}_i) \cdot \mathbf{k} - \partial\Omega/\partial\Lambda_n\nabla_{\mathbf{r}}\Lambda_n. \quad (\text{A4})$$

- 25 Here, $c_{gi}(\nabla_{\mathbf{r}}\mathbf{e}_i) \cdot \mathbf{k}$ should be zero for invariance with respect to choice of coordinate system (Sect. 2.2). Consequently, Eq. (A4) is reduced to the equation for \mathbf{k} in Eq. (4).

The constraint $c_{gi} (\nabla_r e_i) \cdot \mathbf{k} = 0$ indicates that the following two relations should always be satisfied on sphere:

$$kc_{g\phi} \tan \phi + mc_{g\lambda} = lc_{g\lambda} \tan \phi + kc_{gr}, \quad (\text{A5})$$

$$\text{and } lc_{gr} = mc_{g\phi}. \quad (\text{A6})$$

Note that these relations are derived from spatial variations of the basis vectors (i.e., $\nabla_r e_i$).

5 Substituting $\mathbf{k} = ke_\lambda + le_\phi + me_r$ into Eq. (A4) [where $c_{gi} (\nabla_r e_i) \cdot \mathbf{k} = 0$] gives component forms of Eq. (A4):

$$dk/dt = -(\Omega_n/h_\lambda) \partial \Lambda_n / \partial \lambda + C_{k1} + C_{k2}, \quad (\text{A7})$$

$$dl/dt = -(\Omega_n/h_\phi) \partial \Lambda_n / \partial \phi + C_{l1} + C_{l2}, \quad (\text{A8})$$

$$\text{and } dm/dt = -(\Omega_n/h_r) \partial \Lambda_n / \partial r + C_{m1} + C_{m2}, \quad (\text{A9})$$

where $\Omega_n = \partial \Omega / \partial \Lambda_n$; $h_\lambda = r \cos \phi$, $h_\phi = r$, and $h_r = 1$; Terms denoted by C represent curvature effects: $C_{k1} = (lc_{g\lambda} \tan \phi)/r$,
10 $C_{k2} = -mc_{g\lambda}/r$, $C_{l1} = -(kc_{g\lambda} \tan \phi)/r$, $C_{l2} = -mc_{g\phi}/r$, $C_{m1} = kc_{g\lambda}/r$, and $C_{m2} = lc_{g\phi}/r$.

From Eqs. (A7)–(A9), it can be shown that the magnitude of a 3D wavenumber vector is invariant with respect to the earth's curvature by multiplying Eq. (A7) by k , Eq. (A8) by l , and Eq. (A9) by m and by adding these results all together.

In the model, Eqs. (4) and (5) are approximated for the shallow atmosphere, and for the dispersion relation Eq. (6), they can be written in a component form as follows:

$$15 \quad d\lambda/dt = [U + kN_\omega^2 / (\hat{\omega}\sigma^2)] / h_\lambda = c_{g\lambda}/h_\lambda, \quad (\text{A10})$$

$$d\phi/dt = [V + lN_\omega^2 / (\hat{\omega}\sigma^2)] / h_\phi = c_{g\phi}/h_\phi, \quad (\text{A11})$$

$$dz/dt = -m\hat{\omega}_f^2 / (\hat{\omega}\sigma^2) = c_{gz}, \quad (\text{A12})$$

$$dk/dt = -(kU_\lambda + lV_\lambda + M_\lambda) / h_\lambda + C_{k1}, \quad (\text{A13})$$

$$dl/dt = -(kU_\phi + lV_\phi + M_\phi) / h_\phi + C_{l1}, \quad (\text{A14})$$

$$20 \quad dm/dt = -(kU_z + lV_z + M_z), \quad (\text{A15})$$

$$\text{and } d\omega/dt = +(kU_t + lV_t + M_t), \quad (\text{A16})$$

where $N_\omega^2 = N^2 - \hat{\omega}^2$; $\hat{\omega}_f^2 = \hat{\omega}^2 - f^2$; $\sigma^2 = k^2 + l^2 + m^2 + \alpha^2$; $h_\lambda = a \cos \phi$, and $h_\phi = a$; U_λ , U_ϕ , U_z , and U_t (V_λ , V_ϕ , V_z , and V_t) denote the partial derivatives of U (V) with respect to λ , ϕ , z , and t , respectively; $C_{k1} = (lc_{g\lambda} \tan \phi)/a$; $C_{l1} = -(kc_{g\lambda} \tan \phi)/a$.

25 In Eqs. (A13)–(A16), terms starting with M , effects of background [medium](#) properties other than U and V , are given by

$$M_\lambda = 1/(2\hat{\omega}\sigma^2) (k_h^2 N_\lambda^2 - \hat{\omega}_f^2 \alpha_\lambda^2), \quad (\text{A17})$$

$$M_\phi = 1/(2\hat{\omega}\sigma^2) (k_h^2 N_\phi^2 + m_\alpha^2 f_\phi^2 - \hat{\omega}_f^2 \alpha_\phi^2), \quad (\text{A18})$$

$$M_z = 1/(2\hat{\omega}\sigma^2) (k_h^2 N_z^2 - \hat{\omega}_f^2 \alpha_z^2), \quad (\text{A19})$$

$$\text{and } M_t = 1/(2\hat{\omega}\sigma^2) (k_h^2 N_t^2 - \hat{\omega}_f^2 \alpha_t^2), \quad (\text{A20})$$

- 5 where N_λ^2 , N_ϕ^2 , N_z^2 , and N_t^2 (α_λ^2 , α_ϕ^2 , α_z^2 , and α_t^2) denote the partial derivatives of N^2 (α^2) with respect to λ , ϕ , z , and t , respectively; $f_\phi^2 = \partial f^2 / \partial \phi$; $k_h^2 = k^2 + l^2$; $m_\alpha^2 = m^2 + \alpha^2$.

Under the shallow-atmosphere approximation (Phillips, 1966) where curvature terms related to vertical movements are ignored, there is no relation corresponding to Eq. (A6), and Eq. (A5) is reduced to

$$kc_{g\phi} \tan \phi = lc_{g\lambda} \tan \phi. \quad (\text{A21})$$

- 10 Using Eqs. (A13) and (A14), it can be proved that the magnitude of horizontal wavenumber vector is invariant with respect to curvature effects as in Eqs. (A7)–(A9).

A2 Effects of viscosity and diffusivity on GWs

Viscous damping and thermal diffusion terms for GWs can be obtained by linearizing the viscosity term (derived from the symmetric stress tensor) in Navier-Stokes equation and the diffusion term in thermodynamic energy equation (see Kundu,

- 15 1990; Vadas and Fritts, 2005) as follows:

$$\nu [\nabla^2 \mathbf{v}' + (1/3) \nabla (\nabla \cdot \mathbf{v}')], \quad (\text{A22})$$

$$\text{and } (\nu/\text{Pr}) (1/\bar{T}) \nabla^2 T', \quad (\text{A23})$$

where $\mathbf{v}' [= (u', v', w')]$ is the 3D perturbation wind vector; u' , v' , and w' are the zonal, meridional, and vertical perturbation wind components, respectively; T' is the temperature perturbation; \bar{T} is the background temperature; ν is the kinematic

- 20 viscosity; Pr is the Prandtl number.

In the viscosity terms Eq. (A22), $(\nu/3) \nabla (\nabla \cdot \mathbf{v}')$ is ignored by assuming that GW vertical wavelengths are much smaller than $4\pi H$ (Vadas and Fritts, 2005), where H is the density scale height. Diffusivity term Eq. (A23) is reduced to $(\nu/\text{Pr}) \nabla^2 b'$ (where $b' = \theta'/\bar{\theta}$, θ' and $\bar{\theta}$ are the perturbation and background potential temperatures, respectively), by neglecting pressure perturbations and spatiotemporal variations of background variables compared to GW phase variations.

- 25 Viscous damping and thermal diffusion may affect propagation of GWs through modification of dispersion relation (Vadas and Fritts, 2005) as well as amplitudes, but in this model effects on amplitudes are only considered. In order to obtain a closed expression for τ_{dis} in Eq. (7), following Marks and Eckermann (1995), the approximated damping terms $[\nu \nabla^2 \mathbf{v}'$ and $(\nu/\text{Pr}) \nabla^2 b']$ are modified, albeit somewhat arbitrarily, to a density-weighted form:

$$K \left[\partial^2 \chi' / \partial x^2 + \partial^2 \chi' / \partial y^2 + \bar{\rho}^{-1} \partial / \partial z (\bar{\rho} \partial \chi' / \partial z) \right], \quad (\text{A24})$$

where χ' is u' , v' , w' , or b' ; K is either the kinematic viscosity (ν) or the thermal diffusivity (ν/Pr).

After substituting plane-wave solutions such as $\chi' = e^{z/(2H)} \hat{\chi} e^{i(kx+ly+mz-\omega t)}$ into Eq. (A24), derivation of equations for GW energy and action averaged over phases gives the right-hand side of Eq. (7):

$$5 \quad -2\nu\sigma^2 (X + Y_{\text{pr}}) / (X + Y) A, \quad (\text{A25})$$

where $X = (\hat{\omega}^2 + f^2)(k^2 + l^2) / (\hat{\omega}^2 - f^2)^2$, $Y_{\text{pr}} = (\hat{\omega}^2 + \text{Pr}^{-1} N^2)(m^2 + \alpha^2) / (N^2 - \hat{\omega}^2)^2$, and $Y = (\hat{\omega}^2 + N^2)(m^2 + \alpha^2) / (N^2 - \hat{\omega}^2)^2$.

Therefore, τ_{dis} becomes

$$\tau_{\text{dis}} = 1 / (2\nu\sigma^2) (X + Y) / (X + Y_{\text{pr}}). \quad (\text{A26})$$

10 When $\text{Pr} = 1$, $Y_{\text{pr}} = Y$, and Eq. (A26) is reduced to Eq. (12).

A3 Details of numerical implementation

The LSODA solver employs subtime stepping within each δt . Sub-timestep is determined so that the maximum norm of relative errors can be less than 1. The relative error (e_r) of each solution (y) is defined by solver-estimated error (e) divided by an weight (w) ($e_r = e/w$), where $w = t_r |y| + t_a$, and t_r and t_a are relative and absolute tolerances specified for each y , respectively. For
 15 λ , ϕ , and z (k , l , m , and ω), t_r and t_a are specified as 10^{-3} , and 10^{-6} (10^{-6} , and 10^{-9}), respectively. Some sensitivity tests on thresholds are carried out, but threshold values smaller than specified above do not give significantly different results. One example of the sensitivity tests can be found in the supplement (Fig. S3).

In the gridding method, the horizontal projection of a 3D ray trajectory during δt is assumed to be represented by a great-circle path, the shortest path between two points on sphere. ~~For an~~ For a given initial location (λ_i, ϕ_i, z_i), time integration of
 20 the ray tracing equations gives a final location (λ_f, ϕ_f, z_f) after δt . Spherical arc lengths (d_s) from the final horizontal position to the centers (λ_c, ϕ_c) of 8 horizontal grid cells adjacent to the initial horizontal position are computed using

$$d = \cos^{-1} (\sin \phi_c \sin \phi_f + \cos \phi_c \cos \phi_f \cos \delta \lambda), \quad (\text{A27})$$

where $\delta \lambda = |\lambda_c - \lambda_f|$. Among the 8 cell-center locations (λ_c, ϕ_c), one cell that gives minimum d is chosen, and then identical procedure is repeated for 8 neighboring horizontal grid cells around the chosen cell until a grid cell that contains the final
 25 horizontal position is approached. Determination of contiguous 3D grid cells between (λ_i, ϕ_i, z_i) and (λ_f, ϕ_f, z_f) is completed considering how many vertical grid cells the ray move through while it pass through the chosen horizontal grid cells.

Using this gridding method, three components of group velocity are stored at the vertices of chosen grid cells between initial and final positions. In addition, various ray properties such as k , l , m , ω , $\hat{\omega}$, F_A , and \mathbf{F}_p including forcing terms of the ray-tracing equations are stored at the same grid vertices to generate gridded model outputs.

In the model, rays are eliminated when some criteria are satisfied after time integration for δt : (i) when rays move out of the model atmosphere through top and bottom boundaries, (ii) when rays are 3-day old, (iii) when magnitude of the pseudomomentum flux ($|\mathbf{k}_h c_{gz} A|$) is less than 10^{-10} , or (iv) when time integration results are numerically invalid. In the present model, rays are not eliminated owing to WKB criteria based on the finding (Sartelet, 2003) that ray theory can work remarkably well in spite of the local breakdown of scale separation between GWs and large-scale flow. For rays to be eliminated, the gridding procedure is not carried out, and thus those rays do not affect τ_{def} and gridded outputs.

Author contributions. ISS and CL planned this study. ISS developed the ray-tracing model, designed ray-tracing simulations, carried out model experiments, and analyzed model results. HYC provided advices on interaction between gravity waves and planetary waves. BGS provided information about previous studies about the 2009 SSW. All coauthors gave comments on the manuscript. ISS wrote the manuscript.

10 *Competing interests.* The authors declare that they have no conflict of interest.

Acknowledgements. [The authors thank three anonymous reviewers for careful reading of the manuscript. Their comments substantially improved the original manuscript.](#) This study was supported by research fund PE19020/PE20100 from Korea Polar Research Institute and funded by the KMA/NMSC's (Korea Meteorological Administration/National Meteorological Satellite Center) project (NMSC-2016-3137). Also, this work was supported by the National Institute of Supercomputing and Network/Korea Institute of Science and Technology Information with supercomputing resources including technical support (KSC-2016-C2-0034). HYC is supported by the National Research Foundation of Korea (NRF) grant funded by the Korea government (MSIT) (No. 2017R1A2B2008025).

References

- Albers, J. R. and Birner, T.: Vortex preconditioning due to planetary and gravity waves prior to sudden stratospheric warmings, *J. Atmos. Sci.*, 71, 4028–4054, <https://doi.org/10.1175/JAS-D-14-0026.1>, 2014.
- Amemiya, A. and Sato, K.: A new gravity wave parameterization including three-dimensional propagation, *J. Meteorol. Soc. Jpn.*, 94, 237–256, <https://doi.org/10.2151/jmsj.2016-013>, 2016.
- 5 Becker, E. and Schmitz, G.: Energy deposition and turbulent dissipation owing to gravity waves in the mesosphere, *J. Atmos. Sci.*, 59, [https://doi.org/10.1175/1520-0469\(2002\)059<0054:EDATDO>2.0.CO;2](https://doi.org/10.1175/1520-0469(2002)059<0054:EDATDO>2.0.CO;2), 2002.
- Bigaouette, N.: Libtrubic, available at: <https://github.com/nbigaouette/libtrubic> (last access: 12 November 2019), 2015.
- ~~Böläni, G., Ribstein, B., Muraschko, J., Sgoff, C., Wei, J., and Achatz, U.: 2016: The interaction between atmospheric gravity waves and~~
- 10 ~~large-scale flows: An efficient description beyond the nonacceleration paradigm, *J. Atmos. Sci.*, 73, 4833–4852, 2016.~~
- Boslaugh, S.: *Statistics in a Nutshell*, 2nd ed., O'Reilly Media, Sebastopol, CA, USA, 2013.
- Bretherton, F. P. and Garrett, C. J. R.: Wavetrains in inhomogeneous moving media, *Proc. R. Soc. Lon. Ser.-A*, 302, 529–554. <https://doi.org/10.1098/rspa.1968.0034>, 1968.
- Bühler, O.: *Waves and mean flows*, 2nd ed., Cambridge University Press, New York, USA, 2014.
- 15 Bühler, O. and McIntyre, M. E.: Remote recoil: A new wave-mean interaction effect, *J. Fluid Mech.*, 492, 207–230, <https://doi.org/10.1017/S0022112003005639>, 2003.
- Bühler, O. and McIntyre, M. E.: Wave capture and wave-vortex duality, *J. Fluid Mech.*, 534, 67–95, <https://doi.org/10.1017/S0022112005004374>, 2005.
- [de la Cámara A, Albers, J. R, Birner, T., Garcia, R. R., Hitchcock, P., Kinnison, D. E., and Smith, A. K.: Sensitivity of sudden stratospheric warmings to previous stratospheric conditions, *J. Atmos. Sci.*, 74, 2857–2877 <https://doi.org/10.1175/JAS-D-17-0136.1>, 2017.](https://doi.org/10.1175/JAS-D-17-0136.1)
- 20 [Chandran, A., Collins, R. L., Garcia, R. R., Marsh, D. R., Harvey, V. L., Yue, J., and de la Torre, L.: A climatology of elevated stratopause events in the whole atmosphere community climate model, *J. Geophys. Res.-Atmos.*, 118, 1234–1246, <https://doi.org/10.1002/jgrd.50123>, 2013.](https://doi.org/10.1002/jgrd.50123)
- Chun, H.-Y., Kim, Y.-H., Choi, H.-J., and Kim, J.-Y.: Influence of gravity waves in the tropical upwelling: WACCM simulations, *J. Atmos. Sci.*, 68, 2599–2612, <https://doi.org/10.1175/JAS-D-11-022.1>, 2011.
- 25 [Cohen, N. Y., Gerber, E. P., and Bühler, O.: What drives the Brewer–Dobson circulation?, *J. Atmos. Sci.*, 71, 3837–3855, <https://doi.org/10.1175/JAS-D-14-0021.1>, 2014.](https://doi.org/10.1175/JAS-D-14-0021.1)
- [Cohen, N. Y., Gerber, E. P. and Bühler, O.: Compensation between resolved and unresolved wave driving in the stratosphere: Implications for downward control, *J. Atmos. Sci.*, 70, 3780–3798, <https://doi.org/10.1175/JAS-D-12-0346.1>, 2013.](https://doi.org/10.1175/JAS-D-12-0346.1)
- 30 Dee, D. P., Uppala, S. M., Simmons, A. J., Berrisford, P., Poli, P., Kobayashi, S., Andrae, U., Balmaseda, M. A., Balsamo, G., Bauer, P., Bechtold, P., Beljaars, A. C. M., van de Berg, L., Bidlot, J., Bormann, N., Delsol, C., Dragani, R., Fuentes, M., Geer, A. J., Haimberger, L., Healy, S. B., Hersbach, H., Hólm, E. V., Isaksen, I., Kållberg, P., Köhler, M., Matricardi, M., McNally, A. P., Monge-Sanz, B. M., Morcrette, J.-J., Park, B.-K., Peubey, C., de Rosnay, P., Tavolato, C., Thépaut, J.-N., and Vitart, F.: The ERA-Interim reanalysis: configuration and performance of the data assimilation system, *Q. J. Roy. Meteor. Soc.*, 137, 553–597, <https://doi.org/10.1002/qj.828>, 2011.
- 35 Drob, D. P., Emmert, J. T., Meriwether, J. W., Makela, J. J., Doornbos, E., Conde, M., Hernandez, G., Noto, J., Zawdie, K. A., McDonald, S. E., Huba, J. D., and Klenzing, J. H.: An update to the Horizontal Wind Model (HWM): The quiet time thermosphere, *Earth Space Sci.*, 2, 301–319, <https://doi.org/10.1002/2014EA000089>, 2015.

- Dunkerton, T. J.: Wave transience in a compressible atmosphere. Part I: Transient internal wave, mean-flow interaction, *J. Atmos. Sci.*, 38, 281–297, [https://doi.org/10.1175/1520-0469\(1981\)038<0298:WTIACA>2.0.CO;2](https://doi.org/10.1175/1520-0469(1981)038<0298:WTIACA>2.0.CO;2), 1981.
- Dunkerton, T. J.: Stochastic parameterization of gravity wave stresses, *J. Atmos. Sci.*, 39, 1711–1725, [https://doi.org/10.1175/1520-0469\(1982\)039<1711:SPOGWS>2.0.CO;2](https://doi.org/10.1175/1520-0469(1982)039<1711:SPOGWS>2.0.CO;2), 1982.
- 5 Dunkerton, T. J.: Inertia-gravity waves in the stratosphere, *J. Atmos. Sci.*, 41, 3396–3404, [https://doi.org/10.1175/1520-0469\(1984\)041<3396:IWITS>2.0.CO;2](https://doi.org/10.1175/1520-0469(1984)041<3396:IWITS>2.0.CO;2), 1984.
- Eckermann, S. D.: Explicitly stochastic parameterization of nonorographic gravity wave drag, *J. Atmos. Sci.*, 68, 1749–1765, <https://doi.org/10.1175/2011JAS3684.1>, 2011.
- Eckermann, S. D., Hoppel, K. W., Coy, L., McCormack, J. P., Siskind, D. E., Nielsen, K., Kochenash, A., Stevens, M. H., Englert, C. R.,
 10 Singer, W., and Hervig, M.: High-altitude data assimilation system experiments for the northern summer mesosphere season of 2007, *J. Atmos. Sol.-Terr. Phys.*, 71, 531–551, <https://doi.org/10.1016/j.jastp.2008.09.036>, 2009.
- Eckermann, S. D., Ma, J., and Broutmann, D.: Effects of horizontal geometrical spreading on the parameterization of orographic gravity wave drag. Part I: Numerical transform solutions, *J. Atmos. Sci.*, 72, 2330–2347, <https://doi.org/10.1175/JAS-D-14-0147.1>, 2015.
- Emmert, J. T., Drob, D. P., Shepherd, G. G., Hernandez, G., Jarvis, M. J., Meriwether, J. W., Niciejewski, R. J., Sipler, D. P., and Tepley,
 15 C. A.: DWM07 global empirical model of upper thermospheric storm-induced disturbance winds, *J. Geophys. Res.-Space.*, 113, A11319, <https://doi.org/10.1029/2008JA013541>, 2008.
- European Centre for Medium-Range Weather Forecasts (ECMWF): ERA Interim, 6-hourly, instantaneous, pressure level, analysis, Reading, UK, ECMWF Meteorological Archival and Retrieval System (MARS), available at: <https://apps.ecmwf.int/datasets/data/interim-full-daily/levtype=pl>, (last access: 12 November 2019), 2009.
- 20 Fritts, D. C. and Alexander, M. J.: Gravity wave dynamics and effects in the middle atmosphere, *Rev. Geophys.*, 41, 1003. <https://doi.org/10.1029/2001RG000106>, 2003.
- Fritts, D. C. and Dunkerton, T. J.: A quasi-linear study of gravity-wave saturation and self-acceleration, *J. Atmos. Sci.*, 41, 3272–3289, [https://doi.org/10.1175/1520-0469\(1984\)041<3272:AQLSOG>2.0.CO;2](https://doi.org/10.1175/1520-0469(1984)041<3272:AQLSOG>2.0.CO;2), 1984.
- Fritts, D. C., Laughman, B., Lund, T. S., and Snively, J. B.: Self-acceleration and instability of gravity wave packets: 1. Effects of temporal
 25 localization, *J. Geophys. Res.-Atmos.*, 120, 8783–8803, <https://doi.org/10.1002/2015JD023363>, 2015.
- Gelaro, R., McCarty, W., Suárez, M. J., Toddling, R., Molod, A., Takacs, L., Randles, C. A., Darmenov, A., Bosilovich, M. G., Reichle, R., Wargan, K., Coy, L., Cullather, R., Draper, C., Akella, S., Buchard, V., Conaty, A., da Silva, A. M., Gu, W., Kim, G.-K., Koster, R., Lucchesi, R., Merkova, D., Nielsen, J. E., Partyka, G., Pawson, S., Putman, W., Rienecker, M., Schubert, S. D., Sienkiewicz, M., and Zhao, B.: The Modern-Era Retrospective Analysis for Research and Applications, version 2 (MERRA-2), *J. Climate*, 30, 5419–5454,
 30 <https://doi.org/10.1175/JCLI-D-16-0758.1>, 2017.
- Global Modeling and Assimilation Office (GMAO): MERRA-2 inst6_3d_ana_Np: 3d, 6-Hourly, Instantaneous, Pressure-Level, Analysis, Analyzed Meteorological Fields V5.12.4, Greenbelt, MD, USA, Goddard Earth Sciences Data and Information Services Center (GES DISC), <https://doi.org/10.5067/A7S6XP56VZWS> (last access: 12 November 2019), 2015.
- Hasha, A., Bühler, O., and Scinocca, J.: Gravity wave refraction by three-dimensionally varying winds and global transport of angular
 35 momentum, *J. Atmos. Sci.*, 65, 2892–2906, <https://doi.org/10.1175/2007JAS2561.1>, 2008.
- Hayes, W. D.: Kinematic wave theory, *Proc. R. Soc. Lon. Ser.-A*, 320, 209–226. <https://doi.org/10.1098/rspa.1970.0206>, 1970.
- Hedin, A. E.: MSISE model, available at: <https://ccmc.gsfc.nasa.gov/models/modelinfo.php?model=MSISE>, (last access:12 November 2019), 2001.

- Hindmarsh, A. C.: Serial Fortran solvers for ODE initial value problems, available at: <https://computation.llnl.gov/casc/odepack> (last access: 12 November 2019), 2006.
- Hindmarsh, A. C.: ODEPACK, A systematized collection of ODE solvers, in: IMACS Transaction on Scientific Computing, edited by: Stepleman, R. S., North-Holland, Amsterdam, Netherlands, 55–64, available at: <https://computation.llnl.gov/casc/nsde/pubs/u88007.pdf>
5 (last access: 12 November 2019), 1983.
- Kalisch, S., Preusse, P., Ern, M., Eckermann, S. D., and Riese, M.: Differences in gravity wave drag between realistic oblique and assumed vertical propagation, *J. Geophys. Res.-Atmos.*, 119, 10081–10099, <https://doi.org/10.1002/2014JD021779>, 2014.
- Kim, Y.-J., Eckermann, S. D., and Chun, H.-Y.: An overview of the past, present and future of gravity-wave drag parameterization for numerical climate and weather prediction models, *Atmos. Ocean*, 41, 65–98. <https://doi.org/10.3137/ao.410105>, 2003.
- 10 Kruse, C. G. and Smith, R. B.: Nondissipative and dissipative momentum deposition by mountain wave events in sheared environments, *J. Atmos. Sci.*, 75, 2721–2740, <https://doi.org/10.1175/JAS-D-17-0350.1>, 2018.
- Kundu, P.: Fluid dynamics, Elsevier, New York, NY, USA, 1990.
- Landau, L. D. and Lifshitz, E. M.: The classical theory of fields, 4th ed., Elsevier, Burlington, MA, USA, 1975.
- Lekien, F. and Marsden, J.: Tricubic interpolation in three dimensions, *Int. J. Numer. Meth. Eng.*, 63, 455–471, [https://doi.org/10.1002/nme.](https://doi.org/10.1002/nme.1296)
15 1296, 2005.
- Limpasuvan, V., Alexander, M. J., Orsolini, Y. J., Wu, D. L., Xue, M., Richter, J. H., and Yamashita, C.: Mesoscale simulations of gravity waves during the 2008–2009 major stratospheric sudden warming, *J. Geophys. Res.-Atmos.*, 116, D17104, <https://doi.org/10.1029/2010JD015190>, 2011.
- Limpasuvan, V., Richter, J. H., Orsolini, Y. J., Stordal, F., and Kvissel, O.-K.: The roles of planetary and gravity waves during a major
20 stratospheric sudden warmings as characterized in WACCM, *J. Atmos. Sol.-Terr. Phys.*, 78–79, 84–98, <https://doi.org/10.1016/j.jastp.2011.03.004>, 2012.
- Limpasuvan V., Orsolini, Y., Chandran, A., Garcia, R. R., and Smith, A. K.: On the composite response of the MLT to major sudden stratospheric warming events with elevated stratopause, *J. Geophys. Res.-Atmos.*, 121, 4518–4537, <https://doi.org/10.1002/2015JD024401>, 2016.
- 25 Lindzen, R. S.: Turbulence and stress owing to gravity wave and tidal breakdown, *J. Geophys. Res.*, 86, 9707–9714, <https://doi.org/10.1029/JC086iC10p09707>, 1981.
- ~~Manney, G. L., Krüger, K., Pawson, S., Minschwaner, K., Schwartz, M. J., Daffer, W. H., Livesey, N. J., Mlynezak, M. G., Remsberg, E. E., Russell III, J. M., and Waters, J. W.: The evolution of the stratopause during the 2006 major warming: Satellite data and assimilated meteorological analyses, *J. Geophys. Res.-Atmos.*, 113, D11115, 2008.~~
- 30 Marks, C. J. and Eckermann, S. D.: A three-dimensional nonhydrostatic ray-tracing model for gravity waves: Formulation and preliminary results for the middle atmosphere, *J. Atmos. Sci.*, 52, 1959–1984, [https://doi.org/10.1175/1520-0469\(1995\)052<1959:ATDNRT>2.0.CO;2](https://doi.org/10.1175/1520-0469(1995)052<1959:ATDNRT>2.0.CO;2), 1995.
- McFarlane, N. A.: The effect of orographically excited gravity wave drag on the general circulation of the lower stratosphere and troposphere, *J. Atmos. Sci.*, 44, 1775–1800, [https://doi.org/10.1175/1520-0469\(1987\)044<1775:TEOOEG>2.0.CO;2](https://doi.org/10.1175/1520-0469(1987)044<1775:TEOOEG>2.0.CO;2), 1987.
- 35 [McLandress, C., and McFarlane, N. A.: Interactions between orographic gravity wave drag and forced stationary planetary waves in the winter Northern Hemisphere middle atmosphere, *J. Atmos. Sci.* 50, 1966–1990, \[https://doi.org/10.1175/1520-0469\\(1993\\)050<1966:IBOGWD>2.0.CO;2\]\(https://doi.org/10.1175/1520-0469\(1993\)050<1966:IBOGWD>2.0.CO;2\), 1993.](https://doi.org/10.1175/1520-0469(1993)050<1966:IBOGWD>2.0.CO;2)

- Medvedev, A. S. and Klaassen, G. P.: Thermal effects of saturating gravity waves in the atmosphere, *J. Geophys. Res.-Atmos.*, 108, 4040, <https://doi.org/10.1029/2002JD002504>, 2003.
- Muraschko, J., Fruman, M. D., Achatz, U., Hickel, S., and Toledo, Y.: On the application of Wentzel-Krammer-Brillouin theory for the simulation of the weakly nonlinear dynamics of gravity waves, *Q. J. Roy. Meteor. Soc.*, 141, 676–697, <https://doi.org/10.1002/qj.2381>, 5 2015.
- National Center for Atmospheric Research (NCAR): Grid- and subgrid-scale topography data, Boulder, CO, USA, available at: <https://svn-ccsm-inputdata.cgd.ucar.edu/trunk/inputdata/atm/cam/topo> (last access: 12 November 2019), 2019.
- National Center for Environmental Information (NCEI): Daily, solar flux and geomagnetic indices, Boulder, CO, USA, available at: ftp://ftp.ngdc.noaa.gov/STP/GEOMAGNETIC_DATA/INDICES/KP_AP (last access: 12 November 2019), 2018.
- 10 Naval Research Laboratory (NRL): 6-hourly, instantaneous, pressure level, assimilation, Washington DC, USA, available at: <https://map.nrl.navy.mil/map/pub/nrl/aim9c> (last access: 12 November 2019), 2009.
- Orr, A., Bechtold, P., Scinocca, J., Ern, M., and Janiskova, M.: Improved middle atmosphere climate and forecasts in the ECMWF model through a nonorographic gravity wave drag parameterization, *J. Climate*, 23, 5905–5926, <https://doi.org/10.1175/2010JCLI3490.1>, 2010.
- Petzold, L.: Automatic selection of methods for solving stiff and nonstiff systems of ordinary differential equations, *SIAM J. Sci. Stat. Comp.*, 4, 136–148, <https://doi.org/10.1137/0904010>, 1983.
- 15 Phillips, N. A.: The equations of motion for a shallow rotating atmosphere and the “traditional approximation”, *J. Atmos. Sci.*, 23, 626–628, [https://doi.org/10.1175/1520-0469\(1966\)023<0626:TEOMFA>2.0.CO;2](https://doi.org/10.1175/1520-0469(1966)023<0626:TEOMFA>2.0.CO;2), 1966.
- Picone, J. M., Hedin, A. E., Drob, D. P., and Aikin, A. C.: NRLMSISE-00 empirical model of the atmosphere: Statistical comparisons and scientific issues, *J. Geophys. Res.-Space.*, 107, A12, <https://doi.org/10.1029/2002JA009430>, 2002.
- 20 Pitteway, M. L. V. and Hines, C. O.: The viscous damping of atmospheric gravity waves, *Can. J. Phys.*, 41, 1935–1948, <https://doi.org/10.1139/p63-194>, 1963.
- [Plougouven, R., de la Cámara, A., Hertzog, A., and Lott, F.: How does knowledge of atmospheric gravity waves guide their parameterizations?, *Q. J. Roy. Meteor. Soc.*, <https://doi.org/10.1002/qj.3732>, 2020.](https://doi.org/10.1002/qj.3732)
- Ribstein, B., Achatz, U., and Senf, F.: The interaction between gravity waves and solar tides: Results from 4-D ray tracing coupled to a linear 25 tidal model, *J. Geophys. Res.-Space.*, 120, 6795–6817, <https://doi.org/10.1002/2015JA021349>, 2015.
- Richter, J. H., Sassi, F., and Garcia, R. R.: Toward a physically based gravity wave source parameterization in a general circulation model, *J. Atmos. Sci.*, 67, 136–156, <https://doi.org/10.1175/2009JAS3112.1>, 2010.
- Rosenlof, K. and Holton, J. R.: Estimates of the stratospheric residual circulation using the downward control principle, *J. Geophys. Res.-Atmos.*, 98, 10465–10479, <https://doi.org/10.1029/93JD00392>, 1993.
- 30 Sartelet, K. N.: Wave propagation inside an inertia wave. Part I: Role of time dependence and scale separation, *J. Atmos. Sci.*, 60, 1433–1447, [https://doi.org/10.1175/1520-0469\(2003\)060<1433:WPIAIW>2.0.CO;2](https://doi.org/10.1175/1520-0469(2003)060<1433:WPIAIW>2.0.CO;2), 2003.
- Sato, K., Watanabe, S., Kawatani, Y., Tomikawa, Y., Miyazaki, K., and Takahashi, M.: On the origins of mesospheric gravity waves, *Geophys. Res. Lett.*, 36, L19801, <https://doi.org/10.1029/2009GL039908>, 2009.
- Senf, F. and Achatz, U.: On the impact of middle-atmosphere thermal tides on the propagation and dissipation of gravity waves, *J. Geophys. Res.-Atmos.*, 116, D24110, <https://doi.org/10.1029/2011JD015794>, 2011.
- ~~Seviour, W. J., Butchart, N., and Hardiman, S. C.: The Brewer-Dobson circulation inferred from ERA-Interim, *Q. J. Roy. Meteor. Soc.*, 138, 878–888, 2012.~~
- Smith, A. K.: Global dynamics of the MLT, *Surv. Geophys.*, 33, 1177–1230, <https://doi.org/10.1007/s10712-012-9196-9>, 2012.

- Song, I.-S. and Chun, H.-Y.: A Lagrangian spectral parameterization of gravity wave drag induced by cumulus convection, *J. Atmos. Sci.*, 65, 1204–1224, <https://doi.org/10.1175/2007JAS2369.1>, 2008.
- Song, B.-G. and Chun, H.-Y.: Residual mean circulation and temperature changes during the evolution of stratospheric sudden warming revealed in MERRA. *Atmos. Chem. Phys. Discuss.*, <https://doi.org/10.5194/acp-2016-729>, 2016.
- 5 Song, I.-S., Lee, C., Kim, J.-H., Jee, G., Kim, Y.-H., Choi, H.-J., Chun, H.-Y., and Kim, Y. H.: Meteor radar observations of vertically propagating low-frequency inertia-gravity waves near the southern polar mesopause region, *J. Geophys. Res.-Space.*, 122, 4777–4800, <https://doi.org/10.1002/2016JA022978>, 2017.
- Song I.-S., Chun, H.-Y., Jee, G., Kim, S.-Y., Kim, J., Kim, Y.-H., and Taylor, M. A.: Dynamic initialization for whole atmospheric global modeling, *J. Adv. Model. Earth Syst.*, 10, 2096–2120, <https://doi.org/10.1029/2017MS001213>, 2018.
- 10 Thuraiajah, B., Bailey, S. M., Cullens, C. Y., Hervig, M. E., and Russell III, J. M.: Gravity wave activity during recent stratospheric sudden warming events from SOFIE temperature measurements, *J. Geophys. Res.-Atmos.*, 119, 8091–8103, <https://doi.org/10.1002/2014JD021763>, 2014.
- Thuraiajah, B., Siskind, D. E., Bailey, S. M., Carstens, J. N., Russell III, J. M., and Mlynczak, M. G.: Oblique propagation of monsoon gravity waves during the northern hemisphere 2007 summer, *J. Geophys. Res.-Atmos.*, 122, 5063–5075, <https://doi.org/10.1002/2016JD026008>,
15 2017.
- Vadas, S. L. and Fritts, D. C.: Thermospheric responses to gravity waves: Influences of increasing viscosity and thermal diffusivity, *J. Geophys. Res.-Atmos.*, 110, D15103, <https://doi.org/10.1029/2004JD005574>, 2005.
- Warner, C. D. and McIntyre, M. E.: On the propagation and dissipation of gravity wave spectra through a realistic middle atmosphere, *J. Atmos. Sci.*, 53, 3213–3235, [https://doi.org/10.1175/1520-0469\(1996\)053<3213:OTPAO>2.0.CO;2](https://doi.org/10.1175/1520-0469(1996)053<3213:OTPAO>2.0.CO;2), 1996.
- 20 de Wit, R. J., Hibbins, R. E., Espy, P. J., Orsolini, Y. J., Limpasuvan, V., and Kinnison, D. E.: Observations of gravity wave forcing of the mesopause region during the January 2013 major sudden stratospheric warming, *Geophys. Res. Lett.*, 41, 4745–4752, <https://doi.org/10.1002/2014GL060501>, 2014.
- Yamashita, C., Liu, H.-L., and Chu, X.: Gravity wave variations during the 2009 stratospheric sudden warming as revealed by ECMWF-T799 and observations, *Geophys. Res. Lett.*, 37, L22806, <https://doi.org/10.1029/2010GL045437>, 2010.
- 25 Yamashita, C., England, S. L., Immel, T. J., and Change, L. C.: Gravity wave variations during elevated stratopause events using SABER observations, *J. Geophys. Res.-Atmos.*, 118, 5287–5303, <https://doi.org/10.1002/jgrd.50474>, 2013.
- ~~Yiğit, E. and Medvedev, A. S.: Heating and cooling of the thermosphere by internal gravity waves, *Geophys. Res. Lett.*, 36, L14807, , 2009.~~

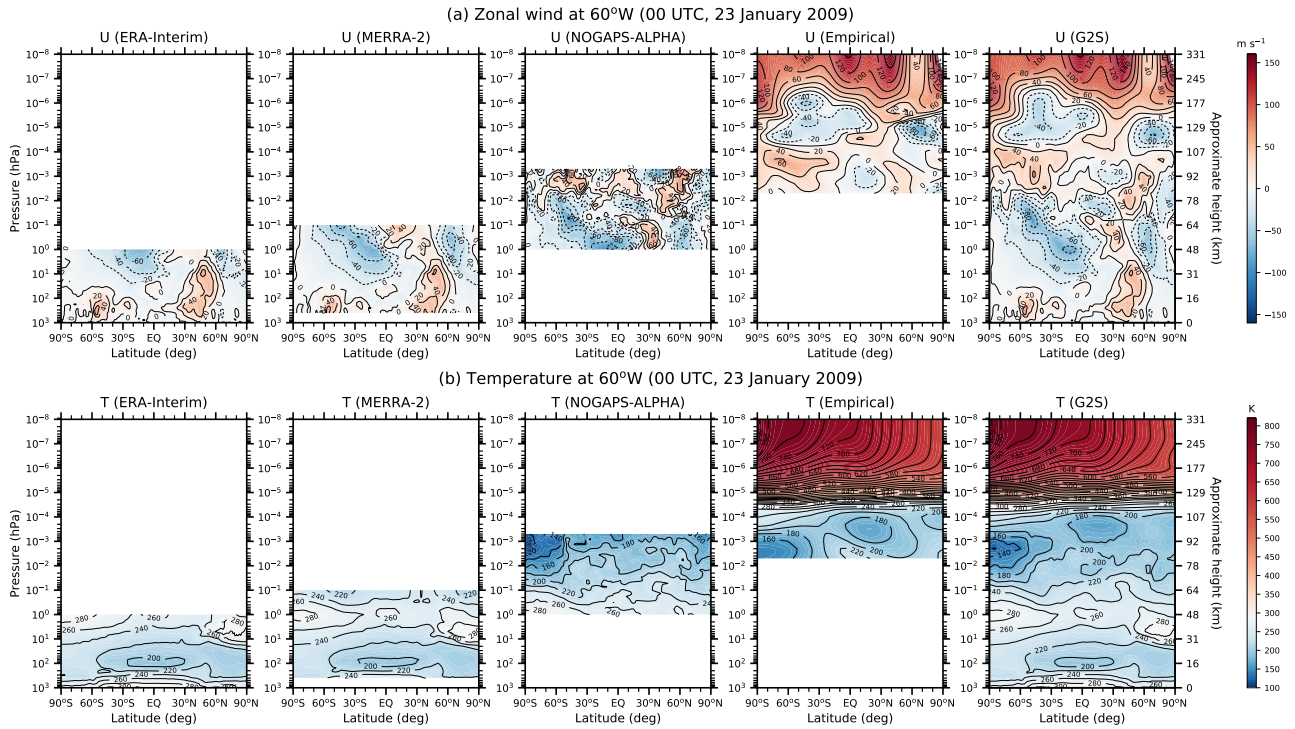


Figure 1. Latitude-height cross sections of (a) zonal wind and (b) temperature in the ERA-Interim, MERRA-2, NOGAPS-ALPHA, empirical models, and G2S data at 60°W at 00 UTC on 23 January 2009. For zonal wind, shading and contour intervals are 2 and 20 m s^{-1} , respectively. Contours for westward winds are plotted in dotted lines. For temperature, shading and contour intervals are 5 and 20 K, respectively.

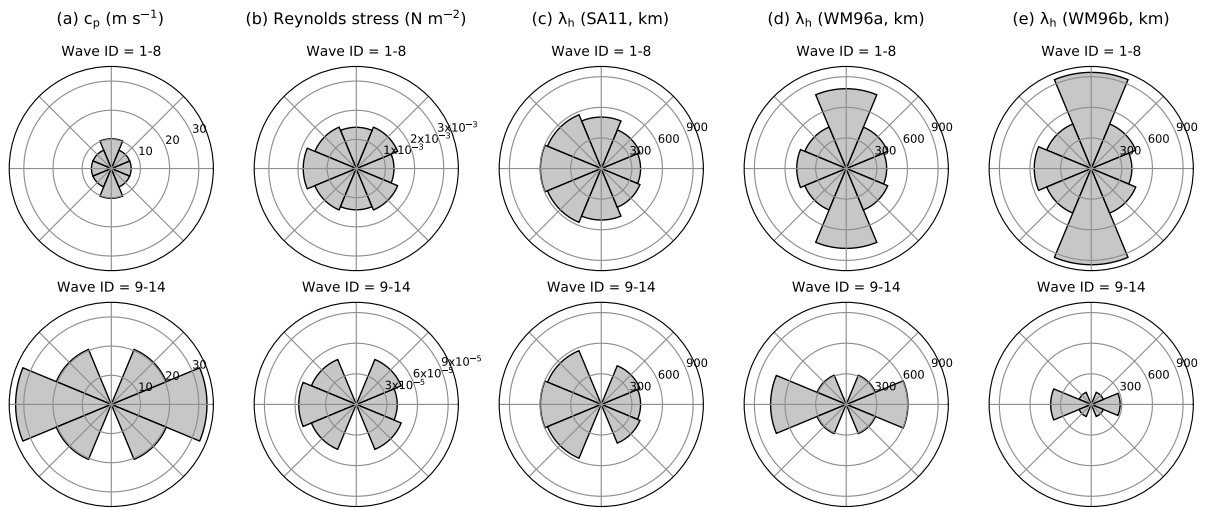


Figure 2. Angular histograms of (a) phase speeds and (b) Reynolds stresses, and (c)–(e) horizontal wavelengths of nonorographic GWs (SA11, WM96a, and WM96b) as a function of propagation directions (φ) at an interval of 45° . For wave IDs of 1–8 (9–14), $c_p = 6.8, 6.8, 10.2, 6.8, 6.8, 6.8, 10.2,$ and 6.8 m s^{-1} ($32.8, 20.4, 20.4, 32.8, 20.4,$ and 20.4 m s^{-1}) counterclockwise from the due East ($\varphi = 0^\circ$).

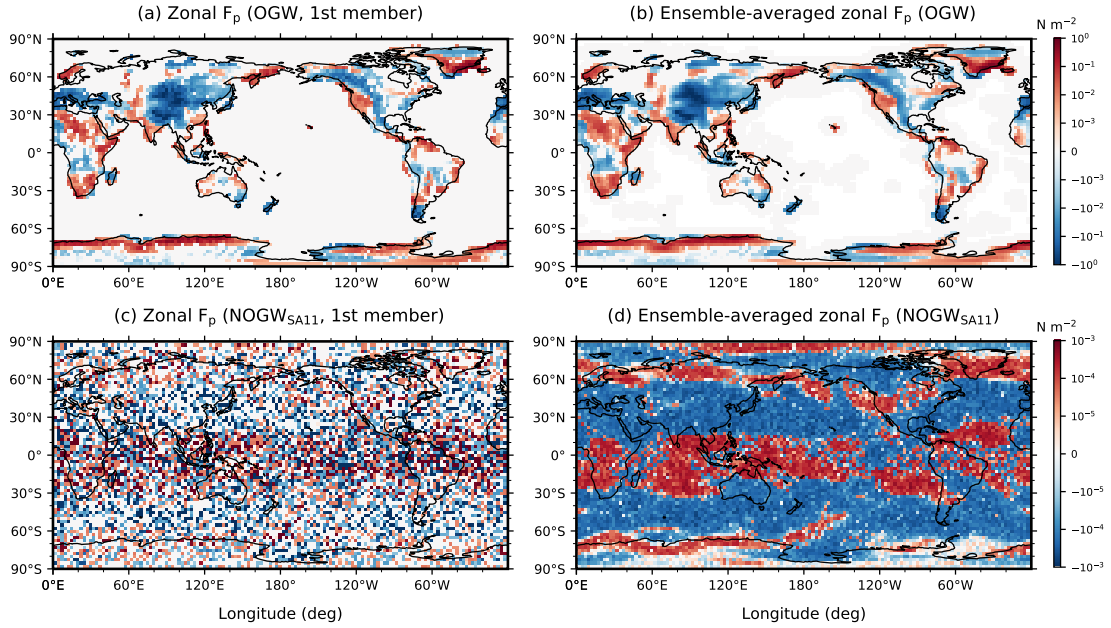


Figure 3. Longitude-latitude distributions of (a) and (d) stochastic parameters and (b), (c), (e), and (f) zonal pseudomomentum fluxes (F_p) for OGWs OGW and NGW $\text{NOGW}_{\text{SAI1}}$ s at 00 UTC on 20 January 2009 on the $2.5^\circ \times 2.5^\circ$ horizontal grid: (a) Scale factors for the standard deviation of the subgrid-scale topography for the 1st OGW ensemble member, (b) zonal OGW F_p above source layers for the 1st OGW ensemble member, (c) ensemble-averaged zonal OGW F_p , (d) wave IDs for the 1st NGW ensemble member, (e) zonal NGW NOGW F_p at $z = 6.8$ km for the 1st NGW NOGW ensemble member, and (f) ensemble-averaged zonal NGW NOGW F_p at $z = 6.8$ km. OGW F_p s are is multiplied by an efficiency factor (0.125) as described in Richter et al. (2010).

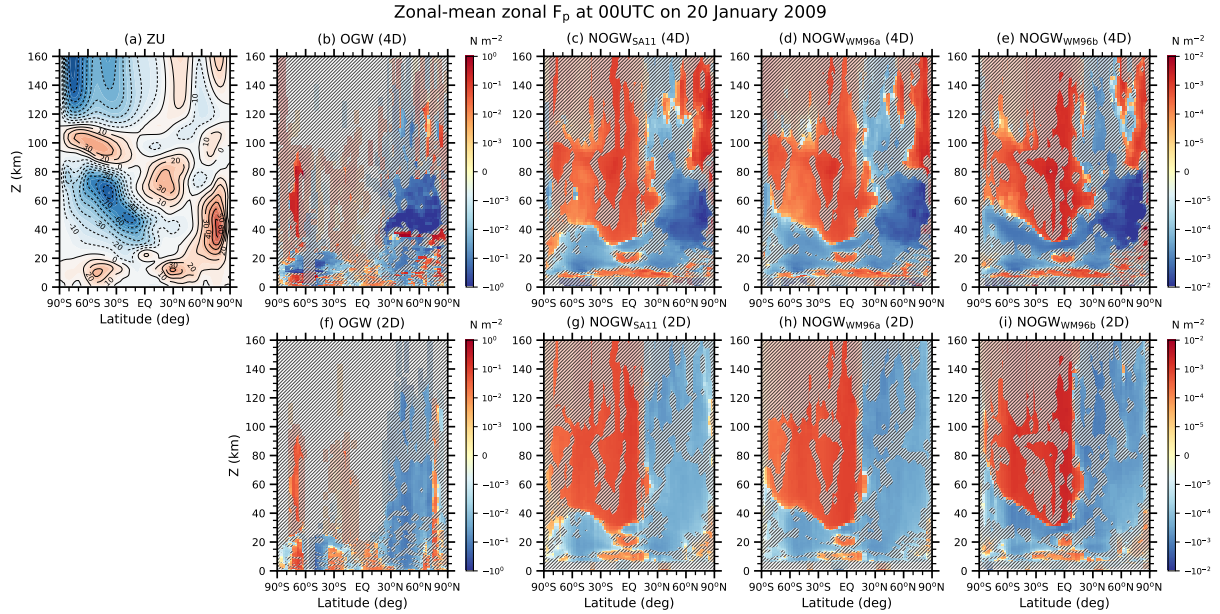


Figure 4. Latitude-height cross-sections of (a) zonal-mean zonal wind (ZU) and (b–i) zonal-mean zonal pseudomomentum fluxes (F_p s) for OGW and three NGW-NOGW schemes in the (top) 4D and (bottom) 2D experiments at 00 UTC on 20 January 2009. OGW F_p s are is multiplied by the efficiency factor (0.125). Contour interval of zonal-mean zonal wind is 10 m s^{-1} and negative values are plotted in dashed lines. Transparently shaded-Hatched areas on the pseudomomentum fluxes indicate regions where the paired and two-tailed t -test for 20 ensemble members of the 4D and 2D experiments gives p values larger than 0.05 (i.e., no statistical significance at the level of 0.05). Here, the p value means probability that mean values in the 4D and 2D experiments would be similar to each other. The shaded-area-hatched areas are identical in the pair of 4D and 2D experiments for a particular GW scheme. Nonparametric test such as Wilcoxon’s signed rank test, where no probabilistic distribution is assumed, also gives almost similar results as the t -test. For these statistical tests, algorithms presented in Boslaugh (2013) are employed.

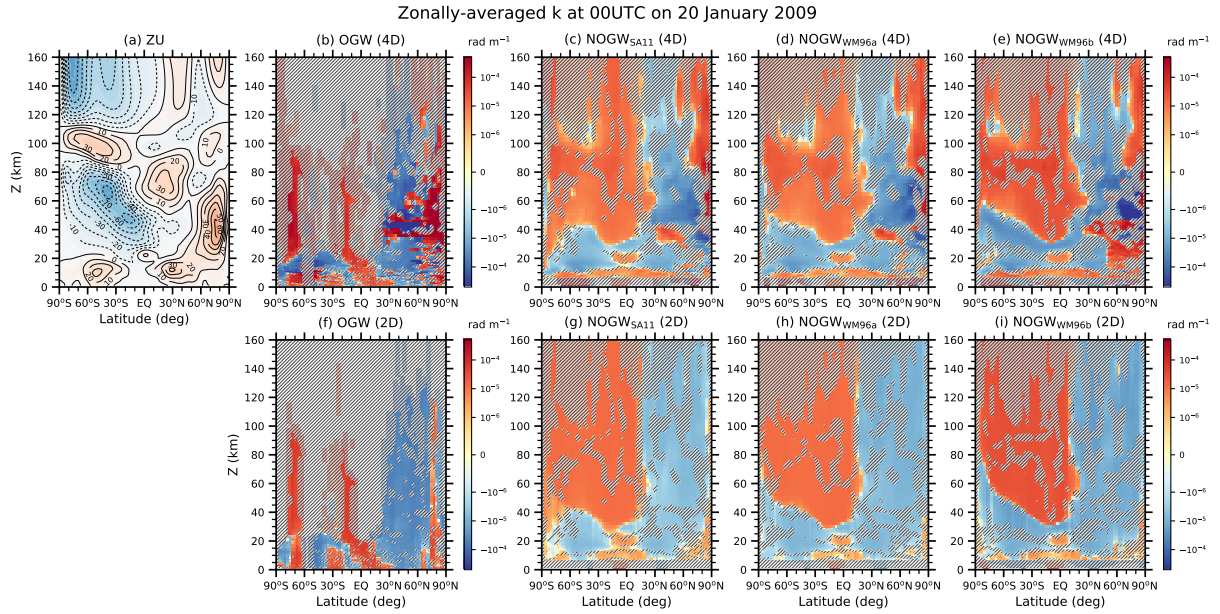


Figure 5. Latitude-height cross-sections of (a) zonal-mean zonal wind (ZU) and (b–i) zonal-mean zonal wavenumbers (k_s) for OGW and three ~~NGW~~~~NOGW~~ schemes in the 4D and 2D experiments at 00 UTC on 20 January 2009. Contour interval of zonal-mean zonal wind is 10 m s^{-1} and negative values are plotted in dashed lines. ~~Transparently shaded~~~~Hatched~~ areas on the zonal wavenumbers indicate regions where the paired and two-tailed t -test for the 4D and 2D experiments gives p values larger than 0.05 (i.e., no statistical significance at the level of 0.05).

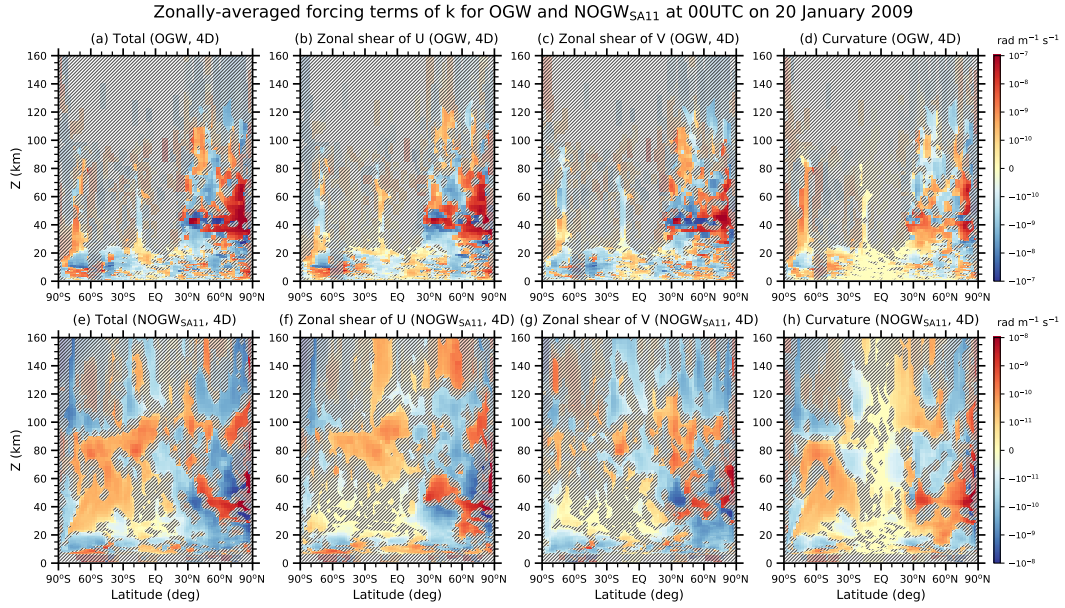


Figure 6. Latitude-height cross-sections of total and three major forcing terms [The zonal shear terms of the large-scale zonal and meridional winds (U and V) and the curvature term] of the zonal wavenumber for (top) **OGW**s-**OGW** and (bottom) **NGW****NOGW**_{SA11} s-in the 4D experiment at 00 UTC on 20 January 2009. The zonal shear terms of U and V are $-k/(a \cos \phi) \partial U / \partial \lambda$ and $-l/(a \cos \phi) \partial V / \partial \lambda$, respectively. The curvature term is given by $l c_g \lambda \tan \phi / a$. **Transparently shaded Hatched** areas indicate regions where the paired and two-tailed t -test for the 4D and 2D experiments gives p values larger than 0.05 (i.e., no statistical significance at the level of 0.05).

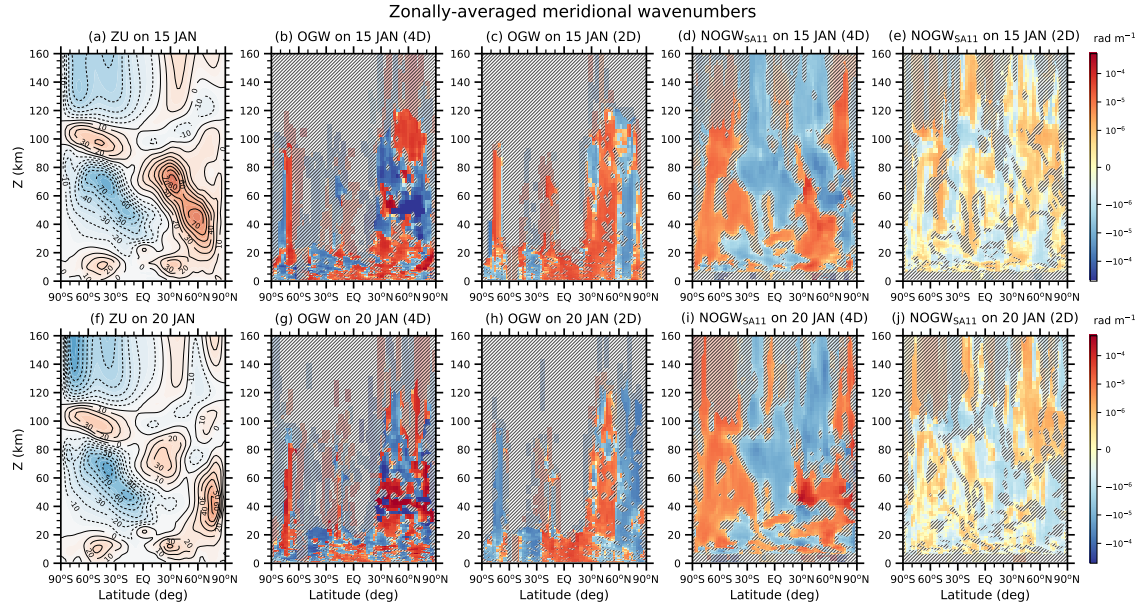


Figure 7. Latitude-height cross-sections of zonal-mean zonal wind (ZU) and ensemble means of zonally-averaged meridional wavenumbers (l_s) for OGWs and ~~NGWNOGW~~_{SAI1S} in the 4D and 2D experiments at 00 UTC on (top) 15 January and (bottom) 20 January, 2009. Contour interval for zonal-mean zonal wind is 10 m s^{-1} and negative values are plotted in dashed lines. ~~Transparently shaded~~_{Hatched} areas on the meridional wavenumbers indicate regions where the paired and two-tailed t -test for the 4D and 2D experiments gives p values larger than 0.05 (i.e., no statistical significance at the level of 0.05).

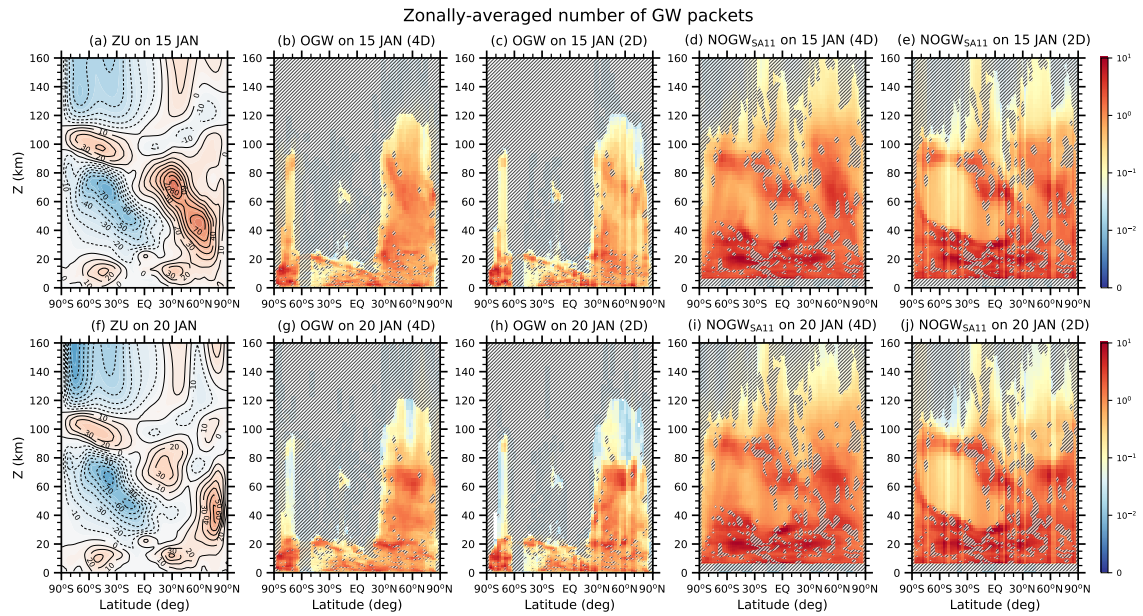


Figure 8. Same as Fig. 7 except for zonally-averaged number of GW packets.

OGWs at $z = 38.0$ km at 00UTC on 20 January 2009

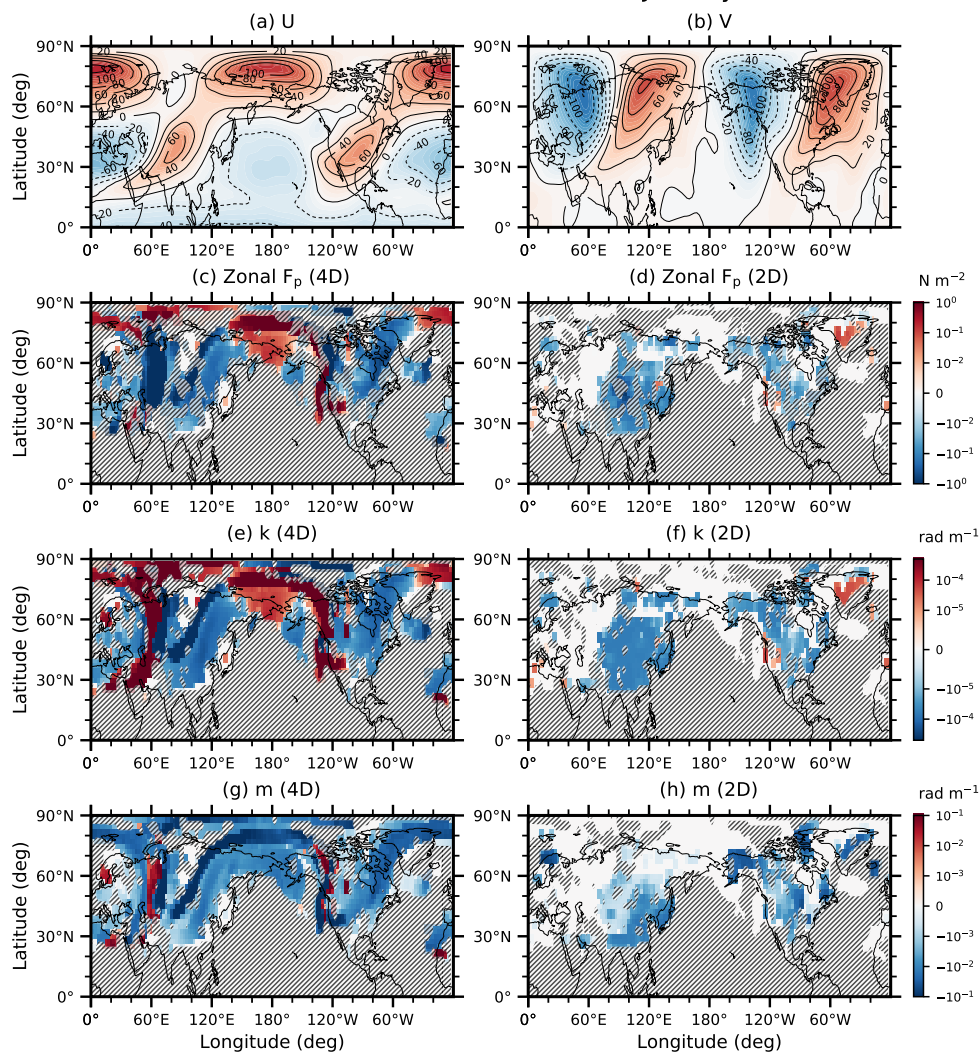


Figure 9. Longitude-latitude cross-sections of (a) zonal wind (U), (b) meridional wind (V), and ensemble means of (c–d) zonal pseudomomentum fluxes (F_p s), (e–f) zonal wavenumbers and (g–h) vertical wavenumbers for ~~OGWs~~ OGW at $z = 38$ km in the 4D and 2D experiments at 00 UTC on 20 January, 2009. ~~OGW F_p s are is~~ OGW F_p s are is multiplied by the efficiency factor (0.125). Contour interval for zonal and meridional winds is 20 m s^{-1} and negative values are plotted in dashed lines. ~~Transparently shaded~~ Hatched areas indicate regions where the paired and two-tailed t -test for the 4D and 2D experiments gives p values larger than 0.05 (i.e., no statistical significance at the level of 0.05).

NOGW_{SA11s} at $z = 38.0$ km at 00UTC on 20 January 2009

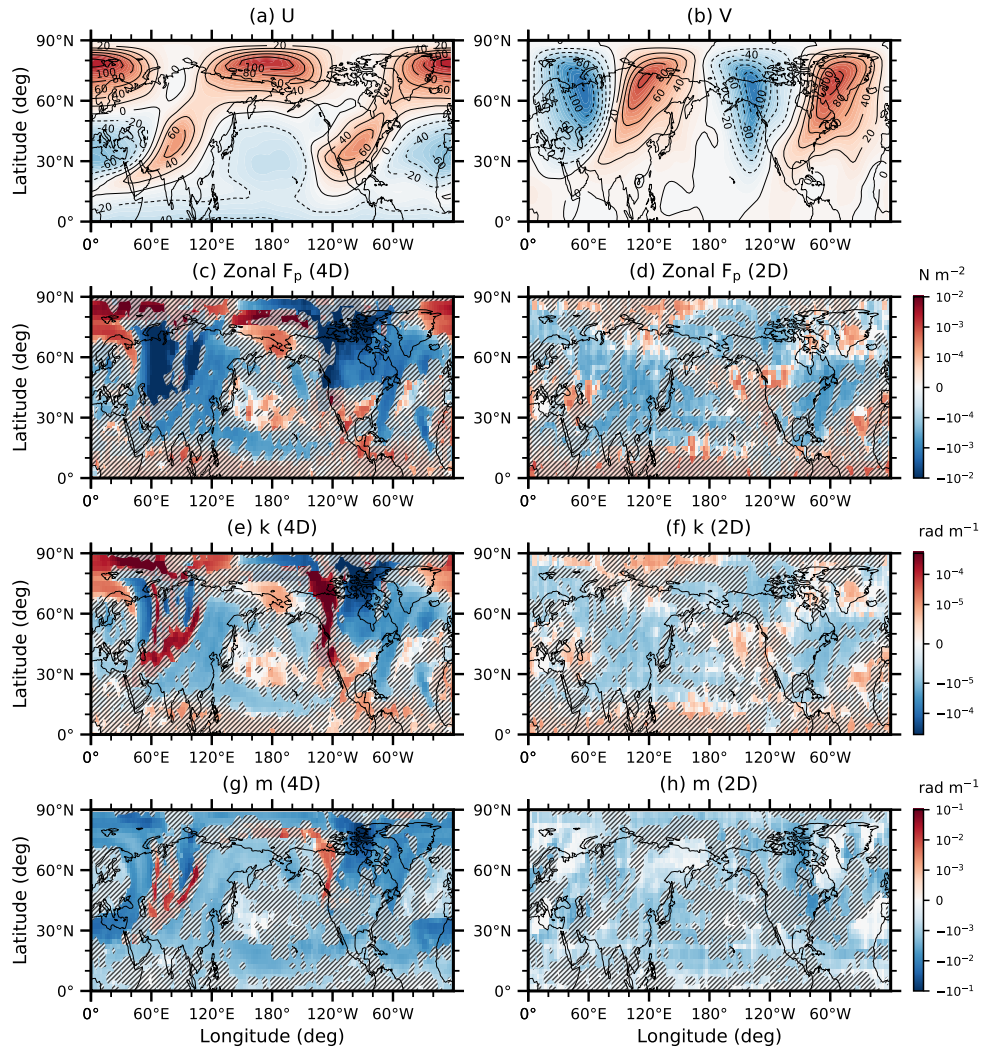


Figure 10. Same as Fig. 9 except for NGWNOGW_{SA11s}.

OGWs at $z = 38.0$ km at 00UTC on 20 January 2009

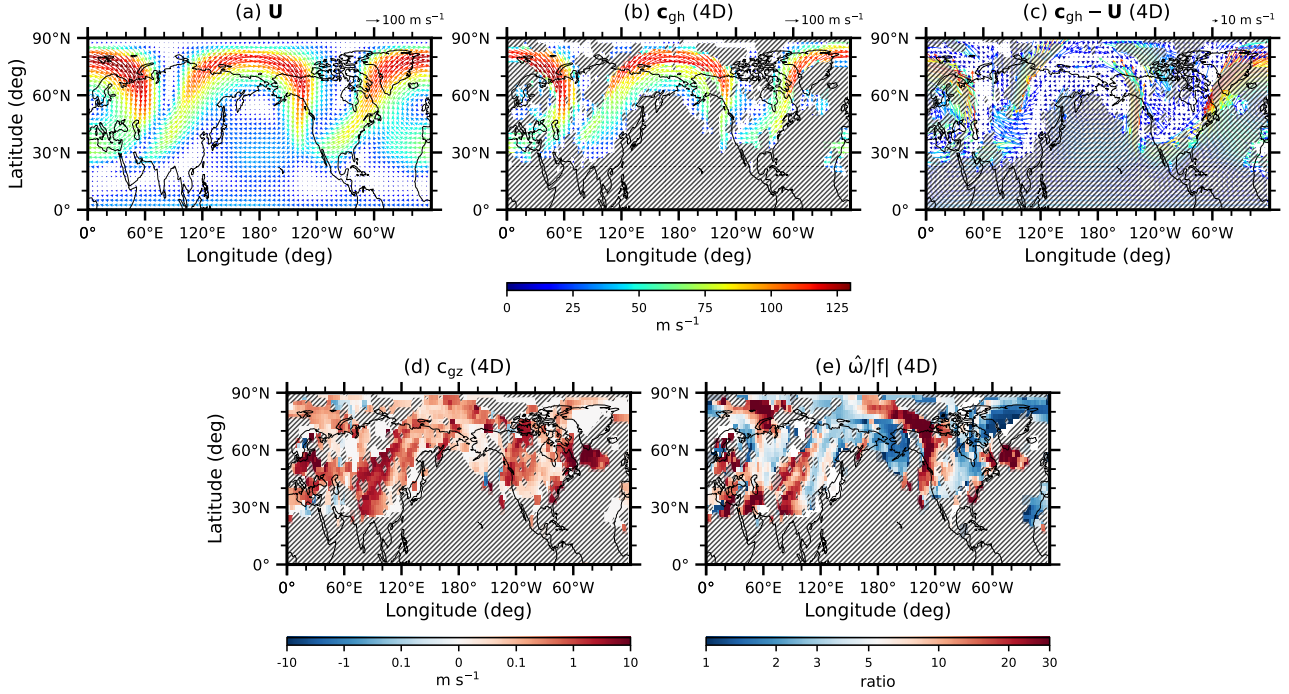


Figure 11. Longitude-latitude cross-sections of (a) zonal-horizontal wind (U), (b) meridional wind (V), and ensemble means of the zonal and meridional components of (c-d) the horizontal group velocity (c_{gx} and c_{gy}) and (e-f) the horizontal intrinsic group velocity ($c_{gx} - U$ and $c_{gy} - V$), (g) the vertical component of the group velocity (c_{gz}), and (h) ratio of intrinsic frequency ($\hat{\omega}$) to Coriolis parameter ($|f|$) for OGWs at $z = 38$ km in the 4D experiment at 00 UTC on 20 January, 2009. Contour interval for zonal and meridional winds and horizontal components of group velocities is 20 m s^{-1} and negative values are plotted in dashed lines. In panels (e) and (f), contours of 0 and $\pm 5 \text{ m s}^{-1}$ are only plotted. Transparently shaded Hatched areas indicate regions where the paired and two-tailed t -test for the 4D and 2D experiments gives p values larger than 0.05 (i.e., no statistical significance at the level of 0.05). For hatching over horizontal vector fields (b-c), the mean value of p values for the zonal and meridional components is used.

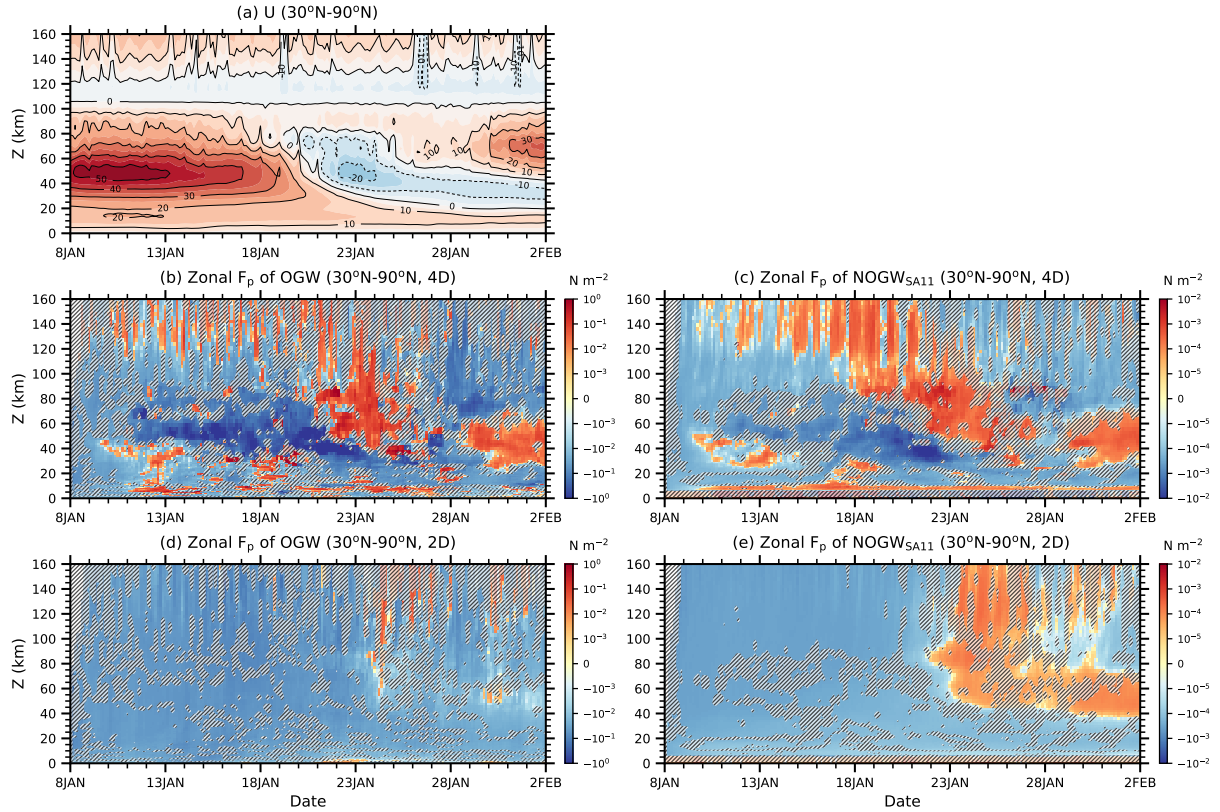


Figure 12. Time-height cross-sections of (a) zonal wind (U), and (b–e) ensemble means of zonal pseudomomentum fluxes (F_p s) averaged over 30°N – 90°N for OGW s OGW and NGW s $\text{NOGW}_{\text{SA11}}$ s in the (top) 4D and (bottom) 2D experiments. $\text{OGW } F_p$ s are multiplied by the efficiency factor (0.125). Contour interval for zonal winds is 10 m s^{-1} and negative values are plotted in dashed lines. **Transparently shaded Hatched** areas over the zonal F_p s indicate regions where the paired and two-tailed t -test for the 4D and 2D experiments gives p values larger than 0.05 (i.e., no statistical significance at the level of 0.05).

Relative vorticity at 5 hPa and zonal F_p of OGWs at $z = 38$ km

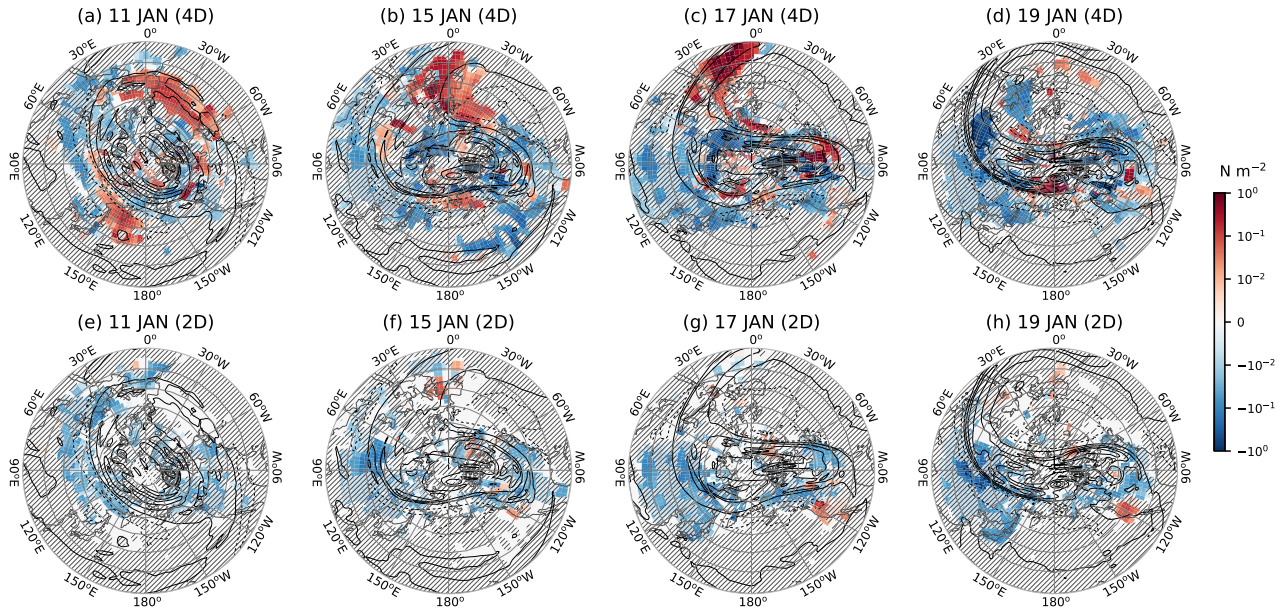


Figure 13. Relative vorticity at 5 hPa and zonal pseudomomentum fluxes (F_p) for OGW at $z = 38$ km at 00 UTC on (a, e) 11 January, (b, f) 15 January, (c, g) 17 January, and (d, h) 19 January in 2009 for the (top) 4D and (bottom) 2D experiments. OGW F_p is multiplied by the efficiency factor (0.125). Contour interval for relative vorticity is $5 \times 10^{-5} \text{ s}^{-1}$ and negative values are plotted in dashed lines. Hatched areas over the zonal F_p indicate regions where the paired and two-tailed t -test for the 4D and 2D experiments gives p values larger than 0.05 (i.e., no statistical significance at the level of 0.05). Latitudinal grids are plotted every 10° from 20°N

Relative vorticity at 5 hPa and meridional F_p of OGWs at $z = 38$ km

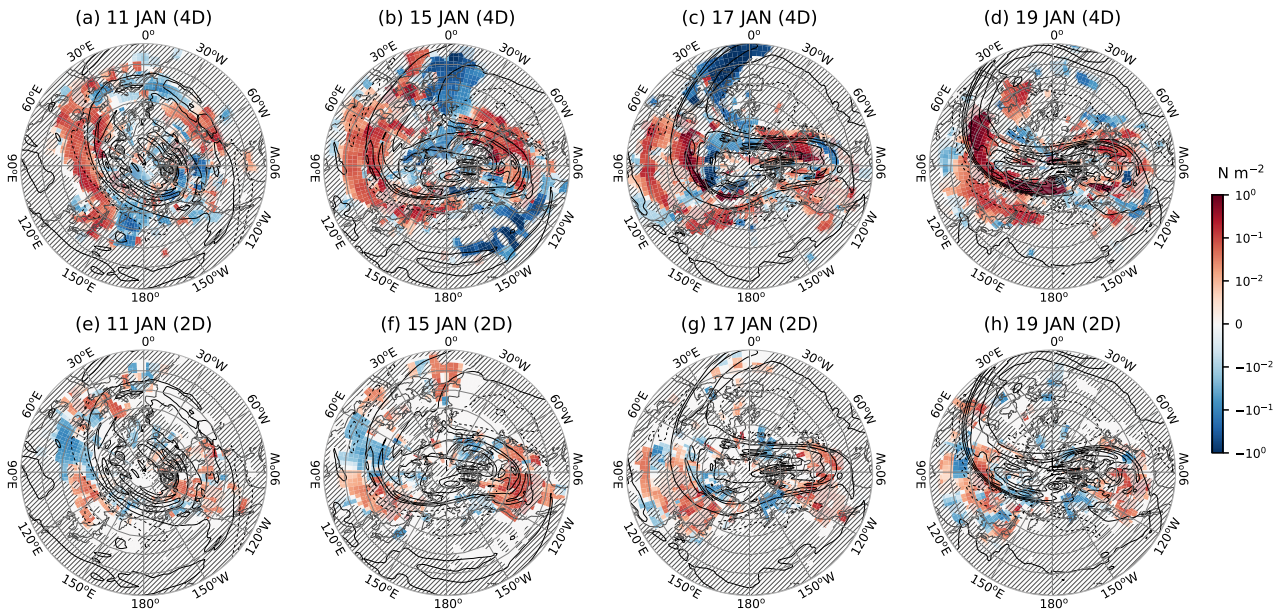


Figure 14. Same as Fig. 13 except for meridional pseudomomentum fluxes (F_p).