

Authors response to Anonymous Referee #1 comments

1. *In Section 3.2 and Fig. 4, the modelled deposition velocities are compared with the data from Helmig et al. It is not clear how they are matched in space and time. Please provide some details. What was the temporal resolution of the model output for vd that was used in the comparison with the data? Following on from the above point, if an appropriate temporal resolution (e.g. hourly) model output for vd is available, perhaps it will also be useful to plot vd vs. wind speed from the model and compare with the corresponding data plot in Helmig et al. (their Fig. 5, solid lines).*

Response: The comparison between cruise and model observations is done on a daily average for the grid box and model data from grid boxes selected based on the latitude and longitude coordinates of the ship during that 24 hr period. Due to this temporal resolution the wind speed comparison would not be appropriate.

“The comparisons between observations and model were made using daily average values with model output selected from grid boxes the ship track passed through in that 24 hour period.”

2. *Table 1. 25th and 75th percentiles are given. It is not clear as to over what kind of sample size/properties (e.g. based on hourly or monthly modelled values?) these statistics are calculated?*

Response: The table description has been updated to give more information about how these statistics were calculated.

“...The average deposition velocities, 25th and 75th percentiles were calculated from monthly average model values for grid boxes containing 100% of the land type specified unless otherwise stated.”

3. *Page 4, last para: I think another point of difference between the present model and that used by Luhar et al. (2018) is that the former includes halogen chemistry. Perhaps this should be mentioned.*

Response: The authors agree with the referee's comment and included the further difference between this work and that of Luhar et al. (2018) by drawing attention to the difference in chemistry schemes, specifically that GEOS-Chem includes halogen chemistry.

“One further difference between this work and that of Luhar et al. (2018) is in the global chemistry transport model and its chemistry scheme, GEOS-Chem includes halogen chemistry which has a notable effect on tropospheric ozone (Sherwen et al., 2016b)”

4. Abstract, line 13: 112 Tg yr⁻¹. In Table 1, it is given as 122 Tg yr⁻¹.

Response: This was a typo and the value in the abstract has been updated. This sentence now reads “*The calculated annual deposition flux of ozone to the ocean is reduced from 222 Tg yr⁻¹ to 122 Tg yr⁻¹ ...*”

5. Page 2, line 19: Generally, in addition to chemical or biological destruction, r_c can also include physical loss at the surface.

Response: The sentence has been updated as the referee suggests to correctly include the possibility of physical loss as a contributing factor to r_c . The sentence now reads “*...and the physical, chemical or biological loss of the molecule at the surface...*”

6. Page 3, line 13: ‘second kind order’ to ‘second kind with order’.

Response: Sentence updated as per reviewers comment to now read “*... modified Bessel functions of the second kind with order zero and one respectively.*”

7. Page 3, line 27: ‘3-D chemical’ to ‘3-D global chemical’.

Response: Sentence updated as per reviewers comments to now correctly read “*... the 3-D global chemical transport model GEOS-Chem Classic...*”

8. Eq. 3: The functions *sinh* and *cosh* are usually not italicised.

Response: As per the reviewers comment the formula has been updated so that the *sinh* and *cosh* functions are no longer italicised.

$$r_c = \frac{1}{\alpha\sqrt{aD}} \left[\frac{\Psi K_1(\xi_\delta) \sinh(\lambda) + K_0(\xi_\delta) \cosh(\lambda)}{\Psi K_1(\xi_\delta) \cosh(\lambda) + K_0(\xi_\delta) \sinh(\lambda)} \right]$$

9. Page 4, line 10: Give the unit of SST (K or deg. C) used in the parameterization equations.

Response: Specified units of kelvin for T, with sentence now reading “*...sea surface temperature (K), T...*”

10. Page 5, line 25: I think ‘table 1’ should be ‘table 2’.

Response: Updated reference to correctly point to table 1

11. Page 5, line 25 and elsewhere: Luhar et al.’s global deposition value is presented. It would be useful to also present the uncertainty they calculated, i.e. 722 ± 87.3 Tg yr⁻¹

Response: The uncertainty in the value of total global deposition of ozone from Luhar et al. (2018) has now been included where this figure is quoted.

12. Page 6, line 5: 'it' to 'in'.

Response: Corrected typo by changing 'it' to 'in' so that sentence now reads "*These cruises were made in waters of significantly different...*"

13. Page 6, line 17: Put spaces around 'and' and no italics.

Response: Corrected typo, removing 'and' from math mode such that it is now correctly spaced and no longer italicised. Sentence now reads "... k, D and α ."

14. Page 7, lines 18-19: You could also highlight that the largest increases are in the extra tropics and they are more pronounced in the Southern Hemisphere.

Response: Based on the referee's comment, the wording of this sentence has been changed to specifically highlight for the reader that the Southern Hemisphere extra tropics see the largest increase in surface ozone concentration. This sentence now reads

"...most notably the extra-tropics with the Southern Hemisphere extra-tropics being the area of greatest increase. The increase in surface ozone concentration 20 becomes negligible over land."

15. Table 2: What year(s) do these values correspond to?

Response: The table caption has been updated to specify that the values in the table are calculated from a model run of the year 2014. The caption now reads

"Area-weighted annual average deposition velocity and deposition flux for 2014..."

16. Table 3. What year(s) do these values correspond to?

Response: The table caption has been updated to specify that the values in the table are calculated from a model run of the year 2014. The caption now reads

"Summary of change to atmospheric oxidative capacity for GEOS-Chem using default (constant) scheme for calculating τ_c and the new scheme (variable) for 2014"

17. Figure 3. Please put year (2014?) in the caption. The same for Figs. 7–9.

Response: The captions of Figures 3,7,8 and 9 have been updated to state that they are showing model data from 2014.

Authors response to Anonymous Referee #2

comments

1. *Resolution Dependence: The simulations in this work are completed at $2^{\circ} \times 2.5^{\circ}$ globally. Dry deposition is highly dependent on environmental conditions that vary in their distribution at higher spatial resolutions. It's not immediately clear from the text that the performance assessment in this work would be consistent at higher model resolutions. Do the authors expect their implementation to be a similar improvement at all relevant spatial resolutions, or are these results unique to $2^{\circ} \times 2.5^{\circ}$?*

Response: We do not believe there is any resolution dependence in this calculation of deposition velocity and results at higher resolutions would still be comparable to those we achieved at $2^{\circ} \times 2.5^{\circ}$. The following addition has been made to the paper to address this

“Whilst $2^{\circ} \times 2.5^{\circ}$ is a relatively coarse model resolution, we don't believe that there is any significant sub-grid scale correlation between tropospheric ozone concentration and sea-surface I concentration therefore this should not result in a resolution dependence”

2. *Computational Expense: A major advantage of the simplified fixed surface resistance is the associated light computational burden in calculating deposition velocities. It would be useful if the authors could comment on the additional computational expense (if any) of their improved simulated deposition velocities.*

Response: We agree that the simplified method for calculating r_c would have a light computational burden. The nature of dry deposition calculation this would be negligible with respect to the rest of the model and have made an addition to the paper to state this. We do not have appropriate diagnostics to provide a quantitative statement on the additional burden.

“Any additional computational expense of implementing this improved r_c calculation will be small as the deposition velocity calculation remains a two dimensional problem, unlike the chemistry or transport calculations which are three dimensional problems.”

3. *Additional Species: The parameterization presented here is likely to be relevant and useful to the simulation of species other than just ozone. It would be valuable to the broader community if the authors could comment on what would be necessary to extend this analysis to other chemical species, and potentially what the impact on those species would be.*

Response: We agree with the reviewers comment that mention of how to apply this deposition scheme to other species and what would be required to do so would be a useful addition to the discussion made in this paper. The following addition has been made to the paper.

“It would be possible to apply this method of calculating r_c to other chemical species. If the appropriate sink processes were understood, chemical kinetics available, and concentrations of reactant species known. For this to be useful, the species would need to have a high dependence on r_c (rather than the physical resistances), but also for dry deposition to form a substantial part of the species budget. It is not clear whether any species, other than O_3 , would meet these requirements.”

4. *Eq 1: In the atmospheric science literature, dry deposition velocities are typically written with respect to the atmosphere (e.g. $F = -V_d * C$). The sign in this equation is unclear with respect to the reference frame of the deposition.*

Response: The in text description of equation 1 does describe the direction of the flux as towards the surface but as commented by the referee equation 1 is inconsistent with this.

The formula for equation 1 has been updated to correctly reflect this.

$$F = -u_d C$$

5. *P6 L26: The labels k and a are inconsistent between the text and Figure 5, which uses full name descriptions. This adds confusion for the reader.*

Response: The figure caption for figure 5 has been updated to give the labels for each of the full name descriptions and wording of the caption updated to address this comment and comment 6.

6. *Figure 5: Why are all panels a function of temperature except for “Water side friction velocity”? Is the Water side friction velocity also binned by temperature?*

Response: As the referee’s comment states the figure caption was misleading and this has been updated to correctly state that all functions are binned by temperature apart from water side friction velocity which is binned by friction velocity. The caption now reads

*“Figure 5. The response of deposition velocity to the variation of only a single parameter with other parameters set to global average values. Sea-surface iodide concentration [I^-], rate coefficient k , diffusivity D and solubility α are produced from global values averaged into 1 K temperature bins. Water side friction velocity $u * w$ is averaged into 0.1 m s⁻¹ friction velocity bins.”*

7. *Figure 6 & Figure 9: What do the shaded regions in the figure represent?*

Response: For both figure 6 and figure 9 the captions have been updated to state that this shaded region represents the 25th to 75th percentile range.

8. *P2 L21: “Gases that are highly soluble giving them a small r_c ”. This sentence is confusing as written.*

Response: We agree that the wording of this sentence could be confusing so this sentence has been reworded and now reads

“Gases that are highly soluble (such as sulfur dioxide) will have a small r_c , so their limiting factors are the atmospheric resistances (r_a and r_b)”

9. P3 L10: *“(the product of ...” the parenthesis in this section appear to be off.*

Response: The surplus parenthesis in this sentence has been removed such that the sentence now reads as intended

“...(the product of [I-] and the second order rate-coefficient, k)...”

10. P6 L17: *“Danda” authors likely meant “D and α ”*

Response: Corrected typo, removing ‘and’ from math mode such that it is now correctly spaced and no longer italicised. Sentence now reads “..., k ,D and α .”

Influences of oceanic ozone deposition on tropospheric photochemistry

Ryan J. Pound¹, Tomás Sherwen^{1,2}, Detlev Helmig³, Lucy J. Carpenter¹, and Mat J. Evans^{1,2}

¹Wolfson Atmospheric Chemistry Laboratories, Department of Chemistry, University of York, York, YO10 5DD, UK

²National Centre for Atmospheric Science, University of York, York, YO10 5DD, UK

³Institute of Alpine and Arctic Research, University of Colorado at Boulder, Boulder, Colorado, USA.

Correspondence: Ryan J. Pound (rp819@york.ac.uk)

Abstract. The deposition of ozone to seawater is an important ozone sink. Despite constituting as much as a third of the total ozone deposition, it receives significantly less attention than the deposition to terrestrial ecosystems. Models have typically calculated the deposition rate based on a resistance-in-series model with a uniform waterside resistance. This leads to models having an essentially uniform deposition velocity of approximately 0.05 cm s^{-1} to seawater, which is significantly higher than the limited observational dataset. Following from Luhar et al. (2018) we include a representation of the oceanic deposition of ozone into the GEOS-Chem model of atmospheric chemistry and transport based on its reaction with sea-surface iodide. The updated scheme halves the calculated annual area-weighted mean deposition velocity to water from 0.0464 cm s^{-1} (25th and 75th percentiles of 0.0461 cm s^{-1} and 0.0471 cm s^{-1} respectively), to 0.0231 cm s^{-1} (25th and 75th percentiles of 0.0121 cm s^{-1} and 0.0303 cm s^{-1} respectively). The calculated ozone deposition velocity varies from 0.009 cm s^{-1} in polar waters to 0.040 cm s^{-1} at the tropics. This improves comparisons to observations. The variability is driven mainly by the temperature-dependant rate constant for the reaction between iodide and ozone, the temperature dependence of the solubility and variations in the ocean iodide concentration. The calculated annual deposition flux of ozone to the ocean is reduced from 222 Tg yr^{-1} to [H2-122](#) Tg yr^{-1} , and overall deposition of ozone to all surface types reduces from 862 Tg y^{-1} to 758 Tg y^{-1} . Tropospheric ozone burdens and global mean OH increase from 324 Tg to 328 Tg , and from $1.17 \times 10^6 \text{ molec cm}^{-3}$ to $1.18 \times 10^6 \text{ molec cm}^{-3}$, respectively. 34% of surface grid boxes experience a 10% or greater increase in ozone concentration. Comparisons between observations of surface ozone and the model are improved with the new parameterization notably around the Southern Ocean. Process level representation of oceanic deposition of ozone thus appears essential for representing the concentration of surface ozone over the planet.

1 Introduction

Tropospheric ozone is an important secondary pollutant. Globally it causes one million premature deaths a year (Malley et al., 2017), degrades ecosystems (The Royal Society, 2008) and is a greenhouse gas (IPCC Stocker et al., 2013). Transport from the stratosphere and in-situ chemical production are balanced by chemical destruction and dry deposition to the surface. Total dry deposition of ozone is thought to amount to $\sim 978 \text{ Tg y}^{-1}$ (Hardacre et al., 2015) compared to $\sim 500 \text{ Tg y}^{-1}$ transported from the stratosphere, $\sim 5000 \text{ Tg y}^{-1}$ for chemical production, and $\sim 4500 \text{ Tg y}^{-1}$ for chemical loss (Young et al., 2018). Whilst

dry deposition velocity to the ocean is thought to be slow ($\sim 0.05 \text{ cm s}^{-1}$) compared to vegetation ($\sim 0.1 \text{ cm s}^{-1}$), the larger area of the ocean compared to the land results in ozone deposition to the ocean representing approximately one third of the total deposition (Ganzeveld et al., 2009).

The ultimate sink of ozone to the ocean is due to chemical reactions. The reaction of ozone with iodide ($[I^-]$) in the surface layer of the ocean via the simplified reaction R1 (Garland and Curtis, 1981; Sakamoto et al., 2009; Hayase et al., 2010; Carpenter et al., 2013) is believed to be the dominant mechanism (Garland et al., 1980). The transport of ozone within the ocean surface also plays an important role in this process, a simplified version of the relevant processes is shown in Fig. 1.



In addition, dissolved organic carbon (DOC) has been shown to react with dissolved ozone and have an enhancing effect on ozone deposition similar to that of iodide (Martino et al., 2012; Shaw and Carpenter, 2013), but is less well understood. Dimethyl sulfide (DMS) and bromide have also been shown to enhance ozone deposition velocity but by small amounts (Sarwar et al., 2016).

The net flux of a gas to a surface F is calculated as the atmospheric concentration at the ocean surface C multiplied by the deposition velocity, v_d , shown in equation 1.

$$F = \underline{v} - v_d C \quad (1)$$

The deposition velocity (v_d) in many models is calculated using the resistance-in-series scheme (Wesely and Hicks, 1977) shown in equation 2. This describes the different limiting factors of the deposition: transport to the surface through turbulent transport (r_a); transport through the quasilaminar sub-layer, which is the air directly in contact with a surface (r_b); and the physical, chemical or biological destruction loss of the molecule at the surface (the ocean in this case) (r_c).

$$v_d = \frac{1}{r_a + r_b + r_c} \quad (2)$$

The relative importance of the different resistances is dependent primarily on the gas being considered. Gases that are highly soluble (such as sulfur dioxide) giving them will have a small r_c , so their limiting factors are the atmospheric resistances (r_a and r_b). Less soluble gases such as ozone are limited by the chemical loss at the surface (r_c). Wesely (1989) gives a value of $r_c = 2000 \text{ s m}^{-1}$ for ozone in all water types, and this is used in most atmospheric chemistry models (Hardacre et al., 2015; Luhar et al., 2017, 2018). This chemical loss of ozone, is the limiting factor for ozone deposition (95% of the sum of the resistances is the value of r_c (Chang et al., 2004)) and so yields an almost constant (0.05 cm s^{-1}) overall deposition velocity, with only small variation due to meteorological variation in r_a and r_b . However, observations of ozone deposition show significant variability. From the observations collated by Ganzeveld et al. (2009), fresh water deposition velocities range from 0.01 to 0.1 cm s^{-1} , with ocean observations ranging from 0.01 to 0.15 cm s^{-1} . The higher values of ocean observations are likely influenced by coastal effects such as those described by Bariteau et al. (2010), with the open ocean observations being substantially lower ($0.009 - 0.065 \text{ cm s}^{-1}$) (Helmig et al., 2012).

Given this observed variability, the fixed r_c approach appears overly simple. Based on Fairall et al. (2007) and Luhar et al.

(2017), Luhar et al. (2018) formulated a new scheme for calculating r_c which explicitly takes into account the simultaneous effects of chemical reactions in the ocean with iodide and the physical processes of molecular diffusion and turbulent transfer in the ocean surface. This considers three oceanic layers (Fig. 1); a very shallow "surface reaction-diffusion" layer, that represents the region of the ocean through which the O_3 can diffuse from the ocean before it reacts in the ocean, which lies above a thicker turbulent layer which is mixed by wind-stress driven turbulence, which in turn, lies above the the 'bulk' ocean. The loss of O_3 is determined by the chemical reactivity within the reaction-diffusion layer, which is supplied by I^- from below. The resulting scheme derived by Luhar et al. (2018), is based on solving the fundamental equation for the conservation of mass of a reacting and diffusing substance in water (Fairall et al., 2007), yields equation 3

$$r_c = \frac{1}{\alpha\sqrt{aD}} \left[\frac{\Psi K_1(\xi_\delta) \sinh(\lambda) + K_0(\xi_\delta) \cosh(\lambda)}{\Psi K_1(\xi_\delta) \cosh(\lambda) + K_0(\xi_\delta) \sinh(\lambda)} \frac{\Psi K_1(\xi_\delta) \sinh(\lambda) + K_0(\xi_\delta) \cosh(\lambda)}{\Psi K_1(\xi_\delta) \cosh(\lambda) + K_0(\xi_\delta) \sinh(\lambda)} \right] \quad (3)$$

10 where α is the dimensionless solubility, a the chemical reactivity of O_3 with sea-surface iodide (the product of $[I^-]$ and the second order rate-coefficient(k)), D the diffusivity of O_3 in water, Ψ is defined in equation 5 where u_w^* is the water-side friction velocity, δ_m is the thickness of the reaction-diffusion layer of the sea-surface microlayer, κ the von Kármán constant (≈ 0.4), ξ_δ defined in equation 4, λ defined in equation 6 and K_0 , K_1 are modified Bessel functions of the second kind with order zero and one respectively. where,

$$15 \quad \xi_\delta = \left[\frac{4a}{\kappa u_w^*} \left(\delta_m + \frac{D}{\kappa u_w^*} \right) \right]^{\frac{1}{2}} \quad (4)$$

$$\Psi = \left[1 + \left(\frac{\kappa u_w^* \delta_m}{D} \right) \right]^{\frac{1}{2}} \quad (5)$$

$$\lambda = \delta_m \sqrt{\frac{a}{D}} \quad (6)$$

20 In this paper we include this description of ozone deposition to the ocean into the GEOS-Chem model and explore the impact on the composition of the troposphere. In Section 2 we describe the GEOS-Chem model and the implementation of the new scheme. In Section 3 we describe the impact of the new scheme on the deposition velocities of ozone to the ocean in the model and assess them against observations of deposition velocities. The impacts of the new deposition scheme on the composition of the troposphere are described in Section 4 together with comparison to observations of surface ozone. Finally we draw some conclusions in Section 5.

2 Modeling

We use here Version 12.1.1 of the 3-D global chemical transport model GEOS-Chem Classic (Bey et al., 2001) (www.geos-chem.org) driven by assimilated meteorology from the NASA Global Modeling and Assimilation Office. GEOS-Chem includes HOx-NOx-VOC-ozone-halogen-aerosol tropospheric chemistry with the halogen (chlorine, bromine and iodine) chemistry being the most recent addition as described by Sherwen et al. (2016b). In this work we use global simulations run at a

spatial resolution of $2^\circ \times 2.5^\circ$ with meteorological data from MERRA-2 (Gelaro et al., 2017). Whilst $2^\circ \times 2.5^\circ$ is a relatively coarse model resolution, we don't believe that there is any significant sub-grid scale correlation between tropospheric ozone concentration and sea-surface I^- concentration therefore this should not result in a resolution dependence. We run simulations for 2006-2008, 2013 and 2014 so that field observations are compared with the appropriate meteorology. Analysis of the sensitivity of the ozone deposition velocity to its controlling factors uses model runs for 2014. For the analysis of the impact on atmospheric composition, a one year 'spin-up' was used to allow the tropospheric composition to reach equilibrium before the subsequent analysis year.

As with many other atmospheric chemistry and transport models, the dry deposition in GEOS-Chem uses a resistance-in-series scheme based on that of Wesely (1989). The details of this implementation are described by Wang et al. (1998). For terrestrial land types, the dry deposition in GEOS-Chem is generally consistent with observations (Silva and Heald, 2018).

We follow the Luhar et al. (2018) methodology, and as shown in Equation 3, this requires the calculation of $\alpha, D, k, [I^-]$ and δ_m . Where these require the sea surface temperature (T -K), T_s , we use the skin temperature from the MERRA-2 meteorological fields.

We use the dimensionless solubility of ozone in water α from Morris (1988)

$$\alpha = 10^{-0.25 - 0.013(T - 273.16)} \quad (7)$$

the diffusivity D ($m^2 s^{-1}$) from Johnson and Davis (1996).

$$D = 1.1 \times 10^{-6} \exp\left(\frac{-1896}{T}\right) \quad (8)$$

the temperature dependent k ($M^{-1} s^{-1}$) for the aqueous phase reactions between ozone and iodide from Magi et al. (1997)

$$k = \exp\left(\frac{-8772.2}{T} + 51.5\right) \quad (9)$$

the reaction-diffusion sublayer thickness (m) is defined as

$$\delta_m = \sqrt{\frac{D}{a}} \quad (10)$$

and the global ocean iodide concentration distribution $[I^-]$ (M) is taken from the most recent global climatology (Sherwen et al., 2019).

The waterside friction velocity u_w^* ($m s^{-1}$) can be calculated from the MERRA-2 atmospheric friction velocity u^* using equation 11 where ρ_a and ρ_w are the density of the atmosphere and seawater respectively. This assumes that drivers of atmospheric stress result in an equivalent oceanic stress (Fairall et al., 2007).

$$u_w^* = \sqrt{\frac{\rho_a}{\rho_w}} u^* \approx 0.0345 u^* \quad (11)$$

Three significant differences exist in our choice of parameters compared to the work of Luhar et al. (2018). Firstly, we use the Sherwen et al. (2019) ocean iodide distributions, whereas they use MacDonald et al. (2014). Sherwen et al. (2019) is based

on a recent collation of sea surface iodide observations (Chance et al., 2019) which are interpolated using a machine learning approach. MacDonald et al. (2014) is based on a more restrictive observational dataset and uses a simple temperature based parameterization. Sherwen et al. (2019) calculates a global average sea-surface $[I^-]$ of 105.8 ± 45.6 nM which is a significant increase from the global mean of 58.9 ± 34.9 nM found by MacDonald et al. (2014). Secondly, we include a variable thickness for the reaction-diffusion sublayer (Equation 10). Luhar et al. (2018) explore various options for this parameter and decide upon a fixed value of δ_m (3.0×10^{-6} m) as this gave the best fit of v_d to observations from Helmig et al. (2012). We decide to use the variable definition in our work as this is more physically based and produces comparable results in our simulations. However, it should be noted that using this definition of δ_m results in terms cancelling in equation 6 such that $\lambda = 1$. This thus simplifies equation 3 somewhat as $\sinh(1) \approx 1.175$ and $\cosh(1) \approx 1.543$. Some of the implications for different choices for δ_m are explored in Luhar et al. (2018). Finally, we differentiate between salt and fresh water, using a salinity map from the World Ocean Atlas 2013 (Zweng et al., 2013). The new ozone deposition scheme is only applied to ocean water. Anywhere with water and a salinity below 20 PSU or no salinity value (fresh water) is assigned a constant $r_c = 2000$ s m⁻¹. One further difference between this work and that of Luhar et al. (2018) is in the global chemistry transport model and its chemistry scheme. GEOS-Chem includes halogen chemistry which has a notable effect on tropospheric ozone (Sherwen et al., 2016b). Any additional computational expense of implementing this improved r_c calculation will be small as the deposition velocity calculation remains a two dimensional problem, unlike the chemistry or transport calculations which are three dimensional problems. It would be possible to apply this method of calculating r_c to other chemical species. If the appropriate sink processes were understood, chemical kinetics available, and concentrations of reactant species known. For this to be useful, the species would need to have a high dependence on r_c (rather than the physical resistances), but also for dry deposition to form a substantial part of the species budget. It is not clear whether any species, other than O₃, would meet these requirements.

3 Impact of new parameterization on deposition

3.1 Change in global distribution of deposition velocities

Figure 2 shows the annual average global distribution of oceanic ozone deposition velocity for both the standard model and the updated surface resistance scheme, along with the percentage difference between the two. Table 1 gives a statistical description of global ozone dry deposition in the model. The near uniform value of v_d with the standard uniform surface resistance can be observed in Fig. 2 (top). The small variability in deposition velocity seen is driven by differences in the meteorology. This contrasts with the variability calculated with the new scheme (middle). The two schemes also differ in the magnitude of the deposition velocities. The largest change occurs in the coolest waters towards the poles, with the Southern Ocean having a reduction of over 90% compared to the standard scheme, whereas the tropics can have as little as a 10% reduction. The distribution of v_d is similar to that shown in Luhar et al. (2018), despite our use of the variable thickness for the reaction-diffusion sublayer and the use of the [Sherwen et al. \(2016a\)](#) [Sherwen et al. \(2019\)](#) iodide. On an area-weighted basis, the deposition of ozone to the ocean surface is reduced from 0.0464 cm s⁻¹ (25th and 75th percentiles of 0.0461 cm s⁻¹ and 0.0471 cm s⁻¹

respectively), to 0.0231 cm s^{-1} (25th and 75th percentiles of 0.0121 cm s^{-1} and 0.0303 cm s^{-1} respectively). This amounts to a halving of the mean ocean deposition velocity. The reduction of deposition velocity to the ocean results in a reduction of 17% in the global average deposition velocity (table-Table 1). The total annual loss of tropospheric ozone to dry deposition decreases by 104 Tg y^{-1} to 758 Tg y^{-1} , substantially lower than the average of $978 \pm 127 \text{ Tg y}^{-1}$ from the multi-model comparison found by Hardacre et al. (2015) but comparable to the value obtained by Luhar et al. (2018) of $722 \pm 87.3 \text{ Tg y}^{-1}$. The seasonal changes in ozone oceanic deposition velocities from the new annual mean are shown in Fig. 3. This shows the response of the ozone deposition velocity to changes in sea-surface temperature with the highest value in the summer for each hemisphere and the lowest values occurring in the winter. In the extra-tropical oceans, deposition velocities are predicted to vary by roughly 50% between summer and winter. Deposition velocities in the tropics remain relatively constant over the year.

10 3.2 Comparison to observations

Here we evaluate the modelled deposition velocities against the open ocean measurements from Helmig et al. (2012) who measured ozone fluxes to the ocean surface using eddy covariance. These measurements are from a series of five cruises between 2006 to 2008 that took place in the Gulf of Mexico, eastern Pacific Ocean, western Atlantic Ocean and Southern Ocean (Fig. 4). These cruises were made ~~it-in~~ waters of significantly different sea surface temperature (SST) and show a trend between deposition velocity and the SST. The comparisons between observations and model were made using daily average values with model output selected from grid boxes that the ship track passed through in that 24 hour period. The old scheme (grey line) overestimates the rate of dry deposition substantially and fails to capture any of the temperature dependencies seen in the observations. The new scheme (black line) is a significant improvement, agreeing more with the magnitude and the temperature dependence of the observations. It should be noted that there are significant uncertainties in the measured deposition velocities at low values (Helmig et al., 2012). Combining all the measurements made by Helmig et al. (2012) and comparing to the model predictions for deposition velocity, the root mean square error for the model agreement was reduced from 0.04 cm s^{-1} using the default scheme to 0.01 cm s^{-1} using the new scheme. Whilst the overall agreement of the model with the observations has been improved, the model still fails to capture all of the variability of the deposition velocity measurements. This may be an issues with the resolution of the model ($2^\circ \times 2.5^\circ$) which may fail to capture local conditions. Uncertainties in sea-surface iodide concentration or the lack of other sea-surface reactions (reaction between ozone and DOC) may also contribute.

3.3 Sensitivity of new scheme

We explore here the sensitivity of the new scheme to our choice of parameterization for u_w^* , Γ^- , k , D and α . Five model simulations were each run for a year with only one of the parameters allowed to vary. When constrained, the value of each parameter was set to a representative value of the global average (α , D , k calculated with an SST of 289 K, sea-surface iodide concentration of 106 nM, and u_w^* of 0.01 m s^{-1}). A sixth model simulation was run with all r_c parameters kept constant at these representative values. The resulting dependence of deposition velocity for each simulation is shown in Fig. 5 as a function of sea surface temperature. If all of the terms needed to calculate r_c are kept constant (top left) the oceanic deposition

velocity does not vary with temperature. Similarly, if only the water side friction velocity is allowed to vary, no dependence on temperature is seen. Surprisingly the temperature dependence of the iodide concentration is not large, reflecting its square root dependence in the calculation of r_c . The two most important factors for giving the observed temperature dependence are k and α . Of these two terms, the dependence on rate coefficient carries the most uncertainty.

5 Magi et al. (1997) is the only temperature dependent rate constant in the literature. Other studies are at single temperatures and show differences (Luhar et al., 2018). We explore the impact of these differences by running a number of simulations with different values of the rate constants (Fig. 6). We use the single temperature rate constants given by Garland et al. (1980) ($2.0 \times 10^9 \text{ M}^{-1}\text{s}^{-1}$ at 298K), Liu et al. (2001) ($1.2 \times 10^9 \text{ M}^{-1}\text{s}^{-1}$ at 298K) and Hu et al. (1995) ($4.0 \times 10^9 \text{ M}^{-1}\text{s}^{-1}$ at 277K). We also use the upper (equation 12) and lower (equation 13) estimates of Magi et al. (1997) (based on the reported error of the
10 series of measurements).

$$k = \exp\left(\frac{-9261.6}{T} + 53.6\right) \quad (12)$$

$$k = \exp\left(\frac{-8796.2}{T} + 50.8\right) \quad (13)$$

Figure 6 shows that the uncertainties in k can substantially impact the modeled deposition velocity, with the difference between a temperature invariant and temperature dependent k most notable. The temperature independent rate constants don't
15 correctly simulate the observed temperature variability in deposition velocity. The higher estimate from Magi et al. (1997) over estimates the deposition velocity in warm waters, with the lower estimate underestimating in cold waters. As discussed in section 1 iodide is the dominant but not only removal mechanism for ozone at the ocean surface. Given the upper and mid value of the Magi et al. (1997) rate constants there does not appear to be much potential role for other oceanic components to play an important role. On the other hand if the lower values of the Magi et al. (1997) rate constant were correct, this would
20 allow for inclusion of additional reactions (such as that of ozone with dissolved organic carbon) in the model parameterization without overestimating deposition velocities.

4 Atmospheric impact

4.1 Global impacts

The net decrease in deposition of ozone to the surface results in an increase in both surface and column ozone mixing ratio
25 (Fig. 7). The greatest increase in ozone concentration occurs in the boundary layer with the magnitude of the change decreasing with altitude through the troposphere. The largest increases in ozone mixing ratio is above the oceans, most notably the extra-tropics ~~with increases becoming negligible with the Southern Hemisphere extra-tropics being the area of greatest increase.~~
The increase in surface ozone concentration becomes small over land. Surface grid boxes that experience a 10% increase or greater in ozone mixing ratio represent 34% of the total surface grid box count. Table 2 gives diagnostics on the oxidative

capacity of the troposphere for both the old and new schemes. The increase in ozone mixing ratio shown in Fig. 7 equates to an increase in the tropospheric ozone burden of 4 Tg y^{-1} (1.2%). This effects the global chemical production and loss of O_3 , however these changes are globally minimal at -0.6% and 1.2%, respectively.

Another consequence of the increased ozone mixing ratio is a small increase in global mean OH concentration of 0.9% (table 2), resulting in a decrease in the tropospheric methane lifetime from 8.3 years to 8.2 years.

Seasonal variations are also observed in the changes in surface ozone mixing ratio due to the new scheme (Fig. 8). The largest increase is observed over the oceans during the winter of each hemisphere due to both the lower deposition velocity that occurs in colder waters and due to the dry deposition playing a larger role in the ozone budget when photolysis is at a seasonal low.

4.2 Regional impacts

To assess the predictions of surface ozone mixing ratios in the model, comparisons were made with surface ozone measurements from a number of World Meteorological Organization (WMO) Global Atmosphere Watch (GAW; http://www.wmo.int/pages/prog/arep/gaw/gaw_home_en.html, accessed through EBAS <http://ebas.nilu.no/>, the database infrastructure operated by NILU – Norwegian Institute for Air Research) sites around the world (Fig. 9, shown south to north).

The largest area of change in surface ozone in the model is in the Southern Ocean. GAW sites in this region (Cape Grim, Ushuaia and Neumayer) show increases in ozone prediction during their winter/spring with the increase most notable in the Antarctic site of Neumayer. Previous work in GEOS-Chem by Schmidt et al. (2016) and Sherwen et al. (2016a) as well as inter-model comparison with ozonesonde observations by Young et al. (2013) show a low bias of GEOS-Chem and other models in the Southern Ocean and Antarctic region. The increased surface ozone mixing ratio brings the model predictions closer to the observations in the Southern Ocean region (Fig. 9), as well as the reductions in root mean square error (RMSE), a measure of disagreement between the model and observations, (table 3) which is reduced by an average of 44% across these three locations. Whilst there are considerable improvements in the Antarctic location of Neumayer, surface ozone demonstrate a 'lag' in responding to Antarctic spring/summer. The model also fails to capture the spring time halogen induced ozone depletion events that are observed at Neumayer.

A comparison to a clean tropical location is made using the GAW site in Cape Verde. Tropical waters are where there has been the least change in ozone deposition velocity, as well as the least increase in ozone mixing ratio both annually and seasonally. Whilst there is a slight increase in predicted ozone compared to the observations at Cape Verde both the model using the old and new schemes for ozone deposition are within the error of the observations, and there is a small reduction in RMSE.

Mace Head, Ireland offers an evaluation of model performance in a mid-latitude inflow region, the inflow of air from the North Atlantic at this site is the dominant component into Europe. Comparing the increase to the observations at Mace Head the improvement is notable with the models error reduced by approximately 30%.

The most northerly of the GAW sites in this comparison is the Villum research station in Greenland. There is a minimal increase in predicted surface ozone (~ 1 ppbv) at this site and the resulting RMSE (table 3) shows for Villum an increases of 0.3 ppbv with the new parameterization. The observations at Villum also show spring time ozone depletion events and, as with Neumayer, the model fails to capture this.

Overall, the majority of GAW sites show an improved comparisons with observations due to the implementation of the new r_c scheme and supporting that this change is an improvement to the model.

5 Conclusions

We have implemented a new scheme for the deposition of ozone to the ocean into the GEOS-Chem chemistry transport model based on the work of Luhar et al. (2018). This considers the physical and chemical controls of ozone loss in the sea surface. In contrast to Luhar et al. (2018), our work has used a variable surface micro-layer depth and the higher ocean iodide concentrations from Sherwen et al. (2019). The new scheme results in a halving of the global mean ozone deposition velocity to the ocean, leading to a small increase in the global tropospheric ozone burden and some regional increases in ozone mixing ratios of up to 30% in the high latitude boundary layer, notably around the Southern Ocean. The new scheme improves comparisons between the model and observations in oceanic regions. The increase in tropospheric ozone concentration also has a minor effect on the global mean OH and CH₄ lifetimes.

The new parameterization improves comparisons between the model and observed oceanic dry deposition velocities. However, no account has been made of potential additional processes such as the reaction of O₃ with DOC, DMS and bromide at the ocean surface. Uncertainties in the rate constant for the reaction between I⁻ and O₃ could allow room for such additional reactions to play a role. Reduced uncertainty in the temperature dependent rate constant for this reaction would be useful. In addition it seems likely that the interaction between DOC and ozone would be complex. It seems likely that some compounds will act as deposition enhancers, whilst others may act as inhibitors (Martino et al., 2012; Shaw and Carpenter, 2013). Further lab, field and modeling studies will be required to better constrain this.

Code availability. GEOS-Chem version 12.1.1 used in this project DOI: 10.5281/zenodo.2249246 . This code will be implemented into forthcoming update of the GEOS-Chem available from <https://github.com/geoschem/geos-chem/tree/master> Code is also available on request.

Author contributions. R.J.P performed model development, ran the simulations and analysed the output. M.J.E., L.J.C. and R.J.P developed the project. T.S assisted in model development. D.H. provided ozone deposition data. Paper was written by R.J.P with contributions from all co-authors.

Competing interests. The authors declare that they have no conflict of interest.

Acknowledgements. We thank WMO GAW and the individual sites that make up this network, for the availability of the surface ozone data. This project was undertaken on the Viking Cluster, which is a high performance compute facility provided by the University of York. We are grateful for computational support from the University of York High Performance Computing service, Viking and the Research Computing team.

R.J.P. thanks NERC SPHERES DTP (NE/L002574/1) for funding his PhD studentship.

L.J.C., M.J.E., T.S. thank funding from Natural Environment Research Council (NERC) through the grant "Iodide in the ocean: distribution and impact on iodine flux and ozone loss" (NE/N009983/1)

L.J.C. acknowledges funding from the European Research Council (ERC) under the European Union's horizon 2020 programme (Grant agreement No. 833290)

References

- Bariteau, L., Helmig, D., Fairall, C. W., Hare, J. E., Hueber, J., and Lang, E. K.: Determination of oceanic ozone deposition by ship-borne eddy covariance flux measurements, *ATMOS MEAS TECH*, 3, 441–455, <https://doi.org/10.5194/amt-3-441-2010>, <https://www.atmos-meas-tech.net/3/441/2010/>, 2010.
- 5 Bey, I., Jacob, D. J., Yantosca, R. M., Logan, J. A., Field, B. D., Fiore, A. M., Li, Q., Liu, H. Y., Mickley, L. J., and Schultz, M. G.: Global modeling of tropospheric chemistry with assimilated meteorology: Model description and evaluation, *J GEOPHYS RES-ATMOS*, 106, 23 073–23 095, <https://doi.org/10.1029/2001JD000807>, 2001.
- Carpenter, L., MacDonald, S., Shaw, M., Kumar, R., Saunders, R., Parthipan, R., Wilson, J., and Plane, J.: Atmospheric iodine levels influenced by sea surface emissions of inorganic iodine, *NAT GEOSCI*, 6, 108–111, <https://doi.org/10.1038/ngeo1687>, 2013.
- 10 Chance, R., Tinel, L., Sherwen, T., Baker, A., Bell, T., Brindle, J., Campos, M., Croot, P., Ducklow, H., He, P., Hoogakker, B., Hopkins, F., Hughes, C., Jickells, T., Loades, D., Macaya, D., Mahajan, A., Malin, G., Phillips, D., Sinha, A., Sarkar, A., Roberts, I., Roy, R., Song, X., Winklebauer, H., Wuttig, K., Yang, M., Zhou, P., and Carpenter, L.: Global sea-surface iodide observations, 1967–2018, *SCI DATA*, 6, <https://doi.org/10.1038/s41597-019-0288-y>, 2019.
- Chang, W., Heikes, B., and Lee, M.: Ozone deposition to the sea surface: chemical enhancement and wind speed dependence, *ATMOS ENVIRON*, 38, 1053–1059, <https://doi.org/10.1016/j.atmosenv.2003.10.050>, 2004.
- 15 Fairall, C. W., Helmig, D., Ganzeveld, L., and Hare, J.: Water-side turbulence enhancement of ozone deposition to the ocean, *ATMOS CHEM PHYS*, 7, 443–451, <https://doi.org/10.5194/acp-7-443-2007>, <https://www.atmos-chem-phys.net/7/443/2007/>, 2007.
- Ganzeveld, L., Helmig, D., Fairall, C., Hare, J., and Pozzer, A.: Atmosphere-ocean ozone exchange: A global modeling study of biogeochemical, atmospheric, and waterside turbulence dependencies, *GLOBAL BIOGEOCHEM CY*, 23, <https://doi.org/10.1029/2008GB003301>,
20 2009.
- Garland, J. A. and Curtis, H.: Emission of iodine from the sea surface in the presence of ozone, *J GEOPHYS RES-OCEANS*, 86, 3183–3186, <https://doi.org/10.1029/JC086iC04p03183>, 1981.
- Garland, J. A., Elzerman, A. W., and Penkett, S. A.: The mechanism for dry deposition of ozone to seawater surfaces, *J GEOPHYS RES-OCEANS*, 85, 7488–7492, <https://doi.org/10.1029/JC085iC12p07488>, <https://agupubs.onlinelibrary.wiley.com/doi/abs/10.1029/JC085iC12p07488>, 1980.
- 25 1029/JC085iC12p07488, 1980.
- Gelaro, R., McCarty, W., Suárez, M. J., Todling, R., Molod, A., Takacs, L., Randles, C. A., Darmenov, A., Bosilovich, M. G., Reichle, R., Wargan, K., Coy, L., Cullather, R., Draper, C., Akella, S., Buchard, V., Conaty, A., da Silva, A. M., Gu, W., Kim, G.-K., Koster, R., Lucchesi, R., Merkova, D., Nielsen, J. E., Partyka, G., Pawson, S., Putman, W., Rienecker, M., Schubert, S. D., Sienkiewicz, M., and Zhao, B.: The Modern-Era Retrospective Analysis for Research and Applications, Version 2 (MERRA-2), *Journal of Climate*, 30, 5419–5454,
30 <https://doi.org/10.1175/JCLI-D-16-0758.1>, 2017.
- Hardacre, C., Wild, O., and Emberson, L.: An evaluation of ozone dry deposition in global scale chemistry climate models, *ATMOS CHEM PHYS*, 15, 6419–6436, <https://doi.org/10.5194/acp-15-6419-2015>, <https://www.atmos-chem-phys.net/15/6419/2015/>, 2015.
- Hayase, S., Yabushita, A., Kawasaki, M., Enami, S., Hoffmann, M. R., and Colussi, A. J.: Heterogeneous Reaction of Gaseous Ozone with Aqueous Iodide in the Presence of Aqueous Organic Species, *J PHYS CHEM A*, 114, 6016–6021, <https://doi.org/10.1021/jp101985f>,
35 2010.

- Helmig, D., Lang, E. K., Bariteau, L., Boylan, P., Fairall, C. W., Ganzeveld, L., Hare, J. E., Hueber, J., and Pallandt, M.: Atmosphere-ocean ozone fluxes during the TexAQS 2006, STRATUS 2006, GOMECC 2007, GasEx 2008, and AMMA 2008 cruises, *J GEOPHYS RES-ATMOS*, 117, <https://doi.org/10.1029/2011JD015955>, 2012.
- Hu, J. H., Shi, Q., Davidovits, P., Worsnop, D. R., Zahniser, M. S., and Kolb, C. E.: Reactive Uptake of Cl₂(g) and Br₂(g) by Aqueous Surfaces as a Function of Br- and I- Ion Concentration: The Effect of Chemical Reaction at the Interface, *J. Phys. Chem.*, 99, 8768–8776, <https://doi.org/10.1021/j100021a050>, 1995.
- IPCC Stocker, T., Qin, D., Plattner, G., Tignor, M., Allen, S., Boschung, J., Nauels, A., Xia, Y., Bex, V., and Midgley, P.: *Climate Change 2013: The Physical Science Basis. Contribution of Working Group I to the Fifth Assessment Report of the Intergovernmental Panel on Climate Change*, 2013.
- 10 Johnson, P. N. and Davis, R. A.: Diffusivity of Ozone in Water, *J CHEM ENG DATA*, 41, 1485–1487, <https://doi.org/10.1021/je9602125>, 1996.
- Liu, Q., Schurter, L. M., Muller, C. E., Aloisio, S., Francisco, J. S., and Margerum, D. W.: Kinetics and Mechanisms of Aqueous Ozone Reactions with Bromide, Sulfite, Hydrogen Sulfite, Iodide, and Nitrite Ions, *INORG CHEM*, 40, 4436–4442, <https://doi.org/10.1021/ic000919j>, 2001.
- 15 Luhar, A. K., Galbally, I. E., Woodhouse, M. T., and Thatcher, M.: An improved parameterisation of ozone dry deposition to the ocean and its impact in a global climate-chemistry model, *ATMOS CHEM PHYS*, 17, 3749–3767, <https://doi.org/10.5194/acp-17-3749-2017>, 2017.
- Luhar, A. K., Woodhouse, M. T., and Galbally, I. E.: A revised global ozone dry deposition estimate based on a new two-layer parameterisation for air–sea exchange and the multi-year MACC composition reanalysis, *ATMOS CHEM PHYS*, 18, 4329–4348, <https://doi.org/10.5194/acp-18-4329-2018>, <https://www.atmos-chem-phys.net/18/4329/2018/>, 2018.
- 20 MacDonald, S. M., Gómez Martín, J. C., Chance, R., Warriner, S., Saiz-Lopez, A., Carpenter, L. J., and Plane, J. M. C.: A laboratory characterisation of inorganic iodine emissions from the sea surface: dependence on oceanic variables and parameterisation for global modelling, *ATMOS CHEM PHYS*, 14, 5841–5852, <https://doi.org/10.5194/acp-14-5841-2014>, <https://www.atmos-chem-phys.net/14/5841/2014/>, 2014.
- Magi, L., Schweitzer, F., Pallares, C., Cherif, S., Mirabel, P., and George, C.: Investigation of the Uptake Rate of Ozone and Methyl Hydroperoxide by Water Surfaces, *J PHYS CHEM A*, 101, 4943–4949, <https://doi.org/10.1021/jp970646m>, 1997.
- 25 Malley, C. S., Henze, D. K., Kuylentierna, J. C., Vallack, H. W., Davila, Y., Anenberg, S. C., Turner, M. C., and Ashmore, M. R.: Updated Global Estimates of Respiratory Mortality in Adults \geq 30 Years of Age Attributable to Long-Term Ozone Exposure, *ENVIRON HEALTH PERSP*, 125, 087021, <https://doi.org/10.1289/EHP1390>, 2017.
- Martino, M., L  z  , B., Baker, A., and Liss, P.: Chemical controls on ozone deposition to water, *Geophys. Res. Lett.*, 39, L05809, <https://doi.org/10.1029/2011GL050282>, 2012.
- 30 Morris, J.: The aqueous solubility of ozone - A review, *Ozone news*, 1, 14–16, 1988.
- Sakamoto, Y., Yabushita, A., Kawasaki, M., and Enami, S.: Direct Emission of I₂ Molecule and IO Radical from the Heterogeneous Reactions of Gaseous Ozone with Aqueous Potassium Iodide Solution, *J PHYS CHEM A*, 113, 7707–7713, <https://doi.org/10.1021/jp903486u>, 2009.
- Sarwar, G., Kang, D., Foley, K., Schwede, D., and Gantt, B.: Technical note: Examining ozone deposition over seawater, *ATMOS ENVIRON*, 141, 255–262, <https://doi.org/10.1016/j.atmosenv.2016.06.072>, 2016.
- Schmidt, J. A., Jacob, D. J., Horowitz, H. M., Hu, L., Sherwen, T., Evans, M. J., Liang, Q., Suleiman, R. M., Oram, D. E., Le Breton, M., Percival, C. J., Wang, S., Dix, B., and Volkamer, R.: Modeling the observed tropospheric BrO background: Importance of multiphase chemistry

- and implications for ozone, OH, and mercury, *J GEOPHYS RES-ATMOS*, 121, 11,819–11,835, <https://doi.org/10.1002/2015JD024229>, 2016.
- Shaw, M. D. and Carpenter, L. J.: Modification of Ozone Deposition and I₂ Emissions at the Air-Aqueous Interface by Dissolved Organic Carbon of Marine Origin, *ENVIRON SCI TECHNOL*, 47, 10947–10954, <https://doi.org/10.1021/es4011459>, 2013.
- 5 Sherwen, T., Evans, M. J., Carpenter, L. J., Andrews, S. J., Lidster, R., Dix, B., Koenig, T. K., Sinreich, R., Ortega, I., Volkamer, R., Saiz-Lopez, A., Prados-Roman, C., Mahajan, A. S., and Ordóñez, C.: Iodine's impact on tropospheric oxidants: a global model study in GEOS-Chem, *ATMOS CHEM PHYS*, 16, 1161–1186, <https://doi.org/10.5194/acp-16-1161-2016>, <https://www.atmos-chem-phys.net/16/1161/2016/>, 2016a.
- Sherwen, T., Schmidt, J. A., Evans, M. J., Carpenter, L. J., Großmann, K., Eastham, S. D., Jacob, D. J., Dix, B., Koenig, T. K., Sinreich, R., Ortega, I., Volkamer, R., Saiz-Lopez, A., Prados-Roman, C., Mahajan, A. S., and Ordóñez, C.: Global impacts of tropospheric halogens (Cl, Br, I) on oxidants and composition in GEOS-Chem, *ATMOS CHEM PHYS*, 16, 12239–12271, <https://doi.org/10.5194/acp-16-12239-2016>, <https://www.atmos-chem-phys.net/16/12239/2016/>, 2016b.
- 10 Sherwen, T., Chance, R. J., Tinel, L., Ellis, D., Evans, M. J., and Carpenter, L. J.: A machine-learning-based global sea-surface iodide distribution, *EARTH SYST SCI DATA*, 11, 1239–1262, <https://doi.org/10.5194/essd-11-1239-2019>, <https://www.earth-syst-sci-data.net/11/1239/2019/>, 2019.
- Silva, S. J. and Heald, C. L.: Investigating Dry Deposition of Ozone to Vegetation, *J GEOPHYS RES-ATMOS*, 123, 559–573, <https://doi.org/10.1002/2017JD027278>, 2018.
- The Royal Society: Ground-level ozone in the 21st century: future trends, impacts and policy implications, Policy Document, 2008.
- Wang, Y., Jacob, D. J., and Logan, J. A.: Global simulation of tropospheric O₃-NO_x-hydrocarbon chemistry: 1. Model formulation, *J GEOPHYS RES-ATMOS*, 103, 10713–10725, <https://doi.org/10.1029/98JD00158>, 1998.
- 20 Wesely, M.: Parameterization of surface resistances to gaseous dry deposition in regional-scale numerical models, *ATMOS ENVIRON*, 23, 1293–1304, 1989.
- Wesely, M. and Hicks, B.: Some Factors that Affect the Deposition Rates of Sulfur Dioxide and Similar Gases on Vegetation, *Journal of the Air Pollution Control Association*, 27, 1110–1116, <https://doi.org/10.1080/00022470.1977.10470534>, 1977.
- 25 Young, P., Naik, V., Fiore, A., Gaudel, A., Guo, J., Lin, M., Neu, J., Parrish, D., Rieder, H., Schnell, J., Tilmes, S., Wild, O., Zhang, L., Ziemke, J., Brandt, J., Delcloo, A., Doherty, R., Geels, C., Hegglin, M., Hu, L., Im, U., Kumar, R., Luhar, A., Murray, L., Plummer, D., Rodriguez, J., Saiz-Lopez, A., Schultz, M., Woodhouse, M., and Zeng, G.: Tropospheric Ozone Assessment Report: Assessment of global-scale model performance for global and regional ozone distributions, variability, and trends., *Elem Sci Anth*, 6(1), 10, <https://doi.org/http://doi.org/10.1525/elementa.265>, 2018.
- 30 Young, P. J., Archibald, A. T., Bowman, K. W., Lamarque, J.-F., Naik, V., Stevenson, D. S., Tilmes, S., Voulgarakis, A., Wild, O., Bergmann, D., Cameron-Smith, P., Cionni, I., Collins, W. J., Dalsøren, S. B., Doherty, R. M., Eyring, V., Faluvegi, G., Horowitz, L. W., Josse, B., Lee, Y. H., MacKenzie, I. A., Nagashima, T., Plummer, D. A., Righi, M., Rumbold, S. T., Skeie, R. B., Shindell, D. T., Strode, S. A., Sudo, K., Szopa, S., and Zeng, G.: Pre-industrial to end 21st century projections of tropospheric ozone from the Atmospheric Chemistry and Climate Model Intercomparison Project (ACCMIP), *ATMOS CHEM PHYS*, 13, 2063–2090, <https://doi.org/10.5194/acp-13-2063-2013>, <https://www.atmos-chem-phys.net/13/2063/2013/>, 2013.
- 35 Zweng, M., Reagan, J., Antonov, J., Locarnini, R., Mishonov, A., Boyer, T., Garcia, H., Baranova, O., Johnson, D., Seidov, D., and Biddle, M.: World Ocean Atlas 2013 Volume 2: Salinity, NOAA Atlas NESDIS 74, p. 39, 2013.

Table 1. Area-weighted annual average deposition velocity and deposition flux [for 2014](#) by land type for ozone in GEOS-Chem using the default (constant) and new (variable) scheme for calculating r_c . The 25th and 75th percentiles are the subscripts and superscripts respectively for each land types deposition velocity. [The average deposition velocities, 25th and 75th percentiles were calculated from monthly average model values for grid boxes containing 100% of the land type specified unless otherwise stated.](#)

Land type	Constant r_c		Variable r_c	
	O ₃ v_d [cm s ⁻¹]	O ₃ deposition flux [Tg yr ⁻¹]	O ₃ v_d [cm s ⁻¹]	O ₃ deposition flux [Tg yr ⁻¹]
Land	0.2370 ^{0.2612} _{0.1486}	383	0.2370 ^{0.2612} _{0.1486}	386
Ocean	0.0464 ^{0.0471} _{0.0461}	222	0.0231 ^{0.0303} _{0.0121}	122
Mixed*	0.1501 ^{0.1785} _{0.0489}	255	0.1426 ^{0.1755} _{0.0332}	248
Ice	0.0098 ^{0.0100} _{0.0094}	2	0.0098 ^{0.0100} _{0.0094}	2
All	0.0937 ^{0.0582} _{0.0319}	862	0.0781 ^{0.0460} _{0.0124}	758

*Where mixed is defined as any grid box containing less than 100% water and less than 100% land

Table 2. Summary of change to atmospheric oxidative capacity for GEOS-Chem using default (constant) scheme for calculating r_c and the new scheme (variable) [for 2014](#)

	Constant	Variable
Troposphere O ₃ burden [Tg]	324	328
Net chemical O ₃ rate [Tg y ⁻¹]*	450	363
O _X production rate [Tg y ⁻¹]*	5048	5017
O _X loss rate [Tg y ⁻¹]*	4598	4654
O ₃ loss to deposition [Tg y ⁻¹]	862	758
Stratospheric O ₃ flux [Tg y ⁻¹]	412	395
Global annual mean OH [10 ⁶ molec cm ⁻³]	1.17	1.18
Global CH ₄ lifetime [years]	8.3	8.2

*with O_X defined as O₃ + NO₂ + NO₃ + HNO₄ + HNO₃ + N₂O₅ + BrO + HOBr + BrNO₂ + BrNO₃ + IO + HOI + IONO + IONO₂ + OIO + I₂O₂ + I₂O₃ + I₂O₄ + ClO + HOCl + ClNO₂ + ClNO₃ + Cl₂O₂ + OCIO + PAN (peroxyacetylnitrate) + PMN (Peroxymethacryloylnitrate) + PPN (Peroxypropionynitrate) + MPN (Methyl peroxy nitrate) + ETHLN (Ethanal nitrate) + R₄N₂ (≥ C₄ alkyl nitrates) + R4N1 (RO₂ from R₄N₂) + Isoprene Nitrate (ISN1, ISOPNB, ISOPND, ISNP) + Peroxy radical from isoprene (ISNOOA, ISNOOB, ISNOHOO) + MACRN (Methacrolein nitrate) + MVKN (nitrate from methyl vinyl ketone) + PROPNN (propanone nitrate) + O₂NOCH₂C(OO)(CH₃)CH=CH₂ (INO2) + O₂NOCH₂C(OOH)(CH₃)CH=CH₂ (INPN) + HOCH₂C(ONO₂)(CH₃)CHO (MAN2) + PRN1 (RO₂ from propene + NO₃) + PRPN (Peroxide from PRN1) + MACRNO2 (result of HOCH₂C(ONO₂)(CH₃)CHO + OH). For further details on this tagging see the GEOS-Chem wiki <http://wiki.seas.harvard.edu/geos-chem/index.php/FlexChem>

Table 3. Root mean square error (RMSE) of the model with the default (constant) scheme for r_c and the new scheme (variable) when compared to the observations at GAW sites calculated from monthly mean values of observations and model predictions.

GAW site	Constant RMSE [ppbv]	Variable RMSE [ppbv]
Villum	4.2	4.5
Mace Head	5.0	3.4
Cape Verde	2.6	2.0
Cape Grim	3.5	1.5
Ushuaia	2.7	2.0
Neumayer	5.6	2.8

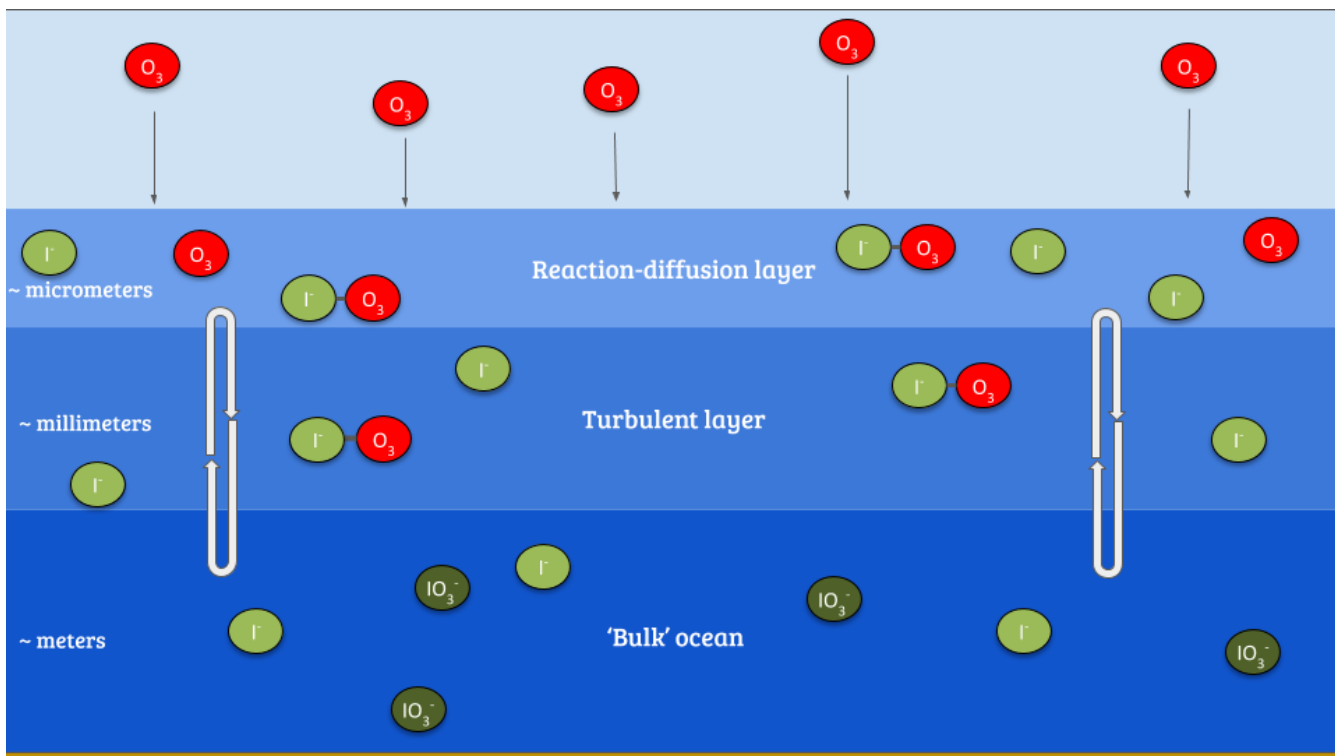


Figure 1. Illustration of the reaction of ozone with I^- in the sea-surface also demonstrating a simplified version of the surface structure where the reaction occurs

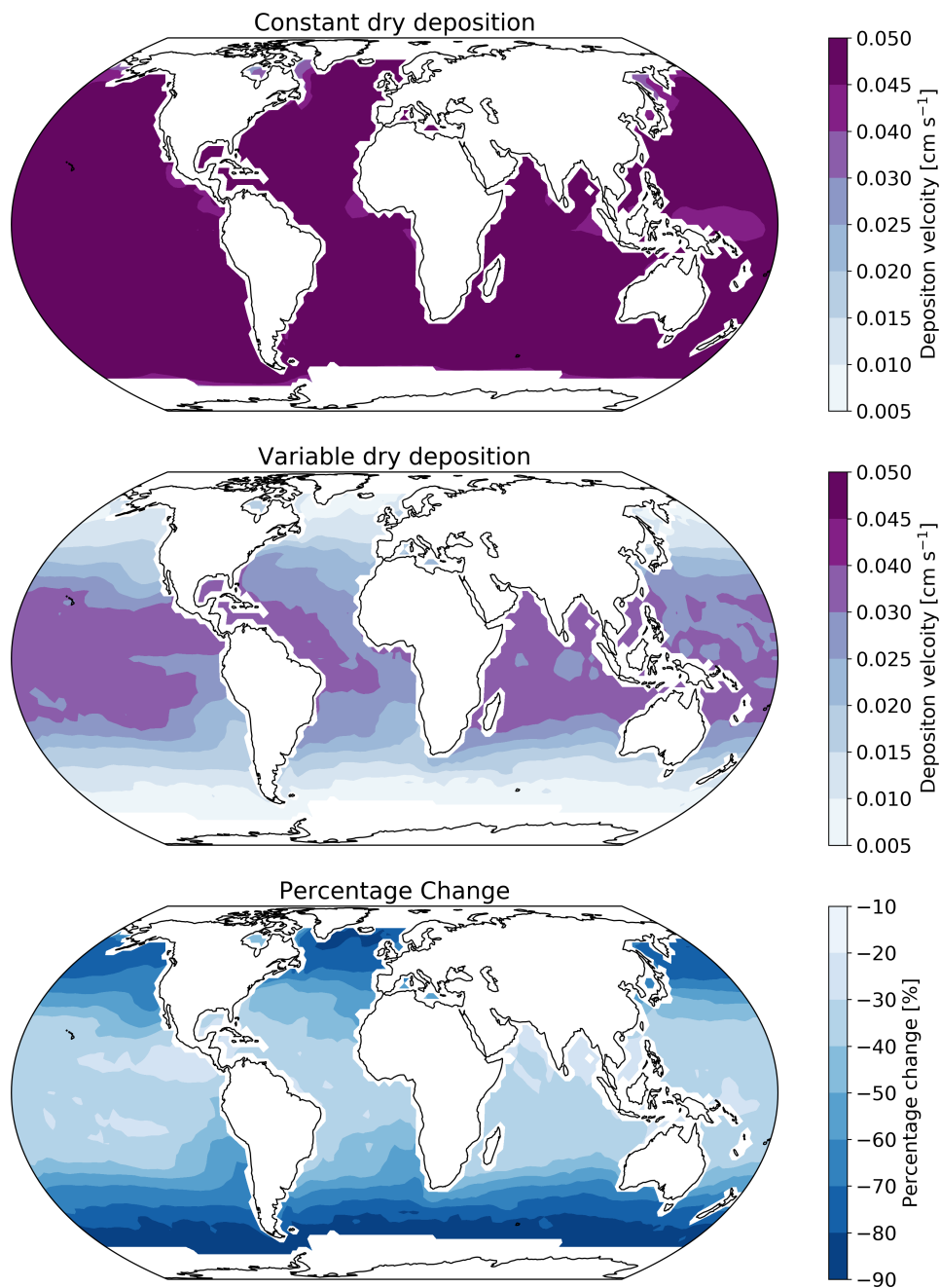


Figure 2. Annual average ozone deposition velocities for 2014 as calculated by GEOS-Chem using the default deposition scheme (top), the new parameterization (middle) and the percentage change between the two schemes (bottom). A $2^\circ \times 2.5^\circ$ land mask has been applied to the deposition velocities to show only the deposition velocity to the ocean.

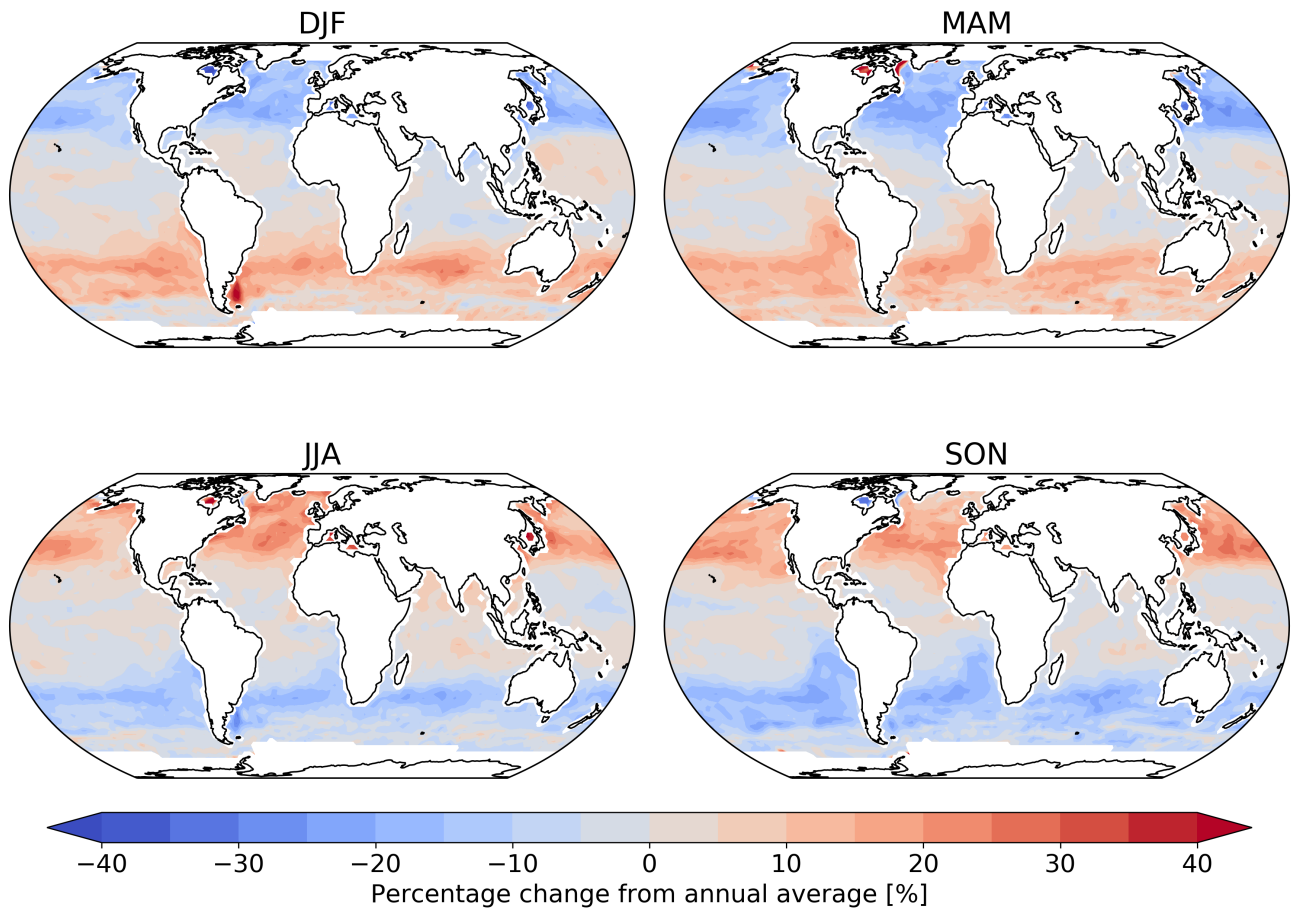


Figure 3. Percentage change from the annual mean deposition velocity for [2014](#) in December, January, February (DJF) March, April, May (MAM) June, July August (JJA) and September, October, November (SON) for the new parameterization (shown in figure 2) demonstrating the deposition velocity responding to changes in sea-surface temperature and ocean I^- concentration with the lowest values of deposition velocity seen in the winter of each hemisphere. Land and ice grid boxes have been masked out.

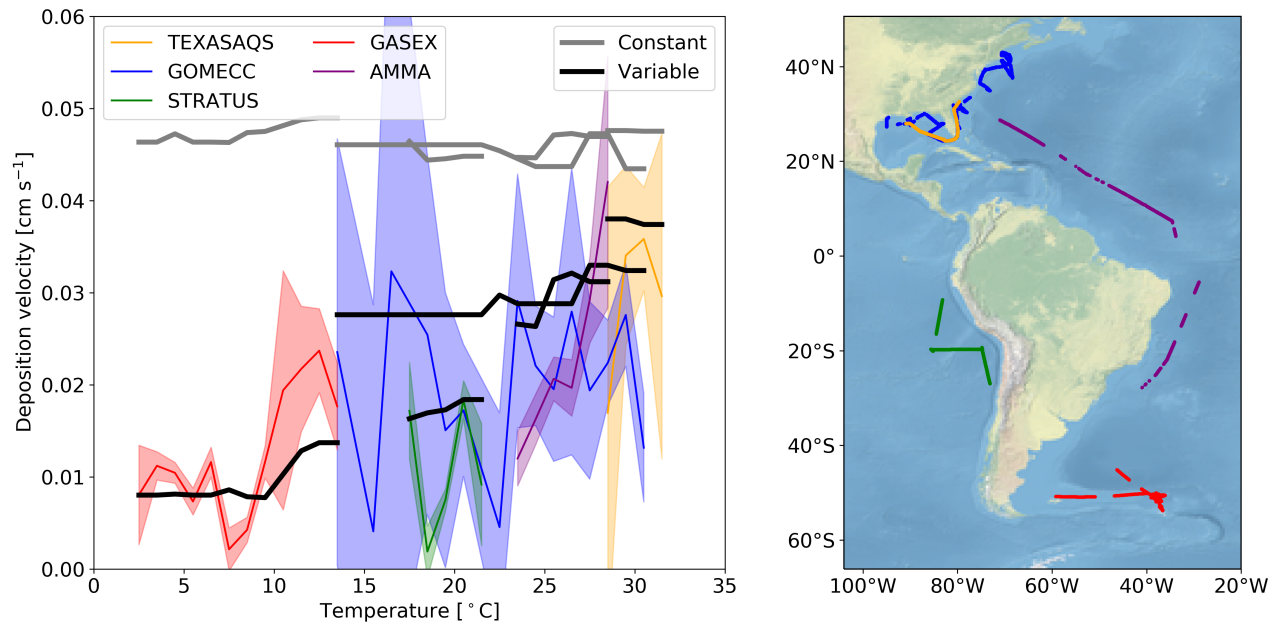


Figure 4. (left) The deposition velocities predicted by the model using the default (Constant) value for r_c and the new (Variable) parameterization of r_c compared against the 5 open ocean cruise data-sets of ozone deposition by Helmig et al. (2012). The solid lines representing the median of the deposition velocity for a one degree temperature window, with the shaded region representing the 25th to 75th percentiles. (right) The locations along the cruise tracks where the ozone deposition has been compared.

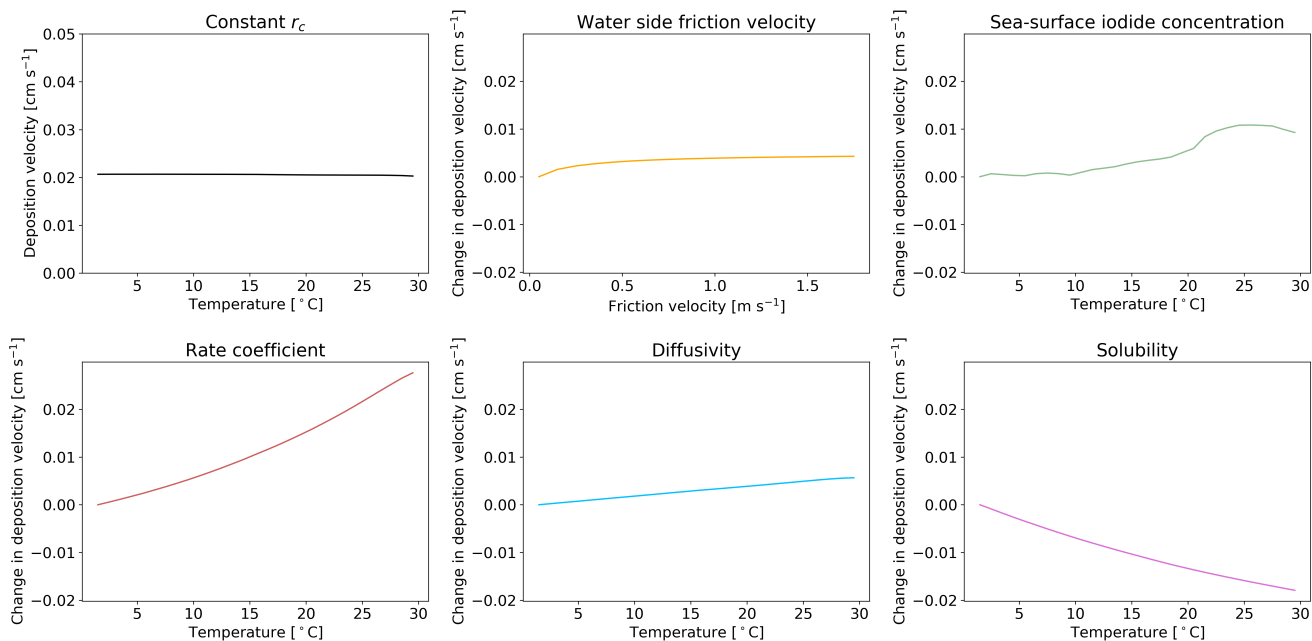


Figure 5. The response of deposition velocity to the variation of only a single parameter with other parameters set to global average values. Each function is Sea-surface iodide concentration [I⁻], rate coefficient k , diffusivity D and solubility α are produced from global values averaged into 4K-1 K temperature bins. Water side friction velocity u_w^* is averaged into 0.1 m s⁻¹ friction velocity bins.

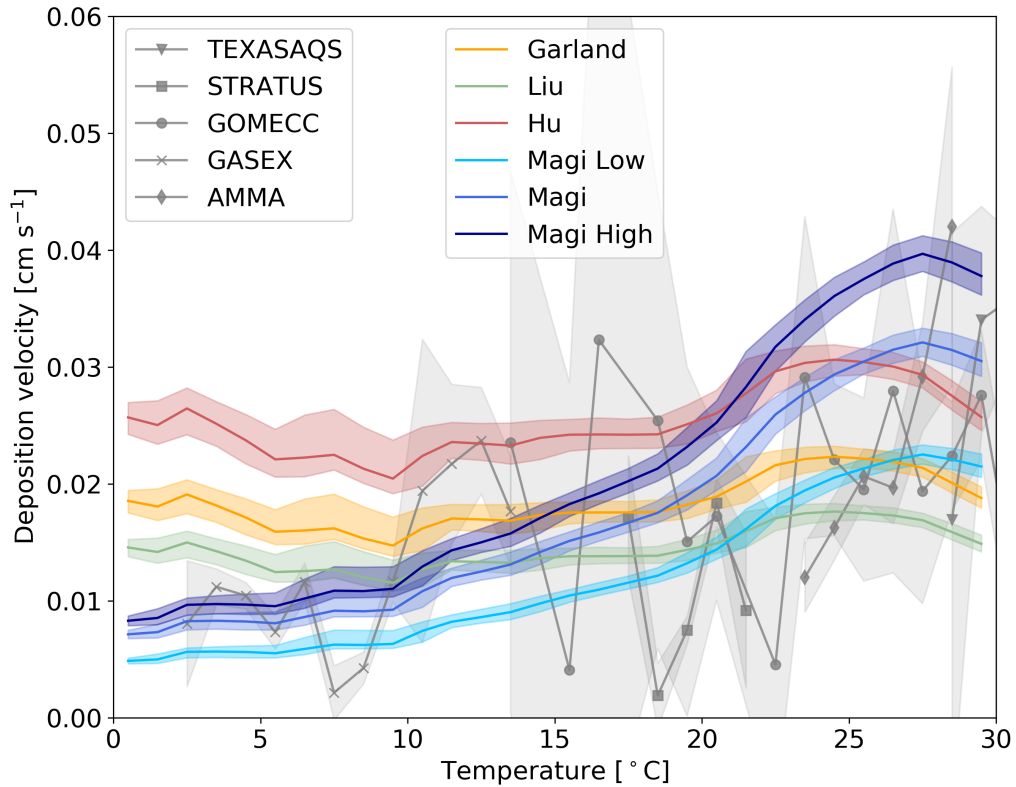


Figure 6. The response of deposition velocity to different different laboratory measurements of k . Three are constant with respect to temperature (Garland et al., 1980; Liu et al., 2001; Hu et al., 1995) and the temperature dependent parameterization of Magi et al. (1997) with two additional cases of k based on the error range of the Magi et al. (1997) measurements (shown in equation 13 and 12). Each function is produced from global values averaged into ± 1 K temperature bins with the shaded region representing the 25th to 75th percentiles.

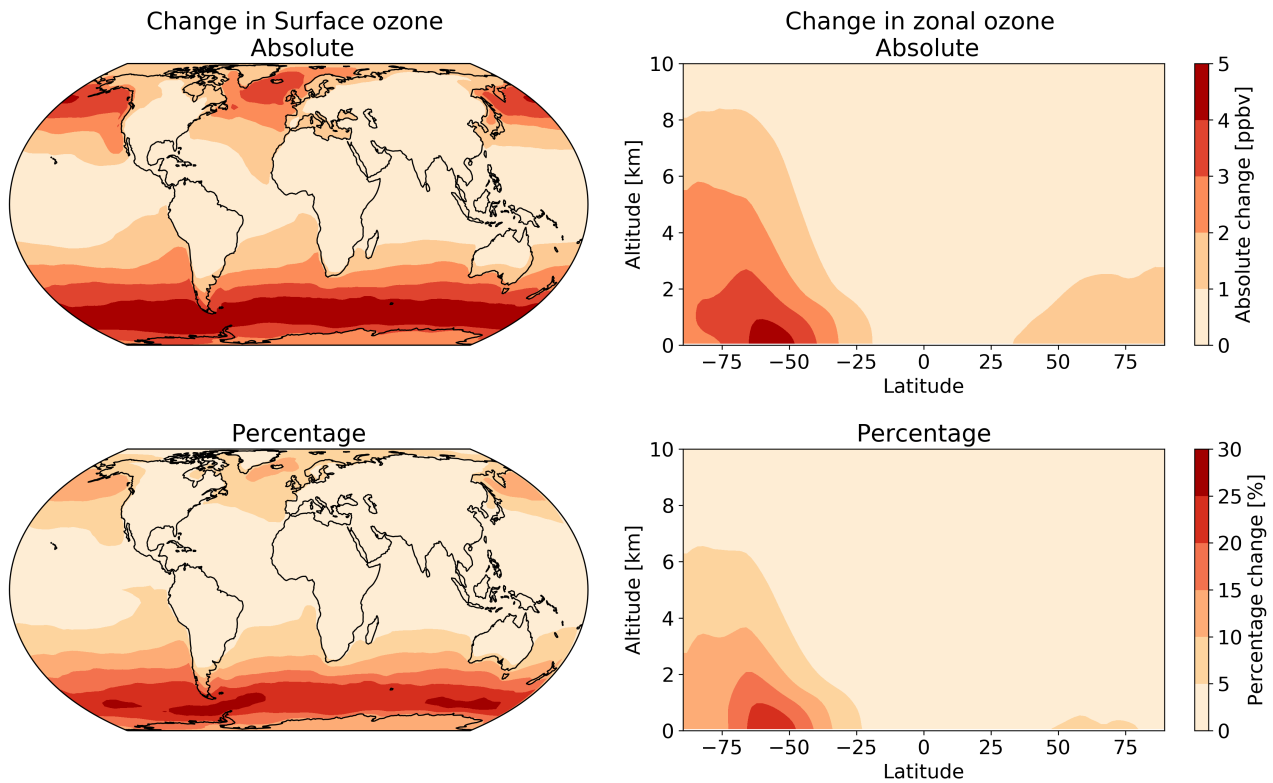


Figure 7. The annual absolute (first row) and percentage (second row) change in surface and column ozone mixing ratios [for 2014](#) between the model using the default (constant) and new (variable) parameterization for r_c . The largest changes occur in the surface levels of the model, especially in higher latitudes with the Southern Ocean boundary layer representing the area experiencing the most annual average change between the two model runs.

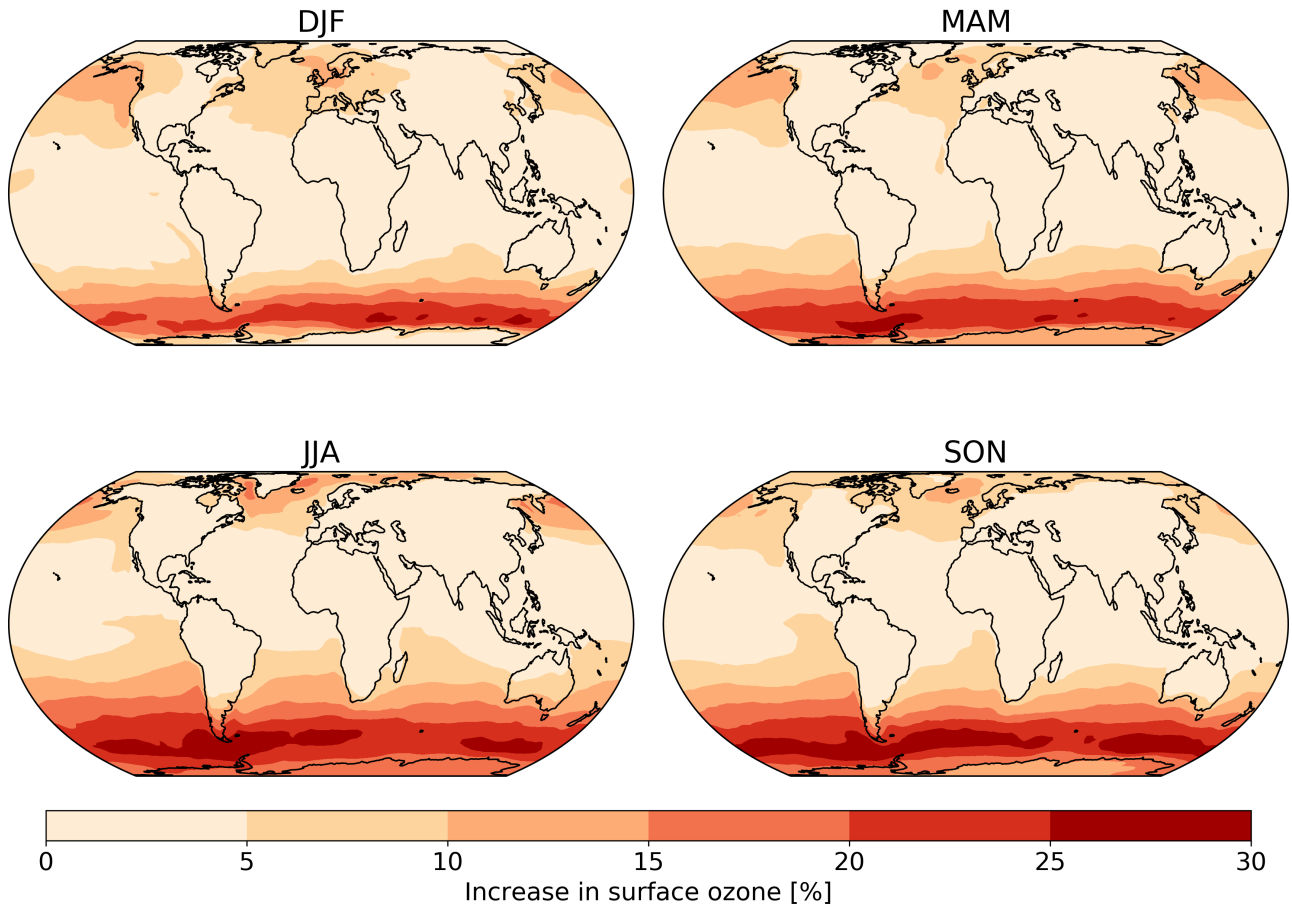


Figure 8. The absolute seasonal surface ozone mixing ratio change [for 2014](#) between the model runs using the default (constant) and new (variable) parameterization for r_c .

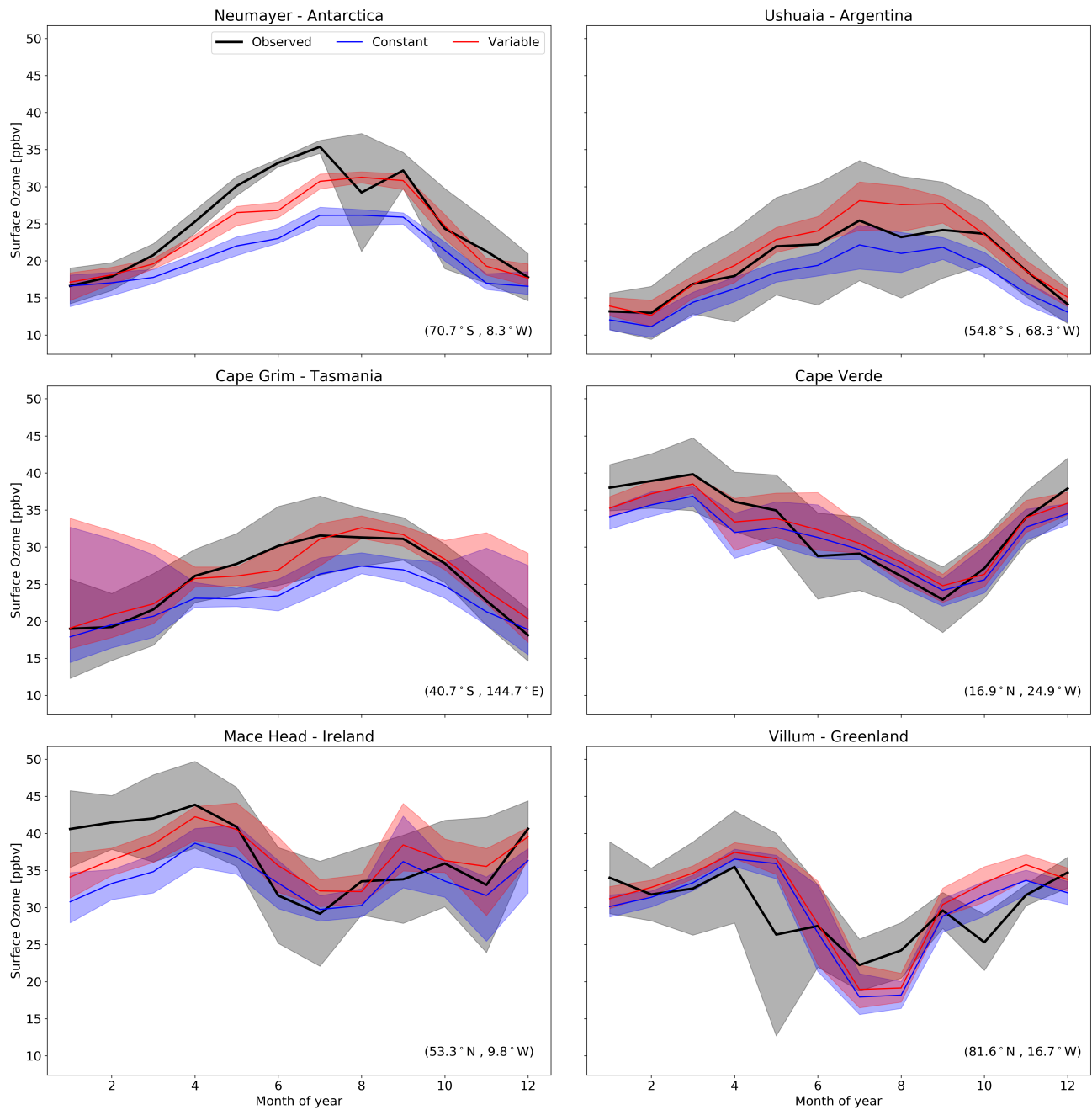


Figure 9. Predictions and observations of monthly average surface ozone mixing ratio for 2014 from the model using the default (Constant) and new (Variable) parameterization for r_c for six GAW stations (with the latitude and longitude for each station at the bottom right) with the shaded region representing the 25th to 75th percentiles.