

Author responses to reviewer comments on paper #acp-2019-1035 "Evidence for EPP and QBO modulations of the Antarctic NO₂ springtime stratospheric column from OMI observations".

We would like to thank the reviewer for their comments. Our detailed responses are given below.

Reviewer #1: The authors have addressed most of my comments satisfactorily, however I still have two concerns regarding the discussion of the QBO influence (section 4.1) and the influence of PSCs (section 4.2):

1. Regarding section 4.1, the sentence "Our results suggest that although there is increased pool of N₂O in polar region during eQBO contributing to larger NO₂ column from N₂O oxidation, EPP still contributes a clear fraction to the overall SH polar stratospheric column NO₂ in the springtime" needs grammatical revision. Apart, while the revised interpretation provides an explanation for larger overall NO₂ columns during QBOe years (independently on geomagnetic forcing) as indicated by Figures 3, 4, and 7a, it is not clear why the NO₂-A_p correlation is more robust in QBOe years (see Figure 5), even when the analysis is restricted to the polar vortex (Figure 7 b and c). Although a deeper analysis of possible reasons might be beyond the scope of this papers, I think that this behavior should at least be mentioned.

Reply: We have revised the text in section 4.1 accordingly and it now reads:

Our results suggest that although there is an increased pool of N₂O in the polar region during eQBO (contributing to larger NO₂ column from N₂O oxidation), EPP still contributes a clear fraction to the overall SH polar stratospheric column NO₂ in the springtime. Taking the QBO phase into account this EPP contribution during spring is generally more pronounced. We note that for wQBO years, the high correlation with \hat{A}_p is only present until September, while lasting until November for eQBO years. It is not clear why this is the case for wQBO. Further analysis of possible reasons behind this discrepancy is beyond the scope of this work.

2. Regarding section 4.2, to my opinion the analysis of MLS temperatures is not a stringent test whether the QBO phase affects denitrification, primarily because a lower mean temperature during QBOw does not necessarily imply a larger PSC area (this would be the case only if the area with temperature below the PSC threshold is larger in QBOw). In order to test the QBO impact on PSC formation one needs to look at the PSC areas as obtained e.g. from CALIPSO observations (see Fig. 13 of Pitts et al., 2018, www.atmos-chem-phys.net/18/10881/2018/, for the winters discussed here). Further, the bulk of PSC formation, particularly at altitudes above 20 km, occurs already in July-August, while the largest differences in MLS HNO₃ are found in September (Fig 8b). Therefore I suggest to either extend section 4.2 by inclusion of additional analysis (including PSC observations) or to weaken related statements (i.e., l 5-9, l 100-102, and l 270 of the revised manuscript).

Reply: We have modified the text to reflect the need for more detailed analysis for robust conclusions:

Abstract: The QBO modulation may be a combination of different effects: QBO is known to influence the amount of the primary NO_x source, N₂O, via transport from the equator to the polar region. The QBO phase also affects polar temperatures, which may provide a link to the amount of denitrification occurring in the polar vortex. We find some support for the latter in analysis of temperature and HNO₃ observations from the Microwave Limb Sounder (MLS/Aura).

Introduction: QBO conditions influence polar temperatures, which may affect the probability of PSC formation. Since PSC formation is linked to denitrification, there may be a connection between removal of NO_x and QBO. To test for the latter, we will provide a simple analysis of

HNO₃ and temperature observations from the Microwave Limb Sounder (MLS), also on-board Aura (more detailed analysis of PSC observations would be required to test this further).

Section 4.2: One of the possible reasons for the lower NO₂ column during wQBO found here could be enhanced denitrification as a result of lower temperatures in the vortex resulting in enhanced PSC formation. In the following we will perform a simple analysis to test for signs of this from existing MLS observations, although more detailed analysis of PSC observations would be required for robust conclusions.

Evidence for EPP and QBO modulations of the Antarctic NO₂ springtime stratospheric column from OMI observations

Emily Gordon¹, Annika Seppälä¹, and Johanna Tamminen²

¹Department of Physics, University of Otago, Dunedin, New Zealand

²Space and Earth Observation Centre, Finnish Meteorological Institute, Helsinki, Finland

Correspondence: Annika Seppälä (annika.seppala@otago.ac.nz)

Abstract. Observations from the Ozone Monitoring Instrument (OMI) on the Aura satellite are used to study the effect of energetic particle precipitation (EPP, as proxied by the geomagnetic activity index A_p) on the Antarctic stratospheric NO₂ column in late winter-spring (Aug-Dec) during the years 2005–2017. We show that the polar (60°S–90°S) stratospheric NO₂ column is significantly correlated with EPP throughout the Antarctic spring, until the breakdown of the polar vortex in November. The strongest correlation takes place during years with easterly phase of the quasi-biennial oscillation (QBO). [\[..¹ \]The QBO modulation may be a combination of different effects: QBO is known to influence](#) the amount of the primary NO_x source, N₂O, [\[..² \]via transport from the equator](#) to the polar region[\[..³ \]](#). The QBO phase also affects polar temperatures, which may provide a link to the amount of denitrification occurring in the polar vortex. [\[..⁴ \]We find some support for the latter in analysis of](#) temperature and HNO₃ observations from the Microwave Limb Sounder (MLS/Aura). Our results suggest that once the background effect of the QBO is accounted for, NO_x produced by EPP significantly contributes to the stratospheric NO₂ column at the time and altitudes when the ozone hole is present in the Antarctic stratosphere. Based on our findings, and the known role of NO_x as catalyst for ozone loss, we propose that as chlorine activation continues to decrease in the Antarctic stratosphere, the total EPP-NO_x needs be accounted for in predictions of Antarctic ozone recovery.

Copyright statement.

15 1 Introduction

In the polar stratosphere, the dominant source of odd nitrogen, NO_x (NO + NO₂), is produced via the oxidation of nitrous oxide, N₂O (Brasseur and Solomon, 2005):



¹removed: We propose that the QBO likely affects the polar springtime NO_x in two ways: firstly by the known modulation of

²removed: transported

³removed: and secondly, by influencing the temperature of the polar vortex and thus the

⁴removed: The latter is supported by

This reaction requires the presence of excited oxygen atoms $O(^1D)$, which are produced in the atmosphere by photolysis of ozone (O_3) and thus depend on sunlight being present. As a result, NO production via reaction (1) only takes place outside
20 polar winter conditions. Following reaction (1) the existing NO can be converted to NO_2 in reaction with ozone:



As N_2O production *in situ* in the polar stratosphere is insignificant, the polar stratospheric NO_x production is highly dependant on the amount of N_2O transported from the tropics (Brasseur and Solomon, 2005). This principal source of polar N_2O is injected from the troposphere into the stratosphere at equatorial latitudes. It is then transported towards the polar regions by the large scale Brewer-Dobson circulation. Recent work by Strahan et al. (2015) has shown that the phase of the QBO influences
25 the transport of N_2O from the surfzone to the polar vortex with a lag of 12 months. Further, their results (Figure 1 of Strahan et al. (2015)) indicate that easterly phase of the QBO during June-July is also generally associated with positive N_2O anomalies in the polar stratosphere between altitudes of ~ 24 -33 km in September, and opposite for westerly phase of the QBO. Notably for our study, these particular altitudes, at this time, are also affected by large scale transport of mesospheric air masses affected by energetic particle precipitation (Funke et al., 2014a).

30 The main pathway to NO_x loss is via photolysis (Brasseur and Solomon, 2005). During polar night conditions when little to no sunlight is available, this results in long chemical lifetime (weeks to months) for the NO_x family. However, NO_x can be removed from the lower stratosphere during the polar night in a process known as denitrification which removes NO_x when it is stored in the HNO_3 reservoir. This requires the winter vortex to be cold enough that polar stratospheric clouds (PSCs) form. Denitrification occurs when reactive nitrogen (particularly NO_2) is converted into HNO_3 in the lower stratosphere (Santee
35 et al., 1995). HNO_3 is readily incorporated into PSCs, removing gaseous HNO_3 from the lower stratosphere as it eventually falls into the troposphere via gravitational sedimentation (Brasseur and Solomon, 2005).

1.1 EPP indirect effect

It is now well established that precipitating energetic particles can drive large enhancements in NO_x quantities in the polar atmosphere (see e.g. Seppälä et al., 2007a; Funke et al., 2014a, b). Energetic particle precipitation (EPP) is the flux of charged
40 particles (protons and electrons) of solar and magnetospheric origin into the Earth's atmosphere. The charged particles are guided to the polar regions by the Earth's magnetic field. Once reaching the atmosphere, they ionise the main neutral gases, N_2 and O_2 . The chain of ion-neutral reactions that follows the ionisation then leads to increases in NO_x species (this is known as "EPP- NO_x "), particularly in the mesosphere and lower thermosphere (Brasseur and Solomon, 2005). EPP manifests as energetic electron precipitation (EEP) as well as proton precipitation, which in the form of solar proton events (SPEs) is the
45 most extreme form of EPP (see e.g. Seppälä et al., 2014). SPEs are usually associated with coronal mass ejections (CMEs) and thus, while the particles are highly energetic and have the ability to ionise as far down as the stratosphere, the events are short (hours to days) in duration, and occur sporadically. Conversely, EEP is always present in some form and is mostly dependant on solar wind speed (Funke et al., 2014b). Due to the lower energies of the electrons, EEP driven *in situ* NO_x increases typically occur in the mesosphere and above (Turunen et al., 2009). When EPP occurs over the winter pole, the mesospheric NO_x has a

50 long chemical lifetime and can be transported downwards into the stratosphere inside the polar vortex. Once in the stratosphere, these NO_x enhancements are effective at catalytically destroying ozone (see e.g., Jackman et al., 2008, and references therein). As NO_x is not formed from N_2O during winter, EPP becomes a significant contributor to the polar winter NO_x budget (Funke et al., 2014b).

1.2 Previous work

55 Several previous studies have examined the effects of EPP on polar winter NO_x , or the wider NO_y family which includes both NO_x and its reservoir species such as NO_3 , N_2O_5 , HNO_3 , and ClONO_2 . We will summarise the findings of the key observational works, with particular focus on those with SH or NO_x transport aspects, in the following. Note that we will use the the term NO_x or NO_y depending on which the study in question addressed.

60 Randall et al. (1998) reported stratospheric NO_2 observations from the Polar Ozone and Aerosol Measurement (POAM II) over three polar late-winter/early-spring periods. They found evidence to suggest that NO_x from the SH polar mesosphere was transported down into the stratosphere inside the polar vortex during the winter. They also suggested that the observed enhanced levels of stratospheric NO_x in 1994 could be, at least partially, due to production by EPP that took place at higher altitudes before the downwards transport. Based on their analysis, Randall et al. (1998) suggested that NO_x transported to stratosphere from the mesosphere and above during the polar winter should be observable in Antarctic NO_2 column measurements.

65 Siskind et al. (2000) used Halogen Occultation Experiment (HALOE) observations from the UARS satellite between 1991-1996 to track NO_x enhancements in October in the SH polar region. They found that the year-to-year variability in NO_x inside the polar vortex followed variability in wintertime mean auroral A_p index, a measure now frequently used for overall EPP levels (Matthes et al., 2017). At the time, they found that the peak NO_x enhancements from "auroral" activity corresponded to around 3-5% of the total NO_x generated from N_2O . Studies of NO_x enhancements following the large Halloween SPEs in October-70 November 2003 also revealed large quantities of NO_x in the Northern Hemisphere (NH) in January (Jackman et al., 2005). However, dynamical effects, driven by the following major sudden stratospheric warming (SSW), indicated that this NO_x was unlikely to have originated from the SPEs (Seppälä et al., 2007b). The NO_x increases were more likely a result of the the large amounts of EEP that was present during the polar winter combined with downward descent. For example, Randall et al. (2005) used observations from a number of satellite instruments to show that the springtime NO_x increases in the NH were influenced 75 by strong downward descent in January 2004, bringing excess amount of NO_x down to the stratosphere. Randall et al. (2007) used Atmospheric Chemistry Experiment-Fourier Transform Spectrometer (ACE-FTS) together with HALOE observations to show that the peak upper stratospheric EPP- NO_x was highly correlated with EEP levels over 1992–2005, up until September in the SH. Dynamics influencing the polar vortex is one of the main reason relations between NO_x observations and EPP break down. This is particularly important in the NH, where the polar vortex is more susceptible to SSWs. Randall et al. (2007) 80 further found that the largest EPP- NO_x occurred during the declining phase of the solar cycle, during which more high-speed solar wind streams, driving EEP, are likely to occur.

Using tracer correlations to quantify EPP- NO_x vs NO_x from N_2O oxidation, Randall et al. (2007) suggested that the maximum EPP- NO_x enhancements made up to 40% of the total polar NO_y (total reactive nitrogen, $\text{NO}_y = \text{NO} + \text{NO}_2 + \text{NO}_3$

+ ClONO₂ + HNO₄ + N₂O₅ + HNO₃) budget. Seppälä et al. (2007a) contrasted average wintertime A_p levels with the polar winter upper-stratospheric-lower mesospheric NO_x observations from Global Ozone Monitoring by Occultation of Stars (GOMOS) onboard the Envisat satellite, finding a nearly linear relationship between the two during 2002-2006 for both hemispheres. Funke et al. (2014b) used Michelson Interferometer for Passive Atmospheric Sounding (MIPAS) observations, also from Envisat, of NO_y, to quantify the amount of EPP-NO_y in the polar winter. Analogous to Randall et al. (2007), they found that EPP-NO_y accounted for up to 40% of the wintertime polar NO_y. Funke et al. (2014a) then correlated A_p and EPP-NO_y in the wintertime and concluded that the strong relationship between A_p and EPP-NO_y supports using A_p as a proxy for tracking EPP-NO_y production in the SH wintertime.

1.3 This work

Here, we use stratospheric NO₂ column observations from the Ozone Monitoring Instrument (OMI) on-board the Aura satellite to investigate EPP as a source of NO_x variability in the Antarctic later-winter - spring. We have a relatively long satellite period (2005-2017) in which to analyse how this NO_x propagates in the following springtime, and whether this is detectable in the NO₂ column. We also analyse how the phase of the QBO affects the contribution of EPP-NO₂ to the total NO₂ column in springtime. The QBO influence could be likely due to a combination of two effects: 1) QBO phase influences transport of N₂O to the polar region (Strahan et al., 2015) resulting in an increased background NO_x source at key times and key altitudes during easterly QBO years (opposite for westerly QBO); 2) QBO conditions influence polar temperatures, which may affect the probability of PSC formation^[..⁵]. Since PSC formation is linked to denitrification, there may be a connection between removal of NO_x and QBO. To test for the latter, we will ^[..⁶]provide a simple analysis of HNO₃ and temperature observations from the Microwave Limb Sounder (MLS), also on-board Aura (more detailed analysis of PSC observations would be required to test this further).

2 Data sets

2.1 OMI NO₂ observations

We use stratospheric NO₂ column observations from the Dutch-Finnish built Ozone Monitoring Instrument (OMI) on-board NASA's Aura satellite from August to December during years 2005–2017 (v3, Level 2 daily gridded NO₂, see Krotkov (2012); Krotkov et al. (2017)). The daily gridded data has 0.25° × 0.25° horizontal resolution. In our analysis, we use data from latitudes poleward of 50°S. Note that all latitudes henceforth are geographic latitudes. Aura is in a Sun-synchronous orbit in the "A-train" constellation (orbital altitude of 705 km, inclination of 98°, 16 day repeat cycle), with ascending node crossing the equator approximately at 1:45pm daily (Schoeberl et al., 2008). As a result, OMI measurements take place at the same

⁵removed: , and as a result EPP-NO_x may be less/more likely to be removed by denitrification during the winter/early spring during easterly/westerly QBOyears

⁶removed: analyse

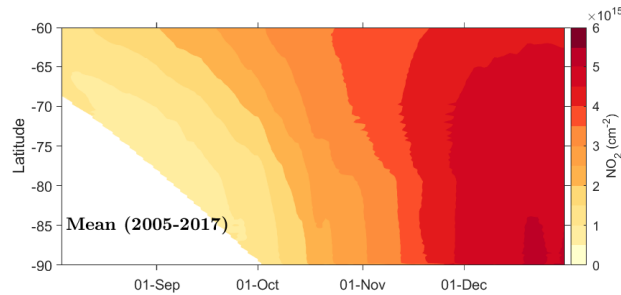


Figure 1. OMI 3 day running mean zonally averaged NO_2 column for the time period 2005–2017. The contour interval is $0.5 \times 10^{15} \text{ cm}^{-2}$. The white area at high latitudes in August-September indicates polar night conditions where OMI observations are not available.

locations each year. While NO_2 notably has a diurnal cycle, using observations from the same sunlit locations (thus same local times) each year minimises the effect of this in our analysis.

The OMI- NO_2 data is provided as total column, as well as separated tropospheric and stratospheric columns. This separation is based on the location of the tropopause. Here, we use the OMI stratospheric column observations only. The effective vertical range of the stratospheric column based on the OMI averaging kernels corresponds to $\sim 15 - 35 \text{ km}$. At these altitudes, NO_2 makes up about 80% of the total NO_x during daytime (see Brasseur and Solomon, 2005, chapter 5.5). As this corresponds to a large fraction of the total NO_x , we take the OMI NO_2 column measurements to represent a reasonable proxy for the variation in total NO_x . The algorithm for the OMI column separation is described in Bucselá et al. (2013). OMI measures back-scattered solar radiation from the atmosphere. Thus, observations are only available for solar illuminated locations – there is no coverage during polar night conditions. The latitudinal coverage is illustrated in Figure 1, which presents the zonally averaged mean NO_2 column for the period under investigation (2005–2017). The figure shows how the NO_2 column varies in the polar springtime, with increasing amounts of NO_2 in the stratosphere as time progresses due to release from its reservoirs (Dirksen et al., 2011). The error in the individual NO_2 column measurement is estimated to be $< 2 \times 10^{14} \text{ molecules cm}^{-2}$, however in areas with low levels of tropospheric pollution (such as the Southern polar region), this error is considerably less (Bucselá et al., 2013). Since June 2007, OMI- NO_2 has experienced an issue known as the row anomaly (RA) affecting certain fields of view. All RA affected measurements have been excluded here, leaving around 2×10^5 observations poleward of 60°S per day for the analysis period.

The Aug-Dec monthly mean polar (60°S to 90°S) average zonal mean NO_2 columns for each year are listed in Table 1.

2.2 MLS observations

We use HNO_3 and temperature profiles from NASA’s Microwave Limb Sounder (MLS) which is also on-board the Aura satellite (Manney et al., 2015; Schwartz and Read, 2015). This study uses the version 4.2 product with data screened according to Livesey et al. (2017). The latitude range used here is 60°S to around 82°S and the pressure range used is approximately 100 hPa to 10 hPa. MLS HNO_3 profiles have been validated by Santee et al. (2007), using data from both the HNO_3 240–

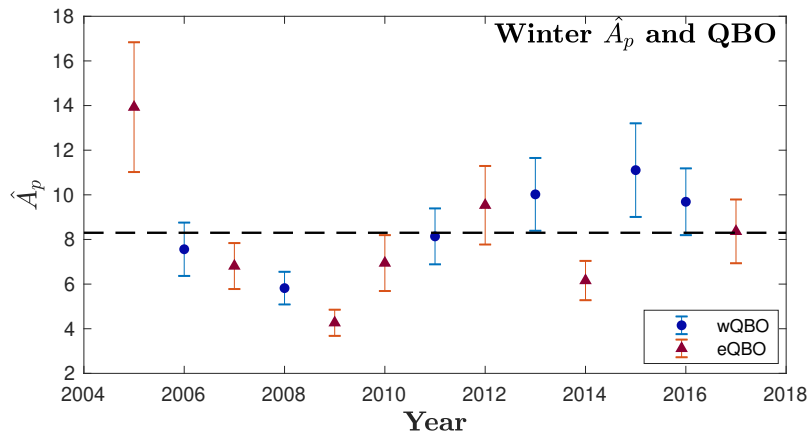


Figure 2. Mean wintertime A_p (\hat{A}_p) for each year of this study with error bars indicating 2 times the standard error in the mean. Dashed line indicates the average \hat{A}_p for this study (8.3). The direction of the QBO at 25 hPa in May is indicated with red triangles representing eQBO and blue circles wQBO.

135 GHz radiometer (for pressures ≥ 22 hPa) and HNO_3 190-GHz radiometer (for pressures ≤ 15 hPa). MLS HNO_3 has vertical resolution of 3-4 km in the lower – middle stratosphere (used here) and the precision of individual profiles is around 0.6 ppbv in this region. The estimated error in these profiles is no more than 10%. MLS temperature profiles have been validated by Schwartz et al. (2008) with precision of around ± 0.6 K on individual profiles between 100 hPa and 10hPa.

2.3 EPP proxy

140 The geomagnetic activity index A_p is a well-established proxy for EPP (see e.g. Matthes et al., 2017; Funke et al., 2014a) and is used here to estimate the overall levels of EPP for each polar winter under investigation. During 2005–2017, the mean of winter A_p was 8.3, reflecting the relatively low overall solar activity during solar cycle 24 (solar cycle 23 average was 12.9). To estimate the overall EPP activity during each winter, we calculate the mean A_p for the period of May–August of each year. These means are hereafter referred to as \hat{A}_p and are provided in Table 1. We designate high \hat{A}_p (H- \hat{A}_p) winters as those with
 145 $\hat{A}_p > 8.3$, i.e. \hat{A}_p higher than the average for 2005–2017. Similarly, we take low \hat{A}_p winters (L- \hat{A}_p) as those with $\hat{A}_p < 8.3$. The variation in winter \hat{A}_p throughout this study is shown in Figure 2. This figure captures the 11-year solar cycle fairly well, with minimum around 2009 and maximum around 2015.

Several previous works have used tracer correlations to extract solely EPP produced NO_x (or NO_y when information on the NO_x reservoirs is available) (see e.g. Randall et al., 2007; Funke et al., 2014b). When tracer information is not available, other
 150 works have investigated the variability in odd nitrogen resulting in variability in EPP levels (usually proxied by A_p) (see e.g. Seppälä et al., 2007a). Here, we focus on finding evidence of EPP contribution to column observations. As we do not have mesosphere-stratosphere descent tracer observations available from OMI, we are unable to use the tracer correlation methods. To overcome this we perform correlation analysis both for latitudinal coverage and polar average NO_2 observations to find

Table 1. May-Aug mean A_p (\hat{A}_p) $\pm 2 \times$ standard error in the mean, the polar (60°S to 90°S) Aug-Dec monthly mean, $\cos(\text{latitude})$ weighted, zonal mean stratospheric NO₂ column density ($\times 10^{15}$ cm⁻²), and QBO phase (E for easterly, W for westerly) for each year 2005-2017.

Year	\hat{A}_p	Aug NO ₂	Sep NO ₂	Oct NO ₂	Nov NO ₂	Dec NO ₂	QBO
2005	13.9 (± 2.9)	0.43	0.49	0.84	1.16	1.24	E
2006	7.6 (± 1.2)	0.59	0.37	0.69	0.96	1.22	W
2007	6.8 (± 1.0)	0.41	0.47	0.82	0.98	1.18	E
2008	5.8 (± 0.7)	0.35	0.37	0.77	0.99	1.20	W
2009	4.3 (± 0.6)	0.40	0.42	0.77	1.00	1.25	E
2010	6.9 (± 1.3)	0.43	0.45	0.78	1.00	1.14	E
2011	8.1 (± 1.3)	0.37	0.39	0.66	0.96	1.18	W
2012	9.5 (± 1.8)	0.46	0.51	0.90	1.09	1.19	E
2013	10.0 (± 1.6)	0.39	0.46	0.87	1.15	1.23	W
2014	6.2 (± 0.9)	0.39	0.46	0.76	1.03	1.22	E
2015	11.1 (± 2.1)	0.37	0.40	0.63	0.98	1.13	W
2016	9.7 (± 1.5)	0.41	0.44	0.75	1.07	1.16	W
2017	8.4 (± 1.4)	0.41	0.46	0.74	1.09	1.19	E

155 evidence of A_p driven variability in the Antarctic NO₂ column. All correlations between the NO₂ columns and \hat{A}_p are based on the Spearman rank correlation (Spearman ρ), as it more robustly accounts for any non-linear relationships (Wilks, 2011) while still interpreting linear trends where present. Statistical significance is here defined as correlations significant at $\geq 95\%$ (i.e. p -value of ≤ 0.05).

2.4 Quasi Biennial Oscillation

160 To investigate the potential QBO effect in the Antarctic atmosphere, we estimate the phase of the QBO from the 25 hPa level zonal mean zonal wind (Naujokat, 1986) near the equator in May each year. For use of the 25 hPa level in the Southern Hemisphere, see Baldwin and Dunkerton (1998). We designate years when the zonal mean zonal wind direction is easterly as easterly QBO (eQBO), and westerly as westerly QBO (wQBO). The QBO direction for each year of the study is indicated in both Table 1 and Figure 2. Figure 2 illustrates the approximately biennial nature of the oscillation, with the direction changing almost every year.

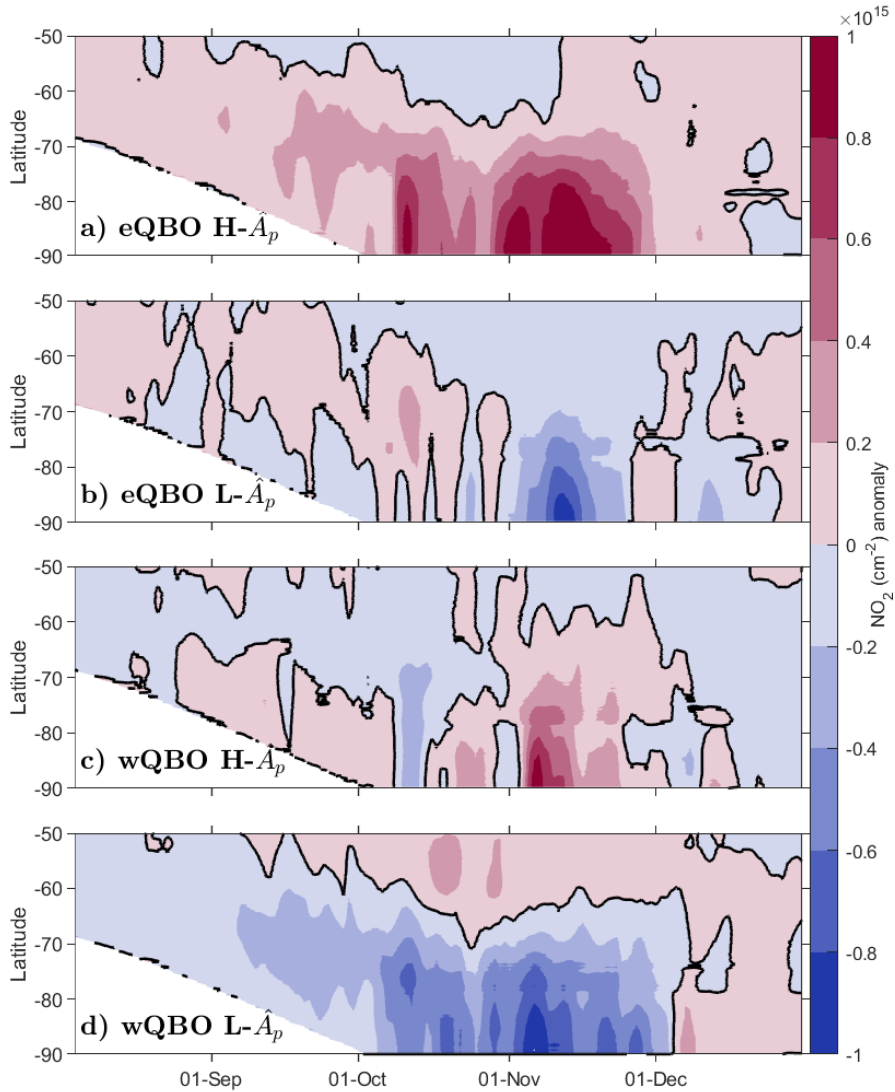


Figure 3. a) mean NO₂ anomaly for years with both H- \hat{A}_p and eQBO. Contour level is $0.2 \times 10^{15} \text{ cm}^{-2}$ with black contour representing zero anomaly. b)-d) as b) but different combinations of \hat{A}_p and QBO (see Figure).

165 3 Results

3.1 NO₂ anomalies

We first investigate the anomaly from the mean for each of the four different categories of this study, eQBO H- \hat{A}_p , eQBO L- \hat{A}_p , wQBO H- \hat{A}_p , and wQBO L- \hat{A}_p . This is to show how NO₂ column evolves in the springtime in the different conditions and to further justify the splitting of years based on QBO phase. Figure 3 presents the average anomaly, (i.e. the mean as in

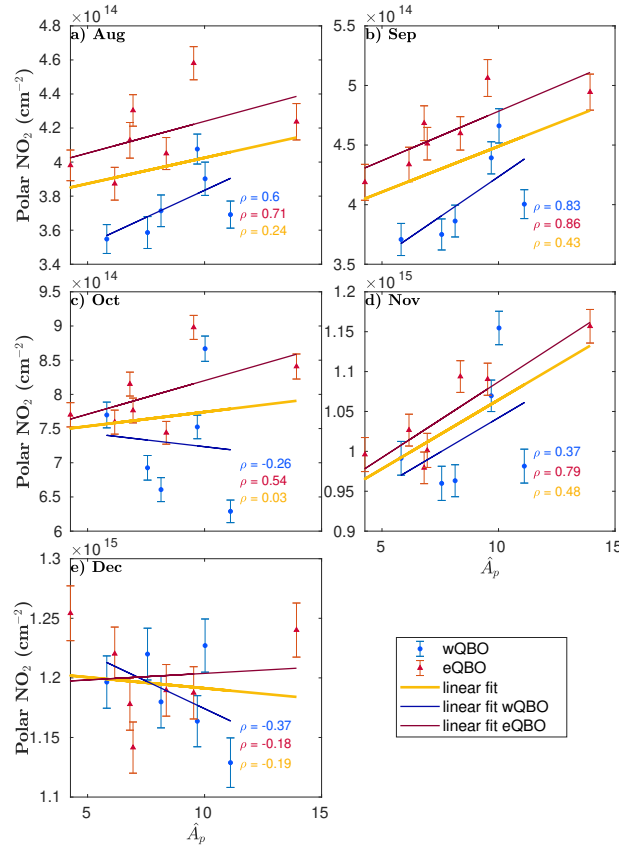


Figure 4. \hat{A}_p versus monthly average, $\cos(\text{latitude})$ area weighed NO_2 column density averaged over 60°S to 90°S (where available, see text) for the months of August to December (months as shown in each individual panel). Red triangles indicate years with eQBO and blue circles years with wQBO. The yellow line shows a least squares linear fit to all data, red line eQBO years only, and blue line wQBO years only. The Spearman ρ (correlation coefficient) for each set is shown in each with corresponding colour, e.g. red ρ corresponds to correlation coefficient for eQBO years etc. Error bars are $2 \times$ the standard error in the mean.

170 Figure 1 deduced) for each of the four different categories of this study. We can see that winter \hat{A}_p affects the column NO_2
 present in the spring: years with H- \hat{A}_p (panels a and c) having more positive anomalies from August to November especially in
 the highest latitudes. In b) and c), the month of October is highly variable with both showing regions of positive and negative
 anomaly. For low \hat{A}_p years (panels b and d) early spring is not consistently positive or negative, however November displays
 negative anomalies at high latitudes. The combined influence of QBO and \hat{A}_p appears to be most significant for H- \hat{A}_p eQBO
 175 years, and wQBO L- \hat{A}_p years (panels a and d). These show consistent but opposite behaviour throughout the spring, with H- \hat{A}_p
 eQBO years the most favourable for NO_2 and wQBO L- \hat{A}_p the least.

3.2 Mean SH polar columns

Figure 4 presents the \hat{A}_p and the mean polar (60°S–90°S) NO₂ column for each year (2005-2017) and for each individual month from August to December. This is to investigate whether there is a relationship \hat{A}_p size and NO₂ column, and how this is affected by QBO phase. The mean polar columns are area weighted by cosine of latitude. The phase of the QBO in the preceding May is indicated with red triangles corresponding to eQBO and blue circles to wQBO conditions. Least squares linear fits for all years, wQBO, and eQBO years are included in each panel to guide the eye. The Spearman correlation coefficient (ρ) for each month for all years (yellow) along with eQBO (red) and wQBO (blue) years only are also included in the panels. Note that, as the OMI measurement field gradually increases from an initial maximum latitude of around 68°S in August to 90°S by the end of September, the total NO₂ column values do not initially fully encompass the entire polar region (60°S–90°S). The missing data in August and September is treated as missing values in the mean calculation and as such does not contribute to the mean in these figures.

The results shown in Figure 4 suggests that a correlation between \hat{A}_p and the stratospheric NO₂ column occurs in August, September and November. This is consistent with Figure 3. Furthermore, there is a clear positive correlation for eQBO years from August to November, while for wQBO years, the positive correlation in August and September disappears in October. While the wQBO November linear fit is close to the total fit, the individual years show large variability. In general, wQBO years have consistently lower column NO₂ values, especially in August and September. The generally reduced levels of NO₂ during wQBO conditions is compatible with the analysis of Strahan et al. (2015), which indicated that the altitudes where Funke et al. (2014a) reported EPP-NO_y enhancements in later winter-early spring, have consistently lower/higher levels of the dominant NO_x source, N₂O, during wQBO/eQBO.

To contrast our results with previous extensive work by Funke et al. (2014a) we repeated the analysis presented in Figure 4 using the units of gigamole (Gmol, see Funke et al. (2016)) for the monthly mean polar NO₂ columns). This figure is included in the appendix as Figure A1 and shows the least squares linear fits, with the corresponding parameters given in each panel. This allows us to estimate the EPP contribution to the lower stratosphere (~ 15 – 35 km) NO₂ in the spring, analogous to Funke et al. (2014a). For example, in September (Figure A1, panel b), the approximate contribution to polar stratospheric NO₂ column from EPP in eQBO years is +0.023 Gmol/ \hat{A}_p . The largest contribution to OMI lower stratospheric NO₂ from EPP occurs in November, with the corresponding values of +0.073 (eQBO), +0.072 (wQBO) and +0.066 (all years) Gmol/ \hat{A}_p , respectively. Funke et al. (2014a) (see their Figure 10, showing excess EPP-NO_y in the stratosphere – lower mesosphere in early spring) found an increase in SH polar EPP-NO_y of around +0.0698 Gmol/ A_p unit in September. Contrasting this to our results of +0.066 Gmol/ \hat{A}_p in November, it seems a large fraction of the EPP-NO_y detected by Funke et al. (2014a) is maintained in the polar region and able to reach the lower stratosphere where it can be detected as NO₂ still in November. Note that Funke et al. (2014a) use a weighted A_p scheme.

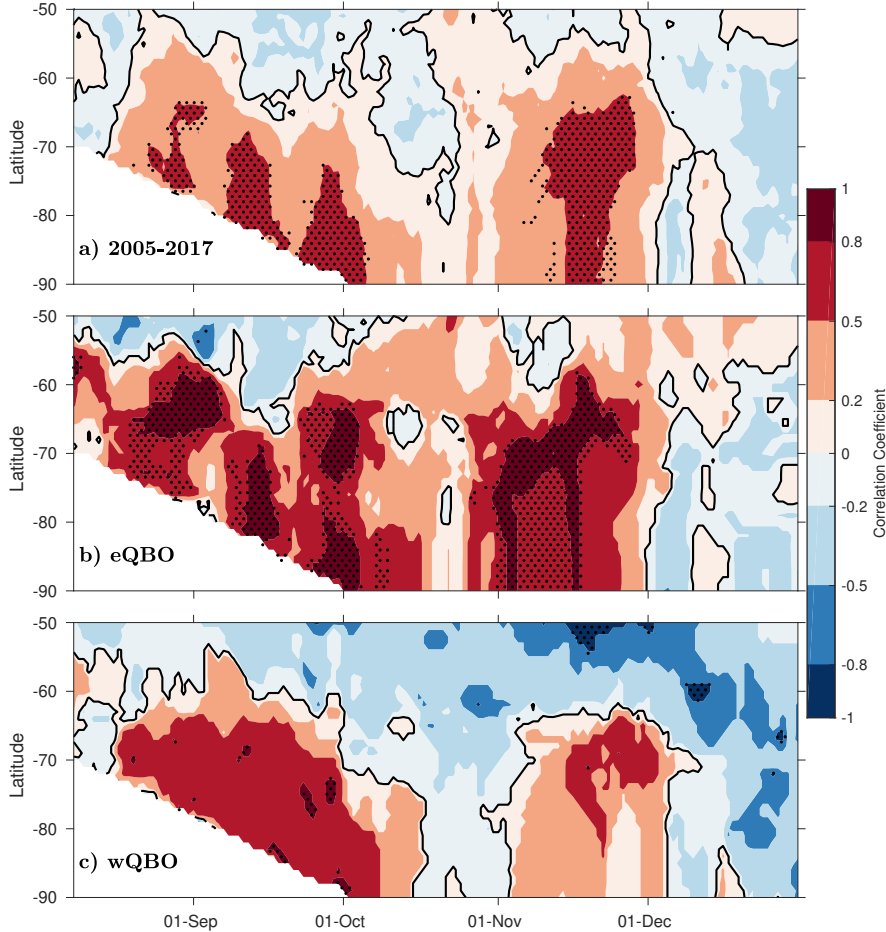


Figure 5. a) Correlation of \hat{A}_p and 7 day running mean NO_2 column density for Aug-Dec for all years. b) Correlation of \hat{A}_p and 7 day running mean NO_2 column density for years with eQBO only. c) as b) except for years with wQBO only. All figures have 1° latitude resolution. Contour levels are shown for [-1, -0.8, -0.5, -0.2, 0, 0.2, 0.5, 0.8, 1] and the zero contour is indicated with black. Stippling shows regions of correlation significant at $\geq 95\%$ level.

3.3 Latitudinal correlations

Figure 5 shows the latitudinal extent of the correlation between \hat{A}_p and the 7 day running mean NO_2 column for latitudes 50°S –
 210 90°S averaged over 1° latitude bins. Stippling indicates correlation significant at $\geq 95\%$ level. This shows how correlation between \hat{A}_p and NO_2 column evolves over time and latitude, and different QBO phase. Panel a) presents the correlation when all years are taken into account. Significant positive correlation occurs in late August and variably throughout September,

then again in November. October and December show little to no significant correlation. Panel b) shows the correlation for eQBO years only. There are areas of statistically significant positive correlations in all months except December. In October, significant correlations occur only at the very beginning of the month. High positive correlations are still present across 60°S to 90°S from early to mid-November providing first evidence of the indirect EPP-NO_x effect lasting well into the SH spring season. Figure 5 c) presents correlation for years with wQBO only. While positive correlations are present throughout August and September, only small regions are found to be statistically significant. October marks a shift towards negative correlation (not statistically significant) at all latitudes. In November the correlations turn positive once more, but these are again, not statistically significant.

The results shown in Figure 5 suggest that the NO₂ increases at high polar latitudes in September are due to increased EPP/geomagnetic activity, as strong correlations between NO₂ and \hat{A}_p occur in all panels. They also imply that increases in NO₂ in November can be due to a combination of high EPP activity and eQBO, whereas wQBO appears to reduce the occurrence of any EPP induced NO₂ increases.

3.4 Polar vortex influence in October

The correlations presented in the previous sections were found to have fewer occurrences of statistical significance in October than the surrounding months. As this time of year marks the typical breakup period of the polar vortex (Hurwitz et al., 2010) and knowing that the descent of EPP produced NO_x is limited to inside the polar vortex (as previously demonstrated for October by Siskind et al. (2000)), we will now investigate October separately, taking the polar vortex into account.

To account for effects from potential asymmetries in the shape of the polar vortex in October in our zonal mean calculations, we repeated the earlier analysis for measurements located inside the vortex. To establish the location of the edge of the polar vortex we utilised the OMI co-located ozone column measurements (Bhartia, 2012): Ozone depleted air is isolated within the vortex until the vortex break up, typically in late November (Kuttippurath and Nair, 2017). Based on this, we take measurement locations poleward of 50°S with corresponding stratospheric ozone column of < 245 DU to be inside the polar vortex. We perform this method for every day of October in the study period to find the daily vortex extent. This is then used to locate NO₂ that is inside the vortex for every day in October over the study period. An example of how the ozone column and the estimated vortex edge are reflected on the NO₂ column measurement for one day of the study (19th October 2014) is shown in Figure 6. Note that we are unable to use this method on months prior to October due to OMI's viewing method and the ozone column not being sufficiently low to detect a clear vortex edge.

Figure 7 a shows the October results (as in Figure 4 c) when only observations inside the polar vortex are included. We find that for eQBO, the observations are now much closer to the linear fit than in Figure 4 c), implying that the earlier disappearance of correlation was likely due to variations in the shape of the polar vortex in October.

Similarly for the horizontal distribution of the correlations (Figure 7 b), we now find high correlations for eQBO years throughout October. This again implies that the lack of correlation in October is due to the distorted shape of the polar vortex being smeared out by calculation of zonal means, and the effect of EPP on the NO₂ column is significant through October. The reappearance of correlations in eQBO years in November in Figure 5b) is likely a mixing effect, with the break down

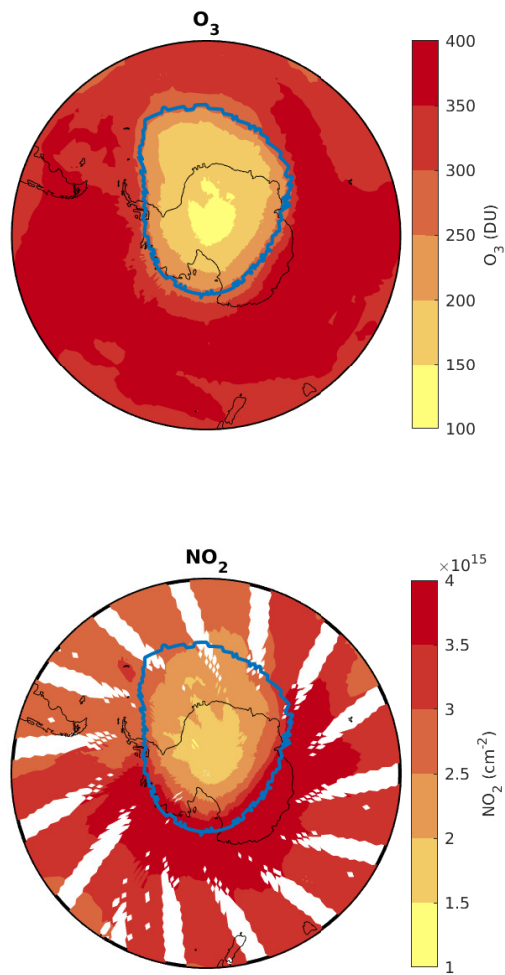


Figure 6. Vortex edge identification based on OMI ozone column for the 19th October 2014. The top panel shows the OMI measured ozone column density with the 245 DU contour highlighted. The bottom panel shows the NO_2 stratospheric column with the 245 DU ozone contour overlaid. This method is repeated for each individual day in October throughout the study period.

of the polar vortex around this time leading to vortex air being mixed with extra-vortex air resulting in the NO₂ distribution not being as skewed as it was when contained in the vortex. Figure 7 c also shows higher correlation with more instances of significance in wQBO years in October than in Figure 5 c though this is more variable than in eQBO years (which is consistent with Figure 5, that wQBO years show lower correlation). Although the A_p index has generally been lower in the past decade than in the 1991-1996 period investigated by Siskind et al. (2000), considering observations only in the vortex still shows the same, strong linear relationship found in that study.

4 Discussion

4.1 Influence of the QBO

As shown in Figures 3, 4 and 5 a), our results suggest that the phase of the QBO is influencing the SH polar EPP-NO_x signal in the spring months. Results of Strahan et al. (2015) suggest that eQBO phase in early winter leads to increased N₂O between altitudes of ~24-33 km in September: Figure 1 of Strahan et al. (2015) shows a positive anomaly for N₂O in September in eQBO years (and opposite for wQBO). Although their designation of QBO phase differs slightly from ours, this will not largely affect their comparability, as our designations only differ for one year of a 10 year study. Our results suggest that although there is an increased pool of N₂O in the polar region during eQBO (contributing to larger NO₂ column from N₂O oxidation), EPP still contributes a clear fraction to the overall SH polar stratospheric column NO₂ in the springtime. Taking the QBO phase into account this EPP contribution during spring is generally more pronounced. We note that for wQBO years, the high correlation with \hat{A}_p is only present until September, while lasting until November for eQBO years. It is not clear why this is the case for wQBO. Further analysis of possible reasons behind this discrepancy is beyond the scope of this work.

4.2 Possible influence of PSCs and denitrification

Here we discuss possible reasons for the consistently lower amounts of NO₂ in wQBO years found in Figure 4. Baldwin and Dunkerton (1998) found that the polar vortex is colder during winters with wQBO. A colder polar vortex results in a higher likelihood of polar stratospheric cloud (PSC) formation (Brasseur and Solomon, 2005). As discussed in the Introduction, PSCs affect the heterogeneous chemistry in the polar region, leading to denitrification of the lower stratosphere (Dirksen et al., 2011). One of the possible reasons for the lower NO₂ column during wQBO found here could be enhanced denitrification as a result of lower temperatures in the vortex resulting in enhanced PSC formation. In the following we will perform a simple analysis to test for signs of this from existing MLS observations, although more detailed analysis of PSC observations would be required for robust conclusions.

⁷removed: the there is

⁸removed: We suggest that this is due to the effect of denitrification in the polar region.

⁹removed: Thus, for years with more PSCs (i.e. wQBO) more denitrification would likely occur, resulting in the depleted

¹⁰removed: reported here . This could also explain the lower incidence of significant correlation in the wQBO cases.

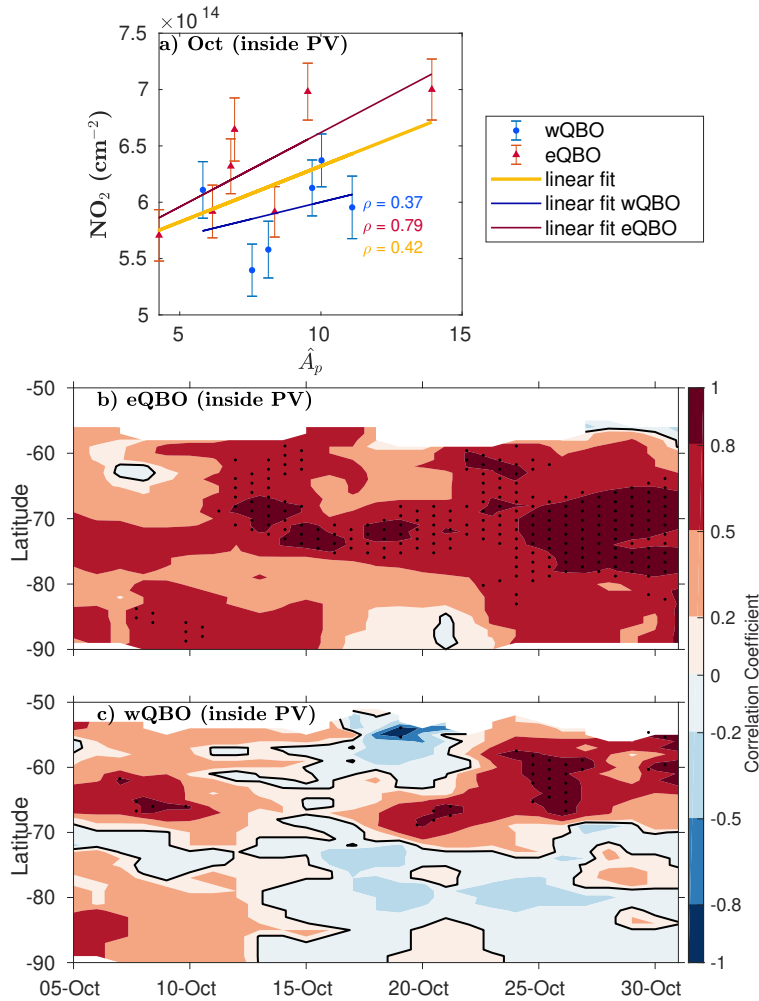


Figure 7. a) \hat{A}_p vs. the average, $\cos(\text{latitude})$ area weighted NO_2 from 60°S to 90°S , for observations inside the polar vortex. Red triangles correspond to eQBO years and blue circles to wQBO years. The yellow line represents a linear fit to all data points, while the red line is for eQBO years only and blue for wQBO years only. ρ values are as in Figure 4. Error bars indicate the 95% confidence interval for the mean. b) Correlation of \hat{A}_p with 5 day running mean NO_2 column inside the polar vortex for eQBO years. Contour levels are shown for $[-1, -0.8, -0.5, -0.2, 0, 0.2, 0.5, 0.8, 1]$, with an additional black line for the zero contour. The stippling indicates correlations significant at $\geq 95\%$ level. c) as b) but for wQBO years.

To test whether QBO phase affects denitrification in the Antarctic stratosphere, we analysed temperature and HNO_3 observations from MLS (see section 2.2). Figure 8 a) and b) show the mean temperature and HNO_3 respectively, each averaged over 60°S to 82°S for 2005-2017 over the late winter–early spring period, i.e. when the polar vortex is coldest and PSCs are forming. Panels c) and e) show the anomalies from the mean temperature, for eQBO and wQBO years respectively. Panels d)

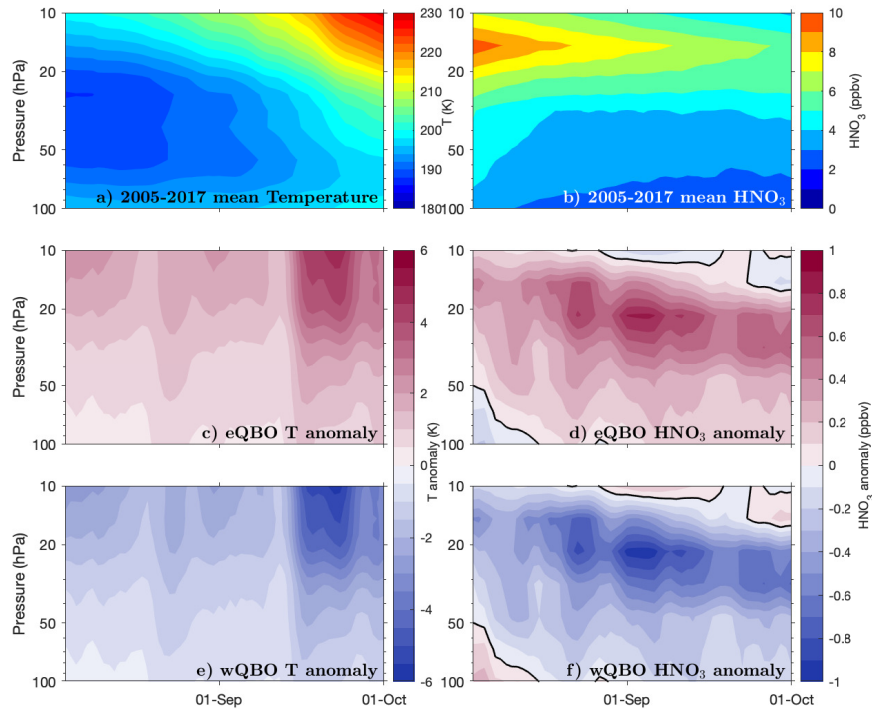


Figure 8. a) Three day running mean MLS temperature from 2005-2017 (5 K contour interval), b) three day running mean MLS HNO₃ from 2005-2017 with contour interval 1 ppbv. a) and b) are both averaged over 60°S to 82°S for the lower stratosphere for 2005-2017 late winter–early spring. c) HNO₃ anomaly (mean shown in a) has been subtracted) for years with eQBO (contour interval is 0.1 ppbv, with black contour showing zero anomaly). d) Temperature anomaly (mean shown in b) has been subtracted) for years with eQBO (contour interval is 1 K, with black contour showing zero anomaly). e) as c) but years with wQBO, and f) as d) for years with wQBO.

and f) present the anomaly from the mean HNO₃ mixing ratio, for eQBO and wQBO years respectively. The vertical pressure range of all panels is 100 hPa to 10 hPa which corresponds to an altitude range of approximately 17 km to 32 km. Figure 8 suggest that eQBO years tend to have more HNO₃ (up to 1 ppbv) and higher temperature (up to 4 K) throughout this period, while wQBO years show a consistently negative anomaly in HNO₃ (down to -1 ppbv) and lower temperature (down to -4 K). Colder temperatures would likely lead to more PSC formation and thus more HNO₃ being removed from the stratosphere (more denitrification) in wQBO years (than in eQBO years). It should, however, be noted here that the link of PSC coverage and QBO modulation of polar temperature via the Holton-Tan effects is still under debate (see e.g. Strahan et al., 2015).

We have, for the first time, provided evidence of EPP contribution to the Antarctic stratospheric NO_x column in the late springtime using OMI/Aura stratospheric NO_2 observations. This is one of the few studies to use stratospheric NO_2 data from OMI and also highlights the value of long time series of stratospheric NO_2 from nadir viewing instruments. Our analysis shows that influence from the QBO is able to mask the stratospheric EPP- NO_x signal in satellite observations in a way that to our
290 knowledge has not previously been accounted for: Accounting for the phase of the QBO makes the contribution from EPP more pronounced in the NO_2 column, and signals of enhanced EPP- NO_x in the polar stratospheric column can be detected until late November.

Previously, Funke et al. (2014a) analysed EPP- NO_y observations and were able to attribute SH enhancements with an average A_p dependence of $+0.0698 \text{ Gmol}/A_p$ into early spring months (September). Here, we show that this reactive nitrogen
295 lingers, entering the lower stratosphere in the form of NO_2 at an average A_p dependence of $+0.066 \text{ Gmol}/\hat{A}_p$ in November.

We present evidence of contribution from EPP- NO_x in the Antarctic stratosphere at a time when halogen activate ozone loss is taking place. NO_x is well known to react with both ozone and active halogens, catalytically destroying the former, and driving the latter to its reservoirs (Brasseur and Solomon, 2005). Antarctic ozone loss has been found to be reduced in years with eQBO (Garcia and Solomon, 1987) due (at least in part) to the increased vortex temperatures hampering chlorine
300 activation on PSCs (Lait et al., 1989). Our results suggest that, as chlorine activation continues to decrease in the Antarctic stratosphere following the Montreal Protocol (Solomon et al., 2016), the total EPP- NO_x (in addition to SPEs as pointed out by Stone et al., 2018) should be accounted for in predictions of Antarctic springtime ozone recovery. Future studies should investigate the role of larger EPP- NO_x fraction when investigating the net effect of NO_2 on the fragile ozone chemistry in the springtime.

305 *Data availability.* All data used here are open access and available from the following sources: A_p : <http://wdc.kugi.kyoto-u.ac.jp/kp>; QBO: <https://www.geo.fu-berlin.de/en/met/ag/strat/produkte/qbo>; OMI and MLS: <https://earthdata.nasa.gov>.

Author contributions. EMG and AS planned the study. EMG did the analysis with support from AS. JT provided expertise on OMI observations. EMG and AS lead the writing of the manuscript with comments from all authors.

Competing interests. The authors declare no competing interests.

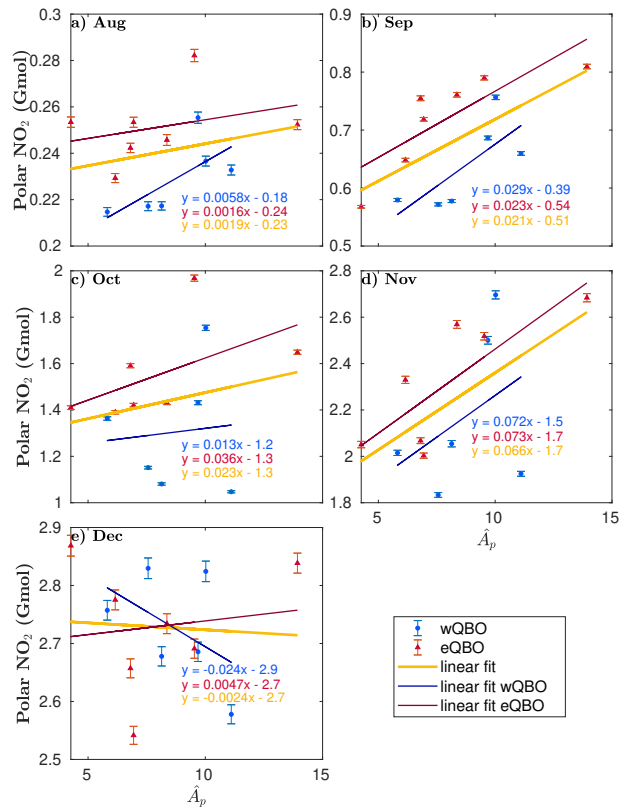


Figure A1. As Figure 4, but with monthly average polar NO₂ expressed in gigamole (Gmol). Each panel shows the linear least squares fit to data points (colour coding as before), including the fit equations ($y = \text{NO}_2$, $x = \hat{A}_p$). Red triangles are years with eQBO, and blue circles are wQBO. The yellow linear fit is a best-fit line for all the data in each plot, while the red fits only eQBO data, and the blue line fits only wQBO data.

310 *Acknowledgements.* We are grateful for the World Data Center for Geomagnetism, the Freie Universität Berlin and the National Aeronautics and Space Administration for providing open access to the data sets used in this study. We would like to thank Dan Smale and Cora Randall for their useful discussions and valuable feedback.

References

- Baldwin, M. P. and Dunkerton, T. J.: Quasi-biennial modulation of the southern hemisphere stratospheric polar vortex, *Geophys. Res. Lett.*, 25, 3343–3346, <https://doi.org/10.1029/98GL02445>, 1998.
- 315 Bhartia, P. K.: OMI/Aura Ozone (O3) Total Column Daily L2 Global Gridded 0.25 degree \times 0.25 degree V3, <https://doi.org/10.5067/Aura/OMI/2025>, Accessed: [12/11/2018], 2012.
- Brasseur, G. P. and Solomon, S.: *Aeronomy of the Middle Atmosphere*, Springer, 2005.
- Bucsela, E. J., Krotkov, N. A., Celarier, E. A., Lamsal, L. N., Swartz, W. H., Bhartia, P. K., Boersma, K. F., Veefkind, J. P., Gleason, J. F., and Pickering, K. E.: A new stratospheric and tropospheric NO₂ retrieval algorithm for nadir-viewing satellite instruments: applications to OMI, *Atmos. Meas. Tech.*, 6, 2607–2626, <https://doi.org/10.5194/amt-6-2607-2013>, 2013.
- 320 Dirksen, R. J., Boersma, K. F., Eskes, H. J., Ionov, D. V., Bucsela, E. J., Levelt, P. F., and Kelder, H. M.: Evaluation of stratospheric NO₂ retrieved from the Ozone Monitoring Instrument: Intercomparison, diurnal cycle, and trending, *J. Geophys. Res.: Atmos.*, 116, D08 305, <https://doi.org/10.1029/2010JD014943>, 2011.
- 325 Funke, B., López-Puertas, M., Holt, L., Randall, C. E., Stiller, G. P., and von Clarmann, T.: Hemispheric distributions and interannual variability of NO_y produced by energetic particle precipitation in 2002–2012, *J. Geophys. Res.: Atmos.*, 119, 13,565–13,582, <https://doi.org/10.1002/2014JD022423>, 2014a.
- Funke, B., López-Puertas, M., Stiller, G. P., and von Clarmann, T.: Mesospheric and stratospheric NO_y produced by energetic particle precipitation during 2002–2012, *J. Geophys. Res.: Atmos.*, 119, 4429–4446, <https://doi.org/10.1002/2013JD021404>, 2014b.
- 330 Funke, B., López-Puertas, M., Stiller, G., Versick, S., and Clarmann, T.: A semi-empirical model for mesospheric and stratospheric NO_y produced by energetic particle precipitation, *Atmos. Chem. Phys.*, 16, 8667–8693, <https://doi.org/10.5194/acp-16-8667-2016>, 2016.
- Garcia, R. R. and Solomon, S.: A possible relationship between interannual variability in Antarctic ozone and the quasi-biennial oscillation, *Geophys. Res. Lett.*, 14, 848–851, <https://doi.org/10.1029/GL014i008p00848>, 1987.
- Hurwitz, M. M., Newman, P. A., Li, F., Oman, L. D., Morgenstern, O., Braesicke, P., and Pyle, J. A.: Assessment of the breakup of the Antarctic polar vortex in two new chemistry-climate models, *J. Geophys. Res.: Atmos.*, 115, <https://doi.org/10.1029/2009JD012788>, 2010.
- 335 Jackman, C. H., DeLand, M. T., Labow, G. J., Fleming, E. L., Weisenstein, D. K., Ko, M. K. W., Sinnhuber, M., and Russell, J. M.: Neutral atmospheric influences of the solar proton events in October–November 2003, *J. Geophys. Res.: Space Phys.*, 110, A09S27, <https://doi.org/10.1029/2004JA010888>, 2005.
- 340 Jackman, C. H., Marsh, D. R., Vitt, F. M., Garcia, R. R., Fleming, E. L., Labow, G. J., Randall, C. E., López-Puertas, M., Funke, B., von Clarmann, T., and Stiller, G. P.: Short- and medium-term atmospheric constituent effects of very large solar proton events, *Atmos. Chem. Phys.*, 8, 765–785, <https://doi.org/10.5194/acp-8-765-2008>, 2008.
- Krotkov, N. A.: OMI/Aura NO₂ Total and Tropospheric Column Daily L2 Global Gridded 0.25 degree \times 0.25 degree V3, <https://doi.org/10.5067/Aura/OMI/2018>, Accessed: [12/11/2018], 2012.
- 345 Krotkov, N. A., Lamsal, L. N., Celarier, E. A., Swartz, W. H., Marchenko, S. V., Bucsela, E. J., Chan, K. L., Wenig, M., and Zara, M.: The version 3 OMI NO₂ standard product, *Atmos. Meas. Tech.*, 10, 3133–3149, <https://doi.org/10.5194/amt-10-3133-2017>, 2017.
- Kuttippurath, J. and Nair, P.: The signs of Antarctic ozone hole recovery, *Scientific Reports*, 7, 585, <https://doi.org/10.1038/s41598-017-00722-7>, 2017.

- Lait, L. R., Schoeberl, M. R., and Newman, P. A.: Quasi-biennial modulation of the Antarctic ozone depletion, *J. Geophys. Res.: Atmos.*, 94, 11 559–11 571, <https://doi.org/10.1029/JD094iD09p11559>, 1989.
- Livesey, N. J., Read, W. G., Wagner, P. A., Froidevaux, L., Lambert, A., Manney, G. L., Millán Valle, L. F., Hugh C. Pumphrey, H. C., Santee, M. L., Schwartz, M. J., Wang, S., Fuller, R. A., Jarnot, R. F., Knosp, B. W., Martinez, E., and Lay, R. R.: Earth Observing System (EOS) Aura Microwave Limb Sounder (MLS) version 4.2x level 2 data quality and description document, https://mls.jpl.nasa.gov/data/v4-2_data_quality_document.pdf, 2017.
- Manney, G., Santee, M., Froidevaux, L., Livesey, N., and Read, W.: MLS/Aura Level 2 Nitric Acid (HNO₃) Mixing Ratio V004, <https://doi.org/10.5067/Aura/MLS/DATA2012>, Accessed: [29/08/2019], 2015.
- Matthes, K., Funke, B., Andersson, M. E., Barnard, L., Beer, J., Charbonneau, P., Clilverd, M. A., Dudok de Wit, T., Haberreiter, M., Hendry, A., Jackman, C. H., Kretschmar, M., Kruschke, T., Kunze, M., Langematz, U., Marsh, D. R., Maycock, A. C., Misios, S., Rodger, C. J., Scaife, A., Seppälä, A., Shangguan, M., Sinnhuber, M., Tourpali, K., Usoskin, I., Van De Kamp, M., Verronen, P. T., and Versick, S.: Solar forcing for CMIP6 (v3.2), *Geosci. Model Dev.*, 10, 2247–2302, <https://doi.org/10.5194/gmd-10-2247-2017>, 2017.
- Naujokat, B.: An Update of the Observed Quasi-Biennial Oscillation of the Stratospheric Winds over the Tropics, *J. Atmos. Sci.*, 43, 1873–1877, [https://doi.org/10.1175/1520-0469\(1986\)043<1873:AUOTOQ>2.0.CO;2](https://doi.org/10.1175/1520-0469(1986)043<1873:AUOTOQ>2.0.CO;2), 1986.
- Randall, C. E., Rusch, D. W., Bevilacqua, R. M., Hoppel, K. W., and Lumpe, J. D.: Polar Ozone and Aerosol Measurement (POAM) II stratospheric NO₂, 1993–1996, *J. Geophys. Res.: Atmos.*, 103, 28,361–28,371, <https://doi.org/10.1029/98JD02092>, 1998.
- Randall, C. E., Harvey, V. L., Manney, G. L., Orsolini, Y., Codrescu, M., Sioris, C., Brohede, S., Haley, C. S., Gordley, L. L., Zawodny, J. M., and Russell, J. M.: Stratospheric effects of energetic particle precipitation in 2003–2004, *Geophys. Res. Lett.*, 32, L05 802, <https://doi.org/10.1029/2004GL022003>, 2005.
- Randall, C. E., Harvey, V. L., Singleton, C. S., Bailey, S. M., Bernath, P. F., Codrescu, M., Nakajima, H., and Russell, J. M.: Energetic particle precipitation effects on the Southern Hemisphere stratosphere in 1992–2005, *J. Geophys. Res.*, 112, D08 308, <https://doi.org/10.1029/2006JD007696>, 2007.
- Santee, M. L., Read, W. G., Waters, J. W., Froidevaux, L., Manney, G. L., Flower, D. A., Jarnot, R. F., Harwood, R. S., and Peckham, G. E.: Interhemispheric Differences in Polar Stratospheric HNO₃, H₂O, ClO, and O₃, *Science*, 267, 849–852, <https://doi.org/10.1126/science.267.5199.849>, 1995.
- Santee, M. L., Lambert, A., Read, W. G., Livesey, N. J., Cofield, R. E., Cuddy, D. T., Daffer, W. H., Drouin, B. J., Froidevaux, L., Fuller, R. A., Jarnot, R. F., Knosp, B. W., Manney, G. L., Perun, V. S., Snyder, W. V., Stek, P. C., Thurstans, R. P., Wagner, P. A., Waters, J. W., Muscari, G., de Zafra, R. L., Dibb, J. E., Fahey, D. W., Popp, P. J., Marcy, T. P., Jucks, K. W., Toon, G. C., Stachnik, R. A., Bernath, P. F., Boone, C. D., Walker, K. A., Urban, J., and Murtagh, D.: Validation of the Aura Microwave Limb Sounder HNO₃ measurements, *J. Geophys. Res.: Atmos.*, 112, <https://doi.org/10.1029/2007JD008721>, 2007.
- Schoeberl, M. R., Douglass, A. R., and Joiner, J.: Introduction to special section on Aura Validation, *Journal of Geophysical Research: Atmospheres*, 113, D15S01, <https://doi.org/10.1029/2007JD009602>, 2008.
- Schwartz, M., L. N. and Read, W.: MLS/Aura Level 2 Temperature V004, <https://doi.org/10.5067/Aura/MLS/DATA2021>, Accessed: [29/08/2019], 2015.
- Schwartz, M. J., Lambert, A., Manney, G. L., Read, W. G., Livesey, N. J., Froidevaux, L., Ao, C. O., Bernath, P. F., Boone, C. D., Cofield, R. E., Daffer, W. H., Drouin, B. J., Fetzer, E. J., Fuller, R. A., Jarnot, R. F., Jiang, J. H., Jiang, Y. B., Knosp, B. W., Krüger, K., Li, J.-L. F., Mlynczak, M. G., Pawson, S., Russell III, J. M., Santee, M. L., Snyder, W. V., Stek, P. C., Thurstans, R. P., Tompkins, A. M., Wagner, P. A., Walker, K. A., Waters, J. W., and Wu, D. L.: Validation of the Aura Microwave Limb Sounder tempera-

- ture and geopotential height measurements, *Journal of Geophysical Research: Atmospheres*, 113, <https://doi.org/10.1029/2007JD008783>, <https://agupubs.onlinelibrary.wiley.com/doi/abs/10.1029/2007JD008783>, 2008.
- 390 Seppälä, A., Verronen, P. T., Clilverd, M. A., Randall, C. E., Tamminen, J., Sofieva, V., Backman, L., and Kyölä, E.: Arctic and Antarctic polar winter NO_x and energetic particle precipitation in 2002-2006, *Geophys. Res. Lett.*, 34, L12 810, <https://doi.org/10.1029/2007GL029733>, 2007a.
- Seppälä, A., Clilverd, M. A., and Rodger, C. J.: NO_x enhancements in the middle atmosphere during 2003-2004 polar winter: Relative significance of solar proton events and the aurora as a source, *J. Geophys. Res.*, 112, D23 303, <https://doi.org/10.1029/2006JD008326>, 2007b.
- 395 Seppälä, A., Matthes, K., Randall, C. E., and Mironova, I. A.: What is the solar influence on climate? Overview of activities during CAWSES-II, *Prog. Earth Planet. Sci.*, 1, 24, <https://doi.org/10.1186/s40645-014-0024-3>, 2014.
- Siskind, D. E., Nedoluha, G. E., Randall, C. E., Fromm, M., and Russell III, J. M.: An assessment of Southern Hemisphere stratospheric NO_x enhancements due to transport from the upper atmosphere, *Geophys. Res. Lett.*, 27, 329–332, <https://doi.org/10.1029/1999GL010940>, 2000.
- 400 Solomon, S., Ivy, D. J., Kinnison, D. E., Mills, M. J., Neely, R. R., and Schmidt, A.: Emergence of healing in the Antarctic ozone layer, *Science*, <https://doi.org/10.1126/science.aae0061>, 2016.
- Stone, K. A., Solomon, S., and Kinnison, D. E.: On the Identification of Ozone Recovery, *Geophys. Res. Lett.*, 45, 5158–5165, <https://doi.org/10.1029/2018GL077955>, 2018.
- Strahan, S. E., Oman, L. D., Douglass, A. R., and Coy, L.: Modulation of Antarctic vortex composition by the quasi-biennial oscillation, *Geophys. Res. Lett.*, 42, 4216–4223, <https://doi.org/10.1002/2015GL063759>, 2015.
- 405 Turunen, E., Verronen, P. T., Seppälä, A., Rodger, C. J., Clilverd, M. A., Tamminen, J., Enell, C. F., and Ulich, T.: Impact of different energies of precipitating particles on NO_x generation in the middle and upper atmosphere during geomagnetic storms, *J. Atmos. Sol. Terr. Phys.*, 71, 1176–1189, <https://doi.org/10.1016/j.jastp.2008.07.005>, 2009.
- Wilks, D. S.: *Statistical methods in the atmospheric sciences*, vol. 100, Elsevier, 2011.