

The authors sincerely thank both reviewers for their comments on our paper. Below are our responses to each concern.

Reviewer #1

General comments

Unfortunately, the article has one flaw, which is the use of year 2000 meteorology in the model, instead of the years of each campaign. I would thus strongly suggest to rerun the model with the appropriate meteorologies in order to strengthen the results.

However, in case this isn't feasible, I would still recommend this paper for publication, as the data and insight gained through their new measurement methodology is still highly valuable and worth publishing. Fortunately, even with the "wrong" model year, the overlap of in situ measurements with the model results is highly remarkable.

We appreciate this comment, which has been made by both reviewers. We agree that simulations that match the meteorological year of the measurements would be the ideal. Per this comment we explored the inclusion of this data and rerun of the simulations. We regret that it became evident that the workload involved in such simulations was beyond the current capabilities of our groups. Given that the major focus of the work was the comparison of the experimental records with a comparison to simulations we do not believe it is strictly required (per the reviewer comments). We have therefore added the following text at the end of Section 2.5: "Here we focus on the model's ability to capture the vertical profile and the average concentration, features which we do not expect to exhibit substantial interannual variability." and on page 7, "A more detailed investigation matching the meteorological year and the size range measured could help provide quantitative insights into the deficiencies in the model description of bioaerosol emissions, removal and vertical transport by convection, and we suggest this is as possible future work."

Because of the value of this data for the community, I would also suggest to the authors to publish their data openly as a supplement, as it could be re-used to improve climate models that work with bioaerosols.

After the publication of the paper data will be shared on Harvard Dataverse, similar to our previous paper, Zawadowicz et al. (2017). Reviewer #2 has also noted that our Data Availability statement was missing from the paper. This has now been added, as follows, "Data used to generate the figures are included in a Harvard Dataverse dataset with the same name as this paper (*citation to follow*)."

Specific comments

p. 2 line 29: Citation for WIBS instrument lacking. Add link to <http://www.dropletmeasurement.com/wideband-integrated-bioaerosol-sensor-wibs-neo>, not just to articles using it in their research. Alternatively, you can add the link to page 3, line 30, where you mention which company is producing WIBS.

Link to DMT has been added to page 3, line 30.

p. 3 line 12: Maybe add a reference to the 2015 mountaintop study you're mentioning.

As of now, the FIN-03 overview paper is still in preparation.

p. 6 line 16: It is a pity, that the simulations run with GLOMAP were performed for the year 2000 and haven't used initial data from the years the sampling took place. Is there a reason why you did this? If so, please explain. Using the wrong year might lead to uncertainties and weaken the strength of your result. If possible, I would strongly advise for rerunning the model to match the specific year of each campaign.

Please see the comments above.

p. 6 line 25: Please explain in a bit more detail how the seasons affect the mixing ratios of bioaerosol with silicates. Especially in the MACPEX campaign the ratio is rather high. Why?

Because data from several different campaigns were used, sampling locations as well as seasons have effect on bioaerosol variability and mixing state. In this case, the strong influence of silicates in MACPEX is probably driven by sampling location. Those flights were carried out over Texas and were aimed at dust effects on ice nucleation. We revised this to say, "Depending on the campaign, 30% - 82% of all bioaerosols also had silicate features (Table 1). The MACPEX campaign had a very high proportion of particles with silicate features (82%), likely owing to flights over Texas."

p. 7 lines 9 and 10: It is very unfortunate, that the model is driven by year 2000 meteorology and wasn't rerun for the years of each campaign. Convective systems are one of key factors for transporting bioaerosol into higher atmosphere levels where they can act as ice nuclei and thus influence precipitation patterns.

Please see the comments above. We included this statement in our discussion, "A more detailed investigation matching the meteorological year and the size range measured could help provide quantitative insights into the deficiencies in the model description of bioaerosol emissions, removal and vertical transport by convection, and we suggest this is as possible future work."

Style and orthography comments

Overall, the manuscript would benefit from another read-through in order to improve the flow of language and correct typographical errors, like missing punctuation. This is however not a deal-breaker, as the science is sound and the findings important.

We thank the reviewer for catching our errors. Overall language editing has now been done. Please refer to the "Track changes" version for the exact nature of the corrections.

p. 2 line 5: replace "it is" with "they are"

Fixed.

p. 2 line 8: there is a full stop missing between "et al., 2012)" and "In order to evaluate. . .".

Fixed.

p. 2 line 8: instead of "spatially, temporally" write "spatial, temporal"

Fixed.

p. 2 line 12: Bioaerosol are usually treated as a plural noun. Therefore, one should write: “Bioaerosol originate from. . .” instead of “. . .originates from. . .”.

Fixed.

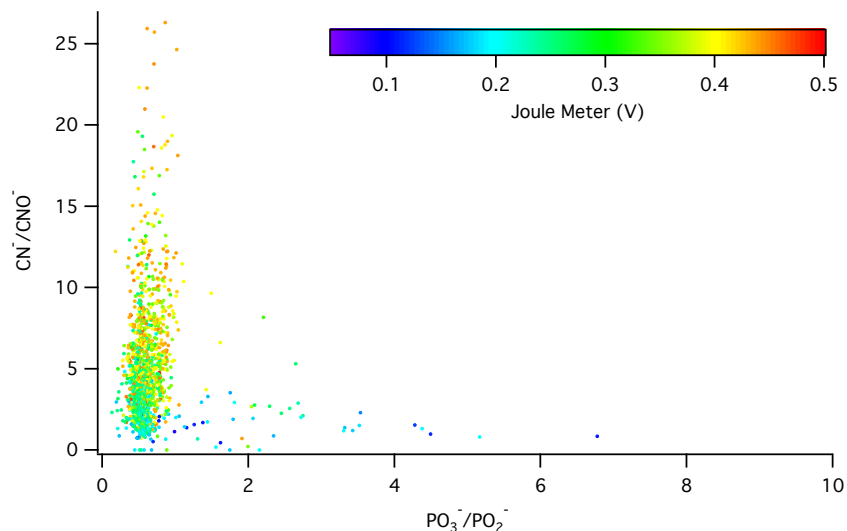
p. 15 Table 1: space between “

Spaces were inserted in the Table column headings, as appropriate.

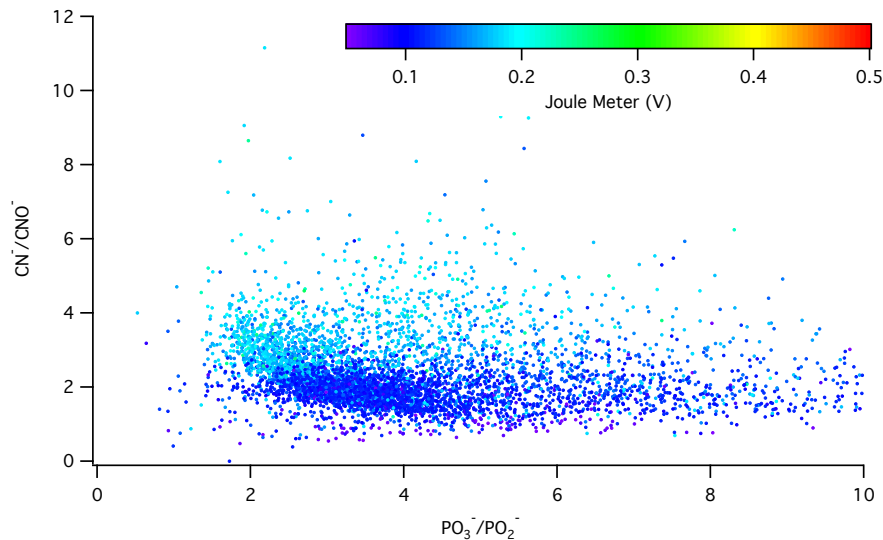
Reviewer #2

In many instances of applying classification routines to historical data, the 'drift' or variable instrument performance can significantly affect performance. Can the authors comment on effective mitigation strategies for this or is this implicitly accounted for in fitting the SVM?

One of the reasons for using mass spectral peak ratios, instead the signal of spectral peaks in the bioaerosol identification technique described in our previous paper, Zawadowicz et al. (2017), is better insulation against instrumental drifts. Single particle mass spectra tend to be affected by drifts in excimer laser power in particular. Variations in laser power don't shift distributions of CN^-/CNO^- and $\text{PO}_3^-/\text{PO}_2^-$ ratios enough to make them indistinguishable using the SVM technique, as shown below, using previously unpublished data.



Apatite particles ionized using different laser powers.



Bioaerosol (*Aspergillus* cellulase) particles ionized using different laser powers.

While these two particle populations were sampled using different laser power ranges, we hope this demonstrates that SVM is valid for a range of laser powers.

We added the following note to the Methods section, “Those spectra were plotted in a CN^-/CNO^- vs. $\text{PO}_3^-/\text{PO}_2^-$ space, according to relative abundances of phosphate and organic nitrate ions. Peak ratios are used instead of absolute peak signals to better account for any instrumental drifts.”

Why is the year 2000 simulated in GLOMAP? Is there much variability in vertical profiles in the model. If not, is this realistic? I find this to be an important feature that needs expanding on in the paper before publication given the title. I would request the model is re-run.

Please see our comments to Reviewer #1.

Im not sure how a variable baseline fluorescence in the WIBS might change results?

The following explanation was added to the Methods section, “In analysis of WIBS data, it is necessary to define the threshold above which a particle is considered fluorescent in a given channel. Here the instrument was run in "Forced trigger" mode (lamps flash in the absence of particles) once daily and a particle is considered to be fluorescent in a given channel if the resulting signal is more than three standard deviations above the mean of the corresponding forced trigger signal. Day to day variations in the calculated fluorescent threshold were minimal.”

Data and code availability. The authors need to add a section on data and model availability following the copernicus guidelines before publication: https://www.atmospheric-chemistry-and-physics.net/about/data_policy.html

Please see our comments to Reviewer #1

Model-Measurement Consistency and Limits of Bioaerosol Abundance Over the Continental United States

Maria A. Zawadowicz^{1,a}, Karl D. Froyd^{2,3}, Anne E. Perring^{2,3,b}, Daniel M. Murphy², Dominick V. Spracklen⁴, Colette L. Heald^{1,5}, Peter R. Buseck⁶ and Daniel J. Cziczo^{1,5,7}

5 ¹Department of Earth, Atmospheric and Planetary Sciences, Massachusetts Institute of Technology, Cambridge, MA, USA

²Chemical Sciences Division, NOAA Earth System Research Laboratory, Boulder, CO, USA

³Cooperative Institute for Research in Environmental Science, University of Colorado, Boulder, CO, USA

⁴School of Earth and Environment, University of Leeds, Leeds, UK

⁵Department of Civil and Environmental Engineering, Massachusetts Institute of Technology, Cambridge, MA, USA

10 ⁶School of Earth and Space Exploration, Arizona State University, Tempe, AZ, USA

⁷Department of Earth, Atmospheric and Planetary Sciences, Purdue University, West Lafayette, IN, USA

^a currently at: Atmospheric Sciences and Global Change Division, Pacific Northwest National Laboratory, Richland, WA, USA

^b currently at: Department of Chemistry, Colgate University, 13 Oak Dr., Hamilton, NY 13346.

15 *Correspondence to:* Daniel J. Cziczo (djciczo@mit.edu)

Abstract. Due to low concentrations and chemical complexity, *in-situ* observations of bioaerosol are geographically and temporally sparse, and this limits the accuracy of current emissions inventories. In this study, we apply a new methodology, including corrections for misidentification of mineral dust, to measurements of single particles over four airborne sampling campaigns to derive vertical profiles of bioaerosol over the continental United States. The new methodology is based on single particle mass spectrometry (SPMS), and it can extend historic datasets to include measurements of bioaerosol, allows for comparison to other techniques, and generally agrees with a global aerosol model. In the locations sampled, bioaerosols were at least a factor of 10 less abundant than mineral dust. Below 2 km, bioaerosol concentrations were measured between 6×10^3 m^{-3} and 2×10^4 m^{-3} . Between 2 km and 8 km, bioaerosol concentrations were between 0 and 2×10^4 m^{-3} , and Above 8 km, bioaerosol concentrations were between 0 and 1×10^3 m^{-3} . Between 30% and 80% of single bioaerosol particles detected were internally mixed with dust. A direct comparison of the SPMS methodology with a co-located WIBS fluorescence sensor on a mountaintop site showed agreement to within a factor of 3 over the common size range.

1 Introduction

The effects of aerosols, clouds, and their mutual interactions on the climate system are more uncertain than those of greenhouse gases (Boucher et al., 2013). Aerosols can influence Earth's radiative budget both directly, by scattering and absorbing incoming solar radiation, and indirectly, by nucleating clouds. Clouds can then scatter solar radiation and trap terrestrial heat with a balance that depends on their specific properties (Boucher et al., 2013). Water droplets and ice crystals nucleate on pre-existing particles termed cloud condensation nuclei (CCN) and ice nucleating particles (INPs), respectively. Bioaerosol can

act as efficient CCN and, because certain bacteria have been shown to be efficient INPs in laboratory studies (Möhler et al., 2008), it has been proposed that bioaerosol could play a significant role in atmospheric ice nucleation (Möhler et al., 2007). Real time and *in-situ* measurements of atmospheric ice nuclei are scarce, which makes it difficult to directly observe and quantify this effect (Cziczo et al., 2013, Ebert et al., 2011). Because of high activation temperature ($> -15^{\circ}\text{C}$) of bioaerosol (Möhler et al., 2008), they are expected to have the strongest influence on mixed-phase clouds, which form in this temperature regime (Hoose et al., 2010). However, modeling studies suggest that this effect is most important locally, and it is difficult to capture the variability of bioaerosol using emissions inventories based on sparse measurements (Hoose et al., 2010, Sesartic et al., 2012). In order to evaluate the importance of bioaerosol, spatial, temporal and altitude-resolved measurements are necessary, but so far lacking. Most available observations are from ground level and abundances above the planetary boundary layer are therefore poorly resolved. Observations made at high altitude research stations (Ebert et al., 2011) can extend above the planetary boundary layer, but they have low spatial resolution.

Bioaerosols originate from a myriad of sources, including, but not limited to, microbes, fungal spores, pollen, and small fragments of vegetation (Després et al., 2012). Prior to the development of portable field sensors, measurements of atmospheric bioaerosol used off-line methods on collected aerosol, such as cultivation, fluorescent labelling, optical and electron microscopy (EM) and DNA amplification (Després et al., 2012, Burrows et al., 2009). These techniques yield estimates of bacteria concentrations near-surface between 1×10^4 and $7 \times 10^5 \text{ m}^{-3}$, depending on the ecosystem (Burrows et al., 2009). Data for fungal spore abundances place their concentrations between 40 and $1.3 \times 10^4 \text{ m}^{-3}$, depending on the ecosystem (Sesartic and Dallafior, 2011). Recent flow cytometry measurements at a remote mountain site reported bacterial concentrations between 1×10^3 and $1 \times 10^5 \text{ m}^{-3}$, depending on the season, corresponding to, on average, 22% of all particles greater than $0.5 \mu\text{m}$ diameter (Bowers et al., 2012). Scanning electron microscopy and optical microscopy measurements, averaged over one year, found $6 \times 10^5 \text{ m}^{-3}$ bioaerosol in the remote atmosphere (20% of all particles greater than $0.4 \mu\text{m}$ diameter) (Matthias-Maser et al., 2000) and $3 \times 10^6 \text{ m}^{-3}$ in a semi-rural location (24% of all particles greater than $0.4 \mu\text{m}$ diameter) (Jaenicke, 2005). In the marine atmosphere, transmission electron microscopy measurements reported 1% of all particles greater than $0.2 \mu\text{m}$ diameter to be bacteria (Jaenicke, 2005), coupled to accumulation mode aerosol measurements at a nearby location (Brechtel et al., 1998) this corresponds to an approximate concentration of $\sim 1 \times 10^6 \text{ m}^{-3}$. These off-line studies generally target surface measurements of bioaerosol, in part because faster sampling was needed to constrain abundances above the boundary layer (i.e., from an airborne platform). Additionally, off-line methods can be susceptible to contamination during sample preparation (Salter et al., 2014). *In situ* and real-time detection of bioaerosol is now possible with commercial monitors, such as Wideband Integrated Bioaerosol Sensor (WIBS). These methods utilize fluorescence when excited with UV radiation which is common for, but not exclusive to, bioaerosol (Kaye et al., 2005). There are numerous examples of recent WIBS field deployments (Crawford et al., 2016, Fernández-Rodríguez et al., 2018, Gosselin et al., 2016, Perring et al., 2015) and efforts to improve particle characterization using clustering techniques (Savage and Huffman, 2018). Recently, WIBS was deployed on an aircraft in the southeastern U.S. and reported between 1×10^4 and $3 \times 10^5 \text{ m}^{-3}$ (at standard conditions) fluorescent particles in vertical profiles from surface level to the upper troposphere (5- 10% of total particles in the $0.6 - 5 \mu\text{m}$ diameter range) (Ziemba et al., 2016).

Deleted: it is

Deleted: spatially, temporally

Deleted: Bioaerosol originates

A similar aircraft WIBS deployment derived vertical profiles of fluorescent particles over the U.S. Great Plains (Twohy et al., 2016). Concentrations up to $1 \times 10^3 \text{ m}^{-3}$ (at ambient conditions) of fluorescent particles in the 0.8 – 12 μm diameter range were found in the mid- to upper troposphere (Twohy et al., 2016).

In contrast to the only recently available fluorescence sensors, ground- and aircraft- deployable single-particle mass spectrometers have existed since the mid-1990's and have generated an extensive record of atmospheric aerosol composition (Murphy, 2007). If bioaerosol can be accurately identified, these data offer an opportunity to extend our knowledge of bioaerosol abundance and link historic measurements and modern instrumentation specifically designed for their detection. Recently, bioaerosols have been detected in single particle mass spectra using the presence and relative magnitude of phosphorous and organic ion peaks (Zawadowicz et al., 2017). Using this new method, we have derived vertical profiles from the boundary layer to the free troposphere from four airborne measurement campaigns. These datasets span the continental United States and two seasons and compare favorably with a global aerosol model output. Additionally, our bioaerosol detection technique was found to compare well with a co-located WIBS sensor during a 2015 mountaintop study.

2 Methods

2.1 Particle Analysis by Laser Mass Spectrometry (PALMS)

The PALMS instrument has been discussed in detail elsewhere (Cziczo et al., 2006, Thomson et al., 2000). Briefly, PALMS uses an aerodynamic lens inlet to sample aerosols and impart them with a size-dependent velocity distribution (Zhang et al., 2002, Zhang et al., 2004). Aerodynamic particle diameter is measured by timing the particle time of flight between two continuous-wave laser beams (532 nm Nd:YAG in laboratory PALMS and 405 nm diode in flight PALMS). The particles are ablated and ionized in one step by a 193 nm excimer laser. A unipolar reflectron time of flight mass spectrometer is then used to acquire mass spectra. Due to the laser fluence used for desorption and ionization ($\sim 10^9 \text{ W/cm}^2$), PALMS spectra show both atomic ions and ion clusters. This type of technique, generally called single particle mass spectrometry, is considered semi-quantitative because the ion signal depends on the ionization potential of the substance and its abundance (Murphy, 2007). Additionally, the ionization potentials can depend on the overall chemical composition of the particle (i.e., the particle matrix) (Murphy, 2007). The lower particle size threshold for PALMS is set by the amount of detectable scattered light at $\sim 200 \text{ nm}$ and the upper size threshold is set by the aerodynamic lens at $\sim 4 \mu\text{m}$ (Cziczo et al., 2006). The 193 nm excimer laser can ionize all atmospherically-relevant particles within this size range with minimal detection biases (Murphy, 2007). Currently, there are two versions of the PALMS instrument. Flight PALMS, which is more compact, is aircraft deployable (Thomson et al., 2000), and it has been used to collect the field datasets analyzed in this study.

2.2 Wideband Integrated Bioaerosol Sensor (WIBS)

WIBS (Droplet Measurement Technologies, Boulder, CO, <http://www.dropletmeasurement.com/wideband-integrated-bioaerosol-sensor-wibs-neo>) is a commercial sensor that measures the optical size and fluorescence of individual particles

Formatted: Font color: Text 1

Formatted: Font color: Text 1

which are used as a proxy for bioaerosol. Briefly, particles scatter light during transit of a 635 nm laser beam, which triggers the sequential firing of xenon flash lamps filtered to emit at 280 nm and 370 nm. The resulting emissions are imaged onto PMTs filtered to detect fluorescent light in two bands: 310 – 400 nm (the FL1 detector) and 420 – 650 nm (the FL2 detector). For data collected in 2015 at Storm Peak Laboratory in Colorado, the WIBS was run at an increased gain such that it was able to count, size and retrieve fluorescent information for particles between 0.4 and 10 μm . The counting efficiency in this size window was assessed by comparison with a co-located Laser Aerosol Spectrometer (LAS, TSI Incorporated, Shoreview, MN) and the agreement between the two instruments was within 10%.

The excitation and emission wavelengths were chosen to target fluorescence expected from tryptophan, an amino acid and NADH, a by-product of bacterial metabolism (Gabey et al., 2010, Kaye et al., 2000, Kaye et al., 2005). The FL1 detector detects fluorescence resulting from the 280 nm excitation and is saturated by the 370 nm flash while the FL2 detector detects fluorescence resulting from both flashes. Thus, each fluorescent particle can have signal in any of three “channels”.

In analysis of WIBS data, it is necessary to define the threshold above which a particle is considered fluorescent in a given channel. Here the instrument was run in "Forced trigger" mode (lamps flash in the absence of particles) once daily and a particle is considered to be fluorescent in a given channel if the resulting signal is more than three standard deviations above the mean of the corresponding forced trigger signal. Day to day variations in the calculated fluorescent threshold were minimal.

2.3 Field Data

Four flight data sets were used in this study (Figure 1). These included the New England Air Quality Study (NEAQS), consisting of 17 research flights on WP-3D aircraft in the summer of 2004 (Peltier et al., 2007). The flights were concentrated around New England and they were the lowest in altitude compared to the others used in this work. The 2012 Deep Convective Clouds and Chemistry (DC3) campaign was aimed at understanding the effect of convective storms on the upper troposphere (Barth et al., 2015). PALMS was flown on the NASA DC-8 aircraft and the flights were concentrated around Colorado, Kansas and Oklahoma. During the 2013 Studies of Emissions and Atmospheric Composition, Clouds and Climate Coupling by Regional Surveys (SEAC⁴RS) field mission, PALMS was also deployed on the DC-8, and the flights included Western and Central U.S. (Toon et al., 2016). The 2011 The Mid-latitude Airborne Cirrus Properties Experiment (MACPEX) campaign was based in Houston, TX and it was focused on cirrus cloud properties (Cziczo et al., 2013). PALMS was deployed on the WB-57 aircraft. Flights focused on central U.S. and they reached higher altitudes than the other three campaigns used in this work. Overall, 539,589 total particle spectra were analyzed: 232,545 for NEAQS, 6,335 for MACPEX, 127,835 for DC3 and 172,874 for SEAC⁴RS. The ground dataset used to compare WIBS and PALMS was acquired as a part of the Fifth Ice Nucleation Workshop—phase 3 (FIN03). The flight PALMS instrument was used to sample ambient air at Storm Peak Laboratory, a high-altitude site atop Mt. Werner in Colorado (elevation: 3220 m M.S.L) in North-central Colorado during September, 2015. WIBS was used to sample the ambient air using the same inlet.

2.4 Data Analysis

2.4.1 PALMS

The PALMS spectra considered for bioaerosol classification are negative-polarity only, as successful classification of bioaerosol can only be performed in negative mode. Phosphate ions, PO_3^- and PO_2^- , are key features used in the classification (Zawadowicz et al., 2017) and they are prominent only in negative PALMS spectra. Definitions and methods for classification of single particle spectra of bioaerosol and inorganic phosphorus-rich particles were described previously (Zawadowicz et al., 2017). Briefly, a library of single particle phosphorus-rich PALMS spectra of known composition was constructed, including biological, mineral and combustion aerosols. Those spectra were plotted in a CN^-/CNO^- vs. $\text{PO}_3^-/\text{PO}_2^-$ space, according to relative abundances of phosphate and organic nitrate ions. [Peak ratios are used instead of absolute peak signals to better account for instrumental drifts.](#) A two-dimensional boundary for a binary classifier was calculated using support vector machines (SVM), a machine learning algorithm. This trained classifier can now be used on unknown data which contains phosphate and organic nitrate ions. The uncertainties reported in this paper are a result of fitting the SVM scores to a probability distribution using Platt scaling, as outlined in Zawadowicz et al. (2017). The result are probabilities of correct classification for the field data. Classification probabilities lower than 80% are flagged as uncertain and reported as error bars.

Number concentrations and particle fractions were calculated by combining PALMS composition data with coincident size distribution data from the LAS instrument or a similar optical particle spectrometer. The average fraction of particles identified as bioaerosol, inorganic phosphate, and silicate particles were determined as a function of size at 3-5 minute sampling intervals. PALMS and LAS data were identically binned according to particle size. Within each size bin, the average fraction of each PALMS particle type was multiplied by the absolute number concentration measured by LAS to give number distributions for each type. These were integrated over size to yield absolute number concentrations of bioaerosol, inorganic phosphate, and mineral/metallic particles. Particle type concentrations were divided by total particle concentration to give number fractions. Results were binned according to sampling altitude for the aircraft studies or averaged of the entire measurement period for the FIN03 ground study.

2.4.2 WIBS

We use the categorization scheme described in Perring et al. (2015), along with laboratory results of known bioaerosol (Hernandez et al., 2016) to interpret fluorescent aerosol concentrations. Hernandez et al. (2016) report, for example, that bacteria generally have signal in the FL1 detector following 280 nm excitation, denoted channel A in Perring et al. (2015), and do not have signal in either of the other channels. Similarly, fungal spores all tend to have signal in channel A and sometimes have signal detected by the FL2 detector following 280 nm excitation (channel B) and 370 nm excitation (channel C). Using the Perring et al. (2015) categorization this would be denoted as a mixture of types A, AB and ABC. Pollen tends to always have signal in channel C and sometimes has signal in channels A and B; in other words, pollen appears as a mixture of types C, BC and ABC. Type B particles (i.e. particles for which the only fluorescent signal is seen by FL2 following 280 nm

excitation) are very rarely found in tests of known bioaerosol and are, instead, frequently observed in ambient data during periods of biomass burning influence. Thus, for the present study, we derive our implied bioaerosol concentrations from the WIBS as the sum of all observed particles of types A, AB, ABC, BC or C and we exclude particles exhibiting type B fluorescence. Very few type AC particles are observed in the lab or in ambient data, however they are also excluded from reported bioaerosol concentrations in this study.

In typical applications, size is also used as an identifying factor to further reduce the likelihood of non-biological fluorescent interferences. Non-biological interferences in the accumulation mode can affect derived bioaerosol concentrations substantially even if only a small fraction of the accumulation mode number contributes. Therefore, submicron fluorescent particles are often excluded from analysis. Here, in order to maximize the size range of overlap between the PALMS and the WIBS, we have not excluded particles based on size though we note that there are known interferences in the accumulation mode associated with various particle types including black and brown carbon and humic material (Savage et al., 2017, Pöhlker et al., 2012). These are spectrally similar to known bioaerosol and likely contribute to our reported concentrations at the smaller sizes.

2.5 Modeling

The global aerosol microphysics model used in this study is the modal version of the Global Model of Aerosol Processes (GLOMAP-mode) with incorporated fungal spore and bacteria emissions, as described previously (Heald and Spracklen, 2009, Spracklen and Heald, 2014). Fungal spore emissions are driven by leaf area index (LAI) and water vapor concentrations (Heald and Spracklen, 2009). Bacteria emissions are implemented following the ecosystem-dependent scheme of Hoose et al. (2010). The model is driven by ECMWF meteorology and is run at a horizontal resolution of $2.8^{\circ} \times 2.8^{\circ}$ with 31 vertical levels between the surface and 10 hPa. These simulations are described in greater detail in (Spracklen and Heald, 2014). We note that while the model is sampled for the location of the airborne measurements, the simulation is performed for the year 2000 and thus not matched to the specific year of each campaign. [Here we focus on the model's ability to capture the vertical profile and the average concentration, features which we do not expect to exhibit substantial interannual variability.](#)

3 Results and Discussion

Flight tracks of the four campaigns analyzed in this study are shown in Figure 1. The datasets were filtered for particles matching bioaerosol chemistry according to a previously described method (Zawadowicz et al., 2017). Figure 2 shows a typical bioaerosol spectrum and size distribution (Figure 2; panels A and B). Note that inorganic phosphorus-bearing aerosol (Figure 2; panels C and D) and bioaerosol have many of the same chemical features and overlapping size distributions and may have been previously confused (Zawadowicz et al., 2017). Internal mixing, where silicate mineral (Figure 2; panel E) and bioaerosol features coexist, may represent particles derived from fertile soils (Zawadowicz et al., 2017). Depending on the campaign, 30% - 82% of all bioaerosols also had silicate features (Table 1). [The MACPEX campaign had a very high proportion of](#)

Deleted: and season

particles with silicate features (82%), likely owing to flights over Texas. All three particle types shown in Figure 2 have similar size distributions, and have to be discriminated on the basis of chemistry rather than size alone.

Vertical profiles of bioaerosol from four flight campaigns are shown in Figure 1. They are compared to previously measured concentrations derived from literature (Bowers et al., 2012, Burrows et al., 2009, Twohy et al., 2016). The literature estimates are approximate ranges due to sparse data above ground level and different measurement techniques used. Near the ground (< 2 km), bioaerosol concentrations were measured between $6 \times 10^3 \text{ m}^{-3}$ and $2 \times 10^4 \text{ m}^{-3}$ (at ambient conditions). At intermediate altitudes (between 2 km and 8 km), bioaerosol concentrations were between 0 and $2 \times 10^4 \text{ m}^{-3}$ (at ambient conditions). At high altitudes, in the free troposphere, (between 8 km and 14 km) bioaerosol concentrations were between 0 and $1 \times 10^3 \text{ m}^{-3}$ (at ambient conditions). Note that Figure 1 uses a log-scale x-axis to capture large ranges of observed and modeled concentrations, but this obscures instances where PALMS-derived concentrations were 0 (i.e. no bioaerosols detected in this altitude bin), for instance during the MACPEX campaign at 4 – 8 km. Those instances should be interpreted as being below the instrument detection limit.

The vertical profiles derived here are also compared with the GLOMAP simulation described in Section 2.5 (Spracklen and Heald, 2014) (Figure 1; panel A). Model results generally capture the decrease in bioaerosol concentrations with altitude, except for the DC3 campaign, which targeted intense vertical motion (i.e., convective systems), and to a lesser extent the SEAC⁴RS campaign. The model does not capture the influence of convective systems during these campaigns because it is driven by year 2000 meteorology. With the exception of convective features and concentrations below the detection limit in MACPEX for intermediate altitudes, the model and observations tend to agree within an order of magnitude throughout the profiles. [A more detailed investigation matching the meteorological year and the size range measured could help provide quantitative insights into the deficiencies in the model description of bioaerosol emissions, removal and vertical transport by convection, and we suggest this is as possible future work.](#)

Concentrations of bioaerosols should always be interpreted noting the instrumental size range, $\sim 0.3 - 4 \mu\text{m}$ for PALMS (Cziczo et al., 2006). WIBS, in contrast, can report diameters between $0.5 \mu\text{m}$ and $16 \mu\text{m}$ (Gabey et al., 2010) and there is no technical upper limit for microscopy. Bioaerosol can be relatively large: for example, some pollen grains range from $10 \mu\text{m}$ to greater than $100 \mu\text{m}$ in diameter (Emberlin, 2008), although the atmospheric lifetime of $\sim 100 \mu\text{m}$ particles is short due to both gravitational settling and wet-depositional processes (Seinfeld and Pandis, 2006). We compare PALMS and WIBS during the FIN03 study over the $0.5 - 4 \mu\text{m}$ diameter size range (Figure 3; panel A). Because fluorescence is not unique to bioaerosol and is impacted by non-biological interferences (Hernandez et al., 2016), data from WIBS are interpreted in conjunction with size and shape information to minimize potential interferences (Hernandez et al., 2016, Perring et al., 2015), as described in the Data Analysis section. We note that interferences are likely worse at smaller sizes, which is why some previous studies (Perring et al., 2015) only consider super-micrometer fluorescent particle loadings. The percentages reported by the fluorescence sensor are similar, on average 1.8 times higher, over the common instrument range. The average concentrations during FIN03 reported by both instruments agree within a factor of 3 (Figure 3; panel B). Exact comparisons between those two instruments are complicated because concentration calculations are sensitive to instrumental size ranges. Additionally, the fluorescence sensor

reports optical particle size, while the mass spectrometer reports aerodynamic particle size. The overall bioaerosol abundance reported by both instruments, <1% of total particles in the size range, is consistent with historic EM results (Pósfai et al., 2003). Vertical profiles of bioaerosol derived in this study can be compared with profiles of particles with similar chemical features and size distributions: inorganic phosphorus-bearing aerosol (see also Figure 2; panels C and D) and mineral/metallic aerosol.

5 The mineral/metallic category used here is consistent with previous studies (Cziczo et al., 2013). In our data, bioaerosols comprise up to 0.08% of particles in the 0.3 – 4 μm diameter size range (Figure 4). By comparison, inorganic phosphorus-bearing aerosol comprises up to 0.9% of particles, and mineral/metallic particles, comprise 0.6 – 10% of particles. Vertical profiles of inorganic phosphorus-rich aerosol align with those of silicate mineral dust, which likely reflects similar surface sources such as saltation or phosphorus-rich fertilizer use (Koppelaar and Weikard, 2013). It should be noted that inorganic

10 phosphorus-bearing mineral dust abundances can be 2-10 times higher than bioaerosol, which illustrates the importance of distinguishing between those chemical classes.

The PALMS technique applied here requires the presence of CN^- , CNO^- , PO_2^- and PO_3^- markers to classify a particle as biological. It is calibrated against laboratory reference material containing bacteria, fungi and their spores and pollen fragments. It is therefore sensitive to those microorganisms and their fragments, but it does not necessarily detect pure saccharides, such

15 as cellulose, or other pure biogenic components once they decomposed into their fundamental constituents. The definition of “bioaerosol” used here and in Zawadowicz, et al (2017) encompasses microorganisms directly released into the atmosphere, their fragments and reproductive dispersal units (e.g. pollen and spores). This technique also does not address speciation of these bioaerosols. However, based on the sizes of biological material detected, observed mixing states, and comparison with WIBS during FIN03, the presence of both soil-derived bacteria and fungal spores is likely. Bacteria derived from soils can

20 range from submicron up to 5 μm in diameter, but the majority was found to be less than 1.2 μm (Portillo et al., 2013). Fungal spores are bigger than soil bacteria, between 2 and 10 μm (Yamamoto et al., 2012) and can be common in forested areas (Zhu et al., 2016). At FIN03, the majority of bioaerosols measured with WIBS were bacteria and fungal spores according to the Perring et al. (2015) classification and only a small fraction were identified as pollen fragments (Figure 3). In the light of this, the comparison to GLOMAP-mode is also valid, as bacteria and fungal spores are both included.

25 Internal mixing of single particles detected with PALMS can reveal some information about particle sources. However, some caution is warranted, as coagulation is also likely during long-range transport of aerosols. Many particles analyzed in this study were internally mixed with dust components (Table 1 and Figure 2), which could indicate a soil origin. Prior studies have shown that dust and microorganisms are often ejected into the atmosphere together, suggesting a similarity of sources (Hallar et al., 2011, Mazar et al., 2016, Tang et al., 2018). A smaller portion of detected bioaerosol particles also had sea salt markers

30 (Table 1). Those might indicate bioaerosols that have been lofted into the marine atmosphere, or transported over the ocean, but it is not enough to suggest bioaerosols ejected from the ocean. Generally, concentrations of bioaerosols over the ocean are lower than over the continents (Burrows et al., 2009) and in studies of marine bioaerosols that included genetic typing, a large portion of bioaerosols detected over the ocean were terrestrial in origin (Seifried et al., 2015, Xia et al., 2015).

4 Conclusion

Single-particle mass spectrometry is a real time, *in-situ* technique that can be used for measurement of bioaerosol. By mining historic data, this method can provide measurements with wider temporal and spatial coverage than previous culturing and microscopy techniques (Burrows et al., 2009), and it is free of contamination that can critically impact laboratory-intensive off-line identification techniques, such as DNA amplification (Salter et al., 2014). In this study, we compare mass spectrometry measurements with WIBS, showing an agreement to within a factor of 3 in the common 0.5 – 4 μm size range. The measurements also exhibit agreement with an aerosol microphysics model within a few factors in the upper troposphere and within an order of magnitude under all conditions. The agreement between two different measurement techniques and a model is an important step in constraining global abundances of this poorly understood but possibly important source of atmospheric aerosol. This offers the potential to use past data sets over different seasons, locations and altitude to build long-term trends in bioaerosol to both constrain and compare to models. Overall, these studies found bioaerosol to be consistently present in the upper troposphere, but an order of magnitude less abundant than mineral/metallic aerosol. These bioaerosol, despite their low abundance, could be important for some atmospheric processes, such as the nucleation of ice at high temperatures ($> -15^{\circ}\text{C}$), where they are more likely than mineral dust to activate. As both dust and bioaerosol have been shown to nucleate ice in laboratory (Atkinson et al., 2013, Möhler et al., 2008), this technique can be further applied to studies aimed at constraining the importance of bioaerosol on cloud formation.

Formatted: Font color: Black

5 Data Availability

Data used to generate the figures are included in a Harvard Dataverse dataset with the same name as this paper ([citation to follow](#)).

Deleted: 5

6 Acknowledgements

We thank the DRI SPL staff and the FIN03 team for their logistical support and scientific discussions of the fieldwork at SPL and the aircraft crews, support staff and scientists of the DC3, SEAC⁴RS, NEAQS and MACPEX studies for assistance with data acquisition. We acknowledge funding from NSF and DOE, which allowed our participation in CARES and FIN03 (grants AGS-1461347 and DE-SC0014487, respectively). We acknowledge NASA for funding data analysis (grant NNX13AO15G) and DC3, SEAC⁴RS and MACPEX. We thank NOAA for funding the NEAQS studies. M.A.Z. acknowledges the support of NASA Earth and Space Science Fellowship. D.J.C. acknowledges the support of Victor P. Starr Career Development Chair. C.L.H. acknowledges NSF funding (ATM-1564495). A.E.P. was supported by the NOAA Health of the Atmosphere Program and the NOAA Atmospheric Composition and Climate Program.

References

- Atkinson, J. D., Murray, B. J., Woodhouse, M. T., Whale, T. F., Baustian, K. J., Carslaw, K. S., Dobbie, S., O'Sullivan, D., and Malkin, T. L.: The importance of feldspar for ice nucleation by mineral dust in mixed-phase clouds, *Nature*, 498, 355-358, 10.1038/nature12278, 2013.
- 5 Barth, M. C., Cantrell, C. A., Brune, W. H., Rutledge, S. A., Crawford, J. H., Huntrieser, H., Carey, L. D., MacGorman, D., Weisman, M., Pickering, K. E., Bruning, E., Anderson, B., Apel, E., Biggerstaff, M., Campos, T., Campuzano-Jost, P., Cohen, R., Crouse, J., Day, D. A., Diskin, G., Flocke, F., Fried, A., Garland, C., Heikes, B., Honomichl, S., Hombrook, R., Huey, L. G., Jimenez, J. L., Lang, T., Lichtenstern, M., Mikoviny, T., Nault, B., O'Sullivan, D., Pan, L. L., Peischl, J., Pollack, I., Richter, D., Riemer, D., Ryerson, T., Schlager, H., St. Clair, J., Walega, J., Weibring, P., Weinheimer, A.,
- 10 Wennberg, P., Wisthaler, A., Wooldridge, P. J., and Ziegler, C.: The Deep Convective Clouds and Chemistry (DC3) Field Campaign, *Bulletin of the American Meteorological Society*, 96, 1281-1309, 10.1175/bams-d-13-00290.1, 2015.
- Boucher, O., Randall, D., Artaxo, P., Bretherton, C., Feingold, G., Forster, P., Keminien, V.-M., Kondo, Y., Liao, H., Lohmann, U., Rasch, P., Sathesh, S. K., Sherwood, S., Stevens, B., and Zhang, X. Y.: Clouds and Aerosols In: *Climate Change 2013: The Physical Science Basis. Contribution of Working Group I to the Fifth Assessment Report of the*
- 15 *Intergovernmental Panel on Climate Change*, Cambridge, United Kingdom and New York, NY, USA, 2013.
- Bowers, R. M., McCubbin, I. B., Hallar, A. G., and Fierer, N.: Seasonal variability in airborne bacterial communities at a high-elevation site, *Atmospheric Environment*, 50, 41-49, 10.1016/j.atmosenv.2012.01.005, 2012.
- Brechtel, F. J., Kreidenweis, S. M., and Swan, H. B.: Air mass characteristics, aerosol particle number concentrations, and number size distributions at Macquarie Island during the First Aerosol Characterization Experiment (ACE 1), *Journal of*
- 20 *Geophysical Research: Atmospheres*, 103, 16351-16367, 10.1029/97jd03014, 1998.
- Burrows, S. M., Elbert, W., Lawrence, M. G., and Pöschl, U.: Bacteria in the global atmosphere – Part 1: Review and synthesis of literature data for different ecosystems, *Atmospheric Chemistry and Physics*, 9, 9263-9280, 10.5194/acp-9-9263-2009, 2009.
- Crawford, I., Lloyd, G., Herrmann, E., Hoyle, C. R., Bower, K. N., Connolly, P. J., Flynn, M. J., Kaye, P. H., Choularton, T.
- 25 W., and Gallagher, M. W.: Observations of fluorescent aerosol-cloud interactions in the free troposphere at the High-Altitude Research Station Jungfrauoch, *Atmospheric Chemistry and Physics*, 16, 2273-2284, 10.5194/acp-16-2273-2016, 2016.
- Cziczko, D. J., Thomson, D. S., Thompson, T. L., DeMott, P. J., and Murphy, D. M.: Particle analysis by laser mass spectrometry (PALMS) studies of ice nuclei and other low number density particles, *International Journal of Mass*
- 30 *Spectrometry*, 258, 21-29, 10.1016/j.ijms.2006.05.013, 2006.
- Cziczko, D. J., Froyd, K. D., Hoose, C., Jensen, E. J., Diao, M., Zondlo, M. A., Smith, J. B., Twohy, C. H., and Murphy, D. M.: Clarifying the dominant sources and mechanisms of cirrus cloud formation, *Science*, 340, 1320-1324, 10.1126/science.1234145, 2013.

- Després, V., Huffman, J. A., Burrows, S. M., Hoose, C., Safatov, A., Buryak, G., Fröhlich-Nowoisky, J., Elbert, W., Andreae, M., Pöschl, U., and Jaenicke, R.: Primary biological aerosol particles in the atmosphere: a review, *Tellus B: Chemical and Physical Meteorology*, 64, 10.3402/tellusb.v64i0.15598, 2012.
- 5 Ebert, M., Worringen, A., Benker, N., Mertes, S., Weingartner, E., and Weinbruch, S.: Chemical composition and mixing-state of ice residuals sampled within mixed phase clouds, *Atmospheric Chemistry and Physics*, 11, 2805-2816, 10.5194/acp-11-2805-2011, 2011.
- Emberlin, J.: Grass, Tree, and Weed Pollen, in: *Allergy and Allergic Diseases*, 942-962, 2008.
- Fernández-Rodríguez, S., Tormo-Molina, R., Lemonis, N., Clot, B., O'Connor, D. J., and Sodeau, J. R.: Comparison of fungal spores concentrations measured with wideband integrated bioaerosol sensor and Hirst methodology, *Atmospheric Environment*, 175, 1-14, 10.1016/j.atmosenv.2017.11.038, 2018.
- 10 Gabey, A. M., Gallagher, M. W., Whitehead, J., Dorsey, J. R., Kaye, P. H., and Stanley, W. R.: Measurements and comparison of primary biological aerosol above and below a tropical forest canopy using a dual channel fluorescence spectrometer, *Atmospheric Chemistry and Physics*, 10, 4453-4466, 10.5194/acp-10-4453-2010, 2010.
- Gosselin, M. I., Rathnayake, C. M., Crawford, I., Pöhlker, C., Fröhlich-Nowoisky, J., Schmer, B., Després, V. R., Engling, 15 G., Gallagher, M., Stone, E., Pöschl, U., and Huffman, J. A.: Fluorescent bioaerosol particle, molecular tracer, and fungal spore concentrations during dry and rainy periods in a semi-arid forest, *Atmospheric Chemistry and Physics*, 16, 15165-15184, 10.5194/acp-16-15165-2016, 2016.
- Hallar, A. G., Chirokova, G., McCubbin, I., Painter, T. H., Wiedinmyer, C., and Dodson, C.: Atmospheric bioaerosols transported via dust storms in the western United States, *Geophysical Research Letters*, 38, n/a-n/a, 10.1029/2011gl048166, 20 2011.
- Heald, C. L., and Spracklen, D. V.: Atmospheric budget of primary biological aerosol particles from fungal spores, *Geophysical Research Letters*, 36, 10.1029/2009gl037493, 2009.
- Hernandez, M., Perring, A. E., McCabe, K., Kok, G., Granger, G., and Baumgardner, D.: Chamber catalogues of optical and fluorescent signatures distinguish 25 bioaerosol classes, *Atmospheric Measurement Techniques*, 9, 3283-3292, 10.5194/amt-9-3283-2016, 2016.
- Hoose, C., Kristjánsson, J. E., and Burrows, S. M.: How important is biological ice nucleation in clouds on a global scale?, *Environmental Research Letters*, 5, 10.1088/1748-9326/5/2/024009, 2010.
- Jaenicke, R.: Abundance of cellular material and proteins in the atmosphere, *Science*, 308, 73, 10.1126/science.1106335, 2005.
- 30 Kaye, P. H., Barton, J. E., Hirst, E., and Clark, J. M.: Simultaneous light scattering and intrinsic fluorescence measurement for the classification of airborne particles, *Applied Optics*, 39, 10.1364/ao.39.003738, 2000.
- Kaye, P. H., Stanley, W. R., Hirst, E., Foot, E. V., Baxter, K. L., and Barrington, S. J.: Single particle multichannel bioaerosol fluorescence sensor, *Optics Express*, 13, 10.1364/opex.13.003583, 2005.
- Koppelaar, R. H. E. M., and Weikard, H. P.: Assessing phosphate rock depletion and phosphorus recycling options, *Global*

- Environmental Change, 23, 1454-1466, 10.1016/j.gloenvcha.2013.09.002, 2013.
- Matthias-Maser, S., Obolkin, V., Khodzer, T., and Jaenicke, R.: Seasonal variation of primary biological aerosol particles in the remote continental region of Lake Baikal/Siberia, *Atmospheric Environment*, 34, 3805-3811, 10.1016/s1352-2310(00)00139-4, 2000.
- 5 Mazar, Y., Cytryn, E., Erel, Y., and Rudich, Y.: Effect of Dust Storms on the Atmospheric Microbiome in the Eastern Mediterranean, *Environ Sci Technol*, 50, 4194-4202, 10.1021/acs.est.5b06348, 2016.
- Möhler, O., DeMott, P. J., Vali, G., and Levin, Z.: Microbiology and atmospheric processes: the role of biological particles in cloud physics, *Biogeosciences*, 4, 1059-1071, 10.5194/bg-4-1059-2007, 2007.
- Möhler, O., Georgakopoulos, D. G., Morris, C. E., Benz, S., Ebert, V., Hunsmann, S., Saathoff, H., Schnaiter, M., and
10 Wagner, R.: Heterogeneous ice nucleation activity of bacteria: new laboratory experiments at simulated cloud conditions, *Biogeosciences*, 5, 1425-1435, 10.5194/bg-5-1425-2008, 2008.
- Murphy, D. M.: The design of single particle laser mass spectrometers, *Mass Spectrom Rev*, 26, 150-165, 10.1002/mas.20113, 2007.
- Peltier, R. E., Sullivan, A. P., Weber, R. J., Brock, C. A., Wollny, A. G., Holloway, J. S., de Gouw, J. A., and Warneke, C.:
15 Fine aerosol bulk composition measured on WP-3D research aircraft in vicinity of the Northeastern United States – results from NEAQS, *Atmospheric Chemistry and Physics*, 7, 3231-3247, 10.5194/acp-7-3231-2007, 2007.
- Perring, A. E., Schwarz, J. P., Baumgardner, D., Hernandez, M. T., Spracklen, D. V., Heald, C. L., Gao, R. S., Kok, G., McMeeking, G. R., McQuaid, J. B., and Fahey, D. W.: Airborne observations of regional variation in fluorescent aerosol across the United States, *Journal of Geophysical Research: Atmospheres*, 120, 1153-1170, 10.1002/2014jd022495, 2015.
- 20 Pöhlker, C., Huffman, J. A., and Pöschl, U.: Autofluorescence of atmospheric bioaerosols – fluorescent biomolecules and potential interferences, *Atmospheric Measurement Techniques*, 5, 37-71, 10.5194/amt-5-37-2012, 2012.
- Portillo, M. C., Leff, J. W., Lauber, C. L., and Fierer, N.: Cell Size Distributions of Soil Bacterial and Archaeal Taxa, *Applied and Environmental Microbiology*, 79, 7610-7617, 10.1128/aem.02710-13, 2013.
- Pösfai, M., Li, J., Anderson, J. R., and Buseck, P. R.: Aerosol bacteria over the Southern Ocean during ACE-I, *Atmospheric
25 Research*, 66, 231-240, 10.1016/s0169-8095(03)00039-5, 2003.
- Salter, S. J., Cox, M. J., Turek, E. M., Calus, S. T., Cookson, W. O., Moffatt, M. F., Turner, P., Parkhill, J., Loman, N. J., and Walker, A. W.: Reagent and laboratory contamination can critically impact sequence-based microbiome analyses, *BMC Biol*, 12, 87, 10.1186/s12915-014-0087-z, 2014.
- Savage, N. J., Krentz, C. E., Könemann, T., Han, T. T., Mainelis, G., Pöhlker, C., and Huffman, J. A.: Systematic
30 characterization and fluorescence threshold strategies for the wideband integrated bioaerosol sensor (WIBS) using size-resolved biological and interfering particles, *Atmospheric Measurement Techniques*, 10, 4279-4302, 10.5194/amt-10-4279-2017, 2017.
- Savage, N. J., and Huffman, J. A.: Evaluation of a hierarchical agglomerative clustering method applied to WIBS laboratory data for improved discrimination of biological particles by comparing data preparation techniques, *Atmospheric*

- Measurement Techniques, 11, 4929-4942, 10.5194/amt-11-4929-2018, 2018.
- Seifried, J. S., Wichels, A., and Gerdt, G.: Spatial distribution of marine airborne bacterial communities, *MicrobiologyOpen*, 4, 475-490, 10.1002/mbo3.253, 2015.
- Seinfeld, J. H., and Pandis, S. N.: *Atmospheric Chemistry and Physics: From Air Pollution to Climate Change*, John Wiley & Sons, Inc., 2006.
- 5 Sesartic, A., and Dallafior, T. N.: Global fungal spore emissions, review and synthesis of literature data, *Biogeosciences*, 8, 1181-1192, 10.5194/bg-8-1181-2011, 2011.
- Sesartic, A., Lohmann, U., and Storelvmo, T.: Bacteria in the ECHAM5-HAM global climate model, *Atmospheric Chemistry and Physics*, 12, 8645-8661, 10.5194/acp-12-8645-2012, 2012.
- 10 Spracklen, D. V., and Heald, C. L.: The contribution of fungal spores and bacteria to regional and global aerosol number and ice nucleation immersion freezing rates, *Atmospheric Chemistry and Physics*, 14, 9051-9059, 10.5194/acp-14-9051-2014, 2014.
- Tang, K., Huang, Z., Huang, J., Maki, T., Zhang, S., Shimizu, A., Ma, X., Shi, J., Bi, J., Zhou, T., Wang, G., and Zhang, L.: Characterization of atmospheric bioaerosols along the transport pathway of Asian dust during the Dust-Bioaerosol 2016
- 15 Campaign, *Atmospheric Chemistry and Physics*, 18, 7131-7148, 10.5194/acp-18-7131-2018, 2018.
- Thomson, D. S., Schein, M. E., and Murphy, D. M.: Particle Analysis by Laser Mass Spectrometry WB-57F Instrument Overview, *Aerosol Science and Technology*, 33, 153-169, 10.1080/027868200410903, 2000.
- Toon, O. B., Maring, H., Dibb, J., Ferrare, R., Jacob, D. J., Jensen, E. J., Luo, Z. J., Mace, G. G., Pan, L. L., Pfister, L., Rosenlof, K. H., Redemann, J., Reid, J. S., Singh, H. B., Thompson, A. M., Yokelson, R., Minnis, P., Chen, G., Jucks, K.
- 20 W., and Pszenny, A.: Planning, implementation, and scientific goals of the Studies of Emissions and Atmospheric Composition, Clouds and Climate Coupling by Regional Surveys (SEAC4RS) field mission, *Journal of Geophysical Research: Atmospheres*, 121, 4967-5009, 10.1002/2015jd024297, 2016.
- Twohy, C. H., McMeeking, G. R., DeMott, P. J., McCluskey, C. S., Hill, T. C. J., Burrows, S. M., Kulkarni, G. R., Tanarhte, M., Kafle, D. N., and Toohey, D. W.: Abundance of fluorescent biological aerosol particles at temperatures
- 25 conducive to the formation of mixed-phase and cirrus clouds, *Atmospheric Chemistry and Physics*, 16, 8205-8225, 10.5194/acp-16-8205-2016, 2016.
- Xia, X., Wang, J., Ji, J., Zhang, J., Chen, L., and Zhang, R.: Bacterial Communities in Marine Aerosols Revealed by 454 Pyrosequencing of the 16S rRNA Gene*, *Journal of the Atmospheric Sciences*, 72, 2997-3008, 10.1175/jas-d-15-0008.1, 2015.
- 30 Yamamoto, N., Bibby, K., Qian, J., Hospodsky, D., Rismani-Yazdi, H., Nazaroff, W. W., and Peccia, J.: Particle-size distributions and seasonal diversity of allergenic and pathogenic fungi in outdoor air, *ISME J*, 6, 1801-1811, 10.1038/ismej.2012.30, 2012.
- Zawadowicz, M. A., Froyd, K. D., Murphy, D. M., and Cziczo, D. J.: Improved identification of primary biological aerosol particles using single-particle mass spectrometry, *Atmospheric Chemistry and Physics*, 17, 7193-7212, 10.5194/acp-17-

7193-2017, 2017.

Zhang, X., Smith, K. A., Worsnop, D. R., Jimenez, J., Jayne, J. T., and Kolb, C. E.: A Numerical Characterization of Particle Beam Collimation by an Aerodynamic Lens-Nozzle System: Part I. An Individual Lens or Nozzle, *Aerosol Science and Technology*, 36, 617-631, 10.1080/02786820252883856, 2002.

- 5 Zhang, X., Smith, K. A., Worsnop, D. R., Jimenez, J. L., Jayne, J. T., Kolb, C. E., Morris, J., and Davidovits, P.: Numerical Characterization of Particle Beam Collimation: Part II Integrated Aerodynamic-Lens-Nozzle System, *Aerosol Science and Technology*, 38, 619-638, 10.1080/02786820490479833, 2004.

Zhu, C., Kawamura, K., Fukuda, Y., Mochida, M., and Iwamoto, Y.: Fungal spores overwhelm biogenic organic aerosols in a midlatitudinal forest, *Atmospheric Chemistry and Physics*, 16, 7497-7506, 10.5194/acp-16-7497-2016, 2016.

- 10 Ziemba, L. D., Beyersdorf, A. J., Chen, G., Corr, C. A., Crumeyrolle, S. N., Diskin, G., Hudgins, C., Martin, R., Mikoviny, T., Moore, R., Shook, M., Thornhill, K. L., Winstead, E. L., Wisthaler, A., and Anderson, B. E.: Airborne observations of bioaerosol over the Southeast United States using a Wideband Integrated Bioaerosol Sensor, *Journal of Geophysical Research: Atmospheres*, 121, 8506-8524, 10.1002/2015jd024669, 2016.

15

Campaign name	% bioaerosol internally mixed with dust	% bioaerosol internally mixed with sea salt
DC3	58%	1%
SEAC ⁴ RS	27%	10%
NEAQS	28%	6%
MACPEX	82%	3%
FIN03	56%	3%

Table 1: Internal mixing of bioaerosol particles described in this study. Bioaerosol markers as defined in Zawadowicz et al. (2017) can be co-located with silicate markers (Figure 2) or sea salt markers (Cl⁻ and other NaCl-derived clusters) in the same particle, indicating internal mixing.

20

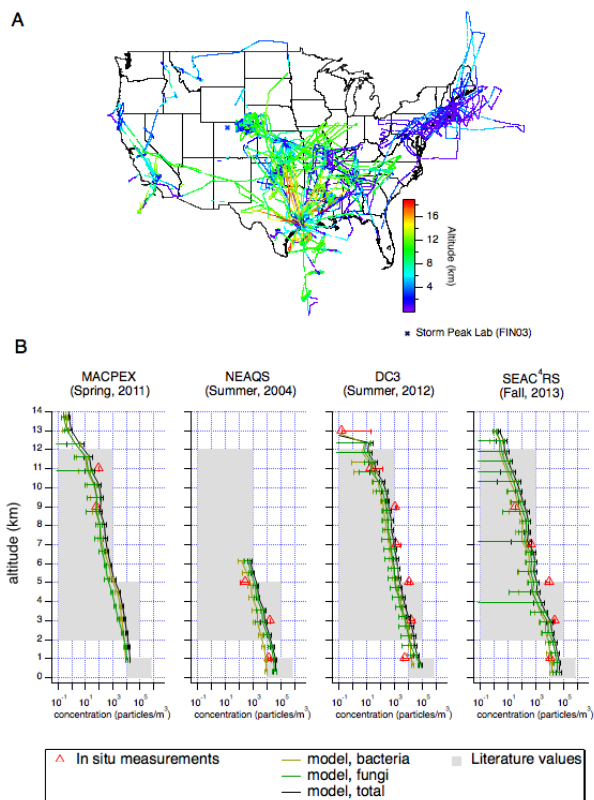


Figure 1: Flight tracks (A) and altitude-resolved concentrations of particles categorized as bioaerosol (B) during four aircraft studies: MACPEX, NEAQS, DC3 and SEAC⁴RS. The PALMS size range is 0.3 – 2 μm for MACPEX and 0.3 – 4 μm for all other campaigns. Note there was no MACPEX data for altitudes less than 2 km. The error bars on PALMS data correspond to particle type assignment confidence estimated using laboratory data and SVM algorithm. Results are shown for the GLOMAP model sampled at the measurement locations. Error bars on model results correspond to standard deviations in the model estimates in each altitude bin. Concentrations for both model and PALMS measurements are reported in particles per ambient m^3 . Typical literature values are estimated using Burrows, et al (2009) for surface values (< 1 km), Twohy, et al (2016) and Bowers, et al (2012) for 2 km – 5 km and Twohy, et al (2016) for 5 km – 12 km.

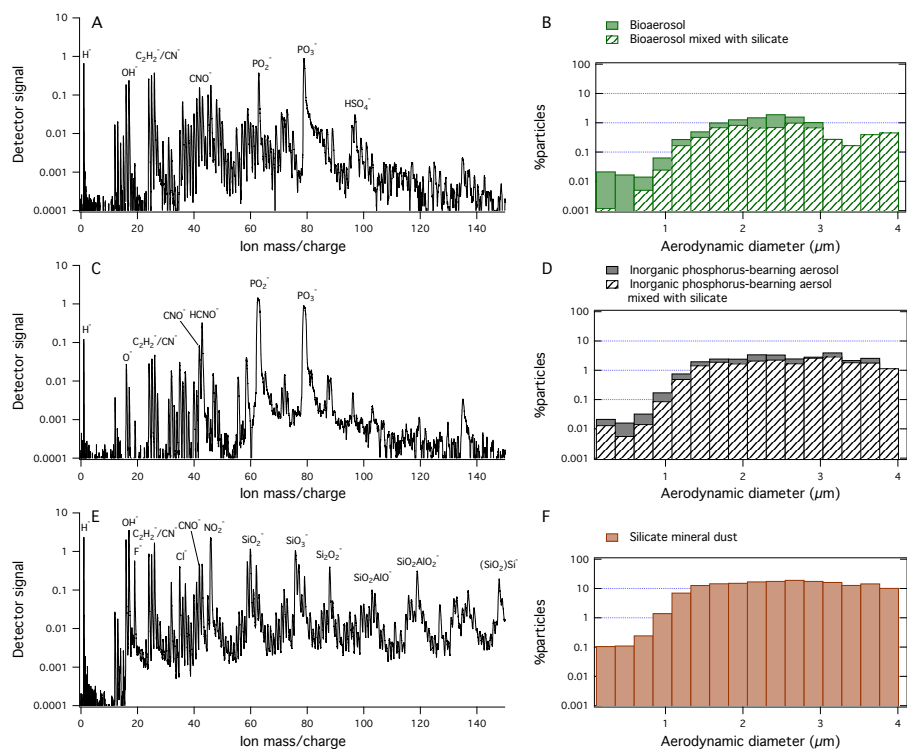


Figure 2. Representative spectra and size distributions of the three types of particles considered in this study: A. Representative spectrum of bioaerosol (DC3 campaign). B. Size distribution of bioaerosol particles in DC3, SEAC⁴RS, NEAQS, MACPEX and FIN03. The hatched pattern indicates the percentage of particles that also exhibited silicate mineral markers. C. Representative spectrum of an inorganic phosphorous-rich particle (DC3 campaign). D. Size distributions of inorganic phosphorous-rich particles in DC3, SEAC⁴RS, NEAQS, MACPEX and FIN03 campaigns. E. Representative spectrum of a silicate mineral dust particle (DC3 campaign). F. Size distributions of mineral dust particles in DC3, SEAC⁴RS, NEAQS, MACPEX and FIN03 campaigns.

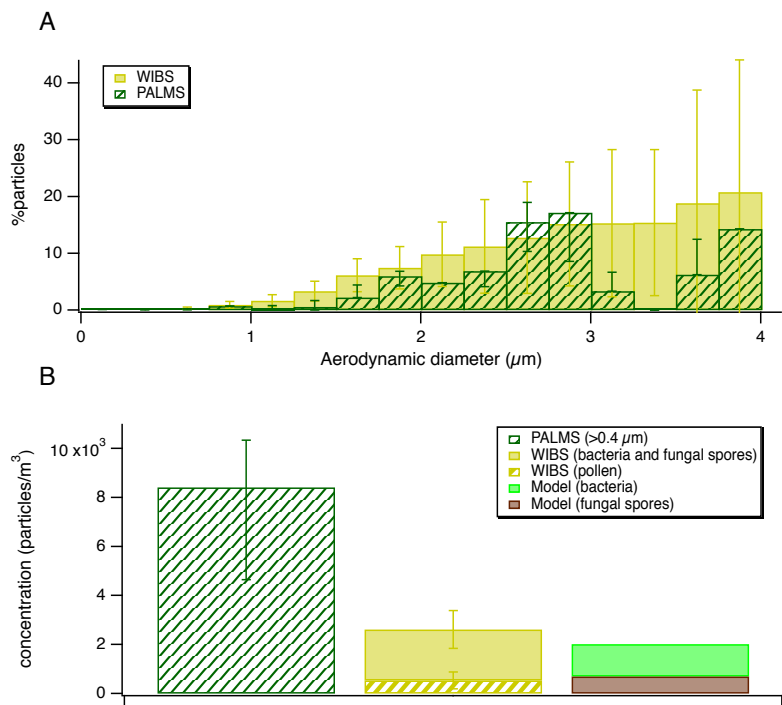


Figure 3. A. Bioaerosol abundances (as percent of all particles) detected by PALMS and WBS, grouped into size bins. The error bars on PALMS data correspond to particle type assignment confidence estimated using laboratory data and SVM algorithm. The error bars on WBS data represent standard deviations of the hourly average in each size bin. B. A comparison of measured concentrations from FIN03 and aerosol model results. A lower cut-off size of 0.4 μm has been used to report PALMS concentrations to match the WBS size range.

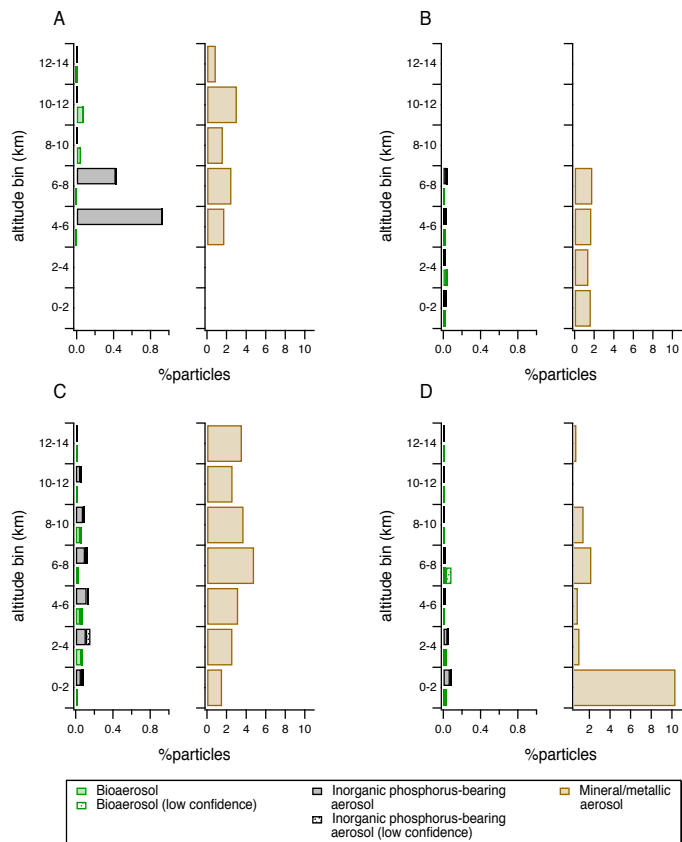


Figure 4. A. Vertical profiles expressed as particle number fractions for particles identified as bioaerosol, inorganic phosphorus-bearing aerosol and mineral/metallic aerosol for the MACPEX (A), NEAQS (B), DC3 (C) and SEAC⁴RS (D) campaigns. Note that the x-axis for the mineral/metallic profiles is x10 the x-axis for bioaerosol and inorganic phosphorus-bearing aerosol. Patterned bars indicate particles with uncertain assignment, as determined using laboratory data and SVM algorithm.